

COLTS, JUNIOR VARSITY SPLIT GAMES WITH CLAUDE

The Wheeler Colts and the Mustang JV hosted their counterparts from Claude last Thursday night on Nicholson Field and when the long night of football was over, the Colts had absorbed their first loss 18-6 and the Mustang JV and got

their first win of the year by the identical 18-6 score. Going into the Claude game, the Colts had not only been undefeated but were also unscored on and as Coach Gaines said, "The boys might have taken Claude too lightly".

Claude scored in each of the first two quarters and took a 12-0 cushion into halftime and made this margin stand up as both clubs put a six point on the board in the last half.

The Colts Benny Baker intercepted a Claude pass at the Claude 45 and returned to the 40 on Claude's first possession but the Colts came up a yard shy after four downs and Claude took over on their 31.

Claude then proceeded to drive the 69 yards to paydirt in just seven plays to take a lead that they never relinquished.

Gary Horton intercepted another Claude pass on the first play of the second quarter at the Claude 30 but once more the Colts

bogged down a yard shy of a first at the Claude 21

Midway of the second quarter, a short 18 yard boot off the toe of Jeff Christner put Claude at the Colt 49 and the visiting Colts stuck in their second TD of the game in 9 plays for their 12-0 halftime lead.

The Colts got to the Claude 5 and 25 in the third quarter but couldn't get any points for their efforts as Christner lost a fumble at the 5 and a fourth and 11 pass from the Colts signal caller, Rich Brown, was a little too tall for the receiver

to stop the second threat. Claude put the game out of reach after stopping the Colts second threat in the third quarter as they scored in four plays with the big gainer coming on a 55 yard run. The run for two points was no good and Claude had an 18-0 lead a couple of plays into the final quarter.

The Colts got their only six pointer when they took the kickoff and drove 45 yards in 7 plays with Jeff Christner getting the final 15 yards off left tackle.

Continued page 6

THE WHEELER TIMES

VOLUME 42 NUMBER 40

THURSDAY, OCTOBER 9, 1975

SINGLE COPY 10c

NATURAL GAS PIPELINE TO HONOR 13 EMPLOYEES

Natural Gas Pipeline Company of America will honor 13 area residents for their combined 125 years of service at a dinner Oct. 16 at the Coronado Inn in Pampa.

Receiving the top award of the evening with 35 years of service will be David B. Heller of Pampa. A 25-year award will be presented to Virgil D. James of White Deer.

Honors for 15 years of service will go to Donald W. Reeves of Wheeler. Receiving five-year awards will be Jimmy J. Baird of Pampa, Johnny M. Baird, Roger D. Bradstreet, Kenneth J. Daughtry, Donald R. Denton, Paul A. Millet and Neil W. Rogers, all of Wheeler, and Nita L. Dedmon and J. Curtis Holland of Miami, and Gene D. Harris of Mobeetie.

William H. Burford, district superintendent of Natural's installation near Fritch, will be master of ceremonies for the dinner. In addition to the awardees, guests at the annual dinner will include other employees from the area, their husbands and wives, along with executives from the company's Chicago headquarters. Natural Gas Pipeline is the transmission subsidiary of Peoples Gas Company. It supplies natural gas to 49 utility customers in the Upper Midwest, and is one of the nation's largest natural gas transmission companies. It operates more than 11,000 miles of pipeline and related facilities in 12 states.

FIRST-CLASS MAIL SERVICE IMPROVEMENT PROGRAM

The U. S. Postal Service first-class mail service improvement program will go into effect at the Wheeler, Briscoe and Allison, Texas Post Offices as well as nation wide on October 11. Postmaster Hiram Whitener said today.

Under the program, first-class mail will receive service that is equal to or better than airmail. The major, new service step will extend to all first-class mail weighing 13 ounces or less. "In practical terms, what this service improvement means is that domestic first-class postage now will purchase the level of service that previously only airmail could buy," said Postmaster Whitener.

Shamrock Plans Folk Fair Oct. 13

The Wheeler County Historical Commission will sponsor a County Folk Fair at the National Guard Armory in Shamrock on Oct. 13, 1975. The fair will begin at 9:00 a.m. and run as long as viewers attend. All forms of early day crafts and techniques such as soap-making, fruit drying, butter making, and many others will be performed at this fair. Early day exhibits of household articles, farm machinery, guns, and antiques will also be on display. This is a county wide fair and all persons having any artifact or talent is urged to display these at this fair.

REYDON Junior Rodeo

The Junior class of Reydon, Okla. are sponsoring a Jr. Rodeo, Oct. 18 at 8:00 p.m. and Oct. 19 at 2:00 p.m. The books open Oct. 14 and close 12:00 noon Oct. 17. Call Mrs. Leo Swope Jr., Reydon, Okla. Phone: 655-4557. Ages for the Rodeo are 19 and under. All contestants will need a signed release.

NEW ARRIVAL
Mr. and Mrs. David Patterson would like to announce the arrival of Brandi Hope, Sept. 29 at 12:09 a.m. at the Shamrock General Hospital. She weighed 7 lb 1 ounce and was 20 inches long.

Grandparents are Mr. and Mrs. Lavon Williams and Mr. and Mrs. Bob Patterson of Wheeler. Great grandparents are Lillie Moon of Wheeler, Marie Nichols of Anton, Mr. and Mrs. Howard Cruise of Pampa, Mr. and Mrs. A. D. Williams of Levelland.

Hennard Rites Read In Calif.

Tommie A. Hennard, Sr., age 73 died Wednesday, October 1, 1975, in El Centro, California, after a long illness. Services were held in Imperial, California. Survivors include, the widow, Bertha of the home; one son, Dr. T. A. Hennard, Jr., Wheeler, one daughter, Mrs. George Mallory, Brawley, California; six grandchildren and two great grandchildren; three sisters and four brothers.

FIRST NATIONAL JOINS GROUP

First National Bank in Wheeler has become a member of a network of some fifty and more banks in this area which has launched a cooperative campaign to educate their fellow citizens on the part banks as institutions and bankers as individuals play in the welfare and progress of the communities they serve.

The network is composed of banks within the signal of the three Amarillo television stations from which the campaign, composed of a series of 30-second spots, is being broadcast. Network members are also provided with a variety of newspaper, counter display, outdoor poster, and radio adaptation materials for use in their own communities.

Rites Read For Agnes Goodnight

Funeral services for Mrs. Agnes Mildred Goodnight, 83, of Pampa were held at 2:00 p.m. at Carmichael-Whitley Funeral Chapel with burial in the Fairview Cemetery. The Rev. Aaron Laverty, pastor of the First Baptist Church in Mobeetie will officiate.

Allison Plans Trap Shoot

The Allison Junior and Senior class are sponsoring a trap shoot on Sunday, Oct. 12 at 2:00. All are welcome.

Wheeler Mustangs Whip Claude 35-22

By David Britt
Maybe it wasn't the best exhibition of the finer points of football but a little bit of everything happened on the Claude gridiron last Friday night and when it was all over the Wheeler Mustangs had come out on top over the Claude Mustangs by a 35-22 count.

So weird was some of the play, the Wheeler Mustangs had 14 points at halftime and had made only two first downs in the game and one of those came on the last play of the half. In scoring their five touchdowns, the Mustangs

Chili Supper

The Wheeler High School Pep Club will have a chili supper this Friday evening, October 10, from 5:30 p.m. to 7:00 p.m. in the school cafeteria. Price will be \$1.00 for children and \$2.00 for adults 12 years and older. Advance tickets can be purchased from any pep club member.

County 4-Hers Plan Playday Sun.

The Wheeler County 4-H Texas Horse Club will sponsor a playday, Saturday, October 11. The playday will be held in the Wheeler Rodeo arena beginning at 7:00 p.m., according to Don King, County Extension Agent. Contestants will be divided into junior (8 years & under), intermediate (9-13 years), senior (14-19 years) and adults. Events will

THANK YOU

I would like to thank the people of this community for helping and sponsoring the march-a-thon that the band of the Wheeler Schools participated in Sept. 20. The march-a-thon was a very big success and the Wheeler Band Boosters have the money to purchase a \$1,000.00 concert tuba for the band. This instrument, like the contra bass clarinet that the Band Boosters purchased last year,

from Wheeler had only one drive of over 50 yards and this was in the third period when they drove 80 yards for their third TD that came on a 18 yard pass from Don Brown to Randy Weaver.

Jim Verden toed the extra point and Wheeler broke the 14-14 halftime deadlock and the Mustangs on their way to their first district win that sets up the big battle with another co-leader, Wellington, this week on Nicholson Field.

Claude filled the air with footballs all night and two long bombs in the first half coupled with Wheeler's inability to mount much offense kept Claude in the game until late in the contest when Wheeler pushed into a 35-14 lead with 3:11 to play.

MUSTANGS HOST DIST. FAVORITE WELLINGTON ON NICHOLSON FIELD

When the results of last Friday night's high school gridiron battles were in, pre-season Memphis had bitten the dust on rushing Wellington and another favorite had jumped to the front and the Wheeler Mustangs host those Skyrockets Friday night. It will be a battle of co-leaders and the winner will still be on top of District 2A and can certainly assume a commanding position.

MUSTANG NEWSLETTER

Only 1 day left to get ready to beat Wellington. Last Friday the Wheeler Mustangs successfully defeated the Claude Mustangs 35-22. The coaching staff was very pleased with the Mustangs' performance. We really appreciated the great support we received from our fans last Friday. We hope that you will all come out and support our boys tomorrow. Even though it was Claude's homecoming, Wheeler had more fans attending the game. This is a tremendous credit to our fans, and we really appreciate your backing. Wellington has a very fine ball club this year. They defeated Memphis last week, but we believe that if a tremendous effort is put forth by our boys, we can beat them. The colts were defeated by Claude last Thursday, and the Mustang J.V. defeated the Claude J.V. by a score of 18-6. Both the Colts and the J.V. will travel to Wellington today

BEAT WELLINGTON! Coach Robinson

Remember, only 1 day left to get ready to beat Wellington. Let's come out and watch the Mustangs get their second district win!

Don Brown

Robert Willis

Jim Verden

Larry Tracy Band Director

Mustang secondary helped stymie the Claude passing attack and the secondary ended the game with four interceptions, two of them by Rob Willis who also made a spectacular catch for one of Wheeler's TD's.

There was only one threat in the first 12 minutes of play and this came as Claude took the opening kickoff and quickly drove to the Wheeler 10 for a first and goal but lost the ball at the Wheeler 4.

Game Statistics:	Wheeler	Claude
First Downs	13	11
Net Yards Rushing	177	69
Net Yards Passing	67	332
Total Yards Gained	244	401
Passes & Completions	10-4	31-13
Opp Passes Intercepted	4	1
Fumbles & Fumbles Lost	3-2	1-0
Penalties & Yardage	6-50	5-45
Punts & Average	6-41	8-23
Return Yardage	74	17
Total Plays	69	63

AS THE BALL WAS ROLLING

A 60 yard passplay from Geoff Forbes to George Jaramillo ate up most of the yardage. Fumbles, 8 for the game, blunted the Wheeler Mustangs' first three possessions and they had to boot the ball away each time.

Time was running out in the first quarter when Wayne Campbell punted from his 38 down to the Wheeler 32.

AS THE BALL WAS ROLLING

As the ball was rolling in the first quarter when Wayne Campbell punted from his 38 down to the Wheeler 32.

AS THE BALL WAS ROLLING

As the ball was rolling in the first quarter when Wayne Campbell punted from his 38 down to the Wheeler 32.

AS THE BALL WAS ROLLING

As the ball was rolling in the first quarter when Wayne Campbell punted from his 38 down to the Wheeler 32.

AS THE BALL WAS ROLLING

As the ball was rolling in the first quarter when Wayne Campbell punted from his 38 down to the Wheeler 32.

AS THE BALL WAS ROLLING

As the ball was rolling in the first quarter when Wayne Campbell punted from his 38 down to the Wheeler 32.

As the ball was rolling in the first quarter when Wayne Campbell punted from his 38 down to the Wheeler 32.

As the ball was rolling in the first quarter when Wayne Campbell punted from his 38 down to the Wheeler 32.

AS THE BALL WAS ROLLING

As the ball was rolling in the first quarter when Wayne Campbell punted from his 38 down to the Wheeler 32.

As the ball was rolling in the first quarter when Wayne Campbell punted from his 38 down to the Wheeler 32.

AS THE BALL WAS ROLLING

As the ball was rolling in the first quarter when Wayne Campbell punted from his 38 down to the Wheeler 32.

AS THE BALL WAS ROLLING

As the ball was rolling in the first quarter when Wayne Campbell punted from his 38 down to the Wheeler 32.

As the ball was rolling in the first quarter when Wayne Campbell punted from his 38 down to the Wheeler 32.

AS THE BALL WAS ROLLING

As the ball was rolling in the first quarter when Wayne Campbell punted from his 38 down to the Wheeler 32.

AS THE BALL WAS ROLLING

As the ball was rolling in the first quarter when Wayne Campbell punted from his 38 down to the Wheeler 32.

AS THE BALL WAS ROLLING

As the ball was rolling in the first quarter when Wayne Campbell punted from his 38 down to the Wheeler 32.

Court Records

LIST OF INSTRUMENTS FILED IN THE OFFICE OF THE COUNTY CLERK AND DISTRICT CLERK OF WHEELER COUNTY, TEXAS FROM SE FT. 29 THRU OCT 3, 1975

SEPTEMBER 29, 1975
 MD--Ben Blank to Frank C Jackson et ux 7-11-75
 10-625 int Sec 9 Blk RE

MML--William H Crosby et ux to Valta E Tarbet 9-26-75 Lot 3 Blk 3 Shamrock, Mont-Lew A
 TMML--Valta E Tarbet to Farmers & Merchants St Blk 9-26-75 Lot 3 Blk 3 Shamrock Mont-Lew A
 DT--Wesley W Masters et ux to Canadian Production

Cre Assn 9-24-75 S 1/2 8 Blk A-4
 RDT--Federal Land Bk of Houston to C F Waters et ux 5-8-75 NW 1/4 Sec 8 Blk E
 AOL--Arkla Exploration Co to Stephens Production Co 9-16-75 Secs 2, 12 Blk 1

B&B Sur E 1/2 Sec 4 AB&M Survey, N 1/2 SE 1/4 Sec 1 Cert 5-720
 ROL--Chevron Oil Company et al to Alta Adams et al 7-31-75 Pt Secs 13, 28, 32, 49 Blk A-4 Sec 5 IRR Co Sur

& Sec 60 Blk A-8
 ROL--Phillips Petroleum Company to Ethel Mason 9-28-75 NE 1/4 Sec 50 Blk A-8
 SEPTEMBER 30, 1975
 4 ROY Ds--Helen Ruth Pond et vir to Glenda Kay Pond Abernethy, Sharon Gay Pond Richardson, Brenda Gay Pond Knoll and Linda Mae Pond Jaggard 9-30-75 5 ac int each in S120 ac 3 1/2 Sec 21 Blk L
 3 Ds--Thelma Blonstein to First National Bank of Amarillo, Trustee 9-26-75 1/2 int S 1/2 6 AB&M Sur, 1/4 int S 1/2 & S40ac NE 1/4 49 Blk A-8; Lot 1 Blk 69 Shamrock, WSSA
 GDN OL--Charles I Lebow to Phillips Petroleum Company 6-5-75 SW 1/4 Sec 32 Blk A-4
 P OF ATTY--Myrtle McCraw to Lorinda Sanders 9-30-75 D--Austin L Wyman Jr et ux to James R Renuau 9-9-75 W 1/2 Sec 5 Blk 24
 AFF--George L Richardson to George L Richardson et ux undated W 1/2 Sec 4 Blk L
 AFF--Gordon H Richardson to Gordon H Richardson et ux undated W 1/2 Sec 4 Blk L
 ASSIGN OVERRID ROY--Linda Plummer to G H Richardson et ux 2-6-75 W 1/2 Sec 4 Blk L
 2 ASSIGN OVERRID ROY--Linda Plummer to George L Richardson et ux 8-19-75 NE 1/4 3 W 1/2 4 Blk L
 OCTOBER 1, 1975
 D--Lloyd H (Butch) Cogburn to Lila F Taylor 9-30-75 Lot 16 Blk 9; Lot 11 Blk 2 Shamrock
 RVL--Irene C Clay to Huey H Cook et ux 9-26-75 Lot 2 & N 1/2 Lot 3 Blk 69 Shamrock WSA
 RENTAL DIV ORDER--Leatrice Ann Adams Woolen to Leatrice Ann Adams Woolen 8-27-75 N 1/2 Sec 8 Blk 2 B&B Survey
 2 AOLs--H L McCracken Company to John P Strong 9-22-75 S 1/2 NE 1/4 47 Blk 13; S 1/2 NW 1/4 57 B24
 BILL OF SALE--Southwest-

ern Bell Tel Co to General Telephone Co, The 5-15-75 Poles
 D--Ben G Lane, Jr to Bill Seymour et ux 6-24-75 Lot 11 & S15 ft 12 Blk 75 Shamrock WSA
 OL--Arnell Holt et al to Minco Oil and Gas Co 9-19-75 W 1/2 NW 1/4 Sec 8 Blk L
 OL--Martin V Callan to Coquina Oil Corp 9-19-75 NW 1/4 Sec 38 Blk A-4 exc 20 ac
 EXT OL--Gaddy Vise to Amarillo Oil Co 9-21-75 W 1/2 SE 1/4 Sec 18 Blk L
 ROY D--Anna Lea McCasland to Andrew C Shapira 8-11-75 1/7 int 135 ac SE 1/4 8 Blk E

15 NW 1/4 14 A-8
 MML--Thomas Adams et ux to D V Brashear Jr 7-22-75 NW 1/4 Sec 8 Blk 17
 TMML--D V Brashear Federal Land Bk of Houston 10-1-75 NW 1/4 89 Blk 17
 TMML--D V Brashear to Federal Land Bk of Houston 10-1-75 NW 1/4 89 Blk 17
 DT--Thomas J Adams et ux to Federal Land Bk of Houston 9-22-75 NW 1/4 Sec 89 Blk 17
 COR ROY D--Clint M to R L Wright 9-17-75 25-423.75 int S 1/2 NE 1/4 5 Blk E
 COR ROY D--Clint M to Lorene Phillips 9-14-75 423.75 int S 1/2 NE 1/4 5 Blk E
 40 A-8 S 1/2 SE 1/4 5 Blk E
 D--Zeulah M Drew to W Cook et ux 9-18-75 N 1/2 NE 1/4 SE 1/4 36 Blk 17
 DT--PLR, Inc to Pacific Natl Bk undated NW 1/4 Secs 28, 29, 33, 34 Blk 17
 ROY D--Dale F Darr to Coiner 9-24-75 2.5-120 ac NE 1/4 Sec 5 Blk A-4
 ROY D--Jean Forster to R B Gill et al 9-30-75 6-120 int N120ac NE 1/4 Blk E
 ROY D--S Peter Lamb to Ed Hudson et al 9-24-75 120 int N120ac NE 1/4 Blk E
 OCTOBER 3, 1975
 OL--Othello Blocker to Ron to Phillips Petroleum Co 8-19-75 NW 1/4 Sec 15 Blk A-4
 OL--Cara Bell Taylor et vir to Phillips Petroleum Co 8-14-75 NW 1/4 Sec 15 Blk A-4
 RENTAL DIV ORDER--The William K Warren Foundation to itself 9-24-75 NE 1/4 29 Blk A-4
 RATIF OL--Daisy Brant et vir to John C Vise 75 SE 1/4 Sec 33 Blk A-4
 AFF--Othello Blocker to Clyde Winfred Cowan 9-30-75
 2 SUB OL--United States of America to John C Vise 4-29-75 E 1/2 Sec 3 Blk A-4
 D--Mary Clifton Henderson et vir to D C Hale et ux 9-25-75 E70f Lots 1, 2 Blk 65 Shamrock, WSSA
 DT--D C Hale et ux to Mary Clifton Henderson 9-25-75 E70f Lots 1, 2 Blk 65 Shamrock, WSSA
 DT--Bill Seymour et ux to Clifton Pritchard 6-24-75 Lot 11 S15 ft 12 Blk 75 Shamrock WSSA
 ROL--Mobil Oil Corp to Sarah Kay Walker et al 9-29-75 S 1/2 5 J Pateve N 1/2 30 A-8
 ROL--Forest Oil Corp to E A Zybach et ux 9-1-1975 W 1/2 Sec 15 Blk RE
 SHUT-IN DIV ORDER--Edith F Sims to Diamond Shamrock Corp 6-20-75 NE 1/4 17 Blk A-5
 3 ROY D--Lucille Tipps to Dean Tipps, to Patricia Robertson & to Dorothy Patterson 10-3-75 20 ac int each N 1/2 & SW 1/4 Sec 25 Blk M-1
 D--Harry T Frye et ux to Harry E Frye et al 10-1-75 Sec 10 Blk A-3
 MARRIAGE LICENSE ISS Harold Wayne Lowry and Billie Sue Swint 9-29-75
 Jack L Robbins and Mable Craft 9-29-75
 Richard Lloyd Leonard and Ava Nellie Davis 10-1-75
 J P Hand and Georgia G Allen 10-2-75
 Gordon Dale Alley and Janice Marie Alley 10-3-

Furniture-Appliance TOONS

By Pierce's Trading Post
 BEFORE television... no one ever KNEW what a headache LOOKED like.



I'll See You Later Mom! I'm Going To
Pierce's Trading Post
 "Furniture, Carpet, Plumbing & Appliances"
 401 East Oklahoma
 Phone 826-5212

LINES FROM LINDA

Linda Horton - Asst. CEA

Soaring costs involved in home ownership is one of the top financial problems facing families today.

Although 60 per cent of families in the U.S. own their own homes, less than one in five could afford to purchase a home at today's inflated prices.

As a general guide in purchasing a house, total cost shouldn't exceed two and one-half times the annual net income. Included in this figure are the mortgage, taxes, insurance, upkeep and repairs, utilities, landscaping, and furnishing.

New home cost has risen 33 per cent in just the last three years and 84 per cent since 1963.

On an average, people in the U.S. are paying \$40,000 to \$50,000 for a new home now.

Annual income spent on housing is currently ranging from 13-35 per cent, with 20 per cent a common estimate for most families.

Contributing to the cost escalation of new one-family homes are increases in labor costs, construction materials, the rising price of land and the upgrading of the size, quality and extra amenities included in the purchase price.

Mortgage rates are also creeping higher. However government tax credits and others forms of assistance should provide some help for the home buyer.

These include Farmers Home Administration lending in rural areas and Federal Housing Administration lending programs.

Just as housing is an individual personal matter, so are the economies that must be considered in housing decisions.

Renters are not always aware of the additional costs involved in home ownership as well as the time involved in care and maintenance, such as lawn-mowing or plumbing repairs. A family should plan to

set aside 1.5 per cent of the market value of the house for repairs and maintenance during the first 10 years of the life of the house.

Two and one-half per cent should be saved after the first 10 years. This amount should be set aside each year whether it is used that year or not, as expenses the following year may be twice the percentage.

American homeowners are discovering that the operating costs of a house are soaring.

According to "U.S. News and World Report," home maintenance and repairs are up 33 per cent, heating oil is up 94 per cent, gas has risen 43 per cent and electricity at a lower rate of 38 per cent. Costs of water and sewage have risen 23 per cent.

Housing today isn't a really prime investment because capital gains from the sale of it really won't be high in these days of inflated dollars.

Buying a house also may mean loss of income that could be used for more profitable investments. Though buying a house is an investment, the homeowner has equity only to the extent that the downpayment and principal are paid off--this is tied-up, not liquid.

In contrast, housing separate from the family home may be a better investment. For example, if the family buys a duplex or quadplex and rents the other unit, this is a good source of income.

Another positive factor in owning a home is tax savings that favor the owner over the renter because owner over the renter because deductions can be itemized. The amount varies according to tax bracket, and generally the higher the income, the more beneficial the tax deductions.

Insurance-Tips

By Thurman Rives



Shore Is A Pleasure To Do Business With
RIVES
 INSURANCE AGENCY
 "We put the sure in your insurance"
 117 W. Texas St.
 Wheeler, Texas
 Phone 826-5224



45" FALL DRESS AND SPORT FABRICS
 REG. 1.19 YD.
77¢ A YARD

What a colorful variety of fall prints! Great for shirts, blouses, playwear, sportswear and dresses. A wide selection of fabrics to make smart fashions at a great price.

Anco Supreme Electric Blanket



Reg. 19.99
\$16.

The Everyone, Everywhere Shell

\$5. 3 for \$12.

Long sleeve soft shell with mock turtleneck styling. She'll think of many different ways to wear it, all flattering. 100% polyester, washable for easy care, back zipper for easy wear. Colors to complement your fall wardrobe. Sizes S-M-L.

Colorful Pants By Royal Park

\$9. 3 for \$25.

Fashion freedom is what it's all about. Breezy, ready-to-go looks for office, travel or leisure... like this proportioned to fit pull-on pant made of easy care Celanese Fortrel polyester. In Black, Ivory, Navy, White, Jade, Gold, and Blue. Sizes S - 20, Petite, Average, and Tall.



FANTESSA!
 comfy care free knit
 by J. P. Stevens

LADIES "Easy Walker" SHOE



You won't believe you're wearing it. But feeling in believing, so come on in and give it the true test! Walk in it!
13.99

Special Colors to Choose From!

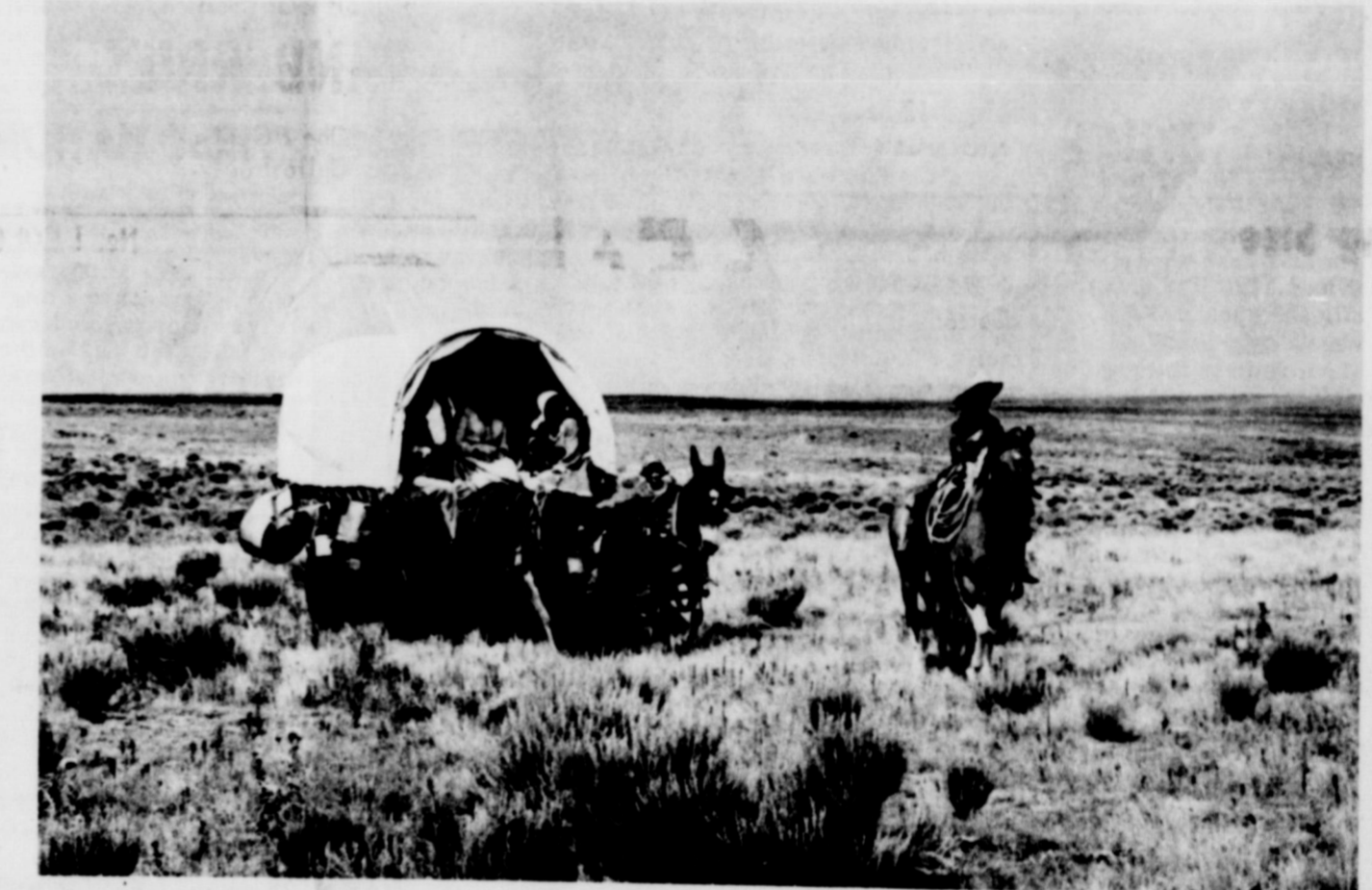
314 N. MAIN SHAMROCK, TEXAS
 Ph. 256-2792
Anthony's
 C. P. ANTHONY & CO.

To the Friends and Relatives of Mr. and Mrs. Clarence Zybach

1925 1975
 The Children of
Mr. and Mrs. Clarence Zybach
 request the honour of your presence
 at the
Fiftieth Anniversary
 of the marriage of their parents
Sunday, the nineteenth of October
 nineteen hundred and seventy-five
Reception
 from two-thirty until four-thirty o'clock
 at their residence
Briscoe, Texas
 No gifts please

Bowen PLUMBING & DITCHING SERVICE

Ditching, backhole work, sewer, gas and water hook-up. Plastic pipe, septic tanks sales and installation. Also septic tank cleaning. Fully insured. Call Collect, Canadian 323-5471 or Mobeetie 845-3151.



1876...

The pioneers brought here with them all they could of civilization. In their covered wagons, they literally included their world, as they came to settle this vast and empty plains country a century ago.

Because there were so few of them, neighbors were treasured. It was a comfort to know that help would come, should the need arise.

And as they tended their herds ... broke the sod ... built their towns, bankers were there, to be relied on.

As your Hometown Bank, we were formed in this tradition. We are part of this community because we had a hand in building it. Our families live here. We want to help make it better for all of us.



YOUR HOMETOWN BANK
 The Progressive
FIRST NATIONAL BANK
 ... Promoting Progress in the Wheeler Area
where your money belongs

HERE'S TO YOUR HEALTH FROM
HYLAND WEAVER
 A quick way to "old age" is thru boredom - the way to remain young and vigorous in old age is to be active and enthusiastic about living. At age 65, we look forward to another years or more of life. We let ourselves go to see life can become a burden. There is so much of beauty and stimulation all around us, so many skills and crafts we can experiment with that life can and should be main active and satisfying.

Filling your prescription our most important way
HYLAND WEAVER PHARMACY
 PH. 826-554

Roark's FINE FOODS

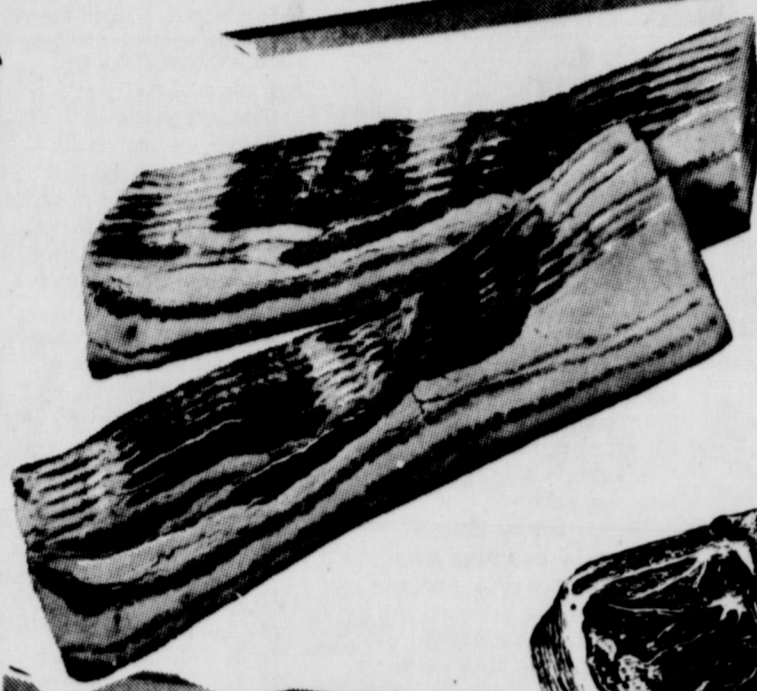
- OPEN MON.-SAT. 8 a.m. till 6:30 p.m.
- USDA FOOD STAMPS ACCEPTED
- FREE DELIVERY WITH \$2.50 PURCHASE
- FEATURING GUNN BROTHERS STAMPS

YOUR FRIENDLY HOME OWNED
AND OPERATED GROCERY STORE

GO MUSTANGS !!
BEAT
WELLINGTON



Meet COY CLAY our new butcher. Former owner of Clay's Food Store in Shamrock. Come in and meet Coy . . . if you have a special cut, he will gladly cut it for you.



FRESH SLICED
SLAB BACON
lb. **\$1.59**



CORN KING SMOKED
PORK CHOPS
lb. **\$1.98**



NO FILLER ADDED To Our
FRESH GROUND BEEF
lb. **79¢**

U.S.D.A. CHOICE
CHUCK ROAST lb. **98¢**

DEL MONTE
TUNA 1/2 Can **49¢**

RANCH STYLE - NO BEANS
CHILI 15 oz. Can **69¢**

JAMES WHITELY won last week's Pick The Winner Contest.

\$25 7th BIG WEEK PICK THE WINNER CONTEST **\$25**
at ROARK'S FINE FOOD

\$25.00 will be given each week during the High School Football Season to the winner of our PICK THE WINNER CONTEST. Each week 10 area High School games will be listed. You pick the winner and guess the total yardage of the Tie Breaker Game. The entry with the most winners picked and with the closest guess to the total yards gained in the Tie Breaker Game will win \$25.00. In the event of a tie the money will be divided between the winners. Play each week and Support your High School Team.

All entries must be in the store not later than 6:00 P.M. Thursday, Oct. 16, 1975. You must be 18 or over to enter. Prize money will be divided in the event of a tie. Winner will be notified. No Purchase Necessary.

CIRCLE THE WINNER

Wheeler	vs	Shamrock
McLean	vs	Memphis
Clarendon	vs	Silverton
Wellington	vs	Claude
Canadian	vs	White Deer
Stinnett	vs	Stratford
Lefors	vs	Boys Ranch
Pampa	vs	Caprock
Perryton	vs	Levelland
Dumas	vs	Canyon

TIE BREAKER
TOTAL YARDAGE GAINED BY
WHEELER AND SHAMROCK
WILL BE _____ YARDS.

NAME _____
ADDRESS _____
PHONE _____

ROTEL
Tomatoes & Green Chilis **31¢**

EAGLE BRAND
MILK 14 oz. Can **59¢**

BANQUET
Cook 'n' Bag DINNERS 3 for **\$1.00**

KIMBELL Asst. Flavors
CAKE MIXES 19 oz. Box **58¢**

KOLD COUNTRY FROZEN
ORANGE JUICE 12 oz. Can **53¢**

King Size
COKE 6 Bottle Carton **65¢**

KOLD COUNTRY FROZEN
CUT GREEN BEANS or SQUASH
3 10 oz. Pkgs. **89¢**

3 MINUTE BRAND
POPCORN 2 lb. Pkg. **65¢**

KIMBELL
BISCUITS 7 10 count Cans **99¢**

BORDEN'S
Cottage Cheese 24 oz. Carton **\$1.13**

KIMBELL
MUSTARD 32 oz. Jar **39¢**
SUPER VALUE BROWN & SERVE

ROLLS
2 Pkgs. **89¢**

BAKER'S
Angel Flake COCOANUT
14 oz. Bag **\$1.15**

A & W
ROOT BEER
28 oz. Btl. **39¢**

KOUNTRY FRESH
OLEO
1 lb. Tub **53¢**

California Sunkist
ORANGES **23¢**

FRESH OCEAN SPRAY
CRANBERRIES One Pound Cello Bag **43¢**

No. 1 COLORADO
CABBAGE lb. **10¢**

ALL PURPOSE
POTATOES 10 lb. Bag RUSSETS **99¢**

BORDEN'S DIPS & SOUR CREAM 2 For **98¢**
BORDEN'S BUTTERMILK 1/2 Gal. **79¢**

PATIO
MEXICAN DINNERS
BEEF - CHEESE - MEXICAN
Each **53¢**



for all your . . .

PARTS NEEDS

500 . . .

BAKER AUTOMOTIVE

116 East Texas Phone: 826-3213

Your **GREEN LIGHT** Auto Parts Store

Want Ads

FOR RENT: Trailer Space Black Gold Trailer Park Phone 826-5874. rtn

For Rent: Trailer Space \$20.00 a month Call 845-2721 or 845-3171

WANTED: Reliable full time farm and ranch man. Contact Bill Waters 806/669-6851 or 669-2494, Pampa.

FOR SALE: 2 bedroom 1 1/2 bath house, 1107 S. Main, Phone: 826-5518 or 826-3026. rtn

FOR SALE: 600-700 bales of oat hay. Jimmy Helton, Phone: 826-3257. 2tc

PAUL'S TRAILER PARK

Across Street From School Trailer lots 40'x70' Modern Underground Utilities Gas and Water furnished Individual Electric Meters

PAUL TOPPER—Ph. 5237 or 5931

4 FAMILY GARAGE SALE: 400 S. Texas St., Shamrock, Texas. Antiques, dolls, furniture, dishes, McCoy, baby bed, clothes and miss, 10:00 a.m. Thurs., Fri. and Saturday. ltc

WATCH FOOTBALL on a new R.C.A. We have a full line of new t.v.'s. L & F Repair. rtn

FOR SALE: 2 bedroom houses. Paul's Real Estate Paul Topper. rtn

HOUSE FOR SALE: 2 bedroom house 1 1/2 miles east of town. .66 acres, Call Gary Bray, 806-935-5989 after 6 or 806-935-3937 from 8:00 to 6:00 rtn

Seamless Reinforced Concrete **STORM SHELTERS** 227-4237 Fairview

Northwest Oklahoma Storm Shelter Co.

FOR SALE: Nearly new 30" gas range with 'continuous clean' oven. \$150. Louis C. Stas, 826-3123. rtn

FOR SALE: 2 bedroom, 2 bath home on Alan L. Bear Call 826-5719 or 857-3141 in Ritch. rtn

Monuments, Grave Covers, and Curbing. Complete finishing. Will Warren, Wheeler rtn

FOR SALE: Lot 100 x 300 ft. 207 S. Stanley. Phone before five 826-3011, after five 826-5905. rtn

HOUSE FOR SALE: 2652 sq. ft. 4 bedroom, 2 1/2 baths kitchen appliances built-in, carpeted, all-electric, full size basement. Call after 5:00 826-3154. rtn

FOR SALE: 1974 Model 4-door Impala 5800 Mi. From Marvin Heil by Estate. Call 375-2386 after 8 p.m. rtn

TAKING BIDS: The City of Wheeler is taking bids for the painting and of the exterior of the City Office and garage. Bids will be opened at the regular council meeting October 20. Etc

STRAYED: Whiteface heifer 600 lb. with B brand and right ear is notched. Call H. B. Leake, Mobeetie, 845-2674. 2tp

IMMEDIATE OPENINGS

If you qualify, we'll teach you a job, pay you while you learn, and give you one of the best benefit packages anywhere. Then you'll earn your keep and know a job. Join the people who've joined the Army. Call 806/665-2022 in Pampa for SFC Charles C. Reed.

FOR SALE: Gentle family milk cows. Phone: 826-5650. 2tp

KING'S KOMMENTS

Joe Don King - CEA

CATTLEMEN URGED TO CUT COW HERDS

Cattlemen across the nation are suffering from poor market prices brought on mainly by excessive numbers of calves. And they can remedy the situation only by culling their cow

herds and reducing the number of replacement heifers.

The Extension Service is cooperating with the American National Cattlemen's Association in urging producers to reduce the size of the cow herd and thus bring about a more favor-

Playday

be as follows.

Junior boys: Barrel race, pole bending, flag race, and egg race.

Junior girls: Barrel race, pole bending, flag race and egg race.

Intermediate boys: Barrel race, pole bending, flag race, walking lead and rescue race.

Intermediate girls: Barrel race, pole bending, flag race, walking lead and egg race.

Senior boys: Barrel race, pole bending, ring race, rescue race and ribbon race.

Senior girls: Barrel race, pole bending, ring race, rescue race and ribbon race.

Adult men: Barrel race, egg race, ring race, ribbon race and saddle race.

Adult women: Barrel race, pole bending, ring

race, ribbon race and egg race.

The entry fee will be 50¢ per event. Books will close at 6:30 p.m. on the day of the playday.

Proceeds from the playday will go toward purchasing an electric timer for the Horse Club.

The 4-H Texans hope everyone who likes to have fun on horses will come to the playday, Oct. 11th.

HOSPITAL NOTES

Old Admissions

8-18 Birdie Hampton
8-31 Claude Franklin
9-22 Gret Gegan
9-25 Martin Callan
9-25 Madge Wright
9-28 Topsis Gossett
Martha Williams
Bob Markham

New Admissions

10-1 Jean Bradstreet
Wilma Risner
Bob Patterson
Lydi Guthrie
Rosemary Banks
Kym Watson

10-2 Louise Faussett
Steve Alexander
Diana Seaman
Roe Green

10-3 Tammy Fleming
Olivia Davis
Mary Bryce
Willie Morris

10-5 Lilly Hunt
Hazel Lackey
Essie Mitchell
John Lister
Melinda Reeves
Claude C. Cox

Dismissals

10-1 Stella Fidds
Sheila Stevens

10-2 Lawrence Crowder

10-3 Kym Watson
Lydia Guthrie
Clinton Stribling
James Atkins
Richard Knight
Bob Patterson

10-4 Rita Grayson
Berniece Short
Tammy Fleming
Pearl Braxton
Lillian Holl and
Diana Seaman
Geniva Farrell

DISTRICT COURT

Grand Jury called in session for 9:00 a.m. Returned four indictments Oct. 6.

- Larry Smith Rape
- Larry Barnes and Dennis Wheeler—Burglary building controlled by Knox Walraven
- Leota Bernice Pierschbacher Forgery by passing check on Kenneth Graham
- Donald G. Heh Theft \$545.00 Boots Cook

Grand Jury reported the indictments to District Judge Granger McIlhany

Also on Monday cases disposed of by Judge McIlhany

Disposed of one Compensation on Suit

Disposed of one Divorce suit by Hearing in Court

Disposed of two Divorce suits by Dismissal

Disposed of one Tax suit by taking Default Judgment

Another Default Judgment heard but decision not rendered. Taken under advisement until later date.

Marriage Announced

Saturday, September 27, Kimberly Brown and Jerry Ray were united in marriage in the parlor of the Tascosa Baptist Church in Amarillo. Parents of the couple are Mr. and Mrs. Bill Wheeler of Kelton and Mr. and Mrs. James Ray of Lefors.

Mr. and Mrs. Ray are continuing their studies at West Texas State University in Canyon.

Card of Thanks

We wish to express our appreciation and thanks to our friends for flowers, visits and phone calls at the passing of my brother, Davie Kinsey at Midland. Also thanks for kindness to Bob who is now in Parkview Hospital.

Mrs. Bob Markham & family
Lester Hall & family
George Markham & family

able beef supply-demand situation for all concerned.

Due to the overload of beef cows, late summer and fall culling will be doubly important this year. First of all, cutting will take the pressure off fall pastures and reduce herd maintenance costs during the coming winter months. Secondly, supplies of other meats, particularly pork and poultry, are down at this time, so there is a ready outlet for the increased beef supply that would result from heavy cow culling.

Cow slaughter is currently

heavy and was 47 per cent more during the first half of 1975 than the same period a year ago. If this pace continues through the remainder of this year, the nation's cow herd on Jan. 1, 1976 may be down by almost one million head from Jan. 1, 1975. Heifer replacements are also down about 7 per cent from a year earlier.

If cow slaughter continues at a heavy rate for the rest of the year and into 1976 and if heifer holding is not excessive, the total cow herd may get back in line with population and income growth by 1977.

The adjustment in cattle numbers must come about if prices to cattlemen are to improve. This adjustment can be orderly if cattlemen make the decision to act now. On the other hand, the current disastrous situation can be extended over a prolonged period if cattlemen take a "wait and see" attitude.

In addition to a more stable beef supply and price situation, reducing beef cow herds will also help producers improve herd quality by eliminating poor producers, reduce feed and other costs by eliminating "boarder" cows, and increase the flexibility of their operations.

Cowmen should reduce cow numbers to maintain a cash flow. A cow-calf operator could cull more cows and retain some calves. Then, during the next year, he would have the flexibility of putting the heifers back into his breeding herd if conditions warrant. Some consideration also might be given to backgrounding the yearlings for an additional period if costs are not excessive.

The American National Cattlemen's Association advises cattlemen to give culling their cow herds. Beef cattle and livestock marketing specialists with the Extension Service can provide additional information on possible changes in herd management to help remedy the current crisis cattlemen are facing.

FIRE

gives no WARNING!

Check All Your Heating Plants

Any heating defect invites disaster. Acid from soot can eat holes in pipes and cause trouble. So does rubbish. Clean out, check carefully!



Wheeler Abstract Co.

FIRE PREVENTION WEEK, Oct. 5-11

BUTCHERING & PROCESSING PRICES

Beef processed, double wrapped 14¢ per pound

1¢ A Pound for Butchering

Pork processing including curing double wrapped 16¢ per pound

\$4.50 A head for butchering

We butcher Monday thru Friday 8 to 12 A.M. except holidays.

CALL FOR QUARTER - HALF - WHOLE BEEF PROCESSED

WE NOW HAVE CUTS OF PORK AND BEEF FOR SALE

SHAMROCK SLAUGHTER PLANT

N. of City Phone 256-3241

Closing at Noon on Saturday

RENT OUR RINSE N VAC

Get carpets professionally clean.



New RINSE N VAC operates on the steam principle to get your carpets professionally clean. Portable and easy to operate—we'll show you how. RINSE N VAC is the powerhouse that cleans, rinses and vacuums out dirt and residues. RINSE N VAC cleans carpets cleaner . . . keeps them cleaner longer.

Rent for only \$12.00 a day

Check the Selection of **LOYD'S**

BEN FRANKLIN

408 Main • Wheeler, Texas 79036

lowing operating instructions:

- Securely fasten the seat belt if the tractor has a ROPS.
- Where possible, avoid operating the tractor near ditches, embankments or holes.
- Reduce speed when turning, crossing slopes and on rough, slick or muddy surfaces.
- Stay off slopes too steep for safe operation.
- Watch the direction especially at row ends, on roads and around trees.
- Do not permit other people to ride.
- Operate the tractor smoothly—no jerky turns, starts or stops.
- Hitch only to the drawbar and hitch points recommended by the tractor manufacturer.
- When the tractor is stopped, set the brakes securely and use the park lock if available.

In addition to these particular items, the working environment may dictate other safety practices.

Operators of tractors equipped with ROPS are required to wear seat belts to keep them inside the protective structure in case of a turnover. Operators of tractors without ROPS should not wear a seat belt.

Operators of tractors equipped with ROPS are required to wear seat belts to keep them inside the protective structure in case of a turnover. Operators of tractors without ROPS should not wear a seat belt.

Richard's RADIATOR AND HEAT SHOP

Complete Radiator and Cylinder Head Work

301 E. 12th Shamrock, Texas Ph. 256-3151

Richard Blakemore - Owner

TEXAS TALK

By George Richardson

American farmers have been making things better for fellow countrymen. As the bicentennial fever starts to build, it is appropriate to look at the contribution our farmers. For instance, thirty-two of the fifty signing the Declaration of Independence were farmers. Some of those same men worked to frame the Constitution. As for the American Revolution, some historians are now giving a major role to the credit for American victory to the farmer, not only as a fighter, but also as a critical food supplier. American fighting strategy never needed to be changed because of food shortages. Conversely, the British were constantly having to make major changes in plans because of food shortages. Strategically, the food supply advantage created by patriotic American farmers was probably as important as any other single factor in British defeat.

SAFE TRACTOR OPERATION NOW LAW

Farmers and ranchers whose employees operate tractors are now required to train these employees on the safe operation of tractors, especially regarding the prevention of rollovers. This training shall be provided at the time of initial assignment and at least annually thereafter.

The required training became effective June 1 and is a part of the Occupational Safety and Health Act. (OSHA), which also requires all agricultural tractors (except the "low profile types") to be manufactured with rollover protective structures (ROPS) and seat belts after Oct. 25, 1976.


The required safety training includes the fol-

THE BUSINESS DIRECTORY

TEXAS PRESS ASSOCIATION

MEMBER 1975

Published Every Thursday at Wheeler, Texas, By . . .



THE WHEELER TIMES

P.O. Box 1080 Phone: 826-3123

Louis C. Stas, Owner and Publisher

Entered as second-class matter December 18, 1933, at the Post Office at Wheeler, Texas 79096, under the act March 3, 1879.

Wheeler Lodge No. 1099 A.F. & A.M. MONDAY 7:00 P.M.

Percy Farmer, Sec'y. Members Urged To Attend. Visitors Welcome.

WRIGHT FUNERAL HOME

All Types Cemetery and Memorial Work

Phone: 806-826-5214

WHEELER REDI-MIX

REDI-MIX CONCRETE SAND

Washed Gravel—All Sizes

Office Hours: 7:30 to 5:00

Phone 806-826-3223

Dr. Marion Roberts

OPTOMETRIST

Phone: 669-3333

112 W. Kingsmill Pampa, Texas

GUARANTEED AUTO GLASS INSTALLATION & Body Repair

GARRISON SERVICE

Phone: 826-5515 Wheeler Texas

TRACTORS - IMPLEMENTS PARTS and SERVICE

HIBLER IMPLEMENT CO.

Wheeler, Texas

Let Me Write It . . .

GEO. RICHARDSON

All Types Of INSURANCE

CUSTOM DRAPERIES

Swags, Cornices, Shutters

We Install Free

Tele. 256 3652

Bronnos Decorators Shamrock, Texas 79079

FINAL FLEA MARKET FOR THE 1975 SEASON, SAT., OCTOBER 11.

FLEA MARKET

METAL DETECTORS

ASSORTED KNIVES

HAND GUNS

FISHING EQUIPMENT

SPORTS EQUIPMENT

CAMERAS

BRING YOUR ITEMS—WATCH THEM SELL

FIRE ARMS - OLD & NEW

OLD BOTTLES

CORONADO CENTER, Pampa, Texas, Sat., Oct. 11

Briscoe News

Clark Parker
Clark and Sammie went to Benton last Saturday night. They visited the Andy family and attended the Holler Festival and Mrs. Ted Atwood visited the Darville family on Friday. Clark and Sammie visited the Lynn William family. Clark and Sammie visited the home of Mrs. Alto Dickerson and the Young family. Clark and Sammie visited the home of Mrs. Alto Dickerson and the Young family. Clark and Sammie visited the home of Mrs. Alto Dickerson and the Young family.

Thursday night visitors at the Colie Parkers were Claud and Mable Parker. On Sunday the Colie Parkers had as supper guest Zetha, Ricky, Dennis Daugherty, Weldon, Diana, Mariana Parker.
Saturday night Colie and Vetola Parker visited the Claud Parkers.
Some may not know that a new family has moved into the Steen house. Now owned by E. J. Meadows. They are Mr. and Mrs. James M. Zachary. We want to welcome them to our community.
Sharon Gatlin and children brought Lois Hudson

(their mother) home Friday. Her foot is still bothering her, but she started working in the store Monday.
Lorene Gadin form Enid, Okla. spent the week end with the Lesler Hudsons.
Friday night Claud and Mable visited the Lister Hudsons.
Last Tuesday Lester and Mary visited the Claud Parkers.
Last weekend Essie Finsterwald, Donald, Charles and David Wright went to Carlsbad to visit the Don Pattersons, they went on Friday came home Monday.
Sunday Essie and boys had the John Wright family for dinner. Friday Essie and Donald visited her sister, Nora Hiltbrunner in Shamrock.
Phillis Vaughn and Leann spent last week with her mother, Evie Aderholt.
Sunday afternoon guest at the Eddie Georges home were Mr. and Mrs. Leroy Goad from Calif., Mr. and Mrs. Albert Zybach, Ardell George and Oschel Goad Jettie Woods from Calif. and Jerald Alewine of Pampa visited and ate dinner last Wednesday with the Venson Smiths and the Davie L. Gilmer.
Glen and Kathy Swift from Eastland, Mr. and Mrs. Fred Castle from Antelope visited Mrs. Swift and the F. Childresses over the weekend.
Fat and Wanda Childress, Kay, Cathy Hunt, Collene Childress and boys, Mrs. Addie Swift attended the fish fry Saturday at the Agriculture Barn in Wheeler.
Those attending the fish fry Friday night at Neal and Effie Renfos were Elbert and Ruby Zybach, Porter and Emma Rogers, Ray and Nancy Rogers, Irene Zybach, Bud and Barbara Williams and children, Milton and Katie Finsterwald and Christy, Forest and Neta Evans, Bill and Mattie Jackson, Essie, Donald and Charles Finsterwald, Grady and Mary Margarette Dodd, Jack and Evalyn Meek, Frances Hefley, Neal and Effie Renfo, a nice time and lot of food was enjoyed by all.
Last Weeks Continued
Sunday night the Wayne Meek family went to Pampa to help Brandi Eggelston to celebrate her second birthday. Beckie Zybach made her a Reggie Ann Cake.
Hoyle Helton came home last Wednesday after spending a few days helping Martha Sweny out while she was sick.
Bob and Gena Zybach took her parent, Mr. and Mrs. Leonard Reid to Pampa.

pa Sunday to attend a birthday dinner for Gena's sister Sally Eads.
Sunday, Truman and Bettie Zybach and Stephany, Sayre, Mark and Brenda Zybach of Okla. City visited the Clarence Zybachs. Erick and Pauline Zybach came that afternoon.
Joy Meadows came home from the hospital last Tuesday.
She is doing real well. Helen Singleton has been going to Amarillo, Pampa and Canadian training at the Weight Watchers so she can hold classes and teach.
Kenneth and Lou Dean Douthitt of Quanah, Don and Paggie, Leandra Stucky ate dinner Sunday with the Daryle Perrys. In the afternoon Daryle's parents, Mr. and Mrs. Odell Perry of Wheeler came and visited.
Roy and Willene Waters spent the weekend in Okla. City with the George Raill-back family and attended the fair.
Last Thursday and Friday the Don Stuckey family visited in Okla. City on attended the fair.
Last Tuesday Debbie Perry took Teresa to the eye doctor. She was doing

fine.
Sunday guest at the Travis Keelin's were Jerry and Sharon Keelin and girls, Gene and Norma Keelin.
Last Friday Travis and Rosalee Keelin, Gene and Norma Keelin ate supper with the Jimmy Keelins near Shamrock.
Tuesday Lester and Mary Hudson visited the Claud Parkers. Then Thursday Pat and Sherril Hudson spent the afternoon and ate supper with Lester and Mary.

PULL-ON PECOS COMFORT
NO LACES!
LARGE SELECTION OF SIZES AND WIDTHS
RED WING
Try them on at
LANCASTER DEPARTMENT STORE

Dr. Jack L. Rose
OPTOMETRIST
121 Main St. - Shamrock
Phone 256-3203
Tues.: 9-5 Fri.: 2-5

Dr. M. V. Cobb
CHIROPRACTOR
Specializing In The Examination And Treatment of Spinal And Nervous Disorders
256-2133
310 South Main Shamrock, Texas

IMPORTANT Tax Savings!
Farmers Salesmen Small Business Owners
... the law permits you to set aside a substantial part of your annual income for retirement, tax free. You may be eligible for this saving.
Ask me about Individual Retirement Annuities for Modern Woodmen members.



Robert L. Fincher
Route 2
Sayre, Okla. 73642

MODERN WOODMEN OF AMERICA
Fraternal Life Insurance
Home Office • Rock Island, Illinois

SAVE MORE

CHUCK ROAST lb. 79¢

Sausage \$1.49

Family Steak lb. 98¢

Swiss Steak lb. \$1.19

HAMBURGER lb. 79¢

Roman Bread MEADS 2 1 lb. Loaves \$1

PORK CHOPS \$1.49 lb.

Stuffing STOVE TOP 6 oz. Box 63¢

Oreo Cookies NABISCO Sandwich 15 oz. Pkg 79¢

Soft Diet Parkay 1 lb. 79¢

Tomato Sauce HUNTS 2 15 oz. Cans 98¢

Refried Beans MOUNTAIN PASS Mashed 2 29 oz. Cans \$1

Pork & Beans CAMPBELL'S 3 16 oz. Cans \$1

SPINACH DEL MONTE 3 15 oz. Cans \$1

BUTTERMILK or Sweet Milk BORDEN'S 2 qt. \$1

ICE CREAM BORDEN'S 5 Quart Bucket \$3.09

Onion Rings FROZEN 20 oz. Bags \$1.09

Grapefruit each 10¢

BANANAS lb. 19¢

Prices Effective: Thurs., Fri. & Sat.

100 Gunn. Bros. Stamps
FREE
with this coupon and \$7.50 Purchase

IMPERIAL or C & H
SUGAR
5 lb. Bag
\$1.49

COCA COLA
32 oz. Size Six Pack
\$1.89
(Plus Btl. Deposit)

GRAND OPENING SALE
The Koyemsi Shop
110 E. Foster Pampa, Texas

FRIDAY, OCT. 10 - 10:00 A.M. TO 6:00 P.M.
SATURDAY, OCT. 11 - 10:00 A.M. TO 6:00 P.M.
SUNDAY, OCT. 12 - 1:00 P.M. TO 6:00 P.M.

INDIAN JEWELRY
Squash Blossoms, Bracelets, Rings, Bolos, Buckles, Ear Rings, Chokers, etc.
1/2 Off GOLD JEWELRY
Diamonds, Rubies, Sapphires, Opals, Garnets, Jade, etc.
ANTIQUe and NEW

1/2 Off Gift Items of all Kinds
Free Drawing Every Day
Grand Prize Given on Monday
COME BY AND BROWSE, SHOP AND SIGN UP FOR THE DRAWING!

Allison WMU Meets, Harvest Dinner Discussed

The Allison United Methodist Women met Wed. evening, Sept. 17 in the Rex Miller home. Ten members were present.
Carol Kiker presided over the meeting. The Harvest Dinner was discussed, and the date will be Saturday, Nov. 1, 1975 in the Fellowship Hall of the United Methodist Church. Serving time will be from 6:00 p.m. until 9:00 p.m. Tickets will be priced at \$2.50 for adults and \$1.50 for children. Tickets are now available.
Chairman of the nominating committee, Juanita Fillingim, presented the names selected by the nominating committee to serve as new officers for the 1976-77 term. They were made official after the members voted. They are as follows; President, Winnie Kiker; Vice-president Darendra Begert; Secretary, Billie Dollar; Treasurer, Edyth Donaldson.
Billie Dollar was in charge of an inspiring program entitled "Building a Spiritual Foundation." Scripture, two songs played with accordian by Edyth Donaldson, poems, and reading made this one of the best programs of the year.
Virginia Miller was a gracious hostess and served lovely refreshments to Juanita Fillingim, Charlene Rainey, Leota Black, Winnie Kiker, Edyth Donaldson, Billie Dollar, Avis Parker, Carol Kiker and Darendra Begert.



MOBEETIE GROCERY
Phone 845-2721
Mobeetie, Texas

SANDERS-DIETZ VOWS EXCHANGED

In a double ring ceremony performed Saturday evening in Central Baptist Church, Miss Becky Darlene Sanders exchanged vows of matrimony with Robert Andrew Dietz. The Rev. Raymond Sanders, area missionary, Alpine, uncle of the bride officiated for the candle-light ceremony.

Sandra Sanders, sister of the bride, and Kim Dyer and Romona Sanders, both cousins of the bride and Kendra Grant, lighted the candles which were placed in each window of the church.

Three rainbow candelabra flanked by spiral candelabra, entwined with greenery and table holding the bride's family Bible and memory candle, decorated the nuptial area.

Wedding music was presented by vocalist Phil Dietz, twin brother of the bridegroom, and Steve

Davis. The bridegroom sang "The Twelfth of Never." Eddie Martin, Spearman was organist and Roberta Grant, Amarillo was pianist.

The couple's parents are Mr. and Mrs. Lindon Sanders, 1305 W. Crawford, Pampa, and Mr. and Mrs. Bob Dietz, Borger.

Fashioned from white angelskin peau de soie and lace, the bride's formal gown was designed with a high neckline, Bishop sleeves and a softly flared skirt enhanced with lace. Each petal of the rose lace was incusted with tiny seed pearls.

Peggy Morris was maid of honor and bridesmaids were Terri Guinn, Donn White and Martha Ward. They wore floor length blue dresses.

Michael Dietz, brother of the bridegroom, was best man and groomsmen

were Randy Fraley, Dennis White and Royce Grant. Bob Sanders and Gary Sanders, both brothers of the bride, seated wedding guests.

Robby Bresciani was ringbearer and Tami Childress was flower girl. Both are cousins of the bride.

For thereception in the church parlor, guests were served by Mona Williams, Katie Mahanay, Lees Thomas, Dee Dee Tarpley, Nancy Kelley, Nita Watkins and Mrs. Michael

Dietz, Pattie Bresciani, cousin of the bride, registered guests.

After wedding trip to Aspen, Colo., the couple will reside at 1515 S. Tyler in Amarillo.

Mrs. Dietz, a 1974 graduate of Pampa High School attended West Texas State University. Her husband, a 1970 graduate of Borger High School and a 1974 graduate of WTSU, is presently singing with the gospel group, "Vicki and the Royalheirs."

Mrs. Dietz grandparents, Mr. and Mrs. L. S. Childress, Mr. and Mrs. Murry Sanders, both of Wheeler.

Mobeetie News

By Mrs. Wilber Beck

Mobeetie Community was saddened by the death of Russell Hull in Pampa, Monday night. Our deepest sympathy goes to Mrs. Hull and all the family.

The Mobeetie Community offers sympathy to the Goodnight family in the loss of Mrs. Agnes M. Goodnight, longtime resident of Mobeetie.

Word was received Monday of the death of the retired Rev. B. A. Philpott, husband of Mrs. Mable Roll Philpott of Roswell, N.M. Mrs. Philpott is the aunt of Mrs. Erna S. John, Mrs. Wilber Beck and Mrs. Glynda Leatherman of Mobeetie.

Mrs. Loyce Brown showed slides of pictures she took while she was in Korea last summer at the First Baptist Church in Mobeetie, Sunday night.

Mr. and Mrs. Orvel Brewer and son Rodney of Pampa visited his mother, Mrs. Mary Brewer, Sunday.

Mrs. Lillie Durham of Wichita Falls is visiting her daughter and son-in-law, Mr. and Mrs. Walter Coward and other relatives and friends.

Mr. and Mrs. Raymond Hooker, Farmington, N.M. spent Monday night with their sister-in-law, Mrs. Pauline Hooker.

Mrs. Pauline Hooker and daughter, Mrs. Sue Harrison attended to business in Pampa, Monday. They also attended the funeral of Mrs. I. T. Goodnight, Sr.

Mrs. Edith McLaughlin attended to business in Pampa Wednesday last week.

Mrs. Wilber Beck spent last weekend in New Mexico visiting relatives. Going to Moriarty on Friday she visited her sister-in-law, Mr. and Mrs. J. V. Orr. Saturday, she and the Ors went to Mountainaire to visit a nephew and family.

Mr. and Mrs. Billy Orr, Kayla and Keven. Her daughter and family Mr. and Mrs. W. A. Leatherman and Allen met her in Shamrock, Monday.

Keith McLaughlin and sons, Kent, Jimmy and Mike of Pampa visited his parents, Mr. and Mrs. Brooks McLaughlin, last week.

Mrs. Melba Burch attended to business and visited in Pampa, Wednesday last week.

Mrs. Glen Sherrill and daughters, Glenda and Penny and Mrs. Glynda Leatherman attended to business in Amarillo, Friday.

Mrs. Clara Adams and Mrs. Bert Kysar, who have been patients in the Parkview Hospital recently are home at this writing.

Clinton Stribling was admitted to the Parkview Hospital in Wheeler, Wednesday last week.

Roy Johnston of 812 Bradley Drive in Pampa, formerly of Mobeetie, was dismissed from the Highland General Hospital Saturday.

Mrs. Dale Holl and is still a patient in the Parkview Hospital in Wheeler at this writing.

Mrs. Gazelle Patterson has been a patient in the Highland General Hospital in Pampa for several days.

Mrs. Elnita Atkins attended to business in Pampa Monday.

to a halt, Don Brown alertly scooped it up and dashed by the first wave of defenders and then outran a lone Claude pursuer to score the games first touchdown. Verden had a perfect night on PAT's and got his first one at 0:26.

Not only did Wheeler intercept four passes but the Mustangs also blocked two punts and the first one came just over a minute after Brown's run.

A host of white shirted Mustangs, led by Verden, broke through to block Campbell's kick on the 6 and Dell Ford alertly picked the ball up and ran into the end zone for Wheeler's second touchdown at 11:19 in the second quarter.

It didn't take Claude long to dispel any Mustang hopes of a runaway as they got back six points in just three plays after the blocked kick.

Facing third down at his 26, Campbell popped a short pass to Jaramillo, the identical play had gained 50 yards earlier, and Jaramillo won the footrace to the Mustangs end zone and it was now 14-6.

The kick for the one pointer failed but Claude picked up another two points on their kick off.

Brown fielded the kick off on his 6 and evidently mistaking where he was, ran into the end zone and downed the ball and Claude had a gift safety that cut Wheeler's margin to 6 and only two minutes had gone by since Wheeler had what appeared to be a comfortable 14-0 lead.

Wellington

From this formation they are able to put a lot of pressure on a defense both with the run and the pass.

Wellington will use both a six and five man defensive front on defense with a three deep secondary and their defensive down people are not only very quick but have real good size.

"We know that Wellington is a real challenge and will be the best team we have played but our kids are going into the game with one thing in mind and that is to win," Coach Jim Robinson said this week.

"We made a lot of mistakes against Claude but I thought we played pretty well especially on defense. Will's graded high and McIlhany played a standout game on defense," the head coach of the Mustangs said. "In fact, taking away some of the errors, we played as well as we have this year."

Kickoff for the Mustang - Skyrocket battle is 7:30 and the best way to support the Mustangs is by being at the game.

SPINNING WHEEL ROLLER RINK Shamrock Grand Opening
Friday, Oct. 10
Start: 7:30-12 p.m.
Drawing for prizes 10 p.m.

Farmers Hog Mkt.
OPEN EVERY THURSDAY 8:00 a.m. to 2:00 p.m.
Brashears Sale Barn, 1/2 mile North on Highway 83, Shamrock, Texas
Bob Richie
HOG BUYER, Ph. 256-2540 Day & Night

General Carpentry
Additions, Remodeling, Repair, New home framing, Interior decorating, Roofing, Painting, Dry wall, Acoustic.
Melvin Johnson
Shamrock, Texas
Phone: 256-3909

Blakemore
FRESH PROTEIN FED CATFISH
"Dressed While You Wait"
BLAKEMORE MOTOR CO. BUILDING
Phone 257-3287
406 North Main, Shamrock, Texas 79079

It always seems like one mistake leads to another and this was true after the safety.

Having to free kick from his 20, Verden boomed the ball 40 yards upfield and Claude just let the ball roll and Danny Helton fell on it to give Wheeler the ball at the Claude 40.

Helton fumbled it right back to Claude a couple of plays later and the home-standing Mustangs went right back to the airways to tie the game up.

Campbell passed to Randy Nuttall for 8 and then Jimmy Sanders picked up a first down at the Claude 49.

Nuttall grabbed a pass from Campbell on the next play and broke out of Terry Tidwell's grasp and raced 51 yards to knot the game at 14 all and it remained that way until halftime although Wheeler had a short drive from midfield to the Claude 23 where they lost the ball on downs.

Ford picked up the Mustangs first first down in this short drive when he bolted 12 yards up the middle.

Wheeler had some anxious moments early in the second half when Brown lost the ball at the Wheeler 18 but a stout Mustang defense came to the front and Will intercepted a Campbell pass on the goal and returned to the 20.

Claude had gained five on first down and then Tommy Weaver made an excellent defensive play and forced a bad pitchout that cost Claude the five that they had gained and sent Campbell to the air.

Wheeler cranked up their first and really only offensive march of the game after Will's interception.

Staying on the ground except for a 13 yard gain on a pass from Brown to

Colts

Continued from page 1
Coach John Copeland was well pleased with the play of his JV Mustangs in the second half of the Thursday night doubleheader that saw the Mustangs come out an 18-6 victor.

The Mustangs had the ball five times in the first half and scored on three of their possessions and completely throttled the Claude offense in the first half.

"We didn't play as well in the second half after getting a three touchdown lead and the kids made some mistakes that hurt our offense but they are improving all the time and I am real proud of their play against Claude," Coach Copeland said.

There was 4:19 to play in the first quarter when the JV broke the goose-eggs on the scoreboard.

Marvin Grimes broke loose at left tackle and raced 35 yards to the end zone to cap a nine play, 60 yard drive.

After holding Claude and forcing a punt, the JV drove from the Wheeler 46 to the Claude 2 for a first and goal but misfortune struck and the Mustangs lost the ball at the Claude 4.

A 15 yard pass from Myron Jolly to Chad Conwell and a 29 yard scamper by Sammy Schaffer ate up most of the yardage in the drive that came for naught.

Wheeler forced Claude into a kicking situation and the Claude punter got a bad snap and fell on the ball at the Claude 5 and it took Wheeler just one play to go ahead 12-0 as Grimes broke into the end zone over right guard.

gent Vise picked off a Claude pass at the Claude 40 and returned it 6 to the 34 to put Wheeler in scoring position again and the JV Mustangs were quick to take advantage.

Jolly lost a couple of steps and then passed to Conwell for 9 to the Claude 25.

Grimes got the call on a sweep at left end and the clock on the scoreboard showed 2:20 to play in the first half when Grimes crossed the goal for his second TD and the Mustangs final points.

Claude got their touchdown late in the third quarter after recovering a fumble at the midfield stripe.

A 28 yard pass play kept the visitors from

Tidwell, the Mustangs drove to the Claude 18 from where Brown passed to Randy Weaver for the Helton and Brown drive most of the dirty work of the drive as the Mustang offensive line began to open up the holes. Helton had one run of 20 yards the 80 yard drive.

Will's second interception at midfield set up Wheeler fourth touchdown.

From the Claude 42, Will got four and Mike picked up eleven in two carries for a first down at the 27.

Will's got a step behind the Claude secondary and made a one handed grab a Brown pass to give Wheeler a 37-14 margin. Verden made it 28 with perfect kick.

With 5:18 to play in the game, the Mustangs forced Campbell to kick from the back end zone and he went only 28 yards and Wheeler had great field position on the Claude 27.

Izard got a couple of yards and Brown passed Tony Heffley for 9 and a first down on the 18.

Ford gouged out 10 more at right guard for another lease and Izard scored three plays later from the one to cap the Mustangs scoring.

Trailing by 21, Claude came back to get their first eight points with a four play, 85 yard drive that was aided by a 15 yard fine against Wheeler on a dead ball foul.

Heckman picked up 38 on a draw play and Campbell rolled out for 20 to put Claude on the Wheeler 19.

Campbell then found Forbes for the 19 yard scoring toss and Jaramillo ran the two pointer and the error marked game ended 59 seconds later.

Congratulations Mustangs

All I can say is, great game Wheeler! That's the way to start off our conference season! I would especially like to thank the coaches for a job well done!

Fans, you were great too! The tum-out for the Claude game was tremendous. Thanks for braving the chilly weather and long miles to support our team!

This week the Mustangs play the Wellington Sky Rockets here on Nicholas Field. It's very important that we win this game, all of our remaining games. I believe that our Wheeler Mustangs can go far this year. I'm proud of them, and proud to say that I'm a Mustang supporter!

Please come out to the ballgame tomorrow night and help our Wheeler Mustangs beat The Wellington Sky Rockets!

WHS Pep Club Elizabeth Grimes

Bank . . . in which bankers have or are making substantial contributions in time, money and personal sacrifice to benefit their areas . . . "because we are a part of this community . . . we have a hand in building it. Our families live here. We want to help make it better for all of us."

In succeeding spots, messages will point up how depositors' money is loaned for business and home building, retail inventories, manufacturers' raw materials, farm equipment, and public improvement . . . all of which provide jobs and, at the same time, give residents of the community a wide choice of goods and services at reasonable prices and good quality.

Symbol of the network is a wagonwheel from a grain schooner which, in its day, housed the entire social and economic community in which a family functioned. This symbol is accompanied by the signature, "Your Hometown Bank."



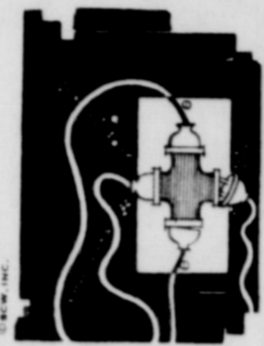
Mrs. Becky Darlene Dietz



FIRE gives no WARNING!

Check Your Wiring, Cords

Never overload electrical circuits. Replace all worn and frayed cords on appliances. Replace blown fuses. Get expert help!



Wheeler Abstract Co.

FIRE PREVENTION WEEK, Oct. 5-11

LEWALLEN INSURANCE AGENCY

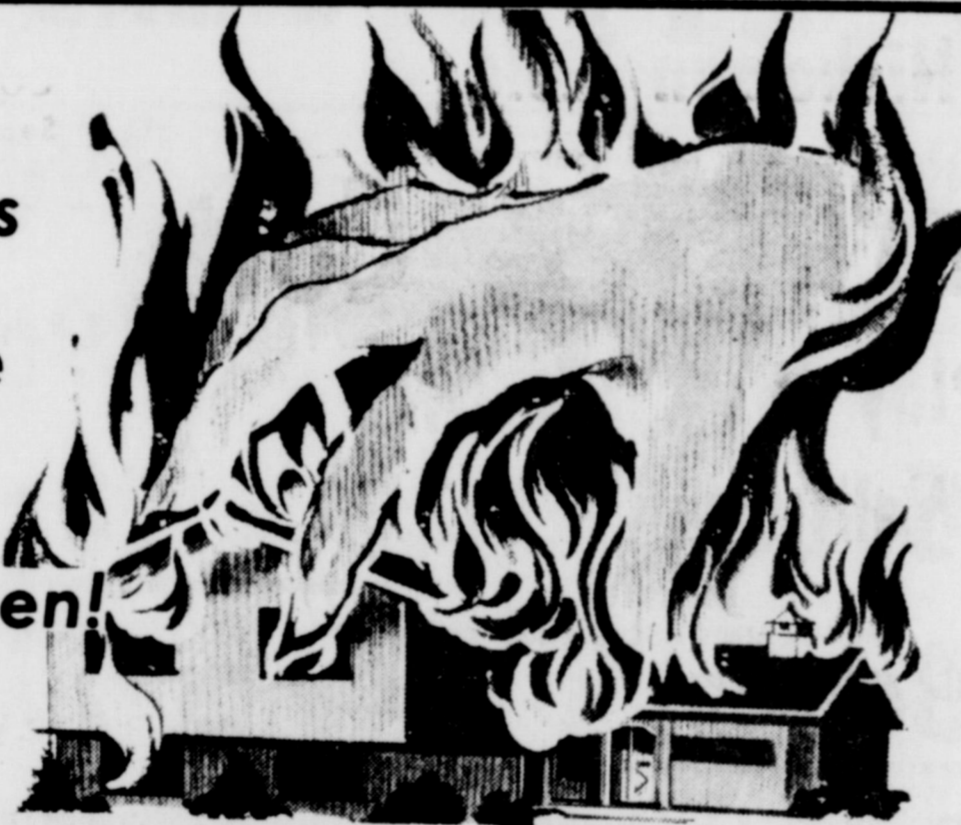
ALL - LINES

826-5719

114 E. Texas

Earl Barnes
Wheeler Fire chief says . . .

The Best Fires We Fight Are Those That Never Happen!



Check Your Home Against

FIRE HAZARDS

DON'T GIVE FIRE A PLACE TO START!

IN CASE OF FIRE

PHONE: 826-3121

★EVACUATE BUILDING—make sure everyone is out and that all doors and windows are closed.

have lost their lives trying to rescue some article, a pet or a piece of furniture.

★NEVER go back into the burning building for anything. Many people

★CLEAR ROADS—leading to the fire... it's the Fire Departments job to get to the fire first, not yours.

MEET WHEELER'S VOLUNTEER FIREMEN

Joe Atwood
Riley Atwood
Earl Barnes
Ronnie Cook
Ken Daughtry
Gary Davis

Dick DeArment
Rick DeArment
Tom Edwards
K. D. Ford
Corky Guthrie

Ed Hennig
Hermon Lowery
Bob Patterson
David Rarden
Donald Reeves

R. J. Smith
Daryl Snelgrooves
Delbert Thomas
Paul Topper
Roy Bradstreet

WHEELER VOLUNTEER FIRE DEPARTMENT

FIRE PREVENTION A Year Round Job



October 5 - 11

MUSTANG UNIORS:



Ricky Markham



Gary Ware



Jim Verden



Darrell Gaines

WHEELER MUSTANGS

VS.

WELLINGTON SKYROCKETS

Friday, Oct. 3
7:30 P.M.

at Nicholson Field

Jr. Varsity & Colts

Play WELLINGTON

At Wellington 6-7:30

1975 Mustangs Football Schedule

Sept. 5	Lefors	27-0
Sept. 12	Open	
Sept. 19	Canadian	6-29
Sept. 26	Groom	8:0
*Oct. 3	Claude	7:30 T
*Oct. 10	Wellington	7:30 H
*Oct. 17	Shamrock	7:30 T
*Oct. 24	McLean	7:30 T
*Oct. 31	Clarendon	7:30 H
*Nov. 7	Memphis	7:30 T
*Nov. 14	Silverton	7:30 H

JR. VARSITY

Sept. 4	Open	
Sept. 11	Open	
Sept. 18	Open	
Sept. 25	Silverton	6:30 T
*Oct. 2	Claude	7:30 H
*Oct. 9	Wellington	7:30 T
*Oct. 16	Shamrock	7:30 H
*Oct. 30	Clarendon	7:30 T
*Nov. 6	Memphis	7:30 H
*Nov. 13	Silverton	7:30 T

COLTS

Sept. 4	Open	
Sept. 11	Open	
Sept. 18	Lefors	6:00 H
*Sept. 25	Silverton	6:00 T
*Oct. 2	Claude	6:00 H
*Oct. 9	Wellington	6:00 T
*Oct. 16	Shamrock	6:00 H
*Oct. 23	McLean	6:00 H
*Oct. 30	Clarendon	6:00 T
*Nov. 6	Memphis	6:00 H
Nov. 13	Open	

WHEELER MUSTANGS

No.	Pos.	Wt.	Class
11	QB	155	Jr.
31	TB	155	Sr.
20	FB	185	Jr.
21	WB	135	Sr.
32	FB	150	Soph.
41	WB	120	Jr.
30	TB	137	Jr.
53	C	170	Sr.
50	C	135	Soph.
61	G	150	Sr.
71	G	150	Jr.
63	G	150	Jr.
64	G	130	Soph.
70	T	165	Soph.
72	T	170	Soph.
74	T	230	Jr.
23	E	150	Sr.
84	E	180	Sr.
80	E	130	Jr.
40	E	145	Soph.
82	E	150	Sr.
83	E	155	Sr.

Wellington Skyrockets

Name	No.	Pos.	Class	Wt.
George Brewer	10	QB	Sr.	160
Shane Tarver	11	QB	Jr.	157
Arnie Ingram	12	HB	Soph.	150
Richard Sims	20	HB	Sr.	140
Paul Hanna	21	E	Sr.	150
Randall Sims	23	HB	Sr.	135
Dan Ford	30	HB	Jr.	170
Sammy Gonsales	33	HB	Sr.	150
George Darton	40	FB	Soph.	150
Jessie Davis	42	FB	Jr.	170
Edward Thomas	43	WB	Sr.	145
Randall Maxwell	50	C	Sr.	150
Ron Ingram	60	G	Sr.	155
Danny Morris	61	G	Jr.	180
Cliff Pennon	62	C	Jr.	160
Don Allred	64	G	Jr.	180
David Null	70	T	Sr.	200
Jackie Black	71	T	Sr.	200
Allen Sanders	72	T	Jr.	170
Mickey Vassey	74	T	Sr.	170
Neal Cochran	80	E	Sr.	160
Tony Martinez	81	E	Jr.	145
Joe Baumgardner	82	E	Jr.	170
Bob Cummings	83	E	Jr.	150

Coaches:
James Williams
Phillip Bailey
Robert Hicks
Bruce Dollar
Ronnie Glenn

THIS AD IS SPONSORED BY THE FOLLOWING MERCHANTS AND INDIVIDUALS

BAKER AUTOMOTIVE
WHEELER MILK CO.
HANNA FAYE & ALBERT CHAPMAN
NORA'S CAFE Odessa & Elwood Mooney
HIBLER IMPLEMENT
WEST MOTEL
EDWARD'S "66" TRUCK STOP
WHEELER FLOWER SHOP
ROARK'S FINE FOODS
McILHANY DRY GOODS
WHEELER REDI-MIX
WHEELER GAS CO.
LEWALLEN INSURANCE AGENCY
MARY WOFFORD

THE WHEELER TIMES
LANCASTER DEPT. STORE
McWHORTER'S TEXACO
WHEELER VETERINARY CLINIC
PRODUCTION CREDIT ASS'N.
TRADING POST
PETE BURTON FORD
WHEELER LUMBER CO.
FIRST NATIONAL BANK
THE DOT SHOP Richard & Lynda Wallace
JOHN C. VISE
WHEELER COUNTY PRODUCE
PRIME FEEDERS
PRITCHARD'S THRIFTWAY

HYLAND'S PHARMACY
WARE CHEVROLET CO.
LEE HARDWARE & FURNITURE
WHEELER FARM BUREAU
George Richardson & Kenneth McCasland
M & M GIN
RIVES INSURANCE
SPARLIN'S RESTAURANT
WHEELER ABSTRACT
SOUTHWESTERN PUBLIC SERVICE CO.
GARRISON SERVICE
BEEF CATTLE COMPANY
SHIRA'S IMPLEMENT
GLEN PORTER RANCH
WRIGHT FUNERAL HOME
SHAMROCK PRODUCTS

QUANTITY RIGHTS RESERVED

COLUMBUS DAY SALE



**BLUE HERITAGE
IRONSTONE DINNERWARE**

THIS WEEK'S ITEM:

CUP

EACH BASIC
PLACE SETTING
WITH EVERY
\$5.00 PURCHASE

49¢

Charmin

Tissue

4 Roll Pkg

69¢



GRAIN FED BEEF
**T-BONE OR CLUB
STEAK**

LB.

GRAIN FED FULL CUT SIRLOIN **\$1.69**
Steak LB.
GRAIN FED RIB EYE BONELESS **\$2.99**
Steak LB.
GROUND, NOT LESS THAN 70% LEAN **79¢**
Beef LB.

- HILLSHIRE FARMS **Hot Links** LB. **\$1.99**
- KAHN'S JUMBO FRANKS OR **Beef Franks** LB. **\$1.29**
- COUNTRY PRIDE-22 OZ. AVG. **Cornish Hens** LB. **99¢**
- RUDY'S FARM WHOLE HOG-2 LB. ROLL '3.17 **Sausage** HOT OR MILD 1-LB. ROLL **\$1.99**
- SLICED **Slab Bacon** LB. **\$1.79**
- SELECT SLICED-SKINNED & DEVEINED **Beef Liver** LB. **79¢**

FROZEN FOOD & DAIRY VALUES

- MORTON MEAT FROZEN **Pot Pies** 3 8 OZ. PKGS. **89¢**
- SHURFINE FROZEN **Broccoli Spears** 10 OZ. PKG. **35¢**
- SHURFRESH CORN OIL **Margarine** 1-LB. IN QTRS. **55¢**
- KRAFT-ASSORTED FLAVORS **Teez Dips** 8 OZ. TUBS. **59¢**
- SHURFRESH HALFMOON LONGHORN **Colby Cheese** 10 OZ. PKG. **89¢**

PURE VEGETABLE SHORTENING

CRISCO

3 \$1.59

LB. CAN

THRIFTY GROCERY BUYS

- Carnation HOT **Coca Mix** 12-Env. Box **98¢**
- Shurfine Pure **Apple Juice** Qt. Jar **49¢**
- Shurfine Pure Concord **Grape Juice** Large 40-oz Jug **98¢**
- Liquid for Dishes Giant **Palmolive** 22-oz Btl **69¢**
- Curity Tape Tab Disposable Daytime **Diapers** Box of 30's **\$1.98**
- 3 MINUTE OLD FASHIONED OR **QUICK OATS** 18 OZ. BOX **49¢**

BOUNTY PAPER

TOWELS

JUMBO ROLL **45¢**

DETERGENT-20% OFF LABEL

LUX LIQUID

32 OZ. BTL. **89¢**

HEAVY DUTY LIQUID DETERGENT 50% OFF LABEL

WISK

GAL. JUG **\$3.99**

- LARGE EXTRA FANCY **Bell Peppers** LB. **25¢**
- CALIFORNIA HASS **Avocados** 4 FOR **\$1**
- LODI-TOKAY **Grapes** LB. **39¢**
- WASHINGTON BARTLETT **Pears** LB. **25¢**

CALIFORNIA VINE RIPPENED

TOMATOES

LB. **29¢**

RED ROME EXTRA FANCY

APPLES

4 **\$1.00**

LBS.

CARNATION EVAPORATED

MILK

3 14 1/2 OZ. CANS **79¢**

KITCHEN TESTED

GOLD MEDAL FLOUR

WITH COUPON BELOW 5 LB. BAG **69¢**

GERBER STRAINED ASSORTED FRUITS & VEGETABLES

BABY FOOD JAR **15¢**

Joan-of-Arc **Corn** 3 303 Cans **89¢**

HEALTH & BEAUTY AIDS

BONUS PACK-LISTERINE ANTISEPTIC **Mouth-Wash** 24 OZ. BTL. **\$1.09**

BONUS PACK-EFFERDENT **Denture Cleaner** 72 CT. TABLETS **\$1.49**

VALUABLE COUPON NO. 06883

GOLD MEDAL KITCHEN TESTED **Flour** 5 LB. BAG **69¢**

WITH THIS COUPON VOID OCTOBER 11, 1975 LIMIT ONE COUPON PER CUSTOMER

THRIFTWAY

LEMON FRESHENED BORAX

FAB

DETERGENT-10% OFF GIANT BOX **99¢**

HANDY WIPES

WIPES

10 CT. PKG. **59¢**

BRECK NORMAL, DRY OR OILY

SHAMPOO

7 OZ. BTL. **89¢**

VALUABLE COUPON

POST TOASTIES **Corn Flakes** 18 OZ. BOX **59¢**

WITH THIS COUPON VOID OCTOBER 11, 1975 LIMIT ONE COUPON PER CUSTOMER

THRIFTWAY

BAR SOAP-4% OFF

DOVE

3 BATH BARS **\$1.00**

COLGATE-10% OFF LABEL

TOOTHPASTE

Colgate MFP LARGE 5 OZ. TUBE **59¢**

Coca Cola \$1.69

Large 32-oz Btl 6-Pack Crt

VALUABLE COUPON

MAXWELL HOUSE **Coffee** LB. CAN **\$1.19**

WITH THIS COUPON VOID OCTOBER 11, 1975 LIMIT ONE COUPON PER CUSTOMER

THRIFTWAY

SHAMROCK-WHEELER WE GIVE S & H GREEN STAMPS

THRIFTWAY

SPECIALS GOOD OCT. 9-10-11