

# THE WHEELER TIMES

VOLUME 41 NUMBER 39

Thursday, October 3, 1974

SINGLE COPY 10¢

## MUSTANGS OPEN DISTRICT PLAY FRIDAY



Coming off a rugged contest with the Groom Tigers, which left the Mustangs with a 1-2 record, Wheeler opens District 2-A competition on Nicholson Field Friday night against the Claude Mustangs.

The only common opponent that Claude and Wheeler have faced was the Groom Tigers and the only consolation Wheeler can gain from that is that the Tigers held Claude scoreless.

Kickoff for Friday night's game is 7:30 and this starting time will hold throughout the remainder of the season.

Wheeler came out of the Groom game pretty well banged up and two starters will definitely miss the district opener.

Starting guard Steve Wallace sustained a cracked rib and will be out of action for 6 weeks and wingback Dan Helton will miss the Claude game after suffering a concussion.

Coach Robinson reported that he would move people around this week to fill the vacancies caused by the injuries and some JV players would be moved to the varsity.

Claude runs from multiple sets on offense and is expected to put the ball in the air, which will be a test for the Wheeler secondary which showed improvement in their pass coverage last week.

Tony Stephenson, a 163 lb. halfback, who was instrumental in Claude's victory over Wheeler last year with a 90 yard run with a completed pass late in the game, has been the back Claude depended on.

"We just didn't play football in the last half against Groom and this was pretty evident the way Groom put it on us," Coach Jim Robinson told the Quarterback Club Monday night. The head mentor of the

## GROOM TIGERS WHOMP WHEELER MUSTANGS 42-13

By David Britt  
The Groom Tigers certainly lived up to their billing as the No. 2 ranked team in Class B and left no question as to the ability of Stan Britten in their 42-13 mauling of the Wheeler Mustangs last Friday night.

Britten carried the pigskin 28 times for 281 yards and was the one the Tigers called on when they needed the yardage. The Tigers continually rolled up the Mustangs flanks, especially in the last half, to spring Britten loose.

The hard hitting game saw the Mustangs play nose to nose with the Tigers in the first half and saw an opportunity to take a 13-8 lead into the dressing room vanish as the Tigers scored a quick 10 points in just over 3 minutes as the half drew to a close.

A short punt out to the Groom 31 and a 15 yard personal foul penalty against the Tigers, gave Wheeler a big break at the Groom 15 late in the

first quarter. On fourth down and needing ten, the Mustangs got another break when Donald Burgin tripped up David Patterson on the 10 on a pass from Don Brown and Wheeler had new life at the 10.

It took Kent Ware a couple of trips up the gut, sandwiched around an off-sides penalty against Groom, to get the Mustangs on the scoreboard and Jim Verden's kick gave the visitors from Wheeler a 7-0 margin with 1:27 remaining in the first quarter.

The Tigers quickly retaliated and kept the ball for only eight plays but that was all that they

Continued page 2

**RECOGNITION:** plaques were presented to George, retired County Judge, Hester Dodson, retired District Collector, and O. W. Pendleton, Commissioner, District 2. Pendleton will retire at the end of his present term in January. The reception, given by the Court-ship crew was held Thursday afternoon. A plaque was presented to Helen Franklin, former employee of the Office at her home. Hefley served 34 years as a city official. Pendleton has served 27 years as commissioner. Hester worked in the Tax office for the past 17 years and Helen Franklin was employed in the tax office for 17 years before retiring due to ill health. Hester was also presented an engraved pen and pencil set by his co-workers. Cake and punch were served.

### TWO RECEIVE EAGLE SCOUT AWARDS SUNDAY

A court of Honor for the local Boy Scout Troop 272 was held Sunday September 29, in the Fellowship Hall of the United Methodist Church. Two young men received Eagle Scout Awards and 13 others received advancement recognition.

Scout troop 272 was in charge of the 2:00 ceremony. The invocation was led by Rev. Marvin Roark of the United Methodist Church.

Ricky Markham and Raymond Martin received the highest awards given in scouting. To receive the award, the candidate must earn 21 merit badges plus additional work and may be accomplished in 3 to 4 years.

### Speech, Hearing Clinic October 14

A clinic composed of speech and hearing specialists from the Panhandle Regional Speech and Hearing Clinic will visit Wheeler Saturday, October 12, to provide free speech and hearing examinations for those children in the community who are 4, 6 and 8 years old. They will be at Wheeler School from 10:00 to 12:00, and from 1:00 to 3:00 in the afternoon.

### YEAR LONG CRIME PREVENTION PROGRAM

Sheriff G. V. Dorman announced the beginning of a year-long crime prevention program today with the kickoff of Operation Identification. The project is designed to thwart burglars and help the Wheeler County Sheriff's Department return stolen property.

"Crime prevention is a vital part of law enforcement," Sheriff Dorman said in announcing the program. "If we can stop some of the crimes before they happen, not only will we have a safer community, but also we'll be saving some tax dollars, since the money that would be spent to handle the in-

creased case load of the county's rising crime rate would be channeled into more productive areas." Operation Identification is the first project in the crime prevention public information and education program starting today here as well as in Carson, Callingsworth, Deaf Smigh, Donley, Hartley, Lipscomb, Potter, Randall, Roberts and Swisher County Sheriff's Departments and the Berger, Canyon, Clarendon, Friona, Fritch, Pampa, Shamrock and Tulia Police Departments. The Wheeler County Sheriff's Department is assisting with the initiation of the program.

The project's objective is to make individuals more aware of the steps they can take as private citizens to arrest the growth of crime. The primary target of this year's activities is burglary. Panhandle Regional Planning Commission has enlisted the aid of Austin-based Travis Froehlich Associates to consult on the implementation and public information portions of the program. The Austin public relations and advertising firm is assisting 13 other Texas law enforcement agencies in the same type of crime prevention program.

### North Fork Baptist Association Meet Oct. 10, In Wheeler

The Baptist Churches of the North Fork Baptist Association will be gathered at the First Baptist Church of Wheeler for the annual meeting, Thursday, October 10, 1974. This is the 10th annual meeting of the Southern Baptist Churches in Wheeler County, Wellington, McLean and Allen.

Simmons Univ. He received his BD degree from Shouthwestern Seminary. In 1942 he served his first pastorate in Big Springs, Tex., and has since served churches in Kentucky, Fort Worth, Denton, Gruver, Wellington, Tucumcari, N.M. and Amarillo.



Chester O'Brien, Jr.

O'Brien became director of missions for the Amarillo Baptist Association in 1967. O'Brien is married and the father of three children.

Leland Wood, Crime Prevention Specialist for the PRPC, will work with the participating law enforcement agencies in implementing their crime prevention programs. Mr. Wood is a graduate of the National Crime Prevention Institute in Kentucky and formerly served with the Potter County Sheriff's Department.

"We recognize that existing law enforcement forces would be completely inadequate to handle the total burden of crime prevention in addition to their current activities, and that the responsibility for crime prevention, as well as crime control, lies with the public," said Sheriff Dorman.

"Therefore, our first responsibility is to let the public know what they can do to prevent crime, using whatever means we can — media, speeches, brochures and person-to-person contact. The first phase of the program is designed to enlist the support, understanding and participation of citizens," Sheriff Dorman added.

During the year the participating police and sheriff's departments will try to reach as many people as possible. "Public awareness of the fact that there is a problem is the crux of the matter," Sheriff Dorman said. "The more everyone knows of the crime problem and the steps they

### Local Punt, Pass & Kick Contest

Local youngsters, between the ages of 8 and 13, will be competing on Saturday, October 5, for one of 18 trophies in the first level of Punt, Pass and Kick competition. PPK&K is an annual event, co-sponsored by the National Football League and the Ford Dealers of America.

First, second and third place winners of Local competition in each of the six age groups will receive a trophy. Additional trophies will be awarded to the first place winner in the Zone, District, Area, Divisional and National finals. Area, Divisional and National matches will be held in NFL team stadiums immediately preceding actual NFL games or during their halftime programs. Youngsters participating at these levels

### T. A. Treadwell Services Tuesday

T.A. "Bud" Treadwell, 79, a retired farmer-rancher died early Sunday in Shamrock General Hospital after a long illness.

Services were at 2:30 p.m. Tuesday at the First Baptist Church of Wheeler. The Rev. David Campbell pastor, officiated with Rev. Ricky Flatter assisting with burial in Wheeler Cemetery by the Wright Funeral Home.

A native of Erath County Mr. Treadwell moved to Wheeler County from Childress County in 1929. He was a member of the Mobeetie Masonic Lodge. Pall bearers were the grandsons; Kenneth Jenkins, Harvey Puryear, Tony Treadwell, David Risley, Weldon Melton, and David Owens. Honorary Pall bearers were Shorty Sechrist, Terrill Gunter, Jerry Hefley, Tom Helton, Loyd Childress, Dick Pendleton, Lee Roark and Ed Riley.

### Junkers Will Be Removed Oct. 14

October 14 is the date to remember if you have an old junker that needs to be removed. A unit will be in Wheeler on the 14th of Oct. to smash old automobiles. There will be no charge for this service.

Owners can have these vehicles picked up and hauled to the dump by contacting the City Office at 826-3222.

If you have a junker which you purchased for parts, plan your work to have everything you need removed and have it carried off; old car bodies setting in the street, yard or alley do not help the looks of our town.

### Over Sixty Club

Over Sixty Club will meet for a covered dish dinner at 6:00 Monday evening Oct. 7, at the Christian Center Annex.

### Mobeetie Asso'n To Meet Tuesday

The Old Mobeetie Assoc. will meet in regular monthly session at the Mobeetie Community Church, Tuesday Oct. 8 at 5:00 p.m. Mrs. Sallie Harris is chairperson with Lester Hathaway as assistant. Everyone is urged to attend these meetings and take part in the plans to re-new Old Mobeetie.



**EAGLE SCOUTS:** Two members of Boy Scout Troop 72 of Wheeler received their Eagle Scout Awards at Court of Honor ceremonies Sunday afternoon in the Fellowship Hall of the United Methodist Church. Shown above, the young men, Ricky Markham, left, and Raymond Martin, right, are the sons of Mr. and Mrs. Glenn Markham and Mr. and Mrs. Frank Martin, respectively. The awards were presented by Dick DeArment. Thirteen other awards were presented at the ceremony.

## DID YOU BRAG ABOUT WHEELER?



### Groom

Continued from page 1

Tiger's led by an 18-13 and it was all Groom from then on.

Groom quickly dispelled Mustangs hopes when they received the second half kickoff and using the flying feet of Stan Britten on two big runs of 23 and 19 yards, drove 57 yards in 10 plays with Tim Britten getting the final step on a dive at left guard. Del Major booted the Tiger's 25th point.

Forced deep in their territory by the kickoff and a clipping penalty, Wheeler was shoved into a punting situation on their 6.

Arthur Brown stomped through the punt protection and blocked Veiden's boot and to add injury to insult, grabbed the ball in the air, just beyond the back line to give the Tiger's another safety and a 27-13 pad.

The closest Wheeler could get to the Tiger's end zone in the last half was the Groom 40 early in the fourth period.

After getting their second safety of the night, Stan Britten returned the free kick 25 yards to the Wheeler 45. A late hit on the tackle cost the Mustangs 15 more and Stan Britten

needed to get the tying touchdown. Stan Britten showed his heels to the Mustangs on four carries in the 63 yard drive to paydirt and he backed up 53 yards with the scoring dash of 12 yards coming off his right tackle.

Groom took the lead 8-7 at 9:41 when Stan Britten ran the two pointers in over the Mustangs right side.

Don Brown blocked the ball on the kickoff but David Massick scooped the ball up on his 20 and headed upfield. Massick broke free, on a real good effort, from a host of Tiger's at the Mustangs 40 and with a clearing block from Terry Tidwell, raced 80 yards to put the Mustangs back in the lead.

Veiden's kick was blocked and the surprising Mustangs had a five point bulge.

The Mustangs halted the Tiger's bid for the go-ahead TD following the ensuing kickoff as Dan Helton intercepted a Tiger's pass in the end zone and returned it to the Wheeler 11.

Needing to kill time to protect their lead and boot the ball out of danger, the Mustangs saw their hopes dashed as Massick was pulled down in the end zone which gave the Tiger's 2 points on the safety at 2:40.

Free kicking from the 20, Veiden booted 41 yards with the wind to Tim Britten at the Groom 39. Britten returned 17 yards to the Wheeler 44.

It just took the Tiger's five plays to get in the end zone with Tim Britten getting the final two yards right up the middle as he went over untouched at 1:10.

Stan Britten swept the Mustangs left end on a pitch for 32 big yards to set up the TD run. Stan Britten swept his left end for the two pointers and the

Wheeler's deepest penetration of the second half ended with Veiden booting to the Tiger 7.

From here, the Tiger's methodically drove 93 yards for their final tally.

and kept the drive going with a successful fourth down run from the Tiger 48 needing two.

Tim Britten jammed over from the one and Clifton Britten passed to Duane Dillinger for the final points in the Tiger's 42-13 win that saw the Tiger's really take over at half-time.

The Mustangs really

### WINDMILL DRIVE-IN

(Formerly O. G. Drive Inn)

will be OPEN after the Game Friday Night

### Game Statistics:

Wheeler	Groom	
First Downs	9	20
Net Yards Rushing	101	331
Net Yards Passing	28	0
Total Yards Gained	129	331
Passes & Completions	9-4	0-0
Passes Intercepted	1	0
Fumbles & Fumbles Lost	4-1	3-0
Penalties & Yards	8-52	8-64
Punt & Average	4-23	3-34
Return Yards	0	0
Total Plays	43	65

### Cowbelle Corner

Mary Neal Henry, State President of Texas Cowbellees, was guest speaker at the September meeting of Top of Texas Cowbellees in Pampa.

A resume of her presidency made an interesting speech for the members.

### Here & There

By Laura Guthrie

This is the time of year to notice every own beauty spot of nature. The first one I have noticed is at the Monroe Galmo place. The old fashioned elms there are turning into clouds of gold. No doubt the late D.E. Holt set those trees there more than a half century ago. How about you reporting some place you know about in our community.

Paul and Charlene Luttrell of Amarillo have been here again. This time they have been winterizing Charlene's mother's house. There are new storm windows on Zinnie Bailey's house.

Most of the employees and their spouses had a holiday in Lubbock last weekend. They attended the Texas Tech - Texas football game, and did various other things according to their plans or liking. Those attending

### Girl Scouts

Troop 71 held its first meeting on Sept. 24th, at the Methodist Church. There were 16 members present.

New patrols were formed and officers elected. Patrol 1 selected the name "Rapid Racers" with Kathy Izard as patrol leader and Maria Pond as assistant patrol leader. Patrol 2 choose the name "Flying Beautiful Butterflies." Elise Christine was elected patrol leader and Rhonda Hogue as assistant patrol leader. Patrol 3 choose "Buzzing Bees" for their name.

They elected Rose Guthrie as patrol leader and Tanya Riden as assistant patrol leader.

Melanie Lee was elected Troop Leader and Lisa Dodd was elected Troop Scribe.

The troop decided to sell Girl Scout Calendars again this year.

Refreshments were served by hostess Beth Brown. The meeting closed with a sing-song session.

Those attending other than the above were: Angela Atwood, Cathy Doherty, Yanny Sangaviam, Michelle Cross, Missy Wiggins, Tine Kreyling, Sherry Lewallen and adult leaders: Anita Brown, Glenda Atwood, and Sandra Christner.

### Wheeler FHA New Year Underway

The Wheeler Chapter of Future Homemakers of America began the 1974-75 year with a come-as-you-are breakfast for freshmen members. Cindy Davis gave the invocation. Lana Callahan, president, welcomed the new members and outlined the chapter's goals for the year. Lana also briefed the group on "Impact" and "Encounter" in FHA. Hostesses were the Chapter officers, including: Lana Callahan, president; Jana Marshall, second vice president; Marilyn Moore, third vice president; Teesa Ford, fourth vice president; Anne McIlhany, fifth vice president; Bienda Jolly, secretary; Cindy Davis, historian; and Becky Ford, parliamentarian.

This year, the chapter is subdivided into class units to provide an opportunity for greater individual participation. Election of officers for each unit was held early in the year. Leadership in the class organizations includes: Homemaking III Bienda Jolly, president; Melinda Reeves, secretary-treasurer; Sharon Williams, counselor-reporter; Homemaking II, Anne McIlhany, president, Amy Watts, secretary-treasurer; Jenny Smith, counselor-reporter; Home and Family Living, Don Chapman, president; Shelly Smith, secretary-treasurer; Steve Wallace, counselor-reporter.

Work has begun on two Chapter Impact projects - "Little Sisters" and "Secret Grandmothers". Each class unit is in the process of choosing and activating an Impact project.

On September 25, a chapter business meeting was held, with the president, Lana Callahan, presiding. Items discussed were the FHA Family Night, the Area I In-Service meeting in Shamrock, and plans for the FHA banquet.

Up-coming events include: October 3, Area I In-Service meeting at Shamrock, October 14 FHA Family Night Supper.

### Laura Jeffus Rites Are Read Mon

Funeral services for Mrs. Laura Mae Jeffus, 80, a longtime resident of Mobeetie were held, Monday, Sept. 30, at 10:30 a.m. in the Cal-michael-Whately Colonial Chapel of Pampa, with Elmer McLaughlin, Minister of the Laketon Church of Christ officiating.

Mrs. Jeffus died Friday morning, September 27, in the Highland General Hospital, where she had been a patient several weeks. She was born July 11, 1894 in Erath County.

She was preceded in death by her husband, Doyle Jeffus who died in 1942.

Mrs. Jeffus came to Wheeler County in 1902 and a longtime member of the Church of Christ. Survivors include a sister, Mrs. Nora Waggoner of Pampa and several nieces and nephews.

Burial was in the Mobeetie Cemetery.

### Family Reunion

Mrs. and Mrs. R. St. John recently returned home from the Andrews Family Reunion held in the beautiful home of Ms. Lyman Andrews in Colorado Springs, Colo.

Children of the late Alvie and Myrtle Andrews who were in attendance were Mrs. Fay Lane of Tucuman, N.M. Mrs. Rona Belcher of Ruidoso, N.M. Mrs. Almaene Bean of Childress, W. and Ms. Martin Ross of Pico Rivers, Calif., Mr. and Ms. Jack Rodamel of Bullhead, Ariz., Mr. and Ms. Linsey Andrews of Roswell, N.M. and Mrs. S.T. John. Two members of the family, Ivan Andrews of Alamogordo, N.M. and Elmer Andrews of Clovis N.M. were unable to attend due to illness.

### Blakemore

FRESH PROTEIN FED CATFISH

"Dressed While You Wait"

**BLAKEMORE MOTOR CO. BUILDING**  
 Phone 253-3287  
 400 North Main Shamrock, Texas 79079

### Blakemore

**BEEF Cattle Co.**  
 WHEELER, TEXAS 79066 - THE CATTLEMAN'S PRIDE!

### Grain Producers!

Your Milo will bring more money from the final user.

Call 826-5591

We are now contracting Milo

### Brays Saddle Shop

(South Side of Square)  
 Wheeler, Texas

Handmade: Saddles, Belts, etc.  
 Boot, Shoe & Saddle Repair  
 (One Day Service Where Possible)

Complete Stock of Tack Equipment  
 Phone: 826-5665

Check the Selection at...

**LOYD'S**

**BEN FRANKLIN**

400 Main • Wheeler, Texas 79096

# FLEA MARKET

Sat., OCTOBER 5

## Coronado Center

Pampa, Texas

THIS WILL BE THE LAST FLEA MARKET FOR THE 1974 SEASON

# VALUE DAYS

**OCT. 2-8** ASSOCIATED DRUGGISTS

<b>AYDS REDUCING CANDY</b>	<b>ALKA SELTZER</b> 36's Mfg. list \$1.31	<b>SCHICK HOT LATHER REFILL</b> 8 1/2 ounce Regular Lemon- Lime Menthol Herbal Mfg. list \$1.25 each	<b>MAALOX LIQUID</b> 12 ounce Mfg. list \$1.83
<b>\$2.34 ea.</b>	<b>89c</b>	<b>67c ea.</b>	<b>\$1.21</b>
1 1/2 lb. Vanilla, Chocolate, Chocolate Mint, Butter Scotch Mfg. list \$3.95 each	<b>VICKS VAPORUB</b> 3 ounce Mfg. list \$1.29	<b>VICKS FORMULA 44</b> 6 ounce Mfg. list \$2.19	<b>ASCRIPTIN ASPIRIN WITH MAALOX</b> 100 tablets Mfg. list \$1.69
<b>\$1.88</b>	<b>83c</b>	<b>\$1.31</b>	<b>99c</b>
<b>OIL OF OLIVE BEAUTY LOTION</b> 4 ounce Mfg. list \$3.50	<b>VICKS ORACIN THROAT LOZENGES</b> 18's Mfg. list 89c	<b>VICKS NYQUIL COLD MEDICINE</b> 6 ounce Mfg. list \$1.79	<b>GILLETTE TRAC II BLADES</b> 5's Mfg. list \$1.29
<b>\$1.99</b>	<b>53c</b>	<b>\$1.06</b>	<b>78c</b>
<b>ALPHA KERI BATH OIL</b> 8 ounce Mfg. list \$3.50	<b>SINUTAB TABLETS</b> 30's Mfg. list \$2.50	<b>BLISTEX LIP OINTMENT</b> Blistex for faster relief of cold sores & fever blisters. Mfg. list 49c each 22c each or 44c each or	<b>LACTONA NYLON TOOTHBRUSHES</b> Mfg. list 98c each 44c each or
<b>\$1.99</b>	<b>\$1.28</b>	<b>3/63c</b>	<b>2/83c</b>
<b>VITALIS HAIR TONIC</b> 7 ounce Mfg. list \$1.49	<b>ABSORBINE JR.</b> 4 ounce Mfg. list \$1.89	<b>Who is your A.D. Personal Pharmacist?</b>	
<b>92c</b>	<b>\$1.24</b>	Today's highly individualized, computerized and mechanized society has one of the fewer and fewer people who carry on the tradition of one-to-one relationships with his customers. He's like the anchor man on your personal health care team: filling your prescriptions, explaining your doctor's instructions and consulting with you on non-prescription needs. Be sure, be safe, ask your A.D. Personal Pharmacist	

**HYLAND'S Pharmacy**

American Diabetes Association Inc. 18 East 48th Street New York, New York 10017

WE RESERVE THE RIGHT TO LIMIT QUANTITIES AT SALE PRICES

### Blakemore

FRESH PROTEIN FED CATFISH

"Dressed While You Wait"

**BLAKEMORE MOTOR CO. BUILDING**  
 Phone 253-3287  
 400 North Main Shamrock, Texas 79079

### Blakemore

**BEEF Cattle Co.**  
 WHEELER, TEXAS 79066 - THE CATTLEMAN'S PRIDE!

### Grain Producers!

Your Milo will bring more money from the final user.

Call 826-5591

We are now contracting Milo

### Blakemore

**BEEF Cattle Co.**  
 WHEELER, TEXAS 79066 - THE CATTLEMAN'S PRIDE!

### Grain Producers!

Your Milo will bring more money from the final user.

Call 826-5591

We are now contracting Milo

### Blakemore

FRESH PROTEIN FED CATFISH

"Dressed While You Wait"

**BLAKEMORE MOTOR CO. BUILDING**  
 Phone 253-3287  
 400 North Main Shamrock, Texas 79079

### Blakemore

**BEEF Cattle Co.**  
 WHEELER, TEXAS 79066 - THE CATTLEMAN'S PRIDE!

### Grain Producers!

Your Milo will bring more money from the final user.

Call 826-5591

We are now contracting Milo

### Blakemore

FRESH PROTEIN FED CATFISH

"Dressed While You Wait"

**BLAKEMORE MOTOR CO. BUILDING**  
 Phone 253-3287  
 400 North Main Shamrock, Texas 79079

### Blakemore

**BEEF Cattle Co.**  
 WHEELER, TEXAS 79066 - THE CATTLEMAN'S PRIDE!



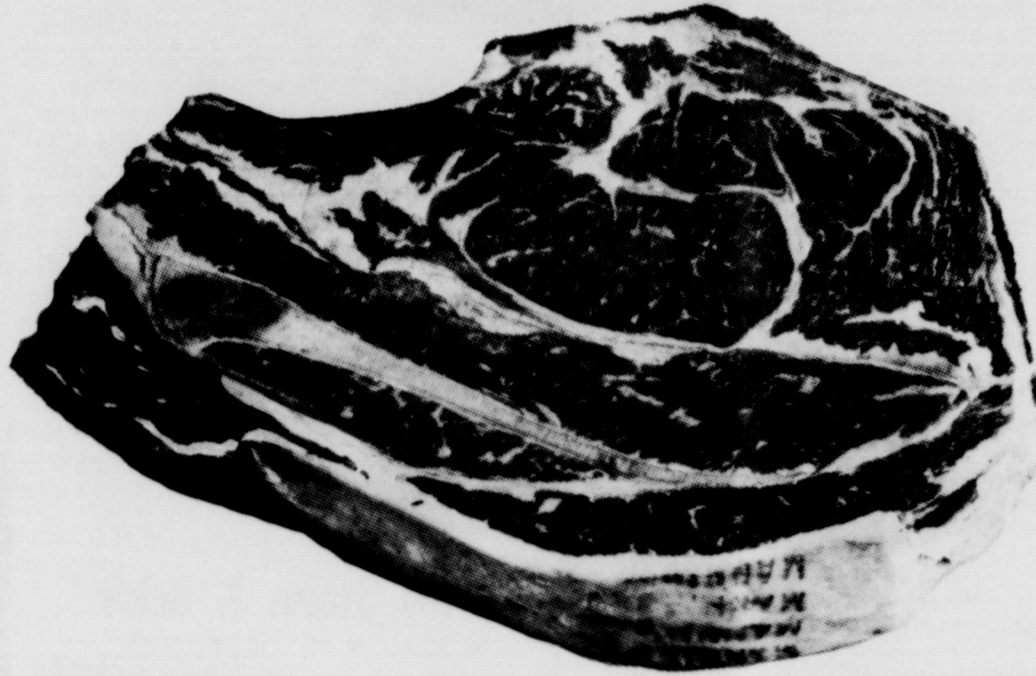
- PRICES EFFECTIVE THURSDAY, FRIDAY AND SATURDAY
- GUNN BROTHERS STAMPS
- WHEELER'S HOME OWNED AND OPERATED GROCERY



- OPEN MON. - SAT. 8 a.m. till 6:30 p.m.
- FREE DELIVERY with \$2.50 Purchase
- FOOD STAMPS ACCEPTED
- PHONE 826-5213

**GROCERY ITEMS**

GIANT WHOLE GREEN BEANS	Reg. 39¢ 303 Can	<b>35¢</b>
SPINACH	303 Can	<b>29¢</b>
PORK n BEANS	303 Can 3 for	<b>93¢</b>
FRUIT DRINKS	46 oz. Can	<b>59¢</b>
APPLE HALVES	Reg. 63¢ 22 oz. Jar	<b>57¢</b>
APPLE HALVES PEACHES	2 1/2 Can	<b>63¢</b>
PACARONI DINNERS	Reg. 35¢ 7 1/4 oz.	<b>33¢</b>
PASTA & TOMATOES	Reg. 57¢ 303 Can	<b>51¢</b>
PASTA	3 oz. 2 for	<b>43¢</b>
APPLE	32 oz. 6 Pack Carton	<b>\$1.59</b>
APPLES		<b>\$1.55</b>
CORN OIL	16 oz.	<b>\$1.05</b>
VEGETABLE SOUP	10 3/4 oz. Can 2 for	<b>49¢</b>
WHEAT RISING FLOUR	5# Bag	<b>\$1.11</b>
WHEAT FASHIONED OATS	18 oz. Box	<b>59¢</b>
WHEAT CEREALS	10 oz. Box	<b>71¢</b>
WHEAT GRAY n WASH	16 oz. Can	<b>\$1.07</b>
WHEAT TOWELS	2 Roll Pkg.	<b>71¢</b>



**CHUCK ROAST** U.S.D.A. CHOICE Pound **79¢**

**CHUCK STEAK** U.S.D.A. CHOICE Pound **83¢**

<b>BACON</b> Wilson's Certified 2 lb. Pkg.	<b>\$2.89</b>	<b>SAUSAGE</b> Bird Farm Original or Hot 1 lb.	<b>89¢</b>	<b>CHEESE</b> Kraft Sharp Natural Cheddar 10 oz. Pkg.	<b>\$1.21</b>
<b>BACON</b> Longhorn Brand 2 lb. Pkg.	<b>\$2.59</b>	<b>PICKLE LOAF</b> Lunch Meat Wilson's 6 oz. Pkg.	<b>51¢</b>	<b>BOLOGNA</b> Wilson's Certified 1 lb. Pkg.	<b>\$1.19</b>
<b>PORK CHOPS</b> 1 lb.	<b>\$1.37</b>	<b>HAMBURGER</b> Fresh Ground 1 lb.	<b>89¢</b>	<b>HAMS</b> Whole or Half 1 lb.	<b>89¢</b>
<b>WIENERS</b> Oscar Mayer 1 lb.	<b>\$1.27</b>	<b>PIZZA</b> Tonys Your Choice 1 lb.	<b>\$1.29</b>	<b>ROUND STEAK</b> 1 lb.	<b>\$1.49</b>

**FRESH PRODUCE FOR THE TABLE**



No. 1 Washington **PEARS** 1 lb. **39¢**



Washington Red Delicious **APPLES** Extra Fancy 1 lb. **39¢**



Fresh Crisp **CELERY** 1 lb. **23¢**

<b>POTATOES</b> #2 Russetts 10 lb. Bag	<b>99¢</b>
<b>TOMATOES</b> Cello Pack pkg.	<b>47¢</b>
<b>CABBAGE</b> Texas Kraut 1 lb.	<b>9¢</b>
<b>GRAPEFRUIT</b> Red Delicious 1 lb.	<b>25¢</b>
<b>CAULIFLOWER</b> 1 lb.	<b>71¢</b>
<b>PUMPKINS</b> Fresh For Pies 1 lb.	<b>10¢</b>
<b>SWEET POTATOES</b> Fresh Wheeler County 1 lb.	<b>19¢</b>

**VALUABLE COUPON**

1 PT. 8 FL. OZ. GIANT SIZE **IVORY LIQUID ONLY** **60¢**

GOOD ONLY AT **ROARK'S Fine Foods**

WITH THIS COUPON **PRICE WITHOUT COUPON 75¢**

OFFER EXPIRES 10/18/74 LIMIT 1 COUPON PER PURCHASE

**DAIRY PRODUCTS**

<b>MILK &amp; HALF</b> Borden's 16 oz.	<b>51¢</b>
<b>BUTTERMILK</b> Borden's 1/2 Gal	<b>83¢</b>
<b>CHEESE</b> Borden's Assorted	<b>49¢</b>
<b>CHEESE</b> Borden's Life Line	<b>69¢</b>
<b>BREAD AND ROLLS</b>	
<b>HOT DOG BUNS</b> pkg.	<b>43¢</b>
<b>HAMBURGER BUNS</b> pkg.	<b>43¢</b>
<b>BREAD</b> Super Value loaf	<b>43¢</b>
<b>HEAT TOAST</b> Borden's 4 oz. pkg.	<b>49¢</b>

**HEALTH AND BEAUTY AIDS**

<b>POLISH REMOVER</b> Cutex 3 oz. Bottle	<b>49¢</b>
<b>DENTURE ADHESIVE</b> Poli-grip 1 5/8 oz. Tube	<b>\$1.03</b>
<b>TOOTH PASTE</b> Close-Up Med. Size Tube	<b>62¢</b>
<b>BANDAID PLASTIC STRIP</b> 10 ct. Box	<b>27¢</b>
<b>HAND LOTION</b> Jergens 4 oz. Bottle	<b>63¢</b>
<b>SINGLE EDGE RAZOR BLADES</b> Pal-Super 10 ct.	<b>67¢</b>
<b>TYLENOL LIQUID</b> For Children 2 oz. Bottle	<b>95¢</b>
<b>ANTI-PERSPIRANT CREAM DEODORANT</b> Ban 1 oz.	<b>73¢</b>
<b>MEDICATED POWDER</b> Mexsana 3 oz. Bottle	<b>69¢</b>
<b>CUP A SOAP</b> Colgate 1 3/4 oz. Bar	<b>26¢</b>

**FROZEN FOODS**

<b>SOLE LUNCHEON</b> Weight Watchers	<b>99¢</b>
<b>LEMONADE</b> Minute Maid 6 oz. Can 2 for	<b>43¢</b>
<b>CHERRIES</b> Stillwell Delicious for Pies 16 oz. Bag	<b>\$1.15</b>
<b>SHRIMP</b> Booth Breaded Fantail	<b>\$3.99</b>
<b>COOL WHIP</b> 9 oz. Tub	<b>75¢</b>
<b>MIX-VEGETABLES</b> West-Pak 1 1/2 lb. Bag	<b>67¢</b>
<b>FISH STICKS</b> Booth 24 ct. Box	<b>1 1/2 lb. \$1.79</b>
<b>ROLLS</b> Mortons Parker House	<b>1 1/2 lb. 69¢</b>
<b>BREAD</b> Sally Ann Salt Free 1 lb. Loaf	<b>55¢</b>
<b>PIE SHELLS</b> Pat Ritz 5 in Box	<b>\$1.35</b>



**Want Ads**

**FOR RENT:** Trailer Space  
Black Gold Trailer Park  
Phone 826-5512 rtm

**FOR SALE:** 3 bedroom  
house and family room with  
pooltable and lot 221 x 225  
on highway. 2-story barn,  
horse barn and small feed  
shed. Well on property  
Charles Moore 826-3228  
rtm

**For Sale:** 3 bedroom, liv,  
kit, den, large corner  
lot on highway. Paul  
Topper Paul's Real Estate  
826-5237 after 5

**LOST BEEF FOR SALE:**  
Half or whole. Light weight.  
L. D. Childress, Phone:  
375-2296. Grain fed. rtm

**Found Hereford Heifer**  
about 425 lbs. 4 miles west  
of Wheeler. Contact Van  
Boize 826-3100

**Office Space Available**  
Call 826-5630 or 826-3234  
113 West Texas St.

**PAUL'S TRAILER PARK**  
Across Street From School  
Trailer lots 40'x70'  
Modern Underground Utilities  
Gas and Water furnished  
Individual Electric Meters  
PAUL TOPPER-Ph. 8237 or 5931

**FOR SALE:** 1966 Dodge  
Charger. Phone: 826-5907.

**For Rent:** House 826-5865  
Sadie Pollard rtm

**To Give Away:** 3 dogs.  
Need a fence. Call 826-  
3165 or 826-5514 3tp

**Garage Sale:** Thursday  
thru Sunday 505 N Texas  
St., Shamrock, Texas 1tp

**For Sale:** Case 16-10  
wheat drill \$100.00 Call  
Hyland Weaver, 826-5561

**For Sale:** 16 ft. Cattle  
feeder, on wheels \$600.00  
(hold 10 ton)

**For Sale:** 8 ft. dozer blade,  
fits most large tractors,  
Hyland Weaver, 826-5561

**For Rent:** 2 bedroom house  
furnished, water furnish-  
ed, carpeted and paneling.  
\$65.00 per month Hyland  
Weaver 826-5561 4t

**For Sale:** 3 bedroom house,  
2 baths, garage, basement  
and well on corner lot.  
826-5976 5tc

**New Shipment LP Stereo**  
Albums, \$2.99. L & F  
Repair.

**Accepting Bids**  
The Wheeler ISD is ac-  
cepting bids on a bus build-  
ing, steel, 36' x 100'.  
Bids to be mailed to  
Secretary, Board of Trustees,  
Box 1010, Wheeler,  
Texas. The board reserves  
the right to approve or  
reject bids. 2tc

**For Sale or Rent:** In  
Wheeler, 5 room home,  
hook-up for washer and  
dryer. 3 lots, fruit, pecan  
trees, big basement. 2  
blocks from square on  
Red River Street.  
826-5830. rtm

**Executor for John F.**  
Daberry, estate says reduce  
prices and sell. 16' all  
steel stock trailer, elec-  
tric brake, lights, like new  
\$800. New 12' John Deere  
Heavy Duty Offset disc  
plow, complete with hydro-  
lic cylinder and hose,  
\$2500.

**250 gal. butane tank** with  
filler hose on 4-wheel  
trailer, excellent condition,  
\$200.

**John Deere 4-wheel trailer,**  
good tires, \$250.  
New Herd Wilwind grass  
seeder for tractor with  
3-point hitch, \$115.  
20 New 16'x52" steel hog  
panel, \$22.50 each.  
Barbwire roller with power  
take-off for tractor, \$32.50.  
Trust Department, The  
First National Bank of  
Amarillo. Contact R. F.  
Brandenburg, 806-372-7060.  
1tc

**News**  
Visiting the C.V. McCraw  
on Tuesday were their  
daughter Mrs. H.B. George  
of Amarillo and their  
grandson, Mr. and Mrs.  
Virgil Hooser of Lubbock.

*Briscoe News*

**By Veta Parker**  
Visitors of Sophia Hel-  
ton last week were Lanora  
Morris, Fannie Mae Brad-  
street, Evalyn Meek and  
Effie Renfro.

Visiting in Turkey last  
Thursday with relatives  
were Willa Fillingim,  
Martha Meek, Shawn Ever-  
ett, Juanita Fillingim. They  
came home by Clarendon  
and visited Mary Fillingim.  
Last Friday night supper  
guest at the Dick Irvines  
were the Bob Swift family.  
Willis and Verna Fillingim  
visited after supper  
with the Dick Irvines.

Kay Gatlin and Rita  
Fillingim shopped in Elk  
City Monday.  
Danny and Dallas Fillingim  
ate dinner Monday  
with the Willis Fillingims.  
Our rain gage registered  
one inch of rain Monday  
and Tuesday together  
September 23 and 24.  
Weldon and Diana Parker  
and Marianda ate supper  
Sunday night with the Col-  
lie Parkers.

Last week was Weldons  
last week at the Dick  
Waterfield ranch.  
Colie and Veta Parker  
ate dinner Thursday in  
Reyton with the Willie  
Parkers and helped cele-  
brate Wanda's birthday.  
Mrs. Adesholt went to  
the doctor Friday for a  
checkup. She was feeling  
fairly Saturday, she was  
looking for Rita Grayson  
and Debbie and some of  
her kids in Borge to come  
see her this weekend.

Mr. and Mrs. Oden Hudson  
visited with Mr. and Mrs.  
B.F. Meadows Sunday  
night.  
Weekend guests of the  
Cliff Walkers were Mr.  
and Mrs. Bill Walker and  
Lacie Michelle of Canyon.  
Sunday afternoon visitors  
were Mr. and Mrs. Eli Sab-  
be of Wheeler and Mr. and  
Mrs. Walt Hughlo of Fergus  
Falls Minnesota.  
Colie and Veta Parker  
went to Pampa Friday with  
the Weldon Parkers, came  
home Saturday night, Colie  
and Veta stayed Friday  
night with the Vene Daugh-  
terlys, Weldon and Diana  
and Marianda stayed with  
Florence and Patricia Cas-  
tleberry.  
Weldon is moving to Pampa  
he starts working there  
Monday.  
Colie and Veta Parker  
visited the Cloude Parkers  
Sunday night. Others there  
were Cliff and Davathy  
Ogle from Kentucky, they  
came in Sunday morning.  
Mr. and Mrs. James Ofle  
and girls, Mr. and Mrs.  
Kevin Sheffield.  
Wanda Childress visited  
in Pampa Monday with  
Kay Childress and Mary  
Swift and children.  
Kay Childress works now  
at the L and R Beauty  
Shop just across from the  
Harvester. Babecue. She  
would enjoy seeing  
some of her friends.  
Mike Castle from Shannon  
is visiting with the Fat  
Childress.  
The children of Loyd and  
Clara Childress had a  
family reunion at the club  
house on Alexander Ranch  
north of Allison. Those  
there were Bar Childress  
and family, Fat Childress  
and family, Helen Dyson  
and family, Weynola Sand-  
ers and family, Kenneth  
Childress and family,  
Carol Ronney and family  
the grand children were  
Wayne Childress and  
family, Janice Helen  
Berry and family, Kathy  
Hunt and family, Loyd  
and Clara, seven out of  
eight children there were.  
Red Childress is in Ger-  
many. J.T. and Maybell  
Childress visited for a  
while.  
Harmon and Daphne  
Barry, Jerry, Berry and  
two girls, Ronny and  
Vici Barry and Mr. and Mrs.  
Diez visited and hunted  
in this area, they spent  
Friday and Sat. night at  
Alexander Ranch.

**DITCH DIGGING AND**  
**PIPE LAYING:** L. B.  
Copeland Shamrock, Tex.  
256-3793 rtm

**4 Family Garage Sale:** Oct. 4 and 5 at 8:30 till 5:00  
Friday, 8:30 till noon Saturday. New ceramics, boys  
shirts and shoes; mens clothes, pants, shoes, Antiques,  
curtains, bedspreads, dishes, etc. 605 N Main, Shamrock  
Texas 1t

**THE BUSINESS DIRECTORY**



Published Every Thursday at Wheeler, Texas, By...



Louis C. Stas, Owner and Publisher

Entered as second-class matter December 18, 1933, at the Post  
Office at Wheeler, Texas 79096, under the act March 3, 1879.

Subscription Rates:  
Wheeler County ..... \$4.00  
Outside County ..... \$5.00

FOR ALL YOUR  
**Farm Supply Needs**  
**WHEELER CO.**  
PRODUCE  
Wheeler, Texas

**WRIGHT FUNERAL HOME**  
24-Hour  
AMBULANCE  
Phone: 806-826-5214

**WHEELER REDI-MIX**  
REDE-MIX CONCRETE  
SAND  
Washed Gravel-All Sizes  
Office Hours: 7:30 to 5:00  
Phone 806-826-3223

**Dr. Marion Roberts**  
OPTOMETRIST  
112 W. Kingsmill  
Pampa, Texas

**GUARANTEED**  
**AUTO GLASS**  
**INSTALLATION**  
& Body Repair  
**GARRISON SERVICE**  
Phone: 826-5515  
Wheeler, Texas

**TRACTORS - IMPLEMENTS**  
**PARTS and SERVICE**  
**HIBLER IMPLEMENT CO.**  
Wheeler, Texas

Let Me Write It...  
**GEO. RICHARDSON**  
All Types Of  
**INSURANCE**

**CUSTOM DRAPERIES**  
Swags, Cornices, Shutters  
We Install Free  
Tele 256 3652  
Brannons Decorators  
Shamrock, Texas 79079

**THE BRIEF FACTS**

Representative Charles  
Chamberlain of Michigan has  
before the Congress a bill  
which will offset the dam-  
age being created among  
smaller firms by having to

pay higher taxes on small-  
er inventories due to  
inflation. A vote by the  
National Federation of  
Independent Business shows  
55 per cent in favor 24 per  
cent opposed and 21 per  
cent undecided.  
"You can't do business  
out of an empty wagon."  
This business maxim  
was developed on the  
American frontier when  
goods were sold out of a  
wagon. Today, double  
digit inflation has given it  
added meaning in an era  
when economists and  
economic theories come and  
go.

Representative Charles  
Chamberlain of Michigan has  
before the Congress a  
bill which would permit re-  
tailers and wholesalers,  
especially the independent  
operations, to survive in an  
inflationary cycle.  
His legislative proposal,  
submitted to a nationwide  
vote by the National  
Federation of Independent  
Business finds support  
from 55 per cent of the re-

spondents, with 24 per cent  
opposed and 21 per cent  
undecided.  
In Texas the vote is  
54 per cent in favor, 26 per  
cent opposed and 20 per  
cent undecided.  
Basically, the problem  
of the independent re-  
tailer and wholesaler is that  
of maintaining adequate  
inventories without being  
penalized by the tax for  
inflation.

Most retailers and  
wholesalers keep books  
on what is known as the  
accrual basis which means  
that any increase in the  
value of the inventory at  
the end of the tax year as  
compared to the beginning  
of the tax year is consid-  
ered taxable profit, or income.  
However in a period of  
widely accelerating infla-  
tion, a business can end  
the year with no more mer-  
chandise in stock, yet from  
a value standpoint the  
inventory is highly inflat-  
ed in value.

The big corporate mer-  
chandisers compensate for  
this by using what is known  
as LIFO or "last-in-first  
out" which stands for a  
method of inventory value  
control which requires the  
use of quite elaborate pro-  
cedures which are not av-  
ailable to the smaller firm.  
The Chamberlain bill,  
developed by the National  
Federation of Independent  
Business with Edward  
Cohen, a former assistant  
to the Secretary of the  
Treasury, would alleviate a  
situation which threatens to  
destroy many independent  
businesses if the current  
double digit inflation can-  
tinue unimpeded.

Briefly, the bill would  
change the tax laws so that  
at the end of the tax year,  
a business would be able  
to add to the value of the  
inventory at the beginning  
of the year the percentage  
of increase in the whole-  
sale price index for the  
year and the difference  
between this adjusted figure  
and the inventory value at  
the end of the year, if any,  
would be the basis for the  
tax computation.  
The tax laws were  
written in a period of rela-  
tive price stability with  
annual increases usually  
under two per cent, and  
obviously did not visualize  
the present chaotic situ-  
ation.

According to data from  
NFIB surveys, many in-  
dependent firms in the  
wholesale and retail trade  
are not increasing their in-  
ventory capital due to the  
high interest rates, even  
though it costs more to  
replace inventory. Thus  
they are ending the tax  
year with less units in  
stock, but paying a higher  
tax on the increased value  
of a smaller inventory.  
There are some who claim  
that between the increased  
cost of replacement in-  
ventory goods, plus the ex-  
tra taxes assessed on a  
higher valuation, their  
capital available for in-  
ventory has been cut as  
much as 25 per cent.  
If this situation can-  
tinues, in time it will be  
reflected in reduced factory

orders and factory emp-  
loyment.

**COMPLETE INSURANCE COVERAGE**  
John C. Vise Agency  
117 W. Texas Street  
Wheeler, Texas

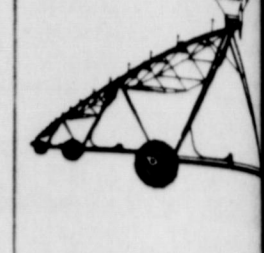
**Farmers Hog Mkt.**  
Open Every Thursday  
8:00 a.m. to 2:00 p.m.  
**Brashears Sale Barn**  
1/2 mile North on Highway 83  
Shamrock, Texas  
**Bob Richie**  
HOG BUYER  
Pho. 256-2540  
Day or Night

Quarry Tile Cobblestone  
**Fether-Wait Stone & Brick**  
CUSTOM WOODBURNING FIREPLACES  
Zero Clearance-Free Standing  
Stanley Baker  
Wheeler, Texas  
Phone: 826-5202

**BUTCHERING & PROCESSING PRICES**  
**Beef processed, double wrapped 11¢ per pound**  
**1¢ A Pound for Butchering**  
**Pork processing including curing**  
**double wrapped 13¢ per pound**  
**\$4.50 A head for butchering**  
We butcher Monday thru Friday 8 to 12 A.M. except holidays  
**CALL FOR QUARTER - HALF - WHOLE BEEF PROCESSED**  
**WE NOW HAVE CUTS OF PORK AND BEEF FOR SALE**  
**SHAMROCK SLAUGHTER PLANT**  
N. of City Phone 256-3241  
Closing at Noon on Saturday

**LIGHTWEIGHT CHAMPION**  
This lightweight boot really takes a load off your feet. So give yourself a lift—come try on a pair today.  
**Red Wing Cures 5 O'clock Feet**  
**RED WING**  
Lancaster Dept. Store

**Are YOU Interested In A Nursing Career?**  
**Shamrock General Hospital**  
**School of Vocational Nursing**  
is now accepting applications for the next class.  
**Starting Date: February 24, 1975**  
DEADLINE for accepting applications:  
December 24, 1974  
For Information:  
Contact: K. Hanson; R.N.; Director  
Shamrock General Hospital  
806/256-2114  
Accredited & Approved by:  
Texas State Board of Voc. Nurse Examiners  
Texas Education Agency  
Approval pending by:  
Veteran's Administration  
EQUAL OPPORTUNITY ORGANIZATION



PT. OF INSTRU-  
ED IN THE OI  
ST COUNTY CL  
RICT COUNTY,  
LER COUNTY,  
OM SEPTEMBE  
ROUGH SEPT  
1974  
PT. 23,  
OL-Malouf Ab  
meich & Payn  
74 & 8-23-74 N  
NE 4-28A-8  
Federal  
ation to Monte  
ble et ux 9-9-  
OS  
Viollette ham  
y Wofford 9-11  
12 B 39 Whee  
4 T&NO  
C Moore Jr e

Hey, what's that  
up there?  
That's  
new Va  
Boy, they must be  
the biggest in  
the world.

**They sure are**  
Pioneered the enter-  
industry Today they  
sell more center pivots  
and service more cen-  
ter pivots, than any-  
else in the world.

**VALLEY**  
**WHEELER**  
**INDUSTRIES, INC.**  
Pivot Division  
Rt. 1 Wheeler, Texas  
806-826-5838

**A. & E.**  
**MOBILE HOMES**  
Highway 83 So.  
Canadian, Texas  
Phone 323-8469

**STARK**  
**Nursery Store**  
Call or Write  
R. StJohn  
Mobeetie, Texas  
Phone 845-2353



# Court Records

**OFFICE OF INSTRUMENTS  
RECORDED IN THE OFFICE OF  
COUNTY CLERK AND  
DISTRICT CLERK OF WHEELER  
COUNTY, TEXAS  
THROUGH SEPTEMBER 23  
1974**

SEPTEMBER 23, 1974  
OL--Malouf Abraham to  
Merich & Payne, Inc  
74 & 8-23-74 NW 1/4 63  
NE 1/4 28A-8  
T--Federal Land Bk of  
Lyon to Monte Allen  
Lyon et ux 9-9-74 Sec 86  
05  
Violetie Hampton to  
Wafford 9-11-74 Lots  
12 B 39 Wheeler, Pt  
4 T&NO  
J C Moore Jr et ux to

Harry Wafford 9-10-74 Lots  
4, 5, 8 to 13 Pt 14, 16 Moore's  
SD  
OL--The Christian Center  
to Harry Wafford 9-6-74 Lots  
10 to 12 Blk 36 Wheeler  
OL--Fay Patterson to  
Harry Wafford 9-11-74 Lots  
7, 8 Pt 9 Blk 35 Wheeler  
OL--Vigil A Patterson et  
ux to Harry Wafford 8-28-74  
Lot 2 Moore's Sub Div  
OL--Richard D DeAment et  
ux to Harry Wafford 9-9-74  
Lots 20 to 24 Blk 11 Wheeler  
Stanley 2nd  
OL--J M Montgomery et ux  
to Harry Wafford 8-26-74 W 1/2  
N 90 ft S 1/2 Blk 19 Wheeler  
OL--Eula Badsstreet to Harry  
Wafford 9-6-74 W 1/2 Lot 12  
Blk 32 Wheeler

OL--George L Richardson  
et ux to Harry Wafford 9-10-  
74 Pt Blk 37 Wheeler; Lot  
9 to 12 Blk J Wheeler, Park  
Addn  
OL--Lloyd Anglin et ux to  
Harry Wafford 9-6-74 S105  
ft E160 ft Blk 55 Wheeler,  
Stanley  
OL--Cecil Denson et al to  
Harry Wafford 8-30-74 Lots  
16, 17, 18 Blk 20 Wheeler  
OL--Joe Weatherly et ux to  
Harry Wafford 8-26-74 50'x  
389.6 Blk 4 Wheeler, Stanley  
2nd  
5 ASSIGN OVERRID ROY--  
H L Brown Jr et ux to Ed-  
ward E Van Petten Jan to  
Oct 1973 land not set out in  
these instruments  
3 ROY D-H L Brown Jr et

ux to Edward E Van Petten  
Nov 72 to Nov 74 Pt Sec 2  
J Poitevent Sur, Pt Sec 2  
T&NO Ry Co Sur, Pt SW 1/4  
50 A-8, Pt 5 Blk E Pt SW 1/4  
Sec, 14 Blk L  
C/C PROBATE--Edward  
Emil Van petten 9-20-74  
D--J H Scribner et ux to  
Pierce Walker, 9-19--  
20'x150' Lot 16 Blk 115 New  
Mobeetie  
SEPTEMBER 24, 1974  
CD--Zybach Cemetery Assn  
to Jimmy Dean Gilmer 9-17-  
74 Lot 1 Blk E-3 Zybach  
Cemetery  
AFF--Lowell Lasley to Frank  
L McAlester 9-24-74  
AFF--Isaac Ruben Bagger-  
man to James Robert Bagger-  
man 7-16-74 N 1/2 Sec 7 Blk  
A-2

ROL--Getty Oil Co to J D  
Paris et ux 9-11-74 Sec 5  
Blk A-2  
QCD--American Cancer Society  
to I L Cook 8-31-74 1/4  
of 1/3 of 25/9600 Min Int S 1/2  
Sec 48 Blk 24  
SEPTEMBER 25, 1974  
AFF--John Austin Morgan to  
John Austin Morgan 9-24-74  
S 1/2 NE 1/4 & NW 1/4 Sec 93 Blk 17  
R/WAL--White House Lumber  
Co to J T Atkins et ux 11-  
19-73 lots 1, 2, 3 Blk B  
Shamrock  
D--Susan E Peachy to Bennie  
Mae Purkey et al 6-17-74  
Lot 7 Blk 65 Shamrock, WSSA  
QCD--Wallace Fields to  
Shamrock Lions Club 9--  
1974 .36 ac Sec 45 Blk 17  
OL--United Methodist Church

**Dr. M. V. Cobb**  
CHIROPRACTOR  
Specializing In The  
Examination And  
Treatment of Spinal  
And Nervous Disorders  
256-2133  
310 South Main  
Shamrock, Texas

OL--Alfred T Carleton et al  
to Chevron Oil Co 9-6-74 Sec  
24 Blk A-7  
OL--John J McClure Jr to  
Chevron Oil Co 9-6-74 Sec  
24 Blk A-7  
8 DESIGN OF UNIT--Chevron  
Oil Co et al to Robert F  
Bailey Jr et al 9-9-74 E 1/2  
Sec 24 W 1/2 Sec 23 Blk A-7  
SEPTEMBER 26, 1974  
D--Cecil O Snelgroes et

ux to Daryl Snelgroes 9-24  
74 100'x300' SW 1/4 Sec 5 Blk  
A-4 exc mins  
C/C PROBATE--Carolyn E  
Franck to Ex Paete 9-16-74  
AOL--Laclede Gas Co to  
Freepart Oil Co 6-12-74 5  
pages close typed descrip-  
tion  
PARTIAL RDT--Mercantile  
Trust Company National Assn  
to LaCede Gas Co 6-13-74  
same property listed immedi-  
ately above  
AFF--Leonard Gaines et al  
to Thomas Elbert Haddox  
et ux 4-24-71 lots 3, 4 Blk  
40 Wheeler exc 5 10 ft 1 of 4  
SEPTEMBER 27, 1974  
FEDERAL TAX LIEN--  
Clarence E Wilhelm et ux to  
United States of America  
9-26-74  
DT--H D Pond et ux to  
Chain-C Inc 9-17-74 E 1/2 SE 1/4  
sec 18 Blk L  
MD--R W Slemake et ux to  
Dalco Oil Co 9-24-74 2.50  
ac int NW 1/4 Sec 12 Blk A-4  
D--Donald L Barber et ux to  
Eddy D Walker et ux 9-20-  
74 Lots 18, 19 Blk 7 Allison  
MD--Blanche Begett to Jack  
Kline et al 9-5-74 All int  
N 1/2 S 1/2 Section 18 Blk RE  
RELEASE JUDGEMENT--  
Daniel Dale vs H H Neuhaus  
9-26-74  
MARRIAGE LICENSE ISSUED  
Steve Kirk Raymond and  
Anna Marie Oldham 9-24-74  
Morris Eugene Cantrell and  
Evelyn Faye Palmer 9-25-74  
Alex Pena Jr and Anita Kath-  
leen McFee 9-27-74  
Edward Daniel Jones and  
Illa Maxine Glaze 9-27-74

## LINES FROM LINDA

By Linda Horton, Asst. County Extension Agent

The "Be yourself" theme of today's home fashions offers special opportunities for creativity in window treatments.

Home don't need to be stereotyped any longer - no one fashion dictates whether your home is up-to-date now. You plan your room and your windows to meet your needs and to express your own ideas.

The traditional window styles - draw drapery, cafe curtains, shades or shutters - can be topped with valances, swags, or cornices. They could be used separately or in combination. Windows don't necessarily have to be treated with fabric. Lambrinquins, made of plywood, and windows framed with folding screens or lattice work give a change from the ordinary.

If privacy or light isn't a problem, try hanging macramé or beads.

If fabric is the window treatment you prefer, there is a variety of choices. One type that many prefer is fiberglass.

Fiberglass offers low-cost qualities, durability and care advantages, along with several disadvantages.

Fiberglass colors don't fade because of sunlight resistance. It's also fire-resistant. Glass fibers are durable, so the draperies don't need frequent replacement.

Draperies made from glass fibers need little cleaning and no ironing. Hand or machine washing according to label instructions suffices for most.

Tiny bits of glass left after washing draperies make it important to rinse tub, sink or machine thor-

oughly. On the negative side, fiberglass draperies don't have good abrasion resistance, so fiber breakage can occur. To get the most resistant draperies, look for a combination of glass and acetate fibers.

Inexpensive glass fiber draperies tend to have a stiff and scratchy hand and refuse to fall in the soft folds some people prefer.

However, new weaving techniques, used in some of the latest draperies on the market, provide solutions to these problems at a slightly higher cost.

Besides offering many color and shade choices, glass-acetate draperies boast numerous weaves and finishes.

So whether it's traditional fabric drapes or beads or whatever, remember to be yourself. It's no longer necessary to have the same type window coverings your neighbor has to be in style.

after you see your doctor...

bring your prescription to  
**RHYLAND'S PHARMACY**  
PH. 826-5561

## We Feature Quality Foods

**BONELESS CLUB STEAK \$1.49** Pound  
**BACON 2 \$2.29** lb. Pkg. Smoke Rite  
**POT PIES \$1** Tukey, Chicken or Beef  
**BREAD 41¢** Loaf Super Value  
**PEPSI COLA 6 69¢** 10 oz. Btls. (Plus Btl. Deposit)  
**Tomato Sauce 7 for \$1** White Swan 8 oz. can  
**APPLE SAUCE 2 for 79¢** White Swan 16 oz can  
**CRACKERS 53¢** Fire Side 1 lb. box  
**FRENCH FRIED POTATOES 2 59¢** 2 lb. Bag Keith  
**CHILI 79¢** 15 oz. Can Ranch Style  
**SOUR CREAM or DIP 2 98¢** 8 oz. Size Borden

## Allison News

Mrs. Rex Miller  
kids home from college  
weekend visit: Dora-  
Lynn, Jaye, J.J., Steve  
Miller, Frank Phillips,  
Gayson, Debbie and  
Wynne Barnett, Winston  
Denny, and Allend Don-  
son, W.T., Jim Miller,  
D. State.  
Miss Sharon McDonald  
visited her father in an  
hospital this  
weekend. Mr. McDonald  
undergone surgery on  
Friday. Sharon says he  
is getting a long fine.  
Edna Begett visited the  
Leibs in Stinnet over  
weekend.  
The Good News Quart-  
et from Amarillo was in  
charge of the morning and  
evening services at the  
First Church Sunday.  
Basket lunch was enjoy-  
ed by everyone at noon.  
Michael Heath is the  
son of Mr. and Mrs  
Hall of Amarillo and  
brother of Richard.  
Parents are M. and  
Mrs. Jerry Hall and Wil-  
son, Jr. of Shamrock.  
Jerry and Richard spent  
Friday night with the Halls.  
A large crowd attended  
wedding of Patty Mar-  
shall and Johnny Crawford at  
Wheeler Sat. night.  
Mrs. and Mrs. Verne  
Begett attended a get  
together of the Anderson  
family in Pampa last week-  
end. Guest in the Loh-  
meyer home were Suzanne  
Reydon and Howard  
in Amarillo.

parents of a baby boy  
born Friday Sept. 28, 1974  
Mr. and Mrs. Frank George  
are the proud grandparents.  
Ed Begett from Amarillo  
visited Edna Begett Mon.

## PAINTING

Interior & Exterior  
Commercial & Residential  
Brush, Roller, and Spray  
Painting.  
No Job Too Large  
(Except Skyscrapers)  
or Too Small.  
Reasonable Rates  
Call:  
Donald Ford  
(806) 826-3106  
Wheeler, Texas

## Mobeetie News

By Mrs. Wilber Beck

Our sympathy is with  
the family of Mrs. Laura  
Jeffus in their loss.  
Mr. E. E. Johnston is  
still in the Highland Gen-  
eral Hospital at this time.  
Albert Trout spent sev-  
eral days in the Warley  
Hospital in Pampa, last  
week.  
Vernon Hooker entered  
the Parkview Hospital in  
Wheeler, Monday morning.  
Mr. and Mrs. Bob Galmor  
visited his brother Wood-  
row Galmor, in Dallas  
last weekend. Mr. Galmor  
is very ill at this time.  
Mr. and Mrs. Doyle Grimes  
visited their children Mr.  
and Mrs. Gay Grimes  
and family and Mr. and  
Mrs. Jerry Tucker all of  
Amarillo last weekend.  
Another son and family,  
Mr. and Mrs. Jerry Grimes  
of Stafford met them in  
Amarillo for a visit. Their  
granddaughter, little D'Wan  
Tucker came home with  
them for a short visit.

Mrs. Melba Burch and  
Mrs. Glynnda Leatherman  
were co-hostess to a dou-  
ble birthday dinner for  
William Burch and W.A.  
Leatherman. Those  
enjoying the festivities  
were C.W. Burch, Mrs.  
Wilber Beck, Glenda  
Sherrill, Allen Leather-  
man, Melody Burch, Kenny  
Sherrill, M.S. Burch and  
William and Mr. and Mrs.  
Leatherman.  
Ray Grayson from the  
grandmother, Mr. and Mrs.  
Allen.  
Mrs. Melba Burch attend-  
ed to business in Amarillo  
Monday.

**WHEELER SCHOOL MENU**  
Monday  
Steak Fingers, Gravy,  
Mashed Potatoes, En-  
glish Peas, Applesauce,  
Hot Rolls, Butter and  
Milk  
Tuesday  
Spaghetti, Meat Sauce,  
Tossed Salad, Green  
Beans, Peach Slices, Hot  
Rolls, Butter and Milk  
Wednesday  
Chicken & Dumplings,  
Broccoli, Corn, Gelatin,  
Bread, Butter and Milk  
Thursday  
Meat Loaf, Blackeye  
Peas, Whipped Potatoes,  
Cole Slaw, Fruit Cocktail,  
Corn, Bread, Butter, and  
Milk  
Friday  
Kosher Style Barbecue  
Weiners, French Fries,  
Pickles, Baked Beans  
Peanut Butter Cookies

Save At This  
LOW PRICE!  
2 for \$1.48

**LANCASTER DEPARTMENT STORE**  
presents  
**THE WINNING TICKET**  
for girls who are tough on panty hose  
**MAY QUEEN PANTY HOSE 25% OFF**  
SAVE 50c on 2 Pairs of 99c Styles

## LANCASTER DEPARTMENT STORE WEEKEND SALE !!

**PLAYTEX GIRDLES**  
THREE STYLES TO CHOOSE FROM . . .  
DOUBLE DIAMOND - FREE SPIRIT  
- 18 HOUR  
LONG LINE BRAS  
ONE STYLE TO CHOOSE FROM  
ALL AT **1/2 PRICE**

Mr. and Mrs. Lester  
Leonard and his mother  
Mrs. Tassie Leonard visit-  
ed Mr. and Mrs. Don  
Powell, Donna and Fred  
and the Rev. and Mrs.  
Dinzell Leonard in  
Canadian Sunday.  
Mr. and Mrs. R. St.  
John returned Tuesday  
last week from the And-  
rews family reunion in  
Colorado Springs, Colo.  
On their return they visited  
her brother, Mr. and Mrs.  
Elmer Andrews in Clovis,  
N.M. who has been ill and  
was unable to attend the  
reunion.

Guests of Mr. and Mrs.  
W.H. Atkins Sunday were  
their son and two grand-  
sons Herbert Atkins,  
David and Tony.  
Weekend visitors of Mrs.  
Ethel Herd were her chil-  
dren, Mr. and Mrs. Lonnie  
Goodner to Fritch, Mrs.  
Velma Carter of Lefors,  
and Mr. and Mrs. Barney  
Gatlin of Mobeetie.

Mr. and Mrs. Richard  
Kysar and son Phillip  
visited Mr. and Mrs. J.B.  
Rector Sunday evening.

Mrs. R.B. Leonard and  
Mr. and Mrs. Jess Patter-  
son visited Mrs. Doshia  
Dix in Wellington. Mrs.  
Dix is Leonard's and  
Mr. Patterson's sister.

Mrs. Arlie Jeffus is home  
this week after visiting  
with her daughter and  
family, Mr. and Mrs.  
Warren Witt in Dumas,  
last week.

Guests of Mr. and Mrs.  
James Bunn Sunday were  
Mr. and Mrs. J. Kirby of  
Dumas.

Teddy Cooper recently  
re-enlisted in the navy and  
is now stationed in San  
Diego, Calif.

"You forgot the monthly  
report?"



Farm and business in-  
surance often requires a  
monthly reporting from  
for variable inventories.  
Failure to file it accur-  
ately and promptly can re-  
sult in non-payment of  
loss claims.

**JOHN C. VISE AGENCY**  
COMPLETE INSURANCE SERVICE  
WHEELER PH. 826-5576



**MUSTANG GOAL:**

# WIN DISTRICT

# WHEELER MUSTANGS

VS.

# CLAUDE MUSTANGS

FRIDAY, OCT. 4 at Wheeler

### WHEELER MUSTANGS

Name	No.	Pos.	Wt.	Class
Chapman, Don	10	QB	155	Sr.
Brown, Dan	11	QB	155	Soph.
Helton, Danny	31	FB	155	Jr.
Massick, David	20	FB	185	Soph.
Tidwell, Terry	21	WB	135	Jr.
Ware, Kent	32	TB	160	Sr.
Mellhany, Bill	53	C	165	Jr.
Martin, Raymond	62	G	180	Sr.
Wallace, Steve	63	G	150	Sr.
Weaver, Tommy	61	G	150	Jr.
Burrell, Mark	72	Jr.	230	Jr.
Markham, Ricky	71	Soph.	150	Soph.
Verden, Jim	73	Soph.	235	Jr.
Elliott, Kenneth	60	Jr.	150	Sr.
Patterson, David	65	Sr.	165	Jr.
Wills, Robert	64	Jr.	150	Jr.
Jr. Varsity				
Guthrie, Bob	10	QB	155	Sr.
Ford, Del	32	FB	155	Jr.
Hefley, Tony	31	FB	155	Jr.
Izard, Mills	41	TB	160	Sr.
Weaver, Randy	40	WB	135	Jr.
Frankenberry, Keith	51	C	165	Jr.
Christman, Greg	62	G	180	Sr.
Lashley, Kevin	64	G	150	Jr.
Sonenshine, Dave	61	G	130	Jr.
Davis, Jeff	70	T	150	Jr.
Patterson, Tim	71	T	150	Jr.
Pond, Mark	70	T	150	Jr.
Gaines, Darrell	82	E	130	Jr.
Hefley, Tim	83	E	120	Jr.
Whiteley, Buddy	84	E	135	Jr.

### CLAUDE MUSTANGS

No.	Name	Pos.	Class	Wt.
10	Wayne Campbell	QB	Soph.	133
12	Staff Forbes	QB	Soph.	145
20	Quin Bagwell	B	Sr.	149
21	George Jaramillo	B	Jr.	135
23	Gene McBe	B	Soph.	112
32	Robert Taylor	B	Sr.	193
40	Tony Stephenson	B	Sr.	165
50	Charles Gillispie	C	Jr.	150
60	Cecil Rich	G	Jr.	150
61	Tommy Jaramillo	G	Sr.	150
62	Gary Bagwell	G	Soph.	165
63	Chris Hartman	G	Soph.	150
65	Kevin Hudson	G	Sr.	150
70	Joey Blate	T	Sr.	170
71	Chuck Brown	T	Soph.	171
72	Doug Barrett	T	Sr.	146
73	Jamie Bible	T	Sr.	274
80	Kenneth Datten	E	Sr.	126
81	Kevin Wisdom	E	Sr.	133
84	Jeff Greenfield	E	Jr.	156

Coaches: James Smith  
Jackie Bann  
Bill Crocker  
Jim Kirkland  
Managers: Andy Friesen  
Jim Sarvan

COACHES:  
Jim Robinson, Head Coach  
Bill Wiggins  
John Copeland  
Richard Gaines

MANAGERS:  
Steve Gaines  
Kent Gaines  
Jimmy Robinson

### MUSTANGS

September 6	Lefors	25-20
September 13	Open Date	
September 20	Canadian	6-16
September 27	Groom	13-42
October 4	Claude Here	7:30
October 11	Wellington There	7:30
October 18	Shamrock Here	7:30
October 25	McLean Here	7:30
November 1	Clarendon There	7:30
November 8	Memphis Here	7:30
November 15	Silverton There	7:30

### B-TEAM

September 7	Lefors There	14-0
September 12	Valley Here	24-0
September 19	Miami There	Cancelled
September 28	Canadian There	12-14
October 3	Canadian There	12-14
October 10	Canadian There	12-14
October 19	Lefors Here	4:00 P.M.
October 24	Valley There	7:30 P.M.
October 31	Miami Here	7:30 P.M.
November 7	Memphis There	6:00
November 14	Memphis There	6:00

THIS AD IS SPONSORED BY THE FOLLOWING MERCHANTS AND INDIVIDUALS

ALBERT'S SHAMROCK SERV. STA.

LOYD'S BEN FRANKLIN

GARRISON'S SERVICE STA.

HYLAND'S PHARMACY

WRIGHT FUNERAL HOME

WHEELER IRRIGATION

JOHN C. VISE AGENCY

SPARLIN'S CAFE

CITY FLOWER & GIFT SHOP

DAVID & PAULA BRITT

WHEELER VETERINARY CLINIC

THE BOB FRANKENBERYS

BANK OF WHEELER

PETE BURTON FORD

EDWARDS '66' TRUCK STOP

GEORGE & VENA RICHARDSON

M. & M. GIN

SOUTHERN PUBLIC SERVICE CO.

CLEANERS & FRABICS

MASTERS STORE

HIBLER BENT CO.

ROARK BROS.

WHEELER INC.

WHEELER LUMBER CO.

### PAKAN PART

SHAMROCK PRODUCTS

YREVA'S BEAUTY SALON

GLEN PORTER RANCH

KENT TWYLA AND ANGELIQUE SIMS

RICHARD WALLACE

BARNES ELECTRIC-Earl & Paulene Barnes

LOWELL AND LORETTA LASLEY

RIVES INSURANCE AGENCY

WHEELER FLOWER SHOP

WHEELER COUNTY PRODUCE

WHEELER ABSTRACT CO.

WARE CHEVROLET CO.

TRADING POST

FIRST NATIONAL BANK

HARRY & MARY WOFFORD

WHEELER REDI MIX

PRITCHARD'S THRIFTWAY

LEE HARDWARE & FURNITURE

BRAY'S SADDLE SHOP

Form 31  
News F  
Memor  
CLA  
NO VEHICLE  
injuries ar  
result of a  
accident oc  
driven by 1  
by the wes  
ack of Pamp  
to travel ea  
capital for 2 b  
as admitted  
discussion; Joh  
and release  
Mrs. John  
on Duane La  
months. Joh  
passed.  
W  
Bi  
Wheeler Cou  
approved by  
can Revoluti  
ennial Commis  
as a Texas  
Community.  
was received  
on Hall, cha  
Wheeler County  
ennial Commi  
letter from  
Sr., chairma  
mission reads  
Mrs. Hall:  
are pleased to  
that the Ameri  
ution Bicen  
mission of Te  
ally approved  
ty's applicat  
was Bicen  
ity. It will b  
sure to forward  
ication to the  
olution Bicer  
istration in  
on, D.C. for u  
sement of Wh  
ty as a Nation  
ennial Commu  
quality of a  
submitted by  
ty is a credit  
airman, and t  
members of y  
ltee. It is a  
a great deal o  
effort has bee  
May we tak  
tunity to con  
on the scope o  
and on the m  
presentation  
unity effort.  
vised as soo  
ve formal noti  
of Wheeler Co  
nal endorsem  
st regards.  
st sincerely,  
ed) Sam Kind  
Chairm  
is approval re  
man-hours of  
preparation.  
ltee is extre  
to have had  
tion approved  
ng forward to  
by the A.R.B.