

MORGAN ELECTED COUNTY JUDGE

Wheeler County voters selected Wendall Morgan as their County Judge in the only contested County race on the ballot. In other races they agreed

with other voters in the surrounding counties and supported the Democratic Party. Unofficial Election results are as follows: U.S. Representative:

Jack Hightower 1010
Bob Price 837
Governor:
Dolph Briscoe 1190
Jim Granberry 579
Lieutenant Governor:

Bill Hobby 1233
Gaylord Marshall 464
Attorney General:
John Hill 1281
Tom Cole 411
Comptroller of Public
Accounts:
Bob Bullock 1271
Nick Rowe 354

State Treasurer:
Jesse James 1173
Robert G. Holt 565
Commissioner of General
Land Office:
Bob Armstrong 1307
Mary Lou Grier 343
Commissioner of Agriculture:
John C. White 1215
Zack Fisher 468
Railroad Commissioner:
Jim C. Langdon 1234
Joe P. Cain 394
Railroad Commissioner
(Unexpired Term):
Mack Wallace 1253
Dale W. Steffes 357
Member, State Board of
Education, District 13:
W. W. (Bill) Carter 1186

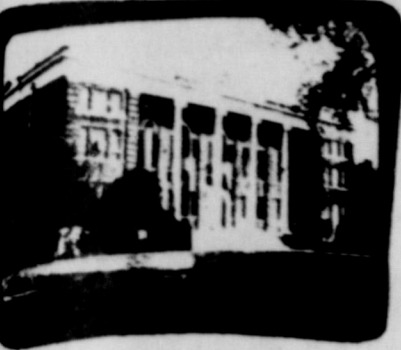
Dan Loving 385
County Judge:
Wendall Morgan 1453
Troy D. Johnston 347
The total number of
ballots cast in each of the
voting boxes is as follows:
Mobeetie, 121; Wheeler, 251;
Stanley, 288; Allison, 73;
Heald, 50; Lela, 86; Twitty,
91; Shamrock (W), not avail-
able; Shamrock (E), 612;
Absentee, 37.

THE WHEELER TIMES

VOLUME 41 NUMBER 44

Thursday, November 7, 1974

SINGLE COPY 10c



WHEELER STUNS BRONCHOS 15-9

Clarendon won the battle of statistics but the Mustangs won the scoreboard and that is what counts and when it was all over, the Mustangs had upset the favored Bronchos last Friday night 15-9 to remain one game behind league leading Memphis.

Getting the big play when needed on offense, the Mustangs came from behind in the fourth quarter after Kenneth King had put the Bronchos in front with a 41 yard field goal and drove 78 yards for the winning touchdown.

The Mustangs took the opening kickoff and did nothing but run right at the bigger Bronchos and went ahead 7-0 at 9:57 and protected this margin until midway of the third period when the Bronchos scored and cut Wheeler's lead to one.

Holding onto the precarious 7-6 lead, the visiting Mustangs played superb defense to keep the Bronchos from blowing them out of the tub after coughing up the ball three consecutive times inside their 30. All the Bronchos could

get out of those three big opportunities was three points.

Even after taking the lead back 15-9 with 4:15 left in the game, the Mustangs had their backs to the wall at their 21 with time running out but the Mustangs, led by Steve Wallace, swarmed Randy Croslin at the 26 on a fourth down passing attempt.

Don Brown fell on the ball for two plays as the clock tolled off the final seconds and the Mustangs had their big win.

Kent Ware, who gained 103 yards for his night's efforts, returned the opening kickoff 33 yards out to the

Mustang 43 and the Bronchos hardly slowed the Mustangs down in their 57 yard scoring drive.

The hard running of Ware and David Massick put the pigskin on the Clarendon 30 and a first down before the Mustangs switched runners and called on wingback Don Chapman for a couple of steps.

Ware broke up the middle from the 28 but was hauled down on the 7 but there was no stopping the fired up Mustangs from that point.

Calling on Ware three straight times, the Mustangs punched it across with the TD coming from the one and Jim Verden's kick put Wheeler on top 7-0.

The Mustangs forward wall just blew the Bronchos back on this scoring drive and they were able to come up

with the big play both offensively and defensively throughout the game.

Clarendon's offense was hampered in the game as Kenneth King, the Bronchos ace tailback, was slowed by a hip pointer but the Mustangs were waiting for him at every turn when he did get the ball.

Clarendon fumbled the ball away to Wheeler at the Clarendon 44 right after Ware's touchdown and the Mustangs could have possibly dealt the Bronchos an early killing blow with another TD but lost the ball at the Broncho 11 when Ware came up a yard shy.

The Bronchos were able to get across the midfield stripe only once in the first half and this was to the Wheeler 42.

Pressure on Croslin kept the Bronchos passing game

from being real effective although the big quarterback did have receivers in the clear a couple of times but he overthrew them.

Clarendon got on the scoreboard the second time they had the ball in the third period with Croslin sneaking over from the 2 to complete a 67 yard Thrust.

The Bronchos used Lynn Floyd and Larry Shields running and one pass for 9 yards in the nine play drive.

Going for the two pointer, the Bronchos were unsuccessful on a pass attempt to set the stage for the Mustangs defensive heroics.

Don Brown fumbled at the Wheeler 44 three plays after Clarendon scored and had their backs to the wall in a hurry but they were up

Hospital Notes

- Old Admissions**
10-17 Geniva Harris
10-18 Sadie Pollard
10-20 Claude Parker
10-21 Mary Sechrist
10-23 Birdie Hampton
- New Admissions**
10-29 Mary Wofford
10-30 Dorothy Wilson
Judy Wall
Mary Peck
Richard DeArment
10-31 Par Dutton
Clydene Hall
Sharon McDonald
Lisa Weatherly
Amy Watts
- 11-1 Essie Mitchell
11-2 Jana Marshall
11-4 Harry Wofford
Helen Franklin
Mary Leota Wiley
John Robinson
Flora Mae Kelley
Imogene Lewis
- Dismissals**
10-30 Elizabeth Richardson
Wilma Risner
10-31 Lee Callan
Edna Williams
Robert Henderson
Elizabeth Boring
Mary Peck
Joanie Lee
Clyde Dickey
Matthew Anderson
Sharon McDonald
11-6 Judy Wall
Lisa Weatherly
Amy Watts

Colts Upended By Clarendon 14-6

Clarendon's Gary McClellan ran back an intercepted pass 54 yards for a touchdown in the last minute of the first half to pad a slim 7-6 Clarendon lead and it also closed out the scoring in the game as the Clarendon Colts defeated the Wheeler Colts 14-6 last Thursday night.

About all the offense the Wheeler Colts had in the first half was a 54 yard run to paydirt by Marvin Grimes on the first play of the second quarter but it kept the Colts within 2 of Clarendon until the interception by McClellan.

Clarendon got on the scoreboard the first time they had the ball when Johnny Jaramilla scooted 19 yards around the Wheeler right end to cap a 55 yard drive in six plays. Billy Gardner ran the two pointer to give the visitors an 8-0 bulge at 4:07.

Wheeler had two good scoring opportunities after they had narrowed the margin to two but couldn't cash in on either and saw one of them turned into the lost Clarendon TD.

The Colts blocked a Clarendon punt at the

Continued page 2

JV Wins Again; Whip Warriors

Miami's varsity was cancelled out last week and they brought most of them to represent their JV against Wheeler but went back to Miami on the losing side of a 14-8 score.

Using the old flea flicker to perfection, Coach John Copeland's JV got on the board first and were never headed in one of the hardest hitting JV games played on Nicholson Field in some time.

Noseguard Mark Baker kept the Warrior quarterback, not to mention the two centers they used, in turmoil all the game and this stifled the Warrior offense until late in the game when the Warrior Quarterback did get outside and score on a 27 yard run with just 41 seconds left.

The flea flicker scoring play covered 71 yards and started out as an innocent cap pass from Bobby Guthrie to Darrell Gaines.

Gaines took possession of the six yard toss at

Continued page 5



AR Good Citizen of the Year

Recently selected as Wheeler High School DAR Good Citizen of the Year is Marissa Williams. Marissa is the 7 year old niece of Mr. and Mrs. David Cross.

Marissa has been active as a member of the Pep Club, National Honor Society, FHA, Student Council and the basketball team. She is a senior. She will be sponsored by the Las Pampas Chapter of the DAR.

Bicentennial Flag To Be Presented

The Wheeler County Bicentennial Committee announced that Wheeler County has received endorsement as a National Bicentennial Community from the American Revolution Bi-

centennial Commission. Presentation of a National Bicentennial Flag will be made at the Wheeler County Courthouse on November 16, 1974, at 2:00 p.m. by representatives of the National American Revolution Bicentennial Commission and the American Revolution Bicentennial Commission of Texas.

Certificates of designation will be presented to each incorporated town located in Wheeler County. A concert will be presented by the Shamrock and Wheeler High School bands prior to the presentations.

All citizens of Wheeler County are invited to attend.

SWCD Representatives Return

Clarence Zybach and Dusan Pagan, Directors, Wheeler County Soil and Water Conservation District and Lavon Williams, District Conservationist, Soil Conservation Service, Wheeler, have returned home from the 34th annual meeting of the Texas Association of SWCD which was held recently in San Antonio.

The theme of the meeting was "Land and Use Regulations." Distinguished speakers included Dee Brune, President, Texas Assn. SWCD, John C. White, Commissioner, Texas Department of Agriculture, Abraham "Chick" Dazen, Jr. US Congressman, John Tower, U.S. Senator, and Bill Clayton, Texas State Representative.

It was pointed out that the land area under asphalt is doubling every seven years in the U.S. while Texas is losing an area the size of the state of Mass. each year. It was also pointed out that 34 states have some form of land use regulations. The Udall Bill (Federal Land Use Planning) was narrowly defeated recently. It has been rewritten and will be reintroduced in the next session of Congress. The Texas Assn. SWCDs was opposed to this bill and was instrumental in its

defeat. The Texas Assn. SWCDs and the Wheeler County SWCD are working to assure that no rights of private ownership are usurped in any upcoming legislation.

Next meeting will be Dec. 2 with the Methodist in charge.

Next meeting will be Dec. 2 with the Methodist in charge.

Next meeting will be Dec. 2 with the Methodist in charge.

Here & There

By Laura Guthrie

It was nice to see our friend Minnie Starkey in town again. She spent Sat. night with her brother, Clarence Robinson. Her daughters family, Mr. and Mrs. Carroll Killingsworth and children brought her and they spent the night with his parents, Mr. and Mrs. J. E. Killingsworth. They all returned to Canyon Sunday morning.

Paul and Cordie Shoemate made a business trip to Amarillo on Monday. They took a few minutes to visit with a daughter and grandchildren.

Anna Green has spent a week with her children, Paula and Merrill Dryden of Spearman. Opal Farmer took her to Pampa and the Drydens met her there.

Clarence Robinson spent last week with Robert and Julia Denson and girls in

Over Sixty

The over Sixties met Monday night for their regular dinner and entertainment. A few more than usual were on hand. The meeting was sponsored by the Christian Center and Pastor Keith Johnson gave the invocation. After dinner he spoke a few opening remarks and called on Rev. Lester Hathaway of Mobeetie to bring a short message. It was one of inspiration and hope.

The President Mary Finsterwald presided at the business meeting. She announced that the Natural Gas Pipeline Company of America had given the over 60 Club a check for \$75.00. The membership voted to use the money for buying game tables. Also the club voted to retain Mrs. Finsterwald as president for another year and to establish the presidency to establish the presidency for a two year term. Mrs. Cecil Denson was re-elected vice president and Ida Farmer was chosen as secretary.

88, 42 and dominoes took the rest of the evening.

Next meeting will be Dec. 2 with the Methodist in charge.

Next meeting will be Dec. 2 with the Methodist in charge.

Next meeting will be Dec. 2 with the Methodist in charge.

Next meeting will be Dec. 2 with the Methodist in charge.

Next meeting will be Dec. 2 with the Methodist in charge.

Next meeting will be Dec. 2 with the Methodist in charge.

Wheeler Receives Rain and Hail

Wheeler started the month of November off with rain and hail. The city received a reported 4.41 inches of moisture Saturday; hail also accompanied the spring like weather.

The area was under a weather watch and received one of the larger amounts in the Panhandle. The hail in some cases large, was not hard enough to do much damage.

Wheeler has received 30.29 inches for the year through October. This compares to 38.06 for the same period last year.

In the month of October, 2.61" were received. This includes .55 inches which fell the week of October 25 thru Nov. 1.

The first official frost for 1974 greeted the citizens of Wheeler October 15 with a temperature of 33 degrees. In '73 the first frost was October 31.

No School Friday

Wheeler students will be out of school Friday for a teacher's meeting in Amarillo. The pep rally this week will be Thursday afternoon at 2:45 and school will be dismissed at 3:00 p.m.

City Project Proves Successful

The 4.41 inch rainfall received Saturday was the first test of the City project to divide the water which flowed down Reynolds, Stanley and East Seventh.

This water has caused heavy damage to the paving on Seventh, to several yards and threatened a home.

In March of this year, the City of Wheeler with the cooperation of Beef Cattle Co. and County Precinct 2 cleaned the ditching system, opened a street and rechanneled the water to split the runoff and carry the water more directly to the creek.

Since the completion of the project, no heavy rains had been received to test the effectiveness of the project. Saturday's rain showed the project to be a success. A culvert was washed out on the south end of Reynolds which is a dirt street, but repairs were made Tuesday.

Wheeler Receives Rain and Hail

Wheeler started the month of November off with rain and hail. The city received a reported 4.41 inches of moisture Saturday; hail also accompanied the spring like weather.

The area was under a weather watch and received one of the larger amounts in the Panhandle. The hail in some cases large, was not hard enough to do much damage.

Wheeler has received 30.29 inches for the year through October. This compares to 38.06 for the same period last year.

In the month of October, 2.61" were received. This includes .55 inches which fell the week of October 25 thru Nov. 1.

The first official frost for 1974 greeted the citizens of Wheeler October 15 with a temperature of 33 degrees. In '73 the first frost was October 31.

No School Friday

Wheeler students will be out of school Friday for a teacher's meeting in Amarillo. The pep rally this week will be Thursday afternoon at 2:45 and school will be dismissed at 3:00 p.m.

City Project Proves Successful

The 4.41 inch rainfall received Saturday was the first test of the City project to divide the water which flowed down Reynolds, Stanley and East Seventh.

This water has caused heavy damage to the paving on Seventh, to several yards and threatened a home.

In March of this year, the City of Wheeler with the cooperation of Beef Cattle Co. and County Precinct 2 cleaned the ditching system, opened a street and rechanneled the water to split the runoff and carry the water more directly to the creek.

Since the completion of the project, no heavy rains had been received to test the effectiveness of the project. Saturday's rain showed the project to be a success. A culvert was washed out on the south end of Reynolds which is a dirt street, but repairs were made Tuesday.

Dr. Rose Attends Soft Lens Seminar

Dr. Jack Rose attended a two day seminar in Lubbock over the weekend. Dr. Charles Stewart, a practicing optometrist from Pampa, and former dean of the College of Optometry at the University of Houston was the speaker.

Dr. Stewart reported on the new Soft Lens which has just been approved by the Federal Food and Drug Administration. Formerly, only the Bausch & Lomb Soft Lens was available for use in the United States. The new lens will open up the use of soft lenses to many who could not be fitted before.

While in Lubbock, Mrs. Rose visited with her niece Ann Gout who is attending college at Texas Tech.

THE SECOND BIG WEEK

THRIFTWAY

A BETTER WAY TO SAVE

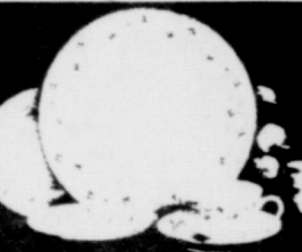
2ND WEEK OF THE 1974 SHURFINE CARNIVAL SALE

VO-5 HAIR SPRAY
WITH VERON REGULAR SUPER OR HARD TO HOLD
\$1.79
16 OZ. CAN

RIGHT GUARD
ANTI-PERSPIRANT DEODORANT SPRAY
69¢
4 OZ. CAN
12 OFF LABEL

NOXZEMA
SKIN CREAM
GREASELESS MEDICATED
NOW 89¢
4 OZ. JAR

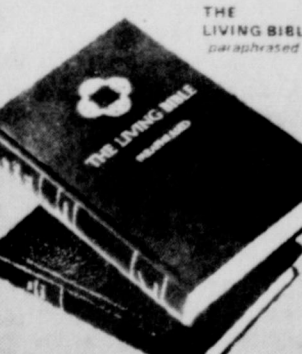
DI-GEL ANTACID
\$1.59
100 TABLETS OR 12 OZ. LIQUID



"MOON MIST"
FINE TRANSLUCENT PORCELAIN CHINA
SPECIAL THIS WEEK
LARGE CUP 49¢
EA. WITH EACH \$5.00 PURCHASE.

CORNING SNAP-ON COASTER TUMBLERS
HEAT PROOF SMOKE TINTED 8 OZ. BEVERAGE 12 OZ. JUICE
4 \$1
MIX OR MATCH FOR

The Perfect Gift for the whole family



LIVING BIBLE EA. \$7.00
TAYLOR'S STORY BIBLE EA. \$5.00
CHILDREN'S LIVING BIBLE EA. \$4.00

NOTICE TO OUR CUSTOMERS WE NEED YOUR HELP!
PAPER BAGS ARE IN SHORT SUPPLY DUE TO THE CRITICAL PAPER SHORTAGE. WE ASK ALL OUR CUSTOMERS TO HELP US. PLEASE BRING YOUR BAGS WITH YOU AND PLACE IN YOUR SHOPPING CART TO BE USED WITH YOUR OWN ORDER. PLEASE TAKE BOXES WHEN POSSIBLE. THANK YOU FOR YOUR COOPERATION.



SHURFRESH BISCUITS
BUTTERMILK OR SWEETMILK
10 \$1
8 OZ. CANS

THRIFTWAY MEAT SPECIALS
U.S.D.A. RIB STEAK LB. \$1.29
EXTRA LEAN BEEF SHORT RIBS LB. 59¢
PURE EXTRA LEAN GROUND BEEF LB. 78¢
EXTRA LEAN BONELESS STEW MEAT LB. \$1.08

Shurfine CARNIVAL

- STOCK UP NOW...SAVE ALL WINTER!**
- Shurfine Macaroni & Cheese Dinner 7 1/2 oz. 4/1.00
 - Shurfine Mandarin Oranges 11 oz. 3/1.00
 - Shurfresh Margarine Reg. Quarters 16 oz. 2/1.00
 - Shurfine Mushrooms Pieces & Stems 4 oz. 3/1.00
 - Shurfine Orange Juice Froz. 6 oz. 6/1.00
 - Shurfine Pancake Mix 32 oz. 1.59
 - Shurfine Peaches Hlvs. or Sliced YC 29 oz. 2/1.88
 - Shurfine Peas Sweet Early Harvest 17 oz. 3/1.00
 - Shurfine Pineapple in Juice Csh./Cnk./Sli. 15 1/4 oz. 3/1.00
 - Shurfine Pork & Beans 16 oz. 4/1.00
 - Shurfine Potatoes Whole Irish 16 oz. 3/1.89
 - Shurfine Preserves Strawberry 18 oz. 1.79
 - Shurfine Rice Medium Grain 2 lb. Bag 1.69
 - Shurfine Spinach 15 oz. 4/1.89
 - Shurfine Tomato Juice Fancy 46 oz. 1.59
 - Shurfine Tomato Sauce 15 oz. 3/1.79
 - Shurfine Tomato Soup 10 1/4 oz. 6/1.00
 - Shurfine Tuna Chunk Style 6 1/2 oz. 2/1.89
 - Shurfresh Vanilla Wafers 10 oz. 3/1.00
 - Shurfine Vegetables Mixed 16 oz. 3/1.79
 - Shurfine Waffle Syrup 32 oz. 1.79
 - Shurfine Apple Butter 28 oz. 2/1.00
 - Shurfine Apple Sauce 16 oz. 3/1.00
 - Shurfine Asparagus Spears Cut-Grn. 14 1/2 oz. 1.55
 - Soflin Bathroom Tissue Ass'd. 2 Ply 8 Roll Pak 1.98
 - Shurfine Beets Sliced 16 oz. 3/1.79
 - Shurfresh Biscuits Butmik./Swtmik. 8 oz. 10/1.00
 - Shurfine Blackeyes Fresh-Shelled 15 oz. 4/1.00
 - Shurfine Broc. Sprs./Cauliflower/Mix. Veg. Froz. 10 oz. 3/1.00
 - Shurfresh Cheese Hifmn. Colby Longhorn 10 oz. 1.79
 - Shurfine Coffee Vac-Pak All Grinds 16 oz. 1.98
 - Shurfine Coffee Creamer 11 oz. 1.69
 - Shurfresh Crackers 16 oz. 1.39
 - Shurfine Cranberry Sauce Strained or Whole 16 oz. 3/1.89
 - Shurfine Cucumber Chips Fresh Pak 16 oz. 1.39
 - MC*2 Detergent All Purpose 49 oz. 1.79
 - Shurfine Dinners Chili Tom./Beef Ndl./Chsburger./Hash Box 1.49
 - Shurfine Drinks Orange/Fruit Punch/Grape 46 oz. 3/1.00
 - Shurfine Evaporated Milk 14 1/2 oz. 4/1.00
 - Shurfine Flour Enriched 5 lb. Paper Bag 1.68
 - Shurfine Fruit Cocktail 16 oz. 3/1.00
 - Shurfine Grapefruit Juice Nat.-Pink Texas Pak 46 oz. 2/1.89
 - Shurfine Green Beans 3 Sv. Cut 16 oz. 4/1.00

SHURFINE FROZEN ORANGE JUICE
61¢
100% PURE FROM FLORIDA 6 OZ. CANS

ENRICHED SHURFINE FLOUR
68¢
5 LB. PAPER BAG



U.S.D.A. GRAIN FED BEEF CHUCK ROAST
88¢
LB.

LUNCHEON MEAT ARMOUR TREET
79¢
12 OZ. CAN

Nestle's Hot Coca **Mix 6** Pkgs 39¢

Fisher Raw **Peanuts** 12-oz Bag 49¢

Tom Scott Mixed **Nuts** 13 1/2-oz Can 89¢

SHURFINE PEACHES
HALVES OR SLICED YELLOW CLING
88¢
29 OZ. CANS

Shurfine **Pork & Beans** 4 16-oz Cans \$1.19

Shurfine **Spinach** 4 15-oz Cans 89¢

FARM FRESH PRODUCE

Grapefruit Texas Ruby Red **2 For 29¢**
Apples Washington Golden Delicious **3 Lbs \$1**
Corn Florida Full Ear **3 Ears 49¢**

AVOCADOS 25¢
CALIFORNIA LARGE EA.
EMPEROR GRAPES 39¢
CALIFORNIA RED LB.

Shurfresh OLEO
Quarters
2 Lbs \$1

SOFLIN BATHROOM 2 PLY ASSORTED **Tissue** 8 ROLL PKG. 98¢
SHURFINE EVAPORATED **Milk** 4 14 1/2 OZ CANS \$1.00
SHURFINE FRUIT **Cocktail** 3 16 OZ CANS \$1.00
SHURFINE 3 SIEVE CUT **Green Beans** 4 16 OZ CANS \$1.00

VALUABLE COUPON NO. 26270
CHIPOS potato chips POTATO CHIPS 9.5 OZ BOX **59¢**
WITH THIS COUPON VOID AFTER NOV. 9, 1974 THRIFTWAY FOOD STORES

PRITCHARD'S Shamrock, Wheeler
DOUBLE S&H STAMPS GREEN WEDNESDAY WITH PURCHASE OF \$2.50 OR MORE
WE RESERVE THE RIGHT TO LIMIT QUANTITIES.

THRIFTWAY VALUABLE COUPON
NIAGARA SPRAY STARCH 15 OZ. CAN **49¢**
WITH THIS COUPON VOID AFTER NOV. 9, 1974 THRIFTWAY FOOD STORES



YOUR FRIENDLY HOME OWNED AND OPERATED GROCERY STORE

- OPEN MON. - SAT. 8 a.m. till 6:30 p.m.
- FEATURING GUNN BROTHERS STAMPS
- FREE DELIVERY WITH \$2.50 PURCHASE
- FOOD STAMPS ACCEPTED
- PRICES EFFECTIVE THURSDAY-FRIDAY-SATURDAY

CONGRATULATIONS

TO OUR 5 TURKEY WINNERS LAST WEEK

Claude Crouch

Wheeler

Tracy Roark

Wheeler

Lanelda Sides

Twitty

Beulah Boles

Mobeetie

Ethel Tuttle

Wheeler

BE SURE AND REGISTER THIS WEEK FOR THE FIVE TURKEYS GIVEN SAT. NOV. 9 AT 4 P.M.

5 FREE TURKEYS EACH WEEK...

5 turkeys will be given away Saturday, November 2, 9, 16 & 23rd. Drawing will be held in the store at 4:00 p.m. each Saturday. You need not be present to win - Winners will be notified. You must register each week to be eligible for that week's drawing.

5 TURKEYS GIVEN FREE EACH WEEK at Roark's Fine Food's
Please register me for the drawing.

Name

Address

Town Zip

Phone

You must register each week to be eligible for that week's drawing. Drawings will be held in the store at 4 P.M. Sat., Nov. 2, 9, 16 & 23. Winners will be notified.

50,000 GUNN BROTHERS STAMPS
FREE SAT., NOV. 30
10 WINNERS OF 5,000 STAMPS

We will take all coupons turned in for the FREE Turkeys for the next 3 weeks, put them in a box and draw 10 winners. Each will receive 5,000 GUNN BROTHERS STAMPS FREE - Just in time for Christmas. Register Today.



FROZEN FOODS	
Die Ida Crinkle Cut POTATOES	2 lb. Bag 79¢
Minute Maid ORANGE JUICE	12 oz. Can 69¢
Flavor Pac Peas, Corn, Broccoli Spears, Mixed Vegetables, Green Beans, Brussel Sprouts VEGETABLES	10 oz. Pkg. 3 for \$1.00
Banquet PEACH PIE	69¢
Banquet Fully Cooked FRIED CHICKEN	\$2.19

GROCERY ITEMS	
Zee Nice 'n Soft BATHROOM TISSUES	4 Roll Pack 69¢
Zee PAPER NAPKINS	160 in Pkg. 53¢
Adhesive SHELF LINING	Solid & Patterns Roll 85¢
10¢ off Reg. Price COLD POWER	Giant Size \$1.27
White Swan COFFEE	Reg. or Elec. Perc. lb. 99¢
Betty Crocker Butter Pecan CAKE MIX	Box 65¢
Kimbell All Purpose FLOUR	5 lb. Bag \$1.01
Mazola Pure CORN OIL	16 oz. Jar \$1.31
32 oz. Bottles COKE	6 Pack Carton \$1.79
32 oz. Bottles MR. PIBB	6 in Ctn. \$1.55
Van Camps 1 lb. Can PORK & BEANS	Reg. 35¢ 3 for 99¢
Kimbell CREAM PEAS	15 oz. Can 31¢
Del Monte Seedless RAISINS	12 oz. Cello Pkg. 75¢

CHUCK ROAST **79¢**
USDA CHOICE lb.

ARM ROAST **89¢**
U.S.D.A. Choice lb.

CHUCK STEAK **73¢**
U.S.D.A. Choice lb.

Johnsons CHILI	1 lb. 99¢	Tony's 16 oz. PIZZA	Each \$1.29
Jimmy Dean SAUSAGE	1 1/2 lb. \$1.89	Kraft Longhorn CHEESE	1 lb. \$1.63
Lean PORK CHOPS	lb. \$1.39	Lean Fresh Ground HAMBURGER	lb. 89¢

DAIRY PRODUCTS	
Borden's COTTAGE CHEESE	24 oz. Ctn. \$1.05
Borden's CHOCOLATE MILK	Quart 49¢
Borden's COTTAGE CHEESE	12 oz. Ctn. 63¢
Blue Bonnet MARGARINE	Pound 85¢
Soft Packay MARGARINE	2-8 oz. Tubs 97¢
Kraft VELVEETA	2 lb. Leaf \$1.91
Slice 'n Bake SUGAR COOKIES	Makes 3 Doz. 81¢

HEALTH AND BEAUTY AIDS	
Gleem TOOTHPASTE	7 oz. Tube 79¢
Vicks NYQUIL	6 oz. Btl. \$1.29
Herbal Essence SHAMPOO	Dry or Oily Hair 8 oz. \$1.19
Pain Reliever EXCEDRIN	36 Tablets 77¢
Medicated HAND LOTION	6 oz. Btl. 77¢

BREAD AND ROLLS	
Meads FRIED PIES	Asst. Flavors 20¢
Hostess HONEY BUNS	25¢
Meads ROMAN MEAL BREAD	lb. Leaf 55¢

FRESH PRODUCE FOR THE TABLE

Golden Ripe BANANAS	lb. 10¢
Fresh Crop TURNNIPS	lb. 19¢
Cello Pack CRANBERRIES	Pkg. 43¢
Cello Pack CARROTS	1 lb. Pkg. 15¢
Fresh CABBAGE	lb. 9¢
Yellow SQUASH	lb. 25¢
U.S. No. 2 POTATOES	10 lb. Bag 93¢

THE SECOND BIG WEEK

THRIFTWAY

A BETTER WAY TO SAVE

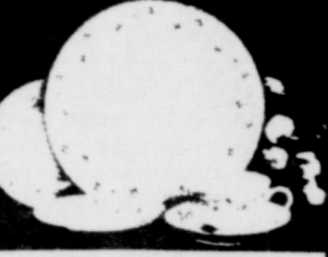
2ND WEEK OF THE 1974 SHURFINE CARNIVAL SALE

VO-5 WITH VERON REGULAR SUPER OR HARD TO HOLD
HAIR SPRAY
\$1.79
16 OZ. CAN

ANTI-PERSPIRANT DEODORANT SPRAY
RIGHT GUARD
69¢
4 OZ. CAN 12 OFF LABEL

NOXZEMA SKIN CREAM
GREASELESS MEDICATED
NOW
89¢
4 OZ. JAR

DI-GEL
ANTACID
\$1.59
100 TABLETS OR 12 OZ. LIQUID



"MOON MIST" FINE TRANSLUCENT PORCELAIN CHINA
SPECIAL THIS WEEK
LARGE CUP
49¢
EA. WITH EACH \$5.00 PURCHASE

CORNING **SNAP-ON COASTER TUMBLERS**
HEAT PROOF SMOKE TINTED 8 OZ. BEVERAGE 12 OZ. JUICE
MIX OR MATCH FOR
4 \$1

The Perfect Gift for the whole family
THE LIVING BIBLE
LIVING BIBLE EA. \$7.99
TAYLOR'S STORY BIBLE EA. \$5.99
CHILDREN'S LIVING BIBLE EA. \$4.99

NOTICE TO OUR CUSTOMERS WE NEED YOUR HELP!
PAPER BAGS ARE IN SHORT SUPPLY DUE TO THE CRITICAL PAPER SHORTAGE. WE ASK ALL OUR CUSTOMERS TO HELP US. PLEASE BRING YOUR BAGS WITH YOU AND PLACE IN YOUR SHOPPING CART TO BE USED WITH YOUR OWN ORDER. PLEASE TAKE BOXES WHEN POSSIBLE. THANK YOU FOR YOUR COOPERATION.



SHURFINE FROZEN **ORANGE JUICE**
61¢
100% PURE FROM FLORIDA 6 OZ. CANS

ENRICHED **SHURFINE FLOUR**
68¢
5 LB. PAPER BAG



BUTTERMILK OR SWEETMILK **SHURFRESH BISCUITS**
10 \$1
8 OZ. CANS



Nestle's Hot **Mix** 6 Pkgs 3
Coca

Fisher Raw **Peanuts** 12-oz Bag 4

Tom Scott Mixed **Nuts** 13 1/2-oz Can 89

HALVES OR SLICED YELLOW CLING **SHURFINE PEACHES**
2 88¢
29 OZ. CANS

THRIFTWAY MEAT SPECIALS
U.S.D.A. RIB **Steak** LB. \$1.29
EXTRA LEAN BEEF **Short Ribs** LB. 59¢
PURE EXTRA LEAN **Ground Beef** LB. 78¢
EXTRA LEAN BONELESS **Stew Meat** LB. \$1.08

U.S.D.A. GRAIN FED BEEF **CHUCK ROAST**
88¢
LB.

LUNCHEON MEAT **ARMOUR TREET**
79¢
12 OZ. CAN

Shurfine **Pork & Beans** 4 16-oz Cans \$1

Shurfine **Spinach** 4 15-oz Cans 89

Shur-fine CARNIVAL
STOCK UP NOW...SAVE ALL WINTER!

- Shurfine Macaroni & Cheese Dinner 7 1/2 oz. 4:11.00
- Shurfine Mandarin Oranges 11 oz. 3:11.00
- Shurfine Margarine Reg. Quarters 16 oz. 2:11.00
- Shurfine Mushrooms Pieces & Stems 4 oz. 3:11.00
- Shurfine Orange Juice Froz. 6 oz. 6:11.00
- Shurfine Pancake Mix 32 oz. 1.59
- Shurfine Peaches Hlvs. or Sliced YC 29 oz. 2:1.88
- Shurfine Peas Sweet Early Harvest 17 oz. 3:11.00
- Shurfine Pineapple in Juice Csh./Cnk./Sli. 15 1/4 oz. 3:11.00
- Shurfine Pork & Beans 16 oz. 4:11.00
- Shurfine Potatoes Whole Irish 16 oz. 3:1.89
- Shurfine Preserves Strawberry 18 oz. 1.79
- Shurfine Rice Medium Grain 2 lb. Bag 1.69
- Shurfine Spinach 15 oz. 4:1.89
- Shurfine Tomato Juice Fancy 46 oz. 1.59
- Shurfine Tomato Sauce 15 oz. 3:1.79
- Shurfine Tomato Soup 10 1/4 oz. 6:11.00
- Shurfine Tuna Chunk Style 6 1/2 oz. 2:1.89
- Shurfine Vanilla Wafers 10 oz. 3:11.00
- Shurfine Vegetables Mixed 16 oz. 3:1.79
- Shurfine Waffle Syrup 32 oz. 1.79
- Shurfine Apple Butter 28 oz. 2:11.00
- Shurfine Apple Sauce 16 oz. 3:11.00
- Shurfine Asparagus Spears Cut-Grn. 14 1/2 oz. 1.55
- Soflin Bathroom Tissue Assd. 2 Ply 8 Roll Pak 1.98
- Shurfine Beets Sliced 16 oz. 3:1.79
- Shurfine Biscuits Butmlk./Swmlk. 8 oz. 10:11.00
- Shurfine Blackeyes Fresh-Shell 15 oz. 4:11.00
- Shurfine Broc. Sprs./Cauliflower/Mix. Veg. Froz. 10 oz. 3:11.00
- Shurfine Cheese Hifmn. Colby Longhorn 10 oz. 1.79
- Shurfine Coffee Vac-Pak All Grinds 16 oz. 1.98
- Shurfine Coffee Creamer 11 oz. 1.69
- Shurfine Crackers 16 oz. 1.39
- Shurfine Cranberry Sauce Strained or Whole 16 oz. 3:1.89
- Shurfine Cucumber Chips Fresh Pak 16 oz. 1.39
- MC*2 Detergent All Purpose 49 oz. 1.79
- Shurfine Dinners Chili Tom./Beef Ndl./Chsburger./Hash Box 1.49
- Shurfine Drinks Orange/Fruit Punch/Grape 46 oz. 3:11.00
- Shurfine Evaporated Milk 14 1/2 oz. 4:11.00
- Shurfine Flour Enriched 5 lb. Paper Bag 1.68
- Shurfine Fruit Cocktail 16 oz. 3:11.00
- Shurfine Grapefruit Juice Nat.-Pink Texas Pak 46 oz. 2:1.89
- Shurfine Green Beans 3 Sv. Cut 16 oz. 4:11.00

FARM FRESH PRODUCE
Grapefruit Texas Ruby Red **2 For 29¢**
Apples Washington Golden Delicious **3 Lbs \$1**
Corn Florida Full Ear **3 Ears 49¢**

CALIFORNIA RED **EMPEROR GRAPES**
25¢
EA. **39¢**
LB.

PRITCHARD'S Shamrock, Wheeler
DOUBLE S&H GREEN WEDNESDAY STAMPS
WITH PURCHASE OF \$2.50 OR MORE
WE RESERVE THE RIGHT TO LIMIT QUANTITIES.

Shurfresh **OLEO**
Quarters **2 \$1**
Lbs

SOFLIN BATHROOM 2 PLY ASSORTED 8 ROLL PKG. **98¢**
SHURFINE EVAPORATED **Milk** 4 14 1/2 OZ. CANS \$1
SHURFINE FRUIT **Cocktail** 3 16 OZ. CANS \$1
SHURFINE 3 SIEVE CUT **Green Beans** 4 16 OZ. CANS \$1

VALUABLE COUPON NO. 26270
POTATO CHIPS **CHIPOS** 9.5 OZ. BOX **59¢**
WITH THIS COUPON VOID AFTER NOV. 9, 1974 THRIFTWAY FOOD STORES

THRIFTWAY VALUABLE COUPON
NIAGARA SPRAY **STARCH** 15 OZ. CAN **49¢**
WITH THIS COUPON VOID AFTER NOV. 9, 1974 THRIFTWAY FOOD STORES

THRIFTWAY

THE WHE
POTAT
ORAN
VEGET
PEACH
FRIED
COTTAG
CHOCOL
COTTAG
MARGAI
MARGAI
VELVEET
SUGAR
FRIED
HONEY
ROMAN B



YOUR FRIENDLY HOME OWNED AND OPERATED GROCERY STORE

- OPEN MON. - SAT. 8 a.m. till 6:30 p.m.
- FEATURING GUNN BROTHERS STAMPS
- FREE DELIVERY WITH \$2.50 PURCHASE
- FOOD STAMPS ACCEPTED
- PRICES EFFECTIVE THURSDAY-FRIDAY-SATURDAY

CONGRATULATIONS

TO OUR 5 TURKEY WINNERS LAST WEEK

Claude Crouch
Wheeler
Tracy Roark
Wheeler

Lanelda Sides
Twitty
Beulah Boles
Mobeetie

Ethel Tuttle
Wheeler

BE SURE AND REGISTER THIS WEEK FOR THE FIVE TURKEYS GIVEN SAT. NOV. 9 AT 4 P.M.

5 FREE TURKEYS EACH WEEK...

5 turkeys will be given away Saturday, November 2, 9, 16 & 23rd. Drawing will be held in the store at 4:00 p.m. each Saturday. You need not be present to win - Winners will be notified. You must register each week to be eligible for that weeks drawing.

5 TURKEYS GIVEN FREE EACH WEEK at Roark's Fine Food's
Please register me for the drawing.

Name

Address

Town Zip

Phone

You must register each week to be eligible for that weeks drawing. Drawings will be held in the store at 4 P.M. Sat., Nov. 2, 9, 16 & 23. Winners will be notified.

50,000 GUNN BROTHERS STAMPS

FREE SAT., NOV. 30
10 WINNERS OF 5,000 STAMPS

We will take all coupons turned in for the FREE Turkeys for the next 3 weeks, put them in a box and draw 10 winners. Each will receive 5,000 GUNN BROTHERS STAMPS FREE - Just in time for Christmas. Register Today.

FROZEN FOODS	
DeLida Crinkle Cut POTATOES 2 lb. Bag	79¢
Minute Maid ORANGE JUICE 12 oz. Can	69¢
Flavor Pac Peas, Corn, Broccoli Spears, Mixed Vegetables, Green Beans, Brussel Sprouts VEGETABLES 10 oz. Pkg.	3 \$1.00
Barquet PEACH PIE	69¢
Barquet Fully Cooked FRIED CHICKEN	\$2.19

GROCERY ITEMS	
Zee Nice 'n Soft BATHROOM TISSUES 4 Roll Pack	69¢
Zee PAPER NAPKINS 160 in. Pkg.	53¢
Adhesive SHELF LINING Solid & Patterns Roll	85¢
10c off Reg. Price COLD POWER Giant Size	\$1.27
White Swan COFFEE Reg. or Elec. Perc. lb.	99¢
Betty Crocker, Butter Pecan CAKE MIX Box	65¢
Kimbell All Purpose FLOUR 5 lb. Bag	\$1.01
Mazola Pure CORN OIL 16 oz. Jar	\$1.31
32 oz. Bottles COKE	\$1.79
32 oz. Bottles MR. PIBB	\$1.55
Van Camps 1 lb. Can PORK & BEANS Reg. 35¢	3 for 99¢
Kimbell CREAM PEAS 15 oz. Can	31¢
Del Monte Seedless RAISINS 12 oz. Cello Pkg.	75¢



CHUCK ROAST 79¢
USDA CHOICE lb.



ARM ROAST 89¢
U.S.D.A. Choice lb.



CHUCK STEAK 73¢
U.S.D.A. Choice lb.


Johnsons CHILI 1 lb.	99¢	Tonys 16 oz. PIZZA Each	\$1.29
Jimmy Dean SAUSAGE 1 1/2 lb.	\$1.89	Kraft Longhorn CHEESE 1 lb.	\$1.63
Lean PORK CHOPS lb.	\$1.39	Lean Fresh Ground HAMBURGER lb.	89¢

DAIRY PRODUCTS	
Borden's COTTAGE CHEESE 24 oz. Ctn.	\$1.05
Borden's CHOCOLATE MILK Quart	49¢
Borden's COTTAGE CHEESE 12 oz. Ctn.	63¢
Blue Bonnet MARGARINE Pound	85¢
Soft Pakay MARGARINE 2-8 oz. Tubs	97¢
Kraft VELVEETA 2 lb. Leaf	\$1.91
Slice 'n Bake SUGAR COOKIES Makes 3 Doz.	81¢


HEALTH AND BEAUTY AIDS	
Gleem TOOTH PASTE 7 oz. Tube	79¢
Vicks NYQUIL 6 oz. Btl.	\$1.29
Herbal Essence SHAMPOO Dry or Oily Hair 8 oz.	\$1.19
Pain Reliever EXCEDRIN 36 Tablets	77¢
Medicated HAND LOTION 6 oz. Btl.	77¢

BREAD AND ROLLS	
Meads FRIED PIES Asst. Flavors	20¢
Hostess HONEY BUNS	25¢
Meads ROMAN BREAD lb. Leaf	55¢


FRESH PRODUCE FOR THE TABLE



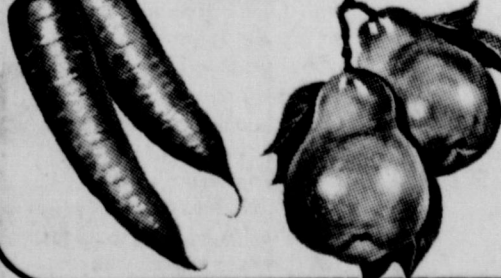
Golden Ripe
BANANAS lb. **10¢**



Fresh Crop
TURNNIPS lb. **19¢**



Cello Pack
CRANBERRIES Pkg. **43¢**



Cello Pack
CARROTS 1 lb. Pkg. **15¢**

Fresh
CABBAGE lb. **9¢**

Yellow
SQUASH lb. **25¢**

U.S. No. 2
POTATOES 10 lb. Bag **93¢**

Court Records

LIST OF INSTRUMENTS FILED IN THE OFFICE OF THE COUNTY CLERK AND DISTRICT CLERK OF WHEELER COUNTY, TEXAS FROM OCTOBER 28 THROUGH NOVEMBER 1, 1974

OCTOBER 29, 1974
STATE TAX LIEN--Floyd Newkirk to State of Texas 10-25-74
 2 APL--Akla Exploration Co to Eason Oil Co 8-6-74 S½ 8 all 5 Blk 2 B&B Survey
 AOL--Malouf Abraham to Leede and Pine 10-22-74 NE¼ Sec 8 Blk E
 ROY D--Marie Lister to H A Hedberg 10-11-74 10 15c int 15c ac Sec 14 Blk L 12 AOL--Malouf Abraham to Helmeich & Payne, Inc NW¼ 28, S½ 30, Pt 27, N½ & SE¼ 26, W½ 13 Blk A-8 SW¼ 10, SW¼ 11, SW¼ 13, SE¼ 11, Blk A-7

OL--Cecil F Mitchell to J Roger Allspaugh 9-18-74 SE¼ Sec 63 Blk 13
 OL--R F Douglas to J Roger Allspaugh 9-10-74 E½ Sec

78 Blk 13
 OL--Ruby Lee Williams et al to J Roger Allspaugh 9-20-74 E½ Sec 78 Blk 13
 3 AOL--J Roger Allspaugh to Helmeich & Payne, Inc 10-15-74 E½ 78 SE¼ 63 Blk 13
 AOL--Malouf Abraham to Westland Oil Development

Corp 3-11-74 E½ & NW¼ 4 BS&F Survey
 OL--Rose Schlegel to Chevron Oil Co 10-11-74 E½ Sec 78 Blk 13
 4 OL--Toy E Pool et al to Chevron Oil Co 5-10-74 E½ Sec 78 Blk 13
 OL--C L Steinberg et ux to Minco Oil and Gas Co 10-16-74 Section 1 J

J Poitevent Sur
 OL--Victor S Huggins et ux to Minco Oil and Gas Co 10-16-74 Section 1 J
 Poitevent Sur
 RENTAL DIV ORDER--C L Steinberg et ux to C L Steinberg et ux 10-6-74
 J Poitevent Sur
 RENTAL DIV ORDER--Victor S Huggins et ux to Victor S Huggins 10-7-74 Section 1 J Poitevent Sur

Jack L McCarty et ux 10-15-74 Lot 2 Blk 42 Shamrock
 DT--Jack S McCarty et ux to First Federal Savings and Loan Assn of Childress 10-15-74 Lot 2 Blk 42 Shamrock

OCTOBER 31, 1974
 OL--H W Benischek et ux to Minco Oil and Gas Co 10-21-74 E½ R J Poitevent Sur
 RENTAL DIV ORDER--H W Benischek et ux to H W Benischek et ux 10-21-74 E½ R J Poitevent Sur
 3 AOL--Chalfant, Magee & Hansen Inc to HNG Oil Co 10-10-74 N½ Sec 70 Blk 23
 MODIF OL--Dorothy E Barker to Phillips Petroleum Co 9-13-74 NW¼ Sec 47 Blk 24
 RATIF OL--Grace A Meek et al to Harry Wofford 9-13-

Blk 32, Lot 3 Pt 4 Blk 40, Part Lots 7, 8, 9 Blk 35 Wheeler; Pt Sec 4 T&NO Ry Co Survey; 3 ac SE¼ NW¼ Sec 60 Blk A-8; Lots 10, 11, 12 Blk E Park Addn; Wheeler; Pt Blks 49, 54, 57 Wheeler, Stanley Addn; Lots 37, 38, 21 to 23 Pt 20 Blk 3 Stanley 2nd Addn to Wheeler
 OL--C G Dodd et ux to Northern Natural Gas Co 9-25-74 N½ R Blk H West of Highway S½ SE¼ 49 Blk M-1 S of RR
 AOL--Sun Oil Co to Harrington & Marsh Inc 10-14-74 72.5 ac & S74.67 ac NE¼ 23 M-1
 2 OL--R E Kershaw et ux to Malouf Abraham 5-23-74 E½ & W½ 95 Blk 13, S212 E½ & S220 a W½ 6 A-7
 OL--Frank L McAlester to Malouf Abraham 9-18-74 NE¼ Sec 28 Blk A-8
 OL--Ruth McAlester Brown to Malouf Abraham 10-10-74 NE¼ Sec 28 Blk A-8
 OL--W E Meadows et ux to Malouf Abraham 10-11-74 70 ac N½ SE¼ Sec 31 Blk A-8
 RVL-RDT--Kenneth Evans et al to F T Flowers et ux 9-9-74 N50' 3 S50' 4 Blk LXXXV Shamrock
 OL--Sarah V Adams to R L Stokes 9-17-74 SW¼ Sec 62 Blk 13
 AOL--R L Stokes to J Roger Allspaugh 10-1-74 SW¼ Sec 62 Blk 13
 AOL--J Roger Allspaugh to Helmeich & Payne, Inc 10-11-74, 10-11-74 SW¼ Sec 62 Blk 13
 OL--Ruth M Douglas to J Roger Allspaugh 10-1-74 E½ Sec 78 Blk 13
 11 AOL--Malouf Abraham to Helmeich & Payne, Inc 9-5-74 & 9-16-74 Secs 47, 46, A-8 Secs 29, 30 A-9
 C C PROBATE PROCEEDINGS--Dave Simpson 8-29-74 RDT--United States of America to Cleo G Dodd et ux 11-1-74 Sec 64 Blk M-1
 MARRIAGE LICENSE ISSUED--Dennis Wayne Beck and Debra Mullnix 11-1-74
 DISTRICT CLERK'S OFFICE No. 7010 Bruce Harrison vs P B Kessee & O B Miller, 10-29-74 Trespass to Try Title Lots 14, 15 Blk 2 Allison
 No. 7011 United Pentecostal Church of Allison vs E McGee & C Newberry 10-29-74 Trespass to Try Title


Mobeetie News

By Mrs. Wilber Beck
 Sunday afternoon M. and Mrs. Lester Leonard with his sister, Mr. and Mrs. Albert Newman of Pampa, visited his brother, A. L. Leonard, who underwent surgery in Amarillo last week. Aubrey Lee is reported to be doing nicely in the recuperation process. While in Pampa, they visited with Jewel's mother, Mrs. Willie Alexander.
 Mrs. Edna Williamson is with her daughter, Mr. and

Mrs. Ernest Gordon following a lengthy stay in the Parkview Hospital in Wheeler.
 Mr. Claude Parker is still a patient in the Parkview Hospital, but is hoping to be discharged, shortly.
 Mrs. W. R. Richardson is home following a few days stay in the Parkview Hospital.
 Ernest Adams, who has been a patient in the Parkview Hospital several weeks, is reported slightly improved Monday.
 Clyde Dickey was admitted to the St. Anthony's Hospital in Amarillo, Sun. Mrs. Wilber Beck visited her sister, Mrs. Lucy Sackett who is very ill in the Morton Wadley Research Clinic in Dallas, Friday thru Sunday. Others visiting Mrs.

Sackett and her husband, Jim Sackett and Mr. and Mrs. Paul Sackett, were all the Sackett children, Mr. and Mrs. Don Bryant and Dan Sackett of Amarillo, Floyd and C. H. Sackett of Pampa. Also visiting were Mr. and Mrs. J. Cooper and Mrs. Billie Jane Cary of Jacksonville.
 Mrs. Tassie Leonard is in Canadian this week with her daughter and family, Mr. and Mrs. Don Powell, Mrs. Powell is still under the weather following an injury to a leg.
 Miss Erella Alexander of White Deer and her grandmother, Mrs. Mary Brewer, visited Mrs. Brewer's brother, Oscar Vawter who is confined to a convalescent home and a sister, Mr. and Mrs. Steven Stephenson in Oklahoma City. They were there while Oklahoma City experienced the weekend flood. Some six to eight inches of rain fell where they were visiting.
 Mr. and Mrs. E. E. Johnston visited and attended to business in Pampa, Monday. Mr. Johnston was reported feeling better at this time.
 Mr. and Mrs. Lee Morris visited their daughter and son-in-law, Mr. and Mrs. Carl Henderson in Pampa last week.
 Visiting Mr. and Mrs. Byron Simpson last weekend were their son and family, Mr. and Mrs. Jerry Simpson, Tim and Tina of Skellytown.
 Mr. and Mrs. Lester Leonard visited her mother, Mrs. Willie Alexander in Pampa, Friday last week.
 Mrs. Barbara Rector of Pampa visited Mr. and Mrs. J. B. Rector and Mrs. C. W. Burch, Thursday last week.
 Mr. and Mrs. Mac Shelton, and daughters, Willetta and Loretta of Spearman, visited her parents, Mr. and Mrs. Vernon Hooker and Heister, Mr. and Mrs. Gene D. Harrison and family attended the Mobeetie School Homecoming, last weekend. Recently Day Lynn Lester of Huntington Beach, Calif., visited his parents, Mr. and Mrs. E. F. Lester. Others visiting while he was here were J. and Mrs. Harold Lester and Gerald Lester of Berger and James Lester and Carol of Mobeetie. Day flies in from Canada, where he has been on a job for several weeks, but returned to his home in Calif., from here. While in Amarillo Mr. and Mrs. Lester and Day visited a granddaughter and family, Mr. and Mrs. Charles Evers and Len Sims. Len and Kathleen's mother, Mrs. Elton Wyatt of Olton also visited.
 Mrs. Walter Davis of Cheyenne Okla., visited last week with her daughter, Mr. and Mrs. J. B. Rector. Saturday night Mr. and Mrs. Marvin Pierce of Wheeler visited his mother and sister, Mrs. Davis returned to her home Tuesday morning.
 Mr. and Mrs. Gene D. Harrison, Leslie and Cindy attended the football game and spent the night in Spearman with Mr. and Mrs. Mac Shelton, Loretta and Willetta.
 Mr. and Mrs. Frank Walker of Wheeler visited with Mr. and Mrs. E. E. Johnston recently.
 Mr. and Mrs. Frank Risner and Bobby Risner visited Mr. and Mrs. Charles Risner, William and Susie in Perryton, recently.
 Mrs. Eula Johnson and Mrs. Mary Brewer visited and shopped in Pampa, Monday. Returning home they visited Mr. and Mrs. Doyle Grimes.
 Mr. C. W. Johnson and son, Doyle Johnson attended to business in Pampa, Tuesday.
 Visiting Mr. and Mrs. Ernest Adams recently their daughter, Mrs. Mrs. Calvin Lannes of Show Low, Ariz., Mr. Adams is ill in the Parkview Hospital. Our deep sympathy is with Mr. and Mrs. Brooks McLaughlin in the death of his brother, recently.

COMPLETE INSURANCE COVERAGE
 John C. Vise Agency
 117 W. Texas Street
 Wheeler, Texas

Blakemore FRESH PROTEIN FED CATFISH

 "Dressed While You Wait"
BLAKEMORE MOTOR CO. BUILDING
 Phone 253-3287
 400 North Main Shamrock, Texas 79079

CANADIAN PRODUCTION CREDIT ASSOCIATION
 Canadian, Texas

STATEMENT OF CONDITION
 FOR
 FISCAL YEAR ENDED OCTOBER 31, 1974

ASSETS:	
Loans and Accrued Interest	\$45,033,007.55
Less: Reserve for Losses	(1,189,530.82)
Net Loans and Accrued Interest	\$43,843,476.73
FICB Capital Stock	883,910.00
FICB Allocated Reserves	231,728.68
Cash on Hand and in Banks	84,377.32
Land and Buildings (Net)	243,136.98
Autos, Furniture and Equipment (Net)	32,674.48
Other Assets	4,976.02
Total Assets	\$45,324,280.21
LIABILITIES:	
Due Federal Intermediate Credit Bank Provisions for Federal Income Taxes	\$38,009,250.21
Drafts Outstanding	58,504.87
Accounts Payable	119,094.00
Other Liabilities	26,989.58
Total Liabilities	\$38,224,585.85
NET WORTH:	
Class A Capital Stock	\$ 16,685.00
Class B Capital Stock	5,645,655.00
Participation Certificates	43,660.00
Reserved Surplus	1,393,694.36
Total Net Worth	\$ 7,099,694.36
Total Liabilities and Net Worth	\$45,324,280.21

Farmers Hog Mkt.
 Open Every Thursday
 8:00 a.m. to 2:00 p.m.
Brashears Sale Barn
 1-mile North on Highway 83
 Shamrock, Texas
Bob Richie
 HOG BUYER
 Day or Night
 Phone 256-2540

Want Ads

DITCH DIGGING AND PIPE LAYING: L. B. Copeland Shamrock, Tex. 256-3793

WANTED: Babysitting in my home. Day or night. Emma Connell, 826-3172.

For Sale: 3 bedroom, liv, kit, den, large corner lot on highway. Paul Topper Paul's Real Estate 826-5237 after 5

Monuments, Grave Covers and Curbing. Complete finishing. Will Warren, Wheeler

PAUL'S TRAILER PARK
 Across Street From School
 Trailer lots 40'x70'
 Modern Underground Utilities
 Gas and Water Furnished
 Individual Electric Meters
 PAUL TOPPER--Ph. 5237 or 5931

For Rent 1 bedroom furnished house. 1104 S. Main. 826-3182

For Sale: Case 16-10 wheat drill \$100.00 Call Hyland Weaver, 826-3561

FOR RENT: Trailer Space Black Gold Trailer Park Phone 826-5512

WANTED: Customized combining of maize. Equipment located at Briscoe, Texas. Call Bill Simmons, Waurika, Okla., 405-228-2649. Night Phone: 228-3376.

Lose Weight with New Shape Tablets and Hydrex Water Pills at Hyland's Pharmacy

Puppies To Give Away: Part Leopard and Collie. Phone: 826-5278 after 5:00

FOR SALE: 3 bedroom house, 2 baths, garage, basement and well on corner lot. 826-5976

To Be Moved: Six room house with upstairs, \$5,000 at Kelton on Wooding Farm. Inez Hartell, 518 Dumas Ave., Dumas, Texas, 935-2895

LOST: Somewhere in Wheeler, umbrella, navy with dots. Reward offered. Call 826-5825.

8 Lbs. Cleaning - \$4.00. City Cleaners & Fabric. Located old City Drug Building.

FOR SALE: 14'x60' Town and Country Mobil Home. Contact T. J. Austin, 826-5693 or 826-5284 after 4:00.

HAMBURGER SUPPER with real beef hamburger, in the school cafeteria at Silerton. Tickets \$1.75 for hamburgers, French fries, pie and tea. Sponsored by Sophomore Class.

FOR SALE: Building, with 2x4's, sheet iron and boxing boards. Phone: 6-5826.

NEW ARRIVAL
 Mr. and Mrs. Buddy Dickinson are the proud parents of a baby boy, Timothy Wade. He was born at 8:28, Oct. 23rd in Hemphill County Hospital in Canadian, weighing 8 lbs. 11½ ounces and 21 inches long.
 The proud grandparents are Mr. and Mrs. Roy Dickinson of Canadian and Mrs. Lorene Evington of Wheeler. Great grandparents are Mr. and Mrs. Carl Snyder of Canadian.

THE BUSINESS DIRECTORY

TEXAS PRESS ASSOCIATION
 PUBLISHED EVERY THURSDAY AT WHEELER, TEXAS, BY...

THE WHEELER TIMES
 P.O. Box 1080
 Phone: 826-3123

Louis C. Stas, Owner and Publisher
 Entered as second-class matter December 18, 1933, at the Post Office at Wheeler, Texas 79096, under the act March 3, 1879.

Wheeler Lodge No. 1099 A.F. & A.M.
MONDAY 7:00 P.M.
 Percy Farmer, Sec'y.
 Members Urged To Attend. Visitors Welcome.

WRIGHT FUNERAL HOME
 24-Hour AMBULANCE
 Phone: 806-826-5214

WHEELER LUMBER CO.
 Permanent year-round protection. Changeable from inside. Easy to clean, prowler-proof. Eliminates drafts... Cuts fuel bills...
STORM-SCREEN WINDOWS
WHEELER LUMBER CO.
 Phone 826-5543 Wheeler, Tex.
 Fine Service for Fine People

TRACTORS - IMPLEMENTS PARTS AND SERVICE
HIBLER IMPLEMENT CO.
 Wheeler, Texas

Let Me Write It...
GEO. RICHARDSON
 All Types Of INSURANCE

Subscription Rates:
 Wheeler County \$4.00
 Outside County \$5.00

FOR ALL YOUR FARM SUPPLY NEEDS
WHEELER CO. PRODUCE
 Wheeler, Texas

WHEELER REDI-MIX
 REDE-MIX CONCRETE SAND
 Washed Gravel--All Sizes
 Office Hours: 7:30 to 5:00
 Phone 806-826-3223

Dr. Marion Roberts
 OPTOMETRIST
 112 W. Kingsmill
 Pampa, Texas

GUARANTEED AUTO GLASS INSTALLATION & Body Repair
GARRISON SERVICE
 Phone: 826-5515
 Wheeler, Texas

CUSTOM DRAPERIES
 Swags, Cornices, Shutters
 We Install Free
 Tele 256 3652
 Brannons Decorators
 Shamrock, Texas 79079

LOOK TO THE BRIGHT STAR IN THE GALAXY OF ELECTRIC HEAT

THE ELECTRIC HEAT PUMP

When you update your heating system... inquire about electric heating for your home. Electric heating is efficient, clean, economical - as modern tomorrow as it is today. There are several different methods of heating with electricity... one of them is just right for your home... and now you can have wise use electric heating and cooling with one unit - the heat pump, the Bright Star in the Galaxy of Electric Heating!

Call us for a free electric home heating survey, this week.

THE ELECTRIC COMPANY
 1001 W. MAIN STREET

PAINTING
 Interior & Exterior
 Commercial & Residential
 Brush, Roller, and Spray Painting.
 No Job Too Large (Except Skyscrapers) or Too Small.
 Reasonable Rates
 Call: Donald Ford (806) 826-3106 Wheeler, Texas

Allison News

Mrs. Rex Miller
Weekend guests in the homes of George and Leon Miller were: Mr. and Mrs. Normal Dyer and Betty Miller, Mr. and Mrs. J. Miller, Peggy and Shelly Miller, and Mrs. Jimmy Gilmer, and Mrs. Glen Spaulding. Mr. and Mrs. Miller were home from school the first part of the week with the flu. There have been lots of colds and flu going around. Guess it is the wet, cold, windy, hot just name it days we have been having. We got over three inches of rain last week. Sure is playing havoc with the crop gathering.

We extend our sympathy to the George Parker and Leland Rainey families on the death of their aunt, Lucy Markham.

Dinner guests in the Monroe Reynolds home

Bessie Megee spent a few days in Pampa hospital. She is home and doing fine. Mary Peck, Sharon McDonald and Clydene Hall were in the Wheeler hospital. They are all home and doing fine. Rex Miller was in Shamrock hospital. He came home Saturday. Donna Miller was home from school the first part of the week with the flu. There have been lots of colds and flu going around. Guess it is the wet, cold, windy, hot just name it days we have been having. We got over three inches of rain last week.

Dr. M. V. Cobb
CHIROPRACTOR
Specializing In The Examination And Treatment of Spinal And Nervous Disorders
256-2133
310 South Main
Shamrock, Texas

Check the Selection at
LOYD'S
BEN FRANKLIN
408 Main • Wheeler, Texas 79086

Quarry Tile Cobblestone
Fether-Wait Stone & Brick
CUSTOM WOODBURNING FIREPLACES
Zero Clearance-Free Standing
Phone: 826-5202 Stanley Baker
Wheeler, Texas

SAFETY SHOE HEADQUARTERS
RED WING
COME FIND YOUR SIZE AT...
LANCASTER DEPARTMENT STORE

Sunday were Mr. and Mrs. Duwood Burris and family from Canadian, Mr. and Mrs. Gary Hall and children and Mr. and Mrs. Gary Boydston.

Mr. and Mrs. Zeland Rainey and family and Mr. and Mrs. Mike Dyer and Danett visited the George Parkers Sunday.

Eddie Walker, Clifton Boydston, Keith Boydston, Pete Gilmer, Kenneth Chandler and Bob Dukes are

spending Sunday with Mr. and Mrs. Forest Boydston and family.

Guests in the Lloyd home Sunday were: Mr. and Mrs. Bill Donaldson and family and Mr. and Mrs. Lee Hall and family.

Bessie Megee visited the Donald Barbers in Canadian last week.

Mr. and Mrs. Lawrence Aderholt, Briscoe visited Rita Grayson Wednesday. Fanny Bradstreet spent the week on the farm getting

FARM or GRASS LAND
- Need Listings -
John C. Vise Agency
Phone: 826-5576 or 5577
117 W. Texas
Wheeler, Texas

Brays Saddle Shop
(South Side of Square)
Wheeler, Texas
Handmade: Saddles, Belts, etc.
Boot, Shoe & Saddle Repair
(One Day Service Where Possible)
Complete Stock of Tack Equipment
Phone: 826-5665

ready for company from California. Others visiting during the week were Mr. and Mrs. Skip Montgomery from Pampa, Mr. and Mrs. Clint Evans and Judy from Miami, Mr. and Mrs. Harley Wright and Joyce Evans from Canadian.

Those visiting Edna Begert last week were Mrs. Margaret Evans and sons, Ronnie and Gerald from California, Mr. and Mrs. Ronald Evans, Fannie and Robie from Canadian and Fanny Mae Bradstreet from Wheeler.

Miss Lucy Markham Rites Tuesday
Funeral services for Miss Lucy Markham, 83, died Sunday, November 3, at Pampa Nursing Center, after several years illness, were held Tuesday, November 5, at 3:00 in the First Baptist Church in Wheeler. Rev. M. B. Smith of Pampa officiated.

Burial was in the Wheeler Cemetery under the direction of Wright Funeral Home.

Miss Markham, born Feb. 1, 1891, in Bullinger Co., Missouri.

She had been a resident of the Pampa Nursing Center for the past 8 years. She had lived in the Wheeler area since 1909.

Miss Markham was a member of the First Baptist Church in Wheeler.

Survivors include two brothers, L. E. Markham, Canyon; Andrew Markham, Wheeler; three sisters, Mrs. Kate Tate, McLean; Mrs. E. W. Brewer, Amarillo; Mrs. Clyde Pyron, Cordell, Okla., one niece, Mrs. Vaneta Keeton, Pampa, and several other nieces and nephews.

Pallbearers were: Alan Keeton, Martin Brooks, George Markham, Ricky Markham, Lloyd Bridges and Robert Huntley.

JV's Win
The JV 35 and quickly pitched the pigskin to the trailing Mike Izard and boom, the Mustangs were ahead by six.

So effective was the Mustangs defense, the Warriors fumbled the ball an astounding 13 times in the game and they were lucky to get away from Wheeler with just a six point defeat.

The Warriors had their moments also as their defensive efforts kept the Mustangs running game from hitting on all fours.

The third quarter was nearing an end when one of the numerous Miami fumbles was recovered by Wheeler at the Miami 43.

With fourth down at the 13 and yardage getting sticky, Guthrie stepped to his right and went right up the middle and went over standing up to put the Mustangs ahead by 12-0 and took the same path for the two points.

The win was the last scheduled game for the JV but the coaching staff is trying to get one more game to make up for one of the two cancellations the JV have had.

Stadium Bags Are Still Available
The Wheeler Band Boosters still have Snug Bugs for sale. These stadium bags are excellent for keeping feet and legs warm at any outdoor event.

The \$13.00 from the sale of the bags will help the band boosters purchase a new instrument for the band.

Contact Patsy Cox, Patricia Forrester, or Valletta Frankenberry.

Mr. and Mrs. Gordon Roper and Mrs. Fred Wood went to Amarillo Saturday to visit Mrs. Hazel Parks who is in the High Plains Baptist Hospital. Hazel is doing much better. When the folks returned it was raining so hard the Ropers were afraid their road was washed out - so they spent the night with the Fred Wood. We received 4 inches of rain Saturday night.

Wanda Walker and girls fishing down on the coast this week.

Several from here attended the funeral of Dave Jackson at Reydon last week. Dave had been Ginner her at the gin for several years. He was the uncle of Willa Jenne Shelton.

Mr. and Mrs. Bruce Harrison visited with Leldon Harrison in the Cheyenne hospital last week.

Medical and hospital expenses today can be ruinous. Protect your finances with a Health-Accident Expense Policy from the John C. Vise Agency. We will gladly explain the details to you.

JOHN C. VISE AGENCY
COMPLETE INSURANCE SERVICE
WHEELER PH. 826-5576

STARK Nursery Stock
Call or Write
R. StJohn
Mobeetie, Texas
Phone 845-2353

Dr. Jack L. Rose OPTOMETRIST
121 Main St. - Shamrock
Phone 256-3203
Tues.: 9-5 Fri.: 2-5

A. & E. MOBILE HOMES
Highway 83 So.
Canadian, Texas
Phone 323-6469

after you see your doctor...
RHYLAND'S PHARMACY
PH. 826-5561

YOUR BEST FOOD BUY

Bacon 2 lb. Pkg. **\$2.19**
Rump Roast lb. **89¢**
TURKEYS Basted Young Norbest Pound **69¢**
Bread Super Value 2 Loaves **79¢**
Round STEAK lb. **68¢**

DIAMOND SHORTENING 3 lb. Can **\$1.69**

DOG FOOD 5 15 oz. Cans **\$1**

White Swan SALAD DRESSING 32 oz. Jar **89¢**

White Swan PORK & BEANS 3 15 1/2 oz. Cans **89¢**

White Swan SLICED BEETS 3 16 oz. Cans **89¢**

White Swan CUT GREEN BEANS 3 16 oz. Cans **\$1**

White Swan PEELLED TOMATOES 3 14 1/2 oz. Cans **\$1**

White Swan TOMATO SAUCE 6 8 oz. Cans **\$1**

Borden's Buttermilk or Hi Pro 1/2 Gal. **79¢**

White Swan COFFEE 1 lb. Can **99¢**

White Swan BUTTER 1 lb. Tub **69¢**

Morton's POT PIES Chicken, Turkey or Beef 3 8 oz. Pkgs. **\$1**

VALUE DAYS

NOV. 6-12 ASSOCIATED DRUGGISTS

PHILLIPS Milk of Magnesia Regular or Flavored 26 oz. Mfg. List \$1.72 ea. \$1.09 ea.	CORICIDIN-D Tablets 25s Mfg. List \$1.69 89¢	BREACOL Decongestant Medication 3 oz. Mfg. List \$1.29 69¢	ORAL-B Adult Toothbrushes B-40, B-60 Mfg. List 98c or 49c ea. 2/94¢
LIQUIFILM Wetting Solution 2 oz. Mfg. List \$2.25 \$1.24	BAYER ASPIRIN 100s Mfg. List \$1.25 83¢	GERITOL TABLETS 40s + 7 Free Mfg. List \$3.39 \$1.94	ASEPTO ORAL THERMOMETER Becton Dickinson Mfg. List \$2.00 99¢
CHLORASEPTIC Anesthetic Antiseptic 6 oz. with Sprayer Mfg. List \$1.71 98¢	SOMINEX Tablets 32s Mfg. List \$2.44 \$1.39	PROTEIN 21 HAIRSPRAY Regular or Extra Hold 13 oz. Mfg. List \$2.25 ea. \$1.24 ea.	KLEENEX 200s White or Assorted Mfg. List 59c ea. 39¢ ea.
LUDENS COUGH DROPS Menthol, Wild Cherry or Honey-Lemon 15c ea. Mfg. List 3/27¢	NEO-SYNEPHRINE 1 1/2% Spray 20 ml. Mfg. List \$1.57 83¢	SINAREST Sinus Tablets 20s Mfg. List \$1.39 79¢	CORYBAN-D COLD CAPS With Vitamin C 24s Mfg. List \$1.39 71¢
VASELINE INTENSIVE CARE Lotion 10 oz. Mfg. List \$1.39 76¢	PERTUSSIN Cough Medicine 3 oz. 8 Hour Mfg. List \$1.39 79¢	Who is your A.D. Personal Pharmacist? In today's highly industrialized, computerized and mechanized society, he's one of the fewer and fewer people who carry on the tradition of one-to-one relationships with his customers. He's like the anchor man on your personal health care team. Filling your prescriptions, explaining your doctor's instructions and consulting with you on non-prescription needs. Be sure to be safe, ask your A.D. Personal Pharmacist.	

HYLAND'S Pharmacy

A.D. Pharmacies Support The Allergy Foundation

31,000,000 Americans suffer during their lives from allergic diseases. Of these, asthma and hay fever together rank third among all chronic diseases. This national voluntary health agency's goals are to unite the public, the medical profession, research scientists and public health workers in a campaign to wipe out these diseases. To help our check goes this month to A.D. Pharmacies from your neighborhood A.D. Pharmacist.

Allergy Foundation
801 Second Avenue
New York, New York 10017

WE RESERVE THE RIGHT TO LIMIT QUANTITIES AT SALE PRICES

BUTCHERING & PROCESSING PRICES
Beef processed, double wrapped 12¢ per pound
1¢ A Pound for Butchering
Pork processing including curing double wrapped 14¢ per pound
\$4.50 A head for butchering
We butcher Monday thru Friday 8 to 12 A.M. except holidays.
CALL FOR QUARTER - HALF - WHOLE BEEF PROCESSED

WE NOW HAVE CUTS OF PORK AND BEEF FOR SALE
SHAMROCK SLAUGHTER PLANT
N. of City Phone 256-3241
Closing at Noon on Saturday

Potatoes 10 lb. Bag **79¢**

Cabbage lb. **9¢** **Bananas** lb. **13¢**

Nyquil 6 oz. Btl. **\$1.43** **Hair Spray** Reg. 79c **59¢**

MOBEETIE GROCERY
Phone: 845-2721 Mobeetie, Texas

BRONCHOS

to it and stopped the Bronchos with a big pass interception by Chapman at the 10 yard line.

Chapman returned the interception nine yards but the reprieve was short lived as Ware fumbled on first down and the Bronchos recovered at the 21.

The football got hot here as Brown pounced on a loose ball three plays later at the 12 and the second quick threat by the Bronchos was quelled.

Just two plays following Brown's recovery, Ware lost the handle again and Clarendon recovered at the Wheeler 24 and the Bronchos drove to the 11 before calling on King for a three point attempt on fourth down.

King missed the short attempt and like a broken record, the Mustangs had stopped the Bronchos but were doomed to give it right back and this time was too much and the Bronchos went ahead by two.

Taking over on the 20 after the first unsuccessful field goal try, Wheeler lost the ball once more as Ware lost his third fumble, this time at the Mustangs 23.

Rising to the occasion, the Mustangs threw the Bronchos back and King went to the tee for the second time and this time the kick was long and good and the Bronchos went ahead with 7:26 left in the game.

If there has been any real big play that has seemed so significant this season, it came as the Mustangs fought to regain the lead.

Brown got the Mustangs a first down at their 35 with a 13 yard keeper on second down to get their winning drive off on the right foot and a 15 yard penalty against Clarendon on the tackle moved the ball to the 50.

Only two yards were gained in two trips into the Broncho line and the Mustangs faced third and eight and hopes were getting strained.

Calling the counter for the first time in the game, the Mustangs opened a gaping hole in the Bronchos right side and Terry Tidwell scooted through and was gone for 17 of the biggest yards of the year and a first down at the 31.

Massick picked up four more and the Mustangs had another third down situation. This time, Brown faked inside to Ware and also to Tidwell on the counter and put the ball on his hip and headed around right end.

One Broncho challenged him inside the 10 but Brown slipped the tackle and was across for the big six. Massick rammed right tackle for the two pointer and the

MUSTANG GOAL:

WIN DISTRICT

CYCLONES

but they came up with the big play when they needed it and this is a sign of a winning attitude." "The kids wanted to beat Clarendon in the worst way and this win will certainly help us this week against Memphis and the whole team thinks they can put it on the Cyclones."

Rain or shine, Nicholas Field should have fans standing at the fences Friday night and the best tonic for the Mustangs would be to have the place crowded with Mustang boosters.

COLTS

Clarendon 49 and after an exchange of fumbles, had the ball at the 46 but were forced to punt.

Recovering a fumble at the same spot as they blocked the kick, the Colts ran into disaster on first down as McClellan picked off a pass thrown by Myron Jolly in the flat and raced untouched into the end zone.

Five times in the second half the Wheeler Colts had the ball and on four of these possessions they got into Clarendon country but could put no points on the board.

Grimes collected 121 yards rushing in the game but the Colts could only muster the six points and lost another tough one and will face Memphis at Memphis this Thursday at 6PM to close out their season.

WHEELER MUSTANGS

Name	No.	Pos.	Ht.	Class
Chapman, Don	10	QB	153	Sr.
Brown, Don	11	QB	155	Soph.
Hilton, Danny	31	FB	155	Jr.
Massick, David	20	FB	185	Soph.
Tidwell, Terry	21	WB	135	Jr.
Ware, Kent	32	TB	160	Sr.
McIlhenny, Bill	53	C	165	Jr.
Martin, Raymond	62	G	180	Sr.
Wallace, Steve	63	G	180	Sr.
Waver, Tommy	61	G	150	Jr.
Birrell, Mark	72	T	230	Jr.
Chapman, Ricky	71	T	150	Soph.
Vanden, Jim	74	T	235	Soph.
Ellis, Kenneth	81	E	150	Jr.
Ellis, David	83	E	165	Sr.
Ellis, Bert	84	E	160	Jr.
Grimes, Myron	10	QB	140	Fr.
Ford, Don	12	FB	150	Fr.
Hilton, Danny	31	FB	155	Soph.
Massick, David	20	FB	185	Jr.
Wright, Jim	41	TB	137	Soph.
Webster, Ken	40	WB	145	Fr.
Franklin, Kevin	51	C	130	Soph.
Christensen, Larry	63	G	170	Fr.
Songras, Jim	62	G	130	Fr.
Grimes, Myron	10	T	165	Fr.
Wright, Jim	41	T	170	Fr.
Paolo, Mark	70	T	170	Fr.
Gaines, Darrell	32	E	130	Soph.
Holley, Tim	20	E	120	Soph.
Whiteley, Buddy	84	E	135	Fr.

COACHES:
Jim Robinson, Head Coach
Bill Wiggins
John Copeland
Richard Gaines

MANAGERS:
Steve Gaines
Ken Gaines
Jimmy Robinson

MEMPHIS CYCLONES

No.	Name	Pos.	Class	Ht.
7	Don Goler	QB	Soph.	150
10	Charles Phillips	E	Jr.	140
11	Ricky Miller	QB	Jr.	160
12	Gary McKay	TB	Sr.	165
16	Ricky Douthit	E	Jr.	164
20	Rickie Spruill	E	Jr.	150
22	Don Davis	FB	Sr.	175
25	James Beck	E	Sr.	170
30	Charles Bayley	TB	Jr.	165
32	Dick Hutcherson	E	Jr.	165
35	Darryl Smith	E	Jr.	155
44	Fred Alexander	FB	Jr.	170
54	Ed Hutcherson	C	Sr.	165
55	Melvin Norton	C	Soph.	190
60	Candy Reyes	T	Sr.	180
61	Audie Moore	G	Sr.	190
62	Mark Monzingo	G	Jr.	167
63	Mark Shawhart	T	Jr.	167
66	J. D. Evans	T	Jr.	185
71	Ricky Woodard	T	Jr.	160
72	Duck Richards	G	Sr.	180
74	Kenneth Fields	T	Jr.	205
75	Chuck Chapman	T	Sr.	160
80	Ted Pittman	E	Jr.	150
81	Buddy Bailey	E	Sr.	155
82	Joe Reyes	S	Sr.	145
83	George Williams	S	Sr.	145
90	Isaac Norman	S	Sr.	145

MANAGERS: Dan Curl, Anthony Johnson, Terry Fowler

Date	Location	Score
September 6	Lefors	25-20
September 13	Open Date	
September 20	Canadian	6-16
September 27	Groom	13-42
October 4	Claude	20-6
October 11	Wellington	6-14
October 18	Shamrock	14-12
October 25	McLean	64-0
November 1	Clarendon	15-9
November 8	Memphis Here	7-30
November 15	Silverton There	7-30

WHEELER MUSTANGS

VS.

MEMPHIS CYCLONES

FRIDAY, NOV. 8 at WHEELER

B-TEAM	Date	Location	Score
	September 7	Lefors	There 14
	September 12	Valley	Here 24
	September 19	Miami	There 12-1
	September 28	Canadian	
	October 3		
	October 10		
	October 19		26
	October 24		
	October 31	Miami	14

COLTS	Date	Location	Score
	Sept. 12	Valley	0-6
	September 26	Silverton	12-3
	October 3	Claude	6-1
	October 10	Wellington	0-3
	October 17	Shamrock	8-2
	October 24	McLean	24-0
	October 31	Clarendon	6-1
	November 7	Memphis There	6-0

PAKAN PARTS

YREVA'S BEAUTY SALON

GLEN PORTER RANCH

KENT TWYLA AND ANGELIQUE SIMS

RICHARD WALLACE

BARNES ELECTRIC-Earl & Paulene Barnes

LOWELL AND LORETTA LASLEY

PRODUCTION CREDIT ASSOC.

RIVES INSURANCE AGENCY

WHEELER FLOWER SHOP

WHEELER COUNTY PRODUCE

WHEELER ABSTRACT CO.

WARE CHEVROLET CO.

TRADING POST

FIRST NATIONAL BANK

HARRY & MARY WOFFORD

WHEELER REDI MIX

PRITCHARD'S THRIFTWAY

LEE HARDWARE & FURNITURE

BRAY'S SADDLE SHOP

THIS AD IS SPONSORED BY THE FOLLOWING MERCHANTS AND INDIVIDUALS

ALBERT'S SHAMROCK SERV. STA.

LOYD'S BEN FRANKLIN

GARRISON'S SERVICE STA.

HYLAND'S PHARMACY

WRIGHT FUNERAL HOME

WHEELER IRRIGATION

JOHN C. VISE AGENCY

SPARLIN'S CAFE

CITY FLOWER & GIFT SHOP

DAVID & PAULA BRITT

WHEELER VETERINARY CLINIC

THE BOB FRANKENBERYS

BEER CATTLE CO.

PETE BURTON FORD

EDWARDS '66' TRUCK STOP

GEORGE & VENA RICHARDSON

M. & M. GIN

SOUTHWESTERN PUBLIC SERVICE CO.

Y CLEANERS & FRABIES

LANCASTER DEPT. STORE

HIBLER IMPLEMENT CO.

ROARK'S FINE FOODS

WHEELER GAS INC.

WHEELER LUMBER CO.