

THE WHEELER TIMES

VOLUME NUMBER 40, NUMBER 46

Thursday, October 25, 1973

SINGLE COPY 10c

Here and There

By Laura Guthrie
Now if every small town in Texas had as many representatives at the Texas Stadium in Irving as Wheeler did, the whole County

couldn't have contained them. I know we can't name everybody that went from here, but here is a partial list of those that watched the Dallas Cowboys wallop the New York Giants: Mr. and

Mrs. Adrian Risner, Mrs. Shirley Brown, Mrs. Arnell Holt, Mr. and Mrs. R.J. Smith, Mr. and Mrs. Jim Porter, Mr. and Mrs. Bud Vanpool, Mr. and Mrs. John C. Vise, Kent and his friend

Tommy Chisner, Mr. and Mrs. James Henderson, Charles Wagner, James Hiltbruner, George Callan, Dean Slaughter of Shamrock, Mx and Mrs. Delbert Thomas and Mr. and Mrs. Paul Hathaway

of Mobeetie. Now all these had a mighty hard trip. Some of them had Monday off because that is the "out of place" Veteran's Day. Other had to travel home Sunday night and work Monday. But it was fun and nobody seems to mind after having such a hilarious time.
Editor Louis Stas, Corky and Lydia Guthrie attended a luncheon in Amarillo Sat. where they were guests of KVII-TV. The get-together was to honor area reporters.

There were 58 counties represented, an area which would compare in size to the state of Ohio. Jim Pratt head of Pro-News and Master of Ceremonies referred to these reporters as Semi-Pros or Stringers. A good many special awards were given. The WHTDN Award went to James McCormick (formerly of Wheeler) who is general manager. Louis Corky each won door prizes. A bountiful meal with STEAK and all the trimmings was served.

VALLEY IS 12-0 VICTIM OF MUSTANGS

Mustangs Ragged In Getting Second District Victory

Friday night was High School's season and for awhile the visiting

Wheeler Mustangs were going to present them with all the ingredients necessary for a victory on the gridiron before they finally prevailed over the Patriots

12-0.
It seems that the best really comes to the top with the Mustangs when they are playing the best and right the opposite is in style when they are up against somebody that is definitely not as good and last Friday night was no exception.

Playing good football in spurts, the Mustangs dominated the statistics but could only push across a touchdown in each half.

Five turnovers, on four lost fumbles and one pass interception, ruined that many Mustang drives.

The Mustangs took the opening kickoff and quickly drove to the Patriot 19 with the big play being fullback Kent Ware breaking for 33 yards on a trap at right guard.

The first of 7 Mustang infractions occurred at the 19 when the Mustangs were guilty of being offside and the drive stalled at the 11 when Mark Bateman, who was starting his first game at quarterback in place of the sick Don Chapman, came up a couple yards shy on a keeper at right end.

Valley had to punt and Lewis Britt returned the kick 11 yards to the Patriot 41.

On fourth and nine, Bateman passed complete to J.C. Brooks for 12 yards and a first down at the 28.

Britt got 5 at left tackle and then broke for 10 at right behind a fine block by Ware for a first down at the 13. Ware found a hole at right guard and breaking a tackle at the three, went into the end zone with the clock showing 4:40 in the

Game Statistics:	Wheeler	Valley
First Downs	20	5
Net Yards Rushing	329	80
Net Yards Passing	20	39
Total Yards Gained	349	119
Passes & Completions	10-2	8-2
Opp. Passes Intercepted	2	1
Fumbles & Fumbles Lost	5-4	6-4
Penalties & Yardage	7-42	3-25
Punts & Average	2-47	6-33
Return Yardage	17	5
Total Plays	72	48

first quarter and the Mustangs led 6-0.
Jim Verden's kick for the one pointer drifted to the left of the uprights and it appeared that a rout was on but things didn't turn out that way.

After scoring their first touchdown, the Mustangs offense left them and completely fizzled out for the remainder of the half except for one good effort that went for naught with the clock running out on the Mustangs at the Patriot 47 yard line.

The Mustangs had the pigskin four times in the half after getting on the scoreboard initially and gave it up twice via fumbles one by Ware and the other by Britt.

Taking over at their 23 following a Valley punt late in the second quarter, the Mustangs hooked up finally and got to moving the football but time wasn't in their favor.

The drive was started on a 20 yard run by Ware on a trap play. Britt got 9 at left tackle before the Mustangs were guilty once more of lining up offside and the ball was moved back to the Wheeler 48.

After a loss of three, the Mustangs got a first down at the Valley 42 on a four yard gainer by Bateman and a 9 yard blast at left tackle by Britt.

The Mustangs had to go to the air with only 37 seconds remaining and nothing was doing via this route and the 6-0 Wheeler margin remained as the two teams headed for the dressing rooms.

Wheeler turned the ball over to Valley with lost fumbles the first two times they had it in the second half with the recoveries coming at the Wheeler 40 and 34.

Valley got ten yards to the Mustang 30 with the first gift but Ron Eudy fumbled and Bill McIlhenny recovered at the 30.

The Patriots made their most serious threat after recovering the second fumble at the 34. Just eight yards were gained however before Dan Helton stepped in front of a Eudy pass on the Wheeler 18 and was downed at the 19.

With their offense having been dormant for better than a quarter, the Mustangs put it all together after Helton's interception and looked like a well oiled machine at they drove 81 yards in just nine plays.

The drive was errorless for a change and was an example of what the Mustangs were capable of if they could overcome their own miscues.

Tailback Britt broke for 26 on a climb at right guard out to the 45 and Ware ripped the same hole for 15 more and the Mustangs were in good shape at the Patriot 40 after just two plays.

Seven straight power plays directed at the Valley tackles with Britt on the lugging end got the six points with Britt going over standing up from 5 yards out after Ware, Larry Rives and J.C. Brooks had opened the way

MEMPHIS CYCLONES INVADE MUSTANGS CORRAL FRIDAY NIGHT

No easy task faces the Wheeler Mustangs Friday night when the formidable Memphis Cyclones visit Nicholson Field but it is one the Mustangs are looking forward to.

With a 2-0-1 record in district play, the Mustangs find themselves all alone in second place in District 2-A behind the high flying Clarendon Bronchos.

The Mustangs have to win their remaining games for any consideration when the championship crown is handed out and the Cyclones face complete elimination with another loss coming off a 13-12 defeat at the hands of Clarendon at last week.

Memphis was defeated earlier in the year by the Childress Bobcats although they outplayed their Class AA opponent and will bring one of the best Class A football teams in the state for the face off with the Mustangs.

The Cyclones combine what all coaches dream of, size, speed, and execution to literally manhandle most of their foes.

Running from the formation, the Cyclones are ably directed by senior Wayne Davis at quarterback, whom many consider is the premier quarterback in the district, and he is backed by hard running Jim Dixon at fullback and speedsters Don Davis and Earl Wright at the halfback posts.

The Cyclones have had their best success just running right at people and there is no reason to believe that they will change

their game plan against the lighter Mustangs.
Defensively, the Cyclones use a five man front and cover three deep in the secondary with a monster man.

The Mustangs came out of the Valley game with probably more banged up people than any other game of the year but it is hoped that all will be able to play against Memphis.

Quarterback Don Chapman is back working out this week but is still recovering from a tooth extraction and with Mark Bateman slowed by a muscle pull, the Mustangs quarterback situation is clouded.

"We are glad we won but we are certainly not pleased with the play in the Valley game," Coach Jim Bateman said this week.

"We had a lot of yards on offense and moved the ball well in spurts but didn't get many points and that is what counts," Bateman added. "Hitting is the name of the game in football and our kids must have forgotten this last week because we didn't do much of it."

"Kent had a real good game running the trap play and Lewis and Larry made some good runs but inconsistency ruined us again," Bateman said in assessing his club's second district win.

In looking at this weeks opponent, the Memphis Cyclones, Bateman told the quarterback club that the Cyclones had probably better personnel than any Class A team in the Panhandle and could easily be undefeated.

Mustangs Remain In District 2-A

In Interscholastic League Alignment

Every two years, the University Interscholastic League realigns the schools in the state of Texas from Class AAAA down through Class B for all competition purposes.

The alignment is based on a two year average of enrollment for the two years preceding the alignment and this new alignment was announced this week in Austin.

The makeup of District 2-A saw two changes being made with Valley High School dropping out of the district and going to Class B and Shamrock coming into the district after many years in Class AA.

Besides Wheeler, member schools of District 2-A will be: Wellington, Silvertown, Shamrock, Clarendon, McLean, Memphis, and Claude.

The football schedules have to be remade with each alignment and the district schedule was made at a meeting in Clarendon by school officials Tuesday.

When the non-conference games for the Mustangs are finalized, a schedule for the 1974 football campaign will be announced.

"Memphis had several opportunities to whip Clarendon and the loss will probably make them that much tougher come Friday night," the head coach of the Mustangs stated.

Facing a rough road is no new adventure for the Mustangs and they remember just a year ago when Memphis came from behind and scored in the last two minutes for a narrow 12-7 win.

Pep Club Plans Chili Supper Fri.

The Wheeler Pep Club will sponsor a Chili Supper prior to the Memphis game Friday evening.

Bring the whole family and get all you can eat. The cost to adults will be \$1.50 and children can eat for \$1.00.

The chili will be served Friday evening, Oct. 26 from 5 to 7 P.M.

Service Set For J.M. Lawrence

Funeral services will be held Thursday, Oct. 25, 1973 at 2:00 P.M. in the First Methodist Church of Wheeler for John Matt Lawrence, 83, who passed away Oct. 23 in Shamrock General Hospital at 11:45 P.M.

Rev. M.B. Smith of Pampa will officiate at the services.

Mr. Lawrence was born Feb. 16, 1890 at Quitman, Texas to John Lawrence and Dee Fargeston Lawrence. He was married to Agnes Mildred Newsome on Dec. 24, 1917 in Pittsburg, Tex. She preceded him in death in October of 1972.

He had lived in Wheeler since 1931, moving here from Mobeetie. He owned and operated the Lawrence Milling Co. and managed Cicero Smith Lumber Co. in Wheeler until his retirement. He was a member of the First Methodist Church of Wheeler.

Survivors include one daughter, Mrs. Willie Dee Whitener of Tyler, Texas; four grandchildren and nine great grandchildren.

Interment will be in the Wheeler Cemetery under the direction of Wright Funeral Home of Wheeler.

Dewey Smith Rites Are Read

Funeral services for Dewey Smith, 73, of Allison were held at the Calvary Baptist Church in Canyon, Monday, Oct. 22. With Rev. Lewis officiating.

Mr. Smith passed away Oct. 12 at the La Casa Convalescent home after a lingering illness.

Mr. Smith was born in Missouri and had attended school in this area for a number of years.

He was married to Mrs. Anna B. Watson of Canyon, Mrs. Goldie of Amarillo, Mrs. Lewis of Allison and Nellie Dawson of Boronia, four grandchildren.

Last Rites For Charles Ellis Fri.

Funeral rites for Charles O. Ellis, 72, were conducted Friday afternoon at two o'clock in the First United Methodist Church of Canadian.

Services were conducted by the Rev. Howard Quiett, pastor, and burial was in the Wheeler Cemetery under the direction of Stickley Funeral Home.

Mr. Ellis, longtime resident of Canadian died suddenly Wednesday night at his home. He was sitting at the supper table when he was stricken.

Charles Owen Ellis was born January 19, 1901, at Mobeetie, Texas. He was the son of Mr. and Mrs. W.H. Ellis, Wheeler County pioneers. His father owned and operated a General Store in Mobeetie for many years.

Mr. Ellis owned and operated the City Drug Store in Canadian for 10 years, retiring in 1959. He was a veteran of World War II. He is survived by his wife, Parille, of the home; a daughter, Mrs. Freda Seaman, and grandson John Charles of Alvin, Texas; two brothers, Hugh of Pampa and Hack of Fort Worth; a sister, Mrs. Georgia Tribble of Woodward, Okla.; and a number of nieces and nephews.

Pallbearers nephews of the deceased, were Quentin Isaacs, Jack Riley Harold Craddock, Ray Laycock, Robert Denson and Mark Craddock.

Conference On Rural Development

Wheeler was represented Tuesday, Oct. 23 at the Governor's Conference on Rural Development.

The conference was held in Austin with each county in Texas being represented. The morning session included speeches by Gov. Dolph Briscoe, John C. White, Commissioner of Agriculture; Dr. John Hutchinson, director of Texas Agriculture; W.L. Sterrett, Dallas County Judge and Congressman, Bob Poage.

The group was divided into workshops in the afternoon to explain the Rural Development Commission's findings in Economic Development, Housing, Natural Resources, Transportation, Health, Education, Human Resources and General Government.

The commission's report is published in book form and each person attending the conference received a copy.

Attending the conference were Kent Sims, president of the Wheeler Chamber, Dr. Tommy Hennard, City Councilman and Chamber member, Berniece Hall, member of the Wheeler Chamber of Commerce and the Thursday Review Study Club, and Louis C. Stas, City Councilman and member of the Chamber.

For the noon meal those in attendance were served Texas Chili furnished by the Texas Department of Agricultural.

Six Weeks Honor Roll

Yamuna Sangarasivam, and Glen Stiles
Grade 5
All A's
Gary Brotherton
A's and B's
Ty Henderson and Michelle Wiggins
Grade 6
All A's
Rich Brown
Cindy Coates
A's and B's
Lynette Gaines, Philip McWhorter, Georgann Millet, Misty Muse and Cathi Stas
All B's
Jana Johnson, Barbara Kreyling and Myranda Pierce
Grade 7
All A's
Beth Willis
A's and B's
Kerri Hefley, Holly Hennard, Brenda Wallace and Myron Jolly
Grade 8
All A's
Teresa Hefley and Mark Seedig
A's and B's
Greg Christner and Wendell Moore
All B's
Dell Ford and Bobby Guthrie

Big Turnip

J.E. Steen brought us a sample of his gardening. The fact is, he raised the vegetable without even trying; he didn't plant the seed, cultivate or water the plant during the growing season. The seed came from last year's crop volunteer. The turnip weighed 3 1/2 lbs. and was raised in town at 1120 S. Canadian.

Kelton Carnival And Chili Supper

The annual Kelton School Halloween Carnival and Chili Supper will be Saturday, Oct. 27 at the gymnasium.
The serving of the chili supper will begin at 5:30 and the carnival will begin at 6:30.
Each class will have a booth at the carnival with fun and games for everyone.

Conference On Rural Development

Wheeler was represented Tuesday, Oct. 23 at the Governor's Conference on Rural Development.

The conference was held in Austin with each county in Texas being represented. The morning session included speeches by Gov. Dolph Briscoe, John C. White, Commissioner of Agriculture; Dr. John Hutchinson, director of Texas Agriculture; W.L. Sterrett, Dallas County Judge and Congressman, Bob Poage.

The group was divided into workshops in the afternoon to explain the Rural Development Commission's findings in Economic Development, Housing, Natural Resources, Transportation, Health, Education, Human Resources and General Government.

The commission's report is published in book form and each person attending the conference received a copy.

Attending the conference were Kent Sims, president of the Wheeler Chamber, Dr. Tommy Hennard, City Councilman and Chamber member, Berniece Hall, member of the Wheeler Chamber of Commerce and the Thursday Review Study Club, and Louis C. Stas, City Councilman and member of the Chamber.

For the noon meal those in attendance were served Texas Chili furnished by the Texas Department of Agricultural.

Big Turnip

J.E. Steen brought us a sample of his gardening. The fact is, he raised the vegetable without even trying; he didn't plant the seed, cultivate or water the plant during the growing season. The seed came from last year's crop volunteer. The turnip weighed 3 1/2 lbs. and was raised in town at 1120 S. Canadian.

Kelton Carnival And Chili Supper

The annual Kelton School Halloween Carnival and Chili Supper will be Saturday, Oct. 27 at the gymnasium.
The serving of the chili supper will begin at 5:30 and the carnival will begin at 6:30.
Each class will have a booth at the carnival with fun and games for everyone.

Conference On Rural Development

Wheeler was represented Tuesday, Oct. 23 at the Governor's Conference on Rural Development.

The conference was held in Austin with each county in Texas being represented. The morning session included speeches by Gov. Dolph Briscoe, John C. White, Commissioner of Agriculture; Dr. John Hutchinson, director of Texas Agriculture; W.L. Sterrett, Dallas County Judge and Congressman, Bob Poage.

The group was divided into workshops in the afternoon to explain the Rural Development Commission's findings in Economic Development, Housing, Natural Resources, Transportation, Health, Education, Human Resources and General Government.

The commission's report is published in book form and each person attending the conference received a copy.

Attending the conference were Kent Sims, president of the Wheeler Chamber, Dr. Tommy Hennard, City Councilman and Chamber member, Berniece Hall, member of the Wheeler Chamber of Commerce and the Thursday Review Study Club, and Louis C. Stas, City Councilman and member of the Chamber.

For the noon meal those in attendance were served Texas Chili furnished by the Texas Department of Agricultural.

Big Turnip

J.E. Steen brought us a sample of his gardening. The fact is, he raised the vegetable without even trying; he didn't plant the seed, cultivate or water the plant during the growing season. The seed came from last year's crop volunteer. The turnip weighed 3 1/2 lbs. and was raised in town at 1120 S. Canadian.

Kelton Carnival And Chili Supper

The annual Kelton School Halloween Carnival and Chili Supper will be Saturday, Oct. 27 at the gymnasium.
The serving of the chili supper will begin at 5:30 and the carnival will begin at 6:30.
Each class will have a booth at the carnival with fun and games for everyone.

Meet the MUSTANGS



JIM VERDEN
220 lbs. Freshman



MIKE IZARD
125 lb. Freshman



GARY WARE
125 lb. Freshman



TONY HEFLEY
110 lb. Freshman

WHEELER MUSTANGS vs MEMPHIS CYCLONES

Nicholson Field • FRIDAY, OCT. 19 • 7:30 P.M.

WHEELER MUSTANGS

No.	Name	PO.	Wt.	Class
10	Bateman, Mark	QB	140	Soph.
11	Brown, Don	QB	140	Fr.
20	Hefley, Tim	HB	110	Fr.
21	Tidwell, Terry	HB	125	Soph.
20	Massick, David	HB	165	Fr.
23	Chapman, Don	QB	150	Jr.
30	Britt, Lewis	HB	165	Sr.
31	Helton, Dan	FB	145	Soph.
32	Ware, Kent	QB-FB	160	Jr.
40	Rives, Larry	FB	145	Sr.
41	Hefley, Tony	HB	110	Fr.
50	McIlhany, Bill	C	160	Soph.
51	Brooks, Wyatt	C	175	Sr.
60	McIlhany, Tom	G	155	Sr.
61	Helton, Dale	G	160	Sr.
62	Martin, Raymond	G	160	Jr.
63	Wallace, Steve	G	145	Jr.
64	Ware, Gary	G	125	Fr.
70	Martin, Frank	T	180	Sr.
71	Wheeler, Wayne	T	165	Sr.
73	Elliott, Kenneth	E-T	135	Soph.
74	Hardcastle, Danny	T	185	Sr.
80	Gaines, Darrell	E	130	Fr.
81	Whitener, Lonnie	E	145	Sr.
82	Verden, Jim	E	220	Fr.
83	Patterson, David	E	160	Jr.
84	Brooks, J. C.	E	170	Sr.
82	Abernethy, Scott	E	125	Soph.
30	Izard, Mike	HB	125	Fr.

Manager: Steve Gaines

Coaches:
Jim Bateman
Richard Gaines
Bill Wiggins
John Copeland

WHEELER MUSTANGS FOOTBALL SCHEDULE

Sept. 7	Lefors	6-7
Sept. 14	Open	
Sept. 21	Canadian	0-30
Sept. 28	Shamrock	0-14
Oct. 5	Silverton	26-13
Oct. 12	Wellington	0-0
Oct. 19	Valley	
		12-0
Oct. 26	Memphis	7:30 ... H
Nov. 2	Claude	7:30 ... T
Nov. 9	McLean	7:30 ... H
Nov. 16	Clarendon	7:30 ... H

WHEELER

JUNIOR HIGH FOOTBALL

Sept. 20	Shamrock	6:00 ... T
Sept. 27	Clarendon	6:00 ... T
Oct. 4	Silverton	6:00 ... T
Oct. 11	Wellington	6:00 ... H
Oct. 18	Valley	6:00 ... H
Oct. 25	Memphis	6:00 ... T
Nov. 1	Claude	6:00 ... H
Nov. 8	McLean	6:00 ... T

MEMPHIS CYCLONES

No.	Name	Pos.	Wt.	Class
10	Browning, Ronnie	QB	140	Sr.
11	Melton, Jimmy	HB	170	Jr.
12	McKay, Gary	FB	165	Jr.
20	Davis, Wayne	QB	175	Sr.
22	Davis, Don	HB	160	Jr.
25	Beck, James	E	165	Jr.
30	Bryley, Charles	HB	160	So.
32	Cofey, David	HB	140	Jr.
35	Miller, Ricky	QB	150	So.
40	Wright, Earl Ray	HB	160	So.
42	Dixon, Jim	FB	180	Sr.
50	Campbell, Jay	C	175	Sr.
54	McQueen, Mark	G	160	Sr.
55	Hutcherson, Ed	C	140	Jr.
60	Reyes, Candy	G	180	Jr.
61	Moore, Audy	G	169	Jr.
62	Booth, Jimmy	G	155	Sr.
63	Ballew, Buddy	G	165	U.
66	Bradshaw, Mark	G	185	Sr.
70	Spearmen, Jarome	T	200	Jr.
71	Mowrey, Mike	T	180	Sr.
72	Richards, David	T	175	Jr.
73	Orcutt, Lyndell	T	175	Sr.
75	Chappell, Chuck	T	160	Jr.
80	Hall, Bobby	E	180	Sr.
81	Smith, Ben	E	200	Sr.
83	Wiggins, George	E	150	Jr.
90	Salinas, Tony	E	145	Sr.

Pep Rally for MEMPHIS GAME

3:20 P.M. Friday
Wheeler Gymnasium

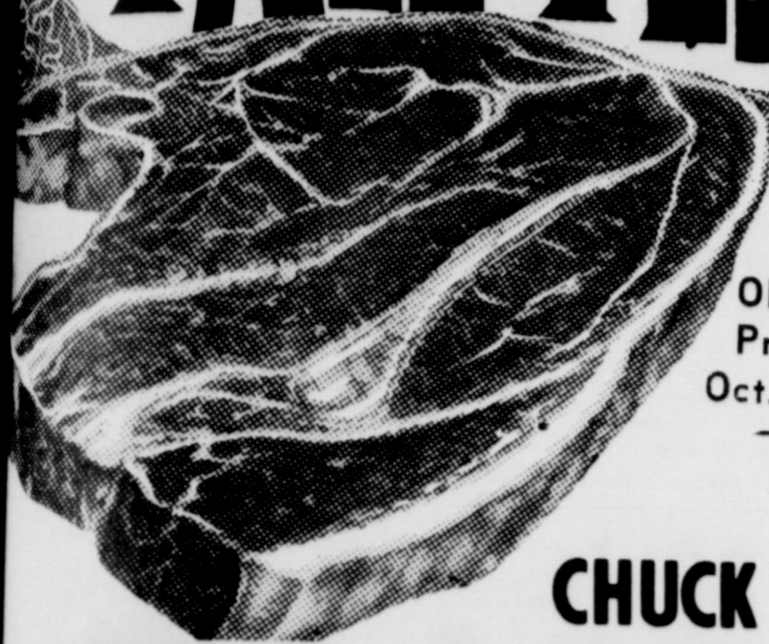
THIS ADVERTISEMENT IS SPONSORED BY THE FOLLOWING MERCHANTS AND INDIVIDUALS

PRITCHARD'S THRIFTWAY
WHEELER GAS INC.
WHEELER LUMBER CO.
LANCASTER'S DEPT. STORE
GARRISON SERVICE
HIBLER IMPLEMENT
PETE BURTON FORD
DAUGHTRY'S BEN FRANKLIN
EDWARD'S 66 STATION
SOUTHWESTERN PUBLIC SERVICE
RIVES INSURANCE
L. & F. REPAIR
WARE CHEVROLET
WHEELER COUNTY PRODUCE
WHEELER FLOWER SHOP
WHEELER REDI MIX

WHEELER IRRIGATION
ALBERT'S SHAMROCK SERVICE
BARNES ELECTRIC
PAUL & YREVA TOPPER
DAVID & PAULA BRITT
SNELGROOES TEXACO
THE WHEELER TIMES
FIRST NATIONAL BANK
M & M GIN
O. G. DRIVE INN
ONE STOP SHOP
JOHN C. VISE AGENCY
WHEELER VETERINARY CLINIC
LEE HARDWARE & FURNITURE
PRODUCTION CREDIT ASS'N.
WARREN'S GROCERY
TRADING POST

WHEELER ABSTRACT COMPANY
WHEELER TV SYSTEM
WRIGHT FUNERAL HOME
SHIRA'S FORD IMPLEMENT
SERVICE CLEANERS
GLEN PORTER RANCH
McWHORTER SERVICE AND SUPPLY
BEEF CATTLE COMPANY
CITY DRUG STORE
HARPER'S DEEP ROCK
HONEY INN
MCILHANY DRY GOODS
WEST MOTEL
WHEEL - TEX

FALL FESTIVAL OF FOOD VALUES



OPEN SUNDAY
Prices Effective
Oct. 26, 27, 28 & 29

Arm Roast

lb. **89¢**

BAR B QUE Hot Lb. **\$1.19**

Jimmy Dean

SAUSAGE 12 oz. Pkg. **87¢** 1½ lb. Pkg. **\$1.69**

Brown Beans Qt. **89¢**

ROLLS Soft N' Lite Brown 'N' Serve **3 FOR \$1**

Borden's
ICE CREAM
Round Carton **98¢**

CHUCK

ROAST

69¢

WHITE SWAN SPECIALS

Fruit Cocktail 3 303 Cans **89¢**

Pear Halves 3 303 Cans **89¢**

Pineapple Juice 3 46 oz. Cans **\$1**

Coffee 1 Lb. Can **79¢**

Pork N Beans 5 Cans **\$1**

Green Beans French Style or Cut 5 Cans **\$1**

Corn Cream Style or Whole Kernel 5 Cans **\$1**

Spinach 5 303 Cans **\$1**

Hominy White or Golden 8 Cans **\$1**

New Potatoes 5 Cans **\$1**

Tomatoes 5 Cans **\$1**

Tomato Sauce 10 8 oz. Cans **\$1**

W. P. Bleach ½ Gal. **29¢**

Biscuits 10 8 oz. Cans **\$1**

Oleo Soft Tub 1 lb. **39¢**

DISCOUNT DRUGS

CONTACT COLD CAPSULES Reg. \$1.69 **\$1.49**

TOOTHPASTE CREST 7 oz. Tube Reg. \$1.13 **99¢**

LISTERINE MOUTH WASH 20 oz. Botl. Reg. \$1.69 **\$1.17**

COUGH SYRUP BREACOL 3 oz. Bottle Reg. \$1.29 **\$1.17**

ROLAID ANTACID TABLETS Reg. 20¢ Roll **17¢**

Borden's **Cottage Cheese** 30 oz. Ctn. **89¢**

WHITE **POTATOES** 10 lb. Bag **79¢**

LETTUCE HEAD **15¢**

APPLES

Red Delicious

5 lb. Bag **99¢**

WARRENS GROCERY

Will Deliver on \$2.50 Purchase or More

IN WHEELER, TEXAS

DOUBLE STAMPS ON WEDNESDAY ON \$2.50 PURCHASE OR MORE

Want Ads

FOR SALE: Trash Barrels. A. B. Griffin 826-5629 rfn
Help Wanted: Grill Cook and/or Bake Cook. 826-9923 Sparlins Restaurant 1tc
APARTMENTS FOR RENT: West Motel. 826-5552 rfn
For Sale: Motorcycle. Call 826-3269 2tp
For Rent: one or two offices 111 W Texas. Write Box 608, Wheeler. rfn
FOR SALE: House and 4 lots across from Park. John C. Vise Agency. Phone 826-5576 icv
PAUL'S REAL ESTATE
J. E. Scott Estate
5 room house on 10 acres Paul Topper 826-5237

For Sale: 1964 New Way Trailer House 56x10 All of Lots 10,11,12,13,14,15,16,17, & 18 Blk O - Park Addt. Wheeler, Texas Contact J.T. Johnston, 845-2311, Mobeettie 3t
Sewing done in my home. Western Shirts. Will fix zippers Call 845-2931 2tp
Help Wanted: 1 Roustabout for oil field work - 1 mechanic. Mutual Oil of America at Shamrock. Call Russell Miller 256-3947 or 256-3662 2tc
Help Wanted: Parkview Hospital has immediate opening in the housekeeping department for 1 employee, male or female. Apply at the hospital business office.
For Sale: Good used refrigerator. 826-5519.

FOR SALE: My home place, 805 Main St., All newly repainted inside and out, new carpet through out the house. Also has two furnished rentals. Clarence Robinson Phone 6-3155 2tc
For Sale: 3 bedroom home John C. Vise Agency 826-5576
Monuments, Grave Covers and Curbing. Complete finishing. Will Warren, Wheeler. rfn
PAUL'S TRAILER PARK
Across Street from School Trailer lots 40'x70' Modern Undergroud Utilities Gas and Water furnished Individual Electric Meters PAUL TOPPER - PH. 5237 or 5931

ATTENTION CATTLEMEN: Pawdler River Cattle Chutes and Cal Tables on Display and For Sale at J.W. Fields Oil Co., Shamrock, Texas.
FOR RENT: Trailer Space Black Gold Trailer Park Phone 826-5512 rfn
For Sale: 1970 model 18 foot self-sustained Trailer house. Would consider trading for cattle. G.A. Martin, Wheeler Texas, Phone 826-5772 2tp

LOOK SANDERS SINGER SEWING MACHINES SALES & SERVICE
Repair all Makes. Singer Approved Dealer Financing Available
200 Main Shamrock 256-3640 rfn

New Shipment of Tapes \$2.99 and Records \$1.59 and \$1.99 L & F Repair
Septic Tank Work: Cesspool pumping and cleaning of all types. D.H. Sanford, 911 N Choctaw, Shamrock 256-3117 rfn
For Sale: Rye Seed. Jaco 6-5826
Thursday night visitors at the Travis Keelins were Jimmy and Elaine Keelin and children, Mrs. Jerry Keelin and girls and Gene and Norma Keelin.
Mickey and Wanda Atherton and Mike visited the Joey Keelins Thursday night.

Card of Thanks
Many thanks to the Allison community for their kindness and thoughtfulness to me with cards, phone calls and the beautiful pot plant sent to my home in memory of the loss of my sister Dewey Smith.
May God bless you richly.
Edith Levitt

Card of Thanks
Many thanks to our friends and neighbors for their kindness visits, and prayers during my stay in the hospital recently.
May God Richly Bless each of you.
Thanks again
Mrs. J.W. (Sue) Ralston

Card of Thanks
We wish to take this time to thank our many friends who sent prayers, flowers, cards and visits during my stay in the hospital.
A special thanks to the Dr. and the nurses at Parkview Hospital.
May God bless you.
Martin and Lora Callan

Card of Thanks
The family of Charles O. Ellis wish to thank their relatives, friends, and neighbors for their kindness during their recent bereavement.
The Family of Charles O. Ellis
Mr. and Mrs. Cecil Denson

Briscoe News

By Vetola Parker
Well happy birthday to Uncle Ern Zybach in Las Cruces N.M. He has a birthday this week. The ones that want to write him his address is E. T. Zybach, 1725 Rio Grande, Las Cruces, N.M.
We want to remember to turn our clocks back this Saturday night when we go to bed.
Our sympathy goes out to the children of Mrs. Bud Wyatt. Her funeral will be Tuesday at 2 o'clock in Pampa with burial in Gage Cemetery.
Mr. and Mrs. Bob Irvine and daughter of Colorado visited the Dick Irvines over weekend.
Sunday dinner guest at the J.P. Meek home were the

Wayne Meek family and Mr. and Mrs. Willis Fillingim and Mrs. Nelda Sides and children.
Willis and Verna Fillingim and Mary ate supper Friday night with the Mack Sides family at Wheeler.
Mr. and Mrs. Lee Lackey of Shamrock visited the Dan Fillingims Sunday.
Mr. Bud Wyatt still works for the Cluberson Chevrolet Co. in Pampa. Our sympathy goes double for him also.
Christine Atherton visited the Oral Heltons Monday.
Hoyle Helton and Vetola Parker visited Alene Hall after church Sunday night.
Clyde and Minnie Bell Vinson is having song practice and visiting at their home Thursday night.
They met last Wednesday night at the Tom Hayes home for singing and visiting in Briscoe.
David Young and two sons visited the Colie Parkers Saturday a week ago.
Arland Young went home to Amarillo Friday to be with his brother Trent Young home for a 10 day leave from the Army.
Sunday dinner guest at the Colie Parkers were Leroy Parker, Weldon Parker and Nelson Parker.
Sunday afternoon visitors in the Colie Parker home were John and Barbara Helton and boys.
Leroy and Nelson Parker visited the Willie Parkers Sunday afternoon.
There was a pink and blue shower last Thursday night in Briscoe Cafeteria honoring Risa Keelin.
There was a large crowd and she received many nice gifts. Refreshments of punch, cookies, nuts, mints were served to all. The hostess were Lois Hudson, Kathy Childress, Mary Hudson, Dorothy Walker, Neta Stanley, Velma D'Spain, Lou Dean Douthit, Lucille Tipps, Diana Parker, Adaline Hays Zodel Swift, Willine Waters Bonnie Meadows, Hoyle Helton and Vetola Parker.
Thursday Truman and Bettie Zybach visited the Clarence Zybachs. Bettie spent the day with them.
Sunday was a week ago Clarence and Irene, Truman and Bettie Zybach, Rudy and Stephanie, Mike and Melody Goad and Shane, Gay and Lori Young visited the R. L. Zybachs.

Here & There

Our neighbor Mrs. Arite
Breakfast For Cotton Farmers
Breakfast for cotton producers in the area will be served Monday morning Oct. 29 at 6:00.
The purpose for the breakfast will be to determine the interest in opening the Wheeler Gin this year.
The breakfast is free.
Greenhouse has not been feeling so well the last few days but she has been cheered by visits from her great grandchildren of Eld City. The Monroe Pages are the parents. Also, her niece Mrs. Dolly Jo Hanning of Vernon dropped in Sunday after noon. Mrs. Hanning also visited her sister Mrs. Ruth Hathaway in Mobeettie.
The Glen Williams of Mountainair, N.M. are here for awhile. They certainly have had beautiful weather to looking after their interests here.
We had a "grocery shipping chat" with Weldon Sanditer the other day. The Sandefers are old-timers of Wheeler but have been living in Kermit several years. They came back to Wheeler several months ago. Weldon says they are very happy to be living in Wheeler again and that it really feels like home. In fact they have been looking forward for a long time to living in Wheeler again.
Your writer's plans for a family gathering on the past weekend somewhat fizzled. But we did enjoy a visit from our brother Lee Wimberly, and wife, Able, who live

in Rudiso, N.M. Guess what they brought. Apples - Han do Valley apples but right out of their back yard. On Sat. afternoon friends who have visited the Wimberlys in Rudiso dropped in for coffee. They were Grace Porter, Vida Brown, Mary Finsterwald and Reba Wofford. We had a great time.
From Last Week: Mrs. Aline Christian, of Shawnee, Okla. has been visiting The

Price Rep. To Visit Area

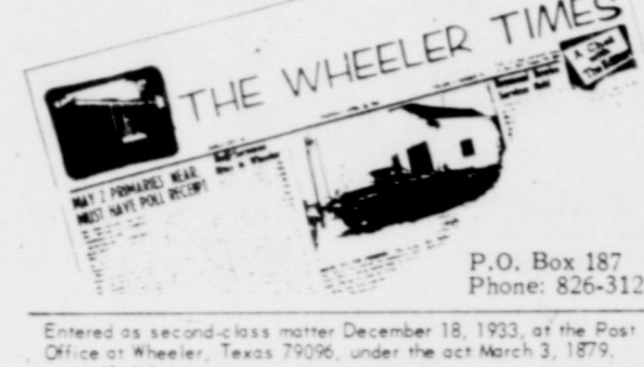
Gene Hanks will be in this area representing Congressman Bob Price on Oct. 30.
He invites everyone to come out and meet with him.
His schedule is as follows: 9:00 - 11:00 A.M. Lefors at the Hill Top Cafe 12:00 - 1:30 P.M. McLenn at the American Nat'l Bank 2:30 - 4:00 P.M. Shamrock at the Farmers & Merchants Bank 4:45 - 6:15 Wheeler at the Prod. Credit Office
Rica Keelin and Tammie, Diana Parker and Sherry Ming and Bobbie went to Pampa and shopped Sat. afternoon.
Travis and Rosalie Keelin ate dinner Sunday in Wheeler with the Gene Keelins. Others there were Jimmy and Elaine Keelin and children.
For the ones away, our weather is perfectly beautiful.

Stark Nursery Stock

Call or Write R. StJOHN Mobeettie, Texas Phone 845-2353

THE BUSINESS DIRECTORY

Published Every Thursday at Wheeler, Texas, By...
TEXAS PRESS ASSOCIATION
MEMBER 1973



P.O. Box 187
Phone: 826-3123
Entered as second-class matter December 18, 1933, at the Post Office at Wheeler, Texas 79096, under the act March 3, 1879.

Wheeler Plumbing Service
ROTO-ROOTER SERVICE
LARRY JENNINGS
Phone 826-5559
(If no answer, Phone 826-5214)

WRIGHT FUNERAL HOME
24-Hour AMBULANCE
Phone: 806-826-5214

Wheeler Lodge No. 1099 A. F. & A. M.
MONDAY 7:00 P. M.
Percy Farmer, Sec'y.
Members Urged To Attend.
Visitors Welcome.

Wheeler Lumber Co.
Aluminum Self-Storing Storm-Screen Windows
Permanent year-round protection. Changeable from inside. Easy to clean...proofer...Eliminates drafts...Cuts fuel bills...
WHEELER LUMBER CO.
Phone 826-5543 Wheeler, Tex.
Fine Service for Fine People

ZENITH TV - RADIO SALES & SERVICE
Call 826-5769
Wheeler Radio & Refrig. Service
L. C. Laflin, Owner

GARRISON SERVICE
Phone: 826-5515
Wheeler, Texas

TRACTORS - IMPLEMENTS PARTS AND SERVICE
HIBLER IMPLEMENT CO.
Wheeler, Texas

Let Me Write It...
GEO. RICHARDSON
All Types Of INSURANCE

CUSTOM DRAPERIES
Swags, Cornices, Shutters
We Install Free
Tel 256-3652
Branonns Decorators
Shamrock, Texas 79079

Louis C. Stas, Owner and Publisher
Subscription Rates
Wheeler County\$3.50
Outside County\$4.50

FOR ALL YOUR Farm Supply Needs
WHEELER CO. PRODUCE
Wheeler, Texas

WHEELER REDI-MIX
REDE-MIX CONCRETE SAND
Washed Gravel - All Sizes
Office Hours: 7:30 to 5:00
Phone 806-826-3223

Dr. Marion Roberts
OPTOMETRIST
112 W. Kingsmill
Pampa, Texas

GUARANTEED AUTO GLASS INSTALLATION & Body Repair
GARRISON SERVICE
Phone: 826-5515
Wheeler, Texas

Dr. M. V. Cobb
CHIROPRACTOR
Specializing In The Examination And Treatment of Spinal And Nervous Disorders
256-2133
310 South Main
Shamrock, Texas

Card of Thanks
We wish to thank the Allison Community for the beautiful pot plant in memory of Mr. Harrison's brother, Walter Harrison of Pea Ridge Arkansas.
May God bless you all.
Mr. and Mrs. Bruce Harrison
Maudie Harrison

ONE STOP SHOP

204 E. Texas Street
High Time Ceiling Alarm Clock \$29.95
Bathroom Tissue Holder Radio \$11.95
Elgin Clock Radio \$69.95
Transistor Headphone Radio \$19.95
Hours: 8:00 till 10:00 A.M. Monday thru Saturday

Blakemore FRESH PROTEIN FED CATFISH

"Dressed While You Wait"
BLAKEMORE MOTOR CO. BUILDING
Phone 253-3287
400 North Main Shamrock, Texas 79079

BUTCHERING & PROCESSING PRICES

Beef processed, double wrapped 9¢ per pound
1¢ A Pound for Butchering
Pork processing including curing double wrapped 11¢ per pound
\$4.50 A head for butchering
We butcher Monday thru Friday 8 to 12 A. M. except holidays.
CALL FOR QUARTER - HALF - WHOLE BEEF PROCESSED
WE NOW HAVE CUTS OF PORK AND BEEF FOR SALE
SHAMROCK SLAUGHTER PLANT
N. of City Phone 256-3241
Closing at Noon on Saturday

NOTICE

Opening of Farmers Hog Mkt.
At Brashers Sale Barn
1 Mile North on Highway 83
Shamrock, Texas
Bob Richie, Hog Buyer
Phone 256-2540
Open Every Thursday, 8:00 A.M. - 4:00 P.M.
WE BUY ALL TYPES OF HOGS

Gordon Whiteners, Gl... Williams and the Wel... Sandefers. These peop... are Mrs. Christians... and nephews.
The Marl Jacobs have their guests Mr. and Mrs. Blair (Ollie's sister) Yucca Valley, Calif., weekend Jaco's daughter, Lavell Stephens of Okla. City and Janice and Marr and boys of Zimo were here.

Reynolds attended funeral of his brother W... Reynolds at Marlton, Ark. Thursday of last week.
Weekend guest in the Reynolds home were Reynolds f the Golden Spread Rest Home in Rock, Mr. and Mrs. Reynolds of Lincoln, Ark., Novella Crossie Okmulgee, Okla. Marcel Cooly and Ruby Carter Tulsa, Okla., Wayne Reynolds, and family from Amarillo, Durwood and family from Canton and Gary Hall and family from Dumas with Mrs. Alton Barber.
Mrs. James Hall and Lester Levitt attended County Singing at the County Center in Wheeler day afternoon. The meeting will be at 11:00 the third Sunday in November.
Mrs. Ruby Robinson Erick accompanied Mr. Zack Miller to Midland, Texas to Portales, N.M. last week where they are relatives.
Jim Miller who is a student at Stillwater spent the weekend with his folks.
Mr. and Mrs. Bruce Harrison attended the funeral of his brother Walter Harrison at Pea Ridge Arkansas Oct. 10.
Miss Donna Miller is and back in school recovering nicely from her recent illness. Glad to be back home again.
Mrs. Lee Kiker returned recently from the Hemphill Memorial Hospital in Canadian where she was confined with pneumonia.
Mrs. Doris Newton Mrs. Millard Donaldson visited relatives in Amarillo recently.
Rev. Jerry Ralston attended the funeral of his mother at San Angelo.

Allison News

By Edith Levitt

Many have been asking about no Allison News in the Wheeler paper in the past five weeks but your reporter was at McAllen with the Roy Langford family 'I'll try to make up for it now that I'm home again.'
"Sorry about that."
Mr. and Mrs. Lloyd Jones went to Temple, Texas Wednesday to be with Mr. and Mrs. John Jones. John had major surgery and is doing fine. His address is Scott and White Hospital, Room 516, Temple, Texas.
Mr. and Mrs. Lee Kiker accompanied Mr. and Mrs. Richard Kiker and Kimberly to Amarillo Monday where Kimberly underwent dental surgery.
Lyn Brown and family from Dumas were Saturday guests in the C.W. Boydston home. Also on Sunday Mr. and Mrs. Sam Bradley and Mr. and Mrs. James Bradley of Pampa were dinner guests.
The Kenneth Chandlers accompanied his aunt (Susie Brantly) to her home in Temple, Okla. Friday and brought back the parakee birds they are raising now for a firm there. They have constructed a new building east of their house to keep the birds in. Mrs. Valorie Young and Angel from Canyon spent Thursday with the Chandlers and Angel remained over a week.
Rev. Virgil Cornwell and family were dinner guests in the Bruce Harrison home Sunday.
Mrs. Nettie Walsh is spending a few weeks at Dumas and Amarillo with relatives.
Mr. and Mrs. James Hall returned home last week from Tennessee where they visited relatives for a week. James hadn't been to his hometown since he was 5.
Mrs. Edith Levitt attended the funeral of her sister Mrs. Dewey Gibon Smith at the Calvary Baptist Church in Ganyon Monday of last week. Lynn Levitt accompanied his mother to Allison after the funeral.
Mr. and Mrs. Rex Miller spent last week at Lake Falcon on the south Coast. They met W.A. Crenshaw there and did some fishing. Mr. and Mrs. Clyde Dukes went down Saturday for a week of fishing with the Crenshaws.
C. and Keith Boydston Pete Gilmer and Kenneth Chandler are at Port Isabel this week on a fishing trip.
Mrs. Edna Begert went to Stinnett recently where she met the Dean Lieb family and they went on to Red River and spent the weekend on an outing.
Edna Begert and Hazel Miller were in Sayre, Okla. Friday on business.
Mrs. Edyth Donaldson spent last week in Dumas with her daughter Mrs. Mae Morse and family.

Hear about the hunter who went thru the whole state without an injury, and while cleaning his gun at home, shot off his big toe. We suggest that hunters cure a Hunters Accident Policy from the John C. Vise Agency.
JOHN C. VISE AGENCY
COMPLETE INSURANCE SERVICE
WHEELER PH. 826-5511

after you see your doctor...
bring your prescription to
RHYLAND'S PHARMACY
PH 826-5561
Highway 83 So. Canadian, Texas Phone 323-6499

THE WHEELER COURT
INSTRUMENTS IN THE OFFICE COUNTY CLERK ACT CLERK OF COUNTY FROM OCTOBER 15, 1973
AGENT T J Pui
Harry Wofford
16 Blk A-4
16 Blk A-4
16 Blk A-4
16 Blk A-4
16 Blk A-4
16 Blk A-4
Francis Farm
Rains Osborne
16, 1973
Morris Anisman
16 Blk A-8 (Pt Sul
16, 1973
L R Beesley
Public 10-1-73 P
BNO Ry Co Sur I
Helen Beesley
Public 10-1-73
Sec 4 T&NO Ry
Wheeler Cemetery
C Vise 9-13-73
16 Blk 11 Blk
Ross H Scott
9-17-73 AI
16 Blk 4
16 Blk 5
10-12-73 N1/2
Louise McK
9-19-73
16 Blk 1
Citizens Bank
to James Bagg
10-12-73 N1/2
Albert F Walke
Gerrill Adams et al
17, 1973
TAX LIEN - F
etal to State
10-16-73
A Horan et ux
13 Shamrock, I
W Whiteley et
Gas Pipeline C
10-16-73 60 ft
16 Blk 2 AB&M
RESOLUTION - I
rent Corporation
Pendleton Jr. 10
Irish Investmer
Walter Pendlet
16 Blk 13
16 Blk 13
Wheat Cemen
Investment Co
16 Blk A-4
Walter Pendleton
Natl BK of Sh
73 Mins S1/2SW1/4
16 Blk 13
16 Blk 13
16 Blk 27
D L Lakey to M
10-16-73 SE1/4S
16 Blk A-7
L J Jones et ux
Oil and Gas Co
16 Blk 17 Blk
AL DIV ORDER
et ux to L L Jo
10-3-73 Blk L
ATTY - J A W
Welch 10-17-7
ATTY - Mattie
Welch 10-17-7
18, 1973
ecil J Denson et
P Adams et ux
7, 8, 9 Blk f6
They Addn
T - Fannie Bro
A. & E. MOBILE HOMES
Highway 83 So. Canadian, Texas Phone 323-6499

Court Records

INSTRUMENTS IN THE OFFICE OF COUNTY CLERK AND DEPUTY CLERK OF DEWITT COUNTY, FROM OCTOBER 15 TO OCTOBER 19,

15, 1973
 DEPUTY AGENT -
 Co to T J Pujol
 10-17-73
 Harry Wafford to
 Inc. et al 9-21-73
 Sec 16 Blk A-4
 Vise et al to
 9-18-73 N100
 Sec 16 Blk A-4
 M Cotton, Trustee
 Fuller 10/9/73 N100
 Sec 16 Blk A-4
 Farmers & Merchants
 Bank et al to
 10-11-73 W80ft of
 Lot 4 Blk 38 Sham-
 rock
 Francis Farrey
 Rains Osborne
 et al 10-11-73 Sec
 24
 Vance Boydston et
 al, Roebuck and
 10-11-73 Lots 10, 11 Blk 6
 K Davidson et
 al 10-11-73
 F Spawls et al
 10-11-73 Blk A-8 (Pt Sub Div
 16, 1973
 Morris Anisman et al
 10-11-73 Blk A-8
 N-SW 1/4 Sec 11 Blk
 46 NE 1/4 Sec 11 Blk
 46 NE 1/4 Sec 42
 L R Beesley et al
 Public 10-11-73 Pt
 10-11-73 Ry Co Sur (NW
 Helen Beesley et
 al 10-11-73
 Sec 4 T&NO Ry Co

et vir to Eleventh Street
 Baptist Church, Shamrock
 10-17-73 Pt Blk 58 Shamrock
 AOL - GHK Company to
 Wren Oil Company 8-17-73
 SW 1/4 22, S120 ac W 1/2 & SE 1/4
 NE 1/4 & SE 1/4 23 SE 1/4 37 SW 1/4
 39, 20 ac NW 1/4 & NE 1/4 38 Blk
 A-4
 AOL - Gasnadarko, Ltd
 to Wren Oil Co 8-17-73 SE 1/4
 & NE 1/4 & SW 1/4 NE 1/4 23 Pt
 SW 1/4 37 A-4
 ASSIGN OVERRI D ROY -
 The GHK Company to Wren
 Oil Co 8-17-73 S 1/2 Sec 4 Blk
 H & Sec 4 Blk E
 MD - Sharon Kay Lane to
 George W Arrington et al
 10-15-73 All my int E 1/2 23
 E 1/2 23 RE
 D - G R Sewell et al to
 William R Bueham et ux
 10-16-73 N 3 'S75' Lot 2 B, k
 37 Shamrock
 AFF - Mary E Beldoe et
 al to James Albert Lisle et
 ux 8-14-73
 AFF - Re Lummus et al to
 Ray Goodwin et ux 8-14-73
 AOL - Amarillo Oil Co to
 Yucca Petroleum Co et al
 10-6-73 Sec 24 W 65 1 ac 26
 Camp Co Sch L
 OL - Donald L Schwab et ux
 to Harry Wafford 9-21-73
 N 1/2 NE 1/4 Sec 14 Blk Ag 4
 CD - Wheeler Community
 Cem Assn to Mrs. Charles
 O Ellis 10-18-73 SW 1/4 Lot 3
 Blk H-11
 Wheeler Cemetery First Add
 October 19, 1973
 DT - Carroll P Adams et ux
 to Cecil J Denson 10-1-73
 Lots 7, 8, 9 Blk 46 Wheeler
 Stanley Addn
 DT - Carroll Adams et ux to

First Natl Bk Wheeler
 10-17-73 140'x75' SW 1/4 SE 1/4
 6A-4
 40LS - Minco Oil and Gas
 Co, Trustee to Minco Oil
 and Gas Co 10-16-73 B 1/2
 17SE 1/4 NW 1/4 19 Blk L & NW 1/4
 Sec 49 Blk A-7
 D - J B Logwood to Mary
 Jane Logwood 10-8-73 Pt Blk
 16 TAX RECEIPTS on
 Britt Ranch
 D - Milford H Shankles et
 ux to Richard L Weither et
 ux 10-18-73 S 1/2 2/3 ft Lots
 6, 13 Lots 7, 12, N 1/2 23 Ft
 Lots 8, 11 Blk J Shamrock
 Potts addn
 DT - Richard L Weither et
 ux to United States of
 America 10-19-73
 District Clerk's Office
 No. 6909 Dudley M Hargrove
 vs O B (Pete) Burton 10-16-
 73 Suit for Damages
 No. 6910 Sandra Mayden
 Meade vs Charles Ray Meade
 10-18-73 Divorce
 No. 6912 Jerome Clemens
 Eggeneyer 10-18-73 Neg-
 lected Child
 Marriage License Issued
 Henry Houston Reese and
 Helen Langston Cozar
 10-15-73
 Raymon Arthur Steward and
 Wilma Jean Morris 10-19-73

Calling the McCraws this
 weekend were their children
 Mrs. H.B. George of Amar-
 illo, Mrs. H.C. Calhoun of
 Post, Inez McCraw of Mem-
 phis, Mr. Odis McCraw of
 Rogers, Ark. Spending the
 weekend with the C.V.
 McCraws were their daugh-
 ters Mr. and Mrs. Millard
 Sanders of Midland and
 Inez and Mrs. Annie
 Hamilton of Memphis.
WANTED: Babysitting in
 my home day or night. Mrs.
 A.E. Connell 826-3172 rtn

Mobeetie News

By Melba Burch
 Tince Williams entered
 Highland General Hospital
 on Sunday. We hope he is
 soon able to be home.
 Our sympathy goes out to
 Mrs. Shackelford on the
 death of her sister Mrs.
 Annie Wyatt of Pampa.
 Our sympathy goes out to
 Mr. and Mrs. Jim Patton
 and family on the death of
 Jim's grandfather Mr. Mason.
 Mr. Mason had been a visitor
 several times in our com-
 munity.
 Mrs. Claudia Quarles
 visited in Pampa Sat. with
 her sister Mrs. Pauline Kerr.
 Mrs. Novella Simpson and
 Mrs. Fern Turnbow went to
 Abilene Sunday to see Mr.
 and Mrs. Jimmy Simpson and
 family. Jimmy had just re-
 turned from Thailand. He
 will be stationed in New
 York State now.
 Harold Loyd Lee's hay
 barn burned to the ground
 Monday.
 Glynda Leatherman and
 Melba Burch were hostess
 for a slumber party Sat.
 night for Melody Burch
 at Glynda's home. Those
 attending were Glenda
 Sherrell, Carol Seitz, Liz
 Ann Allen, Debra Anderson
 and Melody Burch.

Melba Burch visited Tues
 and Wed. in Amarillo with
 Mr. and Mrs. Jerry Rector
 Lynn Steyten and Amy and
 Mr. and Mrs. R.C. Beals,
 Richard, Chris, Debbie,
 David, Junie and Robbie.
 Marilyn and Melba went to
 Hereford to get Jerry. He
 was involved in the crane
 wreck on Santa Fe tracks.
 He was only bruised. He
 ran out from under the crane
 before it fell off the tracks.
 Mr. and Mrs. Ted McCurley
 visited her mother in Wim-
 wood, Okla. over the week-
 end.
 Mrs. Holland is in Park-
 view Hospital. We hope she
 is soon home.
 Mr. and Mrs. Gene Harrison
 attended to business on
 Monday in Amarillo.
 Arzia Corcoran was in-
 jured Sun. when his horse
 fell with him. He is in
 Amarillo in the hospital. He
 underwent surgery for an
 injured shoulder.

Mr. and Mrs. Grady Wat-
 son, Sheryl and Darryl of
 Amarillo, Cary Johnson,
 Jack and Jessica of Dumas
 visited over the weekend
 with Mrs. Eula Johnson.
 Mrs. Eula Johnson re-
 ceived word that her stee-
 mother Willie Morris Witt
 of Porterville, Calif.
 passed away Mon. afternoon
 Our sympathy goes out to
 her.
 Mr. and Mrs. Phil Cor-
 coran visited Sunday with
 their granddaughter Mr. and
 Mrs. Bill Tigerett of Perry-
 ton.
 Visiting Friday with
 Mr. and Mrs. Phil Corcoran
 was her brother, Mr. and Mrs.
 Lawson Graham of Tacum,
 Texas.
 Visiting Saturday night
 with Mr. and Mrs. Phil Cor-
 coran was Mr. and Mrs.
 Lowell Groves and Phillip
 of Pampa, Mr. and Mrs.
 Earl Barnes, and Mr. and
 Mrs. Ray Corcoran and
 Connie of Wheeler.

Mrs. Sylvia Corcoran and
 Connie of Wheeler visited
 Monday with Mrs. Mary
 Margaret Quarles and Kelly.
 Mrs. Melba Burch visited
 Wed. in Pampa with Mrs.
 Barbara Rector, J.D. Sack-
 ett and Mrs. Adaline Wisdom.
 Mrs. Nancy Shelton,
 Cendie and Teresa visited
 Sat. with Mr. and Mrs. Wheel-
 er Corwile.
 Joe Shelton of Borger
 visited in Mobeetie Thurs.
 Mrs. Wilber Beck and Mrs.
 Glynda Leatherman and
 Allen visited Mon. in Pam-
 pa with Mr. J.D. Sackett.

Rev. and Mrs. L.V. Grace
 Lester Hathaway, Mrs. Wil-
 ber Beck, Allen Leatherman,
 Mrs. Lorene Rector, Mrs.
 Selena Vernon Mr. and Mrs.
 Toman Scott, Mrs. Mollie
 Selby and Mrs. Bessie Gal-
 mar attended North Wheeler
 County Singing at Wheeler
 on Sunday.
 The St. Mark's C M Church
 of Pampa was in charge of
 the Sun. night services at
 the First United Methodist
 Church. There were 28 of
 their members present. They
 filled the choir and Rev.
 Gilbert preached the ser-
 vice. Everyone enjoyed

the service. Thre were also
 visitors from Gageby,
 Wheeler and Briscoe.
 Visiting with Mr. and
 Mrs. Tince Williams was his
 sister Christine of Fort Worth
 Mr. and Mrs. Jerry Jones
 of Wheeler visited Friday
 with Mr. and Mrs. Butch
 Leatherman and Allen.
 Mr. and Mrs. Johnny New-
 man of Pampa visited Sat.
 with Mr. and Mrs. Jess
 Paterson and Mr. and Mrs.
 Dulmar Newman and family.
 Mr. and Mrs. Ronnie Stuart
 of Sayre, Okla. visited with
 Mr. and Mrs. Calvin Stuart,
 Randy, Dennis, Mrs. Thema
 Dunn, Mr. George B. Dunn,
 Mr. and Mrs. Paul Hath-
 away and Mr. and Mrs. Cecil
 Martin attended the Dallas
 Cowboy ball game in Dallas
 on Sunday.

Stetson Hats
 Western or Dress
20% off
McIlhenny
 DRY GOODS
COMPLETE
INSURANCE
COVERAGE
 John C. Vise Agency
 117 W. Texas Street
 Wheeler, Texas

Dr. Jack L. Rose
OPTOMETRIST
 121 Main St. - Shamrock
 Phone 256-3203
 Tues. 9-5 Fri. 2-5

FOR WEAR ON CONCRETE
 In stock, no
 waiting. Come cushion your feet.
RED WING
 Also available with steel toe
LANCASTER
 DEPARTMENT STORE
 Sure cure for
5 o'clock
 feet

THE TREAT'S ON US, FOR...
HALLOWEEN
 Sirloin or Round
STEAK
\$1.19
 Lb.
BACON
 LONG HORN
\$1
 24 10 oz. Btts
 or 1 Case
 With Bottle Deposit

ALL KINDS
8-Track Western
Stereo Tapes
2.99 **\$2.39**
 Each

ICE CREAM BORDEN'S
 MORTON'S Turkey, Beef & Chicken
POT PIES 3 8 oz. Pkgs. **89¢**
 SUNSHINE SALTINE
CRACKERS 16 oz. size **49¢**
 WHITE SWAN
COFFEE 1 LB. CAN **\$1.09**
 MEADS
Honey Crushed Wheat Bread Loaf **43¢**
 WHITE SWAN
PORK & BEANS 4 15 1/2 oz. Cans **\$1**
 WHITE SWAN
CUT ASPARAGUS 2 14 1/2 oz. Cans **98¢**
POTATOES 10 Lb. Bag **79¢**
CARROTS 2 1 Lb. Cello Bags **29¢**

Dr. L. J. Zackry
Optometrist
 announces the removal
 of his office to
Combs-Worley Bldg.
 (Ground Floor)
 Kingsmill Street Pampa, Texas

AUCTION SALE
 Located: 2 Miles East of Wheeler, Tex., then 3 1/2 miles
 North to cattle guard on right, then 1/4 mile East over hill.
 Watch For Sign
SATURDAY, NOVEMBER 3, 1973
10:30 A.M.

FARM MACHINERY
 sets on drawbar with hydraulic control
 1 - 7 ft. John Deere Mower
 1 - 5 ft. 908 Ford Brush Beater, with 3 Point Hitch
 1 - Sulky Rake
 1 - Old Row Binder on Rubber
 1 - 8 ft. Dempster Windmill Fair Condition
 1 - 12 ft 2 Wheel Trailer With Flat Bed
 1 - 12 ft. 4 Wheel Trailer With Grain Bed

MISCELLANEOUS
 2 - Lawn Chairs
 2 - Inside Doors
 1 - Good Screen Door
 1 - 10" G.E. Electric Fan
 1 - Portable Porcelain Bath Room Commode
 Several empty clean fruit jars.
 1 - Dormeyer Electric Mixer
 1 - Circulator Fan
 1 - 20" self Propelled Lawn Mower
 Carpenters Hand Saws, Square, Hammers, Axe, Pick, Cotto Scales, Tin Snippers, Boomer, Pipe Wrench, Hoof Nipper, Nail Bars, Forrel

Pump, 8 - Metal Barrels, Coke Box, 2 - 20 ft. Log Chains, 3 Shorter Log Chains About 4 Fishing reels and rods.
 80 ft 3/4" Galvanize Pipe
 2 - Roller Colters
 5 - Metal Hog Troughs
 1 - Roll hog Wire 30" high
 1 - Set of Dehorners and nose Leader for Cattle
 1 - Western Field, Bolt Action Repeater
 1 - 22 Rifle

CATTLE
 100 Bales Love Grass Hay in Barn
 1 - White face Cow, 2 yr old with White Face Black Heifer Calf by side
 3 - White Face Heifers Coming 2 yr. old
 1 - Black with White Face Heifer Coming 2 yr. old
 1 - Black Angus Heifer Coming 2 yr. Old
 The Above are pasture bred to Angus Bull.
 2 - Angus Steers
 2 - Angus & Holstein Steers mixed
 1 - Angus & Holstein mixed Heifer
 1 - Red Heifer
 2 - Red with White Spots Heifers
 1 - White Face Heifers The above weight 450 to 550 lbs. each. 1973 calves.

Terms: CASH
 Lunch will be served
Mr & Mrs. M. V. Callan, Owners
 AUCTIONEERS
 Shelby Pettit Wheeler, Texar
 Harvie Hartley Charlie Hartley
 Paul Topper Clerk & Real Estate

A. & E. MOBILE HOMES
 Highway 83 So.
 Canadian, Texas
 Phone 323-6469



WHITE, DECORATED, SOLID OR ASST. COLORS

BOUNTY TOWELS

3 JUMBO ROLLS \$1



5¢ OFF LABEL
12-oz. SIZE

PALMOLIVE LIQUID DETERGENT

19¢

Try Our Golden Brown "Broasted" CHICKEN Ready to Eat One Whole Fryer ONLY **\$2.19**

Doverstone Fine Imported Stoneware. WITH EACH \$5.00 PURCHASE

Cup 49¢

MIRRO ELECTRIC CORN POPPER EACH **\$7.99**

The Living Bible It's easy to read! \$6.99



no tricks just treats at

THRIFTWAY

AFFILIATED

Effective Oct. 26, 27, 29 Fri., Sat., Mon.

Jimmy Dean **SAUSAGE** Pure Pork

We Reserve the Right to Limit Quantity

ARMOUR'S GOLDEN STAR USDA GRADED 'A' YOUNG **SELF-BASTING TURKEY** 16 to 18 LB. AVERAGE

LB. **69¢**

SHURFRESH **CANNED HAMS** 3-LB. CAN

EACH **\$4.29**

12 oz. Pkg. **89¢**

24 oz. Pkg. **\$1.79**

WILSON CERTIFIED **SLICED BACON** 1-LB. PACKAGE

EACH **\$1.29**

SLICED 1/4 - 9-11 PER. PKG. **PORK CHOPS** LB. **98¢**

RIB PORK CHOPS CENTER CUT LB. \$1.19

LOIN PORK CHOPS CENTER CUT LB. \$1.29

SPARERIBS COUNTRY STYLE LB. 89¢

PORK ROAST RIB HALF LOIN LB. 89¢

PORK ROAST LOIN HALF LB. 99¢

BOOTH FROZEN **CATFISH FILLETS** LB. 89¢

BOOTH FROZEN **PERCH FILLETS** LB. 79¢

SLICED SELECT, SKINNED & DEVEINED **BEEF LIVER** LB. 99¢

GOOCH GERMAN SMOKED **SAUSAGE** LB. 99¢

WITH 35¢ COUPON IN AD MAXWELL HOUSE **COFFEE** 2 LB. CAN **\$1.69**

HUNT'S **WHOLE PEELED TOMATOES** 14 1/2-oz. CANS **\$1.59**

Fireside **SALTINES CRACKERS** 16-oz. BOXES **\$1.39**

Check & Rated **SUGAR** SHURFINE PURE CANE FIRST ONE... 5-LB. BAG **69¢**

Check & Rated **POP CORN** SHURFINE YELLOW 2-LB. SIZE **29¢**

Texas New Crop **Oranges** 5 lb. Bag **59¢**

Texas Ruby Red **Grapefruit** 10 lb. Bag **79¢**

Shurfresh Grade "A" **EGGS** 10 Medium Dozen **69¢**

SHURFRESH SWEETMILK OR BUTTERMILK **BISCUITS** 10-CT. CANS **99¢**



Tom Scott **Mixed Nuts** 13 oz. Can **89¢**

Minute Maid Frozen **Orange Juice** 12 oz. Can **49¢**

Check & Rated SHURFRESH **COTTAGE CHEESE** 30-oz. CTN. **89¢**

25¢ OFF LABEL **PRELL LIQUID SHAMPOO** 11-oz. SIZE **79¢**

Check & Rated **NyQuil** Vicks' 6-oz. SIZE **\$1.19**

Check & Rated **Excedrin TABLETS** 36's **69¢**

Check & Rated **Vicks' FORMULA 44** 3 1/4-oz. **89¢**

Fields World's Best PECAN PIES \$1.49 with this Coupon

GAINES GRAVY TRAIN DOG FOOD 5-LB. BAG **89¢**

BRIM REG. DRIP OR ELECT. PERK **COFFEE** 1-LB. CAN **\$1.19**

BRIM FREEZE DRIED **COFFEE** 4-oz. JAR **\$1.39**

WITH COUPON **TIDE DETERGENT** KING SIZE **\$1.29**

Contadina TOMATO SAUCE 8 8-oz. CANS **\$1**

PRITCHARD'S SHAMROCK & WHEELER Double S&H Green Stamps Wednesday with \$2.50 Purchase

TIDE DETERGENT KING SIZE **\$1.29**

MAXWELL HOUSE COFFEE 2-LB. CAN **\$1.69**