

THE WHEELER TIMES

VOLUME NUMBER 40, NUMBER 18

THURSDAY, APRIL 12, 1973

SINGLE COPY 10¢

AREA ELECTION RESULTS

City, School, Hospital Elections Held Saturday, April 7, In Area

Wheeler Briscoe

Wheeler voters elected two men to the School Board and three members to the Wheeler City Council.

One hundred and ten votes were cast in the City election. Three members were to be elected to the city council. Elected were Tommie Hennard, 100 votes; Glen Markham, 99 votes; and Bill Owen 83 votes.

In the school election, two names were on the ballot. Larry Jennings received 87 votes for position 5 and Bob Patterson received 89 votes for position 4. In a write-in campaign, Tom Edwards received 48 votes for position 4 and 18 for position 5 and Darrell Moore received 59 votes for position 5 and 19 votes for position 4.

Fifty votes were cast for Cantrell as trustee-at-large for the county.

Briscoe voters had two elections in which to cast ballots Saturday, April 7. Three members were to be elected to the School Board with a representative to be elected to the Hospital Board.

Four names were printed on the ballot for the school election. Three of these names received the largest number of votes with four names being written in. H.S. Austin received 67 votes; Grant Meek received 64; Eddie George, 53 and Mrs. LaJuana Puryear, 21. Write-in votes were received by Wayne Meek, R.L. Davis, Lou Dean Douthit and Hefley.

Cantrell received 54 votes for County School Trustee at large and Caldwell received 59 votes for County School Trustee.

Elected to represent the Briscoe Community on the Hospital Board was Herbert Finsterwald.

Rites Are Read For O. Johnson

Funeral services were held Wednesday, April 11, 1973 at the First Baptist Church, Wheeler, 2:30 p.m. for Mrs. Ophelia Johnson, 82, who passed away Monday, April 9, 1973 at North Plains Hospital in Borger after an illness of several months.

Rev. Aaron Laverty, Mobeetie, officiated at the services. Mrs. Johnson was born April 29, 1890 in Purdy, Oklahoma to Mr. and Mrs. J.O. Kelly. She was married to James H. Johnson, Sr. on Nov. 15, 1915 in Erick, Oklahoma.

She had lived in Wheeler County since 1939 and had been a resident of Mobeetie most of that time.

She was a member of the First Baptist Church, Borger, and the Order of Eastern Star, Mobeetie.

She is survived by two sons, Russell K. Johnson of Pensacola, Fla., and Jim Johnson of Borger; two sisters, Mrs. Zack Miller of Allison and Mrs. Minnie Weiss of Garnett, Kansas; 3 grandchildren and 1 great grandchild.

She was preceded in death by her husband in Sept., 1959.

Serving as pall bearers were Clifford Farmer, Rex Miller, Johnnie Reed, Domer Reed, Jim Helton and Kelly Miller.

Interment was in the Wheeler Cemetery under the direction of Wright Funeral Home.

CHAMBER TO MEET

Community Bldg. Is Chamber Topic

The April meeting of the Wheeler Chamber of Commerce will be held Tuesday, April 17 at Nora's Cafe. The community building committee will present the plans for the remodeling of the Old Hospital and utilizing the structure for a community building, library and city offices.

At the March meeting, a plan was presented for the construction of a new building. A committee was appointed to do further study into the possibility of remodeling the existing structure; it was requested the committee have bids available for the April meeting.

Since the March meeting, the committee has located plans for the existing building and rearranged the building to house a banquet room-32 x 84 with adjoining kitchen, a meeting room, City Council room which will also be utilized for other meetings, a large library with adjoining kitchenette and a city office which is large enough to be used as more than one office if necessary. The drawing of plans is being completed, but the plans have not been submitted for bids.

Chamber members and persons interested in seeing the completion of this project are urged to be present at the Chamber meeting.

If you plan to attend, you are asked to call Jane Thomas at 826-5579 by noon Tuesday.

Chamber members and persons interested in seeing the completion of this project are urged to be present at the Chamber meeting.

If you plan to attend, you are asked to call Jane Thomas at 826-5579 by noon Tuesday.

NOTICE

A complete rundown on district and regional track competition will be carried next week.

Here & There

BY: Laura Guthrie

The subject of voting is fresh on our mind. So we will say a few words about it. We all know that voting is a privilege; it is a legal right; it is lending a voice; it is giving an opinion; it is endorsing a candidate; it is approving or rejecting a proposal; it is giving confidence without it we would be in the grip of anarchy. We in America cherish it. But how many accept its privilege and responsibility? What would be our reaction if this right was taken away? But do we exercise this right?

As an answer, take the local election just past. It is with shame that we have to report how few participated. We make a survey of our downtown businesses--those within a four block area. Only one third of these businesses - we repeat ONE THIRD, even sent a representative to the city pole. A few of the business heads voted. Some were represented by a clerk, or the wife. TWO THIRDS of the four-block area were not represented. Granted no big issues were at stake. But what about those that serve? Don't you think that they would like to know that we have confidence in them? Somebody has to do the job or our city would revert to nothing.

Our city is one of the nicest small towns that you can find. We have efficient government. We have plans for development. We want

Continued on Page 7

April Snow, Freeze Hit Area

Wheeler received 4 inches of snow Saturday and Sunday, April 8 and 9. The wind that accompanied the snow piled most of the snow in the roads with drifts as high as 5 feet in some areas.

A low of 22 degrees Sunday and Monday nights put an end to the hopes of a fruit crop for the county.

Wheeler has received a total of 10.78 inches of moisture for the year. The snow netted .42 inches of moisture. 1.07 inches of moisture was received in January, .78 inches in February; 7.38 inches in March and 1.17 so far in April.



Dr. Kit Show Slated

The Great Dr. Kit, black-bearded hypnotist of international fame, will appear at Wheeler High School auditorium for one night only on Thursday, April 26.

This great showman is being brought here by the Wheeler Key Club. Dr. Kit is one of the few living Master Hypnotists who has been 16 years a showman on the road and has continuously broken records in city after city all over Europe, Hawaii, U.S.A., Alaska and Canada.

On his tour throughout Europe, Hawaii, Alaska, Canada, and the U.S.A., he has broken box office records in city after city and has hypnotized over sixty thousand people in the past.

"Professional researchers have been able to achieve remarkable results by applying hypnosis to the treatment of physical and mental ailments," says Dr. Kit.

Hypnosis is the answer to correcting such habits as stuttering, stammering, smoking, biting of finger nails, drinking, weight reduction, plus others.

During the show the great Dr. Kit will demonstrate the Phenomenon of mass hypnosis and actually hypnotizes 20 to 25 local volunteers from the audience at one time.

The hypnotist's show has been described as the most amazing and funniest entertainment sensation to be seen in many years. It is a clean, wholesome show for the entire family.

Advance tickets are priced at \$1.00 and are being sold by members of the Wheeler Key Club. Ticket prices at the door will be priced at \$1.50 for adults and 1.00 for children.

Hospital Notes

Admissions
3-23 Fred Darrell
3-29 Geniva Harris
4-2 Lela Meek
Jewell Leonard
Sylvia Rathjen
Crystal Bradstreet

4-3 H.J. McCormick
4-4 Martin Callan
4-5 Ada Lou Lester
Marvin Pierce
Loubet Moore
Frank Caswell

4-7 Lois Richardson
Erwin Hale
Eugene Clerkley
Evelyn Duker
Sybil Carter

4-10 Marvin Pierce
Claude C. Cox
4-11 Woodrow Carlton
Goldie Gordon
Sharon Arganbright

Discharges
4-4 Lois Richardson
4-5 Edith Owens
Mary Beth Hagan
George Grayson
Clois Traxell
Frank Caswell
Marvin Pierce
Janie Bliss
William Howard, Jr.
Ray Hunt
David Massick
Barbara Ann Jones
Lizzie Rosser
Cris H-I-I
Dorsie Hutchison
Kimberly Hall
Larry Rives

4-10 Beatrice Harville

Mr. and Mrs. Loyd Anglin are spending a week in Apache Junction, Arizona with Loyd's brother, and Minnie Anglin. That might have been a nice place to be during our blizzard.



MEETING: We are very proud of our senior members of the Wheeler High School Band and are sorry this is the last year they can be in the band. Mike Blewins is the band leader. The high school band will play her senior year. I want to thank these two students for being a part of the Wheeler High School Band program. Mr. Tracy

Wheeler Band Boosters to Sponsor Banquet Tuesday Night

The Wheeler Band Boosters will sponsor a banquet to honor the members of the Wheeler High School and High Bands. The banquet will be held Tuesday night, April 17.

Tickets for the banquet will be available through the band members and students at a cost of \$25 per plate.

Prizes earned by the band members for the past year will be presented at the banquet. The students will elect a band king, queen, prince and princess with the honorees being announced at the banquet.

Band boosters, parents and supporters of the band are urged to be present at the banquet. Band members will be the guests of the Band Boosters.

D. Brown Gets Good Conduct

Army Specialist Four Donald L. Brown, son of Mr. and Mrs. Guy Brown, Wheeler, recently was awarded the good conduct medal in Baumholder, Germany.

The medal, established in 1941, is awarded on a selective basis for those who distinguish themselves from among their fellow military personnel through exemplary conduct, efficiency and fidelity during their active military service.

Spec. Brown received the award while assigned as an ammunition handler in Battery A, 1st Battalion, 2nd Field Artillery of the 8th Infantry Division in Baumholder.

Spec. Brown entered the Army in February 1970, completed basic training at Ft. Ord, Calif., and was last stationed at Ft. Sill, Okla.

The 21-year-old soldier was graduated from Estacado High School in 1970 and was employed by Parker Drilling Co., before entering the Army.

Pinewood Derby To Be Saturday

The Pinewood Derby race will be held this Saturday at 2:00 p.m. in the American Legion building. Each Cub Scout will be present with his racer he has carved and decorated. The race, to find the fastest car in Wheeler is a highlight of the Cub activities each year. Come see the boys' handicrafts.

NORTH WHEELER COUNTY SINGING, APRIL 15TH
North Wheeler County singing will be held April 15th from 2:00 to 4:00 p.m. in the Mobeetie church of Christ. Everyone is welcome.

Mobeetie Kelton

Mobeetie voters turned out Saturday, April 7, to elect city officials, a hospital board director and school trustees.

The School Trustee election was the only contested race for the voters. Four names were placed on the ballot with three to be elected. Placed on the school board were Doug Corse, Gordon Estes and Paul Hathaway. The votes received were: Corse, 56; Estes, 43; Hathaway, 40; and Robert Dyson received 26 votes.

A. G. Caldwell received 57 votes for County School Trustee.

Persons voting in the City Election had a blank ballot on which to place the names of their candidate for Mayor, Marshall and five aldermen. Elected to serve as mayor was Calvin Stuart with 28 votes. Henry Johnston was selected to serve as Marshall with 25 votes. Council members are Jimmy Selby, Melba Burch, Walter Coward, Dale Corcoran and Rev. Aaron Laverty. Votes received were: Selby, 28; Burch, 25; Coward, 18; Corcoran, 11 and Laverty, 29. Clarence Dyson and Mrs. Jimmy Selby each received votes in the election.

Fifty-four votes were cast in the Hospital Election. Lester Leonard, who has served on the board of Directors for Parkview Hospital since it was first established, was again elected to represent his community in that capacity.

Allison

Allison citizens elected three members to the school board and a representative for the hospital board. The election was held Saturday, April 7.

Three names appeared on the ballot for School Trustee. Elected to serve on the Allison School Board were Hiram Begert, Larry Elmore and Domer Miller. Each of the three received 14 votes.

Cantrell received 18 votes for County School Trustee-at-Large.

Lewis Grayson again placed his name on the ballot for the Parkview Hospital Board of Trustees. He received 14 votes.

Soil Map Avail. At Conserv'n Off.

A multi-colored general soil map of Texas has now been published and is available for sale to the public, a local conservation official said this week.

Bill Brooks, district conservationist for the U.S. Soil Conservation Service at Wheeler, said the beautiful 36-by-45-inch map can be seen in his office. It shows soil information compiled from years of detailed soil survey work by the Soil Conservation Service in cooperation with the Texas Agricultural Experiment Station.

Brooks said the map lists basic soil information which should be useful to teachers, planners, conservationists, contractors, engineers, developers, realtors, farmers, ranchers, researchers, and others.

The map gives color delineations of the 73 major soil associations (containing 161 separate soil series) in the state and their extent. It also lists special limitations of the soils that affect their use.

Inset maps show rainfall, temperature, and length of growing season across the state. Current and potential urban and rural uses by soil associations are also listed.

Published cooperatively by the Texas Agricultural Experiment Station and the Soil Conservation Service, the map is available in two sheets or printed front and back. Printed front and back, the map costs \$3.00. Printed on two separate sheets, the map costs \$4.00.

For mounting on a wall, Brooks recommended the two-sheet style. For folding and filing, he said the map printed on both sides might be the best.

The map may be purchased from the Dept. of Agricultural Communications, Texas A&M University, College Station, Texas 77843.

Order blanks can be obtained from the SCS office at Wheeler or from the County Extension Agent's office at Wheeler.

Services are Held For Mrs. Reynolds

Services for Mrs. J.A. Reynolds, 83, a Wheeler county resident 34 years were held Tuesday, April 10, 1973.

Mrs. Reynolds died Sunday morning at the Golden Spread Nursing Home in Shamrock, where she had lived the past year.

She had resided in the Allison and Mobeetie communities since 1939. She was a member of the Assembly of God Church in Wheeler.

Surviving are her husband, J.A., a daughter, Mrs. Jinny Davis of Los Banos, Calif.; seven sons, James I. of Lincoln, Ark., Walter of Morrilton, Ark., Elmer of Sunrise, Ariz., the Rev. M.W. of Vernon, Denver of 1627 N. Fairfield in Amarillo, Allen of Allison and Robert O. of Jasper; a sister, Mrs. Annie McNutt of Witts Springs, Ark.; 35 grandchildren and 38 great grandchildren.

THE Resurrection Story Scheduled

The Resurrection Story will be presented April 19 at the Gageby Community church at 7:30. The film and program will be presented by Rev. L.V. Grace. Everyone is invited to attend the meeting.

PERSONALS

James Vise is at home during semester break at Texas University.

Southwestern Georgetown employed independent school a choral

ative group North Texas and is an Vleck school District will take in the event United States Houston

er County Conservator help farmers tillage

ooklet available plains minor il. To get fact the School at Wheeler

MEETINGS 4-H Club will be held Tuesday, April 17. Tickets for the banquet will be available through the band members and students at a cost of \$25 per plate.

Officers and Meeting

Association Production Credit Bank's annual meeting and 50th anniversary celebration at the Houston Hotel.

CA board member parent for 8 hours

White Deer, chairman, N. Hamker of Book-ice chairman, C.B. Henion will meet at Wheeler, High F. and L.F. Etheredge mediaman, and M. Lawrence Perryton.

ry E. Albin of Canadian, president, and D. Gene of Pampa, vice president of your policy

g contact agent for

Congressman, governor president highlight the

bank's meeting

Briscoe News

BY: Vetola Parker

The Oral Heltons received a long, nice letter from Earnest Zybach last week. He was doing pretty good. Planning on coming home. Earnest Zybach's address is 1725 Rio Grande, Ave., Las Cruces, N.M. Some of his friends may want to write him.

Mr. and Mrs. Joe Paul Smith and children ate dinner last Sunday with the parental, Tom Heltons.

Briscoe Community was saddened by the death of Mrs. O.K. Henson of Sweetwater. She was buried Monday afternoon. She used to teach at Briscoe.

Some from Briscoe that attended the funeral were

Mr. and Mrs. Tom Helton, Mr. and Mrs. Jim Helton, Evalyn Meek, Mr. and Mrs. Darville Atherton and Mr. and Mrs. Claud Barker.

Sammie Atherton visited Mrs. Verbon Smith last Thursday.

Last Tuesday and Wednesday visitors at the Colie Parkers were Leroy Parker, Janice, Jackie and Angie King.

Martha Brown came last weekend and got her boys. She visited the Oral Heltons over the weekend.

Mr. and Mrs. Elmer Pillers of Oklahoma City visited the Oral Heltons Friday and Saturday.

The school bus couldn't make all the route due to snow drifts 2 and 3 feet high Monday, April 9th. The east and west roads were blocked. It started snowing April 7 about 10 o'clock Saturday night. It snowed and blew all day Sunday. We were glad it wasn't like April 7, 1938. They said we were in the edge of it - back north and west was much worse.

Helen Helton went with her brother and wife, Mr. and Mrs. Joe Hayes on a trip. They left last Tuesday and went to Ft. Worth to visit a brother, Lee Hayes and family and on to Mesquite where they visited a sister, Pearl Hammon and then at Lewisville they visited the Papsy Helton family. At Carrollton they visited the Ray Smith family and at Clarksville, Mr. and Mrs. A.N. Pace, a sister. They came home Saturday ahead of the snow storm. They had heard about it coming on T.V.

Cloid Helton spent Wednesday night in Miami with Joe Talley, Joe got snowed in at Clolds Saturday and Sunday.

Mr. and Mrs. Lee White visited the Jim Heltons Saturday.

Mr. and Mrs. Mark Meek was home over the weekend visiting the Jim Heltons and the Jack Meeks.

James Hefley spent the weekend with a college friend Bill Simmons in Waurika, Okl.

Frances Hefley shopped in Pampa Saturday.

Mr. and Mrs. Garry Parker are the proud parents of a baby girl born April 2. She weighed 7 pounds 1 1/2 oz. and was named Shiredon Dawn. Nona and baby are still in the Cheyenne, Okla. hospital Monday. The baby is still in the incubator, but all are doing o.k. now.

Mr. and Mrs. Colie Parker, Bobby, Randy, Shane and Billy went down Friday night to see the new girl. Mr. and Mrs. Colie Parker of Briscoe and Ben Nelson of Pampa are the proud grandparents.

Mr. and Mrs. L.H. Barry of Amarillo spent the weekend at the Alexander ranch lodge house. They got snowed in and left for home

Principles of Range Management . . .

Most all range management practices are based upon four basic principles. Proper use of the available forage. Proper distribution of grazing. Proper numbers of livestock and classes of livestock. Proper season of use. Good range managers apply these rules daily as second nature.

Proper use of the available forage is probably the most important of these four rules - Proper use of most range plants will mean grazing approximately 50% of the plant and leaving the other 50% for replenishing the plant root system for the following years growth. A properly grazed plant will produce more forage because it is a healthy plant with good vigor. An overgrazed plant will be robbed of its root carbohydrate reserve and either die or remain in a low producing decadent condition.

The 50% of the plant that is not grazed will also help mulch the soil to catch more of the rainfall that falls and prevent erosion. Everyone knows how important it is to hold and make use of every drop of the rain that falls, especially in a semi-arid area such as Wheeler county.

A proper grazed range pays dividends. The forage that remains on the range when the new years growth begins is not wasted, it has served an important purpose in the life cycle of the grass. The root system will be stronger, spring growth will begin earlier, and the plants will grow

Monday morning. It was so bad weather that no one got to visit them.

Mr. and Mrs. Horace Fillingim attended a funeral of their aunt, Nelly Boren in Eurika, Kans. They left last Thursday and came home Saturday.

Lawrence and Bonnie Fillingim stayed with the Willis and Dan Fillingims while they were gone.

The Grant Meeks had 10 extra unexpected visitors Saturday night due to the snow storm. They were Mr. and Mrs. Dick Irvin and children, Sheila Reams and 5 boys from Woodward, Okla. They got as far as they could go and had to stop for the night.

Larry Meadows is home for a few days with the Roy Meadows.

Grant and Karen Meek shopped in Amarillo Friday and Saturday. Shonda stayed with her grandparents, the Raymond Moores. Lisa and Todd visited the Willis Fillingims while they were gone.

Mr. and Mrs. Willis Fillingim visited Mrs. Edward Meek and the Ted Nelsons Monday morning.

The idea to remember is that it takes a large factory of leaves above ground to produce a good strong root system below ground.

Proper distribution of grazing is especially important in certain grass species, often cattle will only graze palatable plants out of a mixture or only graze the tender new growth of grass like weeping lovegrass. This problem can also be seen around a specific area such as near watering areas or on bottomland sites.

Possible solutions to distribution problems could include cross-fencing, moving supplemental feed or salt, use of electric fences to temporarily rest a given area, and high intensity rotation grazing systems in which large numbers of cattle are on a pasture for a short period of time with a long period of rest following; thus forcing the cattle to utilize all forage equally. Any number of ideas will work, the main thing is to make use of all your available resources and adapt them to your individual problem.

Proper numbers and classes of livestock will vary with the condition of the growing season. The land manager can work toward improvement of certain types of forage to meet the needs of the class of animals he is producing. For example a landowner interested in deer should manage feeding areas and plants such as

Everyone enjoys Earnest Zybachs letters in the Wheeler paper. Earnest keep them coming. They are very interesting.

Vetola Parker visited Marylou Markham Saturday afternoon.

Temper ure at the Oral Heltons Sunday morning was 26°. It was 23° Monday morning so guess the fruit is gone.

Last Sunday Mr. and Mrs. Bob Zybach went to Canyon after church and visited Mr. and Mrs. Lewis Hinders and family, Mr. and Mrs. Curtis Hall and family and came back through Pampa and visited the Cecil Francis family.

Nelson Parker and crew were snowed in at their oil well for 52 hours N.W. of Miami before another crew came in to relieve them.

ing in the area of winter perennial grasses. They are some suited to our climate, especially under

Continued on Page 6

COMPLETE INSURANCE COVERAGE

John C. Vise Agency
117 W. Texas Street
Wheeler, Texas

after you see your doctor...

bring your prescription to

RHYLAND'S PHARMACY
PH. 826-5561

ONE STOP SHOP

204 E. Texas Street

Pumps is our Business!

- Garrig
Tape Recorder Portable \$90.00
- Elgin
Tape Player 8 Track \$85.00
- General Electric
Automatic Washer \$230.00
- Stereo-Record Player**
AM-FM Radio
With Built In Porti-Fi

Hours: 8:00 till 10:00 A.M. Monday thru Saturday

BUTCHERING & PROCESSING PRICES

Beef processed, double wrapped 8¢ per pound
\$3.00 A head for Butchering

Pork processing including curing double wrapped 10¢ per pound
\$4.50 A head for butchering

We butcher Monday thru Friday 8 to 12 A.M. except holidays.

CALL FOR QUARTER - HALF - WHOLE BEEF PROCESSED

WE NOW HAVE CUTS OF PORK AND BEEF FOR SALE

SHAMROCK SLAUGHTER PLANT

N. of City Phone 256-3241
Closing at Noon on Saturday

Lillian Russell

SPRING-FRESH DOTS

Gain-sized, in white on brown or black background. 100% polyester knit with flare skirt, white belt and buttons. Sizes 8-10

30.00

LANCASTER DEPARTMENT STORE

LIGHT AS A BREEZE

Airy 100% polyester Ultrase. Navy or red houndstooth checks on white, a slim leather-like belt. Looks twice the price! Sizes 12½-24½

30.00

Countess Custom

REPORT OF THE CONDITION OF THE FIRST NATIONAL BANK of Wheeler

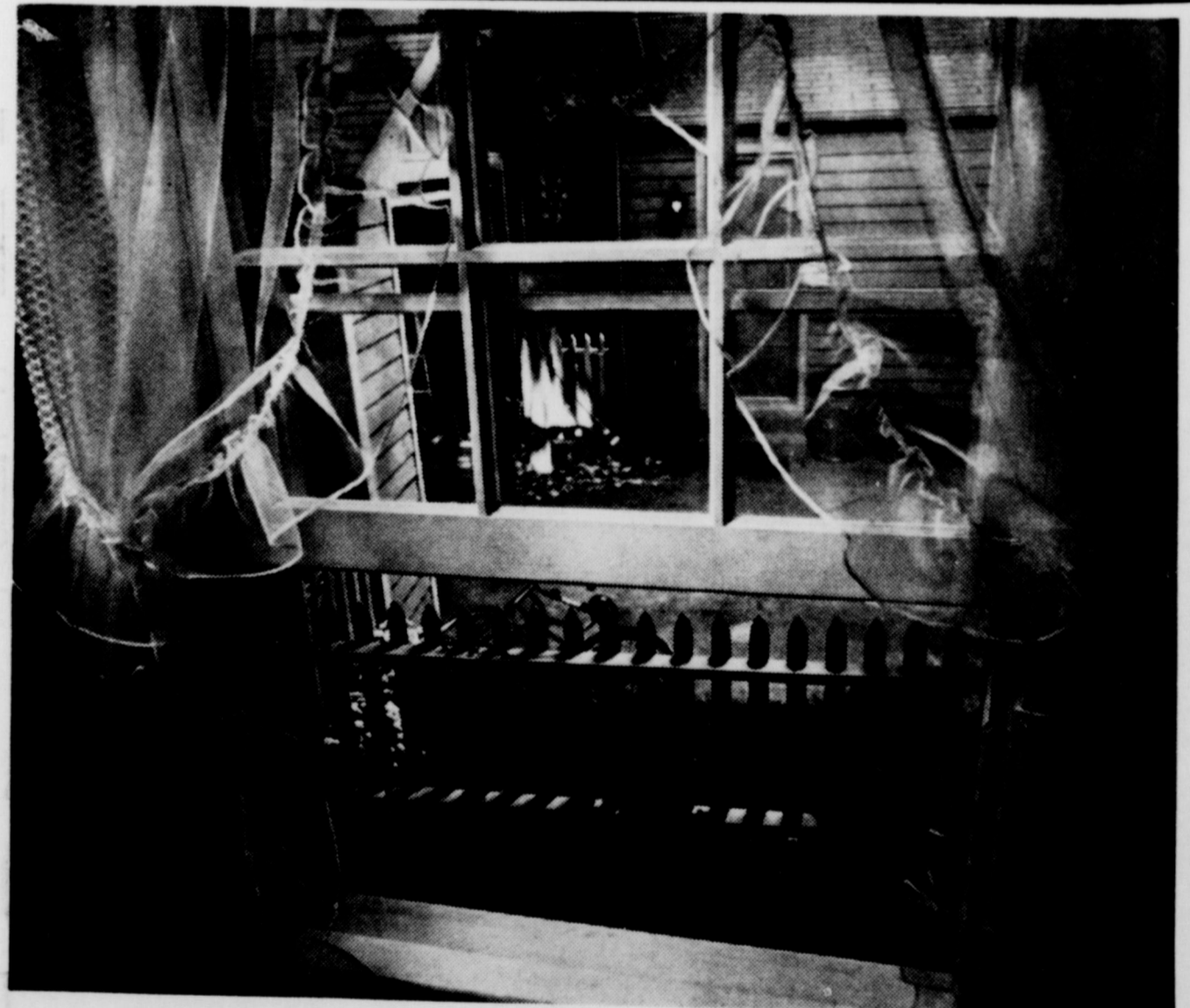
IN THE STATE OF TEXAS, AT THE CLOSE OF BUSINESS ON March 28, 1973, PUBLISHED IN RESPONSE TO CALL MADE BY COMPTROLLER OF THE CURRENCY, UNDER SECTION 161, U.S. REVISED STATUTES

ASSETS	
Cash and due from banks	\$ 1,176,337.02
U. S. Treasury securities	
Securities of other U. S. Government agencies and corporations	504,426.34
Obligations of States and political subdivisions	839,438.02
Other securities	6,000.00
Federal funds sold and securities purchased under agreements to resell	450,000.00
Loans	3,824,057.94
Bank premises, furniture and fixtures and other assets representing bank premises	14,761.80
TOTAL ASSETS	6,815,021.12
LIABILITIES	
Demand deposits of individuals, partnerships and corporations	\$3,479,528.80
Time and savings deposits of individuals, partnerships and corporations	2,094,872.22
Deposits of United States Government	21,749.33
Deposits of States and political subdivisions	413,159.81
Deposits of commercial banks	.00
Certified and officers' checks, etc.	81,414.00
TOTAL DEPOSITS	\$6,090,724.16
(a) total demand deposits	\$ 3,805,157.22
(b) total time & savings deposits	\$ 2,285,566.94
Other liabilities	13,870.85
TOTAL LIABILITIES	\$6,104,595.01
Reserve for Bad Debts	\$37,732.73
CAPITAL ACCOUNTS	
Equity capital - total	672,693.38
Common Stock-total par value	\$10.00
No. shares authorized	10,000
No. shares outstanding	10,000
Surplus	100,000.00
Undivided profits	178,703.45
Reserve for contingencies & other capital reserves	293,989.93
TOTAL CAPITAL ACCOUNTS	672,693.38
TOTAL LIABILITIES	\$6,815,021.12

I, Adrian R. Risner, Vice President, of the above-named bank do hereby declare that this report of condition is true and correct to the best of my knowledge and belief.

We, the undersigned directors attest the correctness of this report of condition and declare that it has been examined by us and to the best of our knowledge and belief is true and correct.

/s/ Charles R. Brant
/s/ O. B. Burton
/s/ L. T. Lee



If your six year old saw something like this, would he know how to phone for help?

It's too important a question to leave to chance. That's why we're running this ad. If there are any six- or seven-year-olds around your house, teach them how to report emergencies. Tell them to dial "0", give their name and tell our operator where they are and what's wrong. With older children, train them to dial emergency numbers direct, since that's the fastest way to call for help. But don't stop there. Copy down the emergency

numbers listed on the inside front cover or first page of your telephone directory. Add your family doctor's number. And the number of the nearest hospital. Next, tack up the list near your phone. Then get your kids to memorize it, in case it gets lost. By the time they're through memorizing those numbers, they're going to have every grownup in the house knowing them, too. Which is also why we're running this ad.

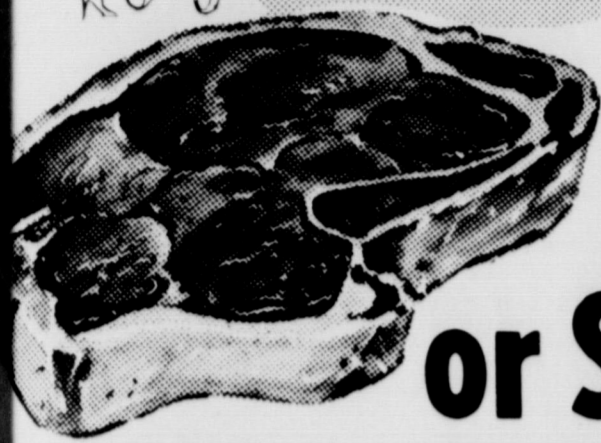
GENERAL TELEPHONE

The people you can talk to One-to-One



FILL YOUR CART WITH

Good Food at Savings



**ROUND
or SIRLOIN
STEAK**

Pound

\$1.19

**T-BONE
STEAK**
lb. **\$1.29**
Market Sliced
Bologna Lb. **69¢**



Towels

3 Big Rolls **\$1**

COCA COLA

6 Bottle Carton
(Plus Bottle Deposit) **39¢**

TISSUE

4 2 Roll Pkg. **\$1**

ICE CREAM

Bordens 1/2 Gal. **89¢**

COFFEE

White Swan 1 Lb. Can **89¢**

**Grade A Large
EGGS**
Dozen **65¢**

BREAD

Super Value 3 1/2 Lb. Loaves **99¢**

Full Dress Dog Food 12 1/2 oz. **\$1**

**W.P.
BLEACH**
29¢

Soft 'N Lite
**Brown
'N Serve**

ROLLS

3 Pkgs. **99¢**

Pork & Beans Van Camps 5 300 Cans **\$1**

Cherries 3 303 Can **\$1**

**GREEN
BEANS**
Lb. **39¢**

VIENNA SAUSAGE Libby's 4 4 oz. Cans **\$1**



PINEAPPLE

Each **49¢**

NEW POTATOES 2 Lbs. **25¢**

CELERY **STRAWBERRIES** Pint **59¢**

19¢ WARRENS GROCERY

Will Deliver on \$2.50 Purchase or More
DOUBLE STAMPS ON WEDNESDAY ON \$2.50 PURCHASE OR MORE

IN WHEELER, TEXAS

Want Ads

MANURE SPREADING - 826-5219 4tp
FOR RENT: 3 bedroom furnished house - 826-3184 after 5:00 rm
FOR SALE: Lots 5 and 6 of Jimmie Field Estate, Ph. 806-852-3481 - Higgins for Mrs. Hill rm 1 a mo

APARTMENTS FOR RENT: West Motel, 826-5552 rtm
FOR SALE: Approx. 21 acres with 2-bedroom home close in. John C. Vise Phone 826-5575

FOR SALE: 1973 El Camino Actual mileage only 5700. Mrs. Glen George, Box 482, Wheeler, Texas, Phone 826-5991 2tc

HOUSE FOR SALE: Jeff Turner house on third and Red River, 2 bedroom, 1 1/2 lot. Contact Lola Smith 4tp

ROSE BUSHES - 14 varieties \$1.98 each or 3 for \$5.00 5 varieties of Peach trees. Hatter's Greenhouse, 120 S. Main, Shamrock rtm

FOR SALE: 2 bedroom home 607 Red River, Mrs. George Davidson 256-3820 Shamrock 3p

NEED BABY CHICKS? They are as near as your phone. Phone is toll free. 1-800-835-2147
PROTECTION HATCHERIES Pratt, Kansas 67124

ATTENTION CATTLEMEN Powder River Cattle Chutes and Calf Tables on Display and For Sale at J.W. Fields Oil Co., Shamrock, Texas.

FOR SALE: House and 4 lots across from Park. John C. Vise Agency, Phone 826-5576 jcv

Why Not let us wash your car and steam clean your motor.
 We Give S&H Green Stamps
 We are open until 10:00 p.m.
H & D MOBIL

FOR SALE: Trash Barrels. A. B. Griffin 826-5629 rtm

Monuments, Grave Covers and Curbing. Complete finishing. Will Warren, Wheeler rtm

FOR RENT: Trailer Space Black Gold Trailer Park Phone 826-5512 rtm

PAUL'S TRAILER PARK
 Across Street From School
 Trailer lots 40'x70'
 Modern Underground Utilities
 Gas and Water furnished
 Individual Electric Meters
PAUL TOPPER - Ph. 8237 or 5931

FOR SALE: Tri-Matic Self Propelled Sprinkler System, will water 5 acres per setting, 103 sprinkler heads, used 4 yrs. Phone AC 806-888-3188 - Location 18 mi. SE of Memphis, Texas 4tcbb

THE BEST Number 1 Rose Bushes at Will Warrens rtm

PAUL'S REAL ESTATE
 House and 10 Acres
 2 Bedroom House with 1 1/2 Baths, excellent location - Paul Topper 826-5237

FOR SALE: 1972 Ford Gran Torino - Pay off note. 826-5995 - After 5 2tp

FOR SALE: 12x38 tractor intertubes - Good condition. George Warren 826-3174 rtm

FOR SALE: Beauty shop booth unit, complete with mirror and shampoo bowl, all purpose hydraulic chair and cool-temp. deluxe dryer. Eloise Kenady 1119 Main St. Phone 826-3235

PUBLIC NOTICE
 Notice of local law pursuant to Art 3.57, Constitution of the State of Texas. Notice is hereby given that I shall apply to the Texas Legislature presently in session, for a local law to combine the office of County School Superintendent and the office of County Judge, within the County of Wheeler. Said combination to be effective upon the expiration of the present term of County Judge and County Superintendent and being the last day of December, 1974.
 Witness my hand this 27 day of March 1973
PHIL CATES
 State Representative
 District 66 4tc

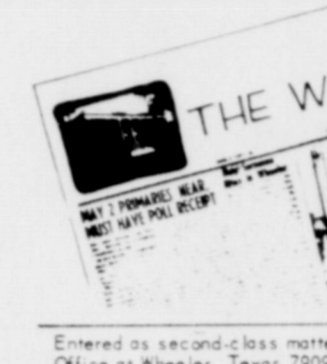
FOR SALE: Newly decorated 2-bedroom house, utility area and basement. Lots of extras throughout. On corner lot with fruit trees and lovely variety of shrubs. Very complete.
 Hugh Peebles Realtors
 Box 338, Pampa, Texas
 Call: Lana Williams at 5797
 Wheeler, Texas 79096 rtmLW

CAKES
BAKED AND DECORATED
 For All Occasions
 Specializing in Birthday and Wedding Cakes
CALL: Beckey Zybach
 806-375-2314 Allison, Tex
 How would you like to work less than 40 hours a week for \$900 to \$1000 a month with only an investment of \$3,800. Call 826-3109.

THE BUSINESS DIRECTORY



Published Every Thursday at Wheeler, Texas, By...



Entered as second-class matter December 18, 1933, at the Post Office at Wheeler, Texas 79096, under the act March 3, 1879.

Wheeler Plumbing Service
 ROTO-ROOTER SERVICE
LARRY JENNINGS
 Phone 826-5559
 (If no answer, Phone 826-5214)

WRIGHT FUNERAL HOME
 24-Hour AMBULANCE
 Phone: 806-826-5214

Wheeler Lodge No. 1099
 A.F. & A.M.
MONDAY
 7:00 P.M.
 Percy Farmer, Sec'y.
 Members Urged To Attend.
 Visitors Welcome.

Wheeler Lumber Co.
 Permanent year-round protection. Changeable from inside. Easy to clean...proofer-proof. Eliminates drafts...Cuts fuel bills...
WHEELER LUMBER CO.
 Phone 826-5543 Wheeler, Tex.
 Fine Service for Fine People

TRACTORS - IMPLEMENTS PARTS AND SERVICE
HIBLER IMPLEMENT CO.
 Wheeler, Texas

Let Me Write It...
Geo. Richardson
 All Types Of INSURANCE

STANDING AT STALLION: Calm Cody by Bill Cody. Fee \$50.00. Dwight Erwin 4tp

I will be responsible for my debts only.
Mae Cornell 4tp

Semi-Drivers Needed Local companies need Certified Semi-Drivers. Earn \$300-\$400 per week. No experience necessary, will train. For application call 317-636-2675 or write Coastway American Systems, P.O. Box 11125 Indianapolis, Indiana. 46201

SEMI-DRIVERS NEEDED: Local companies need Certified Semi-Drivers. Earn \$300-\$400 per week. No experience necessary, will train. For application call 317-637-1134, or write Rapidway Systems, 5140 S. Madison Ave., Suite 4, Indianapolis, Indiana 46227 30tc

THE BUSINESS DIRECTORY

TEXAS PRESS ASSOCIATION
 MEMBER 1973

Published Every Thursday at Wheeler, Texas, By...

THE WHEELER TIMES
 P.O. Box 187
 Phone: 826-3123

Entered as second-class matter December 18, 1933, at the Post Office at Wheeler, Texas 79096, under the act March 3, 1879.

Louis C. Stas, Owner and Publisher
 Subscription Rates
 Wheeler County\$3.50
 Outside County\$4.50

FOR ALL YOUR Farm Supply Needs
WHEELER CO. PRODUCE
 Wheeler, Texas

WHEELER REDI-MIX
 REDI-MIX CONCRETE SAND
 Washed Gravel—All Sizes
 Office Hours: 7:30 to 5:00
 Phone 806-826-3223

Dr. Marion Roberts
 OPTOMETRIST
 112 W. Kingsmill
 Pampa, Texas

ZENITH TV - RADIO SALES & SERVICE
 Call 826-5769
 Wheeler Radio & Refrig. Service
 L. C. Laflin, Owner

GUARANTEED AUTO GLASS INSTALLATION & Body Repair
GARRISON SERVICE
 Phone: 826-5515
 Wheeler, Texas

TRACTORS - IMPLEMENTS PARTS AND SERVICE
HIBLER IMPLEMENT CO.
 Wheeler, Texas

CUSTOM DRAPERIES
 Swags, Cornices, Shutters
 We Install Free
 Tele 256 3652
 Brannons Decorators
 Shamrock, Texas 79079

FOR SALE: Just received a new shipment of tapes. On sale now for \$2.99.
L & F REPAIR

ALL LIVESTOCK SUPPLIES VACCINES INSECTICIDES
1/3 Off
HYLAND'S PHARMACY
 4tp

INDIVIDUAL NEEDED Full Time to do painting and carpenter work. Phone 826-3184 after 5 rtm

FOR SALE: 14 ft. Fiberglass fishing boat and motor. Kenneth Chandler, Allison 375-2355 2tp

LOSE WEIGHT with New Shape Tablets and Hydrax Water Pills at Hyland's Pharmacy. 8tp

COTTAGE FOR THREE: Small lawn in front, fenced back yard for rent. 301 Texas Street. See Mrs. H.M. Wiley 3p

Gossip is like a check. One should be sure that it is genuine before endorsing it. Attend Landmark Missionary Baptist Church this Sunday.

FOR SALE: Trailer home-14' x 68' Castle, 3 bedroom, 2 full baths. Carpeted throughout. Late 69 model - moved one time. Lyndon Loyd 826-5850 1tc

LOST: 2 hound dogs, one white and black; other black and tan. Bill Golden. 826-3186. Reward 2tp

FOR SALE: 1966 Rembrandt Trailer, 12' x 60', excellent condition, completely furnished, 2 bedroom, 17 ft living room, kitchen with pantry, new nylon carpet throughout, with year-old skinny-minny Frigidare washer and dryer, \$3600; without \$3400. See at corner of 4th and Washita in Canadian. 323-6150 rtm

FOR SALE: Model 1969 Brookwood Mobile Home. One owner. Corner 500 and Kiowa St. Call after 5:00 Robert Lane 2tp

NOTICE
 The Wheeler City Council will receive bids for the razing of existing structures on lots 1 thru 12, block 15, in Wheeler, otherwise known as McNeill Gin Property. Bids are to be submitted by mail or presented at the City Office by May 21. City reserves the right to accept or reject any and all bids. City of Wheeler, Box 476, Wheeler, Texas 79096.

CONTRACTORS' NOTICE OF TEXAS HIGHWAY CONSTRUCTION
 Sealed proposals for constructing 3.556 miles of Sign, Delin. & Safety Lighting from 1.0 Mi. W. of F.W. & D. RR Underpass to 1.0 mi. E. of Shamrock on Highway No. IH 40, covered by 1 40-2(2) 161 & 1 40-2(13) 161 in Wheeler County, will be received at the Highway Department, Austin, until 9:00 A.M., April 17, 1973, and then publicly opened and read. THIS CONTRACT IS SUBJECT TO THE WORK HOURS ACT OF 1962, PL-87-581 AND IMPLEMENTING REGULATION. The State Highway Department, in accordance with the provisions of Title VI of the Civil Rights Act of 1964 (78 Stat. 252) and the Regulations of the U.S. Department of Transportation (15 C.F.R., Part 8), issued pursuant to such Act, hereby notifies all bidders that it will affirmatively insure that the contract entered into pursuant to this advertisement will be awarded to the lowest responsible bidder without discrimination on the ground of race, color, or national origin, and further that it will affirmatively insure that in any contract entered into pursuant to this advertisement, minority business enterprises will be afforded full opportunity to submit bids in response to this invitation and will not be discriminated against on the grounds of race, color, or national origin in consideration for an award. Plans and specifications including minimum wage rates as provided by Law are available at the office of O.V. Johnson, Resident Engineer, Wellington, Tex., and Texas Highway Department, Austin. Usual rights reserved.

FOR SALE
 Downtown Business lot - 25'\$3,500.00
 1971 Mercury Marquis Brougham\$3,400.00
 1972 Yamaha 175cc Motorcycle\$400.00
 Trailer House - 8' x 36'\$1,000.00
 1961 Falcon Ford\$100.00
 Model MT John Deere Tractor\$400.00
 (Just overhauled)
 All items above inquire with Hyland Weaver at Hyland's Pharmacy -- 826-5561 4tc

NOTICE TO CONTRACTORS
 Sealed bids for cleaning and painting one 50,000 gallon and one 200,000 gallon steel ground storages and one 50,000 gallon steel elevated storage for the City of Wheeler, Texas, will be received by the City Secretary, City Hall until 7:30 p.m., May 21, 1973, and then at said place publicly opened and read aloud. All proposals shall be accompanied by a cashier's or certified check upon a national or state bank in the amount of five (5%) percent of the total maximum bid price payable without recourse to the City of Wheeler, or a bid bond in the same amount from a reliable surety company, as a guarantee that bidder will enter into a contract and execute performance bond within ten (10) days after notice of award of contract to him. The bid security must be enclosed in the same envelope with the bid. Bids without check or bid bond will not be considered. The successful bidder must furnish performance and payment bonds upon the forms which are attached hereto in the amount of 100% of the contract price from an approved surety company holding a permit from the State of Texas to act as surety or other surety or sureties acceptable to the Owner. The right is reserved to reject any and all bids and to waive any informality in bids received. Plans, specifications and bidding documents may be secured from the office of the City Secretary, City Hall, Wheeler, and the office of Bill R. McMorries and Associates, Inc., 6300 Canyon Dr., Amarillo, Texas 79109, on deposit of Twenty-five Dollars (\$25) per set, which sum so deposited will be refunded, provided: (1) All documents are returned in good condition to Bill R. McMorries & Associates, Inc. not later than 48 hours prior to the time for receiving bids; or (2) The contractor submits a bid and all documents

NOTICE TO ALL PERSONS HAVING CLAIMS AGAINST THE ESTATE OF MAGGIE MODENIE RAMSEY
 Notice is hereby given that Original Letters Testamentary upon the Estate of Maggie Modenie Ramsey were issued to me, the undersigned, on the 19th day of March, 1973, in the proceedings indicated below my signature hereto, which is still pending, and that I now hold such letters. All persons having claims against said Estate, which is being administered in the county below named, are hereby required to present the same to me respectively, at the address below given, before suit upon same are barred by the general statutes of limitation, before such estate is closed, and within the time prescribed by law. My residence and post office address is: Bessie May Ramsey, Wheeler, Texas 79096.
 Dated this the 19th day of March, 1973.
 s/ Bessie Ramsey
 Executrix of the Estate of Maggie Modenie Ramsey, No. 1769, in the County Court of Wheeler County, Texas.

CARD OF THANKS
 We would like to express our sincere thanks and appreciation to the doctors, nurses and the staff of Parkview Hospital for their care and concern during my stay in the hospital after my accident.
 Thanks to those who visited, sent cards, flowers and also for the prayers.
 May God bless each of you.
 Dorsie and Alvern

WANTED: Babysitting in my home day or night. A.E. Connell 826-3172
FOR SALE OR TRADE: tle, smoothmouth mare, unexpected horse call. Parter Rogers, Briscoe 375-2216
FOR RENT: 2 room apartment. 805 S. Main, Apt. 2. Phone 826-3155
CARD OF THANKS
 I would like to take means to thank all of my friends and neighbors for the cards, letters visits and prayers while I was the hospital.
 Also a special thanks all the doctors, nurses and all of the staff at the hospital for their good care while more there. It made it more like a vacation than a trip to the hospital.
 Beatrice Harville

WANTED: Lawn mowing, edging, hedge trimming. Lawn care during your vacation. Bobby Guthrie 826-5518
are returned in good condition to Bill R. McMorries & Associates, Inc. not later than five (5) days after the time that bids are received.
CITY OF WHEELER, TEX.
 By: O. B. Burton, Mayor

Valley's rough ground capability is fantastic.

- Wide wheelbase
- Highly flexible
- Ample power

Delta Irrigation Co.
 Follett, Texas Pampa, Tex
 Box 364 Box 84
 806-653-3711 806-665-1511

AUCTION SALE

Wednesday, April 18, 1973

Sale Time — 10 A. M.

Located: 1 Mile North & 2 Miles East of Gageby Store. 15 Miles North & 2 Miles East of Wheeler, or 19 Miles South and 2 Miles East of Canadian, Texas

- 1 1962 IHC H. Tractor (butane)
- 1 8x16 J. D. Drill (press wheels)
- 1 Noble Sweep, 11 ft. (like new)
- 1 Soil Saver Chisel, 5 Shank (good)
- Set of 42-inch Sweeps for above chisel
- 1 12-ft. Miller Rod Weeder (good)
- 1 8-ft. Graham Hoemer (lift)
- 1 8-ft. Noble Sweep for Hoemer
- 1 12-ft. Krouse One-way (lift)
- 1 8-ft. Molene 26 in. disk One-way
- 1 Servis 66, 3 pt. Shredder (heavy duty)
- 1 J. D. 3-pt. 2x16 Moldboard (high speed)
- 1 J. D. 7-ft. Mower, 3 pt.
- 1 Wire Roller P. T.
- 1 Post Digger, 3 pt. P. T.
- 1 Post Digger (Continental) P. T.
- 1 Whitmore Feed Grinder (belt)
- 1 12-ft. Dry Fertilizer Spreader
- 1 2-row Ford Planter, 3 pt.
- 1 2-row Ford Cultivator, 3 pt.
- 1 3-row Stalk Cutter, 3 pt.
- 1 2-row Sled, 3 pt.
- 1 2-row Disk Opener Planter, 3 pt.
- 1 2-row Planter for H. or M. Tractor
- 1 2-row Cultivator for H. or M.
- 1 IHC Broadcast Binder
- 1 4-row J. D. Cultivator (70-730)
- 1 4-wheel Tractor (flat bed) 14 ft.
- 1 14-ft. Stock Trailer

- 1 J. D. Hydraulic Cylinder (hose)
 - 60 ft. T. V. Tower and Base
 - 1 Push-in Stock Rack (Long Bed)
 - 1 16-ft. Heavy Duty Auger (Electric)
 - 1 Old Scratch Oiler
 - 1 Drive-on Grease Rack
 - 1 Air Compressor
 - 100 ft. 2-inch Pipe
 - 8 ft. Dempster Windmill 12A
 - Heavy Duty Vise and Anvil
 - 1 22" Self-propelled Lawn Mower, 3 1/2 B. S. Gas, Motor Easy to Start
- ANTIQUES:**
- 1 Wall Telephone, crank type.
 - 1 Burpee Can Sealer
 - 1 Corn Sheller
 - 1 Shoe Last
 - Single Trees, Neck Yokes, Egg Case, Meat Choppers, Washboards, Hames, Pumps and Plows
 - Glass top Jars, 11 Dozen Fruit Jars, 1/2 Gallons, Quarts and Pints, Box of Glass Lids
 - 2 Pressure Cookers
 - 2 Wall Heaters
 - 2 Metal Bedsteads and Springs
- HOUSEHOLD ITEMS:** Pots, Pans, Dishes, Chairs, Etc.
- 1 Famous Buttonhole Worker
 - 1 Ice Crusher

MISCELLANEOUS
 Cream Cans, Oil Cans, Hand Tools, Pipe Wrenches, Wrenches, Log Chains, Boomers, Shovels, Halters, Blocks, Stretchers, Nose Leaders, Pipe Dies, Bolt Dies, Bolts New and Old, Tattoo Sets, Hoof Trimmers, Vaccine Needles, Horn Branding Irons, Brake Lining Machine, Wheels, Tires, Fans, Electric Motors, Scrap Iron and Miscellaneous Items.

TERMS: CASH
 Lunch by Briscoe H. D. Club
Mr. & Mrs. Claude Barker, Owners
AUCTIONEER: SHELBY PETTIT
 Wheeler, Texas 826-5255
Don Schaefer & Associates, Clerk
 Canadian, Texas

Court Records

LIST OF INSTRUMENTS FILED IN THE OFFICE OF THE COUNTY CLERK AND STRICKLAND COUNTY, TEXAS FROM APRIL 2 THROUGH APRIL 6, 1973

APRIL 2, 1973
 TIF OL--Webb Walker Jr et al to John C Vi se 3-27-73
 Sec 2 J Poitevent Sur-

APRIL 3, 1973
 FF--Stella Hise et al to William R Porter et ux 3-5-73
 --Bailey Alexander et to Malouf Abraham 2-5-73
 Sec 8 Blk E
 --Bailey Otho Burgess et to Malouf Abraham 5-73 NE 1/4 Sec 8 Blk E
 OL--Sun Oil Co to Forest

Oil Corporation 3-9-73 N 85.33 ac NE 1/4 Sec 23 Blk M-1
 DT--B F Meadows Jr et ux to First Natl Bk in Wheeler 3-9-73 Pt Blk 52 Wheeler, Stanley Addn
 April 3, 1973
 STATE TAX LIEN--4-2-73 Clifford Bednorz et al to State of Texas 4-2-73
 MD--Beth M York et al to Verbon Smith et ux 3-6-73 1/4 int 15.62 ac SW 1/4 NW 1/4 14 Blk L
 D--J McDonald et al to Verbon Smith et ux 3--1973 NW 1/4 Sec 14 Blk L exc 3/4 mins & exc 15.62 acres
 RDT--Farmers & Merchants St Bk Shamrock to Troy D Johnston et ux 3-27-73 W 1/2

Lots 5,6 Blk 26 Shamrock D--Troy D Johnston et ux to Lloyd H Cogburn 4-2-73 W 1/2 Lots 5,6 Blk 26 Shamrock April 4, 1973
 MML--James Ray Henderson et ux to Paul E Bennett 4-3-73 2 ac S 1/2 SE 1/4 Sec 60 Blk A-8
 TMM--Paul E Bennett to First Natl Bk of Wheeler 4-3-73 same as above
 OL--Virginia Rickson to Malouf Abraham 3-5-73 14.11 ac Sec 9 Blk RE
 AOL--Malouf Abraham to Kerr McGee Corporation 3-13-73 14.11 ac Sec 9 Blk RE
 OL--Keith Rudy et ux to Malouf Abraham Company, Inc 1-31-73 SW 1/4 Sec 12 Blk L
 AOL--Malouf Abraham Co Inc to Amarillo Oil Company 2-22-73 same as above
 RENTAL DIV ORDER--Keith Rudy et ux to Della Ann Rudy et vir 1-31-73 SW 1/4 12 Blk L
 OL--Malouf Abraham Jr, Trustee to Amarillo Oil Co 1-31-73 SW 1/4 Sec 12 Blk L
 RENTAL DIV ORDER--Malouf Abraham Jr, Trustee to Malouf Abraham Jr, Trustee 1-31-73 SW 1/4 Sec 12 Blk L
 AOL--Kenneth M Axelrod to Hawk Enterprises, Inc 4-2-73 SE 1/4 NE 1/4 Sec 81 Blk 23
 MD--R J Holt et ux to Dennis L Holt et al 10-28-73 1/2 our int N 1/2 19 & E 1/2 & NW 1/4 & E 1/2 SW 1/4 Sec 20 Blk RE
 D--P P Corcoran Jr et ux to Loyal W Grove et ux 4-3-73 Lot 30 Blk 119 New Mob-

How Important Is Your Home?

Your home and loved ones are sacred to you, and you would protect them with your life. Nothing but the best you can provide is good enough for them.

But--are you protecting them from the emptiness of a non-spiritual life--from the coldness of death without

hope--from the prospect of an eternity without heaven? You can give them the best in Christian influence and training ONLY when you encourage them to read--or read with them--the Bible, and bring them regularly to Bible study and worship. You

can not only protect their souls for eternity; you can give them a life of rich fullness and genuine, wholesome happiness they will never forget.

Won't you begin now to study the Book of God, and worship regularly at the

church of Christ?
 --Marlon McWilliams
Dr. Jack L. Rose
OPTOMETRIST
 121 Main St. - Shamrock
 Phone 256-3203
 Tues.: 9-5 Fri.: 2-5

WOODS' SHOES
 Shamrock, Texas
 NEXT TO FIRST NATIONAL BANK

EASTER SHOES

FOR ENTIRE FAMILY
 SHOES ALL PRICES

SELF SERVICE SHOE STORE

MOBEETIE NEWS

BY: Melba Burch
 Mr and Mrs. J.B. Rector visited Wednesday and Thursday in Amarillo with Mr. and Mrs. Jerry Rector, Lynn, Stephen and Amy.

Visiting over the weekend with Mr. and Mrs. Charles Jones and family was Ann's mother of Abernethy.

Mrs. Lorene Rector visited Saturday in Pampa with Mr. and Mrs. Wiley Davis. Others visiting there were Mrs. Nellie Williams and Carol of Levelland and Mrs. Avis Williams of Huntington Park, Calif.

Mr. and Mrs. J.V. Orr of Moriarty, N.M. visited the first part of the week with Mrs. Wilber Beck.

Mrs. Myrtle Barker of Wheeler spent the weekend with Mrs. Bonnie Hogan.

PERSONALS

Mrs. Juanita Carpenter, Mrs. Jannell Williams and son, Jeffery, of Lubbock, visited this past weekend with Mrs. Jess Crowder.

STARK Nursery Stock

Call or Write
 R. STJOHN
 Mobeetie, Texas
 Phone 845-2353

SHOP FOR SAVINGS IN EVERY AISLE

Super Value BREAD 3.99¢ Loaves

White Swan COFFEE 1 lb. Can **89¢**

ICE CREAM 1/2 Gal. **98¢**

PHILADELPHIA CREAM CHEESE 8 oz. Pkg. **39¢**

Buttermilk 1/2 Gal. **59¢**

Macaroni & Cheese DINNERS 2 Pkgs. **53¢**

Formel LITTLE SIZZLERS 12 oz. Pkg. **69¢**

SAUSAGE 2 lb. Pkg. **\$1.29**

ORANGES Lb. **19¢**

APPLES Lb. **29¢**

8-Track Stereo Tapes Each **\$1.99**

MOBEETIE GROCERY
 Mobeetie, Texas

Jehovah's Wit. To Meet Tues.

A special invitation is extended to the people throughout the earth to assemble with Jehovah's Witnesses on Tuesday evening, April 17. The occasion is the annual Memorial of Christ's death. The meeting will be held at the Shamrock Community Building, 210 W. 2nd St., Shamrock, Texas at 7:30 p.m., according to Orville Caruthers, presiding minister in Shamrock.

"More than 3,500,000 people will assemble with us in our more than 28,000 congregations," Caruthers said. He continued: "Of this number, only about 10,000 will partake of the bread and wine. In a 50 minute discourse the reason that so few partake will be explained in each congregation." All interested persons are invited to attend.

Catholic Women Hold Ann. Meet

The Pampa Deanery of the Amarillo Diocesan Council of Catholic Women held its annual Spring meeting, Monday, April 2, 1973 at St. Mary's Hall, Groom, Texas, with Mrs. Gregory Rapstine presiding.

At the morning session the theme, "Joy of Living" was developed by a panel discussion and a filmstrip entitled "Right to Life," presented by Mr. and Mrs. Allen Monroe and Mr. and Mrs. Tommy Albracht of Hereford.

Guest speakers for the afternoon session were Rev. Jos. Tash, Msgr. Francis Smyer, Rev. Donald Rusch and Bishop Lawrence M. DeFalco, Bishop of Amarillo.

The next meeting will be held in Canadian, Texas in the spring of 1974.



"A total wreck!"

That new camper-protect your investment with insurance against loss from road collision, fire, windstorm, explosion and theft.

The John C. Vise Agency can insure your camper and sports equipment.

JOHN C. VISE AGENCY
 WHEELER PH. 826-5576

EMERGENCY PRICE BUSTING

Everything is reduced so much we're practically going to GIVE IT AWAY!

Wall To Wall

Starts TOMORROW 9:30 a.m.

Chas. M. Brooker Broker Sales Inc.

EXCLUDES CERTAIN FRANCHISE ITEMS

Store Fixtures AND EQUIPMENT FOR SALE

Buy ALL or ANY PART AT BIG SAVINGS COME IN AND LOOK AT THE PRICE TAGS TODAY.

QUITTING BUSINESS SALE

EVERYTHING IN THE STORE, NOW

15% TO 25% OFF

30% TO 50% OFF

You Must See It To Believe It!

It nearly breaks our hearts to see our Merchandise GO ON SALE at the ridiculously low prices you see advertised here! But our ENTIRE STOCK MUST BE SOLD in the shortest possible time! SO WE GAVE THE ORDERS! CLEAR THE SHELVES! CLEAR the Stockrooms! CLEAR out Everything! Strip the Store to the Bare Walls. WE WANT ACTION. SELL OUR inventory. Even IF WE SUFFER A LOSS. FORGET PROFITS and give the People of this community Real Bargains. We know they'll respond to an Honest, Legitimate QUITTING BUSINESS SALE!

204 N. Main Shamrock, Texas

DRAPER - WILLIAMS MEN'S WEAR

The Store For Men And Boys

Phone: 256-2751

Allison News

BY Edith Levitt

We are all wondering what this blanket of snow has done to our fruit crop. The cold, high, wind probably did the most damage. Several people failed to make it to church because of the high drifts. Sure hope it doesn't stay around too long.

We were saddened to hear of the death of Allen Reynolds' mother, Mary Reynolds. Mr. James A. Reynolds and his wife, Mary, had been residents of the Golden Spread Rest Home in Shamrock for some time. Mary Reynolds passed away suddenly Sunday the 8th, at 6:00 a.m.

A week ago Sunday, Mr. and Mrs. Nick Wiebe and daughter, Linda, went to Buffalo, Okla. to visit his sister. She is ill and in the hospital at Buffalo. Mrs. Bertha Sears lives at Woodward.

We are sorry to say the small son of Lester and Clydene Hall is still in the hospital at Wheeler. Do hope he will soon be well.

Mr. and Mrs. Kenneth Ray Hamon, of Pampa, are the proud parents of a fine baby

boy. This boy is the great grandson of George and Avis Parker of this city. Also he is the great, great grandson of Mrs. Eula Markham of Allison.

The Junior and Senior Classes of Allison presented a hilarious, three-act comedy play last Tuesday night, titled "The Haunted Chair." It was well worth your time and money.

Mr. and Mrs. Lee Kiker were business visitors in Canadian and Pampa last week.

Josephine Beget, Doris Newsom and Edith Donaldson were in Pampa last week. Josephine had an appointment with her optician. While there they met with Mrs. Laletta West and her son, Jerry from Erick, Okla., who also had an appointment with the doctor.

Mrs. Lee Kiker visited Mrs. Florence George at Wheeler last week.

Mr. and Mrs. Eddie Walker and daughter were dinner guests in the Ed Walker home Sunday. After dinner Eddie accompanied his fa-

ther on the road grader to help open up drive ways around the area. This is truly a wonderful service to people who need to get moving again. Their youngest son, Terry, is in Korea now. They received their first letter from him last week. Hope all goes well with him there.

Mr. and Mrs. O.V. Shelton of Cheyenne visited their son, Bill and family, of Allison last Thursday evening.

Visiting with Bessie Megee over the weekend were Mr. and Mrs. Elmer Brown and children of Elk City, Oklahoma. Mr. and Mrs. Jack Scheller and family of Borger. Her son, J.W. McGee has been with her this past week. He and Jack braved the roads and weather early Sunday morning to get him to the Amarillo air terminal. J.W. lives in Placerville, Calif.

Nona Hall and Mary Lou Markham have received letters from Mrs. Edith Levitt. She reports having a good time and missing all this blowing snow.

Little Carol Dene and Jim Bob Hall are staying with their grandparents this week. Who's having fun?

Rev. and Mrs. Eldon Wyatt of Hale Center were dinner guests of the Verne Lohbergers Saturday.

Mr. and Mrs. Verne Lohberger and daughter, Suzanne

visited relatives in Borger last week. While there Suzanne attended a get-together of Frank Phillips College students. A nice time was had by all.

YESTERDAY RECALLED

BY E.T. ZYBACH

The first time I saw the city of Wheeler I was 18 years old—was in 1910. There was a barbaque pit just south of the old court house on court house square—plenty of fine things to eat, but as far as entertainment is concerned there was very little but people in those days did something once in a while for entertainment.

The summer was hot and dry and a lot of people from down Nebraska and Kansas and other states were discouraged to the extent they wanted to get away from their holdings but buyers were scarce.

In 1912 my father Fritz Zybach had that 320 acre place where Clarence and Elbert Zybach now live—80 acres was in horse pasture on the night of Sept. 1st a hail storm and near tornado came and hit that horse pasture. A coming 2-year old colt got wire cut so badly it had to be destroyed and 6 or 8 horses and mules got wire cut so badly we had a real horse hospital for a month.

As early as 1916 I well remember E.L. Bud Puryear told me I would live long enough to see land like it is very common in Wheeler Co.—worth \$100 per acre and a railroad and gas or oil wells. Of course, I did not believe it.

Then in 1917 I was cultivating milo about where Clarence house now stands and like people in July only a straw hat and of course shirt and overalls and shoes for protection. I heard a hail storm from the southwest, what shall I do. I pulled the levers as deep in the ground as I could—turned the 4 horses backs to the wind, tightened the lines the best I could get under the horses necks for protection, looked at my watch in ten minutes of severe hail, the maize that was knee high was like a led pencil. Above the roar of hail I guess a deaf mute could of heard me holler whoa.

There used to be quite a lot of hogs raised and fattened in the Zybach settlement in the summer months when the weather was hot. No motor vehicles thought of we farmers used to load hogs after sundown wagons with horse loaded to drive to Canadian which took 8 or 9 hours to market hogs averaged 5 to 10 per lb. for top hogs—a good many were produced as on some good years grain was plentiful at 65¢ to \$1.00 per hundred lbs. However on a good year there was no outlet closer than Canadian 30 miles away—hauling was 25¢ per hundred so if you rented land and paid 1/3 you had very little profit left.

It was on the 8th of Dec. 1913 I was riding a good sized horse just a little on the twitchy order—the ground frozen and slippery fell on my left leg. I got up and found I had a broken leg above the ankle. I still feel my heart beat and that was a long time ago. I got on my haunches and knees and made for the house. I would estimate about 30 rods. No one at home, I got to the telephone and called the company ring. In a short time a number of good neighbors were there to comfort me. Dr. Joss lived 3 miles and he came with a mule team that he was using about his place. He examined my leg—said we have a fractured and a dislocated ankle. He said to me we won't cloreform you unless we have to—I told him to use his own judgement. I didn't faint but when the outfit was set and in the cast I felt better. I was only 22 years old but after 100 days of idleness I did not exactly like to go to work again. So I believe when people spend their time in idleness they get that way. Now I am 81 with a heart ailment and can't do much and can't help it. Bail the whole affair down a man can but do his best. People here on

the desert have boats for fishing. I asked a fellow a few days ago—do you know the fisherman's prayer. He wanted to know how it was I told him Lord give me grace to catch a fish so large that I need never tell a lie.

Very Truly
E.T. Zybach

Endangered Species Preserv.

The battle to protect the black-footed ferret from extinction has attracted the interest of two additional organizations who have backed their sincerity with funds to continue endangered species research which was started two years ago by the Oklahoma Cooperative Wildlife Research Unit at Oklahoma State University.

Jim Lewis, assistant unit leader, said Welder Wildlife Foundation, Sinton, Tex., financed initial studies with \$3,000 and has added another \$3,150 to continue research already underway in the Texas panhandle.

New agencies committed to the 1973 program include World Wildlife Fund, Washington, D.C., with \$4,000 and U.S. Forest Service regional office, Albuquerque, N.M., with \$1,500.

Lewis explained Welder Wildlife Foundation and World Wildlife Fund are interested in endangered species preservation. The U.S. Forest Service is interested in information compiled during surveys conducted on national grasslands.

Field work is being conducted by Fred Hassien, Vandalia, Mo., an OSU wildlife ecology graduate student. Hassien is assisted



Management

gation, but few people had given them a fair trial. A perennial cool season grass would eliminate the cost and work involved in planting small grains strictly for grazing.

The wise range manager will set goals for his operation and develop a plan to work toward consistently

RANGE PROPER USE: Fence line contrast - showing heavy use vs proper use. Grass on right was seeded through GPCP Contract (1962). Grass on right defoliated through summer and winter. Hardland Slopes Site.

improving his resources and his operation will and prosper accordingly. The objective of your local Soil and Water Conservation

service personnel are able to assist each landowner in developing a complete conservation plan operation.

ted by Richard Jones, Tecumseh, an OSU senior and also majoring in wildlife ecology.

The favorite food of the black-footed ferret is the common prairie dog which has had its numbers greatly reduced through extensive and effective eradication programs conducted by property owners.

When prairie dogs disappear, so do the black-footed ferrets who seek a new source of prairie dogs for food.

Hope for the preservation of the black-footed ferret appears brighter with previous surveys indicating many probably signs and more than 50 reported sightings of this particular animal.



WILDLIFE WITHOUT MAN



MAN WITHOUT WILDLIFE

A happy medium between man and wildlife can be achieved. Even if you are not one who enjoys hunting just stop thinking how quiet and desolate it would be on a warm summer evening or a snowy winter morning without any life.

Establishing Weeping Lovegrass

of our mailing list.

The annual 4-H spring Party will be held at 7:30 p.m. on Friday, April 13 at the Magic City Bridge. All 4-H'ers are invited to attend.

Alfalfa growers should be on the watch for alfalfa weevils. Remember they got almost all of the first cutting last year!

Some have asked, "When is spring here?" or "When can I plant tender vegetables without damage from frost?" Officially the last average frost-free date is April 8. This year several inches of snow were on the ground on April 2! However, we hope now that the weather will settle and be fair for a while.

It looks like prospects for a peach crop are dim. Perhaps we'll have enough peaches to make one small cobbler in the whole county this summer.

In establishing Weeping Lovegrass the first and most important factor in getting a stand of grass is seedbed preparation. In very dry years a stand of seeded grass can be obtained if enough care is taken in preparing the seedbed.

Weeping Lovegrass, like our native grasses, has been best established in a clean seedbed. This can be done in a number of different ways depending on the type of land and equipment available. On land infested with Shin oak the seedbed can be prepared by deep plowing (20 in. or deeper) or by plowing shallow and farming for from 1 to 3 years. On land that is in farming or old fields with a cover of annual grasses and weeds plow in April, allow to dry by rains, etc.; or plow in May and firm seedbed by mechanical means (any type packing operation) and seed in May. The last plowing operation is a good time to apply feedlot manure or commercial fertilizer.

Excellent stands may result from either drilling or broadcast (Whirlwind type seeder) seedings when the seedbed is properly prepared. The seedbed should be as firm as possible with a firm top by the drill or other implement when using the Whirlwind type seeder. For more information on establishment and management of Weeping Lovegrass contact your local Soil Conservation Service office at Wheeler.

Mr. and Mrs. Troy L. Mason of Denver City, Texas visited Saturday afternoon with his mother, Mrs. W. Mason and brothers, R.D. and William E. Mason.

Hanes Everyday stretch pantyhose. Free.



Right now, just buy one pair of any Hanes pantyhose (including Hanes Everyday) and pick up a free specially marked package of Hanes Everyday.

This is stretch pantyhose the way Hanes makes it. Pantyhose that comes in your size with a stretchy fit that hugs your legs all day. So hurry down and pick up your free pair of Hanes Everyday...today.

Just buy one pair of any Hanes pantyhose and get Hanes Everyday...free.

The DOT-SHOP

826-3111

WHAT REVIVAL

WHEN— APRIL 23rd thru 29th

WHERE— LANDMARK MISSIONARY BAPTIST CHURCH

7:30 P.M. Nightly*

WHO— REV. LARRY GOINS, Gotebo, Oklahoma Evangelist

EVERYONE is invited to attend any or all of these services. There will be Christ centered messages and good Gospel singing each night. Plan NOW to attend. "Is your religion a Burden or a Blessing, is it a Weight or Wings, is it something you feel compelled to carry, or does it carry you." Some people don't talk much about their religion because they don't have much to talk about.

Rev. Rickay Hatter, the pastor of Landmark wishes to take this opportunity to invite you to all of these services.

*The Sunday night service will begin with the song service at 7:00 p.m.

Across the Fence

BY: Max Hatter, CEA
Looks like the government is champing at the bits to put the farmer-rancher back in the peon class. A lid's on meat prices, but most folks picking up fertilizers are finding it at least \$5 a ton higher. Hardly sounds if the average little ol' farmer is going to get anywhere. Sort of reminds me of the

days my dad sold a 10 gallon can of milk for 60¢. So all you folks who thought you were going to get rich selling cattle on supply-demand situation, take it kind of slow!

With production costs of farmers and ranchers continuing to increase and since our producers know now that they won't receive any higher prices for their animals, they may become "fed up" with the whole situation. The 3 major items - seed, feed & livestock increased by 10% in 1972. This comes at a time when producers should be expanding their herds to meet the increased consumer demand for red meat. According to some analysts, the red meat shortage could become even more critical unless livestock producers are given some incentives for profitable production.

Our research demonstration handbooks for 1972 are just off the press. It doesn't have a lot of crystal ball gazing economic stuff in it, but it does show some of the projects that we believe will make more net money for you in 1973. These handbooks are available at our office. We will be mailing some 400 of them to members

EASTER SEAL APPEAL GOING WELL

Wheeler County's Easter Seal Representative reported today that the 1973 Easter Seal Appeal of the Easter Seal Society for Crippled Children and Adults is going well. Joe D. Rogers serves as Easter Seal Appeal Treasurer for Wheeler County.

The 1973 Easter Seal Appeal will finance the Easter Seal Society's rehabilitation program for crippled children and adults in Texas. Last year the Society helped 16,572 disabled persons through its program of assistance in finding and making effective use of services for the disabled and their families.

The Easter Seal Society helps support 18 treatment facilities in Texas where children and adults not eligible for other assistance are treated. These centers offer physical therapy, medical diagnosis, speech and hearing programs and related services to help the disabled build happier and more useful lives.

As Easter Seal Representative, Rogers is the person to contact for services from the Easter Seal Society. He can be contacted at First National Bank, Wheeler.

When contacted for services, Rogers will provide the request to the Easter Seal Society to investigate the needs of the disabled person. The Society will advise the handicapped person of the best resources available to help him.

Rogers added that contributions to the Easter Seal Appeal should be sent to him as soon as possible.

Weather Master Announces A New Dealer

Stuart's Grocery

(Blinker on Highway 152, Mobeetie) Phone 845-2901

THE EARLY BIRD GETS THE SEED Come by and book or pick up early -

HEGARI - \$10.50 hd. SORGHUM-SUDAN-CROSS - \$12
HIGH MAC (RED TOP CANE) - \$18.00 (While it lasts)

8-Track STEREO - Western - \$2.88
Acco DOG FOOD - 20 Lb. - \$2.85
Bulk GARDEN SEEDS
TOMATO PLANTS - .08¢ each



MARY PURYEAR

PURYEAR WINS DISTRICT FOOD SHOW

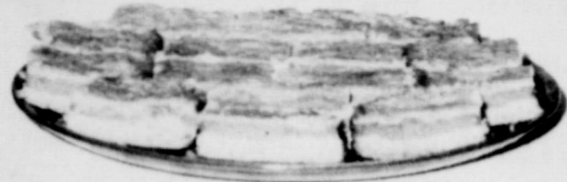
Mary Puryear, daughter of Mrs. Jeff Puryear of Amarillo, was winner of the District Food Show held in Amarillo on Saturday, April 7. Mary will be representing District 1 and Wheeler County at the State Show in June at Texas University in conjunction with the State 4-H

Roundup. A 4-H member for 8 years, Mary is very active in the Briscoe club where she serves as President; she is also secretary-treasurer of the County 4-H Council.

Mary's prize winning Pumpkin Pie Squares was run in last week's paper. In case you missed it, here it is again!

PUMPKIN PIE SQUARES
1 pkg. yellow cake mix

1/2 cup brown sugar
3 eggs
1/2 cup white sugar
1/4 cup butter
2 1/2 tsp. pumpkin pie spice
1 lb. can pumpkin
1 1/3 cup evaporated milk
Mix ingredients and pour into greased and floured square cake pan. Cook at 425° until done. When cooled cut into squares and serve for snacks as cookies.



Historical Survey Committee Meets

Thursday, April 5, the Wheeler County Historical Survey Committee met in the home of Beverly Whittle's lovely daughter, Mrs. Evert Whittle, in Shamrock. The meeting for the evening was given by Mrs. Evert Whittle about the first Telephone and Newspaper in Wheeler County. The talk was recorded by Mrs. Whittle. Present were: Mrs. Evert Whittle, Mrs. Nell Adams, Mrs. Evert Whittle, Mr. and Mrs. A.E. Whittle, Mr. and Mrs. Harry Williams, Mr. Harry Williams of Miami, minister in charge, Lester Hathaway, Judge George Whittle, Mr. N.L. Sechrist, Tom Crossland, Marie Crossland and Mr. and Mrs. Whittle.

Here & There

to maintain and increase our economy. We want to provide jobs for the younger generation. We want to

Letter To The Editor

Dear Editor:
I am seeking information about Art Names. During the 1930's and 1940's he operated a traveling tent show which I think played in this area. I am searching for information about him and his show with the ultimate hope of writing his biography. I would like to hear from anyone who knew him who would be willing to correspond with me about their memories. I would also like to hear from anyone who might have pictures, letters, poems, or other memorabilia about Art Names or his troupe.

Sincerely,
Donald W. Whisenhunt
History Department
Thiel College
Greenville, Pa. 16125

keep it a matter of pride. Would you resolve here and now to do your part—even if it isn't more than going to the poles on election day? Thanks for listing.

Were you dreaming of luscious peaches dropping on the patio, and apples for a juicy pie? Since the weekend blizzard you had better stretch your frozen supply. Looks like hope for a fruit crop is completely gone. Will add the final verse to it in a few weeks. May be there is a bit of those good things left.

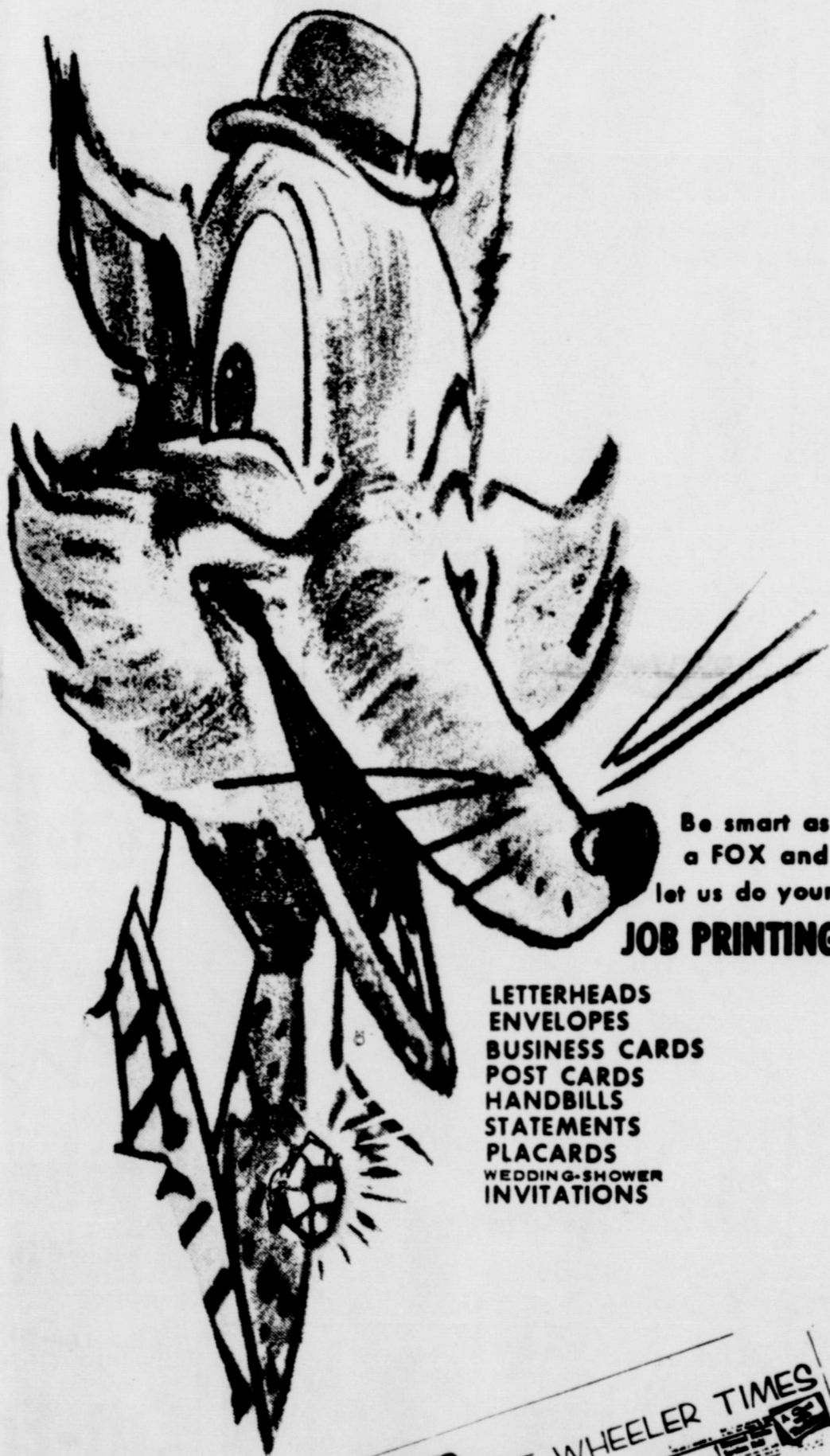
Mr. and Mrs. Ervin Hale of Portales, N.M. came last week to visit his sister, Mrs. Emma Connell. Due to illness, Mr. Hale entered the Parkview hospital on Monday. His son, Marvin of Colorado City, came Monday afternoon to be with him. Mr. Hale's condition seems to be improving.

The Frank Walker, Jr. are on the move again. This last weekend they were invited to show their Indian Jewelry with The Gallery of Amarillo at the GWA Home Show in the Civic Center. 3 galleries, 30 starving artists and lots of commercial exhibits were featured. The show was well attended and everyone really enjoyed it. Monday they are to be in Tucson, Ariz. where Frank will auction a big antique sale. We imagine they will stop in Gallup and surrounding area to pick up jewelry from their silversmiths. Keeps them on the go, but they seem to enjoy it.

Mr. and Mrs. Jim Bateman who lived on Canadian Street, have moved to new quarters in the west part of town - the house known as the Weeks house.

MT. VIEW QUILTING CLUB Mrs. Roberts Host

The Mt. View Quilting Club met March 15th. Lelia Roberts was hostess. A charter member of the Quilting Club was our visitor. Lizzie Roberts of Leedey, Okla. The day was truly enjoyed by those present: Beatrice Street, Lou Dick, Bulah Grimes, Mable Dickey, Myrtle Ford, Audrey Seitz, Lizzie Roberts and Lelia Roberts.



Be smart as a FOX and let us do your **JOB PRINTING**

- LETTERHEADS
- ENVELOPES
- BUSINESS CARDS
- POST CARDS
- HANDBILLS
- STATEMENTS
- PLACARDS
- WEDDING-SHOWER INVITATIONS



THAT'S A FACT

SPEED DEMONS
EVER WONDER WHAT A "MAILS PACE" REALLY IS? WELL, IT RANGES FROM SLEDDY-55 YDS. PER HOUR TO SLOW-23 INCHES PER HOUR.



PLEASURE FOR SALE!
IF YOU WANT TO BUY A PLEASANT WAY TO RETIRE, CONSIDER THE PAYROLL SAVINGS PLAN WHERE YOU WORK. AN AMOUNT YOU SPECIFY WILL BE SET ASIDE FROM EACH PAYCHECK AND USED TO BUY U.S. SAVINGS BONDS. TRY IT - YOU'LL LIKE IT!

SWIFT MACKEREL

THE MACKEREL-BECAUSE OF IT'S BOD BREATHING APPARATUS - IT SWIM TO LIVE. AS FOR SPEED HAS BEEN CLOCKED AT 70 MILES PER HOUR!

contrast - showing light was seeded on right defense Slopes Site.

personnel are assist each land n developing a observation plan on.



Wildlife can be hunting just stop I be on a warm ig without any

Lovegrass

publishing Weeping ss the first and t factor in getting of grass is seed ion. In very dry stand of seeded n be obtained if are is taken in ie seeded. ng Lovegrass, native grasses, blished in a dbed. This can a number of diffi depending on the nd equipment a land infested the seedbed covered by deep plow (deeper) or by shallow and farm 1 to 3 years. On is in farming shlds with a cover grasses and we etc.; or plow in firm seedbed by al means (any operation) and se The last plowing is a good time diot manure or al fertilizer. ent stands may either drilling (Whirlwind type eedings when is properly pre- ie seedbed show n as possible on of the top by ther implement ng the Whirlwind er. re information of ment and manage eeping Lovegrass our local Soil Service office

Mrs. Troy L. City, Texas afternoon with rs. W. Mason and R.D. and Willard



15¢ OFF WITH IN AD COUPON
CASCADE
 FOR AUTOMATIC DISHWASHER
 35-oz. BOX
49¢



13¢ OFF LABEL
JOY
 22-oz. BTL.
49¢



DASH
 DETERGENT
\$2.29
 JUMBO BOX



THRIFTWAY
 Imported **GOURMET**
 PORCELAIN-GLAZED STEEL COOKWARE
 On Sale This Week
 FIESTA OR RED TOLEDO OVAL
AU GRATIN 12"
\$5.99
 WITH A \$5.00 PURCHASE



NO WONDER HOUSEWIVES LOVE US WE'RE
Check & Rated

THRIFTWAY

- WICKLOW SLICED BACON 2 LB. PKG. **\$1.89**
- Shurfresh ALL MEAT FRANKS 12-oz. PKG. **69¢**
- USDA CHOICE 7-BONE ROAST LB. **88¢**
- LEO'S SLICED BEEF, HAM, DARK TURKEY, CORNED BEEF, WHITE TURKEY CHICKEN 3-oz. PKG. **43¢**
- Shurfresh COLD CUTS ROLOGNA 6-oz. PKG. **49¢**

Check & Rated

TEXAS RUBY RED GRAPEFRUIT 2 FOR **25¢**
 CALIFORNIA, THE PEEL UNZIPS POUND **29¢**

SHELLED BLACKEYED PEAS 12-oz. CELLO BAG **49¢**
 CALIFORNIA DELICATE SPEARS POUND **49¢**

ASPARAGUS

WASHINGTON WINESAP APPLES 3-LB. POLY BAG **59¢**

CALIFORNIA GREEN PASCAL CELERY LB. **15¢**

ALL PURPOSE RUSSET POTATOES 10 LB. BAG **79¢**

PRICES EFFECTIVE APRIL 13, 14 & 16
 WE RESERVE THE RIGHT TO LIMIT QUANTITIES.

Check & Rated FROZEN FOODS

RICH'S FROZEN COFFEE RICH 16-oz. SIZE **29¢**

SHURFINE FROZEN BROCCOLI SPEARS 10-oz. PKG. **3 FOR \$1**

MORTON FROZEN POT PIES BEEF, CHICKEN TURKEY, MEAT 8-oz. PKG. **5 FOR \$1**

Check & Rated DAIRY

ICE CREAM 1/2 Gal. Round **98¢**

Shurfresh Cottage Cheese Large Tub **69¢**

Check & Rated

MIRACLE WHIP QT. JAR **59¢**

WITH 20¢ AND COUPON MARYLAND CLUB COFFEE 1-LB. CAN **79¢**

KRAFT BARBECUE SAUCE 18-oz. JAR **39¢**

PROTEIN By Melrose Shampoo Large 16 oz. Bottle \$1.75 value **79¢**

Pinesol Bathroom Cleanser Aerosol Can 95¢ value **69¢**

Delmont Cookies Lemon Puff, Pink Lady, Orange Blossom, & Toasties 3 FOR **\$1**

Purina Chicken and Salmon Chicken and Liver Cat-Food 6 1/2 oz. Cans **8 \$1**

Kleenex Facial Tissue 280 Count Box **39¢**

Roxey Dry Dog Food 5 lb. Bag **79¢**

Gladiola 5 Lb. Bag **49¢**

Shurfresh Potato Chips Reg. 59¢ Value **49¢**

Gibhardt's Chili With Beans 1 1/2 lb. Can **58¢**

PRITCHARD'S
 SHAMROCK & WHEELER
 Double S & H Green Stamps
 Wednesday with \$2.50 Purchase

VALUABLE COUPON
 20¢ OFF No. 06
 MARYLAND CLUB COFFEE 1-LB. CAN **79¢**
 WITH THIS COUPON THRIFTWAY FOOD STORES VOID AFTER APRIL 14, 1973

VALUABLE COUPON
 15¢ OFF No. 23707
 WHEATIES 12-oz. BOX **29¢**
 WITH THIS COUPON THRIFTWAY FOOD STORES VOID AFTER APRIL 14, 1973

VALUABLE COUPON
 7¢ OFF No. 23741
 BETTY CROCKER TUNA HELPER BOX **49¢**
 WITH THIS COUPON THRIFTWAY FOOD STORES VOID AFTER APRIL 14, 1973

VALUABLE COUPON
 15¢ OFF
 FOR DISHES **CASCADE** 35-oz. BOX **49¢**
 WITH THIS COUPON THRIFTWAY FOOD STORES VOID AFTER APRIL 14, 1973

For New Mom
 K
 STAL HELD
 day aftern
 water, Okl
 an massi
 and say t
 ll to one c
 and dedi
 wrens, Crysta
 ices were
 water Bapt
 p.m. with
 officiator
 Dan Bar
 on Novem
 etwater, C
 Fowler and
 Jennings F
 ved most c
 s area. F
 se at O.K. H
 at Tony R
 county, Tex
 at Sweetwa
 1951 to 19
 Sweetwater u
 Crystal had b
 tal doctors
 of 1971 tha
 icted with L
 se, or Amc
 il Sclerosis.
 iven in the
 that of th
 ally losing
 ability to ta
 lity to eat.
 challenge as sh
 iled life. A
 her physical ha
 nued to be
 for the F
 urch in Swee
 month befor
 Her public se
 she was 1
 began to pl
 her church,
 rruption thr
 ear span. I
 degree in F

Crystal I
 keep Ai
 beautifu
 pril 28th wi
 rica Beaut
 eler. The l
 uts and Boy
 be out that
 ur town.
 For main proj
 park. We v
 00 a.m. at
 rakes, she
 lunch. De
 p in mind th
 working t
 th having.
 to pitch in
 LCOME. So
 town beauti
 together, th
 28, 1973.