

# THE WHEELER TIMES

VOLUME NUMBER 39, NUMBER 43

THURSDAY, OCTOBER 5, 1972

SINGLE COPY 10¢

## COLTS REMAIN UNDEFEATED AS THEY BLANK CLARENDON

The Wheeler Colts got their second win of the year in an easy style last Thursday and the Clarendon Colts were the victims. Fielding their smallest team in years, the Clarendon

Colts couldn't stand up to the hard rushing Colts who were once more led by David Massick.

Massick carried for the home Colts first touchdown when he blasted over left tackle from two yards out to cap a quick 49 yard drive with three minutes left in the first stanza.

The two points were added by Massick and the Colts were on their way to a victory that could have been worse.

Wheeler did all of their scoring in the first half and then was content to ride it out in the second half.

A blocked kick by Jim Verden, who fell on the ball at the Clarendon 16, gave the Colts their second chance and they didn't turn it down.

Massick got a couple and then Verden got a huge hole at left guard and went over standing up for the Colts second score. Massick added the two pointer.

The third and final Colt touchdown brought the crowd to their feet when Bobby Guthrie passed to Tony Hefley from the Clarendon 30 and Hefley scampered to the end zone as Darrell Gaines wiped out the last Clarendon defender with a perfect block at the 15. Massick added the final two points for the Colts.

Coach Gaines substituted liberally in the second half as he had the victory safely nailed down and looked forward to the Colts third straight game on Nicholson Field this Thursday at 6 P.M. when they play Silverton.

## Services Today For Frank Cocke

Services will be held at 3:00 P.M., Thursday, Oct. 5, 1972, in Kelso Chapel, Wellington, for Frank A. Cocke, who passed away at 10:30 P.M., October 3, 1972 in St. Anthony's Hosp. Amarillo.

Rev. Glendon McCune of Waco will officiate at the services. Mr. Cocke came to Wheeler County in 1921 from Collingsworth County. He was a member of the Methodist church and a Mason.

He was married to Jewel Griffith, Oct. 23, 1920. She passed away in 1971.

Survivors include three sisters, Mrs. Lela Terry of Mineral Wells, Mrs. Clyde Drake of Wellington and Mrs. A.T. Emmanuel of Little Rock, Ark.

Interment will be in Memorial Garden Cemetery, Wellington under the direction of Kelso Funeral Home of Wellington.

# MUSTANGS, OWLS IN FIRST DIST. PLAY



**FOOTBALL QUEEN AND HER COURT:** The 1972 Queen was crowned Friday night in pre-game ceremonies at Nicholson Field. Jayne Parsons (second from left) was crowned Queen. Her court is (l.) Jo Rita Riggers, Kim Dutton, Sally Brown and Debra Henderson.

## MORNING OLD MOBEETIE MEETING TO BE HELD THURSDAY

Meeting will be held at Mobeetie church of Christ on Thursday night, October 12, to discuss progress and proposed plans for Old Mobeetie. Mr. Hathaway, chairman of the steering committee, said the meeting would start at 7:30 p.m. The primary discussion will be the incorporation and

proposed water and sewer systems. Everyone interested is encouraged to attend.

The Wheeler County Soil and Water Conservation District will hold an election at the first of the meeting. A director is elected from a separate subdivision each year. The directors serve a five-year term. Farmer Hefley is the present director.

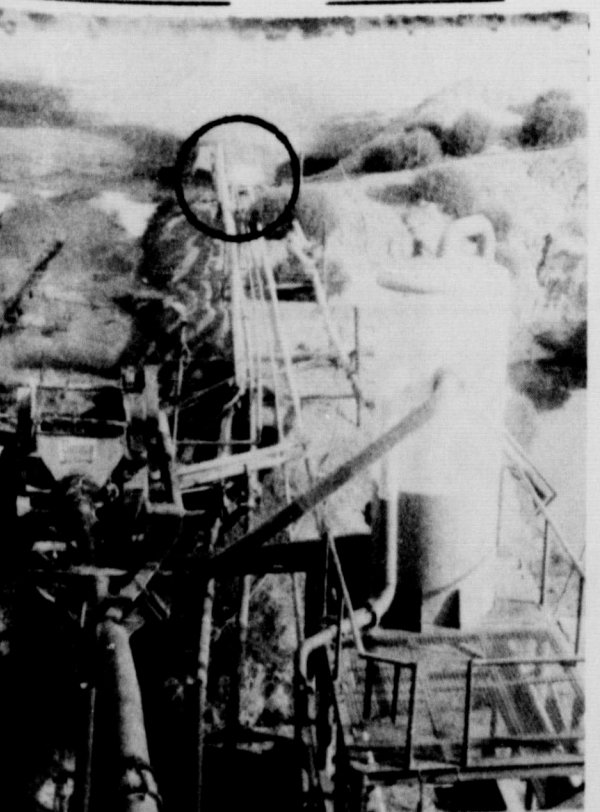
## TOUR OF NATIVE RANGELAND PLANNED FOR OCT. 6TH

There are being formulated to have a tour of native rangelands on the Britt Ranch in Wheeler County. Sponsor of the Wheeler County and Water Conservation District, Friday, October 6, is the date that has been set, with starting time at 9 a.m. The morning session will be held in the courtroom of the County Courthouse. Outstanding speakers have been secured for the tour. Dick DeArment of the Texas Parks and Wildlife Dept., headquartered in Amarillo, is the tour leader. He is a conservationist with the Conservation Service, headquartered at Abilene, and is Manager and Director of Prime Feedlot Operation at

Wheeler will make presentations on various phases of wildlife and range management. Following these talks the group will drive to the Britt Ranch for a bar-b-que lunch and then a tour of the ranch.

The group will have the opportunity to hear Mr. T.M. Britt and his son, David, discuss their range management program. The benefits of resting pastures, proper grazing of pastures, brush control and wildlife management and benefits of these practices will be viewed while on the tour.

Everyone is invited to attend that is interested in management of rangeland resources. Conclusion of the tour will be approximately 3:00 p.m.



**DRILL STEM TEST:** The above shows the drill stem test of the Freeport-Fabian well 3 miles southeast of Kelso, Sec. 45, Blk A-7 H&GN RR Co Survey, Wheeler by the Oil Company. The well was brought in at 7:30 p.m. Wednesday. They have been drilling for 8 months. Information on the test at this time. The circle shows gas flowing from the well.

The Wheeler Mustangs' hopes are two fold as they make their long junket to the South Plains Friday night to open the District 2-A competition against the Silverton Owls.

Not only will the Mustangs break out with a share of the lead in the district with a win but they will also snap a two game losing streak if they can nab the victory.

The Owls, who like the Mustangs are picked as also rans in the district, might not be so cooperative following a hard fought loss to Petersburg last week 7-6. Although the Mustangs lost their homecoming battle to the Shamrock Irish, the Mustangs showed improvement over their loss to Canadian two weeks ago.

"Mistakes are still hurting us real bad but the kids are working hard to overcome them and are anxious to get

the district race going," Coach Jim Bateman said this week.

"Silverton is always tough for Wheeler and I don't have to remind everyone that they were the ones that knocked us out of the championship two years ago in Silverton," Bateman added.

The Owls use both the I formation along with a wing set T and have good speed in their two running backs, Culwell and McCoy, and have a good passing attack with sophomore quarterback Wood doing the chunking.

Even in a losing cause, several Mustangs drew plaudits from the Wheeler coaching staff.

"We were real happy with the overall defensive play against Shamrock, especially looking back at how much the defense had to play," Bateman said, "and Rick Hefley, J.C. Brooks and Rusty Cole all graded well

on defense," the coach went on to add.

The Mustang-Owl clash will get underway at 7:30 and the best way that fans can show their backing of the Mustangs is to hit the road to Silverton for this

first district battle.

The Mustangs are in good shape injury wise for the Silverton clash but will still be without the full time services of Dale Stevens, who will be used for spot duty as in the Shamrock contest.

## \$60,500 LAWSUIT FILED IN DISTRICT COURT TUESDAY

A \$60,500.00 lawsuit was filed in District Court Tuesday by Ted Nelson against Acco Feeds and Bill Shelton, manager of Allison Grain and Farm Supply.

The suit alleges Acco Feed prepared for distribution and allowed the sale of Acco Calf Magic, Medicated, for use as a dry milk formula to be fed to small calves. Several sacks of this formula was purchased by Ted Nelson on January 20, 1972. The feeding of this formula resulted in the death of 23 calves.

The suit further alleges a disease has been left in the lots and pens used by Nelson for the raising of calves. Because of this alleged dis-

ease, it will be necessary to doctor each and every calf that is brought on his place against the disease.

Based on the loss of 23 calves, loss of time used for the tending of the sick cattle and loss of profits due to the calves being sick, Nelson seeks \$25,000.00 in damages.

An additional \$5,500.00 is being sought to compensate for expense of veterinarian bills, medicine bills and lab tests. Because of the disease left in the pens used by Nelson for the feeding of the calves, \$30,000 is sought to cover the future expense incurred for the doctoring of calves brought into the pens.

## HOMECOMING FOR WHEELER IS SPOILED BY SHAMROCK IRISH 26-7

By: David Britt  
Shamrock's Irish capitalized on Mustang mistakes early in the contest and rode the gifts to a 26-7 victory and put the damper on Wheeler's homecoming last Friday night before a packed Nicholson Field.

Of the four touchdowns the Irish tallied, they never had to travel over 50 yards with two of the drives originating inside the Mustangs 20.

Ronald Gragg got all of the Irish points before the Mustangs were able to erase the goose eggs on the scoreboard with a 55 yard scoring pass from Gary Fischer to Dale Stevens with just over a minute remaining in the game.

Wheeler won the toss before the kickoff but the advantage was of short duration as Lewis Britt bobbled a handoff on the first play from scrimmage and the Irish gobbled it up at the Mustang 21.

The Irish couldn't cash in on the break however as the Wheeler defensive unit, which got a terrific workout in the early going, buckled down and held the Irish at the 6.

But the Irish were knocking at the door again shortly when they pounced on the second of four fumbles by the Mustangs during the game, which Wheeler lost, this one by Rusty Cole at the Mustang 17.

Gragg got his first touchdown three plays later from the five as he squirmed through the Mustangs right side. Big Walter Bond's kick sailed wide to the right and the Irish led by six with 4:52 to play in the first quarter.

After an exchange of punts, the Mustangs were still in the shadow of their goal at their 5 yard line and here came another fumble as Cole couldn't find the handle and Shamrock was quick to take care of the charity.

The Irish called on Gragg and once again they took it to the Mustangs right side and Gragg found his hole at tackle to put the Irish up by 12.

The two points were added by Gragg as he swept his left end.

This second touchdown by the Irish came on the first play of the second quarter with the Mustangs still trying to get outside of their own 30 yard line.

The Irish had scored their second TD.

A 14 yard pass from Ray Vinyard to Bond gave Shamrock a first down at the 18.

Gragg capped the six play drive when he skirted the Mustangs right side once again and with still 7:14 to play in the half, the Irish had the Mustangs down by 20 and the margin stayed that way when Rick Hefley broke through and blocked Bond's placement kick.

If it wasn't fumbles in the first half, it was three penalties on the same drive that kept the Mustangs bogged down.

A fine kickoff return by Fischer was wiped out by a clipping penalty and another clipping fine and one for holding were just too much to overcome and the Mustangs had to punt and Stevens boot was returned to the Irish 28 by Gragg where he was rubbed out.

Just 53 seconds remained in the half when Sammy Jackson fumbled for the Irish and Cole draped around the pigskin at the Irish 35.

After an offside penalty against Shamrock, Fischer kept around his right end for 15 yards before he was knocked out of bounds.

Britt rammed right tackle for 9 big yards to the 6 on second down and the Mustangs called time with 30 seconds left.

Fischer lost one on third down and the home crew used their last time out. Shamrock must have been reading Wheeler's mail on fourth down as they dumped Fischer for a loss of five and the Mustangs only threat of the first half died.

The visiting Irish continued to apply the pressure to the Mustangs defense in the third quarter but came up with nothing as the stout hearted Mustangs would bend but didn't break before the onslaught.

Shamrock took the second half kickoff and drove to the Wheeler 6 but were stopped on three plays from that point and Bond was called on for a field goal try that went under the crossbar.

Bond recovered a fumble by Fischer at the Mustang 26 two plays later and the Irish got to the Wheeler 9 before Vinyard's fourth down pass fell to the turf.

Vinyard stepped in front of an errant pass at the Mustang 44 early in the second quarter and the Irish closed out their scoring with a 9 play drive with Gragg going around his left end from two yards out.

The game was two minutes from being over when

Wheeler took over at their 33 and the 67 yards to the Shamrock end zone was covered in two pass plays with a 5 yard penalty thrown in.

Fischer hit Rives for 7 yards and then Stevens roamed free behind the Irish safety and took Fischer's toss on the dead run at the Irish 30 and fled untouched the rest of the way. Steven made a seven out of the six before an onside kick try went awry and the Mustangs had absorbed their second consecutive defeat.

Game Statistics:

	Whe.	Sham.
1st Downs	8	18
Net Yds Rush	103	240
Net Yds Pass	62	28
Tot. Yds Gain	165	268
Pass. & Comp.	10-2	12-3
Pass. Inter.	0	1
Fum. & Fum L	4-4	3-1
Pen. & Ydg	4-43	5-25
Punts & Avg	4-36	2-43
Ret. Ydg	-1	2
Total Plays	50	68

## ALLISON JR'S AND SR'S Chili Supper

The Allison Junior and Senior class would like to announce a Chili Supper and Domino Tournament at the Allison High School Gym.

Friday afternoon, Oct. 6, they will begin serving chili in the cafeteria at 6:00. Prices will be 50¢ for 1st through 5th grades, \$1 for 6th through 8th grades and \$1.50 for adults.

There will be a \$1.00 per person entry fee for the domino tournament. You will choose your own partners.

Everyone is invited to come and have a good time with us Friday, Oct. 6, 1972.

## Wheeler PTA To Meet Monday

The Wheeler P.T.A. will have its first meeting Monday, October 9 at the school auditorium. This will be a get acquainted meeting with introduction of the new faculty members. We also will be presenting new playground equipment for your approval. Hope you will plan to attend.

Visiting Mr. and Mrs. C.V. McCraw Monday night were Mr. and Mrs. Clyde Meeks. Their daughter, Mr. and Mrs. Millard Sanders of Midland visited then Friday and they visited another daughter, Inez and Mrs. Annie Hamilton of Newlin and another daughter, Mr. and Mrs. H.C. Calhoun of Post, Tex. on Saturday.



**SELF EXPLANATORY:** The sign means what it says. It is not uncommon to travel west on Second street and find cars parked the wrong way. The City Council voted to make two blocks of Second Street (East 100 and West 100) one way for the protection of the school children and easier movement of traffic before and after school. The street is one way at all times. Due to the lack of cooperation, the City is going to begin giving traffic citations for traveling or parking the wrong way on this street.

## Here & There

BY: Laura Guthrie

We had a good time at the Senior chili supper this week. Practically everybody was there. And we had a chance to shake hands with our Congressman Bob Price and his wife. Nice of them to come to our small town affair. Then the ball game followed. Even tho we didn't like the outcome, the game wasn't bad. The crowning of the queen is always a thrill. Congratulations to Janie Parsons. I'm glad I didn't have to judge. They were all lovely girls.

Then there is the college football games. A lot of Wheeler people were in Lubbock Saturday for the Tech game. Of course the drawing power was our own Don Rives who is on the team. I may not be able to name everybody that went, but here is a list: The N.D. Wares and Arnel Holt, the Thurman Rives, Larry and Gary Fisher, the Bob Pattersons with David and Dale, the David Rardens and Calvin, Jim Wrights, Pete Burtons and Gary Don, J. D. Beatus and Jerry, the Bill Owens, David Britts and Lewis, the Delbert Thomases, the John C. Vises and Kent, Thomas Helton, Dorman Thomas, Bob Wills and Kent Sims.

John C., Rosemary and Kent Vise spent Saturday night with Dr. and Mrs. Paul Stewart in Lubbock. On Sunday they attended a play in which Ronald Rives had a role. Of course Jane and Thurman Rives attended also.

The show at the local movie house was fairly well attended Sunday night. The proceeds went to the Band Boosters Club.

Grace Porter and Mary Finsterwald visited with Mary's sister, the Elmer Byars Sunday afternoon. In the evening they attended a movie.

Billy and Geniva (Shugart) Farrell, who have been living in Wheeler a few months have moved to Mountainview, Oklahoma.

Jake Bevilheimer, manager of the Donut Hole, made a business trip to Oklahoma City Monday.

Cleo Gaines, who has been in the local hospital for six weeks is very much improved. However, he was disappointed that he didn't get to go home on Monday. Andy Markham, who has been in the local hospital for some weeks went to the Veterans Hospital in Amarillo on Tuesday. His niece, Bonita Keeton of Pampa was here looking after Uncle Andy and closing up his house.

Glad to see Bob Stiles around town this morning. Bob has been in an Amarillo hospital for several weeks. He says he hasn't lost but thirty pounds. For some of us that wouldn't be so bad. But for Bob-well that is another story.



**WHEELER CO. DATES:** These dates were grown by C.H. Turner, 6 miles west of Wheeler. They started their date tree with a sprout from Gainesville. This is their 4th crop.

## HOSPITAL NOTES

Admissions	Discharges
8-26 Cleo Gaines	10-2 Baby Boy Barnett
9-1 Harry Fields	Debbie Barnett
9-17 Agnes Lawrence	Ollie Jacob
9-30 Claude C Franklin	Pearl Braxton
10-2 Dorothy Risner	Rebecca Blevins
Lillie Moon	Andrew Markham
Alfred Smith	Dorothy Risner
	Alfred Smith



# Court Records

LIST OF INSTRUMENTS FILED IN THE OFFICE OF THE COUNTY CLERK AND DISTRICT CLERK OF WHEELER COUNTY, TEXAS FROM SEPT. 25 THROUGH SEPT. 29, 1972

September 25, 1972  
AOL--McCulloch Oil Corp. to McCulloch Oil Corp to Texas 9-14-72 Pt Thomas James & C&MRR Co Surveys; S<sub>1/2</sub> 49 NE<sub>1/4</sub> 50 Blk A-3 D--Velma Hood to Jerry Clapp Jr 10-15-71 1/120 int 70 ac N<sub>1/2</sub> Sec 34 Blk 23 TDT--Betty Ann Baggerman Kotara et vir to Natl Bk of Commerce Dallas 9-11-72 S<sub>1/2</sub> & S 40 ac NE<sub>1/4</sub> Sec 1 Blk A-2 RDT--Federal Land Bk of Houston to J R Clark et ux 8-30-72 40 ac NE<sub>1/4</sub> Sec 20 Blk A-5 DT--Lee and Lee Cattle Co to Jess Moore 9-22-72 40 ac NE<sub>1/4</sub> Sec 20 Blk A-5

September 26, 1972  
D--H H Hall to Paul Topper 9-25-72 N 15 ft Lot 2 Blk 11 Wheeler  
RESIGN OF TRUSTEE-- Gladys Shannon to Haynie E Edwards 12-20-71 P OF ATTY--Joe B Reid to Eura Reid 6-21-72 ROY D--Joe B Reid et ux to Grace Ann Barnard et al 9-25-72 30/640 int Sec 9 Blk RE  
ROY D--Joe B Reid et ux to Jerry Preston Reid 9-25-72 same as above  
ROY D--Joe B Reid et ux to J B Rid Jr 9-25-72 same as above  
ROY D--Joe B Reid et ux to Charles William Reid 9-25-72 same as above  
ROY D--Joe B Reid et ux to James Wilson Reid 9-25-72 ROY D--Joe B Reid et ux to Eura Mae Gantt 9-25-72 same as above  
September 27, 1972  
MD--Minco Oil and Gas Co to Spencer L Depew 9-12-72 5/823 int 823 ac Sec 25 Camp Co Sch.  
DT--Coy A Clay et ux to Farmers & Merchants St Bk Shamrock 9-26-72 Lots 11, 12 N 40 ft Lot 10 Blk 30 Shamrock  
AFF--Guy Hardin to Paul T Macina et al 9-27-72 E<sub>1/2</sub> 99 E<sub>1/2</sub> 100 Blk 23  
September 28, 1972  
STATE TAX LIEN--Joe C Jernigan dba Joey's Restaurant to State of Texas 9-27-72  
DT--Prime Feeders, Inc to Canadian Production Credit Assn 9-25-72 48.95 ac NW<sub>1/4</sub> Sec 11 Blk A-4 & 40 ac NE<sub>1/4</sub> Sec 20 Blk A-5  
RVL--Emily Rippey et vir to A W Lankford et ux 9-27-72 S<sub>1/2</sub> & NW<sub>1/4</sub> Sec 45, Pt 34 Blk 23  
D--Eugene Worley et ux to J Seibert Worley 7-24-72 1/2 int Lots 4, 5 Blk 2 exc N 6<sub>1/2</sub> Lot 4; Lots 21, 22 Blk 9 Shamrock & Pt Sec 43 Blk 17  
September 29, 1972  
The following 17 instruments are all ROWs to El Paso Natural Gas Co--  
Bob McCoy 8-26-72 N<sub>1/2</sub> Sec 19 Camp Co Sch L--Allen M. Reynolds et ux 9-14-72 N<sub>1/2</sub> NW<sub>1/4</sub> 25 Camp Co Sch Land--Bessie E Megee 9-16-72 E<sub>1/2</sub> SW<sub>1/4</sub> Sec 20 Blk RE; George C Walker et ux 9-12-72 Pt NW<sub>1/4</sub> 5 Camp Co Sch L--Audrie M Howard et al 9-8-72 Sec 69 B 23-- A. L. Grigsby et ux 9-4-72 W<sub>1/2</sub> NW<sub>1/4</sub> 96 Blk 23-- Joe W Brown et ux 9-2-72 W<sub>1/2</sub> Sec 45 Blk 24--F M Grimes et ux 9-1-72 SE<sub>1/4</sub> Sec 28 Blk A-9--F M Grimes et ux 9-1-72 Pt Sec 32 Blk A-9--J R Clark et ux 8-22-72 N<sub>1/2</sub> Sec 31 Blk A-9; Flora Mae Kelley et al 8-23-72 Sec 32 SE<sub>1/4</sub> 49 A-4--Mary Beth Schoon et vir 8-29-72 32 SE<sub>1/4</sub> 49 A-4-- Lewis D Gates et al 9-5-72 NW<sub>1/4</sub> 54 Blk A-4--H J Finsterwald et ux 8-29-72 16, ac 59 A-4--Vida S Brown et al 9-11-72 6 E<sub>1/2</sub> 7 Camp Co Sch--M B Eiland et ux 9-7-72 N<sub>1/2</sub> Sec 13 Camp Co Sch Land OL--Verbon Smith et ux to Gulf Oil Corp 8-23-72 NE<sub>1/4</sub> Sec 13 Blk L  
D--George A Barth et ux to Jim C Hensley et ux 9-28-72 125' x 450' Lot 1 Blk 1 Shamrock, Schlegel Addn  
AFF--A O Doggett to C C Kuykenda II et ux 9-20-72 same as above  
DT--Jim C Hensley et ux to George A Barth et ux 9-28-72 same as above  
MD--Fowler G Roberson Prater to William L Arrington et al 9-21-72 All my int 199.78 ac Sec 32 Blk A-5 RVL--First Natl Bk in Wheeler to G L Aderholt 7-11-72 3.196 ac NW<sub>1/4</sub> Sec 60 Blk M-1  
FED TAX LIEN--Darell T Hutchison et ux to United States of America 9-27-72  
Curtis Orville Holland and Lula Collette Sours 9-27-72 Elmer Lee VanZant and Pamela Gail Owen 9-29-72 Clarence Eugene Perry and Phyllis Ann Dobbins

2 AOLs--Sand Springs Oil and Gas Co to Bob Galmore 8-31-72 S<sub>1/2</sub> SE<sub>1/4</sub> Sec 4 Blk A-8  
September 26, 1972  
D--H H Hall to Paul Topper 9-25-72 N 15 ft Lot 2 Blk 11 Wheeler  
RESIGN OF TRUSTEE-- Gladys Shannon to Haynie E Edwards 12-20-71 P OF ATTY--Joe B Reid to Eura Reid 6-21-72 ROY D--Joe B Reid et ux to Grace Ann Barnard et al 9-25-72 30/640 int Sec 9 Blk RE  
ROY D--Joe B Reid et ux to Jerry Preston Reid 9-25-72 same as above  
ROY D--Joe B Reid et ux to J B Rid Jr 9-25-72 same as above  
ROY D--Joe B Reid et ux to Charles William Reid 9-25-72 same as above  
ROY D--Joe B Reid et ux to James Wilson Reid 9-25-72 ROY D--Joe B Reid et ux to Eura Mae Gantt 9-25-72 same as above  
September 27, 1972  
MD--Minco Oil and Gas Co to Spencer L Depew 9-12-72 5/823 int 823 ac Sec 25 Camp Co Sch.  
DT--Coy A Clay et ux to Farmers & Merchants St Bk Shamrock 9-26-72 Lots 11, 12 N 40 ft Lot 10 Blk 30 Shamrock  
AFF--Guy Hardin to Paul T Macina et al 9-27-72 E<sub>1/2</sub> 99 E<sub>1/2</sub> 100 Blk 23  
September 28, 1972  
STATE TAX LIEN--Joe C Jernigan dba Joey's Restaurant to State of Texas 9-27-72  
DT--Prime Feeders, Inc to Canadian Production Credit Assn 9-25-72 48.95 ac NW<sub>1/4</sub> Sec 11 Blk A-4 & 40 ac NE<sub>1/4</sub> Sec 20 Blk A-5  
RVL--Emily Rippey et vir to A W Lankford et ux 9-27-72 S<sub>1/2</sub> & NW<sub>1/4</sub> Sec 45, Pt 34 Blk 23  
D--Eugene Worley et ux to J Seibert Worley 7-24-72 1/2 int Lots 4, 5 Blk 2 exc N 6<sub>1/2</sub> Lot 4; Lots 21, 22 Blk 9 Shamrock & Pt Sec 43 Blk 17  
September 29, 1972  
The following 17 instruments are all ROWs to El Paso Natural Gas Co--  
Bob McCoy 8-26-72 N<sub>1/2</sub> Sec 19 Camp Co Sch L--Allen M. Reynolds et ux 9-14-72 N<sub>1/2</sub> NW<sub>1/4</sub> 25 Camp Co Sch Land--Bessie E Megee 9-16-72 E<sub>1/2</sub> SW<sub>1/4</sub> Sec 20 Blk RE; George C Walker et ux 9-12-72 Pt NW<sub>1/4</sub> 5 Camp Co Sch L--Audrie M Howard et al 9-8-72 Sec 69 B 23-- A. L. Grigsby et ux 9-4-72 W<sub>1/2</sub> NW<sub>1/4</sub> 96 Blk 23-- Joe W Brown et ux 9-2-72 W<sub>1/2</sub> Sec 45 Blk 24--F M Grimes et ux 9-1-72 SE<sub>1/4</sub> Sec 28 Blk A-9--F M Grimes et ux 9-1-72 Pt Sec 32 Blk A-9--J R Clark et ux 8-22-72 N<sub>1/2</sub> Sec 31 Blk A-9; Flora Mae Kelley et al 8-23-72 Sec 32 SE<sub>1/4</sub> 49 A-4--Mary Beth Schoon et vir 8-29-72 32 SE<sub>1/4</sub> 49 A-4-- Lewis D Gates et al 9-5-72 NW<sub>1/4</sub> 54 Blk A-4--H J Finsterwald et ux 8-29-72 16, ac 59 A-4--Vida S Brown et al 9-11-72 6 E<sub>1/2</sub> 7 Camp Co Sch--M B Eiland et ux 9-7-72 N<sub>1/2</sub> Sec 13 Camp Co Sch Land OL--Verbon Smith et ux to Gulf Oil Corp 8-23-72 NE<sub>1/4</sub> Sec 13 Blk L  
D--George A Barth et ux to Jim C Hensley et ux 9-28-72 125' x 450' Lot 1 Blk 1 Shamrock, Schlegel Addn  
AFF--A O Doggett to C C Kuykenda II et ux 9-20-72 same as above  
DT--Jim C Hensley et ux to George A Barth et ux 9-28-72 same as above  
MD--Fowler G Roberson Prater to William L Arrington et al 9-21-72 All my int 199.78 ac Sec 32 Blk A-5 RVL--First Natl Bk in Wheeler to G L Aderholt 7-11-72 3.196 ac NW<sub>1/4</sub> Sec 60 Blk M-1  
FED TAX LIEN--Darell T Hutchison et ux to United States of America 9-27-72  
Curtis Orville Holland and Lula Collette Sours 9-27-72 Elmer Lee VanZant and Pamela Gail Owen 9-29-72 Clarence Eugene Perry and Phyllis Ann Dobbins

## Across the Fence

ronomist with the Nobel Foundation at Ardmore, Okla., R.L. had a few news items that may be applicable to our area. He said they seeded ryegrass (80-90/lb. per acre) into lovegrass fields about this time of year with a regular grain drill and applied an application of 18-46-0 fertilizer as a kicker. Stocker steers gained 200 lb. of beef to the acre before the lovegrass got to growing in April. Instead of growing 200 lb. of beef to the acre in the summer on lovegrass alone. With rye overseeded, he said there may be a possibility of producing 400 lb. of beef to the acre or more. At any rate, I hope to obtain some data on this work this fall if we can find a willing cooperater....

Here is an important reminder to all of you who own land in Zone 4 of the Wheeler County Soil and Water Conservation District in the Mobeetie vicinity. On Thursday night, October 12th at 7:30 p.m. in the Mobeetie church of Christ, you will have an opportunity to elect a director of your district, who will represent you in soil and water conservation matters. You are eligible to vote if you are over 21, own

BY: Max Hatter, CEA  
We had a good turn out at the 15th Annual Northwest Texas Research Demonstration Program last Thursday night at Kelton. A lot of folks are interested in grazing alfalfa and weeping lovegrass. On Friday morning we had a nice visit with R.L. Dalrymple. Ag-

9-29-72  
Robert Walter Talley and Lynn Jo Shipman 9-29-72 Jackie Don May and Sallie Jo Shelton 9-29-72 District Clerk's Office No. 6814 Jesus Gonzales Castillo and Sylvia Yolanda Casti llo 9-22-72 Divorce

Dr. Jack L. Rose  
OPTOMETRIST  
121 Main St. - Shamrock  
Phone 256-3203  
Tues. 9-5 Fri. 2-5

Dr. M. V. Cobb  
CHIROPRACTOR  
Specializing In The Examination And Treatment of Spinal And Nervous Disorders  
256-1133  
310 South Main  
Shamrock, Texas

land in Zone 4, or if you are the wife of a landowner. The northern boundary of Zone 4 is the Hemphill County line north of New Mobeetie stretching from the Gray County line eastward to the powerline road. The southern boundary is the north fork of the Red River from the Gray County line eastward to a point one mile east of the Magic City Road Bridge.

Farmer Hefley is presently the duly elected director of Zone 4 and is eligible for re-election at the discretion of the landowners. Anyone who is a landowner in Zone 4 can be nominated for director as long as they are 21 years of age and actively engaged in the business of farming or livestock raising. The director attends a meeting once a month. They serve a term of 5 years. Nominations will be accepted from the floor. That date again is Thursday night, October 12, 7:30 p.m. at the Mobeetie Church of Christ. By all means, VOTE.

Frank Tidwell, my good friend at the Security State Bank in Cheyenne, Okla., attended the Grazing Management Program at Kelton last week and wrote us a nice letter. He said that "It's good that irrigated lovegrass is able to compete favorably with irrigated alfalfa as a profit maker. I feel you made it quite clear that with the longer growing season that alfalfa would have here, as opposed to the study in Utah, would put it into a more favorable position which would indicate that the profit potential for alfalfa is somewhat greater than lovegrass as an equal basis. This is as it should be as we are comparing a medium protein crop (lovegrass) with a high protein crop (alfalfa). When we get into the management of irrigated lovegrass we may find that there are corners to cut on expenses and

to be sure we'll find the proper stocking rate. There is very likely a greater profit potential here than we can even imagine at this

LUCY MEADOWS PLAYS VOLLEYBALL  
Over 100 Hardin-Simmons University coeds are participating in Women's Intramural Volleyball.  
Lucy Meadows of Briscoe is a member of the Tri PHI No. 1 team.

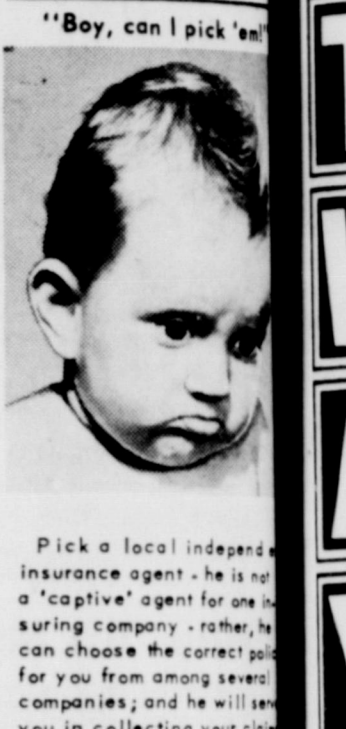
TIDWELL IN BANGKOK  
Marine Sgt. David L. Tidwell, son of Mr. and Mrs. J.T. Tidwell of Wheeler, Texas, is on assignment with the Marine Aircraft Group 15's Task Force Delta at the Nam Phong Air Base, 255 miles northeast of Bangkok.  
He is a 1966 graduate of Wheeler High School and a 1970 graduate of West Texas State University in Canyon.

QUIZ FOR PARENTS  
What do I think school should be - and does my child know what I think? What are his attitudes toward learning, to teachers and classmates?  
Do I know how my child acts at school? How often do I talk with his teacher at a place and time where we can truly exchange ideas? Did I vote in the last school board election? Are the board members capable of making sound decisions about spending hundreds of thousands of dollars? Do they really know the teachers they hired?  
A child is in school about 35 hours out of a 168-hour week. He's there approximately 174 days out of a 365-day year. Without good support from homes, schools will fight a losing battle and taxpayers will never get their money's worth.  
Come on taxpayers, lets become educated about our school system!

R.L. FISHER RECEIVES BA  
Robert Fisher of Wheeler was among more than 300 students at the University of Texas who were candidates for Bachelor of Business Administration degrees at the close of the summer session.

JEHOVAH'S WITNESSES SCHEDULE SPECIAL TALK  
"Who Is Your God?" is the title of the public address to be delivered by Mr. R.A. McCarroll, representative of the WATCHTOWER Society. The date is Sunday, October 8th at 10 A.M. according to Orville Caruthers, presiding minister of Jehovah's witnesses in Shamrock.  
Mr. Caruthers reports a three hundred per cent increase in meeting attendance in the congregation, and, as he stated: "We have again reserved the banquet room at the Wrangler restaurant, 401 East 12th St., Shamrock, Texas, and expect a capacity crowd."  
All interested persons are welcome. No collection will be taken.  
PAMPA FINE ARTS TO HOLD SHOWING  
Pampa Fine Arts Association's sixth annual Art Festival will be held Saturday and Sunday, November 11 and 12 in the Heritage Room of the M.K. Brown Civic Auditorium. Selling and exhibiting hours will be from 10 AM until 8 PM Saturday and from twelve noon until 6 PM Sunday.  
The Pampa Association is extending invitations to all interested artists

point in time. We may be able to make the first statement that irrigated grass is a greater profit maker than is irrigated alfalfa sooner than we think.  
Thought you would be interested in the very knowledgeable remarks made by Frank.  
Brother Bill Lewis of Shamrock visited with Mr. and Mrs. Cecil Clark Sunday.  
Mr. and Mrs. Cecil Clark visited in Dodson Tuesday with the Otho Talleys.  
Chip Hill, the grandson of Carroll Adams and the Harold Hills had a very bad bicycle accident last week. He fell with his bike and acquired a severe leg break. He is in traction for a couple of weeks before the cast can be set. He is in Room 709, Medical Center Hospital, Odessa, Texas.  
Please don't forget about the Betty Crocker coupon that Girls Town, Berger, needs for their pickup. Let them at Warren's Grocery Pritchard's Grocery by Oct. 15.  
"Boy, can I pick 'em!"



Pick a local independent insurance agent - he is not a "captive" agent for one insurance company - rather, he can choose the correct policy for you from among several companies; and he will save you in collecting your claim.

JOHN C. VISE  
AGENCY  
COMPLETE INSURANCE SERVICE  
WHEELER PH. 826-555

## AD autumn DISCOUNTS

Prices Good Only At Associated Druggists OCT 4, 5, 6 & 7  
We Reserve The Right To Limit Quantities At Sale Prices.

Your neighborhood drug store... is a member of America's largest group of independent pharmacists who are all dedicated to the idea of giving you special discount prices plus the same individual attention you've always received.  
Watch for the Value Days sales starting the first Wednesday of every month.

<b>FACE GUARD</b> Razor Blades 4s Mfg list 89c <b>49c</b>	<b>ABSORBINE</b> Arthritic Pain Lotion 4 oz Mfg list \$1.50 <b>84c</b>
<b>BABY MAGIC</b> Lotion by Mennen 9 oz Mfg list \$1.29 <b>69c</b>	<b>STYLE</b> Hair Spray Regular, Super, Ultra Hold Mfg list 99c <b>52c ea.</b>
<b>DRY LOOK</b> After Shampoo Control 4 oz Mfg list \$1.09 <b>65c</b>	<b>JOHNSON &amp; JOHNSON</b> Baby Powder 14 oz Mfg list \$1.29 <b>77c</b>
<b>MENNEN SKIN BRACER</b> 6 oz Mfg list \$1.39 <b>81c</b>	<b>DESERT FLOWER</b> Hand & Body Lotion 16 oz Mfg list \$2.00 <b>\$1.12</b>
<b>TRAC II RAZOR</b> Mfg list \$2.95 <b>\$1.78</b>	<b>CEPACOL</b> 14 oz Mfg list \$1.29 <b>69c</b>
<b>CARTRIDGE</b> 5s Mfg list \$1.19 <b>72c</b>	<b>MAALOX</b> 12 oz Mfg list \$1.69 <b>\$1.12</b>
<b>ST. JOSEPH CHILDREN ASPIRIN</b> 36s Mfg list 43c <b>25c</b>	<b>BRECK ONE</b> Lotion 6 oz Mfg list \$1.79 <b>86c</b>
<b>VASELINE INTENSIVE CARE</b> Bath Beads Mfg list \$1.19 <b>67c</b>	<b>ALKA SELTZER</b> Mfg list \$ .75 <b>57c</b>
<b>CREST</b> Toothpaste 5 oz Regular and Mint Mfg list 89c <b>59c</b>	<b>Oral-B</b> Tooth Brush 60 and 40 Mfg list 98c <b>46c ea</b>

These are suggested A.D. prices optional with participating stores.

September 26, 1972  
D--H H Hall to Paul Topper 9-25-72 N 15 ft Lot 2 Blk 11 Wheeler  
RESIGN OF TRUSTEE-- Gladys Shannon to Haynie E Edwards 12-20-71 P OF ATTY--Joe B Reid to Eura Reid 6-21-72 ROY D--Joe B Reid et ux to Grace Ann Barnard et al 9-25-72 30/640 int Sec 9 Blk RE  
ROY D--Joe B Reid et ux to Jerry Preston Reid 9-25-72 same as above  
ROY D--Joe B Reid et ux to J B Rid Jr 9-25-72 same as above  
ROY D--Joe B Reid et ux to Charles William Reid 9-25-72 same as above  
ROY D--Joe B Reid et ux to James Wilson Reid 9-25-72 ROY D--Joe B Reid et ux to Eura Mae Gantt 9-25-72 same as above  
September 27, 1972  
MD--Minco Oil and Gas Co to Spencer L Depew 9-12-72 5/823 int 823 ac Sec 25 Camp Co Sch.  
DT--Coy A Clay et ux to Farmers & Merchants St Bk Shamrock 9-26-72 Lots 11, 12 N 40 ft Lot 10 Blk 30 Shamrock  
AFF--Guy Hardin to Paul T Macina et al 9-27-72 E<sub>1/2</sub> 99 E<sub>1/2</sub> 100 Blk 23  
September 28, 1972  
STATE TAX LIEN--Joe C Jernigan dba Joey's Restaurant to State of Texas 9-27-72  
DT--Prime Feeders, Inc to Canadian Production Credit Assn 9-25-72 48.95 ac NW<sub>1/4</sub> Sec 11 Blk A-4 & 40 ac NE<sub>1/4</sub> Sec 20 Blk A-5  
RVL--Emily Rippey et vir to A W Lankford et ux 9-27-72 S<sub>1/2</sub> & NW<sub>1/4</sub> Sec 45, Pt 34 Blk 23  
D--Eugene Worley et ux to J Seibert Worley 7-24-72 1/2 int Lots 4, 5 Blk 2 exc N 6<sub>1/2</sub> Lot 4; Lots 21, 22 Blk 9 Shamrock & Pt Sec 43 Blk 17  
September 29, 1972  
The following 17 instruments are all ROWs to El Paso Natural Gas Co--  
Bob McCoy 8-26-72 N<sub>1/2</sub> Sec 19 Camp Co Sch L--Allen M. Reynolds et ux 9-14-72 N<sub>1/2</sub> NW<sub>1/4</sub> 25 Camp Co Sch Land--Bessie E Megee 9-16-72 E<sub>1/2</sub> SW<sub>1/4</sub> Sec 20 Blk RE; George C Walker et ux 9-12-72 Pt NW<sub>1/4</sub> 5 Camp Co Sch L--Audrie M Howard et al 9-8-72 Sec 69 B 23-- A. L. Grigsby et ux 9-4-72 W<sub>1/2</sub> NW<sub>1/4</sub> 96 Blk 23-- Joe W Brown et ux 9-2-72 W<sub>1/2</sub> Sec 45 Blk 24--F M Grimes et ux 9-1-72 SE<sub>1/4</sub> Sec 28 Blk A-9--F M Grimes et ux 9-1-72 Pt Sec 32 Blk A-9--J R Clark et ux 8-22-72 N<sub>1/2</sub> Sec 31 Blk A-9; Flora Mae Kelley et al 8-23-72 Sec 32 SE<sub>1/4</sub> 49 A-4--Mary Beth Schoon et vir 8-29-72 32 SE<sub>1/4</sub> 49 A-4-- Lewis D Gates et al 9-5-72 NW<sub>1/4</sub> 54 Blk A-4--H J Finsterwald et ux 8-29-72 16, ac 59 A-4--Vida S Brown et al 9-11-72 6 E<sub>1/2</sub> 7 Camp Co Sch--M B Eiland et ux 9-7-72 N<sub>1/2</sub> Sec 13 Camp Co Sch Land OL--Verbon Smith et ux to Gulf Oil Corp 8-23-72 NE<sub>1/4</sub> Sec 13 Blk L  
D--George A Barth et ux to Jim C Hensley et ux 9-28-72 125' x 450' Lot 1 Blk 1 Shamrock, Schlegel Addn  
AFF--A O Doggett to C C Kuykenda II et ux 9-20-72 same as above  
DT--Jim C Hensley et ux to George A Barth et ux 9-28-72 same as above  
MD--Fowler G Roberson Prater to William L Arrington et al 9-21-72 All my int 199.78 ac Sec 32 Blk A-5 RVL--First Natl Bk in Wheeler to G L Aderholt 7-11-72 3.196 ac NW<sub>1/4</sub> Sec 60 Blk M-1  
FED TAX LIEN--Darell T Hutchison et ux to United States of America 9-27-72  
Curtis Orville Holland and Lula Collette Sours 9-27-72 Elmer Lee VanZant and Pamela Gail Owen 9-29-72 Clarence Eugene Perry and Phyllis Ann Dobbins

## Mustang Inn

WHEELER, TEXAS  
1 BLOCK EAST OF INTERSECTION

GOOD FOOD SERVED EFFICIENTLY AND COURTEOUSLY, IN CLEAN AND PLEASANT SURROUNDINGS. WE HAVE DRIVE UP WINDOWS FOR CAR SERVICE

TRY US -Ph. 826-3278

## BUTCHERING & PROCESSING PRICES

Beef processed, double wrapped 8¢ per pound  
**\$3.00 A head for Butchering**  
Pork processing including curing double wrapped 10¢ per pound  
**\$4.50 A head for butchering**

We butcher Monday thru Friday 8 to 12 A.M. except holidays

CALL FOR QUARTER - HALF - WHOLE BEEF PROCESSED

WE NOW HAVE CUTS OF PORK AND BEEF FOR SALE

### SHAMROCK SLAUGHTER PLANT

N. of City Phone 256-3241

Mon., Oct. 16th

# 8 99¢

KING SIZE WALLET CREATIVE COLOR PORTRAITS FOR ONLY

PHOTO HOURS  
9 A.M. TO CLOSING

GET PICTURES MADE OF GRANDMA, GRANDPA, DAD, MOM AND ALL THE LITTLE ONES AT THESE SAME LOW PRICES!

## SHUGART COLOR PHOTOS

Daughtry's Ben Franklin

408 Main St.

Prog. Study Club Hosts Meeting  
The Progressive Study Club met Sept. 28 in the Reception room at the ASCS building with the Wednesday and Thursday study clubs as their guests.  
The club president, Mrs. Anna Green, presided over the meeting by welcoming the guests and repeating the club collect in union.  
Mrs. Paula Britt, 1st Vice President of Top of Texas District gave a very interesting program on the Federated Club's roll in the changing environment of our community.  
We have helped in every community project - such as hospital, schools, swimming pool, pavement, get out the votes, library and many others.  
Guests present were: Mmes. Paula Britt, Ross Dunn, Larry Jennings, Laura Guthrie, Grace Porter, Mary Finsterwald, Mary Wofford, Carl Laffin, Cecil Denison, M. McIlhany, Forrester, Sharon Wright, Polly Tucker, Richard Brown and Miss Esther Sorensen and Wilma Hefley.  
Members present were Mmes. Anna Green, Ila Byers, Opal Daughtry, Doreen Owen, Ida Farmer, Pauline Hefley, Irma Kirk, Inez Lancaster, Curtis Moore, Amelia Sims and Emma Weatherly.  
Refreshments of punch and cookies were served by the Social Committee.

## RCA XL-100

100% Solid State AccuColor

XL-100 is made to last. All chassis tubes are gone, replaced by solid state circuitry designed to perform better with fewer repairs.

AccuMatic color monitor locks color within a normal range. If the kids fiddle with the dials, just press a button and beautiful color snaps back.

RCA's black matrix picture tube assures vivid, lifelike color... color that won't shift or fade, even after hours of continuous viewing.

Twelve exclusive plug-in AccuCircuit modules control most set functions, so most repairs can be done in your home more quickly and easily.

**L. & F. REPAIR** Phone: 826-3241  
110 W. Oklahoma

Is now the time to refinance loans?

Capital for expansion more money from your equity, debt consolidation, smaller payments - these are important reasons for adjusting your loan structure. It's sound business to analyze credit obligations at least once each year to make sure borrowed money is being used to full advantage. Let's talk it over. Should you decide to rearrange your debts, we would be glad to make a Land Bank refinancing proposal.

Federal LAND BANK Association  
of Shamrock  
Jack Williams, Mgr.  
117 E. Third  
Phone 256-1212

## STARK Nursery Stock

Call or Write  
R. St JOHN  
Mobeetie, Texas  
Phone 845-2353

## Hyland's PHARMACY

Wheeler, Texas

Prices of... Oct. 6... No. 237... TO G... ME... FL... Goo... Goo... BA... CHI...



Bring your *Bonnie*

# STAMP COUPON PAMPHLET

TO OUR STORE & DURING THE NEXT 4 WEEKS ACCUMULATE UP TO ...



IF YOU FAILED TO RECEIVE A BONUS COUPON PAMPHLET IN THE MAIL, GET ONE AT OUR STORE TODAY.

THRIFTWAY

THRIFTWAY

**TV Special**  
**Shurfine SOFT DRINKS**  
 28 oz. BOTTLE **19¢**

SHURFINE YELLOW CLING SLICED OR HALVES

**PEACHES** 3 29 oz. CANS **\$1.00**

**FRUIT COCKTAIL** Del Monte 3 303 cans **89¢**

**Adorn PANTY HOSE**  
 2 pair **88¢**

**Wright's Boneless Ham**  
 1 19

**shurfresh Bacon**  
 1 pound pkg **79¢**

**Tide 25¢ OFF**  
**Tide**  
 Tide's In... Dirt's Out

**19**

**Shurfine YELLOW POP CORN**  
 2 32 oz. BAGS **49¢**

**COOKWARE COLOR CENTER**

KITCHEN BRIGHTENERS by MIRRO  
 Each value-priced offering made of quick-heating durable aluminum... styled to add charm to kitchen decor.

YOUR CHOICE **POPPY OR AVOCADO**



ITEM	WEEK	YOUR PRICE (with 5.00 purchase)	REG. PRICE
A	MIRRO 4 QT. ELECTRIC CORN POPPER	\$ 4.44	\$ 7.99
B	MIRRO-MATIC 4 QT. ELECTRIC POP 'N' SERVE POPPER	7.99	15.99
C	MIRRO-MATIC 9 CUP ELECTRIC PERCOLATOR	7.77	12.99
D	MIRRO-MATIC 4 QT. SPEED PRESSURE COOKER	8.88	14.99
E	MIRRO-MATIC 6 QT. SPEED PRESSURE COOKER	11.88	18.99
F	MIRRO-MATIC 11" ELECTRIC BUFFET SERVER-FRYER	13.88	24.99
G	KITCHEN PRIDE 2 1/2 QT. WHISTLING TEAKETTLE	2.44	3.99
H	MIRRO-MATIC 30 CUP ELECTRIC PARTY PERK	8.88	17.99

**10 LB. GOLD MEDAL FLOUR**  
 WITH COUPON **98**  
 Without Coupon **\$1.15**

**Calif. Iceberg Lettuce**  
 1 pound **19**

**shurfresh VEGETABLE OIL**  
 24 oz. BOTTLE **43¢**

**15¢ OFF**  
**MAXWELL HOUSE COFFEE** 1-LB. CAN **79¢**  
 WITH THIS COUPON GOOD ONLY AT THRIFTWAY  
 Expires October 7, 1972

**Texas Sweet Oranges**  
 5 pound bag **49¢**

**BAYER CHILDREN'S ASPIRIN**  
 36-count **33¢**

**Down FABRIC SOFTNER**  
 King size **19**

**PRITCHARD'S**  
 Shamrock, Wheeler  
**DOUBLE S&H GREEN STAMPS WEDNESDAY**  
 WITH PURCHASE OF \$2.50 OR MORE



# Briscoe News

BY: Vetola Parker

Helping Mary Fillingim celebrate her 19th birthday last Monday night were Cindy, Phoeby and Kathy Meek, Joan Fillingim, Donna Meadows, Dan and Rita Fillingim and Mr. and Mrs. Mack Sides.

Mr. and Mrs. Mack Sides took Melissa to Dallas Sunday for treatment for cystic fibrosis.

Jimmy Sides is staying with the Ray Meadows. Mr. and Mrs. Willis Fillingim went to the dentist at Sayre Wednesday and came back by the Horace Fillingims and ate dinner there.

Larry Meadows came home last Wednesday from Colorado and stayed until Sunday. Lucy Meadows and Ric Lucas came in from Abilene and Rita Gill from Canyon and spent the weekend.

Bonnie Meadows and children visited the E.G. Fillingims Sunday afternoon.

Mr. and Mrs. Dan Fillingim visited the Bill Heffleys Thursday night.

Helping Beckie Irvin celebrate her 10th birthday with a supper, skating and a slumber party Friday night were Teresa Horton, Lavonda Thomas, Carla Bible, Lacy and Shannon Swift and Carolyn Sue Gilmer.

Mr. and Mrs. Willis Fillingim ate supper with the Dick Irvins Friday night.

Mr. and Mrs. Wayne Meek and boys visited her folks, the Albert Bynums and shopped in Pampa Saturday.

Mr. and Mrs. Gale Singleton visited the Willis Fillingims Thursday night.

Mr. and Mrs. Gale Singleton and children spent the weekend in Hereford with her folks, the Abe Davises.

Rich Irvin spent Friday night with the Willis Fillingims. Phoeby Meek ate dinner

with the Willis Fillingims Sunday.

Irene Zybach is doing o.k. since her eye surgery. Some of her visitors since she came home were Mr. and Mrs. R.L. Zybach and Royce, Mr. and Mrs. Porter Rogers, Mr. and Mrs. Albert Zybach, Mr. and Mrs. E.O. Kelley, Mr. and Mrs. Oral Helton, Anna Zybach, Lucille Tipps, Melody and Shane Goad, Gay Young, Mr. and Mrs. Dave Kiker.

John Helton came home from the hospital Thursday night.

Mr. and Mrs. John Helton got their house moved in on their lot in Briscoe last week.

John Helton slipped Sunday off a cinder block they were using for a step and jabbed a stab into his stomach. The doctor let him come home Sunday.

Willene Waters came home Saturday afternoon from the hospital.

Mary Hudson took Willene Waters some dinner Sunday.

Monday morning visitors at Willene's were Lou Dean Douthit and Velma D'Spain. Hoyle Helton visited Mr. and Mrs. Lawrence Aderholt Sunday evening.

Oral and Hoyle Helton visited Bertha and Ewell Steen Saturday afternoon.

Mr. and Mrs. Jack Meek had a birthday dinner Sunday for Evelyn's daddy, Gaddy Vise of Wheeler. Those present were Mr. and Mrs. Lafoy Vise and Becky, Mr. and Mrs. Claude Barker, Gaddy Vise, Ola Underwood, and Tony Whipple of Canadian.

Mr. and Mrs. Tru man Scott of Mobeetie visited the Jim Heltons Sunday afternoon.

Mr. and Mrs. Jim Helton and Claid visited the Jimmy Heltons in Wheeler Sunday afternoon.

Mr. and Mrs. Jim Chandler were in Amarillo Saturday.

Mr. and Mrs. Tom Tucker and Will of Guyman, Okla. visited her sister, Mr. and Mrs. Jim Chandler Saturday and Sunday.

Mr. and Mrs. Bill Jackson moved into their new house in Briscoe last Wednesday.

Saturday visitors at the Bill Jacksons were Mr. and Mrs. Don Zollar, Debbie and Carla and a grandson and Irene (Matthew) Signor.

Mr. and Mrs. Bill Jackson went to Pampa Monday on business and shopping. Last Wednesday dinner guests at the L.J. Hudsons were Mr. and Mrs. Ronny Gatlin, Mr. and Mrs. Claud Parker, and Mr. and Mrs. Oden Hudson.

Wednesday night visitors at the L.J. Hudsons were Mr. and Mrs. B.F. Meadows, Dorothy Walker and Mr. and Mrs. Oden Hudson.

Leroy Parker spent Friday night with the colie Parkers.

The Briscoe Home Demonstration club had their annual fish fry at Mr. and Mrs. Neal Renfros Thursday night. There were 25 there.

Mrs. E.G. Fillingim has an oblong corningware bowl left at her place during Mrs. Rose's funeral she can't find an owner for. Please let her know if its your bowl.

Mr. and Mrs. Bill Walker and Danny Davis of Pampa spent the weekend with the Cliff Walkers. Mr. and Mrs. Howard Lohberger of Sweetwater, Okla., Mr. and Mrs. Richard Meadows, Leslie and Ben of Candian and Mr. and Mrs. Mike Aderholt and Danne of Wellington visited the Bill Walkers Saturday evening, and Mr. and Mrs. Ewell Steen visited Sunday afternoon.

J.E. WILLARD HAS 86TH BIRTHDAY

Mr. J. E. Willard of Canadian had his 86th birthday last Saturday. His daughter, Elva Wood, cooked dinner and took it over to him at the Abraham Memorial Home. Others attending were Mr. and Mrs. Jimmy Britten and daughter, Carlene of Groom, Fred Wood, Mrs. Lela Wilson and Mrs. Willard.

Others visiting the Willards this past week were Rev. Ross Dunn, Mrs. Violette Hampton, Mr. and Mrs. Lafoy Vise.

Mrs. Fred Wood, Mrs. Lela Wilson and Mrs. May Muse visited at Canadian Abraham Memorial Home Tuesday.



## Shelton-May Vows Read

Mrs. Nancy Shelton announces the wedding of her daughter, Sallie Jo to Mr. Jackie May, son of Mr. and Mrs. Melvin May on Saturday, September 30 in the First Baptist church of Mobeetie.

Rev. Aaron Laverty performed the double ring ceremony.

Wedding music was played by Gazelle Patterson and Mrs. Mary Beth Hogan sang "Till the 12th of Never" and "Bless Be The Tie."

Miss Debbie May served as brides maid. She was attired in a purple cape gown accented with a v-neck and wore a corsage of white carnations. Tom Stribling was best man.

The bride's mother was attired in a blue dress accented with a corsage of white carnations and the groom's mother's dress was beige with a white carnation corsage.

With a background of blue carnation flowers, the bride was given in marriage by Jess Patterson. She was attired in an empire style, gown of white satin trimmed with white lace and featuring a train. Her veil was of white net with rhinestone trimmed flowers.

A reception was held following the wedding for the members of the family who attended the wedding with Cendie Shelton serving the punch and Debbie May the cake which was white and blue, 2 tiered, with the traditional bride and groom.

Mr. May is a 1971 graduate of Mobeetie High School and is employed at a Gruver feed lot. The couple will make their home in Gruver.

**FARM or GRASS LAND**  
- Need Listings -  
John C. Vise Agency  
Phone: 826-5576 or 5577  
117 W. Texas  
Wheeler, Texas

**ONE STOP SHOP**  
204 E. Texas Street

**Pumps is our Business!**

Garig  
**Tape Recorder Portable \$90.00**  
Elgin  
**Tape Player 8 Track \$85.00**  
General Electric  
**Automatic Washer \$230.00**  
**Stereo-Record Player AM-FM Radio With Built In Porti-Fi**  
Hours: 8:00 till 10:00 A.M. Monday thru-Saturday

**Fred Rodgers BACKHOE & DITCH DIGGING SERVICE**  
Storm Cellars & Ceptic Tanks  
We Carry Plastic Pipe.  
Phone: 806-826-5763

**America's hottest love affair...**

Homes and electric heat. They were made for each other. Electric heat solves so many of the homeowner's problems. Convenient. Worry Free. If you're shopping for a new home see how much more you can get for your money with total electric. Or, if you own an older home it can be switched to electric heat in a matter of hours. Call us for a free estimate. It's a real eye-opener.

**electric heating estimate**

**Total Electric Heating**

**To the friends and relatives of Connie Nixon and Kenneth Fisher**

Mr. and Mrs. Charles Nixon  
and  
Mr. and Mrs. Joe Fisher  
invite you to share in the joy of the marriage uniting their children  
Connie Marie  
and  
Kenneth Lynn

We invite you to worship with us and witness their vows on Saturday, the fourteenth of October  
Nineteen hundred and seventy-two  
at eight o'clock in the afternoon  
At the First Baptist Church  
Amharst, Texas

If you are unable to attend we ask your presence in thought and prayer.

Reception following

**Mobeetie News**

BY: Melba Burch

Mr. and Mrs. Ronnie Stuart of Sayre, Okla. visited Thursday with Mr. and Mrs. Calvin Stuart, Randy and Dennis and Mrs. Thelma Dunn and George B. Dunn. Mr. and Mrs. Calvin Stuart, Randy and Dennis visited Sunday in Sayre, Okla. with Mr. and Mrs. T.A. Richardson and Jerry and Mr. and Mrs. Ronnie Stuart.

Mr. and Mrs. Gerald Stuart, Robert, Teresa and Donald of Pampa and Mrs. Lee of McLean visited Sat. with Mr. and Mrs. Calvin Stuart, Randy and Dennis. Mr. and Mrs. C.W. Burch and Mrs. Wilber Beck were called to St. Anthony hospital in Amarillo early Monday. Their uncle, Farris Pounds of Bovina was in suffering from injuries in a wreck. He passed away about 4:15 Monday afternoon.

Visiting with Mrs. Sylvia Barton, Shelia and Susan were Mr. and Mrs. Earl Kinnie and daughter and Mrs. Sarah Mason and children of Abilene, Mr. and Mrs. Lester Reynolds of Pampa and Liz Ann Allen.

Our sympathy goes out to Mr. and Mrs. Delmar Newman and family on the death of his mother in Colo.

What man in Mobeetie has gotten too big for his pants?  
Mr. and Mrs. Chunky Leonard of Pampa visited Friday night with his mother, Mrs. Tassie Leonard.

Mrs. Mike Hill visited in Phillips Sunday with Mr. and Mrs. Bobby Hill and family. Willie Ruth Hathaway of Pampa visited Wednesday with Mrs. Mike Hill, Mr. and Mrs. Doug Baird,

Mr. and Mrs. Alvis Burt visited Mrs. Nathan Lancaster for Wichita Falls Tuesday to see Mr. and Mrs. Cecil Eubanks. Hazel is reported as about the same.

Mrs. Eula Johnson visited over the weekend in Dun with Mr. and Mrs. Cary Johnson and family.

Mr. and Mrs. Cecil Ma and family of Miami and Mrs. Paul Hathaway family visited Sunday with Mr. and Mrs. Lester Hathaway.

Visiting Saturday with Mr. and Mrs. Lester Leav were her brother, Mr. and Mrs. Earl Alexander of White Deer and her mother Mrs. Willie Alexander of Pampa. Visiting them Saturday were Mrs. Lonnie Paell, Mrs. T.C. Tash and Mrs. Bobby Mayer, all of Pampa.

**Dyer's Restaurant & Buffeteria**  
Will be open Daily  
11:00 A.M. to 3:00 P.M.  
For Lunch  
6:00 P.M. to 8:00 P.M.  
For Dinner

**COMPLETE INSURANCE COVERAGE**  
John C. Vise Agency  
117 W. Texas Street  
Wheeler, Texas

## Want Ads

**FOR RENT:** 2 Bedroom Houses. See Hyland Weaver at Hyland's Pharmacy Phone 826-5561

**CARPET CLEANING**  
Free Estimates  
Phone 826-5740

**FOR SALE:** House and 4 lots across from Park. John C. Vise Agency. Phone 826-5576 jcv

**WANTED:** Tractor Driver to mow highway - Carl Giddens Phone 375-2287, Allison 2tc

**WANTED:** Someone to do quilting. Harrison Hall-Phone 826-5714 rtn

**FOR RENT OR SALE:** 5 room house and basement, 3 lots. Phone 364-5816 Hereford, Texas rtn

**FOR SALE:** 1/2 section land 1 mile East of Shamrock and 1/4 section 4 miles SE of Erick by owner. 935-3511 (Dumas) after 8:00 p.m. 4tp

**HAWLEY'S APPLIANCE**  
Repairs on all small appliances. All makes of vacuum cleaners, Hair Dryers, Electric Shavers, also hand power tools, Scissors sharpened. Used vacuum cleaners for sale. Phone 256-3197, 420 S. Okla. St., Shamrock rtn

Why Not let us wash your car and steam clean your motor.  
We Give S&H Green Stamps  
We are open until 10:00 p.m.  
H & D MOBIL

**CESSPOOL PROBLEMS?**  
TOWN AND COUNTRY DRILLING SERVICE  
Amarillo, Tex. 383-0907

**FOR RENT:** Trailer Space Black Gold Trailer Park Phone 826-5512 rtn

**FOR SALE:** Trash Barrels. A. B. Griffin 826-5629 rtn

**PAUL'S REAL ESTATE**  
Houses and 10 Acres Paul Topper, 826-5237  
Monuments, Grave Covers and Curbing. Complete finishing. Will Warren, Wheeler rtn

**PAUL'S TRAILER PARK**  
Across Street From School Trailer lots 40'x70'  
Modern Underground Utilities Gas and Water furnished Individual Electric Meters  
PAUL TOPPER - Ph. 5237 or 5931

**ATTENTION CATTLEMEN:**  
Powder River Cattle Chutes and Calf Tables on Display and For Sale at J.W. Fields Oil Co., Shamrock, Texas.

**WANTED TO BUY:**  
Horses - Ph. 826-3203

**FOR RENT:** 3 room apartment, 305 E. 8th 826-3155 rtnr

**LOST:** Red long-haired greyhound. Phone 826-5721 2tp

**FOR RENT:** 3 bedroom house 703 S. Main 826-5616 2tp

**FOR RENT:** Storage Room 6-5826 1tc Jaco

**WANTED:** Household help. Harrison Hall - Phone 826-5714 rtn

**FOR SALE:** Good Caloric gas range and Sears Cold-spot refrigerator. Call 826-5248 1tcck

**FOR SALE:** Rye Seed-6-5826

**FOR SALE:** Maple Trundle Bed - Used 3 months. One Regular mattress and one Pasturepedic mattress. Phone 826-3111 - 9:00-5:00 1tcdd

## THE BUSINESS DIRECTORY

**TEXAS PRESS ASSOCIATION**  
P.O. Box 187  
Phone: 826-3123

Published Every Thursday at Wheeler, Texas, By...

Entered as second-class matter December 18, 1933, at the Post Office at Wheeler, Texas 79096, under the act March 3, 1879.

**Wheeler Veterinary Supply**  
(For all your Veterinary Supplies)  
Phone 826-5821  
West Highway 152  
Wheeler, Texas 5tc

**WRIGHT FUNERAL HOME**  
24-Hour AMBULANCE  
Phone: 806-826-5214

Wheeler Lodge No. 1099  
A. F. & A. M.  
MONDAY 7:00 P.M.  
Percy Farmer, Sec'y.  
Members Urged To Attend.  
Visitors Welcome.

**STORM-SCREEN WINDOWS**  
Permanent year-round protection. Changeable from inside. Easy to clean...proofer-proof. Eliminates drafts...Cuts fuel bills....  
**WHEELER LUMBER CO.**  
Phone 826-5543 Wheeler, Tex.  
Fine Service for Fine People

**TRACTORS - IMPLEMENTS PARTS and SERVICE**  
**HIBLER IMPLEMENT CO.**  
Wheeler, Texas

Let Me Write It...  
**GEO. RICHARDSON**  
All Types Of INSURANCE

**Louis C. Stas, Owner and Publisher**  
Subscription Rates  
Wheeler County .....\$3.50  
Outside County .....\$4.50

**FOR ALL YOUR Farm Supply Needs**  
**WHEELER CO. PRODUCE**  
Wheeler, Texas

**WHEELER REDI-MIX**  
REDI-MIX CONCRETE SAND  
Washed Gravel--All Sizes  
Office Hours: 7:30 to 5:00  
Phone 806-826-3223

**Dr. Marion Roberts**  
OPTOMETRIST  
112 W. Kingsmill  
Pampa, Texas

**ZENITH TV - RADIO SALES & SERVICE**  
Call 826-5769  
Wheeler Radio & Refrig. Service  
L. C. Laflin, Owner

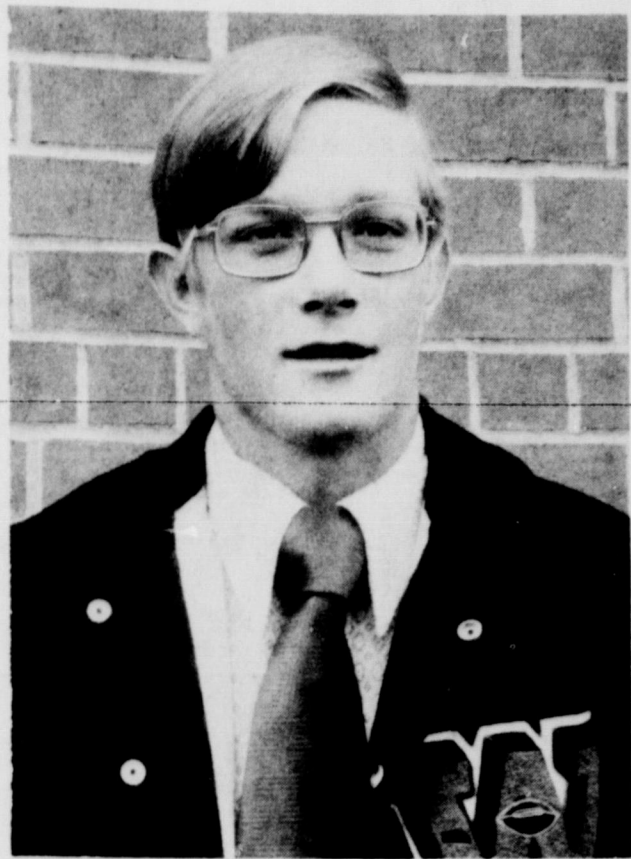
**GUARANTEED AUTO GLASS INSTALLATION & Body Repair**  
**GARRISON SERVICE**  
Phone: 826-5515  
Wheeler, Texas

**CUSTOM DRAPERIES**  
Swags, Cornices, Shutters  
We Install Free  
Tele 256 3652  
**Brannons Decorators**  
Shamrock, Texas 79079





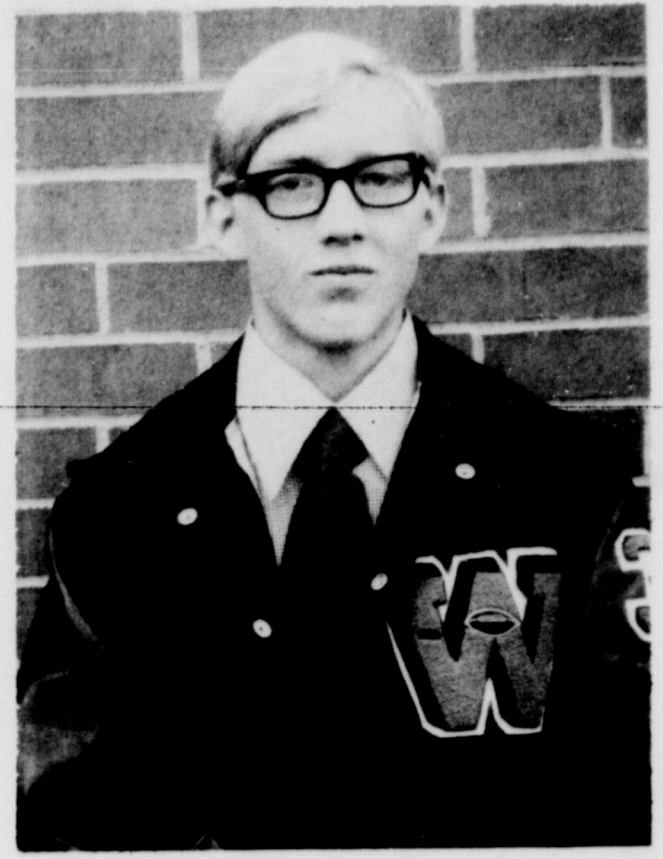
**LARRY RIVES**  
Junior - 140 lbs. - Halfback



**J. C. BROOKS**  
Junior - 160 lbs. - End



**WAYNE WHEELER**  
Junior - 155 lbs. - Tackle



**STEVE WALLACE**  
Soph. - 140 lbs. - Guard

**MUSTANG JR VARSITY**

10	Bateman, Mark	QB	125	Fr.
11	Tidwell, Terry	HB	120	Fr.
12	Lamb, Steve	HB	135	Fr.
13	Helton, Danny	FB	135	Fr.
14	Ford, Ricky	HB	110	Soph.
15	McIlhany, Bill	C	135	Fr.
16	Weaver, Tommy	G	130	Fr.
17	Martin, Raymond	G	140	Soph.
18	Earle, Jerry	G	135	Fr.
19	Bradstreet, Mike	T	160	Fr.
20	Love, Alan	T	160	Fr.
21	Abernethy, Scott	E	110	Fr.
22	Lewallen, Randy	E	135	Fr.
23	Chapman, Von	E	140	Fr.
24	Whitener, Lonnie	E	140	Jr.
25	Wills, Robert	E	125	Fr.

# WHEELER MUSTANGS VS SILVERTON OWLS

**Friday, October 6 7:30 P.M. at Silvertown**

**WHEELER MUSTANGS FOOTBALL SCHEDULE 1972**

September 8	Lefors	H	8:00
September 15	OPEN DATE		
September 22	Canadian	T	8:00
September 29	Shamrock	H	8:00
October 6	Silvertown	T	7:30
October 13	Wellington	H	7:30
October 20	Turkey-Quitaque	H	7:30
October 27	Memphis	T	7:30
November 3	Claude	H	7:30
November 10	McLean	T	7:30
November 17	Clarendon	T	7:30

**Wheeler Mustangs**

11	Fischer, Gary	QB	140	Sr.
20	Stevens, Dale	HB	140	Sr.
30	Britt, Lewis	E	160	Jr.
31	Parson, Micky	HB	135	Soph.
32	Ware, Kent	FB	150	Soph.
40	Rives, Larry	HB	140	Jr.
41	Cole, Rustye	HB	165	Jr.
51	Brooks, Wyatt	T	160	Jr.
53	Hefley, Ricky	C	140	Sr.
60	McIlhany, Tom	G	155	Jr.
61	Helton, Dale	G	165	Jr.
63	Wallace, Steve	G	140	Soph.
64	Sechrist, Calvin	G	160	Sr.
70	Martin, Frank	T	160	Jr.
71	Wheeler, Wayne	T	155	Jr.
72	Davis, Kevin	T	170	Sr.
73	House, Torin	T	170	Jr.
74	Hardcastle, Danny	T	185	Jr.
80	Simmons, Walter	E	130	Soph.
83	Patterson, David	E	140	Soph.
84	Brooks, J. C.	E	160	Jr.

**MANAGERS:**  
Kenny Frankenberg  
Steve Gaines  
Brad Bradstreet

**MUSTANG JUNIOR VARSITY FOOTBALL SCHEDULE**

September 14	Clarendon	H	7:30
September 21	Shamrock	H	7:30
September 28	Lefors	T	7:30
October 5	Silvertown	H	7:30
October 12	Wellington	T	7:30
October 19	OPEN DATE		
October 26	Memphis	H	7:30
November 2	Claude	T	7:30
November 9	McLean	H	7:30

**Silvertown Owls**

61	John Burson	Sr.	150	G
52	Rex Clayton	Sr.	150	C
82	Terry Culwell	Sr.	155	E
73	Mike Grady	Sr.	195	T
60	Mark Hutsell	Sr.	145	G
65	Derrel Martin	Sr.	140	T
20	Stanley Martin	Sr.	135	FB
12	John Minyard	Sr.	185	QB
87	Barry Bullock	Jr.	140	E
25	Craig Culwell	Jr.	115	HB
35	David McCoy	Jr.	160	FB
72	Marshall Rauch	Jr.	115	T
70	Dee Arnold	So.	110	T
62	Able Asebedo	So.	130	G
40	Kelly Bomar	So.	110	HB
64	Tommy Bullock	So.	130	G
88	Mikel Griffin	So.	105	E
21	Scott Hutsell	So.	115	HB-QB
22	Pete Juarez	So.	130	FB
50	Todd McJimsey	So.	160	C
77	Bruce Tiffin	So.	130	G
10	Ken Wood	So.	150	QB
24	Dean Ziegler	So.	120	HB
51	Merle Roehr	Fr.	180	T
74	Carl Beene	Fr.	125	T
80	Randy Clay	Fr.	110	E
71	Ken Sarchet	Fr.	120	T
85	Brett Gill	Fr.	120	E

Head Coach: Eugene Jennings

**WHEELER JUNIOR HIGH**

**FOOTBALL SCHEDULE**

September 21	Shamrock	H	6:00
September 28	Clarendon	H	6:00
October 5	Silvertown	H	6:00
October 12	Wellington	T	6:00
October 19	Turkey-Quitaque	T	6:00
October 26	Memphis	H	6:00
November 2	Claude	T	6:00
November 9	McLean	H	6:00

**First National Bank**

**Albert's Shamrock**

**Wheeler Redi-Mix**

**David & Paula Britt**

**Southwestern Public Service**

**Pritchard's Thriftway**

**Wheeler Lumber Co.**

**Lancaster's Dept. Store**

**Wheeler Gas, Inc.**

**Hibler Implement**

**Harry & Mary Wofford**

**Lee Hardware & Furniture**

**Production Credit Assoc.**

**Beef Cattle Co.**

**Pete Burton Ford**

**Wheeler TV System**

**Edward's 66 Truck Stop**

**Garrison Service Station**

**M & M Gin**

**Snelgrooves Texaco**

**Rives Insurance Agency**

**John C. Vise Agency**

**Ware Chevrolet**

**Wheeler Abstract**

**Trading Post**

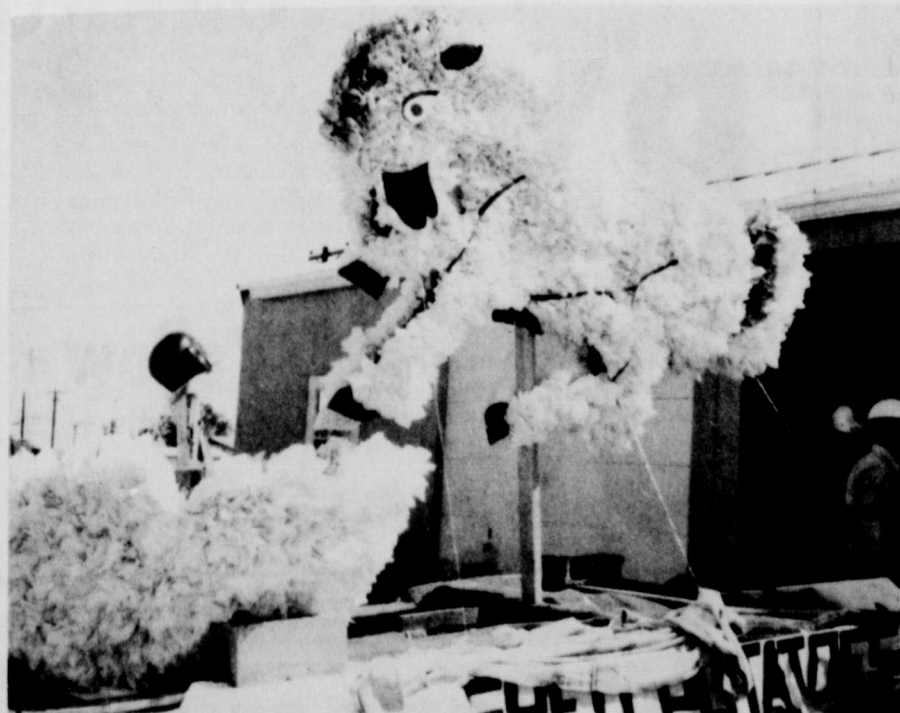
**Wheeler Flower Shop**

**Wheeler Gin**

**George & Vena Richardson**

**B&L Tank Company Co.**

**Wheeler Times**



**BAND FLOAT IS WINNER:** The above float, entered by the Wheeler Band students was the First place winner in the Homecoming Parade Friday. Strong northerly winds damaged the signs on the floats before they appeared in the parade.



**Team Captain Gary Fischer crowns Jayne Parsons 1972 Football Queen at the Homecoming Game Friday.**



Better Quality Food More Food Savings



**PORK CHOPS**

Center Cut lb.

**89**

PORK LOIN

**ROAST**

lb. **79¢**

Jimmy Dean

**SAUSAGE**

2 lb.

**\$1.49**

**SHORT RIBS**

lb. **39¢**

**ICE CREAM**

**5**

Borden's Quart Bucket

**\$1.79**

**Chiffon TOWELS**

**3**

Big Rolls

**\$1**

**Kimbell FLOUR**

**5**

lb. Bag

**39¢**

**Kounty Kist CORN**

Whole Kernel Cream Style

**6**

Cans

**\$1**

**Diamond MARGARINE**

**5**

Solid Lb.

**\$1**

**American Cheese**

Kraft Singles

12 Oz. Pkg.

**69¢**

**Pillsbury BISCUITS**

**12**

Cans

**\$1**

**COCA COLA**

**3**

Cartons

**\$1**

(Plus Deposit on Bottles)

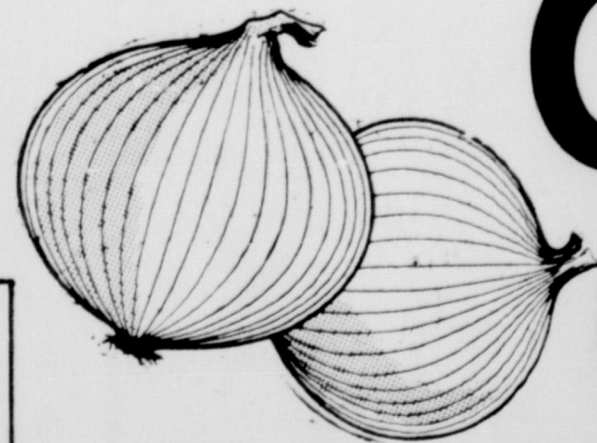


**Kimbell Tomatoes**

**5**

303 Cans

**\$1**



**CELERY ONIONS**

Yellow

Stalk

**19¢**

lb. **7¢**

Warren's Grocery

WITH THIS COUPON

1- pound Can of Maryland Club Coffee

**79¢**

Without coupon 91¢

Cash value 1/20¢

COUPON EXPIRES 10-7-72



**Sweet Potatoes**

Lb. **10¢**

**ORANGES**

**20 For \$1**

**5** 303 Cans **\$1**

**WARRENS**

Will Deliver on \$2.50 Purchase or More

DOUBLE STAMPS ON WEDNESDAY ON \$2.50 PURCHASE OR MORE

PRICES EFFECTIVE FRIDAY & SATURDAY

**GROCERY & SUPERETTE**

IN WHEELER, TEXAS

IN MOBEETIE, TEXAS