

Here & There

By Laura Guthrie

It was nice meeting up with Mrs. Jim Trout in a store last week. It had been a long time since I saw her. She and her husband Jim, are here visiting his twin brother Ben, and

his sisters, Pat and Ola. The Trouts left Wheeler in the early 40s and by way of Amarillo and Lefors, landed in Fayetteville, Arkansas. They are farming in a big way and like it. But of course they enjoyed a trip to Wheeler.

Walter Sorensen had the misfortune to fall the other day, but the good fortune not to break any bones. He is in Parkview Hospital suffering painful bruises, but improving.

Grace Porter returned from Houston a few days ago. She has been with her daughter and family for

some time. Reba Wofford and Vida Brown met her at the air port in Amarillo.

Florence George, Opal Hefley and Mary Finsterwald made a business trip to Oklahoma City last week. They spent the night and returned the following day.

Mr. and Mrs. Bryan Richardson have recently moved to Wheeler. She is the daughter of the Glen Markhams and he is the son of Mrs. Lois Richardson. They live in the Black Gold Trailer Park.

Mrs. O. L. Forrester, who has been out in for several weeks was cheered last

THE WHEELER TIMES

VOLUME 42 NUMBER 11

THURSDAY, FEBRUARY 20, 1975

SINGLE COPY 10¢

4-H & F.A. SHOWS, BARN DEDICATION

Open House, Barbecue Planned for Dedication County Show Barn

Some eleven months ago a group of men met to set up a County Committee to build a building to house the Wheeler County Agriculture Center. The following men were selected to serve on this committee: Paul Hathaway, James Jordan, Richard Kiker, Harry Altman, Stanley Baker, David Britt, Doug Corse, George R. Davis, Larry Moore, Gordon Estes, Wallace Fields, Danny Fillmore, Dan Gatlin, Gary Goodcastle, David Hefley, Tom Hefley, Tommy Hennard, M. Bob Hink, Bill Howe, L. Lee, Kenneth McCasland, Terry McCasland, Gary McKinney, Paul Mackey, Jr., Bob Martin, Melvin May, Grant Meek, James Moffett, Jim Montgomery, Connie Palmer, Jack Roach, Tom Selby, Delbert Thomas, Bud Vanpool, H. C. Weatherly, David Zybach and Tom Bryant.

The first meeting was held in the Production Credit Meeting room on March 25, 1974. The following officers and directors were elected to serve on this committee: Paul Hathaway, President, Mobeetie; Tom Bryant, Vice President, Kelton; Don King, Secretary, Wheeler; James Verden, Treasurer, Wheeler.

Other Directors are: Doug Corse, Bob Martin, Connie Palmer, Wallace Fields, Delbert Thomas, Richard Kiker, and Danny Willingim.

The Committee has met each month without exception, to work on this project and keep all members abreast of the progress being made. Many trips were made to other communities to look at buildings at the expense of the committee members.

The First National Bank and Farmer's & Merchant's State Bank of Shamrock, along with the First National Bank of Wheeler, and the First State Bank of Mobeetie, donated \$1,250 each to purchase the building site for the Agriculture Center. Other contributions made are as follows: Wheeler County, \$40,000. T. M.

Britt, \$5,000; Canadian Production Credit Ass'n \$1,250, Wheeler Co. Farm Bureau, \$1,250; C & H Supply, \$1,000; Mr. and Mrs. Pete Burton, \$1,000; M. W. (Bus) Walker, \$1,000; Wheeler Chamber of Commerce, \$500.00; Harry and Mary Wofford, \$500; Mr. and Mrs. H. T. Fields, \$500; James Reneau Seed Co., \$500; Wheeler Gas Co., \$500. Those donating from \$100 to \$400 are: Tom Puryear, Cantrell Fuel Corp., C. H. Sammons, Lyndon Sims, Frank Caswell, Bill Caswell, C. W. Flyr, Tom Bryant, James M. Verden, C. L. (Fat) Moore, Pierce Walker, Harrison Hall, Doug Corse, Connie Palmer, Leonard (Nig) Mills, John Vermillion, C. J. VanZandt, Joe VanZandt, H & H Livestock of Graver, Clifford Walser, Charles Walser, Frank Walker, In Memory of Ed Wallace, Shamrock Products, Tracy Laycock Insurance, Robert T. Tapps, Harry Frye Agency, H. B. Leake, Murrell Trout, Paul and Lester Hathaway, Bill Rains, May Insurance Agency, Rives Insurance Agency, George Richardson, Webb Livestock Auction (Adren Cunningham), Hibler Implement Co., John C. Vise, El Paso Gas Co., Joe Weatherly.

A number of others have made contributions under a \$100. Plaques are being placed in the Center with the names of the contributors listed on them. Several donations have been made as Memorials. A community auction was held July 9, 1974 to raise money to help support the project. We still need \$17,500, to complete the finances on the Center. We are still accepting donations. A donation of \$100 or more qualifies your name to be placed on a plaque. We

will hold a community-wide auction each spring to support the project.

Wheeler County is fully dependent on agriculture. We invite you to be on hand Saturday, February 22, 1975 at 6:00 p.m. for a FREE Barbecue and Open House. The barbecue is being sponsored by May Insurance, of Mobeetie, Thurman Rives Insurance, of Wheeler, John C. Vise Insurance of Wheeler, Webb Livestock Auction of Sayre, Okla., and the Wheeler County Agriculture Committee.

The Committee feels this is one of the best facilities in the Panhandle of Texas. They are grateful for the contributions that have made this facility possible. "Seeing is Believing".

Be on hand for the whole show: Hog Show Friday, February 21, 1975, 6:30 p.m.; Calf Show Saturday, February 22, 1975, 10:00 a.m.; Barbecue Saturday, February 22, 1975, 6:00 p.m. (FREE); Hog Sale Saturday, February 22, 1975, 7:00 p.m.

The show will be judged by Larry Schickendance of Frank Phillips College of Borger, Bedford Forest and Bill Climer of Amarillo will cry the Hog Sale.

Liz Ann Allen in Who's Who List

Who's Who Among American High School Students Honors Liz Ann Allen, a senior at Mobeetie High School was recently notified that she is to be featured in the Eighth Annual Edition of Who's Who Among American High School Students, 1973-74, the largest student award publication in the nation.

Students from over 20,000 public, private and parochial high schools throughout the country are recognized for their leadership in academics, athletics, activities or community service in the books. Less than 3% of the junior and senior class students nationwide are awarded this recognition.

Liz Ann Allen is the daughter of Mr. and Mrs. John E. Allen of Mobeetie. She is active in basketball, volleyball, FFA, Student Council, Cheerleading, 4-H School Play - A Honor roll, Annual Co-Editor. And has also won fighting Hornet Award, Social Science Award, Betty Crocker Home-maker Award.

In addition to having her biography published in the book, Liz Allen will also compete for one of ten scholarship awards of \$500 to \$1,000 funded by the publishers and will be invited to participate in the firm's annual "Survey of High Achievers".

Miss Allen plans to attend West Texas State University upon graduation in June.

SENIOR Auction Plans

The Seniors are still collecting items for the auction and the people to call this week: John George, 6-3291; Joanie Lee, 6-5641; Jana Marshall, 6-3154 and Raymond Martin, 6-5707.

Rogue Theater Opens March 1

The Rogue Theatre will open Friday, March 1 with the showing of "Where the Lilies Bloom". The feature will be shown Friday, Saturday and Sunday evenings at 7:30 p.m.

The theatre will be operated by Torin House, a resident of Wheeler for the Admision will be \$1.50 for adults and 75¢ for children. Children under 5 will be admitted free. Show calendars are presently being printed and will be available soon.

The opening of the theatre has been the concern of many citizens since it was closed 3 years ago. The movie house can not operate without the support of the citizens of Wheeler and surrounding area; spend an evening at the movies.

The first feature is rated "G".

Band Boosters Fund Raising

The Band Boosters met in a called session Feb. 12, 1975 with a good number present. President, Mrs. Ronnie Cox thanked each for coming. The group will sponsor a Pee Wee Basketball Tournament April 3-5, 1975. They will also have the concession open for the Beta Sigma Phi sponsored volleyball tournament April 17-19, 1975 to make money to sponsor a banquet honoring the band students and director April 25, 1975 and to help purchase new instruments for the band. The group recently helped purchase a new contra-bass clarinet which is being used during the concert season. The band will present a concert at the high school auditorium Feb. 24, 1975 for the assembly.

Aaron Riggs Operates Garage

Aaron Riggs has taken over the operation of Percy's garage. Aaron began the operation of his garage Feb. 1.

Aaron and family have resided in Wheeler for the past seven years. During this time he has worked at the hospital as technician, served as administrator for the hospital and is now self employed.

If that vehicle of yours is not running as it should, give Aaron the opportunity to fix it for you.

Beta Sigma Phi Crowns Sweetheart

Dixie Chick is the representative of Alpha Mu Alpha chapter of Wheeler for the Valentine Sweetheart and for the presentation she was escorted by her husband, Roy Don.

Dix has been a member of the Wheeler chapter nearly two years. She has served on the social committee and the service committee.

She and her husband have a son, Brandon. She is a hair dresser and has lived in Wheeler all her life. She sings in the choir of the United Methodist Church where the family attends services.

The two attendants were Linda Schwalk and Lue Crockett.

City Council Meets Mon.

The February meeting of the Wheeler City Council was held Monday evening, February 17 in the City Office.

School Lunch Price Increase

The Wheeler School serves good lunches every full day of school. To keep the lunch program operating and serving our students, the prices of the school lunch must be increased.

The district has supplemented the Cafeteria Fund in the amount of \$6,000 for this school year.

Due to the continued increase in all products the Wheeler School will increase the lunch rate effective March 3, 1975.

Students will have the opportunity of buying a lunch ticket which will be purchased for either one week or two weeks. The new prices will be: Kindergarten - 4 - 55¢ or one week \$2.75, 5 - 12 - 65¢ or one week \$3.75. Staff members rate will be 75¢ and adults \$1.25.

Students may also pay daily if it is recommended that they purchase a ticket weekly.

Lunch tickets may be charged but the maximum charge will be two tickets. The business office has application forms for families who have difficulty in providing lunches for their children. Contact the school principals and they will be happy to explain the free lunches or reduced price lunch program to you.

School Trustees Regular Meeting

The Board of Trustees of Wheeler ISD met in regular session February 13, 1975 with all members present. The Board discussed the instructional, transportation, athletic and lunch program of the district.

The board reviewed the vocational programs of the school and authorized the initiation of a Building Trades program, General Farm Mechanics Course and a Co-op Program for Home Economics, for the 75-76 school year.

In other actions the board renewed the contracts of Thomas Helton, Elementary Principal, Bob Willis, High School Principal and Jim Robinson, Athletic Director. Increased insurance coverage of school building; increased lunch prices; and approved January accounts.

Mobeetie Cagers Vie For Bi-Dist.

The Mobeetie community is justifiably proud of the Mobeetie High School basketball boys in their winning District Class B-3. Good Luck Boys in the bi-district game.

The boys with a 28-7 standing for the year will meet Booker for the Bi-District honors at a date to be announced. Coach Bill Beaty has scheduled a practice game with Wellington tonight at Wellington and with Booker at Higgins Tuesday night.

The council voted to advertise for bids for furnishing the city with gas, oil and diesel and the equipment necessary for storage and use.

Wallace reported on activities of Planning Commission. He presented to the council the goals and objectives of the commission. First on the list is a community building; the commission will determine the cost a new building and the renovation of the Old Hospital and proceed from there.

A pre-application for a grant for the laying of additional sewer line, updating park and additional paving has been prepared by the commission to present to H.U.D. Grant applications have to be completed by March 1, the commission, therefore, selected these three uses for the money presently available and will continue their work toward the community building.

The council voted to officially appoint the members of the Planning Commission. Members are: Bob Roark, Lyndon Loyd, Bob Patterson, David Patterson, Ruth Rogers, Lynda Wallace, Richard Wallace, Charles Wagner, and Marilyn Moore.

The council adopted an ordinance to elect city aldermen according to place in the 1976 election. It was hoped to have the ordinance in effect in time for this year's election, but the ordinance has to pass 60 days before election. Council seats will be numbered and citizens will file for a particular position on the council.

Jerry Hefley gave a report on the activities of the Water and Sewer Department. He expressed the need for new tires for the maintainer. The council instructed Hefley to obtain information on the cost of new, used and re-capped.

Keith Miller, Chief of Police, reported on the activities of the police department.

The council voted to annex property from the corner of Second and Grove east to Airport Road. Annexed is all the property south of this line.

Wheeler School Election Called

The Wheeler ISD has called its Trustee Election for Saturday, April 5. School for Saturday, April 5. School Trustees whose terms expire are: Position 3, Harold Loyd Lee, Position 2, A. T. Jones, and Position 1 Bennie Westmoreland. Persons desiring to have their names on the ballot should come to the School Business Office. Deadline for application is March 5th.

Absentee voting will begin March 17 and end on April 1, at the School Business Office with Mrs. Clara Marshall as deputy clerk. As of this date Harold

Cowbelles Corner

In last week's column, we discussed the inspection mark and the grademark which meat inspectors and graders mark beef carcasses. As you know, the inspection mark tells you that the beef is wholesome, and the grade mark tells you the quality of the beef. The consumer should know about the different grades of beef to be sure that he can get the most value for his money in his beef purchase. We have listed the following grades in the hope that this information will be helpful to you.

PRIME: The elite cut of beef from well fed cattle. The cuts of prime beef are well marbled, firm to touch, rich in flavor, and consistently tender and juicy.

CHOICE: The meat is of high quality, but has less marbling, therefore, less fat. The cuts are also rich in flavor, tender and juicy.

GOOD: Good cuts lack the marbling, has less fat and flavor. The cuts are less flavorful, less tender, but equally delicious when properly prepared.

STANDARD: Standard cuts have little or a thin covering of fat, but a high proportion of lean. These cuts have a mild flavor, less juiciness and will require longer cooking.

COMMERCIAL: These cuts are produced from older cattle. The meat is not as tender so it requires a long cooking time, but it can be used in economical beef dishes. Often herbs and seasonings are added for flavor.

UTILITY: This is an economical source for extra lean meat that can be used for stews, boiling, or ground meat dishes and pot roasts. These cuts lack tenderness, juiciness, fat, and must be prepared with moist heat.

As you can see, prime represents the highest quality, therefore it is the highest priced. Each grade should be priced less per pound than the one preceding it because the meat becomes progressively less tender, juicy, and flavorful. Also, should you see beef listed as BABY BEEF or other names in your store, you should remember that this is grass fed beef and it should be cheaper than the grain fed beef. Do not expect it to be as flavorful, tender and juicy as the grain fed beef. Be sure to prepare it properly.

Beef is a bargain - happy eating!

DAYLIGHT SAVINGS To Begin Sunday

Daylight Savings time goes into effect Sunday, February 23. At 2 a.m. you are reminded to turn your clocks forward one hour.

If you think it is going to be dark, just remember last year. Daylight Savings time went into effect January 7 because of the energy shortage.

Wheeler Chamber Meets Tuesday

The Chamber of Commerce met Tuesday evening at Sparlin's Restaurant. The meeting was conducted by the newly installed Chamber President, Charlie Wagner.

It was decided to change the time of the meetings to the third Thursday of each month at 12 noon. In this way it is hoped that more people can attend and participate in the Chamber. The meetings will be mainly a board meeting, but anyone interested in attending is invited.

The group discussed the appointment of committees and the membership drive. The appointment of committee heads will be announced later. The membership drive will be underway shortly.

The Chamber voted to donate \$100 toward the purchase of pigs at the Hog Sale Saturday evening

WHEELER RECEIVES SNOW

Wheeler received 8 1/2 inches snow Sunday morning followed by an additional 1 inch Monday night. This brings the moisture received for the month to 2.31 inches. A four inch snow fell February 5 with a moisture content of .44 inches.

For the month of February, the following moisture was reported by Joe Rogers: Feb. 1 - .10 inches rain; Feb. 2 - .22 inches rain and drizzle; Feb. 3 - .25 rain and drizzle; Feb. 4 - 1.5 inches snow with .38 inches moisture content.

The moisture for the year stands at 2.97 inches as compared to 1.46 inches in 1974.

HOSPITAL NOTES

Old Admissions
1-23 Andrew Markham
1-27 Inogene Lewis
2-4 Lewis Rogers
2-6 Jewel Leonard
2-8 William Howard, Jr.
2-10 J. B. Rhoades
Dudley Baird
Mary Beth Hogan
Gloria Hill

New Admissions
2-13 Walter Sorensen
Katherine Rogers
2-14 Vera Moore
Ethel Herd
2-15 Berniece Short
Alline Holt
2-16 Nancy Hampton
2-17 Wilma Risner
Odessa Mooney
Jim Albright
2-18 Baby Boy Hampton
Goldie Calcote
2-19 Bessie McCartney
C. J. VanZandt

Dismissals
2-12 Ida Mae Goad
Dewey Adams
2-13 John Wright
2-15 Betty Sue Kysar
Baby Boy Kysar
Dorothy Jamison
Shannon Dale Robinson
Lewis Wright
2-16 Bennie Mae Whitener
2-17 Susie Parker
2-18 Katherine Rogers
2-19 Ruby Sandifer
Vera Moorer

WHEELER WHIRLERS

The Wheeler Whirlers will square dance Friday night at the Legion Hall. The dance will begin at 8:00 with club caller Sammy Parsley doing the calling. The club invites area square dancers to join the fun Friday night.



MISS LULA WILLARD

Miss Lula Willard Observes Birthday

Miss Lula Willard celebrated her 82nd birthday Thursday, Feb. 13, 1975 at the Golden Spread Nursing Home at Shamrock, Tex. She received gifts and many cards from relatives and friends.

Birthday cake and punch were served during the evening. Those that visited with her were: Mr. and Mrs. Pete Burton, Mr. and Mrs. Shorty Sechrist, Mr. and Mrs. Ralph Smotherman, Mr. and Mrs. Leo Lamb, Mrs. Onie Laycock, Mr. and Mrs. J. W. Sechrist, Mrs. Ethel Grimes, Mrs. Sara Watson, Mrs. Ethel Litchfield, and Mrs. Elva Wood.



DIXIE CHICK

Girl Scout Cookie Sales Extended

The Girl Scout Cookie sales have been extended March 1, due to the bad weather we have been having. Remember the money helps the girls with their projects and the cookies will freeze for use at a later date.

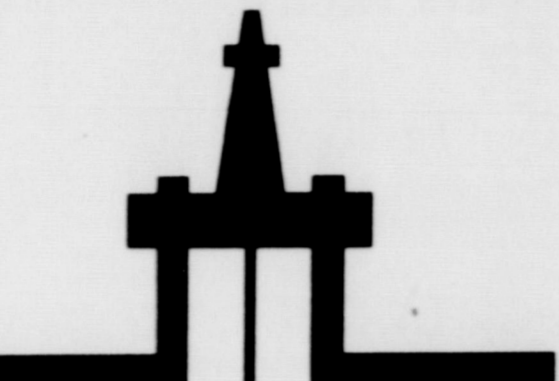
Briscoe News

By Vetola Parker
 News gathered Feb. 10 to 16.
 Sunday guest at the Oren Horn home were Mr. and Mrs. Dave Croslin and children and the Thurman Horn family.
 Sunday night Mr. and Mrs. Raymond Moore visited Mr. and Mrs. Oren Horn.
 Monday morning 11 o'clock was much warmer 50 degrees. I couldn't believe my eyes.
 Mike and Noveta Aderholt visited the Ting Aderholts over the weekend.
 Travis and Rosalee Keelin attended her uncles funeral Cliff Bradstreet in Wheeler Sunday. The Bradstreets have our love and sympathy.
 Travis and Rosalee Keelin ate supper Sunday night with Gene and Norma Keelin in Wheeler.
 Claud and Mable Parker visited the Colie Parkers Tuesday afternoon.
 We feel we have had some cold weather this winter, but Tolene Clark reported at Hayden, Colo. where her husband George works they have had minus 30 degrees.
 Hoyle Helton visited Alene Hall Monday afternoon.
 Harmon and Jerry Barry and a friend visited the Oral Heltons, Colie Parkers and Doc Wilhelm over the weekend and they hunted some.
 Visitors at the Colie Parkers Sunday were Weldon and Diana Parker and Marianda, Gene and Zetha Daugherty, Ricky and Dennis from Pampa.
 This is an ideal week where the weather is concerned.
 Mrs. Wiley McCray came home from Wheeler hospital last Saturday, we wish for her a speedy get well.
 Allen Meadows is still improving in our last report.
 Eddie and Gladys Pannel spent Sunday night in Skellytown with the Adolph Novotny's.
 Mr. and Mrs. Red Ivey of Wheeler visited the Eddie Pannels Monday afternoon.
 Angela Atherton was visiting Darville and Sammie Atherton Thursday.
 Darville Atherton was

some better Thursday. He was able to get out and help do some chores. He had a slipped disk in the back.
 Darville and Sammie visited Mattie Atherton Sunday, others there were Ted and Lodeell Atwood.
 Vetola Parker and Sammie Atherton went to Pampa Thursday afternoon to

Dr. Jack L. Rose
OPTOMETRIST
 121 Main St. - Shamrock
 Phone 256-3203
 Tues. 9-5 Fri. 2-5

visit relatives, the Sam and Gene Daughertys.
 Mr. and Mrs. Jim Lewellen Candy and Sherrie, Rev. Keith Johnson of Wheeler, Eric Zybach, Sayre, Okla.; Mrs. Myrtle Hunter of Pampa visited with the Cliff Walkers Wednesday night.
 Alice Kelley, Effie Renfro and Lois Meadows visited Sophia Helton recently.
 Mr. Allen Meadows is still in Canadian hospital, but continues to improve. He can walk and move his right arm pretty well now. His children and grandchildren and friends visit him frequently. Mrs. Meadows stays with her daughter, Lorene and Lofay Vise in Canadian sometimes. Frances Hefley stayed in Wheeler with her mother



Top Pay For Experienced Drilling Personnel

First, take a look at our OLD salaries:

Toolpusher	\$21,300 to \$26,400
Driller	\$18,900 to \$24,000
Asst. Driller	\$17,700 to \$22,800
Derrickman	\$15,000 to \$18,900
Crane Op./Roustabout Foreman	\$17,100 to \$23,400
Heavy Duty Diesel Mechanic	\$20,000 to \$25,200
Diesel-Elec. Electrician	\$20,000 to \$25,200
Welder	\$17,100 to \$23,400

Now, call our Personnel Department for our NEW salaries (free of foreign taxes).

713/622-5670

The Offshore Company
 P.O. Box 2768 Houston, Texas 77001

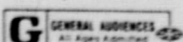
The same producer and the same proud, warm feeling that made "Sounder" last year's best-loved film



Radnitz/Mattel Productions presents

where the lilies bloom

A Robert B. Radnitz Film
 Introducing Julie Gholson as "Mary Call"
 and Harry Dean Stanton as "Katie Deak". Screenplay by Earl Hamner, Jr.
 Based on the Newbery Award Winning Honor Book by Vera and Bill Cleaver
 Produced by Robert B. Radnitz Music Performed by The Earl Scruggs Revue
 Directed by William A. Graham



United Artists

ROGUE THEATRE ADMISSION: Adults \$1.50 TIME: 7:30 P.M.
 Children .75 Under five free

KING'S KOMMENTS

By Don King - CEA

Joe Don King - CEA
 Copies of the 1975 Farmer Tax Guide are available Saturday night.
 Gerald and Evalyn Free, April and Evalyn Bowe spent the weekend with Dick and Ruth Irvine, Becky and Rich. Ruth and Evalyn are sisters. They all ate Sunday dinner with Willis and Verna Fillingim. Dan and Rita Fillingim and Dallas, Mary Fillingim and Mrs. Jimmy Conway of Pampa were also there.
 The young adults have organized teams and are practicing volleyball.
 Lavonda Eggleston and Brandi spent Wednesday night with her sister and family, the Wayne Meeks. Lavonda works at Cabot in Pampa.
 Karen Meek and children visited her mother, Mrs. Raymond Moore at Kelton Friday night while Raymond and Grant attended a Case supper at Elk City. Dan Fillingim and Bill Hefley also attended the supper.
 The Bob Swift family visited the Dick Irvine family Friday night.
 Bill Helton and Jeff from Amarillo visited Tom and Alice Bell Helton Saturday.
 Lori and Stephen Collins from Pampa spent the weekend with their grandparents the Roy Bakers. Their father had major surgery, their mother came for them Saturday.
 Several of the teachers attended a textbook workshop at Amarillo last Saturday, including Billie Hill, Ruth Irvine and Wilma Bible.
 Carolyn Gilmer spent last weekend in Borger with Carla Bible. They all had dinner Saturday with Nancy Bible in Amarillo.
 Larry Meadows from Clovis and Roy and Lois Meadows all ate dinner last Sunday with Eddie and Leta Meadows.
 Rita and Dallas Fillingim visited her folks, the Lee Lackeys in Shamrock Sat.
 Mary Fillingim and Mrs. Jimmy Conway (Lynetta Davis) of Pampa spent the weekend with the Willis Fillingims. Jimmy Conway and Eddie Davis were Sunday supper guests.
 Dan and Rita Fillingim and Dallas were Saturday supper guests of Bill and Karen Hefley.
 Dan and Rita Fillingim and Dallas were Saturday supper guests of Bill and Karen Hefley.
 Mrs. Tom Helton went by and got her sister, Mrs. Clay Adcock, Thursday and took her to Canadian where they visited another sister, Mrs. Vera Bussell in the Rest Home.
 Tom and Alice Bell Helton and Willis and Verna Fillingim and Mary and

PERSONAL
 Mr. and Mrs. Jim Atherton and girls of Pampa and two friends of the girls were supper guests of his folks, Mr. and Mrs. Albert Chapman Tuesday, Feb. 11, and went to the final basketball game.

in the county extend in the county extension office. This booklet, published by the Internal Revenue Service, covers changes in the tax laws and gives information that will be helpful in completing the 1974 income tax return.
 If you would like to have one of these Guides, you may pick it up or call the county extension office.
Reduce Winter Feed Costs
 Separating and feeding cattle on the basis of age, weight and production status can cut down feeding costs.
 And, because nutritional requirements of cattle vary supplemental feeding should also be different.
 Feeding an average winter supplement of two to three

Lynetta Conway visited Sybil Nelson in the Shamrock hospital. Sybil had major surgery on Tuesday and is improving.
 Mrs. Rodney Vaughn and Leann from Borger visited Ting and Ernie Aderholt and Sharon Aderholt Saturday and Sunday. Tom and Alice Bell Helton visited in afternoon Sunday.
 Wayne and Colleen Childress have a new baby boy.

Operation Identification

Operation Identification should be used as a crime prevention program by businesses as well as residence, according to Wheeler County Sheriff Bus Dorman.
 "Typewriters, calculators and other office equipment and furniture are especially attractive to burglars and thieves," Dorman said.
 "Businessmen who protect their property with positive identification and let the potential criminal know that their property is marked and easily traceable will have fewer burglaries and thefts. They can do that by displaying decals warning that the property is marked.
 Savings to the businessman can also come in the form of lower insurance rates by keeping replacement costs down, an expense which is included in the "deductible" portion of insurance policies.
 Whenever possible, business property should be marked with the proprietor's Texas drivers license number.
 "If the proprietor does not have a drivers license," said Dorman "he should contact the Wheeler County Sheriff's Department for a number to use.
 Other operating instructions and procedures are outlined in material distributed through the department and at Operation Identification engraver check-out stations. Engravers may be obtained for free use in Wheeler at the Sheriff's Office & Shamrock at the Sheriff's office.
 For more information on Operation Identification and other crime prevention programs sponsored by the Wheeler County Sheriff's dept., contact a member of the department in Wheeler at 826-3211 and in Shamrock at 256-3253.

pounds per day often results in some cattle being underfed while others get more than they need. A fat cow may need only one pound of supplement a day while a thin cow may require five pounds a day for the same level of production.
 Replacement heifers, pregnant cows and cows nursing calves should be put in separate groups and

fed according to their needs. Also, separate overweight cows from underweight cows.
 A fat cow can lose a pound a day and still be in good condition at calving. This can mean feeding five pounds less hay a day - a savings of about \$7.50 over a 100-day period. A reduction in the feeding of high energy range cubes could amount to a savings of \$25 over the same period.
 However, a fat cow getting half as much supplement as a thin one is also getting half the minerals and vitamins. So she should receive twice as much Vitamin A and phosphorus as the cow receiving a full supplement.
 By using feed sparingly and making use of forage testing and animal requirement guides to determine rations, producers will save money and get more production out of less feed.
 This information is supplied by Dr. Dennis Herd, Extension Beef Cattle Specialist.
 Relief from the present cattle situation can only come about through a reduction in cattle numbers or culling, believes Dr. Ed Uvacek, livestock marketing specialist for the Texas Agricultural Extension Service.
 "Migration into the cattle business was fast and furious during the last few years due to several factors but particularly the

high calf prices of 1972 and 1973," says the specialist with the Texas A&M University System.
 "Many went into the business as weekend ranchers while others put everything they had into it. As a result cow numbers in the United States by mid-1974 had increased by 16 percent over 1970 levels."
 Now, with this over supply of both cattle and cullings, a liquidation must occur.
 Uvacek contends that the true cattleman, whose major source of income is from the cattle business, is the one who has been hurt the most during the present crisis. He has no other place to turn for income and is forced to cut down on his cattle herd.
 "Although the true cattleman has been hard hit, the newly arrived cattleman who came into the business full-time is in really bad shape," says Uvacek.
 "The long-time cattleman has experience in the business and knows how to get through such bad years, while high breeding herd costs, lack of experience and indebtedness usually mean the end of a newcomer's operation."
 "The part-time rancher is probably the one who suffers least since he usually has other sources of income to fall back on," adds Uvacek.

SAWS SHARPENED
 Hand Saws - Skil Saws
 Table Saw Blades
 Chain Saws
 Jointer Blades
 Foley Equipment
R. St. John
 Mobeetie

FARM or GRASS LAND
 - Need Listings -
John C. Vise Agency
 Phone: 826-5576 or 5577
 117 W. Texas
 Wheeler, Texas

Dr. M. V. Cobb
CHIROPRACTOR
 Specializing In The Examination And Treatment of Spinal And Nervous Disorders
 256-2133
 310 South Main
 Shamrock, Texas

PERFORMANCE TESTED BULL SALE
Tues., March 11, 1975 1 P.M.
PANHANDLE STATE UNIVERSITY FARM
 Goodwell, Okla. 73939
100 HEAD BIG YEARLINGS
 Selected From 133 Head - weighing from 1000-1400 lbs.
Herefords, Polled Herefords, Angus and Charolais
 Fertility Checked & Guaranteed!
 Proven Gainability!
 Performance Certified!
 Soundly Conditioned on a 50% Ensilage Ration
BUY WITH CONFIDENCE !!
 For Catalog: Write or Call:
 M. W. England, Panhandle State Univ.
 Goodwell, Ok. 73939
 Phone: 405-349-2611 Ext. 228
 Residence: 349-2512

Plan Landscape With Purpose
 The lack of a unified landscape plan for a yard or outdoor area can cause problems.
 All landscaping should be done with a purpose. Large shade or evergreen trees planted too close to a house can overpower and hide the house. Plants spaced too close together can grow up over windows and prevent light from coming through.
 Shrubs and trees around a house serve several purposes. They can soften architectural lines of a house, accent an entrance break up a large, dull wall surface, and provide privacy.
 "Today few homes are built symmetrically with the door in the center of the house. So instead of planting a symmetrical balanced landscape, include plants along walkways and sidewalks in an informal garden-type design.
 Fences are also good landscaping devices. They can serve as a backdrop for smaller plants, as a windbreak for less hardy plants, and can provide privacy for the outdoor living area.
 Everett Janne, Extension Landscape Horticulturist, provides this material for your use.

after you see your doctor...

bring your prescription to
RHYLAND'S PHARMACY
 PH. 826-5561

HELP !!

The Future Leaders of Wheeler County Agriculture will be exhibiting their livestock this weekend in the New Wheeler County Agriculture Center. We encourage you to support the 4-H and FFA Stock Show and Open House for the New Wheeler County Agriculture Center.

Program of Events:
 Hog Show Friday, February 21, 1975, 6:30 P.M.
 Calf Show Saturday, February 22, 1975, 10:00 A.M.
 Barbecue Saturday, February 22, 1975, 6:00 P.M.
 Hog Sale Saturday, February 22, 1975, 7:00 P.M.

A Free Barbecue will be served to all Exhibitors, Parents, Contributors, and Supporters of The Wheeler County Agriculture Center. You don't need a special invitation. Come out and have fellowship with Wheeler County's Future Leaders of Tomorrow.

Sponsored by:
CANADIAN PRODUCTION CREDIT ASSOCIATION
 Farm and Ranch Loans
 James M. Verden Vice-Pres
 James M. Verden, Vice-President
 501 Alan L. Bean Blvd.
 Wheeler, Texas 79096
 826-5533



Fresh - Firm
LETTUCE
lb. **19¢**



U.S. No 2
RUSSETT POTATOES
10 lb. Bag **65¢**

Tony's



PIZZA

- CHEESE
- CANADIAN BACON
- PEPPERONI
- SAUSAGE

Save 20c Each
\$1.19
EACH



32 oz. Jar
KRAFT MIRACLE WHIP
\$1.39

KIMBELL SWEET PEAS
2 303 Cans **59¢**



DINTY MOORE BEEF STEW
24 oz. Can **79¢**

RANCH STYLE BEANS
3 303 Cans **\$1.00**

Northern **Bathroom TISSUE**
4 Pack **69¢**

CHUCK ROAST
USDA CHOICE



lb. **69¢**

VLASIC **KOSHER DILLS**
32 oz. Jar **79¢**



SHASTA SOFT DRINKS
Assorted Flavors
7 Cans **\$1.00**



3 lb. Can **JEWEL SHORTENING**
\$1.79

MATEY FROZEN **FISH STICKS**
8 oz. Pkg. **39¢**

FRESH GROUND **HAMBURGER MEAT**
lb. **69¢**



TEXSUN **GRAPEFRUIT JUICE**
46 oz. Can **49¢**

MORTON'S **TV DINNERS**



Beef
Chicken
Turkey
Salisbury Steak

11 oz. Pkg. **49¢**

NU MAID **SOFT MARGARINE**
With Free Mugs
lb. **89¢**



Nestle's **QUIK**
2 lb. Can **\$1.69**

Pop-up **TOAST 'EMS**
Asst. Flavors
53¢



1 lb. Can **FOLGER'S COFFEE**
"A Delicious Way To Start The Day"
99¢



MORTON **POT PIES**
Chicken
Turkey
Beef
Tuna

8 oz. Pkg. **4 For \$1**

YOUR FRIENDLY HOME OWNED AND OPERATED GROCERY STORE
• Featuring Gunn Brothers Stamps
• Free Delivery with \$2.50 Purchase
• Open Mon. - Sat. - 8 a.m. till 6:30 p.m.
• Food Stamps Accepted

PRICES EFFECTIVE **THURSDAY-FRIDAY & SATURDAY**

Roark's FINE FOODS

Want Ads

Accepting Bids

The City of Wheeler is accepting bids for the furnishing of Gas, Diesel oil, grease and the equipment necessary for storage and use. Bids are to be mailed to City of Wheeler, Box 98, Wheeler, Texas 79096. Bids will be opened Monday, March 17 at the City Office. The City reserves the right to accept or reject any and all bids.

PIANO BARGAIN: Nearly new teacher approved Spinet Piano. Outstanding Bargain. This is your chance to own a fine Piano on Small Payments or discount for cash. Trade-in accepted.

Write at once - McFarland Music Co., 1401 West 3rd, Elk City, Okla. 73644.

CUSTOM DRAPERIES
Swags, Cornices, Shutters
Phone: 826-5604
Mrs. Clyde Kelley
Wheeler, Texas 79096
3tp

FOR SALE: 4 room house and 4 lots by city park. Owner will carry some of the loan. Call after 5:00 p.m. 792-3675, Lubbock.

WANTED: Yard work and tree trimming. Steve Wallace, Phone: 826-5519. 1tc

NEEDED: Experienced part-time checker. Pritchard's, Phone: 826-5944. rtn

PAUL'S TRAILER PARK
Across Street From School
Trailer lots 40'x70'
Modern Underground Utilities
Gas and Water furnished
Individual Electric Meters
PAUL TOPPER - Ph. 8237 or 5931

Monuments, Grave Covers and Curbing. Complete finishing. Will Warren, Wheeler. rtn

For Sale: 3 bedroom, liv, kit, den, large corner lot on highway. Paul Topper Paul's Real Estate 826-5237 after 5.

FOR TRADE: Well improved 240 acres near Lake Texoma for Wheeler County land. Buddy Passmore, Rt. 1, Tuttle, Okla., Phone: 405-381-2038. rtn

FOR RENT: 2 bedroom furnished house, water furnished. Hyland Weaver, Phone 826-5561. 2tc

FOR LEASE: 640 acres, 75 acres in cultivation, 80 acres of alfalfa with irrigation, large 2 story house in A-1 condition with barns. Contact Bus Dorman, 826-5211. 2tc

NOTICE TO CREDITORS OF THE ESTATE OF ARLIE L. GRIGSBY

Notice is hereby given that original letters testamentary upon the Estate of Arlie L. Grigsby, Deceased, were granted to me, the undersigned, on the 23rd day of December, 1974, by the County Court of Wheeler County, Texas. All persons having claims against said Estate are hereby required to present them within the time prescribed by law. My address is P. O. Box 776, Pampa, Texas 79065. Vivian E. Grigsby Independent Executor of the Estate of Arlie L. Grigsby

NOTICE

Notice of Accepting Bids. The Kelton Independent School District will receive bids for the installing of suspending ceiling in six (6) classrooms and installing metal windows in four (4) classrooms. Contractors interested in placing a bid on the ceiling or windows or both should contact N. Dean Johnson, Superintendent by phoning 806/826-5795 or personally coming by the school. Bids should be in by 7:00 P.M. March 10, 1975. Bids can be mailed to the attention of the Superintendent at Kelton School, Rt. 1, Wheeler, Texas 79096.

The Board of Trustee reserve the right to reject any or all the bids received.
Signed
Bob Hink
President, Kelton I.S.D.
Board of Trustees

Reduce safe & fast with GoBese Tablets & E-Vap "water pills" Hylands Pharmacy. 2tp

We are receiving CB Radios and antennas. L & F Repair. rtn

FOR SALE: 100 Bales Alfalfa hay. Isaac Carter rtn

LEGAL NOTICE
Sealed bids for 200 shares of common stock of the First National Bank in Wheeler, a Banking Corporation, will be accepted by David Franklin Hefley, Independent Executor of the Estate of William Marvin Hefley.

Bids should be presented at the office of Sims & Lasley, Attorneys at Law, before 5:00 p.m. Monday, February 24th, 1975. Bids will be considered by the Independent Executor who reserves the right to reject any and all bids. A bidder who's bid is accepted by the Independent Executor will be notified of the acceptance and payment by certified check or cashier's check will be made to the Independent Executor within 24 hours after notification of the acceptance. Sims & Lasley Attorneys for Independent Executor. It

FOR SALE: Maytag washer and full size rollaway bed. 826-3188. 1tp

FOR SALE: 1969 Mustang 390 engine and tape player. 205 N. W. Eighth. 2tp

FOR SALE: Good drapes, dinette set and Maytag stove. Gaddy Vise. 1tp

Grain Fed Beef For Sale: Ready to butcher. Jess Moore, Phone: 826-5771. rtn

FOR SALE: 1/2 minerals under 280 acres. 1/4 minerals under 232 acres west of Mobeettie. W. L. Moore, 1016 S. Georgia, Amarillo, Texas 79102. Phone: 374-1577. 2tc

Card of Thanks
We would like to take this opportunity to express our sincerest thanks to all our friends and neighbors for the many kindnesses extended to us in our recent loss. All of the cards, flowers, food and visits from those close to us have helped to fill the void.

Thank you for caring.
The James Phillips Family

THE BUSINESS DIRECTORY

TEXAS PRESS ASSOCIATION

Published Every Thursday at Wheeler, Texas, By...



Louis C. Stas, Owner and Publisher.
Entered as second-class matter December 18, 1933, at the Post Office at Wheeler, Texas 79096, under the act March 3, 1879.

Wheeler Lodge No. 1099
A. F. & A. M.
MONDAY
7:00 P.M.
Percy Farmer, Sec'y.
Members Urged To Attend.
Visitors Welcome.

WRIGHT FUNERAL HOME
All Types Cemetery and Memorial Work
Phone: 806-826-5214

STORM-SCREEN WINDOWS
Permanent year-round protection. Changeable from inside. Easy to clean, proofer-proof. Eliminates drafts. Cuts fuel bills.
WHEELER LUMBER CO.
Phone: 826-5543 Wheeler, Tex.
Fine Service for Fine People

GUARANTEED AUTO GLASS INSTALLATION & Body Repair
GARRISON SERVICE
Phone: 826-5515
Wheeler, Texas

TRACTORS - IMPLEMENTS PARTS and SERVICE
HIBLER IMPLEMENT CO.
Wheeler, Texas

Let Me Write It...
GEO. RICHARDSON
All Types Of INSURANCE

Subscription Rates:
Wheeler County \$4.00
Outside County \$5.00

FOR ALL YOUR Farm Supply Needs
WHEELER CO. PRODUCE
Wheeler, Texas

WHEELER REDI-MIX
REDI-MIX CONCRETE, SAND
Washed Gravel - All Sizes
Office Hours: 7:30 to 5:00
Phone 806-826-3223

Dr. Marion Roberts
OPTOMETRIST
112 W. Kingsmill
Pampa, Texas

GUARANTEED AUTO GLASS INSTALLATION & Body Repair
GARRISON SERVICE
Phone: 826-5515
Wheeler, Texas

TRACTORS - IMPLEMENTS PARTS and SERVICE
HIBLER IMPLEMENT CO.
Wheeler, Texas

CUSTOM DRAPERIES
Swags, Cornices, Shutters
We Install Free
Tele 256 3652
Brannons Decorators
Shamrock, Texas 79079

Court Records

LIST OF INSTRUMENTS FILED IN THE OFFICE OF THE COUNTY CLERK AND DISTRICT CLERK OF WHEELER COUNTY, TEXAS FROM FEBRUARY 10 THROUGH FEBRUARY 14, 1975

FEBRUARY 10, 1975
RELEASE FED TAX LIEN--United States of America to Clarence E. Wilhelm et ux 2-7-75
AFF--Harold S. Kenady to Ex Parte 1-18-75 Sec 2 J Poitevent Survey
COL--L. A. Batham to H. Rollin Batham et al 1-20-75 5,960 int Mins S 2 Sec 48 Blk 24
ROY D--Wm M. Cotton et ux to Earl Stoops et ux 2-6-75 2/320 x 1/8 int for 5 years S 2 Sec 2 BBB&CRR Co Survey
OL--Joel G. Sanders et al to H. L. Brown Jr 12-9-74 N23 ac 1,153.363 ac 6 Blk C
OL--Ben Parks et al to Apexco Inc 12-9-74 NW 1/4 Sec 8 NK RE
D--Gordon Whitener et ux to Nancy B. Miller 2-7-75 SW 1/4 Sec 51 Blk A-8 exc mins
D--Gordon Whitener et ux to William A. Whitener 2-7-75 NW 1/4 50 Blk 18 exc mins
MD--Verbom Smith to O. B. Burton 2-7-75 120/160 int NE 1/4 Sec 13 Blk L
MD--W. V. Lister et ux to Marie Lister 1-27-75 20/160 int NE 1/4 Sec 4 Blk L
MD--Lloyd Lee to Harold

HONORED WITH SHOWER
Sharon Williams was honored with a lingerie shower, Feb. 10, at the home of Alesa Trimble. Hostess were Alesa Trimble, Brenda Jolly, Denise Miller, Melinda Reeves, and Lana Callahan. About 26 either sent gifts or attended.

Card of Thanks
A special thanks to each and everyone for the prayers, cards, gifts, food and for visits and every act of kindness shown us during Hubs eye surgery. May God bless each one in our prayer.

Mr. and Mrs. Hub Cole
Card of Thanks
We wish to thank our many friends for all the kindness shown during our time of sorrow. May God richly bless you for all your prayers, food, flowers, cards and expression of sympathy.
The Cliff Bradstreet family

Card of Thanks
We extend our thanks to everyone for their many acts of kindness during our recent bereavement. To those who gave of their time to set at the hospital, Dr. Barbour and the nursing staff at Parkview, we extend a special thanks. May God bless each of you.

The family of Emma Connell
Here & There
From Page 1
hats of my very own. (See Times Window.)
WHAT IS A HAT?
A Piece of Magic Is a Hat!
A Hat is a flag... a shield... a bit of armor... the badge of femininity.
A Hat is the difference between wearing clothes and wearing a costume;
It's the difference between be-in dressed and being dressed up;
It is the difference between looking adequate and looking your best.
A Hat is what carries you to Church... waits you through a party... turns you into a well-dressed woman on a shopping spree.
A Hat is to be stylish in... to flow under... to flirt beneath... to make other women jealous and all men feel masculine about.
A Hat is a conversation piece... a morale booster... therapy for drooping spirits... A flatterer to banish years and put stars in your eyes.
A Hat is the pride of the present and the nostalgia of the past.
A Hat is what turns a girl into a woman... a woman into a lady. Better still, a hat is what turns men's glances to your head and turns their heads to the heart.

Colonial Roy Co 1-20-75 W 1/2 NE 1/4 81 A-5; Pt 8, 9 Blk H
2 OL--Tom C Burkhalter to Kerr-McGee Corporation 1-20-75 Pt 8, 9 Blk H 1 N 1/2 NE 1/4 81 A-5
2 RENTAL DIV ORDERS--Tom C Burkhalter to Tom C Burkhalter 1-20-75 Pt 8, 9 Blk H 1 N 1/2 NE 1/4 81 A-5
ROL--Kerr-McGee Corp to Florence Burgess George et al 2-3-75 Sec 74 Blk M-1
ROL--Kerr-McGee Corp to Nan Milstead 2-3-75 14.11 ac Sec 9 Blk RE
OL--Henry Fish et al to

WANT TO BUY LAND
Am interested in buying from 80 to 320 acres of land in Northern Wheeler County. Prefer land with some trees, either improved or unimproved.
MALOUF ABRAHAM
Phone 323-6447 Canadian, Texas

BUTCHERING & PROCESSING PRICES
Beef processed, double wrapped 12¢ per pound
1¢ A Pound for Butchering
Pork processing including curing double wrapped 14¢ per pound
\$4.50 A head for butchering
We butcher Monday thru Friday 8 to 12 A.M. except holidays.
CALL FOR QUARTER - HALF - WHOLE BEEF PROCESSED
WE NOW HAVE CUTS OF PORK AND BEEF FOR SALE
SHAMROCK SLAUGHTER PLANT
N. of City Phone 256-3241
Closing at Noon on Saturday

When the quality of your grass goes down,
UP YOUR PROTEIN
with our special
T.E. Liquid Feed Supplement 32
The nutritional value of grass varies from time to time and from place to place. That's why T.E. has developed a complete line of liquid feed supplements to meet all the conditions faced by cattlemen.
T.E. Liquid Feed Supplement 32 is the one to use when the grass is dry or poor. It delivers protein, phosphorus, vitamins, trace minerals. And it delivers the energy to make them get out and rustle for what grass there is.

Get with the program... the T.E. Liquid Feed Supplement Program
T.E. LIQUID FEED SUPPLEMENT
M. & M. GIN
Wheeler, Texas

SELL HEREFORDS
Annual Production Sale
1:00 P. M. SATURDAY
March 1, 1975
HEATED SALE BARN
"Profitable, Practical, Performing Cattle" RANGE RAISED--NO CREEP--BRED ESPECIALLY FOR THE COMMERCIAL PRODUCER
SELLING 65 BULLS
YOU CAN AFFORD TO BUY Range Bulls in Volume From One of the Highest Performing Herds in the Nation
OUR BULL SALE RANGES AS ONE OF THE TOP TEN SALES (For our Sale Size) IN AMERICA THE LAST TWO YEARS.
56% OF THESE BULLS SOLD IN THE \$400-\$1,000 PRICE RANGE TO COMMERCIAL RANCHERS
CALL OR WRITE FOR TOTAL PERFORMANCE CATALOG
SELLING 33 Bred and Open Heifers
SELL HEREFORDS
HOOKER, TEXAS
Route 1, Phone 888-855-2253
Located 1 1/2 miles north on Highway 22
120 miles southeast of Amarillo

Chevron Oil Co 1-20-75 W 1/2 NE 1/4 81 A-5; Pt 8, 9 Blk H
FEBRUARY 11, 1975
D--Ronald Cole to Bess Cole 1-15-75 NE 1/4 Sec 26 Blk RE
STIP OF INT--Minco Oil & Gas Co et al; to Rex Fuller et al 1-1-75 N 1/2 NE 1/4 26 Blk RE
STIP OF INT--J. C. Moore Jr et al to L. L. Jones et al 1-1-75 NE 1/4 Sec 26 Blk RE
RMML--RDT--Panhandle Savings and Loan Assn to Don Earnley et ux 2-5-75 Lot 9 Blk 29 Wheeler
AFF--A. D. May et al to Robert H. Hutchison et ux 2-7-75
OL--Clifford E. Austin et al to Amarillo Oil Co 11-26-75 Sec 55 NW 1/4 46 A-4
3 AOL--John C. Vise et ux to Harrington & Marsh, Inc 4-15-74 E 1/2 S 1/2 85.13 ac E 1/2 W 1/2 & E 1/2 S 1/3 Sec of W 1/2 Sec 14 Blk RE
DT--Larry V. Lister to Canadian production Credit Assn 2-11-75 Sec 38 E 1/2 23 Blk 24
DT--Madge Glass Porter et al to Federal Land Bk of Houston 1-29-75 SW 1/4 30 exc N 50ft Sec 29 Blk A-9 N 1/2 Sec 62 Blk 24
FEBRUARY 12, 1975
OL--F. H. Davidson et ux to John C. Vise 1-14-75 S 120 ac W 1/2 Sec 2 Blk 4 B&B Survey
LETTERS TESTAMENTARY --Iva Bell Smith Watters to First St Bk Abilene 4-10-69 RVL--Elwin Eugene Bearow et ux to First Southern Methodist Church 1-28-75 Lot 9 Blk 57 Shamrock, WSSA
RDT--Government National Mtge Assn to James C. Moore et ux 4-11-73 N 3/4 Lot 2 S 50 ft Lot 1 Blk LVI Shamrock WSSA
ASSING OVERRID ROY--Howard G. Morrison to Thomas Henry Morrison 8-21-75 N 1/2 Secs 58, 59, Blk A-7
AFF--Thurman Adkins et al to Claud E. Martin et ux 2-4-75 Lot 5 Blk 83 Shamrock WSSA
2 MODIF OL--Margie Thomas & Maude Pitts to Phillips Pet Co 11-15-74 & 1-31-75 NW 1/4 47 B24
GAS PURCHASE CONTRACT --Amarex, Inc et al to Natural Gas Pipeline Co of America 10-15-1974 Pt Sec 12 Blk RE & Pt E 1/2 Sec 23 Blk M-1
RELEASE CONTRACT--Albert P. Devin to James R. Reneau et al 1-1-75 SE 1/4 Sec 41 Blk 24
AFF--Harry Wofford et al to George P. Helton et ux 6-6-74
ROL--Gulf Oil Corp to J. R. Henry et ux 1-30-75 SW 1/4 Secs 11 & 13 Blk A-7
FEBRUARY 13, 1975
RVL--Gaddy Vise to O. B. Burton 2-10-75 Pt, NW 1/4 Sec 60 Blk A-8
RDT--CHAIN-C, Inc to H. D. Pond et ux 2-4-75 E 1/2 SE 1/4 Sec 18, Blk L
MML--H. G. Finley et ux to A. O. Nicholson 2-11-75 Pt Lots 21 to 24 Blk 1 Shamrock
AFF--John B. Roach et al to C. V. Brown et ux 2-13-75 Lots 10 to 12 Blk I Lela, Purcell Ad
D--United States of America to D. V. Brashears Jr et ux 10-16-74 Lot 9 Blk 3 Shamrock HSA
FED TAX LIEN--Edgar D. Maynes Jr et ux to United States of America 2-12-75 ROY D--Arnell Holt et vir to Edward L. Poole 1-22-75 1/4 of 1/10 of 1/8 int S 1/2 5 J Poitevent Survey
RELEASE INHER TAX LIEN--State of Texas to R. W. Adams 3-8-74
AFF--John W. Adams to June Adams 3-8-74
3 OL--SAMEDAN Oil Corporation to Rex P. Fuller 1-22-75 SE 1/4 52 SW 1/4 69 NW 1/4 68 Blk A-5
OL--Ewert Ray Duncan et al to Rex P. Fuller; 1-3-75 SW 1/4 Sec 51 Blk A-5
RENTAL DIV ORDER--J. Kirk Duncan et al to Jeta Duncan et al 1-3-75 SW 1/4 51 A-5
OL--L. Ester O. Berg to Harry Wofford 1-21-75 SW 1/4 51 Blk A-5
AOL--Harry Wofford to Rex P. Fuller 1-28-75 SW 1/4 Sec 51 Blk A-5
FEBRUARY 14, 1975
FED TAX LIEN--Sandra Randolph, Hiway Cafe to United States of America
DT--H. B. Krug et ux to Canadian Prod Cre Assn 2-13-75 23.9 ac SW 1/4 20 Blk A-7
2MD--Ernest C. Murrell et ux to Vera A. Murrell et al, Trustees 2-3-75 1/5 int 58.1336 ac W 1/2 11 & NW 1/4 30 Blk A-5

COME TO THE Land Bank for a long-term loan at reasonable cost
Extra years in which to repay and an interest rate kept low as possible are big reasons farmers and ranchers choose Land Bank financing. But Land Bank also recognizes each borrower needs a carefully planned to meet individual needs. A better loan and better loan service. Come to us for both.

...and for other advantages you might find even more important
John C. Vise Agency
117 W. Texas Street
Wheeler, Texas

COMPLETE INSURANCE COVERAGE
John C. Vise Agency
117 W. Texas Street
Wheeler, Texas

A. & E. MOBILE HOMES
Highway 83 So.
Canadian, Texas
Phone 323-6469

PAINTING
Interior & Exterior
Commercial & Residential
Brush, Roller, and Spray
Painting.
No Job Too Large
(Except Skyscrapers)
or Too Small.
Reasonable Rates
Call:
Donald Ford
(806) 826-3106
Wheeler, Texas

Allison News

Mrs. Lester Levitt
Mrs. Bessie Megee returned to her home Thursday after spending several weeks with the Jackie Schelb in Borger and Donald in Canadian. She had major surgery recently and is recovering nicely. Glad to be home again. Our basketball girls were District Winners of the game at Lefors against Mobeetie 1 point day night the game being played at Wheeler. Girls Valley for by-district Pampa Tuesday night. Mrs. Edith Levitt spent day night and Saturday in Hollis, Oklahoma where she met Evelyn and Roy Bradford at Roy's mothers home. On the way down today she spent two hours with Mr. and Mrs. Ben (Ruth) Helm and Mrs. Theodocia at Wellington. Visiting Saturday Mr. and Mrs. Puryear notored to Hollis and spent the day with the Langfords. Mr. and Mrs. Bob Young and Angel and Miss Cindy Chandler from Canyon spent the weekend with Mr. and Mrs. Kenneth Chandler and family. Mrs. Nona Hall spent today in Pampa for her annual physical check up. Mrs. Edyth Donaldson and Virginia Puryear were in Canadian Monday of last week for medical reasons. Mrs. Mary Cornell had minor surgery in Pampa Tuesday and came home Thursday. Mr. and Mrs. Bruce Harrison returned home Thursday from Truth or Consequence, New Mexico where they took the baths for a month. They came by Amillo and Canyon and visited relatives on their way home. Mr. and Mrs. George Arkham went to Amarillo Friday where George had his tests run at High

and family Sunday, Feb. 9. John Jones from Sudan visited Mr. and Mrs. L. L. Jones recently. Mr. and Mrs. Bob Markham and Mr. and Mrs. Lester Hall and children spent the weekend in Amarillo with relatives and friends. Mr. and Mrs. Mike Dyer and children and Lee Hall and family were dinner guests in the home of Mr. and Mrs. James Hall Sunday. Mr. and Mrs. Virgil Kidwell and daughter from Amarillo and Mr. and Mrs. Curtis Kidwell from Wheeler visited Rev. Mike Sullivan and family Sunday evening and attended services at

Girl Scout Troop 71 Meets

The opening ceremony was given by Patrol III. They led the troop in the Pledge of Allegiance and in the song, "My Country 'Tis of Thee". Present were: Missy Wiggins, Tanya Rarden, Rhonda Hogue, Lisa Dodd, Melannie Lee, Marla Pond, Rose Guthrie, Kathy Izard, Beth Brown, Sherry Lewallen, Yamma Sangarasivam, Cathy Dorety Angela Atwood, and Elise Christner. Leaders present were Anita Brown, Glenda Atwood, and Sandra Christner. Rhonda Hogue brought delicious ice cream sandwiches for everyone. We decided to bring as many cents as we are old for the Juliet Low Fund. For example if you are 10 years old, bring 10c. Bring the Juliet Low Fund money along with your regular dues. During the meeting, we discussed the beginning of Girl Scouts in England and America; the Girl Scout Banquet, which will be March 14, 1975; and several girls gave talks or exhibits to the troop for badges. Everyone try to complete as many badges as you can before the banquet. Patrol III led the troop in an exciting game of "Valentine Turn-over." The closing ceremony was led by Patrol III. They led the troop in the song "Girl Scouts Together" in the Friendship Circle.
By Elise Christner

the Baptist Church. Roy Morse returned home Saturday from the General hospital in Shamrock. Mrs. Becky Zybach returned home last week from High Plains Baptist Hospital in Amarillo and is staying in the home of her parents, the Joe Dukes recovering from major surgery. Dinner guests in the C. W. Boydston home Sunday were Mr. and Mrs. Steve Chadwick and Christopher from Lawton, Oklahoma, Mr. and Mrs. Bruce Harrison and Mrs. Wanda Walker and daughter. Weekend guests in the Rex Miller home were, Mr. and Mrs. Kelly Miller and Shelley from Hugton, Texas, Mr. and Mrs. Gary Hodges from Santa Fe, New Mexico and Jim Miller from Weatherford college. Mr. and Mrs. Gary Boydston, Allen Reynolds and family were dinner guests in the Gary Hall home Sunday. Hoyle Helton visited Mrs. Jessie Hall Wednesday. Mrs. Hall spent Friday at Shamrock with Roy Hall and family. This area had from six to seven inches of snow over the weekend.

Lines from Linda
By Linda Horton, Asst. County Extension Agent
SPRING FASHIONS
Consumers will see at least one new style of rainwear this spring. The rain suit—a skirt and short cape or pants and shirt jacket—is making fashion news in water repellent poplin or chintz. The suit goes anywhere in warm weather without a coat, and that's a definite comfort feature for late spring and summer. Other rainwear styles are big, bold, swashbuckling looks, with a few slimmer looks for variety. Most popular colors will be the naturals—saddle tan, camel, taffy and beige. Sparks of color such as red and green will also be seen, as well as the ever-faithful black. Favorites will be big half-circle capes, belted in front or floating loose. A similar silhouette is seen in the tent coat that flares from shoulders to below knee. Poplin is the usual fabric for these. Another new look for spring rainwear is the Sherlock Holmes style coat with detachable elbow-length cape. Capes and cape looks are seen more than any other look for spring. A slimmer look will come from coats that look like shirt dresses. Details range from zip-up front closings to full sleeves gathered into cuffs at the wrist. Dropped shoulder lines and yokes add interest, too. Also making spring fashion news is terrycloth. Stretch terrycloth is perfect for leisurewear. Made of cotton or cotton polyester blend, it provides easy-care features. Skinny stripes and solids in bright pastels and patriotic colors contribute to the spring and summer fashion parade. T-shirts and shorts in stripes and solids used interchangeably with a wrapped skirt give the sporty look for active wearers. Leisurewear in terrycloth mix-and-matches gives the conform and ease of movement needed for loose, lounging attire.

Arthritis Seminar Slated
More than 20 million Americans suffer from some form of arthritis serious enough to require medical care. It's the nation's number one crippling disease, with one in four U.S. families affected. These facts and others, says County Extension Agent Linda Horton "will be the focus of attention for 'What's blanket coverage?'"

Arthritis Seminar Slated
More than 20 million Americans suffer from some form of arthritis serious enough to require medical care. It's the nation's number one crippling disease, with one in four U.S. families affected. These facts and others, says County Extension Agent Linda Horton "will be the focus of attention for 'What's blanket coverage?'"

Mrs. Johnston Is Club Hostess
Mrs. Ella Johnston was hostess to the bi-monthly Fort Elliott Study Club on Tuesday afternoon at 2:30. Mrs. Eula Johnson, as president called the meeting to order and conducted the business meeting. Mrs. Margaret Trout led the group in the Club Collected. Mrs. Bernice Hefley was welcomed into the club by a unanimous vote of the club members. Mrs. Elnita Atking gave the devotion with the daily devotion taken from the upper room, entitled "Value In The Un-Seen", reading Second Corinthians Chapter four and verse sixteen. Mrs. Johnston brought the program "Garden Therapy" which is a very timely study, giving recommendations for both organic and natural garden tips, stating "you are never closer to God than in a garden". One guest, Mrs. Lee Morris and the following members enjoyed the very delicious refreshments the hostess served. The members were: Mrs. Hefley, Mrs. Johnson, Mrs. Atkins, Mrs. Trout, Mrs. Ether Lee Dyson, Mrs. Bessie Galmor, Mrs. Edith Flanagan, Mrs. Ada Lester, Mrs. Gazelle Patterson and Mrs. Wilber Beck. Mrs. Lottie Eva Denson will be hostess to the next meeting with Mrs. Hefley and Mrs. Lester program leaders.

SALE Still In Progress
(Purchase one fall and winter item at regular price and receive a second item for 1c)
The Dot Shop
Friendly Service
Spring & Summer merchandise arriving daily.

The Frontier STEAKHOUSE & Restaurant
Highway 152 - Mobeetie, Texas
Open 7 Days a Week
5:30 a.m. to 10 p.m.
FEATURING:
Noontime Specials
Also
Char-Broiled Steaks
After 5 p.m.

PUBLIC NOTICE
\$50,000
STOCK LIQUIDATION
LOCATION: 117 N. MAIN - SHAMROCK, TEXAS
TIME: Beginning Thursday, Feb. 20 - 10 A.M.
ENDING WHEN LIQUIDATION IS COMPLETED
PURPOSE OF LIQUIDATION:
Miller's Furniture, Shamrock's newest furniture store has joined a group of 500 Affiliated Furniture Stores. This association is known as Better Living Furniture Stores. Joining this group, 500 strong, gives us the buying power of the 500 Stores because our buyers buy for 500 stores, at the same time, the same merchandise from the manufacturer, and brother that large an order GETS THE PRICE DOWN! In order to join this group, we must dispose of all the merchandise that does not come through the association - - - We have \$50,000 Worth!
To Move This \$50,000 worth of merchandise we are having the most fantastic FURNITURE SALE ever in the Panhandle! For 10 Days We Are Going To Sell Furniture, Bedding, Lamps, Dinettes and miscellaneous decorative things at TREMENDOUS DISCOUNTS - Some At Cost - Some Even Below Cost!
ATTENTION!
If you are going to need furniture anytime during the coming year **DON'T MISS THIS SALE!**
You will never see furniture prices like these again so bring your Pickup, Station Wagon or Trailer, and come prepared to buy! Terms Can Be Arranged On the Spot! We Want Your Business!
PLEASE NO PHONE ORDERS DURING THIS SALE
PLEASE NO LAY AWAY DURING THIS SALE
PLEASE NO EXCHANGES OR REFUNDS DURING THIS SALE
Miller Furniture
117 N. Main
Shamrock, Texas
FREE DELIVERY WITHIN 30 MILES
WHEELER PH. 826-5576

Check these Savings
ROUND STEAK 98¢
SIRLOIN STEAK 1 lb. \$1.09
BACON 1 lb. Pkg. \$1.19
Buttermilk Qt. 39¢
SOUR CREAM or DIP 12 oz. Ctn. 39¢
Ice Cream 5 Qt. Bkt. \$2.89
Potatoes 10 lb. Bag 69¢
Sweet Potatoes 2 lbs. 29¢
LETTUCE 1 lb. 29¢
MOBEETIE GROCERY
Phone 845-2721
Mobeetie, Texas

TONY'S PIZZA \$1.19 (With This Coupon)
BREAD 2 Loaves 79¢
MEXICAN DINNERS 14 oz. Pkg. 69¢
BEETS 3 16 oz. Cans 89¢
CONTAC Reg. \$1.79 \$1.29
VAPOR RUB Reg. \$1.69 \$1.37

ARTHRTIS SEMINAR SLATED
More than 20 million Americans suffer from some form of arthritis serious enough to require medical care. It's the nation's number one crippling disease, with one in four U.S. families affected. These facts and others, says County Extension Agent Linda Horton "will be the focus of attention for 'What's blanket coverage?'"

JOHN C. VISE AGENCY
WHEELER PH. 826-5576

It's National FFA WEEK

National Student Organization

Proud Past — Bright Future

One of the best examples of youth in action on the American scene today is the FFA, the national organization for students studying vocational agriculture in the public high schools. It is an organization run by the student members under adult guidance.

Soon after vocational agriculture became a subject in many of the nation's high schools in 1917, instructors became aware of the need to provide practical training beyond the traditional classroom approach. Their idea was to make the instruction more interesting by making practical work experience, competitive livestock judging, and agricultural leadership development activities part of the instruction. Vocational agriculture instructors and students eagerly accepted the learn by doing principle.

The FFA was founded nationally in 1928 after similar organizations had started in several states. Right from the beginning, the FFA has stressed leadership, cooperation and citizenship—all vital to success in modern agriculture.

Today the FFA has a membership of over 450,000 with chapters in approximately 8,000 high schools throughout the nation. The organization has state

associations in all states, except Alaska, and in Puerto Rico.

Vocational agriculture or agrribusiness programs are funded in part by the National Vocational Education Acts through the U.S. Office of Education, state departments of education and the local school systems. The FFA operates under a federal charter granted by an Act of Congress in 1950 (Public Law 740, 81st Congress). The charter provides for a national board of directors and a board of student officers elected from the membership.

FFA activities are specifically designed to be a part of the instructional program in vocational agriculture. Members learn through active participation how to conduct and take part in public meetings, how to speak in public, and how to take a leadership role in their school and community.

Each local chapter and each state association elects its own officers each year. In all cases the teacher of vocational agriculture is the advisor of the local FFA chapter and the State supervisor of agricultural education is the advisor of the state association.

FFA members have full opportunity to practice the principles of democracy in conducting the affairs of their organization by ex-

ercising their privilege to vote at chapter meetings, serve on committees, and otherwise assist in carrying on the work of their organization. Elected delegates to the state and national conventions, held each year, are asked to decide on major issues facing the organization.

Advancement through the degrees in the organization from the Green Hand through the Chapter Farmer, State Farmer, and American Farmer or Agrribusinessman is based on achievement in farming, ranching, or agrribusiness careers.

Nearly 8,000 public high schools have FFA chapters. One of the requirements for membership in FFA is that a student be enrolled in vocational agriculture. Students may retain their membership until they are 21.

Competition is a key element of the FFA from the chapter to the national level. Each year the FFA recognizes more than 80,000 members at local, state and national levels for outstanding achievement in activities related to agriculture career and leadership development.

Funds for awards are provided by more than 700 businesses, organizations, and individuals that sponsor FFA programs

through the National FFA Foundation, Inc. The Foundation provides nearly half a million dollars to make the incentive awards available to deserving FFA members in the following award programs: Star Farmer and

Star Agrribusinessman awards, 19 agricultural proficiency awards, public speaking, national chapter awards, national chapter safety, Building Our American Communities Awards, national judging contests, establishment in

agriculture awards, and through state initiated programs for improving agricultural leadership.

Recent food shortages in this country have reaffirmed the need for continuing a strong program of vocational agriculture and the FFA. Thus there is a bright future for trained agriculturists ready to serve America.

FFA a chance for GROWTH

He grows taller to reach new goals in life.

She can see over the horizon to her career in agriculture.

They are members of the FFA—a national student organization of young men and women enrolled in 8,000 local high school vocational agricultural education departments. They are over 450 thousand strong.

There is the physical GROWTH of youth of course, stimulated by nutrition and youthful vigor.

But more, FFA and vo-ag provides youth in agriculture a chance to GROW personally and professionally. The program creates the atmosphere in which they can GROW and become responsible leaders for agriculture. FFA is an integral part of the educational system, and the FFA is built around the principle of learning by doing. Professional growth in a selected agri-career is the objective of the agricultural education effort.

The FFA student organization also offers an atmosphere of opportunities for the individual to GROW. He faces competition. She

serves as an elected officer. Or works hard as a member of a chapter committee. He is responsible for the project. The others are depending on him. Personality development occurs.

One other important stimulant of student member GROWTH is the vocational agricultural instructor. He guides the student through the vo-ag program and advises the member in FFA. This advisor is the important catalyst in the GROWING process.

Students emerge from this time-proven GROWTH program trained and prepared for a career serving America's agriculture. They have developed themselves as effective leaders, sensible decision makers, creative personalities, morally straight citizens, and confident individuals ready for life.

Observe their enthusiasm, sparkle and pride for FFA, for themselves, and for our America.

More Than 450,000 Students Of Vocational Agriculture Are Members Of The FFA.

Washington The Farmer

George Washington Considered Agriculture Important To The Success Of Every Nation

Everyone knows that George Washington gave seven years of

his life without pay to command the Revolutionary Army and more to serve as the new country's first president. What isn't so known is that he would have been much happier "under his own vine and fig tree." By his own mission, George Washington's first interest was farming.

It was because of his intense farming and his accomplishments as a successful farmer that FFA WEEK is celebrated during the week of George Washington's birthday. In addition, George Washington has been labeled the patron saint of the organization and has come to symbolize FFA's mission.

Actually it was a strong inheritance that launched Washington's career as a farmer. He was 11 when his father died, according to custom, Lawrence, the oldest son—got most of the estate including Mt. Vernon. Washington's small inheritance was only a 280-acre Cherry Farm plus a share of land at Run.

What's Ahead, Food or Famine?

What's ahead for tomorrow's agriculture? Over 450,000 members of the Future Farmers of America are confident that agriculture has a bright future. They're preparing for careers in this vital industry that provides food, fiber and a better environment for the nation and the world.

In over 8,000 high schools across the nation, students in the vocational agriculture instruction program are learning the skills and gaining the technical know-how that will prepare them for careers in production agriculture, agrribusiness or natural resources.

Their goal is to become employed in one of the thousands of occupations that serve consumers by supplying and servicing the nation's farmers, by producing an abundant supply of food and fiber and by maintaining and carefully using precious natural resources.

The optimism of these young people comes from the realization that they will be part of the nation's largest and most vital industry. Today two out of every five jobs are related to agriculture. They know that food produced by the nation's farmers is the backbone in our successful free enterprise system. They know too the pride and accomplishment of

working in one of the most modern and efficient agriculture production plants in the world.

Through their membership in the FFA, vocational agriculture students are preparing themselves for the challenges of tomorrow's agriculture. As officers, committee participants, and in chapter business and community service ventures, FFA members learn to set goals, work together and take a leadership role to achieve their goals. It is this training that helps prepare for tomorrow's agriculture and gives members a chance for GROWTH.

Old Mobeetie Association Meets

Nine members and three visitors were present at the monthly meeting of the Old Mobeetie Association, Tuesday evening in the Mobeetie Community Church, where Mrs. Sally Harris presided over the business session.

Visitors were Wheeler County Commissioners, E. E. Henderson and N. L. Sechrist and County Judge Wendell Morgan. Members attending were Mr. and Mrs. Lester Hathaway, Mrs. Sallie Harris, Mrs. Lottie Eva Denson, Mrs. Tommie Tyson, Mrs. Maggie Myers, Mrs. Emalee London, Mrs. Bessie Galmor and Mrs. Bernice Caldwell. The Association meets each second Tuesday afternoon of the month.

Washington started accumulating land with money earned as a surveyor. At George had bought 550 acres. Washington resigned military commission when he was 26 and soon married Martha Custis, a wealthy Virginia widow that time he owned about 100 acres of land which included Vernon's 2,500 acres inherited from his brother Lawrence.

Washington began to take business seriously! He had a business mind, an eye for business and a searching curiosity about anything new.

Washington divided his huge estate into five farms. Each farm overseer made weekly reports which Washington used for notes, diaries, and account books. He made exacting notes on planting, harvest, and sale—a task that is recognized in the FFA.

As early as 1766, Washington realized the error in continuing tobacco cultivation. He practiced abandoned tobacco, the national crop.

Some have called Mt. Vernon one of the earliest "experiment stations" in America. It's true! Washington tried various manure and water applications under controlled conditions. He experimented with countless seeds, fertilizers and management practices.

Washington called the life of a farmer "most delectable." "It is honorable. It is amusing, and with judicious management it is profitable," he said.

Perhaps his far-reaching vision and love of farm life are best expressed in his eighth address to Congress: "It will not be doubted that with reference either to individual, or National Well-being, Agriculture is of primary importance. In proportion as nature advances in population, and the circumstances of maturity, the truth becomes more apparent, that renders the cultivation of the soil more and more, an object of public patronage."

FFA a chance for GROWTH

FFA Unites Its Members With Career Opportunities.

10% OFF ON ALL ITEMS IN STOCK

15 STYLES BOOTS

BOOT SIZES: Youth Sizes 6-13½ Men's & Ladies Sizes 1-12

Boot Overshoes (All Sizes)

We feature Skinner's Boots designed by Bray's Saddle Shop

Our Stock Includes . . .

- Rain Coats (¾ & Full Length)
- Men's Western Shirts & Slacks
- Tack Equipment: Bits, Spurs, Head Stalls, Halters, Reins, Latigos, Girths, Tie-Downs, Nylon Ropes, Grass Ropes, New Shipment of Treated 93's, Horse Blankets, Saddle Pads, Rope Cans, Piggin Strings, etc.
- Veterinary Supplies
- Horse Supplement
- Horse Wormer

Boot, Shoe & Saddle REPAIR

Customized LEATHER WORK

BRAY'S SADDLE SHOP (South Side of Square) WHEELER, TEXAS

Mobeetie News

By Mrs. Wilber Beck

Recent visitors of Mr. and Mrs. Aubrey Greenhouse were their daughter and grandson, Mrs. Virginia Nixon and Miles and a grandson, Wade Greenhouse all of Dumas.

Danny and Dennis Hilburn and Dean Randolph of Borger visited their sisters, Diane and Denise Hilburn and their grandparents, Mr. and Mrs. Walter Coward last weekend.

Mr. and Mrs. Teddy Tucker and family of Friona, visited the lady's mother, Mr. and Mrs. Lee Morris last weekend.

Jimmy Selby and Wayne Leatherman spent last week in Oklahoma City where they were working on the job.

Mrs. Albert Scribner of Golden City, Mo., spent Tuesday night with her mother-in-law. She was enroute to Lubbock where she attended the funeral of her nephew-in-law.

Mr. and Mrs. E. E. Rice are in Amarillo visiting this week.

Mr. and Mrs. Cecil Martin of Miami were in Mobeetie Monday.

Mr. and Mrs. Bob Galmor visited his brother, Mr. and Mrs. Monroe Galmor in Wheeler Sunday. Mr. Galmor was recently dismissed from the Parkview Hospital.

Glen Sherrell and Wayne Leatherman attended to business in Alanreed Monday.

Carl Henderson visited his sister, Mr. and Mrs. Pierce Walker and his wife's parents, Mr. and Mrs. Lee Morris Monday.

Mr. and Mrs. E. E. Johnston shopped and attended to business in Pampa, Monday.

Mr. and Mrs. Bobby Galmor and family of Shamrock visited his parents, Mr. and

Blakemore
FRESH
PROTEIN FED CATFISH

"Dressed While You Wait"
BLAKEMORE MOTOR CO. BUILDING
Phone 253-3287
400 North Main Shamrock, Texas 79079

Answer a Prayer for Vision...
be an Eye Donor.

Call a local Lions Club member for a donor card - or write Lions Hi-Plains Eye Bank, P.O. Box 1110, Amarillo, Texas 79105 for information and a donor card.

give a Gift of Vision.

Charles Hix 826-5504
Kenneth Nelson 826-5609

Washington started accumulating land with money earned as a surveyor. At George had bought 550 acres. Washington resigned military commission when he was 26 and soon married Martha Custis, a wealthy Virginia widow that time he owned about 100 acres of land which included Vernon's 2,500 acres inherited from his brother Lawrence.

Washington began to take business seriously! He had a business mind, an eye for business and a searching curiosity about anything new.

Washington divided his huge estate into five farms. Each farm overseer made weekly reports which Washington used for notes, diaries, and account books. He made exacting notes on planting, harvest, and sale—a task that is recognized in the FFA.

As early as 1766, Washington realized the error in continuing tobacco cultivation. He practiced abandoned tobacco, the national crop.

Some have called Mt. Vernon one of the earliest "experiment stations" in America. It's true! Washington tried various manure and water applications under controlled conditions. He experimented with countless seeds, fertilizers and management practices.

Washington called the life of a farmer "most delectable." "It is honorable. It is amusing, and with judicious management it is profitable," he said.

Perhaps his far-reaching vision and love of farm life are best expressed in his eighth address to Congress: "It will not be doubted that with reference either to individual, or National Well-being, Agriculture is of primary importance. In proportion as nature advances in population, and the circumstances of maturity, the truth becomes more apparent, that renders the cultivation of the soil more and more, an object of public patronage."

Briscoe 4-H Club Meeting

The Briscoe 4-H Club met Jan. 27 at the home of Dick Irvin. Mr. Irvin and Mr. Garlin gave some instruction on the use of wood working instruments. Each member plans to make something.

Those attending were Cindy Meek, Phoebe Meek, Carla Bible, Kevin Meadows, Jay Phil Meek, Becky Irvine, Kevin Meek, Rick Gatlin, Carolyn Gilmore, Rich Irvine, Misty Meadows, Jeff Baker, Keith Meek, Todd Meek, and Shawn Watley. Misty, Shawn and Jeff are new members.

Refreshments were served. The adult leaders attending were: Mr. and Mrs. Irvin, Mr. and Mrs. Dan Gatlin, Mrs. Tola Fay Meek, Mr. J. P. Meek, Larry Gatlin was a visitor.

**WELCOME
to the 4-H & FFA
CALF & HOG SHOW**



HOG SHOW: Friday, February 21, 1975 — 6:30 P.M.

CALF SHOW: Saturday, February 22, 1975 10:00 A.M.

HOG SALE. Saturday, Feb. 22 - 7 P.M.

and . . .

**WHEELER COUNTY SHOW BARN
DEDICATION & BARBECUE**

SATURDAY, FEBRUARY 22 - 6:00 P.M.

THIS AD IS SPONSORED BY THE
FOLLOWING MERCHANTS AND INDIVIDUALS

ALBERT'S SHAMROCK SERV. STA.

LOYD'S BEN FRANKLIN

GARRISON'S SERVICE STA.

HYLAND'S PHARMACY

WRIGHT FUNERAL HOME

JOHN C. VISE AGENCY

SPARLIN'S CAFE

CITY FLOWER & GIFT SHOP

WHEELER VETERINARY CLINIC

THE BOB FRANKENBERYS

MR. & MRS. CARROLL ADAMS

HARPER'S DEEP ROCK

HONEY INN

MCWHORTER SERVICE & SUPPLY

BEEF CATTLE CO.

PETE BURTON FORD

EDWARDS '66' TRUCK STOP

GEORGE & VENA RICHARDSON

M. & M. GIN

SOUTHWESTERN PUBLIC SERVICE CO

LANCASTER DEPT. STORE

HIBLER IMPLEMENT CO.

ROARK'S FINE FOODS

WHEELER GAS INC.

WHEELER LUMBER CO.

SHAMROCK PRODUCTS CO.

GLEN PORTER RANCH

SAND & SAGE MOTEL

SHIRA'S IMPLEMENT

PRODUCTION CREDIT ASSOC.

RIVES INSURANCE AGENCY

WHEELER FLOWER SHOP

WHEELER COUNTY PRODUCE

WHEELER ABSTRACT CO.

WARE CHEVROLET CO.

TRADING POST

FIRST NATIONAL BANK

HARRY & MARY WOFFORD

WHEELER REDI MIX

PRITCHARD'S THRIFTWAY

LEE HARDWARE & FURNITURE

BRAY'S SADDLE SHOP

THE DOT SHOP

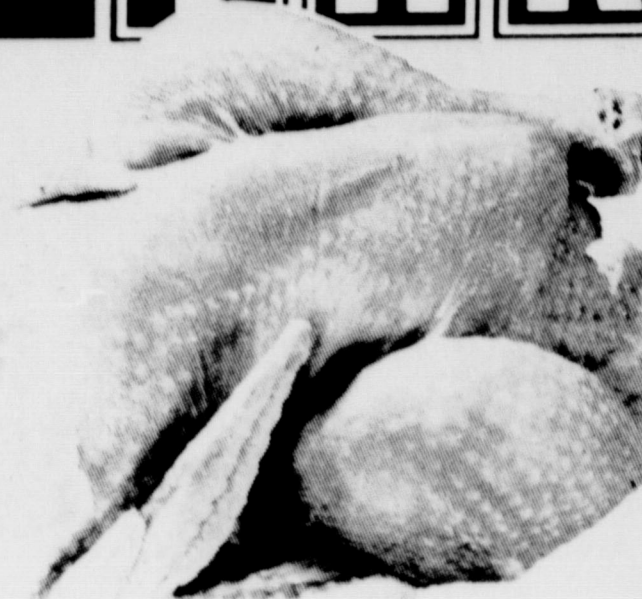
RICHARD & LYNDY WALLACE

THE WHEELER TIMES

**WASHINGTON'S
BIRTHDAY
SALE**

THRIFTWAY

**A BETTER
WAY
TO SAVE**



U.S.D.A. GRADE "A" WHOLE

FRESH FRYERS

TWO
IN A
BAG

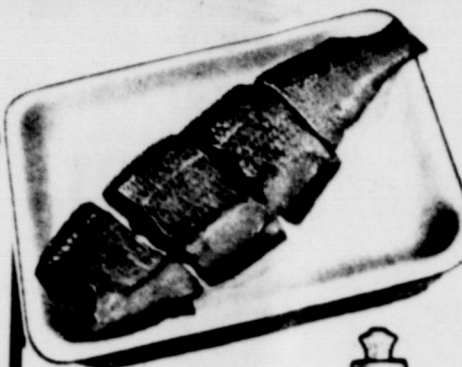
47¢

SINGLE PKGS. **49¢** LB.

**BONELESS
CHUCK
ROAST**
LB. **\$1.19**

SLICED SLAB
BACON
LB. **\$1.09**

U.S.D.A. GRADE "A" Cut Up Fryers LB.	55¢	FRESH FRYER Drumsticks LB.	79¢
FRESH DRESSED Fryer Breast LB.	89¢	FRYER PKG. (BACKS, WINGS, NECKS) Dumplin' LB.	39¢
FRESH DRESSED Fryer Thighs LB.	79¢	BONELESS Chuck Steak LB.	\$1.29



FARM-GRAIN FED
FRESH CATFISH LB. **\$1.29**
FRESH AND FLAVORFUL
H & C WHITING 1 1/2 LB. PKG. **79¢**



ANTISEPTIC
**LISTERINE
MOUTHWASH**
14 OZ. BTL. **89¢**



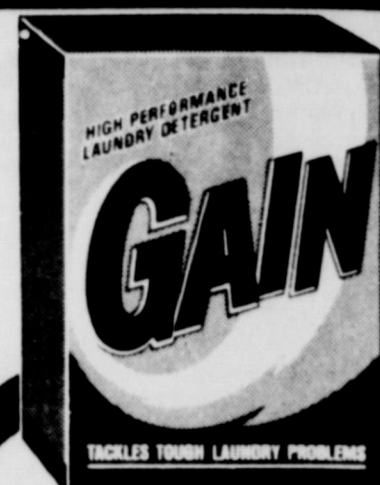
25% OFF LABEL
**OXYDOL
DETERGENT**
KING SIZE BOX **\$1.79**



20% OFF LABEL
DETERGENT
LIQUID DAWN
32 OZ. BTL. **89¢**



WHITE OR DECORATOR
JUMBO PAPER
VIVA TOWELS
ROLL **49¢**



10% OFF LABEL
**GAIN
DETERGENT**
GT. BOX **99¢**

TENDER CRUST BROWN & SERVE
Dinner Rolls 3 12 CT. PKGS. **\$1.00**

Shurfine Vienna
Sausage 4 1/2-oz Can **35¢**

Gladiola
Cornbread Mix 2 Pkgs **39¢**

ALL PURPOSE ENRICHED
Shurfine Flour 5 LB. BAG **69¢**

ALL PURPOSE RUSSET
Potatoes 10 LB. BAG **69¢**

CALIFORNIA SUNKIST
Oranges LB. **19¢**

Sunkist
Lemmons Pound **29¢**

PARKAY KRAFT SQUEEZE
Margarine 16 OZ. BTL. **89¢**

Shurfine Pancake
Mix Lb Box **65¢**

Maxwell House
Coffee Lb Can **99¢**
(with coupon)

Coffee Folgers Instant 6-oz Jar **\$1.49**

Cleanser Comet 14-oz Can **25¢**

GILLETTE TRAC II CARTRIDGE
Blades 5 CT. PKG. **\$1.19**

CURITY DAYTIME DISPOSABLE
Diapers 30 CT. BOX **\$1.79**

MORTONS FROZEN
TV DINNERS 11 1/2 OZ Size **48¢**

Shurfresh
Eggs Grade 'A' Med. Doz **59¢**

Hershey Instant
Chocolate 2 Lb Can **\$1.89**

SHURFRESH AMERICAN
CHEESE 12-oz Sliced Singles **88¢**

10% VALUABLE COUPON
KEEBLER TOWN HOUSE
CRACKERS 16 OZ. BOX **69¢**

WITH THIS COUPON VOID FEB. 22, 1975
THRIFTWAY FOOD STORES
LIMIT ONE COUPON PER CUSTOMER
10% **THRIFTWAY**

10% VALUABLE COUPON
KEEBLER PECAN SANDIES OR
RICH 'N CHIPS 14 OZ. PKG. **79¢**

WITH THIS COUPON VOID FEB. 22, 1975
THRIFTWAY FOOD STORES
LIMIT ONE COUPON PER CUSTOMER
10% **THRIFTWAY**

20% VALUABLE COUPON
MAXWELL HOUSE
COFFEE LB. CAN **99¢**

WITH THIS COUPON VOID FEB. 22, 1975
THRIFTWAY FOOD STORES
LIMIT ONE COUPON PER CUSTOMER
20% **THRIFTWAY**



BRITANNICA JUNIOR
THE MOST FAMOUS STUDENT REFERENCE EVER PUBLISHED. SAVE OVER \$75.00. START YOUR SET TODAY.
THIS WEEK:
\$2.99 VOLUME NO. 4
ONLY WITH A \$5.00 PURCHASE
VOLUMES OFFERED PREVIOUSLY ALSO ON SALE NOW.

Pritchard's
Shamrock, Wheeler
DOUBLE S&H GREEN STAMPS WEDNESDAY
WITH PURCHASE OF \$2.50 OR MORE
SPECIALS GOOD FEB. 20-21-22

20% VALUABLE COUPON
MAXWELL HOUSE
COFFEE LB. CAN **99¢**