

# THE WHEELER TIMES

VOLUME 44 NUMBER 18

THURSDAY, APRIL 6, 1967

SINGLE COPY 10¢

## MITCHELL AND VERDEN SCHOOL TRUSTEES



**FOUR INJURED:** Four persons were hospitalized following this two car accident two miles east and two north of Wheeler, Friday at approximately 5:00 p.m. The accident occurred at the intersection of two county roads. Mr. and Mrs. Tom Edwards and their 8 month old baby daughter were traveling north in a 1966 Ford. Terry Wayne Wilkinson, 12, was the driver of a 1954 Ford which was traveling east at the time of the collision. The '54 Ford was totally demolished and the 1966 Ford sustained heavy damage. Patrolman Dave Croslin investigated the accident.

### National Honor Society Named

Mr. Barham, principal and the faculty of Wheeler High School are pleased to announce the election of the following students to the local chapter of the National Honor Society: Graduate Membership: Villard Hunter, Johnny Hutchison, Vic Helton and Sue Richerson; Active Membership: Richard Sachrist, Freddie Goad, Allen Lamb and Jolene Steen; Provisional Memberships: Steve Hampton and Nancy Wiley.

Nancy Moore, Linda Moore and Bob Stiles are now graduate members. Tommy Levitt and Frankie Rogers will be promoted from provisional to active membership.

Students are elected to membership on the basis of four areas: leadership, service, character and scholarship. To rate high in LEADERSHIP, the student must take a constructive lead in classroom and school activities, contribute constructive ideas and show initiative in his studies. SERVICE is rated on the basis of contribution not for personal gain, but for the class, school and community as a whole; on courtesy to all; and representation in various types of competition.

CHARACTER is judged by the responsibility of meeting obligations to the school and teachers, by highest standards of attitude toward honest, real reliability, fairness and tolerance for others; by willing cooperation with all school regulations; and the highest principals of morality and ethics. SCHOLARSHIP rating

demands that the student have a B average in the upper ten percent of his class.

The cumulative ratings in these four areas are averaged to elect: 15 percent of the seniors for graduate membership; 10 percent of the juniors



**NATIONAL HONOR SOCIETY:** Pictured above are the members of the National Honor Society of Wheeler High School. (Back Row) (l to r) Steve Hampton, Richard Sachrist, Allen Lamb, Vic Helton, Johnny Hutchison, Villard Hunter, Fred Goad, Frankie Rogers and Bob Stiles. (front row, l to r) Tommy Levitt, Jolene Steen, Nancy Wiley, Linda Moore, Sue Richerson, Nancy Moore and Mrs. Vida Brown, sponsor.

Billy R. Cantrell carried the county for Trustee-At-Large in Saturday's School Election. With a total of 1184 votes cast in the Trustee-at-Large election, Cantrell received 673 votes. Max Wiley, incumbent in the race, received 501 votes.

The voting as follows was:  
**Prec. Trustee (One Elected)**  
Austin Caldwell - 263  
Joe Rogers - 125  
Pete Burton - 1

**Wheeler (Two Elected)**  
James Verden - 213  
W.D. Mitchell - 210  
H.H. Hall - 133  
Roy Ford - 163

**Briscoe (Three Elected)**  
Milton Finsterwald - 51  
Jack Meek - 47  
Willis Fillingim - 43

**Mobettie (Three Elected)**  
Darville Atherton - 20  
Kelton (Two Elected)  
Tom Bryant - 34  
George Davis - 17

**Kindergarten**  
W.D. Harris Jr. - 1  
Garland Abernethy - 7  
Neal Raymond - 3  
Bob Hink - 1

**Mobettie (Three Elected)**  
Robert Hogan - 82  
L.T. Underwood - 66  
Joe Shelton - 57  
Paul Hathaway - 86

**Kindergarten**  
Raymond Moore - 3  
Floyd Carver - 1  
A.W. Burrell - 2  
George Davidson - 1  
Walter Atwood - 1  
Connie Palmer - 1

**Kindergarten**  
There will be a short program for the kindergarten group Thursday, April 13 at 7:30 p.m. The parents and anyone interested in sending their children next year are especially invited.

**Kindergarten**  
Walter Atwood - 1  
Connie Palmer - 1

**Kindergarten**  
There will be a short program for the kindergarten group Thursday, April 13 at 7:30 p.m. The parents and anyone interested in sending their children next year are especially invited.

**Kindergarten**  
There will be a short program for the kindergarten group Thursday, April 13 at 7:30 p.m. The parents and anyone interested in sending their children next year are especially invited.

**Kindergarten**  
There will be a short program for the kindergarten group Thursday, April 13 at 7:30 p.m. The parents and anyone interested in sending their children next year are especially invited.

**Kindergarten**  
There will be a short program for the kindergarten group Thursday, April 13 at 7:30 p.m. The parents and anyone interested in sending their children next year are especially invited.

**Kindergarten**  
There will be a short program for the kindergarten group Thursday, April 13 at 7:30 p.m. The parents and anyone interested in sending their children next year are especially invited.

**Kindergarten**  
There will be a short program for the kindergarten group Thursday, April 13 at 7:30 p.m. The parents and anyone interested in sending their children next year are especially invited.

**Kindergarten**  
There will be a short program for the kindergarten group Thursday, April 13 at 7:30 p.m. The parents and anyone interested in sending their children next year are especially invited.

**Kindergarten**  
There will be a short program for the kindergarten group Thursday, April 13 at 7:30 p.m. The parents and anyone interested in sending their children next year are especially invited.

**Kindergarten**  
There will be a short program for the kindergarten group Thursday, April 13 at 7:30 p.m. The parents and anyone interested in sending their children next year are especially invited.

**Kindergarten**  
There will be a short program for the kindergarten group Thursday, April 13 at 7:30 p.m. The parents and anyone interested in sending their children next year are especially invited.

**Kindergarten**  
There will be a short program for the kindergarten group Thursday, April 13 at 7:30 p.m. The parents and anyone interested in sending their children next year are especially invited.

**Kindergarten**  
There will be a short program for the kindergarten group Thursday, April 13 at 7:30 p.m. The parents and anyone interested in sending their children next year are especially invited.

**Kindergarten**  
There will be a short program for the kindergarten group Thursday, April 13 at 7:30 p.m. The parents and anyone interested in sending their children next year are especially invited.

**Kindergarten**  
There will be a short program for the kindergarten group Thursday, April 13 at 7:30 p.m. The parents and anyone interested in sending their children next year are especially invited.

**Kindergarten**  
There will be a short program for the kindergarten group Thursday, April 13 at 7:30 p.m. The parents and anyone interested in sending their children next year are especially invited.

**Kindergarten**  
There will be a short program for the kindergarten group Thursday, April 13 at 7:30 p.m. The parents and anyone interested in sending their children next year are especially invited.

**Kindergarten**  
There will be a short program for the kindergarten group Thursday, April 13 at 7:30 p.m. The parents and anyone interested in sending their children next year are especially invited.

**Kindergarten**  
There will be a short program for the kindergarten group Thursday, April 13 at 7:30 p.m. The parents and anyone interested in sending their children next year are especially invited.

**Kindergarten**  
There will be a short program for the kindergarten group Thursday, April 13 at 7:30 p.m. The parents and anyone interested in sending their children next year are especially invited.

**Kindergarten**  
There will be a short program for the kindergarten group Thursday, April 13 at 7:30 p.m. The parents and anyone interested in sending their children next year are especially invited.

**Kindergarten**  
There will be a short program for the kindergarten group Thursday, April 13 at 7:30 p.m. The parents and anyone interested in sending their children next year are especially invited.

**Kindergarten**  
There will be a short program for the kindergarten group Thursday, April 13 at 7:30 p.m. The parents and anyone interested in sending their children next year are especially invited.

Ross Morgan - 29  
H.J. Ridgway - 2  
Allison (Three Elected)  
Zeland Rainey - 42  
Nick Weibe - 9  
Damer Miller - 43  
Boyd Huff - 50  
L.W. Grayson - 2

### LIVESTOCK TOUR, BAR-B-Q, CLINIC SET FOR WED. APRIL 12 AT SHAMROCK

A Spring Livestock Tour, barbecue and livestock clinic will be held on April 12, 1967. This event is being sponsored by the Livestock Sub-committee of the County Program Building Committee and the businessmen of Shamrock.

The tour will begin at the Shamrock High School at 1:45 p.m. Buses will be furnished for the tour which will arrive back at the Shamrock high school around 6:45 p.m. where the complimentary barbecue will be served. Following the meal a program is planned that should be of interest to all livestock producers and businessmen.

**Program:**  
1:45 Buses Load  
2:00 - 2:30 Visit Wallace Fields Hereford Ranch  
3:10 - 3:30 View Commercial Cow-Herd at Bryant Ranch  
3:30 - 3:45 Discuss Range Management  
3:55 - 4:10 Stocker Cattle Operation on Floyd Davidson Ranch  
4:20 - 4:50 View Feed Lot and Growing Cattle Operation at Don Smith Feedlot  
5:10 - 6:10 Davis Swine farm

**Program:**  
2 mil. N. of Erick, Okla. 6:30 - 7:30 Barbecue - special entertainment  
7:30 - 8:00 Keys to successful stocker and cattle feeding operation  
8:00 - 8:30 Method of determining beef cattle feeding requirements from forage analysis  
8:30 - 8:45 - Animal Health.

"We hope that you will attend our entire program or any portion that would be of interest to you."

Uel D. Thompson will be a speaker for the Livestock Tour, Barbecue and Livestock Clinic, to be held April 12. Thompson is Extension Animal Husbandman on staff at Texas Agricultural Extension Service at College Station.

A graduate of Waxahie High School and Texas A&M University, Thompson has taught vocational agriculture and served as a farm management specialist with the Farmers Home Administration prior to his first Extension Service appointment in 1942.

Thompson has served as assistant county agent in Tarrant and Dallas counties and was named county agent for Hunt County.

In 1956, Thompson took a two year leave of absence for an assignment with the International Cooperation Administration in Brazil where he served as a beef cattle specialist.

Thompson has served as assistant county agent in Tarrant and Dallas counties and was named county agent for Hunt County.

In 1956, Thompson took a two year leave of absence for an assignment with the International Cooperation Administration in Brazil where he served as a beef cattle specialist.

Thompson has served as assistant county agent in Tarrant and Dallas counties and was named county agent for Hunt County.

In 1956, Thompson took a two year leave of absence for an assignment with the International Cooperation Administration in Brazil where he served as a beef cattle specialist.

Thompson has served as assistant county agent in Tarrant and Dallas counties and was named county agent for Hunt County.

In 1956, Thompson took a two year leave of absence for an assignment with the International Cooperation Administration in Brazil where he served as a beef cattle specialist.

Thompson has served as assistant county agent in Tarrant and Dallas counties and was named county agent for Hunt County.

In 1956, Thompson took a two year leave of absence for an assignment with the International Cooperation Administration in Brazil where he served as a beef cattle specialist.

Thompson has served as assistant county agent in Tarrant and Dallas counties and was named county agent for Hunt County.

In 1956, Thompson took a two year leave of absence for an assignment with the International Cooperation Administration in Brazil where he served as a beef cattle specialist.

Thompson has served as assistant county agent in Tarrant and Dallas counties and was named county agent for Hunt County.

In 1956, Thompson took a two year leave of absence for an assignment with the International Cooperation Administration in Brazil where he served as a beef cattle specialist.

Thompson has served as assistant county agent in Tarrant and Dallas counties and was named county agent for Hunt County.

In 1956, Thompson took a two year leave of absence for an assignment with the International Cooperation Administration in Brazil where he served as a beef cattle specialist.

Thompson has served as assistant county agent in Tarrant and Dallas counties and was named county agent for Hunt County.

In 1956, Thompson took a two year leave of absence for an assignment with the International Cooperation Administration in Brazil where he served as a beef cattle specialist.

Thompson has served as assistant county agent in Tarrant and Dallas counties and was named county agent for Hunt County.

### PIERCE, WEAVER, VISE ARE NAMED TO CITY COUNCIL POSTS

A total of 196 votes were cast by Wheeler citizens in Tuesday's election. The voters selected three of the four names appearing on the ballot to serve as councilmen for the next two years.

Cecil Pierce, Hyland Weaver and John C. Vise will take their places on the City Council, May 18, when the council meets. The fourth person seeking a position on the council was Carroll Adams.

Cecil Pierce received the majority of the votes in the election. Pierce received 184 votes. Cecil is a life long resident of Wheeler. He is a farmer-businessman. He farms in the Mobettie area and does custom wheat and cotton harvesting. When not in the field, Cecil is associated with Lee Hardware and Furniture.

Hyland Weaver received 142 votes in the election. Hyland, a registered pharmacist, is owner of Hyland's Pharmacy. He and his family moved to Wheeler in 1961. Weaver is an active leader in the community; he is a past president of the Chamber of Commerce.

John C. Vise, a resident of Wheeler since 1963, received 115 votes in Tuesday's election. John C. farms in the Wheeler and Briscoe areas and is an agent with Aetna and Western Insurance Companies.

Carroll Adams, general contractor, received 98 votes in the election.

Three names appeared in the election as write-ins. They were Donald Reeves, N.D. Ware, Jr. and Louis C. Stas. They received 15, 1 and 1 votes respectively.

Three names appeared in the election as write-ins. They were Donald Reeves, N.D. Ware, Jr. and Louis C. Stas. They received 15, 1 and 1 votes respectively.

Three names appeared in the election as write-ins. They were Donald Reeves, N.D. Ware, Jr. and Louis C. Stas. They received 15, 1 and 1 votes respectively.

Three names appeared in the election as write-ins. They were Donald Reeves, N.D. Ware, Jr. and Louis C. Stas. They received 15, 1 and 1 votes respectively.

Three names appeared in the election as write-ins. They were Donald Reeves, N.D. Ware, Jr. and Louis C. Stas. They received 15, 1 and 1 votes respectively.

Three names appeared in the election as write-ins. They were Donald Reeves, N.D. Ware, Jr. and Louis C. Stas. They received 15, 1 and 1 votes respectively.

Three names appeared in the election as write-ins. They were Donald Reeves, N.D. Ware, Jr. and Louis C. Stas. They received 15, 1 and 1 votes respectively.

Three names appeared in the election as write-ins. They were Donald Reeves, N.D. Ware, Jr. and Louis C. Stas. They received 15, 1 and 1 votes respectively.

Three names appeared in the election as write-ins. They were Donald Reeves, N.D. Ware, Jr. and Louis C. Stas. They received 15, 1 and 1 votes respectively.

Three names appeared in the election as write-ins. They were Donald Reeves, N.D. Ware, Jr. and Louis C. Stas. They received 15, 1 and 1 votes respectively.

Three names appeared in the election as write-ins. They were Donald Reeves, N.D. Ware, Jr. and Louis C. Stas. They received 15, 1 and 1 votes respectively.

Three names appeared in the election as write-ins. They were Donald Reeves, N.D. Ware, Jr. and Louis C. Stas. They received 15, 1 and 1 votes respectively.

Three names appeared in the election as write-ins. They were Donald Reeves, N.D. Ware, Jr. and Louis C. Stas. They received 15, 1 and 1 votes respectively.

Three names appeared in the election as write-ins. They were Donald Reeves, N.D. Ware, Jr. and Louis C. Stas. They received 15, 1 and 1 votes respectively.

Three names appeared in the election as write-ins. They were Donald Reeves, N.D. Ware, Jr. and Louis C. Stas. They received 15, 1 and 1 votes respectively.

Three names appeared in the election as write-ins. They were Donald Reeves, N.D. Ware, Jr. and Louis C. Stas. They received 15, 1 and 1 votes respectively.

Three names appeared in the election as write-ins. They were Donald Reeves, N.D. Ware, Jr. and Louis C. Stas. They received 15, 1 and 1 votes respectively.

Three names appeared in the election as write-ins. They were Donald Reeves, N.D. Ware, Jr. and Louis C. Stas. They received 15, 1 and 1 votes respectively.

Three names appeared in the election as write-ins. They were Donald Reeves, N.D. Ware, Jr. and Louis C. Stas. They received 15, 1 and 1 votes respectively.

Three names appeared in the election as write-ins. They were Donald Reeves, N.D. Ware, Jr. and Louis C. Stas. They received 15, 1 and 1 votes respectively.

Three names appeared in the election as write-ins. They were Donald Reeves, N.D. Ware, Jr. and Louis C. Stas. They received 15, 1 and 1 votes respectively.

and a half years. Cobb is presently employed as Animal Health Representative for Chemagro Corporation serving the Texas, Oklahoma and New Mexico territories.

Foster Whaley, County agent for Gray County, will address the group on April 12 also. The title of his address will be "Keys to Successful Stocker and Cattle Feeding Operation."

Whaley is a Texas A&M graduate. He entered the Texas Agricultural Extension Service upon graduation. He has served in Deaf Smith, Armstrong, Carson and Gray Counties.

Uel D. Thompson will be a speaker for the Livestock Tour, Barbecue and Livestock Clinic, to be held April 12. Thompson is Extension Animal Husbandman on staff at Texas Agricultural Extension Service at College Station.

A graduate of Waxahie High School and Texas A&M University, Thompson has taught vocational agriculture and served as a farm management specialist with the Farmers Home Administration prior to his first Extension Service appointment in 1942.

Thompson has served as assistant county agent in Tarrant and Dallas counties and was named county agent for Hunt County.

In 1956, Thompson took a two year leave of absence for an assignment with the International Cooperation Administration in Brazil where he served as a beef cattle specialist.

Thompson has served as assistant county agent in Tarrant and Dallas counties and was named county agent for Hunt County.

In 1956, Thompson took a two year leave of absence for an assignment with the International Cooperation Administration in Brazil where he served as a beef cattle specialist.

Thompson has served as assistant county agent in Tarrant and Dallas counties and was named county agent for Hunt County.

In 1956, Thompson took a two year leave of absence for an assignment with the International Cooperation Administration in Brazil where he served as a beef cattle specialist.

Thompson has served as assistant county agent in Tarrant and Dallas counties and was named county agent for Hunt County.

In 1956, Thompson took a two year leave of absence for an assignment with the International Cooperation Administration in Brazil where he served as a beef cattle specialist.

Thompson has served as assistant county agent in Tarrant and Dallas counties and was named county agent for Hunt County.

In 1956, Thompson took a two year leave of absence for an assignment with the International Cooperation Administration in Brazil where he served as a beef cattle specialist.

Thompson has served as assistant county agent in Tarrant and Dallas counties and was named county agent for Hunt County.

In 1956, Thompson took a two year leave of absence for an assignment with the International Cooperation Administration in Brazil where he served as a beef cattle specialist.

Thompson has served as assistant county agent in Tarrant and Dallas counties and was named county agent for Hunt County.

In 1956, Thompson took a two year leave of absence for an assignment with the International Cooperation Administration in Brazil where he served as a beef cattle specialist.

Thompson has served as assistant county agent in Tarrant and Dallas counties and was named county agent for Hunt County.

In 1956, Thompson took a two year leave of absence for an assignment with the International Cooperation Administration in Brazil where he served as a beef cattle specialist.

Thompson has served as assistant county agent in Tarrant and Dallas counties and was named county agent for Hunt County.

In 1956, Thompson took a two year leave of absence for an assignment with the International Cooperation Administration in Brazil where he served as a beef cattle specialist.

Thompson has served as assistant county agent in Tarrant and Dallas counties and was named county agent for Hunt County.

In 1956, Thompson took a two year leave of absence for an assignment with the International Cooperation Administration in Brazil where he served as a beef cattle specialist.

Thompson has served as assistant county agent in Tarrant and Dallas counties and was named county agent for Hunt County.

In 1956, Thompson took a two year leave of absence for an assignment with the International Cooperation Administration in Brazil where he served as a beef cattle specialist.

Dr. Donald B. Hudman will also address Wheeler County livestock producers and businessmen on the livestock tour April 12. Hudman, Extension Swine Specialist, at College Station, joined the Extension Service in 1966 and gives overall leadership to the service's off campus educational programs dealing with swine for both adults and 4-H Club members.

Dr. Hudman graduated from Moran High and holds B.S. and M.S. degrees from Texas A&M University with majors in animal nutrition and minors in veterinary physiology. He received his Ph.D. from Iowa University in 1956 in animal nutrition.

Hudman served on the teaching and research staff at the University of Nebraska after his graduation from Iowa State until the Texas appointment.

Hudman served as an assistant county agricultural agent in Hale and Falls counties from 1948-50 and in the U.S. Army from October 1948 to December 1949 and again from December 1950 to July 1952. He was an infantry commander on Okinawa. He held the rank of 1st Lt. at the time of his honorable discharge.

Hudman grew up on a farm and was a 4-H Club member during his youth.

Hudman grew up on a farm and was a 4-H Club member during his youth.

Hudman grew up on a farm and was a 4-H Club member during his youth.

Hudman grew up on a farm and was a 4-H Club member during his youth.

Hudman grew up on a farm and was a 4-H Club member during his youth.

Hudman grew up on a farm and was a 4-H Club member during his youth.

Hudman grew up on a farm and was a 4-H Club member during his youth.

Hudman grew up on a farm and was a 4-H Club member during his youth.

Hudman grew up on a farm and was a 4-H Club member during his youth.

Hudman grew up on a farm and was a 4-H Club member during his youth.

Hudman grew up on a farm and was a 4-H Club member during his youth.

Hudman grew up on a farm and was a 4-H Club member during his youth.

Hudman grew up on a farm and was a 4-H Club member during his youth.

Hudman grew up on a farm and was a 4-H Club member during his youth.

Hudman grew up on a farm and was a 4-H Club member during his youth.

Hudman grew up on a farm and was a 4-H Club member during his youth.

Hudman grew up on a farm and was a 4-H Club member during his youth.

Hudman grew up on a farm and was a 4-H Club member during his youth.

Hudman grew up on a farm and was a 4-H Club member during his youth.

Hudman grew up on a farm and was a 4-H Club member during his youth.

Hudman grew up on a farm and was a 4-H Club member during his youth.

Hudman grew up on a farm and was a 4-H Club member during his youth.

Hudman grew up on a farm and was a 4-H Club member during his youth.

WEATHER INFORMATION			
DATE	MAX.	MIN.	WIND
3 30	82	62	S Se 4-12
3 31	72	58	S Se 8-20
4 1	74	61	S Sw 8-17
4 2	79	62	S Se 8-14
4 3	70	54	N Ne 4-10
4 4	85	54	S Se 4-12
4 5	94	60	S Sw 8-15
Precipitation for the year 1.24"			

Courtesy of First National Bank  
Readings by: Joe Rogers

### BRISCOE TO PRESENT 1-ACT PLAY

Briscoe will present its one act play April 7 at 7:30 p.m. in the Briscoe auditorium.

# Allison News

by Mrs. Lester Levitt

Mr. and Mrs. Forace Evans took their two grandsons, Randy and Tony Aaron to Vernon Sunday to meet their parents to go to their home in Graham. The Aarons have been to Michigan on business.

Earl Gunter from Canyon visited friends here last week. Gunter is a former resident of Allison.

Mrs. Nettie Walsh returned home Saturday from several months stay with relatives in Amarillo and Dumas. Her daughter, Mrs. Charlene Warren and family of Amarillo brought her home and returned to Amarillo the same day.

Rev. Joe Jones, Allen Reynolds, Ernest Wallace and Rev. Coy Burt attended a

breakfast at the Wrangler Cafe in Shamrock Saturday morning sponsored by the North Fork Baptist Association of this area.

Lawrence Crawford and family spent Sunday at Keltan in the parental Frank Joslyn home.

Mrs. John Megee was in Pampa recently for medical reasons.

Mr. and Mrs. Ernest Wallace were dinner guests in the Monroe Reynolds home Sunday.

Mrs. Edwin Begert and family of Amarillo spent last week with Mr. and Mrs. Ern Begert. Edwin came Saturday and took his family back home.

Mr. and Mrs. R.E. Lee

left Thursday for their home in Austin after spending a month here at their Allison residence.

Mr. and Mrs. Jessie Hall spent last week in Los Angeles, Calif. with relatives. They also visited Mrs. John Bryant while here.

Mr. and Mrs. Rodney Walker of Perryton spent the weekend with Kenneth Chandlers and Ed Walkers. Frank Chandler of Guyman, Okla. also visited the Chandlers.

Ellie Boydston and family of Dumas were weekend guests of the W.H. Boydstons.

Minister Joe Dukes is conducting a revival in Bethany, Okla. at the Church of Christ this week.

Pete Gilmer was Sunday dinner guests of the C.W. Boydstons.

Rex Millers and Clyde Dukes attended the Beauty Pageant, Queen of the West in Elk City Saturday night.

Mr. and Mrs. Bill Allen and Gail from Amarillo and Mr. and Mrs. L.S. Adair of Briscoe were guests of the L.W. Graysons Sunday.

Lester Halls were Sunday dinner guests in the parental Bob Markham home. The Markhams visited Lucy Markham in Parkview hospital in Wheeler in the afternoon.

Mr. and Mrs. Clyde Dukes accompanied by Mr. and Mrs. Rayburn Hall of Pampa motored to Elk City Sunday after church and had lunch and visited Mr. J.R. Hall at the Hodges Rest Home.

Boyd Huff, Zeland Rainey and Domer Miller were elected school trustees at the Election Saturday. George Parker, Glen Elmore and Ernest Begert were in charge of the election held at the school house.

Mr. and Mrs. Zack Miller were Sunday dinner guests of the Rex Miller family.

Mr. and Mrs. Hiram Begert of Erick, Okla., spent the weekend with the Bill Begerts.

Mr. and Mrs. Domer Reed spent the weekend at Muskogee, Okla. with the Henry Duponts. Mrs. Lola Stone who had visited relatives here last week returned to her home with the Reeds.

The Methodist W.S.C.S. sponsored a breakfast Wednesday morning in Fellowship Hall of the church honoring the seniors. Rev. Frank Matthews was guest speaker and other guests were Supt. and Mrs. Everett Dollar and Mrs. Doris Newsum, Sherri Boty and Katie Duke gave a vocal duet.

## AUSTIN— As I See It

This week has seen a lot of action.

The first shot out of the box was the Daylight Saving Bill. This has been a real problem and a lot of stir has been made about it.

As you know, the bill to keep us on Central time was defeated by a big margin. If this bill could have been voted on early in the session, it probably would have passed. However, as all of our neighboring states have gone on the Daylight deal, the majority of us felt like there would be an awful lot of confusion if Texas was the only state in the Southwest to be on Central. Also, four of the counties in our district border Oklahoma and that would certainly create a problem.

I know this will be a hardship on some people, but I feel like the majority of the folks feel the same way as I.

I sure had a strong urge to be absent when the vote came up.

The next big issue was on the Governor's Bill to vote a constitutional amendment to give 4-year terms to all statewide officers beginning in 1970.

I was very much opposed to this bill for several reasons. First off, only 16 months ago the people of Texas voted this down by better than 55% and the Panhandle was about 60% opposed. This is the very same bill and I felt it was a waste of the people's money, \$40,000 or so, and that it puts the Legislature in the position of trying to cram something down the people's throat. I made my first speech on the floor against it, but the heat was on and arms were being twisted real good. It took 100 votes to pass the House. They were 2 short on the first vote, but the next day they ran everyone through the grinder and came up with 104. Another big objection to me is the fact that this just about insures a governor 8 years in office, if he keeps his nose clean and his hand out of the cookie jar. This enables him to have appointed all the boards and commissions and to have perfected a tremendous machine. Also there is no restriction as to how many terms he can serve. This still has to get 21 votes in the Senate before it can be put on the ballot. I would especially like to hear from you as to your reaction to my views. If you feel like I do, you better start letting your Senator know.

Another objection is that with the Governor having 4 years and House having 2 year terms, if a guy wasn't voting to suit the Governor, he could give him a lot of trouble in getting re-elected.

This politics is quite an eye opener.

M. ABRAHAM

Mr. and Mrs. Fat Jones and girls and Mr. and Mrs. Watson Burgess attended Northside Church of Christ in Amarillo Sunday. They were dinner guest of Mrs. Jean Ayers and children. In the afternoon, Mrs. Jones and Mrs. Burgess attended a hair style show at the Holiday Inn West. Mr. Jones and Mr. Burgess and the girls attended the air show.

Visiting Mrs. G.W. Mason last Saturday were her great grandchildren, Mike, Dan Cliff Cris and Jan of Amarillo, grandson Carl Mason of Pampa and Mr. and Mrs. Cliff Mason of Pampa and Mrs. Bob Ramsey.

**CARD OF THANKS**

We come with grateful hearts to say Thanks to those that had a part in lightning our load of sorrow, to Jim Wright and staff, Bro. Dale, to the ladies that served the dinner, to those who brought food, sent flowers, cards and words of sympathy. Your thoughtfulness will long be remembered.

May God Bless you all.

The family of Cora McCandless

**JACK & JILL  
KINDERGARTEN**

Those interested in sending children to kindergarten next year are asked to register during April - From 8:30 to 11:30 a.m. - Monday thru Friday at the old Church of Christ Building.

## SHELTON AIRCRAFT & CHEMICAL SERVICE

AERIAL SPRAYING  
STUDENT INSTRUCTION  
CHARTER SERVICE  
FLYING AMBULANCE SERVICE

FAA Approved  
Phone 845-9821 or (Night) 845-2454

## WANTED A WESTERN AUTO DEALER FOR WHEELER, TEXAS

Hardware store owners, variety store owners, appliance and furniture store owners, or if you are considering a business of your own, Western Auto has a plan for you.

Let us explain how our merchandise and operating plan will help assure you of a profitable retail business during bad times as well as good times. You can be a successful, independent, hometown merchant with all the advantages of a chain store—and more.

Our representative will be in your town during the week of April 10th for interviews.

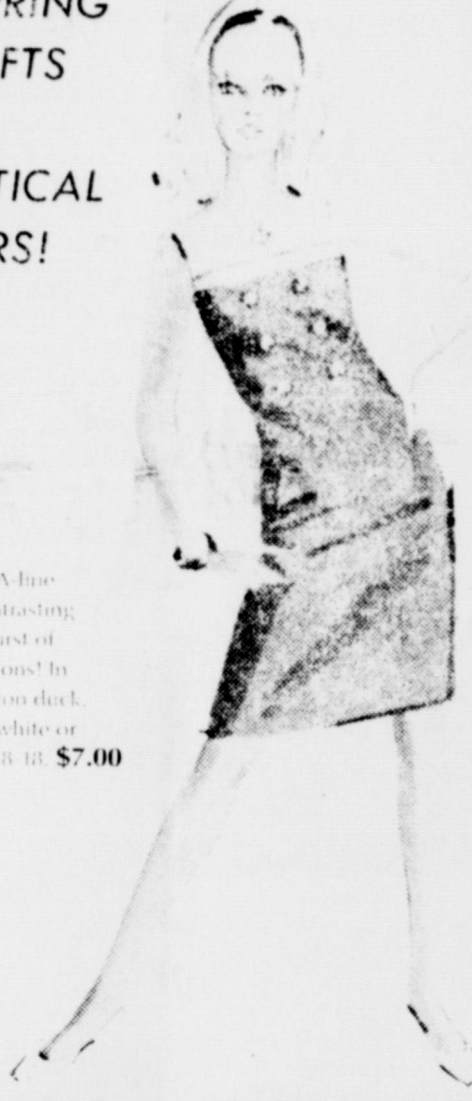
Phone AM 5-8662 Or Write:  
Dept. 53  
Western Auto Supply Company  
801 East Zimmerman  
Wichita, Kansas

## LANCASTER DEPARTMENT STORE

### Lady Wrangler

SPRING  
SHIFTS  
TO  
NAUTICAL  
COLORS!

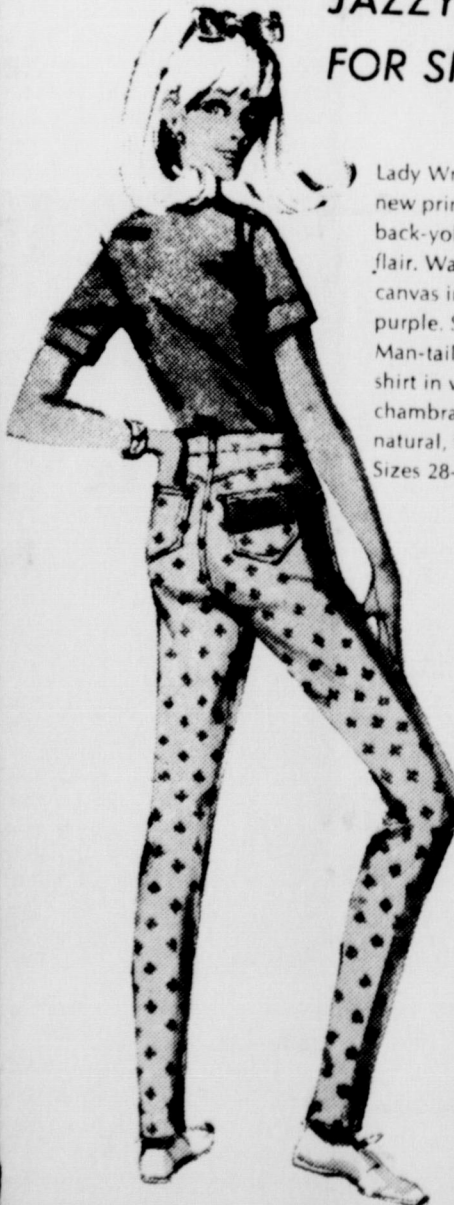
Snappy little A-line shift with contrasting yoke and a burst of big brass buttons! In washable cotton duck. Natural, red, white or navy. Sizes 7-18. \$7.00



### Lady Wrangler

JAZZY JEANS  
FOR SPRING!

Lady Wrangler jeans in a jazzy new print! Front-zipped, back-yoked with a real western flair. Wash and wear cotton print canvas in red, brass, turquoise, purple. Size 5/6-18. \$4.98 Man-tailored, button down shirt in wash and wear cotton chambray denim. Red, natural, turquoise, purple. Sizes 28-38. \$4.



Mr. and Mrs. Banner Smith

Mr. and Mrs. Banner Smith of Seminole, Texas were married fifty years ago on April 7 in Wheeler. He was the son of the late Mr. and Mrs. B.J. Smith and she, the daughter of Mr. and Mrs. G.A. Lamberth. All four of their parents are buried in Wheeler Cemetery. He has a brother and sister here, Ellis Smith and Mrs. H.J. Finsterlund. Mrs.

Bob Ramsey is her sister. All six of their children were born in Wheeler county and are Col. B.J. Smith of the Philippines, Mrs. Fern Spencer of Dallas, Jack Smith of Carlsbad, N.M., Joe Smith of Seminole and Mrs. Patsy Coleman of Anchorage, Alaska. They have twenty grandchildren and ten great grandchildren.

# HAS YOUR SUBSCRIPTION EXPIRED

CHECK THE ADDRESS  
ON YOUR PAPER

Mrs. Gertrude Levels 2-6  
444 66th St.  
Cleveland, Texas, 76540

# RENEW TODAY

RATES:  
\$3.00 in Wheeler County  
\$4.00 Elsewhere



## NOTICE OF SALE

The First Baptist Church of Shamrock, Texas will accept sealed bids for the sale for cash of the following personal property:

- | ITEM NO. | DESCRIPTION  |
|----------|--|
| 1.       | House, framed, 7 rooms & bath, located at 419 North Main St.         |
| 2.       | House, stuccoed, 4 rooms & bath, located at 108 West 5th St.         |
| 3.       | Garage, asbestos siding, size 14' x 24'                              |
| 4.       | Storage house, stuccoed, size 10' x 14'                              |
| 5.       | All fences, lattice and laing and two double clothes lines and posts |

Bids should be submitted on "item" basis as awards may be split between bidders on various items listed.

Bids should be placed in a sealed envelope, marked plainly on the outside of such envelope "SEALED BID-PERSONAL PROPERTY" and directed to Mrs. T.J. Johnson, Church Secretary, First Baptist Church of Shamrock, 401 N. Main, Shamrock, Texas.

Bids will be received until 5:00 o'clock P.M. Tuesday, May 9, 1967 and will be publicly opened and read at a meeting of the Church Trustees at 7:00 P.M. Wednesday, May 10, 1967. No bid received subsequent to the time and date stated will be considered.

All bids should be accompanied by a Cashier's Check in favor of First Baptist Church, Shamrock, Texas, in an amount equal to ten per cent (10%) of the total bid.

Successful bidder will be notified within ten (10) days after the opening of bids. Cashier's Checks of unsuccessful bidders will be returned and that of the successful bidder or bidders will be retained as evidence of "good faith" and performance.

Bidders desiring to inspect property may obtain keys from Church Secretary at the church office, 401 N. Main St., Shamrock, Texas.

Successful bidder must make full cash settlement for items purchased within three (3) days of notification of award, and will be allowed a further period of thirty (30) days to remove the property purchased from premises and to clean up and remove all debris caused by such removal.

The Trustees of the First Baptist Church of Shamrock, Texas, reserve the right to accept and or reject any and all bids received.



These advantages plus \$15.00 certificate

Be a wise buyer! Southwestern Public Service customers can now save an additional \$15.00 with the purchase of a new electric clothes dryer from a Reddy Kilowatt Dealer.

This money-saving offer is free to getting 300 loads of clothes dried free because electric dryers cost only 5¢ a load to operate—and that's total cost. Buy now and save!

BUY AT THE STORE  
WITH REDDY  
ON THE DOOR



Convenient  
ELECTRIC  
Drying

# Court Records

List of Instruments Filed in the office of the County Clerk and District Clerk of Wheeler County, Texas from March 27 through March 31, 1967

March 27, 1967  
 CHG OF DEP--Mary E Williams to Gulf Oil Corp--3--1967  
 SEC 11 Blk A-8  
 C/C PROBATE PROCEED--Ben G Barnett to Ex Parte 11-1-66  
 OGD--Elmer A Bell to Stanley E Bell 7-14-66 Lots 17 to 22 Blk XVII Shamrock  
 Roy D--I B Gunter to E T Gunter 2-21-67 1 20 int N 1/2 Sec 17 Blk RE  
 March 28, 1967  
 DT--C Richerson et ux to Ella Mae Evans 3-21-67 156' x 170' NW 1/4 Sec 4 T&NO Ry Co Sur  
 ROL--Pan American Petroleum Corp to Thelma Dunn et al 3-22-67 140 ac NE 1/4 Sec 15 & All Sec 16 Blk A-5  
 March 29, 1967  
 C/C PROBATE PROCEED--Linda Ayres et al to Ex Parte 3-21-67 Lot 4 Blk 32 Wheeler  
 FIELD NOTES--H C Weatherby to Charley Whiteley 3-23-67 ac NE 1/4 Sec 21 Blk L D--Charley Whiteley et ux to Jerry Abernethy et ux 3-28-67 same as above  
 DT--Jerry Abernethy et ux to Charley Whiteley 3-28-67 same as above  
 March 30, 1967  
 D--C C Dyson et al to Elmer Hill et ux 3-23-67 Lots 12, 13, Blk 116 New Mobeetie  
 DT--Cecil D Spain to First Natl Bk in Albuquerque 3-24-67 Mins Sec 52 Blk 24  
 C/C REMOVAL OF DISABILITIES--Duane G Porter 3-30-67  
 FEDERAL TAX LIEN--Oma Dennis Leblanc et al to United States of America 3-29-67  
 RVL--First State Bank Mobeetie to Albert Chapman 3-27-67 W 1/2 SW 1/4 Sec 60 Blk A-8  
 March 31, 1967  
 C/C PROBATE PROCEED--Catherine D Hefner 2-28-67 ac N 1/2 Sec 7 Blk 24  
 RDT--Farmers & Merchants St Bk Shamrock to William J Shaffer et ux 3-30-67

70 3' x 140' SW 1/4 Sec 4 T&NO Ry Co Survey  
 DEPOSITORY STIP--L L Jones to Sinclair Oil & Gas Co 3-25-67 N 1/2 S 1/2 & S 1/2 N 1/2 Sec 14 Blk A-7  
 OL--J M Mixon et ux to Sun Oil Co 3-6-67 S 1/2 SW 1/4 & NW 1/4 Sec 48 Blk A-5  
 OL--B F Addington et ux to Sun Oil Co 3-7-67 S 1/2 SW 1/4 & NW 1/4 Sec 48 Blk A-5  
 DT--J P Keeton Jr et ux to Federal Land Bk of Houston 3-27-67 E 1/2 Sec 23 & SW 1/4 Sec 24 Blk RE  
 District Clerk's Office  
 #6372 Duane G Porter for Removal of Disabilities of Minority

Visiting Mr. and Mrs. Lloyd Childress Sunday were Mr. and Mrs. Dale Cocoran and children of Pampa, Mr. and Mrs. Clarence Dyson of Mobeetie and Mr. and Mrs. Bo Childress and children.

Mr. and Mrs. George Porter visited last week in Gatesville with her mother Mrs. L.J. Dildery. She returned home with them to spend the week.

# Briscoe News

## By Lucille Tipps

Mr. and Mrs. Cliff Walker attended a friends funeral, Paul Hayden Clowdus, April 1st at Olustee, Okla. They lived next door to them in California 25 years ago.

Mrs. Lelan Luttrell and Mrs. Kenneth Douthit visited Mrs. Susie Pendleton in Wheeler Sunday.

W.M. Lohberger was Sunday dinner guest of the Vern Lohberger family.

Mr. and Mrs. Ted Parker, Mr. and Mrs. Willie Parker and family visited the Colie Parker Saturday and Sunday.

Mr. and Mrs. Lloyd Childress and Mr. Mason of Wheeler were Briscoe visitors Monday.

Mrs. Chan Helton spent several days with the Oral Heltons.

Mrs. Carol Stepp and Mrs. Thurman Horn gave a slumber party at the Stepp home, March 31st for the high school girls. Those enjoying the night were Judy Finsterwald, Diane Dodd, Melody and Gay

Zybach, Lucy Meadows, Lynn Hefley, LaJo Fillingim, Rebecca Treadwell, Sharon and Phillis Aderholt, Noveta Francis and Helen Puryear. Visitors were Mrs. Ethridge and Mrs. Dean Tipps. Everyone reported a very nice time. We wonder if the Stepp house would ever be the same again.

Mrs. Ronnie Gatlin and boys were Sunday dinner guests of her parents, Mr. and Mrs. Oden Hudson.

Mrs. L. J. Hudson and Mrs. Oden Hudson visited Mrs. B.F. Meadows at Parkway Hospital Monday afternoon.

Mrs. Zetha Dougherty and children of Pampa visited the Darville Athertons Sunday.

Mr. and Mrs. Elbert Zybach went shopping in Amarillo Friday and visited the Curtis Hall family.

Those enjoying Sunday dinner with Mr. and Mrs. A.C. D'Spain were Mr. and Mrs. N.J. Tyson and Mr. and Mrs. L.R. Pigg. Those calling in the evening were the H.J.

Finsterwalds.  
 Mrs. Roy Meadows and Mrs. Willis Fillingim visited Mrs. Edd Helton Thursday afternoon.

Mrs. Doc Wilhelms mother is visiting them.

Mr. and Mrs. Verne Lohberger were Sunday night visitors of Mr. and Mrs. Elbert Zybach.

Mr. and Mrs. Bill Allen of Amarillo spent the weekend with Mr. and Mrs. L.S. Aderholt.

Mr. and Mrs. Claude Barker were Sunday dinner guests of the Leon Fillingims in Wheeler.

Melvin Helton made a business trip to Canyon Saturday and visited in Amarillo with Mrs. J.M. Ponder and Mr. and Mrs. W.M. Dexter.

Juanell Manning and children spent Sunday with the Oral Heltons.

Mr. and Mrs. Tom Helton visited the Fred Blackburns at Granite, Okla. Sunday.

Jack Helton and family were Saturday night supper guests of the Tom Heltons.

Sunday dinner guests of the E.G. Fillingims were Mr. and Mrs. John Root of Daltart and I.G. Fillingim. Those attending the Bap-

tist revival at Allison Sunday night were Mr. and Mrs. Roy Meadows and children and the J.P. Meek family.

Mrs. T.A. Treadwell visited Mr. and Mrs. Jeff Puryear and family Sunday.

Mr. and Mrs. Richard Dyson and family of Sayre visited the Bob Zybachs Sunday.

Seventh and Eighth grade classes went to Pampa Friday night on a class party. Some enjoyed swimming and then all attended a double feature. Their sponsor Jim Chandler and parents going were Mr. Mac Macias, Mrs. Cecil Meadows, Mrs. Harold Austin, Mrs. Colie Parker, Mrs. Willis Fillingim and Mrs. Bob Zybach.

Rev. Abercrombie and the Albert Walker family attended the Baptist revival at Allison Friday night.

Mr. and Mrs. Oran Horn visited Mr. and Mrs. Henry Lee Saturday night.

Mr. and Mrs. Harley Ethridge and family and Mr. and Mrs. Carol Stepp and Melissa went to Lefors Saturday night and visited friends.

Dub Swift of Garden City Kansas, Glen Swift and Tommy Hays of Eastland and Mrs. Stuart of Shamrock, Blenda and Dean Stuart of Lela spent the weekend with Addie Swift. Sunday visitors were the Fat Childress family.

Mr. and Mrs. Allen Meadows and Mr. and Mrs. Ewell Steen visited the Henry Lees Sunday afternoon.

Mrs. Addie Swift visited in Henerietta from Wednesday until Friday.

A2 c Joe D. Rucker, who parents are Mr. and Mrs. Verne Lohberger has arrived for duty at Seymour Johnson AFB North Carolina.

Airman Rucker, a munitions specialist, previously served at Bien Hoa AB, Vietnam. He is assigned to the TAC which provides the battlefield firepower, precision air photo reconnaissance and air mobility for the nation's ground forces.

He is a 1962 graduate of Allison High School.

## It's A Fact

Your prescriptions will be filled exactly as your Doctor orders and I am trying my very best to be competitive with pharmacies in surrounding towns. Even the discount pharmacies. If you are having your prescription filled out of town, we will meet the price you are now paying for your prescriptions. I would appreciate your business.

Call me day or night for your prescriptions.

**HYLAND'S PHARMACY**  
 YOUR PRESCRIPTION CENTER  
 Bus--Phone 826-2121  
 Home--Phone 826-4191

## Service-Toons

By **Jim White**



"Don't over do it Jim... GOOD service and a CLEAN station are enough to PULL them in!"

But we DO, over do it on service... We've got enough pumps and enough men to give everybody top service. Come see US

## JIM'S Mobil Station

Best Service in Wheeler  
 Phone 5851

## Wright-Denson Funeral Home

AMBULANCE SERVICE  
 Phone 826-2151  
 Wheeler, Texas

## For COLDS take 666

## Dr. Jack L. Rose

OPTOMETRIST  
 Office Hours:  
 Tues.: 9 A.M. - 5 P.M.  
 Fri.: 2 P.M. - 5 P.M.  
 Phone: BL6-3203  
 207 N. Wall  
 Shamrock, Texas

# CLAY'S FOODS

WHEELER, TEXAS

**U.S. Good Beef**

Side	lb 45¢
Hind Quarters	lb 53¢
Fore Quarters	lb 40¢

WRAPPED AND READY FOR YOUR HOME FREEZER

**Gold Bond Stamps**

## ENJOY STOREWIDE SAVINGS THIS WEEK!

**Gr. Beans**  
4 303 Cans **77¢**

**Vienna Sausage**  
4 4-oz. Cans **77¢**

**C&H PURE CANE Sugar**  
10 LB BAG **\$1.09**

# HAWAIIAN FESTIVAL!!

**TV Fryers**  
WHOLE **29¢**  
LB. ONLY

**USDA Grade "A" Pineapple** LIBBY'S--Chunk, Crushed or Sliced **3 15 1/2-oz. Cans 66¢**

**Peaches** Libby's Yellow Cling Halves or Slices **2 1/2 Can 29¢**

**Hi-C Drink** Assorted Flavors **3 46-oz. Cans 77¢**

**Coffee** Flaming's Reg., Drip or Fine Grind **2-Lb. Can \$1.17**

**Fruit Cocktail** Libby's **4 303 Cans 77¢**

**Salad Dressing** IGA **32-oz. Jar 33¢**

**Pinto Beans** Tru-Vu **2-Lb. Pkg. 19¢**

**ECONOMY SPECIAL!**

**Pork Chops**  
END CUT **49¢**  
LB.

**Pork Chops** Center Cut Rib Chops **65¢**  
LB.

**Wieners** Swift Premium, **59¢**  
1-Lb. Pkg.

**Bacon** Swift Premium **65¢**  
1-Lb. Pkg.

**French Fries** Sno Peak Crinkle Cut **5 1 1/2-Lb. Bags \$1**

**Perch Fillets** Booth **2 1-Lb. Pkgs. 89¢**

**LANES ICE CREAM**  
HALF GALLON **55¢**  
ALL DELICIOUS FLAVORS

**Margarine** Parkay Qtrs. **29¢**  
Lb.

**Cinnamon Rolls** Pillsbury **2 10-oz. Pkgs. 45¢**

**Cheese** Kraft Chunk or Sliced Half Moon Horn **10-oz. Pkg. 61¢**

**Honey Buns** Morton **4 9-oz. Pkgs. \$1**

**GRAPEFRUIT**  
EA. **5¢**

**Avocados** Fresh **ea. 10¢**

**Lettuce** California **hd. 19¢**

**Radishes** **3 bchs. 19¢**

**Green Onions** **3 bchs. 19¢**

**Apples** Extra Fancy Starking Delicious **5 lbs. \$1**

**MORTON'S FROZEN DINNERS**  
12-INCH **39¢**

**COCA COLA**  
KING OR REG.  
**3 CTNS \$1**  
PLUS DEPOSIT

**Orange Juice** **4 12-oz. Cans \$1**

her sister...  
 J. Smith of...  
 Mrs. Fern...  
 Jack Smith...  
 Mrs. Joe Smith...  
 Mrs. Patsy...  
 herage, Al...  
 rently gran...  
 D...  
 S...  
 V...  
 Y...  
 nty...  
 M...  
 A...  
 B...



## LAWN IMPROVEMENT IDEAS

**By Vivian Warminski**  
Are you ready to start a new lawn or reseed some bare spots in your old lawn? Do you want a lawn with a "carpet-like" appearance? Then, you should select seed of fine textured grass.

You can find out whether the package contains fine-textured or coarse-textured grass seeds by reading its label. It shows what seeds are included in the blend and the percentage by weight of each kind.

Also, you'll find the percentage of weed seeds and inert matter—such as dirt, chaff and stones—in the blend, the percentage of seeds of each variety likely to germinate and the date on which the seeds were tested.

Generally, the germination percentage is considered reliable up to six months after testing.

Price may influence your choice of seed. Seed of fine-textured grasses are many more seeds per pound of the

fine-textured grasses than of the coarse kinds.

**HOW TO BUY GRASS SEEDS**  
For example, it takes upwards of 7 million bentgrass seeds and about 2 1/4 million bluegrass seeds to make a pound of each. It takes only 225,000 tall fescue or ryegrass seeds to make a pound of each.

When buying grass seed, ask yourself several questions. What will the lawn be used for? In what type of climate do I live? Will the lawn be in the shade or the sun?

You may only want to plant a fast-growing grass to cover the back lot which the neighborhood children use as a multi-purpose playground. So, you might then not want any of the more expensive fine grasses, which are slow to grow, but instead the coarse grasses, which are usually cheaper per pound and faster growing.

The fine-textured grasses,

with the narrow soft leaves, include the bluegrasses, red fescus, chewings fescue and bentgrass.

Most other kinds tend to grow in clumps, have wider leaves and coarser stems, and are considered "coarse."

Once you have decided the type of lawn you want, then consider the climatic conditions of your area and the conditions of sun and shade your grass will encounter.

Kentucky blue grass, rough bluegrass (often called by its latin name, "Poa trivialis"), red fescue and bent grass for example, are suitable for lawns in the northern states, while the first grasses suitable for lawns in the warm regions include bermuda grass, carpet-grass, zoysia and St. Augustine grass.

Grasses that tolerate shady places are red fescue, rough bluegrass and St. Augustine grass, while bentgrasses, Kentucky bluegrass, bermuda-grass and carpet-grass require more sun.

Red and chewing fescue and rough bluegrass—which is really a fine-textured grass similar in appearance to Kentucky bluegrass—are often mixed with Kentucky bluegrass for planting in shady areas of the lawn.

Most seeds that are used for lawns are perennial, that is, they survive from year to year. One major exception is annual ryegrass, which dies out after one season.

Experts frequently recommend a blend of various suitable kinds and varieties of grass seeds instead of a single kind because diseases which might attack certain varieties might not attack others.

Also a blend of both fine textured and coarse kinds is sometimes recommended for a new lawn because the coarse grass, which grows faster, would provide ground cover until the other grass matures.

When an already-established lawn is to be thickened, however, only seed of the desired kinds or varieties should be used.

Because the proper blend of grasses varies according to an area, and even according to soil within the area, experts suggest that you should consult your county extension agents, who can recommend the best mixtures for your area and your soil.

## County Agent Reports

**By Charles David Jackson**

Farmers are reminded that the Northwest Texas Research Demonstration booklet is just off the press. Demonstration results from last year's Wheeler County Crop and Livestock Demonstrations are published annually in this booklet. Cotton farmers will certainly want to see the results obtained from new long staple cotton varieties and weed control work. Grain sorghum producers will be interested in the varieties studies and alfalfa producers will be interested in variety work being done on alfalfa in Wheeler County.

The grazing studies conducted in Wheeler County is as good as any conducted anywhere in the United States and the knowledge gained will do much toward changing the agricultural picture in the county.

These books are available to anyone interested free of

Billie Ruth Brown and Ronnie Fox of Lubbock visited recently with her parents, Mr. and Mrs. Guy Brown.

Mrs. T. J. Cole and Mrs. Marl Jaco visited Sunday afternoon with Mr. and Mrs. Elgie Dearing.

## Thursday Review Club Meeting

"Hands Across the Sea" was the theme of the regular meeting of the Thursday Review Club on March 23 in the home of Mrs. Harold Loyd Lee.

As a representative of the Scholastic League participants, Ronald Rives, presented "To a Contemporary Bunkshooter" by Carl Sandburg. Mrs. Grainger McIlhany reported on Advances in Communications and Mrs. David Butt present "World Wide Communications - Telstar."

Two area exchange students presented slides and lectures on their homelands. Yoothongkan of Thailand who is spending this year as a senior at Pampa High was accompanied by Mrs. D. F. Elder and J. C. Hyatt of Pampa. Pierre Dubois of Switzerland was accompanied by Mrs. Harold Williams of Shamrock in whose home he is a guest for this school year.

The two students spoke of interesting contrasts in life in their respective countries as well as the United States.

A question and answer period followed their presentations and each youth displayed artifacts of his native land.

Also a guest at the meeting was Miss Beverly Clark. Club members who attended included Miss Wilma Hefley and Mrs. G. C. Barton, Britt, Brown, Denson, Hall, Harrison, Jack Hefley, Richard Hefley, Hill, Johnson, Luttrell, McIlhany, Millet, Pierce, Rives, Vise, Wright and the hostess.

## Hospital Notes

**ADMISSIONS**  
3-29 Lucy Markham  
Zodie Mitchell  
Willie Ruth Hathaway  
3-30 Bennie May Whitener  
Margie Meadows  
3-31 Maria Benavidez  
Jerry Wilkinson  
Tom Edwards  
Ruth Ann Edwards  
Melissa Edwards  
4-2 John Neuhaus  
4-5 Donald Rives  
Nan Meadows

**DISMISSALS**  
3-30 Tanya Dunn  
3-31 Myrtle Reeves  
Billy Welty  
4-1 Barbara Williams  
Baby Boy Williams  
Mattie Atherton  
Zodie Mitchell  
Bennie May Whitener  
Tom Edwards  
Melissa Edwards  
4-2 Pearl Abernethy  
Maria Benavidez  
Margie Meadows  
Ruth Ann Edwards  
4-4 John Neuhaus

## PERSONALS...

Mr. and Mrs. B. F. Keener of Joplin, Mo., spent two weeks with Mrs. A. B. Crump while she was recuperating from her illness.

Visiting Mr. and Mrs. Guy Brown over the Easter holidays were Richard, Ronald, Donald and Joe Brown of Lubbock.

Mrs. Darla Childress and baby of Coppas spent last week with her parents, Mr. and Mrs. Adrian Risners. They

took her home Sunday.

Mr. and Mrs. Levi Reid returned home last week from San Angelo after spending a few days with her mother Mrs. H. L. Austin and brother, the B. C. Austin family.

Mr. and Mrs. Bobby McCain of Pampa spent the weekend with his grandparents, Mr. and Mrs. Lloyed Anglin. They and Mr. Anglin went fishing.

Mrs. Nola Wright and Mrs. Myrtle Barker went to Elk City Monday on business.

## Davis Paints Spring Sale

Give Rooms New Warmth and Color with **DA-TEX** one coat vinyl WALL PAINT

You want your home to be comfortable for your family and inviting to guests. The modern decorator colors of DA-TEX will add new appeal and warmth to your rooms.

**Sale Price \$4.95** Gallon  
Save \$1.00 a Gallon Regular \$6.85

## LATEX 22 WALL PAINT

Beautiful glare-free finish. Use on any interior painted or unpainted surface of plaster, wallboard, brick, wallpaper. Choice of latest colors.

- Dries in Less Than One Hour
- No Laps, Streaks or Brush Marks
- Apply with Brush or Roller
- Wash Tools, Hands with Soap and Water

**\$3.98** GALLON

## FARM and RANCH RED

Maximum Protection For Barn or Roof

A Superior Quality, long-lasting paint for roofs, barns, silos, outbuildings—apply on wood or metal. Comes in a deep, rich red, ready-mixed. Holds its color and is mildew resisting.

**Sale Priced \$2.95**  
10c a gallon higher in 1's a gallon in 5's

Check Out **BARGAIN COUNTER 1 2**  
For discontinued Colors...  
**WHEELER LUMBER CO.**  
Phone 826-3431 Wheeler, Texas

charge at the County Agents office.

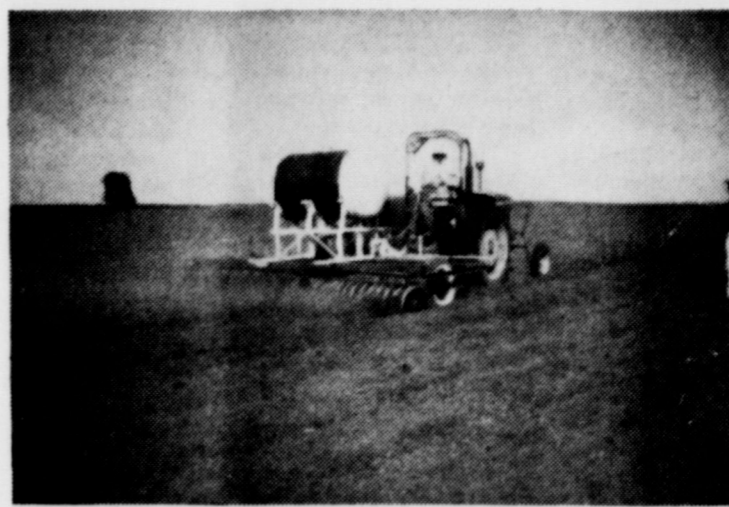
## 4-H STEER PROGRAM

Any 4-H member that is interested in feeding a steer

call during 1967 for the State Fair, Amarillo or Pampa Stock Show is reminded to start making plans now. Calves need to be selected and a feeding

and training program planned for the entire feeding program. Any calls by the parents concerning this matter will be appreciated.

## DO THIS NOW



## Get A Head Start On Weeds

Stops Over 25 Weeds and Grasses  
Including Careless Weeds Water Grasses and Many Others  
Easy to Use  
Weatherproof



Apply Early  
Save Valuable Time Later  
Eliminates Spring Weather Application Problems  
Eliminates Spring Rush For Equipment

This Is Planning For Profit

## Allison Implement Co.

Call Clyde Dukes

Phone Dr-5-2426

## AUCTION SALE

Since the death of my husband, we will sell all livestock and farm machinery. Located: 1 mile west from Twitty, Texas, then 1/4 mile north.

**TUES., APRIL 11, 1967 10:00 A.M.**

### MACHINERY

- 1 — 1952 Model M International tractor, motor and tires good
- 1 — 4-row lister and planter
- 1 — 4-row cultivator
- 1 — 1965 model John Deere 1010 Diesel tractor, looks new
- 2 — 4-row govtors, complete with knives and plows
- 1 — 12-ft. Massey Ferguson tandem disc, good as new
- 1 — 3-point hitch with cylinders, nearly new
- 10 — Wheel weights, 1 — IHC junker oneway
- 2 — 3-section harrows
- 1 — 8-ft. Hoeme plow with 3-point hitch
- 1 — 7-ft. Dearborn power mower
- 1 — Bulldozer for M tractor
- 1 — Butane, 4-row weed burner
- 1 — Rollover 4-bottom 16-inch breaking plow
- 1 — 2-row drag type fertilizer
- 1 — 2-row Ford lister and planter
- 1 — 16 x 8 John Deere grain drill on rubber, perfect shape
- 1 — 4-row Mayrath sprayer with pump
- 1 — 3-disc belly swing IHC breaking plow
- 1 — 6-ft. spring tooth harrow with 3-point hitch
- 1 — IHC 2-row lister and planter
- 2 — John Blue fertilizer boxes. Three 36-in. sweeps
- 1 — IHC oneway 7-ft. size on rubber, also hydraulic lift
- 1 — No. 22 IHC cotton stripper, nearly new
- 5 — Factory made 4-wheel cotton trailers —

- 3 to 5 bale size, good tires
  - 3 — Shop made 4-wheel cotton trailers
  - 1 — Tandem stock trailer, good tires
  - 1 — Buggy-top shade for tractor
  - 1 — 550 butane tank, also filler hose
  - 1 — 1952 Dodge 1-ton truck, good grain bed, motor and tires ready to go
  - 1 — Three-point hook-up hoist
  - 1 — A. C. combine 6-ft. size, 12-trailer tires
  - 1 — John Deere hammer mill
  - 1 — 4-inch electric loader — 16-ft. with motor
  - 1 — Carryall box for Ford tractor
  - 3 — Steel hog troughs, 1 — 12-hole metal hog feeder
  - 6 — Rolls hog wire, 2 — 10-ft. wooden cow troughs
  - 1 — Electric fence, also 1 1/2 miles wire and metal posts
  - 1 — Ford oneway 6-ft. size
  - 1 — 4-row marker for M tractor
  - About 250 bales of haygrazer hay
  - 1 — TV tower 70-ft., also 3 antennas, complete
- SHETLAND PONIES**
- 2 — Spotted mares about 6 years old, broke to ride
  - 2 — Spotted mares, 3 years old
- COWS**
- 3 — Black Whiteface cows, about 4 years old
  - 11 — Whiteface cows with 5 calves by side
  - The above are heavy springers
  - 1 — Black Angus bull, 3 years old (registered)

Many other articles not mentioned

Terms: CASH

Lunch will be served by **KELTON HOME DEMONSTRATION CLUB**

## MRS. EGDAR BAKER

(Owner)

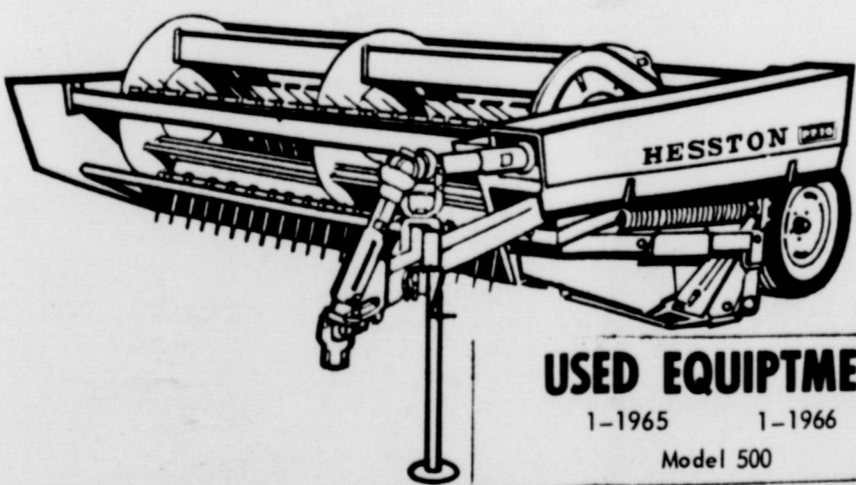
**SHELBY PETTIT (Auctioneer)**  
Wheeler, Texas

**JAMES VERDEN (Clerk)**

This is your year to step up to

## HESSTON

...and the new PT-10 Pull-type Windrower/Swather makes it easy!



**USED EQUIPMENT**  
1-1965 1-1966  
Model 500

Consider the time, labor, fuel and tractor wear you can save by one-pass mowing and conditioning your hay... and having a choice of putting your hay in the windrow or leaving it in a full-width swath. Add the higher feed values of hay rich in TDN, conditioned with most of the leaves intact—unique Hesstonized Hay. Count your profits, and step up to a Hesston PT-10 to your tractor. Here's a pull-type that tracks true. It has unutilized all-metal construction. Conditions hay gently, yet fully before it ever touches the ground... you get uniform conditioning with stem cracked at 1 1/2" intervals. Full 9-ft. cut, full width 102" conditioner. Every inch a Hesston—and priced to be easy to buy! See it now.

There's something special about a HESSTON!

## MOORE EQUIPMENT

Phone 826-9951

E. Highway 152

Wheeler, Texas



**ENGAGEMENT ANNOUNCED**  
Mr. M.W. (Bus) Walker of Wheeler announces the engagement and approaching marriage of his daughter, Sarah Kay Walker, to Jerry Wayne Blakemore, son of Mr. and Mrs. Forbus E. Blakemore of Shamrock. The marriage will be solemnized June 24, in the First Baptist Church of Shamrock.



**ENGAGEMENT ANNOUNCED**  
Mr. and Mrs. Leo Lamb announce the engagement and approaching marriage of their daughter, Carol and John David Bryant of Amarillo. He is the son of Mr. and Mrs. D.C. Bryant of Hereford. Miss Lamb is a graduate of Wheeler High School, class of 1965, and is a student at W.T.S.U. Mr. Bryant is a graduate of W.T.S.U. and is employed in Amarillo. The wedding date is set for May 29 in the First Baptist Church in Wheeler.

### Wheeler Schools

By Arling Cordell, Supt.  
This week, we are preparing the second six-weeks period tests, and also getting in condition for part of the Interscholastic League contests on Friday afternoon, beginning at 5:00 p.m. These include Spelling, Ready Writing and Shorthand. The remainder of the Literary events will be on next Friday at 4:00 p.m. Also, the District Track and Field Events will be at McLean on Monday, April 10th.  
Just think - We - Teachers Parents - and Pupils have only six weeks to get ready for the end of another school year. Whether we are prepared or not will be determined by how soon we begin to tie up the loose end, review, read and study.

### Wheeler School Menu

**Monday** - Sloppy Joes, fried potatoes, green beans, carrot sticks, pineapple cake, milk  
**Tuesday** - Meat and vegetable stew, pinto beans, celery hearts, cornbread, chocolate cookies, milk, crackers  
**Wednesday** - Roast beef, buttered corn, baked beans, hot rolls, sweet potatoes, jelly milk, honey, butter  
**Thursday** - Meat Loaf, creamed potatoes, lettuce salad, english peas, hot rolls, peach float, milk, butter  
**Friday** - Fried Fish, black-eye peas, pickle, tomatoes macaroni, cornbread, lemon pie, milk

We have sold our flower shop to Mr. and Mrs. C. A. Holdeman.

It has been such a pleasure and privilege to serve you for the last thirteen years. We sincerely hope you will all see your way clear to give the Wheeler Flower Shop your patronage.

Thank You again for your friendship and support.

Sincerely,  
Berniece and Harrison Hall

### Howard Criner Rites Are Read

Funeral services were held Saturday, April 1, in Oklahoma City for Howard Criner, 63 years old, brother of Mrs. Fay May and Mrs. Gladys Herd.  
Mr. Criner died suddenly Thursday at his home.  
He is survived by his wife, one son, Donald of the armed forces and one daughter of San Antonio and three grandchildren.  
Those attending from Wheeler were Mr. and Mrs. Amos May and Mrs. H.H. Herd.

### Richard Parks Gives Recital

The Music Department of McMurry College, Abilene, presented Richard Parks, son of Mr. and Mrs. L.A. Parks of Wheeler in a senior recital Tuesday, April 4.  
Richard presented a program on the organ consisting of "Offertoire sur les Grands Jeux", six variations on the Chorale, a Chorale Prelude, Prelude & Fugue in C major, "The Four Winds" consisting of the North Wind, South Wind, East Wind and West Wind, Requiesscat in Pace and Fantasia and Fugue on B.A.C.H.  
Attending the recital from Wheeler were his parents, the L.A. Parks, Elizabeth Hubble and Mrs. Lyndon Sims, who taught Richard piano and organ for nine years through grade school and high school.

### FHA Releases Loan Funds

Secretary of Agriculture Orville L. Freeman today gave details on \$71 million released by President Johnson, Friday, March 17 for rural loans.  
The Presidential action will enable the USDA's Farmers Home Administration to commit an additional \$25 million in farm operating loans, \$21 million in emergency farm loans and \$24 million in insured rural housing loans during the balance of the current fiscal year which ends June 30, 1967.  
Previous allocations of funds for these programs had been exhausted.  
Emergency loan funds are being made available immediately. Release of funds for operating and insured rural housing loans is effective April 1.

The demand for farm operating and emergency credit, the Secretary said, "is caused by a continued upward movement in farm operating costs, the bringing back into production of several million acres of previously idle cropland, the shortage of adequate farm operating credit through private lenders, the drought that prevailed in many areas of the country in 1966 and the hurricanes, freezes and floods of the past two years." He said the effect of a natural disaster, so far as operating credit is concerned, is felt in the years following the disaster.  
The upward adjustment in the insured rural housing loan program will permit the Farmers Home Administration to continue processing applications for housing loans received from families with above-moderate incomes.  
Farm operating loans are made for livestock, equipment and annual operating expenses. They bear 5 percent interest.  
Emergency farm loans are made in areas designated by the Secretary of Agriculture where natural disasters such as floods and drought have brought about a need for credit. The loans are made for seed, fertilizer, replacement of equipment and other items that farmers and ranchers in the areas need to resume normal farming operations. The interest rate is 3 percent.  
Currently 1,189 counties are designated for emergency loans in 38 states.  
Wheeler, Hemphill and Roberts Counties are designated for emergency loans, according to John L. Manning, County Supervisor.

Mr. and Mrs. David Maley and children went to Norman, Okla. last Thursday and visited her sister, the Jerry Kellys and then to Altus and spent the weekend with their parents.

Visiting Saturday afternoon with Mrs. George Henderson was a nephew, Mr. and Mrs. Gene Nowlin and children of Louisville, Texas and also Mrs. J.W. Durham.

### WCS Honors Allison Seniors

The senior class of Allison school was honored Wednesday morning at the Fellowship Hall of the Methodist Church.  
Special music was offered by Sheri Bodey and Kathy Duke with Mrs. Lee Kiker at the piano.  
Tables were decorated with flowering fruit tree branches and Easter motifs. The places were marked with a black mortar board.  
After breakfast Rev. Matthews spoke to the seniors. The theme of his talk was "You can make your life what you want."  
Adeline Dukes was toastmistress and Mrs. Newsom offered prayer.  
The entire class of six members attended. They were Becky Billingsley, Becky Dukes, Adeline Dukes, Dian Kelly, Roy Hall and Glenn Rose.

### Ray Owens Is Marine Medic

Hospitalman Noble Ray Owens, USN, son of Mr. and Mrs. T.W. Owen of Wheeler was graduated from the Field Medical Service School at the Marine Corps Base, Camp Pendleton, Calif.  
The five-week course is designed to instruct Navy medical men, attached to Marine units, in emergency care of casualties under combat conditions. Subjects taught at the school are practical field medicine, evacuation of the wounded, logistics and special medical procedures for nuclear and chemical warfare.  
After graduation, the students are assigned as combat corpsmen with Marine units in the U.S. or with Marine combat forces overseas.

### Mansel Williams Gets Promotion

Mansel Williams has been promoted to the rank of Captain in the U.S. Air Force, effective April 1, 1967. Mansel is stationed at Ellsworth AFB, South Dak., where he is a Deputy Missile Combat Crew Commander and a Missile Procedures Trainer Operator. He entered the Air Force in June 1963 and plans to be released from active duty in September, 1967.  
Mansel Williams is the son of Mr. and Mrs. S.W. Williams of Wheeler.

### Operating Credit Loans Available

Farmers Home Administration now has loan funds available for operating credit. According to Mr. John L. Manning, County Supervisor for Wheeler, Hemphill and Roberts Counties, operating loan funds are available for the following:  
1. For young farmers to become established in a successful farming operation repayable over a period of time consistent with the repayment ability of the operator.  
2. To adequately finance all farm management practices essential to profitable crop and livestock productions.  
3. To make major adjustments in over-all farming or ranching operation.  
4. Adequate in amount - \$35,000 limit - to enlarge or establish a livestock enterprise such as a purchase of 100 head of beef cattle, 3 or 4 bulls, establish pastures, provide fencing and water supply which may be amortized by deferring the first payment not beyond the end of the second full crop year following the date of the loan and over a period not to exceed seven (7) years with the provision of a "Bumper Note" that would enable the borrower to refinance from another credit source or repay the loan over a period of an additional five (5) years.  
Anyone interested in this type of credit should contact Mr. John L. Manning, County Supervisor at the Wheeler FHA office.

### Savings Bond Sales Report

Mr. R.J. Holt, Chairman of the Wheeler County Savings Bonds Committee announced today that February sales of United States Savings Bonds in Wheeler County totaled \$17,648. During the first two months of 1967 sales in Wheeler County totaled \$40,391 which is 16% of the 1967 goal of \$260,000.  
During the first two months of 1967 Savings Bond sales in Texas totaled \$29,451,247 which is 16% of the state's goal of \$181.3 million and a 15.2 percent increase over sales during the same period of 1966.  
Nationally, the sale of Savings Bonds during February totaled \$426 million and were 23% higher than a year ago and the highest for any February in 7 years. The January-February total was \$917 million, 12% over sales for the first two months of 1966 and the highest January-February sales since 1963.

### Baptist Royal Service Meets

The Royal Service W.M.S. of the First Baptist Church met Tuesday 7:00 p.m. in Fellowship hall with Mrs. Albert Chapman, vice-president in charge. Fifteen members were present.  
The prayer calendar was read by Jewel Waters. She also led in prayer.  
The program "First and Twentieth Century Churches" was presented with Rosemary Vise in charge. Hannah Chapman, Ann Jackson, Corrine Brooks, Joan Millet, Clara Marshall, Dot Robinson and Erma Riley brought the program.  
Mrs. Ray Miller dismissed in prayer.  
The business of the Executive Council met with Mrs. Guthrie, president in charge. The new and old business was presented and discussed. Those attending were Ann Gandy, Clara Marshall, Martha Manning, Hannah Chapman, Corrine Brooks, J'Dell Conklin, Jewel Waters and Mrs. Guthrie.  
Clara Marshall dismissed in prayer.

### SPELLING BEE WINNERS NAMED

Kay Ridgway, 11 year old daughter of Mr. and Mrs. H.J. Ridgway of Mobeetie, was the winner in the Junior Division of the Wheeler County Spelling Bee which was held in the Wheeler High School Auditorium, March 31, 1967. Deborah Jean Gragg, 13 year old Shamrock girl, won the senior division of the Bee.  
Deborah, the daughter of Mr. and Mrs. Robert E. Gragg, is an eighth grader. She and her brother, Kenneth, were the county champions in 1966. Track, basketball, volleyball and tennis are her hobbies. Deborah Jean will represent Wheeler County in the Regional Spelling Bee at Amarillo April 22.  
Carla Ridgway of Mobeetie was runner-up in the senior division.  
Kay Ridgway is a sixth grader at Mobeetie. Her hobbies are playing the piano, cooking and playing basketball. Her sister, Carla was the Junior Champion in 1965.  
Teresa Keys of Allison School was the runner-up in the Junior Division.  
Mrs. J.T. Hill was the pronouncer, Mrs. Earl Barnes and Mrs. R.J. Holt, Jr. were the judges. Mrs. Harrison Hall was the director for the Spelling Bee.

### Women's Bowling League

	W	L
Clay's	63	49
Hyland's	55	57
Guthrie's	54½	57½
Lancaster's	51½	60½
<b>High Games</b>		
Grace Pettit	167	
Wanda Chapman	156	
Grace Pettit	147	
<b>High Series</b>		
Gay Burton	407	
Mary Barnes	406	
Grace Pettit	405	

Mr. and Mrs. Claudy Brotherton and Mrs. C.B. Brotherton went to Amarillo to see C.B. who is in North West Texas Hospital. Gary didn't get to see his Daddy because he has the chicken-pox. They report C.B. was some better.

### Personals . . .

Mr. and Mrs. Sam Hale are moving back to Wheeler and will live in the old Baptist parsonage.  
Mr. and Mrs. N.D. Ware, Sr. returned home Monday after spending almost a month

with their daughter, Mr. and Mrs. W.S. Pitman in Haltwill, Calif.

Mrs. Richard Hefley and sons, Mrs. Farmer Hefley and Mrs. Florence Burgess visited Saturday afternoon in Gruber with the L.W. Bayless and the Bill Ethings.

Mr. and Mrs. Farmer Hefley went to Shamrock after church Sunday and visited his sister in the rest home, Mrs. Buckingham and Mr. and Mrs. Bert Betenbough.  
Mrs. Mattie Atherton went to Pampa last week to visit awhile with her daughter, Mrs. Ted Atwood.

Mr. J.C. Hampton of New Castle, Del. visited his sister Mr. and Mrs. Bill Bricker over the weekend. He also visited other relatives. Visiting the Brickets Sunday was her sister-in-law, Mrs. Judy Hampton and children of Pampa.

# ALL TYPES PRINTING

## Statements

## Letterheads

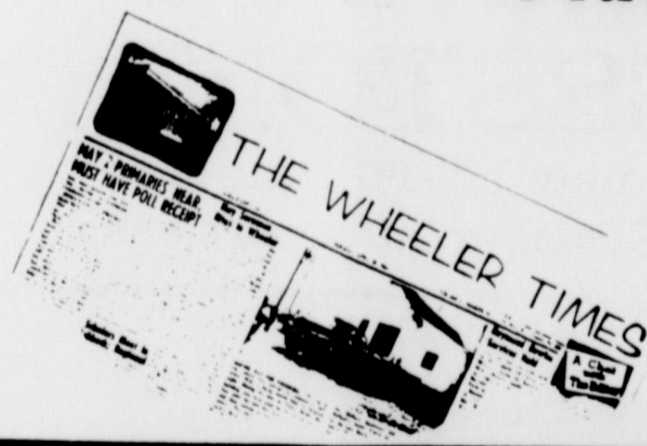
## Envelopes

## Business Cards

## Handbills

## Invitations

## Placards



Forman News F Monmou

Methodist Sets Revival

Revival Set for Methodist April 16-20 v in Froehner preaching. The first s Sunday mornin The evening

DATE  
4 6  
4 7  
4 8  
4 9  
4 10  
4 11  
4 12  
Total for  
Total Mar  
Total to  
April 196

22 YEARS  
Glen Part  
ered a col  
ing 22 ye  
a colt is  
this mare  
are the pr  
Dakota, T  
attention.