

THE WHEELER TIMES

SINGLE COPY 10c

THURSDAY, APRIL 9, 1964

VOLUME 41 NUMBER 17

CITY ELECTION STORY—Page 5

TRIO ARRESTED FOR THEFT

For further information, see EXAMINING TRIAL Page 5

From Pampa Daily News

Charges of burglary with intent to commit theft were filed today by County Attorney Guy Hardin of Shamrock against two Springfield, Mo., men after their arrest in McLean early Sunday morning by the Wheeler County sheriff's office.

Sheriff Bus Dorman said Harold Lee Breeden, a former Gray County resident, and Charles Ray Geren, 25, Springfield, Mo., were being charged in connection with the March 23 burglaries of three Mobeetie firms and the attempted break-in of a fourth.

Breeden, Geren and a 44-year old woman, who is being held in Gray County jail in Pampa, were arrested following a chase through the back roads of Wheeler County Saturday night that ended in McLean when a city officer apprehended the trio.

District Attorney Bill Waters, in Pampa, said officers presented enough evidence to bring the charges in the burglary of the Santa Fe Depot, Lewis Leonard's Farm Supply Store, the Mobeetie Drug Company and the attempted burglary of Atkins Grocery.

Waters directed Dorman to take the two men to Shamrock before Hardin for filing of charges and setting of bonds.

Dorman said he and Deputy Sheriff Doyle Ramsey had been spending "the past three weeks sitting up with Mobeetie" since the four burglaries had occurred.

Dorman said he went to Mobeetie Saturday night to stakeout the drug store as part of the effort to catch the burglars.

"I felt all along they might come back because all that was taken was \$4 and four cartons of cigarettes and a bunch of tire tools, screwdrivers and stuff like that," Dorman said.

About 10:30 p.m. Dorman parked near a pickup truck when he noticed a strange automobile driving down the main street. He followed the car out Highway 152 East and lost it as it dropped over a small dip in the road. When the sheriff drove over the hill, the car was turning

around, heading back to Mobeetie.

Dorman stopped the automobile for routine check and one of the men told him they were seeking a service station and he directed them to one in Wheeler. The automobile drove away, Dorman following without his lights on.

The car made a left turn off the highway, onto a dirt road, and Dorman gave chase, putting out license information to Wheeler, where dispatchers in turn notified the Pampa police department, Amarillo and other points on the police radio network.

The automobile was apprehended shortly after midnight near McLean.

Texas Rangers in Pampa were questioning the woman in an effort to learn just where the trio had been before and after the March 23 burglaries.

"They haven't been working anywhere and were just touring the country, so we feel like they may have other things to tell us about,"

one of the Rangers said. Dorman said Breeden and Geren both have served two prison terms, with Breeden recently released from the Jefferson City, Mo., prison where he had served a term for armed robbery. The sheriff said the two men had served terms for Dyer act violations, burglary and armed robbery.

The officers said no record had been found for the woman and Waters indicated he would question her personally before any charges are brought against her.

HOOTINANNY

A "Hootinanny" will be sponsored by the Kelton PTA on Friday, April 17th, at 8:00 p.m. This special program will feature The Velasquez Brothers, The Monarchs, The Fundamentals, Pat & Frank Embury (with Hill & Dill Entertainers), The Bobolinks, and other local talent.

Admission will be 25c and 50c. There will be a great variety of music and an enjoyable evening can be expected by all who attend.



NEIL ROGERS TO PLAY IN STATE ALL-STAR

Neil Rogers, Wheeler High tackle, has been invited to play in the North-South All-Star football game. Rogers, who has accepted the invitation, will play in the classic which will be played in Aus played in August, at Fort Worth.

The 223-pound, 6'2" Rogers will accept an athletic scholarship to TCU after he finishes the current track season. A 12-letter man in high school, Rogers was named as first string tackle on the All Top O' Texas football team in 1963, and was a two-year, offense and defense All District selection.

The selection of players was made by the Texas High School Association, and were made from more than 900 schools over the State.

Rogers will play for the North in the game, which will climax the week-long coaches association meeting, in Fort Worth on August 6th. Neil is the son of Mr. and Mrs. Joe Rogers of Wheeler.

Important C. of C. Meeting coming up April 21st.

INTERSCHOLASTIC LEAGUE RESULTS

- April 4, 1964
In Wheeler Schools
- HIGH SCHOOL EVENTS**
- 9th Grade Declamation:**
1st—Joyce Walser, Kelton;
2nd—Brenda Pond, Kelton;
3rd—Liz Hubble, Wheeler
- Debate:**
1st—Penny Puryear, Kelton;
2nd—David Jamison, Johnny Hutchison, Wheeler
- Extemporeous Speaking, Boys:**
1st—Jerry Tucker, Wheeler;
2nd—Clay Walser, Kelton;
3rd—Jimmy Adams, Wheeler
- Extemporeous Speaking, Girls:**
1st—Beverly Clark, Wheeler;
2nd—Linda Pond, Kelton;
3rd—Christine Wegner, Wheeler
- Persuasive Speaking, Boys:**
1st—Jimmy Jamison, Wheeler;
2nd—Keith Abernathy, Kelton;
3rd—Jamie Moore, Wheeler
- Persuasive Speaking, Girls:**
1st—Estelle Fillingim, Wheeler;
2nd—Glenda Pond, Kelton;
3rd—Nancy Moore, Wheeler
- Poetry Interpretation, Boys:**
1st—Mike Goad, Wheeler;
2nd—Mike Carver, Kelton;
3rd—Ronnie Hayes, Briscoe
- Poetry Interpretation, Girls:**
1st—Shery Burrell, Kelton;
2nd—Elizabeth Wiley, Wheeler;
3rd—Beth Hefley, Briscoe
- Prose Reading, Boys:**
1st—Kent Sims, Wheeler;
2nd—James Hefley, Briscoe;
3rd—Steve Davidson, Kelton
- Prose Reading, Girls:**
1st—Marilyn Nash, Wheeler;
2nd—Ann Lunnus, Kelton;
3rd—Cheri Jackson, Miami
- Ready Writing:**
1st—Beth Hefley, Briscoe;
2nd—Penny Puryear, Kelton;
3rd—Saranne Montgomery, Miami
- Spelling:**
1st—Wanda Seitz & Beverly Weiss, Miami;
2nd—Steve Davidson & Clay Walser, Kelton;
3rd—Mike Aderholt & Vivian Newsom, Allison
- Typing:**
1st—Nancy Moore, Wheeler;
2nd—Donna Davidson, Wheeler;
3rd—Judy Uzzell, Mobeetie
- Number Sense:**
1st—Chester Jones, Kelton;
2nd—Lewis Holland, Miami;
3rd—Kenneth Abernathy, Kelton
- Science:**
1st—Linda Pond, Kelton;
2nd—Chester Jones, Kelton;
3rd—Kent Sims, Wheeler
- Slide Rule:**
1st—Kent Sims, Wheeler;
2nd—Terry McCasland, Wheeler
- Total School Points Earned:**
1st—Kelton 171 points
2nd—Wheeler, 132 points
3rd—Miami, 40 points
- ELEMENTARY EVENTS:**
- 5th & 6th Spelling:**
1st—Rick Burnett & Keith Wood, Wheeler;
2nd—Sandra Dedmon & Karen Anderson, Miami;
3rd—Deborah Whistler & David Britt, Kelton
- 7th & 8th Spelling:**
1st—Nancy Wiley & Connie Richardson, Wheeler;
2nd—Sharon Dedmon & Betty Tarbert, Miami;
3rd—David Overcast & Kelly Abernathy, Kelton
- Storytelling:**
1st—Kay Ridgeway, Mobeetie;
2nd—Joe Bill Seabass, Miami;
3rd—Danna Luttrell, Wheeler
- Picture Memory:**
1st—Cynthia Manning, Vicki Gaines, Bill Tucker, Carol Holt and Darrell Hanks, Wheeler;
2nd—Ridgeway, Seitz, Knight, Mobeetie;
3rd—Kim Wheeler, Sue Harrison and Sharon Pond, Kelton
- Boys' Declamation:**
1st—Mike Holt, Wheeler;
2nd—Ronald Rives, Wheeler;
3rd—Kelly Abernathy, Kelton
- Girls' Declamation:**
1st—Becky Vanpool, Wheeler;
2nd—Deborah Whistler, Kelton;
3rd—Linda Davis, Kelton
- Ready Writing:**
1st—Connie Richardson, Wheeler;
2nd—Sharon Dedmon, Miami;
3rd—Pam Garrison, Wheeler
- Number Sense:**
1st—Kelly Abernathy, Kelton;
2nd—Winfred Marshall, Allison;
3rd—Tommy Levitt, Wheeler
- Total School Points Earned:**
1st—Wheeler, 81 points
2nd—Kelton, 37 points
3rd—Miami, 19 points

BAPTISTS TO HOLD REVIVAL APRIL 19-26



The First Baptist Church, Wheeler, will have Revival Services, April 19-26. Rev. John Ferguson, Pastor of the First Baptist Church, Bovina, Texas, will do the preaching. Rev. Ferguson, is a graduate of East Texas Baptist College, of Marshall, Texas. He has pastored Churches in Texas and Louisiana.

Jamal Badry, of Oklahoma City, Oklahoma will lead the music. Mr. Badry, is in full time Evangelistic Singing. He has his degree in Music, from the Oklahoma Baptist University.



RECITAL

Mrs. Cabot Brannon will present Janet Coffman, of Shamrock in a "Senior Piano Recital" at the Shamrock First Methodist Church at 4:00, Sunday afternoon, April 12, 1964.

Janet is the daughter of Mr. and Mrs. H.W. Coffman of Shamrock. The Coffman's are former residents of Wheeler.

Guests artists on the program will be Betty Barrett and Gail Holmes. The public is cordially invited to attend.

WHEELER PTA TO MEET

The 8th monthly meeting of the Wheeler Unit of District No. 19 will be held on Monday evening, April 13, 1964.

The program will be brought by Mrs. Gordon Whitener, school and community worker, and former Homemaking teacher, using the theme—"The Family—Wholesome and Happy?"

Come and take part in this evening dedicated to cooperation in helping our young people to a better life in the future.

Also, plans will be made for members to attend the District No. 19 Conference at Spearman on April 20-21. Are you able to say, "I am an active PTA member?"



Church of Christ Gospel Meetings

The Church of Christ will hold a Gospel meeting April 13 through 19. They will have services each evening at 7:30.

Mr. Bert Robertson of Snyder, Oklahoma will do the speaking at the meetings.

Mr. Robertson works with the church in Snyder, Oklahoma. Mr. Robertson obeyed the gospel about six years ago, and since that time has developed into one of the finest young preachers of the church. We extend to you a special invitation to come out and hear this man of God preaching on Bible centered lessons.

On Sunday, April 19th

ALL IS WELL FOR ALASKAN RELATIVES

Dear Aunt Cora, Newmans, Puryears and Larry and Jack Williams families,

I am going to try and type five letters, mistakes and all, and try and tell you just a little that has happened. To me it has caused a void in my life and feel that something is floating around I need to get back. Sounds comy but that is the way it is.

Mike had Friday off for vacation, so he and I went to Anchorage with Ivan. I spent all day with Wanda until nearly five o'clock. Then I walked down to the shopping center. On the way down I met Mike and he went back with me. We were in Woolsworth when the earthquake started. As it grew in volume we rushed out the door and as I went down a man standing there and Mike helped me up and just missed being covered with broken windows. The man pulled me back against the building and held me. I grabbed hold of Mike. All I could do was watch the new tall building of the Westward Hotel sway

like a piece of paper. There was a terrible noise. Things flying around, people rushing around and screaming. I NEVER want to hear anything like it again. It lasted they say, from 3 1/2 to 5 minutes, but to me it was longer than that. When it was over Mike almost had to pry my hand from his coat. I don't know who the man was that kept hold of me but I will never forget the favor he did for me. So help me I looked back in Woolsworth, and it was a mess and things still falling and so thick with dust one could hardly see. I saw the basket of things I had picked out and got a clerk and asked to be checked out. It happened to be a girl from Hope so she did. I'll never know why I did such a foolish thing. Then Mike and I were to meet Ivan at the Library. It was not damaged at all but they wouldn't let us in but we could wait in the entry way. When I could move again I looked around and saw windows broken out of the building. The new Penny

Store looked like a crumpled match box. Big cement slabs had fallen on cars parked in front and killed two women. Two were trapped in the elevator. Nine bodies have been taken out and they are still looking. The two tall apartments, the L Street and the Mickely are ruined. The Denali Theatre, Mac Photo, Anchorage Hardware, the Arcade, and I don't know the others sunk way down. I don't know the exact number of feet. Anyway you walk in the balcony of the theatre from the street. After the quake the stillness was almost as awful as the quake. Civil defense made us get off the business part of town. He told us to walk to where we could run for the middle of the street if it started again. I never walked such a long 1/4 blocks to Wanda's. Ivan had been there to hunt us and he finally came back. He got his hand cut in the store. Wanda's apartment was a mess. We got as far as Tollefsens. Rode over cracks in the road, humps

and all. Their house had three big cracks around it and their basement was out a lot of it and one end of their house was over the broken out basement. We found we couldn't get to Girdwood, so we sat up all night and about at least every hour a tremor would come and out we would go. They are still doing it and every time they do I rush out. I am chicken. Doreen, I take back what I said about not being afraid in an earthquake. Also Peg you would have had a hell of a stomach before this one.

Well, we stayed at Tollefsens until Sunday morning and took off for Girdwood. The slides had been cleaned to a one way passage. That morning the tide had flooded the road at Bird Flats. There is cracks, parts of the pavement moved, the road is out of line, bridges out. We got to Girdwood about noon and the bridge just close to the railroad track was out, so we packed our stuff over the railroad track to Girdwood. The quake really hit the village of Girdwood. Peg

under the house you built there is a long crack at least a foot wide and at every tide it shoots water. It shoots water and opens wider all over and the lower part of Girdwood is flooded. Your house was pushed back a good foot and so was the Danichs. Cracks are all over Girdwood, and Glacier Bridge is bad. The road in front, on the Seward Highway has sunk five feet. The Little Dipper and the house next to it burned to the ground. Also the Post Office.

Portage has sunk at least five feet. They all had to leave. Whitter was hit bad and the docks burned and several killed, also Seward. A lot of gas and oil is gone and gas is rationed and they might ration fuel oil. We got our first light this afternoon. All the bridges are out between here and Seward. We can not get mail until roads are a two way passage, but I am sure you are all right. Ivan will mail these when he goes to work tomorrow.

At Alyeska it just happened that all the skiers were down off the mountain. It brought down a big slide that just stopped at the chair lift, but put a big lot of powder snow over the rest of the area. Around 150 were in Girdwood until the road was opened.

Lady was alone in the house and she went under the bed. When Bursiels got in the next day she was trapped in the bedroom. Every dish almost in the cupboard fell and mixed in with 5 pounds of whole wheat flour, catsup, vinegar, etc., and what a mess to clean up. I have 5 pretty cups left out of 26. Some day Jack will you send me another from Greenleaf Whittiers farm? My clock I got from Stuart did fall and why I don't know. I have what dishes I left back in the cupboard and the books off from the floor. So the big room looks fairly good. Mike picked up in his room upstairs. The bedroom is passable. The quake wasn't nearly as hard as in Gird-

wood and as far as we can tell our house is fairly safe. Bursiels had more damage. We feel very fortunate and very humble to come through this as well as we did. We all were plenty scared and still shook up. We will have to be cut down on groceries for awhile and as well as fuel oil. No matter what we have ahead I feel we should not complain one bit. I went down and helped Catherine put her groceries she had left in the store in Joe Allen's house. Max is out on the line fixing it and has-

CONT'D ON PAGE 4 QUAKE

CONT'D ON PAGE 4 CHURCH

COURT RECORDS

List of Instruments Filed in the Office of the County Clerk and District Clerk of Wheeler County, Texas From March 30 Through April 3, 1964.

March 30, 1964

MM--Billy Jack Thompson et ux to OJ Walker 3-26-64 S75' Lot 1 Bk 38 Shamrock RVL--LC Adams to DP Kilgus 3-28-64 Lot 4 Bk LXXVIII Shamrock
AFF--JT Johnston to Mabel Arrington 3-26-64 Sec 9, 22 Bk A-9 N1/2 Sec 69 Bk 24
D--Minnie & Louis D Hicks to Jessie White et ux 3-26-64 1959 N75' Lots 19 to 24 Bk B Lela, Parcel Addn BILL OF SALE--JR Pennington et al to Jessie White 5-3-53 NW1/4 Sec 50 Bk 17

MM--HC Fields et ux to Cicero Smith Lumber Company 3-12-64 Lots 13 to 18 Bk F Wheeler, Park Addn D--Bert Graham et ux to Nelson Porter et ux 3-18-64 E/2S/3 Bk 51 Wheeler, Stanley's Addn

March 31, 1964

AFF--Annabell Ware et al to Lynna Violet Ware 3-29-64 D--Frank E Going et ux to John Bennett, Jr 3-31-64 Lot 14 & S1/2 15 Bk 82 Shamrock RSA
D--Gene Dungan to Paul Crossman 3-29-64 1/220 int 70 ac N1/2 Sec 34 Bk 23

April 1, 1964

OL--JD Paris et ux to Gulf Oil Corp 3-30-64 Sec 5 Bk A-2
OL--Charles C Tighman to Gulf Oil Corp 2-24-64 Sec 5 Bk A-2
CHG OF DEP--Preston Leroy Gifford to Gulf Oil Corp 3-25-64 W2NW4 Sec 56 Bk A-8
CHG OF DEP--Dare L Locke et al to Gulf Oil Co 2-25-64 N213,3ac E1/2 Sec 9 A-5
RMML--Modern Lumber Co to Steven B Black et ux 3-25-64 W1/2 Lots 4 to 6 Bk 13 Wheeler

April 2, 1964

OL--EE Wilsford et ux to Don Eamey 3-21-64 Bks G-3, G-4 Wheeler, Prairie Lawn Addn
OL--Mabel Arrington to Harry Wofford 2-28-64 S1/2 Sec 9 Bk A-9
AOL--Harry Wofford to Pan American Pet Corp 3-3-64 Sec 9 Bk A-9
OL--Mabel Arrington to Harry Wofford 2-29-64 N1/2 Sec 9 Bk A-9
AOL--Harry Wofford to Pan American Pet Corp 3-3-64 N1/2 Sec 9 Bk A-9
OL--Mabel Arrington to Harry Wofford 2-29-64 S1/2 Sec 22 Bk A-9
AOL--Harry Wofford to Pan American Pet Corp 3-3-64 S1/2 Sec 22 Bk A-9
OL--Mabel Arrington to

Harry Wofford 2-29-64 N1/2 Sec 22 Bk A-9
AOL--Harry Wofford to Pan American Pet Corp 3-3-64 N1/2 Sec 22 Bk A-9
OL--Mabel Arrington to Harry Wofford 2-29-64 N1/2 Sec 69 Bk 24
AOL--Harry Wofford to Pan American Pet Corp 3-3-64 N1/2 Sec 69 Bk 24

April 3, 1964

DI--Tom Crossland et ux to First Natl Bk Wheeler 4-3-64 Lots 6,7,8 Bk L Wheeler Park Addn
OL--JD Johnson et ux to Harry Wofford 3-3-64 Sec 25 Bk A-9
AOL--Harry Wofford to Pan American Pet Corp 3-4-64 Sec 25 Bk A-9
OL--JD Johnson et ux to Harry Wofford 3-3-64 N1/2 66 & 66 Bk 24 N of River

AOL--Harry Wofford to Pan American Pet Corp 3-4-64 N1/2 66 & 67 N of River Bk 24
OL--JD Johnson et ux to Harry Wofford 3-3-64 N1/2 5 & E1/2 25 Bk A-9
AOL--Harry Wofford to Pan American Pet Corp 3-4-64 Same as above

OL--JD Johnson et ux to Harry Wofford 3-3-64 S1/2 Sec 5 Bk A-9 & 65 Bk 24 N of River
AOL--Harry Wofford to Pan American Pet Corp 3-4-64 Same as above

OL--JD Johnson et ux to Harry Wofford 3-3-64 Sec 7 Bk A-9
AOL--Harry Wofford to Pan American Pet Corp 3-4-64 Same as above

OL--JD Johnson et ux to Harry Wofford 3-3-64 Sec 4 Bk A-9
AOL--Harry Wofford to Pan American Pet Corp 3-4-64 Same as above

OL--JD Johnson et ux to Harry Wofford 3-3-64 Sec 6 Bk A-9
AOL--Harry Wofford to Pan American Pet Corp 3-4-64 Same as above

RDT--Far & Mer St Bk Shamrock to Jack William Toolen et ux 2-14-64 S1/2 NW1/4 Sec 28B 17

C/C PROBATE PROCEED--Marion Kate Lincoln Brown to Ex Parte 10-18-63
C/C WILL--Marion Kate Lincoln Brown to Ex Parte 10-18-63

District Clerk's Office No.6140 Harrison Hall et ux vs Texas Allied Florists' Credit Assn Inc 3-30-64 Suit for Damages
Marriage License Issued Norma Jean Morris and Horace Raymond Griffin 3-30-64
Alpha Joy Smith and William Albert Hall 3-31-64

for COLDS take 666

GORDON McLENDON

Your Candidate for the U. S. Senate in the May 2 Democratic Primary

BELIEVES . . .

- CIVIL RIGHTS**—Equal educational and voting rights for all, but firm opposition to attempts to deprive anyone of the rights of trial by jury, private property and civil liberties.
- JOB OPPORTUNITIES**—Free business from bureaucratic restraints in order to promote business expansion and thus create greater employment.
- MEDICAL CARE FOR THE AGED**—Retain the right of the aged to select their own doctor and hospital as outlined in the provisions of the Kerr-Mills law and the Texas-65 program.
- FEDERAL AID TO EDUCATION**—Staunch opposition to federal aid to and control over schools, and encouragement of a realistic tax exemption for families supporting students in higher education.



GORDON McLENDON
Democratic Candidate
For U. S. Senator

Vote for Gordon McLendon
All Texans will be proud you did

Political Ad. paid for by McLendon Committee, George Sautin, campaign director

CLAY Food Store



FOLGER'S COFFEE
75c

CHUCK
Roast
OR CHUCK STEAK
39c

U.S.D.A. CHOICE
P.S.
T.V.T.

Ground Beef Lean Ground For Cook Outs, 2-lb. 79c

NEW!
CRISCO OIL

SWISS STEAK U.S.D.A. Choice P.S. Beef Round Bone Arm Cook. **49c**
BISCUITS All Brands 3 16-oz. cans **25c**
PIE APPLES Comstock Apples For A Quick Delicious Pie. No. 2 Cans **\$1.00**

WITH PURCHASE OF ONE DOLLAR SIZE MELROSE HAND LOTION OR HAND CREAM

FREE SUGAR
5 lb. bag
WITH PURCHASE OF ONE DOLLAR SIZE MELROSE HAND LOTION OR HAND CREAM
\$1.63 Value for \$1.00

INSTANT FOLGER'S
10 oz. Jar **1.29**
6 oz. Jar **89c**

FREE JELLO
14 Flavors to Choose From
WITH PURCHASE OF ONE DOLLAR SIZE MELROSE HAND LOTION OR HAND CREAM
\$1.68 Value for Only \$1.00

LANES FESTIVE 1/2 gal. cartons
ICE CREAM 2 \$1

EASY FIX FROZEN FOODS
SNOW PEAK VEGETABLES
Peas, Corn, Mixed Vegetables, Lima Beans or Cut Green Beans
3 1 1/2-Lb. Bag \$1

EASY FIX FROZEN FOODS
PATIO DINNERS
Mexican, Cheese Enchiladas or Enchilada
3 Your Choice \$1

PEAK SAVINGS FLOUR
25 lb. Bag \$1.89

BIG BARGAINS
MRS. MARSHALL'S
PECAN PIES
36 oz. or over **69c**

SUMMIT SPECIALS
FRESH
TOMATOES
19c

GIANT SAVINGS
U.S. NO. 1 RED
POTATOES
20 lb. Bag **79c**

CLAY Food Store

COUNTY AGENTS REPORT

BY CHARLES D. JACKSON

MODERN WOODMEN of America
44th Anniversary
Savings Plan
Retirement Program
For the Entire Family



EMORY ARCHER
District Manager
Sayre, Okla.
Phone: WA 8-3286

DR. M. V. COBB

Chiropractor

Phone BL 6-1133

310 South Main
Shamrock, Texas

DR. R. J. MADSEN, Optometrist
IN SHAMROCK; SATURDAY, 9:00-5:00
Eyes Examined — Contact Lenses — Visual Training
OFFICES: Amarillo—512 West 8th Phone: DR 3-6621
Shamrock—Community Center

JOHN C. VISE AGENCY

Representing

Aetna Insurance Co. & Aetna Fire Underwriters Ins. Co.
ALL TYPES OF INSURANCE

OFFICE: Phone 5241

110 Jackson St. Wheeler, Texas



WITH JUDGE

JESSE OWENS

Place 1 Railroad Commission

END THE 8-DAY ALLOWABLE FAMINE
PROTECT PROPERTY RIGHTS
STOP FRESH WATER POLLUTION

CHEVY II by Chevrolet

How to get away from it all including the high cost of travel!

A Chevy II Station Wagon is the way to get the whole family there and back on a small vacation budget. You get 76 cu. ft. of cargo space for less than you'd pay for most sedans. You get money-saving, easy-care features, too. And you'll go so far between gas stops you'll think we built in a



spare tank. And now that it's Trade 'N' Travel Time at your Chevrolet dealer's, you'll never find a better time to buy a Chevy II. There's a wide range of engines and transmissions to choose from. And whatever you pick, you can be sure you'll always get a good run for your money.

Chevy II Nova 4-Door Station Wagon



CHECK THE T-N-T DEALS ON CHEVROLET · CHEVELLE · CHEVY II · CORVAIR AND CORVETTE NOW AT YOUR CHEVROLET DEALER'S

WARE CHEVROLET CO. Phone 3101 WHEELER, TEX.

were set at 231 million pounds for 1964, 240 million pounds in 1965 and 248 million pounds for 1966.

Meat imports have created more interest among livestock producers than any other topics of discussion in recent months. Almost any Wheeler County livestock producer will bring up the subject of meat imports when a conversation arises concerning the cattle business.

Australia and New Zealand are the principal supplies of meat imported into the United States. Together they account for over 3/4 of the U.S. imports of meat. Our Department of State has made an agreement in recent months to limit exports to us. The government of Australia has agreed to limit shipments of beef, veal and mutton in all forms other than canned, cured, cooked and live animals; however, New Zealand export agreement covers only beef and veal.

Exports limits for Australia in 1964 will be 542 million pounds, in 1965 it cannot exceed 562 million pounds product weight. Similar limits for New Zealand

The quantity allowed in 1964 reflects the average level of U.S. imports for each of the Countries during 1962 and 1963. Quotas set for the future years are based upon a calculated Annual Growth Rate of 3.7 percent per year. Included in the agreement is for a review of this growth factor, and an appropriate adjustment every 3 years.

Both exporting countries have also agreed that the preparation of primal cuts should not exceed approximate current levels. Each of these agreements has been made for an indefinite duration and may be terminated by either party upon at least six months notice prior to the end of the current year.

Ireland which exports about 7 percent of U.S. imports to the U.S. will limit exports to the U.S. in 1964 to 76 million pounds, in 1965 to 79 million pounds and in 1966 to 82 million pounds as in the previous agreements, the quantities specified for 1965 and 1966 are also calculated at an annual growth rate of 3.7 percent per year. It is also received every three years to see if adjustments need to be made.

It has been said that meat imports represent around 12 percent of our annual meat consumption.

Screwworms are on the move in Texas, and livestock producers must take precaution in handling their livestock if they do not want the insects to spread across the state.

Several infestations have already been detected in various parts of the State, and, with the coming of Spring weather and an increase in livestock management practices, few areas can be counted completely safe from screwworm attack.

Spring is ideal period for screwworms because of the mild, moist weather. In addition, such activities as calving, farrowing and shearing, along with routine surgical operations, provide thousands of wounds that are open invitation to screw-

worm infestation.

Many farmers and ranchers are reported not using smears, sprays, or other screwworm preventative, and are allowing their animals to go unchecked and untreated. This practice could quickly result in an explosion of screwworm cases in this County and throughout the State.

Although the statement recently released by the Southwest Animal Health Foundation, the United States Department of Agriculture, and the Texas Animal Commission that screwworms have been eliminated from the over-wintering areas of the Southwest, screwworm cases could occur because of insects migrating into the United States from Mexico. Cases caused by migrating flies, if not detected and treated promptly, could permit the screwworm to become reestablished in Texas.

To prevent this from happening, I urge producers to inspect their livestock frequently, treat wounds and infestations, collect larvae samples, and report cases immediately so that emergency measures can be taken. Sterile screwworm flies will again be dropped near all cases reported.

FRIENDLY QUILTING CLUB

The Friendly Quilting Club met on regular quilting day March 24, with Mrs. Julia Williams and Eula Johnson as hostesses. The quilts were not completed so they will be hostesses next quilting day, which will be April 7. The second Tuesday is supposed to be regular quilting day, but due to losing so much time during the snow, it was voted to quilt the 7th and also the 14th in order for all members to have a quilt quilted this year.

A delicious meal was enjoyed at noon. A regular meal will be served this next time also, so members may bring any kind of a covered dish instead of salad as has been for some time. The following members and visitors were present: Dutch Berry, Aline Corse, Mary Farmer, Bobbie Elmann, Clara Hoffer, Sallie Ring, Georgia Corse, Julia Williams, Eula Johnson and Ora Lee Underwood.

Historical Society Meets

The Wheeler County Historical Survey Committee met for a business session at the home of Mrs. H.M. Wiley in Wheeler, Saturday afternoon with seven members present. Mrs. Grady Harris presided over the meeting. Medallions have been secured for the oldest standing homes in the County. The State has approved these medallions and plaques for each one has been applied for. The plaques gives the date of construction and who built the houses. The above approved medallions are: The Frye rock home on the Tom Puryear ranch; The rock house, built by Tom Baley, on David Britt's ranch; The Rock School cared for by Mr. and Mrs. Tom Britt on his ranch. Plaques have also been applied for each of the above buildings which gives the date of construction and by whom.

The committee agreed to apply for a plaque to place at the original flag pole which stood at Fort Elliott and is still in use at the Old Jail in Old Mobeetie.

A dedication ceremony is planned at a later date in behalf of all the Historical Medallions and plaques acquired for Wheeler County. The reconstruction of Fort Elliott was discussed, but no definite plans have been made.

Mrs. Wiley served refreshments of tea, coffee and cake to Mrs. John Harvey, Mrs. George Stanley, Mrs. Lillie Trostle, Mrs. A.R. Hugg, Mrs. Clyde Whittle and Mrs. Grady Harris. A social hour was enjoyed.

CARD OF THANKS

We are very grateful for the "shower of birthday cards," on Mother's 80th birthday.

This brought a great joy to our mother's heart and brightened her life in a great way.

May God bless you.

Mrs. Wright Harbour and Miss Mary Lou Harbour.

IT'S A BOY

Pfc and Mrs. Kenneth D. Errington of Ft. Eustis, Virginia are the proud parents of a baby boy, born March 25, 1964. He weighed 7 lbs. 2 oz. and has been given the name of Bret Duane.

Grandparents are M. and Mrs. R.A. Leamon of Reed, Oklahoma. Great-grandmother is Mrs. J.B. Roper of Wheeler

BRISCOE 4-H CLUB

By Richard Meadows

The Briscoe 4-H Club met Monday in the Briscoe Club House with nine members present. Cathy Childress led the Pledge to the United States Flag and John Meadows led the 4-H Motto and Pledge.

The topic of the program was Method Demonstrations. Cathy Childress gave her demonstration which she will enter in the County Elimination on April 18th. Her demonstration is on Food and Nutrition. John Meadows, gave his presentation, the fun act, which is a song called "Cow Town" Recreation was led by recreation leaders, Bill Walker and Richard Meadows.

Refreshments were served by Cathy Childress to the following members: Bill Walker, John Meadows, Richard Meadows, Cathy Childress, Kay Childress, Judy Finsterwald, Mary Puryear, Helen Puryear and to the adult leader, Mrs. Jeff Puryear.

WHEELER TOPS CLUB

The Wheeler Whittlers Tops Club met Monday evening with 10 members present. Roll call was answered with a hint for easier diting. A total of 11 pounds was lost by members for the week.

After a short business meeting, a song session and refreshments was enjoyed by all. Any one wishing to visit the Tops Club is welcome to meet Monday evening at 7:30 at the Library Building.

Mr. and Mrs. Garland Parks and son of Lubbock and Richard Parks of Abilene, visited with their parents, Mr. and Mrs. L.A. Parks, over the Easter Holidays.

Mr. and Mrs. Bill Errington and family of Amarillo spent the Easter Holidays with his parents and sister, Mr. and Mrs. R.E. Errington and Brenda of Kelton, Mrs. J.B. Roper had Sunday dinner with them. Mr. and Mrs. R.A. Leamon and Marie of Reed, Oklahoma visited in the afternoon.

Mr. and Mrs. R.E. Errington and Brenda, visited Monday night with her sister, Mrs. J.E. Willard, who is in the Shamrock Hospital. They also visited with Mr. and Mrs. Leroy Walls and family in Shamrock.

Mrs. R. Wm. Brown, Mr. and Mrs. Richard Brown, Beth and Rich spent Easter with Mrs. Rich Brown in Canadian.

THURSDAY, APRIL 9, 1964

Mr. and Mrs. Randy Callan and son Brent visited her mother, Mrs. Obeta Vanlandingham in Bowie over the Easter weekend.

Mr. and Mrs. Cecil Lanning and children, Roy and Judy, visited Mr. and Mrs. Bill Osborne of Eldorado, Okla., Sunday night and Monday.



What else is there to say about the Morning Glory Champion "Dream Team"?

There's a lot more to say. You can pay more money but you cannot get more health-giving rest... even with a mattress selling for as much as \$79.50. The Morning Glory Champion "Dream Team" interspring mattress and custom-matched box springs are built to provide maximum sleeping comfort at the best value possible. Come in today and ask about the many "worth more" features of the Morning Glory "Dream Team." Morning Glory Champion mattress... \$59.50. Matching box springs, also... \$59.50.

We also have on special price, the 312 coil mattress. It will pay you to see this real special at \$69.95 for both mattress and springs box.

LEE HARDWARE & FURN.

DEKALB

the New-Revolutionary
Cotton Seed
is here!

New Vigor • High Germination
Fast Growth • Early Maturity
Good Staple • Strong Fiber
HIGH YIELD!

"DEKALB" is a Brand Name.
HAS A BEE IN ITS BREEDING

Direct from the Breeder

A-B FARM SUPPLY

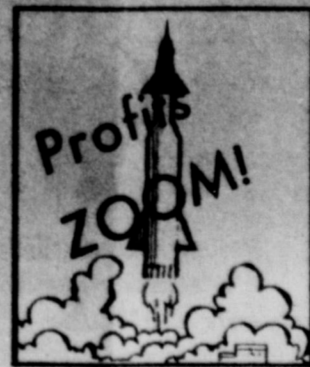
SPACE AGE PROGRESS IN AGRICULTURE

BEST'S PHOSTEMIC-D FERTILIZERS

PHOSTEMIC-D is a systemic insecticide which is taken into plants by their roots. When placed in soil near germinating seeds, the plant is immediately supplied with built-in protection from aphids, thrips, mites and many other sucking insects. This built-in protection lasts six weeks and often times longer. Phostemic-D does not harm lady beetles, lace wings, pirate bugs and other predators that feed on destructive insects such as boll worms, fleahoppers, lygus bugs and leaf worm - thereby your PROFIT ZOOMS!

More details coming in 2 weeks.

You Get Results With
BEST FERTILIZERS



Fertilize and control insects in one operation

No nozzles or strainers to clean
No drift of dust or spray
Harmless to predators
Easy to apply

no extra handling
No measuring or mixing
No water to haul
Less cost

Available

ONLY at your BEST Dealer

(Book early to assure timely delivery)

R & R FERTILIZER

PHONE 5261 WHEELER, TEXAS

MEET NEXT FOR TRACK

Wheeler did not fair too well at the Amarillo Relays which they attended the past weekend. In previous relays they came out close to the top, but this time they were competing with Class AA and Class A teams which have a larger group of boys going out for track.

The Wheeler Teams won every heat they entered. However, only two made the semi-finals. Bobby Vampool

Spring

at McILHANY'S
Soft and comfortable HUSH PUPPIES in new spring styles for men, women and boys.

New S-T-R-E-T-C-H sportswear, just arrived, girls CAPRI PANTS and JAMAICA SHORTS with matching tops.

Ladies stretch denim JEANS

See our many new SPRING MATERIALS in "whipped cream," "ice cream" oxford cloth, seersuckers, and dacron prints.

BRA SALE--A close-out of "name brand" bras, sizes 32,34,36 for \$1.00 EACH.

Padded BRAS for \$1.50
Playtex long-line BRAS--\$1.00 OFF.

New in men's and boy's wear: Large shipments of STRAW HATS; SUMMER SPORT SHIRTS including the new jac-shirt, Marx & Haas slacks, walking shorts, and summer foot-wear.

made semi-finals in 100 yard dash and Dunk Potter made semi-finals in the low hurdles.

Saturday, the team will travel to Amarillo where they will compete in the District Relays at Lefors. This is the meet that the team has been training for as they will be competing with teams in their class. Participating in the meet besides Wheeler will be Briscoe, Mobeetie, Allison, and Kelton. The Field events will start at 9:30 and the running events will start in the afternoon.

Come and hear the Wheeler and Hemphill County candidates speak at the Candidates' Rally, April 13th, at 7:30 p.m. and eat "homemade" ice cream and cake with the Allison WSCS Ladies while there.

APOLOGIES TO ROBERT

In reference to last week's paper, the Cub Scout reporter forgot to mention one Scout that received an award at the March 27th Pack meeting. The Scout was Robert Henderson who received 2 arrows for the Wolf Badge.

Sorry I overlooked you Robert.

LEGAL NOTICE

THE STATE OF TEXAS, COUNTY OF WHEELER

TO ALL PERSONS AND PARTIES INTERESTED IN THE ESTATE OF LYDIA WOLF, A PERSON OF UNSOUND MIND:

You and each of you are hereby cited, required and commanded to appear before the County Court of Wheeler County, Texas, to be held in the County Court House of Said County in the City of Wheeler, such appearance to be at or before 10 o'clock a.m. on the first Monday next after the expiration of ten days from the date of service, exclusive of the day of such service, which day and date of service shall be the date of publication of this newspaper bears, and which day of appearance

Cont'd—QUAKE

I tried to send out a letter Saturday morning and that night a message out to Larry and Aunt Cora by a short wave operator. I hope none of you worried too much.

Mike probably won't go to school until the later part of the week. One of the high schools is out and they will have to double up.

Anchorage is a mess and it will take a lot to get it back in shape. When we can, we will try to send all of you at least one paper. All the papers outside have sent up reporters and you should see some of it in the outside magazines. I heard some talk over the radio. So lots of love to all of you and when things get down to normal I will write again.

The railroad is a mess and will take a lot of fixing up. Don't know when we will get mail.

Ivan says this letter is a mess and I don't doubt it, but I couldn't do better tonight if I tried. At least I got a little news to you.

By
will be the 20th day of April 1964, and contest by filing written answer of contest if they or any of them see proper so to do, a verified account, the nature of which is an account for final settlement of such estate which has been filed by D.O. Beene, Guardian of the Texas estate of Lydia Wolf, a person of unsound mind, and is now pending there, in probate proceedings on the Docket of said Court styled Estate of Lydia Wolf, a person of unsound mind, the file number of which is 1340, which account will at such 10 o'clock hour, on such day, and such place be considered by the Court.

If this citation is not served within 90 days after date of its issuance it shall be returned unserved.

Herein fail not but have you before said court at or before such hour on said first Monday after such service is perfected which will be the said 20th day of April 1964, this citation with your return thereon, showing how you have executed the same.

Witness the Clerk of the County Court, of Wheeler County, Texas.

Harry Wofford, Clerk of the County Court of Wheeler County, Texas—Elsie Langley, Deputy.

Given under my hand and seal of said court, at office in the City of Wheeler, Texas, this 6th day of April, 1964.

Mrs. Dixie Price spent the weekend with the Marj Jacobs.

BRISCOE NEWS

By Winnie Smith

Last week's volleyball game scheduled for Thursday was postponed until this Thursday at 5:30 at Wheeler.

Mrs. Tom Helton visited with Mrs. Travis Keelin while Wednesday morning with Mrs. Travis Keelin, Mr. and Mrs. Jimmy Selby and children had Sunday dinner with Mr. and Mrs. Jim Selby.

Mr. and Mrs. Albert Walker, Peggy and Allen, visited relatives in Amarillo Sunday.

Mr. and Mrs. John D. Foreman and Sharee of Lubbock spent the weekend with her parents, Mr. and Mrs. Grady Dodd and Diane.

Those having dinner Sunday in the home of Mr. and Mrs. Venson Smith, Winnie

BOWLING

Schedule for Mon., April 13th
Mustang Bowl vs. Fire Department— -- -- --7:00
Chapman Truck Stop vs. Vanpool Burton Mtr.—7:00
John C. Vise Agency vs. Packer Drilling— -- --9:00

Mr. and Mrs. C.C. Jones have just returned from a trip to Arizona and California. They visited Mr. and Mrs. Oliver Glenn at Mule Shoe. Mrs. Glenn is the former Jewel Rimer of Wheeler.

Mr. and Mrs. Darville Aherton and family visited with Mr. and Mrs. T.O. Bradstreet Sunday afternoon.

Mr. and Mrs. David Crouch, Jeff and Brad of Amarillo, spent the Easter Holidays with her parents, Mr. and Mrs. Nelson Porter.

Mrs. Joyce Barnes and children visited the Buster Callan's over the Easter weekend.

HORSE RACING

AT THE
McLEAN RACE TRAINING STABLES
McLEAN, TEXAS

SUNDAY, APRIL 12

\$25 EACH ENTRY
PRIZE: 60% -30% -10%
DISTANCE: 220 YARDS TO 1/2 MILE
10 PURSE RACES
6 HORSES EACH RACE
Post Time : 1:00 P.M.

Florence Dodd, and Mrs. John McCarroll Saturday afternoon.

Mr. and Mrs. Jack Helton and children of Lubbock visited the Tom Heltons over the weekend.

Mr. and Mrs. Richard Smith and children of Shamrock had supper Saturday evening with Mr. and Mrs. Venson Smith and family.

The B.F. Meadows had dinner Sunday with the Fulton Meadows.

Mr. and Mrs. Guy Brown spent Saturday night with her sister, Mrs. Travis Keelin and family.

Mary D. Zybach spent Sunday with Brenda Horn.

Tom and Jack Helton and Grant Meek visited the Grady Dodds Sunday.

Mr. and Mrs. Thurman Horn and children visited Mr. and Mrs. Grant Meek Friday evening.

Mrs. Travis Keelin visited her mother, Mrs. Marvin Bradstreet, Thursday. She also visited Mrs. Guy Brown.

Those having supper Sunday in the Venson Smith home were Reuban and Darrel Silva, Mr. and Mrs. Richard Smith and family of Shamrock and L.A. Walker Mr. and Mrs. Clark Reagan visited the Milton Finster-Walds Sunday.

Mrs. Dave Croslin and children and Mr. and Mrs. Oren Horns visited the Thurman Horns Sunday.

Von Nell Hughes of Canadian visited the B.F. Meadows Sunday.

Those receiving recognition of their work at the Interscholastic League were Prose; James Hefley, second; Poetry; Ronny Hays and Beth Hefley, third; Ready Writing; Beth Hefley, first.

James Hefley was on the honorable play cast at Miami Friday evening.

Cont'd—Church

there will be a special program for all the young people of this area. Beginning at 2:30 p.m. with singing Bible reading, followed by a lesson specially prepared for this occasion by Bro. Robertson.

The public is cordially invited to attend these informative meetings.

Shamrock Slaughter and Locker Plant

● Custom Butchering
● Lockers to Rent
BL 6-3241 Shamrock North Highway 83

FREE! WIN YOUR CHOICE OF FIVE 1964 CARS

FREE! 10,000 SETS OF 4 GENERAL DUAL 90s

BONUS!

WIN A 1964 CAR FREE! OFFICIAL ENTRY BLANK

Name _____
Address _____
City _____ Phone _____

RULES: Just fill out this official entry blank and bring or mail it to your nearest General Tire Dealer before midnight May 15, 1964, or write for official entry blank. No obligation. Nothing to buy. You may be one of five winners eligible for a choice of a Chevy Impala, Ford Galaxie 500, Plymouth Fury or Rambler Ambassador. Drawing of completed official entry blanks will be conducted by D. L. Blair Corporation, an independent organization. The first five cards drawn will be the winners. Not valid where restricted or prohibited by Federal, State or local laws. Redeemable only by licensed drivers. Not open to personnel of The General Tire & Rubber Company, its dealers, its advertising agency, nor to the employees of D. L. Blair Corp. and their families. Winners will be notified by mail.

OWEN'S SERVICE

QUARTERLY REPORT

COUNTY TREASURER, WHEELER COUNTY, TEXAS
QUARTERLY REPORT ENDING MARCH 31, 1964

| FUNDS | BALANCE OCT 1-1962 | RECEIPTS FOR THE YEAR | BALANCE PLUS RECEIPTS | DISBURSEMENTS FOR YEAR | BALANCE |
|--------------------|--------------------|-----------------------|-----------------------|------------------------|---------------|
| JURY | \$ 4,148.01 | \$ 1,246.41 | \$ 5,394.42 | \$ 770.00 | \$ 4,624.42 |
| ROAD BRIDGE GEN. | 3,053.83 | 21,372.19 | 24,426.02 | 11,256.67 | 13,169.35 |
| PCT. #1 | 12,486.01 | 10,752.20 | 23,238.21 | 12,065.74 | 11,172.47 |
| PCT. #2 | 6,716.37 | 8,895.72 | 15,612.09 | 11,306.27 | 4,305.82 |
| PCT. #3 | 4,421.70 | 12,361.99 | 16,783.69 | 12,311.85 | 4,471.84 |
| PCT. #4 | 24,724.45 | 14,077.91 | 38,802.36 | 8,831.89 | 29,970.47 |
| COUNTY GEN. | 44,131.84 | 132,599.25 | 176,731.09 | 79,040.71 | 97,690.38 |
| COURT HOUSE & JAIL | 908.99 | 11.14 | 815.13 | - | 815.13 |
| LATERAL ROAD | 808.43 | 57,716.00 | 58,524.43 | 13,976.51 | 44,547.92 |
| ROAD BOND | .80 | - | .80 | - | .80 |
| WCRB War '47 | 466.97 | - | 466.97 | 454.12 | 12.85 |
| WCRB Sinking | 1,087.84 | - | 1,087.84 | 1,055.64 | 2.20 |
| Permanent School | - | 9,202.83 | 9,202.83 | - | 9,202.83 |
| TOTAL | \$102,784.34 | \$ 288,235.74 | \$ 371,020.08 | \$ 151,069.40 | \$ 219,950.68 |

PALMER SIVAGE, County Treasurer



WATCH AND WIN

Visit your electric appliance dealer this week. See a demonstration of an electric freezer, range, dryer or dishwasher — or all four. You may win the very electric appliance you've seen demonstrated because it's WATCH AND WIN TIME. You need be 21 or married and live in the area served by Southwestern Public Service Company. It's your opportunity to see the latest in better living electric appliances — and perhaps be a winner.



THE BUSINESS DIRECTORY

The Wheeler Times
 TEXAS PRESS ASSOCIATION
 Member 1963

Published every Thursday at Wheeler County Texas By ...

The Wheeler Times

Entered as second-class matter December 18, 1933, at the Post Office at Wheeler, Texas, under act of March 3, 1879

Louis C. Stas, Owner and Publisher

SUBSCRIPTION RATES:
 Wheeler County ----- \$3.00
 Outside Wheeler County ----- \$4.00

READ & USE the WANT ADS

Stucco, Painting and Remodeling. Carroll Adams. Phone 4691, Wheeler.

FOR SALE: Shetland Ponys for the Kiddoes. Shelby Pettit. rt

FOR RENT: 4 rooms and bath. 812 Sweetwater. Call 3721 rtn-4

FOR SALE: Starkey Calf Tables. Cuts labor and time and casualties 50 percent. The best Calf Table on the Market. Only \$225. Wheeler County Produce

Better Farm Living thru

Home Modernization can be financed with a long term ...

Low Payment . . . Federal Land Bank Loan. For details, see RAYBURN L. SMITH Manager 11 North Main Street Shamrock, Texas

For Rent: Furnished or unfurnished 2 bedroom. See Cecil Denson Rtn

For Rent - 2 bedroom house Call J.E. Hubbard after 5. 2tc

For Pickup & Delivery

Call 2881

CITY CLEANERS

For Sale: A Farnall Tractor and equipment and a Ford Tractor and Beater. See Ed Trimble rtn

For Rent - 3 Bedroom House See J.H. Mason. rtn

Get Your Cotton Seed Delinted NOW!

Wet Acid Process Phone 447-2585 Dick Sweat, Mgr. WELLINGTON COTTONSEED DELINTING CO.

Just South Of Town On Highway 83

HOUSES FOR RENT. Contact Morgan Price 3671 rtn-7

Will do ironing at my home. Minnie Dee Weeks 410 Mobeetie 2tp-13

TRY A CLASSIFIED AD

Registered White Poodle at Stud and Registered Red Dashed at Stud - See Randy Callan - Phone 9061 or 2101 rtn

For Sale: 33 Registered and Pure Bred Polled Hereford Bulls, 10 to 18 months old \$150 to \$200. Y.C. Fuchs, Jr. Grimes, Okla. 4 East, 1/2 No. 1/2 East of Sweetwater, Okla. 3tc

For Sale - 5 Top Jersey Heffers - Be fresh in a few days Subject to Register See W.H. Templeton, Wheeler, Texas 2tp

For Sale: Four Room House 608 Main Donald Reeves rtn

For Sale: Registered Angus Bulls. Lindsey McCasland rtn

Appaloosa Stallion - Standing Stud - \$50.00 Fee - Return in season. Frank Walker, Jr. Phone 3622 rtn

For Sale - Winegard Powertron T.V. Antenna, Antenna rotar and 40 ft. mast. Will install. W.R. Lasater, Twitty - Bl 6-824 rtn-14

For Sale: 2 Wheel Trailer without bed. Has 600-16 tires. All for \$10.00. Marl ltc

For Sale: 1959 Automatic Washer - Lee Hardware rtn Mrs. Less Andrew and Earl came Sunday to get Mrs. S.W. Williams who had been visiting the Marl Jacobs since Wednesday.

Mr. and Mrs. Bill Helton and children spent the Easter weekend with their parents, Mr. and Mrs. Cecil Richerson and Mr. and Mrs. Tom Helton of Briscoe.

Examining Trial

An Examining Trial was held Tuesday for the trio arrested Sunday morning and the men were charged on 2 counts each and the woman on 1 count. Bond was set at \$3,000 each count on the men and \$3,000 for the woman. One of the men is a four time loser and the other man is a two time loser.

F.H. Perryman from Amarillo, Mr. and Mrs. J.D. Dearen, son, Roy and daughter, Tammie, spent Easter with Mr. and Mrs. J. Tom Dearen and Mrs. C.J. Meek.

CITY ELECTION

A total of 91 votes was cast in the City Election Tuesday, April 17th. Results were as follows:

FOR MAYOR:
 Archie Hibler - 87
 Don Earney - (write in) - 3

FOR COUNCILMEN
 (2 to be elected)
 L.A. Parks - 50
 O.B. (Pete) Burton 56
 Carroll Adams - 11

W.D. Mitchell - 60
 Mrs. Harold Austin visited Mrs. T.O. Bradstreet Tuesday afternoon.

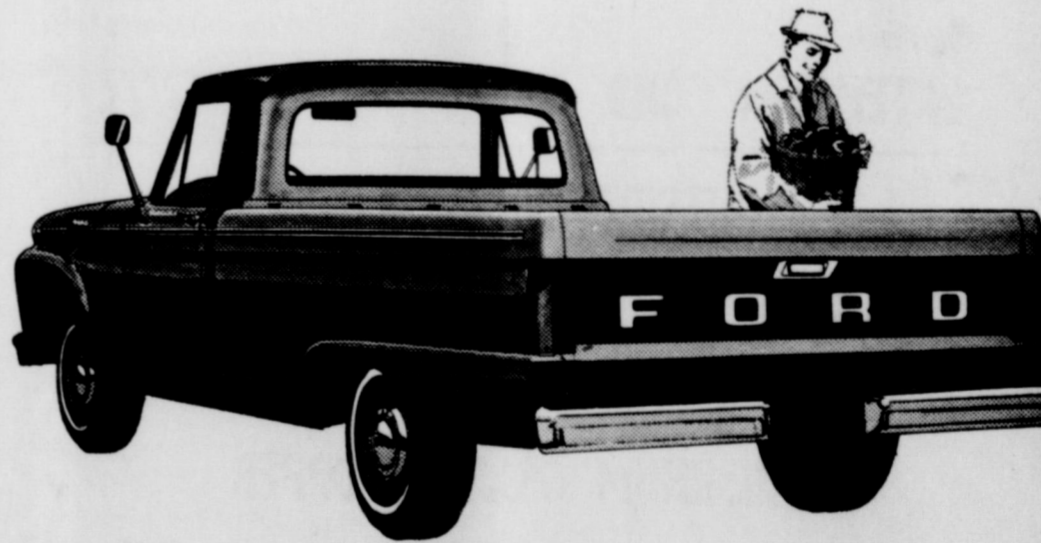


RECEIVE A DELICIOUS, CHOCOLATE-COATED MINT AT CHECKSTAND TAKE A "LUCKY BITE"!

- ★ IF THE MINT IS GREEN, YOU WIN 10,000 TOP Savings Stamps!
- ★ IF THE MINT IS PINK, YOU WIN 500 TOP Savings Stamps!
- ★ IF THE MINT IS YELLOW, YOUR GROCERIES ARE FREE!
- ★ IF THE MINT IS WHITE, YOU JUST HAD A DELICIOUS WHITE MINT!

RULES: Everyone passing through checkstand receives a delicious, chocolate-coated mint, absolutely FREE! No purchase is required. Only adults are eligible to play "Lucky Bite". Only one "Lucky Bite" per person per day. Only one adult member of each family, or group, may take the official "Lucky Bite". No employee or immediate family member of employee may participate. We reserve the right to have a qualified inspector check the validity of each winning mint.

EXCITING! TASTY! FUN FOR EVERYONE!



WHO brings you the BIG NEWS in pickups for '64?

BIG NEW DOUBLE-WALL BOX WITH EASY ONE-HAND TAILGATE
 Rugged double-wall Styleside box... stronger inside, steeper outside. New tailgate can support a ton!

NEW BIG SIX ENGINE
 Now available... 262 Big Six for top power and economy! Eats up the miles, not the gas!

NEW "BIG CAR" RIDE
 New 128-in. wheelbase, longer than many luxury cars, gives you the smoothest pickup ride yet!

BIG NEW SAVINGS
 New self-adjusting brakes! New, up to 32% longer lining life! New double-life muffler, tailpipe!



BUILT LIKE THE BIG TRUCKS, WITH A BIG COMFORT BONUS

Who but your **FORD DEALER**

Vanpool - Burton Ford

Phone 2311

Wheeler, Texas

FIGURE ON SAVING **BIG ON GOOD FOOD**

CRISCO 3 lb. can **79¢**

FLOUR PURASNOW 10 lb bag **98¢**

HIC **ORANGE** 46 oz. can **35¢**

SALAD BOWL FRENCH DRESSING 8 oz. bottle **19¢**

WHITE POTATOES 20 pound bag **59¢**

CALIF LEMONS doz. **39¢**

TOP O' TEXAS **SAUSAGE** 2 lb. Bag **53¢**

PANHANDLE QUALITY **BACON** 2 lb. Pkg. **79¢**

SOUTHERN DELIGHT **BISCUITS** 4 Cans **29¢**

BISQUICK 40 oz. box **49¢**

BAMA JAM 18 oz. glass **39¢**

DIAMOND CATSUP 2-12 Oz Bottles **29¢**

WILSON **CHILI** 1 1/2 lb. can **53¢**

RANCH STYLE **BEANS** 2 No. 303 Cans **29¢**

HUNTS **PEACHES** 3 No. 2 1/2 Cans **89¢**

Double Stamps Every Wednesday on Purchase of \$2.50 or More These Prizes Good Friday and Saturday
Puckett's WHEELER, TEXAS FOOD MARKET

Dr. Marion N. Roberts
 OPTOMETRIST
 112 W. Kingsmill
 Pampa, Texas

FOR ALL YOUR **Farm Supply Needs** WHEELER COUNTY PRODUCE Wheeler, Texas

Let Me Write It... **GEO. RICHARDSON** All Types Of INSURANCE

GUARANTEED AUTO GLASS INSTALLATION & Body Repair GARRISON SERVICE Wheeler, Texas

We can supply all your needs for... **READY MIX CONCRETE** BATCH DESIGN MADE AND APPROVED BY AMARILLO CONCRETE TESTING LABORATORIES. **Redi-Mix Concrete Plant** Ned Bearrow Mtr. & Sales Hwy. 83 N. Phone BL 6-2243

REPAIR - REMODEL - LOANS - NO MONEY DOWN Loans For: Bath Rooms Additions to Houses, Barns, and Chicken Houses Meet Any Type of Repair Work **FREE ESTIMATES** **Wheeler Lumber Co.** Phone 3431 Wheeler, Tex. Fine Service for Fine People Wayne Edwards - 3691 T. M. BOWMAN - 4852

AUCTIONEER **SHELBY PETTIT** Phone 3361 - Wheeler, Texas Will cry your sale any time or place

FLOWERS FOR ALL OCCASIONS **Halls Flower Shop** Wheeler, Texas

REPAIR & REMODEL LOANS Up to 60 Months to Repay **LOAN PAYS LABOR** Revolving Accounts are available for short term loans **CICERO SMITH LUMBER CO.** Wheeler, Texas

SAW SHARPENING All Kinds Satisfaction Guaranteed **Mobeetie Saw Shop** R. St. John Phone 845-2353 Mobeetie

Expert **BLACKSMITHING** ♦ Welding ♦ Repair ♦ Portable Welding **A&K Welding Shop** Boyd Austin & Lonnie Kenney 1 mi E of Red Light on 152 Wheeler, Texas Phone 3006

Attention... See Me For All Of Your **DIRT WORK** ● TANKS ● TERRACES **Bill Topper** Phone 2861 - Wheeler or BL 6-3788 - Shamrock

WHEELER MACHINE SHOP "General Machine" & Welding Box 51 Wheeler, Texas "Corner 152-83"

ZENITH TV - RADIO SALES & SERVICE Call 2231 Wheeler Radio & Refrig. Service L. C. Laflin, Owner

PRINTING

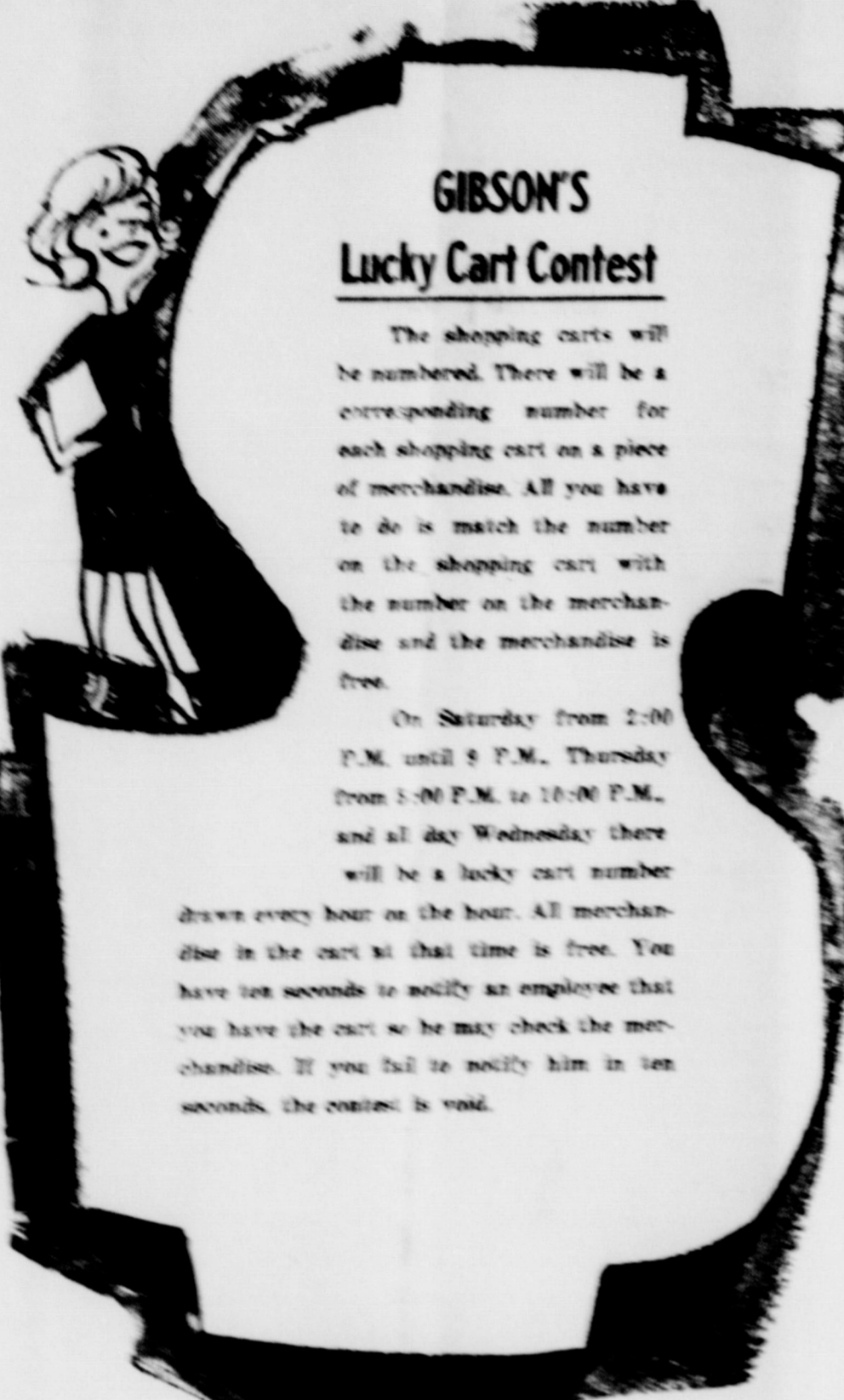
TRACTORS - IMPLEMENTS PARTS and SERVICE **HIBLER IMPLEMENT CO.** Wheeler, Texas

SHOP GIBSON'S AND SAVE

GIBSON'S Lucky Cart Contest

The shopping carts will be numbered. There will be a corresponding number for each shopping cart on a piece of merchandise. All you have to do is match the number on the shopping cart with the number on the merchandise and the merchandise is free.

On Saturday from 2:00 P.M. until 9 P.M., Thursday from 1:00 P.M. to 10:00 P.M., and all day Wednesday there will be a lucky cart number drawn every hour on the hour. All merchandise in the cart at that time is free. You have ten seconds to notify an employee that you have the cart so he may check the merchandise. If you fail to notify him in ten seconds, the contest is void.



WESTINGHOUSE
MIXMASTER
Three Speeds, Beater Ejector
White & Assorted Colors
Reg. 19.95, GDP \$9.97

NEW TILT & POUR
DECANTER
Serves Hot & Cold Liquids
With New Magic Flipper
Reg. 98c, GDP 57c

GARCLA
ASU-MATIC 170
**SPIN
CASTING REEL**
REGULARLY \$28.95
GDP \$14.97



McCLEANS KING SIZE TOOTHPASTE
Reg. 75c, GDP 43c
20 OZ. MUCRIN MOUTH WASH
Reg. 1.29, GDP 67c
16 OZ. LANOLIN PLUS EGG SHAMPOO
Reg. 99c, GDP 57c
LANOLIN PLUS CREAM RINSE
16 OZ., Reg. 99c, GDP 57c
VO-3 GET SET HAIR SET LOTION
8 OZ., Reg. 1.50, GDP 87c

SPECIAL!
SILICONE IRONING BOARD
PAD & COVER

Reg. 1.19
GDP 19c



TOTES CHEST-HI
NO. 70-SG GREEN
Large, Medium, Small
Reg. 12.95 GDP \$6.97

NEW SHIPMENT




Lamp & Lamp Shades

COLEMAN ALL ALUMINUM
3 BURNER STOVE
Reg. 29.95, GDP \$19.95
FREE: Gallon Of Fuel With Any Coleman
Stove Or Lantern

MOSAIC TILE KITS
Reg. 2.98, GDP \$1.47
Reg. 10.98, GDP \$4.47
Reg. 1.49 GDP 97c
Reg. 4.95, GDP \$2.25

Hawthorne Ball Glove
Reg. 6.95, GDP \$3.27
Baseball Bat
With Glove 79c



15 OZ. ADORN HAIR SPRAY
Reg. 2.25, GDP \$1.47
10 OZ. WOODBURY'S HAND & BODY LOTION
Reg. 50c, GDP 29c
32 OZ. Capri Bath Oil, GDP 57c
100 COUNT BUFFERIN
Reg. 1.29, GDP 77c
16 OZ. THE FINEST
Spray Starch, GDP 37c

ALL REVELL AUTHENTIC MODEL KITS
1/2 RETAIL PRICE

WELLES PROFESSIONAL DAD/SDS
SOLDERING KIT
Reg. \$12.95, Gibson Discount Price 697

25 FOOT
EXTENSION CORD 77c

OUTSIDE LIGHT SHADE
With 10 Foot Cord, GDP \$1.47

8" x 30"
ALUMINUM GRASS STOPPER
Reg. 3.95, Gibson Discount Price 87c



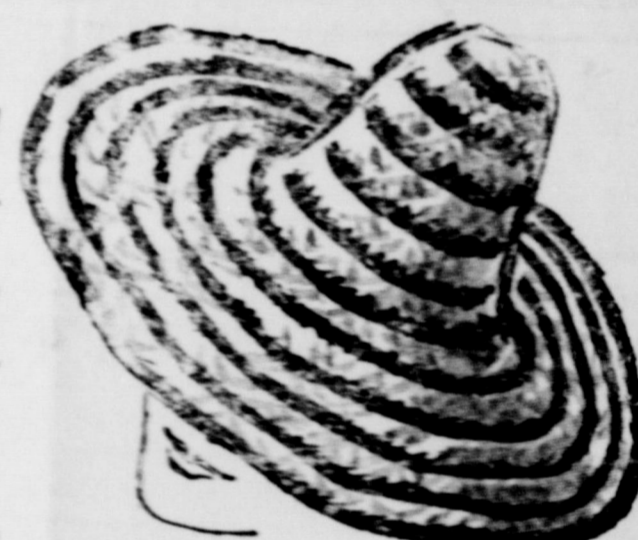
NEW SHIPMENT OF HANDBAGS FOR SPRING
Straws & Others, GDP \$1.97 to \$3.47

ASSORTED CYCLING SIZE 14 TO 17 PRINTS & SOLIDS
WESTERN SHIRTS, Reg. 4.98 to 5.98 GDP \$3.27

MR. TURF'S CRAB GRASS KILLER
POST-EMERGENCE, COVERAGE 2500 SQUARE FEET (50' x 50')
Regularly 5.95, Gibson Discount Price \$2.27

EQUIPMENT NO. 7 (WASH & WAX IN ONE STEP)
WAX WASH, Reg. \$1.00, GDP 67c

3-PIECE W/REEL, AUT. DISCONNECT
Westinghouse AM-FM Radio Reg. 29.95 GDP 25.97



Ladies Ass'd. Colors
**STRAW
BEACH HATS** Reg. 1.49
GDP 77c

GET MORE COMFORT *out of Summer*

7-Strapged, Ass'd. Colors
Chaise Lounges
All Metal Construction
Regularly \$11.95
GDP \$7.77



ASSORTED COLORS AUTO FLOOR COVERS
FRONT & BACK TO FIT ALL CARS

SPECIAL PRICES!

NO. 40 CHRYSLER LAUNCHER MADE IN WEST GERMANY
BAROMETER, Reg. 14.95, GDP 9.97

WESTINGHOUSE
STEREOPHONIC HIGH FIDELITY
Regularly \$99.95, GDP \$71.97

OPEN DAILY 9 A.M. - CLOSED SUNDAY

GIBSON'S DISCOUNT CENTER

"Where You Always Buy The Best For Less"

2201 PERRYTON HIGHWAY PAMPA, TEXAS