

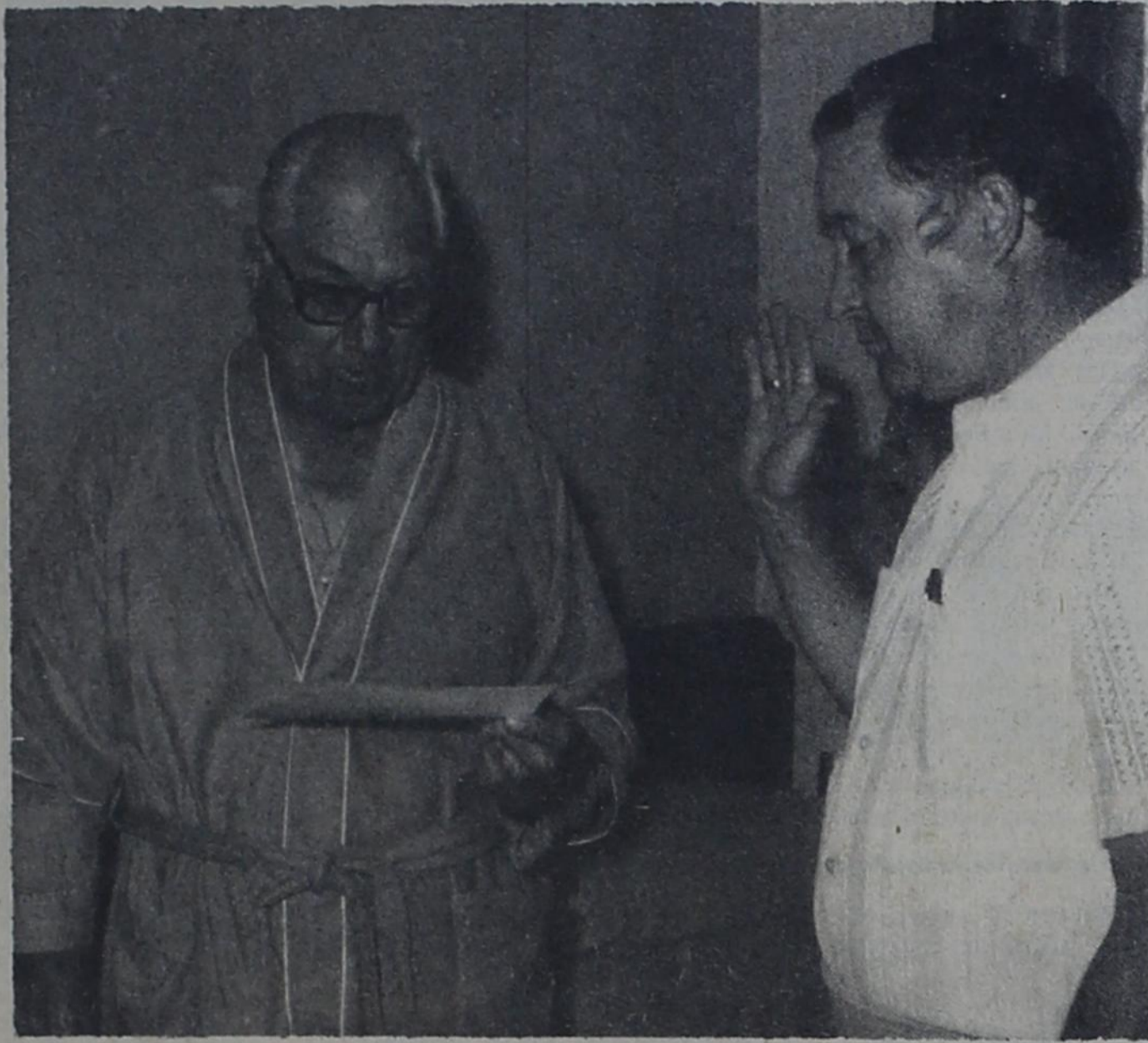


THE WHEELER TIMES

VOLUME 42, NUMBER 33

THURSDAY, SEPTEMBER 2, 1976

Single Copy 15¢



SWEARING IN: Bill Owen, Mayor Pro-tem for the City of Wheeler, administers the oath of office to newly elected mayor, Pete Burton. Burton was elected in a special election Saturday, August 14, and took the oath Wednesday, August 25, at Parkview Hospital. Owen was in the hospital for minor surgery.

Here and There

by Laura Guthrie
Things are going sorta so-so here this week. How is it there? A bright spot however was the "sprinkle" we had Monday afternoon. It may not make the grass grow, but it waded the dust off so that it looks much greener today.

This morning (Tues.) I went to a party. It was a happy thing in the home of Jewel Moore. The Moores have a lovely home and they are unselfish, often sharing it with their friends. This occasion was a little tribute to Bennie Mae Whitener, who is the Sunday School teacher of the ones who attended the party. It was a surprise for Bennie Mae. There was a shower of gifts, tributes made to, and about her, and then coffee and donuts in the lovely back yard. In short we just wanted Bennie Mae to know that we appreciate the effort she makes in searching the Scriptures so she can share them with us on Sunday morning.

Sara Loiselle, of Salt Lake City is visiting here with her sister Tessie Clark and her brothers, Puny, Ben and Bogin Griffin. She attended the party at Jewel Moore's Tuesday morning.

Hazel Parks has just had a trip to New York City. She flew from Amarillo—not even a change of planes enroute. While there visiting her son Richard, she enjoyed a number of nice things that are not available to us in this vicinity. Richard had planned for every day. She attended the Reformed Church, where her son plays the organ. Also there were concerts, symphonies, Broadway shows and a trip to Stanton Island. We remember Richard as a gentlemanly Wheeler youth with ambition. He has been in New York for several years. He plays the organ, teaches music, and has just had some of his own



MAKING WAY FOR PROGRESS: This property at the intersection of highways 83 and 152 in Wheeler is being cleared for the construction of a convenience store. The service station and machine shop was operated for a number of years by the late Fred Farmer. The front part was used by L. & F. Repair when they started in business 10 years ago. The front part was last used for a body shop by Pete Burton. The razing of the building began this week.

music published. He is now taking his Masters Degree in music.

A late word from Robert Brickey, son of Bill and Vera Brickey, says his ship is heading for an eighty day cruise to Europe. He is based at Jackson, Fla. When the present cruise is ended his time of discharge will be here. He hopes to be home for Thanksgiving.

Adrian and Dorothy Risner had planned on a fall vacation, but these hot dry days got so monotonous that they decided to take off for the outlands. So they have been to the land of the pines and pinon, in Ruidoso, N. M. They stayed in The Inn of the Mountain Gods, which is in a new resort development. Adrian got in some golf (on a super course, I bet) while Dorothy just "pined". They both enjoyed drives and sight seeing in the vicinity.

Last weekend Darla and Punk Childress and children of Oklahoma City visited with their parents, Adrian and Dorothy Risner and the Childress family at Briscoe.

WHEELER CHRISTIAN ACADEMY BEGINS SECOND SCHOOL YEAR

School has begun at Wheeler Christian as of Monday, August 23. Students are now turning their thoughts away from summer vacations and activities they were involved in while out of school. They are adjusting themselves now to the business of learning.

Wheeler Christian Academy, as of Wednesday, had an official enrollment of 75 students in the 3 Learning Centers. Mrs. Dorothy Hilpert is the Supervisor (main teacher) in the Kindergarten through 2nd Grade Learning Center. Rev. Norman Hilpert is

Emergency Care Attendant 24-Hour Course Offered

A class for the training of Emergency Care Attendants will be held beginning Monday evening, September 13. The 24-hour course will offer training in splinting, bandaging and CPR.

The course is being offered by the Wheeler County Ambulance Service, and sponsored by Wheeler County. Each class will be held on Monday evening and the instructor will be David Farmer of Amarillo.

The purpose of the course is to train more individuals to help with the operation of the Wheeler County Ambulances. If you wish to take the course, you will not be required to help with the Ambulances. It is simply good training for an individual.

If you are interested in taking the course, you are asked to contact any member of the North Wheeler County Ambulance Corps. Members are: Tommie Hennard, Louis Stas, David Cross, Linda Davis, David Sierra, Roger Bowers, J. Thompson, Leon Sutton, Mike Lightfoot or Gary Davis.

SWCD Directors Attend Meeting

The semi-annual meeting of the Panhandle Association of Soil and Water Conservation Districts was held on August 25, 1976 at Pampa. Clarence Zybach, Chairman of the Wheeler County Soil and Water Conservation District attended along with Paul Macina, Jr., member. They were accompanied by Lavon Williams, District Conservationist of the Soil Conservation Service at Wheeler. These meetings are held on a semi-annual basis whereby Directors of the SWCDs in the Panhandle can get together to discuss mutual problems and possible solutions. Various resolutions are passed to be presented to the Texas Association of SWCDs at their annual meeting. Distinguished guests included Representative Phil Cates of Shamrock.

Some of the basic objectives for a Christian school are: 1. To train young people to know how to live. (This is impossible when God's word is omitted. He's the author of life, and Jesus is the way, the truth and the life. 2. To train young people to honor their country. 3. To train young people to honor their parents. 4. To give them a high quality, individualized academic education.

Rev. Ricky Pfeil, President of W.C.A., said, "We have something to offer young people that they can't get anywhere else in the area. We're thankful to God for the opportunity of having a program like this. We're making an investment in the lives of boys and girls who will live as long as God lives."

Grade Band

The 5th grade beginning band students will start band the 9th of September and I would like to know about anyone that is wanting to sell a band instrument. If you have not contacted me, please do so between now and Monday the 6th. My phone number is 6-5980. Mr. Tracy

MUSTANGS TO HOST IRISH IN PIGSKIN OPENER FRIDAY

All of the color and excitement of high school football is back with us as the 1976 football campaign gets its start this Friday night when the Wheeler Mustangs host the Irish from Shamrock at 8:00 P.M. on Nicholson Field.

You can say that the county championship will be on the line because the Mustangs and Irish are no longer in the same district and this season opener for both teams will have no bearing on either teams district standing.

Not only will the Mustangs be competing in District 1-B this year but they will be directed by a revamped coaching staff.

Preston Smith, formerly the

defensive coordinator at Monahans High School, is the new head coach of the Mustangs and Jim Hester, who coached at River Road in Amarillo last year, is a new varsity assistant.

The Irish will be a formidable foe for Coach Smith's young gridders but if spirit and determination means much then the Irish had better be prepared for a battle.

Picked to finish third in the tough District 2-A, the Irish return a wealth of backfield talent led by quarterback David Ramsey and Coach Ashley Rutherford is counting on his speedy backs to help the Irish make a run at the district championship.

Jackie Thompson, a 175 pound halfback that has been boosted for all-state honors is on the doubtful list for the Irish Friday night because of injuries.

The Mustangs, although quite young and inexperienced, will be led in the line by returning seniors, Jim Verden, Gary Ware, and Darrell Gaines with Verden being counted on to do a standout job both offensively and defensively.

Don Brown and Tony Hefley are the two senior starters in the backfield with Brown running at tailback and Hefley in the wing-back slot.

Only 24 young men came out and weathered the two a day workouts but Coach Smith is proud of this group of Mustangs.

"Numbers don't mean as much as a attitude and desire to play and these young Mustangs want to win and have been willing to pay the price it takes to be a winner," Coach Smith said. "We would like to have had more boys in the program but we only want players and this is what we have and the kids are really looking forward to this game against Shamrock."

Offensively the Mustangs will operate from the power I formation that is familiar to Mustang fans and will use a 5-2 defense with a rover.

The Shamrock game will be the first of only two non district games for the Mustangs in the '76 season. The Pampa JV was scheduled after Darrouzett dropped football and will be played October 14 on Nicholson Field.

An overflow crowd is expected for the Mustang-Irish tilt and the Mustangs need all of their fans at the game to help get the Mustangs off to a winning year and send the Irish back across the river with their first loss.

Blood Pressure Clinic Sept. 2

There will be a free Blood Pressure Clinic for all Wheeler County residents regardless of age, Thursday, September 2nd. It will take place in the south end of the old Nicholson Memorial Hospital on Canadian Street from 9:30-12:00 a.m.

This clinic is sponsored by the Retired Senior Volunteer Program and the Texas Agriculture Extension Service.

Those needing a ride can call Inez Wright at 826-3239.

PROMOTED TO SENIOR AIRMAN

SPANGDAHLEM, Germany—Promoted to senior airman in the U. S. Air Force is John E. Bailey, son of Mr. and Mrs. Jap E. Bailey of Rt. 1, Mobeetie, Texas.

Airman Bailey is assigned at Spangdahlem AB, Germany, as an inventory management specialist, and is a member of the U. S. Air Forces in Europe. The airman is a 1972 graduate of Pampa (Tex.) High School.



CHEERLEADERS: Pictured (bottom) Terrie Collins, Misty Muse and Darla Moore, (second row, left) Cindy Davis—Head Cheerleader and Anne McIlhany, and (top) Terri Rarden.

Local Cheerleaders Attend Camp

The Wheeler Mustang Cheerleaders attended camp June 28—July 3 in Norman, Oklahoma. The cheerleaders are: Cindy Davis (Sr. Head), Anne McIlhany (Sr.), Darla Moore (Sr.), Terrie Collins (Jr.), Terri Rarden (Soph), and Misty Muse (Fr.).

The cheerleaders received three excellent ribbons, one superior, the Spirit Stick, and received the honor of being a Super Star Squad. They learned many new cheers, chants, pom-pom routines, and hand routines.

Windbreakers Are On Sale Now

Wheeler Mustang windbreakers can be ordered this week by Mustang fans. At a meeting of Wheeler Mustang Booster Club Monday evening. Members voted to order lined or unlined windbreakers and caps for fans to wear to various athletic events during the year. Jackets are priced at \$10 and \$13 and will have "Wheeler Mustangs" printed on the back. Caps are black and white with a gold "W" on the front and will sell for \$3. Orders may be placed Friday evening from 5:30 to 7:30 at the covered dish supper sponsored by the Senior Class to be held in the school cafeteria.

At the club meeting Bynum Smith outlined some of the league guidelines. Coach Preston Smith gave a brief talk on the scrimmage at Wellington and urged fans to support the team Friday evening in their season opener with Shamrock. Wheeler Mustang Booster Club will meet next Monday evening, September 6th at 7 p.m. in the school cafeteria. A film of the Shamrock Wheeler game will be shown.

Reserved seats are on sale—\$5.00—contact Thurman Rives. Dues for membership are \$3.00—contact David Britt.

Recent visitors in the home of Mr. and Mrs. Haskell Weatherly was their son. Kearby Weatherly and family formerly from Oklahoma City. Also they visited with his brother and family, Mr. and Mrs. Tony Weatherly.

Dearby has recently moved to Cincinnati, Ohio, where he was transferred to his new position of Civic Branch Manager for Honey Wells.

Kearby is a graduate of Oklahoma State University.

Wheeler Public School Has 330 Pupils Enroled

Wheeler Public School is in its second full week of classroom work with the students looking forward to the Labor Day Holiday—the first vacation of the year.

Enrollment for the 1976-77 school year stands at 330. Average daily attendance for the 1975-76 year was 309.

The sophomore class again holds the record for the largest class in school; 39 students are in the 10th grade.

Hospital Notes

OLD ADMISSIONS
8-12 Louis Wright
8-13 Walter Coope Myrtle Lane

8-22 Naomi Allen
NEW ADMISSIONS
8-25 Lillie Rodriguez
8-26 Dan Hefley

Euell Kennard
Alana Daugherty
Emma Weatherly
8-27 Fayette Seitz
Sally Ledbetter
Keith Boydston
Baby Boy Ledbetter

8-29 Lydia Guthrie
Amy Kenyon
8-30 Gollie Calcate
Boyice Farris
Nora Hyatt
Claud R Cox
Manson Porter
8-31 Lola Smith
Edita Cabuco
Mark Burrell

DISMISSAL
8-25 Earl Jolly
Effie Sanders
Nancy Denton
Lillie Anderson

8-26 C. B. Brotherton, Jr.
Minnie Blackshears
Suzie Erwin
Kenneth Franklin
Rebecca Harkins
8-27 Euell Kennard
8-28 Bill Owens
Cecil Denson
Bessie Baird
LizAnn Gattis
Keith Boydston
8-29 Fred Reams
8-30 Lillie Rodriguez
James Hall
W. E. Mason, Jr.
Elizabeth Richardson
Riley Richardson
8-31 Golda McIlhany

The first grade class has an enrollment of 27 and the Kindergarten class has 25 students.

There have additions to the curriculum. Creative writing is being offered this year with the students being responsible for the writing and publication of the school newspaper which will be printed as part of The Wheeler Times. Other classes may be added at the end of the first and second quarters.

In the physical education department the students are presently being offered tennis and golf. Instruction in archery will be taught when the equipment arrives.

'Old Mobeetie' Final Performance LABOR DAY

The Mobeetie Little Theatre will have its final performance of "Old Mobeetie" on Monday evening September 6, at 8:00 p.m. in the open air pavilion located on the grounds of the Old Jail in Mobeetie. The Mobeetie Little Theatre was organized in early 1975 and gave one performance that year.

The presentation on Labor Day evening will be the final performance of the year. The Little Theatre is a non-profit organization. The pavilion was built for the use of the different organizations of the community.

On Monday, Labor Day, when the Old Settlers Reunion and picnic is in progress, the Little Theatre will sponsor a fabric truck and will also sell soviers including picture plates of the Old Jail.

On Saturday evening, Sept 4, the Mobeetie Little Theatre will sponsor a dance beginning at 8:00 p.m. The Texas Swingers of Austin will be playing for the dance. The leader of the Texas Swingers is Tony Thomas, a former resident in Mobeetie.

The evening's admission prices are \$5.00 per couple or

Continued page 4

LINES FROM LINDA

Linda Horton - Asst. CEA

It's a plaid-mad tartan and madras world for fall, adding new dimensions, built-in interest and excitement to the season's fashions.

Plaids with their special fabric design present a challenge to the homemaker, but produce results well worth the extra effort.

For best results with plaid fabric, select a pattern with a minimum of seams. Also, check the pattern envelope to see if the garment is appropriate for

plaids. If the envelope states "unsuitable for plaids," this means that seams can't be matched due to the garment design. As a rule, if the garment is illustrated in a plaid on the envelope, the pattern designer feels it is particularly suited for plaids.

When buying plaid fabric, choose one in scale with the size of the person to wear it. Also, don't try to buy a plaid from a small sample or swatch—the illusion created by several repeats of one pattern may be much stronger than the single design.

When buying a printed plaid, check the lines of the plaid follow the grainlines of the fabric. Do not buy a plaid that is off-grain more than one inch per yard. If a print is slightly off-grain more than one inch per yard, because the plaid is the more noticeable.

Allow extra yardage to match plaids. Generally, the larger the plaid, the more widely spaced each repeat and the larger the pattern size and garment, the more yardage needed.

Arrange & cut pattern pieces so the plaids will match at major joining seamlines, not cutting lines. Do this by placing pattern notches of joining pieces on the same area of the plaid design. For example, a notch at the top of a repeat should match it corresponding notch at the top of the same repeat.

If you are hesitant to try sewing a plaid fabric, begin by using a plaid for garment trim such as collar, cuffs, pockets or yokes, or choose designs with few pattern pieces.

Even plaid designs are also easier to sew and are arranged in the same design sequence crosswise and lengthwise. When folded through the center of any

design, the lines of the top and bottom layers mirror each other. Uneven plaids vary in design either crosswise or lengthwise or both.

PAINTING

Interior & Exterior

Commercial & Residential
Brush, Roller, and Spray
Painting.

No Job Too Large
(Except Skyscrapers)
or Too Small.

Reasonable Rates

Call:
DONALD FORD
(806) 826-3106
Wheeler, Texas

REEVES ELECTRIC

FOR ALL YOUR ELECTRICAL WIRING NEEDS,
RESIDENTAL, COMMERCIAL SERVICE CALLS,
OIL FIELD TROUBLE SHOOTING.

Call Day or Night Phone: 826-5975

BUTCHERING & PROCESSING PRICES

Beef processed, double wrapped 14¢ per pound

1¢ A Pound for Butchering

Pork Processing including curing

Double wrapped 16¢ per pound

\$4.50 a head for butchering

We butcher Monday thru Friday 8 to 12 A.M. except holidays.

CALL FOR QUARTER—HALF—WHOLE
BEEF PROCESSED

WE NOW HAVE CUTS OF PORK AND BEEF FOR SALE

SHAMROCK SLAUGHTER PLANT

North of City Phone: 256-3241

Closing at Noon on Saturday

CULLERS-SMITH VOWS ARE EXCHANGED

Miss Shelley Marie Smith and Raymond E. Cullers, III were united in marriage in the First Baptist Church of Gainesville on Saturday, August 28 at 7:30 in the evening. Dr. Harry Roark, pastor, officiated at the double ring candlelight ceremony.

Parents of the couple are Mr. and Mrs. Bynum E. Smith of Wheeler, Texas and Mrs. Betty Beaty and Mr. Raymond E. Cullers, Jr., of Muncie, Indiana.

The guests were registered by Mrs. Dickey Lipsy of Garland as they arrived at the church.

A brass arch candlelabrum was the focal point of the altar with spiral and tree candelabra completing the arrangement. Bouquets of yellow stock and white gladiolus were placed at the foot

of the stairway leading to the altar. Garlands of huckleberry and lemon leaf adorned the choir and organ rails. The family pews were marked with swags of huckleberry and white satin.

Miss Kathy Wallis of Gainesville was maid-of-honor. Mrs. Richard Heiberg of Grapevine, sister-in-law of the bride, Mrs. Bill Enderby, Gainesville, Miss Cathy Groce, Gainesville and Miss Terri Tooley of Dallas were bridesmaids. Their yellow crystallette gowns were re-embroidered with a white daisy pattern, had lace edged cape collars, scoop necklines and handkerchief hems edged in lace. They carried colonial nosegays of yellow and white daisies and wore bandeaus of white daisies in their hair.

Misses DeAnn Coker of Sanger and Paula Lee of Saint Jo lit the candles. The young ladies were lovely in yellow dresses featuring round necklines with white lace outlining the yoke and bell sleeves. Floor length skirts fell from slightly gathered Empire waistlines and tied with self sashes at the back. Their wristlets were of white daisies.

Miss Amy Wolf of Gainesville, wearing a yellow crystallette dress with lace ruffled bouffant skirt with round neck and puffed sleeves, was flower girl.

Ring bearer was Burke Sullivant of Gainesville.

Organist Bill Lawler of Saint Jo played a prelude and accompanied Mrs. Harrison Hall, Wheeler, as she sang "More" by Ortoloni and "The Wedding Prayer" by Dunlop. Traditional processional and recessional wedding marches were included.

Mr. Smith gave his daughter in marriage. She wore a formal gown of candlelight organza designed with a fitted Empire bodice, portrait neckline and brief sleeves applied in Venice lace. Her A-line skirt fell to a lace embossed hemline which swept into controlled back fullness cascading into a full chapel train. Appliques of lace traced a pattern and made garlands over her skirt front.

A camelot coil of lace held a chapel length veil of French illusion edged and appliqued

with matching lace medallions.

The bride carried a cascade bouquet of phalanopsis and stephanotis. The traditional blue garter and penny in her shoe were included in her attire.

At her throat, she wore an heirloom lavalier of gold, encrusted with pearls and diamonds which had belonged to her maternal grandmother, Mrs. John Dunn.

Brothers of the bride, Richard Heiberg of Grapevine and Jeff Heiberg of Ruidosa, New Mexico ushered the guests, as did Mike Wood of Dallas and Bill Enderby of Gainesville.

Larry Sullivant of Gainesville served as best man with Greg Smith, brother of the bride of Dallas, Darrell Wolf, Grady Koonce of Gainesville and Tim Daley of Arlington serving as groomsmen.

For her daughter's wedding Mrs. Smith chose a pale blue jersey floorlength gown with self jacket and sheer floral print sleeves with matching accessories. Mrs. Beaty wore a beige jacquard knit with fingertip length jacket. She wore gold accessories. Both mother wore corsages of yellow roses.

Mr. and Mrs. Smith entertained with a reception at the River Valley Country Club following the ceremony.

The bride's table was laid with a yellow linen cloth. A crystal and silver epergne held a sunburst arrangement of yellow and



MRS. RAYMOND CULLERS, III

white stock complimented by yellow tapers.

Mrs. Bob Perrin and Miss Lisa Wallis of Gainesville and Miss Karen Wagner of Wheeler served punch and the wedding cake from the table. The cake was an all white confection with tiers separated by Grecian columns and topped with white doves.

At the groom's table, which was skirted in rust burlap and appointed with brass, Miss Cheryl Cullers, sister of the groom from Atlanta, Georgia, and Miss Marilyn Moore, Wheeler served a chocolate horseshoe shaped cake and coffee.

A white linen cloth covered the table which held champagne and canapes.

Following a trip to Florida, the couple will make their home on the Sullivant Ranch, Route 2, Gainesville.

For her going away costume, the bride chose a candlelight sundress of imported Mexican embroidered gauze and matching accessories.

Mrs. Cullers graduated in the 1975 class of Wheeler High School and is employed at Zale's Jewelers in Gainesville.

The groom is a 1972 graduate of North Side High School, Muncie, Indiana. He attended Cooke County College and North Texas University. He is employed as horse trainer at the Sullivant Ranch.

IMPORTANT

Tax Savings!

Farmers
Salesmen
Small Business Owners

...the law permits you to set aside a substantial part of your annual income for retirement, tax free. You may be eligible for this saving.

Ask me about
Individual
Retirement
Annuities
for Modern
Woodmen members.



Robert L. Fincher
405-928-3157
Sayre, Okla. 73662

MODERN WOODMEN OF AMERICA

Fraternity Life Insurance
Home Office • Rock Island, Illinois

10 BIG DAYS
September 2 thru 11



314 North Main Shamrock, Texas

September Home Furnishing Sale

Big extra savings are yours on needs for the home during this big event. Famous brands you know and trust.

Dan River "Sweetheart Rose" No-Iron Sheets

Fortrel® polyester and cotton muslin

Twin Size 3.99 Values **2 FOR \$6.**

499 Full Size **2 for 7.50**

42x36 Cases 2.85 pair

8.99 Queen Size Sheets 2 for 12.50

10.99 King Size Sheets 2 for 16.50

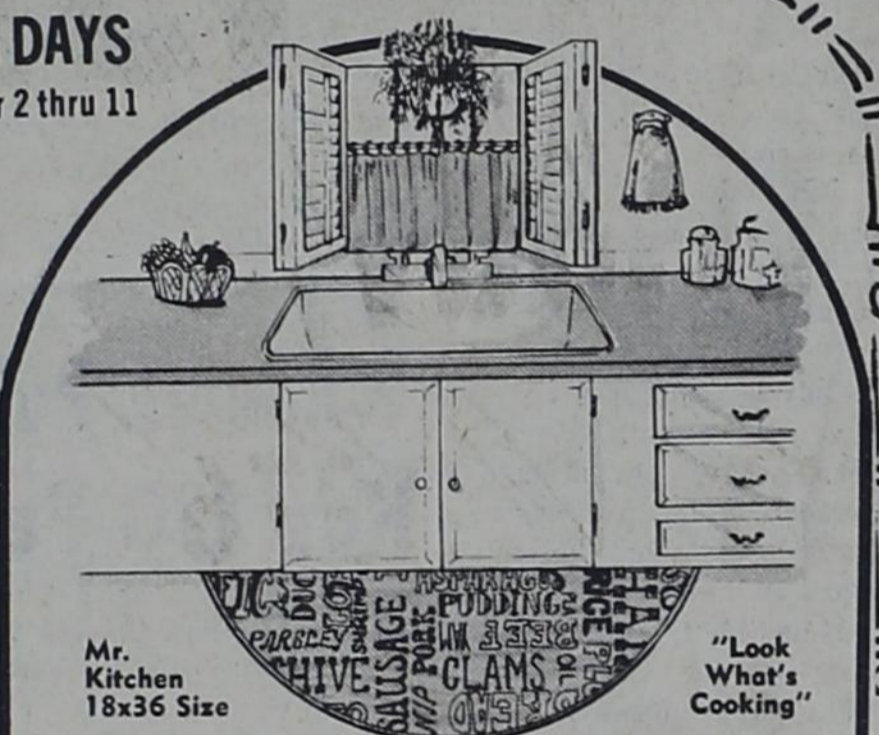
42x46 Cases 3.35 pair

A beautiful rose print on bone-back grounds that will add new color to your bedroom. Choose flat or fitted sheets. Show save today.

Quilted Bedspreads and Matching Drapes

Quilted to the floor, throw style spreads. 100% cotton top polyester filled, polyester backing.

Bedspreads
Twin \$10.88 Full \$12.88 Queen \$17.88 King \$18.88



Mr. Kitchen
18x36 Size

"Look What's Cooking"

Broadloom Kitchen Mats 2 FOR 5.00

Foam backed carpet, ideal fatigue mats for kitchen, doorway, or other traffic area.

Lady Pepperell® 3-Pc. Towel Ensemble

2.99 B. Towel, 1.59 H. Towel, 89c Cloth

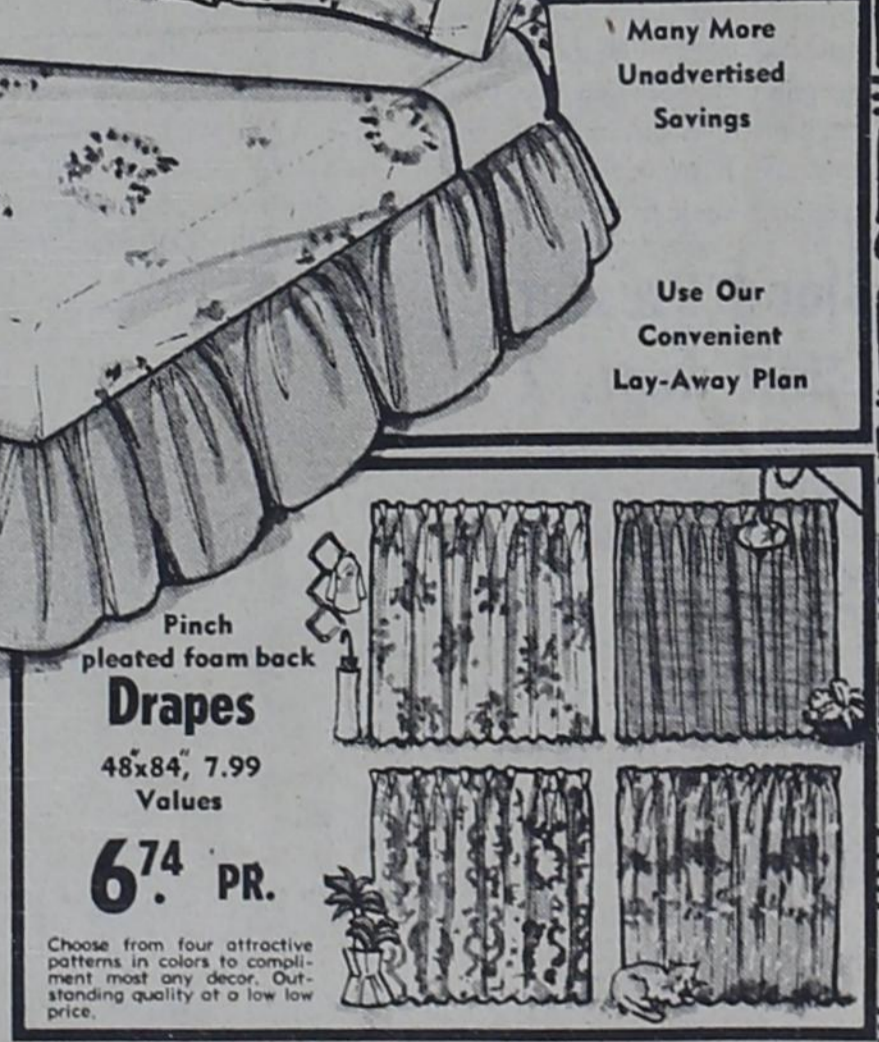
\$5. SET

Jeffersonian Rose print on pure white sheered ground. Both size 22x42, Hand size 15x26, Wash cloth 12 x 12. Blue, Peach and Sun Yellow.



Many More Unadvertised Savings

Use Our Convenient Lay-Away Plan



Pinch pleated foam back

Drapes

48x84, 7.99 Values

6.74 PR.

Choose from four attractive patterns in colors to complement most any decor. Outstanding quality at a low price.

Polyester Fiberwoven Blankets

Regular 4.99 Value

3 FOR \$12.

72x84 fits full or twin size bed. 4" wide nylon binding. 2 1/2 pound. Blue, Green, and Gold.



Shower Honoring Miss Shelley Smith

Miss Shelley Smith, bride-elect of Raymond E. Cullers, III, was honored at a guest tea and miscellaneous shower on August 8 at the home of Mrs. Harrison Hall. Mrs. R. J. Smith, Mrs. David Britt, Mrs. N. D. Ware, Jr., Mrs. Larry Jennings, Mrs. Peggy Dunn, Mrs. Harold Loyd Lee, Mrs. Thurman Rives, and Mrs. JoAnne McWhorter were co-hostesses.

The hors d'oeuvres table was clothed in ecru linen edged in lace with raffia appointments. A table skirted in white Pineapple linen held the crystal punch bowl.

Special guests for the occasion were Mrs. Aline Jones, grandmother of the bride, of Saint Jo and Mrs. John Coker from Sanger.

Guests called during the hours from 3-5 p.m.

Rehearsal Dinner

Mr. and Mrs. Larry Sullivant were hosts to a rehearsal dinner honoring Raymond E. Cullers, III and his bride-elect, Miss Shelley Marie Smith, on Friday, August 27, in the Petroleum Club of the Turner Hotel, Gainesville.

Guests were seated at tables decorated with white candles and English ivy garlands.

Those in attendance were Mr. and Mrs. Bynum Smith, parents of the bride, Mrs. Betty Cullers, mother of the groom, and Miss Cheryl Cullers, members of the wedding party and their guests. Special guests were Mr. and Mrs. Harrison Hall of Wheeler and Mr. and Mrs. John Coker of Sanger.

Bridesmaids' Luncheon
Mrs. John Coker and Miss DeAnn Coker were hostesses to Bridesmaids' luncheon at the Colonial Country Club in Fort Worth on Saturday, August 21.

Miss Shelley Smith, bride-elect of Raymond E. Cullers was the honored guest.

The guest list included the honoree, her mother, Mrs. Bynum Smith, Miss Kathy Wallis, Miss Cathy Groce, Mrs. Bill Enderby, Miss Paula Lee, Mrs. Harrison Hall and the hostesses.

The guests lunched at a table centered with a yellow basket of yellow and white daisies.

Dr. Jack L. Rose
OPTOMETRIST

121 Main St. - Shamrock

Phone 256-3203

Tues.: 9-5 Fri.: 2-5

HERE'S TO YOUR HEALTH from
HYLAND WEAVER

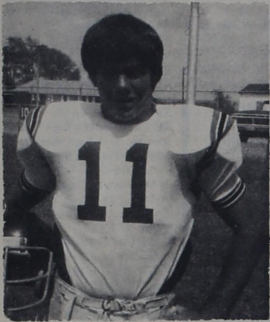
RHYLAND'S PHARMACY
PH. 826-5561

Oxygen - about 1/5 of the air we breathe - is the only part of the air that sustains human life. When a fireplace, gas, oil, or coal heater burns, it also uses oxygen in the room. As the supply of oxygen becomes scarce in a tightly closed room, the burning process then produces carbon monoxide, which is a non-odorous but highly poisonous gas which can quickly cause death. The warning is clear. Rooms must be well ventilated during the heating season to supply enough oxygen both for heating units and for human breathing.

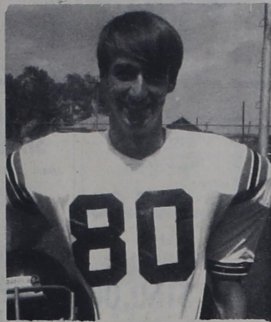
SAVINGS

from your neighborhood ASSOCIATED DRUGGISTS
SEPT. 1ST - 7TH, 1976

SCHICK SUPER II CARTRIDGE 5s Mfg. List \$1.49 91¢	SINUTAB SINUS TABLETS 30s Mfg. List \$2.86 \$1.44	DATRIL TABLETS 100s Mfg. List \$1.98 \$1.19	CHAPSTICK Regular or Flavored Mfg. List 69¢ each 3 FOR 89¢
SUPER CRICKET BUTANE LIGHTER by Gillette Mfg. List \$1.98 97¢	COLGATE DENTAL CREAM 7 oz. Mfg. List \$1.44 98¢	CRUEX MEDICATED SPRAY POWDER 4 oz. Mfg. List \$2.39 \$1.37	PROTEIN 21 SHAMPOO Regular, Dry or Dry, 14 oz. Mfg. List \$2.69 each \$1.58 each
CRUEX MEDICATED SPRAY POWDER 4 oz. Mfg. List \$2.39 \$1.37	DESENEK SPRAY-ON FOOT POWDER 6 oz. Mfg. List \$2.29 \$1.32	STRI-DEX MEDICATED PADS 42s Mfg. List \$1.29 71¢	VO-5 HAIR SPRAY Reg. or Hard-To-Hold, 16 oz. Mfg. List \$2.59 each \$1.51 each
STRIBAN-D COLD CAPSULES 24s Mfg. List \$1.77 92¢	STRIBAN-D COLD CAPSULES 24s Mfg. List \$1.77 92¢	STRIBAN-D COLD CAPSULES 24s Mfg. List \$1.77 92¢	STRIBAN-D COLD CAPSULES 24s Mfg. List \$1.77 92¢
STRIBAN-D COLD CAPSULES 24s Mfg. List \$1.77 92¢	STRIBAN-D COLD CAPSULES 24s Mfg. List \$1.77 92¢	STRIBAN-D COLD CAPSULES 24s Mfg. List \$1.77 92¢	STRIBAN-D COLD CAPSULES 24s Mfg. List \$1.77 92¢
STRIBAN-D COLD CAPSULES 24s Mfg. List \$1.77 92¢	STRIBAN-D COLD CAPSULES 24s Mfg. List \$1.77 92¢	STRIBAN-D COLD CAPSULES 24s Mfg. List \$1.77 92¢	STRIBAN-D COLD CAPSULES 24s Mfg. List \$1.77 92¢
STRIBAN-D COLD CAPSULES 24s Mfg. List \$1.77 92¢	STRIBAN-D COLD CAPSULES 24s Mfg. List \$1.77 92¢	STRIBAN-D COLD CAPSULES 24s Mfg. List \$1.77 92¢	STRIBAN-D COLD CAPSULES 24s Mfg. List \$1.77 92¢
STRIBAN-D COLD CAPSULES 24s Mfg. List \$1.77 92¢	STRIBAN-D COLD CAPSULES 24s Mfg. List \$1.77 92¢	STRIBAN-D COLD CAPSULES 24s Mfg. List \$1.77 92¢	STRIBAN-D COLD CAPSULES 24s Mfg. List \$1.77 92¢
STRIBAN-D COLD CAPSULES 24s Mfg. List \$1.77 92¢	STRIBAN-D COLD CAPSULES 24s Mfg. List \$1.77 92¢	STRIBAN-D COLD CAPSULES 24s Mfg. List \$1.77 92¢	STRIBAN-D COLD CAPSULES 24s Mfg. List \$1.77 92¢
STRIBAN-D COLD CAPSULES 24s Mfg. List \$1.77 92¢	STRIBAN-D COLD CAPSULES 24s Mfg. List \$1.77 92¢	STRIBAN-D COLD CAPSULES 24s Mfg. List \$1.77 92¢	STRIBAN-D COLD CAPSULES 24s Mfg. List \$1.77 92¢
STRIBAN-D COLD CAPSULES 24s Mfg. List \$1.77 92¢	STRIBAN-D COLD CAPSULES 24s Mfg. List \$1.77 92¢	STRIBAN-D COLD CAPSULES 24s Mfg. List \$1.77 92¢	STRIBAN-D COLD CAPSULES 24s Mfg. List \$1.77 92¢
STRIBAN-D COLD CAPSULES 24s Mfg. List \$1.77 92¢	STRIBAN-D COLD CAPSULES 24s Mfg. List \$1.77 92¢	STRIBAN-D COLD CAPSULES 24s Mfg. List \$1.77 92¢	STRIBAN-D COLD CAPSULES 24s Mfg. List \$1.77 92¢
STRIBAN-D COLD CAPSULES 24s Mfg. List \$1.77 92¢	STRIBAN-D COLD CAPSULES 24s Mfg. List \$1.77 92¢	STRIBAN-D COLD CAPSULES 24s Mfg. List \$1.77 92¢	STRIBAN-D COLD CAPSULES 24s Mfg. List \$1.77 92¢
STRIBAN-D COLD CAPSULES 24s Mfg. List \$1.77 92¢	STRIBAN-D COLD CAPSULES 24s Mfg. List \$1.77 92¢	STRIBAN-D COLD CAPSULES 24s Mfg. List \$1.77 92¢	STRIBAN-D COLD CAPSULES 24s Mfg. List \$1.77 92¢
STRIBAN-D COLD CAPSULES 24s Mfg. List \$1.77 92¢	STRIBAN-D COLD CAPSULES 24s Mfg. List \$1.77 92¢	STRIBAN-D COLD CAPSULES 24s Mfg. List \$1.77 92¢	STRIBAN-D COLD CAPSULES 24s Mfg. List \$1.77 92¢
STRIBAN-D COLD CAPSULES 24s Mfg. List \$1.77 92¢	STRIBAN-D COLD CAPSULES 24s Mfg. List \$1.77 92¢	STRIBAN-D COLD CAPSULES 24s Mfg. List \$1.77 92¢	STRIBAN-D COLD CAPSULES 24s Mfg. List \$1.77 92¢
STRIBAN-D COLD CAPSULES 24s Mfg. List \$1.77 92¢	STRIBAN-D COLD CAPSULES 24s Mfg. List \$1.77 92¢	STRIBAN-D COLD CAPSULES 24s Mfg. List \$1.77 92¢	STRIBAN-D COLD CAPSULES 24s Mfg. List \$1.77 92¢
STRIBAN-D COLD CAPSULES 24s Mfg. List \$1.77 92¢	STRIBAN-D COLD CAPSULES 24s Mfg. List \$1.77 92¢	STRIBAN-D COLD CAPSULES 24s Mfg. List \$1.77 92¢	STRIBAN-D COLD CAPSULES 24s Mfg. List \$1.77 92¢
STRIBAN-D COLD CAPSULES 24s Mfg. List \$1.77 92¢	STRIBAN-D COLD CAPSULES 24s Mfg. List \$1.77 92¢	STRIBAN-D COLD CAPSULES 24s Mfg. List \$1.77 92¢	STRIBAN-D COLD CAPSULES 24s Mfg. List \$1.77 92¢
STRIBAN-D COLD CAPSULES 24s Mfg. List \$1.77 92¢	STRIBAN-D COLD CAPSULES 24s Mfg. List \$1.77 92¢	STRIBAN-D COLD CAPSULES 24s Mfg. List \$1.77 92¢	STRIBAN-D COLD CAPSULES 24s Mfg. List \$1.77 92¢
STRIBAN-D COLD CAPSULES 24s Mfg. List \$1.77 92¢	STRIBAN-D COLD CAPSULES 24s Mfg. List \$1.77 92¢	STRIBAN-D COLD CAPSULES 24s Mfg. List \$1.77 92¢	STRIBAN-D COLD CAPSULES 24s Mfg. List \$1.77 92¢
STRIBAN-D COLD CAPSULES 24s Mfg. List \$1.77 92¢	STRIBAN-D COLD CAPS		



Don Brown



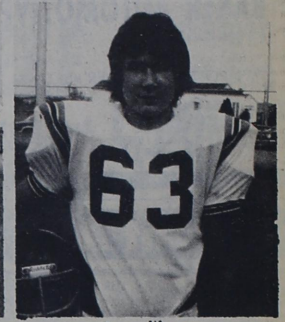
Darrell Gaines



Tony Hefley



Jim Verden



Gary Ware

WHEELER MUSTANGS

VS.

SHAMROCK IRISH

Friday,

SEPT. 3, 1976

8:00 P.M.

at Nicholson Field

Mustang Football Schedule

DATE	SCHOOL	PLACE	TIME
Sept. 3	Shamrock	Here	8:00
*Sept. 10	Follett	Here	8:00
Sept. 17	Open		
*Sept. 24	Lefors	Here	8:00
*Oct. 1	Groom	There	8:00
***Oct. 9	Texline	Here	2:30
Oct. 14	Pampa JV.	Here	7:30
*Oct. 22	McLean	There	7:30
*Oct. 29	Miami	There	7:30
*Nov. 5	Booker	Here	7:30
*Nov. 12	Higgins	There	7:30

Superintendent: Bynum Smith
Principal: Bob Wills
Band Director: Larry Tracy
Head Coach: Preston Smith

* District Games
*** Homecoming

WHEELER MUSTANGS

B	W	NAME	O.	D.	Class	Wt.
10	10	Guthrie, Bobby	QB	DB	JR.	175
11	11	Brown, Don	RB	LBR	SR.	185
12	23	Brown, Rich	QB	DB	FR.	145
30	30	Grimes, Marvin	RB	LBR	SOPH.	185
32	32	Ford, Dell	FB	LBR	JR.	179
33	21	Elliott, George	TE	7	SOPH.	140
40	40	Mosley, Brett	FB	DB	FR.	165
41	41	Hefley, Tony	SB	DB	SR.	170
44	83	Lasley, Kyle	TE	DB	FR.	140
50	50	Whiteley, Buddy	C	2	FR.	165
51	51	Horton, Gary	G	2	FR.	165
55	53	Farnsworth, Miles	C	2	SOPH.	155
60	62	Bradford, Vic	T	7	FR.	165
61	61	Lee, Mike	G	LBR	SOPH.	175
63	63	Ware, Gary	G	2	SR.	170
64	64	Lasley, Kevin	G	2	JR.	165
70	70	Christner, Tom	G	7	SOPH.	160
71	71	Shaffer, Sam	FB	7	SOPH.	180
72	72	Patterson, Tim	T	2	JR.	205
74	74	Verden, Jim	T	7	SR.	240
80	80	Gaines, Darrell	E	DB	SR.	175
81	81	Vise, Kent	E	DB	SOPH.	150
82	82	Evans, Mike	SE	DB	FR.	125
84	84	Sutton, Sam	SB	DB	FR.	125

SHAMROCK IRISH

NAME	No.	P.	Wt.	Class
Alan Close	5	HB	140	Sn
Mickey Mitchell	11	QB	160	Jr
David Ramsey	12	QB	157	Sn
Gerry Aaron	24	HB	150	Jr
Mark Howard	30	FB	160	Jr
Jackie Thompson	32	FB	178	Sn
David Martinez	40	E	150	Sn
Steven Stokes	42	HB	150	Sn
Randy Tallant	44	HB	165	Soph
Rick Gowdy	50	C	155	Jr
Bill Young	51	C	160	Soph
Jeff Kingston	60	G	145	Sn
Danny Davis	61	G	142	Jr
Mike Caldwell	66	G	155	Sn
Craig Terry	67	G	140	Jr
Russell Waters	70	T	220	Fr
Scott Wells	72	T	180	Sn
Stanley Waters	75	T	190	Jr
Tony Doss	77	T	180	Sn
Keith Krug	80	E	135	Sn
Leo Segura	82	E	160	Sn
Randy Copeland	85	E-HB	160	Sn
Bill Blair	88	E	150	Sn

MANAGERS
Bill Payne
Jeff Moore
Gene Ferris
Scotty Carlton

COACHES
Ashley Rutherford
Ed Cruzan
Lester Ramsey
Lawrence Overcast
John Bond
Troy Adams

CHEERLEADERS

Doug Allen
Brenda Robertson
Leslie Galmor
Natalie Jones
Pam Miller
Mindy Hensley

PRODUCTION CREDIT ASSOCIATION

WHEELER ABSTRACT

FRANKENBERY'S TEXACO SERVICE

PRITCHARD'S THRIFTWAY

WHEELER FARM BUREAU

George Richardson & Kenneth McCasland

LANCASTER DEPT. STORE

WHEELER LUMBER CO.

WHEELER VETERINARY CLINIC

FIRST NATIONAL BANK

WARE CHEVROLET

SPARLIN'S RESTAURANT

WHEELER CO-OP

ROARK'S FINE FOODS

BAKER'S AUTOMOTIVE

PRIME FEEDERS

HANNAH & ALBERT CHAPMAN,
Don & Von

LEE HARDWARE & FURNITURE

WHEELER REDI-MIX

THE DOT SHOP

KOSHARE SHOP

Fine Jewlery

WHEELER FLOWER SHOP

BEEF CATTLE COMPANY

RIVES INSURANCE

THE WHEELER TIMES

WHEELER GAS, INC.

PETE BURTON FORD

HIBLER IMPLEMENT

EDWARDS SIXTY-SIX TRUCK STOP

McILHANY DRY GOODS

MAC'S ALIGNMENT

BEN & CAROLYN WESTMORELAND

BARNES ELECTRIC Earl & Pauline

M & M GIN

HYLAND'S PHARMACY

LEWALLEN INSURANCE AGENCY

WRIGHT FUNERAL HOME

GARRISON SERVICE

SHIRA'S IMPLEMENT

TRADING POST

LOYD'S BEN FRANKLIN

SOUTHWESTERN PUBLIC SERVICE CO.

for all your . . .

PARTS NEEDS

see . . .

BAKER AUTOMOTIVE

116 East Texas Phone: 826-3213

SUPPORT THE WHEELER MUSTANGS

Your  Auto Parts Store

Want Ads

REDUCE safe and fast with Gobese Tablets and E-Vap 'water pills'. Hylands Pharmacy. 3tp

BOOT REPAIR PICK-UP: Frankenbery Texaco. Woody's Boot Shop, Canadian. rtn

BLACK GOLD TRAILER PARK Gas & Water Furnished Storm Cellar Underground Utilities Individual Electric Meter 500 S Osage 826-5874

FOR SALE: Tomatoes by the pound or bushel until frost. Call 826-5903. 3tc

OUTLET STORE 211 E. 12th Wheeler, Texas TRICO yd. \$1.00 PANTS, PANTSUITS, LACE BLOUSES, SHELLS, Phone: 826-3221

NEW GOBESE GRAPEFRUIT DIET PILL. Eat satisfying meals and lose weight. Hylands Pharmacy. 7tp

DRY CLEANING 8 lbs. \$4.00 City Cleaners & Fabrics 400 S. Main 826-3266

TRAILER SPACE: For Rent in Mobeetie, \$20.00 per month. Phone: 845-3171. rtnjv

Monuments, Grave Covers, and Curbing. Complete finishing. Will Warren, Wheeler. rtn

PAUL'S TRAILER PARK Across Street From School Trailer lots 40'x70' Modern Underground Utilities Gas and Water furnished Individual Electric Meters PAUL TOPPER-Ph. 826-5931

APPLES FOR SALE: 9 miles west 4 1/2 miles S of Old Mobeetie. Call: 779-2917. 2tc

CONCRETE SHELTERS AND BASEMENTS Woodward 256-7205 Northwest Oklahoma Storm Shelter Co. 20tmc

LOT FOR SALE: Phone 826-3271 rtn

FOR SALE: 1 double bed, springs and mattress, 2 rocking chairs, 1 corner table, 1 coffee table. Call: 826-3243 1tp

FOR SALE: 1200 acre stock farm in Collingsworth County. Nearly all in grass, Gramma, Buffalo, and Ermelo. 5 water wells and windmills, and ponds. Good fences. Sheds and corrals. Unusual arrangement for cattle. Part minerals. Tom Montgomery Real Estate, Shamrock, Texas. rtn

FOR SALE: 69 Chevrolet pickup. Good Condition. Call 826-5734. rtn

FOR SALE: Avon bottles. Call 826-2321 2tc

FOR RENT: 2 bedroom furnished house. Carroll Adams. 826-3184. rtn

WILL TRADE good chest type deep freeze for late model refrigerator. Phone 826-5953.rtn

ACCEPTING BIDS The Allison ISD Board of Trustees are accepting sealed bids on 13,000 bricks until September 9, 1976, at 8:00 p.m. The Board of Trustees reserve the right to refuse any or all bids. Mail bids to: Supt. of Schools, Box 50, Allison, Texas 79003.

BABYSITTING: Birth to 4 years of age. Call 826- 3231 2tp

FOR SALE: Frigidaire Custon Delux Electric Stove. Call: 826-5521 1tc

NAZARENE CHURCH WOMEN'S MISSIONARY SOCIETY GARAGE SALE: 206 N. Canadian St. Starts 10:00 a.m. Friday through Saturday. 1tc

WANTED: Couple with one child would like to rent a furnished two bedroom house, in or around Wheeler. Reply to: K. E. Blackwell, Box 250, Wheeler. 1tp

FOR SALE: Equilizer Trailer Hitch. T. J. Daughtry rtn

CARD OF THANKS We want to thank all those who brought food to our home in time of our sorrow. Mr. & Mrs. Douglas Baird

Court Records

LIST OF INSTRUMENTS FILED IN THE OFFICE OF THE COUNTY CLERK AND DISTRICT CLERK OF WHEELER COUNTY, TEXAS FROM AUGUST 23 THROUGH AUGUST 27, 1976

AUGUST 23, 1976
D—Lone Star Gas Co to Warren Petroleum Corp 5-1-64 Page after Page of Description (Gas Gathering line etc)
OL—Andrew C Shapira to Getty Oil Co 8-10-76 SE 1/4 Sec 25 Blk A-4
MML—Donald E Meares et ux to John Farnsworth 8-13-76 Lot 11, N 1/2 10S 1/2 Blk 82 Shamrock, WSSA
DT—Sammy J Whatley Jr et ux to Charles A Wedgeworth 8-23-76 17.43ac NE 1/4 2 T&NO RyCo
OL—J A Conner et ux to Malouf Abraham 7-12-76 W 1/2 Sec 14 Blk A-4
OL—Welsey M Steen et ux to Malouf Abraham 7-12-76 NW 1/4 Sec 14 Blk A-4
OL—A T Markham to Malouf Abraham 7-12-76 SW 1/4 Sec 14 Blk A-4
OL—J C Moore Jr et al to Malouf Abraham 7-12-76 W 1/2 Sec 14 Blk A-4
4 AOL—Malouf Abraham to Monsanto Company 7-14-76 to 8-5-76 W 1/2 Sec 14 Blk A-4
OL—M L Guthrie et ux to Amarex, Inc 8-2-76 6.15 ac NE 1/4 Sec 15 Blk A-4
9 ROY D—J Noel Sikes to Curt Weaver Oil Co, to Richard A Gray Jr, to Cash R Harbaugh, to Tom C Milne, to H Charles Harbaugh, to William G Lucas, to Harry H Hudson, to J C Man Jr and to Don A Mullin 8-20-76 MesneInterests in Section 33 Blk A-8
R OF JUDG—Norden Laboratories, Inc to Tommie A Hennard 7-30-76
D—Robert N Barrington et al to Dwayne Baker et ux 5-8-76 Surface Pt SW 1/4 2 T&NORYCo
RDT—Robert E Gragg et ux to Frank R Embery et ux 8-23-76 SE 1/4 SE 1/4 Sec 52 Blk 23
AUGUST 24, 1976
D—Anna M Winchester et vir to Byron C Duncan et ux 8-20-76 56' x 140' Outlot 26 Shamrock
MML—Frances Hefley to Ralph H Baxter 8-4-76 75' x 140' E 1/2 Sec 60 Blk A-8 (PtSubDiv 6)
EXECD—Sol Blonstein to Hyland C Weaver 8-7-76 1/2 int S 1/2 S 1/4 NE 1/4 Sec 49 Blk A-8
D—R F Douglas et al to Hyland C Weaver 8-7-76 1/2 int S 1/2 S 1/4 NE 1/4 Sec 49 Blk A-8

DT—Hyland C Weaver to First Natl Bk of Amarillo 8-7-76 S 1/2 S 1/4 NE 1/4 Sec 49 Blk A-8
ROY D—Howard G Morrison to Ana-Tok Exploration Co 8-16-76 S 1/2 160 int NW 1/4 31 A-8
AOL—J Roger Allspaugh to Amarillo Oil Co 8-2-76 NW 1/4 SW 1/4 10; & E80acNW 1/4 9 Blk A-4
OL—Landrum Vill Dodson Jr to J Roger Allspaugh 5-12-76 NW 1/4 SW 1/4 Sec 10 Blk A-4
OL—Coy N Bradstreet et ux to J Roger Allspaugh 5-6-76 NW 1/4 SW 1/4 Sec 10 Blk A-4
OL—Loubet Moore et al to J Roger Allspaugh 3-15-76 NW 1/4 SW 1/4 Sec 10 Blk A-4
OL—Earl W Dodd et ux to J Roger Allspaugh 6-22-76 E80ac NW 1/4 Sec 9 Blk A-4
OL—C Grady Dodd et ux to J Roger Allspaugh 6-22-76 E80ac NW 1/4 Sec 9 Blk A-4
OL—Kate N Edwards et al to Amarillo Oil Co 5-12-76 SE 1/4 Sec 10 Blk L
OL—Louise S Chizum to Amarillo Oil Co 5-12-76 SE 1/4 Sec 10 Blk L
OL—Elizabeth Sue Borganard to Amarillo Oil Co 5-12-76 Sec 10 Blk L
OL—Charles F Collins et ux to Amarillo Oil Co 6-17-76 W 1/2 NE 1/4 Sec 1 Cert 5/720
AUGUST 25, 1976
2D—Beatrice E Foster et vir to Wesley W Masters et al 8-23-76 4/5 int SW 1/4 Sec 35 Blk 23 exc mins; Pt N 1/2 Sec 35 Pt SW 1/4 24 Blk 23 exc mins

ASSIGN PRODUCTION PAYMENTS—Minco oil and Gas Co to Minco Oil and Gas Co, Trustee undated Secs 48, 49, 50 E 1/2 & NW 1/4 S 1/2 S 1/2 53 Blk A-5
ROW—Lucille Beane Scott et vir to Pioneer Natural Gas Co 8-23-76 NE 1/4 40 A-8 Sec 5 Blk E
OL—Grainger W McIlhany et ux to Thomas G McIlhany 6-24-76 W 1/2 SE 1/4 Sec 32 Blk A-8
AOL—Thomas G McIlhany to Andrew C Shapira 6-24-76 W 1/2 Sec 32 Blk A-8
C/CROBATE—L L Hagerman 8-11-76
AMEND OL—Ladd Petroleum Corp to W P Buckthal et al undated land not set out
AUGUST 26, 1976
RDT—Federal Land Bk of Houston to J M Swink et ux 8-18-76 Land not set out
MD—Doyle Grimes et ux to Ronnie Nicholson 8-26-76 50 ac int NE 1/4 Sec 50 Blk A-5
RDT—Jess Moore to Frank Caswell et ux 8-25-76 1.26 ac NW 1/4 Sec 4 T&NO Ry Co Sur
RELEASE ROW—Koch Industries Inc to J Loyd Rice et ux 3-39-76 W 1/2 Sec 26 Blk 13
RTD—Farmers & Merchants St Bk Shamrock to Kenneth Jacque Graham et ux 8-26-76 W 35 feet of Lots 9, 10 Blk 70 Shamrock, WSSA
ASSIGN OVERRID ROY—M W McCracken to Joe R Crenshaw 8-27-71 N 1/2 14, 98 ac NW 1/4 NE 1/4 Sec 15, SW 1/4 26, SW 1/4 32, 33 Blk A-8
ROW—Mary Ann Richards to Pioneer Natural Gas Co 8-13-76 SW 1/4 Sec 18 Blk A-4
DT—Wesley W Masters et ux to Canadian Production Credit Assn 8-25-76 S 1/2 Sec 8 Blk A-4
AUGUST 27, 1976
OL—Howard F Reames to J W Manauh 8-11-76 E 1/2 Secs 22, 31 Blk RE
OL—Warren N Reams to J W Manauh 8-11-76 E 1/2 Secs 22, 31 Blk RE
ASSIGN OVERRID ROY—B D Price to Thomas Connell 7-30-76 Secs 43, 44, 45, 56 A-7 Sec 4 Blk E
D—Billy R Beck et ux to P M Hobbs et ux 6-10-75 50' x 150' Out of Lots 7, 8 Blk & Shamrock, PBA
ROL—Kerr-McGee Corporation to J P Keeton Jr et ux 8-20-76 SW 1/4 Sec 24 Blk RE
MARRIAGE LICENSE ISSUED Ray Edward Hendrick and Ida H McCormick 8-23-76
Leonard Edwin Abla and Vonetta Mae Massey 8-24-76
Richard Dale Blakemore and Renee Jewett Myers 8-25-76
Jeffery Neil Barham and Mary Ellen Lancaster 8-25-76
Stephen Roy O'Donnell and Tina Lynette Wallace 8-26-76
Walter Ray Sewell and Carol Ann Belter 8-27-76
Wayne Allan Trent and Angela D Hershberger 8-27-76
DISTRICT CLERK'S OFFICE
7194 Wesley Masters et al vs City of Wheeler 8-23-76 Suit for Declaratory Jud
7195 Farmers Group Purchasing, 261nc vs David Crockett 8-26-76 Suit on Account

TEABERRY CB SPECIALS

MIGHTY-T Reg. \$129.95
Now . . . \$75.00

T-SCOUT Reg. \$149.95
Now . . . \$85.00

TELE-T Reg. \$209.95
Now . . . \$160.00

FIVE-BY-FIVE
Now . . . \$150.00

JERRY'S RADIO SERVICE
409 S. Oklahoma
Shamrock, Texas
Phone 256-3405

SAWS SHARPENED

Hand Saws - Skil Saws
Table Saw Blades
Chain Saws
Jointer Blades
Foley Equipment

R. St. John
Mobeetie

Bowen Plumbing & Ditching

Backhoe Work, Sewer, Gas and Water Hook-ups, Plastic Pipe and Septic Tank Sales and Installation

Also . . .
Septic Tank Cleaning

Route 1 Box 28 Phone: 826-3013
Wheeler, Texas

LEWALLEN INSURANCE AGENCY

ALL - LINES

826-5719 114 E. Texas

REWARD \$250

OIL & GAS PRODUCING LEASES

We desire to purchase producing oil and gas wells. If you advise us the name and address of the owner and location of producing wells available for immediate sale, which we then purchase we will pay you a finder's fee of \$250 per well will be paid and only to the first party who contacts us regarding the oil and gas wells we purchase. This offer may be withdrawn at any time. All replies will be held confidential and the oil and gas property owner will not be advised the name of the finder. Please write or call Jerry Bunce, Wheeler Oil Company, Box 1526, Tulsa, Oklahoma 74101. Phone 918/627-2333.

AUCTION SALE

LOCATED: Two blocks north of stop light Wheeler, Texas on Highway 83, then 1 block East, 110 S Sweetwater St.

SATURDAY, SEPT. 11, 1976

11:00 A.M.

FURNITURE:

- 1—Chrome Table and 4 Chairs, drop leaf type
- 1—Singer Vacuum Sweeper
- 1—6' x 9' oval Rug
- 1—Set of T. V. Trays
- 1—Towel Pole for bathroom
- 1—4 burner Maytag Range
- 1—Charcoal Barbequer
- 1—Kitchen Stool
- 1—Electric Char-B-Que
- 1—Large size Kelvinator Deep Freeze, holds 584 lb capacity
- 1—Large Gibson Combination Refrigerator and Deep Freeze with two doors, the top is Frost Free
- 1—Electric Sunbeam Mixer
- 1—Complete set of dishes for 12
- Lots of Dishes and Cooking Utensils, galore
- 1—Kenmore Clothes Washer, automatic
- 1—Kelvinator clothes Drier
- Several Plastic Molds for Hobby Shop
- 1—18 qt. National Pressure Cooker, with twist type lid
- 1—G. E. clothes Washer, automatic

MISCELLANEOUS

- 1—7 HP Briggs and Stratton motor 36" Riding Lawn Mower, with 6 forward and 2 reverse gears
- 1—18" Electric Lawn Mower, also about 100 ft of cord
- 1—New electric Grass Edger
- 2—Bicycles
- 1—Nearly new 3 Wheeler with 3 speed, cycle
- 1—7 ft 2 wheel Trailer

Several more items not listed.

For Private Sale

1—6 Room Home, 3 Bed Rooms and Bath with corner lot 100' x 140'.

Mr. & Mrs. W. L. Jolly,

OWNERS

Shelby Petit, Auctioneer
Tx License No. GC 760101
Wheeler, Texas 79096

Paul Topper
Clerk-Broker
Wheeler, Texas

Sheri Gale Porter
Collecting Clerk

Mobeetie News

The Mobeetie Community was saddened by the death of Mrs. Peggy Corcoran, Tuesday last week. Our sympathy is extended to her husband Dale and little son Scotty in their loss.

We extend our sympathy to Mr. and Mrs. Eugene Gudgel and Ronald in the death of their sister-in-law, Mrs. Elmer Gudgel in Amarillo, Monday last week.

Recent visitors of Mr. and Mrs. J. R. Patterson were her sister, brother-in-law and nephew, Mr. and Mrs. V. W. Smith, Sr. of Shawnee, Oklahoma and V. W. Smith Jr. of Oklahoma City.

Friday evening Mr. and Mrs. W. F. Howard, Bill, Kelly and Dennis honored Mrs. Earl Whitten by surprising her when they took a birthday dinner to the home of Mr. and Mrs. Whitten to help her celebrate her birthday. During the weekend the Whittens had as their guests Mr. and

XYZ CLUB SPONSORING FREE BLOOD PRESSURE CLINIC

The regular free monthly blood pressure clinic will be held in the First Baptist Cottage on Friday afternoon from 2:00 to 4:00 o'clock.

The XYZ Club is sponsoring this clinic and would urge everyone regardless of age to take advantage of this free service.

The XYZ Club will meet in regular session the same afternoon at 5:00 o'clock, continuing until 9:00 o'clock in the evening.

Guest speaker for the evening will be Dick DeArment, head of the Wild Life Department.

A covered dish dinner will be served and the evening will be spent enjoying games and fellowship.

Final From page 1

\$3.00 single, either to dance or listen to the Music.

A concession stand with soft drinks will be available.

MOBEETIE LITTLE THEATRE ELECTS OFFICERS FOR NEXT YEAR

Before the practice session on Saturday evening August 28, the Mobeetie Little Theatre met in a business meeting to elect officers for the new year of 1976-1977.

Glen Sherrill was re-elected as president, with Ernest Gordon being elected vice-president, Melba Burch was elected Secretary, Mildred Mickey was voted as treasurer and Sallie Harris was voted to the office of publicity.

Dr. Marion Roberts

OPTOMETRIST
Phone: 669-3332
112 W. Kingsmill
Pampa, Texas

HAY HAULING

L. T. & R. HAY HAULING
Wheeler, Texas

Phone: 806/826-3106 or 806/826-3275

GUARANTEED AUTO GLASS INSTALLATION & Body Repair

GARRISON SERVICE
Phone: 826-5515
Wheeler, Texas

CUSTOM DRAPERIES Swags, Cornices, Shutters - WE INSTALL FREE - Telephone: 256-3652 Brannons Decorators Shamrock, Texas 79079

THE BUSINESS DIRECTORY

TEXAS PRESS ASSOCIATION

MEMBER 1976

Published Every Thursday at Wheeler, Texas, By . . .

PAUL'S TRAILER PARK

Across Street From School Trailer lots 40'x70' Modern Underground Utilities Gas and Water furnished Individual Electric Meters PAUL TOPPER-Ph. 826-5931

CONCRETE SHELTERS AND BASEMENTS

Woodward 256-7205 Northwest Oklahoma Storm Shelter Co. 20tmc

WHEELER LODGE NO. 1099

A.F. & A.M. MONDAY 7:00 P.M. Percy Farmer, Sec'y. Members Urged To Attend. Visitors Welcome.

WRIGHT FUNERAL HOME

All Types Cemetery and Memorial Work
Phone: 806-826-5214

WHEELER REDI-MIX

REDI-MIX CONCRETE SAND
Washed Gravel—All Sizes
Office Hours: 7:30 to 5:00
Phone 806-826-3223

Dr. Marion Roberts

OPTOMETRIST
Phone: 669-3332
112 W. Kingsmill
Pampa, Texas

WHEELER LUMBER CO.

Phone 826-5543 Wheeler, Tex. Fine Service for Fine People

STORM-SCREEN WINDOWS

Permanent year-round protection. Changeable from inside. Easy to clean...powder-proof. Eliminates drafts...Cuts fuel bills....

GARRISON SERVICE

Phone: 826-5515 Wheeler, Texas

WHEELER LUMBER CO.

Phone 826-5543 Wheeler, Tex. Fine Service for Fine People

WHEELER LUMBER CO.

Phone 826-5543 Wheeler, Tex. Fine Service for Fine People

Let Me Write It . . .

GEO. RICHARDSON
All Types Of INSURANCE

Let Me Write It . . .

GEO. RICHARDSON
All Types Of INSURANCE

Briscoe News

Last Sunday Roy and Linda Hall and children of Shamrock brought her parents Mr. and Mrs. Bill Bradstreet. They picked Fannie Mae Bradstreet up in Wheeler. Roy dropped them off to visit Mr. and Mrs. Oren Horn while he and family visited Alene Hall, his mother in Allison. Other visitors at the Oren Horns were Thurman and Bobby Horn.

Mr. and Mrs. Craig Keeting and children of Hereford spent Saturday with Roy and Lois Meadows.

Gayle and Helen Singleton and children have moved to Hereford. Gayle and Helen are attending college at WTSU in Canyon.

Visiting Sophia recently were Effie Renfro, Evelyn Meek, Lois Meadows, and Verna Fillingim.

Thursday at Willis and Verna's were Wylma Bible, Carla and Tom Baker and Jeff and Kevin Meadows.

Monday morning, August 30, 1976 it was cloudy, damp and cool. Looks like we could get rain.

Dick waterfield bought steaks for a supper to thank those that fought fire on his ranch Saturday Richard and Bonnie Meadows, Danny and Cathy Miller cooked the food. Others present were Roy and Lois Meadows, Eddie and Lita Meadows and Amy, E. G. and Willa Fillingim, Charles and LaJo Crownover and Boyce, Dan and Rita Fillingim and Dallas, Don and Billie Stuckey and LeAndra, Emil and Bennie Strohmeyer and Billy, Bill and Karen Hefley, Kan and Kay Gatlin and children, Sam and Barbara Meadows and children, Dick and Ruth Irvine and children, Sam and Barbara Meadows and children, Mr. and Mrs. Bud Lowe, David and Phillis Hefley and children.

Wayne and Tola Fay Meek took her dad, Mr. Bynum, back to Oklahoma City for a check up Monday.

Willis and Verna Fillingim went to Clarendon last Tuesday. They ate in the home of James and Susan Hall and Sheri.

Sunday dinner guest at the Dick Irvine home were Leon and Veal Fillingim.

Sunday dinner guest at Mr. E. E. Meek were Jack and Evelyn Meek Roy and Lois Meadows.

Cindy Meek left Wednesday to return to Hardin and Simmons College in Abilene.

Vern Fillingim visited, Birdella Roberts in the Shamrock Hospital last Wednesday. She visited Mrs. E. E. Meek and Mrs. Harry Fields in Wheeler on her way home.

Sunday dinner guest at Wink Reams' home were Bob and Sue Ratliff and Kevin and Melody, Gerald and Terri Reams and Jerrod of Canadian.

Don and Mayme McElroy and girls, and Phoeby Meek spent the weekend visiting Don's folks in Brownsfield.

Dorene ate dinner at Willis and Verna's Thursday.

Hoyle Helton visited the Colie

CARD OF THANKS

We wish to express our thanks to all the nice folks who sent cards, flowers and visited us while we was in the Hospital. Also thanks to the ones who did our chores. A special thanks to Dr. Barbour and the nurses.

Mr. & Mrs. W. R. Richardson

CARD OF THANKS

We thank each and everyone of you that called, sent cards, visited and sent flowers to me while I was in St. Anthony's Hospital. We love you all.

Bus & Myrtle Dorman

CARD OF THANKS

We wish to express our thanks to all who sent flowers, cards, and brought food during the loss of our loved one.

Dale Corcoran & Scott

Mr. & Mrs. Phil Corcoran

Fannie Lou Hunter

CARD OF THANKS

By your expressions and sympathy, your cards and flowers, and many kind deeds, you have helped us to bare our loss. We stand on Jesus' promise John 11:25.

Mary Burke

RoseAnn, Bill, Tanya, & Leslie Burke

Alvis and Jane Burke

Don and Barbara Burke

Loy and Patricia Burke

Roy and Phillis Burke

and their families

NOTICE

SENIOR CITIZENS

The regular covered dish supper will be held at the Senior Citizens building September 6, at 6:30 p.m. The drawing for the afagan will be held.

Parkers Friday night. Visiting the Colie Parkers Sunday were Zetha Dougherty Ricky and Dennis of Pampa. Sunday afternoon we all visited the Willis Parkers in Reydon, Oklahoma on our way home we visited Claud and Mable Parker. Tuesday 24 of August was Colie Parkers birthday. Clarence and Irene Zybach visited Dave and Jane Kiker Sunday after noon. Rozena Zybach, Gay Purcell and Lori, Shane and Travis visited the Clarence Zybachs Friday.

Bob and Gena Zybach had a ice cream supper and showed their films of their trip in Europe Saturday night. Those that were there were: Mr. and Mrs. Jim Tucker, Clarendon; Mr. and Mrs. Hirom Begart and Bret of Allison; Mrs. Gay Purcell and Lori; Mr. and Mrs. Benard Dukes and

Deidre; Mr. and Mrs. R. L. Zybach; Mr. and Mrs. Wayne Zybach; Mr. and Mrs. David Zybach, Christy and Shawn; Mr. and Mrs. Elbert Zybach; and Mr. and Mrs. Clarence Zybach.

Gregory and Keenin Atherton went home with their grandparents Sunday after church, the J. O Heltons.

Claud and Mable Parker children from Kentucky and California went home last Thursday. Pete Gilmer's little girls stayed with them while Pete and Margarette took Linda to catch a plane to college Friday.

We were all proud of Larry and Judy Parker's girl Saprine. She won 2nd in Pampa rodeo barrell race. She won 1st at Wheeler Jr. Rodeo pole bending and flag race. She is only 9 years old. We haven't heard what she won in Amarillo and Perryton.

David and Beckie Zybach, Christy and Shawn ate dinner Sunday with Benard and Diana Dukes, and supper with her folks the Joe Dukes after church Sunday night. They had water-melon.

Gearld and Sheryl Waters, Little Roy and Montie visited Roy and Willene Waters Sunday.

Skinny D'Spain fell and fractured a hip. Willene was telling me an ambulance took him to Plainview to the hospital. Velma is out there staying with her granddaughter and family Weldon and Judy Melton can be near to Skinny.

We hope Skinny is soon back at home doing o.k.

Bill and Mattie Jackson visited in Borger Thursday and Friday with the Don Zollars. They saw Irene and Dean Signor. The Dub Matthews were getting ready for a 2 week vacation.

Bill and Mattie ate supper with Glen and Diana Rose one night last week.

E. O. and Alice Kelley took Linda back to college in Springfield Missouri Wednesday.

Mr. and Mrs. Dick Renfro from Eurka, California are visiting his Dad, Neal and Effie Renfro Monday and Tuesday.

Mike and Melody Goad, Shane and Travis went to a rodeo at Tyrone, Oklahoma over the weekend.

Helen and Cloyd Helton went to Amarillo Friday visited Lee and Jo Ann White on Saturday. They shopped for Cloyd before he goes back to college.

Teresia Evans visited Helen and Cloyd Sunday. Cloyd took her back to Canyon Sunday night where she goes to school.

They visited Oma Dyer and Lula Helton while in Amarillo. Mark and Annette Meek visited them Sunday afternoon.

Tammie Helton spent last Tuesday nite with Helen and Cloyd.

Henry young visited Cloyd Sunday afternoon.

Sylvia Brown spent last week with the Travis Keelins.

Joey and Risa Keelin and Children ate dinner Sunday with Travis and Rosalee, Sunday afternoon Travis and Rosalee, Sylvia Brown, Gene and Norma Keelin and Tammie ate supper in Shamrock with the Joey Keelin's Myrle Hunter and Granddaughters Candy and Sheree Sewellan and Verne Lohberger visit with the Cliff Walkers Sunday.

Daryle, Debbie and Tressa Perry had supper at Sweetwater, Saturday night with the Jerry Alexander's.

Supper guest at the Daryle Perry's Sunday night were Howard and Linda Lohberger and boys and Jerry and Lisa Alexander.

Tim Dickinson spent Saturday afternoon with Tressa Perry.

Farmer's Hog Market
Open Every Thurs.
8:00 a.m. to 2:00 p.m.
Brashears Sale Barn
Shamrock, Texas
BOB RICHIE
HOG BUYER Phone: 256-2540
Day or Night

Extra Special Boy's Long Sleeve SHIRTS
Perma Press ONE GROUP
Sizes 6-18 **\$1.49**

Ladies & Children's **SHOES \$1.00**
See our new fall Shoes, Dresses and Coats

McIlhenny DRY GOODS
FOR Everything YOU WEAR
826-5688

REVIVAL First Baptist Church
ALLISON, TEXAS
September 5-12, 1976
Services:
SUNDAY MORNING-11:00
EACH EVENING-7:30
Evangelist: **JERRY RAULSTON**
Midland, Texas
Singer: **CLIFF ROGERS**
Midland, Texas
Tom Etheredge, Pastor

LOOMIX Liquid Feed Supplement
C. & N. FEEDS
"WE CAN COMPETE WITH THE BEST AND BEAT THE REST"
NATURAL PROTEIN
NO ADDED UREA
FEED TAILORED TO THE AREA
CONSUMPTION CONTROL BY PALATABILITY
DELIVERED PRICE IS FED PRICE
BILL COSBY 1600 N. Main
Shamrock, Texas 256-2451
TED NELSON Wheeler, Texas
826-5650

At Golden Spread Nursing Center, we offer care with a personal touch backed by the largest health care management team in the southwest.
Visit us and see what experience really means.
RUTH TERRY, Administrator
Phone: 256-2153
Highway 83 South
Shamrock, Texas 79079

NOW OPEN
Watson & Sons Machine & Welding Shop
General Maching & Shop Welding
- OIL FIELD WORK -
Airport Road
CANADIAN, TEXAS
Phone: 806/323-5291
806/323-5656 (Night)

"Vacation's almost over!"



The liability risk of causing personal injury to others continues in all seasons—and this can be our greatest financial risk. We invite every individual, farmer and businessman to check with Rives Insurance Agency for a realistic level of liability protection.

RIVES INSURANCE AGENCY
115 W. TEXAS 826-5224

LABOR DAY WEEK-END FOOD BUYS WE ACCEPT FOOD STAMPS

GROUND BEEF lb. **69¢**

Hamburger or Hot Dog BUNS 2 Pkgs. **89¢**

BACON 2 lb. Pkg. **2.98**

WEINERS Rath Beef 12 oz. Pkg. **98¢**

POTATO CHIPS 8 oz. Bags **59¢**

POTATOES 10 lb. Bag **69¢**

MOBETTIE GROCERY Phone: 845-2721 Mobettie, Texas

FROZEN FOOD SPECIALS

Banquet POT PIES Chicken Beef or Turkey 3 8 oz. Pkg. \$1.69	Banquet Fried Chicken DINNERS 69¢	Donald Duck ORANGE JUICE 12 oz. Cans 59¢
Borden's ICE CREAM 1/2 gallon Rounds \$1.39	Morton MINI PIES Apple and Cherry 3 8 oz. Pkg. \$1.79	Morton GLAZED DONUTS 9 oz. Boxes 2.89
Oreida Shredded HASH BROWNS 12 oz. Boxes 89¢	Kimbell Chopped Mustard Greens 4 303 Cans \$1	Kimbell Ranch Style Pinto Beans 3 15 oz. Cans \$1
Kimbell Sloppy Joe 15 1/4 oz. Cans 98¢	Kimbell Turnip Greens 4 303 Cans \$1	Instant Potato Buds 16 1/2 oz. Boxes 87¢
Ice 10 lb. Bags 55¢	Washington Delicious APPLES 3 lb. \$1	

YOUR FRIENDLY HOME OWNED
AND OPERATED GROCERY STORE!

Stop

This is IT!



USDA CHOICE
CHUCK ROAST Lb. **79¢**

"Guaranteed Good Eating"

USDA CHOICE
ARM ROAST Lb. **89¢**

WILSON
BULK SLICED
BACON
Lb. **\$1.59**

KIMBELL
SUGAR BARREL
SUGAR
5 lb. Bag **\$1.09**

WE FEATURE
USDA CHOICE
BEEF

BEAT
SHAMROCK

<p>WILSON'S MARKET SLICED BOLOGNA Lb. 89¢</p>	<p>KOUNTRY FRESH OLEO MARGARINE 1 lb. Tub 49¢</p>
<p>INDIVIDUALLY SLICED KOUNTRY FRESH SLICED CHEESE 12 oz. Pkg. \$1.19</p>	<p>CORN KING BEEF FRANKS WEINERS 12 oz. Pkg. 75¢</p>

U.S. No. 1
WHITE
POTATOES
10 lb. Bag **79¢**

DELICIOUS
FRESH
CAULIFLOWER
Each **79¢**

FRESH
TOMATOES
Lb. **43¢**

SUNBEAM
COOKIES
CHOCOLATE CHIP
PECAN CHIP
OATMEAL
COCOANUT
Approx. 5-8 doz. per 20 oz. Box
Each Box **85¢**

KIMBELL
POWDERED DETERGENT
GIANT SIZE **99¢**

<p>BETTY CROCKER CAKE MIXES 13 1/2 oz. Box 59¢</p>	<p>HI-DRI PAPER TOWELS JUMBO ROLL 47¢</p>
<p>BORDEN'S RICH & READY ORANGE DRINK Gal. Jug 85¢</p>	<p>CLOROX BLEACH GALLON 79¢</p>
<p>DEL MONTE CUT GREEN BEANS 3 303 Size 89¢</p>	<p>KOLD KOUNTRY ORANGE JUICE FROZEN 12 oz. Can 43¢</p>
<p>KIMBIES DIAPERS EXTRA ABSORBENT \$2.09 24 Count</p>	<p>DISINFECTANT PINE SOL \$1.15 28 oz. Btl.</p>
<p>LYN FARMS FRENCH FRIES 2 lb. Bag 65¢</p>	<p>Roark's FINE FOODS</p>

OPEN MON.-SAT. 7:30 A.M. TILL 6:30 P.M.
USDA FOOD STAMPS ACCEPTED
FREE DELIVERY WITH \$2.50 PURCHASE
FEATURING GUNN BROS. STAMPS