

THE WHEELER TIMES

VOLUME 44, NUMBER 10

THURSDAY, FEBRUARY 16, 1978

SINGLE COPY 15¢



Mustangs Win District...

Here and There

Laura Guthrie

Well, just what are you doing tonight, Monday, without TV, sometimes without telephone, sometimes without electricity and the weather is too miserably cold and icy to get outside? We who aren't fortunate (?) enough to have all electric houses are fareing pretty well. But I'd say you that do depend on such to keep you warm may have to move in with some of your poor neighbors or relatives. Any how, we are fortunate. Our houses haven't been washed down a muddy hillside and (so far) we haven't been stranded in a blizzard for days, having to dig the army to come in and dig us out. (But now without TV for three days, what is going on in the rest of the world?)

I am just learning that the Thurman Rives has had a trip to Hawaii. It was a Christmas gift from their son Donald and his wife. They returned last week, but Jane (from exhaustion probably) had to enter the hospital soon after. She is caged up in one of those little plastic tents. Poor thing has pneumonia. Donald, who has a leave from the exhaustive season with the Chicago Bears and his wife has been here. At present they are in Dumas visiting with her people.

Betsy Brickley has the very good fortune of getting to enter LVN training next week. She will be with the Shamrock Hospital. On week ends she will work at the Rest Home in that city. Betsy was delighted to have help from a scholarship presented to her by the Thursday Review Club.

Today I learned a real human interest story. A lot of you remember Doris Ragan. She was here on the said occasion of her mother's funeral. I had a chance to visit briefly with her. Doris finished Wheeler High School several years ago about the early fifties. So she lives in Roswell, New Mexico with a husband, Bill Louton, and a family. Three children, I think. Now that is all very ordinary. But the amazing thing is that in the spring, Doris will be getting a degree from Eastern New Mexico University. She is majored in Home Economics and Business. This honor didn't come easy. For four years Doris has commuted, five days a week, from Roswell to Portales—a distance of about 90 miles. Now how is that for perseverance? That should teach us all something.

I'm feeling so sorry for all the people that are responsible for getting our utilities back in operation. While we hover around the fire, or sleep in a comfortable bed, somebody has to be out in the weather, wrestling in ice, fog and snow to try to bring our way of life back to normal. Let's tip our hats to them.

Our wrestling will come when we have a spring day. Every body that has a tree will have to have a prune-up and clean up. Well, that isn't so bad when the sun is shining.

The Wheeler Mustangs closed the regular season Tuesday evening with a win-loss record of 22-6 and 14-0 in district play. The team now stands as District Champions and will play for Bi-District title Monday or Tuesday. The winner will go to Regional Tournament Friday and Saturday, Feb. 24-25 at Leveland.

LOWELL LASLEY ANNOUNCES FOR CO. CHAIRMAN FOR DEM. PARTY

Mr. Lowell Lasley, at the request of Mr. Joe Rogers, Wheeler County Democratic Chairman, and other leading Democrats in Wheeler County, wishes to announce his candidacy for Wheeler County Democratic Chairman.

Mr. Lasley received a B. A. Degree, with honors, from Southwestern State College in Weatherford, Oklahoma and a Doctor of Jurisprudence, with honors, from Texas Tech. University. His is a partner in the law firm of Sims, Hayes & Lasley and has served as an officer on the Board of Directors of various civic organizations. He and his wife, Loretta, who teaches in the Wheeler Independent School System, have three children, Kevin, Kyle and Renee.

Mr. Lasley has been active in the Democratic Party and states that his objectives as chairman of the Wheeler County Democratic Party will be to stimulate interest

COOKIE SALES
Because of bad weather the Girl Scouts will extend their cookie sales for another ten days.

Maude Ragan Is Buried Monday

Mrs. Beulah Maud Ragan, 72, died Friday, February 10, 1978. Services were held Monday, February 13, 1978 in the First Baptist Church at 2:00 p.m. with Rev. Larry Payne, pastor of the First Baptist Church of Beavor, Oklahoma, officiating. Burial was in the Wheeler Cemetery by Clark Funeral Home of Beavor.

Mrs. Ragan had lived in Wheeler County most of her life. She was a member of the First Baptist Church. She moved to Beavor two years ago.

Survivors include her husband, Oscar Sr. of Fort Lyon, Colorado; two sons, Oscar Jr. of Beavor and Lee of Amarillo; two daughters, Mrs. Doris Louton of Roswell, N. M. and Bonita Berry of Tulsa, Oklahoma; one sister, Annie Hunt, Pritchett, Colorado; one brother, Luther Patterson of Colorado City, Texas; 12 grandchildren and six great-grandchildren.

She was preceded in death by one son, her parents, six brothers and one sister.

Pall bearers were Loyd Lee, Harold L. Lee, Paul Topper, Roy Bradstreet, Dub Goad, and Bill Owens.

Groom was their opponent Tuesday evening and the scoreboard read 64-59.

Six seniors are playing their final season for Wheeler High School.

The team members are (back row l to r): Kevin Lasley*, Tim Patterson*, Wendell Moore*, Jeff Davis*, and Bennie Baker; (front row, l to r) Dell Ford*, Myron Jolly, Kevin Andis, Jeff Christner, Duane Childress*, and John Harris.
* Denotes Seniors

in local, state and national political races and seek to select, support and elect worthy Democratic candidates at all levels.

PERSONAL
Mrs. Ethel Boone of Sunray, Texas spent last weekend and around Wheeler. Visiting her sister Mrs. Gwyn Edwards north of Wheeler and her brothers, Mr. and Mrs. Virgil Helton of Wheeler and Tom Helton of Gageby. Then on to Canadian visiting her daughter, Mrs. Joann Brewsters and family.



DOWNED POWER LINES: Much of Wheeler County has been without electricity since Friday night and this picture shows the reason for the delay in restoring power in some areas. This picture was taken in the northwest corner of Wheeler

Library News

We appreciate the patronage of every cardholder at the Library but please come by and drop books off only during the regular Library hours. If you books are left on our doorstep, they may be stolen or destroyed by the elements or the animals. A few cents in overdue charges is far

Eighth Grade To Present Play

The eighth grade will perform in a 3-Act play, Thursday, February 16, 1978 at 7:00 P.M. in the school auditorium. The name of the play is "An Overboard".

Everyone is welcome. The admission will be 50¢ for adults and 25¢ for students. The money will go to the speech, Drama and Art Department.

SNOW & ICE DAMAGE HEAVY IN COUNTY

Moisture received this week in the form of rain, snow, and ice has been very destructive and expensive. The snow received in the early part of last week remained and an additional 2" fell Wednesday giving Wheeler approximately 4" on the ground. Temperatures were too low for much melting until early Saturday morning when 0.52 inches of rain fell. The rain was the "last straw" for power lines in the area; mile after mile of highline poles broke as wind whipped the lines, caked with up to 3" of ice.

Power problems began in the county Saturday morning as the electricity went off in the Kelton community. Allison, Briscoe, and Mobeetie soon suffered the same fate. Wheeler was without power for short periods of time until Monday afternoon; Monday's power failure was only for an hour and a half. Some of the rural areas in the county remain without electricity with no promise as to when service will be restored.

Both Wheeler and Shamrock

Gladys Rowe Rites Are Read

Mrs. Gladys Lee Rowe of 2522 Dryden Road, El Cajon, California, a formal medical secretary, died Monday, February 6. She was 70.

Mrs. Rowe the former Gladys Lee Gunter was born in Morgan Mill, Texas and moved to Wheeler County in 1908 and moved to San Diego County 36 years ago. She was a member of LaMesa Chapter 300 of the Order of Eastern Star and Social Order of Beaucourt 67.

Services were held at Greenwood Mortuary February 10 at 9 a.m. under the auspices of Order of the Eastern Star Lamesa Chapter #300 Entombment Greenwood Mausoleum.

She is survived by three brothers, Albert W. Gunter of Ruidoso, New Mexico, M. L. Gunter, Jr. Parsifany, New Jersey, and T. L. Gunter of Wheeler, Texas.

were without water for a time Sunday due to the lack of power to run their water wells. The power to Wheeler's wells was restored at 1 p.m. and again at 3 p.m. The wells are presently operating on a temporary system. The pumps were without power around seven hours. The water tower supplied the city with water until 11:30 Sunday when the supply was exhausted.

Southwestern Public services 1550 customers in the county; all were without electricity from 5:09 a.m. until 5:56 a.m. Sunday. The problem began about 2 p.m. Saturday when Wheeler suffered a power failure for an hour. It was 3:30 a.m. Sunday when the real problems began for the company. The local crew has been working tirelessly to restore power with Thursday as their goal for complete restoration of power.

For Southwestern Public Service the storm has meant the loss of 57 poles, cross arms and hardware. There is no estimate on the amount of wire lost.

Power to Wheeler was restored at 7:56 a.m. with temporary outages Sunday. Power was restored to Kelton 3:10 p.m. Monday. Fifteen to 20 customers in the Gageby Community had their power restored Monday.

Natural Gas Pipeline and Pioneer Natural Gas had the power restored at their plants in the Briscoe community by 8 p.m. Tuesday.

As of 8:10 a.m. Wednesday, February 15, 519 of SPS's customers remained without power. Service was scheduled to be restored to Mobeetie and part of Briscoe Wednesday.

The local SPS crew, Jay Thompson, Marshall Andis and Betty Cox, expressed their appreciation for the cooperation and understanding their customers have shown.

The "Times" was unable to reach Greenbelt Electric for a report on the damage their system received.

GREENBELT ELECTRIC DAMAGE

David Pruitt, manager of Greenbelt Electric in Wellington, reports a loss of 600 poles scattered over the 10 counties in Texas and Oklahoma served by Greenbelt. Poles are being brought in from all over the united state following the worst ice storm the company has suffered. It is feared some of their customers may be without power until Saturday.

For the benefit of Green belt customers who have freezers, dry ice is available at Shamrock Slaughter as a special price. Customers are asked to furnish the stub from their electric bill as identification.

Pruit also expressed their appreciation for the understanding their customers have shown. Sam Schaffer, Wheeler's local serviceman has been working night and day to restore service.

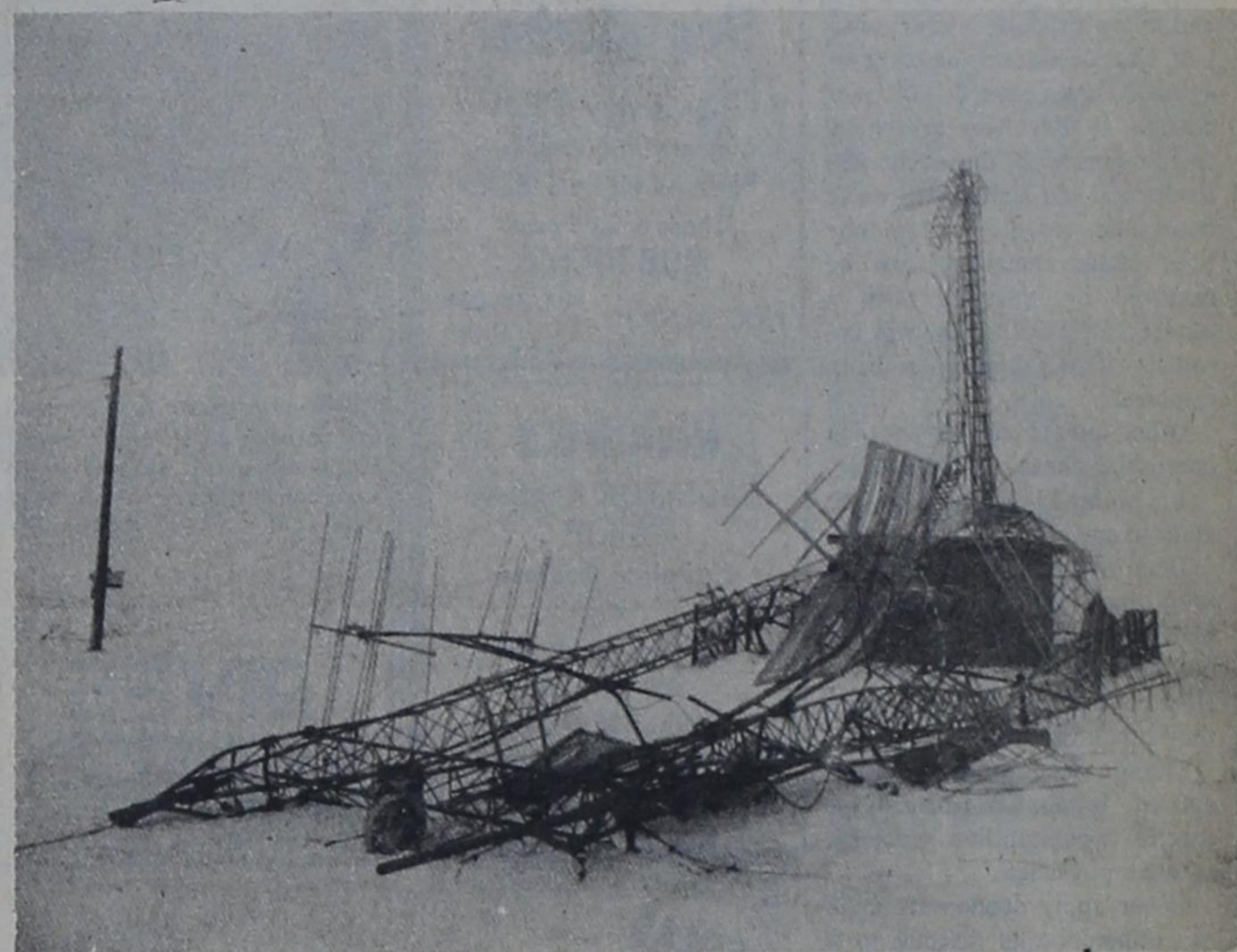
Filing Deadline For City Council

Deadline for filing for position on the Wheeler City Council is March 2. The office of mayor and three places on the City Council are to be filled; place 3 will be for a one-year term.

Mayor Pete Burton was elected last year to fill an unexpired term. The person elected will serve a full two-year term.

Councilmen are to be elected to places 2, 3 and 4 on the council. Places 2 and 4 are presently held by David Cross and Louis Stas respectively. Place 3 is presently vacant due to the resignation of Jim Helton, who moved outside the city limits; this will be for a one-year term. A citizen wishing to place his or her name on the April 1 ballot must file with the city secretary before 5 p.m. on March 2.

"Hope ever tells us tomorrow will be better." Tibullus



WHEELER TRANSLATOR FALLS SAT. DUE TO ICE

The Wheeler Translator Tower located in the northwest corner of Wheeler County fell to the ground Saturday afternoon about 3 p.m. after the weight of ice caked on the tower and guys. The 250' tower furnishes a TV signal for rural Wheeler County.

A meeting of the Board of Directors was held Tuesday afternoon at Odessa's Place in Wheeler to determine the fate of the system. It is hoped a new tower can be erected, but it will take the cooperation of everyone using the tower. No decisions were made at the meeting. A meeting will be called at a later date.

The Wheeler Translator System began operation in 1959 with two channels being offered by UHF. Customers were asked to pay a set amount to begin receiving the signal and a \$24 annual fee was required. For the past nine years the system has been operating in the red; service has been discontinued for per-

Hospital Notes

- OLD ADMISSIONS**
- 11-28-76 Allen Meadows
 - 11-14 Lela Simpson
 - 12-17 Melvin Pillers
 - 12-24 James Steen
 - 12-28 Elmer Simpson
 - 1-15 Louise Glazner
 - 1-25 Ollie Jacob
 - 2-2 Bessie Galmor
 - 2-5 O. C. Goad
 - 2-6 Nancy Shirey
- NEW ADMISSIONS**
- 2-7 Ella Ballard
 - 2-7 Matt Johnson
 - 2-8 L. V. Suttee
 - 2-8 Claudy Brotherton
 - 2-8 Willie Morris
 - 2-9 Bennie Mae Whitener
 - 2-9 Homer Sanders
 - 2-9 Irene Dixon
 - 2-9 Lizzie Caldwell
 - 2-9 George Weems
 - 2-10 Jane Rives
 - 2-11 Carroll Summers
 - 2-11 Kenneth Franklin
 - 2-11 Gary Van Osdalle
 - 2-12 Glenetta Huff
 - 2-12 Shonda Hall
 - 2-13 Louis Richard
 - 2-13 Crulie Callan
 - 2-13 Virgil Jamison
 - 2-13 Edwin Hall
 - 2-13 Kenneth Frankenbery
 - 2-13 Ruth Venable
 - 2-13 Ladonna Griffin
 - 2-14 Marvin Dixon
 - 2-14 Christopher Bradley
- DISMISSALS**
- 2-8 Bryant Richardson
 - 2-8 William Smith
 - 2-8 D. C. Venable
 - 2-9 L. V. Suttee
 - 2-9 Beatrice Weems
 - 2-9 George Weems
 - 2-10 Judy Richardson
 - 2-10 Matt Johnson
 - 2-10 Claud R. Cox
 - 2-13 Gary Van Osdalle
 - 2-13 Irene Dixon
 - 2-13 Claudy Brotherton
 - 2-13 Shonda Huff
 - 2-13 Dixie McDowell

iods of time because of non-payment of dues. The February 2 issue of the "Times" carried a notice listing the customers who regularly pay dues. The system has no way of checking who is using the signal; they entirely on the honesty of the good citizens of Wheeler County. The board reports however that his system of collection will have to improve & dues increased or the tower cannot be rebuilt. Of an estimated 1,000 customers, only 221 are paying.

The tower insured for \$10,000 which is not enough to cover the damage.

Feel free to contact any member of the board of directors if you are interested in the reconstruction of the system and have any ideas for the improvement of the system. Board members are Glenn Bell, president; Coy Revous, Paul Macina and Austin Caldwell.

THANK YOU

These pictures of the Wheeler Translator System were possible only because Coy Revious furnished the 4-wheel drive vehicle for the editor to reach the scene. The "Times" says thanks. The pictures were made Tuesday afternoon and the ground in the Mobeetie was still completely covered and ice remained on the downed power lines.

Wheeler ISD Calls Trustee Election

The Board of Trustees of the Wheeler ISD meeting in regular session January 12, has called a Trustee Election for Saturday April 1st, 1978. Three positions on the Board will expire-Position #1, Bennie Westmoreland Position #2, Betty Hennard and Position #3, Harold L. Lee.

All requests by candidates to have their names placed on the ballot for the above mentioned election shall be in writing and signed by the candidate and filed with the secretary of the Board of Trustees at the superintendents office not later than 30 days prior to the date of this election. Deadline for placing names on the ballot will be 12:00 P.M. on March 1, 1978.

Hospital Directors To Be Elected

The deadline for filing for director of North Wheeler County Hospital District is March 6, 1978. 2 Districts will elect directors this year, the Kelton district and Wheeler district. These districts are currently represented by Paula Britt of Kelton and W. A. Goad, Jr. of Wheeler.

The hospital director election will be held in conjunction with the school election April 1, 1978. Any qualified tax payer desiring his or her name to be placed on

TOWER COLLAPSES: The Wheeler Translator System tower, located in the northwest corner of the county collapsed Saturday from the weight of the ice collected on the tower. The 250' tower was supported by 40 guywires. This tower furnished the TV signal for the rural citizens of the county.

Pride Is Named Division Manager

Francis (Sonny) Pride, twenty year employee of AMPI or predecessor coops, was named manager of the Oklahoma Division in December. In making the announcement, Region Manager Jiggs Wise said, "I have every confidence in Sonny, he has performed many jobs well for dairymen and is dedicated to serving their interests."

Pride left the post of assistant manager of the Dallas-Fort Worth Division at Arlington, Texas to assume his new duties in Oklahoma City.

Following the December meeting of the board of directors of the Oklahoma Division, Lyndon Wahl, president said, "The division board is pleased with Mr. Pride's experience and record. We are looking forward to working with him."

A native of Wheeler, Texas, Pride started to work for dairymen in 1958 when he was hired at Shattuck, Oklahoma in the transportation and field service at that location where he served till 1964 when he was named manager of the Wichita Falls, Texas, area.

In 1969 he was appointed area manager at Sulphur Springs, Texas, and worked there until 1971 when he was moved to D-FW Division headquarters in Arlington to be transportation manager.

Pride continued as transportation manager and was given additional responsibilities as assistant division manager in 1976. He served in this capacity until his appointment to Oklahoma in December.

Sonny and his wife Jeraldine have four children: Ronnie, 19; Rhonda, 17; Ricky, 16; and Randy, 14. Sonny says the whole family is enthusiastic about their move to Oklahoma.

Pride succeeds Noble Anderson who resigned as Oklahoma Division manager to become a bank officer in his home town of Sulphur, Oklahoma.

Hospital Directors To Be Elected

The ballot as a candidate for director shall file a petition signed by not less than qualified voters residing in the candidates voting precinct asking that the ball name be printed on the ballot for election purposes. Such petitions must be filed with the secretary to the board 25 days prior to the election or by 5:00 p.m. Monday March 1, 1978.

Petitions for filing may be obtained from Charles Hix, administrator, at his office at Parkview Hospital.

LINES from LINDA

CEA — Linda Daughtry

Immediate attention to clothing stained by deodorant, antiperspirant or perspiration may save the garment.

Otherwise, damage due to odor, yellowing, color change or fabric deterioration can ruin the clothing.

To remove a deodorant, antiperspirant or perspiration stain, sponge thoroughly with liquid detergent and warm water. Enzyme detergents or pre-soaks are particularly effective for perspiration stains and restoring whiteness. Then rinse.

If stain remains, treat with diluted chlorine or an oxygen bleach appropriate for the fabric, and follow produce instructions. If the deodorant or antiperspirant has caused a color change, it may help to sponge fresh stains with household ammonia and old stains with white household vinegar. Any oily body stains remaining can be removed by sponging with a grease solvent. Odor will not remain if the stain has been removed.

Other points to consider in controlling these stains include:

Act promptly. Do not allow the stain to age.

Do not apply heat in any form until the stain has been completely removed. This means, do not press or dry in the dryer. Heat permanently sets stains and they cannot be removed.

Change deodorant or antiperspirant brands or forms for excessive perspiration problems or see a physician.

Never apply deodorants and/or antiperspirants directly to a garment. Let products dry or set before dressing.

Point out and identify stains when taking garments to a dry-cleaner. Check these garments for complete stain removal before taking them home.

Garments with permanent permanent stains, discoloration or deterioration should be discarded or used only when appearance is not important.

Antiperspirants differ from deodorants in that they reduce perspiration by approximately one-fourth, while deodorants control odor. Many antiperspirants also have deodorant properties. Therefore, when using antiperspirants only, garments will remain dryer but may absorb more odor as long as the antiperspirant remains effective. The reverse is true when using deodorants only.

Chemical ingredients of both products will vary from brand to brand. Many contain acid salts. When in a contact with a natural

fiber or high percentage natural fiber blend, acid deterioration may result. Tests show that paste forms do less harm than liquids. Perspiration will also weaken natural fibers, especially silk, but not as much as acid salts from deodorants and antiperspirants.

Mildew Stains
Remove mildew from clothing immediately—and better yet, prevent it—as it can stain clothing permanently without proper attention.

Farmer's Hog Market

Open Every Thurs.
8:00 a.m. to 2:00 p.m.
•Brashears Sale Barn
Shamrock, Texas
BOB RICHIE
HOG BUYER Ph. 256-2540
Day or Night

Richard's RADIATOR & HEAD SHOP

Complete Radiator and
Cylinder Head Work
301 E. 12th
Ph. 256-3151
Shamrock, Texas
Richard Blakemore
Owner

SOLAR

INSULATION

Approved Rated R-5
Non-Combustible Chemically Bonded

Free Inspections

Wheeler Insulation Co

Call: **Bennie Reeves** 826-5975
Bill Douglas 826-3040

Blakemore FRESH PROTEIN FED CATFISH



"DRESSED WHILE YOU WAIT"

Blakemore Motor Co. Building

PHONE 256-3287
400 NORTH MAIN SHAMROCK, TEXAS 79079

Remember, mildew grows in damp, warm, dark and poorly ventilated places.

It often leaves a musty odor and can eat holes in fabric if left too long.

Fabrics most susceptible to mildew are the natural fibers—cotton, wool, linen and silk—and cellulosic manmades, including rayon, acetate, and triacetate.

To prevent mildew stains remember the following:

Make sure laundered clothing is completely dry before storing

in closets or drawers.

Never store soiled clothing.

Be sure to dry clothing that is wet or soiled before putting in a hamper.

If possible, store clothing in a well ventilated closet—or leave the door open periodically to prevent moisture build-up in closed areas.

Dampen clothing for ironing only as you are ready to iron—for example, using a spray pump bottle. Do not predampen a lot of clothes thinking you will iron them all at once.

When storing clothing use a mildew inhibitor, such as paradichlorobenzene or paraformaldehyde, in the drawer or closet. These may be obtained at your local food markets or drug stores. Read the instructions before using to prevent clothing damage or health hazards.

To remove mildew stains, follow these steps:
Remove the stain as soon as it is discovered.

Moisten stain with a mixture of lemon juice and salt, if the garment is launderable. If not, moisten with detergent and water. Rinse and allow it to dry in the sun.

If stain still remains, use a mixture of two tablespoons pre-oxygen bleach and one pint hot water if fabric can take it—if not,

"That black cloud's heading this way."



Is your property fully covered for tornado and other wind-storm damage? Let the Rives Insurance Agency check your insurance for 'full value' protection.

RIVES INSURANCE AGENCY

115 W. TEXAS 826-5224

OIL NEWS

INTENTIONS TO DRILL:
HEMPHILL—Mendota, N. (Upper Morrow) - Diamond Shamrock Corporation - Webb "R" #2-192 - 660' f N & 660' f W lines of Sec. 192, C, GMMB&A - PD 11,100'

HEMPHILL—Mendota, NW (Morrow, Upper) - Exxon Corporation - Wiggins Gas Unit #1 Well No. 2 - 660' f S & 660' f W lines of Sec. 54, 1, I&GN - PD 11,450'

WHEELER—Wildcat - Amarillo Oil Company - McMahan #1-22 - 660' f N & 660' f E lines of Sec. 22, 4, Camp County School Land - PD 19,000'

HEMPHILL—Mendota, NW (Granite Wash) - Exxon Corporation - Myrtle Flowers #2 - Sec. 61, B-1, H&GN - Comp. 12-31-77 - Pot. 14,700 MCF/D - Perfs. 10,372' - 10,620' PBD 10,751'

HEMPHILL—Viking (Morrow, Upper) - HNG Oil Company - Lucas #91 - Sec. 9, Z-1, Ach & B&H&W - Comp. 1-18-78 - Pot. 1730 MCF/D - Perfs. 15,198' - 15,226' - PBD 15,366'

HEMPHILL—Canadian, East (Douglas) - Pioneer Production Corporation - Shel George Unit #1-169 - Sec. 169, 41, H&TC - Comp. 9-7-77 - Pot. 1017 MCF/D Perfs. 6897' - 7116' - PBD 7217'

HEMPHILL—Wildcat - Star Pet - W. S. & E. C. Jones Trust #2-25 - Sec. 25, 1 C&K - Plugged 11-23-77 - TD 2554' - Dry

Allison News

Juanita Boydston

We've had terrible cold weather and snow and ice. It's been bad all week, but I was sure glad to see the sunshine out this Monday morning. We've also been out of Electricity since Saturday night. Power lines are down all around, but hope to get them repaired soon.

Greg Boydston spent the weekend with his grandparents, Mr. and Mrs. Clifton Boydston. Mrs. Edith Donaldson was Sunday dinner guest of Mr. and Mrs. Bill Donaldson. Rev. and Mrs. Ronnie Chadwick and Mrs. Rhonda Puryear

They returned Thursday and Rev. and Mrs. Ronnie Chadwick were in Davidson again Friday. Rev. Ronnie Chadwick officiated two funerals while there. Allan and Janie Lane of Miami, Perry and Evelyn Elliott of Wheeler and Mr. and Mrs. Franklin Lane spent Sunday with Mr. and Mrs. Frank George. Mr. and Mrs. Forrest Boydston and family and Juanita Boydston were Saturday evening guest of Mr. and Mrs. Clifton Boydston.

Dr. Jack L. Rose
OPTOMETRIST
121 Main St. - Shamrock
Phone 256-3203
Tues.: 9-5 Fri.: 2-5

PERSONAL INCOME TAX PREPARED

Reasonable Fees
-Call Anytime-
256/2992 or 256-2378

80-BULLS . . . Performance Tested

Selling on TUES., MAR. 7, 1978

Oklahoma Panhandle State University

Goodwell, Oklahoma - 1:00 P.M. cst

65 Herefords
35 Angus
25 Polled Hrd.
5 Charolais

THE SELECTED TOPS
FROM 130 HEAD
WEIGHING 1000-1400

Fertility Checked & Guaranteed

Fed on high-roughage ration

Many with 3 1/2 lbs. ADG and/or 3 lb. WDA

BUY PERFORMANCE — IT PAYS!

FOR CATALOGS, Write or Call: M. W. England

Box 186; Goodwell, Ok. 73939

or 405/349-2611 - Ext. 228

were in Davidson Wednesday. They returned Thursday and Rev. and Mrs. Ronnie Chadwick were in Davidson again Friday. Rev. Ronnie Chadwick officiated two funerals while there.

Allan and Janie Lane of Miami, Perry and Evelyn Elliott of Wheeler and Mr. and Mrs. Franklin Lane spent Sunday with Mr. and Mrs. Frank George.

Mr. and Mrs. Forrest Boydston and family and Juanita Boydston were Saturday evening guest of Mr. and Mrs. Clifton Boydston.

Dr. Jack L. Rose
OPTOMETRIST
121 Main St. - Shamrock
Phone 256-3203
Tues.: 9-5 Fri.: 2-5

Boydston and family. Rev. and Mrs. Virgil Cornwell were Sunday dinner guest of Mr. and Mrs. Eddy Walker. Mr. and Mrs. John Glisan were in Pampa one day last week.

Mr. and Mrs. Forrest Boydston and family were Sunday dinner guest of Mr. and Mrs. W. H. Boydston.

Mrs. Vivian Wallace and Ronnie and Mrs. Tina O'Donnell and daughter Monica and Cheryl Boydston and Lisa Craig were Sunday dinner guest of Mr. and Mrs. Bruce Harrison.

Rev. and Mrs. Virgil Cornwell and boys were supper guest of Mr. and Mrs. Bruce Harrison Sunday night.

Mr. and Mrs. Eddy Walker and family were glad to accept an invitation to dine out at the Irish Inn in Shamrock with friends from Inneapolis, Minnesota. Who were passing thru going to Bronsville, Texas.

Mr. and Mrs. Keith Boydston kept the Ray Currie children Tuesday, Wednesday and Thursday. While their mother, Mrs. Verline Currie was in Pampa Hospital for observation.

Mr. and Mrs. Ray Currie of Pampa were Thursday guest of Mr. and Mrs. Keith Boydston.

Mrs. Forrest Boydston and SaRita and Neal and Rusty visited the Keith Boydston's Thursday night.

Rev. and Mrs. Virgil Cornwell and boys were supper guest of Mr. and Mrs. Keith Boydston Saturday night.

Mr. and Mrs. Clarence Cornwell of Hazelton, Indiana and David Cornwell of Evansville, Indiana were guest Sunday thru Friday of Rev. and Mrs. Virgil Cornwell and boys. This is Rev. Virgil Cornwell's parents and a brother.

Mr. and Mrs. W. H. Boydston and Juanita shopped in Wheeler and Shamrock Saturday.

"In time and place a harmless lie is a great deal better than a hurtful truth."
Roger Ascham

FREE! \$20 WORTH OF CRYSTALS WHEN YOU BUY A BEARCAT CRYSTAL SCANNER!

Here's your chance to get in on the action of public service broadcasts—police, fire, emergency, weather—and save \$20 in crystals. Buy a Bearcat® Crystal Scanner between February 1 and March 31, 1978

and receive direct from Bearcat four free crystals in the frequencies of your choice. That's a \$20 retail value, from the world's leading scanner manufacturer. Visit our Scanner Department for complete details.

WE HAVE A BEARCAT CRYSTAL SCANNER FOR YOU:



Bearcat® 8 An economical 8-channel scanner that monitors all public service bands.



Bearcat® 12 The finest crystal scanner offered by Bearcat. Monitors 10 channels and packed with features unavailable on any other Bearcat crystal scanner.



Bearcat® Hand-Held The portable, lightweight, 4-channel scanner for professionals.



Bearcat® III Plug-in modules allows listening to any single band or two-band combination, scans 8 channels.



Bearcat® IV Monitors all four public service bands simultaneously, covering every frequency. Scans 8 action channels.



Bearcat® 6 High quality two-band coverage at a moderate price. Scans 6 exciting public service channels.

LANCASTER DEPARTMENT STORE

Softness in bloom



TONI TODD

Drift into a spring-full of good times in Toni Todd's sensational peasant-look dress. You'll love the newsy square neck yoke, soft gathers front and back. Long sleeves billow to elasticized wrists. Inset sash at waist. In poly interlock, machine wash-dry. Pink, Coral or Brown. 8-18

vicky vaughn

Challis forth into springtime. Vicky Vaughn makes it easy with this pretty threesome. Lushly gathered peasant top tucks into a flower-full flounced dirndl. Goes all-out romantic with matching triangular shawl. In poly/rayon, machine wash-dry. Beige and White. 5-15.

Bearcat

L. & F. REPAIR

110 West Oklahoma

Phone: 826-3241

Wheeler, Texas

General Telephone Reports Damage

Telephone service to 851 customers in the northern part of the Memphis Division was interrupted last Sunday, February 12, 1978 when a cold front crossed the area dropping snow and freezing rain. J. H. Davis, division manager for General Telephone Company said. The following towns were the hardest hit by the ice storm: Clarendon, Hedley, Wellington, Dodson, Wheeler, Miami, Mobeetie, Panhandle, Claude, White Deer and Groom.

The major portion of the outages were caused by ice accumulating on the lines which caused them to break due to the extra weight. Ice accumulation on some of the lines was noted at up to four inches in diameter.

We also have several telephone lines down throughout the area due to power lines falling across our lines, causing the telephone lines to burn in two, Davis added.

Employees have been brought in from as far south as Del Rio to assist in restoring service to our customers. We have approximately 60 people and 40 vehicles working in these towns to repair damaged facilities. I could possibly take as long as Sunday, February 19, 1978 to restore service to some remote rural locations.

Telephone installation has been hampered due to this storm and there will be some delays in establishing new service during this time period. Priority will be given to establishing and re-establishing normal service to all emergency-type phone installations, Davis explained.

Emergency generators were brought in to furnish auxiliary power to our offices in Claude, Groom, Panhandle, Miami and Mobeetie because of commercial power failure. Our emergency generator was also used in Mobeetie to assist in getting the water supply to people in Mobeetie.



The U.S. and France are the world's largest producers of apples.



ALSO ON MAIN: This tree is the front yard of Mrs. James Phillips at 1226 S. Main was exceptionally pretty Saturday morning. In the background is the ice-covered apricot tree.



A SLEIGH RIDE: horse power but at the present time the Rogers rely on one-mule. The sleigh was built from "scratch" by Neil's brother, Dale Rogers, who lives at Hydro, Oklahoma. The six-passenger sleigh should be two-

**HAY FOR SALE
BIG ROUND BALES**

**Co-op SS-75 Haygrazer
Call After 6:30 P.M.
806/826-5600**

AUCTION

LOCATION: 215 East 13th Street,
Wheeler, Texas.

**Saturday, Feb. 25
12:30 P.M.**

- | | |
|--|--|
| 1—Dinning room Table and Chairs | 2—410 Gauge Shotguns |
| 1—Buffet | 1—Saddle, new |
| 2—Recliners | 1—Saddle Pad |
| 2—Twin Beds with mattress and box springs | 1—Saddle Stand |
| 2—Chests | 1—Storage Cabinet |
| 1—Full Size Bedroom Suite with Dresser and Chest | 1—Metal Bookcase |
| 1—General Electric Portable Dishwasher | 1—Set Metal Shelves |
| 1—Whiz Grid | 3—Steel Clothes Racks |
| 1—Toaster Oven | 1—Lariat Rope |
| 1—Desk | 1—Foot Stool |
| 1—Set Wearever Aluminum Cookware | 1—Portable Radio |
| 1—12 cu. ft. Upright Freezer | 1—Picnic Table with 2 benches |
| 1—23 cu. ft. Chest Type Freezer | 1—Couch and Chair |
| 1—Blue Lamp | 1—Dresser and Chest |
| 1—Toy Chest | 1—Queen Size Bed |
| 1—Pool Table | 1—Queen Size Mattress and Box Springs |
| 1—Canister Set | 2—Recliners |
| 1—Blender | 1—Kingsize Headboard, Bedspread and Foot Stool |
| 1—Deep Fat Fryer | 1—Upright Freezer |
| | Miscellaneous lamps, bedspreads, glassware, cooking utensils, etc. |

Many other items not listed

**Mr. & Mrs. Lowell Lasley
Owners**

NOT RESPONSIBLE FOR ACCIDENT

Auctioneer:
Charles Walser
Ph 665-3142
Pampa, Texas
Lic. applied for

Shari Gail Porter
Ann Henderson
Collection Clerks

**WHEELER IS PROUD
OF ITS YOUNG PEOPLE!**

CONGRATULATIONS WHEELER MUSTANGS & MUSTANGETTES

MUSTANGS—DIST. CHAMPIONS

Season: Record 22-4

District: Record 14-0

Mustangettes—Third in District

Season: 17-12

District: 10-4

This Ad Sponsored by the Merchants & Individuals listed below:

Southwestern Public Service

All The Employees From
Thriftway

THE CHAPMANS,

Albert, Hannah, Don & Von

Koshare Shop Fine Jewlery

Rives Insurance Agency

Wheeler Lumber Co.

Frankenberg's Texaco

Wil-Mart

Pierce's Trading Post

The Dot Shop

Wheeler Abstract Co.

Wheeler Flower Shop

Times Fashions

Production Credit Association

Raymond's Drive-In

Rogue Theatre

W. J. & Fliptian Patterson

The Wheeler Times

Rolling Plains Feed Service

Barnes Electric

Pauline and Earl

Ben & Carolyn West moreland

Beef Cattle Company

Wheeler Gas, Inc.

Dr. & Mrs. Tommie A. Hennard, Jr.

Lewallen Insurance Agency

Sparlin's Restaurant

Loyd's & Streets, Inc.

Baker's Automotive

Mac's Alignment

Wheeler Flower Shop

Roark's Fine Foods

Ware Chevrolet Co.

Cross Car Center

Wheeler Redi Mix

First National Bank In Wheeler

Hibler Implement

Hyland's Pharmacy

Lancasters Dept. Store

L. & F. Repair

Lee Hardware & Furniture

Reeves Electric

Pete Burton Ford

Want Ads

F. M. RADIO via cable in Wheeler. Try it. We have the radio. L. & F. Repair. 826-3241. rntlf

FOR SALE: 3 bedroom house, 2 baths, large den, storm cellar on two lots in Mobeetie. Phone 826-5944 and after 7 call 845-3171. rntnj

See Gene Hall, Minco Oil and Gas Co., for sale of oil leases and minerals. Wheeler Abstract Office on Thursdays. 669-6805 in Pampa on other days. rntgh

LADY VENUS: Aloe Vera Cosmetic's now available at the City Cleaners & Fabrics. Call for free facial and skin treatment. 826-3268. rtn

Call a Professional! CALL A REALTOR!
Copeland Company, Realtors
Marilyn Jo Copeland,
Broker — G.E.I.
254-3962

CUSTOM CATTLE WORK: Will gather your cattle, move, sort, work and doctor them and start your cattle. Contact Riley Bradstreet, 826-5871, RT 1, Wheeler, Texas. Stprb

FOR RENT: 2 bedroom house east of Mobeetie on Highway 152. Call 806-669-9437. 2tpred

FOR SALE: Pinto Station Wagon, 1974, 4 speed, air, CB, tape deck and radio. 30,000 miles. \$2175.00. Z-1 Kawa 900 1975, handle bars fairing, luggage carrier, 27,000 mi. \$12,000. 2 Michelin (JR) 225-15 10,000 mi. \$25.00 each. See at Mac's Alignment, W. Hiway 152, Wheeler or call 826-3034. rntmc

BLACK GOLD TRAILER PARK
Gas & Water Furnished
Storm Cellar
Underground Utilities
Individual Electric Meter
500 S Osage 826-5874

FOR RENT: Office space 32' x 14'. Separate entrance and bathroom facilities. Carpet, central air and heat. Phone 826-3001 or 826-5905. rntbr

PAUL'S TRAILER PARK
Across Street From School
Trailer lots 40'x70'
Modern Underground Utilities
Gas and Water furnished
Individual Electric Meters
PAUL TOPPER—Ph. 8237 or 5931

FOR SALE: 160 acres with circle irrigation. Phone Mendall Hunter, 826-5820. 2tcmh

FOR SALE: Stock trailers. H. L. Lee Call 826-5641. rtn

House Moving
Sparlins—826-5898
Wheeler, Texas

FOR SALE: 1 male Norwegian Elkhound, 11 weeks old; playful puppy; later, a great watchdog. 826-5683. 2tq

UPHOLESTRY DONE: Reasonable 30% off on fabric. 600 Kiowa 826-3104. 7ptel

2 HOMES FOR SALE
404 S. COMMACHE: 3 bedroom, 2 bath, living room, dining room, kitchen, breakfast room, utility room, basement, front porch and double garage. 150' east front corner lot with many shade, fruit and pecan trees. \$25,500.

504 W. TEXAS: 2 bedroom, bath living room and large combination kitchen-dining room. \$14,500.

Both homes together for total of \$38,000. Call Connie Lambert, 826-3107. rntcjm

I will not be responsible for any bills other than my own.
Roy W. Callaway

FOR SALE: 1976 Ford F150 HD 390 V8 4 speed power, radio, air. Real Clean. For more information 826-3260 after six. rntjt

HELP WANTED: Part or full time domestic help in Mobeetie. Reply to 207 Ramada Trail, Amarillo 79108. 2tckp

FOR RENT: 2 bedroom house. Mrs. Jess Crowder. Call 826 3219. rntj

FOR SALE: 1975-380 GT Suzuki 1200 miles with windshield and farring. Excellent condition. Also Idle Time topper with house type door in back, tinted side windows, good condition. Call 375-2327 after 5 p.m. or see in Allison, Dean Keyes. 2tcdk

FOR SALE: 1974 Ford LTD, four door, white. Call 826-3161. 4tchi

ACCEPTING BIDS
WHEELER COUNTY COMMISSIONERS' COURT WILL ACCEPT BIDS ON THE FOLLOWING NEW EQUIPMENT:

One full size 1978 4 door sedan automobile such as a Chevrolet Impala, Ford LTD, Pontiac Catalina, etc.

A Police Package to include the following minimum requirements:

350 CID V8 2 barrel engine or equivalent, 70 amp. alternator, 80 amp. battery, heavy duty cooling system, heavy duty frame and suspension, heavy duty front and rear seat, heavy duty automatic transmission, heavy duty power brakes, heavy duty 15" wheels, heavy duty front and rear seats, power steering air conditioner, heater, AM Radio, Tinted glass, all windows, 2 outside rear view mirrors, spot light, heavy duty rear axle, and police radial tires.

Bids will be opened February 27, 1978 at 10:00 o'clock AM. All usual rights reserved.

1 1975 4 door Ford sedan car for sale and/or difference. 2tct

POLITICAL ANNOUNCEMENTS
For: State Representative 66th Legislative District
GLENN CONRAD
FOSTER WHALEY
For: County Judge of Wheeler County
WENDALL MORGAN
For: County Clerk of Wheeler County
COY CLAY
THOMAS DAUGHTRY
For: District Clerk of Wheeler County
PAUL TOPPER
KATHY HILL
For: County Attorney of Wheeler County
M. KENT SIMS
GUY HARDIN

For: Wheeler County Justice of Peace Precinct 1
CHARLIE WHITELEY
For: Commissioner of Precinct 2 of Wheeler County
R. D. MASON
BUS DORMAN
BILL ATHERTON
For: Commissioner of Precinct 4 of Wheeler County
L. B. COPELAND
ERNEST HENDERSON
For: Wheeler County Treasurer
JERRIE MOORE

FOR SALE: Seven room carpeted home, 3 bedroom, large den, large basement, bath and one-half carport, steel siding and large corner lot. 806 Allen Bean Blvd. Call 826-5753. rntnm

FOR SALE: 1971 Ford 100 LWB Pickup, 4 x 4 6-Cylinder 4-speed, \$2,000. 826-3272.

FOR SALE: Alfalfa hay. Stacked outside 826-5755. 4tctp

Court Records

LIST OF INSTRUMENTS FILED IN THE OFFICE OF THE COUNTY CLERK AND DISTRICT CLERK OF WHEELER COUNTY, TEXAS FROM FEBRUARY 6 THRU FEBRUARY 10, 1978
FEBRUARY 6, 1978
RVL—Vera Duncan to Whiting Brothers Oil Co 1-20-78 W115' Lot 1 Blk LXXXI Shamrock MD—Cordia M Landers to Glenda Landers Bozeman et al 1-20-78 1/2 int E#80 a NW 1/4 96 B 23
FOR SALE: Sears Electric Range, A-1 shape. Light Green. 826-5908, 708 Alan L. Bean. 2tces

FOR SALE: 1971 Ford 100 LWB Pickup, 4 x 4 6-Cylinder 4-speed, \$2,000. 826-3272.

FOR SALE: Alfalfa hay. Stacked outside 826-5755. 4tctp

Legal Notice
THE STATE OF TEXAS
TO: Any Sheriff or Constable Withing the State of Texas;
You are hereby commanded to cause to be published once each week for four consecutive weeks, the first publication to be at least twenty-eight days before the return date thereof, in a newspaper printed in Wheeler County, Texas, the accompanying citation of which the following is a true copy:

THE STATE OF TEXAS
TO: EDGAR HAYNES, JR., defendant in the cause numbered and styled hereunder.

Your are hereby commanded to appear before the Honorable District Court, 31st Judicial District of Wheeler County, at the courthouse in Wheeler, Texas at or before 10 o'clock a.m. of the first Monday next after the expiration of forty-two days from 27th of January, 1978, the date of issuance of this citation, by filing a written answer to plaintiff's Amended petition that was filed in said court on 26 of January, 1978, numbered 7267 on the docket of said court, and styled MRS. J. T. SAMMONS, Plaintiff, v. EDGAR HAYNES, JR., Defendant.

A brief statement of the nature of this suit is as follows: Plaintiff is the owner of one certain motor vehicle, which Defendant is in possession of and Defendant has failed to make payments on said vehicle since June 14, 1976. Plaintiff is also the owner and holder of one certain promissory note which Defendant has failed to make payments on and which is due and payable, as is more fully shown by Plaintiff's petition on file in this suit.

If this citation is not served within ninety days after the date of its issuance, it shall be returned unserved.

The officer executing this writ shall promptly serve it and make due return thereof according to requirements of law, and the mandates hereof.

Issued under my hand and the seal of said court at Wheeler, Texas on the 27th day of January, 1978.

Paul Topper
District Clerk, 31st Judicial District, Wheeler County, Texas 4t

Gabel et ux 1-24-78 N 1/4 & N 1/4 Sec 14 B 24 Exc Min
ROW—Bill Graham Jr et ux to Minco Oil and Gas Co 1-24-78 S150 ac Sec 14; N55 ac 7 B 24
FEBRUARY 9, 1978
A OF JUDGE—Consolidated Pipe & Tube Co dba Bos vs David Crockett 2-6-78
HOMESTD DESIGN—Bob Covington et ux 2-6-78 S 1/2 Lot 2 Lots 3, 4, 11 to 16 Blk 78 Shamrock WSA
2 RATIF OL—Kenneth W Meek et al to George W Arrington et al 2-3-78 N 1/4 39 A-8
2 RENTAL DIV ORDERS—J T Johnston et al to Jimmy Charles Johnston et al 2-1-78 W 1/2 Sec 95 & N 1/2 NW 1/4 86 Blk A-5
MD—Teresa Humphreys Reed to Cecil Snelgroves 2-9-78 20 acint SW 1/4 & S40ac NW 1/4 53 A-3
D—Dorothy Patterson to Dean Tipps 2-2-78 NE 1/4 12 NW 1/4 11 Blk RE exc mins
DT—Dean Tipps to Dorothy Patterson 2-2-78 NE 1/4 12 NW 1/4 11

DT—Saundra Johnston to Lena L Rushing 1-19-78 N240 ac E 1/2 Sec 40 Blk 17
3 RENTAL DIV ORDERS—Gene Welch et al to Leta Mae Gatlin et al 1-28-78 2.217 ac 49 A-5
2 ROY D—F H Davidson et ux to R C Callan et al 2-1-78 10 ac int NE 1/4 31 Blk A-8
2 AOL—James H Scott to Mobeetie Associates 1-30-78 Pt 38 & MD—Cordia M Landers to Glenda Landers Bozeman et al 1-20-78 1/2 int E#80 a NW 1/4 96 B 23
2 OLS—Max Holt Britt et ux to CIG Exploration, Inc 9-15-77 Secs 7, 8 Blk 1 B&B Survey
RDT—United States of America to Joe Quinton Harrison et ux 2-3-78 Land not set out
D—Joe Quinton Harrison et ux to Billy R Chance et ux 2-3-78 92' x 140' N 1/2 NW 1/4 60 A-8
DT—Billy R Chance et ux to First Fed Savs & Loan Assn 2-1-78 92' x 140' N 1/2 NW 1/4 60 A-8
D—Barry D Altman et ux to Jerry A glazner et ux 2-1-78 Blk G-5 Wheeler, Prairie Lawn A
DT—Jerry Glazner et ux to First Fed Savs & Loan Assn 2-1-78 Blk G-5 Wheeler, Prairie Lawn UNIT DESIGN—H L Brow Jr et al to Oren Horn et al 1-23-78 Sec 4 Camp Co Sch Land
RDT—First Natl Bk in Big Spring to Forbus E Blakemore et al 2-3-78 SW 1/4 63 Blk 17
AOL—W R Gray to CIG Exploration, Inc 12-29-77 NW 1/4 Sec 11 Blk RE
AOL—Coquina Oil Corp to HNG Oil Co 1-27-78 W116.56 ac S193 ac W 1/2 Blk A-7
ESTATE TAX LETTER—United States of America to Alma McCoy 2-25-71
ROW—Boyd Hiltbrunner et al to Perry Gas Transmission, Inc 1-30-78 Pt Sec 26 Blk 17
D—Tyler I Collins et ux to Paul Millet 2-1978 Pt Lots 7, 8, 9 Blk 11 Wheeler
D—Matt H Sims Jr to John J Sims 1-19-78 SW 1/4 Sec 56 Blk A-5 exc mins
2 DS—Tirl F Sims et al to John J Sims 1-25-78 SW 1/4 Sec 56 Blk A-5 exc mins
FEBRUARY 7, 1978
DT—Kenneth Wischkaemper et ux to Farmers & Merchants St Bk Shamrock 2-6-78 S 1/2 S B24 C/C PROBATE PROCEEDINGS—Olive A Rauch 1-24-78
OL—Vernon L Miller et ux to R C Callan 1-14-78 Sec 40 Blk A-3
RENTAL DIV ORDER—Vernon L Miller et ux to Margaret Lois Miller et vir 1-16-78 Sec 40 Blk A-3
FEBRUARY 8, 1978
R OF JUDG—James Reneau to Virgil Simmons 12-1977
RDT—Vernon Savings and Loan Assn to Barry D Altman et ux 2-6-78 Blk G-5 Wheeler, Prairie Lawn Addn
OL—Carol L Furr et al to Amarillo Oil Co 9-21-77 Secs 19, 20, 21, 23 Camp Co Sch Land DISSOLUTION OF PARTNERSHIP—John C Ward et al to Pace and Ward 11-29-77 Sec 47, 53 Blk 13
ROL—Sun Oil Company to T R Burrell et al 2-3-78 S214 ac Sec 2 D Tindale Sur & Sec 48 Blk A-7
D—Kent Gabel et ux to Minco Oil and Gas Co 1-27-78 N 1/2 N170 ac S 1/2 Sec 14 B 24 Exc Min
DT—Bill Graham Jr et ux to Kent

GEORGE HARRIS AUCTION
SATURDAY, FEBRUARY 18
CANCELED
Due To Weather!

BUTCHERING & PROCESSING PRICES
Beef processed, double wrapped 14¢ per pound
1¢ A Pound for Butchering
Pork Processing including curing
Double wrapped 16¢ per pound
\$4.50 a head for butchering
We butcher Monday thru Friday 8 to 12 A.M. except holidays.
CALL FOR QUARTER—HALF—WHOLE BEEF PROCESSED
WE NOW HAVE CUTS OF PORK AND BEEF FOR SALE
SHAMROCK SLAUGHTER PLANT
North of City Phone: 256-3241
Closing at Noon on Saturday

ANGLIN'S BOUTIQUE
412 Main
INSULATED COVERALLS
BEAUTY SUPPLIES
STEEL TOE BOOTS
WRANGLER PANTS
(Three Prices: \$9.95 up)
Complete line of Shaklee Products
Ear Piercing: MEDI-SYSTEM...
(Safe, Painless, Quick)
BEAUTY SALON in back 826-3168 for Appointments Tues. thru Sat.

THE DIFFERENT LIQUID FEED SUPPLEMENT NATURAL PROTEIN
SMALL AMOUNT OF NPN IS DERIVED FROM THE AMMONIATED BEET SOLUBLES
17% PROTEIN SWEET
25% PROTEIN SOUR
Loomix has 2 range feeds that can be blended together to regulate the consumption to fit your cattle needs and your budget.
THE CATTLEMAN FEED SERVICE
Ted & Sybil Nelson
P.O. Box 548 - Wheeler, Texas 79096
Star Route Phone: 806/826-5650

THE BUSINESS DIRECTORY

MEMBER
TEXAS PRESS ASSOCIATION

Published Every Thursday at Wheeler, Texas, By...

THE WHEELER TIMES
P.O. Box 1080
Phone: 826-3123
Entered as second-class matter December 18, 1933, at the Post Office at Wheeler, Texas 79096, under the act March 3, 1879.

Subscription Rates:
Wheeler County \$4.75
Outside County \$5.75

BAR-B CONOCO SERVICE
Corner: Alan L. Bean and Texas St.
"Featuring Conoco Products"
Phone: 806/826-3218

BARNES ELECTRIC
Refrigeration and Appliance Repair
—All Kinds of Wiring—
Wheeler, Texas
806/826-5777

WHEELER REDI-MIX
REDI-MIX CONCRETE SAND
Washed Gravel—All Sizes
Office Hours: 7:30 to 5:00
Phone 806-826-3223

Wheeler Lodge No. 1099 A.F. & A.M.
MONDAY 7:00 P.M.
Percy Farmer, Sec'y.
Members Urged To Attend.
Visitors Welcome.

Dr. Marion Roberts
OPTOMETRIST
Phone: 669-3333
112 W. Kingsmill
Pampa, Texas

WHEELER LUMBER CO.
Phone 826-5543 Wheeler, Tex.
Fine Service for Fine People

GUARANTEED AUTO GLASS INSTALLATION & Body Repair CROSS
CAR CENTER
Phone: 826-5515
Wheeler, Texas

CUSTOM DRAPERIES
Swags, Cornices, Shutters
— WE INSTALL FREE —
Telephones: 256-3652
Brannons Decorators
Shamrock, Texas 79079

Let Me Write It...
GEO. RICHARDSON
All Types Of INSURANCE



READY OR NOT, the future will come...

The stream of time brings to each of us its own special combination of challenges and surprises. How well we meet them will depend on whether we're ready... or not. Your Modern Woodmen representative can show you how you can prepare for the future for yourself and your family with our unique combination of life insurance and fraternal benefits. Discover — as millions of Modern Woodmen members already have — that extra measure of security that will be yours through membership in one of America's leading fraternal life insurance societies.

MODERN WOODMEN OF AMERICA
Fraternal life insurance since 1883
Home Office: Rock Island, Illinois 61201

ROBERT L. FINCHER
P.O. Box 179
Phone: 405/928-3157
Sayre, Okla. 73662

Briscoe News

Vetola Parker

February 9, we had around 3 inches of snow on the ground, last night. We got around 3 more maybe. Temperature was down around 12 degrees at the night and up to 20 degrees in the day.

Sunday morning February 12, we received some rain last night. This morning the tree limbs are weighed to the ground and breaking off. So much ice on them. We have no electricity. So no T.V., no radio, no water coming in the house and can't get the operator. So, no long distant calls. Makes me think of days in the past, before we got all these conveniences, can't start our car—snow in also due to snow drifted around our car.

Happy anniversary to Claud and Mable Parker, married 8 years ago, the 23th of February.

Some visiting Sophia Helton in Abraham Hospital in Canadian were Edd Helton, Effie Renfro, Lois Meadows, Verna Fillingim, Evelyn Meek, Mr. Holderman, Lottie Thompson, Glenna Walker, Barbara Northcut and Sandifer and Ruby Cole.

Weldon Parker came down from Perryton and took Collie and Vetola Parker to Amarillo to visit Leroy Parker in High Plains Baptist Hospital. We only got as far as Pampa Friday night. The roads and blowing snow was so bad. We spent the night with Gene and Zetha Dougherty and boys. Went to Amarillo Saturday. We visited a niece in St. Anthony Hospital, Susalee Barron, picked Hoyle Helton up at the Harmon Barries and brought her home. Others going with us were Zetha Dougherty, Terry and Freddie Dougherty, and Diana Parker.

I thought we had a lot of snow, but snow around Pampa the high lines were touching the ground, some were broken. The telephone lines were all down, the

ones up looked like they were 2 and 3 inches in diameter, workers were out all night working. I guess piles of snow 3, 4 and 5 feet high were all over Pampa where they had shoveled it so people could get to the grocery store or filling station and tree so loaded with and frost they were

phone 665-6701

ann's alterations

all work guaranteed
ann thomas
329 hobart st.
pampa, texas 79065

Western Insulation Co. BLOWN INSULATION and ACCOUSTIC CEILING

SAVE ON FUEL BILLS

FREE ESTIMATES

- SATISFACTION GUARANTEED -

Thad Snelgrooes
826-3130

Cecil Snelgrooes
826-3212
WHEELER, TEXAS

REEVES ELECTRIC

FOR ALL YOUR ELECTRICAL WIRING NEEDS,
RESIDENTIAL, COMMERCIAL SERVICE CALLS,
OIL FIELD TROUBLE SHOOTING.

Call Day or Night

Phone: 826-5975

breaking down.

Melody Ratcliff spent Sunday to Thursday with her uncle and aunt at White Deer. They brought her home Thursday and visited the Bob Ratcliffs.

Roy and Lois Meadows ate dinner Sunday with the Eddie Meadows family. Bob Ratcliff family ate dinner Sunday at the Dick Irvine home. They ate supper with Willis and Verna Fillingim.

Others at the Irvine home Sunday were Willis and Verna, Charles and LaJo Crowmover,

Jody and Boyce and Helen Singleton.

Recent visitors at the J. P. Meeks home were Roy and Lois Meadows, Mackie Sides, Missie and Jimmy, Willis and Verna Fillingim.

Since I started this, Saturday night at 15 after 4 our electricity went off. It 9:30 Monday morning and still no electricity. We woke Sunday with every iced over from a little rain. We had high lines broke, poles broken, people out of fires, something to cook on, no water for cows. Bob and Marylee Markham had to take a cook stove to their daughters so they could have fire and cook. We have just to much on electricity. We all got out battery radios out and batteries are low, but it sure sounds good.

Bob Zybach were getting their emergency generator going that they used when they ran the milk barn. So they could have water for Davids Zybach pigs farm.

The Claud Parkers were lucky they had bought them a Ben Franklin Wood Stove, had been using it some this winter, tis really comes in handy. When their wall heater would not come on with out electricity.

We have worked so hard to get everything we could on electricity now its seems the highest product we have to pay for and now its been off 41 hours at 9:15 and no telling how much longer. Guess all we need to do if the deep freezer defrosts put the stuff on the outside.

Jack and Doris Hayes visited her parents Saturday.

Mrs. Lawrence Aderholt said tell everyone it had been cold and was still cold at her place. She was worrying about so many of her childrens homes that are run by electricity.



Some say to dream of doves means happiness.

KINGS KOMMENTS

By Joe Don King CEA

FEEDING TIPS

Due to current tight profit margins in the beef industry, Wheeler County producers must give close attention to supplemental feeding so that they do the most good with the least output.

Here some keys factors for producers to consider in supplemental feeding programs:

1. Provide a good supply of minerals the year round. Minerals should provide salt and 8-12 percent of phosphorus and calcium.

2. Begin protein supplementation before cows lose a lot of weight and condition. Feeding should begin with the first killing frost. Feeding may also be necessary during drought conditions when grass is dry and tough.

3. For adequate protein, add a half to a pound-and-a-half of a 30 to 40 percent protein supplement to low quality forages daily. This stimulates digestibility and forage intake.

4. To hold supplemental feeding to a minimum, improve hay quality, control calving seasons so that high quality forage is available when cows and calves need it the most, and have cows in good condition at the start of the winter season.

5. When cows get in poor shape, either feed higher levels of supplement or be prepared for a reduced calf crop and lower weaning weights.

6. Use 1 to 2 pounds of high-protein, high-energy supplement that will help cattle clean up dead grass in the fall. Then provide good quality hay or hay plus supplement to keep cows in acceptable condition.

7. Look ahead and try to stay out of situations calling for high levels of supplementation.

FIRST AID FOR STORM-DAMAGED TREES

Wheeler County residents who had some of their choice shade and fruit trees damaged by recent ice storms should take immediate action to save the damaged trees.

First decide whether it is practical to attempt to save a damaged tree. A tree can usually be considered damaged beyond repair if more than 30 to 50 percent of its trunk or main branches are severely split, broken or mutilated.

On the other hand, there may be some good reasons for wanting to save a certain tree, especially if it is one of the more desirable species, such as oaks, most maples, sweet gums, pecans, most pines, magnolias or hollies.

Tree repair time is also a good time to consider correcting landscape errors. A tree too close to a power line or building might better be removed rather than repaired. Also, consider age when deciding whether to remove or repair the tree. A lack of vigor might affect its recovery.

In case of special values such as rarity, historical or sentimental meanings, extra consideration might be given to a damaged tree.

When applying first aid to a tree, remove only those branches in need of immediate repair. Too much pruning in one season can help to create other problems such as sunscald, weak branching habits, and soft sucker growth.

When treating tree wounds, reattach the bark to the inner wood with galvanized nails if healing seems possible. Reshape bark wounds in a vertically elongated shape for faster healing. Coat all wounds and pruning cuts with a good commercial tree would dressing.

Avoid leaving branch stubs by making removal cuts at side branches whenever possible. Strive to maintain an attractive shape or balance for the entire tree top.

If major repairs are needed, it is usually better to reply on a professional tree surgeon. If you do it yourself, follow all safety precautions reative to falling branches, ladders of contacting power lines.

If the repairs are to be done by a freind, investigate before

if you have adequate insurance for personal injury, liability and property dmg.

Prompt removal of all debris caused by either wind or pruning will help eliminate breeding areas for insects and diseases.

SAWS SHARPENED

Hard Saws - Skil Saws
Table Saw Blades
Chain Saws
Jointer Blades
Foley Equipment

R. St. John
Mobeetie

Good follow-up care of injured trees is also important. Thin out prolific sucker growth and examine tree would dressings regularly, repainting them as needed. For continued care of the damaged tree, establish a ferti-

lizer program, continue gradual pruning and reshaping over a period of three to five years, and provide protection from drought, insects and diseases.

Use Solar Energy Now!
Help keep the ice off your stock tank with the new
BLAZER*

\$19.95 ea.
two for \$34.95
(order 1 unit for each 750 gallons)

*The BLAZER is a floating solar energy collector made of heavy-duty vinyl. It requires no maintenance and keeps the water from freezing by reflecting the sun's rays to heat the water.

*concentrates sun's rays to heat the water
*keeps heat in tank *insulates
*prevents algae
Send check, money order, Master Charge or Visa along with name and address to:

MC SQUARE
P. O. Box 8728, Dept. Fort Worth, TX 76115

Natural Fibers Fashion Contest

LUBBOCK—Homemakers, students, and anyone who likes to sew can take part in a new feature of the South Plains Farm Show to be held March 30-April 1 at the Lubbock Memorial Civic Center.

The Natural Fibers Fashion Revue is one of the major events on opening day of the show, March 30. Adults and youths from Texas New Mexico and Oklahoma will compete for hundreds of dollars in prizes and model apparel they have created from fabrics which are predominantly cotton, wool or mohair.

The revue is designed to emphasize elements of good clothing construction, home sewing and fashion, as well as the use of natural fibers, said Becky Culp, chairman of the planning committee. Mrs. Culp is area clothing specialist with the Texas Agricultural Extension Service, Amarillo.

The competition will have three divisions: Junior high, senior high, and adult.

Each complete ensemble must be made from fabrics which are at least 50 percent cotton, or 50 percent wool, or wool and mohair comprising 50 percent or more of the fabric. Accessories such as blouses, trims and inner construction fabrics are excluded from this requirement.

Each ensemble must be made and modeled by the contestant, Mrs. Culp noted. Contestants may enter only one ensemble, and it must be worn to be entered.

Ensembles entered in the competition must have been made during the last six months preceding the contest.

The entries will be judged on construction as it affects the overall appearance, compatibility of fabric and design, quality of work, creativity, overall appearance, accessories, becomingness, fit, poise, and representation of current fashion trend.

A panel of judges will determine first, second and third place winners in each of the three divisions, Mrs. Culp said.

Entry forms may be obtained from West Texas homemaking teachers, county Extension agents, or implement dealers, or by writing to Natural Fibers Fashion Revue, Route 3, Box 213 AA Lubbock, Texas 79401.

Completed entry forms must be returned to the above mailing address to be received by March 10.

CARD OF THANKS

We would like to take this opportunity to express our deepest gratitude and thanks to those who sent flowers and food offerings. Your kindness and prayers during our time of sorrow, lose of our mother, sister and aunt, were greatly appreciated. May God bless each of you.

The Ragan Family



At one time it was thought gold dissolved in dew.

City National Bank

Sayre, Oklahoma

Buy a certificate of deposit with us. Why? Let us compound the interest quarterly for you and you will get the following effective rate on your certificate of deposit:

	Normal Rate	Effective Rate with quarterly compounding of interest
90 Day Certificate	5.5	5.50
1 Year Certificate	6.0	6.14
2½ Year Certificate	6.5	6.68
4 Year Certificate	7.25	7.45

Federal Law and regulation prohibit the bank from allowing payment of a time deposit before maturity without substantial interest penalty

Come In And See Us —

You'll Be Glad You Did!



City National Bank
Sayre, Oklahoma



405/928-3311

Helping Build A Better Community

Dr. M. V. Cobb

CHIROPRACTOR

Specializing in The Examination And Treatment of Spinal* And Nervous Disorders

256-2133

310 South Main
SHAMROCK, TEXAS

TELEPHONE 826 3078

ROGUE THEATRE

Wheeler, Texas 79096

Richard Nall, Manager

Showtime - 7:30 P.M. . . . ALL THE TIME

NOW SHOWING! DOUBLE FEATURE

Through Saturday, February 18



FREE MERCHANT'S SHOW EVERY SATURDAY
Showtime: 2:00 P.M.

Starts Sunday, Feb. 20, through Saturday, Feb. 25

DOUBLE FEATURE



Featuring ORSON WELLES based on the book by HAL LINDSEY with C.C. CARLSON
A PACIFIC INTERNATIONAL ENTERPRISES RELEASE Color by C.I. PG

COMING SOON—1 Day Only!

SUNDAY, FEB. 26

Showtimes: 3:00-7:00-9:00



Wheeler, Texas 79096
(806) 826 3078

Only Pac. Int'l Passes Accepted

Sell Herefords

Annual Production Sale

12:30 P.M. SATURDAY

March 4, 1978

"Profitable, Practical, Performing Cattle"

RANGE RAISED — NO CREEP

SELLING 60 BULLS

40 BRED AND OPEN HEIFERS

CALL OR WRITE FOR TOTAL PERFORMANCE CATALOG

SELL HEREFORDS

BOOKER, TEXAS

Route 1, Phone 806/658-2253

Located 1½ miles north on Highway 23





bring home
some sunshine!



CALIFORNIA
CELLO PACK
CARROTS
4 lb. Bags \$1.00

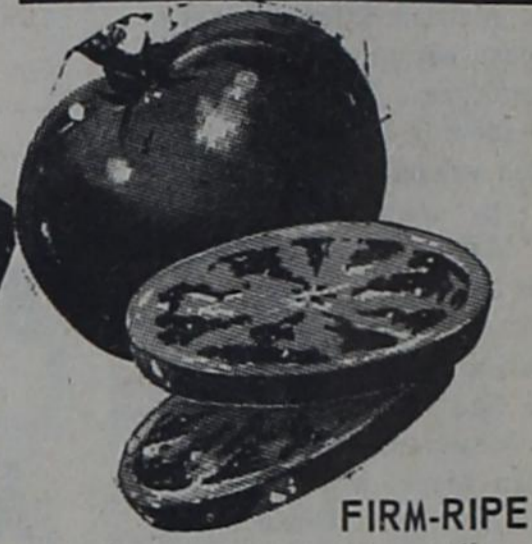


Frozen 100%
Florida Orange Juice 16 oz. Can \$1.13

PRICES
EFFECTIVE
THURSDAY,
FRIDAY &
SATURDAY

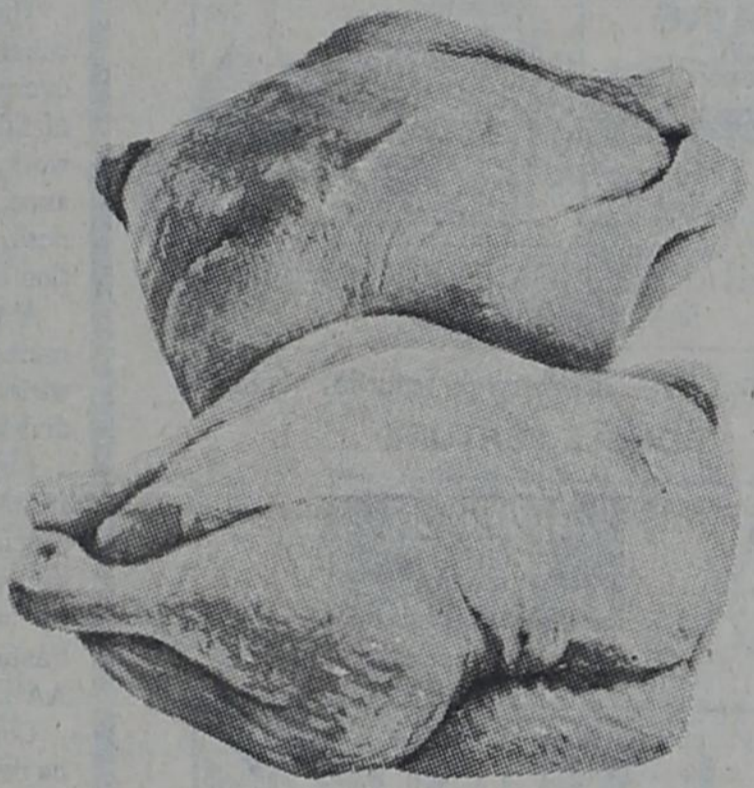


FOLGERS
COFFEE 2 lb. Can \$6.39



FIRM-RIPE
TOMATOES lb. 23¢

TENDER-YOUNG
GRADE A



Fryers
LB. 49¢

ARMOUR
KORN KIST
BACON THICK or THIN 2 lb. Pkg. \$2.39

WILSON
BEEF & MEAT
FRANKS 12 oz. Pkg. 65¢

CALIFORNIA LARGE-TASTY
TANGERINES 4 lbs. \$1.00

PURPLE TOP
TURNIPS 5 lbs. \$1.00



LIPTON
TEA BAGS 24 Family Size Bags Only \$1.59



CHICKEN OF THE SEA
TUNA 6 1/2 oz. Can 69¢

TROPHY
STRAWBERRIES 3 10 oz. Pkgs. 99¢



3 MINUTE BRAND
OLD FASHIONED
OATMEAL COOK IN ONE MINUTE 49¢



SPAM
LUNCHEON MEAT 12 oz. Can 99¢

RED AND WHITE
MARGARINE 2 lb. Pkg. 85¢

2 lb. Pkg. 85¢



MORTON
POT PIES 4 For Only \$1.00

NEW TRIAL SIZE
ALPO
DOG FOOD

Plus 15¢
Coupon 6 oz. Pkg. 15¢

KRAFT
LONGHORN COLBY
CHEESE Half Moon 16 oz. Pkg. \$1.59

\$1.59



ORE IDA
CRISPERS
FRIED
POTATOES 20 oz. BAG 65¢

RANCH STYLE
BEANS 3 300 Cans 99¢



HUNT'S
TOMATO
JUICE 46 oz. Can 59¢

THRIFTY MAID
MACARONI
& CHEESE
DINNERS 5 7/4 oz. Pkgs. \$1.00 While Supply Lasts

Your Friendly Home Owned and Operated Grocery Store

- OPEN MONDAY-SATURDAY 7:30 A.M. till 6:30 P.M.
- USDA FOOD STAMPS GLADLY ACCEPTED

- FREE DELIVERY WITH \$2.50 PURCHASE
- WE GIVE THE BEST GUNN BROS. STAMPS

