

THE WHEELER TIMES

(USPS 681-960)
VOLUME 67, NUMBER 40

THURSDAY, SEPTEMBER 14, 2000

Single Copy **50¢**

"Wheeler, town of friendship and pride."



MUSTANGS OPEN SEASON WITH 54-14 LOSS TO PADUCAH DRAGONS

The Wheeler Mustangs traveled to Paducah last Friday night for a class A showdown of ranked teams. But the billing of this game would not materialize as the experienced Dragons of Paducah would have their way over a young and turnover prone Mustang team.

The Paducah Dragons would capitalize on the turnovers of the Mustangs to build a 20-0 lead at the end of one quarter. The Mustangs would seem to catch a little fire in the second quarter as Caleb Finsterwald would go 60 yards off left tackle for the Mustangs first score to cut the lead to 20-6. But the fumble bug would attack the Mustangs again and the Dragons would get two more TD's before half and would lead 34-6 at intermission.

The second half would fair no better for the Mustangs and the Dragons would convert three TD's off Mustang turnovers and add another 20 points to their lead. The Mustangs would score again in the fourth quarter as James Chapman hits Finsterwald on a 6 yard TD pass. Finsterwald would get the two point conversion over left tackle as the final score would read Paducah 54-Wheeler 14.

The Mustangs played hard, but will have to gain some valuable experience for the young players as they go through the non-district schedule. This week the Mustangs will travel to Sunray for a 7:30 game with the Bobcats.

Teams	1st	2nd	3rd	4th	To.
Wheeler	0	6	0	8	14
Paducah	20	14	20	0	54

1st Score—Derick Jones, 6yd run; Patrick Hemphill kick—7-0
2nd Score—Hemphill, 25 yd. run, Hemphill kick—14-0
3rd Score—John Tucker 30 yd. pass from Pete Cruz, Kick Failed—20-0
4th Score—Caleb Finsterwald 60 yd. run—Kick Failed—20-6
5th Score—Erick Richardson 44 yd. pass; Gaylean kick—27-6
6th Score—Erik Hinojosa 9yd. pass from Cruz, Gaylean kick—34-6
7th Score—Terence Moore—66 yds. Fumble Return—Kick Failed—40-6
8th Score—Hemphill, 19 yd. run; Gaylean kick—47-6
9th Score—Cruz, 65 yd. Run; Gaylean kick—54-6
10th Score—Finsterwald, 6yd. T.D. Pass from James Chapman; Finsterwald 2 pt. Run—54-14.



GAINING GROUND: Caleb Finsterwald, #24, has the ball in an attempt to make some yardage for Wheeler in the Friday evening game with Paducah. James Chapman, #9, is moving in to be of assistance. —Photo by Rob Schaffer

HAS THE BALL: Wheeler's James Chapman, #9, has the ball and is getting help from Donnie Phipps, #21. Moving in to clear out some Dragons are Bret Goad, #52, and Chris Hutchison, #72. —Photo by Rob Schaffer

Shamrock Area Title Ribbon Cutting Friday

Shamrock Area Title Company will have an Open House Friday, September 15, 2000, from 10:00 A.M. to 12 noon. The address of the new business is 404 N. Main Street in Shamrock (north of the fire station).

The ribbon cutting will be sponsored by the Shamrock Chamber of Commerce (10:00 A.M.)

Everyone is invited to attend and view the computer system and agency. Refreshments will be served and door prizes given. A representative from Commonwealth Land Title Insurance Company, the underwriter for Shamrock Area Title Company, (Otis Phillips, Agency Rep.) will be on hand to visit with the public. Also, Dan Bartlett of American Imaging systems, Inc., in Richardson, Texas, will be here. Mr. Bartlett did the indexing of the records in Wheeler County to build the abstract plant.

Wheeler County Commissioners Hold Meeting; New County HD Agent Hired

Wheeler County Commissioners met in regular session Monday, September 11. Sixteen items were on the agenda.

The minutes were read and approved along with the J. P. reports and hourly payroll.

John Burrell was sworn in as a new deputy sheriff. He will continue as a dispatcher.

The discussion of the Retirement Options and a program by the Extension Service were tabled.

Karen Tellman was approved to serve as Wheeler County Extension Agent. She will be moving to Wheeler from Irving and begin work October 7.

The burn ban, recently enacted, will continue to be in effect.

No action was taken on the Diesel Pricing Proposal.

Wheeler commissioners agreed to send four Wheeler and one Shamrock Ambulance attendants to the Tri-State Trauma Symposium in Amarillo. The Briscoe Vol. Fire Department will pay the expenses on one ambulance attendant.

The Wheeler County Sheriff's Dispatch and City of Shamrock contract was discussed and a \$3,000 increase in personnel salary was approved. The total for the contract is \$48,760. Tommy Puryear abstained from voting in regard to the salary increase.

County Attorney Bobby Hill will serve as the Re-Districting Consultant for the county if one is needed. Her fee will be \$10,000.

David Watson has served his probational period and received the additional \$50 per month; his salary will be \$1933.74.

County Tax Assessor Scott Porter met with the commissioners to discuss the use of credit cards to pay county taxes. The commissioners agreed to allow the credit card collections with a 3% sir charge—legality is being checked.

No action was taken by the commissioners on the resolution to adopt a 15% penalty to recover collection costs on delinquent taxes.

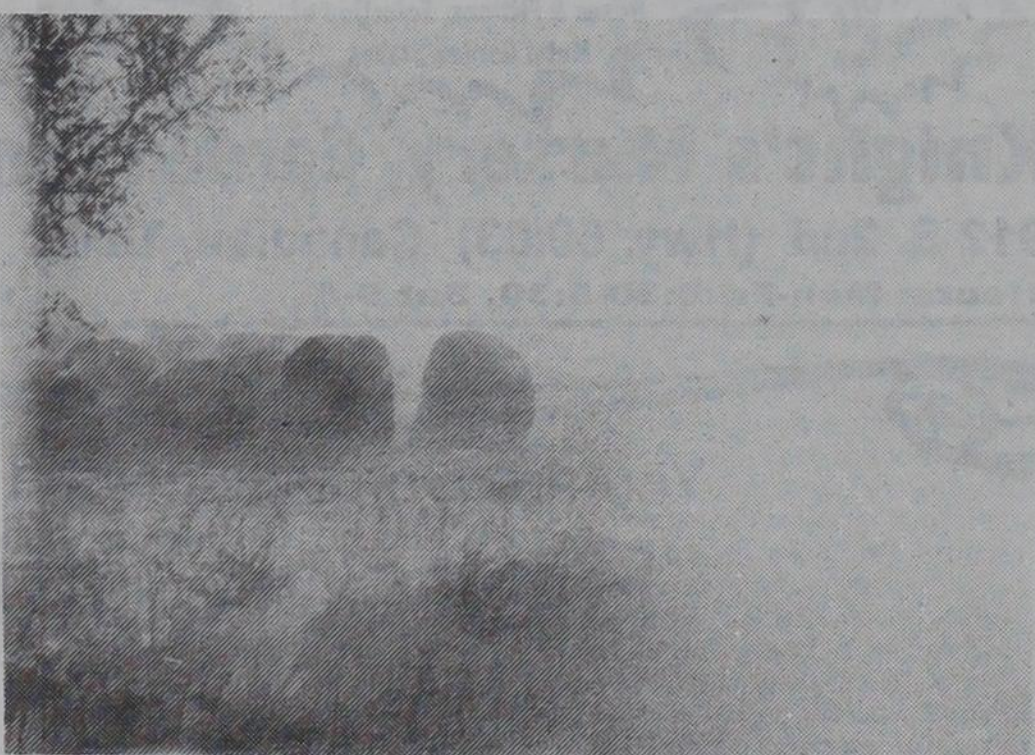
The next meeting of the commissioners will be September 21, instead of September 25.

The first October meeting of the commissioners has been moved from October 9 to October 10.

Wheeler Pep Rally

The Pep Rally on Friday will be at 1:30 in the new gym. A last minute change Tuesday morning moved it from Nicholson Field. School will be dismissed immediately after the rally.

Wheeler Mustangs will meet the Sunray Bobcats at Sunray Friday, September 15.



THURSDAY AFTERNOON FIRE: W. D. Mitchell was moving hay Thursday afternoon, September 7. He was in the process of unloading several big round bales from the trailers behind his pickup when the catalytic converter caught the dry grass on fire. The fire resulted in the loss of the pickup, trailers and several bales of hay. Fortunately there was no wind and the fire was confined to a small area. The Wheeler Volunteer Fire Department was on the scene immediately to contain the fire. A Wheeler County maintainer was used to cut a circle around the fire. The scene was four miles west of Wheeler on Cemetery Road.

'Texas Turkey' Will Air Sat. Morning on TNN

The Ducks Unlimited show on turkey hunting in Texas will run Saturday, September 16, on TNN, the Nashville Network, at 10:30 A.M. The filming was done in Wheeler and Hemphill Counties.

The World of Ducks Unlimited, airing Saturday mornings at 10:30 a.m., Eastern time, features waterfowl hunting action from all over North America while focusing on the role that sportsmen play in helping conserve wildlife habitat and keeping outdoor traditions alive.

This year, Ducks Unlimited has made a few changes to the show, including two new co-hosts: Marc

Pierce, from Bozeman, Montana, and J. Oran Richard, from Lafayette, Louisiana. Pierce and Richard join veteran actor Jameson Parker in search of the continent's best hunting locations and in spreading DU's conservation message. For a preview of this season's first episode, "Texas Teal," please visit DU's website at www.ducks.org.

With more than a million supporters, DU is North America's premiere wetlands and waterfowl conservation group.

"Texas Turkey" is scheduled to also run December 16.

Briscoe/Mobeetie 'Wheels For Life' Is Sept. 23

The Briscoe/Mobeetie "Wheels For Life" Bike-A-Thon to be held on September 23, 2000, has been announced by St. Jude Children's Research Hospital. Coordinator for this year's event is Mrs. Pam Jones, who encourages all residents and businesses to support this community effort.

The event will take place on the north end of Boy Scout Road from 9:30-11:30.

St. Jude Children's Research Hospital, founded in 1962 by the late entertainer, Daddy Thomas, is the

largest childhood cancer research center in America in terms of the number of patients treated and treatment success. Treatment is provided at no cost to the family and all findings are shared freely with doctors and hospitals all over the world. Thanks to St. Jude, children, who have leukemia, pediatric AIDS, sickle-cell anemia, and other life-threatening diseases now have a better chance to live.

Four year old Macarena Ottogalli represents all of the patients who

(Continued Page 8)

C. F. 'Clifford' Hefley, 87 Services Are Tuesday

C. F. "Clifford" Hefley, 87, died Saturday, Sept. 9, 2000.

Services were at 2 p.m. Tuesday in First United Methodist Church with the Rev. Rob Lindley, pastor of First United Methodist Church in Tulia and the Rev. Wayne Sheffield, pastor, officiating. Burial was in Gageby Cemetery by Wright Funeral Home.

Mr. Hefley was born in Wheeler County and graduated from Briscoe High School. He moved to Wheeler in 1965 from Hemphill County.

A farmer and rancher, he was a former member of the Southwest Cattle Raisers Association and served on the Board of Directors of the First State Bank of Mobeetie. He was a member of First United Methodist Church.

His daughter, Marva Sue Hefley, died in 1946.

He married Pauline Evans in 1934 at Wheeler.

Survivors include his wife, Pauline; two sons, Joe Hefley of Cooper and David Hefley of Briscoe; two daughters, Thelma Greene of Riverside, Calif., and Beth Alvey of Wheeler; a sister, Thelma Evans of Amarillo; nine grandchildren and 14 great-grandchildren.

The family suggests memorials be to First United Methodist Church in Wheeler.

Co. Show Pigs Must Be Validated By Sept. 18

If you are planning to show a pig this spring at the Wheeler County Livestock Show or any major Texas Spring Livestock Show, you should contact your FFA advisor or the Wheeler County Extension Office at 826-5243 by Monday, September 18, 2000 to order validation tags. All 4-H and FFA show pigs in Wheeler County will go through the validation process.

4-H and FFA members who do not have their swine projects on feed now, but plan to have one by the end of October, should contact their supervisor **NOW** to ensure that enough tags will be available.

2001 Music Festival Bands Being Booked

The Old Mobeetie Texas Association held their regular monthly meeting September 7, 2000 at the lodge building. Dale Corcoran President called the meeting to order. Jay Godwin led in the opening prayer. Bobby Hill read the minutes from the last regular and special meeting. Motion by Jimmy Hill to accept as read and second by Bill Elliott. Carried. Dutch Elliott gave the financial report as prepared by Louise Hogan. Motion by George Kilcrease to accept as presented Second by Bernice Hefley. Carried.

Melba Corcoran presented the visitors report, which showed 365 visitors for August with 31 of these from out of state. She also reported that we had 260 hits on the web site. New countries on the web site were Bulgaria, Czech Republic USSR Former Malaysia.

She also reported that we had 117.5 hours volunteer hours for August.

Dutch Elliott gave nomination committee report; they recommended Dale Corcoran for President, Melba Corcoran for First Vice President, Jimmy Hill for Second Vice President, Bobby Hill for Secretary, Louise Hogan for Treasurer. They also recommended the following for board members, Dutch Elliott, Bernice Hefley, Maurita Stribling, Jay Godwin, Joe VanZandt and Bill Finsterwald. They were elected by acclamation. Restrooms were discussed. No action was taken they will report back at the next meeting on what type and cost. Dale Corcoran appointed Bobby Hill to chair the committee to get the items in the CAP prioritized. Bernice Hefley, Patricia Hand and Melba Corcoran will serve on the committee.

The Music festival was discussed. Joe VanZandt reported that Frank Cleveland has been booked for the sound system. Melba Corcoran reported that Star Canyon, Mary McDonald and a Touch of Grass, Texas Country, Wright Family, Magic City Cowboys are already booked. Several more bands were discussed.

Bobby Hill announced that PMTC would be at the museum September 19, 2000. Brett Cruse will be on the program. Motion by Melba Corcoran to get Steve Walker to cater the meal. Second by Joe VanZandt. Steve was

(Continued Page 6)

CWE CHAT WITH EDITOR

By Louis C. Stas

It's o.k. Mustangs, learn from your mistakes and be prepared for the district games.

—cwe—
The results of the game were told to us by an individual from Kerrville. He was not a Wheeler native; the Mustangs are well known over the state.

—cwe—
And, we will continue to be. Get a Bobcat!

—cwe—
We were very fortunate Thursday afternoon that the wind was not blowing when the hay caught fire west of Wheeler. The Wheeler Volunteer Fire Department did a great job in controlling the fire.

—cwe—
I am in the dog house. I had two family birthdays which needed to be in the paper last week.

—cwe—
The oldest granddaughter, Jessica, turned 16 last Monday. Happy Birthday, Jessica!

—cwe—
The son-in-law, Guy, turned also. His birthday was Sunday. Happy Birthday, Guy.

—cwe—
My 'twin brother-in-law', Leroy Meriwether and Rhonda Blanchard, went with me to bring Barbara back to Wheeler over the weekend. She had spent the week in Lovelady with Cathi and Dorcie. Guy and Pipp were in Georgia and Lubbock.

—cwe—
Our return trip was back through Kerrville.

—cwe—
We played cards Monday evening and I regret to tell you that the only game Bob and I won was the first one. Mike and Dwight won the second and third games.

—cwe—

Ft. Elliott Boosters Set Mexican Pile-on

The Fort Elliott Booster Club will sponsor a Mexican Pile-on on Friday, September 15, 2000 at the Briscoe Cafeteria from 5:30 to 7:30. The cost will be \$4.00 for adults and \$2.00 for children 12 and under. This will be prior to Homecoming Football Game. Everyone is welcome.

PWPG Sets Hearing For Tues.; Water Is Subject

Panhandle residents will have a chance September 19, 2000, to voice their opinion on the proposed regional water plan. The Panhandle Water Planning Group will conduct a public hearing on the proposed regional water plan at 6:30 p.m. at the Texas A&M Research and Extension Center, 6500 W. Amarillo Blvd., Amarillo, Texas. The regional plan examines the area's current water supply and demand plus strategies to ensure water supplies in the future.

This is an important issue and includes recognition of the Sweetwater Creek Reservoir as a future site for development and funding.

Hospital Notes

Old Admissions
Estelle Orr
Virginia Frye
Ruth Ledbetter
Clara Holmes

New Admissions
9/5 Faye Mayes
Leon Crook
9/8 Ruth Ware
Aidee Emiliano
9/10 Katherine Holt

Dismissals
9/5 Sammie Atherton
9/7 Leon Crook
9/8 Red Meadows
9/9 Florene Walker
9/10 Aidee Emiliano

Sweetwater News

By Lois Flowers

Congratulations to the Cheyenne Star. It is one hundred years old and still going strong. Why, I have been with it some thirty years.

Leonard Burns of Reydon will be 100 next week. They are planning a big party for him.

Hot and Dry. The governor has named Sunday to be a state-wide day of prayer for rain. Most folks have already been praying for rain for a month or so. We hope our prayers are answered soon. The earth is beginning to crack in spots.

Dale, Sherry, and Jake Dunlap of Wellington were out to visit Iva Thompson Sunday. They and Leroy and Peggy Dunlap of Sayre took in the Elk City Rodeo.

I just turned on to the MDA telethon, the other night in time to see them receive nearly \$8,000 from the Elk City firemen.

Thought my Daily Oklahoman fell off the Pony Express but turned out I just picked up the top layer of mail and left it in the box.

Tina Porter won a gold medal as a student at the Western Technology.

Had a call from Martha and John Haag. Their little four year old granddaughter is to have open heart surgery in Dallas.

Zuma Sutton tells me she is home from a ten day stay in OKC hospitals where she had knee surgery. She is getting around with a walker. Hopes to go visit Frankie Lee's in Alaska soon.

Modena Downs of Las Vegas, has been visiting her sister and husband, Gail and Billy Mac Sutton.

It seems to me that instead of high speed chases, the police should be

Boy Into Man

By: Lorena g. Males

"Mama, what's school like?"

"It's a nice place where you'll be with friends your age (six) and you'll have a pretty teacher who is a substitute mother."

"What does sub-sti-tute mean mother?"

"She'll take my place. She'll be your school mama."

If you fall and bump your knee, she'll kiss it."

"I like you Mama! Please don't quit me."

"None of that! You're too big to cry. When a boy starts to school he becomes a man. No more cry baby!"

"What if the kids don't like me?"

"You like them and they'll like you."

"Will the girls like me?"

"Keep your mind off the girls. Think of school things."

"Do you want me to go to college and leave you?"

"That's a long way off. Lets talk about tomorrow when you'll have your first day of school. You'll wear a nice clean new shirt and carry a white handkerchief in your pocket. It will be your first day without Mama. We'll be lonesome but no tears! You must be a little man."

Next day, 8:00 A.M.

"Mama, hurry up. Here come the bus. All the kids are out there. I gotta run! Mama, let me whisper in your ear."

DON'T kiss me good-bye in front of the kids."

You can have time to do your thing today, Mama."

Don't be lonesome. I'll be home at three—on the bus—can't wait to see my teacher."

"Son, you have a handkerchief in your pocket May I borrow it?"

able to radio ahead for someone to stop the speeder.

Donnie and Michael Smith had lunch Thursday with Helen Smith.

Mike Harding of Minn., and John Harding of Wisc., have been visiting their mother, Mary Ann at Erick.

Imogene Pickering is home from the hospital. Doing well, I have heard. Needs lots of rest.

Services were Friday at the Erick Baptist Church for little Jessica West, 30 days old. Burial was in the Erick Cemetery. She was the daughter of Larry and Carolyn West.

Services were Wednesday for Walter Guenzel, 73, at the Erick Baptist church. He lived some years in our county and graduated from Reydon. Burial was in the Erick Cemetery.

Everyone, especially the school kids enjoyed Labor Day. Then Friday was Grandparents Day and a Student Council Back to School Dance. New students are Hannah Miller,

Macy Boyd, Shane Hoyd, William Billingsly, Carla Humphrey, Hunter Copenhaver, Tanya Nave and Marty Blake.

The Labor Day weekend started Friday evening for the Mong Reunion with a luncheon at Charlene Hutchins. Present were Joe and Faye Mong, Vera and Buck Burckhalter, and Benji, Ina Lancaster, Charles, Linda and Jamie Baker, Laura and Garland Jones of Basin Wy.

Saturday, 45 Mong offspring gathered for a surprise birthday party for Joan Mong Scott of Greybull, Wy. The other 4 Mong siblings are Laura Jones of Greybull, Ina Lancaster of Cheyenne, Joe Mong and Vera

Burckhalter of Sweetwater.

Others attending were Faye Mong, Garland Jones, Buck and Benji Burckhalter, Karl, Stacey, James and Travis Brown, Paul and Tina Brown, Gerald and Laura Joy, Lynn and Jonathan Barton of Amarillo, Mike and Laura Nell Mong, Sharissa Mong of Clinton, Jack Heird of Blair, Okla., Donni, Bobbi, Brittoni, Bethani and Matthew Barton of Rogers, Ark.

Glenda Odom of Riverton, Wy., Willie Smith of Dumas, Jason Chritti and Jacky Mong of OKC, Charlene Hutchins and Charles Baker of Cheyenne, Roy and Inez Manselle of Oregon, Paul, Karil, Ysabel Sanders of Pueblo, Co.

Sunday lunch was at the Joe and Faye Mong home. Guests were Shay, Jason, James, Taylor, Tanner and Tess Mong, Laura and Sharissa Mong, Jack Heird, Garland and Laura Jones, Ina Lancaster, Charles Hutchins, Buck, Vera and Denji Burckhalter, Johnny Mong, Buddy, Sierri and Timothy Paden.

Some good news is the Cheyenne Rook theatre is now open. New owner is Dorothy Alexander. Here's wishing her success.

Louise Perry won a whole sheaf of ribbons at the Cheyenne Fair. FFA members who participated were Cade Sites, Trampis Fowler, Jane and Ricky Hanson, Nathaniel Quinn, Dailey Davis, Rachel Miller, Lindsey Coffey, Lacey Fowler, Dustin Hogg. Winning judging teams were Danny Farrell, Tyler Locke, Shane Yarbrough and Brian Chandler, 1st; Chase Arrington,

WHEELER PLUMBING

511 S. Cheyenne
New Construction
Remodel
Repair
Sewer Service
Septic Systems
(Site Evaluations)

Phone: 826-5907

MAX McQUEEN

P.O. Box 754 Wheeler, TX



THE WHEELER TIMES

PAGE 2—Thursday, September 14, 2000

"Wheeler, town of friendship and pride."

Cade Sites, Dylan Perry and Nathan Reed, 2nd.

Helping Ruby Sutton get an early start on her birthday celebration with cake and ice cream were Johnny and Beth Wilson of Sayre, Laura Anderson of Weatherford, Michael Anderson, Willa Wyrick of Sayre, Kathy

Blount of Elk City, Wayne, Sharon and Eddie Gibson, Junior, Lisa, Kyle and Kara Cox.

Friday night visitors of Ed and Elleen Logan were their grandchildren Chris and Monica Shaffner, and Emily Lipscomb of Edmond.

Wheeler County COURT RECORDS

List of instrument filed in Wheeler County Clerk's Office from August 28, 2000 — September 8, 2000.

AUGUST 28, 2000

TD—Old Kent Mortgage Company to NationsBanc Mortgage Corporation, 7-24-00.

C/C P. of ATTY.—Marjorie Rebecca Henderson to Margaret Elaine Boring, 6-26-00.

MD—Marjorie Rebecca Henderson to Margaret Elaine Boring, 8-21-00, Secs. 19 and 23, Camp County School Land.

MD—Sidwell Oil & Gas Inc. to Reid T. Sidwell, 8-24-00, Secs. 19, 20, 21, 23, 26 and 27, Camp County School Land.

D—Celeste Jean Wiley to City of Wheeler, 8-28-00, .15 acs. W part of Lots 6-10, Blk. A, Park Add., Wheeler. P. of ATTY.—Jesse T. Richardson to Lola B. Richardson, 6-11-98.

AUGUST 29, 2000

RDT—First American Bank of Texas SSB to Willie Lee Darby, et ux, 8-17-00, 140' x 91.5' SE 1/4 Sec. 60, Blk. A-8, H&GN Ry. Company Survey.

MD—Mary E. Kershaw to Mary E. Kershaw Trust, 8-18-00, See Instrument.

C/C PROBATE—Aleene F. Patterson to Ex Parte, 8-10-00, S 1/2 Sec. 89, Blk. 13, H&GN Ry. Company Survey.

MEMO OPER. AGREE.—EEX E&P Company LP to Sempra Energy Production Company, 6-1-00, Sec. 27, Camp County School Land.

AOL—EEX Operating LP to Cabot Oil & Gas Corporation, 8-21-00, Land Not Given.

PARTIAL RDT—Bob West Treasurer

ALLISON

MENU

MONDAY, September 18, 2000 — FRIDAY, September 22, 2000

MONDAY

Breakfast: Toast/Jelly, Cereal, Juice, Milk

Lunch: Corn Dog, Tater Tots, Carrots, Pickle Spear, Fruit, Milk

TUESDAY

Breakfast: Biscuits/Gravy, Scrambled Eggs, Sausage, Juice, Milk

Lunch: Turkey Spaghetti, Blackeyed Peas, Scalloped Potatoes, Bread, Fruit, Milk

WEDNESDAY

Breakfast: Toast/Jelly, Cereal, Juice, Milk

Lunch: Sloppy Joe, Cheese Sticks, French Fries, Pickle Spears, Fruit, Milk

THURSDAY

Breakfast: Toast/Jelly, Pancake Pup/Syrup, Sausage, Juice, Milk

Lunch: Chicken Nuggets, Candied Carrots, Mashed Potatoes, Hot Roll, Fruit, Milk

FRIDAY

Breakfast: Toast/Jelly, Cereal, Juice, Milk

Lunch: Beef Taco Pie w/Cheese, Chili Beans, Salad, Crackers, Fruit, Milk

(Menu subject to change)

SAVE! Incredible Storewide Inventory Clearance SALE

Starts Sept. 14 Ends Sept. 30

50% OFF
Grass Seed, Redwood Planters, Wishing Wells, Gazing Balls, All Baskets & Artificial Flowers, Woodland Fountains, Garden Tools, Wild Birdseed

35% Off
Insecticides & Plant Foods & All Pottery

15% OFF
Potting Soil

25% Off
Soil Conditioners, Rose Bushes, Bird Baths, Garden & Soaker Hoses & Fittings, Selection of Metal Garden Stakes

40% OFF
All Fruit & Nut Trees, Bags of Lawn Fertilizer, Weed & Insect Control Products*

10-35% Off
Selected Gift Items

*ferti-lome products excluded

10% Off
Edging

30% OFF
Birdhouses & Supplies

Knight's Nursery, Garden Center & Gift Shop

912 S. 2nd (Hwy. 60/83) Canadian, Texas (806) 323-5577

Hours: Mon-Fri 8:30-5:30, Sat 9-5

www.knights.hhtx.com

You are Cordially Invited to Our
Ribbon Cutting
&

Open House

Friday, September 15, 2000

10:00 a.m. - 12:00 noon

Refreshments will be served

Shamrock Area Title Company

404 N. Main Street—Shamrock, Texas

(Just North of the Fire Department)

Ribbon Cutting sponsored by Shamrock Chamber of Commerce

LLC to EEX E&P Company LP, 8-9-00, Land Not Given.

PARTIAL RDT—Enron North America Corp. to EEX E&P Company LP, 8-9-00, Land Not Given.

AOL—EEX E&P Company LP to Cabot Oil & Gas Corporation, 8-21-00, Land Not Given.

MEMO OPER. AGREE.—EEX E&P Company LP to Cabot Oil & Gas Corporation, et al, 8-16-00, Land Not Given.

ASSIGN.—Brigham Oil & Gas LP to ECT Merchant Investments Corp., et al, 8-9-00, Secs. 22, 23, 34, and 36, Blk. A-8, H&GN Ry. Company Survey; and Sec. 96, Blk. 13, H&GN Ry. Company Survey.

D—Dean Tipps, et ux to Ft. Elliott Consolidated Independent District School, 8-14-00, 5.33 acs. Sec. 1, Camp County School Land.

NOTICE TO OPERATOR—State of Texas Railroad Commission to Black-jack Oil & Gas Inc., 8-28-00, Sec. 12, Blk. 27, H&GN Ry. Company Survey.

RDT—Wells Fargo Bank Texas NA to Sterling Sloss, et ux, 8-18-00, E/3 Lot 2, Blk. 38, Shamrock.

RDT—Wells Fargo Bank Texas NA to Sterling Sloss, et ux, 8-18-00, E/3 Lot 2, Blk. 38, Shamrock.

HOMESTEAD DISCLAIMER—Gwen Hensley to National Bank of Commerce, 8-24-00, S/2 Lot 7 and all of Lot 8, Blk. 78, WSSA, Shamrock.

DT—Gwen Hensley to National Bank of Commerce, 8-23-00, S/2 Lot 7 and all of Lot 8, Blk. 78, WSSA, Shamrock.

AUGUST 30, 2000

QCD—M L & C Trust to S&S Family Ltd., 8-25-00, 10.6 acs. Sec. 44, Blk. 23, H&GN Ry. Company Survey.

CONTRACT—Ricky Pfeil, et ux to Ryan McNeil, 9-1-98, Lots 5 and 6, Blk. 3, Wheeler.

C/C PROBATE—Loyce L. Murray to Ex Parte, 8-24-00, NW 1/4 and SE 1/4 Sec. 95, Blk. 23, H&GN Ry. Company Survey.

OL—Hugh Addison Bobbitt to Brigham Oil & Gas LP, 6-28-00, SW 1/4 Sec. 96, Blk. 13, H&GN Ry. Company Survey.

OL—Hugh Addison Bobbitt to Brigham Oil & Gas LP, 6-2-00, NW 1/4 Sec. 96, Blk. 13, H&GN Ry. Company Survey.

TD—Bank of America NA to Bank of Oklahoma National Association, 7—00, See Instrument.

AOL—Devon Energy Production Company LP to Minco Oil & Gas Company, 8-24-00, NW 1/4 and E 1/2 Sec. 24, Blk. R.E., Roberts & Eddleman Survey.

EXT. DT—Roy Lee Henry, et ux to First National Bank of Shamrock, 8-15-00, Lots 17-19, Blk. 6, Shamrock.

RELEASE LIS PENDENS—Municipal Assessment Co. to Jim Hensley, 8-14-00, S 1/2 Lot 7 and all of Lot 8, Blk. 78, WSSA, Shamrock.

HOMESTEAD DESIGN—Lawrence Thompson, et ux to First National Bank of Shamrock, 8-21-00, S 40' Lot 1 and the N 12' of Lot 2, Blk. 37, Shamrock.

AUGUST 31, 2000

D—Charles Petit to Charles Petit, et ux, 8-28-00, Lot 8, Blk. 25, Wheeler.

D—Wilma Ray Wood to Shirley M. Wittenbrock, 8-23-00, 140 acs. NE 1/4 Sec. 7, Blk. A-5, H&GN Ry. Company Survey.

PARTIAL ASSIGN.—Devon Energy Production Company LP to Osage Oil & Gas Company LLC, 8-24-00, E 1/2 and E 1/2 NW 1/4 Sec. 24, Blk. R.E., Roberts & Eddleman Survey.

PARTIAL ASSIGN.—Devon Energy Production Company LP to Louis McKee Ford Living Trust, 8-24-00, E 1/2 and the E 1/2 NW 1/4 Sec. 24, Blk. R.E., Roberts & Eddleman Survey.

EXT. DT—National Bank of Commerce to Melvin J. Canafax, et ux, 8-25-00, Lot 23, Blk. 7, Tarbet Add., Shamrock.

PARTIAL ASSIGN.—EEX E & P Company LP to Stonetex Oil Corp., 8-18-00, See Instrument.

OL—Bob L. Thrasher, et ux to Cambridge Production Inc., 7-25-00, 120 acs. SE 1/4 Sec. 28, Blk. A-5, H&GN Ry. Company Survey.

DVL—Mae Welch Trust, et al to William A. Umsted, et ux, 8-30-00, Lots 1, 2, 3, 4, 5, 6, 7, and 8, Blk. 9, Briscoe.

DT—William A. Umsted, et ux to Wheeler Banking Center, 8-30-00, Lots 1, 2, 3, 4, 5, 6, 7, and 8, Blk. 9, Briscoe.

AFF.—Donneta R. Dollar to H. L. Copeland, et ux, 6-6-00.

SUB. TRUSTEE DEED—H. L. Copeland, et ux to Laramie and Jan McEntire, 6-6-00, E 41' Lot 13 and W 21' Lot 14, Connor Add., Wheeler.

SEPTEMBER 1, 2000

DT—Aspen Energy Group Inc. to Local Oklahoma Bank NA, 4-28-00, Sec. 18, Blk. A-4, H&GN Ry. Company Survey; Sec. 29, Blk. R.E., Roberts & Eddleman Survey; and Lots 2 and 3, Blk. 1, Brooks & Burleson Survey.

D—Laura June Stubblefield Close to Elizabeth Owen, 7-24-00, N 1/2 Sec. 34, Blk 23, H&GN Ry. Company Survey.

NONHOMESTEAD DESIGN.—Joe Montgomery, et ux to The Public, 8-21-00, E 36 acs. S 56 acs. SW 1/4 and the SE 1/4 Sec. 27, Blk. A-8, H&GN Ry. Company Survey.

DT—Joe Montgomery, et ux to First National Bank of Amarillo, 8-21-00, E 36 acs. S 56 acs. SW 1/4 and the SE 1/4 Sec. 27, Blk. A-8, H&GN Ry. Company Survey.

AOL—Devon Energy Production Company LP to Rock Island 1997

(Continued Page 7)

Oil & Gas NEWS

(New Location, Completion and Plugging Report made possible by Oil & Gas Reporting Service, Box 2052, Pampa, TX 79065. Doris Harrison, Phone: 806/665-5800.)

Week Ending September 7, 2000

Intentions to Drill
GRAY (PANHANDLE) Petro Petroleum Corp., Combs, Sec. 35, 3, I&GN, PD 3700', for the following wells:

#202, 1980' from South & 2310' from West line of Sec.

#204, 1385' from South & 2310' from West line of Sec.

GRAY (PANHANDLE) Petro Petroleum Corp. Worley, PD 3700', for the following wells:

#131, 1980' from South & 1320' from West line, Sec. 61, 3, I&GN. # 1 3 5

1320' from South & 5' from East line of Sec. 61, 3, I&GN. # 1 3 8

2005' from North & 1980' from East line, Sec. 84, 3, I&GN.

HEMPHILL (WILDCAT & WEST CANADIAN Lower Morrow) Mewbourne Oil Co., #1 Brinard '111', 1650' from North & 990' from West line, Sec. 111, 42, H&TC, PD 12800'. Rule 37 & 38

Plugged Well
GRAY (PANHANDLE) Bradley Op-

erating Co., #28 Morse Water Flood Project, 282' from North & 330' from East Lease line, Sec. 3, 26, H&GN, spud unknown, plugged 7-7-00, TD 2600' (injection) --

GRAY (PANHANDLE) Dyne Oil & Gas, Inc., #13 John Haggard, 990' from North & 2310' from West Lease line, Sec. 112, 3, I&GN, spud unknown, (Continued Page 4)

LARGE ANTIQUE ESTATES AUCTION

Saturday, September 16—11 A.M.

M.K. Brown Civic Center—Heritage Room
1100 W. Coronado Drive—Pampa, TX

Viewing: One Hour Before Auction

This is a Fantastic Auction of Fine Antique Furniture & Collectibles and Designer Furnishings from various estates and consignments. Every quality item will be moved to the M. K. Brown Civic Center for your comfort and convenience, where there will be plenty of seating, parking and air conditioning. Everything must be sold and moved day of sale. A partial list: A very rare circa 1870's Fabulous Victorian Cylinder Roll Bookcase Desk in mint condition...A Must See! A rare antique 1870's Victorian large cylinder Music Box in heavy carved case...must see and hear to believe! A large heavy carved antique Victorian hall tree. A beautiful circa 1860's Victorian Barley Twist Bedroom Suite with large Double Door Armoire, carved Bed, marble top Dresser with mirror and matching marble top nightstand—complete and original—Must See! A beautiful 9-pc Chippendale Diningroom suite, has 8 heavy carved chairs and a large carved Chippendale table—All matching! A Fabulous pair of Square marble top tables with Ball and Claw feet. A Fabulous large Bronze Fountain—The Best of the Best! Don't Miss! A rare antique claw foot mahogany game table. A rare 1915 upright phonograph with records. Two Fabulous Antique complete Bedroom Suites. The Best ever seen at Auction! A rare Authentic Antique 1892 "Winchester" Rifle with Hex barrel in very good working condition. A Fabulous pair of Lawyers Stacking Bookcases. A beautiful Heavy Cut Crystal Lamp. A large Collection of Western Bronze Statues by Fredric Remington, including the "Bronco Buster", "Coming Thru the Rye" and many others. A beautiful Dragon-fly Word Leaded glass lamp. Indian Artifact Shadow boxes. An outstanding Heavy Cut Crystal Punch Bowl Set, Hummels, Flow Blue, Limoges, McCoy, Pictures, mirrors. Over 75 pcs. of Fine Cut Crystal and much more! Auctioneer's Note: This will be a Fantastic Auction! Way too many items to list. Something for everyone. Bring your truck. Don't Miss This One! Bring cash or check with proper I.D. Auctioneer—Michael Mears, TX Lic. #12703- For Reserved Seating, Call 405-381-3732. Come Expecting The Best! Absolutely—No—Buyers Premiums!

TEXAS STATEWIDE CLASSIFIED ADVERTISING NETWORK

TexSCAN

TexSCAN Week of September 10, 2000 ACREAGE

LAND BARGAIN! 3+ ACRES - \$24,900 with boat slip! Beautifully wooded, spectacular views, deeded access to crystal clear 35,000 acre recreational lake in Tennessee - next to 18 hole golf course. Paved roads, utilities, soils tested. Excellent financing. Call now, 1-800-704-3154, ext. 30.

ADOPTION

NOTE: It is illegal to be paid for anything beyond medical and legal expenses in Texas adoption.

A HEART FILLED with smiles. Our hearts are bursting with love for a baby. Please call Lisa and Tim at 1-877-877-2801 and get to know us.

ADOPT: LET US be the loving and caring parents to guide your baby through life. Medical/legal expenses paid. Call Anna and Paul, 1-800-595-6976.

AUCTION

ABSOLUTE AUCTION, TUESDAY September 26. Camp Creek Ranch, 26,879 +/- acres, Joseph (Walloway County) Oregon. Finest Hunting/Fishing in Northeast. JP King Auction Company LLC. 1-800-558-5464. LTG Brokerage CO License # 100321011. William L. Free - Oregon Broker.

AUTOMOBILES

CHARITY CARS - DONATE your vehicle, tax deductible, free towing. We provide vehicles to needy families. As seen on Oprah and People Magazine. 1-800-442-4451, www.charitycars.org.

BUSINESS OPPORTUNITY

\$1.00 STORES. \$1.00 - \$10.00 STORES. 10,000 products. Financing available. Complete from \$47,900. Call 1-800-829-2915.

BRAND NAME GREETING card route. 50 established locations (all local), proven income. Free information, call Card Songs of America, 1-800-529-9407.

DRIVERS WANTED

ATTN. DRIVERS: FLEETWHEEL Transportation hiring long-haul flatbed drivers. Peterbilt equipment. Guaranteed home time and complete package of benefits. Also need long-haul owner operators. 1-800-458-4279.

COMPANY PAID CDL training & first year income \$35K - Stevens Transport - OTR drivers wanted! Non-experienced or experienced, 1-800-333-8595. EOE.

DRIVER: COVENANT TRANSPORT * Coast to coast runs * Teams start 42cpm - 46cpm * \$1,000 sign-on bonus for experienced company drivers. For experienced drivers, 1-800-441-4394; owner/operators 1-877-848-6615. For graduate students 1-800-338-6428.

DRIVER - MARTEN TRANSPORT, LTD. Marten Transport can pay you with 1 year plus experience, 33cpm. Call 1-800-395-3331, www.marten.com.

DRIVER-MORE MONEY and respect with OTRX. Start at 40cpm * Full benefits/401 (k) * Earn \$44-\$52K first year * Assigned late model equipment * Need 2 years OTR experience. The best drive for OTRX. 1-800-423-6939, www.otrx.com.

DRIVER - OWNER OPERATORS Average 113 cpm in five-state area running AR, TX, OK, LA, and NM. We need 63 trucks to cover current obligation. \$1,000 sign-on bonus. Base plates provided. Generous fuel surcharge and a low-cost lease program. FFE has plenty of freight. Call 1-800-569-9298.

DRIVERS: INDUSTRY LEADING pay, top out a 43cpm. CDL Training & tuition reimbursement available for inexperienced drivers. O/O's welcome. USA Truck. 1-800-237-4642.

DRIVER - SOLOS START at 31cpm, teams 34cpm. Guaranteed home time, top equipment. Owner/Operators, 83cpm, 3,000+ miles per week, paid fuel surcharges, \$1,000 sign-on. 1-877-9-HELWIG, James Helwig & Son.

DRIVERS...\$2,000 SIGN on pay increase. Instant health insurance. OTR/regional. Single, teams and owner/operators, vans, flatbeds, or specialized. Class A CDL. Roadrunner Trucking. 1-800-945-BIRD(2473).

NOTICE: While most advertisers are reputable, we cannot guarantee products or services advertised. We urge readers to use caution and when in doubt, contact the Texas Attorney General at 1-800-621-0508 or the Federal Trade Commission at 1-877-FTC-HELP. The FTC website is www.ftc.gov/bizop.

Call this Newspaper to Advertise Statewide and Regionally or Call 512-477-6755.

Call this Newspaper to Advertise Statewide and Regionally or Call 512-477-6755.

Call this Newspaper to Advertise Statewide and Regionally or Call 512-477-6755.

Call this Newspaper to Advertise Statewide and Regionally or Call 512-477-6755.

Call this Newspaper to Advertise Statewide and Regionally or Call 512-477-6755.

Call this Newspaper to Advertise Statewide and Regionally or Call 512-477-6755.

Call this Newspaper to Advertise Statewide and Regionally or Call 512-477-6755.

Call this Newspaper to Advertise Statewide and Regionally or Call 512-477-6755.

Call this Newspaper to Advertise Statewide and Regionally or Call 512-477-6755.

Call this Newspaper to Advertise Statewide and Regionally or Call 512-477-6755.

Call this Newspaper to Advertise Statewide and Regionally or Call 512-477-6755.

Call this Newspaper to Advertise Statewide and Regionally or Call 512-477-6755.

Call this Newspaper to Advertise Statewide and Regionally or Call 512-477-6755.

Call this Newspaper to Advertise Statewide and Regionally or Call 512-477-6755.

Call this Newspaper to Advertise Statewide and Regionally or Call 512-477-6755.

Call this Newspaper to Advertise Statewide and Regionally or Call 512-477-6755.

Call this Newspaper to Advertise Statewide and Regionally or Call 512-477-6755.

LA RESPUESTA

LA RESURRECCION DE CRISTO es el fundamento de nuestra creencias cristiana cuando resucito, vencio la muerte y el pecado y proporciono el poder que necesitamos a fin de vivir para EL. tambien EL nos ha dado la fortaleza para vencer las circunstancias dificiles en nuestra vida. Si esta luchando con alguna dificultad en su vida, permita que el poder de la resurreccion de le ayude en su dificultad. Tambien tenemos la responsabilidad de darle el evangelio a un mundo incredulo, muchos no creen en lo milagroso, y mucho menos en la resurreccion de CRISTO. cuando usted viva de una manera que exalte a DIOS, ellos veran la realidad del CRISTO RESUCITADO. IGLESIA CANAAN WHEELER TX.

SPONSORED BY: LA FAMILIA GALUTIA

erating Co., #28 Morse Water Flood Project, 282' from North & 330' from East Lease line, Sec. 3, 26, H&GN, spud unknown, plugged 7-7-00, TD 2600' (injection) --

GRAY (PANHANDLE) Dyne Oil & Gas, Inc., #13 John Haggard, 990' from North & 2310' from West Lease line, Sec. 112, 3, I&GN, spud unknown, (Continued Page 4)

Want Ads

BIG SCREEN TV for sale. Take on small payments. Good credit required. 1-800-398-3970. 9/21p

NOW HIRING: LVN's, CNA's, and will train uncertified nurse aids. Classes will start soon. **Wheeler Care Center, 1000 S. Kiowa, 806-826-3505 9/21c**

Homeworkers Needed \$635 weekly processing mail. Easy! No experience needed. Call 1-800-520-4638 Ext 3200 24 Hrs. 9/28p

Custom Swathing & Baling Big Round Bales Only! Clifton Boydston 806/375-2315

Building Materials and Construction Two Steel Buildings, Engineer Certified. 40x40 was \$8,680, now \$4580. 50x100 was \$17,940, now \$11,935. MUST SELL, CAN DELIVER. 800/292-0111. 9/21p

GARAGE SALE: Furniture, Clothes & Miscellaneous. Saturday, Sept. 16, from 8 a.m. till 7. 714 Stanley, Wheeler.

TIME & TEMPERATURE: 24-Hours a day. Compliments Knight's Nursery, Canadian, Texas. Phone: 323-9339. rtn

FOR RENT: 2 Bedroom house in Wheeler. \$275 per mo., plus deposit. 323-5719. 9/14p

WHY RENT?

16X76—3 bed, 2 bath 1998 Fleetwood, great condition, \$22,000. \$1050 cash-\$300 month. Delivered 100 miles. Or leave on location at 1102 Reynolds, Wheeler. Call 806-353-4145

Canadian Laundry and Dry Cleaners, 1-800-766-6532 or mobile 323-2367. We have linens for parties, banquets and special occasions, napkins and banquet tops. We specialize in Dry Cleaning and Starched Jeans. rtn

SHEPARD'S CROOK NURSING AGENCY INC. needs Full Time RN. Ben-

efits include 401K, Cafeteria Plan & Health Insurance for Wheeler, Shamrock Area. Call 665-0356. rtn

FOR SALE: Three bedroom, 1 1/2 bath, wood burning stove, fenced backyard with cellar, well, fruit trees and lots of storage and carports. Call 826-3360. 9/14p

Tom L. Scott Oil and Gas Properties

P.O. Box 2806 Amarillo, Texas 79105

(806) 372-2692 (806) 374-9988 Fax

NOTICE OF HEARING

RAILROAD COMMISSION OF TEXAS

OFFICE OF GENERAL COUNSEL

OIL AND GAS DOCKET NO. 10-0225042

IN RE: CONSERVATION AND PREVENTION OF WASTE OR CRUDE PETROLEUM AND NATURAL GAS IN THE STATE OF TEXAS

Austin, Texas August 30, 2000

NOTICE OF HEARING ON THE APPLICATION OF FREMONT EXPLORATION, INC. TO CONSIDER AN EXCEPTION TO STATEWIDE RULE 38 PATTERSON LEASE, WELL NO. 1

THIS HEARING IS HEREBY GIVEN to the public and to all interested parties that under the legal authority and jurisdiction of Title 3, Oil and Gas, Subtitle A, B, and C of the Texas Natural Resources Code, Chapters 26, 27 and 29 of the Texas Water Code, and TEX GOV'T CODE ANN. art ss 2001 et seq. (2000), the RAILROAD COMMISSION OF TEXAS will hold a hearing on OCTOBER 17, 2000, at 9:00 a.m. at the William B. Travis State Office Building, 1701 N. Congress Avenue, Austin, Texas. This hearing will be conducted in conformity with the TEX. GOV'T. CODE ANN. art. ss 2001 et seq. (2000). For room assignment, on the date of the hearing please check the bulletin board in the 1st Floor lobby. Persons planning to attend this hearing are urged to contact the applicant (see service list) immediately prior to the hearing date to be sure that the hearing will proceed on the scheduled date.

This hearing will be held to consider the application of Fremont Exploration, Inc. for an exception to Statewide Rule 38 for its Well No. 7, Patterson Lease, 646 Acres, Section 45, Block A-5, H&GN RR Co. Survey, A-273, Mobetie (Douglas) Field, Wheeler County, being 1.5 miles southwest of Mobetie, Texas. The location of the well is as follows: 1320' from the south line and 2467' from the west line of lease and survey.

If you have questions regarding this application, please contact the Applicant's representative, Thomas Conroy, at (405) 936-0012. If you have any questions regarding the hearing procedure, please contact the Railroad Commission, Office of General Counsel, at (512) 463-6848. IF A CONTINUATION IS NECESSARY, this hearing will proceed at the William B. Travis State Office Building, Austin, Texas, and to the extent possible, on subsequent working days. The room number and exact time of the continuation will be announced on the record in this proceeding and recorded with Docket Services, Office of General Counsel, Railroad Commission of Texas. PURSUANT TO SAID HEARING, the Commission will enter such rules,

regulations, and orders as in its judgment the evidence presented may justify.

ANY REQUEST FOR POSTPONEMENT of this hearing must be received no later than five (5) working days prior to the scheduled date shown above. Copies of such request must be forwarded to all parties shown on the service list.

TO APPEAR IN SUPPORT OF OR IN OPPOSITION TO THIS PROCEEDING, a party other than the applicant must file with Docket Services, Office of General Counsel, at least five (5) working days in advance of the hearing date, a notice of intent to appear.

IF ANY PARTY DESIRES A WRITTEN TRANSCRIPT of the hearing, that party should notify the Court Reporter's office at (512) 463-6926, at least five (5) working days in advance of the hearing date. If a written transcript is requested, the Commission may assess the cost of the transcript to one or more parties. Unless any party requests a written transcript, the record will be made by audio tape recording.

ANY INDIVIDUAL WITH A DISABILITY who needs auxiliary aids and services in order to have an equal opportunity to effectively communicate and participate in this hearing must request such aids or services at least two weeks prior to the scheduled hearing by notifying the Personnel Office of the Railroad Commission of Texas by mail at P.O. Box 12967, Austin, Texas 78711-2967, or by telephone at (512) 463-7327 or TDD No. (512) 463-7284.

ALL EXHIBITS FILED AS A PART OF THE RECORD IN THIS CAUSE MUST BE SUBMITTED IN DUPLICATE. DATA IN COMMISSION RECORDS MAY BE INCORPORATED BY REFERENCE, BUT THE REFERENCE MUST BE SPECIFIC, AND IF IT INCLUDES EXHIBITS FILED IN PRIOR PROCEEDINGS BEFORE THE COMMISSION, A COPY OF SUCH EXHIBIT PROPERLY IDENTIFIED SHALL BE SUBMITTED FOR THIS RECORD.

THIS HEARING REQUIRES NOTICE BY PUBLICATION. 9/21c

By virtue of an Order of Sale issued out of the Honorable 31st Judicial District Court of WHEELER County on the 7th day of September, 2000, by the Clerk thereof, in the case of Wheeler County vs. Mobetie Associates.

Cause #10570 and to me, as SHERIFF directed and delivered, I will proceed to sell, at Ten (10) o'clock a.m. on the 3rd day of October, 2000, which is the first Tuesday of said month, at the official door of the Court-house of said WHEELER County, in the City of Wheeler, Texas, the following described property, to wit:

Tracts 1&2: Being a strip of land in Sections 38 & 43, Block A-5, described as follows:

BEGINNING in the northwest quarter of the northeast quarter (NW4 of NE4) of Section 43, Block A-5 THENCE west about 8 rods;

THENCE south one mile to the south line of Section 43;

THENCE extending south into Section 38, block A-5, to a point on the north line of the highway right-of-way;

THENCE east with said highway to a point approximately 8 rods distance from the point of intersection of said highway;

THENCE north to a point on the south line of said Section 43, Block A-5, at the southwest corner of the east one-half (E/2) of the southeast quarter (SE4) of said Section 43;

THENCE one mile to the place of beginning to contain in this strip 20 acres of land, more or less, in said Section 43 and Section 38, Block A-5, H&GN RR Co. Survey, Wheeler County, Texas

Levied on the 11th day of September, 2000, as the property of Mobetie Associates to satisfy a judgment amounting to \$2,447.25 plus all taxes, penalties, interest, and attorney fees accrued to the date of sale and all costs recoverable by law in favor of Ft. Elliott Cisd and Wheeler County. GIVEN UNDER MY HAND THIS 11th day of September, 2000.

(Signed) Jimmy Adams, Sheriff Wheeler County, Texas By (signed) Rick Walden, Deputy. 9/28c

Levied on the 11th day of September, 2000, as the property of Mobetie Associates to satisfy a judgment amounting to \$2,447.25 plus all taxes, penalties, interest, and attorney fees accrued to the date of sale and all costs recoverable by law in favor of Ft. Elliott Cisd and Wheeler County. GIVEN UNDER MY HAND THIS 11th day of September, 2000.

(Signed) Jimmy Adams, Sheriff Wheeler County, Texas By (signed) Rick Walden, Deputy. 9/28c

Levied on the 11th day of September, 2000, as the property of Mobetie Associates to satisfy a judgment amounting to \$2,447.25 plus all taxes, penalties, interest, and attorney fees accrued to the date of sale and all costs recoverable by law in favor of Ft. Elliott Cisd and Wheeler County. GIVEN UNDER MY HAND THIS 11th day of September, 2000.

(Signed) Jimmy Adams, Sheriff Wheeler County, Texas By (signed) Rick Walden, Deputy. 9/28c

Levied on the 11th day of September, 2000, as the property of Mobetie Associates to satisfy a judgment amounting to \$2,447.25 plus all taxes, penalties, interest, and attorney fees accrued to the date of sale and all costs recoverable by law in favor of Ft. Elliott Cisd and Wheeler County. GIVEN UNDER MY HAND THIS 11th day of September, 2000.

(Signed) Jimmy Adams, Sheriff Wheeler County, Texas By (signed) Rick Walden, Deputy. 9/28c

Levied on the 11th day of September, 2000, as the property of Mobetie Associates to satisfy a judgment amounting to \$2,447.25 plus all taxes, penalties, interest, and attorney fees accrued to the date of sale and all costs recoverable by law in favor of Ft. Elliott Cisd and Wheeler County. GIVEN UNDER MY HAND THIS 11th day of September, 2000.

(Signed) Jimmy Adams, Sheriff Wheeler County, Texas By (signed) Rick Walden, Deputy. 9/28c

Levied on the 11th day of September, 2000, as the property of Mobetie Associates to satisfy a judgment amounting to \$2,447.25 plus all taxes, penalties, interest, and attorney fees accrued to the date of sale and all costs recoverable by law in favor of Ft. Elliott Cisd and Wheeler County. GIVEN UNDER MY HAND THIS 11th day of September, 2000.

(Signed) Jimmy Adams, Sheriff Wheeler County, Texas By (signed) Rick Walden, Deputy. 9/28c

Levied on the 11th day of September, 2000, as the property of Mobetie Associates to satisfy a judgment amounting to \$2,447.25 plus all taxes, penalties, interest, and attorney fees accrued to the date of sale and all costs recoverable by law in favor of Ft. Elliott Cisd and Wheeler County. GIVEN UNDER MY HAND THIS 11th day of September, 2000.

(Signed) Jimmy Adams, Sheriff Wheeler County, Texas By (signed) Rick Walden, Deputy. 9/28c

Levied on the 11th day of September, 2000, as the property of Mobetie Associates to satisfy a judgment amounting to \$2,447.25 plus all taxes, penalties, interest, and attorney fees accrued to the date of sale and all costs recoverable by law in favor of Ft. Elliott Cisd and Wheeler County. GIVEN UNDER MY HAND THIS 11th day of September, 2000.

(Signed) Jimmy Adams, Sheriff Wheeler County, Texas By (signed) Rick Walden, Deputy. 9/28c

Levied on the 11th day of September, 2000, as the property of Mobetie Associates to satisfy a judgment amounting to \$2,447.25 plus all taxes, penalties, interest, and attorney fees accrued to the date of sale and all costs recoverable by law in favor of Ft. Elliott Cisd and Wheeler County. GIVEN UNDER MY HAND THIS 11th day of September, 2000.

(Signed) Jimmy Adams, Sheriff Wheeler County, Texas By (signed) Rick Walden, Deputy. 9/28c

Levied on the 11th day of September, 2000, as the property of Mobetie Associates to satisfy a judgment amounting to \$2,447.25 plus all taxes, penalties, interest, and attorney fees accrued to the date of sale and all costs recoverable by law in favor of Ft. Elliott Cisd and Wheeler County. GIVEN UNDER MY HAND THIS 11th day of September, 2000.

(Signed) Jimmy Adams, Sheriff Wheeler County, Texas By (signed) Rick Walden, Deputy. 9/28c

Levied on the 11th day of September, 2000, as the property of Mobetie Associates to satisfy a judgment amounting to \$2,447.25 plus all taxes, penalties, interest, and attorney fees accrued to the date of sale and all costs recoverable by law in favor of Ft. Elliott Cisd and Wheeler County. GIVEN UNDER MY HAND THIS 11th day of September, 2000.

(Signed) Jimmy Adams, Sheriff Wheeler County, Texas By (signed) Rick Walden, Deputy. 9/28c

Levied on the 11th day of September, 2000, as the property of Mobetie Associates to satisfy a judgment amounting to \$2,447.25 plus all taxes, penalties, interest, and attorney fees accrued to the date of sale and all costs recoverable by law in favor of Ft. Elliott Cisd and Wheeler County. GIVEN UNDER MY HAND THIS 11th day of September, 2000.

(Signed) Jimmy Adams, Sheriff Wheeler County, Texas By (signed) Rick Walden, Deputy. 9/28c

Levied on the 11th day of September, 2000, as the property of Mobetie Associates to satisfy a judgment amounting to \$2,447.25 plus all taxes, penalties, interest, and attorney fees accrued to the date of sale and all costs recoverable by law in favor of Ft. Elliott Cisd and Wheeler County. GIVEN UNDER MY HAND THIS 11th day of September, 2000.

(Signed) Jimmy Adams, Sheriff Wheeler County, Texas By (signed) Rick Walden, Deputy. 9/28c

Levied on the 11th day of September, 2000, as the property of Mobetie Associates to satisfy a judgment amounting to \$2,447.25 plus all taxes, penalties, interest, and attorney fees accrued to the date of sale and all costs recoverable by law in favor of Ft. Elliott Cisd and Wheeler County. GIVEN UNDER MY HAND THIS 11th day of September, 2000.

(Signed) Jimmy Adams, Sheriff Wheeler County, Texas By (signed) Rick Walden, Deputy. 9/28c

Levied on the 11th day of September, 2000, as the property of Mobetie Associates to satisfy a judgment amounting to \$2,447.25 plus all taxes, penalties, interest, and attorney fees accrued to the date of sale and all costs recoverable by law in favor of Ft. Elliott Cisd and Wheeler County. GIVEN UNDER MY HAND THIS 11th day of September, 2000.

(Signed) Jimmy Adams, Sheriff Wheeler County, Texas By (signed) Rick Walden, Deputy. 9/28c

THE WHEELER TIMES
PAGE 3—Thursday, September 14, 2000

MEMBER 2000
TEXAS PRESS ASSOCIATION

THE WHEELER TIMES
P.O. Box 1080
Wheeler, Texas 79096
Phone: 806/826-3123

Entered as second-class matter December 18, 1933, at the Post Office at Wheeler, Texas 79096, under the act March 3, 1879.

Postmaster: Send Address changes to The Wheeler Times, P.O. Box 1080, Wheeler, TX 79096-1080

Louis C. Stas, Owner & Publisher

SUBSCRIPTION RATES:
Wheeler County...\$18.00 Outside County...\$20.00

THE BUSINESS DIRECTORY

Psalms 28: 5-7: Because they regard not the works of the Lord, nor the operation of his hands, he shall destroy them, and not build them up.

Blessed be the Lord, because he hath heard the voice of my supplication.

The Lord is my strength and my shield, my heart trusted in him, and I am helped; therefore my heart greatly rejoiceth and with my song will I praise him.

The early mornings here in Allison are so pleasant, but they are usually

Oil News (from Page 3)

plugged 8-15-00, TD 3295' (oil) -- HEMPHILL (BUFFALO WALLOW Hutton) Chevron USA, Inc., #1 Hefley-SWD, 2184' from South & 2063' from East Lease line, Sec. 28, M-1, H&GN, spud 12-8-69, plugged 7-0-00, TD 6400' (swd) -- Form 1 in Gulf Oil Corp. HEMPHILL (FELDMAN Tonkawa) Empire Operating, Inc., #1 Crosier, 660' from South & East Lease line, Sec. 15, 1, G&M, spud 10-22-82, plugged 6-7-00, TD 7925' (gas) -- Form 1 in Malouf Abraham, Inc. ROBERTS (QUINDUNO Lower Albany Dolomite) Exxcel Production Co., Edge 'B', Sec. 19, 1, M-2, BS&F -- Form 1 in Phillips Petroleum, for the following wells: #3, 2970' from North & 330' from East Lease line, spud 11-19-53, plugged 7-13-00, TD 4153' (oil) -- #4, 1650' from North & East Lease line, spud 11-30-53, plugged 7-7-00, TD 4125' (gas) --

SCOTT PORTER
6 The Wheeler County Tax Office Crew

Gary, Karen & Dee Alston

SOTO FAMILY RESTAURANT
708 E. Oklahoma St. — 826-3129

YREVA TOPPER

Scott & Janell Dunnam, Chad & Aaron
Cami & Charles Ellison State in '00!

Sandra Christner

ARROW WATER WELL INC.
Jerry & Barbara Koelzer, Vince, Greg & Joe

LYNDON AUCTIONEERS
Lyndon & Noveline Loyd
P.O. Box 1279
Wheeler, Texas 79096
Phone: 806/826-5850 (L7119)

Leo & Sylvia Shuler

H. & R. BLOCK Jim & Beth Alvey
Phone: 826-3736

Lewis, Jennie, Jeff & Tom Britt

Betty Hennard

Jennings Plumbing, Heating & Air Conditioning
Larry & Bobby

Wheeler Lumber Co.

CHICK ELECTRIC — Roy & Dixie Chick
Brandon, Gorbey & Wakenzie

James, Belinda, Kyle & Brad Masters

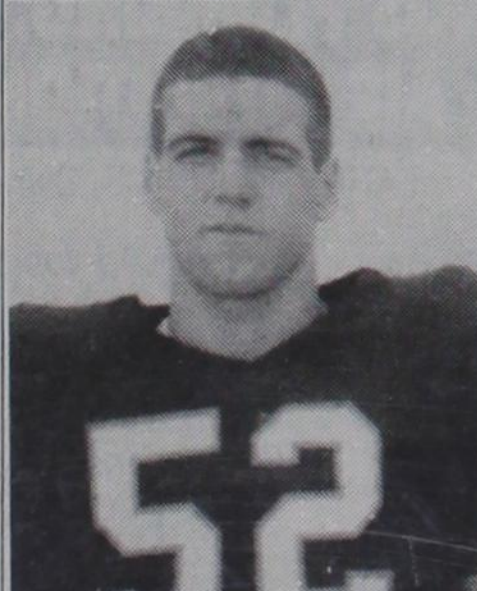
BOOSTER CLUB MEETING
MONDAY, SEPT. 11—7:00 P.M.
Wheeler Fieldhouse

Jim & Bobbye Hill
Looking forward to another winning season!

HEFLEY HARDWARE, Inc.
Furniture, Appliances, ACE Hardware
Carpet & Gifts
8:00 A.M. - 5:30 P.M. — Mon. thru Sat.
Phone: 826-5532 — 420 S. Main — Wheeler, Texas

WARE Chevrolet-Buick
Olds & Pontiac, Inc.
South Hwy. 83 Wheeler, Texas

MEET THE MUSTANGS



52—Bret Goad
OC1B—12

the making of a very hot day, but Fall weather is on the way.

Darrel and Johnnie Harrison came last Saturday morning. He brought Johnnie over then he went back to the farm near Mobeetie. Johnnie fixed my hair, then we went to the Hill Top for a hamburger. We had a good visit. Took her over to the farm to meet Darrel. They went home from there.

Sorry to hear that Edna May fell at her home one day last week and broke her hip. She is in Amarillo hospital, or maybe in Rehab by now. We hope everything goes well with her.

Juanita Boydston drove Billy Brown's car and took her to the eye doctor in Pampa last Tuesday. Opal also went with them and they also did some shopping. Juanita and Billy were in Shamrock on Wednesday for Billy to see her doctor there. On Thursday, Roma and Billy took their son, Larry, to Clinton to help car shop.

Sunday, Thursia Poindexter from Cheyenne was Sunday dinner guest with Roma and Billy.

The ladies of the United Pentecostal church of Allison attended the Ladies' U.P. Church Retreat Thursday thru Saturday morning at the U.P. Church Camp Grounds near Amarillo. The ladies that attended from Allison were Louise Boydston, Pearl Harrison, Wanda Walker, Juanita Boydston and Cheryl Dupont. They reported a good time.

Peggy Chandler took Jennie Walker to the eye doctor at Pampa last Friday. Eddy Walker took his mother, Jennie, to the Hill Top Restaurant last Saturday for dinner.

Ruby Craig took her mother, Wilma Gilmer, to Wheeler Parkview last Friday morning, where she spent Friday night in the hospital. Her granddaughter, Rhonda McWhorter, brought her home Saturday.

Red and Anna Dukes went to Min-

eral Wells last Thursday and spent the night and also spent Friday night with Claude and Pat Pewitt. On Friday they all attended the Hughes and Dukes reunion at Jacksboro. They ate their meals while there at the Green Frog Restaurant and they came home on Saturday.

Pearl Harrison and Wanda Walker went to Elk City last Tuesday and spent the night with Jimmy and Vivian Wallace and Ronnie. They also visited Pearl's niece, Laverne and Shady Ditmore and came home Wednesday afternoon. Pearl spent Thursday night in Amarillo with Gace Henson, her sister, Dr. Willis and Mary Harrison took Pearl out to dinner on Saturday. Pearl, Louise Boydston, Wanda Walker, Juanita Boydston and Cheryl and H. B. Dupont, Sabrina and Cody attended the 5th birthday celebration for Britteny Thompson at the home of Chuck and Kim Thompson. They all came home Saturday evening.

H. B. and Cheryl, Sabrina and Cody spent Saturday night in Amarillo and attended North Side United Pentecostal Church Sunday morning. Also

Kim and Chuck and family were at the U.P. church Sunday morning.

Congratulations to Laurie Lane and Rick Poindexter on their marriage last Friday evening at the church of Christ in Wheeler.

Vance and Caroline Boydston, Dick and Cletus Greene, Roy Geene, Shawn and Jamie Downey and Lanora Morse and Narveta Robertson all were in Elk City last Sunday evening to celebrate Narveta's birthday by eating the evening meal at the Western Sizzlin.

Alan and Sheryl Lane are proud to announce the marriage of their daughter, Laurie Diane, to Rick Poindexter. Rick and Laurie were married on Sept. 8, at the Church of Christ in Wheeler. They will reside in Sayre, Okla.

The wedding reception for the newlyweds will be held on Saturday, Sept. 16, 2000, at 7 p.m. at the Church of Christ in Wheeler. All family and friends are invited to attend.

Take time to pray—it is the greatest power on earth.

MARSHALL'S
HEATING & AIR CONDITIONING
Wheeler, TX —Phone: 826-0043
—24 Hour Emergency Service—
LICENSED & INSURED
License No. TACLB0 18635E
Mark Marshall, Owner

THRIFTWAY
SUPERMARKET
300 E. OKLAHOMA — WHEELER, TEXAS

DAIRY QUEEN
MARSHALL DISCOUNT AUTO
PARIS PLUS
Darrell & Maggie Marshall
Steve & Mechelle—Mack, Heather,
Mariah & Trevor
Mark, Joanna & Urriek

Gail & Sally Ledt
Joe Dan, Bobbie
3-H CATTLE
Harris
Dick & Jere

WHEELER MUSTANGS
2000

9	James Chapman	QB/DB	9
10	Joe Don Glassey	WR/DB	9
11	Justin Chapman	WR/DB	12
17	Jacob Britt	QB/DB	11
21	Donnie Phipps	WR/DB	12
22	Brenton Goerend	WR/DB	9
24	Caleb Finsterwald	RB/DB	12
28	Gavin McQueen	TE/LB	11
32	Kendall Hefley	RB/DB	11
35	Chris Gallagher	RB/DB	10
39	Josh Miller	RB/LB	9
50	Dirk Chapman	OC/DT	11
52	Bret Goad	OC/LB	12
57	Nic Gaines	OT/DT	9
58	Evan Watts	OT/DE	10
60	Joe Salas	OG/LB	9
61	Trenton Gaines	OT/DT	9
62	Tyler Lewis	OG/DE	10
63	Danny Spikes	OG/LB	10
70	Blaine Rutherford	OC/DE	9
72	Chris Hutchison	OT/DT	10
74	Danny Glasgow	OT/DT	10
75	Kelby Ledbetter	OT/DE	12
85	Corey Jewell	WR/LB	11
88	Brad Masters	TE/DE	9

Head Coach: Jim Verden
Asst. Coaches: Shane Whiteley, Kenny Rutherford, Cory Lynch
Managers: Dwight Arganbright, Devin Parker
Superintendent: Brooks Symank
Principal: Dale Pulpan

WHEELER MUSTANGS
2000 FOOTBALL SCHEDULE

Aug. 25	Scrimmage—Farwell	Claude	6:00
Aug. 31	Scrimmage—Clarendon	HERE	6:00
Sept. 8	Paducah—W—O—P-50	There	7:30
Sept. 15	Sunray	There	7:30
Sept. 22	Memphis (HC)	Here	7:30
Sept. 29	Dalhart	Here	7:30
Oct. 6	Childress	There	7:30
Oct. 13	*Claude	There	7:30
Oct. 20	*Gruver	Here	7:30
Oct. 27	*Booker	There	7:30
Nov. 3	*White Deer	Here	7:30
Nov. 9	*Shamrock	There	7:30

* District Games

Rita Smith, Shelley, Don & Taylor Hudgins
Rick Heiburg
Rob Schaffer
Capturing the Mustangs on Film
THE WHEELER TIMES
Louis & Barbara, Brice & Jennifer
Hayley Hipkins
The Kenneth Nelson Family

WHEELER
vs. SUNRAY
FRIDAY, SEPTEMBER 15
At SUNRAY STADIUM
7:30 P.M.

SOTO FAMILY RESTAURANT
East Highway 152 — Phone: 826-3129
Charlie Brown
Wheeler Texaco— Corner Deli
Mustang Video—Tex. Scratch Off & Lottery
Bill & VonEva Robertson
Mainstreet COMMUNICATIONS
410 S. Main—Wheeler—806/826-1213
CellularONE
WRIGHT FUNERAL HOME
The Wright Family
Thurmon & Jane Rives
"We're standing behind you!"
JONES FUELS
Larry, Christie, Haley & Katie
Grace Fellowship
supports the Mustangs!
HONEY INN MOTEL
McILHANY DRY GOODS
Dr. Louie Mendiola, M.D.,
Cina, Rocky, Vincent, Stacy & Hunter Mendiola

Away Games will
KPDR-4
Keep Pouring Down
Ruth
Larry, Carol,
Dave & Mary Britt
Weatherly Heating
Scott Weatherly
Dr. Larry & Fre
Weatherly Heating
Scott Weatherly

My Country Tis of Thee

By Lorena g. Males

Hazel Maggard and Vera Holley come to my house every day full of stories about school.

"We went to Blue Ridge, a two room elementary school near old Gem City, Texas," explained Hazel.

Vera, her sister, chimed in.

"We sang every morning."

"Yes, but we always sang the same song—Grandfather's Clock. Day after day."

Now Grandfather's Clock is a good American song that every American child should know, but as a steady diet—

X X X

What is an American song?

Some think it's patriotic band music like Stars and Stripes Forever.

Others think it's somber hymns like Nearer My God To Thee.

Is it country? Your Cheatin Heart.

What is the difference in Country and Bluegrass?

A heart-felt spiritual Nobody Knows The trouble I've seen.

A children's song I Don't Want To Play In Your Yard.

International song Londonderry Air.

Music of the frontier Sweet Betsy From Pike.

Native American Music Indian Tom Toms.

Stephen Foster—Old Folks At Home.

Children's Favorite—Grandfather's Clock.

Of course, we must all know the

recognized American songs:

Star Spangled Banner

My Country Tis of Thee

America The Beautiful

God Bless America

Dixie

Every American should know his or her state song, Sing Oklahomal!

Songs of a people tell their history. Just as our country is a melting pot, so are our songs.

American songs are the legacy of the American children to know, to love, to cherish, to preserve.

School is starting. Time to start singing. Time for the family to gather around the piano and sing.

When we're gone there won't be anyone to sing these wonderful old American songs unless we teach them to the children.

P.S. A former student of mine told me recently, "You were my fifth grade teacher. I can't remember a thing you taught me about Math, but you taught me so many American songs that I still remember, Thanks!"

Listen to . . .

KPDR-FM, 90.5

WHEELER, TEXAS

MEET THE MUSTANGS

Psalm 37:23, 24 The steps of a good man are directed by the Lord. He delights in each step he takes. If he falls it isn't fatal, for the Lord holds him with his hand.

Happy Birthday to Savannah Shipp and Dale Stinnett on Sept. 17, Deraduh Weldon and Barbara Meadows on Sept. 12, Blake Baker, Debbie Kinnaman, Stacie Fitzer, Pat Graham and Eldon VanHooser on Sept.

I can hardly wait!



Quality Blind-Made Products

(This Ad furnished by Charles Kuntz, C.P.A.)

19, Cody Selby, Ruth Irvine, Pierce Walker and Ed Trimble on Sept. 20, Mary Newman, Sue Chandler, Nadine Lane and Shane Everett on Sept. 21, Keith Bell, Adrian Reis, Casey Zybach, Carla Howard and Amanda Johnson on Sept. 22, Mona Cook, Janet Hefner, Doug Whaley, Sue Lehman, and John Paul Harris on Sept. 23.

Happy Anniversaries to Horace and Juanita Fillingim on Sept. 19.

Homecoming Queen candidates for Friday night Sept. 15 are Ashley Estes, Casey Zybach, Kirby Kinnaman and Kyleigh Trimble.

2000 Fort Elliott annuals are in at Mrs. Horn's office.

Next Friday night Sept. 15 at 7:30 will be a Fort Elliott Homecoming Game with Higgins at Briscoe. The Booster Club will be serving a Mexican Pipe-on supper in the School Cafeteria before the game. Homecoming activities will be at half time of the game.

Monday, Sept. 18 will be the Tri-State Fair Swine Show at 6:00 p.m. Tuesday, Sept. 19 San Jacinto Christian School will come play Ft. Elliott at 5:00 in volleyball with J. V. and Varsity games at Briscoe.

Willa Fillingim and Vea Fillingim got back Sunday afternoon from visiting a few days with their sister, Elton Fillingim at Prescott, Ariz. They had a great time. They drove to Amarillo and left their pickup and flew to Arizona. They were met at Phoenix and driven around the country to see all the sights. They also enjoyed visiting with all Elton's family.


Best wishes to Aspen Hendrickson and Michael Boyett of Reydon, who were united in marriage Saturday, Sept. 2. A wedding shower was given Saturday, Sept. 9, at Allison Baptist Church in their honor. Best wishes! Pray for them!

Edna May had the misfortune to fall over a hose on her porch and break or fracture a hip Tuesday night, Sept. 5. She was taken to B.S.A. Some repair surgery was done and she was given 2 units of blood. Might have to have more. Pray for Edna. She is in Amarillo. She came through surgery O.K. and is expecting to go to Spearman for rehab to be near her daughter and husband, Linda and Dean Lieb. Some visiting Edna at Amarillo were Bill and Kay Donaldson, Edwin and Sue Begert and Linda and Dean. So sorry about the fall and break. Life is so fragile! Leonard Jr. and Teresa Powledge also visited Edna Saturday as did Irene Keys and Nova Powledge. We are praying for you, Edna. Hurry back!

Nice to visit with Bill and Vera Brickey, Glenn Elmore, Alvin and Shana Reeves with Lois and Bob

Listen to . . .
KPDR-FM, 90.5
WHEELER, TEXAS

WHEELER COMMUNITY CHURCH



Rev. Alberta & Pat Helton
806-323-9849 or 826-5607
P.O. Box 544
Wheeler, TX 79096

John 14:6 "Jesus saith unto him, I am the way, the truth and the life; no man cometh unto the Father but by me."

1/3 mi. N. Hwy. 83
Thursday's 7:00 P.M.
—WELCOME!—

Bull, Bill and Dutch Elliott and Kathy Zybach and Casey at Wheeler Dairy Queen Wednesday night. We also went to Grace Fellowship Church. Casey drove her grandpa Glenn home.

Tuesday night Volleyball games with Trinity Fellowship were all won by Ft. Elliott at Briscoe. Varsity girls won 15-11, 12-15 and 15-8. J. V. girls won 14-16, 15-11, 15-10. Junior High girls also won.

Lori Lane and Rick Poindexter of Sayre were united in marriage Friday night, Sept. 8, 2000, at Church of Christ in Wheeler. On Saturday, Sept. 16, at 7:00 p.m. will be a wedding reception at Wheeler Church of Christ for Lori and Rick Poindexter. Friends and relatives are invited to come share in their joy.

Nice to see Lori Baird and Charity and Lauren from Colorado out to the volleyball tournament at Briscoe with Gay Purcell and Rozena Zybach. Also several college kids there, including Amber Estes, Reagan Meadows, Michael Hilburn, Clay Zybach and T. J. Trimble.

Amber and Reagan work at Maxeys on weekends and do a good job.

Best wishes to Jody Powledge and Cathy Hinojosa as they were married Saturday, Sept. 9, 2000, at Canyon at Country Bed and Breakfast with family and friends. Some there were Leonard Jr. and Teresa Powledge (Jody's parents), Sarah and Bobby Ford and Ty and Tate from Perryton, Irene Keys, Patty Ann Shields and Amanda, Kevin and Heather Shields and Lauren, Nova Powledge, Cindy and Bob Fulgham, and Alton and Ariel Lohberger. Also many of Cathy's family from Plainview and church friends. Jody drives a truck for Affiliated Foods. They will be making their home in Amarillo. Pray for them.

Clifford Helley passed away Saturday night, Sept. 9. Sincere sympathy to family and friends. Funeral was Tuesday, Sept. 12, at Wheeler Methodist Church. Clifford and Pauline Evans were united in marriage Dec. 29, 1934, at Wheeler. Would have been 66 years in December. He is survived by his wife and children, Thelma, Earline, David, Joe and Beth Alvey and 9 grandchildren and 14 great-grandchildren.

Emmitt and Carolyn Singleton visited Ed and Laurel Herschman Saturday. They were on their way home to Graham from Oklahoma City.

Rosalie Keelin visited in Wheeler with Sammie Atherton at the hospital and Fannie Mae Bradstreet and others at Wheeler Care. Sammie and Fannie were not very responsive. She also visited Larry and Janie Taylor and Lucille Helton and Lucy at Briscoe. They always enjoy her visits. Larry is home from the hospital. Rosalie also

visited Pat Smith Saturday. Pray for these dear people.

Had you heard about Chuck and Phoebe Hartline's new son? Daniel is (Continued Page 6)

FT. ELLIOTT (Briscoe Campus) MENU

MONDAY, Sept. 18, 2000 — FRIDAY, Sept. 22, 2000

MONDAY
Breakfast: Waffles, Little Smokies, Syrup, Peanut Butter, Milk
Lunch: Shrimp, Fish, Spicy Italian Potatoes, Corn, Hush Puppies, Rice Pudding, Milk - Tea

TUESDAY
Breakfast: Biscuits, Sausage, Gravy, Jelly, Juice, Milk
Lunch: Chalupas, Refried Beans, Salad, Oatmeal Muffin Squares, Milk - Tea

WEDNESDAY
Breakfast: Cereal, Cheese Toast, Juice, Milk
Lunch: Bar-B-Que Franks, Mixed Vegetable w/Cheese, Okra, Biscuits, Peaches, Milk - Tea

THURSDAY
Breakfast: Scrambled Eggs, Hash Browns, English Muffin, Jelly, Juice, Milk
Lunch: Chicken Fried Steak, Mashed Potatoes w/Gravy, Green Beans, Hot Rolls, Jello w/Fruit, Milk - Tea

FRIDAY
Breakfast: Donuts, Yogurt, Juice, Milk
Lunch: Chicken Patty Sandwiches, French Fries, Fruit Pies, Milk - Tea (Menu subject to change)

ter, Jarrod & Kelby
Grant Ledbetter

COMPANY
n Hall

e DeArment

HYLAND'S Pharmacy

L. & F. REPAIR Leona Coates

Wellington State Bank

Wellington, Texas • Wheeler • Memphis • Childress • Canadian

Wheeler Banking Center

405 Alan L. Bean Blvd. • P.O. Box 1040 • Wheeler, Texas 79096
Phone: 826-5566

Elva Wood

MAXEY'S Steakhouse

CHARLES F. KUNTZ
CERTIFIED PUBLIC ACCOUNTANT
111 W. Texas P.O. Box 489
Wheeler, TX 79096
806/826-5516

121 N. Main
Shamrock, TX 79079
806/256-3790

MUSTANGS BOBCATS

PEP RALLY
1:30 P.M.
FRIDAY
In New Gym

WHEELER J. V. & JR. HIGH 2000 FOOTBALL SCHEDULE

Sept 7	Claude	There	JH/JV	5:00/6:30
Sept 14	Gruver	Here	JH/JV	5:00/6:30
Sept 21	Memphis	There	JH/JV	5:00/6:30
Sept 28	White Deer	Here	JH/JV	5:00/6:30
Oct 5	Shamrock	There	JH/JV	5:00/6:30
Oct 12	Claude	Here	JH/JV	5:00/6:30
Oct 19	Gruver	There	JH/JV	5:00/6:30
Oct 26	Booker	Here	JH/JV	5:00/6:30
Nov 2	White Deer	There	JH/JV	5:00/6:30

SUNRAY BOBCATS

No.	Name	Pos.	Ht.	Wt.	Cl.
2	Jeremy Mullins	RB/LB	5'8"	170	10
3	Kyron Trussell	RB/DB	5'11"	175	10
7	Cody Satterfield	WR/DB	5'9"	140	11
12	Jerrold Drinnon	QB/DB	6'2"	200	12
15	Abe Acosta	RB/LB	5'8"	180	10
16	James Moore	QB/DB	6'	165	12
21	Nick Kauten	WR/DB	6'	155	11
22	Chase Morton	RB/DB	5'9"	145	12
30	Joaquin Andujo	RB/DB	5'11"	165	12
32	Derek Cockrum	WB/DB	5'7"	135	12
33	Fernando Ritcheson	RB/LB	5'9"	160	12
40	Trevor Martin	RB/DB	5'10"	160	11
41	Scott Rachels	WR/DB	5'10"	155	12
44	Landon Morton	RB/LB	6'2"	190	11
55	Danny McClure	G/T	5'11"	215	11
60	Joel Acosta	G/LB	5'10"	210	12
66	Josh Grieve	T/T	6'3"	275	11
68	Tyson Harper	T/T	6'3"	300	10
69	Keith Hernandez	T/T	6'2"	205	12
70	Chris Woodall	T/T	6'2"	190	10
72	Ruben Velazquez	T/T	5'7"	245	12
74	David Stone	T/DE	6'2"	205	12
77	Darren Fletcher	G/DE	6'2"	160	12
82	Caleb Wilkerson	TE/DE	6'	180	12
85	Cody Defries	WR/DE	5'11"	165	12
88	Jesse Lechuga	TE/DE	6'1"	190	11

Coaches: Keith Mullins, Tom Lair, Jeep Shanks, Kent Colley, Rusty Gilbreath

Managers: Travis Quirk, Ryan Hare, Landry Millins

Principal: Margaret Parsons

Superintendent: Mike Brown

Cheerleaders: Brenna Cartrite, Laura Rodriguez, Trudy Hazlett, Jayme Lunt, Julia Sonen, Nikki Shanks, Ashley Crowley, Shelia Evenson

Mascot: Angela Patton

Sponsors: Valerie Cartrite and Jane Wilson

Band Directors: Zane Polson and Ray Bell

Drum Majors: Amber Alves and Kala Stone

Twirlers: August Schuman and Kelli Loman

be broadcast on
M 10,000 Watts Wheeler
20,000 Watts Amarillo
4 Booster Stations
n Righteousness

Viley

Jason Porton

Ben, Jake & Josh

Air Conditioning
= 826-0040

ericka Barbour

Air Conditioning
= 826-0040

West Texas Gas Co.
500 South Mobeetie
Wheeler, Texas 79096

R. J. & Georgia Smith

AG CREDIT OF TEXAS P.C.A.
PRODUCTION CREDIT ASSOCIATION

DR. MIKE SMITH
Mike, Jenny & Lacey Smith, Ben & Kristen Crowe

Adrian Risner

WHEELER FLOWER & GIFT SHOP

Gene, Rhonda, Rusty & Ty Ferguson
Mark, Mandy, Landry & Tatum Meadows

Wayne, Toni & Marice Kuehler

SPEEDI-MART Convenience Store
(On the square on the level)

Brooks & Connie Symank

STILES RANCH
Bob, Sue, Liz, Robert & Rachel
Bill & Kay, Bill, Melinda, Makenzie & Hannah
Michael Hawks

Wireless WORKS
412 S. Main—Wheeler
806/898-1800

—Full Service DOBSON Agent—
★ Bill Payment ★ Minor Repairs
★ Accessories ★ Upgrades

FIRST STATE BANK
Mobeetie & Wheeler
Established 1906 Member: F.D.I.C.

JOHNNY'S SHAMROCK SERVICE
Johnny, Betty, Melissa & Justin Chapman

Bobby, Shelly, Chris & Kylie Schubert

David & Paula Britt

CROSS CAR CENTER
BODY REPAIR & AUTO GLASS INSTALLATION
Intersection 83 & 152—Wheeler—Phone: 806/826-5515
David & Kathleen Cross

The General Store
Devlin & Becki Burrus

FREE ESTIMATES 24 HR. WRECKER SERVICE
McCAIN'S AUTO BODY
117 W. Okla.—Wheeler—806/826-3433
INSURANCE CLAIMS
OWNER: BOB McCAIN

PABLO ENERGY
Arvid, Joetta & Benny Sword

Bob & Evangeline Wills

Rick & Judy Woollard
Russell, Kate, Will & Bobbi

Marshall's Heating & Air Conditioning
Mark, Joanna & Urriek Marshall

JOHNNY'S SHAMROCK SERVICE
Johnny & Betty Chapman, Melissa & Justin

Hibler Implement Co., Lee & Pam
Joannie & Michael, Brandi, Zachery & Layton

Billy & Tobytha Wiggins & Phillip

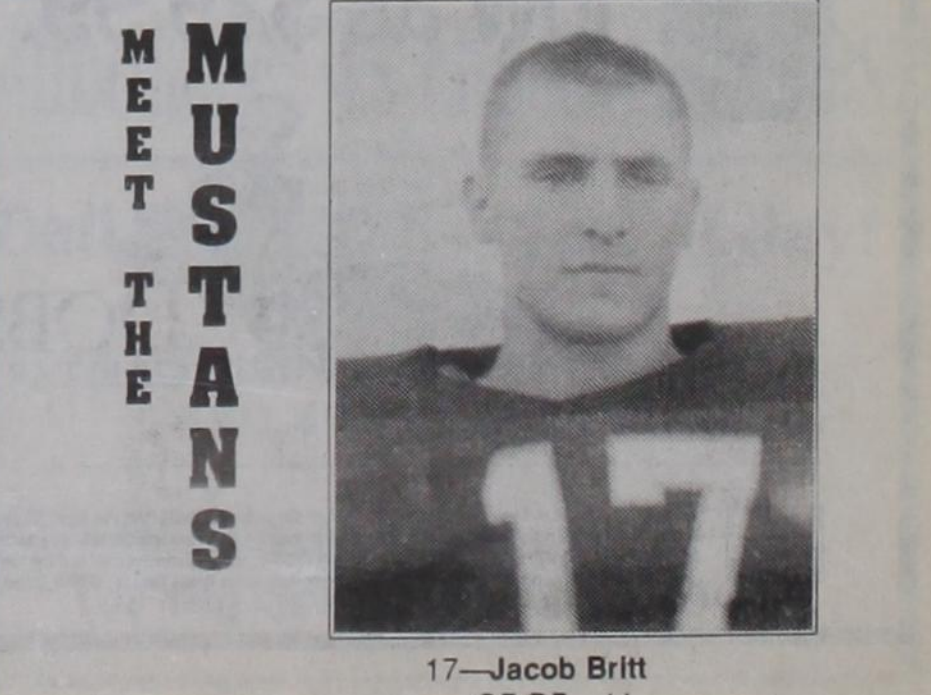
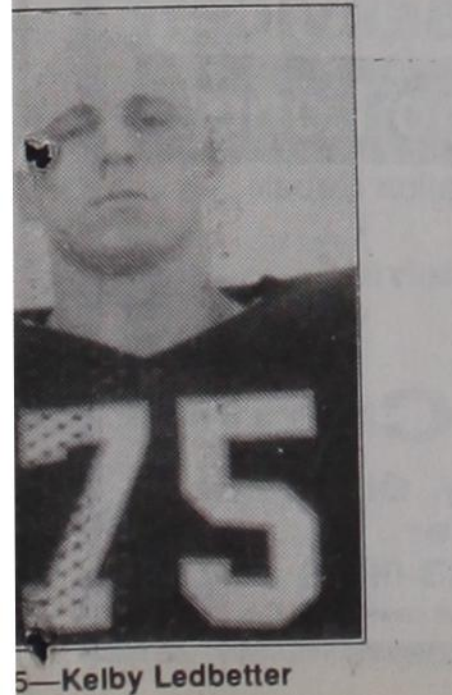
WHEELER REALTY, L.L.C.
Steve, Gwen, Kara, Jordan & Drew

Claudine's Beauty Shop
Larry & Claudine Finsterwald

Eastern Panhandle Insurance Agency

HIBLER IMPLEMENT CO., Lee & Pam
Joannie & Michael, Brandi, Zachery & Layton

Heritage Beef Cattle Co.
"The Cattleman's Feedlot"
806/826-5591 Joe Weatherly, C.E.O.



17—Jacob Britt

MOBEETIE NEWS

By: Melba Corcoran

Ernest Lancaster went to a roping at Oklahoma City over the weekend roping. His team came in 35th out of 1720 teams. He got home Tuesday morning. They are computer matches up for their partners.

Last Sunday, Jess Mixon, Julian and Jerry Martinez, Michael, Trish, and Andi went to the Boys Ranch Rodeo.

Bob Bull and Lois Reeves went to Amarillo shopping Wednesday.

Arica Lancaster and Lamari visited Wednesday in McLean with Ariza Corcoran.

The sophomores are selling candles for their class. If you need a candle get in touch with some of the sophomores.

Chuck and Louise Hogan went to Amarillo Wednesday for Chuck to have back surgery Thursday. He got to come home on Saturday.

Clint and Maurita Stribling took Cleveland to Amarillo to catch the plane for home. Maurita went for her doctor's appointment for her checkup after her back surgery.

Ralph Riggs suffered a heart attack. Don and Wilene Burke went to Amarillo to be with LaNell Thursday night. He had surgery to repair a hole in his heart and to clean out 3 arteries. He had a 30 percent chance of coming out of surgery. Ralph passed away Sunday. Our sympathy goes out to LaNell and the family.

Our sympathy goes out to the family of Clifford Helley.

Aline Corse went to the doctor Thursday. She started her chemotherapy. Remember her in your prayers.

Bill and Dutch Elliott and Dale and Melba Corcoran went to Mel's for dinner Thursday night. Bill and Dutch went back home on Friday.

Bob Bull and Lois Reeves took Jess Mixon to Wheeler for dinner Friday.

Julian and Jerry Martinez went to Amarillo Friday to visit Julian's father

MEALS on WHEELS MENU

MONDAY, September 18, 2000 — FRIDAY, September 22, 2000

MONDAY: Pinto Beans W/Ham, Fried Squash, Cornbread/Margarine, Fruit Cocktail

TUESDAY: Chicken Fried Steak, Gravy, Baked Potato, Seasoned Green Beans, Roll/Margarine, Carrot Cake W/Frosting

WEDNESDAY: Baked Lasagne, Salad, Garlic Bread, Bananas and Jello

THURSDAY: Chicken Nuggets/Gravy, Mashed Potatoes, Mixed Vegetables, Bread/Margarine, Pineapple Upside Down Cake

FRIDAY: Fried Fish, Macaroni and Cheese, Stewed Tomatoes, Hush Puppies, Bread Pudding

in the hospital. Mr. Martinez will be starting dialysis. They went back Sunday to see him.

Terry and Sheila Mick went to Amarillo Sunday afternoon.

Doyle and Bulah Grimes went to Elk City, OK Friday for Doyle's eye doctor appointment. He had laser on his good eye.

Chris and Dixie Purdy, Dillion and Carly of Guymon, OK visited with Doyle and Bulah Grimes on Saturday. Other visitors were Phyllis Tucker and Derenda Arudra and Remie and Auden of Elkhart, KS. They spent the weekend and attended Church with Doyle and Bulah. Saturday was Bulah's birthday. They brought her a

strawberry birthday cake and dinner. Doris Whaley spent the weekend in Cache, OK with Tom and Elaine Dennis and Hailey. She went to spend Grandparents Day Friday with Hailey. Visiting with Leola Stuart and Gladys Richardson over the weekend was Troy Richardson of San Antonio. Visiting on Labor Day were Eddie and Amy Richardson, Jerry Richardson and Tyler of Wheeler, Dale and Barbara Richardson and Cloise and Rita Richardson of Elk City, OK, and Ivy Richardson and Marsha Richardson of Erick, OK.

Wednesday, Leola Stuart and Gladys Richardson went to Elk City, OK to their doctors.

Orville Greenhouse visited Sunday afternoon in Wheeler with Alvern Hutchison.

Scott and Caaron Neighbors are home from their honeymoon in

Gageby

(from Page 5)

a foreign exchange student from Germany—very pleasant and nice looking. He was helping with the senior booth at the Old Settler's Reunion. Aaron Hartline is a junior and Tamera a sophomore so ought to work out good. Best wishes!

Nice to have Bob and Charleen Carey and granddaughter Hannah (daughter of Alicia and Darrell Hill) meet us for supper at Maxeys Tuesday night. Hannah will be one year in October. A new baby girl is expected in November. Best wishes! Hannah is a beautiful, peaceful baby, very blonde.

Henry and Margaret Leach left early Thursday to go to yet another funeral of a cousin at Waxahachie. They've had so many deaths and illness in their family. Billie Brock, about 60, died Wednesday. They got back in time for Margaret to come to church Sunday night at Gageby.

Billy and Susie (Luttrell) Umsted and Brody have bought Mae Welch's nice home in Briscoe and are already moved in. Best wishes Umsteds; we are happy for you.

We enjoyed watching some of the volleyball games at Briscoe Saturday. On our varsity team were Ashley Estes, Tamara Hartline, Kirby Kinnaman, Amanda and Brittney Mick, Julie Zybach and Casey Zybach. They defeated Fritch J.V. 15-0, 15-4 and another, but lost to Dumas J.V. to win second. On Ft. Elliott J.V. team were Jocelyn Meek, Stephanie Baker, Kenzie Watkins, Melissa Kephart, Crystal Selby, Jackie Dukes, Shana Reeves, Savannah Estes, Holly McCurley and Adella. They lost to Dumas J.V., but went on to win Consolation. Congratulations to all. Some other teams playing were Fritch Varsity and Childress J.V. and 9th grade and Fritch J.V.

Dub and Mary Swift and Morris and Nikki Swift visited Fat and Wanda Childress Sunday afternoon.

Kaleb and Marti Meek were weekend visitors to Mark and Annette Meek and Jocelyn and visited grandmother Evelyn Meek.

Nice to have Joe and Sherry Waggoner eat lunch at Dairy Queen at Canadian with us Sunday. Good visit.

I hadn't considered myself a murderer, but these black crickets better watch out! No mercy! or on the brown ones either.

Good to hear Nova Powledge is feeling better. She spent last week with her daughter, Margaret Ann and Charles Hall at Pampa. They took her to Jodey Powledge's wedding at Amarillo and to see Edna.

Some visiting Lou Dean Douthit and Donald and Billie Stuckey recently are Donald's sister and husband, Bernice and Roy Young from Albuquerque, Johnny and Patty Crawford, Rosalie Keelin, Cousins George and Laverne Saunders from Fargo, Okla., and Ed and Brenda Graddy from Canadian. They have also talked to Bennie and Emil Stromeyer in Arkansas.

Willis and I enjoyed going to Miami Fun Bunch Monday night. Hostesses were Doyle and Bulah Grimes and Betty and Sid Talley. About 29 there playing 42, Bridge, Canasta and Chicken Foot. Some others there were J. P. and Martha Meek, Glenn D. and Estelle Hodges, Lazell South, JoAnn Morgenstern, Evelyn Huff, Frank and Evelyn Heare, Carl and Shirley Williams, Ina Pearson, Esther Bowers, Vera Noltz, Vera Murphey, Barbara Alexander, Georgia Dea Holland and great-niece Cathy Dea Burris, Pearl Skeen, Jane Bright, Irene Shearer, Twila Taylor, Gladys Smyth. Delicious meal and fun games. Next meeting will be Sept. 25, at 6:00 p.m. with a potluck meal. Visitors welcome.

Willis and I went to the Sunday School Rally at Wheeler Baptist Church Thursday night. The women and men of the church served a very delicious dinner. There was a good crowd there for the Panfork Association meeting from Memphis, Clarendon, Wellington, Shamrock, Lefors, McLean, Allison and other places. The program was inspirational and included a song by Kloeette Henson, a signing song to music by Suzanne Hampton, a motivational video, scriptures, and discussion led by Toby Henson. All very good.

Nice to have Ray and Verline Currie from Pampa meet us for supper and a good visit at Maxeys Friday night. They had just gotten back from a visit to their daughter, Tina, and Trai and Maddie at Dallas area. Recently Verline's brother, Kenney from Florida and Keith from Beaumont visited them. Ann was at her parent's, Pete and Margaret Gilmer.

Also good to see at Maxeys Friday night were Donna Walser, Marcie Maupin and Ruth Morey. They were celebrating Ruth's birthday. Ruth's



THE WHEELER TIMES

PAGE 6—Thursday, September 14, 2000
"Wheeler, town of friendship and pride."

Mexico. We want to welcome Scott to Mobeetie. They will be living here.

Aaron Lavery is attending a seminar this week. Claudette and Caaron are getting everything ready to take their cooking shack to the Tri State Fair in Amarillo.

Seitz Host Cookout

Dean and Gina Seitz hosted a cookout Saturday for several members of Gina's family. Those getting together for hamburgers and visiting were: Bobbie Walker, Cliff and Dorothy Walker of Wheeler, Verne and Susie Lohberger, Suzanne Lohberger and

Justin Lohberger of Allison, Bill and Geneva Ledbetter of Malvern, Arkansas, Robert and Louise Walker, Herman and Lois Ledbetter, Phyllis Carroll, Kristie Whalley, Florence Simonton, Carolyn Graves, Amanda Graves and friend Amy all of Pampa, Dean Tipps of Briscoe, Bobby Shaw of Orlando, Florida, Bernice Hoertsen, Judy Hall, Christian and Charlie Schow, Gene and Virginia Ledbetter and Kimberly of Amarillo. The annual picnic is held every year the weekend after Labor Day. A really good time was had by all.

Canadian Supply & Redi-Mix

for all your Concrete Needs!

Jerry Smith, Owner

806-323-5379

THE ALL NEW PALACE THEATRE

210 Main — Canadian, TX

Showtime: 7:30 Fri. thru Thurs.

Sunday Matinee: 2:00

Beginning Fri., Sept. 15

"The Cell"

Rated: R

For Show Time Information
Phone: 323-5133

The only THX Approved
Theatre in the Texas Panhandle
www.palacetheatre.com



Little Dave Smith, eight months old, is the son of Rusty and Michelle Smith of Katy, TX. Grandson of David and Kathleen Cross of Wheeler and Jean Smith, of Georgia.

For all your . . .
Insurance Needs, See
Eastern Panhandle
Insurance Agency, Inc.
117 W. Texas St.—Wheeler, Tex.
806/826-3573
•Auto •Home •Life •Health
•Commercial •Bonds

Old Mob.

(from Page 1)

called and booked.

Workday was set for September 23. Motion by Jim Hill to adjourn at 8:45. Second by Jay Godwin.

Those attending were Joe VanZandt, Jay Godwin, Bill Finsterwald, David Seitz, George Kilcrease, Lawrence Scribner, Bernice Helley, Walter and Patricia Hand, Bill and Dutch Elliott, Jimmy and Bobbie Hill, and Dale and Melba Corcoran.

Painter Willem De Klooning left Holland at age 22 and came to America as a stowaway on a cattle boat.

FIRST AG CREDIT introduces Small Town & Country Home Loans!

- Rural land purchase
- Homesite purchase
- Country home loans
- Refinancing
- Competitive Rates



Call your local office in
Childress for more information.
940-937-6181



Exclusively
at Elk City
Hearing Aid Center

Our 1-2-3 Program

1-Year: All Hazards Insurance Coverage

2-Years: Worry-Free Warranty

3-Years: Free Batteries

HOW LONG HAS IT BEEN SINCE
YOU'VE HAD GOOD SERVICE??

Well . . . That's Too Long!

Certified In Advanced Modification Repair

"Here Today, Gone Tomorrow"

Elk City

Hearing Aid Center

2900 West Third • Elk City, Oklahoma

1-800-986-1689 or

Call Collect 1-580-243-0939

Since 1982 the only full time exclusive hearing aid center in Elk City.

Plan on a free NEC digital phone,

or a \$50 credit,

and plans as low as \$29.99...wow!



DOBSON CELLULAR SYSTEMS

1.800.882.4154 www.dobsoncellular.com



\$50 credit offer available on 1 year service agreements. \$25 credit offer available on Partner Plans. Free Digital NEC phone offer requires 1 year service agreement. \$50 credit offer will be applied toward the cost of Digital NEC phone. Offers available on select rate plans. Plans applicable with new activations and are contingent upon credit check and annual contracts. Activation is limited to one-minute increments. Long distance, roaming, taxes, surcharges and other fees and conditions may apply. Certain features may not be available in some areas. Terms of offer vary by plan. See store for details. Available at participating locations only. Limited time offer. ©2000, Dobson Cellular. 128-0037X

BURGER

Dobson Cellular

218 Burger Shopping Plaza

(806) 273-5656

Hy-Tech Communications

(806) 274-7452

WT Services

(806) 273-2092

CANADIAN

Baker City Drug

(806) 323-9135

GRUVER

Gruber Ford, Inc.

(806) 733-2431

PAMPA

Dobson Cellular

2131 Perryton Parkway

(806) 665-0500

Farmer Equipment

(806) 665-8048

Pampa Communications

(806) 665-1663

PANHANDLE

Lane & Company, Inc.

(806) 537-3537

PERRYTON

Ace Commercial Radio

(806) 435-7131

Zink Consulting

(806) 435-2200

SHAMROCK

Stacey Morgan Communications

(806) 256-3681

SPEARHEAD

Cellular Communications

(806) 659-3782

B&B Sales True Value Hardware

(806) 659-3782

WELLINGTON

Langford Communications

(806) 447-1004

WHEELER

Lyndon Lloyd Auctioneers

(806) 826-5650

Ware Chevrolet

(806) 826-3026

Court

(from Page 2)

Exploration Project, 8-24-00, E 1/2 and NW 1/4 Sec. 24, Blk. R.E., Roberts & Eddleman Survey.
 ROW—Joe Montgomery to Greenbelt Electric Cooperative Inc., 8-30-00, Sec. 27, Blk. A-8, H&GN Ry. Company Survey.
 OL—Albert M. Rogers to Lariat Petroleum Inc., 7-25-00, Sec. 62, Blk. M-1, H&GN Ry. Company Survey.
 OL—Alison Heath to Lariat Petroleum Inc., 7-21-00, Sec. 62, Blk. M-1, H&GN Ry. Company Survey.
 OL—Austin Heath to Lariat Petroleum Inc., 7-21-00, Sec. 62, Blk. M-1, H&GN Ry. Company Survey.
 AOL—William P. Harris to Phillips Petroleum Company, 3-2-99, S 1/2 Sec. 29, Blk. A-5, H&GN Ry. Company Survey.
 AOL—William P. Harris to Phillips Petroleum Company, 2-19-99, N 1/2 Sec. 12 and the SE 1/4 Sec. 29, Blk. A-5, H&GN Ry. Company Survey.
 DVL—Gregory L. Estes, et ux to Steven D. McAlpine, et ux, 9-1-00, Lots 23-26, Blk. 119, New Mobeetie.
 DT—Steven D. McAlpine, et ux to First State Bank of Mobeetie, 9-1-00, Lots 23-26, Blk. 119, New Mobeetie.
SEPTEMBER 4, 2000
 Labor Day Holiday
SEPTEMBER 5, 2000
 AFF—James Ray Tindall Sr. to The Public, 9-1-00, 5 acs. NE 1/4 Sec. 4, Blk. A-8, H&GN Ry. Company Survey.
 RDT—First American Bank Texas, SSB to Bettie J. Kidwell, 8-24-00, 1 ac. E 1/2 SW 1/4 Sec. 37, Blk. 17, H&GN Ry. Company Survey.
 ROY, MD—Sandra Street Estess to J. D. Minerals, et al, 8-9-00, Interest Owned in Wheeler County.
 ROY, MD—Williams Living Trust to Jon S. Brown, et al, 8-14-00, Interest Owned in Wheeler County.
 TDT—Chase Mortgage Company-West to ABN AMRO Mortgage Group Inc., 4-17-00, Lot 13 and the S 1/4 Lot 14, Blk. 5, Stanley Add., Wheeler.
 C/C DEATH CERT.—Ruth Eileen Stearns to Ex Parte, 8-22-00.
 C/C PROBATE—Ruth E. Stearns to Ex Parte, 8-22-00, See Instrument.
 AFF.—GTE Southwest Incorporated to Allred Telephone Company, et al, 8-25-00, See Instrument.
 PARTIAL RDT—Bank of New York to GTE Southwest Incorporated, 8-28-00, See Instrument.
 D—GTE Southwest Incorporated to Valor Telecommunications of Texas, LP, 8-30-00, See Instrument.
SEPTEMBER 6, 2000
 C/C DEATH CERT.—San P. Millet to Ex Parte, 3-8-99.
 DVL—Charlene Luttrell to Charlotte Coward, 8-29-00, Lot 3, J. D. Johnson Sub. Div. Stanley Sub. Div. 3, Wheeler.
 DVL—Chester Roy Bailey, et ux to Charlotte Coward, 8-31-00, Lot 3, J. D. Johnson Sub. Div. Stanley Sub. Div. 3, Wheeler.
 DVL—Bernice Havenhill to Charlotte Coward, 8-31-00, Lot 3, J. D. Johnson Sub. Div. Stanley Sub. Div. 3, Wheeler.
 DT—Charlotte Coward to First State Bank of Mobeetie, 9-5-00, Lot 3, J. D. Johnson Sub. Div. Stanley Sub. Div. 3, Wheeler.
 RDT—Ruth Porter Smith to Jack Sisemore, 8-28-00, Sec. 45, Blk. A-8, H&GN Ry. Company Survey.
 ASSIGN.—William P. Harris to Phillips Petroleum Company, 5-12-99, NW 1/4 Sec. 13, Blk. A-5, H&GN Ry. Company Survey.
 ASSIGN.—William P. Harris to Phillips Petroleum Company, 3-6-99, Pt. Sec. 9, Blk. A-5, H&GN Ry. Company Survey; and N 1/2 Sec. 39, Blk. A-9, H&GN Ry. Company Survey.
 MEMO OL—Michael Eugene Lewis, et ux to Cambridge Production Inc., 9-1-00, N 1/2 Sec. 14, Blk. A-5, H&GN Ry. Company Survey.
 RMML—Pacesetter Corporation to Roddy Lummus, et ux, 8-24-00, Lot 12, Blk. 76, WSSA, Shamrock.
 C/C PROBATE—Ruth E. Stearns to Ex Parte, 8-31-00, See Instrument.
 C/C PROBATE—Helen King Baker to Ex Parte, 8-11-00, See Instrument.
 C/C PROBATE—Myrtle Lindley King to Ex Parte, 5-23-00, See Instrument.
 AFF.—Raymond Lindley King Jr. to Myrtle Lindley King, 8-25-00.
 HEIRSHIP AFF.—James C. King II to James Cicero King, 8-28-00, NE 1/4 Sec. 11, Blk. 24, H&GN Ry. Company Survey.
SEPTEMBER 7, 2000
 DVL—James Ray Tindall Sr., et ux to Jerry Bob Jernigan, et ux, 9-1-00, N 1/2 SE 1/4; S 1/2 NE 1/4; Pt. N 1/2 NE 1/4; and the W 1/2 Sec. 4, Blk. A-8, H&GN Ry. Company Survey.
 DVL—James Ray Tindall Sr., et ux to Jerry Bob Jernigan, et ux, 9-1-00, 5 acs. N 1/2 NE 1/4 Sec. 4, Blk. A-8, H&GN Ry. Company Survey.
 DT—Jerry Bob Jernigan, et ux to First National Bank of Shamrock, 9-1-00, N 1/2 SE 1/4; S 1/2 NE 1/4; Pt. N 1/2 NE 1/4; and the W 1/2 Sec. 4,

Blk. A-8, H&GN Ry. Company Survey.
 DT—Jerry Bob Jernigan, et ux to First National Bank of Shamrock, 9-1-00, 5 acs. N 1/2 NE 1/4 Sec. 4, Blk. A-8, H&GN Ry. Company Survey.
 DT—Jerry Bob Jernigan, et ux to James Ray Tindall Sr., et ux, 9-1-00,

N 1/2 SE 1/4; S 1/2 NE 1/4; Pt. N 1/2 NE 1/4; 5 acs. N 1/2 NE 1/4; and the W 1/2 Sec. 4, Blk. A-8, H&GN Ry. Company Survey.
 RDT—Ag Credit of Texas PCA to James Ray Tindall, et al, 8-16-00, See Instrument.
 RDT—Ag Credit of Texas PCA to James Ray Tindall, 8-25-00, See Instrument.
 RDT—Ag Credit of Texas PCA to James Ray Tindall, 8-14-00, See Instrument.
 RDT—Ag Credit of Texas PCA to James R. Tindall, 8-14-00, See Instrument.
 RDT—Ag Credit of Texas PCA to

James R. Tindall, 8-16-00, See Instrument.
 C/C PROBATE—John W. Adams to Ex Parte, 2-11-97, See Instrument.
 RELEASE OF LIEN—Eleanore Adams Braly, et al to John W. Adams, 6-24-98.
 C/C DEATH CERT.—Vera Leona Scherler Cavins to Ex Parte, 3-6-00.
 C/C WILL—Vera L. Cavins to Ex Parte, ———.
 C/C ORDER TO PROBATE—Vera L. Cavins to Ex Parte, ———.
 C/C INVENTORY—Vera L. Cavins to Ex Parte, ———.
 C/C ORDER—Vera L. Cavins to Ex Parte, ———.
 PARTIAL ASSIGN.—Devon Energy Production Company LP to Steve Browne, 8-31-00, E 1/2 Sec. 24, Blk. R.E., Roberts & Eddleman Survey.
 DT—Bobby J. Weatherly to First State Bank of Canadian, National Association, 9-6-00, See Instrument.
SEPTEMBER 8, 2000
 EXT. OL—Loudene Oswalt to Brigham Oil & Gas LP, 7-25-00, Sec. 9, Blk. 13, H&GN Ry. Company Survey; and W 1/2 S 440 acs. and the S 212 acs. E 1/2 Sec. 6, Blk. A-7, H&GN Ry. Company Survey.
 EXT. OL—Jean M. Boehm Trust to Brigham Oil & Gas LP, 8-10-00, Sec. 95, Blk. 13, H&GN Ry. Company Survey.
 EXT. OL—Jean M. Boehm Trust to Brigham Oil & Gas LP, 8-10-00, S 212 acs. E 1/2 and W 1/2 S 440 acs. Sec. 6, Blk. A-7, H&GN Ry. Company Survey.
 EXT. OL—Patrick A. Lippmann Revocable Trust to Brigham Oil & Gas LP, 8-14-00, Sec. 95, Blk. 13, H&GN Ry. Company Survey.
 EXT. OL—Patrick A. Lippmann Revocable Trust to Brigham Oil & Gas LP, 8-14-00, S 212 acs. E 1/2 and W 1/2 S 440 acs. Sec. 6, Blk. A-7, H&GN Ry. Company Survey.
 EXT. OL—Barbara Rowley Opperman to Brigham Oil & Gas LP, 8-11-00, Sec. 95, Blk. 13, H&GN Ry. Company Survey.
 EXT. OL—Barbara Rowley Opperman to Brigham Oil & Gas LP, 8-11-00, S 212 acs. E 1/2 and the W 1/2 S 440 acs. Sec. 6, Blk. A-7, H&GN Ry. Company Survey.
 MD—Ernestine Rosser Carver to Gwendolyn C. Loerwald, 8-30-00, 20 acs. Sec. 25, Camp County School Land.
 PARTIAL ASSIGN.—Devon Energy Production Company LP to Duncan Oil Properties Inc., 8-31-00, E 1/2 NW 1/4 and the E 1/2 Sec. 24, Blk. R.E., Roberts & Eddleman Survey.
 ASSIGN.—Questa Energy Corporation to DWR Energy LLC, et al, 8-17-00, See Instrument.
 ROY, MD—Avalon Energy to BHCH Mineral Ltd., et al, 8-31-00, See Instrument.
 ASSIGN.—D. A. Taylor Oil & Gas Inc., et al to First State Bank of Mobeetie, 10-28-99, See Instrument.
 ASSIGN.—D. A. Taylor Oil & Gas Corporation, et al to First State Bank of Mobeetie, 10-29-99, See Instrument.
 C/C PROBATE—Nolta Jean Young Humphreys to Ex Parte, 7-12-00.
 D—Tom Harry Fryeto Mark K. Brown, et ux, 8-8-00, N 1/2 NW 1/4 Sec. 9, Blk. A-3, H&GN Ry. Company Survey.
 District Clerk's Office
 #10936—Manita Zaiontz vs Roger Steve Zaiontz, 8-22-00, Divorce.
 #10937—Christi Mills vs Monte Lynn Mills, 8-24-00, Divorce.
 #10938—In Re to Minor Children, 8-25-00.
 #10939—Charla Stulir vs Chad Stulir, 8-25-00, Divorce.

Listen to . . .
KPDR-FM, 90.5
 WHEELER, TEXAS

WELCOME TO
FIRST UNITED METHODIST CHURCH
 8TH AT MAIN - P.O. BOX 89 - WHEELER, TX 79096
 CHURCH (806) 826-3114 - PARSONAGE (806) 826-3079
 Wayne Sheffield, Pastor
 Sunday School 9:45 a.m.
 Morning Worship 11:00 a.m.
 Evening Worship 6:00 p.m.

GIFTS — AMBASSADOR CARDS
HYLAND'S PHARMACY
 109 W. TEX. ST.—WHEELER, TEXAS
 Phone: 806/826-5561
 COSMETICS—VITAMINS—FILM DEVELOPING

FREE ESTIMATES 24 HR. WRECKER SERVICE
McCAIN'S AUTO BODY
 117 W. OKLAHOMA - BOX 65 - WHEELER, TX 79096
 PHONE: 806/826-3433
 INSURANCE CLAIMS OWNER: BOB McCAIN

WHEELER REALTY, LLC
 112 E. Texas
 806-826-5541
 Peter D. Denney, Broker
 NEW LISTING: #250 Beautiful 3BR, 3BA, brick, formal dining, lg. living, walk-in closets, utility, patio, 2-car garage, lg. fenced yard. 1311 Canadian (for other listings, call or come by)

WALLACE MONUMENT COMPANY
 MONUMENTS, CURBING, GRAVE COVERS
 Represented By: **David Wright**
Wright Funeral Home
 Wheeler, Texas Phone: 806/826-5214

WEATHERLY HEATING, AIR CONDITIONING
 1107 S. Canadian — Wheeler, Texas
 Licensed by State of Texas
 — Fully Insured —
 Phone: 826-0040
 Over 10 Years Experience
 Scott Weatherly, Owner
 All Brands — Sales & Service
 LICENSE # TACL016644E

FREE Satellite TV
 Save \$200⁰⁰ by Subscribing Today!
 Programming starting at \$21⁹⁹/mo. Over 210 digital-quality channels available. Avoid rising cable rates. No monthly contract.
 877-DISH-111
 Local Toll-free for Texas
 DIRECTV

FT. ELLIOTT
 (Mobeetie Campus) MENU

MONDAY, September 18, 2000 — FRIDAY, September 22, 2000
MONDAY
 Breakfast: Cereal, Cheese Toast, Juice, Milk
 Lunch: Little Smokies, Cole Slaw, Brown Beans, Rolls, Cake, Milk or Tea
TUESDAY
 Breakfast: Biscuits w/Gravy, Eggs, Ham, Jelly, Juice, Milk
 Lunch: Hamburger Steak w/Brown Gravy, Corn, Peas, Rolls, Pudding, Milk or Tea
WEDNESDAY
 Breakfast: Breakfast Burritos, Juice, Milk
 Lunch: Mini Corn Dogs, Tator Tots, Salad, Mixed Fruit, Milk or Tea
THURSDAY
 Breakfast: Pancakes, Sausage, Juice, Milk
 Lunch: Soft Tacos, Lettuce, Tomatoes, Refried Beans, Spanish Rice, Peaches, Milk or Tea
FRIDAY
 Breakfast: Breakfast Pizza, Juice, Milk
 Lunch: Ham Sandwiches, Salad, French Fries, Cookies, Milk or Tea
 (Menu subject to change)



THE WHEELER TIMES
 PAGE 7—Thursday, September 14, 2000
 "Wheeler, town of friendship and pride."

Thoughts of A Retired Teacher

By: **Lorena g. Males**
 For twenty years I bought my new clothes when the school bell rang in the fall. My mother taught me to look

Last Rose of Summer

By: **Lorena g. Males**
 Say the word autumn. It has a beautiful sound. It tells of the end of a season, the gathering in of the crops, the completion of a plan, the fruition of a dream.
 To everything there is a season—a time to plant, a time to reap.
 Reaping time is now approaching in all her glory—dressed in fall hues of copper, brown, gold, and hunter green. Gone are the pastels of spring that promised a rich fall harvest.
 The flowers in the yard are a calendar for the changing season. Tulips tell of spring, petunias welcome summer. There's a flower by the back door step that is always the last to bloom. This very day it is full of buds. It warns us that now is the changing of the guards.
 There's a somber, sad beauty with the arrival of autumn—saying Good-bye to summer. Friends go back to college. Lovers kiss good-bye.
 There's a sudden disappearance of the purple martens. All summer they've been busy outside the kitchen window. When spring came they sent a scout to locate their old birdhouse. Then they came en masse—ready to make babies. Now they're gone and its quiet and lonesome. They're going home to Brazil.
 Geese will soon fly south.
 The store windows are filled with crayolas, pencils, rulers, glue, tablets and lunch pails. Vacation is over. Hear the school bell?
 The eternal cycle goes round and round. There's joy and sadness in every season.
 Autumn time is Thanksgiving time, the culmination of a years work in garden and field. We can feel and see God's hand in it all for without Him there be no harvest.
 Now thank we all our God!

nice for the school children.
 "They love you best," Mama said. She had been a teacher too.
 I always chose bright colors for I wanted us all to be happy and peppy so they could learn faster. Red was their favorite color and mine.
 This year when I hear the bell I have the urge to go shopping but where is my class?

They're middle-aged people: doctors, maintenance people, farmers, teachers and mechanics. Some live right here where I see them every day. Some are far away but they're always in my mind.

You see, to a teacher her class comes second to her family. Day after day the teacher baby-sits them, wiping their noses, applying a band-aid, sending them to the office, hearing their lessons.

The pupils share all the family secrets with the teacher.

Being a teacher gives one a sense of fulfillment, makes you feel like "somebody come". You believe in the work you're doing. You have a good reason to get to work early. Some eager students wants your help.

A retired teacher feels put out to pasture. Her pupils are grown up and married—on their own. Growing old, you're no longer in demand in the schoolroom. You feel useless with no class, like a mother and daddy when all the children leave home.

When you hear the school bell no need to hurry. The kids call someone else Teacher.

Some people ask me if I miss teaching. Does a cat meow? When I see one of my pupils on the street doing some kind of valuable work, I give myself a pat on the back. "I was his teacher."

But when the first day of school rolls around and I hear the school bell—I feel sad.

No reason to buy a new red dress!

THANK YOU NOTE

I would like to thank all my friends for their prayers, cards, telephone calls, food that was brought in and your visits after my recent back surgery. I am well on the road to recovery and feeling much better.

I also want to thank everyone for your prayers for Wayne as he struggles with this terrible brain cancer. They have reoccurred and he is taking further Chemo treatments. We covet your continued prayers as we pray for God's healing power.

It is such a blessing to live among such caring and loving people. May God Bless each and everyone.

Love,

Maurita Stribling



The musical directive prestissimo means in the fastest possible tempo.

HOUSE PAINTING & LIGHT CARPENTRY, ROOFING, PLUMBING & ELECTRICAL
 SPRAYED ON ACOUSTICAL TYPE CEILINGS.
DONALD FORD
 806/826-3106

MOVE UP
MOVE ON
 Get your career moving at
 ★ **COVENANT TRANSPORT** ★
 Teams Start up to **46c**
 Benefits, we've got ALL the bells & whistles
 Owner Operators
Solos 83c Teams 88c

Lease Purchase Program Available
 Experienced Drivers
1-800-441-4394
 Owner Operators
1-877-848-6615
 Graduate Students
1-800-338-6428
\$1,000 Sign-on Bonus for Exp. Company Drivers

TEXAS 2x2

AFFORDABLE DISPLAY ADVERTISING

Now you can reach more than a half million consumers with your 2x2 newspaper advertisements — all with just one phone call.

It's Affordable! It's Effective! It's Easy!

Call 806/826-3123 Today!

212 Participating Newspapers
 590,477 Circulation

Costs only \$900
 (or regionally for just \$350)

THRIFTWAY SUPERMARKET

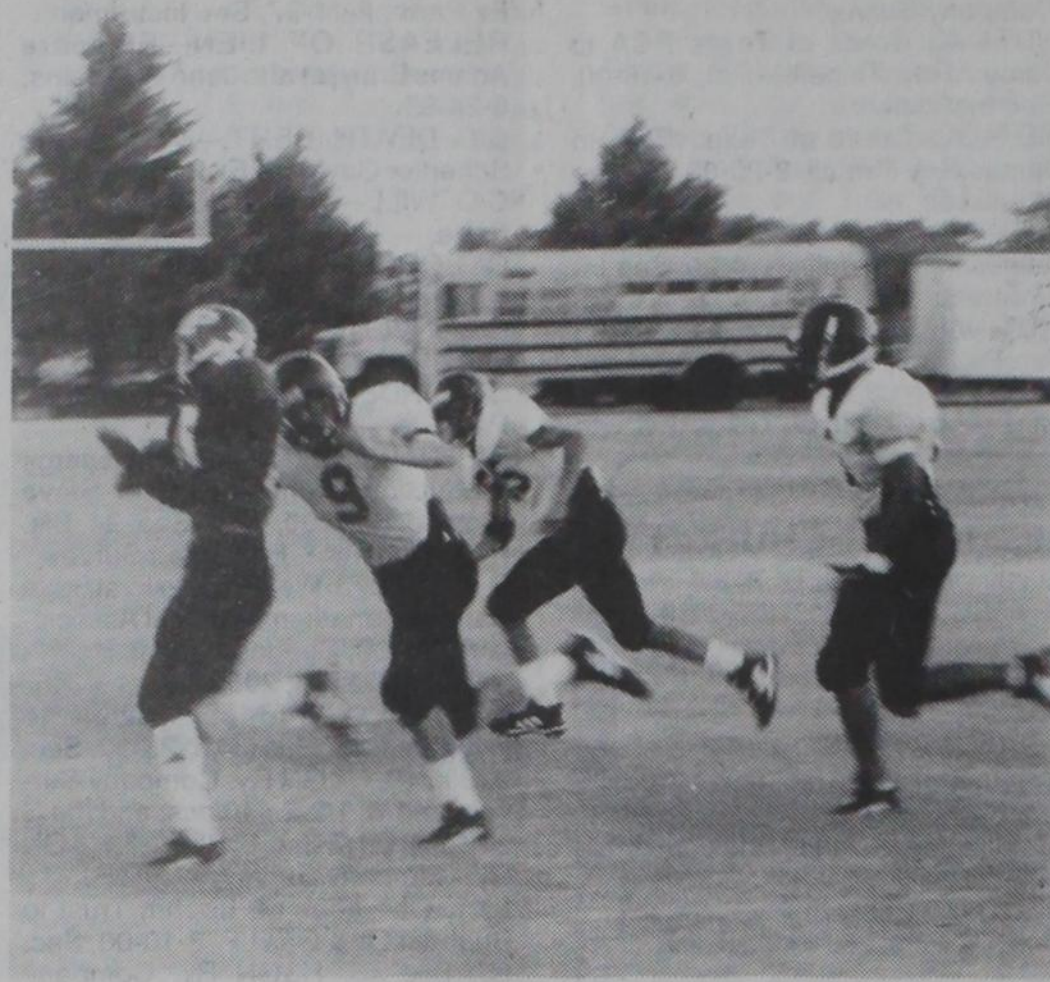
Your source for the freshest
PRODUCE • MEAT • DAIRY

ONE DAY ONLY CHILI ROASTING

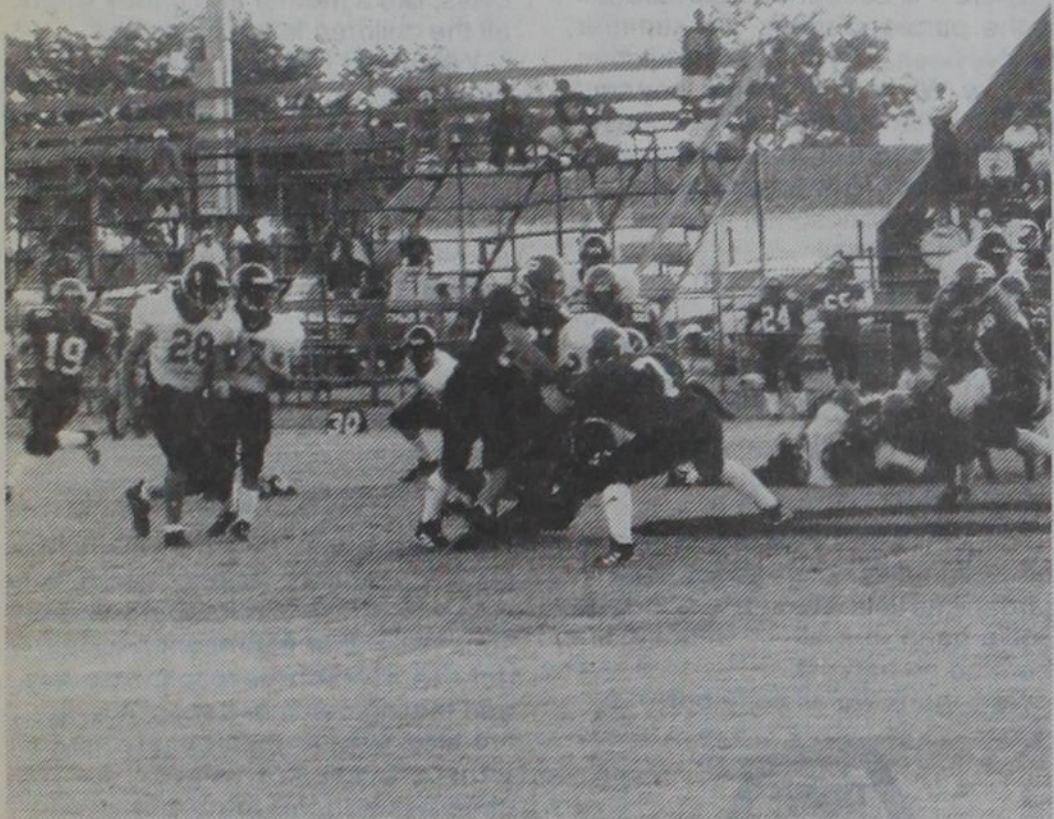
Saturday from 10:00 A.M. till 6 P.M.
 Thriftway Parking Lot — Wheeler, Texas



HE'S NOT GOING ANYWHERE: A Wheeler Mustang brings down a Dragon in the game against Paducah Friday evening. Corey Jewell, #85, and Justin Chapman, #11, are nearby. —Photo by Rob Schaffer



STOP THE DRAGON: James Chapman, #9, is about to bring down a Paducah Dragon. Chris Gallager, #55, is nearby to help if needed. —Photo by Rob Schaffer



IN ON THE PLAY: Chris Gallagher, #35, has his man with Gavin McQueen and Jacob Britt ready to move in if needed. —Photo by Rob Schaffer



SHOWING THEIR SPIRIT: The Mustang Cheerleaders and other members of the pep club prepare for the Mustang entry onto the field Friday evening prior to the game with Paducah Dragons. —Photo by Rob Schaffer



THE WHEELER TIMES
PAGE 8—Thursday, September 14, 2000
"Wheeler, town of friendship and pride."

KELTON

MENU

MONDAY, Sept. 18, 2000 — FRIDAY, Sept. 22, 2000
MONDAY
Breakfast: Cereal, Toast, Juice, Milk
Lunch: Meat/Nachos w/Cheese, Salad, Corn, Fruit, Milk
TUESDAY
Breakfast: Waffles, Syrup, Juice, Milk
Lunch: Beans, Potatoes, Fried Orka, Cornbread, Spiced Apples, Milk
WEDNESDAY
Breakfast: Biscuits, Gravy, Juice, Milk
Lunch: Pigs/n Blanket, Blackeye Peas, Macaroni & Cheese, Cake, Milk
THURSDAY
Breakfast: Eggs, Sausage, Biscuits, Jelly, Juice, Milk
Lunch: Hamburgers, Cheese, Lettuce, Tomatoes, Pickles, Onions, French Fries, Ice Cream/w Strawberries, Milk
FRIDAY
Breakfast: Donuts, Toast, Juice, Milk
Lunch: Corn Dogs, Cheese Sticks, French Fries, Baked Beans, Choc. Pudding, Milk



READY TO MEET THE ENEMY: Corey Jewell, #85, is ready to meet the opponent in the game against Paducah Friday evening. —Photo by Rob Schaffer

Bike

(from Page 1)

have received the benefits of St. Jude's research. Macarena was only three months old when she was diagnosed with neuroblastoma. Since the tumor was discovered early, Macarena's chances of survival are good. She has been in remission of two years and has returned home to Argentina. She is a very bright child. She loves to draw with markers and play with wooden blocks. Doctors report that she comes to the hospital every six months for checkups and is doing extremely well. Thanks to all who support events like the "Wheels for Life," St. Jude Children's Research Hospital will always be available for children like Macarena.

WHEELER

MENU

MONDAY, September 18, 2000 — FRIDAY, September 22, 2000
MONDAY
Breakfast: Toast/Jelly, Cereal, Juice, Milk
Lunch: Corn Dog, Tater Tots, Carrots, Pickle Spear, Fruit, Milk
TUESDAY
Breakfast: Biscuits/Gravy, Scrambled Eggs, Sausage, Juice, Milk
Lunch: Turkey Spaghetti, Blackeyed Peas, Scalloped Potatoes, Bread, Fruit, Milk
WEDNESDAY
Breakfast: Toast/Jelly, Cereal, Juice, Milk
Lunch: Sloppy Joe, Cheese Sticks, French Fries, Pickle Spears, Fruit, Milk
THURSDAY
Breakfast: Toast/Jelly, Pancake Pup/Syrup, Sausage, Juice, Milk
Lunch: Chicken Nuggets, Candied Carrots, Mashed Potatoes, Hot Roll, Fruit, Milk
FRIDAY
Breakfast: Toast/Jelly, Cereal, Juice, Milk
Lunch: Beef Taco Pie w/Cheese, Chili Beans, Salad, Crackers, Fruit, Milk
(Menu subject to change)

Allison Alumni Plans Reunion Sat., Oct. 7

A reunion for the alumni of the Allison I.S.D. has been planned for Saturday, October 7, 2000. We are updating the mailing list. If you know of anyone who would like to be on this list or has a new address, we would appreciate your help. You may contact Louise (Rogers) Coulter, Rt. 1, Box 15A, Briscoe, Texas 79011, phone #806-375-2513, E-Mail odcltr@nts-online.net or Dorothy (Newsom) Welch, 1013 S. Lamar, Amarillo, Texas 79102, phone #806-373-4103, E-Mail dtylwl@nts-online.net or Clydene (Markham) Hall, Box 84, Allison, Texas 79003, phone #806-375-2540, E-Mail lhall@centramedia.net. The mailing address is Allison School Alumni, P.O. Box 92, Allison, TX 79003. Hope to see you October 7, 2000.

Of all crops planted annually in the U.S., cotton has the longest growing season, it's growing lasts from 150 to 180 days.

Pampa Cinema 4
Coronado Shopping Center
665-7141

—September 15-21—

The Cell—Rated R

Fri.-Sat.-Sun.:

3:30 7:30* 10:30*

Mon. thru Thurs: 7:45 P.M. Only

The Gladiator—Rated R

Fri.-Sat.-Sun.:

3:00 7:00* 10:00*

Mon. thru Thurs: 7:15 P.M. Only

Scary Movie—Rated R

Fri.-Sat.-Sun.:

3:45 7:45* 10:45*

Mon. thru Thurs: 8:00 P.M. Only

What Lies Beneath—Rated PG-13

Fri.-Sat.-Sun.:

3:15 7:15* 10:15*

Mon. thru Thurs: 7:30 P.M. Only

Coming Soon:

Bring It On Urban Legend

Notice: There will be no Matinees Mon. thru Thurs. until further notice.

* Friday & Saturday

Admission Prices:

\$3.50 (All Matinee Shows starting before 5:00)

Child (3-11) or Sr. Citizens: **\$3.50**

Adult: **\$5.00**

Check with the . . . **TIMES** for all your **JOB PRINTING OFFICE SUPPLIES OFFICE FURNITURE ANNOUNCEMENTS INVITATIONS & PRINTED NAPKINS**

110 EAST TEXAS — WHEELER, TX

Phone: 806/826-3123

A Subscription to . . .
THE WHEELER TIMES

. . . makes an excellent gift . . .

KEEP UP WITH WHAT'S HAPPENING IN WHEELER
"It's like a letter from home for those living elsewhere!"

\$16.50 in Wheeler Co. \$18.00 Elsewhere
806/826-3123—P.O. Box 1080—Wheeler, TX 79096