



THE WHEELER TIMES

(USPS 681-960)

VOLUME 67, NUMBER 35

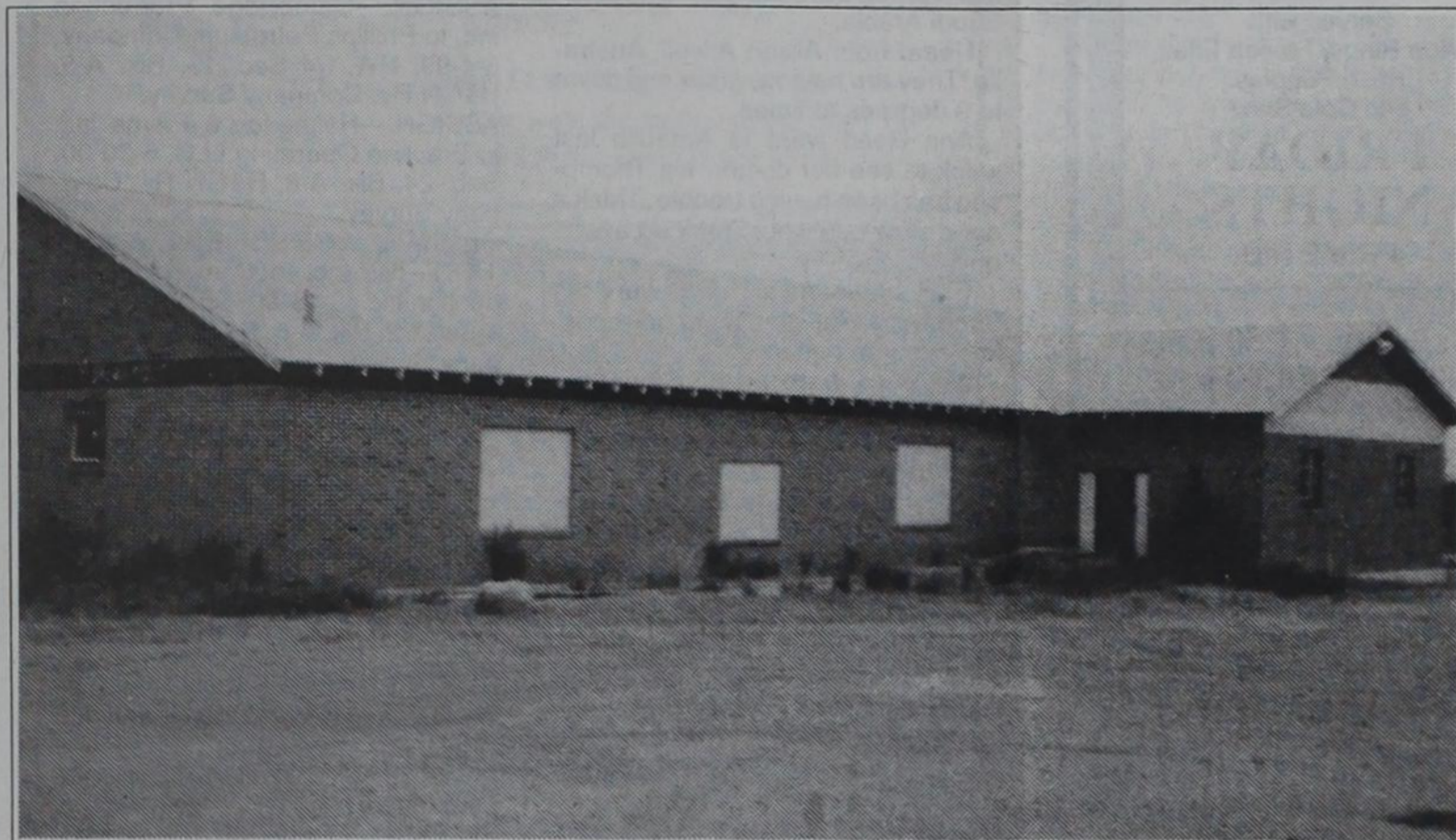
THURSDAY, AUGUST 10, 2000

Single Copy **50c**

"Wheeler, town of friendship and pride."

CWE CHAT WITH EDITOR
By Louis C. Stas

What is the future of this building?



Harrison Hall Proposes Restoration Of Legion for Community Building

Harrison Hall was in attendance at the monthly meeting of the Wheeler Chamber of Commerce Tuesday, August 8. Topic of discussion was the possible renovation of the American Legion Building at the north edge of Wheeler.

The building, built in the late 40's-early 50's was sold to the Wheeler School system for their use. The building was used for a weight room for a period of time and then abandoned with the construction of the new weight room west of the fieldhouse.

At a recent meeting of the Wheeler Board of Trustees the board agreed to take bids for the building with the intentions of an individual tearing the structure down for the materials salvaged. With the opening of the bids, it was going to cost the school in the neighborhood of \$17,000 to have the building removed.

Harrison Hall met with the board and proposed renovation of the building for it to be used for a community building. The board agreed to table any further action on the building until January, 2001. This would give Harrison an opportunity to further investigate possibilities of the building's use.

Harrison reported to the Chamber of his work on the project. He has taken people to see the building and verify the structural soundness.

The building has been measured and estimates made on the cost of renovation. The area of the building is 4300 square feet. (This is approximately twice the size of the school cafeteria, which is presently used for

the annual Chamber of Commerce banquet and other activities.) The following estimates were presented: Metal Roof, Heating and Air Conditioning, Drop Ceiling, Metal Trim, and Lighting (each \$10,000)—\$40,000; 12" Insulation—40c per ft.; Windows (tempered & insulated) and new doors—\$3,500; new bathroom fixtures—\$3,500; paint—\$5,000. The total cost would be in the neighborhood of \$78,000 for a very nice useable facility.

In addition to the 4300 square feet, there is a basement and one upstairs room.

The question is: "how to finance" and "who would own and maintain the building".

Harrison is scheduled to meet with the Wheeler City Council on Monday, August 21.

If you are interested in the pursuit of this project, feel free to contact Harrison Hall.

Checking will be done into the possibility of grant money being available for the project.

It is definitely August—hot and dry.

—cwe—
It looked so promising on Monday and Tuesday evenings for a little shower, but we missed. It even went so far as to lighting Monday.

—cwe—
The teachers are meeting and the final arrangements are being made for school to get underway. Summer is over.

—cwe—
The proposal to restore the legion building to be used for a community building was presented at Kiwanis Monday and at the Chamber meeting on Tuesday.

—cwe—
The proposal will again be made at the City Council meeting on Monday, August 21.

—cwe—
I can remember the county fair being held at the legion and we spent many nights square dancing there over 25 years ago.

—cwe—
The building is structurally sound and can be restored for a fraction of the cost of a new building.

—cwe—
Your opinions and your ideas are welcomed.

—cwe—
Harrison Hall is the man to contact.

—cwe—
No, the Silhouette has not passed on. We brought Leroy's vehicle to have some repairs and left the Silhouette at Hinton.

—cwe—
Cathi, Guy and Dorcie spent the night Friday in OKC at the Long home. They were returning home from a trip to Yonkers, NY, to visit his parents.

—cwe—
It was back to the card table Monday evening. Jane, Dwight and I started off the evening with two wins, but were not successful in a skunk. Barbara, Mike and Bob won the last game.

Mustang Boosters To Organize August 14

Mustang Booster Meeting will be Monday, August 14, 2000, at 7:00 P.M. in Wheeler School Cafeteria. Officers will be elected. Plans for meeting the Mustangs possibly will be Tuesday, August 29, 2000, at 7:00 P.M.

Allison Alumni Plans Reunion For October 7

A reunion for the alumni of the Allison I.S.D. has been planned for Saturday, October 7, 2000. We are updating the mailing list. If you know of anyone who would like to be on this list or has a new address, we would appreciate your help. You may contact Louise (Rogers) Coulter, Rt. 1, Box 15A, Briscoe, Texas 79011, phone #806-375-2513, E-Mail odcltr@nts-online.net or Dorothy (Newsom) Welch, 1013 S. Lamar, Amarillo, Texas 79102, phone #806-373-4103, E-Mail dtylw@nts-online.net or Clydene (Markham) Hall, Box 84, Allison, Texas 79003, phone (Continued Page 5)

Wheeler Kindergarten Packets Can Be Picked Up

Wheeler I.S.D. Kindergarten Registration Packets are available.

Any child, who will be 5 years old on or before Sept. 1, of this year is eligible to attend Kindergarten.

Registration packets for children, who will be attending Wheeler I.S.D. Kindergarten during this school year are available and may be picked up in the hall outside the superintendent's office on business days.

The required forms included in the packets are: 1. Registration Form; 2. Student Health information (A two page questionnaire); 3. Home Language Survey. The parent/guardian must provide all the requested information, including full legal names and the child's social security number, as well as, copies of the child's official birth certificate (state copy—not hospital copy) and immunization records (authorized by doctor or official clinic), before his/her child can be enrolled in school.

The estimated length of time needed to finish these documents is from 15 to 30 minutes; some of the information required (for example, the date of the last dental exam or the phone number of your preferred hospital) is generally kept with other personal records at home or may even require a call to your family doctor.

Because of these factors, coupled with the usual, unavoidable registration "traffic jam" of waiting in line to complete the enrollment process, school personnel believed some parents might prefer the option of completing these documents in the quiet and privacy of their own homes. Parents who prefer to wait until registration day are welcome to do so.

Special Attention!!!
Registration Day... For Kindergarten... will be Monday, Aug. 14, 8:30 A.M. in the cafeteria. You will register your child then take your child home. This will count as his first day of school.

The first full day of class for kindergarten will be August 15, a Tuesday. Kindergarten attendance hours for the first 2 weeks are 8:30 - 1:30.

POSSIBLE COMMUNITY CENTER: Work is underway to return this presently vacated building back in to use. The American Legion Building was once the sight of many activities, including county fair. A proposal has been made to restore this structure to be used for a community building. The school cafeteria is presently used for community banquets and is in some cases too small; the main room of the legion is almost twice the size of the cafeteria.

Top O' Texas

CattleWomen Plan Annual Style Show

Top O'Texas CattleWomen have plans for a busy September. September 4, CattleWomen will serve chopped brisket sandwiches during Chataqua in Pampa. They also will be passing out recipes and beef information. Everyone is invited to stop by for a delicious sandwich.

STYLE SHOW- September 7 CattleWomen will present their Fall Style Show at the Pampa Country Club. A delicious brunch will be served with numerous door prizes given by participating stores. Approximately 12 stores will be participating including Duncan & Boyd Jewelers of Amarillo. Duncan & Boyd will display some of their fine jewelry and a drawing will be held for a piece of jewelry or a gift certificate from their store compliments of Duncan & Boyd and CattleWomen. For reservations call Dianne at 256-3887.

FALL CONVENTION-September 22-24 CattleWomen's Fall Convention will be held in Lubbock. We encourage all CattleWomen in the area

to make plans to attend. Our State President, Cisco Barron, is from the Lubbock area and it is rare for a State Convention to be held in this area. Most of the time they are held in larger cities downstate.

Some CattleWomen members will also be working at the Ground Beef Contest on September 20 at the Tri State Fair in Amarillo.

Report on Local Golf Course Expected Soon

The Panhandle Regional Planning Commission submitted the grant application for the Wheeler Recreational Complex to the Texas Parks and Wildlife Department July 31, 2000. We should hear the results in the early part of January 2001.
Mayor Wanda Herd

RESOLUTION

A RESOLUTION OF THE WHEELER COUNTY WATER SUPPLY DISTRICT IN SUPPORT OF THE SWEETWATER CREEK RESERVOIR PROJECT IN WHEELER COUNTY

WHEREAS, Wheeler County Water Supply District, supports the preservation of all water in Wheeler County as a renewable natural resource for use by the county, and

WHEREAS, Wheeler County Water Supply District desires to secure a reliable source of municipal, agricultural and commercial water, and

WHEREAS, Wheeler County Water Supply District desires to develop a renewable natural resource for recreational purposes and

WHEREAS, Wheeler County Water Supply District desires to increase and improve the natural habitat for wildlife;

NOW THEREFORE, BE IT RESOLVED BY THE WHEELER COUNTY WATER SUPPLY DISTRICT:

THAT the Wheeler County Water Supply District on behalf of Wheeler County, Texas supports building the Sweetwater Creek Reservoir Project in Wheeler County in order to preserve all water in Wheeler County as a renewable natural resource for use by the county, to secure a reliable source of municipal, agricultural and commercial water, to develop a renewable natural resource for recreational purposes and to increase and improve the natural habitat for wildlife.

Passed by the Wheeler County Water Supply District this 3 day of Aug, 2000.

Harrison Hall
Harrison Hall, President of the Wheeler County Water Supply District

ATTEST:
Bobbie C. Hill
Bobbie C. Hill, Secretary of the Wheeler County Water Supply District



FIFTIETH ANNIVERSARY: Bernice Carter and Jack Hefley were married in Mobeetie August 12, 1950. They have two children, Mark and Darla Hefley of Butler, OK and Melissa and Mark Hampton of Wheeler, TX. They are blessed with 6 grandchildren, Tiffany and Bryan Johnson of Lubbock, Michael Hall of Pampa, Dustin and Heather Hampton of Wheeler, Justin and Tamara Hefley of Mobeetie. They are also blessed with a great-granddaughter Alexis Johnson of Lubbock, TX. They also have 3 stepgrandchildren, Vanessa of Elk City, OK, Jonathan of Butler, OK, Randi of Hydro, OK, 2 stepgreat-grandchildren, Megan and Allison. Their children and grandchildren are hosting a reception for their friends and family August 12, 2000, 2:00 p.m. to 5:00 p.m. at the Church of Christ multi-purpose building in Wheeler, TX. No gifts, please.

Coach Cecil Thomas Is Recognized By THSCA

Cecil Thomas drove to Houston last week to attend meetings sponsored by the Texas High School Coaches Association. On Wednesday, Mr. Thomas was recognized at the Hall of Honor Luncheon for coaching a state champion team and was presented his coach's state ring.

The Wheeler Boys' Golf Team won the Class A State Championship in Austin this past spring.

Mr. Thomas has coached golf in Wheeler for fourteen years and has advanced to the state tournament eight of those years. The teams have won three state championships, two state runner-ups and one team placed third at state. The Panhandle Sports Hall of Fame named him Golf Coach of the Year in 1995.

Mr. Thomas has been employed at Wheeler I.S.D. for the past sixteen years.

Mobeetie Class of 1940

The Mobeetie Class of 1940 will be holding a reunion Saturday September 2, 2000 at the Hospitality Room of the First State Bank. The group will be there from 9 AM to noon or longer. They want all of their friends to come by and visit with them. They will be at the school house following their time of visiting for the rest of the school reunion.

Wheeler Vol. Firemen Attend Fire School

Four members of the Wheeler Volunteer Fire Department attend fire school at College Station, Texas A&M July 24-28, 2000.

Billy Richardson, secretary/treasurer of the local fire department took Fire Fighting I and earned 30 hours. Randy Finsterwald took Fire Prevention I and earned 30 hours. Randy is the public relations person for the local fire department.

Del Ford, assistant fire chief, took automobile extrication and earned 30 hours credit.

Kevin Frankenbery is the local training officer and earned 40 hours credit in methods of teaching.

The local firemen would like to say "Thank You" to the Wheeler County Commissioners and the City of Wheeler for making it possible for them to participate in the school and continue their education.

Got up Monday and no water! Roy Hartley came down from Reydon and discovered the pump had burned out. By Tuesday afternoon, everything was back in gear. Two days waterless is something to remember.

Wheeler Senior Citizens Meet for Dinner, Games

Wheeler Senior Citizens met for our monthly meeting August 7. We always have a boundful potluck supper then visiting and games. The Birthday cake was baked by Evelyn Meek it was beautiful and delicious. August Birthday people were: Willis Fillingim, Inez Wright and Mary Margaret Dodd. Lou Dean Douthit, president, conducted the business meeting.

Those present to enjoy the games of Canasta and 88 were: Watson and Aldena Burgess, Doyle and Bulah Grimes, Elva Wood, Joyce Perkins, Elsie Hughes, Helen Sabbe, Marie Gudge, Martha Meek, Willis and LaVerna Fillingim, Lou Dean Douthit, Evelyn Meek, Jo Redding, Inez Wright, Iona May, and Mary Margaret Dodd.

There will be no September meeting due to Labor Day. Visitors are welcome we have a good time.

Shall We Dance?

Lorena G. Males

Some folks say dat dancin's sinful, an' de blessed Lawd, dey say, 'Givine to punish us fu steppin' w'en we hyeah de music play,

But I tell you I don't believe it, fu de Lawd is wis and good,

An' he made de banjos medal an' he make de fiddle's wood

An' he made de music in dem, so I don't quite think he'll keef if our feet keeps time a little to the melodies we hear.—Paul Lawrence Dunbar (1872-1906)

Ever feel bored? No place to go? Nothing to do? There's plenty of good places to go dancing, every Tuesday night in Elk City. The first and Thursday night at Durham.

Climb aboard our Stream-lined Imagination Special and we'll have a ball.

At 7:15 P.M. You'll see all the people milling around, visiting and laughing. It's a custom to give a friendly hug to good friend.

They call the dancing Country—Western.

That says it all. Nothing high-faluting!

People feel comfortable in anything they wish to wear. Some dress like they're going to a wedding, men in jeans wear western hats. Full skirts are pretty as the lady twirls in matching high heels. Shorts are stylish. When a couple wishes to show they're sweet on each other, they wear matching cowboy shirts.

The clock points to 7:30 P.M. When Raymond Snider picks up his bow and his son, Carl, starts to sing, "Waltz Across Texas With You," the light of the singers light up, accompanied by the five piece string band.

The men choose their favorite partners for the first dance.

The dances vary: a two-step, jig, schottische, New Shoe, Skip To Ma Lou, Miller Boy, Rye Waltz and polka.

Many of these folk dances were brought to the Cheyenne-Arapaho Country in a covered wagon by the forebears of the dancers. The dancers learned these dances as children. There'd be a neighborhood dance in a pioneer home and the furniture would be set out in the yard to make room in the house for the fun.

The dancers are determined that these old dances, ties to the past, shall not be forgotten. Young children dance with parents and friends to keep the dances alive.

Young fiddlers practice to learn "Turkey in the Straw".

When someone yells, "Lets have a waterall," every one scrambles for a partner.

When the nostalgic strains of "Home, Sweet Home" fill the air, every one knows the Cinderella evening has come to a happy end!

some ice cream first.

We are very dry and no promise of any rain soon. In fact, my onions didn't promise much moisture the last months of the year. But then how could onions know about such things?

Joe Dale and Esther Pearl drove in Wednesday afternoon from San Antonio. They had some car trouble

and we spent quite a bit of time at the Ford Agency. Dayva Spitzer dropped by and we had a nice visit.

We went up to Cheyenne to see Glenna Kirk and back to Erick to all have lunch with Joe. Sure was nice. Barbequed chicken.

Joe Dale is a great Scrabble fan. So we had games every night. I even

won one.

Our grandson in St. Joe, MO called to visit. They'd had quite a storm a few nights before. Electricity was off a long time.

Clifford and Helen Jones from Elk City went over to Erick to see Joe at the home. Came back by here to see me. They were just back from a bus tour to Michigan and elsewhere. Even over into Canada.

Funeral services were Thursday at the Texola Baptist Church for Camella Ellis Henson. Burial was in the Mulberry Cemetery. She worked in the bank at Erick many years.

Services were Sunday at the Buffalo Baptist Church for Phillip Sanders, 41. His parents are Juniece and Villard Sanders. He also had two brothers Jerry and wife Charlotte, Paul and wife Karry. Burial was in the Buffalo Cemetery.

Our Tony, who lives in Florida, stays on the Internet a lot. He said he has been in touch with a distant cousin, Pat Turner Burchall who is now in Saudi Arabia.

Heard from Alison Atwell, Australia. They are having winter and down to 8 degrees at times.

Ann Reed went to Amarillo last week to see her doctor. Iva Thompson has been having trouble. Think a good slow rain would perk up everyone.

C. R. and Minnie Tucker were out Sunday to visit the Sam LeGrands. I'm some better.

While we were at the Sonic, we saw some ladies from Delhi who knew Esther. I'm not sure about their names, but it used to be Gurlay.

Eddy and Darlene Brisco, Nebraska, visited Noma Zellmer and Ollie Anderson this week.

Birthday folks are Judy Tipton, Hersel Anderson, Gene Perry, Kent Bryan, and Wade Dixon, Anniversary—Mr. and Mrs. O. K. Henson. Happiness to all.

4-Day Senior Camp Planned Sept. 12-15

The Panhandle is host to a unique camping experience just for senior citizens. Senior Camp is a four day retreat for individuals, married or on their own, age fifty or older. It is sponsored by the Task Force on Aging Committee of the Texas Agricultural Extension Service in Potter and Randall counties, Amarillo Senior Citizens Association and related community organizations for senior citizens. This is the ninth year for the camp. This year's camp dates are September 12-15. It will be held at the New Beginnings, a conference and retreat center located between Channing and Dumas.

Senior Camp is an opportunity for senior citizens to fellowship and interact with other seniors from across the panhandle. Among the scheduled activities at camp are: entertainment, crafts, speakers, free time, and a health fair with health screenings.

This year's camp theme is "Celebrate America". Entertainment will include Robert Clouch, the Texas Twanger, Jello the Clown, The Fabulous Two and other Panhandle talent. Participants can also look forward to "Laughing the Great American Way", a presentation by Wynon Mayes and "Moving Around the World with Granny Gadabout and PoPo. A special highlight will be a "Red, White and Blue Tea Party". There will be many more fun activities that all participants can look forward to being a part of.

Cost of Senior Camp is determined by the accommodations you choose: one person per room - \$160.00; two persons - \$140 per person; three or four persons per room - \$130 per person. There is a day fee for individuals participating during the day but not staying overnight of \$30.00 per person or \$10.00 per meal. Cost of the camp includes workshop sessions, programs, room linens, all meals and refreshments. Facilities include a park and 42 bedrooms with a double bed and private bath. Rooms are connected by an inside hallway to the lobby, chapel, conference rooms, and dining area. All areas are air conditioned and smoke free. Three meals plus snacks are served each day in the dining room. Special dietary needs can be met if advance notice is given.

Camp reservations will be accepted through September 1, 2000. The cost of the camp is due at the time of registration. Cancellations with full refund will be accepted until September 1. After the September 1 date, the registration fee less \$25.00 will be refunded. Checks may be made out to: Senior Camp. Mail your registration form and check to: Senior Camp, Potter County Extension Service-FCS, 3301 E. 10th Av., Amarillo, TX, 79104

For additional information including camp costs, contact the Potter County Extension Service office at 373-0713 or the Randall County Extension Service office at 655-6325. Camp is not limited to Potter and Randall County residents. All Panhandle senior citizens are welcome to participate.

Extension programs serve people of all ages regardless, or socioeconomic level, race, color, sex, religion, disability or national origin.

Loan Assistance Offered Farmers And Ranchers

The Farm Service Agency provides direct and guaranteed loan assistance for farmers and ranchers who are unable to obtain financing from commercial credit sources. For information on the programs, eligibility requirements, and to make application, please come by the Farm Service Agency office located at 321 Sully, Clarendon, Texas.

The United States Department of Agriculture (USDA) prohibits discrimination in its programs on the basis of race, color, national origin, sex, religion, age, disability, political beliefs and marital or familial status.



Wheeler County COURT RECORDS

List of instruments filed in Wheeler County Clerk's office from July 25, 2000 — August 4, 2000.

JULY 25, 2000

ROY, D.—George Weinschel to David H. Holstein, 7-21-00, S 1/2 Sec. 27, Blk. A-4, H&GN Ry. Company Survey.

ASSIGN.—William P. Harris to Phillips Petroleum Company, 5-18-99, NW 1/4 Sec. 13, Blk. A-5, H&GN Ry. Company Survey.

ASSIGN.—Cambridge Production Inc. to Phillips Petroleum Company, 6-4-99, NW 1/4 Sec. 13, Blk. A-5, H&GN Ry. Company Survey.

ASSIGN.—Helmerich & Payne Inc. to Bracken Operating LLC, 6-30-00, Sec. 24, Blk. A-8, H&GN Ry. Company Survey.

SEISMIC AGREEMENT & OPTION—Ivis Inc. to Cambridge Production Inc., 3-15-00, SE 1/4 & SE 1/4 Sec. 22, Blk. A-5, H&GN Ry. Company Survey.

SEISMIC AGREEMENT & OPTION—Melvin Pettit, et ux to Cambridge Production Inc., 4-3-00, Sec. 19, Blk. A-5, H&GN Ry. Company Survey.

SEISMIC AGREEMENT & OPTION—Eugene Pettit, et ux to Cambridge Production Inc., 4-3-00, Sec. 19, Blk. A-5, H&GN Ry. Company Survey.

SEISMIC AGREEMENT & OPTION—Jim Hunter Jr. to Cambridge Production Inc., 4-16-00, N 1/2 SW 1/4 Sec. 18, Blk. A-5, H&GN Ry. Company Survey.

SEISMIC AGREEMENT & OPTION—Brady Meadows to Cambridge Production Inc., 4-7-00, W 1/2 NE 1/4 and NE 1/4 NE 1/4 Sec. 22, Blk. A-5, H&GN Ry. Company Survey.

SEISMIC AGREEMENT & OPTION—T. J. Waggoner III to Cambridge Production Inc., 3-20-00, SE 1/4 Sec. 18, Blk. A-5, H&GN Ry. Company Survey.

SEISMIC AGREEMENT & OPTION—John Stephens Waggoner to Cambridge Production Inc., 5-11-00, SE 1/4 Sec. 18, Blk. A-5, H&GN Ry. Company Survey.

SEISMIC AGREEMENT & OPTION—Tennie Smith to Cambridge Production Inc., 2-15-00, 317.36 acs. W 1/2 Sec. 22, Blk. A-5, H&GN Ry. Company Survey.

SEISMIC AGREEMENT & OPTION—Jim D. Ballard to Cambridge Production Inc., 3-27-00, W 1/2 NE 1/4 and NE 1/4 NE 1/4 and W 1/2 Sec. 22, Blk. A-5, H&GN Ry. Company Survey.

SEISMIC AGREEMENT & OPTION—Richard Moore Waggoner to Cambridge Production Inc., 4-3-00, SE 1/4 Sec. 18, Blk. A-5, H&GN Ry. Company Survey.

SEISMIC AGREEMENT & OPTION—Judy Waggoner Lambert to Cambridge Production Inc., 4-3-00, SE 1/4 Sec. 18, Blk. A-5, H&GN Ry. Company Survey.

SEISMIC AGREEMENT & OPTION—Pettit Family Trust Utd. July 7, 1993 to Cambridge Production Inc., 4-3-00, Sec. 19, Blk. A-5, H&GN Ry. Company Survey.

SEISMIC AGREEMENT & OPTION—Melissa Webb Hogan to Cambridge Production Inc., 5-8-00, SE 1/4 and SE 1/4 NE 1/4 Sec. 22, Blk. A-5, H&GN Ry. Company Survey.

SEISMIC AGREEMENT & OPTION—Vester Lee Smith, et ux to Cambridge Production Inc., 2-15-00, 317.36 acs. W 1/2 Sec. 22, Blk. A-5, H&GN Ry. Company Survey.

SEISMIC AGREEMENT & OP-

TION—Dorie Turner to Cambridge Production Inc., 3-24-00, SE 1/4 and SE 1/4 NE 1/4 Sec. 22, Blk. A-5, H&GN Ry. Company Survey.

SEISMIC AGREEMENT & OPTION—John M. Haynes, et ux to Cambridge Production Inc., 2-15-00, 317.36 acs. W 1/2 Sec. 22, Blk. A-5, H&GN Ry. Company Survey.

SEISMIC AGREEMENT & OPTION—Maurita L. Blackwell to Cambridge Production Inc., 4-5-00, SE 1/4 and SE 1/4 NE 1/4 Sec. 22, Blk. A-5, H&GN Ry. Company Survey.

SEISMIC AGREEMENT & OPTION—H. B. Taylor Jr. to Cambridge Production Inc., 4-11-00, W 1/2 NE 1/4; NE 1/4 NE 1/4 and W 1/2 Sec. 22, Blk. A-5, H&GN Ry. Company Survey.

SEISMIC AGREEMENT & OPTION—Dora Taylor Reeves to Cambridge Production Inc., 4-11-00, W 1/2 NE 1/4; NE 1/4 NE 1/4 and W 1/2 Sec. 22, Blk. A-5, H&GN Ry. Company Survey.

SEISMIC AGREEMENT & OPTION—Carey Don Smith to Cambridge Production Inc., 2-15-00, 317.36 acs. W 1/2 Sec. 22, Blk. A-5, H&GN Ry. Company Survey.

SEISMIC AGREEMENT & OPTION—Jesse W. Turner to Cambridge Production Inc., 4-6-00, SE 1/4 and SE 1/4 NE 1/4 Sec. 22, Blk. A-5, H&GN Ry. Company Survey.

SEISMIC AGREEMENT & OPTION—Maurice Pettit, et ux to Cambridge Production Inc., 4-3-00, Sec. 19, Blk. A-5, H&GN Ry. Company Survey.

(Continued Page 4)

MAXEY'S STEAKHOUSE

SUNDAY BUFFET

Salad Bar
Pot Roast
Smothered Pork Chops
Assorted Vegetables
Hot Rolls
Iced Tea/Coffee
Dessert

THURSDAY NIGHTS

All the fresh Water Catfish and Shrimp you can eat.

Served with Onion Rings, French Fries, Hush Puppies and Cole Slaw

FRIDAY NIGHTS

PRIME RIB

Sun.—Noon Buffet (Only): 11:30 a.m. - 1:30 p.m.
Mon.-Tues.-Wed.-Thurs.: 11:00 a.m. - 10:00 p.m.
Fri.-Sat.: 11:00 a.m. to 10:00 p.m.

PHONE: 826-3441
1 Mile South of Wheeler on U.S. 83

MARSHALL'S HEATING & AIR CONDITIONING

Wheeler, TX —Phone: 826-0043
—24 Hour Emergency Service—

LICENSED & INSURED
License No. TAELBO 18635E

Mark Marshall, Owner

Diabetics • Rezulin® Users

- Liver Failure
- Liver Damage
- Heart Attack
- Jaundice
- Increased Liver Enzymes
- Congestive Heart Failure

If You or A Loved One have taken Rezulin® and experienced these problems call:

THE SIMON LAW FIRM, P.C.
5630 Yale Blvd. • Dallas, Texas 75206
1-877-909-6363 (Toll Free)
Not Certified by the Texas Board of Legal Specialization

No Out-of-Pocket Expenses

HYLAND'S PHARMACY
109 W. TEXAS WHEELER
Phone: 806/826-5561

Back to School Supplies

- Elmer's Glue (4 oz.) 49c
- Bic Stick Pens (10 ct.) 99c
- Paper (200 ct.) 59c
- 3 Subject Note Books 69c
- 5 Subject Note Books 1.19
- Pocket Divider 1.99
- Crayola (24 ct.) 99c

THE ALL NEW... **PALACE THEATRE**

210 Main — Canadian, TX
Showtime: 7:30 Fri. thru Thurs.
Sunday Matinee: 2:00

Beginning Fri., Aug. 11
"What Lies Beneath"

Rated: PG-13
For Show Time Information
Phone: 323-5133
The only THX Approved Theatre in the Texas Panhandle
www.palacetheatre.com

Listen to us on **KPDR-FM, 90.5**
WHEELER, TEXAS

WHEELER PLUMBING

511 S. Cheyenne
New Construction
Remodel
Repair
Sewer Service
Septic Systems

Phone: 826-5907
MAX McQUEEN
P.O. Box 754 Wheeler, TX

Exclusively at Elk City
Hearing Aid Center

Our 1-2-3 Program

- 1-Year: All Hazards Insurance Coverage
- 2-Years: Worry-Free Warranty
- 3-Years: Free Batteries

HOW LONG HAS IT BEEN SINCE YOU'VE HAD GOOD SERVICE??

Well... That's Too Long!

Certified In Advanced Modification Repair

"Here Today, Gone Tomorrow"

Elk City Hearing Aid Center

2900 West Third • Elk City, Oklahoma
1-800-834-5989 • In Elk City Call 243-0939

Since 1982 the only full time exclusive hearing aid center in Elk City.

Earn Extra Credit for Back-to-School

Get a \$25 pre-paid Visa® card with the purchase of any Nokia phone.*

NOKIA
CONNECTING PEOPLE

www.nokia.com

Gary Ware - Ware Chevrolet
Your Authorized Dobson Agent
S. Hwy. 83 • Wheeler
826-5521 **DOBSON**

*See terms and conditions at participating retail locations for details.
A \$25 pre-paid Visa card can be used only up to the \$25 value; the card does not extend credit to the cardholder. Visa and its Member financial institutions have not offered or sponsored this promotion. Visa and the Handy Design are registered trademarks of Visa International® and are reproduced here with permission.

Diabetic Patients!

If you have Medicare or Private Insurance, You may be eligible to receive your:

Diabetic supplies at NO Cost To You!

For more information call
Diabetic Supply Program
Toll Free 1-888-466-2678
(no HMO patients, please)

MOBEETIE NEWS

By: Melba Corcoran

Glen D. and Estelle Hodges went to Amarillo Wednesday for doctor's appointments.

William and Sissy Burch, Chris, Tyler and Caitlyn visited Tuesday evening with Lorene Rector.

Those quilting on the school quilt Wednesday at the City Hall were Louise Bailey, Maurita Stribling, Bernice Hefley, Betty Haines, Marie Gudgel, Aline Corse and Melba Corcoran. Dutch Elliott fixed dinner and cleaned up. Visitors there were Stormi and Lamari Lancaster and Hailey and Ashley Jones of Claude.

Spending part of the week with Doug and Aline Corse were their granddaughters Hailey and Ashley Jones of Claude, and Davis Corse of Mobeetie.

We want to welcome Mr. and Mrs. Kevin Ralston and children to Mobeetie. Kevin will be the third grade teacher at Fort Elliott. They live in the brick teacher's house on Circle Dr.

Those enjoying a cook out and homemade ice cream Tuesday night at the Museum camp grounds were George and Marie Kilcrease, Nathan and Nelda Lancaster, Lee and Melba Brown, Bill and Dutch Elliott and Dale and Melba Corcoran.

Rob and Geniva Hogan from Stillwater, OK spent part of the week with Chuck and Louise Hogan.

Bill and Dutch Elliott spent the weekend in Pampa. Bill took Brad back to the doctor on Friday.

Zana Jones of Claude came Saturday to pick up Hailey and Ashley. She spent the night with Doug and Aline Corse.

Mt. View Quilting Club met Thursday at Totty Schoolhouse with Sidney Lancaster as hostess. Those there were Estelle Hodges, Jane Seitz, Betty Haines, Martha Meek and Sidney Lancaster. They got both sides rolled.

XYZ met Friday night at the Fellowship Hall of the First Baptist Church. Melba Corcoran took blood pressures. Marion Grimes called the meeting to order. Melba Corcoran presented the program. Doris Finsterwald, Lorene Rector and Orville Greenhouse all had birthdays.

Those enjoying the meal were Marion Grimes, Orville Greenhouse, Lorene Rector, Doris Finsterwald, Melba Corcoran, Doyle and Bulah Grimes, Willis and Verna Fillingim, J. P. and Martha Meek, and Terry and Sheila Mick. Gary Morris, Michael Killingworth and Charles and Lajo Crownover came and played 42. There were 2 tables of 42 and 7 played chicken foot.

Dale and Melba Corcoran visited Saturday night with Pauline Barnes in Wheeler.

Jess Mixon got home Sunday afternoon after spending some time in the hospital in Amarillo. He had a pacemaker installed last week.

Chuck and Louise Hogan spent Sunday night in Amarillo. Louise had an early morning appointment.

Those from Mobeetie attending the singing at Briscoe were Doris Finsterwald, Lorene Rector, Orville Greenhouse, Marion Grimes, Liz Shipp, Doyle and Bulah Grimes and Terry and Sheila Mick.

Glen D. and Estelle Hodges attended the wedding of their grandson, Brad Dickey, to Melissa Haggerton at Tatum, New Mexico on Saturday, August 5. Estelle said the wedding was beautiful. It was done in a Western theme.

The Class of 1980 of Mobeetie High School held their 20th school reunion Saturday and Sunday at the 5 Season Inn in Amarillo.

Those attending were Sheryl Estes of Corpus Christi, TX, Bo and Brenda Keys of Reydon, OK, Wanda Hefley of Mobeetie, Leslie and Jan Harrison of Elk City, OK, Mark and Jamee Hamilton of Tulsa, OK, Randy Dyson, and Jerry and Linda Dyson of Pampa, Dean and Lacy Hathaway of Wheeler. Classmates not attending were William Burch, James Turner, James Lester, Dennis Howard and Pam Stribling.

Leola Stuart is recovering after surgery at home. Dennis and Vanessa Stuart, Garrett and Bradon of Garland has been visiting with her this week. Ivy Richardson of Erick is also staying since Dennis left to help her out. Other visitors this week were Jerry and Cheryl Richardson, Tyler and Katie, Rita Smith, Brenda McCasland and Eddie and Amy Richardson all of Wheeler, Clarise Hathaway and granddaughters of Mobeetie.

Cheryl Richardson of Wheeler took Gladys Richardson to Pampa to the eye doctor on Wednesday. Gladys

Richardson stayed with Cheryl while Leola was in the hospital.

The Jones family visited with Gaylord and Pam Thompson, Carri, Curtis and Crystal Pigg over the weekend. Dakota came to Sunday school with the kids.

Gary Grimes of Amarillo came down

Saturday and helped his parents Doyle and Bulah Grimes.

Joe and Melba Darnell are home after vacationing in Colorado for two weeks.

Charlotte Coward is still on crutches. She is having lots of trouble with her ankle.

Chances on the quilt to be given away are on sale now. The quilt has pictures of the classes ending with 0.

You are forgiven for your happiness and your successes only if you generously consent to share them both.

—Albert Camus

Listen to...
KPDR-FM, 90.5
WHEELER, TEXAS

WHEELER COMMUNITY CHURCH



Rev. Alberta & Pat Helton
806-323-9849 or 826-5607
P.O. Box 544
Wheeler, TX 79096

1/3 mi. N. Hwy. 83
Thursday's 7:00 P.M.
—WELCOME!—

John 14:6 "Jesus saith unto him,
I am the way, the truth and the life;
no man cometh unto the Father but by me."

WEATHERLY HEATING, AIR CONDITIONING

1107 S. Canadian — Wheeler, Texas

Licensed by State of Texas

— Fully Insured —

Phone: 826-0040

Over 10 Years Experience

Scott Weatherly, Owner

All Brands — Sales & Service

LICENSE # TA1LB016644E

Meet the Money Maker!



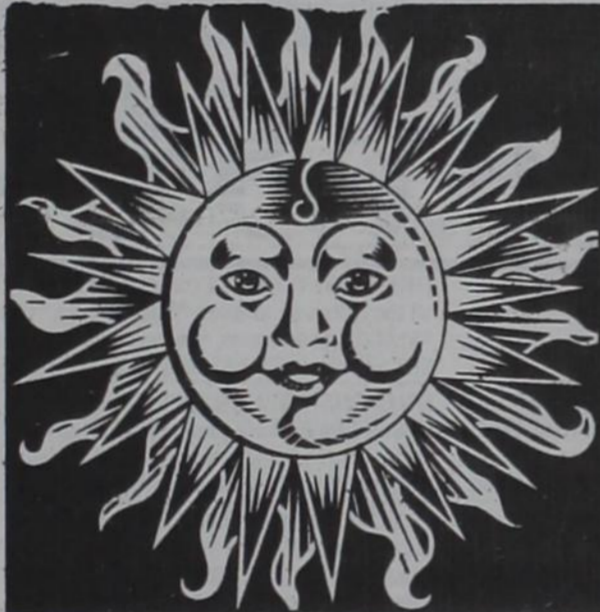
THIS LITTLE WAGON IS TRULY A
FREEDOM WAGON!

- Freedom from financial worries!
- Freedom to work as you please!
- Freedom to go where you like!

Sell popcorn, Bar-B-Q, candy, snow cones, hot dogs, whatever you wish.

Cashwagons, Inc.

P.O. Box 199 • Sidney, NE 69162
1-800-543-1732 Ask for Mr. Cash



Celebrate Summer

with great vision from

Canadian Eyecare Clinic!

Beat the heat this summer with a pair of glasses, sunglasses or contacts from Canadian Eyecare Clinic. With a variety of styles and price ranges to choose from, they're sure to have exactly what you need.

CANADIAN EYECARE CLINIC

Bob Lusk, O.D. • M-F, 8:30 a.m. - 5:30 p.m.
204 Panhandle • Canadian • 806-323-8484

The road to success begins at Southwestern Oklahoma State University—Sayre Campus.

S
W
O
SAYRE
U

- 12 Degree Programs
- Small Classes With Teachers Who Know Your Name
- State Of The Art Technology
- A Growing List Of Student Activities
- Quality Education In Your Own Back Yard

Enroll for the fall semester today. Classes begin August 23rd.



409 E. Mississippi, Sayre
(580) 928-5533

ALLISON NEWS

By Christine Gilmer

Ezekiel 11-17: 19-20: Therefore say, Thus saith the Lord God; I will even gather you from the people;

And I will give them one heart, and I will put a new spirit within you; and I will take the stony heart out of their flesh, and will give them an heart of flesh.

That they may walk in my statutes and keep mine ordinances, and do them; and they shall be my people, and I will be their God.

August is giving us some very hot summer weather and no rain.

We would like to welcome the new high school basketball coach, Lance Reamer, from Oklahoma City, and also Vincent Lum, the new principal from River Crest School at Bogata, Texas. We hope they will enjoy living in our little town.

Johnnie Harrison of Amarillo spent Saturday with me, Darrel brought her over and he went back to the farm. Johnnie and I visited Wilma Gilmer a while in the afternoon before taking Johnnie to the farm to meet Darrel for them to go home.

Pete Gilmer and Peggy Chandler took Jennie Walker to Amarillo last Monday for Jennie to see Dr. Rimmer.

WHEELER MENU

MONDAY, August 14, 2000 — FRI- DAY, August 18, 2000

MONDAY
Breakfast: Toast/Jelly, Cereal, Milk, Juice

Lunch: Chili Dog/Cheese, Tater Tots, Pickle Spears, Fruit, Milk

TUESDAY

Breakfast: Biscuits/Gravy, Scrambled Eggs, Sausage, Juice, Milk

Lunch: Beef & Cheese Nachos, Salad, Pinto Beans, Fruit, Milk

WEDNESDAY

Breakfast: Toast/Jelly, Cereal, Juice, Milk

Lunch: Cheeseburgers, Lettuce, Tomato, Pickles, Onions, French Fries, Fruit, Milk

THURSDAY

Breakfast: Toast/Jelly, Pancake Pup/Syrup, Sausage, Juice, Milk

Lunch: Chicken Nuggets, Green Beans, M. Potatoes, Hot Roll, Fruit, Milk

FRIDAY

Breakfast: Toast/Jelly, Cereal, Juice, Milk

Lunch: Pizza, Corn, Salad, Fruit, Milk
(Menu subject to change)



THE WHEELER TIMES

PAGE 3—Thursday, August 10, 2000
"Wheeler, town of friendship and pride."

Pete and Margaret Gilmer's son-in-law, Rodney Ingersoll, was very ill and is in the Pampa hospital, where he had surgery last Sunday, but was feeling some better after the surgery. We hope he is soon well.

Stephanie Walker, Tyler and Juanita Boydston were in Elk City last Tuesday for Stephanie to see the doctor and they also did some shopping.

Last Saturday, SaRita Green from Binger, Okla., visited her mother, Janice Boydston and also visited Opal and Juanita and ate dinner with them on Saturday. Cleo and Mary Wolf and daughter, Shana, spent the weekend with Janice Boydston. Opal and Juanita also visited Janice and her house guest a while Saturday afternoon.

Red and Anna Dukes and Joe and Sylvia Richardson of Paradise, TX, went to Ureka Springs, Ark., to a church of Christ on July 28 and 29. They also had church on Sunday morning at this same place. On their way to Ureka, they stopped and visited their grandson, Joe Wayne Richardson and family at Witter, Ark.

The church of Christ had a meeting last week from Wednesday night through Sunday night. The preacher's name was Mark Parkhurst and family from McMinnville, Tenn. On Friday night after church services they all went to the Allison school cafeteria for refreshments. On Friday noon, Red and Anna Dukes had the preacher and his family and also Minnie Bell Vinson at their home for dinner. On Sunday after morning church services, they all went back to the school cafeteria for the noon meal. Anna reported they had a good meeting.

Ray and Sue Giddens' Sunday afternoon visitors were Wayne and Kathy Zybach and Casey of Briscoe.

Pearl Harrison's last Wednesday dinner guests were Louise and Clifton Boydston and Julie Boydston and pastor McDaniel and Britney and Chase Thompson. Pearl went to Elk City on Thursday and spent the night with Jimmy and Vivian Wallace and Ronnie. On Friday afternoon Pearl and Vivian attended a Harrison/Bradley family reunion at Green Country near Cheyenne. Others attending the reunion from Allison Saturday and Sunday were Clifton and Louise Boydston, Cheryl Dupont, Sabrina and Cody and Wanda Walker and three of her grandchildren, Kim Thompson and children of Amarillo and Justin and Stephanie Walker and Tyler went on Sunday.

Eleventh Annual Mini Bazaar To Be Oct. 28

The eleventh annual Mini Bazaar will be held on Saturday October 28, 2000. This show is sponsored by the Waka Church of the Brethren and will be held in Perryton TX at the Ochiltree County Exposition Building. Open from 9:00 A.M. to 5:00 P.M.

We are expanding the show to include a wider range of interests this year. We will be open to arts and crafts, small entrepreneurs, antiques, collectible, stamps, coins, rocks, guns or even cars. If you have an interest and are interested in participating, give us a call and we will talk about it. No live animals, please.

We have a one day Saturday show. We have a congenial, relaxed atmosphere and we welcome your participation. Our spaces rent for \$15.00 each for an eight foot by eight foot space.

This is an annual fund raiser that our Church sponsors and proceeds are used mainly for capital improvements. If you need information call: 806-435-4515, 806-435-3893, 806-435-3874 or 806-435-2104.

Editor's Note:

We received a note from Ruby McLaurin when she renewed her subscription to the paper. They are having a ball as Camp Hosts at June Bug Campgrounds in Red River. She states at night the temperature is 41 and highs during the days is 79.

Mob. Exes (from Page 1)

have anything you'd like to contribute. Plaques will be awarded to the ex-student traveling the longest distance to attend. This is the Gary Morris "Fighting Hornet" award. There will also be a plaque for the oldest ex-student in attendance.

Any reservations can be mailed to Mobeetie Ex-Students, P. O. Box 64, Mobeetie, TX 79061. Officers this year are Louise Bailey, President; Sue Harrison, Vice President; Helen Mixon, Secretary; Melba Darnell, Treasurer; Maurita Stribling, Parliamentarian, and Betty Haines, Advisory.

Nona Jones attended the Jones family reunion in Amarillo this past weekend.

Virginia Miller's weekend guests were her daughter, Lynda Banger from Amarillo and a grandson, Austin, from Dallas.

Vance and Caroline Boydston attended the Morse family reunion last weekend at Clayton, N.M. Others going from here were Lanora Morse and Marveta, Robertson, Dick and Cletus Greene, Roy Greene, Jonathan and Alexis, Shawn and Jamie Donnie.

Jennie Walker's weekend guests were Terry and Freita Walker from Pampa. They did yard work for Jennie. Eddie Walker took his mother Jennie to Wheeler for Sunday dinner at Soto's restaurant.

Take time to pray—it is the greatest power on earth.

To The Editor
The Wheeler Times
Wheeler, TX 79096

Dear Editor:

I enjoy the paper, and news of everyone. I was born and raised at Briscoe. My family lives at Wheeler now and at Allison. Altho I lived away for years. I still remember older friends there.

I like it here at Marble Falls. It's a real growing and nice town. Lots of tourist through here to the Valley at fall time. Also there's some that stay here, they say it's not as hot, as in the Valley. We are on 281 Highway that starts in Brownsville. They have lots of entertainment, boat races, rodeos, golf tournaments, something all the time.

Altho I'm 90 years old now. I care for myself and have a 2 bedroom apartment. With help from my daughters I do fine. I get lonely at times. My house in Pampa hasn't sold. I miss it, but I'm content here.

Best wishes to all.
Myrle Lohberger Hunter

MEALS ON WHEELS MENU

MONDAY, August 14, 2000 — FRI- DAY, August 18, 2000

MONDAY: Pinto Beans W/Ham, Fried Potatoes, Stewed Tomatoes, Cornbread/Butter, Fruit Cocktail

TUESDAY: Barbecue Beef On Bun, Baked Beans, Coleslaw, Apple Crisp

WEDNESDAY: Enchiladas/Sauce, Spanish Rice, Tossed Salad/Dressing, Cornbread/Margarine, Pineapple Upside Down Cake

THURSDAY: Fried Veal Patty, Baked Potato, Gravy, Mixed Vegetables, Plum Cobbler

FRIDAY: Fried Catfish, Spinach, Au Gratin Potatoes, Bread/Margarine, Gingerbread/Topping

Canadian Supply & Redi-Mix

for all your Concrete Needs!

Jerry Smith, Owner

806-323-5379



Ann Marie Kidd, 14 years old, is the daughter of Dale and Monica Kidd of Woodway, TX. Grandparents are David and Kathleen Cross of Wheeler, TX and Roy and Linda Kidd of Lockney, TX.

For all your...
Insurance Needs, See
Eastern Panhandle
Insurance Agency, Inc.

117 W. Texas St.—Wheeler, Tex.
806/826-3573
•Auto •Home •Life •Health
•Commercial •Bonds

THRIFTWAY SUPERMARKET

Your source for the freshest
PRODUCE • MEAT • DAIRY

WHEELER COUNTY'S EXCLUSIVE
SOURCE FOR PLAINS & SHURFINE PRODUCTS.

THRIFTWAY SUPERMARKET
300 EAST OKLAHOMA
WHEELER
826-5944 PHONE 826-3345 FAX

MARKET SQUARE THRIFTWAY
205 EAST THIRD
SHAMROCK
256-2481 PHONE 256-5060 FAX

WALLACE MONUMENT COMPANY

MONUMENTS, CURBING,
GRAVE COVERS

Represented By: David Wright

Wright Funeral Home

Wheeler, Texas

Phone: 806/826-5214

Oil & Gas NEWS

(New Location, Completion and Plugging Report made possible by Oil & Gas Reporting Service, Box 2052, Pampa, TX 79065. Doris Harrison, Phone: 806/665-5800.)

Week Ending August 3, 2000

Intentions to Drill
HANSFORD (WILDCAT & SHAPLEY Morrow) Phillips Petroleum Co., #2 Nix, 660' from South & 1250' from East line, Sec. 103,2,GH&H, PD 7050'

HEMPHILL (GILL RANCH Sweetwater Sand) Seagull Energy E&P, Inc., #1014 Mathers, 1750' from North & 181' from West line, Sec. 14,A,2,H&GN, PD 14000'. Rule 37 & 38

LIPSCOMB (WILDCAT & COBURN Lower Morrow) EOG Resources, Inc., #2 Burrus Family, 2000' from South & 775' from West line, Sec. 255,43,H&TC, PD 11400'

LIPSCOMB (WILDCAT & LIPSCOMB Morrow) Jones Energy, Ltd., #3 Harry Parker, 1320' from South & West line, Sec. 697,43,H&TC, PD 10600'. Rule 37 & 38

LIPSCOMB (WILDCAT & SOUTH CAMBRIDGE Upper Morrow) Apache Corp., #3 W.C. Meredith 'D', 2500' from South & 1320' from East line, Sec. 558,43,H&TC, PD 9400'

MOORE (WEST PANHANDLE North Red Cave) Anadarko Petroleum Corp., #3049R Sneed 'C', 960' from South & 570' from West line, Sec. 49,6-T,T&NO, PD 2075'

POTTER (WILDCAT) Sunlight Exploration, Inc., #5-2 Marsh Ranch, 1320' from South & 3035' from East line, Sec. 2,4,G&M, PD 6000'

POTTER (WILDCAT & TECOVAS CREEK Brown Dolomite) Sunlight Exploration, Inc., #13-14 Marsh Ranch, 467' from South & 660' from East line, Sec. 14,21W,EL&RR, PD 4000'

ROBERTS (RED DEER CREEK Granite Wash) Prize Operating Co., #4-6 Byrum, Sec. 6,B-1,H&GN, PD 11000'. Rule 37

WHEELER (WILDCAT & TWITTY Granite Wash) Bracken Operating, L.L.C., #1022 Laycock, 500' from North & East line, Sec. 22,A-8,H&GN, PD 8000'

Applications to Plug-Back
LIPSCOMB (LIPSCOMB Douglas) Mewbourne Oil Co., #7 Peery, 1700' from South & 590' from East line, Sec. 732,43,H&TC, PD 7755'

OCHILTREE (WILDCAT & NORTHURP Cleveland) Apache Corp., #3 W.H. Dutcher 'A', 467' from North & 1980' from East line, Sec. 584,43,H&TC, PD 9711'

Application to Deepen (within casing)
OCHILTREE (PHILCON-MAXWELL Lower Morrow) Kile Production, #1 Barnett, 467' from South & 1000' from West line, Sec. 2,Z,J.D. Branson, PD 8500'

Amended Intentions to Drill
HUTCHINSON (PANHANDLE) Melvin Anisman Oil Co., Inc., #B13 Killough, 660' from South & West line, Sec. 1,Y,M&C, PD 3210'. Amended to change Field Name from WEST PANHANDLE & 60 change well number from #1-G to #B13

SHERMAN (WILDCAT & ANVIL Morrow & LARIAT Morrow & CUMBERLAND Morrow) Phillips Petroleum Co., #3 Williams 'B', 1250' from South & 2050' from East line, Sec. 98,1-C,GH&H, PD 6950'. Amended to change well location & remove two Fields

Amended Plug-Back
HANSFORD (WILDCAT & SPOONY Collier Line) Abraxas Petroleum Corp., #1 Alexander, 1980' from North & 467' from East line, Sec. 12,1,WCR, PD 4800'. Amended to add WILDCAT FIELD & Plug-Back (Orig. drilled by P.L.O., but not completed)

Oil Well Completions
HEMPHILL (GEM-HEMPHILL Lower Douglas) Strat Land Exploration Co., #1-81 Ramsey, Sec. 81, 41,H&TC, spud 7-9-99, drlg. compl 9-11-99, tested 7-16-00, flowed 22 bbl. of 42.5 grav. oil + 1 bbl. water thru -- choke on 24 hour test, GOR 4000, TD 7900', (PBDT 7862' -- (This well was originally completed as a gas well, and has been re-classified to oil)

OCHILTREE (S.E. SHARE Upper Morrow) Strand Energy, L.C., #5306 SE Share Upper Morrow Unit, Sec. 53,4,GH&H, spud 5-20-00, drlg. compl 6-1-00, tested 7-13-00, pumped 10 bbl. of 38.4 grav. oil + 1 bbls. water, GOR 1000, TD 7700', PBDT 7658' --

ROBERTS (MCMORDIE RANCH 9400') Bracken Operating, L.L.C., #2012 McMordie, Sec. 12,A,2, EL&RR, spud 5-23-00, drlg. compl 6-11-00, tested 7-21-00, flowed 25 bbl. of 38 grav. oil + 1 bbl. water thru 20/64" choke on 24 hour test, GOR 2600,

LA RESPUESTA

A LOS PRIMEROS CREYENTES SE LES CONOCIO POR SUS OBRAS DE BONDAD HACIA LOS DEMAS. ESTABAN PRESTOS A AYUDAR A LOS NECESITADOS HECHOS 2: 44,45;6:1-6) PERO AUN ENTRE LOS CREYENTES, TAMBIE TIENEN MUCHAS OPORTUNIDADES DE AYUDAR A LOS DEMAS. PERMITA QUE AL LEER ESTE CORTO PEN-SAMIENTO EL ESPIRITU SANTO LO ANIME A SERVIR A LOS DEMAS CON LOS MOTI-VOS CORRECTOS. LE INVITO A QUE LEA MATEO 6:9-13. Y MATEO 6:14. DISE POR-QUE SI PERDONAIS A LOS HOMBRES SUS OFENSAS, OS PERDONARA TAMBIE A VO-TROS VUESTRO PADRE CELESTIAL.

SPONSORED BY: LA FAMILIA GALUTIA

TD 9800', PBDT 9746' --
Plugged Wells
CARSON (PANHANDLE) Bargo Energy Co., Peeler, Sec. 23,7,I&GN (oil) -- Form 1 in Energy-Agri Products, for the following wells:

#1, 330' from North & East Lease line, spud 5-1-81, plugged 7-5-00, TD 3466' --
#2, 330' from South & East Lease line, spud 9-23-81, plugged 7-7-00, TD 3580' --

HEMPHILL (WILDCAT) Burlington Resources Oil & Gas Co., #1 Jahnel, 2528' from North & 1423' from East Lease line, Sec. 73,41,H&TC, spud 1-3-98, plugged 6-18-00, TD 19870' (dry) --

HEMPHILL (CAMPBELL RANCH Upper Morrow) Apache Corp., #2 Campbell, 1700' from South & 1849' from East Lease line, Sec. 11,I&GN, spud 2-2-00, plugged 3-4-00, TD 11686' (dry)

LIPSCOMB (BRADFORD Tonkawa) Amoco Production Co., #15 Ola O, Piper, 660' from North & West Lease line, Sec. 688,43,H&TC, spud 6-24-96, plugged 6-19-00, TD 6840' (gas) -- Form 1 in Midgard Energy

LIPSCOMB (BRADFORD Tonkawa) Mewbourne Oil Co., #3722 R.C. Bradford, 1270' from South & 2047' from East Lease line, Sec. 722,43,H&TC, spud 3-15-63, plugged 6-30-00, TD 6700' (oil) -- Form 1 in Shell Oil Co.

LIPSCOMB (N.W. HORSE CREEK Lower Morrow) Amoco Production Co., #2293 Andrew Broaduss, 1320' from South & East Lease line, Sec. 293,43,H&TC, spud 5-22-84, plugged 5-17-00, TD 11026' (gas) -- Form 1 in Diamond Shamrock

MOORE (PANHANDLE) Lyco Energy Corp., #4 McDowell 'B', 990' from North & 330' from East Lease line, Sec. 195,3-T,T&NO, spud 2-4-88, plugged 7-18-00, TD 3750' (oil) --

MOORE (WEST PANHANDLE) Amoco Production Co., #1 Brown, Sec. 117,44,H&TC, spud not shown, plugged 6-6-00, TD 3560' (gas) -- Form 1 in Shamrock Oil & Gas

MOORE (WEST PANHANDLE) Amoco Production Co., #1 Roenfeldt, Sec. 36,44,H&TC, spud unknown, plugged 5-25-00, TD 3625' (gas) -- Form 1 in Shamrock Oil & Gas

MOORE (WEST PANHANDLE) Amoco Production Co., #1 Tays, 1320' from South & East Lease line, Sec. 396,44,H&TC, spud unknown, plugged 6-5-00, TD 3227' (gas) -- Form 1 in Shamrock Oil & Gas

MOORE (WEST PANHANDLE) Amoco Production Co., #1 Young, 1320' from South & East Lease line, Sec. 263,44,H&TC, spud unknown, plugged 5-10-00, TD 3565' (gas) -- Form 1 in Shamrock Oil & Gas

MOORE (TEXAS-HUGOTON) Amoco Production Co., #1 Bowermaster, 330' from North & East Lease line, Sec. 22,Q,H&GN, spud unknown, plugged 5-9-00, TD 3402' (gas) -- Form 1 in Shamrock Oil & Gas

SHERMAN (TEXAS-HUGOTON) Amoco Production Co., #1 Bivins Estate, Sec. 56,3-B,GH&H, spud unknown, plugged 5-11-00, TD 1240' (disposal) -- Form 1 in Shamrock Oil & Gas

SHERMAN (TEXAS-HUGOTON) Amoco Production Co., #1050 Bivins Estate, 1250' from North & 2980' from East Lease line, Sec. 56,3-B,GH&H, spud unknown, plugged 5-9-00, TD 3123' (gas) -- Form 1 in Diamond Shamrock Corp.

SHERMAN (TEXAS-HUGOTON) Amoco Production Co., #1 Junkin, 1320' from South & East Lease line, Sec. 300,1-T,T&NO, spud unknown, plugged 5-10-00, TD 3071' (gas) -- Form 1 in Shamrock Oil & Gas

The longest one-syllable word in the English language is "Strengths."

TD 9800', PBDT 9746' --
Plugged Wells
CARSON (PANHANDLE) Bargo Energy Co., Peeler, Sec. 23,7,I&GN (oil) -- Form 1 in Energy-Agri Products, for the following wells:

#1, 330' from North & East Lease line, spud 5-1-81, plugged 7-5-00, TD 3466' --
#2, 330' from South & East Lease line, spud 9-23-81, plugged 7-7-00, TD 3580' --

HEMPHILL (WILDCAT) Burlington Resources Oil & Gas Co., #1 Jahnel, 2528' from North & 1423' from East Lease line, Sec. 73,41,H&TC, spud 1-3-98, plugged 6-18-00, TD 19870' (dry) --

HEMPHILL (CAMPBELL RANCH Upper Morrow) Apache Corp., #2 Campbell, 1700' from South & 1849' from East Lease line, Sec. 11,I&GN, spud 2-2-00, plugged 3-4-00, TD 11686' (dry)

LIPSCOMB (BRADFORD Tonkawa) Amoco Production Co., #15 Ola O, Piper, 660' from North & West Lease line, Sec. 688,43,H&TC, spud 6-24-96, plugged 6-19-00, TD 6840' (gas) -- Form 1 in Midgard Energy

LIPSCOMB (BRADFORD Tonkawa) Mewbourne Oil Co., #3722 R.C. Bradford, 1270' from South & 2047' from East Lease line, Sec. 722,43,H&TC, spud 3-15-63, plugged 6-30-00, TD 6700' (oil) -- Form 1 in Shell Oil Co.

LIPSCOMB (N.W. HORSE CREEK Lower Morrow) Amoco Production Co., #2293 Andrew Broaduss, 1320' from South & East Lease line, Sec. 293,43,H&TC, spud 5-22-84, plugged 5-17-00, TD 11026' (gas) -- Form 1 in Diamond Shamrock

MOORE (PANHANDLE) Lyco Energy Corp., #4 McDowell 'B', 990' from North & 330' from East Lease line, Sec. 195,3-T,T&NO, spud 2-4-88, plugged 7-18-00, TD 3750' (oil) --

Want Ads

Registered Nurse
Needed for weekends only. Apply in person at Abraham Memorial Home in Canadian. Sign on Bonus. Contact Rita Walker, 8/10c

Custom Swathing & Baling
Big Round Bales Only!
Clifton Boydston
806/375-2315

Canadian Laundry and Dry Cleaners, 1-800-766-6532 or mobile 323-2367. We have linens for parties, banquets and special occasions, napkins and banquet tops. We specialize in Dry Cleaning and Starched Jeans. rfn

FOR SALE: Good used Alto Saxophone. \$650. Call Buford or Karen. 826-5293. 8/10c

FOR LEASE: Beautiful two-story country home with large trees and acreage. 4-bedroom, 3 bath, beige carpet. \$750 monthly plus deposit. Chester Jones 512-868-2235. rfn

REAL ESTATE APPRAISAL & SALES
Farm & Ranch Land Specialist
State Certified Appraiser
TEXAS SUNBELT SERVICES
Laven Williams
806/826-5232
or 826-5803

THE WHEELER TIMES

PAGE 4—Thursday, August 10, 2000

MEMBER 2000

TEXAS PRESS ASSOCIATION

P.O. Box 1080
Wheeler, Texas 79096
Phone: 806/826-3123

Entered as second-class matter December 18, 1933, at the Post Office at Wheeler, Texas 79096, under the act March 3, 1879.

Postmaster: Send Address changes to *The Wheeler Times*, P.O. Box 1080, Wheeler, TX 79096-1080

Louis C. Stas, Owner & Publisher

SUBSCRIPTION RATES:
Wheeler County...\$18.00 Outside County...\$20.00

I Tom L. Scott
Oil and Gas Properties

P.O. Box 2806 (806) 372-2692
Amarillo, Texas 79105 (806) 374-9988 Fax

WHY RENT?

16X76—3 bed, 2 bath 1998
Fleetwood, great condition,
\$22,000. \$1050 cash-\$300
month. Delivered 100 miles.
Or leave on location at 1102
Reynolds, Wheeler.
Call 806-353-4145

SHEPARD'S CROOK NURSING AGENCY INC.
needs Full Time RN. Benefits include 401K, Cafeteria Plan & Health Insurance for Wheeler, Shamrock Area. Call 665-0356. rfn

SMALL TAXING UNIT NOTICE
The CITY OF WHEELER will hold a meeting at 9:00 a.m. on August 21, 2000 at CITY HALL to consider adopting a proposed tax rate for tax year 2000. The

THE BUSINESS DIRECTORY

AUTO GLASS INSTALLATION, BODY REPAIR & 24-Hr. WRECKER SERVICE
CROSS CAR CENTER
Phone: 826-5515
WHEELER, TEXAS

It pays to Advertise in The Wheeler Times
Yes, these ads are read; You just read this one!

Advertising: Advertise 24 hours a day, 7 days a week on Canadian's Cable 6 TV. Call 806/323-6660. rfn

TIME & TEMPERATURE: 24-Hours a day. Compliments Knight's Nursery, Canadian, Texas. Phone: 323-9339. rfn

TEXAS STATEWIDE CLASSIFIED ADVERTISING NETWORK

TexSCAN

TexSCAN Week of August 6, 2000

ACREAGE

100 ACRES BETWEEN Rocksprings and Bracketville. Joins larger ranch. End of road. Fence two sides, oak, cedar cover. Texas Veteran or owner financing. 1-830-257-5572. www.texasranchland.com.

59.5 ACRES SOUTHWEST of Rocksprings. Good live oak and cedar cover. Whittail, exotics, turkey, 5 deer county. Low down, owner terms. 1-830-257-5626. www.texasranchland.com.

LAKE BARGAIN! 3+ acres - \$24,900 with boat slip! Beautifully wooded, spectacular views, deeded access to crystal clear 35,000 acre recreational lake in Tennessee - next to 18 hole golf course. Paved roads, utilities, soils tested. Excellent financing. Call now. 1-800-704-3154. ext. 30.

CHARITY CARS - DONATE your vehicle, tax deductible, free towing. We provide vehicles to needy families. As seen on Oprah and People Magazine. 1-800-442-4451. www.charitycars.org.

BUSINESS OPPORTUNITY
A NATIONAL GREETING re. 50 established locations (all local). Super income. (\$6.5k investment), free info. 1-800-462-5813.

M&M, MARS/NESTLE. Established vending route. Will sell by 8/21/2000. Under 5% minimum investment required. \$2000+ monthly profit potential. Financing available/good credit. 1-800-637-7444.

DRIVERS WANTED
ATTN. DRIVERS: FLEETWOOD Transportation hiring long-haul flatbed drivers. Peterbilt equipment. Guaranteed home time and complete package of benefits. Also need long-haul owner operators. 1-800-458-4279.

COMPANY PAID CDL training & first year income \$35K - Stevens Transport - OTR drivers wanted! Non-experienced or experienced. 1-800-333-8595. EOE.

DRIVER: COVENANT TRANSPORT Coast to coast runs * Teams start up to 46c/m * \$1,000 sign-on bonus for experienced company drivers. For experienced drivers, 1-800-441-4394; owner/operators 1-877-848-6615. For graduate students 1-800-338-6428.

DRIVERS: ALLIED VAN Lines has openings in their special products fleet. Class A CDL with 2 yrs. OTR experience required. Average 125c/m. 1-800-634-2200, Dept. ATXS.

DRIVERS - CFI HIRING OTR company/student/owner operators. Company with one year experience start at 32 cpm. Students earn \$50 per day. Owner/Operator start at \$80 all miles. For more information call 1-800-CFI-DRIVE.

TRUCK DRIVERS - O/O'S 82+ cpm, company teams 36+ cpm and solo 28+ cpm or 30+ cpm. Good miles, excellent equipment and benefits. OTR experience required. Gulf Coast Transport, 1-888-988-8666.

DRIVERS - NEW PAY package. Applications processed in 2 hours or less. Long haul and regional drivers. Class-A CDL required. Continental Express, 1-800-727-4374.

DRIVERS: NORTH AMERICAN Van Lines has openings in their specialized general commodities fleet. Minimum of 3 months OTR experience required. Call 1-800-348-2147, Dept. TXS.

NOTICE: While most advertisers are reputable, we cannot guarantee products or services advertised. We urge readers to use caution and when in doubt, contact the Texas Attorney General at 1-800-621-0508 or the Federal Trade Commission at 1-877-FTC-HELP. The FTC website is www.ftc.gov/bizop.

Call this Newspaper to Advertise Statewide and Regionally or Call 512-477-6755.

1, Blk. 24, H&GN Ry. Company Survey.
ASSIGN.—HNL Royalty Company to Dragon Royalties, 7-27-00, SE 1/4 Sec. 26, Blk. 13, H&GN Ry. Company Survey.
JULY 31, 2000
RDT—National Bank of Commerce to Tommy Staggs, 7-21-00, Blk. VI, Shamrock.
DISTRIBUTION MD—Alma Merchant Trust to Stacy Merchant Levesque, et al, 7-12-00, NE 1/4 Sec. 1, Blk. 24, H&GN Ry. Company Survey.
ASSIGN.—John E. Morrison Jr., et ux to Orion Oil & Gas Properties, 7-6-00, Secs. 3 and 5, Blk. 5, Brooks & Burleson Survey.
MD—James H. Doores to Orion Oil & Gas Properties, 6-26-00, Secs. 3 and 5, Blk. 5, Brooks & Burleson Survey.
MD—Helen Edgar, et vir to Orion Oil & Gas Properties, 6-26-00, Secs. 3 and 5, Blk. 5, Brooks & Burleson Survey.
MD—James Martin House to Orion

PREMIER STEEL BUILDINGS must sell overstock. Arch and straight-wall. 1-800-973-3366. www.premiersteel.org.

HEALTH MEDICAL
HERPES - EverCLR STOPS herpes outbreaks! 96% never have another herpes outbreak! Free call: 1-877-EVERCLR. More information: www.everclr.com.

MALE IMPOTENCE CAN be corrected at no cost to you by a safe FDA approved vacuum pump fully covered by medicare/private insurance. Call 1-800-500-6995.

MEDICARE NEBULIZER PATIENTS! Stop paying cash for Albuterol, Atrovent, etc. Medicare pays for them. We bill Medicare and deliver to you. Med-A-Save 1-800-538-9849, ext. 12Q.

HELP WANTED
CHECK THIS OUT. We are hiring 18-23 sharp individuals to assist in nationwide travel tour. Training, transportation and lodging furnished. Return guaranteed. Prince Sales Inc., 1-800-490-9559.

CLAIMS PROCESSOR! \$20-\$40/hour potential. Processing claims is easy! Training provided, must own PC. Call now! 1-888-568-7649, ext. 698.

CONTINUUM, 2 PEOPLE NEEDED to travel 100% thru-out US working to provide medical testing. Must have clean driving record. I team member must have a class A CDL. Will train right team. Call 1-800-232-2332, ext. 336.

FOR LOCAL DOCTORS! Data entry. Easy claims processing. Training provided. Computer lit required. No previous experience necessary. Flexible hours. Software \$449.00. Titan Business Solutions, 1-800-806-8663, ext. 7088.

HOST FAMILIES
FOREIGN EXCHANGE STUDENTS like Melanie, 18, from Germany arriving in August. Melanie likes volleyball, swimming, and theatre. Be a host family. Call 1-800-SIBLING or visit our web site at www.aixetok.com to view Melanie's and other student profiles online.

MISCELLANEOUS
A NEW LOOK for men and women - Cosmetic surgery. \$0 down, \$38 per week. Hair, breast, lipos, nose. Toll free. 1-877-842-8566

UNLIMITED LOCAL CALLING with 200 free domestic long distance minutes for \$44.95 per month. Call 1-800-519-1735 (referral number: 211221). Visit www.phoneworld.org for free phone card.

NOTICE: TEXAS EAGLE sightseer lounge car singing competition. R&B, blues, pop, C/W. Write: Making Texas Music, Putnam, TX 76469, for application.

PHONE BILL TOO high? International and USA unlimited flat rate long distance. 24/7, in/out state. Business/residential fiber optic lines. Call Commercial Funding Group, 1-877-929-2444.

RANCHES/REAL ESTATE
SO. COLORADO MOUNTAIN ranch, 40 acres - \$36,900, 30 miles from Colorado/New Mexico border. Picturesque acreage with pinon trees and Rocky Mountain views. Year round access and utilities. Excellent financing. Ideal home property. Call Red Creek Ranch, toll-free, 1-877-676-6367.

FORECLOSURE HOMES. LOW or \$0 down. Government and bank repos being sold now. Fantastic savings. Financing available. Call for listings! 1-800-501-1777, ext. 2099.

We urge readers to use caution and when in doubt, contact the Texas Attorney General at 1-800-621-0508 or the Federal Trade Commission at 1-877-FTC-HELP. The FTC website is www.ftc.gov/bizop.

Train for a Career with Potential!

**Professional/Private Pilot
Aircraft Dispatcher
Aviation Maintenance Tech
Travel and Tourism**

800-678-0700 www.iatac.com

FAA/VA Approved Financial Aid if Qualified On Campus Housing Lifetime Placement Asst.

International Aviation and Travel Academy
4846 S. Collins, Arlington 5757 Alpha Rd. Dallas 505 N. Sam Houston Pkwy. Houston

FREE Satellite TV

Save \$200⁰⁰ by Subscribing Today!

Programming starting at \$21⁹⁹/mo. Over 210 digital-quality channels available. Avoid rising cable rates.
No monthly contract.

877-DISH-111

Local Toll-free for Texas

Listen to . . .
KPDR-FM, 90.5
WHEELER, TEXAS

* Limited time promotion. Offer for new residential subscribers who purchase DIRECTV system from Three TV's. System includes 100 hours of free programming and 100 hours of free pay-per-view programming. Offer requires a 3-year agreement. Offer ends 8/31/00. See store for details. © 2000 DIRECTV, Inc. All rights reserved. DIRECTV, the "D" logo, and "What are you looking at?" are trademarks of DIRECTV, Inc. All other trademarks are the property of their respective owners.

Psalm 46:1 God is our refuge and strength, a very present help in trouble. Therefore will not we fear, though the earth be removed, and though the mountains be carried into the midst of the sea.

Happy Birthday to Sharron Gowin, Claude Laverty and Everett Stone on Aug. 13, Krista Murray on Aug. 14, Eula Newman, Dewayne Lane, Shawn Hunt, Toby Newman, Trey Wood on Aug. 15, Katie Cornell Pennington, Eric Shields and Richard Meadows on Aug. 16, Jill Crownover, Sam Wash, Rosalie Keelin, Vea Fillingim, Kolton Moore and Becky Richmond on Aug. 17, Willis Fillingim, William Fillingim, Melody Morgan, Alyssa Kinnaman and Roy Moran on Aug. 18, Mary Margaret Dodd and Charlie Phillips on Aug. 19.

Happy Anniversary to Charlie and Edi Phillips and Ethel and Marion Grimes on Aug. 13, Glenn D. and Estelle Hodges on Aug. 15, and J. P. and Martha Meek on Aug. 19.

Gageby Revival Aug. 9 to 13 each night at 7:00 p.m. except closes after Sunday morning service with lunch at church on Aug. 13. Everyone invited to all services.

Fort Elliott High School girls will start practicing for volleyball starting Monday Aug. 7. Boys will start football practice Monday also, but no games till a scrimmage Aug. 25. School starts Aug. 10, Thursday. First volleyball game is at Borger, August 15.

Nice to have Doretta Moore and Johnny Wilson join us for lunch at Mel's, Sunday. I got a gift certificate from Mel's as a door prize at the Briscoe School Reunion. Thanks, Mel's. Also at Mel's were 5 people who rode down from Borger on motorcycles. Also there were Clint and Maurita Stribling with Marie Gudgel and Gene and Sue Harrison. Also from Samnorwood were Rudy and Karen Tate with Mr. and Mrs. Breeding. Also there was Donald Finsterwald. Kirbie Kinnaman was our efficient waitress.

We had a nice time at XYZ Friday night at Mobeetie. Nice to have Gary Morris and Charles and Lajo Crownover and Michael Killingsworth join us for 42 and Chicken Foot. Good to have Terry and Shelia Mick drop in and eat and visit with us.

Delicious food and devotional by Melba Corcoran. Others there were Orville Greenhouse, Lorene Rector, Marion Grimes, Doris Finsterwald, J. P. and Martha Meek, Doyle and Bulah Grimes and Willis and Verna Fillingim. We missed several regulars. Next time will be Sept. 1, at Mobeetie Baptist Church. Visitors and new members always welcome.

Lajo Crownover has been hired to teach math at Booker and will start to work Monday, Aug. 7. She has an

apartment there, but can come home some on weekends. Terri will be a senior at Booker. I'm sure Charles will visit them when he can.

Verneal Prater is doing some better, but wants us to keep praying for him and Juanita.

Matha Meek, Willis and I enjoyed going to Country Chapel Saturday night to their Experiencing God" weekend. About a dozen people from different places were leading groups, giving testimonies of God's power for local members. A delicious hamburger supper was served with chips and dip and desserts. When we were growing up, our families always went to revival at other churches and we still enjoy that a lot. So many lovely people. The visitors stayed with local members and were from Booker, Dimmitt, near Ft. Worth and other

places. Julie (Gilmer) Shields has been hired to teach first grade at Canadian. I know she is a good teacher. She and husband, John, got moved into Canadian from the Horn place. John works for Canadian Redi-Mix. Pray for all our teachers and schools.

We are thankful our pastor, Aaron Laverty, came through back surgery so well with so little pain and able to be back out to church and to singing Sunday. Thanks for your prayers.

Chris Mick and Acasha Baker were united in marriage Thursday, Aug. 3, with just parents and sisters there at Paramount Terrace Christian Church. Terry and Shelia Mick and Amanda and Brittainy went to the wedding. Best wishes to Chris and Acasha Mick.

Visitors to Willa Fillingim Saturday were Maralee Singleton and friend. They always help with things. Also Lajo Crownover and granddaughter, Lacy Amber. Willa and Lacy have great tea parties and enjoy the kittens and other animals.

Best wishes to Dayla Johnson and Lance Cates on their marriage Friday night, July 28, at Gazebo Park in

Canadian. Reception and dance followed at the County Pavilion. They took a little honeymoon over the weekend. Kade and Lance's son stayed with Kade's dad, Frank Johnson. Lance also has a girl, 10.

Nice to have Timm and Melody Rodgers and Gabriel, Nikki and Allison and Sue Ratliff join us for supper at the Pizza Hut in Canadian Tuesday night. All doing well. Timm is a diesel mechanic at Perryton and drives to work. Melody does some extra baby sitting. Sue still works at the hospital as does Sue Reames.

Also there were Connie Bryan and Kathy Hathaway and Jade, Blake and Kade. Sarah Hathaway and Brittainy Bryan were at Megan Horn's 9th birthday swimming party. Beautiful children.

Pray for Lucille Helton. She has been in the hospital.

Nice to have Laurel and Ed Hershman meet us for supper at Maxey's Thursday night. Good to see Homer Sanders' daughters, Janiz Sanders and Debbie McCraven and Tyrell there. Also Cecil and Jean Meadows and Celeste and Ruth Wiley, Grainger and Dorothy McIlhany and Eupha Mae Sorenson.

We went out to Wheeler Community Church. Lots of good music and singing. Lori DeBose played the piano and sang and brought the message on "Servanthood". Very inspiring. Donald Ford was in charge of the testimony service, with many participating. Alberta and Pat Helton were gone to Pagosa Springs, Colo., to get some things. Hope they got to relax a little and have a nice time.

Weekend visitors to Lessie Austin were Kenneth and Paulette Austin and Nicholas, James and Christopher from Gravette, Ark., and Joe and Liz Austin and Payton and Korbin Nash.

Some of the Clepper kids stayed Friday night and Saturday night at Fat and Wanda Childress' "Kemp county" place and included Warren Clepper, Iris and Bob Pair from Pearlard and Lee and Juanita Parks. Some who ate supper with them there on Friday or Saturday were Don and Laverne (Finsterwald) Patterson, Bud and Mar-



garet Clepper and Bill Chandler and sister, Nellie Bea. They had a great time together, making music and visiting.

Nice to have Billie Stuckey out to singing at Briscoe. Also Lewis Meers, Patty and Johnny, Fat and Wanda, and Lou Dean.

Lois Meadows flew to Virginia and visited Larry and Pam Meadows and Sarah, Gordon and Brandon at Spotsylvania for several days.

Preston and Elsie Glazner went to Oklahoma City Thursday for Preston's check-up on his knee surgery some months ago. They were to meet Elsie's sister, Eula, and Muri Kuhlman, from Tuttle for lunch and a good visit. Preston is doing much better.

Willis and I enjoyed going to Canadian Saturday to the School Reunion. Willis graduated in 1938. There were three others we saw from his class: Carl Jahnel, Jack King and Katherine Rutledge. Also nice to see Frances Hefley and Murray and Ferne Vise from Tulsa, Erben and Louise Crowell, Agnes Adams, Jessie and Jonilyn Hanes and many, many more. They thought over 1500 there. They were grouped around the gym according to years. A nice lunch was served by Alexanders at the Canadian Elementary School. We sneaked out early and got to eat early, before the main crowd. Long lines! Good to see Dayla and Lance Cates, Lee Hendershot and others there.

Saturday, David and Rita Pearson went to Amarillo for an air-conditioner and supplies for the Briscoe Fire Department. Lindsey Criswell met them at Furrys for lunch and a good visit. The Criswells are doing fine.

Visiting Rosalie Keelin Tuesday were sisters Floy Larkin and Joy Garrison. They also visited their brother, Roy and Nell Bradstreet, and went to the funeral for a cousin, Florine Castleberry.

Playing 42 at Edna May's Wednesday Systems, Inc., 6-15-00, Pt. NE 1/4 Sec. 65, Blk. A-5, H&GN Ry. Company Survey.

District Clerk's Filings:
#10902—The State of Texas vs 1997 Ford Thunderbird, 7-17-00

#10903—City of Mobeetie vs Gordon and Wanda Estes, 7-18-00

#10904—Shamrock ISD vs Ima Jean Clark, 7-20-00, Tax Suit

#10905—Shamrock ISD vs Robert M. Edwards and Chris T. Edwards, 7-20-00, Tax Suit

#10906—Shamrock ISD vs Herbert W. Jones Jr., 7-20-00, Tax Suit

#10907—Wheeler County vs William K. Lankford, 7-20-00, Tax Suit

#10908—Shamrock ISD vs Billie Ray Lisle Ind/DBA Bill's Auto Parts, 7-20-00, Tax Suit

#10909—Shamrock ISD vs Clara Mack, 7-20-00, Tax Suit

#10910—Shamrock ISD vs Kenneth Duane Ott, 7-20-00, Tax Suit

#10911—Shamrock ISD vs Rheba Rankin Prestidge, 7-20-00, Tax Suit

#10912—Shamrock ISD vs Bobby Reeder and Russell Reeder, 7-20-00, Tax Suit

#10913—Shamrock ISD vs Jo Ann Taylor, 7-20-00, Tax Suit

#10914—Ft. Elliott CISD vs Larry Zamora and Sharon Zamora, 7-20-00, Tax Suit

#10915—The State of Texas vs James Daniel Ketchum, 7-25-00

#10916—Shamrock ISD vs A. L. Vinyard, Estate, 7-26-00, Tax Suit

#10917—Brandy Reni Collins vs John P. McLaughlin, 7-27-00, Family Law Matter

#10918—Christopher Kyle Beard vs Samantha Jean Beard, 7-31-00, Divorce

#10919—Enerlex, Inc. An Oklahoma Corporation vs Andrew C. Shapira, et al, 7-31-00,

#10921—Ft. Elliott CISD vs M. A. Locke, 8-3-00, Tax Suit

Court

(from Page 4)

Orion Oil & Gas Properties, 6-26-00, Sec. 4, Blk. 5, Brooks & Burleson Survey.

MD—Marilyn Ann Sturdivant, et vir to Orion Oil & Gas Properties, 7-8-00, Sec. 4, Blk. 5, Brooks & Burleson Survey.

UNIT DESIGNATION—Panhandle Royalty Company, et al to R. A. Noret, et al, 6-20-00, See Instrument.

NOTICE OF OPERATOR—State of Texas Railroad Commission to Blackjack Oil & Gas, Inc., 7-28-00, Sec. 11, Blk. 27, H&GN Ry. Company Survey.

AFF.—Frances Evelyn Langford to Lester L. Levitt, 7-20-00.

MML—Charles F. Kuntz, et ux to James Sabbe, 7-26-00, Pt. of a 5 ac. tract out of SE 1/4 Sec. 60, Blk. A-8, H&GN Ry. Company Survey.

DT—Charles F. Kuntz, et ux to James Sabbe, 7-26-00, Pt. of a 5 ac. tract out of SE 1/4 Sec. 60, Blk. A-8, H&GN Ry. Company Survey.

T DT/TMML—James Sabbe to First State Bank of Mobeetie, 7-26-00, Pt. of a 5 ac. tract out of SE 1/4 Sec. 60, Blk. A-8, H&GN Ry. Company Survey.

AUGUST 2, 2000

D—Bill Beck, et ux to Kathy Lynn Seymour, et al, 8-1-00, Lot 7, Blk. 1, Shamrock.

DT—Kathy Lynn Seymour, et al to National Bank of Commerce of Shamrock, Texas, 8-1-00, Lot 7, Blk. 1, Shamrock.

BILL OF SALE—Bill Beck, et ux to John Phillip Shaffer, et al, 8-1-00, See Instrument.

A of JUDG.—Paula P. Pennington to Aero-Span Feeders, Ltd., et al, 7-13-94.

CONVEYANCE—Beverly B. Clare Family Trust to Pecos Bend Royalties Inc., 7-24-00, See Instrument.

D—Leigha Kaye Bailey Goodfellow to Ronnie Pat Bailey, 6-9-00 Lot 2, Blk. 56, WSSA, Shamrock.

DT—Ronnie Pat Bailey to National Bank of Commerce of Shamrock, 6-9-00, Lot 2, Blk. 56, WSSA, Shamrock.

DT—Anthony Francis, et ux to National Bank of Commerce of Shamrock, 7-3-00, Lot 3, Blk. E, Potts Add., Shamrock.

D—Leigha Kaye Bailey Goodfellow to Ronnie Pat Bailey, 6-9-00, Lots 3 and 4, Blk. 1, PBA, Shamrock.

D—Leigha Kaye Bailey Goodfellow to Ronnie Pat Bailey, 6-9-00, S 1/2 Lot 11 and N 28' of Lot 10, Blk. 28, Shamrock.

CORR. DT—Charles F. Kuntz, et ux to First State Bank of Mobeetie, 7-26-00, Pt. of a 5 ac. tract out of SE 1/4 Sec. 60, Blk. A-8, H&GN Ry. Company Survey.

AUGUST 3, 2000

D—Randy Reeder, et ux to Robert Nobles, 8-2-00, W 1/2 SW 1/4 Blk. 22, Shamrock.

D—Jerry Campbell to Pruitt Family Children's Education Trust, 7-13-00, Lots 11 and 12, Blk. D, Smith's Add., Shamrock.

D—DeWain Jackson to Michael Payte, 7-13-00, W 1/2 Sec. 15, Blk. A-8, H&GN Ry. Company Survey.

AFF.—James C. Fling to Justin Shea Davis, et al, 8-2-00, Pts. Sec. 45, Blk. 17, H&GN Ry. Company Survey.

D—Bobbie Sue Baker, et vir to Devin Burrus, et ux, 8-3-00, Lots 1 and 2, N 1/2 Lot 3, and Pt. of Lots 4-6, Blk. 14, Wheeler.

DT—Devin Burrus, et ux to Friona Industries LP, 8-3-00, Lots 1 and 2, N 1/2 Lot 3, and Pt. of Lots 4-6, Blk. 14, Wheeler.

DT—Devin Burrus, et al to Friona Industries LP, —, Lots 1 and 2, N 1/2 Lot 3, and Pt. of Lots 4-6, Blk. 14, Wheeler.

AUGUST 4, 2000

MD—Florine Jackson Castleberry to Mary Fay Brown, et al, 4-14-00, See Instrument.

TDT—Market Street Mortgage Corporation to Mortgage Electronic Reg-

Listen to . . .
KPDR-FM, 90.5
WHEELER, TEXAS

JENNINGS PLUMBING, HEATING & AIR CONDITIONING

LARRY JENNINGS, Owner

TX# TA017641E

Licensed, Insured & Bonded

(806) 826-3153

Licensed Septic Systems, & Site Evaluations



YORK
SALES & SERVICE



"A Flush . . . Is Better Than a Full House!!!"

JOHN E. MORRISON

Attorney-at-Law

1112 S. Main

Wheeler, Texas

826-3243

ANDRUS TRANSPORTATION is currently seeking experienced
www.andrustrans.com OTR Drivers! **\$1000.00 Sign-On Bonus!**

Home Weekly * Paid Weekly * Competitive Pay *

Paid Vacations * Driver Paid Medical, Dental, Vision & Life * 401K Plan *

Dedicated Runs * Assigned Equipment & Dispatcher * Rider Program *

Driving School Grads Welcome * Tuition Reimbursement Program *

Purchasing New Volvo & Freightliners, Many With Automatic

Immediate openings! Call Toll Free 1-800-888-5838

or 1-888-200-7887 for further information.

Where Families Are Just As Important As Our Drivers!

EQUAL OPPORTUNITY EMPLOYER

2000 Property Tax Rates in PARKVIEW HOSPITAL #1

This notice concerns 2000 property tax rates for PARKVIEW HOSPITAL #1. It presents information about three tax rates. Last year's tax rate is the actual rate the taxing unit used to determine property taxes last year. This year's effective tax rate would impose the same total taxes as last year if you compare properties taxed in both years. This year's rollback tax rate is the highest tax rate the taxing unit can set before taxpayers can start tax rollback procedures. In each case these rates are found by dividing the total amount of taxes by the tax base (the total value of taxable property) with adjustments as required by state law. The rates are given per \$100 of property value.

Last year's tax rate:

Last year's operating taxes	\$463,916
Last year's debt taxes	\$37,110
Last year's total taxes	\$501,026
Last year's tax base	\$249,427,988
Last year's total tax rate	0.200870/\$100

This year's effective tax rate:

Last year's adjusted taxes (after subtracting taxes on lost property)	\$499,371
/ This year's adjusted tax base (after subtracting value of new property)	\$246,991,438
= This year's effective tax rate	0.202181/\$100

This year's rollback tax rate:

Last year's adjusted operating taxes (after subtracting taxes on lost property and adjusting for transferred function)	\$462,383
/ This year's adjusted tax base	\$246,991,438
= This year's effective operating rate	0.187206/\$100
x 1.08 = this year's maximum operating rate	0.202182/\$100
+ This year's debt rate	0.000000/\$100
= This year's rollback rate	0.202182/\$100

Statement of Increase/Decrease

If PARKVIEW HOSPITAL #1 adopts a 2000 tax rate equal to the effective tax rate of \$0.202181 per \$100 of value, taxes would decrease compared to 1999 taxes by \$1,340.

Schedule A:

Unencumbered Fund Balances

The following estimated balances will be left in the unit's property tax accounts at the end of the fiscal year. These balances are not encumbered by a corresponding debt obligation

Type of Property Tax Fund	Balance
Schedule B:	
2000 Debt Service	

The unit plans to pay the following amounts for long-term debts that are secured by property taxes. These amounts will be paid from property tax revenues (or additional sales tax revenues, if applicable).

Total required for 2000 debt service	\$0
-Amount (if any) paid from funds listed in Schedule A	\$0
-Amount (if any) paid from other resources	\$0
-Excess collections last year	\$0
=Total to be paid from taxes in 2000	\$0
+Amount added in anticipation that the unit will collect only 99.00% of its taxes in 2000	\$0
=Total debt levy	\$0

This notice contains a summary of actual effective and rollback tax rates' calculations. You can inspect a copy of the full calculations at WHEELER COUNTY COURTHOUSE

Name of person preparing this notice: LEWIS SCOTT PORTER

Title: TAX ASSESSOR COLLECTOR

Date prepared: July 10, 2000

HOUSE PAINTING & LIGHT CARPENTRY, ROOFING, PLUMBING & ELECTRICAL

SPRAYED ON ACOUSTICAL TYPE CEILINGS.

DONALD FORD
806/826-3106

WHEELER REALTY, LLC

112 E. Texas
806-826-5541

Peter D. Denney, Broker

NEW LISTING: #250 Beautiful 3BR, 3BA, brick, formal dining, lg. living, walk-in closets, utility, patio, 2-car garage, lg. fenced yard. 1311 Canadian (for other listings, call or come by)

FREE ESTIMATES 24 HR. WRECKER SERVICE

McCain's AUTO BODY

117 W. OKLAHOMA - BOX 65 - WHEELER, TX 79096
PHONE: 806/826-3433

INSURANCE CLAIMS OWNER: BOB MCCAIN

WELCOME TO

FIRST UNITED METHODIST CHURCH

8TH AT MAIN - P.O. BOX 89 - WHEELER, TX 79096
CHURCH (806) 826-3114 - PARSONAGE (806) 826-3079

Wayne Sheffield, Pastor

Sunday School 9:45 a.m.
Morning Worship 11:00 a.m.
Evening Worship 6:00 p.m.

7 Years in Miles
Leader in a Row
COVENANT TRANSPORT

\$1,000 Sign-on Bonus for Exp. Company Drivers

Teams Start up to **46¢**
Benefits, we've got ALL the bells & whistles

Owner Operators
Solos 83¢ Teams 88¢

Lease Purchase Program Available

Experienced Drivers
1-800-441-4394

Owner Operators
1-877-848-6615

Graduate Students
1-800-338-6428



Shamrock Lad & Lassie Golf Tourney Results

The Shamrock Ladies Golf Association sponsored the Lad & Lassie Couples Gold Tournament on July 22 and 23. Steve Walker, Mr. BAR-B-Q of Wheeler served the dinner Saturday nite with all the trimmings which was enjoyed by all participating in the tournament. Twenty-six teams participated in the tournament from the surrounding towns of Shattuck, Cheyenne, Elk City, OK and Canadian, Pampa, Dallas, Clarendon, Briscoe, Amarillo, Canyon, Wheeler, and Shamrock.

Winners in the Championship Flight:
1st Delbert McWhorter of Wheeler and Mary O'Neil of Shamrock—61-66—127
2nd Bill Walker of Briscoe and Kelly Rose of Canyon—66-64—130
3rd Walter Bond of Shamrock and Sterling Seward of Shamrock—65-66—131

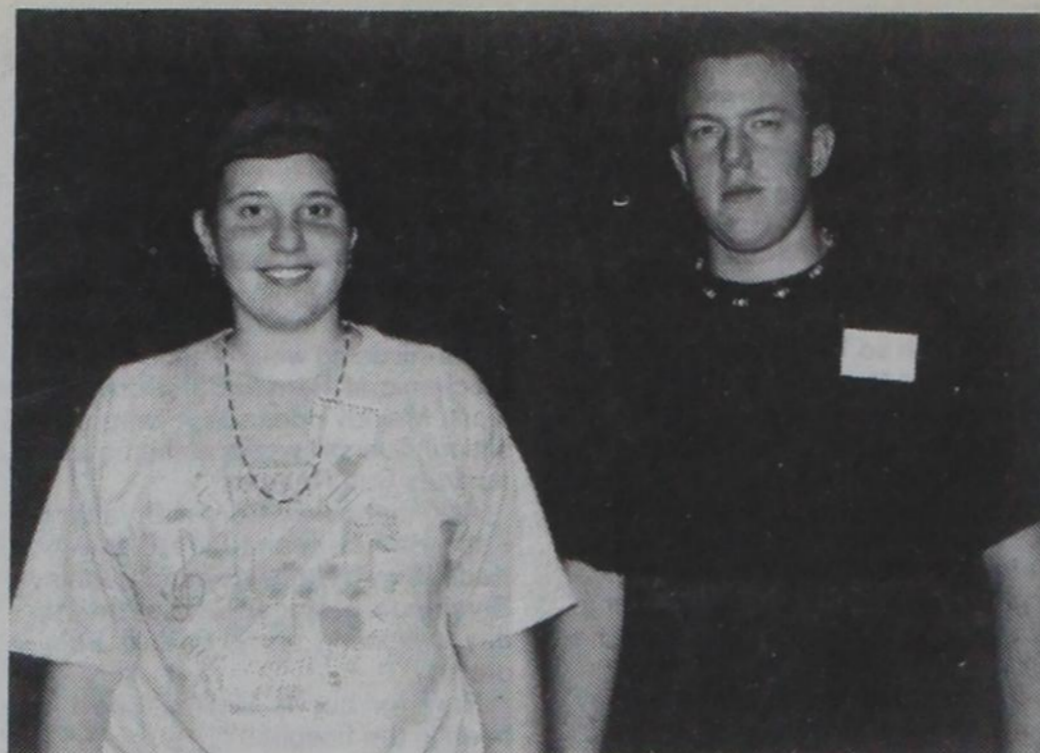
First Flight:
1st Tom Scribner and Ann Cowan of Elk City, OK—70-67—137
2nd Blake Hurst of Pampa and Ashley Ware of Wheeler—71-69—140

3rd Ken Harrison and Lindsey Harrison of Shattuck, OK—70-71—141

Second Flight:
1st Cole and Christi Bond of Shamrock—67-66—133
2nd Chad and Melissa Ellis of Dallas—71-67—138

3rd Brian Wesner and Jeanette Scott of Cheyenne, OK—70-71—141

Third Flight:
1st J. K. and Chera Harrison of Pampa—74-71—145
2nd Randy and Betty Lee of Shamrock—70-76—146
3rd R.L. and Rita Stone of Canadian—74-76—150



SWOSU BAND CAMP: Nearly 500 students attended Southwestern Oklahoma State University's 45th annual band camp held July 9-14 on the Weatherford campus. The camp is Oklahoma's largest and longest-running band camp for students in grades six through 12. The camp, hosted by the SWOSU Music Department, concluded with a final concert by the various camp bands. Among those attending the SWOSU camp were (from left): Amy Hubble, Wheeler TX; and Casey Hardin, Miami TX.



SERVICE AWARDS: Texas Department of Transportation (TxDOT) recently awarded the Wheeler County Maintenance Section service awards for their years of employment with TxDOT. Terry Keener, Childress Director of Operations, who presented these awards said, "we appreciate the years of hard work and dedication of these TxDOT employees and look forward to many more years of service." Pictured from left to right are: Marcia Henard, 10 years; David Deger, 5 years; Kenneth Whitaker, 15 years; Otis Franks, 5 years and Terry Keener.

News from... Around the County

by Kenny Brdecko,
Wheeler County Extension Agent

CONSERVATION FARMING FIELD DAY AUGUST 16, 2000

The Oklahoma Cooperative Extension Service would like to invite you to join them in a Conservation Farming Field Day on August 16, 2000. It will be held at the Collingwood Grain Elevator in Brinkman, Oklahoma from 9:00 a.m. to 12:00 p.m. Brinkman is located 8 miles N. of Mangum on Highway 283 and 1 mile W. on Highway 34 B.

Topics to be discussed include "Residue and Moisture Saving," "Riparian Buffer Strips and Manage-

ment," and "Soil Compaction and Tillage." Demonstrations include "Erosion and Runoff Demonstration," "Stream Erosion Demonstration," and "Equipment and Planting Demonstration." Lunch and refreshments will also be provided. Make plans to attend this very educational event. For more information, contact the Wheeler County Extension Office at (806) 826-5243.

Sincerely,
Kenny Brdecko
Wheeler County Extension Agent

Extension programs serve people of all ages regardless of socioeconomic level, race, color, sex, religion, disability or national origin.

The Texas A&M University System, U.S. Department of Agriculture, and the County Commissioners Courts of Texas Cooperating

Post Office Announces Rural Carrier Exam

The Rural Carrier Associate examination for the Pampa, TX Area Eligibility Register (AER) will be open to the general public for application beginning Monday, August 14, 2000. Offices included in the Pampa AER are: Follett, Miami, Mobeetie, Pampa, Perryton, Shamrock, Wellington, Wheeler, and Booker, TX. Rural Carrier Associates are PART-TIME, NON-CAREER POSITIONS ONLY, who relieve the regular rural carrier on his/her day off and for vacation or illness. Salary begins at \$13.05 per hour. RCA's must provide and maintain at their own expense a vehicle suitable for the delivery of mail. Applicants MUST HAVE A VALID STATE DRIVERS LICENSE AND A SAFE DRIVING RECORD.

Interested persons may apply at one of the above offices during the open announcement. Applicants will be required to take a written examination at a later date.

NO APPLICATIONS WILL BE ACCEPTED BEFORE August 14, 2000.



Hawaii was originally known as the Sandwich Islands.

Listen to...
KPDR-FM, 90.5
WHEELER, TEXAS

To the Friends & Relatives Of Jack and Bernice Hefley

In honor of the
50th Wedding Anniversary of
Jack and Bernice Hefley
their children and grandchildren
request the pleasure of your company
at a reception
on Saturday, the twelfth of August
Two thousand
from two to five o'clock in the afternoon
Multi-purpose Room
Church of Christ
1001 Alan L. Bean Blvd.
Wheeler, Texas
No gifts please

Chemical Use & Application Skills Update Offered

West Texas agriculture producers and agribusiness people can update their chemical use and application skills and learn more about state and federal regulation, irrigation, conservation tillage and the future of agriculture and ag legislation Aug. 30 at the 48th annual West Texas Agricultural Chemicals Conference in the Lubbock Memorial Civic Center.

On-site registration over coffee and donuts begins at 7 a.m. and costs \$70 per person. Pre-registration costs \$50 per person, but must be post-marked by Aug. 18. Advance registration should be sent to: WTACI, care of Ricky Kuntz, Flagg Fertilizer, Rt. 4, Box 42A, Dimmitt, TX 79027.

The general conference session runs from 8 a.m. to 2:45 p.m., and will include presentations on conservation tillage, laws and regulations, the federal Food Quality Protection Act, and irrigation scheduling. Morning keynote speakers are: Rep. Larry Combest, Update on Texas Agriculture; and William Lapp, ConAgra, Inc., Mega-Trends in Food and Agriculture: Changes and Challenges in Coming Years. More than 500 producers, chemical dealers and agribusiness people are expected to attend.

Participants can earn up to 5 1/4 continuing education units (CEUs) required by the Texas Department of Agriculture for certification of commercial and non-commercial pesticide applicators, or several CCA education units.

The conference is sponsored by the West Texas Agricultural Chemicals Institute (WTACI), an organization of scientists, educators, industry representatives and agribusiness leaders. The institute has sponsored-conducted research and educational programs focusing on safe ag chemical use since 1953.

The noon luncheon will feature presentation of WTACI awards and college scholarships totaling more than \$8,000. Election of new officers will also take place at the luncheon.

The afternoon general session begins at 3:15 p.m. and will feature concurrent educational sessions on weed control and herbicides; peanut, corn and cotton insect control; and peanut and cotton diseases presented by Extension specialists, Texas Agricultural Experiment Station scientists and Texas Tech University and industry representatives.

The weed control session will focus on control programs, new herbicides, weed identification and symptoms of herbicide damage. Topics in the insect session are peanut insect control, managing cotton insects, and an overview of corn insects. The plant disease session will key on peanut diseases, cotton seedling diseases and a cotton disease workshop.

Concurrent afternoon sessions will begin at 3:15 p.m. and wrap up around 4:55 p.m. Business meetings, closing remarks, CEU-CCA certificates and session evaluations will be the order of business after these sessions close.

Groups who plan to attend can receive a reduced hotel rate for the conference if reservations are secured by Aug. 18 -- call the Four Points Hotel in Lubbock at 806-747-0171 or 800-325-3535 and ask for

the Ag Chem group rate.
For more information on the WTACI conference, call Sheryl Smith at 806-746-6101.



THE PRICE OF HAVING FUN: The young ladies were voluntarily working Monday morning cleaning up the mess made while having FHA initiation. The mess to be cleaned up included egg, flour and vegetable oil. The activity was legal, because each of the individuals being initiated signed a note of consent. Pictured (l. to r.) Morgan Nall, Suzy Galutia, Shannon Lewallen, Jordan Emmert and Tina McWhorter.

Check with the...
TIMES
for all your
JOB PRINTING
OFFICE SUPPLIES
OFFICE FURNITURE
ANNOUNCEMENTS
INVITATIONS
& PRINTED NAPKINS

110 EAST TEXAS — WHEELER, TX
Phone: 806/826-3123

A Subscription to...
THE WHEELER TIMES
... makes an excellent gift...

KEEP UP WITH WHAT'S HAPPENING IN WHEELER
"It's like a letter from home for those living elsewhere!"

Sent your college student a subscription
for nine months for only \$12.50

\$18.00 in Wheeler Co. \$20.00 Elsewhere
806/826-3123—P.O. Box 1080—Wheeler, TX 79096

Wheeler Church of Christ

Congregational Concerns:

The men's monthly business meeting will be held in the multi-purpose building on this coming Monday night, August 14th. A fellowship meal will be served before this meeting business is held. This fellowship meal will be served at 7:00 p.m.

On Saturday, August 19th, the Church of Christ in Borger will host the annual Teenage Crusade for Christ. The theme for this year's crusade will be, "Y2J". More information about this crusade is posted on the bulletin board in the lobby.

Congratulations must be expressed to Fat and Ruby Jones who celebrated their 60th wedding anniversary on Friday, August 4th.

Charlie Burton was baptized into Christ last Monday night.

Amber Estes had knee surgery last week in Amarillo. She is now recovering at home.

Barbara Jackson, who is the daughter of Vergia Reagan, is hospitalized in the Odessa Medical Center. When she was admitted last week, it was believed that she had suffered a heart attack. However, tests have shown that she did not have a heart attack.

Skeet Johnson is scheduled to have hip replacement surgery on Monday, August 21st.

Bob Frankenbery is hospitalized in the local hospital.

From The Minister's Desk:

Ann Landers, the newspaper columnist, recently published an article in her column that needs to be read by many parents and children. This article was entitled, "Ten Rules Kids Won't Learn In School" and it said:—

1. Life is not fair. Get used to it.
2. The real world won't care as much about your self-esteem as your school does.
3. Sorry, you won't make \$40,000 a year as soon as you get out of high school. And you won't be a vice president and have a car phone, either. You may even have to wear a uniform that doesn't have a designer label.
4. If you think your teacher is tough, wait until you get a boss.
5. Flipping burgers is not beneath your dignity. Your grandpar-

ents had a different word for burger flipping. They called it "opportunity".

6. It's not your parents' fault if you mess up. You're responsible.

7. Life is not divided into semesters. And you don't get summers off. Not even spring break. You are expected to show up every day for at least eight hours.

8. Smoking and drinking does not make you cool.

9. Your school may be "outcome based", but life isn't. In some schools, you're given as many chances as you want to get the answer right. This, of course, bears not the slightest resemblance to anything in real life—as you will soon find out."

Bill Morrison, Minister
Church of Christ
Wheeler, Texas

Services:

- Sunday Bible Study 10:00 A.M.
- Sunday Morning Worship ... 11:00 A.M.
- Sunday Night Worship 6:00 P.M.
- Wednesday Bible Study 7:30 P.M.

An Invitation: You are cordially invited to attend any of the weekly services of the Wheeler Church of Christ which meets at 1001 S. Alan Bean Blvd, in Wheeler, Texas