

SATURDAY IS ELECTION DAY

CITY OF WHEELER

The City of Wheeler will hold an election Saturday to elect a mayor and two councilmen. Voting will be at the Wheeler school cafeteria. None of the races are contest-

ed. Mayor Pete Burton is seeking re-election along with councilmen David Cross, Place 2, and Louis C. Stas, Place 4. Two incumbents have filed for re-election to the Board of Trustees of the Wheeler ISD. Mrs. Vida Brown has filed for Position 6 and Mr. Richard Brown has filed for Position 7. The election will be held jointly with the City of Wheeler in the School Cafeteria. Polls will open at 7 AM and close at 7 PM. Rev. Ernie McGaughey will be the election judge with Mrs. Lynda Allen and Mrs. Donna Walsler acting as clerks.

PARKVIEW HOSPITAL BOARD

Two directors are to be elected to the Parkview Hospital Board of Trustees in the election Saturday. The voters in the Wheeler district have only one name on the ballot while the Kelton voters will be deciding which of two candidates to elect. The election in Wheeler will be held at the school in conjunction with the school and city election. John C. Vise, incumbent, is again asking the opportunity to serve the local voters as their representative. The Kelton voters will have a choice between incumbent Paula Britt or T. J. Puryear, Jr. The election will be held at the Kelton Gin. The Polls will be open to the voters from 7 a.m. to 7 p.m. April 5.

MOBEETIE CITY ELECTION

Saturday, April 5, the Mobeetie City Election will be held in connection with the Mobeetie Independent School District Trustee Election. Polls will be open from 7:00 a.m. to 7:00 p.m., with Glynda Leatherman election judge for the City and Edith McLaughlin and Joy Vuicich as clerks. Three Aldermen will be elected Saturday with seven candidates competing. Names on the City ballot are: Roy Stirling, Robert Hogan, Jr., Walter Coward, Don Moore, Randall Hamilton, Dale Corcoran and Kay Hamilton. At news time 8 absentee ballots had been voted.

MOBEETIE SCHOOL

The voters in the Mobeetie School District are to elect three members to their board of trustees in the election Saturday. The election will be held at the school with the polls being open from 7 a.m. to 7 p.m. Three men are seeking re-election to the board. Randy The hunt represents a lot of work and any individual wishing to help with the preparations for the hunt and the actual hunt may also contact the store. If you were ever at one of the hunts in the past, remember how the youngsters enjoyed the activity, and those who helped in the past can remember how much work it was.

KELTON SCHOOL

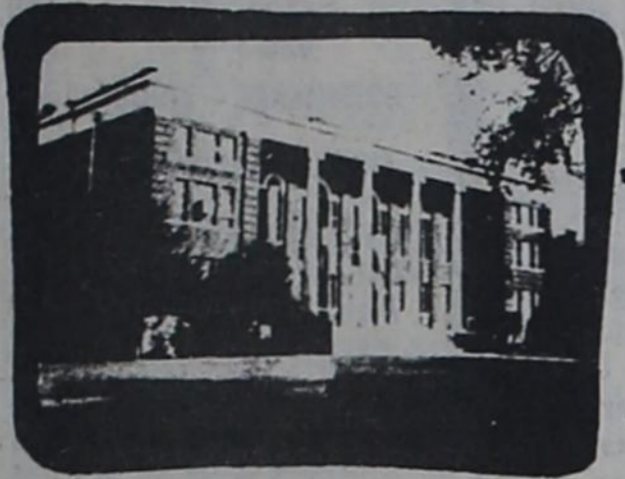
Three school trustees will be elected, Saturday, April 5, 1980 at Kelton Schools. The election will be held in the school lunchroom with the polls opening at 7 a.m. and closing at 7 p.m. Three incumbents, Garland Moore, H. B. Krug and Thurman Calcote have placed their names on the ballot for re-election.

ALLISON SCHOOL

The Allison School Trustee election will be held Saturday, April 5, at the Vocational Agriculture building. Neither of the two races are contested; Bevard Dukes and Mike Dyer are asking for your votes in the election. The polls will be open from 7 a.m. to 7 p.m.

BRISCOE SCHOOL

Two trustees are to be elected to the Briscoe Independent School District board of trustees. Ballots will be cast at the high school. Seeking re-election to the School Board is Alvin Lehman. Richard Meadows is also asking an opportunity to serve his community.



THE WHEELER TIMES

(USPS 691-960)
VOLUME 46, NUMBER 17
THURSDAY, APRIL 3, 1980
Single Copy 15¢

STORM ALERT

Do you have your place of safety picked out in case a storm is spotted heading in the direction of Wheeler? If the answer is no, it would be wise to make a plan of action if it becomes necessary to take shelter. Wheeler has been fortunate so far this year in not having had a cloud which appeared severe enough to sound the alert. Each year the Wheeler Volunteer Fire Department divides their men into storm watch crews; these men go on duty each time Wheeler is placed under storm alert. The crews position themselves at different locations around Wheeler and watch the clouds for threatening conditions. Radio contact with the fire station allows the immediate sounding of the siren if they feel it is necessary. The alarm will be sounded when the men feel the citizens should take shelter. The warning, as it has been for a number of years, will be two 30-second blasts of the fire siren; this is not to be confused with the fire whistle which is a series of 10-second blasts. (Note: In case of fire during severe weather, it is the policy to not sound the fire siren; the firemen are notified of the fire with their individual scanners.) In threatening weather, if the alarm sounds, two long blasts indicate shelter should be taken.



Melissa Hill

Local Student Offered Position

Melissa Hill, Wheeler High School Junior, has been offered a position and scholarship in the "United States of America School Band" 1980 Summer Concert Tour of Hawaii. This organization is the nineteenth U.S.A. School Band (the performing organization of FIRST CHAIR OF AMERICA) organized for recognition for outstanding band and orchestra members. The U.S.A. school Band will present five concerts at the best concert cities in Honolulu. Rehearsals will be held in the instrumental music department of the University of Hawaii. The band will be housed at the Mirmar Hotel, a first class hotel near the beach, the International Market Place and points of interest. In past years the U.S.A. School Bands have performed in Europe, Mexico, Canada, the British Isles, Japan and has presented concerts in twenty-five of the states of the nation. This is Melissa's second opportunity to participate with a national organization of recognition for the musical arts. Last year she was a member of the American Youth Symphony and Chorus Texas Band and represented our community and school in concert tour of Europe. Band Director, Mike Trussell, is pleased that we have students such as this that can participate in an organization of national recognition and serve as an ambassador of our school, community and state. Melissa's other musical accomplishments include: member of the Mustang Marching Percussion, All-Region Bassoonist, solo mallets for the Mustang Concert Band, keyboards for the high school jazz band, and member of the high school choral program.

Annuals On Sale

Mustang Annuals are now on sale for \$9.00 each. They can be ordered through March 28 by contacting any annual staff member.

Key Club Selling Raffle Tickets

Wheeler Key Club will be selling raffle tickets for a chance of winning \$50.00 worth of free groceries. The price of the tickets is \$1.00 per ticket. The drawing will be held on Monday, April 7 at 2:00 P.M. at the Wheeler Flower Shop. Tickets may be purchased from Key Club members or at the High School Principal's office. The Key Club wishes to express grateful appreciation to Roark's, Thriftway, and the Flower Shop for their assistance in this project.

LIIONS CLUB STILL TAKING DONATIONS FOR GIRLSTOWN

The Wheeler Lion's Club is still taking donations for girlstown. You may donate clothes or cash. Call Lewallen's Insurance 826-5719 or Weldon Simmons 826-3053 if you need your donations picked up. If you want, you may deliver these things to Lewallen Insurance or Weldon Simmons residence.

Easter Sunrise Service Planned

Sunday morning, April 6 at M.K. Brown Scout Camp there will be a Sunrise Service at 6:00. All church members are invited. Program will include Don Slaughter, of Boy Scouts of America, Rev. Jerry Hogan, Pastor 1st Baptist Church, of Wheeler, Song service will be led by Melvin May of Mobeetie. Rev. John Hansard, Pastor 1st Baptist Church, Mobeetie and Robert Hogan will also be on the program. There will be a fellowship following the services with refreshments furnished by the 1st Baptist Churches of Wheeler and Mobeetie. Mrs. Louise Hogan is chairman of the refreshment committee. The service will take place at the Boy Scout Camp Chapel. A wooden cross between the congregation and the sunrise, makes this a memorable experience.

Mobeetie Baptists To Hold Revival

Starting Sunday, April 6 at 7:00 p.m. the First Baptist Church of Mobeetie will hold their annual spring revival. The Evangelist will be Rev. Lewis Ellis. Rev. Lewis Ellis is a former pastor of the First Baptist Church of Mobeetie. The song director is Dennis Julian. Dennis is the minister of music for the Bykota Baptist Church in Amarillo. The organist will be Mrs. Gazelle Patterson and she will be assisted by Mrs. Dennis Julian. Services will be held each night at 7:00 p.m. The revival will close with the Sunday morning, services April 13.



Mona Jennings

Mona Jennings In Golf Tournament

Mona Jennings competed for metalist in the Amarillo Relay Girls Golf Tournament Friday at the Ross Rogers Municipal Golf Course. There were three divisions which consisted of Division I (Classes AAAA - AAA), Division II (Classes AA-A-B), and Division III (B teams from any class). In Division II 34 girls competed for the top six individual metalist honors. Schools participating in this division were: Farwell, Guymon, Hart, Memphis, Tulia, Vega, Nazareth and Wheeler. Mona placed sixth in the 18-hole competition with a score of 103. Those leading in metalist honors were: 1st Janene Berry, Farwell, 46-48=94; 2nd, Lisa Hughes, Farwell, 49-46=95; 3rd Robin Vinton, Farwell, 48-48=96; 4th Kim Marsh, Farwell, 52-48=100; 5th Debbie Schnewels, Guymon, 52-49=101 6th Mona Jennings, Wheeler, 50-53=103. This would have advanced Mona to the finals for Saturday's play but was cancelled out because of snow and bad weather conditions. Awards were presented on the results of the first-days play. Mona is the 15 year old daughter of Mr. and Mrs. ary Jennings of Wheeler and the grand daughter of Mr. and Mrs. W. E. Ellis of Shamrock. The District Golf Meet will be held in Perryton on April 9th, 1980.

Services Held For Lillie Mae Hunt

Mrs. Lillie Mae Hunt, 69, died Sunday, March 30. Services were held at 2 p.m. Tuesday, April 1, 1980 in Kelton Baptist Church. Rev. L. V. Grace, pastor of Mobeetie Methodist Church, officiated. Burial was in Mobeetie Cemetery by Wright Funeral Home. Mrs. Hunt was born in Ringling, Oklahoma and had been a resident of Wheeler County 41 years ago. She married Roy Hunt in 1924 in Ringling. He preceded her in death in 1973. Survivors include six daughters, Mrs. Geneva Woodruff, Mrs. Dorothy Woodruff and Mrs. Shirley Davis, all of Pampa, Mrs. L. Mrs. Roylene Meadows of Springdale, Ark., and Mrs. Lavonia Cox of Wickitt; three sons, Leroy Hunt of Wheeler, Tommy Hunt of Cleveland, Tenn., and Melvin Hunt of Briscoe; two brothers, Carl Henderson of Pampa and Claude Henderson of New Orleans, La.; four sisters, Mrs. Betty Schaub of Pampa, Mrs. Nettie Walker of Mobeetie, Mrs. Virginia Martin of Miami and Nadine Jones of California; 29 grandchildren and 23 great-grandchildren. Pallbearers were her grandsons; Robert Burrell, Buster Davis, Eddie Davis, Gary Don Woodruff, Larry Woodruff, Judge Woodruff.

Martha E. Rosser Is Buried Sunday

Mrs. Martha Elizabeth Rosser, 97 died Friday, March 28. Services were held at 2:30 p.m. Sunday, March 30 in First Baptist Church, Wheeler. Rev. M. B. Smith, pastor of Highland Baptist Church in Pampa, officiated. Burial was in Wheeler Cemetery by Wright Funeral Home. Mrs. Rosser was born in Wise County, moved to Wheeler County in 1929 and to Wheeler in 1946. She was a member of the Baptist Church. Her husband, Sid, preceded her in death in 1959. Survivors include a daughter, Mrs. Elsie Cooper of Hunington Park, Calif.; a brother, Frank Williams of Texas; three grandchildren; one great-grandchild and two great-great-grandchildren. Pallbearers were Johnny Chapman, Mel Ray Coates, Ronnie Cook, Dick DeArment, Jimmy Helton, George Martin.

Last Rites Read For J. L. Burress

James L. Burress, 70 died Tuesday, March 25 in Amarillo. Services were held at 2 p.m. Friday, March 28 in First Baptist Church, with the Rev. John Hansard, pastor, officiated. Burial was in Mobeetie Cemetery by Wright Funeral Home of Wheeler. Mr. Burress, was born in Quanah, moved to Mobeetie a year ago from Raymondville. He was a retired road construction worker and an army veteran of World War II. Survivors include his mother, Mrs. Ura Burress of Canadian; four brothers, Virgil Burress of Raymondville, Marvin Burress of Perryton, Durwood Burress of Canadian and W. T. Burress of Levelland; and two sisters, Mrs. Nadene Reynolds of Allison and Mrs. Madalene Terry of Miami. Pallbearers were: J. W. Baird, Kenneth Gray, Doyle Gimes, Rusty McClure, Ralph McLaughlin, Hubart Sims.

Lola M. Jones Is Buried March 27

Mrs. Lola M. Jones, 80, died Wednesday, March 26, in a Grandbury hospital. Funeral services were held Thursday, March 27 at Scotts Funeral Home Chapel at Gatesville, Texas. Rev. Don Scott officiated. Burial was in the Gatesville City Cemetery. Mrs. Jones was born, Sept. 23, 1899, in Bosque County. She was the daughter of Mr. and Mrs. Jerry Poston, an attended school at Mosheim. She married H. J. Jones, June 17, 1914 at Mosheim, Texas. She was a member of the 1st United Methodist Church in Gatesville. She was preceded in death by her husband in 1971. Survivors include 2 sons, Mr. Homer Jones of Grandbury, W. O. Jones of Amarillo; two sisters, Mrs. Lydia Womack of Fritch; Mrs. Sadie Marsh, Whittney, Texas; four grandchildren, and 8 great-grandchildren.

EGG HUNT

Youngsters, ages 1 thru 12, in the Wheeler and surrounding areas are invited to participate in an Easter Egg Hunt at 2:30 Sunday afternoon, April 6, at the Wheeler airport. The hunt is being sponsored this year by Loyd and Street's Ben Franklin. Wheeler merchants and individuals are welcome to donate prize eggs for the event. The hunting ground will be divided into four areas for different age groups, the age division will be 1 thru 3, 4 thru 6, 7 thru 9 and 10 thru 12. Individually wrapped candy eggs and prize eggs will be used in the hunt. Each youngster who finds a prize egg is asked to report to persons in charge of the hunt so the winners names can be obtained in this matter. Each prize egg will contain a slip giving the donor's name; the lucky youngster will either take the slip to the business or individual and collect or he will be given his prize when he reports his find. Over 2000 eggs will be used for the hunt. These are being furnished by the local Loyd's and Street's Ben Franklin. All merchants and individuals who wish to contribute a prize or prizes for the hunt are asked to contact Loyd's and Street's. This will be handled as it has been in the past with the names of the donors and the finders of their prize eggs listed in the next edition of the "Times". The number to call is 826-5868.

RC&D Program Has Been Funded

The North Rolling Plains Resource Conservation and Development (RC&D) program has recently been funded by the Federal government. The North Rolling Plains RC&D area includes Wheeler, Donley, Hall, Hemphill, Collingsworth, Gray, Lipscomb and Briscoe counties. The program will make Federal funds available for projects in these counties. The program is being coordinated by the Soil Conservation Service. The area program is administered by an Executive Council made up of one representative from each county. An organizational meeting for Wheeler County was held in the District Courtroom on Tuesday, March 25. The Board of Directors, composed of one representative of each sponsoring organization in the county, elected County Judge Wendell Morgan Chairman of the Board. As Chairman he will represent Wheeler County on the Executive Committee. Representatives of the sponsors, and members of the Board of Directors, are Woodrow Sims, City of Shamrock; Bill Owen, City of Wheeler; Bill Atherton, Wheeler county Commissioners Court and Darville Atherton, Wheeler County Soil & Water Conservation District. Don King will serve as secretary to the Board of Directors. Several committees have been formed to analyze the current situation, problems and trends in Wheeler County. These committees include people, Organizations and Institutions, Minerals, Soils, Land, Water and Air, Agriculture, Fish and Wildlife, Recreation and Tourism, Industry and Business, and Community Facilities and Services. A county plan is to be completed by July 1, 1980. Residents who have projects they would like to have considered for inclusion in the plan should contact one of the Directors.



WHEELER HIGH TAKES TOP UIL PLAY HONORS

Wheeler and Booker High School took top honors last Thursday at the University Interscholastic League One Act Play Contest held in the auditorium at W.H.S. "Fables" presented by Wheeler High School and "A Canterbury Tale from the Wife of Bath" presented by Booker High School were selected from, eight plays by critic judge Dr. Larry Menefee of W.T.S.U. to represent the zone in area competition to be held in White Deer on Saturday, April 12. Pictured (left to right) are (back row) Melissa Hill, Lisa Dodd, Tammy Moore, Gary Brotherton, Sammy Sutton, (front row) Misty Muse, Scott Wright, Elise Christner and Glen Stiles. (not pictured) Bill Stiles, Russel Gibson, Candy Lewallen, Mark Wright and Lynette Gaines.

COUNTY JAIL PASSES INSPECTION

Sheriff Doyle Ramsey reports that Joe Slater, Supervising Inspected the Wheeler County Jail on March 26, 1980. After the inspection Mr. Slater met with the Sheriff and County Judge Wendell Morgan. He commended them on their efforts for the progress made during the past year. The Texas Commission on Jail Standards has made every effort to help the counties in their understanding and meeting of these standards. Last year at the inspection by Mr. Slater on April 18, 1979 the jail failed to meet the minimum jail standards on 42 items. Since that time the Sheriff, the County Judge and the Commissioners Court have worked toward bringing the jail into compliance with these standards. The latest inspection indicated only 17 items of noncompliance. Three of these items pertain to the requirement that a jailer be on duty at the jail 24 hours a day. Six of the items would require major changes to correct and do not affect the security, care and supervision of the inmates. County jails can under certain circumstances receive variances for certain requirements. Six variances will be requested. The cost of correcting these items, we feel, is not justified due to the fact that Wheeler County Jail houses a small number of prisoners on a daily basis. If these variances are granted, it would not affect the security, care and supervision of the inmates nor would it jeopardize the safety of the law enforcement personnel or the public. The other eight items which will not require major or the public. The other eight items which will not require major structural changes do affect the security, care and supervision of the inmates. These items are in the process of being corrected at this time. The Wheeler County Commissioners Court and the Sheriff hope to comply with the Jail Standards by the next inspection.

Allison Revival

The United Pentecostal Church of Allison is having special Revival Services, beginning April 2nd, Wednesday thru Sunday evenings at 7:00 p.m.. Rev. Richard Neihare of Odessa, Texas as will be preaching and singing. EVERYONE WELCOME!

Bake Sale

The Young Homemakers of Texas will hold a Bake Sale, Saturday, April 5, 9:00 a.m. at Thifftway. So come by and buy your pies or cakes for Easter.

Co Agent Plans Area Meetings

Landscape Meeting

Homeowners who are interested in doing what they can to reduce their home heating and cooling bills, and at the same time, increasing the value of their home, are invited to a meeting at 7:30 p.m. Thursday, April 3 in the District Courtroom in Wheeler. Mr. Everett Janne, Landscape Horticulturalist with the Texas Agricultural Extension Service, will present a program on "Landscape for Energy Conservation." He will explain how to place trees and shrubs to provide shade in the summer, provide a windbreak and let the sun warm the house in the winter. The meeting is being sponsored by the Wheeler County Program Building Committee and the Texas Agricultural Extension Service and open, without charge, to anyone wishing to attend. Educational programs conducted by the Texas Agricultural Extension Service serve people of all ages regardless of socio-economic level, race, color, sex, religion or national origin. *****

Livestock Show Assn. Meeting

The annual meeting of the Wheeler County Livestock Show Association is scheduled for Monday, April 14 at 7:30 p.m. in the District Courtroom at Wheeler. The purpose of the meeting is to go over the rules for the 1980 County Livestock Show, elect officers and fill expired director. For more information on the meeting or to get membership applications call me at 826-5243. *****

Irrigation Meeting

Mr. Leon New will be in Wheeler County April 17 and then visit 2 or 3 wells. Mr. New will show how to check the wells for pumping efficiency and how to determine whether it would pay to rework your well. At 7:30 p.m. we will meet in the Justice of the Peace Courtroom at 122 W. Second in Shamrock. At that time Mr. New will discuss the timing and amount of water to apply from maximum return on your irrigation cost. Educational programs conducted by the Texas Agricultural Extension Service serve people of all ages regardless of socio-economic level, race, color, sex, religion or national origin.

RAINFALL

The Wheeler area received some much needed moisture Thursday. The rains began falling before dawn and continued through the day; the rainfall amounted to 1.73 inches. Early morning rains Wednesday produced an additional 0.2 inches. The total rainfall from March was 2.14 inches. This compares to 3.42 in March, 1979. Moisture was received on three different dates this past month; the measurements were 0.18" on March 12, 0.23" on March 24 and 1.73" on March 28. The rainfall is measured at 7 a.m. and rain which falls during the day will be recorded on the following date. *****

MOBEETIE FOOD SALE SAT.

The Mobeetie Boosters are holding a bake sale in the Mobeetie Grocery, Saturday, April 5th, beginning at 9:00 a.m. the proceeds will be used to help purchase animals in the 1980-81 stock shows. All assistance will be appreciated.

FORD DEGER VOWS ARE EXCHANGED

Wedding vows for Tina Lynn Ford and David Wayne Deger were read on March 22 in the First Baptist Church in Wheeler. Tina is the daughter of Mr. and Mrs. K. D. Ford, and David is the son of Mrs. Loraine Pickens of Shamrock and Mrs. Denzil Deger of Clarendon.

The alter was sheltered with an arch of greenery decorated with blue bows and blue and white daisies, this was flanked with a pair of wicker baskets filled with daisies, gladiola and baby's breath. The spiral candle holders carried the same decoration.

The double ring ceremony was read by Reverend Jerry Hogan, pastor. Given in marriage by her father, the bride wore a gown of Chantilly lace over bridal satin,

featuring a fitted waistline and bishop sleeves, the skirt was bouffant with layers of ruffles. The chapel length veil was of allusion trimmed with matching lace. Her bouquet was white satin roses, blue daisies and baby's breath tied with blue and white satin streamers. The bride carried out tradition by wearing an old, opal necklace, a new opal ring, a borrowed ankle bracelet, a blue garter and a coin in her shoe.

The bride's attendants were her cousin, Rhonda Pride, bridesmaid. Debra Hiltbrunner,

the groom's sister and Becky Brown, the brides sister, the Matrons of Honor. The attendants wore blue synthetic crepe, over cotton and polyester in self color they were fitted with sheer sleeves, ribbon belts and a ruffle at the hem.

The flower girl was Teri Ford, sister of the bride and the ring bearer was Heath Hiltbrunner, nephew of the groom. The ushers were Robby Reeder and Lewis Olson, friends of the groom, both of Shamrock. The candle lighters were Angela Atwood, cousin of the bride and Robert Ford, brother of the bride. Galina Ford, sister of the bride registered the guests. Both mother's chose to wear blue street length dresses.

The groom's attendants were Mark Cadra, Pagan, a friend, David Johnson, Shamrock, a friend and James Hiltbrunner a brother-in-law.

Mrs. Sylvia Lee played the wedding music. Mrs. Becky Hardcastle sang "Color My World" and "The Wedding Prayer".

Following the ceremony a reception was hosted by the bride's parents in the Fellowship Hall of the church. The table was laid with a white lace cloth, centered with a topiary of daisies and baby's breath. The cake was a white two-tiered fountain, decorated with daisies. Mrs. Glenda Atwood and Mrs. Georgia Smith, aunts of the bride, and Mrs. Debbie Ford, Sister-in-law, served. Rice bags were distributed by Candie Atwood, cousin of the bride.

The bride attended the Wheeler Schools. The groom attended Shamrock High School, Frank Phillips College and Amarillo College. He is employed with the Wheeler County Police Department, now holding the place of Chief Deputy Sheriff.

The newly wedded couple took a short wedding trip to Amarillo. The bride chose a blue three-piece pant suit for travel. They will be at home at 903 N. Arkansas Street, Shamrock.

Mrs. Deger's grandparents are Mrs. Elsie Cox and Mr. and Mrs. Otis Ford, Wheeler. the grooms grandparents are Mr. and Mrs. Walter Deger.

Pucusso's Ceramics & Arts
105 Year Sixth
WHEELER TEXAS
826-3441

GREENWARE - BISQUE
FIRING-INSTRUCTION
DUNCAN SUPPLIES

Mon. & Thurs. Nights
ADULT SESSIONS . . . 7:30 P.M.

ALMA DAUGHERY, Owner

PRESTIDGE GOLDEN SPREAD BACKHOE SERVICE
"Good Clean Dirt Work"
INSURED

Oil Field and Domestic
Choctaw & Laville Streets
Shamrock, Texas
Phone 256-2509

52-tfc-5

Mobeetie Saw & Lock Shop

SAW SHARPENING & LOCKSMITHING

Phone: 845-2353

R. St. John
Mobeetie, Texas

The Upper Room Living Prayer Center
If you have a need for prayer, call 1-(855)-327-H O P E

or Toll Free 1-(800)-251-2488

Rogue Theatre
Wheeler, Tx. 826-3078
LATE SHOW 10:00 PM.
FRI. & SAT. APRIL 4-5

The Push-Button Gang... **A Man and A Woman and A Bank**

DONALD SUTHERLAND
BROOKE ADAMS
PAUL MAZURSKY

In a savage wilderness, they were the most untamed of all.

EAGLE'S WING

ONE WEEK! APRIL 4 Thru 10
FRI. Thru THURS. AT 8:00 PM.

MARTIN SHEEN SAM WATERSTON
"EAGLE'S WING"
—STEPHANIE AUDRAN AS THE WIDOW
JOHN CASTLE AND INTRODUCING CARMI LANGELOFF
HARVEY KEITEL

PG PARENTAL GUIDANCE SUGGESTED (SEE BOTTOM MATERIAL MAY NOT BE SUITABLE FOR CHILDREN)



EASTER EGG-STRAVAGANZA
One Day Only!
(SATURDAY, APRIL 5)

20% off
All Dresses in Ladies Ready-to-Wear

JUST IN TIME FOR EASTER
No Alterations or Lay-a-way!

WEARHOUSE Inc.
Phone: 806/826-5524
410 South Main
WHEELER, TEXAS 79096

HEARING INSTRUMENTS
Beltone Hearing Centers

— FREE HEARING TESTS —

710 West Francis
Pampa, Texas

Phone: 665-3451

PHARMACY PLUS

P

APRIL 1 - 7, 1980

Many years of intensive education and training are behind your PHARMACY PLUS PHARMACIST. Great advances are continually being made in the fields of drugs and health care and your PHARMACY PLUS PHARMACIST spends a great deal of time keeping abreast of changing drug news. He has a true commitment to giving you professional service with a friendly, personal touch.

ALL SEIKO WATCHES

10% off

ALL GLOVES
Leather & Cloth

1/3 off

Shop our . . .

COSMETIC DEPARTMENT

We have many specials!

We carry . . .

- Charlie BaBe Nuance Enjoli Hope Halston Cle Me! Emerald Tabu Weil Ambush
- Joran Lanvin Jungle Gardenia Intimate Aviance Masumi Smitty LeSport Masa Wind Song Bal de Bain Prince Matchabell's

We also carry a full line of . . .

COTY & COVER GIRL Makeup

OIL NEWS
March 21 - March 27

INTENTIONS
HEMPHILL - Humphreys (Douglas) Diamond Shamrock Corp. - Lewis H. Humphreys #1-34 - 1420' f W & 1470' f S lines of Sec. 34, 1, G&M - PD 10,008' - Plug Back
HEMPHILL - South Parsell (Upper Morrow SE) - Gulf Oil Corp. - Webb #2-187 - 660' f W & 1000' f N lines of Sec. 187, C, G&M & MB&A - PD 11,300'
HEMPHILL - Twister (Douglas) - Phillips Petroleum Co. - Humphreys "E" #1 - 660' f S & 1980' f E lines of Sec. 44, 1, G&M - PD 7250'
WHEELER - Panhandle - Conser Petroleum Corp. - Angie #1 - 1001' f sW & 2313' f S lines of Sec. 13, 36, H&GN PD 2286'
WHEELER - Wildcat - Exxon Corporation - Simmons Gas Unit #1 - 1320' f S & 1980' f W lines of Sec. 2, Cert. 5/720, H&GN - PD 18,600'
WHEELER - East Panhandle - Stahl Petroleum Co. Walker #1 - 1650' f N & 990' f W lines of Sec. 44, 24, H&GN - PD 2500'

PLUGGED WELLS
WHEELER - Mills Ranch (Granite Wash) - Pennzoil Company - C. R. Jackson #1 - Sec. 46, A-7, H&GN - Plugged 1-12-80 - TD 11,000' - Dry

Dr. M. V. Cobb
CHIROPRACTOR
Specializing in The Examination And Treatment of Spinal And Nervous Disorders

256-2133

310 South Main
SHAMROCK, TEXAS

"I'm wiped out?"

The greatest risk most persons or firms face is a liability lawsuit for \$100,000 — \$1,000,000 or more for causing personal injury or death to others. For nickels a day, an Umbrella Liability policy can protect against such a catastrophic financial loss.

RIVES INSURANCE AGENCY

115 W. Texas - 826-5224 or 826-5202

Realty of the Southwest

This one has it all!
If you are wise you won't delay in seeing this lovely home. Offers three bedrooms, 1 bath with large family room. Back yard is fenced. Don't let this one get away.

Can Your Wife Cook?
If she can here's a chance to make some money!! Newly Remodeled Restaurant For Sale with established customers. Owner will Finance.

Investment Property - Still remaining 2 - 100'x150' lots.

Easy to Love
This cozy two bedroom house on Commanche is too-oo Easy To Love. It has a lovely price also. Come in and see us about it.

Brusting with Potential!
This newly Remodeled Restaurant has good monthly income. Another nice place to eat is in demand in Wheeler. So don't miss this opportunity to invest in the Future — Call us now.

New Home on Reynolds St.
This new home has three bedrooms, 2 baths and spacious living area. It's close to town and located on pavement

Two Choice Lots on Mobeetie Street.

WE NEED YOUR LISTINGS!
John Norman, Broker
Don Rives, Salesman

806/826-5202—Office
826-3283—Home

| | | |
|---|--|---|
| DRY IDEA ROLL-ON A.P. Regular or Unscented 1.5 oz. Mfg. List \$2.33 \$1.29 | PEPTO BISMOL Liquid 8 oz. Mfg. List \$2.16 \$1.27 | JOHNSON'S BABY SHAMPOO No More Tears 11 oz. Mfg. List \$3.24 \$1.79 |
| AYD'S CANDY Reducing Plan Vanilla or Chocolate 12.75 oz. Mfg. List \$3.00 \$1.77 | EXCEDRIN Pain Reliever Tablets 36's Mfg. List \$1.76 \$.99 | ONE-A-DAY VITAMINS Regular 100's Mfg. List \$4.51 \$2.49 |
| NEW! APPETITE SUPPRESSANT CANDY AYDS | VASELINE INTENSIVE CARE BABY POWDER 24 oz. Mfg. List \$1.89 \$1.19 | CHLOR-TRIMETON Allergy Tablets 4 mg 24's Mfg. List \$1.69 \$.99 |
| ALKA SELTZER Fast Relief 25's Mfg. List \$1.74 \$.99 | VASELINE INTENSIVE CARE BABY OIL 16 oz. Mfg. List \$1.89 \$1.19 | CHLOR-TRIMETON Allergy Tablets 4 mg 24's Mfg. List \$1.69 \$.99 |
| PLAYTEX DEODORANT TAMPONS Regular or Super 28's Mfg. List \$3.33 \$1.89 | NOXZEMA SKIN CREAM Grazeeless Medicated 4 oz. Mfg. List \$1.67 \$.99 | BUF PUF Non-Medicated Cleansing Sponge Mfg. List \$2.70 \$1.57 |
| | | BUF ACNE KIT Mfg. List \$4.25 \$2.39 |

THESE ARE SUGGESTED PHARMACY PLUS PRICES OPTIONAL WITH PARTICIPATING STORES

HYLAND'S Pharmacy
WHEELER, TEXAS

*Service Mark WE RESERVE THE RIGHT TO LIMIT QUANTITIES AT SALE PRICES

TOTAL SAVER



BETTER BUYS

for Easter

SPECIALS



FROZEN FOODS

- TOPPING FROZEN
COOL WHIP 8 OZ. CTN. **59¢**
- NIBLET
CORN ON COB 4 EAR. PKG. **89¢**
- SHURFINE WHOLE SPEARS
BROCCOLI 2 10 OZ. CTN. **\$1.00**
- SENECA FROZEN NATURAL
APPLE JUICE 6 OZ. CAN **39¢**
- MORTON FROZEN
HONEY BUNS 9 OZ. BOX **49¢**
- MORTON MEAT
POT PIES 3 8 OZ. BOXES **\$1.00**
- ORE-IDA SOUTHERN STYLE
HASH BROWNS 2 LB. PKG. **69¢**



SHURFRESH ROUND CTN.
ICE CREAM

\$1.29

1/2 GAL. CTN.

HICKORY GROVE BONELESS FULLY COOKED WHOLE WATER ADDED

KAHN'S HAMS

13-15 LBS. AVG.

\$1.79

LB.

HALF OR PORTIONS 4-7 LBS. AVG. **\$1.89**



ALL VEGETABLE
CRISCO OIL

\$1.99

48 OZ. BTL.



IMPERIAL POWDERED OR LIGHT
BROWN SUGAR

99¢

2 LB. BAG

TOTAL GROCERY SAVERS

- DREAM WHIP 6 OZ. BOX **\$1.19**
- BAKER'S CHOCOLATE FLAVORED
BAKING CHIPS 12 OZ. PKG. **\$1.29**
- BROWN & WILD OR LONG GRAIN & WILD
COMET RICE 6 OZ. BOX **99¢**
- CEREAL
WHEATIES 18 OZ. BOX **\$1.19**
- WELCH'S
GRAPE JELLY 2 LB. JAR **99¢**
- DEL MONTE TOMATO
CATSUP 32 OZ. JUG **89¢**
- SHURFINE IN JUICE CRUSH/CHUNK/SLICE
PINEAPPLE 15 1/2 OZ. CAN **59¢**
- NABISCO'S VANILLA NILLA
WAFERS 12 OZ. BOX **79¢**
- FOLGER'S INSTANT COFFEE
CRYSTALS 10 OZ. JAR **\$4.59**
- GINGHAM GIRL 4 CT. CUPS
SHORT CAKES 4 1/4 OZ. PKG. **49¢**
- GINGHAM GIRL
ANGEL RINGS 13 OZ. PKG. **\$1.29**
- APOTHECARY JARS
ORANGE TANG 27 OZ. JAR **\$1.99**
- GREEN GIANT
SWEET PEAS 3 17 OZ. CANS **\$1.00**



WILSON CERTIFIED MEAT
FRANKS

12 OZ. PKG. **89¢**

WILSON'S CERTIFIED SLICED
BACON

1 LB. PKG. **\$1.19**

WE RESERVE THE RIGHT TO LIMIT

YOUR THRIFTWAY STORES SELL & FEATURE ONLY THE FINEST QUALITY AMERICAN GROWN GRAIN FED BEEF, FRESH PORK & QUALITY POULTRY.

- KAHN'S HICKORY GROVE BONELESS
HAM SLICES LB. **\$2.39**
- HEAVY GRAIN FED BEEF
BRISKETS WHOLE IN THE BAG LB. **\$1.49**
- HILLSHIRE FARM REGULAR SMOKED
SAUSAGE LB. **\$1.89**
- HILLSHIRE FARM POLISH SMOKED
SAUSAGE LB. **\$1.89**
- RED RIND LONGHORN
CHEESE MARKET CUT LB. **\$1.99**
- SHURFRESH 4-6 LBS. AVG.
BAKING HENS LB. **69¢**
- SHENANDOAH ALL WHITE TURKEY
ROASTS 2 LB. PKG. **\$3.99**
- BANQUET GRAVY & SLICED
TURKEY 2 LB. PKG. **\$2.39**



RED RIPE SLICERS

TOMATOES LB. **39¢**

- SUGAR LOAF
PINEAPPLE EACH **79¢**
- WASHINGTON WINESAP
APPLES EXTRA FANCY LB. **49¢**
- CALIFORNIA HASS LARGE SIZE
AVOCADOS EACH **59¢**
- CALIFORNIA CRISP
CARROTS 1 LB. BAG **25¢**
- CALIFORNIA GREEN PASCAL
CELERY LB. **23¢**
- PORTALES MARYLAND
SWEET YAMS LB. **29¢**
- CALIFORNIA LARGE
ARTICHOKES EACH **79¢**



CALIFORNIA FULL RIPE

STRAWBERRIES



SHURFRESH WHIPPING CREAM 3 8 OZ. CTNS. **\$1.00**

BASKET

59¢

DAIRY VALUES

- PHILADELPHIA CREAM
CHEESE 8 OZ. BOX **69¢**
- SHURFRESH SWEET CREAM QTRS.
BUTTER 16 OZ. BOX **\$1.69**
- SHURFRESH
BUTTERMILK 1/2 GAL. CTN. **89¢**



BAKER'S ANGEL FLAKE

COCONUT

7 OZ. BAG

79¢



ASSORTED GELATIN

JELL-O

4 3 OZ. BOX

89¢



BATHROOM TISSUE

DELSEY

4 ROLL PKG.

89¢



GREEN GIANT

CREAM STYLE WH. KERNEL GOLDEN CORN 17 OZ. CAN OR 1 1/2 REG. CUT

GREEN BEANS



3

16 OZ. CANS

\$1

SHELF SPECIALS

- FACIAL TISSUE
KLEENEX 280 CT. BOX **89¢**
- NEW FREEDOM
MAXI PADS 30 CT. BOX **\$2.69**
- NEW FREEDOM
MINI PADS 30 CT. BOX **\$1.99**
- ASSORTED OR DECORATOR
TERI TOWELS JUMBO ROLL **79¢**
- KLEENEX DINNER
NAPKINS 50 CT. PKG. **59¢**
- PAMPER'S EX. ABSORBENT DAYTIME 60 CT. OR TODDLERS
DIAPERS 48 CT. BOX **\$6.99**
- DETERGENT 70" OFF LABEL
ERA LIQUID 128 OZ. JUG **\$5.39**

HEALTH & BEAUTY AID SAVINGS



STOPS THE GREASIES AGREE

SHAMPOO

8 OZ. BTL.

\$1.29



AGREE CREME RINSE &

CONDITIONER

8 OZ. BTL.

\$1.19



CREST

TOOTH-PASTE

9 OZ. TUBE **\$1.09**



JOHNSON'S SHAVING

EDGE GEL

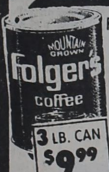
7 OZ. CAN **\$1.39**



ANTACID

GAVISCON TABLETS

32 CT. BTL. **\$1.59**



FOLGER'S MOUNTAIN GROWN

COFFEE

\$2.79

1 LB. CAN

3 LB. CAN **\$9.99**

COUPON GOOD THRU APRIL 5, 1980

SAVE \$1.00 OFF

VALUABLE COUPON WORTH \$1.00
4 DINNER NAPKINS

YOUR PRICE WITH COUPON **\$3.99** WITHOUT COUPON **\$4.99**

Circle W
Blue Stamps
DOUBLE STAMPS
ON WEDNESDAY

WE ACCEPT FOOD STAMPS

THRIFTWAY

PRICES EFFECTIVE APRIL 3-5, 1980

Want Ads

WAITRESS WANTED: Apply at Sparlin's Restaurant. rtn

CAKES
CATERING SERVICE FOR Wedding & Anniversaries Cathy Hunt—375-2391 Kay Luttrell—375-2238 Also Cakes for all Occasions

FOR SALE: registered two year old polled Hereford Bulls. Call Sayre 405/928-2030. Evan Fuch. 8tp

PRAIRIE HAY FOR SALE
Contact Britt Ranch 826-5239

FOR RENT: 3 Bedroom and den w/carport, carpeted and redecorated. Available about April 1. Phone: 826-5843. rtn

House Moving
SPARLIN'S—826-5898 Wheeler, Texas

OIL AND GAS LEASES
I am interested in buying your OIL and GAS LEASES, MINERALS and ROYALTY. Gene Hall, Minco Oil and Gas Co. Box 2317, Pampa, Texas 79065. Phone: 669-6805. rtn

OIL & GAS LEASES
I am interested in leasing your Oil & Gas Leases, also purchasing your Minerals. R. C. Callan Box 7473, Amarillo, TX. 79109 Phone: 806/352-7891

OIL & GAS LEASES
I'm interested in buying your Oil & Gas Leases, minerals and Royalty. Mark Burrell Box 23 Wheeler, TX 79096 806/826-3208

OIL LEASES
We buy oil leases, minerals & royalty. Top dollar pay. 514 Permian Bldg. Midland, Texas 79701, Ken Taylor, 915/685-3479. Call Collect.

FOR SALE OR TRADE: One 1976 3/4-Ton Ford Pickup — Contact Elmer Ray Harrison, Commissioner, Precinct No. 1. 2t

HOLCOMB TRAILER PARK
West 12th Street Phone: 806/826-5810 or 826-5942

NOT RESPONSIBLE for any debts but my own. Sharon Helton Wells. 4tp

SAVE 30-50% on your energy bill, use Fisher or Big Time Air Tight Wood burning Stoves and Encon Fascio Ceiling Fans. For information, call E. M. Rives, Shamrock, 256-5250 or Betty Rives, 826-3224. rtn

R & D ENTERPRISES
AMWAY Products Available
Will Deliver Anytime Call: 826-5746 826-3278

TRAILER SPACES: \$50, plus utilities. Call Glenda 806/376-4781, Amarillo. Black & Gold Trailer Park.

POLITICAL CALENDAR

DEMOCRATIC PARTY
For State Atty
Wheeler County
Doyle Ramsey
For Tax Assessor Collector
Wheeler County
Jean DeArment
For Commissioner
Precinct #1
Elmer Ray Harrison
For County Attorney
Kent Sims
For State Senator
Gerald McCathern
REPUBLICAN PARTY
For County Attorney
Jim Fling

CLASSIFIED RATES
All classified ads must be paid in advance, except for open ledger account customers. Charges are 11c per word. Minimum charge is \$1.10. Card of Thanks charges will be \$2.25.

ADVERTISING DEADLINES
Classifieds...5:00 p.m. Monday
Display...5:00 p.m. Monday

WILL HAUL
TREE LIMBS FURNITURE JUNK
Will haul after school or Saturdays. Day Phone: 826-3123 Evenings & Saturdays Phone 826-3221

FOR SALE: 3 — 18 ft. Heavy Cattle Guards, \$500.00 each. Call 826-5731. 8tc

FOR SALE: House to be moved, good shape, 28'x32' \$5000.00. call 826-5731. 8tc

FOR SALE: John Deere self-propelled swather \$4500.00, call 826-5731. 8tc

All Our Wheeler Property Is FOR SALE
5 HOUSES
3 HOUSE TRAILERS
TRAILER SPACES
ACREAGE
— GIVE US A CALL —
Borsberry Construction Co.
826-3332

THE BUSINESS DIRECTORY

TEXAS PRESS ASSOCIATION MEMBER 1980
Published Every Thursday at Wheeler, Texas, By...

THE WHEELER TIMES
Entered as second-class matter December 18, 1933, at the Post Office at Wheeler, Texas 79096, under the act March 3, 1879.
Louis C. Stas, Owner and Publisher
SUBSCRIPTION RATES: Wheeler County \$6.50 Outside County \$7.50

| | |
|----------------|--------|
| Wheeler County | \$6.50 |
| Outside County | \$7.50 |

The Cattleman's Feed Service
LOOMIX Since 1905
Liquid Feed Supplement
♦ Natural Protein
♦ Highest Energy
♦ Consumption Control
♦ Fully Patented
TED NELSON
Phone: 826-5650

PAUL'S REAL ESTATE
Houses or Land
Paul Topper
200 S. Canadian St.
806/826-5237 Wheeler, TX

Wheeler Lodge No. 1099
A.F. & A.M.
MONDAY 7:00 P.M.
Percy Farmer, Sec'y
Members Urged To Attend.
Visitors Welcome.

GUARANTEED AUTO GLASS INSTALLATION & Body Repair
CROSS CAR CENTER
Phone: 826-5515 Wheeler, Texas

STORM-SCREEN WINDOWS
Permanent year-round protection. Changeable from inside. Easy to clean...power-proof. Eliminates drafts...cuts fuel bills...
WHEELER LUMBER CO.
Phone 826-5543 Wheeler, Tex. Fine Service for Fine People

WHEELER REDI-MIX
REDI-MIX CONCRETE SAND
Washed Gravel—All Sizes
Office Hours: 7:30 to 5:00
Phone 806—826-3223

Dr. Marion Roberts
OPTOMETRIST
Phone: 669-3333
112 W. Kingsmill
Pampa, Texas

CUSTOM DRAPERIES
Swags, Cornices, Shutters — WE INSTALL FREE —
Telephone: 256-3652
Brannans Decorators
Shamrock, Texas 79079

Let Me Write It...
GEO. RICHARDSON
All Types Of INSURANCE

Wholesale Jewelry Company Expanding Nationwide
Needs part and full time sales and management personnel. Will train — High Commissions. Call for appointment only.
826-5202 (day)
826-3278 [after 5 P.M.]

DRILLING
Banks Water Well Service & Drilling
Mobeetie, Texas
Phone: 845-3431

LADY VENUS: Aloe Vera Cosmetics now available at the City Cleaners & Fabrics. Call for free facial and skin treatment. 826-3268. rtn

ART CLASSES have several openings in Monday or Tuesday Oil Painting classes, well known instructors.
Anderson Studios, Wellington, Texas, 806/447-5438, or 817/937-3508. 3tc

FOR SALE: 5 disc Towner deep plow. Have been using with 3 disc. 8 extra good used disc to go with plow.
8x18 John Deere Mouldboard Plow. Late model in excellent shape.
4sets 18.4x34 duels to use with tractor with 23.1x30 tires.
Tractor Christner, 826-5742. rtn

FOR SALE: 2 Bedroom house to be moved. Phone: 826-3212. rtn

WANTED
Yardwork, Evergreen Trimming, Rotary Tilling Iswn. \$100 minimum. Kenneth Banks, 669-6119, Pampa, Texas.

FOR SALE: 188.5 acre Farm. part cultivated, part grass on highway, 2 1/2 miles north Sweetwater, east side. Surface only. Phone: 405/534-2218, O. W. Coffey. 2tp

FOR SALE: 55 Hereford and Black & Whiteface cows with first calf. 10 Springer Heifers, 4 Polled Hereford Bulls, call after 8:00 p.m. 806/826-5965. rtn

PIANO FOR SALE: \$195.00, 600 Kiowa, 826-3104. 3tp
Reduce safe & fast with GoBese Tablets & E-Vap "water pills" Hylands Pharmacy. 5t

FOR SALE: 1973 Lincoln Continental, perfect condition, new Michelin radial tires. H. P. Barnes, 1420 Alan L. Bean Blvd., Phone: 826-3317. rtn

Puppies to give away: Part Blue Heeler, 375-2209 or 826-5744. 2tc 3tc

FOR SALE: Ermelo Weeping Love Grass Seed. Darville Lee Atherton, Rt. 1, Sweetwater, Okla. 73666, Phone: 806/754-2422. 3tc

NOTICE OF BID
The Board of Trustees of the Wheeler ISD will accept on a bid basis and oil and gas lease on school property located in Wheeler County, Texas, described as a tract of land out of SE/4 of Section 6, Block A-4, H&GN RR Co. Survey containing a total of 24-478 acres. All bids must be submitted to H. L. Lee, President, Board of Trustees, no later than 5:00 PM, April 10, 1980. The Board reserves the right to reject any and all bids. 3t

NOTICE
The City of Wheeler is accepting applications for Mowing of Park, baseball field, swimming pool grounds, Library lawn and City office grounds. Send application to City of Wheeler, Box 98, Wheeler, Texas 79096. Applications will be considered at regular meeting April 21, 1980. 2t

NOTICE
The City of Wheeler is accepting applications for Swimming Pool Manager for the summer of 1980. Send resume to City of Wheeler, box 98, wheeler, Texas 79096 Applications will be reviewed at the regular meeting, April 21, 1980.

NOTICE
Wheeler County will accept bids on one (1) New Pickup with the following minimum specifications: 3/4 ton, GVW 8500, radio, heater, air conditioning, power steering, power brakes, gauges, big mirrors, 350 engin, 4-speed transmission, 950x16.5 tires.
Bids will be accepted until 10:00 A.M., April 14, 1980. We reserve the right to accept or reject any and all bids. 2t

FOR SALE: Lovegrass seed. Bus Dorman, 826-5238. 3tc

LOST: Red PTO Shaft, on highway 152, west of Wheeler. Contact Garland Moore, 256-2934. 2tc

FOR SALE: 5th wheel Midas trailer. Call 806/375-2233, Allison. 2tp

USED Emerson variable speed 38" decorator fan. \$75. used 2-speed Emerson 52" decorator fan \$100. Phone 826-3224. 1tc

FOR SALE: Containerized garbage system for towns of 3-5,000. 432 one yard metal containers, 57 barrel lifts, two trucks. Good to excellent condition. \$47,500 for all. Will sell part. Available July 1, 1980. Lyman D. Smith, Box 386, Goodwell, Oklahoma 73939. 1-405-349-2658 evenings. 1tc

PIANO IN STORAGE
Beautiful spinet-console stored locally. Reported like new. Responsible party can take at big saving on low payment balance. Write Joplin Piano, Inc., Joplin, Missouri 64801.

FOR RENT
Trailer Space available, extra large lot, garden space, Call 826-5634 or 826-3215, Darrel Moore. 3t

FOR SALE: 14'x70' — 1976 Mobile Home, 3 bedroom, 2 full bath, underskirted, kitchen appliances. \$3,500 down, assume monthly payments \$153.47. Call Bob or Sue Mayfield, 826-3380. 1tp

New Shipment Religious Tapes
Burl Ives, George Beverly Shea, Wanda Jackson & Pat Boone.
L & F Repair

SAYRE MEMORIAL HOSPITAL needs RN for charge nurse position on the 11:00-7: shift. Excellent benefit package, salary negotiable, depending on experience and education. Current licensure in Oklahoma required. Contact Administration or director of nurses at 405/928-5541 for further information. rtn

FOR SALE: 1971 Grand Torino, fair condition. Call after 6:00 p.m., 826-3076. rtn

FOR SALE: 1969 Chevrolet 1/2 ton, 6 cylinder pick-up. Phone: 826-3360. 2tp

Mother drives over from Pampa. Needs sitter for infant, 1 day a week, starting in June. 2 days in the fall. 826-5505, evenings 665-3426. 2tp

New Shipment 8-track & cassette tapes. Good stock record albums. L & F Repair.

FOR SALE: 1967 Chev. 283 eng. Make good work or rig car. \$400, 826-3304 evenings only. 1tp

SHARP
We now sell and service Sharp Electronic Cash Registers \$399.00 & up
Also see our line of Sweda Cash Registers
We repair all NCR Mechanicals
AMARILLO CASH REGISTER INC.
408 West 7th (806) 372-8701

Cornell & Company
CERTIFIED PUBLIC ACCOUNTANTS
Announces the opening of its Mobeetie Office.
Office Hours: Each Monday 9:00 A.M.—3:30 P.M.
Location: First State Bank of Mobeetie
Lewis Meers C.P.A. — Partner In Charge

Court Records

LIST OF INSTRUMENTS FILED IN THE OFFICE OF THE COUNTY CLERK AND DISTRICT CLERK OF WHEELER COUNTY, TEXAS FROM MARCH 24 THRU MARCH 28, 1980

C/C PROBATE PROCEED—Isabel Huseby 3-20-80
AOL—Philip E Pendleton to Diamond Shamrock Corp 3-14-80 Pt Secs 14, 27 Blk A-7
7 RENTAL DIV ORDERS—James Earl Henderson et al to Wm F Holmes et al Feb-Mar 1980 Pt Secs 14, 27 Blk A-7
ROW—Marion E Moore to Pioneer Natural Gas Co 3-20-80 Pt Sec 58 no Blk Shown
ROW—Beef Cattle co to Pioneer Natural Gas Co 3-12-80 Pt Sec 8 No Blk Shown
OL—Ettie May Wilsford Morris et al to Yucca Petroleum Co 2-12-80 Blks G-3 & G-4 Wheeler Prairie Lawn Addn
ROL—Pennzoil Co to Hugh E Bailey et al 3-12-80 Sec 92 Blk A-5
ROY D--Cecil Meadows et ux to Kenneth L Love 1-18-80 20/320 int E 1/2 22 Blk RE
ROY D--Ana-Tok Exploration Co to Marilyn N Henslee 3-18-80 10 ac SW 1/4 2 Cer 5/720
ROY D--Ana-Tok Exploration Co to R C Callan 3-18-80 10 ac int SW 1/4 Sec 2 Cert 5/720
OL & Rental Div Order—Joel C Sanders et al to Buffalo Roy Co 11-21-79 E 1/2 Sec 29 A-4
DT--D V Brashers et ux to First Bk & Tr Shamrock 2-25-80 Lot 18 Blk 1 Shamrock
STATE TAX LIEN—Samuel G Kirkland to State of Texas 3-21-80
ROL—R W Burrell to Cecil O Snelgroes et ux 3-21-80 16 ac SW 1/4 Sec 5 A-4
MD--Alex Singer to Alex Singer Royalty Tr #1 12-24-79 1/320 int S 1/2 48 Blk 24
2 AMEND OL—Iva Barker et al to Hunt Energy Corp 3-18-80 Land not set out
OL--Cecil Snelgroes et ux to A W Burrell 3-21-80 16 ac SW 1/4 Sec 5 A-4
RMML--First Natl Bk Wheeler to Robert I Patterson et ux 3-12-80 55'x165't60 A-8 (Pt Sub Div 4)
2 MD--Jack William Finsterwald et ux to Jerry D Finsterwald et al 3-18-80 15 ac int N220 ac E 1/2 68 & 15 ac int NW 1/4 68 A-5
AFF--Peggy Ford ex Parte 3-20-80 Lots 1 to 22 Blk 24 Mobeetie
MARCH 25, 1980
AOL--Ralph H Bauman Oil & Gas Properties to Southern States Pet Corp 2-15-80 W 1/2 Sec 105 Blk 23 exc 20 ac NW 1/4 NW 1/4
OL--Joseph W Erickson et al to Phillips Petroleum Co 2-1-80 NW 1/4 54 A-4 exc 6.44 ac
PARTIAL RDT--First Fed Savs & Loan Assn to John R Hill et ux 1 ac SW 1/4 Sec 31 A-8
P OF ATTY--Rosa A Henderson to Milton Finsterwald 3-21-80
D--James H Woodruff et ux to Bobby C Hall et ux 3-25-80 Lots 11, 12 Blk 3 Shamrock, PBA
D--Eula B Willis McAlester et al to J W Hughes 3-10-80 N40 ft Lot 5 S 1/2 4 Blk 25 Shamrock
MARCH 26, 1980
DT--Jack A Alexander et ux to

"TOMORROW'S IDEAS FOR BETTER LIVING TODAY"
\$1000 GIFT CERTIFICATE
DRAWING SUNDAY 8 PM
HOME SHOWCASE '80
DREAM HOME ART CONTEST FOR SCHOOL KIDS
KHIVA CLOWNS * BALLONS
ALL NEW IDEA HOUSE
ADMISSION Adults \$1.00 Students 50c
Presented by
APRIL 11, 12 & 13
AMARILLO CIVIC CENTER
3 Big Days
Friday 12 noon - 10 pm
Saturday 10 am - 10 pm
Sunday 10 am - 9 pm

IT PAYS TO PLANT
Paymaster
Sweet Sioux IV® GR 1018
The superior forage hybrid that combines the high energy and palatability of sweet sorghum with the fast growth of Sudangrass.
Greenbug resistant hybrid grain sorghum.
*Delivers high yields
*Early maturity
For more information contact:
LANGLEY SERVICE & SUPPLY
MOBEETIE, TEXAS
845-2611
The statement of limited warranty and liability on each Paymaster bag is a condition of sale.

IT'S A NATURAL

As Natural as 1-2-3

Namolco
Mol-Mix LPS®
liquid supplements

MOL-MIX/LPS®
1—CONTAINS NO UREA
2—AVAILABLE IN PROTEIN LEVELS OF 20%
3—CONTAINS HIGH LEVELS OF VITAMINS, MINERALS AND ENERGY
IN today's artificial world it's comforting to know that Natural Ingredients are still available.
NOW all Mol-Mix/LPS® products are fortified with vitamins and minerals, in a special formula essential for high gain growth in beef and high production levels in dairy cows. This is possible because Mol-Mix/LPS® contains High Natural Levels of Energy. A special fermentation process delivers to you a product that is formulated to be not only high in natural protein but easily digested and used. This fermented product is imported exclusively for use in National Molasses Company's, Mol-Mix/LPS® Liquid Supplements..... Naturally.

305 S. Alan L. Bean Blvd.
Wheeler, Texas
Phone: 826-5953

OMEGA GRAIN & SUPPLY, INC.

LEWALLEN INSURANCE AGENCY
ALL LINES

845-2951 826-5719
1st STATE Bldg. 114 TEXAS ST.
MOBETTIE, TEX. WHEELER, TX.

FIRST FEDERAL
Savings & Loan Association
—CHILDRESS, TEXAS 79201 (817) 937-2514
BRANCH OFFICES
MEMPHIS WELLINGTON

Wheeler, Texas
is counting on you.

ANSWER THE CENSUS.

25 WED., APRIL 9

KING SIZE WALLET CREATIVE COLOR PORTRAITS FOR ONLY **99¢**

Kodak paper. For a Good Look at the Times of Your Life.

25 PICTURES FOR 99¢ THIS TIME

Extra Charge for GROUPS

SHUGART COLOR PHOTOS

ASK About Our FREE 8x10 OFFER

BEN FRANKLIN
LOYD'S & STREET'S, Inc.
408 S. Main Phone: 826-5868
Wheeler, Texas

FSC BALANCED NUTRITION FREE CHOICE

✓ ENERGY ✓ MINERALS
✓ PROTEIN ✓ VITAMINS

BALANCED nutrition is easy with the FSC 4 or 5 Point Program... and the proper balance between all the minerals, vitamins, energy and protein is the most important part of beef cattle production... FREE CHOICE feeding of MOREA* Energized Protein Supplement, MORANOL* Energized Supplement and CATALYX* Minerals and Vitamins provides the balance you are looking for... THIS PROGRAM WORKS... Write today for free information.

5-POINT FEED CO.
— 1 1/2 Miles South of Wheeler —
PHONE: 806/826-5887

MOREA, MORANOL, and CATALYX are registered trade marks of Feed Service Corporation

Allison News

Edna May
An old fashion "generation gap" basketball game took place in the Allison gym last Tuesday. The guys and gals entertained the spectators with two close games.

Mr. and Mrs. Buck Miller from Borger visited Mr. and Mrs. Domer Miller Tuesday and Wednesday.

Mrs. Nellie Gransee from Springfield, Oregon is visiting Mr. and Mrs. Hiram Begert and Mr. and Mrs. Ruben May.

Enjoying Sunday dinner with Lloyd and Myrtle were Mr. and Mrs. Harold Jones and family from Wheeler; Mr. and Mrs. Bill Donaldson and Daniel Wayne, Mr. and Mrs. Jim Donaldson and daughter and Mr. and Mrs. Lee

Court Records
From Page 4

Penn Square Bk Natl Assn 3-21-80 Mins NW 1/4 19 Pt N 1/2 SE 1/4 Sec 7 James L Burress to Madelene Terry 2-4-80

RENTAL DIV ORDER--Lola E Holcomb et vir to J C Holcomb et ux 6-2-78 21.5 ac SE 1/4 60 A-8

RENTAL DIV ORDER--Cecil J Denson et al to Raymond Burks et al 4-18-79 20 a SW 1/4 4T&NO UNIT DESIGN--Texas American Oil Corp et al to Mrs. J L Hunter et al 2-14-80 NE 1/4 72 Bk RDT--Western Natl Bk Amarillo to Charles H Cranford et ux Pt secs 67, 68, 77, 86, 87, 88, 89 All Secs 72, 73, 74, 76 Bk 17

RELEASE--Western Natl Bk Amarillo to Charles H Cranford et ux 3-19-80 Pt Secs 77, 85, 86, 87, 88 Bk 17

UNIT DESIGN--Hulen H Lemon et al to Robert Joe Lummus et al 3-10-80 SW 1/4 Sec 55 B17

COR MD--Thomas R Helton Sr et ux to Bob K Helton et al 3-26-80 205/316.782 ac int Pt E 1/2 Sec 60 Bk M-1

OL--County of Wheeler to Minco Oil and Gas Co 3-17-80 13.774 ac Sec 12 Bk A-4

MARCH 27, 1980

AOL--Wheeler Oil Co to Hulen H Lemon 1-14-80 S 1/2 NE 1/4 80 Bk 17

AOL--Hulen H Lemon to George R Gibson 3-20-80 S 1/2 NE 1/4 80 Bk 17

RDT--Texas American Bank Dallas 3-4-80 Sec 33 S 1/2 SW 1/4 40 A-8 exc 100 ac 40

D--Jocie Burrell to Gerald Johnson 3-10-80 Lot 7 Bk 1 Wheeler Anzelia Jaco Addn

AOL--W R Gray to Tom F Marsh, Inc 2-1-80 NE 1/4 Sec 5 Camp Co Sch Land

4 OL--Celeste Wiley, Lillian Lee et al, Balaam K Barham et ux, Dennis dilbeck et ux to Cotton Petroleum Corp Jan to Mar 80 Lots in Wheeler 7 Adj Acreage

ASSIGN--Edward Lewis Zihlman et ux to Zihlman Family Tr 10-1-79 Mins Secs 36, 37 Pt 48 Bk M-1; 44 Bk A-3; 1 Camp Co Sch and

MML--John Reynosa to M A Lindsey 3-25-80 Pt Sec 24 Bk 17

D--Rozelle Hooten to Melissa Hooten 3-10-80 Lot 3 Bk 13 Shamrock

3 AOL--The Allspaugh Co to Pioneer Production Corp 3-25-80 Pt Prairie Lawn Adn to Wheeler, S 1/2 SE 1/4 SW 1/4 (part) 6 A-4, Pt N 1/4 4 H; Pt S 1/2 DE 1/4 49 M-1, W 1/2 70 A-7

OL&Rental Div Order--Viola Carlton to A W Burrell 3-6-80 NW 1/4 28 A-8

ROY D--R Callan to A W Burrell 3-19-80 5 ac int SW 1/4 Sec 2 Cert 5/720

C/C PROBATE--Freja Echols 3-18-80

RENTAL DIV ORDER--Jack Ray

Y. Homemakers Meet March 17

The Wheeler Chapter of Young Homemakers of Texas met Monday, March 17 at 7:30 p.m. in the Home Economics Dept. of Wheeler High School.

The program was on crafts. Jane Thomas, of the "Hobby Korral" gave a demonstration on Rub-Out painting, which was very interesting.

Each member present was asked to fill out a questionnaire on laundry procedures, distributed by the Home Economics department at Texas Tech.

Refreshments were served by hostesses Frankie Jackson and Cathy Dunn.

Projects for March thru May were discussed and voted on. The March project will be a bake sale, to be held April 5. Other projects for the coming months will be a trap shoot, and cleaning up the City Park.

Those present at the meeting were: Wendy Cole, Debra Glazner, Cathy Harrison, Deleise Johnson, Lois Puryear, Debbie Simmons, Dolores Simmons and the advisors, Mrs. Ruth Wiley and Mrs. Suzanne Hampton.

CIRCLE STEEL CORP.

Quality, Strength, Style

in Grain Bin & All Types of Steel Building.

Commercial Buildings

Call: JERRY HILL—Dealer
806/226-2291

U-U Electrical Service
"We handle all your electrical needs"

RESIDENTIAL, COMMERCIAL and CUSTOM

Robert and Laura Underwood, Owners
Box 269 Wheeler, Texas 79096

Call Day or Night: 826-3150
If no answer — 845-2442

WELCOME TO FIRST UNITED METHODIST CHURCH

8TH AT MAIN - P. O. BOX 89
WHEELER, TEXAS 79096
Church (806) 826-3114 - Parsonage (806) 826-3079

Sunday School 9:45 a.m.
Morning Worship 11:00 a.m.
Evening Worship 6:00 p.m.

Ernie McLaughlin, Pastor

BUTCHERING & PROCESSING PRICES

Beef processed, double wrapped 17¢ per pound
1c A Pound for Butchering

Pork Processing including curing
Double wrapped 20¢ per pound
\$.50 a head for butchering

We butcher Monday thru Friday 8 to 12 A.M. except holidays.

CALL FOR QUARTER—HALF—WHOLE BEEF PROCESSED

WE NOW HAVE CUTS OF PORK AND BEEF FOR SALE

SHAMROCK SLAUGHTER PLANT
North of City Phone: 256-3241
Closing at Noon on Saturday

SAVE

Ladies Casual Clothes

Times Fashion
110 E. Texas

SAVE ON HANDY GARDEN EQUIPMENT
Plan Ahead For Spring & Summer

Langley Service & Supply

GREENBRIER Reg. \$389.00 Mobettie, Texas
TILLER 345⁰⁰
5 Horsepower Briggs & Stratton Engine Forward & Reverse

GREENBRIER Reg. \$185.00
TILLER 165⁰⁰
2 Horsepower Briggs & Stratton Engine

RIDER MOWERS

8 Horsepower Reg. \$926.00
Briggs & Stratton Engine 3 Forward & Reverse

11 Horsepower Reg. \$1178.00
Briggs & Stratton Engine 3 Forward & Reverse

895⁰⁰ 1050⁰⁰

Phone 845-2611

REMEMBER: We service what we sell

WE DO REPAIR WORK ON ALL MOWERS AND TILLERS

Monday.

Mr. and Mrs. Joe Richardson from Paradise, Texas spent a few days last week with Clyde and Anna Dukes

Effie Bersire from Reydon, Oklahoma spent a few days with George and Avis Parker last week.

The Church of Christ closed a

NOTICE TO TAXPAYERS OF WHEELER ISD

Notice is hereby given that persons who owned their residential homesteads on January 1, 1980 may apply for the Homestead Exemption in the amount of \$5,000.00. In addition to the \$5,000.00 exemption, persons 65 years of age or over may apply for the \$10,000.00 exemption. These must be filed before April 30, 1980. Also, persons who use ag-use valuation exemptions must file for the exemption before April 30, 1980.

These exemptions can be filed in the office of Wheeler School District Tax Assessor Collector.

THE RESURRECTION

The resurrection of Jusus Christ is one of the major doctrines of the Bible. The resurrection is not just an Easter story, the resurrection is absolutely necessary for our salvation. Other peoples in the world serve gods that are dead. They have gods that are not real. But the Bible says if we believe in our heart that God raised Jesus from the dead and confess with our mouth that He is Lord, we shall be saved. The resurrection of Jesus Christ is a bodily resurrection. It was not a spiritual resurrection. Luke 24:3 says "and they entered in and found not the body of the Lord Jesus". Our resurrection as believers in Jesus Christ will also be a literal bodily resurrection from the dead.

As you read thru the book of Acts you find the apostles in the early days of the church preached much about the resurrection of the body from the dead. 1 Corinthians 15 lists several calamities for us if there is no resurrection: 1) our preaching is vain, 2) your faith is vain, 3) we are liars, 4) you are in your sins forever, and 5) our loved ones who believed in Christ are eternally perished.

So at this Easter season and at all times may we ever be thankful and joyful because of the resurrection of our Lord Jesus Christ. Because He lives we too shall live. Because He lives our fears are gone. Because He lives we have forgiveness for the past, peace for the present, and hope for the future.

(Devotion, Compliments of Christian Center)

C. & M. GREENHOUSE
 1009 S. Main 826-3119
Easter Lillies-Garden Plants
Small Geraniums & Others
Also Artificial Arrangements
 We will have garden supplies & plants!
 Owners: Buster & Curlie Callan—Danny & Cathy Miller
 Mon. thru Sat. — 10:00 to 5:00

THE SHIRT SHACK
 114 East Texas St
Letters & Transfers
Jersey & T-Shirts
Candy & Sherri Lewallen

SHUGART COUPON
WEDNESDAY, APRIL 9
 LOYD'S & STREET'S **Ben Franklin**
 408 South Main
25
WALLET SIZE COLOR PORTRAITS
99¢
 ASK About Our **FREE 8 x 10 OFFER** Extra charge for **GROUPS**

ANGLIN SALES & BEAUTY SHOP
 412 Main
Blouses 0% Off
Close-Out on Sweaters
20% Off Boys Coats
Perm Special \$15.00
 Call Joann or Sharon for appointment.
 Ask about our Senior Citizen Rates.
 REDKEN PRODUCTS Call: **826-3168**

Briscoe News
 Vetoal Parker We had another Ex-student
 Wednesday, March 26, damp meeting last night there were
 and pretty cold this morning. nine there, we will meet April 22

KIRBY Sales & Repair
 605 NORTH SUMNER
FREE PICK-UP & DELIVERY
 — ALL WORK GUARANTEED —
TWO DAY SERVICE
 CALL AFTER 6:00 P.M.
 PAMPA, TEXAS — 665-5347

100 Thomas Lane
HOBBY KORRAL
9-5 Monday—Friday
 — New Shipment: GREENWARE —
FREE Ceramic Lessons
 9 a.m.-5 p.m. — Monday thru Friday
 at your convenience
 7 p.m.-10 p.m. — Monday
 JANE THOMAS, Certified Teacher
 Wheeler, Texas

for our next meeting at 7:00 p.m.. We decided to have Carrol and Debbie catering in Shamrock serve our meal, July 26.
 T.V. says every 9 seconds a new baby is born, every 17 seconds someone dies.
 Rained off and on all morning Thursday 27, March.
 Saturday Morning, March 29, our ground is covered with snow.
 Todd Helton and Kevin Robinson spent Friday night, Saturday with Helen Helton.
 Cloyd and Teresa Helton and Amber ate supper last Tuesday night with Helen.
 Alice Bell Helton said they had received over 2 inches of rain now snowing down and ground covered over there.
 Talked to Sandy Ault Saturday. Sarah was getting over the flu, the Sheltons had given her a puppy, Sam and Sarah had planted (with their parents help) 1400 pecan trees for a pecan orchard, they had pulled up cotton wood trees transplanted close to their house for shade.
 Visitors Saturday at Claude and Mable Parker were Bill and Neta Ault, James and Bea Ogle and girls everyone has received between 1 & 2 inches of rain.
 T.V. says there is 222 million people in U.S.A.
 Wine is made from grapes, Vodka is made from potatoes.
 Mike and Melody Goad had supper and birthday party after for their son Travis 5th birthday last Tuesday. Ones there were R. L. and Rozena Zybach, Mac and Gayle Purcell and children, Royce and Deedy Zybach, Clarence and Irene Zybach.
 On Thursday nite he had another Birthday Party at his grandparents Dub and Ida Mae Goad at Wheeler.

Gayle Levelland and Shonda and Sandra visited her grandparents Tom and Alice Bell Helton last Wednesday.
 Thomas Roy Helton and Son Danny visited Tom and Alice Bell Saturday.
 Lou Dean Douthit visited in Briscoe last weekend. She, Debby and Teresa Perry ate dinner Sunday with Donald and Billie Sue Stuckey and LeAndera at Canadian Lou Dean took Tressa home with her. Kenneth Douthit brought her home Wednesday and visited.
 Lester and Mary Hudson visited Claude and Mable Parker last Tuesday.
 David L and Winnie Gilmer and children visited Darrel and Tillie Snelgrooves and children last Sunday.
 I just found out Winnie is our postmaster relief—replacement at Briscoe. She has been working around a month now.
 Don and Nona Reynolds and Jeff of Amarillo visited Essie Finsterwald, Donald and Charles over weekend.
 Bill and Mattie Jackson visited in Borger and Fritch with the Don Zollars and Irene Signor Friday, Bernice, Bill and Mattie visited Mr. and Mrs. Lawrence Aderholt they were doing pretty good, others there were, Lois Johnson, Rita Grayson and Estelle Topper.
 Talked to Wanda Childress, she was playing and her girls in volleyball tournament in Wheeler their team is L. D. Childress inc.
 Nelson Parker ate breakfast and dinner with us Sunday and rested to hit that rough necking again tonight.
 A Good thing to keep in mind, submit to God and resist the devil.
 Others visitors at Essie Fins-

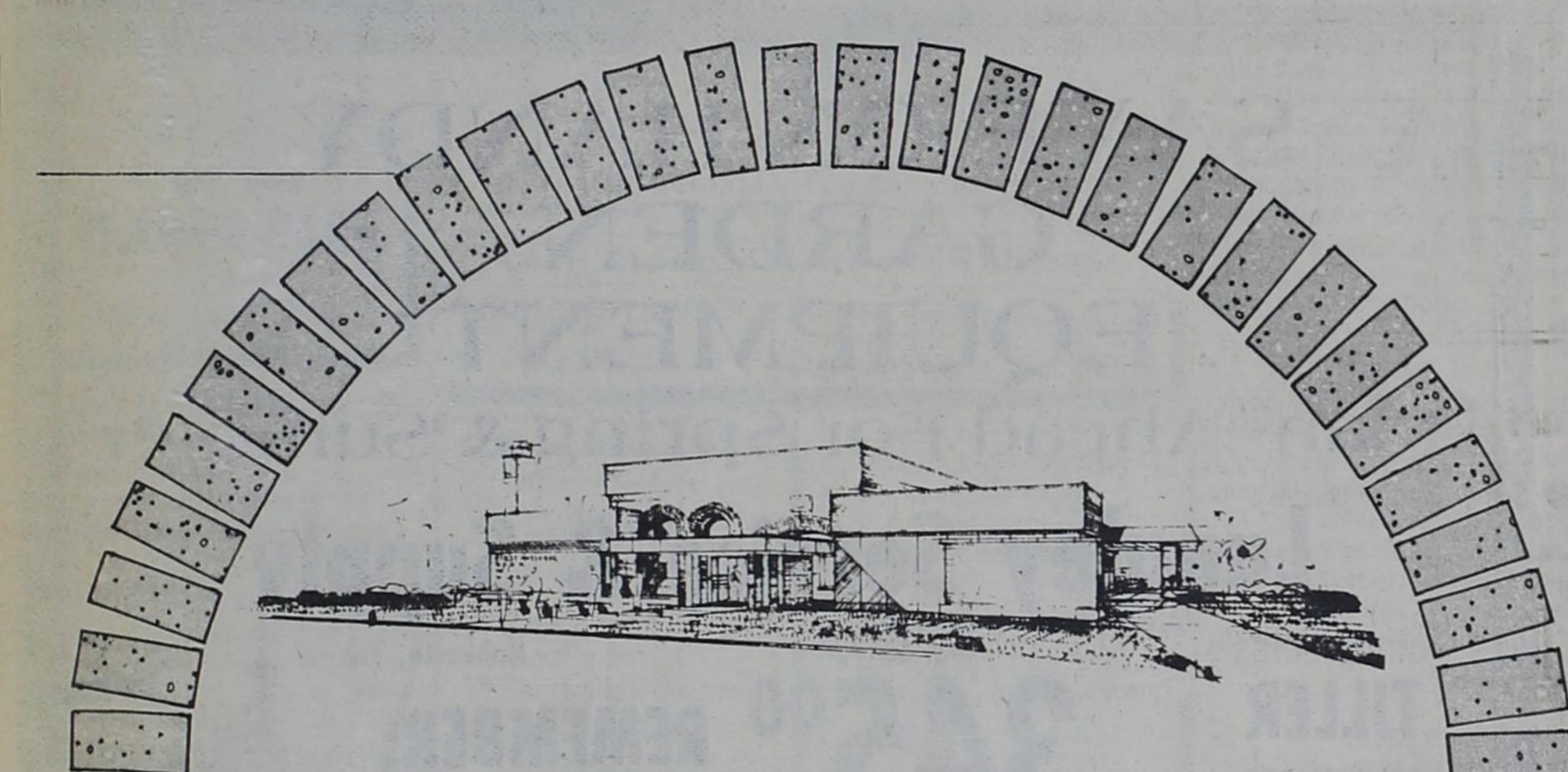
terwalds and the boys were John and Marie Wright, David and Ann, Sunday.
 Colie and Vetola Parker visited Claude and Mable Parker Sunday night after church, Mable piecing on a double wedding ring quilt while she watches the T.V.
 Sunday visitors at Willis and Verna Fillingim were Joe and Shirley Wagoner, Shanna of Canadian, Charley, Eddie Phillis, Mike and Stacy of White Deer.
 Mike and Stacy are on their spring break they stayed this week with Willis and Verna and other friends.
 Tuesday supper guest at J. P. Meek home were Bob and Connie Downs and Jay David, Tola Fay Meek and Keith, Willis and Verna. They were helping Willis and Verna celebrates their 37th wedding anniversary
 Leonard Jr. and Teresa Powledge and Jody and Sarah spent the weekend in Quail with Mike and Pattie Ann Shields and children, Amie, John, Kevin, Amanda.
 Visitors in the Bob Darwin home over the weekend were Connie's mother and step dad from Tulsa and Phillip Harris.
 Jay David was entered in Lads and Lassie style show at Shamrock Saturday night.
 Connie and Jay David went home with her parents.
 Rick and Mary Brentmyer, Regina and Jeania visited Charles and LaJo Crownover and children Sunday, they all attended church at Gageby.
 Willis and Verna were Wednesday nite supper guest in Bob Downs home.
 Saturday night Willis and Verna and Dallas ate supper in Dan Cornette home. He is assistant Co. Agent.
 Charley and Eddie Phillis and Stacy visited Leonard Jr. and Teresa Powledge Sunday afternoon.
 Verna said they received around 2 inches rain.
 Monday morning, March 31, just talked to Melvin Hunt, he and Kathy went to see his mother Sunday morning found her dead

Mrs. Hunt and family use to live 1/2 mile south of us. We really enjoyed having them as neighbors.
 Cecil and Ema Jean Meadows visited in Wheeler Sunday afternoon with his mother Mrs. Allen Meadows and Zane and Margaret Frances.
 I guess we received over 2 inches of rain everyone around us did. Our snow was really a wet snow. It is pretty today Monday, but tomorrow is suppose to be bad again. The moisture was needed very much.
 R. L. and Rozena Zybach visited Clarence and Irene Zybach Saturday night.
 Mr. Roy Hunts Funeral was to be Tuesday in Kelton and burial at Mobeetie.
 Some may remember Perry Riley she passed away in Amarillo last week. Our sympathy goes out to all her children.
 Visitors at Elbert and Ruby Zybachs Sunday were Ardell and George of Canadian, David Zybach and family, Curtis Hall and family.
 Some of the hostess at Brenda Hefleys baby shower Saturday were Gena Zybach, Mary Diane Dukes, Peggie Dukes, Rita Fillingim, Ruby Zybach, Kathy Zybach, Evelyn Meek, Helen Helton, Rozena Zybach, Mary Margaret Dodd, Katie Finsterwald, Deedy Zybach, Jane Ann Hall, Mildred Treadwell, Fay Smith, Patricia Hand, I didn't get all of these hostess. I sure am sorry.

NORTHWEST OKLAHOMA STORM SHELTER & BASEMENT CO.
 CONCRETE SHELTERS & BASEMENTS
 FAIRVIEW
 405/227-4357

ELECT JOE MONTGOMERY Constable Precincts 1 & 2
"Your Vote Appreciated"
 (Pol. Adv. paid for by Joe Montgomery)

WE GIVE DISCOUNTS ON VACANT HOUSES
CARPET CLEANED
BY DEEP "STEAM" PROFESSIONALS \$29.95
 *WE FEATURE GENUINE **Scotchgard** CARPET & UPHOLSTERY "PROTECTOR"
UPHOLSTERY Special \$29.95
 ANY REGULAR SIZE SOFA AND CHAIR STEAM CLEANED
WHOLE HOUSE SPECIAL \$59.95
 ANY LIVING ROOM, HALL & 3 BEDROOMS DEEP STEAM CLEANED
ADDITIONAL ROOMS \$14.95 EACH
 ★ Check our reputation against any of our competitors.
Enterprise Carpet Cleaning
 1021 S. Hobart
 Pampa, Texas 79065
MARVIN NELSON Phone: 665-5501



Mrs. Sims Hosts Ft. Elliott Club

The Fort Elliott Study Club met in the home of Mrs. Edith Sims on March 18th. Mrs. Margaret Trout the president called the house to order. Mrs. Edith Sims led the club collect. Mrs. Esther Lee Dyson had the program on L. V. Personalities. Delicious refreshments were served to those mentioned above and Mrs. Laverne Scribner, Mrs. Arlie Jeffus, Mrs. Gazelle Patterson.
 The next meeting will be in the hospitality room at the First State Bank of Mobeetie on April the 1st with Mrs. Margaret Trout hostess. Mrs. Paul Crouch of Pampa will bring the program.

MOBEETIE ANNUALS HERE
 The Mobeetie Senior Class now has the 1979-80 annuals on sale. If you wish to purchase an annual, contact any senior. The cost is \$7.50 per annual. The deadline for purchasing is April 28, 1980.

BIG NEWS
 Maximum insurance for each depositor has been increased to **\$100,000**
 Each depositor insured to \$100,000
FDIC
 FEDERAL DEPOSIT INSURANCE CORPORATION

150% Insurance protection increase
 Congress has raised the limit of insurance on your savings and checking accounts to \$100,000... up 150% from the former limit of \$40,000. You now get more insurance protection and it still costs you nothing.
 Your money now enjoys a stronger second line of defense, behind our experienced and able management. While we carefully protect your deposits with safe and prudent investments, it is reassuring to know that the Federal Deposit Insurance Corporation, a permanent agency of the U.S. Government, is standing behind us.
 And, through the intelligent use of multiple account ownership, you may extend your insurance coverage beyond the new limit. We welcome the opportunity to explain how you may benefit from this added safety feature.

FIRST NATIONAL BANK
 in Wheeler

Langley's Restaurant & Steakhouse
NEW HOURS
OPEN: SUN. 6 A.M. 3 P.M.
DAILY 6 A.M. 8 P.M.
 Langley's features a private banquet room. Available to groups or parties at no charge.
Phone: 845-3871
 At the intersection in Mobeetie on Highway 152

WHEELER TV LOG

SATURDAY, APRIL 5, thru FRIDAY, APRIL 11

saturday

Table with 8 columns (Channel, 4 KAMR, 7 KVII, 10 KFDA, 12 KWET, 9 WGN, 5 WTBS, 2 CBN, HEO) and rows listing TV programs for Saturday.

sunday

Table with 8 columns (Channel, 4 KAMR, 7 KVII, 10 KFDA, 12 KWET, 9 WGN, 5 WTBS, 2 CBN, HEO) and rows listing TV programs for Sunday.

daytime

Table with 8 columns (Channel, 4 KAMR, 7 KVII, 10 KFDA, 12 KWET, 9 WGN, 5 WTBS, 2 CBN, HEO) and rows listing daytime TV programs.

monday

Table with 8 columns (Channel, 4 KAMR, 7 KVII, 10 KFDA, 12 KWET, 9 WGN, 5 WTBS, 2 CBN, HEO) and rows listing TV programs for Monday.

First National Bank IN WHEELER Promoting Progress in the Wheeler Area

tuesday

Table with 8 columns (Channel, 4 KAMR, 7 KVII, 10 KFDA, 12 KWET, 9 WGN, 5 WTBS, 2 CBN, HEO) and rows listing TV programs for Tuesday.

WARE CHEVROLET, KOSHARE SHOP "FINE JEWELRY", RIVES INS. AGENCY

wednesday

Table with 8 columns (Channel, 4 KAMR, 7 KVII, 10 KFDA, 12 KWET, 9 WGN, 5 WTBS, 2 CBN, HEO) and rows listing TV programs for Wednesday.

Tell the advertisers on this page you appreciate the Schedule L. & F. REPAIR - R.C.A. & ZENITH -

thursday

Table with 8 columns (Channel, 4 KAMR, 7 KVII, 10 KFDA, 12 KWET, 9 WGN, 5 WTBS, 2 CBN, HEO) and rows listing TV programs for Thursday.

LEWALLEN INSURANCE - ALL LINES - 114 E. Texas Phone: 826-5719 Wheeler

friday

Table with 8 columns (Channel, 4 KAMR, 7 KVII, 10 KFDA, 12 KWET, 9 WGN, 5 WTBS, 2 CBN, HEO) and rows listing TV programs for Friday.

NOTICE

BRISCOE SCHOOL DISTRICT The Briscoe Independent School District hereby announces that all persons are entitled to receive an exemption of \$5,000 from the Market value of their residence homestead for the purpose of school taxes.

land use. The application classifies the value of land considering the agricultural use to which the land is principally devoted and the average annual net income derived from its use.

NOTICE HOMESTEAD EXEMPTION ALLISON INDEPENDENT SCHOOL DISTRICT

The Allison Independent School District hereby announces that all persons are entitled to receive an exemption of \$5,000 from the Market Value of their residence homestead for the purpose of school taxes.

NOTICE AG USE VALUE FOR SCHOOL TAXES INDEPENDENT SCHOOL DISTRICT

Briscoe Independent School District hereby announces that all persons owning land that is currently devoted principally to Agriculture and that has been devoted principally to agricultural use for at least five (5) of the preceding seven (7) years may file an application of agriculture

to qualify for these exemptions, and application must be filed with the school district tax office by April 30, 1980.

LEGAL NOTICE

TO: FRANK RAY KNIGHT and to all whom it may concern, GREETINGS:

You are hereby commanded to appear and answer before the Honorable District Court 31st Judicial District, Wheeler County, Texas, at the Court house of said county in Wheeler, Texas, at or before 10 o'clock a.m. of the Monday next after the expiration of 20 days from the date of service of this citation, then and there to answer the petition of VIOLET M. KNIGHT, Petitioner, filed in said Court on the 16th day of February, 1979, against Frank Ray Knight Respondent(s), and the said suit being number 7554 on the docket of said Court, and entitled "In the Matter of Marriage of VIOLET M. KNIGHT and FRANK RAY KNIGHT" the nature of which suit is a request to receive a divorce and decree, and request that the Court find that Respondent has no interest in Lots 1 and 2, Block 11, Original Townsite of Wheeler, Wheeler County, Texas, and that all of said property be awarded to the Petitioner herein.

To qualify for these exemptions, and application must be filed with the school district tax office by April 30, 1980. Applications forms are available at the school tax office:

Hemphill County: James McCarley Box 65 Canadian, Texas 79014 WHEELER COUNTY Thurman Rives 115 Texas Wheeler, Texas 79096 John W. Solis, Jr. Superintendent of Schools

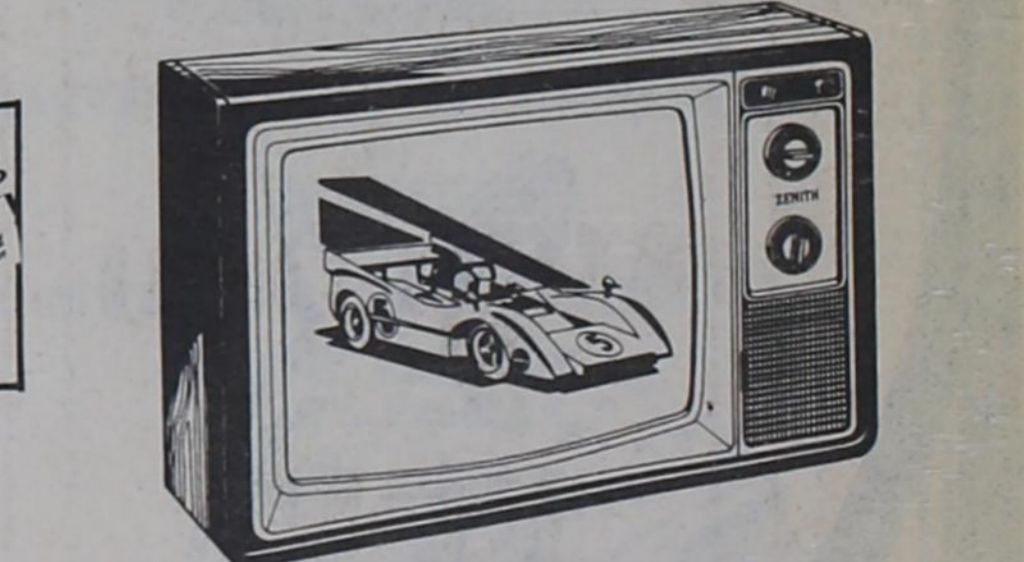
NOTICE AG USE VALUE FOR SCHOOL TAXES ALLISON INDEPENDENT SCHOOL DISTRICT

Allison Independent School District hereby announces that all persons owning land that is currently devoted principally to Agriculture and that has been devoted principally to agricultural use for at least five (5) of the preceding seven (7) years may file and application of agriculture land use. The application classifies the value of land considering the agricultural use to which the land is principally devoted and the average annual net income derived from its use.

An application must be filed with the school district tax office by April 30, 1980. Applications forms are available at the School Tax Office:

Hemphill County: James McCarley Box 65 Canadian, Texas 79014 WHEELER COUNTY Thurman Rives 115 Texas Wheeler, Texas 79096 John W. Solis, Jr. Superintendent of Schools

SALE 1980 ZENITH COLOR TV



The GREENBRIER • L 1936W-19" diagonal Zenith Color TV Decorator Compact Table Model. Tri-Focus Picture Tube. Triple-Plus Chassis. Electronic Power Sentry. Super Video Range Tuner. Dark Brown with Nickel-Gold color trim. Durable polystyrene cabinet.

SALE SPECIAL \$499.95 Reg. \$529.95

L & F REPAIR 110 W. Oklahoma Phone: 826-3241

COUNTY AGENTS Report

JOE DON KING County Extension Agent

Annual Shortcourse To Aid Swine Producers

New techniques to help improve production and management in a changing swine industry will be provided West Texas pork producers at the annual Texas A&M University Swine Shortcourse at Plainview, Wednesday, April 9.

Leading animal scientists and producers from Texas, Kentucky, Kansas & Missouri will conduct the day long program at the Hale county Agricultural Center south of Plainview. There is a \$7 registration fee for the course and lunch is provided. Dr. Robert S. Cohen, area swine specialist

with the Texas Agricultural Extension Service.

The course begins at 8 a.m. and adjourns at 4:05 p.m. It is organized and sponsored by the

Extension service. Cooperating with it are the department of animal science at A&M, the Texas Agricultural Experiment Station, Texas Pork Producers Assn., and Texas Pork Producers Board.

The changing swine industry, including an outlook for hog and feed prices and hog numbers, will be presented by Glenn

Grimes. He is a professor and livestock marketing specialist in the department of agricultural economics at the University of Missouri, Columbia, Mo.

A practical swine herd health program will be outlined by Dr. David A. Schoneweis, veterinarian and associate professor in the department of surgery and medicine at Kansas State University, Manhattan, Kan.

Ways they have improved their swine production system will be explained by Lawrence, Tommy and Don Berend, swine producers from Windthorst. Charles Axtell, co-owner of Sunny Side Pork Producers at Springlake, will report on his triple-deck swine nursery.

Swine production costs in various systems will be discussed by Dr. Gary R. Parker, Extension

swine specialist with the University of Kentucky.

The economics of fresh pork plants will be discussed by Dr. Gene Mathia, chairman of the department of agricultural economics at Texas Tech University, Lubbock.

Reports on swine research being conducted by the Texas Agricultural Experiment Station will be given by Dr. D. A. Knabe and Dr. T. D. Tanksley Jr. Knabe

is an assistant professor of animal science with the Experiment station. Tanksley is a professor and swine specialist with the Experiment station and the Extension service. Both are from College Station.

Bryan Ashburn, a swine and grain producer at Plains, will tell how he uses his 80-sow swine operation to sell grain he produces. Moderators for the shortcourse will be Cohen and Dr. William B. Thomas, Extension swine specialist from College Station.

Brand New Leather Saddles
\$200.00 Savings

We Repair Old Saddles! \$798.00 Value

Hwy. 60
Miami
868-4691

Trail Dust Western Supply, Inc.
We will allow you \$5 toward purchase for your gas allowance.



Ext Homemakers Meet Mar. 11

The Wheeler Extension Homemakers Club met March 11, 1980 in the home of Valetta Frankenberg. The meeting was called to order by President Betty Rives. The creed was read by all members present. The devotional was given by the hostess Valetta Frankenberg. Minutes of the last meeting were read and no changes were made. It was decided that we needed to find out more about the cultural arts table that will be at the district meeting April 15, 1980. Wanda Walker brought the program on stress in our day to day life.

Refreshments were served to the following members: Valetta Frankenberg, Debra Hiltbrunner, Charlene Nutley, Betty Rives, Laura Underwood and Judy Wollard. One guest was served, Wanda Walker.

The next meeting will be held at Laura Underwood's with Linda Daughtry bringing the program on household cleaning hints.

The Wheeler Extension Homemakers Club met March 25, 1980 in the home of Laura Underwood. The meeting was called to order by President Betty Rives. The creed was read by all members present. Devotional was given by Sandi Quaid. Roll call was answered by "My Biggest Household Cleaning Problem." Minutes were read and no changes were made. Linda Daughtry reported that club boundaries had been drawn up & if minorities were inside the boundaries, affirmative action efforts (or enlistment of minorities) had to be made. Saturday May 3 the Shamrock Evening Club will be hosts of the Mothers Day Luncheon. There will be a seminar in April on "Refueling at Middle Age." Thursday, April 10, 1980 at 7:30 p.m. there will be a seminar in Shamrock on EMT training. This will take the place of the 1st April meeting. The club is to make 100 cookies

BLOOD PRESSURE CLINIC

There will be a free Blood Pressure Clinic for all Wheeler County residents regardless of age, Thursday, April 3, 1980. It will take place in the south end of the Old Nicholdson Memorial Hospital on Canadian Street from 9:30 - 12:00 a.m.

This clinic is sponsored by the Retired Senior Volunteer Program and the Texas Agricultural Extension Service.

Educational programs conducted by the Texas Agricultural Extension Service serve people of all ages regardless of Socio-economic level, race, color, sex, religion or national origin.

REVIVAL APRIL 6-13

SERVICES: 7:00 Each Evening

Evangelist: Rev. Lewis Ellis
Song Leader: Dennis Julian

FIRST BAPTIST CHURCH

MOBEETIE, TEXAS

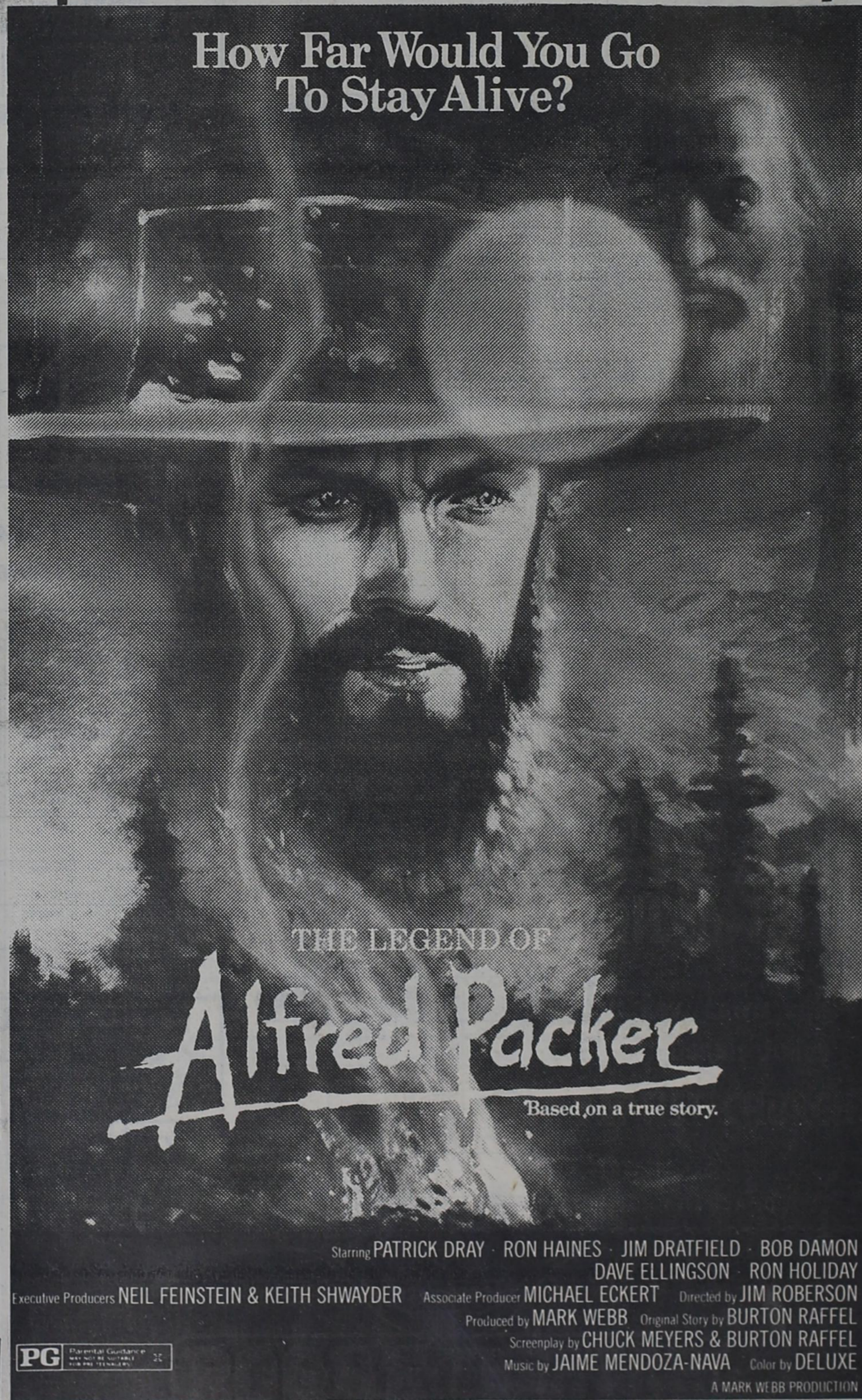
PASTOR: JOHN HANSARD

TELEPHONE
826 3078

ROGUE THEATRE

Wheeler, Texas 79096

2 DAYS ONLY APRIL 11 & 12
9:00 P.M.



How Far Would You Go To Stay Alive?

THE LEGEND OF
Alfred Packer
Based on a true story.

Starring PATRICK DRAY · RON HAINES · JIM DRATFIELD · BOB DAMON
DAVE ELLINGSON · RON HOLIDAY

Executive Producers NEIL FEINSTEIN & KEITH SHWAYDER Associate Producer MICHAEL ECKERT Directed by JIM ROBERSON

Produced by MARK WEBB Original Story by BURTON RAFFEL

Screenplay by CHUCK MEYERS & BURTON RAFFEL

Music by JAIME MENDOZA-NAVA Color by DELUXE

A MARK WEBB PRODUCTION

SEE ADS ON AMARILLO TV
**ALIVE WITH
EXCITEMENT!**

ADVANCE TICKETS
NOW ON SALE

SPRING MAGIC

**Swing into
SPRING!**

with fashions from . . .

The Dot Shop

"The Spot for Fashion"

Phone: 806/826-3111

P.O. Box 208

WHEELER, TEXAS 79096

We have 1980 Spring Fashion trends in:
Dresses, Blouses, Slacks Jeans, Junior Tops,
Short Sets and Lingerie

Layaway now for Summer
Gift Certificates
Visa

Easter

EGG HUNT

SUNDAY, APRIL 6

2:30 P.M.

at the south end of Air Strip

Northeast of

WHEELER, TEXAS

4 AGE GROUPS

1-3, 4-6, 7-9, 10-12

Sponsored by:

BEN FRANKLIN
LOYD'S & STREET'S, Inc.
408 S. Main Phone: 826-5868
Wheeler, Texas



JR. HIGH TRACK TEAM WINS MEET

Wheeler Jr. High Boys Track won the eastern panhandle district track meet here in Wheeler last Thursday. Wheeler boys scored 174 points followed by Phillips with 162 and Claude with 125 points. Wheeler won 4 events, the 440 yard dash, 1320 yard run, shot put, and the pole vault. Winners in each event were: 440 yard relay, Wheeler, 3rd. 880 yard run, Bryan Johnson—3rd, Kelly Kyseth—6th. 120 yard Int. Hurdles, Bill Watson—4th, Steven Snapp—6th. 100 yard dash, Mark Moore—3rd, Sid Whiteley—4th. 440 yard dash, Mark Moore—1st, Bryan Johnson—4th, Larry Trevino—6th. 220 yard low hurdles, Bill Watson—2nd, Kelly Kyseth—6th. 1320 yard run, Ronny Jones—1st, Justin Miley—3rd. One Mile Relay, Wheeler—2nd. Long Jump, Bill Watson—2nd, Mark Moore—3rd. Discus, Lance Reames—4th, Duncan Porter—5th. High Jump, Mark Moore—3rd. Shot Pt, Lance Reames—1st, Bill Watson—3rd, Manson Porter—4th. Pole Vault, Steven Snapp—1st, Sid Whiteley—2nd, Kelly Kyseth—3rd. Shamrock Meet Saturday. 400 Meter Relay, Wheeler—5th. 100 Yard Dash, Sid Whiteley—5th. 440 Yard Dash, Mark Moore—5th, Sid Whiteley—6th. 220

Tennis Team To Enter Regional

The results of the District 2B Tennis Tournament are in and once again Wheeler High School will have a team representing the black and gold at the Regional Tennis Tournament. The doubles team of Lori Lee and Missy Wiggins finished second last week at the District Tournament held at Canadian and for the second straight year have qualified for region in tennis. Lee and Wiggins were defeated in the finals by Ehrlich and Sken of Follett 6-7, 6-4, 6-4 for their second place finish. Both teams will represent District 2B at the regional tournament.

In the singles competition, Ruth Ann Alexander finished 4th out of 15 contestants. Ruth won her first two matches in advancing to the semifinals before running into stiffer competition. She was defeated in the match played for 3rd place by Kim Eggleston of Higgins 6-2, 6-1. Patty Wilyard of Higgins won the singles competition and advanced to the regional tournament.

Wheeler's girls will be participating at the Regional Meet April 17 through 19 at Levelland. Tennis coach Dewey Shepard feels that the girls should do well at the Region tournament. "Lori and Missy are both playing good tennis right now. They lost a tough 3 setter at district, but still played well. How far they go will depend a great deal on the tournament bracket at Region. We'll just keep working hard and see what happens."

Here & There

Laura Guthrie
Last week, on Friday, Ollie Jaco had a birthday. She was eighty years old. Her daughters had long planned a party. But Ollie was in the hospital. That didn't stop the party. The Dr. released her for an hour. When I got there, along with dozens of other friends, Ollie was in her lounge chair, dressed in her pretty bedroom clothes, with a gay afagan draped across her lap, enjoying her greetings and congratulations. Her daughter, Janice Marr, from Moore, Oklahoma, had come on Wednesday. She had helped Lavelle, the daughter that stays with Ollie, with all the preparations. A friend, Suzanne Sandifer, helped serve the beautiful cake and delicious punch. Ollie stayed out a little over her time, but she had had her party. It is because of her dauntlessness and determination, that she was able to attend. A character like that is to

be admired.

Bennie Mae and Gordon Whitener are spending a few days in Wheeler. They have recently moved to Knox Village in Lubbock. They like the place quite well and are contenting

Wheeler Students Begin Reading

The first grade students in Wheeler are headed for the stars. The annual reading contest has begun. Independent reading is stressed as the children read from the school, public, and home libraries. As a book is read, parents are writing the book title and signing their name as an indication that the book was read.

Each book title earns a star for the child's book record. Already, stars are shining and reading is improving. The contest will end in early May. Parents are encouraged to listen to the reading and send the notes.

SAN ANGELO RELAYS ARE ENTERED

The Wheeler Mustangs competed in the San Angelo Relays this past weekend. A total of 65 teams were entered in the meet which was divided into four divisions. Wheeler was one of the two Class B teams participating with fifteen Class A teams in Division IV.

Ty Henderson placed 6th in the 1600 meter run with a time of 4:49.57 while Kevin Andis turned in his best effort in the 800 meter run with a 2:06 to reach the finals.

In the field events, Mike Gallagher earned a 5th place in the discus with a toss of 128'8". Benny Baker also received 5th place in the long jump with a 20'2 1/2" jump. Paul Bentley

placed 6th in the pole vault with a vault of 11'6". Coach Allen said that the vaulting began at 11'6" which is unusually high for the opening vault. Only six vaulters were able to clear the opening height.

Coach Allen was extremely pleased with the performance of these athletes. They faced some of the best competitors in the state in this meet. He felt that the team gained valuable experience through this trip.

Wheeler will host the Mustang Relays on Friday, April 4. If anyone is interested in helping with the meet, please contact Joe Allen at 6-5534. Everyone is urged to come out and watch the junior high and high school boys of Wheeler in competition.

themselves to make it their home.

Mrs. Nettie Luttrell, who has been staying in Canadian for several months, is spending several days here in her home with her daughter Mona Guinn. There are a good many evidences that it is spring. Certainly these howling winds are indigitive. I hear the guys talking about going fishing—what kind and how big the biting ones are. The Ed Rileys are in Arkansas indulging in this sport. They may have other business there, but I understand Ed was getting his fishing gear in order.

Ida Farmer and Alta Jean Davis took off on a little spree last Sunday. They drove to Canyon where they visited with Ida's son and family. Alta Jean drove on to Amarillo and spent the night with her sister. She attended some business the next day. The both returned to Wheeler the evening. VOTE! Vote confidence! Just Vote!

Allison H.E. Club Regular Meeting

The Home Extension Club of Allison will meet in the home of Vivian Wallace, April 7th at 1:30 P.M. The lesson topic will be Household Cleaning Tips and will be presented by Linda Daughtry the Home Extension Agent of Wheeler County. Everyone is invited to attend. There will be a Texas Home Extension District Meet at White Deer April 15th. Those wishing to attend need to enroll by the 3rd. You may call Wanda Walker to enroll, Phone: 2349.

CARD OF THANKS

We would like to thank the following merchants and individuals who furnished trophies for the Volleyball tournament, Kelton Gin, Britt Ranch, Taylor Petroleum Co., Hibler Implement, Pete Burton Ford, Wheeler Lumber Company and T. J. Austin.

Also we want to thank all participants who helped to make this tournament a success. The proceeds went to help Girlstown.

Thank You

Kelton Lions Club & Kelton Volunteer Fire Dept.

If you find it hard to screw a wood screw into wood, coat the threads of the screw with soap and it should slip in more easily.

WHEELER VOLUNTEER FIRE DEPARTMENT

WHEELER FIRE DEPT. DONATION

Wheeler Volunteer Fire Department was recently presented a

check for \$100 in appreciation for services rendered to the Wheeler Church of Nazarene by Germania Farm Mutual Insurance whose insured property was damaged by fire on Feb. 21, 1980.

Med. Emergencies Seminar Planned

Wheeler County Emergency Medical Service as a part of its public service program will present a Seminar featuring Emergency Life Saving Techniques on Thursday, April 10 at 7:30 p.m. in the Fellowship Hall of the First United Methodist Church in Shamrock, Texas.

The program is being sponsored by the Wheeler County Family Living Committee, Extension Homemakers Council and Texas Extension Homemakers Association.

The seminar will include a film and comments by Betty O'Rourke, EMS Regional Coordinator as well as Emergency Life Saving Techniques by Wheeler County Paramedics involved in the program are Carl Knoll and Don Carlton of Shamrock, Tommie Hennard of Wheeler and Dwight Tipps of Briscoe.

Wheeler County Extension Homemakers Clubs will be serving refreshments during the intermission. There will be no charge for this program. Programs conducted by the Texas Agricultural Extension Service serve people of all ages regardless of socio-economic level, race, color, sex, religion or national origin.

If you would like further information regarding this seminar you may contact Mrs. Faye Martin at 256-2314 in Shamrock or Linda Daughtry, County Extension Agent (Home Economics) at 826-5243 in Wheeler.

In a letter to the Wheeler Fire Dept it was stated that the local department has been a tremendous help in keeping fire losses to a minimum not only for Germania policy holders, but for all people in the area. The fire department services not only help keep fire insurance rates low as possible, but also save lives as well, together with a tremendous amount of valuable property.

A check will be presented to the Fire Department each time they make an effort to protect one of Germania Farm Mutual Policy holders.

The check for \$100.00 was presented to Fire Chief Daryl Snelgrooves by local Chapter Germania Secretary Rita Fillingim.

Allison News

Darrel Harrison of Amarillo and Willis Harrison of Canyon spent the weekend with the Bruce Harrisons. They kept busy building corral fences. Darrel also visited the John Gilmer family.

Juanita Boydston and Vivian Wallace enjoyed Thursday, and Friday at Clinton, Okla. Vivian went on to Oklahoma City on business Friday.



The octopus stalks its prey until it can drop down on it from above and encompass it with its eight arms.

Senior Banquet

The annual banquet for the 1980 Senior Class will be held next Monday, April 7th, at 7:30 p.m. in fellowship hall at the 1st Baptist Church, Wheeler. The banquet is given in recognition of the Seniors and their completion of twelve years of education. The W.M.U. of 1st Baptist sponsor this event. A barbeque meal will be served, and entertainment by Bruce Ayers, music evangelist and entertainer, will follow. All Wheeler Seniors are invited to an evening of fun & fellowship.

GOT IT MADE AT EIGHTY

We oldsters sure do get away with a lot just because we have managed to keep breathing longer than most folks, I have just celebrated my 80th Birthday and I've got it made.

If you forget someones name or an appointment or what you said yesterday, just explain that you are 80 and you will be forgiven, if you spill soup on your tie, or forget to shave half of your face, or take another mans hat by mistake, or promise to mail a letter and carry it around in your pocket for 2 weeks, just say I'm 80 you know, and nobody

will say a thing you have a perfect alibi for ever thing when you are 80. If you act silly, you are in your second childhood. Being 80 is so much better than being 70 at 70 people are mad at you for everything. But if you make it too 80 you can talk back argue, disagree and insist on having your own way because everybody thinks you are a little soft in the head.

They say that life begins at 40 not true if you ask me, life begins at 80.

Written By Riley Richerson for Ollie Jaco 80th Birthday

LINES from LINDA

Linda Daughtry — CEA (Home Economics)

Easter Breakfast — A Spectacular Start
Make Easter breakfast a "spectacular start" for a very special day.

Add your own creativity to a sound nutritional basic plan, and make breakfast memories they'll remember a long time.

Breakfast should provide about one-fourth of the day's calorie and protein needs — that's easy when you rely on the basic four food groups.

Include something from the meat group, milk group, breads-cereals group and the fruits-vegetables group.

Festive Fruits, Vegetables
Start breakfast with a bowl of fresh fruits — top that with a scoop of sherbet, frozen ice milk or frozen yogurt.

Put a rabbit face on that with raisins, add toothpick ears, and you've got instant delight — for young and old alike.

Or, your family might like a broiled grapefruit half flavored with cranberry or orange juice.

A bowl of fresh dewberries or blackberries with cream and sugar is a sure hit, too. (Optional: If you're on a diet, then use artificial sweetener and skim milk.)

For a chilly Easter morning, serve a mug of hot tomato juice or soup flavored with basil.

Creative Cereals
Dress up your hot or cold cereals with a bunny face, too.

Banana coins and raisins make impressive eyes, a mandarin orange wedge makes a neat mouth, and a grape or cherry can be the nose.

Serve apple wedges on the plate underneath the bowl or an attractive collar.

Bunny Bread
Bunny bread will fascinate almost everyone.

Simply take yeast or biscuit dough, roll into long round "fingers" about 11 inches long. Tie two "fingers" into a loose knot, and pull the pointed ends

upward to form ears. Use raisins for the eyes and mouth.

Another favorite Easter tradition might be Hot Cross Buns, usually available at bakeries around Eastertime if time doesn't permit making them from scratch.

Also, you can cut toast into different festive shapes.

Eggs In A 'Nest'
Serve poached eggs in rice nests for an exciting breakfast entree.

To serve six, you'll need three cups cooked rice, six slices cooked bacon (crumbled), one cup diced cheddar cheese, six eggs and salt and pepper to taste.

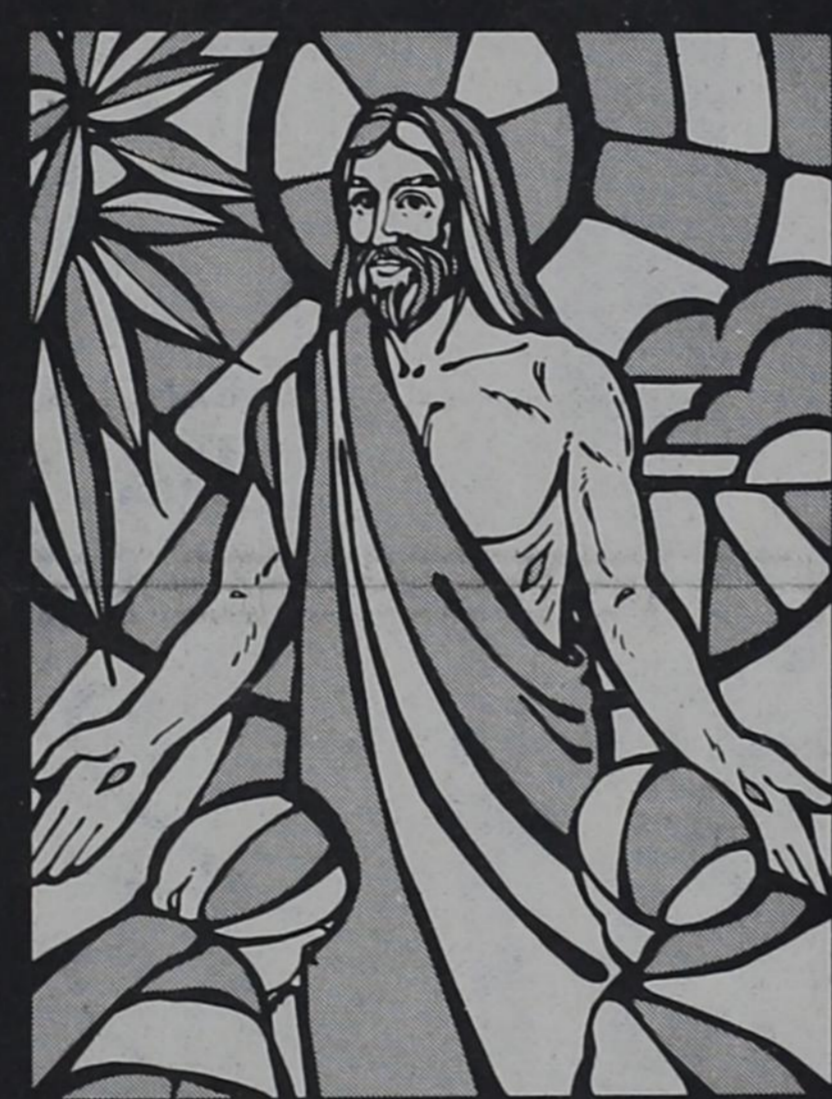
Simply mix the rice, bacon and cheese. Put the mixture into a greased flat baking dish (9 1/2 x 13 inches). Make six indentations in the rice, and drop an egg into each. Season to taste. cover and bake in 350 degrees F. oven until the eggs reach a desired degree of doneness.

'Italian' Eggs
Another favorite might be pizza eggs. Just make scrambled eggs, and while they're cooking, add oregano, garlic powder, mushrooms or cooked sausage. Spread tomato sauce on toasted English muffins, top them with the eggs and sprinkle with parmesan cheese.

Morning Milk Marvels
Milk-group items round out the Easter breakfast menu. Choose cottage cheese or plain yogurt in a melon wedge, or make cheese toast or a delicious cheese-and-bacon quiche.

Or try breakfast drinks or shakes made in the blender with milk and fresh fruits or spices, such as cinnamon or nutmeg — or if no problem, make Easter eggnog.

Remember, for a good start on Easter morning — or any morning, eat something! Be sure to include a protein source and a serving from each of the food groups.



Attend The Religious Service Of Your Choice This Week

A Spiritual Message To The People

Why go to worship? To praise God for his blessings, to have vision and strength midst life's burden, to drink from the inexhaustible well of God's truth, to let eternity speak to the minutes, to encourage God's children beside us, to lay a solid foundation for the next generation, to keep from being blinded by the cares of this world and the snare of many things, to have our lives centered in God and not self-centered, to find courage for service beyond the doors of the house of prayer, and to encourage others to join us in prayer and praise.

- MAC'S ALIGNMENT
- LOYD'S & STREET'S BEN FRANKLIN Lyndon & Novelne
- HAMPTON'S "66" TRUCK STOP
- WHEELER REDI MIX
- RIVES INSURANCE AGENCY
- PIERCE'S TRADING POST
- PETE BURTON FORD
- WHEELER ABSTRACT
- HYLAND'S PHARMACY
- TOMMY & BETTY HENNARD & FAMILY
- B.J.'S WEARHOUSE Jimmie & Bobbye
- HIBLER IMPLEMENT
- THRIFTWAY of Wheeler
- CROSS CAR CENTER
- ROGUE THEATRE Richard Nall, Manager
- McILHANY DRY GOODS
- WIL-MART

- LEWALLEN INSURANCE AGENCY
- FIRST NATIONAL BANK in Wheeler
- ANGLIN'S SALES
- THE DOT SHOP
- ALBERT'S SHAMROCK SERVICE Albert & Hannah
- WARE CHEVROLET
- HARVEY'S FAMILY RESTAURANT
- M & M GIN
- SOUTHWESTERN PUBLIC SERVICE CO.
- BARNES ELECTRIC Earl & Pauline
- HOBBY KORRAL
- LEE HARDWARE & FURNITURE
- WHEELER LUMBER COMPANY
- PRODUCTION CREDIT ASSOCIATION
- ROARK'S FINE FOODS
- U — U ELECTRIC SERVICE
- KORSHARE SHOP Fine Jewelry



Loaded with savings

SUE BEE STRAINED HONEY

24 oz. Jar \$1.69

DEL MONTE WHOLE NEW POTATOES

2 79¢
303 Cans

RED & WHITE APPLE SAUCE

303 Can 43¢

FRESHE BROWN & SERVE ROLLS

12 in Pkg. 49¢

RED & WHITE DONUTS

14 oz Box 85¢

SWANSON BEEF BROTH

13 oz Cans 2 55¢

MOTT'S APPLE JUICE

Qt. 79¢

LIPTON FAMILY SIZE TEA BAGS

24 per Box \$1.59

PALMOLIVE Liquid Dishwashing DETERGENT

32 oz. 1 29



PRICES GOOD : THURSDAY, APRIL 3rd THROUGH SATURDAY, APRIL 6th

LONGHORN DRY CURED HAMS

WHOLE or HALF \$1.39

HAM PORTIONS \$1.15

CENTER CUT HAM SLICES \$2.29

BORDEN WHIPPING CREAM 1/2 pt. 39¢

SUNKIST ORANGES 25¢

SLICER TOMATOES 37¢

TASTY GREEN ONIONS 2 Bunches 39¢

SWEET POTATOES 27¢

RANCH & RAIL BACON 2 lb. \$1.85

KLEENEX TISSUE 200 Ct. Box 75¢

KRAFT BARBEQUE SAUCE 18 oz. Bottle 75¢

KRAFT COLBY HALFMOON LONGHORN CHEESE 10 oz. Pkg. \$1.39

PILLSBURY BIG COUNTRY BISCUITS 12 oz. Can 39¢

GLADE AIR FRESHNER 7 oz. Can 69¢



KLEENEX PAPER TOWELS

Jumbo Roll 59¢



KRAFT MIRACLE WHIP SALAD DRESSING 75¢

RED & WHITE WHOLE KERNEL CORN 3 303 Cans \$1

SHAWNEE CORNBREAD MIX 2 47¢

RED & WHITE SWEET PEAS 303 Can 39¢

SOFT PARKAY MARGARINE 2-8 oz. Cups 79¢

WINDEX with Spray

22 oz. 99¢