



THE WHEELER TIMES

(USPS 681-960)
VOLUME 50, NUMBER 36

THURSDAY, AUGUST 9, 1984

SINGLE COPY 20c

County Water Board "Clears The Air"

At the special meeting of the Board of Directors of the Wheeler County Water Supply District which was held on July 23, 1984, discussion arose relative to certain information and misinformation that has appeared in local newspapers relative to the Sweetwater Dam Project. It was decided that the Board should issue a statement in an effort to "clear the air" and furnish the people with the factual information developed by the board during its work on the project, and with these facts you the voters can decide whether or not to build this project. The following statement was developed and unanimously approved by the Board:

WATER NEEDS:

1. Engineering reports were presented to us from both the City of Shamrock and the City of Wheeler which show that water levels in all city wells of both cities have been declining since records have been kept.
2. Reports have been made to us that show that in some isolated areas water well levels have risen but over all of Wheeler County the level of our main water table, the Ogallala Aquifer, has been and still is dropping.
3. When the City of Wheeler approximately 7 or 8 years ago had to drill new water wells for water for the City, 17 wells were drilled all around

the City before a site was found that would produce sufficient water needed for the City.

PROPOSED RESERVOIR

1. The Sweetwater Creek Reservoir would be located seven miles east and two miles north of Wheeler, Texas.
2. The Reservoir would impound 65,760 acre-feet of water. (Reference - Greenbelt Lake has 59,100 acre-feet).
3. The Reservoir would cover approximately 2,530 acres of land.
4. The Reservoir would have an average depth of 44.8 feet at the dam.
5. The Reservoir would have an average depth of 26 feet over its entire areas.
6. The Reservoir has been designed to hold all siltation for fifty years without affecting the number of acre feet it was designed to impound.
7. The Reservoir has been designed with a core in the dam that would not allow seepage.
8. All of the water in the project is dedicated to the Wheeler County Water District.
9. Only land sufficient to provide for the 100 year probable flood elevation, 3,240 acres will be taken, with an easement on an additional 660 acres to provide for the probable maximum flood elevation.
10. The historical flow of Sweetwater Creek shows that the reservoir should fill within three years after

completion of the reservoir. This is based on actual measurements of water flow for 35 years.

OTHER FACILITIES IN PROJECT:

1. Part of the approximately \$27 million cost of the project includes pipelines to Shamrock, Wheeler, Mobeetie, Briscoe, Allison and Kelton.
 2. Also included are storage facilities for water in Briscoe, Allison and Kelton.
 3. Also included are distribution lines for water in Briscoe, Allison and Kelton.
 4. There is also a large water treatment plant included in the cost so the water would be potable.
 5. This cost includes engineers fees of 5% to 6% for the design inspection, and acting as manager of construction of all phases of the project.
- ### HISTORY OF THE PROJECT:
1. Red River Authority beginning in 1963, at the request of the City Councils of Wheeler and Shamrock and the Wheeler County Commissioners Court, applied for a permit from the Texas Water Commission for this project, conducted on-site tests had plans prepared and fought legal battles which attempted to stop these things.
 2. Red River revived these efforts in 1982, again at the request of the City of Shamrock, Mobeetie and Wheeler and Wheeler County Commissioners Court and with proclamations from the School Boards of Allison, Briscoe, and Kelton.
 3. The Wheeler County Water Dis-

trict, contiguous with the boundaries of Wheeler County was established by the legislature in 1983.

4. The voters of Wheeler County confirmed the establishment of the Wheeler County Water District in an election on August 13, 1983.
 5. The Wheeler County Water District and the Red River Authority have been working out the details of a contract in connection with this project since August 1983.
- ### FINANCING OF PROJECT:
1. The total cost of the project according to Engineers estimates, revised as of July, 1984, is \$27,323,000.
 2. The engineering firm preparing these plans and specifications have built more lakes than any other engineering firm within the State of Texas (Over 140) and have had many of their latest projects contracted for, for less than they estimated.

Continued Page 13

Water Polo Tourney

The Wheeler Volunteer Fire Department is hosting a County Wide Water Polo Tournament to be held August 11th, from 3:00 P.M. to 5:00 P.M.

Area firemen will be testing their skills and luck against each other to find the best polo players.

Disc Jockeys, Dee Sanders and Bill Coleman from radio station KECO will be on hand from 1:00 P.M. to 3:00 P.M. fine tuning their polo skills.

The action will take place at the intersection of 2nd and Canadian Streets on the Wheeler school parking lot.

The public is welcome to attend and cheer for the contestants of their choice.

Walking ...



Some of you may have seen a strange sight if you went to Pampa on Monday or Tuesday. Bob Wieland is walking across the nation. However, he has no legs. Bob lost both legs in Vietnam. He is on a "walk for hunger". While serving his country in Vietnam, he saw starving and diseased children rummaging through garbage for rotten scraps of food. He determined then and there that one day he would do something to help. People sponsor Bob's walk across America by sending \$5.00 for each step they wish to sponsor. The money goes to hunger relief organizations of proven record, such as the Salvation Army, World Vision, Food for the Hungry, and others.

Bob Wieland's journey began at Knott's Berry Farm in Southern California and will span 34 months and 6,000,000 steps, ending at Washington, D.C. Prior to Vietnam, Bob was negotiating a contract with the Philadelphia Phillies to play professional baseball. After losing his legs, he started lifting weights as a rehabilitation tool. Eventually, Bob broke the World Record in the bantam weight division competing against able-bodied men. Officials refused to sanction his 303 pound bench press lift, however, because of a rule that says shoes must be worn during competition. It is somewhat difficult to get shoes on with no legs.

Bob will be lifting weights prior to giving his testimony for Jesus Christ in the Sunday evening service at a Christian Center in the 7:00 p.m. service. Bob has appeared on "Good Morning America", "Real People", "That's Incredible", "700 Club", and the "PTL Club". Since his walk began, more than 300 people have been born again through his witness, and of them along the highway a they stopped to visit with him. He plans to see and hear this unusual man this coming Sunday night, August 12.

OFFICE OF THE COUNCIL

PROCLAMATION

WHEREAS: The support of an understanding and informed citizenry is vital to the planning and construction of public works programs and systems such as water, sewer and other types of facilities; and

WHEREAS: the health, sanitation, safety and general well-being of the the county depends, to a great degree, on these services and facilities; and

WHEREAS: the present and future well being of the citizens of this county depends on adequate supply of water and the proper use and distribution of this water; and

WHEREAS: retaining and supplying this water to the citizens of Wheeler County by the Wheeler County Water Supply District; the present water supply is from two wells which were drilled in 1977. On January 12, 1977 water level in well #1 was 28 feet; July 24, 1984 it stands at 42 feet, a decline of 14'. Well # 2 on January 13, 1977 was 29 feet to water, July 24, 1984 it stands at 52', a decline of 23 feet. Peak pumpage on July 15, 1984 was 1,047,000 gallons of water. Prior to the drilling of these two wells in 1977 the City's water supply came from 4 wells of which 3 are dry holes today; now therefore

BE IT RESOLVED that we, THE CITY COUNCIL, of the City of WHEELER, TEXAS does hereby call upon all citizens to go to the polls AUGUST 11, 1984 and cast a "yes" vote for propositions No. 1 and No. 2 on the ballot.

IN WITNESS WHEREOF, we have hereunto set our hands and caused the official seal of the City of Wheeler, Texas to be affixed.

Done at the City of Wheeler, Texas, this 3 day of August, 1984.

Mayor
Councilman
Councilwoman
Councilman
Councilman

WHEELER REGISTRATION AUG. 17

Elementary registration, K-8 will be Friday August 17 at 9:00 a.m. All kindergarten and first grade students must have immunization records and birth certificates. All new students must have immunization records.

A list of supplies for the Elementary students will be posted in Ben Franklin's.

Junior High registration will be Friday August 17 at 9:00 a.m., come and go.

High School registration will be Friday August 17. 12th grade, 9:00-10:30, 11th grade 10:30-12:00 10th grade 1:00-2:30 and 9th grade 2:30-4:00.

First day of school will be Monday, August 17.

High School Schedule

Period	Time
Tutorial	8:00-8:40
1	8:45-9:40
2	9:43-10:38
3	10:41-11:36
4	11:39-12:34
Lunch	

Kelton Schools To Open Friday, Aug. 17

Supt. N. Dean Johnson announced that Kelton School will open the 1984-85 school year with the students coming to school Friday, August 17, 1984 at 8:45 AM. No breakfast will be served on this day. However, lunch will be served and breakfast will be served the following Monday. Buses will run the regular routes, including the kindergarten route at 11:30 AM.

There will be a general assembly at 9:00 AM in the gymnasium. For the remainder of the day, students will be enrolled and books checked out. A short schedule of classes will be run so that the students can determine the supplies that will be needed in any particular class.

A full staff has been employed for the school year. They are as follows: Jr. High-High School Principal and Science-Ross Coffey; Elementary Principal and Third Grade-Deaton Williams; Special Education-Earlene Rose; Kindergarten-Cara Killingsworth; First Grade-Ann Killingsworth; Second Grade-Katti Shutt; Fourth Grade-Larry Hampton; Fifth Grade-Barbara Austin; Sixth Grade-Linda Davis; Business-Freida Robason; English-Phyllis Macmillan; History and Art-Sylvia Reames; Math-Lisa Charton; Home Economics- Suzane Hampton; Vocational Agriculture-Don Johnson; Principals Secretary-Jenny Coffey; Library Aide-Glen Waldo, Jr.; Supt. Secretary-Kim Ray; Cooks-Barbara Harris and Coleen Alls; Custodians-George Valencia and Jennie Lewis.

There are several new State Mandated rules that affect students. These will be explained to the students in the general assembly and to the parents in a meeting yet to be announced.

Continued Page 4

Open House Slated at Wheeler I.S.D. Aug. 20

All parents of students attending the Wheeler Schools are encouraged to attend the OPEN HOUSE ON Monday night, August 20th at 7:30 PM

Parents are invited to a general orientation session to be held in the Auditorium that will explain the new school reforms initiated for the 1984-1985 school year. Eligibility requirements, tutorials, school In-Service, TABS tests, Wheeler ISD testing program, and other areas of concern will be explained to parents.

Following the orientation parents are encouraged to meet the teachers and visit the classrooms.

The school schedule will be as follows for the 1984-1985 school year:

Awards ...



Teresa Williams, 17 year old daughter of Lavon and Wanda Williams has been named to receive two prestiaes awards.

She will be listed in the next edition of The National Honor Roll, an organization which dedicates itself to excellence in the field of academics. The National Honor Roll is an annual publication of the National Leadership Organization which lists the biographies of students throughout the country who have achieved scholastic excellence.

Teresa will also be listed in the next edition of Who's Who Among American High School Students.

Continued Page 4

Allison I.S.D. Begins 1984-85 School Year

Classes, for the Allison I.S.D. School Year 1984-85, will begin at 8:30 A.M., August 15, 1984. School buses will be in operation and the cafeteria will serve breakfast and lunch.

Bus schedules are: begin the route at 7:10 A.M., arrive at school at 8:10. Afternoon: the buses will begin the routes at 3:45 p.m.

The school building will be open to students at 8:05 a.m., breakfast will at school at 8:00 a.m., breakfast will be served from 8:10-8:25 a.m. daily.

Class Registration, will be 2:00-3:00 p.m., August 14, 1984. Students (Grades k-5) will register with the classroom teacher of their grade level.

"Pre-registered Kindergarten" students need not register again. Kindergarten students not "Pre-registered" will need to furnish BIRTH-CERTIFICATES and IMMUNIZATION RECORDS, and register with the classroom teacher. Both students and parents are invited to come visit with the school staff and to see the new classrooms.

Our new teachers for this year are: Home Economics-Nora Hutto, Second grade-Sandra Gaines, Fourth grade-Machille Henson, English Language Arts-Aubrey Carothers, Science-Floyd Foster, Vocational Agriculture-Carter Trew.

Briscoe Students To Begin School Aug. 16

First day for students of Briscoe I.S.D. will be August 16. Teachers will report for duty August 14. Teachers for the 1984-85 school year are as follows: Carolyn Nicholson, Jo Beth Bates, Arleta Cole, Patricia Morgan, Cecil Reynolds, Joe Woodward, Mary Spradlin, Jack Morgan, Ed Shepler, Sharon Taylor, Pat Graham, Sonya Holder, Bob Downs, Principal, L. Harold Salmon, Superintendent. 1st & 2nd Grade Supplies: 1 Box of 8 crayons (1st grade only), Crayons (2nd grade), several No. 2 pencils, Scissors (blunt end for 1st grade), School Box, Elmers glue or glue stick, 1 Big Chit Tablet, 1 small box kleenex, 1 red grading pencil, 1 bar soap, 12 inch ruler (2nd grade only). 3rd & 4th Grade Supplies: Looseleaf notebook, Filler Paper, Notebook Dividers, Elmer's Glue or a glue stick, Scissors, Crayons, 12 inch ruler, Several No. 2 pencils, School Box, Kleenex, Red Grading pencil.

Hospital Notes

Uld Admissions	New Admissions
7-14 Lola Shira	7-30 C.C. Baird
	7-31 Grace Pettit
	8-2 Michael Hibler
	8-3 Feliptian Patterson
	Willie May
	8-5 Joey Dial
	8-6 Jennie Slaten
	Willard Ingram
	William Heinz
	Minnie Trout
Dismissals	
7-31 Theodore Heide	
	Sandra Woods
	Baby Girl Woods
	Lydia Guffey
8-2 John Allen	
	Margaret Heide
	Minerva Jones
	Grace Pettit
8-4 Michael Hibler	
	Sandra Randolph
	C.C. Baird
8-6 Feliptian Patterson	

Wheeler Fire Dept. Officers Are Elected

The Annual election was held Thursday, August 2nd at the regular meeting. The results were as follows:

Chief Daryl Snelgrooves

Asst. Chief K.D. Ford

Fire Marshal Ken Daughtry

Asst. Fire Marshal Steve Walker

Secretary Riley Atwood

Asst. Secretary Jackie May

Public Relation Officer Robert Ford

Asst. Public Relation Lyndon Loyd

Training Officer Gary Davis

Truck Captains will be appointed by the elected officers at the next regular meeting.

CWE CHAT WITH EDITOR

By Louis C. Stas

This is the last edition of the paper before the election to determine the fate of the Sweetwater Creek Project. I for one, will be glad when ballots are counted.

The Wheeler and Shamrock Chambers of Commerce have placed a brochure in the mail with information concerning the issue. The center two pages show the taxes for properties of different value. Included also are a number of questions and answers. The important thing is to VOTE.

-cwe-

In filling out the rainfall report for August, I reported 1.41 inches of rain. This is certainly not evenly scattered over the county. The rains have been very spotted. With the good cloud cover we had Tuesday evening, we only received 0.03 inches.

Extends Invitation

Wheeler's Elementary teachers are invited to be guests of the Wheeler Kiwanis Club at their regular meeting at noon on Monday, August 13. The program for the day will be a film on the worth of a child.

The club meets in the atrium of the First United Methodist Church.



Continental Singers ...

The "Continental Singers and Orchestra" will perform a live concert of contemporary Christian music on Tuesday, August 14th at 8:00 P.M. at the Wheeler United Methodist Church.

This year's concert theme and newest album is "Come Love The Lord." In addition to featuring medleys from that album, the program will also contain selections from "O Come All Ye Faithful" (the first Continental Christmas album) and "Dreamer" (1984 Dove Award Winner-Best Musical). Songs in this year's program include "Majesty," "By Our Love," "Great Is The Lord," "He Will Carry You," and a special children's number...a variety of Christian songs and hymns for the whole family.

The 24 vocalists and 11-piece orchestra are completely self-contained, including their own sound and lighting equipment.

Since they were first organized in 1967, various editions of the "Continental Singers and Orchestra" have made over 8,000 live domestic appearances and over 2,400 foreign

appearances before more than 4.5 million people.

They perform their concerts nightly, seven days a week. Performers are selected for the yearly 75-day tours by auditions from thousands of high school and college-age young people. Auditions are held after each concert for future talent.

This year the Continental Singers and Orchestra will perform throughout all fifty states and Australia, Austria, Bahamas, Barbados, Bolivia, Bulgaria, Chile, Colombia, Denmark, England, Fiji, Finland, France, Greece, Haiti, Holland, Hungary, Israel, Korea, Martinique, New Zealand, Norway, Peru, Philippines, Poland, Romania, Russia, Spain, Sweden, Switzerland, Trinidad, Germany, and Yugoslavia.

They have recorded 24 record albums on the Word, Light, and Christian Artists labels. Their latest, "O Come All Ye Faithful" and "Come Love The Lord," are on the Christian Artists Records label.

The "Continental Singers and Orchestra" is a presentation of Continental Ministries; located in Thousand Oaks, California, with Cam Florida, President.

Home 826-3240 Shop 826-3636
HESS TRUCK & TRACTOR
 All Types Truck & Tractor Repair
 407 East Oklahoma St.
 Wheeler, Texas

WELCOME TO
FIRST UNITED METHODIST CHURCH
 8TH AT MAIN - P. O. BOX 89
 WHEELER, TEXAS 79096
 Church (806) 826-3114 - Parsonage (806) 826-3079
 Ernie McGaughey, Pastor
 Sunday School 9:45 a.m.
 Morning Worship 11:00 a.m.
 Evening Worship 6:00 p.m.

FREE ESTIMATES 24 HR. WRECKER SERVICE
McCain's Auto Body
 117 W. OKLAHOMA BOX 65 WHEELER, TX 79096
 PH. 806/826-3433
 INSURANCE CLAIMS OWNER: BOB MCCAIN

HALL-JONES VOWS ARE EXCHANGED

Tammy Hall daughter of Mr. and Mrs. Lee Hall of Allison and Bobby Jack Jones son of Mr. and Mrs. Robert Jones of Wheeler, were united in marriage in a double ring ceremony on July 7th, 1984 at 7:00 P.M. by Rev. Ronnie Chadwick, in a candlelight ceremony at the First Baptist Church in Allison.

The bride given in marriage by her father with the vows, her mother and I, wore a formal length wedding gown of knit chiffon, re-embroidered chantilly and venise lace and schiffle embroidery over bridal taffeta designed with a high neckline, semi-empire waist, long Victorian sleeves and full skirt. Inserts of the laces, enhanced with seed pearls and sequins, complimented the neckline, bodice, sleeves and skirt. Rows of chantilly lace ruffles on the skirt of the gown fell in waterfall fashion and full back of the gown ended in a sweeping Cathedral length train. Her Derby hat was enhanced with venise lace and imported illusion, and she carried a bouquet of pink silk roses accented with baby's breath, lace, ribbons and a white handkerchief that belonged to her grandmother, Myrtle Jones.

The groom wore a formal white tuxedo with tails. The suit was trimmed with white satin.

The bride was attended by Michelle Coulter of Allison. Bridesmaids were Angela Elmore, Lisa Craig and Kim Hall, cousin of the bride, all of Allison.

The bridesmaids wore identical floor length dresses of pink taffeta with a flower trim ruffled flounce worn off the shoulders. The dresses had a close fitting bodice with shirred cummerbund and flared skirt. They carried a bouquet of small pink roses accented with lace, ribbons and small flowers. They wore a wreath of small pink flowers in their hair. To accent the pink dresses, the grooms-men, ushers, candelighter, and father of the bride wore light grey tuxedos.

The groom was attended by his father, Robert Jones of Wheeler. Grooms-men were Larry, Ronny, and David Jones, brothers of the groom all of Wheeler.

The brides mother wore an emerald green silk street length dress with bone accessories.

The groom's mother wore a dark rose colored silk street length dress with bone accessories.

The candelighters were Lisa Jones of Wheeler, cousin of the bride and Ronnie Hall of Allison, brother of the bride.

Ring bearers were Darla Donaldson of Allison, cousin of the bride, and Scott Poteet of Irving, cousin of the groom.

The flower girl was Amber Dyer of Allison, cousin of the bride. She carried a pink basket filled with pink petals. She was escorted by Daniel Lewis of Panhandle, cousin of the bride.

The little misses wore floor length dresses of pink dotted swiss with a ruffled lace bodice. Their full skirts

with lace hemline ruffles were accented with ribbon bows.

Ushers were Randy Hall of Allison brother of the bride, Jeff Jones of Paradise Valley, Az. cousin of the bride, and Ty Henderson of Wheeler.

The guest were registered by Carol Archer of Sayer, Ok., cousin of the bride.

The ceremony took place at an altar decorated with brass candelabras adorned with large baskets of pink flowers. The aisle was decorated with white candelabras with greenery and pink bows.

David Nall of Pampa, cousin of the bride, sang "Welcome To My World" He and Wynetta Hill of Pampa sang "The Wedding Song" and "You, and I". After the couple lit the unity candle, Wynetta sang "The Wedding Prayer" as the couple knelt. They were accompanied by Vicki Donaldson of Canyon, cousin of the bride. She also provided the traditional wedding music.

The reception immediately followed in the fellowship hall of the church. The bride's table was decorated in pink with a white lace table cloth and adorned by a tiered fountain cake accented with pink roses. Cake and punch were served by Sherri Shelton and Christie Morgan, both from Wheeler.

The Grooms table was decorated with a white lace table cloth. The grooms cake was chocolate with the inscription "Get me to the Church on Time". It was decorated with a groom, carriage, and horses. The coffee was served from a silver coffee set. Serving at the groom's table were Jackie Lewis of Panhandle and Dawn Donaldson of Allison, both cousins of the bride. Kelly Nall of Pampa and Casey Hall of Canyon, cousins of the

are making their home in Wheeler bride, passed out rose rice bags after the reception. After the honeymoon, the couple



Mr. and Mrs. Bobby Jones

Denise School of Dance FALL REGISTRATION

Sunday, August 12 — 2-4 P.M.
 at Dance Studio in Wheeler, Texas.

TAP

BALLET

JAZZ

GYMNASTICS



Country Western
Night Classes

New Beginners
Aerobic Class

Ladies
Jazz Class

Fun & Fitness For ALL AGES

Drawing to be held for

1 month's "FREE" Lessons

Now In "7th YEAR" Of Business

TO PRE-REGISTER CALL . . .

Denise Ware

or

Brenda McWhorter

Instructor
806/826-3206

Asst. Instructor
806/826-3181

Morgan And Schaffer Reunion Held July

The families and friends of the S.T. Morgan and Jettie Schaffer, Pioneer ranchers of Wheeler Co., Tx. gathered Sunday, July 22, 1984 in the Flame Room of the Energas Corp. of Pampa, Tx. Prayer was given by Wayne Archer. Happy Birthday was sang to those having birthday in July.

Alta Lamb autographed the Accent West magazine that featured an article on her quilting. She was oldest member attending the reunion. She is 87 years old.

Lots of homecooked food and fellowship was enjoyed by all.

Those attending were: Earl and Julie Williams-Pampa, Betty Morgan-Amarillo, Marilyn (Lamb) Hodges and daughter Glynnes Hodges-Amarillo, Bonnie Johnson-Amarillo, Dorotha Keele-Garland, George and Helene Martin-Wheeler, Mable Sartor-Amarillo, Allen Martin and daughter Tye-Boulder, Colo., John and Sidney Miller-Amarillo, Alta Lamb-Amarillo, Elvin and Angela Lamb and daughter Heavenly and son Clarence-Amarillo, Judy and Larry Parker and John and Alan-Pampa, Alice and Jap Bailey and Jason Kysar (grandson)-Mobeetie, Chlorene and Henrey Spruell-Amarillo, Annas Seitz-Pampa, Doyle and Peggy Beckham-Pampa, Joan Morgan and son James Sidney-Amarillo, Dottie Ann Phillips-Amarillo, Tammy L. Spruell and daughter Beth Anne-Amarillo, Mr. and Mrs. Kermit Anderson and grandson Justin Myers-Amarillo, Jennie and Wayne Archer-Bellflower, Calif., Irene Morgan-Bellflower, Calif., Henry and Clara Lemke-Amarillo, Walter Morgan-Amarillo, phn and Deborah Bailey and sons Matt and Mark-Pampa, Edna O'Neal-Pampa, Duncan and Sue Seitz and daughter Shannon-Pampa, Judy Cook and daughter Alana-Amarillo, Moran and Carol Spruell-Amarillo, J.L. and Claudia Phillips-Clarendon, Harold and Jeri Robertson-Borger, ue Kysar-Pampa, Lynn Glover-pearman, James Schaffer.

Cake Decorating Classes

Cake Decorating classes will be offered at Sayre Junior College, meeting on Saturdays, September 15, 22, 29, October 6, 13, 27, and November 3. The beginning Class will meet from 9:00 a.m.-12:00 and the Advanced Class will meet from 1:00 p.m.-4:00 p.m. The class will be under the instruction of Evelyn Norman and Leann Welk and will meet in Classroom 108. One hour of college credit will be given for this class.

The cost of the class is \$29.35. This does not include the decorating kit. Anyone interested in this class is welcome to enroll at the Classroom Building between the hours of 9:00 a.m.-4:00 p.m. any day after August 7.

Vote Saturday

Briscoe News
 By Vetola Parker

C.P. and Linda Bates has gone after Eddie Bates, down close to Mississippi River, Tark Tre, Ark, close to

"You ain't nuthin' but a houn' Dog!"



For insurance, pick up th trail to an 'independent agent', the Rives Insurance Agency. We are not the employee of one insurance company — we are self-employed and represent you in fair settlement of claims.

RIVES 115 W. Tex. St.
 INSURANCE AGENCY 806/826-3573

Our Young People



FALLON LEE OTIS one year old daughter of Freddie and Cathy Otis.



CASEY MARTINDALE 19 month old daughter of Kim and Melinda Martindale of Welleinton, grandparents are Donald and Anita Reeves of Wheeler.

- For all your prescription and cosmetic needs!
- Gift Selections for all Occasions

HYLAND'S PHARMACY
 YOUR PRESCRIPTION CENTER

BEAT THE SUMMER HEAT Install A Ceiling Fan

- FASCO with Light \$159⁰⁰
- LITCO \$149⁰⁰
- Old Jacksonville \$139⁰⁰

INSTALLATION AVAILABLE
 Call: E.M. Rives Shamrock, (806) 256-5250 or Mrs. Betty Rives Wheeler, (806) 826-3224

Opening
 Wednesday 9:30 a.m.
 AUGUST 8, 1984

Bette's
 LARGE SIZES
 "Just For You"
 708 N. Hobart Hours 9:30-5:30

Styles with a Fashion Flair
 By Our Famous Designers-

Lillian Russell
 Chez
 Swift
 Regal Row
 Graft
 Komet
 Act III
 Ample Tags
 Kayser Rath
 Aris Isotoner
 Leroy Sweaters
 Fresh Ideas
 Laura Ashley
 Lady Manhattan
 Tribute
 Karen Reed

Visa Layaways Welcome

The Thomas Agency

"For All Your Insurance Needs"

110 East Texas Street

. . . in The Wheeler Times Bldg.

Office Phone: 826-5529

Home Phone: 826-5792

Please be patient . . .

We are not settled completely —

If you are not able to catch me,

please keep trying. It will be

better in a few days.

Delbert Thomas, Agent

MORRIS, MOORE, DALRYMPLE, MOSS & DYSON
ATTORNEYS AT LAW

THE PARAMOUNT BUILDING, SUITE 205 / 817 S. POLK
AMARILLO, TEXAS

August 3, 1984

EDWARD L. MORRIS
BOB G. MOORE
STEPHEN T. DALRYMPLE
CHARLES E. MOSS
M. RYAN DYSON
DAVID H. THOMAS, III

MAILING ADDRESS:
P. O. BOX 15208
79105

TELEPHONE
AREA CODE 806
374-9551

A Bonding Attorney's interpretation of "The Contract" and Propositions 1 & 2:

RE: Proposed Sweetwater Creek Reservoir Project Installment Sale Contract and Wheeler County Water Supply District Official Ballot for August 11, 1984 Election

A review of the proposed Sweetwater Creek Reservoir Project Installment Sale Contract (the "Contract") when read in conjunction with the two Propositions placed on the Wheeler County Water Supply District Official Ballot for its called August 11, 1984 election leads one to the inescapable conclusion that the District is asking the taxpayers of Wheeler County to write a "blank check" in order that the District (and ultimately the Red River Authority in light of the one-sided nature of the Contract) have complete authority to spend whatever amount deemed necessary to complete the reservoir project and operate it in the years to come.

The format of the two Propositions on the Official Ballot are unusual in that neither Proposition No. 1 (dealing with approval of the Contract and the

levy of taxes to pay for the project), nor Proposition No. 2 (dealing with the levy of a maintenance tax), specify a dollar amount or percentage limit. The more accepted and prudent practice with respect to elections such as this one is to specify a cap or limit on the amount of debt that a governmental authority, such as the District, will be authorized to incur, or the amount of taxes it will be able to levy. Placing such a limit on the District's debt and taxing authority insures that ultimate fiscal control is still maintained in the hands of the voters.

We would point out that the format of these 2 Official Ballot Propositions are extremely troublesome in light of our reading of the Contract. No where in the Contract can there be found a specific dollar limitation on the amount of money that will or can be spent by the Red River Authority on the reservoir project. To the contrary, the Contract basically requires that whatever costs are incurred by the Red River Authority in order to acquire,

construct, complete, and operate the project, the taxpayers of Wheeler County will be totally obligated to pay.

For your review we have prepared and furnished a section-by-section synopsis of the Contract. Reading the Contract as a whole, it is quite evident that the Red River Authority will be in total control of the project, as Project Manager. We base this assertion upon the fact that even though the Contract provides for a Management Committee comprised of equal numbers from the District and the Authority in Section 3, the Contract specifically states that the duties and powers of this Committee will be decided later, apparently after the election. Further, the language of Section 3 suggests that this Committee is intended only as a consulting body.

It is interesting to note throughout the Contract, that the Red River authority is held to only a "best efforts" standard of performance, whereas the District and the taxpayers of Wheeler County are placed under a

strict accountability standard. This is to say, the Red River Authority can choose not to perform its end of the bargain and under the terms of the Contract probably not be held financially accountable, while the District and the taxpayers of Wheeler County must pay off the bonds and any attendant expenses even if the project is never built or operated. As we stated earlier, this is a pretty one-sided arrangement.

We would refer you to Section 8 of the Contract which illustrates this point. In Section 8, the parties are protected from liability when by reason of "force majeure" a party cannot perform his end of the bargain. Section 8 specifically states that the obligation of the District to make payments to the Red River Authority is not covered by this Section. The term "force majeure", which normally deals with acts of God and similar events, is given a broad definition in Section 8. Not only does it include acts of God, but specifically includes "inability on the part of the

(Red River) Authority to deliver water" under the Contract. Consequently under this Contract, a situation can arise where the Authority does not have to deliver the water in the reservoir, yet Wheeler County still has to pay for it. Similarly, Section 9 imposes upon the District and ultimately the taxpayers of Wheeler County an unconditional obligation to reapey the bonds of the Authority.

Another disturbing aspect of this Contract involves the budgetary process specified in Section 6. In Section 6.B., the Red River Authority is the party which develops the annual "Budget" for the project. The District does not institute this process or develop the Budget. The District's role in this process is to hold a public hearing on the tentative budget developed by the Authority. If it does not approve this budget, the District's only recourse is to go before the Red River Authority and raise its objections. Thereafter if the Authority and the District still cannot agree, the matter is ultimately decided in Austin by the Chairman of the Texas Water Commission or his designee. This choice is a most interesting one indeed, in light of the fact that the Texas Water Commission has ongoing relations and dealings with the Red River Authority (a major client, so to speak, of the Commission), while there is no such relationship with the people of Wheeler County. This arrangement would realistically seem to take a significant amount of

budgetary control out of the hands of the District.

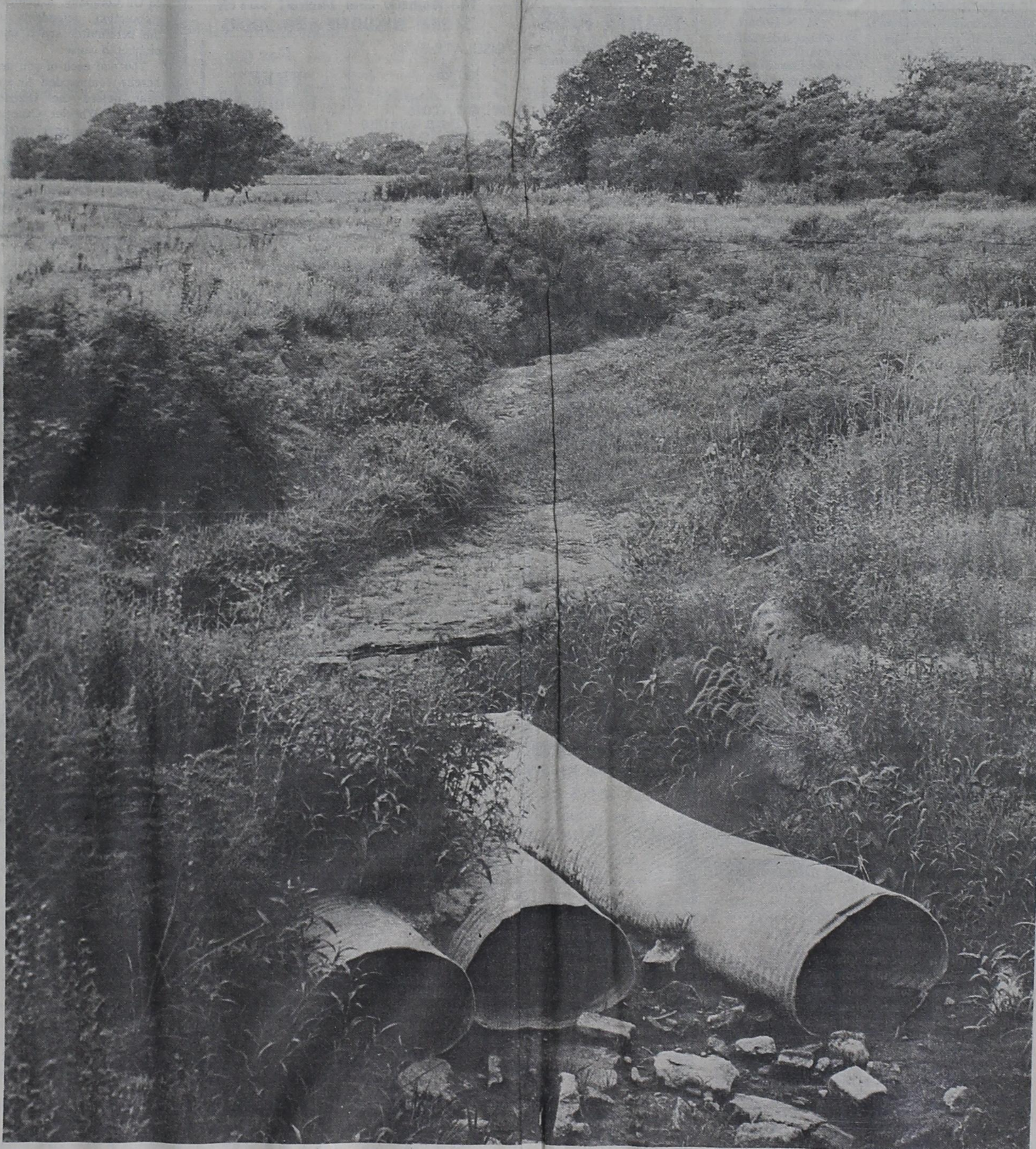
We would strongly urge you to carefully study our synopsis of the Contract, for there are numerous other problem areas which we have outlined therein. We have attempted here to point out only those areas of the Contract which we feel are extremely significant.

In conclusion, it is our opinion that the proposed Contract offers little protection to the people of Wheeler County, while at the same time obligating them to pay millions of dollars regardless of whether the reservoir is ever built or one drop of water ever flows through the project's pipelines. Likewise, the Propositions on the District's Official Ballot are inappropriate for lack of specification of the amount of debt and taxes to be authorized. From the taxpayers' standpoint, regardless of whether one is for or against the project itself, BOTH Propositions should be voted down, since either one will hand over a "blank check" to the District and ultimately the Red River Authority, by virtue of the Contract, to incur debts and raise taxes to whatever level they may desire.

Very truly yours,
MORRIS MOORE DALRYMPLE
MOSS & DYSON

Stephen T. Dalrymple

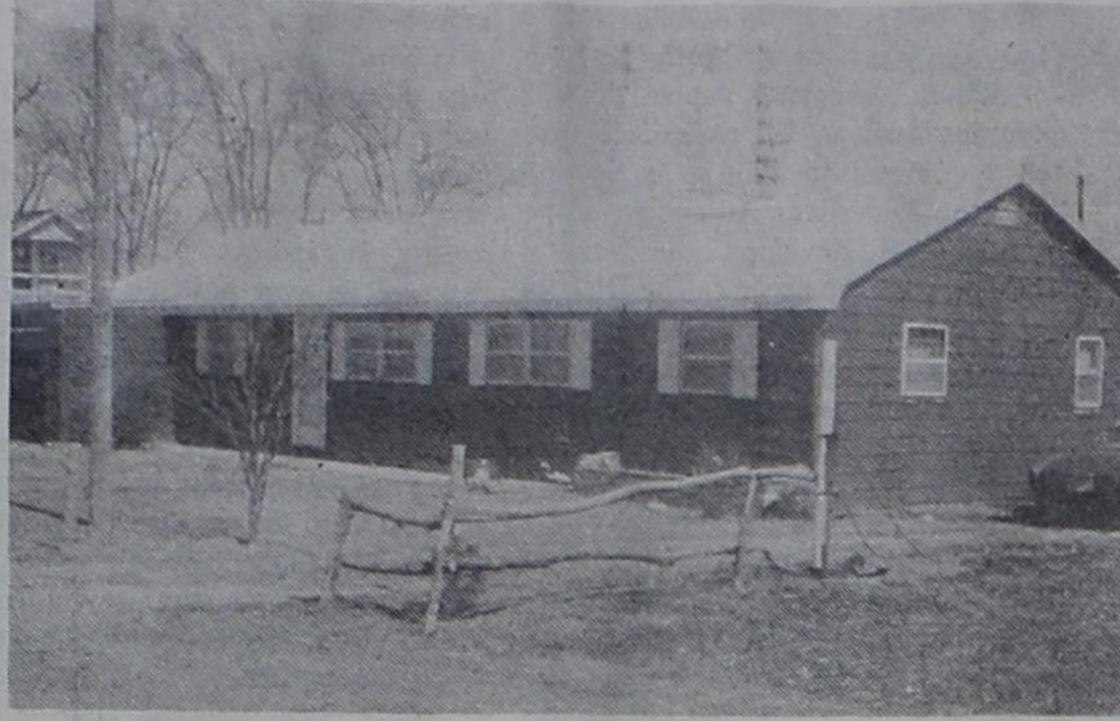
Proposed Dam Site on Dry Sweetwater Creek



One Picture Is Worth A 1000 Words! Vote Against Proposition 1 & 2!

OWNERS READY TO DEAL

On These Two Houses...



RESIDENTIAL . . .

3 Br, 2 bath, stucco home. Large garage. Priced very below appraisal.
 3 Bedroom, 1 1/2 bath, Central Air. Single garage. 408 W. 12th.
 3 Bedroom house. Owner will pay closing costs.
 Like new. 3 Bedroom, 1 1/2 bath, big **SOLD** Owner is **DESPERATE!**
 1 Br stucco home close to town — in great shape.

Large 4 Bedroom, 2 bath, double garage, large yard. Owner wants to move.
 3 Br, 1 bath, assume FHA loan. We have a large home for rent.
 3 Bedroom, 2 bath, energy-efficient, many extras.
 Home in Allison Call Joe Lee
 3 Homes in Shamrock — all price ranges.
 3 Bedroom, 2 bath, single car garage and fenced back yard.

LOTS. . . We have several on paving.

FARM & RANCH . . .

1/2 section Eastern part of County—lovegrass.
 2 acres with hog & chicken pens and barn; 8 miles east of Wheeler-Home has 2 Br.
 One section. Large home, loarge metal barn, love grass, irrigation, alfalfa. ASCS Bases, FHA financing.
 House and 6 acres southeast of Wheeler & great country atmosphere!
 1280 ac. SE of Briscoe; 440 ac. wheat, improved pasture, 5 lakes, sticked deer, turkey, quail, and prairie chicken.

640 ac. SW or Wheeler on river. 190 ac. wheat sub-irrigated pasture. 800 gal/min. irrigation well, deer, turkey, quail.
 195 ac. 4 miles West of town. Irrigation systems.
 1/2 section with 1/2 minerals.
 Country Showplace—Owner will finance part. Have your own lake. 1 Section. Some farm land, some grass. Large brick home.
 1/4 section, 2 miles south of town—large home, barns & great fences.
 1/4 section NE of Shamrock, Hunting!

COMMERCIAL . . .

Mechanic garage and home. 205 S. Main.
 Rent house and 10 trailer hook-ups or 3 building lots—\$20,000.00.
 Office Space for rent in a prestigious location.

Office Building, trailer spaces and old gin buildings for storage.
 Three rent houses, 2 trailer spaces at the edge of town.
 Building in Prime location—owner will finance part.
 Elevator and home at Allison.

the smith agency

R RUTH SMITH, Broker GREG SMITH, Salesman
 JOE LEE, Salesman - 375-2380
 LONA WILLIAMS, Salesman - 826-3341

Phone: 806/826-5541 or 826-3238

Want Ads

NEW ORLEANS WORLDS-FAIR Chartered Bus Tour. Leaves Wheeler Sept. 14, return Sept. 23. \$598 each includes transportation, twin rooms, admission. Hoobler Travel Agency, Box 4, Canadian, Texas 79014, Phone 323-6514

YARD FENCE BUILDING: All types, chainlink, cedar, spruce, with or without concrete curb. Also treated cedar. J. B. Oney, 447-2043, Wellington, Texas.

RICHARD'S UPHOLSTERY
 Furniture, etc.
 Phone: 845-2761
 Mobeetie, Texas

FOR SALE: International 430 twine tie sq. hay bailer, like new, reasonable priced. 826-5203

C. C. Tackle
 Name Brands — Low Prices
 301 South Main Street
 Gateley Electric

FOR SALE: 5 full blood Dachshund puppies. 2 females, 3 males. Call 826-3070.

FOR SALE: Pipe and cable Various sizes. New reject. O. D. Coulter, Jr. Allison, Tx 806/375-2513.

HORSE SHOING AND TRIMMING Bill Billingsley, McLean Tx. 779-2120. Call any time.

CLASSIFIED RATES:

The Times prefers all classified ads be paid in advance, except for open ledger account customers.
Cash and Ledger account: 15c word; \$1.50 minimum. (Ad paid when placed or by 5:00 p.m. Wednesday of week ad runs.)
Charge: 20c word; \$2.00 minimum.
Card of Thanks . . . \$3.75
ADVERTISING DEADLINES
 Classifieds: Noon Tues.
 Display: Noon Tuesday.

NOTICE TO PUBLIC
 Any erroneous reflection upon the character, standing or reputation of any person, firm or corporation, which may appear in the columns of this paper will be gladly corrected upon due notice being given to the editor personally at the office at 110 East Texas St., Wheeler, Texas.

The Wheeler Times does not knowingly accept false or fraudulent advertising or other advertising of an objectionable nature, as printed in full confidence in the presentation made. Readers will confer a favor if they will promptly report any failure on the part of the advertiser to make good any misrepresentation in our advertisements.

LITTLE MUSTANG DAY CARE CENTER
 State Licensed, accepting children 0-10 years of age. New flexible hours. Drop-ins welcome, 801 Mobeetie St. 826-3411.

GENERAL CONTRACTING
 Roofing—Painting
 Remodeling
 Call Al Fancher
 After 5 p.m., 826-5286

FOR SALE: 1/2 blk, 2 bedroom house, water well. McKamy and College St. Old Mobeetie. call 665-7389.

La Grone Monument Co.
 Faye Sparlin, Rep.
 806/826-5898

LIGHTS AND SIGHTS
 Casa Blanca Ceiling fans, Lamps, Lampshades, Lighting Fixtures, Gift Items, Lamp Parts & Bulbs, Curio and Gun Cabinets.
 Unique Items for your Home!
 665-8341
 107 N. Cuyler
 Downtown Pampa

NOTICE
 I will not be responsible for debts other than my own, Buck Hill.

NOTICE
 All trouble shooting, jobs as of this date, Aug. 2, 1984. \$12.50 per hr. minimum one hour. C. W. Vinson. Phone 375-2580.

GARAGE SALE
LARGE GARAGE SALE: Thursday, Friday & Sat., Aug. 9, 10 & 11, 8 to 5. 1208 S. Mobeetie.

DOG GROOMING: All Breeds, Lee Ann Lowrey, 826-5265, after 6:00 p.m.

BOAT FOR SALE: 16 foot fiberglass boat and trailer, excellent condition, call 375-2224. 1973 Mercury Marquis runs good, sell or trade for small car call 375-2224.

FOR SALE: Couch (Hide-a-bed), and matching rocking chair. Excellent condition and quality. Will sell separate or together. Phone 826-3474.

I will pay cash for mortgage notes secured by Real Estate. Call Don at 826-3573

TO GIVE AWAY: Small puppy, brown and white, good with kids 826-5860.

FOR SALE: Blackeyed Peas see Ebb Smith, you pick.

PAMPA POOL & SPA
 We sell Hot Tubs, Spas, Swimming Pools, Saunas, and Metal Storm Cellars "We Service"
 1312 N. Hobart
 Phone: 665-4218

FOR SALE: Signature Washing Machine, 1 year old, almond color, in good condition, \$175.00. Admiral side-by-side refrigerator, \$250.00. Call 826-3335 or 826-3072.

FOR SALE: 8 x 32 Logging Trailer for Mobile office or Lakeside Cottage. Phone 806/826-3123.

HOUSE FOR SALE: Reduced price, \$125,000 for house an approximately 20 acres. 4 bedroom, 3 bath, plant room, patio, swimming pool. 826-5820.

HOLCOMB TRAILER PARK
 West 12th Street
 Phone 806/826-5810 or 826-5942

NEED RAWLEIGH PRODUCTS call Harold L. Jones 826-5684.

SEWING MACHINE REPAIRING
 30 years experience
 Inquire at
 Carrie's Sewing Box
 Phone: 826-3352

TPA MEMBER 1984 TEXAS PRESS ASSOCIATION

THE BUSINESS DIRECTORY

THE WHEELER TIMES
 P.O. Box 1080
 Phone: 826-3123

Entered as second-class matter December 18, 1933, at the Post Office at Wheeler, Texas 79096, under the act March 3, 1879.
Louis C. Stas, Owner and Publisher
SUBSCRIPTION RATES:
 Wheeler County. . . \$7.75 Outside County. . . \$8.75

Let Me Write It . . .
GEO. RICHARDSON
 All Types Of INSURANCE

GUARANTEED AUTO GLASS INSTALLATION & Body Repair
CROSS CAR CENTER
 Phone: 826-5515
 Wheeler, Texas

WHEELER REDI-MIX
 REDI-MIX CONCRETE SAND
 Washed Gravel—All Sizes
 Office Hours: 7:30 to 5:00
 Phone 806-826-3223

WHEELER LUMBER CO.
 Phone 826-5543 Wheeler, Texas.
 Fine Service for Fine People

CITY DUMP GROUND HOUR
 Monday, Tuesday, Thursday, Friday and Saturday
 8:30 A.M. til 5:30 P.M.
 Closed on Wednesday

Wheeler Lodge No. 1099
A. F. & A. M.
MONDAY
 7:30 P.M.
 Robert Lane, Sec'y.
 Members Urged To Attend.
 Visitors Welcome.

WHEELER REDI-MIX
 REDI-MIX CONCRETE SAND
 Washed Gravel—All Sizes
 Office Hours: 7:30 to 5:00
 Phone 806-826-3223

WHEELER LUMBER CO.
 Phone 826-5543 Wheeler, Texas.
 Fine Service for Fine People

CITY DUMP GROUND HOUR
 Monday, Tuesday, Thursday, Friday and Saturday
 8:30 A.M. til 5:30 P.M.
 Closed on Wednesday

PLAINS ALUMINUM DUST STOPPERS
 Box 38 • Panhandle, Texas 79068
The Number One ENERGY SAVER STORM WINDOWS AND DOORS

INSULATE FOR:
 COLD
 HEAT
 HIGH WIND
 SWEATING
 FADING DRAPES
 DUST
 DIRT
 HAIL

For "FREE" Estimates
 Call Collect: 806/537-3382 or 537-3400

FOR SALE: Wurlitzer-Spinet Piano, call 375-2413.

FOR RENT: Trailer space in Moore's Trailer Park, 826-3364.

APARTMENT FOR RENT
 2 bedroom, appliances including washer and dryer. Call 256-3792 evenings, or 826-3364 days.

FOR RENT: Beautiful Mountain Cabin on the river in Red River, New Mexico. Call Henry Lewis, 806/655-2333 or 806/655-2227.

FOR RENT: 3 apartments, 5-2 bedroom houses. Call 826-3184.

FOR RENT: 3 Bedroom, 2 bath, 110 N. Canadian, 405/527-3151.

Awards
 From Page 1
 Recognition in this book represents a significant personal achievement for junior and senior class high school students who have demonstrated achievement in either academics, athletics or extra curricular activities.
 Nominations are received from over 12,500 high schools and most of our nation's prominent youth organizations, however only five percent of the

KELTON
KELTON SCHOOL CALENDAR
 1984-85 School Calendar

Aug. 15	Teacher Inservice
Aug. 16	Teacher Workday
Aug. 17	1st Day Enrollment
Sept. 3	Labor Day Holiday
Sept. 17	Teacher Inservice—Shamrock
Sept. 28	End of 1st Six Weeks
Oct. 15	Teacher Inservice—Shamrock
Nov. 9	End of 2nd Six Weeks
Nov. 22, 23	Thanksgiving Holidays
Dec. 20	End of 3rd Six Weeks & Sem.
Dec. 21	Teacher Workday
Dec. 22-Jan. 1	Christmas Holiday
Jan. 2	Beginning of 2nd Sem. & 4th Six Weeks
Feb. 8	End of 4th Six Weeks
Feb. 18	Teacher Inservice—Shamrock
Mar. 4-8	Spring Break
Mar. 18	Teacher Inservice—Shamrock
April 3	End of 5th Six Weeks
*April 8	Easter Vacation
May 17	Last Day of Instruction
May 18	End of 6th Six Weeks
May 18	Teacher Workday

*This Day maybe used for snow days

VOTE SATURDAY

LEGAL NOTICE
CITATION
 To Myrtle Robinson, Beatrice Lillian Robinson, J. L. Robinson and the unknown stockholders of Budco Oil Company, a defunct corporation, which petition was filed in said court on the 8th day of June, 1984, and the nature of which said suit is as follows:
 Plaintiffs, by said suit, seek to establish that they are the sole owners of all of the stock and property owned by Budco Oil Company, a defunct corporation; more particularly an overriding royalty of 1/4 of 7/8 interest in the oil, gas and minerals in the following described lands in Wheeler County, Texas, to-wit:
 The W1/2 of the SW 1/4 of Section 44, Block 24, H&GN RR Co. Surveys, Wheeler County, Texas.
 The E/2 of the SW 1/4 of Section 44, Block 24, H&GN RR Co. Surveys, Wheeler County, Texas.
 A copy of the petition filed by plaintiffs is available in the office of the County Clerk of Wheeler County, Texas.
 If this citation is not served within 90 days after date of its issuance, it shall be returned unserved.
 WITNESS, Paul Topper, Clerk of the District Court Wheeler County, Texas

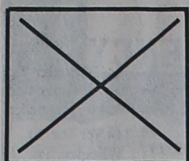
LEGAL NOTICE
NOTICE
 Kelton ISD Board of Education will hold its 1984-85 budget hearing, August 20, 1984, 8:30 p.m. at Kelton School Building.
 N. Dean Johnson
 Superintendent

LEGAL NOTICE
NOTICE OF BUDGET HEARING
 The Board of Trustees of the Wheeler ISD will hold a public hearing on the 1984-1985 Budget at 7 p.m. on Thursday, August 16, 1984, in the Wheeler School Business Office.
 Bynum E. Smith
 Superintendent of Schools

Library News
 We have had a good summer at the library. We enjoyed the reading program and the swimming party that followed.
 We have several items that can be checked out that I feel the majority of the people are not aware of. We have books written in the Spanish language both adult and children. We have large print books, fiction, western, and mysteries. A 16 mm projector, a 600 polaroid land camera, Art prints of all kind, and several films.
 Recently we have received several memorials. Consider giving a living memorial for your loved one. Some of the books used for memorials were: Approaching Hoofbeats by Billy Graham, Adding on, Working With Wood, The Home Workshop, all by Time Life. If you wish to give a memorial and have a special book in mind we can order it for you.
 Hot weather is a good time to sit by the cooler and read. Come see us and check out a book.
 Your Librarian
 Betty McNeil

MOBEETIE ISD MENU
August 14-17, 1984
Tuesday: Breakfast: Hot biscuits, sausage and gravy, jelly & butter, juice & milk.
Lunch: Hamburgers, lettuce & tomatoes, pickles & onions, sliced cheese, cookies & peaches, milk, tea.
Wednesday: Breakfast: Buttered toast, scrambled eggs, butter & honey, juice, milk.
Lunch: Steak, new potatoes, green beans, plum pie, hot rolls & butter, milk or tea.
Thursday: Breakfast: Toast, Jelly & Butter, individual cereal, banana, milk.
Lunch: Batter fry fish with tartar sauce, blackeyed peas, macaroni and cheese, pears, hot rolls, with butter, milk or tea.
Friday: Breakfast: Pancakes, syrup and butter, slice bacon, juice, and milk.
Lunch: Pizza with extra cheese, tator tots and catsup, toss salad, peanut butter cake, milk or tea.
 Free Choice at Salad Bar

CARD OF THANKS
 Words cannot express our heartfelt thanks for the love shown during the loss of our beloved Mike. The many prayers, flowers and food helped to make the sorrow easier to bear.
 The family of Michael Johnson
 Ginger Johnson
 Betty & Dave Kreyling
 Kathy & Michael Hunt
 Curtis & Fern Kidwell



VOTE WATER

FOR ALL OF WHEELER COUNTY SATURDAY, AUGUST 11, 1984

What Is The Reason For This Election?

The Wheeler County Water Supply District is proposing that all Wheeler County join together to build a 3,900 Surface acre reservoir on Sweetwater Creek, northeast of Wheeler.

The construction of the reservoir would provide water for all Wheeler County for future years

To pay for this lake a bond election has been scheduled to be held August 11, 1984

All Wheeler County registered voters will vote at their normal precinct polling places for a bond rate and a maintenance tax rate. The application of tax revenues is explained below.

PROJECT INFORMATION

Size Of Reservoir: 3,900 Surface Acres
Storage Capacity: 49,260 Acre Feet (After 50 years siltation.)
Cost of Dam and Reservoir: \$27,146,000

SOURCE OF FUNDS

Sale Of Bonds: \$17,146,000
Loan From State Water Board: \$10,000,000
Total: \$27,146,000

It is estimated this debt would be retired in 15 to 20 years.

Question: What will it cost the taxpayer? Answer: An average tax rate of 25¢ per \$100 assessed valuation is estimated over the life of the bonds. Example calculation: Your county tax value: \$10,000 x .25¢ = \$25.00 per year. Over 65 exemption: -0- per year.

Question: What about silt?
Answer: The total capacity of the reservoir is 65,760 acre feet. After 50 years of siltation the storage capacity still will be 49,260 acre feet.
Question: Will the lake provide recreation as planned?
Answer: Yes. The shoreline will be made accessible. The lake will provide good fishing, water skiing, swimming, and sailing for all

Wheeler County residents. Lake lots will be available for development.
Question: Who will be in control of the contracts for the sale of water from the reservoir?
Answer: It is very important that you as tax payers know that the Wheeler County Municipal Water District has negotiated contracts that give them complete control of the sale of all water from the reservoir.

SWEETWATER CREEK DAM AND RESERVOIR PROJECT Tax Calculation for homes with no exemptions If rate is 25c Average value per residence: \$20,000

VALUE	TAX PER YEAR	10,000 OVER 65 EXEMPTION	Tax Calculation for Category D . . . Ag. Value
\$10,000.00	\$25.00	\$ 0.00	RATE: 25c Average of Acre Value:
20,000.00	50.00	5.00	
30,000.00	75.00	20.00	25,242,730 (Total Ag Value) 572,332 (Acres)
40,000.00	100.00	35.00	= \$44.00 44 X 25c = \$11.00
50,000.00	125.00	50.00	
60,000.00	150.00	65.00	
70,000.00	175.00	80.00	
80,000.00	200.00	95.00	

VALUES FROM WHEELER COUNTY APPRAISAL DISTRICT

PERTINENT DATA IN REGARD TO THE DAM AND RESERVOIR ARE AS FOLLOWS:

Drainage Area	281 Square Miles
Water Supply Capacity	49,260 Acre Feet
Silt Pool	16,500 Acre Feet
Total Capacity	65,760 Acre Feet
Service Spillway Elevation	2323.0
Emergency Spillway Elevation	2333.0
Elevation Maximum Water Level	2342.2
Elevation Top of Dam	2347.0
Surface Area at Capacity Level	2530 Acres
Surface Area at Emergency Spillway Level	3240 Acres
Surface Area at Maximum Water Level	3900 Acres
Flood Storage between Spillways	28,800 Acre Feet
Maximum Surcharge Storage	95,000 Acre Feet
Average Depth Water at Dam	44.8 Feet
Average Reservoir Depth	26 Feet
Length of Shoreline	32 Miles
Length of Dam	12,000 Feet
Maximum Height of Dam	102 Feet
Maximum Bottom Width of Dam	608 Feet
Top Width of Dam	20 Feet
Service Spillway	7 Ft. X 7 Ft. Conduit
Width Emergency Spillway	2000 Feet

Why Should You Vote For Sweetwater Creek Reservoir?

We Need An Adequate, Dependable Source Of Raw Water

We need an adequate, dependable source of raw water.
Ground water production for both Wheeler and Shamrock is becoming more difficult to obtain. Shamrock, the larger water user, presently has two widely separated well fields where the yields dwindle and new wells have to be constructed to maintain an adequate supply.
The most urgent need for additional water is for Wheeler; however, it is anticipated that Shamrock will need a supplementary source soon and will eventually use Sweetwater Creek water for its

normal demands and obtain peaking water from its well fields.
The rural communities of Briscoe, Allison, Mobeetie, Kelton, etc. will be included to receive treated water for their use, as well as all rural users.
Common sense tells us that additional supplies and treatment facilities would be more economically built through joint efforts of all Wheeler County residents. The simplest solution to future needs for Wheeler County is to build Sweetwater Dam and Reservoir now.

We Will Never Be Able To Build A Cheaper Water Supply

Today's prices for land, labor, machinery, materials and supplies are as cheap as we will ever see. The sooner we get started, the more economical will be the cost. If we had built this lake ten years ago, it would have cost less than

one-half of today's price, and if we wait ten years, the cost will undoubtedly double. The entire county will eventually need additional supplies of water.
The time to build the reservoir is NOW.

Assuring Long Range Supplies Now Will Insure Reasonable Cost For The Future

Although the initial cost of any project may seem high, we must look at the overall long range program. Engineers employed by both Wheeler and Shamrock indicate the water table of their well fields are lowering. To depend on our well fields entirely could be costly. The tax rates now

would allow the debt to be paid off in 15 years. The oil and gas value of the county would pay for 89% of the debt with only 11% being paid by local residents. The natural resources of oil and gas will help pay for another resource (WATER).

Our Only Hope For Tax Rate Stability In The Future Is Growth

Water is the basic ingredient of growth! Growth of our tax base is the only sure way to control future tax rate increases. To provide the services which you demand from your government, additional revenues will surely be required.

Wouldn't it be better to generate these rates from a new tax base, rather than a tax increase?
We can grow if we provide a stable supply of water.

Isn't It Time We Banded Together To Control Our Own Future?

We have complained for years about the fact that the future of Sweetwater Creek Dam and Reservoir, and our future as well, was always controlled by environmentalists, government lawyers, and folks from Dallas, Austin, Wichita

Falls, Amarillo or Washington.
We now have the opportunity to put all those frustrations behind us.
A vote for the Sweetwater Creek Reservoir will assure local control for the future.

Do You Need Transportation To The Polls?

If You Need Transportation To The Polls On Election Day, Call 256-2501...Someone Will Pick You Up, Drive You To The Polls, And Return You To Your Home.

CALL 256 - 2501
IN SHAMROCK
CALL 826 - 3573
IN WHEELER

MARK YOUR BALLOT X FOR SWEETWATER CREEK RESERVOIR

A Vote In The Right Direction For All Wheeler County.

Sweetwater Creek Dam/Reservoir Steering Committee - Shamrock And Wheeler Chambers Of Commerce
(Pol. Ad. Pd. For By Sweetwater Creek Dam/Reservoir Steering Committee, Don Rives, Chairman)

1011's RADIO & T.V. SERVICE
COMMERCIAL RADIO & TV
806-826-3568

We will try to repair any make and/or model Radio and T.V.
700 E. Oklahoma St.
Phone: 826-3568

2 MI. WEST ON 152
WESTERN DRIVE
GOLF DRIVING RANGE
VAN BAIZE OWNER
MON.-WED.-FRI. 9-12
MON.-SAT. 3:00 P.M.

LEWALLEN INSURANCE AGENCY
ALL-LINES
845-2951 1st State Bk. Bldg. Mobeetie, Tx. 826-5719 114 W. Tex. St. Wheeler, Tx.

Court Records

LIST OF INSTRUMENTS FILED IN WHEELER COUNTY CLERKS OFFICE FOR THE WEEK OF JULY 30 THRU AUGUST 3, 1984
AOL—Bruce L Carter to Bailey Peyton, 5-30-84, Sec 33 Blk M-1
AOL—Bailey Peyton to Holden Corp, 5-31-84, Sec 33 Blk M-1
D—Jack D Wilkes to The JDW Trust, 7-23-84, All my int, .00657894 Min Int N½ Sec 32 Blk A-4
RDT—First National Bank of Boston

to First City Bank of Dallas, 6-25-84, See Instrument
RDT—United States of America to Bryan H Close, etux, no date, NW¼ NW¼ Sec 54 Blk 23
C/C PROBATE PROCEED—A J Howell, dec, 7-17-84, Pt Sec 11 Blk A-4
AOL—Trigg Drilling Company 1980-1 Joint Venture to Buttram Energies Inc, etal, 3-20-84, Sec 29 Blk RE
AOL—Trigg Drilling Company 1980-1 Joint Venture to K&M Oil Company, etal, 3-20-84, Sec 2 Blk 2, B&B
AOL—Trigg Drilling Company 1980-1 Joint Venture to McNeilco Inc, etal, 3-20-84, SE¼ Sec 10 Blk 2, B&B
AOL—Trigg Drilling Company 1980-1 Joint Venture to Norville Oil Co, etal, 3-20-84, Sec 1 Blk 2, B&B
COR D—Louise Bowen to Freddie

Velasquez, etux, 7-28-84, 90' x 140' SE¼ Sec 60 Blk A-8 Exc Mins
RDT—Thurman L Bowen, etux to Freddie Velasquez, etux, 7-28-84, 90' x 140' SE¼ Sec 60 Blk A-8 Exc Mins
JULY 31, 1984
C/C DEATH CERTIFICATE—Charles M Bittner, dec, 5-21-84
COR AOL—J&N Production to Panhandle Drilling Company, 7-27-84, N¼ Sec 41 Blk 24
RMML—First Bank & Trust, Shamrock to Donald W Carlton, etux, 7-30-84, Lot XIII Blk 1, Shamrock, Mont Lew
RDT—First Bank & Trust, Shamrock to Donald W Carlton, etux, 7-30-84, Lot XIII, Blk 1, Shamrock, MontLew
ROW—J T Johnson to Palo Duro Pipeline Company, 7-31-84, S½ Sec 4 Blk A-5
AUGUST 1, 1984
ESTATE TAX LETTER—Albert E Lusby Jr, dec, no date
D—First Federal Savings & Loan Association of Childress to United States of America, 4-25-84, Lot 2 Blk 42, Shamrock
ROY D—Wanda Ruth Greenhill Green, etal to Richard Franklin Greenhill, 7-30-84, 8ac Roy Int N 256ac Sec 57 Blk A-8 and 12ac Roy Int NE¼ Sec 4 Blk A-4
SUBORDINATION AGREE—Federal Land Bank of Texas to Rosewood Resources (POC) Inc, 6-20-84, See ins.
SUBORDINATION AGREE—Canadian Production Credit Assn to Rosewood Resources (POC) Inc, 6-29-84, Sec 12 Blk A-8
OL—John R Henry, etal to Rosewood Resources (POC) Inc, 6-8-84, SW¼ Sec 11 Blk A-7
OL—Edgar D Haynes, etux to Rosewood Resources (POC) Inc, 6-8-84, W½ & SE¼ Sec 2 Blk A-8
EXECUTOR & TRUSTEE OL—J Malcolm Shelton Special Trust to Rosewood Resources (POC) Inc, 6-12-84, Sec 1 Blk A-8
OL—Marion A Fallwell, etux to Rosewood Resources (POC) Inc, 5-31-84, SE¼ Sec 11 Blk A-7
OL—Jessie C Henry to Rosewood Resources (POC) Inc, 6-8-84, SW¼ Sec 11 Blk A-7
OL—J L Pepper, etux to Rosewood Resources (POC) Inc, 6-8-84, SW¼ Sec 11 Blk A-7
OL—Duane Porter, etux to Rosewood Resources (POC) Inc, 6-8-84, SW¼ Sec 11 Blk A-7
MML—Donham Oil Tool Company Incorporated to Puma Exploration Company, 7-13-84, Sec 18 Blk L, JM Lindsey
MML—Donham Oil Tool Company Incorporated to Puma Exploration Company, 7-13-84, Sec 18 Blk L JM Lindsey
DT—Jerry Dan Hefley, etux to First National Bank in Wheeler, 6-12-84, Pt NE¼ Sec 59 Blk A-8, Lot 1, Lots 5-9, Hefley Addn and Lots 10-14, 14-19 and 22 Hefley Addn # 2
AUGUST 2, 1984
FEDERAL TAX LIEN—United States of America to Michael D Alexander, 7-27-84
RDT—Shamrock Savings Association to Thurman L Bowen, etux, 7-7-84m 90' x 140' in Sac SE¼ Sec 60 A-8, Exc Mins
AOL—Hoen Exploration Company Inc to Rosewood Resources (POC) Inc, 7-10-84, Sec 3 Blk A-5
EXECUTOR MD—Patricia Ann Vise, etvir to Alan B Jones, Trustee, 7-26-84, 1/9 Min Int E¼ SW¼ Sec 4 Blk A-4
DT—R P Fuller, etal to First National Bank of Amarillo, 7-16-84, Int in Sec 41 & 51 Blk A-8 & Sec 5 Blk E, I M Wright Survey
DT—Zephyr Petroleum Company, etal to Continental National Bank of Fort Worth, 7-27-84, Int in SW¼ Sec 96 Blk 23
D—Dale Wells, etux to Clifford

Farmer, etux, 7-31-84, Lots 1-6 Blk G, Lela, Purcell
D—James R Harris, etux to Robert T Crabtree, 7-26-84, SW¼ Sec 126 Blk 23, Exc ½ Mins
DT—Robert R Crabtree, etux to First National Bank in Wheeler, 8-2-84, SW¼ Sec 126 Blk 23, Exc ½ Mins
DT—Larry R Bailey, etux to United States of America, 8-1-84, Pt N½ Sec 17 Blk A-8 and SW¼ Sec 13 Blk L, J M Lindsey
AGREE—Delmer E Barefoot, etal to United States of America, etal, 7-13-84, SW¼ Sec 13 Blk L, J M Lindsey
AUGUST 3, 1984
D—W A Goad Jr, etux to Fred M Goad, etux, 7-27-84, W½ N½ Sec 28 Blk A-4, Exc Mins, Exc E/3 N½

RDT—First National Bank in Wheeler to Van Baize, etux, 7-26-84, E½ N½ & E½ S½ Sec 28 Blk A-4, Exc mins
D—Kenneth Dale Crowder, etal to James Turner, etux, 7-13-84, 10ac SE¼ Sec 4 Blk A-4, Exc Mins
DT—James Turner, etux to Kenneth Dale Crowder, etal, 8-1-84, 10ac SE¼ Sec 4 Blk A-4, Exc Mins
D—Reo Heasley to Cleve Parson, 6-26-84, N½ Lot 11, all 12 Blk 17, Shamrock
DT—R B Hankins, etux to Bank Central, 7-5-84, 92.3ac SW¼ Sec 24 Blk 17
MD—Lola B Mundy to Margaret Leftwich, 8-1-84, 1/8 Min Int W½ Sec 30 Blk RE
DT—Don A Hillin Inc to Lewisville National Bank, 7-7-84, Pt Sec 85 Blk A-5
TMML—HLC Production Compnay to Austin Oil Company, 7-30-84, See Instrument
RDT—Manufacturers Hanover Trust Company, etal to El Paso Natural Gas Company, 7-18-84, See Instrument
RMML—First Bank & Trust, Shamrock to Johnny Case, etux, 8-1-84, N½ Lot 11, all 12 Blk 32, Shamrock
RDT—First Bank & Trust, Shamrock to Johnny Case, etux, 8-1-84, N½ Lot 11, all 12 Blk 32, Shamrock
ROL—CSC—PR 1982 Kunuted Partnership, etal to Lester O Berg, 5-25-84, 153.809ac Sec 15 and Pt Sec

32 Blk A-5
OL—R D Mills, etal to Harper Oil Company, 7-18-84, Sec 83 Blk 13
OL—R D Mills, etal to Harper Oil Company, 7-18-84, Sec 82 Blk 13
D—Joe K Lester, etux to Carolyn Glover, 2-27-82, 208.5' x 432' and 208.5' x 432' NW¼ Sec 57 Blk 17
DISTRICT CLERKS FILINGS FOR THE SAME WEEK
#8462 Cheryl Ann Hunter vs Tony Dean Hunter-Divorce
8463 Interest of a child
8464 Tara Lynn Edwards vs Thomas Lynn Edwards-Divorce
8465 Southwestern Bell Telephone Co vs County of Wheeler-Damages
8466 Mildred Henson Parks vs Edgar Ace Parks-Divorce
8467 Ralph Marquis, etux vs Stewart Weaver & B-W R.V. Center Inc-Bodily injury
8468 Susan L Puryear vs Mark A Puryear-Divorce
8469 R C Callan, etal vs Esther Sorenson, etal-Lease Cancellation & Damages

Realty of the Southwest
FOR SALE: Owner Moving, Trailer Must Sell 1980 Marshfield, 70' x 14', 2 bedroom, 1 bath, Assumable Note-Payment \$350, Call Realty of the Southwest 826-3573.
WE NEED YOUR LISTINGS!
John Norman, Broker 806/826-3573—Office
Don Rives, Salesman 826-3283—Home

DIET CENTER
WE'RE THE WEIGHT-LOSS PROFESSIONALS.
Call today for a free consultation.
2100 B. Perryton Pkwy 669-2351

JENNINGS PLUMBING & ELECTRIC SERVICE
Owner: Larry Jennings
"A flush is better than a full house."
Roto-Rooter Service—Repairs—Remodelling
Phone: 806/826-3153 9 years Experience P.O. Box 423
1110 South Main St. Reasonable Rates Wheeler, Tx. 79096

PUBLIC NOTICE
AT&T Communications has filed with the Public Utility Commission (PUC) of Texas to introduce a new intrastate, optional long distance service to begin August 1, 1984, the same date "Reach Out® America" plan will be available for interstate calls.
A new service designed to give customers the opportunity to reduce the cost of long distance in Texas has been filed with the state PUC by AT&T Communications of the Southwest, Inc.
"Reach Out® Texas" is an optional calling plan which will provide additional discounts on long distance rates for Texas customers who frequently place calls in the evening, weekend, and night time calling periods.
The new "Reach Out® Texas" plan for the first time extends the benefits of competition to many Texas consumers who previously have not had any discounted long distance service available to them.
AT&T Communications customers who choose this new optional service will pay a monthly charge of \$14 which entitles them to one hour of intrastate "Direct Dialed" (1+) calling during the weekend and night rate period.
An additional customer savings for those participating in the plan will be that any Direct Dialed calls placed during the weekend and night rate period that exceeds the one hour period will be charged at an hourly rate of \$12, or \$.20 per minute.
Customers selecting this option also receive an additional 15 percent discount for intrastate Direct Dialed calls during the evening discount rate period for a total savings of approximately 38 percent.
A one-time charge of \$6 is billed when a customer orders the "Reach Out® Texas" plan. The \$6 is collected by AT&T Communications and paid to the local telephone company to establish the service. This charge will be waived during the first 90 days that the offering is available.
AT&T Communications is proud to offer this optional service for its Texas long distance customers and will in the future continue to introduce cost cutting programs to help Texans reduce their long distance bills.
A complete copy of the "Reach Out® Texas" tariff and rate schedule is on file with the Texas Public Utility Commission at Austin, Texas.
AT&T Communications estimates that the revenue impact of this new service would be significantly less than 2.5 percent of annual gross revenues.
Persons who wish to intervene or otherwise participate in these proceedings should notify the Commission as soon as possible. A request to intervene or participate or for further information should be mailed to the Public Utility Commission of Texas, 7800 Shoal Creek Boulevard, Suite 400N, Austin, Texas 78757. Further information also may be obtained by calling the Public Utility Commission Consumer Affairs Division at (512) 458-0223 or (512) 458-0227, or (512) 458-0221, teletypewriter for the deal.
*Customer billing for the optional calling plan will be provided for AT&T Communications through billing contracts with the local telephone companies. Therefore, the introduction of these rate plans into a specific area is contingent upon local company billing capabilities. Southwestern Bell Telephone Company has agreed to handle the billing in its service areas effective August 1, 1984.

AT&T Communications

INDUSTRIAL RADIATOR SERVICE
INDUSTRIAL • OILFIELD AUTO • AGRICULTURAL PAMPA, TEX.
FACTORY TRAINED SPECIALISTS • MODERN EQUIPMENT LOCAL PICK-UP & DELIVERY • EXTRA LARGE RADIATOR CAPACITY GAS TANK REPAIR • CUSTOM GULF RADIATOR.
OPEN SATURDAY MORNINGS
John & Carolyn Stokes OWNERS
115 OSALE
665-0190
IF NO ANSWER 665-7896

GATELEY ELECTRIC
301 Main St. 826-3352
"Let us handle all your electrical needs."
● Wiring for:
New Construction
Remodeling
Computers
Telephone Installation
Underground
Overhead (poles)
● Seasonal Air Conditioner Check
● Ceiling Fan Sales & Installations
● Small Appliance Repair
NO JOB TOO SMALL!

WHEELER COUNTY, TEXAS
STATEMENT OF RECEIPTS AND DISBURSEMENTS OF ALL FUNDS FOR THE NINE MONTHS ENDED JUNE 30, 1984


	BALANCE 10-1-83	FOR YEAR	PLS RECEIPTS	FOR YEAR	BALANCE 6-30-84
SOCIAL SECURITY RESERVE	8,418.74	445.37	8,864.11		8,864.11
ROAD AND BRIDGE GENERAL	93,504.91	405,219.65	4,8724.56	238,355.59	260,368.97
PRECINCT #1	111,976.82	52,804.01	14,780.83	42,955.64	121,825.19
PRECINCT #2	122,116.23	53,392.02	17,508.25	38,209.72	137,298.53
PRECINCT #3	170,091.60	58,126.00	28,217.60	67,366.28	160,851.32
PRECINCT #4	236,749.79	60,190.27	29,940.06	42,907.21	254,032.85
COUNTY GENERAL	392,006.70	1,316,196.67	1,708,203.37	907,508.99	800,694.38
PERMANENT SCHOOL FUND	44,587.79	-0-	44,587.79	-0-	44,587.79
REVENUE SHARING	105,821.80	80,560.00	186,381.80	85,940.00	100,441.80
HOT CHECK FUND	6,074.98	1,754.16	7,829.14	3,328.69	4,500.45
LATERAL ROAD-PRECINCT #1	79,076.99	111,245.53	190,322.52	50,331.67	139,990.85
LATERAL ROAD-PRECINCT #2	101,462.04	110,045.54	211,507.58	133,587.46	77,920.12
LATERAL ROAD-PRECINCT #3	134,915.94	110,045.54	244,961.48	103,465.39	141,496.09
LATERAL ROAD-PRECINCT #4	208,580.65	110,045.53	318,626.18	119,241.52	199,384.66
TOTAL	1,815,384.98	2,470,070.29	4,285,455.27	1,833,198.16	2,452,257.11

Jerrie Moore, County Treasurer

Filingim Reunion
The big Filingim reunion of the children and offspring of I.G. and Laura Filingim and assorted cousins and other relatives and friends was held from Friday through Sunday at the E.G. Filingim farm. There was lots of good eating and visiting and picture taking and picture showing, volleyball games, treasure hunts, goose chase, greased pig chase, horse back and three wheelers rides, square dancing, talent show, auction, marathon races, swimming, trampoline jumping, goat rides, track and field events, B.B. gun target shoot, water balloon toss with young and old, scavenger hunts, walks, chicken chase and many other games planned and started by LaJo and others. There was very, very little fussing and crying among the many, many children. All seemed to have a great time, eagerly looking forward to another in a few years.
Those present were Leola Root, Raymond and Jan Root and John and Andee, Evla Newman, Connie Mae H Gunter, Laura Faye Huddler, Jody Huddler, Frosty and Rhonda Stoll and Larisa and Joey, Dan and Tammy Tidwell and Raymond, all of Fort Worth, Steven and Robbie Bleakley and Stevie and Aaron and Maxine Oldham of the Houston Area, Leon and Vea Filingim of Wheeler and Violet and Kenneth Farris and Shannon and Channing of Houston, Dick and Ruth Irvine, Becky and Terry Tipps and Zachary of Amarillo, Rich and Connie Irvine of Canadian, Sharon and Stephanie Mitchell, Estelle McAdams and Lacy and Ken of Plains, Texas, Mozelle and Glenn Thomas and David Andrea and Micah of Caddo Mills, E.G. and Willa Filingim, Laurel and Ed Hershman and Troy, Sarita and Alan, of Kirkin, Indiana, Charles and LaJo Crownover and Boyce, Jodie, Londa and Terri, Lynn and Paula Reed and Christy and Ronnie, Gayle and Helen Singleton and Randy and Andy of Fritch, A.T. and Shirley Filingim of Providence, Utah, Dawn and Jim Jones and Heather and Brian of Longmont, Colo., Sandee Filingim, Karenda Hongisto, Joan and Dan Eckstein and Nathan and Lance of Arizona, Jerry and Greta Filingim and Cherene and Brendon of Calif., Willis and Verna Filingim, Dan and Chris Filingim and Andy, Dallas and Lindsey, Mary and H.G. Newman and Clint, Horace and Juanita Filingim Lawrence Filingim and Zandra Peters of Tatum, Bonnie and Bobby Maddox and Bridget and Bonnie Christine of Hobart, Ok., Velma Boren, Hugh and Betty Filingim, Lyndell and Melody Sexton and Davidson and Sascha of Grand Prairie, Phyllis and Steve Duree and John and Jarrod, Nila and Greg Kirkpatrick and Lorie and Kelley of Arlington, Uncle Conley Filingim, A.C. and Betty Jean Filingim, Bob and Fernie Filingim of New Home, Aunt Rosa May Anderson and Clyde of Levelland, Dub and Latrell Appling of Amarillo, J.P. and Martha Meek, Suzann Everett and Shane Shawn Everett, Mac and Lynda Sides and Jimmy, Jamie, Tina and Dale, Bonnie Long of Morton, Elnita Key of Enoch, Roy and Martha Crumley of Amarillo, Chuck and Phoebe Hartline and Aaron, Cindy Meek, Faye Sell and Glenda of Perryton, Eda Bynum of Alabama, Bernie and Eupha Mae Sorenson of Wheeler, Sue Helm and children, Sue Reames, Marjorie Trask, Bonnie Andler. There were 152 in all and we enjoyed having them visit. Many stayed at the E.G., Horace, Leon Willis and Dan Filingim homes and the Dick Irvine, J.P. Meek homes. Many attended church at Gageby Sunday.

SIMCA
— THE STATION —
Serving You Better For Less
SPECIAL PRICES . . .
For Fill-Ups!
 With 10 Gals. or More
Highway 152 East 826-3135

JERRY RAY
CONSTRUCTION
 Conventional & Log Homes
 Additions & Remodeling
 Shingling & Cabinet Work
826-5747 after 5

Announcing the Opening of
 **Dickey, Cory and Co., P.C.**
 certified public accountants
204 East Texas St.,
Wheeler, Texas
Office hours:
8:00-12:00 & 1:00-5:00
Monday thru Friday
Charles Kuntz, C.P.A.
 Office Manager **806/826-5516**

Gageby News
 Verna Fillingim

Going to Lubbock to Christ Ambassadors Convention Monday and Tues. were Diann Rose, Linda Kelley, Jill and Jennifer Brown, Carol and Tina Watson, Dale Hazel, Sally Brewster. We had two very helpful kids help us work corn all day Monday! Lisa and Frank Hickman. Nice to have Brad and Sue Chandler and Jana and Bridget, Ruby and Lisa Craig stop by to visit also.

Bea Ogle had major surgery at Shattuck Friday and is doing O.K. hopes to be home Wednesday.

Marsha Reynolds is visiting her mother at Houston this week and helping paint her house.

Ray and Pat Hudson, Cheryl and Rodney attended a Patton reunion at Pampa Sunday.

Stan and Jean Pollack of Maryland visited Jean's mother, Jewell Holloman and they all visited Evelyn Meek Sunday and attended church at Gageby Sunday night.

Maralee Singleton has been attending drama school at Canyon. Tonya Gilmer went for a few days.

Brewer Witcher of Houston has been visiting the Bob Ratliff family. Sure sorry to hear that Doc Wilhelm has been in St. Anthony's Hospital at Amarillo and had cancer surgery. Hope he will soon be O.K. Our thoughts and prayers are with him and Ilene and family.

Glad to have had Sue Watson and girls back from their trip to Missouri. Her mother is better.

Bertie (Maddox) and Steve Eudey visited Bob and Alma Maddox and Willis and Verna Fillingim and attended church at Gageby Sunday night.

Those from Wheeler County attending the 4-H dress review at Canyon Tuesday were Bea Ogle and Christina, Sue Ratliff and Melody, David and Winnie Gilmer and Julie and Davy, Sharon Miles and Marcie, Stephanie Dollar, Cristina and Melody placed in the top four in their groups. Also going was our little friend, Shawna Wagoner and Sherry from Canadian. Congratulations to all!

David and Winnie Gilmer and family visited Delmer and Maurine Thomas Tuesday.

Rick and Lucy Lucas, Charissa and Russell from Westport, Kentucky spent last week visiting the Roy Meadows and other relatives. So nice to have them and Amy and Laura Meadows to church Wednesday night. Ten hardy souls made it to Men's prayer breakfast at Gageby Saturday morning at 6 a.m. Aaron Laverty and Ray Forbes prepared the delicious breakfast.

Sweetwater News
 Mrs. Joe Flowers

Boy Howdy! The monsoons have come? We've had showers in four of the past 8 days. Nothing drastic but sure does help. Heard Cheyenne had a good rain today.

The Roy Hollands have had a rather hectic two weeks. Best of all they have a new grandson Eddy Lee Jr. born at Antlers, where his other grandparents live. As soon as the baby and his mother Vickie were able to leave the hospital, they came to Roy's.

In the meantime, Ruth's mother Dorothy Holland suffered a backset and had to return to the Altus hospital. Then Eddy Sr. had to have knee surgery at Altus. The other boys rallied round and helped run the dairy

while all this was going on.

Everyone is now home from the hospital and doing well. Little Eddy is a doll. His other grandparents are Mr. and Mrs. Tommy Winn.

Everyone knows about Eddy who is an Elk City policeman. He and his dog Ben help in many cases.

We've been hearing on the scanner and on TV about Mr. Luther West of Sayre being lost. Seems he was last seen east of Sweetwater on Wednesday night. They have been searching the highways and byways.

We had a pleasant surprise today when Joe's brother and wife Arlie and Bonnie from Blanchard, his daughter Nita Cotton and Sherry of Sayre come out for a visit.

Mr. and Mrs. Audie Jenkins and Brandon were out Monday to see Stella Jenkins. Little Brandon was a year old the 27th. Of course, they had a party.

We are very proud of Chris. She won 1st with her story about the Elk police murder. Second with the story of the little Johnson Girl at Cheyenne who has cancer.

Stella's son and wife Mr. and Mrs. Hansford Jenkins of Yukon were also out for a few days.

Birdie Whipkey was visited last week by Artie Fuchs and her sister Faye of CA. and Mr. and Mrs. Orville Matlock who were trying their three wheelers.

The peace people were out again this week protesting Pantex. It has just come out in the last few years that Pantex is the place where all our nuclear weapons are finished. Seems it is mighty foolish to be scattering that kind of information.

was a WW II veteran.

Elmer's mother was Annie Bruner, for many years the Annie Bruner well was mentioned in all the papers as the papers as the deepest oil well in the world.

Nora Zellmer, Mr. and Mrs. Pat Anderson and girls, Mr. and Mrs. Eddy Williams of Stratford vacationed in Colo., rode the Million Dollar Highway, went to Royal Gorge, and many other beauty spots there.

Lucille Thompson is at Amarillo with Frances Thompson. Mozelle is back in the hospital there.

We visited Mozelle Stanton and Beulah Atchley in the Sayre hospital.

We've had some wicked wasps move in on us. Think they're kin to the S A killer bees. They just hunt you up and whop it to you. Joe goes with a can of Hot Shot.

Mr. and Mrs. Ohmer Smulcer of McLean spent several days with their niece and family Mr. and Mrs. Albert Bryan.

I-40 was completed recently with appropriate ceremonies when the link by McLean was finished. Highway 66, the main street of America will soon be a memory.

Joe said he could remember in 1921 when the road on the south side of Erick coming from Delhi (and points further) going to Shamrock was called The Sunset National Highway.

Helen Smith, Lois Bryan, and Bonnie Rice attended a class on sanitation for school room lunch employees at Laverne last Friday.

Mr. and Mrs. Bill Davis, Kody and Kristin, Keith Gray and fiances, all of Hobart visited Sunday with their grandparents Mr. and Mrs. Rhome Nix.

They are going to take leaded gasoline off the market because it may be the cause of mental retardation among children. Maybe it is also the reason why the majority of us old folks are getting forgetful. We've been exposed to all that lead the most of our lives.

Stacey Gordon and Michelle Thompson attended a Farm Bureau 3 day meet on Safety at Edmond. Said they really learned a lot. Michelle also went to the state and district officers meeting at Stillwater.

Blanche Kuykendall and Gertrude Garrett met the John Fowlers of Memphis at Shamrock where they enjoyed a get together and lunch.

Eva Holloway of Skelleytown is visiting Bob and Lori Thompson this week.

We've had company all week. Some little chickadees moved in, thought I saw a humming bird but Joe footh-pooed, said it was a moth.

Julian and Coy Wallace of Elk were out to see Hertense Wadden and the Lee Coffeys. They too had been vacationing in Colo.

Norma Zellmer said it just poured while they were in Colo. but they went river rafting and had a barrel of fun anyway.

BUTCHERING & PROCESSING PRICES
 Beef processed, double wrapped—25¢ Per Pound
 \$7.50 for Butchering
 Pork Processing including curing
 Double Wra Double wrapped—32¢ Per Pound
 \$8.50 a head for butchering
 We butcher Mon., Tues., Thurs. & Fri. until 11:30 A.M.
CALL FOR QUARTER—HALF—WHOLE
BEEF PROCESSED
 WE NOW HAVE CUTS OF PORK & BEEF ON SALE
SHAMROCK SLAUGHTER PLANT
 North of City Closing at Noon on Saturday Phone: 256-3241


STORMOR
 • EZE-DRY® Grain Dryer
 • All-Steel Farm Buildings
 • Grain Storage and Conditioning Systems
 In this area your authorized Stormor Dealer:
Vise Energy, Inc.
 112½ E. Texas St. • Wheeler, Texas
 Phone: 806/826-5576

Briscoe From Page 2

Leroy and Janice Parker and Angie arrived home this morning Saturday around 4 o'clock, tired and worn out, they went 3200 miles plus. They went swimming in the Atlantic Ocean at Myrtle Beach, South Carolyn, on the east coast. Rained most every day while they were there, was raining in Ark. last night they could barely drive through the state.

Bea Ogle had surgery Friday morning in Shattuck, Okla. she was doing just ok Friday night. Her mother came to be with her. We wish for her a speedy recovery.

We went to Shamrock Friday morning, talked to Bessie Crenshaw at the store, they were doing just fine, Dub was doing some painting inside their house. We stopped north of courthouse in Wheeler. I never saw so many cantelopes or mushmellons as some them, that Christine Atherton had to sell, and Watermellons, James Lewis Smith and Christine had tomatoes, okra, peas, cucumbers, peaches, just made you hungry.

Una McGaughy ate supper with us Saturday night.

Joe Kelley visited us Saturday night and Nelson Parker.

Sunday afternoon we received a nice shower, right at 1/2 inch of rain, now it was very nice and appreciated the most we had in a month.

I have company this Aug. 6th can't gather news I am sorry, but I don't have a dear sister visiting every week.

Mrs. Bill Miller visitors Sunday were 2 of her nieces were Lilla Taylor of Reydon and Inez Bird from Midland, Texas. Bill said they had a ball visiting. Bill got 3/20 of inch of rain Sunday.

Lou Dean and K. D. Douthit visited Mrs. Lelan Luttrell at the Wheeler Care Center last Sunday evening.

VOTE SATURDAY

U B A R U
OILFIELD TROUBLE SHOOTING
IPS — ROSS HILL CERTIFIED
NOTED FOR 24HR. SERVICE!!
INDUSTRIAL COMMERCIAL OILFIELD INSTRUMENTATION ELECTRONICS
NO JOB TOO BIG FULLY INSURED
WILL SUPPLY COPY OF INSURANCE IF NECESSARY
BOB UNDERWOOD
BOX 269 WHEELER, TX 79096
806-826-3150 24 HRS.
U B A R U

Jay's Radiator Shop and Garage
 300 East 12th St. Shamrock, Texas Phone 806/256-2222
Now offering Complete Now Offering Complete Auto Repair and Radiator Service — Now Introducing Complete Custom Muffler Service
3 Mechanics — 1 Radiator Repairman
Dwight Erwin — Formerly with Pete Burton (15 years)
Roy Burger — 20 years Experience
George Morgan — 20 years Experience
J. D. Clay — 20 Years Experience
 I now offer one day pick up and delivery in Wheeler Area.
5:00 - 7:00 A.M. — 5:00 - 7:00 P.M. Call 826-5812
Guaranteed Masterbuilt Rebuilt-Motors AAA Transmissions

West Texas and Oklahoma too are fighting being blessed with unwanted disposal dumps. Now they have announced that regardless of where the nuclear waste is dumped a good percent will come down I-40. That means most of us will be living dangerously.

Election year and the politicians are off full force. No waiting till Labor Day for them.

Michelle Thompson and Stacey Gordon have been to 4-H camp at Lugert where they served as counsellors. Jake and Jerome Silk, Giletta Tharpe, Lisa Tucker, and Julie Muxic attended the camp.

Robert Thompson accompanied Joel Welch, and Mr. and Mrs. Eugene McEntire to Yellowstone and Wyoming, on vacation.

Stan and Cindy Perry went on a fishing trip to Lugert this weekend.

Norma Zellmer and Ollie Anderson have been to Ponca City to see Wanda and Bill Martin. Bill is home from the hospital but still having trouble after being terribly injured in a high line accident, 4 months ago.

Onah Brown, Ruth Johnson, Nancy Dozier of Sayre, Mr. and Mrs. Dale Bryan and Dallas were out to see the Leonard Bryans, brought cake and ice cream for Lois' birthday.

Leonard and Lois have had a water problem the past two years and are getting tied on the rural water line.

School enrollment will be August 10. Buses will run the 16th. New teachers will be Gwen Calhoun of Erick-1st grade teacher. (Earline Rose is going back to Kelton). Ag instructor is Merritt Roberts of Tucumseh. English teacher is Loyd Hammon from Cheyenne. other teachers are the same.

I boiled some eggs on general principles the other day and laid them on the ice box shelf. David thought they looked untidy and put them in the door with the others. I finally figured out to candle them like we used to do incubator eggs. Worked OK.

Hersel Anderson attended funeral services at Wheeler for his aunt Ethel Herd.

Memorial services were Saturday for Elmer Robinson who died at Erick. He had been making his home there after the death of his wife Martha, rites were at the Buffalo church with burial in the Buffalo Cemetery. He

Card of Thanks
 Mobeette and the surrounding community was shocked by the tragic death of Larry Johnston on July 28. Larry was the owner of KC Pumping and farmed locally. On August 3 a number of friends showed up with their tractors, and plowed around 750 acres of land Larry farmed. Those furnishing tractors and labor were, Chuck Hogan, Melvin May, Ralph Hovey, Jack Hefley, Keith Matties, Bill Caswell, Steve Martin, Cecil Martin, Mark Hefley, Randy McCurley, Pete Seitz, L.D. Childress, Joe Darnell, Dwight Tipps, Dean Tipps, Ed Trimble, Bob Galmor, Bob Howard, James Verden, Bill Wiggins, Paul Hartman, and Bud Howard.

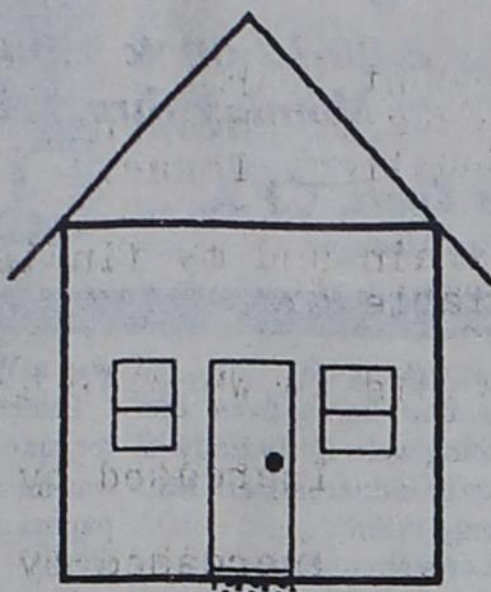
The family of Larry wish to express their deep appreciation for this labor of love.

Personal
 Visiting over the weekend with Elwood and Odessa Mooney was Odessa's grandson, Jalen Whitener, also his parents, Jamie and Helen Whitener were with him.

THE SHIRT SHACK
 114 East Texas Street
 Wheeler, Texas
 We do GIFT WRAPPING
 Phone: 826-5719

The proceeding map is based on the change in county-wide tax base. The increase in property taxes mandated by budget increases is not considered. For example the school districts in Wheeler County will receive less State money under the new School Aid bill recently passed by the special legislature in Austin. Some school districts in Wheeler County have already begun to raise taxes. How much more will these programs add to an already inflating tax bill?

AVERAGE HOUSE

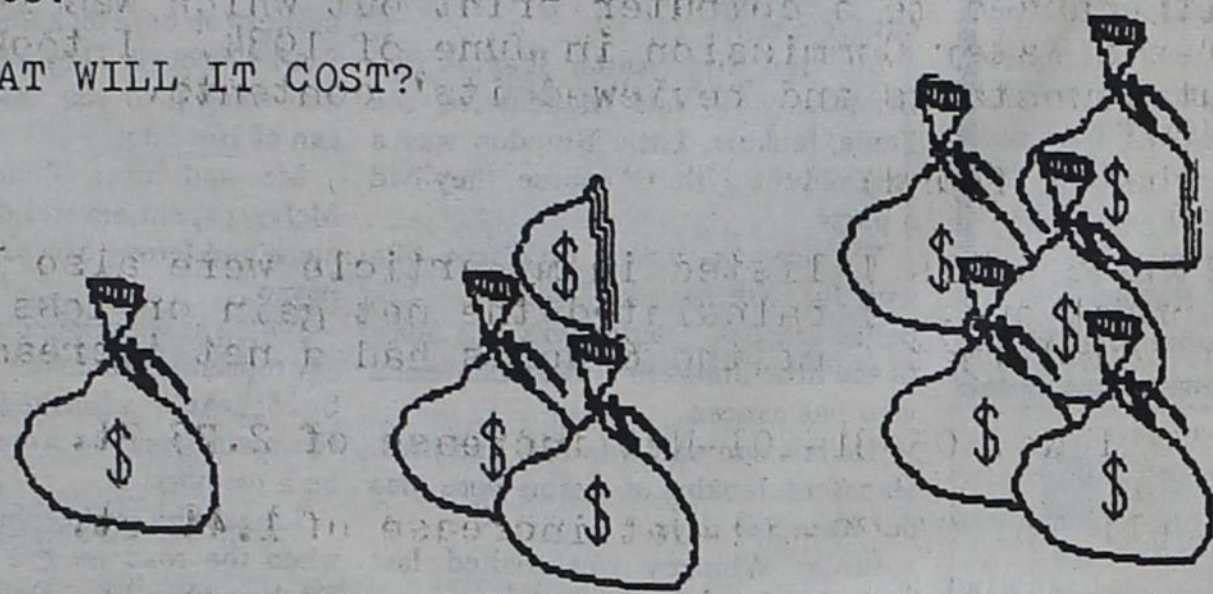


40 year financing
\$214.64 per year
\$8,585.60 total

20 year financing
\$242.68 per year
\$4,853.60 total

Debt service for the project, without considering operating costs, would require a tax rate of \$60.67 per \$10,000 appraised valuation. For a typical \$40,000 house, the annual bill would be \$242.68 or \$4,853.60 over the life of the project, figured on a twenty year financing at 10.250% interest rate.

WHAT WILL IT COST?



\$28 Million NOW

\$66 Million 20 Year

\$137 Million 40 Year

Even if we believe the \$28 Million total construction cost, the payments over 20 years would exceed \$66 Million. If the project were financed for 40 years, the payments would exceed \$137 Million.

If we examine the trends in the Petroleum industry, it becomes obvious that the valuation of petroleum properties will continue to decrease in the foreseeable future. Through 1990, one reasonable attempt to measure this devaluation is to continue the most recent years rate of decrease. If the Petroleum industry continued to decrease at 11.81% per year until 1990, the county-wide tax base would be as follows:

Year	Non-Pet \$Million	Pet \$Million	Net tax base \$Million	Tax per \$100.00
1984	120	900	1,020	.32
1985	120	793	913	.36
1986	120	700	820	.40
1987	120	617	737	.45
1988	120	544	664	.50
1989	120	480	600	.55
1990	120	423	543	.61

We believe that this is the tax rate that would be necessary to support a \$28 Million project at current interest rates. Since the project could not be completed until at least 1990, it is reasonable to assume a tax base of \$543 Million. Although the tax base may be somewhat higher, it will be far less than \$1.193 Billion.

A Summary of "The Contract":

This section creates a "Management Committee" which is to be composed of two representatives and one alternate from the Authority and the District, respectively. Although it is clear as to how the committee will be made up, conspicuously absent from this section is any specification of duties or powers for the committee. This is apparently to be determined after the election. Consequently, the proposed Management Committee has little more than a consulting role. The construction of the Sweetwater Creek Reservoir Project will be managed by the Authority. The authority will receive as compensation for its efforts in this regard, a "charge" which is "equal" to one percent of the actual cost of the construction of each phase of the project. Assuming that the actual costs of the construction are a minimum of \$28,000,000, as is projected by the Authority and the District, the Authority will receive at least \$280,000.00 in compensation for administrative and overhead expenses. Another extremely important provision of this paragraph is the requirement that the Authority use its "best efforts" to complete the pro-

ject. The use of the term "best efforts" in the contract puts no burden on the Authority other than to simply try to complete the project. This "Best efforts" burden will be expounded upon more thoroughly later with reference to Section 8. An examination of clauses (i) through (iii) of this Section reveals specific details as to the expenses and costs to be paid by the taxpayers of Wheeler County for the issuance of the bonds by the authority. It should be observed that the expenses and costs as described therein are basically all inclusive and the Authority itself will bear no burden in this regard. Of particular interest in clause (i) is the requirements that "expenses and cost of the project payable after the date of this contract for all legal and professional fees associated with the permit acquisition for the project development as well as administrative, general and indirect expenses" are to be paid through the bonds which will be paid back by ad valorem taxes imposed upon the Wheeler County taxpayers. Emphasis is placed upon the word "payable" for purposes of pointing out that the past bills incurred by the Authority in the

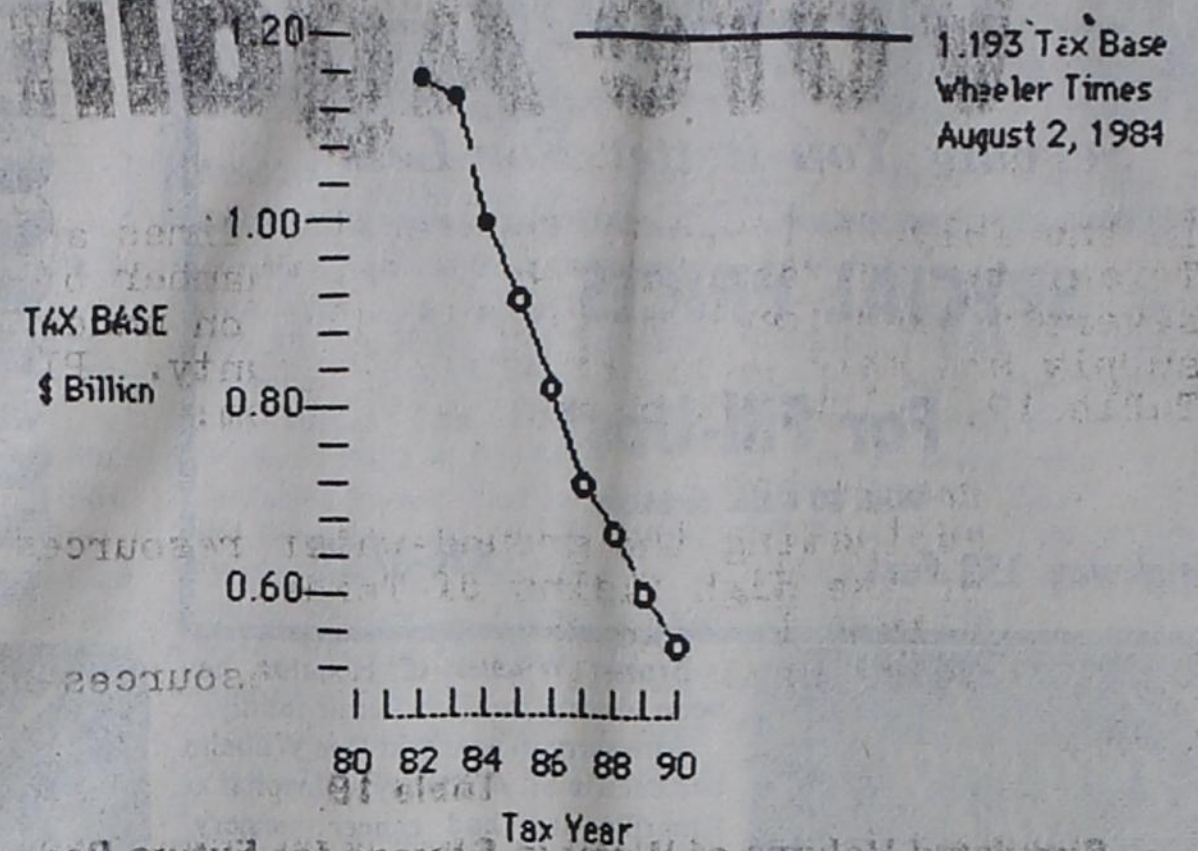
pursuit of this project, would be considered to be "payable" under generally accepted accounting practices. This being the case, the liability for these past expenses of the Authority will be placed squarely on the shoulders of the Wheeler County taxpayers. This section is a rather lengthy section with particulars regarding the actual delivery of water from the Authority to the District. It should be recognized that, again, the Authority has no absolute legal burden placed upon it to supply certain quantities or qualities of water. Only, the "best efforts" are all that is required of the Authority by this section. Consequently, in fact the Authority is unable to deliver water after the project is completed, the taxpayers of Wheeler County are still obligated to pay for the project. This is true even though they have no water to show for their tax monies spent. The remainder of Section 5 deals with specifics regarding measuring equipment, calibration, accuracy and metering, corrections for inaccuracies and metering, separate metering facilities for the District and the Authority, and units of measurement. References should be made to the contract pages

5, 6, and 7 for further details in those areas. The first sentence of subparagraph 1. of this section points out that the title to the water will be held by the Authority until it is delivered to the district at the points of delivery. This of course means that once the lake is completed, the water itself and the lake will be owned by the Authority. The remainder of this Section 7 can be summed up as requiring the taxpayers of Wheeler County, through ad valorem taxation, to unconditionally pay for all the expenses of construction of the Sweetwater Creek reservoir project and water distribution system. The term "force majeure" is generally defined as a superior or irresistible force. This term is generally used in oil and gas leases or contracts to allow for one party to get out of the terms of the contract if some irresistible force arises. You will note in Section 8 some irresistible and unforeseen forces that are specifically delineated which may allow the Authority to get out of its obligations, under this contract. However, pay particular attention to the last five sentences of Section 8. In those sentences the Authority has the ability

to back out of any of the terms of this contract if it can show a "inability on the part of the Authority to deliver water hereunder for any reason". That phrase is of course self-explanatory and allows the Authority to back out of the terms of this contract if it is not able to deliver water "for any reason", not reasonably with it's control. This section is a reiteration of the requirement that the Wheeler County taxpayers shall be unconditionally obligated to pay the "Debt Service Component" and "Annual Requirement" of any bonds that are issued. The Debt Service Component and Annual Requirement are defined in Section 6 C (b) and Section 1 E, respectively. This Section delineates the amount of lands to be acquired for the proposed project. The surface estate for lands up to the hundred-year flood elevation will be condemned with permanent ownership to the authority, and a permanent flood easement will be acquired on the Texas Water Commission, or his designee, for final resolution." All hundred-year flood elevation up to the probable maximum flood elevation. This will require condemnation of the surface estate outside of the ordinary

lake itself to a great degree. It is also interesting to note the example used for the quantity and character of lands that might be acquired, including "purchases of remainders of tracts and mineral interest to minimize the cost of acquisition." Clearly, knowing the value of the minerals of Wheeler County in general, any acquisition of mineral interest in this area would be prohibitively expensive. This section fulfills the requirements of the laws of the State of Texas regarding the ability to subject the contract to arbitration. It should be noted that arbitration can apply to any disputes under this contract except for those contained under Section 6 B of the contract. As a reminder, Section 6 B. is the section regarding the year to year budgets of the projects. Of course the year to year budgets are critical to the amounts of monies to be expended by the Wheeler County taxpayers. As previously pointed out the ultimate control in that regard is granted to the "Chairman to the Texas Water Commission, or his designee, for final resolution." All arbitration hearings conducted under this Section are designated to take place in Wichita Falls, Wichita County, Texas.

WHEELER COUNTY TAX BASE IS DECLINING



The Water District has used a property valuation of \$1.193 Billion as the basis of their calculation of tax rates. The Wheeler County Appraisal District records show that the tax base in 1984 is \$1.023 Billion. The Special over-65 exemption voted by the Water District will reduce the tax base \$8.4 Million. The removal of the land to be flooded by the proposed reservoir will reduce the tax base by more than \$1.0 Million. The estimated tax base would be \$1.020 Billion for the Wheeler County Water Supply District in 1984.

The loss in tax base in 1983 was 1.22% and the loss in 1984 was 10.56%. An examination of the components of the 1984 County-wide tax base revealed the following:

Municipal tax rolls	62,275,040.00
Agricultural land (after Ag Use exemption)	36,126,934.00
Non-Petroleum industry (estimated)	22,000,000.00
Petroleum industry	899,633,783.00

According to the Appraisal District records, the first three categories have been relatively constant over the last several years. Therefore the entire reduction in the county-wide tax base must be from the petroleum industry resulting in a 1.36% decrease in the appraised value of petroleum in 1983, and a 11.81% decrease in 1984.

The August 2, 1984 issue of the Wheeler Times contains an article titled "A Surface Water Supply for Wheeler County" which claims the current tax base is \$1.193 Billion. This overstated tax base is then projected constant for the next 30 years to evaluate the required tax rates. This overstated tax base understates the required taxes to support this project!

WHAT WILL FLOW INTO SWEETWATER CREEK DAM:

1. Sewage-Wheeler Sewage Effluent.
2. Manure and urine-40,000 cattle from two feed lots.
3. Salt and oil-residue gunk from county roads (approved by County Commissioner).
4. Poisons-pesticides and herbicides from farms.
5. Toxins-from Wheeler city run off (nitrates, lead, and phosphorus).

DRINKING WATER-HA!

VOTE "AGAINST" SWEETWATER CREEK DAM.

Vote Against Propositions 1 & 2!

Vote Against Propositions 1 & 2!

In the July 26 issue of The Wheeler Times and Shamrock Texan, two representatives of The Chamber of Commerce severely questioned my figures used on underground water supply and well data for Wheeler County. Please look at Table 19, below, which was taken from:

Report 288
Evaluating the ground-water resources of the High Plains of Texas.
Volume 1 Page 84
Texas Department of Water Resources-May 1984

The well data I used was taken from:

Report 170,
Texas Water Development Board
Ground-water Resources of Wheeler and Eastern Gray Counties, Texas.

I have listed the 6 wells again and my findings which are recorded on Page 59 under Table 6:

Records of Water Levels in Wheeler County.

- Well No. 05-31-201 Increased by 2.92 Ft.
- Well No. 05-38-902 Increased by 2.45 Ft.
- Well No. 05-39-201 Increased by 2.03 Ft.
- Well No. 05-39-301 Increased by 5.30 Ft.
- Well No. 05-39-701 Decreased by 1.04 Ft.
- Well No. 05-53-503 Increased by 2.88 Ft.

At the water board meeting on Monday July 30, project booster Greg Smith handed me a computer print out which was released by the Texas Water Commission in June of 1984. I took that print out downstairs and reviewed its' contents.

This is what I found:

Each of the 6 wells I listed in my article were also listed in this print out. I calculated the net gain or loss on each well and found that 5 of the 6 wells had a net increase.

- Well No. 05-31-201-Net increase of 2.73 Ft.
- Well No. 05-39-201-Net increase of 1.44 Ft.
- Well No. 05-39-301-Net increase of 3.21 Ft.
- Well No. 05-39-701-Net increase of 6.86 Ft.
- Well No. 05-53-503-Net increase of 3.63 Ft.

Whether you use my figures, or Greg Smith's figures, it is very plain to see that Wheeler County has underground water that certainly is not decreasing.

I would like to thank the two Chamber members—Ruth Smith and Bobby Hill who handled our disagreement over these figures in such a mature and fair manner.

Thank You,

Tommy Puryear

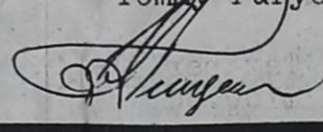


Table 19
Simulated Volume of Water in Storage for Future Period, North Model

County ¹	Volume, in millions of acre-feet					
	1980 ²	1990	2000	2010	2020	2030
Armstrong ²	3.41	3.22	3.05	2.90	2.76	2.64
Carson	14.52	13.30	12.16	11.08	10.05	9.06
Dallam	30.14	27.16	25.08	23.36	21.74	20.26
Donley	7.98	8.02	8.04	8.05	8.06	8.06
Gray	13.50	13.08	12.67	12.25	11.82	11.46
Hansford	24.68	21.48	19.23	17.31	15.45	13.70
Hartley	28.57	26.91	25.71	24.66	23.65	22.69
Hemphill	16.30	16.46	16.61	16.76	16.88	16.98
Hutchinson	10.86	10.27	9.77	9.35	8.96	8.56
Lipscomb	20.55	20.06	19.68	19.33	18.97	18.62
Moore	14.41	12.57	11.22	9.98	8.70	7.38
Ochiltree	19.04	17.61	16.57	15.67	14.79	13.92
Oldham ²	.03	.04	.04	.05	.06	.07
Potter ²	2.65	2.41	2.19	1.99	1.82	1.66
Randall ²	.58	.51	.46	.41	.37	.33
Roberts	27.62	27.75	27.88	27.99	28.08	28.15
Sherman	23.49	20.53	18.33	16.34	14.39	12.50
Wheeler	8.12	8.13	8.17	8.21	8.26	8.31
Total	266.45	249.51	236.86	225.69	214.81	204.35

As you can see, this table unquestionably supports the figures I used in my article of July 19. According to this report Wheeler County will have an additional 190,000 Ac. Ft. of water by the year 2030.

Yes my child, there will be water for you!

Vote Against Proposition 1 & 2



Vote Against Proposition 1 & 2

Figures taken from:
Report #288, Vol. #1,
Table 19, Page 84,
Dated May 1984.

**Save our Wheeler Co.
Tax Dollars
Over \$80 million**

The Texas Department of Water Resources has predicted that Wheeler Co. will have an additional 190,000 AC. ft. of underground water by the year 2030. This brings Wheeler Co. total predicted underground water supply, by the year 2030, to 8.31 million AC. ft.

Letters To The Editor:

Letter To The Editor:

How much will the interest amount to? I haven't seen any figures on the treatment plant, pipe lines, maintenance and labor on upkeep.

How much will it raise the valuation of your property? What will be the tax rate?

The first figures I remember on the cost of the dam was \$8,000,000 and the last was somewhere between \$27,000,000 and \$28,000,000.

Have any of you crossed the Sweetwater Creek North of Wheeler of near Mobeetie in the last two or three years? If you haven't go out and look at the trickle of water. How long would it take to fill the proposed dam.

The creek had a small raise two or three years back due to rain upstream. In the past it would get out of banks two or three times in a year. The last big raise was in May 1960.

What about sediment? When the creek flowed a good stream of water we would see the sand floating in the water.

Take into consideration the cost of the dam, water treatment plant, pipe lines, maintenance, labor force, equipment, taxes, interest and probably other expenses. do you think you water rates would remain the same?

I am sure some of the younger people will favor the dam. What will they think when they own property and they will be taxed to pay for all of these things.

I lived on a ranch near Mobeetie for 9 years and the Sweetwater flowed across this ranch. I have lived just North of Wheeler for over 34 years. I have watched the Sweetwater Creek go from a large stream to a trickle. How many years would it take to fill a large lake?

Think these things over, I believe you will vote NO on August 11th.

Frank D. Walker

To The Editor:

As a concerned citizen of Wheeler County, I believe every aspect of the proposed Sweetwater Creek Dam and Reservoir Project needs to be brought to light. I would like to make a few comments concerning the environmental effects this project would have on each of us.

The Sweetwater Creek Area, which would be covered by water if the proposed reservoir were filled, is classified by the Texas Parks and Wildlife Department (TPWD) and the U.S. Soil Conservation Service (SCS) as a unique and limited area. The area is located in the Rolling Plains Land

Resource Area. This area has four distinct habitat descriptions, sub-irrigated native meadow, bog, open freshwater, and wooded stream banks. Located within this area are over one hundred (100) different representative plants and many species of animal life. Many of the plants are found no where else in the Texas Panhandle and are not found until the eastern woodlands in Eastern Oklahoma. Also, there are four endangered species of birds, five endangered species of fish, two endangered species of mammals and one endangered species of reptile, which use this area. Several species of plants are considered endangered or threatened. Construction of the Sweetwater Creek Dam Project, if filled, would result in the loss of most of this unique and limited habitat. (Don Henley, Ph.D 1983)

Bottomlands provide important habitat for several game species, including whitetail deer, quail and turkey. Censused taken by TPWD indicate as many as five hundred (500) deer and six hundred (600) turkey in the immediate area of the proposed site. These bottomlands provide a unique and diverse wildlife habitat for this region. (TPWD)

Another area we must consider is water quality impacts. The City of Wheeler currently discharges its sewage effluent upstream of the proposed dam site. This effluent would be discharged into the reservoir after construction. This effluent would contribute significant loads of nutrients to the reservoir. These nutrients cause luxuriant growths of noxious aquatic plants, which interfere with beneficial uses, such as water supply and recreation. In addition public health impacts may be posed due to the presence of pathogenic microorganisms, which occur within sewage effluent. Also, runoff from two feedlots drain into Sweetwater Creek upstream of the proposed dam. Runoff from the streets and lawns would also be deposited upstream of the proposed dam. Biologist say this runoff is a poison almost as dangerous as industrial discharge that has choked many of our nations waterways. I ask you if you would like to drink this water?

I too have young children whose future is of my utmost concern. I have read and studied all of the computer printouts, the latest manual published by the Texas Water Resources Department and have personally spoken to that department by phone on two occasions. I have no doubt that my children and their children can have good clean water for many years in the future. In my opinion there is ample underground water located in Wheeler County for many years in the future.

A few days ago I had the privilege of driving through the bottomlands of Sweetwater Creek, which would be covered if the proposed dam were built and if the reservoir were filled. We stopped on land owned by Mr. Johnnie Reed and looked at the beautiful pecan, black walnut and cottonwood trees. I would like to ask you a question, which was ask to me by one of my children. "Why would anyone want to destroy something so beautiful"? I could not give an answer to that question. If the proposed dam were built and the reservoir filled, this beautiful and unique area would be lost forever to all future generations. Is it worth the destruction of such beautiful country and the destruction of the people who live there for no other reason than to have a place to put your boat in the water and for a few people to make a few extra dollars?

I moved back to Wheeler County almost six years ago. I moved back here because of the quality of the country, the quality of education and most of all, the quality of the people. I've lived and worked in several states and in three distinct areas of the state of Texas. Without a doubt Wheeler County is the best place I have seen to live and raise a family. Many of the people who live on the Sweetwater Creek Area have lived there for four or five generations. They helped make this county a good place to live. Is it right to ask them to give up everything they and their forefathers have worked so hard for?

I would like to lay all charts, graphs, records and printouts aside and ask you, the good people of Wheeler County, to join with me in preserving this beautiful and unique area, which could be lost forever. Most of all, I would like to ask you to preserve these fine people, who have fought so hard

for so many years and have dedicated their lives to the protection of this area. Would you please vote "NO" on August 11, 1084.

Thank You,
Douglas P. Rives

24-HOUR DROP SERVICE
Vogue Drive-In Cleaners
1542 North Hobart,
Pampa, Texas
669-7500

J. B. Muffler and Mechanics
Pipe Bending--Stock & Glass Pack Mufflers
Two Blocks South of Simca Station
Owner — James Babb 826-5607

GERMANIA FARM MUTUAL
Aid Association
REASONABLE, SOUND PROTECTION
for your home and other property,
Rita Pearson: 375-2379
E. A. Zybach: 375-2528 Rt. 1, Canadian, Texas

L. & F. REPAIR
ZENITH T.V.'S R.C.A. T.V.'S
SATELLITE ANTENNA SYSTEMS
FRANK E. COATES, OWNER
P.O. BOX 220 WHEELER, TEXAS 79096 PHONE 806/826-3241 110 W. OKLA. ST.

Sweetwater Creek Builders
● Custom Homes ● Additions ● Remodels
● Roofing ● Concrete Work
Jeff Reid P.O. Box 55
845-2104 Mobeetie, Tx.

Thursday, Friday, Saturday & Sunday
Try our Special: **FISH SANDWICH \$1.29**
Enjoy **Coca-Cola** *There's more to it.*
Harvey's Family Restaurant
Phone 826-3333

SALE
NEW marketing Network of Associated Brokers offers a New Communication Link to Market:

FARM EQUIPMENT	TRUCKS	BOATS & RV's
MACHINERY	TRAILERS	AUTOMOBILES
AIRPLANES	COMPUTORS	INVENTORIES
SERVICES	SURPLUS	LEASES
CONSTRUCTION equipment	OILFIELD equipment	PRINTING equipment

BUSINESS FOR SALE.....and more.....

LIST YOUR FOR SALE NEW or USED ITEMS or SERVICES WITH OUR GROUP of ASSOCIATED BROKERS.....

CONTACT US WHEN YOU ARE SHOPPING FOR THAT NEW BUSINESS or USED ITEM.....

GROUND FLOOR
A "MARKETING NETWORK CENTER" OPPORTUNITY IS NOW AVAILABLE IN YOUR COUNTY TO SPEARHEAD OUR EFFORTS LOCALLY.....

START IN FIRST PLACE
WANTED "ASSOCIATED BROKERS" WORLDWIDE TO BUILD A STRONG UNITED ORGANIZATION WITH CONTACTS IN ALL MARKETS AND AREAS.....
TRULY A UNIQUE INCOME PRODUCING MARKETING PLAN.....
NO CHARGE TO BECOME A BROKER.....

for details contact:
ASSOCIATED BROKERS
2021H 35N
WACO, TEXAS 76705

Name _____
Address _____
City _____ State _____ Zip _____
Phone _____ Telex _____
Title _____

YES please send us the Marketing Plan and Agreement for becoming an Associated Broker

YES please send us details on the "Marketing Network Center" for _____ county

YES please contact us about the enclosed pieces we have For Sale

YES please send us your next Directory (8 1/2 x 11 loose leaf for easy update) \$10.00 is enclosed

YES please send us a 3 ring binder for the Directory enclosed is an additional \$2.00 to cover its cost.....

Letter To The Editor:

I believe Wheeler County might possibly loose all of our water-rights if this present contract is voted in. I vote against this bond issue.

The problem at Parkview Hospital is similar to water-rights. There is a possibility of loosing this hospital, people have begged the administrator Drs. and nurses to stop that smoking where it can get in to the sick, peoples lungs, some dying.

There is a law that prohibits this smoking in our hospital. Why don't people inforce this law. Same as water, you die without it, millions will

die from Tobacco before you die from thirst. Jesus said there will be water.

Citizens of this county do have wisdom to correct BOTH. If we Listen.
E.D. Lester

Death and Taxes

Tax his cow,
tax his goat,
Tax his pants,
tax his coat,
Tax his crops,
tax his work,
Tax his tie,
tax his shirt,
Tax his chew,
tax his smoke;
Teach him taxes
are no joke.
Tax his tractor,
tax his mule,
Teach him taxes
are a rule,
Tax his oil,
tax his gas,
Tax his notes,
tax his cash;
Tax him good
and let him know—
After taxes
he has no dough.
If he hollers,
tax him more;
Tax him 'til
he's good and sore.
Tax his coffin,
tax his grave,
Tax the sod
in which he lays.
Put these words
upon his tomb.
"Taxes drove me
To my doom."
And after he's gone
he can't relax;
They'll still be after
Inheritance Tax!

Do we need more taxes?
Vote NO on August 11 on the
Sweetwater Dam Project.
J. R. & Leota Black

Vote Saturday

WHEELER PLUMBING
204 South Main St.
New Construction
Remodel
Repair
Sewer Service
Phone: 826-5907
FREE ESTIMATES
MAX McQUEEN
P.O. Box 754 — Wheeler, Texas

In honour of
the Fiftieth Wedding Anniversary
of
Mr. and Mrs. Curly P. Anderson
their children and grandchildren
request the pleasure of a your company
at a Reception
Sunday, the twelfth of August
from two until four o'clock
First United Methodist Church
Fellowship Hall
500 North Main
Shamrock, Texas

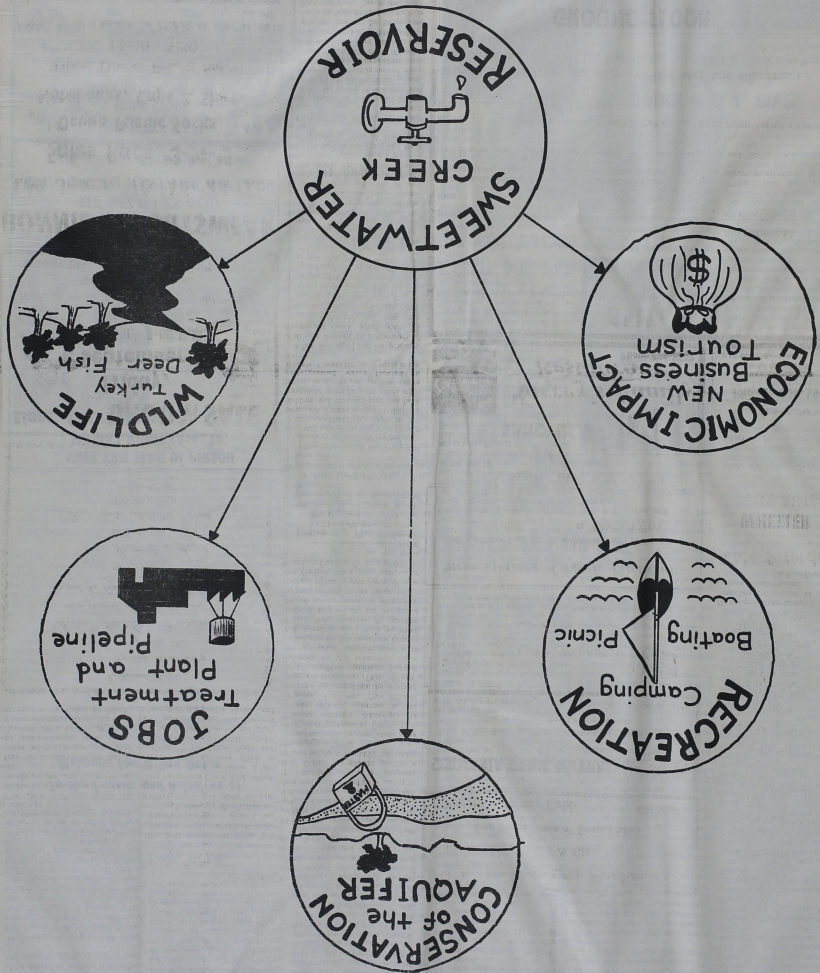
Lions' Club BROOM SALE
Friday,
September 14
8:00 A.M. - 5:00 P.M.
South Side of Square
Brooms, Mops, Dish Cloths, Potholders, etc.
Check your needs now!
Advance Order Blanks available at SPS Office.

BONNIE'S SPORTSWEAR
Lee Jeans \$16-\$18-\$22-\$25
Sales Rack \$3-\$4-\$5
Ocean Pacific Socks,
Notebooks, Caps & Shirts
Open Thurs., Fri., & Sat.
— 12:00 - 5:30
7 Miles E. of Wheeler on 152 & 1/2 Mile North

GIBSON'S
Circular Prices Effective
Till
August 10th, 1984

Mac's Car Service
OPEN BY APPOINTMENT
Professional
Car & Pickup Service
West Highway 152
Phone: 826-3469

VOTE "FOR"



Letters To The Editor:

To The Editor:

The election on August 11th of the proposed Sweetwater Dam is probably the most important election in the history of Wheeler County. Deciding which way to vote has been made more difficult because of the conflicting information presented by both sides.

The same data from the Texas Department of Water Resources has been used by both sides to confirm or deny the increase or decrease in the level of the water table. Proponents claim that the lake will be larger than Lake Greenbelt while opponents claim that it may never fill up. The cost of the proposed dam has been reported as being \$18 million, \$28 million, and even an astounding \$87 million.

Considering the importance of the issue, it would be best for new independent studies and research to

be conducted. The taxpayers of Wheeler County need current professional information to vote intelligently.

The most disturbing thing to me is the wording of the ballot. The propositions do not specify dollar amounts or percentage limits that the Water District can impose on Wheeler County citizens. In effect, we the taxpayers of Wheeler County, are being asked to sign a blank check. I plan to vote against both proposals and hope other concerned citizens will join me.

Very truly yours,
J. R. Hefley, Jr.

Letter To Editor:

With this being the last editions of the local newspapers prior to the election, I want to interject a brief but personal message.

People have the constitutional and

social rights to disagree and form their own personal beliefs and the privilege of freedom of speech to speak out and stand up for those beliefs. America gives us the privilege that many across the world may never know. Therefore, I feel, when we do take a stand for our beliefs, we should never lose sight of our respect for our opponents. There is no absolute RIGHT OR WRONG side when we are dealing with beliefs. IT IS NOT THE BELIEFS THAT ARE RIGHT OR WRONG ONLY THE MANNER IN WHICH THEY ARE PURSUED.

We, as individuals, just decide in our own hearts and minds what is right for ourselves and follow that conviction. In our stand against the Sweetwater creek Dam project we have only printed and spoken of information which could be verified by legal depositions, the latest reports from the Texas Department of Water Resources (report 288, May, 1984), reports from tax and bond experts and from geologists. We would not open ourselves for malicious attacks by using information that could not be verified.

Our community has had a stormy year with our heated issues of dam and movies. Following the election, regardless of the outcome, I hope we can remember our rights as citizens, put our differences behind us and reunite for the continued community spirit that has made our hometowns great.

Our conviction has been based on factual documented material and we still stand behind our letters of protest 100%.

A quote taken from chamber member Bobby Hill which was taken from the Sunday edition of the Pampa News "We admit this is a vote of faith in the board". We are all aware that BUSINESS PROPOSITIONS ARE NOT ENTERED IN ON FAITH! WE URGE YOU TO VOTE ON FACTS NOT FAITH! Vote against both propositions on Saturday, August 11.

Mr. and Mrs. T.G. Puryear

Letter To The Editor:

ATTENTION

On August 11th the citizens of Wheeler County will go to the voting poles to vote on the Sweetwater Dam Project.

I would just like to point out the positive sides of having the Dam and Lake built.

The lake would have strong increase of revenue for the County. The lake would create many jobs for people at the lake site and at the towns around the lake.

The lake would supply thousands of gallons of water to be pumped to the area towns. The water is VERY VITAL to our County for present and future. We know if we get the water NOW, our children and theirs will have good water for a long time.

Also the lake will provide a great recreational area for all the people. It would include beautiful picnic areas, fun, water skiing and boating for the family, and fishing for all ages. It would be a great place for the retiring people of our County to go out and spend time with their families, fishing or just relaxing.

As you can see the Sweetwater Dam would benefit every age group.

Be sure to go to the poles on August 11th and vote YES for this fine Project.

Resident of Wheeler County

In Memory

LARRY JOHNSTON

I am home in heaven, dear ones; All's so happy, all's so bright! There's perfect joy and beauty In this everlasting light.

All the pain and grief are over, Every restless tossing passed; I am now at peace forever, Safely home in heaven at last.

Did you wonder I so calmly Trod the Valley of the Shade? Oh, but Jesus' love illumined Every dark and fearful glade!

And He came Himself to meet me On the way so hard to tread; And with Jesus' arm to lean on, Could I have one doubt or dread?

Then you must not grieve so sorely, For I love you dearly still; Try to look beyond earth's shadows, Pray to trust our Father's will.

There is work still waiting for you, So you must not idle stand; Do your work while life remaineth— You shall rest in Jesus' land.

When that work is all completed, He will gently call you home; Oh, the rapture of the meeting! Oh, the joy to see you come!

The family of Larry Johnston would like to thank all our many friends for the food, prayers, flowers and especially for their love during the loss of our beloved Larry. We wonder why when things such as this happen but Larry has found eternal peace and happiness with our father above. God Bless you all very much.

Kimberly, Krista and Shelley Henry and Lucy Johnston John, Mary, Tammy and Kevin Geshner Paul and Clarise Hahaway Dean and Lacey Hahaway Dale and Kim Hahaway Wade and Gayla Hahaway Lester and Ruth Hahaway Cecil and Lillia Bailey

Letter To The Editor:

I am not going to use this space to argue whether Wheeler, Shamrock or Wheeler County is running out of potable water. I want to ask you to consider the economic feasibility of the Sweetwater Dam project as it is being proposed at this time.

First off, we are being asked to vote for approval or disapproval of a contract between the Red River Water Authority and the Wheeler County Water Supply District that isn't even a valid contract! Mr. Ron Glenn, General Manager of the Red River Authority, stated in the August 5th edition of the Pampa News that the contract had not been signed by the proper people of the authority and all that they had was a working contract. Would you run a business like this?

If we are running out of water, has any alternate source of water been investigated? Our Water District Board says no because they don't have any funds to do so but yet they are willing to saddle the taxpayers of Wheeler County with an indebtedness in the neighborhood of 80 million dollars, including interest on payments of the bonds and loan from the State of Texas.

When asked, one member of our Water District Board said that they had no idea how long it would take for the proposed dam to fill or whether it would fill or not! Yet people are being asked to give a green light to spending millions of dollars to find out. How many of you taxpayers would expend a large amount of capital for something that you probably couldn't use for years and years, if ever? Very few I imagine.

No studies have been made on the siltation of the proposed lake in the last decade so it is strictly a guess on how much and what kind of siltation will occur in the years that it takes the proposed lake to fill.

Proponents of the project say that oil and gas properties will pay for 85-90 percent of the entire cost. How do we know that oil and gas evaluations will remain fairly constant or drop as they have the last 2 years? Wheeler County's evaluation dropped almost 12 percent over the last 2 years and this drop came basically from lowered oil and gas evaluation. No one has any idea what evaluations will do the next 25 years or so but the payout on the Sweetwater Dam project is being figured on 1984 evaluations. If these oil and gas evaluations just drop perceptibly over a 20-25 year period then businesses, homeowners, landowners and non petroleum industries will have to pick up the slack as tax rates must rise for the payout.

Do not forget the proposition for another tax on the ballot for up to 4 1/2 cents per \$100 evaluation for maintenance...this in addition to tax for bonded indebtedness.

Ask yourself just how far we can go with additional taxes. Several of our schools are proposing raising taxes this year just to replace monies lost on the lowered evaluations and to fund the recently passed education bill. We are being asked to add 2 more tax bites to our already heavily taxed dollar.

I ask you, is it feasible or economical to add what could be an albatross around the taxpayers necks? If we are running out of water sources let's first try to find an alternate source and if none is available, then propose a possible reservoir the size necessary to furnish the cities of Wheeler and Shamrock water and forget the recreational aspects. After all, the project is proposed because potable water is supposedly becoming scarce.

THINK ABOUT IT TAXPAYERS! Sincerely your, David M. Britt

Mobeetie Meditations

By Goldie Gordon

Mr. and Mrs. Marvin Harrison from Denton visited a few days in Mobeetie with Edwin and Norma Leake, Dolly Arnold and Henry and Lucy Johnston. They attended Larry's funeral.

Those visiting Ruth and Lester Hathway last week and attending the funeral of Larry Johnston were, Roy and Lorita Hathway-Queens City, Jerry and Benita Griffin-Queens City, Ronnie and Lorinda Clark and children, Lorinda and Heath from Atlanta, Dolly Haning-Vernon, Mattie Wooley-Borger, Dorothy Greenhouse-Borger, Lawrence and Kathaleen Weddle and daughters-Electra, Dean and Lacey Hathway-Chester, Okla.

Mr. and Mrs. Walter Fletcher from Childress spent several days last week with Dolly Arnold.

Ebb and Virgie Patton and Claudia Phillips from Howardwick visited Tuesday in the home of Anna Belle and Ariza Corcoran.

Jeannie Coogler from Houston visited in the home of her parents Boyd and Lorry Kennedy for several days last week.

Anna Lee Sims spent the weekend in Booker with Carla, Kent, Sara and Bridget Sims.

Reece Simpson from Skellytown took Jess and Gazelle Patterson to Amarillo to see the Dr.

Lonnie Trout from Miami visited last week with Ab and Ella Trout. Dooley and Winona Allen from Elk City visited with Ab and Ella Sat.

Loretta and Herk Atkins spent Sunday in the home of Herk and Elnita Atkins.

Tina Mason and daughter from Amarillo spent last Thursday with Tince and Leona Williams.

Peggy Dunn from Canadian spent the weekend of the Blue Grass Festival with Tince and Leona.

Tince and Leona Williams visited in Wheeler with Bynum and Rita Smith, they went to visit with Hoyt Dunn from Austin.

Kent, Carla, Sara and Bridgett Sims were back in Mobeetie. They visited with Cotton, Clara, Kaye and Todd Ridgway and Bill and Virginia Ridg-

way. They brought Anna Lee home. Jamee and Amber Richardson spent Monday with Calvin and Leola Stewart.

Mr. and Mrs. Jack Hayes from Wheeler and Rev. L.V. Grace from Pampa visited Tuesday with Marie and Gene Gudge.

Ralph and Lanell Riggs daughter Linda and Tommie Pritchett and children Tanya and Dwayne from Louisiana are spending their vacation with them. Deloris Czesnawske and Joey of Pampa visited with them last week.

Novelene Simpson visited Friday in Amarillo with Tiny, Kay, Linda and Shirley Simpson.

Sandra Randolph came home from the hospital Saturday. Sure hope this finds her much better.

Blest be the tie that binds our hearts in Christian Love, my week has been very nice with so many lovely people stopping by. Orville Greenhouse, Lorena Rector and Leatha Corcoran stopped by for a visit and Anna Belle and Ariza Corcoran brighten me up each day. I met the new Methodist preacher Rev. Perry Griffith and I know, he will make a wonderful pastor.

I didn't get to church Sunday but Mr. and Mrs. Claudia Brotherton came by and had prayer together on Sunday.

Thanks Everyone Hello to Billie Ruth Williams of Louisiana from her friend Leola Stuart.

Robert Sims and friend Les Pryar from Boys Ranch visited over the weekend with Lynn Sims and attended the Blue Grass Festival

Mildred, Bob and Robin Mickey went to Lake Texhoma for a fun week of water skiing and visiting relatives. On their returns they met Lou Ann Northcutt and sons from Plainview in Canyon to help celebrate Matt's birthday.

Alycia Moffett's nephew Daniel Talbert from Pampa spent last week with James, Alycia, John Shelia and Diane.

Eula Johnson has just returned from Odessa where she attended the funeral of her son-in-law Glen Barnell who was married to her daughter Barbara. Cary Jack came home with her and spent several days.

Visiting with Kay, Jim and Steven Batton on Sunday afternoon were Mark and Jamee Hamilton, Ron, Shannon and Jeremy gudge from Andrews; Mark, Nancy, and baby Darcy Marie Arrington from Dallas and Mrs. Betty Arrington from Miami.

Wanda Estes injured her back last week. Sure hope this will find her much better.

The 4-H Wheeler Rodeo was held on Aug. 2nd, 3rd and 4th. Jim Dutton was the announcer and Don Webb helped in the arena.

Congratulations to 15-19 years Dean Randolph who won first place in the bull riding, Steven Batton, 13-14 years, 3rd place in the breakaway Roping, Ronnie Vandifeur-15-19 years 4th place in breakaway roping and 3rd place in the ribbon roping.

James Moffett left Monday for Houston where he will attend the Ag teachers convention.

Rev. Ralph Hovey and Mary were dinner guests Sunday in the home of James and Alycia Moffett.

Kay, Jim, and Steven Batton visited last week in Miami with Mrs. Betty Arrington and Mark, Nancy, and Darcy Ann Arrington from Dallas.

Bessie and Bob Galmor were dinner guests Sunday in the home of Bobbie and Shirley Galmor in Shamrock. Bessie is feeling much better.

Lester and Jewell Leonard visited in Pampa Tuesday night with Jewell's sister Mr. and Mrs. Lawrence Scribner



ENGAGEMENT ANNOUNCEMENT

Mr. and Mrs. Dwayne Baker of Wheeler and Mr. and Mrs. C. W. Petit of Shamrock announce the engagement and approaching marriage of their children Kristi Sue Baker and Charles William Petit. The couple plan a September wedding.

Miss Baker is a 1983 graduate of Wheeler High School and attended West Texas and Amarillo College. Mr. Petit graduated from Wheeler High School in 1984 and is employed by Johnny's Shamrock.

DOUGLAS O.V. RIVES, Mayor of Shamrock, Texas

Supports the Sweetwater Creek Dam Project!

Pol Adv. pd by Douglas O.V. Rives, Shamrock, Tx

United Methodist Church
Wheeler, Texas

MEET THIS MAN IN PERSON SUNDAY NIGHT (Aug. 12)



Bob Wieland is walking on his hands across the nation. His journey from California to Washington, D.C. has taken him as far as Wheeler so far. A world-record breaking weight lifter, Bob will demonstrate his physical abilities and give a testimony for Jesus Christ.

HEAR BOB TELL WHY HE BELIEVES GOD IS GOING TO RESTORE HIS LEGS.
7:00 p.m. at Christian Center.

sale **SANDERS' MENS STORE** **sale**
205 N. Main SHAMROCK, TEXAS 256-3501

SUITS Sale Reg 106.00 to 265.00 Price 89.00 to 199.00	SLACKS Sale Reg 20.00 to 42.00 Price 15.00 to 31.50	SPORTCOATS Sale Reg 67.00 to 198.00 Price 50.00 to 148.00
STRAW HATS 1/4 Off	NIKE BAND SHOES Leather 40.00 Canvas 23.00	Select Group FELT HATS 1/3 off
L/S DRESS SHIRTS Regular 14.00 22.00 SAVE 25% Sale Price 10.50 to 16.50	GOLF & TENNIS SHIRTS Regular 14.00 to 26.00 Sale Priced 10.50 to 19.50	Levi Saddleman Dress Jeans Regular 22.00 Sale Price 18.50
S/S DRESS SHIRTS 1/2 Price	L/S Western Shirts Regular 18.00 to 28.00 Sale Price 13.50 to 21.00	S/S Western Shirts 1/2 Price
Western Boots Regular 62.95 to 180.00 Less 15%	Camouflage Pants & Shirts Pants 18.88 Shirts 6.88 Regular 23.00 & 9.00	

SPECIAL SELECT GROUPS LIMITED QUANTITIES & SIZES

LEVIS & WRANGLERS Small Sizes 8.88	DRESS SLACKS 8.88	S/S KNIT SHIRTS 7.88
SWEETWATER YES	Designer Jeans & Casual Slacks 8.88	SWEETWATER YES

sale **SUPER BARGAIN RACKS & TABLES SALE** **sale**



ENGAGEMENT ANNOUNCEMENT

Mr. and Mrs. Bob Cornell of Allison would like to announce the engagement of their daughter, Becky to Mr. Tommy Hefner, son of Mr. and Mrs. Max Hefner of Borger. The couple plans to be married Sept. 8th in Borger.

CARD OF THANKS

We would like to thank everyone who helped make the Kuntry Bunch Chili Kookoff a success. A special thanks to everyone who helped out, and to Red Meadows and Oden Hudson for donating the trophies.

Thanks again
Scott & Kay Luttrell

VOTE SATURDAY, AUGUST 11

Water From Page 1

3. Wheeler County's tax base is \$1,023,491,797 according to latest figures from Wheeler County Tax Appraisal District.

4. The decline of tax base last year was, according to Pritchard and Abbott, mineral appraisers hired by the Wheeler County Tax Appraisal District, due mainly to a price drop in the amount being paid for gas at the wells within the County.

5. Based on today's tax base and the sale of 10.5% interest 20 year bonds the tax rate would be in the range of 24 cents to 25 cents per \$100 valuation.

6. Other avenues are available through Red River's use of their financing that could save considerable costs since Red River can sell short term certificates of obligation at 6% to 6.5% interest to carry interim financing for up to five years. This would serve to reduce the tax rate of 24 cents to 25 cents.

7. All revenues from the sale of water, recreation or any other source are dedicated to payment of expenses and debts. At the present time Greenbelt receives \$400,000 to \$500,000 more in revenue than they have in expenses. If this project receives the same amount the tax rate would be reduced from 24 cents - 25 cents to 19 cents - 20 cents.

8. The Texas Water Development Board has available \$40 million for projects like this in the State of Texas with none of it designated for any project and no other projects are any further along than the Sweetwater Creek Reservoir. It is contemplated that \$10 million will be furnished by this State Agency and there has been as solid assurances from them, as can be made at this time, that it or help similar to this would be available. If this is not available, or something similar, the project can be cancelled by the local Water District Board.

9. The local board has already voted to allow an exemption for homesteads of everyone within the County (the maximum exemption allowed under the law) and a \$10,000 exemption on the tax base for those over 65 years old. Therefore, for example, the taxes on \$20,000 home of someone over 65 after all exemptions, and at a 25 cents tax rate, would be \$5.00 a year, or if you are not over 65 with exemptions, the tax would be \$30.00 a year.

THE PROPOSITION AND BALLOT:

1. The election we called asks for you to vote for or against a contract we have worked out with Red River Authority.

2. A vote FOR the contract would ask that the project as we have previously outlined.

3. Under the terms of this contract both the local Water District Board and Red River Authority's board must approve all policies in regard to the development of the project, plans and specifications.

4. THE LOCAL WATER DISTRICT MUST APPROVE THE BUDGET FOR THE OPERATION, MAINTENANCE, AND DEBT SERVICE EXPENSE EACH YEAR ON THE PROJECT.

5. No bonds can be issued by the District of Red River Authority except at the request of the local water district board.

6. There is also a proposition on the ballot to vote for or against the

authority to levy a maintenance tax of not more than 4½ cents. It is contemplated that 2 or 3 cents is the most that would ever be needed to finance the continued pursuit of a permit and then the establishment of tax collection and local water district offices and maintenance of those offices and the other facilities in the project.

7. Full ownership of the project vests in the local district when the bonds are paid off, but control of all aspects vests immediately in the local district and the Red River Authority if the Contract and the maintenance tax propositions are approved in this election.

8. Under the contract the local water district is entitled to receive the total yield of water from the reservoir.

9. Under the contract, Red River Authority, will not be paid for past monies they have expended. Red River will receive one percent of the construction costs as a fee for their continued help in this matter but will not be allowed to include in their operation or other expenses anything but actual expenses they incur.

This statement is made to share with you, the voter, as many of the facts that we have learned about this project in a way we hope is clear to those who have not been involved in daily talks concerning this project. If there are any other questions you need answered, feel free to call on any of the board members. This statement is being made jointly and unanimously

Care Center
By Laura Guthrie
Comments

The people at the Care Center appreciate so many visitors, within the last few days Ida Frmer welcomed visits from Mr. and Mrs. Foy Farmer of Mobeetie, and Mr. and Mrs. Foy Satterfield of Pampa.

Kenneth and Loudean Douthit of Briscoe visited her mother, Lelan Luttrell. They also brought squash for the Center dining table.

Janie Bliss of Shamrock visited with Mrs. Mary Bledsoe.

Gary Brotherton took part in the Sunday afternoon Worship service. Everybody enjoyed it and said "Thank You."

I haven't been very active in the Auxiliary of late, but I am told that service chores go on, and the residents are very grateful. On Monday Elva Wood and Mary Mitchell manned the juice cart.

Paula Britt helped in the Beauty Shop on Friday.

Pat McWhorter took Ieryl Littrell to High Plains Hospital last week, she

by the full Wheeler County Water District Board.
O.B. (Pete) Burton, Chairman
W.A. Sims, Secretary
Melvin May
Dan Macina
M. Kent Sims

spent two days there to undergo eye surgery.

Mable McCaslin was in local hospital for a couple of days but is back at the Center and doing fine. Jack Allen is out of the hospital and doing fine.

Nora Patterson and Renee Weatherly have been out of the Center for day-visits with relatives.

Thanks to Pat McWhorter who brought squash and cantalopes last week.

Mrs. Hyatt is filling in at activities while Alene Palmer is on vacation.

On Friday evening August 10 at 7:00 p.m. Marvin Pierce will show, for the benefit of the residents, a film on the second Coming of Christ. Anyone intersted is invited to come and view the film.

Donations to the Auxiliary for May, June and July are as follows: In memory of Owen Jones, Mr. and Mrs. David Britt, Vida Brown, Wayne and Jimmy Patterson, Wayne Patterson family, Mahona Mann family, Gwen Harvey family, Fern McCormic family, Ruby Holland family and Mr. and Mrs. Jimmy Hill.

Mr. and Mrs. Larry Jones gave in memory of Mrs. Bowman, Sherman Smith and Lucille Burgess.

Mr. and Mrs. David Britt, in memory of Sherman Smith.

Those making other donations to the Auxiliary are: Inez Wright, Ida Farmer and the Wheeler Chapter of Young Homemakers of Texas.

PROCLAMATION
CHILD SUPPORT MONTH IN TEXAS

WHEREAS, our state's future lies in the strength of our families and the neglect of our children undermines the hope of that future; and

WHEREAS, the failure of parents to take financial responsibility for their children in this state is recognized as another form of child abuse; and

WHEREAS, in order to ensure our children the needed financial support from their parents, the 68th Texas Legislature passed resolutions declaring the month of August "Child Support Month" in Texas; and

WHEREAS, all citizens of the City of Wheeler are urged to join in acknowledging the significance of "Child Support Month" to emphasize the financial aspects of parental responsibility:

NOW, THEREFORE, I, Louis C. Stas, Mayor of the City of Wheeler, do hereby proclaim the month of August, 1984, as CHILD SUPPORT MONTH

Here & There
By Laura Guthrie

This week has almost been like old times. Lydia is still with me. Melinda has her friend Dana Warren from Canadian, Joe and wife Rhonda of Abilene came today (Tuesday) and of course Steve and I are here. We made ice cream this afternoon, and at supper we were seated at the table like a real family. Later Steve and Joe gave the football some wallops in the back yard, and sitting out in the cool of the evening was a real joy.

Patricia and Ed Forrester spent the weekend with their son Curtis in Dallas.

Elva Wood returned Sunday night from her vacation. She made a two-week bus tour. She is tired but she loves trips.

Kent and Leslie Gaines and family used last week for their vacation. She was missed at the Times office, so Melinda and I did a bit of pinch-hitting to help out.

Jean and Stan Pollock of Baltimore Maryland, are visiting Jeans mother, Jewel Holloman. Jewel met their plane in Amarillo last week. The Pollocks joined her in a weeks trip to visit in Lubbock, Amarillo and other places. They are here in Wheeler now, but Mr. Pollock returns to Maryland today and Jean will spend this month with her mother.

JoAnn Simmons and Hestell Killingsworth returned this week from a weeks trip to Connecticut where they visited Louie and Mary Simmons. Louie is JoAnn's son and Hestell's grandson. They enjoyed the days of planned activities, and the change of environment.

Gene, Melba, Teri and Neil Arnolds of Oklahoma City, arrived in Wheeler on Saturday evening and spent the rest of the weekend with the Louis Stas family. The Toby Bradstreets came in from the country Sunday morning and the day was spent visiting.

Personal

Visiting with Elwood and Odessa Mooney for 10 days were Odessa's granddaughters, Heather and Lainie Keylon of Dallas while their parents, Jerry and Judy Keylon vacationed in New York.

O. D. Richardson Reunion

The Richardson family reunion was held on Aug. 5th at the boy scout camp. Everyone enjoyed a covered dish luncheon under the trees. The young people spent their time swimming and playing volleyball.

Those who attended were: James and Tony Richardson, Gary and Tanya Richardson, Choise Richardson, Bob and Minnie Richardson, Sonya and Brad Richardson, Kenneth and Janice Moss and children all of Perryton. Mr. and Mrs. Joe Richardson and children, Robert and Jay Moss, Bill and Bulah Amrine all of Dumas. Connie Moore from Leveland, Sherry Bates and Juanita Wilkins-Loving New Mexico, Tom and Jeniece Taylor-Sayre, Oklahoma, Ron Tanya, Chad and Jerod Stewart-Sayre, Albert and Gladys Richardson-Sayre, Robert and Hazel Smith, Juanita Rogers, Ella Mae Beardon, from Pampa, Jerry Richardson, Eldorado, Jamee Coleman and Amber, San Angelo, Dickie and Don Ritchie, Clinton, Okla., Nona and Michael Gish, Artesia, New Mexico, Eldon and Kathy Taylor, Watonga, C.L. and Maurine Young, Amarillo, O.D. Barbie and Christi Richardson, Elk City, Audrey, Della and Jennifer Richardson, from Burns Flat, Okla., Jim and Patsy Richardson, Erick, Okla., Thrumman Richardson, Panhandle, Ella Mae Beardon, Pampa, Randy, Bobbie and Katrina Stewart, Wheeler, Calvin, Leola, Dennis and Amy Stewart from mobeetie.

Patton Reunion

The decendants of W.H. (Will) and Loula Belle Patton met in Pampa Aug. 5th at the Bull Barn for a covered dish luncheon. The couple had eleven children with two living. Ebb Patton from Howardwick and Daisy Belle Patton Ritter from Beaver, Okla. ten of the children had families represented and 36 families were present.

Anna Belle and Ariza Corcoran attended. Anne Belles mother was Bertha Patton Stracener.

XYZ Club Meeting Held

The XYZ Extra Years of Jest met on August 3rd in the fellowship hall of the Baptist Church.

A inspiring devotion of Acts 5:15 was given by Mary Hovey.

Happy Birthday was sang to Jane Seitz and Estelle Orr who were birthday ladies for August.

Rev. Ralph Hovey gave the evening blessing, a covered dish supper was enjoyed by Lester and Ruth Hathaway, Marion and Ethel Grimes, Sid and Carrie Harris, Jess and Gazelle Patterson, Munroe and Jane Seitz, Chuck and Louise Hogan, Lester and Jewell Leonard, Bob and Bessie Gaimor, Rev. Ralph Hovey and Mary, Doyle and Bulah Grimes, Elizabeth Richardson, Orville Greenhouse, Laverne Scribner, Renald St. John, Irene Webb.

VOTE
SATURDAY,
AUGUST 11

MAXEY'S
STEAKHOUSE
SUNDAY BUFFET
Salad Bar
Steamship Round Au Jus
Baked Fish
Sweet Peas/Pearl Onions
Fried Okra
Ice Tea, Coffee
Dessert

Mon.-Sat.—6:30 A.M. - 10:00 P.M.
Sun.—Noon Buffet (Only) 11:30 - 1:30
Phone: 806/826-3441
Located: 1 mile South of Wheeler on U.S. 83



AT SECURITY FEDERAL,
YOU CAN GET A LOAN
FOR ANYTHING.

That's right. Security Federal is lending money for nearly anything you can think of getting. Cars, boats, education, home entertainment systems — anything you need!

Consumer and personal loans are just another of the full range of services you can get at Security Federal.

And here's something important. If you have another account at Security Federal, such as Security Checking, you can qualify for a lower loan rate! It's another benefit we offer our customers.

So whatever you need, come see us. We'll do our best to help you get it!

Security Federal
SAVINGS AND LOAN ASSOCIATION
WHEELER, TEXAS • On the Square • (806) 826-3586
Member FDIC • An Equal Opportunity Lender

BACK-TO-SCHOOL SPECIALS



DOUBLE COUPONS
ON TUESDAY

DOUBLE STAMPS
ON WEDNESDAY
with \$2.50 or more

ASSORTED FLAVORS
SHURFRESH
ICE CREAM

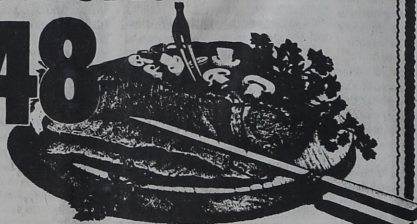
\$1.29

1/2 GAL.
SQ. CTN.

HEAVY GRAIN FED BEEF BONELESS
CHUCK ROAST

\$1.48

LB.



SPECIAL BARGAINS

EXTRA LEAN
GROUND CHUCK 12 OZ. PKG. **\$1.58**
SHURFRESH QUALITY
SLICED BACON 12 OZ. PKG. **\$1.49**
SHURFRESH QUALITY MEAT
FRANKS 12 OZ. PKG. **89¢**
SHURFRESH QUALITY MEAT
BOLOGNA 12 OZ. PKG. **99¢**

OSCAR MAYER
COOKED HAM 6 OZ. PKG. **\$1.39**
OSCAR MAYER
CHOPPED HAM 8 OZ. PKG. **\$1.39**
OSCAR MAYER MEAT
BOLOGNA 8 OZ. PKG. **79¢**
OSCAR MAYER BEEF
BOLOGNA 8 OZ. PKG. **89¢**
SHURFRESH ASSORTED THIN SLICED
LUNCH MEATS 2 1/2 OZ. 3 OZ. PKG. **39¢**
SHURFRESH WHOLE HOG REG. OR HOT PORK
SAUSAGE 1 LB. **\$1.59**
SHURFRESH 4-6 LBS. AVERAGE
BAKING HENS LB. **69¢**



SHURFINE
PORK & BEANS

4.99¢

16 OZ.
CANS

ASSORTED COLORS FACIAL TISSUE
KLEENEX

59¢

175 CT.
BOX

SHURFINE GRANULATED
SUGAR

\$1.49

5 LB.
BAG

ALL GRINDS
SHURFINE
COFFEE

\$1.99

1 LB.
CAN



CALIFORNIA THOMPSON SEEDLESS
GRAPES

59¢

LB.

CALIFORNIA RED RIPE
PEACHES LB. **39¢**
CALIFORNIA READY TO EAT
NECTARINES LB. **39¢**

COLORADO MOUNTAIN GROWN FULL EAR
CORN 3 EARS FOR **59¢**
COLORADO GREEN TIES
GREEN ONIONS 2 BUNCHES **45¢**
PECOS FULL SLIP
CANTALOUPE LB. **29¢**
A SALAD FAVORITE
CHERRY TOMATOES BASKET **59¢**
CRISP CRUNCHY
CUCUMBERS LB. **19¢**
STRAIGHT NECK
YELLOW SQUASH LB. **39¢**
RED OR GREEN
LEAF LETTUCE BUNCH **49¢**

GROCERY SPECIALS

SHURFINE
VEGETABLE OIL 48 OZ. BTL. **\$1.09**
ASSORTED FLAVORS SHURFINE
SODA POP 6 12 OZ. CANS **99¢**
KRAFT DINNERS
MAC & CHEESE 7 1/2 OZ. BOX **39¢**
CONTADINA
TOMATO SAUCE 6 8 OZ. CANS **99¢**
ASSORTED PUDDINGS - HUNT'S
SNACK PACK 4 CT. PACK **\$1.19**
SWIFT VIENNA
SAUSAGE 2 5 OZ. CANS **99¢**
SHURFINE PEACH
PRESERVES 18 OZ. JAR **99¢**
SMOOTH OR CRUNCHY PEANUT BUTTER
PETER PAN 18 OZ. JAR **\$1.59**
SHURFINE THROWN MANZANILLA
STUFFED OLIVES 5 1/2 OZ. JAR **79¢**
SHURFINE
SWEET RELISH 8 OZ. JAR **59¢**
SHURFINE SALAD
MUSTARD 2 16 OZ. JARS **89¢**
SHURFINE SALTINE
CRACKERS 2 16 OZ. BOXES **99¢**
SHURFINE COOKIES
CHIPS SUPREME 19 OZ. PKG. **\$1.69**
ASSORTED COLORS OR WHITE BATH TISSUE
DELSEY 4 ROLL PKG. **89¢**
WHITE OR EARTHTONE HI-DRY
PAPER TOWELS JUMBO ROLL **49¢**
50" OFF LABEL LIQUID DETERGENT
PALMOLIVE 32 OZ. BTL. **\$1.29**
SHURFINE LOCK TOP
SANDWICH BAGS 2 10 CT. PKGS. **89¢**

SHURFINE POWDERED
CLEANSER 14 OZ. CAN **29¢**
SHURFINE CONCENTRATED
FABRIC SOFTENER 64 OZ. BTL. **\$1.19**
5" OFF LABEL
CLOROX BLEACH GAL. BTL. **99¢**
15" OFF LABEL-ALL FABRIC BLEACH
CLOROX 2 40 OZ. BOX **\$1.49**
2 LBS. FREE-DOG FOOD
COME & GET IT 8 LB. BAG **\$3.99**
SHURFINE
TEA BAGS 48 CT. PKG. **99¢**
SHURFINE
EVAPORATED MILK 2 13 OZ. CANS **89¢**
SHURFINE FROSTED OR SOFT WHITE
LIGHT BULBS 60/75/100 WATT 2 CT. PACK **79¢**

FROZEN FOOD & DAIRY

SHURFRESH
MARGARINE 2 1 LB. PKGS. **89¢**
SHURFINE FROZEN
QUARTERS 1 LB. PKGS. **89¢**
SHURFINE FROZEN
ORANGE JUICE 2 6 OZ. CANS **89¢**
SHURFINE FROZEN
WHIPPED TOPPING 8 OZ. BOWL **69¢**
SHURFINE FROZEN
CUT CORN 20 OZ. PKG. **89¢**
SHURFINE FROZEN
WAFFLES 4 5 OZ. PKGS. **99¢**
SHURFRESH INDI. WRAPPED SLICED AMERICAN
CHEESE FOOD 12 OZ. PKG. **\$1.29**
KRAFT HALFMOON LONGHORN COLBY OR
CHEDDAR CHEESE 10 OZ. PKG. **\$1.69**
SHURFRESH CHUNK CHEESE
MOZZARELLA 1 LB. PKG. **\$1.99**



THICK & TASTY
SHURFINE
CATSUP

79¢

32 OZ.
BTL.

ANTI-FREEZE
PRESTONE

\$3.99

1 GAL.
BTL.

BACK TO SCHOOL

ELMER'S
SCHOOL GLUE 4 OZ. BTL. **49¢**
CRAYOLA
CRAYONS 16 CT. PKG. **69¢**
3 SUBJECT
THEME BOOK EACH **79¢**
BIG CHIEF
TABLETS 120 SHEETS **69¢**
BLUE/BLACK MEDIUM POINT PENS
ERASER-MATE 2 EACH **59¢**
NOTEBOOK
FILLER PAPER 200 SHEETS **49¢**

ELEGANT
STAINLESS
TABLEWARE
ON SALE
NOW!



We're proud to give you more!

WE ACCEPT FOOD STAMPS
WE RESERVE THE RIGHT TO LIMIT QUANTITIES

THRIFTWAY



PRICES EFFECTIVE
AUGUST 5-18, 1984

Thrifty
McSaver