

The Wheeler Times

Serving Wheeler, Hemphill and Beckham Counties

THURSDAY, APRIL 28, 1960

SINGLE COPY 5c

NUMBER 21

Chat with the Editor

YOUR STEP
Oregon for a long yellow dividing lines. Highway authorities claimed evidence that believe yellow lines are better visible lines and are an eye factor.

Over, the Oregon Department announced that will replace the person: The Federal Court ruled that states can't sue for loss of funds under the interstate highway program.

be a sobering loss of aid in our square: Jody me more of those to give away. quick... The seem to be gain week. As you only organized a. Nevertheless, uncapable leadership by Wayne Weather-

son and Joe Rogg has really been caps and bounds. He submitted their membership into night. The new lodge are Dennis Wilks... has opened an in the back office National Bank. It... It won't be south side of the different appear- building own- to tear down the Page 8, No. 7)

Office of the...

PERINTENDENT

By Arling Cordell
Class visited in... Junior Class was... The test was... sent to the... to be graded... results will be... in about two...
astic Meet:
brought honor to... by best place... reading. The... was the "Crea... W. A. will be... on May 6th to... ate Meet.

Spring Band Con- on Tuesday eve- more specific an- be read elsewhere the Times.
ementary Track... as held last Wed- at Briscoe. Fol- of the winners of... Wheeler and... place winners... and a half points

Honor Roll Students for the 5th six weeks in Wheeler Elementary School are as follows:
First grade straight A students were Steve Dunn, Phillip Risner Susan Ford, Vicki Gaines, Patricia Jones, Cynthia Ann Manning.
Those making A's and B's were Darrell Blevins, Sam Montgomery, Carletta Earney, Brenda McCasand, Cindy Johnson.
Straight A students in the Second grade were Danny Weatherly, Carl Weiss, Geniva Shugart, Debra Lamb, Larry Overcast, Dixie DeArment, Janice Ware, Nancy Watts, Dyanna Patterson, Dennis Moore.

(Continued on Page 8, No. 3)

Positive Approach

er tragic paradox that the productive genius in farmer is regarded abroad as perhaps the this nation has; while here at home, it is com- led as a handicap and a sin against the nation-

Probably not a nation among the world's powers, that would not be willing to exchange all ap- ons, its technological discoveries, its mis- probing paraphernalia for the productive ca- and fiber in the generous abundance of this erican farmer. No other nation has the ability ture. What a powerful weapon this capacity eads of the Russian and Chinese leaders!



Lyndon B. Campaign Is Gaining Momentum

The movement to name Senator Lyndon B. Johnson Texas favorite son and win the Democratic presidential nomination is gaining momentum throughout Texas.
Jack Bowen of the Johnson for President headquarters in Austin, in Wheeler last Wednesday, said throughout Texas people of all walks of life are rallying to the LBJ standard.

Harry Wolford, a leader in the Johnson for President campaign in Wheeler County, said that the campaign in the County is progressing "quite well."
"I am convinced," Wofford said, "that the vast majority of people in our county are behind Senator Johnson. Many of them are working diligently in this movement to win the Democratic nomination for Senator Johnson. I believe we will be successful."
Bowen, who travels throughout Texas, said he has found the sentiments strong for Senator Johnson. "The people are ready to go 'All the Way With LBJ,'" he added.

MUSTANG BAND PLANS CONCERT NEXT WEEK

The Wheeler School Auditorium will be the place for the Mustang Band concert next Tuesday evening. The program will get under way at 8:00 p.m. featuring first the Colt band and followed by the Mustang band.

Colt band members will be those which they will play at the Elementary music meet in Phillips, Tex., next month.

Mustang members will offer the three numbers played in the recent contest, and others that will be enjoyed by the general public.

Admission will be fifty cents for adults and 25 cents for all student tickets. Plan to attend the program, supporting the band, and also participating in the Music week program.

Funeral Scheduled For C. B. Oglesby

C. B. Oglesby, 64, 2508 22nd St., a resident of Lubbock since 1933 died about 2:35 p.m. Monday in his home after suffering a long illness. He moved there from Dabhart.

Funeral services were held at 10:30 a.m. Wednesday in the chapel of Sanders Funeral Home. The Rev. Hugh Daniels, pastor of the Overton Methodist Church, officiated.

Burial will be in the City of Lubbock Cemetery under the direction of Sanders Funeral Home. He was a member of the Methodist Church.

Survivors include the wife; three daughters, Mrs. Inez Moffett, Mrs. Steve Watson and Mrs. J. A. McMurry, all of Dumas; three brothers, Chester, Tucumcari; Tom, Farmington, N.M.; and J. B., Wheeler; five sisters; Mrs. Ethel White, Phoenix, Ariz.; Mrs. Hollis Taylor, Mrs. L. C. Faris; Mrs. Bill Fruedenrick of Pampa; and five grandchildren.

Senator Hazlewood Endorses Ben Ramsey

State Senator Grady Hazlewood of Amarillo today announced his endorsement of Ben Ramsey of San Augustine for re-election as Lieutenant Governor.

Hazlewood said: "My friend, Lieutenant Governor Ben Ramsey, deserves our active support for re-election. He has been our friend on all legislative matters affecting the Panhandle.

"Ben Ramsey's fairness, experience, and good judgement, qualify him and I hope you will join me in supporting him."

Billie Burres Is Commended For Outstanding Service

U.S. FORCES, GERMANY (AP)—Billie C. Burres, whose wife, Alice, lives in Wheeler, recently received a letter of appreciation while assigned to the 2nd Artillery Group in Germany.

Specialist Burres was commended for outstanding performance of duties as a senior saunterer crewman in the group's battery.

The 25-year-old soldier attended Mobeetie High School. Burres is the son of Mr. and Mrs. Marvin O. Burres, Pryorton.

Pvt. K. V. Willard, Jr. Is Assigned To 2nd Guided Missile Group

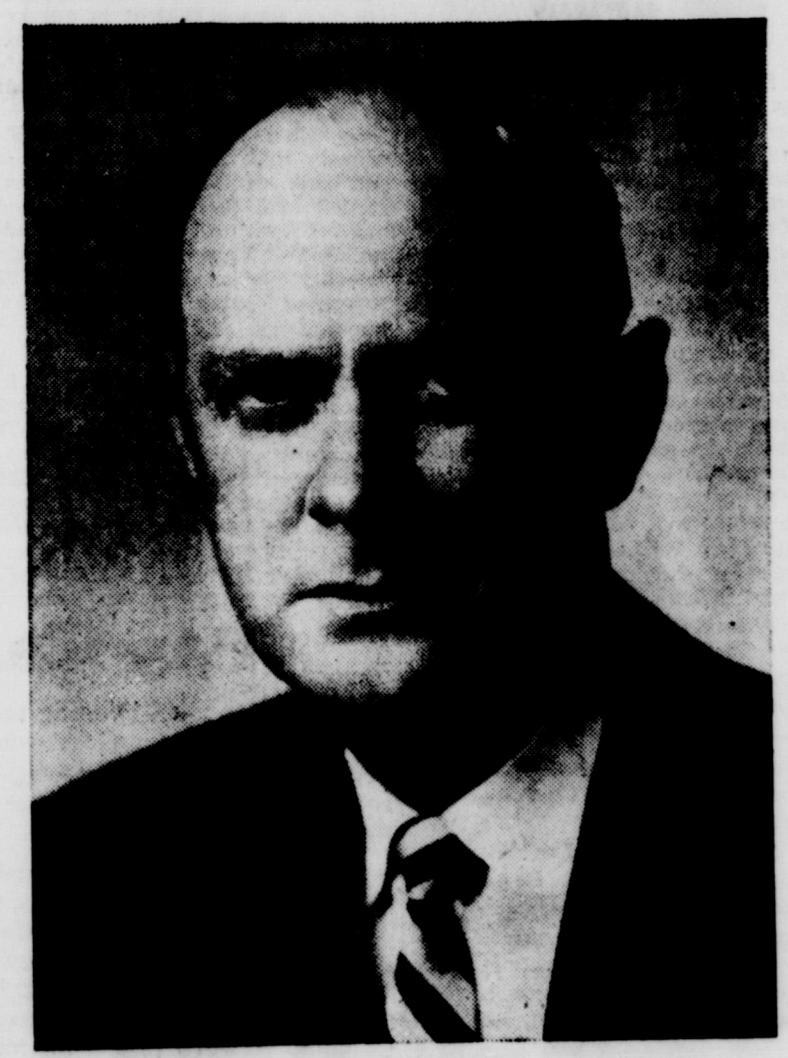
FORT BLISS, Tex. (AHTNC)—Army Pvt. K. V. Willard Jr., whose parents live on Route 1, Wheeler, recently was assigned to the 2nd Guided Missile Group's 5th Battalion, a Hawk Missile unit at Fort Bliss, Tex.

Willard, a member of the battalion's Battery F, entered the Army in December 1959 and completed basic training at Fort Riley, Kan.

The 22-year-old soldier was graduated from Wheeler High School in 1957.

Now a 34-year-old Houston trial lawyer, Mr. Yarborough began stumping the state urging the "cleanup of corruption" and "programs of progress" a few days after he was discharged from the Marine Corps following the Korean Conflict.

Congressman Walter Rogers To Speak At Annual Masonic Fish Fry



Walter Rogers

Collectors' Item

Here's a sobering thought for this taxpaying time of the year. If you work 8 hours a day you are working 2 hours and 16 minutes for the tax collectors.

So says the authoritative Tax Foundation as the result of a nationwide study. The taxes you pay are both direct and hidden.

Even if you take a coffee break on the "government's time" to forget your troubles, you can't win.

You'll be paying, by our quick estimate, at least 11 different taxes for goods and services as you down the java, munch the roll and puff your cigaret.

Yarborough Seeks Lt. Governor Post

Don Yarborough is the third of three children of Mr. and Mrs. Donald Yarborough. Born December 15, 1925, he moved with his parents when he was 12 years old.

He helped support himself while attending Johnson Junior High School by delivering newspapers.

Two months before he graduated from San Jacinto High School in Houston at the age of 17, he enlisted in the Marine Corps as a private.

It was the World War II, year of 1943, and Mr. Yarborough didn't wait to be called. Within a few days after receiving his diploma, he was in the Marines.

At 19, he became a Marine platoon leader and at 20, in China he was one of the youngest company commanders old Marines could remember.

After the war, he swapped his rifle and uniform for history and law books. Substituting brains and persuasion for physical strength, he became a national collegiate debate champion and a leader on the University of Texas campus.

He received his LLB Degree in 1950, and passed the bar, just in time to return to the Marines for the Korean Conflict.

For the next year and a half, he served as a First Lieutenant attached part of the time to the First Marine Division. He was discharged in 1952, and opened his law practice in Houston. He lives in Houston with his wife, the former Miss Kay Edwards, a well-known Houston newspaper writer.

Congressman Walter Rogers will be the speaker at the annual Masonic "Fish Fry" to be held Friday evening in Wheeler. A spokesman for the local lodge estimated that some 400 persons would be in attendance at the annual affair.

Two hundred and fifty pounds of fish has been purchased and will be prepared for the meeting which will begin at 7:30 P.M. Friday, April 29 in the Legion Building.

The following is a biographical sketch of Congressman Walter Rogers:

Don't Forget Your Poll Tax Receipt

All voters who are required to have a Poll Tax Receipt or an Exemption Certificate must present to the Presiding Judge of each voting precinct the Poll Tax receipt or Exemption Certificate so it can be stamped Democrat or same before securing a ballot, according to County Chairman A. B. Crump.

If you have lost your poll Tax Receipt or Exemption Certificate, your presiding Judge will furnish you with an affidavit stating same has been lost and it will be stamped DEMOCRAT and you may secure a ballot.

Those over age and others not required to secure a Poll Tax receipt or Exemption Certificate will be furnished an affidavit to secure a ballot from your presiding Judge and this will be stamped DEMOCRAT. These requirements are a MUST.

It is very necessary that you vote early for you must have one of the above before you can attend either of the Precinct or County Conventions and it could be a requirement before attending the State Conventions. VOTE EARLY.

Revival To Be Held At Mobeetie Church

Rev. Charles Uzzle, pastor of the First Baptist Church, in Mobeetie, has announced plans for a Revival, which will begin Wednesday, April 25 and continues through May 1. Services start each evening at 7:30 p.m.

Arthur W. Pattey, now serving as an interim pastor of the First Baptist Church at Valiant, Okla., will be the evangelist.

Brother Pattey's home is in Ringgold, Ga. He is now attending Southwestern Seminary in Ft. Worth, Texas.

Singing for the special meeting will be under the direction of Monroe Rogers.

Hospital Notes

Admitted:
Charles Davis, Wheeler, 4-15-60
Mrs. Onita Bartz, Wheeler, 4-20-60
Mrs. Billie Joe and Baby Harris, Twitty, 4-21-60
Mrs. J. W. Anglin, Wheeler, 4-22-60
Mrs. Sue Beavers, Pampa, 4-24-60
Kevin Ray Locke, Shamrock, 4-25-60
Mrs. V. Haggerman and baby, Allison, 4-25-60
Mrs. Ida Whitt, Claredon, 4-25-60

Dismissed:
Charles Davis, 4-21-60
Mrs. Billie Joe and Baby Harris, 4-24-60
Mrs. Sue Beavers, 4-25-60
Kevin Ray Locke 4-25-60

Conventions To Be Held At Voting Place

This is the voting Precincts, Numbers, Names and Judges of the election (Judges are the Precinct Committeemen). The election will be held at the usual voting places on May 7th from 8 a. m. to 7 p.m.

The Precinct Conventions will be held at voting places at 4 p.m. on day of election to elect Delegates to the County Convention to be held in Wheeler, Texas May 14th at 10 a.m. and this convention will elect delegates to state convention to be held in Austin, Texas June 14th and at State Convention will be elected Delegates to National Convention in San Francisco to be held in July.

The following men were elected in 1958 to serve two years:
Prec. 1—Mobeetie, E. E. Johnston of Mobeetie.
Prec. 2—Briscoe, O. L. Hudson
(Continued on Page 8, No. 4)

(Continued on Page 8, No. 5)

It's Your Money!

A stiff 10% is added to your telephone bill every month by federal excise tax. Furthermore, the tax rate is that which is usually reserved for luxury items. It is a direct tax on you. The telephone companies merely collect this \$150,000,000 tax for remittance to federal government. Its removal, therefore, would be a direct and immediate benefit to you—not to the telephone companies.

Following the end of World War II, 15 years ago, Congress was supposed to remove this tax from your telephone bill. It was imposed as a wartime measure to restrict use of long distance facilities and to conserve critical materials.

But, the telephone tax remains despite the fact that similar taxes on other home services have been removed. It is an unfair tax because it discriminates the telephone utilities and put them in a class separate from all other utility services.

Unless reversed by the current session of Congress, a bill passed last year will remove the federal tax on local telephone service on June 30, this year.

Now, however, there is talk by the President and some members of Congress of continuing this tax.

If the government needs more money, there are certainly more equitable ways to solve the problem. The government might, for instance turn over to private enterprise some of its many hundreds of businesses which are competing tax-free against private enterprise.

If you agree that this unfair tax should be repealed, write your congressman, now!

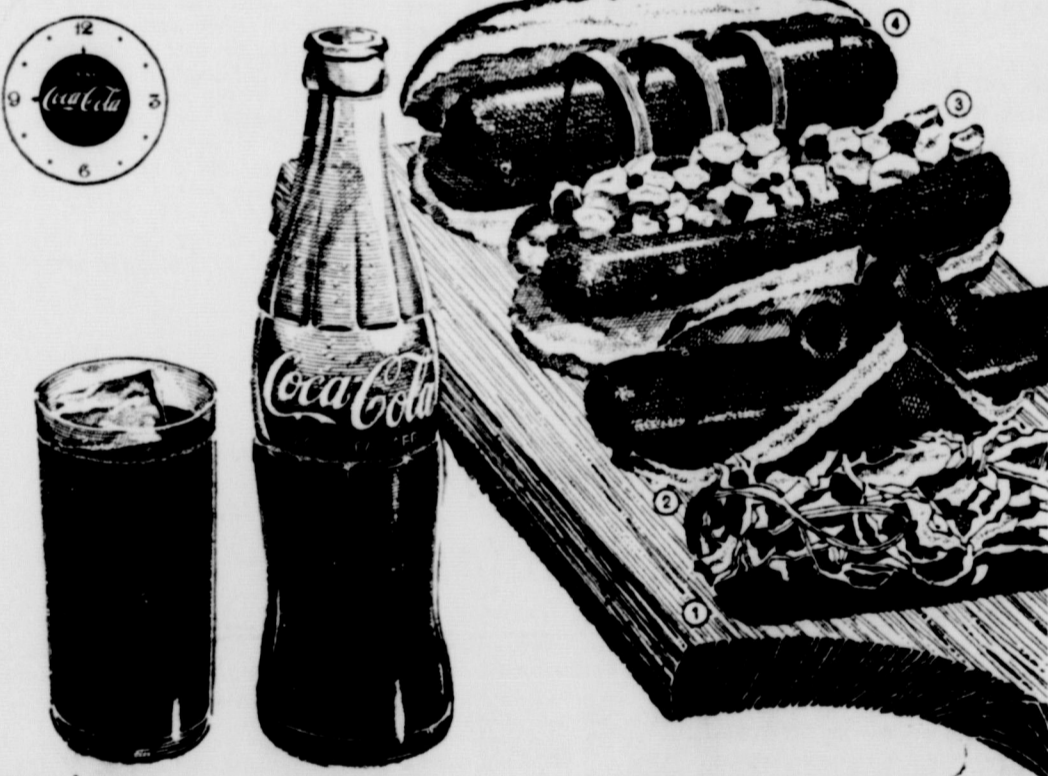
READ THE CLASSIFIED ADS

PAMPA COLLEGE OF HAIR DRESSING AND BEAUTY CULTURE

- ENROLL NOW -

DAY OR NIGHT SCHOOL
For further information call at 716 West Foster in Pampa, Texas or Phone MO 5-3521 in Pampa.

BE REALLY REFRESHED AROUND THE CLOCK!



Here are four easy ways to serve "Fancy Franks." 1) Slice a hot frank, stuff with core slaw. 2) Roll frank in slice of mustard-spread bread. Fasten with wooden pick, brush with melted butter, brown in hot oven. Add olives. 3) Mix relish into canned baked beans, pile into sliced franks, pop in hot oven. 4) Put hot frank in bun with slice of dill pickle, red sash of pimento. Serve with ice-cold King Size Coca-Cola. Only Coca-Cola gives you that cheerful lift...that cold crisp taste that brightens any bite.



Serve this Hors d' Oeuvres Pie for a midnight snack with King Size Coca-Cola. Just take a center slice out of a round loaf of dark or white bread. Decorate with a circling of devilled ham and egg salad. Mix yellow pasteurized processed cheese spread with softened butter and pipe along the edges with a pastry tube. Garnish with cucumber slices, sliced olives, cream cheese and a radish. Cut into wedges and serve with ice-cold King Size Coca-Cola!

TRY THESE TEMPTING TREATS WITH BIG KING SIZE COKE!

Library To Receive Books On White House Conference

The Wheeler Public Library will receive the eight-volume set comprising the official publications of the 1960 White House Conference on Children and Youth to Texas libraries by Mr. and Mrs. A. H. Meadows of Dallas through a Meadows Foundation grant of \$12,000.

The gift was arranged by Fred M. Lange, executive vice-president of the Dallas Community Chest Trust Fund and volunteer consultant to the national finance committee of the White House Conference. Mr. Lange said four volumes completed by the Columbia University Press. Four others including a digest of Texas research are to be printed between now and July.

WHEELER COUNTY SOIL CONSERVATION NEWS

Soil conservation work recently completed in the Wheeler District includes diversion terraces by Rex Miller of Allison and Jim Selby of Briscoe. Regular terraces have just been completed on Lewis Underwood's place north of Mobeetie. Wallace Fields has seeded grass on his place near Shamrock and Norbert Schlegel has completed two waterways near Lela.

All Engineering work has been slow this spring because of the unusually wet conditions. By the time machinery could get into the fields, it was time to put up land for crops.

Brush control should be a big item this year. The early moisture has hurried the brush along and spraying should start earlier than usual this spring.

Bids were opened on three of the flood prevention structures on April 25. No more invitations to bid have been posted yet, but three more should be out soon. Construction should start in about two to three weeks on those already let.

The district dragline has been laid up for repair for several weeks. It should be back in operation soon. Anyone having use for it should see their District Supervisor. Soil Conservation Service personnel assisting the district will lay out any work you may have but the supervisor maintains and route the equipment.

ASC NEWS

By Albert Marshall

Disposition of Excess Wheat—We would like to again remind those of you with wheat in excess of your allotment that May 10, 1960 is the final disposition date in order to bring your farm in compliance and avoid a marketing quota penalty.

There has been some changes in the regulations regarding the disposition of excess acres to comply with the farm allotment. For us to give credit for disposition of excess acres the area disposed of must be of regular shape. The acres must not have more than 4) sides. Two sides must be parallel. The restrictions may be disregarded when the crop in an entire field or plot is destroyed in disposing of excess acres.

Conservation Reserve Soil Bank—All soil bank farms will be inspected to determine if conditions of the agreement are being carried out. If you have soil bank land under agreement, it will be checked to see that it is not being grazed or harvested, that noxious weeds (cocklebur and sunflower) are being controlled, that an eligible adequate cover has been established and is being maintained, that permitted acres of soil bank crops have not been exceeded and that additional land has not been broken out. All holders of Soil Bank agreements have been notified as to the number of permitted acres permitted for harvest.

Choice (B) Cotton—Of the 846 cotton farms in Wheeler County with a combined allotment of 26,841.3 acres, 27 farms elected the Choice (B) cotton allotment. Under Choice (B) the allotment is 40 per cent larger and the level of price support is 15 percent of parity lower than under the Choice (A) allotment.

In 1850, when it was first enumerated in a Federal census, Texas had a population of 212,592. One hundred years later, census takers counted 36 times that many Texans or a total of 7,711,944.

Populationwise:

County has had its Ups and Downs

Ten years of population change in Wheeler County will be measured by the 18th decennial census being conducted this month by the Bureau of the Census Department of Commerce.

The new statistics will bring forward the information last collected in the 1950 census.

In 1880, when the first census was taken in Wheeler County, the population was 512. The county added 267 residents during the next 10 years, and in 1890, 778 persons made their home in this Texas Panhandle county.

When the 1900 census was taken, a decrease in population was recorded—a drop from 778 to 636—probably caused by the removal of soldiers from Fort Elliott, near Mobeetie.

After that the county began to grow rapidly. In 1910, the population stood at 5,258 and in 1920, the figure had jumped to 7,397.

The County's largest population—15,555—was recorded when the 1930 census was taken. Ten years later, in 1940, the number of residents had decreased to 12,411, and in 1950, when the last census was taken, the county population was set at 10,317.

It will be interesting to know the 1960 figure, which will not be available for several weeks. The farm population, has continued to decrease. Whether the city population has increased enough to offset the rural decrease is anybody's guess.

In 1850, when it was first enumerated in a Federal census, Texas had a population of 212,592. One hundred years later, census takers counted 36 times that many Texans or a total of 7,711,944.

Texas has always grown, populationwise, at more rapid pace than the nation as a whole. Records at the Census Bureau show that in 1900 the state had a population of 3,048,710 or 14 times as many people as were counted in 1850. The rate of growth in the 20th century ranged from 10.1 per cent between 1930 and 1940 to 27.8 per cent between 1900 and 1910.

The numerical increase of 1,296,370 for the decade 1940 to 1950, the largest in the history of the state, represented a gain of 20.2 per cent over the 1940 population of 6,414,814. Texas moved from sixth to fifth place among the states in population in 1910, passing Missouri, only to be itself surpassed in 1940 by California. It was sixth in population according to the 17th decennial census (1950) following New York, California, Pennsylvania, Illinois and Ohio.

Texas, originally a part of Mexico, won its independence by revolution in 1835 and 1836, and continued as an independent republic until 1845, when it was annexed to the United States and admitted to the union as the 28th state. At that time, it included area now comprising parts of Colorado, Kansas, New Mexico, Oklahoma and Wyoming. In 1850, with the transfer to the United States of the territory now in these other states, Texas assumed practically its present boundaries. Upon settlement of a boundary dispute with Oklahoma in 1930, Texas assumed its present boundaries.

The state has a land area of 268,513 square miles. In 1950 there was an average of 29.3 inhabitants per square mile as compared with an average of 24.3 in 1940.

The 1950 urban population of Texas comprised 4,838,060 persons, or 62.7 percent of the population of the state. This urban population was living in the 272 urban places in the State and in other territory in the urban fringe areas of the 12 urbanized areas in the State.

The rural population of Texas comprised 2,873,134 persons or 37.3 percent of the population of the State. Of the rural population, 361,654 persons, or 12.6 percent, were living in the 195 incorporated and 33 unincorporated places of 1,000 to 2,500 inhabitants.

The 254 counties in Texas ranged in size from Loving with a population of 227 to Harris with a population of 806,701. Between 1940 and 1950, 108 of the counties increased in population as against 134 in the previous decade. The most rapid rate of increase between 1940 and 1950 was experienced in Andrews County, which had nearly four times as many inhabitants in 1950 as in 1940. In four additional counties—Ector, Midland, Moore and Orange—the pop-

ulation more than doubled in the 10-year period. In the previous decade, the population increase was recorded in 106 counties, which had a total population of 277,740. The counties of Harris and Dallas had an increase of more than 100,000. Tarrant County, which had more than three times its population gain for the decade. In 1950 there were 1,350 villages or places of 1,000 inhabitants in Texas. Of the 5,080,431 inhabitants, more than 2,500 were living in 33 places of 105,869 persons living in 500 incorporated places in 33 places in Texas. In Wheeler County, population of 10,317 in 1950. There were 12 unincorporated places with a population of 468,140 were in the 106 of the urbanized areas in Texas. In 1940, there were 149,350 in the urbanized areas in Texas. In 1950, there were 295 unincorporated places and 192 incorporated places.

New President Band Boosts

The Wheeler Club met for its annual meeting at 3:30 p.m. April 21.

Those elected were Daughtry, president; Stiles, vice president; Earl Barnes, secretary.

After a short banjo and vocal program the meeting was adjourned.

The Band Boosters thank the following for help during the year.

Vernon Lewis for his work as director of Mustang Band; all of their time and production of the band. Mrs. W. L. Jolly for help in the Bureau of the entire county splendid co-operation year.

Mr. and Mrs. Kenneth Spearman, Texas end visitors with Davidson.

Mrs. Francis Post stayed with Mr. and Mrs. Stas from Tuesday last week.

ATTEND CHURCH

Pay Television?

Pay television is being tested again, this time in a densely populated area near Toronto, Canada. First reports indicate a generally pleased reaction among those who have participated in this new means of providing home entertainment.

The system being employed is different from that used in another large-scale pay television experiment which failed to catch on. That was at Bartlesville, Okla., where subscribers paid \$9.50 monthly. The Bartlesville failure has been ascribed to the combination of this relatively high fee and programming that did not measure up to public expectations. In Canada, viewers pay a \$5 installation fee. Henceforth they pay—by dropping a dollar into a coin box attached to their set—only for such programs as they want to see.

First-run motion pictures have been shown to subscribers. The company also plans to carry major sporting events, ballet and opera. Important stage productions and other top-notch programs. A company spokesman said of the experiment, "If it goes here, it will go anywhere in Canada and the United States." Perhaps so. In any case, the Canadian test run will be watched with widespread interest.



OVER BACK-COUNTRY ROADS WITH A SKY-HIGH LOAD OF TONS

Chevy middleweight shows the big rig how it's done!

That's a 6303 medium-duty Chevrolet powered by a 283-cu-in. But there's sure nothing medium-duty about the load. Mr. J. Blankinship, Arkansas logging contractor, says both of his torsion-spring 6303's "meat and potatoes" at 40 to 50 miles per hour can maintain a 5-trip-a-day schedule with no trouble at all. Figure money you save when you get a medium-duty truck that can cover 30,000 back-country miles year with a high-tonnage load.

We've never seen anything like amount of praise truck owners heaping on Chevy's new torsion-spring suspension. Owners like fact the truck handles a load easier, can move faster off the road without beating the driver to a pulp and shaking loose all the sheet metal. They like the idea of extra thousand miles before trade-in!... a '60 Chevy just once. It's a new experience.

Chevy middleweight averages 200 miles of back roads a day dogging timber of the woods and delivering a mill at Crossett, Arkansas.

WORTH MORE BECAUSE THEY WORK MORE! CHEVROLET STURDI-BILT TRUCKS

See your local authorized Chevrolet dealer

WARE CHEVROLET CO.

118 West Oklahoma

Wheeler Texas

Phone 31

Bottled under authority of The Coca-Cola Company by
SHAMROCK COCA-COLA BOTTLING CO. -SHAMROCK, TEX.



More Mileage for your dollar



I.G.A.
ORANGE JUICE
46 oz. Cans **\$1**

I.G.A.
APPLE BUTTER
28 oz. Jars **\$1**

RAINBOW CHERRIES
300 Cans **\$1**

HUNTS
TOMATO JUICE
300 Size Cans **\$1**

PASTAS Pound **45¢**

BEINERS 12 oz. Pkg. **39¢**

BACON 1 lb. Pkg. **47¢**

T.V. FROZEN
STRAWBERRIES
10 oz. Pkgs. **\$1**

MORTON
FROZEN PIES
(Peach — Apple — Cherry)
3 For **\$1**

WHITE WAX
ONIONS
lbs. **15¢**

RED
POTATOES
25 lb. Bag **99¢**

FRESH
CARROTS
Pkg. **19¢**

BANANAS
2 lb. **29¢**

I. G. A. PINEAPPLE JUICE
46 oz. Cans **\$1**

I. G. A. RIPE & RAGGED PEACHES
2½ Cans **\$1**

I. G. A. TOMATO JUICE
46 oz. Cans **\$1**

FIRST PICK PURPLE PLUMS
2½ Cans **\$1**

I. G. A. GRATED TUNA
Reg. Cans **\$1**

I.G.A. APPLE SAUCE 7 303 Cans **\$1**

GOOD VALUE PEAS 8 303 Cans **\$1**

GOOD VALUE CORN 8 303 Cans **\$1**

FOLGERS COFFEE 2 lb. Can **\$1.29**

LANES Ice Cream ½ Gallon **69¢**

SUGAR 10 lb. Bag **95¢**

GOOD VALUE OLEO 6 lb. **\$1.00**

WISCONSIN LONGHORN CHEESE Pound **49¢**

These Prices Good Friday and Saturday, April 29 & 30
Save Prudential Stamps — Double On Wednesday
We Reserve The Right to Limit Quantities



CLAY Food Store

Free Delivery
On \$2.50 Orders or More

Allison News

By Mrs. Lester Levitt

Everett Dollar and family spent the weekend at Crawford, Okla., with Jack McDaniel and family. Visitors in the Domer Reed home Sunday were Mrs. Odene Rascoe and children and Mr. and Mrs. Dudley Miller from Borger, Domer Miller and family, Jake Childress and family and Mr. and Mrs. Leo Peterman.



THE WILL OF TEXANS

Re-elect

WILL WILSON ATTORNEY GENERAL

Mr. and Mrs. Claude McMillan and Mrs. Neville Dillon and Michel from Wellington were house guests in the A. E. Dillon home Sunday. The Dudley McMillans from Wellington were visitors in the H. R. Warren home.

Mr. and Mrs. Forace Evans visited Mr. and Mrs. Ernest Wallace at Sweetwater, Okla., Saturday night. Mr. and Mrs. Forace Evans visited Mr. and Mrs. Ernest Wallace at Sweetwater, Okla., Saturday night.

Mr. and Mrs. Frye visited relatives in Oklahoma City last week. Mr. and Mrs. Dwayne Evans from Wheeler and Mr. and Mrs. Leon Hayes visited in the Forace Evans home Sunday.

Rev. Jim Waller and family were dinner guests in the Tom Helton home at Briscoe Sunday. Mrs. Edna Begert and Linda and Mrs. Doris Newsom and children enjoyed a picnic lunch on the creek Sunday after church.

Carl Hanks and Myra from Hollis, Okla., and Denzil Reed and family visited in the J. T. Childress home over the weekend.

Mr. and Mrs. Harry Estes from Tucumcari, N.M., visited Rev. and Mrs. Oscar Welch in the Bob Black home over the weekend.

Austin Carnagey and family from Amarillo spent the weekend in the parental Ed Walker home.

Mr. and Mrs. David Kiker visited her mother Mrs. C. S. Williams and Bertie Mae at Canyon Sunday.

Roy Morse and family accompanied by Mrs. Nettie Welsh spent Saturday night and Sunday in Amarillo with the Vance Boydstons and Warren Brown homes.

Mr. and Mrs. Willis Harrison from Canyon, Jim Greenwood and family from Stratford and Mrs. J. D. Helms from Spearman visited Mr. and Mrs. Ray D. Brown the last of the week. Willis and Mary also visited in the Bruce Harrison home.

Mr. and Mrs. A. D. Cleere and Zehna from Hollis, Okla., spent Sunday with her sister, Mrs. G. A. Wise.

Pete Gilmer and family and Mrs. Mae Gilmer visited relatives at Dumas over the weekend. Mr. and Mrs. Lee Kiker spent Saturday at Butler, Okla., with Mr. and Mrs. Leonard Kiker. Mr. and Mrs. Walter Scott from Pampa were dinner guests in the M. K. Levitt home Sunday. Mr. and Mrs. Lester Levitt called in the afternoon.

Mrs. Bob Markham took Cleve back to Amarillo Saturday for a checkup.

Mrs. Edyth Donaldson spent the last of the week with her daughter Dolores who is a patient in the North West Texas Hospital in Amarillo.

Mr. and Mrs. James Hall and Terry and Mr. and Mrs. Vernon Hall visited Mrs. J. R. Hall at Elk City Sunday.

Tommy Harrison from Amarillo spent the week with his mother, Mrs. E. J. Harrison. Mrs. and Mrs. James Harrison from Cashion visited in the B. Harrison home Saturday.

Mrs. Leo Peterman visited her sister Mrs. Carl Sattledwhite at Higgins a few days last week.

Shot Childress and family were dinner guests in the home of Mr. and Mrs. Zack Miller Sunday.

Glen Elmore and family spent Sunday at Shattuck with the John Dan Bowman family.

Joe Rucker, Charles Waller and Leslie Newsom went to Lubbock the last of the week and took part in judging dairy cows in connection with the Ag class. Mr. Baxter, the teacher, accompanied the boys.

Mr. and Mrs. Glen George from Gageby visited Mr. and Mrs. L. Kiker Thursday.

Mrs. C. C. Curlee returned home Friday from the General Hospital in Shamrock where she spent a week for treatment.

John Smith and family from Forser were weekend guests in the home of her parents, Rev. and Mrs. Jessie Levrett.

Ed Gilmer and family from Wheeler visited in the Carl Giddens home Sunday.

Mrs. Clemons Helton and Mr. and Mrs. Bill Jackson from Gageby were dinner guests in the E. O. Kelly home Sunday.

G. L. Aderholt and family spent Sunday at Kelton with Jud Anderson and family.

Mrs. Vera Moore spent the weekend at Sayre, Okla., with relatives.

H. L. Jones have moved on the Harry Frye Ranch south of Allison to make their home.

Mr. and Mrs. Leroy Parker from Canadian were dinner guests in the parental Glen Markham home Sunday.

Mr. and Mrs. Aurba Bowers and Guy and Mrs. Pearce were in Pampa Saturday on business.

Several from the Pentecostal Church attended a Conference and Fellowship meeting at Pampa Monday night.

Mrs. Mary Lon Markham, Edith Levitt and Mr. and Mrs. Lloyd Jones visited Mrs. C. C. Curlee at the Shamrock hospital Thursday.

April Session Of Court Meets Monday

The April session of the 31st Judicial District Court of Wheeler County will begin Monday, May 2, in the district courtroom of the Wheeler County Courthouse.

District Judge is Lewis M. Goodrick; District Attorney, Bill Walters; Sheriff, Bus Dorman; Court Reporter, Bob Baker and District Clerk, Rena Sivage.

Cases to appear Monday include:

Case No. 4787—Leslie Snow vs. Howard F. Leake. Represented by Hill and Adkins of Shamrock and Guy Hardin, Shamrock.

J. P. Bowles vs. Robert O. Lister and W. H. Riddle represented by Guy Hardin of Shamrock and R. L. Templeton of Wellington.

Case No. 4851 Edsel Dorrell vs. Gaston Harbor. Represented by Thurman Adkins of Shamrock and John R. Fullingim, Suite 210 First National Bank Bldg., Amarillo.

Case No. 4853 Ted R. Lewis vs. Jim Tom Neeley. Represented by John B. Merchant, Box 1398, Amarillo and R. A. Wilson, Box 559, Amarillo.

Archie Gene Hardin vs. Texas Employers Insurance Company No. 4882. Represented by Peery & Wilson, 500 Oil and Gas Building, Wichita Falls and Guy Hardin of Shamrock.

Case No. 4918 Augusta Earl Carpenter ex ux vs. Earl Stubblefield and Dwight Stubblefield. Represented by Clayton Heare, Box 559 Amarillo and Aaron Sturgeon, 298 Combs Worley Building, Pampa.

Jurors called for this session of court include:

Patricia Ann Eads of Wheeler
Walter J. Lunn of Wheeler
C. D. Harding of Wheeler
Billy Cantreu of Twitty
J. B. Brown of Kellerville
L. J. Burdine of Kellerville
R. W. Shields of Shamrock
Mrs. Pearce Walker of Mobeetie

Mrs. Clyde Dukes of Allison
J. M. Lisle of Wheeler
M. B. Eiland of Briscoe
Garland Abernathy of Twitty
George Kite of Mobeetie
Mrs. J. C. Dennis of Lela
John Wright of Briscoe
F. E. Blakemore of Shamrock
A. C. Brown of Shamrock
Mrs. B. K. Barham of Wheeler
Carl E. Henry of Shamrock
Archie Henderson of Shamrock
Howard Caswell of Wheeler
Bob Bidwell of McLean
C. E. Giehart of Shamrock
A. C. D'Spain of Briscoe
Mrs. Erma Riley of Wheeler
Charlie Cocoran of Mobeetie
Mrs. Clifford Walser, Mobeetie
Mrs. Alfred Hill of Mobeetie
J. W. Seitz of Kellerville
Mrs. Frank Caswell of Wheeler
Mrs. Doyle Grimes of Mobeetie
N. L. Sechrist of Wheeler
George Parker of Allison
C. C. Collinsworth of Shamrock
Mrs. E. W. Poole of Shamrock
Jim Litsch of Mobeetie
Mrs. E. F. Lester of Mobeetie
Mrs. T. B. Henderson of Twitty
Robert L. Patterson of Wheeler
Wanda Chapman, Wheeler

Mr. and Mrs. Barney Burgess visited Mrs. Burgess' twin brother, O. L. Rankin in Friona.



HI THERE

By Lavell Stephens

In last week's paper Mr. Swaim, our county agent told us how to get rid of skunks. It seems to me that Mr. Swaim went to much more trouble than is necessary—such as getting a two by six board eight feet long, a garbage can, etc.

I'm all for borrowing a trap from one of your good neighbors—baiting the trap with what ever it is a skunk likes—then when you have the skunk in the trap, take your 22 and stand as far back as you possible and still get him with your first shot—not that this makes too much difference (how far back you are) because by this time your skunk is fairly unhappy

and has been shooting his "time bomb" all this time anyway, but go on shoot, for keeps. Now, the skunk is caught in the trap, and has been shot, but—he is still in your neighbor's trap—well, you could give each member of your family an opportunity of taking that "pretty little kitty" out of the trap, but if you don't get any buyers for this job, then the next best thing—call your good neighbor, tell his to come get his trap, you don't need it any more.

I don't believe that I have met Mr. Swaim, but if he will drop in the Times office, I'd be glad to discuss this "Skunk Problem" and also "How to win friends and influence people."

Robison And Dyer Are Hostesses To Progressive Study Club

The Progressive Study Club met in the home of Mrs. Clarence Robison Thursday night April 14. The theme of the program was on religion. The group sang "He Lives" and a book review "The Unaccounted" by Laurine Chinn was given by Norbela Vanpool.

The hostess Anna Robison and Irene Dyer served refreshments carrying out the Easter theme, to three guests, Mrs. N. D. Ware, Sr., a former member; Mrs. Minnie Starkey and Mrs. Cleo Gaines.

Members attending were: Onal Daughtry, Ona Dyer, Joyce Edwards, Ida Farmer, Grace Ford, Inez Lancaster, Curtis Moore, Doreen Owen, Carrie Rodgers, Novella Vanpool, and Mrs. Arling Cordell.

One of the cats that works down town said the other day "If my nose blows over my head don't roll it down, I have on a new gir- de- le."

DINNER

Misses Ann Gatlin and Ada Lou Allen were honored with a dinner Tuesday evening in the home of Mrs. C. M. Gatlin Sr.

The table was covered with a lace cloth, center piece of purple and white Lilies and place names or Lilac colored miniature bags.

Guests were members of the Junior class and sponsors, Sus Hooker, Arca Cocoran, Carolyn Trout, Jimmy Simpson, Keith McLaughlin, James Lester, Gene Harrison, Don Quarles, Jeff Kelley and Mrs. Alma Sutz the sponsor.

Hostesses were: Mrs. Jake Allen, Mrs. Barney Gatlin and Mrs. C. M. Gatlin Sr.

Mr. and Mrs. Randy and Betty...

Mr. and Mrs. J. B. E. visited relatives in Pampa.

For Mother's Day

GIVE

Chocolate for Americans



ROYAL COLLEGE
One of America's finest centers in finest chocolate.
1 and 2 lb. sizes.
WE HAVE MANY
CITY

HELP ELECT



Don Yarborough

To The Office Of

Lt. Governor

HE WILL:

- Save the people of Texas from a general sales tax
- Launch an industrialization program for all of Texas
- See to it that Texas children have schools second to none
- Push a real "Advertise Texas" program to attract tourists
- Insist that Texas' senior citizens get the maximum assistance and medical aid approved by the voters but blocked in the Legislature
- Get a sound water conservation and storage program underway in Texas

HE IS:

A man who will serve all Texans' interests instead of a few special interests!

(Paid for by Wheeler County Friends of Don Yarborough)

I WILL SINCERELY APPRECIATE YOUR

- VOTE -

As you probably know, I am a candidate for Sheriff of Wheeler County . . . I have tried my best to contact each of you personally, in the event I missed you, I will take this opportunity to ask you for your vote and support in the May 7 primary. All I ask is that you consider the qualification.

If elected, I will do my utmost to serve you in the way that a sheriff should serve his county . . . I am not committed to any special groups and don't have any time consuming hobbies. I will serve you as sheriff "full time". Thank You

Herbert Knoll CANDIDATE FOR SHERIFF OF WHEELER COUNTY

SHINNERY SPRAYING

BUCK SIMS

American Dusting Co.

WILL BE IN WHEELER

MAY 7th

ANYONE THAT IS INTERESTED

PHONE

Buck Sims MO 3-2542
Quanah, Texas

C. G. Frye CA 4-14
Chickasha, Okla.



THE WILL OF TEXANS
Re-elect
WILL WILSON
ATTORNEY GENERAL

SHOW DEMONSTRATION TO BE SATURDAY

ould plan to at-
w demonstration
aturday April 30.
emonstration in
homemaking Cot-
at 10 A.M. The
ill be in Sham-
afternoon begin-
m. in the High
ing Department.
ation will be on

members and leaders, if anyone
fails to receive a letter, they are
urged to attend the demonstra-
tion in either town that is con-
venient.

U.S. - Canada To Have Good Will Week

The 39th annual observance of
U.S. Canada Good Will Week will
take place April 24-30, under the
leadership of Kiwanis Clubs in
both nations. The week-long event
which is aimed at dramatizing the
traditional friendship between the
two neighboring countries is sched-
uled so that it falls at the time
of the anniversary of the famous
Rush-Bagot Agreement. This is a
document, signed April 28, 1817,
which virtually demilitarized the
boundary between the United
States and Canada by calling for a
limitation of naval vessels on the
waterways between the countries,
and instructing those which were
deemed necessary to interfere in
no way with the peaceful passage
of merchantmen of either coun-
try. The agreement could — and
can be terminated by a simple
six months notice on the part of
either signatory nation. It is this
document which has made possi-
ble the unfortified three thousand
mile U.S. - Canada border — which
to-day stands as a dramatic exam-
ple of good neighborliness.

Though residents of the United
States and Canada are similar in
origin, geographically and econom-
ically close, and with the excep-
tion of eastern Canada, possessed
of a common language, some of
the citizens on opposite sides of
the border know less about one an-
other than they should.

Court Records

List of instruments filed in the
office of the County Clerk and
District Clerk of Wheeler County,
Texas from April 18 through April
22, 1960

April 18, 1960
RVL & RDT - R. F. Kuhn et al
to T. A. Richardson et ux 4-11-60
170x70 NW 1/4 Sec 4 T & NOR Ry
Co.
RVL - Clarence Hillman et ux
to Sam Risner 4-5-60 S 1/2 Sec 60
Blk A-5
RVL - Sarah Risner Helton to
Sam Risner 4-5-60 S 1/2 Sec 60 Blk
A-5
RVL Hobe Risner et al to Sam
Risner undated S 1/2 Sec 60 Blk A-
5
AOL - C. C. Hammer et al to
Maiof Oil Development Co 4-15-
60 NE 1/4 Sec 23 Blk 13
AOL - C. C. Hammer et al to
Maiof Oil Development Co 4-15-
60 SW 1/4 NW 1/4 E 1/2 NW 1/4 Sec 23
B 13
RVL - James W. Hanes et ux to
Federal Land Bk of Houston 4-
14-60 N 28 1/2 S 1/2 E 1/2 S 1/2 S 1/2
of R1P1 in NE 1/4 Sec 53 Blk 23
RDT - United Fidelity Life Ins
Co to Clarence O Parrish et ux
4-11-60 Lot 4 Blk 3 Shamrock
PHB
RDT - Jess Moore to W. A.
Goad Jr et ux 4-15-60 100' x 28'
SE 1/4 SW 1/4 Sec 6 Blk A-4
OL - R. William Brown et ux to
Maiof Abraham 3-25-60 NE 1/4
Sec 7 Camp Co Sch Land
OL - R. William Brown et ux to
Maiof Abraham 3-25-60 Sec 8 &
NE 1/4 Sec 5 Camp Co Sch Land
OL - R. William Brown et ux to
Maiof Abraham 3-25-60 Sec 6 and
SE 1/4 Sec 7 Camp Co Sch Land
OL - George A. Brown et al to
Maiof Abraham 3-26-60 S 1/2 Sec
17 Blk RE
RVL - Lula A. Williams to Ray-
mond Harkins et ux 4-14-60 E 65'
Lot 6 Blk 67 Shamrock WSA
D - Raymond Harkins et ux to
Martha Eden 4-14-60 E 65' Lot 6
Blk 67 Shamrock WSA
ROL - S. M. Borne to Jabe Darg-
nell et al 3-29-60 NW 1/4 Sec 69 &
S 1/2 Sec 61 Blk 13
April 19, 1960
D - Leo A. Gibson et ux to W. H.
Loche Jr et ux 4-18-60 Lot 3 Blk
7 Shamrock HSA
PART MD - Mary M. Miller et
al to Johnnie Peed et al 3-25-60
Sec 19 Cert 227, Sec 1, 2 Cert
273, S 1/4 Sec 12 Cert 292, E 1/4 Sec
2 & E 1/4 Sec 1 Blk 4 B&B Survey
Thomas James Sur et ux 281.86 ac
Sec 2 & N 231.79 ac Sec 1 C & M
PR Co Sur Sec 31 NW 1/4 NE 1/4
30 49 50 Blk A-3
DT & MML - Jodie R. Cook et
ux to Southern Builders Supply
Co. 3-8-60 M/3 Lot 1 Blk LVII
Shamrock
TDT & TMML - Southern Build-
ers Sup Co to Century Trust Co
4-11-60 M/3 L 1 Blk LVII Sham-
rock
ROL - Teel Production Co et al
to John O'Gorman et al 4-4-60 E
1/2 NW 1/4 Sec 98 Blk 17
SUB OL - Federal Land Bk of
Houston to Maiof Abraham 2-19-
60 S 1/2 Sec 71 Blk M-1
C C PROBATE - Roy O Neal to
Ex Parte 4-8-60 1/32 Min Int NE
1/4 & 160 ac W 1/2 Sec 30 Blk A-4
AFF - Carl Levitt to Stanley T.
Richardson 4-18-60 N 1/2 Sec 3 Blk
RE
April 20, 1960
ROL - Warren Pet Corp to A.
S. Plummer et ux 4-18-60 SW 1/4
Sec 45 Blk 24
ROL - Warren Pet Corp to City
National Bk in Wichita Falls 4-18-
60 NW 1/4 Sec 45 Blk 24
ROL - Warren Pet Corp to Sab-
bine Royalty Corp 4-18-60 NW 1/4
Sec 45 Blk 24
ROL - Warren Pet Corp to A. S.
Plummer et ux 4-18-60 NW 1/4 Sec
45 Blk 24
ROL - Warren Pet Corp to Wola
Royalty Corp 4-18-60 NW 1/4
Sec 45 Blk 24
OL - Lee Barry et ux to Malouf
Abraham 3-28-60 N 1/2 & SE 1/4 E
NW 1/4 NW 1/4 Sec 12 Camp Co Sch
Land
OL - Lee Barry et ux to Malouf
Abraham 3-28-60 W 1/2 Sec 11
Camp Sch Land
AOL - Pan American Pet Corp
to Norvel Douglas 3-29-60 S 1/2 Sec
58 Blk 24
AOL - Norvel Douglas to Delos
Douglas 4-19-60 S 1/2 Sec 58 Blk
24
AOL - Norvel Douglas to David
Bruce Fann 4-19-60 Sec 58 Blk 24
EXT AGREE - Woodrow W.
Adcock to Geo. F. Turentine 3-
22-60 N 1/4 Sec 103 Blk 26
April 21, 1960
MML - Frederick T. Flowers to
Economy Supply Corp 2-29-60 N
50' Lot 3 & S 50' Lot 4 Blk LXX
XV Shamrock
AFF - Robert N. Foster to Fred-
erick T. Flowers 4-20-60 N 50' Lot
3 & S 50' Lot 4 LXXXV Shamrock
AFF - Robert N. Foster to
Frederick T. Flowers 4-20-60 N50'
Lot 3 and S 50' Lot 4 Blk LXX-
XV Shamrock
TMML - Robert N. Foster to
First Natl Bk Shamrock 4-20-60 N
50' Lot 3 & S 50' Lot 4 Blk LXX-
XV Shamrock
April 22, 1960
DT - Douglas Robertson to O.
C. McPherson et ux 3-30-60 Lot 12
Blk 69 Shamrock WSSA
D - W. A. Goad, Jr. et ux to
James W. Chapman 4-20-60 100'
x 280' W 1/2 Sec 3 S 1/2 S 1/2 SE 1/4 SW 1/4
Sec 6 Blk A-4
D - James W. Chapman et ux
to William A. Goad et ux 4-20-60
95' x 250' Blk F-1
95' x 250' Blk F-1 Wheeler, Prairie
Lawn Addn
DT - William A. Goad et ux to
United States of America 4-20-60
95' x 250' Blk F-1 Wheeler, Prairie
Lawn Addn
AOL - Malouf Abraham to Pure
Oil Company 1-27-60 Sec 28 Blk
RE
AOL - Malouf Abraham to the
Pure Oil Company 1-29-60 W 1/2
Sec 23 Blk RE
PARTITION AGREE - Verlie O.
Johnston et al to B. T. Johnston
et al 1-5-60 Mins NW 1/4 Sec 56
Blk 23
AFF - Verlie O. Johnston to
Sidney T. Johnston et al 4-5-60
AFF - Robert Fred Johnston 4-
5-60
RDT - Farmers & Merchants St
Bk Shamrock to B. Johnston et
al 3-30-60 NW 1/4 Sec 56 Blk 23 and
SW 1/4 NE 1/4 Sec 68 Blk 13
AOL - Carolyn Pearl Johnston
to R. Earl Stubblefield et al 2-27-
60 NW 1/4 Sec 56 B 23
RATIF OL - O. B. Harvey et ux
to R. Earl Stubblefield et al 4-8-60
NW 1/4 Sec 56 Blk 23
AOL - Verlie O. Johnston et al
to R. Earl Stubblefield et al 1-5-
60 NW 1/4 Sec 56 B 23
District Clerk's Office

NEW CASE BALERS

AM SIZE
135

hat hay put up at the peak
and palatability... with-
standing on hired help or
baler... this is the baler
that makes twine-tied 14 x
14 just right in density for easy handling, storing and
it's so simple most anyone can adjust and operate
low in cost that most any farmer can well afford it.
dependable air-cooled engine and positive-drive pick-up
auger for smooth operation.

TONNAGE
140

ve big hay acreage... or
m baling... or bale for
... the baler for you is
"140". It makes firm,
tied 14 x 18 bales, twine-
tied. Its double-plunger action gets slicing done
compression starts, makes bales more uniform, boosts
Its 4-cylinder air-cooled engine can be started from
eat. PTO drive is optional. Choice of bale diverter
in loader. See your Case dealer for complete facts.



Ask about the Case
Income Payment Plan

Get All the Facts

CASH APPLIANCE
& SUPPLY CO.



THE WILL OF TEXAS
Re-elect
**WILL
WILSON
ATTORNEY
GENERAL**

LAWN MOWERS

19" to 24"

39⁹⁵
UP

SEE THEM
ON
DISPLAY
AT

CICERO SMITH
Lumber Co
Wheeler, Texas

Public-Ker
SOLINE
MOWERS

Powerful 4 1/2 H.P.
CLINTON
ENGINE

Shatterproof
Steel Base

Briscoe Club Sets Out Trees And Meets With Agent

The Briscoe Home Demonstration
Club met recently at the club
house and set out one hundred
trees around the lot. They had a
covered dish luncheon. Then in the
afternoon, Mrs. Litsch, the agent,
gave a demonstration on "Picture
and furniture arrangement." "Be
sure to hang all pictures in the
room on the same level and on a
level with the eye," stated Mrs.
Litsch. The 4-H club girls gave
the following demonstrations. Violet
Fillingim and Jackie Dodd, vege-
table preparation; Estelle and
Mozelle Fillingim, poultry prepara-
tion; Judy Finsterwald and Diani
Dodd, dairy foods and Helen Pur-
year and Melody Zybach, dairy
foods.

Mrs. Effie Renfro was hostess
and served refreshments to the
following visitors: Mrs. Jay Booth,
Mrs. John C. Vise, Mrs. Rose, Mrs.
R. L. Zybach and the 4-H club
girls, members: Mrs. Jeff Puryear,
Mrs. Grady Dodd, Mrs. Claude
Barker, Mrs. Barney Burgess, Mrs.
Berbert Finsterwald, Mrs. Milton
Finsterwald, Mrs. Farmer Hefley,
Mrs. John McCarroll, Mrs. Colbie
Parker, Mrs. Doyle Standlee, Mrs.
Ernest Zybach, Mrs. Clarence Zy-
bach, Mrs. Bob Ramsey, Mrs. Hen-
ry Lee and the hostess.

Mrs. Armond Sanifer from
Crossplains, Tex., and Mrs. Peevey
from Abilene were in Wheeler Sun-
day. They brought Mr. and Mrs.
Charlie Sanifer home after spend-
ing last week with their son and
wife, Mr. and Mrs. Armond Sanifer.

Miss Suzanne Sanifer from Ker-
mit was in Wheeler Sunday visit-
ing with her grandmother Mrs.
W. L. Williams.

Mr. and Mrs. T. Wallace have
moved back to Wheeler from Na-
moke. Mr. and Mrs. Wallace had
lived in Wheeler many years and
are as happy to be back in Wheel-
er as we are to have them.

4-H Judging Team Competes in Okla.

The Wheeler County 4-H Live-
stock judging team journeyed to
Stillwater, Okla., this past week-
end to practice livestock judging
along with their State F.F.A.
Livestock Contest. Members of the
team are Larry Elmore, Allison,
4-H Club; Mac Shaffer and James
Henderson, Kelton 4-H Club; and
Kenneth McCasland, Wheeler 4-H
Club. The boys made top grades
according to Bryan Swaim, Coun-
ty Agent, who said the lowest
grade was 333 and top grade was
375 out of a possible 400 points.
Hogs again gave the boys the most
trouble. They judged three classes
of hogs which were officially
placed by the University of Okla-
home Livestock Judging team.

The agent and boys were guests
of Richard Kiker, 4-H Member of
Allison who is majoring in A.H.
at the University. Kiker took the
agent and boys to the college Rog-
geo Friday night and after the judg-
ing showed them around over the
college campus. Al reported a good
time and enjoyed the trip.



THE WILL OF TEXAS
Re-elect
**WILL
WILSON
ATTORNEY
GENERAL**

REVIVAL

YOU ARE INVITED!

First Baptist Church

Mobeetie, Texas

APRIL 27 - MAY 1

Starting Wednesday Night
Services At 7:30 P.M.
Arthur W. Patty, Evangelist
Charles Uzzle, Pastor

THANK YOU

I want to thank each and everyone of you for your fine
support and cooperation during my tenure in office as
your Precinct one commissioner. I hope that my effort
will merit your vote in the May 7 primary.

I WILL SINCERELY
APPRECIATE
YOUR CONTINUED
SUPPORT

BE SURE TO VOTE MAY 7

Shelby Pettit

Allison News

By Mrs. Lester Levitt

Everett Dollar and family spent the weekend at Crawford, Okla., with Jack McDaniel and family. Visitors in the Damer Reed home Sunday were Mrs. Odene Rascoe and children and Mr. and Mrs. Dudley Miller from Borger, Damer Miller and family, Jake Childress and family and Mr. and Mrs. Leo Peterman.



THE WILL OF TEXANS

Re-elect

WILL WILSON
ATTORNEY GENERAL

Mr. and Mrs. Claude McMillan and Mrs. Neville Dillon and Michael from Wellington were house guests in the A. E. Dillon home Sunday. The Dudley McMillans from Wellington were visitors in the H. R. Warren home.

Mr. and Mrs. Forace Evans visited Mr. and Mrs. Ernest Wallace at Sweetwater, Okla., Saturday night.

Mr. and Mrs. Forace Evans visited Mr. and Mrs. Ernest Wallace at Sweetwater, Okla., Saturday night.

Mr. and Mrs. Frye visited relatives in Oklahoma City last week. Mr. and Mrs. Dwayne Evans from Wheeler and Mr. and Mrs. Leon Hayes visited in the Forace Evans home Sunday.

Rev. Jim Waller and family were dinner guests in the Tom Helton home at Briscoe Sunday.

Mrs. Edna Begert and Linda and Mrs. Doris Newsom and children enjoyed a picnic lunch on the creek Sunday after church.

Carl Hanks and Myra from Hollis, Okla., and Densel Reed and family visited in the J. T. Childress home over the weekend.

Mr. and Mrs. Harry Estes from Tucumcari, N.M., visited Rev. and Mrs. Oscar Welch in the Bob Black home over the weekend.

Austin Carnagey and family from Amarillo spent the weekend in the parental Ed Walker home.

Mr. and Mrs. David Kiker visited her mother Mrs. C. S. Williams and Bertie Mae at Canyon Sunday.

Roy Morse and family accompanied by Mrs. Nettie Welsh spent Saturday night and Sunday in Amarillo with the Vance Boydstons and Warren Brown homes.

Mr. and Mrs. Willis Harrison from Canyon, Jim Greenwood and family from Stratford and Mrs. J. D. Helms from Spearman visited Mr. and Mrs. Ray D. Brown the last of the week. Willis and Mary also visited in the Bruce Harrison home.

Mr. and Mrs. A. D. Cleere and Zelma from Hollis, Okla., spent

Sunday with her sister, Mrs. G. A. Wise.

Pete Gilmer and family and Mrs. Mae Gilmer visited relatives at Dumas over the weekend.

Mr. and Mrs. Lee Kiker spent Saturday at Butler, Okla., with Mr. and Mrs. Leonard Kiker.

Mr. and Mrs. Walter Scott from Pampa were dinner guests in the M. K. Levitt home Sunday. Mr. and Mrs. Lester Levitt called in the afternoon.

Mrs. Bob Markham took Clyde back to Amarillo Saturday for a checkup.

Mrs. Edyth Donaldson spent the last of the week with her daughter Dolores who is a patient in the North West Texas Hospital in Amarillo.

Mr. and Mrs. James Hall and Tony and Mr. and Mrs. Vernon Hall visited Mrs. J. R. Hall at Elk City Sunday.

Tommy Harrison from Amarillo spent the week with his parents, Mr. and Mrs. Bruce Harrison. Mr. and Mrs. James Harrison from Borger visited in the B. Hanson home Saturday.

Mrs. Leo Peterman visited her sister Mrs. Carl Sattedwhite at Higgins a few days last week.

Shot Childress and family were dinner guests in the home of Mr. and Mrs. Zack Miller Sunday.

Glen Elmore and family spent Sunday at Shattuck with the John Dan Bowman family.

Joe Rucker, Charles Waller and Leslie Newsom went to Lubbock the last of the week and took part in judging dairy cows in connection with the Ag class. Mr. Baxter, the teacher, accompanied the boys.

Mr. and Mrs. Glen George from Gageby visited Mr. and Mrs. L. Kiker Thursday.

Mrs. C. C. Curlee returned home Friday from the General hospital in Shamrock where she spent a week for treatment.

John Smith and family from Forcer were weekend guests in the home of her parents, Rev. and Mrs. Jessie Levrett.

Ed Gilmer and family from Wheeler visited in the Carl Giddens home Sunday.

Mrs. Clemons Helton and Mr. and Mrs. Bill Jackson from Gageby were dinner guests in the E. O. Kelly home Sunday.

G. L. Aderholt and family spent Sunday at Kelton with Jud Anderson and family.

Mrs. Vera Moore spent the weekend at Sayre, Okla., with relatives.

H. L. Jones have moved on the Harry Frye Ranch south of Allison to make their home.

Mr. and Mrs. Leroy Parker from Canadian were dinner guests in the parental Glen Markham home Sunday.

Mr. and Mrs. Aurbra Bowers and Guy and Mrs. Pearse were in Pampa Saturday on business.

Several from the Pentecostal Church attended a Conference and Fellowship meeting at Pampa Monday night.

Mrs. Mary Lon Markham, Edith Levitt and Mr. and Mrs. Lloyd Jones visited Mrs. C. C. Curlee at the Shamrock hospital Thursday.

April Session Of Court Meets Monday

The April session of the 31st Judicial District Court of Wheeler County will begin Monday, May 2 in the district courtroom of the Wheeler County Courthouse.

District Judge is Lewis M. Goodrick; District Attorney, Bill Waters; Sheriff, Bus Dorman; Court Reporter, Bob Baker and District Clerk, Iena Sivage.

Robison And Dyer Are Hostesses To Progressive Study Club

The Progressive Study Club met in the home of Mrs. Clarence Robison Thursday night April 14. The theme of the program was on religion. The group sang "He Lives" and a book review "The Unanswered" by Laurine Chinn was given by Norvella Vanpool.

The hostess Anna Robison and Irene Dyer served refreshments carrying out the Easter theme to three guests, Mrs. N. D. Ware, Sr., a former member; Mrs. Minnie Starkey and Mrs. Cleo Gaines.

Members attending were: Onal Daughtry, Ona Dyer, Joyce Edwards, Ida Farmer, Grace Ford, Inez Lancaster, Curtis Moore, Doris Owen, Carrie Rodgers, Novella Vanpool, and Mrs. Arling Cordell.

Cases to appear Monday include:

- Case No. 4787—Leslie Snow vs. Howard F. Leake. Represented by Hill and Adkins of Shamrock and Guy Hardin, Shamrock.
- J. P. Bowles vs. Robert O. Lister and W. H. Riddle represented by Guy Hardin of Shamrock and R. L. Templeton of Wellington.
- Case No. 4851 Edsel Dorrell vs. Gaston Harbor. Represented by Thurman Adkins of Shamrock and John R. Fullingim, Suite 210 First National Bank Bldg., Amarillo.
- Case No. 4853 Ted R. Lewis vs. Jim Tom Neeley. Represented by John R. Merchant, Box 1398, Amarillo and R. A. Wilson, Box 550, Amarillo.
- Archie Gene Hardin vs. Texas Employers Insurance Company No. 4882. Represented by Peery & Wilson, 500 Oil and Gas Building, Wichita Falls and Guy Hardin of Shamrock.
- Case No. 4918 Augusta Earl Carpenter ex ux vs. Earl Stubblefield and Dwight Stubblefield. Represented by Clayton Heare, Box 550 Amarillo and Aaron Sturgeon, 298 Combs Worley Building, Pampa.

Jurors called for this session of court include:

- Patricia Ann Eads of Wheeler
- Walter J. Dunn of Wheeler
- C. D. Harding of Wheeler
- Billy Cantren of Twitty
- J. B. Brown of Kellerville
- L. J. Burdine of Kellerville
- R. W. Shields of Shamrock
- Mrs. Pearce Walker of Mobeetie
- Mrs. Clyde Dukes of Allison
- J. M. Lisle of Wheeler
- M. B. Eiland of Briscoe
- Garland Aternathy of Twitty
- George Kite of Mobeetie
- Mrs. J. C. Dennis of Lela
- John Wright of Briscoe
- F. E. Blakemore of Shamrock
- A. C. Brown of Shamrock
- Mrs. B. K. Barham of Wheeler
- Carl E. Henry of Shamrock
- Arcie Henderson of Shamrock
- Howard Caswell of Wheeler
- Bob Bidwell of McLean
- C. E. Giehart of Shamrock
- A. C. D'Spain of Briscoe
- Mrs. Erma Riley of Wheeler
- Charlie Cocoran of Mobeetie
- Mrs. Clifford Walsler, Mobeetie
- Mrs. Alfred Hill of Mobeetie
- J. W. Seitz of Kellerville
- Mrs. Frank Caswell of Wheeler
- Mrs. Doyle Grimes of Mobeetie
- N. L. Sechrist of Wheeler
- George Parker of Allison
- C. C. Collinsworth of Shamrock
- Mrs. E. W. Poole of Shamrock
- Jim Litsch of Mobeetie
- Mrs. E. F. Lester of Mobeetie
- Mrs. T. B. Henderson of Twitty
- Robert L. Patterson of Wheeler
- Wanda Chapman, Wheeler

Mr. and Mrs. Barney Burgess visited Mrs. Burgess twin brother, O. L. Rankin in Friona.



HI THERE

By Lavell Stephens

In last weeks paper Mr. Swaim, our county agent told us how to get rid of skunks. It seems to me that Mr. Swaim went to much more trouble than is necessary—such as getting a two by six board eight feet long, a garbage can, etc.

I'm all for borrowing a trap from one of your good neighbors—baiting the trap with what ever it is a skunk likes—then when you have the skunk in the trap, take your 22 and stand as far back as you possible can and still get him with your first shot—not that this makes to much difference (how far back you are) because by this time your skunk is fairly unhappy

and has been shooting his "time bomb" all this time anyway, but go on shoot, for keeps. Now, the skunk is caught in the trap, and has been shot, but—he is still in your neighbor's trap—well, you could give each member of your family an opportunity of taking that "pretty little kitty" out of the trap, but if you don't get any buyers for this job, then the next best thing—call your good neighbor, tell him to come get his trap, you don't need it any more.

I don't believe that I have met Mr. Swaim, but if he will drop in the Times office, I'd be glad to discuss this "Skunk Problem" and also "How to win friends and influence people."

One of the cats that works down town said the other day "If my nose bleeds over my head, just tell it down, I have on a new gir-dle."

DINNER

Misses Ann Gatlin and Ada Lou Allen were honored with a dinner Tuesday evening in the home of Mrs. C. M. Gatlin Sr.

The table was covered with a lace cloth, center piece of purple and white Lilies and place names or Lilac colored miniature bags.

Guests were members of the Junior class and sponsors, Sus Hooker, Arcia Gorcoran, Carolyn Trout, Jimmy Simpson, Keith McLaughlin, James Lester, Gene Harrison, Don Quarles, Jeff Kelley and Mrs. Alma Sutz the sponsor. Hostesses were: Mrs. Jake Allen, Mrs. Barney Gatlin and Mrs. C. M. Gatlin Sr.

I WILL SINCERELY APPRECIATE YOUR

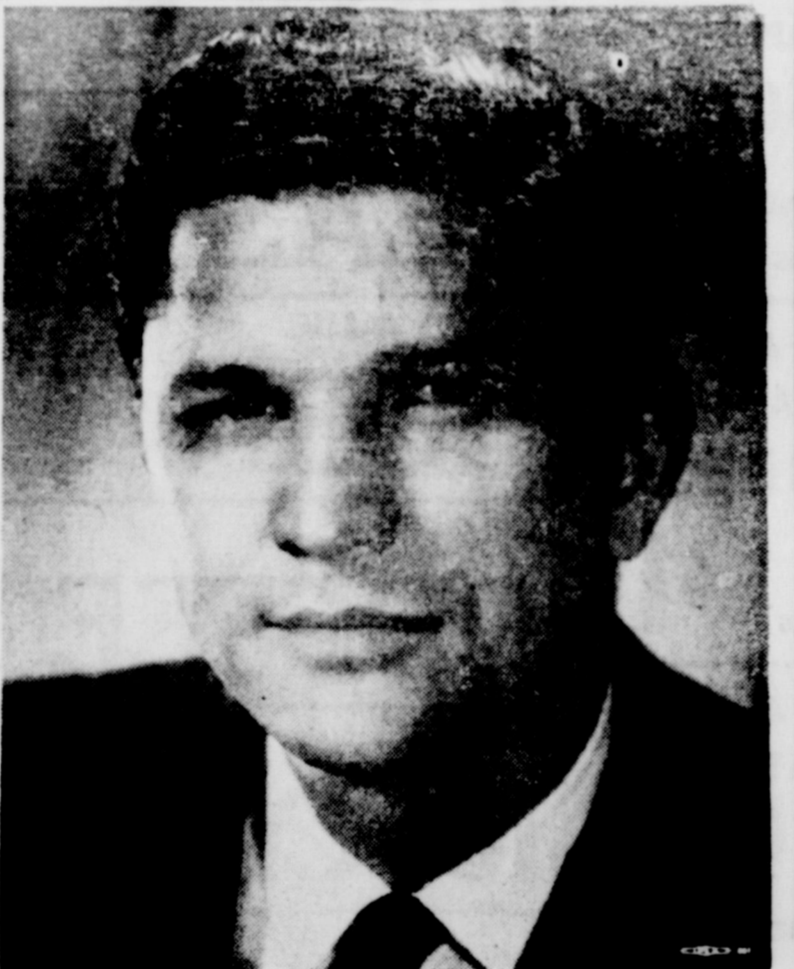
- VOTE -

As you probably know, I am a candidate for Sheriff of Wheeler County . . . I have tried my best to contact each of you personally, in the event I missed you, I will take this opportunity to ask you for your vote and support in the May 7 primary. All I ask is that you consider the qualification.

If elected, I will do my utmost to serve you in the way that a sheriff should serve his county . . . I am not committed to any special groups and don't have any time consuming hobbies. I will serve you as sheriff "full time". Thank You.

Herbert Knoll CANDIDATE FOR SHERIFF OF WHEELER COUNTY

HELP ELECT



Don Yarborough
To The Office Of
Lt. Governor

- | HE WILL: | HE IS: |
|--|---|
| <ul style="list-style-type: none"> Save the people of Texas from a general sales tax Launch an industrialization program for all of Texas See to it that Texas children have schools second to none Push a real "Advertise Texas" program to attract tourists Insist that Texas' senior citizens get the maximum assistance and medical aid approved by the voters but blocked in the Legislature Get a sound water conservation and storage program underway in Texas | <p>A man who will serve all Texans' interests instead of a few special interests!</p> |

(Paid for by Wheeler County Friends of Don Yarborough)



THE WILL OF TEXANS
Re-elect
WILL WILSON
ATTORNEY GENERAL

SHINNERY SPRAYING

BUCK SIMS

American Dusting Co
WILL BE IN WHEELER
MAY 7th
ANYONE THAT IS INTERESTED

PHONE Buck Sims MO 3-2542 or C. G. Fry CA 4-1664
Quanah, Texas Chickasha, Okla.

Mr. and Mrs. Randy and Jimmy...
Mr. and Mrs. J. E. ...
the Russell Barkers.
Mr. and Mrs. J. E. ...
ted relatives in Fr...

for Mother's Day
GIVE
Chocolate
for American

ROYAL COLLECTION
One of America's...
boxes, 24 varieties...
centers in finest milk...
chocolate.
1 and 2 lb. sizes.
WE HAVE MANY OTHERS
Come See
CITY DEPT.
Wheeler, Tex.

BAKE SHOW DEMONSTRATION TO BE SATURDAY

Should plan to attend show demonstration Saturday April 30. A demonstration in the Homecoming Court at 10 A.M. The afternoon beginning in the High School making Department. Letters will be on rolls, which are required entries sponge cakes and quick batter for the bake show this year. The county bake show will be held at a later date. The purpose in the girls seeing the demonstration is to have suggested helps in preparing their entries and how the judging will be based on the finished product.

U.S. - Canada To Have Good Will Week

The 39th annual observance of U.S. - Canada Good Will Week will take place April 24-30, under the leadership of Kiwanis Clubs in both nations. The week-long event which is aimed at dramatizing the traditional friendship between the two neighboring countries is scheduled so that it falls at the time of the anniversary of the famous Rush-Bagot Agreement. This is a document, signed April 28, 1817, which virtually demilitarized the boundary between the United States and Canada by calling for a limitation of naval vessels on the waterways between the countries, and instructing those which were deemed necessary to interfere in no way with the peaceful passage of merchantmen of either country. The agreement could — and can — be terminated by a simple six months notice on the part of either signatory nation. It is this document which has made possible the unfortified three thousand mile U.S. - Canada border — which today stands as a dramatic example of good neighborliness.

Though residents of the United States and Canada are similar in origin, geographically and economically close, and with the exception of eastern Canada, possessed of a common language, some of the citizens on opposite sides of the border know less about one another than they should.

Court Records

List of instruments filed in the office of the County Clerk and District Clerk of Wheeler County, Texas from April 18 through April 22, 1960

APRIL 18, 1960
 RVL & RDT - R. F. Kuhn et al to T. A. Richardson et ux 4-11-60 170x70' NW 1/4 Sec 4 T & NOR Ry Co.
 RVL - Clarence Hillman et ux to Sam Risner 4-5-60 S 1/2 Sec 60 Bk A-5
 RVL - Sarah Risner Helton to Sam Risner 4-5-60 S 1/2 Sec 60 Bk A-5
 RVL - Hobe Risner et al to Sam Risner updated S 1/2 Sec 60 Bk A-5
 AGL - C. C. Hammer et al to Major Oil Development Co 4-15-60 NE 1/4 Sec 23 Bk 13
 AGL - C. C. Hammer et al to Major Oil Development Co 4-15-60 SW 1/4 NW 1/4 E 1/4 NW 1/4 Sec 23 B 13
 FV - James W. Hanes et ux to Western Bank Bk of Houston 4-14-60 N 280 ac & S 1/4 & 129 ac S of RBR in NE 1/4 Sec 53 Bk 23
 RDT - United Fidelity Life Ins Co to Clarence O. Parrish et ux 4-11-60 Lot 4 Bk 3 Shamrock PHB
 RDT - Jess Moore to W. A. Goad Jr et ux 4-15-60 100' x 283' SE 1/4 SW 1/4 Sec 6 Bk A-4
 OL - R. William Brown et ux to Malouf Abraham 3-25-60 NE 1/4 Sec 7 Camp Co Sch Land
 OL - R. William Brown et ux to Malouf Abraham 3-25-60 Sec 8 & NE 1/4 Sec 5 Camp Co Sch Land
 OL - R. William Brown et ux to Malouf Abraham 3-25-60 Sec 6 and SE 1/4 Sec 7 Camp Co Sch Land
 OL - George A. Brown et al to Malouf Abraham 3-26-60 S 1/2 Sec 17 Bk RE
 RVL - Lula A. Williams to Raymond Harkins et ux 4-14-60 E 65' Lot 6 Bk 67 Shamrock WSA
 D - Raymond Harkins et ux to Martha Eden 4-14-60 E 65' Lot 6 Bk 67 Shamrock WSA
 ROL - S. M. Borne to Jabe Darnell et al 3-29-60 NW 1/4 Sec 63 & S 1/2 Sec 61 Bk 13
 APRIL 19, 1960
 D - Lee A. Gibson et ux to W. H. Locke Jr et ux 4-18-60 Lot 3 Bk 7 Shamrock HS
 PART MD - Mary M. Millie et al to Johnnie Bond et al 3-25-63 Sec 19 Cert 227 Sec 1, 2 Cert 273 S 1/4 Sec 12 Cert 272 F 1/4 Sec 2 & F 1/4 Sec 1 Bk 4 B&B Survey; Thomas James Sur 281.86 ac Sec 2 & N 231.79 ac Sec 1 C & M PR Co Sur Sec 31 NW 1/4 NEV 30 49.50 Bk A-3
 DT & MML - Jodie R. Cook et ux to Southern Builders Supply Co. 3-8-60 M/3 Lot 1 Bk LVII Shamrock
 TDT & TMML - Southern Builders Sup Co to Century Trust Co 4-11-60 M/3 L 1 Bk LVII Shamrock
 ROL - Teel Production Co et al to John O'Gorman et al 4-4-60 E 1/2 NW 1/4 Sec 98 Bk 17
 SUB OL - Federal Land Bk of Houston to Maouf Abraham 2-19-60 S 1/2 Sec 71 Bk M-1
 C C PROBATE - Roy O. Neal to Ex Parte 4-8-60 1/32 Min Int NE 1/4 & 160 ac W 1/2 Sec 30 Bk A-4
 AFF - Carl Levitt to Stanley T. Richardson 4-18-60 N 1/2 Sec 3 Bk RE
 APRIL 20, 1960
 ROL - Warren Pet Corp to A. S. Plummer et ux 4-18-60 SW 1/4 Sec 45 Bk 24
 ROL - Warren Pet Corp to City National Bk in Wichita Falls 4-18-60 NW 1/4 Sec 45 Bk 24
 ROL - Warren Pet Corp to Sabine Royalty Corp 4-18-60 NW 1/4 Sec 45 Bk 24
 ROL - Warren Pet Corp to A. S. Plummer et ux 4-18-60 NW 1/4 Sec 45 Bk 24
 ROL - Warren Pet Corp to Wotola Royalty Corp 4-18-60 NW 1/4 Sec 45 Bk 24
 OL - Lee Barry et ux to Malouf Abraham 3-28-60 N 1/2 & SE 1/4 ex NW 1/4 NW 1/4 Sec 12 Camp Co Sch Land
 OL - Lee Barry et ux to Malouf Abraham 3-28-60 W 1/2 Sec 11 Camp Sch Land
 AGL - Pan American Pot Corp to Norvel Douglas 3-29-60 S 1/2 Sec 58 Bk 24
 AGL - Norvel Douglas to Delos Douglas 4-19-60 S 1/2 Sec 58 Bk 24
 AGL - Norvel Douglas to David Bruce Foss 4-19-60 Sec 58 Bk 24
 EXT AGREEE - Woodrow W. Adams to Geo. F. Turcotte 3-29-60 N 1/4 Sec 103 Bk 28
 APRIL 21, 1960
 MML - Frederick T. Flowers to Economy Supply Corp 2-29-60 N 50' Lot 3 & S 50' Lot 4 Bk LXX XV Shamrock
 AFF - Robert N. Foster to Frederick T. Flowers 4-20-60 N 50' Lot 3 & S 50' Lot 4 LXXXV Shamrock
 AFF - Robert N. Foster to Frederick T. Flowers 4-20-60 N50' Lot 3 and S 50' Lot 4 Bk LXX-XV Shamrock
 TMML - Robert N. Foster to First Natl Bk Shamrock 4-20-60 N 50' Lot 3 & S 50' Lot 4 Bk LXX-XV Shamrock
 -April 22, 1960
 DT - Douglas Robertson to O. C. McPherson et ux 3-30-60 Lot 12 Bk 69 Shamrock WSSA
 D - W. A. Goad, Jr. et ux to James W. Chapman 4-20-60 100' x 280' W 1/2 Sec 8 1/2 S 1/2 SEVSW 1/4 Sec 6 Bk A-4
 D - James W. Chapman et ux to William A. Goad et ux 4-20-60 95' x 250' Bk F-1
 95' x 250' Bk F-1 Wheeler, Prairie Lawn Addn
 DT - William A. Goad et ux to United States of America 4-20-60 95' x 250' Bk F-1 Wheeler, Prairie Lawn Addn
 AGL - Malouf Abraham to Pure Oil Company 1-27-60 Sec 28 Bk RE
 AGL - Malouf Abraham to the Pure Oil Company 1-29-60 W 1/2 Sec 23 Bk RE
 PARTITION AGREEE - Verlie O. Johnston et al to B. T. Johnston et al 1-5-60 Mins NW 1/4 Sec 56 Bk 23
 AFF - Verlie O. Johnston to Sidney T. Johnston et al 4-5-60
 AFF - Robert Fred Johnston 4-5-60
 RDT - Farmers & Merchants St Bk Shamrock to B. Johnston et al 3-30-60 NW 1/4 Sec 56 Bk 23 and SW 1/4 NE 1/4 Sec 68 Bk 13
 AGL - Carolyn Pearl Johnston to R. Earl Stubblefield et al 2-27-60 NW 1/4 Sec 56 B 23
 RATIF OL - O. B. Harvey et ux to R. Earl Stubblefield et al 4-8-60 NW 1/4 Sec 56 Bk 23
 AGL - Verlie O. Johnston et al to R. Earl Stubblefield et al 1-5-60 NW 1/4 Sec 56 B 23
 District Clerk's Office

Briscoe Club Sets Out Trees And Meets With Agent

The Briscoe Home Demonstration Club met recently at the club house and set out one hundred trees around the lot. They had a covered dish luncheon. Then in the afternoon, Mrs. Litsch, the agent, gave a demonstration on "Picture and furniture arrangement." "Be sure to hang all pictures in the room on the same level and on a level with the eye," stated Mrs. Litsch. The 4-H club girls gave the following demonstrations. Violet Fillingim and Jackie Dodd, vegetable preparation; Estelle and Mozelle Fillingim, poultry preparation; Judy Finsterwald and Diani Dodd, dairy foods and Helen Puryear and Melody Zybach, dairy foods.

Mrs. Effie Renfro was hostess and served refreshments to the following visitors: Mrs. Jay Booth, Mrs. John C. Vise, Mrs. Rose, Mrs. R. L. Zybach and the 4-H club girls, members: Mrs. Jeff Puryear, Mrs. Grady Dodd, Mrs. Claude Barker, Mrs. Barney Burgess, Mrs. Herbert Finsterwald, Mrs. Milton Finsterwald, Mrs. Farmer Heflex, Mrs. John McCarroll, Mrs. Collie Parker, Mrs. Doyle Standlee, Mrs. Ernest Zybach, Mrs. Clarence Zybach, Mrs. Bob Ramsey, Mrs. Henry Lee and the hostess.

4-H Judging Team Competes In Okla.

The Wheeler County 4-H Livestock judging team journeyed to Stillwater, Okla., this past weekend to practice livestock judging along with their State F.F.A. Livestock Contest. Members of the team are Larry Elmore, Allison, 4-H Club; Mac Shaffer and James Henderson, Kelton 4-H Club; and Kenneth McCasland, Wheeler 4-H Club. The boys made top grades according to Bryan Swaim, County Agent, who said the lowest grade was 333 and top grade was 375 out of a possible 400 points. Hogs again gave the boys the most trouble. They judged three classes of hogs which were officially placed by the University of Oklahoma Livestock Judging team.

The agent and boys were guests of Richard Kiker, 4-H Member of Allison who is majoring in A.H. at the University. Kiker took the agent and boys to the college Rogee Friday night and after the judging showed them around over the college campus. Al reported a good time and enjoyed the trip.



THE WILL OF TEXANS
Re-elect
WILL WILSON
 ATTORNEY GENERAL

NEW CASE BALERS

ARM SIZE 135

Want hay put up at the peak of green and palatability... depending on hired help or owned baler... this is the baler. It makes twine-tied 14 x 14 bales just right in density for easy handling, storing and drying. It's so simple most anyone can adjust and operate. So low in cost that most any farmer can well afford it. Dependable air-cooled engine and positive-drive pick-up and edger for smooth operation.

G TONNAGE 140

Have big hay acreage... or custom baling... or bale for sale... the baler for you is Case "140." It makes firm, weight 14 x 18 bales, twine-tied. Its double-plunger action gets slicing done. Compression starts, makes bales more uniform, boosts density. Its 4-cylinder air-cooled engine can be started from operator seat. PTO drive is optional. Choice of bale diverter or auger loader. See your Case dealer for complete facts.



Ask about the Case Income Payment Plan

Come In... Get All the Facts

NASH APPLIANCE & SUPPLY CO.



THE WILL OF TEXANS
Re-elect
WILL WILSON
 ATTORNEY GENERAL

LAWN MOWERS

19" to 24"

39⁹⁵ UP

SEE THEM ON DISPLAY AT

CICERO SMITH Lumber Co
 Wheeler, Texas

Public-Ker Gasoline Mowers

Powerful 3 1/2 H.P. CLINTON ENGINE

Shatterproof Steel Base

REVIVAL

YOU ARE INVITED!

First Baptist Church
 Mobeetie, Texas

APRIL 27 - MAY 1

Starting Wednesday Night

Services At 7:30 P.M.

Arthur W. Patty, Evangelist
 Charles Uzzle, Pastor

THANK YOU

I want to thank each and everyone of you for your fine support and cooperation during my tenure in office as your Precinct one commissioner. I hope that my effort will merit your vote in the May 7 primary.

I WILL SINCERELY APPRECIATE YOUR CONTINUED SUPPORT

BE SURE TO VOTE MAY 7

Shelby Pettit

- Business Directory -



TRACTORS — IMPLEMENTS
PARTS and SERVICE
HIBLER IMPLEMENT CO.
Wheeler, Texas

See Us For
INLAID LINOLEUM
Expert Installation
**ERNEST LEE HDW.
& FURNITURE CO.**
Wheeler, Texas

FLOWERS
FOR ALL OCCASIONS
Halls Flower Shop
Wheeler, Texas

FAST — EFFICIENT
SERVICE
P & G LAUNDRY
Wheeler, Texas

TELEVISION
Sales & Service
NASH APPLIANCE
Wheeler, Texas

ELECTRICAL
REPAIRS
H & B APPLIANCE
Wheeler, Texas

smart
people are
want-ad minded!
PHONE 5011
The Wheeler Times
Wheeler, Texas

GUARANTEED
AUTO GLASS
INSTALLATION
& Body Repair
GARRISON SERVICE
Wheeler, Texas

SEE US FOR
◆ Welding
◆ Blacksmithing
◆ Windmill Towers &
◆ General Repair
◆ Hard Surfacing
TOPPER
WELDING SERVICE
Phone 2861
Wheeler, Texas

SEE ME FOR
HAIR
STYLING
At Its Best
Rutha Mae's
Beauty Shop
Phone 3411 Wheeler, Tex.

EXPERT
TV And Appliance
REPAIR
On All Brands
H & B APPLIANCE
Wheeler, Texas

Let Us Make Your
KEYS
DAUGHTRY'S
Wheeler, Texas

Read The Business Directory
In The Wheeler Times

FOR ALL OF YOUR
PAINTING NEEDS
SEE
WHEELER COUNTY
PRODUCE
Wheeler, Texas

Let Me Write It
GEO. RICHARDSON
All Types Of
INSURANCE

Ab Gunter
LIFE INSURANCE

DR.
R. J. MADSEN
Optometrist
In Wheeler
SATURDAY 9-5
For Appointments
Call 2332

JOKE
Guest—"My word! I'm thirsty."
Hostess—"Wait a moment and
I'll get you some water."
Guest—"I said thirsty; not
dirty."

See Our
Complete Line Of
WALLPAPER
Cicero Smith
Lumber Company
Wheeler, Texas

THE JOLLY
HOBBY
SHOP
Molds For Plastic Casts
Plastic Flowers,
Picture Framing
Coin Holders
Ceramics

EXPERT
WELDING
BLACKSMITHING
GENERAL REPAIR
WINDMILL TOWERS
HARD SURFACING
L. D. BEESLEY
Welding Shop
Mobeetie, Texas
Phone 4891 — Wheeler, Texas

Dr. Marion N. Roberts
112 W. Kingsmill
Pampa, Texas
Telephone 4-3333
OPTOMETRIST

DR. JOEL M. GOOCH
OPTOMETRIST
207 N. Wall
Phone 800
SHAMROCK, TEXAS

POLITICAL
ANNOUNCEMENT
FOR STATE
REPRESENTATIVE
Grainger McIlhany
FOR COUNTY SHERIFF
Bus Dorman
Herbert Knoll
FOR COUNTY TAX ASSESSOR
AND COLLECTOR
Thurman Rives
FOR COMMISSIONER
PRECINCT 1
Shelby Pettit

For
COLDS
take 666

JR.

If you have a "Junior" miss or
mister in your home, then this
information is for you. Right
now is the time to prepare for
his education . . . his future
. . . with Modern Woodmen's
special plan for boys and girls.
Do you know that for only
\$8.40 per year (if your child
is under 5) you can obtain
\$2,000 life insurance. Rates are
slightly higher at older ages.
Polio benefits are included at
no extra cost.
Futures are made in the present.
Plan for your child's NOW.
Call or write about Modern
Woodmen Junior Insurance—it
could well be one of the most
important things you've ever
done!

MODERN WOODMEN
of America

EMORY L. ARCHER Jr.
District Manager
Phone 286
202 W. Benton Sayre, Okla.

JOHN DEERE
Quality Farm Equipment and Service
HOLDEMAN IMPLEMENT CO.
Wheeler, Texas

The Wheeler Times
TEXAS PRESS ASSOCIATION
Member 1960
Published every Thursday at Wheeler County
Texas By
The Wheeler Times

Entered as second-class matter December 18, 1933, at the postoffice
at Wheeler, Texas, under act of March 3, 1879.

Don Earney, Editor and Publisher
Lavell Stephens, Society Editor
Victor Porter, Shop Foreman
Louis Stas, Linotype Operator
Bill Pearce, Sterotyper

FOR SALE

The following list of farms, houses and business
buildings are just a few of the many which we
have. Stop in and let us show you what we have
to offer.

- 63 acres farm with 15 acres al-
lotment. Has two good springs.
- Choice 100 ft. lot. Paving, wa-
ter, sewer, only \$600.00
- New 3-Bedroom brick home.
Bath and one-half. Small down
payment.
- 80 acre farm with small house
windmill and out buildings.
- 3-bedroom home with wall to
wall carpet. Bath and one-half
100 ft. lot.
- 6-room modern house, back
porch, basement. 75'x150' lot.
Own water system, septic tank.
- 160 acre Farm. 100 acres in soil
bank. 20 acre cotton allotment.
- Want to sell your property or
business? Contact us now.
- 5-room modern house with 8
acres close to town.
- 1/2 section of land. 110 acres in
soil bank at \$9.00 per acre. 50
acres in cultivation. 45 acre
cotton allotment.
- 320 acre farm. Near Wheeler.
Cotton allotment.
- 6-50 ft lots on paving, water,
sewer and gas.
- We have numerous other choice
building locations and several
acresages listed.
- Extra nice 3-bedroom rock
home. 200 ft. lot double garage.
- 160 acre farm with 1/2 minerals,
soft water. About 120 acre in
Cultivation. \$40.00 per acre.
- Nice 2-bedroom home across
from Baptist Church.
- Extra Nice 2-bedroom home.
Wall to wall carpeting. Corner
location.
- 3-bedroom home and 4 acres.
City limits of Wheeler.
- 55 acres, 1/2 mineral rights,
East of Wheeler.
- Business building for sale.
- Extra nice 3-bedroom home.

Oil And Gas Leases

V & E Real Estate
COMPANY
Phone 5011 — John C. Vise — Wheeler
"Located in the Wheeler Times Building"

ROGUE
THEATRE
WHEELER, TEXAS

Fri. - Sat. April 29-30
"THE ROOKIE"
Tommy Noonan
Pete Marshall

Pre. - Sun. - Mon.
April 24-25
"EDGE OF
ETERNITY"

Cornel Wilde
Victoria Shaw
Mickey Shaughnessy
Edgar Buchanan

Wed. - Thurs. May 4-5

"THE BEST OF
EVERYTHING"

Hope Lange
Joan Crawford

AUCTIONEER
SHELBY PETTIT
Phone 3561 — Wheeler, Texas
Will cry your sale
any time or place

See Our
COMPLETE STOCK
OF
RECORDS
H & B APPLIANCE
Wheeler, Texas

ABSTRACTS
and
INSURANCE
Thurman Rives
Hiram Whitener
TITLE
ABSTRACT CO.
Wheeler, Texas — Phone 2221

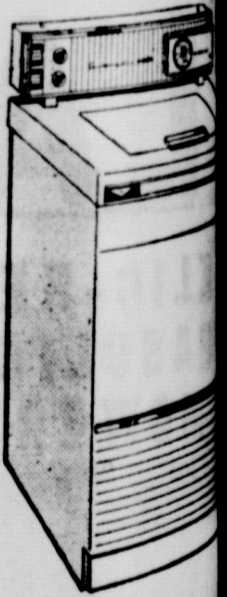
PICTURES
For All Occasions
See
Vearner's Studio
714 S. Main Shamrock

PROTECT
THIS INCOME
WITH HAL
INSURANCE
During 1959 in Texas one
five and one-half million
crop hail damage claims
insurance companies paid
that equaled that amount
suffered on crops that in-
sured. Your Texas Farm
can give you complete
Farm Bureau policy that
more insurance per acre
other policy. Texas Farm
Bureau insures their own
you are assured of full
amount on all your crops.
Texas Farm Bureau appli-
cure of adequate amount
for your crops.
Wheeler County
FARM BUREAU
Geo. Richardson
Wheeler, Texas



AIN'T IT THE
TRUTH
By Parsley Furniture

Noticed where some bird that
had been doing TV work got caught
in the service makin' a program for
Uncle Sam. He was the feller that
used to make the Wide World
World. Accordin' to him, it seem-
ed to be cheaper to make mili-
tary shows, least that was what
he knew about it. But he never
figgured what Unk wuz payin'
them troops that would march
around in front of one of them
cameras all day, under the super-
vision of some ole soreheaded sar-
gent. Yessir, I bet there will be
a lot of doin's that TV bird never
thought possible, like polishin' all
them cameras, then paintin' them
O.D., then removin' the O.D., paint
and polishin' them again. Then
there will be the proper place to
set them, accordin' to the corpor-
al's wishes, which will be changed
by the sergeant, just to be repre-
minded by the second Louie and
then dressed down by the captain.
Golly, a feller really would have
a time tryin' to shoot picturs with
one of them fancy gadgees, with
all of the help he would get from
the army. Hope that he don't have
a nervous breakdown, but if he
ain't accustomed to livin' the life
of a miserable private he's got a
heap of trouble.
When I first got in the army I
got off on the wrong foot, I guess.
I was stationed out there in Cali-
fornia and one day some bird
came by and I jest passed him
by, he stopped me and asked if
I didn't know who he wuz, course
I didn't. He said his name was
General Kimberly. I told him my
name wuz Ab Gunther and if he
ever needed any help to let me
know, as I shore knew who I
wuz—apparently he didn't. He help-
ed me get one of the best jobs I
ever had in the service, I wuz
made permanent kitchen police.



Automatic
WASHERS
DRYERS
RANGES
FREEZERS
REFRIGERATORS
by NORGE APPLIANCE

"NORGE APPLIANCE
Parsley Furniture
Phone 4321

CATTLE TEST AIDS BRUCELLOSIS PROGRAM

On April 5—a new testing cattle is being started. It is a savings to beef breeders and an important step in eradicating brucellosis, according to Dr. W. A. Patterson, extension veterinarian, in a report based on use of the blood test of cull on the way to or during slaughter. Animals tested each year equal 5 percent of all cows in the area, he said. Another important requirement that owners must have is to have all eligible calves vaccinated at least 80 percent of all eligible calves each year.

Successful use of this test to recertify Benton County, Washington as a modified-certified brucellosis area marks a major advance in the battle to eradicate this costly disease. The county was officially recertified effective March 15.

A modified-certified area, Dr. Patterson explained, is one in which no more than one percent of the cattle or 5 percent of the herds are affected with brucellosis. Certification is for 3 years. Continuous testing makes recertification possible, but for beef producers it has meant working up at least a fifth of all herds in the certified area every 3 years.

The advantage of the new method are shown in the Benton County test. During the 3 years prior to March 15, 1960, brucellosis was found—and further tests required—in only 11 of a total of 601 beef herds in the county. Under alternate recertification procedures, it would have been necessary to test a total of at least 120 herds. As a result of the new method, 92 percent of on-the-ranch testing was eliminated.

This reduction in ranch testing saves the majority of beef producers the expense and labor of handling cattle, as well as eliminating the possibility of injury to the animals themselves. Furthermore, Dr. Patterson added, since all herds in an area may be included in this continuous screen-

testing program, any infection is likely to be detected before it has an opportunity to spread.

Memory Lane

by Lavell Stephens

January 4, 1940

Holiday Visitors Honored At Banquet Friday Night

One of the high lights of the holiday season was a banquet given Friday night at the Methodist church honoring the college students and teachers who came home for Christmas vacation.

Mrs. C. J. Meek, T. M. Britt and H. M. Wiley were hostesses, assisted by Misses Winona Adams and Beulah Hubbard. Misses Marilyn Wilky and Ruth Dill, Travis Jones and Neil Hale were responsible for the artistic decorations. Rev. Wayne Cook directed the program and Neil Hale was toastmaster.

Those attending were Misses Mary Lou McIlhenny, Marguerite Ficke, Florence Marrison, Beissie Mae Ficke, Elva Willard, Ruth Barr, Bonnie Adams, Evonne Hubbard, Naomi Johnson, Beulah Hubbard, Lola Barr, Genevieve Britt, Marthals Wiley, Mary Eunice Noah, Texas Miller, Louise Britt, Marilyn Wiley, Sylvia Louise Ficke, Ruth Dill, and Emily Lou Ahler.

Messrs. Neil Hale, Noel Bryant, R. D. Mason, Travis Jones, Wallace Pendleton, Clowes Jones, Tom Wood, Joe Meek, Max Wiley, Bill Miller, Earl Gilmore, James Passions, Rev. Wayne Cook, and Taft Holloyay. Baptist pastor from Sanderson.

February 1, 1940

Birthday Party Wednesday For Duane Bradford

Mrs. A. C. Mitchell honored her grandson, Duane Bradford with a party Wednesday afternoon, January 31, the occasion being his ninth birthday anniversary. A number of outdoor games were played.

Refreshments of cake and hot chocolate were served to Billie Jean Brigan, Patsy Noah, Billie V. Brown, Eloyee Sandifer, Margaret Ann Holt, Coene, Yreva Sue and Viann Carter, Marie Regan, Joann Mitchell, Betty Pearl Dill, Patsy Wiley, Virginia Rose Marrs, and Francis Andrews, Jerry Cain Newberry, Richard McWhorter, Joe Noah, Richard Lee Gaines, Harold James Hardestem, Raymond Anglin, Bill and Dale Crossland, Horace Lee Rezan and the honoree, Duane Bradford.

Colorful lollipops were given as favors.

Sports

September 1940

Local Football Team players First Conference Game of the season.

Rarin' to test their skill, speed and stamina, the Wheeler Mustangs journey to Lakeview tomorrow (Friday) when they will play their first conference game of the season, starting at 2:30 in the afternoon. Lack of floodlight facilities compel daylight games at Lakeview.

The locals are expecting stiff opposition in tomorrow's contest. They gave a good account of themselves in a scrimmage round at Sayre, Okla., last Friday. Being an early season match, they are said to have shown some weakness in blocking and tackling. This defect has since been largely corrected.

Starting lineup tomorrow, according to Coach Bill Horechem, will be: Kiser—le. Adams—lt. Pendleton—lg. Wright—c. Revious—rg. Williams—rt. Johnson—re. Perrin—qb. Tillman—lh. Rogers—rh. Hampton—fb.

Other Wheeler players expecting to make the trip are Garrison, Noah, Cordell, Newkirk, Reeves, Sandifer, Henderson, C. Pendleton, Barnes, Whitener, Jolly, Herd, Farmer, Lamb and Hefley.

You Must Have Poll Tax Receipt In Order To Vote

Absentee voting began Monday in Wheeler for the Democratic Primary, and as was expected, quite a number of the absentee voters are forgetting to bring their poll tax receipt.

Remember, you must have your poll tax receipt or an exemption certificate in order to vote.

You vote in the County Clerk's office.



More History: This is another group that marks the first year. R. H. Forrester was in Wheeler. Here he is pictured with the baseball team of 1916. They are (back row) left to right: Dan Sanders, coach, and team members, Charley Briggs, Richard Sanders, Jim Risner, Ben Chambers, Frank Breeding and Mr. Forrester. Front row (left to right) they are: John Lewis, Monte Gossett, Ernest Beard, Dick Craig, Peeby Bohonno and Hubert Scott.

AN INTERESTING ACCOUNT OF THE '86 BLIZZARD

(EDITORS NOTE: Ernest Zybach of the Briscoe and Allison Community handle in the article. Mr. Zybach was born and reared in the Okta to area. We thought the story might interest you as it did us.)

An interesting account of the blizzard of '86 related by a former Oketo resident, was published in the Topeka Capital recently. The story as told by James G. Kinsley, who was a boy 12 at the time.

Kinsley said, in part: At the time of the blizzard his family lived on a farm in Marshall county, five miles east of Oketa. He and his brothers were in school the day the storm started, January 1. Until about 4 o'clock it was foggy, but mild. Then the storm struck.

It started all at once, a sudden blast of wind and snow that has been described as though a sack of flour was emptied in a fierce gale. One witness said it was choking. It filled the air with a swirling powder that reduced visibility to a few feet.

School was dismissed and the Kinsley boys faces bent against the snow, walked the mile and a half to their home. A neighbor, William Larkin, who lived eight miles away, had brought grain to the Oketa mill and stopped at the Kinsley home when the storm broke. He stayed more than a week, worrying about his wife and children and knowing his wife feared him lost and frozen.

Eleven persons stayed out the storm in the Kinsley home—Mr. and Mrs. Kinsley, their four boys, William, James, Christopher and Albert, nine to 14 years old, three daughters, Louise, Jennie and Sadie, two to six, Kinsley's brother William, who lived with them and Larkin.

They had meal and flour, meat molasses and enough staves to see them through. The two cows were milked morning and evening and hay dug out of the stack near the barn to feed the stock. The men groped their way to and from the barn and the well to carry in water.

"We were a lively bunch," Kinsley said. "The men played cards, the children played checkers and my mother fought it out. The wind sounded like an avalanche coming down on the house."

After three days of steady blizzard, the weather became clearer and warmer, then suddenly dropped below zero and the storm began once more and lasted on and off for weeks.

The 11 people in the Kinsley home emerged to a world of white hills and valleys. Snow was two to three feet deep on the level and drifts were piled house high. Creeks were filled halfway to the tops of the timber.

A couple of weeks after the blizzard a neighbor asked Kinsley if he would allow Jim to go to Nebraska and get a bottle of white rye whiskey which his wife's doctor said was badly needed for medicinal use. Kansas had prohibited the boy took the train at Oketo and rode to Barneston Neb., 18 miles away, got the package from the neighbor's brother-in-law and brought it back to the sick woman, who recovered. Last week Kinsley said it was the first time he had told anybody about his innocent humanitarian "boot-legging."

He looked out the train windows at prairies whitened and drifted as far as he could see and so still that it seemed all life had departed. The present heavy snows could be the beginning of a cycle of white winters. The 1886 blizzard was followed by one the next year almost as bad and by heavy snows for several winters.

But for stark suffering and death, nothing has touched the terrible storm of 1886 particularly in western Kansas. Many settlers lived in flimsy shacks that were blown away, leaving families to freeze to death. Travelers froze on the road and cowboys perished trying to look after the cattle. It has been estimated that 100 or more persons froze in the storm.

About 80 percent of the cattle perished and many that survived were walking skeletons. They drifted with the wind and dropped to the ground at their last breath. They were found dead with their tails to the storm. It changed a whole way of liv-

ing. The cattlemen were ruined, wiped out. The vast cattle grazing on western ranges was ended. Farmers took over, fenced the prairies and planted grain. The cattlemen never came back.

In the spring of 1886 horses were found wandering over the plains, with a part of the harness still on. Some pulled ghostly wagons bearing occupants frozen to death. Bodies of a man and woman and three children were found in a wagon pulled by a team of mules wandering dazed north of Dodge City.

Human bones were found all spring along with those of cattle and wild animals. Skippers shipped carloads of hides that spring and summer.

THE WHEELER TIMES, WHEELER, TEXAS THURSDAY, APRIL 28, 1960

Demonstration Club Studies Care Of Sick

"For shock take this emergency action. Keep the casualty lying down. His head should be level with or lower than his body unless he has a head injury. In the latter case, his head should be raised slightly. Wrap the casualty warmly but do not permit him to become overheated. If he is able to swallow, give him plenty of water to drink. Mix one teaspoon of salt and one-half teaspoon of baking soda to one quart of water. This will help to prevent severe shock," stated Mrs. Colbie Parker to the Briscoe Home Demonstration Club on April 19 when she and Mrs. Ernest Zybach gave the program on "Home care of the sick." Mrs. Zybach stated, "In case of an accident act promptly but not hastily. Take time to think, and to examine the injured person carefully and quickly from head to toe."

Mrs. Jeff Puryear, the president, presided at the business meeting. The club voted to remember shut-ins with a card. Mrs. Bob Ramsey was elected reporter.

The hostess, Mrs. Farmer Hefley, served cake and punch to the following: Mrs. Jeff Puryear, Mrs. Claude Barker, Mrs. Herbert Flasterwald, Mrs. Grady Dodd, Mrs. Barney Burgess, Mrs. Leon Filligim, Mrs. Clarence Zybach, Mrs. Milton Finsterwald, Mrs. Bob Ramsey, Mrs. Oden Hudson, Mrs. Ernest Zybach, Mrs. Albert Zybach, Mrs. John McCarroll and the hostess, Mrs. Hefley. The next meeting will be May 3. Visitors are welcome.

Mrs. Weiss Has Skating Party

Mrs. Weiss took her class on the last skating party of the year last Friday, April 15, 1960. The group left at 5:30 and arrived about 6:15. They skated till 7:30.

Those who attended were fourth graders: Freddie Goad, Richard Sechrist, Allen Lamb, Don Lang, Bobby Ware, John Moore, Mike Holt, Pam Garrison, Pat Garrison, Connie Richardson, Linda Carter, Joline Steen, and Vicki Stewart.

Fifth graders who attended were Donald Ross, Gary Hardestem, Bob Stiles, Daria Risner, Donna Davidson, Linda Moore, Nancy Moore, Judy Whistner, and Martha Wofford. Guests were: Danny Weiss, Carl Weiss and Mrs. Lang and boys.

Mr. and Mrs. Eugene Stas of Calumet were Sunday guests in the Louis Stas home.

WANT ADS PAY!

EXCELLENT RECEPTION—NO INTERFERENCE

JUST PHONE 2911

FOR CABLE TV

Why fool with those old fashion towers or put up with an inefficient operation . . . Just phone 2911 in Wheeler and we will tie you on to the "Wheeler Cable System" and you can really enjoy those favorite television programs.

The \$25.00 tie-on fee can be paid in monthly installments of \$1.00 each with no interest or carrying charges . . . Remember, for excellent reception and dependable service tie onto the cable system.

Wheeler Television System

PHONE 2911 WHEELER, TEXAS

Birthdays

April 29, 1960

James Oscar Sabbe
Mrs. W. E. Bowen
David Watson Jamison

April 30, 1960

Paul Green
Dick Pendleton
Mrs. A. L. Bean

May 1, 1960

Ronnie Paul Cantrell
T. M. Caldwell, Jr.
Regina Risner
John Michael Trout
Lloyd Childress

May 2, 1960

Sherry Van Richersan

May 3, 1960

Hazel Davidson
Mary Bob Laycock
W. L. Callan
Martha Ann Wood
Deborah Sue Davis
Jerry Swain
Mrs. Jimmy Venable

May 4, 1960

Martin D. Noland
Marty Lee Edwards

May 5, 1960

David Britt
A. D. Speck

SUNRISE SERVICE

The wind and sand that blew up on Saturday night before Easter was very bad on the Sunrise Easter Services. Those that did make it out did enjoy the service. The '54 Study Club would like to thank the following for their help in making it possible.

Mrs. Lora and Corky Guthrie, Rev. Frank Ross, Rev. Carroll Jones, Geo. Weems, Bernice Hall and choir, Frank Wofford, Wheeler Times, Freshie Bread Co. American Legion, L. C. Lathin, Natural Gas Pipeline, C. B. Kirk, Wheeler School.

ARM PROPERTY

SALE?

By and See

C. Vise

WE A READY

MARKET

Real Estate

Company

Wheeler, Texas

Phone 5011

Attention Farmers:

Have a full line of Texas Certified

Hum Seeds. We also have common

corn. Both Sweet & FANCY. We give

you Brother Stamps. Double on Wed-

nesday.

Wholesale Grocery & Market

W. R. Richardson, Owner

Wheeler, Texas

ENJOY PERFECT INDOOR

CLIMATE

AUTOMATICALLY



WINTER HEATING • SUMMER COOLING



With the all-electric

HEAT PUMP

One unit does both jobs better

Use two when one will do? The all-electric heat pumps cool as well as heats—automatically—even the same day to keep indoors comfortable during our nights and warm days. Comfortable rooms when using a heat pump—and, with just one temperature-setting—the heat pump automatically adjusts to the weather conditions.

SOUTHWESTERN PUBLIC SERVICE COMPANY

Would like more information about

Home Heating for new building remodeling replacing old heating plant adding a room

supplemental heat for a cold room both heating and cooling free home survey (no cost or obligation)

CITY

SOUTHWESTERN PUBLIC SERVICE COMPANY

Number Four

of Briscoe
Prec. 3—Wheeler, R. J. Holt, Jr., of Wheeler
Prec. 4—Allison, Rex Miller of Allison
Prec. 5—Stanley, T. L. Gunter of Wheeler
Prec. 6—McBee, Leonard Rathjen of Wheeler
Prec. 7—Twitty, Billie Cantrell of Twitty
Prec. 8—Kellerville, J. B. Brown of Kellerville
Prec. 9—Heald, W. J. Chilton, Jr., of McLean
Prec. 10—Lela, Robert Terry of Shamrock
Prec. 11—Shamrock, W. H. Walker of Shamrock
Prec. 12—Shamrock, Glyn Bell of Shamrock
Prec. 13—Kelton, T. B. Killingsworth of Twitty
Prec. 14—Pakan, Paul Macina of Shamrock
Prec. 15—Wheeler, J. W. Hooker of Wheeler

Fred Waters Was Who-Zit In Last Issue Of Times

Fred Waters was the Who-Zit in last week's Times. He was correctly identified by Verne Callan, Erma Riley and Sherry Douthitt. Fred was born at Ozona, Tex., January 24, 1902 and attended school there.

Fred took a barber course when a young man—but didn't care for this type of work, so he began farming about 47 years ago and has farmed and lived in Wheeler all this time. Fred says he likes Wheeler, Wheeler people and wouldn't live any other place.

Fred was married to Edna Hathaway in 1925. They have 3 children, one boy, Doyle, and two daughters, Mary Weatherly and Sue Herd.

Mr. and Mrs. Waters are members of the First Baptist Church.

Number Five

many of our transportation problems. He serves on the Communication and Power and the Legislative Oversight Subcommittees of this Committee, where he is readily aware of the contribution of all these factors to the vitality of America. The legislative problems contingent with the railroad, trucking and aviation industries are his constant concern and he contributes much to their daily solution. One of his hardest fought battles is the continuing fight to see legislation enacted which would free the producers of natural gas from Federal controls.

Mr. Rogers has long sought proper recognition of the farmer in our economy, and has always contended the migration from farm and small community to metropolitan areas is responsible for many of the social ills with which the United States is confronted today, and that the farmer and small businessman, the epitome of independence, must always remain as an essential facet to the future and progress of America. He has long been recognized as a champion of free enterprise and the rights of the individual within the framework of the Constitution.

His lovely wife is the former Catherine R. (Jean) Daily of Pampa, and their six children, Joan, Walter, Jr., Susan, Thomas, Robert and Mary Catherine, serve to make theirs a typical American home—busy, constructive, and motivated by real family devotion.

Mrs. T. W. Bowman had surgery in the Pampa hospital this past week. The report is that she is doing nicely and should be home this week.

Mr. and Mrs. Ocie Ford, Donna Sue, and Mr. and Mrs. John Holcomb had dinner with Mr. and Mrs. Foye Prahrer in Delhi, Okla.



THE WILL OF TEXANS
Re-elect
WILSON
ATTORNEY GENERAL

Memory Lane

January 21, 1943
RATIONING AT A GLANCE
WAR RATION BOOK NO. 1—Used for sugar and coffee, will be required to obtain Book No. 2.
WAR RATION BOOK NO. 2—To be issued soon, will provide for rationing on a "point system."
MILEAGE RATION BOOKS—Books A, B, and C used for books for non-highway uses; D for motorcycles; 7 for Trucks and commercial vehicles.
RATIONED FOOD COMMODITIES
SUGAR—Stamp No. 10 in Book No. 1, good for 3 pounds until midnight, January 31, 1943. Stamps No. 11 good for 3 pounds until midnight March 15, 1943.

COFFEE—Stamp No. 28 in Book No. 1 (for those 15 or older on the date the book was issued) good for 1 pound until midnight, Feb. 7, 1943.

MEAT—Voluntary share-meal program sets limit at 2½ pounds per person per week. Meat will be rationed under the "point system" after Book No. 2 is distributed.

MILEAGE RATIONING
GASOLINE—Value of each coupon in A, B, and C books is 4 gallons. First 8 coupons in A book expires at midnight Jan. 21, 1943. Second 8 coupons are good until midnight March 21, 1943. Those who think they are eligible for supplemental rations should see their local ration board.

TIRE INSPECTION—All "A" book holders must have first official tire inspection by March 31, 1943. Subsequent inspections for A book holders will be once every six months. "B" and "C" book holders and owners of bulk coupons for fleets must have first official tire inspection by Feb. 22, 1943. Subsequent inspections for B book holders will be once every four months. Subsequent inspections for C book holders will be once every three months. "T" ration book inspection holders must have first official tire inspections by Feb. 28, 1943. Subsequent inspections for T book holders will be once every 60 days, or every 5000 miles which ever comes first.

July 1, 1943
MR. AND MRS. JIM RISNER HONOR SONS WHO ARE HOME

Mr. and Mrs. Jim Risner entertain a group of relatives and friends Sunday, honoring their two sons, Cpl. James Scotty Risner and Pfc. Adrain Risner, who are home on furlough.

Those attending the dinner were Mrs. M. L. Risner, Miss Anne Risner, Hobe Risner, Miss Edna Mae Dyer, Mr. and Mrs. Garrett Baxter, Mr. and Mrs. Normal Dyer, and son, Ed of Allison. Mr. and Mrs. Sam Risner and two daughters, Billie Jo and Geraldine. W. E. Pennington, Floyd Pennington, Pauline Dyer and Henry Risner. Afternoon callers were Cpl. Albert Gunter and Rev. and Mrs. O. Holladay and daughter.

August 1943
PAMPA SOLDIERS ENTERTAINED BY DR. AND MRS. WALKER

Dr. and Mrs. Glenn R. Walker had as house guests during the weekend, Pvt. Frederick M. Schuster, Sgt. Edward W. Silk, Pvt. Eric G. Forsberg, and Sgt. Hugh Best all from the Army Air Field, Pampa.

On Sunday the group enjoyed an all day outing at the Stiles Ranch east of Wheeler where they had the pleasure of riding horseback, kooking and many other outdoor sports followed by a picnic supper.

Others joining the party at the ranch were Misses Pauline Miller, Genevieve Britt, Beth Stiles, Mrs. Bert Kennedy, Henry Wofford, Mr. and Mrs. Fred Ashley and son, Mr. and Mrs. Gordon Stiles and daughters, Sandra and Sharon, Mr. and Mrs. Bronson Green and son Jim.

SHOWER

Mrs. Edna Begert, Mrs. Rey Miller and Mrs. Archie Dillion were co-hostess to a lullaby shower Thursday night in the Dillion home honoring Mrs. Mary Ann (Brown) Harrison. Those present to enjoy the evening were Louise and Opal Townsend, Pearl Harrison, Inis Townsend, Lena Brown, Edith Lovitt, Roxey Sanford, Nettie Walsh, Varne Bell Markham, Georgiana Wise, Ida Brown from Shamrock; Inis Gilson, Nova Powledge, Avis Parker, Winnie Kiker, Charlene Rainy, Doris Newsom, Texas Childress, Bernice Giddens, Tommy Hall, Mrs. Katy Lee Greenwood from Stratford and Mrs. Donna Jo Helms for Spearman and the host and hostesses. Delicious cake and punch were served after the many lovely and useful gifts were opened. Many who could not attend sent gifts.

RAINBOW INSTALLATION

The Rainbow girls hold their installation of new officers in the Masonic Temple at 7:30 p.m. April 28. Everyone is invited to attend.

MECHANICS SCHOOL
Bob McNeil, shop foreman at Ware Chevrolet, is attending a week-long Mechanics School in Oklahoma City this week. Bob left Sunday and will return Saturday afternoon.

HIGHLIGHTS AND SIDELIGHTS FROM YOUR STATE CAPITAL

Austin, Tex.—A great number of persons are not aware of the fact that the Legislature, at its 1959 session, moved the primary and run-off elections forward several months.

Candidates are not in sufficient abundance this year to impress this fact upon the voters. Now with only a short period remaining, many of them are surprised to learn that not one out of a hundred voters knows when the elections are to be held.

Those who are campaigning have not failed to stress the earlier voting dates. First primary will be held on Saturday, May 7. The run-off, if any should be necessary, is scheduled for June 4.

If you are going to be out of town during the first primary election, May 7, you have now until May 3 to vote absentee for that election.

After May 3 you must go to the polls of your own town. For those living in a county seat town, the simplest procedure is to go by the county clerk's office.

If you do not live in the county seat, you can write the county clerk for the necessary forms.

Voting in the Democratic primaries is essential to participation in other Democratic party activities this year. No one will be allowed to take part in a Democratic precinct convention unless he has a poll tax that has been stamped "Democratic." Poll tax holders must vote in the primary, absentee or at the polls, to get their poll taxes stamped.

This new section of the election law was designed to keep out the so-called "one-day Democrats" who participate in Democratic primaries and conventions and Republican conventions, too. People who go to the GOP precinct conventions will have their poll taxes stamped "Republican." This shuts the door on their having any part in Democratic Party affairs until they get a new poll tax.

An intensive campaign has been under way for several weeks to educate voters to the new procedures and dates and the importance of their voting and coming to precinct conventions.

DOOR KNOB COSTS CUT—Amid a statewide hubbub over the hardware came a quiet explanation that the door knobs in the State Office Building really cost only \$3.65, not \$36.00 apiece.

H. R. Nieman, executive director of the State Building Commission, said the cost of all the hardware for the building—including automatic closers, locks, keys, hinges and doorposts for 1,000 doors—came to \$36,000.

Nieman, who was not with the building commission at the time the State Office Building was constructed, called the hardware costs "well within reason."

Nieman's statement punctured a story that had been the subject of almost as many jokes as Pappy O'Daniel's flour barrel. It got started when a house committee on tax saving investigated the building which had cracks in the lobby's terrazzo floor.

Sightseers had come, almost as to a museum, to look at the highly publicized stainless steel knobs.

TROUBLES EVERYWHERE—If sunny weather and disappearance of the flu has you feeling secure and content, the State Department of Health has bad news.

Health officials warn of three separate menaces:
1. Rabies is on the increase—up 33 per cent from this time last year. During the first three months of the year 219 positive cases were diagnosed.

2. It's the measles season with Travis County (Austin) leading the state with 250 cases reported. Nueces County (Corpus Christi) reported 205 and Galveston 172.

3. Stinging caterpillars are about and will be around feeding on trees and shrubs until fall. Health Department officials particularly urge parents to warn their children not to pick up the fuzzy fascinating moth larvae. Stings should be treated as bee or wasp stings—by cleaning with alcohol and covering with calamine or other soothing lotion.

Oil Slumbafstah yspsa 2e
OIL SLUMPS FURTHER—Texas oil allowable has been further reduced to a permissible flow of 2,574,894 barrels a day for May.

An eight-day producing pattern, as low as at any recent time, was set by the Railroad Commission. A number of independent producers ask for an even sharper cut to seven days. They said the industry was going into a lower-demand season with too much oil on hand.

Recent crude oil price cuts have intensified the general gloom of the Texas oil industry. It raises too, the probability that state tax revenue from oil will fall substantially below expectations.

CRIMINAL CODE CHANGES—Directors of the State Bar of Texas approved recommendations for extensive changes in the Texas Criminal Code.

But they took a "make haste slowly" view about taking the proposals to the Legislature. If enacted, the revisions would bring about considerable change in the way criminal court trials are conducted.

Bar directors suggested the proposals might be voted upon by lawyers and studied in seminars over the state before presentation to the Legislature in 1963.

Recommended changes would allow 11 jurors to return a verdict if one juror had to drop out and would leave the locking of jurors in criminal cases to the discretion of the judge.

UPHELD—Texas Supreme Court upheld state action against several loan companies accused of charging excessive interest.

It was the first test in the state's highest court in a field where the state has filed 365 suits against loan companies for charging more than the legal maximum interest.

In other action, the Supreme Court ordered the participants in fight over grazing rights in the Davis Mountain State Park to start all over with a new trial in district court.

At odds over the matter are the State Park Board, which leased the land for park use, and owners a fight over grazing rights in the park for horseback riding. Park Board declared this impaired its use as a public park.

Supreme Court said there was error on both sides and ordered a fresh start.

Richardson and Evans Are Married in Pampa

Ella Mae Richardson daughter of Mr. and Mrs. Cecil Richardson of Wheeler and Dwayne Evans, son of Mr. and Mrs. Forace Evans of Allison were united in marriage April 8th at the Mission Baptist Church at Pampa with Rev. Grace, (former Mobeetie Baptist pastor) performing the single ring ceremony.

Mrs. Evans chose for her wedding a white Chiffon street length dress with white accessories and a corsage of white carnations. Their only attendants were Mr. and Mrs. J. Grimes of Wheeler. The young couple are at home at Wheeler and he is employed by the highway department. Mrs. Evans is a senior in Wheeler school and Mr. Evans graduated from Allison last year.

Number Seven

old wooden porch awning . . . Pete Burton and Bud Vanpool have almost completed their remodeling project at the Ford Garage. They have almost doubled the capacity of the service department. And they are planning a big celebration next week. Watch for the announcement in the Times . . . Those with new houses under construction but not completed include: Bill Chapman, Eli Baker, and Cecil Denson is building two new houses. Roy Weatherly has moved in a new home and Thomas Daughtry will start construction of a new home within the next couple of weeks . . .

Food for thought is about the only kind that hasn't been affected by the high cost of living reports Joe Bass.

Fellows, don't forget that all important day which falls on Sunday, May 8 this year. It's Mothers Day.

The Texas Crop and Livestock Reporting Service indicates that April 1 wheat condition reflecting good fall and winter moisture, points to a 79 million bushel crop—the fourth largest in Texas history. Only huge crops of 1944, 1947 and 1949 exceeded this estimate. Wheat production last year totaled 60 million bushels. A fall and winter drought reduced 1959 production, especially in the low plains. This year's crop received excellent winter moisture. Cold winter weather slowed growth of the present crop; however, in late March the weather warmed and spring growth got under way.

The Amarillo, Canyon, Claude, Panhandle and Vega areas received from one-half to one and one-half inches of rainfall April 12 which will be of great benefit to the crop. All areas report the wheat making satisfactory growth as the weather remains mild. There have been no reports of any extensive insect damage to date.

Wheat and other small grain prospects remain excellent in Pampa, Wheeler, Canadian, Lipscomb and Miami areas due to continued timely moisture and favorable weather. Some early wheat has been sprayed to control weeds. No report of insects or diseases. . . .

He who loses wealth loses much; he who loses a friend, loses much more, but he who loses his courage, loses all. . . .

Mrs. Harrison Hall handed in this one for publication: "Though people in the city incline to run it down, life is not monotonous in a little town. One may not see so much, my dears, but when ee-ee-the things that one hears! . . .

R. J. the Banker tells us he is the owner of an All-American tom cat. It recently made 45 yards in one night.

"Prosperity has certainly built up this community," observed a recent visitor to Wheeler as he looked at the freshly painted houses, and the new homes. "It wasn't prosperity at all," replied N. D. Ware, "it was just plain jealousy."

"Lots of men who make the most noise in this world are really in the blank cartridge class."

Too many Fellows who say "Just watch my smoke—merely light another cigarette."

It is ridiculous to be more concerned about clothes than character.

The best place to find a helping hand is at the end of your arm.

Ray Owens asked his Dad if he had any work he could do around the service station where he could make a fast buck. Bill assured him he could think of nothing. "Then," suggested Ray, "how about putting me on relief?"

Number Three

A and B Second graders were Sally Richardson, Mark Robinson, Brent Briscoe, Russell Dean. Steve Hampton was the only Third grade student with straight A's.

Those who received A's and B's were Monie Edwards, Donald Rives, Jerry Bob Watts, Tommy Cole, Gale Caswell, Becky Vanpool, Cynthia Smith, Ronald Rives, Sidney Ann Kenady, Danny Manning, David Lewis, Nancy Wiley and Reta Davidson.

Fourth grade students earning straight A's were Mike Holt, Pamela Garrison, Richard Sechrist, Lee Hibler, Vicki Shugart, Freddie Goad, Randy Helton, John Moore.

A's and B's were earned by Tommy Levitt, Frankie Rogers, Vicki Davidson, Patricia Garrison, Joline Steen, Connie Richardson, Allen Lamb, Linda Carter, Bobby Ware, Donald Lang.

The Fifth graders with A's were Linda Moore, Johnny Hutchison, Dale Smith, Martha Wofford, Donald Ross, Nancy Moore.

Those with A's and B's were Bob Stiles, Donna Davidson, Gary Hardcastle, Ricky DeArment, Judy Whittner, Darla Risner, Billie Ruth Smith, Patricia Baker, Juy Page, Sue Richardson, Sarah Walker, Beverly Weiss, Linda Watts, Elizabeth Hubbie, Cheryl Watson, Diane Weatherly, Beverly Martin.

The only Sixth grade student who received straight A's was Beverly Clark.

Donna Ford and Debbie Lewis made A's and B's.

In the Seventh grade Vicki Walker received straight A's and Richard Wallace and Rebecca Lewis both received A's and B's.

The Eighth grade students in the A and B group were Jane Wofford, Gwen Barnes, Mendall Hunter, Elizabeth Hunter, Kent Sims.

Jackie Johnson night and Sunday with friends.

Mr. and Mrs. Sp... a new baby. The... born Friday April... in Pampa. He... Wendell Ray.

Mr. and Mrs. Sp... visited... fields... by lived... years... coach... Mrs. P. Stout... Inez W... Sunday... A. B.

Mr. and Mrs. Sp... and Mr. and Mrs. and child... Sunday... M. H. B.

Mr. and Mrs. Sp... and Mr. and Mrs. and child... Sunday... M. H. B.

Mr. and Mrs. Sp... and Mr. and Mrs. and child... Sunday... M. H. B.

Mr. and Mrs. Sp... and Mr. and Mrs. and child... Sunday... M. H. B.

Mr. and Mrs. Sp... and Mr. and Mrs. and child... Sunday... M. H. B.

Mr. and Mrs. Sp... and Mr. and Mrs. and child... Sunday... M. H. B.

Mr. and Mrs. Sp... and Mr. and Mrs. and child... Sunday... M. H. B.

Mr. and Mrs. Sp... and Mr. and Mrs. and child... Sunday... M. H. B.

Mr. and Mrs. Sp... and Mr. and Mrs. and child... Sunday... M. H. B.

Mr. and Mrs. Sp... and Mr. and Mrs. and child... Sunday... M. H. B.

Mr. and Mrs. Sp... and Mr. and Mrs. and child... Sunday... M. H. B.

Mr. and Mrs. Sp... and Mr. and Mrs. and child... Sunday... M. H. B.

Mr. and Mrs. Sp... and Mr. and Mrs. and child... Sunday... M. H. B.

Mr. and Mrs. Sp... and Mr. and Mrs. and child... Sunday... M. H. B.

Mr. and Mrs. Sp... and Mr. and Mrs. and child... Sunday... M. H. B.

Mr. and Mrs. Sp... and Mr. and Mrs. and child... Sunday... M. H. B.

Mr. and Mrs. Sp... and Mr. and Mrs. and child... Sunday... M. H. B.

Mr. and Mrs. Sp... and Mr. and Mrs. and child... Sunday... M. H. B.

Mr. and Mrs. Sp... and Mr. and Mrs. and child... Sunday... M. H. B.

Mr. and Mrs. Sp... and Mr. and Mrs. and child... Sunday... M. H. B.

Mr. and Mrs. Sp... and Mr. and Mrs. and child... Sunday... M. H. B.

Mr. and Mrs. Sp... and Mr. and Mrs. and child... Sunday... M. H. B.

Mr. and Mrs. Sp... and Mr. and Mrs. and child... Sunday... M. H. B.

Mr. and Mrs. Sp... and Mr. and Mrs. and child... Sunday... M. H. B.

Mr. and Mrs. Sp... and Mr. and Mrs. and child... Sunday... M. H. B.

Mr. and Mrs. Sp... and Mr. and Mrs. and child... Sunday... M. H. B.

Want Ads

FOR SALE

FOR SALE: 3 bedroom brick home with 1½ baths. Approved for VA or FHA loan. Cecero Smith Lumber.

Monuments, Markers, Grave Covers, Curbing, Surface Burial Vaults. Will Warren. 4-tfc

FOR SALE: Cotton seed. Western Storm Proof. Deltinot or Plain. 98.59 pure. 1.47 Inert Matter. Germination 82.00%. See Tom Berry, 1 mile east of Wellington. Highway 102.

FOR SALE 1959 Ford V-8 Overdrive, Radio and Heater. White Sidewall Tires.

1958 Chevrolet, Power Steering, Power Brakes, Radio and Heater.

1954 Ford V-8, Overdrive, Radio and Heater.

WARE CHEVROLET Phone 3101 Wheeler, Texas FOR SALE: 1949 Chevrolet Truck Good Buy. L. C. Austin, Harold Douglas. 3tp-21

FOR SALE: Few good Jersey Cows, W. H. Templeton, Wheeler, Tex. 2tp-21

FOR SALE: Cane Seed, Annual Grass Seed. Odys Vernon, Mobeetie. 2tp-21

HOUSE FOR SALE: 2 bedroom, Large Lot, Storm Cellar, Lots of fruit trees and garden plot. Sol Shelton, 600 Sweetwater. 4tp-21

vator, and planter. Gwyn Edwards of Wheeler, Tex., 2tp-21

FOR SALE: One half Eiland, Briscoe, Tex. FOR SALE: Ford T...

USED TRACTOR FOR SALE Two 10-28 Two 11-28 OWEN SERVICE Wheeler, Tex.

FOR SALE: Goodyear Mottz Spnz BATTERED only \$2.00 exchange OWEN'S SERVICE Wheeler, Tex.

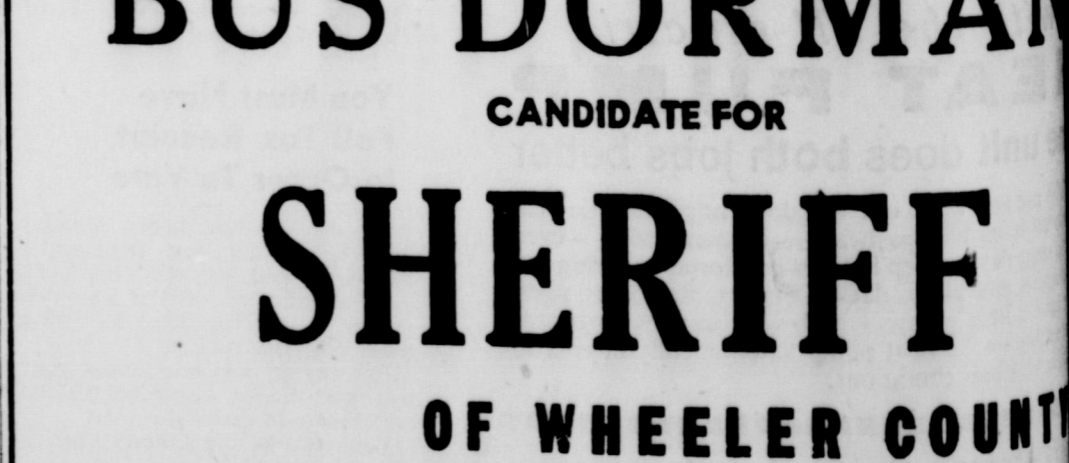
FOR SALE: Northern seed. L. A. McWhorter, Texas.

FOR SALE: Few Jersey Cows, F. H. Templeton, Texas.

MISCELLANEOUS FEDERAL LAND LOANS For Details RAYBURN L. Manager Shamrock, Tex. 111 North Main

AT STUD: Permanent Quarter Horse—Pedigo 7423. FEE: \$25.00. Eggs during season. Ryan, Phone Gr. 222 Texas

VOTE FOR BUS DORMAN CANDIDATE FOR SHERIFF OF WHEELER COUNTY



We think Bus Dorman's record as sheriff of Wheeler County is without a doubt the most outstanding record ever achieved by a sheriff in Wheeler County. And because of this record and his untiring effort to serve the public, we feel that he deserves and will certainly appreciate your support.

VOTE MAY 7 FOR "BUS"

(Paid for by friends of Bus Dorman)

SPECIALS!

A Table of Ladies — Grace Walker — Rhythm Steps VALUES to \$11.95

SHOES \$3.95

A Large Selection of Men's SPRING and SUMMER VALUES to \$9.95

SLACKS \$4.95

A Group of Men's Short Sleeve

SPORT SHIRTS \$1.49

Kitchen Towels Each 15¢

A New Assortment of

THROW RUGS 24" by 48" \$1.98

McIlhany DRY GOODS 2011

Briscoe News

Mrs. Lucile Tipps and Mr. and Mrs. Bud Wyant of Pampa attended the Assembly of God Church Sunday night.

Rev. and Mrs. Francis Ford and children of Pampa ate Sunday dinner with the John C. Vises and ate supper with the Claude Barkers. He held services at the Gageby Church Sunday.

Mr. and Mrs. Grady Dodd and Mrs. Florence Dodd of Wheeler visited Mr. and Mrs. Claude Barker Sunday afternoon.

Mr. and Mrs. Loyd Hefley and children visited relatives in Wheeler Sunday. Mrs. Leon Fillingim and girls attended the Gageby church Sunday.

Ruth Fillingim of Canyon College spent the weekend with her parents.

Dean Tipps was with the National guard that spent the weekend at Canyon rifle range.

Peggy Douhit of Canyon college spent the weekend with her parents Mr. and Mrs. Kenneth Douhit.

Mr. and Mrs. Verne Lohberger and children, Mr. and Mrs. Tom Helton and Mrs. Joyce Crossland and children visited Mrs. L. S. Aderholt Sunday night.

Mr. and Mrs. Charlie Myers of Eldorado, Okla., and Mrs. Glen Weldon and children of Amber, Okla., spent the weekend with Mr. and Mrs. G. H. Vann. On Sunday Mr. and Mrs. Troy Wilson and children were callers.

Mr. and Mrs. Bill Allen and family of Berger spent the weekend with her parents, Mr. and Mrs. L. S. Aderholt.

Mr. and Mrs. Allen Meadows and Mr. Fulton Meadows spent the weekend with their brother and sister Tom Meadows and family and Esther Galaz and family of Paradise.

McCarroll visited here since...

April 33rd Anniversary

GENERAL ELECTRIC



DIAL-DEFROST REFRIGERATOR
WITH STRAIGHT-LINE DESIGN

ONLY \$198³³

EASY TERMS

MODEL BB-11T

ONLY 28 INCHES WIDE

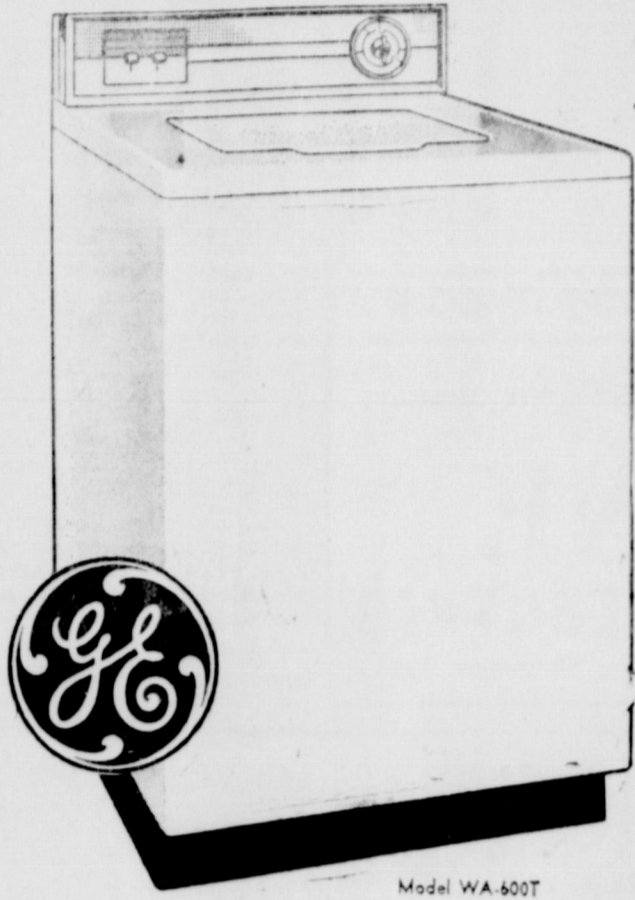
- No door clearance needed at side
- Full-Width Freezer
- Chiller Tray
- Full-Width Vegetable Drawer
- 2 Adjustable Cabinet Shelves
- Butter Keeper

Plus 11-cubic foot

Magnetic Safety Door . . . 2 Door Shelves of sturdy aluminum . . . Butter Compartment . . . Egg Shelves

OUTSTANDING VALUE... at a low low price!

NEW 1960 MODEL BY G-E WITH WASHING SYSTEM THAT CLEANS AND RECLEANS WASH WATER TO GIVE YOU CLEANER CLOTHES



Filter Flo
FULLY AUTOMATIC WASHER

Model WA-600T

Trade **\$179⁹⁵**

now

never before... all these features at such a low price!

- BIG 10-LB. CAPACITY
- FLEXIBLE AUTOMATIC CONTROL
- NON-CLOGGING FILTER
- WATER-SAVER CONTROL
- DAMP DRY SPIN
- PORCELAIN WASH BASKET AND TUB
- FAMOUS G-E ACTIVATOR WASHING
- SPRAY RINSES
- SAFETY LID SWITCH
- 5-YR. PROTECTION PLAN

FIELD SEED

RICHARDSON 610 AND 608
DEKALB -- E56A

Sweet Sudan to Regular Sudan

H & B Farm Supply
Wheeler



LOOK AT ALL YOU GET IN A G-E RANGE

40-INCH DOUBLE OVEN PUSHBUTTON RANGE

- Big 23-inch Master Oven with removable oven door.
- No drip cooktop.
- Modern pushbutton controls
- Focused heat broilers.
- Big roomy storage drawers.
- Appliance outlets—timed.
- Two durable, lock-stop oven shelves.
- Automatic oven and minute timer.

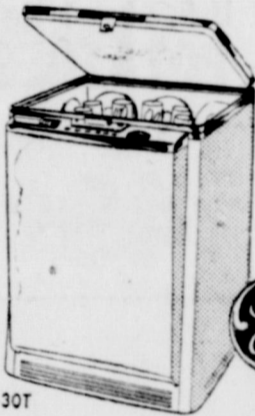
HURRY... 3 DAYS ONLY!

\$288³³ And your old gas range.

Reg. \$369.95

TRADING POST PRICED AT ONLY

MOTHER'S DAY SPECIAL



MOBILE MAID[®] DISHWASHER

- NO INSTALLATION
- FLUSHAWAY DRAIN—NO PRE-RINSING
- ROLLS ON WHEELS
- HOLDS NEMA SERVICE FOR 12

\$178.33

DISPOSAL



Iron Caddy . . . 33¢

Used Records . . . 33¢

New Emerson TELEVISION \$168.33

Voyager Transistor Radio—Record PLAYER \$63³³

Reg. \$89.00

13 Ft.

Auto Defrost REFRIGERATOR FREEZER

Combination Reg. \$469.95

\$383³³



USE OUR FARM PLAN!

NOTHING DOWN
NO PAYMENTS TILL
NEXT YEAR


33¢ Down-33 Months to Pay

H & B Appliance Center

HENRY RISNER, Owner

Phone Night 2263 — Day 2061

Wheeler, Texas



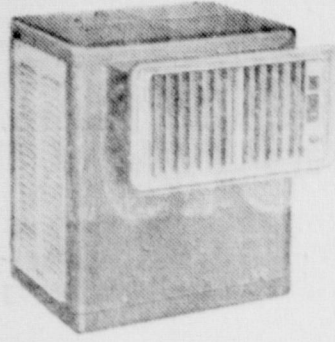
ALBERT'S Shamrock Service
Wheeler, Texas
South On Highway 83 Phone 3301

Your Car is Important To Us...

We're show-offs, let's face it! When we take complete care of a car, we take genuine personal pride in how that car runs! On a steady diet of Shamrock Products and our careful service, your car's going to run GOOD! You'll be glad... we'll be glad! Try us!

SALE

OF
4,000 C.F.M.



AIR CONDITIONER

Reg. \$139.95

89.95

◆ VOLUME CONTROL ◆ PUMP ◆ FLOAT
◆ DIRECTIONAL LOUVERS ◆ CHAIN SUPPORTS

SPECIAL GOOD FOR A LIMITED TIME ONLY

See Our Service And Parts Department

PAYNE
PLUMBING & ELECTRIC

Phone BL 6-3291

Shamrock, Texas

"Kelton's Korner"

Mrs. Joe Weldon

The T. E. L. Class of the Baptist Church held their monthly meeting Thursday April 14 in the home of Mrs. Joe Weldon. Mrs. Fred Rathjen gave a devotion on the Resurrection. President, Mrs. Chester Beasley, took charge of the meeting. Mrs. Horace Briley, treasurer gave her report. Sec. Mrs. Fred Rathjen read the minutes of the last meeting. At the close of the business, games were conducted by Mrs. Joan Daberry. One of the games consisted of making Easter Bonnets from ribbon, flowers and crepe paper. Prizes going to Mrs. T. B. Killingsworth, Mrs. Paulene Killingsworth and Mrs. Chester Beasley. Refreshments were served carrying out an Easter theme, with Easter basket cup cakes, ice cream and punch. Those attending were Mrs. Louise Abernathy, Mrs. Core Abernathy, Mrs. Garland Abernathy, Mrs. T. B. Killingsworth, Mrs. Ed Killingsworth, Mrs. John Daberry, Mrs. Horace Briley, Mrs. Fred Rathjen, Mrs. Leonard Mills, Mrs. Joe Weldon and five children, Terry Beasley, Jody, Jana, Anne Marie and Suzanna Weldon.

Mr. and Mrs. Chester Beasley spent their anniversary Monday, April 18 in Shamrock, having supper in the home of Mrs. Beasley's brother, J. L. Pepper.

Callers in the Chester Beasley's home Monday were Penny Puryear, Carol Motes and Kay Pepper.

per.

Mrs. Peggy Puryear was a caller in the home of Mrs. Judd Anderson last Tuesday.

Mrs. T. A. Treadwell is doing much better.

Mr. and Mrs. Charlie Lang Jr. were visiting their parents, Mr. and Mrs. Charlie Lang and Mr. and Mrs. Joe W. Bailey this weekend.

Mr. and Mrs. Max Baird and children visited their grandparents in Alabama this weekend.

Mrs. D. Harris from Lawton, Okla., visited in the home of her parents this weekend. Her parents are the Charles Davis.

Bro. Joe P. Weldon is in a Revival this week at McLean, Tex. Bro. Paul Carlin is the Evangelist and Bro. Joe Weldon is leading the singing.

Mrs. J. Evert Smith presented Miss Jean Daberry in her senior speech recital Sunday afternoon, April 24 at the Clark auditorium in Shamrock.

Her first number on the program was the difficult "The White Cliffs" was done in superb quality. Miss Carol Harvey then gave a lovely interpretation on the piano of Schubert's Impromptu.

Jean then gave a very humorous reading called "An Evening with TV," which really delighted the audience.

Carol Harvey then came back to the piano playing "Arabesque" by Debussy.

"Fatal Woman" was chosen as Jean's final speech. It was about a young girl, Jean's age. A perfect ending for her recital, leaving the audience in a happy mood.

Ushers for the recital were Leon Dweese, Gary Harvey and Rhonda Smith.

Mr. George Wilson is visiting in the home of Mr. and Mrs. Leonard Rathjen. Mr. Wilson is the father of Mrs. L. Rathjen.

Mr. and Mrs. Joe Killingsworth and Mr. and Mrs. Ron Killingsworth were visiting relatives in our community Sunday.

If you have noticed cars and children on the school ground on Saturday, yes, you are right, school will be held from 8:00 until 1:30 on these Saturdays: April 23, April 30 and May 14. This is necessary to make up days lost in bad weather, last winter.

Bro. Robert Thrasher had charge of the Sunday morning service at the Baptist Church. He preached for the Texas Alcohol, Narcotic Education Inc.

Bro. Leonard Rathjen and Bro. Chester Beasley took charge of the evening services.

Mrs. Dora Stimpson and Vicki from Fairbanks, Alaska, visited with the S. A. Blackburn's over the Easter Holidays.

The Rebekah lodge of Shamrock, won the cup in the degree work at Hereford April 22nd and 23rd, competing against Borger, Pampa, Hereford, and Amarillo. Those that were part of the team Blocker, Mrs. S. A. Blackburn and Mrs. J. R. Clemmens.

Mr. and Mrs. Clyde Johnson visited in the O. Nations home Monday night.

Must Have Permanent Disability To Receive Social Security Benefits

In order to receive social security disability benefits, only those are eligible who have a permanent disability—that is a disability which is so severe that it prevents doing any substantial gainful work.

Hal Geldon, District Manager of the Amarillo Social Security Office emphasized the disability which the claimant has must be a condition which is expected

to last indefinitely and one which will not likely improve with time or medical treatment.

Many people believe that the social security disability payment is a "stop-gap" income on which they can depend until they are well enough to return to work. Geldon stressed that such a provision is not a part of the social security law.

"Rather," he said, "social se-

curity benefits are intended to provide some relief from the economic hardship which may come due to a permanent disability. If the disability improves with time, or if medical treatment, or if the claimant can work at a job demanding less than his usual ability, will not be considered disabled under the social security law, and should not be receiving disability benefits.

COTTON SEED!

Planting time is nearly here. The better the seed used

the better prospect you have for a good yield in the fall.

Why waste your time and money on inferior seed when you

can get Time tested and proven varieties of cotton seed

from us.

We Have All Varieties Of Cotton Seed In Stock.

We Also Have Some Extra Good Gin Run Cotton Seed.

SEE US FOR YOUR FERTILIZER NEEDS FOR PLANTING

PAYMASTER GIN

FAT JONES



FLUFFO 3 lb Can **69c**

COCK O' THE WALK No. 2 1/2 Can **25c**

ALL FLAVORS 3 Boxes **23c**

Central American BANANAS lb. 10c	U.S. No. 1 Red POTATOES 10 lb. Bag 49c	Large Head LETTUCE Each 10c
---	---	------------------------------------

BACON SQ. lb. **23c**

LEAN PORK CHOPS lb. **45c**

FOLGERS 2 lb. Can **\$1.35**

Wilson OLEO 2 lbs. 29c	Lipton TEA 1/4 lb. 39c	SKINNER'S MACRONI or SPAGHETTI 2-7 oz. Boxes 29c
-------------------------------	-------------------------------	---

MIRACLE WHIP qt. Jar **55c**

PURASNOW 25 lb. Bag **\$1.98**

MEAD'S 2 cans **15c**

These Prices Good Friday and Saturday. Double Stamps Every Wednesday on Purchase of \$2.50 or More

Puckett's WHEELER, TEXAS
FOOD MARKET

J-LEE DEPT. STORE BEAUTIFUL COTTONS

A BIG SELECTION OF COTTON DRESSES IN SHORT SLEEVE OR SLEEVELESS... CHOOSE GINGHAM CHECKS, SOLID COLOR LUCINAS, OR BEAUTIFUL TRIMMED PRINTS!

SAVE AT **\$6.95**

TREAT YOURSELF TO SEVERAL..... SIZES 10 to 20 and 14 1/2 to 24 1/2

Other Spring Dresses Reduced!

\$5-\$7-\$10



MENS SHORT SLEEVE WHITE DRESS SHIRTS

MENS SHORT SLEEVE SPORT SHIRTS

A Large Selection In Your Favorite Colors and Styles! Save Now At This Low Price!

\$1.98

WOMENS NYLON HALF SLIP

Lots of Frills And Lace...

New Spring Shades Of White, Pink, Blue Tango, French Rose, Carmal or Mint. Sizes S. M. L. SAVE!

\$1