

# THE WHEELER TIMES

VOLUME 47, NUMBER 19

THURSDAY, APRIL 30, 1970

SINGLE COPY 10c

## PRIMARY ELECTIONS SET FOR SATURDAY

County Democrats will go to the polls Saturday, May 2, to vote for the state and county officials of their choice.

In Wheeler, those living west of highway 83 will vote in the gymnasium. Those living east of the highway will vote in the commissioners courtroom in the courthouse.

### VOTING PLACES:

- Pct. 1: Mobeetie - school house;
- Pct. 2: Wheeler - gymnasium;
- Pct. 3: Stanley - Commissioners Courtroom in the Courthouse;
- Pct. 4: Allison - School House;
- Pct. 5: Heald - Church;
- Pct. 6: Lela - School;
- Pct. 7: Twitty - Tindalls Gin;
- Pct. 8: Shamrock (south side) - School;
- Pct. 8: Shamrock (north side) - School

The 1970 Republican Primary will be held Saturday, May 2. The polls will open at 8:00 A.M. and close at 7:00 P.M.

half of the county, will vote in Junior High School in Shamrock. D. O. Beene's office is located on the south side of the public square in the City of Wheeler.

Qualified voters in precincts 1 and 2, north half of the county, will vote in the office of D. O. Beene. Those residing in precincts 3 and 4, south

- For UNITED STATES SENATOR:**
  - Lloyd Bentsen
  - Ralph W. Yarborough
- For GOVERNOR:**
  - Preston Smith
- For LIEUTENANT GOVERNOR:**
  - Ben Barnes
- For ATTORNEY GENERAL:**
  - David H. Brown
  - Crawford C. Martin
- For COMPTROLLER OF PUBLIC ACCOUNTS:**
  - Robert S. Calvert
- For STATE TREASURER:**
  - Jesse James
- For COMMISSIONER OF GENERAL LAND OFFICE:**
  - Bob Armstrong
  - Jerry Sadler
  - Fred Williams

Voting hours are from 8:00 a.m. to 7:00 p.m.



Mrs. George Weems

### Reception Will Honor Mrs. Weems

The women of the grade school faculty of Wheeler will honor Mrs. Lola Weems at a reception on the occasion of her retirement after 39 years of teaching.

Mr. and Mrs. George Weems have given many years of their lives to the service of the people of Wheeler County. Mr. Weems retired as County Superintendent after 8 years in 1967.

In 1963 Mrs. Weems was named "Teacher of the Year" by the Federated Womens' Clubs of Texas.

The Community will miss the active participation of these fine people in community affairs. Mr. and Mrs. Weems plan to travel and see some of America that they have missed by being too busy and involved. Their home will remain in Wheeler.

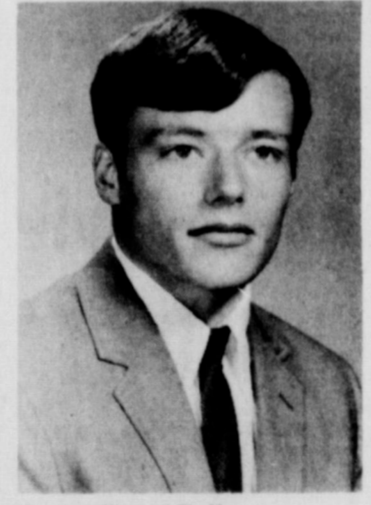
- For United States Senator:**
  - GEORGE BUSH, Harris County
  - ROBERT MORRIS, Dallas County
- For Governor:**
  - PAUL EGGERS, Wichita County
  - ROGER MARTIN, Cooke County
- For Lieutenant Governor:**
  - BYRON FULLERTON, Travis County
- For Attorney General:**
  - EDWARD M. YTURRI, Nueces County
- For Comptroller of Public Accounts:**
  - S. L. ABBOTT, El Paso County
- For State Treasurer:**
  - ROBERT F. KOENNECKE, Guadalupe County
- For Commissioner of General Land Office:**
  - HARRY TRIPPET, McLennan County
- For Commissioner of Agriculture:**
  - DANIEL C. HEATH, Hidalgo County
- For State Senator, 31st Senatorial District:**
  - MALOUF ABRAHAM
- For State Representative, 79th Legislative District:**
  - BILL NIX
  - JACK HART
- For District Judge, 31st Judicial District:**
  - BRUCE L. PARKER
- For County Chairman:**
  -

- For RAILROAD COMMISSIONER:**
  - Connie Lawson
  - Ben Ramsey
- For SUPREME COURT OF TEXAS (Associate Justice, Place 1):**
  - Jack Pope
- For SUPREME COURT OF TEXAS (Associate Justice, Place 2):**
  - Ruel C. Walker
- For SUPREME COURT OF TEXAS (Associate Justice, Place 3):**
  - Matt Davis
  - James G. Denton
  - Hawthorne Phillips
- For COURT OF CRIMINAL APPEALS (Presiding Judge):**
  - John F. (Jack) Onion, Jr.
- For COURT OF CRIMINAL APPEALS (Judge):**
  - Truman Roberts
  - Earl W. Smith
- For COURT OF CIVIL APPEALS, SEVENTH SUPREME JUDICIAL DISTRICT (Associate Justice):**
  - Charles L. Reynolds
- For DISTRICT JUDGE (31st Judicial District):**
  - Grainger W. McIlhenny
- For STATE SENATOR (31st Senatorial Dist.):**
  - Max Sherman
  - Jack Hazlewood
  - Walter L. Knapp
  - Mrs. Nancy Moyer
- For STATE REPRESENTATIVE (79th Legislative Dist.):**
  - Ray Trasper
  - Phil Cates
  - Jimmy R. Graves
  - W. H. Willoughby

- WHEELER COUNTY**
- For COUNTY JUDGE:**
  - Garland C. Abernethy
  - G. W. Hefley
  - Paul T. Macina
- For COUNTY CLERK:**
  - Harry Wofford
- For DISTRICT CLERK:**
  - Paul Topper
- For COUNTY TREASURER:**
  - Palmer Sivage
- For SUPT. PUBLIC SCHOOLS:**
  - Wendell Morgan
- For COUNTY CHAIRMAN:**
  - A. B. Crump

### Services Pending For Hoesa Weeks

Hosea Benton Weeks, 57, died VA Hospital in Hot Springs South Dakota, Tuesday morning, April 28. Services are pending at Wright Funeral Home.



Deans Honor Roll

Dale L. Rogers was listed on the Deans Honor Roll, at Southwestern State College, Weatherford, Oklahoma. Dale is a Commercial Arts major. He is the son of Mr. and Mrs. Joe D. Rogers.



### Simmons To Play Greenbelt Bowl

Steve Simmons is going to play in the Greenbelt Bowl at Childress August 15. Steve is one of 44 boys picked to play out of the state of Texas and Oklahoma.

### Rites Slated For Mrs. Ware Today

Kathryn Inez Ware, 75, passed away Monday, April 4, 1970. Length of her illness was one year.

Mrs. Ware was born in Centerville, Iowa January 7, 1895. She was married to N. D. Ware, Sr., on June 4, 1914 at Woodward, Oklahoma.

Mrs. Ware lived in Fargo, Okla. until she moved to Wheeler with her family in 1948. She was a member of the order of the Eastern Star, an Honorary member of the Wheeler Garden Club, and the Wednesday Study Club. She was a member of the

### Thursday Review Auction Planned

The Thursday Review Club is having an auction Saturday, May 2, at 1:30. The auction will be held in the old Service cleaners building south of the courthouse. Shelby Pettit will be auctioneer.

We will have toys, some furniture and many other items. The Thursday Review Club turns their money making projects back into the community. At this time our two projects are helping the Remedial Reading program in the school and a scholarship for a Wheeler student.

Anyone wishing to donate items to be sold in the auction, may call Mona Patterson 826-5651 or any club member, Friday or Saturday morning, and we will be glad to pick it up. We will also have cakes and pies for sale. Come and buy your dessert for the weekend!

## DORMAN W. THOMAS IS HIRED AS WHEELER SCHOOL SUPERINTENDENT

Dorman W. Thomas, superintendent at White Deer, has been hired by the Wheeler School Board of Trustees to serve as Superintendent of Schools in Wheeler for 1970-71. Thomas has been superintendent at White Deer for the past five years.

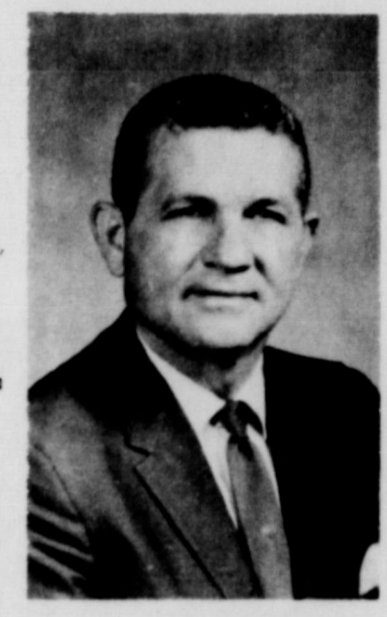
Thomas has been in the teaching profession for the past 19 years. He served as superintendent at Robert Lee before taking the position at White Deer. He has been affiliated with six school districts, Brock, Santo, Gregory, Clon, Robert Lee and White Deer.

Thomas, 44, graduated from Brock High School, Weatherford, Tex., in 1944.

He received a Bachelor of Science Degree in 1951 and a Master of Science Degree in 1960. He has been taking additional courses at West Texas State University at Canyon.

Mr. Thomas is married; he and his wife, Naomi Ruth, have four children. One daughter, Sandra is married. Buddy Dorman is a junior at WTSU. Deborah is a high school sophomore and Donna is in the seventh grade.

The Thomases attend the United Methodist Church. Mr. Thomas served as chairman of the Official Board two years at Robert Lee and has been a member of the Official Board at White Deer for three years.



### THREE STUDENTS TO COMPETE AT STATE CONTEST

The five Speech students who represented Wheeler High School in the Regional Meet of the University Interscholastic League at Lubbock last weekend placed second for Sweepstakes Honors in the Class A schools, which represented eight districts. All five students placed in their individual contests.

Kim Wheeler, Carol Holt, and Mike Hefley won firsts and will compete in the State Meet at Austin, May 8. Kim Wheeler won first in Informative Speaking; Carol Holt won first in Prose Reading; Mike Hefley won first in Persuasive Speaking.

Carla Marshall won second in Persuasive Speaking and Keith Wood won third in Informative Speaking. The students were accompanied to Lubbock by Mrs. Vida Brown, their director.



REGIONAL WINNERS: Pictured above with their first place medals are (l to r) Carol Holt, First in Prose Reading, Mike Hefley, First in Persuasive Speaking, Kim Wheeler, First in Informative Speaking. These students will go to Austin May 8th.

### Grade Operetta Is Friday

Excitement is running high among the students in the Wheeler Elementary School as the date of May 1 draws near. There is a scramble for costumes, and last minute preparations are being made for the presentation of the operetta, "The Frog Prince" on May 1, 1970, at 7:30 P.M. in the Wheeler School Auditorium.

All students of the first through the fifth grades are members of the cast, except the Beginner's Band Students, a total of 133 pupils being in the operetta. The Elementary Teachers are cooperating with Mrs. Lyndon Sims for this production.

### Allison Jr. High Attends Meet

Students from the Allison Jr. High in Allison, Texas who will attend the Track Meet at Lefors May 2, are: Jackie Donaldson, Vickie Reynolds, Susan Richardson, Linda Kelly, and Cynthia Chandler. Boys are: Clifton Miller, and Johnny Grayson. They are sponsored by Coach Barnett.

### Wheeler School Closing Activities

Plans are being finalized for the end of school activities, with only three weeks remaining in the current school year. Activities are scheduled as follows:

The public is cordially invited and urged to attend and show encouragement to our younger youth of our community. There will be no charge. REMEMBER: May 1, 1970, Wheeler School Auditorium

### Hospital Notes

- ADMISSIONS**
  - 2-26 Jewel Jones
  - 4-22 William Jameson
  - 4-20 Hank Miller
  - 4-23 Bernice R. Ramsey
  - Tempie Blanton
  - Ottis G. Beck
  - 4-24 Shirley Ivey
  - 4-26 Demis H. Porter
  - 4-27 Sherman Trout
  - 4-28 William R. Richardson
- DISMISSALS**
  - 4-23 Angela Jamison
  - 4-26 J. R. Clark
  - Roy Hunt
  - Sherman Trout
  - 4-28 Betty Lou Wright
  - 4-29 Shirley Ivey

### Briscoe School Information

The final annual sale is in progress. If you have not purchased your annual then please do so now. The last day of school this year will be on Thursday, May 14th. Eighth grade graduation will be Thursday, May 14th, 8:00 P.M. Senior Baccalaureate is May 10th at 11:00 A.M. and Graduation is Friday, May 15th, 8:00 P.M. The Briscoe PTA is sponsoring a group from Amarillo to be in Briscoe Thursday, April 30th to present a program concerning harmful drugs. Time of program is 2:30 P.M. in the auditorium.



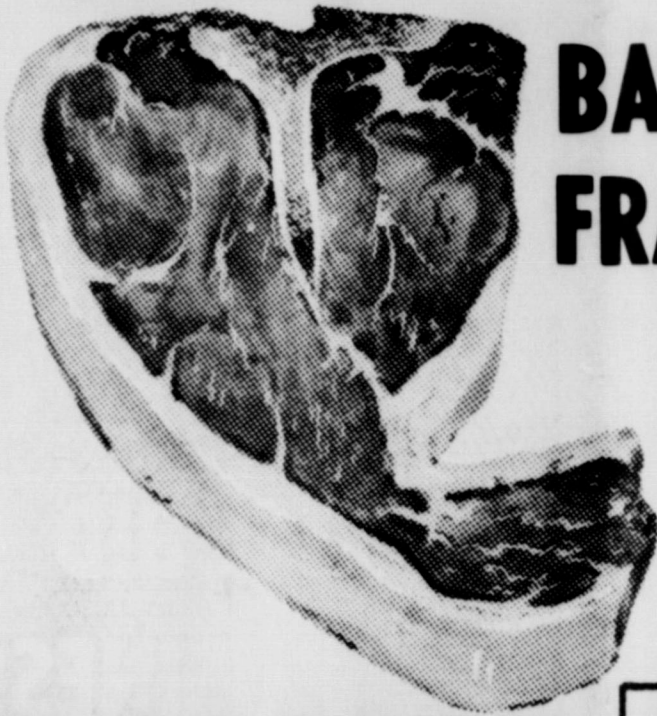
We put the **M=M=M=M** in menus

**DEL MONTE® GARDEN SHOW**  
 Cream Style or Whole Kernel  
**CORN** 5-303 Cans **\$1**  
**TUNA** 3-½ Size Cans  
**SPINACH** 5-303 Cans



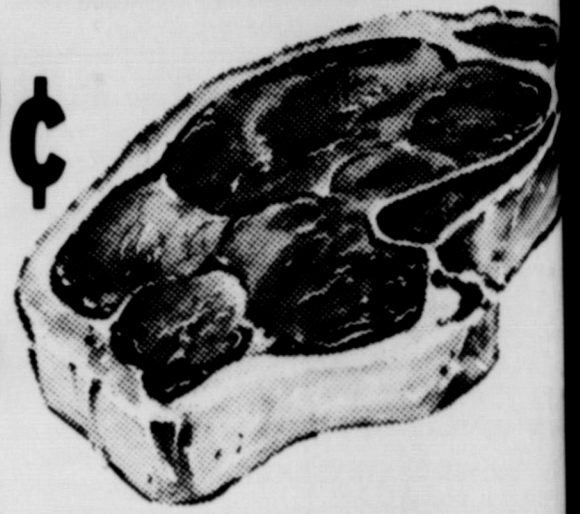
**STEAK**

**SIRLOIN** LB. **89¢**



**BACON** Smoked Rite 2 lb. Pkg. **\$1.29**

**FRANKS** Wilson 12 oz. Pkg. **53¢**



**T-BONE** LB. **\$1.29**

**BOLOGONA** Longhorn Brand 8 oz. Pkg. **35¢**

**FRUIT DRINKS**

Hi-C **3** 46 oz. Cans **\$1.00**

**PORK CHOPS**

Center Cut Pound **73¢** End Cut Pound **63¢**

**GREEN BEANS**

Mile High Cut

303 Cans **75¢**

Lane's **ICE CREAM** ½ Gallon Carton **69¢**

Kuners **TOMATOES** 4 303 Cans **\$1.**

**Bordens Swiss Style YOGART** 3 Cartons **\$1.00**

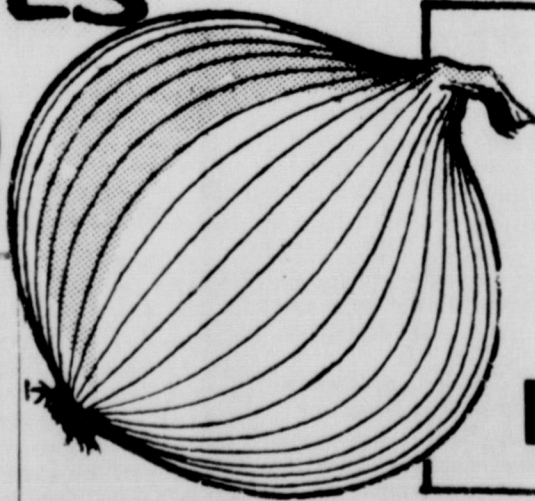
**Bordens CHIP DIP** Carton **43¢**

**Kim Asst. PAPER TOWELS** Large Roll **29¢**

**Kimbell VIENNA SAUSAGE** 4 4 oz. Cans **\$1.00**

**STRAWBERRIES**

Fresh **4 PINTS \$1.00**



**ONIONS** YELLOW LB. **9¢**

**LEMONS** Calif. Sunkist Pound **25¢** **APPLES** Red Rome 15 for \$1

Comparative Value \$24.98  
**Ekco Eterna Stainless Steel Tableware**  
  
 \$9.99 Here

Comparative Value \$31.95  
**Ekco Electro-Plated Gold Tableware**  
  
 \$12.49 Here

4 Pieces FREE With Purchase of 36 Piece Set

Ekco Electro-Plated Gold Tableware

After You Purchase **\$45.00** of Merchandise

These Prices Good Friday and Saturday

Double Stamps Every Wednesday on Purchase of \$2.50 or More.

**Puckett's**  
**FOOD MARKET**

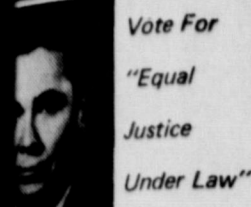
**WHEELER, TEXAS**

BOOK  
 ready for a po  
 with a differe  
 ★ ★  
 Elec  
 WITH  
 PHILL  
 PREME  
 ★ ★  
 ed by Houstr  
 Christi, Va  
 rict Judge, 9  
 e. As't. Attc  
 As't. Attor  
 ate Practice,  
 Agent, 5 Ye  
 or Law Sch  
 May 2  
 ed for by Ju  
 hills Comm  
 man, Chair  
 VOTE I  
 H. ( )  
 Willoug  
 ate Repres  
 79th Dist  
 ark for you  
 enced, Rel  
 and Ranch  
 PIPE  
 Se  
 th  
 Buried  
 sitive e  
 corrod  
 harmle  
 Test  
 the job  
 applie  
 sophis  
 vigilan  
 Con  
 edge i  
 in safe  
 The  
 vate ir



## BOOKS' CORNER

Try this recipe for a potato salad with a different twist?



Vote For  
"Equal  
Justice  
Under Law"

Elect

AWTHORNE  
PHILLIPS

PREMIER COURT

led by Houston, Austin  
Christi, Valley Lawyers

ict Judge, 9 Years  
As't. Attorney General  
As't. Attorney General  
ata Practice, 15 Years  
Agent, 5 Years  
or Law School Graduate

May 2 (Pd. Pol. Ad.)

id for by Judge Hawthorne  
ings Committee, H. C.  
man, Chairman



VOTE FOR  
H. (Webb)  
Willoughby

ate Representative  
79th District  
ork for you Full-time,  
enced, Reliable,  
and Ranch Interests.

Paid for by W. St. Willoughby

Try this recipe.  
Dill-Sour Cream Potato  
Salad.

- 4 c cooked diced potatoes
- 1 c diced celery
- 3 green onions sliced
- 3 Tablespoons vinegar
- 3 Tablespoons vegetable oil
- 1/4 teaspoon red pepper
- 1/4 teaspoon pepper
- salt to taste
- 1/2 teaspoon dry dill seed
- 1/4 cup sour cream

Combine potatoes, celery and onions. Mix next five (5) ingredients and pour over potatoes. Toss together. Chill for several hours. Mix in sour cream and garnish with red and green pepper slices.

Fix sliced cucumbers and onions in a half & half of vinegar and water with a little salt added, in the summer. Do you?

### Fed. Ld. Bank Reduces Rate

Jack Williams, Manager of the Federal L and Bank Association of Shamrock, received word today that The Federal Land Bank of Houston has reduced the interest billing rate on variable rate loans to 8 1/2%.

The variable rate loan plan, which was introduced by the Houston Bank last July, lets the interest rate "float" over the variations in the money market. In large measure, therefore, the rate in any specific year will reflect the changes in the price which the Bank must pay for the money it makes available for farm mortgage loans.

"Recent improvements in the money market have made this reduction possible," Williams stated.

The Federal Land Bank of Houston makes long term real estate loans on farm and ranch lands throughout Texas. On January 1 of this year, the Bank had slightly over

### Highland General Nursing School

Application will be taken Monday, April 27 through Friday, May 8, 1970, for the 1970-1971 class of Vocational Nurses. A \$10 application fee is required but if the applicant is not accepted, the fee is refunded. The total cost of the program is approximately \$310. This includes tuition fee, uniforms, textbooks and graduation expense. An LVN can expect to earn between \$4,300-\$4,800 per year, after graduation.

Highland General Hospital School of Vocational Nursing is a State accredited school. This means the school is one that has met the requirements established by the State Board of Vocational Nurse Examiners. Highland General Hospital has had fifty-two

graduates and presently has thirteen students who will graduate in August and will be eligible to take the exam given by the State Board of Vocational Nurse Examiners. Upon successful completion of this exam the vocational nurse becomes an LVN.

The purpose of this program is to train men and women as Vocational Nurses to give nursing care under the supervision of professional registered nurses or a physician. The length of the school is forty hours per week for twelve months and the applicant must be between the ages of eighteen and fifty-five years; have completed the tenth grade or the equivalent; be a U. S. citizen; be in good physical and mental health; and be able to pass the Texas Employment Commission test. If you are interested, please contact the Vocational School for further information.

### Dunn Receives Mission Patch

In recent ceremonies at the Marine Air Base at Chu Lai, 1st Lt. David L. Dunn, Wheeler, Texas, was awarded the Hundred Mission Patch by a technical representative of McDonnell-Douglas Aircraft Corp. Lt. Dunn earned this patch, which is awarded upon completion of one hundred combat missions, while serving as a Radar Intercept Officer with Sqd. 122, Marine Air Group 13, 1st Marine Air Wing. Lt. Dunn, who also holds the American Defense Medal and the Air Medal, has been in Vietnam since October, 1969. His wife and two sons reside in San Juan, Texas, and his parents, Mr. and Mrs. Walter Dunn, live in Donna, Texas. His present address is:

1st Lt. David L. Dunn,  
H&S Co., Air Officer,  
1st Bn., 7th Marines,  
1st Marine Division,  
FPO San Francisco 96602



Engagement Announced  
Mr. and Mrs. Shelby Johnson announces the engagement and approaching marriage of their daughter, Janice, to Eddie Matthews, son of Rev. and Mrs. Frank J. Matthews of Kelton. The wedding will be solemnized June 5, at 7:00 P.M. at the United Methodist Church at Kelton.

Vote Saturday,  
May 2

# A TIME FOR CHANGE & NEW IDEAS

- \* EQUAL REPRESENTATION  
OVER THE COUNTY
- \* EQUAL OPPORTUNITY  
TO BID FOR COUNTY  
BUSINESS

VOTE FOR

# GARLAND ABERNETHY

THE MAN WITH BUSINESS EXPERIENCE AND  
THE WELFARE OF THE COUNTY IN MIND

Candidate For

# COUNTY JUDGE

Stands for . . .

- \* LAW AND ORDER
- \* SOUND LOCAL GOVERNMENT
- \* DEVELOPMENT OF AREA INDUSTRY
- \* EFFICIENT USE OF COUNTY FUNDS

Pol. Adv. paid for by the Committee for Garland Abernethy  
-David Britt, Chairman

### PIPELINE PEOPLE



### Sentinels along the pipelines

Buried underground near natural gas pipelines is sensitive electronic equipment. Its task: sidetrack metal-corroding currents found in soil and render them harmless to the pipelines.

Testing and maintaining this electronic "screen" is the job of an NGPL Corrosion Technician. He adeptly applies basic electronic principles to the operation of sophisticated equipment. The result is a silent, but vigilant, shield against costly corrosion.

Corrosion Technicians, with their personal knowledge and independent judgment, play a major role in safeguarding our natural gas transmission lines.

They are pipeline people—vital links in a giant private industry serving the public interest.

**NGPL**  
NATURAL GAS PIPELINE  
COMPANY OF AMERICA  
A subsidiary of Peoples Gas Company





THE RAY TROSPER FAMILY  
RITA RENE RAY

### SOME POINTS FOR CONSIDERATION . . .

- I think it is absurd that many murderers and other lawbreakers are constantly getting off on bond, receiving short prison terms, or getting suspended sentences and then are allowed to roam our streets again. I am against this, and I favor strengthening our court system and changing our laws, which presently allow this to occur.
- I believe that the greatest threat to America is Communism. I recommend legislation to prevent Communists from speaking on our college campuses. I also believe that our public education system should keep a loyalty oath to prevent Communists and Socialists from teaching anti-American propaganda in our schools and universities.
- I believe that children should be allowed to pray in public schools.
- I am against going head-first into costly government programs which are initiated and then are either forgotten about or are abandoned, wasting huge sums of our tax money. Thus, I would support legislation which would allow for maximum economy in state government and I would work to see that every citizen received a dollar's worth of benefit for every tax dollar which is spent.
- I oppose bussing school students to foreign school districts. If a family lives in a location which is conveniently located near a school of their choice, I don't see why their children should be forced to attend a school on the other side of town, or on the other side of the county.
- I am against gun control by the federal government.
- I believe that responsible people can handle their own local affairs without interference from people in the federal government who do not really understand the problems in our rural towns and communities.

These ideas can and must be accomplished. With your help, I will do everything I can to see that these challenges are met and handled to the best of your wishes.

VOTE FOR  
**RAY TROSPER**  
STATE REPRESENTATIVE  
DEMOCRATIC PRIMARY MAY 2

Pol. Adv. Paid for by Ray Trosper

GOING  
GOING  
GONE



GIGANTIC

**AUCTION!**

WAYLAND BAPTIST  
COLLEGE

MAY 19, 10.00 A.M.  
WAYLAND BOWL

WE  
NEED  
YOU

Ways You May Help:

- First:** We want you to see what you have of value, either used or new items which might be auctioned to raise money for the college. This money will go into the operating fund for the current budget.
- Second:** We want you to make plans to join us for the Auction in the Wayland Bowl on the Campus, May 19, 10:00 A.M.

IF YOU HAVE ITEMS TO DONATE, CONTACT:  
THE BAPTIST MINISTER IN YOUR TOWN  
OR  
Dr. W. Neil Record, AC 306-296-5521

## Court Records

List of instruments filed in the office of the County Clerk and District Clerk of Wheeler County, Texas from April 20 through April 24, 1970

April 20, 1970  
ROY D-Nannie M Mixon et vir to H H Hall 4-3-70 1/4 int Pt Sec 11 Blk A-4  
RVL-Robert B Barth to Lillian M Cates 4-11-70 300'x 75' NW 1/4 Sec 57 Blk 17  
D-Robert B Barth to Lillian M Cates 19-21-69 1/2 Int 300' x 75' NW 1/4 Sec 57 Blk 17  
ROL-Phillips Pet Co to Southwestern Public Service Co 3-28-70 52ac Sec 80 A-5  
DT-Lillian M Cates to First Fed Savs & Loan Assn 4-9-70 75'x300' NW 1/4 57 Blk 17  
OL-Grady W Harris to Standard Oil Co of Texas 3-10-70 1/2 Sec 66 Blk A-5  
OL-Mary Ellen Gooding to Standard Oil Co of Texas 3-17-70 SW 1/4 Sec 36 Blk A-5  
OL-Bill W Waters et al to same as above 3-27-70 N 1/2 NW 1/4 Sec 34 Blk A-9  
OL-same as above 3-27-70 E 1/2 Sec 34 Blk A-9  
OL-Thomas L Wade et al to same as above 3-31-70 Sec 26 ex NE 1/4 NE 1/4 NE 1/4 Sec 16 140 ac N 1/2 NE 1/4 Sec 15 Blk A-5

April 21, 1970  
RATF-Minco Inc to J M Huber Corp 3-31-70 Pt Secs 3, 9, Blk H  
AOL-Harry Wofford et al to Engery Development, Inc 3-10-70 140ac Sec 59 Blk A-4  
AOL-Armell Holt et al to same as above 3-10-70 180 ac Sec 59 Blk A-4  
OL-Vida S Brown et al to same as above 2-23-70 E 1/2 Sec 7 Camp Co Sch Land  
OL-same as above 2-23-70 Sec 8 NE 1/4 5 same as above  
OL-same as above 2-23-70 Sec 6 Camp Co Sch Land  
OL-F H Davidson et ux to same as above 3-2-70 S120ac W 1/2 Sec 2 Blk 4 B&B Survey  
OL-M B Eiland et ux to Robert C Atkins 2-18-70 N 1/2 Sec 13 Camp Co Sch Land  
OL-Kenneth Evans et ux to Engery Development, Inc 2-24-70 W 1/2 Sec 7 Camp Co Sch Land  
OL-Willis Fillingim et ux to same as above 2-24-70 W 1/2 Sec 7 same as above  
OL-C F Hefley et ux to same as above 2-24-70 same as above  
OL-James L Massey et ux to same as above 2-24-70 same as above  
OL-Lynda Pierce et vir to same as above 2-24-70 same as above  
OL-Johnnie Reed et ux to same as above 2-24-70 155ac Sec 2 C&MRRR Co Survey  
OL-Domer L Reed et ux to same as above 2-26-70 Pt Sec 1, 2, C&MRR Co Survey  
Pt Thomas James Sur  
OL-Domer L Reed et ux to same as above 2-26-70 Pt 2 C&MRR & Pt Thomas James Survey  
OL-T A Treadwell to same as above 3-4-70 Sec 35 Blk M-1  
OL-Mary Putman VanSant et vir to same as above 2-24-70 W 1/2 Sec 7 Camp Co Sch Land  
OL-J M Wiley, Trustee to

OL-Christine Farrell et vir to same as above 3-17-70 SW 1/4 Sec 36 Blk A-5  
OL-Isabel Huseby to same as above 3-31-70 E 1/2 Sec 34 Blk A-9  
ROL-Humble Oil and Ref Co to W Q Weatherly et ux 4-10-70 S1/2E1/4 Sec 1 Cert/AFF-Gaddy Vise to H G Vise et ux 4-18-70

April 22, 1970  
OL-Elva Meek et al to R A Fitzgerald 3-6-70 SW 1/4 Sec 11 Blk RE  
OL-Thomas R Helton Sr et ux to R A Fitzgerald 1-20-70 E 1/2 Sec 60 Blk M-1  
OL-Elva Meek et al to R A Fitzgerald 3-6-70 SW 1/4 Sec 11 Blk RE  
OL-Elva Meek et al to R A Fitzgerald 3-9-70 37.5 ac W 1/2 Sec 60 Blk M-1  
OL-W H Lee et ux to same as above 2-10-70 103.64 ac Sec 2 Blk M-1  
ROY D-H H Hall to Cummins Investment Corp 4-3-70 120/481.77 int Pt Sec 11 Blk A-4  
MD-Lafay Vise to Gaddy Vise 4-22-70 1/2 int S 1/2 Sec 59 Blk A-8

April 23, 1970  
MD-E A Zybach et ux to Jane Ann Hall 4-16-70 3/320 int W 1/2 Sec 15 Blk RE  
MD-E A Zybach et ux to Bob R Zybach R-16-70 same as above  
MD-E A Zybach et ux to J David Zybach same as above  
RDT-Federal Land Bk of Houston to Donald L Schwab et ux 4-9-70 SW 1/4 26 N 1/2 NE 1/4

same as above 3-9-70 SE 1/4 6 J Poitevent Survey  
OL-E T Zybach et ux to same as above 3-6-70 SW 1/4 Sec 11 Blk RE  
April 22, 1970  
OL-Thomas R Helton Sr et ux to R A Fitzgerald 1-20-70 E 1/2 Sec 60 Blk M-1  
OL-Elva Meek et al to R A Fitzgerald 3-6-70 SW 1/4 Sec 11 Blk RE  
OL-Elva Meek et al to R A Fitzgerald 3-9-70 37.5 ac W 1/2 Sec 60 Blk M-1  
OL-W H Lee et ux to same as above 2-10-70 103.64 ac Sec 2 Blk M-1  
ROY D-H H Hall to Cummins Investment Corp 4-3-70 120/481.77 int Pt Sec 11 Blk A-4  
MD-Lafay Vise to Gaddy Vise 4-22-70 1/2 int S 1/2 Sec 59 Blk A-8

April 24, 1970  
MD-E A Zybach et ux to Jane Ann Hall 4-16-70 3/320 int W 1/2 Sec 15 Blk RE  
MD-E A Zybach et ux to Bob R Zybach R-16-70 same as above  
MD-E A Zybach et ux to J David Zybach same as above  
RDT-Federal Land Bk of Houston to Donald L Schwab et ux 4-9-70 SW 1/4 26 N 1/2 NE 1/4

OL-Elva Meek et al to R A Fitzgerald 3-9-70 37.5 ac W 1/2 Sec 60 Blk M-1  
OL-W H Lee et ux to same as above 2-10-70 103.64 ac Sec 2 Blk M-1  
ROY D-H H Hall to Cummins Investment Corp 4-3-70 120/481.77 int Pt Sec 11 Blk A-4  
MD-Lafay Vise to Gaddy Vise 4-22-70 1/2 int S 1/2 Sec 59 Blk A-8

April 24, 1970  
MD-E A Zybach et ux to Jane Ann Hall 4-16-70 3/320 int W 1/2 Sec 15 Blk RE  
MD-E A Zybach et ux to Bob R Zybach R-16-70 same as above  
MD-E A Zybach et ux to J David Zybach same as above  
RDT-Federal Land Bk of Houston to Donald L Schwab et ux 4-9-70 SW 1/4 26 N 1/2 NE 1/4

OL-Elva Meek et al to R A Fitzgerald 3-9-70 37.5 ac W 1/2 Sec 60 Blk M-1  
OL-W H Lee et ux to same as above 2-10-70 103.64 ac Sec 2 Blk M-1  
ROY D-H H Hall to Cummins Investment Corp 4-3-70 120/481.77 int Pt Sec 11 Blk A-4  
MD-Lafay Vise to Gaddy Vise 4-22-70 1/2 int S 1/2 Sec 59 Blk A-8

April 24, 1970  
MD-E A Zybach et ux to Jane Ann Hall 4-16-70 3/320 int W 1/2 Sec 15 Blk RE  
MD-E A Zybach et ux to Bob R Zybach R-16-70 same as above  
MD-E A Zybach et ux to J David Zybach same as above  
RDT-Federal Land Bk of Houston to Donald L Schwab et ux 4-9-70 SW 1/4 26 N 1/2 NE 1/4

OL-Elva Meek et al to R A Fitzgerald 3-9-70 37.5 ac W 1/2 Sec 60 Blk M-1  
OL-W H Lee et ux to same as above 2-10-70 103.64 ac Sec 2 Blk M-1  
ROY D-H H Hall to Cummins Investment Corp 4-3-70 120/481.77 int Pt Sec 11 Blk A-4  
MD-Lafay Vise to Gaddy Vise 4-22-70 1/2 int S 1/2 Sec 59 Blk A-8

April 24, 1970  
MD-E A Zybach et ux to Jane Ann Hall 4-16-70 3/320 int W 1/2 Sec 15 Blk RE  
MD-E A Zybach et ux to Bob R Zybach R-16-70 same as above  
MD-E A Zybach et ux to J David Zybach same as above  
RDT-Federal Land Bk of Houston to Donald L Schwab et ux 4-9-70 SW 1/4 26 N 1/2 NE 1/4

OL-Elva Meek et al to R A Fitzgerald 3-9-70 37.5 ac W 1/2 Sec 60 Blk M-1  
OL-W H Lee et ux to same as above 2-10-70 103.64 ac Sec 2 Blk M-1  
ROY D-H H Hall to Cummins Investment Corp 4-3-70 120/481.77 int Pt Sec 11 Blk A-4  
MD-Lafay Vise to Gaddy Vise 4-22-70 1/2 int S 1/2 Sec 59 Blk A-8

April 24, 1970  
MD-E A Zybach et ux to Jane Ann Hall 4-16-70 3/320 int W 1/2 Sec 15 Blk RE  
MD-E A Zybach et ux to Bob R Zybach R-16-70 same as above  
MD-E A Zybach et ux to J David Zybach same as above  
RDT-Federal Land Bk of Houston to Donald L Schwab et ux 4-9-70 SW 1/4 26 N 1/2 NE 1/4

OL-Elva Meek et al to R A Fitzgerald 3-9-70 37.5 ac W 1/2 Sec 60 Blk M-1  
OL-W H Lee et ux to same as above 2-10-70 103.64 ac Sec 2 Blk M-1  
ROY D-H H Hall to Cummins Investment Corp 4-3-70 120/481.77 int Pt Sec 11 Blk A-4  
MD-Lafay Vise to Gaddy Vise 4-22-70 1/2 int S 1/2 Sec 59 Blk A-8

April 24, 1970  
MD-E A Zybach et ux to Jane Ann Hall 4-16-70 3/320 int W 1/2 Sec 15 Blk RE  
MD-E A Zybach et ux to Bob R Zybach R-16-70 same as above  
MD-E A Zybach et ux to J David Zybach same as above  
RDT-Federal Land Bk of Houston to Donald L Schwab et ux 4-9-70 SW 1/4 26 N 1/2 NE 1/4

OL-Elva Meek et al to R A Fitzgerald 3-9-70 37.5 ac W 1/2 Sec 60 Blk M-1  
OL-W H Lee et ux to same as above 2-10-70 103.64 ac Sec 2 Blk M-1  
ROY D-H H Hall to Cummins Investment Corp 4-3-70 120/481.77 int Pt Sec 11 Blk A-4  
MD-Lafay Vise to Gaddy Vise 4-22-70 1/2 int S 1/2 Sec 59 Blk A-8

April 24, 1970  
MD-E A Zybach et ux to Jane Ann Hall 4-16-70 3/320 int W 1/2 Sec 15 Blk RE  
MD-E A Zybach et ux to Bob R Zybach R-16-70 same as above  
MD-E A Zybach et ux to J David Zybach same as above  
RDT-Federal Land Bk of Houston to Donald L Schwab et ux 4-9-70 SW 1/4 26 N 1/2 NE 1/4

OL-Elva Meek et al to R A Fitzgerald 3-9-70 37.5 ac W 1/2 Sec 60 Blk M-1  
OL-W H Lee et ux to same as above 2-10-70 103.64 ac Sec 2 Blk M-1  
ROY D-H H Hall to Cummins Investment Corp 4-3-70 120/481.77 int Pt Sec 11 Blk A-4  
MD-Lafay Vise to Gaddy Vise 4-22-70 1/2 int S 1/2 Sec 59 Blk A-8

April 24, 1970  
MD-E A Zybach et ux to Jane Ann Hall 4-16-70 3/320 int W 1/2 Sec 15 Blk RE  
MD-E A Zybach et ux to Bob R Zybach R-16-70 same as above  
MD-E A Zybach et ux to J David Zybach same as above  
RDT-Federal Land Bk of Houston to Donald L Schwab et ux 4-9-70 SW 1/4 26 N 1/2 NE 1/4

OL-Elva Meek et al to R A Fitzgerald 3-9-70 37.5 ac W 1/2 Sec 60 Blk M-1  
OL-W H Lee et ux to same as above 2-10-70 103.64 ac Sec 2 Blk M-1  
ROY D-H H Hall to Cummins Investment Corp 4-3-70 120/481.77 int Pt Sec 11 Blk A-4  
MD-Lafay Vise to Gaddy Vise 4-22-70 1/2 int S 1/2 Sec 59 Blk A-8

April 24, 1970  
MD-E A Zybach et ux to Jane Ann Hall 4-16-70 3/320 int W 1/2 Sec 15 Blk RE  
MD-E A Zybach et ux to Bob R Zybach R-16-70 same as above  
MD-E A Zybach et ux to J David Zybach same as above  
RDT-Federal Land Bk of Houston to Donald L Schwab et ux 4-9-70 SW 1/4 26 N 1/2 NE 1/4

OL-Elva Meek et al to R A Fitzgerald 3-9-70 37.5 ac W 1/2 Sec 60 Blk M-1  
OL-W H Lee et ux to same as above 2-10-70 103.64 ac Sec 2 Blk M-1  
ROY D-H H Hall to Cummins Investment Corp 4-3-70 120/481.77 int Pt Sec 11 Blk A-4  
MD-Lafay Vise to Gaddy Vise 4-22-70 1/2 int S 1/2 Sec 59 Blk A-8

April 24, 1970  
MD-E A Zybach et ux to Jane Ann Hall 4-16-70 3/320 int W 1/2 Sec 15 Blk RE  
MD-E A Zybach et ux to Bob R Zybach R-16-70 same as above  
MD-E A Zybach et ux to J David Zybach same as above  
RDT-Federal Land Bk of Houston to Donald L Schwab et ux 4-9-70 SW 1/4 26 N 1/2 NE 1/4

OL-Elva Meek et al to R A Fitzgerald 3-9-70 37.5 ac W 1/2 Sec 60 Blk M-1  
OL-W H Lee et ux to same as above 2-10-70 103.64 ac Sec 2 Blk M-1  
ROY D-H H Hall to Cummins Investment Corp 4-3-70 120/481.77 int Pt Sec 11 Blk A-4  
MD-Lafay Vise to Gaddy Vise 4-22-70 1/2 int S 1/2 Sec 59 Blk A-8

April 24, 1970  
MD-E A Zybach et ux to Jane Ann Hall 4-16-70 3/320 int W 1/2 Sec 15 Blk RE  
MD-E A Zybach et ux to Bob R Zybach R-16-70 same as above  
MD-E A Zybach et ux to J David Zybach same as above  
RDT-Federal Land Bk of Houston to Donald L Schwab et ux 4-9-70 SW 1/4 26 N 1/2 NE 1/4

same as above 3-9-70 SE 1/4 6 J Poitevent Survey  
OL-E T Zybach et ux to same as above 3-6-70 SW 1/4 Sec 11 Blk RE  
April 22, 1970  
OL-Thomas R Helton Sr et ux to R A Fitzgerald 1-20-70 E 1/2 Sec 60 Blk M-1  
OL-Elva Meek et al to R A Fitzgerald 3-6-70 SW 1/4 Sec 11 Blk RE  
OL-Elva Meek et al to R A Fitzgerald 3-9-70 37.5 ac W 1/2 Sec 60 Blk M-1  
OL-W H Lee et ux to same as above 2-10-70 103.64 ac Sec 2 Blk M-1  
ROY D-H H Hall to Cummins Investment Corp 4-3-70 120/481.77 int Pt Sec 11 Blk A-4  
MD-Lafay Vise to Gaddy Vise 4-22-70 1/2 int S 1/2 Sec 59 Blk A-8

April 23, 1970  
MD-E A Zybach et ux to Jane Ann Hall 4-16-70 3/320 int W 1/2 Sec 15 Blk RE  
MD-E A Zybach et ux to Bob R Zybach R-16-70 same as above  
MD-E A Zybach et ux to J David Zybach same as above  
RDT-Federal Land Bk of Houston to Donald L Schwab et ux 4-9-70 SW 1/4 26 N 1/2 NE 1/4

OL-Elva Meek et al to R A Fitzgerald 3-9-70 37.5 ac W 1/2 Sec 60 Blk M-1  
OL-W H Lee et ux to same as above 2-10-70 103.64 ac Sec 2 Blk M-1  
ROY D-H H Hall to Cummins Investment Corp 4-3-70 120/481.77 int Pt Sec 11 Blk A-4  
MD-Lafay Vise to Gaddy Vise 4-22-70 1/2 int S 1/2 Sec 59 Blk A-8

April 24, 1970  
MD-E A Zybach et ux to Jane Ann Hall 4-16-70 3/320 int W 1/2 Sec 15 Blk RE  
MD-E A Zybach et ux to Bob R Zybach R-16-70 same as above  
MD-E A Zybach et ux to J David Zybach same as above  
RDT-Federal Land Bk of Houston to Donald L Schwab et ux 4-9-70 SW 1/4 26 N 1/2 NE 1/4

OL-Elva Meek et al to R A Fitzgerald 3-9-70 37.5 ac W 1/2 Sec 60 Blk M-1  
OL-W H Lee et ux to same as above 2-10-70 103.64 ac Sec 2 Blk M-1  
ROY D-H H Hall to Cummins Investment Corp 4-3-70 120/481.77 int Pt Sec 11 Blk A-4  
MD-Lafay Vise to Gaddy Vise 4-22-70 1/2 int S 1/2 Sec 59 Blk A-8

April 24, 1970  
MD-E A Zybach et ux to Jane Ann Hall 4-16-70 3/320 int W 1/2 Sec 15 Blk RE  
MD-E A Zybach et ux to Bob R Zybach R-16-70 same as above  
MD-E A Zybach et ux to J David Zybach same as above  
RDT-Federal Land Bk of Houston to Donald L Schwab et ux 4-9-70 SW 1/4 26 N 1/2 NE 1/4

OL-Elva Meek et al to R A Fitzgerald 3-9-70 37.5 ac W 1/2 Sec 60 Blk M-1  
OL-W H Lee et ux to same as above 2-10-70 103.64 ac Sec 2 Blk M-1  
ROY D-H H Hall to Cummins Investment Corp 4-3-70 120/481.77 int Pt Sec 11 Blk A-4  
MD-Lafay Vise to Gaddy Vise 4-22-70 1/2 int S 1/2 Sec 59 Blk A-8

April 24, 1970  
MD-E A Zybach et ux to Jane Ann Hall 4-16-70 3/320 int W 1/2 Sec 15 Blk RE  
MD-E A Zybach et ux to Bob R Zybach R-16-70 same as above  
MD-E A Zybach et ux to J David Zybach same as above  
RDT-Federal Land Bk of Houston to Donald L Schwab et ux 4-9-70 SW 1/4 26 N 1/2 NE 1/4

OL-Elva Meek et al to R A Fitzgerald 3-9-70 37.5 ac W 1/2 Sec 60 Blk M-1  
OL-W H Lee et ux to same as above 2-10-70 103.64 ac Sec 2 Blk M-1  
ROY D-H H Hall to Cummins Investment Corp 4-3-70 120/481.77 int Pt Sec 11 Blk A-4  
MD-Lafay Vise to Gaddy Vise 4-22-70 1/2 int S 1/2 Sec 59 Blk A-8

April 24, 1970  
MD-E A Zybach et ux to Jane Ann Hall 4-16-70 3/320 int W 1/2 Sec 15 Blk RE  
MD-E A Zybach et ux to Bob R Zybach R-16-70 same as above  
MD-E A Zybach et ux to J David Zybach same as above  
RDT-Federal Land Bk of Houston to Donald L Schwab et ux 4-9-70 SW 1/4 26 N 1/2 NE 1/4

OL-Elva Meek et al to R A Fitzgerald 3-9-70 37.5 ac W 1/2 Sec 60 Blk M-1  
OL-W H Lee et ux to same as above 2-10-70 103.64 ac Sec 2 Blk M-1  
ROY D-H H Hall to Cummins Investment Corp 4-3-70 120/481.77 int Pt Sec 11 Blk A-4  
MD-Lafay Vise to Gaddy Vise 4-22-70 1/2 int S 1/2 Sec 59 Blk A-8

April 24, 1970  
MD-E A Zybach et ux to Jane Ann Hall 4-16-70 3/320 int W 1/2 Sec 15 Blk RE  
MD-E A Zybach et ux to Bob R Zybach R-16-70 same as above  
MD-E A Zybach et ux to J David Zybach same as above  
RDT-Federal Land Bk of Houston to Donald L Schwab et ux 4-9-70 SW 1/4 26 N 1/2 NE 1/4

OL-Elva Meek et al to R A Fitzgerald 3-9-70 37.5 ac W 1/2 Sec 60 Blk M-1  
OL-W H Lee et ux to same as above 2-10-70 103.64 ac Sec 2 Blk M-1  
ROY D-H H Hall to Cummins Investment Corp 4-3-70 120/481.77 int Pt Sec 11 Blk A-4  
MD-Lafay Vise to Gaddy Vise 4-22-70 1/2 int S 1/2 Sec 59 Blk A-8

April 24, 1970  
MD-E A Zybach et ux to Jane Ann Hall 4-16-70 3/320 int W 1/2 Sec 15 Blk RE  
MD-E A Zybach et ux to Bob R Zybach R-16-70 same as above  
MD-E A Zybach et ux to J David Zybach same as above  
RDT-Federal Land Bk of Houston to Donald L Schwab et ux 4-9-70 SW 1/4 26 N 1/2 NE 1/4

OL-Elva Meek et al to R A Fitzgerald 3-9-70 37.5 ac W 1/2 Sec 60 Blk M-1  
OL-W H Lee et ux to same as above 2-10-70 103.64 ac Sec 2 Blk M-1  
ROY D-H H Hall to Cummins Investment Corp 4-3-70 120/481.77 int Pt Sec 11 Blk A-4  
MD-Lafay Vise to Gaddy Vise 4-22-70 1/2 int S 1/2 Sec 59 Blk A-8

April 24, 1970  
MD-E A Zybach et ux to Jane Ann Hall 4-16-70 3/320 int W 1/2 Sec 15 Blk RE  
MD-E A Zybach et ux to Bob R Zybach R-16-70 same as above  
MD-E A Zybach et ux to J David Zybach same as above  
RDT-Federal Land Bk of Houston to Donald L Schwab et ux 4-9-70 SW 1/4 26 N 1/2 NE 1/4

OL-Elva Meek et al to R A Fitzgerald 3-9-70 37.5 ac W 1/2 Sec 60 Blk M-1  
OL-W H Lee et ux to same as above 2-10-70 103.64 ac Sec 2 Blk M-1  
ROY D-H H Hall to Cummins Investment Corp 4-3-70 120/481.77 int Pt Sec 11 Blk A-4  
MD-Lafay Vise to Gaddy Vise 4-22-70 1/2 int S 1/2 Sec 59 Blk A-8

April 24, 1970  
MD-E A Zybach et ux to Jane Ann Hall 4-16-70 3/320 int W 1/2 Sec 15 Blk RE  
MD-E A Zybach et ux to Bob R Zybach R-16-70 same as above  
MD-E A Zybach et ux to J David Zybach same as above  
RDT-Federal Land Bk of Houston to Donald L Schwab et ux 4-9-70 SW 1/4 26 N 1/2 NE 1/4

OL-Elva Meek et al to R A Fitzgerald 3-9-70 37.5 ac W 1/2 Sec 60 Blk M-1  
OL-W H Lee et ux to same as above 2-10-70 103.64 ac Sec 2 Blk M-1  
ROY D-H H Hall to Cummins Investment Corp 4-3-70 120/481.77 int Pt Sec 11 Blk A-4  
MD-Lafay Vise to Gaddy Vise 4-22-70 1/2 int S 1/2 Sec 59 Blk A-8

April 24, 1970  
MD-E A Zybach et ux to Jane Ann Hall 4-16-70 3/320 int W 1/2 Sec 15 Blk RE  
MD-E A Zybach et ux to Bob R Zybach R-16-70 same as above  
MD-E A Zybach et ux to J David Zybach same as above  
RDT-Federal Land Bk of Houston to Donald L Schwab et ux 4-9-70 SW 1/4 26 N 1/2 NE 1/4

OL-Elva Meek et al to R A Fitzgerald 3-9-70 37.5 ac W 1/2 Sec 60 Blk M-1  
OL-W H Lee et ux to same as above 2-10-70 103.64 ac Sec 2 Blk M-1  
ROY D-H H Hall to Cummins Investment Corp 4-3-70 120/481.77 int Pt Sec 11 Blk A-4  
MD-Lafay Vise to Gaddy Vise 4-22-70 1/2 int S 1/2 Sec 59 Blk A-8

April 24, 1970  
MD-E A Zybach et ux to Jane Ann Hall 4-16-70 3/320 int W 1/2 Sec 15 Blk RE  
MD-E A Zybach et ux to Bob R Zybach R-16-70 same as above  
MD-E A Zybach et ux to J David Zybach same as above  
RDT-Federal Land Bk of Houston to Donald L Schwab et ux 4-9-70 SW 1/4 26 N 1/2 NE 1/4

OL-Elva Meek et al to R A Fitzgerald 3-9-70 37.5 ac W 1/2 Sec 60 Blk M-1  
OL-W H Lee et ux to same as above 2-10-70 103.64 ac Sec 2 Blk M-1  
ROY D-H H Hall to Cummins Investment Corp 4-3-70 120/481.77 int Pt Sec 11 Blk A-4  
MD-Lafay Vise to Gaddy Vise 4-22-70 1/2 int S 1/2 Sec 59 Blk A-8

April 24, 1970  
MD-E A Zybach et ux to Jane Ann Hall 4-16-70 3/320 int W 1/2 Sec 15 Blk RE  
MD-E A Zybach et ux to Bob R Zybach R-16-70 same as above  
MD-E A Zybach et ux to J David Zybach same as above  
RDT-Federal Land Bk of Houston to Donald L Schwab et ux 4-9-70 SW 1/4 26 N 1/2 NE 1/4

OL-Elva Meek et al to R A Fitzgerald 3-9-70 37.5 ac W 1/2 Sec 60 Blk M-1  
OL-W H Lee et ux to same as above 2-10-70 103.64 ac Sec 2 Blk M-1  
ROY D-H H Hall to Cummins Investment Corp 4-3-70 120/481.77 int Pt Sec 11 Blk A-4  
MD-Lafay Vise to Gaddy Vise 4-22-70 1/2 int S 1/2 Sec 59 Blk A-8

April 24, 1970  
MD-E A Zybach et ux to Jane Ann Hall 4-16-70 3/320 int W 1/2 Sec 15 Blk RE  
MD-E A Zybach et ux to Bob R Zybach R-16-70 same as above  
MD-E A Zybach et ux to J David Zybach same as above  
RDT-Federal Land Bk of Houston to Donald L Schwab et ux 4-9-70 SW 1/4 26 N 1/2 NE 1/4

OL-Elva Meek et al to R A Fitzgerald 3-9-70 37.5 ac W 1/2 Sec 60 Blk M-1  
OL-W H Lee et ux to same as above 2-10-70 103.64 ac Sec 2 Blk M-1  
ROY D-H H Hall to Cummins Investment Corp 4-3-70 120/481.77 int Pt Sec 11 Blk A-4  
MD-Lafay V



# Want Ads

**Want to buy baby Wild Animals**  
Baby only. Coyotes-\$3.00, Raccoons-\$5.00, Skunks-\$5.00, Fox-\$5.00, Badgers-\$10.00, Bob Cats-\$20.00. Reptile Village, Erick, Okla. 526-3574. rtm

**FARM or GRASS LAND**  
- Need Listings -  
John C. Vise Agency  
Phone: 826-5576 or 5577  
117 W. Texas  
Wheeler, Texas

**For Sale: 2 bedroom carpeted home.** 1130 S. Main. Contact Cecil Snelgrooves. 826-3212. rtm

**For Sale: White Stucco, fully carpeted.** Located on West Okla. St. Three bedrooms, two baths and two car garage. Call 826-3146 or 826-5241. rtm

**For Rent: Apartments.** West Motel. rtm

**Paul's Real Estate, Houses and Land,** 200 Canadian St. Ph 826-5237. rtm

**Morgan Aerial Spraying-weeds, brush, insecticides, and herbicides.** Ph. 256-1678, Shamrock, 203 S. Madden St. 4tp

I will not be responsible for any debts made by anyone other than myself.  
Kenneth Holt  
4-29-70  
Needed Farm Hand. Call Harrison Hall, Ph. 826-5714.

**Wanted: lawn mowing.** See Dan or Van Chapman. Call 826-9914 or 826-3116.

**Wheeler Lodge No. 1099**  
A. F. & A. M.  
MONDAY  
7:00 P. M.  
Harvey Davis, W. M.  
Percy Farmer, Sec'y.  
Members Urged To Attend.  
Visitors Welcome.

**House For Sale: 4 rooms & basement.** 1104 Canadian. Call or write R. N. Davis, P. O. 546, Cisco, Texas, 76437. Ph. 817-442-3044.

Houses to be moved out of Berger, Surplus FHA houses; price reduced; 2 bedroom priced from \$1250. to \$2250. This price is cheaper than labor alone would cost to build. Ed Turner Realty, 304 W. Tenth, Berger, Texas 273-7571. 6tc

**For Rent: 3 Bedroom furnished.** 1/2 mile from Highway. 1/2 east, 1/2 south of Mobeetie light. C. V. McCraw. Ph. 845-2358. 4tc

**For Sale: Nice home with all modern conveniences.** Two bedrooms, two baths, two acres. Several others from \$1750 up.

**Wanted: Listings on farm and grazing land.** G. C. Barton, Realtor, Ph. 826-3124

**Last: Gray and White Poodle has flea collar, answers to Sam.** Ph. 826-5968. Reward Offered. 1tc

**For Sale: Brick House, 906 Main,** reasonable. Call 826-3197. rtm

**Beaten down carpet paths go when Blue Lustre arrives.** Rent electric shampooer \$1. Lee Hardware & Furniture

**Wanted experienced hired hand on dairy, house furnished, eggs, cream and milk.** Salary \$500 a month. Hoy Hunter, Ph 826-5774, Wheeler, Texas.

**For Rent: Cottage for three,** Call 826-5273. rtm

## "Restless Ones" Will Be Shown

"THE RESTLESS ONES," considered the most successful motion picture yet produced by Evangelist Billy Graham, will be shown in Wheeler on May 1st in the Assembly of God Church.

With the accent on youth, this feature-length film deals imaginatively and dramatically with the teen-age crisis. With a background setting provided by the 1963 Billy Graham Los Angeles Crusade, and artfully woven into the story pattern, "THE RESTLESS ONES" is a hard-hitting, bold approach to our social problems.

Here is a film which dares to be different, a story which will stir the heart and mind. Having seen "THE RESTLESS ONES," you will never be the same.

As one reviewer said, "Here is a picture that tells the world the truth and comes up with an answer, not an easy answer, but an answer from beyond us." This answer will satisfy, challenge and inspire young and old alike and will appeal to churchgoers and non-churchgoers. The Christian message comes through in the midst of a realistic teen-age situation, cleanly and without cloying. Swift-moving plot episodes highlight the opportunities facing the church.

Screen writer James Callier has skillfully brought into focus the contemporary plight of both teen-agers and parents. A sensitive script, produced by World Wide Pictures under the direction of Dick Ross

Friday & Saturday - 8:00 P. M.

## "The Appaloosa"

"Journey to the Far Side of the Sun"  
Preview - 10:30  
Sunday - 2:30

## ROGUE THEATRE

**Dr. M. V. Cobb**  
CHIROPRACTOR  
256-1133  
310 South Main  
Shamrock, Texas

**Dr. Jack L. Rose**  
OPTOMETRIST  
Office Hours:  
Tues.: 9 A.M.-5 P.M.  
Fri.: 2 P.M.-5 P.M.  
207 N. Wall  
Shamrock, Texas  
Phone: 256-3203

**COMPLETE INSURANCE COVERAGE**  
John C. Vise Agency  
117 W. Texas Street  
Wheeler, Texas

**For State Representative:** (79th Legislative Dist.)  
RAY TROSPER  
BILL NIX  
JIM GRAVES  
DAVID E. HOLT  
JACK HART

**For District Judge** (31st Judicial District)  
BRUCE L. PARKER  
GRANGER McILHANY

**For County Judge:** (Wheeler County)  
GEO. W. HEFLEY  
GARLAND ABERNETHY  
PAUL MACINA

**For County Clerk:**  
HARRY WOFFORD  
**For District Clerk:**  
PAUL TOPPER

**For County Treasurer:**  
PALMER SIVAGE  
**For Superintendent:**  
WENDELL MORGAN

**For Commissioner:** (Precinct 2)  
O. W. PENDLETON

**For Justice of the Peace** (Precincts 1&2)  
DICK GUYNES  
**For Constable** (Precinct 1&2)  
O. F. "Pappy" HOLT

# Allison News

by Mrs. Lester Levitt  
Mrs. Claude McMillin from Wellington is spending the week with her sister, Mr. and Mrs. Archie Dillon.

Mr. and Mrs. Lester Levitt are visiting in Panhandle with the Lyn Levitts and in Stinnett with Roy Langfords.

Mr. and Mrs. Jack Grayson visited with Hattie Grayson in the Cheyenne, Okla. hospital Sat. Mrs. Grayson is better at the time of writing.

Mr. and Mrs. Joe Dukes Garland, Bevard and Diann Zybach attended a birthday dinner for Mrs. Dukes Grandmother, Mrs. Fannie Brady, who was 100 years old, at the home of Mrs. Brady's daughter, Mrs. J. H. Lisle of Canyon Sat.

Mr. and Mrs. Alvin Woodward and Rhonda from Woodson, Texas spent Sat. night and Sunday with the Joe Dukes.

Mr. and Mrs. Clyde Vin-

son from Pampa were in Allison Sat. working on their house and visiting relatives.

Lynda Miller from Amarillo was visiting her parents, Mr. and Mrs. Rex Miller, over the week end.

Mrs. Bessie Megee spent the week end in Elk City with her daughter and family the Elmer Brown.

Several from Allison attended the Regional meet at Lubbock over the week end. Suzann Lohberger, Ready Writing, Terry Grayson and Ken Higdon, Judaina team, George Crawford, Broad jump, Alton Lohberger, shot put, Jim Miller, 220, High jump, Jim paced 5th in the 220. Mr. and Mrs. Verne Lohberger took Suzann and Mr. Dowson took the track team and Mr. McCasland took the Judging team.

Dinner guests in the Leon Lane home Sunday

were: Mr. and Mrs. Charles George and family, Mr. and Mrs. Charles Elliott and family and Mr. and Mrs. A. E. Miller and family from Pampa, Mr. and Mrs. Perry Elliot and family, Lowton, Mr. and Mrs. Mike Dyer, Mr. and Mrs. Normal Dyer and Betty Ann, Mr. and Mrs. Bobby Dyer, and son, Mr. and Mrs. David Gilmer and family of Allison and Jimmy Gilmer of Briscoe.

They also visited in the home of Mr. and Mrs. Frank George. Mrs. George has been on the sick list and spent part of last week in the Cheyenne hospital.

Mr. and Mrs. Buck Miller from Berger visited in the Damer Miller home over the week end.

Mr. and Mrs. Millard Donaldson were in Wheeler Monday shopping.

Mr. and Mrs. George

Markham from Canyon visited the Bob Markhams over the week end.

Mr. and Mrs. Lester Hall were dinner guest in the James Hall home Sunday. In the afternoon Mr. and Mrs. James Hall visited Mrs. J. R. Hall in Elk City.

Mr. and Mrs. Reynolds, Mobeetie, Mr. and Mrs. Gary Hall were dinner guests in the Monroe Reynolds home Sunday.

Dinner guests in the Red Dukes home Sunday were Mr. and Mrs. Dave Dukes, Mr. and Mrs. Joe Dukes and family, Mr. and Mrs. Alvin Woodson and Rhonda from Woodson.

Mr. and Mrs. Vance Boydston and Kevin visited friends in Dalhart and Amarillo over the week end.

Roy Morse and Cletus Green visited in Dalhart Sunday.

## Mrs. Davidson Hosts '54 Study

The '54 Study Club met April 24, 1970, with Mrs. Floyd Davidson. The meeting was called to order by the president, Mrs. Carroll Adams. The reading of the minutes and business meeting was discussed.

The program was turned over to Mrs. Davidson, who in turn introduced Mrs. Clarence Killingsworth, who gave interesting suggestions for redoing faded artificial flowers for Memorial Day sprays. She also had other beautiful hand work that she had done.

Next Mrs. Davidson introduced Mrs. Pearl Jones. She gave an interesting talk on her trip to Saudi Arabia this past winter. She dressed in the silk gown of the Arabian women called an "Abia". This is a show length square of silk with side seams, arm holes and a head hole. A black veil covering the face completely conceals the features and form of the wearer.

Mrs. Jones visited her son and his family in an American built oil camp. Every convenience is available for the American people. She made trips each day to see Arab forts over 1,000 years old and Arab cities and shops. The Arabs frown upon the clothing customs of the American and European women and they were careful to wear no pant suits or short dresses while visiting Arab quarters. If you weren't dressed correctly you weren't waited on.

Bus travel in this country wasn't pleasant. The busses were outmoded, crowded, and the drivers less than efficient.

Mrs. Jones collected

shells from the coast line on the Persian Gulf and similar shells from the sand 80 miles inland. She showed slides taken over there also. This was a very interesting program.

Delicious refreshments were served to 3 guests: Mrs. Clarence Killingsworth, Mrs. Pearl Jones and Mrs. Curti Moore.

Members were Meses: C. C. Crowder, Lloyd Davidson, George Weems, Joe Rogers, Harvey Davis, Fred Wood, Carroll Adams, Ola Underwood and the hostess, Mrs. Floyd Davidson.

## Youth Rally

This is to remind you of our upcoming Youth Rally May 2. Registration will begin at 12:30, and the program will start at 1:00. Included in the program will be a question and answer session. Pencils, paper, and a box will be provided for the questions.

There will be one change in our program. Jack Pape from Pampa will speak in Brother Jim Ravanelli's place along with Brother Richard Rogers. Also featured will be the film that was shown at the New York World's Fair on "What is Christianity?"

The evening meal will be furnished at about 5:30 in the school cafeteria, and entertainment will be provided by the Second In Line, a musical group from Lubbock.

## CARD OF THANKS

I would like to express my appreciation to friends and loved ones for the cards, visits and Prayers during my recent stay in the hospital. Special thanks to Dr. Barbour.

God bless each and everyone.

Ira Passons

# BUSINESS DIRECTORY

**TEXAS PRESS ASSOCIATION**  
MEMBER SINCE 1970

Published Every Thursday at Wheeler, Texas, By...

**THE WHEELER TIMES**  
P.O. Box 187  
Phone: 826-3123

Entered as second-class matter December 18, 1933, at the Post Office at Wheeler, Texas 79096, under the act March 3, 1879.

**Louis C. Stas, Owner and Publisher**  
SUBSCRIPTION RATES:  
Wheeler County.....\$3.00  
Outside Wheeler County.....\$4.00

**WRIGHT FUNERAL HOME**  
24-Hour  
AMBULANCE  
Phone: 806-826-5214

**FOR ALL YOUR Farm Supply Needs**  
WHEELER CO. PRODUCE  
Wheeler, Texas

**WHEELER REDI-MIX**  
REDE-MIX CONCRETE SAND  
Washed Gravel-All Sizes  
Office Hours: 7:30 to 5:00  
Phone 806-826-3223

**Dr. Marion Roberts**  
OPTOMETRIST  
112 W. Kingsmill  
Pampa, Texas

**ZENITH TV - RADIO SALES & SERVICE**  
Call 826-5769  
Wheeler Radio & Refrig. Service  
L. C. Lafin, Owner

**GUARANTEED AUTO GLASS INSTALLATION & Body Repair**  
**GARRISON SERVICE**  
Phone: 826-5515  
Wheeler, Texas

**TRACTORS - IMPLEMENTS PARTS and SERVICE**  
**HIBLER IMPLEMENT CO.**  
Wheeler, Texas

**Let Me Write It . . .**  
**GEO. RICHARDSON**  
All Types Of INSURANCE

**SAW SHARPENING**  
All Kinds Satisfaction Guaranteed  
**Mobeetie Saw Shop**  
R. St. John  
Phone 845-2325 Mobeetie

**ONE STOP SHOP**  
204 E. Texas Street

**STA-RITE PUMPS**  
Sales & Service

New Hours: 8:00 till 10:00 A.M. Monday thru Saturday.

**THE CHOICE OF TEXAS ATTORNEYS BY 62%**

In a poll of attorneys conducted by the State Bar of Texas, 62 percent indicated Judge Truman Roberts as their choice for the Texas Court of Criminal Appeals . . . You can place your trust in a man who merits this widespread approval by his fellow lawyers and judges.

**Vote for Judge TRUMAN ROBERTS**  
Texas Court of Criminal Appeals  
Saturday, May 2

(Pol. Ad. paid for by Truman Roberts Campaign Committee)  
Abner McCall, Chairman

**VOTE FOR: GARLAND C. ABERNETHY**  
Candidate For  
**COUNTY JUDGE**  
Wheeler County

**Stands for . . .**  
Law and Order  
Sound Local Government  
Development of Area Industry  
Efficient Use of County Funds

Qualified for the office in formal education as well as by extensive training and practice in business, finance and public relations.

If elected I promise to do my utmost to perform the duties of the office in such a manner that will verify your confidence in me.

I sincerely solicit your vote and support.

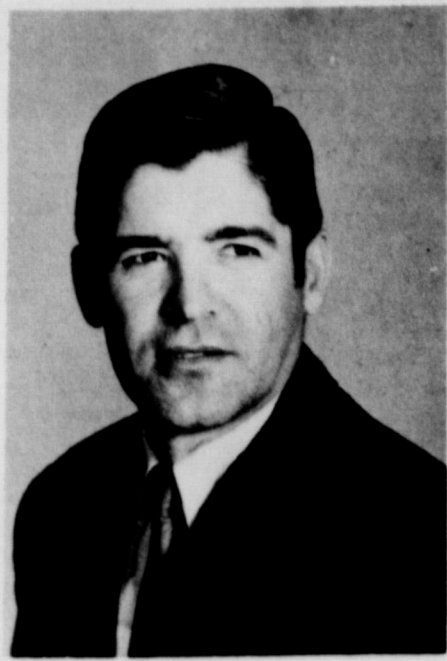
We as Americans have the great privilege of being permitted to vote for the person of our choice; A precious freedom a great many countries do not have; so make a special effort to go to the Polls and exercise this right in the Democratic Primary Saturday, May 2, 1970.

Paid for by Garland Abernethy



LET'S ELECT . . . .

**PAUL T. MACINA**  
(A QUALIFIED MAN)  
**COUNTY JUDGE**



**PAUL WILL WORK FOR:**  
Development of Area Industry  
Efficient Use of County Funds  
Sound Local Self Government  
An Equal Voice for All Wheeler County  
Objective Law Enforcement

**Paul Believes That . . .**

1. Judges cannot avoid issues, county, federal or state.
2. Each case must be judged on its own merits.
3. A contemporary, effective leadership is needed for the present and in planning for future generations.

LET'S ELECT . . .

**PAUL T. MACINA**  
**COUNTY JUDGE--WHEELER COUNTY**

Political advt. paid for by Wheeler County friends of Paul T. Macina, Robert Adams, Chairman.

Notice Of

Membership Meeting

**WHEELER COUNTY PRODUCE ASSOCIATION**

To Be Held At The

**STORE**

Saturday, May 2, 1970

Doors Open At 10:00 A.M.

You are invited to come by the store any time between 10:00 and 4:00 o'clock. There will be a door prize and refreshments for each member that comes.

Each member will register and sign a card for the drawing at 4:00 o'clock. You need not be present if your name is drawn to get your prize.

There will be 20 door prizes. Each name drawn receives a \$5.00 gift.

Two directors are to be elected. You will vote for the director of your choice.

Financial Statement on back side.

**DIRECTORS**

C. B. Brotherton, Jr. - President  
Irven Hink - Vice-President  
Thomas R. Helton - Secretary  
Lindsey McCasland - Member  
Grant Meek - Member  
V. B. Hardcastle - Manger

*Mobeetie News*

Miss Ora Pearl Cowan and Mrs. Alice Dolloff of Amarillo visited over the weekend with Bill and Jim Cowan.

Mr. and Mrs. Lester Reynolds and daughter of Pampa was visitors in the First Baptist Church Sun.

Mr. and Mrs. Pat Bradley and children of Lela visited Sunday in the First Baptist Church.

Mrs. Maida Allen and Liz Ann visited Sunday with Mr. and Mrs. James Lester and children of McLean. Mr. and Mrs. E. F. Lester was also there.

Ada Lou had fixed Mrs. Lester a birthday dinner.

Mr. and Mrs. Jerry Rector, Lynn and Stevie of Amarillo visited Sunday with Mr. and Mrs. J. B. Rector.

Mr. and Mrs. Dewey Kysar and Shon of Pampa visited over the weekend with Mrs. Bert Kysar.

Mr. and Mrs. Don Quarles and daughter visited Saturday in Amarillo with Mr. and Mrs. Tiny Simpson and children.

Mrs. Bert Kysar spent part of last week visiting her sister in Amarillo, Mr. and Mrs. Harvey Morton.

Mr. O. G. Beck is in Parkview Hospital and is real sick. Mr. and Mrs. Wayne Leatherman and Allen are on their way home from Grand Forks, North Dakota.

Mrs. Bert Kysar spent part of last week visiting her sister in Amarillo, Mr. and Mrs. Harvey Morton.

Mr. O. G. Beck is in Parkview Hospital and is real sick. Mr. and Mrs. Wayne Leatherman and Allen are on their way home from Grand Forks, North Dakota.

Mrs. Bert Kysar spent part of last week visiting her sister in Amarillo, Mr. and Mrs. Harvey Morton.

Mr. O. G. Beck is in Parkview Hospital and is real sick. Mr. and Mrs. Wayne Leatherman and Allen are on their way home from Grand Forks, North Dakota.

Mrs. Bert Kysar spent part of last week visiting her sister in Amarillo, Mr. and Mrs. Harvey Morton.

Mr. O. G. Beck is in Parkview Hospital and is real sick. Mr. and Mrs. Wayne Leatherman and Allen are on their way home from Grand Forks, North Dakota.

Mrs. Bert Kysar spent part of last week visiting her sister in Amarillo, Mr. and Mrs. Harvey Morton.

Mr. O. G. Beck is in Parkview Hospital and is real sick. Mr. and Mrs. Wayne Leatherman and Allen are on their way home from Grand Forks, North Dakota.

Mrs. Bert Kysar spent part of last week visiting her sister in Amarillo, Mr. and Mrs. Harvey Morton.

Mr. O. G. Beck is in Parkview Hospital and is real sick. Mr. and Mrs. Wayne Leatherman and Allen are on their way home from Grand Forks, North Dakota.

Mrs. Bert Kysar spent part of last week visiting her sister in Amarillo, Mr. and Mrs. Harvey Morton.

Mr. O. G. Beck is in Parkview Hospital and is real sick. Mr. and Mrs. Wayne Leatherman and Allen are on their way home from Grand Forks, North Dakota.

Mrs. Bert Kysar spent part of last week visiting her sister in Amarillo, Mr. and Mrs. Harvey Morton.

Mr. O. G. Beck is in Parkview Hospital and is real sick. Mr. and Mrs. Wayne Leatherman and Allen are on their way home from Grand Forks, North Dakota.

Mrs. Bert Kysar spent part of last week visiting her sister in Amarillo, Mr. and Mrs. Harvey Morton.

Mr. O. G. Beck is in Parkview Hospital and is real sick. Mr. and Mrs. Wayne Leatherman and Allen are on their way home from Grand Forks, North Dakota.

Mrs. Bert Kysar spent part of last week visiting her sister in Amarillo, Mr. and Mrs. Harvey Morton.

Mr. O. G. Beck is in Parkview Hospital and is real sick. Mr. and Mrs. Wayne Leatherman and Allen are on their way home from Grand Forks, North Dakota.

Mrs. Bert Kysar spent part of last week visiting her sister in Amarillo, Mr. and Mrs. Harvey Morton.

Mr. O. G. Beck is in Parkview Hospital and is real sick. Mr. and Mrs. Wayne Leatherman and Allen are on their way home from Grand Forks, North Dakota.

Mrs. Bert Kysar spent part of last week visiting her sister in Amarillo, Mr. and Mrs. Harvey Morton.

Mr. O. G. Beck is in Parkview Hospital and is real sick. Mr. and Mrs. Wayne Leatherman and Allen are on their way home from Grand Forks, North Dakota.

Mrs. Bert Kysar spent part of last week visiting her sister in Amarillo, Mr. and Mrs. Harvey Morton.

Mr. Bobby Risner of Amarillo visited his parents, Mr. and Mrs. Frank Risner over the weekend.

Mr. A. A. Burch left Pampa with his daughter, Mrs. Mary Cooper of La Habra, Calif. to visit in Jacksonville, Texas with his granddaughter and then they will return to Calif. where Mr. Burch will visit for several months.

Mr. and Mrs. D. L. Rector visited Sunday afternoon with Mr. and Mrs. Curtis Kidwell in Wheeler.

Mr. and Mrs. T. A. Richardson of Sayre, Okla. visited their daughter, Mr. and Mrs. Calvin Stuart and boys Sunday.

Mr. Buck Scribner was to enter Nicholas Hospital in Plainview Mon and have surgery Tues. morning. Hope he is recovering by print time.

Mr. and Mrs. E. E. Johnston visited Thurs. night in Amarillo with Ella's sister, Mrs. A. B. Guynes.

Mr. and Mrs. Horace Blair and James of Gruver visited over the weekend with Mr. and Mrs. Gene Gudge and Ronald Wayne.

Mr. and Mrs. Buck Hooker and children of Pampa visited Saturday with his parents, Mr. and Mrs. S. B. Hooker.

Mr. and Mrs. Shorty Schott of Gravette, Ark. visited most of last week and this week with friends. They have stayed with the Roy Johnstons.

Mr. and Mrs. W. E. Wilborn and his mother of Barger visited Sunday with Mr. and Mrs. Roy Johnston.

Mrs. Bonnie Hagan returned home after visiting in San Antonio with her daughter, Mr. and Mrs. Bob Helton and children.

Mrs. Vernon Hooker

spent Mon. in Pampa helping Aunt Mint Owsalt celebrate her 93rd birthday. Congratulations to Car-

la Ridgeway on winning her spelling contest and getting to go to state in spelling.



**BOB ARMSTRONG**

A new leader of unquestioned integrity . . . a unifying voice for all the people of Texas.

"He will open the doors . . . so that the people may know how their land business is being conducted."

—HOUSTON POST

"A keen sense of responsibility . . . sound background of experience."

—SAN ANTONIO EXPRESS

"The people have the chance to get back their land commissioner's office . . . Armstrong can furnish the leadership."

—FORT WORTH STAR-TELEGRAM

"Armstrong will follow sound conservation practices to protect the resources of Texas for future generation."

—DALLAS MORNING NEWS

"Bob Armstrong holds hope for a stronger land office."

—CORPUS CHRISTI CALLER-TIMES

**ELECT** Democratic Primary

**BOB ARMSTRONG**

for LAND COMMISSIONER

(Pol. Adv. Paid for by The Bob Armstrong Committee—Bill Green, Chairman)



LET'S ELECT. . .

**JIM GRAVES**

DEMOCRATIC CANDIDATE FOR  
STATE REPRESENTATIVE  
79th DISTRICT

**JIM GRAVES, WILL WORK FOR**

- ★ SOUND LOCAL SELF GOVERNMENT
- ★ OBJECTIVE LAW ENFORCEMENT
- ★ IMPROVED AGRICULTURE PRODUCTION
- ★ BETTER EDUCATION FOR OUR YOUTH
- ★ DEVELOPMENT OF AREA INDUSTRY
- ★ EFFICIENT USE OF STATE FUNDS

**JIM GRAVES IS QUALIFIED**

OLD ENOUGH TO EVALUATE OUR PROBLEMS—YOUNG ENOUGH TO DO SOMETHING ABOUT THEM.

Pd. Pol. Adv. By Jim Graves



*The Restless Ones*  
inside the bright, turbulent world of today's youth . . .

**COMING**  
**Friday, May 1st**

FILM STARTS AT 7:30 P.M.

**ASSEMBLY OF GOD**  
**CHURCH AUDITORIUM**

**The Public Is Invited**

Special screen appearance **BILLY GRAHAM**

**Finest Quality Reasonable Prices**

8'-10'-12'-14' and Double widths available.  
Col. Dick Bayless, Mgr.  
Greenbelt Sales  
1414 N. Hobart  
Ph. 669-2351  
Pampa, Texas



# Briscoe News

the Horace Fillingims, were Mr. and Mrs. E. G. Fillingims and Mrs. Rose, Mr. and Mrs. Willis Fillingim and Mary.

Mr. and Mrs. Marvin Cox and children spent the weekend with her parents the LaFoy Vise, others there for Sunday dinner were Mr. and Mrs. Roy Meadows, Eddy and Lucy, Mr. and Mrs. Dan Gatlin and children and Gaddy Vise. Lyn Hefley visited in the afternoon.

Mr. and Mrs. Ted Nelson recently attended the 40th Wedding Anniversary of her parents, Mr. and Mrs. Wiley Copeland in Mangum, Okla. Mr. Copeland has improved since surgery.

James Hefley arrived home Friday from Vietnam on a 30 day leave to see his father, Loyd Hefley. Loyd Hefley is still in the Canadian hospital, he is showing improvement in health. Lyn Hefley came home last Wed. and went back to college Sunday.

Minister and Mrs. Sandifer Cole ate dinner Sunday with the Jack Meek family.

Sandra Meek and Allene Stovall came by and visited Sandra's parents Sunday afternoon on their way home to Canyon. They had spent the week end in Kansas.

Evolyn and Kathy Meek shopped in Pampa Sat. Hoyle Helton visited in Wheeler last Thursday with Mrs. J. C. Helton and Oma Dyer.

Christine Atherton and boys and Mrs. Oral Helton visited in Pampa Friday

with the Ted Atwoods and shopped.

NI F. Young Jr. came by Wed. and Mrs. Oral Helton and Mr. and Mrs. Colie Parker went with him to Altus and attended their Uncle's funeral, Mr. Hugh B. Grider, Sr.

Mr. and Mrs. Garry Parker spent Friday night and Saturday with the Willie Parkers.

Visitors in the Colie Parker home the past week were Mr. and Mrs. Jessie Hall, Claude Parker, Mr. and Mrs. Oral Helton.

Week end guests were: Mr. and Mrs. Gary Parker and boys, Mr. and Mrs. Willie Parker and girls, Zetha Dougherty and boys, and Sun. were Diana Castleberry visited and ate supper.

The Herbert Finsterwalds attended the Gospel meeting in Mobeetie every night last week at the Church of Christ.

Mr. Carl Zyback of Canadian ate dinner Thursday with the Earnest Zybachs, in the afternoon they all visited the Bill Begerts in Allison.

Mr. and Mrs. Clarence Zyback ate dinner Sunday with the Elbert Zybachs and in the afternoon they visited Truman Zybachs in Sayre.

Georgia Tipps and

Genia Zyback shopped in Pampa last Wed.

Last report on Walter Wyant was last Monday. His folks got word he had been taken off the critical list. Walters friends can write him at this address:

SSG James W. Wyant  
464-62-1207  
359 Tu. Tran. Co. POL  
APO San Francisco,  
Calif. 96318  
% Hospital Mail Section  
96347

Mr. and Mrs. Benny Wyant and children and Eugene Wyant of Pampa came down fishing at Finsterwalds Lake and visited the Cecil Meadows family Saturday.

Mr. and Mrs. Tommy Hayes and Jimmy visited the Jack Hayes over the week end.

Mr. and Mrs. Claud Parker visited the Lester Hudson Sat. night.

Mr. and Mrs. Lester Hudson ate dinner Sunday with the Oden Hudsons.

Mr. and Mrs. Ronny Gatlin and boys spent the week end with the Oden Hudsons.

Mr. and Mrs. Lester Hudsons visited the Claud Parkers last Tues. night.

Mrs. Glen Gudath is visiting her children in Dallas.

Mr. and Mrs. Gene Keelin spent the week end with the Travis Keelins, Jerry Keelins and girls, Elaine Keelin and Children visited Sunday. Mrs. Eula Bradstreet visited Monday.

Minister and Mrs. George Knight ate dinner Sunday with the Bill Jacksons.

Gene Wayne Helton had surgery on his back Monday at Shattuck hospital and his brother, Rex Helton came in from Calif. Rex came by Pampa and brought his daughter, Brinda with him. Brinda's mothers house burned last week.

Mr. and Mrs. Colie Parker visited the Claud Parkers Monday night.

Myrtle Hunter of Pampa

spent the week end with the Cliff Walkers and William and Verne Lohberger visited them Sunday.

## PTA Conference

The 15th annual conference of the 19th district of Texas Congress of parents and teachers was held April 20-21st, 1970 at the 1st Christian Church in Perryton, Texas. Mrs. J. B. McCray, District President, presided. Mrs. R. O. Stringer of Kirbyville, Texas, Vice President of Texas Congress of PTA gave the keynote address, "PTA Forum For Influence."

Mr. James R. Hill of Irvin, Texas State Youth Protection Chairman, gave a talk on "Living With Responsibility." The Allison PTA received an award of the gavel for the highest increase of membership percentage wise for 1969-70 with 10% increase.

Those attending the meeting from Allison were President, Mrs. Boyd Huff, Vice-President, Mrs. Jerry Davidson and District Membership Chairman, Mrs. Leldon Harrison.

## CARD OF THANKS

Our deepest appreciation to the many, many friends who were so kind during the loss of our beloved husband and father, Elbert Tillman.

The Tillman Family

## Library News

Mr. Dorsie Hutchinson is responsible for the nice new porch in front at the Library.

New books at Wheeler Public Library this week are: Three Historical novels: one by Jan Westcott: "A Captain for Elizabeth", Miss Westcott is one of our favorite authors. "Rujub the Juggler" a collector's item by Henty. Is about the Sepoy uprising in India 1857.

We would like to thank Mr. Paul Topper for the paper back books he contributed. Our patrons will enjoy them.

Be all you can be-read.

## Johnson-Shields Vows Are Exchanged in Iowa Park

Miss Sarah Elizabeth Shields became the bride of Steven Ray Johnson in the Faith Baptist Church Friday evening. The Rev. Gerald Tidwell was the officiant.

The bride is the daughter of Mr. and Mrs. Joe V. Forsythe and the bridegroom's parents are Mr. and Mrs. H. C. Johnson.

The altar decorations featured twin candelabra and arrangements of white gladioli and yellow carnations.

Given in marriage by her father, the bride chose a formal gown of white peau de soie accented with Chantilly lace and pearl trim at the Empire waistline and on the front of the skirt. A crown of seed pearls held her veil and she carried yellow and white carnations.

Miss Jo Williams was maid of honor. She wore a pastel yellow voile dress flocked with daisies with a moire taffeta bow in the back. Her veil was attached to a Dior bow and she carried yellow and white carnations.

Harold Reid of Pampa was best man.

Ushers were Edward White and Douglas Johnson.

The wedding reception held in the Fellowship Hall of the church was hosted by the bride's parents. Reception assistants were Misses Brenda Trahan, Debbie Forsythe, Rhonda Johnson and Mrs. Nina Williams.

The bride is a student at Iowa Park High School and she is also attending Carter's School of Beauty in Wichita Falls.

The bridegroom was graduated from Iowa Park High School and is employed at Johnson Elevator.

You can vote with confidence



FOR **BEN RAMSEY**  
For RAILROAD COMMISSIONER OF TEXAS

**THE MAN TEXANS KNOW and RESPECT**

(Pol. Adv. Paid for by Ben Ramsey)

**WE SELL ELECTRIC WATER HEATERS**



Call us when you have water heater troubles. We'll take out the old, put in a sparkling new electric model . . . we take care of all the fuss and bother. And, if you like, you can pay it out on your monthly electric bill.



**WATER HEATER TROUBLES? CALL US! WE'LL DO THE WORRYING!**

## FRANK PHILLIPS COLLEGE

Borger, Texas

Summer Registration June 1st

Fall Registration Aug. 26th & 27th

# VOTE FOR THE MAN

With Many Years Of Solid Accomplishment In Office

## VOTE FOR JUDGE GEORGE HEFLEY

For

# Wheeler County Judge

Democratic Primary - May 2, 1970

DURING THREE FOUR-YEAR TERMS UNDER JUDGE HEFLEY'S ADMINISTRATION, WHEELER COUNTY HAS MADE GREAT PROGRESS WITHOUT INCURRING ANY BONDED INDEBTEDNESS.:

- COUNTY RETIRED THE LAST OF OUTSTANDING BONDS IN 1962 AND IS NOW DEBT FREE.
- THERE HAS BEEN NO TAX RATE INCREASES DURING JUDGE HEFLEY'S TERMS IN OFFICE.
- PER CAPITA COST OF GOVERNMENT IN WHEELER COUNTY IS EXTREMELY LOW.
- THERE HAS BEEN NO RE-EVALUATION OF PROPERTY FOR COUNTY TAXING PURPOSES UNDER JUDGE HEFLEY'S LEADERSHIP.

UNDER JUDGE HEFLEY'S ADMINISTRATION, COUNTY-WIDE ACCOMPLISHMENTS HAVE BEEN MANY AND THE COST MINIMAL.

- REMODELED AND MODERNIZED THE COURTHOUSE IN WHEELER AT A COST OF ONLY \$60,000.
- ACQUIRED MODERN EQUIPMENT ADEQUATE FOR THE WORK AT HAND AND EQUIPMENT IS WELL-MAINTAINED.
- ASSISTED IN PROVIDING ADEQUATE RURAL FIRE FIGHTING EQUIPMENT FOR ENTIRE COUNTY.
- CO-OPERATED IN ESTABLISHING POLICE DISPATCHING SYSTEM FOR THE PROTECTION OF THE PEOPLE OF THE COUNTY.
- PURCHASED AND REMODELED OFFICE BUILDING IN SHAMROCK TO HOUSE JUSTICE OF THE PEACE, HIGHWAY PATROL, POLICE DISPATCHER, DEPUTY SHERIFF, DEPARTMENT OF PUBLIC WELFARE AND CONSTABLE OFFICES.
- REMODELED OLD JAIL IN WHEELER TO HOUSE THE COUNTY LIBRARY AND MUSEUM.
- REMODELED THE COUNTY JAIL.
- WORKMEN'S COMPENSATION INSURANCE PROVIDED FOR ALL COUNTY EMPLOYEES.
- RENDERED SERVICES TOO NUMEROUS TO MENTION TO CITIES, SCHOOL DISTRICTS, CHURCHES, CEMETERY ASSOCIATIONS AND AIRPORTS.

JUDGE HEFLEY IS WHEELER COUNTY JUDGE, a judge for the whole county serving no special interests. He has always been THE JUDGE with the well-being of all the people of the county uppermost in his mind and heart... known for his fair and impartial decisions.

An active member of three Texas County Commissioners and Judges Associations--Texas, West Texas, and Texas Panhandle--Judge Hefley has reflected great credit upon his home county.

**LET'S CONTINUE TO BENEFIT FROM HIS WISDOM AND EXPERIENCE LET'S RE-ELECT JUDGE GEORGE W. HEFLEY**

(Political Advertisement Paid For By Wheeler County Friends Of Judge George W. Hefley, R. C. Lewis, Chairman)



# DISCOVER DOLLAR VALUES



P.S. BEEF  
STEAK  
SALE



HERE THEY ARE! BIG SAVINGS!

Pioneer  
**CORNBREAD MIX** 19¢

---

**FLOUR**  
Magic Bake 5 lb. Bag 39¢

MARY BAKER or CAROL  
**COOKIES**  
29c Variety

**4 Pkgs. For \$1**

**Round Sirloin**  
U.S.D.A. CHOICE PERSONALLY SELECTED

**93¢** | **93¢**

**T-Bone** **STEAKS**  
U.S.D.A. Choice P.S. Beef **LB. \$1.39**

**Kleenex**

**BOUTIQUE FACIALS**  
Soft, Beautiful & So Absorbent  
Value Priced Special . . .

**4 125-CT. BOXES \$1**

**Corn**

**GREEN GIANT**  
Whole Kernel Niblet Corn . . .  
Garden Fresh Taste . . . Value Priced

**12-OZ. CAN 21¢**

**Peaches**

**ROYAL GUEST**  
Elberta Peaches . . .  
Value Priced To Save You More

**4 2 1/2 CANS \$1**

**Dog Food** Pet's Choice . . . For That Special Pet **13 15-oz. Cans \$1**

**Relish** Heinz Sweet, Hot Dog, Hamburger, India **4 12-oz. Jars \$1**

**Peanut Butter** Smooth or Crunchy **12-oz. Jar 43¢**

**Green Peas** IGA . . . Great Sweet Taste **5 303 Cans \$1**

**Aluminum Foil** First Pick **4 25-Ft. Rolls \$1**

**Salmon** Rainbow Chum . . . Sea Food Treat at a Value Price **No. 1 Tall Can 79¢**

Mushroom, Peppers or Onions  
**Bar-B-Q Sauce** Heinz **16-oz. Bil. 39¢**

**BREAD** MAGIC BAKE

**Fruit Cocktail** IGA **2 303 Cans 45¢**

**Candy** Tru-Vu Orange Slices or Gum Drops **3 20-oz. Pkgs. \$1**

**Pinto Beans** Tru-Vu . . . Economical Meal Fixings **2 -Lb. Bag 31¢**

**Coffee** Maryland Club **3 lb. Can Only \$2.49**

**Bacon** **GOOD VALUE Thick or Thin**  
for the Breakfast Treat  
Your Family Loves So Much **2-LB. PKG. \$1.39**

**Baking Hen** **COUNTRY HILL**  
Treat Your Family Right This Sunday **LB. 39¢**

**Potatoes** Good Value Shoe String . . . Value Priced **8 300 Cans \$1**

**Cake Mix** Mary Baker . . . **4 19-oz. Boxes \$1**

**6 1 LB. LOAVES \$1.00**

**Wieners** Oscar Mayer All Meat or All-Beef . . . Value Priced **1-Lb. Pkg. 79¢**

**Lunch Meat** Oscar Mayer . . . **1/2-Lb. Pkg. 59¢**

**Crackers** Mary Baker . . . Fresh and Crisp . . . Value Priced **1-Lb. Box 29¢**



**Potatoes**  
**10 -LB. BAG 79¢**

**GOOD VALUE Margarine**  
Pure Vegetable Oil

**5 89¢**  
1-Lb. Ctns.

5 ct. . . Value Priced Special

**Biscuits** **4-oz. Can 6¢**

Medium Grade "A"

**Eggs** **Doz. 45¢**

**TV Lemonade**  
Frozen . . . Pink or Regular

**10 6 Oz. Cans \$1**

Cut Corn, Peas, Peas & Carrots, Leaf or Chopped Spinach

**Vegetables** **6 10-oz. Pkg. \$1**

Good Value Crinkle Cut Frozen French Fries

**Potatoes** **5 -Lb. Pkg. 85¢**

Morton Frozen . . . All Varieties Except Ham

**Dinners** **11-oz. Pkg. 39¢**

**Tomatoes** Vine Ripe **Lb. 19¢**

**Apples** Washington Extra Fancy Starking or Goldens **4 -Lbs. For \$1**

**Yellow Onions** Mild Medium & Delicious **3 -Lbs. For 39¢**

**Squash** Tender Yellow **2 -Lbs. 29¢**

**Rhubarb** Washington Tart Great Variety Item **Lb. 25¢**

**Cucumbers** Slicing **2 For 25¢**

**LANE'S ICE CREAM**  
**1/2 Gal. Ctn. 69¢**

**Fish Sticks** Icelandic Frozen Treat from the Sea **8-oz. Pkg. 39¢**

**Potato Chips** Magic Flake Plain or Ripple **10-oz. Bag 49¢**

**BAN**

**Spray Deodorant** Reg. \$1.19 **VALUE PRICE 77¢**

Prices in this Ad Effective **May 1 & 2**

Tablet for Hay Fever Relief 24-ct. Reg. \$1.35

**Allerest** Value Price **99¢**

Tanya Reg. \$1.00

**Tanning Butter** Value Price **79¢**

Command for Men Reg. 89¢

**Hair Spray** Value Price **49¢**

**CLAY Food Store**  
& **CLAY'S** **IGA SUPERETTE**  
IN WHEELER, TEXAS  
IN MOBETTIE, TEXAS