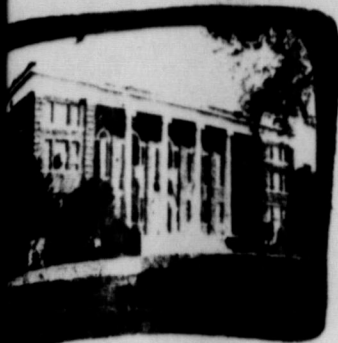


THE WHEELER TIMES

VOLUME 46 NUMBER 37

THURSDAY, AUGUST 21, 1969

SINGLE COPY 10¢



Mary Puryear
Bake Queen

Wheeler County 4-H Show Queen for 1969 is Mary Puryear, daughter of Mr. and Mrs. Jeff Puryear of Briscoe. She will represent this county at the District 4-H Show in Amarillo on August 23, 1969. Mary has been a member of the Briscoe 4-H Club for four years. During the year she had completed projects in Food Nutrition, Money Management, and Community Service. She has won several ribbons and honors in her projects in Food Nutrition. This past spring she won the District 4-H Food Show in the Dairy Foods division. Last year she represented Wheeler County in the District 4-H Show and placed 5th out of 10 girls.

The purpose of the Better Food Show is to help 4-H girls learn the nutritional value of food and cereal in the diet and to learn the skills of planning, preparing, and scoring products. The products for this year are plain bread, cinnamon rolls, and receiving ribbons were given to Anderson and Ronda of the Shamrock 4-H Community Club.



Senator Ralph Yarborough

Senator Ralph Yarborough came to Wheeler Tuesday morning for a short visit with the Wheeler Voters. Sen. Yarborough opened the meeting to questions. The round table discussion was held in the meeting room of the Production Credit Office at 10:30. Billings of the Wheeler Soil Conservation Service, requested Sen. Yarborough help in clearing the way for the water shed projects on Sweetwater creek. Sen. Yarborough suggested the farm organizations in Wheeler County get in touch with their related organizations in Oklahoma.

Sen. Yarborough was commended on his stand to increase personal tax exemption from \$600 to \$1,000. Sen. Yarborough explained that the figure of \$889,000 is felt to be a good estimate on the amount needed this day to care for one child for a period of one year.

Parkview Hospital 188 Ex-Students, Teachers Register At Reunion Sat.

The Board of Directors of Parkview Hospital announced today that effective Sunday August 23rd, room rates at the Hospital will be raised.

The new rates will be as follows: Semi-private \$24/day, Private \$27/day and two patients/room with shared bath, \$20/day.

The Board of Directors regrets this action but prices to the hospital from drug firms and Medical Supply companies are now to the point where our present charges can no longer absorb these costs. Even with these price increases, the Board noted that our hospital is still being operated at a lower cost to the patient than other Texas panhandle hospitals.

The Board also wishes to inform the citizens of our Hospital District that ALL patients NOT having Hospitalization Insurance or who are not indigents of the district MUST pay a deposit, before entering the hospital unless admitted as an EMERGENCY patient by your physician.

All outpatient services are also to be a cash ONLY basis. Unless the services required are from an accident, insurance companies do NOT pay for these procedures.

Sen. Yarborough Visits Wheeler

Senator Ralph Yarborough came to Wheeler Tuesday morning for a short visit with the Wheeler Voters. Sen. Yarborough opened the meeting to questions. The round table discussion was held in the meeting room of the Production Credit Office at 10:30. Billings of the Wheeler Soil Conservation Service, requested Sen. Yarborough help in clearing the way for the water shed projects on Sweetwater creek. Sen. Yarborough suggested the farm organizations in Wheeler County get in touch with their related organizations in Oklahoma.

Sen. Yarborough was commended on his stand to increase personal tax exemption from \$600 to \$1,000. Sen. Yarborough explained that the figure of \$889,000 is felt to be a good estimate on the amount needed this day to care for one child for a period of one year.

Sen. Yarborough was commended on his stand to increase personal tax exemption from \$600 to \$1,000. Sen. Yarborough explained that the figure of \$889,000 is felt to be a good estimate on the amount needed this day to care for one child for a period of one year.

Sen. Yarborough was commended on his stand to increase personal tax exemption from \$600 to \$1,000. Sen. Yarborough explained that the figure of \$889,000 is felt to be a good estimate on the amount needed this day to care for one child for a period of one year.

Wheeler School Budget Approved

The Board of Trustees of the Wheeler Independent School District met in a special session Monday night August 18 at 8:00 P.M. for the purpose of approving a Budget for the 1969-70 school year.

The Budget as approved will require a tax increase of forty cents on the \$100.00 valuation. The increase in the budget was brought about by the increase in Teacher salaries approved by the State Legislature, normal increase in maintenance of school plant and a deficit of \$17,000.00 from the current 1968-69 Budget. The Budget also anticipates within the School District, The 1969-70 School Budget sets the school tax rate at \$1.85. The rate includes 48¢ for Interest and Sinking Fund, which is for bond payment only, and \$1.37 for maintenance and operation.

The Budget as approved will require a tax increase of forty cents on the \$100.00 valuation. The increase in the budget was brought about by the increase in Teacher salaries approved by the State Legislature, normal increase in maintenance of school plant and a deficit of \$17,000.00 from the current 1968-69 Budget. The Budget also anticipates within the School District, The 1969-70 School Budget sets the school tax rate at \$1.85. The rate includes 48¢ for Interest and Sinking Fund, which is for bond payment only, and \$1.37 for maintenance and operation.

The Budget as approved will require a tax increase of forty cents on the \$100.00 valuation. The increase in the budget was brought about by the increase in Teacher salaries approved by the State Legislature, normal increase in maintenance of school plant and a deficit of \$17,000.00 from the current 1968-69 Budget. The Budget also anticipates within the School District, The 1969-70 School Budget sets the school tax rate at \$1.85. The rate includes 48¢ for Interest and Sinking Fund, which is for bond payment only, and \$1.37 for maintenance and operation.

The Budget as approved will require a tax increase of forty cents on the \$100.00 valuation. The increase in the budget was brought about by the increase in Teacher salaries approved by the State Legislature, normal increase in maintenance of school plant and a deficit of \$17,000.00 from the current 1968-69 Budget. The Budget also anticipates within the School District, The 1969-70 School Budget sets the school tax rate at \$1.85. The rate includes 48¢ for Interest and Sinking Fund, which is for bond payment only, and \$1.37 for maintenance and operation.

The Budget as approved will require a tax increase of forty cents on the \$100.00 valuation. The increase in the budget was brought about by the increase in Teacher salaries approved by the State Legislature, normal increase in maintenance of school plant and a deficit of \$17,000.00 from the current 1968-69 Budget. The Budget also anticipates within the School District, The 1969-70 School Budget sets the school tax rate at \$1.85. The rate includes 48¢ for Interest and Sinking Fund, which is for bond payment only, and \$1.37 for maintenance and operation.

The Budget as approved will require a tax increase of forty cents on the \$100.00 valuation. The increase in the budget was brought about by the increase in Teacher salaries approved by the State Legislature, normal increase in maintenance of school plant and a deficit of \$17,000.00 from the current 1968-69 Budget. The Budget also anticipates within the School District, The 1969-70 School Budget sets the school tax rate at \$1.85. The rate includes 48¢ for Interest and Sinking Fund, which is for bond payment only, and \$1.37 for maintenance and operation.

The Budget as approved will require a tax increase of forty cents on the \$100.00 valuation. The increase in the budget was brought about by the increase in Teacher salaries approved by the State Legislature, normal increase in maintenance of school plant and a deficit of \$17,000.00 from the current 1968-69 Budget. The Budget also anticipates within the School District, The 1969-70 School Budget sets the school tax rate at \$1.85. The rate includes 48¢ for Interest and Sinking Fund, which is for bond payment only, and \$1.37 for maintenance and operation.

Area Schools To Begin Year

The new school year will start Friday, August 22, 1969 at 9:00 a.m. with student registration. All students enrolling in the Wheeler Schools should be present. The registration session will begin at 9:00 a.m. and end at 12:00 p.m.

The school buses will run their regular routes. Lunch will not be served in the Cafeteria.

All First grade students are required to furnish their birth certificates, and small-pox vaccination certification. Monday, August 25th, will be the first day for regular classes.

The new school year will start Friday, August 22, 1969 at 9:00 a.m. with student registration. All students enrolling in the Wheeler Schools should be present. The registration session will begin at 9:00 a.m. and end at 12:00 p.m.

The school buses will run their regular routes. Lunch will not be served in the Cafeteria.

All First grade students are required to furnish their birth certificates, and small-pox vaccination certification. Monday, August 25th, will be the first day for regular classes.

The new school year will start Friday, August 22, 1969 at 9:00 a.m. with student registration. All students enrolling in the Wheeler Schools should be present. The registration session will begin at 9:00 a.m. and end at 12:00 p.m.

The school buses will run their regular routes. Lunch will not be served in the Cafeteria.

All First grade students are required to furnish their birth certificates, and small-pox vaccination certification. Monday, August 25th, will be the first day for regular classes.

The new school year will start Friday, August 22, 1969 at 9:00 a.m. with student registration. All students enrolling in the Wheeler Schools should be present. The registration session will begin at 9:00 a.m. and end at 12:00 p.m.

The school buses will run their regular routes. Lunch will not be served in the Cafeteria.

All First grade students are required to furnish their birth certificates, and small-pox vaccination certification. Monday, August 25th, will be the first day for regular classes.

The new school year will start Friday, August 22, 1969 at 9:00 a.m. with student registration. All students enrolling in the Wheeler Schools should be present. The registration session will begin at 9:00 a.m. and end at 12:00 p.m.

The school buses will run their regular routes. Lunch will not be served in the Cafeteria.

All First grade students are required to furnish their birth certificates, and small-pox vaccination certification. Monday, August 25th, will be the first day for regular classes.

The new school year will start Friday, August 22, 1969 at 9:00 a.m. with student registration. All students enrolling in the Wheeler Schools should be present. The registration session will begin at 9:00 a.m. and end at 12:00 p.m.

The school buses will run their regular routes. Lunch will not be served in the Cafeteria.

All First grade students are required to furnish their birth certificates, and small-pox vaccination certification. Monday, August 25th, will be the first day for regular classes.

The new school year will start Friday, August 22, 1969 at 9:00 a.m. with student registration. All students enrolling in the Wheeler Schools should be present. The registration session will begin at 9:00 a.m. and end at 12:00 p.m.

The school buses will run their regular routes. Lunch will not be served in the Cafeteria.

All First grade students are required to furnish their birth certificates, and small-pox vaccination certification. Monday, August 25th, will be the first day for regular classes.

The new school year will start Friday, August 22, 1969 at 9:00 a.m. with student registration. All students enrolling in the Wheeler Schools should be present. The registration session will begin at 9:00 a.m. and end at 12:00 p.m.

The school buses will run their regular routes. Lunch will not be served in the Cafeteria.

All First grade students are required to furnish their birth certificates, and small-pox vaccination certification. Monday, August 25th, will be the first day for regular classes.

Mobeetie

The Mobeetie School will begin the 1969-70 school year on Monday, August 25. School will take up at 9:00 A.M. and dismiss at 2:30 P.M. on Monday. Buses will run an hour later than normal. Therefore, school time will be 8:15 A.M. to 3:35 P.M.

First day activities will include an assembly, registration of students, and a short run of class periods.

The first holiday will be Labor Day, September 1. The Mobeetie teachers will have a Faculty Meeting at 10:00 A.M. on Friday, Aug. 22, in the high school library. Wiley Bailey, Superintendent

The Mobeetie School will begin the 1969-70 school year on Monday, August 25. School will take up at 9:00 A.M. and dismiss at 2:30 P.M. on Monday. Buses will run an hour later than normal. Therefore, school time will be 8:15 A.M. to 3:35 P.M.

First day activities will include an assembly, registration of students, and a short run of class periods.

The first holiday will be Labor Day, September 1. The Mobeetie teachers will have a Faculty Meeting at 10:00 A.M. on Friday, Aug. 22, in the high school library. Wiley Bailey, Superintendent

The Mobeetie School will begin the 1969-70 school year on Monday, August 25. School will take up at 9:00 A.M. and dismiss at 2:30 P.M. on Monday. Buses will run an hour later than normal. Therefore, school time will be 8:15 A.M. to 3:35 P.M.

First day activities will include an assembly, registration of students, and a short run of class periods.

The first holiday will be Labor Day, September 1. The Mobeetie teachers will have a Faculty Meeting at 10:00 A.M. on Friday, Aug. 22, in the high school library. Wiley Bailey, Superintendent

The Mobeetie School will begin the 1969-70 school year on Monday, August 25. School will take up at 9:00 A.M. and dismiss at 2:30 P.M. on Monday. Buses will run an hour later than normal. Therefore, school time will be 8:15 A.M. to 3:35 P.M.

First day activities will include an assembly, registration of students, and a short run of class periods.

The first holiday will be Labor Day, September 1. The Mobeetie teachers will have a Faculty Meeting at 10:00 A.M. on Friday, Aug. 22, in the high school library. Wiley Bailey, Superintendent

The Mobeetie School will begin the 1969-70 school year on Monday, August 25. School will take up at 9:00 A.M. and dismiss at 2:30 P.M. on Monday. Buses will run an hour later than normal. Therefore, school time will be 8:15 A.M. to 3:35 P.M.

First day activities will include an assembly, registration of students, and a short run of class periods.

The first holiday will be Labor Day, September 1. The Mobeetie teachers will have a Faculty Meeting at 10:00 A.M. on Friday, Aug. 22, in the high school library. Wiley Bailey, Superintendent

The Mobeetie School will begin the 1969-70 school year on Monday, August 25. School will take up at 9:00 A.M. and dismiss at 2:30 P.M. on Monday. Buses will run an hour later than normal. Therefore, school time will be 8:15 A.M. to 3:35 P.M.

First day activities will include an assembly, registration of students, and a short run of class periods.

The first holiday will be Labor Day, September 1. The Mobeetie teachers will have a Faculty Meeting at 10:00 A.M. on Friday, Aug. 22, in the high school library. Wiley Bailey, Superintendent

The Mobeetie School will begin the 1969-70 school year on Monday, August 25. School will take up at 9:00 A.M. and dismiss at 2:30 P.M. on Monday. Buses will run an hour later than normal. Therefore, school time will be 8:15 A.M. to 3:35 P.M.

First day activities will include an assembly, registration of students, and a short run of class periods.

The first holiday will be Labor Day, September 1. The Mobeetie teachers will have a Faculty Meeting at 10:00 A.M. on Friday, Aug. 22, in the high school library. Wiley Bailey, Superintendent

The Mobeetie School will begin the 1969-70 school year on Monday, August 25. School will take up at 9:00 A.M. and dismiss at 2:30 P.M. on Monday. Buses will run an hour later than normal. Therefore, school time will be 8:15 A.M. to 3:35 P.M.

First day activities will include an assembly, registration of students, and a short run of class periods.

The first holiday will be Labor Day, September 1. The Mobeetie teachers will have a Faculty Meeting at 10:00 A.M. on Friday, Aug. 22, in the high school library. Wiley Bailey, Superintendent

Hospital Notes

ADMISSIONS
5-21 Fulton Meadows
8-2 Ruby Williams
8-12 William Jamison
8-14 Aaron Williams
Millie Williams
Geniva Farrell
8-15 Sue Kysar
Opal Smith
Jewel Mae Jones
Opal Daughtry
Baby Boy Kysar
8-17 Mary Wofford
Terry Hall
Sylvia Corcoran
LaDonna Holt
8-18 James Williams
Gene Coward
8-19 Lucille Laycock
Anita Reeves
Bertha Medlin
Johnny Curry
8-20 Baby Boy Curry
Marie Benavidez
DISMISSALS
8-13 Sue Kysar
Dorthea Lowery
8-14 Sue Ivey
J.A. Holland
Lillian Holland
Sue Kysar
Suzie Erwin
8-15 Irene Crofton
8-16 Noveta Aderholt
Robert Fulker
8-17 J.T. Johnson
Geniva Farrell
8-18 Aaron Williams
Sue Kysar
Baby Boy Kysar
Ira Passons
8-19 Opal Daughtry
8-20 Mary Wofford
Laura Jo Marshall

ADMISSIONS
5-21 Fulton Meadows
8-2 Ruby Williams
8-12 William Jamison
8-14 Aaron Williams
Millie Williams
Geniva Farrell
8-15 Sue Kysar
Opal Smith
Jewel Mae Jones
Opal Daughtry
Baby Boy Kysar
8-17 Mary Wofford
Terry Hall
Sylvia Corcoran
LaDonna Holt
8-18 James Williams
Gene Coward
8-19 Lucille Laycock
Anita Reeves
Bertha Medlin
Johnny Curry
8-20 Baby Boy Curry
Marie Benavidez
DISMISSALS
8-13 Sue Kysar
Dorthea Lowery
8-14 Sue Ivey
J.A. Holland
Lillian Holland
Sue Kysar
Suzie Erwin
8-15 Irene Crofton
8-16 Noveta Aderholt
Robert Fulker
8-17 J.T. Johnson
Geniva Farrell
8-18 Aaron Williams
Sue Kysar
Baby Boy Kysar
Ira Passons
8-19 Opal Daughtry
8-20 Mary Wofford
Laura Jo Marshall

ADMISSIONS
5-21 Fulton Meadows
8-2 Ruby Williams
8-12 William Jamison
8-14 Aaron Williams
Millie Williams
Geniva Farrell
8-15 Sue Kysar
Opal Smith
Jewel Mae Jones
Opal Daughtry
Baby Boy Kysar
8-17 Mary Wofford
Terry Hall
Sylvia Corcoran
LaDonna Holt
8-18 James Williams
Gene Coward
8-19 Lucille Laycock
Anita Reeves
Bertha Medlin
Johnny Curry
8-20 Baby Boy Curry
Marie Benavidez
DISMISSALS
8-13 Sue Kysar
Dorthea Lowery
8-14 Sue Ivey
J.A. Holland
Lillian Holland
Sue Kysar
Suzie Erwin
8-15 Irene Crofton
8-16 Noveta Aderholt
Robert Fulker
8-17 J.T. Johnson
Geniva Farrell
8-18 Aaron Williams
Sue Kysar
Baby Boy Kysar
Ira Passons
8-19 Opal Daughtry
8-20 Mary Wofford
Laura Jo Marshall

ADMISSIONS
5-21 Fulton Meadows
8-2 Ruby Williams
8-12 William Jamison
8-14 Aaron Williams
Millie Williams
Geniva Farrell
8-15 Sue Kysar
Opal Smith
Jewel Mae Jones
Opal Daughtry
Baby Boy Kysar
8-17 Mary Wofford
Terry Hall
Sylvia Corcoran
LaDonna Holt
8-18 James Williams
Gene Coward
8-19 Lucille Laycock
Anita Reeves
Bertha Medlin
Johnny Curry
8-20 Baby Boy Curry
Marie Benavidez
DISMISSALS
8-13 Sue Kysar
Dorthea Lowery
8-14 Sue Ivey
J.A. Holland
Lillian Holland
Sue Kysar
Suzie Erwin
8-15 Irene Crofton
8-16 Noveta Aderholt
Robert Fulker
8-17 J.T. Johnson
Geniva Farrell
8-18 Aaron Williams
Sue Kysar
Baby Boy Kysar
Ira Passons
8-19 Opal Daughtry
8-20 Mary Wofford
Laura Jo Marshall

ADMISSIONS
5-21 Fulton Meadows
8-2 Ruby Williams
8-12 William Jamison
8-14 Aaron Williams
Millie Williams
Geniva Farrell
8-15 Sue Kysar
Opal Smith
Jewel Mae Jones
Opal Daughtry
Baby Boy Kysar
8-17 Mary Wofford
Terry Hall
Sylvia Corcoran
LaDonna Holt
8-18 James Williams
Gene Coward
8-19 Lucille Laycock
Anita Reeves
Bertha Medlin
Johnny Curry
8-20 Baby Boy Curry
Marie Benavidez
DISMISSALS
8-13 Sue Kysar
Dorthea Lowery
8-14 Sue Ivey
J.A. Holland
Lillian Holland
Sue Kysar
Suzie Erwin
8-15 Irene Crofton
8-16 Noveta Aderholt
Robert Fulker
8-17 J.T. Johnson
Geniva Farrell
8-18 Aaron Williams
Sue Kysar
Baby Boy Kysar
Ira Passons
8-19 Opal Daughtry
8-20 Mary Wofford
Laura Jo Marshall

ADMISSIONS
5-21 Fulton Meadows
8-2 Ruby Williams
8-12 William Jamison
8-14 Aaron Williams
Millie Williams
Geniva Farrell
8-15 Sue Kysar
Opal Smith
Jewel Mae Jones
Opal Daughtry
Baby Boy Kysar
8-17 Mary Wofford
Terry Hall
Sylvia Corcoran
LaDonna Holt
8-18 James Williams
Gene Coward
8-19 Lucille Laycock
Anita Reeves
Bertha Medlin
Johnny Curry
8-20 Baby Boy Curry
Marie Benavidez
DISMISSALS
8-13 Sue Kysar
Dorthea Lowery
8-14 Sue Ivey
J.A. Holland
Lillian Holland
Sue Kysar
Suzie Erwin
8-15 Irene Crofton
8-16 Noveta Aderholt
Robert Fulker
8-17 J.T. Johnson
Geniva Farrell
8-18 Aaron Williams
Sue Kysar
Baby Boy Kysar
Ira Passons
8-19 Opal Daughtry
8-20 Mary Wofford
Laura Jo Marshall

ADMISSIONS
5-21 Fulton Meadows
8-2 Ruby Williams
8-12 William Jamison
8-14 Aaron Williams
Millie Williams
Geniva Farrell
8-15 Sue Kysar
Opal Smith
Jewel Mae Jones
Opal Daughtry
Baby Boy Kysar
8-17 Mary Wofford
Terry Hall
Sylvia Corcoran
LaDonna Holt
8-18 James Williams
Gene Coward
8-19 Lucille Laycock
Anita Reeves
Bertha Medlin
Johnny Curry
8-20 Baby Boy Curry
Marie Benavidez
DISMISSALS
8-13 Sue Kysar
Dorthea Lowery
8-14 Sue Ivey
J.A. Holland
Lillian Holland
Sue Kysar
Suzie Erwin
8-15 Irene Crofton
8-16 Noveta Aderholt
Robert Fulker
8-17 J.T. Johnson
Geniva Farrell
8-18 Aaron Williams
Sue Kysar
Baby Boy Kysar
Ira Passons
8-19 Opal Daughtry
8-20 Mary Wofford
Laura Jo Marshall

ADMISSIONS
5-21 Fulton Meadows
8-2 Ruby Williams
8-12 William Jamison
8-14 Aaron Williams
Millie Williams
Geniva Farrell
8-15 Sue Kysar
Opal Smith
Jewel Mae Jones
Opal Daughtry
Baby Boy Kysar
8-17 Mary Wofford
Terry Hall
Sylvia Corcoran
LaDonna Holt
8-18 James Williams
Gene Coward
8-19 Lucille Laycock
Anita Reeves
Bertha Medlin
Johnny Curry
8-20 Baby Boy Curry
Marie Benavidez
DISMISSALS
8-13 Sue Kysar
Dorthea Lowery
8-14 Sue Ivey
J.A. Holland
Lillian Holland
Sue Kysar
Suzie Erwin
8-15 Irene Crofton
8-16 Noveta Aderholt
Robert Fulker
8-17 J.T. Johnson
Geniva Farrell
8-18 Aaron Williams
Sue Kysar
Baby Boy Kysar
Ira Passons
8-19 Opal Daughtry
8-20 Mary Wofford
Laura Jo Marshall



The 4-H Texans Drill Team returned Friday from Sweetwater, Texas where they competed in the 4-H State Horse Show. The members of the team are: Scott, Dana, Tammy and Darrell Luttrell, Bo and Tanya Dunn, Ricky and Tim Hefley, Billie and Ronnie Crossland, Shonda Johnson, Rhonda Bachman, David and Charlotte Smith, Sam Montgomery, Chrystal Bradstreet, Davy and Susan

Hanks, Judy and Mike Parker, and M.L. Gierhart Jr. The drill was the Parade of the Wooden Soldiers and was directed by Mrs. Bus Freeman. Bo Dunn and family and Max Hatter remained in Sweetwater where Bo competed individually in Western Pleasure and running. Out of 90 running contestants Bo tied for 18th place. Bo was also chosen to carry the District I banner in the Grand Entry on Friday night.

Hanks, Judy and Mike Parker, and M.L. Gierhart Jr. The drill was the Parade of the Wooden Soldiers and was directed by Mrs. Bus Freeman. Bo Dunn and family and Max Hatter remained in Sweetwater where Bo competed individually in Western Pleasure and running. Out of 90 running contestants Bo tied for 18th place. Bo was also chosen to carry the District I banner in the Grand Entry on Friday night.

Hanks, Judy and Mike Parker, and M.L. Gierhart Jr. The drill was the Parade of the Wooden Soldiers and was directed by Mrs. Bus Freeman. Bo Dunn and family and Max Hatter remained in Sweetwater where Bo competed individually in Western Pleasure and running. Out of 90 running contestants Bo tied for 18th place. Bo was also chosen to carry the District I banner in the Grand Entry on Friday night.

Hanks, Judy and Mike Parker, and M.L. Gierhart Jr. The drill was the Parade of the Wooden Soldiers and was directed by Mrs. Bus Freeman. Bo Dunn and family and Max Hatter remained in Sweetwater where Bo competed individually in Western Pleasure and running. Out of 90 running contestants Bo tied for 18th place. Bo was also chosen to carry the District I banner in the Grand Entry on Friday night.

Hanks, Judy and Mike Parker, and M.L. Gierhart Jr. The drill was the Parade of the Wooden Soldiers and was directed by Mrs. Bus Freeman. Bo Dunn and family and Max Hatter remained in Sweetwater where Bo competed individually in Western Pleasure and running. Out of 90 running contestants Bo tied for 18th place. Bo was also chosen to carry the District I banner in the Grand Entry on Friday night.

Hanks, Judy and Mike Parker, and M.L. Gierhart Jr. The drill was the Parade of the Wooden Soldiers and was directed by Mrs. Bus Freeman. Bo Dunn and family and Max Hatter remained in Sweetwater where Bo competed individually in Western Pleasure and running. Out of 90 running contestants Bo tied for 18th place. Bo was also chosen to carry the District I banner in the Grand Entry on Friday night.

Hanks, Judy and Mike Parker, and M.L. Gierhart Jr. The drill was the Parade of the Wooden Soldiers and was directed by Mrs. Bus Freeman. Bo Dunn and family and Max Hatter remained in Sweetwater where Bo competed individually in Western Pleasure and running. Out of 90 running contestants Bo tied for 18th place. Bo was also chosen to carry the District I banner in the Grand Entry on Friday night.

Local Items

Mr. and Mrs. Keith Oliver and daughter, Mrs. Lorraine Hex and family of Hereford spent Friday with his sister, Mrs. Boyce Farris.

Boyd Burks spent the weekend in Amarillo with the Ted Cummings.

Visiting the Clarence

Mr. and Mrs. Keith Oliver and daughter, Mrs. Lorraine Hex and family of Hereford spent Friday with his sister, Mrs. Boyce Farris.

Boyd Burks spent the weekend in Amarillo with the Ted Cummings.

Visiting the Clarence

Mr. and Mrs. Keith Oliver and daughter, Mrs. Lorraine Hex and family of Hereford spent Friday with his sister, Mrs. Boyce Farris.

Boyd Burks spent the weekend in Amarillo with the Ted Cummings.

Visiting the Clarence

Mr. and Mrs. Keith Oliver and daughter, Mrs. Lorraine Hex and family of Hereford spent Friday with his sister, Mrs. Boyce Farris.

Boyd Burks spent the weekend in Amarillo with the Ted Cummings.

Visiting the Clarence

Mr. and Mrs. Keith Oliver and daughter, Mrs. Lorraine Hex and family of Hereford spent Friday with his sister, Mrs. Boyce Farris.

Boyd Burks spent the weekend in Amarillo with the Ted Cummings.

Visiting the Clarence

Mr. and Mrs. Keith Oliver and daughter, Mrs. Lorraine Hex and family of Hereford spent Friday with his sister, Mrs. Boyce Farris.

Boyd Burks spent the weekend in Amarillo with the Ted Cummings.

Visiting the Clarence

Mr. and Mrs. Keith Oliver and daughter, Mrs. Lorraine Hex and family of Hereford spent Friday with his sister, Mrs. Boyce Farris.

Boyd Burks spent the weekend in Amarillo with the Ted Cummings.

Visiting the Clarence

Mr. and Mrs. Keith Oliver and daughter, Mrs. Lorraine Hex and family of Hereford spent Friday with his sister, Mrs. Boyce Farris.

Boyd Burks spent the weekend in Amarillo with the Ted Cummings.

Visiting the Clarence

WEATHER INFORMATION				
DATE	MAX.	MIN.	WIND	PRECIPITATION
Aug. 14	94	74	N 2-7	
Aug. 15	88	69	SSE 1-2	Rain .60
Aug. 16	94	72	SE 2-3	
Aug. 17	95	72	SE 2-4	
Aug. 18	90	71	ESE 2-4	Rain August 1, 01
Aug. 19	96	74	SE 3-8	Rain 1969 18.34
Aug. 20	98	79	SSE 3-11	1 Yr. Ago 24.82

Courtesy of First National Bank
Readings By: Joe Rogers

New Arrival

Mr. and Mrs. Villard Hunter are the parents of a daughter, Terry Renea. The little lady was born at the Baptist Hospital in Oklahoma City Tuesday at 2:10 A.M. She weighed in at 6 lbs. 13 ozs. Grandparents are Hoy Hunter and Mr. and Mrs. Joe Weatherly of Wheeler. Great Grandparents are Mr. and Mrs. Cliff Weatherly, Mr. and Mrs. Fred Waters and Mrs. Annetta Purvis, all of Wheeler.

600 OPERATION OF PLANT

Salaries	7,560.00
Contr. Services	-0-
Heat for Bldgs.	2,000.00
Util., Except Heat for Bldgs.	10,000.00
Supplies, Exc. Ut.	1,500.00
Other Expenses	200.00
TOTAL OPER. OF PLANT	21,260.00
800 FIXED CHARGES	
Employees Ret.(OASI only)	-0-
Insur. and Judgm.	2,000.00
Rentl. of Land and Bldgs.	-0-
Int. on Cur. Loans	200.00
Other Fix. Chg.	6,500.00
TOTAL FIXED CHARGES	8,700.00
TOTAL FOR COMPUTING PER PUPIL COST (total of accounts)	229,330.00
100 through 800	
900 FOOD SERVICE	
Salaries	-0-
Other Expenses	-0-</

Court Records

LIST OF INSTRUMENTS FILED IN THE OFFICE OF THE COUNTY CLERK AND DISTRICT CLERK OF WHEELER COUNTY, TEXAS FROM AUGUST 11, 1969 THROUGH AUGUST 15, 1969



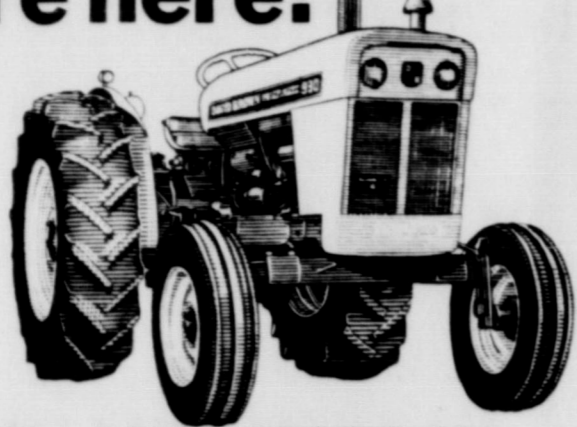
LUTTRELL'S SERVICE CENTER

MOBIL Products . . . Gas-Oil-Tires-Batteries-Accessories

Monday - Friday: 7 a.m. - 10 p.m.
Saturday: 7 a.m. - 12:00 p.m.
Closed Sunday

Phone: 826-5061

The Convincers are here!



The DAVID BROWN 990

ONE OF THE COMPLETE LINE OF RUGGED, DEPENDABLE DAVID BROWN DIESEL TRACTORS

We call them the "Convincers" because of the thousands of more than satisfied owners from coast to coast. And there's a model for every requirement—770, 880, 990 and 1200. The "Convincers"—test drive one today.

BRISCOE IMPLEMENT CO.

Box 407 Briscoe, Texas 79011

NATIONAL EQUIPMENT DISTRIBUTORS ASSOCIATION
David Brown Tractors are distributed nationally through the members of the National Equipment Distributors Association

NTY CLERK AND DISTRICT CLERK OF WHEELER COUNTY, TEXAS FROM AUGUST 11, 1969 THROUGH AUGUST 15, 1969

AUGUST 11, 1969
D--Martha Smith to J J Smith 6-20-69 3, 2 acres SW1/4 Sec 4 T&NO Ry Co Survey RDT&RVL--Dixie V Martin et al to Eugene Worley et ux 7-18-69 N1/2 Sec 59 Blk 17 exc N1/2NE1/4NE1/4 C/C PROBATE PROCEED-- Marguerite M Gettz 8-6-69 DT--Arkansas Louisiana Gas Co to Morgan Guaranty Trust Co of New York et al 7-1-69 All Holdings

AUGUST 12, 1969
OL--State of Texas to Union Oil Co of California 7-1-69 Sdc 26A Blk OS2 RVL--Nark Ike Smith et ux to Alfred Louis Martin et ux 8-11-69 Lot 7 Blk 6 Shamrock Mont-Lew Addn

AUGUST 13, 1969
C/C PROBATE PROCEEDINGS --Augusta Peterson 7-22-69 OL--Martha R Farren et al to Makouf Abraham 7-18-69 Secs 36, 37, E3/4 Sec 48; N185acE3/4 & S160 ac E 3/4 Sec 47 Blk M-1 ROL--Atlantic Richfield Co to Elva Hill 7-31-69 NE1/4 Sec 18 Blk A-4 RDT--First National City Bank et al to United Gas Pipe Line Co 7-23-69 All Holdings D--Allene Downer to Maxine Downer Heitel 8-13-69 Mins Sec 6 Blk OS2

Mobeetie Crossroads

Elveta and Bobby Underwood have been visiting their sister and husband, Mr. and Mrs. Carl Pitman of El Paso, Texas.

DISTRICT CLERK'S OFFICE
#6548 Felipe G Ramirez vs National Standard Insurance Co 8-11-69 Suit for Damages MARRIAGE LICENSE ISSUED Robert Eugene Lee and Ruth Evelyn Davis 8-11-69 Isam Ray Harris and Carol Sue Whitehead 8-13-69 James Robert Jennings and Le-ann Renee Roberts 8-14-69 Lane Ephem Reynolds and Jessie B Wicker 8-14-69 Joe Flanagan and Marie Underwood Flanagan 8-14-69 Robert Clayton Wolfe Jr and Marilyn Marie Gibbin 8-14-69 Glenn Henry Kitchens and Rebecca Ann Tyarks 8-15-69

Briscoe Grain Company
Phone 375-2385 Briscoe Texas
SEED CLEANING AND TREATING SERVICE & SUPPLY

Dr. Jack L. Rose
OPTOMETRIST
Office Hours:
Tues.: 9 A.M. - 5 P.M.
Fri.: 2 P.M. - 5 P.M.
207 N. Wall
Shamrock, Texas
Phone DRS-2385

COMPLETE INSURANCE COVERAGE
John C. Vise Agency
117 W. Texas Street
Wheeler, Texps

Mr. and Mrs. Fred Mixon and San Micheal of Fritch visited Mr. and Mrs. Mickey Mixon over the weekend.

Mr. and Mrs. Butch Leatherman and son of Amarillo visited in the home of her parents Mr. and Mrs. O. G. Beck and attended church at the Methodist Church.

BIRTH ANNOUNCEMENT
Mr. and Mrs. Dewey Kysar announce the birth of a son Shawn Loyd August 15, 1969 in Parkview hospital.

Personals
Mr. and Mrs. Codie Crowden of Amarillo spent Saturday night in Wheeler and visited the Jacobs.

Visiting Saturday night with Mr. and Mrs. Jud Anderson were Becky Treadwell and Phyllis Aderholt, Mr. and Mrs. Tuig Aderholt and Mr. and Mrs. Zane Francis and Steve, all of Briscoe.

Mr. and Mrs. Mike Anderson of Amarillo spent Sunday night and Monday with his grandparents, Mr. and Mrs. Anderson.

CARD OF THANKS
I would like to express my appreciation to the many friends for their prayers, flowers, cards, telephone calls, and visits. Thanks to the ones that tended to the cows and chickens while I was in the hospital.
May God bless each of you.
S. R. Williams

Dr. M. V. Cobb
CHIROPRACTOR
256-1133
310 South Main
Shamrock, Texas

San Bernadino, Calif. She spent several days in Portland Ore., visiting her daughter Mrs. Dora Gibson. Mrs. Rodney's husband came for her and the children returning them to Leonard Wood. Needless to say Mobeetie folks are happy to have Miss Tommie Home. We miss you when you're gone!

Mr. and Mrs. Floyd Miller and family of Okla. City were weekend visitors of the Murel Trouts. Two of the girls, Cathy and Cindy remained for a longer visit. They had made a round to the West Coast also and returned by way of the northwestern states.

Mr. and Mrs. Henry Lane were visiting his mother Mrs. Myrtle Lane and brother Rofers and wife in Wheeler over the weekend. They also visited around Mobeetie, Mount Zion, and Lone Star Communities with former neighbors and friends--we enjoyed their visit.

Mr. and Mrs. Len Mixon spent the weekend with her parents Mr. and Mrs. Cloy Long in Pampa.

Garland Taylor and children of Vernon came Wednesday for a few days visit with his sister and family Mr. and Mrs. Murel Trout, Debbie remained for a longer visit.

Mr. and Mrs. Wayne Shaham of Pampa were visiting the Don Quarles Wed. They have purchased the "Jaco" Lee place from Dr. Wedgeworth and will be moving to Mobeetie soon.

The Mobeetie Jr. and Cadette Girl Scouts had their back to school camping trip to Skipout Lake at Reydon, Okla. Those attending were Sheila and Susan Barton, Dottie and Teresa Flowers, Zana, Jana, Aline and Doug Corse, Sallie, Teresa and Nancy Shelton, Melody, William and Melba Burch, Randy Stuart, Kemberly Hathaway, Carol Seitz. The girls spent Mon. through Wed. there. Tuesday night Mr. and Mrs. Paul Hathaway, Dean, Dan and Wade and Jackie May ate supper and visited. The girls

also finished several outdoor badges.
Cindy Shelton spent the first part of the week visiting in Pampa with Mr. and Mrs.

Wheeler Carevile, Mr. and Mrs. J. B. visited Sun. in Cheyenne Okla. with Lorene's mother Mrs. Walter J. Davis.



REGISTRATION SEPT. 11th & 12th

TWO BEAUTIFUL NEW DORMITORY ROOMS CAN BE RESERVED NOW

Frank Phillips College
BORGER, TEXAS

WEEK OF REVIVAL SERVICES

Beginning Sunday, August 24
Bro. Don Chesser of Norman, Okla.

will be doing the preaching.
EVENING SERVICES: 8:00
— Everyone Is Invited —
Come Worship With Us At The . . .

Landmark Missionary Baptist Church in Wheeler

FIGHT BACK

Fight the price/cost squeeze on your wheat with NITROMITE. Shamrock's fine brand of anhydrous ammonia. lush, high-quality forage (and plenty of it!)—an important factor if you plan to graze cattle this winter.

And the cash crop? NITROMITE delivers the most usable nitrogen per dollar to help increase yields without increasing cost appreciably. So come harvest, even if prices are low, you make out. If they're good, you'll be the big winner.

Put down NITROMITE now. It'll give you a fighting chance in the marketplace.

DISTRIBUTED BY TAYLOR EVANS—AMARILLO
Subsidiary of Diamond Shamrock Corporation
M & M GIN
Wheeler, Texas
A product of Diamond Shamrock Oil and Gas Company
A Unit of Diamond Shamrock Corporation

This Costs Texans \$ 2 MILLION A DAY



YOU HELP PAY THE BILL

The way cars are being wrecked and the way folks are being injured and killed in traffic accidents, it looks like this year's Texas traffic toll will top \$800 million. This figures out to be more than \$2 million a day and that is a lot of money!

When you pay for your auto insurance you help pay this bill because most of your insurance rate is for the amount of money insurance companies pay for traffic accidents. Add to this the amount they pay for autos destroyed or damaged by collision, fire, hail, theft and pilferage. Lower these amounts and your insurance costs will go down. Raise these amounts that insurance companies must pay and your auto insurance costs will have to go up. It is as simple as that.

Here are three ways to cut your auto insurance costs.

1. Help reduce the number of Texas traffic accidents. You can do this by driving the very best you can and by insisting that traffic laws are enforced in your town, county, and state. Let your Mayor, County Officials and Governor Smith know that you want all traffic laws enforced.
2. Help cut down on car thefts and vandalism by locking your car and taking the keys whenever you park. Always try to park your car in a safe place.
3. Ask your insurance agent to show you how you can save money on your auto insurance by taking full advantage of the Driver Education, Two Car and other discounts now offered in Texas.

Auto insurance costs will be cut in Texas after accidents and their costs go down. You and other motorists of Texas can bring this about . . . if you really want to. **IT IS UP TO YOU!**

Association of Texas Fire & Casualty Companies

110 Vaughn Bldg. Austin, Texas 78701



THE VALUE SCENE... TAKE IT AT... IGA

SPECIAL VALUE PRICED

Beets Libby Whole or Sliced 303 Can 17c



LARGE CALIFORNIA HEAD

Lettuce HEAD 15c

- Nectarines California 4 -Lbs. \$1
- Plums Idaho Italian Prune Lb. 18c
- Pears Sweet Bartlett Lb. 19c
- Cabbage Firm Solid Green Lb. 6c
- Sweet Corn Full Ear 5 Ears 29c
- Tomatoes California Red Ripe 5 -Lbs. \$1
- Carrots Cello Packed Crisp 2 1-Lb. Bags 29c

Notebook Reg. \$3.12
Borden's Now Only \$1.98
Binder, Paper, Composition Book, Index, Dictionary, Carryall

500 ct. Reg. 98c
Notebook Paper 69c

Ice Cream or Sherbet Lanes
1/2 Gal. 49c

Jumbo Pies Bremner 33c

FOLGERS COFFEE
1-2-3 lb. Cans per lb. 69c

SUGAR Pure Cane

LIBBY VIENNA SAUSAGE

All meat treat... perfect for sandwiches snacks or casseroles

4-OZ. CAN

21c

LIBBY TOMATO JUICE

A wonderful refresher anywhere, anytime.

46-OZ. CAN

31c

FROZEN NATURAL

TV ORANGE JUICE

Fresh natural juice concentrate from sunny Florida

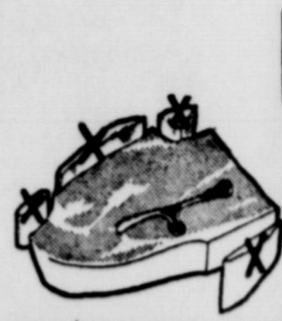
3 12-OZ. CANS \$1

COTTAGE CHEESE

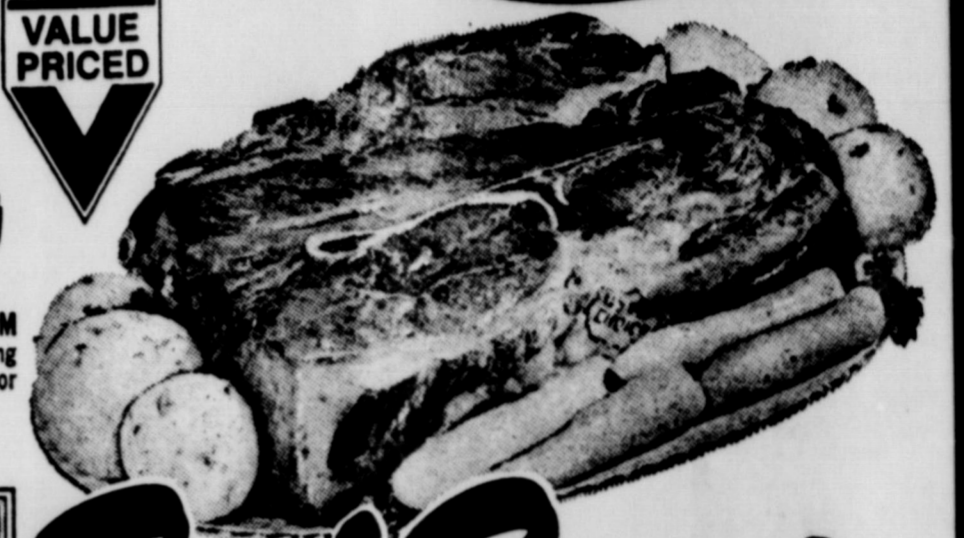
Protein rich and low in calories for the weight watchers.

2-LB. CTN. 59c

Margarine Miracle Whipped 1-Lb. 31c
Cheese Kraft Sliced or Chunk Halfmoon Longhorn 10-oz. Pkg. 59c



P.S. BEEF HAS TRUE VALUE TRIM
Our exclusive method of preparing beef cuts means you never pay for excess fat and bone.



Beef Roast

U.S.D.A. CHOICE PERSONALLY SELECTED BEEF!

BLADE CUT CHUCK

LB.

52c

CENTER CUT CHUCK

LB.

62c

Bacon Harvest Brand Smoked Sliced

1-Lb. Pkg. 65c

Chicken Fried Steak Hereford Heaven Lb. 79c

Short Ribs USDA Choice PS Beef with TVT

Lb. 39c

Wieners Good Value All Meat 12-oz. Pkg. 54c

Arm Roast USDA Choice PS Beef with TVT

Lb. 72c

Boneless Ham Wilson Festival Whole Lb. \$1.25

Fryers



CUT UP
USDA Grade "A" fresh frozen... fried chicken the fast and easy way.

LB. 35c

MORE SAVINGS ON THE SCENE

Fruit Drinks

WAGNER ASS'T. FLAVORS

4 32-OZ. BTL. \$1

Green Beans

LIBBY CUT
Young tender beans... rich and delicate in flavor.

5 303 CAN \$1

Flour

MAGIC BAKE
All purpose enriched flour... compare it with any flour for baking quality and compare the low Value Price.

5 -LB. BAG 39c

Fruit Pies Apple, Peach, Cherry, Coco. Custard Morton Frozen

20-oz. Pie 29c

Potatoes Tru-Vu Instant 14-Lb. Pkg. 39c

Pizza Cheese, Hamburger, Sausage, Pepperoni TVT Frozen

22-oz. Pkg. 79c

Tissue Good Value Bathroom White or Ass't. Colors 4 -Roll Pkg. 29c

Potatoes Good Value Frozen Crinkle Cut

5 -Lb. Bag 79c

Cake Mix Mary Baker White, Yellow or Devils Food 19-oz. Box 25c

Vegetables Caul., Brocc. Spears, Bruss. Sprouts TVT Frozen

3 10-oz. Pkgs. 79c

Tomatoes Rainbow Vitamin Rich 303 Can 17c

Fish 'N Chips Gorton Frozen

1-Lb. Pkg. 69c

Toothpaste Ultra-Brite Reg. \$1.00 Sale Price 83c

Potato Chips Magic Flake Plain or Rippled

10-oz. Bag 49c

Deodorant Reg. \$1.00 Hour After Hour Sale Price 79c

Buns Magic Bake Coney or Hamburger

2 8-ct. Pkgs. 49c

VO-5 Shampoo Reg. \$1.09 Sale Price 79c

Margarine Rainbow Solids 7 1-Lb. Cns. \$1

CLAY Food Store

IN WHEELER, TEXAS

10 lb. Bag \$1.17 & CLAY'S IGA SUPERETTE IN MOBETTIE, TEXAS