



THE WHEELER TIMES

(USPS-681-960)
VOLUME 78, NUMBER 6

THURSDAY, JANUARY 26, 2012

SINGLE COPY **50c**

"Wheeler; town of friendship and pride."

Stock Show, Barbecue, Sale

CWE CHAT WITH EDITOR
By Louis C. Stas

The community suffered a loss Saturday with the death of Jim Wright. Jim was very active in the community, having served on several boards and served as the Master of Ceremonies for many community events over the years.

— cwe —
Our sympathy to the family.

The event for this week is the Junior Livestock Show scheduled for Friday and Saturday, followed by Barbecue and Sale.

— cwe —
Take some time to attend the show and watch these youngsters show the results of several months of hard work.

— cwe —
It is time once again for nominations for Outstanding Man, Woman and Employee to be recognized at the annual Chamber of Commerce Banquet.

— cwe —
The Chamber always seeks your nomination for this recognition because the most deserving people are sometimes in the 'background' and working without recognition. So, lets have your input. You need to get word to the Chamber very soon.

— cwe —
The banquet has been set for Saturday, February 25, 2012.

— cwe —
February is birthday month for family. Birthday greetings are extended to **Cathi Gillette** on Wednesday, February 1.

— cwe —
The weekend was spent in OKC with Seth and Jennifer. Joining us for the evening meal Saturday was The Fishers, The Musaes, Glen Meriwether and Suzy Musae.

— cwe —
Cards were played Monday evening with Mike and Barbara winning the first two games. Patsy and I avoided a skunk by patsy the second game.

STORM REPORT

As Reported by **Stormie Wether**,
Second Grade Student

Dear Friends, Everything is great! In my Musical Theatre Class we are doing songs from "Annie". I have to bring a bucket and a rag. I am an orphan. I have to scrub the floors and sing a song. That is a fun class! Karate is very hard and I love it! We do exercises at a bar like in ballet. We learn to do kicks. I haven't kicked anyone yet. My book, War Horse is so exciting. I want to read all the chapters, but my mom says only one a night. My dad helped me learn about simple machines for my science project. He is a good teacher. The knife is an upside down lever. That's a little strange. We had snow! It was beautiful! I played outside and my fingers almost froze off! It was great! Now the snow is gone and everything is muddy. On Monday we didn't go to school. It is Chinese New Year. It is the Year of the Dragon. That is a good year! We learn Chinese in my school. "Ni hau" My dad is almost ready for his Stem Cell. I hope he will be brave. That's it.

Wheeler I.S.D. Bd. Meets On Dec. 7

Regular Board Meeting
The Wheeler ISD Board of Trustees met for a scheduled meeting December 7, 2011. Dr. Mike Smith called the meeting to order at 6:30PM. Board members present were Dr. Mike Smith, Todd Moore, Billy Richardson, Mark Marshall and Kent Ware. Members absent were Dr. LeeAnn Hillhouse and James Masters. School personnel attending were Bryan Markham, David Dale and Clay Mahler. The pledge to the flag was led by Dr. Smith and the invocation was offered by Todd Moore.

There were no public comments or public participation.
Motion by Todd Moore; Second by Billy Richardson to pay all bills except Ware Chevrolet and Buck and Beyond. Five members voted to accept the motion, no votes against.

Motion by Mark Marshall; Sec- (Continued Page 5)

County Livestock Show Will Be January 27-28

It's stock show season again and everyone is getting prepared for the Wheeler County Livestock Show. The show is scheduled for January 27 and 28.

Mass Notification System Launched In Wheeler Co.

Region Launches New Public Mass Notification System to help with medical emergencies.

For the past several years, Panhandle Emergency Managers and the Panhandle Regional Planning Commission (PRPC) have been

Fund Is Established For Lisa Rivera

A fund has been established for Lisa Rivera at Wheeler Banking Center to help with medical expenses.

Lisa was injured in a car accident in Wheeler County on November 26, 2011. She was taken to N.W.T.H. in Amarillo, by ambulance and placed in ICU. She later underwent surgery for right hip displacement and fracture. She has been hospitalized since that time in both N.W.T.H. and Parkview Hospital. She was discharged from the hospital last week. She remains on weight bearing and is enrolled in a physical therapy program. She has not been released by her Amarillo surgeon.

All donations will be appreciated. Donations can be made to Lisa Rivera Fund, Wheeler Banking Center, P.O. Box 1040, Wheeler, TX 79096.

CattleWomen Offer 2012 Scholarships

Top O' Texas CattleWomen are announcing that scholarship applications are available at their High School counselors office now. Each year Top O' Texas CattleWomen give scholarships to seniors that are going into a major in Agricultural, Nutritional or Health related fields.

You might ask if you are eligible. If you live in Hemphill, Hutchinson, Gray, Compton, Hutchinson, Lipscomb, Ochiltree, Roberts or Wheeler counties and only seniors in these counties are eligible.

This year Top O' Texas CattleWomen are doing four scholarships for \$750.00 each to four deserving seniors.

You may also contact Dianne Buckingham in Shamrock 806-256-3633 for information or applications. The applications must be post marked no later than April 01, 2011.

Parenting Classes Are Offered Feb. 4

Ora Belinda SchoolHouse Early Learning Center, Ann Porter, Director welcomes the S.T.A.R. (Services-To-At-Risk youth and their families) Janice James, Instructor, to Wheeler County.

"BACK IN CONTROL" Parenting Workshop offers a group-based parenting skills program based on the book and training video by Gregory Bodenhamer, a psychologist and former probation officer. Tried and True, since the early 1980's. Designed to assist parents and care givers with establishing rules, clear communication, stress and anger management, and teaching self-discipline. This class is taught in one 6-hour workshop. Offers a certificate of completion and CEU credit for Licensed Professional Counselors and Social Workers, as well as, general CEU credit.

Topics will include Three Kind of Rules, Out of Control Issues, Back in Control and Parent Burn-out Prevention.

"Back In Control" Saturday, February 4, 2012 First United Methodist Church, 704 Main Street Wheeler, TX 79096
This workshop is open to the community.
Please Join us by calling to pre-register by January 30, 2012.
Call Ann Porter 806-826-1111 or Janice James 806-359-2005 in Amarillo.
No childcare is provided.

On Friday, January 27, the show will begin at 7:00 a.m. with the weigh-in.

Activities on Saturday begin with the Market Hog Show. At 5:00

working together in an effort to provide all jurisdictions in the region the ability to contact their residents quickly when disasters are imminent. The goal was to create a sustainable call-out system that would enable local emergency management officials to rapidly notify their residents in mass when conditions (weather or otherwise) jeopardized their jurisdictions.

Commonly referred to as a reverse calling system, a number of Panhandle counties do maintain these capabilities but until now, the vast majority have not been able to afford the cost.

The opportunity to see this effort come to fruition appeared two years ago when the PRPC applied for; then received a grant from the Federal Emergency Management Agency (FEMA) to cover 75% of the cost of building and implementing a regional notification system. The Amarillo Area Foundation generously provided \$100,000 to support a large portion of the non-FEMA funded system costs, with the PRPC providing another \$24,000 in support. Together, these grant funds and contributions have now made it affordable for every jurisdiction in the region to maintain notification capabilities.

The system has been in the design-build stage for the past year and will be officially unveiled beginning January 16. A region-wide media campaign will begin on that date to encourage residents throughout the Panhandle to "Resolve to Be Ready" by registering their contact information into the new regional system. Why is this important? The more contact points that residents enter into the system, the more likely they are to receive a notice when time is of the essence. And, it's important to note that any information entered into the system belongs to the individual that provided that information. Nobody else can see it or use it for any other purpose other than for notifications. The system simply knows to send a call or text message to the cell phone, email address or home phone number entered by a registering resident.

With the reliance on cell phones growing, it's more important than ever that critical information be conveyed in a mobile environment. Panhandle residents are active and they're not always around a radio, TV or warning siren when emergency notices are issued. However, if that same notice can also go out to a cell phone, this will increase the odds that the message will reach its intended audience no matter where the audience happens to be.

The regional "Resolve to Be Ready" campaign is being carried out in conjunction with FEMA's national Resolve to Be Ready campaign. Throughout the 6-week regional campaign, KAMR will be airing segments, hosted by local emergency management representatives, to discuss not only this new regional system but also provide residents with helpful information they can use to better protect themselves, their families and their communities.

As a first step toward personal preparedness, residents should "Resolve to Be Ready" by logging onto www.R2BeReady.com to register their contact information, along with the contact information of

their family members, into this new system. That way, they can stay informed of conditions that may affect their safety. By registering, residents also make themselves eligible to win one of three prizes that will be awarded each week throughout the 6-week campaign.

In the months to come, new communications opportunities will be added into the system so resi- (Continued Page 6)

p.m. the free barbecue dinner will be held, followed by the awards presentation and premium sale.

Shamrock's local show was Saturday, January 7.
Fort Elliott's Local Show was January 22, at 2:00 p.m.

Wheeler youngsters will show their animals on Thursday, beginning at 6:00 p.m.

For those of you, who are unable to attend the auction, but would like to contribute, you may stop by the Wheeler County Extension Office, located in the Wheeler County Ag and Family Life Building on the north edge of Wheeler, to complete an add-on Card.

The local show will be in the Wheeler County Showbarn with the barbecue, awards and sale in the Ag and Family Life Building.

Comm. Court Held; Equipment Bought

The Commissioners' Court of Wheeler County, Texas met in regular session on Monday, January 23, 2012, at 9:00 a.m., in the Commissioners' Courtroom of the Wheeler County Courthouse, 401 Main Street, Wheeler, Texas, to consider prior bills and discuss matters of mutual concern.

At 10:00 a.m., 14 items on the agenda were considered and action taken, if necessary.

There were no minutes from previous meetings to approve. The court approved the hourly payroll timesheets for payment as presented.

The bills were approved and paid.

No action was taken on the budget.

No action was taken on the burn ban with the prediction of rain for Tuesday.

There were no reports presented for the court's approval.

John Walker, Commissioner, Pct. 4, had advertised for bids for road maintainers. Two companies, Warren Caterpillar and YellowHouse, each presented four bids. After examining and considering the bids, the court voted to purchase the bid from YellowHouse. The bid accepted was \$272,942.00 for a 140M2 All-Wheel drive unit. Resale value of the motor grader was quoted at \$140,000.

No action was taken on Daryl Snelgrooves', Commissioner, Pct. 2, request for permission to advertise for tractor with loader over \$5,000.00.

Margaret Dorman, County Clerk, presented her certificate showing she completed 12 hours of Continuing Education.

Chesapeake Midstream Gas Services, LLC, was given permission to bore under County Road "EE" for installation of an oil and gas pipeline.

Devon Energy Corp. was given permission to bore under County Road "29" for installation of an oil and gas pipeline.

Enbridge Pipelines (Texas Gathering), L.P., was given permission to bore under County Road "14" for installation of an oil and gas pipeline.

Linn Gas Marketing, LLC, was given permission to bore under County Road "19" for installation of an oil and gas pipeline.

OneOK NGL Pipeline, LLC, was given permission to bore under County Roads "EE" and "22" for installation of an oil and gas pipeline.

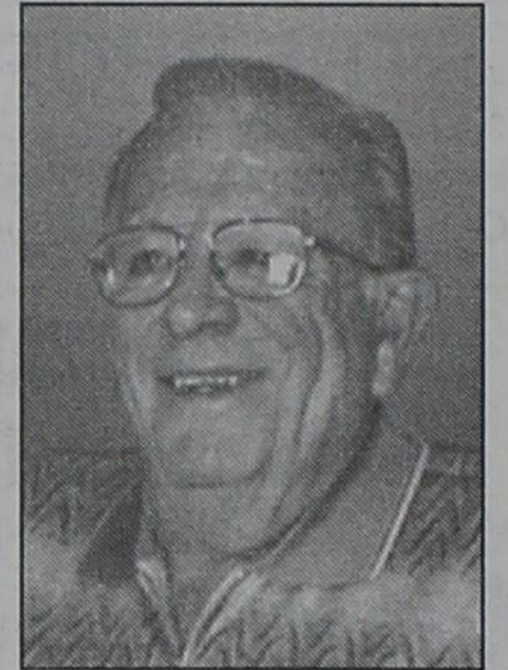
The next meeting of the Wheeler County Commissioners' Court will be Monday, February 13, 2012.

2012 Wheeler Track Schedule

February 20-23 (Day TBA)	JH	Canadian
March 1	JH	Wellington
March 3	HS	Wellington
March 8	JH	Wheeler
March 9	HS	Gruber
March 15	HS	Shamrock
March 22	JH	Wheeler
March 24	HS	Quanah
March 30	JH	Canadian
March 31	HS	Canadian
April 4 & 5	HS	Panhandle (District)
April 10	HS	Panhandle (Area)
April 13	JH	Canadian (District)
April 19 or 20 Reg.		Qualifiers
April 30-May 1		Levelland (Regional)
May 11 & 12		State @ Austin

Services Are Monday, Jan. 23, 2012 For Jim Wright, Community Leader

Jim C. Wright, age 75, of Wheeler, Texas, went to be with his Lord on Saturday, January 21, 2012, surrounded by his loving family. Funeral services were held Monday, January 23, 2012, at 2:00 pm at United Methodist Church in Wheeler with Rev. Todd Dyess, interim pastor of the First United Methodist Church of Groom, Texas, and Rev. Matthew Gary, pastor, officiating. Interment followed at Wheeler Cemetery under the direction of Peppers Family Funeral Home, Wheeler, Texas.



Jim C. Wright

Jim was born in Hamlin, Texas, on August 12, 1936, to Lewis and Inez (Cox) Wright. Following graduation from Colorado City High School in 1954, he went on to attend Texas Tech University where he worked as a disc jockey and a television commercial announcer. After leaving Lubbock, he met and married the love of his life, Sharon Christie, on June 23, 1960, before continuing his education at Dallas Institute of Funeral Service, formerly known as Gupton-Jones School of Mortuary Science, where he graduated in 1962.

January 1, 1965, Jim and Sharon moved from Comanche, Texas, to Wheeler, Texas, where they became partners in Wright-Denson Funeral Home, which became Wright Funeral Home in 1970.

While working as a funeral director in Wheeler, he also served in several other capacities in the community including serving on the Wheeler ISD School Board from 1967 to 1974 and from 1986 to 1990. He also served as a commissioner of the Texas Funeral Service Commission from 1999 to 2009 after being appointed by then Governor George W. Bush and was a proud member of the United Methodist Church in Wheeler.

Jim was also honored to have received several of the highest including, Man of the Year from the

Wheeler Chamber of Commerce in 1991; Pioneer Funeral Director of the Year by the Panhandle Funeral Directors Association in 2010; and Jim and Sharon were chosen to receive the Pioneer Spirit Award in 2010 by the Wheeler Chamber of Commerce.

Jim was preceded in death by his parents.
Jim leaves behind, Sharon, his wife of 51 years, as well as three sons, David and Andrea Wright of San Antonio, Texas; Mark and Topsy Wright of Bryan, Texas; and Scott and Marcie Wright of Ruston, Louisiana; eight grandchildren, Meagen Smith of Shamrock, Texas; Brad Poage of Bryan, Texas; Tandy Wright of Bryan, Texas; Taylor Wright of Lubbock, Texas; Austin Wright and Baylee Wright of Ruston, Louisiana; Gayla Cornett of Tulsa, Oklahoma; and Stacy Finsterwald of Wheeler, Texas, as well as nine great-grandchildren.

The family requests donations be made to the United Methodist Church, P.O. Box 89, Wheeler, TX 79096 or a favorite charity.
You may send condolences online at www.peppersfuneralhome.com.

Stewardship Sign-Up Date Extended

USDA Natural Resources Conservation Service (NRCS) has extended the cut-off date for the current Conservation Stewardship Program (CSP) ranking period to January 27, 2012.

Producers who maintain a high level of conservation on their land and agree to adopt higher levels of stewardship are eligible for CSP payments.

"We want to make sure that people who want to be considered for CSP during this first ranking period have the time they need to complete their applications," said NRCS State Conservationist Salvador Salinas.

"CSP is a very popular program and I encourage interested producers to apply at their local NRCS office as soon as they can."

CSP is offered in all 50 states, tribal lands and the Pacific and Caribbean areas through continuous signups.

Administered by NRCS, CSP provides many conservation benefits including improved water and soil quality, enhanced wildlife habitat and conservation activities that address the effects of climate change.

"There are currently a lot of

Annual Banquet February 25

Wheeler Chamber Asks For Your Help In Selecting Individuals

The Wheeler Chamber of Commerce is once again taking nominations for the five outstanding individuals who will be recognized at the annual 2012 Chamber of Commerce Installation Banquet. The date hasn't been announced.

It is the desire of the Chamber to recognize the most deserving individuals in each of the five categories. To be recognized are the Woman, Man, Employee, Teenager and Farmer/Rancher of the year and Pioneer Spirit Award.

Please make your ideas for the Woman, Man and Employee known and also list the reasons why the individual should receive the honor. The Teenager of the year is selected by the Wheeler school faculty. The Farmer/Rancher award recipient is se-

City Election Set; Filing Opens Feb. 6

The City of Wheeler will be holding an election to fill the terms of 2 Council Members and Mayor. The May 12th election will fill two full term council positions; Place 2 currently being held by Stacy McCasland, and Place 4 currently being held by Don Rose. The position of Mayor, currently being held by Bob McCain, will also be on the ballot.

The first day to apply for a place on the ballot is February 6, 2012 and the deadlines for filing is March 5, 2012. Applications for a place on the ballot may be obtained at the City office located at 505 Alan L. Bean Blvd between the hours of 8:00 a.m. and 5:00 p.m.

Girl Scout Cookie Sale Is Underway

Girl Scout Cookies are now on sale. The sale started January and will continue thru March 1.

With the price at \$3.50 per box, the customer has a choice of eight different kinds.

The scouts are also taking donations to send cookies to our troops.

Thanks is extended to all those, who sent Girl Scout Nuts to our troops. And the Wheeler Lions club for footing the cost of shipping.

Your nominations will be con- (Continued Page 6)

MOBEETIE NEWS

By Melba Corcoran

Working at the museum this week were Suzanne Lohberger on Monday, Thursday & Friday, Working Monday thru Saturday

were Louise Hogan and Melba Corcoran. Working Monday thru Friday was Maurita Stribling. Joe VanZandt put up some supplies Friday. Gina Seitz worked on paying the bills. David Seitz came by the museum on Friday and talked with the group. We had a man from Oklahoma doing research on Fort Elliott.

Dale and Melba Corcoran went

to Pampa Thursday. They picked up supplies for the museum.

Debbie Stribling of Happy spent Thursday night with Maurita Stribling. Debbie was working in Wheeler Thursday and Friday.

Harry Sims campground has one camper in his new campground. The campground has sewer hookups. It is located on Hamburg Street.

Dale Corcoran went to Wheeler on Friday. Melba didn't feel like going.

Bill Finsterwald had to go back to the eye doctor on Friday in Canadian and then on to Amarillo to pick up supplies for Amarillo's new house. Bill thought his eye was better; he could see a little better.

The last few days have been warmer, but still need rain. Pray for rain. We got 1/100 of inch Sunday. The wind was bad Sunday afternoon.

Our sympathy goes out to the family of Jim Wright. He was a nice person and will be missed.

Jeff and Mellie Kelley and girls went to Amarillo last Sunday to celebrate Kyrah's birthday. Friday, Martha Meek held a singing at her house. Doris Finsterwald went to it.

Lamar Lancaster's team, Amarillo Aces Volleyball, played last weekend in Colorado Springs and did well. This weekend they played in a tournament in Amarillo. The team tied for third place, which was good with so many



teams. This team is for 15- and 16-year-old girls.

Several were sick and didn't go to church Sunday. I was having muscle spasms in my back. Vickie Ray was dizzy and sick at her stomach. Arica Lancaster was so

tired and didn't feel like getting ready. Maybe all will be able to go next Sunday.

Next Saturday, the First Baptist Church will have a workday at the church. Lunch will be served. It is to do deep cleaning and small repairs. Everyone is needed; there will be a job for everyone. See you then.

COUNTRY NEWS

By Verna Fillingim

Thanks to Johnny and Betty Crawford and others for coming to play pretty music and sing Sunday afternoon at Wheeler Care Center. Very good!

Sincere sympathy to family and friends of Jim Wright, 75, in his death. Thanks for all the great funerals!

Congratulations, Dallas, for being chosen Fireman of the Year at Windthorst, Texas, and being so helpful. God bless you!

Funeral services for Thelma "T.J." (Hefley) Evans were held January 16, 2012, in the First Baptist Church, Tulsa, Texas, followed by burial in Rose Hill Cemetery, Tulsa, Texas. Her husband, B. Raymond Evans, preceded her in death. Surviving are a daughter and three grandsons all of Dallas, Texas. Thelma was born and raised in the Briscoe area.

CARD OF THANKS

Thank you to all our family friends and associates for your acts of kindness and thoughtfulness during the loss of our mother and grandmother. We are grateful to a great community for support & prayers. God bless you all.

**Kathy Meek
Mark & Meek
Kaleb Meek family
Jocelyn Meek & Avery**

News, Views & Commentary
KPDR-FM, 90.3
WHEELER, TEXAS
Weekdays: 6:00 a.m. to 7a.m.

WHEELER PLUMBING
511 S. Cheyenne
New Construction
Remodel
Repair
Sewer Service
Septic Systems
Site Evaluations

Phone: **826-5907**
MAX McQUEEN
P.O. Box 754 Wheeler, TX

Canadian Supply & Redi-Mix
for all your Concrete Needs!



Jerry Smith, Owner
806-323-5379

GR W MOORE

- >Liquid Fertilizer
- >Dry Fertilizer
- >Compost
- >Chemicals
- >Application available

Grow Moore, LLC
Matt & Michelle Moore
Kelton, Tx
(806) 256-2313

RiverCrest Homes
Building distinctive custom homes designed for your one of a kind lot.

Quail Run Estates Coming Soon
1.5 to 5 acre lots across from Maxey's
Chip Hill 972-989-8019
chip@rivercrestproperty.com

Continuing Service offered by Locklear Brothers

... for over 50 years

Residential Commercial For Workmanship You Can Be Proud Of

ORVILLE LOCKLEAR ROOFING

800-466-3120
800-323-3100

ORVILLE LOCKLEAR 40 Years Experience P.O. Box 904 Clinton, OK 73601
11/17-2/24p

"TENACIOUS LAND SERVICES"

Tommy F. Yowell, CPL
PETROLEUM LANDMAN

OFFICE 940-825-5000
CELL 940-872-7000
TFYowell@aol.com

211 MAIN ST. NOCONA, TEXAS 76255

Wheeler United Methodist Church
Eighth at Main St.—P.O.Box 89
Wheeler, TX 79096
806-826-3114 — Fax 806-826-3780
wheelerumc@windstream.net

Sunday Schedule
Coffee & Donut Fellowship—9:30 a.m.
Sunday School—9:45 a.m.
Worship—11:00 a.m.

Wednesday Schedule
Youth Fellowship—6:00 p.m.
Choir Rehearsal—7:00 p.m.

Wheeler County COURT RECORDS

List of instruments filed in the Wheeler County Clerk's office from January 12, 2012 – January 20, 2012.

JANUARY 12, 2012
CORR. CD-Wheeler Community Cemetery Association to Beatris Salas, 1-2-12, SE/4 Lot 2, Blk. K-1, NE Addition, Wheeler Cemetery.

MML-Lane Supply Inc. to J & J Sign Service, et al, 1-10-12, Lots 3-6, Blk. 4, High School Addition, Shamrock.

OL-Vickie Renee Miller Reiley to Linn Energy Holdings LLC, 10-24-11, Sec. 21, Camp County School Land.

OL-Debbie Sue Miller Purnell to Linn Energy Holdings LLC, 10-26-11, Sec. 21, Camp County School Land.

EXECUTRIX ROW-William F. Holmes Trust to Enbridge Pipelines (Texas Gathering) LP, 11-28-11, Pt. N/2 Sec. 17, Blk. R.E., Roberts & Eddleman Survey.

ROW-Melvin Ray Ault to Enbridge Pipelines (Texas Gathering) LP, 11-29-11, Pt. M 61.1 acs N/2 S/2 Sec. 17, Blk. R.E., Roberts & Eddleman Survey.

ROW-Margaret Ann Gilmer Boydston, et al to Enbridge Pipelines (Texas Gathering) LP, 11-28-11, Pt. N/2 Sec. 17, Blk. R.E., Roberts & Eddleman Survey.

ROW-Wayne R. Zybach to Enbridge Pipelines (Texas Gathering) LP, 11-28-11, Pt. N/2 Sec. 19, Camp County School Land.

ROW-Lott Family Limited Partnership to Enbridge Pipelines (Texas Gathering) LP, 9-13-11, Pt. SE/4 Sec. 2, Blk. 3, Brooks & Burleson Survey.

ROW-Gail Ledbetter, et ux to Sanguine Gas Exploration LLC, 12-20-11, Pt. Sec. 66, Blk. A-7, H&GN Ry. Company Survey.

STIPULATION MD-David Madison Britt, et al to David M. Britt Jr. GST Trust #2009, et al, 12-21-11, Sec. 26, Blk. A-3, H&GN Ry. Company Survey.

C/C PROBATE-Winston E. Trostle to Ex Parte, 1-5-12.

C/C PROBATE-James Edward Brandon to Ex Parte, 1-5-12, No Wheeler County Land Listed.

DT-Matthew D. Moore, et ux to National Bank of Commerce, 1-5-12, See Instrument.

SECOND AMEND. DT-Bluestem Gas Services LLC, et al to Wells Fargo Bank National Association, 12-20-11, See Instrument.

MD-Patricia Chapman Wilder TOGMI Trust, et al to Blasdel Plains LLC, 12-31-11, See Instrument.

C/C PROBATE-Fern Hiltbrunner to Ex Parte, 1-12-12, E 80' S 100' N/2 Outlet 26, Shamrock.

CORR. ASSIGN.-Zephyr Operating Co. LLC to Todd G. Armstrong, et al, 11-24-10, Sec. 20, Blk. A-3, H&GN Ry. Company Survey.

CORR. ASSIGN.-Zephyr Operating Co. LLC to Todd G. Armstrong, et al, 11-24-10, Sec. 20, Blk. A-3,

H&GN Ry. Company Survey, CORR. ASSIGN.-Zephyr Operating Co. LLC to Todd G. Armstrong, et al, 11-24-10, Sec. 20, Blk. A-3, H&GN Ry. Company Survey.

JANUARY 13, 2012
DEED- Billy Kirk Clay, et ux to Bobby Whitten, et ux, 1-12-12, 3 acs N/2 NE/4 SE/4 Sec. 36, Blk. 17, H&GN Ry. Company Survey.

TDT-Mortgage Electronic Registration Systems Inc. to Bank of America NA, 1-5-12, See Instrument.

EXECUTORS MD-Franklin Carter Perkins (Estate) to Kelley P. Deibel, 1-4-12, S/2 Sec. 48, Blk. 24, H&GN Ry. Company Survey.

APPT. SUB. TRUSTEE-American Bank of Commerce to Mark W. Harmon, 1-12-12, See Instrument.

ROW-Stiles Land Assets Ltd. to Enogex Gas Gathering LLC, 12-5-11, Pt. SW/4 Sec. 68, Blk. A-7, H&GN Ry. Company Survey.

ROW-Stiles Land Assets Ltd. to Enogex Gas Gathering LLC, 12-22-11, Pt. SW/4 Sec. 3, Blk. A-3, H&GN Ry. Company Survey.

ROW-Stiles Land Assets Ltd. to Enogex Gas Gathering LLC, 12-22-11, Pt. S/2 Sec. 16, Blk. A-3, H&GN Ry. Company Survey.

ROW-Stiles Land Assets Ltd. to Enogex Gas Gathering LLC, 12-22-11, Pt. NW/4 Sec. 17, Blk. A-3, H&GN Ry. Company Survey.

ASSIGN. B. of SALE-Charles Schusterman Enterprises to CLS Limited Partnership, 12-30-11, S/2 NE/4; S/2 NW/4 Sec. 18, Blk. A-4, H&GN Ry. Company Survey.

ASSIGN. B. of SALE-CLS Limited Partnership to Lynn Schusterman Irrevocable Trust, 12-30-11, S/2; NE/4; S/2 NW/4 Sec. 18, Blk. A-4, H&GN Ry. Company Survey.

ASSIGN. B. of SALE-Lynn Schusterman Irrevocable Trust to Samson LS LLC, 12-30-11, S/2; NE/4; S/2 NW/4 Sec. 18, Blk. A-4, H&GN Ry. Company Survey.

CORR. ASSIGN. B. of SALE-Modano Oil & Gas LP to Azalea Properties Ltd., et al, 10-12-11, Sec. 48, Blk. A-7.

CORR. ASSIGN. B. of SALE-Azalea Properties Ltd. to RCWL LP, 11-9-11, Sec. 48, See Instrument.

JANUARY 16, 2012
Holiday
JANUARY 17, 2012

ROW-Stiles Land Assets Ltd. to Enogex Gas Gathering LLC, 12-5-11, Pt. NE/4 Sec. 17, Blk. A-3, H&GN Ry. Company Survey.

ROL-Linn Energy Holdings LLC to Shannon Westmyer Steger, 1-4-12, NW/4 Sec. 12, Blk. R.E., Roberts & Eddleman Survey.

ROL-Linn Energy Holdings LLC to Brenda Thompson Duncan, 1-4-12, NW/4 Sec. 12, Blk. R.E., Roberts & Eddleman Survey.

ROL-Linn Energy Holdings LLC to Jerry Robertson, 1-4-12, NW/4 Sec. 12, Blk. R.E., Roberts & Eddleman Survey.

ROL-Linn Energy Holdings LLC to Dorothy Patterson, 1-4-12, NW/4 Sec. 12, Blk. R.E., Roberts & Eddleman Survey.

AFF. TERMINATION TRUST-John M. Shelton III (Trustee) to Elizabeth Shelton Trust, 12-16-11.

TRANSFER CHILD SUPPORT LIEN-State of Texas to Nathalie Branch, — — —

RDT-JPMorgan Chase Bank NA to Renee J. Adams, 1-4-12, See Instrument.

ROY/MD-Lisa M. White to Arrowhead Royalty LLC, et al, 12-23-11, Sec. 22, Blk. R.E., Roberts & Eddleman Survey and Including any other Interest in Wheeler County, Texas.

SUBORDINATION AGREEMENT-Larry Jack Taylor, et al to R. Kenton Dorris, et al, 1-8-12, See Instrument.

JANUARY 18, 2012
ASSIGN.-Dorothy Rosenbach to J. A. Martindale, 2-16-10, SW/4 Sec. 11, Blk. 24, H&GN Ry. Company Survey.

Limited Time **5.03%** APY*
INSURED CD
Ask About IRA/401K Specials!

FIRST FIDELITY
Financial Group, LLC
Your Safe Money Solution®

1800 Washington, Suite 110 • Amarillo, TX
806-373-9480
1-800-371-9201
By appointment only

HOUSE HUNTERS-REALTOR

In Wheeler—15 Acres on County Road 15-A, Good Farmland, utilities available

Linda Laycock Broker, ABR, GREEN, SRES, e-Pro
806.662.1312

Larry Hadley Assoc.
806.662.2779

Jordan Oneal Assoc.
806.670.6623

Pampa MLS www.househunterspampa.com Amarillo MLS

KIM'S KITCHEN

Dine-in, Carry-out, & Catering

Hwy 152 & 83
806.826.5102

Daily Buffet — Bakery
Open Seven Days A Week

Notice of Availability of Electronic Communications

Wheeler — Under a new law, chief appraisers of county appraisal districts, appraisal districts, and appraisal review boards may communicate electronically through email or other methods with property owners or their designated representatives. Written agreements are required for notices and other documents to be delivered electronically in place of mailing.

How does it work? Certain guidelines must be followed for this local option communication:

- Written agreements with the county appraisal district must be entered first, ensuring what electronic means of delivery are acceptable. If you are interested in receiving communications in electronic format, you should contact your local appraisal district.
- Public notice regarding the availability of agreement forms authorizing electronic communications may be published in a newspaper of general circulation in the district on or before Feb. 1 each year, or agreement forms may be delivered on or before Feb. 1 each year to property owners shown on the certified appraisal roll for the preceding tax year.
- The chief appraiser may determine the medium, format, content and method to be used for electronic communications other than notices required by Section 25.19 of the Tax Code, which are prescribed by Comptroller rule.
- A decision by the chief appraiser not to enter into agreements may not be the subject of an appraisal review board protest, a lawsuit or a complaint to the Texas Department of Licensing and Regulation.

For more information, contact us at:

Wheeler Central Appraisal District
PO Box 1200
Wheeler, TX 79096
(806) 826-5900
wheelercad@windstream.net

Listen to ...
KPDR-FM, 90.3
WHEELER, TEXAS

THESE PICTURES SPONSORED BY:

FIRST STATE BANK

Mobeetie Office:
First & Wheeler St.
Mobeetie, Texas
845-2311



Wheeler Office:
1408 S. Alan Bean Blvd.
Wheeler, Texas
826-5546

January is...

School Board Recognition Month



WHEELER I.S.D. BOARD: Members of the Wheeler I.S.D. School Board are (l. to r.) Todd Moore, Billy Richardson, Dr. Mike Smith, James Masters, Dr. Lee Ann Hillhouse, Kent Ware and Mark Markshall.



FORT ELLIOTT C.I.S.D. BOARD: Members of the Fort Elliott C.I.S.D. School Board are (l. to r.) Brett Begert, Mark Meadows, Keith Horn, Mindy Duncan, Richie Kiker, Richard Meadows, and Wade Hathaway.



KELTON I.S.D. BOARD: Members of the Kelton I.S.D. School Board are (l. to r.) Larry Lister (secretary), Barry Price, Matt Moore (president), Brett Buckingham, Paul Calcote, Champ Davis, Dr. Kenneth Abernethy.



ATTEND COMPETITION: Mr. Herndon took his Kelton science class to Robotics Competition in Amarillo, Texas. Students shown here are (l. to r.) Kristen Garner, Charmayne Hampton, Tammye Lumpkin, Cierra Alvarado, and Cheyenne Powell. It was a great learning experience for the students at their first competition.

OLD TIMES NOT FORGOTTEN

By Roland Miles

PROCRASTINATORS MAKE GOOD HUSBANDS

At first glance, I'd guess that most wives would consider this title to be pretty contradictory. I'll have to admit, a few husbands in the past, might have given "procrastination" a bad name. I've even heard one or two say, "Never put off until tomorrow, what you can put off 'til next week." With that attitude, no wonder wives get the wrong impression. They might even get the idea that we didn't want to do that little job at all. It's just that as we get older and more experienced, we begin to realize the value of procrastination.

When I was young, at the first

ALLISON NEWS

By Juanita Boydston

Come unto me, all ye that labour and are heavy laden, and I will give you rest. Take my yoke upon you, and learn of me; for I am meek and lowly in heart: and ye shall find rest unto your souls. For my yoke is easy, and my burden is light. Matthew 1:28, 29 & 30

Then Peter said unto them, Repent, and be baptized every one of you in the name of Jesus Christ for the remission of sins, and ye shall receive the gift of the Holy Ghost. For the promise is unto you, and to your children, and to all that are afar off, even as many as the Lord our God shall call. And with many other words did he testify and exhort, saying, Save yourselves from this untoward generation. Acts 2:38, 39 & 40

WHOSOEVER believeth that Jesus is the Christ is born of God: and every one that loveth him that begat loveth him also that is begotten of him. By this we know that we love the children of God, when we love God, and keep his commandments. For this is the love of God, that we keep his commandments: and his commandments are not grievous. For whatsoever is born of God overcometh the world and this is the victory that overcometh the world, even our faith. Who is he that overcometh the world, but he that believeth that Jesus is the Son of God? This is he that came by water and blood, even Jesus Christ; not by water only, but by water and blood: And it is the Spirit that beareth witness, because the Spirit is truth. For there are three that bear record in heaven, the Father, the Word and the Holy Ghost: and these three are one. And there are three that bear witness in earth, the Spirit, and the water, and the blood: and these three agree in one. I John 5:1-8

This is the day which the Lord hath made; we will rejoice and be glad in it. Save now! beseech thee, O Lord: O Lord, I beseech thee, send now prosperity. Blessed be he that cometh in the name of the Lord; we have blessed you out of the house of the Lord. God is the Lord, which hath shewed us light: bind the sacrifice with cords, even unto the horns of the altar. Thou art my God, and I will praise thee: thou art my God, I will exalt thee. O give thanks unto the Lord; for he is good: for his mercy endureth for ever. Psalm 118:24-29

The weather in Allison, Texas on this Tuesday morning is beautiful. The sun shines and then it goes behind a cloud. But as of yet, it isn't windy and its mild outside. Really nice. There is predicted that Allison will receive rain this evening into Wednesday. That will be wonderful. Praise be to Jesus!! Talking about the weather tho, Sunday was a terrible terrible windy day. This reporter was worried about their roof and trees and other things that could have been flying around. It was awful for sure. We were happy about the moisture we received tho, aho I think it began as mud balls. For the dust did blow for awhile before the rain came. Just thankful we didn't get any bad damage done to our house or trees. Thank the Lord for his protection and goodness to us. Praise the Lord!!

Seems like this year is really rolling along pretty fast. Before long Spring will be here and this reporter asked, where is winter?? Oh I know that we could still receive some winter but hasn't been a bad one yet as far as snow and ice. Thank goodness for the lack of ice. Besides the wind it has been a mild winter so far.

Please remember Vance Boydston in your prayers. He was to have surgery on this Tuesday but didn't have enough blood to be able to have it and also a bigger concern arose. He now has a mass on his spine that is affecting his bone marrow. His body is unable to make blood so he has to keep getting blood transfusions. And if this mass on his spine isn't taken care of soon, he could become paralyzed from

mention of something needing done, I'd tie right into it. Oftentimes, that would result in a botched up job. I don't even choose to call it "procrastination" any more. It has become "job planning," instead. Patience is another virtue I've developed over the years. If your patient and do a lot of job planning, you can change your mind sixteen times without consequence. This will save you countless hours of work

and a ton of money because of torn-up building material you've avoided having.

Another good thing can result from not getting in too much of a hurry. That is, sometimes while you're still "job planning," the need for the job, just simply goes away. In that case, you'll be really glad you never got around to starting! I've had several projects to turn out exactly like that. Just look at all the labor and mistakes avoided, with just a good dose of "procrastination." I'm sure there are a few "newly married" guys around here and need to take this to heart, or at least, think about it; could save them a lot of work and money. It'll also, give them more time to spend with their new wives. Turns out to be a good deal, all the way 'round.



THE WHEELER TIMES

PAGE 3 - Thursday, January 26, 2012

"Wheeler; town of friendship and pride."

waist down. So it is a very serious problem with him. He needs prayers rather badly. But we should not become discouraged cause we serve a God that can heal anything and nothing is impossible thru our God. Praise God!! We claim healing for him in Jesus Name!! There is power and healing in his great name!! Hallelujah!!

Neal and Gwen arrived in Allison on Friday from Loveland, Colorado. They stayed with Glenn and Betty Boydston. But while here they visited Pastor and Mrs. F.R. Johnson and also Opal and Juanita Boydston. Glad to see and visit with them. Opal and Juanita was surprised Sunday morning when they walked into church and there was Neal and Gwen!! WOW!! A great surprise.

Sunday after church, Louise Boydston traveled to Elk City, Oklahoma and visited her mother, Pearl Harrison in the Elk City Nursing Home. Prayers are coveted for Pearl Harrison who isn't feeling well at all at this time. May God bless her and make her feel better.

May the presence of the Lord shine down upon you and his blessings flow thru you and the peace and love of God be with

you. May God Bless and keep you till next time!!

Jennings Plumbing, Electric Heating & Air Conditioning

806-826-3153

Licensed, Insured & Bonded



Old Time Gospel Music KPDR-FM, 90.3

... In Wheeler
Sundays: 6:00 a.m. to 8:00 a.m.

DOUG BOYD MOTOR CO.

Buy Here / Pay Here

No Credit Check • Areas Largest Selection

Pampa • Corner of Hwy 60 @ Hwy 70

806-669-6062 • www.dougboydmotors.com

GIFTS - CARLTON CARDS

HYLAND'S PHARMACY

HOURS: 8-5:30 M-F, 8:30-Noon Sat

109 W. TEX. ST. - WHEELER, TEXAS

Phone: 806/826-5561

WEDDING/BABY SHOWER REGISTRY



Rock-N Okie

Complete Tree Service

Fully Insured

Mitch or Barbee
Horstkoetter
580-243-7494

P.O. Box 327
Erick, Ok 73645
www.rocknokie.com

Get Your Refund FAST! Because It's Your Money



Get Your Tax Refund FAST
with Electronic Filing!

ALVEY Tax & Service

101 E Oklahoma St. - (806) 826-3736

Mon-Fri - 9:00 A.M. - 6:00 P.M.

Sat. - 9:00 A.M. - 1:00 P.M.

Wheeler, Texas 79096



Hear the
"Abundant Living Broadcast"
KPDR-FM, 90.3
WHEELER, TEXAS
Saturdays: 9:00 a.m. to Noon

Want Ads

BULLS FOR SALE: Black composite, 2 yrs. old, LBW, gentle, moderate size, range raised, no grain, heavy muscle, reasonable priced. Joe VanZandt, 845-2101, cell 669-5436. 1-26/5-3c

\$5000 Sign-On Bonus! Tons of Runs. Frac Sand Hauling. Owner Operators need tractor, pneumatic trailer, blower. 800-397-2338 1/26p

NOTICE: The Wheeler County Tax Office is taking bids for new computer hardware. A copy of the specs can be obtained from the tax office in the courthouse located at 401 Main St., Wheeler, TX or call 806-826-3131. The bids will be considered during the February 13, 2012 Commissioners' Court at 10:00 a.m. Bids must be turned in to the Wheeler County Tax Office by 9:30 a.m. on February 13, 2012 to be considered. Bids may be hand delivered or mailed to Wheeler County Tax Office. P.O. Box 1060, Wheeler, TX 79096. Attn: Lewis Scott Porter.

HELP WANTED ROBERT C. GALUTIA, M.D. is now accepting applications for **Office Help.** Applications may be obtained at 309 E. 9th, Parkview Clinic, Wheeler, Texas. Phone 1-806-826-3581 1/19-26c

NURSES UNLIMITED, INC. is seeking **Enthusiastic Attendants** to assist clients in the home with personal care, meal prep., and light housekeeping. P-T E.O.E. Call: 888-859-0631 1/19-26c

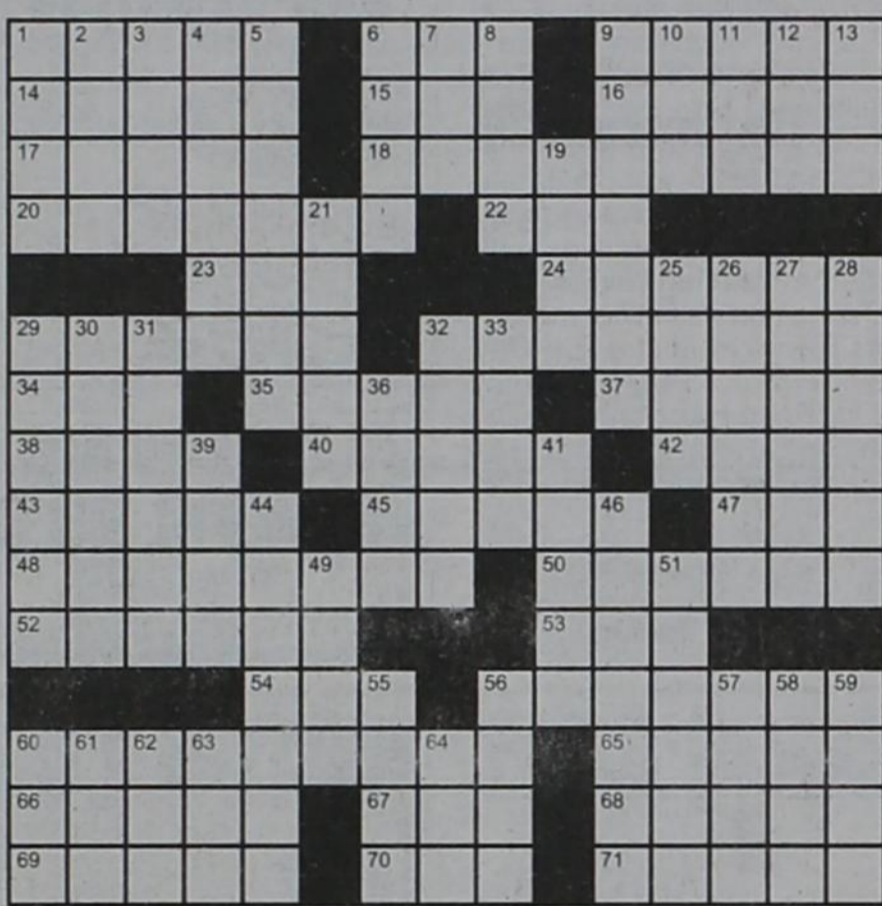
Taking Applications for Tray Aide or Cook at Parkview Dietary. 826-1355 10/27rtn

Wheeler Historical Museum is looking for: Licensed and Bonded Electrician; Licensed and Bonded Heating and Air Contractor, and Carpenter—Bonded or Provide Equivalent Insurance. P.O. Box 449, Wheeler, TX 79096. Phone: 806-663-9511. 4/28rtn

Parkview Hospital and Parkview Assisted Living is now accepting applications for a **Nurses Aide** for the 11 p.m.-7 a.m. and 3 p.m.-11 p.m. Shift. Competitive Salary with full benefits. Please call Sue Stiles D.O.N. at 826-5581 or apply in person at 901 Sweetwater Street, Wheeler, Texas. 12/9rtn.

Hemphill County Hospital—RN Home Health Director needed. Great benefits, Competitive Pay, Insurance, PTO and Retirement. Fulltime hours Please call : Rayanna @ 806-323-6422 ext 231. 2/17rtn

Crossword PUZZLE



Across
 1. Like some milk
 6. Coal carrier
 9. Fab
 14. Macho dude
 15. Cow, maybe
 16. Birdlike
 17. At attention
 18. Put into a new order
 20. Like some professors
 22. Marvelous, in slang
 23. "Uh-uh"
 24. Angel
 29. Domestic

53. Mouse catcher
 54. Blackguard
 56. Dirty deed doer
 60. Give the go-ahead to
 65. Ban
 66. Parts of inner thigh

19. Farrier's tool
 21. High nest: Var.
 25. Acquire
 26. Enter the picture
 27. Go through
 28. Football gear

Wheeler Banking Center
 P.O. Box 1040 Wheeler, Texas (806) 826-5566
 CANADIAN • CHILDREN'S • MEMPHIS • WELLINGTON • WHEELER
 32. Symbol of Americanism
 34. Car accessory
 35. Bridget Fonda, to Jane
 37. Mike holder
 38. A long time
 40. Old
 42. Make waves
 43. People person
 45. Ab strengthener
 47. Trick taker, often
 48. Like most gasoline
 50. Bordeaux wine
 52. Mainstay

67. Bit
 68. Dazzling success
 69. Hostile
 70. Pick, with "for"
 71. Nursery

29. Calculator?
 30. Pressing
 31. Spanish dish
 32. Pungent
 33. Trapper's prize
 36. Comfort
 39. Dribble
 41. New Mexico's state flower
 44. Apartment terrace
 46. Bandage coating
 49. "me!"
 51. Hook up
 55. Lover of Aeneas
 56. Balance sheet item
 57. Well
 58. Be itinerant
 59. Spoil, with "on"
 60. Gray, in a way
 61. Coffee holder
 62. "For shame!"
 63. "Get ____!"
 64. Cook in the microwave

ENERCEPT INC.

ROYALTY OWNER SERVICES

Are You Receiving Your Proper Share of Oil and Gas Sales?

We provide:

- Accounting and Accuracy of Payment Verification
- Accuracy of High Cost Severance Tax Charges
- Identification, Resolution and Collection of Royalty Payment Errors. Provided on either an Ongoing or Project Basis

Local References Available Upon Request.
Call Toll Free 1-800-658-7168
John McNab — Enercept, Inc.

3-3-12p

Court (from Page 2)
 Mocking Bird Hill Addition, Wheeler.
JANUARY 19, 2012
AMENDED DECLARATION- Parklane Estate Inc., et al to The Public, 9-20-11, Lots 13-18, Blk. 1, Parklane Estate, Wheeler.

Oil & Gas NEWS

(New Location, Completion and Plugging Report made possible by Oil & Gas Reporting Service, 3930 Beaver St., Vernon, TX 76384. Pete Porter, Phone: 940/552-6644. Cell: 940/839-1335)

Week of Jan 16 – Jan 20, 2012
 Intentions to Drill
HEMPHILL (MENDOTA, N.W. Granite Wash) BP America Production Company, #6H Isaacs 195 (640ac) 966' from North (Off Lease) & 3176' from West (Off Lease) line, Sec. 195, C, G&MMB&A, 8.5 mi SW from Canadian PD 10500 (BHL: 252' from South & 2625' from West) (sgd. Nikki Macres 281 366 3384) Horizontal

REL. UCC DT-First National Equipment Financing Inc. to Bobby D. Galmor, — — —, NE/4 Sec. 4, Blk. A-8, H&GN Ry. Company Survey. ROW-Larry G. Elmore to Markwest Oklahoma Gas Company LLC, 12-13-11, Pt. Sec. 24, Camp County School Land. CORR. CONVEY. ASSIGN. BS-Denbury Onshore LLC to Black Diamond Resources LLC, et al, 11-14-11, See Instrument. DEED-Harold Gilbert Haning Jr., et ux to Jennifer Daun Haning, et al, 1-11-12, S/2 Sec. 7 & 210.11 acs. Sec. 6, Blk. A-5, H&GN Ry. Company Survey. TDT-American Bank of Commerce to Garrison Food Mart Inc., 1-17-12, See Instrument. DT/SECURITY AGREE.-Garrison Food Mart Inc. to American Bank of Commerce, 1-17-12, See Instrument.

JANUARY 20, 2012
ROW-Britt Enterprises Inc. to MarkWest Oklahoma Gas Company LLC, 12-22-11, Pt. SW/4 Sec. 8, Blk. 2, Brooks & Burleson Survey. MD-Sharon L. Pitman, et vir to Carl D. Pitman and Sharon L. Pitman Revocable Living Trust, 5-25-11, NW/4 & SE/4 Sec. 2 & NW/4 & NE/4 Sec. 1, BS&F Survey. ROW-Dean Tipps, et ux to Devon Energy Production Company LP, 5-17-11, NW/4 Sec. 2, Camp County School Land. HEIRSHIP AFF.-Corie Naco Langford to Bradley Dale Langford, 1-19-12, Mineral Interest in Wheeler County. DEED-Rafael Gallardo to Roman Gallardo Nunes, 7-28-10, E 70' Lot 12, Blk. 38, Wheeler. AMEND. DT-American Assurance 2000 LP to BNP Paribas, 1-6-12, See Instrument. DT-Royalty Repository II LLC to BNP Paribas, 1-6-12, All my interest in Wheeler County. MEMORANDUM OL-Peyton Royalties LP to Granite Operating Company, 1-11-12, E/2 Sec. 30, Blk. R.E., Roberts & Eddleman Survey. MEMORANDUM OL-Peyton Royalties LP to Granite Operating Company, 1-11-12, N/2 & SW/4 Sec. 21, Blk. A-4, H&GN Ry. Company Survey.

WHEELER (MILLS RANCH Granite Wash Cons.) Forest Oil Corporation, #8029H Frye Ranch (640ac) 250' from North & 760' from East line, Sec. 29, A3, H&GN, 6 mi NW from Kelton PD 16000 (BHL: 100' from South & 550' from East) (sgd. Cindy Bush 303 812 1554) Horizontal
WHEELER (WHEELER N.E. Granite Wash) Forest Oil Corporation, #1044 Raticar SWD (640ac) 1035' from North & 2625' from East line, Sec. 44, A-4, H&GN, 2 mi SE from Briscoe PD 6000 (sgd. Kelly Harris 303 812 1676) Vertical
WHEELER (WHEELER N.E. Granite Wash) Granite Operating Company, #404HA Pyle (640ac) 660' from West & 350' from South line, Sec. 40, A4, H&GN, 5 mi NE from Wheeler PD 11900 (BHL: 660' from West & 467' from North) (sgd. Kyle Grant 512 478 3456) Horizontal

WHEELER (BUFFALO WALLOW Granite Wash) Linn Operating, Inc., #3 Dukes 7 (320ac) 2173' from South & 751' from East line, Sec. 7, 2, CCSL, 2 mi E from Briscoe PD 14400 (sgd. Rhonda Chancellor 405 241 2207) Vertical Field Transfer
WHEELER (BUFFALO WALLOW Granite Wash) Linn Operating, Inc., #4 Dukes 7 (320ac) 1787' from North & 467' from West line, Sec. 7, 1, CCSL, 2 mi E from Briscoe PD 15000 (sgd. Rhonda Chancellor 405 241 2207) Vertical Field Transfer
WHEELER (WHEELER N.E. Granite Wash) Samson Lone Star, LLC, #5058H Lancaster (646.74ac) 550' from West & 200' from North line, Sec. 58, A4, H&GN, 3 mi S from Wheeler PD 12000 (BHL: 550' from West & 120' from South) (sgd. James Clark 512 732 9812) Horizontal
WHEELER (MILLS RANCH Granite Wash Cons.) Sanguine Gas Exploration, LLC., #5024H Mills Ranch (160ac) 200' from South & 550' from East line, Sec. 24, A7, H&GN, 5 mi SE from Kelton PD 12500 (BHL: 2444' from South & 467' from East) (sgd. Stewart Newton 512 480 8800) Horizontal

TEXAS STATEWIDE CLASSIFIED ADVERTISING NETWORK
TexSCAN
TexSCAN Week of January 22, 2012
AUCTIONS
SEMI DRIVERS WANTED to deliver Bob-tails from either Garland OR Laredo. Get pre qualified by calling 1-866-764-1691 or www.qualitydriveaway.com
YOU GOT THE DRIVE, we have the direction. OTR drivers, APU Equipped, Pre-Pass, EZ-pass, Pets / passenger policy. Newer equipment. 100% NO touch. 1-800-528-7825
EDUCATION
EARN COLLEGE DEGREE ONLINE Medical, business, criminal justice. Job placement assistance, computer available, financial aid if qualified. SCHEV certified. Call 1-888-205-8920, www.CenturaOnline.com
HIGH SCHOOL DIPLOMA graduate in 4 weeks! Free brochure! Call now! 1-866-562-3650, ext. 55. www.southeasternHS.com
ENTERTAINMENT
RED GREEN LIVE Experience this hilarious one-man show. Mon, May 21st at 7:00pm Lakewood Theatre, Dallas. Tickets call 1-214-821-7469. Purchase online at www.lakewoodtheater.com or www.redgreen.com
FINANCIAL
\$500 LOAN SERVICE: No credit refused, fast and secure. Easy on the budget. Payments spread out over three months. Toll free: 1-855-626-4373. LoanHere.com
HELP WANTED
A CAN'T MISS limited opportunity to travel with a successful business group. Paid training. Transportation/lodging provided and unlimited income potential. Call 1-877-646-5050.
JOB TRAINING
AIRLINES ARE HIRING Train for high paying aviation career. FAA approved program. Financial aid if qualified, job placement assistance. Call Aviation Institute of Maintenance, 1-888-886-7315
CAN YOU DIG IT? National Heavy Equipment 3 week training program. Backhoes, Bulldozers, Trackhoes. Local job placement assistance. Start digging dirt now. 1-866-362-6497
DRIVERS
DRIVER: NEW CAREER for the new year! No experience needed! No credit check! Top industry pay/quality training. 100% paid CDL training. 1-800-326-2778, www.JoinCRS.com
DRIVER: WEEKLY HOMETIME Dry and refrigerated. Daily pay. 31 service centers, local orientation and newer trucks. CDL-A, 3 months current OTR experience. 1-800-414-9569, www.driveknight.com
DRIVERS SW REGIONAL lanes start 36 cpm with 6 months recent experience. Start 38 cpm on TX/LA. 57' lanes with 6 months experience. CDL-A required. 1-800-483-5182, www.LKAM.com.
EXPERIENCED FLATBED DRIVERS: Regional opportunities now open with plenty of freight and great pay. 1-800-277-0212 or primeinc.com
OWNER OPERATORS \$5000 Sign-on bonus. Tons of warm, prosperous South TX runs. Frac Sand Hauling. Must have tractor, pneumatic trailers and blower. 1-800-397-2639.
REGIONAL CDL-A truck drivers start at 37c cpm with 1 year experience. Start pay 42.5c cpm. 4-12 months experience? Then we have a paid refresher course. 1-888-362-8608 or visit AVERITTCareers.com EOE
NOTICE: While most advertisers are reputable, we cannot guarantee products or services advertised. We urge readers to use caution and when in doubt, contact the Texas Attorney General at 1-800-621-0508 or the Federal Trade Commission at 1-877-FTC-HELP. The FTC web site is www.ftc.gov/bizop

MEMBER 2011
TEXAS PRESS ASSOCIATION

City of Wheeler Turns 100
Aug. 6, '05 Celebration Planned

P.O. Box 1080
Wheeler, Texas 79096
Phone: 806/826-3123

Entered as second-class matter December 18, 1933, at the Post Office at Wheeler, Texas 79096, under the act March 3, 1879.
Postmaster: Send Address changes to *The Wheeler Times*, P.O. Box 1080, Wheeler, TX 79096-1080 — wtimes@windstream.net

Louis C. Stas, Owner & Publisher
SUBSCRIPTION RATES:
 Within Wheeler Co: \$22.00 Elsewhere: \$25.00

THE BUSINESS DIRECTORY

CROSS COUNTRY BARN ★ 24 Hr. Gas & Diesel ★ Convenience Store ★ Hunt Bros. Pizza

301 E. Oklahoma St. Wheeler, TX
 Phone: 806-826-2276
 Dale & Monica Kidd

It pays to Advertise in The Wheeler Times
 Phone & Fax: 806/826-3123 wtimes@windstream.net

Classified Rates:
 Cash—\$6.00 for 1st 20 wds.
 Chg.—\$6.50 for 1st 20 wds.
 25c for each additional word
 Display Classified: \$6.50 pci
 Card of Thanks: \$7.00

First Monday Trade Days

Canton, Texas

FLEA MARKET

Shopping Adventure As Big As TEXAS!

Open Thursday - Sunday before the FIRST MONDAY of every month
 Sunup 'til Sundown, Rain or Shine. Pavilions officially open Friday.

Feb. 2-5 • Mar. 1-4
Mar. 29 - Apr. 1 • May 3-6

Over 7000 Vendors
 200 acres open-air-stands
 Indoor market with A/C & Heat

Free Admission
 Clean Restrooms
 RV hook-ups

Oldest & Largest in the USA!

"Home of the World Famous First Monday Trade Days"
 877-462-7467
 www.visitcantontx.com

Actos® BLADDER CANCER?

FDA Reports Increased Risk of Bladder Cancer with Extended Usage

The Type 2 diabetes drug, Actos®, has been reported to increase the risk of bladder cancer to patients with extended usage and increased cumulative dosages. Bladder cancer symptoms may include painful urination, blood in urine, frequent urination and other side effects.

If you or a loved one have taken ACTOS®, ActosPlus MET® or ActosPlus MET XR®, and have been diagnosed with bladder cancer, then call us about your legal rights. No Legal Fees or Expenses charged unless we make a recovery.

WILLIS LAW FIRM
 HOUSTON, TEXAS
BOARD CERTIFIED
PERSONAL INJURY TRIAL LAWYER
 TEXAS BOARD OF LEGAL SPECIALIZATION
DAVID P. WILLIS — ATTORNEY AT LAW
1-800-883-9858
 CALL FOR A FREE CASE REVIEW

Ann Byers, 1-17-12, Tax Suit.
 #12698-Shamrock ISD vs Mary Helen Clymer, 1-17-12, Tax Suit.
 #12699-Wheeler ISD vs Linda K. Cohen, 1-17-12, Tax Suit.
 #12700-Wheeler County vs Duke Oil Properties Inc., 1-17-12, Tax Suit.
 #12701-Wheeler ISD vs Thomas A. Elwood, 1-17-12, Tax Suit.
 #12702-Fort Elliott Cisd vs Ken- (Continued Page 5)

Do you take VIAGRA or CIALIS?

SAVE \$500!

Get 40 100mg/20mg pills for only \$99.00

BUY THE BLUE PILL NOW!
 call 1-888-395-8456

CALL NOW AND GET 4 BONUS PILLS FREE!

SATISFACTION GUARANTEED

EARN UP TO 8% APY FDIC CD

WE HAVE THREE SOLUTIONS!

- 1) FDIC¹ Market Linked CD's: Yield linked to stock market performance. FDIC Insured. Earn up to 8% APY.
- 2) CD²-Type Annuity: Yield guaranteed for term. 2% for 2 yrs; 3.75% for 5 yrs; & 4.15% for 10 yr terms.
- 3) Interest³ Rate Benchmark: Rewards upswings in short-term interest rates up to a 10% APY. Provider is A+ rated.

Call at: 1-866-300-0659

BBB A+ Rated • www.BetterBankCD.com • Plano, TX
 Beat the Bank USA (DBA Elders Financial LLC) • TX License #817209

1. Terms 4-7 yrs. Min. \$25,000. Yields capped. 0% APY if market loss. Possible principal loss if not held for term. 2. Insurance (annuity). Principal and interest are guaranteed if held for contractual term. 3. Terms 5-10 yrs. Insurance (annuity). Utilizes 3-mo. LIBOR index. 0% APY if index loss. Possible principal loss if withdrawals exceed contractual benefits.

Old Time Gospel Music
KPDR-FM, 90.3
 ... In Wheeler
 Sundays: 6:00 a.m. to 8:00 a.m.

Extend your advertising reach with TexSCAN, your Statewide Classified Ad Network.

Sch. Bd. (from Page 1) and by Billy Richardson to pay Ware Chevrolet
Four members voted to accept the motion, no votes against, Kent

Ware abstained Motion by Kent Ware; Second by Mark Marshall to pay bill from Buck and Beyond
Four members voted to accept the motion, no votes against, Billy

Richardson abstained. Motion by Billy Richardson; Second by Mark Marshall to approve minutes from the previous meeting. Five members voted to accept the motion, no votes against

Dr. Hillhouse entered the meeting at 6:39pm Motion by Dr. Hillhouse; Second by Kent Ware to accept Update 91 at the recommendation of Mr. Mahler. Six members voted to accept the motion, no votes against

Motion by Mark Marshall; Second by Dr. Hillhouse to approve the Operation guidelines for Special Education Services at the recommendation of Mr. Mahler. Six members voted to accept the motion, no votes against
Motion by Todd Moore; Second by Dr. Hillhouse to approve voter agreement with Hospital and



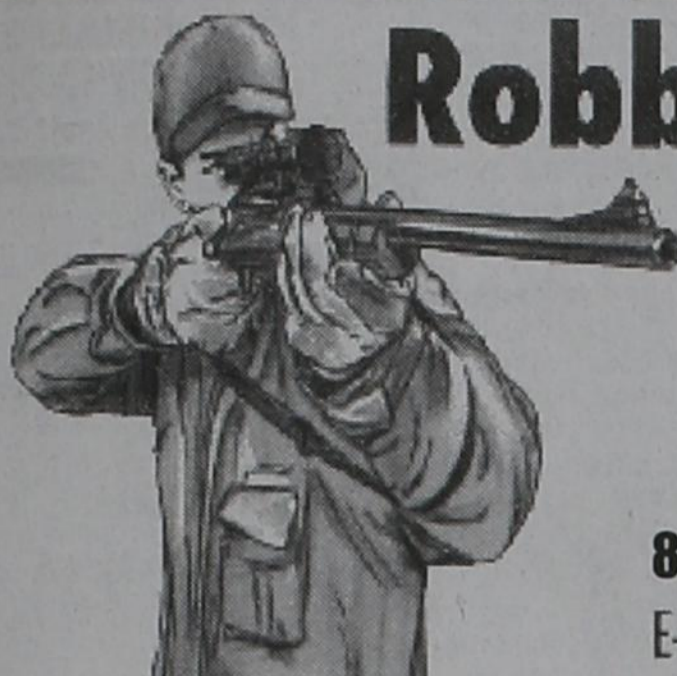
Wheeler County. Six members voted to accept the motion, no votes against
Motion by Mark Marshall; Second by Billy Richardson to approve Extra Duty Stipend. Six members voted to accept the motion, no votes against
Mr. Dale discussed enrollment, upcoming activities and the elementary musical to be held on December 15th. Mr. Markham dis-

ussed enrollment, upcoming activities, the Fall play, semester exams. Pride Program and the student council canned food drive and toys for tot's projects. Mr. Mahler gave financial report and discussed the Highly Qualified Report for the District. Dr. Hillhouse discussed the Wheeler Education Foundation progress and the receipt of a \$15,000 donation to the foundation.

The next meeting was set for January 19th, 2012 at 6:30pm Motion by Mark Marshall; Second by Todd Moore to adjourn at 7:04 PM

Six members voted to accept the motion, no votes against. As appropriate, the Board may enter in Closed Meeting as authorized by the Texas Open Meetings Act, Government Code, Chapter 551. Before any meetings are convened, the presiding officer will publicly identify the section on the Act authorizing the closed meetings. All final votes, actions, or decisions will be taken in open meetings.

Court (from Page 4)
neth Gene Evans, 1-17-12, Tax Suit.
#12703-Kelton ISD vs Nicholas J. Felix, 1-17-12, Tax Suit.
#12704-Shamrock ISD vs Kent Fike DBA Fike Cattle Co., 1-17-12, Tax Suit.
#12705-Wheeler ISD vs Rhonda Lynn Gallagher, 1-17-12, Tax Suit.
#12706-Wheeler ISD vs James A. Garner, 1-17-12, Tax Suit.
#12707-City of Wheeler vs Debora Gail Glazner, 1-17-12, Tax Suit.
#12708-Shamrock ISD vs Willis N. Hackney II R, 1-17-12, Tax Suit.
#12709-Ft. Elliott ISD vs Dennis Henson, 1-17-12, Tax Suit.
#12710-Shamrock ISD vs Homesales Inc., 1-17-12, Tax Suit.
#12711-City of Shamrock vs Dagoberto & Mary Huante, 1-17-12, Tax Suit.
(Continued Page 6)



Robby Schaffer

FIREARMS & AMMUNITION

602 Cheyenne • Wheeler, TX
806.826.0129 • 806.216.1322
E-mail: robschaf@windstream.net

Store Hours: Mon. to Fri. 6 P.M. to 9 P.M.
Sat. 12 to 8 P.M.

I am going to be away some
so please call ahead to be
certain I'm home.

ESTATE AUCTION
SAT. FEB. 4 — 9:43 A.M.
LOC. WHEELER, TX. — 7894 Co. Rd. 15A From Inters. Hwy. 83/152 Take Hwy. 152 East Approx. 6 Blks. To East (Edge Of Wheeler (Co. Rd. 15A) Then South 1/4 Blk.
MARIE WILLIAMS & OTHERS LIVING ESTATES
APPLIANCES-FURNITURE-ANTIQUES & COLLECTIBLES-TV's-COMPUTER-POOL TABLE HOUSEHOLD-KITCHEN-COLLECTIBLE GLASS COLLECTIBLES-JEWELRY-ANT. MONEY-TOY TRACTORS-TOOLS-FISHING-TENTS
Full Listing On Web Page
www.loydsauction.com
806.826.5850 or 334.0407
LYNDON LOYD AUCTIONEERS
Wheeler, TX. (Lic. 7119)

FEBRUARY 2012

This Calendar runs the last Thursday of Each Month and is available for Organizations & School Activities. Call: 806/826-3123 for listings.

SUNDAY	MONDAY	TUESDAY	WEDNESDAY	THURSDAY	FRIDAY	SATURDAY
 Hunt Bros. Pizza Pumps Open 24/7/365 301 E. Okla. St.—Wheeler Phone: 806/826-2276 Dale, Monica & Rachel Kidd	FIRST STATE BANK OF MOBEETIE Mobeetie & Wheeler Member: F.D.I.C. 	<i>Wellington State Bank</i> Wheeler • Memphis • Childress • Canadian Wheeler Banking Center 405 Alan L. Bean Blvd. P.O. Box 1040 Wheeler, Texas 79096 Member: F.D.I.C.	1	2 Wheeler Jr. High Basketball Tournament	3	4 Wheeler Jr. High Basketball Tournament
5 Church ... Wheeler Nursing & Rehab W. First Baptist 3:00 P.M.	6	7 Wheeler Lions Club Mel's 6:00 A.M.	8 Wheeler I.S.D. Board Meets 6:30 A.M.	9	10	11 Wheeler I.S.D. Sweetheart Banquet
12 Church ... Wheeler Nursing & Rehab Allison 3:00 P.M.	13 Kelton I.S.D. Bd. 7:00 P.M. Comm. Court 10:00 A.M. Mobeetie City Coun. 7:00 P.M. Ft. Elliott C.I.S.D. Bd. 7:00	14 Mobeetie Fire Dept. 7:00 P.M. Wheeler Lions Club Mel's Diner 6:30 A.M. Birthday Party 2:30 P.M. Care Ctr. (Meth. Women) Our Country Band Care Center 6:30 P.M.	15 WHEELER CHAMBER OF COMMERCE 12:00 Noon Chamber of Commerce Office 212 W. Oklahoma St.	16 Old Mobeetie, Texas, Assoc. Visitors' Center 7:00 P.M.	17	18
19 Church ... Wheeler Nursing & Rehab Mobeetie Baptist 3:00 P.M.	20 Wheeler City Council City Hall 7:00 P.M.	21 Wheeler Lions Club Mel's Diner 6:30 A.M. Chamber of Commerce Monthly Meeting	22	23 Wheeler Fire Dept. . 7:00 P.M.	24	25 ANNUAL CHAMBER OF COMMERCE BANQUET 7:00 P.M. Wheeler County Ag & Family Life Center
26 Church ... Wheeler Nursing & Rehab Johnnie & Patty Crawford 3:00 P.M.	27	28 Wheeler Lions Club Mel's Diner 6:30 A.M. Our Country Band .. 6:30 P.M. Wheeler Nursing & Rehab	29			



Phoebe Jackson is the 13-year-old daughter of John and Liz Jackson of Noble, OK. She is the granddaughter of Diane Lovell of Morrision, OK.

For all your ...
Insurance Needs, See Eastern Panhandle Insur. Agency, Inc.
117 W. Texas St.—Wheeler
806/826-3573
•Auto •Home •Life •Health
•Commercial •Bonds

LEGAL NOTICE
NOTICE OF SHERIFFS SALE
THE STATE OF TEXAS
COUNTY OF WHEELER
By virtue of an Order of Sale issued out of the Honorable 31ST DISTRICT COURT of WHEELER County in the following cases on the 6 day of January, 2012, and to me, as Sheriff, directed and delivered, I will proceed to sell at 11:00 AM on the 7th DAY OF February, 2012, which is the first Tuesday of said month, at the Official door of the Courthouse of said WHEELER County, in the City of WHEELER, Texas, the following described property, to wit:
Cause # 12582 WHEELER COUNTY, ET AL VS ROWDEN, J A Lot Eighteen (18), in Block One Hundred five (105), New Mobeetie, Wheeler County, Texas
Cause # 12576 WHEELER COUNTY VS. PARSONS, J P Lots Six (6), Seven (7), and Eight (8), all in Block Twenty-six (26), Lela, Wheeler County, Texas
Cause # 12575 WHEELER COUNTY VS. NOKES, FLOYD J A .5 acre tract located in the South one-half (S/2) of Block Thirteen (13), in Section Sixty (60), H&GN Survey, of the Original Townsite of Benonine, Wheeler County, Texas
Cause # 12567 WHEELER COUNTY VS. CLYNCH, LEE Lots Ten (10), Eleven (11), Twelve (12), Thirteen (13), Fourteen (14), Fifteen (15), Sixteen (16) and Seventeen (17), Lela (Story Addition), Wheeler County, Texas
Cause # 12566 WHEELER COUNTY VS. BEESLEY, DEBORAH J Part of the Southwest Quarter of Section 5, Block A-4, Houston & Great Northern Railway Company Survey, Wheeler County, Texas: Point of Beginning is 50 feet North, and 320 feet West of Southeast corner of the Southwest Quarter (SW/4), Thence West 112 feet; Thence North 300 feet; Thence East 135 feet; Thence South 170 feet; Thence West 23 feet; Thence South 130 feet to the point of beginning.
Cause # 12561 WHEELER COUNTY VS. THE OKLAHOMA & TEXAS INVESTMENT COMPANY Lot One (1), in Block XIV, Romans, an Addition to the City of Shamrock, Wheeler County, Texas
Cause # 12560 WHEELER COUNTY VS. THOMAS, GLEN ROSE ESTATE
The west fifty feet (W 50') of Lots Seven (7), Eight (8), and Nine (9), all in Block Twelve (12), Bowers Addition to the Town of Shamrock, Wheeler County, Texas
Cause # 12557 WHEELER COUNTY VS. DOWNS, AUDREY D ESTATE
Lot Three (3), in Block Fifty-nine (59), Woodley's South Side Addition, and Addition to the City of Shamrock, Wheeler County, Texas
Cause # 12555 MCLEAN INDEPENDENT SCHOOL DISTRICT VS. ATEX GAS INC
Irregular shaped 2.353 acre tract out of the SW part of Section 45, Block 13, H&GN RR Company Survey, Wheeler County, Texas, and being north of US Interstate Highway 40. Beginning at an iron pipe set in the NW corner of a 3.523 acre tract previously surveyed which is 671.83 feet east, 457.18 feet north and 200 feet N

30° 09' E of the SW Corner of Section 54; Thence North 333.4 feet to an iron pipe set under a fence for the NW corner of tract; Thence S 86° 34' East 157.6 feet to the center of a power pole for the NE corner of tract; Thence S 30° 47' E 507 feet to an iron pipe corner post for the SE Corner of tract; Thence N 75° 01' West 431.5 feet along the north boundary of said previously surveyed 3.523 acre tract to the place of beginning and containing 2.353 acres.
Five (5) acres of a plot of land hereto platted and filed of record in the Deed Records of Wheeler County, Texas, and being designated as Area "C" Commercial, and being in the Southwest (SW) Forty (40) acres of Section Seventy One (71), Block Twenty Three (23), H&GN RR Co. Survey, Wheeler County, Texas, save and except all of the oil, gas and other minerals in and under such parcel of land and subject to any easements thereon as shown in the Deed Records of Wheeler County, Texas. Such parcel of land being described by metes and bounds as follows: Beginning at an iron pipe set on the North right of way boundary of US I-40, 1320 feet East and 320 feet North of the Southwest (SW) Corner of Section 71, Block 23; Thence North 670 feet along the East boundary of said Southwest (SW) 40 acres to an iron pipe set for the Northeast (NE) corner of tract being surveyed; Thence West 334 feet to an iron pipe set for the Northwest (NW) corner of tract; Thence South 651.71 feet to an iron pipe on the North right of way of I-40 for the Southwest (SW) corner of tract; Thence Southeasterly 335.29 feet along said North right of way boundary the place of beginning and containing 5 acres of land
Cause # 12553 WHEELER COUNTY, ETAL VS. GRAVES, CHARLIE ESTATE
The West one hundred feet (W 100') of Lots Seven (7), Eight (8), and Nine (9), in Block Eleven (11), Bowers, Wheeler County, Texas
Cause # 12550 WHEELER COUNTY VS. DEAN, FREEMAN ESTATE
Tract 1: The East 100 feet Lot 2, Block Eleven (11) of the Bowers Addition to the Town of Shamrock, Wheeler County, Texas
Cause # 12477 WHEELER COUNTY VS. HOLLAND J D & ZULA Lots Four (4) and the East fifty feet (E 50') of Lot Nine (9), all in Block Eleven (11), Bowers Addition to the City of Shamrock, Wheeler County, Texas
Cause # 12384 SHAMROCK INDEPENDENT SCHOOL DISTRICT VS. HILL MILES & FLORA B ESTATE
Lots Seventeen (17), Eighteen (18), and Nineteen (19), all in Block III, Romans Addition to the City of Shamrock, Wheeler County, Texas
Cause # 12309 WHEELER COUNTY VS. JACKSON, JUANITA
A One-fifth Interest (20%) in Lots Seventeen (17) and Eighteen (18), in Block One (1), Lincoln Addition to the City of Shamrock, Wheeler County, Texas
Cause # 12213 WHEELER COUNTY VS. MAJORS, MARION ESTATE
Lots Four (4), Five (5), Six (6), Seven (7), Eight (8), and Nine (9), all in Block Five (5), Bowers Addition to the City of Shamrock, Wheeler County, Texas
Cause # 12086 CITY OF SHAMROCK VS. WRIGHT, JENNIFER
Lot Eleven (11), in Block Seventy-six (76), Woodley's Southside, an Addition to the City of Shamrock, Wheeler County, Texas

Cause # 11941 SHAMROCK INDEPENDENT SCHOOL DISTRICT VS. REGALTEX PROP INC
Tract 1: That certain lot, tract of parcel of land situated in Wheeler County, Texas, and more particularly described as follows: A tract of land located in the Southwest part of Section No. Fifty-four (54) in Block No. Thirteen (13), H&GN RR Co Survey, in Wheeler County, Texas being further described by metes and bounds as follows: Beginning at a point which is 671.83 feet East and 457.18 feet North of the Southwest corner of said Section 54, said point being in the North right of way line of Interstate Highway 40, said point being identified on the ground as a metal disk embedded in the top of a concrete right of way marker, said point also being established as the southwest corner of this tract; Thence, on said right of way line in a Southeast-erly direction along a circular curve bearing to the left a distance of 473.82 feet to a point also identified on the ground as a metal disk embedded in a concrete right of way marker, said circular curve having a radius of 904.93 feet; Thence South 89° 51' East along said right of way line a distance of 487.47 feet to a point established as the Southeast corner of this tract; Thence North 0° 09' East a distance of 121.05 feet to a point established as the most Northeasterly corner of this tract; Thence South 89° 51' West a distance of 203.00 feet to an iron fence post; Thence, continuing on a bearing of South 89° 51' West along a wire fence a distance of 219.81 feet to an iron fence post; Thence North 0° 08' East along a wire fence a distance of 65.14 feet to an iron fence post; Thence North 75° 01' West a distance of 431.50 feet to a point established as the Northwest corner of this tract; Thence South 30° 09' West a distance of 200.00 feet to the place of beginning. The tract containing 3.523 acres, more or less.
Cause # 9388 SHAMROCK INDEPENDENT SCHOOL DISTRICT VS. HENSLEY JIM IND & DBA JIMS I-40 SHELL STATION
West One Hundred Twenty-five feet (W 125') of the East Two Hundred Twenty-five feet (E 225') of Lot One (1), Block One (1), Schlegel Addition, Wheeler County, Texas
ALL BIDDERS MUST COMPLY WITH SECTION 34.015 OF THE TEXAS PROPERTY TAX CODE.
Levied on the 6 day of January, 2012, as the property of said Defendants to satisfy the judgments rendered in the above style and numbered causes, plus all taxes, penalties, interest, and attorney fees accrued to the date of sale and all costs recoverable by law in favor of each jurisdiction.
GIVEN UNDER MY HAND This 6 day of January, 2012.
JOEL FINSTERWALD
SHERIFF, WHEELER County, Texas
By ROWDY CLARK
Deputy
The minimum bid for a person owning an interest in the property or for a person who is a party to the suit (other than a taxing unit), is the aggregate amount of the judgment(s) against the property plus all cost of suit and sale. THERE MAY BE ADDITIONAL TAXES DUE ON THE PROPERTY WHICH HAVE BEEN ASSESSED SINCE THE DATE OF JUDGMENT. For more information, contact your attorney or the tax collector.

Sign-up (from Page 2)

Producers are encouraged to apply for CSP throughout the year to be considered for current and future application ranking periods. Those who apply by January 27, 2012, may be eligible for current available funding. Eligible lands include cropland, pastureland, rangeland and nonindustrial forestland. A CSP self-screening checklist is available to help producers determine if CSP is suitable for their operation. The checklist highlights basic information about CSP eligibility requirements, contracts obligations and potential payments. It is available from local

NRCS offices and at <http://www.nrcs.usda.gov/wps/portal/nrcs/main/national/programs/financial/csp>. Learn more about CSP and other NRCS programs at <http://www.nrcs.usda.gov/wps/portal/nrcs/main/national/programs>.
Note: Photos of conservation work in Texas are available at <http://nrcsphoto-gallery.smugmug.com/>. USDA is an equal opportunity provider, employer and lender. To file a complaint of discrimination, write: USDA, Director, Office of Civil Rights, 1400 Independence Avenue, SW, Washington, DC 20250-9410 or call (800) 795-3272 (voice) or (202) 720-6382 (TDD).

C. of C. (from Page 1)

sidered by the committee appointed to select the respective individuals to be named. Each nomination is to be accompanied by a list of reasons for the nomination. The list will be used in determining the most deserving. Nominations may be delivered to the office of the Wheeler Chamber of Commerce or mailed to P.O. Box 221, Wheeler, Texas 79096.

Sunday Nite Live
KPDR-FM, 90.3
... Live from Canadian
9:00 p.m. to 10:00 p.m.

Court (from Page 5)

12, Tax Suit.
#12712-Wheeler County vs Suzanne Oles Hyatt, 1-17-12, Tax Suit.
#12713-Shamrock ISD vs Mick Jimenez, 1-17-12, Tax Suit.
#12714-Shamrock ISD vs Timothy Dean Johnson, 1-17-12, Tax Suit.
#12715-Fort Elliott CISD vs Robert G. Kelley, 1-17-12, Tax Suit.
#12716-Shamrock ISD vs Joe Bob Kinnaman, 1-17-12, Tax Suit.
#12717-Shamrock ISD vs Daylon R. Kirkland, 1-17-12, Tax Suit.
#12718-Wheeler County vs Ben and Rayman Kupis, 1-17-12, Tax Suit.
#12719-Shamrock ISD vs Christine Marett, DBA Busy Body Fit-



THE WHEELER TIMES
PAGE 6 - Thursday, January 26, 2012
"Wheeler: town of friendship and pride."

Advertising in the Times pays!



ness, 1-17-12, Tax Suit.
#12721-Ft. Elliott CISD & Wheeler County vs Shea Davis D/B/A Gator Oilfield Service, 1-20-12, Tax Suit.

Notify (from Page 1)

dents are encouraged to come back to the site from time-to-time to see what's been added and to make sure their contact information stays current. So, start off your New Years right and "Resolve to Be Ready".



PRICES GOOD
WEDNESDAY, JANUARY 25, THRU
TUESDAY, JANUARY 31, 2012

NOT LIABLE FOR TYPOGRAPHICAL OR PICTORIAL ERRORS.
WE RESERVE THE RIGHT TO LIMIT QUANTITIES.
SOME ITEMS NOT AVAILABLE IN ALL STORES.

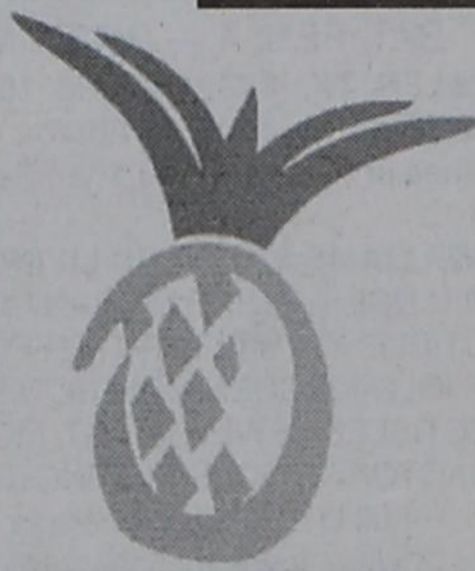
OKLAHOMA

CHEYENNE

TEXAS

SHAMROCK • SUNRAY

WELLINGTON • WHEELER



Market Square

THRIFTWAY

www.marketsquareonline.com

10 lb. Meat Sale



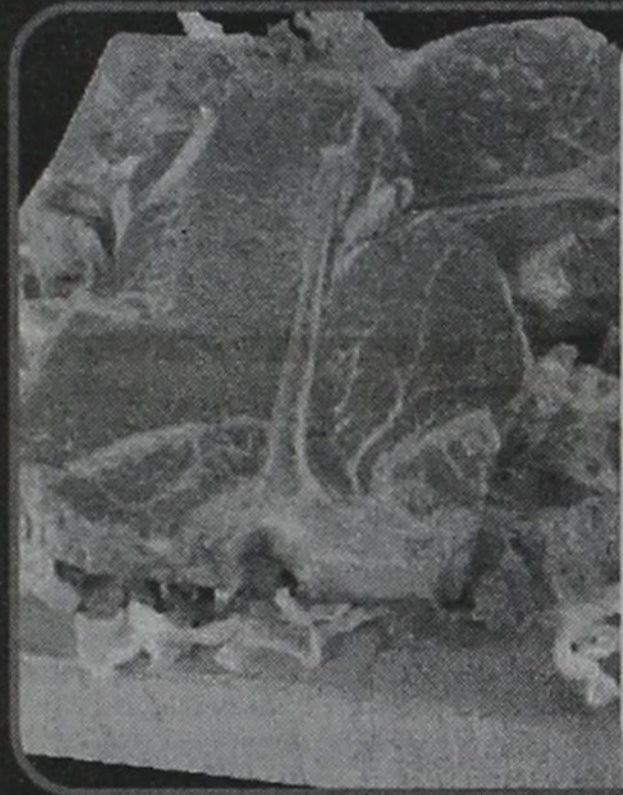
Fresh Ground Beef
family pack
(sold in the 10 lb. tube)
\$1.99 lb.
Small Pack \$2.29 lb.



Sirloin Tip Steak
family pack preferred trim boneless beef
\$2.99 lb.
Single Pack \$3.19 lb.
Sirloin Tip Roast boneless beef **\$2.79** lb.



Shurfine or Shur Saving Milk
select varieties gallon **2 \$5** for 5



T-Bone Steaks
preferred trim (sold in the bag)
\$3.99 lb.
T-Bone Steaks family pack preferred trim **\$4.99** lb.
Single Pack \$5.19 lb.

Claude's Marinades
select varieties 16 oz.
\$1.99



Pork Half Loin
boneless strap off **\$1.99** lb.



Banquet Dinners
select varieties 4.75-10.2 oz. **4 \$5** for 5



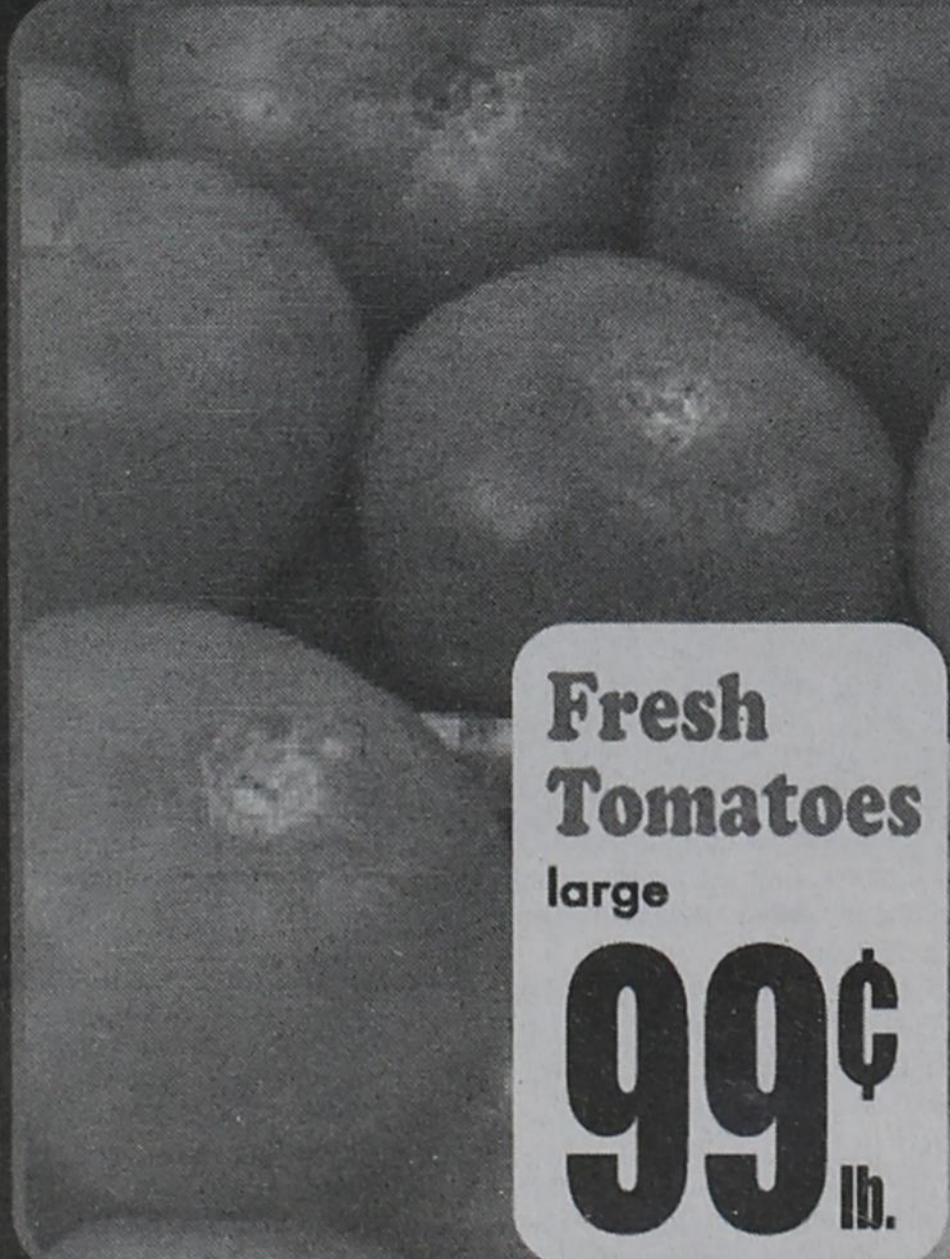
Covered Wagon Sliced Bacon
10 lb. box **\$14.99** ea.



Fryer Leg Quarters
10 lb. bag **\$4.99** ea.



Knorr Sides
select varieties 4-5.7 oz. **5 \$5** for 5



Fresh Tomatoes
large **99¢** lb.



Premium Lettuce
cello **79¢** ea.
Green Bell Peppers
large **4 \$1** for 1



Ragu Pasta Sauce
select varieties 16-26 oz. **\$1.79**



Pedigree Dog Food
adult complete nutrition 20 lbs. **\$9.99**

LOOKING TO SAVE? BE SURE AND CHECK OUT OUR PRIVATE LABEL PET FOOD PRODUCTS