



MINISTER E. M. BORDEN

### New Minister For Church Of Christ

E. M. Borden of Hamlin, has arrived in Wheeler and assumed his duties as Minister of The Church of Christ here.

He and his wife, Elsie, reside in the church parsonage on west 6th street. They have three children. Eli, 17, high school senior, band student at Hamlin playing clarinet. Lou, 15, sophomore, also played in the band, and Francis, 10, sixth grade who has started on the clarinet.

Minister Borden has had 22 years service in the ministry in California and Texas. He invites all to come join the fellowship and enjoy the activities of the church.

### L. LANCASTER NAMED HEAD OF DEFENSE FUND

Mr. L. M. Lancaster, Wheeler has been named Chairman of Wheeler County for the Texas United Defense Fund, the statewide group which will sponsor USO's campaign for \$340,000 in Texas this year. The quota for Wheeler County is \$947.00. At present there are 242 servicemen from Wheeler County serving in the armed forces.

Mr. Lancaster was appointed by John H. Head, who is district chairman of the forthcoming fund appeal to carry on the familiar service of the USO to the young men and women of the nation's armed forces.

### KEY DATA FOR HUNT SEASON

Richard De Arment, local representative of the Texas Game and Fish Department, this week released the following pertinent information regarding hunting seasons and bag limits in the Panhandle area:

Dove: September first to October 15, ten doves per day or in possession.

Ducks, November 2 — January 15, five ducks per day, ten in possession. Geese, November 17 — January 15, five per day or in possession in the aggregate.

Deer, November 19-28, one buck deer.

Turkey, November 12-21, two gobblers.

Quail, December 1 to January 16, ten per day not more than 20 in possession any one time. Special dates and limits govern several counties.

This is a short reference and does not give all the information. Check the local game warden or consult your hunting law digest.

### REV. H. THOMSON TO FILL PULPIT

Rev. Hubert Thomson, Superintendent of the Abilene District of the Methodist Church will be in Wheeler Sunday, September 4, to fill the pulpit at the local Methodist Church.

Rev. Hubert Thomson is the father of the local pastor, Rev. Carlton Thomson and will be here over the week end to visit his son and family.

The public along with all Methodists are invited to come hear the message of this man of God.

Mr. and Mrs. Jack House and family of Turkey were week end guests in the home of Mr. and Mrs. W. O. Weatherly.

### OLD SETTLERS PICNIC TO BE IN MOBEETIE

Mobeetie will hold her annual Old Settlers Picnic on Labor Day, Monday, September 5, according to Jim Hathaway, commander of the Mobeetie post of the American Legion, sponsoring organization.

The program will get underway at 11:00 a.m. at the American Legion Hut, which is the old Wheeler County Jail. Harry Wofford of Wheeler will be master of ceremonies. Mrs. J. H. Scribner is in charge of the registration of Old Timers.

The program committee, composed of Henry Johnston, Mmes. Jim Hathaway and Johnny Murrell, promise a full day of visiting and entertainment. Cotton John, Farm and Ranch editor of KGNC will be on hand to interview old settlers. Dick Wright has prepared the barbecue and beans.

There will be a small admission charge at the dance to be held Monday night at the Legion Hall. The orchestra to furnish music for the dance was not announced by the spokesman this week.

Come, enjoy the fun and bring a basket lunch, salad, or whatever you wish to supplement the barbecue, beans, bread and coffee furnished by Mobeetie for the crowd.

### LOCAL LENDING AGENCIES MEET

Representatives of all Wheeler County agriculture and lending agencies are meeting 2:00 p.m. today in the Commissioners Courtroom to discuss the Farmers Home Administration Loan Program.

In a meeting held recently FHA representatives, R. A. Ragains and Odum Stewart, Washington, D. C.; Welton R. Fall and Wallace White, Dallas, and John Barbee of Amarillo; met with the local supervisor, John L. Manning, to discuss and solve some of the problems of the Great Plains Emergency Loan Program.

Many problems were worked out to speed up the making of these loans. In the meeting today, these problems and solutions are being discussed and procedure explained.

### ASC County Committee Members Named Fri.

At a meeting held in the Wheeler County ASC office last Friday afternoon the Community Chairman re-elected members of the County ASC Committee to serve for another year. These men are: John O'Gorman, Chairman; Jessie R. Patterson, Vice Chairman; Jess D. Moore, member; E. R. Brewer, first alternate; and Alvis Jolly, second alternate.

Members of the Community Committee who met and held the election were: Charley McCarty, Community "A" Chairman; Elbert Zybach, Community "B" Chairman; Douglas Baird, Community "C" Chairman; Paul Macina, Jr., Community "D" Chairman and John Vermillion Community "E" Chairman.

### HOSPITAL NOTES

- PATIENTS ADMITTED
- Mrs. Dick Pendleton, August 27
  - R. J. Tyson, Mobeetie, August 27
  - Mrs. L. B. Henderson, Twitty, August 28
  - Nig Clark, August 29
  - Mrs. M. L. Gearhart, Shamrock, August 29
- PATIENTS DISMISSED
- Mrs. Dick Pendleton, August 30
  - Mrs. M. L. Gearhart, August 28

### Births

- Mr. and Mrs. Dick Pendleton are the proud parents of a baby daughter born August 27.
- Mr. and Mrs. G. W. Gosnell of Longmont, Colo. are the proud parents of a baby girl born Saturday, August 27.
- Mr. and Mrs. Jack Swetman of Pampa are the proud parents of a baby daughter born August 25.



PICTURED ABOVE are the five first place winners in the Dress Revue held in the HDA office in Wheeler on Tuesday, August 16. All 4-H Clubs in Wheeler County were represented in the contest. Winners were, left to right; Sandra Meek, Gaye Sivage, Violet Fillingim, Kitty Hilber and Evalyn Fillingim.

### FARM BUREAU QUEEN CONTEST SEPTEMBER 8

Plans for the Wheeler County Farm Bureau Queen Contest to be held Thursday, September 8, 8:00 p.m. in the Grade School Auditorium, are progressing according to B. A. Schlegel, general chairman.

Last year fourteen girls entered the contest. Martha Stanlee, daughter of Mr. and Mrs. Doyle Stanlee, of the Briscoe Community was chosen queen. She appeared on KGNC-TV, Amarillo during the Farm Bureau District Queen Contest. Sandra Stiles, daughter of Mr. and Mrs. Gordon Stiles, Kelson community was the runner-up. It is hoped that even more will be entered this year.

Mrs. Lyndon Sims of Wheeler will be in charge of the program. Some special musical numbers are also planned.

Young ladies who are single and between the ages of 15-22 whose parents or brother are

(Continued on last page)

### AMARILLO WINS OVER WHEELER 7 TO 6 SUNDAY

Wheeler lost the first game of the Caprock League Championship play-off to the Amarillo Rath Blackhaws last Sunday. The game was played on the Rath's home diamond and the score was 7-6.

Hendricks started the game for the Wheeler Independents and went five and one-half innings. He gave up three hits and was charged with five runs. Gabby Haynes took over and finished the game allowing two hits and was charged with 2 runs.

Davis started for the Blackhaws going six innings and giving up five hits and five runs. Running finished for the Amarillo team with two hits and one run off him.

The second game of the championship series will be played here next Sunday afternoon at three o'clock. Admission prices will remain the same for the game as they have been for the entire

(Continued on last page)

### 25 YEAR MASONS HONORED THURS.

At a district meeting of the 98th Masonic district held in Shamrock last Thursday night three members of Mobeetie Lodge 972 A.-F. & A. M. were awarded 25-year pins. The awards were made by George Moffett, Most Worshipful Grand Master of the Grand Lodge of Texas.

The Mobeetie Lodge was granted its charter December 8, 1908. The present officers are: George B. Dunn, Worshipful Master; Walter Coward, Senior Warden; C. W. Burch, Junior Warden; Henry L. Flanagan, Treasurer; Allen J. O'Brien, Secretary; Jess Patterson, Chaplin; J. R. Williamson, Senior Deacon; Henry Shelton, Junior

(Continued on last page)

### RANGE TOUR TO BE HELD WED.

Farmers and ranchers are invited to meet at the courthouse in Wheeler at 1:00 p.m. Wednesday, September 7 to go on a range tour, according to County Agent Ray Siegmund, sponsor of the tour.

The Great Plains Experiment Station from Woodward, Okla., has a 3-year demonstration set up on the T. M. Britt Ranch which will be used to show the chemical control of Sage brush, skunk brush, and shin oak by use of 2-4D and 2-4-5T.

Growth of grasses and varieties of grasses will also be shown. Mr. Siegmund stated.

### Hill Billy Musical Staged In Shamrock

Mr. and Mrs. Bill King of Dozier this week announced that a Hill Billy Musical would be staged in Shamrock Friday night at the National Guard Armory. Entire proceeds of the show will go toward the purchase of a Seeing Eye Dog for Cecil Rook.

Admission price will 50 cents and 25 cents.

Western music artists from the entire area are donating their talents and the Armory is giving the building to the support of this worthy cause. The Kings urge the public to attend and help secure the Dog for Cecil.

### State FHA Meeting Held Recently

The State Farmers Home Administration meeting held recently at San Antonio was attended by Mr. and Mrs. John L. Manning, County Supervisor and Mrs. Verna M. Metz and son Ralph, County Office Clerk for FHA.

The Farmers Home Administration personnel returned with the feeling that they were better able to cope with the problems of the farmers and ranchers in this area as a result of having attended the meeting. Representatives of the State and National offices and administrators were in attendance at the meeting.

### Brother of J. W. Scott Buried at Wellington

Funeral services were held at the First Christian Church, Wellington, on August 19 for Carr Scott, 78-year-old Collingsworth county farmer and brother of J. W. Scott of Wheeler, who died at his home in Wellington on August 18.

Mr. Scott had lived at Wellington since 1913 and was a farmer. He and his wife celebrated their golden wedding anniversary in 1951. He is survived by his wife, 5 sons, 2 stepsons, two brothers and one sister. Interment was in West Wellington Cemetery.

### Bel Canto Chorus To Be Presented at Church

The Bel Canto Chorus of the Boles Orphan Home, Quinlan, will present a program at the Church of Christ in Shamrock Saturday night, September 3, at 8:00 o'clock.

The chorus is under the direction of 17-year-old Paul Robert Oler. It is trained by A. H. Graham and is managed by Tex Williams. The group has traveled thousands of miles to bring their concerts in many localities since its organization in 1949.

The public is cordially invited to come hear these excellent singers.

### Ex-Students Reunion Attracts Big Crowd

The first Ex-Students Reunion, held in Wheeler on August 20, was a huge success, according to Harrison Hall, who had worked hard at endeavoring to make it so.

Harrison said all the classes from the Wheeler School since the first formal graduating class of 1937 were represented and that Alice Wright Frye, class of 1910 and Ben Trout, class of 1911 were the oldest in terms of years since graduation.

Martin Callan was the oldest in terms of years. Mrs. Altha Hunt and Martin Callan were both members of the class of 1917.

About 96 persons paid their registration fees before the dates of the celebration but didn't get to attend. Around 300 more were here and registered during the celebration. Some ex-students were in town for the celebration but did not take time to register so did not get counted.

Registration of Capt. R. J. Puckett who is serving with the Air Force in Japan, registered from the farthest distance. Katherine Scott Kirby, Van Nuys, Calif., came the greatest distance to attend the reunion.

The class of 1937 had the largest number of representatives, 17, in attendance, while ten members of the class of 1955 registered at the reunion.

At the mass meeting of ex-students held Friday night, August 19, in the school gymnasium, the following officers were elected: Harrison Hall, president; Carroll Pettit and Terril Gunter, vice presidents; and Mrs. Eli Sabbe, secretary. This formed a permanent organization of ex-students for Wheeler.

The Merriman family was recognized as having the largest number from one family here. Six members of the family returned for the gala event.

More ex-students registered from Oklahoma than any other state except Texas. Eleven states were represented in the group. They were: Texas, Oklahoma, New Mexico, California, Arizona, North Dakota, Missouri, Kansas, South Dakota, Louisiana and Washington.

Those in attendance were: Alice Wright Frye, Ben Trout, Doc Guynes, Martin Callan Bill Guynes, Jeannie Carter Pendleton, Altha Breeding Hunt, Cora Porter Hyatt, J. E. Risner.

Glady's Merriman Turner, Robert J. Holt, Della Kelley Hutch.

Bernice Lambeth Ramsey, Mrs. G. A. Ayers, Maud Bradshaw Patterson, Lucy Breeding Sanders, E. Douglas Carver, Fred Cotton, Ola Kelley Gordon.

Hazel Cos Davidson, Deward Wofford, Essie Smith Finsterwald, Ruby Bradshaw Pendleton, R. S. Tisdal, Myrtle Wallis Patterson, Paul Green, Nelson Porter, Dee Breeding Parton, Stella Beatrice Witt Carver.

Audrey Hooker Buchanan, Shelby Pettit, Lloyd Anglin, Rose Lee Mullin, Charley H. Bradshaw, Armond O. Sandifer, Cornelia Watson Sandifer, Ardell Goad George, John N. Merriman, Reba Wofford.

Olas Williams Whitson, Mrs. Ruby Ford, Elder Stearns, Mrs. Gordon Williams Whitener, Loyde T. Lee, Mrs. Cecil Sparkman Martin, Lottie Eva Clay Denison, Verdalee Page Cooper, Nellie Mae Beauty Lackey, Walter Flynt.

Annie Ruth Cole Lee, Flora Mae Gordon Kelley, Juanity Bradstreet Levitt, Clint F. Wofford, Florence

(Continued on last page)

### DISASTER FUND BEING RAISED BY RED CROSS

The American National Red Cross, through the local chapter is making an appeal for funds to assist the flood disaster victims in the eastern states. The losses sustained, both in life and property, in the disaster were enormous. All federal agencies are participating in the relief but a heavy load falls upon the Red Cross regardless of others as some agencies of the federal government cannot contribute to individuals. The Red Cross must carry this load.

In an appeal for funds this week, George Gandy, local chapter chairman stated that we should all contribute to the limits of our ability as we are fortunate in having escaped disaster with them all around us this season. Mr. Gandy stated that funds contributed should be labeled "Disaster Relief" and that as such were deductible from income taxes when the 1955 returns were made in the spring of 1956.

"An extensive drive will not be made at this time as we feel

(Continued on last page)

### SILVER S DAY DRAWS CROWDS

Lots of folks come in Saturday for the Silver Dollar Day Event which is always gratifying to the participating merchants though you don't have to spend a nickel to be eligible for the awards. They are glad you come in to visit and try to win an award anyway so just always remember you are welcome and they hope you enjoy seeing someone made happy when they win an award.

Ernest D. Abbott of Briscoe claimed the first award for \$25. Other names called were J. H. Gordon and Elmer Suiter of Mobeetie and Claud D. Davis of Kelson.

Joe Potts of Wheeler received

(Continued on last page)

### Announcing A Change In Picture Showing

Lee Guthrie this week announced a change in policy in the operation of theatres here. Pictures scheduled on the September Calendar for showing Pre-views Saturday night, Sunday and Monday will be shown Pre-views Saturday night and Sunday at the Rogue Theatre then moved to The Mustang Drive-In where they will be

(Continued on last page)

### Smith Radio Program Discontinued Wed.

Announcement was made this week that the Smith Radio program was to be discontinued as of Wednesday's program. The people of Wheeler and surrounding area will miss this program, as many items of importance were broadcast at the noon hour, which also released information of vital interest to the entire community, as well as spot news and entertainment.

### CALENDAR OF THE WEEK

- THURSDAY, SEPTEMBER 1 — Kiwanis Directors Meeting in Commissioners courtroom.
- Fire Department meeting at Fire Hall.
- FRIDAY, SEPTEMBER 2 — Mobeetie School Students register.
- SATURDAY, SEPTEMBER 3 — Dollar Day Activities, Jackpot \$150.00.
- Dance at Wheeler Legion Hut.
- SUNDAY, SEPTEMBER 4 — Independents vs. Raths Legion diamond, 3:00.
- MONDAY, SEPTEMBER 5 — Wheeler School Opens with full days scheduled.
- Mobeetie Old Settlers Picnic.
- WEDNESDAY, SEPTEMBER 7 — Range Tour on T. M. Britt Ranch, 1:00 p.m.

**THREE BIG DAYS  
FRIDAY SATURDAY  
AND MONDAY  
SEPT. 2, 3 & 5  
WHEELER TEXAS**

# J-LEE DEPT. STORE

## DOLLAR DAYS

**THREE BIG DAYS  
FRIDAY SATURDAY  
AND MONDAY  
SEPT. 2, 3 & 5  
WHEELER, TEXAS**

Shop J-Lee's For All Your BACK-TO-SCHOOL Clothing Needs!



**MOCK FLYFRONTER**  
slim skirt of heavy rayon faille. Pleats each side. Bl'k, navy, br'n, wine gr'n. 24-30.



**TAFFETA SKIRT**, Iridescent, boasts cummerbund waist. All around pleats. Bl'k, navy, gr'n, br'n. 24-30.



**STRIPED FLANNEL** unpressed pleated skirt made of Cotton. Grey or brown with contrast stripes. 24-30.

**THREE STYLES IN THREE DIFFERENT MATERIALS JUST THE SKIRT FOR BACK TO SCHOOL! each 2.00**



Pick A Plaid or Check — Choose A Solid Color

### Short Sleeved Classic Blouses

To Top Everything You Own!

Only **1.00**

Imagine paying so little for so much! Our beautiful tailored classic Blouse — made with ocean pear buttons — team up with everything from Bermudas to skirts. Choose from a wondrous assortment of solid colors or Sanforized plaids and checks. Sizes 32 to 38.



### Cinderella

Triple Check — Fashion — Endorsed for Fall

**LITTLE SISTER**  
Sizes 3 to 6x

**2.98**

**BIG SISTER**  
Sizes 7 to 14

**3.98**



You're seeing triple — three sizes of cotton checks! Cinderella does a bright-eyeful torso dress — wings it with a white butterfly collar — bands the hips prettily. Perfect-washing, of course, sizes 4 to 6x, 7 to 12.

This and many more styles of Beautiful Sanforized Cottons. Other styles in 7-14 that are only 2.98. Shop now for Back-To-School!

**BOY'S BACK-TO-SCHOOL  
COLORFUL VERSATILE**

### Sport Shirts

IN COLORS AND PATTERNS GALORE

**1.98**



Shirts styled just like Dad's that look as nice under sweaters and jackets as they do by themselves! All made with two button-through pockets and convertible collars. Choose from Heather-tone print, Dan River Sanforized Broadcloth, all viscose challis print and a metallic woven Sparkle plaid in a slew of old and new favorite colors. Sizes 4-18.



SO PRETTY AND PRACTICAL TOO!

### Three-Way Lounger

In Washable  
Acetate Print

**2.50**

Pipe the tiny price on our so-pretty 3-way luster! Delicately floraled all washable acetate with matching nylon lace on the collar and two pockets. Wear it free'n flowing — half-belted or neatly belted all 'round. Pink or blue in sizes 12-20.

**SAVE! SPECIAL PURCHASE LARGE ROOM SIZE**

### Rugs

**9' x 12' 15.00**

Chenille — Enduring Skid-Resistant — Cotton — Washable!

**VISCOSE and NYLON**

**RUGS 7.77**

Viscose and Nylon in a beautiful loop that will wear longer and be easy to laundry!

**BOYS SIZE 4 to 12**

**DOUBLE KNEE**

### Levi's

**SANFORIZED 2.98**

Jean's just like Dads but with long wearing double Knee and Sanforized too!

**BOYS COTTON AND NYLON**

### School Socks

Heel and Toe made of 100% Helench Nylon Stretch Yarn! These socks grow with your feet! **4 pr. 1.00**

### Special Closeouts

- Straw Hats ..... 1.00
- Women Shoes ..... 1.00
- Children Sandals ..... 1.00
- Girls and Womens Sport Wear ..... 1.00

**SEW AND SAVE! Completely Washable**

**80 Sq. Percal 29¢ yd.**

Every yard first quality! Fine cotton wash fast yarn yourself or home. 500 yards to choose from. Make pretty dresses for Back-To-School.

**Check & Plaid Gingham 79¢**

A personal favorite for back-to-school sewing preshrunk, yarn dyed and fast colors. YD.

**Cotton Prints 1.00**

Fast-Colored — Crease resistant Cottons — the season's smartest patterns and dark grounds. 2 YD.



**MEN'S FANCY Socks**

**2 pr. 1.00**

Heavy combed cotton soft-spun Ingrain. Novelties, Diamonds.



**MEN'S ZIP Jackets**

**5.95**

Splended choice Rayon two-tone Gabardinees Chest stripes.

**Blue Jeans 2.29**



Made of sturdy Sanforized 13 3/4 ounce Denim-Bar tacked at all points of strain. Zipper fly. Western cut. Slim or Regular. Sizes 4 to 16.

One group of 11 oz. JEANS in sizes 12, 14 & 16. **Reduced 1.50**



**BOYS ACME**

### Cowboy Boots

Black or Brown **5.50**

Sizes 8 1/2 to 3. A good Boot at this low price.



**GIRLS RAYON TRICOT KNIT**

### Panties

**3 For 1.00**

Nylonized -Nylon trim in white, pastel or bright colors.

**WOMEN'S Cotton Plisse Panties**

Plain Elastic Leg! SAVE!

**GIRLS COTTON PLISSE OR POLISH COTTON HALF OR FULL**

### Slips

**1.00**

Neatly trimmed with Nylon and full ruffles! Just the slip to wear to school. So easy to laundry.

**44**



See how money stretches

# DOLLAR DAYS

## FLOUR

Packards Best 25 lb. Sack **\$1.69**

SWANS DOWN <b>Cake Mixes</b> YELLOW, CHOCOLATE OR WHITE 4 Packages <b>\$1.00</b>	BAKERITE <b>Shortening</b> 3 lb. Can <b>69¢</b>
---	---

CANE  
**Sugar**  
lbs. **83¢**

KIM DOG FOOD 12-1 lb. Cans **\$1.00**  
ALL GRINDS MOUNTAIN GROWN  
**Folgers Coffee**  
lb. **83¢**

7 DELICIOUS FLAVORS  
**JELLO**  
12 Packages **\$1.00**

GERBERS  
**BABY FOOD**  
12 CAN **\$1.00**

JOHNSONS DEEP GLOSS  
**CAR-NU**  
CAN **\$1.00**



DELICIOUS HOME GROWN  
**Watermelons**  
"Cold if you like"  
lb. **2¢**

DIAMOND  
**Tomatoes** 8 No. 303 Cans **\$1.00**

DIAMOND  
**Tomato Juice** 5 46 oz. Cans **\$1.00**

VAN CAMP  
**Pork & Beans** 8 1 lb. Cans **\$1.00**

LUCKY LEAF SLICED  
**Pie Apples** 4 No. 2 Cans **\$1.00**



THE FANCY ELBERTA  
**Peaches**  
10¢

SUNKIST  
**Oranges**  
3 doz. **\$1.00**

RED  
**Potatoes** 10 lbs. **29¢**

**Clay's 'Back To School' Sale**

Regular 10c Package  
**Notebook Paper** 12 For **\$1.00**

Alligator Grain finish complete with 25c pkg. Paper. Regular \$1.98 value. Each

**Zipper Notebook** **\$1.39**

30c Value Box of 24 Colors  
**Crayons** Box **19¢**

DEL MONTE WHOLE  
**Green Beans** 4 No. 303 Cans **\$1.00**

YELLOW CLING DEL MONTE  
**Peaches** 3 Sliced or Halves No. 2 1/2 CANS **\$1.00**

DEL MONTE 3-46 oz. CANS  
**Pineapple Juice** **\$1.00**

## CHOICE CUTS

GREEN PASCAL  
**CELERY** 2 Large Stalks **29¢**

THOMPSON SEEDLESS  
**Grapes**

2 lbs. **25¢**

FANCY CELLO  
**CARROTS** 2 BAGS **19¢**

RED YELLOW  
**BEANS** 3 LBS. **19¢**



WESTERN  
**LOCKER WRAP**  
20 in. Wide 100 Ft. Roll **98¢**

FOR JELLY MAKING  
**Pen Jel**  
3 pkgs. **\$1.00**

**FRUIT JARS**  
KERR REGULAR PINTS  
1 DOZ. **97¢**



ARMOURS STAR  
**CANNED HAM**  
Heat & Eat  
4 lbs. **\$3.89**

GOOD VALUE 5 LBS.  
**Oleomargarine** **\$1.00**

KERR SQUAT 12 FOR  
**Jelly Glasses** **65c**

KERR REG. QUARTS  
1 DOZ. **\$1.15**

FRESH FROZEN  
**Strawberries** 10 oz. Pkg. **19c**

CALF CHUCK LB. LEAN MEATY LB.  
**Roast** **29¢** **Short Ribs** **15¢**

### SAVE VALUABLE CLAY FOOD STAMPS

Stamps for a large variety of Nationally Advertised Gifts.  
Oversize Plastic 10 1/2 x 8 2 Ring Reg. \$3.19 value  
1 Book Red Stamps

SNOW CROP  
**Peas** 2 10 oz. Pkgs. **33c**

10 to 16 LB. AVERAGE HALF OR WHOLE  
**Hams** **57¢**

1000  
MAGAZINE RACK in Iron Reg. \$7.50 val. 2 Books Red Stamps

SNOW CROP CHOPPED  
**Broccoli** 10 oz. Pkgs. **19c**

DELICIOUS MADE IN OUR OWN MARKET  
**Pork Sausage** 4 lbs. **\$1.00**  
KREE MEE  
**Cheese** 2 lb. box **59c**

ASSORTED BANNER  
**Cookie**  
5 9 1/2 oz. Pkgs. **\$1.00**

49c

# CLAY Food Store

Save Valuable IGA Red Stamps—Double on We

**THE WHEELER TIMES**  
Published Every Thursday at  
Wheeler, Wheeler County,  
Texas, by  
Cooper, Slemmer & Montgomery

Entered as second-class matter,  
December 18, 1933, at the post-  
office at Wheeler, Texas under act  
of March 3, 1879.

**LOCAL NEWS ITEMS**

Enjoy a delicious toasted Sand-  
wich and refreshing soda at our  
fountain, Wheeler Drug. tfe

Mr. and Mrs. Frank Wofford  
vacationed in Ruidoso, N. M., last  
week.

Mrs. J. B. Roper is visiting her  
daughter and family Mr. and Mrs.  
Vernon Lummas in Hollywood,  
Calif. She plans to be gone 3  
months.

Garland Parks left Sunday for  
Amarillo, where he will be the  
P. E. teacher in the Whittier  
School.

George Gandy was on a business  
trip in Austin Monday and Tues-  
day.

The Hiram Whiteners are fish-  
ing in New Mexico.

Mr. and Mrs. Rex Newkirk and  
children of Pampa visited Sunday  
in the L. W. Newkirk and J. B.  
Grimes home.

J. T. Grimes left Monday night  
for Beloxie, Miss., after spending

**KILL RED ANTS!**

Rid your premises of Red Ant Beds with  
**BURHAM'S ANT BALLS** for less  
than 5¢ per den. Just dissolve balls in  
water, pour in beds. Goodbye Ants!  
Mandy 35¢ and 60¢ jars at your druggist or  
**CITY DRUG STORE**

**Dr. R. J. Madsen**

**Optometrist**

**Cliff Weatherly Office**

Office Hours — Sat. 9 to 9  
For Appointments Call

**H. P. GRIDER, Jeweler**  
Wheeler, Texas

10 days with his parents Mr. and  
Mrs. J. B. Grimes and friends in  
Wheeler.

Wheeler's Complete Drug Store  
Wheeler Drug. If it is avail-  
able, we have it. tfe.

Mr. and Mrs. J. C. Tipton and  
family of Borger spent the week-  
end with her parents, Mr. and  
Mrs. J. D. Johnson.

Mr. and Mrs. Happy Martin and  
Becky Jo of Pampa, and Mr. and  
Mrs. Dub Goad and boys were  
Sunday dinner guests of Mr. and  
Mrs. P. A. Martin.

Mrs. Annie Sivage visited re-  
latives in Portales, N. M., over  
the week end.

Bennie Westmoreland of Texas  
A&M is home for two weeks.

Mr. and Mrs. Don Alexander  
of Pampa, spent the week end with  
their parents, Mr. and Mrs. Bur-  
ley and Mr. and Mrs. D. Alexand-  
er.

Mrs. Elsie Mae Hood of Sham-  
rock was a Wheeler visitor re-  
cently.

Mr. and Mrs. Frank Wofford,  
Jane and Martha have been  
vacationing this week.

Mr. and Mrs. Clarise Robison,  
Sonny and Beverly of Socorro, N.  
M., MSgt. and Mrs. G. A. Robison,  
Robbie and Cherry of Laredo, Mr.  
and Mrs. Lance Cole of Flippin,  
Ark., Mr. and Mrs. Bun Cole of  
Springfield, Colo., Mr. and Mrs.  
Rusty Cole of Quannah, Lt and  
Mrs. Marvin Cole of Santa Anna,  
Calif., and Mr. and Mrs. Aldon  
Wood of Frederick, Okla., were  
week end guests in the home of  
Mr. and Mrs. Clarence Robison.

Mr. and Mrs. Henry Greenhouse  
and Donna, who resided south of  
Wheeler, moved recently to Bor-  
ger.

Mrs. Nolan Harrel and Cynthia  
Ann of Ft. Worth were visitors  
in Wheeler over the week end.

Mr. and Mrs. N. P. Woos-  
ley and family of Borger were  
Wheeler visitors over the week  
end.

Mr. and Mrs. R. T. Watts and  
Mrs. Morgan Pride recently re-  
turned from Houston, where they  
had been visiting with relatives.

Mr. and Mrs. Elmer Lee Traylor  
of Pampa visited in Wheeler  
last week end.

Mr. and Mrs. E. Buchanan of  
Pauls Valley, Okla., were week  
end guest in the home of her par-  
ents, Mr. and Mrs. J. W. Hooker.

**Wheeler County Soil  
Conservation .  
District News**

District Supervisors Bennie  
Schlegel, Clarence Zybach, Dusan  
Pakan, and George Henderson in-  
spected grass seeding and range  
work on the Mill-Iron Ranch at  
Cee Vee and Wellington last week.  
John O'Gorman of Twitty and  
Paul Macina of the Pakan com-  
munities also went on the tour.

Special attention was given to  
planting equipment, blue panic  
seedling and the improvement of  
native range where grazed with  
blue panic. Some parts of the  
Wheeler district are adapted to  
blue panic grass. Where it can be  
grown, it will be a valuable graz-  
ing crop. It also produces excellent  
hay.

Marion Bryant has just complet-  
ed thirteen miles of channel type  
terraces near Kelton. Channel  
type terraces are not common in  
this district. Wheat farmers find  
them better suited to their needs,  
than ridge type terraces. They are  
also better adapted to steeper  
slopes.

**LOCAL NEWS ITEMS**

Wheeler Durg for reliable pre-  
scription Service. Let us fill your  
next prescription. tfe

Miss Sue Vaughan visited  
friends in Oklahoma City last  
week end.

Mr. and Mrs. Henry Greenhouse  
and Donna, who resided south of  
Wheeler, moved recently to Bor-  
ger.

Mrs. Nolan Harrel and Cynthia  
Ann of Ft. Worth were visitors  
in Wheeler over the week end.

Mr. and Mrs. N. P. Woos-  
ley and family of Borger were  
Wheeler visitors over the week  
end.

Mr. and Mrs. R. T. Watts and  
Mrs. Morgan Pride recently re-  
turned from Houston, where they  
had been visiting with relatives.

Mr. and Mrs. P. A. Martin and  
Eob of Mobeetie, Mrs. Dub Goad,  
Mike and Freddie, and Larry  
Henderson of Wheeler attended  
the Annual Martin family reunion  
at the City Park in Altus, Okla.,  
last week.

**Want Ads...**

**FOR SALE**

FOR SALE—Canning tomatoes,  
on Tuesdays and Fridays —\$2.00  
bu. at Jowett Plant. Ralph Sims  
35-8tp

FOR SALE—6 ft. Case combine  
in good repair located 3/4 mi. so.  
of Kelton, Texas. Bobbie Wood-  
ring. 37-2tp

FOR SALE—Doe Rabbits Bred  
\$1.50 a piece and young pheasants  
\$1.00 a piece. See J. E. Brown or  
phone 3983. 37-2tp

FOR SALE—Allis-Chalmers 1947  
Combine. Call or see S. A. Mex-  
well. 38-1tp

FOR SALE—25 New Hamp-  
shire Red Fryers \$1.00. L. A. Mc-  
Whorter 1 1/2 IM. East of Wheeler.  
38-1tp

FOR SALE—6x6 redwood over-  
head storage tank in good condi-  
tion. See Ernest Lee Hardware.  
38-1tc

**MISCELLANEOUS**

Monuments, Markers, Grave  
Covers, Curbing, Surface  
Vaults, Will Warren. 4-tfc.

Furnished apartment for rent.  
Call Wheeler Gas office, phone  
2771. 1-tfc

Hardwick stoves are good  
stoves, change to a Hardwick  
today. Willey's 45-tfc

WANTED—Clean cotton rags,  
no scraps, buckles, buttons or  
snaps. Wheeler Times 31-tfc

FOR RENT — 2-room and 4-  
room modern houses. Dr. Hall.  
38-2tp

Mr. and Mrs. Lloyd Wayne  
Weatherly and children are oc-  
cupying the F. A. Traylor house  
on Canadian Street.

Mr. and Mrs. Paul Litrell and  
Linda of Dallas visited recently  
in the home of Mr. and Mrs. Roy  
Bailey.

Orville Williams and Pam, Mrs.  
F. A. Traylor and Mrs. Elmer  
Williams had dinner with the  
Robert Specks recently.

Your dollar buys more quality  
merchandise at Wheeler Durg if  
Mr. and Mrs. Carrol Pendleton  
have rented Mrs. W. E. Bowen's  
house on Shamrock St. They will  
move September 1.

**Announcing . . .**  
The addition of  
**Jack Terry**  
and  
**Harvey Davis**

as new shop mechanics

These men have had about six years  
experience and are Ford factory trained  
all phases of Ford repair, including the  
FORD-O-Matic.

We are now equipped to give you the  
best in automotive service from minor tune  
up to major overhaul on any make or model  
car or truck.



We maintain a complete body shop  
with the necessary equipment and know-  
how to take care of minor dents to major  
wrecks. Glass work our speciality.

**J. C. Chandler**  
in charge of body shop



**Johnson-Burton Motor Co**

Phone 2311

Wheeler



Get your  
**FREE**  
CLOTHESPIN  
BAG  
**NOW!**

Ask for yours with your first  
purchase of a **PURINA LAYING CHOW**  
for fall pullets . . .

They're top-quality bags made by  
the country's leading manufacturer.  
All you do is ask for yours when  
you make your first purchase of 100  
pounds of any Purina Laying Chow  
for your pullets.

They're going fast . . . and when  
they're gone we can't get more. So  
please phone us or drop in real soon.

Given to get you to try **PURINA CHOWS**  
and prove that you'll get up to **40%**  
**MORE FALL EGGS** than U. S. average.

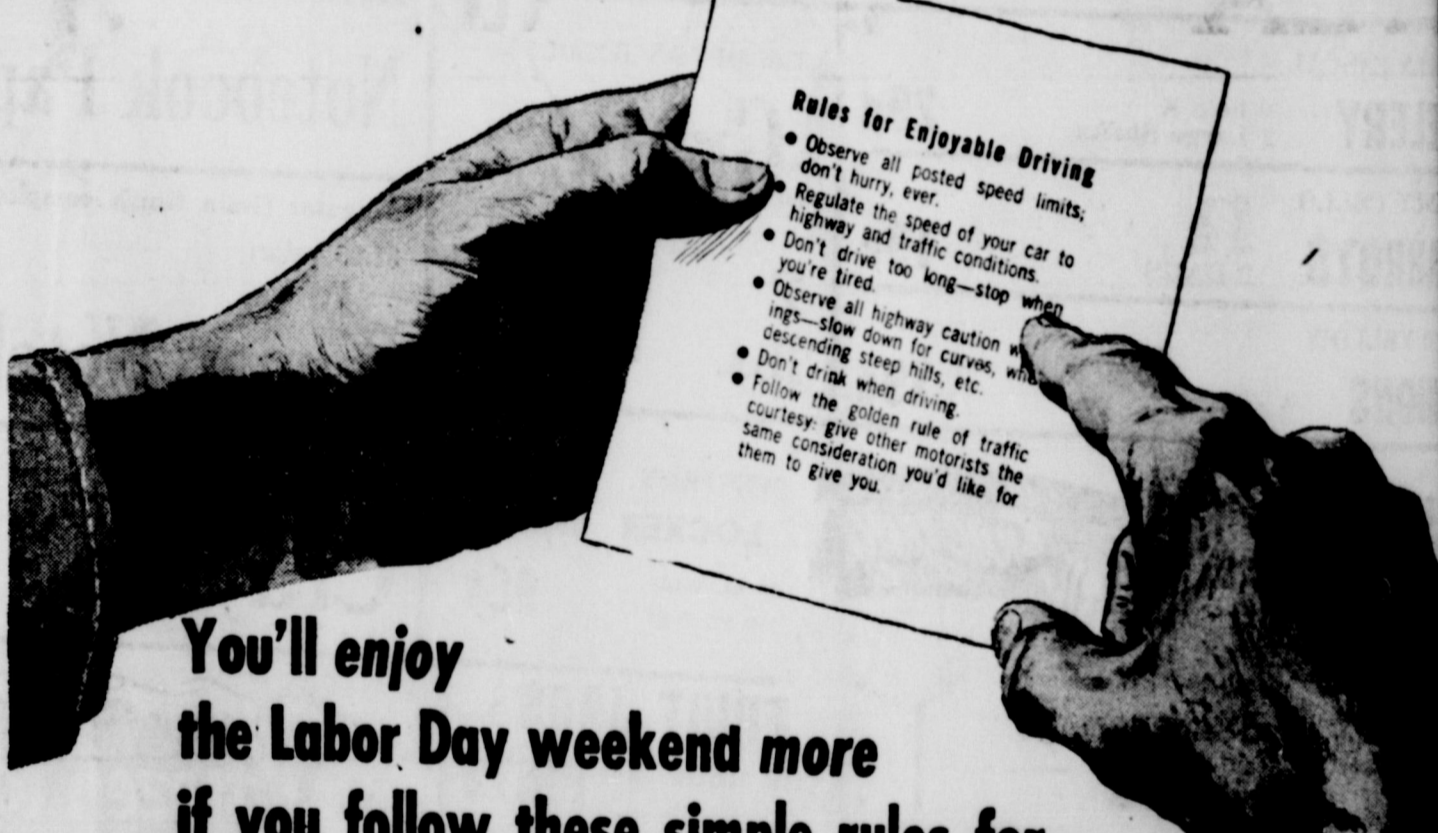
1,033 Purina feeders who kept rec-  
ords last fall and early winter got 3  
dozen EXTRA eggs over U. S. aver-  
age by Christmas. Figuring eggs at  
40¢ a dozen, they made an EXTRA  
\$120 per 100 pullets! That's the  
REAL reason for feeding Purina.

**WORM  
PULLETS NOW**

**WITH PURINA  
CHEK-R-TON**



**WHEELER COUNTY PRODUCE ASS'N**  
Wheeler, Texas



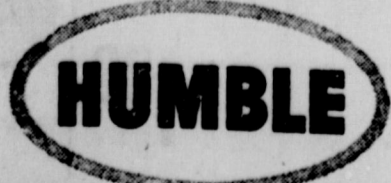
You'll enjoy  
the Labor Day weekend more  
if you follow these simple rules for  
**SAFE DRIVING**

Safety Associations recommend that you follow these simple rules  
to make your Labor Day weekend not only happy, but also safe

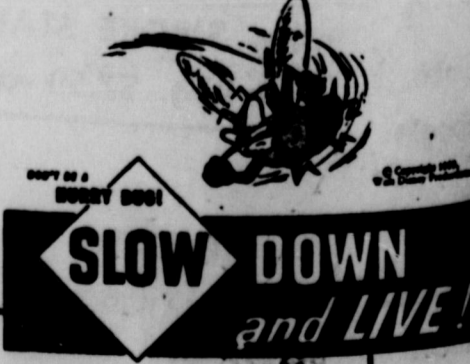
- Observe all posted speed limits. Don't hurry ever. Enjoy the scenery . . . and the feeling that you and your family are out for fun.
- Regulate the speed of your car to highway and traffic conditions. Enjoy taking your time . . . enjoy relaxing from traffic tension.
- Don't drive too long — stop when you're tired. That you'll surely enjoy a lot.
- Observe all highway caution warnings — slow down for curves, when descending steep hills, etc. Enjoy the freedom from fear that these precautions give you.
- Don't drink when driving. You'll enjoy your trip the more.

Follow the golden rule of traffic courtesy: give other motorists  
the same consideration you'd like for them to give you.  
Enjoy the good feeling that you're helping others  
to have a good time, too.

Enjoy this Labor Day weekend—  
please drive safely!



HUMBLE OIL & REFINING COMPANY



Last year  
in Texas, 28 people lost their lives and  
were injured in 1400 traffic accidents over  
the Labor Day weekend. This year, let's bar  
tragedy from our holiday.

# BUSINESS AND PROFESSIONAL DIRECTORY

**Gene Hall**  
Accounting, Tax Returns  
Real Estate  
Wheeler, Texas

Children's Health  
**GIVE THEM**  
**ORDEN'S**  
Dairy Products  
**MAN DAIRY**  
Wheeler

**Representative**  
**Canadian Valley**  
**Production Credit**  
**Association's**  
  
**IS IN THEIR**  
**Wheeler Office**  
  
**EACH**  
**Thursday**

**AUCTIONEER**  
**SHELBY PETTIT**  
Will cry your sale  
any time or place  
Phone 3561 - Wheeler, Texas

**C. J. MEEK**  
AGENT  
**INSURANCE**  
Nite Ph. 3881, Day Ph. 2221

**DR. JOEL M. GOOCH**  
OPTOMETRIST  
207 N. Wall  
Phone 800  
SHAMROCK, TEXAS

## Russ-Farmer Vows Read in Hale Center

On Friday, August 26, at 3 p.m., Janet Russ daughter of Mr. and Mrs. R. G. Russ, Jr., became the bride of Glen Edwin Farmer in the home of the bride's parents in Hale Center.

B. M. Litton, minister of the Church of Christ in Jal, N. M., read the double ring ceremony in front of a fireplace decorated with baskets of pink and white gladioli and green stock and an arrangement of white gladioli and greenery.

Miss Bobbye Louthan, of Hale Center, played pre-nuptial piano selections and the traditional wedding march.

Miss Billie Owen, of Amarillo, was the maid of honor. She wore a pink-orchid ballerina length dress of antique silk over taffeta, with a fitted dropped waistline, full gathered skirt, and a square portarit neckline accented by a rolled collar. Her head bandeau was of matching material covered with tulle. She carried a colonial bouquet of blue, pink, and white Frenched carnations.

Bob Weatherly, of Wheeler, was best man.

Given in marriage by her father, the bride wore a ballerina length dress of Dresden blue nylon over taffeta, fashioned with a full, pleated skirt, an empire waistline accented by a lace panel, an off-the-shoulder neckline and small pleated sleeves. Her short circular veil fell from a halo of blue tulle accented by tiny pink flowers.

Her only jewelry was a string of pearls, a gift from the groom. She carried a colonial bouquet of pink sweetheart roses tied with white satin streamers. For something old, she wore her maternal grandmother's engagement ring and moonstone; for something new and blue, her ensemble; and for something borrowed was a handkerchief borrowed from the pianist, Miss Louthan.

Mrs. Russ, mother of the bride, wore a cinnamon princess styled dress of rayon faille, with coffee frost accessories and a pink carnation corsage. The groom's mother, Mrs. Farmer, wore a cinnamon silk shantung two piece dress, with pink accessories and a pink carnation corsage.

Immediately following the ceremony, a reception was held in the dining room of the Russ home. Mrs. W. P. Davis, of Acuff, cousin of the bride, presided at the punch bowl. Mrs. Tillman Richardson, of Hale Center, served the tiered-wedding cake.

The lace covered table was centered by the bouquets of the bride and maid of honor, and laid with crystal and silver. Pink tapers in crystal holders completed the setting. Miss Bobbye Louthan, pianist, played soft music throughout the reception.

The bride traveled in an avocado, white, and yellow three piece suit, with avocado and white accessories.

The couple will be at home at



MRS. GLEN FARMER

1506 7th Avenue, Canyon, Texas, where both are attending West Texas State College.

Mrs. Farmer is a graduate of Wheeler High School in 1955, where she was an honor student and is a freshman student at West Texas State College.

The groom is a graduate of Wheeler High School in 1953 and is a junior student at West Texas State College.

The Russes recently moved to Hale Center from their home in Wheeler.

Out-of-town guests at the wedding were Mrs. Ebb Farmer, Mrs. Shelby Pettit, Mrs. Roy Bailey and C. R. and Bob Weatherly, of Wheeler; Mr. and Mrs. Hester Dodson, Twitty; and Mr. and Mrs. J. Hastings, former Wheeler residents, who now live in Hereford.

Miss Rosie Lee Mullins of Oklahoma City was a week end visitor in Wheeler.

Bring your doctors prescriptions to Wheeler Drug for accurate service.

### LOCAL NEWS ITEMS

When you care enough to send the very best, you will choose a Hallmark card or notes from Wheeler Drug.

Patricia Hubbard, former local resident, spent the week end in Wheeler visiting friends and relatives.

Mr. and Mrs. Bill Darnell and family of Lubbock visited in Wheeler last week. Mr. and Mrs. Arnold Jones and Patricia returned to Lubbock with them and visited over the week end.

Mr. and Mrs. Clyde Guynes and family of Borger were week end visitors of their parents, Mr. and Mrs. Roy Weatherly and Mr. and Mrs. Dick Guynes.

Mr. and Mrs. R. B. Mann, Jr., and Debbie of Leveland were week end guests in the home of his parents, Mr. and Mrs. Burley Mann.



**COFFEE** Cain's lb. **75¢**

DUNCANS	¼-POUND	DEPENDABLE SWEET	NO. 2½ CAN
<b>TEA</b>	<b>31¢</b>	<b>Potatoes</b>	<b>21¢</b>

KOUNTY KIST, Whole Kernel	BANQUET	NO. 2½ CAN
<b>Corn</b> 2 cans <b>25¢</b>	<b>Pears</b>	<b>35¢</b>

DIAMOND	46 OZ. CAN	MOUNTAIN	QT. JAR
<b>Tomato Juice</b>	<b>25¢</b>	<b>Dill Pickles</b>	<b>23¢</b>

**CRISCO** 3 lb. Can **89¢**

GOLD STANDARD	1-LB. CAN	HUNT'S	NO. 2½ CAN
<b>Salmon</b>	<b>39¢</b>	<b>Peaches</b>	<b>31¢</b>

GROUND	CHUCK		
<b>Beef lb.</b>	<b>29¢</b>	<b>Roast lb.</b>	<b>43¢</b>

BOSS BRAND	2-LB. PKG.	LEAN, MEATY	POUND
<b>Sliced Bacon</b>	<b>93¢</b>	<b>Beef Ribs</b>	<b>19¢</b>

Prices Good Friday, Saturday and Monday. Double Stamps Wednesday.

**Puckett's** WHEELER, TEXAS  
**FOOD MARKET**

**PARADE**  
of VALUES

Personal Size 4 FOR  
**IVORY** 52¢

There's COLD CREAM  
now in  
**CAMAY**  
BATH SIZE 12½¢ COMPLEXION SIZE 9¢

**LAVA SOAP**  
LARGE SIZE  
2 for 29¢

**OXYDOL** REGULAR 29¢ GIANT 69¢  
Beats the Sun for getting clothes white!

FOR THE CLEANEST CLOTHES POSSIBLE  
**TIDE**  
Giant Size 5¢ OFF REG. PRICE

**CHEER**  
Giant 69¢

try new pink  
**dreft**  
IT'S MILD!  
Giant Size 10¢ OFF REG. PRICE

New Liquid for Faster Easier Dishwashing  
**JOY** Giant 69¢

**SPIC and SPAN** 2 pkgs. for 49¢  
NO RINSING NO WIPING

**Special Notice!**

**DARBY'S BIG FURNITURE STORE**  
in Duke, Oklahoma

Will Be

**CLOSED**

**THURSDAY AND FRIDAY,**  
**SEPTEMBER 1 AND 2**

To Take Inventory

Largest and Most talked about Furniture and carpet store in all the Southwest.  
Come to see us

**DARBY'S**  
OF DUKE OKLAHOMA  
Phone 1

# Give God A Chance Attend Church Services Sunday!

**First Baptist Church**  
Kelton, Texas  
Sunday School . . . . . 10:00 a.m.  
Morning Worship . . . . . 11:00 a.m.  
Training Union . . . . . 7:30 p.m.  
Evening Worship . . . . . 8:30 p.m.  
WMS Monday . . . . . 2:00 p.m.  
Wm. M. Lewis, Pastor

**First Methodist Church**  
Wheeler, Texas  
Sunday School . . . . . 9:45 a.m.  
Morning Worship . . . . . 11:00 a.m.  
MYF . . . . . 7 p.m.  
Evening Worship . . . . . 8 p.m.  
Carlton H. Tompson, Pastor

**First Baptist Church**  
Mobeetie, Texas  
Sunday School . . . . . 10:00 a.m.  
Morning Worship . . . . . 11:00 a.m.  
L. T. Fields, Pastor

**Briscoe Baptist Church**  
Briscoe, Texas  
Sunday School . . . . . 9:45 a.m.  
Morning Worship . . . . . 11:00 a.m.  
Sanford Cole, Pastor

**First Baptist Church**  
Wheeler, Texas  
Sunday School . . . . . 10:00 a.m.  
Morning Worship . . . . . 11:00 a.m.  
We preach Christ crucified, buried,  
risen and coming again.  
M. B. Smith, Pastor

**First Methodist Church**  
Mobeetie, Texas  
Church School . . . . . 10:00 a.m.  
Morning Worship . . . . . 11:00 a.m.  
Albert W. Cooper, Pastor

**Methodist Church**  
Briscoe, Texas  
Sunday School each  
Sunday . . . . . 10:00 a.m.  
Preaching, second and fourth Sun-  
day . . . . . 11:00 a.m. and 8:00 p.m.  
Rev. P. E. Yarborough, Pastor

**Assembly of 'God'**  
Wheeler, Texas  
Morning Worship . . . . . 11:00 a.m.  
Evening Worship . . . . . 8:00 p.m.  
D. R. Kirkendall, Pastor

**Ware Chevrolet Company**  
N. D. Ware, Sr., and N. D. Ware, Jr.

**Johnson-Burton Motor Company**  
Ford Sales and Service

**Hibler Implement Company**  
Your International Dealer

**Doris Forrester Agency**  
Insurance and Abstracts

**Hall Flower and Gift Shop**  
"Flowers for every occasion"

**Nash Appliance & Supply Company**  
Harold and Shelton Nash

**Owen's Service Station**  
Mr. and Mrs. Bill Owen

**Wheeler Drug Store**  
Mr. and Mrs. Frank Wofford

**Southwestern Public Service Co.**  
Electric Service



*"Come Unto Me, All Ye That Labor And Are Heavy Laden And I Will Give You Rest." That is an invitation; that is a promise. Rest for the toiler is what a boon that is! Some of us scarcely expected rest until we get to Heaven, but "Home We Go" is the term of Jesus that He gave to men in toil the assurance and the fellowship that turned the uncommon and the ordinary into the glorious. In His company men found glory and great living. They toiled as did the disciples but found renewed strength for the task. The difference was not with the task but with the company. Your task may be heavy and your toil all too try, but if you know where you are coming out... that makes a difference. You may be weary with the day-in and day-out responsibility, but if good company is added... that makes a difference.*

God glorified work... we are workers together with God. To know that one's work really counts is to find new joy in the task. The men who toiled with the Carpenter of Nazareth, found their labor "was not in vain in the Lord." Now our nation declares a holiday in honor of our working men. May our acts, as we pause for rest, be honorable, may our respite be earned. *...we turn our backs on our plow for a day may we find rest of soul, joy and refreshment of spirit for tomorrow as "Home We Go."*



**CHRISTIANITY IS THE ROAD** to the solution of the perplexing problems of the hour.

**THE CHURCHES** and their messages are the guide posts on this road.

**THE PUBLIC SPIRITED FIRMS** listed on this page urge church support and attendance—thus working toward a greater and more spiritual community in which to live and raise our families.

**City Laundry**

Mr. and Mrs. Clayton Satterfield

**Cicero Smith Lumber Company**

Wayne Edwards, Mgr. — Wheeler

**Thomas Garage**

Mr. and Mrs. Al Thomas

**Clay Food Store**

Mr. and Mrs. Cecil Denson

**Lowell's Service Station**

Mr. and Mrs. Lowell Farmer

**Wheeler County Produce Ass'n.**

N. Arganbright

**Title Abstract Company**

C. J. Meek

**Borden's Fine Dairy Products**

Albert Chapman

**Holdeman Implement Company**

Mr. and Mrs. C. A. Holdeman

**The Wheeler Times**

Job Printing — Office Supplies — Advertising

**First Baptist Church**

M. B. Smith, Pastor

**Wheeler Abstract Company**

Mr. and Mrs. Harold S. Kenady, Arden and Ann

**Assembly Of God**  
Briscoe, Texas  
School . . . . . 9:45 a.m.  
Morning Worship . . . . . 11:00 a.m.

**United Pentecostal Church**  
Allison, Texas  
Sunday School . . . . . 10:00 a.m.  
Morning Worship . . . . . 11:00 a.m.  
Rev. R. L. Cupit, Pastor

**Church Of God**  
Old Mobeetie  
Sunday School . . . . . 9:45 a.m.  
Morning Worship . . . . . 11:00 a.m.  
C. A. James, Pastor

**Church Of The Nazarene**  
Wheeler, Texas  
Sunday School . . . . . 10:00 a.m.  
Morning Worship . . . . . 11:00 a.m.

**Methodist Church**  
Allison, Texas  
Sunday School each  
Sunday . . . . . 10:00 a.m.  
Preaching, first and third Sundays  
. . . . . 11:00 a.m. and 8:00 p.m.  
Rev. P. E. Yarborough, Pastor

**Church of Christ**  
Wheeler, Texas  
Sunday Bible Class . . . . . 10:00 a.m.  
Morning Worship . . . . . 11:00 a.m.  
E. M. BORDEN, Minister

**First Methodist Church**  
Kelton, Texas  
Church School . . . . . 10:00 a.m.  
Preaching . . . . . 11:00 a.m.  
Bruce Parks, Pastor

**The Land Mark Missionary Baptist Church**  
Wheeler, Texas  
Services 1st, 2nd, and 4th Sundays  
Sunday School . . . . . 10:00 a.m.  
Preaching . . . . . 11:00 a.m.

**Paymaster Gin Co.**

**Percy's Garage**  
Mr. and Mrs. P. L. Farmer

**J-Lee Department Store**  
"Your friendly Department Store"

**Chapman Service Station**  
Mr. and Mrs. Bill Chapman

**Cicero Smith Lumber Co.**  
"Everything for the builder" — Mobeetie

**Farmers' Equity Service, Inc.**  
Jack Miller

**Wheeler Gas Company**

**Farm Bureau Ins. Service**  
Geo. and Vera Richardson

**Wheeler Lumber Company**  
"For better building" — George Warren

# DOLLAR DAYS

## Friday, Saturday and Monday, Sept. 2, 3 & 5

Farm Bureau  
**Queen Contest**  
**September 8th**

PRIZE — Gift and all Expense Paid Trip  
 PRIZE — Gift valued at \$7.50  
 CONTESTANTS to receive gifts

Grade School Aud.  
**Wheeler, Texas**

BEST RULES: Must be single and between the  
 15 and 22. Must be daughter or sister of Wheel-  
 Farm Bureau member.

For further information, contact your community con-  
 chairman, or the Farm Bureau Office.

### SUPPORT RATES ON SOME WHEAT BE CUT 20 CENTS

The U. S. Department of Agri-  
 culture announced on August 12th  
 a discount of 20 cents per bushel

in 1956 price-support rates for 34  
 wheat varieties designated as un-  
 desirable because of inferior mill-  
 ing and baking qualities. This an-  
 nouncement is being made in ad-  
 vance of planting time for the  
 1956-crop winter wheat to give  
 producers notice of the new sup-  
 port provisions.

Seven varieties have been list-  
 ed as undesirable in Texas. All of  
 the Texas varieties listed are

Hard Red Winter types and are  
 as follows: Red Chief, Red Jacket,  
 Kanking, Chiefkan, Early Black-  
 hull, New Chief, Blue Jacket and  
 Yogo. The 20c per bushel discount  
 is designed to discourage planting  
 of these varieties. USDA states  
 that while these varieties are  
 planted to meet specific produc-  
 tion problems, such as growth or  
 rust resistance, early maturity,  
 adapted for modern harvesting  
 methods, and others, they prove to  
 be undesirable for commercial  
 food use.

Because these varieties are dif-  
 ficult to determine from threshed  
 samples of wheat, the price-sup-  
 port regulations for the 1956 pro-  
 gram will provide for producer  
 certification regarding undesirable  
 varieties similar to certifications  
 now made by a producer that he  
 produced the wheat and produced  
 it in the current crop year. The  
 identification of the variety of  
 wheat going under price-support  
 will be the producer's responsibility  
 based on his knowledge of the  
 varieties he seeded and harvested.

Even though some of the un-  
 desirable varieties might have  
 protein content high enough for a  
 premium, no premiums will apply  
 to any of the undesirable varieties.  
 USDA officials state that this  
 change in the wheat price-support  
 program for 1956 is designed to  
 encourage production of the more  
 desirable wheat varieties and dis-  
 courage planting of wheat with  
 inferior milling or baking qualities.  
 Officials hope that this step will  
 lessen the possibility of U.S. wheat  
 of inferior quality finding its way  
 into domestic and export channels.  
 Representatives of crop improve-  
 ment associations have strongly  
 urged this action to help improve  
 the quality of commercial baking  
 type wheats.

Desirable wheats for Wheeler  
 County include the following:  
 Commanche, Early Triumph, Con-  
 cho, Quanah, Kiowa, Panca, Ten-  
 nara, Pawne, Cheyenne, Kanred,  
 Westar, Wichita, and Turkey.

### BROWN & HINKLE, INC.

- GENERAL SHEET METAL WORK
- HEATING & AIR CONDITIONING
- COMMERCIAL REFRIGERATION

SALES & SERVICE

Phone 4-7421 — Pampa, Texas  
 MALCOLM E. HINKLE—Owners—PAUL N. BROWN

### Dollar Day Specials!

**FREE! FREE! \$79.95 RADIO AND REC-  
 ORD PLAYER COMBINATION** to be given  
 away at 5 p.m. Saturday, September tenth,  
 in connection with our **BIG BACK TO  
 SCHOOL SALE**, nothing to buy, just come  
 in and register. You don't have to be pre-  
 sent to win.

#### CHENILLE RUGS

size 24x48, Reg. 3.98 ..... 2.98  
 size 24x36, Reg. 2.98 ..... 1.98

**FIRE KING**  
 Dinner Plates ..... 5 for 1.00

7½ in. PYREX  
 Pie Plates Reg. 29¢ each ..... 4 for 1.00

Anklets, Ruth Barry Reg. 39½ pr. . 5 pr. 1.00

Clothes Pins ..... dozen, .10

Ladies Bras. Reg. 98¢ ..... each, .85

**SCHOOL SUPPLIES**—Buy them at our store  
 —you get better value for your money. Pen-  
 cils, Crayolas, paste, glue, loose leaf filler,  
 zipper binders, tablets, etc.

**DAUGHTRY'S 5¢ & 10¢ STORE**  
 "The Store With Over 5,000 Items"  
 Wheeler, Texas

## DOLLAR DAYS

### CANNON TOWELS

Large Size  
**3 FOR \$1.00**

BRAY  
**MATERIAL**  
**4 YDS. \$1.00**

RAYON, AND COTTON  
**BLANKETS**  
 wide satin binding, special  
**\$3.95 EACH**

size Chenille  
**BEDSPREADS**  
**SPECIAL, \$3.95 EACH**

BROWN DOMESTIC  
**YDS. FOR \$1.00**

A GROUP OF

### LADIES SHOES

Value to \$7.95

**SPECIAL, \$1.98 PR.**

A LARGE GROUP OF

### LADIES DRESSES

½ PRICE

LADIES

### NYLON HOSE

60 Gauge made by Cannon Mills,

**79¢ PAIR**

### PREMIUM SHEETS

81 by 99 size

**\$1.59 EACH**

See Our New Shipment of Beautiful

**NYLON RUGS**

A Large Group of Boy's and Men's

### SPORT SHIRTS

Short Sleeved

**\$1.00 EACH**

MEN'S

### UNDERSHIRTS

Monarch Brand

**3 FOR \$1.00**

### BOY'S SPORT SOX

**5 PR. FOR \$1.00**

MEN'S

### WORK SHIRTS

Khaki or gray Sanforized, special

**\$1.79 EACH**

ALL MEN'S DRESS

### STRAW HATS

½ PRICE

### LOCAL NEWS ITEMS

B. M. Fulks, Nelda Fulks, and  
 Leonad Fulks visited recently in  
 Illinois and Kentucky.

Tony Weatherly returned to his  
 air corp base at Bryan last week  
 end after spending a furlough at  
 home.

Mr. and Mrs. Watson Burgess  
 and family returned last week  
 from a vacation and fishing trip  
 to Cowles, N. M. Mrs. Burgess  
 bought the evidence in the form  
 of a 22" rainbow trout to the  
 office upon returning to prove  
 where they had been and what  
 they were doing while there. Nice  
 fish.

### Elk City RODEO

September 5-6-7 1955

Mon. Night — Tues. Night — Wed. Night

**FREE TWILIGHT PARADE**

Monday Afternoon at 4 p.m.

**FIRST SHOW FOLLOWS PARADE AT 8 O'CLOCK**

Plenty of FREE Parking Space

### Wheeler Locker and Grocery

Now is the time to fill your locker with beef, pork, and  
 plenty of fresh vegetables.

A full locker means more food for the table at a great  
 or saving.

See us for your butchering of hogs and beef.

**Dial 3151 Wheeler**

shipment of 45 in. heavy  
**PAPER MATERIAL**  
 Special, yard

**98¢**

**NEW FALL MATERIALS-FALL  
 COATS - DRESSES - SUITS - HATS  
 AND SHOES.**

# McILHANY'S

"For Everything You Wear"

**25-Year Masons —**  
(Continued from page one)

Deacon; Ralph Sims, Senior Stewart; J. H. Scribner, Junior Stewart; and Boyd Beck, Tiler.

Members receiving 25-year pins and the date they became master masons were: Willard Godwin, '28; E. E. Johnston, '18; John H. Scribner, '21.

Other members whose name have been cleared for the award but who were not present to receive the pins last week are:

Ben G. Barker, '29; Tom A. Beck, '29; J. W. Dart, '29; John L. Dunn, '18; Henry L. Flanagan, '28; Nathan M. Hunt, '23; J. A. Jeffus, '20; E. T. Scott, '24; O. E. Sims, '19; Dr. Glenn R. Walker, '19; and Gus Ware, '25.

**Farm Bureau —**  
(Continued from page 1)

members of the Wheeler County Farm Bureau are eligible to enter. Each contestant is asked to be dressed in evening clothes and to have a one-minute speech prepared on the subject, "Why My Parents or Brother are Members of the Farm Bureau".

Judging will be done according to personality, poise, beauty, and intelligence out-of-county judges will be used.

For further information contact the Farm Bureau office or any of the following:

**Theatre Calendar**

**SATURDAY**  
**Hell's Island**  
VistaVision  
John Payne Mary Murphy  
AT THE ROGUE

**MATINEE SATURDAY**  
Show starts at 1:30 p.m.  
AT THE ROGUE

**PREVIEW SATURDAY NIGHT**  
and **SUNDAY AT THE ROGUE**  
and **MONDAY AT THE MUSTANG**  
**Track Of The Cat**  
CINEMASCOPE  
Robert Mitchum Teresa Wright

**TUESDAY AND WEDNESDAY**  
**Young at Heart**  
Technicolor  
Doris Day Frank Sinatra  
THE MUSTANG DRIVE-IN

**THURSDAY AND FRIDAY**  
**Top Of The World**  
Dale Robertson Evelyn Keyes  
Frank Lovejoy  
THE MUSTANG DRIVE-IN

the following community chairman: Kelson, Mrs. Buster Walsler or Mrs. Gordon Stiles; Twitty, Mrs. Ernest Blake or Mrs. John O'Gorman; Mobeetie, Mrs. Clifford Walsler; Briscoe and Allison, Mrs. Clarence Zybach and Mrs. Grady Dodd; Palkan, Mrs. Dusan Palkan; Kellerville, Mrs. Ray Gossett.

Shamrock, Mrs. L. E. Clay, Mrs. Clayton Sanders, Mrs. Sam McMurtry, or Mrs. B. A. Schlegel; Wheeler, Mrs. Ray Siegmund, Mrs. W. A. Goad, Jr. or Miss Vara Crippen.

No deadline has been set for entering.

**Amarillo Wins —**  
(Continued From Page 1)

If Wheeler wins Sunday there will be another game in the series. If the Amarillo team wins they will be declared the league Champions and the season will be over. Come out help Wheeler get back in the game.

The game last Sunday was a close one. We should be able to win the game on our own diamond, Pete Burton, team manager stated.

**Silver \$ Day —**  
(Continued from page one)

the second award for \$12.50. Other names called were J. R. Hale, Hugh E. Miller, and Roy P. Scribner of Shamrock.

B. F. Meadows of Briscoe claimed the third award for \$7.50 other names called were E. C. Hunter, Q. A. Hündrick, E. K. Capterton, and Joe K. Lester, Shamrock.

Mrs. Tom Atwood of Wheeler won the fourth award of \$5.00 the other name called was Geo. Wells, of Miami.

The name called for the \$120.00 Jackpot, R. L. Stokes of Shamrock was not claimed, so the pot for Saturday September third will amount to \$150.00.

**Announcing —**  
(Continued From Page 1)

shown on Monday nights.

Mr. Guthrie stated this change was made in the showing in order that more patrons might get to see these outstanding films that have been scheduled for the weekends during September. This policy will remain in force until further notice.

Mr. Guthrie also stated that the management was sorry so many people had to be turned away last Monday night that came to see the film "A Man Called Peter." He said he hoped that they were not inconvenienced too much and got to see it on Tuesday night.

**Disaster Fund —**  
(Continued from page 1)

these are enough people who are interested in their fellowmen to more than make up the chapter's share of the disaster fund", Gandy stated.

Contributions may be mailed to Mr. Gandy's office, to the office of County Clerk, Harry Woford, or to The Times. If you prefer you may hand your contribution to any of these people or their employees.

The need is urgent and the time is short so attend to this matter while it is on your mind, NOW!

**Ex-Students Reunion —**  
(Continued from page one)

Merriman Graham, Wanda Taylor Hugg, Clarence B. Holt, Jewel McCasland Holt, Ernest Gordon, Ruby Goad Zybach.

Curtis Ashley Moore, Ruby Lee Williams Sandifer, Buster Walsler, Mildred Flynt Newkirk, Sherman Smith, Mrs. Aral Bonham, Pat Beene, Dorothy Bradstreet Beene, Vaudie Walsler Briley, Bill Owen.

Weldon Sandifer, Helen Morgan Martin, Catherine Scott Kirby, Avis Tillman Broome, R. M. Green, Evelynne Irons Caviness, Lindsey E. McCasland, Helen Green Sabbe, Anne Mae Green Cantrell, Wayland Merriman, Jack Garrison.

Anna Mae Puett Johnston, Marguerite Ficks Philpott, Mrs. Ruth Dill Wiley, James Merriman, Florine Callan Liles, John Ficke Willie Mae Hollabaugh Wegner, Aubrey A. Brazil, Willis Rogers, Mrs. Bill Owen.

Augusta Guynes Beauchamp, Mary Eunice Noah Wofford, A. B. Turner, W. L. Oallan, Carlise C. Robison, A. L. "Bodie" Cole, Derwood D. Lewis, Nettie V. Jamison Guynes, N. T. Conner, Florine Guynes Beaty.

Ford Newkirk, Virgil Jamison, Jr., Dorothy Mae Burgess Crone, Rutha Mae Conner Tolliver, Nerine Young Carter, Gladys Warren Bridges, Beatrice Miller Porter, Clarice Robertson Newkirk, Everett Cole, J. D. Beaty.

Mrs. Dorothy Tolliver, Robison, Alvis Jolly, Guy A. Robison, J. N. Tucker, Charles C. Harmon, E. M. (Spud) Moore, Douglas Groves,

Elizabeth Elanch Flynt, Andrew T. Sartor, Jr., Clyde Ayres.

Wanda L. Hyatt Nations, Mary Berniece Bailey Havenhill, Kenneth Young, Melba Wiley Montgomery, W. L. Jolly, Jake Trout, Marie Herd Hampton, Alvis Hampton, Mary Helen Jones Tucker, Carroll P. Adams.

Adrian Risner, James E. (Jim) Johnson, Harold D. Callan, Charles B. Sandifer, Hiram Whitener, Harry Garrison, Lowell Pendleton, Nile Patterson, Earl Barnes, O. B. Burton.

Clifford Farmer, Emily Lou Ahler Farmer, Mary Elizabeth Maars Barnes, Clyde Guynes, Louise Whitener Robertson, Imogene Crowder Trout, Mable Lamb Sartor, Jean Dill Parks, Lester T. Robertson, Jr., June George Herd, Parilee Clay Ellis, Herbert N. Whitener, Bob Noah, Alma Burnley Traylor, Mrs. Wave Wallace Meek, Irene Hunt Norman, Thelma Louise Milum Overture, Lula Barr McCasland, Huffman Walker, Amos Page.

Willie Dee Whitener, Cora Jean Dill Parks, Jean D. Pitcock, Alvern Hampton Hutchison, Otis Alton Nations, Edgar Flynt, T. J. Cole, Jr., Harrison Hall, Arnold T. Jones, Ab Gunter.

Helen Flynt Franklin, Elsie Newkirk Grimes, Faeine Newberry Mitchell, Claude A. Pillers, Harley B. Pond, Ruby Ayres Jones, Lowell F. Farmer, Laverne Cox Tucker, Bobbye Thoraberry, Joe R. Weatherly.

Harvey Wright, Louis Martin, Louise Tillman Pendleton, Gene Hall, R. J. Holt, Jr., Carroll Pendleton, Carroll Pettit, Virginia Lowrie Callan, LaRue Cole Sims, Virginia Marrs Pettit.

Donnie Goad Close, Don Farmer, Henry Risner, Charles F. Hubbard, Iris Conner Waldrys, May Waters Weatherly, R. B. Mann, Jr., Edna Farmer Davis, Bonnie Prater Clay, Glenna Hefley, Roy Ford, Donald Reeves, Peggy Weatherly Ford, Vendell Starkey Killingsworth, Ida Mae Martin Goad, Nell Garner Bradstreet, Anita Weatherly Guynes, Floy Bradstreet Larkin, Dolores Ahler Pendleton.

James R. McCormick, Lois May Harris, Joyce Bowman Edwards, Francis Porter Crouch, Bill Robertson, Billie V. Brown, Johnny

Weeks, Melba May Robertson, Margaret Ann Holdeman Weatherly, Jack Mitchell, C. R. Bailey, Dorothy Esslinger Holdeman, Floy Bell Patterson Lewis, Georgia Ford Smith, Maurine Herd, Betty Sue Ripley Risner, Glenda Laycock Crossman, Von Eva Hooker Robertson, Melvin May, Mrs. Dixie Sanders Moore, Mrs. Donita Regan Barry, Richard Brown, Nadine Barton Ruff, Bobby G. Weatherly, Mary Bob Denson Laycock, Waunetta Burgess Whittenburg, Patricia Hubbard, Helen Johnson May, Glen Farmer, Georgia Herd, K. D. Ford, Mrs. Esther Mae Rogers Stansell, J. R. Stansell, Jr., Clarence

Whittenburg, Mary Barton, Larry L. Jones, Jimmy Z. Goad, Mitchell, Maxey E. Cook Henderson, Mary Cook Finster, Lonelle Lee, Joyce Kenady, Ada Pierce, J. T. Grimes, and Joe

**WE NEED TIRES FOR WINTER NEW TREADS**

**LET'S TRADE NOW!**

**GOOD YEAR TUBELESS Deluxe Super-Cushion**

Goodyear's exclusive 3-T Triple-Tempered Cord Body makes the new Tubeless DeLuxe Super-Cushion one of the strongest, safest tires ever built.

Better Puncture Protection... Triple-Tempered 3-T Cord plus exclusive Grip-Seal Construction give a double line of defense against punctures.

Better Blowout Protection... the great new tire has no tube to pinch, or blow out.

Fit your present wheels... no extra to buy.

**MORE PEOPLE RIDE ON GOODYEAR TIRES THAN ON ANY OTHER KIND**

**OWEN SERVICE STATION**  
Intersection Highways 83 & 152  
Pick Up and Delivery Service  
Dial 4401  
Wheeler

"My ELECTRIC FOOD FREEZER gives me substantial savings plus top quality!"



says **MRS. HERB GRIFFITHS**  
**1500 AVENUE F**  
**MULESHOE, TEXAS**

"But, that's not all! I save time because I can buy foods in larger quantities eliminating 'those little trips' to the grocer store," Mrs. Griffiths adds

Many homemakers, through personal experience, are firmly convinced that a food freezer pays for itself through reduced food bills as Mrs. Griffiths suggests.

You too can save money and time and get the big plus of top quality when you own an electric food freezer. Why wait? See your Reddy Kilowatt dealer, now!



"We purchase meats for our family of four in large quantities, and the freezer saves us money at the same time that it lets us enjoy top quality cuts of meat"

"Our son, Prentice, who is now three, was stricken with polio in 1953, and for several months was on a diet which included lots of lean meat. Our food freezer really came in handy during that time"

"My husband, Herb, and I enjoy outdoor cooking during the summer months, and our freezer is just right for keeping the cuts of meat we enjoy." We almost

always use something from our freezer in entertaining friends, and I avoid any last-minute rush before the guests arrive."

"The children enjoy the frozen desserts and between meal snacks which our freezer keeps ready for them at a moment's notice"

A freezer fits into pleasant living — as you can see from Mrs. Griffiths' enjoyment of hers. Why not make meal planning a pleasure at your home. A food freezer will help

**SOUTHWESTERN PUBLIC SERVICE COMPANY**



**SEE YOUR REDDY KILOWATT ELECTRIC APPLIANCE DEALER**

For a short time only we are offering  
**6 CHILD'S PORTRAIT'S**  
Value \$9.00  
**!! SPECIAL !!**  
All 6 — All Different  
**ONLY \$3.95**

**W.D. Barrymore**  
THE ORIGINAL  
Bromofone Studio  
PHOTOGRAPHERS

Studio is Located in Wheeler 1/2 Mile South of Courthouse on Highway 83  
**OPENS SEPTEMBER 6**

Just 6c a day can help build rich, red blood — save you from being  
**TIRED...NERVOUS...**  
**EASY PREY TO MINOR ILLS\***

Nutritional experts reveal vitamin losses in cooked foods plus faulty diet may be seriously undermining your energy, strength, and resistance, making you feel on edge — affecting your appetite — spoiling your sleep — because your body is vitamin and iron starved.

\*These symptoms if due to a vitamin deficiency occur only when daily intake of vitamins B1, B2, and niacin is less than minimum daily requirements over a prolonged period. In themselves, they do not prove a dietary deficiency as they may have other causes or be due to functional conditions.

Now you can stop chronic Vitamin & Iron starvation TODAY... Feel like a new person!

Supplement your diet every day with just one High-Potency Bexel Capsule. Just one of these wonderfully strengthening capsules give you the full vitamin and iron content nature provided in the groups of the following foods before cooking:

1 quart of pasteurized milk	4 oz. of fresh orange juice
1/2 lb. of lean bacon	1 lb. of lean pork
1/2 lb. of green string beans	1/2 lb. of ham
1 lb. of beef	1/2 lb. of butter

**Penny for penny... you get more value in high-potency**

**BEXEL**  
SPECIAL FORMULA VITAMIN CAPSULES

WHEELER DRUG STORE