





**THE WHEELER TIMES**

Published Every Thursday at Wheeler,  
Wheeler County, Texas, By  
**COOPER, HOWELL & MONTGOMERY**  
J. C. Howell Editor-Manager  
Charlotte Weatherly Society Editor  
Richard L. Bradley Printer  
Maurice Pettit Apprentice



**SUBSCRIPTION RATES**  
In Wheeler, Beckham and Hemphill Counties

8 Months	75c
6 Months	\$1.25
1 Year	\$2.00

Everywhere Else

8 Months	85c
6 Months	\$1.50
1 Year	\$2.50

**ADVERTISING RATES**

National Rate	42c Column Inch
Local Rate	35c Column Inch
Classified	See Want Ad Page

Entered as second-class matter December 18, 1933, at the postoffice at Wheeler, Texas, under act of March 3, 1879.

**NOTICE TO PUBLIC**  
Any erroneous reflection upon the character, standing or reputation of any person, firm or corporation, which may appear in the columns of this paper will be gladly corrected upon due notice being given to the Editor personally at the office at Wheeler, Texas.

THURSDAY, SEPTEMBER 11, 1952

*Editorial*

**THE NEW FIVE YEAR PLAN**

The calling of a Russian Congress in Moscow, the announcement of a new five-year plan, and the visit of Chinese communist leaders, in Moscow, all point to a new phase in the cold war between the United States and Russia. These developments can also be taken as an indication that one phase of the cold war has now ended. That phase was the one in which communist military power was practically unchallenged in Europe, or by the United States.

In the last two years western Europe and the United States have made steady, although slow progress towards rearmament.

Today the United States and western Europe possess the military strength to make Soviet aggression costly, and thus that short-term danger has ended. The new Russian five-year plan and the calling of the Russian Congress indicates the Russians are looking to the future, and planning over a long-range period, in their effort to gain world domination.

It is believed the Russians want to bring their industrial production up to a point more nearly equalling that of the United States before engaging in a war with this country. If the newest Soviet five-year plan succeeds, 1955 production of steel in Russia will total about 45 million tons. That is still less than half current U. S. production, though it is many millions of tons more than the Russians are producing at present. Many experts expect the rate of expansion in the Soviet industrial field to exceed that in the United States. The Communists believe they can continue to increase their production totals and avoid a depression. They also believe that a depression will sooner or later occur in the United States and that this may offer them their best chance to match U. S. production totals.

While one might find some satisfaction because the short-termed danger of Russian aggression seems to have eased, should Russian plans succeed the United States will one day be faced with a far more serious Russian threat. This country will eventually be faced with a huge country, outnumbering us in population, and equalling us in industrial production. When this day comes the United States will face its greatest danger, since the question will not be one of immediate preparedness but one of the possibility of defeating Russia in a sustained conflict—likely between two countries separated by such large distances. The best insurance against such an eventuality is steadily increasing industrial production totals in the United States, which can only be achieved if we avoid the serious economic depressions. The Communists believe that we cannot, and their threat is a direct challenge to our democracy and our leaders in government.

**MACHINE THAT READS ALOUD**

Dr. Walter Blum, electrical engineer of Hanover, Germany, has invented a machine that will read aloud to the blind. This report was made to the World Veterans Foundation by Edgar Joubert.

On the battlefield in North Africa, a friend near Dr. Blum at the front was seriously wounded and lost his sight. This inspiration for his invention came from this incident.

The invention is still in the experimental stage and it has been estimated that it will take at least three years and \$100,000 before manufacturing on a large scale is possible. It is hoped that this mechanical reader can be produced for less than \$300 apiece.

**!!!!!! IT'S A SECRET !!!!!!**



Don't tell more than 5,000,000 people that Dean Martin and Jerry Lewis will be at the State Fair Auditorium Oct. 4-19, quipped the two zaniest characters in show business. The number one comedy team will be the number one amusements attraction at the 1952 State Fair of Texas. Mail orders for the mammoth Martin and Lewis show will open Aug. 31.

'Tis said that more women should be in politics because their minds are clearer. Maybe so, but they oughta be, they change them more often.

Then there's the one about the GI returning from overseas, who remarked as he passed the Statue of Liberty; "Put your torch down, honey, I'm home."

**The Best Stove Value In The World**



**WILEY'S**

**NOT PRACTICAL**

"Arithmetic is a science of truth," said the professor earnestly. "Figures can't lie. For instance, if one man can build a house in 12 days, 12 men can build it in one."

"Yes," interrupted a quick-brained student. "Then 288 will build it in one hour, 17,280 in one minute, and 1,936,800 in one second. And I don't believe they could lay one brick in that time."

While the professor was still gaping, the smart "ready reckoner" went on: "Again, if one ship can cross the Atlantic in six days, six ships can cross it in one day. I don't believe that either; so where's the truth in arithmetic?"

Some men smile in the evening, some men smile at dawn; but the man worth while is the man who can smile, when all his front teeth are gone.

Any man who watches will never be the man of...

this emblem... is nationally known for TRIPLE PROTECTION. See your STATE insurance agent. **ALBERT GUN** Phone 248 Wheeler

**NOW IS THE TIME...**

To Check Your Present Insurance Protection Rebuilding Costs And Replacement Value

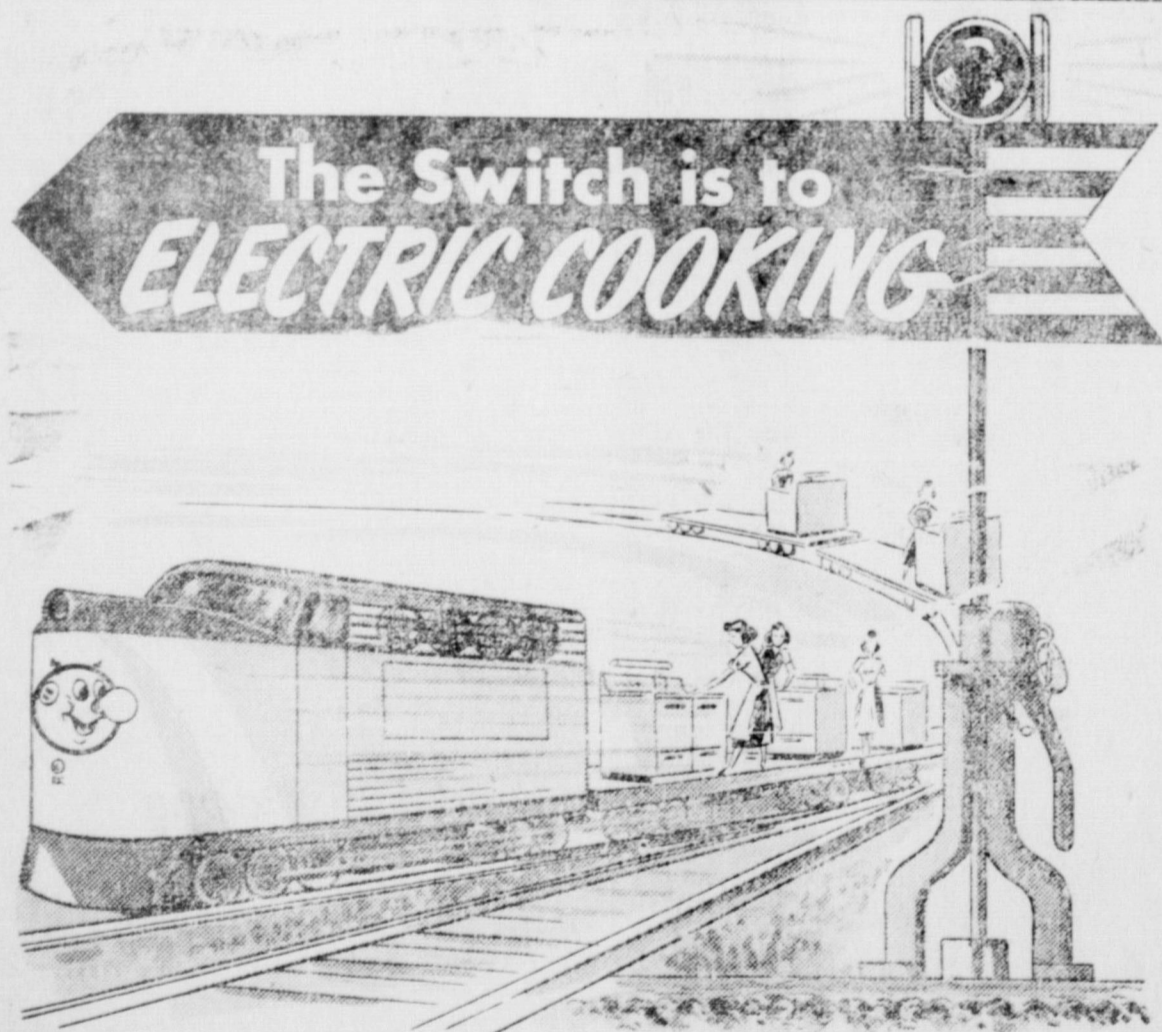
For Do You Have Sufficient Insurance On Your Household Furniture?

We shall gladly check your present insurance coverages and offer recommendations so that you may obtain the maximum protection at the least cost.

Of Course You Will Incur No Obligation At All!

**Doris Forrester Agency**

Call 15



Modern homemakers demand a modern cooking method, and the switch is to the most modern of them all — electric cooking.

Clean, fast, safe, accurate, dependable, cool and economical — all of these qualities will be found in the modern range — the electric range.

It's time for you to switch to modern cooking. Of course, it's electric.

SEE YOUR MODERN ELECTRIC APPLIANCE DEALER

**SOUTHWESTERN PUBLIC SERVICE COMPANY**  
27 YEARS OF GOOD CITIZENSHIP AND PUBLIC SERVICE

There's **NO** value like Chevrolet value!

...the lowest-priced line in its field!

Measure value by what you get for what you pay... and it's easy to see why more people buy Chevrolets than any other car.

For you get more with Chevrolet... fine quality features found in no other low-priced car. And yet you pay less... for Chevrolet is the lowest-priced line in the low-price field.

Today more and more people are looking for greater value in everything they buy. Come in and let us show you all the reasons why—in automobiles—there's no value like Chevrolet value.

(Continuation of standard equipment and trim illustrated is dependent on availability of material.)  
**MORE PEOPLE BUY CHEVROLETS THAN ANY OTHER CARS!**

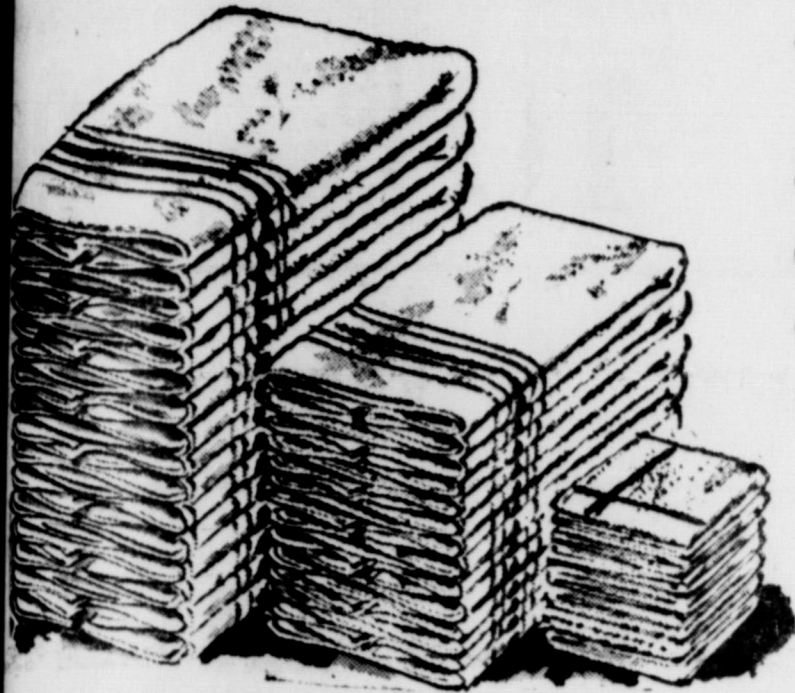


The Styleline De Luxe 2-Door Sedan

**WARE CHEVROLET COMPANY**  
WHEELER, TEXAS



# J-LEE DEPARTMENT STORE SUPER VALUE DAYS!



## TOWELS

- EXTRA LARGE
- EXTRA THICK
- FOR FASTER DRYING AND LONGER WEAR!

SIZE 24"x44" ..... 67c

SIZE 18"x36" ..... 37c

### WASH CLOTH

SIZE 12"x12" ..... 13c



100%  
NYLON  
TRICOT  
SLIPS

All nylon with lavish nylon net trim. Sizes 32 to 40. White only!

\$3.98

**M-A-N**  
There's a good  
buy in dairy feed!



Purina Milk Chow is a real milk-maker... all grains and proteins... no screenings. Call us for price.

Sell Us Your Cream, Poultry and Eggs  
For Highest Market Prices!

## WHEELER COUNTY PRODUCE ASS'N

PHONE 142 P. O. BOX 93

WHEELER, TEXAS

### LEGAL NOTICE

**CITATION BY PUBLICATION**  
To any Sheriff or any Constable  
within the State of Texas—

**GREETING:**  
You are hereby commanded to cause to be published once each week for four consecutive weeks, the first publication to be at least twenty-eight days before the return day thereof, in a newspaper printed in Wheeler County, Texas, the accompanying citation, of which the herein below following is a true copy.

**CITATION BY PUBLICATION**  
THE STATE OF TEXAS  
TO: John Thornton Pilcher, Defendant, Greeting:  
YOU ARE HEREBY COMMANDED to appear before the Honorable District Court of Wheeler County at the Courthouse thereof, in Wheeler, Texas, by filing a written answer at or before 10 o'clock A. M. of the first Monday next after the expiration of forty-two days from the date of the issuance of this citation, same being the 20 day of October A. D. 1952, to Plaintiff's Petition filed in said court, on the 26 day of July A. D. 1952, in this cause, numbered 4285 on the docket of said court and styled Ladonna Mae Pilcher, Plaintiff, vs. John Thornton Pilcher, Defendant.

A brief statement of the nature of this suit is as follows, to-wit:  
Suit for divorce alleging marriage by plaintiff, a single woman then by name of Ladonna Mae Switzer, to defendant at Dewey, Oklahoma on March 13, 1950, and final separation on April 13, 1952 on account of cruel treatment, statutory residence in county and state, for costs and custody of Ronnie Leon Pilcher, son and child enccinte, both of said marriage as is more fully shown by Plaintiff's Petition on file in this suit.  
If this citation is not served

within ninety days after the date of its issuance, it shall be returned unserved.

The officer executing this writ shall promptly serve the same according to requirements of law, and the mandates hereof, and make due return as the law directs.

Issued and given under my hand and the seal of said court at Wheeler, Texas, this 4 day of September A. D. 1952.

(SEAL)  
Attest: HAROLD D. CALLAN  
Clerk, District Court  
Wheeler County, Texas  
40-4tc.

### DOUBLE TALK

A proud parent called up the newspaper and reported the birth of twins. The girl at the news desk didn't quite catch the message over the phone. "Will you repeat that?" she asked.  
"Not if I can help it," was the reply.

During the past 12 months, 9,550 soil samples have been analyzed by the soils testing laboratory at Texas A. & M. College. It's time now to submit samples from the fields on which fall and winter crops will be planted.

Play safe  
**BE safe!**



Get an X-Ray Today!



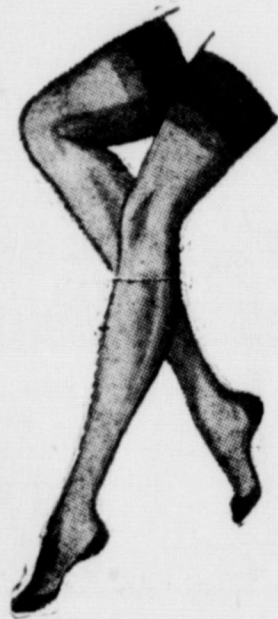
## NYLON PANTIES

FOR WOMEN

Colors white, pink, blue and maize. Lace inserts. A regular 38c pantie.

FRIDAY & SATURDAY

2 pairs \$1.00



FOR GIRLS

## RAYON PANTIES

All around elastic waist. Brief style. Sizes 2 to 14. Colors white and pink.

Friday and Saturday Only!

3 pairs \$1.00

## NYLONS

Extra sheer nylons, all first quality. Regular and dark seams. Sizes 8 1/2 to 10 1/2. A hose you would expect to pay \$1.35 for.

2 Pairs \$1.00

MEN'S

## DRESS SHIRTS

Solids, checks and stripes. Sizes 14 to 17 1/2.

Friday and Saturday Only!

\$1.77

## BIRDSEYE DIAPERS

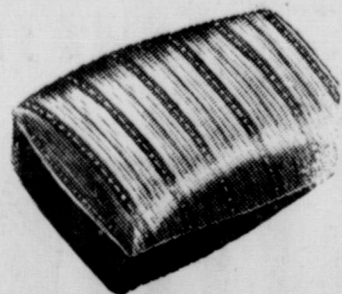
Sizes 27"x27". All first quality. A Super-Value-Day savings.

\$1.98 Dozen

## ONE GROUP OF LADIES NEW FALL DRESSES

Many have not been in the store over 3 days. Special-Super-Value-Day saving.

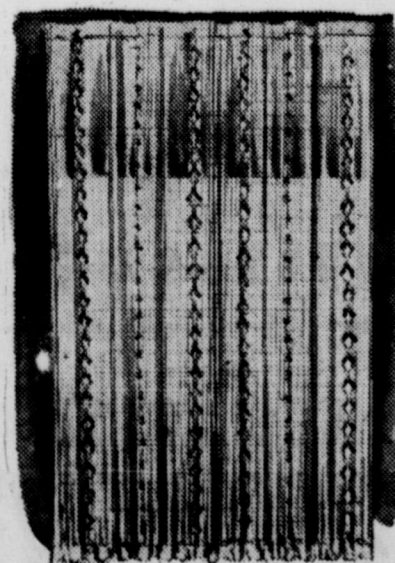
Values to \$12.95—Now \$6.99



## CURLED CHICKEN FEATHER PILLOWS

Extra large and extra fluffy. A Super-Value-Day saving.

\$1.00 each



## LACE PANELS

Size 42"x81". Ready to hang. Color—Eggshell only!

88c each

AN EXTRA SPECIAL SUPER-VALUE-DAYS SAVINGS

## BIG, BOLD PLAID GINGHAMS

Combed, not corded. Sanforized and fast color.

Every piece a new full bolt. Never been in our store before. Ideal for school dresses and boys shirts. Friday and Saturday only!

yd. 47c

## FARM AND RANCH LOANS WANTED

By Largest Mortgage Byers In America

All our dealings are strictly confidential. No Red Tape, we can arrange a loan for you that you can pay off at any time from Farm & Ranch Income. Not a cent bonus or Penalty. Lowest interest rates.

See W. H. Walker Agency in Shamrock, Texas or Call 275 for convenient time you can come over.

**W. H. (BILL) WALKER**

112 W. 2nd Street

Shamrock, Texas





**KIWANIS NOTES**

By Dr. C. C. Merritt

AND SO—That was a good one you played on your unsuspecting servant Monday night. But wait . . . I came away with the money anyway. Ten dollars and forty-five cents of it. Now who's joke is it? And I did not sell a single bottle of pop either.

We had a good day Monday in spite of the fact that our program did not come off. Most of the members were present and we installed a new member, a very important one, too, he is Bus Dorman. Glad to have you with us Bus. The next one is (?). Come along now Mr. D. H., we're waiting patiently.

The club is active and because of that we have a happy bunch of men forming this thing we call the Wheeler Kiwanis Club. And we want to keep it that way. If any of you good people in Wheeler or about know of some good community work that needs to be done, just you call on the Kiwanis

Club and we'll see to it that you will have the finest opportunity to be harnessed right into a good work and YOU will see how it feels to be a good worker for Wheeler and vicinity.

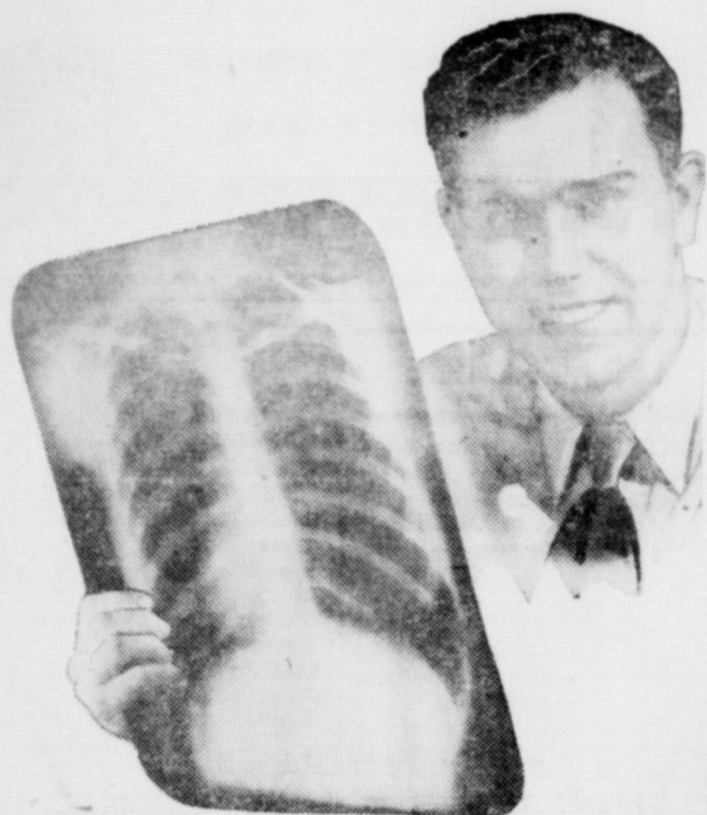
Next week is Chest X-Ray week. The Kiwanis Club hopes to see every one avail themselves of the benefits of this health measure.

**LOCAL NEWS ITEMS**

Mr. and Mrs. H. L. Austin from San Angelo, parents of Mrs. Levi Reid, are visiting here with relatives for an indefinite time.

Sgt. Harold Ray Starkey, son of Mr. and Mrs. C. H. Starkey of this city, arrived home Wednesday after serving 17 months in France with the U. S. Army. He was inducted into the army September 25, 1950 and is scheduled to receive his discharge at Ft. Sam Houston, San Antonio, September 24, 1952.

Mr. and Mrs. Frank Mote and family moved from the Pettit place to Pampa this week.



**THE PICTURE OF HEALTH!**

He knows he's in good health. And he's even got a picture to prove it... a "picture of health."

He's not taking any unnecessary chances. He knows that a chest X-ray is the only sure way of detecting the destructive effects of tuberculosis... early TB frequently shows no symptoms of any kind.

He knows that TB kills about 50,000 people each year, people whose lives might have been saved but for ignorance and indifference to the protective measures offered by science.

He knows that the earlier TB is discovered, the easier, quicker, and less costly it is to cure.

He knows, too, that TB is highly contagious and that by guarding himself he is also safeguarding the lives and welfare of his entire family.

That's why he had his chest X-rayed... why don't you?

**Check your Chest... Get an X-Ray**



SCIENCE ROOM  
MOBEETIE HIGH SCHOOL  
SEPTEMBER 15

Space for this advertisement contributed as a public service by

**CICERO SMITH LUMBER CO.**  
Mobeetie, Texas



Betty Crocker  
**FOOD FESTIVAL**

<b>SUGAR PURE CANE</b>	<b>10 lb. bag</b>	<b>89¢</b>
<b>COFFEE Folger's</b>	<b>1 lb.</b>	<b>79¢</b>
<b>CRISCO</b>	<b>3 lb. can</b>	<b>69¢</b>

**Meats**

6 TO 8 POUND AVERAGE <b>PICNIC HAMS</b>	Pound	<b>43¢</b>
FRESH <b>GROUND MEAT</b>	Pound	<b>49¢</b>
WILSON'S CORN KING <b>SLICED BACON</b>	Pound	<b>49¢</b>
SUGAR CURED <b>BACON SQUARES</b>	Pound	<b>27¢</b>
RIB OR LOIN END—2-lb. Average <b>PORK ROAST</b>	Pound	<b>53¢</b>
VELVETTA <b>KRAFT'S CHEESE FOOD</b>	2-lb. Box	<b>98¢</b>
GOOD VALUE <b>OLEOMARGARINE</b>	2 Pounds	<b>41¢</b>
WILSON'S HALF OR WHOLE—6 to 8-lb. Ave. <b>BONELESS HAMS</b>	Pound	<b>77¢</b>

**FROZEN FOODS**

LIBBY'S FROZEN <b>STRAWERRIES</b>	10 1/2-oz. Can	<b>25¢</b>
NO BONE—NO WASTE <b>BONELESS PERCH</b>	Pound	<b>39¢</b>
LIBBY'S <b>ORANGE JUICE</b>	2—6-ounce Cans	<b>29¢</b>

Betty Crocker  
**FOOD FESTIVAL**  
EASY TO PREPARE RECIPES AT DISPLAY

"Breakfast of Champions" 12-oz. Pkg. <b>WHEATIES</b>	<b>23¢</b>
Toasted Corn Puffs Pkg. <b>KIX</b>	<b>17¢</b>
Ready to Eat Out Cereal 10-oz. Pkg. <b>CHEERIOS</b>	<b>24¢</b>
BETTY CROCKER <b>CAKE MIXES</b>	
Party Cake	37¢
Devils Food Cake	37¢
Ginger Cake	25¢
Betty Crocker's Pie Crust Mix Pkg. <b>CRUSTQUICK</b>	<b>19¢</b>
12 Good Things from 1 good Mix 44-ozs. <b>BISQUICK</b>	<b>47¢</b>
Softasilk 44-ozs. <b>CAKE FLOUR</b>	<b>43¢</b>
"Kitchen Tested" <b>GOLD MEDAL FLOUR</b>	
10-lbs.	92¢
25-lbs.	\$2.07

BROWN LABEL  
**BRAR RABBIT SYRUP**

DONALD DUCK <b>ORANGE JUICE</b>	IGA FANCY <b>APPLE SAUCE</b>
46-ounce Can	2 No. 303 Cans
<b>25¢</b>	

**Produce**

NEW CROP <b>TOKAYS GRAPES</b>	2 Pkgs.	29¢
LARGE BUNCHES <b>CARROTS</b>	1 Pkg.	19¢
GOLDEN YELLOW <b>BANANAS</b>	2 Pkgs.	29¢
SOLID GREEN <b>COLORADO CABBAGE</b>	1 Pkg.	19¢
SNO-WHITE HEADS <b>CAULIFLOWER</b>	1 Pkg.	19¢

FANCY WASHINGTON <b>BARTLETT PEARS</b>	20-pound	<b>\$1.99</b>
NEW PACK <b>NIBLETS CORN</b>	12-ounce Can	<b>19¢</b>
IGA <b>TOMATO CATSUP</b>	11-ounce Bottle	<b>19¢</b>
ZESTEE <b>STRAWBERRY PRESERVE</b>	2 Pound Jar	<b>59¢</b>
SKINNER'S <b>MACARONI or SPAGHETTI</b>	7-ounce Package	<b>10¢</b>

**CLAY FOOD STORE**  
Phone 145  
Wheeler, Texas

REMEMBER EVERY WEDNESDAY IS DOUBLE STAMP DAY ON ALL GROCERY PURCHASES OF \$2.50 OR MORE!



### GRASSLAND IMPROVEMENT TROPHY GIVEN

Months of flood, Texans are progressing in improving pastures and pastures. The results have drastically cut crop but range and pasture as well. But with conditions, farmers and ranchmen are expected to materially expand their range and pasture and range.

The National Fertilizer Association made available the Texas Agricultural Service a trophy to be given to the county in Texas that has the most outstanding pasture and range improvement. The selection has been made by the Grasslands Achievement Trophy—a silver loving cup—was presented to Kaufman County at a countywide meeting held at the community house at Poetry-Camp Ground on Friday night, August 29.

The presentation was made by the Association's Texas Director J. D. Dawson, Fidelity Chemical Corporation, Houston. He stated a similar award would be made again for the 1952-53 year and urged that farmers and stockmen continue their efforts to increase the production of their pastures and ranges. Growing conditions, even though unfavorable during most of the past year, have curtailed the carrying out of improvement practices but he added there'll be better days and urged all to have plans ready when the break does come.

During the past year four Kaufman County communities conducted their program through their community organizations while many other farmers and stockmen carried out improvement practices on their farms.

These practices included improving waterways, seeding grasses and legumes, mowing, brush clearing, planting seasonal pastures, deferred grazing, terracing, constructing tanks and many other soil and water conservation and pasture improving practices. The ultimate Kaufman County objective is to develop a year-round grazing program for the county and the leaders are putting to good use the research findings of the Texas Agricultural Experiment Station in their program.

All counties of the state are eligible to compete for the Grasslands Achievement Trophy and local county agricultural agents have detailed information on what is required to make an entry in the program.

### MARY ROUTH'S GUIDE FOR BEING WELL DRESSED

A good basic dress plus correctly selected accessories make up a costume ensemble. Mary Routh, clothing specialist with the Texas Extension Service, points out that smartness is achieved when shoes, hose, gloves, bag, hat, blouse and jewelry serve to make the costume a unit.

The specialist suggests the "Guide for Dressing" as an aid for solving accessory selection and over-dressing problems. After dressing to go out, she suggests a last look in a full length mirror to see if the costume ensemble, from head to toe, is a unit and not over-accessorized. Count each accessory by the guide, the sum should be somewhere around 12 points. The "Dressing Guide" and points for each item follows: one piece dress—1; suit—2; buttons—1 or 2; and all other items hat, each, color, veil, flower, hose, dark

### MOTHER'S RIGHT

Father: "Mabel, that young man of yours stays too late when he calls. Hasn't your mother something to say to you about that?"

Mabel: "Yes, father — mother says men haven't changed a bit."

The shortage of strong elastic girdles has revealed just what shape this country is really in.

heels, clocks on hose, shoes, bows, buckles, straps, purse, trim on purse, gloves, jewelry (each piece), scarf and coat on wrap count one point each.

The basic one piece dress counts one. If figured or plaid, the count may go up to five. A basic hat counts one but when a veil and feather or flower is included the count is three and each color gives a count. When a fancy hat is worn, choose a simple dress or suit and visa versa.

Accessories that are worn in pairs such as earrings, gloves or hose count only one point the specialist says.

Most of the count is on accessories and their trim. After the guide has been used for a while, skill is developed in varying accessories so the count will automatically fall under 12.

However, Miss Routh advises, a count too far under the prescribed number will make the ensemble appear under-accessorized.

Correct accessories in the right numbers are most important to the smart costume ensemble. The well dressed woman wears simple clothes with individual touches that express her personality.

Then there's the husband who didn't speak to his wife for three days. He was too polite to interrupt her.

We've often thought of looking up the family tree, but every time someone says we're a sap if we do.



### From where I sit... by Joe Marsh

#### Narrow Town—Broad Outlook

The wife's cousin Ben, and Belle his bride are back from honeymooning in the Rockies. Took them to dinner last night at the Garden Tavern. Ben told about the trip:

"Went through a town in Idaho that was only 100 feet wide. No kidding! Built into a long, narrow canyon. And it shares those 100 feet with a railroad track that runs right through the hotel!"

"To get gas there we had to park right on the tracks. Suddenly Belle screams—'there's a train coming!' But the gas fellow just laughs and says we were there.

first. Blamed if the engineer didn't stop the train and wait, too!"

From where I sit, it's a good illustration of how people can learn to "think of the other fellow" so that the community benefits. Railroaders and townspeople, Democrats and Republicans, malted milk fanciers and those who prefer a temperate glass of beer—we all have to share the same space. Let's maintain our neighbor's "right of way."

Joe Marsh

Copyright, 1952, United States Brewers Foundation

**It's Bonus\*Time**  
ALL THE TIME  
WHEN YOU USE  
PATTERSON-SARGENT  
**HOUSE PAINT**

\*Extra Years Of Beauty and Protection At No Extra Cost!

Dress up your home exterior now with faded, long-lasting BPS House Paint. Tough and durable, it provides maximum protection against wear and weather... stays clean and fresh-looking for years! For top results, use BPS House Paint.

**CICERO SMITH LUMBER CO.**  
Wheeler, Texas Phone 104

**LARRY PLANNY SAYS**

Before You Sign for Roofing or Siding  
**INVESTIGATE**  
the Contract

Before You Choose Roofing or Siding  
**COMPARE**  
the Quality

Before You Buy Roofing or Siding  
**SEE**  
What You Are Getting

Don't spend more than you should for roofing or siding! Buy what it takes to make your home more beautiful and more liveable at a price you CAN afford. Too many people have paid too much because they didn't consult us! Call us now! You may save money!

**NO DOWN PAYMENT**

**F.H.A. TERMS**

**CICERO SMITH Lumber Co.**  
WHEELER, TEXAS

**ASPHALT SHINGLES**  
The best type in all... to blend with your buildings.

**ASBESTOS SIDING**  
The easiest way to restyle your house. Apply it right over existing sidewalls.

**BRICK SIDING INSULATED**  
Transforms a drab, fuel-using house into a bright money-saving home.

**CERTIFIED QUALITY SERVICE**

*The best pictures they ever took aren't in the Family Album!*



Every family album is filled with snapshots that recall so many happy yesterdays. But how about the pictures that ensure happy and healthy tomorrows?

X-ray pictures that say you've had your chest checked—and it's O.K.

More and more people are having their chests X-rayed at least once a year. They want to be sure there isn't the slightest chance of tuberculosis endangering the future health and happiness of their children. They know that a chest X-ray is the quick, easy, and sure way of detecting TB.

You protect yourself, your family, and your community when you have your chest checked.

It's great to know you're healthy... to know you have healthy lungs as only an X-ray can show them to be.

Your tuberculosis association reminds you that: Active disease does not occur so long as the body's resistance can successfully fight germs. TB is contagious. It is spread through coughing, sneezing, and personal contact.

TB is curable.

The sooner the presence of TB is detected, the quicker the cure and the less chance your family and friends stand to catch it.

A chest X-ray is the safest, surest step toward combating tuberculosis.



## CHECK YOUR CHEST...Get an X-RAY

Wheeler Gym -- Sept. 16 & 17

Space for this Advertisement is contributed as a public service by—

# City of Wheeler



### BUDGET SHOULD ENTER INTO FURNITURE BUYS

Before buying furniture, it's a good idea to know the pieces needed and approximately what the budget will allow. Bernice Claytor, home management specialist with the Texas Agricultural Extension Service, suggests the study of magazines, visits to furnished homes and securing the advice of competent persons before the final decisions are made.

Mrs. Claytor also advises the examination of the construction of each piece of furniture before

buying. Some construction features can be judged by looking at the underside of the furniture. For example, corner blocks are usually visible. These are triangular pieces screwed to the rails which support the seat or table top. If they are not there, it indicates inferior construction.

Look carefully at the back posts of chairs, legs or beds, tables and cabinets. Make sure they are strong and stand squarely on the floor. Notice if there are possibilities of breaks from splits in the wood.

Assurance is given by the specialist that drawers in well-made pieces of furniture do not stick. The action is quick, easy and quiet. Best drawers have center slides in the bottom and are dovetailed in the front and back, not nailed together.

Mrs. Claytor lists other general suggestions to follow when buying furniture: plan ahead, even though you buy only one piece at a time; have complete measurement of floor and wall space so the furniture will fit; buy when you need furniture and not because there is a bargain. It's a good plan, she continues, to buy from a dealer who is established in the community and has the confidence of his customers. Study the labels carefully and shop around for the best prices and quality.

If good furniture is bought and properly cared for, it should give many years of satisfactory service, says Mrs. Claytor.

Too many girls have a one-track mind, with a troop train on the track.



NATIONAL PRESS BUILDING WASHINGTON, D. C.

By Ann Goode

Most likely just a conversation piece — but one famous hat designer has come up with earrings which fasten outside the veil. They're clipped to the brim when the veil is lifted.

Those tender green Spring onions make a tasty luncheon dish when boiled, drained and served on toast. Season with salt, pepper and melted vitaminized margarine. Accompany with broiled bacon and sliced tomatoes.

Recently come to market is an "edible" paint for baby's furniture. It's a vegetable paint especially made for Junior's crib and other furnishings.

Meat loaf is either dry, dull and held in disdain by the family or it's moist, full of flavor and a family favorite. Two touches which almost assure meat loaf success are: one, spread the top before baking with mustard-with-horseradish and, two, baste frequently while cooking with consommé.

Do you ever use wooden spoons for cookery? I've found them very satisfactory for several reasons: the handles don't get hot, bowl of spoon doesn't scratch bottoms of pots 'n pans and certain foods don't seem to adhere to the wood as much as to metal. One disadvantage, of course, is the small bowl which does not lend itself to dishing up food.

A mighty nice substitute for dessert is assorted chocolates served along with coffee.

#### LIVE DISPOSAL UNIT

The fancy questionnaire a household appliance company used to survey Iowa housewives brought equally fancy replies. To the question, "What make of garbage disposal unit do you use?" one woman wrote: "Four hogs."

The old fashioned wedding ring was a cumbersome affair, made to last a lifetime. The modern ring is very thin and narrow, designed to last as long as modern marriages.

#### WRONG METHOD

Composer: "I got tight in order to compose a new drinking song."  
Friend: "Did it work?"  
Composer: "No, I couldn't get beyond the first two bars."

'Tis reported that soldiers in New Guinea discovered a tribe of natives in which the bridegroom greased himself from head to foot before the ceremony started . . . but seldom escaped.

Coffee isn't the only thing that is fresh when dated.

#### DON'T

Gob—I am burning with love for you.  
Gal—Oh, don't make a fuel of yourself.

There would be fewer accidents if drivers would keep their eyes on the car behind the car in front of them.

If you want to annoy your wife try grinning in your sleep.

Jumping to conclusions doesn't always end in happy landings.

#### MORE THAN WO

"I don't like your dog," said the man. "I trust him. I'd come off wasn't for your dog."  
"A dog," said the man, "is man's best friend. 'is man's best friend."

Low or 'penalty' cotton can be avoided if more care is placed on harvesting, baling and mechanical. Pick only trailer and do not tramp it. Also, early stalk destruction reduce the insects next year.

## BUSINESS AND PROFESSIONAL DIRECTORY

<p><b>OFFICE SUPPLIES AND STATIONERY AT THE WHEELER TIMES</b></p>	<p><b>DR. JOEL M. GOOCH</b> OPTOMETRIST 207 N. Wall Phone 800 SHAMBOCK, TEXAS</p>	<p><b>C. J. MEEK</b> AGENT <b>INSURANCE</b> Night Phone 124, Day Ph</p>
<p><b>NOTICE!</b> WE SCALD HOGS ON MONDAY &amp; WEDNESDAY OF EACH WEEK. Wheeler Lockers</p>	<p><b>Canadian Valley Production Credit Association's Representative IS IN THEIR Wheeler Office EACH Thursday</b></p>	<p>Now Open For Business <b>OTIS REID GARAGE</b> Located on Highway 11 Wheeler, Texas</p>
<p>Protect Children's Health <b>GIVE THEM BORDEN'S</b> Fine Dairy Products <b>CHAPMAN DAIRY</b> Phone 70-J Wheeler</p>	<p><b>THIS SPACE FOR SALE</b></p>	<p><b>THIS SPACE FOR SALE</b></p>

# Firestone

## HARVEST SALE

### Special Purchase

### PLASTIC RAINCOATS

- FINEST QUALITY PLASTIC
- LIGHTWEIGHT
- FOLD UP . . . TUCK AWAY IN YOUR POCKET

A Regular 2.00 Value  
**Special Sale Price 1.39**  
Small Medium & Large Sizes

Keep One In Your Car . . .  
One In The Office . . .  
One At Home . . .

**SIMONIZ SPECIAL!**

Now get a Reg. 98c Can (Big 12-oz. Size) New Simoniz **BODYGARD** and a 12-oz. 57c Can of Simoniz **LIQUID KLEENER** 1.55 Value Both for **1.29**

**SPECIAL!**  
Buy Six Light Bulbs For The Price Of Five  
(This offer on 25, 40, 60 and 100 watt bulbs. Excise tax extra.)

**PRICE SLASHED FAMOUS DORMEYER MIXER - JUICER**  
formerly \$29.95 While Quantities Last **19.98** only 2.00 Down 1.00 a Week

**Hopalong Cassidy LUNCH KIT** 2.89  
With 1/2-Pt. Vacuum Bottle.

**Super Special!**  
**BROOM RAKE**  
Reg. 1.09  
**Sale 84c**

**PRESERVE AUTO CHROME!**  
**CHROME PROTECTOR SPECIAL**  
1.82 Value  
**1.37**  
Get all 3 for only

**SPECIAL! PRICES SLASHED...**

## Firestone

**GUARANTEED New Treads**  
Applied on Guaranteed Tire Bodies or on Your Own Tires  
Reg. \$9.98  
**\$7.95**  
6.00-16 AND YOUR OLD TIRE Other Sizes Also Low!

**EASY TERMS**

**HE CAN'T TELL YOU—**  
*but an X-RAY will!*

It takes science—not hocus-pocus—to tell you what's what with your lungs. It takes a chest X-ray to spot tuberculosis.

And a chest X-ray is what every man and woman—every teen-age boy and girl—should get.

Remember this: Tuberculosis strikes without warning—and it kills nearly 50,000 people each year. Early TB frequently shows no symptoms of any kind that might tip off the victim. *But it can't*

hide from the X-ray.

The best time to fight TB is in its early stages. Then the cure is comparatively easy. But if let go until the germs get firm hold, the cure is long and costly—and could be impossible.

For your own sake and that of your family—*don't take chances.* Have your chest X-rayed now.

If it is O.K., you'll have the comfortable feeling of *being sure.* And if it isn't, the chances are you have been warned *in time.*

✓ **CHECK YOUR CHEST...GET AN X-RAY**

**Wheeler Gym -- Sept. 16 & 17**

Space for this advertisement is contributed as a public service by

# Wheeler Gas Co.

**NASH APPLIANCE & SUPPLY CO.**  
"Better Things For Better Living"  
Wheeler, Texas



**'YOUR CHEAPEST WAY TO BUY OR SELL'**  
**WANT ADS**

RATES—15c per line (counting 5 words to line) for first insertion. Minimum charge, 45c; 10c per line after first time. Minimum charge 30c. Reader ads scattered among local items 15c per line each insertion. Cards that run every week 30c per column inch per week.

DISPLAY ADVERTISING—National rate, 42c an inch; Local Advertising rate, 35c per column inch, 28c per inch when 40 inches or more used each week during calendar month

Radio and Refrigerator Service, 39-tfc.

FOR SALE or TRADE—1942 Chevrolet 2-door Acro, 1941 M & M tractor with tool bar lister and planter and cultivator, 12A John Deere combine, 8-row John Deere cotton duster, all machinery in good repair, ready to use, will trade all for a 1951 car with low mileage, see Alfred Hill at Mobeetie Drug Store. 38-tfc.

Three-room modern house with 75-ft. front for sale. Levi Reid. 39-tfc.

1/2 section located in southeast part of Hemphill County, on Farm

to Market road 277, well improved, priced to sell, see Forrest Vise, Briscoe. 39-4tp.

12-ft. International Harvester Home Freezer with two years and four months guarantee left, for sale for \$225. Wheeler Radio and Refrigerator Service. 40-tfc.

FOR SALE—336 bales good grain sorghum will sell 100 bales or more, call 506-F3 for information. 39-2tc.

MISCELLANEOUS  
2 rooms for rent, room and board if wanted. Mrs. C. N. Wolford. 40-1tc.

FOR RENT—2-room modern house for couple, prefer elderly people. Dr. V. N. Hall. 39-1tp.

LOST—in vicinity of Mobeetie 250 feet of 1/2 inch manila rope with set of 1 and 2 blocks. Finder

please notify Isaac Carter, Wheeler. 40-1tc.

Hardwick stoves are good stoves, change to a Hardwick today. Wiley's 45-tfc.

Monuments, grave covering curbing and all memorial work Will Warren. 21-tfc.

BRUCE & SONS TRANSFER  
Local and long distance moving Best equipment and vans. We have plenty storage space. Agent: North American Van Lines, serving the Nation. Phone 934, Pampa, Texas. 48-tfc.

Maurice Pettit formerly an employee at the Wheeler Times started to college this week for the fall semester at Kilgore Junior College, Kilgore. He will make his home at present with the Allan Kavanaughs of New London a short distance from the college.

**LEGAL NOTICE**

**CITATION BY PUBLICATION THE STATE OF TEXAS**  
To any Sheriff or any Constable within the State of Texas—

GREETING:  
You are hereby commanded to cause to be published once each week for four consecutive weeks, the first publication to be at least twenty-eight days before the return day thereof, in a newspaper printed in Wheeler County, Texas, the accompanying citation, of which the herein below following is a true copy.

**CITATION BY PUBLICATION THE STATE OF TEXAS**

TO: William Bolinger if living, and if dead, his unknown heirs and legal representatives, Defendants.

GREETING:  
**YOU ARE HEREBY COMMANDED** to appear before the Honorable District Court of Wheeler County at the Courthouse thereof, in Wheeler, Texas, by filing a written answer at or before 10 o'clock A. M. of the first Monday next after the expiration of forty-two days from the date of the issuance of this citation, same being the 27 day of October A. D. 1952, to Plaintiff's (first amended original) Petition filed in said court, on the 8 day of September A. D. 1952, in this cause, numbered 4281 on the docket of said court and styled Jas. C. Moore, Jess Moore and A. B. Crump, Plaintiffs vs. William Bolinger, if living, and if dead, his unknown heirs and legal representatives, Defendants.

A brief statement of the nature of this suit is as follows, to-wit: Suit in trespass to try title for title and possession of following lands in Wheeler County, Texas: Tract One; Survey No. 30, Blk. OS-2, about 16.7 Miles North 54 degrees East of Wheeler, Texas, Patent No. 292, containing 114.83 acres of land. Tract Two; Survey No. 31, Blk. OS-2, lying adjacent to tract One on North; patent No. 293, containing 32.1 acres of land. Both patents issued by State of Texas in name of William Bolinger, Vol. 81-A. Plaintiff Jess Moore claiming fee simple title, subject to 1-64 non-participating mineral interest each respectively in each of other two plaintiffs. Claim also on 5 and 10 yrs. statute of adverse possession & limitation as is more fully shown by plaintiffs amended original petition on file herein. If this citation is not served within ninety days after day of issuance it shall be returned unserved.

The officer executing this writ shall promptly serve the same according to requirements of law, and the mandates hereof, and make due return as the law

**NEWS FROM—**

**County Agent's Office**

By R. D. Siegmund

The legume seedling demonstration that was held at the farm of Haskell Weatherly last Friday was a big success. The new legume seeders that the Soil Conservation District 141 bought were demonstrated in the field and vetch and rye were seeded at the rate of 15 pounds of rye and 5 pounds of vetch per acre. Since only two drills are planted in the middle of each row, the above planted amount will be sufficient for an excellent stand. The new seeders have fenders to facilitate planting in cotton and grain sorghums before they are harvested without harming the crop. Fertilizer should be used when seeding these winter legumes and the seeder is equipped with fertilizer boxes. A fee of 50c per acre rental will be charged to anyone who wants to use this equipment and you can sign up for it at either the county agent's or soil conservation office in Wheeler.

The Wheeler County Farm Bureau Board of directors met in the county agent's office on September 5 and at this time set up plans for a county wide Farm Bureau barbecue to be held in Wheeler at the Wheeler park beginning at six o'clock the night of Tuesday, September 23rd. Farm Bureau members and non-members are cordially invited to enjoy lots of good food and fellowship together. Raymond Moore, president, announced that there would be a small fee of 50c per person charged for this affair to cover a small cost of the barbecue.

There will be a short range course held in Wheeler County for all farmers and ranchers of the county beginning at 1 o'clock Friday afternoon, September 12. Everyone interested in grassland range problems will meet at the courthouse in Wheeler and we will go to the ranch from there. A. H. Walker, range specialist for the Extension Service and Wheeler County Agent will cooperate to put on the program. Bring any questions on livestock and range problems that you might have.

Issued and given under my hand and the seal of said court of Wheeler, Texas, this 8 day of September A. D. 1952.

(SEAL)  
Attest: HAROLD D. CULLAN  
Clerk, District Court  
Wheeler County, Texas  
32-59c.



HOLLANDAILE  
**Oleo**  
Colored Quarters  
**2 lbs. 38c**

CAMPBELL'S TOMATO  
**Soup**  
**2 Tall Cans 21c**

<b>BEANS</b>	<b>29c</b>	<b>CHUCK-TIME VIENNA SAUSAGE</b>	<b>25c</b>
<b>BE LIMAS</b>	<b>39c</b>	<b>MAINE OIL SARDINES</b>	<b>25c</b>
<b>MONTE CATSUP</b>	<b>19c</b>	<b>POWDERED SUGAR</b>	<b>25c</b>

**DOOCH'S CORN MEAL** 5-lb. Bag **41c**

<b>GLEY'S GUM</b> ALL FLAVORS	<b>19c</b>	<b>CANDY BARS</b> ALL 5c BARS	<b>25c</b>
<b>LO</b> ALL FLAVORS	<b>15c</b>	<b>KRAFT MALTED MILK</b>	<b>45c</b>
<b>T-FINE</b> ALL FLAVORS	<b>15c</b>	<b>BLUE PLATE TURNIP GREENS</b>	<b>25c</b>

<b>DEL MONTE SPINACH</b>	No. 2 1/2 Can	<b>19c</b>
<b>DIAMOND WAX PAPER</b>	125-ft. Roll	<b>25c</b>
<b>NORTHERN TOWELS</b>	2 Rolls	<b>35c</b>
<b>DIAMOND—80-COUNT NAPKINS</b>	2-pkgs.	<b>25c</b>
<b>MERIT EGG MASH PELLETS</b>	100-lb. Bag	<b>\$5.25</b>

Check the spread of **TB**  
Check your chest **FIGHT TB**  
Get an X-Ray Today!  
F-R-E-E CHEST X-RAY WHEELER GYM  
SEPTEMBER 16 & 17

First Again!  
**GENERAL ELECTRIC**  
offers you  
**NEW SECTIONAL FREEZERS**  
With more food space!  
**8 to 33 Cubic Feet or Larger!**  
• AND... With These Important Features:

- Arrange It As You Want
- Separate Controls for Different Temperatures
- Large Storage Capacity

**\$339<sup>95</sup>**  
**\$34.00 Down \$15.25 per mo.**  
**FALL PAYMENT PLAN • UP TO 2 YRS. TO PAY**  
CHOOSE YOUR SIZE:  
8 cu. ft., 11 cu. ft., 16 cu. ft., 22 cu. ft., 27 cu. ft., 33 cu. ft. or Larger!

**PLUS**  
These Important General Electric Features:  
• Quick Freeze Compartment Case Set 50 degrees below Freezing  
• Greater Inside Value  
• Quick Freezing  
• Famous GENERAL ELECTRIC dependability  
• 5 Year Warranty

DOUBLE S & H GREEN STAMPS EVERY WEDNESDAY PURCHASE OF \$2.50 OR MORE!

**PUCKETT'S FOOD MARKET**  
SPECIALS FOR FRIDAY AND SATURDAY, SEPTEMBER 12 AND 13

**WHEELER RADIO & REFRIGERATOR SERVICE**  
L. C. LAFLIN, Owner Phone 113  
Wheeler, Texas



**W. D. BARRYMORE**  
**BLANCHE FOWLER BARRYMORE**  
 —PHOTOGRAPHERS—

Will Open Studio In Wheeler For Business  
**FOR 10 DAYS ONLY**  
**BEGINNING SEPT. 9, 1952**

*W.D. Barrymore*  
 —THE ORIGINAL—  
 Bromo Tone Studio  
 PHOTOGRAPHERS

WHEELER, TEXAS — PASADENA, CALIFORNIA

**DESTRUCTION OF SOIL TESTING  
 COTTON STALKS LABORATORY  
 RECOMMENDED A BUSY PLACE**

Drouths and cotton insects— independently or in combination— annually take a heavy toll from the state's cotton producers. This year the dry, hot weather of the past several weeks has caused the cotton crop in many sections of the state to deteriorate badly. On the other hand, boll weevils and pink bollworms, especially in South Texas, have been very destructive.

According to A. C. Gunter, entomologist for the Texas Agricultural Extension Service, the late stalk destruction program in the South Texas area last year became a major consideration in this year's heavy insect infestation. It is a matter of record, he says, that when the cotton stalks are destroyed early, the insect infestation the next year has been comparatively light.

Weather conditions now prevailing in most sections of the state will speed up the harvest and give farmers an opportunity to practice early season stalk destruction which, Gunter says, is one of the most effective of known control methods against boll weevils and pink bollworms.

The specialist points out that to be most effective, the stalk destruction program should be carried out on a community or better still a county-wide or area basis. Right now moisture conditions are not favorable for plowing and this may prove a handicap but stalks should be cut as soon as harvest is completed so

The soil testing laboratory operated by the Agricultural Extension Service of the Texas A. & M. College System has been a busy place during the past year. According to M. K. Thornton, agricultural chemist and in charge of the lab, 9,550 soil samples have been analyzed.

He says the number of samples submitted has steadily increased since the lab was opened on Nov-

ember 1, 1950. Determinations made by the laboratory include the amount of organic matter, nitrogen (computed), soil reaction, available phosphoric acid, available potash, available lime and soluble salts for each sample. Recommendations for best land use based upon the soil analysis are returned to the sender along with the report on the sample.

Thornton reminds farmers that right now is the time to submit samples from the fields on which winter legumes and small grains will be planted this fall. Thornton points out that the samples submitted must be representative of the field if they are to be of value. He encourages farmers to contact their local county agent for detailed information on how to take representative samples.

Farmers who have submitted soil samples report that the analysis and recommendations have been very useful to them. First, they find that often times different grades and amounts of fertilizer from that normally used are needed to improve their crop yields; that low yields are not always the result of low soil fertility and third that savings can be made on the purchase of

fertilizers when only the recommended amounts are used. Local county agents can supply details on taking and mailing samples and can give assistance in putting the recommendations into practice, says Thornton.

Take no chances with fire. The drouth has caused a situation that is tailor-made for fires.

Times Classifieds Get Results!

**KNOWS EVERYTHING**  
 Groom: "Now perhaps I'll be permitted to point out a few of your defects."  
 Bride: "It won't be necessary, darling. I know them. They keep me from getting a better man than you."

No wonder Captain Syeed Shaykh Achmed Abdullah Nodir Khan el-Iddrissiyeh el Duran wrote under the pen name of Achmed Abdullah.

**ROGUE**  
 THEATRE

FRIDAY AND SATURDAY  
**"Apache Country"**  
 —starring—  
 Gene Autry

PREVUE SATURDAY NIGHT  
 SUNDAY AND MONDAY  
**"The Denver And Rio Grande"**  
 —starring—  
 Edmond O'Brien and Sterling Hayden

**Today, While You're Still Insurable,  
 Buy That Life Insurance Policy You've  
 Been Thinking About.**

- For Family Protection.
- For Childrens College Education.
- For Old Age Retirement Income.

**FRANK F. FATA**  
 1212 Williston Pampa, Texas  
 Representing The Equitable Life Assurance Society  
 Of The United States

A Child May  
 So Drive W

**MUSTA**  
 DRIVE

FRIDAY AND SATURDAY  
**"Honey-C"**  
 —starring—  
 Judy Canova

MONDAY AND TUESDAY  
**"Scarlet A"**  
 —starring—  
 Yvonne De Carlo  
 Rock Hudson

WEDNESDAY AND THURSDAY  
**"Scaramou"**  
 —starring—  
 Stewart Granger, Elaine  
 and Janet Leigh

MEET THE FOLK  
 AT BEL-AIRE

C. BILL FRYE, MANAGER  
 of Tempo since 1947. Mr.  
 Frye's experience in man-  
 aging The Frye reads:



"Keep your shirt on!"

**CELEBRATING**  
 National Home Week  
 SEPT. 14th to 21st

**YOUR HOME IS YOUR ONLY REAL SECURITY**  
 Don't neglect it. We're holding open house all week for those planning to Build, Repair or Remodel. Come in and talk things over. No obligation.

**CICERO SMITH**  
 Lumber Co.  
 Mobeetie, Texas

Certified  
 QUALITY  
 SERVICE

Sure, you're O.K. And the very idea that anyone should question your obvious good health makes you a little mad. But keep your shirt on.

Do you know how quickly and conveniently you can have the priceless assurance that your lungs are in healthy condition?

Are you aware that a chest X-ray can mean a longer life and a happier life for you—or for your family and friends?

Have you any idea how subtle tuberculosis is and how it can be active for a long time without your realizing it? It's time you did. And time to act!

These are facts: Tuberculosis kills nearly fifty

thousand people in the United States every year, and it's so unnecessary... X-ray examination allows the doctor to direct the battle against this insidious disease in time.

It is estimated that over 250,000 people today are unknowing victims of TB. For this disease frequently has no early symptoms of any kind. But it can't hide from the X-ray machine!

And it's so easy to be sure. It takes only a moment to be X-rayed. And you don't have to remove anything except outer coat or jacket.

So check TB—get your chest checked today. And keep your shirt on!

✓ CHECK YOUR CHEST... GET AN X-RAY

**Mobeetie Sept. 15      Wheeler Sept. 16 & 17**

Space for this Advertisement is contributed as a public service by—

**County of Wheeler**



MEET THE FOLKS  
AT BEL-AIRE



J.C. FRYE, MANAGER  
of Bel-Aire since 1946. Mr. Frye  
has a long experience in men's fu-  
nery. The Frye family at 1934



MICHAEL YOUNG  
is a well known in the Pampa  
area and has worked in a  
men's clothing store here  
for many years at Bel-Aire.



OTTO REUT  
is a well known salesman in  
the area and has many experi-  
ence in men's clothing here in  
the Wheeler area. He is now  
at Bel-Aire.

# Bel-Aire assures you of solid style, comfort, solid distinction

Depend upon Bel-Aire to bring you the clothes that are preferred by college men for styling, for fabrics, for wearability. Here are the suits, the sport coats, the slacks . . . around which you can build your campus wardrobe with complete assurance that style and colors are right . . . that tailoring and quality meet the standards you demand . . . that comfort and wearability are built to stay!

Come in tomorrow . . . choose your campus wardrobe from names you know—Style Mart, Louart, Louis Roth.

## SUITS

Flannels, gabardines, tweeds and sharkskins . . . in the new blu-grey, and new shades of blue, brown and tan.

\$49.50 up

## SPORT COATS

Your favorite patch-pocket styles . . . in flannels, chevots and tweeds. Solids, neat checks and tweed designs, in blues, greys, tans and brown.

Most styles \$35.00 and \$38.50

## SLACKS

Smooth-fitting styles in gabardines, flannels, tweeds and shepherd checks . . . in every shade of blue, brown, grey and tan . . . all expertly tailored by Esquire, Champion and La Jolla.

\$12.95 to \$22.95

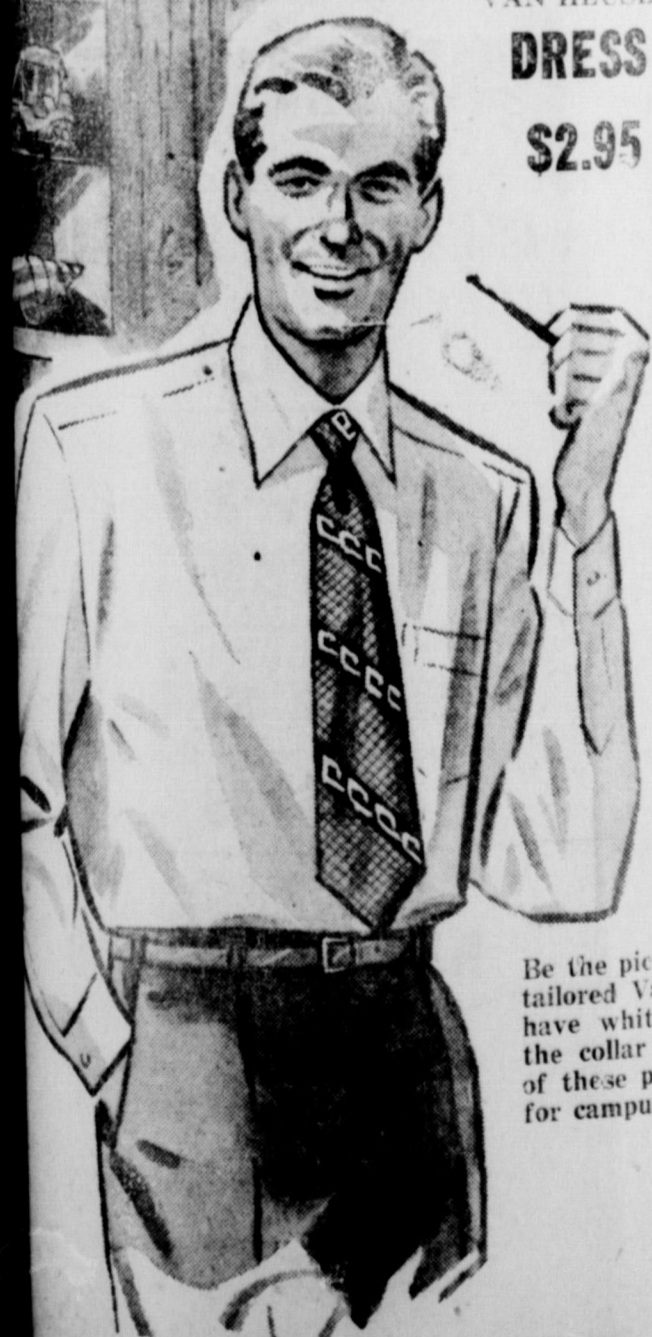


A Personal Message from  
J. C. Daniels, Owner . . .

We have gone to great lengths to get the very smartest of men's and young men's styles for fall. I want to personally invite you people of the Wheeler area to see these new styles . . . I think that once you try the fit and feel of our finer clothing you will never wear others—our prices are low, too!

## VAN HEUSEN AND WINGS DRESS SHIRTS

\$2.95 to \$4.95



## SPORT SHIRTS

from \$4.95



## SOX

from 65¢



## MUNSING SHORTS

from \$1.20

McGregor, Van Heusen and Wings sport shirts in a big selection of checks, plaids and solid colors—including the popular washable rayon gabardine. And famous Munsing and Wilson Brothers shorts and undershirts . . . plus ties and man-sized handkerchiefs.



## DRESS HATS

Depend upon Stetson and Stevenson to bring you just the hat of your choice.

from \$7.50



## DRESS SHOES

Your favorite style and leathers in all sizes by Nunn-Bush, Edgerton and W. L. Douglas.

\$9.95 up

# BEL-AIRE STORE FOR MEN

HUGHES BLDG.



**Mobeetie Meditations**

(Continued from Page 1)  
 pieces present with their families were: plant manager, Allen J. O'Brien, Jim Williamson, Odell Upchurch, Eldon Lee, Charlie France, Charles Mixon, Olaf Stivage, Ralph Sims, Clyde Ayers, Millard Sanders, Jowett, Paul Green, Estes Wilsford, Lowell Pendleton, Wheeler; Sam A. Thomas, Jr., Warren E. Witt and E. E. Matthews of Mobeetie. Two company executives from Amarillo attended also.

Sunday afternoon seven members of the 1942 graduating class of the Mobeetie High School held a reunion at the Wheeler Park. Attending were: Mr. and Mrs. Renee Fields and son, Mr. and Mrs. Jim Johnson and family, Mr. and Mrs. Jack Bearden, Pampa; Junior Barton, San Angelo; Mr. and Mrs. Earl Alexander and family, Mr. and Mrs. Johnnie Murrell and Judy, Mr. and Mrs. Arthur Carmichael and Bruce and Mr. and Mrs. Warren E. Witt, all of Mobeetie. Members present of the class of '42 were as follows: Arista Jeffus Witt, Kathryn Miller, Carmichael, Imogene Herd, Murrell, Audrey Brewer Alexander, Delma Lee Satterfield Field, Jack Bearden and Junior Barton.

Mobeetie young folk graduating in the '52 class who will leave

this weekend for college are Miss Frances Totty, daughter of Mr. and Mrs. Frank Totty, who will attend West Texas at Canyon, Nep Patton, son of Mr. and Mrs. Elbie Patton, who also will go to Canyon and Harold Hooker, son of Mr. and Mrs. S. B. Hooker, who will enroll at Clarendon Junior College.

Last weekend Miss Madge Patterson and Miss Edith St. John went to Plainview where they were to enroll Monday as members of the sophomore class at Wayland College. They were accompanied to Plainview by Mrs. J. R. Patterson and Marcella, Mrs. R. St. John and Mrs. Willard Godwin.

Births of interest to Mobeetie folk are the baby boys born the night of the 29 of August to Mr. and Mrs. Leroy Patton, named, Waylan Dale and to Mr. and Mrs. Jack Flippin, named Barth West. Mrs. Flippin is a sister of Leroy Patton and the girls shared the same hospital room at Northwest Texas Hospital in Amarillo. The baby boys are grandsons of Mr. and Mrs. Elbie Patton.

Mr. and Mrs. R. J. Tyson had as their guests Sunday Mr. and Mrs. Sherman Lockhart, Amarillo. The Jeffus and Lockharts visited in the afternoon in the A. Finsterwald home.

Mr. and Mrs. J. H. Taylor have returned from Dallas where they were called on account of the illness of Mrs. Taylor's father, A. H. McCarthy.

Mr. A. D. Alexander has been a patient in the Highland General Hospital this past week. It seems bone surgery is pending. We trust he soon will be home and well.

Mrs. Herk Atkins has been in the Wheeler Hospital, threatened with pneumonia, since Sunday. We understand she is much better and look for her home before the paper is off the press.

Mrs. Clara Hathaway has been seriously ill at her home in Mobeetie, but is slowly improving.

Mr. and Mrs. Tom Hathaway had as their guests Sunday Mr. and Mrs. Clyde Johnson of Wheeler.

Mrs. Lester Hathaway has been a medical patient at the Highland General Hospital in Pampa for the last week. We hope she will soon be well and able to come home.

**Wheeler hisperings**

(Continued from Page One)

appears to us after reading the copy that items which are included in the news should be prepared almost as easily on Friday of the week preceding as on Monday and could be in our hands Monday morning so we could set the type on Monday and the students could then be assured of it being published on the week they intended it to be printed. However, if it is impossible for students to prepare their copy the later part of the week we will continue to accept school paper copy Monday afternoon and do our best to publish it on the week it is intended.

Our right-hand man for the past three years, Maurice Pettit, left us last week to begin a belated college education. Maurice left Sunday to begin school this week at Kilgore Junior College. He plans to try out for the college basketball team. It has been a pleasure to have had Maurice work for us and we wish him success in his new venture. Jimmie Goad, son of Mr. and Mrs. W. A. Goad, Sr., has been employed as printer's devil and apprentice at the Wheeler Times and has already started work. Goad is a junior in Wheeler High School and he works down here before and after school and on Saturdays.

Since we mentioned the prowlers around town in our column last week, we have been informed that there has been a great deal of plain old window peeping going on around town lately. We wish it were possible to catch these culprits in the act and give them proper punishment as well as expose them to the public.

**Garden Club Has First Meeting Of Season Fri.**

The North Wheeler County Garden Club began its official year Friday, September 5, with a morning coffee in the home of the president, Mrs. Frank Walker. Co-hostesses were members of the year book committee including: Mesdames D. O. Beene, Floyd Pennington, Jesse Dyer and flower arrangement hostess, Luther Parks.

Entertaining rooms were decorated with seasonal flowers. Mrs. Pennington presided at the coffee service.

During the brief business sessions, reports were given by officers and standing committee chairmen. The year's books are ready and members may call at the local newspaper office for their copy.

A very instructive script was given by Mrs. H. M. Wiley on "Shrubs for Year 'Round Blooming," as slides of each shrub was shown on the screen.

Members registered by Mrs. D. M. Bentley were: Mesdames Geo. Porter, P. L. Farmer, Roy Bailey, Fred Waters, Cora Hyatt, Jesse J. Dyer, Luther Parks, Floyd Pennington, D. M. Bentley, J. M. Porter, Jim Risner, O. Nations, Earl Barnes, Coy Revious, Jess Moore, Max Wiley, M. McIlhany, Lee Guthrie, D. O. Beene, Frank Walker, Harold Nash, guest, president of the Wednesday Study Club, who is sponsoring the Garden Club.

Three local boys, Richard Brown, Teedie Johnson and Bob Weatherly, enrolled at Oklahoma A & M College, Stillwater, Okla. this week.

Early destruction of cotton stalks is one of the best known control methods against the boll weevil and pink bollworm. To be most effective, the program should be carried out on a county or area wide basis.

**FREE FAIR TO BE HELD NEXT THURS.--SAT.**

The fair association has tried to plan the biggest and best State-Line Free Fair in Shamrock on September 18, 19 and 20 for your entertainment and participation.

The premium lists, while not as impressive as the association would like for them to be, will encourage the best entries possible from each community and individual.

Whatever your interest, farming, stock raising, business enterprise, hand work, flowers, or just having a good time, the fair has something to offer you. The exhibits will be completed by noon on Thursday, September 18.

The women's exhibits to be entered in the fair must be in place by Thursday noon, September 18, and remain in place until 7:30 p.m. Saturday, September 20, with all open class exhibits labeled with name, product and address. Every woman in the county is eligible and invited to enter the open class exhibits.

Each Home Demonstration Club will have an educational exhibit reaching for \$10, \$7.50, \$5, \$3, and \$2 prizes for 1st, 2nd, 3rd, 4th and 5th places respectively.

On Thursday morning the beef cattle will be judged. The breeders division will be judged first, followed by the 4-H and FFA calves in the heavy and light weight classes. H. H. Reeves and Hubert Tindall are directors of this division.

Strictly for fun on Thursday will be the Terrapin Derby with W. H. Walker as chairman of the committee sponsoring it. The mobile X-ray unit will start its work Thursday afternoon and the carnival attractions will be open.

The judging of the exhibits of the communities, Home Demonstration Clubs, individual women's entries, and 4-H girls will be Friday. The three top community booths will receive cash prizes totaling \$50.

Awards of \$20 will be made to each of the educational exhibits entered with these limits to the entries: Vocational Agriculture, one entry per chapter, 4-H Boys, one entry per county, 4-H Girls, one entry per county, Future Homemakers, one entry per chapter, and FFA, one entry per chapter.

The flower show will open at 1:00 p.m. on Friday with entries invited from all amateur flower growers of the area. Mrs. J. H. Caperton is director of the flower show.

The swine judging will begin at 10 a.m. Friday. Exhibitors need not fear that their swine will contract cholera through contact with contaminated entries. Director Ray Sigmund, county agent, has announced that no entries will be accepted from herds known to have cholera or with vaccination certificates dated less than 45 days before show dates.

Club calves and breeders' entries in the dairy division will be judged on Saturday morning. Director H. C. Weatherly and Assistant "Lefty" Thomas require that all cattle are in place by 9

**HOSPITAL NOTES**

Patients Admitted

- Stephen Barrymore, Los Angeles, Calif., September 9.
- Don Meadows, Briscoe, September 6.
- Joe Loter, September 7.
- Mrs. B. F. Meadows, Briscoe, September 6.
- David White, Kelton, September 5.
- Mrs. Herk Atkins, Mobeetie, September 7.
- Mrs. C. E. Thompson, Vernon, September 8.

Patients Dismissed

- Gerald Gudge, September 9.
- Stephen Barrymore, Los Angeles, Calif., September 9.
- Mrs. E. L. Hiltbrunner, Dozier, September 9.
- Don Meadows, Briscoe, September 8.
- Joe Loter, September 7.
- Mrs. B. F. Meadows, Briscoe, September 8.
- Mrs. Clifford Farmer, Borger, September 5.
- David White, Kelton, September 6.
- Mrs. Lindsey McCasland, September 6.
- Mrs. George Harville, Canadian, September 5.

Births

- Mr. and Mrs. E. E. Raper of Wellington are the parents of an eight pound baby boy born at the Wheeler Hospital, September 5, 1952.
- Mr. and Mrs. Leon Moore of Pampa are the parents of a baby daughter, Deborah Kay, who weighed 5 lbs. and 2 ozs. She was born at the Highland General Hospital in Pampa, August 31, 1952.
- Mr. and Mrs. Olin Pendleton, Jr. of Amarillo are the parents of a baby boy born at the North West Texas Hospital, Amarillo, September 8, 1952. He weighed 7 lbs. and 1/2 ozs. The paternal grandparents are Mr. and Mrs. Olin Pendleton, Sr. of Wheeler.

Jamie Clark and Kenneth Richardson left last Thursday for Texas A & M College and Jerry Newberry joined them on Sunday.

Nona Ann Byers, daughter of Mr. and Mrs. R. N. Byers, has moved to Fabens with the W. O. Carrick family where she will attend her senior year of school.

Mr. and Mrs. W. L. Jolly and boys were visitors in Wheeler over the weekend. The Jollys moved a few weeks ago to Sunray.

**Times Classifieds Get Results!**

a.m. Saturday and remain until 4:30 p.m.

If you would like to have an entry in the Terrapin Derby to be run each day of the fair, a \$5 fee will enter one in your name. Entry blanks may be secured from Walker, chairman; Bob Douglas, Stuart Tisdal, Fry Drug, Earl's Grill, Johnnie Mundy, Loyd's Service Station, Dennis Ward or Lonnie Burks, all of Shamrock.

**Kirk-Mason Funeral Home Purchases New Emergency Ambulance**

Nash Appliance & Supply delivered Kirk-Mason Funeral Home a new Forrester Green 1952 Pontiac Station Wagon with the spectacular dual-range performance this week for use as an emergency ambulance and flower car.

The new all-steel station wagon E-Z-Eye Pontiac Glass all around was converted for use as an emergency ambulance by removing the rear seat and installing mechanism to hold a cot. The cot and single rear seat which was also installed can be removed and the car can handily be used as a flower conveyer.

Some time back the Kirk-Mason Funeral Home purchased a late model Pontiac ambulance which with the addition of the

**People's Mission Is Opened At**

Beginning on Monday, September 1, a 5-room house, People's Mission Orphan Home, Canadian, became the five orphan children and accommodate more in the future. The home is located at 323 S. Superintendents are Mrs. J. S. Johnston of that general Canadian business firms are incorporated in establishment.

Mrs. Johnston contacted residents of the Wheeler community while on a get-acquainted made last Saturday to and several contributors for the home's fund.

station wagon makes of Pontiac products exc

**SEND THEM BACK TO SCHOOL WITH ELGIN**



- 17-jewel Elgin DeLuxe, 10K gold filled case, chain bracelet. \$60.00
- Lord Elgin, 21 jewels, 14K natural gold filled case, Calfskin strap. \$71.50
- 19-jewel Lady Elgin, 14K natural gold case, High curved crystal. \$71.50

Prices include Federal Tax.

You'll be first in your Dear One's heart when you give an Elgin Watch. Thrilling beauty! Famous Elgin dependability! Come in today and see the latest Elgin models. They are priced from \$29.75.

**WHEELER DRUG STORE**

"A Friendly Place To Trade"

**Week End SPECIALS**

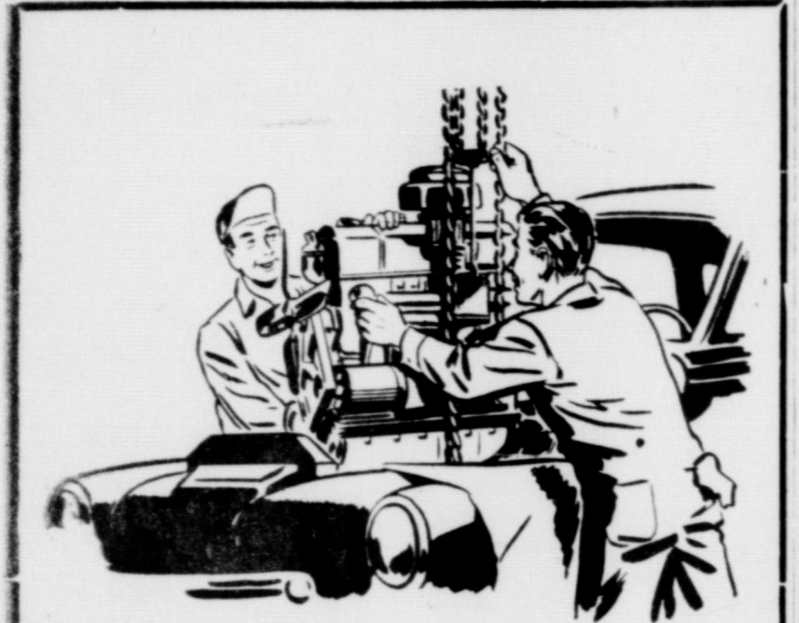
NEW SHIPMENT OF  
**CHENILLE BED SPREADS**  
 \$7.95 Values, Special this week end for...  
**\$4.98**

A GROUP OF LADIES FALL  
**SUEDE SHOES**  
 Special **\$2.95** Pr.

MEN'S HEAVY DUTY  
**WORK SHOES**  
 First quality with composition soles, special  
**\$3.49** Pr.

A NICE SELECTION OF  
 MEN'S SANFORIZED  
**DRESS SHIRTS**  
 Colored patterns or white broadcloth,  
 Regular \$2.95 values  
 Special **\$1.98** Each

**McILHANY'S**  
 "For Everything You Wear"  
 Wheeler, Texas



**COMPLETE MOTOR REPAIR**

Is the engine of your car practically worn out? Are you having difficulty with it now? If you are, you had better have something done about it NOW, because it will really give you trouble when cold weather sets in. We are fully equipped to handle any of your engine repair jobs whether it's minor adjustments or a complete new engine or block assembly. Bring your car out and let us give you an estimate on your job.

**THOMAS GARAGE**

8 Blocks West of Square on Highway 152  
 Phone 190-M Wheeler, Texas

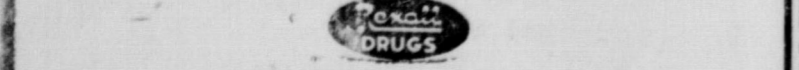


**KEEP YOUR BABY "SOCIAALLY ACCEPTABLE" WITH PLAYTEX**

We have just received a full line of PLAYTEX baby needs and invite you to stop by and look over this fine merchandise.

The line includes: Baby oil, cream and powder which comes with a money back guarantee against diaper rash if you use all three. Extra soft waterproof sheets, transparent pants, extra thin and extra cool, bibs, ventilated baby pants, dryer pants and panties and pads are also included in the line.

**CITY DRUG STORE**



Here's the perfect combination for perfect sleeping! The matched design, construction and finish of the famous Morning Glory Innerspring Mattress and its Matching Box Spring mean years and years of fine sleeping for you and your family. The unique, perfectly matched, Equi-Balanced spring assemblies of the Morning Glory Dream Team are the finest in the world—to give you form-fitting, soft-yet-firm "floating support."

**ERNEST LEE HARDWARE**

Furniture - Rugs - Radios - Hardware

**Home Page**  
 "The Voice of Wheeler County"

Page XIX—NUMBER

**Mobeetie Meditations**

Homer E. Matthews

Vernon. Hotel is

has been torn down

of Mr. and Mrs.

being erected just w

location. Your rep

the blue-prints for

Another new house

in our town at

the Clero S

Mobeetie has had s

years and it certa

learn look alive. Al

er plans are under

being painted and

are taking on

the old Vernon H

of the railroad in

Stett, who ran the h

er of years. When

it seemed to

ing of a new era

So, with the erec

homes going up

hope is the beginn

er era for Mobe

mean prosperity

for the entire comm

at the High S