

# The Wheeler Times

Serving  
**WHEELER**  
and  
**MOBETTIE**

WHEELER, TEXAS, THURSDAY, OCTOBER 12, 1950

5c Per Copy

THE COUNTY SEAT NEWSPAPER

Home Paper  
The Voice of  
Wheeler County

XVII—NUMBER 44

## Mustangs Win Over Guerillas, Play Memphis

Wheeler's Mustangs stepped out of their bracket Friday night when they go to Memphis to tackle the Class A Cyclone eleven which has been defeated only by the strong Shamrock delegation. The contest is to be played on the Memphis gridiron beginning at 8:00 o'clock Friday night.

The Mustangs have three victories to their credit and one loss thus far this season, the victories being over Turkey, 32 to 8, Vega, 13 to 12, and Pampa Guerillas, 19 to 13. The loss was to White Deer by a count of 18 to 7.

The Cyclone team had defeated Canyon, 25 to 6, and Lefors, 12 to 7. They lost to Shamrock last Friday night after a hard fought battle by a count of 18 to 14.

The last time the Wheeler and Memphis eleven played, the Mustangs came out on the long end of the score.

The Cyclone of Memphis boasts a strong running attack, depending much on Tommy Messer, fullback for ground gains. They also have a good passing attack, with Roddy Stargel, quarterback, tossing the pigskin.

Reports have it that Memphis has a speedy line and a good backfield.

Coach Bernie Smith reports that the Mustangs are in fairly good physical condition for the contest having come through their first four battles without anyone receiving serious injury.

Although the contest is a non-conference affair with a Class A team, and means nothing as far as conference standings are concerned, it would establish the Mustangs as somewhat of a favorite in the north half of District 1-B should they defeat the strong Memphis aggregation.

Wheeler's Mustangs stepped out of their bracket Friday night when they go to Memphis to tackle the Class A Cyclone eleven which has been defeated only by the strong Shamrock delegation. The contest is to be played on the Memphis gridiron beginning at 8:00 o'clock Friday night.

The Mustangs have three victories to their credit and one loss thus far this season, the victories being over Turkey, 32 to 8, Vega, 13 to 12, and Pampa Guerillas, 19 to 13. The loss was to White Deer by a count of 18 to 7.

The Cyclone team had defeated Canyon, 25 to 6, and Lefors, 12 to 7. They lost to Shamrock last Friday night after a hard fought battle by a count of 18 to 14.

The last time the Wheeler and Memphis eleven played, the Mustangs came out on the long end of the score.

The Cyclone of Memphis boasts a strong running attack, depending much on Tommy Messer, fullback for ground gains. They also have a good passing attack, with Roddy Stargel, quarterback, tossing the pigskin.

Reports have it that Memphis has a speedy line and a good backfield.

Coach Bernie Smith reports that the Mustangs are in fairly good physical condition for the contest having come through their first four battles without anyone receiving serious injury.

Although the contest is a non-conference affair with a Class A team, and means nothing as far as conference standings are concerned, it would establish the Mustangs as somewhat of a favorite in the north half of District 1-B should they defeat the strong Memphis aggregation.



EVANG. GAYLE OLER

## GOSPEL MEET TO START AT LOCAL C OF C

Sunday morning will mark the beginning of the gospel meeting to be conducted through October 22nd at the Church of Christ in Wheeler. Evangelist Gayle Oler of Quinlan, Texas, will preach at the morning services at 10:00 o'clock, and at the evening services to begin at 7:30. Congregational singing will be directed by Otto Shewmaker of Pampa. A special song service is being announced for Sunday afternoon, October 15th, at 2:30, with the public invited.

Minister Oler, who is Superintendent of Boles Orphan Home at Quinlan, Texas, has just returned from a tour with the Bel Canto Chorus of the home that took them through most of the states and into Canada in a friendship trip. At the home an intensified program of dairying, beef and pork production, and farming is directed by the superintendent, and the program of the home is planned to give each child a task he can do. Minister Oler believes an important part of a child's training is learning to handle responsibility.

Before taking the job of being "daddy" for more than three hundred youngsters, Mr. Oler was minister of the Church of Christ in the average-sized East Texas oil town of Gladewater, where he also published his brief religious weekly paper, the JUST A MOMENT, and spoke each day on an East Texas radio station. Since his college days he has been active in evangelistic work, devoting several weeks of every year to meetings a practice he has continued in addition to his duties at the home. He also preaches for churches in the Dallas-Greenville area on Sundays.

Ernest Grizzard, local minister of the church, stated that the baptistry will be filled and warmed for every service, and clothing will be prepared for baptism the "same hour of the night."

Members of the Wheeler church extended a cordial invitation to all their friends in this community to attend each service of the meeting. It was stated.

## Wheeler Whisperings

By J. C. Howell

Jack Garrison, owner of Garrison Service, has taken a step in the right direction this week in announcing that he will keep his service station closed until 1:30 p.m. on Sundays hereafter in order to give him and his help an opportunity to attend church and enjoy a half day's rest once each week.

.....

We understand that Mr. and Mrs. Jack Crout had quite a time getting their tickets for the Texas A & M-Oklahoma football game which they attended at Norman last Saturday. Here's the story as we get it. . . . the Krouts had planned for some time to see the contest and John Carter had secured tickets for them quite a while back, then when they left for Norman last Saturday they were so excited that they got off without their tickets, good ones and right on the fifty-yard line, too, then someone happened to mention tickets when they got off down the way about El Reno which reminds the Crouts that they have left theirs at home. Now here's the procedure they had to go through to get their tickets. . . . first they call Delmar Faught over the Duard Wofford phone and have Faught to go to Shamrock and meet the bus which they were sending the key to their apartment on, then he goes up to their apartment and secures the tickets, which he takes over and leaves with Mrs. C. N. Wofford who has to wait up till all hours of the morning for Robert Ledbetter who was going down to the game early Saturday morning. Ledbetter was attending the Shamrock-Memphis game at Memphis, and so finally the tickets are in Ledbetter's hands and he takes them with him Saturday morning, but when he gets to Norman instead of delivering the tickets, he tells the Crouts that he spent the night in Shamrock and didn't even go home so he doesn't have their ducats. . . . and makes them sweat right up until game time before telling them any different. Now that was just pretty mean of Mr. Ledbetter wasn't it?

.....

Thanksgiving is marked on the calendar as November 23, but it happens that there are 5 Thursdays in November this year and the 23rd is not the last Thursday, but we suppose everyone will observe the 23rd as Thanksgiving and take a holiday. We checked with the Chamber of Commerce at Pampa and that is the day they are observing, in fact, they have a football game scheduled between themselves and Plainview at Pampa on that date.

If any of the Wheeler merchants or businessmen are not satisfied to observe the 23rd, please get in touch with Whisperings right away so we can take the matter up with the Chamber of Commerce and the other merchants and definitely set the date in plenty of time for everyone to make proper plans.

## CONTENTS OF HIBLER SAFE ARE RECOVERED

Archie Hibler reported this week that the safe which was stolen from the Hibler Implement Company here Wednesday night, September 27 was found less than a mile north of Wheeler last Friday morning by Mrs. George Higgins who lives just across the creek east and a little north from where the thugs broke the safe open and went through its contents.

The safe was found at the east end of a highway culvert a little less than a mile north of Wheeler and was still on the hardware truck which was stolen from the Implement Co. at the same time as was the safe.

The thieves ransacked the safe and strewn the contents on the ground around the safe taking only the cash which was in the lock box, Hibler reported. Practically all the valuable papers, bonds, checks and ledgers were recovered.

The culprits had used a chisel in breaking open the safe and consequently had completely demolished same.

Hibler had offered a \$100.00 reward for information leading to the recovery of the papers which were in the safe and this reward went to Mrs. George Higgins.

## PMA Approves Eleven Practices For '51 Program

Eleven practices have been approved by the County PMA committee for the 1951 government farm program, Albert C. Marshall, administration officer for the Wheeler County PMA, announced this week. This is the smallest number of practices in recent years.

Major changes in the program include increasing the payment for deep plowing to \$5.00 per acre for land plowed 18 inches or deeper, and the reduction of terracing from \$1.50 to \$1.25 per 100 feet.

There will also be a limit of \$500 that any farm can earn.

The Wheeler County Committee has selected the following practices and payment rates to be used under the 1951 ACP program:

1. Large ridge type and large channel type terraces \$1.25 per 100 feet.
2. Diversion terraces .06 per cu. yd. of dirt.
3. Subsoiling 12 inches \$1.25 per acre.
4. Deep plowing at least 12 inches but less than 15 inches \$2.00 per acre; 15 inches but less than 18 inches \$3.00 per acre; 18 inches and deeper \$5.00 per acre.
5. Drilling or Digging Water Wells with casings 4 inches but less than 6 inches in diameter, or uncased wells with a bottom hole diameter 4 inches but less than 6 3/8 inches \$2.00 per linear ft. Casings 6 inches or more in diameter, or uncased wells with a bottom hole diameter of 6 3/8 inches or more \$3.00 per ft.
6. Construction of Earthen Dams .10 cents per cu. yd. of dirt.
7. Application of Potash and Phosphate.
8. Growing a Green Manure or Cover Crop of Summer Legumes.
9. Establishing a satisfactory cover of winter legumes and ryegrass seeded in the fall of 1950.
10. Turning under or leaving on the land a satisfactory stand and growth of rye seeded in the fall of 1950—\$2.00 per acre.
11. Establishing or improving permanent pastures by seeding adapted pasture grasses, pasture legumes, or mixtures of grasses and legumes.

The payment rate on grass seed legumes, and phosphate will depend on the kind you purchase.

"At this time we do not have a 1951 Handbook printed with the required specifications; however, we will try to have a book ready for each farmer at a later date, Marshall stated.

"We still have about \$4,000.00 to be used on the 1950 program. "If you plan to carry out any practice, that can be completed by the 1st of December, 1950 come to the County PMA Office and get your approval, before you start work on your practice," Marshall urged.

## SON OF LOCAL COUPLE REPORTS ON EARTHQUAKE

Editor's Note—Printed below is an article from the Army newspaper, Stars and Stripes at Tokyo concerning the recent earthquake there. The clipping was sent to Mr. and Mrs. T. T. Wallace by their son, Capt. J. M. T. Wallace, who is stationed in Tokyo. Capt. Wallace stated that the earthquake only lasted for a few seconds but it seemed much longer and was something terrible. In the interest of those who have sons or relatives over in Japan we reprint the following article.

A violent earthquake shook Tokyo and the whole Kanto plains about 12:23 p.m. Sunday afternoon (Sept. 24).

It was the biggest shake that occupational personnel in the Japanese capital have felt since the beginning of the occupation five years ago.

Radio Tokyo building, a big six story modern building in downtown Tokyo, shook harder than it has during the two previous postwar devastating quakes.

The first big postwar quake was in Wakayama prefecture on December 21, 1946 and the second in Fukui prefecture on June 28, 1948.

In the Fukui quake 3895 persons were killed. In the Wakayama quake 1330 persons were killed.

Tokyo University observatory says it believes the epicenter was about 80 kilometers from Tokyo but does not know yet in which direction.

Kyodo news agency, which has bureaus all over Japan, still has not received any reports of damage. It has not heard from all its bureaus.

The three story Nippon Times newspaper building was evacuated when the quake hit. The Army's Stars and Stripes newspaper, with editorial offices on the third floor said the Japanese building manager, who is an old hand at earthquakes, insisted their ten-man Sunday staff get out of the building.

The university observatory classified the quake as intensity three. The maximum is six.

## COLTS TO PLAY HERE THURSDAY

The Wheeler Grade School Colts will play Canadian on Nicholson Field here Thursday night, October 19. Coach Bill Knighton announced this week. The Colts will then engage McLean on the local gridiron on Thursday night, October 26. Both games are scheduled to begin promptly at 8:00 o'clock.

In games played thus far this season, the Colts have lost to Lefors by a count of 18 to 6, won over Groom by a count of 26 to 12 and tied with McLean by a score of 6 to 6.

Next Thursday night's contest will be the first home game for the local squad. Admission prices will be 25c for adults and 15c for students.

A list of the players together with their positions includes: Donald Oglesby, guard; Claude Cox, center; George Mize, halfback; Francis Pride, guard; Denny Bowerman, end; Ode! Davis, tackle; James Stone, halfback; Jerry Barton, quarterback; Jimmie Don Jackson, halfback; Tony Weatherly, end; Dale Richardson, tackle; Reggie Barr, tackle; Rondell Childress, guard; Elmer Penny, tackle and fullback; Donald Barber, halfback and Douglas Blevins, guard. Ray Durham is manager. Richard Lee Smith was one of the star performers on the squad before receiving a severe ankle injury in the McLean contest. Smith will be out of the line-up for the remainder of the season.

## ROGERS WILL START TALKS

Walter Rogers of Pampa, Democratic nominee for congress, starts a weekly series of radio speeches Friday at 7 p.m. over station KGNC, according to Judge Ralph Porter of Clarendon, district campaign manager.

Judge Porter said Democrats in every county in the district are busy making plans for a large turnout in the November election in order to send Rogers to Washington by a big margin. The Panhandle's position in the party will be stronger if the vote is large because representation at the state convention is based on the number of votes cast in the general election.

"Rogers has demonstrated his ability and qualification for the job in congress at recent meetings with farmers and a representative of the labor department.

"He has offered a legal and logical solution for the problem facing cotton farmers presented in the child labor law, which according to the Labor Department, does not permit children to pick cotton during school hours.

"Rogers presented a solution that permits the farmer to gather his crop without any violation of the law.

"The popular thing would have been to hurl criticism at the law, but that doesn't get results. Rogers believes in getting things done.

"We need a working congressman and not a critic to represent us in Washington," Porter said.

Miss Beulah Hubbard of Amarillo spent the weekend at home visiting her mother, Mrs. Ollie Hubbard.

## Doctors, Dentists And Vets Trained By Govt. Must Register Soon

Jesse J. Dyer, chairman of the Wheeler County Draft Board, announced this week that all doctors, dentists and veterinarians who were trained at government expense or deferred to attend school who have not served as much as 90 days with the armed forces of the United States will be required to register on or before October 16, 1950.

They may register with Flake George at the post office in Shamrock or with the draft board located on the third floor of the court house in Pampa.

## Happy Birthday

- OCTOBER 18—19
- Wilma Hefley
  - Mrs. C. H. Clay
  - Carroll Pendleton
  - Gene Hubbard
  - Chester Lewis
  - Frances Ann Holt
  - A. L. Bean
  - Levi Reid
  - Paula Green
  - Bill Chapman
  - Carlisle Robison
  - Mrs. Vida Brown
  - H. B. Guynes
  - Martha Ann Hastings

## BAND CLUB TO HOLD TOURNEY

There will be a 42 and Canasta tournament at the School Cafeteria next Tuesday night, October 17, sponsored by the Band Boosters Club, a representative of the organization announced this week.

Refreshments will be served and there will be a lady or two to act as baby sitters; so, everyone is urged to come to the tournament bring the children, and help back the band. Admission price will be 50c per player.

A representative of the Band Parents Club states that since the suits have been received, interest on the part of backers has lagged, but we are hoping for larger attendance in the following meeting. Everyone is urged to come out and see what helps to keep the band functioning.

Band Master Patrick Boddy will present some of the Mustang Band members in a musical program during the evening. Members who will participate in the program include: Joyce Sims, Lovetta Moore, Georgia Gay Herd, Donna Greenhouse, Sarah Jane Goad, Janet Russ, Dale Wofford and Burley Owen.

## New Liquefied Gas System Announced By Local Distributors

A new revolutionary butane-propane system is now available to consumers of this area for the first time. The Shamrock Products Co. announced this week. Known as the Mix-O-Gas System, the product has exclusive patented construction features that make its operation a vast improvement over the conventional butane-propane tank.

"Exhaustive tests in the Mix-O-Gas Home-makers Laboratory have shown that on a national basis the average family can cook for as little as 2 1/2¢ a day," a representative explained. "Fuel savings are possible up to 17% with the Mix-O-Gas System."

The exterior of the new system does not differ from the conventional butane-propane systems, but the internal construction is considerably changed. As a result of the patented construction features, a constant stratification of the liquefied petroleum gases prevents stratification of the butane or propane.

"Mix-O-Gas gives the butane-propane user the first real balance vapor blend at his or her appliances whether the tank is full or near empty," explained a representative of the company. "It means that the burner on the appliances (Continued on Last Page)

## City Drug To Hold Annual 1 Cent Sale

Lonnie Lee, owner of the City Drug Store, announced this week that he would hold an annual Rexall 1 cent sale at his store beginning Thursday, October 19 and lasting through Monday, October 23. An advertisement announcing the big sale appears on the back page of this week's Times, but Mr. Lee calls attention to the fact that the sale does not begin until Thursday, October 19.

During this big annual sale Mr. Lee is offering many famous Rexall products for the price of only 1 plus 1c.

Mr. Lee invites the people of this trade territory to plan now to visit the City Drug during this big sale and avail themselves of the many bargains being offered.

Mrs. Carroll Pendleton and Mrs. Lowell Farmer visited with relatives in Odessa Thursday, leaving Wheeler Wednesday afternoon.

## Briscoe Band Parents Elect New Officers

Briscoe Band Parents met Thursday night October 5 for a business meeting during which time they elected officers. Officers elected were: Mrs. Claude Barker, president; M. B. Eiland, vice-president; Mrs. Forest Vise, secretary and treasurer; Mrs. Weaver Barnett, reporter. A food sale was also discussed.

Everyone is invited to attend the meetings of the Band Parents and help to make the organization a success.

## Briscoe Schools Has Plans For Carnival

Supt. Harold Barnett of the Briscoe schools announced this week that the Briscoe school had already begun to make plans for their Halloween carnival which is to be held Tuesday night, October 31.

Proceeds will be used for the welfare of the school.

**BITTEN BY RATTLE SNAKE**

Mrs. U. B. Traylor was bitten on the middle finger of her left hand by a rattle snake Wednesday morning while gathering tomatoes at her home near Wheeler. She was taken to the Walker Clinic for treatment and was dismissed from the Clinic that afternoon.

## TO HAVE AT FAIR

Ed Bazeman of Evansville, executive of the Christian Temperance Union, including a visit from Wheeler, on the 1950 State Fair will be observed at the Mid-Century in Dallas.

All Dallas unions will be for a 3 p.m. program at the 187th Fair grounds. More than 32 Texas towns are to be represented.

Mrs. Claude DeVan Austin, president of the Christian Temperance Union, will speak on Reason and Revelation. B. O. Baker of Dallas and Thomas C. Jensen of corresponding secretaries at the literature desk.

She is proud and happy to be in this gigantic and Mid-Century Exposition.

She declared, "The term 'Fair' is the greatest vision medium ever presented to the people" and urged members and their friends attend the October 17

have been extended in Austin, Beaumont, Corsicana, Canadian, Center Point, Fort Worth, Edinburg, Georgetown, Harlingen, Lubbock, McAllen, Mexico, San Antonio, Snyder, Waco, Weslaco, Waxahatchee, Euclid, Post, and Dallas.

House Will Be  
Myers Home

was made this open house to be held in honor of Mrs. Eva Myers on Sunday, October 15.

being in honor of Mrs. Myers' 75th birthday.

friends are invited to the hours of 3:00 and

See it To  
CE FOR 64-  
S LOW AS  
WHEEL  
RUG ST  
tendly Place



### THE WHEELER TIMES

Published Every Thursday at Wheeler, Wheeler County, Texas, By  
COOPER, HOWELL & MONTGOMERY

J. C. Howell Editor-Manager  
Annie Mae Howell Society Editor  
Richard L. Bradley Printer  
Maurice Pettit Apprentice

#### MEMBER

Panhandle Press Association  
National Editorial Association

#### ADVERTISING RATES

National Rate 42c Column Inch  
Local Rate 35c Column Inch  
Classified See Want Ad Page

#### SUBSCRIPTION RATES

In Wheeler, Beckham and Hemphill Counties  
3 Months 75c  
6 Months \$1.25  
1 Year \$2.00  
Everywhere Else  
3 Months 85c  
6 Months \$1.50  
1 Year \$2.50

Entered as second-class matter December 18, 1933, at the postoffice at Wheeler, Texas, under act of March 3, 1879.

#### NOTICE TO PUBLIC

Any erroneous reflection upon the character, standing or reputation of any person, firm or corporation, which may appear in the columns of this paper will be gladly corrected upon due notice being given to the Editor personally at the office at Wheeler, Texas.

THURSDAY, OCTOBER 12, 1950

### Editorial

#### U.N. HAS PROVED MORAL COURAGE

The United Nations took itself out of the debating society category Saturday when the forty-seven nations declared firmly for crossing the thirty-eighth parallel and the determination of Korea's future on the basis of a free election. Previously, the General Assembly had given tacit approval to armed invasion of North Korea by General MacArthur's forces. It had authorized the general to take any steps necessary to prosecute the war to a successful issue. But that negative approval evaded the issue. It could have resulted in subsequent insistence that the assembly had never meant to cross the thirty-eighth parallel.

Saturday's action on the contrary was sharp, to the point, admits of no ifs and buts. MacArthur is told to go ahead. And to drive

the lesson home, the assembly has summarily rejected the Russian proposal which in effect would be a restoration of the status quo of the first three years after V-J Day under which the Soviet, planned, underwrote and effectuated the North Korean aggression.

In a very large sense the act called for moral courage. No few of the nations that voted occupy positions of strategic military risk. With the single exception of India, not one of the abstaining nations can be suspected of fear of Soviet or Communist reprisal. The only adverse votes were those of the Soviet bloc itself.

The Near East abstainers, Syria, Saudi Arabia, Egypt and Lebanon, are, to be sure, close to the Soviet sphere of influence but from the start their case has been based on the inconsistency of the U.N. position in carving the State of Israel out of territory held for centuries by Moslem squatter rights. Those four countries are still voting in Israel rather than on Korea.

In the main, the forty-seven nations that cast the majority vote stood at Armageddon and chose their side. The Soviet is served a clear warning that the world within U.N. is no longer willing to pay tribute to blackmail—Dallas News

#### OUR CRIMINAL RECORD

The semiannual crime report bulletin covering the period from January through June 1950, published today by the Federal Bureau of Investigation, contains an array of facts and figures that should cause decent, law-abiding citizens to blush with shame. The volume of criminal activity in the United States, and particularly that portion of it being committed by young people, is appalling.

Reports sent to the FBI by co-operating law enforcement agencies throughout the country indicate that crime increased 7.4 percent in rural areas of the nation during the first six months of this year in comparison with the first half of 1949. The increase in urban areas was 1.9 percent.

When the statistics on youthful offenders are considered, it is difficult to avoid the conclusion that something is sadly lacking in the way many American children are being brought up. Note the following excerpt from the bulletin:

"As an indication of the predominant part youths play in the commission of crimes against property, it may be observed that during the first half of 1950 persons of all ages arrested for robbery, burglary, larceny, auto theft, embezzlement and fraud, forgery, counterfeiting, receiving stolen property, and arson numbered 99,130, and 29.9 percent of these persons were less than 21 years of age."

The report is a challenge to the responsible citizens of the nation. The basic causes of so many of our young people turning to crime—despite mountains of evidence that crime doesn't pay—should be searched out and, if possible, removed.

—From Fort Worth Star-Telegram

### Church Calendar

#### FIRST BAPTIST CHURCH

Sunday School 10:00 a. m.  
Morning Worship 11:00 a. m.  
Evening Worship 8:00 p. m.  
W.M.U., Tuesday 2:30 p. m.  
Prayer Service, Wed. 8:00 p. m.  
Teacher's Meet. Tues. 8:00 p. m.  
We preach Christ crucified, buried, risen, and coming again.  
M. B. SMITH, Pastor

#### CHURCH OF CHRIST

Bible Classes 10:00 a. m.  
Morning Worship 10:55 a. m.  
Young People's Class 6:30 p. m.  
Evening Worship 7:30 p. m.  
Wed. Eve. Classes 7:30 p. m.  
Ladies Bible Class, Mon. 3:00 p. m.  
Radio, KEVA, Tuesday 9:15 p. m.  
ERNEST GRIZZARD, Minister

#### THE METHODIST CHURCH

Church School 9:45 A. M.  
Morning Worship 11:00 A. M.  
Evening Service 8:00 P. M.  
Prayer Meeting (Wed.) 8:00 P. M.  
Church Night - First Wednesday  
Methodist Men, 2nd & 4th Thurs.  
DARRIS L. EGGER, Pastor

#### CHURCH OF GOD

Old Mobeetie  
Sunday School 9:45 a. m.  
Morning Worship 11:00 a. m.  
Willing Workers 2:30 p. m.  
Tuesday  
Young People's Service, 7:00 p. m.  
Saturday  
C. A. JAMES, Pastor

#### BRISCOE BAPTIST CHURCH

Sunday School 10:00 a. m.  
Morning Worship 11:00 a. m.  
First and Third Sundays.  
Evening Worship 8:00 p. m.  
Prayer Service 7:30 p. m.  
Wednesdays, following First and Third Sunday preaching services.  
Each and everyone is cordially invited to attend each service.  
REV. C. R. HOLT, Pastor

#### TWITT BAPTIST CHURCH

Sunday School 10:00 a. m.  
Morning Worship 11:00 a. m.  
Evening Worship 8:00 p. m.  
Mid-week prayer service 8:00 p. m.  
WILLIAM PARKS, Pastor

#### KELTON BAPTIST CHURCH

Sunday School each Sunday at 10:00 a. m.  
T. U. each Sunday at 7:30 p. m.  
Preaching each Sunday at 11:00 a. m. and 8:30 p. m.  
A. G. ROBERTS, Pastor

#### CHURCH OF THE NAZARENE

Sunday School 10 a. m.  
Worship 11 a. m.  
N.Y.P.S. 7:30 p. m.  
Evening Worship 8:00 p. m.  
Prayer Meeting Wed. 8:00 p. m.  
E. F. ROBINSON, Pastor

#### ALLISON PENTECOSTAL CHURCH

Sunday School 10:00 a. m.  
Worship 11:00 a. m.  
Young Folks Service 7:30 p. m.  
Worship 8:00 p. m.  
Wednesday Night Prayer Meeting 8:00 p. m.  
REV. ROBERT ESTES, Pastor

#### FIRST METHODIST CHURCH

Mobeetie, Texas  
Church School 10:00 a. m.  
Morning Worship 11:00 a. m.  
M. G. F. Meeting 6:45 p. m.  
Evening Worship 7:30 p. m.  
Wed. Evening Prayer Service 7:30 p. m.  
You Are Welcome.  
VERNON E. WILLARD, Pastor

#### BRISCOE METHODIST CHURCH

Sunday School Each Sunday 10:00 a. m.  
Preaching, second and fourth Sundays 11:00 a. m. and 8:00 p. m.  
A hearty welcome to all.  
BERNARD F. SEAY, Pastor

#### ALLISON METHODIST CHURCH

Sunday School Each Sunday 10:00 a. m.  
Preaching, first and third Sundays 11:00 a. m. and 8:00 p. m.  
A warm welcome to all.  
BERNARD F. SEAY, Pastor

#### ALLISON BAPTIST CHURCH

Sunday School 10:00 a. m.  
Preaching Service 11:00 a. m.  
Training Union 7:30 p. m.  
Preaching Service 8:30 p. m.  
REV. F. B. DAKE, Pastor

#### KELTON METHODIST CHURCH

Church School 10:00 a. m.  
Preaching 11:00 a. m. every third Sunday  
MYF, WSCS and Bible Study 7:30 p. m.  
Preaching 7:30 p. m. every third Sunday.  
L. D. CLEVELAND, Pastor

### LEGAL NOTICE

#### CITATION BY PUBLICATION

##### THE STATE OF TEXAS

TO: A. S. Garrett, if living, and if dead, his unknown heirs and legal representatives GREETINGS:

You are commanded to appear and answer the plaintiff's petition at or before 10 o'clock A. M. of the first Monday after the expiration of 42 days from the date of issuance of this Citation, the same being Monday the 20 day of November, A. D. 1950, at or before 10 o'clock A. M. before the Honorable District Court of Wheeler County, at the Court House in Wheeler, Texas.

Said plaintiff's petition was filed on the 2 day of October, 1950.

The file number of said suit being No. 4144.

The names of the parties in said suit are: Lula A. Williams, a feme sole, as Plaintiff, and A. S. Garrett, if living, and if dead, his unknown heirs and legal representatives as Defendants.

The nature of said suit being substantially as follows, to-wit: Suit by plaintiff in trespass to try title to all of Lot One (1) Block Twenty-eight (28) of the original town of Shamrock, Wheeler County, Texas.

#### ASSEMBLY OF GOD

Mobeetie, Texas  
Sunday School 10:00 a. m.  
Worship 11:00 a. m.  
Junior Church 7:30 p. m.  
Sunday Night Service 7:00 p. m.  
Prayer Meeting, Tues. 7:30 p. m.  
Young Peoples Ser. Thursday 8:00 p. m.  
H. E. LEE, Pastor

#### FIRST BAPTIST CHURCH

Mobeetie, Texas  
Sunday School 10:00 a. m.  
Morning Worship 11:00 a. m.  
Training Union 7:30 p. m.  
Evening Worship 8:30 p. m.  
Prayer Meeting, Wed. 8:00 p. m.  
JAMES M. BRYANT, Pastor

#### ASSEMBLY OF GOD CHURCH

Wheeler, Texas  
Sunday Services—  
Sunday School 10:00 a. m.  
Morning Worship 11:00 a. m.  
Evangelistic Service 8:00 p. m.  
Wednesday Bible Study and Prayer Meeting 8:00 p. m.  
B. G. SYVERSON, Pastor

er County, Texas (according to the recorded map or plat of such town) with count in petition alleging possession by plaintiff by the three year statute of limitation.

Issued this the 2 day of October, 1950.

Given under my hand and seal of said Court, at office in Wheeler, Texas, this the 2 day of October, A. D. 1950.

(SEAL)

CHRISTOPHER S. McCLAIN  
Clerk District Court  
Wheeler County, Texas  
43-4c.

Harry F. Byrd, U. S. Senator from Virginia:

"We have permitted ourselves to be involved in civil wars throughout the world and to exhaust our resources, regiment and tax our people."

John Foster Dulles, Republican advisor to State Department:

"Every dollar, every pound, every franc available should be devoted to providing the implements needed for the protection of the free world."

### SHOULDN'T

"I never knew what was until after I was stated a screen idol. Not brood over the lanta Constitution."

Clement L. Atlee, British Minister:

"The fire that has been in distant Korea may be house."

Guy Gabrielson, National man, Republican Party:

"When our flag, our peace of the world, ended, the people of the States are united in the peace."

Envy is a madness which endure the good of others."

To Relieve Misery of

**COLIC** take  
LIQUID OR TABLETS

## Let Us Handle Your Real Estate Loans

If you want to refinance or buy FARM, RANCH or CITY PROPERTY

See us for low-rate carrying charge

We represent some of the largest mortgage buyers in the country.

**W. H. (BILL) WALKER**

112 W. 2nd. Street Shamrock, Tex



### BE A MODERN-DAY COLUMBUS

Discover the efficiency, economy, dependability and ease of modern living—electrically.

ELECTRIC COOKING	ELECTRIC HOME FREEZING
ELECTRIC REFRIGERATION	ELECTRIC MIXING
ELECTRIC WATER HEATING	ELECTRIC WASHING AND DRYING

**SOUTHWESTERN PUBLIC SERVICE COMPANY**  
25 YEARS OF GOOD CITIZENSHIP AND PUBLIC SERVICE

## A Rare Opportunity For Wheeler



DR. HERBERT LOCKYER

Dr. Herbert Lockyer, D.D., D. L. Fellow of the Royal Geographic Society will speak in Wheeler at the Methodist Church Friday, October 13th at 7:30 p.

Dr. Lockyer is an Englishman by birth but has been in this country for so many years. He is an evangelist and a speaker of national fame.

You should not miss his Bible lecture

Also, with him will be

Dr. E. F. Webber of Radio Church of the Air fame. Many of you have heard Dr. Webber and you will be anxious to see him. He will introduce Dr. Lockyer.



DR. E. F. WEBBER

SINCE THIS IS A COMMUNITY AFFAIR, AND NOT JUST ONE CHURCH, ALL ARE INVITED. WE ARE EXPECTING A FULL HOUSE.

**COME!**



## CHECKERBOARD CHUCKLES • From Your Purina Dealer



Regular Price \$2.60  
**Now only \$1.35**  
 with every 500 lbs. of Purina Laying Chows you purchase before October 31st. Ask us!  
**Wheeler County Produce Ass'n.**  
 YOUR LOCAL CO-OP  
 Ph. 142 — Wheeler

## Election Year 'Statesmanship'



**THE BRONCO**  
 The students of the High School.  
**STAFF**  
 Doris Brotherton  
 S. W. Dougherty  
 Lottie Murray  
 Lucy Barnett  
 Bobby Helton  
 Mr. Henson

**JUNIOR NEWS**  
 The juniors presented an assembly program for the student body. The title was "The Crooked Mouth Family". The characters were: Tolene Parker, Ma; S. W. Dougherty, Pa; Sue, Imogene Pan-

**WONDER WHY**  
 Everyone's arms are so sore? Mary and Patsy were so tickled Friday morning? Girls, take it easy on these Thursday night. Juaneil, Cleaveen, W. L., and Jayne Ann have all missed days of school this week. Onions to the flu. Lucy wanted to go to Wheeler's football game so badly? Mauretta thinks that basketball games are so rough? What about that Mr. Fowler? All the girls swoon when Buddy plays the piano? Pete always has that watergun?

**SOPHOMORE NEWS**  
 We met and elected our carnival Queen and King. They are Maurita Horn and W. L. Williams. We hope that they win and we appreciate every vote.

**FRESHMAN NEWS**  
 The freshman class elected Sylvia Sonntag and Eddie Walker for our carnival Queen and King. We have also decided upon our

assembly program for Friday, Oct. 20.

Eddie Walker, Jerry Hays, and Gene Haddox are now playing trombones in the school band.

**8TH GRADE NEWS**  
 The eighth graders are looking forward to basketball this year. We hope to have a game with the freshman girls pretty soon. Mr. Bumpas is our coach and we are very glad to have him. We are looking forward to playing most of the schools this year. Next week is six weeks test week and we hope the best for everyone.

**SPORTS NEWS**  
 Patsy Meek and Lottie Murray are our girls managers this year. We are all anxious for our first game here with Samnorwood, Tuesday night. We play them again Friday night there. Mary Jo McNeill is our captain and Doris Brotherton is our co-captain.

**BAND NEWS**  
 The Briscoe Band has been invited to participate in the Homecoming celebrations at the West Texas State College at Canyon, Saturday, October 21. There will be a parade at 10:30; a rehearsal for a big combined band show after the parade; a barbecue at noon; and a football game with the Sam Houston State at 2:30, with the band show between halves. The Band members and our Bandmaster, Mr. Barnett, will be guests of the college at all of these activities.

THE WHEELER TIMES classifieds offer more for less money, to both buyer and seller, than any other business device we know about.

## ROGUE THEATRE

FRIDAY AND SATURDAY—  
**"Storm Over Wyoming"**  
 —starring—  
 Tim Holt

PREVIEW SATURDAY NIGHT—  
 SUNDAY AND MONDAY  
**"SIERRA"**  
 —starring—  
 Audie Murphy & Wanda Hendrix

WEDNESDAY AND THURSDAY—  
**"RENEGADES"**  
 —starring—  
 Evelyn Keyes, Larry Parks and Willard Parker



## 1167 OFFICERS TO BE CALLED FROM TEXAS

With the Department of the Army more than doubling the number of Organized Reserve officers previously called for on August 10, the Fourth Army has increased its previous quotas to the five military districts. Previously the Fourth Army sent out a call for 182 captains and 612 lieutenants for the 16 arms and Services.

Texas, is called upon to furnish an additional 179 captains, 469 lieutenants and 14 chaplains for this increased quotas. Colonel Oscar B. Abbott, Chief of the Texas Military District stated.

The new recall to involuntary active duty of company grade officers for 21 months adds 309 captains, 834 lieutenants and 24 chaplains.

The first involuntary recall by the Department of Army embraced 7,862 company grade officers. The new call-up requires 9,565 additional captains and lieutenants to be furnished by the Zone of Interior Armies.

The latest quota assigned to the Fourth Army indicated that 257 captains and 693 lieutenants, total 950, would be required. To make allowances for failure to pass physical examinations and for officers whose orders to active duty are not authorized, the Fourth Army was instructed to call 120% of quotas. Therefore the Military Districts, in the Fourth Army area, are required to nominate 309 captains and 834 lieutenants, total

1,143 subject to subsequent orders to report for active duty.

The respective Military Districts are required to nominate officers to fill the quotas allotted, 1-3 by October 1, 2-3 by October 7 and the remainder by October 14. Insofar as practicable the nominations made will include a proportionate share of each branch quota allotted.

The processing of nominated officers, who are selected for active duty, such as final type physical examinations etc., will be expedited. As far as practicable orders to active duty will be so phased that the officers selected will report for active duty at their respective stations in increments, as follows: 1-3 by November 8, 2-3 by November 15, and all November 22, 1950.

Officers found physically qualified will be ordered to active duty at such a time that each officer has at least 21 days between the date he can be expected to receive orders and the date he departs from his home. The 21-day interval for settlement of private affairs is mandatory, unless the individual officer waives it and requests or agrees that he be ordered to report at an earlier date.

The week of October 8-14 is Fire Prevention Week and it is a good time to make the annual check of the farmstead for fire hazards. When hazards are found, either make necessary repairs or remove the hazards. Farm fires cost rural dwellers \$100,000,000 each year.

Steven Grafstrom, Swedish delegate to the United Nations should have military forces at its disposal."

Newspaper Advertising Pays!



# COTTON FARMERS

## We're Ready To Serve You

We have assembled an experienced crew that knows how to gin cotton in this section . . . . how to operate the machinery to give you a better sample and turn-out.

# Come To See Us

We will be glad to have any of you come by and inspect our gin, regardless of whether you are a customer, or even a cotton grower. We believe you will enjoy seeing how our "know how" crew operates our gin.

**Paymaster Gin**  
 BILLY J. DARNELL, Manager  
 Wheeler, Texas

# QUARTERLY REPORT

COUNTY TREASURER, WHEELER COUNTY, TEXAS  
 For Quarter Ending September 30, 1950

Balances June 30, 1950	Receipts for Quarter	Receipts plus Balances	Disbursements for Quarter	Balances September 30, 1950
\$ 9,356.59	\$ 39.61	\$9,396.20	\$ 5,362.00	\$ 4,034.20
5,743.05	236.84	5,979.89	2,199.96	3,779.93
20,708.43	6,810.13	27,518.56	18,150.20	9,368.36
10,360.26	86.00	10,446.26	741.95	9,704.31
3,745.66	536.21	4,281.87	7,763.71	3,481.84 O. D.
8,368.22	428.98	8,797.20	7,163.49	1,633.49
15,246.33	589.82	15,836.15	5,252.71	10,583.44
3,068.53	916.69	3,985.22	7,168.25	3,183.03 O. D.
<b>\$76,597.07</b>	<b>\$9,644.28</b>	<b>\$86,241.35</b>	<b>\$53,802.49</b>	<b>\$32,438.86</b>

G. W. HEFLEY, County Judge

## At Long Last A Policy Covering

- POLIO**
- 9 DREAD DISEASES**
- CANCER**
- DISABILITY**  
 (By Dismemberment)

We now have a policy in the LIFE INSURANCE COMPANY of AMERICA which covers medical and hospital expense and treatment in cases of polio, 9 other dread diseases, cancer and disability (by dismemberment).

This policy pays up to \$10,000.00 Polio, and "9" Other Dread Diseases plus \$500.00 Cancer plus \$3,000.00 Disability (by dismemberment). The above figures are aggregate for each person.

## DORIS FORRESTER AGENCY

INSURANCE & ABSTRACTS

Phone 15 Wheeler



**"YOUR CHEAPEST WAY TO BUY OR SELL"  
WANT ADS**

**RATES**—15c per line (counting 5 words to line) for first insertion. Minimum charge, 45c; 10c per line after first time. Minimum charge 30c. Reader ads scattered among local items 15c per line each insertion. Cards that run every week 30c per column inch per week.

**DISPLAY ADVERTISING**—National rate, 42c an inch; Local Advertising rate, 35c per column inch, 28c per inch when 30 inches or more used each week during calendar month

**FOR SALE**  
Used electric refrigerator with new unit for sale at Wheeler Radio and Refrigerator Service. 44-1tc.

**USED PIPE FOR SALE**  
We have some used pipe and fittings for sale. Wheeler Gas Company. 22-tfc.

**FOR SALE**—Re-cleaned White Biennial Sweet Clover seed at my place 3 1/2 mi. west of Samnorwood, Texas on Farm to Market road. The perfect crop for Johnson Grass farms with cattle. A. F. Wishkamper, Jr. 41-4tc.

**WANTED**—Cotton pullers. \$1.75 per 100-lbs. L. A. McWhorter. Wheeler. 44-1tp.

**FOR SALE**—1 GMC. 3/4 ton pickup. Will run. \$200. Dr. V. N. Hall. 43-1tp.

See the new Tappan Electric Range now on display at the Wheeler Radio and Refrigerator Service. 44-1tc.

1947 Dodge school bus for sale at Allison Consolidated School, Allison, Texas. Bid proposals may be obtained at the Allison school or the County Superintendent's office at Wheeler, Texas. All bids must be placed on or before October 28, 1950. 42-5tc.

**FOR SALE**—1950 model Massey Harris tractor, butane equipped. Also 1950 Handcock terracer. See E. L. Loyd, Sayre, Okla., phone 183 W. 44-1tp.

Extra good 2-wheel trailer for sale. Bogan Griffin at Gulf Service Station. 41-tfc.

Free Westinghouse Sewing Machines for sale at Wheeler Radio and Refrigerator Service. 44-1tc.

**FOR SALE**—1936 model Ford truck, Crane bed. Jack Sims. Wheeler. 43-2tp.

**FOR SALE**—Re-cleaned white clover seed. Plenty of them. Bus Walker. 44-1tp.

**FOR SALE**—Appliances, good butane heater, butane bottles and regulator. Frank Walker, 6 mi. north and east of Wheeler. 42-3tp.

Just received large shipment of heating stoves for natural gas and butane. Wheeler Radio and Ref-

rigerator Service. 44-1tc.

**MISCELLANEOUS**  
Apartment for rent. Wheeler Gas Company. 44-tfc.

Monuments, grave covering, curbing and all memorial work. Will Warren. 21-tfc.

Corner Building: 40 x 20 for rent. 1 block west of bank, 3 doors west of Post Office. Wiley's. 25-tfc.

**BRUCE & SONS TRANSFER**  
Local and long distance moving. Best equipment and vans. We have plenty storage space. Agent: North American Van Lines, serving the Nation. Phone 934, Pampa, Texas. 48-tfc.

**ALCOHOL**  
PUBLIC enemy No. 1—  
Alcoholics Anonymous offers help to men and women who have an honest desire to stop drinking. Write P. O. Box 589, Shamrock, Texas. 5-tfc.

Newspaper Advertising Pays!

**KEEP YOUR FOOD COSTS DOWN**

**WITH IGA'S LOW PRICES!**



**PET MILK** 2 Tall Cans **25c**

**LUX TOILET SOAP**  
2 Bars **17c**

**BAB-O**  
Cleans the easy way  
2 Cans **23c**

**IDEAL DOG FOOD**  
2 Cans **27c**

**IGA RED KIDNEY BEANS** No. 300 Can  
**CUT GREEN BEANS** Red Ace Std. No. 2 Can  
**FANCY SALAD CUT BEETS** No. 2 Can  
**WHOLE NEW POTATOES** Gooding's Irish No. 2 Can  
**WISCONSIN KRAUT** Mester's Fancy No. 300 Can

**YOUR CHOICE CAN 10c**

<b>IGA FANCY APPLE BUTTER</b> 28-ounce Jar <b>23c</b>	<b>LIBBY'S CRUSHED PINEAPPLE</b> No. 2 Can <b>32c</b>	<b>GERBER'S BABY FOOD</b> 6 Cans <b>49c</b>
--	--	--

**PURITY OATS** FREE RELISH DISH WITH EACH 3-POUND BOX **29c**

**CUBED POTATOES**  
No. 303 Can **5c** | 12 Cans **55c**

**COMBINATION DEAL**  
1 FANCY BROOM Valued at **\$1.49**  
1 HEAVY COTTON MOP Valued at **79c**  
**\$2.28** Value for **\$1.79**

**REAL GOLD ORANGE CONCENTRATE**  
Makes 1 Quart 2 Cans **25c**

Smart companion for fall...



the dressmaker pump by **LifeStride**

A STRIDE AHEAD IN FIT AND VALUE  
The simplicity and beautiful styling of your new fall suit is reflected in this shoe by LifeStride. You'll find it the complementary shoe for dressmaker suits and basic dresses.  
**\$6.95**

**RUSS DRY GOODS**  
Wheeler, Texas

*Quality Meats at Low Prices!*

**LEAN PORK CHOPS** Pound **53c**  
**LEAN PORK ROAST OR STEAK** Pound **43c**

**BONELESS CATFISH** Pound **49c**  
**BEEF CHUCK ROAST** Pound **55c**  
**WISCONSIN KREE-MEE CHEESE** 2-lb. Box **73c**



Really fine values in **FRESH** Fruits & Vegetables

**WASHINGTON DELICIOUS APPLES**

**NEW MEXICO FANCY CARROTS** 2 Bunches **17c** | **SWEET JUICY TEXAS GRAPEFRUIT** 1 Pound

**RUBY RED CRANBERRIES**

**CLAY FOOD STORE**

Phone 145 Free Delivery Wheeler, Texas

**FROZEN STRAWBERRIES** 1 Pound Box **49c**

EVERY WEDNESDAY IS DOUBLE STAMPA DAY



**LEGAL NOTICE**

the return day hereof, in some newspaper of general circulation published in said County, which has been continuously and regularly published in said County for a period of not less than one year, the following notice:  
 THE STATE OF TEXAS,  
 COUNTY OF WHEELER, To all persons interested in the estate of Ethel W. Burk, deceased:  
 Millard Donaldson has filed in the County Court of Wheeler Co-

nty, Texas, an APPLICATION for the probate of the last will and testament of said Ethel W. Burk, deceased, filed with said application, and for letters testamentary of the estate of Ethel W. Burk, deceased, which will be heard by said Court on Monday the 30th day of October 1950, at the Court House thereof, in Wheeler, Texas, at which time all persons interested in said estate may appear and contest said application, should they desire to do so.  
 Herein fail not, but have you before said Court on said date this writ, with your return thereon, showing how you have executed the same.  
 Given under my hand and seal of said Court at my office in Wheeler, Texas, this 9th day of October 1950.  
 (SEAL)  
 HARRY WOFFORD  
 Clerk, County Court

Wheeler County, Texas 44-1tc.

"Feed the Land and Fatten the Crops" should be the slogan of every Texas farmer. The practice of planting inoculated and fertilized legumes is the best method for doing the job. Now is the time to plant winter legumes.

A Child May Dare So Drive With Care!

**SOCIETY**

**Miss Genevieve Morton And Gwyn Crossland Are Married**

Miss Genevieve Morton, daughter of Mr. and Mrs. W. J. Morton of Palo Duro community became the bride of Gwyn E. Crossland of Amarillo, son of Mr. and Mrs. Thomas Crossland of Wheeler in a double-ring ceremony Saturday evening, September 30 at 6 p.m. in the home of the bride's aunt, Mrs. G. R. Castleman at Bivins.  
 The wedding vows were read by Charles E. Ritchie, Church of Christ pastor, as the couple stood before an improvised altar of smilax, tall floor baskets of white gladioli and white tapers burning in candelabrum.  
 William Castleman, cousin of the bride lighted the candles. Miss Ruth Merrill of Wheeler, roommate of the bride, played a program of pre-nuptial piano selections including "One Alone," "When I Grow Too Old To Dream," "In the Still of the Night," "Wanting You" and "Always." Two solos, "Thine Alone" and "Through the Years" were sung by Miss Billie V. Brown of Wheeler.

their home at 1212 W. 11th St. in Amarillo. The bride is the daughter of a pioneer Moore County family. She graduated from Dumas High and from T.S.C.W. at Denton in 1948. For the past two years she has been assistant Home Demonstration agent of Wheeler County.

The groom graduated from Wheeler High School and attended the University of Texas until he was called into service for World War II. He served 22 months in the U. S. Army. Following his discharge he attended Draughn's Business College in Amarillo. He is employed in the auditing department of the Santa Fe Railway offices in Amarillo.

Other out of town guests present for the wedding were Mr. and Mrs. J. M. Glass, J. M. Jr. and Bobbie of Fluvanna, Texas; Mr. and Mrs. L. G. Daugherty of Seminole; Mr. and Mrs. H. E. Morton and Charles of Amarillo; Miss Lulu Childress of Wheeler; Mrs. Ralph Jones of Stanton; Richard Gaines of Wheeler.

Modern "Betsy Roses" all over Texas and the nation are busy making United Nations flags. They are to be flown alongside the Stars and Stripes on United Nations Day, October 24.

**Fineline**

Made by Fineline Division, W. A. Sheaffer Pen Company. World's Largest Manufacturers of Quality Writing Instruments.

**OUTSTANDING PENCIL VALUE**

**\$1.50**

Patented Sleeve Tip reduces lead breakage to minimum. Spiral grip prevents finger fatigue. Adjustable eraser. Various color combinations. Propel, repel, expel mechanism. Precision built throughout.

**THE WHEELER TIMES**

**IT'S HERE!**

**The Amazing MIX-O-GAS SYSTEM**

**FUEL SAVINGS CERTIFIED**  
By Pittsburgh Testing Laboratory

**EVEN PRESSURE from FULL or ALMOST EMPTY TANKS**

**ECONOMICAL! AUTOMATIC! SAFE!**

**QUICK LIGHTING - EVEN FLAME FULLY BURNED. NO GAS WASTED**

**LP GAS**  
THE MODERN FUEL  
Beyond the gas mains

**MAIL THIS HANDY COUPON for Free Demonstration**

**MIX-O-GAS SYSTEM**

**GIVES YOU BALANCED FUEL AUTOMATICALLY!**  
The NEW, BETTER WAY to Burn BUTANE-PROPANE GAS!

Here is something REALLY NEW in a Butane-Propane System! It is a simple, new kind of tank that supplies automatically-mixed and balanced fuel. Tests show that this patented Mix-O-Gas System actually cooks for a few pennies a day, supplies constant gas pressure from a full or nearly empty tank, burns cleaner, assures quick lighting on cold mornings and prevents freezing.

These features can be obtained ONLY in the New Mix-O-Gas System, manufactured under U. S. Patent No. 2,211,005. You'll enjoy ALL the benefits of butane and propane for the first time with a

**SHAMROCK PRODUCTS CO.**

**WHEELER PAMPA CANADIAN**

**SEE HOW IT WORKS TODAY**

**SALES AND INSTALLATION**  
 In WHEELER By  
**NASH APPLIANCE & SUPPLY COMPANY**

**Inlaid Linoleum**

We now have in stock several new patterns in inlaid linoleum and we invite you to pick out the patterns you like right away. Inlaid which we have in stock is in 6-ft. widths.

**LINOLEUM RUGS--YARD GOODS**

We have a nice selection of high quality linoleum rugs in 9 x 12, 12 x 12 and 12 x 15 sizes. We have linoleum yard goods in 9 and 12-ft. widths.

**WOOL CARPETING**

We now have in stock two beautiful patterns in wool carpeting in 12-ft. width.

**ERNEST LEE HARDWARE**  
 Furniture - Rugs - Radios - Hardware



**WEIGHTY TOPICS UNDER DISCUSSION**



This pensive young gentleman is giving some after-school coaching to one of his classmates. Modern philosophy or some weightier topic might be the subject under discussion, judging from his solemn expression. The flirtatious little miss is taking it all with a grain of salt, however. She is more interested in his neat, man-about-town cotton suit. With it, he wears a polka dot cotton shirt that is the masculine equivalent of her own western style cotton blouse. Both of the cotton school ensembles were designed by Johnston of Dallas.

of the flag and will be displayed on U. N. Day.

The clubs of each community will not only make the flag but will present a program in the interest of U. N. Day in order to make the people more conscious of the meaning of the United Nations.

All clubs in the county were represented. One guest, Miss Doris Leggett, District Agent from Wellington, was also present for the called meeting.

Turkey producers should keep in mind the type of birds, as to finish, the consumers will be demanding when the marketing season gets underway.

**Ruby Simmons Enrolls At TSCW For Fall Term**

Ruby Simmons, daughter of Mrs. C. O. Killingsworth of Wheeler enrolled for the fall term at Texas State College for Women.

One hundred and eighty-four out of the 254 Texas counties are represented in the registration figure as well as 19 foreign students from 10 foreign countries and 284 registrants from 30 other states.

Housing facilities are the best in the college's history as all girls are housed in brick, fireproof, modern buildings. An upperclass-

men dormitory is under construction and is scheduled to be completed in time for the second semester.

Hall, seating 2400 accommodates the entire student body at one time.

THE WHEELER TIMES offers more for less both buyer and seller, other business device about.

**NOTICE**  
**EFFECTIVE SUNDAY, OCTOBER 15**  
**WE WILL BE CLOSED UNTIL 1:30 P.M.**

In order that we may attend church and have a half a days rest on Sunday we are staying closed until 1:30 p.m. each Sunday hereafter beginning Sunday, Oct. 15.

We humbly ask that our customers anticipate their needs in advance and purchase their gasoline, oil, tires, tubes, accessories or other items which we carry in advance of that time in order that our staying closed for at least a half day will in no way inconvenience them.

We would like to thank you in advance for your co-operation in this matter.

**Garrison Service**

Phone 38 Wheeler, Texas

**"PROMPT SERVICE PAYS"**

To our many friends in Wheeler County. We appreciate the business we have received through the years and the confidence and trust that you have placed in us.

Our records are complete in every way. We are familiar with the County Records, and we render prompt, efficient, dependable service.

We want to extend to you every courtesy. See us when we can serve you in any way.

**TITLE ABSTRACT COMPANY**

C. J. MEEK & SON

Abstracts Insurance

**Society**

**FHA Girls Hold '50 Initiation Party Tuesday**

The F.H.A. girls of the Wheeler Chapter entertained the new members with an initiation party Tuesday night, October 3.

A formal initiation was held first by the members and then the informal initiation followed with fun for all present.

A number of games were played after which refreshments of sandwiches, lettuce and tomatoes and punch were served to the following: Wanda Blevins, Billie Traylor, Patricia Hubbard, Margaret Moore, Dixie Sanders, Betty Kidwell, Bonita Reagan, Nadine Barton, Waunetta Burgess, Nona Ann Byers, Shirley Moore, Lois Barr, Georgia Herd, Wanda Topper, Claudine Johnson, Margie Barr, Martha Lou Goad, Billie Owens, La Veta Moore, Martha Ann Chapman, Vondell Hodges, Sue Cox, Pearl Johnson and the sponsor, Mrs. Blevins and Annetta.

**Mrs. Martin Hostess To Co. Line HD Club**

The County Line Home Demonstration Club met in the home of Mrs. P. A. Martin on October 5 at 2:00 p.m. for an achievement meeting, with the Pleasant Valley Club, Miss Sybil Gidden and Mrs. W. A. Goad, Jr. of Wheeler as

guests. Mrs. Jim Selby presided over the business meeting. Mrs. Earl Williams directed a get acquainted game.

Each demonstrator for the club gave her report for the club year. Articles displayed by the demonstrator included: western-styled shirts, a girl corduroy suit, overcoat for a boy, embroidery work, crocheted pieces, ear screws and canned goods.

Refreshments were served to the following guests: Mesdames Roy Meadows, Gaddy Vise, W. A. Powledge, John C. Vise, Leon Fillingim, Florence Dodd, Willis Fillingim, Claude Barker, I. G. Fullingim, W. A. Goad, Jr. of Wheeler and Miss Sybil Gidden.

Members present were: Mesdames C. N. Strawbridge, Ben Helton, John McCarroll, Doyle Standlee, Earl Williams, Clyde Meek, Jim Selby, Jack Meek, Tom Helton and the hostess, Mrs. P. A. Martin.

**H. Demo Council Meets At Agent's Office**

The Wheeler County Home Demonstration Council held a called meeting in the office of the County Home Demonstration Agent in Wheeler recently.

Mrs. Duard Price, president, presided over the meeting which was called for the purpose of planning for United Nations Day, October 24. All club women in America are to make a United Nations Flag for that day. These are to be made so that every community may learn to appreciate the meaning

**Who Runs America?**

the Congress? the President?

**OR YOU AND THE MAN NEXT DOOR?**

**RUNNING AMERICA is the joint job of 150,000,000 people. It's the biggest job in the world today—keeping it running for liberty and for freedom. And the whole world's watching to see whether Americans can do it!**

**IN MUCH OF THE WORLD today, the people have resigned from running their own countries. Others have been quick to step in—first with promises of "security"—and then with whips and guns—to run things their way. The evidence is on every front page in the world, every day.**

**FREEDOM COMES UNDER ATTACK.** The reality of war has made every American think hard about the things he's willing to work and fight for—and freedom leads the list.

**But that freedom has been attacked here recently—just as it has been attacked in other parts of the world. One of the most serious threats to individual freedom has been the threat of Government-dominated Compulsory Health Insurance, falsely presented as a new guarantee of health "security" for everybody.**

**THE PEOPLE WEIGH THE FACTS.** In the American manner, the people studied the case for Socialized Medicine—and the case against it.

They found that Government domination of the people's medical affairs under Compulsory Health Insurance means lower standards of medical care, higher payroll taxes, loss of incentive, damage to research, penalties for the provident, rewards for the improvident.

**They found that no country on earth can surpass America's leadership in medical care and progress. They found that able doctors, teachers, nurses and scientists—working in laboratories where Science, not Politics, is master—are blazing dramatic new trails to health for Americans—and for the world.**

**THE "GRASS ROOTS" SIGNALS CONGRESS.** In every community in the Nation, people stood up to be counted on this important issue. Thousands of local women's clubs, civic groups, farm, business, religious, taxpayer, medical, educational and patriotic organ-

izations spoke out—giving the great United States Congress its unmistakable Grass Roots signal from home!

**And ever watchful, ever sensitive to an alert people, The Congress saw that signal, and heard the people speak out, loud and plain. That's democracy in action. That's the American way!**

**Today among the 10,000 great organizations on militant public record against "Compulsory Health Insurance" are:**

- |   |  |
|---|--|
| General Federation of Women's Clubs       | American Legion                            |
| American Farm Bureau Federation           | National Association of Small Business Men |
| National Grange                           | United States Chamber of Commerce          |
| Veterans of Foreign Wars                  | National Association of Retail Grocers     |
| National Conference of Catholic Charities | National Retail Dry Goods Association      |
| American Protestant Hospital Association  | American Bar Association                   |

• Doctors of this Nation are grateful that the people refused to be wooed by the fantastic promises of this un-American excursion into State Socialism. • Doctors of America are dedicated to serve their fellow citizens at home and their comrades in uniform, wherever service to this Nation may take them. • And the thing they stand ready to fight for—to sacrifice for—to die for—is not the alien way of life of Socialism, but the prideful security of a free and self-reliant people!

**THE VOLUNTARY WAY IS THE AMERICAN WAY!**

• Throughout the Nation, free men and women, working and planning together, are finding the American answer to every question of medical service, care and cost. Hundreds of Voluntary Health Insurance Plans are in healthy competition—sponsored by doctors, insurance companies, hospitals, fraternal organizations—by industry, agriculture and labor. • Today

in America—70 million people are protected by Voluntary Health Insurance! • Throughout the Nation, families are insuring themselves against the major costs of illness—at reasonable, budget-basis prices. Voluntary Health Insurance takes the economic shock out of illness. Protect your family now. • For information, ask your doctor—or your insurance man.

*An American's greatest heritage is the right to learn the facts—and to speak his mind. Maintained with honor and used with sincerity—that right will guarantee forever that*

**You and Your Neighbor Run America!**

PHYSICIANS OF THIS COMMUNITY PARTICIPATED IN PAYING FOR THIS SPACE  
**AMERICAN MEDICAL ASSOCIATION • NATIONAL EDUCATION CAMPAIGN**  
ONE NORTH LA SALLE STREET, CHICAGO, ILLINOIS

**Just Received:--**

**New Shipment**

**HIGH QUALITY COSTUME JEWELRY**

**CHINESE DESIGN PLASTIC PLANTERS**

**39c TO 98c**

ALSO IVY AND SMALL POT PLANTS

**NEW STOCK TEN DESIGNS OF OIL CLOTH**

Don't forget our LAY-A-WAY PLAN on your Christmas needs.

Watch for the date of our FORMAL OPENING which will be in the near future.

**DAUGHTRY'S 5c & 10c STORE**

Wheeler, Texas



**WHEELER NEWS**

**LESTER LEVITT**  
Mrs. Lester Levitt returned to her home Wednesday from the hospital where she spent most of the week. She is now home with her daughter, Mrs. Lee and family there. She drove her mother's car to her and returned to her home in Austin Thursday via plane.

Mrs. O. C. Evans from Amarillo spent Tuesday night at the home of her daughter, Mrs. Doc Kiker and family. She returned from Oklahoma the weekend here with her family.

Tuesday night at the home of Mrs. M. Donnell, president in charge. A program was given by Mrs. Ernest Wallace and Mrs. Lester Levitt attended the Workers Conference at the Baptist Church in Wheeler Thursday.

Mrs. Porter Rogers, Mrs. Billy Peterman and Mrs. Lee Kiker attended W.F.C.F. at Briscoe Methodist Church Tuesday.

Rev. and Mrs. F. B. Dake, Mrs. Ernest Wallace and Mrs. Lester Levitt attended the Workers Conference at the Baptist Church in Wheeler Thursday.

Mrs. Mesdames Pat Huff, Lee Kiker, Doc Wilhelm, Porter Rogers, and Leo Peterman were present for the Achievement Day Club meeting at the home of Mrs. Leo Fillingim one day last week.

Those attending the Texas-Oklahoma singing convention at Shamrock Sunday were: Lee and Kiker and families; E. P. Kiker, Mrs. Ray Brown and daughter, Katie; Mr. and Mrs. Lester Levitt, Mrs. Roy Langford, Mrs. Jess Bessire and the Kiker's guests, Mr. and Mrs. Ausbury Kiker from California.

Mrs. Rex Miller and children moved to Pampa Monday to join Mr. Miller who is employed there. Rev. F. B. Dake returned home Saturday from a Shamrock hospital where he spent a week suffering from an infection on his neck.

Lois Curlee and family spent Sunday at Canadian in the Lew Ramsey home helping to celebrate his birthday.

Mr. and Mrs. Loyd Jones and Mr. and Mrs. Walter Holbrook motored to Amarillo Tuesday for medical purposes.

Mr. and Mrs. Lester Levitt and Mrs. Roy Langford accompanied by Mr. and Mrs. Leslie Waters from Mobeetie spent Monday of last week in Pampa visiting a niece, Mrs. Neal Herd, who was in the hospital with diabetes. She is now much improved and able to go home.

Francis Huff who is teaching at Pampa spent the weekend with her parents, Mr. and Mrs. Pat Huff.

Earl Waldrip and family were dinner guests Sunday in the James Hall home.

A new modern house from Amarillo has been moved here on the Joe Reid farm to be occupied by Nick Weibe and family. The Weibes lost their home by fire a few weeks ago.

**WALKER NOW IN PACIFIC AREA**  
Norris Walker, son of Mrs. S. E. Walker, who was called back into active service with the U. S. Navy in August, is now aboard a ship patrolling the waters near Korea, according to word received Tuesday by friends and relatives here. Norris was sent to California soon after reporting for active duty at Dallas and sailed from California September 16.

Mrs. Grace Mize, nurse at the Wheeler Hospital, is a medical patient there this week.

Mr. and Mrs. W. L. Williams returned home last week after attending the fair in Amarillo and a visit with their son, Glenn, and family at Mountaineer, N. M.

Miss Evelyn Mason and Mr. and Mrs. Carl Mason of Pampa spent the weekend with Mr. and Mrs. C. A. Mason and daughters.

Mrs. J. I. Maloy spent the weekend in Clinton, Okla. with her daughter, Mrs. Tony Puckett, and family.

Co. Supt. Jesse J. Dyer, Harold Barnett and Lee Barry of Briscoe returned home Monday night from a business trip to Austin.

Miss Evonne Ruth Hubbard spent last weekend in Borger visiting the W. L. Price family. While there she attended the revival at the North Borger Methodist Church and heard Rev. Frank Beauchamp, who conducted the revival services.

Mrs. J. P. Newton and Mrs. T. H. Lippoldt, sisters of Mrs. V. N. Hall, and Mr. Lippoldt, all of Amarillo, Okla. were visitors of Dr. and Mrs. V. N. Hall Sunday.

Mr. and Mrs. Jack Krout, John Carter, Robert Ledbetter, Robert Leonard and Ralph Wheat were among those from Wheeler who attended the football game between Texas A and M and Oklahoma University at Norman, Okla. Saturday afternoon.

**LOCAL NEWS ITEMS**

**INJURED IN FALL**  
Mrs. Mary Reid, or Grandmother Reid as so many call her, fell at her home Tuesday morning and broke her shoulder. She was taken to the Wheeler Hospital for treatment where she is still a patient.

Mr. and Mrs. R. H. Dyson are both medical patients at the Wheeler Hospital this week.

James Leaster of Mobeetie is receiving treatment at the Wheeler Hospital this week.

Merrieta Burris of Mobeetie entered the Wheeler Hospital Sunday for treatment when she had the misfortune to break her collarbone.

**A Child May Dare So Drive With Care**

Mr. and Mrs. Bob Ramey, Patsy and Doyle had as Sunday visitors, Mr. and Mrs. Glenn Hibbits, Mr. and Mrs. C. A. Mason, Dot and Wilma Lou, Mr. and Mrs. Homer Ballard and daughter of Pampa, Calif., Mr. and Mrs. Carl Mason and Miss Evelyn Mason of Pampa.

**HEAP BIG VALUES!**  
Indian Summer  
**SPECIALS!**

**PUCKETT'S**  
RECIPE OF THE WEEK  
By Mary Lee Taylor  
American Cream Soup

1/2 cup butter  
2 beef or chicken bouillon cubes  
1 cup diced carrots  
1 cup diced celery  
2 cups cream  
1/2 cup flour  
1/2 cup grated American cheese  
1/2 cup Fat Milk  
1/2 cup Parsley  
4 teaspoons chopped parsley (can omit)

Melt butter until yellow in frying pan. Blend in flour, salt and pepper. Stir in water, heat to boil. Add bouillon cubes, carrots and celery. Cover and boil 20 min. or until vegetables are tender. Then add cream and milk. Stir over low heat until these melt and mixture is very hot, but do not boil. Add parsley and serve. Makes 4 servings.

You Will Need:  
Butter, Milk, American Cheese, Onions, Beef Bouillon Cubes, Carrots and Celery.

HOLLYWOOD 2-lb. Box  
**MACARONI 25c**

WITH PREMIUM 3-lb. Box  
**MOTHER'S OATS 42c**

GERBER'S 3 Cans  
**BABY FOOD 25c**

BRIGHT & EARLY OR with glass 1/2-lb.  
**ADMIRATION TEA 29c**

PINTO Pound  
**BEANS 10c**

Miracle Whip Salad  
**DRESSING**  
Pint 37c

**MACKEREL**  
Tall Can. Each 19c

GREENE—Guaranteed 50-lb. Towel Bag  
**FLOUR \$3.10**

PET 2 Tall Cans  
**MILK 25c**

10 Lbs.  
**SUGAR 93c**

ALL SOAP Each  
**POWDER 28c**

PURE 1/2-Gallon  
**SORGHUM 69c**

**HANDY HINTS**  
By Mary Lee Taylor

Add a few tablespoons of raw grated pineapple to fruit salads. Prevents apples and bananas from darkening, adds flavor.

SUNSHINE HI-HO 1-lb.  
**CRACKERS 29c**

BIG TOP 12-oz. Jar  
**P'NT BUTTER 35c**

DILL OR SOUR Qt. Jar  
**PICKLES 25c**

OLD BILL VIENNA Each  
**SAUSAGE 10c**

**PUCKETT'S FOOD MARKET**  
SPECIALS FOR FRIDAY AND SATURDAY, OCTOBER 13 AND 14

**Will Have Plenty Of Storage**

We will have plenty of storage space for milo which is to go into government loan. Milo which goes into the loan must have a moisture content of 13% or less.

We will buy Milo which has a moisture content of up to 15% without dock.

**KIMBELL ELEVATOR**  
WILLARD GODWIN, Mgr.  
Mobeetie, Texas

**Announcing**  
**SUN**  
SCIENTIFIC DIAGNOSIS EQUIPMENT  
**The Electric Brain**  
● NEVER MISSES  
● NEVER GUESSES

**Are You Satisfied**

WITH THE WAY YOUR CAR  
— STARTS?  
— USES OIL?  
— ACCELERATES?  
— IDLES?  
— USES GAS?

**N-O-W**  
Wise car owners get the revealing tests before spending a cent for repairs.

**Here's Where To Go**  
**NASH**  
APPLIANCE & SUPPLY CO.  
'Better Things For Better Living'  
Wheeler, Texas

**EXPERT CUTTING**  
**EXPERT PACKAGING**

**YOU CAN TRUST** your locker plant to do an expert job of processing and cutting your meat. Cutting meat is no job for an amateur and we take pride in the professional work we do... preparing the meat according to your instructions. We have the equipment to do the job correctly and economically... at the cost of only a few pennies a pound. Your foods are properly wrapped, quick-frozen, and placed in your own locker where they're kept in perfect condition, ready for easy selection, whenever you want them.

**DEER HUNTERS!**  
Let us cure your venison this year—is it delicious!

**Wheeler Locker**  
PHONE 164 — — — WHEELER

**This is the Place to Get Your IH SERVICE PARTS**

**WE CAN FIX YOU UP IN A HURRY NOW!**

They Make Your Farm Machinery Wear Better... Last Longer

Your International Harvester Farm Equipment has probably plenty of hard work these past few seasons, if it's like most of the tractors and machines around the country. To put it back in A-1 working order, IH Service Parts are just what you need. And we're ready to help you get that job done now. Our parts stock is filled up once more since this production is receiving special attention at the factories. So stop in with your list of needed parts and we'll get to work on it.

The precision-made IH Service Parts we carry are your guarantee of satisfactory performance and longer equipment life.

**HIBLER IMPLEMENT CO.**  
PHONE 151  
WHEELER TEX.

**INTERNATIONAL HARVESTER FARM EQUIPMENT HEADQUARTERS**



O. V. Wells, chief, Bureau of Agricultural Economists: "The need will be for a twenty-to-twenty-five percent increase in our total agricultural production in the next quarter of a century." Times Classifieds Get Results!

## Prepare for Winter with "Lubri-tection"!

### LUBRICATION PLUS ENGINE PROTECTION

That's what your car needs for the cold weather ahead. And that's what it gets when you choose new Phillips 66 Premium Motor Oil. It's improved four ways to help your car stand up better under severe driving conditions.



Get Double-Check Service now at your Phillips 66 Dealer's!

FOR SAFETY	FOR MAINTENANCE
Wheel Packing	Radiator and Antifreeze
Brake Fluid	Battery and Cables
Lights	Motor Oil
Tires and Tubes	Spark Plugs
Windshield Wipers	Maze and Fan Belt



Hear Rex Allen and the Sons of the Pioneers Every Friday Night over C. B. S.



From where I sit... by Joe Marsh

### Ought To "Polish Up" Her Traffic Manners!

Spent most of yesterday over at the Court House. "Tiny" Fields, the biggest and fastest-talking of our three policemen, was holding forth about his traffic troubles.

"Women drive just as good as men do," Tiny said, "and just as bad. For instance—a girl in a convertible today. She started a three-block tie-up all by herself.

"She's creeping down Main Street—left hand stuck out and sort of waving around. Never turns right or left, never stops. But, of course, everyone behind her thinks she's signaling about something. Nobody dares to pass. When I stop her and ask what's up, she smiles sweetly and explains that she's drying her nail polish!"

From where I sit, that girl's typical of certain folks who are so wrapped up in themselves, they never notice they're not being fair to others. Our neighbor has a right to drive in safety—just as he has a right to enjoy a glass of beer. Let's all respect the other fellow's rights.

Joe Marsh

Copyright, 1950, United States Brewers Foundation

## THE CORRAL

By the students of Wheeler High School

**STAFF**  
 Editor ----- Glenda Laycock  
 Ass't. Editor ----- Bill Hooker  
 Junior Reporters ----- Carmoleta Brown and Bob Weatherly  
 Sophomore Reporter ----- Loretta Crowder  
 Freshman Reporter ----- Glenda Porter  
 Eighth Grade Reporters ----- Ada Pierce and Burley Owens

### SENIOR NEWS

The Wheeler Mustangs won their football game Friday night, by defeating the Pampa Gorillas, with a score of 13 to 19. We are all very proud of our boys.

If they continue to hustle as hard as they have in the past games, we are sure they will take District. At least we are looking forward to them doing so.

### CHIT-CHAT

We have found that some of the senior students have been reading such books as these:

Smiley—"Ten Hints on Dating"  
 Dick—"How I Lead a Dog's Life"

Bonnie—"How to Handle a Horse"

Leola—"How to Overcome Bashfulness"

Bill—"Popularity Overnight"

Dossie—"Tips for School Parties"

Betty—"Good Housekeeping"

Edwina—"How to Become a Ranch Hand"

Maurine—"Sales Man-Ship"

Glenda—"Planning for the Future"

### JUNIOR NEWS

The Juniors had the assembly program Monday. Despite an uncooperative cast, we struggled thru it. Our playbooks will be here this week and we shall start our work on it.

### SHOW NEWS

James, next time you're on a program, don't be so haughty.

We're sorry our sextet got their feelings hurt. We won't call them Beavers anymore, poor things.

We were proud of Margaret and Dixie. They have talent when it comes to throwing fits.

Mary Bob, you made an adorable witch. You sure gave the small children a thrill.

This is six weeks tests week. If everyone would study, the juniors could do good on their tests. But since we won't study, we'll sure have to be sweet to our teachers for a week.

### SOPHOMORE NEWS

Sophomore Personality

Name ----- Nadine Barton  
 Age ----- 16 years  
 Height ----- 5-ft. 4 1/2-in.  
 Weight ----- 125-lbs.  
 Favorite subject ----- History  
 Favorite teacher ----- Miss Mobley  
 Favorite food ----- Fried chicken  
 Favorite actor ----- John Derek  
 Favorite actress ----- Jane Wyman  
 Likes ----- Baseball and friendly people  
 Ambition ----- To get out of school

Honest ----- Lois  
 Ambitious ----- Wauwetta  
 Lovable ----- Louise  
 Lucky ----- Helen  
 Odd ----- John Dan  
 Weary ----- Molly  
 Energetic ----- Nadine  
 Eager ----- Pat  
 N-Shirley

### 8TH GRADE NEWS

WONDER WHY

Bonnie has been throwing candy kisses at Tony?

Patricia was so happy Monday at activity?

Erma Dean is always looking at the back of the room?

Janice was so mad Wednesday?

The 8th grade class is progressing very nicely in their studies. We hope that they will continue to do so in the future days to come.

I am sure that everyone is dreading the six weeks tests which we are to take this week. But I don't think that anyone can blame us for feeling that way.

### PEP SQUAD

The Pep members attended the game Friday night to see the Mustangs defeat the Gorillas. Every one was sure bragging on the way the boys played.

We had a substitute for one of the leaders, Annie Collins, who was unable to attend, because of illness. We don't know when she will get to continue with us but we hope that it will be soon. Until she is able we will let Betty Laycock lead in her place.

We are all beginning to show more sportsmanship in our club and we hope to continue to do well.

Cotton farmers should plan now for the 1951 crop. Acreages will be up, good planting seed are likely to be scarce, early stalk destruction and the planting of winter legumes should be practiced and fertilizers needed for the 1951 crop should be bought now and stored on the farm.

Alfred C. Meeks, soldier fighting in Korea:

"I had got tired of riding a tractor and I wasn't very good in school, so I enlisted."

### NEWS FROM--

## County Agent's Office

By Ralph Wheat and Robert Ledbetter

### RAT AND MOUSE KILLER

Warfarin, a new crystalline chemical that has been developed by the Wisconsin Alumni Research Foundation, is proving its worth as a very effective rat and mouse killer.

Warfarin is a tasteless and odorless compound that is made up into baits. It is a cumulative poison and acts slowly. It prevents blood clotting and causes internal hemorrhage resulting in death to rodents.

Warfarin has been misquoted as being safe for humans and other domestic animals, but is quite the contrary if taken in large doses. However, the quantities taken to kill larger animals makes it much safer to use than heretofore poisons. In Government tests it has proved 85-90% effective.

### COTTON SEED SITUATION BAD

The present world situation and weather conditions over much of the cotton producing areas of the state has had a material bearing on the cotton seed situation. The demand for cotton seed is going to be much higher next year, but weather conditions has been unfavorable for a good supply this year.

Cotton seed that are high in moisture content is also high in free fatty acid; therefore it will heat and cause poor germination.

Everyone that has a good seed crop of better varieties of cotton will do well if they save them to be planted in 1951. Plans should be made for such as may be needed.

ed since much of the cotton is getting ready to start to the gins. reV ed

### FEEDER CALF SALE

We would like to call to the attention of 4-H Club and interested FFA boys over the county to the commercial steer sale to be held in Amarillo the 26th of October. This sale is exclusive for 4-H and FFA boys that want to get in the drylot feeding business. It is sponsored by the Panhandle Livestock Association in co-operation with the Extension Service.

This promises to be a very good sale with plenty of steers that will go into grade that is desired. The cattle will sell high but not out of line with current market prices.

Come by and see us if you have any questions about this. We think it's a good thing to be one of the better marketing some of the grain sorghum, that leaves Wheeler County.

Unidentified General, commanding U. S. troops in China:

"We had hell kicked out of this morning."

Officer, MacArthur's headquarters, at Tokyo:

"The theory of 'tank' is a snare and a delusion. The only tank country."

Newspaper Advertising

# STOVES

Do you need a stove for this cold winter that is coming. You had better get it now, while you can. There may not be enough to go around. We have them.

**J. P. GREEN & SON**  
**HARDWARE**  
 Wheeler, Texas

## BUSINESS AND PROFESSIONAL DIRECTORY

**AUCTIONEER**  
**SHELBY PETTIT**  
 Will cry your sale any time or place  
 Phone 158—Wheeler, Texas

**DR. JOEL M. GOOCH**  
**OPTOMETRIST**

200 S. Wall Street  
 Phone 123  
**SHAMROCK, TEXAS**

**C. J. MEEK**  
 AGENT  
**INSURANCE**  
 Night Phone 124, Day Phone 124

**Dr. C. C. Merritt**  
**CHIROPRACTOR**  
 WHEELER, TEXAS  
 Equipped to give complete chiropractic service

**THIS SPACE FOR SALE**

Protect Children's Health  
**GIVE THEM BORDEN'S**  
 Fine Dairy Products  
**CHAPMAN DAIRY**  
 Phone 70-J Wheeler

**Canadian Valley Production Credit Association's Representative**  
 IS IN THEIR  
**Wheeler Office**  
 EACH Thursday  
 208 Combs-Worley Bldg.  
 Pampa, Texas

**THIS SPACE FOR SALE**

**WATCH & JEWELRY REPAIRING**  
 All work guaranteed  
 Shop located in building South Citizens State Bank  
**H. B. Grider, Jr.**

Now Open For Business  
**OTIS REID GARAGE**  
 Located on Highway 183  
 Wheeler, Texas

**NOTICE!**  
**WE SCALD HOGS ON MONDAY AND TUESDAY OF EACH WEEK.**  
**Wheeler Lockers**

Law Offices of  
**Clifford Braly**  
**Thomas C. Braly**  
 208 Combs-Worley Bldg.  
 Pampa, Texas

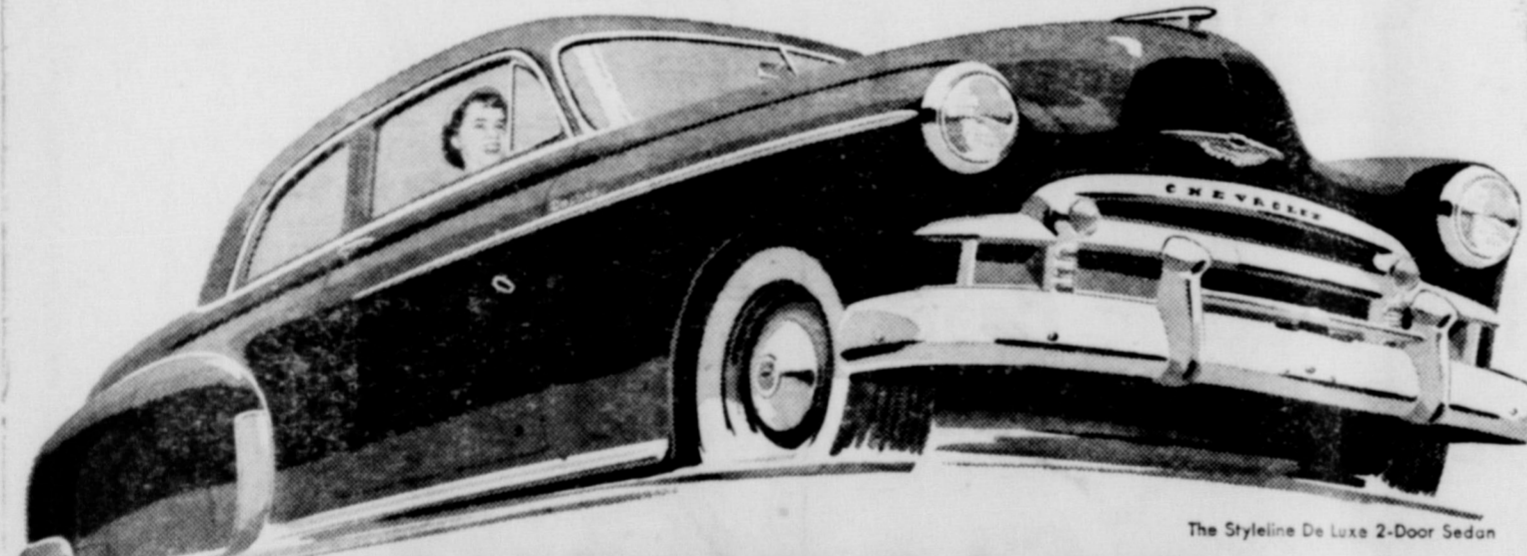
**DAUGHTRY'S 5 & 10**  
 Complete line of School Supplies  
 Baby Needs Sewing Machine  
 Notions and Toys  
 Pyrex, Clorox Plastic Dishes  
 Use Our LAY-A-WAY Christmas Merchandise

**Notary Seals**  
**Salesbooks of all kinds . . .**  
**Rubber Stamps**

**QUALITY PRINTING**  
 of all kinds . . .  
**THE WHEELER TIMES**  
 "The Voice of North Wheeler County"

**Refresh... Add Zest To The Home**  
  
**Coca-Cola**

## Judge it on POWER and PERFORMANCE



The Styleline De Luxe 2-Door Sedan

# CHEVROLET

## Your Best Buy—by All Odds

**It offers more for less—throughout**  
 All these features at lowest cost: Center-Point Steering; Curved Windshield with Panoramic Visibility; Fisher Unisteel Body-Construction.

**It operates more economically**  
 Owners know that Chevrolet brings them an unequalled combination of thrills and thrift, because it's powered by a Valve-in-Head Engine . . . exclusive to Chevrolet in its field. Come in and see it!

**It's better looking—all around**  
 Yes, it's the best looking of all low-priced cars, as a recent independent nationwide survey shows—and, in addition, it's the longest, widest, heaviest car in its field.

**It drives more easily**  
 Finest no-shift driving at lowest cost with Chevrolet's Powerglide Automatic Transmission\* . . . or finest standard driving at lowest cost with Chevrolet's Silent Synchro-Mesh Transmission.

**It lasts longer, too**  
 Chevrolet cars are extra-sturdy, extra-rugged, extra-durable. That's one reason why there are over a million more Chevrolets on the road than any other make.

**It rides more smoothly**  
 So smooth—so steady—so safe . . . the easiest riding car in its field . . . thanks to the famous Unitized Knee-Action Ride combined with airplane-type shock absorbers all around!

\*Combination of Powerglide Automatic Transmission and 105-h.p. Engine optional on De Luxe models at extra cost.

**AMERICA'S BEST SELLER!** **AMERICA'S BEST BUY!**  
**WARE CHEVROLET COMPANY**  
 Wheeler, Texas

Dewey, Governor of  
 Jar  
 eral, "G  
 Gree  
 nerv  
 Fu  
 of T  
 ends  
 imp  
 ture.  
 Re  
 ister  
 "I  
 the  
 tecti  
 CHURCH  
 Sunday  
 CHARTER N  
**BANK**  
 STATEMENT OF F  
 OF THE  
**STATE BANK**  
 of business on the 4th day  
 the Banking Commission  
 Laws of this State.  
 RESOURC  
 discounts, including overdra  
 Government Obligations,  
 guaranteed  
 stocks  
 dues due from other banks,  
 and cash items in proces  
 ing exchanges for clearing  
 house, or leasehold improve  
 ments, and equipment  
 estate owned  
 RESOURCES  
 LIABILITIES AND CA  
 Capital Stock  
 Certified  
 profits  
 deposits of individuals, part  
 operations  
 (Incl. U. S. Govt., states  
 and subdivisions)  
 all deposits \$538,608.71  
 LIABILITIES AND CAP  
 TEXAS, COUNTY OF W  
 JOHNSTON, being cashi  
 over that the foregoing s  
 my knowledge and belief.  
 J.  
 ATTEST  
 MILLER, H. L. FLANAG  
 and sworn to before  
 GOWIN, Notary Public.  
 ou A  
 Presenting  
 Oct  
 ch Mornin  
 CH  
 Congregation  
 Special Sir  
 an Nov



James A. Van Fleet, Lieut.-General, former Director in Greece: "Gestures toward Yugoslavia and Greece is just part of a war of nerves and I discount them."

Fuad Koprulu, foreign Minister of Turkey: "The way the Korean tragedy ends will certainly provide a very important indication for the future."

Robert G. Menzies, Prime Minister of Australia: "If we are unwilling to accept the sacrifices needed for our protection, then was it inevitable."

**MOBEETIE HI-LIFE**

**STAFF**  
 Editor - Madge Patterson  
 Ass't. Editor - Ann Nell Alexander  
 Sports Reporters - Edwin Sims, Ouida Burke  
 Senior Reporter - Patsy Johnston  
 Junior Reporter - Patricia Trimble, Vernon Willard  
 Sophomore Reporter - Aline Walker, Bill Thomas  
 Freshman Reporter - Belle Willard  
 Eighth Grade Reporter - Nelda Baird

**SPORTS NEWS**

The Mobeetie Hornets won their game Thursday with a smashing victory of 38 to 0 over the Shamrock Irish. Three touchdowns were made by Vernon Willard, one by Bobby Corcoran, one by Bill Leonard, and one by Waylon Newman. Waylon kicked two extra points.

**SENIOR NEWS**

We did very good on selling ads for our annuals in Canadian, Wheeler, Shamrock, and Mobeetie. We are very glad that the towns were co-operative and helped us out on our annuals.

**PERSONALITY**

On December 26, 1933, Mr. and Mrs. Roy Johnston were presented with a little white haired baby girl. They gave her the name of Patsy Ruth.

**NEWSY NEWS**

Mearlene, where did you go Wednesday afternoon?

**FRESHMAN NEWS**

Name - Virginia Greenhouse  
 Age - 14 years  
 Height - 5-ft., 5-in.  
 Weight - 108-lbs.  
 Color of eyes - Blue  
 Color of hair - Dark Brown  
 Favorite teacher - Aunt Elsie  
 Favorite actress - June Allyson  
 Favorite actor - Robert Taylor  
 Favorite subject - Study Hall  
 Likes - To skate  
 Dislikes - People who can't take a hint  
 Ambition - To go to Dumas  
 The freshman class went to Wheeler last Thursday night for a skating party. Everyone skated and had a good time, even Marie who learned to skate. We're getting to be old hands at this skating business, so there were few sore muscles. We did manage to collect a few blisters. We were sorry that Reba, LaNell, Ruth and Juanice couldn't go.

**5TH GRADE NEWS**

Name - Tommye White  
 Age - 13 years  
 Color of eyes - Blue  
 Color of hair - Blonde

Ann Nell, why are you so happy now? It couldn't be that Harold is coming home could it?

Ouida, how does this red pickup ride?

Evelyn, please don't be making Jim Bob mad at you.

Madge, why do you want to go to Canadian to the ball games? It couldn't be that Jimmy will be there?

Edwin, please shave, or else! Joe, did you get rich in Kansas? Bobby, we are sorry they don't make purple footballs.

Patsy, why are you so sad this week? It couldn't be that J. B. is leaving?

She started her first year in school in Chillicothe. The other schools she attended were Killeen, Borger, and Phillips before coming to Mobeetie her 7th year. She graduated from grade school in 1947 and came into high school a green freshman but eager to learn. There weren't many activities up until last year when things started really popping for Patsy. During her junior year, she was candidate for Lion's Club Queen, class favorite and class secretary. This

Weight - 111-lbs.  
 Favorite food - Popcorn  
 Favorite subject - Spelling  
 Favorite teacher - Mrs. Bud Scribner  
 Favorite actress - June Allyson  
 Favorite actor - John Wayne  
 Hobby - Teasing people  
 Ambition - To be a teacher  
 Likes - Handsome men  
 Dislikes - Hatful people

**JUNIOR NEWS**

Name - John Deere Seitz  
 Age - Old enough  
 Color of hair - Blue  
 Color of eyes - Blonde  
 Favorite food - Sardines and onions  
 Ambition - To drive a tilt-a-whirl around the block

Evelyn Hiles doesn't sit by the girls in the study hall?  
 Sally would like to be in the seventh grade?  
 Tommye likes the freshman class?  
 Aunt Elsie likes Hubert so well?  
 People call Carl Miller "Smokey".  
 Carl Willyard makes good grades in math and English.  
 Bobby talks so much during class?  
 The girls call Jerry "Toni"?  
 Jimmy Olsen is so bashful?  
 James traded seats in English class?  
 Nelda Glyn likes to scare people?  
 Peggy likes to chew gum in the study hall?  
 Nelda Barton is called "Tom" or "Toni"?  
 Herbert wears his coat all the time?  
 We'd rather have a wart on our nose than a debt on our bank.

**WONDER WHY?**

Evelyn Hiles doesn't sit by the girls in the study hall?  
 Sally would like to be in the seventh grade?  
 Tommye likes the freshman class?  
 Aunt Elsie likes Hubert so well?  
 People call Carl Miller "Smokey".  
 Carl Willyard makes good grades in math and English.  
 Bobby talks so much during class?  
 The girls call Jerry "Toni"?  
 Jimmy Olsen is so bashful?  
 James traded seats in English class?  
 Nelda Glyn likes to scare people?  
 Peggy likes to chew gum in the study hall?  
 Nelda Barton is called "Tom" or "Toni"?  
 Herbert wears his coat all the time?  
 We'd rather have a wart on our nose than a debt on our bank.



**CHARTER NO. 121**

**BANKS**

**STATE BANK OF MOBEETIE**

of business on the 4th day of October, 1950, pursuant to the Banking Commissioner of Texas in accordance with the Laws of this State.

**RESOURCES**

Discounts, including overdrafts	\$187,369.71
U. S. Government Obligations, direct	211,500.00
Stocks	10,000.00
Due from other banks, including reserve	178,065.95
and cash items in process of collection	5,298.80
(including exchanges for clearing house)	1.00
Real estate owned	3.00
<b>RESOURCES</b>	<b>\$392,238.46</b>

**LIABILITIES AND CAPITAL ACCOUNTS**

Capital Stock	20,000.00
Surplus	20,000.00
Profits	13,629.75
Deposits of individuals, partnerships,	525,552.13
corporations	
(Incl. U. S. Govt., states and	
territorial subdivisions)	13,056.58
and all deposits	\$538,608.71
<b>LIABILITIES AND CAPITAL ACCOUNTS</b>	<b>\$592,238.46</b>

**TEXAS COUNTY OF WHEELER:**

J. T. JOHNSTON, being cashier of the above named bank, do swear that the foregoing statement of condition is true to my knowledge and belief.

J. T. JOHNSTON, Cashier

**ATTEST**

H. L. FLANAGAN, J. H. SCRIBNER, Directors,  
 subscribed and sworn to before me this 9th day of October, 1950.  
 EDWIN, Notary Public, Wheeler County, Texas.

**Binder Bargains**

One used two row INTERNATIONAL binder ready to cut feed

One Brand New 4 E Broadcast Binder on Transports

One Used 4 E Broadcast Binder ready to cut feed

**HOGUE-MILLS EQUIPMENT, INC.**

International Harvester Dealer  
 Pampa, Texas  
 Phone 1360

**You Are Cordially Invited**



To Hear Evangelist  
**GAYLE OLER**  
 Quinlan, Texas

Presenting A Series Of Gospel Sermons

**October 15--October 22**

Each Morning at 10:00 Each Evening at 7:30

At the Wheeler  
**CHURCH OF CHRIST**

Congregational Singing Directed by Otto Shewmaker, Pampa  
 Special Singing Sunday Afternoon, October 15, at 2:30

Now To Attend Every Service!

Name - Tommye White  
 Age - 13 years  
 Color of eyes - Blue  
 Color of hair - Blonde

**BEN GUILL**

Can Serve the Panhandle BEST

Because

BEN GUILL is NOW a member of the House Agriculture Committee. Only through his re-election can the Panhandle retain this important committee assignment.

BEN GUILL has gone to the people of the Panhandle to find out what they want and expect from their Congressman.

BEN GUILL has introduced legislation which would give the farmer a chance to write his own farm program.

BEN GUILL has supported legislation to outlaw Communism in this country.

BEN GUILL, according to Bascom Timmons, veteran Washington newspaper correspondent, "HAS GOT OFF TO THE BEST START OF ANYONE I HAVE EVER SEEN."

BEN GUILL has VOTED PANHANDLE! His vote will never be dictated by a party boss or an individual boss.

Let's re-elect

**BEN GUILL FOR CONGRESS**

Tuesday, Nov. 7

(Paid for by Democrats for Ben Guill; Mickey Ledrick, Chairman.)



**We Are Ready!**

Yes, we are now ready to take care of your auto washing and lubrication needs and to completely service your automobiles.

All the new equipment which we have ordered for our new station has not arrived yet, but we still have everything we need to take care of your service needs and invite you to stop by and see us at our brand new TEXACO SERVICE STATION.

We also invite you to stop by and have your radiator drained and flushed and filled with anti-freeze before the first COLD SNAP hits. You'll pat yourself on the back when the Cold Spell comes if you have your car made ready for WINTER.

**Owen's Service Station**

Intersection of Highways 83 and 152  
 Wheeler, Texas



### New Liquefied Gas

(Continued from Page One)  
pliance can be set for efficient operation at all times with a resulting even, economical hot flame. There's no waste because of different B.T.U.-rated gases reaching the burner from stratified storage."

More than 15 years of practical experience and research on the part of the manufacturer of Mix-O-Gas System, stands back of the new product, according to a representative of the Shamrock Product Co. The manufacturer actually tested the system in more than 1,000 homes and businesses for extended periods before releasing the product to the public. Correct setting of burners and appliances for an even balanced blend at all times prevents smoking up pots and pans," it was pointed out. "The Mix-O-Gas System is fully automatic in operation and has no moving parts inside to wear out ever. There's no mess or dirt or fuss for the housewife. The butane-propane delivery man does the work."

"Now you can enjoy clean, safe cooking, heating, refrigeration—get plenty of hot water—enjoy the benefits of a better way of life with the new Mix-O-Gas System."

### Mustangs Win

(Continued from Page 1)  
7-6. Courson blocked the try for extra point to keep Pampa out in front.

Wheeler added another touchdown when Reggie Mayo's punt traveled 26 yards and went out of bounds on Pampa's 38-yard line.

Johnson scored the second Wheeler TD on a quarterback sneak from the one-yard line. The try for extra point was blocked

and Pampa trailed 12-7.

James Worley put the Guerillas back into the lead in the fourth quarter. With third down and one to go, Worley took a hand-off from Cox and scampered 58 yards to pay dirt. Enloe threw a key block on the 35-yard line to let Worley go all the way. The try for extra point failed and Pampa took the lead, 13-12.

The Mustangs took the kick-off and marched 65 yards for their third touchdown. With fourth down and four to go on their own 42-yard line, Pendleton made four on a quarterback sneak, Johnson added 30 yards on an end run to move the ball down to Pampa's 14-yard line. Campbell caught Johnson from behind, or the fleet Mustang would have gone all the way.

In three plays, Wheeler moved the ball to the two-yard marker where Whittenburg punched it

over for Wheeler's third TD. The Mustangs rammled center for the extra point and Wheeler led 19-13. Pampa was moving down field when a fumble erased their last chance to tie up the ball game. With first and ten on Wheeler's 45, the Guerillas fumbled. The game ended with the Mustangs on the Pampa's 14-yard line.

Miss Georgia Porter, a student at Texas Tech, spent the weekend at home with her parents, Mr. and Mrs. George Porter.

Rev. and Mrs. Darris Egger and sons, Darris and Charles Frank, attended the revival services at the North Berger Methodist Church Friday night and heard Rev. Frank Beauchamp, a dear friend and the minister who married them. They spent the night with the W. L. Price family who lived for a short time in Wheeler.

### Health Dept. Now Has Radioactive Detectors

At least four different types of radioactive detection instruments and computers are available for measuring radiation particles if and when an atomic bomb is ever exploded over a Texas community.

This encouraging bit of information was revealed by the state's chief health official, Dr. Geo. W. Cox. He's state director of health and emergency medical services, part of the Texas civil defense setup.

Radiation is one of three principal harmful effects of atomic explosions. Others are blast damage and burns. Using RADIAC instruments, it is possible to know what areas are safe from the tasteless, odorless, colorless radioactive particles.

All RADIAC instruments are designed for use by radiation monitoring squads. Squad members might be soldiers, or they could be civilians trained by the State Health Department's radiological division. In either case they would be trained for immediate action in

atomic disasters. "Planning emergency medical and health services in an atomic disaster has been one big mess of confusion," Dr. Cox admitted. "But we're beginning to see light now. Our radiology division is going to go right to work, now that we have it set up."

Radiac instruments got this official explanation:

Film badges can be pinned onto the lapel, strapped onto the wrist, worn in a ring, etc. They consist of a piece of photographic film, and are used to show the amount of radiation to which the monitor has been exposed. Radiation particles affect the film like light. Dozens of "tracks" are visible when the film comes in contact with the heavy concentrations of radiation.

Film badges are a permanent record of the exposure to which the monitors have been subjected. Dr. Cox says they show whether or not the wearer has received the "maximum allowable lifetime dosage."

Pocket dosimeters, like the film badges are for the protection of the monitors. They look like four-

tain pens, and gauge amounts of radiation. Geiger counters and chambers actually count rays, and alpha and beta present in an area. So the Geiger counter that could be wired to a fly line could be heard distinctly.

THE WHEELER TIMES offers more for less both buyer and seller other business devices about.

OFFICE SUPPLIES AND STATIONERY AT THE WHEELER TIMES

## NOTICE

EFFECTIVE MONDAY, OCT. 16  
HELPLY-SELFY LAUNDRY 60c HR

One of the undersigned laundries will be open each Saturday 'til noon for the convenience of the public.

HAVENHILL LAUNDRY  
DURHAM'S LAUNDRY

### REPORT OF CONDITION OF THE FIRST NATIONAL BANK OF WHEELER

In the State of Texas, at the close of business on October 4, 1950. Published in response to call made by Comptroller of the Currency, under Section 5211, U. S. Revised Statutes.

ASSETS	
Cash, balances with other banks, including reserve balance, and cash items in process of collection	\$ 407,479.27
United States Government obligations, direct and guaranteed	450,000.00
Corporate stocks (including \$2,250.00 stock of Federal Reserve bank)	2,250.00
Loans and discounts (including \$2,192.06 overdrafts)	352,583.01
Bank premises owned \$1.00, furniture and fixtures \$3,700.00	3,701.00
<b>TOTAL ASSETS</b>	<b>\$1,216,013.28</b>
LIABILITIES	
Demand deposits of individuals, partnerships, and corporations	\$1,114,698.52
Deposits of banks	10,005.65
<b>TOTAL LIABILITIES</b>	<b>\$1,124,704.17</b>
CAPITAL ACCOUNTS	
Capital stock: Common stock, total par \$100.00	\$ 50,000.00
Surplus	25,000.00
Undivided profits	16,309.11
<b>TOTAL CAPITAL ACCOUNTS</b>	<b>91,309.11</b>
<b>TOTAL LIABILITIES AND CAPITAL ACCOUNTS</b>	<b>\$1,216,013.28</b>

STATE OF TEXAS, COUNTY OF WHEELER, ss:  
I, R. J. HOLT, Jr., cashier of the above-named bank, do solemnly swear that the above statement is true to the best of my knowledge and belief.

(SEAL)  
CORRECT-ATTEST:  
D. E. HOLT, R. J. HOLT, C. B. HOLT, Directors.  
Sworn to and subscribed before me this 9th day of October, 1950.  
D. O. Beene, Notary Public.

## MILO STORAGE

Place your milo in government approved warehouse and receive loan price of \$1.65 or more per hundred. We have unlimited storage for truck milo and would be glad to handle same at any time.

## Warrick Feed Store

EARL KELLER, Manager  
Phone 96  
Wellington, Texas

**THURSDAY THROUGH MONDAY OCTOBER 19-23 INCLUSIVE**

**Original 1 SALE**

As Advertised In... LIFE - POST  
Look - Cullbert's - Farm Journal and on the RECALL RADIO SHOW starring DICK POWELL as "Richard Diamond, Private Detective" - WEDNESDAYS, NBC

<b>ANTISEPTIC</b> The mouthwash of many uses. REG. 50c Pr. <b>2 for 70c</b>	<b>Alco-Rex RUBBING ALCOHOL</b> REG. 43c Pr. <b>2 for 44c</b>	<b>purest ASPIRIN</b> No faster-acting aspirin made! 5 grain 100's REG. 54c <b>2 for 55c</b>
<b>21 Mottled CHRISTMAS CARDS</b> All different! REG. 59c <b>2 for 60c</b>	<b>MILK OF MAGNESIA</b> REG. 39c Pr. <b>2 for 40c</b>	<b>ADRIENNE Beauty Aids</b> Creams - Lotions - Powders Lipsticks - Amy 2 essential items REG. 75c Pr. <b>2 for 76c</b>
<b>Helen Cornell HORMONE CREAM</b> 1 1/2 oz. jar, reg. \$1.00 <b>2 for 1.01</b>	<b>Victoria 2-qt. WATER BOTTLE</b> REG. \$2.15 <b>2 for 2.16</b>	<b>Household GLOVES</b> Latex rubber, sizes 7-9 REG. 75c Pr. <b>2 for 76c</b>
<b>Theatrical COLD CREAM</b> 1 lb. tin, reg. \$1.00 <b>2 for 1.01</b>	<b>Luxurious Lavender BATH POWDER</b> 9 ounces, reg. \$1.00 <b>2 for 1.01</b>	<b>RECALL KLENZO ANTISEPTIC</b> Reg. 65c Pr. <b>2 for 70c</b>
<b>POUND PAPER</b> 50 white linen sheets. Reg. 65c <b>2 for 66c</b>	<b>ENVELOPES</b> 10 match above. 50's, reg. 65c <b>2 for 66c</b>	<b>HAND LOTION</b> Maczall's Almond. Reg. 55c Pr. <b>2 for 56c</b>
<b>COUGH SYRUP</b> Recall's Best. 4 oz. size, reg. 55c <b>2 for 56c</b>	<b>RECALL STORK NURSERY</b> 8 oz. size, reg. 55c <b>2 for 56c</b>	<b>ADHESIVE TAPE</b> Pro-Tap. 1 in. x 5 yds., reg. 55c <b>2 for 56c</b>
<b>STUVE CREAM</b> Lavender Menthacated. Reg. 45c <b>2 for 50c</b>	<b>HONEY SAVERS</b> Lemon Menthacated. Reg. 1.15 <b>2 for 1.16</b>	<b>\$50,000 CHOCOLATE STRIP</b> Household size <b>2 for 23c</b>
<b>SHAVE CREAM</b> Recall's - orchard or leather. 2 for 35c	<b>BEER, WINE &amp; IRON TONIC</b> 2 for 1.41	<b>Elegant FACIAL TISSUES</b> <b>2 for 33c</b>
<b>CACCARA COMP.</b> laxative tablets, 100's 2 for 46c	<b>COO LIVER OIL</b> Recall's high potency. Pr. 2 for 41c	<b>RECALL HUNTSMAN 11-ounce GLASS TUMBLERS</b> Chip-proof design <b>2 for 16c</b>
<b>PANOVITE</b> Multivitamin capsules. 100's 2 for 3.20	<b>ABDG CAPSULES</b> dietary supplement. 100's 2 for 1.56	<b>RECALL REX-SELTZER</b> Fruiting aniseptic tablets. <b>2 for 55c</b>

**SUPER VALUES**

<b>Wiggett's J-U-M-B-O Size MILK CHOCOLATE BARS</b> Plain or Almond Limit 2 Bars <b>2 for 37c</b>	<b>RECALL Aniseented TOOTH PASTE</b> No unpleasant after taste! Limit Three 3 1/2 oz. Tubes <b>3 for 79c</b>
<b>RECALL QUIK-BANDS</b> Plain or Mentholated. Pack of 30, Reg. 25c. Limit 1 package. <b>19c</b>	<b>RECALL Complexion SOAP</b> Scented Box of six 3 1/2 oz. cakes Limit 1 Box <b>39c</b>
<b>Town Talk ASSORTED CHOCOLATES</b> Milk or dark chocolate coated creams. Limit 1 box. <b>79c</b>	<b>7 Bottles RECALL HAND LOTION plus 1 Box 100 KLENZO FACIAL TISSUES</b> Limit 1 Combination \$1.75 value <b>76c</b>
<b>Glennidge Linen Bordered WRITING PAPER</b> 24 large flat sheets, 24 envelopes. Choice of colors. <b>39c</b>	

CITY DRUG STORE

*Nelly Don*



tucked basic dress with a French Accent, \$11.95

**McILHANY'S**  
"For Everything You Wear"  
Wheeler, Texas



Prices Are Down!  
Everything Is Up  
But Heating Stoves

We are overstocked on heating stoves and are going to sell them at greatly reduced prices.

**Wiley's**  
At Gas Office

