

The Wheeler Times

Serving
WHEELER
and
MOBEETIE
THE COUNTY SEAT NEWSPAPER

WHEELER, TEXAS, THURSDAY, APRIL 6, 1950

5c Per Copy

THE COUNTY SEAT NEWSPAPER

Wheeler Springs

The man who
lender of our car
arked in front of
Wednesday morn-
ough to stop by
damages. The man
us was driving
odge pick-up.

people voted in the
sunday it would ap-
ers of the council
ittle complaint
during the next
or us. It appears
people have any
ver in their city

American Legion
commendable job
of a handful
of the word
property which is
north of the city
A great team-
working that Wheel-
er is doing for the best
we know of.

of some fine work
members of precinct
Anglin and W. E.
Legionnaires have
getting the ground
erity well and
process of building
erity. When this
good factor in
will have a team-
work in our city

erity committee were
erity committee
erity committee
erity committee
erity committee
erity committee
erity committee
erity committee
erity committee
erity committee
erity committee

Wheeler Takes Seat

Wheeler
erity committee
erity committee
erity committee
erity committee
erity committee
erity committee
erity committee
erity committee
erity committee
erity committee

erity committee
erity committee
erity committee
erity committee
erity committee
erity committee
erity committee
erity committee
erity committee
erity committee

erity committee
erity committee
erity committee
erity committee
erity committee
erity committee
erity committee
erity committee
erity committee
erity committee

erity committee
erity committee
erity committee
erity committee
erity committee
erity committee
erity committee
erity committee
erity committee
erity committee

erity committee
erity committee
erity committee
erity committee
erity committee
erity committee
erity committee
erity committee
erity committee
erity committee

erity committee
erity committee
erity committee
erity committee
erity committee
erity committee
erity committee
erity committee
erity committee
erity committee

erity committee
erity committee
erity committee
erity committee
erity committee
erity committee
erity committee
erity committee
erity committee
erity committee



PATRICK F. BODDY

Mustang Band To Present Concert

The Wheeler Mustang Band will present its first spring concert at the Wheeler Community center Tuesday evening, April 11 at 8:00 o'clock. The band will be under the direction of Patrick F. Boddy.

The Wheeler band which was organized last summer with a roster of 20 members and a membership of 30 and is growing all along.

The band will be in uniform for their concert because they are not home uniforms but are in uniform to bring their spirit and to give the audience the full benefit of the band and the fine music that the band will be presenting.

A band concert is a very important part of the school program and the Wheeler Mustang Band will be a credit to the school.

The program for Tuesday night will include "The Blue Danube" by Strauss, "The Swan" by Saint-Saens, "The Nutcracker" by Tchaikovsky, "The Firebird" by Stravinsky, "The Rite of Spring" by Stravinsky, "The Sorcerer's Apprentice" by Dukas, "The Carnival of the Animals" by Camille Saint-Saens, "The Barber of Seville" by Rossini, "The Marriage of Figaro" by Mozart, "The Marriage of Figaro" by Mozart, "The Marriage of Figaro" by Mozart.

Wheeler P. T. A. To
Meet Thursday Night

The Wheeler P. T. A. will meet on Thursday night, April 13 at 8:00 o'clock at the Wheeler Community center. The program for the evening will include a business meeting and a social hour.

Kathleen Jensen To
Present Choir Play

Kathleen Jensen will present a choir play at the Wheeler Community center on Tuesday evening, April 11 at 8:00 o'clock. The play is titled "The Song of the Lark" and is a beautiful story of a young girl who becomes a famous singer.

The Wheeler P. T. A. will meet on Thursday night, April 13 at 8:00 o'clock at the Wheeler Community center. The program for the evening will include a business meeting and a social hour.

FARMERS MAY APPLY FOR MORE COTTON ACRES

Bill Rushing, secretary of the county PMA, has called the attention of cotton growers that they may now apply for additional cotton acreage allotments.

The County PMA office has the necessary application blanks for owners or operators to file their requests for the minimum cotton acreage allotment for their farms, in accordance with the recent amendment to the 1950 cotton allotment regulation.

"A written application must be filed with the County PMA office not later than April 28, 1950, if the producer expects to receive the additional acreage, provided his farm is eligible for an increase as outlined in the provisions of the amendment. The minimum cotton allotment will be the larger of 80 percent of the three year average acreage for 1948 through 1949, or 45 percent of the highest acreage planted during the three year period, but shall not exceed 80 percent of the crop land on the farm," Mr. Rushing said.

All farms will not be eligible for an increase in acreage under the amendment. However, any producer may make an application on the ground that his farm was not eligible for an increase in acreage under the amendment.

CO. PIONEER DIES AT MOBEETIE

Wm. W. J. Jett, a member of Wheeler County for the past 15 years, passed away at his home in Mobetie last Thursday.

Funeral services for Mr. Jett were conducted from the Church of Christ at Mobetie Tuesday afternoon at 2:30 with burial in the Wheeler cemetery.

Mr. Jett was born in Wheeler County, Texas, and lived in Wheeler County for the past 15 years. He was a member of the Wheeler County Pioneer Association.

Funeral services for Mr. Jett were conducted from the Church of Christ at Mobetie Tuesday afternoon at 2:30 with burial in the Wheeler cemetery.

Mr. Jett was born in Wheeler County, Texas, and lived in Wheeler County for the past 15 years. He was a member of the Wheeler County Pioneer Association.

Funeral services for Mr. Jett were conducted from the Church of Christ at Mobetie Tuesday afternoon at 2:30 with burial in the Wheeler cemetery.

Mr. Jett was born in Wheeler County, Texas, and lived in Wheeler County for the past 15 years. He was a member of the Wheeler County Pioneer Association.

Funeral services for Mr. Jett were conducted from the Church of Christ at Mobetie Tuesday afternoon at 2:30 with burial in the Wheeler cemetery.

Mr. Jett was born in Wheeler County, Texas, and lived in Wheeler County for the past 15 years. He was a member of the Wheeler County Pioneer Association.



GRAINGER MCILHANY

MCILHANY ASKS RE-ELECTION

Grainger McIlhany has announced his candidacy for re-election to a second term as State Representative of the 122nd district, comprising Gray, Wheeler, Collingsworth and DeWitt counties.

Although he has no opposition, Mr. McIlhany plans to spend the next several weeks contacting voters of his district getting their views on legislative affairs.

McIlhany admits state affairs are not all that bright but he will do his best to represent the people of his district.

Mr. McIlhany was born in Wheeler County, Texas, and lived in Wheeler County for the past 15 years. He was a member of the Wheeler County Pioneer Association.

Funeral services for Mr. Jett were conducted from the Church of Christ at Mobetie Tuesday afternoon at 2:30 with burial in the Wheeler cemetery.

Mr. Jett was born in Wheeler County, Texas, and lived in Wheeler County for the past 15 years. He was a member of the Wheeler County Pioneer Association.

Funeral services for Mr. Jett were conducted from the Church of Christ at Mobetie Tuesday afternoon at 2:30 with burial in the Wheeler cemetery.

Mr. Jett was born in Wheeler County, Texas, and lived in Wheeler County for the past 15 years. He was a member of the Wheeler County Pioneer Association.

Funeral services for Mr. Jett were conducted from the Church of Christ at Mobetie Tuesday afternoon at 2:30 with burial in the Wheeler cemetery.

Mr. Jett was born in Wheeler County, Texas, and lived in Wheeler County for the past 15 years. He was a member of the Wheeler County Pioneer Association.

Funeral services for Mr. Jett were conducted from the Church of Christ at Mobetie Tuesday afternoon at 2:30 with burial in the Wheeler cemetery.

2nd Immunization Program For Co. Planned For Sept.



MISS ADA MAY MARSHALL

4-H STYLE SHOW BE PRESENTED

Miss Ada May Marshall, 4-H Club Stylist for the Wheeler County Community is the ideal person for the job. She was a 4-H Club member for 10 years and is also a member of the Wheeler County 4-H Club.

Miss Marshall received her 4-H degree from the College of Home Economics as a major in Home-Making and Fashion at Southern University.

With this background, she brings to her job a good knowledge of 4-H Club work and her extensive training will enable her to advise them on their clothing and sewing problems.

This year the county 4-H Club has been selected for the National 4-H Club Show at the State Fair in Dallas, Texas.

The Wheeler 4-H Club members of 4-H members, started the year ago at 20, and included all the 4-H members of the county.

Miss Marshall will be in charge of the 4-H Club Show at the State Fair in Dallas, Texas.

The Wheeler 4-H Club members of 4-H members, started the year ago at 20, and included all the 4-H members of the county.

Miss Marshall will be in charge of the 4-H Club Show at the State Fair in Dallas, Texas.

The Wheeler 4-H Club members of 4-H members, started the year ago at 20, and included all the 4-H members of the county.

Miss Marshall will be in charge of the 4-H Club Show at the State Fair in Dallas, Texas.

An immunization program for all school children of Wheeler County was announced this week by County Sanitarian W. R. Ritter. The program, the second of a county-wide nature ever held here, has been set for the week of September 25.

During that week, all school-age children will be offered, free of charge, inoculations against smallpox, typhoid and diphtheria. Students may take advantage of the free health service in Shamrock and Wheeler. In Shamrock, Dr. Louis R. Devaney, city health officer, will be in charge of the program at the Chamber of Commerce, inoculating students of Shamrock, Bethel, Lela and Kellerville.

Dr. Glenn E. Walker will inoculate school-age children in Wheeler, Schuess at the school gymnasium, and Dr. Harold Nicholson, county health officer, will care for students from Kellerville, Alton and Mobetie. This service will also be rendered at the Wheeler school gymnasium.

The vaccine for the county health program is furnished free by the State Health Department and the county and city health officers donate their time and services to the public service.

A similar program was conducted here in the fall of 1947. Following the success, County Sanitarian W. R. Ritter stated that 85 percent of all students in the county took part in the program and had received the inoculation.

All school children are asked to participate—those who have been vaccinated in the past should also take part in the program and those who have become of school age since then. Those who participated in the program last time will be notified on a separate basis.

Mayor, Three Aldermen Are Elected Tuesday

Mayor S. D. Furver and three aldermen, W. W. Coffman, Wm. Jones and J. C. Howard were re-elected in which only 28 residents of the City of Wheeler voted Tuesday.

Members of the city council are T. M. Newman and J. C. Howard.

NORA OPENS NEW DINING ROOM

Don and Vera Watson are opening the brand new dining room, April 5, of their new dining room which has been an early reservation for the past several months.

The dining room is large enough to accommodate almost any local gathering and is available for private parties and luncheon gatherings.

Happy Birthday
April 17-14
Eugene Morris
Lula McCasland
Glenn Watson Adams
George Higgins
Mrs. G. W. Mason
D. E. Holt
Mrs. Estie Seedig
Tommy Wiley
Jamie Clark
Lindsay McCasland
Charlie Carter

Mobetie Meditations

by Mrs. M. S. Thompson

The Mobetie Meditations are a series of short stories and poems that are published in the Wheeler Times. They are written by Mrs. M. S. Thompson and are a source of inspiration and comfort to many readers.

The Mobetie Meditations are a series of short stories and poems that are published in the Wheeler Times. They are written by Mrs. M. S. Thompson and are a source of inspiration and comfort to many readers.

The Mobetie Meditations are a series of short stories and poems that are published in the Wheeler Times. They are written by Mrs. M. S. Thompson and are a source of inspiration and comfort to many readers.

The Mobetie Meditations are a series of short stories and poems that are published in the Wheeler Times. They are written by Mrs. M. S. Thompson and are a source of inspiration and comfort to many readers.

The Mobetie Meditations are a series of short stories and poems that are published in the Wheeler Times. They are written by Mrs. M. S. Thompson and are a source of inspiration and comfort to many readers.



Portrait of a man

Portrait of a man

Portrait of a man

THE WHEELER TIMES

Published Every Thursday at Wheeler,
Wheeler County, Texas, By
COOPER, HOWELL & MONTGOMERY

J. C. Howell Editor-Manager
Annale Mae Howell Society Editor
Richard L. Bradley Printer
Maurice Pettit Apprentice



MEMBER
Panhandle Press Association
National Editorial Association

ADVERTISING RATES
National Rate 42c Column Inch
Local Rate 35c Column Inch
Classified See Want Ad Page

SUBSCRIPTION RATES
In Wheeler, Beckham and
Hemphill Counties
3 Months 75c
6 Months \$1.25
1 Year \$2.00

Everywhere Else
3 Months 85c
6 Months \$1.50
1 Year \$2.50

Entered as second-class matter December
18, 1933, at the postoffice at Wheeler, Texas,
under act of March 3, 1879.

NOTICE TO PUBLIC

Any erroneous reflection upon the character,
standing or reputation of any person,
firm or corporation, which may appear in the
columns of this paper will be gladly corrected
upon due notice being given to the Editor
personally at the office at Wheeler, Texas.

THURSDAY, APRIL 6, 1950

Editorial

**SUBSIDIES TO RIVALS
KEEP RAILROADS POOR**

Railroads ordering new Diesel locomotives
and other modern equipment show more

courage and optimism than current earnings
might suggest. Last year, on the Class 1
roads, freight car loadings were down 16 per-
cent and passenger travel 15 percent. Bliz-
zards, labor disputes and diminished coal pro-
duction contributed to the railroad blues. The
roads suffered also from higher costs and
from subsidies to competing forms of trans-
portation. As a result, the return on railway
investment was only 2.91 percent, compared
with 4.38 percent in 1948.

The peril in this situation is not limited
to those who hold railroad stocks and bonds.
Nor even to those who hold insurance in
companies that may be heavy holders of such
securities. If the railroads continue to be
squeezed by administration policies that pre-
vent them from earning normal profits, the
result will be socialization, as has happened
in other countries. That would mean an in-
creased burden on every taxpayer to pay the
deficits resulting from inefficient political
management.

America's railroads can show good earn-
ings if given a fair opportunity. But, to do
so, they must be freed from some of the red
tape of federal controls and from an admin-
istration policy that forces their labor costs
up without allowing proportionate hikes in
rates. Most of all they need release from un-
fair competition. With Congress using tax-
payers' money to subsidize water, highway
and air transportation, it is increasingly hard
for the rail lines to show a profit. Equality
of opportunity is the first requisite for free
enterprise.—From Dallas Morning News

INTERSTATE GAMBLING

Of the two bills introduced in Congress
to give the Federal Government power to
police some forms of gambling, only one
seems to have intrinsic merit. That is the
bill to bar interstate transmission of gam-
bling information on sports events. Such
transmission would be limited solely to reporting
or broadcasting news.

The other—preventing interstate ship-
ment of slot machines into states which out-
law them—is purely a local problem. The
slot-machine racket is admittedly a national
racket. But it can not exist locally unless
authorities permit it. Federal intrusion would
be enlarged into federal policing of strictly
local conditions. The Capones and Costellos
and Riccas can not exist, unless they have a
nod from local officialdom.—Dallas News

The industries and interests in the state
of Michigan are diversified and important.
It leads in auto building; other manufactur-
ing interests are numerous. The state ranks
high in agriculture, and its commerce in-
cludes a large lake traffic.

Church Calendar

FIRST BAPTIST CHURCH

Sunday School 10:00 a. m.
Morning Worship 11:00 a. m.
Evening Worship 8:00 p. m.
W.M.U., Tuesday 7:30 p. m.
Prayer Service, Wed. 8:00 p. m.
Teacher's Meet, Tues. 8:00 p. m.
We preach Christ crucified,
buried, risen, and coming again.
M. B. SMITH, Pastor

CHURCH OF CHRIST

Bible Classes 10:00 a. m.
Worship and Sermon 11:00 a. m.
Evening Worship 7:30 p. m.
Young Peoples Class.
Sunday 6:30 p. m.
Ladies Bible Class, Mon. 2:00 p. m.
Wed. Eve. Classes 7:30 p. m.
ERNEST GRIZZARD, Minister

THE METHODIST CHURCH

Church School 9:45 A. M.
Morning Worship 11:00 A. M.
Evening Service 8:00 P. M.
Prayer Meeting (Wed.) 8:00 P. M.
Church Night First Wednesday
Methodist Men, 2nd & 4th Thurs.
DARRIS L. EGGER, Pastor

CHURCH OF GOD

Old Mobeetie
Sunday School 9:45 a. m.
Morning Worship 11:00 a. m.
Willing Workers 2:30 p. m.
Tuesday
Young People's Service, 7:00 p. m.
Saturday
C. A. JAMES, Pastor

BRISCOE BAPTIST CHURCH

Sunday School 10:00 a. m.
Morning Worship 11:00 a. m.
First and Third Sundays.
Evening Worship 8:00 p. m.
Prayer Service 7:30 p. m.
Wednesdays, following First
and Third Sunday preaching
services.
Each and everyone is cordially
invited to attend each service.
REV. C. R. HOLT, Pastor

TWITTY BAPTIST CHURCH

Sunday School 10:00 a. m.
Morning Worship 11:00 a. m.
Evening Worship 8:00 p. m.
Mid-week prayer service 8:00 p. m.
NELSE D. WRIGHT, Pastor

KELTON BAPTIST CHURCH

Sunday School each Sunday at
10:00 a. m.
T. U. each Sunday at 7:30 p. m.
Preaching each Sunday at 11:00
a. m. and 8:30 p. m.
A. G. ROBERTS, Pastor

CHURCH OF THE NAZARENE

Sunday School 10 a. m.
Worship 11 a. m.
N.Y.P.S. 7:30 p. m.
Evening Worship 8:00 p. m.
Prayer Meeting Wed. 8:00 p. m.
C. D. CLIFFT, Pastor

**ALLISON PENTECOSTAL
CHURCH**

Sunday School 10:00 a. m.
Worship 11:00 a. m.
Young Folks Service 7:30 p. m.
Worship 8:00 p. m.
Wednesday Night Prayer
Meeting 8:00 p. m.
REV. ROBERT ESTES, Pastor

FIRST METHODIST CHURCH

Mobeetie, Texas
Church School 10:00 a. m.
Morning Worship 11:00 a. m.
M. G. F. Meeting 6:45 p. m.
Evening Worship 7:30 p. m.
Wed. Evening Prayer
Service 7:30 p. m.
You Are Welcome.
VERNON E. WILLARD, Pastor

**BRISCOE
METHODIST CHURCH**

Sunday School Each
Sunday 10:00 a. m.
Preaching, second and fourth Sun-
days 11:00 a. m. and 8:00 p. m.
A hearty welcome to all.
L. J. HELM, Pastor

**ALLISON
METHODIST CHURCH**

Sunday School Each
Sunday 10:00 a. m.
Preaching, first and third Sun-
days 11:00 a. m. and 8:00 p. m.
A warm welcome to all.
L. J. HELM, Pastor

ALLISON BAPTIST CHURCH

Sunday School 10:00 a. m.
Preaching Service 11:00 a. m.
Training Union 7:30 p. m.
Preaching Service 8:30 p. m.
REV. F. B. DAKE, Pastor

**KELTON
METHODIST CHURCH**

Church School 10:00 a. m.
Preaching 11:00 a. m. every third
Sunday.
MYF, WSCS and Bible Study
7:30 p. m.
Preaching 7:30 p. m. every third
Sunday.
H. E. LONG, Pastor

ASSEMBLY OF GOD

Mobeetie, Texas

Sunday School 10:00 a. m.
Worship 11:00 a. m.
Junior Church 7:30 p. m.
Sunday Night Service 7:00 p. m.
Prayer Meeting, Tues. 7:30 p. m.
Young Peoples Ser.
Thursday 8:00 p. m.
H. E. LEE, Pastor

FIRST BAPTIST CHURCH

Mobeetie, Texas

Sunday School 10:00 a. m.
Morning Worship 11:00 a. m.
Training Union 7:30 p. m.
Evening Worship 8:30 p. m.
Prayer Meeting, Wed. 8:00 p. m.
JAMES M. BRYANT, Pastor

A Child May Dare
So Drive With Care!

**NERVOUS
STOMACH**

ALLIMIN relieves distressing symptoms
of "nervous stomach"—heaviness after
meals, belching, bloating and colic due to
gas. ALLIMIN has been scientifically tested
by doctors and found highly effective. World
famous—more than a billion sold to date.

ALLIMIN Garlic Tablets

CITY DRUG STORE
Wheeler, Texas

Now is a good time to inspect
and make needed repairs on the
house and other farm buildings.
Leaks and structural defects
should be repaired before they be-
come big expense items.

**ROGUE
THEATRE**

FRIDAY AND SATURDAY—

**"The Mysterious
Desperado"**

—starring—
Tim Holt

PREVUE SATURDAY NIGHT—
SUNDAY AND MONDAY

"Holiday Affair"

—starring—
Robert Mitchum and Janet Leigh

WEDNESDAY AND THURSDAY—

"Mr. Soft Touch"

—starring—
Glenn Ford and Evelyn Keyes



**BUSINESS AND PROFESSIONAL
DIRECTORY**

AUCTIONEER
SHELBY PETTIT
Will cry your sale
any time or place
Phone 158—Wheeler, Texas

**DR. JOEL M.
GOOCH**
OPTOMETRIST
200 S. Wall Street
Phone 123
SHAMROCK, TEXAS

C. J. MEYER
AGENT
INSURANCE
Night Phone 124, Day

HOMER L. MOSS
LAWYER
Old County Agent's Building
WHEELER, TEXAS

Dr. C. C. Me...
CHIROPRACTOR
WHEELER, TEXAS
Equipped to give
chiropractic

MR. & MRS. J. M. GLOVER
FOR
NURSERY STOCK AND
REAL ESTATE
PHONE 206

**Canadian Valley
Production Credit
Association's
Representative**
IS IN THEIR
Wheeler Office
EACH
Thursday

**THIS SPACE
FOR SALE**

Protect Children's Health
GIVE THEM
BORDEN'S
Fine Dairy Products
CHAPMAN DAIRY
Phone 70-J Wheeler

**WATCH & JEWELRY
REPAIRING**
All work guaranteed
Shop located in
South Citizens Star
H. B. Gridel

Now Open For Business
OTIS REID GARAGE
Located on Highway 183
Wheeler, Texas

Law Offices of
Clifford Braly
Thomas C. Braly
208 Combs-Worley Bldg.
Pampa, Texas

INSULATION
with mineral rock wool
"erstripping"—Perma-
Curtis P...
SCHELL-MUNDY CO.
1708 W. 8th — Amarillo
Phones
Office 2-8361 — Res.

NOTICE!
WE SCALD HOGS ON
MONDAY AND TUESDAY
OF EACH WEEK.
Wheeler Lockers

Notary Seals
Salesbooks of
all kinds ...
Rubber Stamps
THE WHEELER TIMES
"The Voice of North Wheeler County"



Let's Go To Church Sunday

EVERY SUNDAY ... Easter is more to every grateful
heart than the thrill of wearing smart new clothes ...
more than gladness that the long Winter is over and Spring
has come again ... more than looking forward to the full
blooming of a happy Summer!

It is the renewal of hope in every heart that life can be good, a renewal
of faith in the future, an acknowledgment of the joyous reassurance
in those immortal words, "Let not your heart be troubled, neither let
it be afraid." The glorious words that have rolled down the centuries
bringing solace and relief to the burdened, are needed in today's con-
fused and anxious world. To Him who said them, let us pay the tribute
of our presence in His House. He is Risen! Come to Church on Easter!

**SOUTHWESTERN
PUBLIC SERVICE
COMPANY**
35 YEARS OF GOOD CITIZENSHIP AND PUBLIC SERVICE

...stry Association
...dals for the mos
DANCE
TO THE ME...
N...
BOULT
There
ck running loc
ouncil has had
ckens and an
dy to remind
imals.
Flowe
rdening time
ore of a nuisa
sons of the
owing.
Citize
eir chickens a
The
RS
Apr
WATCH & JEWELRY
REPAIRING
All work guaranteed
Shop located in
South Citizens Star
H. B. Gridel
A. Edwin W
SE
10:0
**QUALITY
PRINTING**
of all kinds
Com

Forestry Association outstanding county 4-H forestry Pay Your Subscription To
 medals for the most demonstrators in 1950. The Wheeler Times Now!

NOTICE

OWNERS OF

POULTRY & LIVESTOCK

There is a city ordinance against poultry and livestock running loose in the City of Wheeler and since the City Council has had some complaints about people letting their chickens and animals run loose, it becomes the duty of this city to remind citizens that they should pen their fowls and animals.

Flowers are coming out now, and it is very near gardening time; therefore, chickens and livestock create more of a nuisance to neighbors than they do at any other seasons of the year when there are no flowers or gardens growing.

Citizens are respectfully asked to either pen up their chickens and livestock or get rid of them.

The City of Wheeler

THE CORRAL

STAFF

Editor ----- Margaret Holdeman
 Assistant Editor -- Garland Parks
 Junior Reporter --- Bill Hooker
 Sophomore Reporters --- Joann Porter and Wayne Burke
 Freshman Reporters --- La June Mann, Glen Farmer
 Eighth Grade Reporters -- K. D. Ford and Jerry Skulley

SENIOR NEWS

The senior's sponsor, Mrs. Carrick, was sick with the flu nearly all of last week. We are all glad to have her back with us this week.
 Everyone, be sure and remember the Senior's Easter Food Sale. It will be on the Saturday before Easter starting at nine o'clock at Clay's Food Store.

IS IT TRUE?

That Winnie has a new name?
 That C. R. is the English teacher's pet?
 That Bobbie has a broken shoulder?
 That J. T. likes the sweaters?
 That Doyle and Corky went to Albuquerque in a Model-A?
 That the seniors are going to have a food sale? (Yes)
 That Joann sings to Allison?
 "Do You Ever Think of Me?"
 That Red is a know-it-all?
 That the seniors are about to receive their invitations?
 That everyone wishes we had left this out?

SOPHOMORE NEWS

James Cox is the sophomore personality of the week. He is 15 years of age, has blue eyes, and likes the girls. He is 5 feet, 6 inches tall and weighs 133 pounds. He dislikes nose people. His favorite teacher is Mr. Paddock, favorite subject is algebra, and his favorite food is fried chicken. His ambition is to get out of school in one piece.

FRESHMAN CHATTER

Patricia, who was the boy who gave you so much attention Friday night at the skating rink?

Kay, it is too bad you didn't go skating Friday night. He was there.

Betty Lou, what is this we hear about you getting stood up Saturday night?

Ray, who is the girl's picture you are packing around in your billfold?

Betty Jo E., why do you go to Shamrock so often?

Wonder why Mary Helen and Helen were so anxious to get back to Wheeler Saturday?

Who is this Annabelle Lee that Nona Ann has been talking about?

June, what happened to your handkerchief you had hidden so nicely? Did it fall?

Marilyn, who did you go to Shamrock with Thursday night?

We wonder if Glen and John Den caught any rabbits Monday night?

Waunetta, why do you study so much?

Doyle, do you still like to sit in front of Jo Ann?

Has everyone noticed Buddy's new shoes, Marlynn's new shoes, and Helen's new coat?

EIGHTH GRADE NEWS

Billie, why do you want to kick Wanda? We wonder?

Wanda, why were you so mad Monday?

K. D., why were you so sleepy Monday?

Buck, what happened to your new gold football?

Tootie, did you get your boat built Sunday?

Esther, you really did get sun burned, didn't you?

Beverly, don't you like where you sit now? We don't blame you?

The eighth grade went skating at Shamrock last Thursday night. All reported a good time, except Mr. Teague.

Margie, you sure are quiet these days. Is it because Beverly moved?

Glenda, you and La Veta sure missed something Thursday night.

PERSONALITY OF THE WEEK

Our personality of the week is Wanda Topper. She is 13 years old, has green eyes and brown hair. She is 5 feet, 6 inches tall and weighs 135 pounds. She likes a certain junior boy and dislikes nose people, stuck-up people. All teachers, sports, and subjects are her favorites.

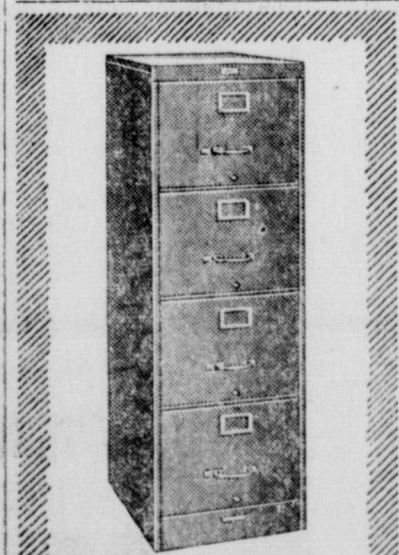
SEVENTH GRADE NEWS

Here are the definitions of the seventh graders:

S---mart ----- Jerry
 E---mpty headed ----- Juanita
 V---ery nice ----- Lonelle
 N---eat ----- Katie
 T---errible ----- Robert D.
 H---appy ----- Everybody
 G---orgeous ----- Janice
 R---ed headed ----- Randel Childress
 A---dorable ----- Ada
 D---ebator ----- Robert L.
 E---verybody is crazy
 C---razy ----- Bonnie
 L---oud mouthed ----- Erma Deen
 A---wful ----- Our teachers
 S---illy ----- All the girls
 S---enseless ----- Reta Babb

ASSEMBLY PROGRAM

Monday, in the assembly program, Coach Smith presented the football and basketball boys their special award sweaters. Those getting sweaters were Doyle Waters, C. R. Bailey, Garland Parks, J. T. Johnson, George Hibbits, Red Crossland, Melvin May, Maurice Pettit, Dick Pendleton, James Gaines, John Dan Bowman, Edgar Hubbard, Joe Mitchell, Buddy Toon, Bill Crossland, Teddie Johnson, Leonard Weeks, Bobbie Johnson, and Ray Cole Johnson. Niel McQueen and Jim Bullard.



BERGER
 STEEL
 FILING CABINETS

DESIGNED FOR EFFICIENCY
 —BUILT FOR LONG LIFE

● Tidy up your overburdened files by adding one or two of these famous-make popular 4-drawer models. Available in letter or legal size, with and without locks . . . \$57
 Prices start as low as \$57

THE
 WHEELER TIMES

Phone 35 — Wheeler

JUNIOR NEWS

The football sweaters were presented Monday at the assembly program. All the boys look swell in them, especially our four junior boys.

We are especially proud of Bill Hooker who has been elected Drum Major.

The juniors have been working very hard on our play. We have finished the first and second acts. We are now working on the third act.

All the juniors (as well as the rest of the student body) are beginning to study a little for a change. The reason is that six weeks tests are just around the corner. We hope every one passes.

SONG DEDICATIONS

From Charlene to Charles—"Drunken Driver".
 From James to Margaret—"Love Sick Blues".
 From Annie to Dewain—"Let's Go Dancing".

PROTECTION FROM FIRE LOSS!

The number of homes and business houses destroyed by fire are on the increase. This is reasonable to expect with deterioration of buildings and inability to obtain adequate repairs and maintenance.

ONE NEVER KNOWS

When or where the next fire may strike nor how extensive its damage may be. The surest way to combat this hazard is to be adequately protected by the right kind of fire insurance policy. Insuring your business or home for you against loss by fire is our business. We want to work with you for this protection.

DON'T DELAY ANOTHER DAY

Why not get in touch with us right now —TODAY. We will gladly help you work out an insurance plan with greatest possible protection for the money you pay.

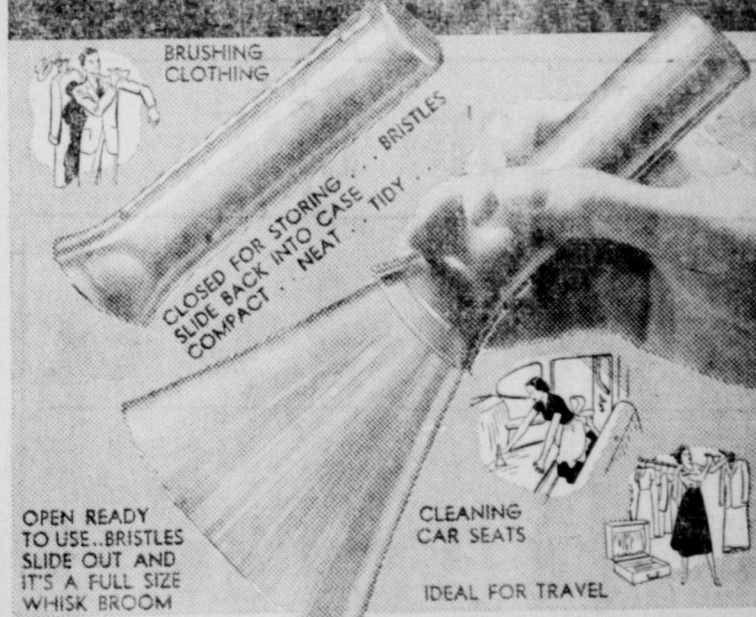
DORIS FORRESTER AGENCY
 INSURANCE & ABSTRACTS

Phone 15

Wheeler

THURSDAY
 FRIDAY
 SATURDAY **At Firestone**
 NEW • DIFFERENT • AUTOMATIC

TELESCOPIC Whisk Broom



BRUSHING CLOTHING
 CLOSED FOR STORING . . . BRISTLES
 SLIDE BACK INTO CASE . . . TIDY . . .
 COMPACT . . . NEAT . . .

CLEANING CAR SEATS
 IDEAL FOR TRAVEL

- Washable Plastic Bristles slide in and out at touch of thumb.
- Flashlight-type Plastic Case Prevents Snagging Bristles.
- More Convenient . . . Easy to store . . . Takes less space.
- Easy to pack for traveling . . . Can not soil clothing.

\$1.00 Value — You Pay Only

39¢

LIMIT 3 TO A CUSTOMER

NASH APPLIANCE & SUPPLY CO.

"Better Things For Better Living"

Wheeler, Texas

REVIVAL

FIRST BAPTIST CHURCH

WHEELER, TEXAS

April 9 thru April 23



Rev. A. Edwin Wilson
 Evangelist



Rev. M. B. Smith

Rev. M. B. Smith
 Singer

SERVICES TWICE DAILY
 10:00 A. M. and 8:00 P. M.

Come Worship With Us!



Easter Shower



OF VALUES!



FINE MEATS FOR YOUR EASTER FEAST

MINUTE RICE
2-5 1/4-oz. Boxes
25c



WILSON'S CERTIFIED (12 to 14 lb. ave.)
HAMS HALF or WHOLE Pound **49c**

HAM Round End Per Pound **43c**
PIECES Shank End Per Pound **39c**

CORN KING **SLICED BACON** Pound **39c**

SUGAR CURED **BACON SQUARES** Pound **21c**

Skinless Weiners lb. **39c**

WISCONSIN DAIRYLAND—American or Pimiento
Cheese 2-lb. box **89c**

FRESH GROUND Pound
Hamburger **33c**

HOME KILLED BEEF Pound
Chuck Roast **49c**

UNCLE WILLIAM'S 4 Boxes
Ice Cream Mix **25c**

STANDARD No. 1 Can
Tomatoes **5c**

IGA EXTRA WHIPPED Pint Jar
Salad Dressing **27c**

ASSORTED LUNCH MEAT
• Pickel and Pimiento
• Macaroni and Cheese
• Liver Loaf
• Large Bologna
Per Pound **45c**

WISCONSIN COLBY LONGHORN **CHEESE**
Per Pound **45c**

FIRE SIDE **MARSHMALLOWS**
1 Pound Package **21c**

HARVEST INN—EXTRA STANDARD—WHOLE KERNEL 2 No.

White Corn 2

STILLWELL—NEW PACK 2 No.

SPINACH 2

Orange Juice 45c
IGA FANCY 46-ounce Can

Tomato Juice 19c
HOUSEWIFE PRIDE 2 No. 300 Tall Cans

FIRST PICK FANCY
Grapefruit Juice 46-ounce Can **39c**

FRESH, CRISP, TASTY FRUITS and VEGETABLES

CALIFORNIA—Crisp, Green Pound
PASCAL CELERY **10c**

FRESH CRISP 3 Bunches
RUBY RED RADISHES **11c**

WINESAP APPLES
Extra Fancy—Serve with your Easter Feast

2 LBS. **25c**

FANCY CALIFORNIA Pound
CHERRY RHUBARB **17c**

U. S. NO. 1 TEXAS YAMS 3 Pounds
SWEET POTATOES **25c**

EASTER FEATURE

ORANGES & ORCHIDS

Dozen King Size Sunkist Oranges
1 Beautiful Hawaiian Orchid

BOTH FOR **89c**

EASTER EGGS 11-oz. Pkg. **25c**

JELLO
All Flavors Per Box

COCA COLA
6 bottles Plus bottle Deposit **19c**

Feature of the Week!
Top off your Easter meal with one of these IGA Brand canned fruits. All in heavy syrup...

Ripe 'N Ragged No. 2 1/2 Can
PEACHES **33c**

IGA—Fancy Crushed No. 2 Can
PINEAPPLE **29c**

IGA—Bartlett No. 2 1/2 Car.
PEARS **35c**

Armour Star Canned Meats
Deviled Ham 19c | **Vienna Sausage** 2 cans 37c

ARMOUR'S TREET CRANBERRY SAUCE 12-ounce Can

SPANISH RICE BROWN BEAUTY No. 300 Can

TOILET **TISSUE** 6 Rolls **25c**

DAMASK—80-COUNT **NAPKINS** 2 Boxes **9c**

IGA FANCY **DILL PICKLES** Quart Jar **29c**

SIoux BEE **PURE HONEY** 2-Pound Jar **57c**

GREEN **GIANT PEAS** No. 303 Can **20c**

RAINBOW CUT **GREEN BEANS** 2 No. 2 Cans **25c**

You Get Service As Well As SAVINGS, When You Trade At A HOME OWNED STORE!
We Give S & H Green Stamps!

CLAY FOOD STORE

Phone 145 Free Delivery Wheeler, Texas

LAST CALL
NO. 1 RED CERTIFIED **SEED POTATOES**
100 Pound Sack
RED, WHITE, or YELLOW **ONION SETS**



We take the time to "Trouble" shoot

MARFAK
Lubrication

When we give you Marfak Lubrication

★ With every Marfak job, we check danger spots to save you trouble later. If exhaust pipe is rusting through, if tie rods are worn, or tires cut—you hear about it! Get this thorough service today. Drive in for Marfak lubrication.

WE GIVE
& H GREEN STAMPS



WOMEN'S SERVICE STATION
Phone 101 Wheeler

SEE THE
BRAND
NEW



1950 Model FRIGIDAIRE

with all these features

- Meter-Miser mechanism
- 5-Year Protection Plan
- Exclusive Quickcube Trays
- Big Freezer storage
- Roller-bearing Hydrator
- Cold Storage Tray
- Non-tilt Shelves
- 1-Piece Lifetime Porcelain Food Compartment
- Interior Light

Be sure to see FRIGIDAIRE—America's No. 1 Refrigerator

SEE THEM ON DISPLAY NOW AT—
ERNEST LEE HARDWARE
Furniture - Rugs - Radios - Hardware
Wheeler, Texas

ELECT J. Blake Timmons as your CONGRESSMAN

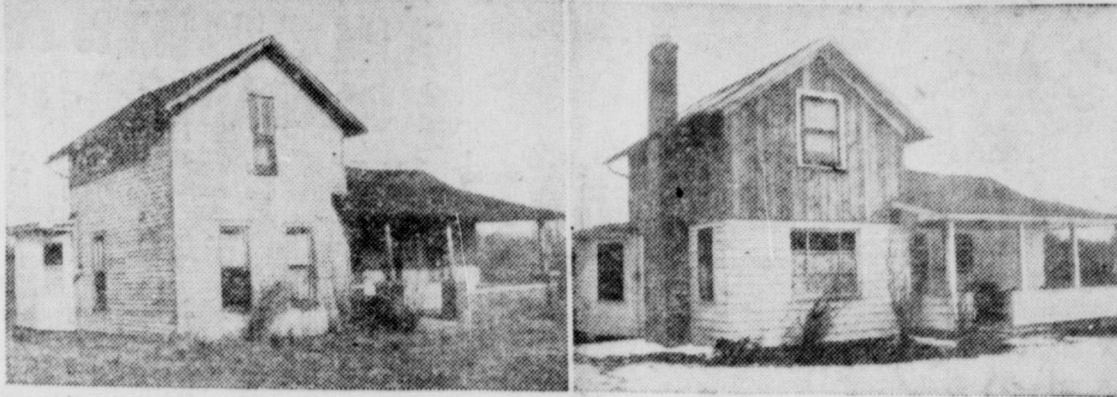
Capable, honest, energetic and with courage to support his convictions.

Studied Government at West Texas State College.
Studied Law at the University of Texas.
More than four years in service, World War II.
A member of the American Legion and V.F.W.
33 years of age, married and has daughter of 4 years.
Native of this district. Farm boy and businessman.
Served two terms as State Representative.
Deacon in Presbyterian Church.
Blake Timmons is not obligated to any individual, special group, organization or special interest.
He will represent ALL the people of the Panhandle without fear or favoritism.

(POLITICAL ADVERTISEMENT)



New Materials Transform Old House



A wise selection of materials changed an old farmhouse, left, into a new-looking house. White-painted boards and natural knotty pine were used for the sidewalls, and green asphalt shingles for the roof.

Selection of distinctive materials can be the secret of transforming an old house into a home with a brand-new look. In remodeling a farmhouse near Chagrin Falls, Ohio, William C. Weidman chose two kinds of siding. The lower part of the walls was covered with 8-inch-wide boards, running horizontally and painted white. Knotty pine was applied vertically on the upper part. Green fire-resistant asphalt roof shingles were selected. Because the lower part of the house is lighter in color than the upper part, attention is attracted to the lower part. Consequently, the house appears lower than it actually is. If the owner of a house wants to make it seem taller, he can choose light-colored shingles and light paint for the upper part. Asphalt shingles are available in a wide variety of solid and blended colors, and many desirable color effects can be created. On the interior, Weidman replastered all the walls and laid new hardwood floors. He added a living room fireplace and built a tile-walled bathroom. The kitchen was equipped with modern fixtures. The old partial basement was expanded to full size. A picture window was cut at the front of the home. New door and window frames and sash were installed. A new chimney was built. The house was insulated completely.

Cotton Evening Dress for Spring



Broad, tri-colored panels in the skirt and a high, choker-type collar on the halter blouse give this evening ensemble a regal air. Made by Lotte of Dreyfus from Wesley Simpson's "Rustler" cotton, it was selected by Cosmopolitan magazine editors for a spring wardrobe. The skirt, cut full and long, comes in gray-chartruese-white, or gray-navy-mauve and sells for about \$25. Another \$8 buys the blouse, which buttons to the waist and is in gray, chartruese or mauve solid colors.

HORNFLY MAY ROB RANCHERS

A tiny fly, grayish to black in color and about three-eighths of an inch long about this time of the year or a little later begins to rob the livestock producer of pounds of beef and dollars that could be profit. This small bloodsucker, according to James A. Deer, assistant extension entomologist of Texas A. and M. College, is the hornfly.

It is seen principally on the head, neck and shoulders of cattle often in great numbers and if permitted to multiply, they may cover 50 percent of an animal's body, says Deer. The hornfly has a very short life cycle—10 to 14 days. This factor, points out Deer, makes it possible for very heavy infestations to build up in the spring before the producer notices their presence. Control measures should be used early to check the multiplication in the first generation. The first spraying is very important and may reduce the total number of sprayings needed during the summer. Animals should be given the first treatment when the fly population reaches an average of about 25 flies per animal.

Deer says there are two insecticides which will give very effective control against the hornfly. DDT has been successfully used for several years and a .5 percent spray or dip will give excellent results. Toxaphene is the other recommended material and it is also used at a .5 percent strength. It is recommended only for use as a spray. Deer adds that toxaphene has given equal or superior results when compared to DDT for hornfly control.

He points out that numerous tests have shown that cattle kept free of hornflies gained from 10 to 20 pounds more per month than those not treated. Ten pounds or eight pounds of 50 percent wettable DDT in 100 gallons of water and used as a spray will protect cattle for a period of 20 to 45 days says Deer.

Illinois is one of the great and leading states of the Nation. Its agriculture is important and varied; its mining industry is large and valuable; its financial, wholesale and manufacturing interests are immense and valuable.

THE WHEELER TIMES classifieds offer more for less money, to both buyer and seller, than any other business device we know about.

Pay Your Subscription To The Wheeler Times Now!

on its size and activities. A good indicator that fuel food needs are being met is a constant body weight. Overweight indicates a surplus and the supply should be reduced. The active and fast-growing youngsters in the family may need more fuel than older members of the family, but their choice of calories should be carefully watched says Miss Mason. Too many sweets, or sweets between meals, may interfere with their appetites for substantial meals needed to provide the fuel for growth, health and vitality. According to a recent government research development, a reasonable promise that a few years synthetic gasolene will be produced from coal as close to that made from petroleum and natural gas.

A Child May Dare So Drive With Caution

WHATEVER CROP GROWS HERE



THE FARMALL C WILL BE THERE, ALL THE WAY!

Grains, grasses, field row crops, vegetables—whatever is planted in this mellow, weed-free seed bed, the new Farmall C Tractor with Touch-Control will be on the job all the way. The Farmall C is shown here with the McCormick No. 10-A Disk Harrow.

For the Farmall C delivers practical 5-way power: (1) at the drawbar, for pulling trail-behind machines; (2) at its mounting pads, for pushing forward-mounted implements; (3) at the belt pulley; (4) at the power take-off; (5) at the Touch-Control power arms for raising, lowering and regulating mounted implements by hydraulic power. All at surprisingly low operating cost!

Available for the Farmall C is a full line of matched, quick-change implement units. New and simple in design, each low-cost implement mounts on the tractor to form a compact operating unit. Rear-mounted implements, likewise, are quick-change.

Implements for the Farmall C are under the complete, 2-way hydraulic control of the Farmall Touch-Control. The Farmall C pulls one 16-inch or two 12-inch bottoms; cultivates two rows of wide-planted crops. Ask for full information.

HIBLER IMPLEMENT CO. INTERNATIONAL
PHONE 151 WHEELER TEX.

FARMALL LEADS THE WAY

BALANCE IN DIET GIVES BETTER HEALTH

To the nutritionist as to the engineer, energy means power from fuel or heat and it is often measured in calories or heat units. The more popular definition of the word energy includes such terms as vim, vigor, vitality and even spirit.

A homemaker may then conclude that the more energy foods her children eat, the more energetic they will be says Miss Mason, extension foods and nutrition specialist of Texas A. and M. College, that is not necessarily the case. Starches, sugars and fats are the high energy foods for they are the chief sources of fuel or calories for the body. If used in excess, these foods are stored as fat and may make a person feel less energetic, says Miss Mason. Likewise, too many of these foods in the diet may cut down on other nutrients, such as vitamins or protein, needed by the body for nutritional well-being and normal vim and vigor.

Miss Mason says the term fuel food might be a better word than energy food since the term describes the foods that supply the fuel for bodily activities. The fuel food needs of the body depend up-

LOW-COST, EASY-TO-OPERATE TROUBLE-FREE

Smith-Corona ADDING MACHINE

Now in a bright, new dress that's easy to look at!



This dependable machine is made by the manufacturer of famous SMITH-CORONA TYPEWRITERS . . . 25 years of hard use has proved its durability and trouble-free service. So simple to use that anyone can operate it! Figures are always visible . . . errors can be corrected before entering on tape. Tape serves for checking and as a permanent record. New design provides greater ease and improved appearance. Low price makes it practical even for the smallest office!

- Dustproof case!
- Large, readable type—punctuated!
- Ciphers print automatically!
- Has a repeat and clear key!
- Single column clearance keys!
- Convenient non-add key!
- Ribbon and paper easily changed!
- Single stroke total and sub-total keys!
- Complete with plastic cover!
- Strong, convenient carrying case! (additional charge)

Ideal for Office & Home Use—Retail Stores
—Service Stations—Garages—Professional Men—Farmers & Dairymen

Buy Now—Pay As You Add—By Week or Month
Liberal Credit Terms

THE WHEELER TIMES

Commercial Printing

Phone 35

Office Supplies

EASPEST WAY TO BUY OR SELL' WANT ADS

per line (counting 5 words to line) for first innum charge, 45c; 10c per line after first time. Large 30c. Reader ads scattered among local items each insertion. Cards that run every week 30c inch per week.

ADVERTISING—National rate, 42c an inch; Local advertising rate, 35c per column inch, 28c per inch when notices or more used each week during calendar month

FOR SALE

mi. N. E. of Shamrock. 15-2tp.
FOR SALE—One 2-disc Ford nearly new, \$200. One new mowing machine, \$225. One GMC truck with good grain \$250. One F-20 International with planters and cultivator for sale, or will trade for tractor. See John Megee, of Allison. 16-2tp.

LE—Ferguson tractor nt. possession of farm will sell equipment Kermit Howard, 7

FOR SALE OR TRADE—Registered Jersey bull calf. Bill Owen. 17-1tc.

FILING EQUIPMENT—We have several 4-drawer letter files, 4-drawer legal files, 2-drawer letter files, 1-drawer letter files and plenty of file folders in stock to take care of your first of the year needs.

The Wheeler Times Office Supplies Job Printing

Used Electrolux refrigerator at a real bargain. Also several good used tractors. Hibler Implement Company. 17-1tc.

Fruit trees, shade trees, evergreens, flowering shrubs, hedge and berry plants. Will Warren. 44

FOR SALE—Alfalfa hay stored in barn. H. N. Patterson. 17-2tp.

FOR SALE—Everbearing strawberry plants, \$2.00 per hundred. See Frank Rogers. 15-3tp.

Vose and Sons Upright piano for sale. Good condition, nicely carved. T. H. Baker, Briscoe. 17-2tp.

FOR SALE—New 1949-1950 Texas Almanacs, \$1.00 per book. The Wheeler Times. 4-1tp.

FOR SALE—1948 deluxe model 8-ft. Servel gas refrigerator. Wheeler Radio and Refrigerator Service. 17-1tc.

FOR SALE—Singer sewing machines and others in cabinets, portables and electric. Also button-hole workers and pinking shears. Terms if wanted. A life-time guarantee with each machine. 26 years experience. Write W. B. Snider, Rt. 6, Box 96-A, Wellington, Texas or phone 370-J. 14-7tp.

FOR SALE—Good used Underwood typewriter, just cleaned and

Spring Checks in Early



You needn't wait for the first pussy willows to sport this neatly checked worsted dress. Wear it under your coat now and be ready to salute Spring's earliest zephyrs. Designer Sheila Lynn has given the ever-popular check pattern new dashes of style in the diagonally-arranged buttons and folded tuck pleat. It's one of three checked dresses featured in Harper's Bazaar and retails for about \$40.

BURK CONSIDERS WEED CONTROL FARM PROBLEMS IN CAMPAIGN

E. T. Burk, who was raised on a farm and has dealt with farmers all his business life, said this week that he considered the farm situation the nation's greatest problem.

"I will discuss this problem right up to the day of the election," said the leading candidate for Congress in the 18th district. "Every farmer faces a bad situation. He faces the loss of price support or else he faces a great tangle of controls that could take management of his farm sailing off to Washington. Only common sense can solve this grave problem."

Agriculture is basic. From it we live, regardless of whether we are city or rural dwellers. A farm depression would spread to every phase of our life and business. It could bring business collapse. And how the Communists would welcome that.

If we were suddenly knocked out all supports, the price of nearly all of our money crops would collapse. That would be nothing less than the government turning the farmers out to the dogs.

On the other hand, if the government supports this basic industry through price guarantees or loans, there is certain to be a loud howl from Washington for strict controls, even on the home poultry flock that furnishes egg money.

This is a knotty problem. The government cannot afford to plunge agriculture into a depression, but we cannot have an effective, profitable agriculture with a Washington bureau running every farm. So what is the answer?

We must continue price supports until we are positive that their removal will not cause a price collapse. But we must also keep the farmers managing the farms. Any measures of acreage or production control voted by the Congress must have local community administration.

We must not let agriculture down and we must not place our farmers under the dictatorial thumb of a Washington bureau. When I go to Congress, I'll fight unceasingly for a common sense farm program with common sense local administration."

WEED CONTROL CONFERENCE TO BE HELD

The third annual Weed Control Conference, sponsored by the Texas Weed Control Association, has been scheduled for April 20 at the Municipal Auditorium in Amarillo. Art Bralley, Potter County Agent and Association Chairman has announced.

The one-day meeting will consist of an educational program and exhibits by various firms of equipment and supplies for the eradication and control of noxious weeds, Bralley pointed out.

Knox Parr, District Agent and Chairman of the Program Committee, is completing arrangements for the program on April 20. "We will have a worthwhile and informative meeting which should be of interest to a large number of land owners and farmers in the entire area," he declared.

Scheduled to appear on the program are C. E. Fisher of the Spur Experiment Station; Dave Savage, Woodward, Oklahoma Experiment Station; Dale Carter, Field Supervisor PMA; and Roger Hamilton, Amarillo Experiment Station. There will be a round table discussion by eight County Agents on brush and weed control as carried out in the various counties. Parr added that the complete program will be announced within about two weeks.

J. B. "Uncle Jay" Linn with radio station KGNC in Amarillo will be in charge of the musical portion of the program.

Mahogany, walnut, oak and maple are still among the most popular woods used for making furniture.

Fence posts can be cut during any season of the year but spring cutting permits summer seasoning and treatment can then follow in the late summer or early fall. Chemical treatment will add years to the useful life of fence posts.

Newspaper Advertising Pays!

IF YOU WANT TO SELL YOUR

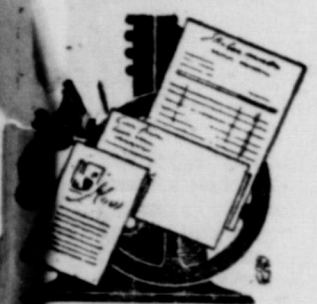
COTTON EQUITIES

SEE

Billy J. Darnell

Wheeler, Texas

FINE PRINTING



We do all kinds of print work. We don't specialize in any one form, but we do specialize in fine work. The finished job is perfect in detail and layout. We try to have our customers really satisfied.

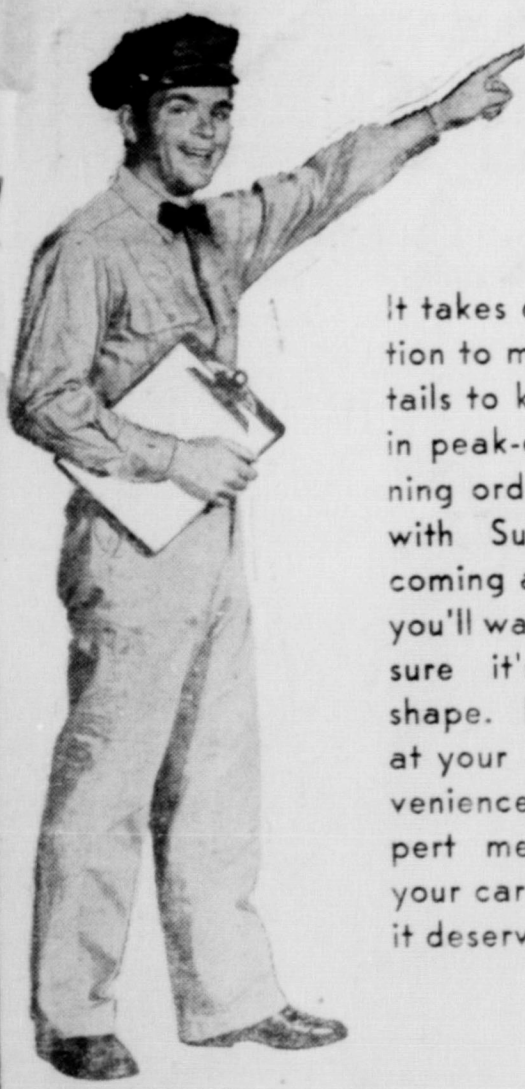
PHONE 35

For Free Estimates

THE WHEELER TIMES

Your Car Needs

It takes careful attention to many little details to keep your car in peak-efficient running order. And now with Summer drives coming along you'll want to be extra sure it's in tip-top shape. Drive around at your earliest convenience—let our expert mechanics give your car the attention it deserves!



WE NOW HAVE A VERY GOOD

LINE OF

Steel Stock Racks

FOR

1/2 and 3/4 ton Pick-ups

WARE CHEVROLET CO.

Highway 152

Wheeler, Texas



21 NEW Reasons Why-

You'll like the McCormick W-9

"Positively the finest tractor ever made." That's what a friend of ours said when he climbed off the McCormick W-9, after putting it through a rough test on his farm. I expected him to say that. You see—this W-9 is improved from radiator to drawbar. 21 NEW improvements make it more efficient than ever—easier to handle than ever—and more durable than ever. The McCormick W-9 has always been tops—but wait till you try the new one! Phone, or drop in, and ask us to bring one out to your place. Get behind the wheel and prove it yourself. Convenient terms with the Income Purchase Plan.



FARMERS EQUITY SERVICE, INC.

Jack Miller, Mgr. Mobeetie

FARMALL First In The Field

NEW KELVINATOR AND PHILCO REFRIGERATORS AND HOME FREEZERS



We have the very latest models and styles in stock on our floor. Don't wait . . . come in today and choose the new refrigerator or deep freeze that you have been wanting. Easy terms can be arranged for those with approved credit rating.

WE HAVE SOME REAL

BARGAINS

IN GOOD USED ELECTRIC REFRIGERATORS

Building Supplies and Service

We maintain a complete line of building materials . . . those high quality BPS Paints . . . plumbing fixtures and supplies. Whatever you may be needing in the way of building supplies or service, don't hesitate to call on us, we're always more than glad to serve you.

Cicero Smith Lumber Co.

Mobeetie, Texas

TIMMONS PLAINS STAND ON SOME ISSUES

Timmons, candidate for the 18th Texas district, Thursday advocated repeal of the Taft-Hartley Act, took a stand against socialized medicine and endorsed full parity for labor control.

which he submitted to the Texas Legislature, emphasizing the interest of the general public in labor peace. "Much of the Taft-Hartley Law is fair and just," Timmons said, "but parts of it are definitely discriminatory." "For example," Timmons said, "the law requires laboring men to sign affidavits that they are not Communists, but does not require the same action by representatives of management. I think both sides should be required to sign non-Communist, non-Fascist affidavits." Timmons voted in the Texas Legislature for anti-Communists

affidavits in our tax-supported schools, but he said the application of such ruling "must be general and apply to everyone, not just a single group." "We need a labor control law which will not impinge the civil rights of any citizen in our nation, whether he be a laboring man or an employer," he said. While in the Texas House of Representatives, Timmons prepared and submitted to that body the Timmons Bill, which was modeled on the Stassen Labor Conciliation Law of Minnesota, the Lafollette Labor Law of Wisconsin, and the North Carolina Voluntary Arbitration statutes. The bill was de-

feated by three votes, 66 to 63. "My bill would outlaw the closed shop when coupled with a closed union," Timmons said. "It would forbid secondary boycotts, violence in picketing, forbid midnight injunctions when only one side can be heard, and would require free collective bargaining by both employer and employee." "It also provides for cooling off periods before strikes, fact-finding and mediation services similar to those of the National Railway Labor Act. It recognizes the paramount interest of the general public." "I will continue to fight for laws of a similar conciliatory na-

ture in Congress and against such un-American proposals as compulsory arbitration and forcing people to work against their will, which I believe will destroy national unity and start us down Serfdom's dismal road," Timmons said. Timmons says "the first plank in my platform is to talk frankly with my lifelong neighbors of this great Panhandle country, and make no promises impossible of fulfillment." The young veteran of World War II said he is opposed to a veteran's bonus "strictly as a gratuity, but I believe in a thorough and comprehensive sy-

stem of assistance to veterans in establishing themselves in a home, in business and in education. "Our nation owes a debt of gratitude to the veterans and their families," Timmons said. "And particularly do I think it is the responsibility of the government to care for both the disabled veterans and their families." In releasing his twelve-point program, Timmons outlined stands on many controversial issues. Advocating economy in all branches of government, he said he believes "in the American tradition of the civil militia as the basis of the armed might of our nation, and I advocate an adequate unified permanent defense force to protect our nation from another insidious attack such as Pearl Harbor."

will destroy the patient-doctor relationship, or which would give any organized group monopoly control." Timmons advocated full parity farm prices to give "protection to the family farmer and rancher." He said they must be "guaranteed cost of production plus a reasonable profit because the agricultural economy is in a more competitive market than the tariff-protected industry which can hold production in line with demand." "I believe in the REA," Timmons said, "and in the last session of the Legislature, I led the fight to permit our farmers and ranchers to organize rural telephone co-operatives." "I will always fight for adequate public education," Timmons said, "and I believe in the retention of Texas' remaining school-owned tidelands."

BRAND NEW FOR EASTER...

- FRESH EGGS Per Dozen 25¢
- TENDERIZED HAMS HALF OR WHOLE Per Pound 45¢
- SLICED RINDLESS BACON Per Pound 37¢
- EGG DYE 3 PACKAGES 25¢
- WATER-MAID RICE 2 Pound Package 23¢

WATCH OUR WINDOW FOR REAL VALUES SAVE AT PUCKETT'S

OCEAN SPRAY—Delicious with chicken	Lb. Can	15¢
CRANBERRY SAUCE		
PET MILK	Tall Can	10¢
GOLDEN, DEVILS FOOD OR WHITE	Each	39¢
CINCH CAKE MIX		
HERSHEY'S CHOCOLATE SYRUP	Pound Can	15¢
K C BAKING POWDER	Pound Can	19¢
SOFTASILK CAKE FLOUR	2 3/4-lb. Box	39¢
BETTY CROCKER APPLE PYE QUICK	Box	39¢
BAKER'S OR HERSHEY'S COCOA	Pound Can—Each	39¢

WHILE THEY LAST! ENAMELED DISHPAN And all these famous Procter & Gamble Products

all for only \$1.49

A \$200 VALUE

SUNSWEEET PRUNES	Pound	23¢	2-Pounds	42¢
NATIONS TASTE PURE ORANGE JUICE			46-ounce Can	35¢
NILE VALLEY NEW WHOLE POTATOES			2 No. 2 Cans	25¢
DEL MONTE CREAM STYLE CORN			Can	16¢
DRY SALT BACON			Pound	17¢

GOLDEN WEST SOUR OR DILL PICKLES		25¢
DEL MONTE WHOLE GREEN BEANS		29¢
PURE RIBBON CANE SYRUP	Gallon	59¢

MEADOLAKE OLEO	Colored	22¢	Colored	33¢
OLMOIVE SOAP BATH SIZE	Each	10¢		
DRY SOAP PERSONAL SIZE	Each	5¢		
PIC & SPAN	16-oz. Box	22¢	54 oz. Box	71¢
CLOROX	Quart Bottle	15¢	Half Gallon	27¢

DEL MONTE PEACHES No. 2 1/2 Can 25¢

FRENCH'S BLACK PEPPER 4-ounce Box 49¢

SUNSHINE KRISPY CRACKERS	1 Pound Box	25¢
SARDINES	3 Flat Cans	25¢
SPAGHETTI & MEAT BALLS	Ellis 15 1/2-oz. Can	18¢
MACKERAL	EATWELL 2 Tall Cans	35¢
ARMOUR'S TREET	12-ounce Can	39¢
ARMOUR'S VIENNA SAUSAGE	2 Cans	35¢

MERIT EGG MASH PELLETS, 100 Pound Bag \$4.39

PUCKETT'S FOOD MARKET SPECIALS FOR FRIDAY AND SATURDAY, APRIL 7 & 8

MERIT ALL-MASH CHICK STARTER, 100 Pound Print Bag \$4.65

"I believe," he said, "that eternal vigilance is the price of peace, just as Jefferson said it is the price of liberty." Timmons attacked the "veto obstruction" in the United Nations, while indorsing that body's work. "I favor the Atlantic pact," he said, "and I believe in economic aid—when necessary—military aid to genuine democracies resisting the aggression of Communism and other similar Godless reigns of terror." "I believe that the American dollars spent in Europe and other continents should be used only in those nations striving toward a genuine democracy," he said, "and no assistance should be given to nations which permit Communism to infiltrate into the national scene." As a member of the Texas Legislature, Timmons supported the Isaacks Anti-Lynching Law, repeal of what he calls the "poll tax price tag on the right to vote," and equalization of educational opportunities in the segregated public schools and colleges. "These subjects are properly considered as within the powers which are reserved in the Constitution to the several states," Timmons said. "I am opposed to FEPC because it is another unnecessary bureau which would serve no useful purpose." "As a small businessman," Timmons said, "I am opposed to the socialization of any business or profession whose functions can be better performed by our traditional American system of free, competitive enterprise. Specifically, I am opposed to socialized medicine or any program which

Children's

Wellco **Foamtreads** For THE WALK THAT RELAXES

Children love the barefoot comfort and smart styling of "Foamtreads." And their exclusive bubble-soles are so good for growing feet. We have a large selection, in all wanted colors, all washable and long-wearing. Choose now for your very young lady and gentleman!

\$2.98 pr.

Exciting new silhouette adds height and grace to Foamtreads' "walking on air" comfort. The famous exclusive "bubble sole" goes dressy with higher heel. Bright, washable Indian Head and soft suede.

\$2.98

ONE GROUP **MEN'S SPORT SHIRTS**

Values to \$5.95 **HALF PRICE**

RUSS DRY GOODS & VARIETY Wheeler, Texas

Mobeetie Hi-Life

STAFF

Editor ----- Betty Lancaster
 Ass't. Editor ----- Patsy McCauley
 Sports Editors ----- Peggy Williams
 and Dale Haynes
 Senior Reporter ----- Jay Willis
 Junior Reporter, Madge Patterson
 Sophomore Reporters ----- Pete Seitz
 and Jim Bob Wright
 Freshman Reporter, Vendell Wallis

SENIORS DONATE LIVING ROOM SUITE TO SCHOOL
 Recently the senior class mother, Mrs. Tince Williams, and Mrs. Guy Ward selected a living room suite to be used in the senior play. This suite was bought by the class and presented to the school as their donation to Mobeetie High School.

SENIORS PRESENTED PLAY
 The senior play, "Look Me In The Eye" was presented Friday evening, March 31, 1950, to a large audience. The approximate receipts from the play totaled \$170.
 The seniors wish to express their appreciation to everyone who had any part in helping to put on their play. They especially appreciate the music furnished by Maurea Godwin at the piano before the play started, and by the grade school chorus between acts of the play.

SENIOR NEWS
 Favorite slang words said by seniors:

Donald ----- Great zounds
 Peggy ----- Great Heavens
 Dale ----- Sweet Socrates
 Patsy ----- Gee Whiz
 Jack ----- By Ginger
 Betty ----- Oh Sappy
 Hayward ----- By Hectoree
 Leeida ----- Sweet Gravy
 Horace ----- Yes Lawd
 Edith ----- Dear John
 Jay ----- Oh, Golly
 Kathryn ----- Jimminiee

JUNIOR NEWS

We have decided that as it is spring now everything is a reminder of it even the juniors:

April Showers ----- Oudia
 Peach ----- Evelyn
 Onion ----- Edwin
 Sand Storm ----- Harold
 Cyclone ----- Ann Nell
 Rose ----- Bernice
 Loafing (spring fever) ----- Joe
 Canary ----- Madge
 Whirl Wind ----- Patsy
 April Fool ----- Bobby
 Love Bird ----- Mary

Here are some of the movies that the juniors would want to see produced:

Oudia and Bernice, "The Elements of Smooching".
 Ann Nell ----- "Old Maid's Paradise".
 Evelyn ----- "Go North, Young Lady, Go North to Bob's House".
 Madge ----- "How To Play 42".
 Edwin and Bobby ----- "The Joy of Thrilling Girls".
 Mary and Patsy ----- "The Whys and Wherefors of Love".
 Joe and Harold ----- "The Beauty of Loafing".

CHECKERBOARD CHUCKLES • From Your Purina Dealer



for MORE MILK, MORE MONEY. Raise Your Calf Without A Cost.
 When you raise your calves on Cal Startena instead of milk you have more milk to sell. That's because each 100 lbs. of Cal Startena places 40 gallons of milk. And Startena helps calves become big, sturdy dairy-quality heifers.

WHEELER COUNTY PRODUCE ASSOCIATION
 YOUR LOCAL CO-OP
 Phone 142 - Wheeler - P. O. Box 92

FARM FACTS WORTH KNOWING

DO YOU KNOW THESE TERMS?
 For any who are not familiar with the terms used by breeders and hatcherymen in advertising their stock, the following explanation of these terms will be of value.

SEXED CHICKS are chicks that have been separated at hatching time into two groups, males and females, by an examination of the sex organs.
ASSORTED CHICKS are a mixture of heavy and light chicks of all breeds.
STRAIGHT RUN CHICKS represent chicks of either light or heavy breeds and sold as they are hatched without sex separation.
HYBRID CHICKS are the first generation poultry produced by the combination of breeds, varieties, or unrelated inbred lines.
STARTED CHICKS OR STARTED PULLETS are pullet chicks that have been brooded at the hatchery past the danger point and may be continued upon their arrival at the farm. Ages at which these are sold are 2 weeks, 3 weeks, 4 weeks and as long as 6-8 weeks. The latter are known as **RANGE SIZE PULLETS**.

QUESTION: I plan to sell some of my chickens as broilers. What age or weight should they be to come under this classification?
ANSWER: The U. S. Department of Agriculture has given standards for both dressed and live poultry, although the poultry trade does not adhere to these very rigidly. U. S. D. A. standards for broilers are:
 Dressed: Young chickens, approximately eight to twelve weeks old, of either sex, of marketable age, but not weighing over 2 1/2 lbs., and sufficiently soft meat to be cooked tender by broiling.
 Live: Young, soft-meated chickens of either sex with tender skin, smooth bright shanks, and flexible breast-bones. (No age or weights are indicated.)

QUESTION: I plan to sell some of my chickens as broilers. What age or weight should they be to come under this classification?
ANSWER: The U. S. Department of Agriculture has given standards for both dressed and live poultry, although the poultry trade does not adhere to these very rigidly. U. S. D. A. standards for broilers are:
 Dressed: Young chickens, approximately eight to twelve weeks old, of either sex, of marketable age, but not weighing over 2 1/2 lbs., and sufficiently soft meat to be cooked tender by broiling.
 Live: Young, soft-meated chickens of either sex with tender skin, smooth bright shanks, and flexible breast-bones. (No age or weights are indicated.)

QUESTION: I plan to sell some of my chickens as broilers. What age or weight should they be to come under this classification?
ANSWER: The U. S. Department of Agriculture has given standards for both dressed and live poultry, although the poultry trade does not adhere to these very rigidly. U. S. D. A. standards for broilers are:
 Dressed: Young chickens, approximately eight to twelve weeks old, of either sex, of marketable age, but not weighing over 2 1/2 lbs., and sufficiently soft meat to be cooked tender by broiling.
 Live: Young, soft-meated chickens of either sex with tender skin, smooth bright shanks, and flexible breast-bones. (No age or weights are indicated.)

QUESTION: I plan to sell some of my chickens as broilers. What age or weight should they be to come under this classification?
ANSWER: The U. S. Department of Agriculture has given standards for both dressed and live poultry, although the poultry trade does not adhere to these very rigidly. U. S. D. A. standards for broilers are:
 Dressed: Young chickens, approximately eight to twelve weeks old, of either sex, of marketable age, but not weighing over 2 1/2 lbs., and sufficiently soft meat to be cooked tender by broiling.
 Live: Young, soft-meated chickens of either sex with tender skin, smooth bright shanks, and flexible breast-bones. (No age or weights are indicated.)

SOPHOMORE NEWS "OVERHEARD"
 The sophomore girls all lost their books Wednesday and Thursday.

Barbara has a date with a certain boy Friday night.
 Ines got a telephone call Thursday.
 Mearlene has a new boyfriend.
 Patricia has got a small pox vaccination.
 Joe carries the keys to the new Oldsmobile.
 Billy L. is always doing what he shouldn't.
 Frances still likes Jesse.
 Jimmy still likes Reba.

QUESTIONS AND ANSWERS ABOUT SOPHOMORES
 Q. Who does Mearlene like?
 A. Nobody in particular.
 Q. What makes Jimmy so loud mouthed?
 A. To show-off mostly.
 Q. Where does Patricia go every Tuesday night?
 A. To the square dance.
 Q. Is Ines going to the banquet or help serve?
 A. To serve.
 Q. What poem is Patricia trying to learn?
 A. Dear March.
 Q. Who reads all of Barbara's books?
 A. I don't know but not Barbara N.

Q. What happened to Paul's flying saucers?
 A. Nobody knows.
 Q. Why is Frances going nutty?
 A. Because Barbara, Patricia, Ines, and Mearlene are so silly.
 Q. Who is the loudest sophomore?
 A. Jimmy and Barbara are tied for first place.
 Q. Who is the sweetest, quietest, nicest?

A. Evidently there isn't one.
 Q. Whom does Patricia like?
 A. Billy Earl C. of Canadian.
 Q. What is Nep always doing?
 A. Teasing.
 Q. What was that Mearlene saw crawling around in Barbara's hair?
 A. Baker's Best.
FRESHMAN NEWS
 Martha, who is your new boyfriend? How about that C. S.?
 Lavada, we are glad to hear you like Briscoe again.
 Alne, we don't believe your arm is that sore.
 Sandra, where did you get that beautiful pin with Sweetheart written on it?
 Joyce, is Leon really coming to see you next month?
 What were Daris, Waylan, and Bill talking about in math class Monday morning?
 Carl, why have you been in a good humor the last few days?
 Daris, who is your new Mobeetie girl friend?
 Freshman girls, are you really afraid of wasps?
IT'S A COINCIDENCE THAT--
 Lavada and Waylan go to their locker at the same time.
 Vendell and Dan said the same poem Monday.
 Martha got another Wheeler boyfriend.
 Alne got a small pox shot the same day she had a date with a boy from Miami.
 Daris and Joyce always go into the English room at the same time.

Handling And Serving Food Very Important Says Dr. G. W. Cox

The Texas State Department of Health's program of teaching food handlers sanitary methods of preparing and serving food continues to be very popular, according to Dr. Geo. W. Cox, State Health Officer. It is one method of attack on that great group of respiratory diseases which include influenza, scarlet fever, measles, whooping cough and the common cold, the viruses of which are spread from person to person by the excretions of the nose and mouth.

Restaurant sanitation programs have become more necessary because of changes which have taken place in our national eating habits. Once upon a time it was customary for most people in Texas and in the U. S. A. to eat three meals a day at their own table. "To eat out" was an unusual event. Now, all the family, including the baby, eat out.

In this constant mingling of people to eat and drink, there exists a vast and complex arrangement perfectly suited for exchange of saliva via glasses, spoons, forks and knives that go in and out of mouths. There are few days in any community where these vectors of respiratory other diseases are not busy.

The prime purpose of restaurant sanitation is to have all plates and utensils sterilized and have all those who handle serve food understand and practice restaurant sanitation day and all the time.

The public in every community needs to be concerned about cleanliness of its public places. You can help by practicing cleanliness in the place you eat.

PATTERSON-CASWELL SERVICE STATION

A. J. SKULLEY GARAGE
 Invite you to stop by for Shamrock Oil and Gas and other popular brands of oil.
 —Complete Mechanical Service—
 Located on Highway 83—Wheeler, Texas

Let Us Handle Your Real Estate Loans

If you want to refinance or buy FARM, RANCH or CITY PROPERTY

See us for low-rate carrying charges

We represent some of the largest mortgage buyers in the country.

W. H. (BILL) WALKER

112 W. 2nd. Street Shamrock, Texas

THE RIGHT WAY TO PAINT YOUR HOUSE

WITH JUST TWO COATS...



BPS FIRST COATER...

Made to do a better job of hiding the old, dirty surface. Dries with a subdued gloss finish. Covers more surface in less time, and brushes on without the usual "pull."

BPS HOUSE PAINT...

The tough, elastic film gives longer-lasting protection against wear and weather. The smooth glossy finish stays clean and looks fresh and attractive for many years.



BEST PAINT SOLD TO GET THE BEST



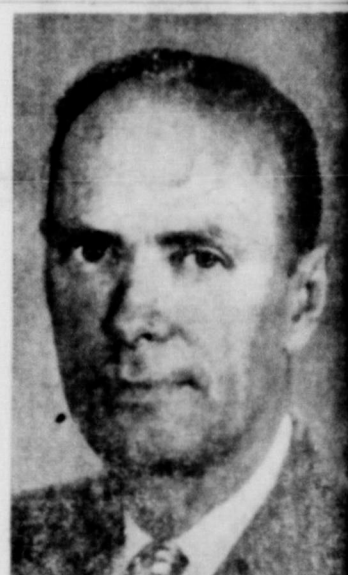
LONGER LASTING BEAUTY

BUY BPS PAINT

Cicero Smith Lumber Co.

Wheeler, Texas

Attention Mr. and Mrs. VOTER Here's the man you've been waiting for! Walter Rogers for Congress



Typical self-made, successful citizen.
 Born in Texarkana, Ark., July 19, 1908—41 years old.
 Attended elementary schools McKinney, Texas.
 Worked on farm while attending Austin College, Sherman.
 Worked way through University of Texas law school, employed in state comptroller's office.
 Graduated with high honors, now licensed to practice before United States Supreme court and all courts of our state.
 Moved to Pampa in 1935, began practice of law. Opened own law office 1937, which he has maintained since, except for 4 years when he served as District attorney.
 Made outstanding record as district attorney, refers voters to any member of grand jury or law enforcement officer in district he served. Has built large practice among his neighbors, friends and acquaintances. Represented many clients before highest courts of land, Railroad, Banking and other state commissions.
 Member Gray County and State Bar Associations.
 Served as first War Bond chairman Gray County.
 Married Jean Daly of Pampa in November, 1936.
 They have family of 6 children, ranging in age from 18 months to 11 years.
 Two sons and daughter are Scouts.
 Former member of Jaycees.
 Past president Pampa Rotary club.
 Active in all civic and community affairs.
 Life-long member Protestant Episcopal Church.

HE BELIEVES

Walter Rogers believes future of our country depends upon the homes and small communities. Believes in home rule and home responsibility. Believes encroachments have been made upon individual rights which must be checked or rights will be lost to the people.
 Believes a balanced economy must depend upon private competitive enterprise, free of Government control except for adjustment of wrongs brought about by bad faith. Believes capital and labor should settle own disputes with government only in role as arbiter.
 Believes economy of this region based primarily on agriculture, believes farmers of this section capable, sound-thinking Americans; favors stabilized farm economy but believes many features of farm program should be at option of the farmer and not at the whim or caprice of Bureaucrats. Problem can not be solved overnight, but is being solved and that farmer's suggestions and advice should be followed and used. Pledges full assistance to Canadian Dam and all other water conservation projects in district; sees such projects as sound investment and essential to economy of district and also vital to national defense.
 Believes federal aid to education is double taxation; believes if government will attend to own affairs, leave our tidelands alone and conduct itself in accordance with Constitution, Texas won't have to worry about federal aid to our schools.
 Believes Civil Rights is a mis-nomer, is purely political and will not aid any of the peoples involved; if Constitution is followed there is no necessity for a Civil Rights program by Congress. Constitution provides that program fairly and honestly.
 Believes the old people are not getting their just dues, too much of

the money set aside for them going into overhead costs, that they are entitled to more courtesy in their claims and requests.
 Believes in soundness of depletion allowance for oil and gas business.
 Believes that soft treatment of traitors should cease.
 Believes in drastic reductions in government costs, abolition of overlapping bureaus, cleaning out of overstuffed departments, streamlining red tape, demands full and fair day's work on part of every government employee, and courtesy to the taxpayers as they go along.
 Believes in proper preparedness and defense of this country first; the cutting where it will not weaken the strength of the nation.
 Believes income taxes too high, that proper economy can bring about reductions.
 Believes rights of Veterans to purchase land under Veterans bill should be immediately stream-lined, completely freed of red tape and all political favoritism should be abolished.
 Summed up, Walter Rogers believes in our American way of life, for efficiency and economy in government, and pledges the people of this district to work for these ideals.
 He is widely-known and respected as an able and courageous lawyer and a conscientious and patriotic citizen.
 He offers to the people of the district experience and training.
 He is successful in his own profession.



Walter Rogers has as much at stake in the future of this country as any of the rest of us. Here is the Rogers family. Standing, left to right, are John, Walter and Tommy. Seated, left to right, are Mary Catherine, Mrs. Jean Rogers, Robert and Susan. "We're one family with never a dull moment," he tells friends.

■ MATURE ■ RESPONSIBLE ■ CAPABLE ■

Political advertisement

COUNTY TO ROGERS BIG OFF IN RACE

Pampa and Gray co- getting set this week to their fellow townsman an 'all in his race for congress. The Pampa candidate as the best qualified entrant in the race. In groups of 4 to the car, the Pampa workers plan to visit every town and community in the district and pass out literature, dis-

tribute placards and tell the voters of the other counties about the Gray county candidate. Mr. Rogers, who enjoys a large law practice, has arranged his affairs so that he can devote all of his time to the campaign. He plans a whirl-wind trip over the district and will speak in all towns.

Stressing stability for agriculture, economy in government and the need for curtailing federal encroachment in local affairs, Mr. Rogers plans to outline his views to the voters of the area. He is opposed to federal aid to education saying if Texas retains its tide-

POLITICAL ANNOUNCEMENTS

Subject to the action of the voters in the democratic primary July 22, 1950.

For Congressman 18th Congressional District:
LeROY LeMASTER
Of Ochiltree County

For District Judge:
H. B. HILL
LEWIS M. GOODRICH

For District Clerk:
HAROLD D. CALLAN
COENE CARTER SMITH

For Tax Assessor-Collector:
THURMAN RIVES
T. L. GUNTER

For County Attorney:
HOMER L. MOSS

For County Clerk:
WENDELL MEEK
HARRY WOFFORD

For County Sheriff:
JESS SWINK

For County Superintendent:
JESSE J. DYER

For Commissioner, Precinct No. 1:
CLIFFORD WALSER
W. F. McNEILL
T. A. (Bud) TREADWELL
FRANK McDONALD
W. L. (Shorty) ERWIN
W. E. GAINES

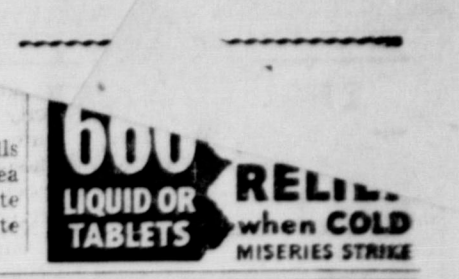
For Commissioner Precinct No. 2:
W. E. MASON

For County Treasurer:
PALMER SIVAGE

For County Judge:
G. W. HEFLEY

The most malnutrition problem adults in the United States is weight.

Treating the small cut ant hills that are scattered over a wide area will do little or no good. Locate the main colony and concentrate on it.



CONRATULATIONS
TO
NORA'S CAFE
ON THE NEW ADDITION
WHEELER COUNTY PRODUCE ASSOCIATION
PHONE 142 WHEELER, TEXAS

OUR VERY BEST WISHES
ON THE OCCASION
OF THE OPENING OF YOUR
New Dining Room
SAM AND NORA WATSON
We think it is a nice improvement to the City of Wheeler.
THE WHEELER GAS CO.

Congratulations,
Nora's Cafe
On the occasion of the opening of your new
Dining Room
Mead's Bakery
Bakers of Mead's Fine Bread

The area of the state of Texas is 265,893 miles. Its fine climate and rich natural resources drew many people to it in early history. While it was a part of Mexico more Americans than Mexicans lived within its borders.

The week of April 30 to May 6 has been designated as National Home Demonstration Week.




Presenting...
Our Second Act
Just one year ago we opened a completely new eating establishment in Wheeler, and we are celebrating our First Anniversary by Announcing The...
Formal Opening
Of Our New
Dining & Party Room
Easter Sun., April 9

We are preparing a special menu for this Sunday's Dinner and we invite you to bring your family and friends out for a delicious meal in pleasant surroundings. There will be plenty of room for all.



MANY THANKS FOR PAST FAVORS AND PATRONAGE
We would like to take this opportunity to thank the good people of this vicinity for the fine patronage we have enjoyed during the first year of our existence, and invite you to keep coming back to see us often. We shall always do our very best to serve you the highest quality foods available at the most reasonable prices possible.

Nora's Cafe
WHEELER
WEST ON HWAY 142
Dining Room Available For Private Parties
Dining Room Available For Special Meetings


The Wheeler Kiwanis Club
Extends
Congratulations
to
Sam & Nora Watson
On the Occasion of the Opening of their
New Dining Room

LOCAL NEWS ITEMS

Captain and Mrs. Billy J. McCarroll left Sunday for Dayton, Ohio to make their home. Visitors in the home of Mrs. Arnie Barker and Florence Dodd Sunday were Mr. and Mrs. Jess Barker and girls of Canyon, Mr. and Mrs. Gaddy Vise, Mr. and Mrs. John C. Vise, Mr. and Mrs. Lashy Vise and girls, Mr. and Mrs. Clyde Barker and Karen, Mr. and Mrs. Jack Meek and family and Mr. and Mrs. Grady Dodd and family. John McCarroll of Mobeetie is visiting in the home of his son, Fred J. McCarroll, at Midland, South Dakota. Mr. and Mrs. Rowe Green returned home Saturday after a trip to points in California and Nevada. Miss Thelma Brewster returned home Friday night from Ft. Ord where she has been visiting in the home of her sister, Mrs. Charles Hollins and family the past two months. She was accompanied home by Mrs. Hollins and two children who are visiting in the home of her mother, Mrs. E. L. Brewster. Mr. and Mrs. H. M. Wiley returned home Saturday night from a two weeks trip during which time they visited many towns in East Texas and attended the Dogwood Festival held at Palestine. They also visited in the home of their son, Paul, in Ft. Worth and their daughters, Mrs. Hutchins and Mrs. Montgomery in Sweetwater. Mr. and Mrs. L. B. Pendleton, Mrs. Jennie Pendleton and Mrs. J. Carter visited relatives in Amarillo Sunday. Mrs. Ann Pitcock and Mrs. J. D. Swan visited in Pampa Tuesday afternoon.

Mr. and Mrs. Lester Robertson and son moved into their newly constructed home on South Main this week.

Mr. and Mrs. Marvin Pierce have completed their new home on Highway 152 just west of the city limits of Wheeler and moved into it this week. Their former home on South Main is being occupied by Mr. and Mrs. Floyd Starks.

Mrs. Roy Bailey and Mrs. Percy Farmer were visitors in Pampa Monday.

HOSPITAL NEWS

DISMISSED

Berdella Genthe, Wednesday Mrs. Ray Davis, Monday Mr. and Mrs. C. O. Sandifer, Sunday

ENTERED

Mrs. J. D. Langwell, Wednesday Brooks McLaughlin, Thursday Ladine Carrick, Sunday Mrs. B. S. McFarlin, Saturday Children of Mr. and Mrs. Geo. Jackson, Saturday.

GIRL SCOUT NEWS

The Wheeler Girl Scouts met Tuesday afternoon and elected new officers for the next six weeks. The officers are, president, Janet Russ, vice-president, Wanda Topper, secretary and treasurer, Billie Owen, reporter, Pearl Johnson, and song leader, Patsy Burgess.

Following the election of officers the troop practiced for the Investiture Service for Kay Hubbard, Jere Ann Pitcock and Jauna Johnson. The service will be held Thursday night, April 6, at 7:30 in the new club room in the Community Building.

Mr. and Mrs. Albert Thomas and family returned home the last of last week after having visited with relatives in Houston.

Society

Mrs. Moss Hostess To Wheeler H. Demo Club

The Wheeler Home Demonstration Club met in the home of Mrs. Homer Moss Wednesday afternoon, April 5.

Roll call was answered by each naming a piece of cleaning equipment that they needed. Mrs. Emma Hastings gave a demonstration on "Care and Storage of Cleaning Equipment" and showed a film on the kitchen.

Those present were: Mesdames J. P. Clark, L. A. Parks, Emma Hastings, Bill Rushing, Bentley Lynch, Barney Teague, H. J. McCormick, Spud Moore, all members; Mesdames Morrow, Henderson Coffman and Al Thomas, visitors.

The next meeting of the club will be with Mrs. Bill Owen, April 19.

Mt. Zion Quilting Club Holds Meeting

Mrs. J. T. Baird and Mrs. Earl Williams were hostesses to the Mt. Zion Quilting Club Friday, March 31.

During the all day meeting two quilts were completed and lunch was served during the noon hour buffet style.

Those present were: Mesdames R. C. Carter, J. P. Maulsby, L. C. Underwood, K. S. Corse, F. R. Hoffer, Jack Johnson, Perman Martin, Henry Shelton, George Wall, Tom Grammer and the hostesses, Earl Williams and J. T. Baird.

Finsterwald Home Is Scene Of Club Meet

The Good Neighbors Club met in the home of Mrs. Bill Finsterwald, Tuesday, March 28.

The meeting was called to order by the vice-president, Essie Finsterwald, and roll call was answered with, "The Housekeeping Job I Dislike Most."

Mrs. Louise Pendleton and Mrs. Melba Robertson gave a very interesting demonstration on work simplification. The main points being stressed on time saving and easier ways of doing ones work. Each member took a job to simplify during the next month.

The textile painting demonstration given by Mrs. Troy Miller was most interesting and enjoyed by all.

Dainty refreshments were served to Mesdames Ewing Barnett, Billy J. McCarroll, Troy Miller and John C. Vise, guests. Members, Mesdames Essie Finsterwald, Maurine Barnett, Mattie McCarroll, Mary M. Dodd, Helen Dyson, Katie Finsterwald, Melba Robertson, Louise Pendleton, Bernice Ramsey, Helen Mixon, Audie Sivage and the hostess, Mrs. Bill

Finsterwald. The next meeting will be in the home of Mrs. Louise Pendleton on April 11.

Miss Brown To Have Part In TCU Play

Miss Billie Brown, Wheeler freshman at Texas Christian University, has been chosen to play a supporting part in the T. C. U. Little Theatre's production of Shakespeare's "Taming of the Shrew."

"Taming of the Shrew" is a play-within-a-play, with a plot built around a group of players presenting the play. The production is scheduled to open April 24 for a two-week run.

2nd Immunization

(Continued from Page 1) booster typhoid inoculations.

All school boards in the county have adopted resolutions making it mandatory for students to be inoculated before entering school.

The state-county program will mean a saving of several thousand dollars to parents of the county.

In connection with another health program, Mr. Ritter announced that the TB X-Ray survey in Wheeler County will be held the week of September 11 this year.

Rep. Timmons

(Continued from Page 7) ports which will not retard the reclamation program of the West or proper aid to our disabled and sick veterans.

"I hope we can retire the war debt as rapidly as possible with the savings which can be effected through increased efficiency."

Timmons said that he will visit over the district "as often as humanly possible" and "I want to discuss every issue with the people frankly."

Worley Takes

(Continued from Page 1) formerly were Texas congressmen. Senator Anderson (D-NM), Texas Attorney General Price Daniel and two of his assistants, Dow Herd of Waco and Joe R. Greenhill of Houston.

Judge Worley issued the following statement to the people of the 18th Congressional district this week:

TO THE PEOPLE OF THE 18TH CONGRESSIONAL DISTRICT

I wish I could write each and every one of you an individual letter but since that is impossible, I am taking this means, through the kindness of the editor of your paper, to extend to you my thanks for your excellent cooperation and for the most generous support you have accorded me in the past.

For nearly ten years I have been honored by election as your Representative to the United States Congress. No one could be prouder of that honor than I am

now and have always been. You have been more than generous to me through the years and I have done my dead-level best to make you a good Congressman. I hope I have succeeded.

You have no idea how really proud I am of the people in my District. I would not trade my District for any in the United States. As I turn to new fields of endeavor, I will carry with me the recollections of my always pleasant associations with you. I wish each and every one of you the very best of everything for all the years to come.

Sincerely,
GENE WORLEY

TOO LATE TO CLASSIFY

FOR RENT—Small house for couple or one. Dr. V. N. Hall, 17-1p

LOST—Black leather billfold containing cash and valuable papers. Reward. Joe Amerson, 17-1p.

First Northern Star cotton seed, gin run, for sale. See Adrian Risner, Wheeler. 17-3tp.

CARD OF THANKS

We wish to thank the good people who were kind and helpful during the sickness and death of our mother, Mrs. W. J. Jeffus. Words cannot express our thanks for each helpful act and each word of sympathy, and comfort. And we wish especially to thank those for the beautiful floral offerings. May God bless each and everyone of you.

Geo. P. Jeffus and family Mrs. R. J. Tyson and family J. A. Jeffus and family Mrs. Doyle Jeffus Mrs. Tyson Jeffus and family Paul Jeffus and family

Edd Watson left Tuesday afternoon for a few days visit in Vernon and Seymour.

INVEST YOUR PRINTING MONEY IN WHE...



We have a nice selection of... Hallmark Easter Greeting Cards Pangburn's Chocolates New Solid Colognes in Bellemead Trifling and Carrasent Fragrances EASTER FLOWERS We can take your orders for Easter Lillies, corsages or other flowers. WE GIVE S & H GREEN STAMPS WHEELER DRUG STORE "A Friendly Place To Trade" PHONE 11

CHURCH OF THE NAZARENE

ANNOUNCES

SIX-DAY REVIVAL MEETING

APRIL 11 THROUGH APRIL 16

REV. C. A. HIGGINS

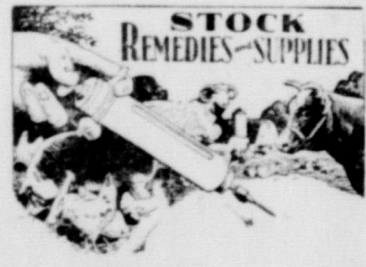
Of Las Cruces, N. M.

EVANGELIST

Services Each Evening At 7:45

Good Singing

Everyone Cordially Invited



DON'T TAKE CHANCES WITH YOUR

LIVESTOCK

PROTECT THEM WITH

FRANKLIN'S

DEPENDABLE VACCINES & BACTERINS

Give your cattle serums and vaccines to guard against...

- Black-leg Malignant Edems Hemorrhagic Septicems Ear Ticks

CITY DRUG STORE



MEN'S NEW SPRING MARX-MADE

Suits

Wrinkle-proof Tan, Blue and Brown ONLY

\$29.95



Spring Slacks For Men

Many new patterns. These Slacks are made of nylon and other crease-resistant materials.

NEW SHIPMENT OF—

Men's Dress Oxfords

McILHANY'S

"For Everything You Wear" Wheeler, Texas



E. T. BURK for CONGRESS

The date of the special congressional election. It is important that YOU select a man who will represent YOU. And the way to be certain is to vote for and vote for E. T. BURK because...

- He is an ordinary citizen like you, a churchman, family man, community man. He has been in business in Amarillo more than 20 years, taking the ups and downs of competitive enterprise, serving customers from all walks of life. He has paid taxes to keep up schools, towns, counties, state. E. T. BURK believes in fairness, honesty, common sense. He is paying his own campaign expenses and is not tied by any individual or group. Big campaign contributions tie the hands of any person. E. T. BURK will not permit his hands to be tied by those who would try to take your rights. He doesn't seek a pay-check nor a political career. E. T. BURK believes in a sound farm program, in fair labor laws, and he opposes spite legislation. He believes strongly in fair, considerate treatment of our senior citizens. E. T. BURK is a common sense, ordinary citizen like you. E. T. BURK is the leading candidate in the congressional race. HE CAN WIN! The way TO BE SURE, TO BE SAFE, TO HAVE REAL REPRESENTATION is to

Back Burk For Congress

YOU Have An Important Decision To Make

MAY 6, 1950 IS AN IMPORTANT DATE!