

# The Wheeler Times

Serving  
WHEELER  
and  
MOBEETIE

VOLUME XVI—NUMBER 42

WHEELER, TEXAS, THURSDAY, SEPTEMBER 29, 1949

5c Per Copy

THE COUNTY SEAT NEWSPAPER

### Legion Happenings

James M. Bryant

Project sponsored jointly by American Legion and the school class. 19 tractors were used to plow Prude Trout's field to recover from an illness. The Legion Auxiliary served dinner to the crew.

Mobeetie Lions Club held regular meeting Tuesday. School faculty was present. All were present except fifteen Lions and their 17 other visitors were present.

Legion school problems were discussed by Mrs. Elsie Scribner, John Brown and C. R. Brown. Legion Auxiliary served dinner.

Rev. Bryson attended the West State-Murray football game in Canyon Saturday after attending a family reunion in Vega. He was visited at Sunday by his brother from Gruver.

Rev. Bryson would like very much to receive all items of news from the Mobeetie area and would appreciate much if people in that area would call his home and let him know about the items or tell him about them when they meet on the radio. The Times would also appreciate your doing this because your names and news in your newspaper are of great interest to us.

### FARMERS TO AWARDS

More than three hundred Texas farmers who have mixed good practices and hard work in their Farmers Home Administration tenant purchase program that thirty years ago will be awarded certificates of achievement at ceremonies in the State Fair Park on October 12. County agent Truman J. Jones announced the week of the number of Farmers Home Administration tenants of Wheeler County who will receive these awards, the supervisor of the program, Elmer L. Bearden, Zerold Beene, B. Hardesty, Elmer L. Bearden, George W. Lamb, E. Reeves, William A. Good, Gordon W. Whitener, W. A. Schuler, and J. Irvin Hinkley are eligible to receive these awards.

Jones will be glad to assist growers in securing transportation to the State Fair Achievement Day on October 12 in Dallas. He will not only help families but other farm operations are financed through the Farmers Home Administration at Wheeler.

### Of Interest To Legionnaires

By Virgil Jamison

Being the last of the month and that things have slackened a bit but all in all the Legion had a good month during the month. Loads of people have enjoyed the dances and the socials this month.

Anderson Hall has not announced its plans and the entertainment committees plans but I bet they will have something up.

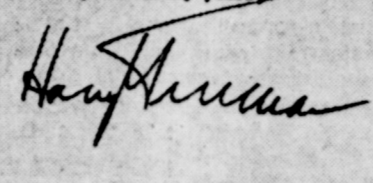
Some of the fellows are paying dues but we are going to get all of you fellows in the month of October (Continued on Last Page)

THE WHITE HOUSE  
WASHINGTON

Dear Mr. Palmer:

Again it is my pleasure to send my greetings and best wishes to the press of America on the occasion of National Newspaper Week. I like your slogan very much. Freedom does indeed go where the newspaper goes. All of us should be eternally grateful that we live in a country where freedom of the press is guaranteed as a fundamental right.

Very sincerely yours,



Mr. Howard W. Palmer,  
Chairman,  
National Newspaper Week,  
New York Press Association,  
Syracuse 10, New York.

Above is a reproduction of President Truman's letter to the Press of America on the occasion of National Newspaper Week, which is October 2 through 8.

## MUSTANGS WIN OVER CLAUDE

The Wheeler Mustangs played superb football during the first half of their contest with the Claude Mustangs last Friday night to roll up a 20 to 0 half-time score which was enough to tide them over the second half. Claude rallied and earned them a 20 to 12 victory in their first conference encounter of the season. The contest was played on Nicholson Field here.

J. T. Johnson, Wheeler full-back, gathered in C. Lambert's opening kick-off on his own 10-yard marker and raced 90 yards behind beautiful blocking to the first score of the contest. David Johnson, Wheeler quarterback, kicked the extra point.

Later in the first period the Wheeler lads recovered a Claude fumble on the Claude 21 from where they marched to their second score. J. T. Johnson made 9 and Maurice Pettit added 3 for a first down. David Johnson made 4 and Pettit made 2 but the play was called back and Wheeler was penalized 15 yards for illegal use of the hands, but J. T. Johnson made the 15 back on the next play placing the ball on the Claude 2 from where David Johnson carried over on the next play. David Johnson again kicked goal.

On the last play of the first quarter D. Jones kicked to J. T. Johnson who returned to the Wheeler 44. Melvin May failed to gain then J. T. Johnson picked up 16 for a first down. Pettit made 1 then David Johnson picked up enough for a first in two tries. A fumble lost the Mustangs 6 yards then Pettit passed to Edgar Hubbard for the remaining 36 yards to pay dirt. David Johnson's kick for extra point was blocked.

At the opening of the second half, J. T. Johnson kicked off to D. Jones who returned to the Claude 32 from where they started their march to their first touchdown. Welchel, Rutherford and (Continued on Last Page)

## COUNTY AGENT REPORTS ON FAIR

County agent W. K. Frey states that from the comments of visitors, the State Line Free Fair at Shamrock was a considerable improvement over last year's fair. "Comments of visitors usually are a pretty good yard stick," said the county agent, "to measure success of such affairs."

The community products booths were considerably improved this year, and the judges, Cotton Neely, Ewel Linder, and District Extension Agent Knox Parr, were especially impressed with the excellent quality of the field crops and fruits and vegetables exhibited.

In the hog division, the excellence and quality of animals exhibited was much better, according to many who saw the hog show, than hogs at several of the fairs. J. P. Smith manager of Pantex farm at Amarillo, said the hog division here was as good as he had judged anywhere.

Alfred Meeks, Hereford Breeder from Dalhart, judged the Boy's Beef Calf Division, and the Breeders' Division, and had somewhat of a rough time of it because of the excellence of cattle throughout the Beef Cattle Division.

Only in the Dairy Cattle Division was there a lack in quality of livestock exhibited. The quality of the cattle was especially good, but there was no dairymen exhibitors and there were not as many junior exhibitors in the Dairy Cattle Division as there might have been. T. L. Leach of Texas Technological College judged the Dairy Cattle.

## MAYOR HEADS FUND DRIVE FOR FOUNDATION

Hundreds of Texans are now busy in all parts of the state doing a great job for a great cause—that of raising money to provide more facilities for treating crippled children. The campaign for half a million dollars to increase the capacity and provide additional medical services at Texas Own Gonzales Warm Springs Foundation got under way this week and will continue through October 5.

Governor Allan Shivers, general chairman of the campaign, stressed the need for more funds in letters asking volunteer workers in all parts of the state to solicit funds for this Texas-wide treatment center.

Mayor R. H. Forrester of Wheeler has been appointed by Governor Allan Shivers as chairman of the drive for Wheeler County and has accepted. Mayor Forrester will receive contributions addressed to him at Wheeler and will turn them over to the state committee in charge of collecting funds for the Gonzales Warm Springs Foundation.

"Texas has one of the most modern and outstanding treatment centers in the world at Gonzales," the governor stressed, "but we need more of everything at our Texas Warm Springs center so that an increasing number of polio victims and other handicapped children can be given the benefit of the Foundation's hospital and treatment services."

Theatre audiences in Texas recently contributed \$170,000 toward the half million dollar goal. Organized solicitation will be carried out in nearly half the counties of Texas, but in other counties the crippled children's center will have to depend upon voluntary mailing of contributions direct to the Gonzales Warm Springs Foundation at Gonzales.

Even with the emergency addition of twenty beds early in July, the Foundation has been running to its capacity of 130 beds—and there is an increasing waiting list, especially from children who were stricken during this year's polio epidemic.

A training program for doctors, nurses, physical therapists and other technicians in specialized crippled children's work is also part of the expansion program. This will provide more specially trained people for the whole state.

More than sixty members of the Beatty family gathered Sunday at the Wheeler City Park for a delightful family reunion. Various members of the group had not seen several of the others for some time.

## CAPERTON TO HEAD DRIVE FOR USO FUNDS

The U.S.O. traditional "home away from home" of our men in the Armed Services, is being reactivated, and Wheeler County has been asked to raise \$840.00 to help support the program.

E. K. Caperton, who successfully conducted similar fund-raising campaigns during the war years, has been named chairman of Wheeler County's 1949 drive.

The drive will be conducted during the month of October, Caperton said. Co-chairman will be named at Wheeler and Mobeetie. The U.S.O. has been reactivated at the specific request of the President and Secretary of Defense. The reason for this is that we now have a large peace-time Army. There are 1,666,000 men in the Armed Services. Texas has 98,000 in service.

Caperton, who points out that the \$840.00 allotted Wheeler County this year, is only about 20 percent of the quotas during World War II, stated that details of the fund raising program would be announced next week.

"There is a definite need for reactivating the U.S.O.," Caperton said. "Of the 700,000 men who entered the services in 1948, more than 500,000 or 70 percent, were under 21 years of age. In the overall strength of the services, more than 50 percent of the men are under 21 years old, and more than 80 percent are under 25. In 1938, only 29 percent of the men in the services were under 21."

"Our youths need homes where ever they are, and we can help them by contributing to the U.S.O. fund," the chairman concluded.

## Civil Service Exam For Substitute Clerk To Be Given Here Soon

The Civil Service Commission announces examinations for filling vacancies in the Wheeler, Texas Post Office in the position of Substitute Clerk at the salary rate of \$1.29 per hour. To be eligible to take the examination applicants must actually reside within the delivery of the Wheeler, Texas Post Office or be bona fide parents thereof. Application forms and additional information may be obtained from the post office or from the Director, Fourteenth U. S. Civil Service Region, 210 South Harwood Street, Dallas 1, Texas.

## Methodists To Observe World Communion

The Wheeler Methodist Church will observe World Wide Communion Sunday, October 2. This is the Sunday when Christians around the world will gather around the Communion Table to observe the Lord's Supper. It is one of the great times to renew your loyalty to Our Lord and our Savior, in whose memory we observe the Lord's Supper. Rev. Darris Egger, pastor of the local church pointed out.

This Sunday will also open the Loyalty Month Crusade for the Wheeler Church. The entire month of October will be loyalty month. "We will unite in an effort to get every church member in the work and program of our church," Rev. Egger stated. The Sunday School, the Morning and Evening worship services on Sunday, the Youth Fellowship meetings, and the Bible Study, will all be emphasized. Each Sunday will be a special Sunday. The first Sunday will be World Wide Communion Sunday, the second Sunday will be Christian's Sunday; the third Sunday will be Sunday School Sunday; the fourth Sunday will be Family Day; and closing of the fifth Sunday will be Church Members Sunday. All Methodists are invited and urged to be present every Sunday in the month of October. If you are a Methodist be a loyal Methodist, the pastor urges.

## Mustangs To Play White Deer Bucks Here Friday Night

### Fans Complimented, Asked To Stay Behind Cables Again Friday

School officials and fans at last Friday night's football game between the Wheeler Mustangs and Claude Mustangs were pleased very much to note the way spectators stayed behind the cables and in the stands rather than following play up and down the field and obscuring yard-markers from people in the stands.

School officials ask that fans again stay behind the cables at this week's game and get in the habit of setting in the stands where they can see just as much or more than if they were chasing up and down the side-line and still allow the people in the stands a clear view of what is taking place on the field of play.

Members of the local American Legion post wish to make it clear to antagonistic fans that they did not take the patrolling job upon themselves, but instead, were asked by school officials to help keep people behind the cables and took the job simply as a public service to the school and community.

The Legionnaires would also appreciate it very much if, when they courteously ask someone to move behind the cable, fans would graciously cooperate with them rather than take a belligerent attitude.

## PONIES WIN OVER SHAMROCK TUES.

Supt. W. O. Carrick unveiled a rip-snorting little grade school football team Tuesday night which ran wild to trample a team from Shamrock by a count of 32 to 6 in their first contest of the season.

The Wheeler Ponies unveiled a hard running, swift striking passing attack and some sterling defensive play which held the Shamrock eleven to a single first down. Shamrock's lone first down came late in the contest and immediately before their score.

The offensive punch for the Ponies was supplied in the form of running principally by Rondel Richerson and Larry Jones and a fancy passing combination made up of Richerson on the pitching end and Glen Gaines on the receiving end.

Maxie Herd, right guard for the Ponies was the standout performer on the field defensively, breaking up play after play for the Irish before they got started. The entire Wheeler team played good defensive ball.

The starting line-up for the ponies included: Glen Gaines, re; Jerry Melton, rt; Maxie Herd, rg; Reginald Barr, c; Richard Lee Smith, lg; Glen Sanders, lt; Jerry Lewis, le; Larry Jones, fb; Jerry Barton, rh; Rondel Richerson, qb; and Wayne Jones, lh. Other members of the squad, all of whom saw action in the contest with the exception of Elmer Penny who just reported for workouts this week, included: Ray Denham, Lenard Gaines, Darrel Johnson, Wayne Martin, Donald Oglesby, J. E. Rogers, James Stone.

The grade school team's schedule for the remainder of the season includes:  
October 3, McLean at Wheeler at 2:15 p. m.  
October 6, Skelleytown at Skelleytown at 2:15 p. m.  
October 10, McLean at McLean at 2:15 p. m.  
October 13, Canadian at Canadian at 7:30 p. m.  
October 20, Spring Creek at Wheeler at 7:30 p. m.  
October 27, Groom at Wheeler at 7:30 p. m.  
November 3 or 7 Shamrock at Shamrock at 7:30 p. m.

Four of the above games, the ones with Skelleytown, Canadian, Spring Creek and Groom, are conference encounters. This district is divided into two halves and the winner will play the winner of the north half for the district championship.

The Wheeler Mustang eleven will be put to one of its most severe tests of the season Friday night when they meet the rampaging White Deer Bucks in their second conference encounter of the season. The contest will be played on Nicholson Field here beginning at 8:00 o'clock.

Should the Mustangs come through this week's contest with a win in the face of all the misfortune which has befallen them in the past two weeks, they stand a very good chance to go on through the season and win undisputed championship of the district this year.

Judging from past performances of the White Deer eleven in which they outscored Shamrock in a pre-season scrimmage, defeated Dumas, another Class A team, lost to Lefors, then came back last week to romp over Stinnett by a 68 to 0 count, the crippled Mustangs definitely have their work cut out for them this week.

First hard luck to befall the Mustangs was the bad cut which Quarterback Dick Pendleton received last week when he stuck his hand through a glass door pane at the school house. The second injury which set the team back somewhat was when Garland Parks, speedy left halfback, sustained a knee injury in the Claude contest last Friday night. The final blow which struck the Mustang eleven was when J. T. Johnson, stutter-footed fullback, received a severe chest and rib bruise in practice.

Even with substitutes filling in at the positions of the injured lads it appears that the Mustangs will carry a 12-pound per man weight advantage over the Bucks into Friday night's contest.

The probable starting line-ups for the two teams will be:

Wheeler	Pos.	White Deer
J. Mitchell	E	Scott
R. Crossland	T	Smith
C. Bailey	G	Thornburg
G. Hibbits	G	Horn
D. Waters	G	Staats
B. Crossland	T	Eller
E. Hubbard	E	Imel
D. Johnson	B	Harvey
G. Parks	B	Buchanan
M. Pettit	B	Talley
D. Lowrey	B	Hussey

## NASH, WRIGHT GET FREE TRIP

Harold Nash and Harvey Wright of the Nash Appliance and Supply Co. here will leave Saturday on an all expense paid trip to the famed Maytag washer factories at Newton, Iowa as a result of having won a selling contest with other Maytag dealers in this territory.

The Maytag Company has Texas divided into eleven regions and Wheeler happens to be located in region 1. The first five dealers in each region were awarded trips to the factory and will leave Dallas on a special train Saturday afternoon and will return Wednesday, October 5.

Nash Appliance and Supply Co. wound up third high in region one by selling 112.76 percent of their 1949 quota during the first nine months of the year.

The contest was on the selling of all Maytag appliances such as washing machines, ironers, duster ovens and home freezers.

## Mobeetie P.-T. A. Holds Regular Meet Thursday

The Mobeetie P.-T. A. met at the school, September 23 for a regular meeting and a reception honoring the teachers.

Mrs. Grady Harris, president of the P.-T. A., presided over the meeting and reread her committee was also appointed to investigate a lunch room for the grade school.

Speaker for the evening was Mayor R. H. Forrester of Wheeler, who spoke on, "Teamwork for Today's Child". He reminded the parents and students of their own responsibility in achieving this teamwork.

The meeting adjourned with a song by the group.

Newspaper Advertising Pays!

### THE WHEELER TIMES

Published Every Thursday at Wheeler,  
Wheeler County, Texas, By  
**COOPER, HOWELL & MONTGOMERY**

J. C. Howell ..... Editor-Manager  
Annie Mae Howell ..... Society Editor  
Richard L. Bradley ..... Printer  
Maurice Pettit ..... Apprentice



MEMBER  
Panhandle Press  
Association  
National Press  
Association

#### SUBSCRIPTION RATES

In Wheeler, Beckham and  
Hemphill Counties

8 Months ..... 75c  
6 Months ..... \$1.25  
1 Year ..... \$2.00

Everywhere Else

8 Months ..... 85c  
6 Months ..... \$1.50  
1 Year ..... \$2.50

#### ADVERTISING RATES

National Rate ..... 42c Column Inch  
Local Rate ..... 35c Column Inch  
Classified ..... See Want Ad Page

Entered as second-class matter December  
18, 1933, at the postoffice at Wheeler, Texas,  
under act of March 3, 1879.

#### NOTICE TO PUBLIC

Any erroneous reflection upon the charac-  
ter, standing or reputation of any person,  
firm or corporation, which may appear in the  
columns of this paper will be gladly correct-  
ed upon due notice being given to the Editor  
personally at the office at Wheeler, Texas.

THURSDAY, SEPTEMBER 29, 1949

#### Editorial

#### TWO-TERM AMENDMENT'S CHANCES DIM

States have until March 28, 1954, to act  
upon the proposed constitutional amendment

to limit future U. S. presidents to two terms,  
but the prospect of the change being ratified  
by a sufficient number of states to make it  
effective is dim indeed and getting dimmer  
as time goes on.

The proposal was submitted by Congress  
in March 1947, and the states given seven  
years in which to ratify it. Legislature of all  
of the states have been in session in the  
meantime, but only 23 have approved the  
change. It must be approved by 13 others to  
make it effective.

Two states ratified the amendment dur-  
ing legislative sessions this year (North  
and South Dakota), but in 12 other states  
(Utah, Nevada, Idaho, Minnesota, Maryland,  
Massachusetts, Indiana, Montana, North Car-  
olina, New Mexico, Washington and Wyo-  
ming) the proposal either was defeated out-  
right or was shoved aside. That just about  
sounded the death knell for the amendment.

Rightly or wrongly, the proposed amend-  
ment is generally considered a slap at the  
late President Roosevelt. When it was sub-  
mitted to the states by Congress, every  
single Republican voted for it, while the  
Democrats voted against it by more than  
two-thirds in the House and almost two-  
thirds in the Senate. It has been ratified by  
only two Southern states, Mississippi and  
Virginia, both of which are controlled by  
conservative Democrats.

Most of the Southern states have simply  
ignored the proposal, which has the same  
effect as rejecting it. These, with the non-  
Southern states which this year either re-  
jected the amendment or declined to consid-  
er it, doubtless are more than sufficient to  
prevent final ratification.

If the proposed amendment should fail  
to become a part of the Constitution, it will  
be the sixth to meet that fate. The five that  
have failed of ratification in the past were  
on apportionment of representatives and  
compensation of Congress (both submitted  
with the Bill of Rights in 1789), emoluments  
from foreign countries without the consent  
of Congress (1810), noninterference with  
slavery (1861), and the so-called ban on  
child labor (1924).

The nation survived the nonratification  
of these proposals, and it doubtless would  
survive rejection of the amendment limited  
presidential tenure to two terms. Rejection  
would leave the question of tenure where it  
always has been—in the hands of the people.

—From Fort Worth Star-Telegram

Charity is economical when, if you fail  
to give, the government gets about three-  
fourth of it anyway.

A friend is one upon whom you can  
count, regardless of your misfortunes. How  
many have you?

### BRISCOE BRONCO

Editor ..... Dorothy Brotherton  
Ass't. Editor ..... Margaret Kite  
Typist ..... Melba Strawbridge  
Class Reporters ..... Margaret Kite,  
Alvie Daughterty, Carol Wayne  
McCraw, Mary Riley  
Student Council Reporter ..... Lucy  
Barnett  
Sports Reporters ..... Thomas  
Roy Helton and Lucy Barnett  
Social Reporter ..... Patsy Meek  
Sponsor ..... Mr. David Bumpas

#### SENIOR CHATTER

Officers for the school year-  
book were elected September 21.  
They are as follows: editor, Mar-  
garet Kite; assistant editor, Sam  
Pruitt; general manager, Tommy  
Eiland; snapshot manager, Melba  
Strawbridge; sports editor, Doro-  
thy Brotherton; artist, Lottie Mur-  
ray. The annual sponsor is Mr.  
Harold R. Barnett.

The seniors and juniors, and  
their guests enjoyed a weiner  
roast Thursday night at Sham-  
rock. After the weiner roast some  
went to the carnival, and others  
to the show. Everyone enjoyed  
themselves.

#### SENIOR PERSONALITY

Name ..... Sam Pruitt  
Age ..... Seventeen  
Weight ..... 162-lbs.  
Color of hair ..... Blonde  
Color of eyes ..... Blue  
Favorite subject ..... Agriculture  
Favorite teacher ..... Mr. Henson  
Likes ..... Girls  
Dislikes ..... Tests  
Ambition ..... To get out of school

#### SOCIAL NEWS

September 18, Maureta Horn  
celebrated her fourteenth birthday.  
Carol Wayne McCraw was with  
Glenda Laycock Sunday night.  
R. G. Reames spent the week-  
end in Perryton visiting a cousin.  
The following couples were seen

in Wheeler Saturday night: Wan-  
da Jean Swift, Devonne Childress;  
Jane Ann Zybach, Tommy Eiland;  
Glenda Porter, Alvie Dougherty;  
Lavada Hogan, Kenneth Levitt;  
Mary Riley, Bill Atherton.

The junior class entertained  
Wednesday afternoon at 1:45 with  
an assembly program. The sopho-  
mores have assembly next wednes-  
day.

Mr. Barnett and Mrs. Henson  
were called on in assembly to play  
the piano and cornet. They did an  
excellent job even on such a short  
notice.

#### GIRLS SPORTS NEWS

The girls had an extensive work-  
out and practice Tuesday night,  
suits were issued to both boys and  
girls last week.

We are looking forward to play-  
ing our first practice game Thurs-  
day night, September 29, at Alli-  
son.

#### JUNIOR JABBER

The juniors have little to report  
this week. We have all been busy  
getting our assignments and have  
had little time for jabbers.

We presented our first assemb-  
ly program "Can You Top This?"  
Wednesday, September 21.

#### SOPHOMORE NEWS

The sophomores are looking for-  
ward to their first assembly pro-  
gram next Wednesday. We hope  
to show the other classes how to  
put on a good assembly program.

Imogene Pannell and Wanda  
Jean Swift went up to Canadian  
last Sunday to see the bronc rid-  
ing and calf roping.

#### FRESHMAN NEWS

We have been working hard the  
past two weeks getting our Home  
Ec. Department cleaned and ready  
for us to really get down to hard  
work.

Patsy Meek and Bobby Helton  
were seen in Wheeler Wednesday  
night.

#### PERSONALITIES

Name ..... Patsy Meek  
Age ..... Fourteen  
Weight ..... 118-lbs.  
Color of eyes ..... Blue  
Color of hair ..... Brown  
Likes ..... Pecan pie for break-  
fast  
Dislikes ..... To eat dinner  
Favorite sport ..... Basketball  
Favorite subject ..... Science  
Ambition ..... None

#### PRE-FRESHMAN NEWS

The pre-freshman met Friday,  
September 9, to organize and elect  
officers for a club.

The officers elected were:  
President ..... Martha Standlee  
Vice-President ..... Jerry Hays  
Secretary & Treasurer - Monett  
Treadwell  
Song leader ..... Eddie Walker  
Student representative - Lucille  
Caudell

Sponsor ..... M.  
Room Mothers nomi-  
Mrs. Doule Standlee, M.  
Treadwell, Mrs. Cash  
Mrs. Clarence Dyson, M.  
Parker and Mrs. Colie Pa-  
meeting was adjourned.

#### BOYS SPORTS NEWS

Coach Thomas Baker  
announced our first game  
Allison to be played  
September 29, at Allison,  
and managers have been  
hard, and everything is  
up well.

There are twelve boys  
basketball this year. B  
has been working out  
boys, prior to going back  
Texas State.

We are proud of the  
of our gym this year. T  
have been sanded and  
and new lines have been

## POLIO INSURANCE

Plus Spinal Meningitis, Diphtheria, Scar-  
let Fever, Smallpox, Leukemia, Ence-  
phalitis and Tetanus.

PAYS UP TO \$5000.00

for  
TREATMENT OF EACH PERSON

**C. J. Meek**  
AGENT

## Introducing Our NEW Post Card Statement

WHERE  
YOU PAY



Southwestern PUBLIC SERVICE Company  
HOME TOWN HOME STATE

METER READINGS	BILL COVERS SERVICE TO	
MULTIPLIER	DELINQUENT AFTER	
USED	DEMAND	
CLASS OF SERVICE OR CHARGE	AMOUNT	
	CLASS OF SERVICE OR CHARGE	AMOUNT

Southwestern PUBLIC SERVICE CO.  
CASHIER'S STUB  
Please Return This Stub When Remitting by Mail

Code: ARS - Arrears MDS - Merchandise ELE - Electrical WTR - Water  
Bills Are Due and Payable When Rendered  
Please Bring Card When Paying at Office

THE AMOUNT  
YOU PAY

Your next Public Service Company statement will come to  
to you in post card form.

Wherever you live, simply continue to make your  
payment where you always have. You'll find the address of  
the office at which you pay your statement across the top of  
this new post card form.

## SOUTHWESTERN PUBLIC SERVICE COMPANY

25 YEARS OF GOOD CITIZENSHIP AND PUBLIC SERVICE

## Hog Killing Time Is COMING UP

Let Us Kill And Cure Your Pork  
In The Most Modern Plant In Wheeler County



Save  
Time & Money

Try Our Locker Cure Bacon  
For Your Choice Breakfast Bacon

## Wheeler Locker

Phone 64

Wheeler

If you have never experience the  
convenience of having a frozen food locker,  
we invite you to avail yourself of this op-  
portunity to see just what you have been  
missing. You don't know how nice it can  
be to go to your locker and get FRESH  
meat, poultry, vegetables or fruit until  
you have tried it.

Hog killing time is here and we  
believe you will enjoy your pork a great  
deal more if you will let us put it in a  
frozen food locker for you, either fresh  
or cured.

# How To Advertise And Get MORE BUSINESS

(Reprinted from Business Research, University of Texas, in co-operation with Small Business Division, U. S. Department of Commerce, Washington, D. C.)

## ADVERTISING FOR MORE SALES

Advertising is telling your present customers and the people you want as customers that you have what they need and want when they want it, and inviting them to come and buy. It is one of the most powerful aids any merchant can use to establish a business and keep it profitable.

**Five things advertising should do.**—1) Move goods out of the store by telling people your store has what they need and want.

2) Create desire for the different kinds of merchandise or service you have to sell.

3) Keep alive people's interest in your store between buying visits.

4) So impress people with the values and services you offer that they will prefer to buy all their needs in your lines from you.

5) Create and increase good-will for your business.

**Amount to spend.**—The amount spent for advertising should be a definite percentage of net sales. The sales for the previous year are generally used, but the appropriation may be based on estimated future sales. The following table of percentages of net sales spent for advertising in a number of lines of retail business gives a good idea of how much was spent on the average before the war. Many stores spent less, but many successful stores spent more.

**Selecting items to advertise.**—Four things will help a merchant to decide what items the customer wants to buy. These things are:

1) **Timeliness.**—Timeliness means offering people the merchandise they want when they want it. Wise merchants keep their eyes on the calendar when selecting things to advertise. At any time of the year they know the things people will buy and feature those items in their advertisements. Timeliness is related to the season, the weather, and the holidays. Timeliness also means relating advertising with current events in the community. County fair contests bring opportunities; election night, parades, conventions, and other local events may all be used to increase demand for merchandise. Timeliness in advertising may also be related to current national advertising. When national advertising reaches the household buyers in the community, it makes them want the product that it features. These same items in local advertising, at the time they are featured nationally, increase the power of local advertising.

2) **Buying habits.**—Local buying habits vary from one locality to another and according to the season of the year. For example, some communities buy heavily in olive oil and wine; others, in cheese and dairy products. One locality may use much corn meal; another locality, little or none. It pays to study local buying habits and to advertise items that are locally popular.

3) **Variety.**—The household buyer is always looking for new ways to get variety in her home, her clothing, and other things she buys. She is constantly attracted by new devices and household aids. Anything new is interesting to her, so a variety of items should be included in each advertisement.

4) **Frequency of purchase.**—Day after day the household buyer uses certain items. She goes to the store regularly for items like soap, cosmetics, hosiery, sugar, and bread. Advertising such commonly used items increases their pulling power. Every advertisement should suggest items which housewives want frequently.

**The price.**—The majority of people are interested in prices. Nearly all people ask, "How much is it?" before buying. Advertising, therefore, must usually answer the price question, although at times it may not be necessary in certain lines of business.

**Descriptions and prices of goods must be definite.** Don't say, "Aluminum pans from 25 cents to 95 cents." Say, "Extra-heavy aluminum sauce pan, quart size—famous (Insert Name) long-life make—only 53 cents."

**Tell the truth.** Too many advertisers exaggerate and the public is becoming aware of it. Never say, "Value \$35.00, our price \$29.99" when a really fair price would be \$25.00.

**When a price is actually cut, give the new figure in dollars and cents.** For example, "Men's suits reduced from \$25.00 to \$22.50" is better than to say that they are "reduced 10 per cent."

**Where to get good advertising ideas.**—Study the advertising of other stores that are successful. Use mail-order catalogs or manufacturers' or jobbers' catalogs. See how they present their merchandise. Notice the simple words and illustrations they use.

**Another good practice is to study advertisements in newspapers, trade papers, and magazines.** Each advertisement represents careful thought and planning on the part of some advertising expert and approval by some successful businessman.

**Ask visiting salesmen for help.** They have many excellent ideas and suggestions. Get all the advertising service you can from the manufacturers. Many of them offer newspaper mats, cuts, illustrations, suggestions, and helpful information and material.

**When a store is so located that trade is drawn from the entire community and surrounding region, or if it is a downtown store in a large city, the local newspaper is probably the best medium to use.** Newspapers can usually reach almost every customer in the vicinity and do it economically.

COMMODITY OR CLASS OF BUSINESS	Average Advertising % to Sales
Alcoholic Beverage Stores	1.4
Aprons, Housedresses & Uniforms	3.0
Art Needlework	1.5
Automotive Accessory and Parts Stores	1.7
Bakery Shops	3.8
Bars & Taverns	0.5
Beauty Shops	2.7
Blankets, Comforters & Spreads	2.9
Blouses, Skirts & Sportswear	1.4
Books and Magazines	1.7
Books and Stationery	1.7
Book Stores	2.4
Boys' Wear	1.2
Candy	1.2

China and Glassware	1.9
Cigar Stores and Cigar Stands	1.1
Cleaners & Dryers	4.4
Clothing, Men's	2.6
Coal and Other Fuel Dealers	0.8
Corsets and Brassieres	1.5
Costume Jewelry	2.2
Country General Stores—(Also see Department Stores)	0.8
Curtains	3.4
Custom Tailors	2.3
Dairy and Poultry Products Stores	1.4
Department Stores	5.6
Domestic Floor Coverings	2.2
Domestics	1.3
Draperies, Curtains & Upholstery	2.1
Dresses (Women's & Misses')	3.3
Dresses, Better (Women's & Misses')	3.3
Dresses, Inexpensive (Women's & Misses')	3.2
Drinking Places, Taverns & Bars	0.8
Drug Stores	1.1
Dry Goods and General Merchandise	1.6
Electric and Gas Household Appliance Stores	2.6
Family Clothing Stores	2.0
Farm Implement Dealers	0.7
Farmers' Supply Stores	0.4
Filling Stations	0.7
Floor Covering Stores	2.4
Florists and Nurseries	3.0
Funeral Directors	4.3
Furniture Stores	4.4
Furniture & Home Furnishings	7.3
Furniture & Undertaking Concerns	1.9
Fur Shops	4.8
Furs	3.1
Garages (with repairing)	1.3
Gift Shops	3.0
Girls' Wear	3.1
Grocery Stores	1.3
Grocery & Meat Stores	0.9
Handbags and Small Leather Goods	2.1
Handkerchiefs	2.1
Hardware Stores	2.0
Hardware & Farm Implement Stores	0.9
Hardware & Furniture Stores	1.2
Hats, Men's	2.4
Hosiery	1.9
Hotels	3.0
House Furnishings Stores	1.7
Housewares, Miscellaneous	2.5
Infants' Wear (Including Furniture)	1.9
Jewelry (Fine) and Watches	1.9
Jewelry Stores	3.5
(larger cities)	4.0
Jr. Miss Coats, Suits & Dresses	3.1
Knit Underwear	1.3
Laces, Trimmings & Ribbons	0.6
Lamps and Shades	2.2
Laundries	0.6
Limited Price Variety Stores	0.6
Linen (Including Towels)	2.2
Lingerie, Hosiery, Millinery & Accessory Stores	2.4
Linoleum	0.8
Luggage	2.4
Lumber & Building Material Dealers	0.4
Major Appliances	1.1
Mattresses, Springs & Studio Beds	2.0
Meat Markets	3.1
Men's Clothing Shops	0.6
Men's Furnishings, Hats & Caps	3.7
Men's Wear Stores	2.1
Millinery	2.8
Monument Concerns	1.8
Motor Vehicle Dealers	0.9
Musical Instrument Stores	2.0
Neckwear and Scarfs	3.0
Negligees and Robes	3.0
Notions	1.8
Office Equipment and Supply Stores	2.9
Optometrists	6.3
Oriental Rugs	2.4
Paint, Wallpaper and Glass Concerns	1.8
Phonograph Record Dealers	3.0
Pictures, Framing and Mirrors	2.0
Radio Stores	3.2
Radios and Phonographs	2.0
Restaurants and Other Eating Places	2.0
Service Stations	0.6
Shoe Stores	3.3
Shoes, Children's	1.6
Shoes	2.2
Shoes, Men's & Boys'	1.8
Shoes, Women's	2.0
Silk and Muslin Underwear & Slips	1.8
Silks, Velvets & Synthetics	1.5
Silverware and Clocks	1.8
Specialty Stores	3.4
Sporting Goods and Cameras	1.5
Sporting Goods Dealers	4.3
Sportswear, Knit Apparel, etc.	3.2
Stationery	1.3
Super Markets	10 to 15
Tire Dealers	2.5
Toilet Articles & Drug Sundries	2.3
Toys	2.3
Umbrellas	1.3
Wash Goods and Linings	1.6
Women's and Children's Gloves	3.1
Women's and Misses' Coats & Suits	3.0
Women's Ready-to-wear Shops	2.2
Woolen Dress Goods	2.0

SET UP AN ADVERTISING BUDGET — BY THE MONTH AND BY THE YEAR — TAKE THE GUESSWORK OUT OF ADVERTISING.

# Let The Wheeler Times Help You

### Mobeetie Hi-Life

(Too late for last week)

#### SENIOR NEWS PERSONALITIES

Name ----- Betty Lancaster  
Age ----- Seventeen  
Height ----- 5 ft., 6 in.  
Weight ----- 125-lbs.  
Color of hair ----- Brown  
Color of eyes ----- Brown  
Favorite subject ----- None  
Favorite teacher ----- Aunt Elsie  
Favorite actress ----- June Allison  
Favorite actor ----- Van Johnson  
Ambition ----- To get out of high school

Name ----- Peggy Williams  
Age ----- Sixteen  
Height ----- 5 ft., 5 in.  
Weight ----- 119½-lbs.  
Color of hair ----- Red  
Color of eyes ----- Brown  
Favorite subject ----- Bookkeeping  
Favorite teacher ----- Aunt Elsie  
Favorite actress, Ester Williams  
Favorite actor ----- John Wayne  
Ambition ----- To finish high school

#### JUNIOR NEWS PERSONALITIES

Name ----- Joyce DeWitt  
Age ----- Sixteen  
Height ----- 5-ft.  
Weight ----- 104-lbs.  
Color of hair ----- Brown  
Color of eyes ----- Brown  
Favorite sport ----- Horseback riding  
Favorite subject ----- Spanish  
Favorite teacher ----- All of them  
Favorite food ----- Fried chicken  
Favorite actress ----- Jane Greer  
Favorite actor ----- Clark Gable  
Ambition ----- Newspaper reporter

Name ----- Harold Gatlin  
Age ----- Sixteen  
Height ----- 5-ft., 11-in.  
Weight ----- 135-lbs.  
Color of hair ----- Brown  
Color of eyes ----- Brown  
Favorite subject ----- None  
Favorite teacher ----- Mr. Walton  
Favorite food ----- Chicken  
Favorite actress, Virginia Mayo  
Favorite actor ----- Joel McCrea  
Ambition ----- To become a senior

#### FRESHMAN NEWS

We are proud to see that some of the freshman boys played in the football game Wednesday night.

We welcome Carl Alexander and George Kilcrease to our class this week. That makes fourteen in our class. We are hoping to have twenty by mid-term.

#### PERSONALITY

Name ----- Martha Abbott  
Weight ----- 112-lbs.  
Color of eyes ----- Green  
Color of hair ----- Brown  
Favorite sport ----- Basketball  
Favorite subject ----- Spanish  
Favorite food ----- Chicken  
Likes ----- Don Reed  
Dislikes ----- Nosey people  
Ambition ----- To get out of school

Name ----- Bobby Reynolds  
Weight ----- 118-lbs.  
Color of eyes ----- Blue  
Color of hair ----- Brown  
Favorite sport ----- Baseball  
Favorite subject ----- Agriculture  
Favorite food ----- Ice Cream  
Likes ----- Pretty girls  
Dislikes ----- Boys  
Ambition ----- To be a farmer

#### EIGHTH GRADE NEWS

##### PERSONALITY

Name ----- Mary Carter  
Age ----- Thirteen  
Color of eyes ----- Brown  
Color of hair ----- Brown  
Favorite drink ----- Sour limes  
Favorite actress ----- Yvonne DeCarlo  
Favorite actor ----- Howard Duff  
Likes ----- Boys  
Dislikes ----- Nosey people  
Ambition ----- Housewife

#### SPORTS NEWS

The Mobeetie Hornets flew to victory over the McLean B by a score of 29 to 0. Wednesday, September 14th. The first touch down was made by Vernon Willard, then Jay Willis made one, and Dale Haynes made two. Donald Waters added to the score with three extra points. Then we got one set back and one safety. The Hornets play Shamrock at Mobeetie Thursday, September the 22nd. Then September the 29th we go to Canadian. We invite you all out to see our game Thursday afternoon.

#### GOSSIP

Patsy, just why were you sick this weekend? Was it because of your company?

Jolene, let's be more careful in playing basketball from now on. Oudia, why do you owe Peggy a dollar? Could it be from Saturday night?

Madge, don't get tickled at church from now on.

You freshmen be more careful with your appearance. You've just scared four people to death.

These freshmen girls surely do look pretty running up and down the hall. We hope this freshman initiation is soon over.

Notice! All pedestrians be on the lookout for Joyce DeWitt, Mr. Dunaway and Mr. Loyd. They get their driver's license Wednesday.

These Specials Good All Week From Fri., Sept. 30 Thru Thurs., Oct 1

**ANNUAL CANNED FOODS Value Roundup!**

**IGA FOOD STORES**

**NEW PACK FOODS**

**BABY FOOD** 3 cans 23c

**FRUIT COCKTAIL** 2 No. 2 1/2 Cans 67c  
12 cans \$3.75  
24 cans \$7.47

CARNATION, PET OR IGA

**Evaporated Milk** 10-lb

PURE **Cane Sugar** 9

**Spam** 12-ounce Can 39

AUTUMN HARVEST GOLDEN

**PUMPKIN**

3 No. 2 1/2 Cans	12 No. 2 1/2 Cans	Case 24 No. 2 1/2 Cans
29c	\$1.13	\$2.25

**Apricot Nector**

3-12-oz. Cans	12-12-oz. Cans	Case 48 12-oz. Cans
25c	97c	\$3.69

OCEAN SPRAY STRAINED

**Cranberry Sauce**

2 No. 300 Cans	12 No. 300 Cans	Case 24 No. 300 Cans
33c	\$1.92	\$3.69

STURGEON BOY RED SOUR PITTE

**CHERRIES**

2 No. 2 Cans	12 No. 2 Cans	Case 24 No. 2 Cans
57c	\$3.24	\$6.19

FROZEN

**Strawberries** 12-ounce Carton 35c

MIXED VEGETABLES, 12-oz. Pkg. 29c  
LIMA BEANS, Frozen, 12-oz. Pkg. 29c  
CAULIFLOWER, Frozen, 10-oz. Pkg. 39c

**Finest Meats**

**STEAK** 55c

**Steak** 69c

**Beef Roast** 49c

**Sausage** 39c

**Ground Beef** 33c

**PINTO BEANS** 19c

Regular Everyday Low Price

**CAMAY** 21c

**IVORY SOAP** 24c

**LAVA SOAP** 9c

**P & G SOAP** 13c

**OXYDOL** 27c  
**DUZ** 27c

**BLACKEYE PEAS** 25c

**GREEN BEANS** 29c

**OLEOMARGARINE**

**GOOD VALUE** 23c  
**MEADOLAKE** 27c

**WILSON'S Creamery Butter** 69c

**BORDEN'S Cottage Cheese** 29c

**RUBY RED Cranberries** 29c

**TEXAS GRAPEFRUIT** 9c  
**CALIF. ORANGE** 5-Pound Bag

**Sweet Potatoes** 27c

**RED JONATHON Apples** 39c

**GOLDEN YELLOW-CENTRAL AMERICAN Bananas** 15c

California Fancy First Pick  
**SPINACH**  
2 No. 2 Cans 29c  
12 No. 2 Cans \$1.69

IGA Ripe California  
**APRICOTS**  
2 No. 2 1/2 Cans 58c  
12 No. 2 1/2 Cans \$3.39

IGA Heavy Syrup  
**PEACHES**  
2 No. 2 1/2 Cans 55c  
12 No. 2 1/2 Cans \$2.99

Good Value—Light Syrup  
**APRICOTS**  
2 No. 2 1/2 Cans 49c  
12 No. 2 1/2 Cans \$2.89

Good Value—Light Syrup  
**PEACHES**  
2 No. 2 1/2 Cans 49c  
12 No. 2 1/2 Cans \$2.88

Regular Everyday Low Price

**NOLA**

SOAP FLAKES

Regular Package 17c

**MAGIC WASHER**

GRANULATED SOAP

Regular Size Box 17c

CLAY'S



**IGA Food Stores**  
LOW PRICES EVERY DAY!  
WHEELER, TEXAS

Regular Everyday Low Price

**PURASNOW FLOUR**

25-Pound Sack \$1.59

50-Pound Sack \$3.17

# Shorty Erwin's USED CAR AND TRUCK VALUES

- 1948—Chevrolet 3-4-ton pick-up, radio and heater.
- 1947—Chevrolet 1/2-ton pick-up, delux cab, heater and defroster.
- 1940—Ford 1 1/2-ton truck, '47 motor, first class condition.
- 1938—Chevrolet 1 1/2-ton truck.
- 1941—Chevrolet 1/2-ton pick-up, radio and heater.
- 1938—Ford 1/2-ton pick-up, new tires and good motor.
- 1937—GMC 3-4-ton pick-up.
- 1947—Chevrolet 4-door sedan, good condition.
- Wheel Trailer, 14 1/2 x 7 1/2-ft. bed, airplane wheels with 8-ply tires.
- 1938—Chevrolet coupe, radio and heater, nice and clean.

# Shorty Erwin's USED CAR LOT

HIGHWAY 152 WHEELER, TEXAS

## THE CORRAL

**STAFF**  
 Editor — Margaret Holdeman  
 Assistant Editor — Garland Parks  
 Junior Reporter — Bill Hooker  
 Sophomore Reporters — Joann Porter and Wayne Burke  
 Freshman Reporters — La June Mann, Glen Farmer  
 Eighth Grade Reporters — K. D. Ford and Jerry Skulley

**SENIOR NEWS**  
 The seniors ordered their invitations Monday and we also looked at some caps and gowns. We are going to order our name cards in the near future.

What would you do if you saw an otter coming toward you? This is what the following people would do.

Gene Hubbard—I would make friends with it.

Liz Skulley—I would look the other way.

Margaret Holdeman—I would yell for help.

Jack Mitchell—I'd go hog-wild.

Neil Laycock—I'd start carrying a gun.

Linnie Newkirk—I would start praying.

Doyle Waters—I'd run like the dickens.

Charlotte Weatherly—I'd die of a heart attack.

Imogene Reid—I'd throw a rock at it.

Bobby Henderson—I'd walk up to it.

Floy Patterson—I'd run.

Martha Hastings—I don't know.

Garland Parks—I'd leave town.

Joann Richerson and Sue Farmer—We'd grab it if it were a man.

(For Your benefit, an otter is a man who tames horses.)

**JUNIOR NEWS**  
 Everyone is enjoying their fourth week of school and they also hope that they enjoy the rest

of them, although I doubt if they do.

### PERSONALITY (Boy)

Name — James Gaines  
 Age — Sixteen  
 Weight — 120-lbs.  
 Height — 5 ft., 6 in.  
 Color of hair — Brown  
 Color of eyes — Blue  
 Favorite food — Fried chicken  
 Favorite sport — Football  
 Favorite teacher — Mr. Clepper  
 Favorite subject — Agriculture

### SOMETHING NEW

Dick goes with Patsy Meek.  
 Billie Ruth isn't engaged anymore.

Bonnie is mad at Jack.  
 Edgar has no girl.  
 Leola has a boyfriend.

Bill has learned how to flirt.  
 Delpha goes with someone else.

### SOMETHING OLD

Charlene still goes with H. C. Smiley is still bashful.

Queenie still goes with Carrel Wayne.

Henry forgot to reduce. (He is a good football player).

Maurice still looks the same.  
 Billy Jo hasn't changed her mind about boys.

Edwina likes J. T.

### ASSEMBLY PROGRAM

The sixth grade was in charge of the program last Monday. The numbers were well prepared and nicely presented. We all enjoyed it very much.

The juniors have the next assembly program.

### SOPHOMORE NEWS

The sophomore class plans to give the freshman class a welcome to high school in the form of a party this coming Tuesday. We hope to show them a good time and we think we will.

After so long a time we finally elected our class parents. We think we made a very wise choice. They are Mr. and Mrs. Jud Johnson and Mr. and Mrs. Cecil Denson.

The Home Economics girls worked hard this week getting ready for the fair at Shamrock.

### PEP RALLY FOR KEVA

Friday, September 23, the students of WHS made a tape recording of our pep rally to be played over radio station KEVA.

All students in high school gathered in the gymnasium and yelled several yells.

Then Coach Bernie Smith and several of the Mustangs were introduced. The announcer introduced our pep squad leaders.

We closed by singing our school fight song.

### PEP SQUAD NEWS

The Pep Squad is going to sell programs at all home games from now on until the end of the season. We would appreciate it very much if all the fans would purchase one at every game.

We are very proud to have a large pep squad this year. Our leaders are doing swell and the team is on the ball. Let's everyone keep giving them your support.

### FRESHMAN NEWS

We are happy to have Lavada Ratliff as a member of the freshman class.

### GUESS WHO?

Name ???  
 Age — Fourteen  
 Height — 5 ft., 1 in.  
 Weight — 98-lbs.  
 Color of eyes — Green  
 Color of hair — Brown  
 Favorite teacher — Miss Mobley  
 Ambition — To be a rancher's wife

The Home Economic girls killed chickens Thursday. We all enjoyed the fine chicken dinner that was served Friday.

### THIS AND THAT

Glen, who were you with Saturday?

Betty Traylor, do you actually have a heart-throb now? Who?

Bobby, you look very cute in an apron.

Nona Ann, La Jaune and Glenda, what was so funny in study hall?

Lois, when did you learn to drive?

We all like John Dan's new plaid shirt.

Ray, who is this P. H.?

### WHAT IF?

Helen was a Billsdaughter instead of a Johnson?

Glen was a Rancher instead of a Farmer?

Betty Jo was a Car instead of a Traylor?

Betty Lou was a Lomsgood instead of a Kidwell?

John Dan was a Bowman instead of a Bowman?

La Jaune was a Woman instead of a Mann?

Louise was a Months instead of a Weeks?

Mary Helen was a Heifer instead of a Hefley?

Ray was a Hot instead of a Cole?

Lois was a Rod instead of a Barr?

Molly was a Cherry instead of a

Berry?  
 Nadine was a Barpound instead of a Bar-ton?  
 Betty Jo was a Layhen instead of a Laycock?

### EIGHTH GRADE NEWS

The eighth grade is working hard this year to pass because we don't think that our desks will fit us next year.

Jerry Melton, you and Jerry Skulley made a good match for sleeping in class.

Ester, why don't you quit looking at Curtis Clark all the time?

Jimmy, why don't you quit looking at the kids in the hall?

Buck, put up those funny books and get your lessons.

### FOOTBALL NEWS

Friday night the Wheeler Mustangs tangled with the Claude Mustangs and came out on top with a score of 20-12.

Wheeler received the kick-off and J. T. Johnson ran for a touchdown. Two more quickly followed.

In the last half Claude came back with two touchdowns. It was then anybody's game. From start to finish there was never a dull moment.

A bad break for Wheeler came when Garland Parks hurt his knee. In addition to this, Dick Pendleton was out of the game because of a cut hand.

Next Friday, one of the best games of the season will be played. It is the Wheeler Mustangs versus the White Deer Bucks.

### FASHIONS OF WHS

School is going strong as usual the kids are still wearing clothes.

Incidentally, they still wear shoes.

Slowly but surely, summer clothes are going and are being replaced by the newer fall clothes.

Among the girls new bright colored sweaters can be seen. The boys are sporting new plaid and corduroy shirts.

### HAVE YOU NOTICED?

Edwina Brown's rust corduroy suit?

J. T. Johnson's bright green plaid shirt?

Sue Farmer's long sleeved orchid sweater?

Doyle Waters' shoes?  
 Bill Hooker's green corduroy shirt?

Corky Robertson's yellow socks?  
 The Pep Squad leader's suits?

Betty Rippl's brown plaid skirt?  
 Dale Cliff's cowboy boots?

Everybody's new crepe soled shoes?

Honey bees are worth 15 to 20 times more for their pollination service than for the honey and wax they produce.

**THE WHEELER TIMES classifieds offer more for less money, to both buyer and seller, than any other business device we know about.**

The greatest damage from rats is not what they eat but what they waste or cause to be wasted.

Farmers can cut their fertilizer bill by growing their own nitrogen. Fall or spring seeded legume crops can convert the unlimited free nitrogen in the air to usable plant food. Inoculate the seed and use phosphate for the best result.

# Every Woman Has a Date In Mind

THE DATE SHE GOES OUT WITH  
HER HUSBAND TO EAT AT THE  
TOWN'S FINEST EATING PLACE

... free from worry over meal preparation  
 ... free to enjoy a deliciously prepared dinner

(of course it's at ...)

# Nora's Cafe



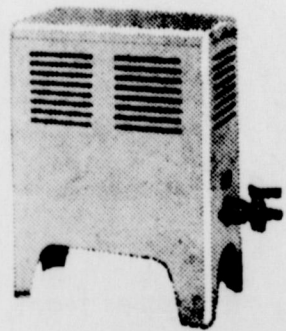
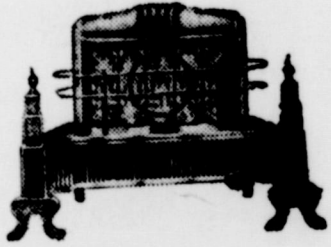
**SELECT YOUR  
STOVES NOW**

We now have on hand one of the most complete stocks of stoves of all types and sizes we have been able to secure since before the war.



We have forced draft heaters, radiant heaters, floor furnaces, wall heaters, bathroom heaters, small electric heaters, in fact any type heater you will need.

SEE OUR SELECTION NOW!



## SEE OUR NEW FURNITURE

We invite you to drop by our store and look over the high quality furniture which we have in stock. We now have, on the floor, several beautiful modernistic dinette suites, living room furniture, occasional chairs, linoleum rugs, sewing machines, radios and other items of home furnishings.

See Us For Your Bathroom Fixtures and Plumbing Supplies.

See Our Beautiful Steel Kitchen Cabinets.

# NASH

APPLIANCE & SUPPLY CO.

'Better Things For Better Living'  
 Wheeler, Texas

**BIGGER AND BETTER** in these  
**VALUES** **VALUES** **USED CAR**  
**VALUES** **BUY**

**'47 CHEVROLET** 3/4-Ton Pick-up, 20,000 Miles, Heater,  
 Other Extras, Perfect **\$1,295.00**

**'38 CHEVROLET** 1/2-Ton Pick-up, Good Tires,  
 Extra Good Shape **\$350.00**

**'48 KAISER SEDAN** Loaded with Extras,  
 20,000 Miles **\$1,250.00**

Get your Car  
 Ready for **WINTER**

Play safe! Bring your car in for a check-up NOW—before winter really sets in. Let us get your car prepared to go when the weather gets bad—when you need it most. Our shop is fully equipped to take care of all your automotive repair and precautionary needs.

Genuine Chevrolet Parts and Accessories

# Ware Chevrolet Co.

Phone 100

Wheeler, Texas

### STATE FAIR BE HOST TO NEWS, RADIO FOLKS

More than 2000 Texas newspaper and radio men will be guests of the 1949 State Fair of Texas when the \$35,000,000 exposition opens October 8 for a 16-day run.

Opening Day is traditionally Press and Radio Day, when newsmen gather to view the newest wonders wrought by the Fair and to report them to their readers.

Representatives of virtually all daily and weekly newspapers and radio stations in the state will be on hand for opening day festivities.

A number of Oklahoma news-

paper men also have been issued invitations.

Most of the weekly newspaper editors who will attend the Fair will wait until they return home to write accounts of the exposition for their readers, but representatives of the big dailies will file thousands of words to their newspapers describing the glories of the 64th State Fair of Texas.

The newspaper and radio men will be guests of the Fair at the Texas-Oklahoma football classic; Spike Jones will give them a special late matinee performance of his Musical Depreciation Revue of 1950 in the Auditorium, and Jole Chitwood's daredevil drivers will entertain them with a program of "planned calamity" at the Grandstand at 8 p. m.

The visitors will have a professional interest in the exhibition of statewide winners in the competi-

### NURSE INDISPENSABLE HERE



New baby is seen by mother, a polio victim. Nurse is from Des Moines, was recruited by American Red Cross which today appealed for at least 100 more nurses to care for polio-stricken. In no other disease is nursing care more important for recovery. Nurses are asked to contact local Red Cross chapters for details about polio service.

tion of Texas press photographers. The display will be open to the public for the first time on Press and Radio Day at the Museum of Fine Arts.

In between these events, newsmen will find plenty to occupy their time as they nose about among the outstanding commercial exhibits, the top-flight livestock show featuring 26 breeds, the special exhibits at the five Fair Park museums, the million-dollar Midway, and the "new look" poultry and agriculture shows.

**THE WHEELER TIMES classifieds offer more for less money, to both buyer and seller, than any other business device we know about.**

### PMA REVIEWS OUTLOOK ON COMMODITIES

With summer about over and the main part of the growing season behind us, this seems to be a good time to take stock of where we are on a few important crops and what's immediately ahead for the farmer, says B. F. Vance, chairman of the State P.M.A. Committee. Vance says that probably the best way to do this would be to call the roll on a few crops, particularly the basic crops, cotton, wheat, corn, rice, and peanuts and give the highlights of the picture.

**COTTON**—The September report indicates a crop of almost 15 million bales, 14,940,000 to be exact. That is a crop of about the same size as that of last year. Besides this year's production we have about 5.3 million bales carried over from last year. Altogether, we will have a total supply of nearly 20 million bales. The best estimates available indicate that we will need a little less than 8 million bales in the United States during the year ahead, and that we will export about 5 million bales. That is a total of 13 million bales and will leave an estimated carryover of about 7 million bales when the 1950 crop comes to market. That means that the carryover about this time next year will be about 2 million bales more than it is now.

The President signed a new law which says the Secretary must call for marketing quotas when the supply of cotton exceeds the normal supply. Formerly, the Secretary had to proclaim quotas when the total supply exceeded the normal supply by more than 7 percent. The new law calls for the 1950 national acreage allotment of not less than 21 million acres. The old law called for not less than 27 million acres. The cotton loan program continues in operation for the current crop at

90 percent of parity. Congress has not decided what the loan rate will be for 1950.

Farmers can store their 1949 crop cottonseed and get a CCC loan of \$49.50 per ton if moisture content is not more than 11 percent.

**WHEAT**—The wheat situation has eased off considerably. The August crop report indicated a production this year of just under one billion 132 million bushels. This is still our fourth largest wheat crop, but with the carry-over estimated at 320 million bushels on July 1 next year, and with consumption and exports estimated at one million, one hundred thousand bushels up to that date, we are just under the marketing quota level. The Secretary on July 14 announced that there would be no wheat marketing quotas for the 1950 crop. Acreage allotments have been announced for 1950 with a national wheat acreage allotment of just under 69 million acres. However, an amendment which became law on August 29 will increase that figure somewhat because of the change in computing wheat acreage allotments on some farms.

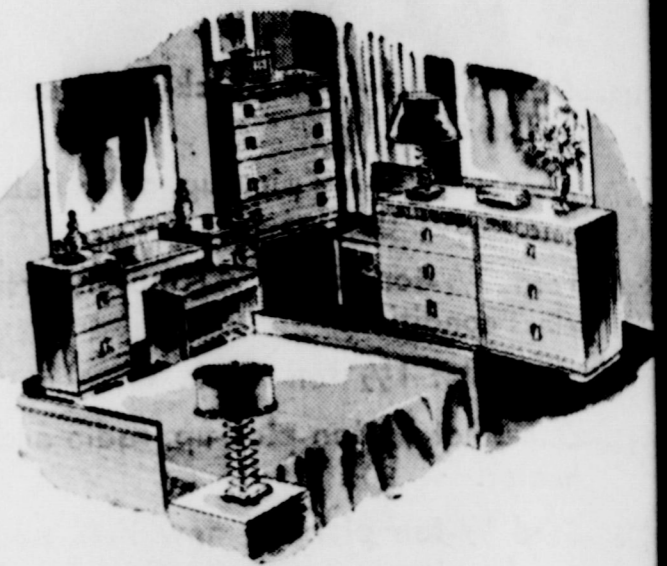
The level of price supports for wheat growers that seed within their wheat acreage allotments has not been decided by Congress.

**PEANUTS**—Peanut growers voted in favor of a three-year marketing quota program in the fall of 1947. The program was not in effect on the 1948 crop by proclamation of the Secretary, but it is in operation this year. Production is estimated a little over one and three-quarter billion pounds, as compared with more than two and a third billion pounds last year. The acreage allotment and marketing quota program on peanuts will continue in effect through 1950. Peanut prices are supported at 90 percent of parity this year. The 1950 support level has not been set.

Cotton, corn and rice growers should be on the alert for any announcements by the Secretary affecting their crops. The place to get the latest information about these crops is at the County Agricultural Conservation Association (AAA) office.

When laying hens become infected with Newcastle disease, egg production declines rapidly; egg size is markedly reduced and many are odd shaped. The shells are thin and sandy; the albumen is thin and watery in the freshly laid eggs and contain loose, bubbly air cells.

A Child May Dare So Drive With Care



### New Stock Modern Bedroom Furniture Just Arrived--

In a beautiful, natural toned wood, which is light in color, and so well adapted to today's modern trends. The distinctive hardware gives it a new and different look, and all of the internal construction details are worthy of higher priced suites.

We invite you to come in and look over our complete selection of new bedroom furniture.

**ERNEST LEE HARDWARE**  
Furniture - Rugs - Radios - Hardware

## DON'T WAIT!!

Have Your Portrait Made days or evenings up to 9 p. m.

**W.D. Barrymore**  
THE ORIGINAL Promotional Studio PHOTOGRAPHERS

Wheeler Pasadena

Wheeler Pasadena



DO YOU NEED A **NEW DRILL**  
WE NOW HAVE IN STOCK  
**16x10 Semi-Deep FURROW DRILLS**  
With 6:00x16 Tires

- CORN BINDERS**
- BINDER TWINE**
- GRAIN BINDERS**
- COMBINES**
- PEG-TOOTH HARROWS**
- 4-WHEEL TRACTOR TRAILERS**
- 1 GOOD USED MODEL M TRACTOR**
- NEW MODEL H TRACTORS**
- NEW MODEL C TRACTORS**
- **ANYTHING FOR THE FARM** •

**HIBLER IMPLEMENT CO.**

Your International Harvester Dealer

Phone 151

Wheeler

### Baseball Game

**SUNDAY OCTOBER 2**

3:00 P. M.

**MOBEETIE**

vs.

**WHEELER**

**MOBEETIE DIAMOND**

ADMISSION 50c



*in* **STYLE for WINTER**  
**Boys Flannel Shirts**  
Red, Green and Blue  
**Sizes 2 to 18 . . . \$1.49**

**100% Wool BOYS JACKETS**

Brown or Blue Plaid Zipper Fasteners, Slash pockets, Sizes 2-6

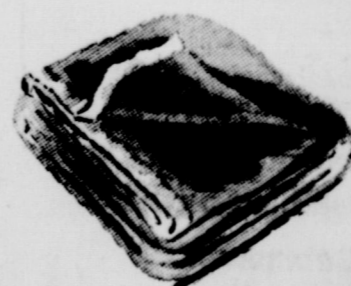
**\$4.98**

**Children's**



One piece, Cap to match Zipper front, Sizes 1, 2 & 3

**\$6.95**



**COLORED SHEET BLANKETS**

Perfect Winter Comfort, Yellow, Peach, Rose, Blue or Green, 72 x 90

**each \$2.29**

**MEN'S CORDUROY HATS**

Red or Tan All Sizes

**\$1.98**

**Russ Dry Goods & Variety**

Wheeler, Texas

## CHEAPEST WAY TO BUY OR SELL WANT ADS

15c per line (counting 5 words to line) for first insertion. Minimum charge, 45c; 10c per line after first time. Advertising rate, 35c per column inch, 28c per inch when used more than once each week during calendar month.

DAY ADVERTISING—National rate, 42c an inch; Local advertising rate, 35c per column inch, 28c per inch when used more than once each week during calendar month.

### FOR SALE

**SALE**—40 model Chevrolet. See Cliff Mason. 41-3p.  
**SALE**—Wearing pigs. J. R. Wheeler. 42-1tc.  
**SALE**—Alfalfa hay. See Lewis. 41-2tc.  
**SALE**—48 model Coldspot refrigerator to sell at a low price. Ernest Lee Hardware. 42-1tc.  
**SALE**—Good used Remington Register. See it at The Times. 29-1tp.

**APPLES**—Winesap, Black Twig, Rome Beauty, Stayman, Den Davis, and Black Ben. Good winter keepers. \$1.00 per bu. on tree. 2 miles East and 6 north of Durham, Okla. H. E. Montague. 41-3p.

**PIANO FOR SALE**  
A repossessed spinet piano to be sold immediately in this community for balance due on contract. For details write Clark Shaw Music Store, 204 N. Main, Garden City, Kansas. 40-3tc.

**FOR SALE OR TRADE**—McCormick-Deering used row binder. W. L. Williams, 2 1/2 miles southwest of Wheeler. 41-2tp.

## BUY YOUR "GUARANTEED" USED CARS AND TRACTORS FROM NASH APPLIANCE AND SUPPLY COMPANY

1946 Pontiac, 2-door.  
1936 Chevrolet, 2-door.  
Model H John Deere Tractor and equipment.  
Model B International tractor with lister-planter.  
Model RC Case tractor and equipment.  
1947 VAC Case tractor with bulldozer.

**NEW EQUIPMENT IN STOCK**  
Wheat drills with the famous seed meter system.  
SC and DC Case tractors with the new low pressure hydraulic lift.  
LA Case Tractor.  
10' Case one-way.  
Case feed mills.  
Jifery Chisel plows.  
Wetmore feed mills.

**NASH APPLIANCE & SUPPLY CO.**  
Wheeler, Texas 42-1tc

**ONLY \$2.49**  
We only have a few "Wheeler Mustangs" zipper notebook binders left and in order to clear them out we are reducing the price to only \$2.49 each. We have many other reasonably priced zipper notebook binders without any in-

signia of any sort on them for students at schools other than Wheeler.

**THE WHEELER TIMES**  
Phone 35 Wheeler

### MISCELLANEOUS

Private Gun Collector wants to buy Colts Frontier or Bisley Model Single Action Six Shooter. Any caliber. Write and describe fully. Devey Hicks, Box 3034, Amarillo. 39-4tc.

We would appreciate it very much if you would please search out your tool boxes and bring back our pipe threader, cutter and vise. We were good enough to lend these tools to you, please be good enough to bring them back. Ernest Lee Hardware. 42-1tc.

**MALE HELP WANTED**  
Large Midwestern Feed Company needs Salesmen in Wheeler County. Good pay. Work routine. Hospitalization. Group insurance. Social Security. Training given. Must have car. Ages 25 to 50. Sales experience and farm background helpful. Write the Wheeler Times, Wheeler, Texas 41-2tp.

Monuments, grave covering, curbing and all memorial work. Will Warren. 21-1tc.

**BRUCE & SONS TRANSFER**  
Local and long distance moving. Best equipment and vans. We have plenty storage space. Agent: North American Van Lines, serving the Nation. Phone 934,ampa, Texas. 48-1tc.

No fishing or hunting on my place without my permission. George Porter. 38-1tc.

### ALCOHOL

**PUBLIC ENEMY No. 1**  
Alcoholics Anonymous offers help to men and women who have an honest desire to stop drinking. Write P. O. Box 589, Shamrock, Texas. 5-1tc.

**WANTED**—To buy your butcher hogs and shoats. Call J. P. Barber or Albert Williams at Farmer's Livestock Market, Shamrock. Day phone 236, night phone 547-W. 23-4tc.

## Society

### Pink and Blue Shower Honors Mrs. Sechrist

Mrs. Shorty Sechrist was honored with a pink and blue shower, September 20, in the home of Mrs. J. R. Clark with Mrs. George Lamb, Mrs. Frank Hyatt and Mrs. Chester Babb as co-hostesses.

After a period of recreation the gifts were presented to the honoree.

Refreshments of punch and cake were served to the following: Mesdames John Barr, Wiley Pettit, Lem Guthrie, Lue Willard, Winston Patterson, DeWitt Swan, B. A. Neece, Harold Laycock, Robert Neice, Leo Lamb, Carrol Laycock, C. D. Mitchell, W. L. Stone, Spud Moore, W. C. Savage, Kara Willard, J. C. Moore and B. L. Brewster.

Those sending gifts were Mesdames Gordon Whitener, Ralph Smotherland, Hunter, Herbert Whitener, James Throckmorton, Lola Smith, Lane, Cecil Martin, Dan Hefley and Sunday School Class.

### Estes-Franks Nuptials Exchanged At Allison

The home of Mrs. R. A. Estes of Allison was the scene of a simple, but impressive wedding ceremony, Thursday, September 15, when her daughter, Alice, became the bride of Rev. J. L. Franks of Mangum, Okla. Rev. Robert Estes, brother of the bride, performed the ceremony.

Relatives attending the wedding were: Mr. and Mrs. V. J. Estes and sons of Dalhart; Warren Dale Franks, Mangum, Okla. and Rev. and Mrs. C. A. Milstead and sons of Tucumcari, N. M.

The couple will make their home at Mangum where Rev. Franks is pastor of the United Pentecostal Church.

### Mrs. Ramsey Hostess To Good Neighbors

The Good Neighbors Home Demonstration Club met Wednesday, September 21, in the home of Mrs. Bob Ramsey.

Plans for the County-Line Fair were made and Miss Morton gave an interesting demonstration on arranging flowers.

Those present were: Mesdames Herbert Finsterwald, Haddock, Vernon Savage, Sam Standlee, Will Finsterwald, T. A. Treadwell, Weaver Barnett and the hostess, Mrs. Bob Ramsey.

Don't walk in a daze—Look both ways.

## SOCIETY

### Wheeler WSCS Holds Regular Meet Monday

The W.S.C.S. met at the Methodist Church Tuesday for their regular meeting.

Mrs. D. L. Egger, study leader, gave the second chapter of, "Japan Begins Again". Mrs. H. M. Wiley gave an article from "World Outlook", entitled, "Hiroshima's Dream", and Mrs. Lyndon Sims gave a report of the District meeting held at Clarendon last week.

Those present were: Mesdames Harold Nash, J. R. Clark, Lyndon Sims, C. C. Robison, H. M. Wiley, D. L. Egger, Ollie Hubbard and Lloyd Davidson.

### Roy Ford Home Scene Of Review Club Meet

Mrs. Roy Ford was hostess to the Thursday Review Study Club, when they met September 22.

In the absence of the president, the vice-president, Mrs. Roy Ford, conducted the business session. Mrs. J. C. Howell led a very interesting program with the theme being, "Cotton, White Gold of America". Miss Glenna Hefley gave, "Discovering Cotton", as the second part on the program after which Mrs. W. A. Goad, Jr. led the group in singing several songs of the south. The program was concluded with the reading of the club collect.

As means of raising money for the club an auction sale was held with articles made from cotton being sold to the highest bidder. Besides being a worthwhile event, the auction proved to be a lot of fun for the members.

Dainty refreshments were served to: Mesdames Earl Barnes Wilton Callan, W. A. Goad, Jr., J. C. Howell, Louis Martin, Carrol Pettit, Carrol Fendleton, Lester Robertson, Leroy Robison, Ralph Robison, Harvey Wright, Stuart Anglin, Guy Dawkins and Cecil Richardson, Jr.

Misses Wilma Hefley, Vendell Starkey, Glenna Hefley and one guest, Miss Ola Mae Scriber.

### Coleman Children Are Honored With Party

A birthday party honoring Augusta and Jerry Coleman was given in the home of Mr. and Mrs. Everett Coleman September 24, with Mrs. Jake Allen and Mrs. Charlie Corcoran as co-hostesses.

Refreshments of punch and cake was served to: Barbara, Sandra Sue, Sarah and Neida Barton, Helen, Ada Lou and Johnny Allen, Neida Newman, Guy Gene, Vaneta and Mary Sue Brewer, Jerry, Gary and Phillis Grimes, Alford, Dale and Rayborn Corcoran, Jennette Morgan, Verina Hunter, Mary Jo Townsend, Tommie Corcoran, Glen and Keith Waters, Melvena Beck, Author and Don Burk, Marcella Patterson, Arcea and Ray Corcoran, Jeannie, Anna Mae, Mary Helen and Gerald Guogge.

### Donaldson Home Scene Of HC Club Meeting

The Home Culture Club met recently in the home of Mrs. Millard Donaldson for their regular meeting.

After singing, "America", as the opening song; regular business was taken care of with new business following. At this time it was voted to send a package to the family in France, which they had sent one to last year, with the package to be mailed near Christmas. It was also decided that the club would donate \$5.00 to the Hemphill County Memorial Hos-

pital. Mrs. M. P. Rogers gave the council report and plans were made for Achievement Day which will be held soon.

Miss Gidden, Home Demonstration Agent, gave an interesting demonstration on, "Lamp Shades". She told of how to repair them, how to make them and what kind to buy.

Refreshments were served to the following: Mesdames M. P. Rogers, Lee Kiker, Pat Huff, Charles Taylor, Porter Rogers, Miss Sybil Gidden and the hostess, Mrs. Millard Donaldson.

### Wiley-Greathouse Vows Exchanged Here Thurs.

Miss Pennie Wiley of Paducah became the bride of Emmons Greathouse of Amarillo when marriage vows were solemnized at the First Methodist Church parsonage in Wheeler, September 22, with Rev. Darris L. Egger, pastor, officiating.

The couple will make their home in Paducah where the groom is an owner of a hotel there.

### Mrs. Goad In Charge Girl Scout Meeting

Wheeler Girl Scout Troop No. 2-18 held their regular meeting Tuesday afternoon in the club room with Mrs. W. A. Goad, Jr. in charge.

Roll call was answered by each member giving a reading or singing a song. The president, Patsy Burgess, presided over the business meeting and new officers were elected. They are: Sharon Green, president; Barbara Revioux, vice-president; Mary Black, secretary and Pam Anglin, song leader.

The meeting was adjourned in the usual manner, by forming the Fellowship Circle and singing "Taps".

**YOUR FOOD DOLLAR MAKES CENTS HERE**

SWIFTS JEWEL	3-lb. Tin		
<b>SHORTENING</b>		<b>69c</b>	
ARMOUR'S	3-lb. Carton		
<b>PURE LARD</b>		<b>53c</b>	
MOUNT JEMIMA	10-lb. Bag		
<b>CORN MEAL</b>		<b>63c</b>	

KRAUT	1/2 lb.	2 1/2 c
<b>CABBAGE</b>		
IDAHO—Large Red	2-lbs.	
<b>DELICIOUS APPLES</b>		<b>25c</b>
TOKAY	2-lbs.	
<b>GRAPES</b>		<b>19c</b>

SUNSHINE	1/2 lb.	25c
<b>KRISPY CRACKERS</b>		
ALL TALL CANS (LIMIT) 3 Cans		
<b>MILK</b>		<b>29c</b>
CAMPBELL'S	2 Tall Cans	
<b>TOMATO SOUP</b>		<b>19c</b>
TEXAS GOLD	46-oz. Can	
<b>GRAPEFRUIT JUICE</b>		<b>25c</b>
SWANSDOWN	Box	
<b>CAKE MIX</b>		<b>33c</b>
WORLD'S FAIR	3-pkgs.	
<b>ROUND TOOTH PICKS</b>		<b>25c</b>

**ARMOUR'S CRESCENT SLICED BACON**

Found **45c**

**BARBO-AJAX CLEANSER**

Each **10c**

**PUCKETT'S RECIPE OF THE WEEK**

by Mary Lee Taylor

**Whipped Lemon Topping**

Prepared August 6, 1949

1 cup chilled Fat Milk  
1 tablespoon lemon juice  
1/2 teaspoon sugar  
1/2 teaspoon grated lemon rind

Put milk and sugar into small bowl. Whip with chilled rotary beater, or electric beater at high speed, until fluffy. Add lemon juice and rind. Continue whipping until stiff. Serve as a topping on fruit, gelatin desserts, plain cake, gingerbread, puddings or other desserts that will blend with the lemon flavor of this topping. Makes 1 1/2 cups.

You Will Need:

**PET MILK**  
**SUGAR**  
**LEMON JUICE**

CHICKEN-OF-SEA	No. 1/2 Can	
<b>GRATED TUNA</b>		<b>33c</b>
SUPERB	No. 1 Tall Can	
<b>RED SALMON</b>		<b>53c</b>
PINK BEAUTY	No. 1 Tall Can	
<b>SALMON</b>		<b>43c</b>
ARMOUR'S	12 oz. Can	
<b>TREET</b>		<b>39c</b>
NEW CROP—NO. 1	Pound	100-lb. Bag
<b>PINTO BEANS</b>	<b>9c</b>	<b>\$8.65</b>
	2 Large Boxes	Case 24
<b>SURF</b> Hard Water Suds Sensation	<b>31c</b>	<b>\$3.60</b>
DIAMOND OR	Carton of 6 Boxes	
<b>ROSE BUD MATCHES</b>		<b>33c</b>

**PUCKETT'S FOOD MARKET**

**SPECIALS FOR FRIDAY & SATURDAY, SEPT. 30 AND OCTOBER 1**

**McCormick Garage**

Complete Tune-up and General Repair.

Expert mechanics with the newest and best equipment obtainable.

All Work Guaranteed. Phone 170, Wheeler

**How About That Cotton Trailer?**

We have all materials for building or repairing your cotton trailer—except the running gear.

Anything You Need for That Trailer—And you'll be needing that trailer.

**BETTER GET IT READY NOW!**

We Also Have Materials for **BARNs and GRANARIES**

IT'S TIME TO THINK ABOUT INSULATING THAT ATTIC... REPLACE BROKEN WINDOW GLASS... REPAIR ROOFS.

**Cicero Smith Lumber Co.**

Wheeler, Texas

its BIG... its FANTASTIC!

**OCT. 8-25 DALLAS**

**STATE FAIR OF TEXAS**

The Biggest State Fair in the World

### CHECKERBOARD CHUCKLES • From Your Purina Dealer

I'M GOING OUT FOR FOOTBALL NEXT FALL.

ME TOO, BET I BEAT YOU OUT AT TACKLE.

I'LL OUTGROW YOU ON THE PURINA PLAN.

OH YEAH? I'M A STRAIGHT GRAIN MAN.

6 MONTHS LATER— HOW'D YOU GET THAT WAY?

PURINA MAN, PURINA!

Up to 1/3 MORE PORK from the same amount of grain

Balance your grain with Purina Hog Chow instead of tankage, soybean oil meal and other single ingredient supplements. Come in and see about the Purina plan.

We Want To Buy Your Cream, Poultry & Eggs.

**WHEELER COUNTY PRODUCE ASSOCIATION**  
Phone 142 — Wheeler — P. O. Box 92

### WE HAVE--Dixie Wonder Peas, Austrian Winter Peas & Hairy Vetch Seed

Farming and ranching are still the basic industries in Texas, even though manufacturing and the production of oil play a major role in the state's economy. In 1946 Texas produced 760,505,000 barrels of oil. This was 44 percent of the total amount produced in the United States.

## ROGUE THEATRE

FRIDAY AND SATURDAY—

### "Desert Vigilante"

—starring—  
Charles Starrett

PREVUE SATURDAY NIGHT—  
SUNDAY AND MONDAY

### "Great Gatsby"

—starring—  
Alan Ladd and Betty Field

WEDNESDAY AND THURSDAY—

### "Little Women"

—starring—  
June Allyson, Margaret O'Brien and Elizabeth Taylor

### LEGAL NOTICE

#### CITATION BY PUBLICATION THE STATE OF TEXAS

TO: Houston Brooks

GREETINGS: You are commanded to appear and answer the plaintiff's petition at or before 10 o'clock A. M. of the first Monday after the expiration of 42 days from the date of issuance of this Citation, the same being Monday the 24th day of October, A. D. 1949, at or before 10 o'clock A. M. before the Honorable District Court of Wheeler County, at the Court House in Wheeler, Texas.

Said plaintiff's petition was filed on the 9 day of September, 1949. The file number of said suit being 4038.

The names of the parties in said suit are: Frankie Eugenia Brooks as Plaintiff, and Houston Brooks as Defendant.

The nature of said suit being substantially as follows, to-wit: "Suit for Divorce by Cruel Treatment"

Issued this 9 day of September, 1949.

Given under my hand and seal of said Court, at office in Wheeler, Texas, this the 9th day of

### METHODIST HR. ON BIG NETWORK

The fourth annual broadcast of "The Methodist Hour" will be carried by the nation's largest independent religious radio network and will be produced in the only interdenominational owned studios in the country.

More than 90 radio stations are now cooperating with the Southern Religious Radio Conference in the distribution of radio broadcasts produced by radio committees of the Presbyterian Church in the U. S., the Protestant Episcopal Church and The Methodist Church.

Beginning October 2nd The Methodist Hour will be produced in the studios of The Protestant Radio Center, which is a corporation chartered under the laws of the state of Georgia. The studios of the Protestant Radio Center will be used for the production of religious radio programs, audio-visual materials and in the future

September, A. D. 1949.

(SEAL)  
CHRISTOPHER S. McCLAIN  
Clerk District Court  
Wheeler County, Texas 40-40c

television programs. This Center is owned by radio committees of The Protestant Episcopal Church, the Presbyterian Church in the U. S., and by the educational institutions: Agnes Scott College, Columbia Theological Seminary, both in Decatur, Ga., and Emory University. Membership in this corporation is also held by the southern office of the Federal Council of Churches and by certain committees from the Lutheran Church and the Christian Church.

Bishop William C. Martin, resident bishop of the Dallas Area of The Methodist Church and chairman of the Advance for Christ and His Church will speak on the first

broadcast, October 2nd, 1949. Other speakers to be heard in October will be Bishop Marvin A. Franklin, Jackson, Mississippi, Dr. H. Bascom Watts, Tulsa, Oklahoma and Dr. John Owen Smith, Greenville, S. C. The Methodist Hour and other programs sponsored by The Southern Religious Radio Conference are heard Sunday mornings at 7:30 over stations KGNC in this area.

The good range grasses will produce from two to five times as much forage as the poor invader grasses and the more good grass you can grow per acre means more meat to the acre.

If fat in a frying pan catches on fire, smother it with wet towels. Never pour water on it for water makes the fat spatter and may spread the fire. Don't walk in a daze. Look both ways.

When Texas Attends the **PRISON RODEO** ANNUAL

RESERVED SEATS \$2.00 Tax Incl. "Nothing Like It In The Whole West"

WRITE OR WIRE FOR CHOICE SEATS TODAY

*Harvest Your Cotton this TIME and MONEY SAVING*



### JOHN DEERE No. 15 Two-Row Cotton Harvester

You'll make short work of harvesting cotton... saves pennies to a fraction of hand-pulling costs when you own a Deere No. 15 Two-Row Cotton Harvester.

The John Deere does an excellent job of harvesting any cotton that is suitable for mechanical snapping. Stripping two rows at a time after defoliation, the John Deere does a once job, saving more cotton than the average hand-puller. Harvest at the same time, cotton pulled with the No. 15 grades as high that picked by hand.

Be sure to stop in soon and let us tell you more about this advanced and money-saving two-row cotton harvester.

**HOLDEMAN IMPLEMENT CO.**  
PHONE 143 WHEELER, TEXAS

**JOHN DEERE**  
The Quality Name in Farm Equipment

# BUSINESS AND PROFESSIONAL DIRECTORY

<p><b>AUCTIONEER</b> SHELBY PETTIT Will cry your sale any time or place Phone 158—Wheeler, Texas</p>	<p><b>DR. JOEL M. GOOCH</b> OPTOMETRIST  200 S. Wall Street Phone 123 SHAMROCK, TEXAS</p>	<p><b>C. J. MEEK</b> AGENT <b>INSURANCE</b> Night Phone 124, Day Phone 48</p>
<p><b>HOMER L. MOSS</b> LAWYER Old County Agent's Building WHEELER, TEXAS</p>	<p><b>Dr. C. C. Merritt</b> CHIROPRACTOR WHEELER, TEXAS Equipped to give complete chiropractic service</p>	<p><b>LELA MARBLE AND GRANITE</b> Lela, Texas Adult Grave Slabs—\$80.00 Caping for Lots, including gateways and post—\$1.40 per ft.  Markers &amp; Granites in proportions. 30% to 35% discount —See— TAY TURNBOW, Owner Lela, Texas No Agents</p>
<p><b>Canadian Valley Production Credit Association's Representative</b>  IS IN THEIR <b>Wheeler Office</b>  EACH Thursday</p>	<p><b>SEE DINZEL LEONARD</b> FOR ● LIFE INSURANCE ● FIRE INSURANCE ● AUTOMOBILE INS. ● POLIO INSURANCE  AT <b>MOBEETIE, TEXAS</b></p>	<p><b>We Invite You To Try WHEELER BAKERY</b> Bread and Pastries Special Orders Appreciated  Made Fresh Daily In Wheeler  The Wheeler Bakery is now under new management</p>
<p>Now Open For Business <b>OTIS REID GARAGE</b> Located on Highway 183 Wheeler, Texas</p>	<p><b>Refresh</b>  COCA COLA BOTTLING CO. Shamrock, Texas</p>	<p><b>Electrolux Vacuum Cleaners SERVICE &amp; SUPPLIES</b> <b>L. A. McWHORTER</b> Route 1 Wheeler, Texas</p>

**Here's what's underneath Advance-Design value**



You're looking at the "backbone" of a Chevrolet Advance-Design truck... the source of Chevrolet's massive strength and durability. Run your eyes over that rugged frame and those sturdy springs. Here's the rock-solid foundation that keeps Chevrolet trucks hauling at peak efficiency mile after mile, year after year! Add Chevrolet's power-packed Valve-in-Head engine, Synchro-Mesh transmission and Hypoid rear axle, and you've a combination that's built for the load... powered for the pull! Come see these great trucks today!

Featuring VALVE-IN-HEAD ENGINES—Greater power per gallon, lower cost per load • DIAPHRAGM SPRING CLUTCH—Smooth engagement • SYNCHRO-MESH TRANSMISSIONS—Quick, smooth shifting • HYPOID REAR AXLES—5 times stronger than spiral bevel type • DOUBLE-ARTICULATED BRAKES—Complete driver control • WIDE-BASE WHEELS—Increased tire mileage • ADVANCE-DESIGN STYLING—With the cab that "Breathes" • BALL-TYPE STEERING—Easier handling • UNIT-DESIGN BODIES—Precision built.

PREFERRED BY MORE USERS THAN THE NEXT TWO MAKES COMBINED!

**ADVANCE-DESIGN CHEVROLET TRUCKS**

**WARE CHEVROLET COMPANY**  
Wheeler, Texas



### Hi-Life

**STAFF**  
 Betty Lancaster  
 Patsy McCauley  
 Peggy Williams  
 and Dale Haynes  
 Jay Willis  
 Madge Patterson  
 Reporter - Pete Seitz  
 and Jim Bob Wright  
 Reporter, Vendell Wallis

**SENIOR NEWS**  
 Kathryn is a sophomore at Mobeetie High and is 17 years old. She is 5 ft. 11 in. tall and weighs 110-lbs. Her hair and blue eyes and her main ambition is to be a housewife. Kathryn lists as her favorites, all teachers, Betty Grable as her favorite actress, and Glenn Ford as actor.

**SENIOR NEWS**  
 Mary is a junior at Mobeetie High and is 15 years old. She is 5 ft. 10 inches tall and weighs 100 lbs. Her hair and blue eyes and her main ambition is to be a housewife. Mary lists as her favorites, all teachers, Betty Grable as her favorite actress, and Glenn Ford as actor.

tion is to be a housewife. Mary lists among her favorites, Spanish as a subject, Mrs. Scribner as a teacher, Yvonne DeCarlo and Richard Widmark as actress and actor, cheese as her favorite food.

**SOPHOMORE NEWS**  
 Barbara Trimble—Barbara is a sophomore this year in Mobeetie High school and is 16 years old. She is 5 ft. tall and weighs 110-lbs. has brown hair and green eyes and states that her main ambition is to pass Biology this year. Barbara lists among her favorites, Mr. Dunaway as teacher, Alan Ladd and June Allyson as actor and actress, English is her favorite subject.

**FOOTBALL & PEP SQUAD**  
 The Mobeetie Hornets lost their second game yesterday to Shamrock B with a score of 6-0. The Hornets didn't get to buzzing good until the last half but it didn't do any good.  
 The Pep Squad was very down-hearted yesterday when Shamrock took home the game. But we still were in there yelling and we will be in there yelling the next time.

**FRESHMAN NEWS**  
 The freshman girls are glad to get their initiation over with. They had three days of it this year. I think the boys are kind of glad it's over too. They didn't like to look at them.  
 Joyce Bonds—Joyce is a freshman at Mobeetie High school this year and is 16 years old. She is 4 ft. 11 in. tall and weighs 106-lbs. has light brown hair and green eyes and states that her main ambition is to get out of high school.  
 Joyce lists among her favorites, Aunt Elsie as teacher, June Allyson and Randolph Scott as actress and actor, and says that she does not have a favorite subject.

Numbered 13 (Benonie) and Number 7 (Bethel) are and were abolished and the territories embraced in their boundaries annexed to and made a part of voting box or precinct No. 12, Shamrock.  
 The precincts are now designated as follows:  
 Mobeetie ----- No. 1  
 Briscoe ----- No. 2  
 Wheeler ----- No. 3  
 Allison ----- No. 4  
 Stanley ----- No. 5  
 McBee ----- No. 6  
 Twitty ----- No. 7  
 Kellerville ----- No. 8  
 Heald ----- No. 9  
 Lela ----- No. 10  
 Magic City ----- No. 11  
 Shamrock ----- No. 12  
 Kelton ----- No. 13  
 Paken ----- No. 14  
 Shamrock ----- No. 15  
 To Certify which witness my hand at Wheeler, Texas this the 19 day of September, 1949.  
**HARRY WOFFORD**  
 County Clerk and Ex-Officio  
 Clerk of the Commissioners Court,  
 Wheeler County, Texas  
 By—Betty Jo Pendleton, Deputy  
 41-3tc.

### LEGAL NOTICE

**NOTICE OF VOTING BOX CHANGES BY COUNTY COMMISSIONERS COURT**  
 Notice is hereby given that at a regular session of the Commissioners Court of Wheeler County, Texas on August 8, 1949, a quorum being present, it was ordered that the following changes in the voting boxes or precincts in Wheeler County, Texas be made to become effective for all elections to be held after such date: (Voting boxes or precincts)

111,000 Texas cotton producers in 167 counties are members of 1,151 organized groups that are cooperating with the Cotton Branch, Production and Marketing Administration, USDA, to get free cotton classing and market news services.

### LEGAL NOTICE

**THE STATE OF TEXAS COUNTY OF WHEELER SHERIFF'S SALE**  
 WHEREAS, on the 14th day of September, 1949, in Cause No. 3962, in the District Court of Wheeler County, Texas, wherein Wheeler Ind. School Dist. et al were Plaintiffs, recovered judgment against J. F. Rathjen et al, Defendants, for taxes, penalty, interest, and cost against the hereinafter described property;  
 WHEREAS, on the 14th day of September, 1949, by virtue of said judgment and the mandates thereof of the Clerk of the above mentioned District Court of said county did cause to be issued an Order of Sale commanding me as Sheriff of said county to seize, levy upon, and sell in the manner and form as required by law the hereinafter described property;  
 WHEREAS, by virtue of said judgment and said Order of Sale and the mandates thereof I did on the 16th day of September, 1949, seize and levy upon as the property of the above defendants the following described property, situated in Wheeler County, Texas, to-wit:  
 (Said description showing the number of acres, original survey,

### Church Calendar

**FIRST BAPTIST CHURCH**  
 Sunday School ----- 10:00 a. m.  
 Morning Worship ----- 11:00 a. m.  
 Evening Worship ----- 8:00 p. m.  
 W.M.U., Tuesday ----- 2:30 p. m.  
 Prayer Service, Wed. ----- 8:00 p. m.  
 Teacher's Meet, Tues. ----- 8:00 p. m.  
 We preach Christ crucified, buried, risen, and coming again.  
**M. B. SMITH, Pastor**

**CHURCH OF CHRIST**  
 Bible Classes ----- 10:00 a. m.  
 Worship and Sermon ----- 11:00 a. m.  
 Evening Worship ----- 8:00 p. m.  
 Ladies Bible Class, Mon. ----- 3:00 p. m.  
 Wed. Eve. Classes ----- 8:00 p. m.  
**B. M. LITTON, Minister**

**THE METHODIST CHURCH**  
 Church School ----- 9:45 A. M.  
 Morning Worship ----- 11:00 A. M.  
 Evening Service ----- 8:00 P. M.  
 Prayer Meeting (Wed.) 8:00 P. M.  
 Church Night -- (First Wednesday)  
 Methodist Men, 2nd & 4th, Thurs.  
**DARRIS L. EGGER, Pastor**

**CHURCH OF GOD Old Mobeetie**  
 Sunday School ----- 9:45 a. m.  
 Morning Worship ----- 11:00 a. m.  
 Evening Workers ----- 2:30 p. m.  
 Tuesday  
 Young People's Service, 7:00 p. m.  
 Saturday  
**B. A. RATCHFORD, Pastor**

**BRISCOE BAPTIST CHURCH**  
 Sunday School ----- 10:00 a. m.  
 Morning Worship ----- 11:00 a. m.  
 First and Third Sundays.  
 Training Union ----- 7:30 p. m.  
 Evening Worship ----- 8:00 p. m.  
 Prayer Service ----- 7:30 p. m.  
 Wednesdays, following First and Third Sunday preaching services.  
 W.M.U. each First and Third Mondays at ----- 2:00 p. m.  
 Each and everyone is cordially invited to attend each service.  
**JAMES E. WILLEFORD, Pastor**

**TWITTY BAPTIST CHURCH**  
 Sunday School ----- 10:00 a. m.  
 Morning Worship ----- 11:00 a. m.  
 Evening Worship ----- 8:00 p. m.  
 Mid-week prayer service 8:00 p. m.  
**NELSE D. WRIGHT, Pastor**

**KELTON BAPTIST CHURCH**  
 Sunday School each Sunday at 10:00 a. m.  
 T. U. each Sunday at 7:30 p. m.  
 Preaching each Sunday at 11:00 a. m. and 8:30 p. m.  
**A. G. ROBERTS, Pastor**

**CHURCH OF THE NAZARENE**  
 Sunday School ----- 10 a. m.  
 Worship ----- 11 a. m.  
 N.Y.P.S. ----- 7:30 p. m.  
 Evening Worship ----- 8:00 p. m.  
 Prayer Meeting Wed. 8:00 p. m.  
**MRS. J. D. ROEDLER, Pastor**

**ALLISON PENTECOSTAL CHURCH**  
 Sunday School ----- 10:00 a. m.  
 Worship ----- 11:00 a. m.  
 Young Folks Service - 7:30 p. m.  
 Worship ----- 8:00 p. m.  
 Wednesday Night Prayer Meeting ----- 8:00 p. m.  
**REV. ROBERT ESTES, Pastor**

**FIRST METHODIST CHURCH Mobeetie, Texas**  
 Church School ----- 10:00 a. m.  
 Morning Worship ----- 11:00 a. m.  
 M. G. F. Meeting ----- 6:45 p. m.  
 Evening Worship ----- 7:30 p. m.  
 Wed. Evening Prayer Service ----- 7:30 p. m.  
 You Are Welcome.  
**VERNON E. WILLARD, Pastor**

**BRISCOE METHODIST CHURCH**  
 Sunday School Each Sunday ----- 10:00 a. m.  
 Preaching, second and fourth Sundays ----- 11:00 a. m. and 8:00 p. m.  
 A hearty welcome to all.  
**L. J. HELM, Pastor**

**ALLISON METHODIST CHURCH**  
 Sunday School Each Sunday ----- 10:00 a. m.  
 Preaching, first and third Sundays ----- 11:00 a. m. and 8:00 p. m.  
 A warm welcome to all.  
**L. J. HELM, Pastor**

**ALLISON BAPTIST CHURCH**  
 Sunday School ----- 10:00 a. m.  
 Preaching Service ----- 11:00 a. m.  
 Training Union ----- 7:30 p. m.  
 Preaching Service ----- 8:30 p. m.  
**JAMES E. WILLEFORD, Pastor**

**FIRST BAPTIST CHURCH Mobeetie, Texas**  
 Sunday School ----- 10:00 a. m.  
 Morning Worship ----- 11:00 a. m.  
 Training Union ----- 7:30 p. m.  
 Evening Worship ----- 8:30 p. m.  
 Prayer Meeting, Wed. ----- 8:00 p. m.  
**JAMES M. BRYANT, Pastor**

### ASSEMBLY OF GOD Mobeetie, Texas

Sunday School ----- 10:00 a. m.  
 Worship ----- 11:00 a. m.  
 Junior Church ----- 7:30 p. m.  
 Evangelistic Service ----- 8:00 p. m.  
 Prayer Meeting, Tues. 8:00 p. m.  
 Young Peoples Ser. Thursday ----- 8:00 p. m.  
**GLEN H. LESTER, Pastor**

### KELTON METHODIST CHURCH

Church School ----- 10:00 a. m.  
 Preaching 11:00 a. m. every third Sunday.  
 MYF, WSCS and Bible Study 7:30 p. m.  
 Preaching 7:30 p. m. every third Sunday.  
**H. E. LONG, Pastor**

### LEGAL NOTICE

**THE STATE OF TEXAS COUNTY OF WHEELER SHERIFF'S SALE**  
 WHEREAS, on the 14th day of September, 1949, in Cause No. 3962, in the District Court of Wheeler County, Texas, wherein Wheeler Ind. School Dist. et al were Plaintiffs, recovered judgment against J. F. Rathjen et al, Defendants, for taxes, penalty, interest, and cost against the hereinafter described property;  
 WHEREAS, on the 14th day of September, 1949, by virtue of said judgment and the mandates thereof of the Clerk of the above mentioned District Court of said county did cause to be issued an Order of Sale commanding me as Sheriff of said county to seize, levy upon, and sell in the manner and form as required by law the hereinafter described property;  
 WHEREAS, by virtue of said judgment and said Order of Sale and the mandates thereof I did on the 16th day of September, 1949, seize and levy upon as the property of the above defendants the following described property, situated in Wheeler County, Texas, to-wit:  
 (Said description showing the number of acres, original survey,

locality in county, and name by which said property is most generally known.)  
**FIRST TRACT:**  
 All of lots 6 & 7 in Block K, Park Addition in the City of Wheeler, Texas.  
 And I will on the first Tuesday in the month of November, 1949, the same being the 1st day of said month, proceed to sell all the right, title, and interest of the Defendants in and to said property at the Court House door of said county in the city of Wheeler, between the hours of 10:00 a. m. and 4:00 p. m. to the highest bidder for cash, provided, however, that none of said property shall be sold to the owner of said property directly or indirectly or to anyone having an interest there in or to any party other than a taxing unit which is a party to this suit for less than the amount of the adjudged value of said property or the aggregate amount of judgment against said property in said suit, whichever is lower, subject also to the right of the Defendants to redeem same in the time and manner provided by law and subject also to the right of the Defendants to have said property divided and sold in less divisions than the whole.  
 DATED at Wheeler, Texas, this 16th day of September, 1949.  
**JESS SWINK**  
 Sheriff Wheeler County, Texas  
 41-3tc.

**RAIL CROSSING STOP**  
**NEED THEM**

### ALLISON FARMERS CO-OP SOCIETY GIN

Will operate this fall under the management of A. R. Collins.  
 The gin has been thoroughly overhauled and put into first class condition and is now ready to start ginning.  
 We have an experienced gin crew and will appreciate your patronage.

### ALLISON FARMERS CO-OP SOCIETY GIN

Allison, Texas

From where I sit ... by Joe Marsh



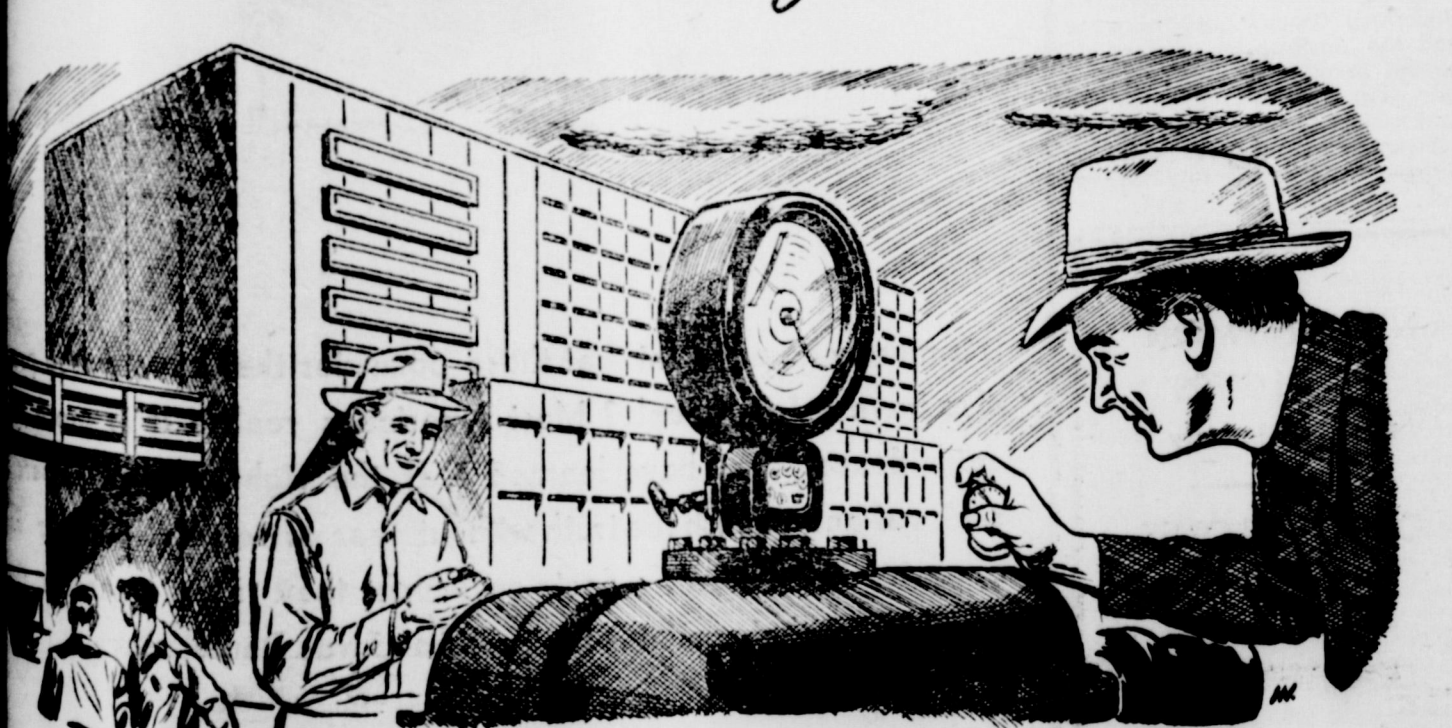
**A Big Boost For Smitty!**

Stepped into Smith's Department Store the other noon and saw the strangest thing. "Sis" Davis was coming up the stairs from the basement with a bundle of wash.  
 "Is Smitty taking in washing these days?" I asked. "Not quite," she says. "He's just put in a new automatic washing machine, so the girls who work here can get their laundry done while they're eating lunch. Means more time to relax at night and on weekends."  
 I thought what a swell boss Smitty must be. Human relations between the boss and employees have certainly taken a big step forward during my lifetime.  
 From where I sit, people seem to be doing a better job of seeing our neighbor's viewpoint these days. Though his ideas and tastes may not be ours, we can understand his preference for a certain breakfast cereal, a favorite movie star, or for a temperate glass of beer or ale. That's the way it should be in a free country.

Joe Marsh

Copyright, 1949, United States Brewers Foundation

### SERVING the Gulf South



... by making natural gas AVAILABLE FOR USE

Your own personal prosperity is closely linked with the prosperity of your community and state. Therefore, anything that creates wealth in the area contributes in one way or another to your welfare.

United Gas has created millions of dollars of new business in the Gulf South by building pipe lines to gather and move to market natural gas that might otherwise have remained worthless under the ground. This is another example of the way the American Business System works to bring better living to your community.

### UNITED GAS Union Producing Company

... SERVING THE Gulf South

### Now Is The Time

... to check your corn binders and get them in shape for fall cutting.

We can serve you with nice stock of repairs or a new binder.

Also Binder Twine.

### FARMER'S EQUITY SERVICE INC.

JACK MILLER, Mgr. MOBEETIE, TEXAS

### POLIO INSURANCE

Our policy also covers 7 other diseases and pays up to \$5,000.00 for treatment of each person who contacts the disease.

**POLIO POLICY BENEFITS INCLUDE:**

- Hospital Services—Room, board, attendants, apparatus, medicines.
- Medical Services—M. D. or Osteopath.
- Nursing Service—R. N. 3 a day at \$10.00 per day each.
- Ambulance Service—\$25.00 each hospital confinement.
- Iron Lung—or similar mechanical apparatus.
- Blood Transfusions—All usual and customary charges.
- Drugs and Medicines—Pays all drug and medicine bills.
- Transportation—Railroad or aircraft, to hospital; patient and 1 attendant.
- Braces and Crutches—As needed.

—DON'T DELAY—COME IN TODAY—

### DORIS FORRESTER AGENCY

N. W. Corner Square—Fire, Tornado, Automobile, Etc.

at the "backbone" of the modern truck...  
 HRO-MESH TRANSMISSIONS—stronger than steel!  
 WIDE-BASE CHASSIS—With the cab that's built for the trucks today!  
 MAKES COMBINED!

TRUCKS

ANY

# Personal

Mr. and Mrs. Percy Bidgood from New York visited in the home of Mr. and Mrs. Fred Rowe and Mr. and Mrs. W. A. Goad, Sr. one day this week. Mr. Bidgood is a cousin of Mrs. Fred Rowe.

Mr. and Mrs. Bill Gilbert of Amarillo visited in the home of her sister and family, Mr. and Mrs. Weldon Weatherly, Sunday.

Ewing Barnett spent the weekend with his parents at Jowett. Ewing is a student at Tulsa, Okla. this year.

Miss Mildred Clark, Miss Anna Clark and Mrs. Walter Curtis of Dallas attended funeral services for their uncle, Lee McCasland, Tuesday of last week.

Miss Ruth Merrill spent the weekend in Lubbock with friends.

Mr. and Mrs. Frank Wofford and daughters and Ben Wofford spent the weekend in Dallas with relatives. They were accompanied by Mrs. R. Wm. Brown who visited with her daughter, Billie V.

Mrs. Lloyd Davidson, Mrs. Ollie Hubbard and Rev. D. L. Egger attended the Methodist Zone meeting at Dodson Monday for an all day meeting.

Lee Guthrie and son, Corky, have been gone on a fishing trip to Possum Kingdom this week.

Donald Ware of Clovis, N. M. is spending a few days with his grandmother, Mrs. Lee McCasland.

Mr. and Mrs. Delbert Mitchell and children who have been living in Hobbs, N. M. are visiting with relatives in Wheeler and Shamrock this week.

Mrs. M. McIlhany and Miss Blanche Grainger returned home Monday after having visited in Comanche and Dallas. Miss Mary Lou McIlhany, who accompanied them, returned to her home in Memphis, Tenn. via the southern route, visiting in New Orleans, La. Atlanta, Ga. and North Carolina enroute.

Joe Rogers was a business visitor in Amarillo Tuesday and Wednesday.

Mrs. Harold Hill entered the local hospital Monday as a medical patient.

Jack Boyd of Kellerville is receiving medical attention at the Wheeler Hospital this week.

Jim Porter, son of Mr. and Mrs. Glen Porter was dismissed from the Wheeler Hospital today (Thursday) after having received treatment there since Monday.

Mrs. W. R. Holbrook is a patient at the local hospital, entering Wednesday.

Mrs. Bob Galmor is receiving medical attention at the Wheeler Hospital after having entered Monday night.

Mrs. Memory Sprowls, Patsy and Johnnie, and Little Susie Trantham of Erick, Okla., Mrs.

Jack Beckham of El Paso, Texas, and Mrs. Ann Absher of Sayre, Okla. were Thursday night visitors in the A. T. Davidson home.

Mrs. Lavena Hatt, nurse at the local hospital, is back on duty this morning (Thursday) after a weeks illness.

Mrs. Neva L. Myers of Amarillo, came last week to spend some time with her sister, Mrs. A. T. Davidson.

Mr. and Mrs. Emory Strout and son of San Diego, California are spending some time in Wheeler, visiting her mother, Mrs. S. L. Farris, who is in the Wheeler Hospital. Mrs. Strout will be remembered as Miss Ruth Farris.

Russell Martin has returned to his home in Canadian, after spending some time in the A. T. Davidson home.

## Of Interest To

(Continued from Page 1)  
 pot if we are to have a large number before Armistice as we are supposed to do. The Veterans Commission of Texas, an unbiased committee of the Texas State Government, last month issued a statement on the importance of belonging to a veterans organization. If all of you could read what chances we have for beneficial veterans legislation without these groups I am sure that you could see more clearly why you should join some post. If any of you are not affiliated with a post in some town then we would sure like to have your membership here at Wheeler because we make no effort to hide the fact that we would like to have more members in our post. Think this over men and remember that the legion or any other organization can only do what the people show they are in favor of by supporting the organization.

It has been decided to have the juke box dances every Tuesday night as long as the public of Wheeler indicates by their presence that they like them. Come out and enjoy them.

## Mustangs Win

(Continued from Page 1)  
 Sanders alternated at carrying the ball for short gains until it was placed on the Wheeler 1-yard line from where Wheelchel went over for the counter in two tries. C. Lambert failed to kick goal.  
 Late in the fourth period, Claude got possession of the pigskin on a kick from the toe of J. T. Johnson on the Wheeler 40 from where they scored in three plays. Jones threw one incomplete pass then threw another pass which was ruled complete on the Wheeler 32 from where Wheelchel broke off guard on the next play and raced to pay dirt. Jones failed to convert on a running play.  
 In the statistics department, Wheeler made only 8 first downs against 12 for Claude, but gained a total of 279 net yards running and passing against 261 for Claude.

## ALLISON NEWS

Mrs. Lester Levitt

Mr. and Mrs. Ray Brown had as their weekend guests, Mr. and Mrs. J. W. Brown from Long Beach, Calif.; Mr. and Mrs. Darrell Gray of Artesia, Calif.; Mr. and Mrs. J. H. Knowles, Tulsa; Everett Clines and family of Reardon, Okla. and Russell Brown and family of Kansas City, Mo.

Those attending the quarterly conference at the Briscoe Methodist Church Sunday were: Mr. and Mrs. H. R. Warren, David Kiker and family, Doc Wilhelm and family, Emma Rogers and daughter and Mrs. M. P. Rogers.

W. A. Crenshaw and family, R. E. Langford and family and Clyde Dukes and family spent Saturday in Hollis, Okla. with relatives.

Mr. and Mrs. Tohe Frye had as their weekend guests recently, Mr. and Mrs. Will Frye from Lawton, Okla.; Mr. and Mrs. Jack Mallott, Lakewood, Calif.; Mrs. N. V. Pryear and Mr. and Mrs. Harry Dunbar from Boulder City, Nevada.

Jackie Taylor and Sam Moore from the Abilene Christian College spent the weekend here with home folks.

Cecil McCoy and family from Dalhart spent the weekend here in the W. S. McCoy home.

Mrs. R. A. Estes and son, Robert, Mrs. Willie Boydston and children, Mrs. Ira Fish and children, Bob Black and family, Frank Chandler and family, Mrs. J. M. Guthrie and children, Mrs. Mae Gilmer and family, Margaret Ault and Mrs. Joe Walsh and daughter, Gene, attended the Fellowship meeting at the Canadian Pentecostal Church Monday afternoon and night.

Frank Dyer, Ina Fae Smalser and Billy Risner from Wheeler

Each team completed two passes. Wheeler only had 1 incomplete pass and none intercepted, while Claude had 4 incomplections and interception. Wheeler was penalized 60 yards against 30 for the visitors.

The starting line-ups included: Wheeler—Joe Mitchell, Red Crossland, C. R. Bailey, George Hibbitts, Doyle Waters, Henry Pond, Edgar Hubbard, David Johnson, Garland Parks, Maurice Pettit and J. T. Johnson. Claude—R. Bagwell, Hollingsworth, W. Hood, D. K. Robinson, C. Lambert, C. Maple, B. Dye, N. Doyle, R. Wheelchel and B. Rutherford.

## County Agent

(Continued from Page 1)  
 workers and farm and ranch people prevailed throughout the fair, and the favorable reaction of visitors to the excellence of the fair was most gratifying.  
 County Agent Frey said the Shamrock Chamber of Commerce and the Agricultural workers assisting in putting on this year's fair were grateful to all exhibitors and wished to thank both the exhibitors and the general public for helping to make the fair successful.

visited Edna Mae Dyer Sunday afternoon.

Mr. and Mrs. Ronald Evans, spent Sunday at Reardon, Okla. with her parents.

Mrs. Ross Waldrip is visiting her daughter, Mrs. Mildred Motta at Pampa who has a new baby.

R. C. and Clifton Taylor, Lewis Wayne Grayson and J. Dean Besire entered the rodeo at Reardon over the weekend.

Mr. and Mrs. C. L. Bain of Childress spent Sunday here with their daughter, Mrs. Jim Phillips and family.

Mr. and Mrs. Harold Jones motored to Amarillo Tuesday on business.

Mrs. Lew Ramsey, Mrs. Brady Sannah, Mrs. Dorothy Davis and Wilma Linley of Canadian spent Sunday here in the Lois Curlee home. Mr. and Mrs. Darrell Gray spent the night with the Curlee's also.

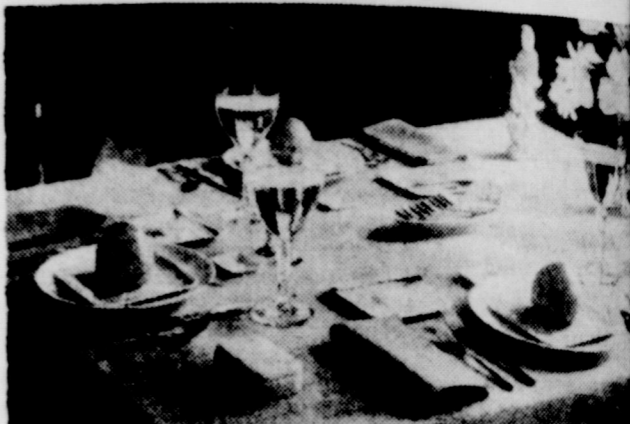
Mr. and Mrs. A. B. Evans, Mr. and Mrs. Ronald Evans, accompanied by Mrs. Harley Wright of Canadian attended the funeral of the infant child of Mr. and Mrs.

## CARD OF THANKS

We wish to take this means to express our heartfelt thanks to our many friends for their kind deeds, thoughtful words, for the food brought and for the bountiful floral offering to comfort us in the sorrow of losing our loving husband, father and grandfather. May God bless each and every one of you is our prayer.  
 Mrs. Lee McCasland  
 Jim and Anna McCasland  
 Kitty Lee and Gus Ware  
 Violette and Chester Hampton  
 Pearl and Sam Morris  
 Ruby and Marshall Adams  
 Orville and Aubrey Greenhouse  
 Jewel and Clarence Holt  
 Lindsey and Lula McCasland

John Henry Evans at Portales, N. Mex. the TB x-ray. Supt. and Mrs. Henry and family motored to Friday evening after so

## HOUSE & GARDEN'S "Table of the Month"



## GOLDEN-HUED DIRILYTE

House & Garden chose Dirilyte (tableware for this lovely Table of the Month with its Chinese theme in vermilion and gold. Did you know we have Dirilyte? It's a wonderful metal, solid, non-plated - hairloss quality through and through, and the first choice of the fashion-conscious. Come and see it! 26 pc. service in chest, \$59.50



ORIGINAL & GENUINE

## WHEELER DRUG STORE

"A Friendly Place To Trade" PHONE 11 WHE

## FARMERS NOTICE!

We think we will have plenty of storage space available for all the grain sorghum you wish to put in the government loan this season, but we must know within the next few days how much space you think you will need so we can reserve a sufficient amount to take care of your needs.

Please contact us within the next few days, next week if possible, and let us know approximately how much grain you plan to put in the government loan.

## KIMBELL ELEVATOR

WILLARD GODWIN, Mgr. Mobeetie, Texas



## Second To None

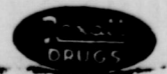
... that's the kind of fountain service you'll find at the City Drug.

We invite you to stop in often and give us a trial, because we believe you will thoroughly enjoy our delicious sodas, sundaes and fountain treats of all sorts.

## TOASTED SANDWICHES

Toasted sandwiches and invigorating malted milks make appetizing and delectable light meals. Next time you're in a hurry for a bite to eat stop by the City Drug and have a tasty toasted sandwich and a drink.

## CITY DRUG STORE



## SPLASH OF DASH FOR FALL



Style 4881

Here's the look of a cunningly dressed foot from a black suede sabot built for plenty of wear. Styled with a twin strap over the top, priced for your budget, this is a real buy in beauty. at \$4.95

## NEW SHIPMENT KID GLOVES

Black, White Navy

## CLOTH GLOVES

Green, Red, Grey

## LEATHER BAGS

IN All Colors

## New COATS—SUITS

## MILLINERY

## S-P-E-C-I-A-L PLASTIC BAGS

Regular 53.00 Value only \$1.50 plus tax

## S-P-E-C-I-A-L

SANFORIZED IMPORTED GINGHAM Per Yard ..... 79c

## McILHANY'S

"For Everything You Wear"

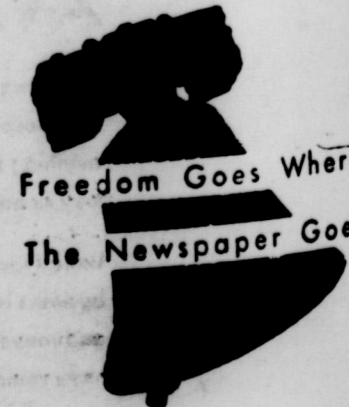
Wheeler

Texas

It is merely an accident that those countries that have a free press also have a free people? Most Americans realize it is more than a coincidence. They have learned that the right of newspapers to seek out and publish the truth without fear of reprisal is their opportunity to know the facts on which they may exercise their freedom of choice. This is the essence of true Democracy.

## Rediscover Your Hometown

Freedom of choice starts where people live and work. There have been vast changes this past decade... not only in the world and nation, but also in our hometown. And... more are on the way. Read your hometown newspaper with care—the advertising as well as the news columns—to discover the freedom of choice that promises you a happier, more abundant life, right here in your own hometown.



## The Wheeler Times