

THE WHEELER TIMES
 Published Every Thursday at Wheeler,
 Wheeler County, Texas, By
COOPER, HOWELL & MONTGOMERY
J. C. Howell Editor-Manager
Annie Mae Howell Society Editor
Richard L. Bradley Printer
Maurice Pettit Apprentice

Member TEXAS PRESS ASSOCIATION
 MEMBER
 Panhandle Press Association
 National Editorial Association

SUBSCRIPTION RATES
 In Wheeler, Beckham and
 Hemphill Counties

3 Months	75c
6 Months	\$1.25
1 Year	\$2.00

Everywhere Else

3 Months	85c
6 Months	\$1.50
1 Year	\$2.50

ADVERTISING RATES
 National Rate 42c Column Inch
 Local Rate 35c Column Inch
 Classified See Want Ad Page
 Entered as second-class matter December
 18, 1933, at the postoffice at Wheeler, Texas,
 under act of March 3, 1879.

NOTICE TO PUBLIC
 Any erroneous reflection upon the charac-
 ter, standing or reputation of any person,
 firm or corporation, which may appear in the
 columns of this paper will be gladly correct-
 ed upon due notice being given to the Editor
 personally at the office at Wheeler, Texas.

THURSDAY, FEBRUARY 3, 1949

Editorial

**A BAD BILL FOR
 WHEELER COUNTY**

A bill is pending in the legislature to
 take away from the counties of Texas the
 authority to sell license plates for cars and
 trucks. The argument is advanced that the
 state can do a better job than the counties.

It is also argued that the state will send to
 the counties as much money as the counties
 have been receiving.

Just talk to any county official before
 you become too much impressed with the
 new scheme.

In the first place, plates will not be
 available at all time as they are today. You
 will either have to wait until the state gets
 ready to send a man around to sell plates,
 or drive to some nearby city.

In the second place, the State High-
 way Commission is kidding about dividing
 with the counties. As soon as this authority
 is passed, you will see the state beginning
 action toward taking over all of his money.

It is a mighty poor law, and would be
 very, very hard on small counties like Wheel-
 er, which has many miles of road to keep up.

TOWARD DENTAL HEALTH

No statistics are available on the propor-
 tion of human ills due to faulty teeth,
 but the ratio must be fairly high. If you add
 to them the mere items of pain and incon-
 venience attached to the lack of proper equip-
 ment for chewing, the bill chargeable to wan-
 ing molar power skyrockets in size. Yet man-
 kind has more or less resigned himself fatal-
 istically to the ultimate loss of his teeth. The
 occasional oldster with a good working set
 of everything from bicuspid to eyeteeth is
 regarded as a marvel instead of a sample of
 what every jawbone proprietor should be.

Hope has been restored to the human
 mouth by our belated knowledge of what
 fluorides can do. Now it has been stepped
 up by the newly reported success of Baylor's
 College of Dentistry Bernard Gottlieb in us-
 ing successive coatings of zinc chloride and
 potassium on tooth surfaces. Discoveries in
 decay prevention will come too late for luck-
 less generations that have seen their bite go
 the way of flesh long before rigor mortis
 sets in on the latter. But the dental achieve-
 ments of Dr. Gottlieb and others foreshadow
 a sort of oral paradise for people born today
 instead of yesterday.

Molar misfortune is only in part self-
 induced. The results of inattention and fail-
 ure to obey fundamental rules of dental health
 are often costly. But in the past, tooth de-
 cay has also occurred in spite of everything
 the individual could do to prevent it. If the
 new processes are entirely successful and
 development proceeds, dental ills will be all
 our own fault. It will be a grand day when
 the dentist proclaims proudly that he is a
 tooth painter instead of an extractor and
 repairman. Amen!—From Dallas News.

You can always recognize a little man
 in a big office by the tight manner in which
 he holds onto the job.

Church Calendar

FIRST BAPTIST CHURCH
 Sunday School 10:00 a. m.
 Morning Worship 11:00 a. m.
 Evening Worship 7:00 p. m.
 W.M.U., Monday 2:30 p. m.
 Prayer Service, Wed. 7:00 p. m.
 Teacher's Meet, Friday 7:00 p. m.
 We preach Christ crucified,
 buried, risen, and coming again.
 M. B. SMITH, Pastor

CHURCH OF CHRIST
 Bible Classes 10:00 a. m.
 Worship and Sermon 11:00 a. m.
 Evening Worship 7:00 p. m.
 Ladies Bible Class, Mon. 3:00 p. m.
 Wed. Eve. Classes 7:30 p. m.
 B. M. LITTON, Minister

THE METHODIST CHURCH
 Church School 9:45 A. M.
 Morning Worship 11:00 A. M.
 Evening Service 7:30 P. M.
 Prayer Meeting (Wed.) 7:00 P. M.
 S. Y. ALLGOOD, Pastor.

BRISCOE BAPTIST CHURCH
 Preaching days—Second and
 Fourth Sundays.
 JAMES E. WILLEFORD, Pastor

**ASSEMBLY OF GOD
 Mobeetie, Texas**
 Sunday School 10:00 a. m.
 Worship 11:00 a. m.
 Junior Church 7:30 p. m.
 Evangelistic Service 8:00 p. m.
 Prayer Meeting Tues. 8:00 p. m.
 Young Peoples Ser. 8:00 p. m.
 Thursday 8:00 p. m.
 GLEN H. LESTER, Pastor

TWITY BAPTIST CHURCH
 Sunday School 10:00 a. m.
 Morning Worship 11:00 a. m.
 Evening Worship 8:00 p. m.
 Mid-week prayer service 8:00 p. m.
 A. C. LYONS, Pastor

**KELTON
 METHODIST CHURCH**
 Church School 10:00 a. m.
 Preaching 11:00 a. m. every third
 Sunday.
 MYF, WSCS and Bible Study
 7:30 p. m.
 Preaching 7:30 p. m. every third
 Sunday.
 H. E. LONG, Pastor

KELTON BAPTIST CHURCH
 Sunday School each Sunday at
 10:00 a. m.
 T. U. each Sunday at 7:30 p. m.
 Preaching each Sunday at 11:00
 a. m. and 8:30 p. m.
 A. G. ROBERTS, Pastor

CHURCH OF THE NAZARENE
 Sunday School 10 a. m.
 Worship 11 a. m.
 N.Y.P.S. 7:00 p. m.
 Evening Worship 7:30 p. m.
 Prayer Meeting, Wed. 7:15 p. m.
 J. D. ROEDLER, Pastor

**ALLISON PENTECOSTAL
 CHURCH**
 Sunday School 10:00 a. m.
 Worship 11:00 a. m.
 Young Folks Service 7:30 p. m.
 Worship 8:00 p. m.
 Wednesday Night Prayer
 Meeting 8:00 p. m.
 REV. ROBERT ESTES, Pastor

**FIRST METHODIST CHURCH
 Mobeetie, Texas**
 Church School 10:00 a. m.
 Morning Worship 11:00 a. m.
 M. G. F. Meeting 6:45 p. m.
 Evening Worship 7:30 p. m.
 Wed. Evening Prayer
 Service 7:30 p. m.
 You Are Welcome.
 VERNON E. WILLARD, Pastor

**BRISCOE
 METHODIST CHURCH**
 Sunday School Each
 Sunday 10:00 a. m.
 Preaching, second and fourth Sun-
 days 11:00 a. m. and 8:00 p. m.
 A hearty welcome to all.
 L. J. HELM, Pastor

**ALLISON
 METHODIST CHURCH**
 Sunday School Each
 Sunday 10:00 a. m.
 Preaching, first and third Sun-
 days 11:00 a. m. and 8:00 p. m.
 A warm welcome to all.
 L. J. HELM, Pastor

ALLISON BAPTIST CHURCH
 Sunday School 10:00 a. m.
 Preaching Service 11:00 a. m.
 Training Union 7:30 p. m.
 Preaching Service 8:30 p. m.
 JAMES E. WILLEFORD, Pastor

**FIRST BAPTIST CHURCH
 Mobeetie, Texas**
 Sunday School 10:00 a. m.
 Morning Worship 11:00 a. m.
 Training Union 7:30 p. m.
 Evening Worship 8:30 p. m.
 Prayer Meeting, Wed. 8:30 p. m.

**CHURCH OF GOD
 Old Mobeetie**
 Sunday School 9:45 a. m.
 Morning Worship 11:00 a. m.
 Willing Workers 2:30 p. m.
 Tuesday
 Young People's Service, 7:00 p. m.
 Saturday
 HETTIE TSCHIRHART, Pastor

**Set Out Trees And
 Shrubs Plenty Early**

Don't wait too long.
 That's the advice from Sadie
 Hatfield, extension landscape
 gardener specialist of Texas A
 and M. College, for those who
 plan to set out new trees or shrubs
 around the yard this year.

This is the time of year to do
 that kind of landscaping job, so
 better begin working on it now.
 Before you know it, the sap will
 begin rising and the buds will be-
 gin swelling after a spell of mild
 weather. And once the trees have
 their leaves, your good plans may
 have to wait another year. Trees
 that are set out late don't stand
 as much drouth as those set early.

Planting new shrubs or trees, or
 transplanting old shrubs, is best
 done right after a rain, says Miss
 Hatfield, and your plants in their
 new places should be well estab-
 lished before the leaves unfold.
 The leaves use up much of the
 plant's vitality.

When you put trees out, it's
 best to ball and burlap them to
 keep the roots from drying out.
 For the planting job itself, use a
 spade or a long handled shovel for
 digging the hole. Make it deep
 enough so that the trees will not
 be more than an inch deeper in
 the ground than they were in the
 nursery or the woods. Planting too

deeply injures or kills the shrubs.
 Be sure the hole you dig is large
 enough to hold the plant's roots
 without crowding them in, or curl-
 ing them up toward the surface.

After you've set the tree, pack
 moist topsoil firmly around the
 roots. A good watering will help
 settle the earth, and get the tree
 off to a good start. Planting right
 after a rain is good management,
 reminds Miss Hatfield.

And when you have time and
 good weather, remember that win-
 ter is the best time for pruning
 shrubs, particularly the ever-
 greens, shade trees and the shrubs
 that bloom in late summer.

Now is the time to get the
 tree too long.

The family was
 for dinner. Julie
 down her spoon
 mother, and
 there's a hair
 "Hush, dear,"
 barassed mother
 the situation,
 in your plate."
 Julie picked up
 ed dubiously a
 my," she insisted
 move?"

**LOOKING FOR
 'FAST WARM-UP'**

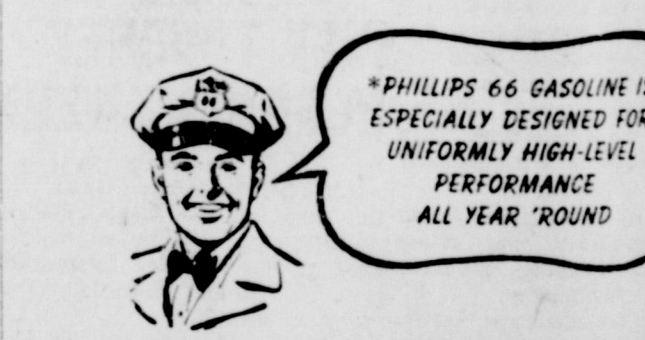


**THIS GASOLINE
 GOT IT!**

That Famous Phillips 66 "CONTROL"
 Is Designed To Give You Fast,
 Smooth Action—Hot Weather or Cold

Don't blame the thermometer—some cars speed
 and miss on the warmest days. That's why Phillips
 Gasoline is controlled!

And that control is designed to better Phillips
 power, pick-up, and pep whether the thermom-
 drops or rises. Get a tankful and see for your-



**PHILLIPS 66
 GASOLINE**

**The Worst
 IS YET
 To Come**

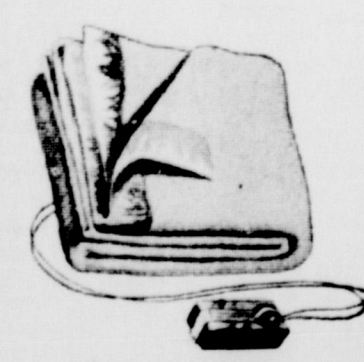


It's been cold... but the worst is yet to come.

Some lucky folks are all set with electric blankets already at home. But for the rest... those who are looking forward to sleeping under a load of blankets this winter or suffering from a series of colds... the word is to "go electric."

Electric blankets bring you not only guaranteed sleeping comfort on the coldest nights, but a definite relief from colds. Under a comfortable featherlight electric blanket, you're not exposed to energy-draining nights of cold discomfort.

While the original cost is just a little more, you'll save money on cleaning your single electric blankets, and on storage problems. One night under an electric blanket, and you'll KNOW that you want the many advantages offered you by an electric blanket.



See Your Dealer
 You'll find a choice of
 makes and colors in elec-
 tric blankets.

**SOUTHWESTERN
 PUBLIC SERVICE
 COMPANY**
 24 YEARS OF GOOD CITIZENSHIP AND PUBLIC SERVICE

**Model B-8
 BOSTITCH**
**The Stapler with
 A HUNDRED USES**

- A DESK FASTENER
- A HAND STAPLER
- A TACKER

Built by Bostitch for years of use.
 Handy, rugged, compact.

**PRICED AT ONLY
 \$2.20**

IN THE OFFICE:
 Dependable performance at low cost makes it economical for every desk, to stop other borrowing and waste of time.

IN THE HOME:
 You'll find it one of the handiest things around the home—for making lunch bags, tacking decorations, etc., binding partitions, fastening grocery slips, letters, checks, putting garbage wrappings, dozens of other every-day uses.

AT SCHOOLS:
 What every student needs, young and old. Handy to carry in pocket, brief case, or bag.

**An ideal gift... for anyone
 even yourself**

Phone 35

**THE
 WHEELER TIMES**

**PLAN NOW TO BUILD SOON
 WITH THE AID OF
 F H A**
 —See Us For Particulars—
W. N. (BILL) WALKER
 112 W. 2nd. Street
 Shamrock, Texas

admitted shortcomings, as an institution, has done more for the average man than he realizes.

A Child May Dare So Drive With Care!



thru the efforts
of your family doctor
AMERICA'S HEALTH
is as strong
as an **Oak!**

Health depends on untiring scientific research and the application of this knowledge to your particular cases by your family physician.

Top O' Texas Medical Society

MEMBERSHIP COMPOSED OF DOCTORS IN GRAY, WHEELER, HANSFORD, HEMPHILL, LIPSCOMB, ROBERTS, OCHILTREE HUTCHINSON and CARSON COUNTIES

Post-Mortem at 'Namru One'



The Naval Medical Research Unit No. 1, at the University of California at Berkeley, directed in 1943 to investigate possible enemy use of infectious disease as a weapon, has not only gained considerable knowledge of mass defense against disease, but also has assimilated invaluable information for the control of communicable airborne diseases among peacetime populations. Photo shows an autopsy under way on an animal infected during the course of studies at "NAMRU ONE." Protective masks are worn by the laboratory researchers. (Official Navy Photograph)

FERTILIZER PAYS BIG DIVIDENDS TO FARMERS

Another reminder about nitrogen fertilizer comes from M. K. Thornton, extension agricultural chemist of Texas A. and M. College.

Topdressing and sidedressing nitrogen fertilizers has paid big dividends over Texas where it has been applied to the crops, according to the records from demonstrations, says Thornton. Here's what happened in the blackland area. A topdressing of 50 pounds of ammonium nitrate—which contains 16 pounds of nitrogen—increased 10 bushels. Wheat was increased 7 bushels and a sidedressing on corn yielded 9 bushels more for each 16 pounds of nitrogen.

Out in the Panhandle area, wheat showed increases up to doubling the yield when ammonium nitrate was applied. In Hale county on irrigated land, the check yielded 30 bushels wheat per acre. When nitrogen fertilizer was applied in form of 200 pounds of ammonium nitrate, the yield in-

creased to 45 bushels. Two years ago in Lamb county, wheat was sidedressed with 100 pounds of ammonium nitrate at three different times to see what effect the time element would have on the yield. When fertilizer was applied on February 15, before jointing, the resulting yield was 22 bushels. Ammonium nitrate was applied one month later on March 15, and the yield was 18 bushels. This was just about the time the plant started jointing.

A third application was made April 15, when the wheat heads were beginning to bloom. The yield here came to only 15 bushels. And the check plot for the experiment yielded only 11 bushels. So, the earlier the nitrogen fertilizer is applied—up to a certain date—the higher will be the yield, says Thornton. These results are in line with results done by the Texas Agricultural Experiment Station and reported in TAES Progress Report 1118.

Hamilton county in Central Texas more than doubled the yield when nitrogen fertilizer was applied in demonstrations run there. On dry land with no fertilizer, the yield came to only 30 bushels. On land where ammonium nitrate was

applied at the rate of 200 pounds per acre, the yield amounted to 65 bushels of oats, more than doubling the yield on the plot that had no fertilizer.

In McLennan county, 20 pounds of nitrogen increased the yield of lint cotton from 300 pounds per acre to 486 pounds.

In East Texas, Henderson county ran a vetch-phosphate experiment, and here's what the results were. The land had a crop of vetch on it that was turned under. Phosphate was applied when vetch was planted. At the time hybrid corn was planted, 400 pounds of 5-10-5 was applied. Later the corn was sidedressed with 400 pounds of ammonium nitrate. Results: 111 bushels per acre. Sixty-three bushels of hybrid corn was the yield where only 300 pounds of 5-10-5 was applied at

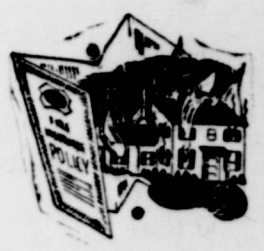
planting time and later sidedressed with 200 pounds of ammonium nitrate. The check plot for this demonstration ran only 15 bushels.

So, in short, Thornton says that topdressing for small grains should be done before the small grains begin to joint. That means between January 15 and February 1 in the south, February 1 to the 15 in the central part, and February 15 to March 15 in the northern part of the state.

The great denouncers of the wrongs done by others are usually somewhat proficient in proclaiming their own virtues.

THE WHEELER TIMES classifieds offer more for less money, to both buyer and seller, than any other business device we know about.

We're Prepared To Make Your Abstracts Complete Index Wheeler County Guaranty Abstract & Title Co. Phone 15



Home Farm Automobile

Give yourself the safeguard of adequate insurance, to assure you compensation should your property "go up in smoke". We are your insurance specialists...

DORIS FORRESTER AGENCY

N. W. Corner Square—Fire, Tornado, Automobile, Etc.

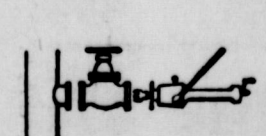


Opening a gate valve to tie in a new pipe line.

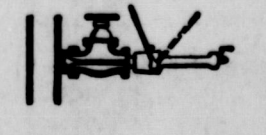
6 GOES INTO 18 *Hundreds* OF TIMES

Yes, in hundreds of locations on the United Gas system, pipe lines of two to twelve inches in diameter have been "tied in" to main transmission lines measuring from eight to 24 inches in diameter. Some of the smaller lines bring additional gas to the system, adding new sources of supply for our customers. Some take gas out of the system, which means dependable natural gas service is provided for still more homes and factories. In many instances, it is necessary to make the connection without interrupting the flow of gas through the main line, a process pipeliners call "hot tapping." This is one of many functions of the United Gas organization... all of which have the ultimate purpose of assuring a continued dependable supply of natural gas to our customers.

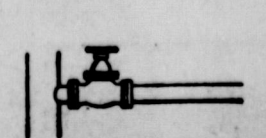
Cutting a hole from two to twelve inches in diameter in a pipe full of high pressure natural gas is "touchy" business.



A short stub of pipe is welded to the side of the line before the hole is cut. To the stub is connected a gate valve and a machine that extends a long-shafted bit through the gate valve to the side of the line to be entered.

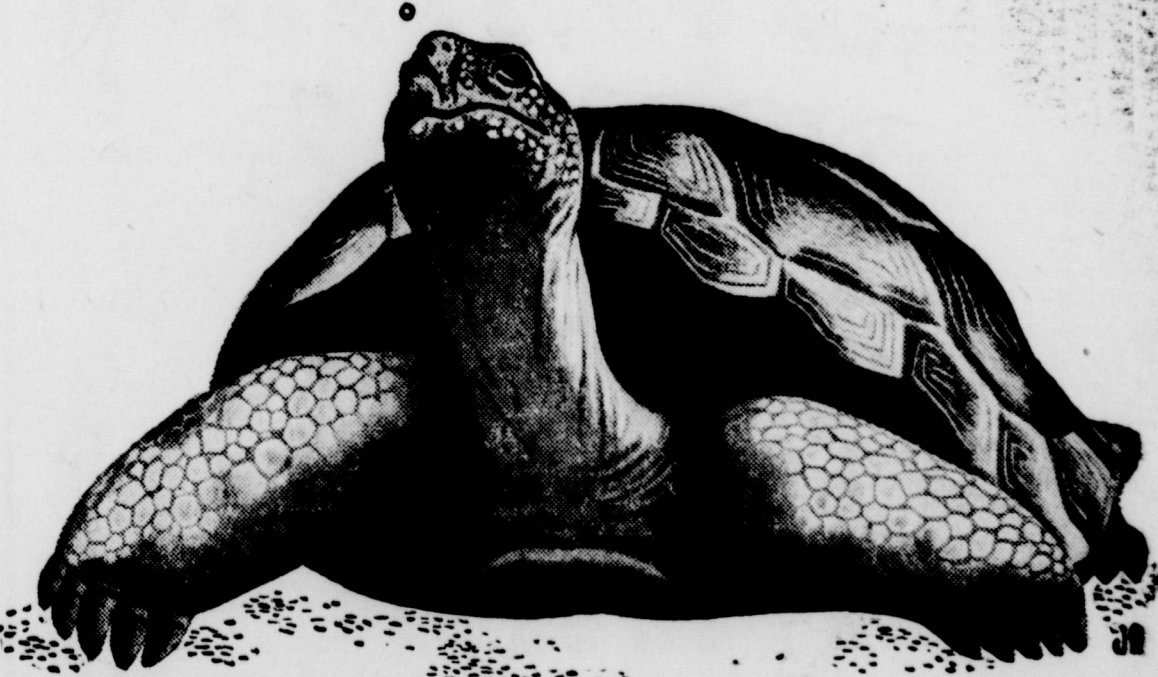


The bit cuts a circular section from the larger pipe and removes the section through the gate valve.



After the valve is closed, the "tapping" machine is removed, the new smaller line is flanged up to the valve, and the line is ready for service.

UNITED GAS... Union Producing Company Serving the *Gulf South*



Maybe you're the "slow" one!

Have you been a little slow about giving your engine the extra protection it needs for winter-weather driving? It's easy to change now to winter-grade Conoco Nth Motor Oil and the extra protection of an engine that is OIL-PLATED! Because free-flowing Conoco Nth actually fastens extra lubricant right to cylinder walls. This extra OIL-PLATING protects working parts from winter's grinding "dry-friction" starts... from metal-eating combustion acids... and from power-robbing sludge and carbon due to wear. So stop trouble before it starts...



Oil-Plate for Extra Protection!

Copyright 1949, Continental Oil Company

Maybe you're the "slow" one, but It still isn't too late to let us "Oil-Plate"

Gasoline—Oils—Washing—Lubrication—Accessories
EBB FARMER SERVICE STATION

SOCIETY

Mrs. Vise Is Honored With Bridal Shower

EDITOR'S NOTE:—It is the understanding of the Times that everything which the young Mrs. Vise received in the shower reported herewith was at the home of her parents when it burned Sunday morning and consequently was destroyed; therefore, we would like to offer the suggestion that it would be very nice for everyone to give the young lady exactly the same gift as they presented in the original shower.

The Home Economic Rooms of Briscoe High School were the scene for a bridal shower honoring Mrs. John C. Vise, nee Miss Rosemary Finsterwald, January 19, at 2:30 p. m. Hostesses were Mesdames Bob Ramsey, J. H. Beall, Gladys Price, Alma Anders, W. J. Bragg and Misses Janice D'Spain, Gloria Dell Upchurch and Betty Standlee, members of the senior class and classmates of Mrs. Vise's.

The reception rooms were beautifully decorated, the bridal motif being carried out in the brides chosen colors—pink and white.

The guests were received by Miss D'Spain. They were served upon arrival. The tea service was at one end of the table and was presided over by Mrs. Ramsey and Miss Upchurch. The cake service was served by Mrs. Price. Pink English tea, topped by a cherry covered marshmallow was served from a tea service used at the bride's mother's wedding.

A hanging mirror bordered in pink and hung with white satin ribbon and glistening wedding bells marked the brides chair. Two cupids with arrow pierced hearts named the honor couple.

Mrs. W. J. Bragg, sponsor of the senior class proposed a toast to the bride while Miss Betty Jo Standlee pinned a corsage on the honoree, her mother and mother-in-law. Miss Roberta Zybach presiding at the brides book then rendered "The Formula."

The display tables were centered by a white wedding cake resting

on a reflection mirror and bearing the traditional bride and groom motif. Among the many beautiful gifts was a service of Suzette Crystal, electrical equipment, complete linen service and many other lovely useful gifts.

The guest list included: Mesdames Jack Meek, Si Mason, Doyle Standlee, I. G. Fillingim, Roy Meadows, C. G. Barker, Clyde Meek, Grant, Darrell Atherton, G. A. Reames, William Fillingim, Estes Wilsford, Farmer Hefley, Lucille Tipps, J. H. Mason, J. F. Cook, R. G. Russ, Jr., G. C. Dodd, Lee Barry, E. T. Zybach, Everett Cole, J. H. Francis, Weaver Barnett, Ewell Steen, Bill Owen, Oden Hudson, Charlie Candler, Jack Wilsford, H. G. Vise, A. R. Meek, Elbert Zybach, Jim Williamson, George Bradstreet, E. G. Fillingim, Emil Seeding, Ted Atwood, Roy Waters, Vernon Savage, Richard Dyson, Roy Harold Johnson, W. A. Powledge, Glen George, Oren Horn, La Foy Vise, Bob Ramsey, W. D. Douthit, Kenneth Douthit, Milton Finsterwald, Tom Helton, Sam Daugherty, J. B. McNeill, Claude Barker, Willis Fillingim, Clarence Zybach, C. B. Brotherton, Elmer Byars, R. L. Zybach, J. C. Moore, Jr., Charles Hubbard, O. H. Upchurch, Cash Walker, J. L. Hefley, Minnie Hardy, Alta Daugherty, Cecil Denson.

Linda Clay, T. A. Treadwell, Williams, Okham, Gaddy Vise, W. A. Finsterwald, O. O. Beatty, W. J. Bragg, Gladys Price, J. H. Beall, Alma Anders, R. L. Ramsey, Leon Fillingim, Herbert Finsterwald, E. J. Panell, A. C. D'Spain, C. E. Roper, C. C. Dyson, J. H. Vise, H. E. Cole, Milt Wilson, Forrest Vise, C. N. Strawbridge, L. D. Powell, Loyd Childress, Elbert Zybach, Arnold Sonntag, Jack Finsterwald, Truman Zybach and Thurman Horn.

Misses Evelyn Culwell, Betty Jo Standlee, Janice D'Spain, Roberta Zybach, Gloria Upchurch, Dorothy Greenhouse, Patsy Waters, Patsy Ann Ramsey, Jane Ann Zybach, Wynola Childress, Melba Strawbridge, Imogene Pannell, La Nell Culwell, Betty Culwell, Jean Zybach, Maureta Horn, Patsy Horn, Patsy Tipps, Nellie Bee Candler,

Affair of Heart



FILM STAR Irene Gunne has been named chairman of the women's committee of the American Heart Association 1949 campaign, it has been announced by Harold E. Stassen, chairman. The drive, from February 7 to the 28th, will attempt to raise \$5,000,000 for research and treatment of heart trouble, nation's No. 1 killer. (International)

Karen Barker, Dorothy Brotherton, Doris Brotherton, Joyzelle Daugherty and Margaret Kite.

Mrs. Bradley Hostess Wheeler H. Demo Club

The Wheeler Home Demonstration Club met in the home of Mrs. Richard Bradley, Wednesday, February 2.

The afternoon was spent with the Home Demonstration Agent Mrs. Emma Hastings cutting and discussing to the club on the making of leather gloves for each individual.

Refreshments of cake and coffee were served to: Mesdames Lyndon Sims, J. J. Smith, Barney Teague, McCormick, Don Curl, James Clepper, Bill Owen, Watts, Emma Hastings, and Richard Bradley.

The next meeting of the club will be in the home of Mrs. Virgil Jamison, February 16.

PAY YOUR SUBSCRIPTION

SPECIALS FOR FRI. & SAT. FEBRUARY 4 AND 5

TREAT YOUR FAMILY TO ONE OF THESE ECONOMICAL EASY-TO-MAKE DESSERTS!



COME IN FOR FREE RECIPES!

Softasilk CAKE FLOUR 44-oz. Pkg. 39¢

MAZOLA OIL 1-pt. Can 39¢



Anna Pillsbury SUNNY PEACH PIE

Pillsbury's Best FLOUR 25-lb. Sack \$1.89

IGA BRAND YELLOW CLING PEACHES No. 2 1/2 Can 33¢

MRS. TUCKER'S SHORTENING

3-lb. Carton 75¢

4-lb. Carton 99¢

5-lb. Carton \$1.19

WILSON'S PURE LARD

3-lb. Ctn.	4-lb. Ctn.	8-lb. Ctn.	50-lb. Car.
55¢	75¢	\$1.49	\$8.50

Fresh Food DELICIOUS APPLES

YOURS AT NO EXTRA COST

ROYAL RUBY IVY BOWL with purchase of 3 lb. package of PURITY OATS

33¢

GRAPEFRUIT 5-Pound Bag

CABBAGE Per Pound

WINTER DRIVING NEEDS

- Mud Chains only a few pair Snap-or and Regular
- Knobby Tires
- Heaters Southwind and Hot Water With or without Defrosters
- Windshield Defrosters
- Defroster Fans
- Antifreeze Texaco Permanent Type Etheleyne-Glycol Base—\$3.50 gallon
- Batteries Willard & Delco We are still paying \$4.50 for old batteries. Will sell you a battery for as low as \$12.50 exchange, others higher

Owen's Service Station

PHONE 101 WHEELER

GRANULATED SOAP SURF

1 LARGE PACKAGE	5¢
1 LARGE PACKAGE	31¢
BOTH	36¢

FAB

1 LARGE PACKAGE	16¢
1 LARGE PACKAGE	31¢
BOTH	49¢

LUX TOILET SOAP

3 REGULAR BARS	27¢
----------------	-----

Quality Low Priced Meats

FEATURE

WILSON'S CERTIFIED PICNIC HAMS Per Pound 45¢

LAUREL SLICED BACON Pound 49¢

GOOD VALUE OLEOMARGARINE Pound 27¢

LONGHORN CHEESE Pound 45¢

CORN KING BOLOGNA Pound 39¢

PURE PORK SAUSAGE Pound 37¢

IGA PURE GRAPE JAM 33¢

GOOD VALUE PEANUT BUTTER 53¢

LIBBY'S WHOLE KERNEL GOLDEN CORN 43¢

WELCH'S PURE PEACH OR APRICOT PRESERVES 23¢

HYPOWER CHILI with BEANS 43¢

Feature of the week!

Here are our feature items for NATIONAL SAUER KRAUT and FRANKFURTER WEEK... two top quality products, both at money-saving prices!

IGA SAUER KRAUT Another guaranteed IGA Brand fine quality food product.

2 No. 2 Cans	23¢
2 No. 2 1/2 Cans	33¢

ARMOUR'S FRANKFURTS 12-OUNCE CAN 38¢

CLAY'S IGA Food Stores LOW PRICES EVERY DAY WHEELER, TEXAS

HELD HIM

Overweight middle-aged man while proclaiming was packing away a longshoreman, re- minded-mannered spouse remark: "I've even the will- ent me from going

NOT SO FUNNY

"You say your sister makes up jokes? Then she's a humorist isn't she?" "No, she works in a beauty parlor."

WHOSE?

Young woman—Whose little boy are you? Sophisticated Willie—Be your- self. Whose sweet mamma are you?

TWO MADE HEAVY WORK

Mrs. Benham—I made this cake with my own hands.

Benham—Well, many hands make light work. You ought to have had help.

PROBABLY

"Last year I received valentines from all over the country."

"Where do you work—in the dead letter office?"

It is a good idea to make up your mind to live agreeably with human beings that you cannot ap- prove.

Credit Association Pays Back Loan From Government

The Canadian Valley Production Association, which serves Ochil- tree, Lipscomb, Wheeler, Hem- phill, Roberts and Gray counties, has paid off all Government Capital and is now owned entirely by the rancher and farmer stock- holders it serves in this area, ac- cording to C. W. Allen, Secretary- Manager of the association.

Since its organization in 1934, the Association has loaned \$18,401,000.00 and had losses of only \$1,700,000. During 1948 it loaned \$2,201,000.00. The highest amount of loans outstanding at any one time was in October 1942, \$1,008,000.00.

Mr. Allen said that in the early thirties, when ranchers and farm- ers could not get credit, the Gov- ernment provided most of the cap-

ital stock in the Canadian Valley Production Credit Association. In 1934, the organization date, the Government supplied \$175,000.00 of its Capital.

Congress outlined two provisions in making this investment: (1) The users of Production Credit, as they became able, would retire all the Government capital, and (2) The association would be ex- empt from Federal Income Tax until the farmer members could get it paid for.

Since organizing in 1934 the stockholders have been building up the capital stock of the associa- tion. The investment of the Gov- ernment has been gradually re- duced, and on December 31, 1948 the association retired the last dollar of the Government invest-



KITCHEN MEMO

If you don't feel like turning on the oven to bake cookies, try *Griddle Cookies* cooked over the top burner. Preheat griddle for three minutes with flame full on, then turn down to low simmer for entire cooking period. Best heat test is a drop of water which should dance, rather than steam, on the griddle surface. Put 1 egg, slightly beaten, into 1/2 cup milk. Add 1 cup raisins. Sift once 3/4 cups all-pur- pose flour, 1 cup sugar, 1/2 tsp. baking powder, 1/4 tsp. baking soda, 2 tsp. nutmeg, 1/4 tsp. salt. Work 1 cup shortening into dry ingredi- ents with pastry blender until mealy. Then pour into this the milk, egg and raisin mixture. Mix. Wrap dough in wax paper, chill in refrig- erator 1 hour. Roll out 1/4" thick. Cut with cookie cutter. Brown on slightly greased griddle on one side, then on the other. Makes 36 cookies.

Don't worry about bollovers on your top burners. Just wipe them up with a cloth dampened in warm water. Later, when your gas range has cooled, you can do a more thor- ough cleaning job.

Neither hot water nor gas is wasted when you have an automatic regulator on your gas water heater, because gas is turned on and off automatically only as hot water is needed.

The built-in towel drier and mov- able racks on some new gas ranges not only save precious space but also hide unsightly dish towels and cloths.

An ordinary vegetable parer is a good tool to use for grating choco- late or cheese and certainly easier to clean than a grater.

The association will now

pay taxes just as other privately owned businesses.

There are now 326 ranchmen and farmer stockholders in the association. They own \$122,000.00 in stock, have \$128,525.00 in re- serves and a total net worth of \$250,525.00.

The organization is cooperative, owned and operated by ranchmen and farmer stockholders who use its credit services. Its purpose is to provide all short term agricultural credit for its stockholders and for any sound operator who can qual- ify.

The association is a big asset to ranchmen and farmers and busi- ness in general in the territory in which it operates in that it goes into the money markets any- where in the country and brings in outside money that is spent locally.

The officers of the association are: H. S. Keahey, President, White Deer, Texas; E. E. Hender- son, Vice-President, Twitty, Tex- as; C. W. Allen, Secretary-Treas- urer; Erbin L. Crowell, Ass't. Secretary-Treasurer; and Mrs. Parilee Ellis, Assistant Treasurer. The Association Directors in addition to Mr. Keahey and Mr. Henderson are: Lloyd G. Bussard of Lipscomb County; M. H. Smith of Hemphill County; and Wallace N. Hamker of Lipscomb and Oc- hiltree Counties.

HOT BATH

"What you need is an electric bath."

"Nothing doing, Doc. I had an uncle drown that way up at Sing Sing."

WHAT'S THERE

"So McDodge lost his mind, you say?"

"Sure, he did. Went crazy trying to find the shady side of the street at noon."

CURIOUS

Lecturer—Now, is there any one here who would like to ask a question?

Some one in the audience— Yeah, what time is it?"

A Child May Dare So Drive With Care!

THE WHEELER TIMES class- fieds offer more for less money, to both buyer and seller, than any other business device we know about.

ROGUE THEATRE

FRIDAY AND SATURDAY—

"Whirlwind Raiders"

—starring— Charles Stewart and Smiley Burnette

PREVUE SATURDAY NIGHT— SUNDAY AND MONDAY

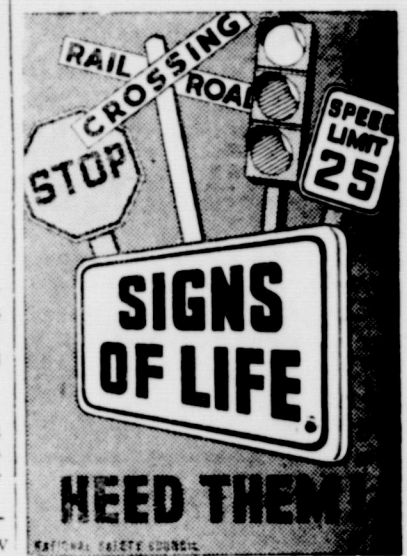
"Blood on the Moon"

—starring— Robert Mitchum, Barbara Bel Ceddes and Robert Preston

WEDNESDAY AND THURSDAY—

"A Song Is Born"

—starring— Danny Kaye and Virginia Mayo



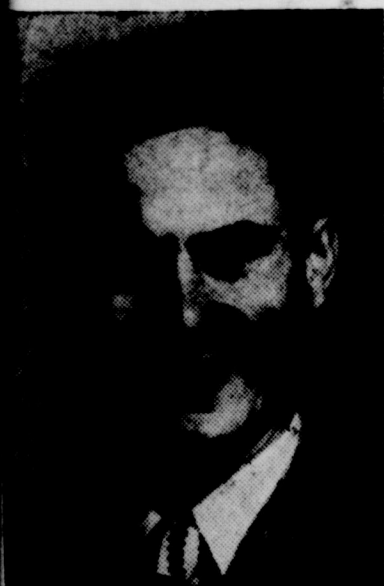
1/5 KEVA'S TIME BELONGS TO WHEELER

OBEETIE--ALLISON--BRISCOE--KELTON

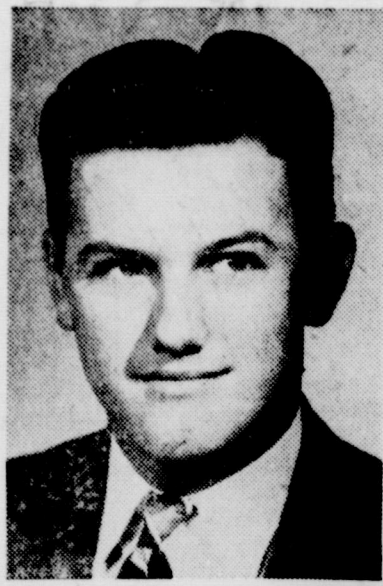
Radio Station KEVA hit the airwaves on a frequency of 1580 on January 20 as "The 5-Town Station"—to serve the interests of WHEELER, WELLINGTON, McLEAN, ERICK, and SHAM- ROCK.

KEVA blankets the area served by Wheeler—30 miles or more in all directions. We want to serve the needs of every town and community in Wheeler County.

Write or Call Radio Station KEVA, Shamrock, for commercial rates or information about the many free program services available in the public interest.



JOHN KENNEDY General Manager



JERRY SANDERS Asst. Manager



ORVILLE HOWARD Chief Engineer



J. ARTHUR SHAPP Production Manager



ROBERT BELLER Engineer-Announcer



BILL SMITH Announcer

7:30 A. M. TO 6:30 P. M. DAILY

Radio Station KEVA

1580--"THE 5-TOWN STATION"--1580

BUSINESS AND PROFESSIONAL DIRECTORY

<p>Protect Children's Health GIVE THEM BORDEN'S Fine Dairy Products CROSSLAND DAIRY Phone 901-F-11 Wheeler</p>	<p>DR. JOEL M. GOOCH OPTOMETRIST 200 S. Wall Street Phone 123 SHAMROCK, TEXAS</p>	<p>J. WADE DUNCAN REAL ESTATE AND CATTLE 109 W. Kingsmill Phone 319 Pampa, Texas "42 Years in the Panhandle"</p>
<p>Canadian Valley Production Credit Association's Representative IS IN THEIR Wheeler Office EACH Thursday</p>	<p>NOTICE! WE SCALD HOGS ON TUESDAY & THURSDAY OF EACH WEEK. Wheeler Lockers</p>	<p>WE HAVE INSTALLED NEW DRYER We can give you Wet Wash, Rough Dry & Dryer Service at Dryer Service, lb. 60 Rough Dry, lb. 80 Wet Wash, lb. 60</p>
<p>AUCTIONEER SHELBY PETTIT Will cry your sale any time or place Phone 158--Wheeler, Texas</p>	<p>Electrolux Vacuum Cleaners SERVICE & SUPPLIES L. A. McWHORTER Route 1 Wheeler, Texas</p>	<p>CITY LAUNDRY Leslie Havenhill, Lessee Phone 218-M Wheeler, Texas</p>
<p>HOMER L. MOSS LAWYER GENERAL PRACTICE WHEELER TEXAS</p>	<p>THIS SPACE FOR SALE</p>	<p>BABY CHICKS Hatch Each Monday 9 Breeds to choose from. Started and Day Old LAWRENCE HATCHERY & FEED Wheeler, Texas</p>

Refreshing **COCA COLA** BOTTLING CO. Shamrock, Texas

C. J. MEEK AGENT **INSURANCE** Night Phone 124, Day Phone 48

Dr. C. C. Meritt CHIROPRACTOR WHEELER, TEXAS Equipped to give complete chiropractic service

ALLISON ANTELOPES

(Published by the students of Allison High School)

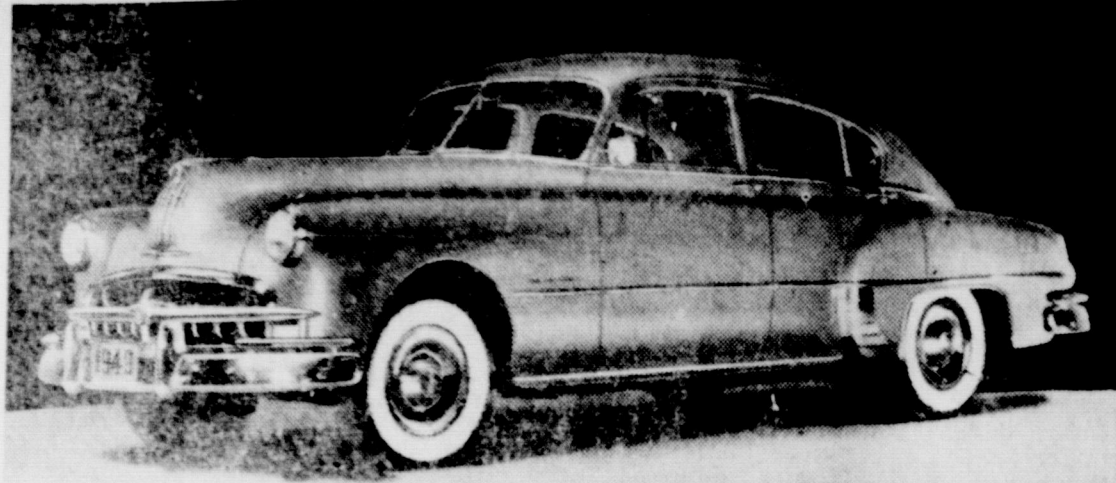
SPORTS NEWS

We've been slightly snowed in over here. We are supposed to play Canadian Friday night, but due to bad weather we couldn't make it. We're supposed to play Briscoe Tuesday night, Wheeler Thursday night, and Canadian Friday night. We certainly hope the weather is fair. All of these games are on our home court.

SOCIAL EVENTS

We have been trying to have our Youth Center for three weeks now, but due to weather conditions we couldn't have it. Now we have another obstacle. We have a ball game that night. We have our Youth Center every other Tuesday night, and we invite everyone that can attend from

Pontiac Has Two "New Looks" For 1949



This is the four door deluxe Pontiac sedan in the Streamline series. Forward thrust has been gained by lowering the hood. Body contour is in the modern manner and yet unmistakably Pontiac. Added safety is compounded by reduced pillars and a curved windshield whose gleaming sweep has been increased nearly six inches. Both Pontiac Streamliner and Pontiac Chieftain lines use a 120 inch wheelbase and Hydra-Matic transmissions optional at extra cost.

That They May Walk



The therapeutic facilities of the Corona, Calif., Naval Hospital were made available to victims of the 1948 polio epidemic in Los Angeles County after the contagious stage was passed at the County General Hospital where patients were first ordered for treatment. Photo shows Navy hospital corpsman aiding a patient at Corona Hospital to walk all over again.

From Bill W. to Helen, Beg Your Pardon".
From David to all the boys, "Never Trust a Woman".
From all the Allison girls to R. C., "Our Prayers Are With You".

PERSONALITY

Name _____ Bill Wise
Occupation _____ Loafing
Eyes _____ Brown
Hair _____ Blonde
Age _____ 17-years old
Favorite food _____ It ain't nobody's business
Favorite subject _____ none of them
Classification _____ Senior
Likes _____ To tease people
Dislikes _____ Girls

TRAPPED

"We've been waiting a long time for that mother of mine."
"Hours, I should say."
"Oh, Jack, this is so sudden."

far and wide. We may have it some time this week if the weather is okay, but if we don't have it this week we will have it next Tuesday night.

Everyone reported having a grand time at Valoise's after League. We wished the weather had been fair so that more kids could have come, because we really had a grand time. We are to go to Troy Dean's next Sunday night after League.

LOCAL CHIT-CHAT

Jay Dean, we're sorry to hear you won't be around any more for awhile.

Shirley Jo, we hear you think you have stayed at home entirely too much these last two weeks. Don't you know that is the place for you?

Bessie Jo, you weren't in Wheeler Saturday night. Why?

Evelyn, we hear Wednesday is the big day for you and Roy. Congratulations!

David, we wonder why you weren't at League Sunday night? Billy Bob, we think you make a very convincing murderer.

Jerry, do you think you can solve all these murders around Allison?

Katy, we think we know who your new heart throb is. Beware J. Jane, no one has seen you around lately. Where have you been or have you been anywhere? Valoise, we're sorry to hear your little calf died.

Bessie Jo, too bad you weren't at home Saturday night. Johnny was quite anxious.

We also hear Shirley Jo and Bobby D. were contemplating a date. What was the matter Shirley, was it so bad that you couldn't go?

We, of the Allison High School wonder what would happen if it cleared up for just one week—so we could continue the mid-term tests. We aren't worried though.

Mr. Dyer, we must say, we're

not sorry you told us we wouldn't have any school Monday.

Shirley Jo, why didn't you have a very good time Saturday night and why didn't you see anyone? Wasn't someone there?

Bette, have you stayed at home all this time? We haven't seen you since it snowed.

Shirley, why did you think he had forgotten all about you? Don't you know that it has snowed and Jackie couldn't come to see you?

Donna Jo, is Clyde still coming to see you or have you seen him?

Laura Mae, are you very sad that Jay Dean won't be here for some time?

Troy Dean, don't you know that you shouldn't follow anyone, you might get lost?

Helen, we hear you had a big time in Reynon Saturday night. What was so interesting over there?

Johnny, why didn't you make it to Wheeler Saturday night?

SONG DEDICATIONS

From Shirley Jo to "who knows", "Someday".

From Bessie Jo to Delton, "How Soon?"

From Jackie to Shirley W., "You Do".

From Katy to J., "Near You".

FORD - TRACTOR and DEARBORN
Farm Equipment Dealers
PRESENT
Shirley Thompson and his FARM HANDS IN SADDLE ROCKIN' RHYTHM
(Starting Feb. 7) 12:45 NOON
MON.-WED.-FRI.
DEAL KFDA 1440

Look again...for sky, shimmering iridescence in breath-of-spring colors beautiful in **Gilbrae Gingham Plaids** and matched plain-&-striped chambray of fine combed cotton yarns among this season's outstanding **Gilbrae Fabrics** Per Yd. \$1.29
as advertised in McCall's and Good Housekeeping

LACY LOOKING PLASTIC TABLE CLOTHS
54 x 72 98c 54 x 54 79c
RUSS VARIETY
Wheeler, Texas

This is a diesel ... a modern locomotive that means better service to you.
Leaders of two unions think it's a feather-bed ... a "make work" grab that means less service to you.

● Leaders of unions representing railroad engineers and firemen seek to force railroads to add extra, needless men on diesel locomotives. This is sheer waste—a "make-work" program which would mean fewer improvements and higher costs—for YOU!

Railroads use modern diesel locomotives because they are one of the means of giving faster, better service to you.

Two men compose the crew of a diesel. They occupy a clean, comfortable cab at the front. The engineer handles the throttle. The fireman sits and watches the track ahead. With no coal to shovel, he has practically nothing else to do.

● No Benefit To You
Now the leaders of the Brotherhood of Locomotive Engineers and the Brotherhood of Locomotive Firemen and Enginemen want to use the diesel locomotive as a means of forcing a feather-bedding scheme on the railroads. The extra men they propose to add to the diesel crews are not needed. There is no work for them.

The union leaders are fighting among themselves about which union should furnish these extra, needless men. The Brotherhood of Locomotive Engineers have even threatened a strike. You may not be interested in this dispute of these two unions, but you would be vitally concerned if these groups succeed in putting through this feather-bedding scheme, because it would mean a slowing up of the improvement program of the railroads—of which the diesel is the outstanding symbol. Diesel crews are among the highest paid

railroad employees—real aristocrats of labor! Their pay is high by any standard. Granting these demands, therefore, would mean that the railroads would be paying out millions in unearned wages to those in the very highest pay brackets.

We'd Like To Spend This Money On You
You know how much the diesel has meant to you in increased speed, comfort and convenience. The railroads have many more of them in order for even greater improvement in service to you. But needless drains of money, needless men on diesel, reduce the ability of the railroads to spend money on better service for you.

Proud as the railroads are of the diesel, it is only a small part of their improvement program. Since the War, literally billions of dollars have been spent on improvement of

tracks and stations, on new passenger and freight cars, as well as on diesel locomotives and on the many other less conspicuous details of railroading that contribute to improved service.

Feather-Bedding Means Less Service To You
But brazen feather-bedding schemes like the one now proposed would, if successful, divert large sums of money from our present improvement programs. Even worse, they make improvements like the diesel worthless, by making the cost of their operation prohibitive.

These demands are against YOUR interests—as well as those of the railroads. They are schemes to "make work". Neither you nor the railroads should be forced to pay such a penalty for progress.

That's why the railroads are resisting the "make work" demands to the last ditch—why they are telling you about them.

WESTERN RAILROADS
105 WEST ADAMS STREET • CHICAGO 3, ILLINOIS
We are publishing this and other advertisements to talk with you at first hand about matters which are important to everybody.

SNOBBISHNESS IN REVIEW
The children of a wealthy heiress have never seen a member of their family engaged in any household task. Recently the youngsters returned from a vacation in their Virginia home, where they visited a great deal with a farm family living near by.
"Well, Cookie," the father asked one of the children, "how did you like playing on a farm?"
"Oh, father, it was so interesting to tell you. They do so many things there—they use a vacuum cleaner and a refrigerator. We are repeatedly told that the speed with which the vacuum cleaner or professors give out solutions to human problems."
"Don't walk in a vacuum cleaner. Look both ways."

30 to 33 lbs. of BROILERS produced PER BAG
Your opportunity for big broiler profits is determined, to a great extent, by the cost per pound of meat produced.
And many growers are getting 30 to 33 pounds of meat per bag of Purina Broiler Chow on the Purina Plan plus fast growth and high livability. No wonder it's America's favorite broiler feed!
Try it! You'll like what your balance book shows you! Come in for Broiler Chow, today!
YOUR STORE WITH THE CHECKERBOARD SIGN
Sell Us Your Cream, Poultry and Eggs For Highest Market Prices!
WHEELER COUNTY PRODUCE ASSOCIATION
PHONE 142 P. O. BOX 93
WHEELER, TEXAS

CHEAPEST WAY TO BUY OR SELL! WANT ADS

per line (counting 5 words to line) for first insertion charge, 45c; 10c per line after first time. Large 30c. Reader ads scattered among local items each insertion. Cards that run every week 30c each per week.

ADVERTISING—National rate, 42c an inch; Long rate, 35c per column inch, 28c per inch when more used each week during calendar month.

FOR SALE

fruit trees, flower- evergreens, straw- hedge plants. Will 47-tfc.

Allis Chalmers tract- ors Chalmers tractor at. Disc harrow, 8-ft. bott Farm Equipment, 73-J, Miami, Texas 7-4tc.

ILING CABINETS
ust received our first high quality 4-drawer and storage cabi-

nets and invite you to come and look these over whether you are in the market or not.

We also have portable typewriters in stock along with a complete line of office supplies.

The Wheeler Times
Phone 35

Texaco Permanent type anti-freeze, limited quantity. Owen Service Station. 5-1tc.

FOR SALE—'41 Model M-M R tractor with lister and cultivator. Perfect shape. M. K. Levitt, 7 mi. north east of Briscoe. 6-4tp.

FOR SALE—1948 model Ford tractor with hi-speed transmission lister, planter and cultivator, slip and transport box. Priced to sell. Mrs. W. A. Scribner, Mobettie, Texas. 8-3tp.

FOR SALE—1947 4-speed PICK-UP run less than 20,000 miles. PRICED TO SELL. Wheeler Gas Company. 52-tfc.

FOR SALE—18 milk cows. 1941 Chevrolet pickup, 4-ton. 1941 Ford pickup, 1/2-ton. Bob Black, Wheeler, Texas. 8-2tp.

FOR fruit trees and honey see J. M. Glover 6 blocks west of Wheeler Bank. 47-3tp.

JUST FEW LEFT
We have sold all but a few boxes of the high quality stationery which we are closing out at 25c per box. Better hurry if you want to get in on this unusual bargain.

THE WHEELER TIMES
Office Supplies Job Printing
Phone 35
Wheeler, Texas

FOR SALE—Coming 4-year old Jersey, be fresh February 1. Also 300 bales cane hay. H. G. Vise, 1 1/2 mi. East of Wheeler. 7-2tp.

TRUMAN BEAMS AT HIS LIKENESS



OBVIOUSLY PLEASED, President Truman is shown in Washington after he was presented with a bronze bust of himself by the Women's Division of the Democratic National Committee. At left is sculptor Felix W. De Weidon. In center is Senator J. Howard McGrath of Rhode Island, chairman of Democratic National Committee. (International Soundphoto)

LOCAL NEWS ITEMS

Mr. and Mrs. Travis Farmer of Berger visited with friends and relatives in Wheeler Tuesday and Wednesday.

Mr. and Mrs. Thomas Daughtry and little son, Ken, visited with relatives in Amarillo Sunday.

Miss Edna Helen Farmer returned to Canyon Tuesday where she is attending college after having spent the semester holidays here with her parents, Mr. and Mrs. Percy Farmer.

Visiting in the home of Mr. and Mrs. Roy Bailey Sunday afternoon were Mrs. Grady Havenhill and son, Frankie Gene of Pampa, Mr. and Mrs. Delton Sanders and son, Dwayne, of Pampa, Mrs. Kenneth Deuthit and daughters, Mrs. Percy Farmer and Edna Helen.

Mr. and Mrs. Raymond N. Johnson of Mobeetie are the parents of a daughter, Wanda Joan, born at the Wheeler Hospital January 17.

CARD OF THANKS

We wish to take this means of expressing our appreciation for the many gifts we have received and kind deeds which have been done for us since our home burned Sunday.

The W. A. Finsterwald Family
Newspaper Advertising Pays!



Saves you many kitchen hours



The New Hardwick Challenger brings all cooking, baking and broiling within easy reach. Come in... see it... and let us show you the new features that bring you better and more comfortable cooking.

The flat top stove has had its day. The high oven is back. It is priced to sell. Before you buy, come in and see this "New Look" stove.

WHEELER GAS COMPANY

Wheeler Texas

WE'RE GOING ALL THE WAY TO BRING YOU THE BEST FOOD BUYS!

KETT'S BEST	25-lb.	
OUR	\$1.69	
T JEMIMA	10-lb. Bag	
CORN MEAL	62c	
SCO	3-lb. Tin	
SHORTENING	\$1.02	
MOUR'S	3-lb. Carton	
PURE LARD	63c	
AFT	2-Pkgs.	
ANNER	25c	

KRAFT	Pt. Jar	
MAYONNAISE	47c	
PETER-PAN	12-oz. Jar	
PEANUT BUTTER	35c	
WORTH	1/2-gal. Bucket	
HONEY	95c	
SILVER DUST —for Laundry and Dishes—Cannon Face Cloth in each Box	Large Box	
SOAP POWDER	34c	

CORN	25c
HEINZ	
CATSUP	25c
RANCH STYLE	
BEANS	25c
HI-POP	
POPCORN	25c
ARMOUR'S	
SLICED BACON	45c
SHORT RIBS OR	
BRISKET ROAST	39c
AMERICAN OR	
LONG HORN CHEESE	43c
Fine for Loaf or Steak Patties	
GROUND BEEF	41c
PORK STEAK	49c
PORK ROAST	45c

INTRODUCING... The New 'CREAMO' OLEOMARGARINE
Contains 5% Pure Cream Vitamin "A"
Pound Package **29c**

PUCKETT'S Meal of the Week
BY MARY LEE TAYLOR

Corned Beef Hash
Creamed Onions
Shredded Cabbage and Carrot Salad
Bread Butter or Margarine
Peach Cream Dessert (Recipe below)

Peach Cream Dessert
1 package vanilla pudding powder
1 cup Fat Milk
1 cup water
12 large graham crackers
1 cup drained, canned sliced peaches*

Put pudding powder into saucepan. Stir in slowly mixture of milk and water. Stir and boil slowly 30 seconds. Cover and cool. Arrange cooled custard in serving dish in layers with graham crackers and peaches, having crackers on top and bottom. Cover and chill. Serve from the dish. Makes 4 servings.

*18 large vanilla wafers can replace graham crackers.
**Sliced, ripe bananas or canned apricot halves can replace the peaches.

You Will Need:
PET MILK
GRAHAM CRACKERS
SLICED PEACHES

JUST THE THING!
We have just the thing for lining the inside of your brooder houses to keep this cold winter wind off your baby chicks—large sheets of heavy cardboard, 32" x 44", which we will sell for only 10c per sheet or 12 sheets for \$1.00.
THE WHEELER TIMES

MISCELLANEOUS
We can now insulate homes. See us for particulars. Wheeler Radio and Refrigerator Service. 34-tfc.

STRAYED TO MY PLACE—3 whiteface heifers with ear marks. Owner may have same by paying feed bill and for this ad. George Hank, 12 miles east and 4 miles north of Wheeler. 8-tfc.

WANTED—We will pay 7 1/2c per pound for good clean cotton rags, but they must be usable. No strings or overalls accepted. The Wheeler Times.

Will Pay \$4.50 for your old battery in on a new Delco or Willard Battery. Owen's Service Station. 42-tfc.

INSULATE with a mineral rock wool. Also weather stripping Perma-stone. Curtis Pond with Schell-Mundy Co., 1708 W. 8th, Amarillo, Texas. Office Phone 2-8361, Res. Phone 3-1668. 47-tfc.

BRUCE & SONS TRANSFER
Local and long distance moving. Best equipment and vans. We have plenty storage space. Agent: North American Van Lines, serving the Nation. Phone 934, Pampa, Texas. 48-tfc.

We can now do your cemetery work. Grave markers, covers, and curbing. Will Warren, Wheeler.

ALCOHOLICS Anonymous offers help to men and women who have an honest desire to stop drinking. Write P. O. Box 589, Shamrock, Texas. 5-tfc.

ALCOHOL
PUBLIC enemy No. 1—

If you need upholstery work done, call or write Fugate Upholstery Shop, Pampa, Texas, 610 N. Banks, Phone 1917-W. Free pick-up and delivery. 37-4tp.

WANTED—Saws to file. Precision filed by machine. R. St. John, Mobeetie. 6-6tp.

We are equipped to do your orchard disk and garden plowing. See or call Harold Nash or Louis Martin. 6-tfc.

PAY YOUR SUBSCRIPTION

Look for the loaf with the "Little Mann"

SO GOOD
SO FRESH
SO NUTRITIOUS

AT YOUR FAVORITE GROCERY STORE

Mann's MALTED MILK Bread

Distributed—
FRESH DAILY

In Wheeler By
George & Naomi Copeland
Owners of
Mann's Bakery
Shamrock, Texas

You'll want to try the several different varieties of MANN'S BREAD — Wheat, Rye, Raisin, and French. You will recognize the distinctive Mann's flavor and uniformly high quality in all. Toasted or plain, MANN'S Bread is sure to please. Try It Today!

Mile-A-Minute Marty By DEKLE BROTHERS MOTOR CO.

UNCLE HANK! YOU IN JAIL—HOW COME?

MY BRAKES WERE BAD, AND I HIT A FIRE PLUG..

THE JUDGE SAID I WAS HERE FOR THE REST OF MY LIFE!

IF YOU'D HAD YOUR CAR SERVICED AT Dekle Bros. Motor Co. YOU WOULDN'T NEED A REST!

OWWWW!

THE SNOWS CAME—AND WHERE WERE YOU?

Did old Betsy take it in her stride—because you'd had her winterized—or did she huddle into the garage and refuse to go out in the cold? They used to put their cars up for the winter, but with our modern winterizing methods, the kind we use, automobiles can carry you through the winter comfortable and safe.

DODGE **PLYMOUTH**
SALES & SERVICE **SHAMROCK** **DODGE** **TRUCKS** **TEXAS** **W. H. WAYS**

Dekle Brothers Motor Company
We Repair All Makes Of Cars

PUCKETT'S FOOD MARKET
SPECIALS FOR FRIDAY AND SATURDAY, FEBRUARY 4 AND 5

MOBEETIE HI-LIFE

STAFF
 Editor ----- Doris Kuykendall
 Feature Editor ----- Joy Davis
 Sports Editors ----- Walter Hill
 and Lou Beck
 Senior Reporter ----- Bill Godwin
 Junior Reporter ----- Edith St. John
 Sophomore Reporter, Edwin Sims
 Freshman Reporters ----- Billy
 Leonard, Paul Jones, Inez Lan-
 caster, and Virginia Ware

JUNIOR NEWS
 The juniors are going to start play practice tonight after putting it off for a week due to bad weather.

GOSSIP
 Patsy E. what's this we hear about your being through with men?

Doris K. has a terrible habit of stepping in and taking over other girl's boy friends.

Joy, who ever told you that you were worth ten cents?

Irvine, why does everyone tease you about Wheeler?

Edith, who is this certain party in your life?

As anyone can tell last week was very dull since only half of the kids were there. The buses are running again and we hope this week will furnish more interesting material for the Hi-Life.

Peggy, are you really going to take Mrs. Noble's advice about pulling Donald's hair if he doesn't learn his part in the play?

SENIOR NEWS
 The seniors are reading plays to pick out the one they will present.

SPORTS NEWS
 The basketball teams lost out in the Hedley tournament. They did not even get to attend because of the bad weather.

SONG DEDICATIONS
 From Patsy to Kenneth. "Don't You Love Me Anymore?"
 From Naomi to Billy. "A Little Bird Told Me."
 From Mr. Brown to Lou. "Green Light."
 From Doris to Canadian. "What's Wrong With Me?"
 From Edith to Bill. "One Sweet Letter From You."
 From Mrs. Noble to English IV. "Tired."

So far, science has developed no method to make pupils like to study.

YOU'RE TELLING ME!

By WILLIAM RITT
 Central Press Writer

AN ADVERTISEMENT tells about a fool-proof electric train. Junior says he isn't interested—what he wants is one that's Papa-proof. ! ! !

As the big leagues roar into the stretch it becomes apparent Cleveland is writing a new Paige in baseball history. ! ! !

Out west they report success luring wild animals by spraying traps with perfumes. Especially wolves? ! ! !

If there were any altitude contests in the National Air Races at Cleveland we would enter a turkey. That bird soars

to a new record high (price) every year as Thanksgiving approaches. ! ! !

It's certainly getting harder to keep up with the younger generation. A 14-year-old Ohio girl has made three solo airplane flights. ! ! !

The last name in the Oklahoma City telephone book is Zvzz. How in the world did a bee get in there? ! ! !

Tillie, our titian-tressed typewriter tapper, wonders why she never heard of that head-lined Hollywood personality before—Mary Juana.

FARMS ALMOST MECHANIZED

Texas farmers are making long strides toward complete mechanization of crop production, according to H. P. Smith, agricultural engineer of the Texas Agricultural Experiment Station.

Smith has just completed analyzing information on power used on Texas farms in crop production furnished him by county agricultural agents.

No horses or mules are now used in crop production in about 40 Texas counties. With the exception of some hand-hoeing and hand-harvesting of cotton, crop production in these counties is completely mechanized, Smith said.

Thirty counties use less than 25 horses or mules, while in another 35 counties less than 100 horses or mules are used in crop production, Smith said.

Tractor power is used almost exclusively in the production of all crops in a block of 77 Northwest Texas counties. It was reported that a few farmers in these counties still keep a team or two for odd jobs about the farm or for hauling feed.

There are about 47 million acres in these 77 counties. The total devoted to crop production amounts to about 14 1/2 million acres.

Smith found that East Texas farmers still use a good deal of animal power. This is likely due to the farms being smaller units than in West Texas. East Texas farmers were reported to use

horses and mules ranging in number from a few hundred per county to more than 6,000, Smith said.

Society

Pink and Blue Shower Honors Mrs. Keelin

Mrs. Travis Keelin was honored with a lovely pink and blue shower on January 27, in the home of Mrs. J. E. Steen. Co-hostesses for the occasion were Mrs. Fulton Meadows and Mrs. Lloyd Childress.

Those present and sending gifts were: Mesdames O. O. Beaty, Don Larkin, Coy Bradstreet, J. B. McNeil, Richard Dyson, Jack Willsford, Oden Hudson, Clayton Satterfield, Edd Riley, L. J. Helm, Leonard Fulk, Kenneth Douthitt, W. D. Douthitt, Sam Daugherty, Clifton Walker, Price, Elbert Zybach, Alvin Steen, N. M. Bradstreet, Clarence Dyson, Darrel Atherton, Annie Moore, B. F. Holland, Margie Meadows, Son-tag, Lucille Tipps, Lee Barry, J. C. Moore, Jr., Rich Brown, Clarence Zybach, Melvin Helton, Roy Johnson, A. C. D'Spain, J. P. King and Ileta Meek.

Misses Joy Bradstreet, Janice D'Spain, Mary and Nelda Riley, Patsy Waters and Jeanette Dixon.

What too many are after is a job, with good pay, and not much work.

RANCHMEN AND FARMERS Pay Money Back To Government

In 1934 the U. S. Government bought stock in the Canadian Valley Production Credit Association to help ranchmen and farmers in this section start their own credit institution. It was understood at the time that as soon as the members were able to do so, they would return the government capital and operate entirely on their own capital.

The Association has never loaned a dime of government money, but has used the government capital as security in securing a source of funds in the open money markets of the nation.

On December 31, 1948, the last of the government capital was retired and now the association is completely owned and operated by its members—ranchmen and farmers in Gray, Wheeler, Roberts, Hemphill, Lipscomb and Ochiltree counties.

FINANCIAL STATEMENT

As of December 31, 1948

ASSETS:	
Loans and interest	\$ 834,272
Government bonds and interest	219,861
Cash	7,496
Other assets	1,284
TOTAL ASSETS	\$1,053,313
LIABILITIES:	
Money due Intermediate Credit Bank	\$ 802,276
Other obligations	461
	802,737
NET WORTH:	
Class B Stock	\$ 93,406
Class A Stock	28,655
Accumulated earnings	128,552
CAPITAL AND EARNINGS	\$ 350,613

Association Progress

	1944	1946	1948
Stock owned by Ranchmen and Farmers	\$ 83,700.00	\$ 101,315.00	\$ 122,055.00
Profits	86,025.00	105,315.00	128,525.00
Total Stock & Profits	169,725.00	206,630.00	250,580.00
Government Owned Stock	90,000.00	45,000.00	NONE
NET WORTH	259,725.00	251,630.00	250,580.00
LOANS:			
Total Loans Made	1,668,000.00	1,816,000.00	2,201,000.00
Total Loan cost	34,213.90	30,319.00	39,196.90
Average cost of each \$100 used	2.05	1.66	1.78

Canadian Valley Production Credit Association

"COMPLETELY MEMBER OWNED"
 Central Office Third and Main Streets Canadian, Texas

WHY NEW TELEPHONE RATES ARE NECESSARY AT WHEELER

NO BUSINESS CAN long survive and charge less for its products and services than it costs to furnish them.

GREATLY INCREASED COSTS of furnishing telephone service make it necessary for the telephone company to place new rates into effect at Wheeler.

We are proud that in the past twenty years we have been able to expand and improve our service without increasing rates. But the pyramiding effect of increased costs of operation—higher wages, taxes, materials and equipment make new rates necessary despite the use of every possible economy consistent with sound business management.

EXPENSES ARE GREATER THAN INCOME

During and since the war, the demand for telephone service has been tremendous. While revenues have increased, the costs of furnishing service have increased much faster. Present trends indicate that we will lose approximately \$2,445.00 on our 1948 operation here.

The cost of almost everything that goes to make telephone service—and almost everything is needed—has increased sharply since 1940.

For illustration:
 Payroll (wages), our biggest expense is away up. Telephone poles cost 110 percent more than 1940—cable is up 119 percent—and manufactured items as much as 139 percent.

NEW RATES ARE REASONABLE

The new rates are reasonable and are necessary to help pay the cost of furnishing telephone service. We do not seek big profits, only reasonable rates that will provide enough earnings to place the system on a sound financial basis, and which will enable us to expand and improve service.

ADEQUATE EARNINGS ARE ESSENTIAL

To carry out its expansion and improvement program, the company must spend many thousands of dollars for new plant and equipment. This money must come from the savings of people who want to invest in something that will bring them a reasonable, regular return. A sound financial business with reasonable earnings is essential to attract new money necessary to expand and improve telephone service.

NEW RATES

The new schedule of rates for Wheeler is given below. Federal taxes which apply are not included.

Class of Service	RATE PER MONTH		
	Wall	Desk	Handset
BUSINESS:			
Individual Line Service	\$4.50	\$4.75	\$5.00
Two-Party Line Service	3.50	3.75	4.00
Extension Service	1.00	1.25	1.50
RESIDENCE:			
Individual Line Service	2.50	2.75	3.00
Two-Party Line Service	2.00	2.25	2.50
Extension Service	.50	.75	1.00
RURAL:			
Business (Metallic)	3.75	3.75	3.75
Business (Grounded)	3.00	3.25	3.50
Residence (Metallic)	2.75	2.75	2.75
Residence (Grounded)	2.00	2.25	2.50

NOTE: Charges for subscriber-owned rural line can be obtained at the Wheeler Central Office. For residence users the new rates represent an increase of from 2 1/2 cents to slightly over 4 cents per day. For business users the new rates represent an increase of from approximately 4 cents to slightly over 6 1/2 cents per day.

Compared with increases in prices you must pay for other things—food, clothing, automobiles and almost every other item in the family budget—the increase in telephone rates is moderate.

SOUTHWESTERN ASSOCIATED TELEPHONE COMPANY

JUST FOR TWO

ing couple had just fin-
pecting" the tiny bird-
ment. Stepping out of
of the agent, they whis-
fly. The wife nodded at
the husband turning to
exclaimed resignedly.
guess we'll take it. Al-
is much too small."
see why," retorted the
man. "The apartment
ed for two people."
w," the young husband
"but, you see, we were
be able to keep a gold-

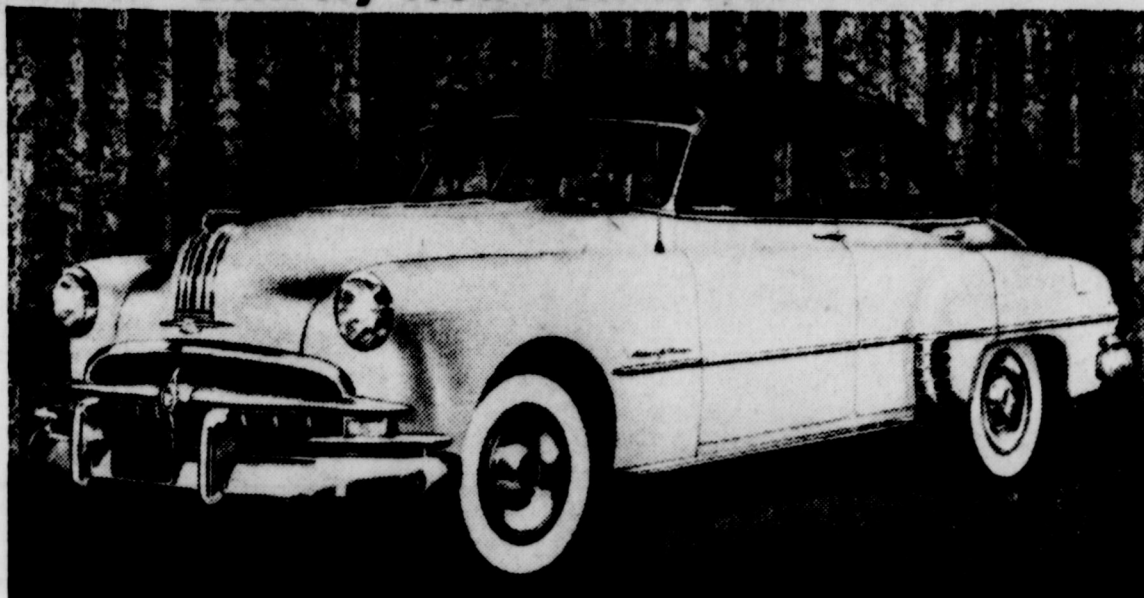
BARK WHEN YOU'RE READY

The dog has taught me several
tricks:
To track, retrieve, jump over
sticks;
We plan to meet, some evening
soon,
And Practice howling at the
moon.

Personally, we read with regret
about the unfortunate hunters shot
in the bushes by their careless
brethren in arms.

A Child May Dare
So Drive With Care!

Entirely New Pontiac For 1949



The Pontiac Chieftain line of which the four-door deluxe sedan is shown here has a 120 inch wheelbase. Roof lines have been lowered without sacrifice of comfort. Trailing pattern of the Chieftain series consists of two gracefully arched steps from roof crown to trunk deck to lower edge. Both Pontiac Streamliner and Pontiac Chieftain lines average 38 percent more glass area. Visor on car pictured is an accessory.

THERE IS NEWS IN THE WHEELER TIMES WANT-ADS | PAY YOUR SUBSCRIPTION

BRISCOE BRONCO

(Published by the students of
Briscoe High School.)

STAFF

- Janice D'Spain -- Editor-in-Chief
- Betty Jo Standlee -- Asst. Editor
- Rosemary Finsterwald -- Soc. Ed.
- Doris Brotherton -- Girls Sports Reporter
- Alvie Daugherty -- Boys Sports Reporter
- Janice D'Spain, Roberta Zybach, Joyce Caudell, Thomas Roy Helton -- Class Reporters
- Mrs. W. J. Bragg -- Sponsor

Some of us hope that we do better
this next half.

Describing the wing of Buddy
Wilson:
Eyes ----- Blood Shot
Age ----- 51
Shoe size ----- 11
Favorite food ----- Onions
Favorite teacher ----- I ain't
got none

IDEAL BOY

Legs like ----- Thomas Roy
Teeth like ----- S. W.
Nose like ----- Douglas
Hair like ----- Carrol
Hands like ----- Buddy

**EIGHTH GRADE NEWS
PERSONALITY**

Name ----- Bobby Helton
Age ----- 14 years old
Color of hair ----- Brown
Height ----- 5 ft. 5 inches
Favorite food ----- Ice Cream
Favorite subject ----- Math
Favorite like ----- Basketball
Ambition ----- Finish the 8th
grade
We are sorry that Gene Welch
has moved, but we hope he likes
his new home.

Due to bad weather we have
not had any school, and all the
members of the Bronco staff were
snowed under so we could not
write the news to be sent to The
Wheeler Times.

SENIOR NEWS

The senior class of '49 received
their picture plaque last Thurs-
day. We hope in the years to come
everyone will remember our mugs
hanging on the wall.

JUNIOR NEWS

Dorothy has sure been angry at
this bad weather, and the roads
are bad. I wonder why?
Melba was seen in Wheeler Sat-
urday. Didn't she know that she
would get her nose frozen?
La Nell, where did you spend
the day Sunday?
Sam, why did you want T. G.
to go home with you Saturday
night? Couldn't have been you
were by yourself?
Tommy, where were you Satur-
day night?
Roberta, why do you study so
hard?
Margaret has a good personality
----- a good basketball player.
Ethel, we hear you have a new
boyfriend. Tell us more.

SOPHOMORE NEWS

We have missed school lately
because of bad weather. We do
wish we could have some pretty
weather for a while.
We hear Joyce has had com-
pany while she was out of school.
Who was it? We are all wonder-
ing.
We hear that Lottie has been
having quite a bit of male com-
pany lately. Better watch out Lot-
tie. He might get jealous.
Mary, have you heard from
Glenn lately? We are really sorry
he moved.
Doris, do you like bad weather?
Or would you rather for it to
clear up so Tooter would not have
such a hard time getting over
there?
Leotie, quit making eyes at
Mary. Don't you know she's
taken? (We wonder who he is.)

FRESHMAN NEWS

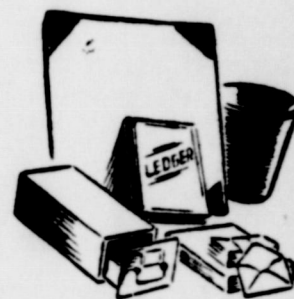
The freshman are doing fairly
well since the mid-term tests.

HEAVY TRAFFIC

Clara's Beau—Tell me, Bobby,
do you ever peep through the key-
hole when your sister and I are
setting in here alone?
Bobby—Sometimes, if mother or
sister Ellen ain't peeping.

There are people who have been
sick so long that they would die
naturally if they got well.

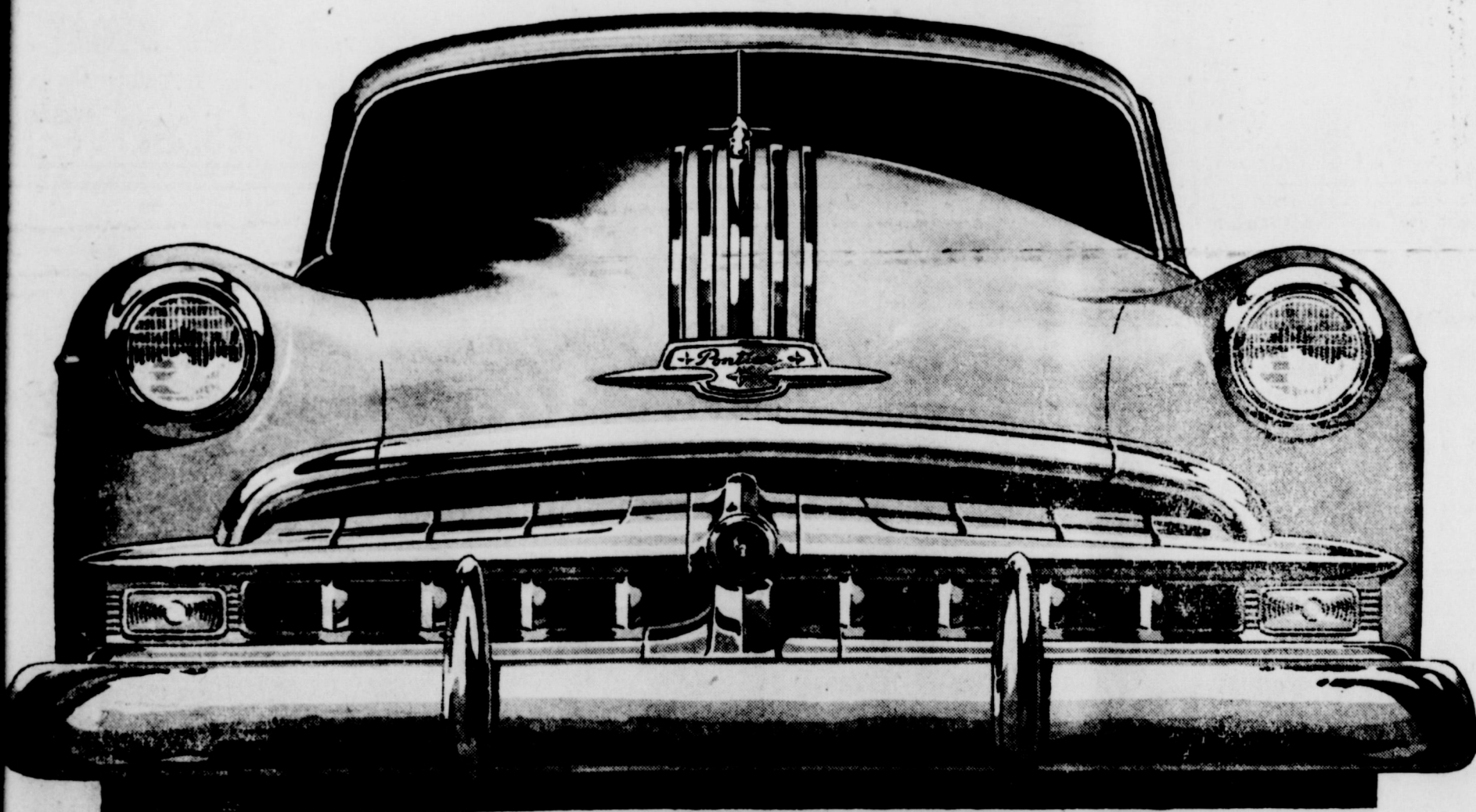
**ALL OUT AID
for your Office**



Give your office a break. Don't
put off buying that file or
wastebasket you've been need-
ing. New equipment will great-
ly increase your efficiency.
Everyone from the office boy
to the boss will work better
and faster with these aids to
better business.

**WHEELER
TIMES**

Announcing the
1949 PONTIAC
Now on display



The Finest of all New Features in the Smartest of all New Cars!



We extend to you and your family a most cordial
invitation to come in and see the great new 1949
Pontiac! Definitely and decidedly, it's the finest,
most beautiful Pontiac we have ever been privileged
to show. You will admire everything about it: the
flashing smartness of its completely new Bodies
by Fisher—its many new features—its fine perform-
ance. Here's a real step forward in the motor car
world . . . one that you should see without delay!

PONTIAC—Division of General Motors

1. THE YEAR'S OUTSTANDING BEAUTY
2. LOWEST PRICED CAR WITH GM HYDRA-MATIC DRIVE
Optional at additional cost
3. COMPLETELY NEW BODIES BY FISHER
4. WIDER SEATS—ADDED ROOM
5. WIDE, EASY-ACCESS DOORS
6. NEW WIDE-HORIZON CURVED WINDSHIELD
7. SAFE-T-NEW DRIVER VIEW
8. NEW DIAL-CLUSTER DASH
9. EXCLUSIVE TRAVELUX RIDE
10. NEW FINGER-TIP STARTER BUTTON ON INSTRUMENT PANEL
11. NEW HEATING AND VENTILATING SYSTEM
12. CARRY-MORE LUGGAGE SPACE
13. NEW LOW-PRESSURE TIRES, 15" WHEELS AND WIDER RIMS
14. PONTIAC FAMOUS IMPROVED STRAIGHT EIGHT AND
SIX CYLINDER ENGINES

NASH
APPLIANCE
& SUPPLY CO.

**WE ARE INTERNATIONAL
TRIPLE DIAMOND DEALERS**
AND HERE'S WHY THAT MEANS TOP TRUCK
SERVICE AND MONEY SAVED FOR YOU

● To earn our rating as International Triple Diamond
Service Dealers we had to meet seven rigid qualifica-
tions. Among these qualifications are technical skill
and training of our mechanics; use of International-
approved tools and equipment; installation of Inter-
national-engineered parts; and established fair prices.
And the seven qualifications we have met mean this
to you: 1. You get the very best in truck service from
us, anything from a lubrication job to a complete over-
haul. 2. We save you money because of our quick,
expert work and our established fair prices.

**HIBLER IMPLEMENT
CO.**
PHONE 151
WHEELER TEX.

INTERNATIONAL Trucks

Society

Levitt-Langford Vows Announced By Parents

Mr. and Mrs. Lester Levitt of Allison have announced the marriage of their daughter, Francis Evelyn, to Roy M. Langford of Hollis, Okla. on February 2, at 10:30 a. m.

The wedding vows were exchanged at the parsonage of the First Baptist Church in Wheeler with Rev. M. B. Smith, pastor, officiating.

Bailey Burgess Is Married At Houston

Marriage vows were solemnized for Mrs. Rose Pettus of Houston and Bailey (Lefty) Burgess of Wheeler on Friday evening, January 28, in Houston.

Mr. Burgess was manager of the Holt Bros. Lumber Company until recently when he resigned to accept a position with a lumber company in Houston.

Mrs. Burcham Hostess Blue Bonnet HD Club

The Blue Bonnet Home Demonstration Club members were entertained on Wednesday evening, January 26, in the home of Mrs. Roy Burcham.

Mrs. A. B. Sims, president, directed the business discussion. Following the business meeting, Mrs. Knox Walraven was honored with a pink and blue gift shower.

Refreshments were served during the social hour to: Mesdames A. B. Sims, C. D. Evans, E. E. Sheegog, Knox Walraven, J. P. Hall, Evelyn Grubbs and one guest Miss Dixie Burcham.

The next meeting will be Wednesday afternoon February 9, in the home of Mrs. J. P. Hall.

Mr. and Mrs. Kenneth Douthit of Briscoe have as their guests this week Mrs. Douthit's parents, Mr. and Mrs. Elmer Luttrell of North Dakota.

Mr. and Mrs. Roy Reeves of Twitty are the parents of a daughter, Ladanna Janette, born January 18 at the Wheeler Hospital.

Mr. and Mrs. E. M. (Spud) Moore are the happy parents of a daughter, Linda Sue, born at the Pampa Hospital January 7.

Mr. and Mrs. Harold Nash and children were visitors in Borger Sunday.

Gene Hall, Lewis Craig, S. D. Miller and F. B. Craig have returned to the University of Texas to resume their studies after spending the mid-semester holidays here in Wheeler.

Members of the Ladies Auxiliary and the American Legion and their families enjoyed a covered dish supper at the Legion Building Monday evening.

WHERE THE SPACES ARE STILL WIDE AND OPEN



SOMETHING NOT OFTEN SEEN THESE DAYS is a cattle drive line like this one on the Three-V Ranch owned by Arizona cattle baron Marcus Rudnick. The big open range stretches about sixty miles east and west and 40 miles north and south, just south of Grand Canyon. There is little water available on the surface, but development of wells and a pumping system with pipe lines, running 20 to 30 miles to storage tanks scattered about the range, enable the cattle to feed on good grass and go short distances to water. There are about 3,000 head of cattle in the above photo, being brought in for inspection, counting and branding. (International)



NTSC MOONMAIDS COMING HOME — Three young singers, former student stars of North Texas State stage shows, will return to the Denton campus Feb. 19, this time as featured vocalists with Vaughn Monroe's orchestra, which will appear at NTSC for two shows, one a radio broadcast. NTSC exes now singing with Monroe are Mary Jo Thomas, Denton, lower left; Tinker Cunningham of Denton, upper left; and June Hiett, Arlington, upper right. The fourth Moonmaid, Marce Lee, lower right, is from Ohio.

Mr. and Mrs. M. V. Callan had as their guest Sunday Mr. and Mrs. Shelby Pettit.

average increase yield of 7.6 bushels per acre. This means a 25 percent increase over open pollinated corn, says Miller.

Some exceptionally high yields were made by both 4-H club boys and adult farmers. Among the club boys, some of the top yielders were John D. Alcorn, Leonard Ross and Dwayne Alcorn, of Harrison county with 100.6, 86 and 82 bushels respectively in the county contests. Julius Wayne Beckham and Milo Maness, Upshur county club boys got 94.5, 71.5 and 68.4 bushels in their county contest. James Ray Findley, Rusk county club boys, got a yield of 87.5 bushels, and Charles Bishop of Van Zandt county got 83 bushels. James Hobbs and Louis Muniza, club boys in the Wharton county contest, averaged 70 and 68 bushels respectively.

Among the high yields made by some of the adult farmers, there were 87 bushels by R. C. Kubbell, of Brazoria county; 84.5 bushels by R. E. Saxon and 83 bushels by R. E. Washburn of Henderson county in a 100 bushel per acre contest. J. K. Hodges, of

Cornell county, averaged 75 bushels.

In Milam county, 50 4-H club boys averaged 23.5 percent more with hybrid corn than with native corn grown side by side with the same treatment.

Using experimental results as a basis, these are the Texas hybrids to use in the following areas: over the entire corn growing region, Texas 24 is first choice; followed by Texas yellow hybrids numbers 20 and 12 in East Texas, and Texas yellow hybrids, 20, 18 and 8 in the blackland region and in the southern and western corn grow-

ing areas.

The white hybrids 11W have made the best record in the Gulf Coast Prairie, in the Rio Grande Valley, and in the White 13W and 11W are the highest yields of white hybrids per acre, says Miller.

So if you're looking for yielding corn, try corn in

It is not "un-American" to agree with others, regarding what positions they occupy.

Newspaper Advertising

OFFICE STATIONERY



You will be delighted showing off stationery

printed by us. How inexpensive our work is, too. Let us print your stationery . . . where work is guaranteed to your satisfaction or money refunded

THE WHEELER TIMES



SELECT YOUR PANGBURN'S VALENTINE CHOCOLATES

AND HALLMARK VALENTINE GREETINGS

While Selection Is Complete

WHEELER DRUG STORE

"A Friendly Place To Trade"

PHONE 11

WHEELER

MAYTAG

Dutch Oven Gas Range



It cooks ON . . . with the gas OFF . . . Automatically

Your kitchen's cooler, cleaner! Retained heat is the secret of Maytag's heavily insulated Dutch Oven. Kitchen stays cool and free of cooking odors, greases.

Cooks while you're away! Dutch Oven control dial automatically turns off gas, yet foods keep cooking by retained heat until deliciously done.

Full meal on one burner! The thrifty Dutch Cooker Well cooks an entire meal with only one top burner. Also ideal for cooking fruits, cereals, puddings.

Wipes clean in a jiffy! Heat-focusing Spiral Flame burners and chrome grids lift out so porcelain burner bowls and range top can be wiped sparkling white.

NASH APPLIANCE & SUPPLY CO.

"Better Things For Better Living"



Sweeten the Occasion

with King's Chocolates for American Queens

A sweet way to say "You're always my queen."

Valentines

25 for 25¢

Others 5¢ to \$1.00 each

CITY DRUG STORE



New

Spring Dresses

Marcy Lee
Carol King
Nelly Don

Arrow Shirts
and Undershirts

Many New Numbers of

PIECE GOODS

Iridescent Rayons—Cottons
Stone-Cutter's Cloth

SPECIALS—

Ladies Panties, 3pr. \$1.00

Boys, spring-foot socks, reg. 59c 39c

Other Specials On Winter Goods

McILHANY'S

"For Everything You Wear"

Wheeler, Texas