

The Wheeler Times

Serving
WHEELER
and
MOBEETIE

WHEELER, TEXAS, THURSDAY, JANUARY 20, 1949

5c Per Copy

THE COUNTY SEAT NEWSPAPER

Proclamation

WHEREAS, infantile paralysis has year struck our nation with intense fury, taking savage toll of thousands of little children, and,

WHEREAS, during the past six polio seasons more than 100,000 Americans have been stricken by this crippling disease, and,

WHEREAS, the services of the National Foundation for Infantile Paralysis and its 2,819 chapters were at hand to aid those stricken, and,

WHEREAS, in so doing last summer the National Foundation exhausted its epidemic emergency aid fund, and,

WHEREAS, the 1949 March of Dimes, January 14-31, provides the only means by which the National Foundation and its chapters may continue to fight infantile paralysis, by aiding those stricken, while financing research to find a preventive or cure, and,

WHEREAS, infantile paralysis is certain to strike again next summer, and adequate resources must be available to meet its menace,

THEREFORE, I, Mayor of City of Wheeler do urgently appeal to each and every resident of Wheeler County to join zealously during the period, January 14-31, in making the 1949 March of Dimes the most successful in local history.

R. H. FORRESTER, Mayor

TWO KILLED IN COLLISION HERE SATURDAY NIGHT

Two persons were killed and a third injured when the car in which they were riding crashed into the rear of a parked truck at 9:15 Saturday night on State Highway 152 west of Wheeler. Killed instantly was Tom McAlister, 31, Dumas, who was a passenger in a car driven by Willie Wisdom, Berger trucker. Mrs. Wisdom died of injuries shortly after she was brought to a Wheeler Hospital. C. F. Henry, 32, Dumas, employe of the Cactus Ordnance Plant was released from the Wheeler Hospital Wednesday. He suffered severe head and facial cuts and a back injury.

According to the State Highway Patrol, Johnnie Weeks, the truck driver, had engine trouble and pulled his truck to the edge of the highway, while headed toward Wheeler. Leaving it with clearance lights on, he had started to walk into town for help.

Mr. Wisdom, coming toward Wheeler from Pampa, en route to Hobart, Okla., struck the truck at the left rear end. The two who were killed were sitting in the front seat and Mr. Henry was sitting alone in the back seat on the right side of the car.

Sheriff Jess Swink of Wheeler called the accident "unavoidable."

McAlister was Mrs. Wisdom's uncle. His body was sent to Stamford and Mrs. Wisdom's to Berger.

It has been understood here that the group was driving a stolen or "borrowed without permission" car but so far as local authorities knew no charges had been filed in any connection with the accident.

Legion Membership Drive Now Underway, Losing Team To Feed

The Wheeler American Legion post is right now in the big middle of its 1949 membership drive according to Jack Garrison local commander.

The local membership has divided up into two teams for the drive with Luther Sides heading one team and Chester Lewis heading the other. The team which secures the most new members in the drive will be the recipient of a feed at the expense of the losing team.

Local dues are \$5.00 per year according to Jim Risner, post adjutant.

Risner points out the fact that 1949 dues are now due and members who do not pay up by February 1 will be delinquent. In order to pass the pension bill and other legislation affecting veterans adopted at the Miami, Florida, Convention the Legion must have the greatest membership in history.

Newspaper Advertising Pays!

SHAMROCK WINS LOCAL TOURNAMENT, BRISCOE TRIRD

The Shamrock boys and girls basketball team took home the championships in Wheeler's Fifth Annual Basketball Tournament which was concluded last Saturday night.

The Hedley girls team and the Miami boys team took home second place in their respective divisions losing only to the championship Shamrock teams.

Both Briscoe's boys and girls teams came out winners in the finals of the consolation bracket to capture third place in the tournament.

Shamrock's girls took a thrilling 37 to 36 overtime victory from the strong Hedley sextet. The score at the end of the regular period of play was 34 to 34. Shamrock's boys defeated Miami by a 27 to 20 count in the final contest.

The Briscoe girls bested Canadian's sextet by a count of 23 to 21 in their final match and the Briscoe boys outlasted the Kelton lads by a count of 32 to 17 in their final match.

Both Wheeler teams lost out in their opening match the boys going down to the fast Miami five by a count of 54 to 41 and the girls losing to Shamrock by a count 38 to 16.

Two Wheeler players, Billie V. Brown and Richard Gaines were placed on the all-tournament teams. Billie V. made the girls' first team and Gaines the boys' second team.

Members of the boys' all-tournament teams included: First, Steer, Cheyenne; Wilson, Pampa; Martin, Shamrock; M. Bengie, Miami; and Yowell, Reydon. Second, Hink, Kelton; C. Gill, Miami; Daugherty, Briscoe; Gaines, Wheeler; and Bayless, Canadian.

Girls' all-tournament teams included: First, Jenkins, Miami; Alexander, Hedley; Futch, Kelton; Pannell, Briscoe; Montgomery, Shamrock; and Billie V. Brown, Wheeler. Second, Gabel, St. Marys of Amarillo; Steer, Cheyenne; Elvins, Shamrock; Low, Miami; Hill, Canadian; and Meek, Hedley.

Singing Convention Meeting Is Postponed

D. D. Vines, vice-president of the Wheeler County Singing Convention, announced this week the regular fourth Sunday meeting which was scheduled for Kelton Sunday afternoon had been postponed until the following Sunday.

The meeting is being postponed because of the fact that the Memorial rites for Pfc. Joseph Jefferson (Jiggs) Cain are being conducted at Kelton Sunday afternoon.

The Convention will meet at Kelton on Sunday, January 30 at the same time and place as previously scheduled according to Vines.

Wheeler Co. Quota For March-Dimes Is Set At \$3,000

Wheeler County's quota in the March of Dimes campaign which is now under way has been set at \$3,000.00 according to Harry Wofford, chairman of the Wheeler County Chapter of the National Foundation for Infantile Paralysis. Wofford stated this week that it is imperative that the county raise this amount to replace the amount which has been spent on Wheeler County polio victims in the past twelve months.

In the Wheeler vicinity, the American Legion, founder of the March of Dimes, will handle the collection of funds with Lester Robertson and Max Wiley acting as co-chairman of the drive.

It is hoped that every resident of the county will give generously to this worthy cause without having to be begged in order that the quota may be raised quickly.

Charlie Mixon, deputy sheriff at Mobeetie, will be in charge of the drive in that vicinity and it is expected that that vicinity will oversubscribe its quota within a very short time because polio struck in their community last year and they have seen the need for funds of the Foundation.

MARCH OF DIMES



3 NEW TEAMS IN DISTRICT 1-B

Football District 1-B will be a nine-team league next year, and will stretch all the way across the Texas Panhandle, from Canadian on the east to Vega on the west.

Three new teams, Groom, Stinnett, and Vega, were admitted to the loop in a meeting of the District 1-B Executive Committee last week at White Deer.

The remaining six teams, which made up the 1-B loop in 1948, are Canadian, Wheeler, Spearman, White Deer, Claude, and Panhandle.

Groom and Stinnett qualified for admission to the 1-B District under new Interscholastic League rules which lower high school enrollment requirements for Class B football schools from 100 students to 75.

Vega High School still had insufficient enrollment to qualify, but was admitted to the conference by unanimous vote of the member schools.

All three of the newly-admitted teams played in Class "C" football leagues last year.

Each school in the enlarged district will play eight conference games, and may, at their option, schedule two games outside the conference during the regular season.

Supt. John Morris of Claude was re-elected as District 1-B Chairman.

Trophies were presented to the 1948 Conference Co-Champions, Wheeler and White Deer.

The District Committee made provisions for deciding the League representatives in event of ties during the regular season. Should two teams tie, the one defeating the other during the regular conference season would be declared the league representative. In case of a tie between three or more teams, the district representative would be decided by a toss of a coin.

The committee also voted to divide gate receipts on a 50-50 basis after deducting taxes and expenses; to employ at least three officials for each game; to pay a minimum of \$15 to each official and to follow Interscholastic League rules for payment of higher fees; to re-adopt the admission price schedule of 75 cents and 40 cents for all conference games; and to admit members of pep squads, bands and visiting teams without charge.

Robertson stated that coin collectors are being placed in Wheeler business houses. Coin cards will be distributed among students of the Wheeler Public School System. In addition to these two methods of raising money to fight polio, a personal solicitation will be made in the business district of this city.

Betty Lancaster, 17-year-old daughter of Mr. and Mrs. Curtis Lancaster, of Mobeetie has been hospitalized since she was stricken early last summer and doctors report she will be hospitalized for another 18-months period, but by the end of that time they claim she will be able to walk again, a feat which might never have been possible except for existence of the National Foundation for Infantile Paralysis. Miss Lancaster's treatments are being financed by the Wheeler County Chapter along with the state and national chapters at the rate of approximately \$17.00 per day.

Besides Miss Lancaster several other Wheeler County victims of polio have been assisted to lesser degrees by the Wheeler County Chapter of the National Foundation for Infantile Paralysis.

Last year \$960.15 was raised in the county-wide drive. One-half of this amount was sent to the State Foundation and one-half was retained here for local use.

"When the facts are known, no one will doubt the importance of maintaining an active chapter for combating infantile paralysis," Wofford said. Quoting figures furnished by Flake George, treasurer of the Wheeler County Chapter, Wofford said:

"We started 1948 with a cash balance of \$932.94. When an epidemic of the dreaded disease spread over Texas and hit in the north part of the county, we borrowed a total of \$1,716.00 from the State Foundation.

"We paid out a total of \$2,610.63 for special treatment and doctor bills, most of the amount being spent on one case. Now we have a cash balance of only \$38.31, and have a bill for special treatment amounting to \$396.58.

"If we had not had an active chapter in Wheeler County, we would not have been eligible to obtain money from the State Foundation, and it is possible that polio might have claimed the life of more residents of Wheeler County."

Wofford asks that the public cooperate as they have in the past in the campaign. The local chapter has been asked to raise 50 percent more money than it did in the 1948 drive. That would still be far short of the more than \$3,000.00 spent to fight polio in this county last year.

Local Cagers To Play Miami Here Tues. Nite

The Wheeler High School basketball team defeated the Briscoe High School team which were not at full strength Tuesday night in contests played on the local court.

The Wheeler teams are participating in the Canadian Tournament this weekend and both won their initial contests over the Allison teams on Wednesday evening. The boys play Hartley tonight and the girls play Spearman.

Next week's schedule for the local cagers calls for contests with Miami here on Tuesday night and there on Friday night and the Wheeler B team is entered in the Hedley Tournament.

CAIN FUNERAL AT KELTON SUN.

Memorial rites for Pfc. Joseph Jefferson (Jiggs) Cain will be conducted from the Kelton Baptist Church Sunday afternoon at 3:00 o'clock. The 30-year old son of Mr. and Mrs. J. O. Cain of Kelton was killed in action in France July 11, 1944.

The body of young Cain will arrive in Shamrock at 5:48 o'clock Friday afternoon and will lie in state at the Clay Funeral Home at Shamrock until Saturday morning when it will be taken to the Cain home near Kelton.

Rev. A. G. Roberts, pastor of the Kelton Baptist Church, will be in charge of the Memorial rites.

Pall bearers will be: Cully Watson, Anderson, J. R. Clemens, George Richardson, Raymond Moore and R. O. Lister, Jr.

Burial will be in the Kelton Cemetery with Clay Funeral Home of Shamrock in charge.

Pfc. Cain was born in Beckham County, Oklahoma on September 20, 1918 and had resided in the Kelton and Mobeetie areas until the time he entered service in December 1942.

Joseph Jefferson Cain trained at Fort Sill, Okla., Camp McCoy, Wisconsin, Camp Breckenridge, Kentucky and a camp near Nashville, Tenn. before going overseas in April 1944. He first landed in England, went to France June 9, entered the invasion at St. Lo, France July 9 and was killed in action two days later on July 11, 1944.

Survivors include: The widow, Mrs. J. O. Cain, and one daughter, Valerie Lucille; the parents, Mr. and Mrs. J. O. Cain of Kelton; 6 sisters, Mrs. Jewel White, Mrs. Lois Hampton and Mrs. Faye Hampton all of Pampa, Mrs. Alma Gale, Helen and Velma Cain all of Kelton; 3 brothers, Clois Cain of Wheeler, Sgt. Billy B. Cain of Tucson, Ariz., and Richard Cain of Kelton.

Churches Of Christ Sponsoring Radio Time

Religious programs sponsored by the Churches of Christ in the five city area covered by KEVA are to be heard each morning, Monday through Friday at 9:05 to 9:20. Congregations sponsoring these programs are Wheeler, Briscoe, Twitty, Shamrock, McLean, Erick and Texola. The Wheeler congregation is to sponsor the Tuesday program.

Grass and Clover Seed To Be Available Soon

Anyone interested in planting grass seed or clover this spring should leave their order at the ACA office before January 26 for seed delivery on January 31.

If enough farmers are interested in this practice the bulk order will be turned over to local dealers who will handle the seed at a very small margin of profit. Government payment amounts to approximately 70 percent of the cost of seed.

DEPUTY STATE SUPT. BE HERE

Deputy State School Superintendent Morris H. Jones has notified the Wheeler County School Superintendent Allen Kavanaugh he will be in Wheeler County on January 22, to check state aid applications. Mr. Jones requested all school superintendents for the state aid schools in the county to meet in the office of the Wheeler County Superintendent.

While the purpose of the meeting is to check applications with the school superintendents, all school board members are welcome to attend. In fact, the superintendents would be very happy to have their board members accompany them to this important meeting.

Last year the schools of this county were approved for a grant of \$52,724. Local school authorities estimate the grant to be even more for the current year. The grant for Wheeler and Mobeetie schools last year was \$8,617.99 and \$9,947.000 respectively.

County School Superintendent Allen Kavanaugh reports that Dr. L. A. Woods, State School Superintendent has cooperated to the fullest extent in every way to make such aid possible to the needy schools. School administrators also have an unlimited amount of confidence in our newly elected State Representative, Grainger McIlhany. They feel confident that Mr. McIlhany will support any program which will provide better educational opportunities for the children of Texas.

Equalization Aid Grants For Last Year (1947-1948)

Briscoe	\$3,799.00
Bethel	655.00
Kelton	8,058.00
Lela	134.00
Twitty	1,995.00
Shamrock	20,519.00
Wheeler	8,617.99
Mobeetie	9,947.00

TOTAL\$52,724.00

The above does not include transportation and for last year which was \$32,439.00.

Mobeetie P.-T. A. To Meet Monday Night

Mrs. C. J. Van Zandt, president of the Mobeetie P.-T. A. announced this week that the January meeting of the Mobeetie organization will be held Monday night, January 24 at the school house. The meeting will begin at 7:00 o'clock.

The Mobeetie homemaking department will be in charge of the program for the evening according to Mrs. Van Zandt.

NOTICE!

The ladies of the Wheeler American Legion Auxiliary will hold a food sale at Puckett's Food Store beginning at 9 o'clock Saturday morning, according to Bernice Hall, president of the group.

The ladies will offer home baked pies, cakes, candies and cookies for sale in an effort to raise funds to further help furnish Wheeler's new American Legion Building.



JERRY SANDERS
Asst. Manager, KEVA



BILL SMITH
Announcer, KEVA

Gerald C. Sanders of Laurinburg, N. C., will be coming home when he arrives in Shamrock this weekend to assume his duties as assistant manager of Radio Station KEVA. Born in the Texas Panhandle, Jerry entered radio as an announcer at Tyler, Texas, in 1940. He had risen to program director when he enlisted in the Marine Corps. Following his discharge he attended Southeast State College at Durant, Okla., received his BA degree, and helped organize a staff for KSEO when it went on the air. A year later he accepted a position as program director-commercial manager of the North Carolina station. He resigned this position to return to his native state and join KEVA.

Bill Mac Smith is a native Shamrocker, the son of Mr. and Mrs. Ernest Smith. He is a graduate of Shamrock High School and has been studying radio announcing at West Texas College at Canyon. He was active in speech and dramatics in school and has done some sports announcing. This is his first commercial assignment.

THE WHEELER TIMES

Published Every Thursday at Wheeler,
Wheeler County, Texas, By

COOPER, HOWELL & MONTGOMERY

J. C. Howell Editor-Manager
Annie Mae Howell Society Editor
Richard L. Bradley Printer
Maurice Pettit Apprentice

Member
TEXAS
PRESS ASSOCIATION
MEMBER
Panhandle Press Association
National Editorial Association

SUBSCRIPTION RATES
In Wheeler, Beckham and
Hemphill Counties

3 Months	75c
6 Months	\$1.25
1 Year	\$2.00
Everywhere Else	
3 Months	85c
6 Months	\$1.50
1 Year	\$2.50

ADVERTISING RATES

National Rate 42c Column Inch
Local Rate 35c Column Inch
Classified See Want Ad Page
Entered as second-class matter December
18, 1933, at the postoffice at Wheeler, Texas,
under act of March 3, 1879.

NOTICE TO PUBLIC

Any erroneous reflection upon the character, standing or reputation of any person, firm or corporation, which may appear in the columns of this paper will be gladly corrected upon due notice being given to the Editor personally at the office at Wheeler, Texas.

THURSDAY, JANUARY 20, 1949

Editorial

MODEL BILL OFFERED FOR INVESTIGATIONS

Pitiless and persistent investigation by a congressional committee need not be unfair. Senator Walsh, a lawyer and able cross-examiner, proved that in the Teapot Dome case. But there is far more unfairness

than fairness in most congressional investigations and something ought to be done about it. The Eighty-first Congress is said to contemplate some action to make such an investigation a court proceeding instead of a lynching bee. Its opportunity is ready to hand in a set of model principles offered as a basis for sound legislation on the subject by the committee on the Bill of Rights of the Association of the Bar of the City of New York.

These legal gentlemen dismiss quickly the contentions that congressional committees can't make witnesses before them testify. Investigation is a proper function. A witness may not refuse to testify except, of course, on the grounds that his testimony will incriminate him and, if he does testify, what he says can not be used against him in a court of law. But subject to these exceptions, he had better speak up.

But the New York lawyers are convinced that Congress needs appropriate rules to govern committee action. Anyone will agree that every citizen merits protection against the sort of badgering that has occurred in far too many proceedings.

The cure embodied in the committee proposal is simple. The subject of investigation must be clearly stated and the evidence must be germane to that subject. Any witness in a public hearing must be entitled to counsel and also in a private hearing unless the committee votes otherwise. Witnesses must be entitled to supplement testimony with a written or oral statement, confined of course to the matter to which he has testified. An accurate stenographic record must be kept, to a copy of which the witness is entitled in a public hearing and in a private hearing also if this refers to what he has said. No photographs, movies, television or broadcast are to be permitted of a witness testifying. Opportunity to be heard must be afforded any person whose name is mentioned or who is specifically identified if thinks that he has been injured or defamed thereby, and the right of cross-examination afforded him.

Here is an opportunity for Congress to act like an American institution instead of a Bloody Assize. It is to be hoped that the Eighty-first sees the light—and the right.

—From Dallas News

Business pays for brains but does not always get them.

There are any number of people who will do great things if they can do them without exertion.

It's getting so, nowadays, that a forward-looking child can never suspect when a parent will come forth with an old-fashioned idea.

Church Calendar

FIRST BAPTIST CHURCH

Sunday School 10:00 a. m.
Morning Worship 11:00 a. m.
Evening Worship 7:00 p. m.
W.M.U., Monday 7:00 p. m.
Prayer Service, Wed. 7:30 p. m.
Teacher's Meet, Friday 7:00 p. m.
We preach Christ crucified,
buried, risen, and coming again.
M. B. SMITH, Pastor

CHURCH OF CHRIST

Bible Classes 10:00 a. m.
Worship and Sermon 11:00 a. m.
Evening Worship 7:00 p. m.
Ladies Bible Class, Mon. 3:00 p. m.
Wed. Eve. Classes 7:00 p. m.
B. M. LITTON, Minister

THE METHODIST CHURCH

Church School 9:45 A. M.
Morning Worship 11:00 A. M.
Evening Service 7:30 P. M.
Prayer Meeting (Wed.) 7:00 P. M.
S. Y. ALLGOOD, Pastor.

BRISCOE BAPTIST CHURCH

Preaching days—Second and
Fourth Sundays.
JAMES E. WILLEFORD, Pastor

ASSEMBLY OF GOD
Mobeetie, Texas

Sunday School 10:00 a. m.
Worship 11:00 a. m.
Junior Church 7:30 p. m.
Evangelistic Service 8:00 p. m.
Prayer Meeting, Tues. 8:00 p. m.
Young Peoples Ser.
Thursday 8:00 p. m.
GLEN H. LESTER, Pastor

TWITTY BAPTIST CHURCH

Sunday School 10:00 a. m.
Morning Worship 11:00 a. m.
Evening Worship 8:00 p. m.
Mid-week prayer service 8:00 p. m.
A. C. LYONS, Pastor

KELTON METHODIST CHURCH

Church School 10:00 a. m.
Preaching 11:00 a. m. every third
Sunday.

KELTON BAPTIST CHURCH

Sunday School each Sunday at
10:00 a. m.
T. U. each Sunday at 7:30 p. m.
Preaching each Sunday at 11:00
a. m. and 8:30 p. m.
A. G. ROBERTS, Pastor

CHURCH OF THE NAZARENE

Sunday School 10 a. m.
Worship 11 a. m.
N.Y.P.S. 7:00 p. m.
Evening Worship 7:30 p. m.
Prayer Meeting, Wed. 7:15 p. m.
J. D. ROEDLER, Pastor

ALLISON PENTECOSTAL CHURCH

Sunday School 10:00 a. m.
Worship 11:00 a. m.
Young Folks Service - 7:30 p. m.
Worship 8:00 p. m.
Wednesday Night Prayer
Meeting 8:00 p. m.
REV. ROBERT ESTES, Pastor

FIRST METHODIST CHURCH
Mobeetie, Texas

Church School 10:00 a. m.
Morning Worship 11:00 a. m.
M. G. F. Meeting 6:45 p. m.
Evening Worship 7:30 p. m.
Wed. Evening Prayer
Service 7:30 p. m.
You Are Welcome.
VERNON E. WILLARD, Pastor

BRISCOE METHODIST CHURCH

Sunday School Each
Sunday 10:00 a. m.
Preaching, second and fourth Sun-
days 11:00 a. m. and 8:00 p. m.
A hearty welcome to all.
L. J. HELM, Pastor

ALLISON METHODIST CHURCH

Sunday School Each
Sunday 10:00 a. m.
Preaching, first and third Sun-
days 11:00 a. m. and 8:00 p. m.
A warm welcome to all.
L. J. HELM, Pastor

ALLISON BAPTIST CHURCH

Sunday School 10:00 a. m.
Preaching Service 11:00 a. m.
Training Union 7:30 p. m.
Preaching Service 8:30 p. m.
JAMES E. WILLEFORD, Pastor

FIRST BAPTIST CHURCH
Mobeetie, Texas

Sunday School 10:00 a. m.
Morning Worship 11:00 a. m.
Training Union 7:30 p. m.
Evening Worship 8:30 p. m.
Prayer Meeting, Wed. 8:00 p. m.

CHURCH OF GOD
Old Mobeetie
Sunday School 9:45 a. m.
Morning Worship 11:00 a. m.
Willing Workers 2:30 p. m.
Tuesday
Young People's Service, 7:00 p. m.
HETTIE TSCHIRHART, Pastor

LEGAL NOTICE

NOTICE OF SHERIFF'S SALE
THE STATE OF TEXAS
COUNTY OF WHEELER

WHEREAS, on the 6 day of December, 1948, in Cause No. 3948, in the District Court of Wheeler County, Texas, wherein The State of Texas in behalf of itself and the county of Wheeler were Plaintiffs, recovered judgment against J. W. McQuady; E. A. Taylor; S. L. Eaves; W. S. Hargrove and James D. Gory, if living and if dead, the unknown heirs and legal representatives of such as may be deceased, Defendants for taxes, penalty, interest and cost against the hereinafter described property;

WHEREAS, on the 8 day of January, 1949, by virtue of said judgment and the mandates thereof of the Clerk of the above mentioned District Court of said county did cause to be issued an Order of Sale commanding me as Sheriff of said county to seize, levy upon, and sell in the manner and form as required by law the hereinafter described property;

WHEREAS, by virtue of said judgment and said Order of Sale and the mandates thereof I did on the 8 day of January, 1949, seize and levy upon as the property of the above defendant the following described property, situated in Wheeler County, Texas, to-wit:

(Said description showing the number of acres, original survey, locality in county, and name by which said property is most generally known.)
FIRST TRACT: lot 13, second tract, lot 14; third tract, lot 15; fourth tract, lot 16; fifth tract, lot 17; sixth tract, lot 18; seventh tract, lot 19; eighth tract, lot 20; all in block XIX of the City of Shamrock, Wheeler County, Texas, according to the recorded map or plat of such city in the office of the county clerk said county and state.

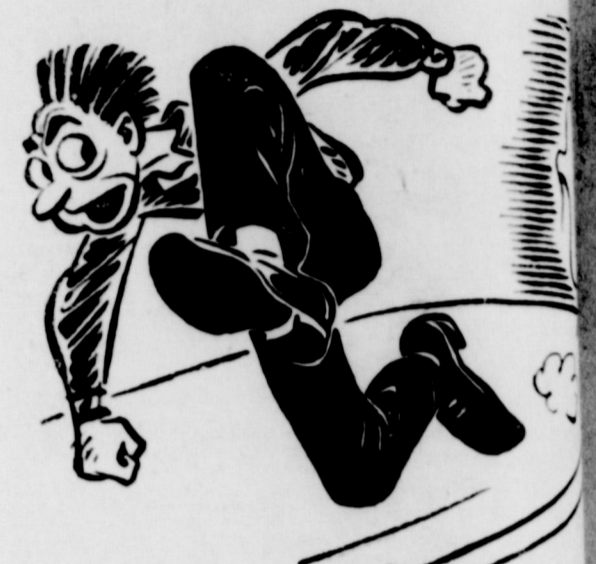
And I will on the first Tuesday in the month of March, 1949, the same being the 1 day of said month, proceed to sell all the right, title, and interest of the Defendants in and to said property at the Court House door of said county in the city or town of Wheeler, between the hours of 2:00 p. m. and 4:00 p. m. to the highest bidder for cash, provided, however, that none of said property shall be sold to the owner of said property directly or indirectly or to anyone having an interest therein or to any party other than a taxing unit which is a party to this suit for less than the amount of the adjudged value of said property or the aggregate amount of judgments against said property in said suit, whichever is lower, subject also to the right of the Defendants to redeem same in the time and manner provided by law and subject also to the right of the Defendants to have said property divided and sold in less divisions than the whole.
DATED at Wheeler, Texas, this 8 day of January, 1949.
JESS SWINK, Sheriff
Wheeler County, Texas
5-3tc.

COMPARISONS
Critical Spectator: "I can't understand anyone missing a putt as short as that."
Golfer: "Let me remind you, sir, that the hole is only four and a quarter inches across, and there is the whole world outside of it."
Cattle need plenty of water. And be sure the water is clean, easily located, and not too cold during the winter months.

IT'S A FAIR
Junior: "Daddy, that the world is Daddy: "Yes, it is."
"Well, then, the same as last to go around."

NOTICE
SHERIFF'S SALE
OF TEXAS
OF WHEELER
on the 6th day of

TALK ABOUT "FAST START"



THIS GASOLINE GOT IT!

Phillips 66 is "CONTROLLED"
You Fast Action In Cold Weather

If your car is a "sluggish starter"—look for Phillips 66 gasoline—it may be sluggish, too. Why not switch to Phillips 66—now!
You see, Phillips 66 is controlled so you get high quality performance from this even at very low temperatures. Try a tank see for yourself!



PHILLIPS 66 GASOLINE

*PHILLIPS 66 GASOLINE IS ESPECIALLY DESIGNED FOR UNIFORMLY HIGH-LEVEL PERFORMANCE ALL YEAR 'ROUND

WORK'S DONE FASTER Electrically

ON THE farm and on the ranch work is done faster when electric service is effectively used.
Today more farms and ranches have electricity than ever before, and those who already have dependable electric service are finding more uses for it than ever before.
These progressive men are finding that electric lighting in the work areas, electric refrigeration, electric power tools for repairs and maintenance, electric milkers, brooders, incubators, choppers, and loaders all mean that more work can be done in a shorter period of time... at less cost.
When the time saved is compared with the low operating cost of modern electrical farm and ranch aids, the answer is obvious. That's why so many are using so much electric service. Check with your nearest county agent, REA or Public Service representative to see where electricity can help you.

SOUTHWESTERN PUBLIC SERVICE COMPANY
24 YEARS OF GOOD CITIZENSHIP AND PUBLIC SERVICE

NO EQUAL For WET, SNOWY DRIVING
NEW, Improved Firestone POLAR GRIP TREADS
The secret is the exclusive skid-resisting material called "Iccocel" imbedded in the rubber producing millions of tiny edges that grip the road, resist skidding and give you greater winter driving safety. Available in two extra traction designs—De Luxe Champion Polar Grip for icy, slippery roads; Studded Polar Grip for deep snow or soft, muddy roads. Be "Winter-Sure"—drive in fox safe, sure Polar Grip Tread today.
*REG. U. S. PATENT OFFICE

NASH APPLIANCE & SUPPLY CO.
Better Things For Better Living"

December, 1948, in Cause No. 3949, in the District Court of Wheeler County, Texas, wherein The State of Texas, in behalf of itself and Wheeler County, Texas were plaintiffs, recovered judgment against W. H. Moore, if living, and if dead, his unknown heirs and legal representatives.

NOTICE

SHERIFF'S SALE
OF TEXAS
OF WHEELER
on the 6th day of



ANOTHER TEXAS FIRST—To Mrs. Oveta Culp Hobby of the Houston Post goes the honor of holding the highest ranking title ever accorded a woman in American journalism. She received the distinction when she was elected president of the Southern Newspaper Publishers Association at that organization's recent convention in Florida. Mrs. Hobby, wife of Texas' ex-governor W. P. Hobby, is one of many nationally known personages who will address the daily and weekly newspaper publishers of Texas on January 22 in Austin during the Annual Mid-Winter Meeting of the Texas Press Association.

Texas Citizens Should Note Morbidity Rate

Every citizen of Texas should be greatly interested in the overall health picture in the State as indicated by the morbidity report just released by Dr. Geo. W. Cox, State Health Officer, showing the year's totals on communicable diseases.

Comparing the 1948 figures with the totals of 1947, a great reduction is shown in some of the major health hazards. For instance, in 1947 there were 1,125 cases of diphtheria, while in 1948 the total had dropped to 924. This was 924 cases too many, since none of them need have occurred if the persons had been immunized. This same statement applies to smallpox, in which the total dropped from 15 cases to 4. Vaccination would have prevented the incidence of even one case of smallpox. Typhoid fever remained at a

comparative standstill, with 317 cases being reported in 1947 and 318 in the past year. These typhoid cases could also have been prevented by immunization.

The results of malaria and typhoid control work throughout the state is reflected in the total number of cases for 1947 and 1948. Malaria dropped from 4,729 to 3,577, and typhus was cut nearly in half with the total falling from 610 to 344.

Dysentery continues to be a serious problem in public health in Texas. The incidence of this disease jumped from 15,863 in 1947 to 20,920 during the past year. Influenza dropped off from 116,561 to 76,823, and mumps was reduced

by nearly half, from 17,202 in 1947 to 9,898 in the past year.

Dr. Cox emphasized that while there are many diseases like poliomyelitis against which there is no specific protection, it is a tragic mistake for any person to be allowed to have diphtheria, smallpox or typhoid fever, when he can be completely protected through the simple means of immunization.

WELL, WHY NOT?

Diner—"Two eggs and a slice of ham, please."

Waiter (shouting down speaking tube)—"Send up two cackles and a grant."



once adopted, always used!

- (1) For posting your records . . .
- (2) For preparing your Income Tax Return . . .
- (3) For preparing your Social Security and Withholding Tax Reports . . .
- (4) For reviewing your business at a glance.

It's the



THE MODERN BUSINESS AND TAX RECORD

For information write or call

THE WHEELER TIMES

PHONE 35
Wheeler, Texas

erally known.)

FIRST TRACT:

All of Lot No. 2, Block No. 23 of the original town of Shamrock, Wheeler County, Texas, according to the recorded map or plat of such town in the office of the county clerk, said county and State.

And I will on the first Tuesday in the month of March, 1949, the same being the 1 day of said month, proceed to sell all the right, title, and interest of the Defendant in and to said property at the Court House door of said county in the city or town of Wheeler, between the hours of 2:00 p. m. and 4:00 p. m. to the highest bidder for cash, provided, however, that none of said property shall be sold to the owner of said property directly or indirectly or to anyone having an interest therein or to any party other than a taxing unit which is a party to this suit for less than the amount of the adjudged value of said property or the aggregate amount of judgments against said property in said suit, whichever is lower, subject also to the right of the Defendants to redeem same in the time and manner provided by law and subject also to the right of the Defendants to have said property divided and sold in less divisions than the whole.

DATED at Wheeler, Texas, this the 8 day of January, 1949.

JESS SWINK, Sheriff
Wheeler County, Texas

Defendants, for taxes, penalty, interest, and cost against the hereinafter described property:

WHEREAS, on the 8th day of January, 1949, by virtue of said judgment and the mandates thereof of the Clerk of the above mentioned District Court of said county did cause to be issued an Order of Sale commanding me as Sheriff of said county to seize, levy upon, and sell in the manner and form as required by law the here-

inafter described property:

WHEREAS, by virtue of said judgment and said Order of Sale and the mandates thereof I did on the 8 day of January, 1949, seize and levy upon as the property of the above defendant the following described property, situated in Wheeler County, Texas, to-wit:

(Said description showing the number of acres, original survey, locality in county, and name by which said property is most gen-



IT'S MILK PER BAG OF FEED THAT COUNTS!

Yes, it's the milk in the bag that pays off in this dairy business. You can't fool the cow, because she produces the right quantity and quality only if she's fed the right quantity and quality. On the Purina dairy plan feeding Milk Chow and roughage you're assured of putting the right ingredients into your cows. Milk Chow is first, last, and always a milk-maker. Ask us about Milk Chow. It's a real milk-maker.

YOUR STORE WITH THE CHECKERBOARD SIGN

Sell Us Your Cream, Poultry and Eggs
For Highest Market Prices!

WHEELER COUNTY PRODUCE ASS'N.

PHONE 142 P. O. BOX 93

WHEELER, TEXAS

IT'S PLAIN GOOD BUSINESS TO

CONSERVE THE SOIL

FOR CASH PAYMENT

FOR LONG-RANGE DIVIDENDS

These Basic Soil Conservation Practices Draw Pay

CONSTRUCTION OF TERRACES FOR WHICH NECESSARY OUTLETS AND WATERWAYS ARE PROVIDED. Large Type—\$1.50 per 100 feet Small Type—\$1.00 per 100 feet.

CONSTRUCTION OF DIVERSION TERRACES TO CONTROL EXCESS WATER. 5c per cubic yard of soil removed.

CROPPING—50c per acre.

ROLLING TO SHATTER HARDPAN OR PLOWING (DEEP CHISELING) \$1.50 per acre.

BREAKING. 12 to 15 inches deep \$1.50 per acre; 18 inches deep \$2.00 per acre; 18 inches deep—\$3.00 per acre.

WORKING ON THE LAND AS PROTECTION

AGAINST WIND EROSION THE STALKS OR STUBBLE OF SORGHUMS OR MILLET. 25c per acre.

8. MANAGING CROP RESIDUE TO PROTECT SOIL FROM WIND EROSION. Summer fallow, 60c per acre; any other, 30c per acre.

9. CONTOUR LISTING, CONTOUR CHISELING WITH TERRACES. Summer fallow, 60c per acre. Other 30c per acre.

10. CONTOUR SEEDING DRILL CROPS. 25c per acre.

11. CONTROL OF BINDWEED. By continuous cultivation, \$7.50 per acre. By treatment with Sodium Chlorate, 5c per pound. By treatment with 2-4D formulations \$1.60 per pound of 2-4D parent acid not to exceed \$4.00 per acre.

16. DRILLING OR DIGGING WATER WELLS.

4 inch or less cased well, \$1.50 ft.
4 to 6 inch cased well, \$2.00 per ft.
6 inch or larger cased well \$3.00 ft.

18. CONSTRUCTION OF EARTHEN DAMS FOR LIVESTOCK WATER OR EROSION CONTROL. Stock water—10c per cubic yard. Spreader dam or damless tank—8c per cubic yard.

21. CONTROLLING COMPETING WEEDS IN PASTURES BY MOWING. 50c per acre.

22. RESEEDING RANGE OR PASTURE LAND BY DEFERRED GRAZING. 12c per acre.

23. CONSTRUCTION OF FIREGUARDS. 6c per 100 feet.

24. ESTABLISHING OR IMPROVING PERMANENT PASTURES BY SEEDING ADAPTED PASTURE GRASSES, PASTURE LEGUMES OR MIXTURES

OF THE TWO. Payment rates per pound of seed.

26. GROWING A GREEN MANURE OR COVER CROP OF SUMMER LEGUMES. Payment rate per pound of seed.

27. ESTABLISHING SATISFACTORY COVER OF WINTER LEGUMES SEEDED FALL OF 1948. Payment rate per pound of seed.

28. TURNING UNDER GOOD GROWTH AND STAND OF RYE SEEDED FALL 1948. \$1.50 per acre.

29. TURNING UNDER GOOD GROWTH AND STAND OF SWEETCLOVER SEEDED FALL OF 1948. \$1.50 per acre.

31. APPLICATION OF POTASH OR PHOSPHATE. Payment rate per pound.

38. CONTROL OF SAGEBRUSH AND NOXIOUS WEEDS. \$1.20 per acre.

BE SURE TO MAKE APPLICATION FOR PRACTICES YOU INTEND TO CARRY OUT BEFORE WORK IS BEGUN, IN ORDER THAT FUNDS MAY BE SET ASIDE.

Inquire At The County A.C.A. Office For Detailed Specifications

WHEELER COUNTY

Agricultural Conservation Association

W. F. WATERS, Chairman GEO. L. CLOSE, V-Chairman JESSE R. PATTERSON, Member BILL RUSHING, Secretary

LAND IS A PUBLIC TRUST --- CONSERVE THE SOIL WITH YOUR EVERY EFFORT

CLIP THIS FOR FUTURE REFERENCE

SOCIETY

McCaulay-Alverson Vows Exchanged In Ceremony At Bovina

In the home of Mr. and Mrs. R. C. Martin, Bovina, Texas, Thursday evening, December 30, at 7 o'clock, Miss Marie Susanna McCaulay of Mobeetie, Texas, and Billy Bob Alverson of Bovina, Texas, were united in marriage by the pastor of the Bovina Methodist Church, the Rev. Baker, in a double-ring ceremony.

Preceding the ceremony Miss Willie Ellen Williams sang "My Happiness" and "I Love You Truly."

Entering upon the arm of her father, L. D. McCaulay, the bride met the bridegroom at the improvised altar banked with greenery overlaid with pink and white carnations, and flanked with candelabra carrying lighted blue candles.

The bride chose as her wedding dress a beautiful aquamarine blue two-piece gown with black accessories. Her corsage was of white gardenias and she carried a white Bible with white satin streamers. For something old and borrowed, she wore a two-hundred year old heirloom pin belonging to Mrs. R. C. Martin.

Harvey Alverson, father of the bridegroom, attended his son as best man. The bride's only attendant was her sister, Miss Joyce McCaulay, who was dressed in a lovely blue suit.

Mrs. L. D. McCaulay, mother of the bride, was dressed in a black suit with black accessories and a corsage of white carnations while the bridegroom's mother, Mrs. Harvey Alverson, wore a gray suit with black accessories and a corsage of white carnations.

Immediately following the ceremony, Mrs. R. C. Martin and Mrs. Emmitt Tabor were hostesses at a reception given in the Martin home for the bridal couple and invited guests.

The wedding cake, after being cut by the bride and bridegroom, was served by Mrs. Andy White. Miss Joyce McCaulay presided at the punch bowl.

The bride was graduated from Mobeetie High School, with the class of '47, and attended McMurry College, Abilene, Texas, prior to her marriage.

The bridegroom was graduated from Bovina High School in 1946. He is now a student at the School of Engineering in Los Angeles, California.

Wheeler HD Club Has Meet At Court House

The Wheeler Home Demonstration Club met January 19 in the club room at the courthouse with nine members present and one visitor.

The meeting was on the installation of officers and the ordering of material to make gloves in the club.

Those present for the meeting were: Mesdames Emma Hastings, Lyndon Sims, Barney Teague, Bill Rushing, James Clepper, Bill Owens, and Richard Bradley. The visitor was Mrs. Patterson from the Myrtle Club.

The next meeting of the club will be in the home of Mrs. Richard Bradley.

Ken Daughtry Honored With Shower Monday

Kenneth James Daughtry, six month old son of Mr. and Mrs. Thomas Daughtry was honored with a welcome shower Monday evening at the home of Mrs. R. G. Russ. Co-hostesses were Mesdames Henry Greenhouse, Paul McQueen, J. C. Bradstreet and B. M. Litton.

Dainty refreshments were served to: Mesdames J. C. McQueen, Ben Westmoreland, Irvin Williams, Weaver Barnett, Milton Finsterwald, Newman Riley, J. R. Clemens, J. W. Anglin, Jewel Heath, G. N. Hibbetts, Clyde Johnson, Chas. Daughtry, C. L. Foshee, Edgar Baker, Chas. Brittain, R. C. Anderson, J. M. Burgess, John Daberry, Douglas Greenhill, John Hodges.

Andrew Morgan, Fern Turnbow, Roy Burcham, Hester Dodson, Ernest Lasater, Edgar Blocker,

George Richardson, Shelby Pettit, W. K. Frey, Jimmie Mitchener, R. H. Forrester, Mary Walker, J. C. Howell, Bill Owen, George Beatty, James A. Clepper, R. D. Purcell, Joe Hardestie, Clara Garrison, Emma Mae Hastings, John Hefley, J. R. Hefley, Jr., Lula Clay and L. G. Clay.

Misses Glenna Hefley, Ruby Reid, Genevieve Morton, Lillie McClain, Vandell Starkey, Willabelle Daughtry, Mary Helen Daughtry and Betty Cantrell.

Those sending gifts were: Leonard Kohls, Margie Simpson, Thurman Rives, C. L. Wilkes, Revious, Hattie Womack, Glenn King, S. C. Havenhill, Don Rives, Roe Green, Mary Hampton, Clint Collingsworth, Homer Moss, Inez McWhorter, M. McIlhenny, W. D. Harris, L. E. Clay, Oma Lee Speck, Olen Pendleton, Loyd Lee, C. B. Kirk, McCracken, J. D. Clay, Bert Betenbough, Acie Henderson, John O'Gorman, Ayers, Ruby Jones, Ollie Hubbard, Evonne Hubbard, Amos May, Bill Rushing, W. L. Williams, Euel Hardy, C. O. Sandifer, W. E. Burke, O. O. Beaty, Jess Swink, George Warren, Ruth Ledbetter and O. Nations.

Patterson Home Scene Myrtle HD Club Meet

The Myrtle Home Demonstration Club met in the home of Mrs. Taylor Patterson, recently for their regular meeting.

Miss Genevieve Morton, assist. home demonstration agent, gave a very interesting talk on glove making and cooperation buying. Mrs. Taylor Patterson gave a report from the council meeting, and a welcome was extended to three new members, Mesdames Olen Smith, G. B. Anderson and Hollis Taylor.

Refreshments were served to: Mesdames Earl Miller, Elmer Miller, Zack Miller, Taylor Patterson, G. B. Anderson, R. A. Watts, Olen Smith, Hollis Taylor, and Miss Genevieve Morton.

The next meeting will be in the home of Mrs. R. A. Watts Thursday night, January 20.

Miss Leona Crossland has returned from a three weeks business trip to Midland.

Mr. and Mrs. Glen Render, formerly of Mobeetie, are to complete their moving to Plainview this week where they will make their home.

Fat Morris, Shelby Pettit, Gravy Burgess and Olen Pendleton left Wednesday morning on a fishing trip to Gladewater—yes, I said fishing trip even tho' the ground is covered with four inches of snow in Wheeler.

Roy Esslinger was called to Pittsburg, Kans. Monday to be at the bedside of his mother. He was accompanied by Mr. and Mrs. Junior Fields.

Mrs. Mary Walker and son, John Paul, of Fort Smith, Ark. are guests this week in the home of Mr. and Mrs. J. C. Howell and Cheryl Kay.

Cpl. Kenneth Crowder, who has been serving with the Air Forces in Europe the past 21 months returned to Wheeler recently after being discharged and is visiting friends and relatives. Kenneth is the son of Mr. and Mrs. C. C. Crowder.

PAY YOUR SUBSCRIPTION TO WHEELER TIMES NOW!



Model B-8 BOSTITCH
The Stapler with A HUNDRED USES

- A DESK FASTENER
- A HAND STAPLER
- A TACKER

Built by Bostitch for years of use. Handy, rugged, compact.
PRICED AT ONLY **\$2.20**

IN THE OFFICE: Dependable performance at low cost makes it economical for every desk, to stop office borrowing and waste of time.

IN THE HOME: You'll find it one of the handiest things around the house—for sealing lunch bags, tacking decorations, etc.; fastening garments, fastening grocery slips, letters, checks; sealing garbage wrappings; dozens of other every-day uses.

AT SCHOOL: What every student needs, young and old. Handy to carry in pocket, brief case, or bag.

An ideal gift... for anyone even yourself

Phone 35

THE WHEELER TIMES

SPECIALS FOR FRI. & SAT. JANUARY 21 AND 22

FRESH BETTER TASTING

LOW PRICED FOODS

ARMOUR'S FRANKS READY TO EAT 12-OUNCE CAN 38c	ARMOUR'S TREET 12-OUNCE CAN 38c	ELLIS CHILI WITH BEANS 2 NO. 300 CANS 38c
--	---	--

MRS. TUCKER'S SHORTENING

4 POUND CARTON 97c	8 POUND BUCKET \$1.99
---------------------------	------------------------------

SNO-KREEM SHORTENING **\$1.03**
3-POUND CAN

GOOD VALUE or MARLENE OLEOMARGARINE **27c**
PER POUND

IGA EXTRA WHIPPED Salad Dressing	PINT JAR	33c
IGA BLUE RIDGE Peanut Butter	12-OZ. GLASS	35c
CAMPBELL'S Tomato Soup	REGULAR CAN	10c
IGA HOMOGENIZED Evap. Milk	3-TALL CANS	39c
SUNSHINE Cheez-it	6-OZ. PKG.	17c
SALLY MAY Beauty Soap	Wash Cloth Free With 4 Bars	33c

PURASNOW FLOUR

25 POUND SACK \$1.69	50 POUND SACK \$3.38
-----------------------------	-----------------------------

CLAY'S IGA Food Stores
LOW PRICES EVERY DAY!
WHEELER, TEXAS

CHECK THESE PRICES

IGA PURE HAWAIIAN PINEAPPLE JUICE
Every Drop Hawaiian Sunshine No. 2 Can **19c**

IGA FANCY UNSWEETENED GRAPEFRUIT JUICE
46-oz. Can **19c**

BROOKS TOMATO CATSUP 12-oz. Bk **19c**

WELCH'S PURE GRAPE JELLY 1L. **29c**

SEASIDE LARGE BUTTER BEANS No. 2 C **19c**

GOOD VALUE EXTRA STANDARD RED RIPE TOMATOES No. 2 C **19c**

MOIST BAKER'S COCOANUT 1L. **19c**

FINE QUALITY MEAT AT SAVINGS

CORN KING SLICED BACON 5L. **59c**

LEAN TENDER PORK ROAST 3L. **39c**

HOME-MADE BRICK CHILI 5L. **59c**

FRESH GROUND BEEF 4L. **49c**

CLOPAY PAPER DRAPES

98c

Dust-Proof
Washable
Economical

BEAUTIFUL—SANFORIZED CHAMBRAYS
By Gilbrae

PER YARD **89c**

20" x 40" SOLID COLOR CANNON TOWELS

Good Heavy Weight
Each **69c**

BRIEF STYLE PANTIES
LADIES EXTRA NICE
Small, Medium, Large
A Good 79c Value
Pair **49c**

RUSS VARIETY
Wheeler Texas

CHEAPEST WAX
15c per line (containing minimum charge, charge 30c. Read instructions each insertion.)
DAY ADVERTISING
Advertising rate, 35c per line or more used.

FOR SALE
SALE—Wards 10 mill. Spotted, sheetrock to ride, 3 years old, 400 pounds. Around bundles, good grain. Y. Box 435, Briscoe, T.

SALE—1946 Case truck equipment, 1942 3-ton Jim Risner, Wheeler.
Fruit trees, fruit trees, flowering shrubs, evergreens, and hedge plants.

MOTHER'S PRIDE FLOUR

AUNT JEMIMA CORN MEAL

ARMOUR'S PURE LARD
1 Pound Carton

SAVE ON THESE

PET MILK, 2

IN SYRUP RUSSEL PEAS

ROYAL GEM TOMATO J

RANCH ST

Del Monte Cream GOLDEN C

GREEN & W LIMA BEAN

ARMOUR'S FRANKFUR

DEL MONTE RED SALM

2 TALL CAN MACKERA

AMERICAN CHEESE

Y SALT ACON

BUCK PAST

ARM PUCK

SPECIALS F

CHEAPEST WAY TO BUY OR SELL WANT ADS

15c per line (counting 5 words to line) for first insertion. Minimum charge, 45c; 10c per line after first time. Charge 30c. Reader ads scattered among local items line each insertion. Cards that run every week 30c per inch per week.

ADVERTISING—National rate, 42c an inch; Local rate, 35c per column inch, 28c per inch when used more than once each week during calendar month.

FOR SALE

FOR SALE—Wards 10-inch mill. Spotted, shetland ewe to ride, 3 years old, 400 pounds. Around 2,000 bundles, good grain. Wiley Mackay, Box 435, Briscoe, Texas. 6-2tp.

FOR SALE—1946 Case tractor with lister and cultivator. Perfect shape. M. K. Levitt, 7 mi. north east of Briscoe. 6-4tp.

FOR SALE—1947 4-speed PICK-UP run less than 20,000 miles. PRICED TO SELL. Wheeler Gas Company. 52-tfc.

FOR fruit trees and honey see J. M. Glover 6 blocks west of Wheeler Bank. 47-3tp.

SPECIAL!

We have two tables of boxed stationery, some of which originally sold for as much as \$4.50 per cabinet which we are closing out at 25c per box. Come in, pick out what you like, only 25c per box.

THE WHEELER TIMES
Office Supplies Job Printing
Phone 35
Wheeler, Texas

FOR SALE—5-room modern house, on highway in northeast part Wheeler. See J. R. Reed. 4-3p.

NEW FILING CABINETS

We have just received our first shipment of high quality 4-drawer filing cabinets and storage cabinets and invite you to come and look these over whether you are in the market or not.

We also have portable typewriters in stock along with a complete line of office supplies.

The Wheeler Times
Phone 35

MISCELLANEOUS

We can now insulate homes. See

us for particulars. Wheeler Radio and Refrigerator Service. 34-tfc.

Will Pay \$4.50 for your old battery in on a new Delco or Willard Battery. Owen's Service Station. 48-tfc.

WANTED—Ironing or sewing to do at my home. Mrs. Cora Teakell. 6-2tc.

INSULATE with a mineral rock wool. Also weather stripping Perma-stone. Curtis Pond with Scheel-Mundy Co., 1708 W. 8th, Amarillo, Texas. Office Phone 2-8361, Res. Phone 3-1668. 47-tfc.

BRUCE & SONS TRANSFER
Local and long distance moving. Best equipment and vans. We have plenty storage space. Agent: North American Van Lines, serving the Nation. Phone 934, Pampa, Texas. 48-tfc.

We can now do your cemetery work. Grave markers, covers, and curbing. Will Warren, Wheeler. 48-tfc.

ALCOHOL PUBLIC ENEMY NO. 1

Alcoholics Anonymous offers help to men and women who have an honest desire to stop drinking. Write P. O. Box 589, Shamrock, Texas. 5-tfc.

If you need upholstery work done, call or write Fugate Upholstery Shop, Pampa, Texas, 610 N. Banks, Phone 1917-W. Free pick-up and delivery. 37-4tp.

WANTED—Saws to file. Precision filed by machine. R. St. John, Mobeetie. 6-6tp.

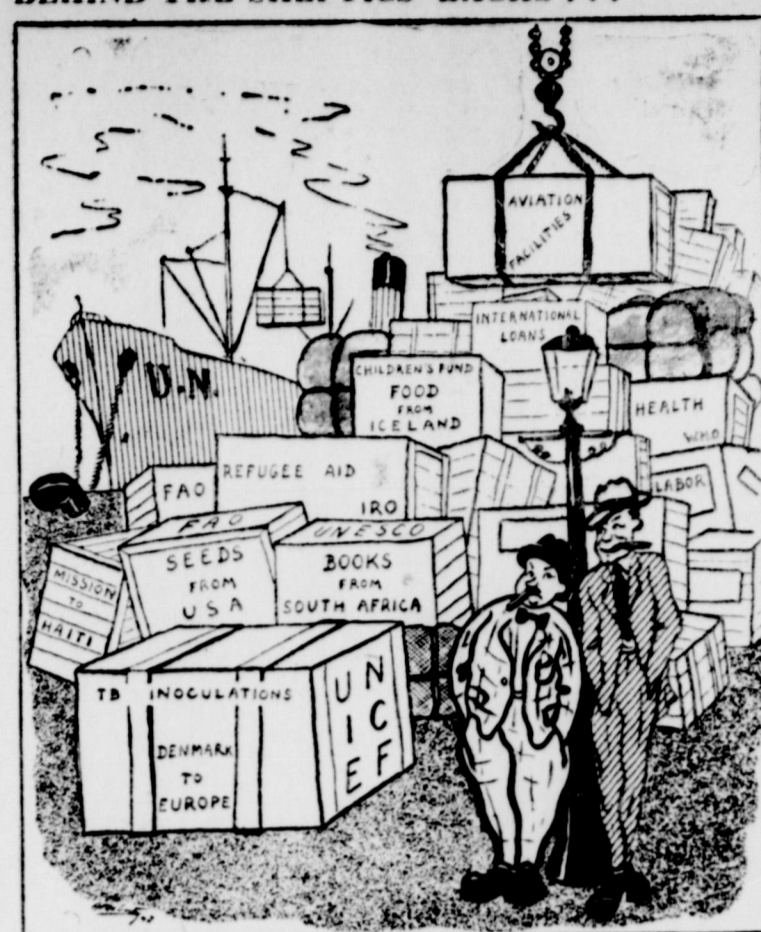
We are equipped to do your orchard diking and garden plowing. See or call Harold Nash or Louis Martin. 6-tfc.

LEGAL NOTICE

NOTICE

Notice is hereby given that the Commissioners' Court of Wheeler County, Texas will on the 13th day of February, 1949, the same being a day of the Regular Term of said Court, accept bids for a Depository for the County Funds, is to state the rate of

BEHIND THE SKEPTICS' BACKS...



"Well, what's the United Nations Doing Anyway?"

accompanied by a certified check in an amount equal to one half of one percent of the average daily balances of the amount of trust funds in the possession of said clerks during the preceding calendar year.

G. W. HEFLEY
County Judge
6-ttc.

EXPLAINED

Sonny: "Pop, what do they mean by stable government?"
Pop: "I'd say it's one that's run with horse sense, son."

SENTENCE REMITTED

Male Straphanger: "Madam, you are standing on my foot."
Female Dittoo: "I beg your pardon. I thought it belonged to the man sitting down."

GOOD RECOMMENDATION

"I've been asked for references for our last maid. What on earth can I say in her favor?"
"Well, she has a good appetite and sleeps well."

Winter is a tough time of the year to drive, so it's a good idea to take extra precaution at this time of the year. It stays dark longer now, the roads are slippery and rain, snow fog, ice and frost cause poor visibility. Weather like that means more hazards to driving, so play safe and drive carefully.

interest offered on the funds for the term between the date of such bid and the next regular time for the selection of a depository, and shall be

G. W. HEFLEY
County Judge
6-ttc.

NOTICE

Notice is hereby given that the Commissioners' Court of Wheeler County, Texas will on the 13th day of February, 1949, same being a day of the regular term of said Court, accept bids for a Depository for the Trust Funds of County and District Clerks, said bid is to state the rate of interest offered on the funds for the term



MAKE A DATE RIGHT NOW FOR US TO PUT YOUR FARM MACHINES IN SHAPE TO WORK!

Right now—ahead of season—is the time for you to be planning to get every farm machine and every piece of equipment in shape.

We make the planning easy. Just drop in or call us. Together we can determine the dates and arrangements for putting your machines in first-class running order.

Avoid costly breakdowns in the field. Let us service your machines ahead of season and save you money.

All work done in our shop is top-quality work. Experienced mechanics! Latest tools and equipment! And factory-standard IH Parts! Don't delay! See or call us TODAY!



PUT SPRING-BRING-IN WINTER MEALS WITH THESE Appetizing FOODS

MOTHER'S PRIDE FLOUR	25-pounds	50-pounds
	\$1.79	\$3.49
AUNT JEMIMA CORN MEAL	5-pounds	10-pounds
	35¢	65¢

ARMOUR'S PURE LARD	SHORTENING CRISCO
Pound 65¢	3 Pound Tin \$1.11

SAVE ON THESE CANNED FOODS
FOR CREAMING VEGETABLES—USE PET MILK

PET MILK, 2 tall cans	27c
IN SYRUP RUSSEL PEACHES	2 No. 2 1/2 Cans 59c
ROYAL GEM TOMATO JUICE	3 No. 2 Cans 25c
RANCH STYLE BEANS, 2 cans	25c
Del Monte Cream Style or GOLDEN CORN	2 No. 303 Cans 35c
GREEN & WHITE LIMA BEANS	1 No. 2 Can 19c
ARMOUR'S FRANKFURTERS, in Brine	12-oz. Can 42c
DEL MONTE RED SALMON	1-lb. Can 69c
2 TALL CANS MACKERAL	For 45c

DULANEYS FRESH FROZEN FOODS

Parker-House ROLLS, pkg.	29c
Green Baby Lima BEANS, pkg.	43c
STRAWBERRIES, pkg.	55c
SUCCOTASH, pkg.	39c
BROCCOLI, pkg.	39c
CAULIFLOWER, pkg.	33c
SPINACH, pkg.	29c
GREEN PEAS, pkg.	31c

RED POTATOES	50 Pounds \$1.75
--------------	------------------

CRISP CRUNCHY CARROTS	2 Bunches 23¢
-----------------------	---------------

OSCAR MEYERS BARBECUED BEEF	12 Ounce Can EACH 53¢
BARBECUED PORK	

WATCH DOG LYE	3 Cans 25¢
---------------	------------

DREFT or VEL	Each 29¢
--------------	----------

PUREX or CLOROX	Qt. Bottl- 15¢
-----------------	----------------

P & G SOAP	3 Bars 25¢
------------	------------

AMERICAN CHEESE	Pound 49¢	Choice Rib or Brisket lb. ROAST 39¢
WY SALT BACON	Pound 33¢	Choice Lean Short lb. STEAKS 69¢
BUCK PAST	Pound 49¢	MEADOWLAKE ib. OLEO 34¢

ARMOUR'S SLICED BACON lb. 49¢

PUCKETT'S FOOD MARKET

SPECIALS FOR FRIDAY AND SATURDAY, JANUARY 21 AND 22

"Look! I can walk again!"

Join the **MARCH OF DIMES**

JANUARY 14-31

FIGHT INFANTILE PARALYSIS

THE NATIONAL FOUNDATION FOR INFANTILE PARALYSIS

Mile-A-Minute Marty By DEKLE BROTHERS MOTOR CO.

GEE, MARTY—I'M IN A TERRIBLE FIX! I MORTGAGED MY HOME TO BUY THIS CAR!

—AND NOW I'VE GOTTA MORTGAGE MY CAR TO PAY TH' INTEREST ON MY HOME!

NEXT THING I KNOW I'LL BE BUYIN' A ONE WAY TICKET TO TH' POOR HOUSE.

YOU SHOULD HAVE GONE TO **Dekle Bros. Motor Co.** TO BUY A CAR—

THAT'S MOTOR SATISFACTION WITHOUT COMPLICATION!

USED CARS AND TRUCKS

1947 Mercury	2-1947 Dodge 1/2-ton Pickups	1939 Chevrolet Tudor	1938 GMC 3/4-ton Truck
1947 Chevrolet Tudor	1946 Ford Truck, 1 1/2-ton	1939 Ford Tudor	1936 Chevrolet Tudor
1947 Jeep Station Wagon	1946 Dodge Truck, 2-ton	1941 Ford Tudor	
1947 Chevrolet Coupe	1942 Ford	1940 Ford Tudor	
1947 Dodge Truck, 3-ton	1942 Ford Truck, 1 1/2-ton	1942 Chevrolet, 5 passenger Coupe	

SALES & SERVICE SHAMROCK DODGE TRUCKS TEXAS

Dodge Dekle Brothers Motor Company **Plymouth**

We Repair All Makes Of Cars

PHONE 70

21 W. HIGHWAY 77

MOBETTIE HI-LIFE

STAFF
 Editor ----- Doris Kaykendall
 Feature Editor ----- Joy Davis
 Sports Editors ----- Walter Hill and Lou Beck
 Senior Reporter ----- Bill Godwin
 Junior Reporter ----- Edith St. John
 Sophomore Reporter, Edwin Sims
 Freshman Reporters ----- Billy Leonard, Paul Jones, Inez Lancaster, and Virginia Ware

SPORTS NEWS
 The Mobettie teams went to the Shamrock tournament last week. The girls won their first two games but were defeated by McLean by two points. The boys won their first game, then lost to Groom by 11 points. They will attend the Canadian tournament this week. They also go to Higgins Friday night January 14.

THIS AND THAT
 This was supposed to be the week that marked the end of the first half of this term of school. To celebrate all the teachers planned to give those things called mid-term tests. Much to the sorrow of all the students this was impossible due to the bad weather. Cheer up, kids! Just remember that the agony is just postponed, for the tests will be given next week. There are some of the students who do not dread next week since they had good enough grades to be exempt.

Everyone is sorry that Beverly Caldwell is ill and will not be able to play in the basketball against Higgins Friday night. It is strange that Mr. Clemons scolds the students for shooting paper wads with rubber bands and then collects rubber bands himself.

The seniors have missed the bright smile of Doris Kaykendall this week. (She got mad.)
 Peggy, don't get mad. Remember, mama knows best.

Joy, why did you shove Dutch out the door Thursday evening? You weren't glad to get rid of her, were you?

ROGUE THEATRE

FRIDAY AND SATURDAY—
"Indian Agent"
 —starring—
 Noah Berry, Jr., Richard Martin and Nan Leslie

PREVUE SATURDAY NIGHT—
 SUNDAY AND MONDAY
"Return of the Badmen"

WEDNESDAY AND THURSDAY—
"Melody Time"
 —starring—
 Roy Rogers, Dennis Day and Freddy Martin

All the seniors are looking forward to taking Texas History the last semester. No wonder! Just look who is going to be the teacher. Tough luck, kids.

Mr. and Mrs. Clemons were called from school last Thursday due to the death of his mother. Mrs. Clemons was absent Friday also due to illness.

The Commercial Law Class is preparing a mock trial to conclude the end of the course. The judge, lawyers, defendants, plaintiff, court clerk, and witnesses have all been chosen. All other members of the class will be the jury. The trial is scheduled sometime next week.

P. T. A. MEETING POSTPONED
 The Mobettie Parent-Teacher Association failed to have its regular meeting the night of January 13th because of the weather. Some of the officers met and decided to postpone the January meeting till the regular time in February. The same program is to be presented with the addition of the short Founder's Day program under the direction of Mrs. Homer Matthews. The homemaking department has already prepared an interesting program which will be presented February 10, 1949, and all members of the P. T. A. and friends are urged to be present at that time.

SENIOR NEWS
 The seniors have already nearly completed their work on the annual and will start reading plays to select the one they will present.

JUNIOR NEWS
 The juniors have received their play books and are anxious to begin practice.

EIGHTH GRADE NEWS
 The eighth grade welcomes Rosalene Hillbrunner to their class.

It may come another snowstorm—Bill Kaykendall is back in school.

We wonder how Mrs. Clemons got enough money from Mr. Clemons to get her a new dress. Mr. Clemons, do you have any money left now? Anyway, the dress is pretty.

Sandra, we wonder why you weren't in Wheeler Saturday night? We saw Don Alexander.

THE OLD HOME TOWN By STANLEY



Bill where was Sue Saturday night? We didn't see you with her.

We're glad Lavada finally met "Tooter", the dog, yesterday.

Vondell, I think you had better hang onto your billfold hereafter. It was an accident there was a quarter left and a quarter gone when you got it back.

Why is everyone in the eighth grade dodging Lavada now? Couldn't be because she has two

straight pins in her pencil, could it?

Anyone can tell by the gossip that the eighth grade class must be the worst one in this school.

There is always more gossip about them than about any other class in school. It might also be that their reporter does get in some news once in a while and that's more than can be said for some of the high school reporters.

New Flavor For Beans By Soaking Till Pump

Ever eat kippered beans? Many Texas housewives use cured meats, such as ham, ham hocks or bacon, to give beans that smoky, spiced flavor.

But there's a special way of getting this new flavor into the beans. It takes a bit of doing, says Louise Mason, extension food preparation specialist of Texas A. and M. College, but you've really got something when you're finished.

First, soak the dry beans for several hours, then cook them until they swell and get plump. But don't let them get soft. Then spread them out on screened trays over smoldering oak chips and tanbark for two hours. Here's a tip to remember: the more smoke there is, the better flavor you'll have in the beans.

After the beans have been soaked, cooked and smoked, the next thing to do is mix the beans with a sauce made of canned chopped olives, tomato, onion, garlic, chopped pimento and salt. Then they're ready to be canned the regular way, or home-baked, depending on how you like beans.

A big advantage of kippered beans is that you get beans with a flavor something like smoked meat, as well as the rich flavor of the olive sauce, says Miss Mason.

Try kippered beans.

NO WONDER
 Doctor (to patient)—Now go home and relax.
 Patient—But, Doctor, I can't. We have antique furniture.
 The first month of the year is a good time to begin your farm record account of all expenses. Since an accurate record is the process of figuring out your come tax.

LOANS

- ... FHA HOME LOANS
- ... FHA IMPROVEMENT LOANS
- ... AUTOMOBILE LOANS
- ... FARM LOANS
- ... PROTECTED PAYMENT LOANS

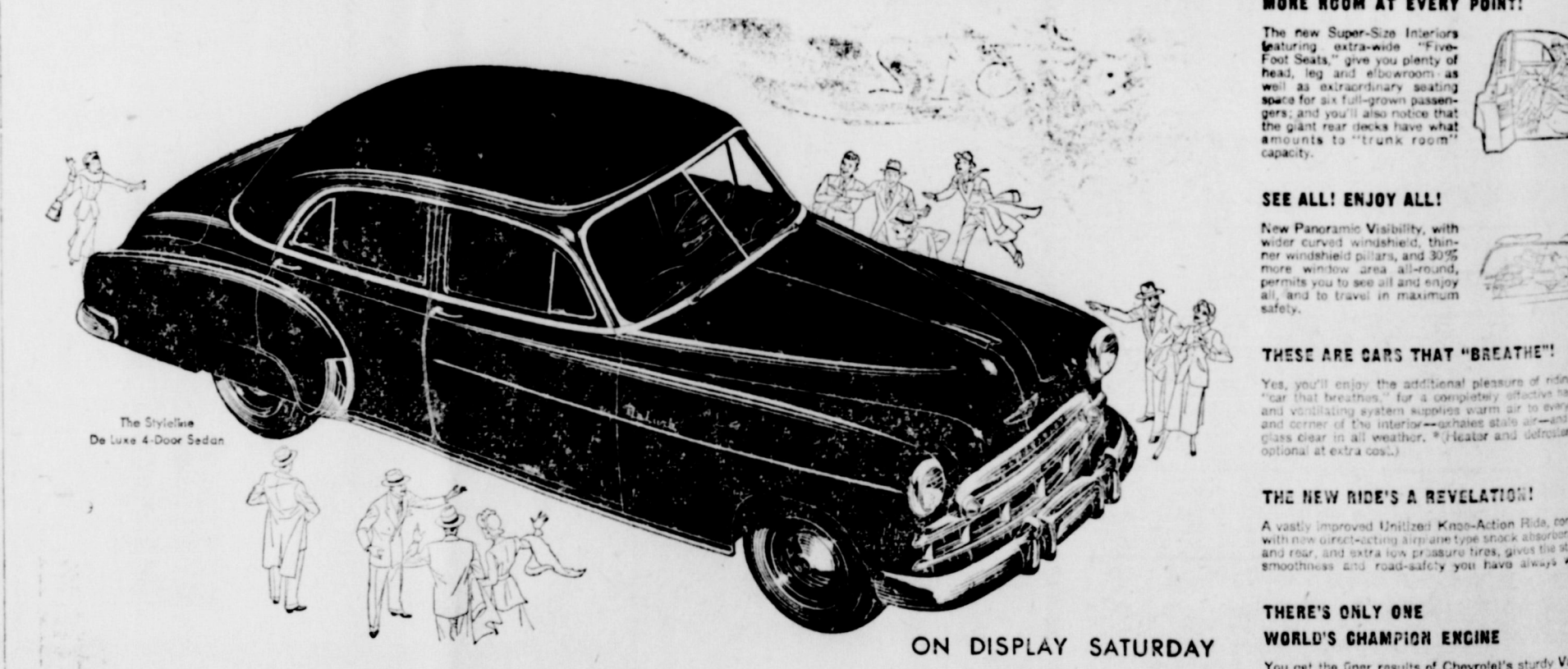
Whatever you may need money for—consult with us—we'll be glad to help you if we can.

W. H. (BILL) WALKER
 112 W. 2nd. Street Shamrock, Texas

NOW COMES THE LEADER WITH A 7-YEAR ADVANCE IN ONE

CHEVROLET
 is the only car bringing you all these fine-car advantages at lowest cost!

Welcome the New
CHEVROLET



ON DISPLAY SATURDAY
The most Beautiful BUY of all

We cordially invite you to see the new Chevrolet for '49—the first completely new car the leader has built in more than seven years—and the most beautiful buy of all!

You'll find it's the most beautiful buy for styling, for driving and riding ease, for performance and safety, and for sturdy endurance born of quality construction throughout... because it alone brings you all these advantages of highest-priced cars at the lowest prices and with the low cost of operation and upkeep for which Chevrolet products have always been famous.

Yes, here's the newest of all new cars—pre-tested and preproved on the great General Motors Proving Ground—and predestined to win even wider preference for Chevrolet as the most beautiful buy of all, from every point of view and on every point of value. Come in and see it!

First for Quality at Lowest Cost
 AMERICA'S CHOICE **CHEVROLET** FOR 18 YEARS

Montgomery Chevrolet
 SHAMROCK, TEXAS



Take a NEW LOOK at the BIG GAINS from Grinding

Get the Mill with HI-SUCTION FAN

PULLS FEED THRU Faster!

● In Case Feed-Saver mills, the big fly-wheel fan sucks feed out through the screen the instant it is ground to required size. Keeps screen clear; feed comes out cooler, more uniform—and a lot faster for the power used. Hammer tips have EIGHT edges for 8-fold grinding life. Wide range of screen sizes for all types of grain or forage. Case Hammer mills are built in three sizes to suit all tractors. Each size priced surprisingly low. See us now.

NASH APPLIANCE & SUPPLY CO.
 "Better Things For Better Living"

NOTICE

Rathjen, Wheeler County, Texas; Grace Fox and Helen Lively, Potter County, Texas; Ruby Sullivan and Inez Renegar, Oklahoma City, Oklahoma; C. T. McBee, Moses Lake, Washington; Clarence Hatchett, whose residence is unknown; Pauline Lowrie, New Mexico; Caroline Gaines, California; Mabel McBee, wife of T. J. McBee, Hidalgo County, Texas; the heirs and legal representatives of any of above named if deceased, whose name and residence are unknown, and the respective unknown heirs and legal representatives of all the above named parties.

Chevrolet's 'Balanced Design' Adds Beauty and Comfort



Progressive streamlining of the 1949 Chevrolet is in line. Notable in the roomier, lower cars is a balance emphasis in this view of the Styleline De Luxe four-door sedan against a new Martin 202 passenger air-

is/are defendant, by the filing by said plaintiffs of a petition on the 27 day of December, 1948 and the file number of said suit being No. 3982 and the nature of which is a suit to collect delinquent ad valorem taxes on the following described property, to-wit:

All of lots 6 and 7 in Block K of Park Addition to the City of Wheeler, Texas

together with interest, penalties, costs, charges, and expenses of suit which have accrued and which may legally accrue thereon. The amount of taxes due each plaintiff, exclusive of interest, penalties and costs is as follows:

Wheeler Independent School District	\$26.94
City of Wheeler	8.33
State and County	12.84

TOTAL \$40.11

The names of all taxing units which assess and collect taxes on said property not made party to this suit are none.

Plaintiff and all other taxing units who may set up their tax claims herein seek recovery of delinquent ad valorem taxes on the property hereinabove described, and in addition to the taxes all interest, penalties, and costs allowed by law thereon up to and including the day of judgment herein, and the establishment and foreclosure of liens, if any, securing the payment of same, as provided by law.

All parties to this suit, including plaintiff, defendants, and intervenors, shall take notice that claims not only for any taxes which were delinquent on said property at the time this suit was filed but all taxes becoming delinquent thereon at any time thereafter up to the day of judgment, including all interest, pen-

alties, and costs allowed by law thereon, may, upon request therefor, be recovered herein without further citation or notice to any parties herein, and all said parties shall take notice of and plead and answer to all claims and pleadings now on file and which may hereafter be filed in said cause by all other parties herein, and all of those taxing units above named who may intervene herein and set up their respective tax claims against said property.

You are hereby commanded to appear and defend such suit on the first Monday after the expiration of forty-two (42) days from and after the date of issuance hereof, the same being the 7th day of February, A. D. 1949 (which is the return day of such citation), before the honorable District Court of Wheeler County, Texas, to be held at the courthouse thereof, then and there to show cause why judgment shall not be rendered for such taxes, penalties, interest, and costs, and condemning said property and ordering foreclosure of the constitutional and statutory tax liens thereon for taxes due the plaintiff and the taxing units parties hereto, and those who may intervene herein, together with all interest, penalties, and costs allowed by law up to and including the day of judgment herein, and all costs of this suit.

Issued and given under my hand and seal of said court in the City of Wheeler, Wheeler County, Texas, this 27 day of December, A. D. 1948.

(SEAL)
CHRISTOPHER S. McCLAIN
Clerk of the District Court
Wheeler County, Texas
5-2c.

NOTICE OF INTENTION TO ISSUE REFUNDING BONDS
THE STATE OF TEXAS
COUNTY OF WHEELER

In compliance with the provisions of Chapter 163, Acts of the Regular Session of the Forty-second Legislature, 1931.

NOTICE IS HEREBY GIVEN that it is the intention of the Commissioner's Court of Wheeler County, Texas, to pass an order on the 14th day of February, 1949, authorizing the issuance of WHEELER COUNTY ROAD AND BRIDGE REFUNDING BONDS, in the maximum amount of \$60,000.00, for the purpose of refunding, canceling and in lieu of a like amount of WHEELER COUNTY ROAD AND BRIDGE WARRANTS, SERIES OF 1947, dated November 15, 1947; said Refunding Bonds to bear interest at a rate not to exceed three (3%) per cent per annum and to mature serially, with a maximum maturity date not later than 1962.

THIS NOTICE is given in pursuance of an order passed by the Commissioners Court of Wheeler County on the 10th day of January, 1949.

G. W. HEFLEY
County Judge
Wheeler County, Texas
5-3c

Newspaper Advertising Pays!

Notary Seals

Salesbooks of all kinds . . .

Rubber Stamps

QUALITY

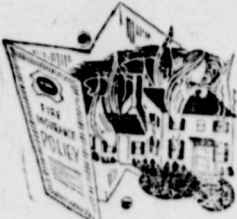
PRINTING

of all kinds . . .

THE WHEELER TIMES

"The Voice of North Wheeler County"

We're Prepared To Make Your Abstracts



Home

Farm

Automobile

Give yourself the safeguard of adequate insurance, to assure you compensation should your property "go up in smoke". We are your insurance specialists . . .

MORIS FORRESTER AGENCY

W. Corner Square—Fire, Tornado, Automobile, Etc.

we **Inaugurate**

A New Service for the People of the Wheeler and Mobeetie Trade Area

The Trading Post

To Be Heard Daily at 12 Noon Over

KEVA--1580 on Your Dail

- If you have anything to sell or trade, if you want to buy something, tell us and it will be broadcast over the new radio station, KEVA, at Shamrock.
- If you have any announcements of meetings, etc., tell us and it will be broadcast.
- If you have any programs suitable for radio presentation, see us about putting them on the air during our time.

And Then Listen to

The Trading Post—12 Noon Daily—KEVA—1580

Sponsored for Public Service by

Cicero Smith Lumber Co.

Wheeler

Mobeetie

BUSINESS AND PROFESSIONAL DIRECTORY

<p>Protect Children's Health GIVE THEM BORDEN'S Fine Dairy Products CROSSLAND DAIRY Phone 901-F-11 Wheeler</p>	<p>DR. JOEL M. GOOCH OPTOMETRIST 200 S. Wall Street Phone 123 SHAMROCK, TEXAS</p>	<p>J. WADE DUNCAN REAL ESTATE AND CATTLE 109 W. Kingsmill Phone 318 Pampa, Texas "42 Years in the Panhandle"</p>
<p>Canadian Valley Production Credit Association's Representative IS IN THEIR Wheeler Office EACH Thursday</p>	<p>NOTICE! WE SCALD HOGS ON TUESDAY & THURSDAY OF EACH WEEK. Wheeler Lockers</p>	<p>WE HAVE INSTALLED NEW DRYER We can give you Wet Wash, Rough Dry & Dryer Service at Dryer Service, lb. . . . 4c Rough Dry, lb. . . . 8c Wet Wash, lb. . . . 6c</p>
<p>Electrolux Vacuum Cleaners SERVICE & SUPPLIES L. A. McWHORTER Route 1 Wheeler, Texas</p>	<p>City Laundry Lealie Havenhill, Lessee Phone 218-M Wheeler, Texas</p>	<p>BABY CHICKS Hatch Each Monday 9 Breeds to choose from. Started and Day Old LAWRENCE HATCHERY & FEED Wheeler, Texas</p>
<p>AUCTIONEER SHELBY PETTIT Will cry your sale any time or place Phone 158—Wheeler, Texas</p>	<p>THIS SPACE FOR SALE</p>	<p>C. J. MEEK AGENT INSURANCE Night Phone 124, Day Phone 48</p>
<p>HOMER L. MOSS LAWYER GENERAL PRACTICE WHEELER TEXAS</p>	<p>Refreshing COCA COLA BOTTLING CO. Shamrock, Texas</p>	<p>Dr. C. C. Merritt CHIROPRACTOR WHEELER, TEXAS Equipped to give complete chiropractic service</p>

BIG CHANGE IS MADE IN 25 YRS. OF AGRICULTURE

Twenty-five years have made a big change in Texas agriculture. A quarter of a century ago, Texas farmers received a large share of their income from cotton—around 7 percent, according to the figures. Today, livestock is taking the place of cotton as the basis of income. It isn't quite up to the 70 percent mark however. At the present time, the income of Texas farmers from livestock and livestock products runs about 40 percent of the total income.

In 1924, the total sales from livestock and livestock products were only 20 percent of the total income, says C. H. Bates, extension farm management specialist of Texas A. and M. College. By 1944, returns from these sources had risen to almost one-half the total income—up to 46 percent. The same year, receipts from cotton and cottonseed had dropped to only 25 percent of the total farm income. It ran about the same as this again last year, says Bates. Sales from these products made up one-fourth of all farm income.

Sales from other Texas crops—wheat, rice, sorghum, citrus, flax and peanuts—made up around 33 to 35 percent of Texas, farm income. And back in 1924, these miscellaneous sources provided only 10 percent of the income. By 1944, they had climbed to 28 percent.

This growth in sales from fruits and crops other than cotton brings out the increasing commercial importance of these parts of Texas agriculture. The big need for food and feed during the war and the years following was one main



NATIONAL PRESS BUILDING WASHINGTON, D. C.

By Anne Gaode

New as 1949 is the color remover that works like a charm on almost every fabric. Acetate rayons—even nylon—respond to this wonderful remover. Only mineral and glass fibers and a few vat dyed materials are the exceptions and in most cases they can be dyed another darker color. Certainly a budget booster to be able to take out old color, then wash with all-purpose dye, have something entirely new and different looking.

Remember that kitchen tools need oiling, but it's wisest not to use machine oil—might get into food; you know. Mineral or vegetable oils are all right.

Wool snoods are as popular as ever this winter. Latest are bonnet styles which boast a small brim to make a pretty frame for your face and streamers that tie under the chin. Wonderful for skiing or skating, equally smart for your everyday wear.

Soft as a glove, but tough as the leathers they're made from (sport buck and baby bull) are the new casual shoes. Some are made with crepe soles, some are strapped and buckled—but they're all so wearable, keep them that way with the oil of shindola to preserve their softness.

Almost out of the mouth of babes are the delicious canapes which can be made from jam or canned meats, such as veal and liver. Say there are unexpected callers—just whip out a can and season with salt, pepper, real mayonnaise and perhaps a little onion juice or curry powder and you've a tempting snack.

cause for this upward trend in these crops, says Bates.

Examples of the industry building up in the areas of production are the vast processing plant at Corpus Christi for handling grain sorghum and cereals, and the expanding milling and feeding manufacturing plants in north and northwest Texas.

Also, markets for an increasing volume of milk have developed from the rapid expansion of the industrial activity in the state. Population growth within Texas and the Southwest calls for an increased output of meats, poultry and dairy products. Prospects are that this growth will balance the economic pattern with more livestock on Texas farms.

Industrial markets, too, have aided in the shift from cotton farming to dairy and livestock farming, says Bates, especially in the South and East Texas areas. The big turn in agriculture wasn't a case of wanting to be concluded, but of having to.

Bought And Paid For But Not Received

"Bought and paid for but not received." Those were the words used by John R. Sanderson, manager of the Amarillo office of the Social Security Administration, to de-

Simplified Controls Assure Driving Ease



In its 1949 model Chevrolet has relocated driving controls in a manner that promises appreciably to add to the safety and pleasure of driving. Dials are grouped around the face of a jumbo-sized speedometer. The starter button is on the panel together with light switches and ventilation controls. Also relocated is the handbrake, now conveniently placed at the right of the steering wheel under the dash. Notable in this view as well is the exceptional visibility offered by wider, deeper windshields.

VACATION SCENERY



Scenery like this is enough to make the stay-at-home just a bit envious of winter resort vacationers. This blonde vacationer wears a cotton cruise and resort ensemble designed by Stephanie Koret of California. The National Cotton Council reports that cotton is the favorite fabric for this season's sportswear.

scribe what happens when a worker fails to show his social security card to each new employer. "When the end of a calendar quarter rolls around, Mr. Sanderson continued, "the company has

FERTILIZER IN SHORT SUPPLY

Four words can describe the fertilizer picture for the coming year. And those four words are "tight supply" and "high prices". So it looks like the same old picture of last year. Fertilizer will be hard to get in view of the big demand, and the cost of it when it can be had will be at least as high as it was last year. In a few cases, it may run slightly higher.

Larger amounts of nitrogen, phosphoric acid and potash will be available, says Dr. J. F. Fudge, state chemist of the Texas Agricultural Experiment Station. But he goes on to say that even though more fertilizers may be available, the demand this coming year is expected to be the greatest in all history. And this is especially true of the nitrogen fertilizers.

Fudge points out that the commercial manufacturers can produce and supply only a certain amount each month. So the manufacturers has to spread his production out over a twelve-month period. He puts out some this month, some next month, and some more the following month. Here Dr. Fudge wants to point out that if a factory doesn't put out any nitrogen fertilizer one month, it cannot manufacture two month's supply the next month. In other words, allocations will not carry over from one month to the next. Right now the fertilizer factories say that the fertilizer isn't moving out of their plants. They're all stocked up. It's for this very reason the fertilizer production is going pretty slow right now, Dr. Fudge says.

All this adds up to another fertilizer shortage again this spring unless the dealers and the farmers themselves do something to brighten the picture. Here's what they can do, he says. Everybody that plans to use fertilizer this spring should order part of his estimated needs right now.

If the farmers and dealers will start the ball rolling, the manufacturers will be able to move the fertilizer out of their factories. This, in turn, will make room at the factories, and at the same time, will lower the chances of a sudden shortage in fertilizers later on in the spring.

That's the fertilizer situation as it stands now... a big demand for what is available and prices as

high as those of last year. On the other hand, the expected high prices the farmers will get for their farm products will offset to some extent the cost of the fertilizers.

So, the main thing to do right now, advises Dr. Fudge is to order part of your supplies now if the storage is available, and help loosen up the tight situation at the factories.

A Child May Dare So Drive With Care!

NO ALTERNATIVE Mother (who has been ner)—Betty, don't talk mouth full. Betty—But, mamma, I to do? When I talk mouth empty, you say "Betty, go on with your Agricultural economist dicting that the demand for commercial fertilizers is the greatest in all history this spring. Order your supplies

2 DAY FLOCK TREATMENT
FOR LARGE ROUND AND CECAL WORMS IN CHICKENS AND TURKEYS

DR. LE GEAR'S POULTRY WORM POWDER

GETS LIVESTOCK and POULTRY WORMS

QUICKLY EFFECTIVELY ECONOMICALLY

DR. LE GEAR'S 100% PNEUMONIA

KEEP THE PAY PRODUCE

DR. LE GEAR'S COW PRESCRIPTION IN CONCENTRATED

KEEP IT always ON HAND

Be prepared for wire cuts—saddle, harness and collar galls—flesh wounds; for dehorning and emasculation.

Dr. LeGear's ANTISEPTIC POWDER

A powerful antiseptic and promotes quicker healing. Safe. Provides most comfort.

LET US KEEP YOU SUPPLIED WITH THIS INTERNATIONAL KNOWN Dr. LeGear's

Use Dr. LeGear's GRUB DUST For treatment of Grubs, Ox Warbles or "Wobles" infesting the backs of cattle.

WHEELER DRUG STORE

PHONE 11 "A Friendly Place To Trade" WHEELER

FINE PRINTING

We do all kinds of printing; we don't specialize in any form, but we do specialize in fine work. The finished job is perfect in detail and layout. We try to have our customers really satisfied.

PHONE 35 For Free Estimates

THE WHEELER TIMES

Always In Demand
... that's the young lady who uses **Cara Nome** Cosmetics & Perfumes

... and it's not only the younger ladies who uses and prefer CARA NOME cosmetics because they help make them alluring and are so kind to the skin.

Stop by the City Drug next time you are down town to replenish your supply of CARA NOME cosmetics.

CITY DRUG STORE

Here Comes Spring

Dresses and Materials Arriving Daily

You will be pleased with the new styles and prices of these new dresses.

New materials include:—Iridescent Rayons
... Chambrays... Stone-Cutter's Cloth... Russian Cords and Changeable Gingham.

SALE CONTINUES

Blankets, Jackets, boots still on sale. Woolens and some other materials and gaberdine dresses going at 1/2 price.

McILHANY'S
"For Everything You Wear"
Wheeler, Texas

THE NEW FERGUSON TRACTOR

MORE POWER. MORE SPEEDS. AUTOMATIC HYDRAULIC OVERLOAD PROTECTION. HYDRAULIC IMPLEMENT CONTROL. FRONT WHEEL TREAD ADJUSTABLE.

No other tractor combines ALL these features.

We Can Furnish . . .

A NEW or USED Tractor for every purpose. Let us help you solve your planting problem by showing you the tractor that can do your job the best and most economically.

SEE US FOR NEW OR USED TRACTORS

WARD BROTHERS MOTOR CO.
106 West 12th Street Shamrock