

STANGS TAKE SPEARMAN LYNX 26-6 COUNT

Wheeler's note:—We are re-
gretting herewith Jerry Ko-
lander's account of last Friday
night's contest between the
Mustangs and the Lynx which appeared
in the Amarillo Daily News-
paper. It is a pity that local fans may see
an outside view of the game and
because it gives a complete resume of the con-
test.

The game got back in the Dis-
trict B football race with a
Friday night, decisive
Spearman's defend-
-s. 26-6.

Mustangs lost their first
game start to White Deet
and another loss would
eliminate them from further
consideration.

Friday night's battle was a see-
saw for three quarters, but
Mustangs took complete con-
-the final period to rack up
touchdowns and turn the
game into a rout.

The game grabbed a 6-0 first-
-lead when a pass from
Robertson to Joe Mitchell
completed for 21 yards to
-man's 24-yard line. Bill
-on and Garland Parks
-ive to the four before
-carried it over.

Robertson threatened consist-
-the first half, and finally
-the count 6-6 in the final
-of the second quarter.
-Sunny Windom intercept-
-Robertson's aerial deep
-er territory but was
-in his tracks by Bill Rob-
-on. Don Floyd then rammed it
-0 and Windom's pass to
-Clayton put the ball four
-away from the goal line. In
-his Windom plunged over,
-id was hurled back on the
-t try and the half end-

Third period was scoreless,
-break early in the final
-to get the Mustangs on the
-march. Windom pun-
-his back to the wall, got
-per kick which Bill Rob-
-on took on the Spearman's
-of stripes. In four plays,
-Parks carried over
-the 15 and Corky Robert-
-led the extra point.

Lynx gambled desperately
-back in the ball game, but
-the ball in Mustang territory
-start-down line play. Bill
-then came up with his
-brilliant performance of the
-he took the ball on an
-smash, bulldozed his way
-four would-be tacklers and
-yards to pay dirt. Parks
-for the extra point and
-setback led 20-6.

Floyd's final tally came in the
-minutes when the Ponies
-ball on downs after four
-aerials were knocked
-Beverly halfback Dick Pen-
-ultimately rifled the ball into
-downland for the touchdown.
-returned the final
-60 yards to Wheeler's
-line, but the play was
-ed by a clipping penalty as
-ended.

Co-Captain Bill Rob-
-was the outstanding player
-field as he ripped off long
-with his vicious line plun-
-stopped the dangerous
-on numerous occasions
-it appeared that the tricky
-back was about away for
-.

Billie V. Brown, blue-eyed
-ter of Mr. and Mrs. R. Wil-
-Brown was crowned 1948
-Football Queen by mem-
-of the team in pre-game cere-

Statistics department.
-outdowned Spearman by
-gained 223 yards against
-completed and 4 of 8 passes for
-yards against 3 of 12 for the
-with each team having one
-intercepted. Bill Robertson
-T. Johnson averaged 33
-on their two punts while the
-only averaged 24 yards on
-punts.

Who saw action in the con-
-cluded: Wheeler; Ends,
-and, Joe Mitchell, Gaines and
-and, tackles, Hardcastle,
-and Jack Mitchell; guards,
-co-captain Ragan and
-center, Hubbard; backs, C.
-son, B. Robertson, Parks,
-on, Pettit, Pendleton and

Robertson; Ends, Sheets, Bann-
-Cates; tackles, Hull and
-guards, Pope and Lackey;
-Darius; backs, Windom,
-D. Floyd and J. Floyd.

Bill Robertson Picked "Player Of The Week" By Amarillo Writer

Jerry Kolander, Amarillo
sports writer who covers Class
B football over the Panhandle,
this week picked the Wheeler
Mustangs' Bill Robertson as the
player of the week in Class B
football and three Mustang line-
men, Doyle Waters, Horace Ra-
gan and Duane Bradford, as
linemen of the week.

Below we reproduce the article
from the Amarillo Daily News
describing Bill and his exploit
in last Friday night's contest
with Spearman.

Once in a great while, a high
school football player comes a-
long who is big and possesses
enough ability and natural foot-
ball sense to become a great
backfield star. Bill Robertson,
195-pound right halfback for the
Wheeler Mustangs is just such a
fellow.

Robertson played a great game
against Spearman last Friday
night, and his performance was
good enough to give him this
week's award as "Player of the
Week" in Region 1-B football
as selected by the Globe-News.

To say that his performance
was good—would be a rank in-
justice. He was brilliant! Time
and time again, he stopped Son-
ny Windom for short gains
when it appeared that the slip-
pery-hipped Lynx halfback was
away for a touchdown.

Robertson gained 100 yards
from scrimmage in 11 tries, and
38 of those yards came on a
final period touchdown jaunt in
which he literally ran over four
would-be tacklers. He blasted
through two tacklers at the line
of scrimmage, and bulldozed
through two more on the 20-
yard line.

On another occasion, Spear-
man's hard-driving fullback, Don
Floyd, powered through the line
into open territory and was
headed for a certain Lynx score.
But Robertson, coming from no-
where, sped over to make the
tackle.

Bill is a senior in the Wheeler
School and combines a good
scholarship record with a fine
personality plus the ability to
excel in football, basketball and
baseball.

Windy Nicklaus, football official
and highly respected coach at
Horace Mann Junior High
School, has had a great many
opportunities to observe Robert-
son through the impartial eyes
of an official and has this to say
about him: "Robertson is a
great prospect, and one of the
finest boys I've ever met on a
football field."

The News-Globe takes pleasure
in saluting Bill Robertson as
this week's "Player of the
Week" in Class-B. football.

Pfc. Oran J. Brown Buried At Amarillo

Funeral services were held for
Pfc. Oran J. Brown, Saturday
afternoon at 2:00 o'clock in the
Blackburn-Shaw Chapel at Am-
arillo. Burial was in the Liano
Cemetery.

After six weeks basic training,
Brown participated in the form-
ing of the 87th Ski Troops which
liberated the Aleutian Islands. He
was later transferred to the 82nd
Chemical Motor Detachment.

Pfc. Brown went into the army
in December 1942 and served for
more than two years in numerous
Pacific Campaigns before dying
on Luzon April 10, 1945, at the
age of 31 years.

Survivors, other than the widow,
include a daughter, Carol Ruth,
the father, J. C. Brown of Roar-
ing Springs, and a sister, Mrs.
Murray Markham, Tulla.

Mrs. Mary Mayfield, who lives
west of Wheeler, has been quite ill
at her home this week.

Mr. and Mrs. E. L. Floyd and
Mrs. Decie Floyd of Los Angeles
visited in the Luther Park home
this week.

To The Mustang Players

(An Editorial)
Congratulations to the Wheeler Mustangs for the
way they performed against Spearman last Friday night.
We wish to commend every member of the Must-
ang squad for his performance and especially do we
wish to give the boys up front in the line a word of en-
couragement for the magnificent way in which they
handled their job of stopping the tricky Spearman backs.
Co-Capt. Horace Ragan, Doyle Waters, Duane Bradford,
Richard Gaines, Harold Hardcastle, Joe Mitchell, Loyde
Goad and Edgar Hubbard all fought until they finally
broke the enemy's resistance down to a point where the
Mustang backs could scamper through them for count-
ers.

May we speak another word of warning though
to THE MUSTANG TEAM, remember you still have
three more tough battles on your hands before the end
of the regular season and if you can win all of them you
probably will have a chance at the district championship
which would be quite an honor for YOU and Wheeler
High School.

BUILDING FOR KEVA STARTED ACP ELECTIONS BE HELD SOON

Construction of the first unit of
the pumice block building to house
KEVA, the East Panhandle's own
radio station, is under way and
Claude Hinton of McLean, con-
tractor, hopes to have the struc-
ture ready for installation of
transmitter equipment early in
November.

The first unit is 25x25 feet and
will serve as a combination studio-
transmitter room and business
office. Plans of owners call for a
second unit of the same size later.

Walter Turner of the Graybar
Electric Co. of Dallas, represent-
ing the Western Electric company,
will begin installation of the radio
equipment early in November. At
the same time a construction crew
from Fort Worth steel construction
company will begin erection of a
200-ft. tower and laying of ground
wires on the 450-ft tract of
ground.

John Kennedy, KEVA manager,
is working on advertising and
program phases in the hope he can
put the 250-watt station on the
air early in December. He said the
four towns of Wheeler, Erick,
Wellington and McLean, will be
given the same consideration as
Shamrock in planning program
and advertising time.

Advertising rates of KEVA are
the lowest of any radio station in
West Texas.

Kennedy will shortly announce
his staff which will consist of a
program director-commercial man-
ager, two engineers, lady book-
keeper-receptionist, advertising sol-
icitor and news reporter. He would
prefer employing local people if
he can find them with sufficient
experience or knowledge.

Station KEVA will operate from
sun-up until sunset seven days a
week, the hours of operation de-
pending on the season. It will op-
erate on a frequency of 1580 kilo-
cycles by permission of the Fed-
eral Communications Commission.
KEVA is owned entirely by local
citizens.

Organizations and individuals
having program suggestions are
invited to contact Manager Ken-
nedy without delay.

Panhandle Be Featured In National Magazine

The Panhandle will be featured
in a 4,000-word article in the De-
cember issue of Holiday, the third
issue of the magazine devoted
principally to Texas.

Written by Lewis Nurdyke, well-
known Amarillo newspaperman,
the article traces the region's
colorful history and tells of the
vast wealth in its modern oil in-
dustry, cattle raising and wheat
farming.

The current November Holiday,
second in the Texas series, carries
five articles on the State, dealing
with Austin, San Antonio, the
Texas Rangers, the Magic Valley,
and one on the State as a whole,
written by J. Frank Dobie.

Newspaper Advertising Pays!

KAVANAUGH IS APPOINTED TO S. S. BOARD

Allen Kavanaugh, Wheeler County
superintendent of Public In-
struction, last week reluctantly
accepted the post of Wheeler County
member of Selective Service
Board No. 52. Kavanaugh is fill-
ing the place left vacant by the
resignation of Cliff R. Weatherly.

Kavanaugh accepted the post
only after considerable urging by
friends and states that he took the
position only to help look after
the interest of Wheeler County
young men who are eligible for
the draft.

In connection with Selective
Service Board No. 52 activities,
C. H. Walker, chairman, released
the following information this
week:

In order to correct any mis-
understanding and avoid unneces-
sary correspondence or trips to
the main office in Pampa, C. H.
Walker, chairman of the four county
Selective Service Board No.
52, has issued the following state-
ment:

1. Full-time students in High
School or College will be classified
in 1-A and remain so classified
until the end of the school year
unless their status changes. They
may be ordered for induction as
others but upon their written re-
quest they will be deferred until
they finish their school year. If
their status changes in any way,
they are required to notify this
board of that fact.

2. Any person may appear before
the board any Tuesday at 2 p. m.
if he is not satisfied with his
classification.

3. After registrants are ordered
for their preinduction physical
examination those who pass will
not be ordered for induction for
21 days after their physical exami-
nation.

4. In case any registrant is or-
dered for induction into the Armed
Forces he will be given at least
10 days notice before the induction
date.

5. Any registrant who thinks he
has any obvious physical defects
that would bar him from service
in the Army should appear before
the board on any Tuesday at 2
p. m. and will be assigned to a
local medical advisor for a report
to this board.

6. Registrants who write to this
office for information as to their
classification should always give
the day, month and year of their
birth.

GIRLS, LOOKING FOR HUSBAND?

If you're looking for a husband,
your chances of finding him are
better in the country than in the
city.

Yet rural young women leave
the farm much earlier than young
men and the migration rate is
higher.

Why?
Recent studies conducted by
rural sociologists in Washington
State may have the answer. Col-
lege girls were asked to give their
preferences for a choice of hus-
bands. Professional men were rat-
ed first, with business men second.

The reason given for not wanting
to marry farmers had nothing to
do with the man or his occupa-
tion, but his social disadvantages,
isolation, hard physical labor and
long hours, as well as poorer edu-
cational advantages and smaller
incomes that are usually found in
rural areas.

Mrs. Eloise Johnson, extension
family life education specialist of
Texas A. and M. College, says the
study gave no indication that col-
lege education turns young women
against farming—in fact, the
higher the education of the girl's
parents, the more favorable she
is toward marrying a farmer. And
girls from farm homes preferred
farmers for husbands almost as
often as professional men.

The majority of these students,
she says, expressed willingness to
become farm wives if they could
have the same conveniences, in-
come and cultural and educational
advantages on the farm as in
town.

Wheeler P.T.A To Sponsor Carnival Tuesday Oct. 26

By Miss Gladys Mobley
Wheeler High School English Instructor
The Wheeler Parent-Teacher Association will sponsor
a Halloween Carnival to be held in the school cafeteria and
gymnasium, Tuesday night, October 26. Everybody is in-
vited.

Customs and superstitions gathered through the ages
go down into celebration of Halloween. Halloween is a time
of many parties for both grown-ups and children. Fortune
telling and ghost stories are typical for Halloween. Why not
celebrate Halloween by attending our Carnival?

Each class will have a booth at the Carnival. They
seem to be very eager to make a tremendous sum of money
for the P.T. A. The class that makes the most money on
their booth will be given a small radio to be placed in their
room.

We have secured a number of games of skill. These
games are inexpensive, and attractive prizes will be given to
the winner. Bingo, basketball shooting, sack races, a fun
house, shooting at the Negro baby, a fishing pond, a cake
walk, dominoes, a hay-ride, chances on a turkey, and many
other things will be included in the Carnival.

FARM SCRAP IS MUCH NEEDED

The Secretary of Commerce has
appealed to the Secretary of Ag-
riculture Charles F. Brannan to
advise farmers of the great need
of scrap iron and steel in order
to keep steel mills running to cap-
acity to furnish enough steel re-
quired for equipment needed for
national security, for industry, for
farms, and for homes.

Secretary Brannan is therefore
asking farmers to again help in
aiding this drive. Farmers made
a wonderful contribution to the
scrap drive effort during World
War II. Farm scrap is particu-
larly desirable because most of it is
of iron grade and more valuable
than steel scrap. In 1942, 24 mil-
lion tons of scrap was melted for
use. Farmers are particularly in-
terested because of the present
high production of farm machin-
ery, fencing, steel roofing, nails,
trucks, automobiles, and countless
other items. One-third of the raw
materials going into castings is
purchased scrap. Every ton of
scrap the farmer sells when com-
bined with other materials, pro-
duced between three and four tons
of new steel.

Here are the facts:
(1) This scrap is now in criti-
cally short supply.
(2) At the rate of present high
production of 88,000,000 tons of
steel, there is not nearly enough
to meet the needs of our domestic
economy, military needs and Eu-
ropean Recovery Program.

(3) Scrap materials were drain-
ed off closely during World War
II causing a shortage of the gen-
eral flow of such materials to
scrap dealers.

(4) Farm industries yield the
greatest tonnage of scrap materi-
als through obsolete machinery
parts and equipment, but farms,
too, are a source of great tonnage
of scrap.

(5) Heavy iron and steel scrap
is the type most needed. This is
purchased scrap and demands good
prices from scrap dealers.

(6) Each year since 1940 total
melt of scrap iron and steel ex-
(Continued on Last Page)

2 Inch Of Moisture Holds Up Harvest Of Cotton, Grain Sorghum

Intermittent showers and driz-
zle starting Wednesday after-
noon and lasting through this
morning (Thursday) produced
two tenths inch of rainfall and
stopped cotton and grain har-
vest in this vicinity.

Clearing skies and bright sun-
shine at press time this after-
noon (Thursday) indicated that
boll pullers and feed harvesters
would be back in the fields again
Friday morning.

Wheeler and the north part of
Wheeler County is experiencing
one of the most beautiful har-
vests of cotton and grain sor-
ghums in recent years this year
and it is a happy sight indeed
to see the gin yards covered
with wagons, trailers and trucks
loaded with cotton waiting their
turn at the gin.

A true fortune teller from far
away will be present. Here we go,
boys. HiHiHere. HiHi, just step
right ova. See little Eva, the deli-
cate girl. She only weighs a quar-
ter of a ton. Right on the inside.
Come on ova, folks, little Eva is
about ready to start. It only costs
ten cents, one-tenth of a dollar,
and your whole life's future will
be revealed. We tell you nothing
of the past, you know that better
than we do. Advice will be given
on all business problems, social
problems, and problems pertain-
ing to your financial welfare. She
can even give you a picture of
your future wife or husband.

The seniors are presenting a
very interesting movie. What
heart throbbing music will be in-
cluded in this picture! Come on
boys, take your girl-friend to the
movie, and you may have your
choice of seats. Popcorn will be
sold to you when entering to pur-
chase your ticket.

The seniors are sponsoring The
King and Queen contest. Each
class chose a King and Queen. The
voting will not cease until the
latter part of the Carnival. The
crowning of the King and Queen
will be a big event of the Carni-
val.

You must come to the Carnival
for supper, do not think of eating
before coming. The first grade
will serve the supper at 6:00 p. m.
and you will be pleased with the
service with a smile. The lunch
stand will be in a very prominent
place. It will be in such a place
as to where you can sit down to
have a little peace while eating.

We sincerely hope that the P-
T. A. Carnival will be a success.
We are depending upon the com-
munity for it to be a success.

HOG SUPPORT PRICES FIXED

Hog prices probably won't fall
to support levels by next March,
but—just in case they should—the
schedule of hog price supports for
October-March has been announ-
ced by the Department of Agricul-
ture. If hog prices should decline
to the support level, the law re-
quires that they would have to
be supported through 1949 at 90
percent of parity. Supports would
be carried out through purchases
of pork products or other appro-
priate action.

Weekly average hog supports for
the next 6 months will range from
a high of \$17.50 per hundred
pounds, Chicago basis, in October
and March, when marketing of
hogs are seasonally small, to a
low of \$15.25 per 100 pounds in
December, when marketings are
seasonally the largest of the year.

Supports are figured twice a year
on the basis of parity prices on
March 15 and September 15. The
September 15 parity price was
\$18.20 per 100 pounds. The aver-
age of prices received by farmers
on that date was \$27.30 per 100
pounds.

Mr. and Mrs. Henry Johnson
are the parents of a new baby
boy, Douglas Royce, born Thurs-
day, October 14 at the Worley
Hospital in Pampa.

Mr. and Mrs. Walter Noel of
San Antonio, Texas visited with
her sister Mrs. Myrtle Lane Sun-
day, Mr. and Mrs. Noel are mov-
ing from San Antonio to Pampa
to make their home there.

STAND UP AND BE COUNTED!
VOTE
ELECTION NOV. 2
Express YOUR OWN convictions

THE WHEELER TIMES

Published Every Thursday at Wheeler,
Wheeler County, Texas, By

COOPER, HOWELL & MONTGOMERY

J. C. Howell Editor-Manager
Annie Mae Howell Society Editor
Richard L. Bradley Printer
Maurice Pettit Apprentice

MEMBER
Panhandle Press Association
National Editorial Association



SUBSCRIPTION RATES
In Wheeler, Beckham and
Hemphill Counties

6 Months	\$1.50
3 Months	85c
1 Year	\$2.00
Everywhere Else	
3 Months	75c
6 Months	\$1.25
1 Year	\$2.50

ADVERTISING RATES

National Rate	42c Column Inch
Local Rate	35c Column Inch
Classified	See Want Ad Page

Entered as second-class matter December 18, 1933, at the postoffice at Wheeler, Texas, under act of March 3, 1879.

NOTICE TO PUBLIC

Any erroneous reflection upon the character, standing or reputation of any person, firm or corporation, which may appear in the columns of this paper will be gladly corrected upon due notice being given to the Editor personally at the office at Wheeler, Texas.

THURSDAY, OCTOBER 21, 1948

Editorial

CHANCE TO EQUALIZE REPRESENTATION

Because succeeding Texas Legislatures for the last 27 years have ignored a plain provision of the State Constitution, the

people of areas growing in population are being denied the legislative representation that is their legal due. Thus the estimated 754,850 inhabitants of the Rio Grande Valley district have only one senatorial representative in the Legislature, exactly the same number as the 79,417 within the borders of the district about Hallettsville. Tarrant County's more than 300,000 population has precisely the same voice in the Senate, so far as its representation is concerned, as the 89,141 of the Greenville district.

The instances of such disproportionate representation that could be cited are numerous. In the lower house the disparity is the same in kind, though less in degree. If the condition thus created does not amount to taxation without representation, as Senator Moffett of Chillicothe contends, it at least results in taxation with highly inequitable representation.

The situation arises from the Legislature's failure to carry out the direction of the Constitution (Article 3, Section 28) for a redistricting of the state after each decennial federal census. The last time the Legislature followed this requirement was in 1921. Since then, many sections of the state, and all its cities, have shown huge gains in population and clearly are entitled to increased representation in the law-making body at Austin. Even sections of the state which stand to lose in population could not, in fairness, object to such a reshuffle.

The people of the state will have a chance on November 2 to make sure that the reapportionment called for both by equity and constitutional requirement is carried out after the next census. On the election ballot will be a constitutional amendment—one of the eight on which the voters will pass—which will assure redistricting at each 10-year interval even though the Legislature again demurs.

Under terms of this amendment, a five-member board would apportion the state into new senatorial and representative districts if the Legislature should fail to do so at the first session after each decennial. The effect of the amendment should be to spur the Legislature into doing its prescribed duty, since it thus would have a voice in fixing the borders of the new districts, but to make certain that the constitutional provision no longer can be ignored.

The obvious need of the constitutional change to restore and preserve equality of representation should gain the proposed amendment an overwhelming vote of approval. Such a vote will mean no increase in the number of legislative districts, but only a realignment that will make every Texas citizen equally represented in the legislative halls.—From Ft. Worth Star-Telegram

Church Calendar

FIRST BAPTIST CHURCH

Sunday School 10:00 a. m.
Morning Worship 11:00 a. m.
Evening Worship 7:00 p. m.
W.M.U., Monday 2:30 p. m.
Prayer Service, Wed. 7:00 p. m.
Teacher's Meet., Friday 7:00 p. m.
We preach Christ crucified, buried, risen, and coming again.
M. B. SMITH, Pastor

CHURCH OF CHRIST

Bible Classes 10:00 a. m.
Worship and Sermon 11:00 a. m.
Evening Worship 7:00 p. m.
Ladies Bible Class, Mon. 3:00 p. m.
Wed. Eve. Classes 7:00 p. m.
B. M. LITTON, Minister

THE METHODIST CHURCH

Church School 9:45 A. M.
Morning Worship 11:00 A. M.
Evening Service 7:30 P. M.
Prayer Meeting (Wed.) 7:00 P. M.
S. Y. ALLGOOD, Pastor.

BRISCOE BAPTIST CHURCH

Preaching second and fourth Sundays.
Sunday School every Sunday.
Frank McDonald, Sunday School Superintendent.
L. P. FORT, Pastor

ASSEMBLY OF GOD

Mobeetie, Texas

Sunday School 10:00 a. m.
Worship 11:00 a. m.
Junior Church 7:30 p. m.
Evangelistic Service 8:00 p. m.
Prayer Meeting, Tues. 8:00 p. m.
Young Peoples Ser. 8:00 p. m.
Thursday 8:00 p. m.
REV. D. W. RING, Pastor

TWITTY BAPTIST CHURCH

Sunday School 10:00 a. m.
Morning Worship 11:00 a. m.
Evening Worship 8:00 p. m.
Mid-week prayer service 8:00 p. m.
A. C. LYONS, Pastor

KELTON METHODIST CHURCH

Church School 10:00 a. m.
Preaching 11:00 a. m. every third Sunday.
M.Y.F., W.S.C. and Bible Study 7:30 p. m.
Preaching 7:30 p. m. every third Sunday.
H. E. LONG, Pastor

KELTON BAPTIST CHURCH

Sunday School each Sunday at 10:00 a. m.
T. U. each Sunday at 7:30 p. m.
Preaching each Sunday at 11:00 a. m. and 8:30 p. m.
A. G. ROBERTS, Pastor

BRISCOE METHODIST CHURCH

Sunday School Each Sunday 10:00 a. m.
Preaching, second and fourth Sundays 11:00 a. m. and 8:00 p. m.
A hearty welcome to all.
L. J. HELM, Pastor

ALLISON METHODIST CHURCH

Sunday School Each Sunday 10:00 a. m.
Preaching, first and third Sundays 11:00 a. m. and 8:00 p. m.
A warm welcome to all.
L. J. HELM, Pastor

ALLISON BAPTIST CHURCH

Sunday School 10:00 a. m.
Preaching Service 11:00 a. m.
Training Union 7:30 p. m.
Preaching Service 8:30 p. m.
L. P. FORT, Pastor

FIRST BAPTIST CHURCH

Mobeetie, Texas
Sunday School 10:00 a. m.
Morning Worship 11:00 a. m.
Training Union 7:30 p. m.
Evening Worship 8:30 p. m.
Prayer Meeting, Wed. 8:00 p. m.
R. L. COOKSEY, Pastor

CHURCH OF THE NAZARENE

Sunday School 10 a. m.
Worship 11 a. m.
Evening Worship 7:15 p. m.
Prayer Meeting Thurs. 8 p. m.
J. D. ROEDLER, Pastor

ALLISON PENTECOSTAL CHURCH

Sunday School 10:00 a. m.
Worship 11:00 a. m.
Young Folks Service 7:30 p. m.
Worship 8:00 p. m.
Wednesday Night Prayer Meeting 8:00 p. m.
REV. ROBERT ESTES, Pastor

FIRST METHODIST CHURCH

Mobeetie, Texas
Church School 10:00 a. m.
Morning Worship 11:00 a. m.
M. G. F. Meeting 6:45 p. m.
Evening Worship 7:30 p. m.
Wed. Evening Prayer Service 7:30 p. m.
You Are Welcome.
VERNON E. WILLARD, Pastor

COTTON QUIZ

HOW MUCH COTTON IS USED EACH YEAR TO MAKE ICE BAGS?



ANS: ICE BAGS ALONE TAKE 1,336,000 YARDS OF COTTON FABRICS!

An important detail in making dress collars with a professional look is to trim the seam to a quarter-inch and clip off the corners after stitching around the edge.

QUICK RELIEF FROM SYMPTOMS OF DISTRESS ARISING FROM STOMACH ULCERS DUE TO EXCESS ACID

First Book Tells of Home Treatment! Most help or it Will Cost You Nothing! Over three million bottles of the WELBOND Treatment have been sold for relief of symptoms of distress arising from Stomach and Duodenal Ulcers due to Excess Acid, Flat Digestion, Sour or Aged Stomach, Canicous, Heartburn, Sleeplessness, etc. Dr. WELBOND'S MASSAGE, which fully explains this treatment—free—

BUSINESS AND PROFESSIONAL DIRECTORY

AUCTIONEER
SHELBY PETTIT
Will cry your sale any time or place
Phone 158—Wheeler, Texas

DR. V. G. MARTIN, Optometrist
(Successor to J. E. Hewitt)
126 East 7th Ave.
Amarillo, Texas

Protect Children's Health
GIVE THEM
BORDEN'S
Fine Dairy Products
CROSSLAND DAIRY
Phone 901-F-11 Wheeler

DR. JOEL M. GOOCH
OPTOMETRIST
200 S. Wall Street
Phone 123
SHAMROCK, TEXAS

J. WADE DUNCA
REAL ESTATE
AND
CATTLE
109 W. Kingsmill Pampa, Texas
"42 Years in the Panhandle"

NOTICE!
WE SCALD HOGS ON TUESDAY & THURSDAY OF EACH WEEK.
Wheeler Lockers

Canadian Valley Production Credit Association's Representative
IS IN THEIR
Wheeler Office
EACH
Thursday

HOMER L. MOSE
LAWYER
GENERAL PRACTICE
WHEELER

Electrolux Vacuum Cleaners
SERVICE & SUPPLIES
L. A. McWHORTER
Route 1
Wheeler, Texas

Completely equipped
Plenty hot, soft water
Wet wash and
Rough dry.
CITY LAUNDRY
Leslie Havenhill, Mgr.
Phone 218-M Wheeler

THIS SPACE FOR SALE

TRY A LOAF OF WHEELER BAKERY'S HOME MADE BREAD "ALWAYS FRESH"
The profit on this loaf of bread stays in Wheeler, taxes, overhead and living expenses. If your money stays here it may come back to you—why send it out of the County?
THE WHEELER BAKERY
Phone 117

Refreshing
DRINK
Coca-Cola
COCA COLA BOTTLING CO.
Shamrock, Texas

C. J. MEEK
AGENT
INSURANCE
Night Phone 124, Day Phone 124

Dr. C. C. MERRILL
CHIROPRACTOR
WHEELER, TEXAS
Equipped to give complete chiropractic service



BE WARM THIS WINTER

Do you dread that first frosty fall night when you may have to get out of bed at two in the morning to find an extra blanket? Remember last winter's nights when you worried about whether an extra blanket would be enough? You don't have to go through that inconvenience this winter. Electric blankets make "just right" sleeping comfort all through the winter a sure thing. One feather-light blanket on your bed... and the convenient electric warmth regulator makes it equally suitable for the coldest northers... or brisk fall nights. See the new electric blankets now... so economical... so attractive... so light. You'll want an electric blanket on every bed in your home... low-cost electric service makes them a better buy now than ever. See your favorite dealer soon about "feather-light" electrical warmth this winter.

SOUTHWESTERN PUBLIC SERVICE COMPANY
24 YEARS OF GOOD CITIZENSHIP AND PUBLIC SERVICE

THE BRONCO
by the students of the High School.
STAFF
Editor-in-Chief
Asst. Editor
Soc. Ed.
Girls Sports
Reporter
Boys Sports
Reporter
Reporter
Class Reporters
Sponsor
NEWS selected for the Carnival. We hope you'll see our booth. The senior

Fire HATS

Headliner 30c
BUDGET RADIO 24.95

SPECIAL
Extra Big 3-Qt. ALUMINUM SAUCEPAN
Now 98¢ 79¢

WE INSTALL IT FREE!

TRADE TODAY
BEST for
During
Fires!
HARV
TRADE TODAY
Fires!
STANDAR
We need used tires. You'll be amazed at the clearance we'll give on tires during our big sale. Here's your chance. Firestone Standard SAVINGS DON'T END. SAVE TODAY. Terms to Suit You.

boys have the cat-chunking booth, and the junior and senior girls have the lunch counter. Every one please come and buy some good food.

Thursday, we elected Janice for our class queen and Thurman for our king. Everyone get busy and lets back the senior queen and king and win!

(Written by senior class)

JUNIOR JABBER

We are all glad that the six weeks tests are finally over. Most of the grades are pretty good, however, there are some that aren't so good. Everyone rated pretty good on their first typing test.

The juniors and seniors practiced the first act of their play, Thursday morning. Everyone is doing pretty good so far. Margaret

has discovered a new way to get a man. Just chase him down Margaret.

SOPHOMORE NEWS

We tried to entertain with a quiz program on Friday, October 15. We really were disappointed because it didn't go over, as well as we expected. We will try to do better next time. We want to express our thanks to Mr. Harrell and Mrs. Bragg for helping us.

All our exams are over and we are pretty well pleased with our grades. We will get our report cards next Wednesday.

We had a watermelon feast and all the high school was invited. We attended the revival meeting at the Briscoe Methodist Church, and then went to the platform at the depot and ate watermelon and played games. All who were pre-

sent enjoyed it. We also want to thank Tommy and Sam for the melons.

FRESHMAN NEWS

The freshman are very glad that the six weeks tests are over. And hope that we all make a passing grade. The tests were not as hard as we thought they were going to be. We all want to thank Mrs. Bragg for giving the idea of a watermelon feast and going to church. Everyone went to church and then invited the preachers to eat with us. We all had a nice time eating watermelon, they were all good because the preachers cut them.

EIGHTH GRADE NEWS

We took tests all this week. They were anything except easy. Maureta, was the show good Sunday?

Patsye, did you have a lot of fun Saturday night?

Bobby, we can't imagine who that eighth grade girl is, that you are so crazy about.

Gene and Leroy, we love to hear you two laugh.

John with jumping beans. Jane Ann, don't be so blue every thing will come out alright.

HALLOWEEN CARNIVAL

The students of Briscoe School are going to have their Halloween Carnival on Friday night, October 29. The Carnival Queen will be crowned in the High School Auditorium at 7:30. Everyone come and bring plenty of money.

GUESS WHO?

Senior boy with blue eyes, black hair, and slightly goodlooking. He weighs less than 150 pounds and not over 300 pounds. He's more than 4 feet tall and not quite 7 feet tall. Girls, here is your man just imagine him anyway your dream man is.

ONIONS AND ORCHIDS

Orchids to the nice teachers who have give us good grades.

Onions to Doris for socking Mary Jo.

Orchids to Sam and Tommy for furnishing the watermelons at the watermelon supper.

Onions to the kids who threw the rinds back in the truck.

Orchids to Mrs. Bragg for being so patient.

Onions to T. G. for throwing erasers.

Orchids for the girls who cleaned up the gym dressing rooms.

Onions to me because I wrote this silly thing.

THE WIND BAG

We ran out of ideas and shook the wind bag. Here's what fell out:

The sophomores in a dizzy haze gave a chapel program.

The freshman staggering like drunkards have finished their tests.

The promising senior salesman aren't doing so well.

The compromising juniors read "The Raven" and are going around saying "Nevermore".

SONGS FOR EVERYONE

From Betty to Truman "All My Life"

From Roberta to Tom "I Love You Truly"

From La Nell to Roger "How Soon"

From Doris to Thomas Roy "I Wonder, I Wonder, I Wonder"

From all the freshman and sophomore girls to Glen "You Call Everybody Darling"

From Gloria to Gene "You're That To Me"

From Margaret to C. B. "I'm Always Chasing Rainbows"

From Melba to Glenn D. "Because"

From Rosemary to John C. "My Happiness"

From T. G. to Bettye C. "Near You"

From Billy to Lottie "Tear Drops In My Heart"

From Janice to Tommy "Take It Easy"

From Thurman to Francis "Life Gets Teguious"

From Patsye Rae to the 7th and 8th grade boys "Don't Fence Me In"

From C. B. to all the girls "Confess"

From Wanda to all the boys "How Lucky You Are"

From Wynola to John Gillinwater "You Were Meant For Me"

From Imogene to Hayden "I Love You So Much It Hurts"

SNOOPER
Dear Snooper: Is Betty Jo trying to kill Truman by feeding him some cake she baked? Worried.

Dear Worried: If you are interested why don't you try it yourself and find out.

Dear Snooper: Why are the freshman and sophomore boys so interested in a certain sophomore girl? Desperate.

Dear Desperate: If you will use your eyes you will see.

Dear Wondering: Why does Mary Jo think Glenn is so wonderful? Wondering.

Dear Wondering: I don't know. I can't see anything about him any different from the rest of us.

Dear Snooper: Why does everybody think Janice is Snooper? Curious.

Dear Curious: Maybe they think there can't be anybody else as nosie. (Guess they will get fooled).

Dear Snooper: Why is Sam so quiet at school? Puzzled.

Dear Puzzled: The girls around here probably get him down just like they do me.

Dear Snooper: Why are the girls always chasing boys? On-Looker.

Dear On-Looker: They don't, until the boys stop chasing them.

SPORTS NEWS

We played Allison Friday night and beat them. The girls score was 10 to 16. The boys score was 16 to 21. We sure hope we can keep this good work up.

Cooking eggs at an even, moderate temperature will keep them from becoming tough.

More and more farmers are finding that selective cutting of woodland means better quality timber and more income from the farm.

The Texas Forest Service sells slash, loblolly, longleaf and shortleaf pine seedlings at cost—2.50 per thousand.

To protect young eyes, light for studying should be free from glare, harsh shadows and contrasts between darkness and bright light. A table study lamp should be tall enough and have a shade broad enough to spread a wide circle of light so that a child can sit up comfortably when reading.

From where I sit... by Joe Marsh



I'm Glad We're "Different!"

There's a lot of difference of opinion in our county on the best kind of pasture. Some say alfalfa mixed with brome grass—others say mixed with oats or barley. But all agree that a mixture's better than a single crop.

From where I sit, so long as we never become intolerant of one another's different tastes—so long as we live together with our differences, and even supplement them the way brome grass does alfalfa, then we're a mighty good crop!

So neighbor—enjoy your cider while I enjoy my beer! Vote for your candidate—I'll stand by mine! But never let our differences divide us!

Joe Marsh

Copyright 1948, United States Brewers Foundation

Firestone HARVEST SALE
NOW GOING ON!

SAVE UP TO 3.03
• Handsome • Streamlined SPOTLIGHTS
During this Sale 13.95

SAVE MORE THAN 1/2 ON THIS 7-PIECE HIGH-SPEED DRILL SET Now 1.35

Headliner Reg. 30.95
Budget Radio 24.95

REDUCED! Reg. 5.95 Sale 3.78 PLUS TAX

Handsomely Fitted TRAVEL CASE

UP TO 4.00 TRADE-IN ALLOWANCE FOR YOUR OLD BATTERY ON A New Guaranteed Firestone BATTERY

As Little As 1.25 A WEEK

Only 23.95

Firestone CAR HEATER

Here's Low Cost GAS HEATING!

1.25 A WEEK BUYS THIS Fireplace-Type GAS ROOM HEATER

Here's low cost heating at its best. Fits in any fireplace—can be used in bedrooms, hallways, etc. 16.95

TRADE and SAVE!
BEST for LESS
During the Big Firestone HARVEST SALE
TRADE TODAY FOR A Firestone STANDARD TIRE

12.95 PLUS TAX
6.00-16

NASH APPLIANCE & SUPPLY CO.

48 hours pay for 40 hours work
Penalty pay for weekends & holidays
25¢ an hour increase
Total 1 1/2 BILLION DOLLARS

1 1/2 Billion Dollar Road Block!

Railroads Run for Everybody—Not Employees Alone

The railroad industry must serve not one but many groups—producers, businessmen, shippers, passengers and the general public—night and day, every day of the year. These unions are proceeding in utter disregard of this important difference between railroads and other industries. Industrial plants can be shut down over weekends and holidays, but freight, mail, express and passengers must continue to move. Everybody who enters railroad employment knows this.

Strike Threat

On September 18, 1948, the leaders of those 16 unions began taking a strike vote. But the threat of a strike will not alter the opposition of the railroads to such unreasonable demands!

Demands Unreasonable

These employees have had substantial raises during and since the war. Their average weekly earnings are higher than the average weekly earnings of workers in manufacturing industries. They have more job security than the average worker in American industry. They also enjoy paid vacations, a retirement system and other advantages more generous than the average worker receives.

In contrast with the demands of these 16 unions, which add up to the equivalent of 48¢ an hour, the Conductors and Trainmen recently settled their wage request for an increase of 10¢ an hour.

They'd Pay the Bill!

Summing up these demands, they mean that these union leaders seek to force the railroads to give one million employees an annual raise which would average \$1500 per employee!

The total cost of this would be no less than 1 1/2 billion dollars per year, which is more than twice the expected net income of the railroads this year.

You'd pay the bill, because if these increased costs are forced on the railroads,

Railroads Run for Everybody—Not Employees Alone

The railroad industry must serve not one but many groups—producers, businessmen, shippers, passengers and the general public—night and day, every day of the year. These unions are proceeding in utter disregard of this important difference between railroads and other industries. Industrial plants can be shut down over weekends and holidays, but freight, mail, express and passengers must continue to move. Everybody who enters railroad employment knows this.

Strike Threat

On September 18, 1948, the leaders of those 16 unions began taking a strike vote. But the threat of a strike will not alter the opposition of the railroads to such unreasonable demands!

Demands Unreasonable

These employees have had substantial raises during and since the war. Their average weekly earnings are higher than the average weekly earnings of workers in manufacturing industries. They have more job security than the average worker in American industry. They also enjoy paid vacations, a retirement system and other advantages more generous than the average worker receives.

In contrast with the demands of these 16 unions, which add up to the equivalent of 48¢ an hour, the Conductors and Trainmen recently settled their wage request for an increase of 10¢ an hour.

They'd Pay the Bill!

Summing up these demands, they mean that these union leaders seek to force the railroads to give one million employees an annual raise which would average \$1500 per employee!

The total cost of this would be no less than 1 1/2 billion dollars per year, which is more than twice the expected net income of the railroads this year.

You'd pay the bill, because if these increased costs are forced on the railroads,

WESTERN RAILROADS

105 WEST ADAMS STREET • CHICAGO 3, ILLINOIS

We are publishing this and other advertisements to talk with you at first hand about matters which are important to everybody.

MOBEETIE HI-LIFE

STAFF
 Editor Doris Kuykendall
 Feature Editor Joy Davis
 Sports Editors Walter Hill
 and Lou Beck
 Senior Reporter Bill Godwin
 Junior Reporter Edith St. John
 Sophomore Reporter, Edwin Sims
 Freshman Reporters Billy
 Leonard, Paul Jones, Inez Lan-
 caster, and Virginia Ware

SENIOR BOX SUPPER

We, the seniors, wish to express our appreciation to everyone attending our box supper Friday night and also to Mr. Shelby Pettit who sold the boxes for us. We made approximately \$210. The winner of the contest for the prettiest girl was Joy Davis and the ugliest man was Tince Williams.

We gave a thirty minute program preceding the sale of the boxes. It consisted of music by Paul Jones, Hugh Jeffus, and Junior Luedeck; two songs by Irvine Ruff and Ted Leonard; two songs by Drew Godwin, Bill Alexander, Ted Leonard, and Audrey Ruff; a piano solo by Beverly Caldwell; jokes by Walter Hill and Billy Godwin; and two songs by Lou Beck, Naomi Scribner, Doris Kuykendall, and Joy Davis.

Again, we wish to express our appreciation to anyone who helped us in any way.

LOVELORN COLUMN

Dear Miss Lovelorn,
 My girlfriend and I have been separated for some time since our graduation from high school. Now we are together again and I would like to know if I should buy her a gift to show her I still feel the same.

Anxious.

Dear Anxious,
 Why not tell her? Words cost nothing.

Dear Miss Lovelorn,
 I am having great difficulty in deciding between two boys. I like both a lot. One is a junior, the other a senior. Can you help me?

Sophie

Dear Sophie,
 Try enny, minny, minny, mo. Dear Miss Lovelorn.
 A certain girl is simply running me to death. Everyone is laughing about it because she chases me. She is taller than I and people call us Mutt and Jeff. How can I get her to leave me alone?

Very Desperate.

Dear Very Desperate,
 Take up track and try to outrun her.

WHAT IF?

Vondell was our teacher all the time.
 Sandra didn't live by Curly.
 Mary didn't like to go to the fair.
 Clyde and Jerry weren't so mean.

Lanelle was hard to get along with.
 Reba didn't write love letters in class to the boys.

Walden could get along with Mrs. Noble.

Harold had stayed at home Thursday night.

Doris was bashful.
 Helen and Chubby were really studying.

The seniors get the Hi-Life off in time.

Curly didn't get grass-burs in his coat.

Donald Ray got his typing exercises in on time.
 Jim Horton wasn't smart.

WONDER OF THE WEEK

The bookkeeping class learning what debits and credits are.

JUNIOR NEWS

The juniors received word that their lovelorn pins will be here by the 5th of November. We are looking forward to getting them.

CANDIDATES FOR KING AND QUEEN

The classes met Monday morning to elect their candidates for the Carnival King and Queen. The contest will continue until our Halloween Carnival on November 5. The candidates elected were:
 Seniors: Bill Godwin and Irvine Ruff.
 Juniors: Donald Waters and Patsy McCauley.

Sophomores: Jim Horton and Helen Newman.
 Freshman: Vernon Willard and Frances Totty.

CANDIDATES FOR PRINCE AND PRINCESS

Eighth: Waylon Newman and Lavada Hogan.
 Seventh: Charles Worthington and Glenda Porter.
 Sixth: Sheline Gully and Bobby Galmor.
 Fifth: Ora Lancaster and Arthur Don Burke.
 Fourth: Melvina Beck and Jay Godwin.
 Third: Wanda Gene Gudge and Tommy Corcoran.
 Second: Sharon Davis and Oran Clemons.
 First: Marcella Patterson and Glen Waters.

EIGHTH GRADE NEWS

The Eighth grade social studies class has planned their first picture for their movie. Joe Hathaway and Gary Morris are to build the screen mechanical equipment. Bill Thomas and William Ford will be the artist for scene one. The remainder of the class will write the script.

We are sorry that Larry Beck, one of our peepiest class mates is ill and can't be in school this week—Did those six weeks tests get you down, Larry?

FRESHMAN NEWS

The freshman selected their class parents at their meeting this morning. The class parents are Mr. and Mrs. H. L. Trimble and Mr. and Mrs. Frank Totty.

SOPHOMORE NEWS

The sophomores elected Mr. Ed Brown as sponsor since Mr. O'Brien left.

SEVENTH GRADE NEWS

A lot of the kids in the seventh grade class have been absent the last two weeks. Some of them have been working at home and some have gone to see everyone back in school.

Six weeks tests are underway now. We hope everyone passes them.

The seventh and eighth grade boys played Kelton in football Thursday evening in favor of Kelton. We hope to win next game. Wednesday Look out, Kelton, here we come!

IDEAL 7TH GRADE BOY

Eyes like—Richard Ruff.
 Hair like—Hansford Jenkins.
 Personality like—Bobby Hauley.
 Sports ability like—Clyde Patton.

Flirts like—Jerry Taylor.
 Studies like—Charles Worthington.

IDEAL 7TH GRADE GIRL

Eyes like—Mary Carter.
 Hair like—Maurea Godwin.
 Personality like—Lanelle Bullard.
 Sports ability like—Ruth Morris.

Flirts like—Jolene Robison.
 Figure like—Glenda Porter.
 Studies like—Belle Willard.

P-T. A. MEETING

"Every man, woman and child needs to take a course in First Aid for if one never uses it he has lost nothing—but, many times a life is saved because someone has a working knowledge of First Aid", was the keynote statement of Captain Perkins of the Pampa Fire Department in his talk to the Mobeetie P-T. A., Thursday evening, October 14, 1948, when they met in regular session in the Mobeetie High School gymnasium.

Mr. Kirk of Wheeler arranged the First Aid program and introduced Captain Perkins. Assistant Chief Fuller assisted Perkins and gave a review of what was being

(Continued on Page 7)

OFFICE STATIONERY



You will be delighted showing off stationery printed by us. How inexpensive our work is, too. Let us print your stationery... where work is guaranteed to your satisfaction or money refunded!

Phone 35

THE WHEELER TIMES

SPECIALS FOR FRI. AND SAT. OCTOBER 22 & 23

"I do all my shopping at IGA where prices are low every day!"

Feature of the week!

Want baking results better than "fair"? Use Sno-Kreem Shortening... it's beyond compare!

SNO-KREEM SHORTENING
 100% pure... all-vegetable all-purpose

3-lb. can 1.10



P. S. It has always been a source of surprise to us that the news of IGA's Everyday Low Prices travels so quickly... and that's good because more customers increases our volume, cuts our operating cost and results in even lower PRICES!

... YOUR IGA GROCER



PURE COLORADO HONEY

Pint	Qt. Strained	Qt. Comb	1/2-Gal.
35c	67c	71c	85c

LEADING LADY FLOUR

25-lb. Sack	50-lb. Sack	10-lb. Sack	25-lb. Sack
\$1.53	\$2.89	58c	\$1.40

KIMBELL'S CORN MEAL

WILSON'S PURE LARD

4-lb. Carton	8-lb. Carton	50-lb. Carton
\$1.03	\$2.03	\$12.50

OXYDOL

Large Box

33c

DREFT

Large Pkg.

30c

NOLA

Large Box

29c

OCEAN SPRAY STRAINED

CRANBERRY SAUCE

CAMPBELL'S TOMATO SOUP

SPICED LUNCHEON MEAT ARMOUR'S TREET

LADY CORINNE APPLE JELLY



COME TO OUR Cheese Festival...

KRAFT'S ELKHORN Pound 49c

KRAFT'S AMERICAN Pound 51c

KRAFT'S VELVEETA 2-lb. Box 97c

NEW CROP COLORADO PINTO BEANS

2-lb. Bag	4-lb. Bag	100-lb. Bag
21c	39c	\$9.10

WHITE SWAN PEACHES

3 No. 1 Cans 53c

Fruits and Vegetables

TEXAS ORANGES 5-lb. Bag 33c

LARGE FIRM COLO. CABBAGE Pound 3c

RUBY RED CRANBERRIES Pound 27c

FRESH ROASTED PEANUTS

POUND 28c

NO. 1 TEXAS SWEET POTATOES

3-POUNDS 23c

HUNT'S PEACHES No. 2 1/2 can 27c

HUNT'S PEARS No. 2 1/2 can 41c

PURE BLACK PEPPER FIRST CHOICE

1 POUND 2 PACKAGE 49c

CLAY'S



IGA Food Stores

LOW PRICES EVERY DAY!

WHEELER, TEXAS

Your Home Need Repairs For Winter?

You can make needed repairs NOW and pay for them later by securing an FHA IMPROVEMENT LOAN, and we will be happy to consult with you in regards to your needs.

All Kinds Of Loans And Insurance

W. H. (BILL) WALKER

112 W. 2nd. Street Shamrock Texas

Wallpaper Sale

1-3 off on every pattern of WALLPAPER in stock—Nothing held in reserve—Over 100 patterns of beautiful paper to chose from—

OTHER BARGAINS

White Enamel \$6.00 gal. Green Shingle Stain \$2 gal.
 Wall-Tex Sanitas 70c yd. Red Roof Paint \$2.00 gal.
 ALL SALES FINAL NO RETURNS ACCEPTED

SHAMROCK BUILDERS SUPPLY

116 N. MAIN PHONE 777
 SHAMROCK, TEXAS

this year are already higher than last year... get the highest destruct... in the history of Tex... Marvin Hall, State Fir... Commissioner. Throug... this year Texas losse... 14,777,790. During th... last year they reach... 300. Ten years ago fir... ed only \$8,813,945.

walk in a daze—both ways.

PLAID

See our nice assort ALL WOOL PLA shipment has just

SPECIALS

LDCREST WOY... double bed size... es to \$6.95

ST QUALITY S

x 99, Special

We now have in bleached sheeting

McIL

"For Eve

Only To S On

The saving percent on

The Commis the Tex Col proved by th

3 PERCE

2 PERCE

1 PERCI

This discour district tax

If it isn't ce your check

Any time w on us.

BER 22 &
GA
lay!
IGA
FOOD STORE
ADO HONE
t. Comb 71c
71c
KIMBELL'S CORN
MEAL
58c
FIRE LARD
\$12.5
NOLA
29c
UCE
47
ET
47
48c

This year are already higher than last year. In the history of Texas, the highest destruction in the history of Texas was in 1918. State Fire Commissioner Marvin Hall says that every year in the United States fire kills about 11,000 people, more than half of them women and children.

As of July, there were more than 10,000 freezer-locker plants in operation in the United States.



PLAID JACKETS

See our nice assortment of Men's and Boy's ALL WOOL PLAID JACKETS. A new shipment has just arrived this week.

- SPECIALS--**
- ADCREST WOVEN BEDSPREADS (double bed size) \$4.95
 - ST QUALITY SHEETS \$2.69

McILHANY'S
"For Everything You Wear"

We now have in stock both bleached and unbleached sheeting in 81-inch width.

THE CORRAL
(Published by the students of Wheeler High School.)

STAFF
Editor - Pat Noah
Asst. Editor - Billie V. Brown
Sports Editors, Johnny Weeks and Roy Ripley
Junior Reporter, Martha Hastings
Sophomore Reporter, Billie Traynor and James Gaines
Freshman Reporter, Jo Ann Porter and Richard Brown

SENIOR NEWS

The seniors are sponsoring a king and queen contest which is starting now and will end the night of the Hallowe'en Carnival. Each class has elected their queen and king. It costs one cent a vote, the two who get the most votes will be crowned the '48-'49 Carnival King and Queen. They will have their picture in the annual.

The seniors have chosen Marie Edwards and Horace Ragan. We plan to have jars in some of the stores for votes and we would appreciate it very much for you to support the seniors!

Vote for the right royal family. The senior King and Queen. We chose them very carefully. For the Carnival on Hallowe'en. Also, at the Hallowe'en Carnival the seniors plan to sponsor a comedy. All the proceeds will go for the P.-T. A.

We have started making plans for our senior trip. We hope to make enough to go to Mexico. We plan to start on our play in a few weeks. We hope to have a good one to present to you.

We can all breath freely for a few weeks now, six weeks tests are over. When our parents see our grades, they will probably say we have been breathing too freely. Congratulations to the students who passed; condolences to those who flunked.

SENIOR PERSONALITY

Name—DUANE BRADFORD
Age—17
Years in W. H. S.—3
Color of hair—Brown.
Color of eyes—Hazel.
Favorite Sport—Football.
Favorite Subject—Algebra.
Favorite Teacher—Mr. Teague.
Favorite Food—Chocolate Cake.
Likes—Girls.
Dislikes—Competition.
Ambition—To get along with girls.

IDEAL SENIOR GIRL

Hair like—Billie Brown.
Eyes like—Margaret Holt.
Lips like—Marie Edwards.
Teeth like—Peggy Rodgers.
Figure like—Frances Porter.
Legs like Pat Noah.
Personality like—Melba Robertson.

WHAT IF

Margaret Holdeman and Wilma Chick exchanged hair.
Mr. Carrick didn't keep watching the study hall.
Miss Mobley were tall and fat.
Miss Mahaffey didn't have that Ford.
The senior class wasn't money crazy.
The junior class could get along with each other.
The sophomore class could get along with the teachers.
The freshman class passed a test.

EIGHTH GRADE NEWS PERSONALITY

Name—Nadine Barton.

Pastry-Crust Meat Pies



A hearty meat mixture hides under the flaky crusts of these individual meat pies. Served with a crisp slaw, there's a complete meal, wanting only a fruit dessert.

Stews and similar meat mixtures have always been favorites with the family. Although they taste good and are high in food value, they seldom appear before guests. There's no good reason for this favoritism, for stews can be dressed up to meet company standards.

Flaky pastry crusts, covering the top of the large or individual casseroles in which the meat and vegetable mixture is baked, will really put the lid on the entree. These crusts will puff and brown so enticingly that everyone will want to be first with the fork that uncovers the filling.

Pastry tops are made just as for dessert pies. Roll out tenderly and cut into fitting circle, using an overturned casserole cover as a guide. Crimp or prick the edges when the circles are fitted to the ramekins and cut a few slashes in the top so steam can escape while the pie bakes.

In this recipe, there's a further surprise as the contents of the casserole disappear. There's a bottom crust, too, as flaky and good as the top covering.

PASTRY-CRUST MEAT PIES

STANDARD PIE PASTRY

2 1/2 cups sifted enriched flour
10 tablespoons fat
1 teaspoon salt
7 tablespoons cold water

Sift together flour and salt. Cut or rub in shortening until consistency of small peas. Add water gradually to form a very dry dough. Toss on lightly floured pastry cloth. Roll one-fourth inch thick. Cut and line individual casseroles with pastry. Fill two-thirds full of meat mixture. Cover with pastry. Bake in moderately hot oven (400 degrees F.) about 40 minutes.

MEAT MIXTURE

3 cups diced cooked meat
1 cup diced cooked celery
1/4 cup enriched flour
Salt and Pepper
2 cups broth or milk
5 diced hard cooked eggs

Combine meat and celery. Dredge with flour and seasonings. Add milk and eggs. Mix well. Fill pastry-lined casseroles and cover with crust.

Makes six individual casseroles, four inches by one and one-half inches, or one large pie to serve six.

Color of hair—Brown.

Color of eyes—Brown.
Favorite Subject—Spelling.
Favorite Teacher—Mr. Osborn.
Favorite Actress—Jane Wyman.
Favorite Actor—Ronald Reagan.
Likes—Friendly People.
Dislikes—Nosy People.
Ambition—To be a secretary.

WHAT IF

Nadine were weak.
Helen couldn't play basketball.
Marilyn and JoAnn had blonde hair.
Doyle could get along with people.
Betty Lou and Patricia had brown eyes.
The eighth grade made good grades.
ONIONS AND ORCHIDS
Onions to teachers who give bad grades.
Orchids to Buddy for making a good grade in math.
Onions to the clock in study hall for not running.
Orchids to Molly and Kay for

being so generous with gum.
Onions to the cold weather that we have been having.
Orchids to the football boys for winning the ball game Friday night.

The eighth grade chose their king and queen for the Hallowe'en Carnival. We think we have chosen wisely. We selected Louise Weeks as queen and Ray Johnson as king. We are hoping to win again.

Bobby, we heard you have a new member in your family. Bet you certainly are proud of that little brother.

Patricia, you surely did look wet when you came into the last period study hall. There are such things as could you know.

JUST GOSSIP

We are glad to see four juniors going together again. How about that, Dorothy Esslinger, and Doyle Waters, Sue Farmer and Corky Robertson?

It looks like Von Eva might have gotten the best of Imogene the other day in basketball. What about that, Gena?

The juniors are glad to welcome Wilma Lee Chick to Wheeler High.

We are very proud of the Football boys; sorry you got your nose hurt, Corky.

The junior girls want to thank Miss Merrill and Miss Mahaffey for helping with the crowning of the football queen, Friday night.

The freshman girls certainly were good to Miss Mahaffey Monday. What's the matter, girls? could it be that we get our report cards Tuesday?

Anita, we are glad to see you back at school again.

It seems that everyone is sick or is getting sick. We are wondering what is the matter.

PEP SQUAD NEWS

One of the biggest highlights of the football season came Friday night, with the coronation of the Football Queen, Billie V. Brown. Before the game the football boys lined up by the goal posts, and the Pep Squad marched through the posts and formed a football, in which the coronation took place. Then the queen and her attendants came out in a car, and their escorts took them to the middle of the football. Captain Bill Robertson escorted Her Majesty, Harold Harcastle escorted Pat Noah, Duane Bradford escorted Charlotte Weatherly, Richard Gaines escorted Georgia Ford, and Co-Captain Horace Ragan escorted Dorothy Esslinger. When Her Majesty was seated on the throne the Pep Squad formed a heart, (honoring the football Sweetheart). Then Bill crowned her "Football Queen of '48-'49". The Queen and her attendants were returned to the car and the Pep Squad marched off the field.

Every two minutes in this country a home burns. In the face of the nation's greatest housing shortage, we are burning more homes than at any other time in history.

STAND UP AND BE COUNTED!
VOTE
ELECTION NOV 2
Express YOUR OWN convictions

Only 8 Days Left To Save 3 Percent On Your '48 Taxes

The saving gained by paying now actually amounts to 12 percent on your money.

The Commissioners Court of Wheeler County has authorized the Tax Collector to give the discount on 1948 taxes as approved by the Legislature as follows:

- 3 PERCENT IF PAID DURING OCTOBER
- 2 PERCENT IF PAID DURING NOVEMBER
- 1 PERCENT IF PAID DURING DECEMBER

This discount applies to all state, county and common school district taxes.

If it isn't convenient for you to come to the office just mail your check in so it will reach us before October 31.

Any time we can be of service to you please feel free to call on us.

T. J. Daughtry
Tax Assessor-Collector of Wheeler County

Take the GOLD out of cold weather!

with **Dearborn**
THE WORLD'S FINEST, SAFEST GAS HEATER

We Have Dearborn Heaters In Stock For Both NATURAL & BUTANE GAS

Also Have Complete Line BATHROOM HEATERS

ERNEST LEE HARDWARE
Furniture - Rugs - Radios - Hardware

IT'S EGGS @ Per Bag of Feed That Count

PURINA LAYENA COMPLETE RATION MASH

When you Buy Purina you BUY EGGS!

Yes, it's pretty sure that the bag of feed that makes the most eggs is the bag that makes the most egg money. We recommend Purina as our best feed for results—come in and see how many eggs per bag some of our customers are getting!

WE RECOMMEND THESE TWO CHOWS... If it's EGGS you want!

FOR A COMPLETE RATION... **TO SUPPLEMENT GRAIN...**

Everything in one bag—nothing else to feed. For top egg production... for top quality eggs. Feed PURINA LAYENA.

Turn your grain into a balanced egg-maker. Low cost... high egg production. Feed your grain half and half with PURINA LAY CHOW.

PURINA LAYENA **PURINA LAY CHOW**

YOUR STORE WITH THE CHECKERBOARD SIGN

Listen to Eddie Arnold and the Checkerboard Jamboree Monday through Friday Over Radio Station KPND, Pampa, 12:45 PM.

Yes! We want you as Cream, Poultry and Eggs Customers.

WHEELER COUNTY PRODUCE ASS'N.
PHONE 142 P. O. BOX 93
WHEELER, TEXAS

Production Of Syrup, Honey Is Far Below Par This Year

During the war, there was a big shortage of sugar and folks in this country became heavy users of syrup, molasses and honey.

The pendulum is swinging back the other way now. This year, with a big supply of sugar, and prices going down, people just aren't using the honey and the syrup and the "lasses on the biscuits as much as they used to, says C. H. Bates, extension farm management specialist of Texas A. and M. College.

The beekeepers don't have as many bee colonies this year as they did last, so there won't be as much honey produced. Last year's production was the second highest on record, but this year, things are a little different... a downward trend in production. The making of sorghum syrup has been dropping off, too, for the past several years. This summer's drouthy weather has brought a further cut in sorghum syrup yields.

In the ribbon cane areas of Texas, the picture is still worse. Dry weather and reduced acreage of cane means a scanty production of cane syrup on farms in the eastern part of the State. The economists look for a decline in refiner's production of molasses and cane syrup from both domestic and Cuban supplies. Likewise, corn syrup production, which reached an all-time high last year, will be down to almost half as much this year.

So, for sweets of all types, it's a pretty spotty picture. But there's enough sugar in sight to keep prices to household and industrial users very near the present levels for the months ahead, says Bates.

Radio Program Will Originate From Station WTAW, College Station

On October 30, "The American Farmer", a coast to coast radio program, will originate in the studios of WTAW at College Station, from 11:30 a. m. to 12 noon.

"Conservation pays and soil building builds people" will be the theme of the broadcast over the American Broadcasting Company.

R. E. Dickson, superintendent of the Texas Agricultural Experiment Substation at Spur, will tell of 25 years of soil building and soil and water conservation at the Spur substation. Mr. and Mrs. Dale Stockton, of Enloe, Delta County, will give their story of soil building and what it has done for their family, their farm and

Save Steps With a Work Center

New appliances and home designs point toward greater household efficiency by concentrating most household jobs in a single work center.

The kitchen-laundry brings the food preparation, dishwashing, clothes washing, and even the ironing duties into one compact area, saving work, steps and time. Under this arrangement the family washing becomes a part of the day's routine instead of a separate job in a basement laundry.

The kitchen is a light and pleasant place to stand the weekly wash—and does not call for trips up and down basement stairs. Doing the laundry in the kitchen makes for a more efficient use of time since other jobs can be taken care of while clothes are swishing in the machine.

One of the newest appliances to meet the requirements of the kitchen-laundry is an "auto-magic sink" with built-in clothes and dishwasher. A three-way time and space saver, the 54-inch cabinet has a standard porcelain sink and a black linoleum-topped drainboard under which the washing units are located. Two interchangeable tubs—a stainless steel dish drum and a porcelain enamel clothes tub—are used for the washing operations.

For the three-meals-a-day dishwashing, the unit turns out clean dishes and silverware for a family of six in less than five

minutes. On washdays, a quick switch of the tubs converts the dishwasher to a clothes washer. The agitator type machine takes a load of about eight pounds. Clothes are washed, rinsed and spun dry without leaving the machine.



Three-way kitchen efficiency is offered by this sink with built-in clothes and dishwasher. A 54-inch modern cabinet is designed to fit into any kitchen plan.



Dishes for six can be washed in five minutes with dishwasher. One dial controls both clothes and dishwashing operations.



Dishwasher converts to clothes washing with a switch of tubs. The tub not in use is stored in space below the sink.

their community as a Farm Unit Demonstration. The Stocktons are farm unit demonstrators under the direction of County Agent L. M. Henley and County Home Demonstration Agent Geraldine Ashford, of Cooper.

Also taking part on the program will be Robert B. White, agricultural public relations director for ABC, D. A. Adams and Frances Arnold, extension radio editors of Texas A. and M. College. Adam and Miss Arnold regularly present the Texas Farm and Home Program and the Texas

A. and M. Farm Review. Research and extension specialists are helping to prepare the script.

If you have trouble with the fruit product rising to the top when you're canning, there's a reason for it. Fruit may float because the pack is too loose or the syrup is too heavy. Another reason may be that all the air in the fruit tissues may not have been cooked out.

Newspaper Advertising Pays!

The most copied car in America...

More than 103 new features and refinements! Two billion miles of driving by people like you who have proved Kaiser dependability. Why don't you drive America's most-copied car yourself and find out what more than a quarter of a million owners already know?



The 1949 KAISER

WARD BROS. MOTOR CO.

105 W. 12TH

SHAMROCK

Superb
COOKING PERFORMANCE

FOUR SPEEDY, WIDELY SPACED EFFLEX BURNERS

unexcelled
ON TOP

unexcelled
IN THE OVEN

NO GUESSWORK... AUTOMATICALLY CONTROLLED TEMPERATURES... HIGH SPEED, LOW TEMPERATURE LOOP TYPE BURNER

unexcelled
IN THE BROILER

HARDWICK Gas RANGES
FAMOUS FOR LOOKS... FAMOUS WITH COOKS

Wheeler Gas Co.

Wheeler, Texas

The curtain rises on
THE NEW FERGUSON TRACTOR

MORE POWER
MORE SPEEDS
AUTOMATIC HYDRAULIC OVERLOAD PROTECTION
HYDRAULIC IMPLEMENT CONTROL
FRONT WHEEL TREAD ADJUSTABLE
...
No other tractor combines ALL these features

FERGUSON TRACTOR AND OTHER FERGUSON EQUIPMENT

on Display NOW!
WARD BROS. MOTOR CO.

105 W. 12TH

SHAMROCK

CHEAPEST VAN

15c per line (count minimum charge, 4 charge 30c. Read the each insertion inch per week.

ADVERTISING: Publishing rate, 35c per or more used a

FOR SALE

1/2 section of 1 mile west and 2 m Dealer. Good water house. Fair out-buildi acres in cultivat grass. See C. W. 45-

es can now take y to the Ft. W. Amarello D Wichita Falls Re their respective an rate, new or rene

2 nice heifers

FIRST ON



BRISKET OR SHORT RIBS

CHOICE OR CUTLETS—S

AMERICAN OF LONGHORN

SALT RAGO

BROWN'S OR REI

ENNA SAUSA

ALL CANS ACKERAL ...

FLAT CANS ARDINE ...

FRESH FI & VEGETI

RED POTATO 10-lb. Bag ...

WASHINGTON DELICIOUS 10-88 size, 2-lb. Box ...

TEXAS ORANGE 5-lb. Bag ...

WHITE or YONION Pound ...

TOKAY G 2-lbs.

FRESH CRAW Pound ...

CABBAGE Lge. Head, 1

PUCK

SPECIALS

**CHEAPEST WAY TO BUY OR SELL
WANT ADS**

15c per line (counting 5 words to line) for first insertion; 10c per line after first time. Charge 30c. Reader ads scattered among local items in each insertion. Cards that run every week 30c per inch per week.

ADVERTISING—National rate, 42c an inch; Local advertising rate, 35c per column inch, 28c per inch when more used each week during calendar month.

FOR SALE
2 or 3 fresh and coming fresh cows. W. H. Templeton. 45-2tp.
FOR SALE—Large used Kelvinator refrigerator. Wheeler Radio & Refrigerator Service. 44-tfc.
10-oz. Cotton sacks, leather knee pads and cotton gloves, good supply on hand. Ernest Lee Hardware. 45-1tc.
FOR SALE—M. W. 10-in. ham-mill, good condition. 3 mi. west of Briscoe. 44-2tp.
FOR SALE—1 1/2-ton steel gran-ery and purebred Duroc boar.

Harvey Close. 45-1tp.
We can now insulate homes. See us for particulars. Wheeler Radio and Refrigerator Service. 34-tfc.
FOR SALE OR TRADE—1947 International pickup, 4-speed transmission, overload springs. Glen Porter. 45-tfc.
Will Pay \$3.50 for your old battery in on a new Delco or Willard Battery. Owen's Service Station. 42-tfc.
YOUNG'S MATTRESS FACTORY
New Mattresses of All Kinds Old Mattresses Renovated Free pickup and delivery Use Your Credit Rating Phone 3848, 112 N. Hobart, Pampa, Texas 44-5tp.
FOR SALE—6-ft. used Frigid-aire. Wheeler Radio & Refrigerator Service. 44-tfc.
FOR SALE—Second handed bathroom outfit, tub and commode. H. M. Wiley. 35-1tc.
If you need upholstery work done, call or write Fugate Upholstery Shop, Pampa, Texas, 610 N. Banks. Phone 1917-W. Free pick-up and delivery. 37-4tp.

MISCELLANEOUS
NO HUNTING on my place. Clyde Dukes. 45-6tp.
STRAYED—Three horses to Jewel Shaffer place 6 mi. south of Wheeler. Owner may have same by paying feed bill and keep and for this ad. 44-1tc.
NO HUNTING on my place. Vernon Hall. 45-6tp.
BRUCE & SONS TRANSFER
Local and long distance moving Best equipment and vans. We have plenty storage space. Phone 934 Pampa, Texas 48-tfc.
NO HUNTING on my place. J. R. Hall. 45-6tp.
LOST—Hurd Super Caster rod. Serial Number 47677. Reward when returned. Return to Times office. Noah Geyer. 43-3tp.
FOUND—Some child left a red and black plaid jacket at the Wheeler Drug about two weeks ago and failed to come back for it. Owner may have same by calling for it at the Wheeler Times office and paying for this ad. 45-tfc.
We can now do your cemetery work. Grave markers, covers, and curbing. Will Warren. Wheeler.

SCOTT'S SCRAP BOOK By R. J. SCOTT

THE MODERN HARP WAS BY NO MEANS AN EFFICIENT INSTRUMENT UNTILL PEPALS WERE INVENTED - AN INVENTION BY SEBASTIAN ERARD, WHOSE PATENT WAS TAKEN OUT IN 1795.

THE WORD ARTESIAN REFERS TO THE METHOD BY WHICH A WELL IS BORED, NOT TO WHETHER IT RUNS WATER.

HOW MANY TIMES IS THE ANT MENTIONED IN THE BIBLE?
TWICE - SHE IS COMMENDED ONCE FOR INDUSTRY AND ONCE FOR FORESIGHT.

THIS ENORMOUS SUNDIAL CONSTRUCTED OF REINFORCED CONCRETE TELLS THE TIME IN A SMALL PARK AT SAN FRANCISCO, CALIF. HERE IS AN ELECTRIC LAMP HANGING NEAR THE TOP OF THE STILE.

4-H CLUB NEWS
Briscoe Club

On October 19 the 4-H Club Girls of Briscoe met and elected their officers for the new club year.

Officers elected were: president, Jeanett Dixon; vice-president, Mary Riley; secretary, Joyce Helton; reporter, Patsy Tipps. Mrs. Ramsey will be sponsor of the club. Patsy Waters was elected program chairman, with Joyce Helton and Mary Riley as helpers.

FIRST ON OUR BALLOT—
FINE FOODS
REASONABLE PRICES

CHOICE MEATS

BRISKET OR SHORT RIBS OF BEEF 43c
CHOICE OR CUTLETS—SHORT STEAKS . 69c
AMERICAN OR LONGHORN CHEESE 49c
DRY SALT BACON 35c

ARMOUR'S PURE LARD
3-Pound Carton 79c

MRS. TUCKER'S SHORTENING
3-1/2 Pound Tin \$1.05

NO. 1 PINTO BEANS
100-Pound Bag \$9.00

FRESH FRUITS & VEGETABLES

RED POTATOES 50-lb. Bag \$1.79
WASHINGTON RED DELICIOUS APPLES 50-88 size, 2-lbs. 35c Box \$5.50
TEXAS ORANGES 5-lb. Bag 39c
WHITE or YELLOW ONIONS Pound 10c
TOKAY GRAPES 2-lbs. 25c
FRESH CRANBERRIES Pound 27c
CABBAGE Lge. Head, lb. 3c

PET MILK, 2 Tall Cons 29c
ARMOUR'S CHILI, tall can without beans 42c
SUNSHINE lb. Box KRISPY CRACKERS 25c
PUCKETT'S BEST—PURASNOW 25-lb. each MOTHER'S PRIDE FLOUR \$1.69
FOLGER'S COFFEE, pound 49c
AUNT JEMIMA CORN MEAL, 10-pounds 75c
OXYDOL, DUZ, VEL, each 33c
NEW SOAP Large Box ARMOUR'S PERK 33c

VAN CAMP Pork & Beans 2-1 lb. cans 25c
ROYAL GEM Tomato Juice 3 no. 2 cans 25c
GRAPELAND Tomatoes 2 no. 2 cans 25c
Naomi Cream Style Corn 2 no. 2 cans 25c

Alcoholics Anonymous offers help to men and women who have an honest desire to stop drinking. Write P. O. Box 589, Shamrock, Texas. 5-tfc.

ALCOHOL
PUBLIC enemy No. 1—
SHAMROCK MATTRESS FACTORY
Calls For and Delivers Have that old mattress made like new. One to two day service. Write Box 8 Phone 215 or Bring. Shamrock, Texas 43-tfc.

MOBETTIE HI-LIFE
(Continued from Page 4)
done during Fire Prevention Week. All were urged to visit the Pampa Fire Department and examine the Iron Lung and other equipment there.

The home talent part of the program consisted of the group singing "America", led by Mr. Aubrey Ruff with Mrs. Herk Atkins acting as pianist.
Maurea Godwin and Madge Patterson, accompanied by Mrs. J. R. Patterson added to the enjoyment of the program with their rendition of "The Bells of St. Mary."
Mrs. Patterson gave a history of the Texas P-T. A. stressing why we should become and enlist members for our P-T. A. "The rapid growth of the Texas Congress of P-T. A. since October 19, 1909, is due in a great measure to people who have pushed ideas and not self; who have worked side by side without heed to doctrines and creeds," concluded Mrs. Patterson.

Personal

Mr. and Mrs. Clyde Sprull of Tahoka and Mr. and Mrs. Buster Callan and children visited over the weekend in Pampa with Mr. and Mrs. F. E. Barnes.
O. L. Rankin and Jack Miller made a business trip to Amarillo Monday; Mrs. Rankin and Mrs. Miller shopped in Pampa.
Mr. and Mrs. Earl Barnes and daughters have returned after visiting with relatives in Wichita Falls.
Mr. and Mrs. Jimmy Swink and Mr. and Mrs. Charles Harris of Oklahoma City spent the weekend in Wheeler.

W. E. Pennington returned home Monday morning after a months vacation in Memphis, Tenn., Georgia and other points in Tennessee where he visited with relatives.
Miss Fannie Pillow of Lubbock was a guest over the weekend in the home of Mr. and Mrs. W. O. Carrick.
Mr. and Mrs. Carrol Pettit visited this past weekend with Mr. and Mrs. Harold Callan at Santa Rosa, N. M. Mrs. Callan returned home with them for a short visit with relatives here.
Mr. and Mrs. Darville E. Atherton and son, Arville Dean, and Mrs. Floyd Atherton attended military services for Royce E. Baker at Floydada Wednesday. Atherton and Baker were buddies in the States and went overseas together. Darville was wounded one day and Baker was killed the next

Three recommendations by the Executive committee were voted on and passed:
(1) A traveling attendance picture will be purchased and used again this year as it was last.
(2) The goals as set forth by the goals committee were accepted.
(3) A committee, appointed by the president, will investigate the needs at grade school and spend approximately \$100 there on equipment not usually paid for by the board.
Mrs. Brown and Mrs. Seitz's rooms tied on the grade count. "The home—a pattern for building sound character and moral values" will be the theme for the next meeting on November 11, 1948.

day in the Battle of Peleliu.
Mrs. Cordie Gill, of Shamrock is employed in the Wheeler Hospital.
Rev. and Mrs. M. B. Smith visited in the home of Mr. and Mrs. Paul Green Sunday afternoon.
Mr. and Mrs. George Bradstreet of near Briscoe visited in the home of his brother, Marvin Bradstreet.
Mr. and Mrs. Elmer Byers of Pampa visited in the home of her parents, Mr. and Mrs. J. F. Cook Tuesday night.

STILL HAVE GRAIN SORGHUM STORAGE SPACE AVAILABLE

Government loan price on warehouse stored grain will net the farmer about \$2.10 per hundred after all expenses are paid provided the grain is No. 2 and has a moisture content of less than

13 PERCENT

Anyone wishing storage space in the elevator should get in contact with Willard Godwin at Mobettie within the next few days.

KIMBELL ELEVATOR
WILLARD GODWIN, Mgr. Mobettie, Texas

NOTICE!

Our Bread does not contain a chemical, Drug or dope of any kind to make it stay soft a day longer.

For a Pure Loaf of Bread try "HOME MADE"

WHEELER BAKERY
Phone 117

Mile-A-Minute Marty By DEKLE BROTHERS MOTOR CO.

GREAT NEWS-POLLY-I'VE BEEN HIRED TO WRITE SOME POETRY FOR Dekle Bros. Motor Co.
I WROTE ONE ABOUT AREAL EXPERIENCE!
LET'S HEAR SOME OF YOUR POETRY...
WHERE CAN I GO SAID EZRA SNOW- TO BUY A CAR THAT'S FULL O' PEP- ONE THAT'LL GO LIKE AN ARROW'S DART- WHEN ON TH' GAS I STEP-
HELLO POLLY DEAR- I BROUGHT HIM HERE- AND WHAT A BARGAIN HE GOT!

We have a few inexpensive used cars available—ideal for cotton pickers; several late models—good buys; and a few practically new used pickups. Come in today—you'll find a used car to suit your needs.

PLYMOUTH PHONE 70
DODGE SALES & SERVICE SHAMROCK DODGE TRUCKS TEXAS 211 W. HIWAY 66

Dekle Brothers Motor Company
We Repair All Makes Of Cars

PUCKETT'S FOOD MARKET
SPECIALS FOR FRIDAY AND SATURDAY, OCTOBER 22 & 23

LEGAL NOTICE

CITATION BY PUBLICATION THE STATE OF TEXAS COUNTY OF WHEELER

In the Name and by the Authority
of The State of Texas

To:
J. W. McQuady; E. A. Taylor;
S. I. Eaves; W. S. Hargrove &
Jas. D. Sory, if living, whose
residences are each and all
unknown, and each and all of
the heirs and legal representatives
of such of the above named
parties who may be deceased,
whose name and residence are
unknown, and the respective
unknown heirs and legal
representatives of all the
above named parties, and their
heirs and legal representatives,
the unknown owner or owners
of the hereinafter described
property and their heirs and
legal representatives, whose
names and places of residence
are unknown, and any and
all other persons, including
adverse claimants, owning or
having an interest in or lien
upon the hereinafter described
property delinquent to
plaintiffs herein for taxes.

YOU ARE HEREBY NOTIFIED
that suit has been brought
and is now pending in the Honorable

able District Court, 31 Judicial
District, Wheeler County, Texas,
wherein The State of Texas and
county of Wheeler are plaintiffs;
The City of Shamrock and Sham-
rock Independent School District
are impleaded party defendants;
and J. W. McQuady; E. A. Taylor;
S. I. Eaves; W. S. Hargrove, and
Jas. D. Sory, if living, and if dead
their unknown heirs and legal
representatives are defendants, by
the filing by said plaintiffs of a
petition, on the 13 day of October,
1948 and the file number of said
suit being No. 3948 and the nature
of which is a suit to collect de-
linquent ad valorem taxes on the
following described property, to-wit:

All of Lots 13 to 20 inclusive
in Block XIX of the City of
Shamrock, Wheeler County,
Texas, according to the re-
corded map or plat of such
city in the office of the county
clerk, said county.

together with interest, penalties,
costs, charges, and expenses of
suit which have accrued and which
may legally accrue thereon.

The amount of taxes due each
plaintiff, exclusive of interest,
penalties and costs is as follows:
State of Texas and County of
Wheeler, \$205.44.

The names of all taxing units
which assess and collect taxes on

said property not made party to
this suit are none.

Plaintiff and all other taxing
units who may set up their tax
claims herein seek recovery of de-
linquent ad valorem taxes on the
property hereinabove described,
and in addition to the taxes all in-
terest, penalties, and costs allowed
by law thereon up to and includ-
ing the day of judgment herein,
and the establishment and fore-
closure of liens, if any, securing
the payment of same as provided
by law.

All parties to this suit, includ-
ing plaintiff, defendants, and in-
tervenors, shall take notice that
claims not only for any taxes
which were delinquent on said
property at the time this suit was
filed but all taxes becoming de-
linquent thereon at any time
hereafter up to the day of judg-
ment, including all interest, pen-
alties, and costs allowed by law
thereon, may, upon request there-
for, be recovered herein without
further citation or notice to any
parties herein, and all said parties
shall take notice of and plead and
answer to all claims and pleadings
now on file and which may here-
after be filed in said cause by
all other parties herein, and all of
those taxing units above named
who may intervene herein and set
up their respective tax claims
against said property.

You are hereby commanded to
appear and defend such suit on the
first Monday after the expiration
of forty-two (42) days from and
after the date of issuance hereof,
the same being the 29 day of Nov-
ember, A. D. 1948 (which is the
return day of such citation), be-
fore the honorable District Court of
Wheeler County, Texas, to be held
at the courthouse thereof, then
and there to show cause why
judgment shall not be rendered
for such taxes, penalties, interest,
and costs, and condemning said
property and ordering foreclosure
of the constitutional and statutory
tax liens thereon for taxes due
the plaintiff and the taxing units
parties hereto, and those who may
intervene herein, together with all
interest, penalties, and costs allowed
by law up to and including the
day of judgment herein, and all
costs of this suit.

Issued and given under my hand
and seal of said court in the City
of Wheeler, Wheeler County, Tex-
as, this 13 day of October, A. D.
1948.

(SEAL)
CHRISTOPHER S. McCLAIN
Clerk of the District Court
Wheeler County, Texas,
31 Judicial District
44-21c.

ALLISON ANTELOPES

(Published by the students of
Allison High School)

This week has been hard for
most of us including teachers, be-
cause it has been six weeks tests.

The junior class is showing the
seniors that they can be patient
too. "Oh" why won't those rings
and pictures come?

The youth center is meeting
twice a month now. They have
just received table tennis sets, but
were unable to play because of
the lack of tables.

WONDER WHY
John Jay is such a pest?

1st day of November 1948, the day
set for hearing by the court in
order duly issued when said ac-
count and application will be con-
sidered by the court.

Witness: Harry Wofford, Clerk
of the County Court, Wheeler
County, Texas.

Given under my hand and seal
of said court at my office in
Wheeler, Texas, this 18th day
of October 1948.

HARRY WOFFORD
Clerk of the County Court
Wheeler County, Texas
By Betty Jo Penleton, Deputy
45-11c.

Jo Spruill and Curtis Boydston
have fights over the typewriter?
Lou Anna and Katy had to copy
the Constitution?

Nearly every one fails in
science?

Bessie Jo is always talking
about a certain Delton?
Every one was looking so dumb
Wednesday morning?

Ray Ault wanted a picture of a
certain sophomore girl?

Ernest Dale and John Jay are
always wanting notebook paper
bands?

Glenna Sue was mad Tuesday
night?

Laura's hair always looks so
pretty?

Troy Dean liked to dance with
a certain girl at the Youth Cen-
ter?

Ray was driving a pretty car
Tuesday night?

Johnny was sitting in the car
with two girls Tuesday night.
What about that Edna and Lou
Anna?

You can keep peaches or other
light colored fruit from turning
dark when preparing them for
canning by dropping the peeled
fruit into a salt and vinegar solu-
tion. The proportions are two
tablespoons of vinegar and two
tablespoons of salt to each gallon
of water used.

PAY YOUR SUBSCRIPTION
TO WHEELER TIMES NOW!

LEGAL NOTICE

CITATION BY PUBLICATION THE STATE OF TEXAS

To:
R. B. Rogers and Mrs. R. B.
Rogers; J. B. Anderson and
Mrs. J. B. Anderson; L. J.
Nix and Mrs. L. J. Nix and
Luke Flynn; if living, and if
dead, the unknown heirs and
legal representatives of such
of the above named persons
who may be deceased.

GREETINGS:
You are commanded to appear
and answer the plaintiff's petition
at or before 10 o'clock A. M. of
the first Monday after the expira-
tion of 42 days from the date of
issuance of this Citation, the same
being Monday the 29 day of Nov-
ember, A. D. 1948, at or before
10 o'clock A. M. before the Hon-
orable District Court of Wheeler
County at the Court House in
Wheeler, Texas.

Said plaintiff's petition was
filed on the 11 day of October,
1948.

The file number of said suit
being No. 3947.

The names of the parties in said
suit are: C. E. Jackson, as Plain-
tiff, and R. B. Rogers and Mrs.
R. B. Rogers; J. B. Anderson and
Mrs. J. B. Anderson; L. J. Nix and
Mrs. L. J. Nix; and Luke Flynn,
if living, and each and all of the

unknown heirs and legal
representatives of such as may
cease, as Defendants.

The nature of said suit is
substantially as follows:
Suit in trespass to try
title to all of the land
of Section No. 63 in
No. A-7, H&G RR. Co.
veys in Wheeler County,
Texas, save and except an
undivided interest in an
eighth of all minerals in and
under such land. Contain-
ing 160 acres of land, more or
less. Issued this 11 day of
October, 1948.

Given under my hand and
seal of said Court, at office in
Wheeler, Texas, this 11 day of
October, A. D. 1948.

(SEAL)
CHRISTOPHER S. McCLAIN
Clerk, District Court
Wheeler County, Tex.
44-21c.

Peace and harmony in
city—begin at home. Fam-
mony is the foundation of
harmony and peace.

STAND UP AND BE
VOTED
Express YOUR OWN


More Case Tractors Will Be Coming



12 MODELS ... Come in and See About the Size and Type to Fit Your Farm

MODERN SHOP SERVICE • MODERN PARTS DEPARTMENT

NASH APPLIANCE & SUPPLY CO.



WHAT WAS YOUR PROFIT LAST MONTH?

S R C

SIMPLIFIED RECORD CONTROL

THE MODERN BUSINESS AND TAX RECORD

The S-R-C System gives you a day by day picture of your business

QUICKLY • ACCURATELY • INEXPENSIVELY

- Spend less time posting to your permanent records
- Spend less time reviewing your current business
- Spend less time closing your books at end of month
- Save on your Income Tax. Avoid costly tax errors.
- Have all income tax figures immediately available

Do It Yourself With The Famous
SIMPLIFIED RECORD CONTROL

For information write or call
The Wheeler Times

LEGAL NOTICE

NOTICE BY PUBLICATION OF FINAL ACCOUNT THE STATE OF TEXAS NO. 655

To the Sheriff or any constable of
Wheeler County—Greetings:

Van Purcell guardian of the
estate of Peggy Stewart and Helen
Stewart having filed in the county
Court his final account of the
condition of the estate of the said
minors Helen Stewart and Peggy
Stewart, together with his applica-
tion to be discharged from said
guardianship trust.

You are hereby commanded that
by publication of this Writ for ten
days and not less than ten days
before the return day hereof, said
application to be published in a
newspaper regularly published in
Wheeler County, Texas, you give
due notice to all persons interest-
ed in the account for final settle-
ment of said estates, to file
their objections thereto, if any
they have, in said County Court
of Wheeler County, Texas, on the

DEMOCRATS ... STATES' RIGHTERS ... REPUBLICANS

WE ALL WANT TO VOTE...
We All Want To Vote For
JACK PORTER!

We can!
Article 2981 of the Laws of Texas
(Enacted 1905) specifically
provides for the voting of a
split ticket in a GENERAL
ELECTION.
Scratch all candidates for U. S.
Senator except the name of
JACK PORTER. Your vote will
be counted, and your choice for
Senator, JACK PORTER, will
be seated.

The so-called loyalty pledge
does not apply to the election
on November 2. It is a GEN-
ERAL ELECTION all over the
United States. It is NOT a
state primary.
This has been so held by our
courts and by the Texas At-
torney General's Department
for years past.

(Pol. Adv. paid for by Porter
for Senate Committee, Lloyd
Wheelock, Chairman.)

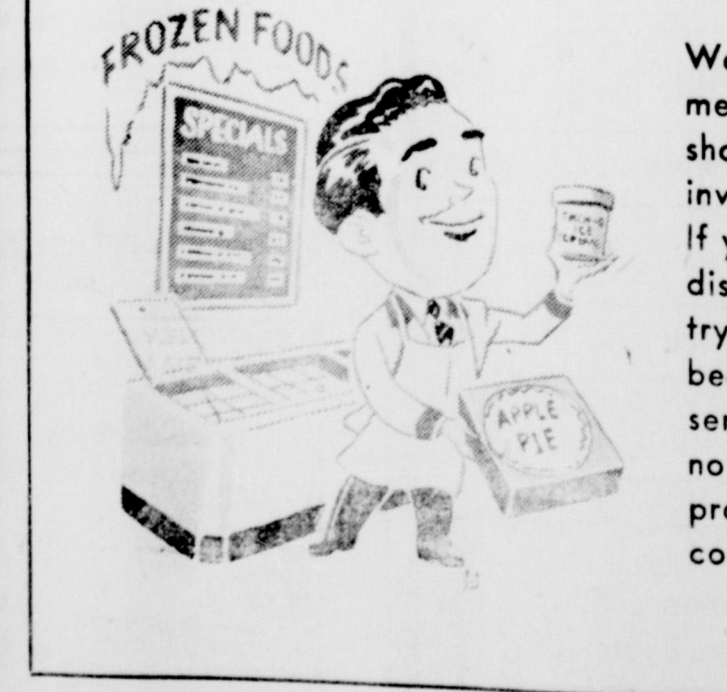
SPECIAL ANNOUNCEMENT

WE HAVE RECENTLY COMPLETED OUR PLANT FOR CUSTOM CURING MEATS

We have recently completed our pork
curing department, having installed the
best equipment available to do a good
job for controlled curing. We are using
the artery pump system under the super-
vision of the Griffith Laboratories of
Chicago. This is the same as used by
many large packing houses and we can
give you any style cure you wish—from
the Mild Flavorful Commercial Type

Hams to the Long Keeping Country
Style Hams, all of which are smoked
after curing with genuine HICKORY
smoke. We also have complete slaugh-
tering facilities. We also will grind the
sausage and render lard. This service is
offered the general public as well as our
locker customers. Please ask for instruc-
tions before bringing pork in.

FOOD LOCKERS



We still have a few lockers available. Govern-
ment forecasts predict increased prices and
shortages of beef. If you haven't had a locker,
investigate this modern way of preserving meat.
If you have had a locker before and have been
disappointed in some respect we invite you to
try us again as our equipment and methods have
been modernized to enable us to give first-class
service. The rates are reasonable, there has been
no increase since the system was installed, and
probably is the only item connected with the
cost of living which has not increased in price.

WHEELER LOCKER

PHONE 164 WHEELER, TEXAS

LEGAL NOTICE

BY PUBLICATION
STATE OF TEXAS
COUNTY OF WHEELER

and by the Authority
of Texas

all other persons, including adverse claimants, owning, or having, or claiming any legal or equitable interest in or lien upon the hereinafter described property delinquent to plaintiffs herein for taxes.

YOU ARE HEREBY NOTIFIED that suit has been brought and is now pending in the Honorable District Court, 31 Judicial District, Wheeler County, Texas, wherein The State of Texas and County of Wheeler are plaintiffs; and Shamrock Independent School District and the City of Shamrock are impleaded party defendants; and W. H. Moore, if living and if dead his unknown heirs and legal representatives are defendants, by the filing by said plaintiffs of a petition on the 13 day of October, 1948 and the file number of said suit being No. 3949 and the nature of which is a suit to collect delinquent ad valorem taxes on the

following described property, to-wit:
All of Lot No. 2, Block No. 33, of the original town of Shamrock, Wheeler County, Texas according to the recorded map or plat of such town in the office of the county clerk, said county and state.

Together with interest, penalties, costs, charges, and expenses of suit which have accrued and which may legally accrue thereon. The amount of taxes due each plaintiff, exclusive of interest, penalties and casts is as follows: State of Texas and County of Wheeler, \$133.85.

The names of all taxing units which assess and collect taxes on said property not made party to this suit are none.

Plaintiff and all other taxing units who may set up their tax claims herein seek recovery of delinquent ad valorem taxes on the

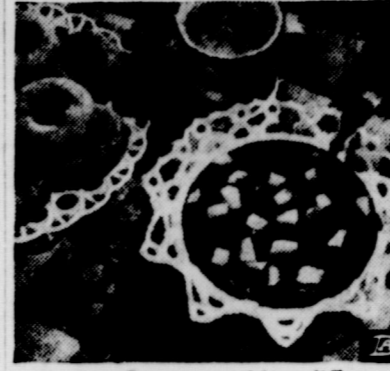
property hereinabove described, and in addition to the taxes all interest, penalties, and costs allowed by law thereon up to and including the day of judgment herein, and the establishment and foreclosure of liens, if any, securing the payment of same, as provided by law.

All parties to this suit, including plaintiff, defendants, and intervenors, shall take notice that claims not only for any taxes which were delinquent on said property at the time this suit was filed but all taxes becoming delinquent thereon at any time thereafter up to the day of judgment, including all interest, penalties, and costs allowed by law thereon, may, upon request therefor, be recovered herein without further citation or notice to any parties herein, and all said parties shall take notice of and plead and answer to all claims and pleadings

now on file and which may hereafter be filed in said cause by all other parties herein, and all of those taxing units above named who may intervene herein and set up their respective tax claims against said property.

You are hereby commanded to appear and defend such suit on the first Monday after the expiration of forty-two (42) days from and after the date of issuance hereof, the same being the 29 day of November, A. D. 1948 (which is the return day of such citation), before the honorable District Court of Wheeler County, Texas, to be held at the courthouse thereof, then and there to show cause why judgment shall not be rendered for such taxes, penalties, interest, and costs, and condemning said property and ordering foreclosure of the constitutional and statutory tax liens thereon for taxes due the plaintiff and the

FRESH CRANBERRIES SATISFY APPETITES



Looking for something different to satisfy the family's cold weather appetites? Serve fresh cranberries as a relish with the roast, chicken or favorite meat loaf. Or try them in a dessert, or as a snack or sandwich spread. You'll find the versatile little red berries pep up menus as soon as they appear on the table. Here's a snack-time idea that meets with approval—a big bowl of Cranberry Applesauce, mugs of hot chocolate or coffee and a heaping plate of doughnuts or your favorite hot bread. The gang will cheer when you serve this colorful menu after the skating party.

CRANBERRY APPLESAUCE
2 cups sugar
2 cups water
2 apples, peeled and cubed
4 cups fresh cranberries

Boil sugar and water together 5 minutes. Add cubed apples and cook for about 5 minutes or until apple cubes are soft, but not mushy. Add washed cranberries and cook without stirring until all the skins pop open—about 5 minutes. Cool in saucepan. Makes about 1½ quarts sauce.

CRANBERRY-ORANGE RELISH
4 cups fresh cranberries
2 oranges, quartered and seeded
2 cups sugar

Put cranberries and orange quarters through food chopper. Add sugar and mix well. Chill in refrigerator a few hours before serving. Makes 1 quart relish. This sauce will keep in the refrigerator for several weeks.

taxing units parties hereto, and those who may intervene herein.

ROGUE THEATRE

FRIDAY AND SATURDAY—
"Code of the Saddle"
—starring—
Johnny Mack Brown

REVUE SATURDAY NIGHT—
SUNDAY AND MONDAY

Mary O'Hara's
"Green Grass of Wyoming"

WEDNESDAY AND THURSDAY—
"Gentleman's Agreement"
—starring—
Gregory Peck, Dorothy McGuire and John Garfield

together with all interest, penalties, and costs allowed by law up to and including the day of judgment herein, and all costs of this suit.

Issued and given under my hand and seal of said court in the City of Wheeler, Wheeler County, Texas, this 13 day of October, A. D. 1948.

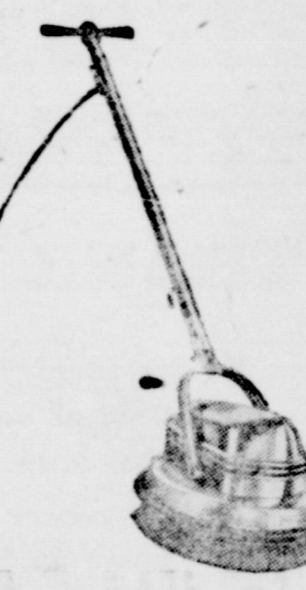
(SEAL)
CHRISTOPHER S. McCLAIN
Clerk of the District Court
Wheeler County, Texas
31 Judicial District
44-2tc



BOYS IN THE ARMED SERVICES BOUGHT 35,958 SPECIAL BONDS DURING 1947.

Buy SECURITY BONDS Now!

POLISH YOUR OWN FLOORS



Polish your own floors. Rent Our High-Speed polishing and scrubbing equipment. Easily handled by women.

NASH APPLIANCE & SUPPLY CO.
WHEELER, TEXAS



What does the Future hold?

What does the future hold for you and yours? Does it hold war, depression, hunger, unrest, strife? All these can befall us, but they need not.

One sentence, written in Philadelphia, gives us assurance: "To establish and maintain peace, to build a country in which every citizen can earn a good living with the promise of real progress for himself and his family, and to uphold a beacon light for mankind everywhere, the inspiring tradition of liberty, opportunity and justice for all"*. . .

That is our platform for this hour of need. That is the platform of Thomas E. Dewey and Earl Warren. Pledges are as good as the men who make them. Dewey and Warren are men of action rather than words. They have proved their capability, their

courage, their integrity. Contrast the fruits of their work with the disunity, discord and distrust in high offices in Washington today.

Your job, your health, everything you own, the welfare of your children, their very lives, depend on sound national government. Dewey and Warren have dedicated themselves to achieve that kind of government for us. Our acceptance will be recorded by the ballots we cast for them on November second.

Let us resolve with them to meet the challenge of the future "with continuing faith in Almighty God; united in the spirit of brotherhood; and using to the full the skills, resources and blessings of liberty with which we are endowed"*. . .

*The Republican Platform

**Join a Great Team—
Elect
DEWEY and WARREN**

THIS SPACE BOUGHT AND PAID FOR BY
OF THE DEWEY-WARREN TICKETWHEELER COUNTY SUPPORTERS



OUR SHOP SERVICE WILL SAVE YOU MONEY!

Your tractor and farm machines—you want them fixed in the shop of course, instead of in the field, where breakdowns and delays are expensive. Our shop service will put your farm equipment in tip-top running order, ahead of season. Pre-season servicing is the stitch in time that prevents costly field breakdowns and delays. Saves money, too.

Help us to help you! Call us now, or drop in and arrange a date for us to give your machines our top-quality shop treatment.

You'll get an economical job, and an expert job—a job done by trained servicemen using the latest equipment and factory-approved methods.

Call us or see us at once for a date to put your equipment in shape ahead of season.

HIBLER IMPLEMENT CO.
PHONE 151
WHEELER TEX.



SOCIETY

Seedig-Cole Vows Are Read At Home Of Bride

Miss Clara Helen Seedig, daughter of Mr. and Mrs. Emil Seedig of Briscoe, Texas, became the bride of Everett Cole, son of Mr. and Mrs. Hub Cole of Wheeler, in the home of the bride's parents, Thursday, October 14, 1948, at 2:00 p. m. Rev. Leonard Field read the impressive double ring ceremony.

The bride, given in marriage by her father, wore a grey metal grey dress with black accessories. Her bridal bouquet was of red roses.

Mrs. Alvis Hefley attended her sister as matron of honor. She wore a grey dress with black accessories and her corsage was of deep pink carnations.

Miss Marie Finsterwald attended as the bride's bridesmaid. She wore a grey gabardine suit with black and white accessories. Her corsage was of light pink carnations.

John M. Wright served the groom as best man and Hub Cole served his son as groomsmen.

Mrs. Seedig chose a navy blue dress with black accessories for her daughters' wedding. Her corsage was of white gardenias. Mrs. Cole also wore a navy blue dress with black accessories and her corsage was of white gardenias.

Mrs. Cole is a graduate of the Insko High School and attended college at Hardin-Simmons University in Abilene. She was recently employed by the Shamrock General Hospital. Mr. Cole is a graduate of the Wheeler High

School and served with the U. S. Navy during World War II. The young couple will make their home near Wheeler where the groom is engaged in farming.

Baptists Juniors Enjoy Party Monday Night

The Baptist Junior Training Union enjoyed an evening of fun and merriment Monday in the home of Mrs. Florence Meadows.

Those present and enjoying the evening were: their leader, Br. M. B. Smith; Paula Green, Sue Waters, Harold Green, Jaunita Sanders, Sylvia Smith, MaAlyn Smith, Janet Jane, Donna Speck, Patsy Burgess, Don Meadows, Don Hardcastle and Mrs. Fred Waters, Mrs. Paul Green and the hostess, Mrs. Florence Meadows.

Mrs. Howell Hostess Thursday Review Club

The Thursday Review Club met Thursday night, October 14, 1948, in the home of Mrs. J. C. Howell.

Mrs. R. J. Holt, Jr., vice-president, was in charge of the business session. Mrs. James Clepper was leader of the program and gave a talk entitled "History of General Federation". A short talk entitled "What is the General Federation of Women's Clubs?" was given by Mrs. Buster Callan and "Growth of Junior Movement" was given by Miss Louise Tillman.

Lovely refreshments were served to the following: Mesdames Buster Callan, Carroll Pettit, Har-

AT BERLIN BLOCKADE PARLEY SCENE



ARRIVING AT THE BERLIN meetings of the four Military Governors, who have been wrestling with the problem of lifting the Russian blockade, Marshal Vassily D. Sokolovsky (left, top) sits solemnly in his car. Known as the "Soviet boss" of Berlin, Sokolovsky walked out on the meetings some time ago—but returned. At bottom, a crowd begins to gather outside the Allied Control Council headquarters as cars of the conferees and their assistants drive past. (International)

YOU'RE TELLING ME!

By WILLIAM RITT
Central Press Writer

STATISTICS show Americans smoked 345,000,000 cigarettes during the last year. No wonder so many of your pals seem to be walking around in a fog!

To tobacco companies the present great demand for fags must seem simply puffery.

The luxury industry is one of our biggest. There's gold in them thar hills.

Los Alamos atom plant employees quit to "go fishin'" when 115 non-union workers were

hired. It seems they don't want to do any fission with non-union help.

Montreal, Canada, reports a series of butter burglaries. A new kind of yellow peril?

Defendant hurled a Bible at an Australian judge. His honor threw the writ right back—jail for contempt.

In Tokyo 1,200 race horses have contracted sleeping sickness. Betcha Dollar Dier says win, place and show should go to the first three nags to wake up.

Dobbs have spent the last several years in Nuenberg, Germany where he was a lawyer in the war crimes and she a Red Cross secretary. Mrs. Dobbs will be remembered by her many friends in Wheeler as Miss Bettye Finsterwald.

Mrs. Burley Mann and daughter LaJune visited her parents, Mr. and Mrs. W. L. Leechman of Paradise, Texas, the past week. They visited with her son, R. B. Mann, who met them in Dallas where they enjoyed the Fair. They also visited the R. C. Mann family in Wichita Falls.

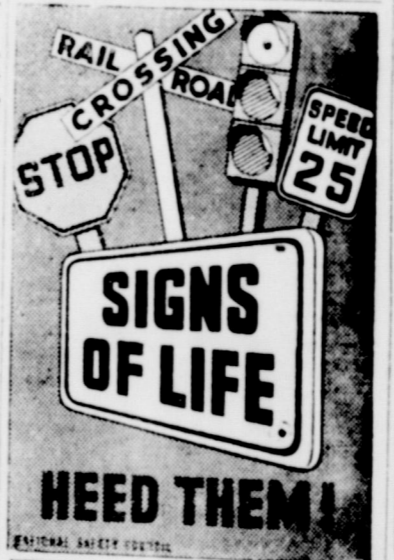
Mrs. John Wright is home after having visited the past two weeks with relatives in Tennessee.

Mr. and Mrs. Herbert Whitener and Mrs. J. M. Lawrence were in Amarillo Monday.

Misses LaVerne Finsterwald and Nannette Tyson who are attending college at Abilene spent the past weekend with their parents, Mr. and Mrs. Herbert Finsterwald, and Mr. and Mrs. N. J. Tyson.

WRIGHTS VISIT TENNESSEE

Mr. and Mrs. John Wright have just returned from a visit to Arkansas and Tennessee and Mrs. Wright brought us in a sample of the tobacco which is raised in Tennessee. The two samples of tobacco which Mrs. Wright left on



THANK YOU FOLKS

We are sorry that we could not accommodate all our customers during our short stay here.

For that reason we are going to be back home in Wheeler first part of December for another 10 days. So our customers will be able to have all their Xmas photographs taken at that time. Please watch this paper for exact date.

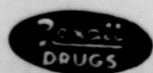


EVERYTHING FOR HALLOWE'EN

Yes, we have everything you might need to make your HALLOWE'EN Celebration complete... MASKS... NOISE MAKERS... PARTY DECORATIONS... KING'S BOXED CHOCOLATES, put up in special Halloween packages.

Come in and look over our large display of Halloween merchandise.

CITY DRUG STORE



HERE'S Real Economy IN FEED MAKING



Feed-making costs hit a new low when you belt up your tractor to a money-saving John Deere Feed Mill. You'll turn out more feed per hour with less power—convert your home-grown crops into more palatable feeds that go farther, require less work in handling, less storage space.

With a complete and modern line of John Deere Hammer Mills and Roughage Mills and Feed Grinders—the four-in-one mills that work as a straight chopper, an ensilage cutter, a combination chopper and hammer mill, or a straight hammer mill.

For all-around feed making, you can't beat the John Deere No. 114-A or No. 110-A Roughage Mills and Feed Grinders—the four-in-one mills that work as a straight chopper, an ensilage cutter, a combination chopper and hammer mill, or a straight hammer mill.

Big capacity, governor-controlled traveling feed table... lawn-mower type cutterhead that cuts fast and clean... heavy-duty grinding unit... and dust-tight feed collector are outstanding features.

HOLDEMAN IMPLEMENT CO.

PHONE 143

WHEELER

JOHN DEERE MILLS

LOCAL NEWS ITEMS

Mrs. E. E. Meek and Mrs. Frank Cocks are in the Wheeler Hospital suffering from bruises and sprains due to a car wreck Sunday afternoon on highway 83 about five miles north of Wheeler which involved the cars of E. E. Meek, Frank Cocks and Jesse Sweetman.

WCS Hold Meeting At Church Monday

The W.C.S. met at the Methodist Church Monday, with the meeting being opened by the group singing "Love Divine".

Mrs. J. W. Barr reviewed Alaska from the Study Book "On Our Own Door Step", and also gave a brief summary on Hawaii, Panama Canal Zone, Virgin Islands and Puerto Rico.

Those present were: Mesdames C. J. Meek, Wren, J. M. Porter, Hazel Davidson and J. W. Barr. The meeting was dismissed with a prayer by Mrs. Wren.

Mr. and Mrs. C. A. Peterman, who were enroute from Shamrock to Santa Rosa, N. M. to make their home, spent Sunday night with Mr. and Mrs. Buster Callan and children.

Mr. and Mrs. Eugene H. Dobbs of New York City, N. Y. have been visiting her father, A. Finsterwald. At present they are visiting her sister Mrs. Jack Knight at Albuquerque, N. M. Mr. and Mrs.

Enhance Your Natural Beauty



... with Richard Hudnut's famous DuBarry Cosmetics. At this season of the year when we are stepping from autumn into winter, changing weather conditions require different preparations for proper skin care... and we have the correct DUBARRY Creams, colorings, lotions and other beauty items you will be needing. Check your supplies now and replace items you may be needing.

WHEELER DRUG STORE

PHONE 11

WHEE

WINTER WORK CLOTHES

MEN'S MOLESKIN PANTS

Ideal For Winter

All Sizes 29 to 50

PAIR \$3.98

AGAIN

100% WOOL GOODS

PLAIDS & SOLIDS

YARD \$1.98

MEN'S ARMY CLOTH KAKA

Type One—Cramerton Cloth

\$8.98 SUIT

There is no better Grade or Brand Well made—Correctly sized—Sanforized

GOOD ALL LEATHER COWBOY BOOTS

For Big Boys that wear men's sizes

PAIR \$12.50

RUSS VARIETY

Wheeler, Texas

Home Paper

The Voice of Wheeler County

NUMBER 46

SURVEY RESULTS GIVEN ANTI-UNITARIAN

County ran a close Victoria for participation in recent state-wide tuberculosis testing, according to a letter received this week.

And yet they continue to raise their heads for the farms for the lower. The reasons given by farm organizations and other groups interested in farm life, concludes.

Chaperon your eyes let it go out alone!

X-rayed, 3,255 test negative, 32 were definite, 44 were of a suspicious nature, 39 other diseases were of the tests and were ruined because of trouble.

MS non-readable film used at Mobeetic, be electrical technicians' control.

Dr. Howard E. Smith, County Sanitarian W. R. Dr. Howard E. Smith of the Tuberculosis Division, State Health Department.

population of 8,500, 65 people were X-rayed. Wheeler and Moore counties were the week of September 14-15. Some 6,275 of the population were eligible for the test after 25 percent of the eligible population were X-rayed.

Results of the Wheeler mass X-ray survey, matter of record. You which you supplied us, population of Wheeler County 8,500, the following referred for your information.

X-rayed, 3,655; population 25 percent of the were held ineligible were under the 6,375 people County who were eligible or 57 percent of population were X-rayed considerably good and there is no doubt that it will start planned on Last Page.

Chapter Initiative Members At M

Wheeler F. F. A. receding to initiate the g new members joining this year. After the each new member to a coke.

the meeting, the s contest was discussed for it to end was until November 16. contestants so far ar Georgia Ford and . The winner will t at a pie supper spot F. F. A. Chapter of V

here A

Proposed amendments Constitution are general election ba on November 2. ing of the descrip tions, as public lot, fails to make c ter the meaning ar of all of the amendm in brief form, is a amendments in th they will appear and a brief descri tion of each: County Insurance amendment 1: Auth to provide 's compensation insu ing the right to p own insurance risk, ty employees, ty employees are by insurance for may sustain on the