

THE WHEELER TIMES

(USPS #81-960)
VOLUME 74, NUMBER 5

THURSDAY, JANUARY 17, 2008

SINGLE COPY 50c

"Wheeler, town of friendship and pride."

Family Center Ground Breaking Set

CWE CHAT WITH EDITOR
By Louis C. Stas

\$200,000 Additional Monies Are Needed

CONGRATULATIONS, Jared Messer for having been named to the *Amarillo Globe-News* "Athlete of the Week Honor Roll". Jared is a junior.

More good news this week! The Wheeler Area Activities & Improvement Council, Inc. met with the commissioners to set a date for the groundbreaking for the Wheeler County Agriculture & Family Center.

Monday, January 28, 2008, is the date set for the groundbreaking.

This project has been 'in the mill' for some time. The group has raised over a million dollars to bring this dream to a reality.

STORM REPORT

As Reported By... Stormie Menwether Pre-Kindergarten

Whew... I got my tonsils out. That's it!
I had an IV in my arm. It didn't hurt. I told the nurse, "I don't want a shot!" She said, "I will put it in you IV; it won't hurt." She put it in. I said, "OUCH!" We laughed and laughed. I was just teasing.

The Wheeler Area Activities & Improvements Council, Inc., met with the commissioners on Monday, January 14, 2008, prior to the regular meeting of the Wheeler County Commissioners' Court.

The W.A.A.I.C., Inc. presented the plans for the proposed Wheeler County Ag & Family Center. The plans, floor plan and elevations are a revision of previously presented drawings.

The group has the money needed to build the structure and groundbreaking has been set for Monday, January 28, 2007. An additional \$200,000 is needed for the "finishing touches"—sound system, floor coverings, stage curtains, furnishings, etc.

Sub-contractors' bids are being taken and are due back to the general contractor by January 22, 2008.

The general contractor will submit construction bids January 25, 2008.

Groundbreaking is set for January 28, 2008 at 10:30 a.m.

Construction is to be completed by November 14, 2008.

Ownership of the structure will be transferred to the County of Wheeler on November 21, 2008.

Open House for the Wheeler County Ag and Family Center will be December 6-7, 2008.

The outside dimensions of the family center are 110'x100'. The location is on the west side of the

Wheeler County Show Barn at the north edge of Wheeler city limits. A small meeting room, 35'x39', in the building will also serve as a community storm shelter. The large meeting room measures 62'x73' with a 34'x15' raised stage. A 20'x35' kitchen will serve both meeting rooms. The County Extension offices will be located in the northeast corner.

Comparisons to other facilities have been made. The kitchen at the First Methodist Church is 24'x20'. The meeting room at the Church of Christ is 39.5'x40'. The Wheeler school cafeteria is 34'x72'. The stage at the Wheeler school is 27'x33' and the high school auditorium is 48'x70'.

Exterior will have metal on the roof and most of the exterior. Some brick and stone will be on the front.

Parking will be on three sides of the new structure.

A total of \$1,114,075.30 has been contributed and/or pledged. Budgeted for the project is \$1,360,000.00. The budget is broken into Building, \$1,000,000; Land, \$60,000; Dirt Work, \$150,000; Paving, \$150,000. The amount remaining to be raised is \$245,924.70.

The foyer walls of the Family Center will be lined with the engraved granite blocks. These blocks have been available since the structure was conceived. The

1-ft. square blocks can be purchased and engraved with the donors' names and/or business logo and names at a cost of \$1,000. A \$500 donation makes a 6'x12' area with engraving of the donor's choice. For \$100 the donor's name will be placed on a granite block with those of other donors. These are available by

County Burn Ban Is Reinstated

On this 14th day of January, 2008, the Commissioners Court of Wheeler County, Texas met in Regular Session, and found that circumstances present in all the unincorporated area of Wheeler County, Texas, create a public safety hazard that would be exacerbated by outdoor burning, therefore,

The Commissioners Court of Wheeler County, Texas, by this Order, hereby prohibits outdoor burning in all of the unincorporated area in Wheeler County, Texas. This burn ban takes effect **January 17, 2008**, and will terminate **April 17, 2008**, Ninety (90) days from that date.

A person who violates this prohibition will be charged with a Class C misdemeanor pursuant to Section 240.906 of the Texas Local Government Code.

SIGNED this 14th day of January, 2008.

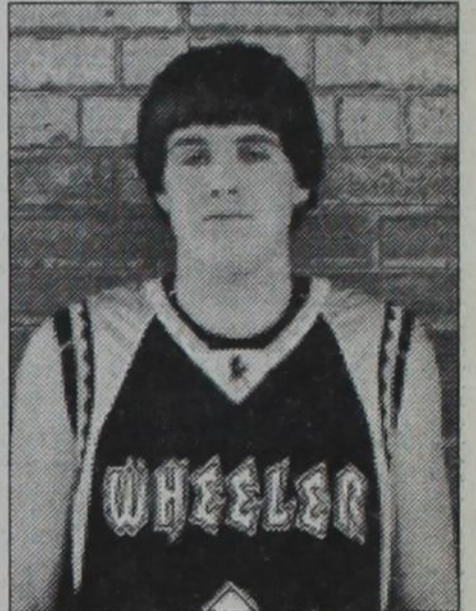
ATTEST:
MARGARET DORMAN

contacting the offices of Charles Kuntz (several blocks are on display at the office) or writing WAAIC-Granite Block, P.O. Box 489, Wheeler, TX 79096. Donations are tax deductible. Through a donation of this kind, you can be a part of the building of this much-needed structure.

Wheeler County Clerk JERRY DAN HEFLEY
Wheeler County Judge DARYL G. SNELGROOES
Commissioner, Precinct 1 TOM PURYEAR
Commissioner, Precinct 2 HUBERT MOORE
Commissioner, Precinct 3 JOHN WALKER
Commissioner, Precinct 4

Additional Information

See Page 7)



RECOGNIZED: Jared Messer was named to the *Amarillo Globe-News* "Athlete of the Week Honor Roll". Messer was named in the article appearing in the Tuesday, January 15, 2008, edition of the *Globe News*. Jared, a junior at Wheeler High School is a member of the Wheeler Mustang Basketball Team. In victories against Wellington and Memphis, Messer scored 57 points and grabbed 22 rebounds.

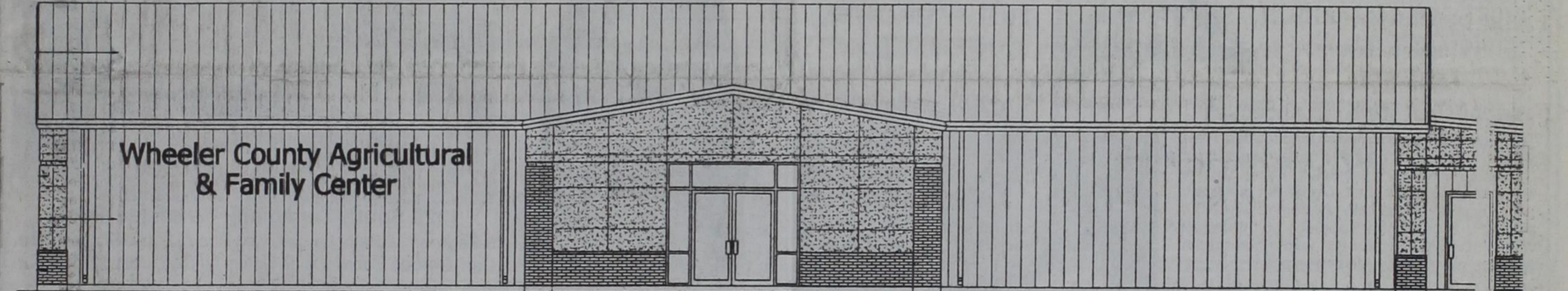
Co. Junior Livestock Show Schedule

The Ft. Elliott local show will be held on Thursday, January 24, at 5:00 pm followed by the Wheeler local show. Both shows will be held at the County Barn.

The schedule for the 2008 Wheeler County Livestock Show is as follows:
Friday, January 25:

8:00 a.m. — Weigh-in of lambs, goats and cattle.
9:30 a.m. — Lamb Show followed by Goat Show, Steer and Heifer Show.
2:00 p.m. — Weigh-in of Market Hogs

(Continued Page 2)



west elevation

Order Prohibiting Outdoor Burning Commissioners Court Meeting;

Wheeler County Commissioners' Court met in the Commissioners' Courtroom of the Wheeler County Courthouse on Monday, January 14, 2008. Sixteen items were on the agenda for the 10:00 a.m. meeting.

The Wheeler Area Activities & Improvements Council, Inc., met with the commissioners prior to the meeting. They presented a schedule for the construction of the Wheeler County Ag & Family Center. The groundbreaking was set for Monday, January 28, 2008, at 10:30 a.m. Completion is estimated to be November 14, 2008. It is planned to have the facility opened for the Wheeler Chamber of Commerce Open House.

The minutes of the previous meetings were approved as presented.

The reports of the Justice of the Peace, County Treasurer, County Tax Assessor, County Clerk and District Clerk were accepted by the court.

The hourly payroll time sheets

were approved for payment. The commissioners voted to pay the bills as presented.

No action was taken on item # 5; the amendment of the budget.

The county-wide burn ban was extended for an additional three months, effective Thursday, January 17.

District Clerk, Sherri Jones, was given permission to collect \$15 in dues for a Family Protection Fee.

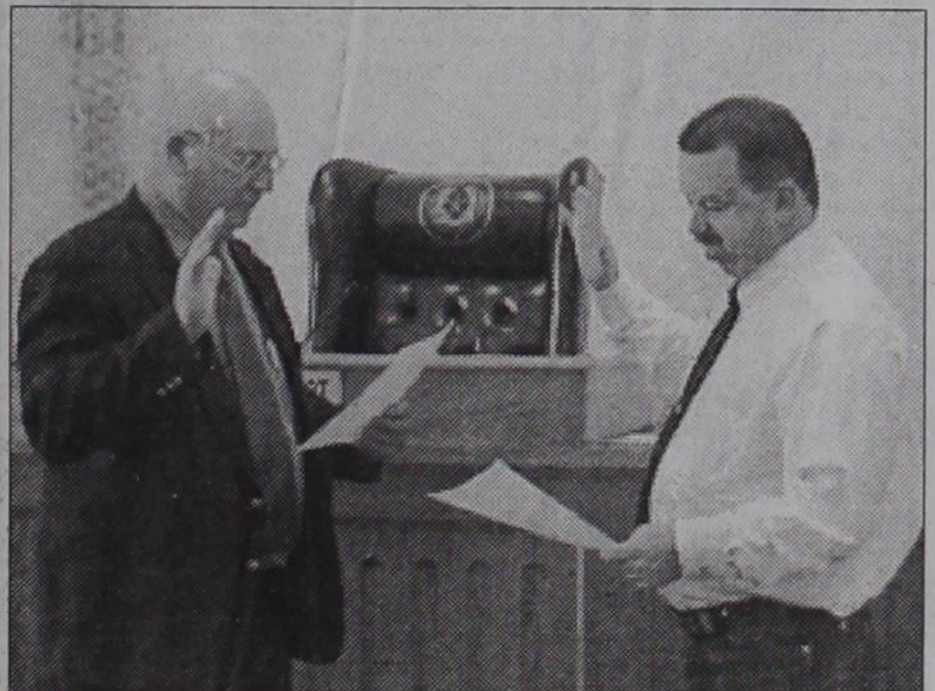
Misty Walker, County Attorney, presented her continuing education hours certificate.

A request by Misty Walker to create a fund for Class C Pre-trial diversion was tabled at the request of the County Attorney. Further study needs to be given this item.

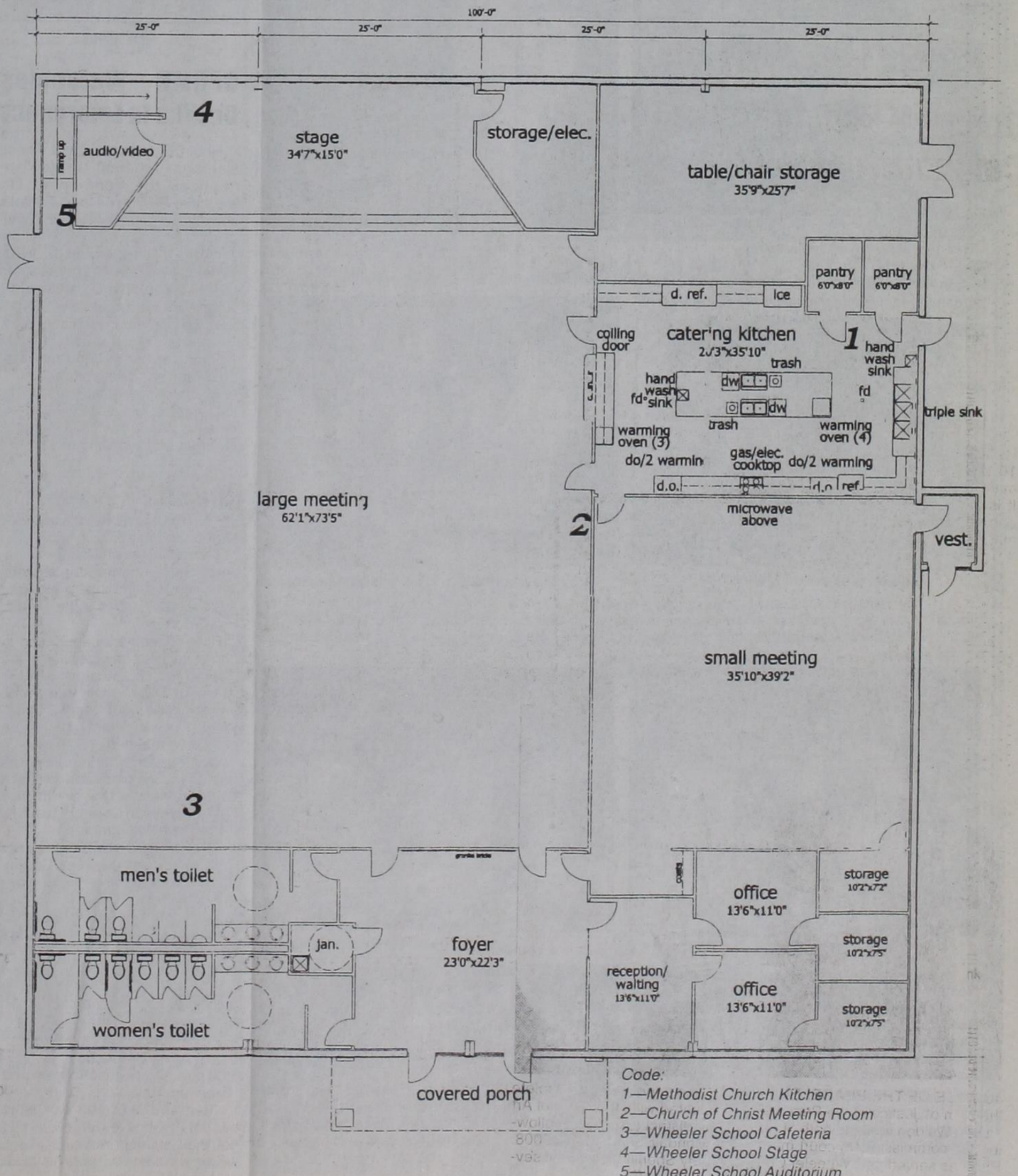
Joel Finsterwald, County Sheriff, informed the court of the removal of Kenneth Williamson from the payroll as deputy effective December 18, 2007.

The court voted to allow the combining of Primary Election

(Continued Page 2)



JUSTICE OF THE PEACE: Rick Walden was appointed to complete the term of Justice of the Peace, Pct. 2, vacated with the death of Art Taylor. Walden took the oath of office in the district courtroom, following the commissioners court meeting on Monday, January 14, 2008. Rick has served as a Wheeler County Deputy Sheriff for the past several years.



The View of a Southern Woman

... Southern California that is.

It seems hard to believe that I have been writing this column for this newspaper for 4 years. It started out as a one time only column to help out when my sister-in-law was ill and could not write her column of local news. As a matter of fact, my first column was on January 22, 2004, and I had just moved to this state 4 months before. I moved from my home in San Clemente, California, after marrying Forrest Glenn Boydston (better known as "Frosty" around the world in the oil field trade). This was quite a change for a Southern California woman, but I made the adjustments very fast. It was either adjust or freeze to death that first winter. I can remember sliding down when I hit our slick sidewalk of ice. Nothing broke but the ice! Then, the spring came and it was so beautiful! Even with those destructive rabbits eating my California bulbs and plants that were coming up the deer trampling on the new garden. Still I persisted and planted more flowers and vegetables and trees. I am a tree person and love trees. It was a fight to keep the trees alive, but we won. Then, the summer hit... hot winds, hot days and wilted plants. I had planted hostas on the north side in the shade, but the sun moved over there and wilted them. Still, I was "adjusting" and my California plants were trying their best to adjust, too. Next, it was fall and all the leaves fell off almost all of our trees and blew into the patio. Those little suckers know just where our patio is and they love to fly in by the thousands. But, with Glenn's help, we now have a nice park-like setting in our back yard and my plants and me are survivors after all. The turkeys and deer are fluffing up the lawn with their big feet and small hooves and it will be spring again soon.

Bob Garrett is putting in tile floors in our bathrooms and it looks so great. He is such a perfectionist! I asked him today at lunch if he could start on the kitchen and dining room next week

and I expected a moan or groan out of him, but he said, "When do we start?" Do not know if we are quite ready to have our kitchen out of commission right now, although I would really like it done. Bob and Frankie did a wonderful job on their home; they completely refinished it on the inside. He and Frankie really have the "know how." They love their animals, too, and they have lots of them just like my daughter, Laurah. Sadness hit Laurah and Ron last week for they had to have their beautiful old dog, Nikki, put down. Nikki was 12 years old, mostly wolf and a very sweet, big dog. When they walked him down the main street in San Clemente, he always drew a crowd of people wanting to know about him. I know they will miss him very much.

We went to the Perdler's Show at the Civic Center in Amarillo last week and it was really nice. There were crafts, food, art, clothing, home decorating items and a lot

of other things. Glenn even liked it and, of all things, there was a man demonstrating a fishing rod and reel. Now, that was not necessary for it was not a fishing or outdoor show. Those are coming

up soon and there is little there for us women. Oh, maybe some camo tee shirts! Anyway, Glenn had to have one. Bet he never uses it. With love to all of you, Betty Boydston.

WHEELER BASKETBALL SCORES

Wheeler J.V. girls played Wellington on Friday, Jan. 4, 2008. Wheeler won 33-28.

Scoring for Wheeler were:
Ashley Gallagher 10
Haley Sparks 13
Tania Flores 2
Presley Thomas 2
Makenzi Stiles 1
Bailey Richardson 5
Wheeler Varsity girls played Wellington on Jan. 4, 2008 and lost 50-31.

Scoring for Wheeler were:

Hear The
"Abundant Living Broadcast"
On KPDR, 90.5
... in Wheeler
Saturdays 9 a.m. to Noon

Stacie Hanson 13
Kaylee Marion 5
Bree McCasland 4
Aspen Hathaway 6
Sparks 2
Wheeler's J.V. boys played Wellington Jan. 4, 2008 and won 44-24.

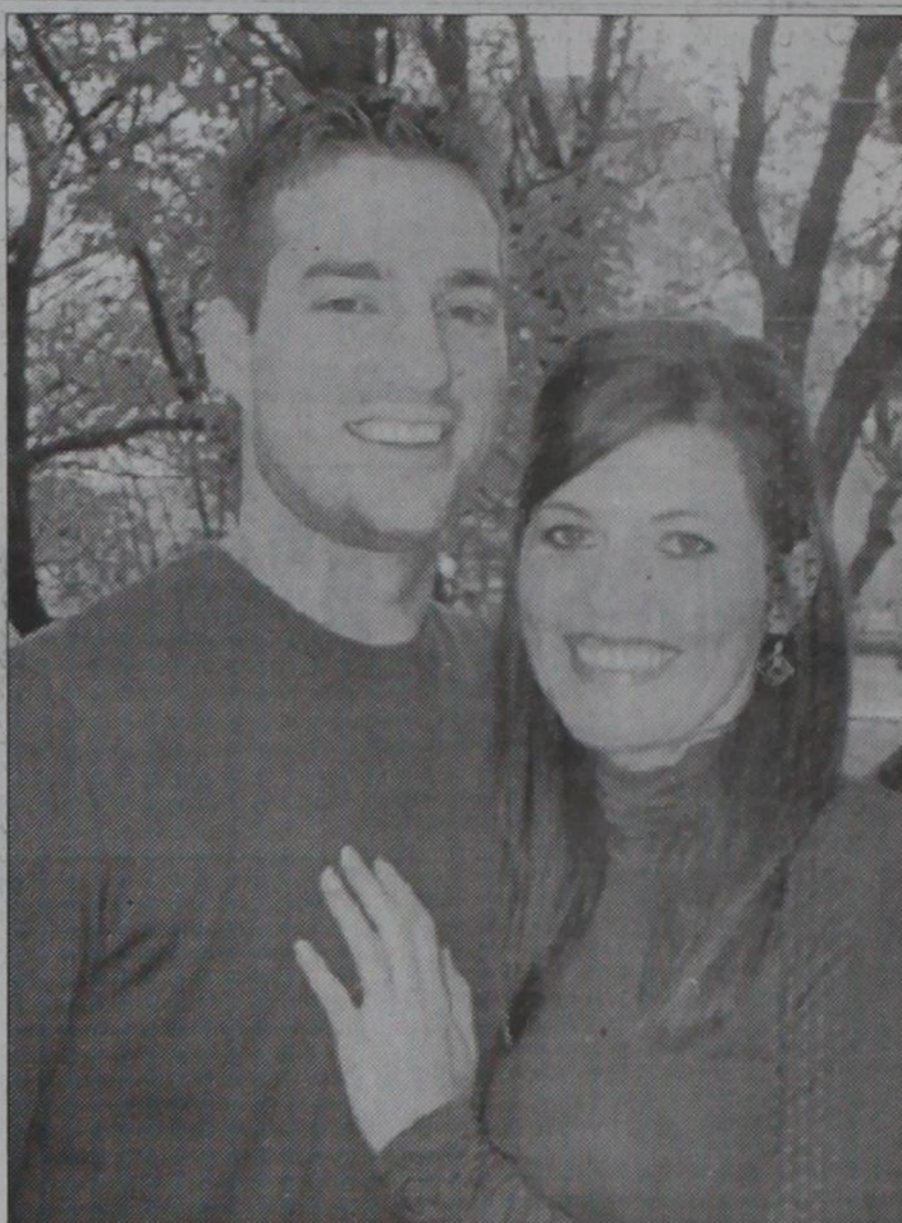
Scoring for Wheeler were:
Collin Hampton 6
Jorge Porras 4
Pedro Hernandez 14
Aaron Gaines 7
Jaten Moore 2
Brock Sabbe 11
Wheeler Mustangs played Wellington Jan. 4, 2008 and won 56-49.

Scoring for Wheeler were:
Jared Messer 31
Tyler Richardson 4
Johnny Venzor 5
Omar Gonzalez 4
Terry Menefield 10
Stefan Tucker 2
Wheeler Mustangs played Memphis on Tuesday, Jan. 8, 2008, and came home the winners with close score of 66-61.

Jared Messer 26
Brock Sabbe 2
Tyler Richardson 6
Johnny Venzor 6
Omar Gonzalez 6
Terry Menefield 18
Stefan Tucker 2
Wheeler JV girls played Memphis on Tuesday, Jan. 8. Wheeler was defeated in a close game 39-36.

Scoring for Wheeler were:
Taylor Sparks 4
Gallagher 7
Haley Sparks 10
Flores 3
Thomas 4
Richardson 6
Stiles 2
Wheeler Lady Stangs played Memphis on Tuesday, Jan. 8. Memphis won 66-29.

Scoring for Wheeler were:
Stacie Hanson 1
Kaylee Marion 6
Nicole Moore 2
Bree McCasland 5
Aspen Hathaway 4
Whitney Reed 7



ENGAGEMENT ANNOUNCEMENT: Mr. and Mrs. Michael Dyer of Amarillo announce the engagement of their daughter, Amber Terece, to Matthew Scott Shutts, son of Tony and Sharon Shutts of St. Joseph Missouri. The couple plan to wed March 21st, 2008 at Trinity Fellowship Church in Amarillo Texas. Amber is a graduate of West Texas A&M University and is a Quality Assurance Specialist for a software company, MPower Systems, in Dallas Texas. Matt is a graduate of TCU and is a Cardiac ICU nurse at Baylor Medical in Dallas Texas.

Katlin Rutherford 4
Wheeler Lady Stangs Shamrock on Friday, Jan. 11. The close game ended in Wheeler's favor, 48-42.
Scoring for Wheeler were:
Kaylee Marion 9
Macie Miller 3
Nicole Moore 8
Haley Sparks 1
Bree McCasland 8
Aspen Hathaway 14
Katlin Rutherford 5
The Wheeler Mustangs met Shamrock on Tuesday, Jan. 11, but lost the game 60-26.
Scoring for Wheeler were:
Cesar Velazco 9
Brady Hill 12
Derek Taylor 5

If you don't like it,
Let us fix it!

CALL
JESSE TAYLOR
Home 806-826-3346
Office 806-664-8619
★ Concrete
★ Carpentry
★ Remodeling
★ Drywall
★ Stucco
★ Spraying

THESE PICTURES SPONSORED BY: FIRST STATE BANK

Wheeler Office:

1408 S. Alan Bean Blvd.
Wheeler, Texas
826-5546

Established 1906



Mobeetie Office:

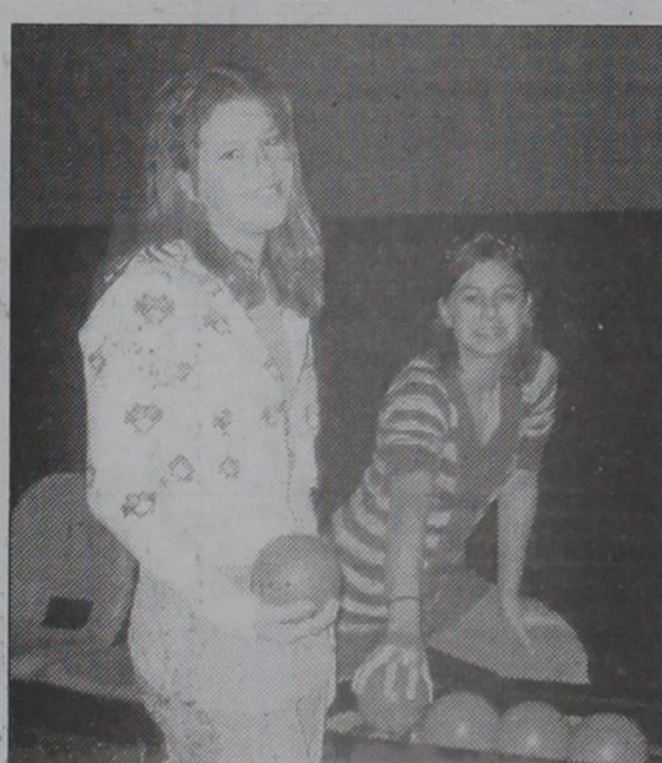
First & Wheeler St.
Mobeetie, Texas
845-2311

Member: F.D.I.C.

The Kelton ISD recently took 3 students who have shown outstanding achievement in reading to Oklahoma City to the Incredible Pizza Co. The students include Elizabeth Moore 8th grade and Lacy Lepp 7th grade both of whom received 300 plus AR (accelerated Reading) points before Christmas and Sara Garner a third grade student who has received over 100 AR points.



Sarah "shooting" water at the targets for tickets. The girls showing off their tickets.

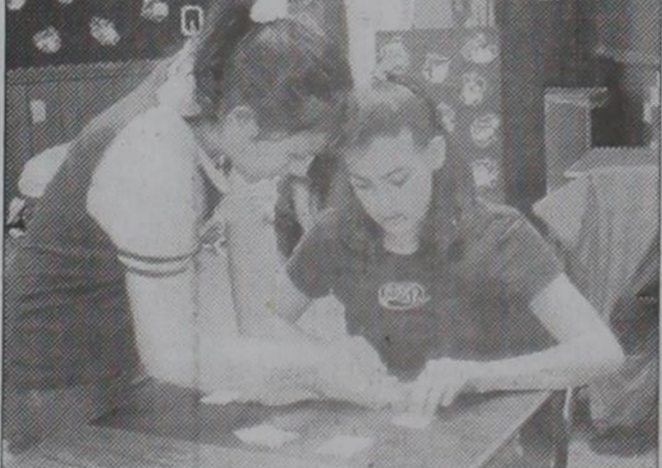


Liz & Lacy bowling

Kelton 6th graders are attempting to solve a "Grammar Bricks" puzzle. They're matching up the 6 stages in the writing process to solve the puzzle.



Miguel Badillo and Mark Mora



Paloma Contreras and Chantelle Hampton

Mrs. Bentley's Science Class at Kelton was investigating unknown substances or powders. (sugar etc.) Each student used the scientific process and followed give procedures to determine what the powders were.



Paul Luna and Curtis Lewis



Tammy Lumpkin, Junior Mora, and Terra Taylor

Destiny Lenz, Mariana Badillo and Danny Morales (l. to r.) from Mrs. Pigg and her fifth grade Science class at Kelton have been studying bats and they were looking through owl pellets for fossilized bone fragments etc.



Dr. Robin E. Lake

GPRMC Welcomes Dr. Robin E. Lake In Emergency

Robin E. Lake at Great Plains Regional Medical Center announces the addition of Dr. Maybelle S. Whu as the hospital's newest Emergency Room Physician.

"We are so pleased to have someone with Dr. Whu's skills and talents join our team," says Lake. "She will be a great asset to our hospital and our community."

Dr. Whu comes to Elk City after working as an ER/Urgent Care physician for Trinity Health Systems in Pennsylvania. Before that Dr. Whu worked as a Family Practice Physician in Pennsylvania, Georgia and Washington.

Comm. (from Page 1)

polls in the case where two judges cannot be found.

The court gave County Judge, Jerry Helley, permission to seek bids for the purchase of a sound and video system for the District Courtroom.

Rick Walden was appointed to complete the term of Justice of the Peace, Pct. 2, vacated with the death Art Taylor. Walden took the oath of office in the District Courtroom, following the Commissioners' Court meeting.

Windstream Communications requested permission to lay a communication line within the right-of-way of County Road K. Permission was granted.

The court agreed to allow ProEgE Energy to cross County Road 6 with an oil and gas pipeline.

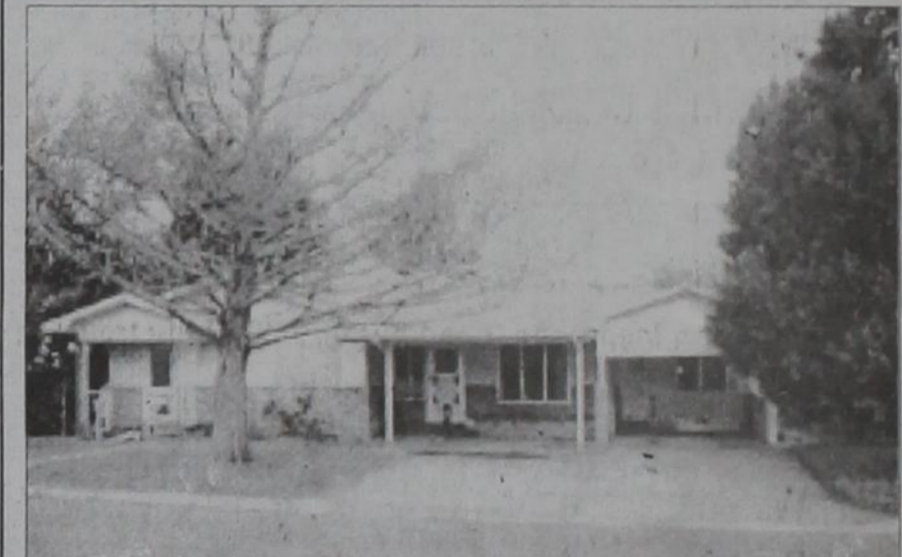
The commissioners voted to purchase Lots 6, 7 and 8, Block 34, of the Original Town of Wheeler.

Stock (from Page 1)

Saturday, January 26:
8:00 a.m. — Market Hog Show
5:00 p.m. — Barbecue
6:00 p.m. — Awards Program and Premium Sale

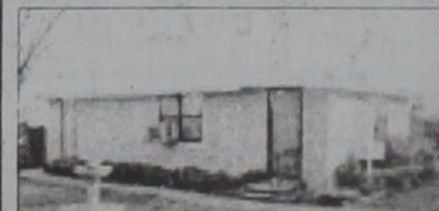
There are over 100 exhibitors this year that have worked hard to get their animals ready to show, so come out and support the youth of Wheeler County.

FOR SALE BY OWNER

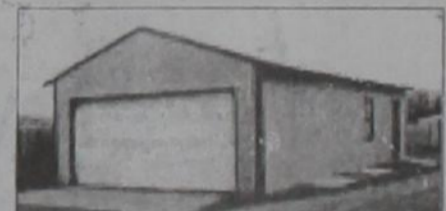


1322 South Canadian— Wheeler, Texas

3-Bedroom, 2 Bath, Large Living Room, Large Kitchen Area, Den, Garden Room, Office Space off Den, Utility, 2-Car Carport, Fenced Yard w/Lots of Trees and Landscaping



One Bedroom Apartment



2-Car Garage & Storage

Phone: 806-663-9850

MARSHALL'S HEATING & AIR CONDITIONING

WHEELER, TX—PHONE: 664-5395—CELL: 662-7876

NOW DOING
TRANE AIR DUCT CLEANING
It's Hard To Stop A Trane —24 Hour Emergency Service—

LICENSED & INSURED
License No. TACL022710E
Mark Marshall, Owner

Wheeler Church of Christ

We have started a Sunday morning series on the gospel of John. It will take us a while to go through this rich book (there are 21 chapters in it) but we will discover so many wonderful things about Jesus. John's approach in this book is to try and convince someone to believe in Jesus. He tells so much about Jesus' character, especially in how he came to take away sins that by the end of the book he is fairly certain that within many readers, he has accomplished this task. John 20:31 says: these are written, that you may believe that Jesus is the Christ, the Son of God; and that by believing you may have life in his name. The words in this book are so focused in on the nature of Jesus. He will be described as the Word, the Lamb of God, the light of the world, the good shepherd, the way, the truth, and the life, the vine. There are many other unique terms to describe Jesus, too. When people see Jesus, they will learn that he loves them, accepts

them, forgives them, heals them, tells them the truth (even when the truth stings), serves them and is willing to die on the cross for them. When people hear Jesus, they are ready to change their lifestyles and follow him, and recognize immediately that he is out to help them. John 3:16 is so true: For God so loved the world, that he gave his one and only Son, that whoever believes in him shall not perish, but have eternal life. There will probably be several Sunday mornings where we do something else rather than teach out of the gospel of John, but for the most part this is where we will spend our time. You are invited and encouraged to be with us every Sunday morning for worship at 10:30 a.m. (we have classes at 9:30 a.m., and meet for evening services at 6:00 p.m., plus we meet on Wednesdays at 7:00 p.m.) and we will learn so much about Jesus. Come join us!

Shawn D. Johnson

An Invitation: You are cordially invited to attend any of the weekly services of the Wheeler Church of Christ which meets at 1001 S. Alan Bean Blvd. in Wheeler, Texas

Services:
Sunday Bible Study 9:30 A.M.
Sunday Morning Worship 10:30 A.M.
Sunday Night Worship 6:00 P.M.
Wednesday Night Worship 7:00 P.M.

O Come let us sing unto the Lord: let us make a joyful noise to the rock of our salvation. Let us come before his presence with thanksgiving, and make a joyful noise unto him with psalms. For the Lord is a great God, and a great King above all gods. In his hand are the deep places of the earth: the strength of the hills is his also. The sea is his, and he made it: and his hands formed the dry land. O come, let us worship and bow down: let us kneel before the Lord our maker. For he is our God; and we are the people of his pasture; and the sheep of his

hand. Today if ye will hear his voice, Harden not your heart, as in the provocation, and as in the day of temptation in the wilderness. Psalm 95:1-8

O sing unto the Lord a new song: sing unto the Lord, all the earth. Sing unto the Lord, bless his name; shew forth his salvation from day to day. Declare his glory among the heathen, and his wonders among all people. For the Lord is great, and greatly to be praised: he is to be feared above all gods. Psalm 96:1-4

The weather here in Allison has been cold and then warm and windy to be sure. But we have been having some beautiful type days which I'm thankful. Sounds like very COLD and snow is coming for Wednesday and Thursday. But it is winter after all.

Louise Boydston went to Leedey, Oklahoma and visited in

the home of Ernie and Sue Martin. Ernie had returned from working overseas and so they were having their Christmas celebration.

Sunday evening, Louise Boydston visited awhile with her mother, Pearl Harrison in Elk City, Oklahoma.

Louise Boydston journeyed to Amarillo, Texas on Friday on business and stayed the night with her daughter and family, Chuck, Kim, Kimber, Brittany and Chase Thompson.

Willis and Mary Harrison of Claremore, Oklahoma visited and

News, Views, Commentary
On KPDR, 90.5
... in Wheeler
Weekdays 6:00 a.m. to 7 a.m.

stayed Monday night in the home of Louise Boydston.

Pete Gilmer journeyed to Amarillo where he helped Jennie celebrate her birthday, they all had a good time visiting and delicious meal at Chillis'.

Glenn and Betty Boydston journeyed to Amarillo, Texas on Friday where Betty saw her cardiologist. She had several test run and did some shopping. We are praying for you Betty and wish the best for you!

Glenn and Betty also attended the Peddler's Show and Betty reported that is was good.

On January 2nd, family and friends of LaQuinta Hulse and Cody Dupont gathered in the Banquet room at Maxey's Steakhouse where they all helped LaQuinta and Cody celebrate their birthdays. There was a full room full



of people. LaQuinta was celebrating turning the big 50 and Cody was celebrating turning 18. Lots of visiting and very delicious food was enjoyed by all. Several wore black in LaQuinta's honor. Ha!

A red velvet cake was served for LaQuinta's birthday cake. And a large decorated and iced cookie with a picture of Cody riding a bull on the front of the cookie was served for Cody. Both received several nice gifts. I thought LaQuinta received a rather unique

gift. A book about sisters that she had bought earlier had been passed around among her siblings and this year it was given back to her to keep. That is pretty special I think.

On Friday, January 11th, Juanita Boydston made a freezer of vanilla ice cream and took it over to Louise's house where Louise had fixed dinner for Vance and Carol Boydston, Curtis and Lillian Boydston, Opal and Juanita Boydston and Bennie and Debbie Boydston. Lots of good ole visiting was enjoyed as well.

Friday afternoon, Vance and Carol Boydston and Opal and Juanita Boydston visited in the home of Curtis and Lillian Boydston and ate supper and afterwards they all enjoyed playing a game of Mexican Train.

Opal and Juanita Boydston enjoyed a very delicious homecooked meal in the home Roma and Billy June Brown after Sunday School. Enjoyed visiting as well.

May God Bless and Keep ya'll till next time.

WHEELER PLUMBING
511 S. Cheyenne
New Construction
Remodel
Repair
Sewer Service
Septic Systems
Site Evaluations

Phone: 826-5907
MAX McQUEEN
P.O. Box 754 Wheeler, TX

Canadian Supply & Redi-Mix
for all your Concrete Needs!
Jerry Smith, Owner
806-323-5379

COUNTRY CHAPEL
Pastor Alan Morgan
7796 U.S. Hwy. 83 P.O. Box 376
Wheeler, TX 79096
806-826-3511

COME AS YOU ARE



Sunday Morning Service 10:30 a.m.
Country Kids for Christ 10:30 a.m.
Tuesday Morning Prayer 6:30 a.m.
Saturday Morning Prayer 7:00 a.m.

Registered Refrigerant Recovery
Walk In Coolers
Residential A/C Repair

Walk In Freezers
Commercial A/C Repair
Industrial A/C Repair

SHANE CO
OMEGA AIR CONDITIONING

Shane Orr
Licensed & Bonded
TACLA27017

(806) 231-8685
Work Guaranteed

DOUG BOYD MOTOR CO.

Buy Here / Pay Here

No Credit Check • Areas Largest Selection

Pampa • Corner of Hwy 60 @ Hwy 70
806-669-6062 • www.dougboydmotors.com

LOCAL, REPUTABLE BUYER
OF MINERALS
& ROYALTIES

Now buying in Wheeler, Hemphill and Lipscomb Counties

Now may be the time for you to receive a fair offer

Why should you consider selling now?

- * Eliminate administrative burdens
- * Avoid complicating your estate with minerals
- * Receive a lump-sum payment, hand delivery
- * Eliminate small depleting interests
- * Sell at high current oil and gas prices
- * Invest cash in more predictable assets

We will prepare all documents and pay all costs

— **WATERS PROPERTIES** —

Diane Dyson Waters
Leland W. Waters

call us at 806-665-6215

WALLACE MONUMENT COMPANY

MONUMENTS, CURBING,
GRAVE COVERS

Represented By: **Jim Wright**

Wright Funeral Home

Wheeler, Texas

Phone: 806/826-5214



Great Plains Great Surgeons

Why travel across the state for surgery when Great Plains Regional Medical Center has two of the best surgeons in Oklahoma right here in Elk City.

Dr. Francis Abraham and Dr. Henry Horrilleno are general surgeons with years of surgical experience. These highly trained surgeons are close to home when you, or a loved one, need surgery. So, why travel to another hospital (running up gas, hotel and food bills) that's far from family and friends?

We know when it's time for surgery, you want the best. That's why Dr. Abraham and Dr. Horrilleno are here in Elk City.

GREAT PLAINS
REGIONAL MEDICAL CENTER

The best medicine is right here at home.

1705 West Second Street / Elk City / 580-225-2511 / www.gprmc-ok.com

Parkview Artery Loss and Grief

Losing someone or something you love is very painful — and it's something that almost everyone will experience at some point in their lives. Loss that goes unacknowledged or unattended can result in disability. But grief that is expressed and experienced has a potential for healing that eventually can strengthen and enrich life. There is no right or wrong way to grieve — but there are ways to make your grieving more complete and more positive.

When someone close to you dies, you don't just lose that person on the physical level, you also face the loss of what might have been. Your pain can involve missing that person's presence: sleeping in a bed that's half empty, craving a scent or an embrace. But knowing that your loved one will miss all the milestones in your life often lasts longer than the pain of the physical absence. This may include the children that were never born, the trips not taken, colleges not attended, weddings not danced at — every life marker can be a reminder and an occasion for renewed grief.

Wherever the support comes from, accept it and do not grieve alone. One of the key elements of healthy grieving is allowing your emotions to surface in order to work through them. In the long run, trying to suppress your feelings in the hope that they'll fade with time won't work. Blocking the grieving process will delay or disable your ability to eventually recover.

If people don't know what they can do to help, tell them — whether it's going with you to a movie, cooking a meal for you, or just holding you as you cry. Life does go on, so we may as well live it to the fullest when all is said and done.

Medcat

Earth has no sorrow that Heaven cannot heal

Chat (from Page 1)

More money is needed to — "dress it up". You can make a tax deductible donation which will benefit the citizens of Wheeler County.

—cwe—
A big "TIP OF THE HAT" to this group!

—cwe—
And,—"Thanks" Coach Markham and Kathy Hatcher for getting the picture of Jared Messer to me on such short notice. I hope you have to do this several more times this year.

—cwe—
We had the early deadline last week so 'Baba and Pop' could go with Stormie and her parents to Woodward Tuesday evening for her to have her tonsils and adenoids out.

—cwe—
All went well and we returned Thursday afternoon.

—cwe—
The hospital at Woodward is very nice and Stormie received excellent care. The doctor who released her—Dr. Gadberry—remembers Wheeler very well. Especially facing Jim Verden on Nicholson Field. He is from Follett.

—cwe—
It is really confusing to people when the four of us show up somewhere with Stormie. Parents? Grandparents? What? As you know, Rhonda and Leroy are the parents and Baba and I, we think we are the "grandparents"—we get to do the spoiling.

—cwe—
Barbara and I stayed home this weekend and it was so nice out I had to get out and work in the yard.

—cwe—
Cards were not played last Monday evening; we were getting ready to go to Woodward. Two games of cards were played Monday night with Rhonda and Leroy winning both games. Mike and I held the lead until the last hand and luck ran out.

—cwe—
It is nice to note we do not have the tumbleweeds, compared to last spring when it required two days of work to get them out of the trees and dips for burning.

—cwe—
The weatherman told us to enjoy Tuesday, as it was going to be the last nice day for a while.

Mobeetie (from Page 6)

Harris and family, Sheila Marti, Scott Corcoran and family, Jim Ash and the family and friends of Alice Ash, Carl and Peggy Carter, Jackie and Fred Thrasher.



MARKET SQUARE
THRIFTWAY

Wheeler County's Exclusive source for Plains & Shurfine Products!

Your source for the freshest

★ PRODUCE ★ MEAT ★ DAIRY

300 E. Oklahoma Ave. — Wheeler, Texas

"Support your Local Merchants"

Phone 826-5944

Want Ads

HELP WANTED: costal Valve Sales needs a Warehouseman and delivery person for valves and automation to oil and gas plant and pipeline. Please Call 817-532-6058 or email: gsnov@coastalvalve.com. Salary is commensurate to experience and abilities 12/24-1/3-17p

FOR SALE: Registered Angus Cattle. Two-year-old bulls, yearling bulls, spring calving heifers and yearling heifers. 7-H Angus Cattle, Wheeler, TX Phone 806-633-0558 or 806-826-3358. Email: sevenhangus@aol.com 1/17rtn

Parkview Hospital is now accepting applications for a **Full Time R.N. and L.V.N.** for the 7 p.m. to 7 a.m. shift. Competitive Salary, Excellent Benefits, Mileage Paid. Call Sue Stiles, D.O.N., at 826-5581 or apply in person at 901 Sweetwater Street, Wheeler, TX 1/10rtn

Full Size mattress set, Brand New, still in package. Sell for \$125, 806-341-6233 1/17rtn

Brand Name King pillow top mattress set, new in plastic w/ warranty. Must sell \$250. Can Deliver 806-341-6233 1/17rtn

All new **QUEEN pillow top set** \$150 NEW in plastic can deliver 806-341-6233 1/17rtn

QUEEN ORTHOPEDIC Mattress Set. New, still in plastic w/warranty. Delivery available \$140 806-341-6233 1/17rtn

A great deal: **NASA memory foam mattress set.** Never used, Sacrifice \$350. 806-341-6233 1/17rtn

Twin mattress set new w/ warranty \$100. 806-341-6233

Brinkley Home Remodeling

- ★ Repairs & Remodeling
- ★ Shingled & Metal Roofing
- ★ Interior/Exterior Painting
- ★ Ceramic Tile
- ★ Laminates
- ★ Wood Flooring
- ★ Window Installation
- ★ Tree Trimming & Removal

— 20yrs. Experience
Call Steve @ 806-217-2222

WANTED Round or 4x4 Square Bales of Hay

Hay Grazer, Some Grass and Some Alfalfa

T & S Farms
Terry Timmons
Pampa, TX
Cell: (806) 930-4659 thru 1/24

Oil & Gas NEWS

(New Location, Completion and Plugging Report made possible by Oil & Gas Reporting Service, 3930 Beaver St., Vernon, TX 76384. Doris Harrison, Phone: 940/552-6644.)

Week Ending January 10, 2008
Intentions to Drill
HEMPHILL (WILDCAT & BUFFALO WALLOW Granite Wash) Granite Operating Co., #2009 Patsy, 2023' from North & 1980' from West line, Sec. 9, A-1, H&GN, PD 13500.
HEMPHILL (GEM-HEMPHILL Granite Wash) Latigo Petroleum Texas, L.P., #4096 J.O. Wells, 1917' from South & 817' from East line, Sec. 96.41, H&TC, PD 12500.

DAY & NIGHT TRANSPORT DRIVERS

Now hiring full-time truck drivers. Previous experience preferred, but will consider training. Valid CDL Drivers License required, and must be able to pass a drug test.

We have new pay rates
Earn up to \$60,000 - \$70,000 per year

Benefits include:

- Health Insurance
- Dental Insurance
- Life Insurance
- STD/LTD Insurance
- Safety Bonus
- 401(k) Retirement Plan (With up to 4% company match)
- Paid Vacations
- Uniforms



For more information contact
Turner Energy Services
(806) 323-8301
Monday - Friday 8:00 a.m. - 5:00 p.m.
Drug Free Workplace

HEMPHILL (WILDCAT & N.W. MENDOTA Granite Wash) Cimarex Energy Co. of Colorado, #22 Flowers '61', 1600' from South & 1700' from East line, Sec. 61, B-1, H&GN, PD 11000.
ROBERTS (WILDCAT & ALPAR-LIPS St. Louis) Range Production Co., #601 Coursion Ranch, 2034' from North & 1657' from West line, Sec. —, —, BBB&C, PD 10000.
ROBERTS (WILDCAT & RED DEER CREEK Granite Wash) Cimarex Energy Co. of Colorado, #27 Byrum, 2350' from North & 1250' from West line, Sec. 27, B-1, H&GN, PD 11000.
WHEELER (WILDCAT & ALLISON-PARKS Granite Wash) Samson Lone Star, L.L.C., #7 Holt '19', 2100' from North & 467' from West line, Sec. 19, RE, R&E, PD 15000.
WHEELER (WILDCAT & DYCO Granite Wash) Linn Operating, Inc., #4 Treadwell '35', 1671' from South & 2247' from West line, Sec. 35, M-1, H&GN, PD 14900.
WHEELER (WILDCAT & FRYE RANCH Consolidated) Questar E&P Co., #104 Smith, 467' from North & East line, Sec. 4, L, J.M. Lindsey, PD 17200.
WHEELER (WILDCAT & MILLS RANCH Granite Wash) Sanguine Gas Exploration, L.L.C., #2016A Naomi, 161' from South & 613' from West line, Sec. 16A, OS2, K.T. Newman, PD 14400.
WHEELER (WILDCAT & STILES RANCH Atoka) Sanguine Gas Exploration, L.L.C., #105 Buckingham, 1980' from South & 660' from East line, Sec. 5, —, AB&M, PD 17000.
WHEELER (STILES RANCH Granite Wash) Newfield Exploration Mid-Con, Inc., #10' Britt Ranch '36', 1910' from North & 2424' from East line, Sec. 36, A-3, H&GN, PD 15796' (BHL: 1785' from North & 2520' from East Sec. line) Directional well
Oil Well Completions
ROBERTS (ST CLAIR Granite Wash) Texakoma Operating, L.P., #6 McMordie '84', Sec. 84, C, G&M, spud 10-20-07, drlg, compl 11-5-07, tested 12-3-07, flowed 251 bbl. of 44 grav. oil + 90 bbls. water thru 28/64" choke on 24 hour test, GOR 4271, TD 9573', PBDT 9504' —
Gas Well Completions
HEMPHILL (BUFFALO WALLOW Granite Wash) Noble Energy, Inc., #1227P Carr '12', Sec. 12, A, AB&M, spud 9-18-07, drlg, compl 9-30-07, tested 12-1-07, TD 11690', PBDT 11611' —
HEMPHILL (BUFFALO WALLOW Granite Wash) Noble Energy, Inc., #4625P Graham, Sec. 46, A-2, H&GN, spud 9-3-07, drlg, compl 9-17-07, TD 12840', PBDT 12723' —
HEMPHILL (BUFFALO WALLOW Granite Wash) Noble Energy, Inc., #5624P Keeton, Sec. 56, M-1, H&GN, spud 9-2-07, drlg, compl 9-14-07, tested 12-1-07, TD 11790', PBDT 11685' —
HEMPHILL (BUFFALO WALLOW Granite Wash) Samson Lone Star, L.L.C., #5 Vise, Sec. 29, M-1, H&GN, spud 8-29-07, drlg, compl 9-22-07, tested 11-28-07, TD 13010', PBDT 12940' —
HEMPHILL (HEMPHILL Granite Wash) Cimarex Energy Co., #2168 Hobart Ranch, Sec. 68, S-2, H&GN, spud 9-9-07, drlg, compl 10-1-07, tested 11-30-07, potential 2670 MCF, TD 12800', PBDT 12708' —
HEMPHILL (HEMPHILL Granite Wash) Cimarex Energy Co., #2268 Hobart Ranch, Sec. 68, A-2, H&GN, spud 10-5-07, drlg, compl 10-25-07, tested 11-30-07, potential 13944 MCF, TD 12830, PBDT 12738 —
HEMPHILL (HEMPHILL Granite Wash) Devon Energy Production Co., L.P., #18 Young '66, Sec. 66, A-2, H&GN, spud 7-2-07, drlg, compl 7-31-07, tested 9-2-07, TD 12806', PBDT 12724' —
HEMPHILL (NORTH MENDOTA Upper Morrow) Unit Petroleum Co., #5 Vollmert 'C', Sec. 10, —, BS&F, spud 7-8-07, drlg, compl 7-27-07, tested 9-27-07, TD 11330', PBDT 11230' —
ROBERTS (LARD RANCH Granite Wash 'C') Chesapeake Operating, Inc., #601H Tolbert, Sec. 6, B, H&GN, spud 6-29-07, drlg, compl 8-13-07, tested 10-25-07, potential 8621 MCF, TD 11400', PBDT 11167' — Horizontal
ROBERTS (LARD RANCH Granite Wash 'C') Cimarex Energy Co. of Colorado, #3H D.D. Payne 'A', Clay County School Land Survey, spud 9-7-07, drlg, compl 10-11-07, tested 11-30-07, potential 2269 MCF, MD 11000', TVD 8877' — Horizontal
ROBERTS (S.W. LIPSCOMB Cleveland) Jones Energy, Ltd., #5511H J.O. Barton, et al, Sec. 511, 43, H&TC, spud 9-7-07, drlg, compl 10-31-07, tested 11-8-07, potential 2507 MCF, 12098', TVD 7863' — Horizontal
ROBERTS (RED DEER CREEK Granite Wash) Cimarex Energy Co. of Colorado, #20 Byrum '4', Sec. 4, B-1, H&GN, spud 9-13-07, drlg, compl 9-26-07, tested 11-15-07, potential 3381 MCF, TD 10750', PBDT 10658' —
ROBERTS (RED DEER CREEK Granite Wash) Cimarex Energy Co. of Colorado, #21 Byrum '4', Sec. 4, B-1, H&GN, spud 9-28-07, drlg, compl 10-11-07, tested 11-30-07, potential 2843 MCF, TD 10700', PBDT 10608' —
ROBERTS (ST. CLAIR Granite Wash) Devon Energy Production Co., L.P., #6 O.R. Tipps, Sec. 1, —, B&B, spud 7-27-07, drlg, compl 8-13-07, tested 10-1-07, TD 9950', PBDT 9854' —
WHEELER (BUFFALO WALLOW Granite Wash) Linn Operating, Inc., #1 Helton '60', Sec. 60, M-1, H&GN, spud 9-21-07, drlg, compl 11-5-07, tested 11-11-07, TD 14800', PBDT 13430'.
Recompletion - Form 1 in Dominion Oklahoma Texas
WHEELER (FRYE RANCH Consolidated) Questar E&P Co., #4013 Puryear, Sec. 13, A-3, H&GN, spud 6-23-07, drlg, compl 9-14-07, tested 10-12-07, potential 14140 MCF, TD 15825', PBDT 15706'
Plugged Wells
GRAY (PANHANDLE) Oilwell Operators, Inc., #2 Gray, 1650' from North & East Lease line, Sec. 102, B-2, H&GN, spud 3-21-64, plugged 12-6-07, TD 3129' (oil) — Form 1 in Cree Oil
GRAY (PANHANDLE) Oilwell Operators, Inc., #9 Gray, 990' from North & 2310' from East Lease line, Sec. 102, B-2, H&GN, spud 6-3-65, plugged 12-7-07, TD 3347' (oil) — Form 1 in Cree Oil
GRAY (PANHANDLE) Oilwell Operators, Inc., #3 Holmes, 990' from North & 330' from West Lease line, Sec. 86, 3, I&GN, spud 10-3-35, plugged 11-21-07, TD 3300' (oil) — Form 1 in Stanolind Oil & Gas
GRAY (PANHANDLE) Oilwell Operators, Inc., #5 Melton 'A-330' from North & 1650' from West (Continued Page 5)

MEMBER 2007 TEXAS PRESS ASSOCIATION

MUSTANGS WIN STATE!!

WHEELER MUSTANGS BRING HOME CLASS 'B' STATE CHAMPIONSHIP

P.O. Box 1080
Wheeler, Texas 79096
Phone: 806/826-3123

Entered as second-class matter December 18, 1933, at the Post Office at Wheeler, Texas 79096, under the act March 3, 1879.

Postmaster: Send Address changes to...
The Wheeler Times,
P.O. Box 1080, Wheeler, TX 79096-1080
Items, Articles & Pictures may be emailed to...
wltimea@centramedia.net

Louis C. Stas, Owner & Publisher

SUBSCRIPTION RATES:
Wheeler County...\$20.00 Outside County...\$22.00

THE BUSINESS DIRECTORY

CROSS COUNTRY BARN

- ★ 24-Hr. Gas & Diesel
- ★ Convenience Store
- ★ Hunt Bros. Pizzas

301 E. Oklahoma
Wheeler, TX
Phone: 826-2276
David & Kathleen Cross

It pays to Advertise in **The Wheeler Times**

Yes, these ads are read; You just read this one!

Classified:
Cash—\$4.00 for first 20 words
Charge—\$6.00 for first 20 words
15¢ for each additional word
Open Rate: \$2.50 Per Col. In.
Card of Thanks: \$3.00

WHEELER CONSIGNMENT

Sat., Jan. 19 — 9:33

Loc. Wheeler, TX.—Wheeler Co. Show Barn, North Edge of Wheeler on Hwy. 83
Rolling Stock & Farm Equipment Will Sell At Approx. 1:00 P.M.

TRACTORS-90 J.D. 3255 MFWD-72 J.D. 4320 W/J.D. 260 Loader—PICKUPS-04 Ford F-150, 4X4, Lariat, Four Dr., 49k—or Dodge 2500, 4x4, SLT, Four Dr., 58k—00 Chevy 2500, 4x4 Ext. Cap—90 Toyota 4 Cyl., 4Sp.—65 Chevy Cab & Chassis 327 Eng.—FOUR WHEELERS-2-07 Polaris—GO CART-Critter II—DIRT BIKE-Suzuki BS 80—AGRI-FAB 48" PULL TYPE MOWER—TRAILERS-05 S&H 24" G/N Enclosed-3 G/N Stock—FARM & CATTLE EQUIP.—WOODWORKING, MECHANIC & SHOP TOOLS

Full List on Web Page
LYNDON LOYD AUCTIONEERS
806-826-5850 or 334-0407
Wheeler, TX (Lic 7119)

Land Close - Out Sale!

River Access Acreage
Homesites in New Braunfels, TX
Bring your best offer!
No Closing Costs*
Tour by 2/15/08
(800) 615-5003
land.riverchasetx.com
*Limited time offer expires 2/15/08

SIGN UP FOR A FREE SCOOTER

One Scooter Given Away Each Month

Toll Free **800-606-9860**

Med Care MEDICAL SUPPLY
www.medcaremedicalsupply.com
Se Habla Espanol

Department of Homeland Security
Border Patrol, Marfa Sector

NOW HIRING!
(888) 536-6204

U.S. Customs and Border Protection

A Career With Borders, But No Boundaries.

PAID CDL TRAINING!

NO EXPERIENCE NEEDED!

Stevens Transport, the premier refrigerated carrier in the US, sponsors the total cost of your CDL training! In 17 short days you will earn your CDL and begin your paid on-the-job training! Earn \$40K first year and up to \$150K fifth year! Excellent benefits and 401K!

For more information, call **800-333-8595**
www.becomeadrivers.com

Put the Pain relief for arthritis, back pain and muscle soreness

Allevia

MAXIMUM STRENGTH ANALGESIC
THERA-GESE
Pain Relieving Creme

Listen to... **KPDR-FM, 90.5**
WHEELER, TEXAS

Med Care MEDICAL SUPPLY

Ask us if you qualify for a **POWER CHAIR** at little or no cost to you.

In most cases, Medicare, Medicaid & Insurance will cover 100% of the cost for your Power Chair.

Toll Free 800-606-9860
www.medcaremedicalsupply.com

Public Utilities Director
City of Artesia, NM Manages operations of Water, Wastewater and other assigned departments.

Salary DOE.

Send resume and salary history to
City of Artesia P.O. Box 1310
Artesia, NM 88211.
(575) 746-8299 or www.artesianm.com

FREE DIRECTV 4 ROOM SYSTEM!

CHECKS ACCEPTED!
250+ CHANNELS!
Starts \$29.99
Add up to 100 HD Channels \$9.99/mo.
FREE HBO+Cinemax+ Showtime+Starz 3 Months!
FREE DVR/HD!
We're Local Installers!
1-800-214-7110

TEXAS STATEWIDE CLASSIFIED ADVERTISING NETWORK

TexSCAN

TexSCAN Week of January 13, 2008 BUSINESS OPPORTUNITIES

ALL CASH CANDY ROUTE: Do you earn \$800 in a day? Your own local candy route. 30 machines and candy. All for \$9,995. 1-888-625-5481. Multi Vend. LLC.

AMERICA'S FAVORITE COFFEE distributor. Guaranteed accounts. Multi billion \$5 industry. Unlimited profit potential. Free information 24/7 1-800-729-4212. www.aacal.com, 1-800-387-1011

DRIVERS

COMPANY DRIVERS-MINIMUM 2 years OTR experience. HM. Liberal home time, weekly pay & great benefits. 1-877-468-0013. Ext. 108. Monday-Friday 8-5. www.gomitrtrafficsales.com

DRIVER-O/O'S, NEW pay scale, plus fuel surcharge. Company drivers. \$5000 signing bonus. Minimum 1 yr. experience. Lots drop & hook! American Eagle Lines. www.aeal.com, 1-800-387-1011

DRIVERS/CALL TODAY! Bonus & paid orientation 36-43cpm. Earn over \$1000 weekly. Excellent benefits Class A and 3 months recent OTR required Melton Truck Lines. 1-800-635-8669

DRIVERS- GET RESPECT you earned! Get support you deserve! \$5000 sign-on. 1 year OTR experience. Students welcome. Tuition reimbursement available. www.fleinc.com. FFE, Inc. Call 1-800-569-9232

DRIVERS- IMMEDIATE OPENING for regional & OTR drivers! CDL-A with tanker required. Premium pay & benefits. Call 1-877-810-1041, or visit www.oakleytransport.com

EXAM / PREP

POST OFFICE NOW hiring Averages pay \$20/hour or \$57k annually including federal benefits & overtime. Paid training, vacations. PT/FT. 1-866-918-1182 USWA Exam/Fee required

EQUIPMENT FOR SALE

SAWMILLS FROM ONLY \$2,990.00. Convert your logs to valuable lumber with your own Norwood portable band sawmill. Log skidders also available. www.norwoodsaawmills.com/300N. Free information: 1-800-578-1363-Ext. 300-N

HELP WANTED

JACOBSON LOGISTICS. SEEKING dedicated regional drivers OK & TX. 1 year free benefits package. Call 1-866-511-1134 or visit www.DRIVEJTC.com

LOOKING FOR WORK? We can help you now! Collect up to \$364/week! Unemployment insurance! 1-800-350-2669. Statepay.com

RECRUITER NEEDED in San Antonio area for college in El Paso, Texas. Transportation, flexible hours. Motivated needed. Email/Fax resumes to: jmaria@stvc-ep.edu or 1-915-858-1814

HOMES FOR RENT

3 BEDROOM ONLY \$178/month! Foreclosed home! 4% down, 20 years @ 8.5% APR! Buy. For listings 1-800-370-5932. foreclosedagency.com

HOMES FOR SALE

BUY FORECLOSURES! 3BR/2BA \$11,869 or \$199/Month. 4BR/2BA \$25,300 or \$215/Month. 5% down, 20yrs@8% Must see! For listings, 1-800-544-6258. Ext. T305

FORECLOSURES C BANK LOOKING FOR YAMAHA REPOS: 4BR/3BA \$30,357 OR Rhino? Kawasaki Mule? We sell \$245/mo! 3BR/2BA \$10,300 OR brand new UTVs only \$4695, \$199/mo! (5% down, 20 yrs. No tax free shipping, dump bed EX @8%) 73MM KRP W/R/W roof, winch, warranty, save last! For listings call 1-800-544-6258 Ext. 9847
www.BuyUTV.com

STOP YOUR FORECLOSURE now. Stay in your home 100% guaranteed. We negotiate with your lender and save your home. Never too late. www.HomeAssure.com/offer or 1-866-371-0721.

MEDICAL SUPPLIES

SCOOTERS C POWER WHEELCHAIRS. Did you know in most cases Medicare, Medicaid and Insurance pay 100% of the cost? Call Melissa or Jon for details. 1-800-606-9860 www.medcaremedicalsupply.com

MISCELLANEOUS

ATTEND COLLEGE ONLINE from home. Medical, Business, Paralegal, Computers, Criminal Justice. Job placement assistance. Financial aid and computer provided if qualified. Call 1-866-858-2121. www.OnlineTidewaterTech.com

CALLING ALL HOST families! 1YRS YHRVAGDh/F2Dh/HM/dent in the past then why not use your cross-cultural experience to help others? By becoming an \$666 (DIDJUSJUNJMM) \$175 enjoy the rewards of getting to know others in your community and around the world! To find out more, call 1-800-473-0696 or www.assoc.com/volunteer

CASH IMMEDIATE CASH for structured settlements, annuities, law suits, inheritance, mortgage notes & cash flows. J.G. WENTWORTH @ 1-866-494-3711.

REAL ESTATE

NEAR RUIDOSO NEW MEXICO. 140 acre ranch parcels. Great views of Sierra Blanca. Good horse property. Power & gravel roads. Borders national forest, may split. 1-888-812-5830. www.swpproperties.com

3.4 ACRES NORTH OF Brady, electricity, central water. Level, oaks, mesquite. Retirement investment, country living. \$24,500. owner financing. 1-800-876-9720. www.hillcountryranches.com

SOUTHERN COLORADO RANCH! Sale. 35 acres- \$29,900. Spectacular rocky mountain views. Year round access, electricity/ telephone included. Excellent financing available with low down payment. Call Red Creek Land Co. Today! 1-866-696-5263 x 3473

Run Your Ad In TexSCAN!

Statewide Ad.....\$450
291 Newspapers, 854,943 Circulation
North Region Only.....\$195
54 Newspapers, 282,347 Circulation
South Region Only.....\$195
53 Newspapers, 428,075 Circulation
West Region Only.....\$195
58 Newspapers, 246,517 Circulation

To Order: Call This Newspaper direct, or Call Texas Press Service at 1-800-749-4783 Today!

NOTICE: While most advertisers are reputable, we cannot guarantee products or services advertised. We urge readers to use caution and when in doubt, contact the Texas Attorney General at 1-800-625-0508 or the Federal Trade Commission at 1-877-FTC-HELP. The FTC web site is www.ftc.gov/biztop

Extend your advertising reach with TexSCAN, your Statewide Classified Ad Network.

For as the rain comes down and the snow from heaven, and returns not, but waters the earth and makes it bring forth and bud, that

Oil (from Page 4)

Lease line, Sec. 95, B-2, H&GN, spud 3-3-73, plugged 11-30-07, TD 3200' (oil) —

GRAY (PANHANDLE) Oilwell Operators, Inc., #2 Merten, 330' from North & West Lease line, Sec. 87, 3, I&GN, spud 3-27-49, plugged 11-15-07, TD 3132' (oil) — Form 1 in Cree Oil

GRAY (PANHANDLE) WO Operating Co., #2W Clarence Anderson 'B', 330' from South & West Lease line, Sec. 203, B-2, H&GN, spud 9-29-89, plugged 10-10-07, TD 3350' (disposal) — Form 1 in Harken Exploration

HEMPHILL (HEMPHILL Granite Wash) Apache Corp., #654 French Arrington, 1558' from North & 714' from East Lease line, Sec. 54, A-2, H&GN, spud 5-14-93, plugged 10-18-07, TD 11050' (gas) — Form 1 in Maxus Exploration

it may give seed to the sower and bread to the eater; So shall my word be that goes forth out of my mouth; it shall not return unto me void, but it shall accomplish that which I please, and it shall prosper in the thing whereto I sent it (Isaiah 55:10,11).

"Happy Birthday" to Tina Bond, Amanda Freeman, Bobby Jones, Katrina Hillhouse, Jill Johnson, Bailey McAlpin, Connie Bryan, Donnie Barr, Shawn Everett, David Young, Georgia Ford and, Wanda Garner, Jan. 13; Sally

Ledbetter, Cheri Holliday, Tucker Long, Esther Brown, Rolonda Meadows, Kaylie Ralston and Clifton Fletcher, Jan. 14; Nic Ware, Jon Sullivan, James Henson, Ginger Porter, Jimmy Henson, Betty Zybach, Alicia Moffett, Lawrence Fillingim and Alesha Moffett, Jan. 15; Haley and Taylor Sparks, Jack Patterson, Danny Hardcastle, Stacy Hood, Dean Tipps, Randy McCurley, and Larry Jones, Jan. 16; Paul Garrison, Nancy Morrison, Kadance Robinson, Hermilla Soto, Jade Childress,

Shane Simms on Jan. 17; Johnny Wilson, Zachary Beard, Clifton Bradstreet, Josh Hector, Tamera Hartline, Paula Brown, Amanda Calco and Aaron Waters, Jan. 18 and Jami Christley, Vicki Gurley, Aspen Hathaway, Brittney Helley, Charles Crowover and L.D. Childress, Jan. 19.

"Happy Anniversary" to Chuck and Ann Jones, Larry and Pam Meadows and Don and Peggy Rose, Jan. 15; Tracy and Andrea Aldridge, Jan. 17 and Keneth and Vernal Densberger and Ted and Dortha McCurley, Jan. 19.

Remember Lorene Rector in your prayers. She appreciates the Prayer-Gram from Wheeler Baptist and misses not being able to go to church and the good services at Mobeetie Baptist and seeing friends. Daughter, Melba Corcoran, fixed lunch for new pastor, Phillip and Bennie Maine and invited them down to Lorene's so she could meet them. Mobeetie is happy to have Phillip and Bennie Maine and family at their church. The Maines are good singers, too. Pray for our church.

Eula Newman had surgery Dec. 31 to remove gall bladder and stones. She was having acute pain and nausea. Then, there was a blockage in her intestines. Pray for Eula; she has been through so much! She is still in North Richland Hills Hospital, but not in pain. Sure hope she will keep improving. We love you, Eula; sorry it has been so rough.

Golden Agers will meet Thursday, Jan. 17, at 11:30 at Wheeler Baptist Church for Home Health people to check our blood pressure, etc., followed by a good potluck meal and to hear about upcoming activities. Everyone over 50 invited.

Sincere sympathy to family and friends of Jimmy Hoobler, 42, of Canadian, in his death Monday. He was the son of Jim and Marge Hoobler of Canadian. Graveside services Thursday at Canadian Cemetery.

Best wishes to Katie Shipp and Wesley Hathaway as they plan to marry March 29 at Canadian. God bless and guide you.

Joetta Sword went to Stephenville and helped son, Ben, and Arielle and Emily get things packed up to move to their new house they had bought (their first one). Best wishes to all! Ben Sword teaches English at Tarleton. Arielle is working toward her Master's degree. A moving company would be moving them.

Spending about a week with Doris Finsterwald and other family members were Jerry and Janice Finsterwald and Megan, Matt and Meredith from Maryland. Also visiting were Bill and Tonya Finsterwald and Randy and Brandon and Bob and Mary Nell Finsterwald and April and Andy for a good time together with visiting, good food and games and to Mobeetie Baptist Church on Sunday.

For He is the living God and He endures forever; His kingdom will not be destroyed, His dominion will never end. He rescues and He saves; He performs signs and wonders in the heaven and on the earth. He has rescued Daniel from the power of the lions (Daniel 6:26-27).

Anne Killingsworth won a free ticket for a cruise to the Bahamas for herself and a guest. Michael Killingsworth and Anne left Sunday, Jan. 6, and are expected back sometime Saturday. Hope they have been having a good time and enjoying it all. A trip of a lifetime, but Jerry didn't go. Guess someone has to stay home and work. Anne's mom, Dorothy Lewis, is back at Wheeler Care Center so they can take care of her. Best wishes to all. Anne and Michael got back Saturday.

Aaron Lavery has started working for H&R Block at the Perryton office. He will stay up there some since tax season started. Aaron has worked for H&R Block at other stations for several years. Pray for Aaron.

Brad and Sue Chandler and several family members were weekend visitors to Amarillo to celebrate granddaughter, Audra Weatherly's, 9th birthday. They stayed at a motel going up Friday and coming home Sunday evening. The kids really enjoyed the indoor swimming pool and they all enjoyed eating and visiting. Some there were Sue's mom, Mary and Tom Dreling from Kingman, KS., Jana and Janessa Barthomew, Bridget and Shea Weatherly and Audra and Hagen, Sharon Cook, Allen Whitson, Jeremy and Sara Silva and Braxton from Pampa and Rodney and Debra Weatherly, grandparents.

Pray for Charles Davidson who is not well; more cancer problems. Glad to know Joe Ellison is home and hungry after having hernia repair and surgery. He had three eggs for breakfast Wednesday. Joe and Ann were out to Sunday School and church Sunday.

CARD OF THANKS

The family of Bobby Vanpool would like to express our heartfelt thanks to all of you who brought food, sent flowers and cards, came by and expressed your concern during his illness and afterward. We are so thankful to be a part of such a wonderful community.

Much Love and God Bless.
Sue Vanpool
Eric and Kerri Vanpool
Lori Braggs
Amy and Kamron Carter
And, all of "Poppo's"
Grandkids

Vernon and Sandy Sivage have been missionaries to Africa at Uganda and other places. They are spending a few weeks visiting family. Pray for Vernon and Sandy and our other missionaries that God will give them strength, wisdom and safety.

Pray for Stormie Meriwether. Glad to know Stormie is doing well since having her tonsils and adenoids out at Woodward, OK. LeRoy and Rhonda Meriwether and Louis and Barbara Stas were there for the surgery. Stormie has enjoyed the attention, too.

"Dear Stormie, Hope all is going well and no more sore throat with your tonsils out. Always good to get them out while you are small, if they are giving trouble." Thanks Jim and Beth Alvey for

taking my Santa Claus down and putting it up and changing my light bulbs. Yea! You are sweet!

Enjoying a good meal and good fellowship at the Martha Meek home Sunday were Eddie and Lavenna Pannell, Ed and Laurel Hershman, Wesley and Helen Steen and Verna Fillingim. Thank you!

Callin Walker and Camri Moore were selling Girl Scout cookies Sunday. My favorites are still Caramel Delites and Peanut Butter Patties, but lots of good ones!

There was a good crowd out to Wheeler Baptist Church Sunday night. H.B. Krug showed and narrated pictures of the Holy Land. H.B. and his son enjoyed seeing so many things there. H.B. has been a real scholar of the Holy Bible for many years, so really related pictures to scriptures. H.B. gave an interesting testimony of their trip to Israel. He had always wanted to go there. Glad you got to go, H.B.!

Next Sunday, Jan. 20, during morning worship service has been set for the Child Dedication service. There are five families that will be participating at Wheeler Baptist Church.

Dianne Sparks sang a pretty special song Sunday night at Wheeler Baptist. Weldon Simmons sang a good special Sunday morning. Thank you both!

Trudy Kendall of Amarillo and California has been spending a few days with her mom, Ned Burrell. Trudy has not been feeling well. Remember Trudy in your prayers. Trudy has breathing problems and had to spend time in Wheeler Hospital.

Sincere sympathy to family and friends of Leslie T. Moore, Sr., 82, of Miami, in his death. Services were Wednesday, Jan. 9, at United Methodist Church of Miami. Survivors include his wife, Billie (Continued Page 6)

RED RIVER Steakhouse
Hrs.: Tues-Sat 11 a.m. - 9 p.m.
Specials:
Friday Night: BBQ Ribs
Saturday Night: Prime Rib
101 W. Hwy 66—McLean, Texas
806-779-8940
Let us custom cook you next party!

GIFTS — AMBASSADOR CARDS
HYLAND'S PHARMACY
109 W. TEX. ST.—WHEELER, TEXAS
Phone: 806/826-5561
VITAMINS — FILM DEVELOPING

SO EASY, NO WONDER 70 MILLION PEOPLE USE IT.

Get your refund in half the usual time — even faster with Direct Deposit — using IRS e-file. We'll prepare your return and file it with the IRS electronically. It's accurate, secure and fast, with proof of acceptance within 48 hours — It's paperless tool!

Do you owe taxes? Get the benefits of IRS e-file and e-pay in a single step by electronic funds withdrawal (direct debit) or credit card. Ask how you can schedule an electronic withdrawal or make a credit card payment.

Come in or call us today.

Charles Kuntz, CPA



111 W. Texas
Wheeler, TX 79096
(806) 826-5516

121 S. Main
Shamrock, TX 79079
(806) 256-3790

1-800-313-5516

Women caring



for Women

MELINDA J. HISCOCK, M.D., P.A.

Board Certified in Obstetrics and Gynecology

- ADOLESCENT GYNECOLOGY
- ROUTINE AND HIGH RISK PREGNANCY AND DELIVERY
- PREVENTATIVE WOMEN'S HEALTH CARE
- MENOPAUSAL MANAGEMENT AND HORMONE THERAPY

Serving Pampa and the Surrounding Area Since 2005

806.665.1500

3023 PERRYTON PARKWAY SUITE 202

Old Time Gospel Music
On KPDR, 90.5
... in Wheeler
Sundays 6 a.m. to 8 a.m.

McLean Care Center
Since 1979
"Caring For Those You Care About, In An Excellent Facility"

- ☆ Family Atmosphere
- ☆ Caring For Each Other
- ☆ Therapeutic Dietary Service
- ☆ Daily RN Coverage
- ☆ Transportation to Dr.'s Appts.
- ☆ Beauty & Barber Services
- ☆ Semi Private & private Rooms
- ☆ Church Services Weekly
- ☆ Fun Activities Scheduled Daily
- ☆ Monthly Newsletters to Families

Medicare & Medicaid & Private Patients Welcome.
We cordially invite you to visit our facility and see for yourself the difference and have lunch with us, to see just how good our food is, for a tour and lunch or just a tour, call the administrator, Nita Massey, or Director of Nursing Kim Wheeler, R.N., and we will set up a time for your visit. You're welcome at anytime you want to come. Questions are always welcome, and we will assist you in any way necessary for admission, or for qualifications necessary for nursing home placement or the Medicare/medicate programs.
"24 Hour Professional Staff"
"McLean Care Center, it's such a short drive for the care your loved one deserves."

NITA MASSEY
Administrator
605 W. 7th — McLean, TX 79075
Phone: 806-779-2469
Fax: 806-779-2515

WHEELER MENU

Week of January 21 thru 25

Monday
Breakfast—Cereal, Toast, Oatmeal, Juice, Milk
Lunch—Chicken Patty Sandwich, Pickle Spears, Baked Beans, Strawberry Shortcake, Applesauce, Milk

Tuesday
Breakfast—Biscuits, Gravy, Eggs, Sausage, Juice, Milk
Lunch—Spaghetti Meat Sauce, Corn, Tossed Salad, Texas Toast, Pears, Milk

Wednesday
Breakfast—Pizza, Cereal, Toast, Juice, Milk
Lunch—Steak Fingers, Mashed Potatoes, Gravy, Green Beans, Hot Rolls, Apricots, Milk

Thursday
Breakfast—Biscuits, Gravy, Sausage, Juice, Milk
Lunch—Meat Chalupa, Refried Beans, Rice, Salad, Grapes, Milk

Friday
Breakfast—Peanut Butter & Jelly, Sandwiches, Cereal, Oatmeal, Juice, Milk
Lunch—Baked Potatoes, Broccoli & Cheese, Bread / Ham, No-Bake Cookies, Peaches, Milk

Steel Construction
Barns — Houses
Sheds
Carports, etc
Fax: 806/447-0158

Pat-Home: 806/447-9705
Cell: 806/205-0770

Clint: 806/205-0646
Scooter: 806/447-1122
Cell: 806/930-9201

Let's compare rates & service ...

FARM BUREAU INSURANCE
Auto - Home - Life

(806) 826-3563
Gary Alston, Agency Manager
James Masters, Agent
srbli.com — txfb-ins.com

Helping You is what we do best.

JENNINGS PLUMBING HEATING & AIR CONDITIONING

P.O. BOX 423 — Wheeler, Texas 79096
LARRY & BOBBY JENNINGS, Owners
Licensed, Insured & Bonded
(806) 826-3153
Licensed Septic Systems, & Site Evaluations
TX# TACLB017641E

"A Flush... Is Better Than A Full House!!!"

MOBEETIE NEWS

By: Sue Mayfield

We hope you have all recovered and recuperated from all of the holiday festivities. Now it seems as though most everyone's attention has turned to the football leagues finals. Some of our family are die hard fans, but thank goodness this household isn't. I certainly wouldn't have been out there in all that snow and cold for the Wisconsin game. That's why they televise the games. But, I know the teams appreciate all the loyal fans that come to watch them play. I'd just have to send them a thank you card and congratulate them.

We have been so lucky to have such beautiful weather the last 3 days or so. After the wind died down some the 40 and 50 degree weather had really felt good. Sort of sounds like we best get the old long johns rounded up though. That old north wind just cuts through everything.

Belated birthday wishes to Clinton Stribling and many, many more. As of Monday, January 6th, Clinton is 87 years young and can out work or out party me any day of the week. Louise Hogan treated the Stribling's to a birthday lunch at the Cowboy Oasis Cafe. They had a nice lunch and an enjoyable visit. Then it was on to Pampa for Clinton to pick out a new chapote. After a short visit with Seth and Carol it was time to go to Wheeler. They attended a meeting of the wind farm advisors. This time they had attorney's present to answer questions and give them tips on the leases and such. They had a good turn out and several of the area families were represented. It was a very informative meeting.

Roy Lynn and Cindy Stribling hosted a family birthday celebration for Clinton at Maxey's in Wheeler on Monday night. Those there to share in a good meal and a wonderful family get together were: Clinton and Maurita, Roy Lynn and Cindy, her daughter, Crystal and Jaxson Campbell, her daughter, Nikki Filyaw and daughter, Kambrie, Cindy's parents, M.L. and Diane Hines, along with Shane Stribling all of Elk City, OK. Also in attendance were Natasha and Toby Collins and daughter,

Larah, of Wheeler. It was a wonderful evening.

We spent Monday in Amarillo taking care of doctor's appointments, pharmacy stuff, and doing a little shopping. I don't know which is worse. Know exactly what you are looking for and can't find it. Or take a chance and just go hoping something will just say this is it. Either way it saved Robert a bunch of money. So he was happy. I don't think he thought he would ever see the day when I could come out of a store empty handed. But, it actually happened more than once in the same day. Kind of scary!!!

Fred Thrasher is able to go back to work on light duty. He was getting cabin fever, so that is a good deal. He has to go to therapy for his shoulder 3 times a week, so maybe very soon he will be able to tell that there is some improvement. Certainly it helps with the pain some. Jackie has to go to the chiropractor 3 times a week to see if the pinched nerves in her neck and arm will go back to where they belong. Maybe the tingling will go away and she can get the grip and control back in her hand. She recently got new pictures of their great-grandson, Zander. He is 8 months old and a real go-getter. He is a doll.

Tuesday we got to babysit with our granddaughter, Kourtney. We also had to take her in for a doctor visit and of course, baby shots. She had a stuffy nose when she was in for her 2 month check-up so they had put the shots off. But they had to make Grandma the "bad guy" that let those nurses give her shots. The poor baby won't want to go any where with Grandma again. She has a heart murmur, so will be seeing a pediatric cardiologist at the Texas Tech clinic in Amarillo soon. She is 2 months old, is 21 inches long and weighs 9 pounds 2 ounce. She tried flirting with Dr. Kim and talking to him. That didn't work though. She still had to have her shots.

Thursday evening we met Todd and Lori Mayfield of Richland Hills, and Bo and Mona Dulancy of Pampa at the Red River cafe in McLean for a delicious supper and nice visit. Todd and Lori are moved back in their home and camping out at the house. They had sold or given away most of their furniture so they will get to start over. Their neighbors were so glad to have them back they had

a welcome home party and a New Year's Eve party all together. Todd and Lori were in the truck loaded for Albuquerque, and Fresno, CA. What a nice surprise to see Billie and Sheila Umsted, daughter, Kimberly and her son all having supper there too. They all stay so busy we hardly ever see them. It was nice to have her dad and brother for neighbors for a while. At least we got to visit with Sheila some. We extend our sympathy to Billie in the loss of his brother over at Erick, OK, recently.

Our sympathy to Jim Ash and the family and friends of Alice Ash of Amarillo. She passed away Thursday evening after 2 procedures on her heart earlier in the day. Services will be on Tuesday, January 15th in Hereford, TX, at the Christian Assembly Church. She and Jim had been married for 48 years. She is also survived by her daughter, Kim Ward, of Arizona, son, Kurt Ward, of Topeka, Kansas, a step-son, Robin Ash, 2 sisters, Jean Draeger and Donna Lienen both of Hereford, and 2

brother, Johnny Brannon of Hereford and Jerry Brannon and wife, Noni, of Grand Junction, CO, 14 nieces and nephews and numerous friends and adopted family. She is also survived by the "baby of the family", Candy, a five year old chihuahua. We have always "blamed" Jim and Alice for Robert and I being together. Alice always said that was her intentions anyway and that is the way she planned it. Alice was also my step-dad's, Lewis Orthman, cousin.

It's good to hear that Peggy Dunn is feeling better and ready to go back to physical therapy. Keep up the good work Peg.

Belated birthday wishes to Sallie Adcock. They really had reason to celebrate this year. Jackie Don, Kelli and Shelton had spent all day in Amarillo doing all the scans and tests to see where Shelton has progressed to. It was wonderful they found no new spots to be concerned about and his blood work is finally starting to come back up. He is still a long ways from where he needs to be. But it is the first time in a long time that it has moved up instead of down. Nanny got the best present ever. It is so good to see Kelli smile again. They had spent Christmas break with her parents and sisters and families in Arizona. They had a good visit. Peyton and Shelton enjoy their cousins so much. Congratulations Shelton. Keep up the good work. It was exactly a year ago on the same date that they got the news that Shelton had cancer again and would have to have more chemo. So this was a very nerve racking day for the May's. Praise the Lord all of Shelton's scans were clean.

Last Monday Joyce Perkins hosted the Canasta club. They had a great time getting caught up with all the news of family and friends after the holidays. It's always nice to get things back on schedule and on track after all the fun of the holidays.

Saturday Leola Stuart was in Canadian to do some shopping and visit with Peggy Dunn. Leola had left a box from Lawton in Peggy's car. They had a good visit. On Sunday she met Jerry and Cheryl Richardson, Katie and Tyler at the cafe for lunch after church. Katie was leaving to go back to college Sunday afternoon. It has been so nice having her home during her semester break and for the holidays.

Saturday Robert and I met Carol Orthman, Shannon Pool, and Joe Orthman, all of Dumas and Mary Sue Straskulic of Hereford at the

home of Jim Ash in Amarillo. After getting everything around for the mortuary we all went to Hereford to take care of business and visit with family. Mike and Paula Harrell hosted the family in their home. It's sad that it takes a death in the family to get most of us together. It was good to see Paula and Mike, Donna Lienen, her granddaughter, Keisha Lienen, Jean Draeger, Johnny Brannon, Pam Word, Mary Sue Straskulic, Sheila Brannon, daughter, Sheridan and husband, Daniel, and son Courtney Brannon all of Hereford, Jim Ash, Rhonda Lienen and friend, Ramon Torrez all of Amarillo, along with, Shay and Paula Brannon and children, Carol Orthman, Shannon Pool, and Joe Orthman all of Dumas, and Robert and Susan Mayfield of Mobeetie. After we got back to Amarillo Jerry, Noni, and little Jerry Brannon arrived from Grand Junction, CO. They thought they were getting close to the tropics when they got to Dallas. They had an hour and a half lay-over there, but they weren't too disappointed with our weather. They have been having a lot of wind too. They left 20 and 30 degree weather for highs for the day. So this does feel nice to them. Not good enough to want to move back though.

Many thanks to the Fort Elliott FFA for all of their help in getting the office furniture and filing cabinets moved from the Old Jail to the new offices in the School building at the museum. It was a great help and you made short work of it. The new facilities are so nice. Jimmy Davis of Pampa did a beautiful job on the cabinetry. It is so nice to have so much room, and everything the office personnel need all on one floor. They really won't miss those steps. It's going to be quite a "grand opening" when the time comes.

Hope this finds Lorene Rector rested up and feeling better.

Sorry that this winter, has been so hard on Carl and Peggy Carter. They are suffering so much with arthritis. They have an appointment this week with a new specialist. Certainly hope there is something the other doctors have missed and they can get to feeling better.

Leola Stuart is looking forward to having the Canasta club ladies at her house today.

We went to Sayre to meet Bob's sister and husband, Buck and Sis Williams of Wister, OK, his brother, Ralph and brother and sister-in-law, Kenneth and Doreen of Arnett, OK, for lunch. Sis and Buck are on their way home from spending 6 weeks with their girls and families in the Bakersfield, CA, area. They also got to visit several times with Buck's mother, Lola Williams, at an area nursing home. They enjoyed Christmas with all the grandchildren and part of the great-grandchildren from out there. They have both been sick with the flu and crud since Christmas Day. Even the antibiotics haven't stopped it. So they were anxious to get home and see their own doctors.

Have a great week.

Please keep our friends and neighbors in your prayers: Don and Mary Edwards, Clinton and Maurita Stribling, Jack and Berniece Helley, Bulah Stuart, Bill and Shirley Dyson, Lorene Rector, Orville Greenhouse, Jane Seitz, Iona May, Mabel Tabor, Peggy Dunn, Curtis Hendrix, John Thierstein, Peggy Frazier, Earl and Leola Farris, Dick and Ann Graham, Kenneth and Vera Walker, Bill and Patsy Caswell, Leola Stuart, Iva Richardson, John McGinty, Shannon Pool, Chuck Carl, Mary Whitener, Byron Simpson, Shelton May and family, Lou Dean Douthit, Joe Tolle and family, Alvern Hutchison, Delmer Murray, Jimmy Love, Aaron Laverty, Joann Couch, Fred Castle, Vance and Carol Boydston, Aaron Hartline and family, Charlie Brown, Melba Corcoran, Lonnie Hendrix, Andrea Aldridge and family, John Paul

(Continued Page 3)



Just how OLD is she, anyway? Happy Birthday, Tina! Mike and Beverly

G & K PLUMBING

- ★ Drain Cleaning
- ★ Water Heaters
- ★ Gas & Water Lines
- ★ Septic Systems
- ★ New Construction
- ★ Remodeling
- ★ Class I OSSF-Installer

Master Plumber
GLEN BISHOP
806.217.1666
Lic. # M-35562

KEVIN RATLIFF
806.217.0616
Lic. # OS0025048

WELCOME TO
FIRST UNITED METHODIST CHURCH
8TH AT MAIN - P.O. BOX 89 - WHEELER, TX 79096
CHURCH (806) 826-3114 - PARSONAGE (806) 826-3079

TOM WOODWARD,
Pastor

Sunday School 9:45 a.m.
Morning Worship 11:00 a.m.
United Methodist Youth 6:00 p.m.

MUSTANG AUTO CARE
PENNZOIL
Oil & Filter Change
\$29.99 up to 6 quarts
5W-20, 5W-30, 10W-30
Now thru February 1, 2008

Country (from Page 1)

Moore, of Miami, a son, Jim Moore of Rowlett, seven grandchildren, six great-grandchildren and a brother, Gene Moore.

Many relatives and friends gathered at Wheeler Baptist Church, Tuesday, to pay last respects to Bobby Vanpool in his death. He was only 59. Dinner was served to the family. Very large crowd at the funeral and dinner. Many brought food. Helping to serve the food and clean up were Leona Coates, Ella Mae Wood, Dianne Sparks and Bobbie Sue Baker.

Ray and Glenda Hudson went to Vernon, TX., Friday to watch granddaughter, Allison Graddy, 13, play basketball Friday and Saturday. They didn't win, but they tried very hard! Saturday afternoon, Ray and Glenda went to Olney, TX., and ate supper and visited with Glenda's sister, Lois Farquer, and sons, Kenneth and Billy Wayne Farquer, and grandchildren. They also saw Glenda's brothers, Charlie and Sue Miller and Jay Miller and grandson, Aaron Miller, and Glenda's sister, Mary Beth and Clarence Watson. Sunday, they went to church with Jennifer and Mike Graddy and Allison and celebrated Jennifer's birthday with lunch at Wichita Falls where they live.

"Nearly Brothers and No Mountain Boys Band" came to Wheeler Care Center Tuesday night and made beautiful music to entertain the residents of Wheeler Care and their guests. Playing music were Gene Keelin, Herb Smith and Jay Godwin playing guitars; Robert Jones playing upright bass; Geoff Caldwell, mandolin, and Chuck Hartline playing fiddle. Singing were Nadine Lane, Jay Godwin, Herb Smith, Lynn Smith, Wesley Steen and Chuck Hartline. All very good! It was a wonderful music program. Thanks for coming, all of you. Some other visitors were Larry and DeAnna Baker from Pampa visiting Larry's mom, Marie Baker, Dale and Melba Corcoran visiting Dale's sister, Sarah Barnes; Tria Godwin (Jay's wife), Fredia Caldwell (Geoff's wife), Helen Steen (with Wesley); Naomi Haggerman (Charles' wife); Martha Meek and Verna Fillingim. Very enjoyable evening.

The band will be back to Wheeler Care Center, Tuesday, Jan. 22, at 6:30 to make beautiful music. Visitors always welcome. See you there!

Sorry to hear that Laverna Doorack, 101, broke her hip and fell (not sure if the hip broke and caused her to fall or if she fell and caused the break). She was the oldest sister of Mary Lea Cole, an aunt to Frances Dickey. I understand she is in a nursing home. I was named after Laverna who is also related to Pat Murray of Pampa. I don't remember meeting Laverna. I was a baby when Laverna came to visit my Grandmother Medkief who lived near us and my mother liked the name. My family was living near Cornwall, west of Wheeler. Sorry Laverna is having infection in her break. Pray for her.

"If God be for us, who can be

against us" (Romans 8:31)? And I am convinced that nothing can ever separate us from Christ's love. Death can't and life can't. Our fears for today, our worries about tomorrow and even the powers of hell can't keep God's love away (Romans 8:38-39). Yea!

Wheeler Senior Citizens met Monday night, Jan. 7, for good fellowship, good food and games of 80 and Chicken Foot. Visitors always welcome. Ones there were Wesley and Helen Steen, Jo Redding, Martha Meek, Joyce Perkins, Verna Fillingim and Betty Howard. We will meet again Tuesday, Feb. 5, from 3-5pm. See you there...weather permitting.

Good to have Earl and Betty Husted back Tuesday, Jan. 8, for Care Center Church, good sing-a-long, communion and prayers for each one. (They usually come each Tuesday morning at 10:00 a.m., but didn't come on Christmas Day and New Year's Day.) Also there to help with singing and greet the residents were Joyce Wood and Verna Fillingim. Nina Hervey played the piano. Several residents out to enjoy the good service. Visitors welcome always. Also there were Wanda Garner and husband, James Garner, visiting her mom, Lynna Vick.

Ann and Michael Killingworth went on a Bible Study Cruise Jan. 7-12, 2008. On the cruise were several Gospel music groups. The Speck Ken Davis, Greater Vision, Stan Whitmier, Geraldine and Ricky, Charles Billingsley and several others. There were nine different speakers, David Jeremiah, Jerry Vines, James Ragle, Phil Waldrep and others.

Islands of the Bahamas were visited, Freeport, Half Moon Cay and Nassau. Sightseeing and shopping were enjoyed by all. Michael went parasailing at Half Moon Cay, and played with the dolphins at the Blue Lagoon near Nassau. Ann enjoyed the shopping and touring of the city.

The food was great, service was wonderful.

The trip was so nice and so much fun.

MARC Meeting
Dallas and Krystal Fillingim and Keaira and Kamry went to San Antonio Wednesday to visit with relatives. Jerry and Marion Lackey and family in the Gonzales area. Also got to see Jeffrey and Jennifer Lackey and Corrina Elise and Ava and Pat and Kristi Steffek and Bailee and Clay. Dallas' family also got to go to the zoo and to see the Alamo. Sunday they went to Dallas' MARC meeting and learned of new products and Dallas got some awards: World of Thanks Award and President's Award for increase in accounts. There was also a banquet on Sunday night. It was a good grip and they just drove to San Antonio. But good to get home Monday night. Was paid for by the MARC company and also cash prizes. Congratulations, Dallas! And they enjoyed seeing the relatives. Kids had fun together and getting acquainted.

"God be with you till we meet again."

Get Your Refund FAST!
FAST!
Because It's Your Money



Get Your Tax Refund FAST
with Electronic Filing!

ALVEY
Tax & Accounting Service

101 E Oklahoma St. — (806) 826-3736

Mon.-Fri. — 9:00 A.M.-6:00 P.M.
Sat.—9:00 A.M.-1:00 P.M.

Wheeler, Texas 79096

IRS e-file



Cooper Adams is the 6-year-old son of Doug and Joann Adams, and the grandchildren of Lee and Pam Hible, all of Wheeler.

For all your...
Insurance Needs, See Eastern Panhandle Insur. Agency, Inc.

117 W. Texas St.—Wheeler
806/826-3573

•Auto •Home •Life •Health
•Commercial •Bonds

Wheeler County COURT RECORDS

List of instruments filed in the Wheeler County Clerk's office from December 31, 2008 — January 11, 2009.

DECEMBER 31, 2007
ROY./MD—Peggy J. Bryant et al to Peggy J. Bryant Trust, 12-28-07, See Instrument.

ASSIGN.—Associated Resources Inc. to Kaiser Francis Oil Company, 9-24-07, See Instrument.
ASSIGN.—Kaiser Francis Oil Company to Kaiser-Francis Mid-Continent Limited Partnership, 10-26-07, See Instrument.
D—Gary L. Hogue, et ux to Douglas M. Acker, et ux, 9-13-07, Lot 4, Blk. LXI, Shamrock.

JANUARY 1, 2008
Holiday.

JANUARY 2, 2008

UCC DT—Civialma Partnership to Amarillo National Bank, —, S 1/2 Sec. 12 and W 1/2 Sec. 13, Blk. A-5, H&GN Ry. Company Survey.
D—John C. Holcomb, et ux to Holcomb Living Trust, 12-26-07, N 86' Lot 15 and S 4' Lot 16 Moore Sub. Div. Wheeler, and E 1/2 of 75' x 140' Blk. 57, Stanley Add., Wheeler.

ASSIGN. B. of SALE—Geodyne Nominee Corporation to Samson Exchange Company LLC, 12-5-07, Sec. 50, Blk. M-1, H&GN Ry. Company Survey.
ASSIGN. B. of SALE—Geodyne

Nominee Corporation to Samson Exchange Company LLC, 12-5-07, W 1/2 Sec. 10, Camp County School Land.
ASSIGN. B. of SALE—Geodyne Nominee Corporation to Samson Exchange Company LLC, 12-5-07, Sec. 44, Blk. A-7, H&GN Ry. Company Survey.
ASSIGN. B. of SALE—Geodyne Nominee Corporation to Samson Exchange Company LLC, 12-5-07, Sec. 1, BBB&C Survey.
ASSIGN. B. of SALE—Geodyne Nominee Corporation, et al to Samson Exchange Company LLC, 12-5-07, NE 1/4, SW 1/4, NW 1/4, Pts. SE 1/4 Sec. 18, Blk. A-4, H&GN Ry. Company Survey.
ASSIGN. B. of SALE—Geodyne Nominee Corporation to Samson Exchange Company LLC, 12-5-07, N 1/2, SW 1/4 Sec. 34, Blk. M-1, H&GN Ry. Company Survey.
ASSIGN. B. of SALE—Geodyne Nominee Corporation to Samson Exchange Company LLC, 12-5-07, N 1/2, SW 1/4 Sec. 34, Blk. M-1, H&GN Ry. Company Survey.
ASSIGN. B. of SALE—Geodyne Nominee Corporation to Samson Exchange Company LLC, 12-5-07, N 1/2, SW 1/4 Sec. 34, Blk. M-1, H&GN Ry. Company Survey.
HOME EQUITY DT—Nancy Morrison to Mortgage Now Inc., 11-9-07, 100' x 150' Sub. Div. 8 SE 1/4 Sec. 60, Blk. A-8, H&GN Ry. Company Survey.
RDT—Citizens Bank to Charles L. Ballard, et ux, 12-28-07, S 1/2 Lot 3, Blk. 49, Shamrock.
OL—Morna K. Rinn to William P. Harris, 12-20-07, W 1/2 NW 1/4 NW 1/4 Sec. 57, Blk. A-5, H&GN Ry. Company Survey.
OL—Janice J. Davis to William P. Harris, 12-20-07, W 1/2 NW 1/4 NW 1/4 Sec. 57, Blk. A-5, H&GN Ry. Company Survey.
OL—Mary F. Curran to William P.

Harris, 12-20-07, W 1/2 NW 1/4 NW 1/4 Sec. 57, Blk. A-5, H&GN Ry. Company Survey.
OL—Jacqueline M. Amos to William P. Harris, 12-20-07, W 1/2 NW 1/4 NW 1/4 Sec. 57, Blk. A-5, H&GN Ry. Company Survey.
RDT—First State Bank of Mobeetie to Benancio S. Lira, et ux, 12-27-07, Pt. NW 1/4 Sec. 4, T&NO Ry. Company Survey.
JANUARY 3, 2008
D—Glen R. Arganbright, et ux to Eliberardo Venzor, et al, 12-14-07, 28 acs. SW 1/4 Sec. 5, Blk. A-4, H&GN Ry. Company Survey.
JANUARY 4, 2008
RVL/RDT—Kay Rikard to Mary Rankins, 12-27-07, N 45' Lot 11 and All of Lot 12, Blk. 63, WSSA, Shamrock.
OL—Miller Family Trust to Orion Oil & Gas Properties, 12-6-07, Sec. 41, Blk. A-3, H&GN Ry. Company Survey.
OL—Thomas Michael Bryant to Chesapeake Exploration LLC, 11-19-07, Sec. 34, Blk. A-7, H&GN Ry. Company Survey.
OL—Terry Lynn Vanpool, et ux to Chesapeake Exploration LLC, 10-2-07, N 1/2 NE 1/4, SW 1/4 NE 1/4 Sec. 23, Blk. A-4, H&GN Ry. Company Survey.
OL—Thomas Michael Bryant to Chesapeake Exploration LLC, Sec. 35, Blk. A-7, H&GN Ry. Company Survey.
ASSIGN. B. of SALE—Geodyne Nominee Corporation to Gunsmoke Energy Company, 12-5-07, Sec. 38, Blk. A-7, H&GN Ry. Company Survey.
ASSIGN. B. of SALE—Geodyne Nominee Corporation to Robertson Energy Resources Ltd., 12-5-07, Sec. 45, Blk. A-7, H&GN Ry. Company Survey.
TERM ASSIGN.—Blue Dolphin Energy LLC to Mobeetie Resource Development LLC, 12-18-07, Sec. 44, Blk. A-5, H&GN Ry. Company Survey.
RATIFICATION OL—James L. Radford Jr. to Bill Eischeid, 11-18-07, Pt. SW 1/4 Sec. 44, Blk. A-5, H&GN Ry. Company Survey.
AMEND. OL—Ruth Hogan to Bill Eischeid, 12-4-07, 100 acs. S side NE 1/4, 24.8 acs. SE 1/4 Sec. 44, Blk. A-5, H&GN Ry. Company Survey.
JANUARY 7, 2008
RDT—National Bank of Commerce to Dennis Lowe, 1-4-08, Lot 3, Blk. 52, WSSA, Shamrock.
A. of JUDG.—Amarillo Floor Co. to John Franklin, 3-28-07.
MD—D.J. Shelby Jr., et ux to Shelby Farms Inc., 4-30-07, Pts. Sec. 32, Blk. R.E., Roberts & Eddleman Survey.
DT—Azalea Properties Ltd. to Texas Capital Bank NA, 12-28-07, See Instrument.
ASSIGN.—Diamond M. Drilling and Exploration Company to Plantation Operating LLC, 10-1-07, See Instrument.
ROW—Miller Family Trust to Chesapeake Energy Marketing Inc., 12-5-07, Pt. W 1/2 Sec. 2, Blk. A-3, H&GN Ry. Company Survey.
ASSIGN.—Chesapeake Energy Corporation to Chesapeake Exploration LLC, 12-12-07, See Instrument.
PARTIAL ASSIGN.—Chesapeake Exploration LLC to Chesapeake Investments, 11-12-07, E 1/2 E 1/2, E 1/2 W 1/2 E 1/2 Sec. 2, Blk. A-3, H&GN Ry. Company Survey.
OL—Donna Hildebrand Epps to Samson Lone Star LLC, 11-26-07, Blk. 1, Copeland Add., Allison.
HEIRSHIP AFF.—William Epps to Edith D. Hildebrand, 12-2-07, Blk. 1, Copeland Add., Allison.
OL—State of Texas to Cambridge Production Inc., 4-3-07, 13.38 acs.

S 1/2 Sec. 12, Blk. A-5, H&GN Ry. Company Survey.
C/C PROBATE—Billy Jack Deger to Ex Parte, 12-13-07, N 45' Lot 3 and S 10' Lot 2, Blk. 3, WSSA, Shamrock; and S 5' of Lot 3 and All of Lot 4, Blk. 82, WSSA, Shamrock.
ROW—Jean Gibson Duncan, et al to Centerpoint Energy Field Services Inc., 11-26-07, Pt. NE 1/4 Sec. 24, Blk. A-5, H&GN Ry. Company Survey.
ROW—Curtis James Van Zandt Family Trust to Centerpoint Energy Field Services Inc., 11-27-07, Pt. Sec. 37, Blk. A-5, H&GN Ry. Company Survey.
ROW—Virginia K. Ridgway, et vir to Centerpoint Energy Field Services Inc., 11-27-07, Pt. SW 1/4 Sec. 44, Blk. A-5, H&GN Ry. Company Survey.
ROW—James P. Davis to Centerpoint Energy Field Services Inc., 11-27-07, Pt. NW 1/4 Sec. 44, Blk. A-5, H&GN Ry. Company Survey.
D—7-H Cattle Co. to Paul Hathaway, et ux, 1-7-08, NW 1/4 Sec. 65 and all of Sec. 76, Blk. A-5, H&GN Ry. Company Survey.
RDT—National Bank of Commerce to John Ronald Patton, et ux, 12-28-07, S 150 acs. W 1/2 Sec. 9, Blk. A-8, H&GN Ry. Company Survey.
D—Luwella Haning to Haning Trust, 12-18-07, S 1/2 Sec. 7, Blk. A-5, H&GN Ry. Company Survey.
UNIT DESIGNATION—Cambridge Production Inc. to Dorothy Red, et al, 8-1-07, S 1/2 Sec. 12 and W 1/2 Sec. 13, Blk. A-4, H&GN Ry. Company Survey.
JANUARY 9, 2008
ROY./MD—George F. Robinson Jr. to Southwest Petroleum Company, et al, 12-26-07, Sec. 19, Blk. A-3, H&GN Ry. Company Survey.
D—Hollis Patterson, et al to Sybil R. Smith, 1-3-08, E 1/2 Sec. 54, Blk. A-8, H&GN Ry. Company Survey.
MD—C. C. Mitchell Jr. and Dorothy I. Mitchell Revocable Living Trust to Nadean Tripenier, et al, 12-28-07, E 1/2 Sec. 54, Blk. A-8, H&GN Ry. Company Survey.
ROW—Garland Moore, et al to Pogo Panhandle 2004 LP, 8-31-07, Pt. S 1/2 NW 1/4 Sec. 3, AB&M Survey.
JANUARY 10, 2008
OWNERSHIP AFF.—Rebecca Blackburn to The Public, 12-27-07, Lots 13-15, Blk. L, Park Add., Wheeler.
MD—Geodyne Nominee Corporation to Samson Lone Star LLC, 1-4-08, N 1/2 SE 1/4 NE 1/4 Sec. 4, AB&M Survey.
ROW—Jerry D. Hefley, et ux to Enogex Gas Gathering LLC, 12-6-07, Pt. E 1/2 NE 1/4 Sec. 1, H&GN Ry. Company Survey, Cert. # 5/270.
OL—Kyle R. Lawson to Crest Resources Inc., 11-19-07, N 40 acs. SE 1/4 Sec. 21, Blk. L, J. M. Lindsey Survey.
OL—June A. Lawson to Crest Resources Inc., 11-19-07, N 40 acs. SE 1/4 Sec. 21, Blk. L, J. M. Lindsey Survey.
OL—Julia Hooper to Crest Resources Inc., 11-28-07, N 40 acs. SE 1/4 Sec. 21, Blk. L, J. M. Lindsey Survey.
OL—Dorothy Lawson to Crest Resources Inc., 12-17-07, N 40 acs. SE 1/4 Sec. 21, Blk. L, J. M. Lindsey Survey.



JANUARY 11, 2008
ASSIGN.—Texhoma Land Consultants Inc. to Kaiser Francis Mid-Continent LLC, 1-7-08, Pt. NW 1/4 Sec. 38, Blk. A-4, H&GN Ry. Company Survey.
QCMD—N Noble FLP LLP to Noble Royalty Access Fund I LP, 11-1-07, See Instrument.
DT—Texakoma Operating LP, et al to Citibank NA, 12-11-07, Pt. SE 1/4 NE 1/4 Sec. 19, Blk. R.E., Roberts & Eddleman Survey; and Pt. Sec. 4, Blk. A-2, H&GN Ry. Company Survey.
POA—Lula McCasland Buice to Lana Elaine Martin, 11-14-07.
D—Gladys Jeanine Hawkins, et vir to Paul Hathaway, et ux, 1-10-08, Lots 11 and 12, Blk. 4, Vise Sub. Div., Wheeler.
HOMESTEAD DESIGN.—Paul Hathaway, et ux to The Public, 1-10-08, S 100 acs. SW 1/4 Sec. 76; and N 100 acs. NW 1/4 Sec. 65, Blk. A-5, H&GN Ry. Company Survey.
DT—Paul Hathaway, et ux to First Ag Credit FLCA, 1-10-08, Pts. NE 1/4 Sec. 65, Blk. A-5, H&GN Ry. Company Survey.
EXECUTORS DVL—John C. Vise Estate to James Porter, et ux, 1-10-08, Lots 1-3, Blk. 1, Vise Sub. Div., Wheeler.
DT—James Porter, et ux to First State Bank of Mobeetie, 1-10-08, Lots 1-3, Blk. 1, Vise Sub. Div., Wheeler.
QCD—County of Wheeler, et al to Shamrock Independent School District, 1-10-08, Pt. Outlot 25, Shamrock.
D—Mary Hovey to Ada Lou Lester, 1-8-08, Lots 16-20, Blk. 3, Blasdel Add., New Mobeetie.
RELEASE INTEREST—Sanguine Gas Exploration LLC to Multi-Financial Investments LLC, 1-9-08, Secs. 2, 5 and 6, AB&M Survey.
ADMINISTRATORS AFF.—Charles L. Hollaway Estate to The Public, 1-7-08, N 41.86 acs W 110 acs. NW 1/4 Sec. 1, H&GN Ry. Company Survey, Cert. # 5/270.
RATIFICATION OL—Charles L. Laughlin Estate to Terra Nova Land Associates Inc., 1-7-08, N 41.86 acs W 110.00 acs. NW 1/4 Sec. 1, H&GN Ry. Company Survey, Cert. # 5/270.
OVERRID. ROYALTY ASSIGN.—Sanguine Gas Exploration LLC to Michael K. Barber, et al, 1-9-08, Sec. 2, BBB&C Survey.
OVERRID. ROYALTY ASSIGN.—Sanguine Gas Exploration LLC to Michael K. Barber, et al, 1-9-08, Section 51, Blk. A-7, H&GN Ry. Company Survey.
OVERRID. ROYALTY ASSIGN.—Sanguine Gas Exploration LLC to Michael K. Barber, et al, 1-9-08, Secs. 22 and 23, Blk. A-7, H&GN Ry. Company Survey.
ASSUMPTION D—Kimberly Christner to Norbert Schlegel, 1-7-08, E 1/2 Sec. 49, Blk. 17, H&GN Ry. Company Survey.
ASSUMPTION D—Norbert Schlegel to Wm. F. Holmes, et ux, 1-7-08, E 1/2 Sec. 49, Blk. 17, H&GN Ry. Company Survey.
DVL—Mary Elizabeth Morgan to Joe Dean Robertson Jr., et ux, 1-9-08, Lots 2 and 3, Blk. 30, Shamrock.
DT—Joel Dean Robertson Jr., et ux to Amarillo National Bank, 1-9-08, Lots 2 and 3, Blk. 30, Shamrock.
PARTIAL ASSIGN.—Questar Exploration and Production Company to Cimarex Energy Co., 12-27-07, Sec. 3, Blk. L, J. M. Lindsey Survey.
PARTIAL RELEASE OF JUDG.—Lee-Swofford Investments LLP to Doretta Moore Estate, 1-9-08.
OL—Doris Fay Finsterwald to Newfield Exploration Mid-Continent Inc., 10-29-07, Pts. Sec. 2, BBB&C Survey.
OL—Bobby Gene Finsterwald to Newfield Exploration Mid-Continent Inc., 10-29-07, Pts. Sec. 2, BBB&C Survey.
OL—Jerry Don Finsterwald to Newfield Exploration Mid-Continent Inc., 10-29-07, Pts. Sec. 2, BBB&C Survey.
SHUT-IN ROYALTY AGREE.—Billy Wayne Finsterwald to Newfield Exploration Mid-Continent Inc., 11-23-07, Pts. Sec. 2, BBB&C Survey.
SHUT-IN ROYALTY AGREE.—Jerry Don Finsterwald to Newfield Exploration Mid-Continent Inc., 11-26-07, Pts. Sec. 2, BBB&C Survey.
SHUT-IN ROYALTY AGREE.—Bobby Gene Finsterwald to Newfield Exploration Mid-Continent Inc., 11-20-07, Pts. Sec. 2, BBB&C Survey.
SHUT-IN ROYALTY AGREE.—Doris Fay Finsterwald to Newfield Exploration Mid-Continent Inc., 11-26-07, Pts. Sec. 2, BBB&C Survey.
TDT—Amarillo National Bank to Lone Star State Bank of West Texas, 12-3-07, See Instrument.
TDT—Amarillo National Bank to Lone Star State Bank of West Texas, 12-3-07, See Instrument.
CERTIFICATE TRUST—Harrison Hall to Harrison Hall Living Trust, 1-8-08.
DEED—Harrison Hall to Harrison Hall Living Trust, 1-8-08. See Instrument.
DEED—Rick D. Gragg, et ux to

Jose de Jesus Martinez, et ux, 1-11-08, Lots 10 and 11, Blk. 86, Shamrock.

District Clerk's Filings:
#12087—Shamrock ISD vs Denise Anglin, 12-7-07, Tax Suit.
#12088—Wheeler County vs D A Taylor Oil and Gas Corp., 12-11-07, Tax Suit.
#12091—Joyce Lynn Ferris vs Steven Fred Ferris, 12-19-07, Divorce.
#12092—Wheeler County vs Johnny & Lynn Ramos, 12-31-07, Tax Suit.
#12093—In Re: to a child, 12-31-07.

WBU—Altus Campus Opens Registration

Registration for the spring term at the Altus Campus of Wayland Baptist University (WBU) begins Monday, January 7. Registration for first-time, non-military students will end January 25. Registration for current or former students and first-time military students will continue through February 22. The eleven-week spring term begins February 25 and ends May 17, with spring break the week of March 17-22. The campus is located on Altus Air Force base, but civilians from Wheeler and surrounding communities may attend classes after enrolling and securing a student pass.

WBU—Altus offers courses on the campus leading to undergraduate degrees in business administration, human resource management, management, and occupational education. Other degrees—health care administration, justice administration, human services, and Christian ministry—can be completed through some online coursework. In addition, there is an online program for Registered Nurses to earn a Bachelor of Science in Nursing. All undergraduate degrees are designed for working adults, who may bring other college credits and work experience to complete their degree. Students with an associate degree can complete the bachelor program in as little as 18 months.

Master's programs in management and business administration are also offered at the campus. Online opportunities include three additional programs—education, public administration, and Christian ministry. Master's programs can be completed in 18 months.

WBU—Altus offers a class schedule designed for working adults, condensing traditional semesters to four eleven-week terms per year. Most classes meet one evening per week, while some are offered on selected weekends. Other options are available online. Class sizes are small, tuition is affordable, and financial aid is available. Interested parties may call the campus at (580) 481-5243 or visit the school's website at www.wbu.edu/altus.

GPRMC Welcomes Physical Therapist

Great Plains Regional Medical Center is pleased to announce that Gilbert Rosario has joined the Physical Therapy Department as a physical therapist.

"We are excited to have someone with Gilbert's credentials and expertise join our team at Great Plains," said Bonnie Lake, Director of Physical Therapy. "By adding another member to our team, Great Plains is making sure we can take care of all patients who need physical therapy in our community."

"Physical therapists provide a multitude of services, all designed to help patients recover from a variety of injuries and medical conditions that limit their physical abilities," says Lake.

Physical Therapy patients include accident victims and individuals with disabling conditions such as low-back pain, arthritis, heart disease, fractures and head injuries. The goal of all physical therapy treatments is to improve how an individual functions at work and at home.

Physical therapists also use electrical stimulation, hot packs or cold compresses, and ultrasound to relieve pain and reduce swelling. They may use traction or deep-tissue massage to relieve pain. Therapists also teach patients to use assistive and adaptive devices, such as crutches, prostheses, and wheelchairs. They also may show patients exercises to do at home to expedite their recovery.

For more information on the Physical Therapy Department at Great Plains Regional Medical Center, call 580-225-2511.

NOTICE TO PUBLIC
Any erroneous reflection upon the character, standing or reputation of any person, firm or corporation, which may appear in the columns of this paper will be gladly corrected upon due notice being given to the editor personally at the office at 110 East Texas St., Wheeler, Texas.
Postmaster: Send address changes to The Wheeler Times, P.O. Box 1080, Wheeler, Texas 79096-1080.
The Wheeler Times does not knowingly accept false or fraudulent advertising or other advertising of an objectionable nature, is printed in full confidence in the presentation made.
Readers will confer a favor if they will promptly report any failure on the part of the advertiser to make good any misrepresentation in our advertisements.

COUNTY WIDE BURN BAN WITH SPECIFIC RESTRICTIONS

The Wheeler County Commissioners Court adopted a County Wide Burn Ban **EFFECTIVE JANUARY 17, 2008 through APRIL 17, 2008**. Specific restrictions will apply. Those producers wishing to burn crop residue on land designated for Ag use will have to follow the Texas Natural Resource Conservation Commission guidelines as set out below AND contact the local Sheriff's Office or Police Department BEFORE ANY burning may be done.

GUIDELINES:

1. Burning shall be commenced and conducted only when wind direction and other meteorological conditions are such that smoke and other pollutants will not cause adverse effects to any public road, landing strip, navigable water, or off-site structure containing sensitive receptors(s).

2. If at any time the burning causes or may tend to cause smoke to blow onto or across a road or highway, it is the responsibility of the person initiating the burn to post flag-persons on affected roads.

a. The initiation of burning shall commence no earlier than one hour after sunrise. Burning shall be completed on the same day not later than one hour before sunset, and shall be attended by a responsible party at all times during the active burn phase when the fire is progressing. In cases where residual fire and/or smoldering objects continue to emit smoke after this time, such areas shall be extinguished if the smoke from these areas has the potential to create a nuisance or traffic hazard conditions. In no case shall the extent of the burn area be allowed to increase after this time.

2. Burning shall not be commenced when surface wind speed be less than six miles per hour (mph) (five knots) or greater than 23 mph (20 knots during the burn period).

3. Burning shall not be conducted during periods of actual or predicted persistent low level atmospheric temperature inversions.

111.221 RESPONSIBILITY FOR CONSEQUENCES OF OUTDOOR BURNING.

THE AUTHORITY TO CONDUCT OUTDOOR BURNING UNDER THIS REGULATION DOES NOT EXEMPT OR EXCUSE ANY PERSON RESPONSIBLE FROM THE CONSEQUENCES, DAMAGES, OR INJURIES RESULTING FROM THE BURNING AND DOES NOT EXEMPT OR EXCUSE ANYONE FROM COMPLYING WITH ALL OTHER APPLICABLE LAWS OR ORDINANCES, REGULATIONS, AND ORDERS OR GOVERNMENTAL ENTITIES HAVING JURISDICTION, EVEN THOUGH THE BURNING IS OTHERWISE CONDUCTED IN COMPLIANCE WITH THIS REGULATION.

Signed this 14th day of January, 2008.

ATTEST:
MARGARET DORMAN
Wheeler County Clerk
JERRY DAN HEFLEY
Wheeler County Judge
DARYL G. SNELGROOES
Commissioner, Precinct 1
TOM PURYEAR
Commissioner, Precinct 2
HUBERT MOORE
Commissioner, Precinct 3
JOHN WALKER
Commissioner, Precinct 4

Wheeler County
FIRST QTR of Fiscal Year Oct 1, 2007 - Sept 30, 2008
Budget and Account Standings

FUND	BEGINNING BUDGET	ENDING BUDGET	ACTUAL BANK ACCOUNT BAL
General Fund	\$ 4,581,339.00	\$ 3,668,343.69	
County Judge	\$ 165,000.00	\$ 137,938.59	
County Clerk	\$ 157,850.00	\$ 120,437.96	
Treasurer	\$ 102,100.00	\$ 81,741.47	
Sheriff	\$ 641,200.00	\$ 496,599.56	
Tax Office	\$ 167,950.00	\$ 129,620.63	
District Clerk	\$ 92,339.00	\$ 72,868.74	
Extension Agent	\$ 94,450.00	\$ 70,708.90	\$ 423,414.27
JP Offices	\$ 171,600.00	\$ 135,639.31	
Janitorial	\$ 66,600.00	\$ 56,444.96	
Coastable	\$ 6,800.00	\$ 6,800.00	
Ambulance	\$ 95,000.00	\$ 95,000.00	
Emergency Mgmt	\$ 39,000.00	\$ 29,062.51	
Veteran Service	\$ 11,150.00	\$ 8,740.96	
District Judge	\$ 104,900.00	\$ 81,993.21	
County Attorney	\$ 119,400.00	\$ 90,316.79	
Court House Security	\$ 14,700.00	\$ 14,700.00	\$ 61,574.50
Co. Clerk Rec Mgmt	\$ 37,103.50	\$ 34,479.65	\$ 56,744.60
Dist. Clerk Rec Mgmt	\$ 2,000.00	\$ 2,000.00	\$ 5,177.03
JP Technology Fund	\$ 17,500.00	\$ 17,437.06	\$ 60,701.54
JP Administrative Fund	\$ 7,500.00	\$ 7,500.00	\$ 12,513.78
JP Court Security	\$ 4,500.00	\$ 4,500.00	\$ 10,797.98
LEOSE Fund	\$ 3,500.00	\$ 3,300.00	\$ 5,280.12
DARE	\$ -	\$ -	\$ -
Hot Check	\$ -	\$ -	\$ 8,214.71
TOTAL GENERAL FUNDS			\$ 644,418.53
Road/Bridge	\$ 768,495.00	\$ 727,303.68	\$ 817,056.88
R/B PCT 1	\$ 170,100.00	\$ 133,851.17	\$ 26,713.41
R/B PCT 2	\$ 223,650.00	\$ 184,324.44	\$ 55,659.38
R/B PCT 3	\$ 173,100.00	\$ 143,503.87	\$ 32,087.55
R/B PCT 4	\$ 124,800.00	\$ 111,714.18	\$ 22,231.37
LATERAL PCT 1	\$ 166,000.00	\$ 103,484.22	\$ 95,079.53
LATERAL PCT 2	\$ 152,500.00	\$ 126,377.44	\$ 274,837.92
LATERAL PCT 3	\$ 125,000.00	\$ 113,531.43	\$ 153,593.97
LATERAL PCT 4	\$ 73,000.00	\$ 53,344.57	\$ 119,202.70
TOTAL PRECINCT FUNDS			\$ 1,596,462.71
Investments	\$ -	\$ -	\$ 3,763,826.50
Payroll Clearing	\$ -	\$ -	\$ 2,476.54
Imprest Fund	\$ -	\$ -	\$ 3,701.62
CURRENT BANK BALANCE OF ALL FUNDS			\$ 6,010,885.90

(Any amounts shown in parenthesis are negative balances)



IT'S COOKIE TIME—JAN. 12-FEB. 25: Last year Troop #243 Brownies sold 4,227 boxes of cookies. Let's make it another great year. There will be 15 girls out selling. They will have cookies with them at \$3 a box. Again We will be sending cookies to Iraq. Any large donations should come to the leaders. Dan Sams is shown here making a purchase of cookies from Caitlynn Walker.
For more information, call Joyce Walker—826-5733 or Jackie Cook—256-5477

WHEELER COUNTY
CRIME STOPPERS
Wheeler County Crime Stoppers needs your help to catch a thief. A black, 2006 Suzuki 4-wheeler was stolen out of a yard at a residence on Osage Street in Wheeler on Christmas day, December 25, 2007. If you have any information that will lead to an arrest, please contact Wheeler County Crime Stoppers at 806.826.0227. You will receive a cash reward up to \$1,000 and no face-to-face contact is ever made. There is NO caller I.D. on the Crime Stoppers hotline.
826.0227

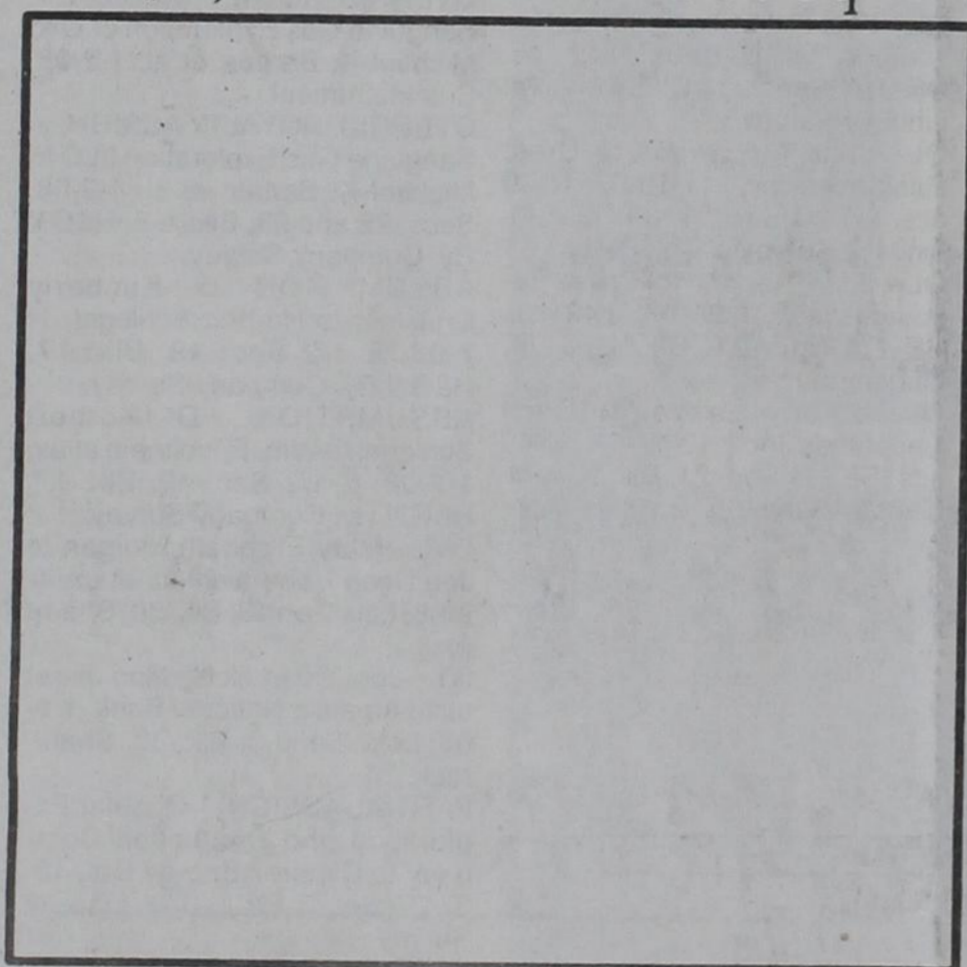
Wheeler County Agriculture & Family Center

ENGRAVED GRANITE BLOCK

Whole Block

\$1,000

1 ft sq



Name: _____

Address: _____

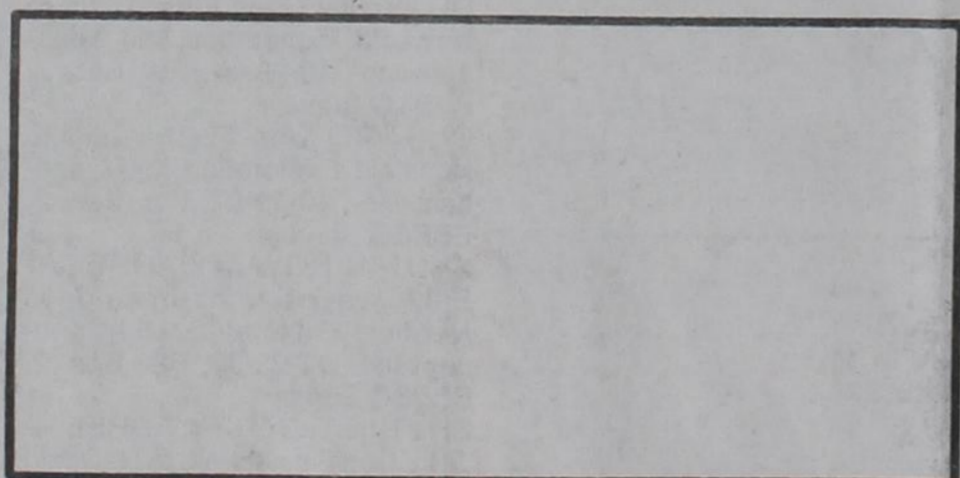
Phone: _____

Fax: _____

Half Block

\$500

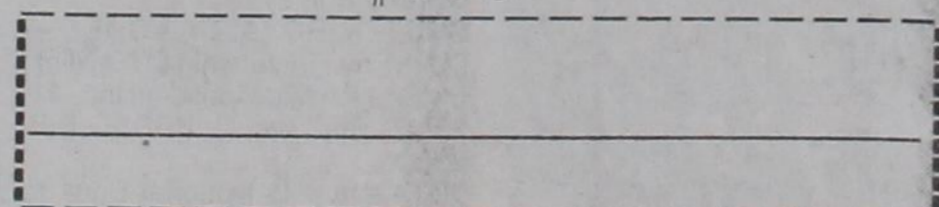
6" X 12"



Please fill in the block you choose with your logo or name.

Name on Block

\$100



Make checks payable to:
WAAIC - Granite Block
PO Box 489
Wheeler, TX 79096

DONATIONS ARE TAX DEDUCTIBLE!