

Ghost story thrusts Muleshoe into national spotlight

Two homicides and Muleshoe gaining national attention for allegedly having a haunted jail were the top local stories in the Journal for the first four months of 1997.

The following is a month-by-month breakdown of the top stories from January to April of 1997.

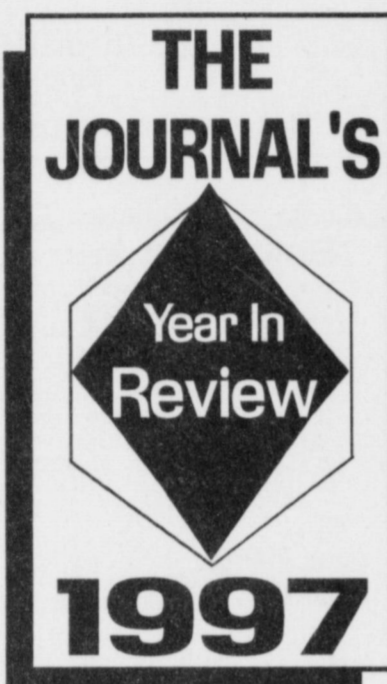
In January, just as the kids were getting ready to go back to school from the Christmas holidays, four inches of snow closed schools and slowed the city to a crawl.

The weather had an even greater affect than people initially realized — at least on their pocketbooks.

Keeping homes nice and cozy turned out to be a bit more expensive than people anticipated. Area residents were shocked when Energas bills arrived last January and the rates had dramatically increased. Energas, who claimed the cost of purchasing natural gas increased, distributed the increase to their customers, with the average household paying an extra \$25 a month.

Although cold and snowy, the weather didn't hamper the annual Bailey County Junior Livestock Show. Jacen Claunch was the big winner with his exotic cross steer being recognized as the grand champion market steer.

Muleshoe residents also



came to the aid of a neighbor in need during the first month of 1997.

After the Lewis family lost their home and all of their possessions in a December fire, the community rallied together to help this family start over. With money, clothes and household items being donated, and a home donated by local cattleman Randy Johnson, the Lewises were soon on their way to getting their life back to normal.

January may have brought the community together with the stock show and helping out the Lewis family, but the beginning of the year also proved that Muleshoe was not immune to crime.

Just 18 days into the new year, Muleshoe had its first homicide of 1997, and unfortunately, not its last.

Ellie Mae Osbend was found dead Jan. 18 in her rural Bailey County home. Osbend, a 54-year-old mentally handicapped woman, showed signs of malnourishment and dehydration. Her son-in-law and caregiver, Andrew Lee Shaw, was later indicted on charged of manslaughter and injury to a disabled person.

With the recent crime, it seemed that Muleshoe more than ever needed to find permanent leadership for the local police department. After what seemed to be a never ending search, Rick Henegar was finally chosen as Muleshoe's new Chief of Police in February. Henegar, who served in the Kermit Police Department for over 14 years, took over in early March.

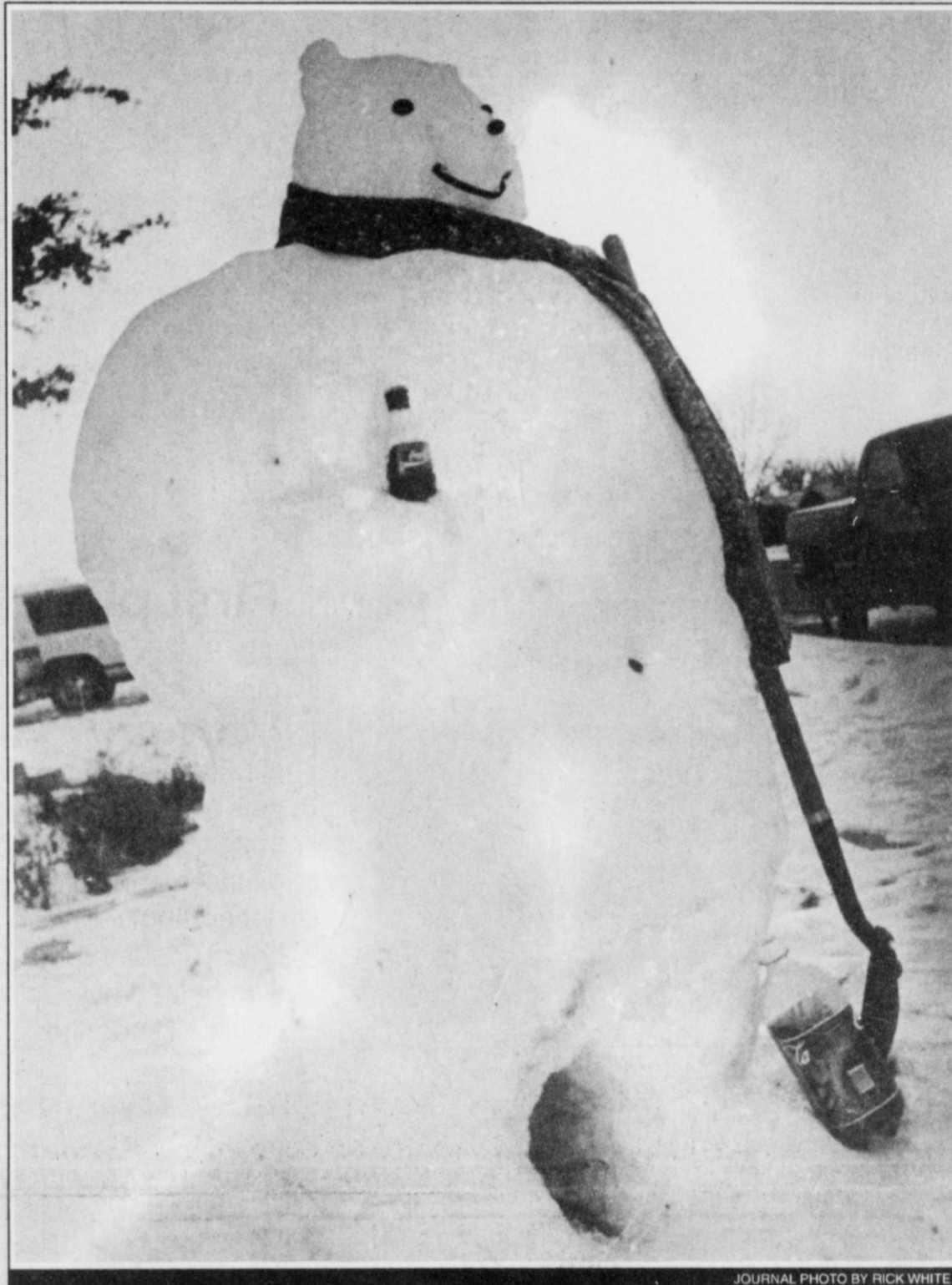
Little did the town and the city council know that just nine months later Henegar would resign and Muleshoe officials would be trying once again to fill the position.

Also in February, Southwestern Public Service officially announced it would be closing its Muleshoe office as part of a merger agreement Colorado utility company.

March kicked off what has

see REVIEW on page 3

UNBEARABLY COLD



Muleshoe residents were busy this week sculpting snow into figures like this Coca-Cola polar bear outside a home on West Avenue K.

Cold, ice cause of power outages

Muleshoe and Bailey County experienced power outages last week as the ice and snow wrecked havoc on electrical lines.

Bailey County residents reported anywhere from blinking power shortages up to 4 hours without power over the weekend and earlier last week.

Crews from Southwestern Public Service and Bailey County Electric worked overtime to ensure that electric services were interrupted for as short of period of time as possible.

Ken Vaughn, manager of communications for SPS, said the Amarillo-based utility company experienced scattered problems throughout Texas and New Mexico, with Muleshoe experiencing only minor problems overall. Vaughn said that Pampa and Hereford have experienced the most extensive problems resulting from the storm.

Vaughn explained that problems are caused by ice and heavy wet snow accumulating

see POWER on page 2

Texans pay some of the lowest tax rates in nation

COLLEGE STATION — This time of year usually brings about fond memories of family — and not so fond memories of taxes due. However, if there is one thing to be thankful for, it is that Texans enjoy one of the lowest tax rates in the United States.

If you compare per capita (how much tax the average person is paying) or the average tax per thousand dollars of income, Texans ranks about 35th in the nation, said Dr. Judith Stallmann, economic development specialist with the Texas Agricultural Extension Service. "So that makes it a fairly low tax state overall," Stallmann added.

The ranking is based on the amount of money each person pays to the state in terms of sales, property and other types of taxes. However, in the sales tax category, Texas' tax is comparatively high. It is six and quarter cents on the dollar. Local governments can add another two cents to that.

"When you take it up to eight and a quarter because of some of the local options, that's getting up there pretty high," Stallmann said.

Stallmann is one of the authors of a new Extension bulletin that chronicles

see TEXANS on page 3

PAGE ONE

A QUICK READ OF THE NEWS

Extra day off thing of past

With Christmas falling on Thursday this year, many people had to go back and finish out the work week according to an Associated Press story Friday.

Most companies give their employees Christmas Day off, with pay, however few companies feel the need to remain closed Dec. 26.

For many small businesses and most retailers, the day after Christmas is just another day at the office, especially when it's a weekday.

A new survey shows that only 36 percent of employers made Friday, Dec. 26 a paid holiday this year, down from 46 percent in 1986 when Christmas last fell on a Thursday.

Journal changes deadlines

Because of the New Year's holiday, the advertising deadlines for the Thursday, Jan. 1 edition of the Muleshoe Journal has been changed to noon for classifieds and 5 p.m. for display ads.

The Journal regrets any inconvenience the changes may create.

Top 5 local stories

The top five local stories in the first four months of 1997 were:

■ A story about an alleged ghost that haunts the Bailey County Jail thrusts Muleshoe into the national spotlight.

The offbeat story caught the attention of Time magazine and radio commentator Paul Harvey, plus newspapers and radio stations all over the country.

■ A 20-year-old Muleshoe housewife was sexually assaulted and brutally murdered.

Faviola Fabela Mendoza was found dead in her home in the early morning hours of April 13. Her next door neighbor Joseph Carpenter was arrested and charged in the slaying.

■ Muleshoe hires Rick Henegar as its police chief in February after a long search.

Henegar would later resign citing a personality conflict with City Manager James Fisher.

■ Area residents were shocked last January when Energas bills double and tripled in some cases. Energas explained the increase by saying that they had to pay an unusually high amount for the gas, and therefore were forced to distribute the increased expense to their customers.

■ Southwestern Public Service announced in February that it would be closing its Muleshoe office in Muleshoe as part of a merger with a Colorado utility company.

TOP LOCAL SPORTS STORIES OF 1997

Mules set school record for wins

A record-setting year by the Muleshoe boys basketball team and three Muleshoe athletes qualifying for the state track meet were the top sports stories in the Journal for the first six months of 1997.

Other top stories included the Three Way boys capturing their first district basketball title in more than 25 years, the Muleshoe girls winning their first district golf title in school history, and Lazbuddie boys reaching the area round of the Class A state basketball tournament.

Led by 6-6 all-district post Dustin Cleavinger, the Mules finished with a school record 21 wins (21-11) and tied for second in District 1-3A. Muleshoe tied with Dimmitt at 10-4,

but the Bobcats owned the tiebreaker edge by virtue of two wins against the Mules. Muleshoe other two district losses were to Tulia, which advanced to the Class 3A state tournament in Austin.

Muleshoe won five games the previous year.

The Lady Mules finished a disappointing season 11-20 overall and tied for fourth in the district.

Three Way won its first district title since 1971, but was eliminated in the first round of the Class 1A state playoffs. The Eagles finished 14-11.

Meanwhile, the Lazbuddie Longhorns needed a post-season playoff

see SPORTS on page 3

LOCAL WEATHER

	High	low	Pre.
Tuesday	32	29	2 in.
Wednesday	37	17	—
Thursday	28	14	—
Snow to date	6 inches		

EXTENDED FORECAST

A warming increase continues, with highs in the mid 50s throughout the beginning of the week.

Muleshoe Area Hospital District Door decorating contest



First place

Joy Stancell, activity director of the Muleshoe Area Healthcare Center, was awarded first prize in the hospital district's annual door decorating contest held Tuesday. She was helped by Chickie Hinderlite.



Third place
OR/OB won third place in the MAHD door decorating contest. Shown are (clockwise from back left) Debi Kern, Susan Cage, Christine Gonzales, Sonia Rejino and Tina Cisneros



Second place

The engineering department, represented by Shonia Orozco, was awarded second place in the MAHD door decorating contest

SIMNACHER NATIVE GRASSES

Experts in the sowing and harvesting of native grasses of the Great Plains

Most native grass seeds available at wholesale prices when purchased with turnkey sowing jobs.

We also provide lifetime care for your CRP Government contract. All work done in compliance with Government specifications.



Please Call:

Darwin Simnacher
(505) 762-7817
Fax (505) 763-9115

Vince Simnacher
(806) 946-3461
Fax (806) 946-3604

or
Thomas Simnacher
(806) 285-2491

References provided upon request.

Bailey County Journal USPS 040-200

Established March 31, 1963. Published by Triple S Publishing, Inc.
Every Sunday at 304 W. Second, Box 449, Muleshoe, TX 79347.

Second Class Postage paid at Muleshoe, TX.
POSTMASTER: Send address changes to the Bailey County Journal, P.O. Box 449, Muleshoe, TX 79347.

We are qualified members of:
Panhandle Press Association, National Newspaper Association,
West Texas Press Association and Texas Press Association

WEST TEXAS PRESS
ASSOCIATION



PPA
Panhandle Press Association

Scot Stinnett, Publisher
Lisa Stinnett, Vice-President/Comptroller
Rick White, Editor
Mary Ann Dominguez, Classifieds
Leah Bell, Advertising

© 1990

SUBSCRIPTIONS: Muleshoe Journal and Bailey County Journal
By Carrier Yearly - \$22.00
Bailey County — by mail - \$24.00
Elsewhere - \$26.00
Advertising Rate Cards on Application

Advertisers should check their ad the first day of insertion. The Journals will not be liable for failure to publish an ad or for a typographical error or errors in publications except to the extent of the cost of the ad for the first day of insertion. Adjustment for errors will be limited to the cost of that portion of the ad where the error occurred.

Library and Heriatge Center receive new computers

The local library and the Muleshoe Heritage Center have each received new computer equipment thanks to two Texas agencies.

The Texas Attorney General's office and the Texas Department of Protective and Regulatory Services donated computers and printers to non-profit organizations and legal subdivisions of the state.

The Muleshoe Library received a computer. The Heritage Center received a computer and printer.

Dyan Shipley, the local librarian, said "Many patrons use the computer we currently have to type resumes, make posters, and announcements. This computer is in so much demand we are having to schedule appointments for people to use it. Because of the Texas Department of Protective and Regulatory Service and the Attorney

General's Office generosity, we will have two more computers for these patrons."

During the last month, 24 organizations across West Texas were given the equipment with the help of Wes-Tex Resource Conservation & Development Area, Inc.

"It is such a great feeling to know we have been able to meet a need of so many organizations in our area," said Karie Preston, Executive Director of Wes-Tex in Morton.

Wes-Tex is committed to assisting rural communities in West Texas improve their quality of life.

"It's amazing what happens when everybody works together—great things happen," said Preston.

Most of the organizations who received the equipment have very limited budgets and they have been doing everything by hand up to this point, said Preston.

POWER

From page 1

on the power lines. Once weighed down, the lines freeze together and short out. Problems are also caused by tree limbs leaning on lines, or breaking off and hitting lines.

With this storm probably being only the beginning in possible bad weather for the winter season, Vaughn wants

to warn people to stay away from broken and fallen power lines.

"It's not like in the movies were the lines jump around spitting sparks," said Vaughn. "In reality the lines look dead and harmless, but they aren't. Down and broken lines are very dangerous. You have to stay away and keep others way."

**Happy
new year!**

All family and friends are cordially invited to attend a 50th Wedding Anniversary Reception honoring D.L. & Helen Redwine on Sunday, December 28, 1997.

The celebration will take place from 2 pm to 4 pm at the Bailey County Coliseum. No local invitations are being sent. No gifts, please. If you have a special memory to share, please bring it with you or mail it to Dr. Jerry Redwine, Box IOII, Muleshoe, TX 79347.



Treasures from the Heart
2105 W. American Blvd. • 272-4217

3 BIG DAYS • Dec. 29 • 30 • 31

The employees don't want to count it.

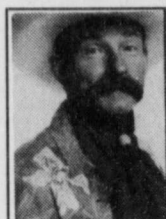
So . . .

**I'VE GOT TO
SELL IT!**

**BIG DISCOUNTS!
YEAR END SAVINGS!**



BRANDED PRIME BEEF



**BAXTER
BLACK**
ON THE EDGE OF COMMON SENSE

Opinions are like those painful little acid blisters you get on the end of your tongue that smart like a pimple on the side of your nostril ... Everybody's had one, so here is mine. Branded beef is the right way to go, it's just goin' in the wrong direction.

The lesson of the 1980's was 'too much fat' in beef. We changed the cattle we breed and feed, we changed the grading system we used but beef's market share hasn't changed.

If people want lean meat they can buy supermarket no-roll.

Steak is the most popular beef cut served in American homes. But from your own vast experience, how often is that steak you eat really tender?

I believe those consumers who continue to buy steak in the grocery store should be catered to. A branded package of prime beef. Yes, heavily marbled, but trimmed. Vacuum packed, two 8 or 10 ounce filets or rib eye or NY strips, priced at the high end. Fifteen to twenty dollars per package, unseasoned, marinated in terriaki, BBQ sauced, rollin' in Jim's special sauce, or whatever. And available in the meat counter locally.

This product would be designated for people who think, "I want to serve something special tonight, but I wanna make sure it's good."

We've all seen, and maybe ordered, those magnificent frozen steak packages from Kansas City or Omaha that are

delivered for 50 or 60 dollars in Fortune magazine and the airline magazines. We expect then to deliver flavor and tenderness, and they do.

It's not that we don't know how to produce tender beef. But we've wound up aiming for a lean product to be healthy, i.e. compete with chicken. But chicken is aiming at the low price buyer. Chicken competes with hamburger, not steak. Chicken does not advertise itself as tender or flavorful. DO we really think we can compete with an animal that converts one to three?

The pork industry is doing a credible job of competing by promoting franchise rib joints, not to mention ham (sandwiches), sausage (pizza) and bacon (salad garnish, BLT's, and bacon burgers). They are not trying to market pork chops as a substitute for cheap chicken.

Logically, one of the major packers should start marketing a branded consistent top o-the-line prime steak package that is recognizable, by name, to the supermarket customer. They already service five star restaurants with that quality of steak. Why not offer it to the regular consumer as well.

I think some innovative packer will seek out the market, demand prime beef from feeders and become successful. And it may not be one of the big three meat packers of today. But twenty years from now, the big three may not be he same big three.

And that's my little acid blister.

REVIEW

From page 1

turned out to be Muleshoe's year in the national spotlight. The entire country had an opportunity to hear or read about Muleshoe with the increasingly popular story of the allegedly haunted county jail.

First reported in the Journal, the story was quickly picked up by the radio commentator Paul Harvey, The Dallas Morning News, and eventually, Time Magazine. Muleshoe continued to get national attention when a story on local TV station owner Magann Rennells appeared in People magazine and for the arrest of five alleged members of a gypsy theft ring.

March was a stressful time

for many farmers around the nation, with local farmers being no exception. With CRP guidelines coming out almost two months late, farmers were being forced to make rushed financial and planting decisions in an effort to decide if they wanted to try and participate in the program.

Also in March, the Muleshoe Chamber of Commerce hired Patty Hartline as the new manager hoping to increase members and community support. Unfortunately, less than six months later, Hartline resigned.

March also saw the end of a 42 year career of public servant, Nelda Merriott. Merriott had served area residents since

January of 1967 as district clerk. Merriott later was honored as Women of The Year by the Chamber of Commerce. Terry Hutto was honored posthumously as Man of The Year.

In April, Muleshoe High School won the district UIL title for the first time since 1985.

But April also brought shock and sadness to Muleshoe as a 20-year-old woman was brutally slain in her own home.

Faviola Fabela Mendoza was beaten, sexually assaulted and killed in the early morning hours on April 13. Her next door neighbor Joseph Carpenter was arrested and charged with the crime. The suspect is out on bail and awaiting trial.

TEXANS

From page 1

taxation Texas and explains how the different taxes work. It addresses the fairness and effect of taxes on people of different incomes.

Also, it addresses whether a tax provides adequate revenue or if it has to be constantly readjusted to get the revenue that's needed for the basics of government.

The bulletin addresses how easy a tax is to administer. For instance, the corporate franchise tax is complicated.

"It's either a tax on net worth or it's a tax on what is called earned surplus which is basi-

cally profits and the salaries of executives. Businesses have to calculate that tax both ways and then they have to pay the higher of the two," she explained.

That is one tax Stallmann expects the legislature to consider revising. Currently, the state is holding hearing to evaluate Texas' tax laws.

Stallmann also expects Texans to pay more in fees and licenses. There is a nationwide trend toward increased fees and licenses.

"An example of a fee or licenses that we're all familiar with is our driver's license, but

there's hunting licenses as well," she said.

College tuition is an example of a fee.

"Were beginning to rely more upon those as sources of revenues to run some specific services that the state provides," she said.

You can get a copy of Stallmann's bulletin, "Texas Taxes: a Fact Book," through the Extension Service or by logging onto Stallmann's home page on the Texas A & M University Department of Agricultural Economics web site or by logging onto the Agricultural communications web site.

SPORTS

From page 1

game just to make the state playoffs, then advanced to the area round for the first time since 1991. The Longhorns finished 21-8.

After a strong start, the Lazbuddie girls took their lumps in district play (0-8) and finished the season 13-15.

Also during basketball season, former Muleshoe standout Kristin Holmans helped Wayland Baptist University in Plainview reach the quarterfinals of the NAIA national tournament.

During the spring, the Muleshoe Lady Mules won several track meets and finished second at the district meet. The

Lady Mules had five championships and sent six girls to the regional meet in eight events.

Record-setting freshman Stacy Locker blossomed into a star during the track season, joining senior teammate Cari Faver and junior Ricko Aguirre in qualifying for the state track meet.

Locker won district and regional titles in the 800 meters before finishing eighth at state.

Faver earned her third trip to the state meet, finishing seventh in the 3200 meters while Aguirre captured the shot put title at both the district and regional meets before finishing sixth in the state.

In golf, the Lady Mules won

the district title and earned their second-straight trip to regionals. Muleshoe junior Keisha Whitt was the district medalist.

Muleshoe senior Kyle Embry earned his four appearance at the regional golf tournament by finishing second in the district after the Mules failed to qualify as a team.

In tennis, the Mules' senior doubles team of Colby Latham and Isaac Miramontes earned their third regional berth in four years.

Meanwhile, the Mules baseball team struggled, finishing fifth in district and below .500 at 10-11.

Do not feed the animals

TUCSON, Ariz. — There's a two-pronged search going on in urban Oro Valley: for more coyotes lurking around a park where three young children were bitten in two days, and for the people who have been feeding them.

There's also a campaign on to teach humans to stop feeding the wildlife.

"It became painfully obvious that people have been feeding the coyotes," Arizona Game and Fish spokesman Scott Richardson said last week.

"We view this not so much as a coyote problem. And when it results in an attack on a child, it is a serious one."

Once coyote was found and killed in Wildlife Ridge Park after an attack last Friday in which 22-month-old toddler Gabrielle Malkin, bitten around her right eye, required seven stitches for the deep puncture wounds. A 4-year-old boy was also bitten and scratched.

The day before, a coyote — possibly the same animal, attacked a 2-year-old boy, although the child's skin was not broken.

The animal that was killed acted peculiar in that it showed no fear of humans, officials said. An Oro Valley officers discovered the female coyote beneath a bush in the park Friday, about a half-hour after the attack on Gabrielle.

The coyote stood up, then laid back down as officer Pam Barrett approached. Barrett shot the animal, which tested negative for rabies.

Officials say there is no way to determine whether the coyote was the attacker.

Richardson said he seriously doubted whether the children's attacker was actively stalking them "as a prey item. Kids are larger in size than what most coyotes eat."

Life Insurance

Caring...

for what matters most

Now that you're a family, it's time to think about building a secure financial future for the ones you love most. We offer term and permanent life insurance programs, as well as annuities and disability income coverage.

So, let our family help you take care of your family.

After all, helping you is what we do best.

Phone today ...
(806) 272-4567

FARM BUREAU INSURANCE
Life • Auto • Home

Southern Farm Bureau Life Insurance Co. • Texas Farm Bureau Underwriters
Southern Farm Bureau Casualty Insurance Co. • Texas Farm Bureau Mutual Insurance Co.

JONES Pontiac GMC Buick
is proud to announce
the latest addition to their staff

JOE ROARK

Joe Roark

So Stop & See Joe At Jones Pontiac GMC Buick

Simple As A Handshake

JONES PONTIAC GMC BUICK
3300 Mabry Drive • (505) 762-2986

Do You Remember Who Brought the Myrrh?

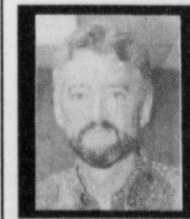
In the middle of the latest issue of *Christianity Today* is a cartoon that tickles my funny bone. The scene is the Holy Family's living room. Joseph is stoking the fire. The baby Jesus is peacefully asleep in his crib. And Mary's at the table dipping a quill in ink: "I'm

open to receive all people of faith, but that was years down the line. The Magi are the first little hint.

Y'all may have heard from other folks who think that the Wise Men were Texans who smelled like smoke. They came from "a far," you know.

Storyteller Garrison Keillor whose marvelous stories portray the fictional, mostly Lutheran, Missouri town of Lake Wobegon, figures that since they were Gentiles, they could have been Lutheran. You may not be aware, says this veteran of scrumptious pot luck dinners at Lake Wobegon Lutheran, that "myrrh" is short for hamburger hot dish casserole, which leads him to believe that at least one of the Wise Men was Lutheran. He'd probably intended to pick up something expensive like gold or frankincense, but his wise wife said, "No, they'll probably be hungry. Take some myrrh. Just bring back the dish."

No, I don't remember if Balthazar was the one carrying frankincense or if his gift was myrrh. And as much as I like Garrison Keillor and my Lutheran friends, I'm not sure about the myrrh! But I do know that "wise men still seek Him."



Focus On Faith
Curtis Shelburne

doing the thank-you notes, Joseph. Do you remember if Balthazar brought the myrrh or the frankincense?"

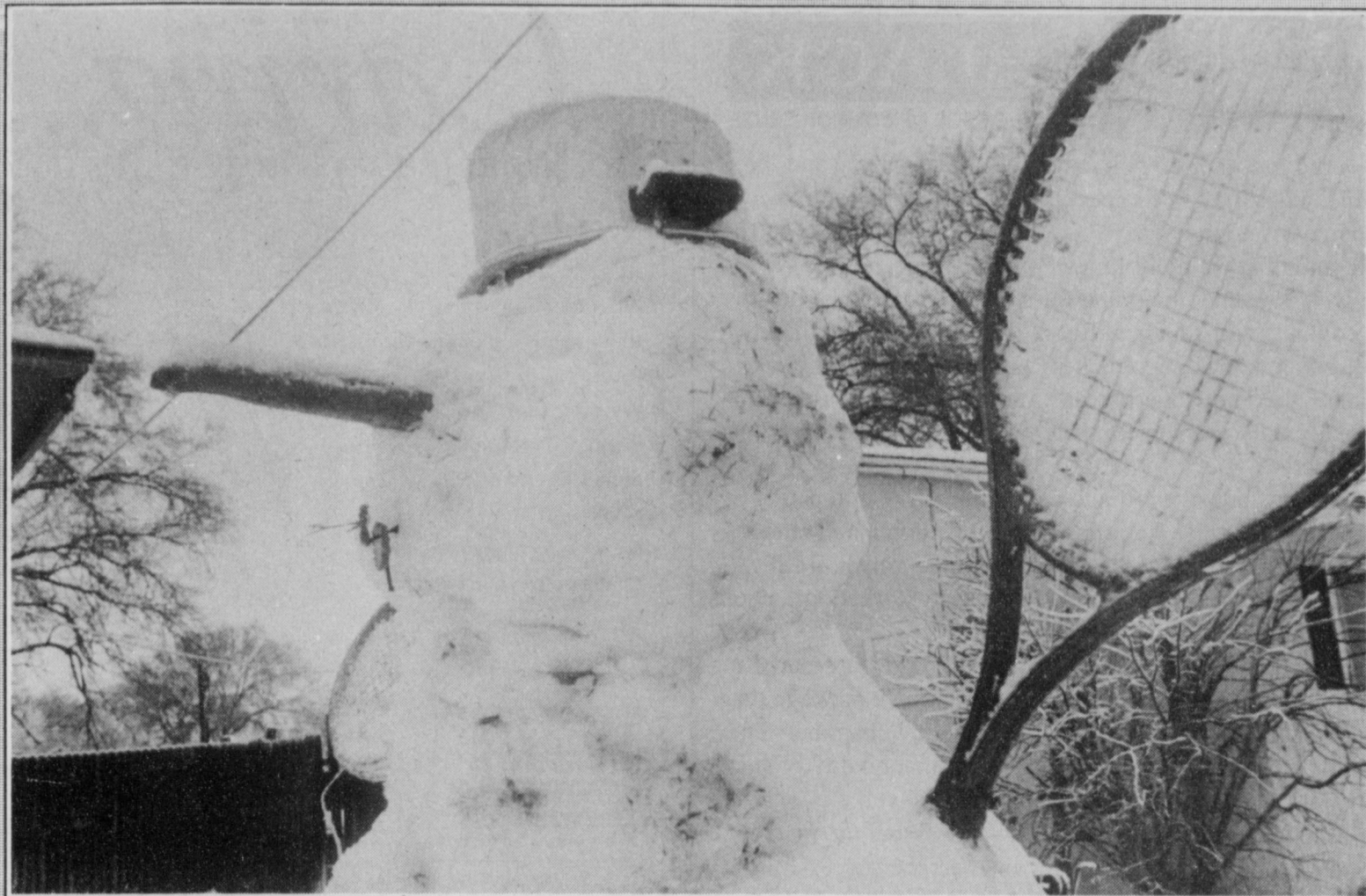
I'm not sure, either. Tradition has given the Magi, the Three Wise Men, names. In fact, it's only because three gifts were given that we guess-timate that it took three wise fellows to give them.

The Wise Men came to worship the Christ Child later than the rest. Angels point the way. Shepherds arrive early on. The Wise Men, the first Gentiles to worship the Incarnate God, come much later.

Sort of like most of us. The first Christians were, of course, all Jewish. By God's will, the doors of the church later swing

Curtis Shelburne is minister of the 16th & Avenue D Church of Christ in Muleshoe.

TENNIS ANYONE?



Snowmen like this one on 19th Street popped up all over Muleshoe after last weekend's snow storm

Officials recommend reducing cattle numbers this winter

Widespread storm fronts affecting the central and southern plains as long ago as late October lend support to the idea that El Nino likely will promote increased challenges to cattle management concerns this year.

USDA Cattle-on-feed reports

confirm that fed cattle numbers likely will pressure fed markets through the winter, said Derrell Peel, Oklahoma University Cooperative Extension livestock marketing specialist.

"Lower placements and lower than expected marketings suggest

that ultimate improvement in the fed market will come only after lower placements work their way through the system next spring," Peel explained.

OSU recommends that producers plan now how to reduce animal numbers to match available feed

resources. OSU also suggests that producers seriously consider early pricing some additional feedstuffs, or a combination of both management practices.

"Bad weather will increase production costs, but less if planned for now rather than in January or February, Peel said.

— TSCRA newsletter

RANGE REPORT

Panhandle — Soil moisture short to adequate. Ranges fair to good. Cattle good with supplemental feeding under way. Wheat fair to good with mustard weed problem persistent in some fields.

South Plains — Soil moisture short to adequate. Pastures, ranges benefiting from rains. Livestock in good condition. Wheat planting nearing completion; crops benefiting from recent moisture.

Rolling Plains — Soil moisture adequate. Pastures, ranges fair. Cattle good; supplemental feeding under way. Wheat needs rain.

North — Soil moisture very short to adequate. Pastures, ranges very poor to excellent. Cattle good. Wheat poor to good; ranchers feeding hay to cattle. Small grain winter pastures look good.

East — Soil moisture adequate to surplus. Winter pastures fair with limited grazing. Livestock fair to good with supplemental feeding under way. Wheat fair to good. Oats in need of sun.

Far West — Soil moisture very short to adequate. Pastures, ranges in need of rain. Livestock in good condition.

West Central — Soil Moisture very short to adequate. Pastures need rain. Livestock good but body condition declining with persistent cool temperatures. Wheat in need of rain.

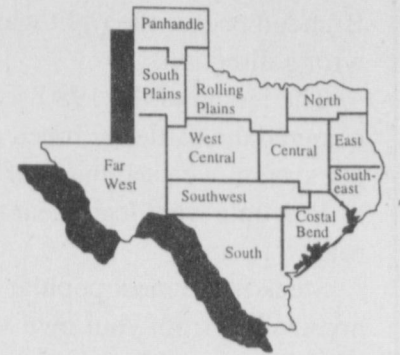
Central — Soil moisture adequate. Heavy feeding under way on pastures with poor grazing on winter pastures. Wheat planting near completion.

Southeast — Soil moisture adequate to surplus. Limited grazing reported on permanent pastures; some small grains being grazed. Supplemental feeding of cattle under way. Good quality ryegrass, oat pastures reported.

Southwest — Soil moisture short. Pastures, ranges benefiting from rain, but poor forage production reported.

Coastal Bend — Soil moisture adequate to surplus. Winter pasture planting delayed due to frequent rains. Some wheat fields are becoming waterlogged. Oat stands look good. Late soybeans yielded well.

South — Soil moisture short. Pasture, range growth delayed by cool temperatures.



SOURCE: TEXAS AGRICULTURE EXTENSION SERVICE, DEC. 9

BASKETBALL

ABC Caprock Holiday Basketball Tournament

39TH ANNUAL ABC CAPROCK HOLIDAY TOURNAMENT

Sites: Municipal Coliseum, Monterey, Coronado, Lubbock High and Frenship gyms

BOYS

MONDAY, DEC. 29

FIRST ROUND

Shallowater vs Levelland, 9 a.m., MHS new gym

Lamesa vs Hereford, 9 a.m., LHS

Abilene vs Lorenzo, 10 a.m., Coliseum

Lubbock High vs Muleshoe, 10:30 a.m., CHS main gym

Snyder vs Dimmitt, 10:30 a.m., MHS Box

Coronado vs Abernathy, 1 p.m., Coliseum

Odessa Permian vs Trinity Christian, noon, MHS new gym

Monterey vs Nazareth, noon, LHS

San Angelo Central vs Dalhart, 1:30 p.m., CHS, main gym

Estacado vs Slaton, 1:30 p.m., MHS Box

Brock vs Lubbock Christian High, 3 p.m., MHS Box

Sweetwater vs Stephenville, 3 p.m., LHS

El Paso Bowie vs Borger, 4:30 p.m., CHS main gym

El Paso Jefferson vs Frenship, 4:30 p.m., MHS Box

San Antonio Taft vs Panhandle, 6 p.m., MHS new gym

Seminole vs Perryton, 6 p.m., LHS

CHAMPIONSHIP BRACKET

SECOND ROUND

Game 17: Lubbock High-Muleshoe winner vs Lamesa-Hereford winner, 7:30 p.m., CHS main gym.

GAME 18: Shallowater-Levelland winner vs Abilene-Lorenzo winner, 7:30 p.m., MHS Box

GAME 19: Monterey-Nazareth winner vs Periman-Trinity Christian winner, 9 p.m., MHS new gym

GAME 20: Coronado-Abernathy winner vs Snyder-Dimmitt winner, 9 p.m., LHS

TUESDAY, DEC. 30

GAME 21: Sweetwater-Stephenville winner

vs Brock-LCHS winner, 9 a.m., MHS new gym

GAME 22: SA Central-Dalhart winner vs Estacado-Slaton winner

GAME 23: EP Bowie-Borger winner vs San Antonio Taft-Panhandle winner, 10:30 a.m., MHS Box

GAME 24: Seminole-Perryton winner vs EP Jefferson-Frenship winner, 10:30 a.m., FHS

CONSOLATION B

SECOND ROUND

GAME 24: Seminole-Perryton loser vs EP Jefferson-Frenship loser, 10:30 a.m., CHS main gym

GAME 26: Monterey-Nazareth loser vs Periman-Trinity Christian loser, 10:30 a.m., CHS second gym

GAME 27: Sweetwater-Stephenville loser vs Brock-LCHS loser, noon, MHS new gym

GAME 31: Lubbock High-Muleshoe loser vs Lamesa-Hereford loser, 1:30 p.m., FHS

CONSOLATION A

SECOND ROUND

GAME 28: EP Bowie-Borger loser vs San Antonio Taft-Panhandle loser, noon, LHS

GAME 29: Coronado-Abernathy loser vs Snyder-Dimmitt loser, 1:30 p.m., MHS Box

GAME 30: SA Central-Dalhart loser vs Estacado-Slaton loser, 1:30 a.m., CHS main gym

GAME 32: Shallowater-Levelland loser vs Abilene-Lorenzo loser, 1:30 p.m., CHS second gym.

CHAMPIONSHIP QUARTERFINALS

GAME 33: Game 18 winner vs Game 20 winner, 3 p.m., MHS new gym

GAME 34: Game 17 winner vs Game 19 winner, 3 p.m., LHS

GAME 36: Game 22 winner vs Game 23 winner, 4:30 p.m., CHS main gym

GAME 39: Game 21 winner vs Game 25 winner, 6 p.m., MHS new gym

CONSOLATION B QUARTERFINALS

GAME 35: Game 24 winner vs Game 24 loser, 4:30 p.m., MHS Box

GAME 37: Game 26 winner vs Game 20 loser, 4:30 p.m., Frenship

GAME 41: Game 27 winner vs Game 18 loser, 7:30 p.m., CHS main gym

GAME 43: Game 31 winner vs Game 22 loser, 9 p.m., MHS new gym

CONSOLATION A QUARTERFINALS

GAME 38: Game 29 winner vs Game 19 loser, 6 p.m., LHS

GAME 40: Game 28 winner vs Game 17 loser, 7:30 p.m., MHS Box

GAME 42: Game 30 winner vs Game 25 loser, 7:30 p.m., FHS

GAME 44: Game 33 winner vs Game 21 loser, 9 p.m., MHS Box

WEDNESDAY, DEC. 31

CHAMPIONSHIP SEMIFINALS

GAME 45: Game 34 winner vs Game 39 winner, 9 a.m., MHS new gym

GAME 46: Game 33 winner vs Game 36 winner, 9 a.m., LHS

CONSOLATION B SEMIFINALS

GAME 47: Game 35 winner vs Game 41 winner, 10:30 a.m., MHS Box

GAME 48: Game 37 winner vs Game 43 winner, 10:30 a.m., MHS main gym

CONSOLATION A SEMIFINALS

GAME 49: Game 40 winner vs Game 42 winner, 10:30 a.m., Coliseum

GAME 50: Game 38 winner vs Game 44 winner, noon, MHS main gym.

GUARANTEE GAMES

GAME 51: Game 33 loser vs Game 36 loser, noon, LHS

GAME 52: Game 34 loser vs Game 39 loser, 6 p.m., Coliseum

THIRD PLACE

GAME 53: Game 45 loser vs Game 46 loser, 6 p.m., Coliseum

CONSOLATION B FINAL

GAME 54: Game 47 winner vs Game 48 winner, 5 p.m., CHS main gym

CONSOLATION A FINAL

GAME 55: Game 49 winner vs Game 50 winner, 5 p.m., LHS

CHAMPIONSHIP

GAME 56: Game 45 winner vs Game 46 winner, 9 p.m., Coliseum

Mules get tough draw at Caprock

By RICK WHITE
Managing Editor

For the third year in a row, Muleshoe dew the host city's hottest in the first round of the ABC Caprock Holiday Basketball Tournament Dec. 29-31 in Lubbock.

The Mules face Lubbock High at 10:30 a.m. Monday in Coronado High School's main gym in the 39th annual edition of one of top prep holiday tournaments in the state.

Lubbock High (8-4) had won six-straight games before dropping a 74-70 decision to Odessa Permian last Saturday.

The Westerners are led all-state candidate Marc Chavez. The sharp-shooting senior guard has scored 33 and 31 points in his last two outings, including 16 3-pointers.

"It seems like we get the strength of Lubbock every year," Muleshoe coach Ralph Mason said. "It's a pretty tough little bracket we got."

Last year, Muleshoe got spanked by Lubbock Coronado 91-41 in the first round.

At No. 7, Muleshoe (13-3) is one of three Class 3A teams in the tournament ranked in the

top 10 in the Texas Association of Basketball Coaches poll. Also ranked are No. 5 Dimmitt and No. 10 Seminole.

The 32-team tournament also includes San Antonio Taft (No. 5 in Class 5A) and Lamesa (No. 10 in Class 4A).

Lamesa, led by 6-10 Texas Tech recruit Andy Ellis, could be Muleshoe's second round opponent.

The tournament will serve as good preparation for the upcoming district season, Mason said.

"We're going to have to play four solid quarters and execute better," said Mason, who remains disturbed by the Mules penchant to play to the level of their competition.

The Mules have played well in big games — beating Seminole, Slaton and Denver City and taking Tulia to overtime — but have been lethargic at times in games they're supposed to win.

Muleshoe is coming off a 58-55 win at Portales Dec. 19.

The Mules open District 1-3A play Saturday, Jan. 3 by hosting Dalhart.

Home Folks Caring For Folks At Home.

MULESHOE AREA HOME HEALTH Agency

Featured Patient

Myrtle Creamer was born November 15, 1907 in Cottle County, which is about 23 miles northeast of Paducah, TX. She grew up in what is now called the Tennessee Valley community. Ms. Creamer moved to Muleshoe with her husband and children in the early 1940's where she has lived in the same house since then. She was married to Buck Creamer who was Deputy Sheriff. Mr. Creamer passed away in 1981.

Ms. Creamer has worked all her life. She spent several years working at the high school lunchroom and selling Avon before she retired.

She is the mother of ten children. Her son Henry lives with her and helps take care of her. She served as President of the local A.A.R.P chapter and is a member of the Primitive Baptist Church.

Ms. Creamer thinks that the people at M.A.H.H.A. are really sweet and knows that it really helps to have them come see about her.

Myrtle Creamer

Happy 90th
Birthday
from
M.A.H.H.A!

To receive Home Health Services, talk with your physician or talk with hospital personnel when you are hospitalized.

Affiliated with Lubbock Methodist Hospital Systems

Home Care

Home is where the heart is

We accept Medicare, Medicaid and Private Insurance
**It Is Your Right To Choose
The Home Health Agency
You Prefer.**

24 Hour # 272-3346
Local Nurse on call 24
hours a day to offer
prompt service.

Smile !



**We're
probably
not on your
Christmas list.**

**Most people might
prefer not to think of
a hospital over the holidays.**

**But some will have to. There
will be injuries and illnesses. . . and
babies will be born. And at this hospital,
over the upcoming holiday, some people
will be doing just what we do every day, in case
you need us. Some will celebrate New Year's with
their families early, some late, so we will be here if
you need us. Most of you won't think about us at
all, because you'll just know we're here. And that
makes
us very
proud.**

**MULESHOE AREA MEDICAL CENTER
272-4524 • 708 S. 1st • Muleshoe, TX**



Award winner

DeShazo third-grader Bianca Gonzales is all smiles after receiving her Circle of Champions certificate last Thursday from Muleshoe school superintendent Bill Moore during an awards ceremony in the school gym.

DeShazo holds Circle of Champions ceremony

The following DeShazo students were honored during a Circle of Champions awards ceremony last week for the second nine weeks. The award is based on attendance, grades and behavior.

Students making the Circle of Champions for the first time received caps. Students making the Circle of Champions a second time received certificates.

3rd Grade — Rafael Jr. Castillo, Miguel Angel Catano, Jesus Gerardo Cazares Hernand, Nicole Clark, Demetrice Gilliam, Leonardo Mendoza, Johanna Morales, Jose Muniz, Gregory Andrew Perez, Jaysol Eysbet Regalado, Martin Humberto Rodriguez, Brenda Adella Romero, Brandon Lee Rubio, Joaquin Arturo Ruvalcaba and Erica Sanchez.

4th Grade — Juan Pedro Bustillos, Kristina Marie Castorena, Cody Edward Clark, Gerardo Colunga, Manuel Diaz, Jennalee L Free, Arsenio Parker Geter, Veronica Alice Martinez, Ocar Ronquillo and Justin Guadalupe Villegas

5th Grade — Erin Jo Aleen, Kristen Abriz, Morgan Shea Burton, Melissa Catano, Christopher Davis, Ester Martinez, Prisma Villegas Ortiz, Jesse Rodriguez, Erik Bryan Sanchez, Isabel Triana and Brenda Cynthia Villegas

Certificates
3rd Grade — Brittany Ambriz, Anna Laura Andrade, Juan Avila, Dustin Barker, Matthew Barnes, T.J. Brantley, Nicklas Wilson Brewster, Kati Ranae Brown, Raul Campos, Brittini Inez Carter, Heather Cisneros, Laura Kay Cogliandro, Timothy Don Conner, Kelly Suzanne Dale, San Juana Davila, Karen Alysha DeAquino, Perla Ariana Diaz, Irene Rachel Dominguez, Daisy Yesenia Estrada, Juan Lorenzo Ford, Angelita Sita Garcia, Kaitlyn

Breanne Geissler, Gerardo Gomez, Tosha Marie Gomez, Bianca Gonzales, Marie Carmen Gonzalez, Jamie Francis Hall, Shayla Hall, Charles Richard Hammer, Calli Alain Hancock, Chelsi Leah Hawkins, Diana Hernandez, Michael Eric Jarmamillo, Randall John Knox, Kale Amber Lepard, Alyssa Danille Lopez, Arthur Ray Martinez, Belen Nichole Martinez, Randy Montejano, Claudia Morales, Ashley Aaron Mumau, Madison Marie Myers, Joshua Kiel Norman, Alvaro C. Jr. Ontiveroz, Sybonay Peralta, Kindra Shgae Pruitt, Autumn Leigh Rainey, Matthew Engale Richards, Liliana Ruiz, Luis Carlos Saenz, Noe Vazquez Salcido, Jordan Scott Saylor, Santiago Sifuentes, Jameson Derek Skipworth, Amanda Shey Slaughter, Cade Smith, Rosario Tafolla, Travis Lance Thompson Camp, Irma Janel Torres, Joshua Toscano, Marina Trevino, Brittany Nicole Villa, Tori Shantel Vise and Eric Alan Washington

4th Grade — Joe C. Ambriz, Ana Idaly Arzola, Zannia Avila, Brett Bamert, Brady Rex Black, Brook Nicole Bottelman, Daniel Armando Caraveo, Catalina Kathy MDeAquino, Hope Ashton DePalma, Kourtnee Leigh Dowty, Monserrat Elias, Michael Lorenzo Ellis, Jarad Paul Flores, Wendy Cuevas Godinez, Rudy Michael Jr. Gonzales, Samantha Renee Gonzalez, Luis A. Guzman, Lindsey Hall, Zachary Mark Hall, Jason Mark Hartline, Wesley Herington, Jesus Lorenzo Hernandez, Joseph Edward Luliano, Myles James, Chelsea Ann Lopez, Geraldine Lopez, Vanessa Marie Lopez, Curtis Allen Martin, Brandon Scott Martinez, Rodrigo Mendoza, Jose Angel Olivas, Christina Deneen Orozco, Luz M. Ortega, Janice Pacheco, Dakota Leslie Pitcock, Monica Posadas, Randall Wayne Radford, Jenna LeAnn Rasco, Christine L. Reeves, Sarah Rey,

Trisha Nicole Robertson, Logan Ruthardt, Elizabeth Salamanca, Sarah Jean Sexton, Hillary Ann Tipps, Amanda Toscano, Trevor Len Tunbow, Cami Jo Vandiver, Erica Villa, Lidia Armida Villezcas, Corey Heath Wallace and Brandi J. Wood

5th Grade — Elena Aburto, Yuri Ivy Aguirre, Cristobal Almanza, Kory Atwood, Amanda Barnes, Ashley Nicole Beggs, Kelsey Lynette Beggs, Trent Black, Robby Franklin Bomer, Jordan Bonds, Mandy Brantley, Kami Lynn Brown, Brandy Wayne Broyles, Thomas Rojas Buenrostro, Jenny Lee Bush, Brenda Jazmin Caraveo, Jamie Shantell Carpenter, Paul Anthony Carrion, Jeremy William Copley, Amber LeAnne Cowart, Josue DeAquino, Erin Crystal Dehoyos, Erika Diaz, Silbestra Diaz, Sarah Marie Dominguez, Ruth Mendes Elizalde, Erica Lynn Estrada, Mylinda Sue Franco, Erin Kendall Gallman, Homero Garza, Patricia Lynn Garza, Jaelyn Faith Gilleland, Nicklas Shayne Green, Bobby Harold Grumbles, Jessica Mae Hall, Amanda Ruth Hardt, Mitci Kay Hawkins, Jennifer Ann Heredia, Maria Hernandez, Coli Don Hunt, Shalisa Dawn Ladd, Amaanda Beth Lopez, Laura Lorena Marquez, Minerva Anna Martinez, Paje McRoberts, Ester Marie Mendoza, Gorje Mendoza, Misty Gail Miller, Michelle Morales, April Morgan, Berry Keith Morris, Luis Raul Muniz, Jeremy Norman, Juan Sanchez Nunez, Lorena Olivas, Sarah Kristen Pace, Andrew Lee Padilla, Fernando Peralta, Adam Darrel Pierce, Derek Wilson Purdy, Laura Ramirez, Armida Munoz Rascon, Shanna Marie Pempe, Cecilia Reyes, Joel Jesus Salcido, Michael Paul Sexton, Joshua Clint Shelburne, Rose Maria Sotelo, Kayla Dawn Spradling, Brittany Ann Thomason, Tamara JoAnn Thompson, Irene Torres, Cami Jo Valdez, Francisco Vidana, Jose Angel Vidana and Tyler Wood.

Local youth minister presents paper

A local youth minister has been selected to present papers at an upcoming religious conference.

Donovan Martin, youth minister at Muleshoe's First Baptist Church, will present, "The Use of Riddle in Judges 14:14, 18 and 1 Esdras 3:1-5:6," at the Southwest Commission on Religious Studies conference in March.

"The occurrence of riddles

in Judges 14:14, 18, the Samson Narrative, and in 1 Esdras 3:1-5:6, the contest of Darius' guards, introduces interesting aspects to the respective narratives sight, and their main characters," said Martin, who added that the individual solving a riddle is assumed to have perspicacious sight, and great importance and power rested in him.

The paper Martin will be

presenting is a thumbnail sketch of the thesis document he is preparing as part of his graduate studies.

Martin completed his Bachelor Degree at Wayland Baptist University in 1994 and immediately began graduate studies focused on obtaining a master's degree in religion.

Following the completion of his master's degree, Martin is planning to pursue his doctorate.

Rip's 314 Wheeler Texico
7th Texico
482-3363 or 800-748-2459

After Christmas Clearance SALE

We will be closed Thurs., January 1st

MEN'S

- Men's Shirts Including Pendelton
 - Men's Suits and Sport Coats
 - Men's Dress Pants
- 50%**
- All Men's Winter Coats **1/3 Off**
- Rip's 4X Felt Hats **\$75⁰⁰**
- Wrangler 13MWZ Jeans **\$17⁹⁸**
- 38"-40" slightly higher
- Wrangler 13MWZ Color Jeans **\$19⁹⁸**
- Resistol Hats **20% Off**
- All Belt Buckles & Billfolds **20% Off**
- Stetson Hats **30% Off**

LADIES'

- Coats & Sweaters **50% Off**
- Slacks & Blouses **50% Off**
- Large Group of Ladies' Wear **75% OFF**

CHILDREN'S

- Boys Shirts **50% Off**
- Children's Justins starting at **\$49⁹⁸**
- All Tack **10% Off**

COUPON

Full Quill Ostrich
Cowboy Boots \$100
Off per pair

COUPON

All
Boots 10%
excluding other sale
Off per pair

All Boots 1st Quality, No Seconds

We Accept **Watch For Other Unadvertised Specials Throughout our Store**
No Refunds or Alterations on Sale Merchandise

MONDAY - SATURDAY 10:00 A.M. TO 6:30 P.M. CST

BAILEY COUNTY DEVOTIONAL PAGE

Risinger Plumbing
 Serving Muleshoe Area
 All Plumbing Repairs
272-6772

Springlake Potatoes, Inc.
 P.O. Box 280 • Springlake, TX
262-5542

EASTER GRAIN, INC.
 Easter Labuddie
 276-5255 965-2817

WEST CAMP GIN, INC.
 Route 2 Box 1000
 Muleshoe, TX • 925-6681
 James Sheppard • Phyllis Sheppard

LLD LANDMARK LABEL & DESIGN
 QUALITY PRINTING AT A COMPETITIVE PRICE!
 218 Main Street
 (806)272-6767

IRRIGATION PUMPS & POWER
ZIMMATIC CENTER-PIVOTS
 W. Hwy. 84 272-4483

MAPLE COOP GIN
 927-5501
 Maple, Texas

Leal's Tortilla Factory, Inc.
 "Serving West Texas since 1957"
 107 E. Ash 272-5772 Muleshoe, TX

O & C OSONS
 Erection Sprinkler Ser. Welding & Repair
 Repair & Assemble Repair
 Lupe Olivarez 272-5018 909 W. American Blvd. 272-3475

Discount Computer & Repair Service
CompuTeK
 206 Main 272-5404
 1-800-687-3816

BOBO INSURANCE AGENCY
 108 E. Ave. C 272-4264

Shipman's Body Shop
 Auto Painting • Wrecker Service • Free Estimates
 Tractor Glass & Windshields
 410 N. 1st Muleshoe, TX
 272-4408 FAX 272-3366

SAIN IRRIGATION & MACHINES
Complete Pump Service
 W. American Blvd. 272-4397
 Walt Sain Muleshoe, TX 272-4148

Bob STOVALL Printing
 The Wells & Janet Hall Family
 221 E. AVE. B • MULESHOE, TX
 (806) 272-3373

TERRA INTERNATIONAL, INC.
 272-4203
 Muleshoe, Texas

RONNIE HOLT INSURANCE AGENCY
 Specializing in Crop, Life & Health Insurance
 Western 66 Office Bldg.
 272-3614 Muleshoe, TX

PACO FEED YARD, INC.
 Commercial Cattle Feeders
 P.O. Box 956 265-3281
 Friona, TX
 Feller Hughes-Mgr.

Jarman Seed
PIONEER 801 W. American Blvd.
 Muleshoe, TX • 272-5985

JAMES CRANE TIRE CO., INC.
 107 Main 272-4594
 Mike Hahn Muleshoe, TX

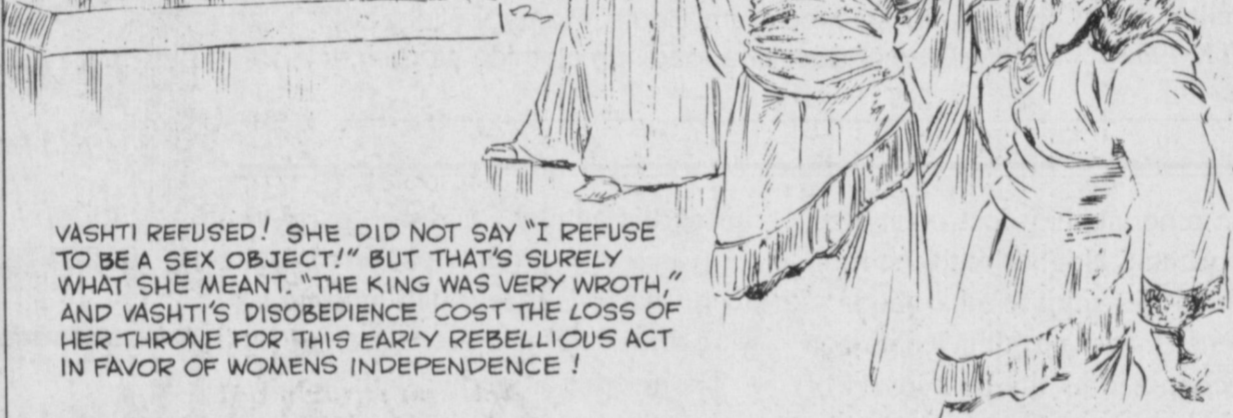
Facts About The BIBLE BY JOHN LEHTI

SHE WAS FAIR TO BEHOLD!
 (ESTHER 1:10ff)

HER NAME WAS VASHTI. VASHTI NEVER HEARD OF MALE CHAUVINISM, BUT SHE SUFFERED IT. VASHTI NEVER HEARD OF WOMENS LIB, BUT SHE WAS ITS SISTER!



HER HUSBAND, KING AHASUERUS, RULER OF THE PERSIAN EMPIRE (485-464 B.C.) WAS ENTERTAINING HIS NOBLES, AND PRINCES, WITH AN ENORMOUS FEAST WHICH LASTED DAYS ON END. "ON THE SEVENTH DAY WHEN THE HEART OF THE KING WAS MERRY WITH WINE" HE SENT ORDERS FOR THE QUEEN TO COME AND PARADE HER BEAUTY BEFORE HIS GUESTS.



VASHTI REFUSED! SHE DID NOT SAY "I REFUSE TO BE A SEX OBJECT!" BUT THAT'S SURELY WHAT SHE MEANT. "THE KING WAS VERY WROTH," AND VASHTI'S DISOBEDIENCE COST THE LOSS OF HER THRONE FOR THIS EARLY REBELLIOUS ACT IN FAVOR OF WOMENS INDEPENDENCE!

NEXT WEEK: WHEN A BIBLE KILLED A KING!

SAVE THIS FOR YOUR SUNDAY SCHOOL SCRAPBOOK.

This devotional & directory is made possible by these businesses who encourage all of us to attend worship services.

ASSEMBLY OF GOD
FIRST ASSEMBLY OF GOD
 521 South First Street • 272-3017
 Jack Stone, Min. • 272-3984
 S.S. 9:45 a.m., W.S. 11 a.m. & 6:30 p.m.,
 Wed. 7:30 p.m.

BAPTIST CALVARY BAPTIST
 1733 W. Ave. C. Rev. Jeff Coffman
CIRCLE BACK BAPTIST
 Intersection FM 3397 & FM 298
 Jessie Shaver, Min. • 946-3676

FIRST BAPTIST
 220 West Ave. E.
 Stacey Conner, Min.

FIRST BAPTIST
 Lazbuddie • 965-2126

PRIMERA IGLESIA BAUTISTA
 223 E. Ave. B Roy Martinez, Min.

PRIMITIVE BAPTIST
 621 South First
 Elder Cleveland Bass, Min.

PROGRESS BAPTIST
 Progress, TX
PROGRESS SECOND BAPTIST
 Arthur Hays, Min.

RICHLAND HILLS BAPTIST
 17th & West Ave. D
 George Malis, Pastor

ST. MATTHEWS BAPTIST
 Corner of W. Boston & W. Birch
 Floyd R. Monroe, Min.

THREE WAY BAPTIST
 927-5467
 James Sinclair, Pastor

TRINITY BAPTIST
 314 E. Ave. B
 Robert Brown, Min.

CATHOLIC IMMACULATE CONCEPTION
CATHOLIC
 805 E. Hickory
 Joseph Augustine, Min.

CHRISTIAN THE CHRISTIAN CENTER
 Morton Hwy. • 272-5105
 Reydon Stanford, Min.

CHURCH OF CHRIST LARIAT CHURCH OF CHRIST
 Sam Billingsley, Min.
 S.S. 10 a.m.; W.S. 11 a.m. & 6 p.m.,
 Wed. 7 p.m.

LAZBUDDIE CHURCH OF CHRIST
 Nathan Crawford, Min.
 S.S. 9:30 a.m.; W.S. 10:20 a.m. & 5 p.m.;
 Wed. 7 p.m.

MULESHOE CHURCH OF CHRIST
 22nd & W. American Blvd.
 John Knox, Min.
 S.S. 9:30 a.m.; W.S. 10:20 a.m. & 6 p.m.;
 Wed. 7:30 p.m.

SIXTEENTH & AVE. D CHURCH OF CHRIST
 Curtis Shelburne, Min. • 272-4619
 W.S. 10:30 a.m. & 6 p.m.;
 Wed. 7:30 p.m.

LUTHERAN ST. JOHN LUTHERAN
 Lariat, TX
 Richard Greenthamer, Min.
 S.S. 10:30 a.m.; W.S. 9:30 a.m.

METHODIST FIRST UNITED METHODIST
HISPANIC MINISTRIES
 E. 5th and E. Ave. D
 Pastor Benito Cavazos

FIRST UNITED METHODIST
 507 W. 2nd St.
 Pastor Brad Reeves

LAZBUDDIE METHODIST
 965-2121

EL DEVINO SALVADOR
 814 W. Ave. C, Muleshoe, TX
 Guadalupe Ballinas, Min.

NAZARENE NEW VISION CHURCH OF THE NAZARENE
 814 W. Ave. C • 272-3622
 David R. McIntire

PENTECOSTAL UNITED PENTECOSTAL CHURCH
 207 East Ave. G • 1-800-454-6051
 Pastor McKibben, 3 pm Sunday Service

INTER DENOMINATIONAL NEW COVENANT
 Plainview Hwy. Jimmy Low, Min.
 S.S. 9:30 a.m.; W.S. 10:15 a.m.;
 Wed. 7 p.m.

WINKLES TRUCKS, INC.
 Box 757 (806) 247-2724
 Friona, TX

Lowe's MARKETPLACE
 401 W. American Blvd.
 Muleshoe 272-4585
 515 W. American Blvd.
 Muleshoe 272-4406

Decorators Floral & Gifts
 616 South First 272-4340
 Muleshoe, TX

SHERLEY-ANDERSON LAZBUDDIE ELEVATOR
 965-2922 Lazbuddie, TX

THE BANK MEMBER FDIC
 202 South First 272-4515

WES-TEX FEED YARDS, INC.
 Custom Cattle Feeding
 272-7555 Muleshoe, TX

AMERICAN AVI ALLEY VALLEY INC. West Hwy 84
 272-4266
 Muleshoe

BAILEY GIN COMPANY, INC.
 946-3397
 Sudan, TX
 Peanut Hawkins, MGR

WESTERN DRUG
 114 Main 272-3106 Muleshoe

B/S & More Family Fun Center
 123 Main • Muleshoe • 272-3828

HERITAGE HOUSE INN
 2301 W. American Blvd. 272-7575
 Muleshoe, Texas
 Clint & Evelyn Peat - Resident Owners
 Reservations 1-800-253-5896

BRUCE, INC. AIR CONDITIONING
 Hwy. 214 North 272-5114
 Muleshoe, TX
 TAOL-B003350C, LP08638

MULESHOE COOPERATIVE GINS
 P.O. Box 569
 272-4794 Muleshoe, TX

MULESHOE AREA HEALTH CARE Center
 "Committed to Caring"
 106 W. Ave. H Muleshoe 272-7578

MULESHOE MOTOR CO.
 1225 W. American Blvd. 272-4251

"THE FIVE AREA TELEPHONE COOPERATIVE ORGANIZATION"
 West Plains Telecommunications Co.
 Five Area Systems, Inc. - Plateau Cellular Network
 Five Area Long Distance - Five Area Internet
 302 Uvalde Muleshoe, USA (806)272-5533

WANDA BROWND INSURANCE AGENCY
 118 E. Ave. C Muleshoe 272-7548
 Since 1957 - The Original

Leal's Mexican Restaurant
 1010 W. American Blvd. 272-3294
 Muleshoe, TX Victor & Debbie Leal

FIRST TEXAS FLBA MULESHOE
 "Serving Farmer & Bailey Counties"
 272-3010 • Fax 272-5388
 316 Main • P.O. Box 424 • Muleshoe, TX

Triple S Publishing
 304 W. 2nd St.
 Muleshoe, TX 79347
 272-4536

MULESHOE LIVESTOCK AUCTION
 Muleshoe, TX • Sale Every Saturday
 Clayton Myers • 272-4201

OBITUARIES

GRACE JONES

Grace Elizabeth Jones, 90, died Monday, Dec. 22, 1997 in Sulphur, Oklahoma.

Memorials services were held Dec. 24 at First Christian Church in Sulphur, Okla. with Pastor Grant Brandt and Rev. Wayne Edgar officiating.

Interment services were held Dec. 27 at Muleshoe Memorial Park Cemetery with Jim Ed McGuire of Lubbock officiating.

Jones was born on May 27, 1907 in Kiowa County, Okla. She married Lee A. Jones in 1927 in Parmer County. He died in 1963.

Jones spent her early years in Kiowa County, Okla. She moved to west Texas around 1920. She moved to Davis in 1985. She lived with her son the last few months.

Survivors include her son Melborn Jones and his wife Bobbie of Sulphur, Okla.; a son, Harold Lavon Jones of Flower Mound, Tex.; 4 grandchildren, 5 great-grandchildren, 1 great-great-grandchild.

RUTH BLACK

Ruth Black, 83, of Muleshoe died Wednesday, Dec. 24

at Methodist Hospital in Lubbock.

Services were held Dec. 27 at First Baptist Church in Muleshoe with Rev. Stacy Conner and Rev. Carrol Gill of Guthrie, Okla. officiating.

Burial will be in Muleshoe Memorial Park under the direction of Ellis Funeral Home of Muleshoe.

She was born Dec. 19, 1914 in Dekalb, Texas. She married James D. "Pete" Black Dec. 16, 1934 in Muleshoe. He died Dec. 20, 1991.

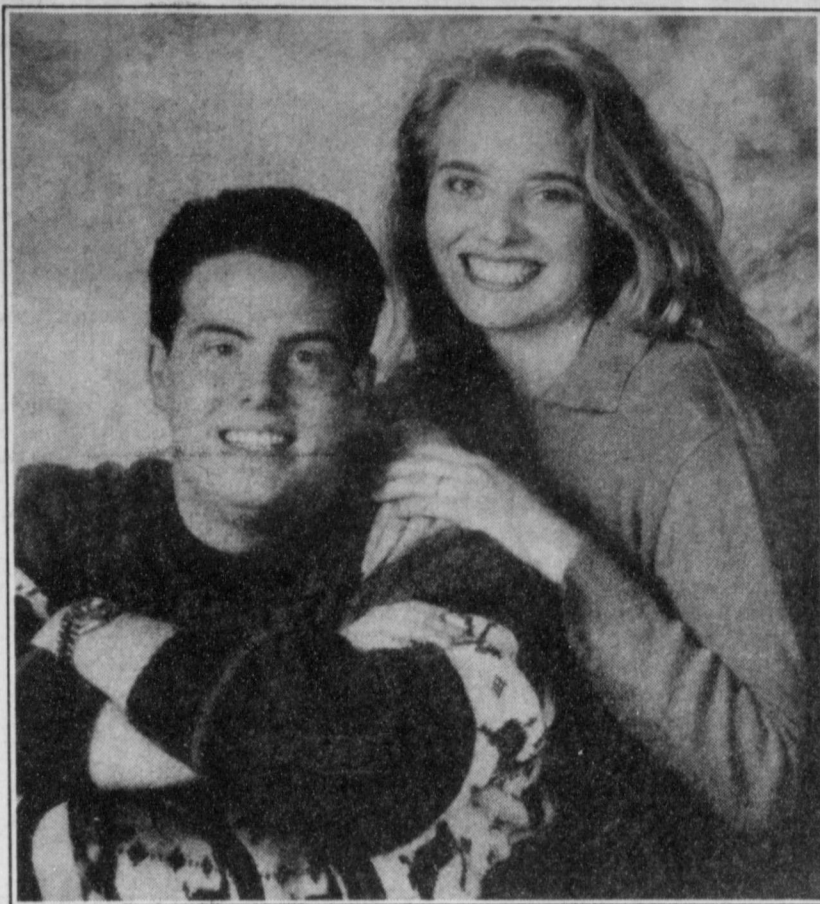
Mrs. Black was a life and health insurance agent and a member of the First Baptist Church of Muleshoe. She moved to Muleshoe from Turkey, Texas in 1932.

Survivors include two sons, Bobby J. Black of Muleshoe and Buddy Black of Dumas; one sister, Vivian Stevenson of Lindrieth, N.M.; 7 grandchildren and 8 great grandchildren.

Casket bearers were Eddie Black, Mitch Black, Wade Black, Kevin Black, L.D. Stevenson and Brian Black (in memory).

The family suggests memorials be made to Bailey County EMS, Muleshoe TX 79347.

ENGAGEMENT



Smith — Alexander

Sonya Dawn Smith of Muleshoe and Matthew Clayton Alexander of Madison, Wisc. proudly announce their engagement. Sonya is the daughter of David and Kay Gray of Muleshoe and Dennis and Margie Smith of Smithville, Tenn. Matthew is the son of Jimmy and Vickie Alexander, also of Madison. The couple is planning to marry Saturday, Jan. 31, 1998, at New Covenant Church in Muleshoe. They will later reside in Madison. Sonya works as a veterinarian's assistant, is 1994 MHS graduate and earned an associate's degree in science from South Plains College. He is an assistant manager of a Madison clothing store.

POLICE LOG

ARRESTS

MULESHOE PD

Dec. 9 — Martha Alvarado, 33, charged with assault that causes bodily injury.

Dec. 14 — Gerald Richard Mumau, 33, charged with driving while intoxicated.

Dec. 17 — Anna Valeriano, 28, charged with theft of less than \$50.

Dec. 18 — Reynaldo P. Martinez, 43, charged with driving while intoxicated.

Dec. 21 — Gilberto Dominguez Buenrostro, 35, charged with driving while intoxicated and possession of less than 2 ounces of marijuana.

BAILEY COUNTY SO

Dec. 2 — Frank Arrendondo, 29, warrant for aggravated assault.

Dec. 2 — Michael Ray Bara, 42, charged with Class A assault.

Dec. 8 — David R. Tisthammer, 27, charged with burglary of a habitation and unauthorized use of vehicle.

Dec. 9 — Michael Ray Bara, 40, arrested on a warrant.

Dec. 10 — William Robert Crawford, 30, charged with burglary of building.

Dec. 18 — Sherry Diana Adams, 35, charged with fraud and felony theft.

Dec. 18 — Rosa Sigala Romero, 39, charged with failure to stop and render aid.

Dec. 19 — Francisco V. Sanchez, 53, charged with making a false statement on driver's license application.

Dec. 19 — Miguel Angel Galindo, 32, charged with Class A assault.

Dec. 20 — Jose Hernandez, 31, charged with driving with a suspended license.

The Country House
40-50% Off
selected Christmas & everyday merchandise!
 123 Marshall Blvd. (Highway 84 by pass)
 Littlefield, TX • (806) 385-3245
 Open Mon. through Sat. • 10 am to 5:30 pm

Have a Great Day!

TOPS NEWS

Tops Chapter No. 34 met at the Muleshoe Church of Christ Dec. 18.

Leader Laverne James called the meeting to order with the Tops pledge, fellowship song and a prayer.

Weight recorder Alene Bryant called the roll with 17 members answering

with the amount they lost or gained. Secretary Janie Hughes read the minutes, which were approved as read.

Evelene Harris and Alma Robertson were recognized as the best losers of the week.

Everyone received an exchange gift

during the annual Christmas party, as well as a gift from their secret pal. Secret pals were revealed and names were drawn for next year's secret pals.

The meeting adjourned with the good night song.

Good Bye
1997

Hope the coming year is a resounding success for all our friends, both old and new. We'll never forget your kind support, trust and confidence. With thanks and warm wishes from all of us at The Bailey County Journal . . .

Happy
1998!

THE STAFF AT THE BAILEY COUNTY JOURNAL URGES YOU NOT TO DRINK & DRIVE. FIND A DESIGNATED DRIVER.

1998

LAZBUDDIE STUDENTS OF THE MONTH

Jill Hodges and Seth Black were chosen as the Lazbuddie High School December students of the month.

Jill, 17, is the daughter of Mack and Rhonda Hodges. Her favorite class in school is year-book. She enjoys reading and playing golf. Her favorite book is Jane Eyre.

Jill likes to eat her mom's tacos and drink Dr. Pepper while watching Days of Our Lives. Her favorite movie is Pretty in Pink. When listening to music she chooses Sister Hazel as her favorite group and "All for You." Her favorite colors are purple and maroon.

Seth, 16, is the son of Ricky and Sarah Black. He enjoys drinking Mountain Dew and eating Mexican food and Sour Punch Straws.

Seth's favorite subject in school is industrial arts. He enjoys roping, snow-skiing, water-skiing and all school sports. Blue is his favorite color and during his free time he listens to Coal Chamber. "Song #2" by Blur is his favorite song.

On Thursday nights Seth

likes to watch his favorite television show, ER. His favorite book is Breakfast of Champions by Kurt Vonnegut and his favorite movie is The Ghost and the Darkness.

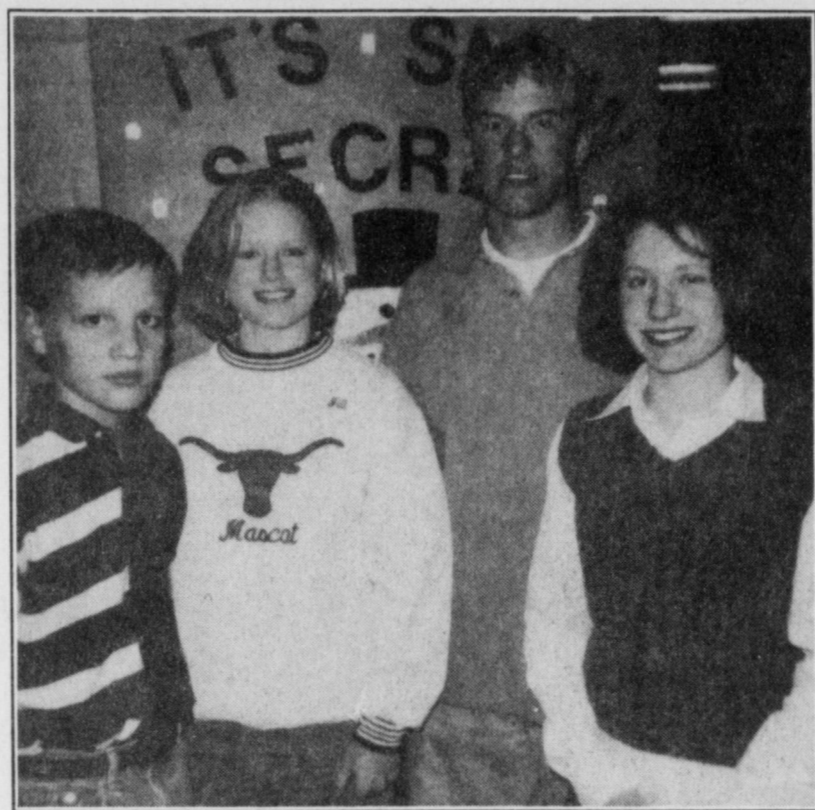
Junior High Students of the month are Kayla Kimbrough and Tobin Redwine.

Kayla, 14, is the daughter of Kyle and Kim Kimbrough. She loves the color blue. She particularly likes school athletics, staying involved in basketball and cheerleading. Kayla dreams of becoming a successful actress. Her favorite movie is Phenomenon and favorite television show is ER.

Being with friends and listening to the band Bush and her favorite song "Tubthumping" are pastimes Kayla enjoys. She also likes to eat Chinese food and drink Dr. Pepper. Remember Me is her favorite book.

Tobin, 12, is the youngest son of Bobby and Debra Redwine. Tobin likes to eat marshmallows and drink Dr. Pepper.

His favorite book is The Hobbit. Although his favorite



Lazbuddie students of the month
Lazbuddie December students of the month are (from left) Tobin Redwine, Jill Hodges, Seth Black and Kayla Kimbrough.

band is the Lazbuddie Junior High Band, he does listen to

Bon Jovi. His favorite song is "Bad Medicine. He likes the movie Braveheart and television show Brotherly Love. Green is Tobin's color of choice as is the classroom subject computer literacy.

He plays video games in his spare time and dreams of going to college and getting a Ph.D. in veterinary science.



Public meeting focuses on water

AUSTIN — The Texas Water Development (TWDB) will be holding public hearings around the state on the final draft of regional water planning areas and proposed planning rules for state and regional water plans.

The public meeting in the South Plains area will be held at 9 a.m., Wednesday, Jan. 14 at the Plainview Country Club in Plainview.

At the public meeting and hearing, the TWDB will receive public comments on the final draft of regional water planning areas and proposed rules for state and regional

water planning. The deadline for public comments is Jan. 26. Comments should include the provisions that are favored or provisions that should be changed and why, and should suggest revised language.

Comments can be e-mailed to SB1@twdb.state.tx.us or by writing to Carolyn Brittin at the Texas Water Development Board, P.O. Box 13231, Austin, Tx. 78711-3211 or by faxing to 512-463-9893.

For copies of the final regional water planning area delineations and rules, please contact Diane Burr: 512-475-2057.

D.C. DRILLING & PUMPS
Larry Jones
Sales & Service
Submersible Pumps & Turbines
WELL DRILLING
House • Irrigation
Steel & PVC
3209 N. Prince
PO Box 1757
Clovis, NM 88101
Bus: (505) 762-0831
Evenings: (505) 763-1347

Journal Classifieds

REAL ESTATE
AUTOMOBILES
HELP WANTED
GARAGE SALES

STOP & SHOP

Deadlines are 5 p.m. Monday and Thursday

Call 272-4536

Deadlines are 5 p.m. Monday and Thursday

<p>LEGAL</p> <p>Notice To Contractors Local Let Maintenance Contract County: Bailey Project Number: RMC - 602259001 Type: Mowing Guaranty: \$1,500.00. EST. Cost: \$73,617.80 Bids Received Until: 2:15 p.m. January 12, 1998 Bids will be opened: 2:15 p.m. January 12, 1998 Mail or Deliver Bids to : Texas Department of Transportation Lubbock district P.O. Box 771 Lubbock TX 79408-0771 (806) 748-4426 Contact person: Stevan Perez, A.E. Box 868 Littlefield, TX 79339 (806) 385-3552 Limits from: F.M 54 In Bailey County, ETC. Limits To: Parmer County Line, ETC. Important Notice To Contractors Non-Mandatory Prebid Conference The contract's attention is directed to the fact that a prebid conference is optional and prospective bidders do not have to attend in order to bid. The prebid conference will be held on Wednesday, January 7, 1998 at 1:00 p.m. At the district HDQTRS., Lubbock. Published in the Muleshoe Journal and Bailey County Journal Dec. 25 and 28.</p>	<p>FOR SALE</p> <p>Whirlpool Electric range-6' mo. White on white, like new. Purchased new home with built-in range. Must sell 499.00 Call 272-4063. 50t-tfc</p> <p>ATTENTION!! Kirby Sales & Service 207 W. 7th next to Sonic Drive-in. (505) 762-4991 Call for FREE Home demonstration or Repair work. Clovis, NM 35t-tfc</p> <p>HELP WANTED</p> <p>Plumber's helper wanted. \$6.00 per hour. No experience necessary. If you want to learn the plumbing trade call 933-4472. 52T-4TCH</p> <p>"AVON", Representatives Needed Now! No Inventory Required, IND/SALES? REP, Toll Free, 800-236-0041. 51t-6tpd</p> <p>RV/LVN We need a nurse! Professional self-motivated RN or LVN needed for contact visits. Experience in home health preferred. Call Brian at (806) 385-3255 for more information. 51t-4tch</p> <p>Our agency is looking for a caring, compassionate RN or LVN for full time staff position. Experience with Medicare and home health preferred. Please call (806) 383-3255 to find out more information about this position. 51t-4tch</p>	<p>REAL ESTATE</p> <p>Price Reduced, Country Living at it's Best - 6 miles West of Muleshoe on Highway 1760. Approx. 3500sq. ft. Gorgeous 3-3-3 Brick home with lots of builtins, fireplace, central heat, ref. air, sunroom with hot tub, lots of storage, large family room and utility room, every woman's dream. All on 2 1/2 acres. Also 30x50 metal barn with corrals. If you want it! This place has it! • 481 ac. Nice 3-2-2 Brick, Home, 6 wells, 3 electric sprinklers, grain storage, hay barn. • 640 ac. 5 wells, 3 electric sprinkler system, 3 bedroom stucco house and domestic well. • 320 ac. NE of Muleshoe, 2 story stucco house, very large barn, 2 sprinkler systems, 4 wells, lays well. Out of Area Owner says "Sell It!" • 160 ac. SE of Lazbuddie, Excellent water area, Circular sprinkler, 100 hp elect. Motor. Excellent cash lease in effect on this farm. • 207 ac. NW of Lazbuddie, 125 hp Elect Motor, electric sprinkler. Domestic well. • 323 ac. S. of Lazbuddie, good water area! 3-wells, 1 valley electric sprinkler. Domestic well. New Listing- Just west of Muleshoe on pavement. Nice 3 bedroom 1 3/4 bath brick home with attached garage. 30 X 40 insulated barn, corrals and lots of storage all on 4.4 acres. Must see to appreciate. Call for more details.</p> <p>REAL ESTATE</p> <p>2 Bedroom, 1 bath. Home fence front and back yard. Built in gas grill, carport. Call 1806-659-3125, after 6 p.m. ask for Bruce. Mobile 806-662-0456. \$25,000. 52s-4tpd</p> <p>MOBILE HOMES</p> <p>16 X 60 Skyline mobile home 2 brm, 2 bath. Needs to be moved. Air conditioning and heat included, take over payments. 965-2967.46t-tfc.</p>	<p>REAL ESTATE</p> <p>James F. Hayes & Co. AGRICULTURAL REAL ESTATE SERVICES</p> <p>390 Acres with 3 brdm Austin stonehouse. Stegall area. 70 acres of native grass. 320 Acres of CRP just renewed for 10 yrs @ \$39.50 per acre. House and 70 acres can be sold separately.</p> <p>240 Acres in northwestern Lamb County near Bailey County line. Good soil, Lays good, 3 wells.</p> <p>Parmer County 1 Section with new half mile sprinkler 600 gallon to 800 gallon water. Immediate cash flow.</p> <p>160 Acres in northwestern Lamb County near Dodd.</p> <p>280 Acres near Earth. 3 wells, strong water. center pivot.</p> <p>Vic Coker, Agent 310 Main St. Suite 103 Muleshoe Office 272-3100 Home 965-2468 WHEN LAND INVOLVES COWS AND PLOWS</p>	<p>REAL ESTATE</p> <p>REAL ESTATE</p> <p>REAL ESTATE</p>	<p>JUST LIKE FINDING COINS IN THE WISHING WELL!</p> <p>It pays to advertise in Name Classified. An ad in the Classified pages can bring you new found money — just like those coins in the bottom of your wishing well. So do more than wish. Call now and place your ad in:</p> <p>THE JOURNAL CLASSIFIED 272-4536</p>
----------------------------------------------------------------------------------------------------------------------------------------------------------------------------------------------------------------------------------------------------------------------------------------------------------------------------------------------------------------------------------------------------------------------------------------------------------------------------------------------------------------------------------------------------------------------------------------------------------------------------------------------------------------------------------------------------------------------------------------------------------------------------------------------------------------------------------------------------------------------------------------------------------------------------------------------------------------------------------------------------------------------------------------------------------------------------------------------------------	--------------------------------------------------------------------------------------------------------------------------------------------------------------------------------------------------------------------------------------------------------------------------------------------------------------------------------------------------------------------------------------------------------------------------------------------------------------------------------------------------------------------------------------------------------------------------------------------------------------------------------------------------------------------------------------------------------------------------------------------------------------------------------------------------------------------------------------------------------------------------------------------------------------------------------------------------------------------------------------------------------------------------------------------------------------------------------------------------------------	--------------------------------------------------------------------------------------------------------------------------------------------------------------------------------------------------------------------------------------------------------------------------------------------------------------------------------------------------------------------------------------------------------------------------------------------------------------------------------------------------------------------------------------------------------------------------------------------------------------------------------------------------------------------------------------------------------------------------------------------------------------------------------------------------------------------------------------------------------------------------------------------------------------------------------------------------------------------------------------------------------------------------------------------------------------------------------------------------------------------------------------------------------------------------------------------------------------------------------------------------------------------------------------------------------------------------------------------------------------------------------------------------------------------------------------------------------------------------------------------------------------------------------------------------------------------------------------------------------------------------------------------------------------------------------------------------------------------------------------	---------------------------------------------------------------------------------------------------------------------------------------------------------------------------------------------------------------------------------------------------------------------------------------------------------------------------------------------------------------------------------------------------------------------------------------------------------------------------------------------------------------------------------------------------------------------------------------------------------------------------------------------------------------------------------------------------------------------------------------------------------------------------------------------------	-------------------------------------------------------------------------------	--------------------------------------------------------------------------------------------------------------------------------------------------------------------------------------------------------------------------------------------------------------------------------------------------------------------------------

The following people have announced their candidacy for the **General Primary Election** Tuesday, March 10, 1998

DISTRICT 287TH JUDGE

- Gordon H. Green, Democrat
- Jack Bates, Democrat

BAILEY COUNTY CLERK

- Sherri Bessire Harrison, Republican
- Elaine Parker, Democrat

Paid political advertisement

EXTRA INCOME FOR '97
Earn \$500 - \$1000 weekly stuffing envelopes. For details - RUSH \$1.00 with SASE to:

GROUP 5
8547 N Academy Blvd. Dept N
Colorado Springs, Co. 80918

VEHICLES

1995 Chevy Cheyenne short bed pickup. Tilt, cruise, air, auto., 4.3 Vortec engine, silver color. Under 13,000 miles. Very sharp! \$14,000 (505) 356-5509 45t-1tnc

1994 GMC SLE extended cab with short bed. 350, V-8, automatic, tilt, air, cruise, power windows and lock. \$14,000. (505) 356-5509. 45t-1tnc

NO JOKE
\$1,125 ? Week net. Tired of empty promises? Work from home with proven turn key system. Not MCM. 800-322-6169 x 9944. 50t-6tc

SUNSET CONST.
* Remodeling, bathrooms etc.
* Carports & Patio
* Fence's
* Tile
* Concrete
* All phase's. 505-762-7689. 50t-6tpd

Nieman Realty
116 E. Ave. C • George Nieman, Broker • 272-5285 or 272-5286

RICHLAND HILLS

3-3-1 Brick, cent. Heat, Evap. Air, built-ins, 2000' + lv. area, fenced yd., stor. bldg, MORE!! \$60K !!! RH-2

PARKRIDGE - NICE 3-2-2 Brick, Cent. A&H, built-ins, FP, cov. patio, fenced yd. \$50's!!

HIGHLAND AREA

3-2-2 Brick, Cent. A&H, built-ins, gas log FP, fenced yd., stor. bldg., MORE!! Price Reduced!! HL-5

2-1-1 Home, vinyl siding, wall furnace heat, fenced yd. \$17,000!!! HL-1

LENAU - COUNTRY CLUB AREA

2-1-1 Carport Home, wall furnace, nice carpet, storm shelter, stor. bldg., fenced yd. \$20's!!! CC-3

2-1-1 Home, Cent. Heat, built-ins, Hardwood floors! \$19,500!! L-3

2-1-1 Home, floor furnace, win. fer. air, fenced yd, stor. bldg., \$19,500 !!! L-1

Commercial Bldg. & Lot, Approx. 1790' area, Numerous uses!! \$22K!!!

HIGH SCHOOL

3-1-1 Brick, Cent. Heat!!! \$25K!!! HS-4

NICE 3-2-2 Brick, Cent. A&H, built-ins fenced yd., MORE !!! \$40's !!! HS-5

Very Nice 3-1-1 Brick Home, cent. Heat & Air, built-ins, fans, woodburning stove, nice carpets, storage bldg., fenced yd., More !!! \$40's!!! HS-7

NICE 2-1-1 Brick, Heat Pump, nice carpets, well insulated, storm windows & doors. \$30's!!! HS6

BUSINESS FOR SALE-SNACK SHACK - Lot, Buildings, furniture, and fixtures!!!!

NICE R.V. STORAGE, 14' X 40' metal bldg, 12' doors, corner lot!!

RURAL

3-2-2 Home on .92 acre at edge of town, Cent. Heat, evap. air, DW, storage bldg., fenced yd., & MORE !! \$30K!!!

W. of SUDAN-NICE 3-3-2 Brick Home, 5 acre tract on Hwy. 298, Cent. Air & Heat, built-ins, large Quonset Barn, MORE!!!! \$95K!!!

JUST LISTED- NICE 4-1-2 Home, Heat Pump, Built-ins fenced yd., 2 Stor. bldgs., approx. 10 acre tract, on pavement close to town!! \$ 50's !!!

5 Acre tract on pavement close to town!

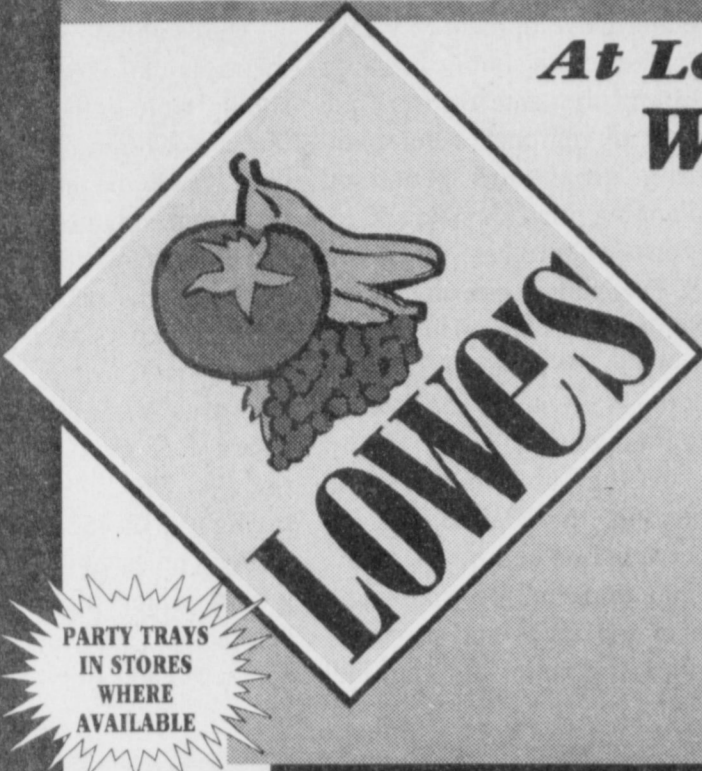
W. of Sudan- 177 acre tract in CRP !!! Price To Sell !!!

Needmore- 1.44 ac., 3 bldgs., \$5K!!!

**PRICES EFFECTIVE
DECEMBER 26-30, 1997**

ALL STORES OPEN FOR YOUR CONVENIENCE
NEW YEARS DAY

WESTERN UNION, MONEY ORDERS CHECK CASHING,
VISA AND TEXAS LONG BEAR CARD
VISA - DISCOVER - MASTERCARD
ACCEPTED IN SELECTED LOWE'S STORES
MARKETPLACE NOT LIABLE FOR TYPOGRAPHICAL
OR PICTORIAL ERRORS. Pay n Save



At Lowe's...
WE

CELEBRATE SAVINGS '98

RINGING IN THE NEW YEAR MEANS
RINGING UP LOW PRICES...

See ya at **LOWE'S**

helping you make memories since 1964

PARTY TRAYS
IN STORES
WHERE
AVAILABLE

**GREEN SKIN
Avocados** 4 For **\$1**

SHURFINE
FRESH SHELLED OR W/SNAPS
Blackeye Peas
4 \$1
15 oz. cans

ASSORTED
**Ruffles® or
Tostitos®**
3 \$5
14 oz. Reg. \$2.99

SHURFINE
WATER OR OIL PACKED
**Chunk Light
Tuna**
39¢
6 oz. can

ANY SIZE
PACK
**U.S.D.A.
SELECT BEEF
T-Bone
Steaks** 2⁹⁶
lb.

SHURFINE
Diced
Tomatoes &
Green Chilies
2 \$1
14.5 oz. cans

FROZEN

SHURFINE ORANGE,
LIME OR PINEAPPLE
Sherbet
99¢
1/2 gallon

TOTINO'S ASSORTED
Party Pizza
99¢
9-10 oz. pkg.

RISE CRUST ASSORTED 12"
DiGiorno Pizza
4⁹⁹
29.45-35 oz. pkg

DAIRY

ASSORTED
**Bagel, Dyna
or Cheese
Bites** 4 \$5
7-7.5 oz.

KRAFT REGULAR OR LIGHT
**Velveeta
Spread** 3⁹⁹
52 oz. pkg.

SHURFINE
GREEN CHILI DIP
SOUR CREAM
FRENCH ONION DIP

• French Onion Dip
• Green Chili Dip
• Sour Cream

2 \$1
1/2 Pints

Solo
Party Cups
or Plates
88¢
20 ct. 16 oz.
9" 15 ct.

MILD, MEDIUM, HOT
**Tostitos® Salsa or
Con Queso Dip**
2 \$4
11 oz. \$2.19
SIZE

BAKERY

ASSORTED
**Cake
Donuts** 12 ct. 1⁹⁹

DELICIOUS
**Assorted
Cookies** 24 ct. 2 \$5

DELI NEW YEARS CELEBRATIONS
DEPEND ON LOWE'S DELI

PARTY TRAYS!

SERVES 15

SHAVED TURKEY, HAM ROAST
BEEF, SLICED AMERICAN AND
SWISS CHEESE
Economy 14⁹⁵
Tray

HARD SALAMI, SUMMER SAUSAGE,
VIRGINIA HAM, HOT PEPPER CHEESE
AMERICAN SLICES, AND CHEDDAR
Deluxe 19⁹⁵
Party Tray

REGULAR OR
W/BLEACH
33-42 USE POWDER
OR
100 OZ. LIQUID
REGULAR
**Surf
Detergent**
4⁹⁹
YOUR CHOICE

SHURFINE
Salad
Dressing
99¢
32 oz. jar

Available At • Lubbock 82nd & Slide Ph# 794-9728 - 50th & Boston Ph# 792-6057 - 34th & Quaker Ph# 797-3461 - 4426 34th Street - Odessa - 1107 E. 42nd Ph# 366-0948 • Monahans - 943-0567

HEALTH & BEAUTY

EXTRA STRENGTH, CHERRY,
OR MINT EXTRA STRENGTH
Maalox Plus
3⁹⁹
12 oz. btl.

ORIGINAL
Alka Seltzer
3⁹⁹
36 ct. pkg.

GINGER ALE,
SPARKLING WATER,
CLEAR SODA OR
TANGY WATER
Canada Dry
69¢
1 liter

ALL TYPES
**Dr
Pepper** 1²⁹
6 pack
12 oz. cans

ALL TYPES
Pepsi 99¢
6 pack
12 oz. cans

FLORAL

MAY INCLUDE MARGINATA
PEPEROMIA, SPIDER PLANT,
SCHEFFLERA

Green Plants
2⁹⁹
4" Pot

BALLOONS MAKE IT A PARTY!
"HAPPY NEW YEAR 1998"
LET OUR FLORAL DEPARTMENT MAKE A BALLOON BOUQUET FOR YOU!

MEAT

BONELESS
**Pork For
Tamales** 1³⁹
lb.

BLOCK CUT
**Beef
Tripe** 39¢
lb.

Salt Jowls
29¢
lb.

BONELESS BEEF
Rump Roast
1⁸⁹
lb.

FRESH
**Pork
Neckbones** 49¢
lb.

IBP
Chitterlings 5⁹⁹
5 lb.

ADVANCE
**FRIED BEEF
Fingers or
Patties** 1¹⁹
12 oz.

PRODUCE

FRESH
**Hot
Jalapenos** 2 \$1
lbs. For

TANGY FRESH
**Lemons or
JEWEL GREEN
Limes**
10 \$1
For

TEXAS RIO STAR
Grapefruit
5 \$1
For