



# The Wheeler Times

BOWINS & MOODY  
Owners and Publishers  
E. R. BOWINS M. L. MOODY  
M. L. MOODY, Editor-Manager

Published Every Thursday at  
Wheeler, Wheeler County, Texas

**SUBSCRIPTION RATES**  
In Wheeler County — \$1.00 a Year  
Outside Wheeler County \$1.50 a Year  
(\$1.50 and \$2 After July 31)

Entered as second-class matter Dec 18, 1933, at the postoffice at Wheeler, Texas, under Act of March 3, 1879.

### JOBS FOR THE UNDERTAKER

Four out of every five automobile accidents occur on dry roads in clear weather. Four out of every five automobile accidents involve cars driving straight ahead.

Here is the statistical proof of the disregard for every rule of courtesy and safety that characterizes the reckless or incompetent drivers. He constantly overestimates the "safety factors" of good roads and modern cars. A straight highway and a clear day act as bait to make him "open her up"—with the result that the undertaker gets about 37,000 new accounts each year.

A National Safety Council survey lists the seven most important causes of fatal accidents, in order as follows: Exceeding the speed limit or driving too fast for road and weather conditions; driving on the wrong side of the road; disregarding stop signals and signs; usurping the right of way; cutting in; passing on hills and curves; failure to signal for stopping and turning.

These driving errors cause the great bulk of all serious accidents, and the first is by far the worst. Every one of them is human error—and every accident they produce could be prevented if individual drivers would observe the most elementary rules of caution and proper driving.

In conclusion, here is one more fact you might think over next time you feel the urge to step on it: At 20 miles per hour, one accident out of every 61 is fatal, while at 50 or more miles per hour, one in every 11 produces a corpse.

### JUSTICE TO THE NEEDY

Aid to the needy blind and to dependent and destitute children of Texas are two services provided for in constitutional amendments which are being submitted to the people in the election August 23. These amendments will, if adopted, complete the federal social security program in Texas, and will make for a rounded-out program of security for all of those groups of our citizens who are insecure, or potentially insecure.

Texas cannot afford to neglect her obligation to her unfortunates while other states of the union are moving forward with the development of greatly needed social legislation. According to a release by the social security board of July 13, 45 states and 3 territories have approved plans for assistance to the needy aged; 33 states for assistance to the needy blind, and 35 states for assistance to dependent children.

The amendment submitted for dependent children specifies that the state shall not appropriate more than \$1,500,000 per year for such service, and that the appropriation shall not exceed \$8 per month for one child, or \$12 per month for any one family. These figures represent the state's two-thirds contribution toward this type of assistance, as provided for under the social security act. The federal government will then contribute the other one-third, which means that the amendment will provide a maximum of \$12 per month for one child in a family, and \$18 per month for a family with two or more children. The federal government will also pay part of the administrative

### MONKEY SHINES



Afton Bernard, beautiful member of the 1939 Golden Gate International Exposition's staff, investigated some of the "Monkey Trees" being transplanted to Treasure Island in San Francisco Bay for the World's Fair. But she got caught by the "Monkey Tree" and a photographer with an eye for beauty.

### Flavoring Broilers And Fryers With Different Proteins

By A. D. JACKSON  
The flavor of chicken meat is distinctly modified by certain feeds used in supplying the protein content of the ration, according to R. M. Sherwood, chief, division of poultry husbandry, Texas experiment station, who has been conducting a series of experiments to determine the effects of feeding different types of protein. Sherwood found that the feeds flavor the meat and that the extent of this influence upon flavor varies somewhat with the character of the cooking and also differs when the meat is tasted hot or after it has cooled. He states that while these flavors vary they may not be objectionable depending upon the different tastes. One flavor may be quite satisfactory to certain persons and not at all satisfactory to other persons. With this point established we should say that we may be selling chickens fattened with soy bean meal for those who like the flavor of that meat and chickens fattened on sardine meal for those who like that flavor.

But there is another twist to this story and that is that Sherwood has found that by making up the usual 18 percent of the ration with high protein feeds, using a combination of say three of these protein sources about equally to form the protein concentrate, a resulting flavor that is more or less neutral may be obtained and thus the average taste better pleased.

Sherwood's experiments have included studies with meat and bone scraps as the protein source in the ration and he has used sardine meal, dried skimmed milk, cottonseed meal, and soy bean meal. He used six different combinations of these several protein additions, and thinks the best combination was six pounds each of sardine meal, soy bean meal and cottonseed meal which with 30 pounds of wheat gray shorts, three pounds of dehydrated alfalfa leaf meal, one pound oyster shell and 48 pounds ground corn made up a very satisfactory ration. He is not satisfied with the mineral level in this ration, however, and is already planning other studies to see if a better balance of the bone meal and oyster shell may be obtained. In these studies he expects to test his mineral combinations with the best as well as the poorest protein combinations.

In his studies with the influence of protein additions, Sherwood observed due regard for gains in live weight, for good quality of feathers and expense of this service. It is estimated that there is a minimum of 30,000 dependent and destitute children in the state. Surely Texas can do this much in providing the necessities of life for her needy children and in equipping them with physical and moral stamina to meet the responsibilities of life as the citizens of tomorrow!

The amendment for the needy blind provides a maximum appropriation by the state of \$15 per month per person over 21 years of age, provided he or she is not being maintained in an institution. The federal government will match the state dollar for dollar for this service, which means that the needy blind person over 21 years of age cannot receive under this amendment more than \$30 per month. The federal government also pays a part of the cost of administration of this service.

The ratification of these two amendments will mean a decided economic and social advantage to Texas. From a humanitarian viewpoint, it will mean that common justice will be done two groups of needy individuals in the state who are unable to do for themselves.

### Dixon News

(Times Correspondent)  
The ladies of the county Home Demonstration club, are sponsoring an ice cream social, Wednesday night July 28 in the home of Mrs. W. L. Newman, for the purpose of raising money to send a delegate to College Station, to attend the annual Short Course.

Mr. and Mrs. Jim Selby visited in the Ransom Carter home.

Gribble Owens and Albert Trout spent Saturday night with Coy and Gilbert Thomas.

Mr. and Mrs. Lester Hathaway left for a four weeks vacation. He will also hold several meetings while gone.

Mr. A. J. Brown was severely hurt by a tractor last Monday, but seems to be recovering nicely and will come home from the Wheeler hospital Wednesday.

Conna Faye Newman spent Sunday in Briscoe.

Gilbert Thomas spent Saturday night with his aunt, Mrs. Hattie Gaines of Wheeler.

### JOKE OF THE MONTH

A bewildered lumberjack stumbled bashfully into a ladies' specialty shop. "I want to get a corset for my wife," he explained. "What bust?" asked the clerk. "Nothin'," replied the flustered logger. "It just wore out."

rapid feather growth, as well as for prevention of slipped tendons. Having achieved these desirable points, he was able then to make nice distinctions in the resulting flavors when the different protein sources were used.

This matter of flavor and palatability generally is not guesswork for a scientific method has been worked out by Dr. Sylvia Cover of the rural home research division, wherein a paired-feeding system provides a most accurate test of these qualities, and these tests furnish a further guide in the matter of proper cooking.

Of course flavor is not the only consideration in poultry meat production. One of the first considerations is the efficiency of the ration in production of pounds of meat and of chickens that are healthy and of fine appearance; but this must be done with due regard for holding down the cost of the feed.

Certain protein concentrates are high in cost as for example the different forms of milk. In fact, the animal proteins such as milk, meat and bone scrap, and sardine meal are at times higher in price on a protein basis than the vegetable proteins such as cottonseed meal and soy bean meal. In such a case it is desirable to use the vegetable proteins as liberally as possible in the interest of economy but, of course, the ration must not be seriously impaired in so doing.

The experiments along this line have shown thus far, that either cottonseed meal or soy bean meal makes an efficient protein addition insofar as gains in weight are concerned; and now in the light of these flavor tests it seems either can be used to form at least a third of the protein part of the ration without impairment of the quality, and it may transpire that certain tastes may demand that one of these cheap proteins be used in producing the very flavor desired.

**Baseball in Bible Days**  
With baseball season at hand, The Progressive Farmer claims that it is a very ancient game, going back to Bible days:

"... what book was the first baseball game mentioned?"

"The Bible—Eve stole first, Adam stole second, Gideon rattled the pitchers, Goliath was put out by David, and the prodigal son made a home run."

If delays are dangerous, lawyers must be brave.

William—"How did you break your leg?"  
Bill—"I threw a cigaret in a man-hole and stepped on it."

The Japanese are selling bottled beer in Germany for less than German brewers pay for empty bottles.

The Sianese twins would never have been heard of if they had not stuck together.

When you come to the end of the rope, tie a knot in it and hang on it.

One of the newest industries in Japan is the reproduction of old American heirlooms—New England furniture, etc.

A survey shows that not more than 15 percent of the nations Jews are strict observers of the orthodox food laws.

Great Britain's merchant marine is the largest on earth.

Like human beings, gorillas are normally right-handed.



# Wheeler Co-operative Revival

Methodist Church of Christ Baptist

EVERY man  
EVERY woman  
EVERY child

This is planned for every body and everybody will get interested and what a revival this will be!

IN COMMUNITIES like ours this plan has proven itself to be the most workable, the most successful, the most satisfactory of any plan that has been tried.

AND WHAT a wonderful time in which to have a meeting like this—"good old summer time!"

THE FIRST week of personal work and prayers. The next two weeks, evangelistic preaching in each church.

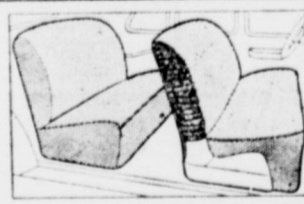
OBJECTIVE—the church revived and the lost brought to Christ for salvation.

Cottage Prayer Meetings Begin July 18  
Preaching Services Begin July 25 and Close August 8

On the Corner—Just West of Post Office

## You Can Pay More but You Cannot Buy Better Quality

### SEAT COVERS



Cover warm car seats with cool fibers and attractive materials. Make riding cleaner, cooler and more comfortable. Tailored to fit your car.

COUPES \$1.69 UP  
COACHES & SEDANS \$3.69 UP

Sun Glasses 10c up

Tire Pump 75c

### PICNIC JUGS

Steel encased porcelain container. Ground cork insulation. Maintains temperature 24 hours. 98c  
FOOD JUG \$1.98  
FAUCET JUG \$2.29

### DELUXE TWIN HORNS

Sturdy motors—long trumpets. Greater volume. Built-in Relay \$6.95

### Garden Hose

50 foot \$2.95  
25 foot \$1.59

Large Sponges 25c

Flash Lights complete 59c

Hammers 45c

5 Gallons Good Oil \$1.85  
Bring Your Can

### BATTERIES

Firestone Long Life Batteries give Lower Cost-per-mile.  
ASK ABOUT OUR CHANGE-OVER PRICE

Guaranteed  
9 Mo. \$3.75  
15 Mo. \$4.95  
21 Mo. \$6.95

### Tire Gauges

Test high and low low pressure \$1

SHELLAC—High grade 10c

Steering wheel control knobs 49c

### INSECT SCREENS

Keeps cooling system efficient. Rustproof, chrome mesh—fabricoid binding. Clip fasteners. 69c

Cup Grease, per lb. 15c

Tire Pump Hose Each 20c

Spark Plugs 1,000-mile guarantee, 45c each  
Tube Patch Small Size 10c Large Size 25c

Floor Mats 39c up

Screw Drivers Medium size 15c

Horns 79c up

Fan Belts Ford and Chevrolet 35c

See and Try the New Model Remington Rand Portable Typewriters Prices From \$39.50 Up  
Terms as Low as 10 CENTS PER DAY

### It's Cool

... in this restaurant on the hottest days. Our cooling system keeps comfortable temperatures that will bring back your appetite. There is no use sweltering through a meal when you know you can enjoy low temperatures.

Drop in through the day, and cool off with a refreshing drink, or stop midday hunger with a piece of home-made pie.

And for pure, good, refreshing ice water, drop in any time for a sparkling glass of the best drink in the world, from our Pelco cooler. We welcome you always.

## Jaco's Cook Shack

### Stomach Gas

One dose of ADLERIKA quickly relieves gas bloating, cleans out BOTH upper and lower bowels, allows you to eat and sleep good. Quick, thorough action, yet entirely gentle and safe.

ADLERIKA CITY DRUG STORE

### Pellagra Caused By Improper Diet

AUSTIN.—"Pellagra that is caused by no kind of food and she by a strange kind of scaling of the skin," W. Cox, state health officer, said today.

"The person with this disease and suffers loss of appetite, diarrhea, soreness of tongue, nervousness, more or less general weakness."

"Thousands of people die each year. More die the spring and early than at any time of the year because more people are restricted diet during comes to those who contain all that is essential in good health."

"Pellagra prevention fact We know this because the right kind of food, the disease, because the disease and eat food do get well and long as they maintain and also when people wrong kind of food disease. Pellagra is a curable disease. The diet be directed by your main thing is diet, patent medicines."

"The prevention depends upon eating food at all times. To the diet is right, it contain plenty of fresh meat and as many vegetables as possible, wheat products, such fresh fruits are especially good. Having provided the proper diet, the diet be directed according to personal likes. In this pellagra."

The 1935 solar eclipse began, and, although it began at 11:11 a.m. height at midnight.

## New Samples

- Worsteds
- Sharkskin
- Coronation Stripes
- Gaberdine
- Beautiful
- Donegal
- Imported
- Kilkarne

\$24.50

City Tailor  
BILL FERRIS  
Phone

### Strange Super



LOST TOOTH UNDER AT NIGHT, THE FAIR IT AND LEAVE A DIME

RAIN BEFORE CLEAR BEFORE



BECAUSE AT MARR BELIEVE A MAN IS SUSCEPTIBLE TO EV IS PAINTED WITH HE BACHELOR FRIEND OF MALIGN IN © Western Newspaper

Fred Fair Garage  
AUTO REPAIR—MACHINE—Cylinders Rec

By Gene Byrnes

REG'LAR FELLERS



Pellagra Caused By Improper Diet

AUSTIN.—"Pellagra is a disease that is caused by not eating the right kind of food and shows itself usually by a strange kind of reddening and scaling of the skin," said Dr. George W. Cox, state health officer.

"The person with pellagra usually suffers loss of appetite, indigestion, diarrhea, soreness of the mouth and tongue, nervousness, low spirits and more or less general weakness.

"Thousands of Texans suffers with this disease and approximately 1,000 die each year. More cases appear in the spring and early summer months than at any time of the year. This is because more people live on a restricted diet during the winter. It comes to those whose diet does not contain all that is needed to keep one in good health. The missing element in the diet is called the pellagra prevention factor or vitamin. We know this because people who eat the right kind of food do not have the disease, because those who have the disease and eat the right kind of food do get well and remain well as long as they maintain a proper diet, and also when people are fed the wrong kind of food they develop the disease. Pellagra is not a communicable disease. The treatment should be directed by your doctor and the main thing is diet. Do not rely on patent medicines.

"The prevention of pellagra depends upon eating the right kind of food at all times. To make sure that the diet is right, it should always contain plenty of milk daily, some fresh meat and as many fresh vegetables as possible. Tomatoes, whole wheat products, salmon, yeast, and fresh fruits are especially valuable. Having provided these essentials of a proper diet, the rest may be arranged according to family or personal likes. In this way, you avoid pellagra."

The 1935 solar eclipse in the south polar area ended a day earlier than it began, and, although it was an eclipse of the sun, was seen at its height at midnight.

Corn Valley News

(By Times Correspondent)

Mr. and Mrs. E. G. Pettit attended church in Wheeler Sunday night.

Mr. and Mrs. Grant Beck attended the Pan-American exposition in Dallas the first of this week.

Mr. and Mrs. Ural Cross and little

daughter Valda of California are visiting her parents, Mr. and Mrs. Oscar Red.

Charlene Bailey spent Sunday with Lois Farmer.

Rev. Burkham held services at the school house Sunday afternoon.

Don Farmer of Wheeler is spending the week with Clifford Turner.

QUARTERLY REPORT OF THE County Treasurer, Wheeler County, Texas Ending June 30, 1937

JURY FUND	
Balance on hand, April 1, 1937	\$16,092.01
Receipts during quarter	1,112.96
Total Balance and Receipts	17,204.97
Disbursements during Quarter	1,844.60
Balance June 30, 1937	15,360.37
ROAD AND BRIDGE—GENERAL	
Balance on hand April 1, 1937	20,386.49
Receipts during Quarter	1,836.42
Total Balance and Receipts	22,222.91
Disbursements during Quarter	21,500.00
Balance June 30, 1937	722.91
GENERAL FUND	
Balance on hand, April 1, 1937	15,698.32
Receipts during Quarter	3,477.82
Total Balance and Receipts	19,176.14
Disbursements during quarter	17,056.91
Balance June 30, 1937	2,119.23
COURT HOUSE AND JAIL	
Balance on hand April 1, 1937	8,593.45
Receipts during Quarter	551.45
Total, Balance and Receipts	9,144.90
Disbursements during Quarter	none
Balance June 30, 1937	9,144.90
R. & B. PRECINCT 1	
Balance on hand April 1, 1937	14,451.62 (overdrawn)
Receipts during Quarter	14,471.78
Total, Balance and Receipts	3,020.16
Disbursements during Quarter	4,344.00
Balance June 30, 1937	1,323.84 (overdrawn)
R. & B. PRECINCT 2	
Balance on hand April 1, 1937	3,941.29 (overdrawn)
Receipts during Quarter	11,202.10
Total Balance and Receipts	7,260.81
Disbursements during Quarter	3,268.76
Balance June 30, 1937	3,992.05
R. & B. PRECINCT 3	
Balance on hand April 1, 1937	9,417.87 (overdrawn)
Receipts during Quarter	20,766.83
Total Balance and Receipts	11,348.96
Disbursements during Quarter	4,466.04
Balance June 30, 1937	6,882.92
R. & B. PRECINCT 4	
Balance on hand April 1, 1937	444.56
Receipts during Quarter	15,278.05
Total, Balance and Receipts	15,722.61
Disbursements during Quarter	6,593.65
Balance June 30, 1937	9,128.96
SPECIAL BRIDGE FUND	
Balance on hand, April 1, 1937	4,374.99
Receipts during Quarter	238.84
Total Balance and Receipts	4,613.83
Disbursements during Quarter	235.10
Balance, June 30, 1937	4,378.73
PERMANENT SCHOOL	
Balance on hand April 1, 1937	1,215.93
Receipts during Quarter	402.63
Total Balance and Receipts	1,618.56
Disbursements during Quarter	none
Balance June 30, 1937	1,618.56
SINKING FUND	
Balance on hand April 1, 1937	8,741.60
Receipts during Quarter	2,430.00
Total, Balance and Receipts	11,171.60
Disbursements during Quarter	4,854.00
Balance June 30, 1937	6,317.60
WHEELER COUNTY ROAD BOND FUND	
Balance on hand April 1, 1937	24,341.72
Receipts during Quarter	none
Total Balance and Receipts	24,341.72
Disbursements during Quarter	6,107.81
Balance June 30, 1937	18,233.91
WHEELER COUNTY ROAD BOND—SINKING FUND	
Balance on hand April 1, 1937	16,039.18
Receipts during Quarter	3,633.63
Total Balance and Receipts	19,672.81
Disbursements during Quarter	2,700.18
Balance June 30, 1937	16,972.63
ROAD BOND—ISSUE, 7-15-28 Funds With State Treasurer	
Balance on hand April 1, 1937	190.66
Receipts during Quarter	1,318.35
Total Balance and Receipts	1,509.01
Disbursements during Quarter	1,197.45
Balance June 30, 1937	311.56
ROAD BONDS—ISSUE, 1-1-30 Funds With State Treasurer	
Balance on hand April 1, 1937	143.00
Receipts during Quarter	376.36
Total, Balance and Receipts	519.36
Disbursements during Quarter	none
Balance June 30, 1937	519.36
ROAD BONDS—ISSUE, 5-1-31 Funds With State Treasurer	
Balance on hand April 1, 1937	204.04
Receipts during Quarter	291.94
Total Balance and Receipts	495.98
Disbursements during Quarter	none
Balance June 30, 1937	495.98
ROAD REFUNDING BOND—ISSUE, 9-1-36 Funds With State Treasurer	
Balance on hand, April 1, 1937	84.74
Receipts during Quarter	221.44
Total Balance and Receipts	306.18
Disbursements durink quarter	none
Balance June 30, 1937	306.18

New Fall Samples

- Worsteds
- Sharkskins
- Coronation Stripes
- Gaberdines
- Beautiful Plaids
- Donegal Tweeds
- Imported Cheviot
- Kilkarney Twists

\$24.50 Up

City Tailor Shop  
BILL PERRIN, Prop.  
Phone 20

Strange Superstitions



MOST ANY BOY OR GIRL WILL TELL YOU CONFIDENTLY THAT IF YOU PLACE THE FIRST LOST TOOTH UNDER YOUR PILLOW AT NIGHT, THE FAIRIES WILL TAKE IT AND LEAVE ADIME IN ITS PLACE

"RAIN BEFORE SEVEN, CLEAR BEFORE ELEVEN"



BECAUSE AT MARRIAGE THE MOORS BELIEVE A MAN IS ESPECIALLY SUSCEPTIBLE TO EVIL SPIRITS, HE IS PAINTED WITH HENNA, WASHED, SHAVED AND BEATEN BY HIS BACHELOR FRIENDS TO RID HIM OF MALIGN INFLUENCES  
© Western Newspaper Union.

Fred Farmer's Garage

AUTO REPAIRING  
MACHINE WORK  
Cylinders Reconditioned

Uncle Jim Says



"Green manure crops cut production costs and pay good dividends on thousands of Texas farms."

The practice of turning under crops, especially legumes, to add fertility to the soil is not new to Texas farmers. In 1920, Texas farmers devoted 14,609 acres to legume demonstrations in co-operation with county agricultural agents, and by 1931 the total had grown to 30,753 acres. The 1930 census figures show that 394,555 Texas acres were devoted to legumes in 1929. The 1935 agricultural census figures show that the acreage of legumes in Texas almost doubled from 1929 to 1934, when farmers planted 773,783 acres to legumes.

A good part of the increase shown in 1934 was due to the planting of legumes on "idle acres" which were rented to the government under the AAA crop reduction program. The past year saw Texas farmers, in compliance with the agricultural conservation program, plant 1,776,808 acres to legumes. Stories of increased yields of crops which were planted to follow the legumes are being reported in large numbers by county agricultural agents.

Assembly of God

(Mrs. Lindora Goodner)

Sister Lindora Goodner announces fellowship meeting at the Assembly of God church all day and evening of Thursday, August 5.

This is a sectional fellowship meeting of the north plains section of the Assembly of God of this district, and a number of ministers, musicians and singers are expected.

Everyone is cordially invited to be present and enjoy these good services.

HANG ON—

"When you get into a tight place and everything goes against you till it seems as though you could not hold on a minute longer, never give up then, for that is the place and time that the tide will turn."  
—Harriet Breecher Stowe.

Jaco's Cook Shack

Has Wheeler Bread To Sell at Any Time  
Phone 105



Introducing Borden's

We have recently acquired the agency for BORDEN'S ice cream, well-known since 1857 as a favorite frozen delicacy. We have chosen this ice cream for its delicate texture, delicious flavor, and invite our customers to try Borden's, served from our new Kelvinator cabinet.

Eat Borden's, it has a flavor you'll remember.

Royal Drug

Phone 11 MELVIN HOWE, Pharmacist Wheeler

For Your Flower Needs  
PHONE 348  
RIBBLE'S  
Shamrock

Title Abstract Co.

C. J. MEEK, Mgr.  
Phones: Day, 48; Night, 124  
WHEELER, TEXAS

Calendar of Historical Events



"A chicken will not be produced from an earthen egg."

JULY

23—The Proteus wrecked in the Kane Sea, Arctic Ocean, 1883.

24—The excursion boat Eastland sinks in the Chicago River, more than 300 lose lives, 1915.

25—Louis Blériot flew across the English Channel, 1909.

26—The first electric locomotive exhibited and operated, 1847.

27—The second Atlantic submarine cable completed, 1867.

28—Burlingame Treaty with China signed, 1868.

29—N. Booth Tarkington, author of Penrod stories and other books, born 1869.

SOLVED!

Star Single-edge Blades solve the mystery of good shaves. Made since 1880 by the inventors of the original safety razor. Keen, long lasting, uniform.



STAR BLADES

FOR GEM AND EVER-READY RAZORS

ROUGH ON RATS

The Old Reliable Exterminator Used the world over for many generations, to kill rats, mice and noxious animals. A sure way to do away with dangerous pests. Safe to handle. Sold by general stores and druggists. 25c, 50c a box. Manufactured by E. S. WELLS, Chemist

KEEP BABY'S SKIN SAFE from GERMS

Mother, heed the urgent advice of doctors and hospitals; do as they do; give your baby a daily body-rub with the antiseptic oil that chases away germs, and keeps the skin SAFE. That means Mennen Antiseptic Oil. It's used by nearly all maternity hospitals. At any drugist.

MENNEN Antiseptic OIL

J. A. Winchester Jeweller

"Wedding and Diamond Ring Headquarters"

Corner Drug Store SHAMROCK

Cooperative

Baptist

...TIES like ours this ...ven itself to be the ...the most success- ...satisfactory of any ...een tried.

...a wonderful time in ...have a meeting like ...l summer time!"

...week of personal ...prayers. The next ...angelistic preaching

...the church revived ...st brought to Christ

...egin July 18 ...and Close August 8

Office

Put Your Quality

Floor Mats ... 39c up

Screw Drivers Medium size ... 15c

Horns ... 79c up

Fan Belts Ford and Chevrolet ... 35c

See and Try the New Model Remington Rand Portable Typewriters Prices From \$39.50 Up Terms as Low as 10 Cents PER DAY

Supply

West of Post Office

Possible Prices"

# PUCKETT'S GROCERY

Free Delivery **And Market** Wheeler, Texas

**BANANAS** Dozen **12c**

Kellogg's CORNFLAKES, With Bowl 2 for 22c  
Okay BRAN FLAKES 2 for 15c

MACARONI, No. 1 Cellophane Pkg. 12c  
Louis SALAD DRESSING, Quart 22c

**CANDY BARS** All Kinds **3 for 10c**

Pink SALMON, No. 1 Tall Can 12c  
APRICOTS, Mission, No. 2 1-2 Can 15c

PRUNES, Gallon 32c  
SHORTENING, Advance, 8-lb. Carton \$1.10

**CHEWING GUM** All Kinds **3 for 10c**

PEACHES, Mission, No. 2 1-2 Can 15c  
5 lbs. SOAP CHIPS 35c

VANILLA EXTRACT, 8-oz. Bottle 10c  
TOILET TISSUE, 6 For 25c

**SUGAR** Limit, One **10 lbs. 50c**

HOMINY, No. 2 1-2 Can 9c  
LUX FLAKES, Large 24c

W. P. PEAS, No. 303 Can 7c  
Bright & Early Tea, 3 1-2 oz. With Glass FREE 15c

**Puckett's Best FLOUR** 48-lb. Sack **\$1.85**

LUX FLAKES, Reg. Size 10c  
LUX SOAP, 3 Bars 20c

COCKTAIL CUBES, 1-lb. Pkg. 10c  
MARSHMALLOWS, 1-lb. Pkg. 15c

**JELLO** Box **5c**

RINSO, Reg. Size, 2 for 17c  
RINSO, Large Size, 2 for 23c

PORK & BEANS, 9-oz. Can 5c  
Swans Down CAKE FLOUR 28c

**CATSUP** 14-oz. Bottle **10c**

LIFEBUOY SOAP, 3 Bars 20c  
PINEAPPLE, Crushed or Sliced, 2 1-2 Can 21c

PUCKETT'S SPECIAL COFFEE, 1 lb. 19c  
PUCKETT'S SPECIAL COFFEE, 3 lbs. 55c

**MUSTARD** Quart **10c**

25 oz. K. C. BAKING POWDER 18c  
2 lbs. Clabber Girl BAKING POWDER 22c  
MATCHES, Carton 17c  
Armour's TOMATO JUICE, 20-oz. Can 8c

TOMATOES  
CORN  
SPINACH  
GREEN BEANS

3 FOR  
No. 2 Cans **25c**

<b>Cheese</b> KRAFT Elk Horn <b>lb. 19c</b>	<b>Sausage</b> Fresh Ground <b>lb. 19c</b>
<b>Oleomargarine</b> All Sweet <b>lb. 17c</b>	<b>Hamburger</b> Meat <b>2 lbs. for 25c</b>

## WANTED

FOUND - White gl... cover at Times offi...

FARMERS ATTEN... and are discarding... able work shoe for... stays soft and wea... Wolverine Shell Hors... 'em. Russ Dry Good...

IF in need of sand... Curtis Pond or...

FOR SALE - "T... condition. See... Calvin Mammen.

FOR SALE - Liv... Quick-Meal range... bedroom furniture a... hold equipment; al... train. See Mrs. M... week or early next...

FOR TRADE OR SA... guitar. See Jim... house.

FOR SALE - Four P... three months old... miles east of Wheeler...

FOR RENT - Cabin... town. See J. E. B...

USED OIL STOVE - Gas Co.

PUBLIC enemy No. 1... A. L. C. O. I.

The English army... great numbers bec... ernment has always... policy of voluntary... cept in time of war.

## Why Not Your Hair



Give every... of a... beat... treat... Come... perma... give... mode... ders... and... bes... the... ment... plied.

**Perry Beauty**

## LIBERTY THEATRE

Satur... Kenneth Maynard... Roundup." News... comedy. Double...

Preview - Sunday, Mond... Katharine Hepbur... Street." News Re...

Tuesday and... Tom Keene in "R... edy.

Thursday a... "Oh, Dr." with... Horton and Comed...

Friday - Famil... With Serial and... Doctor



**READ THE ADS IN THIS PA...**

# WANT ADS

FOUND—White glove. Owner recover at Times office.

FARMERS ATTENTION—Thousands are discarding old, uncomfortable work shoe for a new kind that stays soft and wears longer. Try Wolverine Shell Horsehide. We have 'em. Russ Dry Goods, Wheeler. 1tc

IF in need of sand or gravel, see Curtis Pond or call 10. 3213p

FOR SALE—Trumpet, first-class condition. See J. W. Lummas or Calvin Mannen. 1tp

FOR SALE—Living room suite, Quick-Meal range, dining room and bedroom furniture and other household equipment; also toy electric train. See Mrs. M. L. Moody this week or early next week.

FOR TRADE OR SALE—Fiddle and guitar. See Jim Risner at court house. 3014c

FOR SALE—Four Poland China pigs three months old. Jeter Smith, 7 miles east of Wheeler.

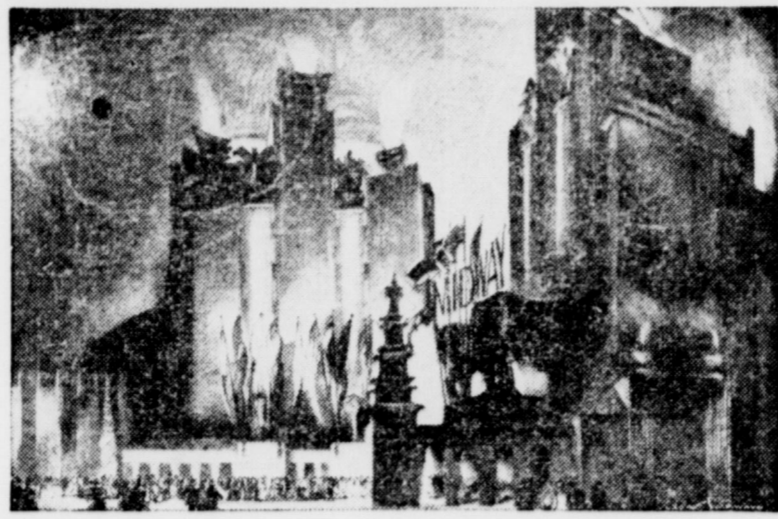
FOR RENT—Cabin in west part of town. See J. E. Risner. 301fc

USED OIL STOVE—For Sale Wheeler-Gas Co. 19tc

PUBLIC enemy No. 1—ALCOHOL 3150p

The English army has never been great numbers because the government has always adhered to the policy of voluntary enlistment, except in time of war.

## FORTY ACRES OF FUN AT S. F. IN '39



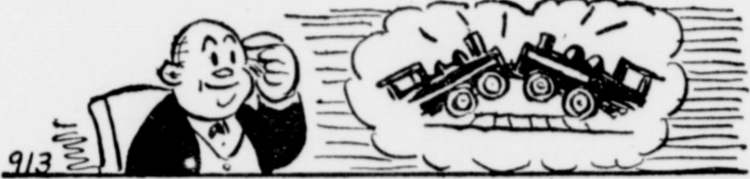
This artist's sketch of the entrance to the Midway at the 1939 Golden Gate International Exposition, to be held on Treasure Island in San Francisco Bay, gives an idea of the pyrotechnic and electrical display which will greet millions of visitors to the World's Fair fun zone. Amazing as well as amusing, the Exposition's forty-acre Midway will be a sportive Pageant of the Pacific.

### Laughing Around the World With IRVIN S. COBB

#### Perhaps the Witness Was Occidental

By IRVIN S. COBB

THE lawyer for the plaintiff in the damage suit apparently had reason to suspect that somebody connected with the defense had been monkeying with one of the witnesses opposing his side.



"Look here now," he said severely, and aimed an accusing finger at the person on the stand. "You realize, don't you, that you have taken an oath to tell the truth?" "I sure do," answered the individual under fire. "All right, then. Now I want to know if you know the meaning of the word collusion?" "Sotintly! I was in one once!" on the B. & O." (American News Features, Inc.)

#### They Thought it Was Woolworth's

By IRVIN S. COBB

TO THE most casual eye it was evident that the four individuals who entered the lobby of the burlesque theatre were not city-dwellers. For some minutes they stood in a group near the entrance studying the printed scale of admission tariffs.



Having absorbed the available information touching on prices, they withdrew to a corner for an earnest conference which lasted several minutes.

Presently a member of the quartet, who plainly was one of those determined masterful persons, broke away from the rest and joined the line at the ticket window. A companion, wearing an expression of mounting uneasiness, followed him.

When the self-willed party reached the wicket, he hauled out a two dollar bill and laying it down said to the box-office man in a proud ringing voice:

"I'm handling all the money for my whole crowd. Gimme four of your best fifty-cent seats."

Apparently, this act was a violation of a prior agreement for the friend who had trailed him clutched him by the coat sleeve and whispered something in his ear.

Impatiently the prodigal paymaster shook himself free of the detaining grasp.

"Whut the thunder do I care?" he exclaimed. "This is only one't in a lifetime!"



For Good Printing

The Wheeler Times

## PERSONAL MENTION

Mr. and Mrs. Robert Bowers were in Amarillo Monday on business.

Miss Wave Wallace came home Sunday from a visit in Wichita Falls.

Harris Tilley of Shamrock was a business visitor in Wheeler Thursday.

W. H. Scott from Hollywood, Cal. is visiting Mrs. J. C. Scott and family.

W. J. Ford, who has been working in Ada, returned to Wheeler Saturday for a visit.

Mr. and Mrs. Harbor of Mineral Wells are visiting their daughter and her husband Mr. and Mrs. Boiles.

Glen and Bill Bilbry of Panhandle were visitors in the home of their cousin W. H. Cooper Monday evening.

Miss Eleanor Watson of Mansfield came Friday for a visit with her uncle and aunt Mr. and Mrs. W. H. Cooper.

Mr. and Mrs. Ed Address accompanied W. Veale and family to Sayre to attend the funeral of Mrs. Address cousin J. T. Lanham.

Mr. and Mrs. Denton Moore and family, of Fort Smith, Ark., are visiting Mr. and Mrs. Joe Tilley. Moore is a cousin of Mrs. Tilley.

Roy Esslinger and Jack Cantrell who has been working in Borger visited their families Wednesday night before leaving for Odessa where they are working.

Rev. and Mrs. Z. R. Fee of Dallas were guests of Rev. and Mrs. Raney Sunday and Monday. Rev. Fee was guest speaker at the Methodist church Sunday night.

Mr. and Mrs. J. P. Meek of Childress spent the week-end with Mr. and Mrs. Fred Farmer and family. Marcelle Farmer who has been visiting in Childress returned with them.

C. M. Tucker who has been visiting his daughters Mrs. A. M. Galmor and Mrs. Fay Wilson at Pampa returned home Sunday with his sons L. D. and P. E. Tucker of Hydro, Ok. Other guests of Mr. and Mrs. Galmor

were Mr. and Mrs. Fay Wilson and son, Mr. and Mrs. Willard Wilson and daughter and Mrs. Eavy Meyers and daughter of Magic City, Mr. and Mrs. Matthew Cantrell, and Mrs. Jack Cantrell and little daughter.

Mr. and Mrs. Cobb Massengale of Brownell, Okla. and their daughter, Mrs. Moyle Schuessel and her two children of Miami, Fla., visited in the H. E. Cole home, and with other relatives here Sunday.

Mr. and Mrs. W. Veale, and daughter Louise were called to Sayre Thursday because of serious illness of Mr. Veale's brother J. T. Lanham who died that afternoon and was buried at Delhi, Okla. Friday at 4:00 o'clock.

J. M. Burgess and son Barney took Miss Dorothy Burgess who has been here recovering from a tonsil operation back to Borger Monday where she is employed. They visited Mr. Burgess' daughter Mrs. J. E. Haynes and family while there.

Trouble seems to be a patriotic affliction. It makes the eyes red, the hair white and the feelings blue.

Although seldom used, hitching posts and water troughs may be seen in many parts of the South today.

This year opened with 1,500 gold and gold-silver mines being worked in Nevada and California.

Automobile tires wear out faster in summer than in winter owing to dry, gritty pavements.

Texas factories employ 180,000 people.

Nature seldom brings the first worm out on the same day that the first robin arrives.—Cleveland Plain Dealer.

There's always two sides to a question, unless it's one of those eternal triangles, in which case there are three.

The world will generally give a decent living to any man who has the stuff to go out and get it.

Ants move 12 times as fast when the temperature is 100 degrees as they do when it is at 50 degrees.

## LaNora

Pampa, Texas  
Prevue Sat. Nite—Also  
3 Days Starting Sunday



## You devaluate your dollar when you don't read the ads

Penny, nickel and dime savings and occasionally much more substantial amounts become the cash dividends you get for following ads and buying advertised goods.

Be kind to your pocketbook  
—read . . . the . . . ads . . .

THE WHEELER TIMES

# Attention Cream Producers

The State, City and Federal Authorities Are Very Active in the Enforcement of the Law Against Buying and Selling of

## POOR CREAM

The consumer of dairy products is entitled to a reasonable protection. Farmers and creamery managers both have a responsibility which they cannot evade.

Many containers now being used on the farm for holding and transporting cream to market should be discarded at once. Creamery managers and farmers are jointly responsible for undesirable containers now being used.

Syrup pails, coffee cans, and other similar containers with open seams must not be used.

Fruit and mayonnaise jars, jars and crocks, or other similar containers which cannot be properly steamed and sterilized, should also be discontinued.

Rusty containers of all kinds must be discarded and under no consideration should cream or milk be received in containers which have previously been used for handling oil or other petroleum products.

Regulation cans with sanitary seams may be procured at small cost.

This department asks for co-operation in eliminating the use of illegal and undesirable containers.

BUREAU OF FOOD AND DRUGS,  
STATE DEPARTMENT OF HEALTH.

We Will Not Be Able to Accept Milk or Cream in Improper Containers After WEDNESDAY, AUGUST 4

ADAMS GROCERY FARMERS PRODUCE  
WHEELER POULTRY & EGG CO.

## Why Not Treat Your Hair Well?



Give your hair every advantage of appearing beautiful by treating it well. Come in for a permanent wave given by the modern new Sanders machine, and feel that the best of care and the best of equipment is being applied.

Perryman Beauty Shop

## LIBERTY THEATRE Shamrock

Saturday  
Kenneth Maynard in "Wild Horse Roundup," News Reel, Serial and comedy. Double Program—10c.

Preview—10:30  
Sunday, Monday, Tuesday  
Katharine Hepburn in "Quality Street," News Reel and Comedy. —10c and 25c


Tuesday and Wednesday  
Tom Keene in "Rebellion," Comedy. —10c

Thursday and Friday  
"Oh, Dr." with Edward Everett Horton and Comedy. —10c and 15c

Friday—Family Nite—25c  
With Serial and Comedy, "Oh, Doctor" —10c and 15c



RY  
er, Texas  
12c  
kg. 12c  
22c  
10c  
32c  
\$1.10  
10c  
10c  
7c  
th Glass FREE 15c  
\$1.85  
10c  
15c  
5c  
5c  
28c  
10c  
1 lb. 19c  
3 lbs. 55c  
10c  
3 FOR  
25c  
lb. 19c  
lbs. for 25c



To Mothers of "Moody" Children  
Look to their Eyes!

Test the vision of the child who is making life a problem for himself and you. Irritability, bad temper—and more serious physical ailments—are directly traceable to defective strained eyes.

**Dr. V. R. Jones**  
Optometrist

Office at  
**McFANN DRUG**  
214 N. MAIN STREET  
Shamrock, Texas

GET A  
**Permanent Wave**  
NOW

SPECIALS

Bring out the loveliness in your hair. Get a permanent wave while these attractive specials are in effect. Come in and ask about our permanents.

—Phone 31—

**Permanent Wave Shop**  
ANN PITCOCK  
THERESA KEMPER  
Operators



"I'm sorry, darling, I didn't mean to offend you when I said your biscuits were all right, but that I would rather have City Bakery rolls!"

The better loaf in the red and yellow wrapper

**CITY BAKERY**  
C. H. DAVIDSON

**Farmers Produce**

ELON MYERS, Prop.

We Buy Poultry, Eggs, Cream, Hides and Furs

Highest Market Prices Paid—  
South of Citizens State Bank

**Jaco's Cook Shack**  
Has Wheeler Bread To Sell at Any Time  
Phone 105

**Professional Column**

J. D. MERRIMAN  
County Surveyor, Wheeler County  
Licensed State Land Surveyor  
Wheeler, Texas

**WILLARD'S DAIRY**  
Good fresh Milk, Cream, Butter and Buttermilk  
Deliveries twice daily  
Phone 902-B Wheeler

**RADIO REPAIRING**  
All Work Guaranteed  
L. C. LAFLIN  
At Wheeler Radio Shop  
Phone 22 Wheeler

**DR. V. N. HALL**  
Dentist  
Office Rear City Drug Store  
Wheeler, Texas

**Society**

**PAMPA VISITOR HONORED AT COSTUME PARTY**

Miss Joyce Turner of Pampa, Tex., was honored at a circus party given on the C. J. Meek lawn by her aunt, Florence Merriman, on Wednesday afternoon.

The guests came dressed to represent circus characters; clowns, fortune tellers, snake charmers, tight rope walkers, lion tamers, bare-back riders, and city slickers were among the circus members present. Miss Gloria Stanley and F. B. Craig won prizes for the best costumes.

The lawn was decorated with gaily colored balloons, and throughout the evening games typical of the "Big Top" were played.

Refreshments of red lemonade, pop corn and all day suckers were served to: Emily Lou Ahler, Celeste Wiley, Gloria Stanley, Melba Wiley, Dorothy Lee Watson, Presley Guynes, Sylvia Louise Ficke, F. B. Craig, Harry Garrison, Lowell Farmer, Adrian Risner, Billy Cosper, Billy Wiley, W. E. Pennington and Miss Turner.

**MISS HUNT ENTERTAINS WITH LAWN PARTY WEDNESDAY**

Miss Irene Hunt entertained a group of friends Wednesday evening with a lawn party in honor of Ruth and Elizabeth Hall who have been visiting at the Britt ranch.

Table games were played and refreshments were served to: Misses Marthals Wiley, Lavell Jaco, Geraldine Lewis, Wave Wallace, Clella Beth Moody, Genevieve Britt, Louise Britt, Ruth Hall, Elizabeth Hall, Irene Hunt, Mrs. John Paris, Messrs. Louis Cain, H. E. Young, Jack Pitcock, Joe Field Meek, Alton Weeks, Theodore Conner, Taft Holloway, A. B. Turner, R. J. Puckett, J. W. Lunnum, W. J. Ford, Bobby Groves, Lavau Cole, and Doyle Chaffin.

**MRS. RANEY ENTERTAINS KAPPA BETA CLUB**

Kappa Beta club met Wednesday evening July 21 at 8 o'clock in the home of the sponsor Mrs. E. C. Raney.

Miss Bessie Mae Ficke led the program, discussing the Bethlehem centers, a missionary work.

Mrs. Raney served a buffet supper to Misses Helen Green, Florence Merriman, Bessie Mae Ficke, Willeta Templeton, and Evonne Hubbard, who are members and also to guests Misses Beulah Hubbard, Lois Hodges, Melba Wiley, Gloria Stanley, Johnnie Fae Templeton and Ethel Claire Raney.

**MRS. CRUMP ENTERTAINS WITH HOUSE PARTY**

Mrs. A. B. Crump entertained Saturday night with a house party for her niece, Gloria Stanley, from Skelly town.

Refreshments of lemonade and cookies were served on the front lawn Saturday night. Breakfast was served Sunday morning on the back lawn.

Guests were: Ethel Claire Raney, Johnnie Faye Templeton, Clella Beth Moody, Melba Wiley, and Gloria Stanley.

**MR. AND MRS. ARNOLD WALDO ENTERTAIN WITH DINNER**

On Sunday July 25 the following were dinner guests at the country home of Mr. and Mrs. Arnold Waldo: Mr. and Mrs. Marvin Bradstreet and family, Mr. and Mrs. Marvin Cochran and son of Sunray, Mrs. Grace Whitener and son of Tulsa, Okla., Miss Hattie Sue Woods of Ft. Worth, Mr. and Mrs. George Bradstreet, Mr. and Mrs. Harold Hill, Mr. and Mrs. E. Davee, Mr. Sims, and Junior Exum.

**Pleasant Hill**  
By Mrs. Jeter Smith

Rev. and Mrs. R. T. Barton of Claremont were among the 70 present at Sunday school Sunday morning, and Brother Barton preached at 11 o'clock.

Mrs. Roy Herd of Wheeler visited her parents, Mr. and Mrs. L. A. Gaines, Saturday and Sunday.

Mrs. John Ficke and daughter Silvia Louise of Wheeler were guests of Mrs. J. L. Shumate over the weekend and attended church Sunday morning.

Weldon Weatherly, who is working at Amarillo, visited his family Monday.

Miss Genevieve Pratt of Wichita Falls is the guest of her uncle and aunt, Mr. and Mrs. Foy Webb.

Harriet Sue Wood, sister of Mrs. Harold Hill, visited with Mrs. B. W. Hill Saturday and Sunday.

Miss Christie Ashley visited Mr. and Mrs. J. L. Smith over the week-end. Mr. and Mrs. Cliff Weatherly and children of Amarillo were here Monday, visiting relatives and friends.

Mr. and Mrs. Jim Trout left Monday for a visit with relatives at Uvalde, Texas.

Mrs. John Eagan of Donna, Texas, and her son Virgil and wife of Shamrock visited at the Jeter Smith home Monday afternoon and evening.

Messrs. Scroggs and Freeman of Weatherford, Okla., were callers in the Pleasant Hill community this week.

Mr. and Mrs. Roy Weatherly and Mr. and Mrs. Burley Mann had Sunday dinner with Mrs. Weldon Weatherly.

**WHIMSY**  
(Continued From Page 1)

vertiser of alcohol as public enemy No. 1, and Dr. V. N. Hall, dentist, whose professional card has failed to appear only during his term of service with the CCC camps.

I could print a long list of persons whom it has been a pleasure to know and have business dealings, but it might be tiresome, and I might leave somebody out, which wouldn't do.

**LIMERICK FINISHER-UPPERS**

Another thing that is appreciated is the splendid co-operation friends of this column have shown after my yell for help in finishing out the limerick.

I failed to state that in case of a tie duplicate prizes would be given, and besides that is a good way to keep from getting in bad with one of two contestants who run neck and neck.

Here is the limerick as completed with the last line by Mrs. J. D. Merriman, who got her winning line in first:

A damsel who lived in Mobeettie  
Picked out a swell guy for a sweetie;  
To get his attention  
She abandoned convention  
And won him her way by entreaty.

And the other No. 1 limerick finisher-upper, Mrs. Ernest Lee, suggests the line, "And asked him to sign a love treaty."

These women have something on the ball when it comes to poetic expression.

As for meter, both lines "lope like a gentle cow pony. Their rhyming could not be improved upon, and as put together there's music in them words.

And that other requisite for poetry, feeling, is there in abundance.

Who can imagine a damsel winning her sweetie over by entreaty without almost feeling her excited pulse-throbs as her young heart goes pitter-pat with emotion.

And visualize the emotional stress of both people when she asked him to sign a love treaty.

If I were single, I do not believe even an old codger like me could go through such a scene without experiencing some mighty queer feelings.

A. F. Rush was the only man to submit an entry. His last line was, "So they're off for a tete-a-tete-tie."

He was considered for first place but was ruled out when my tongue got twisted up on the French.

Mrs. G. L. Reid submitted a line which puzzled me, and I don't understand it yet:

"Except milanese and brassieres," Mrs. Reid suggested.

You see, I am ignorant about

**Davis Items**  
(Mrs. Zura Bullock)

Sunday school was well attended Sunday; several visitors were present.

Mr. and Mrs. Babe Bearden were Sunday visitors in the community.

Janie Mae Gordon was a week-end visitor of Merle McSpadden of Texola.

Mr. and Mrs. John Kenney, Jane Kenney, Edna Rae Gordon and Imogene Bass were Erick visitors Saturday night.

Mr. and Mrs. McBee and daughter were callers in the community Monday.

Jane Kenney and Mr. and Mrs. Luther Bullock and children were Sunday guests in the W. J. Bass home.

Champ Davis has been on the sick list this week but is improving at the present, we are glad to report.

George Champion Davis of Erick was a business visitor at the ranch Saturday.

Mrs. Claude Gibson is on the sick list at the present writing.

Several of the Davis singers attended the Beckham county singing convention at Hext Sunday afternoon.

We are sorry to learn our neighbors, Mr. and Mrs. Jack Cooper, are leaving the community but wish them happiness in their new home.

Mr. and Mrs. W. B. Stansell enjoyed a visit from their daughter and family from Borger Sunday.

Mr. and Mrs. L. D. Smith of Mobeettie spent last week on a vacation trip to the coast.

**Petroleum Students Complete Survey**

AUSTIN.—University of Texas petroleum engineering students who are enrolled for a new summer course in oil field study have completed their survey of west Texas oil fields and are in Austin to prepare reports on the trip. H. H. Powers, professor of petroleum engineering, directed the course which included trips to oil fields and lectures by oil company engineers.

The party went first to Texon to study the property of the Big Lake Oil Co. in the Big Lake field, an area of particular interest to University of Texas students because that institution derives income in oil royalties from university land in that field. The study included history of the development of the field, drilling problems, production problems, gasoline manufacture, oil treating, pipe line station operation, and miscellaneous surface operations.

In the Davis mountains the students spent a few days studying the geology of the area, particularly from a standpoint of correlation with the producing oil areas of west Texas. A side trip was made to the McDonald astronomical observatory, at Mount Locke.

From the Davis mountains the party moved to the McElroy camp of the Gulf Coast Corp., near Crane, where drilling and producing problems characteristic of that area were studied. Short trips were made to Odessa, the Goldsmith pool, and the Kermit, Monahans and Winkler areas.

Mr. and Mrs. Cliff Weatherly and children Dawn and Joe visited relatives and friends in Wheeler Monday. Joe remained for a longer visit at the home of his uncle Weldon Weatherly in the Pleasant Hill community.

A. J. Cooper of Mansfield is visiting his son W. H. Cooper.

things the women wear. I used to know even less than I do now.

Time was when I was so densely ignorant on such things, and so extremely modest that I would blush even at the mention of casseroles in mixed company.

**HOPPER COOKERY?**

Jeff W. Turner, Corn Valley farmer, told The Times Saturday he had been inquiring among the good cooks if grasshoppers were fit to eat.

Nobody seems to know, he says, but he opines they ought to be good for something, else they would not be here.

There does not seem to be anything else they could be good for, so he reasons we may be missing something.

Turner declares, however, he is so busy trying to make a crop he simply can't spare any time for experimenting.

C. C. Merritt says that his brother, who is a missionary to Africa, told him the African natives ate grasshoppers when they were hungry enough.

The negroes eat the hoppers' legs and discard the rest.

If anybody wants to try it, I am confident my successor will be glad to print the result of your experiment with a grasshopper diet.

**AND HERE'S "30"**

And we come at last to the end of my last Whimsy column. It has been a lot of fun, and I hope you have liked it.

So good-bye, everybody, and good luck to all of you.

**THANKS . . . .**

On behalf of Wheeler and Mobeettie people who have attempted to get a more convenient and efficient truck service to the two towns, thanks to those people who appeared before the railroad commission last week.

The efforts to bring good truck service to these two towns is appreciated.

**ADAMS TRUCK LINE**  
J. M. ADAMS, Manager

**Guaranteed Magneto Repairing Prompt Service**

"The Best Equipped Magneto Shop in the Panhandle"

New Magnetos Carried in Stock

See  
**Radcliff Bros.**  
ELECTRIC CO.  
1246 SO. BARNES PAMP  
PH. 1220

**Mobeettie Happenings**  
(Times Correspondent)

Mr. and Mrs. Buck Scribner and Mr. and Mrs. R. C. Martin are vacationing in Colorado this week.

Loy Compton is visiting his parents in Cotton Center this week.

Mrs. John Dunn and sons, R. L., Hoyt and George B. and Roland Dyson were business visitors in Pampa Monday.

Miss Tina Mae Wright of Dimmitt is visiting in the R. H. Crump home this week.

Miss Helen Dyson is visiting in Pampa this week.

Mr. and Mrs. Ward Golden of Dimmitt spent the week-end with Mrs. Golden's parents Mr. and Mrs. J. B. Oswald.

Mr. and Mrs. J. E. Collins and Larry Jo LeCroy were Pampa visitors Saturday afternoon.

Mr. and Mrs. E. E. Johnson and Mr. and Mrs. O. W. Elliot and Zelma returned last Friday from Eagle Nest New Mex.

Mr. and Mrs. H. L. Flanagan and La Rue and Edwina Flanagan of Wheeler are vacationing in Eagle Nest, New Mex.

Mrs. Leonard Green and Elizabeth and Mrs. N. M. Hunt and Maurine were shoppers in Pampa Tuesday of last week.

Mrs. Grady Harris and Mrs. Buck Scribner were visitors in Shamrock Thursday of last week.

Mrs. B. A. Harris visited her sister in Vernon last week.

Rev. and Mrs. C. W. Young are visiting their son in Sweetwater.

Mrs. T. H. Hathaway returned Monday after a weeks visit with her son Elmer Hathaway and family in Wichita Falls.

Miss Donnie Collins returned home Tuesday from a weeks visit with Mr. and Mrs. Dean Collins of Borger.

Jim Winkley of Detroit, Mich., is visiting relatives in Mobeettie.

Miss Rene Cheek returned home from Fresno, Calif., where she has been visiting her brother.

Mrs. Cecil Eubanks of Seymour, Tex. spent last week-end with her parents Mr. and Mrs. A. H. Burke.

**Former Pu Returns t**

C. G. Miller, Found  
Newspaper, Agai  
After Brief

This week's issue of The Times marks the return of C. G. Miller, and destiny for three year management. On Dec. 1, M. L. Moody of Okla. an associate, E. R. E. Okla., bought the publishing active editor.

Last week final transaction were which the business a property of Miller, M ler and daughter, I back to Wheeler on 5 possession of the morning, Bill Miller, and wife, remains in commercial printing Okla., until Sept. 1, chaser will take char here two days this with the work of pu sue and other duties.

Mr. and Mrs. M children moved Wedr rock, where he has tion as lintype oper an. The Moodys, du dence her, made mar who will regret their will wish them well detakings.

After disposing of Millers continued to March 1, while looki other location. A co without a newspaper finally chosen. The back to its former i in the meantime mov Okla.

Mr. and Mrs. Mill first came to Wheeler of 1933, buying the printing business fr boys, who had been publishing a paper t that year, when the pend.

All subscription lis the mails, etc., of t as published by Percy had been disposed o Miller established a publication, naming Times.

The publisher and entire satisfaction up to Wheeler and he their intention to m their permanent hom cation of the best their business. A m hearty welcome has b scores of friends who them back in Wheel

The Millers are Finsterwald residec Main street.

**How Hot W**

With a well-develo news, and particulr facts which bear a c his vocation, H. M. of the Wheeler Gas ( following figures o which would indicat creasing summer avei gion.

According to the A bureau man, the Par ually growing hotter by. The Panhandle st: lished during 1892, 4 there was not a Ju 1900's with a readi average was 75 degr a low in 1895.

From 1901 to 1910 was 77, with 79 for 1910, and 74 for a le and 1906.

From 1911 to 1920 was 77, with 79 for 1912, '13, '16 and '1 low during 1913 only right along.

From 1921 to 1930 77.5 with 80 for a h only, and 79 four o low was 75, three dif

From 1931 up to July 1937 the averag 80, 82, 84, 81 and 81

Our hottest July v 1934, and the avera seven years has bee grees hotter than the first nine years after established.

From 1892 to 1930 without a July as ho and since that time w one which was not i past six years have b

Mrs. J. M. Turner Joyce, of Pampa an Van Sickle and son, Longview spent Mond with the ladies' pa Mrs. J. D. Merrimar Florence.

**City Drug Store**

Phone 33 "Where It Is a Pleasure to Please" Wheeler  
LONNIE LEE, Manager IRA FOSTER, Pharmacist

**THE Rexall DRUG STORE**

**Your Tires**

» » They May Give You TROUBLE

It is not economy to travel on tires that endanger your life and your car. Avoid trouble with tires, and avoid danger.

For your selection we have a wide range of tire sizes and different quality in FEDERAL TIRES, which are nationally known and recognized for their endurance.

Don't take a chance on trouble in the hot weather that puts extra pressure on automobile rubber . . . Ask to see our line of Federal tires.

**Crump-Mundy**  
Service Station Phone 101

**Khaki Suits**

All sizes, good weight, Sanforized, fast coolers, guaranteed—

**Priced Right**

A New  
**Wichita Overall**  
\$1 19

Sanforized—8-oz.

*Russ Dry Goods*  
fashions without extravagance  
"Always Something New"

**Jaco's Cook Shack**  
Has Wheeler Bread To Sell at Any Time  
Phone 105

**Nations Barber and Beauty Shop**  
Come to see us at our location, South Side Square  
O. Nations, Prop.

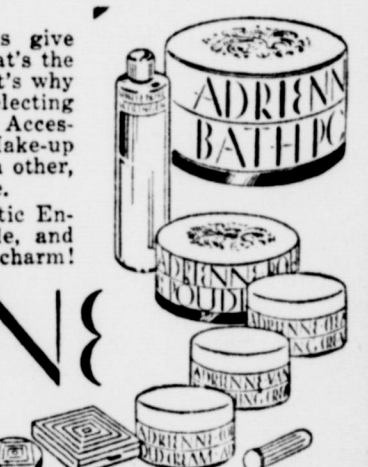
**America's Smartest Women Adopt Adrienne Cosmetic Ensembles**

Scientifically Harmonized Cosmetics Skyrocket to Popular Favor

Scientifically Harmonized Cosmetics give beauty harmony from head to toe. That's the reason for their meteoric success. That's why smart women are so enthusiastically selecting their *Adrienne Ensembles*. . . Bath Accessories, Creams, Lotions, Powder and Make-up Aids scientifically harmonized with each other, with the complexion, with the costume.

Your own complete *Adrienne* Cosmetic Ensemble will cost you surprisingly little, and will give you amazing new beauty and charm!

**ADRIENNE**  
SCIENTIFICALLY HARMONIZED COSMETICS



**City Drug Store**

Phone 33 "Where It Is a Pleasure to Please" Wheeler  
LONNIE LEE, Manager IRA FOSTER, Pharmacist

**THE Rexall DRUG STORE**