



THE WHEELER TIMES

(USPS 681-960)
VOLUME 55, NUMBER 37

THURSDAY, AUGUST 10, 1989

Single Copy: **35¢**

"Wheeler, town of friendship and pride."

CWE CHAT WITH EDITOR

By Louis C. Stas

The resignation of the Manuel Martinez was a disappointment but not a shock. We all knew it was only a matter of time until he would be 'snatched up'. A lot has been accomplished these past two years and we still have the young people and the talent. I am looking forward to another great year for the band.

BAND DIRECTOR RESIGNS

Manuel Martinez, band director for Wheeler school, has resigned his position to accept a job at Ft. Stockton.

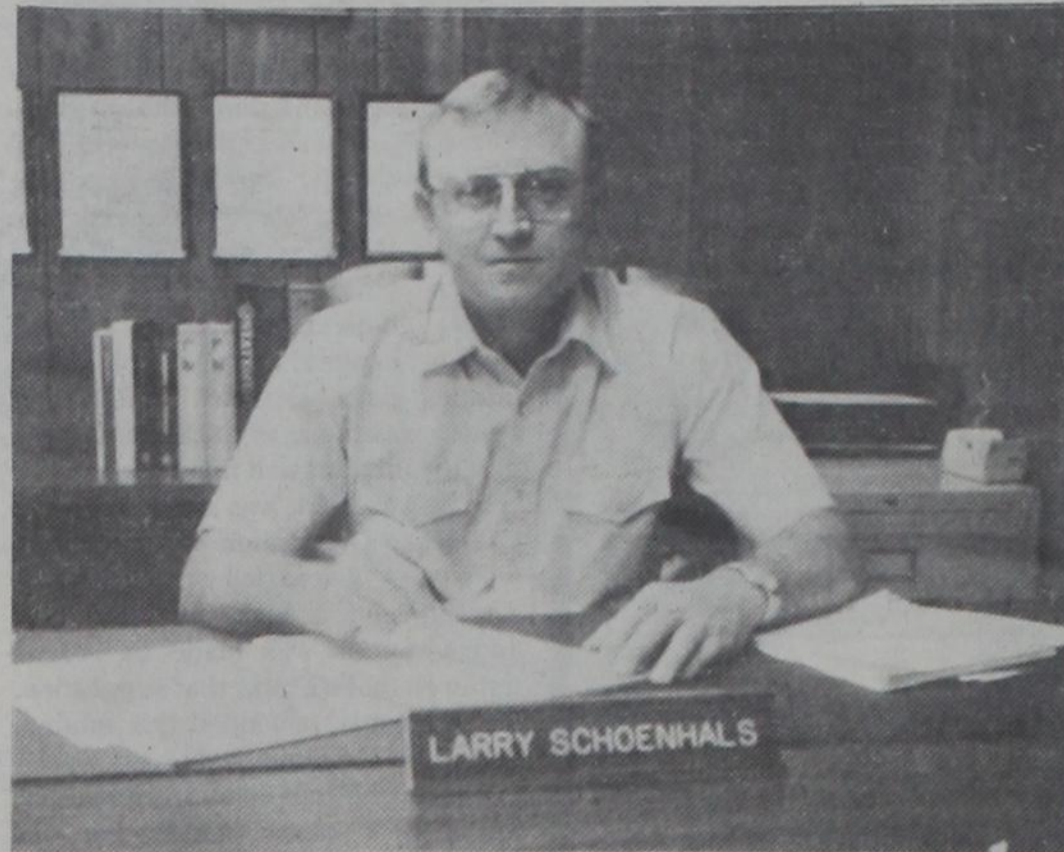
Martinez came to Wheeler in 1987 and worked "miracles" with the local students. The band earned state recognition in marching both years and was named the No. 2 "A" concert band for '89.

Martinez has always given the local students the credit for the drive and determination needed for the past two

year's accomplishments. Martinez and his wife Kelly, put in an untold number of hours working with our youth building our 'award winning' band.

Martinez will be moving to a larger school, receive a large increase in salary and gain two assistants by making the move. This will be 'several steps' up the ladder of success.

The Wheeler School Board will be accepting application for the vacancy.



LARRY M. SCHOENHALS

Schoenhals Named Co. Chief Appraiser

Larry M. Schoenhals, 46, formerly of Lipscomb County assumed the position of Chief Appraiser for the Wheeler County Central Appraisal District (CAD) August 1st, 1989. He was selected from a field of several applicants by the CAD Board of Directors.

Schoenhals has served as Deputy Appraiser and Field Appraiser for the Lipscomb County CAD since 1983. He is certified as a Registered Professional Appraiser (RPA) by the Texas State Board of Tax Professional Examiners.

A native panhandle Texan, Schoenhals grew up on a family farm in North Central Lipscomb County and graduated from Darrouzett High School in 1960. He earned his bachelor's degree in 1964 from Southwestern Oklahoma State University, Weatherford, OK. In 1975 he was graduated with a Master's degree in Management from Webster College, St. Louis, MO.

Schoenhals served as an officer in the U.S. Air Force from April 1965 thru February 1980, when he received an Honorable discharge in the grade of Captain. His primary Air Force duties were as an aircraft maintenance officer for twin-engine jet fighter squadrons. He was stationed in Germany, Vietnam, Ohio, North Carolina, Missouri, and Illinois. He served on temporary duty in Holland, North Africa, The Philippines and Thailand.

Schoenhals joined the U.S. Army Reserve in 1982 and was granted a direct commission in the grade of Captain. He is currently assigned as a mobility Supply Management Officer at the U.S. Army Ammunition Plant, McAlester, OK, and is attached for training to the 422nd Support Brigade in Amarillo, TX. He was recently selected for promotion to Major.

Schoenhals' military education includes graduation from the Army Quartermaster Officer Advanced Course, Department of Defense Information Officers School, Aerospace Maintenance Staff Officers Course, and the Air Command and Staff College. His awards and decorations include the Bronze Star Medal, Presidential Unit Citation, Air Force Outstanding Unit Award with 2 oak leaf clusters and "valor" device, Republic of Vietnam Gallantry Cross with palm, and the Vietnam Service Medal with 3 campaign stars.

Schoenhals is a member of the Texas Association of Appraisal Districts, Texas Association of Assessing Officers, The Reserve Officers Association, The Air Force Association, The American Legion, Veterans of Foreign

Continued Page 7

Funeral Services Held For Ed L. Smith

Ed L. Smith, 102, died Saturday, August 5, 1989.

Services were held at 5 p.m. Monday, August 7, in Wheeler Church of Christ. Bill Morrison, minister, and Rev. Rodney Weatherly officiated. Burial was in Wheeler Cemetery by Wright Funeral Home.

Mr. Smith was born in Seymour, TX. He married Ethelyne Richerson in 1915 at Estelline. She died in 1977. In 1966 he moved to Wheeler from Amarillo. He was a butcher and a member of Wheeler Church of Christ.

Survivors include a son, Harry L. Smith of Tucson, Ariz.; a daughter, Anne Massick Wilson of Claude; a sister, Connie Lambert of Wheeler; three grandchildren, Rick Massick of Pampa, Nikki Mitchell of Midland, Michigan, and David Massick of Claude; and seven great grandchildren.

Pallbearers were Dr. Larry Barbour, Larry Finsterwald, W.A. Goad, Mike Goad, Jerry Hefley, Donald Rivers.

Honorary pallbearers were Thomas Daughtry, Bus Dorman, Terrell Gunter, Arnold Jones, R.D. Underwood.

CO-ED

Softball Tournament

Co-ed softball tournament, tonight, August 10, 7:00 p.m. at Britt Field. Enter as an individual and teams will be drawn. This tournament is strictly for FUN. Come out and enjoy a game of softball on our new field. These games will be played with a 16 inch ball. Entry fee is \$2 per person. For more information call Brenda Childress, 826-5219.

Jubilation Brass To Perform Thurs., Aug. 10

The First Baptist Church will be hosting the nation's leading clinic and convention orchestra from Howard Payne University. They are leaders in sacred instrumental music. They are presently on tour and will be visiting

and playing in Mexico City before coming to Wheeler. Don't miss this exciting event with Doyle Combs and Jubilation Brass on Thursday, August 10th, at 8:00 p.m., in the First Baptist Church auditorium.

Community Work Assigned Youths

Eight teenagers were sentenced to 128 hours community work at the park for their part in vandalism at the city park, according to Sheriff Jimmy Adams.

Vandalism of the "port-a-potties" at the park was reported last week. The six youths involved in this act of vandalism were apprehended and sentenced to 96 hours labor at the park.

In a separate incident this week, two other youths went 4-wheeling at the park in the creek. The youths involved in this destruction were also sentenced to community labor—a total of 32 hours.

Boy Scout To Sponsor Bass Tournament

Boy Scout Troop 485 will sponsor a Bass Tournament on Saturday, August 12, from 7:00 a.m. to 12:00 noon and a Perch Rodeo on Sunday, August 13, from 2:00 p.m. to 4:00 p.m. at the M.K. Brown Scout Camp west of Wheeler.

Entry fee is \$20 for the Bass Tournament and \$2 for the Perch Rodeo. Prizes will be awarded to the top three. Proceeds will be used for maintenance of the camp.

Wheeler School Bd., Meetings Recorded

SPECIAL MEETING
July 20, 1989

A special meeting of the Wheeler ISD Board of Trustees was held in the Board Room at 6:30 p.m. All members were present. Also present, Clayton Neal, Interim Superintendent.

The Board went into Executive Session under Article 6252 Sec 17 2A VCS at 6:40 p.m. The Board returned to open session at 7:00 p.m.

1. Motion by Mr. Wills, seconded by Mr. Morrison to have Locklear Construction put a 30 lb. cap roof on the old gym at the agreed price.

The meeting adjourned at 7:15 p.m.
SPECIAL MEETING
July 22, 1989

A special meeting of the Wheeler ISD Board of Trustees was held in the Board Room at 6:00 p.m. All members were present except Mr. Ledbetter.

The Board went into executive session under Article 6252 Sec 17 2A VCS at 6:05 p.m.

At this time the Board interviewed Glyndol Holland of Hedley and Jake Cottrell of Holliday for the position of Superintendent.

The Board returned to open session at 8:35 p.m. and the meeting was adjourned.

SPECIAL MEETING
WHEELER ISD
BOARD OF TRUSTEES
July 24, 1989

A special meeting of the Wheeler ISD Board of Trustees was held at 6:00 p.m. All members were present.

The Board went into Executive Session at 6:15 p.m., article 6252 Sec 17 2A of VCS.

Jimmy Collins of Seagraves and Don Blankenship of Seagraves were interviewed for the position of Superintendent.

Cattle Management Meeting Scheduled

By Joe Don King

A stocker cattle management meeting is scheduled for Thursday, August 10, 1989. The meeting is sponsored by the Wheeler County Livestock, Range & Pasture Committee and the Texas Agricultural Extension Service.

Dr. John McNeill, Extension Beef Cattle Specialist, will present the program which will center on receiving and processing cattle. He will talk about the importance of worming using implants, controlling grubs and sampling newly arrived cattle for the presence of bacteria that may cause problems.

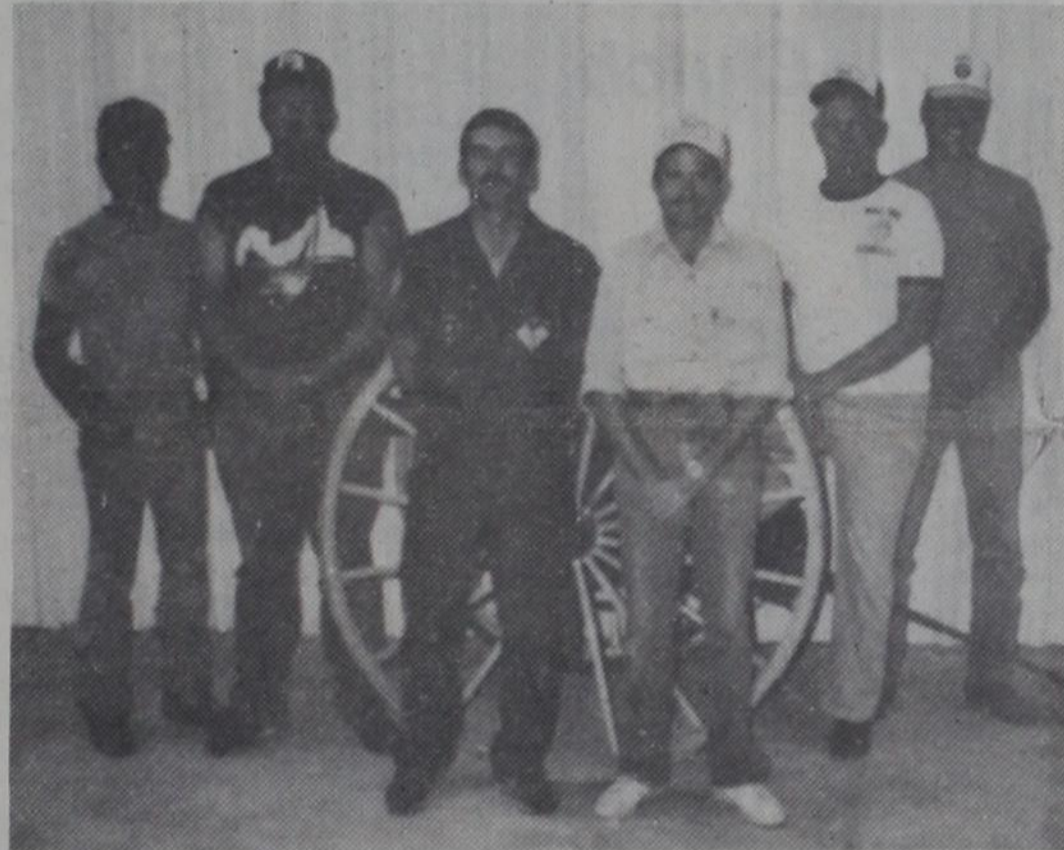
The economic benefit of feeding grain to cattle on wheat pasture will also be discussed. The relationship of grain prices to cattle prices can make this a profitable practice. There has been a lot of work done on the amount

to feed and the frequency of feeding.

This meeting will be held at Maxey's Steakhouse in Wheeler. You can come for a "Dutch Treat" meal at 7:00 p.m. If you do not want to eat or cannot get there that early you can come for the program at 7:45 p.m. The committee felt that many producers would enjoy getting to visit during the meal. Wives are, of course, welcome to attend.

Although we will order off the menu when we arrive at the meeting, I would like to know how many plan to eat or just come to the meeting.

Educational programs conducted by the Texas Agricultural Extension Service serve people of all ages regardless of socioeconomic level, race, color, sex, religion, handicap or national origin.



LOCAL FIREMAN ATTEND TEXAS A&M FIRE SCHOOL

The six firemen pictured above (l. to r.): Robert Ford, Gary Davis, Walter Simmons, Jack Sparlin, Clayton Neal, and Max McQueen attended the 60th annual Fireman's Training School at Texas A&M University during the month of July. This training assures taxpayers that we (members of the Wheeler Volunteer Fire Department) receive updated information regarding fire prevention and suppression techniques.

This training also provides for reduction of fire "Key Rate" (Insurance Premiums) paid by local property owners. "Key Rate" is determined by many factors, including, but not limited to: Water works, percentage of wood shingle roofs in city, fire department equipment, fire depart-

ment training and organization, and fire loss record.

The expense of this training is carried by the City of Wheeler, Wheeler County, North Wheeler County Hospital District and Wheeler Care Center.

The members of the Wheeler Volunteer Fire Department wish to extend our sincere thanks to the agencies, organizations and businesses who supported this training. Also, thanks to all our supporters, we are able to provide the fire prevention and suppression you deserve.

Wheeler Vol. Fire Dept. Elect Officers

Election of officers was held at the Wheeler Fire Station during regular meeting, August 3rd, 1989. Officers elected are as follows: Chief, Daryl Snelgrooves; Asst. Chief, Gary Davis; Fire Marshall, Robert Ford; Asst. Fire Marshall, Steve Walker; Sec.-Treas., Kyndall Murray; Training officer, Ken Daughtry; Public relations, Russell Gaines; Station Manager, Walter Simmon

The Wheeler Volunteer Fire Department meets at 6:30 p.m. on the first, third and fifth Thursday of each month. Visitors are welcome. Anyone interested in membership is urged to attend a meeting, or talk with any member. Current members are: Riley Atwood, Gary Davis, Phillip Gaines, Brent Lee, Clayton Neal, Jack Sparlin, Boyd Austin, Edwin Ellison, Russell Gaines, Lyndon Loyd, H.L. Owens, Ron Thornton, Jerry Berten, K.D. Ford, Jim Jackson, Max McQueen, Walter Simmons, Steve Walker, Ken Daughtry, Robert Ford, Larry Jones, Kyndall Murray, Daryl Snelgrooves. Junior members: Charles Ellison, Michael Kenney.

Public Relations Officer:
Russell Gaines



BIG TURNIP: Lester Leonard came by the "Times" office with this turnip raised at Mobeetie. The vegetable tipped the scales at 4.25 pounds.

New Arrival

JOSHUA ADAM GATLIN

Rusty would like to announce the arrival of his new baby brother Joshua Adam Gatlin. Born August 1, 1989. He weighed 7 lbs, 7 ozs. His proud parents are Joe and Minnie Gatlin of Ponder, TX. Grandparents are Sharon Grandstaff and James and Jewel Jenkins. Great grandparents are Oden and Lois Hudson and great great grandma Mary Hudson.

Friday morning found us at Six Flags Over Texas. The temperature was hot, but we timed the 'wet rides' to refresh us. The us in this instance is Jennifer, Juanita, Ronal Jr., Liz Lovell, Kathy Farris and myself. The new ride this year is "Flashback"—everybody needs to ride at least once. We spent about six hours riding and 'taking in the sights'. The lines were kept moving and the time spent in each line was short—time flies when you are having a good time.

Saturday it was back to Dallas and class for Jennifer. Barbara, Ronal and Jessica joined the 'us' Saturday. We took two cars for the 60 mile trip to Dallas from Sherman.

Sunday we were on the road again. Ronal Jr. and Jessica had to spend one more week this week in Wheeler.

This was Kathy Farris' first trip with the Stas family, but it must not have been too bad, she is going again. Kathy is the granddaughter of Earl and Leota Farris.

Let me give you an idea what the trip was like. We left about 11:30—our departure was originally scheduled for 10:00 a.m. First stop was Elk City—45 miles away. 120 miles into the trip we stopped at Hinton. On down the road—24 miles—a stop at "Johnny's" for hamburgers and hot dogs. Del City was the next stop 170 miles into the trip; Mother Stas was left for the weekend. We had to have ice cream when we got to Pauls Valley—50 miles further down the road. We arrived in Sherman about 6:30.

The return trip was almost a reverse but remember we added two more. Picture 8 bodies in our 'coupe'—ranging in age from 4 to 85. Then, remember we got home in the middle of the storm Sunday evening—that last nine miles was 'like all eight of us in the front seat driving'.

Corey Case must have gotten some of his ball playing ability from granddad. I believe Bus Dorman used to be quite a ball player. **Congratulations, Corey!**

WEATHER

Date/Day	Lo	Hi	Pre
08-02, Wed.	66	88	0.00
08-03, Thurs.	66	96	0.00
08-04, Fri.	74	98	0.00
08-05, Sat.	69	102	0.00
08-06, Sun.	65	89	0.00
08-07, Mon.	60	77	3.13"
08-08, Tues.	54	78	0.00
Low for the year:	2-04,-5		
High for the year:	8-05,102		
Total moisture for month:	3.13"		
Total for year:	19.88"		
Total snow:	1"		

Courtesy: KPDR-FM Radio

Sweetwater
Mrs. Joe Flowers
News

Same old song. Hot and dry. Things sure went down today. We've got the garden watered. There's a limit to our watering. The house, yard, garden and about 30 cows depend on our well. Have to be careful.

I bought two each of Better Bush, Better Boy, Giant Orange, and Roma tomatoes, plus a Porter and a stray that I've forgot the name of. Poor thing, it just sits and looks at me. Has a bloom or two. Lack of TLC. The rest are loaded to the hilt and very nice. Asked Jake McDowell how his were doing. He said so good, he wasn't going to have to talk mean to me.

Our dear friend Velma Gibson died Tuesday at the Elk City Hospital. Funeral services were today at the Erick Baptist Church with burial in the

Erick Cemetery. We weren't really cousins (just kissin kin). She and Joe shared the same Aunt Annie and Uncle Tom plus a set of cousins.

Cousins Myrtle Flowers, Zulu Caywood, Callie Brawley of CA were here for the services and to spend a few days visiting relatives. Their plans are to visit their brother in Florida and kin in Ohio and be back for the Abba Reunion.

The Kitchen Band went to the Erick home Tuesday. They helped Fern Howell celebrate her 87th birthday. Her granddaughter Janie was up from Mangum for the occasion. There were several more visitors. Roy and Kathryn Gaynor of Santa Barbara, Johnny Homesley of Borger, Mary Chadwick and William of Dallas, Paul Miller of Corona, CA., Janie Bruner, Colleen Gordon, Mrs. Holland Leonard Taylor of Elk, and Joe Lawson. Band members were Jack Criswell, Betty Brothers, Basil and Billy Doss, Virgie and Alvin Marshall, Iona Miller, Rose Abba, Donna and Jack Mercer, Richard Crawford, Roy Swagger, Bess

Perkins and we three and ole S String. The Gaynors are my uncle and aunt. We're here visiting her sister, Sophia Spencer and the Harold Bollens.

Thursday the Band had a wonderful time at Reydon with the Senior Citizens. They served a delicious luncheon. We saw a lot of old and new friends. One lady told me her sister in Houston reads the SW news. Makes me two there. Hello, Ann and Samantha.

Woody and Leona Miller entertained their family Saturday night with a cookout. Those present were the Ford Millers from Sayre, Mr. and Mrs.

Old Mobeetie Assoc. August Meeting

The OMA, for The Old Mobeetie Jail Museum met at 7:00 p.m. in the First State Bank Hospitality room. The meeting was called to order by President, Sallie Harris. The opening prayer was led by Al Caviness. The minutes of the last meeting were read by Austin Caldwell and the financial report given by treasurer, Louise Hogan, expenses for all bills and utilities paid out was, \$372.55. A motion was made by Jack Finsterwald that the minutes and finance report be accepted as read, was seconded by Al Caviness. The motion carried unanimously. A discussion was held concerning having dues paid each year and a motion was made by Austin Caldwell that we pass that suggestion, Louise Hogan seconded the motion, that carried unanimously.

Those who had collected donations for a new larger mower for the association turned in their report. Because of the large acreage of about 13 acres around the museum and camping area a regular size riding mower is not sufficient to keep all the area mowed, and it takes most of the time of the caretaker, to keep it mowed so we will continue to ask for donations to have sufficient funds for the five or six foot width mower that we need. Those who have contributed: County Commissioners, Gordon Stiles, Florence George, B.K. Barham, Sparlin's Restaurant, Johnnie Reed, Clifford Walsler, Mary Finsterwald and some others whose names I do not have except Burrell Oil and Gas Properties. We are hoping that others will come to our rescue on helping to obtain a larger mower for the campus around the museum. If anyone gives \$100.00 or more your name will be engraved on a gold plate and put on the donation plaque, or a memorial may be given in memory of your loved ones and the names engraved on the Memorial Plaque, in the museum. Plans for Old Timers meeting on Memorial Day was discussed. This is a memorable year, its the 35th year since the Mobeetie American Legion began the "Labor Day Old Timers Meeting"; 107 years ago that Wheeler County was organized at Mobeetie; 103 years since Cap. G.W. Arrington moved into the Jail of 1886. The school plans to have the homecoming on Saturday before Labor Day, so there is expected a large crowd in 1989.

Motion was made by Austin Caldwell that the meeting adjourn, seconded by Jap Bailey.

Those attending the meeting were: R. St. John, Carol McCurley, Lona Williams, Bob Galmor, Jap Bailey, Henry Johnston, Al Caviness, Laura Eubanks, Austin Caldwell, Louise Hogan, Jack Finsterwald, and Sallie Harris.

The meeting for September will be on Thursdays the 7th at 7:00 p.m. All persons who are interested in preserving and enjoying history feel free to come meet with us, you are welcome.

Danny Miller and family, Mr. and Mrs. Gene Miller and children all from Erick. Glenn and Franklyn Miller from Amarillo, Ernest Wayne from Clinton, Lavon and Vernon Bailey of Texola, Paul Miller of CA and Mr. and Mrs. Tony Dorrell and family. Oh, yes, Paul is one of my CA readers.

Memorial services were Friday for our fiddling friend George Spell of Elk City. Burial was in the Berlin Cemetery.

Services were Wednesday at Borger Central Baptist Church for Raymond Wesson of Amarillo. Burial in Buffalo Cemetery, beside his wife Mozelle Thompson. She was our cousin.

School starts August 16 without further ado. Enrollment and classes same day. Personally, I think starting before Labor Day is the height of folly but since, I don't have any students, it doesn't concern me. Guess the parents are needing a rest and it lets the kids have more time over Christmas.



THE WHEELER TIMES

Page 2—Thursday, August 10, 1989
"Wheeler, town of friendship and pride."

New teachers at this time are Math teacher—Rodney Wilson, elementary and junior high Brenda Quinn. Both are from Sayre.

A group from the Buffalo Baptist Church spent a week at Falls Creek. Reported lots of fun and lots of people. Sponsors were Cindy Perry, Lisa Alexander, and Kathy Heinsohn. Young folks were Aaron Hall, Jake and Jeremy Silk, Colin Perry, Tess Heinsohn, Wesley Powers, Leslie Hagerman, Hope McCord, Jamie Loyd and friend Jennifer from Shamrock, Julie Schmidt, Jamie Heinsohn, Darla Powers, Sheila Sites, Jada Alexander.

Niece Samye Steward called from Cottonwood, AZ to say her aunt Hazel

Tippen Slaton had open heart surgery with two bypasses. She should be home now. For those friends who would like to send a card, the address is 540 Irving Drive, Thousand Oaks, CA 91360.

Juanita Taylor is home after surgery in the city. Joyce Matlock was home and able to go to Reydon with the Band.

Our little Dawg died some weeks ago and we have no one to chase the "pet snakes" and other varmints away. Heard a noise under the pickup hood and thought Joe had caught something in the trap he keeps set for packrats. But when he raised the hood there were two big snakes. I do believe they were six foot long. Good thing I didn't open it. I'd have died dead right there.

And almost worse something is going along underground cutting my peas off. We can't see a mole tunnel or a gopher mound but every day a few more plants meet their doom.

Funeral services were held in Yuba City, CA recently for Clarence Bessire. The Bessire family lived many years in Sweetwater. Bertha was a year or two ahead of me in school.

Saw Elec and Beulah Atchley in town and she was looking so pretty. Turned out it was her birthday. Maurice and Freda Coffey of Tulsa, J.R. and Ellen Coffey and Sue Coffey of Burkburnett came up to help her celebrate. They had a big birthday dinner in Elk City. Bertha Coffey visited them at home.

Saw Anne Reed in town the other day. She and L.G. were going to vacation in Tennessee and visit the Grand Ole Opry. Couldn't get her on the phone. But I'm sure they had a marvelous time.

Mrs. Hatty Pickering spent nearly 3 weeks with her son and wife Raymond and Imogene Pickering.

Visited with Bud Hickey in town. He is the nephew of our friend Coy Hickey of Bethany.

Among those enjoying the quilt show in Elk Sunday were Juanita Coffey, Hortense Madden, J.E. and Clara Lou McGuire, Mr. and Mrs. Woodrow Miller.

To the Editor
The Wheeler Times

EDITOR:
I recently had an occasion to see your judicial system work. When a man can receive a \$20.50 fine for the physical assault on a woman, there is something mighty wrong with the system.

We see so much abuse and violence in our country today, it is scary. I can't help wondering what will happen to our future generations.

The child that has been abused in the home, whether it be verbal or physical, will probably grow up to be an abuser himself.

Counseling is available thru several organizations, but the abuser does not always think he needs help, therefore counseling is equally important for the family of the abuser.

We as citizens need to all get involved to get legislation passed to protect our family from abusers.

Sincerely,
Mary Wilson

Amarillo Tri-State Fair Parade Sept. 18

The big parade that officially opens the 1989 Amarillo Tri State Fair will begin its march down Polk Street in Downtown Amarillo at 10:00 a.m. on Monday, September 18th. This year's parade will feature marching bands, floats, military units, horses, clowns... everything that you expect to see in a parade. The theme of the parade is "Just For the Fun of It". Cash awards that total \$400.00 will be awarded to the top three floats that best follow the theme of the parade. Trophies will be awarded for the best entries in the following categories: military, equestrian, band (5 trophies for high school and junior high), Junior ROTC, youth (3 trophies), and other entries not in named categories (3 trophies). Parade winners will be presented their awards at 5:30 p.m., Monday, September 18th on the outdoor stage at the fairgrounds. There is no fee for entering the parade, but an entry must be submitted or mailed to the fair office not later than Friday, September 1st. For entry forms or additional information, call the fair office at 806/376-7767 or write Tri State Fair, P.O. Box 31087, Amarillo, TX. 79120.

Platinum is one of the most useful of metals, because it resists oxidation, most common acids and heat.

Listen to
KPDR-FM, 90.5
Wheeler, Texas

MAXEY'S STEAKHOUSE

SUNDAY BUFFET

Salad Bar

Roast Beef Au Jus
Fried Chicken
w/Cream Gravy
Whipped Potatoes
Corn on Cob
Green Beans
Hot Rolls
Coffee/Iced Tea

Thursday Nights

All the Fresh Water
Catfish & Shrimp
you can eat.

Served with onion rings,
French fries, hush puppies
and cole slaw.

Dessert

Sun.—Noon Buffet (Only) 11:30-1:30

• Closed Monday •

Phone: 826-3441

1 Mile South of Wheeler on U.S. 83

A State of Mind

CHALLENGE

Lady Buff Tammy Williams is a 1988 graduate of Canyon High School and a business major at West Texas State University, where we help you turn challenges into opportunities.

For admission information, call 806/656-2020.

West Texas State University.
It's more than brick and mortar. It's a state of mind.

1989 Property Tax Rates in WHEELER County			
This notice concerns 1989 property tax rates for WHEELER County. It presents information about three tax rates. Last year's tax rate is the actual rate the taxing unit used to determine property taxes last year. This year's effective tax rate would impose the same total taxes as last year if you compare properties taxed in both years. This year's rollback tax rate is the highest tax rate the taxing unit can set before taxpayers can start tax rollback procedures. In each case these rates are found by dividing the total amount of taxes by the tax base (the total value of taxable property) with adjustments as required by state law. The rates are given per \$100 of property value.			
	General Fund	Farm to Market/Flood Control Fund	Special Road/Bridge Fund
Last year's tax rate:			
Last year's operating taxes	\$ 815,387	\$ 113,564	\$ 76,442
Last year's debt taxes	\$ -0-	\$ -0-	\$ -0-
Last year's total taxes	\$ 815,387	\$ 113,564	\$ 76,442
Last year's tax base	\$ 509,617,375	\$ 504,732,740	\$ 509,617,375
Last year's total tax rate	\$.1641 /\$100	\$.0230 /\$100	\$.01538 /\$100
This year's effective tax rate:			
Last year's adjusted taxes (after subtracting taxes on lost property)	\$ 815,387	\$ 113,564	\$ 76,442
This year's adjusted tax base (after subtracting taxes on new property)	\$ 496,838,327	\$ 493,242,791	\$ 496,838,372
This year's effective tax rate for each fund	\$.1641 /\$100	\$.0230 /\$100	\$.0153 /\$100
Total effective tax rate	\$.2085 /\$100		
A county that adopted the additional sales tax in a 1989 election must include the following lines:			
Sales tax adjustment rate	\$ NONE /\$100		
Effective tax rate	\$ NONE /\$100		
1.03 - maximum rate unless unit publishes notices and holds hearing	\$.2085 /\$100		
This year's rollback tax rate:			
Last year's adjusted operating taxes	\$ 815,387	\$ 113,564	\$ 76,442
Last year's adjusted tax base (after subtracting taxes on lost property)	\$ 496,838,327	\$ 493,242,791	\$ 496,838,372
This year's adjusted tax base	\$.1641 /\$100	\$.0230 /\$100	\$.0153 /\$100
This year's effective operating rate	\$.1772 /\$100	\$.0249 /\$100	\$.0166 /\$100
1.08 - this year's maximum operating rate	\$ -0- /\$100	\$ -0- /\$100	\$ -0- /\$100
This year's debt rate	\$.1772 /\$100	\$.0249 /\$100	\$.0166 /\$100
This year's rollback rate for each fund	\$.2187 /\$100		
This year's rollback rate	\$.2187 /\$100		
A county that imposes the additional sales tax must include these lines, regardless of when it held the election:			
Sales tax adjustment rate	\$ NONE /\$100		
Rollback tax rate	\$ NONE /\$100		

SCHEDULE A: Unencumbered Fund Balances

The following balances will probably be left in the unit's property tax accounts at the end of the fiscal year. These balances are not encumbered by a corresponding debt obligation.

Type of Property Tax Fund	Balance
GENERAL FUND	\$6,275
ROAD AND BRIDGE FUND	\$7,434
LATERAL ROAD	\$51,238

SCHEDULE B: 1989 Debt Service

The unit plans to pay the following amounts for long term debts that are secured by property taxes. These amounts will be paid from property tax revenues (or additional sales tax revenues, if applicable).

Description of Debt	Principal or Contract Payment to be Paid	Interest to be Paid	Other Amounts to be Paid	Total Payment
Total required for 1989 debt service		NONE		
- Amount (if any) paid from funds listed in Schedule A		NONE		
- Excess collections last year		NONE		
= Total to be paid from taxes in 1989		NONE		
+ Amount added in anticipation that the unit will collect only % of its taxes in 1989		NONE		
= Total Debt Service Levy		NONE		

SCHEDULE C: Expected Revenue from Additional Sales Tax

(For counties and cities with additional 1/2 % sales tax)

In calculating its effective and rollback tax rates, the unit estimated that it will receive \$ NONE in additional sales and use tax revenues.

This notice contains a summary of actual effective and rollback tax rate calculations. You can inspect a copy of the full calculations at WHEELER COUNTY TAX OFFICE.

Name of person preparing this notice: Jerry Dean Kelly

Title: TAX ASSESSOR/COLLECTOR

Date prepared: 8-7-89

OLNEY SAVINGS AND LOAN ASSOCIATION

Pampa Amarillo Wheeler
Shamrock Hereford

55—? Olney has

a FREE checking account for you !!!

Come, See Us Soon -
Or Call And We'll Come See You

One Touch On The Clutch

is the new technology from Hesston. With adjustable hydraulic density control and 92% belt coverage, the 560 Automatic Baler makes uniform extra heavy weight bales up to 75" in diameter and 61 1/2" wide. The 560 Automatic Baler takes the guess-work out of making high density perfect shaped bales... bales that have long storage life. Check with your Hesston Dealer today!

HESSTON THE PRIME LINE

Hesston Corporation, a Member of the FIAT Group

FIATAGRI

DICKASON EQUIPMENT

Cheyenne, Okla.

PLENTY OF HESSTON PARTS IN STOCK!
—On Call 24 Hours a Day!—

1-800/234-0918 405/497-3494 Home: 497-3926

SPECIAL

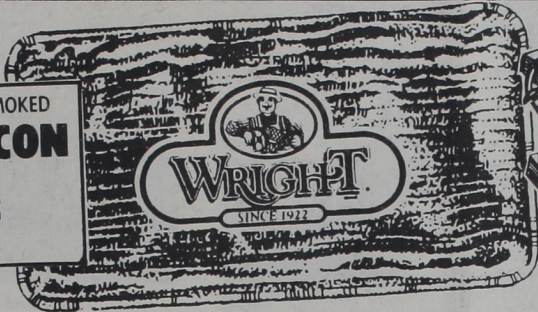
Root Beer Welch Strawberry
Orange Squirt
Delaware Punch Grape
Ginger Ale 6 Pack
12 oz. Cans

\$1.39

DISCOVER
the best place to shop

WRIGHT'S HICKORY SMOKED
SLICED BACON

LB. **99¢**



GREAT FOR THE OUTSIDE GRILL!!
FRESH FAMILY PACK

GROUND BEEF

99¢

HEAVY GRAIN FED BEEF BONELESS BLADE CUT

CHUCK ROAST 80% LEAN FRESH GROUND LB. **\$1.59**
BEEF CHUCK GREAT FOR OUTSIDE GRILL LB. **\$1.69**
HEAVY GRAIN FED BEEF BONELESS ARM
SHOULDER STEAK BONELESS CENTER CUT LB. **\$1.89**
CHUCK ROAST LB. **\$1.69**

WILSON'S SMOKED
PORK CHOPS WILSON'S REGULAR/POLISH/BEEF/CHEESE LB. **\$2.19**
SMOKED SAUSAGE LB. **\$1.99**
OSCAR MAYER SLICED LIVER CHEESE/P&P LOAF/PICNIC LOAF/OLIVE LOAF/
LUNCHEON MEATS LUNCHEON LOAF 8 OZ. PKG. **\$1.59**
WISCONSIN RED RIND OR CALICO JACK MARKET CUT
LONGHORN CHEESE LB. **\$1.99**

- 1 You receive one Super Saver Coupon for each full \$5.00 of your grocery purchase.
- 2 Pick up a Super Saver Card from your store checkout and save your Super Saver Coupons.
- 3 Present your filled Saver Card to your store checkout to purchase your selected Super Saver Specials.



A Super Way to Save Every day!

Watch for
INSTANT WIN COUPONS!

CLOROX Detergent 48 OZ. BOX **79¢**
WITH ONE FILLED SUPER SAVER CARD

Bounty PAPER TOWELS ASSORTED BOUNTY JUMBO ROLL **1.99**
WITH ONE FILLED SUPER SAVER CARD

LIPTON TEA BAGS FAMILY SIZE 24 CT. BOX **69¢**
WITH ONE FILLED SUPER SAVER CARD

HAMBURGER BUNS 10' OFF LABEL-TENDERCRUST 6 CT. PKG. **249¢**
WITH ONE FILLED SUPER SAVER CARD

HOMO MILK SHURFINE MILK GAL JUG **\$1.29**
WITH ONE FILLED SUPER SAVER CARD

BAKE-RITE SHORTENING WHIPPED 42 OZ. CAN **49¢**
WITH ONE FILLED SUPER SAVER CARD

FREEZER BAGS HEFTY QUART SIZE 40 CT. PKG. **29¢**
WITH ONE FILLED SUPER SAVER CARD

CORN MEAL QUAKER WHITE OR YELLOW 1 1/2 LB. BAG **29¢**
WITH ONE FILLED SUPER SAVER CARD

WELCH'S **GRAPE JELLY** 32 OZ. JAR **\$1.69**

DUNCAN HINES CHEWY **BROWNIE MIX** 19.8 OZ. BOX **\$1.29**

SHURFINE HAMBURGER **SLICED DILLS** 32 OZ. JAR **\$1.29**

REFILL BONUS PAK HAND SOAP 40' OFF LABEL LIQUID DISH
IVORY LIQUID IVORY 22 OZ. BTL. **\$1.99** 22 OZ. BTL. **\$1.29**

FRESH

SWEET CORN

6 \$1

EARS

LOCALLY GROWN

YELLOW ONIONS 4 LB. **\$1.00**

SALAD SIZE

RED RIPE TOMATOES LB. **59¢**

LOCALLY GROWN

YELLOW SQUASH LB. **39¢**

JEWEL

GREEN LIMES 10 FOR **\$1.00**

CALIFORNIA'S BEST... THOMPSON SEEDLESS **GRAPES** LB. **69¢**

POTATO CHIPS/ CORN CHIPS
PRINGLES 6-8 OZ. CAN **\$1.29**

ALL CONVENIENCE PACKS DIAPERS
HUGGIES BOX **\$9.99**

PURINA KIT-N-KABOODLE
CAT FOOD 3.5 LB. BAG **\$2.99**

35' OFF LABEL STAIN GUARD FAB. SOFTENER SHEETS
BOUNCE 36 CT. BOX **\$2.29**
YOUR CHOICE
BOUNCE 40 CT. BOX **\$2.29**

FROZEN

PET RITZ APPLE/ PEACH/ CHERRY
FRUIT COBBLERS 16 OZ. BOX **\$2.19**

1B CAPLETS/TABLETS **MOTRIN** 50 CT. BTL. **\$2.99**

EPIC WAVES VASELIN IntensiCare **LOTION** 10 OZ. BTL. **\$1.99**

TRY-ON CURLY KIT PERM KIT **EPIC WAVE** **\$6.98**

COTTON SWABS **Q-TIPS** 170 CT. BOX **\$1.39**

ASST. SHAMPOO/CONDITIONER **STYLE** 15 OZ. BTL. **\$1.19**

STYLE ASST. **HAIR SPRAY** 8 OZ. CAN **\$1.19**

DAIRY DELIGHTS

SHURFINE **BUTTER-MILK** 1/2 GAL. JUG **\$1.09**

PET RITZ DEEP DISH **PIE SHELLS** 2 CT. PAK **\$1.49**

TOTINO'S ASST. PARTY **PIZZA** 10.6 OZ. BOX **\$1.29**

LA CREME WHIPPED **TOPPING** 8 OZ. TUB **\$1.29**

WELCH'S FROZEN PURPLE GRAPE **JUICE** 12 OZ. CAN **99¢**

THRIFTWAY

WE ACCEPT FOOD STAMPS...WE RESERVE THE RIGHT TO LIMIT

AFFILIATED FOODS INC. MEMBER STORE

WIC & FOOD STAMP CUSTOMERS WELCOME

DOUBLE COUPONS

PRICES EFFECTIVE **August 6-12, 1989**

Tuesday, Thursday, Saturday **TODAY DOUBLE COUPONS**

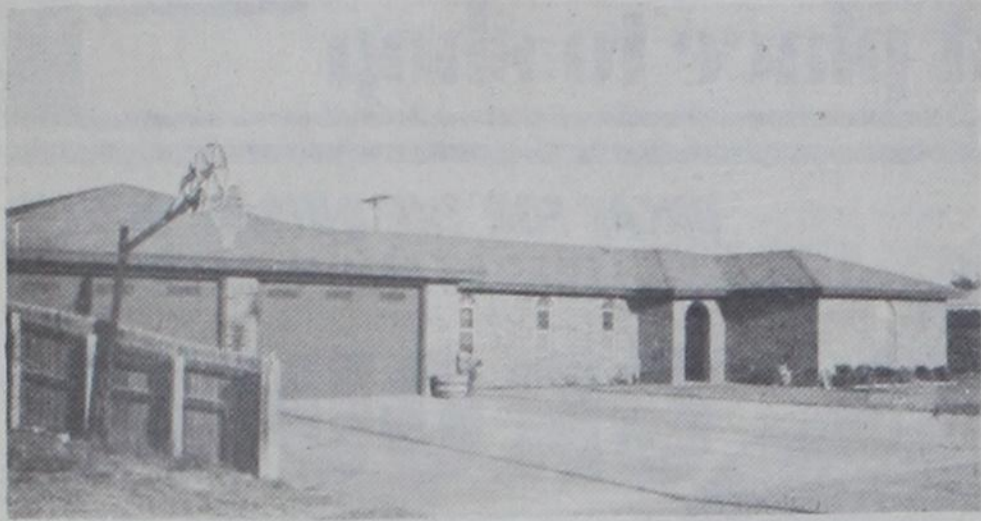
HOME OWNED & OPERATED

MINUTE MAID CHILLED **LEMONADE** 64 OZ. CTN. **\$1.09**

SHURFINE CORN OIL **MARGARINE** 1 LB. QTRS. **69¢**

1/2 MOON COLBY JACK/ LONGHORN **KRAFT CHEESE** 10 OZ. PKG. **\$1.99**

Make **1989** the year
your family selects a home
that really meets
all your needs!



Brick home, fully carpeted. Formal living room, large den with fireplace. 3 large bedrooms, 2 baths. Extra large attached double car garage 30 x 39. Fenced back yard, water well, and fruit trees.



3 BR, 2 Bath home with carport.

Farmer's Home Administration
Houses Available in Shamrock

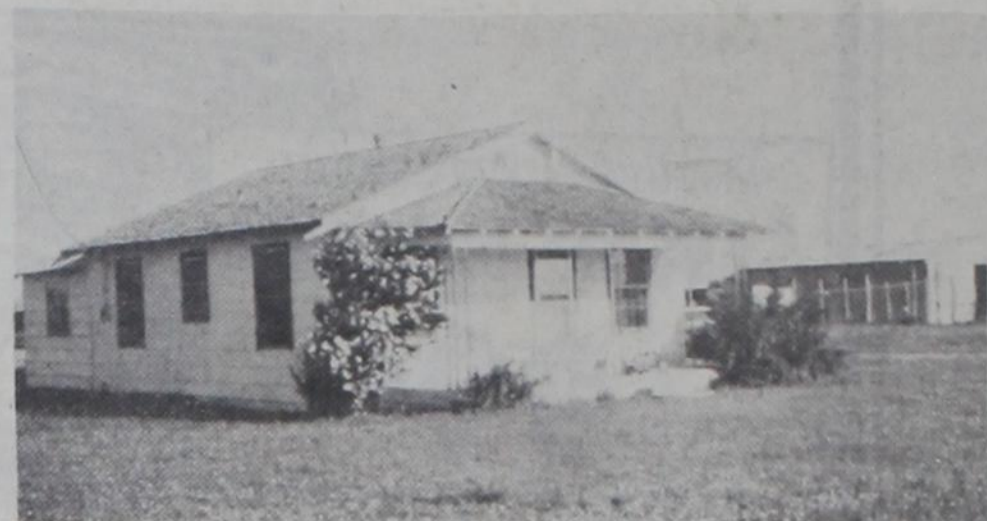


3 BR, 2 bath brick home with fireplace, office, large patio, central air, cellar, double garage, large swimming pool and bathhouse on large lot. Call for appointment.



2 BR, 1 bath house close to downtown.

New Listing
3 Bedroom, 1 1/4 bath brick home
with beautifully landscaped yard
in an excellent location



2 BR, 1 bath house with barns and pens plus 6.65 acres. South East of Wheeler. #33

the smith agency

R RUTH SMITH, Broker GREG SMITH, Salesman
JOE LEE, Salesman—375-2380
BETTY LEE, Salesman—375-2380
JIM HILL, Salesman—826-3094
LONA WILLIAMS, Salesman—826-3341 LAVON WILLIAMS, Salesman & Appraiser—826-5803

Phone: 806/826-5541 or 826-3238

Want Ads

IF YOU BUY HEALTH INSURANCE, you could be paying too much. Specializing in Major Medical and Medi-Care Supplements. Contact: **Kenneth McCasland** 826-3573 or 826-3036.

Shamrock Laundry
Open 24 Hrs.
7 Days a Week
Corner of 4th & Madden St.
Shamrock, TX.

CRP SHREDDING Lavon Williams, 826-5803.

Real Estate Appraisal & Sales
Lavon Williams
The Smith Agency
826-5541 826-5803

CUSTOM SLAUGHTERING
1/2 Beef, Beef cuts and Pork.
Shamrock Slaughter Plant
We accept food stamps.
256-3241.

Portable Buildings
Storage • Office
Workshop
BABB CONSTRUCTION
820 W. Kingsmill
669-3842 Pampa, TX.

FOR RENT: \$200 month/ deposit, 3 bedroom country home. New carpet/paint. Kelton Schools 826-5207 or contact Jones 1112 S. Mobeetie.

RICHARD'S UPHOLSTERY & CARPET CLEANING
Furniture, etc.
Call: Richard Laverty
Mobeetie, Texas

MARY KAY COSMETICS: Free facials and delivery. Call Ruth Richards, 845-2000.

HOUSE FOR SALE: Call 826-3519 or 826-3211.

PART TIME EMPLOYMENT OFFERED: 20 hrs/wk, \$3.35/hr, 55 yrs. or older, must meet income guidelines. EOE Wheeler ISD, 826-5241.

CLASSIFIED RATES:
The Times prefers all classified ads be paid in advance, except for open ledger account customers.
Cash and Ledger account: 15c word; \$1.50 minimum. (Ad paid when placed or by 5:00 p.m. Wednesday of week ad runs.)
Charge: 20c word; \$2.00 minimum.
Card of Thanks . . . \$3.75
ADVERTISING DEADLINES
Classifieds: Noon Tues.
Display: Noon Tuesday.

FOR SALE OR TRADE: Ben Franklin Store 826-5944 or 826-3376.

FOR RENT: Furnished 2 bedroom trailer, \$125 month. Phone 826-5634 or 826-3586, ask for Donna.

1982 GRAND MARQUIS MERCURY 2 door FOR SALE, please call after 5:00 p.m. 826-3003.

GARAGE SALE: 405 Cheyenne, Friday 11th, and Saturday 12th, 9 to ?

THREE FAMILY GARAGE SALE: Saturday 8 to 5, 301 Canadian St.

YARD SALE: 509 Comanche, 8:00 a.m. - 12:00 noon. Lots of clothes, Knick Knacks and misc. items.

FOR RENT: Large 3 bedroom, 2 bath home in the country. Phone 826-3666.

NOTICE
Wheeler County is accepting bids for the purchase of one (1) ambulance as follows:
Type II, Class I, New Model Standard Commercial Van Type Vehicle. Specifications may be obtained from County Judge's Office, Box 486, Wheeler, Texas 79096. Bids must be received by 10 a.m., Monday, August 14, 1989. The County reserves the right to accept or reject any or all bids.

I WILL NO LONGER BE RESPONSIBLE for any debts other than my own, as of July 26, 1989. T.J. Austin.

GOVERNMENT JOBS! Now hiring in your area, both skilled and unskilled. For a current list of jobs and application, call 1-615/383-2627 Ext. P 351.

\$60.00 PER HUNDRED re-mailing letters from home! Details, send self-addressed, stamped envelope. Associates, Box 309-T, Colonia, NJ 07067.

BUDGET HEARING
Mobeetie I.S.D. will have a Budget Hearing August 24, 1989 at 8:00 p.m. at the Mobeetie School Library.

NOTICE TO PUBLIC
Any erroneous reflection upon the character, standing or reputation of any person, firm or corporation, which may appear in the columns of this paper will be gladly corrected upon due notice being given to the editor personally at the office at 110 East Texas St., Wheeler, Texas.

The Wheeler Times does not knowingly accept false or fraudulent advertising or other advertising of an objectionable nature, is printed in full confidence in the presentation made. Readers will confer a favor if they will promptly report any failure on the part of the advertiser to make good any misrepresentation in our advertisements.

After Hours Video 111 W. Texas Wheeler Phone: 826-3612
Hours: Mon. - Sat.: 1 p.m. - 9 p.m. Sun.: 1 p.m. - 5 p.m.

1. Fly II	4. True Believer
2. Tequila Sunrise	5. Who's Harry Crumb
3. Mississippi Burning	6. New Spanish Movies

NINTENDO TAPES

1. Ninja Gaiden	3. Anticipation
2. Wheel of Fortune	4. Castlevania II

Now Your Hometown WATKINS Dealer
We Appreciate Your Business!

MEMBER 1989
TEXAS PRESS ASSOCIATION

THE BUSINESS DIRECTORY

THE WHEELER TIMES
P.O. Box 1080
Phone: 826-3123

Entered as second-class matter December 18, 1933, at the Post Office at Wheeler, Texas 79096, under the act March 3, 1879.

Louis C. Stas, Owner and Publisher

SUBSCRIPTION RATES:
Wheeler County . . . \$13.50 Outside County . . . \$15.00

FARM BUREAU TEXAS
TEXAS FARM BUREAU
Insurance Companies
Gary Alston Agency Manager
Gary Ware Agent
Phone: 806/826-3563

AA MEETING
Alcoholics Anonymous meets at 8:00 p.m. in the Commissioners Court Room of Wheeler Co. Courthouse on Thursday of each week.

Wheeler Lodge No. 1099
A. F. & A. M.
MONDAY
7:30 P.M.
J. M. Montgomery, Sec'y.
Box 675
Members Urged To Attend.
Visitors Welcome.

GUARANTEED AUTO GLASS INSTALLATION & Body Repair
CROSS CAR CENTER
Phone: 826-5515
Wheeler, Texas

WHEELER REDI-MIX
REDI-MIX CONCRETE SAND
Washed Gravel—All Sizes
Office Hours: 7:30 to 5:00
Phone 806-826-3223

PAUL'S REAL ESTATE
Houses or Land
Paul Topper
200 S. Canadian St.
Wheeler, Tx.

CITY DUMP GROUND HOURS
Monday, Tuesday
Wednesday, Thursday,
Friday, Saturday
8:30 A.M. til 5:30 P.M.

ESTATE OF ETHEL LEE AHLER, DECEASED IN THE COUNTY COURT OF WHEELER COUNTY, TEXAS

To: Sheriff or any constable within Wheeler County, Texas:

You are hereby commanded that by making publication of this citation in a newspaper of general circulation in Wheeler County, Texas, once ten (10) days before the date of hearing on the application to Determine Heirship filed by DOLORES PENDLETON, E. KENNETH ADLER, and EMILY FARMER, the hearing to be held in the Probate Court at the County Courthouse in Wheeler County, Texas, at 10:00 o'clock a.m., on the 21 day of August, 1989, you summon all persons interested, any unknown heirs, and heirs suffering legal disability of the Estate of ETHEL LEE AHLER, Deceased, to be and appear in Probate Court on the date and at the time stated above, to show cause, if any they have, why this court should not determine and declare the heirs of ETHEL LEE AHLER, Deceased, according to the application filed herein on the 4 day of August, 1989. You shall produce this

writ before the Probate Court on the 21 day of August, 1989, along with your return thereon, showing how and when you have executed the same.

Given under my signature and seal of the court in the City of Wheeler, Wheeler County, Texas, on the 4 day of August, 1989.

Margaret Dorman
Clerk, Wheeler County Court

PUBLIC NOTICE

The Wheeler Independent School District will hold the 1989-90 Budget Hearing on August 22, 1989, at 6:30 p.m. in the school board room at 101 E. 2nd St. in the school business office. The 1989 Tax Rate will also be set at this time. All interested patrons are invited to attend.

BRISCOE INDEPENDENT SCHOOL DISTRICT

The Board of Trustees will hold a Public Hearing August 21, 1989, at 7:00 p.m. at the Superintendent's office for the purpose of adopting the budget for the 1989-90 school year.

LEGAL NOTICE

The Kelton I.S.D. Board of Education will conduct a FY 1989-90 Budget Hearing August 14, 1989, at 8:30 p.m. in the Kelton School Building, Kelton, Texas.

BUTLER LOCKER PLANT
We specialize in custom slaughtering and processing.
BEEF—19c lb. (dressed weight)
PORK—26c lb. (dressed weight)
Phone: 806/447-5660
1303 8th St. Wellington

Wheeler Fire Department July Report
The Wheeler Volunteer Fire Department had one rescue, two grass fires, one vehicle fire, and one gasoline fire. The rescue occurred on the west edge of Wheeler about 1:21 a.m., July 5. This accident involved 2 vehicles, one pickup and one tractor trailer. This accident took the life of one man and one was treated for minor injuries at Parkview Hospital. The driver of the truck was unhurt. There were 15 members and 2 junior firemen present at this accident. The vehicle fire occurred on the morning of July 11, at 6:00 a.m. There were 14 members present. One of the two grass fires occurred on the night of July 12, at 10:20 p.m. in which Mobeetie called us for help. There were 14 members and 1 junior present at this fire. The other fire occurred about four miles west, half mile north of Wheeler at 4:55 p.m. There were 14 members at this fire.
On the 22 of July at 8:15 p.m. there was two 5 gallon cans of gas on fire at Taylor Petroleum, the fire was out when we arrived at the scene, by the help of a citizen.
Just remember when burning (trash, grass, etc.) be very careful and if it gets out of control call your local fire department, don't try to fight the fire yourself you could set try to fight

Adams Rentals
Call or See JIMMY ADAMS, Wheeler
After 6:00 P.M.

- NEW LISTINGS •

- 1—3 bedroom house
- 2—1 Bedroom houses
- 1—Efficiency Apt.
- 1—2 Bed Apt. (built-ins)

DEPOSIT REQUIRED ON ALL RENTALS

Calderon Construction
Carpentry, Concrete, Masonry, Stucco, Roofing, Painting, Drywall
FREE ESTIMATES
All Work Guaranteed
18 Years Experience
References Upon Request
Call 826-3639 after 5:30 P.M.

Glen's Barber Shop
Licensed Barber
Darrell Lewis Phone: 826-3794
111 W. Texas
Open 8:30 a.m. to 5:30 p.m.
Monday thru Saturday

Wheeler I.S.D. From Page 1
SPECIAL MEETING
July 28, 1989
A special meeting of the Wheeler ISD Board of Trustees was held at 6:00 p.m. All members were present. Guests included Becky Hardcastle, Nina Walker, Donna Walser.
The Board went into Executive Session under Article 6252 Sec 17 2A of VCS at 6:20 p.m.
The Board returned to open session at 7:58 p.m.
1. Motion by Mrs. Hennard, seconded by Mr. Morrison to offer Glyndol Holland a 2 year contract, \$45,000.00 negotiable with moving expense up to \$1,000.00 negotiable. Motion carried unanimously.
The meeting adjourned at 8:05 p.m.
ing and attended the Country Squire Dinner Theatre. They saw the show, "Deadwood Dick."
Elizabeth and Lanny Atchley, Judd and Katina of Lefors, visited Elizabeth's mother, Elva Wood, over the weekend.
Steve Guthrie of Canadian spent Tuesday night with us. He comes seldom so we are always glad to see him.
The bagpipe is an old instrument. It is spoken of in the Old Testament and it was used by the Egyptians, Greeks and Romans.

Here & There

By Laura Guthrie
Age sits with decent grace upon his visage, and worthily becomes his silver locks, who wears the marks of many years well spent, of virtue, truth well tried, and wise experience.
—Rowe
Mr. Ed, of our community, has finished his work on this earth and has been taken from it. We will miss him. He loved living—even at 102 years. He was a favorite with staff and residents at the Care Center. Everybody admired Mr. Ed.
Steve and Christie Patterson and their small twins visited with his parents, Shirley and Earl Jolly, and other relatives on the weekend. They attended the Baptist Church Sunday morning and rendered a vocal duet for the service.
Helen Sabbe, Doris Hays, Opal Davidson, Myrtle Davidson and Elva Wood drove to Amarillo Friday even-

Court Records



NOTICE OF PUBLIC HEARING ON TAX INCREASE

The Allison Independent School District will hold a public hearing on a proposal to increase total tax revenues from properties on the tax roll in 1988 by 43.904 percent. Your individual taxes may increase at a greater or lesser rate, or even decrease, depending on the change in the taxable value of your property in relation to the change in taxable value of all other properties.

The public hearing will be held on August 14, 1989 at 7:00 p.m. at the Allison Independent School District cafeteria.

FOR the proposal: Terry Grayson, Vance Boydston, Keith Boydston, Cleatus Greene, Kenneth Keys, Joe Rucker, and Winston Rainey

AGAINST the proposal:

PRESENT and not voting:

ABSENT:

The statement above shows the percentage increase the proposed rate represents over the effective tax rate that the unit published on August 3, 1989. The following table compares taxes on an average home in this taxing unit last year to taxes proposed on the average home this year. Again, your individual taxes may be higher or lower, depending on the taxable value of your property.

	Last Year	This Year
Average home value	\$24,038	\$24,558
General exemptions available (amount available on the average home, not including senior citizen's or disabled person's exemptions)	5,000	5,000
Average taxable value	\$19,038	\$19,558
Tax rate	\$.42/100	\$.42/100
Tax	\$79.96	\$82.14

Under this proposal taxes on the average home would increase by \$2.18 or 2.726 percent compared with last year's taxes.

Comparing tax rates without adjusting for changes in property value, the tax rate would remain the same as last year's rate per \$100 of taxable value. These tax rate figures are not adjusted for changes in the taxable value of property.

List of instruments filed in Wheeler County Clerk's office for the week of July 28, thru August 2, 1989

JULY 28, 1989

ROL—Kerr-McGee Corp. to Grace Copeland Lee et vir 7-13-89 See Instrument

MD—Doris Wickersham to Doris F. Wickersham Revocable Trust 7-25-89 N/2 SE/4 Sec 3 Blk A-4

MD—Doris Wickersham to Doris F. Wickersham Revocable Trust 7-25-89 Sec 8 Blk RE

DT—Jimmy D. Selby, Jr. et al to Bobby Carroll Selby et al 1-1-89

D—Bobby Carroll Selby et al to Jimmy D. Selby, Jr. 1-1-89 W/2 Sec 72 Blk M-1

A OF JUDG—White House Lumber et al to Howard Evans 7-25-89

A OF JUDG—White House Lumber et al to Tim Wilson 7-25-89

AOL—Martin Exploration Management Corp. to Martin Exploration Management Co. 7-21-89 Pt Secs 85 & 114 Blk 23

ASSIGN—Peter Paul Petroleum Co. et al to Posse Petroleum LTD. 7-20-89 See Instrument

D—Rex R. Miller to Garland Cavitt 5-15-89 Lots 2, 3 Blk 6 Allison

JULY 31, 1989

MD—Plains/Anadarko-A Limited Partnership to Plains Resources, Inc. 7-19-89 Sec 43, 37 Blk A-8 S/2 Sec 31 N/2 Sec 30 Blk A-7

A OF JUDG—Questa Energy Corp. to Panhandle Drilling Co. et al 7-26-89

DT—Gifford Operating Co. to Metropolitan National Bank ----- See Instrument

AOL—American Gas & Oil Investors et al to First Reserve Resources, Inc. 6-30-89 See Instrument

RDT—Olney Savings & Loan Association et al to Rubye Balthrope 4-26-89

AUGUST 1, 1989

DT—Charles M. Lockhart et ux to First National Bank in Wheeler 7-31-89 S/2 Sec 48 Blk A-4

D—Goldome Credit Corp. et al to N & H Management et al 7-26-89 See Instrument

D—Lawrence W. Moore et ux to Kurt Gilbert et ux 7-19-89 Lot 10 Blk 5 Mont-Lew Add Shamrock

DT—Kurt Gilbert et ux to Western National Bank of Amarillo Texas 7-19-89 Lot 10 Blk 5 Mont-Lew Add Shamrock

RDT—First Bank & Trust Shamrock

Texas et al to Lawrence W. Moore et ux 7-14-89 Lot 10 Blk 5 Mont-Lew Add Shamrock

TDT—Western National Bank of Amarillo Texas to Fleet Mortgage Corp. 7-28-89 Lot 10 Blk 5 Mont-Lew Add Shamrock

D—Marvin Dale Barker to Achsa Blake Brothers 7-25-89 1/4 Int. SW/4 Sec 8 Blk A-8

D—Kay Page to Achsa Blake Brothers 7-18-89 1/4 Int. SW/4 Sec 8 Blk A-8

AUGUST 2, 1989

D—J.W. Fields Oil Co. to Damor Pump & Supply, Inc. 0-00-89 Pt Lots 4 & 5 Blk 3 Schlegel Add Shamrock

AOL—Barker Production Co. et al to B.D. Galmor 0-00-89 See Instrument

AOL—Barker Production Co. et al to B.D. Galmor 11-1-88 SW/4 Sec 53 Blk 13

DT—Stephen O'Gorman et ux to Pacesetter Products, Inc. ----- Sec 17 Blk 6 M/L Add Shamrock

D—United States of America to Richard Keys et ux 7-21-89 Bld. Lot 12 Outlot 1 Original Town Shamrock

DT—Richard Keys et ux to United States of America 8-1-89 Bld. Lot 12 Outlot 1 Original Town Shamrock

MML—Fred Martin Goad et ux to James Sabbe Construction 7-26-89 Pt Lot 4 & all S & 6 Blk 2 Risner Add Wheeler

TMML—James Sabbe Construction to W. A. Goad, Jr. 7-26-89 N/2 Lot 4 & all S&6 Blk 2 Risner Add Wheeler

CD—Wheeler Community Cemetery Association to J. E. Hubbard et ux 8-2-89 SE/4 N/2 Sec 3 Blk J-8 1st Add Wheeler

To the Editor
The Wheeler Times

Dear Sir:

I have been receiving the "Times" for some time now and want you to know how much I enjoy reading the "Ain't It The Truth" column. Don't print another issue without it please. I realize Ole Ab is kind of windy at times but he's full of common sense and that's what the world seems to be short of these days. I feel like I'm at the Dairy Queen drinking coffee with all the Wheeler folks each week when the paper comes. Thanks. We'll see all you folks some time.

Ab's Old Fat Cousin,
Mck Jolly

Listen to...
KPDR-FM, 90.5
Wheeler, Texas

Wheeler Independent School District Policy, Concerning Non-Discrimination In Vocational Education Programs
September 1, 1989

Wheeler Independent School District offers vocational programs in Vocational Agricultural, Vocational Homemaking, and Vocational Co-op.

It is the policy of Wheeler Independent School District not to discriminate on the basis of sex, handicap, race, color, and national origin in its educational and vocational programs, activities, or employment as required by Title IX, Section 504 and Title VI.

Wheeler Independent School District will take steps to assure that lack of English language skills will not be a barrier to admission and participation in all educational and vocational programs.

For information about your rights or grievance procedures, contact the Title IX Coordinator, Glyndol Holland at Box 1010, 806-826-5241, or the Section 504 Coordinator, Glyndol Holland, at Box 1010, 806-826-5241.

1989 Property Tax Rates in Wheeler Independent School District

This notice concerns 1989 property tax rates for Wheeler Independent School District. It presents information about three tax rates. Last year's tax rate is the actual rate the taxing unit used to determine property taxes last year. This year's effective tax rate would impose the same total taxes as last year if you compare properties taxed in both years. This year's rollback tax rate is the highest tax rate the taxing unit can set before taxpayers can start tax rollback procedures. In each case these rates are found by dividing the total amount of taxes by the tax base (the total value of taxable property) with adjustments as required by state law. The rates are given per \$100 of property value.

Last year's tax rate:	
Last year's operating taxes	\$ 985,974
+ Last year's debt taxes	\$ 54,776
= Last year's total taxes	\$ 1,040,750
+ Last year's tax base	\$ 109,552,667
= Last year's total tax rate	\$.95000/\$100

This year's effective tax rate:	
Last year's adjusted taxes (after subtracting taxes on lost property)	\$ 1,037,553
+ This year's adjusted tax base	\$ 104,325,365
= This year's effective tax rate	\$.99453/\$100
* 1.03 = maximum rate unless unit publishes notices and holds hearing	\$ 1.02437/\$100

This year's rollback tax rate:	
Last year's adjusted operating taxes (after subtracting taxes on lost property)	\$ 982,944
+ This year's adjusted tax base	\$ 104,325,365
= This year's effective operating tax rate	\$.94219/\$100
* 1.08 = this year's maximum operating rate	\$ 1.01756/\$100
+ This year's debt rate	\$.07985/\$100
= This year's rollback rate	\$ 1.09741/\$100
+ Rate to recoup lost state funds	\$ -0-/\$100
= A. Rollback rate	\$ 1.09741/\$100
B. Rate that would result in maximum state funds	\$ -0-/\$100
Rollback Rate (greater of A or B)	\$ 1.09741/\$100

SCHEDULE A: Unencumbered Fund Balances

The following balances will probably be left in the unit's property tax accounts at the end of the fiscal year. These balances are not encumbered by a corresponding debt obligation.

Type of Property Tax Fund	Balance
Interest and Sinking Fund	\$17,571.00

SCHEDULE B: 1989 Debt Service

The unit plans to pay the following amounts for long-term debts that are secured by property taxes. These amounts will be paid from property tax revenues (or additional sales tax revenues, if applicable).

Description of Debt	Principal or Contract Payment to be Paid	Interest to be Paid	Other Amounts to be Paid	Total Payment
HTrust Austin	\$40,000.00	\$ 1,550.00	\$66.94	\$41,616.94
NCHB Texas	40,000.00	15,021.50		55,021.50

Total required for 1989 debt service	\$96,638.44
- Amount (if any) paid from funds listed in Schedule A	-0-
- Excess collections last year	17,571.00
= Total to be paid from taxes in 1989	79,067.00
+ Amount added in anticipation that the unit will collect only 94% of its taxes in 1989	5,047.00
= Total Debt Service Levy	84,114.00

NAME OF PERSON PREPARING THIS NOTICE: JAMES L. MCCARLEY
TITLE: TAX ASSESSOR
DATE PREPARED: AUGUST 7, 1989

1989 Property Tax Rates in BRISCOE INDEPENDENT SCHOOL DISTRICT

This notice concerns 1989 property tax rates for BRISCOE I.S.D. It presents information about three tax rates. Last year's tax rate is the actual rate the taxing unit used to determine property taxes last year. This year's effective tax rate would impose the same total taxes as last year if you compare properties taxed in both years. This year's rollback tax rate is the highest tax rate the taxing unit can set before taxpayers can start tax rollback procedures. In each case these rates are found by dividing the total amount of taxes by the tax base (the total value of taxable property) with adjustments as required by state law. The rates are given per \$100 of property value.

Last year's tax rate:	
Last year's operating taxes	\$ 743,919.
+ Last year's debt taxes	\$ 2,600.
= Last year's total taxes	\$ 746,519.
+ Last year's tax base	\$ 156,097,183.
= Last year's total tax rate	\$.478239 /\$100

This year's effective tax rate:	
Last year's adjusted taxes (after subtracting taxes on lost property)	\$ 746,519.
+ This year's adjusted tax base (after subtracting taxes on new property)	\$ 158,016,135.
= This year's effective tax rate	\$.47243 /\$100

This year's rollback tax rate:	
Last year's adjusted operating taxes (after subtracting taxes on lost property)	\$ 743,926.
+ This year's adjusted tax base	\$ 158,016,135.
= This year's effective operating rate	\$.47079 /\$100
+ 1.08 = this year's maximum operating rate	\$.50845 /\$100
= This year's debt rate	\$.001578 /\$100
= This year's rollback rate	\$.510028 /\$100

SCHEDULE A: Unencumbered Fund Balances

The following balances will probably be left in the unit's property tax accounts at the end of the fiscal year. These balances are not encumbered by a corresponding debt obligation.

Type of Property Tax Fund	Balance
MAINTENANCE & OPERATIONS	\$136,880.00

SCHEDULE B: 1989 Debt Service

The unit plans to pay the following amounts for long term debts that are secured by property taxes. These amounts will be paid from property tax revenues (or additional sales tax revenues, if applicable).

Description of Debt	Principal or Contract Payment to be Paid	Interest to be Paid	Other Amounts to be Paid	Total Payment
	2,000.	250.	220.	2470.00

Total required for 1989 debt service	2470.
- Amount (if any) paid from funds listed in Schedule A	-0-
- Excess collections last year	-0-
= Total to be paid from taxes in 1989	2470.
+ Amount added in anticipation that the unit will collect only % of its taxes in 1989	25.
= Total Debt Service Levy	2495.

NAME OF PERSON PREPARING THIS NOTICE: JAMES A. MCCARLEY
TITLE: TAX ASSESSOR-COLLECTOR
DATE PREPARED: AUGUST 4, 1989

Mable stayed at home this week, Mary Ann got home ok her grandkids had grew a lot.
Bill and Nita Ault were going to eat dinner with Mable this Saturday.
Christina Ogle is going to Denton College the 17 of August. She is working in Canadian at drug store now.

Mary Hudson ate dinner Wednesday with Mable Parker. Mable said Mary's leg was better. Mary will soon be 89, Mable said.
Eunice Edwards had her oldest son Kenneth and wife and Kenneth's daughter and husband and their son.

Eunice said they all were cooking and cleaning. I know what she means. I feel so bad just sitting and letting all rest cook and clean.
Correction, Eunice visitors last week were her oldest son Kenneth's daughter and family.
Darv Atherton ate supper with Eunice here of late, while he bails hay there.



Mattie had visitors from Old Mexico (Guao, Haio) sounded like. A daughter and child of preacher Cox that used to preach at Briscoe. Think her husband was with them. They have been in Old Mexico 11 years.
If you were born before 1945, cigarette smoking was fashionable, grass was mowed, coke was a cold drink and pot was something you cooked in. Rock music was grandma's lullaby. Aids were helpers in the principal's office. We made do with what we had, no wonder we are so confused and there is such a generation gap today. But we survived. What better reason to celebrate.
Tuesday, August 1, it is hot. My lilacs—everything wilted. Don't remember what we did when we did not have fans and air coolers. Oh yes, I hung wet towels over the windows for one thing and doors. Some summer it was so hot we had inch cracks in the ground. I was afraid they were going to spread till my baby chicks would fall into them.
Sheridan's mother, Nona, just called, 2 P.M. Tuesday, she said it was really hot there in Florida. She was 150 to 200 miles from the hurricane—so far.
Back there we slept outside a lot. There were not one mosquito around. They would eat us up now. We had 2 or 3 dogs we did not worry about snakes with those dogs sleeping close by. We were not afraid of anything might come up and around.
Saturday morning its fair could get hotter today now 10:30.
The cheerleaders are having softball tournament at Allison this Saturday, the Briscoe have gone.

HAYDON CHIROPRACTIC CLINIC
28th & Perryton Parkway Pampa, Texas
Phone 665-7261
Dr. Mark W. Ford, Jr. Dr. Louis Haydon

L. & F. REPAIR
ZENITH T.V.'S R.C.A. T.V.'S
SATELLITE ANTENNA SYSTEMS
FRANK E. COATES, OWNER
P.O. BOX 220 WHEELER, TEXAS 79096 PHONE 806/826-3241 110 W. OKLA. ST.

COMING MONDAY, JULY 24th
"Dale's Quick Cuts"
OPEN: 8:30 A.M. to 6:00 P.M. Monday through Friday
8:30 A.M. to 1:00 P.M. Saturday
Men's Cuts: \$5.00 Perms: \$20.00
Ladies Cut & Style: \$10.00
511 S. Canadian (Next to Post Office in Wheeler)
PHONE: 806-826-5970
By Appointment or Walk-Ins Welcome
Dale Bullock, Owner/Operator
Licensed 10 Years

WELCOME TO
FIRST UNITED METHODIST CHURCH
8TH AT MAIN - P.O. BOX 89
WHEELER, TEXAS 79096
Church (806) 826-3114 - Parsonage (806) 826-3079
Weldon Rives, Pastor
Sunday School 9:45 a.m.
Morning Worship 11:00 a.m.
Evening Worship 6:00 p.m.

40th wedding anniversary. They got to see all of their kids and grandkids of Truman and Bettie.
Irene said they got 2 inches of rain, no hail.
All of Elbert and Ruby Zybach's kids and grandkids and great grand were there Sunday, Beckie is doing fair, we wish for her a speedy recovery.
Ruby said they ate watermelons last night.
Ronny and Lisa Anderson and Chrystal and Adron from between Wheeler and Shamrock visited Doc and Lolene Wilhelm Sunday, they received 2 1/10 inches rain Sunday nite, at Doc's.
Bill Walker said he got over 2 inches rain Sunday nite.
Addie Swift visited Wanda Childress Thursday others there were Zedell Swift, Shannon Canwell and 2 children Devon and London.
Addie has a new great grand named Julia Ann she said she could remember her name, ok real easy.
I like adding names even tho I can't remember them or pronounce them.
Rosalie was going to take her news to the paper office this morning they probably had a reunion.
Essie Finsterwald and boys went to church yesterday they had dinner at the church 1st Sunday in the month, they came home, Jack and Doris Finsterwald came and visited.
Last Thursday Bettie Dobbs, Herbert's sister from Albuquerque visited Essie and boys she was on her way to

The 4-H club rodeo was at Wheeler last night Friday night.
We finally heard from Randy, I was fixing to turn his whereabouts over to F.B.I. or some law, he was just busy working, no time to write.
Clyde Vinson visited us Saturday, bought us some goodies.
We are fairly Saturday morning Colie is able to be up and walk some, he ate a few bites of breakfast, this morning is in pretty good mood.
Glen Elmore came Saturday to visit us. He brought us a big mess of peas.
Bob Markham came Tuesday he brought us some corn and pears, sure appreciate all this.
Hoyle visited Tuesday while they were going to Amarillo.
Zetha went home Friday Gene has been sick this week was not able to work Wednesday.
N. F. Young Jr., came Saturday evening, has gone home Saturday night, he said Mac and Una V. McGaughy and Bernice and Evan Davis visited them in Panhandle this week.
Leroy and Janice came this Sunday afternoon, they had to wait till the cloud checked and there was a smell over Amarillo, they thought lightning had struck something. They decided it was coming from oil fields.
Monday morning 7th we are wet, wet this morning, we really got a nice rain Sunday evening and Sunday nite till 1 or 2 o'clock, it sounded like it had gone on. Don't know how much we got yet.
Clarence and Irene Zybach went to Truman and Bettie Zybach at Sayre Sunday to help them celebrate their

visit another sister, Clara Holmes.
Essie said they got over three inches of rain Sunday nite, W.O.W. that was wonderful, they got little hail.
Did I say Roy Waters called, Willene is in the Pampa hospital hope she is better this Monday morning.
Fannie Bradstreet, Ruth Taylor, Rosalie Keelin, Joy Garrison, Roy and Nell Bradstreet and Sylvia Brown attended Graveside services at the Shamrock cemetery recently for their uncle, Less Bradstreet, of Apache Pass, Ariz. He was 100 and 7 months of age. He and his wife were vacationing in Ark. at the time of his death.
Rosalie Keelin had a good short visit in Wheeler Thursday evening with Ruth Taylor, Paula Helton and Coy and Betty Bradstreet of Foss, Ok. On Saturday morning Travis and Rosalie had a good visit via telephone with her sister Thelma and Wes Bailey of Dexter, N.M. They get the Wheeler Times. Thelma said she and Wes fight over who reads it first. (Now that should please the editor). They especially enjoy Ab's "Ain't it the Truth" and Vetola and the woman from Sweetwater and all the rest.
Travis and Rosalie visited Gene and family Monday. They had been to Foss lake for a week skiing, fishing and having a good time with relatives and friends. They also visited with Joey and family. Joey completed his years training Aug. 4th in Amarillo at T.S.T.L., where he took Transport Refrigeration.
Sunday visitors at the Keelin's home were Joey, Risa, Matt and a friend Matt Sullivan of Wheeler and Katrina Cullers and daughter Kayla of Darrouzett, Texas and Jimmy Keelin of Wheeler.

Listen to . . .
KPDR-FM, 90.5
Wheeler, Texas

Ain't It The Truth
By Ab Gunter

Fifty some years ago I was staying with my brother M.L. at a little town of Blocker, Texas. No need to look on the map for Blocker as there ain't none. The folks that lived there changed the name to Progress unbeknowning to Josh Blocker that the town was named after. I knew Mr. Blocker and Mr. Brooks who ran the little store there. Josh lived in a little dirt floored house just East of the store and would walk to Muleshoe every few days with a gunnysack picking up bottles such as Coke and Nehi ones to sell, for spending money.
Josh used to ride an old big wheel bicycle when he first came there but I never saw that as he had been there when there were buffalo there and just sort of wagon roads.
Josh wore a dark suit and a black hat that I thought had ever been in the cleaners but he tried to keep them neat and he wore rim glasses and I believe a watch and chain and he and Mr. Brooks would sit in front of the store in the evenings and a few of the other folks talking bout old timers or if the weather was bad they would be in the store playing dominoes using an old Magnolia sign for the table. It would have been fun if a feller had taken down all the things that were talked about back in them days as those gents had been there even during the Indian days and could tell you a bunch of history that wasn't recorded. Josh had given the land for the school there and laid out the town and I sort of feel he had been a surveyor or something and Mr. Brooks a sutler or store owner that sort of moved with the railroad. Mr. Brooks had merchandise that you just don't see anymore such as 8 gauge shotgun shells of brass and lantern and the like.
I wish that someone over in Bailey County would put up a little remembrance that would say that Progress, Texas had been Blocker at one time cause it was and apparently the man had an interest in the country and education of the children.
I used to work with a feller from Amarillo that wasn't interested in history and used to make light of me for my interest, apparently his only interest was in his own greed and his own ego but I figer if we don't keep up with the past we might not have much future, usually we learn by mistakes of others but the way I figer if you ain't ever made any mistakes you ain't done much.
We love you and see you next week.
Ab and Benita

1989 Property Tax Rates in Kelton Independent School District
This notice concerns 1989 property tax rates for Kelton I.S.D. It presents information about three tax rates. Last year's tax rate is the actual rate the taxing unit used to determine property taxes last year. This year's effective tax rate would impose the same total taxes as last year if you compare properties taxed in both years. This year's rollback tax rate is the highest tax rate the taxing unit can set before taxpayers can start tax rollback procedures. In each case these rates are found by dividing the total amount of taxes by the tax base (the total value of taxable property) with adjustments as required by state law. The rates are given per \$100 of property value.

Last year's tax rate:	
Last year's operating taxes	\$ 638,213.22
+ Last year's debt taxes	\$ -0-
= Last year's total taxes	\$ 638,213.22
+ Last year's tax base	\$ 98,058,420.00
= Last year's total tax rate	\$.65085 /\$100
This year's effective tax rate:	
Last year's adjusted taxes (after subtracting taxes on lost property)	\$ 638,148.14
+ This year's adjusted tax base (after subtracting taxes on new property)	\$ 100,354,305.00
= This year's effective tax rate	\$.63589 /\$100

A city that adopted the additional sales tax in a 1989 election must include the following lines:

- Sales tax adjustment rate	\$ /\$100
= Effective tax rate	\$ /\$100
x 1.03 = maximum rate unless unit publishes notices and holds hearing	\$.65496 /\$100

This year's rollback tax rate:	
Last year's adjusted operating taxes (after subtracting taxes on lost property)	\$ 638,148.14
+ This year's adjusted tax base	\$ 100,354,305.00
= This year's effective operating rate	\$.63589 /\$100
x 1.08 = this year's maximum operating rate	\$.68676 /\$100
+ This year's debt rate	\$ -0- /\$100
= This year's rollback rate	\$.68676 /\$100

A city that imposes the additional sales tax must include these lines, regardless of when it held the election:

- Sales tax adjustment rate	\$ /\$100
= Rollback tax rate	\$ /\$100

SCHEDULE A: Unencumbered Fund Balances
The following balances will probably be left in the unit's property tax accounts at the end of the fiscal year. These balances are not encumbered by a corresponding debt obligation.

Type of Property Tax Fund	Balance
General Fund	130,963.00

SCHEDULE B: 1989 Debt Service
The unit plans to pay the following amounts for long-term debts that are secured by property taxes. These amounts will be paid from property tax revenues (or additional sales tax revenues, if applicable).

Description of Debt	Principal or Contract Payment to be Paid	Interest to be Paid	Other Amounts to be Paid	Total Payment
Total required for 1989 debt service				
- Amount (if any) paid from funds listed in Schedule A			N/A	
- Excess collections last year			N/A	
= Total to be paid from taxes in 1989			N/A	
+ Amount added in anticipation that the unit will collect only % of its taxes in 1989			N/A	
= Total Debt Service Levy			N/A	

SCHEDULE C: Expected Revenue from Additional Sales Tax
(For counties and cities with additional 1/2 cent sales tax)
In calculating its effective and rollback tax rates, the unit estimated that it will receive \$ -0- in additional sales and use tax revenues.

This notice contains a summary of actual effective and rollback tax rate calculations. You can inspect a copy of the full calculations at Kelton I.S.D.
Name of person preparing this notice: James A. McCarty RPA, RTA
Title: CA
Date prepared: 8-8-89

1989 Property Tax Rates in CITY OF WHEELER
This notice concerns 1989 property tax rates for City of Wheeler. It presents information about three tax rates. Last year's tax rate is the actual rate the taxing unit used to determine property taxes last year. This year's effective tax rate would impose the same total taxes as last year if you compare properties taxed in both years. This year's rollback tax rate is the highest tax rate the taxing unit can set before taxpayers can start tax rollback procedure. In each case these rates are found by dividing the total amount of taxes by the tax base (the total value of taxable property) with adjustments as required by state law. The rates are given per \$100 of property value.

Last year's tax rate:	
Last year's operating taxes	\$ 115,738.00
+ Last year's debt taxes	\$ 38,579.00
= Last year's total taxes	\$ 154,317.00
+ Last year's tax base	\$ 27,073,128.00
= Last year's total tax rate	\$.5700 /\$100
This year's effective tax rate:	
Last year's adjusted taxes (after subtracting taxes on lost property)	\$ 154,317.00
+ This year's adjusted tax base (after subtracting taxes on new property)	\$ 26,888,872.00
= This year's effective tax rate	\$.57390 /\$100

A city that adopted the additional sales tax in a 1989 election must include the following lines:

- Sales tax adjustment rate	\$ -0- /\$100
= Effective tax rate	\$ -0- /\$100
x 1.03 = maximum rate unless unit publishes notices and holds hearing	\$.59112 /\$100

This year's rollback tax rate:	
Last year's adjusted operating taxes (after subtracting taxes on lost property)	\$ 123,453.00
+ This year's adjusted tax base	\$ 26,888,872.00
= This year's effective operating rate	\$.45912 /\$100
x 1.08 = this year's maximum operating rate	\$.49585 /\$100
+ This year's debt rate	\$.12679 /\$100
= This year's rollback rate	\$.62264 /\$100

A city that imposes the additional sales tax must include these lines, regardless of when it held the election:

- Sales tax adjustment rate	\$ -0- /\$100
= Rollback tax rate	\$ -0- /\$100

SCHEDULE A: Unencumbered Fund Balances
The following balances will probably be left in the unit's property tax accounts at the end of the fiscal year. These balances are not encumbered by a corresponding debt obligation.

Type of Property Tax Fund	Balance
Interest & Sinking	\$8,194.00

SCHEDULE B: 1989 Debt Service
The unit plans to pay the following amounts for long-term debts that are secured by property taxes. These amounts will be paid from property tax revenues (or additional sales tax revenues, if applicable).

Description of Debt	Principal or Contract Payment to be Paid	Interest to be Paid	Other Amounts to be Paid	Total Payment
General Obligation	\$30,000.00	\$9285.00	\$60.00	\$39,345.00
Total required for 1989 debt service				
- Amount (if any) paid from funds listed in Schedule A			-0-	
- Excess collections last year			\$8,194.00	
= Total to be paid from taxes in 1989			\$31,151.00	
+ Amount added in anticipation that the unit will collect only % of its taxes in 1989			\$3,461.00	
= Total Debt Service Levy			\$34,612.00	

SCHEDULE C: Expected Revenue from Additional Sales Tax
(For counties and cities with additional 1/2 cent sales tax)
In calculating its effective and rollback tax rates, the unit estimated that it will receive \$ -0- in additional sales and use tax revenues.

This notice contains a summary of actual effective and rollback tax rate calculations. You can inspect a copy of the full calculations at CITY OF WHEELER OFFICE.
Name of person preparing this notice: James A. McCarty
Title: Chief Appraiser Hemphill County
Date prepared: August 4, 1989

Appraisal From Page 1
Wars, The National Rifle Association, and the Smithsonian Institute. He is also a former Boy Scout Leader.
Schoenhals says he is looking forward to meeting the people who live and work within the boundaries of the Wheeler CAD. "I will do my best," he said, "to insure that all the taxpayers are treated as equally and fairly as possible."
Dr. Jack L. Rose
OPTOMETRIST
121 Main St.—Shamrock
Phone: 256-3203
Tues.: 9-5 Fri.: 2-5

Allison News

By Christine Gilmer

Lamentations 3, 41 and 58: Let us lift up our hearts with our hands unto God in the heavens. O Lord, thou hast pleaded the causes of my soul; thou has redeemed my life.

I am sorry I missed getting the Allison happenings in the "Times" last week. My son Jerry Gilmer came Sunday afternoon and stayed until Wednesday morning with me, it was so very good to have him. We did a lot of visiting even though we were busy. Kinda like the days when we were raising our family. We always worked together, played together and prayed together. Jerry painted the eaves of the house, window and door facings and the porches which took a little over two full days of work with scraping off old paint, caulking around the windows and doors and putting on primer looks much better. What would we do without good children. Guess there would be a way some way.

Those from Allison that attended the Oklahoma Camp meeting recently at Mustang, OK, was Pastor and Mrs. F.R. Johnson, Gwen Fielding and Garren, David and Becky Lucuis, Kendall and Tabitha, Bruce and Pearl Harrison, Louise Boydston, H.B. and Cheryl Dupont and Sabrina, Wanda Walker, Melissa, Melody, Jonathan and Justin and Ona Black. Hope I didn't miss any one. They reported a real good camp meeting.

Steve and Nina Walker visited Ed and Jennie Walker one day last week.

Edith Levitt visited Ona Black last Sunday afternoon.

Bruce and Pearl Harrison went to Elk City last Friday and from there they and Inez Townsley went to Woodward, OK, to a church service. They then came back to Elk City and spent the night returned home Saturday. Bruce and Pearl's dinner guest on Sunday was Wanda Walker, Melissa, Melody, Jonathan, and Justin, Vivian Wallace from Elk City, H.B. and Cheryl Dupont and Sabrina and Clifton and Louise Boydston.

Keith and Ann Boydston's last Sunday's dinner guest was Nellie Long and Thurlia Poindexter from Cheyenne, OK, and Sylvia Brown from Wheeler.

Tiffany Burrus from Canyon spent Saturday night with Natalie and attended church with her Sunday morning. Bret, Tiffany's brother, and her mother Cindy and Marki Stringer

visited awhile on Saturday.

Pastor and Mrs. F.R. Johnson spent the weekend at Midland where Pastor Johnson preached both services at the U.P. Church where Bro. Chapman is the pastor.

Bob Taylor, the son of Nat and Joy Taylor of New Braunfels, Texas and the grandson of Wilma Gilmer of Allison will be leaving from San Antonio, Texas Sunday, August 13th for Saudi, Arabia where he has a job as a mechanic to the King's plane there.

(Marginal Note) The credit for a nice garden that goes to the green thumb should go to elbow grease.

I guess they had a baseball tournament at the baseball field here last Saturday. There was some down there when I got up about seven thirty

Saturday morning and were still there when I went to bed at eleven o'clock Saturday night 103 degree temperature is pretty warm to be out playing ball or doing anything else.

This is such a nice morning here, cool and cloudy, and my rain gauge showed two inches of rain, heard Wheeler got over three. It was just what we needed.

Peggy Chandler's weekend guest was Marki Stringer from Temple, OK and Cindy Burrus, Tiffany and Bret from Canyon, TX.

Judy Cornell and Jamie Nelson and Ashley shopped at Amarillo last Tuesday. Thursday Judy and Julie Boydston, Amie and Greg went to the foot doctor at Weatherford, OK, and did some school shopping while there. Becky Zybach had back surgery

again Tuesday, August 1st at Oklahoma City and came home last Monday. This is Becky's third back surgery. We hope this is the one that fixed it right.

Bevard and Diane Dukes and their two oldest daughters attended the funeral of Dianne's uncle at Pampa last Monday.

Pete and Margaret Gilmer spent the last weekend of July in Amarillo with Rodney and Linda Ingersoll and Andrew and helped Rodney and Linda get new shingles put on their house.

Alan and Sheryl Lane, Laurie, Jimmy Alan, and J.W. were in Elk City last Sunday doing some shopping and they were also supper guest with Dewayne and Wanda Lane and family Sunday evening.

Edith Donaldson has been home for about two weeks. She is at her home through the day and spends the night at Bill and Kay Donaldson's.

Talk to George Parker Monday morning. Avis was gone to Pampa a



Page 8—Thursday, August 10, 1989

funeral. George didn't have any news, but said to put in the paper he was cold, was going to have to shut the door.

Monroe and Nadine Reynolds visited sister and husband Madaline and Hugh Terry at Miami, Texas last Sunday evening. Hugh is doing OK since her surgery.

Roy and Lanora Morse, Kyle Boydston and Jamie Green left Tuesday, August the first and went to Clayton, N. M. Then on Thursday Kevin Boydston and Roy Green went to Clayton also, Friday Vance and Caroline Boydston, Dick and Cletus Green went. They were all attending the Morse family reunion at the Rockledge ranch. They all returned home Sunday evening except Lanora, Kyle

and Jamie and they spent Sunday night at Dalhart with Lanora's sister and husband, Ray and Anna Ruppanner they came on home Monday morning.

Last Friday Susan Finney from Pampa visited her mother Ruby Craig and Ruby, Susan and Tanner visited Wilma Gilmer and they also visited me for a while. Good to have them. Tanner had spent Wednesday and Thursday night with his Me-Ma Ruby, Jerry, Susan husband, came later Friday evening and he and Susan were supper guest at Ruby's and then they took Ruby's car home with them. Jerry is going to do some work on it. They left one of their cars to drive until they get hers back to her.



MELANIE REEVES

Licensed Cosmetologist

Haircut \$5.00
Perms \$20.00
Ladies' Cut & Style \$10.00
French Braid \$3.00
826-5970

DALE'S QUICK CUTS
(Next to Post Office)

OPEN: Mon. - Fri. 8:30 - 6:00
Sat.: 8:30 - 1:00

FREE ESTIMATES

24 HR. WRECKER SERVICE

McCAIN'S AUTO BODY

117 W. OKLAHOMA BOX 65 WHEELER, TX 79096
PH. 806/826-3433

INSURANCE CLAIMS

OWNER: BOB MCCAIN

JENNINGS PLUMBING & ELECTRIC SERVICE

Owner: Larry Jennings
"A flush is better than a full house."
Roto-Rooter Service—Repairs—Remodeling
Phone: 806/826-3153 12 Years Experience P.O. Box 423
1110 South Main St. Reasonable Rates Wheeler, Tx. 79096

GERMANIA FARM MUTUAL Aid Association

REASONABLE, SOUND PROTECTION for your home and other property,
Rita Pearson: 375-2379
David Pearson: 375-2379 Office: 845-1002

Mobeetie News

By Melba Corcoran

Dale and Melba Corcoran went to Amarillo on business Tues. They visited at High Plains Baptist Hospital with Ella Trout, Judy Watts and Carolyn McGee.

Mark Thompson was transferred Monday from Canadian Hemphill Hospital to Coronado Community Hospital in Pampa for test and treatment. He was released Wed. Glad he is home.

WHEELER PUBLIC LIBRARY LIBRARY NEWS

We have several new books in for the young children, as well as teenagers. A list of some for young children are: Seven Ravens, Thaddeus Jones and The Dragon, Jungle Day, See You Tomorrow, Charles; Green Darter; Hector, The Accordion-Nosed Dog.

Also, some for the teenagers are: Flambarbs; Flambarbs Divided; Free Rein; Karen's Sister; Vanishing Wild Life of Latin America; The Kidnapping of Mr. Huey.

We also have several new Caldecott and Newbery Award books. Betty Howard has worked very hard to try to bring our award books up to date. Some of the books are award books from the 1920's.

The Caldecott's are for young children and are filled with pretty pictures. The Newbery's are for teenagers. We have special displays for these award winners.

Some of the Caldecott's are: Song of Swallows; St. George and the Dragon; Many Moons, The Egg Tree, Frog Went a Courtin', May I Bring a Friend? Some of the Newbery's are: Dicey's Song, Thimble Summer, Lincoln, A Photobiography, Story of Mankind.

We invite you to come to your library and get acquainted with us, and see the many books we have. If we do not have the book you want, we will be happy to get it for you from inter-library loan.

Noami Speck, Librarian

WHEELER Senior Citizens

The Wheeler Senior Citizens met Monday night, August 7th, for a covered dish supper. Twenty four were present. Fannie Mae Bradstreet baked the birthday cake. Everyone sang "Happy Birthday" to Doris Finsterwald and Fannie Mae Bradstreet. Jack Hays gave the blessing.

The Pres. Helen Sabbe, called the meeting to order. The secretary, Elva Wood, read the minutes of the last meeting. Names were drawn for the door prizes. Alice Bell Helton and Laurence Lancaster were the lucky ones. The program was songs by Claudy and Ina Mae Brotherton. Their daughter Doris Finsterwald played the piano. After the program 88 and dominoes were played.

Those present were: Eli and Helen Sabbe, Jack and Doris Hays, Tom and Alice Bell Helton, Claudy and Ina Mae Brotherton, Elva Wood, Sally Harris, Nellie Horton, Fannie Mae Bradstreet, Jewell Holloman, Mary Finsterwald, Opal Davidson, Grace Burke, Ruth Hoggard, Oleta Jones, Birdie Hudson, Amelia Sims, Paul Shumate, B.K. Barham, Laurence Lancaster and one guest, Doris Finsterwald.

WHEELER POTLUCK Softball Tourney

Wheeler Softball League is sponsoring a co-ed tournament Aug. 10. Haven't played softball in years? Doesn't matter. Not in shape? Doesn't matter! Like the game, but think you're not very good? DOESN'T MATTER! This tournament is FUN, FUN, FUN—played with a 16 inch softball.

Listen to...
KPDR-FM, 90.5
Wheeler, Texas

WHEELER PLUMBING

511 S. Cheyenne

New Construction
Remodel
Repair
Sewer Service

Phone: 826-5907

FREE ESTIMATES
MAX McQUEEN
P.O. Box 754—Wheeler, Texas

HYLAND'S PHARMACY

110 W. TEXAS - WHEELER 826-5561



Full Value DRUG STORES

MEAD TRAPPER KEEPER WITH PORTFOLIO 36 SHEET NOTEPAD & PENCIL CLIP **4.59**

MEAD THEMES BOOKS WITH OR WITHOUT RULE 200 SHEET PACK **69¢**

MEAD PORTFOLIOS PICTURE & PROGRESS ASSIST COVER DESIGNS PROTECTS ORGANIZES **5/\$1**

ELMER'S GLUE REGULAR OR SCHOOL 4 OZ GUESTS 27 OZ **2/97¢**

MEAD POKETS and PRONGS folio

ELMER'S GLUEALL

ELMER'S SCHOOL GLUE

FILLER PAPER 200 SHEET PACK **69¢**

PAPER MATE WRITE BROS. BALL POINTS MEDIUM POINT BLACK OR BLUE 10'S **77¢**

PAPER MATE WRITE BROS. BALL POINTS MEDIUM POINT BLACK OR BLUE 10'S **77¢**

CRAYOLA CRAYONS BOX OF 16 **59¢**

SHARP CALCULATOR SECAR OR BATTERY 8 DIGIT KEY MEMORY A 7% KEY **3.99**

MEAD NOTEBOOK PAPER **200**

MEAD PAPER MATE WRITE BROS. 10 REIS

MEAD 70 Sheets Wirebound Notebook

MEAD 3 Sheets Wirebound Notebook

MEAD CRAYOLA CRAYONS

MEAD SHARP CALCULATOR

Available at...
HYLAND'S Pharmacy
110 W. Texas Wheeler, Texas

We accept coupons on all merchandise!

Double Coupon Value EVERYDAY!

P.C.S., Blue Cross & Blue Shield & Medimet
Prescription Cards Welcome!
Free prescription print outs on 1988 prescriptions.

KLEENEX TISSUE BOX OF 250 **1.39**

Jubilation BRASS

THE NATION'S LEADING CLINIC & CONVENTION ORCHESTRA

Featured throughout the United States and Europe

DOYLE COMBS, Director

In Your Area...
FIRST BAPTIST CHURCH
Thursday, August 10th
8:00 p.m.
FREE ADMISSION — A love offering will be given.