

THE WHEELER TIMES

(USPS-681-960)
VOLUME 73, NUMBER 35

THURSDAY, AUGUST 13, 2009

SINGLE COPY **50c**

"Wheeler: town of friendship and pride."

CWE CHAT WITH EDITOR

By Louis C. Stas

The start of schools in the area is just around the corner.

Wheeler's football players and cross-country runners are out each day getting ready for the upcoming season. The youngsters are dedicated to be out in this heat.

The Kelton Fireman's Ball is set for Saturday, August 22. Mark the date on your calendar and plan to be in attendance.

Wheeler Chamber of Commerce Rodeo is set for Saturday, August 29. Another date to be marked on the calendar. This will be held at the Wheeler Rodeo Arena.

And Mobeetie's Labor Day activities will be here before you know it—Sept 5 and 7. This, again, will be a parade on Saturday morning; dance Saturday night with Kasey Berry and Texas Live Mosquitoes and the barbecue w/entertainment on Monday.

Where has the year gone?

How did you like the rain on Sunday evening? Such a threatening cloud to produce only 0.01" for Wheeler.

It did make it nice to be out mowing in the early evening.

Had a call for tomatoes. I was told that several gardeners' tomatoes did not produce this year. If you have tomatoes, give me a call.

I have not been to the farmers' (Continued Page 5)

STORM REPORT

As Reported by... Stormie Meriwether, Kindergarten Graduate

The bead is the best! I was on the edge of the water getting sea shells. A big wave came and covered my head. I fell right in the ocean. I was like a surfer. The waves just splashed me to the shore.

Next we went to the zoo (San Diego). I liked the polar bear and the peacock best.

Now I am home! I am so happy to see my dogs, cats and friends. Now I want to go to the city to see Seth. That's it.

Fireman's Ball Set In Kelton Aug. 22

The Kelton Fire Department will be holding their Second Annual Fireman's Ball on Saturday, August 22, 2009. The event begins at 6 p.m. Admission will be \$10 per person.

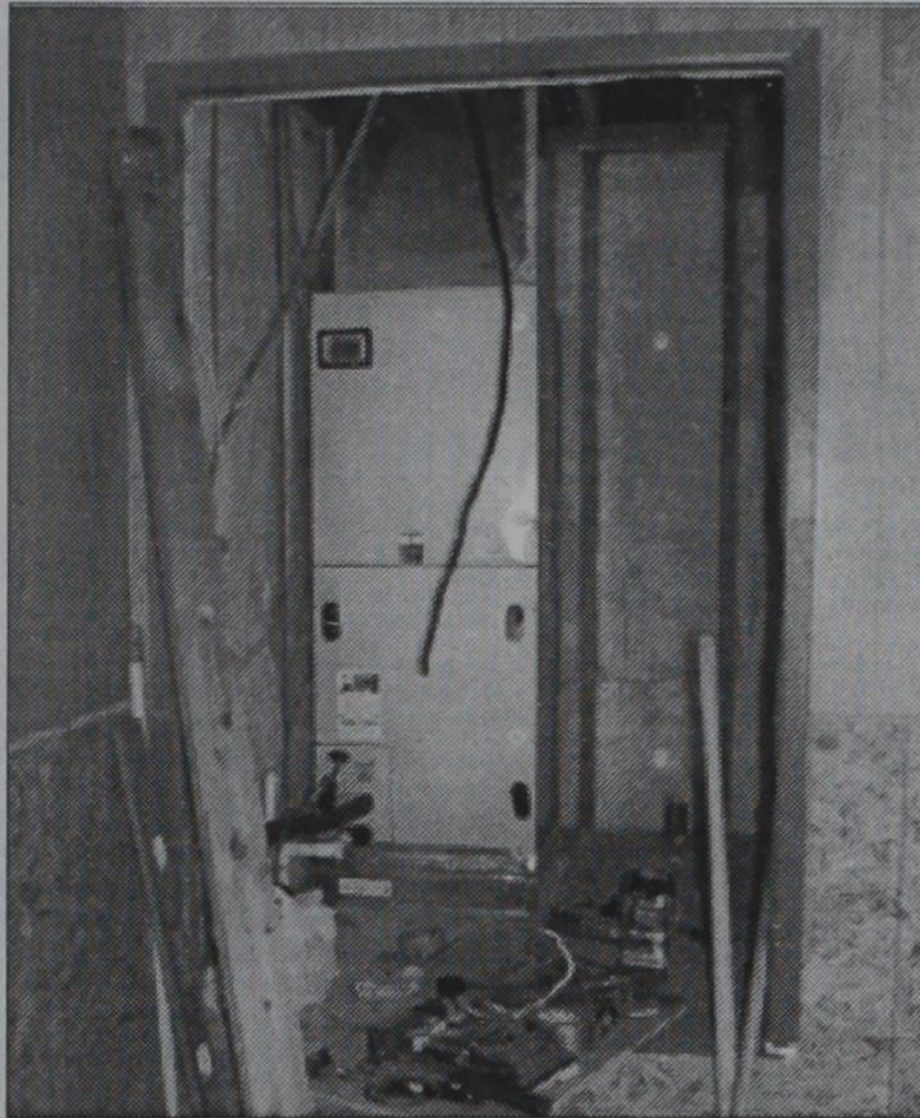
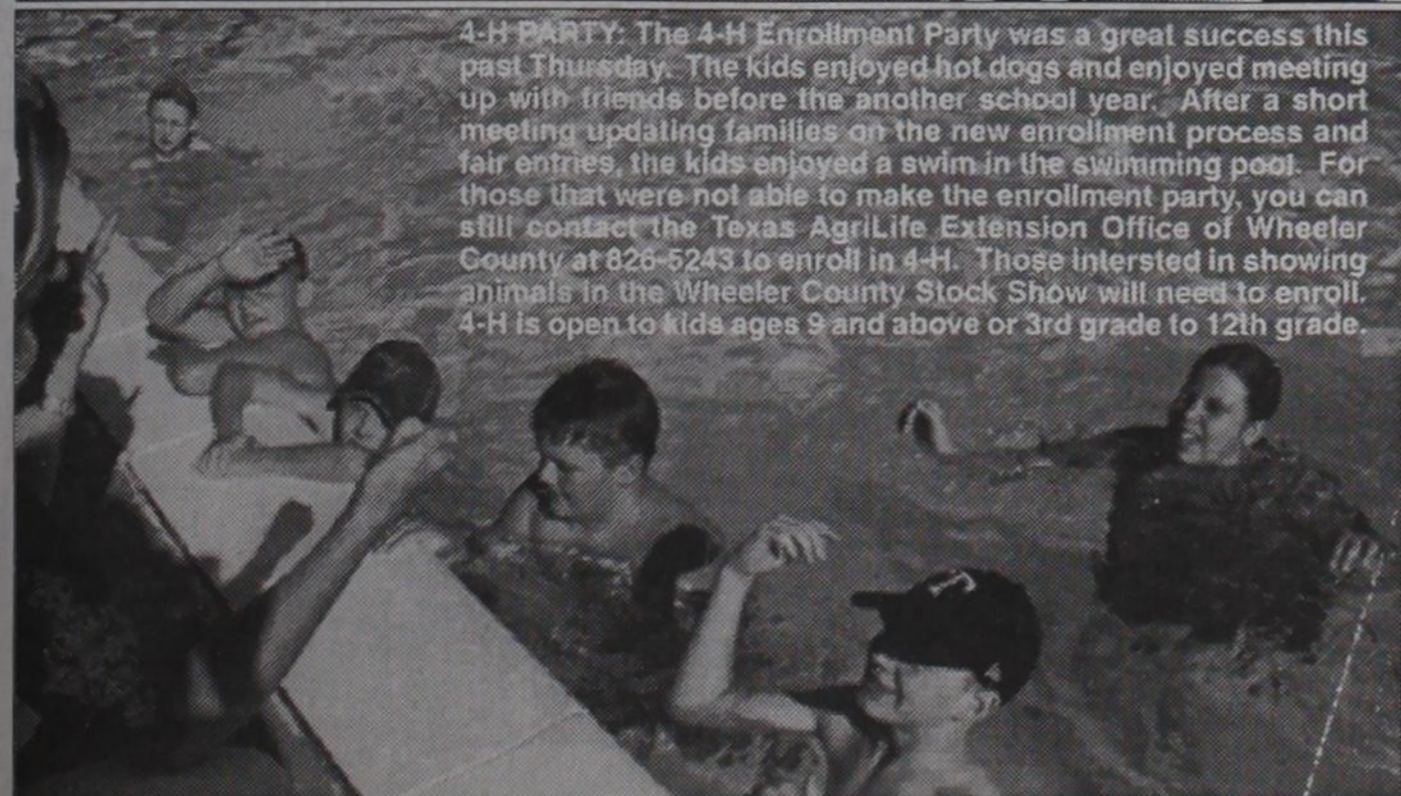
Location will be nine miles east of Wheeler on Hwy 152; then 2 miles south on Hwy 592.

Bring your lawn chairs. Calf Fries and German Sausage will be served.

Door Prizes will be awarded; auctions will be held and a rifle will be raffled.



4-H PARTY: The 4-H Enrollment Party was a great success this past Thursday. The kids enjoyed hot dogs and enjoyed meeting up with friends before the another school year. After a short meeting updating families on the new enrollment process and fair entries, the kids enjoyed a swim in the swimming pool. For those that were not able to make the enrollment party, you can still contact the Texas AgriLife Extension Office of Wheeler County at 826-5243 to enroll in 4-H. Those interested in showing animals in the Wheeler County Stock Show will need to enroll. 4-H is open to kids ages 9 and above or 3rd grade to 12th grade.



WORK CONTINUES: The new central heat/air have been installed at the home of Bret and Tammy Moore west of Wheeler. The Moore's home and contents were totally destroyed in the 2009 Wheeler County Fire on April 4. The total remodeling of the home is being done by volunteers under the direction of Texas Panhandle Builders' Assoc.



WORK CONTINUES: The interior walls of the Moore home were stripped to the studs and new insulation was also put in place.

Wheeler County Tax Office

FOR YOUR INFORMATION

Because the general elections are coming up in November, 2009, I wanted to remind everyone to please update your Voter Registration Certificate. If you have changed your residence, changed your name, misplaced

your certificate, and need to obtain a duplicate certificate, you must fill out a voter registration application. To make a change to your Voter Certificate, please pick up a Texas Voter Registration Application form from the Wheeler County Tax Office located in the Wheeler Courthouse, the Shamrock City Hall, or the Shamrock Chamber of Commerce.

Please fill out the application with the new information and check the appropriate box, then drop it in the mail.

If you have made a change on your Voter Registration when renewing your Driver's License and have not received a new Voter Certificate, please call the Wheeler County Tax Office at 806-826-3131. Remember, you must be registered for 30 days prior to any election or signing of a petition.

If you have any other questions concerning Voter Registration, Property Tax, or Vehicle Registration, please call the Wheeler County Tax Office at 806-826-3131. Thank you for your support, Lewis Scott Porter your Wheeler Co. Tax Assessor/Collector.

Commissioners' Court

Petition Six Signatures Short Of Allowing Election On Liquor

Wheeler County Commissioners' Court met in regular session on Monday, August 10, 2009, in the Commissioners' Courthouse at 401 Main Street in Wheeler, TX. Seventeen items were on the agenda for the meeting.

The minutes of the previous meetings were approved as presented.

The monthly reports of the Justices of the Peace, County Clerk and District Clerk were accepted.

The hourly payroll time sheets were approved for payment as presented.

The court voted to pay the bills as presented.

No action was taken on the budget.

The burn ban remains in effect. No action was taken on the placing of speed limit signs on county roads I, J and 3. This will be placed on the agenda for the August 21 meeting.

Permission was given to Elk City, Oklahoma Pipeline, LP to cross County Road T for the installation of an oil and gas pipeline.

The Commissioners Court meeting for Monday, August 24, 2009, will be changed to Friday, August 21, 2009.

The county employees' insurance renewal was approved. As of December 1, 2009, the cost per employee increases \$55 bringing the cost per employee to \$614.98 per year.

The court approved the adop-

tion of a \$5.00 Appellate Judicial Fee for County and District Clerks. The \$5.00 will be paid by the person filing the case.

The court approved the adoption of a \$5.00 District Court Technology Fund fee.

The title of the 624H Front End Loader was transferred from Precinct 3 to Precinct 4.

The court approved the payment of \$141,000 to Buy Board for the purchase of a 2009 4-wheel drive front end loader.

The commissioners approved the grant of \$350 each to Wheeler and Shamrock Meals on Wheels.

The request by voters in the City of Shamrock for a Local Option Election was turned down by the court due to the lack of the necessary signatures of 213 qualified voters in the respective voters' precincts. The petition was turned in with 230 signatures; these were checked by the County Tax Assessor and County Clerk. Only 207 of the signatures were determined to be valid; some addresses were not correct and some signatures were not the same as on the registration form. The same request for an election cannot be requested again until next year.

The court approved the county clerk to submit an article to the newspapers asking for interested persons to serve on the Wheeler County Historical Committee.

The next meeting of the court will be Friday, August 21, 2009.

Parkview To Adopt Policy For Random Drug Testing

BOARD MINUTES
JULY 13, 2009

Chairman Thomas Helton called the meeting to order at 6:00 p.m. in the Board Room at Parkview Hospital.

Present were: Thomas Helton, Chairman; James Batton, Secretary; Ray Hudson and Dale Garner. Absent: Sue Chandler, Scott Porter, Tax Assessor. Also present: Ann Fagan Cook, RN, BSN, CEO; John P. Lavelle, M.D. and Glenda Hudson - G&R Services

Dale Garner made a motion to approve the consent agenda. Motion seconded by James Batton. There were no additions or corrections to the minutes. There was discussion regarding financial statements. Question was called and passed unanimously.

Ms. Fagan Cook presented the investment report. No action was taken.

Ray Hudson made a motion to approve bad debts for write-off. Motion seconded by Dale Garner and passed unanimously. There were no charity write-offs.

Scott Porter was unable to attend the meeting regarding the contract to collect taxes for the District. He will be invited to the meeting next month.

Ms. Fagan Cook presented an update regarding the progress of our electronic medical record. We will be at the end of phase 0 the middle of August and training for phase 1 will begin at that time.

The automatic door at the front entrance of the hospital was damaged by an electrical storm and it is no longer possible to get parts for it. A bid was received for \$6800 to replace the door. Dale Garner made a motion not to get an automatic door. Motion seconded by Ray Hudson. Motion passed unanimously.

Ray Hudson made a motion to get bids for a swinging door from KGS Signs and AAA Glass. Dale Garner seconded the motion and the motion carried unanimously.

Chairman Helton asked if there was any new business. Ms. Fagan Cook stated that in the past we had discussed our policy regarding random drug testing but nothing further was done about implementing it. Glenda Hudson made a presentation for G & R Services, Canadian, Texas regarding a Drug and Alcohol Program for Parkview Hospital. She explained what portions of the program are required and which portion was an option. We could build our own program to suit our purposes. James Batton made a motion that we accept the proposal and that Mrs. Hudson meet with Mrs. Stiles, DON, so that the two policies could be compared and recommendations could come back to the Board. Dale Garner seconded the motion. Dale Garner, James Batton voted

yes; Ray Hudson abstained from the discussion and the vote. Motion carried.

There was discussion regarding the chain link fence around the helipad. Ms. Fagan Cook said that Brenda Sparlin, EMS Director, was going to talk to an actual pilot of the large helicopter to see what would actually work for the pilots and we will proceed after that. Comment was made that the paint on the helipad was peeling off. Ms. Fagan Cook will contact the contractor and have this repaired.

James Batton made a motion to approve QAPI Minutes and scorecards. (Ms. Fagan Cook had left this item off the agenda.) Ray Hudson seconded the motion and the motion carried unanimously.

There was no further business and the meeting was adjourned at 7:15 p.m.



DETAILING: Classic Car Wash has expanded. A building has been added at the corner of the premises and several types of detailing is now offered. If you want your car to look really nice on both the inside and outside, call 826-0152 or 334-0045. Fred Velasquez, Chucky Rivera and Ruddy Rivera will do your 'top notch' job.

2009 Wheeler Varsity Football Schedule

Date	Opponent	Site	Time
8-15	Claude-scrimmage	Claude	12:00
8-20	Amarillo River Road-scrim.	Wheeler	5:00
8-28	Gruver	Gruver	7:30
9-4	Spearmen	Wheeler	7:30
9-11	Open		
9-18	White Deer	Wheeler	7:30
9-25	**Booker	Wheeler	7:30
10-2	Amarillo Highland Park	Amarillo	7:30
10-9	*Quanah	Quanah	7:30
10-16	*Memphis	Memphis	7:30
10-23	*Clarendon	Wheeler	7:30
10-30	*Wellington	Wellington	7:30
11-6	*Shamrock	Wheeler	7:30

2009 JV, 7th and 8th Football Schedule

Date	Opponent	Site	Time
8-27	Gruver—JV only	Wheeler	6:00
9-3	Open		
9-10	Memphis 7 th , 8 th , JV	Memphis	5:00
9-17	Clarendon 7 th , 8 th , JV	Wheeler	5:00
9-24	Wellington 7 th , 8 th , JV	Wellington	5:00
10-1	Shamrock 7 th , 8 th , JV	Wheeler	5:00
10-8	Quanah 7 th , 8 th , JV	Wheeler	5:00
10-15	Memphis 7 th , 8 th , JV	Wheeler	5:00
10-22	Clarendon 7 th , 8 th , JV	Clarendon	5:00
10-29	Wellington 7 th , 8 th , JV	Wheeler	5:00
11-5	Shamrock 7 th , 8 th , JV	Shamrock	5:00

*District **Homecoming

OLD TIMES NOT FORGOTTEN

By Roland Miles

"Bare Necessities and Good Friends," are what a lot of folks counted on back in the 1940's. So, this is the first short story of things I experienced and feel sure many of you will relate to. I hope you enjoy these articles, as much as I've enjoyed writing and remembering all the "good times".

I was raised on a farm located four miles east of Wheeler. We moved here in 1945 when my Dad got out of the Navy after WWII ended. He rented a farm that was 1 1/2 miles off of the highway and it had a two-roomed house on it. Sure looked big to a kid. The fact that it sat in the middle of an old, shinnery infested pasture, made it look even better to me. I could already see all the great adventures I could have. Exploring, hunting, digging for arrow-heads, or whatever. I could only guess at what buried treasure I would find in all that sand. How good could it get for a wide-eyed, six year old boy with a big imagination?

We raised cotton, milo, hogs, cows and most important to me...WATERMELONS!

A few farms were getting electricity, but this wasn't one of them. We had the old kerosene lamps

with the wick. It worked just fine as long as you were close to it. That's the key...close. When it came night time in the summer and the lamp was burning, all kinds of flying bugs would come in and fly around it like crazy. The expression, "like a moth to the flame" is true. Winter time, we pretty much had the lamp to ourselves.

Sometimes, it would be really dark outside and the old wick lamp was all the light we had if the moon wasn't shining. One dark night in our house, my Mom walked by me and the 'coveted source of light' that was sitting on a table, right beside me. She never missed a beat, just reached over and snagged that lamp while on her way to fetch another iron that was heating on the stove. Not wanting to sit there in the dark all by myself, I jumped up to follow her. I didn't realize it, but one of my legs had gone to sleep. I immediately fell in the laundry basket and panic time hit! I was like a fish out of water, but a fish with a voice. I'm not sure if you would describe me screaming or bawling. Between dark...and a leg that felt like it was missing, I was one

scared kid. Slowly, feeling started coming back in my leg. I felt like this whole thing was one big accident and I was lucky to have my leg back. Mom, sure wouldn't do that again, I thought, but I'd better not count on that. I'm sure she got a chuckle out of it all when I wasn't looking.

When the "Aladdin Lamp" became available, we got one. It was really a step up. Not electricity, but definitely a step up.

Mom, had an old wooden ice-box that had two doors on the front and a big lid on top. It would hold a 50 pound block of ice that we'd buy at the grocery store when we went to town. To get it home, they'd wrap it in a thick blanket to keep it from melting. We'd chip off with an ice-pick, what we wanted to use each time. I remember it really tasting good! A lot of my generation still refers to refrigerators as "iceboxes".

Our water came from a windmill that was a quarter-mile from our house, so...Dad built a sled, put a 30 gallon barrel on it, hooked it up to the tractor and hauled water from the windmill to our house. We used a water bucket with a "dipper" in the house. Everyone, drank from the same dipper, and not a soul died!

Our closest neighbors were the "Hill" family. They had two boys. Jimmy, the oldest, started first grade with me. His brother,

Wayne, was about three years younger.

I spent a lot of time at their house and couldn't help noticing that their outhouse was a lot nicer than ours. It had a concrete floor and two holes with lids that had hinges. It was also, closer to the house. I really liked that, just in case you had to make a run for it after dark. Most of my cousins and I, were scared of the dark. A trait connected mostly to my Grandma Holt. TV hadn't been invented yet, but Grandma, felt duty-bound to tell us ghost stories and scare the liver out of us; she did a good job of it, too. Back to the subject of outhouses. I never could understand why so many were built with two holes, sometimes, called a two-seater. I never personally knew anybody who wanted a co-pilot.

Canadian Supply & Redi-Mix
for all your Concrete Needs!



Jerry Smith, Owner
806-323-5379



THE WHEELER TIMES

PAGE 2 — Thursday, August 13, 2009
"Wheeler: town of friendship and pride."

Free and Reduced-Price Meals

The Fort Elliott CISD and Wheeler ISD today announced its policy for providing free and reduced-price meals for children served under the National School Lunch and School Breakfast Program. A copy of the policy, which may be reviewed by any interested party, is on file at the Superintendents' Offices: 501 E. Wilson, Briscoe, Texas and #1 Mustang Drive, Wheeler, Texas.

The household size and income criteria below will be used to determine eligibility for free and reduced-price benefits. Children from households whose income is at or below the levels shown are eligible for free or reduced-price meals. Foster children who are the legal responsibility of a welfare agency or court may also be eligible for benefits regardless of the income of the household with whom they reside. Eligibility for the foster child is based on the child's income.

INCOME ELIGIBILITY GUIDELINES FOR DETERMINING FREE & REDUCED PRICE BENEFITS JULY 1, 2009- JUNE 30, 2010

FAMILY SIZE	ANNUALLY		MONTHLY		TWICE PER MONTH		EVERY TWO WEEKS		WEEKLY		
	FREE	REDUCED	FREE	REDUCED	FREE	REDUCED	FREE	REDUCED	FREE	REDUCED	
1	\$14,079	\$20,036	\$1,174	\$1,670	\$567	\$635	\$542	\$771	\$271	\$366	
2	\$18,941	\$26,955	\$1,579	\$2,247	\$790	\$1,124	\$729	\$1,037	\$365	\$519	
3	\$23,803	\$33,874	\$1,984	\$2,823	\$992	\$1,412	\$918	\$1,303	\$458	\$652	
4	\$28,665	\$40,793	\$2,389	\$3,400	\$1,195	\$1,700	\$1,103	\$1,569	\$552	\$785	
5	\$33,527	\$47,712	\$2,794	\$3,976	\$1,397	\$1,988	\$1,290	\$1,836	\$645	\$918	
6	\$38,389	\$54,631	\$3,200	\$4,553	\$1,600	\$2,277	\$1,477	\$2,102	\$739	\$1,051	
7	\$43,251	\$61,550	\$3,605	\$5,130	\$1,803	\$2,565	\$1,664	\$2,368	\$832	\$1,184	
8	\$48,113	\$68,469	\$4,010	\$5,706	\$2,005	\$2,853	\$1,851	\$2,634	\$926	\$1,317	
9	\$52,975	\$75,388	\$4,416	\$6,283	\$2,208	\$3,142	\$2,038	\$2,901	\$1,020	\$1,451	
10	\$57,837	\$82,307	\$4,822	\$6,860	\$2,411	\$3,431	\$2,225	\$3,168	\$1,114	\$1,585	
11	\$62,699	\$89,226	\$5,228	\$7,437	\$2,614	\$3,720	\$2,412	\$3,435	\$1,208	\$1,719	
12	\$67,561	\$96,145	\$5,634	\$8,014	\$2,817	\$4,009	\$2,599	\$3,702	\$1,302	\$1,853	
For each additional family member		\$4,862	\$6,919	\$406	\$577	\$203	\$289	\$187	\$267	\$94	\$134

Application forms are being distributed to all households with a letter informing households of the availability of free and reduced-price meals for their children. Applications also are available at the office in each school. To apply for free and reduced-price meals, households must fill out the application and return it to the school. Applications may be submitted anytime during the school year. The information households provide on the application will be used for the purpose of determining eligibility and verification data. Applications may be verified by the school officials at any time during the school year.

For school officials to determine eligibility for free and reduced-price benefits, households receiving food stamps or TANF only have to list their child's name, food stamp or TANF case number, and an adult household member must sign the application. Households who do not list a food stamp or TANF case number must list the names of all household members, the amount and source of the income received by each household member, and the social security number of the adult household member who signs the application. If the adult who signs the application does not have a Social Security number, the household member must indicate that a Social Security number is not available by writing the word "NONE", "No Number," or some indication that the person does not have a Social Security number. The application must be signed by an adult household member.

Under the provisions of the free and reduced-price meal policy the school reviewing official will review the applications and determine eligibility. Parents or guardians dissatisfied with ruling of the official may wish to discuss the decision with the reviewing official on an informal basis. Parents wishing to make a formal appeal for a hearing on the decision may make a request either orally or in writing to the Superintendent of the school.

Households that list a food stamp
(Continued Page 8)

Hear the "Abundant Living Broadcast"
KPDR-FM, 90.5
WHEELER, TEXAS
Saturdays: 9:00 a.m. to Noon



Magnolia Noel Mendiola is the 7-month-old daughter of Rocky and Rosemary Parks-Mendiola of Ft. Worth, TX. Grandparents are Dr. Louie and Gina Mendiola of Wheeler and George and Mary Ann Parks of San Antonio, TX

For all your...
Insurance Needs, See Eastern Panhandle Insur. Agency, Inc.
117 W. Texas St. — Wheeler
806/826-3573
•Auto •Home •Life •Health
•Commercial •Bonds

This Adv. Sponsored By

FIRST STATE BANK

Mobeetie Office:
First & Wheeler St.
Blvd.
Mobeetie, Texas
845-2311



Wheeler Office:
1408 S. Alan Bean
Wheeler, Texas
826-5546



Tom Velasquez & The Global Nomads

Second Annual Kelton Fireman's Ball Saturday, August 22, 2009

6:00 P.M. till ?

\$10.00 per person

Includes:

Meal & Dance

9 Miles East of Wheeler on Hwy. 152 then 2 Miles South on Hwy. 592

Bring Your Lawn Chairs

Calf Fries — German Sausage Door Prizes — Auctions Rifle Raffle

MARSHALL'S HEATING & AIR CONDITIONING
WHEELER, TX — PHONE: 664-5395 — CELL: 662-7876

TRANE NOW DOING...
AIR DUCT CLEANING
It's Hard To Stop A Trane —24 Hour Emergency Service—

LICENSED & INSURED
License No. TACL022710E
Mark Marshall, Owner

Host an Exchange Student Today!



Anna from Germany, 16 yrs.
Likes to play tennis, swim, loves to dance. Anna hopes to play American softball and learn American slang while in the USA.

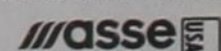
Make a lifelong friend from abroad.

Enrich your family with another culture. Now you can host a high school exchange student (girl or boy) from France, Germany, Scandinavia, Spain, Australia, Japan, Brazil, Italy or other countries. Single parents, as well as couples with or without children, may host. Contact us for more information or to select your student today.



Pascal from France, 17 yrs.
Loves the outdoors and playing soccer. Pascal's dream has been to spend time in America learning about our customs and attending American high school.

Karen at 1-800-473-0696 (Toll Free)
www.asse.com/host or email us at hostinfo@asse.com.



Founded in 1976
ASSE International Student Exchange Program is a Non-Profit, Public Benefit Organization.

FREE DIRECTV 5 MONTHS!
ALL 265+ DIGITAL CHANNELS!
130 HD CHANNELS!
Plus HBO, Cinemax, Showtime & Starz!
ALL FREE FOR 5 MONTHS!
Ask How
FREE DVR/HD
We're Local Installers!
Toll Free 800-214-7110

DIRECTV

Starz \$29.99

NFL Sunday Ticket is Here!!!

DirectStarTV

"What good is it, my brothers, if someone says he has faith, but does not have works? can faith save him? If a brother or sister is without clothes and lacks daily

food, and one of you say to them: "Go in peace, keep warm and eat well," but you don't give them what the body needs, what good is it? In the same way faith, if it doesn't have works, is dead by itself" (James 2:14-17).

"Happy Birthday" to William Atkins, Missy Bowers, Toni Helton, Tonya Martin, Ruby Tubirico, Tallon Sabbe, Joshua Lee, Amy McCasland, Regina Ramos, Marcy Smith, Aspen Brown, Stephanie Brock, Violet Farris, Taylor McAlpine and Billy Newman, August 9; Joe Austin, Tonia Meadows, Kevin Romines, Ronnie Reed, Kelly Meriwether, Jimmy Morgan and Christ Schubert, August 10; Brianna Mayfield, Kent Bryan, Tammy Moore, Lance McIlhane, Braden McNeill, Calvin Devereaux, Travis Hughes, Jaxon Chick, Bill Morrison and Keena Dorman, August 11; Von Chapman, Nancy Hampton, Heather Leven, Audra Rives, Jim Wright and Angie Hunsaker, August 12; Dillon Helton, Skeet Johnson, Robert Swindler, Jr., Jack Sparlin, Cody Sparlin, Krista Marshall, Steve Marshall, Amy Nelson, Lisa Whitaker and Daryl Snelgroves, August 14; Layne McCasland, Traci Stiles, Bradd Morgan and Jeff Helstead, August 15; Sharon Gowin, Claude Laverty, Shane Everett, Dwayne Lane, Samantha Lowe, Toby Newman, Trey Wook, Shawn Hunt and Tasha Rives, August 15.

"Happy Anniversary" to Bill and Carla Howard and Randy and Machille Henson, Aug. 8; Jimmy and Jotana Henson and John Paul and Deidre Harris, Aug. 9; Marion and Ethel Grimes, Aug. 11 (58 yrs); Mark and Mandy Meadows, Glenn and Lois Hughs, Curtis and Brenda Smith, and Todd and Mandy Brashears, Aug. 12; Charlie and Edie Phillis, Aug. 13; Eric and Pauline Zybach, Jim and Sondra Wright and Danny and Brenda Mitchell, Aug. 14 and Mark and Annette Meek, Aug. 15. Keep praying for Dixie Gaines who is in BSA Rehab and having three different therapists work with her: speech, occupational and "other." Darrell and Sue Gaines and Aaron, Darren and Gracie went to see her Sunday after church and a quick lunch. She seems to be improving in some ways. We love you, Dixie.

Congratulations to Kent and Carron McNeely of Mobeetie on the birth of their new baby girl named Jaycee Jaylene McNeely. They are home doing well and Jaycee is gaining a little weight. Praise the Lord! Proud grandparents include Rev. Aaron and Claudetta Laverty. God bless you all!
Enjoying quilting and visiting at Totty School Thursday were Augusta Brown, Jimmae Hinds, Jamie Johnston and Riggins and Mendy Reeves.
Sincere sympathy to family and friends of Emily Annette Heffley Barclay, 59, of Amarillo in her



death Thursday. Services and burial at Amarillo.
Jim and Beth Alvey enjoyed a weekend visit from Don and Kay Pane, friends from Lake Kiowa. They all like to play golf.

Wheeler Senior Citizens will meet Tuesday, Aug. 18, at noon (12:00 p.m.) at Wheeler Banking Center Cour and Copper Room. All over 50 years invited for food, fellowship and games. See you there!

Sincere sympathy to family and friends of Daphne Barry, 92, of Amarillo in her death. Services Tuesday at Amarillo. She was born to Nick and Flora Young and was our neighbor in the Briscoe area, attending Briscoe School. She married L. H. Barry. Survivors include three children and two sisters, Una V. McGaughy and Madell Pillars.

Leona Coates enjoyed having most of her family visit several days from Raleigh, North Carolina, Krum, Texas, and other places. They helped with things and had a great time together. Grandkids especially enjoyed the wild turkeys, deer and coons they seldom get to see. They did not want to go home.

Nice to have a newsy letter from Cornelia Lehman in Minnesota. Been especially cool at McGregor, Minnesota, but she didn't offer to send any our way.

Everyone invited to a baby shower for the expected baby of Amanda (Shields) Stone and her precious baby boy or girl, Sunday, Aug. 16, at Briscoe School at 2:30.

David and Winnie Gilmer enjoyed having granddaughter,

(Continued Page 7)

Statement of Increase/Decrease

If City of Mobeetie adopts a 2009 tax rate equal to the effective tax rate of \$.75814 per \$100 of value, taxes would NOT CHANGE compared to 2008 taxes by \$

Schedule A - Unencumbered Fund Balances

The following estimated balances will be left in the unit's property tax accounts at the end of the fiscal year. These balances are not encumbered by a corresponding debt obligation.

Type of Property Tax Fund Balance

Schedule B - 2009 Debt Service

The unit plans to pay the following amounts for long-term debts that are secured by property taxes. These amounts will be paid from property tax revenues (or additional sales tax revenues, if applicable).

Table with columns: Description of Debt, Principal or Contract Payment to be Paid from Property Taxes, Interest to be Paid from Property Taxes, Other Amounts to be Paid, Total Payment.

Schedule C - Expected Revenue from Additional Sales Tax

(For hospital districts, cities and counties with additional sales tax to reduce property taxes) In calculating its effective and rollback tax rates, the unit estimated that it will receive \$ in additional sales and use tax revenues. For County: The county has excluded any amount that is or will be distributed for economic development grants from this amount of expected sales tax revenue.

Schedule D - State Criminal Justice Mandate (For Counties)

The County Auditor certifies that the County has spent \$ for the maintenance and operations cost of keeping inmates sentenced to the Texas Department of Criminal Justice. County Sheriff has provided information on these costs, minus the state revenues received for reimbursement of such costs.

Schedule E - Transfer of Department, Function or Activity

The unit spent \$ from to on the. The unit operates this function in all or a majority of the. (Second Year of Transfer: Modify schedule to show comparison of amount this year and preceding year by unit receiving the function.)

Schedule F - Enhanced Indigent Health Care Expenditures

The unit spent \$ from \$ to \$ on enhanced indigent health care at the increased minimum eligibility standards, less the amount of state assistance. For the current tax year, the amount of increase above last year's enhanced indigent health care expenditures is \$.

This notice contains a summary of actual effective and rollback tax rates' calculations. You can inspect a copy of the full calculations at 401 MAIN ST WHEELER TEXAS. Name of person preparing this notice: LEWIS SCOTT PORTER. Title: WHEELER CO TAX ASSESSOR/COLLECTOR. Date prepared: 7/31/2009.

Weatherly Roofing WR logo. 20 plus yrs Experience. All Work Guaranteed. Insured & Bonded. Wellington, Texas. Free Estimates. (806)205-0800.

Go to Wheelerwind.com for current weather information for Wheeler, TX. A complete weather station and a internet connection are set up at the wind turbine in Wheeler. River Crest Energy, Inc. Chip Hill - 972-989-8019. chip@rivercrestproperty.com

WALLACE MONUMENT COMPANY. MONUMENTS, CURBING, GRAVE COVERS. Represented By: Jim Wright. Wright Funeral Home. Wheeler, Texas. Phone: 806/826-5214.

SWOSU Southwestern Oklahoma State University

Fall 2009 Class Schedule Sayre Campus

Large table of Fall 2009 class schedule for Sayre Campus. Columns include SEC, CRSE, COURSE TITLE, TIME, DAYS, INSTRUCTOR, BLDG, ROOM. Lists various courses like Fundamentals of English, United States History, Biology, etc.

Want Ads

Parkview Hospital Dietary Department is now taking applications for full time and part-time cook and tray aid. Benefits and mileage paid. 826-1355. 9/4/17n

FOR SALE: Registered Angus Cattle. Two-year-old bulls, yearling bulls, spring calving heifers and yearling heifers. 7-H Angus Cattle, Wheeler, TX Phone 806-633-0558 or 806-826-3358. Email: sevenhangus@aol.com 1/17rn

NOTICE OF DRINKING WATER NITRATE VIOLATION

The Texas Commission on Environmental Quality (TCEQ) has notified the City of Wheeler water system that the drinking water being supplied to customers had exceeded the Maximum Contaminant Level (MCL) for NITRATE. The U.S. Environmental Protection Agency (U.S. EPA) has established the MCL for NITRATE at 10mg/L, and has determined that it is a health concern at levels above the MCL. Analysis of drinking water in your community for NITRATE indicates a level of 13mg/L. This violation occurred the 2nd quarter of 2009.

Infants below the age of six months who drink water containing nitrate in excess of the MCL could become seriously ill and, if untreated, may die. Symptoms include shortness of breath and blue baby syndrome. If your child is under the age of six months, the child must be given an alternative water supply for any consumption. Boiling the affected water is not an effective treatment for nitrate removal.

Most consumers do not need to use an alternative water supply. However, if you have health concerns, you may want to talk to your doctor to get more information about how this may affect you. At this time, the health effects to fetuses of pregnant women is unclear. If you are pregnant, you may also choose to use an alternative source of water for drinking and cooking purposes.

We are working to correct the problem.

We no longer use the well with the highest level of nitrate, which has lowered the nitrate level from 18.6 mg/L to 13 mg/L. Bottled water is available at no cost for the affected populations at City Hall. We are working with the City Engineer and getting technical support from TCEQ for an alternative water supply.

Please share this information with all the other people who drink this water, especially those who may not have seen this notice. You can do this by posting this notice in a public place or distributing copies by hand or mail.

For further information contact: Kristi Petit, City Secretary; Paul Arganbright, Water Superintendent 806-826-3222 505 S. Alan Bean Blvd. Public Water System ID# 2420002

Hugh Garage Sale: Lots of baby items and girls' clothing, women's clothing, jewelry and antiques. 209 E. First St., Wheeler. Sat. 9-? 8/13p

Pet Grooming in Wheeler on Thursday. Call in for appointment. 662-1801 8/6-27c

For Sale: Couch in good condition, \$75.00. 826-5628. 8/13c

City Drug Bed and Breakfast Hotel now hiring **Assistant Manager/part time**. \$8.00 per hour. Must be able to work weekends. Please call 826-3790.

REAL ESTATE APPRAISAL & SALES

Farm & Ranch Land Specialist
State Certified Appraiser
TEXAS SUNBELT SERVICES

Lavon Williams
806/826-5232
or 826-5803

Parkview Hospital is now accepting applications for a **full time LVN**. Excellent Salary, Full Benefits, Mileage Paid. Call Sue Stiles, D.O.N. at 826-5581 or apply in person at 901 Sweetwater St., Wheeler, TX. 5/14rn

Employees Needed (All Positions) at Speedi-Mart, 500 S. Alan L. Bean Blvd., Wheeler, 580/821-4413 or 580/243-9479. Call for appointment 4/16rn

Oak Firewood—Deliver & Stack. Also Oak Trailer Flooring. Call 1-580/564-2797. 12-18rn

Parkview Hospital is now accepting applications for a **Full Time Nurse's aid**. Competitive Salary, Excellent Benefits, Mileage Paid. Please call Sue Stiles, DON at 826-5581 or apply in person at 901 Sweetwater, Wheeler, Texas. 7/24rn

Mountain Cedar Fence Posts, T-Posts, Stays, Barbwire, and Oak or Mesquite Fire Wood

Butch McBee
806/455-1310 or
806/346-1105

If no answer, leave a message. thru July

PUBLIC UTILITY COMMISSION OF TEXAS (PUC) DOCKET NO. 37260

Southwestern Public Service Company (SPS) originally filed an application with the Public Utility Commission (Commission) to construct a transmission line in Wheeler County on April 7, 2009. After filing that application it was discovered that the location that was selected for the Wheeler Substation was in an area that allowed water to stand because

ROYALTY OWNER SERVICES

ARE YOU RECEIVING YOUR PROPER SHARE OF OIL AND GAS SALES?

We Provide:

- ★ Accounting and Accuracy or Payment Verification
- ★ Accuracy of High Cost Severance Tax Charges
- ★ Identification, resolution and Collection of Royalty Payment Errors. Provided on either an Ongoing or Project Basis

Local References Available Upon Request.

Call Toll Free 1-800-658-7168

John McNab - Enercept, Inc.

of poor drainage. A new site for the proposed Wheeler Substation was selected approximately .3 of a mile west of the original location. SPS is providing notice of the new application.

Persons with questions about the transmission line may contact Southwestern Public Service Company's (SPS) representatives Brad Sparks at 806-378-2132 or James Bagley at 806-378-2868. Persons who wish to intervene in the docket or comment on SPS's application should mail the original and 10 copies of their requests to intervene or their comments to:

Public Utility Commission of Texas
Central Records
Attn: Filing Clerk
1701 N. Congress Avenue
P. O. Box 13326
Austin, Texas 78711-3326

Persons who wish to intervene in the docket must also mail a copy of their request for intervention to all parties in the docket and all persons that have pending motions to intervene, at or before the time the request for intervention is mailed to the PUC.

The deadline for intervention in the docket is September 21, 2009, and the PUC should receive a letter from anyone requesting intervention by that date.

The PUC has a brochure titled "Landowners and Transmission Line Cases at the PUC." Copies of the brochure are available from Brad Sparks at (806) 378-2132 or James Bagley at (806) 378-2868 or may be downloaded from the PUC's website at www.puc.state.tx.us. To obtain additional information about this docket, you may contact the PUC's Customer Assistance Hotline at (512) 936-7120 or (888) 782-8477. Hearing and speech-impaired individuals with text telephones (TTY) may contact the PUC's Customer Assistance Hotline at (512) 936-7136 or toll free at (800) 735-2989.

A copy of the map illustrating SPS's preferred and alternate routes has been provided to directly impacted landowners. This map may be reviewed at SPS's office located at 601 S. Tyler, Amarillo, Texas, by contacting Brad Sparks at (806) 378-2132. Persons wishing a copy of the map should contact James Bagley at (806) 378-2868.

SPS is proposing to construct a single-circuit, 115-kilovolt (kV) electric transmission line between the new Wheeler Substation, located approximately 2,000 feet west of the intersection of U.S. Highway 83 and County Road Q on the north side of County Road Q and the new Howard Substation located approximately 917 feet due south of the intersection of South Osage and FM 2473, directly east of the Wheeler Cemetery. The line will be built using single-pole, self-supporting steel structures. Depending on which route is ultimately selected, the proposed project would be approximately 7 miles long and located entirely within Wheeler County, Texas. Depending on the route selected, the total estimated cost of the project, including the transmission line and substation costs, is \$13,720,014.

The proposed transmission line is presented with a preferred route and two alternate routes consisting of a combined five segments and is estimated to be approximately 7 miles in length. The proposed 115 kV single circuit transmission line would be constructed utilizing single-pole steel structures requiring a smaller surface area and eliminating the use of guy wires for dead-end and corner structures. The steel structures would also increase the line reliability and decrease normal maintenance costs of using wood structures and also greatly lessen exposure to damages from range fires. Except for the areas that are double circuit, the proposed transmission line will be constructed on new right-of-way consisting of a proposed easement width of 60 feet. There are two areas where the proposed 115 kV transmission line will become double circuit with existing SPS transmission lines:

(1) [230 kV transmission line (Circuit K54)] The proposed line runs parallel with Circuit K54 along County Road Q until the road dead ends at the northeast corner of Section 33, then the line parallels Circuit K54 along the section line and becomes double circuit with K54 for approximately 0.5 miles in order to avoid an ex-

remely large grove of trees. SPS attempted to minimize constructing double circuit with Circuit K54 due to the critical nature of the line serving Public Service of Oklahoma and the safety issues involved with performing maintenance or emergency work on one circuit when the other is energized.

(2) [69 kV transmission line (Circuit Y62)] The proposed 115 kV transmission line becomes double circuit with Circuit Y62 for 735 feet in order for both circuits to follow the outer edge of the cemetery and enter Howard Substation. By becoming double circuit with Circuit Y62 into Howard Substation, this allows for future transmission access into Howard Substation.

The new Wheeler Substation will be designed to accommodate two 230 kV transmission line terminals, a 230/115 kV - 250 MVA autotransformer and one 115 kV transmission line terminal. This line is not designed or intended to carry the full output of the 230/115 kV transformer. This transformer is sized for possible future 115 kV lines being served from the Wheeler Substation 115 kV bus. Wheeler Substation will be served with a 230 kV source from SPS's existing transmission line Circuit K54 in Wheeler County. The Wheeler Substation site is located approximately 2,000 feet west of the intersection of U.S. Highway 83 and County Road Q. The substation location is on the north side of County Road Q about 200 feet north of the existing 230 kV Circuit K54 which is located on the south side of County Road Q. The 230 kV line will be tapped and brought into Wheeler Substation utilizing steel structures for the in-and-out lines. The Wheeler Substation site was determined by the accessibility of paved roads for transporting equipment and for emergency operations. Alternative substation site locations would have required the construction of several miles of all-weather road for access. The new 115 kV transmission line will be constructed from Wheeler Substation to the new Howard Substation located in Wheeler County. The new Howard Substation will consist of one 115 kV transmission line terminal, a 115/69 kV - 40/46 MVA autotransformer, a 115/13.2 kV - 10 MVA transformer, and two 69 kV transmission line terminals.

The existing Grave Substation would have been the terminus for the proposed project; however, SPS determined that the Grave Substation was inadequate and that a new site for the substation was necessary for several reasons. SPS required 8.0 acres for the substation, but the Grave Substation sits on only 1.15 acres. An 8.0-acre site will accommodate future expansion of the substation and also will allow enough room to set up mobile substations for maintenance or in the event of emergency switching conditions. An expansion of the Grave Substation is not possible due to limitations of existing development features including the proximity of existing roads and other obstructions. Grave Substation is bound on the west side by South Osage Road, on the south side by FM 2473, on the east side by a large, above-ground tank, and on the north side by a residence. Although, all property owners adjacent to the Grave Substation were contacted in an attempt to expand the existing site, there were complications in acquiring property—either due to no interest in selling or an inflated purchase price. Upon completion of this project, the load from the Grave Substation will be transferred to the new Howard Substation located approximately 2,000 feet to the south and at that time, the Grave Substation will be dismantled. Figure 3.1 illustrates the area surrounding the Grave Substation and the new Howard Substation and details the proposed changes. The Greenbelt Electric Cooperative, Inc. (Greenbelt) 69 kV transmission line will be terminated into the new Howard Substation as illustrated by Figure 3.1 with the work to be performed by SPS and coordinated with Greenbelt.

Route 1 – Line Segments A, B, and C (The Preferred Route). This route consists of approximately 7 miles of a new single circuit 115 kV transmission line from the new Wheeler Substation located approximately 2,000 feet west of the intersection of U.S. Highway 83 and County Road Q



THE WHEELER TIMES

PAGE 4 — Thursday, August 13, 2009

"Wheeler: town of friendship and pride."



MEMBER 2009 TEXAS PRESS ASSOCIATION

City of Wheeler Turns 100
Aug. 6, '05 Celebration Planned
Wheeler 100th Anniversary Fundraising Effort
Wheeler 100th Anniversary Fundraising Effort
Wheeler 100th Anniversary Fundraising Effort

P.O. Box 1080
Wheeler, Texas 79096
Phone: 806/826-3123

Entered as second-class matter December 18, 1933, at the Post Office at Wheeler, Texas 79096, under the act March 3, 1879.
Postmaster: Send address changes to *The Wheeler Times*, P.O. Box 1080, Wheeler, TX 79096-1080 — wtimes@centramedia.net

Louis C. Stas, Owner & Publisher
SUBSCRIPTION RATES:
Wheeler County...\$20.00 Outside County...\$22.00

THE BUSINESS DIRECTORY

CROSS COUNTRY BARN ★ 24 Hr. Gas & Diesel ★ Convenience Store
★ Hunt Bros. Pizza
301 E. Oklahoma St.
Wheeler, TX
Phone: 806-826-2276
Dale & Monica Kidd

It pays to Advertise in **The Wheeler Times**
Phone & Fax: 826-3123
wtimes@centramedia.net

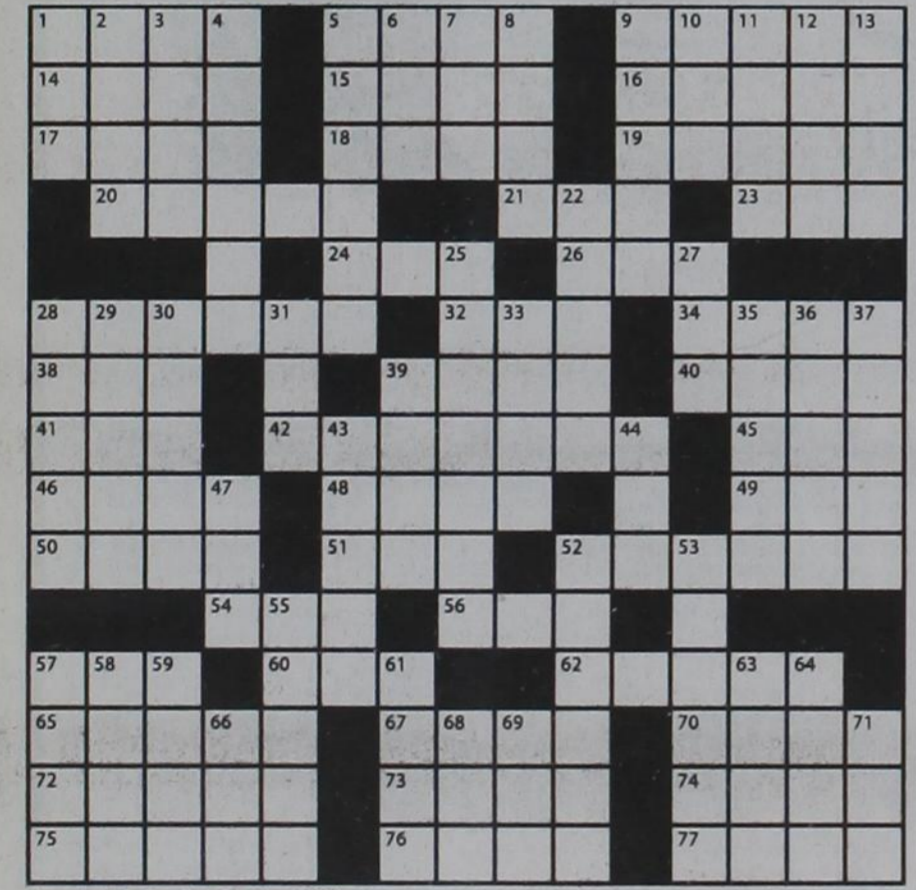
Classified:
Cash—\$4.00 for first 20 words
Charge—\$6.00 for first 20 words
15¢ for each additional word
Open Rate: \$2.50 Per Col. In.
Card of Thanks:\$5.00

on the north side of County Road Q. Segment A runs approximately 0.5 miles west along the south side of Sections 1 and 40 and parallel with County Road Q to a dead end and County Road 16 turns south at this point. Segment A continues west for approximately 0.5 miles to the intersection of Segments B, C, and D, also being near the half section line of Section 51. At this point Route 2 turns north along Segment D and the west line of the east half of said Section 51 for approximately 2,600 feet. At this point, to avoid a center pivot irrigation system, the route proceeds northwesterly approximately 1,500 feet to a point, then north approximately 810 feet to a point, then northeasterly approximately 705 feet to a point, then north approximately 415 feet to the new Howard Substation located approximately 917 feet due south of the intersection of South Osage and FM 2473, directly east of the Wheeler Cemetery.

Route 3 – Segments A and E. This route consists of approximately 6 miles of a new single circuit 115 kV transmission line from the new Wheeler Substation located approximately 2,000 feet west of the intersection of U.S. Highway 83 and County Road Q on the north side of County Road Q. Segment A runs approximately 0.5 miles west along the south side of Sections 1 and 40 and parallel with County Road Q to a dead end and County Road 16 turns south at this point. Segment A continues west for approximately 0.5 miles where it becomes double circuit with an existing 230 kV transmission line (Circuit K54) for approximately 0.5 miles to a point in the southeast corner of Section 39. It then turns north, departing Circuit K54, continuing along the east line of Sections 39, 41, and 50 for approximately 2.75 miles to a point in the north half of Section 50 then angling toward the northwest to a point in the south line of Section 51 approximately 370 feet west of the southeast corner of Section 51. The southeast corner of Section 50 are congested with Greenbelt's existing distribution and a new transmission line as well as guy wires in the corners. SPS opted to avoid crossing Greenbelt's facilities for safety considerations. At this point, the Preferred Route turns west along Segment B and parallels County Road N and the south line of Section 51 for approximately 0.5 miles to the intersection of Segments B, C, and D, also being near the half section line of Section 51. At this point, the Preferred Route continues west along Segment C for approximately 0.5 miles to the west line of Section 51, then turning north along the west line of Section 51 and parallels County Road 14 continuing north for approximately 1.0 mile to the north line of Section 51 and intersecting with Circuit Y62 at a point where Segment C turns east. From the northwest corner of Section 51, at the intersection of FM 2473 and County Road 14, Segment C will proceed east becoming a double circuit with the current Circuit Y62 for approximately 735 feet to a point then turning southwesterly for approximately 237 feet to a point then east for approximately 521 feet to a point then turning north for 280 feet following the boundary of the cemetery to the new Howard Substation located approximately 917 feet due south of the intersection of South Osage and FM 2473, directly east of the Wheeler Cemetery.

Route 2 – Line Segments A, B, and D.—This route consists of approximately 6 miles of a new single circuit 115 kV transmission line from the new Wheeler Substation located approximately 2,000 feet west of the intersection of U.S. Highway 83 and County Road Q on the north side of County Road Q. Segment A runs approximately 0.5 miles west along the south side of Sections 1 and 40 and parallel with County Road Q to a dead end and County Road 16 turns south at this point. Segment A continues west for approximately 0.5 miles where it becomes double circuit with an existing 230 kV transmission line (Circuit K54) for approximately 0.5 miles to a point in the southeast corner of Section 39. It then turns north, departing Circuit K54, continuing along the east line of Sections 39, 41, and 50 for approximately 2.75 miles to a point in the north half of Section 50 then angling toward the northwest to a point in the south line of Section 51 approximately 370 feet west of the southeast corner of Section 51. The southeast corner of Section 50 are congested with Greenbelt's existing distribution and a new transmission line as well as guy wires in the corners.

Crossword PUZZLE



- Copyright © PuzPuzz Puzzles 2008
- Across**
- Back talk
 - Thought
 - Jeer
 - Lope
 - Middy
 - Small boat
 - Calendar span
 - Penny
 - Full-length
 - Bouquet
 - Recede
 - Epoch
 - Pouch
 - Rodent
 - Flock of geese
 - Egg cell
 - Toward sunset
 - Street or road (fr.)
 - Foiled
 - Half a dozen
 - Direct (to)
 - Excuse
 - Speed contest
 - Morally bad
 - Gaze
 - Muscle
 - Assemble in sequence
 - Deuce
 - Hoarse
 - Hearing-related
 - Magical wish
 - granter
 - Fond du __, Wis.
 - Conceited
 - Incite (2 wds.)
 - Vernacular
 - Native American tent
 - Italian greeting
 - Tedium
 - Come together
 - Beam of light
 - Give up
 - Influence
 - Willow twig
 - Door fastener
 - Choir voice
 - Watch face
 - Superman's vision
 - "... happily ____ after"
 - Carnival attraction
 - Legitimate
 - In the past
 - Demure
 - Robert E. ____
- Down**
- Pippen
 - Length x width
 - Fly high
 - Potent
 - As a precaution
 - Female deer
 - Long, long time
 - Wager
 - Aqua-Lung
 - Campbell's container
 - "__ a chance"
 - "__ bitten, twice shy"
 - Quartet
 - Greek cheese
- Mustang Auto Care**
110 S. Alan L. Bean Blvd.—Wheeler, TX
806.826.0948—Hrs: M-F-8-5
39. Pincer

40. Eye amorously

41. Vase

42. Limit

45. Opening

46. Impartial

48. Indian bread

49. Single

50. Dog biter

51. "___ a chance"

52. Rim

54. "___ rang?"

56. Self-importance

Listen to **KPDR-FM, 90.5**
WHEELER, TEXAS

MOBEETIE NEWS

By Sue Mayfield

cooler this week. On returning from Wheeler Monday afternoon, it was 99 degrees. Some cool spell!!!! Hope they have something cooler for the next week or so, at least.

Hot or not, come join the fun and good eats with the junior high and high school girls of the youth group of the First Baptist Church of Mobeetie, Sunday, August 16, 2009, under the trees at the Old Mobeetie Museum for a yummy hamburger and banana split party. (Donations only) It will start at 12:30 P.M. Bring a chair and let the youth girls do the cooking for Sunday lunch. Good food and great visiting. The girls and their sponsors are working toward making enough money in the next few months to cover all the girls' registration and room fees for the weekend. Any money left over will be divided between the girls for food for the weekend. All junior high and high school girls of the area are invited to join them in going to Moore, OK., for a week-end retreat just for them. Just contact the First Baptist Church of Mobeetie and they will put you in contact with someone who can answer all your questions and get your resistered for the event. Please call the church office, 806-

845-2511, or Sallie Adcock at 806-662-7771. It is sort of a spin-off of the Women of Faith retreats for the adults. Last Dec. 10 the area youth and four sponsors attended the retreat in OKC. It was an awesome experience, geared to everything in a teenager's life...so very uplifting! They came home fired up and ready to share their experience and practice what they had learned. We can all use a little encouragement and refresher course once in a while. Have a great time girls.

Glad to hear that Joe Shelton is doing so well after his hip surgery and rehab. He just can't stay away from the ranch. He has to know that everything is going okay and that Sallie, Tim and the boys are doing things his way. Ha! Ha! Jarrett goes back to the orthopedist on Thursday to have x-rays and, hopefully, get rid of his cast and maybe even get a date set to have the pins removed from his arm. He is very anxious. He has had his arm bound up or in a cast most of the summer. He is getting to be a one-handed whiz at almost everything. The good part for him is that it's gotten him out of doing most of his chores. Sure ruined his summer fun, though, this year! Good luck, Jarrett.

Our condolences to the family and friends of Dr. Walter "Walt" Piskun, 66, of Amarillo. He was a very popular neurologist in the area. He died Tuesday, August 4, 2009. Mass will be celebrated Saturday morning, August 22, at St. Thomas the Apostle Catholic Church in Amarillo with Monsignor Joseph Tash as celebrant. Dr. Piskun was a 1966 graduate of the U. S. Military Academy at West Point. He served with the intelligence corps and was in the Army Rangers. He saw combat in Vietnam and received several medals. He attended the University of Hawaii Medicine and was president of the first graduating class of Texas Tech Medical School in Lubbock. He trained in neurology at Wilford Hall Air Force Medical Center in San Antonio.

After his retirement from the service, he worked for the Gould Medical Foundation in CA. In 1994, he and his family came to serve the Amarillo area. He retired from his medical practice in 2008 for health reasons and to enjoy more time with his wife and family. He is survived by his loving wife, Dr. Mary Ann Piskun, of the home; six children, Jennifer Piskun Johnson and husband, Sam, of Austin, Christopher Piskun of Philadelphia, Pa., Sally Piskun Berg and husband, Justin, of Boulder, CO., Molly Piskun of Los Angeles, CA., Betsy Piskun of Austin, and A.J. Piskun of Lodi, CA., along with five grandchildren. He will be greatly missed.

Sorry that Joe Hathaway has to have more tests. Hopefully, the treatments did the job and he can avoid surgery. Please keep Joe in your prayers.

It was so good to see Ann and Robert Jones, but sorry it had to be in the Dr. office. Ann had taken a tumble over the weekend. Bless her heart. Please keep Ann in your prayers. The boys and their families are well and stay busy. They really enjoy the granddaughters coming by almost every day. They are such beautiful young ladies. All their grandchildren are the bright spots of their lives. They are blessed with a wonderful family. Yea!!

The Weatherly roofing crew finally got down to us on Sat. It took them only one day to put our new shingles on. We knew we were on a long list with all the storm and wind damage in Childress and the surrounding area; we just had to wait our turn. The Weatherly sign was in our yard for a couple of weeks before they actually got here. So, if you went by during that time and saw shingles waving at you, it wasn't any of their work. Come by now; it really looks so much better! Now all we have to do is get the painting done. Thanks, guys. You made it look so easy. Sorry it was such a hot day.

Sorry that Mrs. Frances Patterson had to give up her home at the Legacy Assisted Living in Dalhart and move in with her daughter, Mrs. Frances Ann Guthrie, in Pampa. If you have an insurance policy that is supposed to pay for extended care, please check it to be sure how long it will pay. They had purchased a policy some years ago thinking that it would cover her until the end. It turned out that it only pays until whatever money the Pattersons put in and the interest it drew was paid back out. It has been very upsetting. They were not the only ones caught in that predicament. Frances Ann had already been signed up and ready to go to the State Eastern Star convention in Arlington. She was driving two other ladies from the area down. I went and spent the week with



"Wheeler: town of friendship and pride."

Mrs. Patterson and tried to help her get settled in. We had a good visit.

On Thursday, we took the day off and drove to Dumas. We had lunch with my mother, Carol Orthman. Mrs. Patterson had met mother when her husband, Richard, was very ill in the Dumas hospital. Mom worked in the kitchen for several years and then went to work with the home health care part. She just knew that Frances and Richard were Frances Ann's parents and went by several times to see if there was anything she could do. We went to eat a Chinese dinner and had a good visit. Then, we took Frances by to see her younger sister, Mary Vaughn Smith, at her apartment at the Golden Heritage complex. Please keep Mary in your prayers as she was just put in the hospice program. We all visited a bit. Mom and I ran some errands and went by to see my sister at work. She was "holding down the fort" while D'Lania was in Amarillo getting the

last-minute running done for the elevator's stockholders' meeting on Saturday. They had some neat ideas for decorations. Some of the guys were cooking 200 pounds of fresh fish and grilling steaks. Along with the fresh-boiled corn, it was a delicious meal. We took cold drinks back to "the girls" and then it was time to head back to Pampa. It was a very good day for the most part. The guys survived the week quite well.

Please remember our friends and neighbors in your prayers. Have a great week!! Hope to see you Sunday at the hamburger and banana split party at the Old Mobeetie Jail Park. It will be yummy and a fun afternoon under the shade of the beautiful trees. Bring your chair and enjoy the good food and fellowship. They start serving at 12:30 on Sunday, August 16. Please help the girls get to go to the youth retreat. Thanks!!!

Hospital Notes

Assisted Living:

Tom Frye
Iona May
Julia Buckingham
Annie Ruth Lee
Mary Whitener
Marcilla Payne

Admissions

8/3 Noveta Atherton
Mary Whitener
8/4 Grace McClellan
8/5 Tanner Brownfield
8/8 Iona May
8/7 Philip Cook

Dismissals

8/5 Noveta Atherton
8/7 Iona May
Grace McClellan
Philip Cook
Tanner Brownfield

CARD OF THANKS

The King family would like to express our thanks to the residents of Wheeler County for their thoughts, prayers and gifts after the passing of Wanda King. Your kind words and actions were a great comfort to our family during this difficult time.

Don King
Andy King
Tara McDanel

Chat

(from Page 1)

market recently. Haven't been in town at the right time.

— cwe —

It was to OKC on Wednesday evening of last week, as the printer messed up and I had to get it repaired for this week.

— cwe —

Cathi and Dorcie brought Barbara to OKC after she had spent the week.

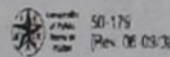
WHEELER PLUMBING
511 S. Cheyenne
New Construction
Remodel
Repair
Sewer Service
Septic Systems
Site Evaluations
Phone: **826-5907**
MAX McQUEEN
P.O. Box 754 Wheeler, TX

Hurting from low CD rates?
Call First Fidelity for the cure!
5.07%* APY
1 Year CD • FDIC Insured
Ask about our higher yielding tax-deterred products
FIRST FIDELITY
Financial Group, LLC
Your Safe Money Solution™
1800 Washington, Suite 110 • Amarillo, TX
806-373-9480 1-800-371-9201
By appointment only

"No" Trenching • "No" Mess
Rick's
Lawn Sprinklers
Financing Available • Over 30 years experience
Complete Turf & Dirt Work • Commercial & Residential
FREE ESTIMATES
RAIN-BIRD 800-466-0915

DOUG BOYD MOTOR CO.
Buy Here / Pay Here
No Credit Check • Areas Largest Selection
Pampa • Corner of Hwy 60 @ Hwy 70
806-669-6062 • www.dougboydmotors.com

Farrar
Small Engine Repair
General Mower Maintenance
806-336-8960
1/4 mile East of Ware Chevrolet on Co. Rd. M
(Big White Barn)
Wheeler, Texas



Statement of Increase/Decrease

If Wheeler Hspt Dist #1 adopts a 2009 tax rate equal to the effective tax rate of \$.0853172 per \$100 of value, taxes would **DECREASE** compared to 2008 taxes by \$.118.00

Schedule A - Unencumbered Fund Balances

The following estimated balances will be left in the unit's property tax accounts at the end of the fiscal year. These balances are not encumbered by a corresponding debt obligation.

Type of Property Tax Fund 0 Balance 0

Schedule B - 2009 Debt Service

The unit plans to pay the following amounts for long-term debts that are secured by property taxes. These amounts will be paid from property tax revenues (or additional sales tax revenues, if applicable).

Description of Debt	Principal or Contract Payment to be Paid from Property Taxes	Interest to Be Paid from Property Taxes	Other Amounts to be Paid	Total Payment
0	\$ 0	\$ 0	\$ 0	\$ 0
<i>(expand as needed)</i>				
Total required for 2009 debt service		\$ 0		
- Amount (if any) paid from funds listed in Schedule A		\$ 0		
- Amount (if any) paid from other resources		\$ 0		
- Excess collections last year		\$ 0		
= Total to be paid from taxes in 2009		\$ 0		
- Amount added in anticipation that the unit will collect only _____ % of its taxes in 2009		\$ 0		
= Total Debt Levy		\$ 0		

Schedule C - Expected Revenue from Additional Sales Tax

(For hospital districts, cities and counties with additional sales tax to reduce property taxes.)

In calculating its effective and rollback tax rates, the unit estimated that it will receive \$ 0 in additional sales and use tax revenues. For County, the county has excluded any amount that is or will be distributed for economic development grants from this amount of expected sales tax revenue.

Schedule D - State Criminal Justice Mandate (For Counties)

The 0 County Auditor certifies that 0 County has spent \$ 0 in the previous 12 months beginning 0 for the maintenance and operations cost of keeping inmates sentenced to the Texas Department of Criminal Justice. 0 County Sheriff has provided information on these costs, minus the state revenues received for reimbursement of such costs.

Schedule E - Transfer of Department, Function or Activity

The 0 spent \$ 0 on the 0. The 0 operates this function in all or a majority of the 0. [Second Year of Transfer: Modify schedule to show comparison of amount this year and preceding year by unit receiving the function.]

Schedule F - Enhanced Indigent Health Care Expenditures

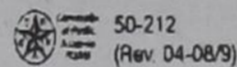
The 0 spent \$ 0 from 0 to 0 on enhanced indigent health care at the increased minimum eligibility standards, less the amount of state assistance. For the current tax year, the amount of increase above last year's enhanced indigent health care expenditures is \$ 0.

This notice contains a summary of actual effective and rollback tax rates' calculations. You can inspect a copy of the full calculations at 401 MAIN ST WHEELER TEXAS

Name of person preparing this notice: LEWIS SCOTT PORTER

Title: WHEELER CO. TAX ASSESSOR/COLLECTOR

Date prepared: 7/31/2009



2009 Property Tax Rates in Wheeler Hspt Dist#1

This notice concerns 2009 property tax rates for Wheeler Hspt Dist#1

It presents information about three tax rates. Last year's tax rate is the actual rate the taxing unit used to determine property taxes last year. This year's effective tax rate would impose the same total taxes as last year if you compare properties taxed in both years. This year's rollback tax rate is the highest tax rate the taxing unit can set before taxpayers can start tax rollback procedures. In each case these rates are found by dividing the total amount of taxes by the tax base (the total value of taxable property) with adjustments as required by state law. The rates are given per \$100 of property value.

Last year's tax rate:

Last year's operating taxes	\$ 1385463
Last year's debt taxes	\$ 0
Last year's total taxes	\$ 1385463
Last year's tax base	\$ 1580117850
Last year's total tax rate	\$.087681 /\$100

This year's effective tax rate:

Last year's adjusted taxes (after subtracting taxes on lost property)	\$ 1385463
+ This year's adjusted tax base (after subtracting value of new property)	\$ 1623895896
= This year's effective tax rate	\$.0853172 /\$100

(Maximum rate unless unit publishes notices and holds hearings.)

In the first year a hospital district or city collects the additional sales tax to reduce property taxes, it must insert the following lines unless its first adjustment was made last year:

- Sales tax adjustment rate	\$ 0	/\$100
= Effective tax rate	\$ 0	/\$100

This year's rollback tax rate:

Last year's adjusted operating taxes (after subtracting taxes on lost property and adjusting for any transferred function, tax increment financing, state criminal justice mandate, and/or enhanced indigent health care expenditures)	\$ 1385463
+ This year's adjusted tax base	\$ 1623895896
= This year's effective operating rate	\$.08531 /\$100
x 1.08 = this year's maximum operating rate	\$.09214 /\$100
+ This year's debt rate	\$ 0 /\$100
= This year's total rollback rate	\$.09214 /\$100

A hospital district or city that collects the additional sales tax to reduce property taxes, including one that collects the tax for the first time this year, must insert the following lines:

- Sales tax adjustment rate	\$ 0	/\$100
= Rollback tax rate	\$ 0	/\$100

For a taxing unit with additional rollback rate for pollution control, insert the following lines:

+ Additional rollback rate for pollution control	\$ 0	/\$100
= Rollback tax rate	\$ 0	/\$100

ALLISON NEWS

By Juanita Boydston

With all lowliness and meekness, with longsuffering, forbearing one another in love; Endeavouring to keep the unity of the Spirit in the bond of peace. There is one body, and one Spirit, even as ye are called in one hope of your calling; One Lord, one faith, one baptism, One God and Father of all, who is above all, and through all, and in you all. But unto every one of us is given grace according to the measure of the gift of Christ. Wherefore he saith, When he ascended up on high, he led captivity captive, and gave gifts unto me. Now that he ascended, what is it but that he also descended first into the lower parts of the earth? He that descended is the same also that ascended up far above all heavens, that he might fill all things. And he gave some, apostles; and some, prophets; and some evangelists; and some pastors and teachers; For the perfecting of the saints, for the work of the ministry, for the edifying of the body of Christ: till we all come in the unity of the faith, and of the

knowledge of the Son of God, unto a perfect man, unto the measure of the stature of the fulness of Christ: That we henceforth be no more children, tossed to and fro, and carried about with every wind of doctrine, by the sleight of men, and cunning craftiness, whereby they lie in wait to deceive; But speaking the truth in love, may grow up into him in all things, which is the head, even Christ: From whom the whole body fitly joined together and compacted by that which every joint supplieth, according to the effectual working in the measure of every part, maketh increase of the body unto the edifying of itself in love. Ephesians 4:2 - 16

O Sing unto the Lord a new song: sing unto the Lord, all the

earth. Sing unto the Lord, bless his name; shew forth his salvation from day to day. Declare his glory among the heathen, his wonders among all people. For the Lord is great, and greatly to be praised: he is to be feared above all gods. For all the gods of the nations are idols: but the Lord made the heavens. Honour and majesty are before him: strength and beauty are in his sanctuary. Give unto the Lord, O ye kindreds of the people, give unto the Lord glory and strength. Give unto the Lord the glory due unto his name: bring an offering, and come into his courts. O worship the Lord in the beauty of holiness: fear before him, all the earth. Say among the heathen that the Lord reigneth: the world also shall be established that it shall not be moved: he shall judge the people righteously. Let the heavens rejoice, and let the earth be glad; let the sea roar, and the fulness thereof. Let the field be joyful, and all that is therein: then shall all the trees of the wood rejoice. Before the Lord, for he cometh, for he cometh to judge the earth; he shall judge the world with righteousness, and the people with his truth. Psalm 96:1-13

The weather in Allison this Tuesday morning is cloudy and rainy looking. It is thundering around, but as of yet no rain, but probably will before the day is out. We could sure use some more. It keeps everything nice and beautiful. This reporters garden is doing really good. Its producing well. I had to pray for the tomatoes to bear, but praise be to God, they have started and have tomatoes on each plant. The Lord is good and merciful to us all. Praise his name!!

Opal and Juanita are thankful and grateful for the ones that are sharing their garden things with us. Thanks a bunch!! Everything is very good and we are enjoying them so very much!! Thanks again!!

Janice McCloy of Morse, Texas came Friday to visit her mother, Alice Kelly and on Saturday her husband, Allen arrived at Alice's and visited also.

Shirley Chadwick has been at Louise Boydston's home visiting for awhile. Also Justin and Stephanie Walker and children, Tyler, Addison and Alyssa were with her for a couple of weeks. They are moving to Allison and have been remodeling the farm house Northeast of Allison.

Louise Boydston had the misfortune of losing her grandson, Adam Martin on July 10th. His parents are Ernie and Sue Martin of Leedy, Oklahoma. All Louise's children and grandchildren were at the funeral at Midwest City, Oklahoma except three grandchildren, Michael Hulse of Austin, Texas, Greg Boydston of Allison,

Texas and Chris Chadwick of Aubrey, Texas could not be there.

Chris is in the National Guard, and was in Wisconsin at the Fort McCoy Army Base.

On July 4th there was a Sanford Reunion at the Elk City, Oklahoma Nursing Home. Pearl Harrison and her brother Elmer and wife Peggy Sanford of Stinnett, Texas, Hershel and wife Ann Sanford of Higgins, Texas, also Jimmy and Vivian Wallace of Elk City, Oklahoma, Louise Boydston of Allison,



THE WHEELER TIMES

PAGE 6 — Thursday, August 13, 2009
"Wheeler: town of friendship and pride."

Texas, Bennie and Debbie Boydston of Allison, Texas, Kim Thompson, Johnnie Harrison of Amarillo, Texas, David Sanford of Amarillo, Texas, Cheryl Dupont, Sabrina Dupont and Makenna of Amarillo, Texas, Willis and Mary Harrison of Claremore, Oklahoma and grandson Jacob Durst of Rockwell, Texas, Nancy Hicks of Bethany, Oklahoma and twin grandsons from Mustang, Oklahoma, Donnie Henson of Amarillo, Texas, David Sanford's daughter and husband and two children

from Shattuck, Oklahoma, Walt and Tersea Hodge from Nicoma Park, Oklahoma, and Shirley Chadwick of Jones, Oklahoma.

July 31st, On Friday, Louise Boydston and her granddaughter, Heather Archer and Paisley drove to Amarillo, Texas and picked up Sabrina Dupont and daughter Makenna. They went to Rudiso, New Mexico and met Mike and LaQuinta Hulse from Saharita, Arizona and also Kim Thompson, Brittany and Chase from Amarillo, Texas. They all attended the Harrison - Bradley Reunion on Saturday at Cloudcroft, New Mexico. About 100 people were there. On Sunday they also went to a potluck dinner at the Upper Fir Campground at Cloudcroft New Mexico.

On Monday evening they went to a cousin, Bob Bradley's home at Las Luma, New Mexico and had supper with several relatives. While there a big rainstorm came and the wash they needed to cross was flooded and they had to visit about an hour to cross it. It did hail a little also.

On Wednesday, Heather and Paisley Archer went to Alamogordo, New Mexico and visited a high school friend, Rachel and her children. They went to the zoo and also the mall. She lives at the Naval Base by the White Sands area. They had a good time.

On Wednesday, Kim Thompson and Chase and Sabrina Dupont and Makenna came back to Amarillo, Texas. On Thursday Mike and LaQuinta Hulse from Saharita, Arizona and Louise Boydston, Heather and Paisley Archer from Allison and Brittany Thompson from Amarillo, Texas. They all left the Condo and headed for home.

Louise Boydston was having lots of pain so in Amarillo, Texas she went to Urgent Care and received a shot and cipro for possibly a kidney infection, but on Saturday she was in the E.R. at Wheeler, Texas and they discovered she had the Shingles, but is some better at this writing.

Sunday dinner guest of Louise Boydston were: Curtis and Lillian Boydston, Vance and Carol Boydston, Opal and Juanita Boydston.

Pastor F.R. Johnson was honored on Sunday at the church with a card and money for his 73rd Birthday.

Wednesday, Roma and Billy June Brown went to Wheeler, Texas

(Continued Page 7)

Have something to sell?
Someone, somewhere wants it!

WeBay

We sell it...you get a check.

Online Sales Assistants
Georgann & David Rion
202-3039 or 202-8128
www.webay.info

★ **Overhead Garage Door Installation and Service Work**
★ **Steel Frame Carports**
★ **Custom Storage Buildings**
★ **Insulation**

Rasco Construction

1211 S Price Road, Pampa, TX
806 665-0042—Phone 806 665-0043—Fax
rascodoor@live.com
Kevin Jefferis 886-2055 Tim Sexton 440-1491

JENNINGS PLUMBING HEATING & AIR CONDITIONING

P.O. BOX 423 — Wheeler, Texas 79096
LARRY & BOBBY JENNINGS, Owners
Licensed, Insured & Bonded
(806) 826-3153

American Standard
HEATING & AIR CONDITIONING

Carrier
TX# TACLB017641E
"A Flush... Is Better Than A Full House!!!"

Listen to . . .
KPDR-FM, 90.5
WHEELER, TEXAS

First United Methodist Church
Eighth at Main St. - P.O. Box 89
Wheeler, TX 79096
(806) 826-3114 - Fax 826-3780
wheelerumc@windstream.net

Tom Carter, Pastor

Summer Schedule:
Donuts & Coffee: 9:30 A.M.
Sunday School: 9:45 A.M.
Morning Worship: 11:00 A.M.

Growing Spiritually

PLUMBING

Residential & Commercial
New Construction & Repair

Hire a professional... Hire a licensed Plumber!

806.323.8288
Glen Bishop - Master Plumber
Lic# M36562

Mesothelioma

EXPERIENCE COUNTS
Lawyers with over 90 years combined expertise.

Ryan A. Krebs, M.D., J.D.
Doctor-Lawyer in Full-time Law Practice
Richard A. Dodd, L.C.
Timothy R. Cappolino, P.C.
Board Certified Personal Injury Trial Law and Civil Trial
Law by the Texas Board of Legal Specialization
NO FEE FOR FIRST VISIT
CAMERON, TEXAS

1-888-MESO-FIRM
(1-888-637-6347)
www.AsbestosLaw.com

2009 Property Tax Rates in CITY OF WHEELER

This notice concerns 2009 property tax rates for CITY OF WHEELER. It presents information about three tax rates. Last year's tax rate is the actual rate the taxing unit used to determine property taxes last year. This year's effective tax rate would impose the same total taxes as last year if you compare properties taxed in both years. This year's rollback tax rate is the highest tax rate the taxing unit can set before taxpayers can start tax rollback procedures. In each case these rates are found by dividing the total amount of taxes by the tax base (the total value of taxable property) with adjustments as required by state law. The rates are given per \$100 of property value.

Last year's tax rate:

Last year's operating taxes	\$	193,820.40
Last year's debt taxes	\$	0.00
Last year's total taxes	\$	193,820.40
Last year's tax base	\$	36,188,880.00
Last year's total tax rate	\$	53558 /\$100

This year's effective tax rate:

Last year's adjusted taxes (after subtracting taxes on lost property)	\$	193,820.40
+ This year's adjusted tax base (after subtracting value of new property)	\$	36,146,836.00
= This year's effective tax rate	\$	53620 /\$100

(Maximum rate unless unit publishes notices and holds hearings.)

Statement of Increase/Decrease
If City of Wheeler adopts a 2009 tax rate equal to the effective tax rate of \$.53620 per \$100 of value, taxes would increase compared to 2008 taxes by \$ 1,995.28

Schedule A - Unencumbered Fund Balances
The following estimated balances will be left in the unit's property tax accounts at the end of the fiscal year. These balances are not encumbered by a corresponding debt obligation.

Type of Property Tax Fund	Balance
---------------------------	---------

Schedule B - 2009 Debt Service
The unit plans to pay the following amounts for long-term debts that are secured by property taxes. These amounts will be paid from property tax revenues (or additional sales tax revenues, if applicable).

Description of Debt	Principal or Contract Payment to be Paid from Property Taxes	Interest to Be Paid from Property Taxes	Other Amounts to be Paid	Total Payment
	\$	\$	\$	\$
(expand as needed)				
Total required for 2009 debt service		\$		\$ -0-
- Amount (if any) paid from funds listed in Schedule A		\$		\$ -0-
- Amount (if any) paid from other resources		\$		\$ -0-
- Excess collections last year		\$		\$ -0-
= Total to be paid from taxes in 2009		\$		\$ -0-
Amount added in anticipation that the unit will collect only -0- % of its taxes in 2009		\$		\$ -0-
= Total Debt Levy		\$		\$ -0-

This notice contains a summary of actual effective and rollback tax rates' calculations. You can inspect a copy of the full calculations at 505 Alan L. Bean Blvd
Name of person preparing this notice Claudine Finsterwald, BTA
Title City Tax Collector
Date prepared 7-31-2009

NOTICE OF PUBLIC HEARING ON WHEELER COUNTY CENTRAL APPRAISAL DISTRICT BUDGET

The Wheeler County Appraisal District will hold a public hearing on a proposed budget for the 2009 fiscal year.

The public hearing will be held on Tuesday, August 25, 2009, at 6:00 p.m. in the boardroom of the appraisal district office located at 402 S. Main St. in Wheeler, TX.

- A summary of the appraisal district budget follows:
- The total amount of the proposed budget. \$ 417,169.00
 - The total amount of increase over the current year's budget. \$ 41,734.00
 - The number of employees compensated under the proposed budget. 3
 - The number of employees compensated under the current budget. 3

The appraisal district is supported solely by payments from the local taxing units served by the appraisal district.

If approved by the appraisal district board of directors at the public hearing, this proposed budget will take effect automatically unless disapproved by the governing bodies of the county, school districts, cities and towns served by the appraisal district.

A copy of the proposed budget is available for public inspection in the office of each of those governing bodies. A copy is also available for public inspection at the appraisal district office.

WHEELER COUNTY CENTRAL APPRAISAL DISTRICT
P.O. BOX 1200
WHEELER, TX 79096
806-826-5900

Country (from Page 3)

Adley Gilmer, spend last week with them. Also visiting Monday and Tuesday were granddaughters, Mattie and Kaitlin Shields from Canadian, children of John and Julie Shields, for a good time. Several Wheeler Care Center residents out to enjoy singing, message from the Bible and communion Tuesday morning. Earl and Betty Husted were in charge of singing, communion and prayers with help from Pastors

Mark and Daniell Barton and Joyce Wood, all from Shamrock. Some residents out to participate were Robert Airstik, Stanley, Wayne Stanton, Bill Dyson, Howard Surber, Jenny Walker, Marie Baker, Edith Adams, Ovella Young, Verna Alston, Dorothy Walker, Rosalie Keelin, Rosalee Atwood, Johnny Wilson, Amazing Grace, Ada Morgan, Ferne Turnbow, Teresa Reed, Tommy Carr and others. Thank you, Beverly Bryant and Tina Bond, for preparing the good

supper Wednesday night at Wheeler Baptist Church. Several others brought good desserts to share for a great time of fellowship. Then, we had singing led by Wesley Steen, a message from the Bible and prayer concerns about those ill or bereaved by Pastor Larry Mitchell. Everyone always invited.

Sue Chandler enjoyed a visit from Braxton and Brianna Barthomew (Jana's step-children) and Audra and Hagen Weatherly. Nice to see Braxton and Brianna from Amarillo out to church with Sue Sunday.

Congratulations to Bridget Weatherly upon her graduation from W.T. with a Bachelor's degree Friday night. She will be teaching or in the office again at Kelton School this school year.

Sonny and Geraldine Pride are spending time at their farm east of Wheeler and visiting Sonny's mom, Lela Pride, at Wheeler Care Center and Geraldine's sister, Joyce Perkins. Always good to see Sonny and Geraldine, friendly folks who have many friends in Wheeler.

Nice to visit by phone with Louise Hogan. She still lives between Wheeler and Mobeetie. Nice to have her come to Wheeler Baptist Church. Her son, Rob, and Geniva Hogan live at Fort Stockton and Rob is an Extension

Allison (from Page 6)

Texas on business and then on to Pampa, Texas to do some shopping. Good to know that Aunt Billy is able to go shopping. Praise God for touching her body. We are praying for you Aunt Billy!!

Thursday, Opal and Juanita Boydston was pleasantly surprised with a visit from Curtis and Lillian Boydston of Oklahoma City, Oklahoma and Vance and Carol Boydston of Norman, Oklahoma.

Friday, Opal and Juanita Boydston, Vance and Carol Boydston and Curtis and Lillian Boydston ate supper with Louise Boydston. Vance had ordered a Pineapple Cream Pie and Lillian wanted a coconut cream pie so Vance and Carol and Curtis and Lillian had eaten together at Curtis and Lil's house and ate the coconut cream pie so they brought the pineapple cream to Louise's and Juanita fixed dinner and we enjoyed the meal and visiting.

Saturday, Opal and Juanita Boydston, Vance and Carol Boydston and Curtis and Lillian Boydston enjoyed a fish fry and meal at Glenn and Betty Boydston's. Juanita Boydston made a freezer of vanilla ice cream for dessert.

Saturday night, Opal and Juanita, and Vance and Carol ate supper with Curtis and Lillian at their Allison home. Afterwards they played a game of Mexican Train and Carol won this time.

Sunday, Juanita Boydston cooked another meal and took it to Louise's house and Curtis and Lillian and Vance and Carol enjoyed the meal and Juanita made a cherry pie this time. Bennie enjoyed the meal also later on. Gary enjoyed the left over pie from the meal before.

Monday, Juanita Boydston and Lillian Boydston went to Wheeler, Texas where they enjoyed shopping and eating a pizza at Country Cross Barn. Was doing errands for Peggy Chandler as she didn't feel like going.

God Bless and Keep ya'll till next time!!

DPS Rolls Out New Inspection Designs

Starting August 1, Texas vehicle inspection stickers will feature a western cowboy motif. Various images of cowboys will appear on different types of inspection stickers. The new stickers are rolling out over the next several months across the state.

Inspection certificates issued in previous years will remain valid

Economist with the Texas A&M system. Rob goes to different places and Geniva works in the office. They really like their jobs. God bless you all!

Pray for Leona Coates' sister-in-law, Ruth Coates, who had a stroke. Pray, also, for Ned Burrell's daughter, Trudy Kendall, who is in a California hospital with pneumonia and high sugar. "God be with you till we meet again."

Oil & Gas NEWS

(New Location, Completion and Plugging Report made possible by Oil & Gas Reporting Service, 3930 Beaver St., Vernon, TX 76384. Doris Harrison, Phone: 940/552-6644.)

Intensions to Drill Ending July 30, 2009 HEMPHILL (WILDCAT & BUFFALO WALLOW Granite Wash) Mewbourne Oil Co., #4H Prater, 200' from North & 600' from East line, Sec. 10,4,AB&M, PD 13500' (BHL: 2649' from North & 600' from East Sec. line) Horizontal

HEMPHILL (WILDCAT & N.W. MENDOTA Granite Wash) Cimarex Energy Co., #12H Flowers '84', 1438' from South & 821' from East line, Sec. 84,B-1,H&GN, PD 12000' (BHL: 560' from North & 739' from East Sec. line) Horizontal

ROBERTS (WILDCAT & LEDRICK Upper Morrow) Unit Petroleum Co., #1 Epps 'A', 1590' from South & 2300' from West line, Sec. 51,C,G&M, PD 1000'. WHEELER (B&B Granite Wash) Linn Operating, Inc., #1 Frye '9', 933' from North & 1495' from West line, Sec. 9,A-3,H&GN, PD 15175'. Field Transfer

WHEELER (FRYE RANCH Consolidated) Questar E&P Co., #1 Methodist Home '2', 467' from North & East line, Sec. 2,—,H&GN, PD 16000'. WHEELER (WILDCAT & LISTER Granite Wash) Sanguine Gas Exploration, L.L.C., PD 15000' for the following:

#1016 MR, 1020' from North & 660' from East line, Sec. 16,A-7,H&GN (BHL: 467' from North & East Sec. line) Directional well #3017 Mills Ranch & Co., 1650' from South & 660' from East line, Sec. 17,A-7,H&GN. WHEELER (WILDCAT & MILLS

THE WHEELER TIMES
PAGE 7 — Thursday, August 13, 2009
"Wheeler: town of friendship and pride."

RANCH Granite Wash) Sanguine Gas Exploration, L.L.C., #205 Quillian, 860' from North & 885' from West line, Sec. 5,L.J.M. Lindsey, PD 12000'. Rule 37 Oil Well Completions WHEELER (MILLS RANCH Granite Wash K.C.) Sanguine Gas Exploration L.L.C., #205 Buckingham, Sec. 5,—,AB&M, spud 4-30-09, drlg. compl 5-14-09, tested 6-30-09, flowed 157 bbl. of 43.4 grav. oil + 33 bbls. water thru 30/64" choke on 24 hour test, GOR 1414, TD I1625', PBTD 11540'—SWR #10 approved Gas Well Completions HEMPHILL (BEGERT 10200) Laredo Petroleum, Inc., #3 Begert '43', Sec. 43,A-1,H&GN. spud 2-26-09, drlg. compl 3-14-09, tested 5-8-09, potential 894 MCF, TD 13475', PBTD 13390'. HEMPHILL (BEGERT 10200) Laredo Petroleum, Inc., #4 Elm Creek Ranch '5', Sec. 5,A-1 H&GN, spud 1-10-90, drlg. compl 1-29-09, tested 3-7-09, potential 3612 MCF, TD 13575', PBTD 13426'—HEMPHILL (BEGERT 10200) Laredo Petroleum, Inc., #4 Elm Creek Ranch '36', Sec. 36,A-1,H&GN, spud 1-21-09, drlg. compl 2-9-09, tested 3-10-09, potential 1716 MCF, TD 13400', PBTD 13357'—

HEMPHILL (BUFFALO WALLOW Granite Wash) Granite Operating Co., #3 Huff '32', Sec. 32, A-1,H&GN, spud 10-29-08, drlg. compl 11-14-08, tested 5-29-09, potential 615 MCF, TD 13200', PBTD 13146'—WHEELER (FRYE RANCH Consolidated) Questar E&P Co., #304 Smith, Sec. 4,L.J.M. Lindsey, spud 10-21-08, drlg. compl 12-11-08, tested 1-21-09, potential 15158 MCF, TD 16513', PBTD 16372'—WHEELER (STILES RANCH Granite Wash Cons.) Apache Corp., #803 Stiles '3', Sec. 3,A-3,H&GN, spud 10-24-06, drlg. compl 1-3-07, tested 7-7-09, potential 3373 MCF, TD 16700', PBTD 14815'—SWR #10 approved WHEELER (STILES RANCH Granite Wash Cons.) Forest Oil Corp., #1005 Britt '5', Sec. 5,1,B&B, spud 2-12-09, drlg. compl 3-12-09, tested 4-10-09, potential 6058 MCF, TD 15050', PBTD 14944'—

GIFTS — CARLTON CARDS
HYLAND'S PHARMACY
HOURS: 8-5:30 M-F, 8:30-Noon Sat
109 W. TEX. ST.—WHEELER, TEXAS
Phone: 806/826-5561
WEDDING/BABY SHOWER REGISTRY

Registered Refrigerant Recovery
Walk In Coolers
Residential A/C Repair
Walk In Freezers
Commercial A/C Repair
Industrial A/C Repair

SHANE CO
OMEGA AIR CONDITIONING

Shane Orr (806) 898-8984
Licensed & Bonded (806) 316-9181
TACLA27017 Work Guaranteed

FAMILY POOL FUN.COM

• Our pools create Generations of Memories everyday, vacations never end!
• Aboveground & Inground pools at WHOLESALE PRICING
• SIMPLE DIY Pool Kit Assembly
• SAVE MONEY on All Pool Supplies & Accessories. Ships Fast

Call Today! 800-250-5502

HOME PHONE SERVICE
1st Month FREE with Lifeline
Starting at \$13.49/mo • \$0 Deposit
NO Credit Check • NO Contracts
Everyone Approved!
Restrictions May Apply.
NEWTALK 866.934.3448

PAID CDL TRAINING! YOUR FUTURE BEGINS HERE

NO EXPERIENCE NEEDED!
Stevens Transport, the premier refrigerated carrier in the US, sponsors the total cost of your CDL training! In 17 short days you will earn your CDL and begin your paid on-the-job training! Potential to earn up to \$40K first year! Excellent benefits and 401K!

For more information, call 800-333-8595
www.becomeadrivers.com

REGLAN Parkinson's Like Symptoms
Tongue Protrusions
Frowning, Facial Twitching

Reglan® (metoclopramide) has been linked to a serious condition called Tardive Dyskinesia (TD), which causes involuntary movements of the tongue, face or mouth, lip smacking, shakes, NMS, Dystonia, Akathisia and other Parkinson's-like symptoms. In Feb. 2009, the FDA required the manufacturers of Reglan® to include Black Box Warnings regarding the drug's usage for more than 12 weeks. If you or a loved one has suffered severe side effects after taking Reglan® you may be entitled to compensation. Cases taken on a Contingency Fee Basis. Call for a Free Case Consultation

WILLIS LAW FIRM
HOUSTON, TEXAS
BOARD CERTIFIED
PERSONAL INJURY TRIAL LAWYER
Texas Board of Legal Specialization
DAVID P. WILLIS — ATTORNEY AT LAW
1-800-883-9858

Mortgage Payment Protection

Worried about losing your job? Relax! This free benefit will pay your mortgage for up to 6 mos. up to \$1,800/mo. Now 14 Sales Offices in Texas. Visit ubh.com to find one near you.

United-Bilt Homes
Homemade just for you.

800.756.2506 ubh.com

Go Painlessly

Go Painlessly™
ARTHRITIS PAIN • BACK PAIN • MUSCLE PAIN
THERA-GESIC
MAXIMUM STRENGTH
Pain Relieving Creme
3 oz. (85 g)

Compare and Save! Buy THERA-GESIC™

IT'S NOT THE INTERNET THAT'S BAD.

IT'S YOUR DIAL-UP CONNECTION.

UP TO 30x FASTER THAN DIAL-UP

GET WILDBLUE HIGH-SPEED INTERNET, AND START LOVING THE INTERNET ALL OVER AGAIN.

STARTING AT ONLY \$49.95/month
INCLUDES FREE STANDARD INSTALLATION

WildBlue
High-speed Internet. Out of the blue.
877-288-5058
www.wildblue.com
Also available from your local retailer.

ANIMAL SCIENCE BREAKTHROUGH

A Blend Of 7 Different Enzymes Which Enhances The Breakdown Of Major Nutrient Consumed By Animals.

BOVAZYME™

- Up To An Additional 1/2 Pound Weight Gain Daily.
- 16.2% Improvement In ADF Digestion.
- 14.6% Improvement In NDF Digestion.
- Increased Milk And/OR Components.
- 12.86% Improvement In Protein Digestion.
- Increased Microbial Growth.
- 12.2% Increased Microbial Nitrogen.
- Feed Less Protein.
- High Return On Investment.
- Minimized PH Swings.
- Consistent Dry Matter Intake.
- Improved Manure Consistency.

DEERZYME™
WITH **BIO-D™**

- Increase Antler Mass And Length.
- Maximize Calcium And Phosphorous Utilization.
- Increase Weight Gain.

DEERZYME COMPLETE FEED
DEERZYME MINERAL
DEERZYME CORN

CONTACT US FOR LOCAL DEALERS

404/376-2466 www.TRAgProducts.com
770/312-7552 www.headgearllc.com

Local Distributor: Riley Bradstreet, 806/334-0798

SIGN UP FOR A FREE SCOOTER
One Scooter Given Away Each Month
Toll Free 800-606-9860
Med Care MEDICAL SUPPLY
www.medcaremedicalsupply.com

Urgent news for people diagnosed with MESOTHELIOMA

Exposure to asbestos is usually the cause of mesothelioma, a serious cancer. Whoever exposed you to asbestos should be held responsible. Call us now toll free at 1-800-THE-EAGLE for a free consultation. We practice law only in Arizona, but associate with lawyers throughout the U.S.

GOLDBERG & OSBORNE
1-800-THE-EAGLE
(1-800-843-3245)
www.1800theeagle.com

TEXAS STATEWIDE CLASSIFIED ADVERTISING NETWORK

TexSCAN

TexSCAN Week of August 9, 2009

ADOPTIONS
PREGNANT? CONSIDERING ADOPTION? We can help you! Housing, financial, medical assistance available. Choose adoptive family. Be involved in plans. Call 24/7. Forever Blessed Adoptions, 1-800-568-4594.

BUSINESS OPPORTUNITIES
ALL CASH VENDING! Do you earn \$800 in a day? Your own local candy route. 25 machines and candy. All for \$9,995. 1-888-625-5481. Multi Vend. LLC.

DRIVERS
CDL DRIVERS NEEDED to deliver brand new semi-tractors and buses from locations in TX, OK, AR and KS to deliver across the U.S. Net \$45,000/year and set your own schedule! Sign on bonuses available! Contact us at www.qualitydriveaway.com or call 1-866-764-1601.

RV DELIVERY DRIVERS
needed. Deliver RVs, boats and trucks for pay! Deliver to all 48 states and CN. For details log on to www.RVdeliveryjobs.com

SLT- IMMEDIATE OPENINGS
for CDL-A teams, solo drivers willing to team. \$1000 sign-on bonus. \$1100/week minimum pay. Hazmat and 1 year experience. Background check required. 1-800-835-9471.

EQUIPMENT FOR SALE
SAWMILLS FROM ONLY \$2,990.00. Convert your logs to valuable lumber with your own Norwood portable band sawmill. Log skidders also available. norwood-sawmills.com/300n. Free information: 1-800-578-1363, Ext300-N.

HELP WANTED
CAN YOU DIG IT? Heavy equipment 3 week training program. Backhoes, bulldozers, trackhoes. Local job placement assistance. Could qualify for GI/Va benefits. 1-866-362-6497

REAL ESTATE
83.32 ACRES, SONORA/Del Rio. Rugged, heavy cover. Whittail, exotics, hogs, turkey. End of road, borders large ranch. \$995/acre, terms. 1-830-257-5572. www.texasranchland.com

MISCELLANEOUS
ABSOLUTELY THE BEST VIEW Lake Medina/Bandera 1/4 acre tract, central W/E, RV/motor home/house. OK only \$830 down \$235 month approved program. Financial aid if qualified. Housing available. Call Aviation Institute of Maintenance, 1-888-349-5387.

ATTEND COLLEGE ONLINE
from home. Medical, Business, Paralegal, Accounting, Criminal Justice. Job placement assistance. Computer available. Financial aid if qualified. Call 1-866-858-2121, www.CenturaOnline.com

WELCOME A HIGH SCHOOL
exchange student as part of your family. Help a dream come true. Short and long term hosting. 1-800-888-9040. www.world-heritage.org

RVs FOR SALE
REPO SALE! TRAVEL trailers, fifth wheels, Must go! Call 1-866-813-2770.

Run Your Ad In TexSCAN!
Statewide Ad.....\$500
307 Newspapers, 1,918,228 Circulation
North Region Only.....\$230
59 Newspapers, 279,048 Circulation
South Region Only.....\$230
107 Newspapers, 591,189 Circulation
West Region Only.....\$230
101 Newspapers, 248,561 Circulation

To Order Call The Newspaper direct, or call Texas Press Service at 1-800-749-4793 Today.

NOTICE: While most advertisers are reputable, we cannot guarantee products or services advertised. We urge readers to use caution and when in doubt contact the Texas Attorney General at 1-800-621-0508 or the Federal Trade Commission at 1-877-FTC-HELP. The FTC web site is www.ftc.gov/bizop

Extend your advertising reach with TexSCAN, your Statewide Classified Ad Network.

Tralee (from Page 1)

escape from dangerous situations and make a better life for their children.

In addition to the decrease in public donations, the severe wind and hailstorms in May destroyed the 18-year-old security fence around our shelter. The fence was not covered by insurance for wind, so we were forced to spend more than \$30,000 of unbudgeted funds to rebuild the fence and replace the aging and unsafe electrical gate.

In the 25 years Tralee has been serving violent crime victims in this area, one thing has remained constant...caring people have al-

ways stepped up when they hear of a true need. We hope you will consider Tralee's need and help in whatever way is possible.

Your gift, whether large or small, will be an investment in a better community. Your gift will ensure that when that trembling finger dials 669-1788 or 1-800-658-2796, there will be a voice to answer: "Tralee Crisis Center. How may I help you?"

If you need any additional information, please contact me at the telephone number above or by email at deedee.tralee@sbcglobal.net.

Thank you for your consideration.

/signed/ Dee Dee Laramore
Executive Director

Reduced (from Page 2)

stamp or TANF case number must report when the household no longer receives these benefits. Also, if a household member becomes unemployed or if the household size increases, the household should contact the school. Such changes may make the children of the household eligible for benefits if the household's income falls at or below the levels shown above.

Non-Discrimination Statement: This explains what to do if you believe you have been treated unfairly. In accordance with federal law and U.S. Department of Agriculture policy, this institution is pro-

hibited from discriminating on the basis of race, color, national origin, sex, age or disability. To file a complaint of discrimination, write USDA, Director, Office of Civil Rights, 1400 Independence Avenue, SW, Washington, D.C. 20250-9410 or call 800-795-3272 or 202-720-6382 (TTY). USDA is



THE WHEELER TIMES

PAGE 8 — Thursday, August 13, 2009

"Wheeler: town of friendship and pride."

an equal opportunity provider and employer.

Solution

S	A	S	S	I	D	E	A	S	C	O	F	F	
T	R	O	T	N	O	O	N	C	A	N	O	E	
Y	E	A	R	M	E	N	T	U	N	C	U	T	
A	R	O	M	A	E	B	B	E	R	A			
	N	S	A	C	R	A	T						
G	A	G	G	L	E	O	V	A	W	E	S	T	
R	U	E	A	C	L	A	W	O	G	L	E		
U	R	N	C	E	L	L	I	N	G	G	A	P	
F	A	I	R	N	A	A	N	E	O	N	E		
F	L	E	A	N	O	T	F	L	A	N	G	E	
				Y	O	U	E	G	O	F			
H	A	D	S	I	X	R	E	F	E	R			
A	L	I	B	I	R	A	C	E		E	V	I	
S	T	A	R	E	A	G	O	G	C	E	D	E	
P	O	L	A	R		Y	O	Y	O		T	R	E

30 YEARS EXPERIENCE • BRICK, BLOCK, STONE
POINT UP & REPAIRS, MAIL BOXES, PLANTERS
RETAINING WALLS, WAIN SCOT & ETC. • REFERENCES AVAILABLE

Guthrie Masonry
806-669-2973
PAMPA, TEXAS 79065

GLEN GUTHRIE

Wheeler County's Exclusive source for Plains & Shurfine Products!
Your source for the freshest ★ PRODUCE ★ MEATS ★ DAIRY
300 E. Oklahoma Ave. — Wheeler, Texas
"Support Your Local Merchants" **806-826-5944**

PRICES GOOD
WEDNESDAY, AUGUST 12 THRU
TUESDAY, AUGUST 18, 2009

ASSORTED
Coca-Cola
6 PK. 1/2 LITERS
5\$10
FOR

NOT LIABLE FOR TYPOGRAPHICAL OR PICTORIAL ERRORS.
WE RESERVE THE RIGHT TO LIMIT QUANTITIES.
SOME ITEMS NOT AVAILABLE IN ALL STORES.



**WHEELER
WELLINGTON
SHAMROCK
CHEYENNE
SUNRAY**

Butter
Quarters 2 for \$4
shurfine 16 oz.

**TenderCrust
Split Top
Wheat Bread**
24 oz.

99¢

**Growers' Pride
Orange Juice**
Florida's Natural
select varieties, 64 oz.

2 for \$4

**Country Style
Hash Brown
Potatoes**
Shurfine 24 oz.

2 for \$3

**Cap'n Crunch
Cereal**
14 oz. peanut butter crunch
15 oz. crunch berries or
16 oz. original

3 for \$5

**Shur Saving
Coffee**
for all coffee makers
34.5 oz.

\$3.99

**BREAKFAST
SPECIALS**

**Owens
Breakfast
Sausage**
regular or hot
2 lb. roll

all varieties
1 lb. roll

\$3.99

\$2.19

**Bar S
Sliced Bacon**
reg. or thick sliced
12 oz. pkg.

2 for \$3

Top Round Roast
london broil
preferred trim
boneless beef

\$1.99
lb.

Cantaloupes
juicy

79¢
ea.

**Red or
Black
Plums**
99¢
lb.

**Red, Black
or Green
Seedless Grapes**
large
99¢
lb.

**Peaches or
Nectarines**
yellow
99¢
lb.

LOOKING TO SAVE? BE SURE AND CHECK OUT OUR PRIVATE LABEL PET FOOD PRODUCTS