



THE WHEELER TIMES

(USPS 681-960)
VOLUME 55, NUMBER 13

THURSDAY, FEBRUARY 23, 1989

Single Copy: **35¢**

"Wheeler, town of friendship and pride."

CWE CHAT WITH EDITOR

By Louis C. Stas

Have you purchased tickets for the annual Chamber of Commerce Installation Banquet Monday evening, February 27? The tickets are on sale at the chamber office or from Chamber board members. Plan to be in attendance; as usual we will have excellent local entertainment, good fellowship and the food will be superb—the meal will be catered by Maxey's Steakhouse.

-cwe-

Congratulations is in order for the Wheeler Mustangettes on having earned the bi-district title. The bad news is they have closed their season; the team met Vega Tuesday evening at Borger and lost with a score of 47-58.

Good Luck to the Wheeler Mustangs and Kelton Lions. The boys will travel to Borger Friday evening. Kelton will play White Deer and Wheeler will play Groom, both for Bi-District games.

-cwe-

You will note elsewhere in the "Times" that the board has begun work on planning the bi-annual Wheeler Ex-Student-Teacher Reunion. The date is June 10. Mark the date and make arrangements to be here. The immediate past sentence was aimed especially at those local ex-students and teachers. It is very disappointing for those traveling hundreds of miles and find the local citizens didn't care enough to walk out the front door.

-cwe-

Enrollment for the E.M.T. class will be Tuesday evening, Feb. 28, 1989, at the ambulance barn, south of the jail in Wheeler. This is not only for those interested in working with the ambulance. This is something everyone needs to learn. It might save the life of a friend or relative. Be prepared.

-cwe-

I missed the demonstration of the Airbag Rescue System Thursday evening. These were purchased by the local ambulance service from the money acquired by "Memorial Donations" and other donations to the service.

-cwe-

Here is a good opportunity to put in a plug for "Memorial Donations". Both the Wheeler Ambulance Service and Volunteer Fire Department accept and acknowledge these donations. The money is then used to purchase items needed by the volunteers.

-cwe-

It is time once again to hand-out some **Roses**. We at the "Times" call on Ann Cook on numerous occasions for anything from identification to 'getting after a teacher to get their news down here'. She very faithfully sees that the news from the school arrives at the office, each Tuesday afternoon. **Thank You, Ann.**

-cwe-

As I wrote 'C.W.E.' last week, I thought the '50th Birthday' was over. Little did I know that those relatives of mine had contacted Patricia for the 'one last picture'. She, of course, was more than willing to oblige. We have yet to figure the significance of the three, black heart shaped boxed of candy received from Raymond and Darla. I received a box on Wednesday, Thursday and Friday. When I got the second box on Thursday, I thought Darla was in worse shape than I and didn't remember sending the first. But, I don't think she would forget sending two boxes. It was lots of fun, but I hope I am not expected to 'grow old gracefully'.

-cwe-

It sounds like lots of fun was had at the expense of Judy Woollard, who recently went 'over the hill'. O' to be 40 again.

-cwe-

WEATHER

Date/Day	Lo	Hi	Pre
02-15, Wed.	29	37	0.25
02-16, Thurs.	24	36	0.00
02-17, Fri.	27	38	0.00
02-18, Sat.	27	38	0.00
02-19, Sun.	28	41	0.00
02-20, Mon.	37	39	0.29
02-21, Tues.	28	51	0.00
Low for the year:	2-04		-5
High for the year:	1-??		68
Total moisture for month:			0.55"
Total for year:			02.16
Total snow:			Tr

Courtesy: KPDR-FM Radio

ANNUAL CHAMBER BANQUET



RETIREES: A retirement reception was held Friday afternoon, February 17, from 2-4 in the meeting room of the city office. Honorees were Mildred Ramsey and Bill Owen. Combined they had 34 years service to the City of Wheeler. Mildred has served for the past 22½ years as city secretary. Bill Owen had no official title in his 11½ years as coordinator and "living

reference". Mildred's retirement was effective January 31, 1989, and Bill's last day at work was February 20. Their presence and contributions to the operation of the city will certainly be missed. Claudine Finsterwald began working part-time with Mildred last year and will take over the secretary's duties.

Mustangs Meet Groom For Bi-Dist

The Wheeler Mustangs will play Groom on Friday at 6:30 at Borger for Bi-District. Kelton boys will play White Deer Friday at 8:00 p.m. at Borger for Bi-District. Come out and support our young people.

WHEELER VS. McLEAN

Wheeler played McLean in a tene-up game on Tuesday, February 14. The girls won 56 to 48. Bobbie Kuehler had 18 points, 4 rebounds, Liz Stiles had 10 points, 6 rebounds, Dee Dee Dorman had 9 points, 2 rebounds, Tera Henderson had 8 points, 2 rebounds, Marcy Smith had 6 points, 9 rebounds, and Tammy Helton had 5 points, 2 rebounds.

The boys won 72 to 61. Stephen Batton had 26 points, 3 rebounds, Sammy Zepeda had 15 points, 1 rebound, Cory Cornett had 12 points, 7 rebounds, Kyle Sword had 11 points, 4 rebounds and Shane Guest had 8 points 5 rebounds.

Pictures Needed

"The Wheeler Times" needs pictures of your child or grandchild to run in the McCasland-Smith Agency advertisement.

Here is an opportunity to show everybody how cute those 'kids' are. There is no charge; all we need is a studio picture (individual billfold to 5x7). Please include child's name, age, at the time the picture was taken, and parent's name and address. The child's grandparents can be named if the list is not too long.



SPECIAL ACHIEVEMENT AWARD: Maggie Myers, clerk in the Mobeetic Post office, was recently recognized by the United States Postal Service for 13 years of dedicated service. Maggie was presented a "Certificate of Appreciation" and a cash award by the Postmaster, Ada Lou Lester.



DIRECTOR OF NURSES: Shirley Meredith, R.N., recently began her duties as director of nurse as Wheeler Care Center. The native of Floydada comes to Wheeler from Houston. Meredith has been an R.N. for the past 6 years. She has been involved with nursing homes since 1968, having also served as an administrator and worked several years with home health. Shirley and her 16-year-old son will reside in the Kelton community; she also has a married daughter.

Send A Mouse To College

The Wheeler School will be participating in the American Cancer Society "Send a Mouse to College" program. The 5th and 6th grades are the classes that have been selected. Sharon Wright will be in charge of the event.

The money raised through this event will be used to buy mice to be sent to a college for research. The cost of a mouse is \$.87c and students may contribute that amount or more to send mice to college to help stamp out cancer. All children participating will

Donkey Basketball

There will be a Donkey Basketball game tonight, Thursday, February 23 in the Wheeler old gymnasium. The ball game is sponsored by Wheeler Band Boosters.

Blood Drive

There will be a Blood Drive on Thursday, March 2 at 3-7 p.m. at the Wheeler High School Cafeteria. The blood drive is sponsored by Wheeler FHA.

The Annual Installation Banquet for the Wheeler Chamber of Commerce will be Monday evening, February 27, 1989, in the Wheeler School cafeteria. Entertainment for the 7:00 banquet will be the "Soprimes".

The meal will be catered by Maxey's Steakhouse.

The tickets are on sale at a cost of \$10 per plate. The theme of the affair will be "Red, White and Blue".

As has been the practice for the past several years, Wheeler's "Outstanding Citizens" will be recognized. Awards will be given the Outstanding Man, Woman, Teenager, Employee and Farmer and/or rancher.

As has been the practice for the past several years, the Wheeler Volunteer Fire Department will present a plaque to their "Outstanding Fireman".

The 1989 officers were recently elected at a Chamber meeting and will be installed at the banquet. Bob McCain will step into the office of president; serving as vice president will be Ben Ed Hillhouse.

Baptist Church To Hold Marriage Seminar

First Baptist Church, Wheeler, Texas will hold a Marriage Enrichment Seminar, Marcy 17, 18, 19, 1989 at the church building. The leaders, Dr. and Mrs. Ebbie C. Smith (Ebb and Donna), have led such seminars in eight states and overseas, according to Pastor Robert Helsley. The purpose of the seminar is making good marriages better. The seminar does not attempt to solve deep marital problems that need extensive therapy.

"We have real fun at marriage enrichment seminars," says Ebbie, who teaches Christian Ethics and Missions at Southwestern Baptist Theological Seminary. "The better a marriage is, the more that couple can profit from a seminar," adds Donna, mother of four, grandmother of two.

The First Baptist Church invite our friends in the community to participate in this Seminar.

Kelton Plays White Deer

Kelton High School boys will play White Deer for Bi-District Friday, February 24, at 8:00 p.m. in the

The Chamber will be bringing to close an excellent year and urges the membership to show their support with their attendance. You will receive

good food, good fellowship and good entertainment for your \$10.

Tickets are available at the Chamber office or any board member.



NEW EQUIPMENT: The Wheeler Volunteer Fire Department recently received the Airbag Rescue System, a set of four bags. A demonstration was held Thursday evening for the demonstration of the fire and rescue equipment. The bags will work in conjunction with the "Jaws of Life" purchased several years ago. The bags are 1 inch thick and of various other dimensions; they inflate to 8 inches thick. The bags are inflated by air

from air packs and will lift up to 23 tons. The picture here show the firemen 'pulling' a steering column. Firemen shown are (l. to r.) Gary Davis, Jon Sullivan, Robert Ford, Daryl Snelgrooves and Steve Horton. The Wheeler Volunteer Fire Department is presently 'fitting out' a 1-ton booster truck. The air bags were purchased at a cost of \$1900 by the Wheeler Volunteer Ambulance Service with money accumulated from "Memorial Gifts" and other donations to the service.

May Election For Three Councilmen

The City has set May 6, 1989, for election to elect 3 members to the Council. Applications for filing to have your name placed on the ballot may be picked up at the City Office.

Bobby Vanpool, Berniece Hall and Jess Sheets are the council members whose terms expire.

ALPHA MU ALPHA TO SPONSOR

Outsiders Men Basketball Tourney

Alpha Mu Alpha is sponsoring an outsiders men basketball tournament Saturday, February 25. This will be an all day tournament and proceeds will go towards Senior Scholarship and Fire, Ambulance and other worthwhile service projects for the Wheeler Community.

Everyone come and enjoy a day of games and support your local sorority.

Borger High School Gym following the Wheeler—Groom game. Come out and support these local teams. **GOOD LUCK IN THE PLAYOFFS!**

E.C.A. CLASSES Enrollment Tuesday

Anyone interested in an E.C.A. (emergency care attendant) class contact Louis Stas 826-3123 or Mary K. Christner 826-3109.

Anyone interested in an E.C.A. (emergency care attendant) class contact Louis Stas 826-3123 or Mary K. Christner 826-3109.

Enrollment will be Tuesday evening, February 28, at 7:00 p.m. in the Ambulance Barn, next to Wheeler jail.

FREE BLOOD PRESSURE Clinic

There will be a Free Blood Pressure Clinic for all Wheeler County residents regardless of age, Thursday, March 2, 1989. It will take place in the south end of the Senior Citizens' Center on Canadian Street from 9:00 a.m. to 12:00 noon.

Continued Page 4

Hospital Notes

Old Admissions
1-31 R. D. Harris
2-3 Winnie Leggett
2-11 Ed Gilmer

New Admissions
2-13 Marvin Underwood
2-15 Naomi Speck
Clayton Owens
Jo Ann Taylor

2-16 June Bailey
Stephanie Dollar
Virgil Helton
Eugenio Martinez

2-17 Pauline Hefley
Effie Jacobs
Will Burke

2-19 Nora Patterson
Dismissals
2-15 Ruby Keys
Doris Rusk

2-16 Clayton Owens
Walter Simmons
Ruby King
Rosemary Liles

2-17 Florence George
Eugenio Martinez
Jo Ann Taylor
Effie Jacobs

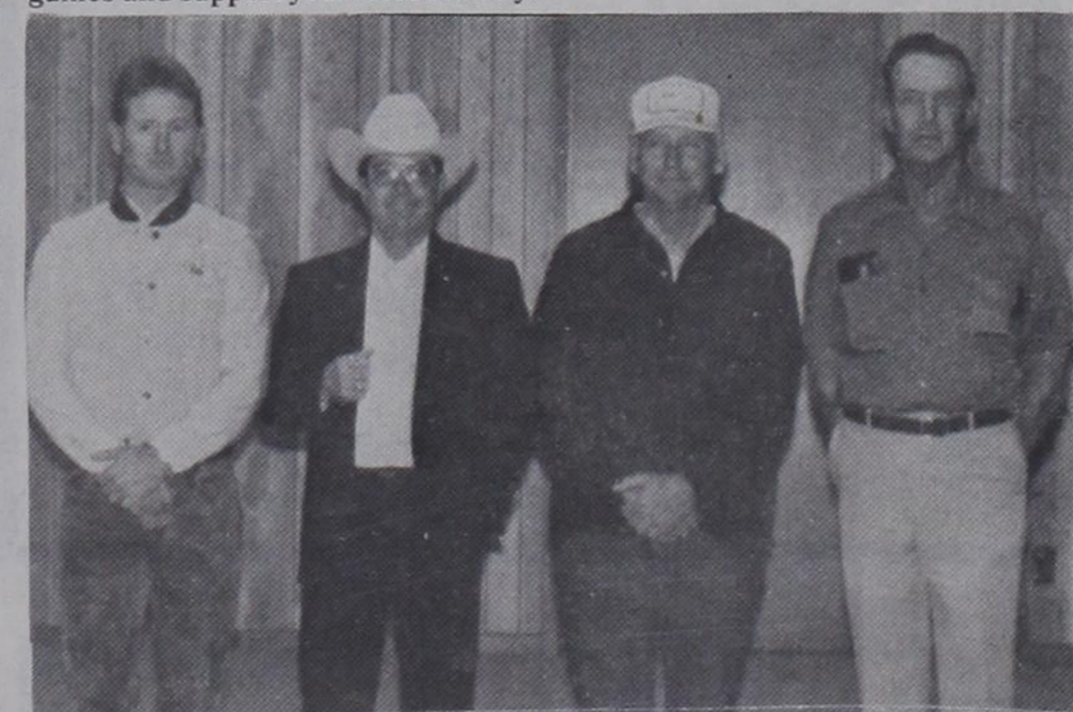
2-19 Naomi Speck

Bi-Annual Reunion Preparations Begin

Work has begun by the officers of the Wheeler Ex-Student & Teacher Association to organize for the bi-annual Wheeler High School Reunion. The reunion is held the second Saturday of each "odd" year. The activities this year will be June 10 at the high school.

The board held a meeting this past week to begin the work of planning the festivities. Serving on the board are Bill and VonEva Robertson, co-president; Dan Kenney, vice president and Bob Stiles, secretary. Committees are: Mailing, Donna Velasquez, Marla Ford, Teresa Rose and Elva Wood; Advertisement, Jimmy Adams; Publicity, Rhonda Ferguson and Program, Brenda Francis.

Continued Page 4



AWARDS RECEIVED: State Department of Highways and Public Transportation employees of the Wheeler County Maintenance Office were recently honored during the Sixth Annual Service and Safe Driving

Awards Assembly. The prestigious event was held at the Fair Park Auditorium in Childress. Employees receiving awards are: (Front row l. to r.) Justin, Rose, Joe Hall, Billy Stewart and Don Alexander.

Sweetwater News

Mrs. Joe Flowers

Good old rain! Had .7. And the treasured ice storm has failed to materialize. Be finie if it doesn't. I remember when the kids were small, we had a sleet storm that lasted for several weeks. No school quite a while. When the roof on the house started going up and down, I'd bundle the boys up and let them slide around on the ice til they worked off some steam.

Been a lot of flu around in the school. They were dismissed Friday for the district teacher's meeting at Sentinel. Maybe everyone will be recovered by Monday.

Quite a week. Presidents birthday and a national holiday. Our number one son is hitting the big number (50) the 23rd. Well, it happens Now even David is older than his mama.

Tony and Carleene called Sunday, he had made it safely home from Israel. Said Israel is about the size of Oklahoma. Heard from Joe Dales. They had been in a convention in Arizona recently. Rented a convertible and lived it up in their spare hours.

Lois and Carl Jarnagin of Erick were out to see Flossie Maddoux and tend to business Tuesday.

Had a call from Curtis Bristow of Cordell. He's getting gardening fever and wanted to know about the tomato growing recipe.

Services were February the 10th at Rose Chapel for Opal Cotton. Burial was at Brookside Cemetery.

We are devout Wheel Watchers and were pleased to read that 42 contestants have been selected from the OKC meet. Salle Banks from Elk City, Jean Evans from Weatherford and Druanne Ryan of Sentinel will represent this part of Oklahoma.

I'm really getting with it. Took down all my Christmas decorations. Had to read all my cards again before I stored them. Well, I haven't stored my Nativity scene yet.

Imogene Pickering spent two weeks in North Carolina with Cheryl and family.

Editha Hildebrand has been to California where she attended funeral services for her brother, Floyd Kline. Floyd was 84. He was raised in the bulo community. Went to school at Wilson and later to Bulo before moving to CA. The funeral and burial were at Modesto.

Mr. and Mrs. Clyde Dodd visited Bertha Coffey Saturday.

We have been getting a slew of letters that are unsealed. One or two even had checks in them. I don't know if it is sorry glue or what. Ever since I got the envelope back stamped "Received in OKC with no contents" I have been extra careful. Never did figure out what it was doing in OKC since it was addressed to Sayre.

Stephanie Shoffner of Edmond and Rhonda Smith of Lindsey spent last weekend with Ed and Eileen Logan.

Blanche Kuykendall and Ronnie Reed were down from Amarillo visiting relatives.

Theresa Nabors has been ill and missed a few days of school Leo Keathley has been a patient at an OKC hospital. Clarence Gee is home from the hospital.

Nice piece in the Sayre Journal about Vicky and Ronnie Harrold and their part in the foster home program. He is a policeman at Sayre and she has a beauty shop over at the 100th Meridian Stop. They have two children, Clint and Kody.

Our Carleene was teacher of the month at the college where she teaches. One of our fiddling friends Albert Anderson was tenant of the month at the Sayre Concept Housing.

Sherman and Wanda Wilson have a new grandson ((their 5th). His name is Clark Reid Wilson. Parents are Keith and Kelly. Great grandmother out here is Dovie Wilson.

Had something odd happen the other day. Clerk wouldn't double the coupon on a sale product even tho they were having double coupon week. First time for that. See Amarillo United is paying double on coupons every day. I like those stores who do that.

Betty Brothers and Jack Criswell of Sayre, Red and Anna Dukes of Allison, Bertha Coffey, Joe, David, and I went to the Wheeler Care Center Wednesday night where the musicians entertained an hour.

Frank and Lynda Osborn were honored with a reception at Erick on the occasion of their 25th wedding anniversary. Guests from out this way were Billy and Gail Sutton, Ed an Eileen Logan, J.E. and Clara Lou McGuire.

Bill Duff, a wheelchair patient, is coming through Oklahoma in March, for the Wheels Across America campaign he started January 17 in Los

Angeles and plans to push his wheel chair to New Your City by mid summer. Barring bad weather, he plans to come from Wheeler thru Sweetwater March 8, on Highway 152. He has a dual purpose to make people aware of abilities of handicapped persons and raise funds for the Miami Project to cure paralysis.

Duff travels about 50 miles a day. The Sweetwater students plan to welcome him to the first thown in Oklahoma. And to wish him a safe journey. They will have banners, signs, and lots of applause for him.

No new taxes? Just add to the old. They are talking \$1 a gallon tax on gasoline. (Lots of foreign countries do pay that much or even double). We'll probably hear a dollar so much we'll be relieved when they made it fifty cents, or so.

WHEELER ISD MENU Feb. 27-March 3

MONDAY: Breakfast: Juice, cereal, toast, milk.

Lunch: Corn dogs, tater tots, corn, milk/tea, choc. chip cookies.

TUESDAY: Breakfast: Juice, biscuits/gravy, bacon, milk.

Lunch: Chili beans, cheese chunks, Mexican hominy, crackers/cornbread, milk/tea, pears.

WEDNESDAY: Breakfast: Juice, cinnamon rolls, milk.

Lunch: Steak fingers, m. potatoes/gravy, beets, milk/tea, brownies.

THURSDAY: Breakfast: Juice, hash browns, sausage, toast, milk.

Lunch: Hamburgers, French fries, lettuce, tomatoes, cheese, pickles, milk/tea, peaches.

FRIDAY: Breakfast: Juice, cereal, toast, milk.

Lunch: Mexican pile-on, cheese, rice, salad, chips, milk/tea, pineapple.

Menu subject to change.

Allison News

By Christine Gilmer

Psalms 19-9 & 11:

The fear of the Lord is clean, enduring forever; the judgements of the Lord are true and righteous altogether. Moreover by them is thy servant warmed; and is keeping of them there is great reward.

"Thanks" so much to the Allison 4-Her's who brought a round Valentine homemade cookies to different ones, very thoughtful of them, God Bless our young people.

Len and Betty Brown of Dumas spent a few days in their home here in Allison a few days last week.

Ruby Craig and Wilma Gilmer went to Pampa last Monday, did some shopping and ate dinner at the Kentucky Fried Chicken, and came back through Wheeler and picked up Tanner and Tyler McWhorter at the babysitters and took them to their home and stayed with them until Rhonda got home from work. Tanner

Listen to...
KPDR-FM, 90.5
Wheeler, Texas

Dr. Jack L. Rose
OPTOMETRIST
121 Main St.—Shamrock
Phone 256-3203
Tues.:9-5 Fri.:2-5

THANK YOU!

The **KELTON BOOSTER CLUB** express their appreciation

to the following individuals and businesses who donated or bought animals of Kelton FFA or 4-H students:

- | | |
|----------------------------|---------------------------------------|
| George Harris | Kelton Gin, Inc. |
| Marion Bryant | Thriftway of Wheeler |
| J. W. Buckingham | Mesa Limited |
| C&H Supply Inc. | Production Credit Assoc. |
| Grayson Grain | Oldham & Oldham Cattle Co. |
| Hyland's Pharmacy | Haber Oil Co., Inc. |
| George C. Davis | First National Bank in Wheeler |
| Garland Moore | First State Bank of Mobeetie |
| | Wheeler Auto. |

MAXEY'S STEAKHOUSE

SUNDAY BUFFET

- Salad Bar
- Roast Beef Au Jus
- Baked Chicken Breast
- Baked Potatoes
- Rice Pilaf
- Green Beans
- Buttered Carrots
- Hot Rolls
- Coffee/Iced Tea
- Dessert

Sun.—Noon Buffet (Only) 11:30-1:30

• Closed Monday •

Phone: 826-3441

1 Mile South of Wheeler on U.S. 83

Thursday Nights

All the Fresh Water Catfish & Shrimp you can eat.

Served with onion rings, French fries, hush puppies and cole slaw.

spent last Friday with his grandmother Ruby, Lisa Farmer and Ryan from Pampa spent the weekend with Ruby. Lisa and Ryan attended both services at the U.P. Church Sunday.

The drizzly, rainy and fog is still with us here in Allison this Monday morning. It is nice that the temperature has been staying above the freezing mark for most of the week. It will be nice to see the sun shine again.

May Bell Childress weekend guest was her granddaughter Jamie Stewart of Kelton.

Opal and Juanita Boydston's Sunday dinner guest was Nellie Long, Thursia Poindexter from Cheyenne, Okla. and Sylvia Brown from Wheeler. Janice Boydston and Shirley Helms went last Wednesday to Binger, OK. and spent the night with

Care Center Comments

Our week was very busy last week. Everyone has welcomed the rain. If we are lucky maybe we will receive a little more before its over with.

Pat Helsley provides a very good Bible study each Monday morning. We appreciate her so much.

Andrea Michell Jones from Kelton brought valentines for all the residents monday afternoon. This was a very thoughtful thing to do.

We held our combination February Birthday/Valentine party Monday afternoon. The Methodist Women brought angel food cake and punch which was very good. The quartet from the Methodist church provided some very nice selections appropriate for each occasion. Our birthday people were: Winnie Leggett, 1st-1902; Vena Richardson, 8th-1912; Walter Skaggs, 8th-1930; Alma Seitz, 9th-1908; Cora Harris, 13th-1900; Iris Ingram, 15th-1906 and Esther Sorenson, 19th-1899. Happy Birthday to all.

The party hostesses were Vida Brown, Mary Margaret Dodd, Alice Bell Helton, Opal Farris and Leola Farris. The quartet members were Greg Smith, Dick DeArment, David Britt, Bob Stiles and Martha Helton as their pianist. We all enjoyed their music very much. Thank you. Our Valentine King and Queen were also chosen. Names of each were chosen from a basket they were Ed Smith (King) and Lorena Adams (Queen). Each wore the red robe of royalty and was presented with a beautiful Valentine.

Tuesday morning Allene Mills (my consultant) came and was very kind to help with Family Altar. Carlene appreciates her help in leading hymns.

Fran Allen was very kind to come out Tuesday afternoon and work in the beauty shop. She is so good at what she does and volunteers are so desperately needed in the beauty shop. Thank you Fran for coming.

We have two new L.V.N.'s Pat Henry from Shamrock and Cherine Beaver from McLean. We welcome you to our staff.

Thank you to the Wheeler Extension Homemakers Club, (Marie Wright treasurer) for the donation to the Care Center Dental fund. You are very generous and kind.

Our Bingo volunteers Wednesday afternoon were Doraeen Owen, Ila Byers and Opal Hefley. Thank you all for coming. Evelyn Meek came to serve juice, she had a helper this week. Josilyn Meek came to help push the cart. Thank you to both of you.

Wednesday night Flowers, family and friends came to play some of that Toe Tappin kind of music. Mr. and Mrs. Joe Flowers and son, Jack Criswell, Betty Brothers, Mr. and Mrs. Red Dukes and Bertha Coffey. They certainly liven up things. Thank you for coming.

Shirley Meredith has been hired to be Director of Nurses. We welcome her here from Pampa. Due to poor health Jessie Bailey has chosen to resign this position.

The Christian Center Inspirational was very interesting to say the least, Thursday morning. Fern Young and Rozena Zybach are very understanding and kind to come every week to teach. Sylvia Brown also came and sang a very pretty song for us. Thank you to everyone.

Ann Ellison and LaJune Alexander were very popular Thursday afternoon when the popcorn started to pop. We gave Shirley her first lesson in procedure. Thursday afternoon—4:00 popcorn break, we may have to remind her again next week. HA! HA!

If there is any licensed beauty operator who would like to work 2 or 3 days a week at the Care Center, please call 6-3505 and ask for Lois. Vida Brown and Mae Nash were here to visit and serve juice Friday afternoon. Thank you so much for coming.

Both our morning exercise class and Story Time went, well Friday. Mary read some short stories and



THE WHEELER TIMES

Page 2—Thursday, February 23, 1989
Wheeler, town of friendship and grace.

SaRita and Carissa Thursday and stayed until Sunday night, Robbie came Sunday for SaRita and Carissa to take them home. Forrest and Janice, SaRita and Carissa visited Opal and Janice. SaRita and Carissa visited Opal and Juanita last Thursday night.

Sue Chandler, Jana and Bridget spent last Monday night with Peggy Chandler.

Bill and Kay Donaldson's weekend guest was Allen and Vicki Donaldson and Ashley from Amarillo. Jimmy and Dawn Donaldson and children also visited part of the time while Allen

lonny tunes Friday afternoon while I did nail care.

Callie Cabe had visitors Sat. and Sun. Russell and Sue Ann Gibson from Abilene, Texas along with Brittney and Chelsie, their daughters, came for a visit with their grand-therm. Russell is the son of Mary and Gene Gibson of Wheeler.

Thank you to Jim and Melba Montgomery for being here to teach Sunday School Sunday morning.

Rev. Jerry Ralston, First Baptist Church Kelton and Members came for afternoon Worship Sunday afternoon. Thank you very much to all came. We appreciate you very much.

Until next week.

ALLISON

Feb. 27 - March 3

MONDAY: Lunch: Steak fingers, mashed potatoes, green beans, hot rolls, butter, milk, ice cream.

TUESDAY: Lunch: Mexican casserole, tossed salad, mexi-corn, sliced bread, milk, rice krispie treats.

WEDNESDAY: Lunch: Sauerkraut and weiners, blackeyed peas, fried okra, hot rolls, butter, milk, jello.

THURSDAY: Lunch: Baked chicken, potato salad, cole slaw, biscuits, butter, apple crisp.

FRIDAY: Lunch: Burrito w/chili and cheese, tossed salad, milk, fruit.

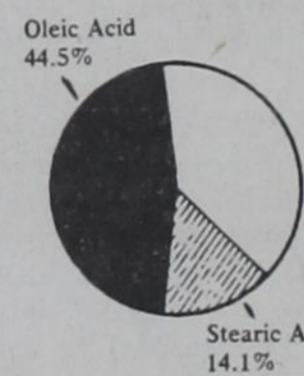
HOUSE PAINTING AND LIGHT CARPENTRY, ROOFING, PLUMBING, AND ELECTRICAL.

SPRAYED ON ACOUSTICAL TYPE CEILINGS

DONALD FORD

6-3106

The Logic of Beef in the Diet



Exciting news: A University of Texas study recently showed that stearic acid, a component of beef fat, does not raise serum cholesterol levels in humans. A previous study on oleic acid, another component of beef fat, showed that it lowered serum cholesterol levels. Texas A&M University, meanwhile, recently announced that beef today has 27% less fat than just two years ago.



AT&T ANNOUNCES PRICE CHANGES FOR LONG DISTANCE CALLS WITHIN TEXAS

AT&T announces April 1, 1989, price changes for Long Distance Service (MTS) within Texas. AT&T's prices for long distance calling within Texas will be increased by two cents per minute for calls under 82 miles in distance and one cent per minute for calls that are 82 miles or greater in distance. AT&T's current discounts of 25% for evening calls and 40% for night and weekend calls will remain in effect. The price increases are expected to produce approximately \$22.8 million, which is nearly 2.9% of AT&T's annual revenues for Texas Long Distance Service.

This represents the first AT&T price increase for long distance calls within Texas. AT&T's long distance prices for calls within Texas have been reduced overall by about 12% since 1986.

The Long Distance Service price changes will also impact AT&T's PROSM WATS Texas offering, which offers subscribers a 10% discount on all long distance calls within Texas. These price changes are expected to produce approximately \$661,000, or about 3.5% of the annual revenues for AT&T's PROSM WATS Texas offering.

Prices for AT&T's REACH OUTSM Texas offering will also change. The price for initial hour usage will increase from \$12.55 to \$12.95; the additional hour price will increase from \$11.40 to \$12.00. These price increases are expected to produce approximately \$364,000, or about 2.1% of the annual revenues for AT&T's REACH OUTSM Texas offering.

AT&T's tariffs implementing these changes will be filed with the Public Utility Commission of Texas on March 1, 1989, with an effective date of April 1, 1989. The combined price increases are expected to produce approximately \$23.9 million, which is approximately 2.4% of AT&T's annual revenues for all Texas intrastate services.

If you have questions regarding these price changes please call AT&T's service consultants at 1-800-222-0300 for residential customers or 1-800-222-0400 for business customers. Persons who have questions regarding this tariff filing may also contact the Public Utility Commission of Texas in writing, at 7800 Shoal Creek Blvd., Suite 450N, Austin, Texas 78757, or by calling the Public Information Office at 512-458-0223, or 512-458-0227, or 512-458-0221 teletypewriter for the deaf.

SM Service Mark of AT&T
Registered Trademark of AT&T



L. & F. REPAIR

ZENITH T.V.'S R.C.A. T.V.'S
SATELLITE ANTENNA SYSTEMS
FRANK E. COATES, OWNER

P.O. Box 220 WHEELER, TEXAS 79096 PHONE 806/826-3241 110 W. OKLA. ST.



GERMANIA FARM MUTUAL

Aid Association

REASONABLE, SOUND PROTECTION for your home and other property,

Rita Pearson: 375-2379
E. A. Zybach: 375-2528

Office: 845-1002



Mobeetie News

By Melba Corcoran

Dale and Melba Corcoran tended to business Tuesday in Amarillo and Pampa.

Janice Johnson of Wheeler visited Wednesday with Melba Corcoran.

Carol, Darren and Damon Remy of Wheeler visited Thursday night with Diana Revious and children.

Jeff and Lynn Corcoran of Perryton visited Saturday with Melba and Scott Corcoran.

Kay Hamilton visited in Spearman over the weekend with her mother Mrs. Georgia McCloud.

Verna Corcoran became great grandmother again with the birth of Reynette Dawn Henson of Lubbock parents are Brenda and Matt Henson grandparents are Raymond and Agnes Barnes of White Deer.

Mrs. Laura Kennedy is doing pretty well this week in Wheeler Care Center.

Paula Thompson and children of Canadian Mary Thompson and children, Shannon James and family visited Sunday with Bill and Lena James.

Jana Hogan of Pampa visited the grandparents Jesse and Gazelle Patterson.

Orville Greenhouse got out of the Coronado Hospital in Pampa and went to her daughters, Virginia Mixon in Dumas.

Visiting with Margaret Trout over the weekend was Charles and Helen Mixon of Amherst, Texas. Kevin, Donna and Courtney Crawford, Shonda, and Roy Pat Rucker, Cassie Hamilton, Lynn and Glenda Mixon, David and Linsley all of Pampa. Mary Margaret and Kelly Quarles of Mobeetie.

Kelly Quarles, John Moffett, Jackie Don May and Jeff Mayfield all attended the Livestock Show in San

Antonio. None of them placed.

Starla and Billy Jackson went to Denver, Colorado on business last week.

Visiting Thursday night with Ariza and Anna Bell Corcoran was Anna Bell's brother Cecil and Betty Stracener of Boonville, Ark.

Goldie Gordon is about the same in Wheeler Care Center.

Gary, Marilyn and Kendra Grimes of Amarillo visited Sunday and Sunday night with his parents Doyle and Bulah Grimes. In the afternoon they all went to Canadian to Abraham Memorial Nursing Center and visited Bulah's mother, Mrs. Mary Brewer. They also visited with Tommie Allen also.

Visiting Sunday with Ralph and Lanell Riggs were their son Jimmy, Cindy, and Vanessa Riggs of Canyon, Teresa Bailey, Nathan and Linsley and Joel and Jessie Czesnowski all of Pampa.

Visiting with Mr. and Mrs. Doug Whaley over the weekend was their daughters Evelyne of Guthrie, TX, and Elaine Brown of Tash, OK. Also Darrel and Dora Whitten of Amarillo, Tommy, and Jan Gregory and girls of Laketon. They were celebrating Doug's birthday.

Mollie Selby spent Monday night with her brother Johnnie Murrell in Pampa.

MOBEETIE W.M.U. MET

The WMU of the First Baptist Church met Tuesday, February 14, for their Royal Service. Bulah Grimes brought the program titled Resolute and Rugged, Resilient and Refined Women in Home Women. Those on the program was Ruth Hathaway, Willene Recker, Carol McCurley and Lorene Rector. Those attending were Bulah Grimes, Gazelle Patterson, Ruth Hathaway, Willene Burke, Carol and Holly McCurley and Lorene Rector.

Only 40 percent of personal interest is now tax deductible. By 1991, none will be deductible.

Listen to . . .

KPDR-FM, 90.5
Wheeler, Texas

Gageby News

Verda Fillingim

Spring break for Briscoe school starts this Friday, March 24 at 12:50. School will resume March 6. Have a safe, happy birthday.

Larry and Vickey Nelson and family took Sybil Nelson, Iva Alexander and Margaret Rust, Sybil's sister, out to eat Sunday.

Sincere sympathy to the family of Jess Barker, who grew up at Gageby. He was a brother to Claude Barker and an uncle to Evelyn Meek, Lafoy Vise, John C. and Rosemary Vise and Grady and Mary Margaret Dodd. They all went to the funeral at Canyon Monday, also C.G. Dodd.

Rita Pearson's brother, Allen Lackey, was painfully and critically injured in an auto accident in West Virginia. He is improving. Joe Lackey went to be with him. Rita's mother, Mrs. Lee Lackey, has been in the Shamrock hospital all this past week, but is improving. Rita was bringing her to her house Tuesday afternoon. Remember them all in your prayers.

Roy Waters had a heart attack when he started to take a shower last Monday. Said he got dizzy and fell in the bath tub and hurt his back. He's been in the Pampa hospital. They were suppose to x-ray his back Monday. They have been living east of Pampa where their trucks are parked since Willene has been sick. remember them in your prayers. He looked pretty good Wednesday.

Maudie Wheeler broke a leg above the knee and has been in the Pampa hospital several days. Remember her in your prayers and drop by to visit. She's still perky.

Happy Birthday to Sam Meadows, Leonard Powledge Sr., Tom Helton, Jimmy Sides, Steve Bleakley, and Aunt Jessie Coker on Feb. 26, David Hale and Rozena Zybach on March 1, Brady Hudson, Ronnie Watson, Janet Stevens and Allen Hershman on March 2, Bobby Finsterwald on March 3, Lee Ann Lehman, Chuck Hartline and Larry Finsterwald on March 4.

Something you won't want to miss: "Up with the People", coming to Pampa at M.K. Brown auditorium, March 9, 7:30. A lively cast of international singers, dancers and actors put on a great show. We went to see a production four years ago with

the Dan Cornett family and enjoyed it very much. A very varied program.

Maudie Wheeler was glad the leg that broke was her bad leg. She can't put much weight on it anyway because of a melanoma. She had a walking cast from toe nearly all the way up to her thigh and is walking some and hoping to go home soon, when we were there Monday. She's a Pollyanna, finds something to be glad about. How about you.

Ed Gilmer has been in the Wheeler hospital, having trouble getting his sugar regulated, but looking good. He is Winnie's father-in-law.

Twyla Walker's Dad from Wildorado was a weekend visitor to the Bill Walker family. They all and Bulldog and Dorothy Walker and Davy Gilmer were eating together at Maxey's Saturday night.

Pauline Hefley is back in the Wheeler hospital. Remember her and her family in your prayers. She was feeling better Monday afternoon.

Virgil Helton is very ill in the Wheeler hospital. Remember him and Mae and their family in your prayers.

Deer are getting very plentiful. We've seen several near our house for the first time ever. Butch Murrice swerved to miss a deer east of Briscoe last Sunday and bugged Butch up, broke some ribs, hurt his shoulder, gashes on his head so he's been unable to work a few days. Remember him in your prayers. Afraid his pick-up is totaled.

Gageby Church High School youth banquet has been set for Tuesday, March 7. Charles Johnson, band director from Pampa High School, will be the speaker.

Sunday dinner guests at the home of Roy and Lois Meadows were Evelyn Meek and Aaron and Claudetta Laverty and Russell and Caaron.

John Sheilds and Julie Gilmer were home from Levelland for the weekend but we didn't get to see them. They visited their folks.

Willa Fillingim went to Kelton Saturday and took a special cake to celebrate Andy Singleton's 18th birthday at the Gayle Singleton home. Lots of kids there to help him celebrate. Big party.

Bruce Mize and Julia Murray's dad J.D. Mize from Pampa and a friend visited the Murray's Sunday. Willis and I visited a little while and brought Shelly and Karla for supper and to church. Randy Finsterwald also visited the Murrays and Bruce Mize.

Psalm 84:11 No good thing will God withhold from them who walk uprightly.

Louis Stas, don't you fret. Those kids don't realize that the second half century is better than the first in many ways. You've just learned how to live, you've got grandchildren and you've made lots of friends.

"Grow old along with me. The best



THE WHEELER TIMES

Page 3—Thursday, February 23, 1989
Wheeler, town of friendship and peace

is yet to be."

Nice to have Don and Cindy Zumstein and Carrie and William spend Friday night with us. We all went to Miami to see Wheeler and White Deer girls play for Bi-District. Wheeler won but all played good. Jill Brown got to play a lot. Also got to visit with Lee and Esther Brown and family and Jennifer Wood and Colton at the game. Lots of Wheeler people there we knew.

Ray and Verline Currie and Tina spent Saturday night with us. We went out to eat at Maxey's to celebrate Verline's birthday. Nice to see Elsie and Preston Gladner and many more there.

"If you expect nothing from God, you won't be disappointed."

Clifford Hefley got to go home from the hospital Tuesday. Wednesday was his birthday. Phyllis and David Hefley and Jim and Beth Alvey went down and ate lunch with them Wednesday to celebrate his birthday and coming home.

So nice to see Pam Dyson Jenkins at Pampa with one of her little boys. She is still so sweet and bubbly.

We went to Wheeler Thursday afternoon to see Wheeler Christian Center Academy kids play San Jacinto Baptist Church Academy kids from Amarillo. We got to see Shane Everett, Dale and Tina Sides, Kaleb Meek, Kyle Zybach, Misty Zybach and others we knew play. Amarillo won but Wheeler played good games. Some others there to watch were Saurda Meek, Evelyn Meek, Eric and Pauline Zybach and family, Martha Meek, Aaron and Tamara, Suzann Everett, Mark and Annette Meek and Jocelyn.

Nice to see Dale Greenhouse at the hospital to see Roy Waters, his uncle. He is son of Pete and Mildred Greenhouse and brother to Wayne and Harold Gene. They used to live east of Briscoe and boys went to Briscoe to school.

Russell Laverty from Tinker Air Force base spent a few days with his folks, the Aaron Lavertys and Caaron. Nice to have him out to church Sunday. Think he leaves Tinker March 6 to go to Honduras. Our thoughts and prayers will be with you. Russell, as you go and with all our youth. We enjoyed meeting Aaron and Claudetta and Russell and grandmothers, Bessie Addington and Beedie Laverty at Furs for lunch Monday. Russell signed up for four more years. He will be Sergeant Russell Laverty in Honduras.

Roy Waters got to be put in a private room at Pampa and is feeling good. If they would just bring him some food. Glad he is doing so well. Willene is with Pat Railsback at Amarillo. Pat works at Amarillo college.

Continued Page 5

Ain't It The Truth

By Ab Gunter

I been looking for a Western on T.V. for several years and they just don't make em any more at least we don't get to see em up here. I like Cowboy shows where there ain't so much kissin, huggin and that sort of stuff but even the commercials are getting Phonegraphic any more. I've never seen such filth as we have to watch on the Boob Tube. Don't they have any writers in the Industry having just a little dab of morality, looks like some of the older ones would try and recover dignity before we go down the Sewer. They say such filth don't influence our youth but I feel it does. Not long ago I tried one of them wild T.V. kisses on Mama and she grabbed the Ole #10 black skillet and whamed me on the head with it and ordered me to go take a cold shower and straighten up my act. Shucks, I wuz just joshing but she meant business.

The President made his Farewell Speech on the tube and just after he finished Sam Donaldson got on the air and explained what the President wuz saying. I thought I had been listening but according to Sam I must not have been, he seemed to think he was saying entirely the reverse as to what I thought he was saying. What am I getting more stupid than usual or what? Every time someone gets up and makes a speech one of them Ancor persons will tell you what the feller that you thought you wuz listening to said and it ain't at all what you thought he said.

You know what would be funny? If Dan Rather and Sam Donaldson had to be out there at Mocking Bird Hill at the Cafe early some morning and have to analyze what Bobby Hink, Spud Moore, Dub Goad, and the Calcote and Moore boys were discussing and solving and then get the jest of what Mrs. Sparland thought of what the Boys had come up with, don't you recon that Donaldson and Rather would immediatly call their respective companies and resign their positions. I bet you that even Pat Robertson would just walk off in disgust being around that bunch, don't you?

Really, I'm just kiddin, it's fun to go out there and get a Democrat Hotcake with Bacon and Egg and try to get in on the conversation. I'd rather be out there with the Birds rather than to be with Bus Dorman, Dub, N.D. and W.L. over there at Shamrock on the Greens trying to keep up with them birds score cards. I bet Lee Trevino er Arnie Palmer couldn't beat any one of them if they got to keep score. Them Fellers could beat the Las Vegas Greek at his own game, believe me. Why them Dudes could win the Kentucky Derby with a Three Legged Horse. Better go now.

Love to all,
Ab and Mama

WHEELER PLUMBING

Highway 83 North

New Construction
Remodel
Repair
Sewer Service

Phone: 826-5907

FREE ESTIMATES
MAX McQUEEN

P.O. Box 754 — Wheeler, Texas

Last Call: FALL & WINTER MERCHANDISE

Now **75%** Off
Now thru
Feb. 28

"Andie's" Appropriate Apparel

"On the Square in Wheeler"

Open 8:30 — 5:30 Monday thru Saturday

Visa, Mastercard
Welcome

GARY'S KERR McGEE

East Hwy. 152

Wheeler, Texas

CAVALIER

made by B. F. Goodrich

LIBERATOR II
STEEL BELTED
RADIAL "LRR"

Steel Belted Radial
48,000 Mile Treadwear Rating



Tire Size	&	Price
P155/80R13		\$42.45
P165/80R13		\$44.65
P175/80R13		\$45.75
P185/80R13		\$48.00
P185/75R14		\$46.80
P195/75R14		\$48.00
P205/75R14		\$49.40
P215/75R14		\$50.75
P205/75R15		\$52.20
P215/75R15		\$53.95
P225/75R15		\$58.20
P235/75R15		\$61.95
P235/75R15XL		\$62.95

SX 5000 S
STEEL BELTED
RADIAL

Steel Belted Radial
56,000 Mile Treadwear Rating



Tire Size	&	Price
P155/80SR13		\$49.50
P165/80SR13		\$51.95
P185/80SR13		\$55.95
P185/75SR14		\$57.85
P195/75SR14		\$59.65
P205/75SR14		\$60.95
P205/75SR15		\$64.75
P215/75SR15		\$66.90
P225/75SR15		\$72.00
P235/75SR15		\$75.60

Free Replacement
guarantee on workmanship
and Road hazard.

First 25% of Tread After that, remaining
Tread-depth on prorated basis.

Road Hazard Warranty
Price Includes Mounting & Balancing

TRALEE CRISIS
CENTER
FAMILY
VIOLENCE &
RAPE
COLLECT
HOTLINE
669-1788
SHELTER &
TRANSPORT

Don't face
the tax
laws alone.



We'll save you time. We'll save you money. And, we'll help you get the maximum refund you're entitled to.

Senior Citizens Discount

Open: Monday-Friday 9:00 A.M.-5:00 P.M.

Saturday 9:00 A.M.-1:00 P.M.

Address: 509 Main, Wheeler, Texas

Phone: 826-3736

H&R BLOCK DON'T SETTLE FOR LESS!

Wheeler Church of Christ

Congregational Concerns:

On this coming Sunday afternoon, February 26th, at 3:00 P.M., this congregation will conduct a devotional at the Wheeler Care Center.

The Wednesday night Ladies' Bible Class is planning another Clothes Give-Away. It's date will

be announced in the next few weeks.

Betty Gaines is hospitalized in Shamrock with pneumonia.

Stephanie Dollar is hospitalized in the local hospital.

Bill Owen's sister remains hospitalized in critical condition in Fort Worth.

From the Minister's Desk:

In the mid 1600's the nation of England was in a state of turmoil because of a conflict between the King, Charles I, and Parliament. The King believed that he should have absolute power over the nation. But Parliament believed that it should have some control over his authority.

Eventually this conflict led to a revolution against the King and in 1649, Charles I was overthrown and beheaded. Following the revolution, a commonwealth was established and Oliver Cromwell was made Lord Protector of the Commonwealth which virtually made him a Military Dictator.

During Cromwell's five year reign as Lord Protector of the Commonwealth, a silver shortage developed which caused a coin shortage. To correct this shortage, Cromwell sent soldiers to see if they could find any silver in the local cathedrals. When the soldiers returned they reported: "The only silver we could find is in the statues of the saints standing in the corners." To which the Lord Protector said: "Good! We'll melt down the saints and put them in circulation."

With this statement, Cromwell unknowingly pinpointed the practical goal of Christianity. Christians are to be real people--not highly polished statues--who are circulating through the main stream of humanity.

Think about the Christians of the first century. Following their conversion, these Christians did not look askance at their wicked world and then retreat into the safety of a church building. Rather they circulated into the world, teaching and demonstrating the life-changing power of the gospel of Jesus Christ. It is true that the scriptures clearly teach that Christians are to be separate from the world. (II Corinthians 6:14-18) But this separation is not synonymous with isolation.

In the hours before His crucifixion, Jesus prayed for his disciples, saying: "I do not ask Thee to take them out of the world, but to keep them from the evil one. They are not of the world, even as I am not of the world. Sanctify them in the truth; Thy word is truth. As thou didst send me into the world, I also have sent them into the world." (John 17:15-18) Like Jesus, Christians have been sent into the world. They are separated from the sinfulness of the world, but they are not isolated from the sinful people of the world.

This is a crucial distinction. Christians who are separate from the world are like Jesus. But Christians who are isolated from the world are like silver statues--polished to a high gloss sheen and safely out of circulation.

Bill Morrison, Minister
Church of Christ
Wheeler, Texas

An Invitation:

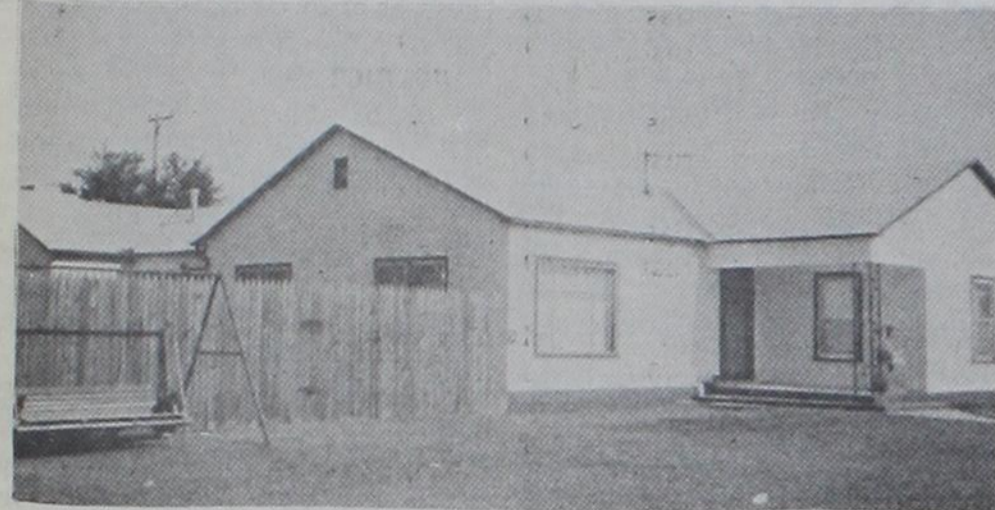
You are cordially invited to attend any of the weekly services of the Wheeler Church of Christ which meets at 1001 S. Alan Bean Blvd. in Wheeler, Texas.

Services

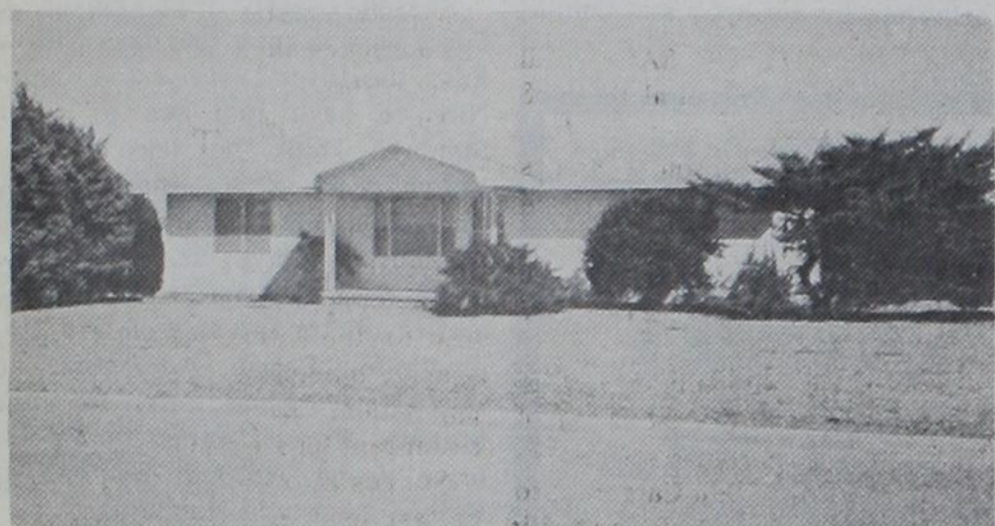
Sunday Bible Study	10:00 A.M.
Sunday Morning Worship	11:00 A.M.
Sunday Night worship	6:00 P.M.
Wednesday Bible Study	7:30 P.M.

"Grow old along with me. The best

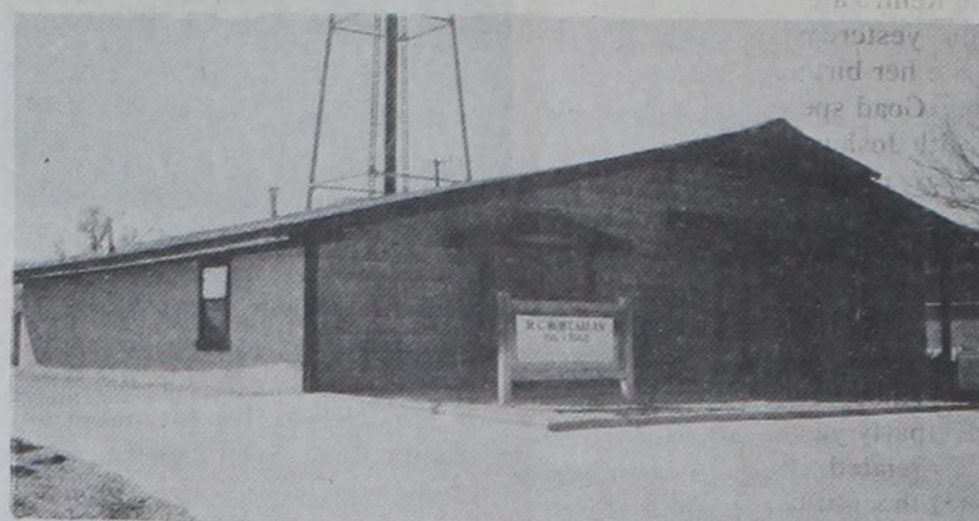
Make **1989** the year
your family selects a home
that really meets
all your needs!



OWNER'S PRIDE ABOUNDS
3 BR, 2 bath, stucco home with basement and double garage on corner lot. #64



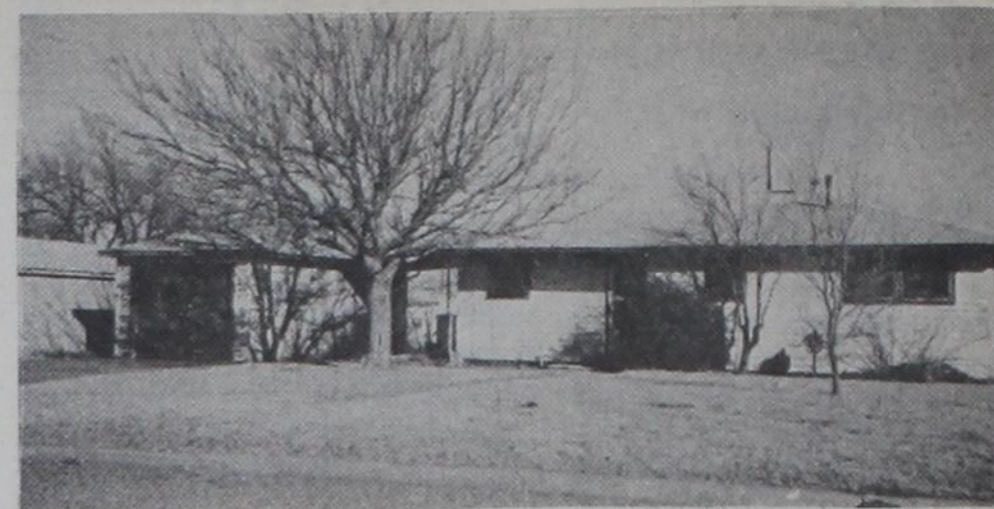
ARE YOU LOOKING
For a 3 BR, 1 bath frame home on corner lot, double garage, central air, good floor plan. #50



Office building—Excellent location.



2 BR, 1 bath house at Briscoe. Pens. Ideal set-up.



Assume the Loan!

Sold!
6 Acres on highway S.
of Wheeler.

\$3500.00

the smith agency

R RUTH SMITH, Broker GREG SMITH, Salesman
JOE LEE, Salesman—375-2380
BETTY LEE, Salesman—375-2380
JIM HILL, Salesman—826-3094
LONA WILLIAMS, Salesman—826-3341 LAVON WILLIAMS, Salesman & Appraiser—826-5803

Phone: 806/826-5541 or 826-3238

Want Ads

IF YOU BUY HEALTH INSURANCE, you could be paying too much. Specializing in Major Medical and Medi-Care Supplements. Contact: **Kenneth McCasland** 826-3573 or 826-3036.

WAITRESS WANTED
Apply In Person
SPARLIN'S RESTAURANT

WILL DO HOUSE CLEANING and will drive up to 15 miles from Wheeler. Have references. 826-3709.

RICHARD'S UPHOLSTERY & CARPET CLEANING
Furniture, etc.
Call: Richard Laverty
Mobeetie, Texas

FOR SALE: Babybed like new. Call 826-3312.

B & B Electric & Appliance Repair
On all makes and models Authorized Sears Service No Mileage or Trip Charge 25 Years Experience Call McLean Collect **779-3252**

FOR RENT: Clean 2 bedroom house, good garden spot, 826-3203.

FOR RENT: Furnished 2 bedroom trailer, clean. Call Donna at 826-5634 or 826-3586.

NOTICE TO PUBLIC
Any erroneous reflection upon the character, standing or reputation of any person, firm or corporation, which may appear in the columns of this paper will be gladly corrected upon due notice being given to the editor personally at the office at 110 East Texas St., Wheeler, Texas.

The Wheeler Times does not knowingly accept false or fraudulent advertising or other advertising of an objectionable nature, is printed in full confidence in the presentation made. Readers will confer a favor if they will promptly report any failure on the part of the advertiser to make good any misrepresentation in our advertisements.

CLASSIFIED RATES:
The Times prefers all classified ads be paid in advance, except for open ledger account customers.
Cash and Ledger account: 15c word; \$1.50 minimum. (Ad paid when placed or by 5:00 p.m. Wednesday of week ad runs.)
Charge: 20c word; \$2.00 minimum.
Card of Thanks ... \$3.75
ADVERTISING DEADLINES
Classifieds: Noon Tues. Display: Noon Tuesday.

FOR SALE: Maroon 1978 Ford Fairmont two door, 4 speed transmission, good tires, one owner car. Call 826-3419.

Real Estate Appraisal & Sales
Lavon Williams
The Smith Agency
826-5541 or 826-5803

CUSTOM SLAUGHTERING
1/2 Beef, Beef cuts and Pork. Shamrock Slaughter Plant We accept food stamps. 256-3241.

B&B.T.V.
123 N. Main Shamrock
256-2502

VCR, TV, Microwave

Repair on all makes and models, generally under \$50. Zenith salesman service. 15 years experience.

FOR SALE: 70 round bales fertilized hay grazer call L.W. Rogers, 826-5842.

HOLCOMB TRAILER PARK
West 12th
826-5810 or 826-3008

GOVERNMENT HOMES
From \$1.00 (U-Repair) delinquent tax properties and repo's. For current lists call 1-800-242-4944 Ext. 5378 also open evenings.

FOR RENT: 2 bedroom house, fully carpeted, 826-5274.

Shamrock Laundry
Open 24 Hrs.
7 Days a Week
Corner of 4th & Madden St.
Shamrock, TX.

LEGAL NOTICE
The County Judge, Wheeler County, Texas will accept applications from all banking corporations, associations or individual banks desiring to be designated as County Depository for all Trust funds. All State laws must be complied with and should you desire for the County to consider other items in your bid, they will be considered. Please include any details for those items. Such application is to be presented to the County Judge, Wheeler County, Texas, on or before February 27, 1989, at 10 a.m. to be considered by the Commissioners' Court on February 27, 1989, at 10 a.m. in the Commissioners' Court room, Wheeler County Court House, Wheeler, Texas.

After Hours Video 111 W. Texas Wheeler
New Hours Mon.-Sat.: 1 p.m.-9 p.m. Sun.: 1 p.m.-5 p.m.
NINTENDO TAPES
1. Stand & Deliver
2. Jeremiah Johnson
3. The Cowboys
4. Big Jake
5. The Great Outdoors
6. New Adventures of Pippi Longstocking
1. The Adventure of Link
2. Super Mario 2
3. Rambo
4. Tag Team Wrestling
5. Rambo
6. New Adventures of Pippi Longstocking
Now Your Hometown WATKINS Dealer
Phone: 826-3612 Come Visit Us
We Appreciate Your Business

MEMBER 1989
TEXAS PRESS ASSOCIATION

THE BUSINESS DIRECTORY

THE WHEELER TIMES
P.O. Box 1080
Phone: 826-3123
Entered as second-class matter December 18, 1933, at the Post Office at Wheeler, Texas 79096, under the act March 3, 1879.
Louis C. Stas, Owner and Publisher
SUBSCRIPTION RATES:
Wheeler County... \$13.50 Outside County... \$15.00

TEXAS FARM BUREAU
Insurance Companies
Gary Alston Agency Manager
Gary Ware Agent
Phone: 806/826-3563

GUARANTEED AUTO GLASS INSTALLATION & Body Repair
CROSS CAR CENTER
Phone: 826-5515
Wheeler, Texas

STORM-SCREEN WINDOWS
Permanent year-round protection. Changeable from inside. Easy to clean, powder-proof. Eliminates drafts... Cuts fuel bills...
WHEELER LUMBER CO.
Phone 826-5543 Wheeler, Tex.
For Service for Fine People

AA MEETING
Alcoholics Anonymous meets at 8:00 p.m. in the Commissioners Court Room of Wheeler Co. Courthouse on Thursday of each week.
Wheeler Lodge No. 1099
A.F. & A.M.
MONDAY 7:30 P.M.
J. M. Montgomery, Sec'y. Box 675
Members Urged To Attend. Visitors Welcome.

WHEELER REDI-MIX
REDI-MIX CONCRETE SAND
Washed Gravel—All Sizes
Office Hours: 7:30 to 5:00
Phone 806-826-3223

PAUL'S REAL ESTATE
Houses or Land
Paul Topper
200 S. Canadian St.
Wheeler, Tx.

CITY DUMP GROUND HOURS
Monday, Tuesday, Wednesday, Thursday, Friday, Saturday, 8:30 A.M. till 5:30 P.M.

FOR SALE: 3 bedroom home, 2 bath, central heat & air, Franklin wood heater, 1 car garage, storm cellar with bldg. on top. 4 to 10 acres of land, horse shed. Large round bales fertilized hay, Lovegrass, 2 cents a pound; Beardless wheat 3 cents a pound. James Verden, 826-5965.

LEGAL NOTICE
SITE NEEDED FOR MAIN OFFICE
ALLISON, TX. 79003-9998
The U.S. Postal service is seeking a suitable site upon which to build a new post office building at Allison, TX.

The preferred area for site consideration is: Bounded on north by 1/4 mile from existing main post office; south by 1/4 mile from existing main post office; east by 1/4 mile from existing main post office; and west by 1/4 mile from existing main post office.
Desired site size is 12,500 square feet or a lot with dimensions of 100 by 125 feet; however, both smaller and larger sites will be considered, particularly those with a corner location. Copies of the advertisement for sites may be obtained from the postmaster at Allison, Texas.

Property owners are asked to submit their site offerings not later than close of business, March 13, 1989 to: Bob Tipton, Postal Operations Specialist, Lubbock Real Estate Office, U.S. Postal Service, 1515 Avenue G, Lubbock, TX. 79402-9998.

Next Door To The Post Office "VIDEOS"
(800 Movies)
*Bull Durham
*Die Hard
*Above The Law
*Dangerous Love
*Presidio
*Dirty Harry
*The Dead Pool
*Seven Hours To Judgement
*Phantasm II
*Poltergeist III
*Elvira
*Three Men and a Baby
*Caddyshack II
*Great Outdoors
*Two Moon Junction
*Unbearable Lightness of Being
*Bloodsport
*Young Guns
*The Tracker
*Ghost Town
[Many More]

Alpha Mu Alpha Met
Alpha Mu Alpha met for Valentine Supper at Maxey's February 11. Members and their husbands attending were: Kim and

Reunion From Page 1
The group will meet tonight, Thursday, February 23, in the board room of the school.

Classes to be honored this year will be those classes graduating in years ending in 0 and 9. Local members of these classes are invited to schedule pre-reunion activities for their respective classes. The board will again welcome local residents to schedule activities for any class or classes during the weekend.
Ex-Students and Teachers are asked to mark the date on their calendar and begin making the necessary arrangements for attending the reunion.

Mike Bybee Construction
• Remodeling
• Roofing
• Painting
All Types of Repairs
779-2007
P.O. Box 104
McLean, TX. 79057

AAA PAWN SHOP
Loans on assorted items.
512 S. Cuyler
Pampa, Texas

KIRBY SERVICE CENTER
New and Used Vacuums
Repairs and supplies on most makes.
512 S. Cuyler
Pampa, Texas
669-2990

Carolyn's Video
400 S. Main St.
Wheeler, Texas
826-3268
Special this weekend:
Rent 2 movies and receive the 3rd FREE!
25 new selections have arrived this week, such as
1. Jack's Back
2. Suspect
3. Casual Sex
Many More—Come & Look

FOR SALE: 1-3 bedroom, central heat & air in country with large cellar. 1-2 bedroom home with large utility room in Wheeler. 10% down and carry balance on houses above. 1-3 bedroom brick home, 1 1/2 bath, central heat & air in Wheeler. Phone 826-3519 or 826-3211.

FOR SALE: 1-3 bedroom, central heat & air in country with large cellar. 1-2 bedroom home with large utility room in Wheeler. 10% down and carry balance on houses above. 1-3 bedroom brick home, 1 1/2 bath, central heat & air in Wheeler. Phone 826-3519 or 826-3211.

THE WHEELER TIMES
Page 4—Thursday, February 23, 1989
Adams Rentals
Call or See **JIMMY ADAMS**, Wheeler
After 6:00 P.M.
• NEW LISTINGS •
1—1 Bedroom House
1—1 Bedroom Apt., Furnished
1—1 Bedroom House, Furnished
1—3 Bedroom House (Mobeetie)
2—2 Bedroom House, carpeted (Wheeler)
DEPOSIT REQUIRED ON ALL RENTALS

FOR SALE OR TRADE: Ben Franklin Store 826-5944 or 826-3376.

Portable Buildings
Storage • Office
Workshop
BABB CONSTRUCTION
820 W. Kingsmill
669-3842 Pampa, TX.
FOR SALE: King size waterbed in good condition. \$75. 826-5518.

Calderon Construction
Carpentry, Concrete, Masonry, Stucco, Roofing, Painting, Drywall
FREE ESTIMATES
All Work Guaranteed
18 Years Experience
References Upon Request
Call 826-3639 after 5:30 P.M.

GET YOUR LAWNS READY for Spring. I'll clean up your yard, flower beds, cut grass, haul limbs. Most anything, at a good price. Danny Flanagan 826-3466.

FOR SALE BY OWNER: 4 bedroom, 2 bath house, w/2 1/2 acres land and out buildings. Call 826-3496 after 5 and weekends: See to appreciate.

LOST: Male Boxer, fawn and white 7 years old, Brittany Spaniel, orange and white 2 years old. Both have tags. \$50.00 reward, 826-5665, after five.

A Gift to the AMERICAN CANCER SOCIETY MEMORIAL
PROGRAM shows that you care.

Alpha Mu Alpha met in the home of Sharla Weaver Feb. 20. Members present were: Machille Henson, Brenda Hefley, Carletta Burton, Debbie Haning, Marla Ford, Kim Moore, Betty Chapman and Karren Gill. Final plans were made for the Men's Basketball Tournament this weekend.

FOR SALE: 1981 Melody Mobile Home 14x70, 2 bdrm, 2 bath, fireplace, built in dishwasher, masonite siding, composition shingle roof, new mini blinds. Call 826-5926, after 6 p.m.

Clinic From Page 1
This clinic is conducted by Agape Home Health Service and it is sponsored by the Wheeler Senior Citizens and the Texas Agricultural Extension Service.
Educational programs of the Texas Agricultural Extension Service serve veterans and people of all ages regardless of socio-economic level, race, color, sex, handicap, religion, or national origin.

LAST WEEK'S NEWS

President Bush had a nice hair cut last night. Jim Wright said our National Debt went up 15 million increases while Bush was talking. Interest I guess. Jim is a representative, a democrat. Also Benson talked after the present.

Weldon and Diana Marianda and Michelle came Friday night from Liberal to spend the weekend with us.

Friday night at 3 Colie sick, getting in his chair again, guess he got too much cold wind yesterday. He says I think its the kind and amount of supper he eats.

Monkeys have tails, apes don't, the difference. Heather Ratcliff spent Friday night with April Purcell.

Mable Parker is quilting and sewing she said Kevin and June Shaffield was in Denver, Colo. Kevin got sick, they took his appendix out yesterday. We hope he has a speedy recovery.

Mable said Cliff and Dorothy were in and out. Also Margaret Gilmer. Pete was doing pretty good now.

Mable was looking for June and Kevin to come home Monday stay 2 weeks for Kevin to recuperate.

Marie Brown brought Eunice Edwards, her mother, home this morning Saturday. Eunice has been up in Amarillo for 10 days, she was feeling real good, it looks like a pretty day this Saturday.

This Weeks News

Colie came in said we received some rain Monday night also. But I did not hear it, foggy and damp today Tuesday.

Word is Roy Waters is in Pampa hospital. They are running tests, hope he comes out clear.

Patsy came down to care for Willene.

We received word that my sister Madell Piller's husband, Elmer, has cancer of the lungs. We sure hated to hear this. They live 7 1/2 miles south of McKenney, Texas.

Hoyle Helton seemed to be feeling better Tuesday sure a lot of sickness around.

Many thanks to the Off Beat by Bear Mills in Pampa paper on our Wheeler paper. Rosalee Keelin called me, read the article, then she brought me some copies out to the house.

Hoyle Helton is my sister, her husband is Oral Helton, Ab Gunter use to live around Wheeler. He lives up north east now Essie Finsterwald is out of the hospital now. I think Ab Gunter married my husband, Colie Parker's Uncle Jack Armstrong's niece.

Hope that ice storm, misses us, this Thurs. and Fri.

Doc Wilhelm visited us Thursday afternoon.

Oral Helton brought us a big box of 3 minute oats Thursday eve.

Nelson and June come brought us some supper and Nelson did the chores, sure helped out. Colie got out went to mail box Thursday first in 6 days. He still told Doc he was not sick. Had not been sick, W.O.W.

Friday morning looks damp out side, must of rained some, last night, Thurs. nite.

Rosalee Keelin called me and read the Off Beat by Bear Mills in Pampa, then she made me some copies nad brought out to me to send to my kids. How nice of Rosalee, many thanks to her. Now she is a nurse and a wonderful person. Her husband is Travis Keelin. I can say a very hard workers around Briscoe. She gave me a very good bath in Wheeler hospital some 30 + years ago. She was in high school working before and after school, hours hard.

I guess when Colie is breathing his last breath he will be saying I am ok. I am not sick. I have wrote him 3 good by notes, I did not think I would be here when he got here and if I can get a pen and paper if I died and he is not here he will know where my aches and pains are while I am dying. Hal There is no need for him not to know how I went from this old world. Ha!

Talked to my sister Madell Pillers at McKenney it has rained down there 3 days and 3 nites not freezing yet, her husband Elmer has come up with cancer of the lungs. Now why would anyone smoke. Doctors said he smoked too long, Roy Morse said he smoked too long.

Glen and Lucille visited Mattie on her birthday Thursday, 16th. She said she did not feel any different this Friday morn.

The doctors tell Madell if the cancer don't get in the bone or brain it is treatable.

To Bear Mills, I belong to the

Church of Christ since I was 26 years old.

That reporter in Amarillo said that red stuff falling up there is rain, so guess it raining up there.

Friday noon the Pakistanians were showing on TV what they thought of the U.S.A. by burning their U.S.A. Flag.

Harmon Barry says he just smoked to long.

Water has dripped off of our house most all morning Friday morning.

They say the bomb that blew up 103 flight plane was in a radio cassette player.

Now Happy 80th birthday to Tom Helton in Wheeler. This will be belated, when the paper comes out.

Talked to Mable Parker Saturday. She did not get sleet last night, but got 1 inch of rain. Real foggy this Saturday morn. and Mable had 31 degrees this morn. She could see ice around the edge of a puddle of water in front of her house this morn.

I think Doc Wilhelm has about made a believer out of Colie with what a big bowl of oats will do for you every morning. One thing I do know will cut his cholesterol down.

Nelson has come up fed for Colie last 2 nites, sure helped out. Colie went to the mail box for first time in 8 days. I fixed him 1 white liniment rag to breathe in, he lost it first night so I just dropped him. He coughed like he use to 30 years ago.

Sat. 18, Jimmy Joe Ault birthday way out there in California, hope he has a good one.

While Kevin and June were up in Colorado, he got sick and he lost his appendix. They have come in home this weekend. He is doing fairly well

TEXAS LUNCH MENU

MOBEETIE SCHOOL MENU Feb. 27-Mar. 3

MONDAY: Breakfast; Hot biscuits, scrambled eggs, jelly/butter, juice, milk.

SEA AND SAND: Ocean nuggets, sand dollar corn, octopus slaw, nautical juice bar, sea biscuits, oyster milk.

TUESDAY: Breakfast; Cinnamon puffs, hot buttered oats, juice, milk.

Ascend to the Stars: Astronaut's Chef salad, Heavenly fresh nut, Saturn muffin, rocket booster fruit juice, Milky Way milk.

WEDNESDAY: Breakfast; Buttered toast, jelly/butter, cold cereal, juice, milk.

Deep in the valley; Rio Grande Nachos, Spanish rice, fiesta salad, mission fruit, mariachi milk.

THURSDAY: Breakfast; Hot biscuits, sausage, bacon w/gravy, jelly/butter, juice, milk.

East Texas Lumberjacks; Country steak, sawmill macaroni, piney woods broccoli, long roll, pine cone fruit, Paul Bunyan milk.

FRIDAY: Breakfast; French toast, syrup, butter, bacon, juice, milk.

Let's Rodeo in Texas; Roasted Prairie chicken, chuckwagon potatoes, Western green beans, trailride wheat roll, wagon wheel cookie, cowboy milk.

Menu subject to change.

Mable said.

Effie Renfro ate dinner with Mattie Jackson yesterday to help Mattie celebrate her birthday.

Travis Goad spent the night Friday night with Joshua Purcell.

Monday morn. cloudy, fog about gone, no snow yet, wind howled last 2 nights around this house calm this morn.

Curtis and Jane Ann Hall took Elbert and Ruby Zybach to Wheeler to Tom and Alice Bell Helton's to Tom's birthday party yesterday, Sunday. So Happy Belated Birthday to Tom Helton, I thought he was more than 3 years older than I was, way he and Colie chopped cotton that year we chopped together. Ha!

Mr. and Mrs. Larry Seales and Darrel from Littlefield came to Essie Finsterwald and boys, and David Wright, Anna and Johnetta also were there.

No mail carrier today. Guess it's Washington Birthday or Lincoln's.

Dub and Mary Swift of Hoover spent the weekend down here last weekend. Visited Addie Swift.

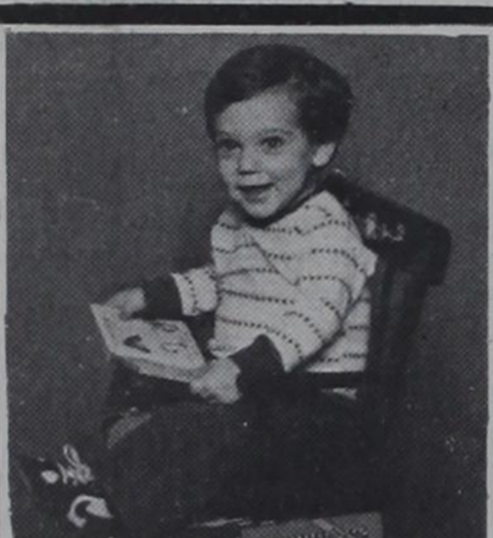
Wayne Childress visited Addie Saturday afternoon.

Morris and Bryan were also with Dub and Mary.

LouDean and K.D. Douthit went to Amarillo on Monday. They came by Pampa and visited with Billie and LeAndra Stuckey who were there shopping. They all visited Roy Waters who is in the Pampa Hospital recovering from a heart condition.

People believe if a fly lands on your nose, somebody has something to tell you.

Listen to . . .
KPDR-FM, 90.5
Wheeler, Texas



CHASE MILLER, is the 1 year old son of Kelly and Carol Miller of Fritch, TX.

Grandparents are Ada Lou Lester of Mobeetie, TX, and Loyol and Stella Miller of Fritch, TX.

For all your . . . Insurance Needs, See

The McCasland-Smith Agency

117 W. Texas St.—Wheeler, Tex.
806/826-3573

*Auto *Home *Life *Health
*Commercial *Bonds

HAYDON CHIROPRACTIC CLINIC
28th & Perryton Parkway Pampa, Texas
Phone 665-7261
Dr. Mark W. Ford, Jr. Dr. Louis Haydon

JENNINGS PLUMBING & ELECTRIC SERVICE
Owner: Larry Jennings
"A flush is better than a full house."
Roto-Rooter Service—Repairs—Remodeling
Phone: 806/826-3153 12 Years Experience P.O. Box 423
1110 South Main St. Reasonable Rates Wheeler, Tx 79096

COUNTRY CLIPPER
MOVED NEXT DOOR TO THE POST OFFICE IN WHEELER
COUNTRY CLIPPER Mon. - Fri. 4:30 p.m. - 6:30 p.m.
Sat. 1:00 p.m. - 5:00 p.m.
VIDEOS (800 Movies) Mon. - Thurs. 4:30 p.m. - 7:30 p.m.
Fri. 4:30 p.m. - 8:00 p.m.
Sat. 1:00 p.m. - 8:00 p.m.
CLOSED SUNDAY

CFK P A
Charles F. Kuntz
certified public accountant
204 E. Texas Wheeler, Texas 79096
P.O. Box 489
Income Tax Preparation & Accounting
Member of American Institute of Certified Public Accountants and Texas Society of Certified Public Accountants

Court Records

List of instruments filed in Wheeler County Clerk's office for the week of FEBRUARY 10 thru February 16, 1989

RMML—American Savings and Loan Association to Guy E. Kinnard et ux 12-16-88 W/2SW/4; W/2SE/4SW/4 Sec 73 Blk 23

PARTIAL ROL—The Northern Trust Co. to Sabre Oil & Gas Co. 12-30-88 Sec 2 Blk 1 B&B Survey EXT DT—La Don Thornhill et ux to First Bank & Trust of Shamrock, Texas 2-7-89 Lot 10 Blk 75 Woodley's SouthSide Add Shamrock

EXT DT—Dennis E. Nixon, Trustee to First City Bank of Corpus Christi 1-16-89 See Instrument

OL—James S. Morrison et al to Upland Resources, Inc. 1-18-89 E/2; SW/4 Sec 4 Blk 5 B&B Survey

NOTICE OF OPERATING AGREE—Indrex, Inc. to John B. Meaders et al 1-31-89 Sec 2 Blk 5 B&B Survey Secs 47 & 48 Blk A-3

AMEND DT—Caspem Oil, Inc. et al to Lloyds Bank PLC ----- SE/4 Sec 96 Blk 23

P OF A—Charles Edward Lackey to Carrol Lackey et al 2-10-89

FEBRUARY 13, 1989
AOL—Samson Resources So. to Philcon Development Co. 1-29-89 Sec 25 Blk M-1

ABST OF JUDG—Amarillo Hospital District to David G. Lopez 1-9-89

DT—Jim M. Pickens to Aquatex, Inc. ----- E/2 Lot 3 Blk 38 Shamrock

DT—Kenneth P. Campbell to Aquatex, Inc. ----- Lot 9 Blk 75 WSSA Shamrock

DT—Paul Lee to Aquatex, Inc. ----- North 90' of E125' N/2S/2 Outlot 24 Shamrock

DT—William T. Potter, II to Aquatex, Inc. ----- Lot 5 Blk 1 Mont-Lew Add Shamrock

DT & ASSIGN—Lamar Hunt Trust Estate to CNB Texas National Bank 1-17-89 all Sec 15 Blk A-3 N/2; SW/4 Sec 61 Blk A-7

PARTIAL AOL—Domestic Properties, Inc. to Bruce E. Lassila et al 12-30-88 Sec 2 Blk 1 B&B Survey

ROY D—Daisy B. Jenkins to Daphne Jenkins Smith et al 1-23-89

D—Bart E. Selman to Becky Payton, Trustee 2-2-89 S/2; NW/4 Sec 6 Blk A-8

EASEMENT—Chicago Rock Island and Pacific Railroad Co. to Gulf Oil Corp. 6-14-83 NE/4 Sec 50 Blk 17

Gageby From Page 3

This beautiful sunshiney Tuesday makes me feel so thankful of so many things. Just to be able to get out of bed and wait on myself is something.

A warm bath, warm clothes, friends and relatives, good food. God is so good. May you feel His loving presence today. He really cares about you, each of you! How about making a blessing list?

Sami Garrison's parents, Mr. and Mrs. Samuel Garrison and her brother, Curtis, of Bovina were weekend visitors to Sami. Sami's finance, Steve Corse, joined them all for supper at Maxey's Saturday night.

There was a very nice shower for Sami and Steve at Mobeetie Saturday with many friends and relatives present. Sami and Steve are to be married at Bovina March 4.1

Mike Johnson was pretty sick Sunday with a high fever. We missed him at church. Remember him in your prayers. Hope you are soon better, Mike.

Willis and I enjoyed going down to Tom Helton 80th birthday party Sunday. Good to see all but one of their kids and several grandchildren and great grandchildren. There was a big crowd of relatives and friends from all around. I told Alice Bell it was a nice party; that she should do that more often. She said she thought she'd wait awhile. I taught Thomas Roy, Bobby, Joyce and Bill at Briscoe School in 1940's. Good to see them all making such fine responsible adults.

Bobby and Lavata didn't get to come to the party. Jack and Sharon and some of their family there from Washington State. Tom sure is a young looking 80 and gets around good.

Charles and Lajo Crownover and family went to Canyon Sunday to celebrate Charles' mother's birthday, Mrs. Bess Crownover.

Ray and Pat Hudson and Cheryl Saturday and shopped and visited with Sonya Paul.

Cheryl spent Saturday night with Melody Ratliff. Others there were Gerald Reames and Tanner and Tucker.

Matthew 5:16 Let your light so shine before men, that they may see your good works, and glorify your father which is in heaven.



A OF JUDG—Helen Laycock et al to Petro-Tex Operating Co. 2-13-89

MD—A.W. Burrell to Charles H. Smith et ux 2-10-89 S/2 NW/4 Sec 34 Blk A-9

MD—A.W. Burrell to Charles H. Smith et ux 2-10-89 See Instrument

MD—Kelton Oil & Gas Co. to Edward Albert Noret Trust 2-10-89 N/2 Sec 25 Blk A-8

MD—Kelton Oil & Gas Co. to Edward Albert Noret Trust 2-10-89 N/2 Sec 25 Blk A-8

MD—Kelton Oil & Gas Co. to Edward Albert Noret Trust 2-10-89 N/2 Sec 25 Blk A-8

MD—A.W. Burrell to Edward Albert Noret Trust 2-10-89 See Instrument

MD—A.W. Burrell to Edward Albert Noret Trust 2-10-89 See Instrument

MD—A.W. Burrell to Edward Albert Noret Trust 2-10-89 See Instrument

FEBRUARY 14, 1989
ASSIGN & BILL OF SALE—Hill Energy Co to W.O. Hill et al 10-15-88 See Instrument

ASORR—George Gibson to James Reneau Seed Co. 1-26-89 SE/4 Sec 4 Blk RE

D—Estate of D.V. Biggers et al to James Reneau Seed Co. 1-24-89 N/2 Sec 103 Blk 23

ASSIGN—Ray Nunnally et ux to James Reneau Seed Co. 2-8-89 SE/4 Sec 4 Blk RE

MD & ROY MD—Ben Carr et al to Deep River Oil Corp. 1-1-89 Sec 8 Blk RE

FEBRUARY 15, 1989
AOL—Upland Resources, Inc. to Mendota Mining Company 2-13-89 E/2 & SW/4 Sec 4 Blk 5 B&B Survey

AOL—James A. Sellers to Gifford Operating Company 2-13-89 Sec 48 Blk A-3

CD—Zybach Cemetery Assn. to George Giddens 5-4-88 10'x10' Lot 8 Blk 1

FEBRUARY 16, 1989
TRUST DIST. D—Clyde S. Sanders to Herb Jones, Jr. et al 2-8-89 N/2 Sec 32 Blk A-4

ASSIGN—William C. Garrett to Lexington Gas & Marine Inc. 2-10-89 Sec 48 Blk A-3

EXECUTORS D—John W. Adams et al to Minco Oil and Gas Co. 1-17-89 W/2 Sec 51 Blk 24

AOL—S & J Operating Company to Fred Stephens et al 1-1-89 See Instrument

ROW—Glen L. Williams to Phillips Petroleum Company 12-9-88 Sec 41 Blk A-8

ROW—Gary Miller et ux to Phillips Petroleum Company 12-13-88 SE/4 Sec 51 Blk A-8

ROW—Gladys Custer et al to Phillips Petroleum Company 11-16-88 NE/4 Sec 50 Blk A-8

ROW—Betty Jackson to Phillips Petroleum Company 11-16-88 NE/4 Sec 50 Blk A-8

ROW—Verta Morris to Phillips Petroleum Company 11-25-88 NE/4 Sec 50 Blk A-8

ROW—Nancy Huerta to Phillips Petroleum Company 11-18-88 NE/4 Sec 50 Blk A-8

ROW—Georgia Brummer to Phillips Petroleum Company 11-26-88 NE/4 Sec 50 Blk A-8

ROW—Calvin Warren to Phillips Petroleum Company 11-17-88 NE/4 Sec 50 Blk A-8

ROW—Carson Bird et ux to Phillips Petroleum Company 12-1-88 SE/4 Sec 50 Blk A-8

RDT—MBank Dallas N.A. to Tecovas Partners L.P. 2-7-89 See Instrument

AOL—Petroleum Enterprises, Inc. to Barker Production Company 1-9-89 NE/4 Sec 87 Blk 17

AOL—W.J. Fellers to Barker Production Company 12-22-88 NE/4 Sec 87 Blk 17

AOL—Sidwell Oil and Gas Inc. et al to Barker Production Company 12-19-88 See Instrument

AOL—Sidwell Oil and Gas Inc. et al to Barker Production Company 12-19-88 See Instrument

POA—Weldon W. Roberts et ux to Texas Commerce Bank National Association 12-13-88

D—Weldon W. Roberts et ux to Mickey R. Mitchell 2-13-89 Pt. Lot 4 Blk LXVII Shamrock

RDT—Cecil B. Amerson et al to Ernest W. Cook et al 2-14-89 Lot 16 Blk F Potts Add Shamrock

QCD—Cheryl A. Pieper to Eugene L. Waits 1-30-89 Pt. Lot 2 Blk 48 Shamrock

QCD—Jimmy L. Waits to Eugene L. Waits 1-6-89 Pt. Lot 2 Blk 48 Shamrock

QCD—Louise McElreath to Eugene L. Waits 1-6-89 Pt. Lot 2 Blk 48 Shamrock

QCD—Teresa Self to Eugene L. Waits 12-20-89 Pt. Lot 2 Blk 48 Shamrock

QCD—Dorothy Jean Morton to Eugene L. Waits 1-13-89 Pt. Lot 2 Blk 48 Shamrock

QCD—Harold L. Waits to Eugene L. Waits 1-14-89 Pt. Lot 2 Blk 48 Shamrock

QCD—Patsy Johnston to Eugene L. Waits 1-31-89 Pt. Lot 2 Blk 48

Shamrock

AFF—Cheryl A. Pieper to The Public 1-30-89

RATIFICATION—Melvin Ray Coate et al to Gifford Operating Co. 2-15-89 Sec 21 Blk A-4

RATIFICATION—Melvin Ray Coate et al to Gifford Operating Co. 2-15-89 NW/4 Sec 30 Blk A-3

DISTRICT CLERK'S FILINGS
#9086—Thurman Howard Brashears vs Wilma Dianne Brashears, 2-9-89; Divorce

Lines from Linda
Linda Daughtry, CEA
(Home Economics)

LOW FAT CHOICES IN FAST FOOD

People trying to eat a low-fat diet often run into trouble when eating at fast food restaurants. But these restaurants—all 55,000 of them—are here to stay.

The U.S. Department of Agriculture

says that half of the money spent on restaurant food goes for fast food—about \$200 a year per person. This amounts to around \$50 billion a year for the nation. Put another way, over 45 million people, a fifth of our population, patronize a fast food restaurant on a typical day.

Studies also show that the number of fast food eaters will increase as more women join the work force giving them more money (but less time) to eat out. They also take along other major consumers of fast food; their children.

Yet according to some experts, children may be susceptible to hardening of the arteries beginning at two years of age and shouldn't make a steady diet of typical fast foods.

What can we do to protect ourselves from excessive amounts of fat and still the convenience, variety, speed and flavor of fast foods? Here are a few suggestions:

*If ordering pizza, avoid processed meats, which usually have a high fat content. Instead, choose mushrooms, peppers and onions and skip the extra cheese.

*When the menu is limited, choose small portions, such as a single hamburger and a small cone. Avoid anything that smacks of bigness, such as "super" and "extra".

*Breakfast can be a problem. The elegant but deceptively fattening croissants are making rapid inroads. They have almost twice the calories and about five times the fat as two slices of whole wheat bread. Instead, order a plain English muffin and fruit juice.

*If baked potatoes are on the menu, choose them instead of French fries, but leave off the sour cream, butter, cheese, and other high-fat toppings.

*Fill up at salad bars, but skip the bacon bits, potato salad, and creamy dressings. Concentrate on the vegetables and watch the amount of dressing you use. Look for low calorie dressing, or, if not available, choose vinegar and oil, using very little oil.

*If you must order deep-fried foods, take off the breading or other coatings, difficult though that may seem at first.

Allison School Given State Recognition

TEXAS EDUCATION AGENCY

Dear Ms. Hutto:

The State Board of Education and the Texas Education Agency are pleased to announce the campuses earning citations for improved student performance in the Board's academic recognition program. We



DOMINO WINNERS: (Back row l. to r.) Doris Hays, Thelma Green, Vera Back, Ruth Hoggard, Oleta Jones, Fannie Mae Bradstreet, Nellie Horton. (Front row l. to r.) Mary Weehunt, Callie Cabe and Alma Seitz.



DOMINO TOURNEY: 1st Place Jack Hays, Lawrence Aderholt. (Back row l. to r.) Eli Sabbe, Lorena Adams, Willie Knoll, Grace Burk, Dewey Adams. (Front row l. to r.) Mary Bledsoe, Lawrence Aderholt, Jack Hays, Willie Anderson.

Here & There

By Laura Guthrie

The Reception for two retiring City employees was a lovely affair. It was staged for an appreciation gesture for Mildred Ramsey, retiring city secretary and Bill Owen who has worked as all-around city handy-man for many years. Both persons have done a magnificent job for our city. And as civic servants usually serve, with too few "thank you's", Berniece Hall with help of Claudine Finsterwald and Mayor Wanda Herd, had charge of serving table. I, as usual, enjoyed visiting with the guests. One I especially was glad to see was Billy Owen Jones. She and her husband had driven from Grand Prairie, Texas to be at the party. They also visited with her parents, Bill and Doraeen Owen for a few days.

Claudine Finsterwald will be filling Mildred Ramsey's place as secretary. I haven't heard who will be taking Bill's place. Bill took his responsibility to the city very seriously. It will be a big job for a person interested in the well being of our town.

There has, also, been some changes in the personnel of technicians at the Laboratory at Parkview Hospital. Mike and Shari Reese, who had been with the hospital a couple of years have moved to Oklahoma City. Melinda Parker, who has been with the hospital in Beaver, Okla. for about a year, has come back to Parkview. Melinda is an "old timer" with us and we are glad to have her again. Working with her is Kay Robinson of Shamrock and Gena Herd who lives here.

My family has scattered a bit of late. Last week Steve's co-worker, Robert Ezell at Canadian Hospital, came over and helped move skillets and pots and other household plunder to Canadian. Then on Saturday Lydia gathered up her furniture and moved to Booker, where she has work. Her friends, Les and Lila Ross Guffey who live near Booker, brought a pick-up and trailer and took her household stuff. I enjoyed a visit with Lila Ross while Lydia, Steve and Les did the work.

Lavelle Stephens made a business trip to Pampa last week.

Mrs. Nadine Harling of Rangely, Colo. is visiting here with her daughter, Temi Dunn, her husband David and 2 granddaughters.

40th Birthday Party

Friends (???) held a surprise 40th birthday party for Judy Woollard February 16 at Maxey's. For once, she was almost speechless!

The dress code for the evening was black, including some lovely mourning hats, complete with veils. The room was draped in black crepe paper with black balloons fastened to the ceiling and chairs. The head table had a lovely arrangement of black carnations and a flashing sign that said "40". The birthday cake even had black icing.

After Judy was reminded of various exploits through the years, she vowed revenge on those who have not made it to the over-the-hill mark yet.

20th ANNUAL STATEWIDE

PIANO COMPETITION HELD

Seven students of Ben Karnes played in the 20th Annual Statewide Invitational Piano Competition at Southwestern State University in Weatherford, Oklahoma February 4. Amber DeVoss was awarded a II, Amy Wilson II plus, others earned I ratings

with Kara Emmert and Stacy Miller advancing to the semi-finals and Heather Wilson winning a first place trophy in her division.

"This event consists of three rounds and is ran smoothly and expertly by Dr. James Breckenridge's committees and staff" said Karnes. "Students who find time to polish and perfect a work are rewarded at Southwestern State by being present in a winner's recital after playing in the preliminaries and semi-finals. Heather Wilson's winning Fantaisie-Improptu by Chopin was reported to have been enthusiastically received by the audience of students, parents, and teachers who had been on campus most of the day for the competition which attractd entrants from three states."

"The \$65,000 Bosendorfer grand was the most beautiful instrument I've ever played" Heather gleamingly stated. "Opportunities for young pianists abound" said Karnes, "and next will be the 12th Annual Festival at Western Oklahoma State in Altus March 4. High school students Amy Wilson, Beki Henard, Marla Keller, and Greg Garrison of Shamrock are working on repertoire for the University Scholastic League contest at Canyon March 4. The Greater Southwest Music Festival is already on some students' calendars as are the May auditions sponsored by the National Guild of Piano Teachers. Our judge this year will be Jeannine Greene of Plainview."

CattleWomen Join Heart Association

Top of Texas CattleWomen, Texas Cattlewomen, and the Heart Association would like the public to know that they are working together as the month of February is heart Month and also Red Meat month. This is the first time in several years that the Heart Association has ask the Beef Industry their help in helping to educate the public on the importance of Beef in their diet. The Heart Association has found the protien and vitamins in lean Meat is good for the public and can help in the recovery of heart surgery patients.

A university of Texas study recently showed that Stearic Acid, a component of beef fat, does not raise serum cholesterol levels in humans. A previous study of oleic acid, another component of beef fat, showed that it lowered serum cholesterol levels. Texas A&M University, meanwhile recently announced that beef today has 27% less fat than just two years ago.

Watch for more news releases in the coming future concerning the beef in your diet.

David Zybach Attends Workshop

David Zybach attended Integrated Resources Equity Corporations National Conference held January 30 to February 2 held in the Loewes Anatole, Dallas Texas. Integrated Resources sponsors the conference to update its more than 4000 Registered Representatives on new investment strategies.

Workshops were held by industry leaders on estate planning, income tax reduction, retirement plans and other financial plans. Tax Legislation work-

shops covered the new tax changes for 1989, like the Medicare castastrophe Coverage Act that taxes individuals over 65 years old.

David Zybach is a licensed Securities Broker with Integrated Resources that offer insurance products and securities to corporate and individual clients.

CARD OF THANKS

Thank you to my friends, my family, and the wonderful people of Wheeler for the food, cards, and prayers during and after my recent surgery. Wheeler truly is a "town of friendship and pride!"

I love you all,
Nina Walker

CARD OF THANKS

We are very grateful for the honor that was given to us by the Mayor and City Council. We also thank our many friends who helped us celebrate our retirement. We appreciated it so very much.

Thanks again,
Mildred Ramsey and Bill Owen



PIANO COMPETITION: Local students played in the 20th Annual Statewide Invitational Piano Competition at Southwestern State University in Weatherford, Oklahoma. Pictured

(back row l. to r.) Heather Wilson, Amy Wilson and Stacey Miller. (front row l. to r.) Kara Emmert, Holly Thomas, Amber DeVoss and Allen Gill.

Gageby Valley Angus Elected To Membership

Gageby Valley Angus, Briscoe, Texas, has been elected to membership in the American Angus Association, reports Dick Spader, executive vice-president of the national organization with headquarters in St.

Joseph, Missouri. The American Angus Association, with over 30,000 active adult and junior members, is the largest beef cattle registry association in the world. Its computerized records include detailed information on nearly 11 million registered Angus.

The Association records ancestral information and keeps records of production on individual animals for its members. These permanent records help members select and mate the best animals in their herds to produce high quality, efficient breeding cattle which are then recorded with the American Angus Association. Most of these registered Angus are used by the U.S. farmers and ranchers who raise high quality beef for U.S. consumption.



The average pencil can draw a line 35 miles long.

Listen to...
KPDR-FM, 90.5
Wheeler, Texas

THIS IS A SURVEY CONDUCTED BY THE CHAMBER OF COMMERCE OF WHEELER, TEXAS. THE PURPOSE OF THIS SURVEY IS TO DETERMINE THE POSSIBILITY OF AN UNMET NEED IN OUR COMMUNITY FOR MONTHLY RENTAL APARTMENTS IN A FULL SERVICE RETIREMENT COMMUNITY. PLEASE TAKE A FEW MINUTES TO COMPLETE THIS QUESTIONNAIRE AND MAIL TO: WHEELER CHAMBER OF COMMERCE, WHEELER, TEXAS 79096.

APARTMENTS	SERVICES	AMENITIES
1. Which apartment style and size do you prefer? <input type="checkbox"/> A. Studio 440 Square Feet with one main room <input type="checkbox"/> B. One Bedroom 650 Square Feet with two main rooms <input type="checkbox"/> C. Two Bedroom 950 Square Feet with three main rooms	1. How many prepared meals per day do you prefer? <input type="checkbox"/> A. One <input type="checkbox"/> B. Two <input type="checkbox"/> C. Three	1. Would you use the following facilities if they were provided at the retirement community? <input type="checkbox"/> Yes <input type="checkbox"/> No <input type="checkbox"/> Barber Shop <input type="checkbox"/> Beauty Salon <input type="checkbox"/> Billiards / Pool Tables <input type="checkbox"/> Chapel <input type="checkbox"/> Exercise Room <input type="checkbox"/> Golf Course (any size) <input type="checkbox"/> Horse Shoes <input type="checkbox"/> Hot Tub / Jacuzzi <input type="checkbox"/> Jogging / Walking Trails <input type="checkbox"/> Laundry Room <input type="checkbox"/> Library / Reading Room <input type="checkbox"/> Parking <input type="checkbox"/> Shuffle Board <input type="checkbox"/> Storage (Additional Inside) <input type="checkbox"/> Storage (Outside) <input type="checkbox"/> Swimming Pool <input type="checkbox"/> TV room with a large screen television <input type="checkbox"/> Vending Machines (in a central location)
2. Which of the following bathrooms do you prefer? <input type="checkbox"/> A. Bathtub <input type="checkbox"/> B. Shower <input type="checkbox"/> C. Combination Bathtub & Shower	2. Depending on your selection in question (1), please select the box(es) representing the daily prepared meals you would prefer. (Please limit your choices to three.) <input type="checkbox"/> A. Breakfast (Served from 7:00 AM to 9:30 AM) <input type="checkbox"/> B. Lunch (Served from 12:00 PM to 1:30 PM) <input type="checkbox"/> C. Dinner (Served from 5:00 PM to 6:30 PM) <input type="checkbox"/> D. Brunch (Served from 9:30 AM to 11:30 AM) <input type="checkbox"/> E. Snack (Available from 8:30 PM to 10:00 PM)	2. If you selected "Yes" to GOLF in question number 1, what size course would you prefer? <input type="checkbox"/> A. Golf Course (Eighteen hole) <input type="checkbox"/> B. Golf Course (Nine hole) <input type="checkbox"/> C. Golf Course (Three hole) <input type="checkbox"/> D. Golf (six hole "pitch & putt")
3. Which of the following kitchens do you prefer? <input type="checkbox"/> A. Full size with Oven/Range, Refrigerator, etc. <input type="checkbox"/> B. Kitchenette <input type="checkbox"/> C. No kitchen (just counter space)	3. How frequently would you prefer to have linen service? <input type="checkbox"/> A. Twice a week <input type="checkbox"/> B. Once a week <input type="checkbox"/> C. Every other Week	3. If you selected "Yes" to PARKING in question number 1, I would you prefer... (please choose one) <input type="checkbox"/> A. Covered parking <input type="checkbox"/> B. Open parking spaces <input type="checkbox"/> C. No particular preference
3. Which of the following floor surfaces do you prefer? <input type="checkbox"/> A. Carpeted <input type="checkbox"/> B. Tiled <input type="checkbox"/> C. Hardwood	4. How would you prefer to take care of laundry? <input type="checkbox"/> A. Inside laundry service <input type="checkbox"/> B. Outside laundry service <input type="checkbox"/> C. Laundry facilities for your use	4. If you selected "Yes" to EXERCISE ROOM in question number 1, I would you prefer... (choose as many as you want) <input type="checkbox"/> Yes <input type="checkbox"/> No <input type="checkbox"/> Bicycle Machines <input type="checkbox"/> Weight Machines <input type="checkbox"/> Whirl Pool <input type="checkbox"/> Sauna <input type="checkbox"/> Floor Mats for aerobics, calisthenics, etc. <input type="checkbox"/> Mirrors <input type="checkbox"/> Ski Machine <input type="checkbox"/> Rowing Machine <input type="checkbox"/> Walking / Jogging Machines <input type="checkbox"/> Television <input type="checkbox"/> Radio <input type="checkbox"/> change rooms w/ shower & wardrobe lockers <input type="checkbox"/> Blood pressure monitors
4. Which of the following window decors do you prefer? <input type="checkbox"/> A. Curtains <input type="checkbox"/> B. Mini Blinds <input type="checkbox"/> C. Combination Curtains & Mini Blinds	5. If transportation service were provided, please select the box representing your preference <input type="checkbox"/> A. Van for doctor visits only <input type="checkbox"/> B. Van for shopping, social outings, & doctor visits <input type="checkbox"/> C. I do not want transportation services	5. If you answered "Yes" to number 7, which activities would you prefer? (You may select more than one.) <input type="checkbox"/> A. Shopping trips <input type="checkbox"/> B. Dances <input type="checkbox"/> C. Seminars <input type="checkbox"/> D. Exercise classes <input type="checkbox"/> E. Educational lectures (In house) <input type="checkbox"/> F. Bingo, dominoes, and bridge <input type="checkbox"/> G. Arts and crafts <input type="checkbox"/> H. Competitive tournaments (chess, cards, etc) <input type="checkbox"/> I. Other
5. Would you prefer to have grab bars and hand rails installed in corridors and hallways? <input type="checkbox"/> Yes <input type="checkbox"/> No <input type="checkbox"/> No particular preference	6. Would you prefer to have on site church services? <input type="checkbox"/> Yes <input type="checkbox"/> No	6. If you selected "Yes" to PARKING in question number 1, I would you prefer... (please choose one) <input type="checkbox"/> A. Covered parking <input type="checkbox"/> B. Open parking spaces <input type="checkbox"/> C. No particular preference
6. Please give us any other ideas you may wish to express regarding the characteristics of the apartments.	7. Would you participate in planned and organized social activities? <input type="checkbox"/> Yes <input type="checkbox"/> No	7. If you selected "Yes" to EXERCISE ROOM in question number 1, I would you prefer... (choose as many as you want) <input type="checkbox"/> Yes <input type="checkbox"/> No <input type="checkbox"/> Bicycle Machines <input type="checkbox"/> Weight Machines <input type="checkbox"/> Whirl Pool <input type="checkbox"/> Sauna <input type="checkbox"/> Floor Mats for aerobics, calisthenics, etc. <input type="checkbox"/> Mirrors <input type="checkbox"/> Ski Machine <input type="checkbox"/> Rowing Machine <input type="checkbox"/> Walking / Jogging Machines <input type="checkbox"/> Television <input type="checkbox"/> Radio <input type="checkbox"/> change rooms w/ shower & wardrobe lockers <input type="checkbox"/> Blood pressure monitors

***** THIS PORTION OF THE SURVEY IS OPTIONAL. YOU MAY ANSWER SOME OR ALL OF THE QUESTIONS BELOW. THE WHEELER CHAMBER OF COMMERCE WILL KEEP ALL PERSONAL INFORMATION CONFIDENTIAL AND WILL NOT USE THIS INFORMATION FOR ANY PURPOSE OTHER THAN THIS SURVEY. *****

NAME _____ TELEPHONE NUMBER _____

ADDRESS _____ AGE _____

ARE YOU RETIRED OR WILL YOU RETIRE WITHIN THREE YEARS? YES ___ NO ___

DO YOU RENT OWN YOUR HOME LIVE IN A RETIREMENT CENTER LIVE IN A NURSING HOME LIVE WITH RELATIVES

**** THANK YOU FOR PARTICIPATING IN THIS SURVEY. THE RESULTS WILL BE PUBLISHED IN FOUR WEEKS. ****

BOARD MINUTES →

N.S.T.R.A FIELD TRIALS ARE HELD NEAR WHEELER

Misty February mornings with temperatures in the low thirties greeted field trailers from five states to this Texas Panhandle town. Greg Smith's place just North of Wheeler, Texas, known for its large wild bird populations, was the venue for what was to be a smoothly run field trial.

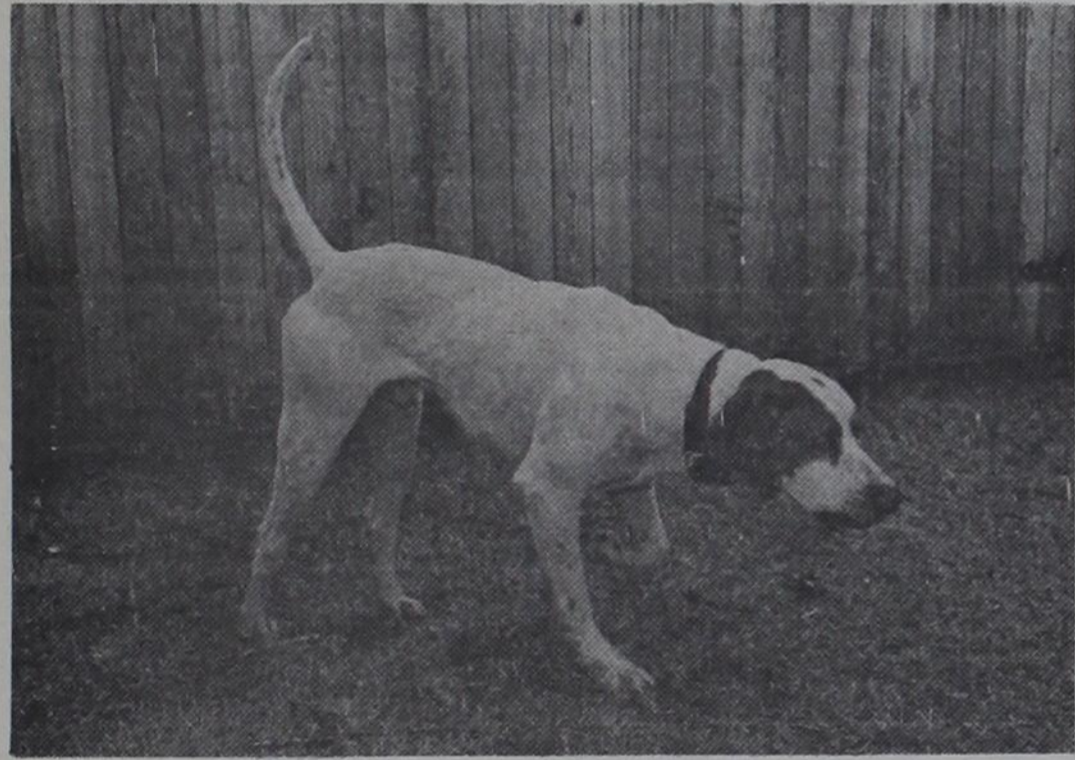
The West Texas Region, quickly becoming known as one of the toughest in the land, took home half of the trophies to be awarded in this two day event. The first WTX member, Marvin Spiller, from Bedford, Texas, set the pace early on Saturday morning when he unleashed his soon-to-be (Sunday) double-champion Pointer, Ozark Rebel Rex. Rex and Marvin had four finds and four retrieves, for a score of 883.5. He was not to be out-gunned until Duke, a stylish male pointer handled by Johnny Young, from Springfield, Missouri, tallied five and five for a score of 1015.5. The final placement on Saturday was awarded in the 10th brace when Bob Cunningham from Medora, Illinois, unleashed Marilyn Frank's classy English Setter, My Little Missie. Missie produced four & four with a nice back to move into second place for the day.

Sunday's competition would prove to be equally tough. Missie and Bob Cunningham would have another nice

run as would Bobby Clark and Spot, from Dallas, in the first brace, with both dogs splitting the field and tallying three finds apiece. But it was the eighth brace that provided the action that the field trailers would be talking about the rest of the day. There were to be eleven finds in brace, six by the eventual winner for the day, Ozark Rebel Rex and five along with a fine back by Texas Panhandle Slim, a nineteen-month-old Pointer owned and handled by trial chairman Greg Smith. Slim would go on to hold down second place for the Sunday running. The other placement for the day came in waning moments of the trial when Jerry Smith, also from Springfield, Missouri, in his first outing at a N.S.T.R.A. trial, placed his male Pointer, Rex, third with four and four and gave the veterans in the lead a scare. Ozark Rebel Rex was crowned High-Point Dog of the event and was awarded a handsome trophy buckle, as is the tradition of the Sweetwater Creek Bird Dog Club, host of the trial. As a result of his four point weekend production, Rex and Marvin Spiller also widened their lead in the race for High Point Dog of the WTX Region over Greg Smith's Spy Rail Buddy. Buddy has tallied 14 points to date to Rex's 19.



[L. to R.] Ozark Rebel Rex with Marvin Spiller, Bob Cunningham with My Little Missie and Johnny Young with Duke.



Texas Panhandle Slim owned and handled by Greg Smith.

MOBEETIE I.S.D. REGULAR MEETING BOARD OF TRUSTEES Feb. 9, 1989

Members present: Greg Estes, Pres., Robert Hogan, Gary May, Sallie May, Susan Mayfield, Earl Tabor.

Members absent: Mark Hefley. Guests: Dave R. Summers, Supt., Donnetta Dollar, Bus. Mgr., John Schaffer, Maint. Supr., Charles Schaeffels, Anna Belle Corcoran, Food Service Supervisor, 15 taxpayers and citizens.

I. Greg Estes called the meeting to order at 8:01 p.m. and welcomed everyone.

II. Gary May lead the opening prayer.

III. No one signed up for open forum.

IV. Rob Hogan read the minutes of the previous meetings. Gary May moved to approve the Jan. 12, 1989 Regular meeting minutes. Robert Hogan seconded the motion. 5 members for, 1 opposed - Earl Tabor. Motion carried.

Greg Estes moved to approve the minutes of the Feb. 7, 1989 special meeting with the following corrections:

Add an L to Earl's name, specify Article 6252-17 Sec. 2 (g), for executive session at 10:34 p.m. and to attach copy of the letter from attorney J. Brim concerning Level II grievance. 5 members for, 1 opposed - Earl Tabor. Motion carried.

V. Action Items:

Sewage and Plumbing Problems - John Schaffer presented bids from 3 sources. Some discussion by the board members followed. Mr. Estes directed Mr. Schaffer to contact Mike Gallagher and discuss adding more gravel his original bid and to report back to the board at their next meeting.

Transportation Report - John Schaffer presented 3 bids to replace engine on bus. Gary May moved to have the bus engine replaced by Hibler's according to the bid quoted. Rob Hogan seconded the Motion. Motion carried unanimously.

Fire Marshall & Health Inspection - All problems had been corrected in a timely manner.

Anna Belle Corcoran - reported on Air-conditioner repair in kitchen area. Mr. Connors suggested a new breaker box and time delay switch to properly repair air-conditioner. Rob Hogan moved to purchase and install the breaker box and time delay switch as soon as possible. Sue May seconded. Motion carried unanimously.

Employee Health & Life Insurance - Charles Michael, from Wellington, TX, gave a presentation and bid proposal to the board concerning employee health and life insurance. The board discussed Mr. Michael's proposal and asked him questions. After some discussion the board tabled any action at this time to give other companies a chance to submit bids and proposals. The board thanked Mr. Michael's for his time and efforts in preparing for his bid.

Donnetta Dollar, Business Manager, presented the bills, purchase orders and payroll to the board for approval and payment. Gary May moved to pay the bills. Rob Hogan seconded the motion. Motion carried unanimously.

VI. At 9:41 p.m. the Board went into

executive session under Article 6252-17 Sec. 2 (g).

At 10:45 p.m. the Board came out of executive session.

No action taken.

VII. Gary May reiterated the motion to correct the minutes by putting an L on Earl's name and by listing the Article & Section the board went under in executive session. Specify Article 6252-17 Sec. 2 (G), at 10:34 p.m. And to attach the letter concerning the level III grievance from the attorney Jay Brim. As read in VI in Feb. 7, special meeting minutes. Sue Mayfield seconded the motion. Motion carried unanimously.

Rob Hogan motioned the meeting adjourn. Gary May seconded. Motion carried unanimously.

Meeting adjourned at 11:01 p.m.

MOBEETIE ISD

Mobeetie I.S.D. Special Board of Trustees Meeting, Feb. 13, 1989.

Members present: Greg Estes, president, Gary May, vice-president, Robert Hogan, secretary, Sallie May, Sue Mayfield, Earl Tabor. Guests: Dave R. Summers, Supt., Donnetta Dollar, Bus. Mgr., 13 Concerned Citizens.

I. Greg Estes called the meeting to order at 8:04 p.m.

II. Robert Hogan lead the opening prayer.

III. Open forum — no one signed.

IV. Action Items:

A. Sewer and plumbing: Mike Gallagher and the board discussed the sewer and plumbing repair bid. Mr. Gallagher made an adjusted bid per the board specifications. Rob Hogan moved the board accept Mr. Gallagher's bid with modifications as attached and noted on bid proposal, plus extra gravel to repair sewer problem. Greg Estes seconded the motion. Motion carried unanimously.

B. Notice of regular or special meetings to individual Board members: Gary May moved the Superintendent of Schools be directed to submit a board policy change of BE (local) to state that board member notice be 24 hours in advance; with notice being written, verbal or consensus, with such proposal being ready for the first reading at the next regularly scheduled board meeting. Motion seconded by Rob Hogan. 5 members for, 1 opposed — Earl Tabor, Motion carried.

Board went into Executive Session at 8:21 p.m. under Article 6252-17 Sec. 2 (g).

Board came out of Executive session at 9:43 p.m.

Robert Hogan moved that the board affirm the action taken by the Superintendent in the Level III grievance and to deny any further relief by the board. Gary May seconded the motion. 5 members for 1 abstained — Earl Tabor, motion carried.

V. Board took a recess.

VI. Board came back into open session during the special meeting after their recess.

Board went into Executive Session at 10:10 p.m. under Article 6252-17 Sec. 2 (g)

Board came out of Executive Session at 11:33 p.m.

Board took a break. At 11:45 p.m. Board reconvened.

VII. Sue Mayfield moved to renew the Superintendent's contract for the 1989-90 school year. Greg Estes seconded the motion. Gary May moved to amend the motion to include a salary of \$41,000.00 a year, \$50.00 a month house rent and \$25.00 per month towards group health & life insurance. Robert Hogan seconded the motion to amend. 5 members for 1 opposed — Earl Tabor, Amendment Carried

The motion as amended was voted on — 5 members for 1 opposed — Earl

Tabor, motion Carried.

Board went into Executive Session at 11:55 p.m. under article 6252-17 Sec. 2 (g)

Board came out of Executive Session at 2:13 a.m. on Feb. 14, 1989.

VIII. The motion was made by Robert Hogan and seconded by Gary May the board issue a statement as follows: "That the Board would like to see the Superintendent address the issue of improved staff relations in the future." (attached) 5 members for 1 abstaining — Earl Tabor, motion carried.

IX. Gary May moved and Greg Estes seconded the meeting adjourn. Motion carried unanimously. Meeting adjourned at 2:20 a.m. 2-14-89.

Mobeetie I.S.D. Special Board of Trustees Meeting.

Feb. 20, 1989

Members present: Greg Estes, Pres., Gary May, V.Pres., Robert Hogan, Sec., Mark Hefley, Sallie May, Sue Mayfield, Earl Tabor. Guests: Dave R. Summers, Supt., 15 Taxpayers, Citizens and Staff.

I. Greg Estes called the meeting to order at 8:06 p.m.

II. Mark Hefley lead the opening prayer.

III. Open Forum — no one signed.

IV. Action Items:

A. Health Insurance Proposals for District Employees-Dan Walkins, Deann Hickmott, Kay McKenzie, and Fred Ehmman presented insurance proposal from Wichita Falls Board of Commerce and Industry. The underwriters are G.I.C. Insurance Co. of San Antonio, TX.



CARE CENTER VALENTINE KING AND QUEEN: Ed Smith and Lorena Adams names were drawn from a

There would be a \$250.00 annual membership fee to join the group, with a 30 day turnaround guarantee.

Charles Michael, Independent Agent from Wellington, was given the opportunity to re-address the board or for additions from the last meeting when he address the board with his proposal. He declined.

It was noted that another bid was received through the mail from the, Association Insurance Management Co., but no presenters were present.

Rob Hogan moved to present the policy from Wichita Falls Board of Commerce and Industry to the staff. Motion carried unanimously.

B. Mr. Summers reviewed the district's liability insurance. Entered 9-1-88 from TASB. The district has property, automobile

Allison

SPECIAL BOARD MEETING

February 20, 1989, 7:01 p.m.

The Allison School Board of Trustees met with the following in attendance: Terry Grayson, Keith Boydston, Vance Boydston, Jimmy Donaldson, Cletus Greene, Kenneth Keys. Members absent: None. Others present: David Mims, Doug Rives, Aubrey Carothers. Invocation: Vance Boydston.

PERSONNEL ACTION ON TEACHER'S CONTRACT: The Board went into executive session after the President announced its right to do so under Article 6252-17, Section 2 G Officers and Employees at 6:11 p.m. 2-15-89. The President declared the executive session end and the meeting returned to open session at 6:34 p.m. 2-15-89. Vote: No action.

ACTION ON TEACHER'S

Motion by Jimmy, seconded by Keith to accept Ron Vorheis resignation as presented. Vote: For unanimous. ADJOURN Motion by Jimmy, seconded by Keith, to adjourn at 8:15 p.m. 2-20-89. Vote: For unanimous.

Motion by Kenneth, seconded by Vance to hire Sheila Damron subject to assignment for remainder of 88-89 school year. Vote: For unanimous.

ADJOURN: Motion by Kenneth, seconded by Jimmy: to adjourn at 8:15 p.m. 2-20-89. Vote: For unanimous.

ADJOURN

Motion by Jimmy, seconded by Keith, to adjourn at 6:35 p.m. 2-15-89. Vote: For unanimous.

ADJOURN

Motion by Jimmy, seconded by Keith, to adjourn at 6:35 p.m. 2-15-89. Vote: For unanimous.

ADJOURN

Motion by Jimmy, seconded by Keith, to adjourn at 6:35 p.m. 2-15-89. Vote: For unanimous.

ADJOURN

Motion by Jimmy, seconded by Keith, to adjourn at 6:35 p.m. 2-15-89. Vote: For unanimous.

ADJOURN

Motion by Jimmy, seconded by Keith, to adjourn at 6:35 p.m. 2-15-89. Vote: For unanimous.

ADJOURN

Motion by Jimmy, seconded by Keith, to adjourn at 6:35 p.m. 2-15-89. Vote: For unanimous.

ADJOURN

Motion by Jimmy, seconded by Keith, to adjourn at 6:35 p.m. 2-15-89. Vote: For unanimous.

ADJOURN

Motion by Jimmy, seconded by Keith, to adjourn at 6:35 p.m. 2-15-89. Vote: For unanimous.

ADJOURN

Motion by Jimmy, seconded by Keith, to adjourn at 6:35 p.m. 2-15-89. Vote: For unanimous.

ADJOURN

Motion by Jimmy, seconded by Keith, to adjourn at 6:35 p.m. 2-15-89. Vote: For unanimous.

ADJOURN

Motion by Jimmy, seconded by Keith, to adjourn at 6:35 p.m. 2-15-89. Vote: For unanimous.

ADJOURN

Motion by Jimmy, seconded by Keith, to adjourn at 6:35 p.m. 2-15-89. Vote: For unanimous.

ADJOURN

Motion by Jimmy, seconded by Keith, to adjourn at 6:35 p.m. 2-15-89. Vote: For unanimous.

ADJOURN

Motion by Jimmy, seconded by Keith, to adjourn at 6:35 p.m. 2-15-89. Vote: For unanimous.

ADJOURN

Motion by Jimmy, seconded by Keith, to adjourn at 6:35 p.m. 2-15-89. Vote: For unanimous.

ADJOURN

Motion by Jimmy, seconded by Keith, to adjourn at 6:35 p.m. 2-15-89. Vote: For unanimous.

ADJOURN

Motion by Jimmy, seconded by Keith, to adjourn at 6:35 p.m. 2-15-89. Vote: For unanimous.

ADJOURN

Motion by Jimmy, seconded by Keith, to adjourn at 6:35 p.m. 2-15-89. Vote: For unanimous.

ADJOURN

Motion by Jimmy, seconded by Keith, to adjourn at 6:35 p.m. 2-15-89. Vote: For unanimous.

ADJOURN

Motion by Jimmy, seconded by Keith, to adjourn at 6:35 p.m. 2-15-89. Vote: For unanimous.

ADJOURN

Motion by Jimmy, seconded by Keith, to adjourn at 6:35 p.m. 2-15-89. Vote: For unanimous.

ADJOURN

5 AUCTION

Saturday, March 4, 1989 — Sale Time: 9:37 a.m.

LOCATED: Canadian, Texas — 2 miles North of Town on U.S. Highway 60-83 (same being just North of Canadian River Bridge).

LEO'S CONSTRUCTION & ROUSTABOUT SERVICE, INC. — Owner

Telephone: Eugene Thompson — (806) 323-6269 Office or (806) 323-8186 Nights
Leo Thompson — (806) 323-6269 Office or (806) 323-5185 Nights

We are quitting business and the following will be sold at Public Auction — Any announcement sale day takes precedence.

WINCH TRUCKS, PICKUPS, AUTOMOBILES —

- 1—1981 Ford F-600 S.A. Winch Truck, 370 Lima Engine, 4 Sp. 2 Sp., Tulsa Winch With Oil Field Bed & Poles
- 1—1979 Ford F-600 S.A. Winch Truck, 307 Engine, 4 Sp. 2 Sp., Tulsa Winch With Oil Field Bed
- 2—1984 Ford F-250 Custom 1/2 Ton Pickups, 300 6 Cylinder Engine, 4 Speed, Radio, Htr., L.W.B., (1-4 Wheel Drive)
- 2—1983 Ford F-250 Custom 1/2 Ton Pickups, 300 6 Cylinder Engine, 4 Speed, Radio, Htr., L.W.B.
- 1—1981 Ford F-250 4X4 Pickup, 390 Engine, L.W.B., Weched
- 1—1979 Ford F-150 Custom 1/2 Ton Pickup, 460 Engine, A/T, Radio, Heater, L.W.B.
- 1—1984 Ford LTD Crown Victoria 4 Door Sedan Automobile, 302 Engine, A/C, A/T, Radio, Heater
- 1—1981 Mercury Marquis 4 Door Sedan Automobile, 400 Engine, A/T, A/C, Radio, Heater

BACKHOES, TRENCHER, TRACTOR —

- 1—1982 Case 580 Diesel Construction King Extendahoe Backhoe And Loader Tractor, 11Lx16 Front Rubber, 16.9x24 Rear Rubber
- 1—1982 Case DHS Trencher Tractor, Diesel Engine, Roll Bar, 4 Wheel Drive, 654 Hours, 60" Bar Up To 16" Teeth, 31x15.50 Rubber
- 1—Case Davis D17 Articulating Diesel Trencher-Backhoe Tractor, D-130 Backhoe, 6' Duzer Blade, Trenching Attachment
- 1—1959 Ford 641 Workmaster Gas Tractor, W.F., 3-pl., P.T.O.

PORTABLE WELDER, AIR COMPRESSORS, SANDBLASTER —

- 1—Lincoln Shield Arc 200 Amp. Portable Electric Welder-Generator, On 2 Wheel Trailer
- 1—LeRol Portable Air Compressor, 4 Cylinder Gas Engine, On 2 Wheel Trailer, (Compressor Needs Overhaul)
- 1—Yeager Portable Gas Powered Air Compressor, Hercules Engine, On 2 Wheel Trailer
- 1—Pro Air Portable 12 Volt Air Compressor
- 1—Kellogg American B32 UB Upright Shop Air Compressor, 80 Gallon Tank, 5 H.P. Electric Motor
- 1—Portable Sandblasting Machine
- 1—Lot Bags Sandblasting Sand

FIELD & SHOP EQUIPMENT —

- 1—Chandler Set Critical Flow Provers, W/Set Oil Office Plates

- 1—Metal Pipe Line Finder Machine With Metro Tech Carrying Case
- 1—Lincoln 225 Amp. Electric Welder
- 1—Coats 20-20 Tire Changing Machine
- 1—Teledyne Mini Recorder Gauge
- 1—Makita Abrasive Cut Off Saw
- 1—Black & Decker Abrasive Cut Off Saw
- 1—Intergram 5 Speed, 1/2 H.P. Electric Drill Press, On Stand
- 2—Victor Acetylene Cutting Torches
- 1—Lot Ridgid 2" & 4" Pipe Threaders, Pipe Cutters
- 1—Folddown Work Table
- 1—Carolina Shop Press
- 1—Large Lot Electric Hand Tools, Drills, Saws, Orbital Grinders, Etc.
- 1—Large Lot Hand Tools
- 1—Large Lot Cement Working Tools
- 1—Set Pumping Units Starting Cables
- 1—Lot Grover Yokes, Various Sizes
- 1—Kohler Portable Generator
- 1—Wagner Portable 2500 Airless Paint Gun
- 2—Binks 2 Gallon Paint Guns
- 1—Lot Pipe Grips, Various Sizes
- 1—Lot Hard Hats
- 1—Lot Floor Jacks
- 1—Lot Mud Chains
- 2—Gas Powered Portable Air Compressors
- 1—Gas Powered Portable Air Compressor, No Compressor
- 1—Large Lot Pipe Wrenches, Various Sizes
- 1—Lot Chain Jong Wrenches
- 1—Lot Hammer Wrenches
- 1—Lot Extension Cords
- 1—Wet/Dry Shop Vacuum
- 1—Norton House Jack
- 1—Lot Socket Sets
- 1—Lot Levels
- 1—Lot Lug Wrenches
- 1—Lot Grease Guns, Dispensers
- 1—Lot Air Hose

TRAILERS, TANK —

- 1—Triangle K 24", T.A., Dual Wheel, Gooseneck Trailer, With Dove Tail, Ramps
- 1—Belshie Backhoe Triple Axle Trailer, With Ramps
- 1—18' T.A. Utility Trailer, With Rails
- 1—16' T.A. Utility Trailer, With Rails
- 1—16' Box Bed T.A. Utility Trailer
- 1—30', 2 Wheel Pipe Trailer
- 1—2 Wheel Pickup Bed Trailer
- 1—SM 1000 Gallon Rectangular Tank, With Lift Hooks And Baffles

FARM & RANCH EQUIPMENT —

- 1—Rhino Sals 5', 3 pl. Shredder
- 1—3 pl. Dirt Buckel
- 1—16' Cattle Guard
- 1—SM 16' Tank Skid
- 1—Lot T Posts
- 1—Lot Used Lumber, Various Sires
- 1—Lot Various Size Pipe, Various Lengths

MOBILE RADIOS, OFFICE EQUIPMENT, NON-CLASSIFIED —

- 16—Motorola Marar Mobile Radios
- 1—Motorola Base Radio Station
- 1—Motorola Remote Base Radio
- NOTE: Most Radios Are 100 Watt
- 1—Secretary Desk
- 1—Card Filing Cabinet
- 1—Executive Chair
- 1—Lot First Aid Kits
- 6—Folding Chairs
- 2—Office Desks
- 1—Credenza
- 1—Paymaster Check Protector
- 3—Sets Metal Shelves
- 1—Small Folding Work Table
- 1—Kirby Classic III Vacuum Cleaner
- 1—Whistler Q2000 Radar Detector
- 1—Ford 370 Lima Engine, (Rebuildable)
- 1—Ford Pickup Trailer, Bumper Hitch, (New)
- 1—Lot 55 Gallon Drums
- 1—Lot Tires & Wheels: Truck, Pickup, Car
- 1—Lot Spades, Hoes, Rakes, Tamping Bars, Posthole Diggers
- 1—Metal Tire Rack
- 2—Metal Clothes Rack
- 1—Large Lot Pipe Connections, V.S.
- 1—Large Lot Valves, V.S.
- 1—Lot Used Batteries, Radiators, Copper Tubing, Wiring
- 1—Lot Telephone Insulators
- 1—Lot PVC Down Gutter Spout
- 3—Plastic Covered Battery Boxes
- 2—Backhoe Hydraulic Cylinders
- 1—Lot Drill Plates, Various Sizes
- 1—Lot Pipe Insulation
- 1—Trailer House Axle
- 1—Lot Shop & Welding Iron, Pipe
- 1—Lot Barrel Racks
- 9—Pickup C/O Toolboxes
- 1—Lot Junk & Scrap Iron
- 1—4 Drawer Filing Cabinet
- 1—2 Drawer Filing Cabinet
- 1—Love Seat & Ottoman
- 2—Desk Chairs
- 1—Typing Stand
- 4—Metal & Naguhdye Chairs
- 1—Paymaster Check Protector
- 3—Sets Metal Shelves

JAMES G. CRUCE (806) 296-7252
MERVIN W. EVANS (806) 293-8195
BENNIE REAGAN (806) 469-5217
JIM SUMMERS (806) 864-3611
JIMMY REEVES (806) 864-3362

We Are Agents And Agents Only
★★★★★
Five Star Auctioneers
Box 1030 — Plainview, Texas 79073-1030

SPECIALS



DECKER
BACON
DECKER QUALITY
SLICED BACON
LB. **\$1.29**



DECKER
BEEF FRANKS

BNLS. CENTER CUT
ROUND STEAK
LB. **\$1.79**

SELECT SLICED YOUNG
BEEF LIVER
LB. **89¢**

BNLS. SIRLOIN TIP STEAK OR
ROAST
LB. **\$2.59**

HEAVY GRAIN FED BEEF
ROUND STEAK
LB. **\$1.59**

QUALITY SLICED MEAT/ BEEF
DECKER BOLOGNA 12 OZ. PKG. **99¢**

DECKER QUALITY
MEAT FRANKS 12 OZ. PKG. **89¢**

DECKER QUALITY
BEEF FRANKS 12 OZ. PKG. **\$1.09**

DECKER QUALITY
CORN DOGS 1 LB. PKG. **\$1.39**

FREE With 2 proofs of purchase from any Decker meat product. One per household. A \$12.00 value!

Decker Foods Offers You Great Taste and Total Health.





THURSDAY, February 23, 1989

SPECIAL: TODAY ONLY

TRIPLE ★ TRIPLE ★ TRIPLE ★ TRIPLE COUPONS

We will triple the value of your Coupons today up to 30¢. Coupons over 30¢ will be face value.

Not to exceed the price of the item. Cigarettes, Tobacco Excluded

DELI MENU	Thurs.-Fri., Feb. 23-24	1 Serv.	Mon., Feb. 27	1 Serv.	Tues., Feb. 28	1 Serv.	Wed., Mar. 1	1 Serv.
	BREADED PORK CHOPS	\$1.69 Dinner \$3.29	SPAGHETTI DINNER	\$1.69 Dinner \$3.09	MEXICAN CASSEROLE	\$1.69 Dinner \$3.29	CHICKEN/NOODLES	\$1.49 Dinner \$3.19

RAISIN BRAN CEREAL
TOTAL 13 OZ. BOX **\$2.29**

WHEATIES
CEREAL 18 OZ. BOX **\$2.49**

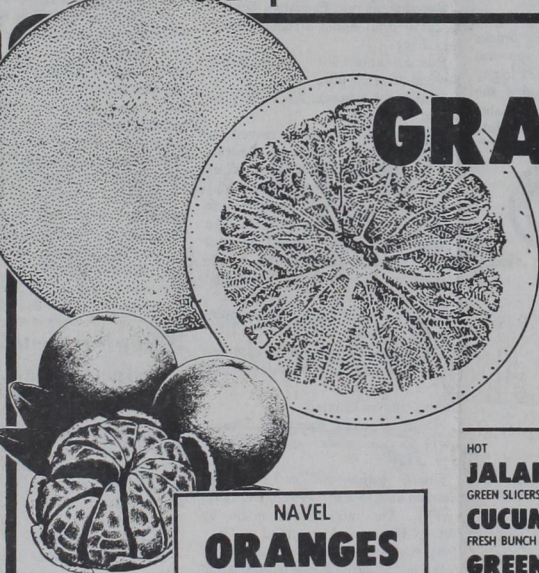
CEREAL
LUCKY CHARMS 14 OZ. BOX **\$2.49**

DEL MONTE CHUNK/ CRUSHED/ SLICED
PINEAPPLE 8 OZ. CAN **39¢**

AMERICAN BEAUTY
LONG SPAGHETTI OR
ELBO RONI 48 OZ. PKG. **\$2.79**

HONEY BOY SKINLESS/ BNLS. PINK
SALMON 6 1/2 OZ. CAN **\$2.49**

TEXAS RUBY RED
GRAPEFRUIT
10¢ EACH



NAVEL
ORANGES
LBS. **3 \$1**

HOT
JALAPENOS LB. **69¢**

GREEN SLICERS
CUCUMBERS 3 FOR **\$1.00**

FRESH BUNCH
GREEN ONIONS 5 FOR **\$1.00**

NATURALLY SWEET
PINEAPPLE EA. **99¢**

NO. 1
POTATOES 5 LB. BAG **99¢**

Borden's
ICE CREAM
1/2 Gal. Rds.
\$1.79

FROZEN

ORE-IDA CRINKLE CUT/
GOLDEN FRIES 2 LB. BAG **\$1.49**

BIRDSEYE FARM FRESH ASST.
VEGETABLES 16 OZ. PKG. **\$1.49**

ASST. TYPES HOT
POCKETS 10 OZ. PKG. **\$2.29**

FILLETS 1 LB. PKG. **\$2.49**

WE ACCEPT FOOD STAMPS... WE RESERVE THE RIGHT TO LIMIT

ASST. CONDITIONER OR
IVORY SHAMPOO 15 OZ. BTL. **\$1.49**

DRY/ EX-BODY
PERT PLUS 15 OZ. BTL. **\$3.59**

NORM./ DRY/ OILY/ X-BODY
PERT PLUS 7 OZ. BTL. **\$2.19**

ASST. FOAM PERMS
LILT EA. **\$4.99**

ROUND ASST.
SECRET 2 OZ. SIZE **\$2.49**

WIDE SOLID ASST.
SECRET 2 OZ. SIZE **\$2.59**

ROLL-ON ASST.
SECRET 1 1/2 OZ. SIZE **\$1.89**

ASST. SPRAY
SECRET 4 OZ. CAN **\$2.39**

THRIFTWAY

W.I.C. Customers Welcome! Tues.-Sat.- Double Coupon Days

Since we are moving to our new location soon,
we are offering lots of instore SPECIALS

Look for our "Featured Today" signs!

AFFILIATED FOODS INC.
PRICES EFFECTIVE FEB. 12-18, 1989

DAIRY DELIGHTS

LUNCH WAGON SLICES 12 OZ. PKG. **99¢**

KRAFT CHILLED GRAPEFRUIT/ ORANGE/ ORANGE PINEAPPLE
JUICE 32 OZ. BTL. **99¢**

SHURFINE SOFT
MARGARINE 1 LB. TUB **59¢**

SHURFINE TEXAS STYLE
BISCUITS 4 5 CT. CANS **\$1.00**