

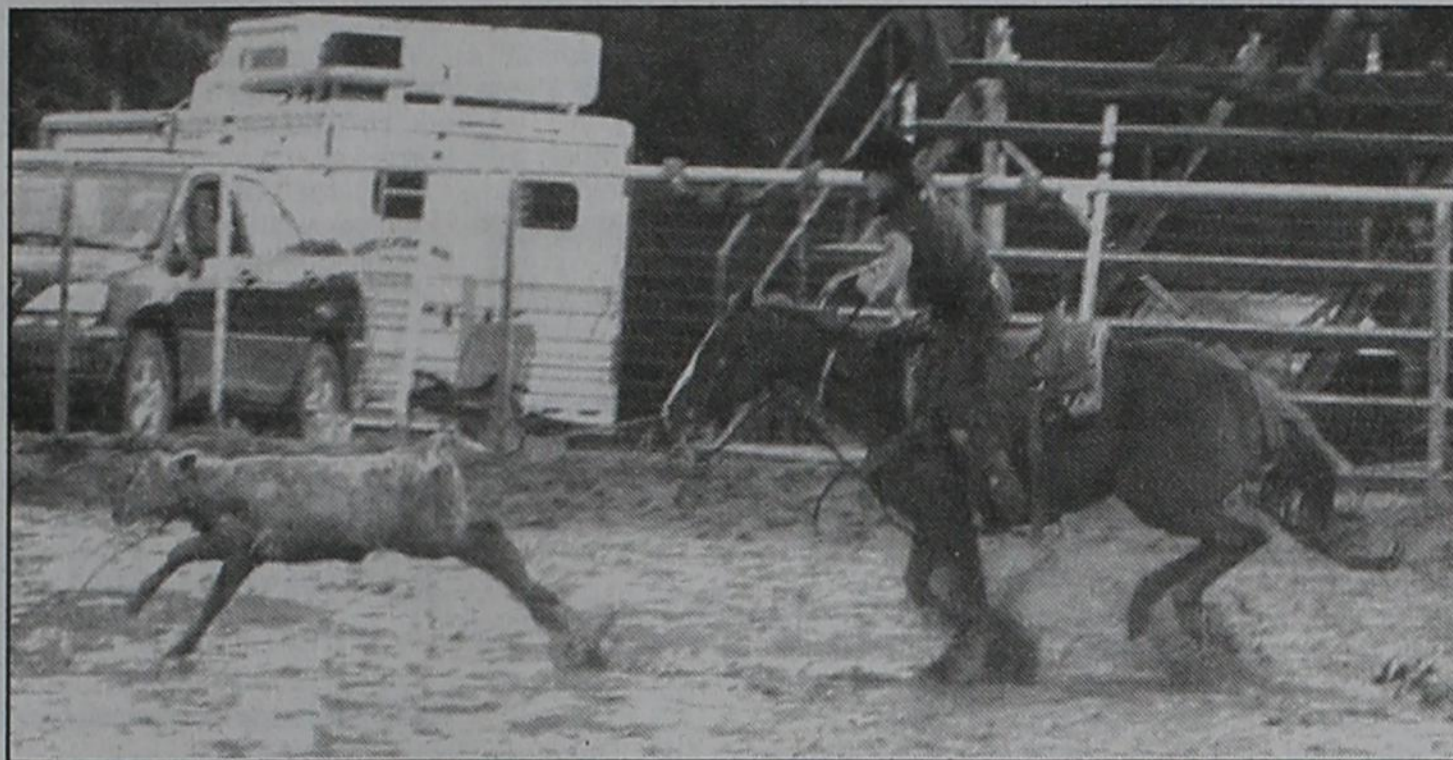
THE WHEELER TIMES

(USPS-681-960)
VOLUME 77, NUMBER 43

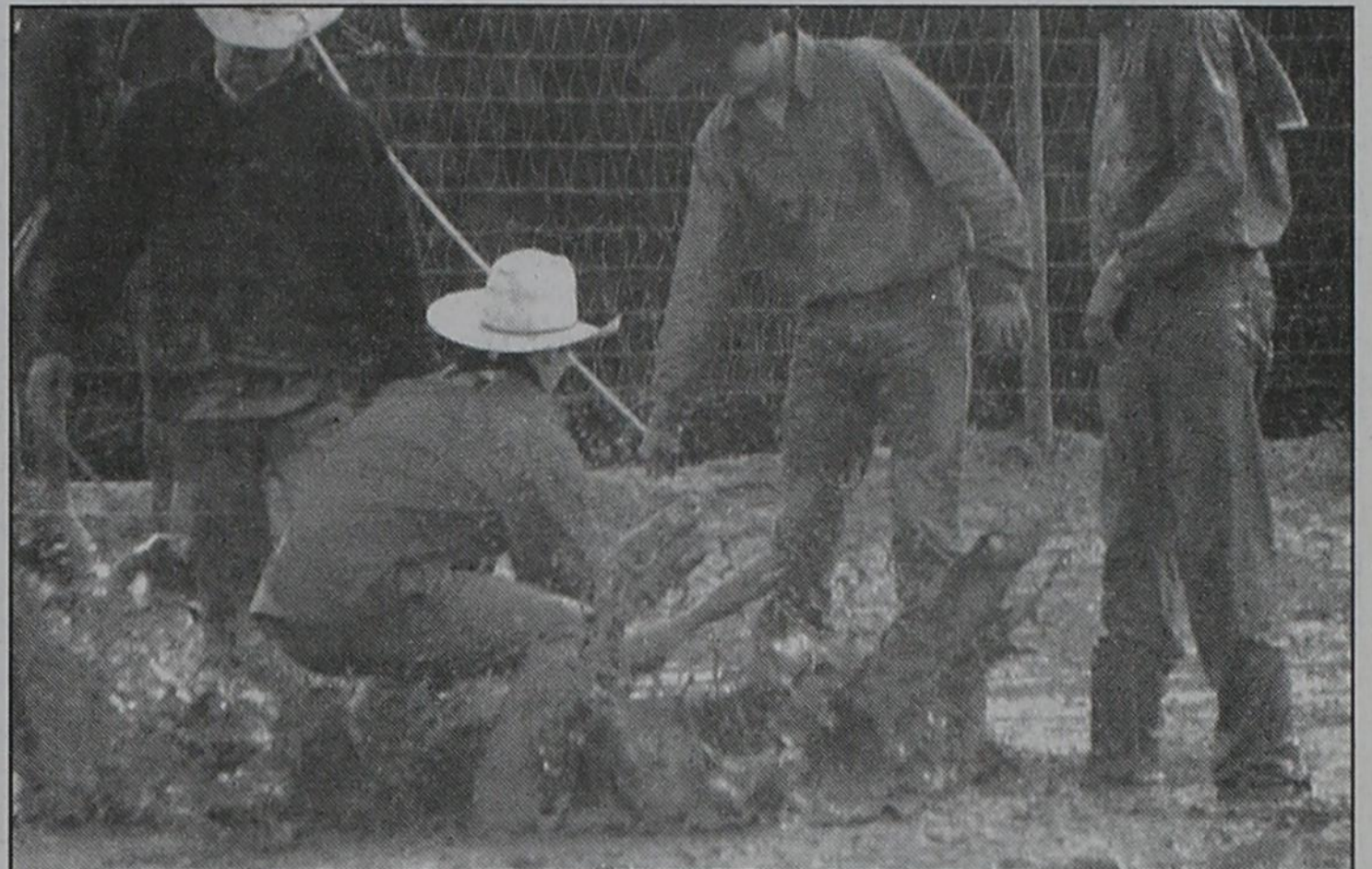
THURSDAY, OCTOBER 13, 2011

SINGLE COPY **50c**

"Wheeler; town of friendship and pride."



RIBBON ROPING: Colton Johnson in ribbon roping on Sunday afternoon at the Wheeler rodeo arena. Colton of Wheeler was one of 124 contestants in the Tri-State High School Rodeo Saturday & Sunday, October 8-9.
—Photo by Janice Johnson



MUDEO: Wheeler Chamber of Commerce co-hosted the Tri-State High School Rodeo Saturday and Sunday. One hundred-twenty-four contestants participated. A gentle rain for both performances made for a very muddy arena. Thursday thru Sunday measurement was 1.81".
—Photo by Janice Johnson

CWE CHAT WITH EDITOR
By Louis C. Stas

IT RAINED! I had measured 0.38" Friday morning before we left for OKC. There was an additional 1.43" in the gauge Monday morning. **"Nice and gentle rain."**

—cwe—
Melba reported 2.35" at Mobeetie and Dwight Tipps reported 2.1" in the Briscoe Area. I did not get an email from my Allison connection.

—cwe—
WAY TO GO MUSTANGS! Let's keep up the winning.

—cwe—
The Tri-State High School Rodeo was a bit of a mess, but the parents of the youngsters participating did not complain. Participants represented the Texas Panhandle and part of New Mexico. All were hoping they had received or were receiving the same rain.

—cwe—
Fortunately there were no injuries. But, there were a few lost
(Continued Page 8)

STORM REPORT

As Reported by...
Stormie Meriwether,
Second Grade Student

Dear Friends, Face Time is so fun! I got to see Dwight! He was at Pop's house to play cards and they called me on the iPad. I'm so happy to see Dwight. You can't believe who else I saw on Face Time. One day Pop called me and, Wahlah! it was my Aunt Melba! That was a very happy surprise! Someday I will go home and see all my friends and family again.

My dad is great. He's not in the hospital, but he has to get his surgery. We don't know when he can get it. I think we have to wait a long time. Now we can do fun things like go to the movies.

You will love the movie Dolphin Tale! It is a very almost true story. The real dolphin is in Florida. I want to go see the real dolphin. Her name is Winter. I am too far away from Florida, so I just went to Baltimore to see dolphins at the National Aquarium. That is an awesome place! They have thousands of fish. The sharks are big and you can look over a wall and see them swim. They have huge sting rays in the tank with the sharks.

My favorite thing at the aquarium is the Jelly Fish! You can't believe how many Jelly Fish! They call it Jelly Invasion. Jelly fish are all over the world. They are filling up the oceans. Some
(Continued Page 8)

Commissioners' Court Meets \$100,000 In County Jail Repairs

The Commissioners' Court of Wheeler County met in regular session on Friday, October 7, 2011, at 9:00 a.m., in the Commissioners' Courtroom of the Wheeler County Courthouse at 401 Main Street, Wheeler, Texas, to consider prior bills and discuss matters of mutual concern.

The court reconvened at 10:00 a.m. to address thirteen items on the agenda.

The court approved the minutes of the previous meetings.

The monthly reports of the Justice of the Peace, Pct. 1; County Clerk, and District Clerk were accepted.

The hourly payroll time sheets were approved for payment as presented.

The court voted to pay the bills as approved.

No action was taken on the budget.

No action was taken on the Burn Ban.

Wheeler County Sheriff, Joel Finsterwald reported on the needed repairs to the county jail. A "ball park" figure on the cost of the repairs to the upper floor of the jail is \$100,000. Some of the plumbing, which needs replacing is in the concrete. There are four cells upstairs and eight downstairs. The cost for housing prisoners at Childress will be approximately \$77,000.

The court voted to make the repairs in the jail, which will require

the closing of the jail during repair.

Bids were received and accepted from the Buy Board for the purchase of two new units for the Sheriff's Department. Cost per unit (Chevrolet Tahoe) was \$37,796.75 or \$75,593.50 for the two fully equipped vehicles.

Deputy Rowdy Clark presented the names of three prospective deputies for the court's approval. Michael Hawks, Jason Holt and Caleb Hodges were added to the
(Continued Page 7)

Mustangs Trample Shamrock Irish

Wheeler43
Shamrock.....6
Wheeler didn't allow a score until the fourth quarter en route to a 37-point victory against Shamrock.

Wheeler improved to 4-3 on the season with the help of two rushing touchdowns each by Andrew Coomer and Hayden Guest while keeping Shamrock winless in seven games this season.

Wheeler 9 21 6 7 43
Shamrock 0 0 0 6 6
W-Andrew Coomer 3 run (Ishmael Buenrostro kick)

W - Safety
W - Zack McCasland 1 run (Buenrostro kick)
W - Buenrostro 32 pass from McCasland (Buenrostro kick)
W - Hayden Guest 12 run (Buenrostro kick)
W - Guest 15 run (kick failed)
W - Coomer 8 run (Buenrostro kick)
S - David Wright 1 run (conversion failed)

	Wheeler	Shamrock
First Downs	15	11
Rushing Yards	240	77
Passing Yards	38	17
Total Yards	278	94
C-A-I	2-2-0	2-5-0
Punts-Avg.	NA	NA
Fumbles-Lost	NA	NA
Penalties-Yards	4-30	7-7

Texas Association of School Boards Elects New Officers

The Texas Association of School Boards (TASB) elected its 2011-12 officers during the Association's recent annual Delegate Assembly and Convention in Austin. New TASB President Gary Inmon of Schertz-Cibolo-Universal City (SCUC) ISD succeeds Immediate Past President Sylvester Vasquez, Jr. of Southwest ISD. Viola Garcia of Aldine ISD will serve as president-elect. TASB vice-presidents will be Faye Beaulieu of Hurst-Euless-Bedford ISD and Andra Self of Lufkin ISD. Bret Begert of Fort Elliott CISD will serve as TASB's secretary-treasurer.

Begert was elected to the Allison ISD board of trustees in 1998 and has served as secretary and president. In 2003, the district consolidated with Fort Elliott and

he was chosen to serve on the new consolidated board. He has held the position of board secretary since that merger.

Begert is a partner in Begert Limousin Ranch, Inc., a family operation raising black, polled Limousin cattle, and in B&H Disposal Systems, LLC. He also is the longtime director of junior activities for the North American Limousin Foundation, overseeing all the junior shows and activities with the Limousin breed. He graduated from West Texas A&M University with a bachelor's degree in kinesiology and was very involved with the university. A past president of the Texas Limousin Association and Panhandle Area Association of School Boards, Begert remains an active member of both organizations. In addition, he is a lay leader of the United Methodist Church in Allison and involved in many other church and civic organizations.

First Six-Weeks Wheeler High, JrHi Honor Roll Posted

Wheeler Junior High and High School Honor Roll All A's

- 7th Grade: Kaitlyn Peppers, Levi Ware
- 8th Grade: Andrea Avila, Kaitlyn Bunch, Kaitlyn Jones, Brennan Umsted
- 9th Grade: Abby Bond, Guili Mendoza
- 10th Grade: Stormy Moore
- 11th Grade: Daniel Gonzalez, Danni Johnson, Alyssa Kinnaman, Chris Parra, Breann Robinson, Damian Salas
- 12th Grade: Makynzi Blankenship, Alyssa Johnson

OMJA Mex. Pile-On Set For October 23

The Old Mobeetie Jail Association will sponsor a Mexican Pile-On Dinner on Sunday, October 23, at the Old Mobeetie Jail Visitors' Center, 2 blocks east of the Jail in Mobeetie.

"Conversation With Mac" Set For Tues.

The cost of admission will be a donation with proceeds to benefit the museum.

Girl Scouts Selling 11 Varieties Of Nuts

U.S. Congressman Mac Thornberry will be visiting with constituents across the 13th district over next few weeks.

"People have a lot of questions about the economy, government regulation, debt and spending. These conversations give me the chance to listen to what folks have to say, answer their questions, and share a little about what I am working on as well," said Thornberry.

Girl Scout's nuts went on sale October 1; sale continues through October 21.

Orders are being taken for 11 different varieties.

Donations are also being taken to send to troops. Contact a member of the Wheeler Girl Scouts.

For additional information, contact Joyce Walker, 826-5733, Rebecca Foreman or Sherry Holland.



BARREL RACING: Danielle Johnson competes in barrel racing on Sunday afternoon of the Saturday and Sunday performance of the Tri-State High School Rodeo at the Wheeler Rodeo Arena.
—Photo by Janice Johnson



—Photo by Janice Johnson

October Is Cooperative Month

October is Cooperative Month. A local cooperative working in our area is Greenbelt Electric Cooperative, Inc. which serves several counties in the Texas Panhandle. Founded in 1938, the cooperative presently serves all and parts of nine counties: Armstrong, Collingsworth, Donley, Wheeler, parts of Childress, Gray, Hemphill, Randall and Roberts. GEC has over 2,260 miles of energized line and over 4,423 connected meters.

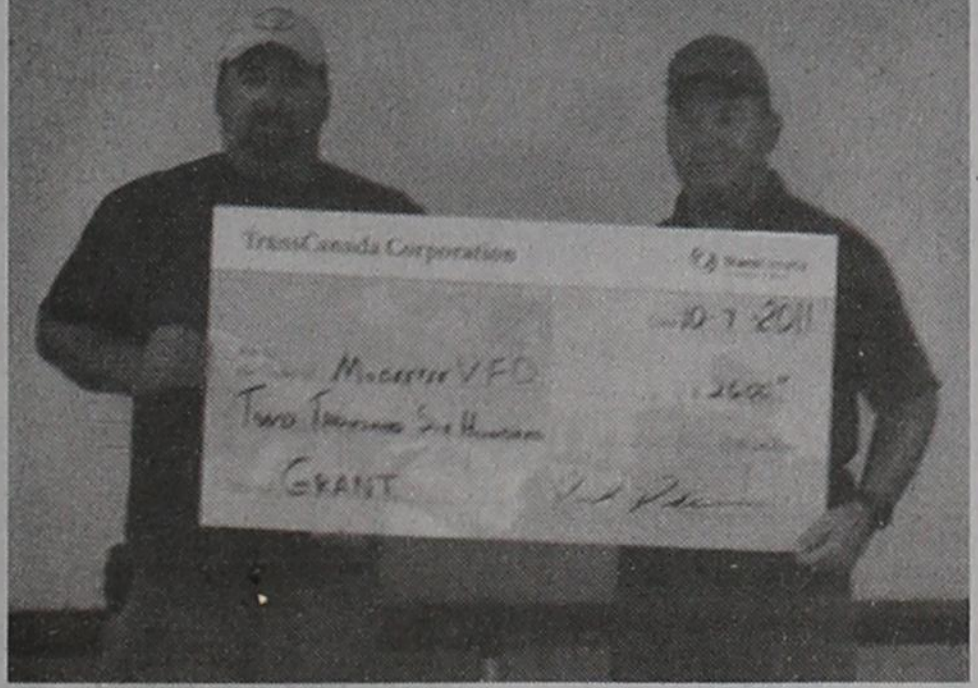
Greenbelt Electric Cooperative, Inc. is dedicated to improving the quality of life for our members in the rural areas of the Texas panhandle.

GEC is a member of Golden Spread Electric Cooperative, which is the co-op's generation and transmission cooperative. Golden Spread owns Mustang Station which is a 480MW gas fired generation facility located at Denver City, Texas. This is a tremendous asset to GEC and its members to help keep the lowest energy cost possible and a reliable source of power for now and well into the future.

In 2006, GEC became a member of Touchstone Energy Cooperative. Touchstone Energy is an alliance of over 6000 cooperatives in 45 states that collectively deliver power and energy solutions to over 22 million customers every day. Touchstone Energy also emphasizes the significance of each electric cooperative's local presence and unique ties to its community, but offers the re-

sources of a nationwide network to bring added value and benefit to customers.

Board of Directors
Members of the board of directors are James W. Batton, president, representing all of Wheeler County west of US Highway 83 and south of State Highway 152, including Gray County to the west; Carson Bird, representing all of Wheeler County north of I-40 east of US Highway 83 and north of State Highway 152, including Roberts County to the north; Walter Camp, secretary-treasurer, representing all of Collingsworth County south of Salt Fork River, including Childress County; Billy Conner, vice president, representing all of Wheeler County south of I-40 and all of Collingsworth County north of Salt Fork River; Steve Mathews, representing all of Armstrong and Randall counties; Stan Shelton, representing all of Donley County west of State Highway 70 and west of FM 2162; and Jimmie Taylor, representing all of Donley County east of State Highway 70 and east of FM 2162.



Mobeetie Volunteer Fire Department has received a grant in the amount of \$2600 to help with the cost of a radio repeater, that will help with communications while the department is on fire calls. The grant was given by Trans Canada-ANR Pipeline. Presenting the check to Randy Finsterwald, training officer for Mobeetie VFD is Darell Dodson from Trans Canada Pipeline.

OLD TIMES NOT FORGOTTEN

By Roland Miles

WHERE'S MY TEAM?

All High School teams have good seasons and bad ones. This is a snapshot back in 1954, when our team didn't do very well. It was made up mainly of freshman and sophomores, and for most of the season, we lost a lot more games than we won; some we lost by a big margin. I guess you could say we spent that year "earnin' our learnin'."

The one game that comes to mind, was when we played Canadian. They were in class A, and we were in class B, but we always played them a non-conference game. They seemed to come up with a good team every year; and that one was no exception. I can't recall for sure if we were

on defense or offense, but during one play, I got hit really hard in the head. I remember getting up and walking over to the "huddle," but they wouldn't let me stay with them.... I had wandered over with Canadian's team. When our coach realized what I'd done, he took me out of the game for awhile, until my head cleared up.

By the end of the season, things started going better for us and we actually won a few games. The following year, we had made a lot of improvement and won most of our games. The next year (our junior year) things went really well and we won our district. We then won Bi-District and went on to win Regional, which was as far as

COUNTRY NEWS

By Verna Fillingim

Herman Lowrey's wife, Norma, has been in Elk City Hospital with pneumonia and transferred to Bell Avenue Nursing Center in Elk City (Room 320, if you would like to send a card or visit. Remember to pray for Norma and Herman. Herman visited Wayne Baker in Elk City one day.

Congratulations, Audra Weatherly, for winning first and second on Water Color pictures at Amarillo Tri-State Fair (shown

class B, could go. It would have been interesting to know just how far we could have gone that year. Our senior year wasn't as successful; but we would up losing district to Matador.

in last week's Wheeler Times). Good job! Audra is the daughter of Shea and Bridget Weatherly and granddaughter of Brad and Sue Chandler and others.

Nice to have a visit from son, Danny Fillingim, Monday. Thanks for coming!

Thank you to the young ladies and guys who help residents with many things at Wheeler Care Center. God bless you all! And, thanks to those who prepare the good food.

So thankful to hear that the huge fire at a munitions plant about 12 - 15 miles from Waxahachie, where Mary lives and Katelyn goes to school, was contained with no one being hurt and only the plant and a truck being burned was hurt.

Best wishes to Josh Bryant and Jordan Alls on their recent wedding, October 12! May God bless and guide you and give you many good years together.

Please pray for Sue Chandler's dad, John Cook, who is in the VA Hospital at Amarillo with pneumonia. Sue took some things to her dad and visited him at the hospital Wednesday as she took Peggy Chandler to the doctor for a check-up. John is doing better.

Lela Pride of Wheeler Care Center enjoyed visits from her son, Sonny Pride, and his wife, Geraldine, and her sister, Joyce Perkins. Good to see them all at the care center.

Several gathered at Maxey's Friday night for a good meal and visiting at the Evans Cousins Reunion. It was a great time of

Wheeler I.S.D. MENU

October 17-21, 2011

Monday

Breakfast - Cereal, Toast, Oatmeal, Juice, Milk

Lunch - Breaded Beef Patties, Mashed Potatoes, Green Beans, Hot Roll / Gravy, Fruit Cup, Milk

Tuesday

Breakfast - Eggs, Biscuit, Sausage, Gravy, Juice, Milk

Lunch - Taco / Loco Bread, Chili Beans, Tossed Salad, Fresh Broccoli / Ranch, Mandarin Oranges, Milk

Wednesday

Breakfast - Pancake Pups, Cereal, Juice, Milk

Lunch - Pizza, Seasoned Corn, Tossed Salad, Strawberries, Milk

Thursday

Breakfast - Biscuits, Sausage, Gravy, Juice, Milk

Lunch - Fish, Mac & Cheese, English Peas, Tossed Salad, Diced Peaches, Graham Crackers / Milk

Friday

Breakfast - PB&J Sandwich, Cereal, Juice, Milk

Lunch - Corn Dog, Oven Fries, Mini Carrots / Ranch, Mixed Fruit, Milk



THE WHEELER TIMES

PAGE 2, - Thursday, October 13, 2011

"Wheeler; town of friendship and pride."

fellowship. (Beth Alvey was to put all the names in.) So good to see everyone; sweet people. Saturday, they were gathering for lunch at David Hefley's and Saturday night supper was at Jim and Beth Alvey's. God bless you, everyone...proud to have you for cousins! Visiting Verna this past weekend were several of her nieces and nephews: Carol & James Hardage, Sunny Keene, Casey Taylor, Quenya Evans, Beth & Jim Alvey, David Hefley, Darren & Chalona Hefley, Dawson, Logan and Addison, Kristi Hefley, Tina Dale, J.B. Alvey and Siah Alvey.

Don't know just how much we got, but thankful for the nice rain.

Wheeler County COURT RECORDS

List of instruments filed in the Wheeler County Clerk's office from September 30, 2011 - October 6, 2011.

SEPTEMBER 30, 2011
AFF-Blackhawk & Associates Inc. to Shamrock G2K Development Partners LLC, 8-15-11, No Land Given.

AFF-Shamrock G2K Development Partners LLC to Blackhawk & Associates Inc., 8-15-11, No Land Given.

RDT-Wheeler Banking Center to Gail A. Knight, 7-20-11, Lots 5-8, J D Johnson Sub-Division Wheeler out of Sec. 60, Blk. A-8, H&GN Ry. Company Survey.

ASSIGN. OVERRID. ROYALTY-Kyle Lance Fulton to Third Coast Minerals Ltd., 9-26-11, Sec. 57, Blk. A-4, H&GN Ry. Company Survey.

DT-CAF ENTERPRISES Inc. to Bank 7, 9-26-11, See Instrument. UCC DT-CAF ENTERPRISES Inc. to Bank 2, ---, See Instrument.

DT-Richard A. Waterfield and Gail L. Waterfield Revocable Management Trust to InterBank, 9-28-11, (Continued Page 3)

Hope you got some, too (Friday, Saturday or whenever). Thank you, Lord, for the great rain.

"With God everything is possible" (Matthew 19:26).

So thankful for the wonderful rain and thankful for the good visit from Carol Hardage, Sunny Keene and Casey Taylor (cousins) on Saturday. Special young ladies (sisters), daughters of "Doc" and Valaise Wilhelm (both deceased).

"It is no secret what God can do; What he's done for others, He'll do for you; With arms wide open, He'll pardon you; What he's done for others, He'll do for you!" Thank you, Lord!

Pray for LeRoy Meriwether! Hope he will be O.K. God is in control. God bless you!

Pray for James Hardage; glad he is better. God bless you!

Heard we got about 3 1/2 inches of rain over the weekend. Praise the Lord!

News, Views & Commentary
KPDR-FM, 90.3
WHEELER, TEXAS
Weekdays: 6:00 a.m. to 7a.m.

WHEELER PLUMBING
511 S. Cheyenne
New Construction
Remodel
Repair
Sewer Service
Septic Systems
Site Evaluations

Phone: **826-5907**

MAX McQUEEN
P.O. Box 754 Wheeler, TX

You're invited to a conversation with
Congressman Mac Thornberry



Tuesday, October 18, 2011
9:00 a.m. to 10:00 a.m.

Maxey's Steakhouse
7789 S. Highway 83
Wheeler, TX

For more information, please call 806-371-8844
<http://www.thornberry.house.gov>

THESE PICTURES SPONSORED BY:

FIRST STATE BANK

Mobeetie Office:
First & Wheeler St.
Mobeetie, Texas
845-2311



Wheeler Office:
1408 S. Alan Bean Blvd.
Wheeler, Texas
826-5546



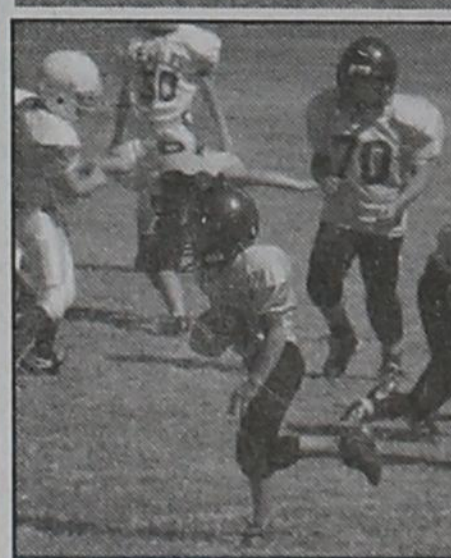
Kelton High School students competed in the Fall Festival High School Art Competition recently. Several bigger schools were there including: Elk City, Sayre, Burns Flat, and Hammon Public Schools. These students had pretty steep competition. Paloma Contreras (below left) won 2nd place in Oil/Acrylics. Shai Dougherty (right) won 2nd place in Watercolor. Brody Calcote (above) won Best of Show for his pastel drawing. Congratulations!



Coletta Holland, Wheeler 7th Grader runs Cross Country.



Above: Wheeler's Zach Hibler finishes the Canadian Cross Country Meet on Saturday, Oct 1. He placed 8th. Right: Katie Bunch, 7th grade, Cassidy Andis, 7th grade, and Isaac Gaucin, 8th grade, compete at Canadian.



(Left) Landon Peppers, of the 3rd and 4th Grade Lil' Stangs team carries the ball into the end zone. (Right) Tony Castillo, with the ball and Eduardo Porras of the 5th and 6th grade Stangs.



Parkview Artery As October is breast cancer awareness month, we are going to continue to give the public as much as early information as possible. Information as possible. Early Warning Signs of Breast Cancer

Breast cancer can be deadly, so it is important to acknowledge and take immediate action if you notice anything different in your breast area. Here are some of the more common early warning signs of breast cancer that you should be aware of.

Lumps

Lumps are perhaps the most obvious sign of breast cancer. It is a good habit to feel your breasts every so often for abnormalities. If you feel a lump, call a professional immediately. There is a good chance that the lump is not cancerous, and the lump can be nothing but scar tissue. At the same time, there is a chance that the lumps could be a sign of breast cancer, so it is important to take these lumps seriously.

Skin Inflammation

If your skin is inflamed and changes from your normal skin color to a more pink or red tone, this could be a sign of breast cancer.

Skin Swelling

Many breast cancer patients have noted a difference in their skin in regards to swelling prior to being diagnosed with breast cancer. If your cup size becomes significantly larger, this could be a sign of breast cancer. Also if one of your breasts seems to be shrinking it is also another sign.

Nipple Discharge

Nipple discharge is another common symptom of breast cancer. If you are not pregnant and your nipples seem to be lactating, consult a specialist immediately.

Specialist

If your skin's texture becomes similar to that of an orange, or just different altogether, this could be an early warning of breast cancer. A number of conditions can contribute to a change in skin texture, including basic moisturizing, but it is always better to be safe than sorry.

Remember it's up to you to check and to make you do yourself breast exams, the information is out there. It's up to you. Take care of yourself. You are all you got!

medcat
When life gives you a hundred reasons to cry, show life that you have a thousand reasons to smile.

HOUSE HUNTERS-REALTOR
In Wheeler—15 Acres on County Road 15-A, Good Farmland, utilities available

Linda Laycock Broker, ABR, GREEN, SRES, e-Pro 806.662.1312	Larry Hadley Assoc. 806.662.2779	Jordan Oneal Assoc. 806.670.6623
--	---	---

Pampa MLS www.househunterspampa.com Amarillo MLS

RiverCrest Homes
Building distinctive custom homes designed for your one of a kind lot.

Quail Run Estates Coming Soon
1.5 to 5 acre lots across from Maxey's
Chip Hill 972-989-8019
chip@rivercrestproperty.com

MARSHALL'S HEATING & AIR CONDITIONING
WHEELER, TX—PHONE: 664-5395—CELL: 662-7876

TRANE NOW DOING...
AIR DUCT CLEANING
It's Hard To Stop A Trane —24 Hour Emergency Service—
LICENSED & INSURED
License No. TACL022710E
Mark Marshall, Owner

dish NETWORK BLOCKBUSTER MOVIE PASS \$19.99
AUTHORIZED RETAILER get access to over 100,000 titles including new release movies up to 12 mo. Packages starting at \$19.99 (12 mo. \$24.99/mo.)

FREE HBO CINEMAX starrz 20 Movie Channels (12 mo.)
FREE 2 Room HD DVR Upgrade (1 HD DVR + 1 SD DVR) (Skins DVR service fee applies)

1-800-679-8823 WWW.INFINITYDISH.COM

EMPLOYMENT OPPORTUNITIES

Diamond Offshore, one of the world's leading deepwater drilling contractors, seeks motivated individuals to contribute to our future growth. Due to the new construction of 3 dynamically positioned, dual activity drillships, Diamond Offshore is seeking candidates for the following positions:

Drilling Superintendent	Assistant Driller	Electrician
Rig Superintendent	Derrickhand	Electronic Technician
Toolpusher	Subsea Specialist	Sr. DPO
Driller	Mechanic	BCO
	Hydraulic Mechanic	

*Dual Activity or Cyber Based Experience considered a plus!
Competitive compensation • Salary increases available upon completion of in-house competency training (rig-based positions) • Exceptional and affordable benefits package: medical, dental, vision, prescription drug, 401(k), and more!
To learn more, visit us at www.diamondoffshore.com

Please forward resumes to:
Diamond Offshore
P. O. Box 4558, Houston, TX 77210-4558
Attn: Employment - Ad #DS01
Fax: 281-647-2295

Diamond Offshore is an Equal Opportunity Employer and subscribes to a drug-free workplace.

MOBEETIE NEWS

By Melba Corcoran

Dale and Melba Corcoran went to Pampa Monday night after work. Congratulations to Juanita Rogers on her retirement from Pampa Office Supply. She will be missed. She was always cheerful and smiling. Dale and Melba Corcoran visited Tuesday night in Wheeler with Pauline Barnes and Joey Stone. They enjoyed playing two games of Pinochle. They split the wins. Friends of Betty Rogers met Wednesday at the home of Arica Lancaster for lunch to wish her good luck in her move to Florida. Those attending were Arica Lancaster, Betty Rogers, Doris Finsterwald, Laura Vandever, Mae Bailey and Melba Corcoran. A good time was had with visiting. Debbie Stribling of Happy spent the night Tuesday with Maurita Stribling. Debbie was working in Wheeler. Maurita met her Thursday for lunch in Wheeler.

Aaron and Arica Lancaster took their camper to Canyon and plan on staying several days and go to the volleyball games. Visiting with Ronny and DeAnna Vandever is their daughter, Raysha, and baby, Jack. Raysha's husband brought her to spend 2 weeks. DeAnna will take her home. The rain was nice Wednesday. It rained again Friday and Sunday. We got more rain than we had all year. Friday we got .55 at the weather site and Sunday we got 1.8. The rain was nice, but the cold weather hurt my bones. Our sympathy goes out to the family of Annie Viola Branum Bender. She was the daughter of John W. and Ethel Shackelford. She had lived in Panhandle for 69 years. She had graveside services Monday at 11:00 AM in Mobeetie. Those working at the museum this week were Maurita Stribling, Suzanne Lohberger, Gina Seitz, Bobbie Walker and Melba Corcoran. We had a visitor from Baton Rouge LA research the family of F.M. Goodin who lived here in the 1880s. He will make another trip here to finish the research as we had several items

on him. Thanks, Margaret, for sending him over. He said your office was very nice and happy to help him. Jay Godwin came by and visited Friday. We enjoyed visiting with him. Rob Hogan went home Thursday after being here for Louise's leg preceptor. Beep came and took her Monday for her checkup. She was able to work, but stayed in due to the cold weather and

rain. We missed her at the museum. She did fine on her preceptor. Remember the OMTA meeting Thursday night at the museum. Tuesday is the Wheeler County Historical Committee meeting. Joe and Melba Darnell left Friday for Red River in their camper. They will be home the first of the week. H&GN Ry. Company Survey. QCD-Delma Merl Dwyer to Delma Dwyer Trust Dated Sept. 12, 2011, 9-12-11, SW/4 Sec. 3, Blk. L, J. M. Lindsey Survey. AOL-Delma Merl Dwyer to Delma Dwyer Trust Dated Sept. 12, 2011, 9-12-11, SW/4 Sec. 3, Blk. L, J. M. Lindsey Survey. OCTOBER 3, 2011 ROY. D-Tom Horn to Rachel Horn, 8-29-11, Sec. 23, Camp County School Land. ASSIGN. BS-Oak Valley Mineral and Land LP to Crump Family Partnership Ltd., 9-28-11, E J D Grinolds Survey. ROY. MD-Cameron Dawn Mullins to Black Mountain Royalty I 2009 LP, 8-18-11, Sec. 1, Blk. A-3, H&GN Ry. Company Survey. PARTIAL REL. DT-Frost National Bank to Jetta Production Company Inc., et al, 8-17-11, See Instrument. PARTIAL REL. DT-Frost National Bank to Jetta Production Company Inc., et al, 8-17-11, See Instrument. REL. FTL-United States of America to Jaimie P. Jernigan, 9-21-11. ASSUMED NAME AFF.-Cobra Petroleum Company, et al to Cobra Petroleum Company LP, 9-23-11. MD-Mary Anne Lindley (Deceased) to John Davis Lindley, et al, 9-26-11, All My Mineral Interest in Wheeler County. ROW-Gary Hall, et ux to Enbridge Pipelines (Texas Gathering) LP, 8-18-11, Pt. E 32 acs. Sec. 24, Camp County School Land. ROW-Elmore Contribution Trust, et al to Enbridge Pipelines (Texas Gathering) LP, 8-18-11, Pt. E 32 acs. Sec. 24, Camp County School Land. MEMORANDUM ROW-Britt Enterprises Inc. to Enbridge Pipelines (Texas Gathering) LP, 8-31-11, Pt. Sec. 43, Blk. A-3, H&GN Ry. Company Survey. MEMORANDUM ROW-Patricia Higgins Moore to Enbridge Pipelines (Texas Gathering) LP, 8-5-11, Pt. S/2 Sec. 42, Blk. A-3, H&GN Ry. Company Survey. SHERIFF'S D-City of Shamrock, et al to City of Shamrock, et al, 9-8-11, W 57' Lots 11 & 12, Blk. 11, Shamrock. SHERIFF'S D-City of Shamrock, et al to City of Shamrock, et al, 9-8-11, Lot 7, Blk. III, Romans Addition, Shamrock. SHERIFF'S D-City of Shamrock, et al to City of Shamrock, et al, 9-8-11, N 100' Lot 3, Blk. LXX, Romans Addition, Shamrock. SHERIFF'S D-City of Shamrock, et al to City of Shamrock, et al, 9-8-11, Lot 8, Blk. III, Romans Addition, Shamrock. DEED-Bonnie L. Kline Revocable Trust to Bonnie L. Dutter, 10-3-11, N/2 S/2 Sec. 18, Blk. R.E., Roberts & Eddleman Survey. RDT-Mortgage Electronic Registration Systems Inc. to Toby C. Brooks, et ux, 9-21-11, See Instrument. RDT-Wells Fargo Bank NA to Bill D. Crockett, et ux, 9-23-11, See Instrument. OCTOBER 4, 2011 DEED-Kimberly Oldham to Clifford Glen Oldham, 9-14-11, Pt. Sec. 27 & S/2 Sec. 28, Blk. 13, H&GN Ry. Company Survey. RDT-Wells Fargo Financial Texas Inc. to Bill T. Warren, et ux, 9-29-11, Land Not Given. DEED-Linda Matthews to C. B. Bryant, 8-17-11, W 100' Lot 1, Blk. 43, Shamrock. DEED-Linda Matthews Bryant to C. B. Bryant, 8-17-11, Lots 1 & 2, Blk. 44, Shamrock. QCMD-Melody Dawn Johnson to Enerlex Inc., 8-16-11, Sec. 1, Blk. 24, H&GN Ry. Company Survey. BOS/ASSIGN.-Chesapeake Midstream Gas Services LLC to Chesapeake Operating Inc., 9-20-11, Sec. 66, Blk. A-7, H&GN Ry. Company Survey. BOS/ASSIGN.-Chesapeake Mid-

stream Gas Services LLC to Chesapeake Operating Inc., 9-20-11, 62.06 rods Thomas James Survey. RELEASE LIS PENDENS-Cross Texas Transmission LLC to Wanda Morris, et al, — — —, Sec. 16, Blk. 24, H&GN Ry. Company Survey. DT-TO Production LLC to International Bank of Commerce, 7-1-11, Sec. 2, Blk. 2, Brooks & Burleson Survey; Sec. 96, Blk. A-5, H&GN Ry. Company Survey. OCTOBER 5, 2011 RVL/RDT-Johnny Velasquez, et ux to Sharon Helton, 10-4-11, Lot 9, Blk. 20, Wheeler. AMEND. OL-Stiles Resources Ltd. to Pogo Producing Company LLC, 7-11-11, N/2 Sec. 2, AB&M Survey. RDT-Kenneth Wischkaemper to Richard Ward, 10-4-11, Lot 13, Blk. G, Potts Addition, Shamrock. WELL-BORE ASSIGN.-Sanguine Gas Exploration LLC to Richard Lee Hauschild Jr. Revocable Living Trust, et al, 9-28-11, Sec. 59, Blk. A-7, H&GN Ry. Company Survey. WELL-BORE ASSIGN.-Sanguine Gas Exploration LLC to Hauschild Resources, et al, 9-27-11, Sec.

Canadian Supply & Redi-Mix
for all your Concrete Needs!




Jerry Smith, Owner
806-323-5379

TWO ESTATE AUCTIONS DIFFERENT LOCATIONS SAME DAY SAT. OCT. 15—9:03 A.M.

LOC. WHEELER TX.—FRIST LOC.—305 Silver Springs Dr.-From Inter. Hwy 83 & 152 Take Hwy 152 West Approx. 1 Mi. Then North ° Blk. SECOND LOC.—910 Canadian St. From Sane Inter. Take Hwy. 83 South 6 Blks. To 10th. St. Then West 2 Blks.

ALEXANDER & WHITENER ESTATES APPLIANCES-GRANDMOTHER CLOCK-FURNITURE-COLLECTIBLES-COLLECTIBLES GLASS-TV's- ORGAN-TOOLS-YARD TOOLS-RIDING MOWER-FISHING-CAMPING-KITCHEN-HOUSEHOLD

Full Listing On Web
www.loydsauktion.com
Lyndon Loyd Auctoneers
Wheeler, TX. (Lic. 7119)



Robby Schaffer FIREARMS & AMMUNITION

602 Cheyenne • Wheeler, TX
806.826.0129 • 806.216.1322
E-mail: robschaf@windstream.net

Store Hours: Mon. to Fri. 6 P.M. to 9 P.M.
Sat. 12 to 8 P.M.

I am going to be away some so please call ahead to be certain I'm home.

REL. FTL-United States of America to Jaimie P. Jernigan, 9-21-11. ASSUMED NAME AFF.-Cobra Petroleum Company, et al to Cobra Petroleum Company LP, 9-23-11. MD-Mary Anne Lindley (Deceased) to John Davis Lindley, et al, 9-26-11, All My Mineral Interest in Wheeler County. ROW-Gary Hall, et ux to Enbridge Pipelines (Texas Gathering) LP, 8-18-11, Pt. E 32 acs. Sec. 24, Camp County School Land. ROW-Elmore Contribution Trust, et al to Enbridge Pipelines (Texas Gathering) LP, 8-18-11, Pt. E 32 acs. Sec. 24, Camp County School Land. MEMORANDUM ROW-Britt Enterprises Inc. to Enbridge Pipelines (Texas Gathering) LP, 8-31-11, Pt. Sec. 43, Blk. A-3, H&GN Ry. Company Survey. MEMORANDUM ROW-Patricia Higgins Moore to Enbridge Pipelines (Texas Gathering) LP, 8-5-11, Pt. S/2 Sec. 42, Blk. A-3, H&GN Ry. Company Survey. SHERIFF'S D-City of Shamrock, et al to City of Shamrock, et al, 9-8-11, W 57' Lots 11 & 12, Blk. 11, Shamrock. SHERIFF'S D-City of Shamrock, et al to City of Shamrock, et al, 9-8-11, Lot 7, Blk. III, Romans Addition, Shamrock. SHERIFF'S D-City of Shamrock, et al to City of Shamrock, et al, 9-8-11, N 100' Lot 3, Blk. LXX, Romans Addition, Shamrock. SHERIFF'S D-City of Shamrock, et al to City of Shamrock, et al, 9-8-11, Lot 8, Blk. III, Romans Addition, Shamrock. DEED-Bonnie L. Kline Revocable Trust to Bonnie L. Dutter, 10-3-11, N/2 S/2 Sec. 18, Blk. R.E., Roberts & Eddleman Survey. RDT-Mortgage Electronic Registration Systems Inc. to Toby C. Brooks, et ux, 9-21-11, See Instrument. RDT-Wells Fargo Bank NA to Bill D. Crockett, et ux, 9-23-11, See Instrument. OCTOBER 4, 2011 DEED-Kimberly Oldham to Clifford Glen Oldham, 9-14-11, Pt. Sec. 27 & S/2 Sec. 28, Blk. 13, H&GN Ry. Company Survey. RDT-Wells Fargo Financial Texas Inc. to Bill T. Warren, et ux, 9-29-11, Land Not Given. DEED-Linda Matthews to C. B. Bryant, 8-17-11, W 100' Lot 1, Blk. 43, Shamrock. DEED-Linda Matthews Bryant to C. B. Bryant, 8-17-11, Lots 1 & 2, Blk. 44, Shamrock. QCMD-Melody Dawn Johnson to Enerlex Inc., 8-16-11, Sec. 1, Blk. 24, H&GN Ry. Company Survey. BOS/ASSIGN.-Chesapeake Midstream Gas Services LLC to Chesapeake Operating Inc., 9-20-11, Sec. 66, Blk. A-7, H&GN Ry. Company Survey. BOS/ASSIGN.-Chesapeake Mid-

GR W MOORE

- >Liquid Fertilizer
- >Dry Fertilizer
- >Compost
- >Chemicals
- >Application available

Grow Moore, LLC
Matt & Michelle Moore
Kelton, Tx
(806) 256-2313

Limited Time **5.03%** APY*
INSURED CD

Ask About IRA/401K Specials!

FIRST FIDELITY
Financial Group, LLC
Your Safe Money Solution®

1800 Washington, Suite 110 • Amarillo, TX
806-373-9480
1-800-371-9201
By appointment only

DOUG BOYD MOTOR CO.

Buy Here / Pay Here

No Credit Check • Areas Largest Selection

Pampa • Corner of Hwy 60 @ Hwy 70
806-669-6062 • www.dougboydmotors.com

GIFTS — CARLTON CARDS

HYLAND'S PHARMACY
HOURS: 8-5:30 M-F, 8:30-Noon Sat
109 W. TEX. ST.—WHEELER, TEXAS
Phone: **806/826-5561**

WEDDING/BABY SHOWER REGISTRY

KIM'S KITCHEN

Dine-in, Carry-out, & Catering
Hwy 152 & 83
806.826.5102

Daily Buffet — Bakery
Open Seven Days A Week

"NO" Trenching

Rick's Lawn Sprinklers

"NO" Mess

Lic#4823

- * Sales - Service - Installation
- * We trade for almost anything
- * Over 25 years experience
- * In-house financing

FREE ESTIMATES 1-800-466-0915

Altus, OK **RAIN BIRD.** Wichita Falls, TX

Want Ads

Garage Sale: Saturday October 15th—7am 1 1/2 Mile South of Wheeler on HWY 83, 1/4 West on County Road N. Furniture, Clothes, Lift Chair, & More. 1tc

CNA NEEDED at Parkview Hospital Home Health. Come by 306 E. 9th St., Wheeler for application. 10/13rtn

OFFICE SPACE FOR RENT in Wheeler. 2 rooms (264 sq. ft) south side of the square. 405-200-9705. rtn

CDL-A Drivers - Great Pay! Tons of South TX work! Frac Sand hauling. Co. paid insurance including dental! 800-397-2338 10/13p

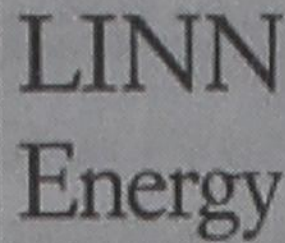
Now Hiring Child Caregivers at Ora Belinda Schoolhouse. Apply at 1320 S. Alan L. Bean Blvd. 10/6-13c

For Sale Thriving Convenience on Highway 83 in a heavy traffic area. Included on this 4.16 acre property is a 4056 sq ft shop and a 5 bedroom 2 bath home. Sold all together or separately. Christina Hadaway sales associate 806-255-0007. 10/6-13c

For Sale: Oak Entertainment Center & Big Screen TV. May be sold separately. 826-5902. 10/29rtn

EXPERIENCED roustabouts needed. Must have valid DL and pass drug test. Call 845-1088 or 662-9185 9/29-10/20c

Wheeler Historical Museum is looking for: Licensed and Bonded Electrician; Licensed and Bonded Heating and Air Contractor, and Carpenter—Bonded or Provide Equivalent Insurance. P.O. Box



LINN Energy has immediate openings for the following:

- Pipeline Supervisor
- Pipeline Operator 1
- Pipeline Operator 2
- Gas Measurement Tech

To apply, please visit our career site at <http://www.linnenergy.com/aboutLINN/careers.htm>

LINN provides competitive compensation packages including: base salary, bonus opportunities, medical, dental and vision benefits, 401K matching, and paid time off. LINN is an equal opportunity employer.

LINN Energy is a responsible operator committed to developing oil and natural gas resources in a manner that protects our employees, contractors, communities and environment.

449, Wheeler, TX 79096. Phone: 806-663-9511. 4/28rtn

For Sale: Mulching Hay, good for pipeline or any erosion control. 150-5x5 round bales fresh cut. Call 806-664-3191 or go to www.gottobell.com for information. 4-21rtn

Parkview Hospital is now accepting applications for a Nurses's Aide for the 11 p.m.-7 a.m. Shift. Competitive Salary with full benefits. Please call Sue Stiles D.N.O. at 826-5581 or apply in person at 901 Sweetwater Street, Wheeler, Texas. 12/9rtn

Hemphill County Hospital—RN Home Health Director needed. Great benefits, Competitive Pay, Insurance, PTO and Retirement. Fulltime hours Please call : Rayanna @ 806-323-6422 ext 231. 2/17rtn

Statement of Nondiscrimination
Greenbelt Electric Cooperative Inc. is the recipient of federal financial assistance from the Rural Utilities Service, an agency of the U.S. Department of Agriculture, and is subject to the provisions of Title VI of the Civil Rights Act of 1964, as amended, Section 504 of the Rehabilitation Act of 1973, as amended, and the Age Discrimination Act of 1975, as amended, and the rules and regulations of the U.S. Department of Agriculture which provide that no person in the United States on the basis of race, color, national origin, age or handicap shall be excluded from participation in, admission or access to, denied the benefits of or otherwise be subjected to discrimination under any of these organization's programs or activities.

The person responsible for coordinating this organization's non-discrimination compliance efforts is Stan McClendon, general manager. Any individual, or specific class of individuals, who feels that this organization has subjected

them to discrimination may obtain further information about the statutes and regulations listed above from and/or file a written complaint with this organization; or the Secretary, U.S. Department of Agriculture, Washington, D.C. 20250; or the Administrator, Rural Utilities Service, Washington, D.C. 20250. Complaint must be filed within 180 days after the alleged discrimination. Confidentiality will be maintained to the extent possible. 10/13c

Declaracion de No Discriminacion
Greenbelt Electric Cooperative Inc. es el receptor de ayuda financiera federal de la Rural Utilities Service, una agencia del Departamento de Agricultura de E.E.U.U. y esta sujeto a las provisiones de Titulo VI del Acto Civil de Derechos de 1964, como enmendado, Seccion 504 del Acto de Rehabilitacion de 1973, como enmendado, el Acto de Discriminacion de Edad de 1975, como enmendado y las reglas y regulaciones del Departamento de Agricultura de E.E.U.U. que con tal que ninguna persona en los Estados Unidos en la base de raza, color, origen nacional, edad, o impedimento sean excluidos de participacion en, admission o acceso, negados los provechos de, o de otra manera ser sujeto a discriminacion bajo cualquier



THE WHEELER TIMES
PAGE 4 — Thursday, October 13, 2011
"Wheeler; town of friendship and pride."

MEMBER 2011
TEXAS PRESS ASSOCIATION



P.O. Box 1080
Wheeler, Texas 79096
Phone: 806/826-3123
Entered as second-class matter December 18, 1933, at the Post Office at Wheeler, Texas 79096, under the act March 3, 1879.
Postmaster: Send Address changes to *The Wheeler Times*, P.O. Box 1080, Wheeler, TX 79096-1080 — wtimes@windstream.net
Louis C. Stas, Owner & Publisher
SUBSCRIPTION RATES:
Within Wheeler Co: \$22.00 Elsewhere: \$25.00

THE BUSINESS DIRECTORY

CROSS COUNTRY BARN
★ 24 Hr. Gas & Diesel ★ Convenience Store
★ Hunt Bros. Pizza
301 E. Oklahoma St.
Wheeler, TX
Phone: 806-826-2276
Dale & Monica Kidd

It pays to Advertise in **The Wheeler Times**
Phone & Fax: 826-3123
wtimes@centramedia.net
Classified:
Cash—\$4.00 for first 20 words
Charge—\$6.00 for first 20 words
15¢ for each additional word
Open Rate: \$2.50 Per Col. In.
Card of Thanks: \$5.00

PPS TRUCKING
Wheeler Texas
806/826-0552
Now accepting applications for the following...
• Pump Truck Operator
• Transport Drivers
Full Time Positions with Benefits
Contact Jeremy Johnson
806/255-0552

programas o actividades de esta organizacion. La persona responsable para coordinar los esfuerzos de conformidad a no discriminacion de esta organizacion es Stan McClendon, gerente general. (Continued Page 8)



ROYALTY OWNER SERVICES

Are You Receiving Your Proper Share of Oil and Gas Sales?

We provide:

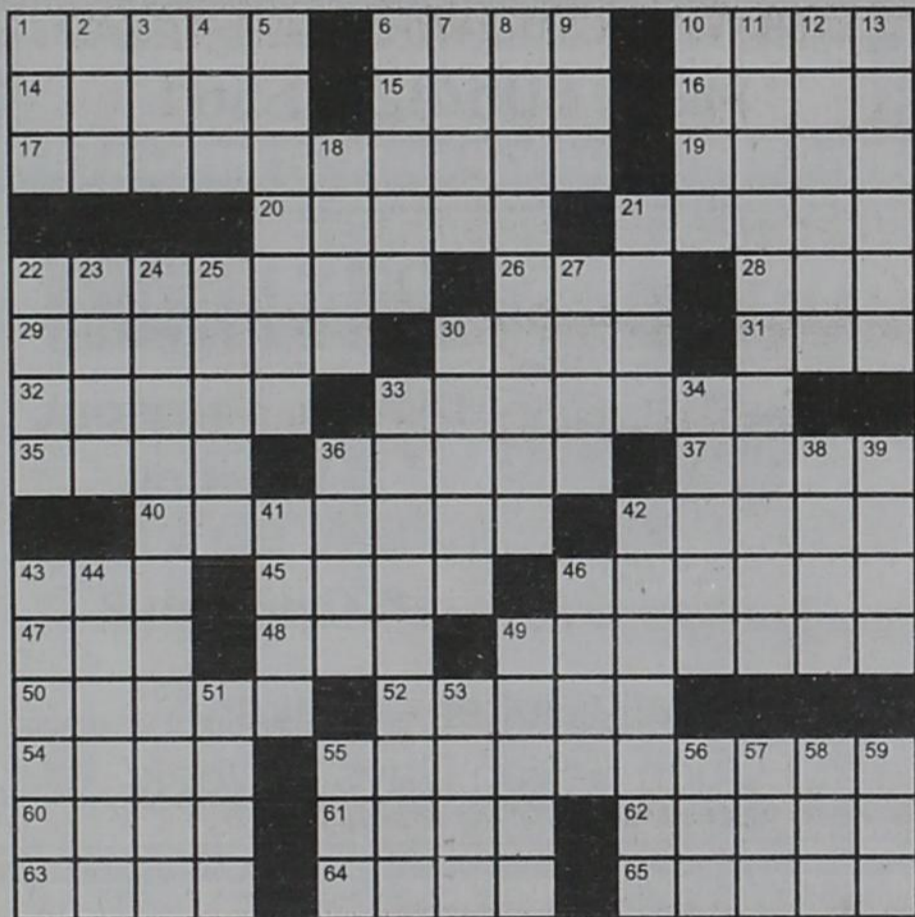
- Accounting and Accuracy of Payment Verification
- Accuracy of High Cost Severance Tax Charges
- Identification, Resolution and Collection of Royalty Payment Errors. Provided on either an Ongoing or Project Basis

Local References Available Upon Request.

Call Toll Free 1-800-658-7168
John McNab — Enercept, Inc.

3-3-12p

Crossword PUZZLE

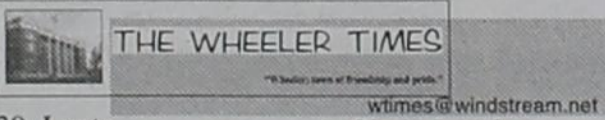


- Across
1. Lint
 6. Foolhardy
 10. ___ Bell
 14. Cliffside dwelling
 15. Eye
 16. Computer picture
 17. Spicy Soda
 19. Land measure
 20. On the lam
 21. Kennel club classification
 22. Horse-drawn vehicle
 26. Ace
 28. Chair part
 29. Plump

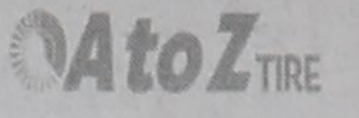
49. "Far out!" game
50. Express
52. Vertical graph component
54. Anger, with "up"
55. Blot out
60. Again
61. Cancelled
62. Romance, e.g.
63. Amount to make do with
64. Physical, e.g.
65. Fine-tune Down

22. Jam-pack
23. Golfers target
24. Chain reactor
25. Chatter
27. Cattle call goal
30. Phase
33. Guard shelter
34. Assumed name
36. Food sticker
38. Flower holder
39. Achy
41. Back of the neck
42. Current
43. Ethically neutral
44. The violent seizure of property
46. Nincompoop
49. Adage
51. Kind of wire
53. Aquatic plant
55. "___ moment"
56. Column's counterpart
57. Map abbr.
58. Green or Oolong
59. Yellowstone sight

H&HTIRE
Chad Helton
Owner
806-826-5759
714 W. Okla. Ave.
Wheeler, TX 79096



30. Lento
31. Before, in poetry
32. Beside
33. First-rate
35. Exec's note
36. Make fun of
37. Glasgow gal
40. Baseball frames
42. It's spotted in westerns
43. Parenthesis, essentially
45. A chip, maybe
46. Business person
47. Blueprint
48. The "p" in m.p.g.
1. Cig in London
2. "Fantasy Island" prop
3. Ashes holder
4. Pudding ingredient
5. Tactile sensation
6. Automaton
7. Long, long time
8. Like an insomniac's night
9. Old what's-___-name
10. Bygone leader
11. Tempo increase
12. Calling
13. Antsy
18. Cross
21. New Year's Day



AW 1-8
Prescribed by Secretary of State
Sections 4.004, 83.010, 85.004, 85.007, Texas Election Code
9/2009

NOTICE OF COMBINED POLLING LOCATIONS AND NOTICE OF SPECIAL ELECTION (AVISO DE ELECCION ESPECIAL)

To the registered voters of the County of WHEELER, Texas:
(A los votantes registrados del Condado de WHEELER, Texas:)

Notice is hereby given that the polling places listed below will be open from 7:00 a.m. to 7:00 p.m., on NOVEMBER 8 20 11, for voting in a special election to vote on 10 Constitutional Amendments

(Notifiquese, por la presente, que las casillas electorales citadas abajo se abrirán desde las 7:00 a.m. hasta las 7:00 p.m. el 8 de noviembre de 20 11 para votar en la Elección Especial para votacion el 10 de enmiendas constitucionales)

On Election Day, voters must vote in their precinct where registered to vote.
(El Día de Elección, los votantes deberán votar en su precinto donde están inscritos para votar.)

Location of Election Day Polling Places Include Name of Building and Address (Ubicación de las casillas electorales el Día de Elección) (Incluir Nombre del Edificio y Dirección)	Precinct Number(s) (Número de precinto)
Girl Scout Hut, Wheeler	1, 2, 10
Commissioners CourtRoom, Wheeler	3, 4, 7
Shamrock City Hall Annex	5, 6, 8
Shamrock Jr. High Gym	9

For early voting, a voter may vote at any of the locations listed below:
(Para Votación Adelantada, los votantes podrán votar en cualquiera de las ubicaciones nombradas abajo.)

Locations for Early Voting Polling Places Include Name of Building and Address (Ubicación de las casillas electorales de votación adelantada) (Incluir Nombre del Edificio y Dirección)	Days and Hours of Operation Días y Horas Hábiles
WHEELER COUNTY CLERK—Main 401 Main St. Wheeler, TX	8am-12pm & 1pm to 5 pm
SHAMROCK CITY HALL—Branch 116 West 2nd, Shamrock, TX	8am-12pm & 1pm to 4:30PM

Applications for ballot by mail shall be mailed to:
(Las solicitudes para boletas de votación adelantada por correo deberán enviarse a:)

MARGARET DORMAN, COUNTY CLERK
(Name of Early Voting Clerk)
(Nombre del Secretario de la Votación Adelantada)

BOX 465
(Address) (Dirección)
WHEELER, TX 79096
(City) (Ciudad) (Zip Code) (Código Postal)

Applications for ballots by mail must be received no later than the close of business on: November 1, 2011
(Las solicitudes para boletas de votación adelantada por correo deberán recibirse para el fin de las horas de negocio el: 11 de noviembre de 2011)

Issued this the 6 day of October, 20 11
(Emitida este día 6 de octubre, 20 11)

James Dan Thibodeau
Signature of County Judge (Firma del Jefe del Condado)

Oil & Gas NEWS

(New Location, Completion and Plugging Report made possible by Oil & Gas Reporting Service, 3930 Beaver St., Vernon, TX 76384. Pete Porter, Phone: 940/552-6644. Cell: 940/839-1335)

Week of Oct 3- Oct 7, 2011
Intentions to Drill
HEMPHILL (WILDCAT & ALLISON PARKS Douglas & ALLISON PARKS Granite Wash) Chesapeake Operating, Inc., #305H Young (640ac) 200' from

South & 1960' from East line, Sec. 3, M1, H&GN, 17 mi SE from Canadian PD 14000 (BHL: 350' from North & 1960' from East) (sgd. Bill Spencer 512 918 1062) Horizontal
HEMPHILL (BEGERT 10,200) Cordillera Energy Partners III, LLC, #104HC Bowers (640ac) 1980' from East & 250' from South line, Sec. 4, A1, H&GN, 22.5 mi SE from Canadian PD 12000 (BHL: 1980' from East & 330' from North) (sgd. Kyle Grant 512 783 3456) Horizontal
HEMPHILL (WILDCAT & BEGERT 10,200) Laredo Petroleum, Inc., #2 Wesner 248

(640ac) 2377' from West & 1633' from North line, Sec. 248, C, G&M&MB&A, 24 mi SE from Canadian PD 14000 (sgd. Shelli Armstrong 918 513 4570 ext. 290) Vertical
LIPSCOMB (KIOWA CREEK Marmaton) Holmes Exploration, LLC, #2HM Bensch Parker 1031 (648ac) 25' from North (Off Lease) & 1400' from East (Off Lease), Sec 994, 43, H&TC, 6.5 mi SE from Booker PD 13000 (BHL: 330' from North & 400' from East) (sgd. David LeDoux 918 551 7141) Horizontal
ROBERTS (MENDOTA, NW. Granite Wash) BP America Pro-

duction Company, #7H Earp 58 (640ac) 420' from South & 583' from West line, Sec 58, B1, H&GN, 8 mi NE from Miami PD 10800 (BHL: 510' from North & 551' from West) (sgd. Nikki Macres 281 366 3384) Horizontal
ROBERTS (PAN PETRO Cleveland) Mewbourne Oil Company, #2H Posey Wilson "43" (665ac) 200' from North & 1860' from West line, Sec 43, 43, H&TC, 26 mi NW from Miami PD 8000 (BHL: 330' from South & 1860' from West) (sgd. Rebecca Dunn 806 665 0338) Horizontal
ROBERTS (WILDCAT & ROBERTS COUNTY ST. Louis) Range Production Company, #8079H J.L. Flowers XS (640ac) 978' from West (Off Lease) & 913' from South (Off Lease), Sec. 94, C, G&M, 13 mi NW from Miami PD 14500 (BHL: 467' from South & 467' from West) (sgd. Doug Laufer 512 899 2414) Horizontal
WHEELER (BUFFALO WALLOW Granite Wash) Chesapeake Operating, Inc., #3H Lee-Hefley (704ac) 200' from North & 550' from East line, Sec unknown, unknown, Wiant, SR, 1 mi W from Briscoe PD 14000 (sgd. Bill Spencer 512 918 1062) Vertical
WHEELER (STILES RANCH Granite Wash Cons.) Granite Operating Company, #4042HA Byrd (644.4ac) 465' from West & 230' from South line, Sec. 42, A3, H&GN, 8 mi SE from Allison PD 12900 (BHL: 660' from West & 467' from North) (sgd. Cindy Williford 512 478 3456) Horizontal
WHEELER (BUFFALO WALLOW Granite Wash) Linn Operating, Inc., #5 Dukes 7B (160ac) 467' from North & 2173' from East line, Sec. 2, unknown, Camp CSL/Lot7, 2 mi E from Briscoe PD 15100 (sgd. Rhonda Chancellor 405 241 2207) Vertical
Field Transfer
WHEELER (FRYE RANCH Consolidated) Linn Operating, Inc., #8H Reed 31SL (640ac) 440' from South & 2150' from East line, Sec. 31, A-3, H&GN, 6 mi NE from Wheeler PD 12375 (BHL: 367' from North & 2150' from East) (sgd. Maureen Carter 405 241 2223) Horizontal
WHEELER (MILLS RANCH Granite Wash Cons.) SM Energy Company, #2061 Davis, G.C., (640ac) 1980' from North & 965' from West line, Sec. 61, A7, H&GN, 5 mi E from Kelton PD 16750 (sgd. Tina Allen 918 486 7635) Vertical Re-Completion
WHEELER (WHEELER, N.E. Granite Wash & B&B Granite Wash) Sandridge Exploration & Production, LLC, #9H Meek 41 (640ac) 200' from North & 550' from East line, Sec. 41, A4, H&GN, 6 mi NE from Wheeler PD 17000 (BHL: 350' from South & 550' from East) (sgd. Bill Spencer 512 918 1062) Horizontal
Gas Well Completions
HEMPHILL (MEG Granite Wash) Plains Exploration & Production Company, #3H Anderson Ranch 109, 200' from South & 660' from West Lease line, Sec. 109, 41, H&TC, elev. 2254 gl, spud 6-15-2011, drlg. Compl. 7-26-2011, tested 9-13-2011, potential 3862.0 MCF, rock pressure 3450 psia, pay 10924-14754, TVD 10707', MD, 14857', tops: Douglas, Cleveland, Granite Wash, 7369.0, 8522.0, 10493.0, 10 ae' csg 1628' (15-85 Poz C 1005sx) 7 5/8" csg 9671' (60-40 Poz H 2350sx) 4 1/2" Liner top-9374 bottom- 14858 (650sx)—API # 42-211-34902—Horizontal
WHEELER (LOTT RANCH Granite Wash Cons.) Chesapeake Operating, Inc., #2057H Atherton, D.E., 200' from South & 550' from East Lease line, Sec. 57 A4, H&GN, elev. 2538 gl, spud 5-10-2011, drlg. Compl. 6-12-2011, tested 9-21-2011, potential 2146 MCF, rock pressure 1589 psia, pay 11503-15847, TVD 11393', MD 15969, tops: Des Moines B, Des Moines C1, Des Moines C2, 11173.0, 11249.0, 11339.0, 9 5/8" csg. 916' (Ext 490sx) 7" csg.



THE WHEELER TIMES

PAGE 5 — Thursday, October 13, 2011

"Wheeler; town of friendship and pride."

10890' (A/H 490sx) 5 1/2" csg. 10389' (0sx) 4 1/2" Liner top-10389 bottom- 15969 (490sx)—API #42-483-32950—Horizontal
WHEELER (STILES RANCH Granite Wash Cons.) Forest Oil Corporation, #2043H Davis, 250' from South & 400' from West Lease line, Sec. 43, A7, H&GN, elev. 2134 gr, spud 5-21-2011, drlg. Compl. 8-9-2011, tested 9-21-2011, potential 3276.0 MCF, rock pressure 2013 psia, Open psia 596, pay 13586-17036, TVD 12523', MD 17210, tops: Oswego, Des Moines, Britt, 11872.0, 12189.0, 12554.0, 9 5/8" csg 2523' (A 1535sx) 7" csg 11691' (Mid Con 880sx) 4 1/2" csg 17203' (H 530sx) Liner unknown—API # 42-483-33109—Horizontal
WHEELER (WHEELER N.E. Granite Wash) Forest Oil Corporation, #3015H Lott, 250' from South & 2715' from West Lease

line, Sec. 2, Camp CSL, elev. 2523 gr, spud 5-13-2011, drlg. Compl. 6-23-2011, tested 9-6-2011, potential 4469.0 MCF, rock pressure 805 psia, Open psia 557, pay 11967-16337, TVD 12105, MD 16512, tops: Oswego, Des Moines, Britt 11437.0, 11712.0, 11790.0, 9 5/8" csg 1073' (HLC A 715sx) 7" csg 11470' (H 430sx) 4 1/2" 16510' (H 510sx) Liner unknown—API #42-483-33136—Horizontal
WHEELER (WHEELER, N.E. Granite Wash) Forest Oil Corporation, #0709H Luther Willis SL, (Continued Page 7)

Old Time Gospel Music
KPDR-FM, 90.3
... In Wheeler
Sundays: 6:00 a.m. to 8:00 a.m.

Greenbelt Electric Cooperative, Inc.

October is COOPERATIVE MONTH



Serving Armstrong, Collingsworth, Donley, Wheeler and parts of Childress, Gray, Hemphill, Randall and Roberts Counties.

... is proud to have been of service to the people of this area for the past 73 years and pledge to continue giving you the best service possible.

THANK YOU!

Cross Country Barn Market Square
B-S Foods 7-H Angus Simmons Farms
Weldon & Dolorse Simmons
Greenbelt Electric Coop Wheeler Feedlot
Twisted Sifter Cakes North Wheeler Co EMS
Wheeler Chamber of Commerce

And all the other Wheeler businesses and residents who helped make this rodeo happen. The Wheeler Tri-State High School Rodeo club appreciates the donations and hard work you all put into making this a successful rodeo weekend.

Sincerely,
Reed Sessions
Kara Jo Hurt
Monty Reed
Danielle Johnson
Dylan Prior
Colton Johnson
Jarrett Dougherty
Dave and Janice Johnson, Club Sponsors



Urgent news for DIABETICS with BLADDER CANCER

The diabetes drug, ACTOS®, has been linked to an increased risk of bladder cancer. If you or a loved one has been diagnosed with bladder cancer after taking ACTOS®, ACTOplus met., ACTOplus MET- XR or duetact, call us now at 1-800-THE-EAGLE about monetary compensation. No fees or costs until your case settles. We practice law only in Arizona, but associate with lawyers throughout the U.S.
GOLDBERG & OSBORNE
1-800-THE-EAGLE
(1-800-843-3245)
www.1800theeagle.com
Open 7 days a week

Say "Good-Bye" to aches, pains, stress & unwanted pounds
Melt it all away in your very own Sauna!
• Cozy warmth 1, 2 or 3 person Saunas
• Free Shipping
• Simple Setup
• Low Sale Prices
www.FamilyPoolFun.com/Saunas
Call Now... 800-950-2210

BLADDER CANCER EXPERIENCE COUNTS

ACTOS® is a drug used to help reduce resistance to insulin in people with Type 2 Diabetes. Now, an FDA report warns that prolonged use of Actos® could lead to serious complications including an elevated risk of bladder cancer, congestive heart failure and liver failure. If you or someone you love has taken this drug and has been harmed, contact us today for professional insight.
Ryan A. Krebs, M.D., J.D.
Doctor-Lawyer in Full-time Law Practice
Richard A. Dodd, L.C.
Timothy R. Cappolino, P.C.
Board Certified Personal Injury Trial Law and Civil Trial Law by the Texas Board of Legal Specialization
NO FEE FOR FIRST VISIT
CAMERON, TEXAS
1-800-460-0606
www.DefectiveDrugLaw.com

Packages Start At \$29.99 Mo.
NFL SUNDAY TICKET™ Included at No Additional Cost GUARANTEED!
PLUS HBO SHOWTIME starz cinemax FREE For 3 Months with CHOICE XTRA™ or Above

Maximum strength analgesic for temporary relief from:
• Back pain
• Muscle pain
• Arthritis pain
• Joint pain
Go Painlessly with THERA-GESIC

STOP LEG CRAMPS BEFORE THEY STOP YOU.
Calcet® is designed to help stop low calcium leg cramps. Just ask your pharmacist.
Petite Tablet with More Calcium & Vitamin D3
Calcet®
Dual Calcium + Vitamin D3
Helps fight leg cramps For those with milk allergies Fights osteoporosis
Mission

TRUCK DRIVERS WANTED THROUGHOUT TEXAS HOME DAILY OR WEEKLY
Hiring Solo and Team Drivers in Dedicated, Intermodal, Oil Field, Tanker and Van (OTR, Regional) Divisions
Sign-on Bonus May Apply - Ask Your Recruiter!
Experienced Drivers and Recent Driving School Grads Welcome
Inexperienced? Take advantage of Schneider's Tuition Reimbursement program and get your CDL at a local driving school.
Apply at schneiderjobs.com/newjobs
Call 1-800-44-PRIDE for more information
SCHNEIDER

FDIC AUCTION
100± PROPERTIES
Live & Online Bidding
WASHINGTON & OREGON Selling from Seattle, WA October 19, 11:00 A.M. PDT
IDAHO & UTAH Selling from Salt Lake City, UT October 21, 11:00 A.M. MDT
COLORADO Selling from Denver, CO October 22, 4:00 P.M. MDT
TEXAS Selling from Houston, TX October 24, 11:00 A.M. CDT
Visit johndixon.com for complete details
Residential Homes, Condos, Townhouses, Duplexes, Lots & Land
Comm. Ind. & Land Comm. & Ind. Bldgs Bank Branches C-Stores Small & Large AC Tracts Restaurants
No Buyer's Premium! Broker Compensation Available
Many Properties Selling ABSOLUTE
JD 800.479.1763
JOHN DIXON johndixon.com

Court (from Page 3)
 Lot 14 & S 2' Lot 15, Blk. 77, Woodley's Southside Addition, Shamrock.
 RDT-Jackie Lane, et al to Martin Castaneda, et ux, 10-4-11, Lots 1 & 2, Blk. 13, Shamrock.
 ROW-Jarrell Russell Jr., et ux to Cross Texas Transmission LLC, 10-3-11, Pt. 161.48 acs. Sec. 128, Blk. 23, H&GN Ry. Company Survey.
 DEED-Jauna Benefield, et al to April Hampton, 8-30-11, 50'x220' & 110' x 340' Sec. 4, T&NO Ry. Company Survey.

FIELD NOTES-Richard E. Johnson to The Public, 9-26-11, Pts. Sec. 4, T&NO Ry. Company Survey.
 OCTOBER 6, 2011
 FIELD NOTES-Kenneth R. Allen to Preston Glazner, 9-16-11, 2.0 acs. Sec. 22, Blk. A-4, H&GN Ry. Company Survey.
 FIELD NOTES-Kenneth R. Allen to Preston Glazner, 9-16-11, 53.4 acs. Sec. 22, Blk. A-4, H&GN Ry. Company Survey.
 FIELD NOTES-Kenneth R. Allen to Elaine Quandt, 9-16-11, 53.4 acs. Sec. 22, Blk. A-4, H&GN Ry. Company Survey.

FIELD NOTES-Kenneth R. Allen to Jerry Glazner, 9-16-11, 53.4 acs. Sec. 22, Blk. A-4, H&GN Ry. Company Survey.
 EXECUTORS DEED-Preston L. Glazner (Estate) to Preston D. Glazner, et al, 10-5-11, Pts. SW/4 Sec. 22, Blk. A-4, H&GN Ry. Company Survey.
 DEED-Preston L. Glazner (Estate) to Preston D. Glazner, et al, 10-5-11, Pts. SW/4 Sec. 22, Blk. A-4, H&GN Ry. Company Survey.
 DEED-Elsie Marie Glazner to Preston D. Glazner, et al, 10-5-11, 2 acs. SW/4 Sec. 22, Blk. A-4, H&GN Ry. Company Survey.

MD-Preston L. Glazner (Estate), et al to Preston D. Glazner, et al, 10-5-11, SW/4 Sec. 22, Blk. A-4, H&GN Ry. Company Survey.
 ROW-Gail Ledbetter, et ux to Chesapeake Midstream Gas Services LLC, 9-6-11, Pt. NE/4 Sec. 66, Blk. A-7, H&GN Ry. Company Survey.
 ROW-Davis Family Trust No. 1 to Chesapeake Midstream Gas Services LLC, 9-6-11, Pt. E/2 Sec. 65, Blk. A-7, H&GN Ry. Company Survey.
 MD-Michey J. Willis, et al to Mickey J. Willis Revocable Living Trust, 9-29-11, E/2 Sec. 19, Blk. L, J. M. Lindsey Survey.
 ROY D-Rachel Horn de Kreizel to Thomas Lee Horn, 9-20-11, Sec. 23, Camp County School Land.
 AMEND. DT-Wheeler County Feed Yard Ltd. to Amarillo National Bank, 9-28-11, See Instrument.
 MD-Family Tree Corporation to Cirrus Minerals LLC, 9-16-11, W/2 NW/4 Sec. 27, Blk. A-4, H&GN Ry. Company Survey.
 HEIRSHIP AFF.-Angela Joy Bristow, et al to Hallie Viola Polard Martin, et al, 9-26-11, S/2 Sec. 30, Blk. A-7, H&GN Ry. Company Survey.
 ROW-James H. Hill, et ux to Enogex Gas Gathering LLC, 9-1-11, Pt. E/2 Sec. 21, Blk. A-4, H&GN Ry. Company Survey.
 ROW-Matthew D. Moore, et ux to

Enogex Gas Gathering LLC, 8-4-11, Pt. SE/4 Sec. 62, Blk. A-7, H&GN Ry. Company Survey.
 ROW-Julie Brooke to Enogex Gas Gathering LLC, 8-4-11, Pt. SE/4 Sec. 62, Blk. A-7, H&GN Ry. Company Survey.
 ROW-Teresa Moore Albus to Enogex Gas Gathering LLC, 8-4-11, Pt. SE/4 Sec. 62, Blk. A-7, H&GN Ry. Company Survey.
 ROW-Boyd Huff to Enogex Gas Gathering LLC, 8-9-11, Pt. W/2 Sec. 34, Blk. A-3, H&GN Ry. Company Survey.
 CORR. DVL-Rodney Barker, et ux to Bobby D. Galmor, et ux, 5-3-11, Lots 26 & 27, Blk. D, Potts Addition, Shamrock.
 CORR. DT-Bobby D. Galmor, et ux to First State Bank of Mobeetie, 5-3-11, Lots 26 & 27, Blk. D, Potts Addition, Shamrock.
 District Clerk's Filings:
 #12656-Alvin L. Simmons vs Brandi Kay Simmons, 8-24-11, Divorce.
 #12657-Bruce Daniel Ellwanger & Jesus & wife, Eulogia Villegas vs Halliburton Energy Services Inc. & Patrick Foster, 8-25-11, Motor Vehicle.
 #12658-In Re: to a child, 8-29-11.
 #12659-Kathy Lynn Guthrie vs Stephen G. Guthrie, 8-30-11, Divorce.
 #12660-Wheeler County vs Carl Dennis, 9-2-11, Tax Suit.
 #12661-Fort Elliott CISD vs Alene Hall (Estate), 9-2-11, Tax Suit.
 #12662-Wheeler County vs Tina Whiteley, 9-2-11, Tax Suit.
 #12663-In Re: to a child, 9-6-11.
 #12664-Wildflower Production Company Inc. vs Jane Fuller Jackson A/K/A Jane Fuller Morris, 9-7-11.
 #12665-The State of Texas vs Jose Luis Porras and Bob Bail Bonds, 9-8-11, Judgment NISI.
 #12666-Wheeler ISD vs Daniel Sigala and Norma Gonzales, 9-8-11, Tax Suit.
 #12667-Wheeler County vs Jacob Seymour, 9-8-11, Tax Suit.
 #12668-Wheeler County vs Bill Lang (Estate) & Heirs, 9-20-11, Tax Suit.

AMMONS CONSTRUCTION
 Remodels & Additions | Custom Homes | Roofing
 Steel & Vinyl Siding | New Windows
 Local Sales Representative Don Rives
 806-669-7777
 AmmonsConstruction.com
 9/22-29/10-13C

Gary & Becky Hardcastle Todd, Mindy, Bailey, Reagan & Presley Brashears
 Marcus, Heather, Justin, Houston & Sierra Hardcastle

The Gallagher Family supports the Wheeler Mustangs in all their activities!
 Go Mustangs, Go!
 Mike, Rhonda, Brandon, Ashley, Kutter, Kynzi, Chris, Tamara & Jackson

ARROW WATER WELL, INC.
 Vince Koelzer, Vincent Hunter, Lisa, E. J., Pete & Donny

CROSS COUNTRY BARN
 24-Hr. Gas & Diesel Convenience Store
 Hunt Bros. Pizza Wings Sandwiches
 301 E. Oklahoma — Wheeler, TX — 806-826-2276
 Dale, Monica & Rachel Kidd, Owners

FIRST STATE BANK
 Mobeetie & Wheeler
 Established 1906 Member F.D.I.C.

MARSHALL DISCOUNT AUTO
 Darrell & Maggie Marshall
 Mack, Crystal, Mariah, Trevor, MaKalli & Kanin
 Mark, Joanna, Urrick & Hesston
 Steve, Krista, Dylan & Kynslee — Mechelle, William, Hope, Austin & Wyatt

Judy Woollard

PARKVIEW HOSPITAL
 901 S. Sweetwater — Wheeler, Texas
 Assisted Living & Home Health Agency
 North Wheeler County Ambulance Service

Jay & Karen Lewis and Family

SOONER ENERGY SERVICES
 3401 Macdonnell Dr. — Norman, Oklahoma
 Soap Sticks Liquid Foamer
 Toby Collins, Sales & Service
 Wheeler Office: 812 S. Osage
 Office: 1-800-579-3220
 Call: (405) 684-3493 www.SoonerEnergyServices.com

Dr. Mike Smith — Mike & Jennie Smith

MEET THE MUSTANGS

 Justin Hardcastle ... Manager
 Blayne Richardson ... Manager

Bill & VonEva Robertson

Shear Delight Botique
 Tina Lee, Stephanie Sullivan, Donna Childress
 290 E. Third—Wheeler—826-3168

WARE Chevrolet - Buick & Pontiac Inc.
 South Hwy. 83 — Wheeler, Texas

BOB'S BAIL BONDS
 806-826-0654 Cell 806-334-0452
 P.O. Box 264 Wheeler, TX 79096 Pat Childress

WHEELER LAND & LIVESTOCK
 15495 Hwy 152 • Wheeler, TX 79096 • Ph: 806-826-5591
 Fax: 806-826-3476 • Website: www.wlfl.net

LeRoy & Rhonda Meriwether & Stormie

Gail & Sally Ledbetter

Go Stangs!
GREENBELT ELECTRIC COOPERATIVE, INC.
 708 10th — Winton, TX 447-2536
 Serving the Rural Area of Armstrong, Childress, Wheeler, Collingsworth, Donley, Gray, Hemphill, Randall & Roberts

Speedi-Mart CONVENIENCE STORE
 Happy Hour: 3-5 — Store Hrs. M-F 6-10, Sat. 6-10:30, Sun. 7-10
 Brock & Jenny Kauk & Girls — Janice Scales, Mgr. 806-826-3414

WHEELER MUSTANGS
2011 WHEELER MUSTANGS

No.	Name	Pos.	Wt.	Gr.
5	Zack McCasland	QB/DB	160	11
9	Zack Johnson	WR/DB	160	10
10	Ismael Buenrostro	TE/LB	170	11
11	Tayt McCasland	QB/LB	170	12
17	Andrew Coomer	RB/LB	175	10
21	Genero Mendoza	TE/LB	150	11
22	Cody Howard	TE/DE	165	10
24	Eduardo Ramirez	WR/DB	175	11
28	Zay McCasland	FB/LB	185	11
34	Jason Pike	TE/DE	175	11
35	Hayden Guest	TB/DB	160	12
51	Brody Richardson	OL/DE	150	10
63	Ricardo Avila	OL/DL	240	11
64	Jacob Thomas	OL/DL	265	12
65	Trevor Marshall	OL/DL	190	12
66	Matthew McNeil	OL/DL	200	11
69	Raul Porras	OL/DL	160	12
70	Chase Miller	OL/LB	170	11
77	Jaime Aguilar	OL/DL	180	10
88	Noah Kidd	TE/DB	190	11

Superintendent — Clay Mahler
 Principal — Bryan Markham
 Athletic Director/Head Football Coach — Brandon Smith
 Assistant Coaches — Waymon Holland, Camden Dorris, Cody Mac Been, Joe Nix
 Managers — Brennan Umsted, Levi Ware, Holden Guest, Rowdy Henson, Justin Hardcastle, Blayne Richardson, Braydon Smith & Jayton Smith
 Band Director — Kimberly Butler
 Cheerleader Sponsor — Tammy G. Moore
 Cheerleaders — Captain Paige Jones, Alyssa Kinnaman, Johanna Porras, Abby Bond, Stormy Moore, Gaby Venzor & Mighty Mustang — Maggie Jones

Charles R. Brown

Dori's Salon
 Full Service Salon
Irene, Dori & Taytum
 115 West Texas — Wheeler

WHEELER VETERINARY CLINIC
 Drs. LeeAnn & Ben Ed Hillhouse

WHEELER NURSING & REHABILITATION
 1000 S. Kiowa • Wheeler, Texas • 806/826-3505

Scoops Ice Cream
 103 W. Texas — Open: Mon.-Sat. 5:30-9:00 p.m.

Danny, Ravonda, Josh & Nick Hardcastle

Betty Hennard

Leo & Sylvia Shuler

Marshall Heating & Air Conditioning
 Mark, Joanna, Urrick & Hesston

David & Paula Britt

Bob & Evangeline Wills

The Purple Door Marla Ford, Owner
 209 E. Third — Wheeler, TX 806-663-0343

Centerdais
 710 E. Oklahoma St. — Wheeler, TX
 806-826-5222
 Jason & Rebecca, Cooper & Reese

Jennings Plumbing, Heating & Air Conditioning — Larry & Bobby
 A flush... is better than a full house
 Soup - Salad- Homemade Dessert
 Open Monday - Friday 10:30 A.M.-2:00 P.M.
 Available for Parties, Catering & Special Events
 806.826.0299
 508 S. Main St. Wheeler, Texas

FIN'S Red Bird CAFE
 Soup - Salad- Homemade Dessert
 Open Monday - Friday 10:30 A.M.-2:00 P.M.
 Available for Parties, Catering & Special Events
 806.826.0299
 508 S. Main St. Wheeler, Texas

Todd Moore Insurance Agency, Inc.
 Representing the Germania Companies
 315 N. Main — P.O. Box 168 — Shamrock, TX 79079
 Todd Moore - Owner/Agent
 806.256.8911 806.334.0330 800.687.3730

SOTO FAMILY RESTAURANT
 708 E. Oklahoma St. — 826-3129

2011 Varsity Football Schedule

Date	Opponent	Site	Time
8-13	Quanah- scrimmage	Wheeler	12:00
8-18	Amarillo River Road-scrim.	Amarillo River Road	5:00
8-26	Boys Ranch	W-7 B-21	7:30
9-2	Spearman	W-7 S-26	7:30
9-9	Clarendon	W-12 C-13	7:30
9-16	Amarillo Highland Park	W-27 H-20	7:30
9-23	**Arbor Academy	W-52 A-0	7:30
9-30	Vega	W-41 V-40	7:30
10-7	*Shamrock	W-43 S-6	7:30
10-14	*Claude	Wheeler	7:30
10-21	Open		
10-28	*Wellington	Wellington	7:30
11-4	*Memphis	Wheeler	7:30

**Homecoming — *District

CAPITAL FARM CREDIT

Ed & Patricia Forrester

BAYMONT INN & SUITES
 1410 S. Alan L. Bean Blvd, Wheeler, TX — 806.826.1012

Court (from Page 6)
300' from South & 350' from East

Your children's pictures are needed for this ad. Email picture w/ name, age, parents & grandparents' names! No Charge.

wtimes@windstream.net
For all your...
Insurance Needs, See
Eastern Panhandle Insur. Agency, Inc.
117 W. Texas St. - Wheeler
806/826-3573
•Auto •Home •Life •Health
•Commercial •Bonds

Lease line, Sec. CCSL/LEAGUE 2/Lot 2, elev. 2563 gr, spud 6-29-2011, drlg. Compl. 8-17-2011, tested 9-6-2011, potential 11984.0 MCF, rock pressure 1842 psia, Open psia 1475, pay 11865-14943, TVD 11852', MD 15050, tops: Oswego, Des Moines, Britt, 11151.0, 11429.0, 11502.0, 9 5/8" csg 1121' (A 770sx) 7" csg 10842' (H 615sx) 4 1/2" csg 15036' (Prem 335sx) Liner unknown - API # 42-483-33256 - Horizontal Oil Well Completions HEMPHILL (FELDMAN Tonkawa) Chesapeake Operating, Inc., #1301H William, 450' from South & 660' from East Lease line, Sec. 13, 43, H&TC, elev. 2675 gl, spud 5-26-2011, drlg. Compl. 6-18-2011, tested 9-2-2011, pumped 82 bbls of 44.0 grav. Oil + 300 bbls water on 64-64 Choke on 24 hour test, GOR 780, perforated 7753-12155, TVD 7557', MD 12290' tops: Base Heebner 6868.0, Haskell 7653.0, Tonkawa 7744.0, 9 5/8" csg 855' (Poz C 419sx) 7" csg 6942' (Txi 227sx) 4 1/2" Liner top- 6683 Bottom- 12290 (620sx) 2 3/8" tbg. Depth set 7349 Packer set 7354 - API # 42-211-34845 - Horizontal

Listen to...
KPDR-FM, 90.3
WHEELER, TEXAS

ROBERTS (PAN PETRO Cleveland) Mewbourne Oil Company, #2H Morrison "51", 200' from South & 660' from East Lease line, Sec. 51, 43, H&TC, elev. 2855 gr, spud 7-29-2011, drlg. Compl. 9-2-2011, tested 9-24-2011, flowed 395 bbls. of 45.4 grav. Oil + 602 bbls water on Open Choke on 24 hour test, GOR 253, perforated 8106-12108, TVD 7721' MD 12212' tops: Cleveland 8036.0, Penn Shale 4355.0, Heebner Shale 6192.0, 9 5/8" csg 2001' (15-85 Poz C 975sx) 9 5/8" csg 2001' (C 300sx) 7" csg 8036' (H 50sx) 7" csg 8036' (H 200sx) 4 1/2" Liner top- 7825 bottom- 12108 2 3/8" tbg Depth Set 7709 Packer set unknown - API # 42-393-32375 - Horizontal
ROBERTS (RASOR Morrow, Lower) Unit Petroleum Company, #1H Kneisley, 167' from North & 329' from West Lease line, Sec. 55, C, G&M, elev. 2751 gr, spud 1-1-2011, drlg. Compl. 2-28-2011, tested 6-2-2011, pumped 56 bbls of 40.2 grav. Oil + 30 bbls water on 47-64 Choke on 24 hour test, GOR 1517, perforated unknown, TVD 9613', MD 12887, tops: Brown Dolomite 4784.0, Kansas City 6800.0, Granite Wash 7730.0, 9 5/8" csg. 2528' (C 1400sx) 7" csg. 10010' (H 300sx) 4 1/2" Liner top- 8377 bottom- 12887 2 7/8" tbg Depth set 8345 packer set unknown - API # 42-393-32335 - Horizontal

Chat (from Page 1)

shoes and lots of mud.
- cwe -
Thanks, Janice Johnson!
Janice, a parent of two of the contestants, took the rodeo pictures.
- cwe -
The pictures remind me of the Hinton Kiwanis Rodeo my senior year. It rained and the contestants really made a splash when they hit the ground.
- cwe -
The Old Mobeetie Jail Association will be sponsoring a Mexican Pile-On Dinner on Sunday, October 23. Mark your calendar. Lots of good eating from 11:30 - 2:00 at the Old Mobeetie Jail Museum Visitors' Center, 2 blocks East of the Jail. Donation admission.
- cwe -
Congressman Thornberry will be on site for a "Conversation" at Maxey's Steakhouse on Tuesday, October 18, 2011, from 9-10:00 a.m.
- cwe -
Our activities over the weekend included being attendance at the Musae residence for the OU/Texas game. Chili was enjoyed during and after the game. And we got in a game of cards.
- cwe -
Cards didn't go so well for Barbara and I Monday evening. We started out really good, but lost the



THE WHEELER TIMES
PAGE 7 - Thursday, October 13, 2011
"Wheeler, town of friendship and pride."

first two games and managed to win only the last game. Patsy and Dwight were the winners.
- cwe -

Rodeo Results

Bareback riding - round 1: Kyle Sutherland; round 2: Preston Burr; average winner: Preston Burr
Saddle bronc - round 1: Jace Lane; round 2: Jace Lane; average winner: Jace Lane
Bull riding - round 1: Arron McKee; round 2: Arron McKee; average winner: Arron McKee
Calf roping - round 1: Klancy Best; round 2: Myles Brown; average winner: Myles Brown
Ribbon roping - round 1: Tylo Kirkpatrick; round 2: Haden Long; average winner: Brent Ivy
Steer wrestling - round 1: Jace Lane; round 2: Austin Vincent; average winner: Jace Lane
Pole bending - round 1: Kellie Collier; round 2: Kelsey Graf; average winner: Kelsey Graf
Break away roping - round 1: Rylea Fabrizio; round 2: Kellie Collier; average winner: Kellie

Collier
Barrell racing - round 1: Janesa Garcia; round 2: Kelsey Graf; average winner: Janesa Garcia
Goat tying - round 1: Nicole Espenson; round 2: Kelsey Graf; average winner: Nicole Espenson
Team roping - round 1: Aaron Macy and Brent Ivy; round 2: K.C. Tippett and Cameron McCarley; average winner: K.C. Tippett and Cameron McCarley

Comm. (from Page 1)
county sheriff's payroll. Their salary will be \$2,866.88 per month. Daryl Snelgroves requested the court's approval to hire Pete Cole to the precinct one payroll. The addition was approved; salary will be \$2,733.92 per month. OneOk NGL Pipeline LLC requested permission from the court to bore under county roads 18, 20 and B for the installation of an oil and gas pipeline. The crossings were approved. The next meeting of the court will be Monday, October 24, 2011. The agenda for the meetings are posted at the courthouse 72 hours before the meetings.

ALVEY TAX & LAW - TODD ALVEY
101 E. Oklahoma - Wheeler, TX 826-3766

NOVEDADES
Saharary
Rosa Villarreal
Environ de Billetero
Joyeria YAM
ymas
(806) 826-0784 • (806) 826-0410 • (806) 826-0785

Dr. Louie Mendiola, M.D., P.A.
Gina, Vincent, Melissa, Hunter, Ashley Marie, Chloe Taylor, Rocky, Rosemary & Magnolia Noelle and Josephine Rose Mendiola

Devin, Kenna, Cody & Kori Howard

LYNDON AUCTIONEERS
Lyndon & Noveline Loyd
P.O. Box 1279
Wheeler, Texas 79096
(Lic. # 7119)

HEFLEY HARDWARE & LUMBER
8:00 A.M. - 5:00 P.M. - Mon. thru Fri.
8:00 A.M. - 12:00 Noon Sat.
Phone: 826-5532 - 511 S. Main - Wheeler, Texas

TEXAS STREET
806.826.5943
Ron & Donna Rives, Owners
Kristen Marion, Manager
FLORAL CO.
121 W. Texas St.
Wheeler, TX

Anytime you are in...
WHEELER, TEXAS
we invite you to spend the night at...
City Drug Bed & Breakfast Hotel
400 South Main Street
806-826-3790

Larry & Carol Porton

WHEELER PLUMBING CO.
Max, Stacy, Greede, Gavin & Jennifer McQueen

AV STILES RANCH
Bob & Sue Stiles
Bill & Kay Stiles

Sandra Christner

Maxey's STEAKHOUSE
S. Hwy. 83 - Wheeler, TX - 806.826.3441
Call for Catering, Private Parties & Daily Specials

WEST TEXAS GAS
Wheeler Division - 500 S. Mobeetie - Wheeler, TX 79096

HONEY INN
North Side of the Square
826-5571 - Wheeler, TX

PARADISE SPA
BY APPOINTMENT ONLY!
114 E. Texas Ave. - Wheeler, TX
806-826-0296

H&H TIRE
Chad Heldon
Owner
806-826-5769
714 W. Okla. Ave.
Wheeler, TX 79096

**Rodney, Greta & Craig Bass
Coach Dorris & Rachel Dorris**

HYLAND'S Pharmacy
Phone: 826-5561
109 West Texas Street
Wheeler, Texas
Randy & Crystal McEntire, Owners

vs. CLAUDE MUSTANGS
FRIDAY, OCT. 14, 2011
Nicholson Field - 7:30 P.M.

Dave & Mary Britt, Jake & Josh
In Memory of Ben

R & M CAR WASH, SPEED CLEAN LAUNDRY
Robert, Marla, Spencer & Mitchell Ford

MEET THE MUSTANGS

Holden Guest ... Manager

Rowdy Henson ... Manager

MR. B.B.Q. - Steve, Joyce & Caitlynn Walker
Don't forget your B.B.Q. burger at the game!

Billy, Kara, Bailey, Brody, Blayne and Bryce Richardson

2011 7th, 8th, JV Football Schedule

Date	Opponent	Team	Site	Time
8-25	Boys Ranch	JV only	Boys Ranch	6:00
9-1	Spearman	JV only	Wheeler	6:00
9-8	Clarendon	7th, 8th, JV	Clarendon	5:00
9-15	Highland Park	7th, 8th, JV	Wheeler	5:00
9-22	Arbor Academy	7th, 8th, JV	Arbor Academy	5:00
9-29	Vega	7th, 8th, JV	Wheeler	5:00
10-6	Shamrock	7th, 8th	Wheeler	5:00
10-13	Claude	7th, 8th, JV	Claude	5:00
10-20	Spearman	7th, 8th, JV	Spearman	5:00
10-27	Wellington	7th, 8th, JV	Wheeler	5:00
11-3	Memphis	7th, 8th, JV	Memphis	5:00

Wellington State Bank
Wellington, Texas
Wheeler • Memphis • Childress • Canadian
Wheeler Banking Center
405 Alan L. Bean Blvd. • P.O. Box 1040 • Wheeler, Texas 79096
Phone: 826-5566
Member F.D.I.C.

THE WHEELER TIMES
Serving Wheeler Since 1933
Louis & Barbara Stas & Family
...a part of Wheeler since 1960

MEL'S DINER, West Hwy. 152
Ph.: 826-3755 - Where Friends Meet to Eat!

EASTERN PANHANDLE Insurance Agency, Inc.
117 W. Texas - Wheeler, TX
Karen Brimer, Office Manager

Claude Roster Not Available

CARNICERIA AGUILAR
7 Days a Week - 10:00 A.M. - 9:00 P.M.
Jaime Aguilar, Jr. Emmanuel Aguilar
117 W. Texas St.
Wheeler, TX 79096
(806) 826-1027

WALLACE CONSTRUCTION
Changing the looks of Wheeler - one building at a time!
305 S. Main - Wheeler, TX - 826-3503
WALLACE TAX SERVICE
For all your accounting needs - 826-3503

MEET THE MUSTANGS

Jayton Smith ... Manager

Levi Ware ... Manager

Gallagher Welding & Construction, LLC
and Employees fully support the Mustangs
GO MUSTANGS, GO! Fight! Fight! Fight!
Roustabouts • Steamers
Welding • Fabrication
Pipeline • Dirtwork
24 Hour Service
Fully Insured
Mike (806) 663-0506
Kyle (806) 663-2547

Lewis, Jennie, Jeff & Tom Britt

PEPPERS
FAMILY FUNERAL HOME

Kim's Kitchen Lunch Buffet Every Day
Intersection 83/152 - Wheeler, Texas - 806-826-5102

GREEN COUNTRY EQUIPMENT, LLC
Darrell Butler
Spearman, TX
Dalhart, TX
Pampa, TX
Dumas, TX
Perryton, TX
Boise City, OK
Guymon, OK
business phone: 800-223-0036
cell phone: 806-664-6442
email: dbutler@greencountryequip.com
WWW.GREENCOUNTRYEQUIP.COM

Discriminacion

Cualquier individuo, o clase especifica de individuos, que sienta que esta organizacion los ha sometido a discriminacion puede obtener informacion mas acerca de las leyes y regulaciones registradas aqui arriba de y/o archivar una queja por escrito con esta organizacion; o el Secretario, Departamento de Agricultura de E.E.U.U., Washington, D.C. 20250; o el Administrador, Rural Utilities Service, Washington, D.C. 20250. Quejas deberan ser archivadas dentro de 180 dias despues de la discriminacion alegada. La confidencialidad sera mantenida a la extension posible.

10/13c



—Photo by Janice Johnson

Another look at the local Tri-State HS Rodeo

Storm

(from Page 1)

can hurt you very badly and can kill you! They sting you. Some only hurt a little bit. Don't touch the Jelly Fish! The Jelly Fish are all different sizes and colors. My favorite is the white one. It is very dainty. The big ones are as big as a basketball and the very tiny ones are smaller than a bug.

We went to see the dolphins at the aquarium. That was so fun! All the dolphins had tails. They did tricks and jumped high in the air. I would love to play with a dolphin!

Now it is fall. I love the trees! The leaves are red, orange and yellow! Some leaves are a little purple. Acorns fall. The squirrels love the acorns. I picked some



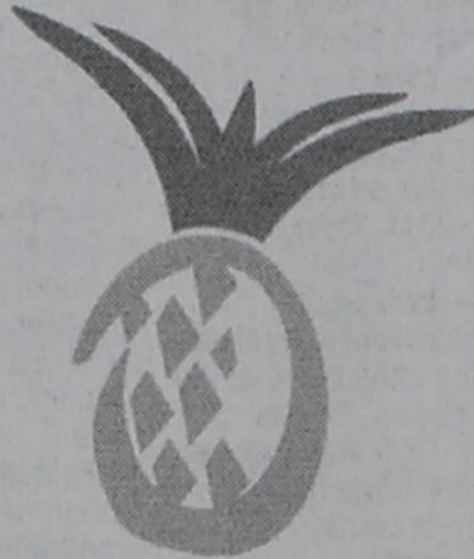
acorns up to take to my ranch house. I want to grow a big beautiful tree in my yard. Someday little kids can pick up the acorns from my tree and they can grow a tree for their kids. That's it.

To Late For Classified

GARAGE SALE: Fri. & Sat, Oct. 14-15 near Wheeler. 2-man bass boat, table w/4 chairs, chair ottoman, misc. Scott Dunnam home, FM2473 (Cemetery Rd.) to FM3104. Follow Sign.



OKLAHOMA
CHEYENNE
TEXAS
SHAMROCK • SUNRAY
WELLINGTON • WHEELER



Market Square

THRIFTWAY

www.marketsquareonline.com



PRICES GOOD
WEDNESDAY, OCTOBER 12
THRU TUESDAY, OCTOBER 18, 2011

NOT LIABLE FOR TYPOGRAPHICAL OR PICTORIAL ERRORS.
WE RESERVE THE RIGHT TO LIMIT QUANTITIES.
SOME ITEMS NOT AVAILABLE IN ALL STORES.



Thriftway or Shurfine White Bread
sandwich or large
24 oz. loaf

79¢



Jack-O-Lantern Pumpkins

2 \$7 for 7



99¢ ea.



Lettuce premium cello



Pilgrim's Whole Cut Up Chicken
"Grade A"

99¢ lb.



Red Diamond Tea
select varieties
gallon

2 \$4 for 4



Kraft Salad Dressing
select varieties
16 oz.

2 \$4 for 4



Baking Potatoes
4 ct.

99¢ ea.



Jalapeño Peppers

69¢ lb.



Fresh Boston Butt Pork Roast

\$1.39 lb.



Top Round Roast
"London Broil" preferred trim boneless beef

\$2.99 lb.



Cottonelle Bath Tissue
Kleenex regular or ultra
12 double rolls

\$7.49



Bounty Paper Towels
extra soft prints
6 big rolls

\$6.79



MPK Foods Guacamole Mix
mild or spicy
1 oz.

69¢

Avocados large

5 \$5 for 5



Roma Tomatoes large

8 \$1 for 1



Gain 2X Liquid Detergent
select varieties
24-32 loads

\$4.99

LOOKING TO SAVE?

BE SURE AND CHECK OUT OUR PRIVATE LABEL PET FOOD PRODUCTS