

16 PAGES THIS WEEK—BRINGING YOU MORE NEWS THAN ANY OTHER LAMB COUNTY NEWSPAPER

TRADES DAY IS BIG EVENT

IOOF AND REBEKAHS ELECT OFFICERS

Bryan's Daughter Today



NEW YORK... With the characteristic Bryan personality beaming cheerfully, Mrs. Ruth Bryan Owen, daughter of the late Wm. J. Bryan, now American Minister to Denmark, arrived here from overseas this week for a vacation in Washington and Florida, her home.

ANNUAL MEETING DRAWS MEMBERS TO CITY PARLEY

Lodges Choose Brownfield As '36 Site; Name New Officers

About 150 Oddfellows and Rebekahs from all over the South Plains gathered in Littlefield last Thursday as one-day guests of the Littlefield lodges in the semi-annual South Plains association meeting. Alph Wright, past grand master of Littlefield IOOF and president of the district association, presided. Degree teams went through contests, lunched at the First Baptist church, elected R. A. Sims of Brownfield new association president and set his home town and April 26, 1936 as the place and time for the next meeting.

Littlefield's IOOF team won the trophy awarded for the second degree contest, while Lubbock's ladies were winners of the Rebekah award.

Individual contest medals went to M. M. Gosdin, Lubbock, conductor in initiatory contest; H. C. Davis, Lubbock, Noble Grand charge in first degree; Mrs. N. M. Gosdin, Lubbock, in unwritten work, and Mrs. Mae Cowdrey of Lubbock, in Vice Grand charge.

Other officers elected for 1935 were Richard Rocky, Muleshoe, vice president, and Roy Wade, Littlefield, secretary-treasurer.

Outstanding visitors who attended were J. F. Ross, Amarillo, deputy warden of the grand lodge of Texas; Lem A. Wright of Clovis, grand secretary of the grand lodge of New Mexico, and Mrs. Wright, past president of the grand assembly of Rebekah of New Mexico.

J. W. GIMMELL DIES SUDDENLY FRIDAY NOON

Funeral Services Are Held At Wellington Sunday Afternoon

J. W. Gimmell, aged 59, passed away suddenly Friday, October 4, at 12 o'clock noon, at his farm home near Fieldton, following a heart attack.

Funeral services were conducted at Wellington, Texas, Sunday afternoon, to which place the body was carried Saturday overland by the Ellis Undertakers of that city. Hammons Funeral Home had charge of arrangements until arrival of the Wellington concern.

Interment took place immediately in the Wellington Cemetery. Deceased had lived near Fieldton for the past six years, coming to the South Plains from Wellington, Texas.

Mr. Gimmell is reported to have been enjoying good health, and took his first heart attack Monday of last week. He was believed to be better, when he was stricken the second time, and passed away suddenly.

He leaves surviving him his widow and one son, James, aged 7.

LITTLEFIELD--THE PULSE OF THE PLAINS

LAMB COUNTY LEADER

Watch Lamb County Grow

Watch Lamb County Grow

Official Newspaper of Lamb County, Texas

THE SOUTH PLAINS GREATEST WEEKLY NEWSPAPER.

Serving the Fastest Developing Agricultural Section of the Entire Southwest.

VOL. 13 LITTLEFIELD, LAMB COUNTY, TEXAS, THURSDAY, OCT. 10 1935 NUMBER 27

Our Next President - Poll

This newspaper is cooperating with 2000 other newspapers in making this nation-wide poll.

VOTE IN ONE BLOCK ONLY

Do you favor the re-election of President Roosevelt?

(yes) (no)

Or, do you favor the nomination, by the Democratic party, of some Democrat other than President Roosevelt?

(FIRST CHOICE)

(SECOND CHOICE)

(THIRD CHOICE)

Do you favor the election of a Republican?

(yes) (no)

If you are in favor of a Republican, whom do you wish nominated?

(FIRST CHOICE)

(SECOND CHOICE)

(THIRD CHOICE)

Or, if you favor the organization of a third party, whom would you want this new party to nominate?

(FIRST CHOICE)

(SECOND CHOICE)

(THIRD CHOICE)

Every reader of this newspaper may vote. No reader is required to sign his name. Vote now and mail the ballot to this newspaper. Additional information on editorial page relative to this "straw" vote.

COTTON YIELD ESTIMATED AT 11,464,000 BALES FOR YEAR 1935

The department of Agriculture at Washington Tuesday estimated a cotton crop of 11,464,000 bales for 1935, or a reduction of 25,000 bales from the September 1 estimate.

The indicated crop this year, based upon conditions as of October 1, is 1,828,000 bales more than 1934 but 3,202,000 bales less than the average production in the period 1928-32.

A decline in prospects of 18,000 bales in Oklahoma and 192,000 bales in Texas was reported during the last thirty days, but the department said this was nearly offset by increases in Georgia, Alabama, Mississippi and Arkansas. Only slight changes from the September 1 forecast were shown for other states.

A month ago, 11,489,000 bales were indicated; two months ago, 11,798,000 bales. Production last year was 9,636,000 bales.

The census bureau at the same time announced cotton ginned from this year's crop prior to Oct. 1 totaled 4,230,367 running bales, counting round bales as half bales and

(Continued on back page)

LITTLE BILLY ED WALTERS TAKEN BY DEATH TUES.

Son Of Mr. and Mrs. Joe Walters Succumbs At Lubbock

Little Billy Ed Walters, infant son of Mr. and Mrs. Joe Walters of Littlefield, passed away in Lubbock at 10:20 p. m., Tuesday.

Ill since Thursday of last week, the 7-months old child was taken to a Lubbock hospital for treatment for an intestinal disorder. With Mrs. Walters constantly at his bedside, and Mr. Walters making frequent trips to Lubbock, the little fellow rallied Monday and was thought early Tuesday to be out of danger. At 3 o'clock in the afternoon, Mr. Walters was called to Lubbock. Both parents were at the bedside when the end came.

Many Littlefield people grieved with the sorrowing parents and grandparents at the brief, simple graveside services held at 11:30 Wednesday morning. Rev. Allen, pastor of the Church of Christ, officiated while Hammons Funeral Home was in charge of the burial at Littlefield cemetery.

Beside his parents, Billy Ed is survived by a brother, Joe A, aged 2, and his grandparents, Mr. and Mrs. Oscar Walters of Littlefield, and Dr. and Mrs. D. T. Jordan of Morton. All were present at the services.

W. H. Free of Abilene spent Sunday night with his sister and brother-in-law, Mr. and Mrs. J. C. Hilburn.

THOUSANDS HERE, WILL CONTINUE AWARD PROGRAM

Two-Day Trade Expansion Program Pronounced "A Fine Thing"

Crowds, estimated at several thousand people, visited Littlefield Saturday and Monday, opening days of Littlefield's trade expansion program. Almost without exception all business houses reported great increase in volume over other Saturdays and first Mondays.

Cash in the amount of \$150.00 was given away in various amounts Saturday and Monday; \$75.00 Saturday on Phelps Avenue between Madden's and Stokes-Alexander Drug and Cuend's Dry Goods and Club Cafe; and \$75.00 at XIT Drive intersection between Cleero-Smith and Jeffries Mercantile.

The parties receiving the money were as follows: Miss Eunice Coley, Littlefield, \$10; Mrs. W. G. Street, Littlefield, \$5; Orville Nance, Rt. 1, Littlefield, \$40.00; C. M. Eudy, Littlefield, \$10.00; A. B. Hale, Littlefield, \$10.00; Mrs. J. F. Reed, Rt. 1, Littlefield, \$10.00; J. F. Jones, Rt. 1, Hale Center, \$5.00; Mrs. C. E. Cowan, Rt. 1, Littlefield, \$40.00; Mrs. E. L. Cain, Rt. 1, Amherst, \$10.00; and B. A. Torrence, Littlefield, \$10.00.

Those qualifying, but who were not present; John Moody, Rt. 1, Amherst; H. M. Bundick, Star Rt. 2, Littlefield; John Bruce, Star Rt. 2, Littlefield; Mrs. H. J. Davis, Littlefield; B. Hall, Rt. 1, Littlefield; D. B. Mann, Rt. 2, Littlefield; Mrs. E. W. Liles, Rt. 1, Amherst; E. J. Bussanas, Rt. 1, Amherst; Mrs. C. A. Willis, Rt. 1, Anton; P. S. Hanks, Littlefield; Mrs. C. L. Cannan, Bula; Carmen Lakay, Littlefield; J. T. Randall, Littlefield; Robert Brown, Rt. 1, Amherst.

(Continued on back page)

BUSINESS WOMEN ARE TO SPONSOR MINSTREL SHOW

Local Talent Will Be Used Almost Exclusively

A manless minstrel, sponsored by the Business & Profession Women of Littlefield, will be held in the high school auditorium Friday, evening, October 25.

Local talent will be used almost exclusively.

Rehearsals will begin the end of this week.

A complete program, with the names of those taking part, will be published in next week's issue of the Leader.

Special Train May Bring Slaton Fans, Players to City for Battle Friday

A special train, carrying Slaton Tiger football fans may roll into Littlefield Friday for the Littlefield-Slaton High school game at Wildcat Field, according to Supt. A. B. Sanders of local schools.

The superintendent said he had been notified that Slaton's plans were to charter a special train, and that should this be abandoned, "there will be plenty of Tiger fans coming in cars."

Slaton's big Bengals, unbeaten this year and probably the toughest foes the Wildcats will face all season, will be out for blood.

"It cost us money to get Slaton to come down here," said Supt. San-

ders, "and Littlefield fans who attend the game Friday will witness probably the best football game here in years."

Jubilant over return of Bob McKnight, Jim Foust, Knowlin Tubbs and Jim Walker, Coach Bill Sanders paced his powerful Wildcats through their toughest workouts of the year all this week, and tapered off Wednesday for a breather before he sends his boys against Slaton's ball-carrying Henry Brothers, said to be the best football brother act ever to come out of the district.

Fully recovered from a seige of

last two games, McKnight and his mumps which kept them out of the three first-string mates are chirp-ers as two-year-old race colts.

Slaton, with the Henry brothers up, handed the strong Floydada eleven a 14-6 drubbing two weeks ago, and crushed Ralls' mixed first and second team under a landslide of eight touchdowns.

"I believe we have the combination to beat Slaton," declared Coach Sanders Wednesday.

Kickoff for Friday's game is set for 8 o'clock. Admission will be 40 cents to adults and 20 cents to youngsters. Season tickets are good.

WE THINK

What do you think

BY M. B. D.

TRADE EXPANSION

PROGRAM—

Under the caption, "Littlefield's 'We Move,' the Lubbock Morning Avalanche editorially compliments the city on its trade expansion program.

The Avalanche makes complimentary reference to the extensive program which is being carried out, and declares that the trade territory expansion program "is the right spirit" at this time of high-way extension.

The Avalanche says in part: "Instead of sitting back and saying it's too bad now. The highway is open to Lubbock and everybody will go down there as often as they can, and we'll lose business, up-and-downing Littlefield merchants and editors are seeing on the new highway as an avenue for more trade.

"In other words, instead of crying wolf, they're out to make the job of pavement an asset rather than a liability.

"While the paved highway will make it easier for people living all the way to Lubbock, so will it make it easier for them to go to Littlefield, to Amherst, to Sudan and eventually to Clovis. As The Morning Avalanche sees it, all of us will profit—most of all the fellow who is tired of traveling to any of the cities named over a rough and sometimes muddy trail.

We thank the Morning Avalanche for its kind reference to our city and its business men. There never has been any quarrel between Lubbock and Littlefield, and by continuing such friendly relations both cities can grow and prosper in a big way.

We are always pleased when the

BEST BETS IN LITTLEFIELD FOR THE WEEK-END

THE FASHION SHOPPE—One Group of New Fall and Winter Dresses \$6.95

RENFRO BROS.—2 Lb. Boxes of Crackers, 2 for (4 Lbs.) 35c

FURR FOOD STORES—Potatoes, 10 Lbs. 11c

WALTERS DRUG STORE—Pond's Cold Cream, \$1.50 jar for \$1.19

JACK HENRY TAILOR SHOP—Tailor Made, All Wool Suits, \$16.75

WILDCATS! BEAT SLATON FRIDAY NIGHT!

LAMB COUNTY LEADER

Published Every Thursday Afternoon at Littlefield, Texas
Entered as second class matter May 24, 1923, at the Post Office at Littlefield, Texas, under the act of March 3, 1897

MORLEY B. DRAKE Editor and Publisher
E. M. DRAKE Business Manager
BILL THOMAS Advertising Manager
BILL NORRIS Sports Editor

Subscription \$1.50 Per Year
75c for Six Months

Advertising Rates Given Upon Application



Subscribers who change their addresses, or fail to get their paper, should immediately notify this office, giving both new and old addresses. Communications of local interest are solicited. They should be briefly written, on only one side of the paper, and must reach this office not later than Wednesday noon of each week. The right of revision or rejection is reserved by the publisher.

Advertising that does not show in its text or typography that it is paid for must be marked as an advertisement. All local advertisements remain in this paper for the time specified or until ordered out. All notices, it matters not by whom nor for what purpose, if the object is to raise money by admission fee or otherwise, is an advertisement and when sent in for publication must be paid for at the regular advertising rate per line for each issue printed.

Obituaries, cards of thanks, and resolutions of respect will also be charged for at the same rate.

Any erroneous reflection upon the character, standing or reputation of any person, firm, or corporation which may appear in the columns of the Lamb County Leader will be gladly corrected upon its being brought to the attention of the publisher.

In case of errors or omissions in local or other advertisements, the publisher does not hold himself liable for damage further than the amount received by him for such advertisement.

OUR NEXT PRESIDENT

Months earlier than ever before in this generation, our national pre-convention political pot is boiling.

Even though the national convention of the major political parties are still some nine or ten months away, citizens of the United States, north, south, east and west, are giving attention to the political outlook for 1936 when presidential candidates will be nominated, party platforms drawn and, what promises to be, intensive campaigns waged.

Who those candidates will be and what kind of platform of government they will stand upon is the subject already tantalizing the minds of voters of all political faiths and beliefs. Such discussions are heard at every hand with preferences in candidates and opinions on government freely expressed.

The situation is brought about, no doubt, through the fact that the people of the United States are today more government-minded than we have ever known. This is as a result of the last half dozen years of struggle through a national economic upheaval and consequent attempts at re-adjustment.

Be that as it may, in the language of the street, the questions of the hour and heard at every turn are: "What do you think of the political outlook for 1936? and who

do you think will be our next President?"

In the wide variance of replies offered to that question comes the opportunity to conduct a nationwide pre-convention poll, the results of which will no doubt be of great interest to voters everywhere.

To the end, that the publishers of the Lamb County Leader are of the opinion that such poll will be of great interest to its subscribers, this newspaper has agreed to help conduct the poll. The poll is nationwide, with some 2,000 newspapers throughout the United States cooperating.

Every attempt is being made by all of the cooperating newspapers to conduct the poll along non-partisan lines. Voters are not asked to sign their names. They are asked only to express a preference for candidate and party; to express a choice which will help show the political leanings of voters throughout the country at this time.

No matter what your party preference may be, wouldn't you like to know how your fellow-citizens throughout the country are viewing the 1936 political situation? As citizens and voters we would like to know and that is why this newspaper has agreed to cooperate with the 2,000 other newspapers publishers, who are of like opinion, in conducting the poll.

Elsewhere in this issue is the "Our Next President Poll" ballot which we are offering to our subscribers, giving them the chance to vote in this nation-wide poll. It affords you three choices of the possible three leading tickets in the 1936 field. It is your privilege to vote as you choose and with no strings attached. You are not asked to sign your name and thus in any manner politically commit yourself. Your honest conclusion and choice, fairly given, is all that is suggested.

Why not clip the ballot and vote it now! Then mail it to this newspaper. Your ballot will then be sent to New York where a central office staff will tabulate the votes and give us state and national returns each week.

Publishers Autocaster News Service of New York, which serves the Lamb County Leader and all other newspapers cooperating in conducting this poll, has agreed to perform the duties of a national headquarters on this poll. The editor of that newspaper service has assured us that most accurate tabulation



SEE SOCIETY PAGE

Nothing Down AND 36 MONTHS IN WHICH TO PAY IN THE PURCHASE OF—

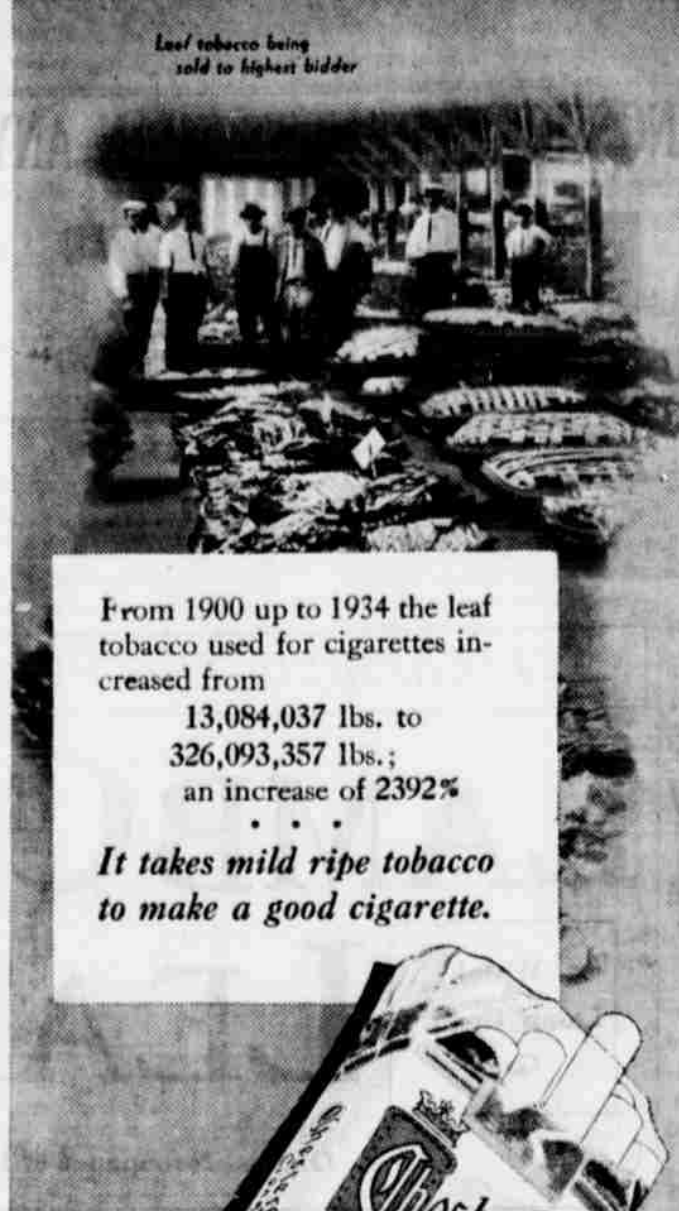


- Crosley Shelvador Electric Refrigerators.
- Kerosene Electrolux Refrigerators.
- Kerosene Automatic Hotwater Heaters.
- Kerosene Circulating Heaters.

Take advantage of our liberal payment plan and enjoy new comforts and conveniences in your home.

Carl Smith

BATTERY & ELECTRIC
LITTLEFIELD PHONE 71



From 1900 up to 1934 the leaf tobacco used for cigarettes increased from 13,084,037 lbs. to 326,093,357 lbs.; an increase of 2392%

It takes mild ripe tobacco to make a good cigarette.



© 1935, LIGGETT & MYERS TOBACCO CO.

During the year ending June 30, 1900, the Government collected from cigarette taxes \$3,969,191

For the year ending June 30, 1934, the same taxes were \$350,299,442 an increase of 8725% —a lot of money.

Cigarettes give a lot of pleasure to a lot of people.

More cigarettes are smoked today because more people know about them—they are better advertised. But the main reason for the increase is that they are made better—made of better tobaccos; then again the tobaccos are blended—a blend of Domestic and Turkish tobaccos.

Chesterfield is made of mild, ripe tobaccos. Everything that science knows about is used in making it a milder and better-tasting cigarette.

We believe you will enjoy the

will be given the vote and that only actual votes from participating newspapers will be counted.

Here is a chance for every reader of this newspaper to vote his pre-convention Presidential choice for 1936. Clip, vote and mail the ballot to us today. As soon as the first early returns have been received we will be in position to inform you when the final nation-wide results may be expected.

Vote early and we can all know how the Presidential winds are blowing!

Morton P. T. A. Sponsors "Round The World Tour"

The Parent-Teachers Association of Morton is sponsoring a "Round the World Tour" for Friday evening, October 11.

Mrs. F. E. Rushing, Chairman of Ways and Means Committee of Morton P. T. A. will be in charge of arrangements.

"All aboard for Mexico," Africa, Italy, Holland, Russia, China, India, Alaska and America!" will be the conductor's cry Friday evening, October 11, at 8:30, Central Standard Time.

School buses will be transformed into streamlined trains, ocean liners and palatial air liners as needed. The Cosmopolitan Special will leave from the north side of the square and will visit eight homes—each gaily decorated to carry out the atmosphere of the country it represents. At each "country" appropriate entertainment will be on sale at a penny a portion.

The ninth stop will be at the White House (or better known as the high school gym) where Uncle Sam, the President, and the First Lady will welcome the globe-trotters home.

Round-trip tickets in this world

tour have been reduced from one thousand dollars to ten and twenty-five cents. All pre-school children are invited to make the trip free of charge.

The proceeds will be used to build sidewalks around the school.

Morton Theatre To Have Formal Opening Friday, October 18

The new movie theatre, recently built in Morton by W. B. Blankenship, also proprietor of the Wallace Theatre, Leveland, is scheduled to have its grand opening Friday, October 18. The program has not yet been arranged in all its details, but is expected to be a gala occasion, and one which will be remembered.

Willis Brooks, formerly of Plainview, has been employed to manage the Morton house.

After opening the theatre will be in operation each night thereafter, with matinees on Saturday and Sunday afternoons, and a preview every Saturday night at 11 o'clock.

Lubbock Man Praises Preachers Hair Tonic!

Says Mr. E. C. Neal "Preachers Hair Tonic cleansed my scalp of a bad form of dandruff and itching. Never have to oil or wet my hair to comb it. Has own natural oil since using Preachers Tonic. Was quite grey, but it has made my hair back to dark brown, natural color before turning gray. Consider it a blessing for any kind of scalp and hair troubles. Gray hair will surely go back to its color before turning gray. If used according to directions." Sold by good Drug Stores Barbers and Beauticians.

Buy Where Prices Are Low

We have always sold GOOD PRODUCTS at REASONABLE PRICES, WITH THE RESULT THAT WE HAVE A CONSTANT INCREASE IN THE NUMBER OF REGULAR CUSTOMERS. Buy from us and save money.

GASOLINE KEROSENE GREASES OILS Wholesale and Retail PENNSYLVANIA TIRES

Texas Motor & Fuel

East End of Concrete on Highway No. 7 J. H. Barnett, Mgr.

INSTALS NEW COUNTERS

The Strickland Tailor Shop, Morton, has installed some new counters.

Bleeding Gums Healed

The sight of sore gums is sickening. Reliable dentists often report the successful use of LETO'S PYORRHEA REMEDY on their very worst cases. If you will get a bottle and use as directed, druggists turn money if it fails. — Stokes-Alexander Drug Co.

ters and other improvements in men's store department of the clothing and pressing plant this week

Drs. Nelms & Nelms
CHIROPRACTORS
Vit-O-Net Baths - Massage
1/2 Block West of Littlefield Hotel on West 5th Street
Dr. J. E. Nelms - Dr. Hazel Nelms
Graduate Chiropractors
TELEPHONE NO. 5

Lighting Recipes.

The modern I.E.S. lamps are ideal for reading, sewing or any other eye tasks which require artificial illumination. Indirect lighting is achieved through the use of a glass reflector which directs the light to the ceiling. Then this same reflector also diffuses the light which is directed downward.

There should be good general illumination for the whole room as well as a good glareless light for a specific visual task. The I.E.S. Better Sight Lamp eliminate sharp contrasts by throwing light up to the ceiling, where it is redirected to other parts of the room.

I.E.S. Lamps of attractive appearance and certified design may be purchased at our local office.

SEE THIS NEW LAMP AT OUR SHOWROOM



IMPORTANT
Be sure to look for the authorized certification tag. It isn't on I. E. S. Better Sight Lamp if it doesn't have this tag.

Texas Utilities Company

THE DIVORCE COURT MURDER

by MILTON PROPPER...



© HARPER & BROTHERS, 1935

SEVENTH INSTALLMENT

...persons are in an office of the law firm of Daw-
 ...Quire and Locke at Phila-
 ...a master hearing in the
 ...case of Rowland vs. Row-
 ...under way. Mrs. Rowland,
 ...by her lawyer brother,
 ...Mr. Willard, the de-
 ...the court clerk and Mr. Daw-
 ...the master, are the six per-
 ...There is a new development
 ...case. After failing to defend
 ...against the charge of adul-
 ...earlier hearings, Mr. Row-
 ...evidence and asks the
 ...permission to produce wit-
 ...and resist the suit. Judge
 ...overrules the heated objec-
 ...of Mr. Willard, and orders the
 ...brought in. Rowland's law-
 ...to get the witness but
 ...her dead—chloroformed. She
 ...Barbara Keith, wife of a

prominent Philadelphia business man.
 Judge Dawson phoned for the police.
 Detective Tommy Rankin is assign-
 ed to the case. He is now ques-
 tioning all of the parties involved
 in the case. NOW GO ON WITH
 THE STORY.

According to the court reporter's
 record, that was all he said—name-
 ly, that at 11:30, a stranger, who
 Mr. Willard later informed him was
 Mortimer Keith, husband of the
 murdered woman, appeared unex-
 pectedly from the hall, looked
 about as though puzzled, and then
 left quickly without a word.

To Rankin, now, the incident was
 of utmost significance. Months
 before it could even have been con-
 jured that his murdered wife would
 be a leading witness to Mrs. Row-
 land's own infidelities. Mr. Keith
 had been present at the scene of
 Rowland's apprehension! What
 could his interest in that intrigue

possibly have been? How was he
 apprised of the rendezvous at the
 Inn, and what did he expect to find
 there?

Instinctively, Rankin perceived
 that an immediate answer to these
 questions was essential to the solu-
 tion of the crime. Going to the
 office door, he called Jenks to sum-
 mon Miss Edmond.

When the secretary appeared, he
 motioned her a seat and returned
 to the lawyer's swivel chair.

"Sit down, Miss Edmond," he
 said brusquely. "You know, of
 course, that I have charge of the
 investigation of this crime. I am
 questioning everyone connected with
 the divorce hearing. You are the
 correspondent, I believe; I suppose
 then that you recall all that hap-
 pened the night of Wednesday, Feb-
 ruary first, at the Sunset Inn."

Perfectly composed, the girl smiled
 quietly. "Yes, quite clearly," she
 admitted freely. "I could hardly for-
 get it as I was unfortunately in-
 volved."

"You've also been told," the de-
 tective pursued, "that the dead wo-
 man is Mrs. Keith—Mrs. Mortimer
 Keith. Are you acquainted with her
 or her husband?"

Though Jill Edmond's tone did
 not change, he caught an expression
 of wariness in her gaze before
 she could veil it.

"No, not personally, Mr. Rankin,
 as Mrs. Rowland's secretary, I never
 had occasion to deal with them.
 Of course, I've vaguely heard of
 them as people prominent in Phila-
 delphia society."

"I have here the complete story
 of the—er—escape at the Inn,"
 Rankin tapped Mr. Simpkins' steno-
 graphic report. "Among other facts
 it states that at eleven-thirty, just
 after Mrs. Rowland invaded the
 bedroom, Mr. Keith arrived and en-
 tered behind her. At least, you
 remember that?"

As he paused, the girl merely
 nodded, her very silence an indica-
 tion of her vigilance.

"What I want to learn, Miss
 Edmond, is why he appeared like that?
 How was he connected with this

affair between you and the Row-
 lands?"

The secretary shook her head. "I
 don't think I can tell you that, sir,"
 she answered. "I don't know why
 he came. In fact, he was a total
 stranger to me until some time
 later Allen—Mr. Rowland identifi-
 ed him as Mortimer Keith."

"Surely he must have offered
 some explanation for his intrusion
 into an embarrassing domestic sce-
 ne in which he had no concern,"
 Rankin pressed.

"I don't believe he said a word,"
 Miss Edmond returned. "He didn't
 remain over a minute; he just came
 in from the hall and looked about;
 then he seemed to realize he was



"I was my own detective," said Rowland.

meddling and turned and went out
 silently."

Rankin sensed that she chose her
 words carefully. "You have no idea
 what brought him to that particular
 place at that time?"

Imperceptibly the secretary hesi-
 tated, but her reply was positive
 and direct.

"Not the least, Mr. Rankin. He
 probably had no reason. If he hap-
 pened to be stopping at the Inn
 that night, he couldn't help coming
 forward when he heard the commo-
 tion."

The detective placed small stock in
 this idea.

He retired to the library where
 Dr. Sackett waited, impatient to
 present his report and get away.
 His examination of the body con-
 firmed Dr. Clark's original diag-
 nosis.

"Thanks very much, doctor," Rankin
 said, when the physician completed
 his summary. "Now, I'd appreciate
 it if you'd do one more
 service for me before you leave.
 Attend to shipping the body to the
 morgue."

Grumbling, Dr. Sackett neverthe-
 less proceeded to supervise the dis-
 posal of the corpse. Hardly had he
 gone when Johnson appeared from
 1505, trying his fingerprint kit to-
 gether.

"I'm just about finished in there,
 Tommy," he said. "I've located
 plenty of prints all over the place—
 on the table, the desk and the book-
 case. All I need now is to find out
 who owns them."

"Well, I've had the entire staff
 detained," Rankin returned, "so you
 can take their prints. And practi-
 cally every visitor who entered
 fifteen-o-five is here too. Get Jenks
 to help you with that. He paused.
 "How about marks on the doors
 and windows, Johnson. Did any come
 from there?"

The expert shook his head.
 "Nothing doing, I'm sorry to say.
 I examined the sills and knobs
 thoroughly, but they were as clean
 as a whistle."

"And the chloroform bottle? Were
 there any prints on that?"

Again Johnson shook his head
 and the detective pursed his lips in

disappointment.

The expert raised a hand and
 smiled quizzically. "One moment,
 Tommy, not so fast. have you
 searched the office that held the
 body at all?"

"No, I haven't had time," Rankin
 replied.

"I made a pretty complete canvass
 of the place while collecting my
 prints; and I located something I
 supposed you had missed. These
 were stuffed way down in the bot-
 tom of the wastebasket under the
 desk—out of sight."

Johnson produced a pair of yellow
 sport suede gloves, of expensive
 quality. Turning back the cuff, the
 detective disclosed the label of an
 exclusive haberdashery on Chestnut
 Street. They were clean and little
 worn, and he eagerly noted their
 size, 7 3-4.

The expert started to leave. "All
 right, Tommy, I'll do the best I
 can," he promised. "I rather ex-
 pected you'd be interested in my
 find."

Now he returned to Mr. Dawson's
 office, switched on the central light
 and summoned Allen Rowland.

He motioned the young man to
 a chair. "Now I'm ready to discuss
 more important matters with you,"
 he said; "primarily about your evi-

(Continued on Classified Page)

**EASY PAYMENTS
 ON STAR
 TIRES**

NO CARRYING CHARGE

DAVE HICKS

In Vinther Motor Co.
Building—Littlefield

NOW!

A Special Service For
Buick and Pontiac
 Owners

BOB LATHAM—FACTORY TRAINED

Brings to Buick and Pontiac owners of Littlefield and Section
 21 Years of Experience in the repair and servicing of these cars.
 We extend to all Buick and Pontiac owners a special invitation
 to avail themselves of this department of our business.

LITTLEFIELD MOTOR COMPANY

Buick and Pontiac Sales and Service

Phone 11

Enochs Lands

IN BAILEY AND COCHRAN COUNTIES

We are offering for sale Improved Farms and
 Unimproved Land at Prices and on Terms that
 will appeal to the Farmers interested in Owning
 a Home.

Prices & Terms

IMPROVED FARMS

\$25 to \$30 per acre. \$500 Cash; balance, 20-year crop
 Payment Note—Or, \$1 per acre each year for 13 years,
 and Remainder in 14th Note.

UNIMPROVED LAND

\$15 to \$20 per acre. \$350 Cash Payment—Balance, Same
 Terms as Above.

I. C. ENOCHS

LITTLEFIELD, TEXAS

BURLESON Funeral Home

AMBULANCE

When you think of FUNERAL DIRECTORS,
 think of BURLESON'S. The Oldest Funeral
 Establishment in Texas, West of Lubbock.

Day Phone 77 — LITTLEFIELD — Night Phone 61

Announcing the Establishing of— PUBLIC SCALES

I have designated the scales at the Doggett Grain Co. as Public
 Scales—State Tested and Bonded—and have appointed B. L.
 Cordill, manager of the Doggett Grain Co., as a Deputy Public
 Weigher.

C. O. Robbins

PUBLIC WEIGHER

Keep a Good Laxative always in your home

Among the necessities of home is
 a good, reliable laxative. Don't be
 without one! Do your best to pre-
 vent constipation. Don't neglect it when
 you feel any of the disagreeable symptoms
 coming on. "We have used Thedford's
 Black-Draught for 21 years and have found
 it a very useful medicine that every family
 ought to have in their home," writes Mrs.
 Perry Hicks, of Balton, Texas. "I take Black-
 Draught for biliousness, constipation and
 other ills where a good laxative or purgative
 is needed. I have always found Black-
 Draught gives good results."

BLACK-DRAUGHT

IT WAS A GREAT DAY FOR THE FARM WOMAN

WHEN **Maytag**

BROUGHT OUT THE FIRST GASOLINE MULTI-MOTOR WASHER!

- Farm washings, that used to require the better part of a tiresome day, became a pleasant duty of less than two hours when the Maytag Multi-Motor washer was introduced. Today it is the favorite farm washer everywhere.
- The Maytag's roomy, cast-aluminum tub keeps the water hot for an entire washing. The Roller Water Remover has an enclosed drain that reverses itself. The auto-type shift lever, the handy hinged lid, adjustable legs, and a score of other Maytag features are a joy every washday.
- The Gasoline Multi-Motor is built for the woman to operate. It starts with a thrust of the foot pedal—operates smoothly and quietly. Electric models operate with electricity.

SPECIALLY LOW PRICES NOW
 Ask about the easy payment plan.

Free demonstrations in city or country.

THE MAYTAG COMPANY, MANUFACTURERS, FOUNDED 1893, NEWTON, IOWA

MAYTAG-STRATTON CO.
 PLAINVIEW-LITTLEFIELD
 J. A. BARTON, Littlefield Representative
 203 Phelps Ave.—Littlefield

**Beware Coughs
 from common colds
 That Hang On**

No matter how many medicines you
 have tried for your cough, chest cold
 or bronchial irritation, you can get re-
 lief now with **Cremomulsion**. Serious
 trouble may be brewing and you can-
 not afford to take a chance with any-
 thing less than **Cremomulsion**, which
 goes right to the seat of the trouble
 to aid nature to soothe and heal the
 inflamed membranes as the germ-laden
 phlegm is loosened and expelled.
 Even if other remedies have failed,
 don't be discouraged, your druggist is
 authorized to guarantee **Cremomulsion**
 and to refund your money if you are not
 satisfied with results from the very first
 bottle. Get **Cremomulsion** right now. (Adv.)

**RAVENWOOD - NIGGERHEAD
 SUNSHINE - MAITLAND**
BEST COLORADO COALS
 Sold by YOUR Coal Dealer
**SOLD IN LITTLEFIELD
 —BY—
 PORCHER
 COAL & FEED CO.**
 (Formerly Heinen Coal & Grain)

SOCIETY.

Former Littlefield Girl Weds Dallas Man September 27

The marriage of Miss Prudence Courtney and C. D. Hendon was solemnized at the home of the bride's sister and brother-in-law, Mr. and Mrs. M. H. White, 5110 Vanderbilt Avenue, Dallas, Friday morning, September 27, at 8:30 o'clock.

The ceremony was performed by Rev. Harrison Baker, pastor of Mungler Place Methodist Church, in the presence of Mrs. Homer Snowden, sister of the bride, Mr. and Mrs. M. H. White, sister and brother-in-law of the bride, and Mrs. Weldon Davenport and Miss Madeline Cole.

The bride, who is the daughter of Mr. and Mrs. E. G. Courtney of this city, was becomingly attired in a green ensemble suit with corresponding accessories, and was attended by her sister, Miss Pauline Courtney, who wore navy blue.

The groom is the son of Mr. and Mrs. A. J. Hendon of Henderson, Texas, and was attended by Weldon Davenport of Dallas, Mr. Hendon has been a resident of Dallas for eleven years.

Mrs. Hendon was reared in Littlefield, and graduated from the Littlefield High school with the 1932 class. She has lived in Dallas for the past two years. For the last year she has been bookkeeper for the Pratt Auditing Company of that city.

She is a young lady of pleasing personality, and was exceedingly popular among the younger set of this city.

Mr. Hendon is buyer for Sears-Roebuck Company, and the couple will make their home in the Alta Vista Court, Dallas.

Mrs. Lena Howard Entertains Bridge Club Thursday

Mrs. Lena Howard was the gracious hostess Thursday afternoon to members of the Thursday Bridge Club at the home of Mr. and Mrs. W. G. Street on East Fifth Street.

The Halloween motif was carried out throughout the party.

The games Thursday consummated the bridge contest in which two teams composed of the members had been playing. The group led by Mrs. S. J. Farquhar were the winners, and consequently will be entertained by the losers in the near future.

Mrs. E. S. Rowe received the travelling prize, and Mrs. W. D. T. Storey was presented with the prize given for the largest number of words beginning with the letters "Caps", after five ladies qualified for it, and then cut for the ward.

Delicious refreshments were served to Mesdames Pat Boone, C. E. Cooper, Mallory Etter, S. J. Farquhar, John Porcher, E. S. Rowe, W. O. Stockton, J. M. Stokes, W. H. Gardner, Dennis Jones, Bob Lewis, W. D. T. Storey, W. G. Street, J. H. Barnett, T. Wade Potter, and a visitor, Mrs. Gregory of Deland, Fla.

Mrs. R. T. Badger Leaves Saturday On Month's Trip

Mrs. R. T. Badger left Saturday on a month's trip to Central and South Texas.

Going direct to Austin she is visiting Mr. and Mrs. M. H. Reed, this week, and will then go to San Antonio, where she will spend some time with her brother and sister-in-law, Mr. and Mrs. Brandt Badger. From that city she will go to Kennedy to visit her son and daughter-in-law, Mr. and Mrs. Marion H. Badger.

Badger will go to Houston, where she will spend some time with her daughter and son-in-law, Mr. and Mrs. Aubrey Howard and family.

Have Called Meeting To Discuss Minstrel

At a called meeting of the Business and Professional Women at the home of Dr. Hazel Nelms Monday evening, committees were appointed to make arrangements for the manless Minstrel, which the club is sponsoring as follows:

Wardrobe Committee—Mrs. E. J. Newgent, Mrs. T. S. Sales and Mrs. H. W. Wiseman; advertising—Miss Iva Dell Carrell, Mrs. Payne Wood, and Mrs. Morley Drake; general arrangements—Misses Gladys Jones, Miss Mary Belle Montgomery, and Miss Fern Hoover.

Prospective members of the cast were also discussed and selected. Plans for a dance for Thursday evening, October 17, were also discussed.

THAXTON'S has cotton picking needs. 25-tfc

Order Eastern Star To Meet Friday Evening

The local Chapter of the Order of Eastern Star will hold their regular meeting Friday evening at Masonic Hall.

Mrs. J. H. Barnett, Worthy Patron, urges all members to attend.

ANOTHER BIG 3-DAY FOOD SALE!

PRICES GOOD FOR **Friday-Saturday-Monday**

Sugar 10 Lb. Cloth Bag **53**

POTATOES Brown Beauties, 10 Lbs. **11c**

ORANGES Nice Size, Dozen **12½c**

TOMATOES Fresh Pinks LB. **3½c**

CRACKERS Excell, 2 lb. box **18c**

SYRUP Brer Rabbit, 10 lb. can **52c**

SOAP Blue Barrel, 6 Giant bars .. **25c** Blue Barrel Soap Flakes, 5 lb. box **43c**

RAISIN BRAN SKINNERS
Pkg. **12c**

SNOWDRIFT
With All Its Locked-In Goodness!
3 lb. Pail **57c** 6 lb. Pail **1 10**

Libby's
Corn— 25c
Fancy Country Gentlemen, 2-No. 2 Cans
Pineapple— 25c
Crushed or Tidbits 3-8 oz. Tins
Peas— 25c
Fancy Tiny Variety, 2-No. 1 Cans

MEAT Specials

STEAK Round, Loin, T-Bones, Lb. **17½c**

CHEESE Fresh Longhorn, lb. **23c**

DROMSTIX
They are Delicious
Try Them, 6 for **25c**
Plenty of Fresh Killed Fryers Saturday

DRY SALT JOWELS
Lb. **22c**

SAUSAGE
Seasoned Just Right Lb. **17½c**

Catsup— Wapco, 14-oz. Bottle, 2 for **25c**
Mustard— Ma Brown, 2 qt. Jars for **25c**
Tomatoes— Wapco, 3 No. 2 Cans for **25c**
Peanut Butter— Wapco, Qt. Jar **25c**
Jelly— Rex, assorted flavors, 5-lb. Can **35c**
Oats— Moonrose, with Beautiful Chinaware, pk. **25c**
Soup— Phillips, 3 Cans **25c**
Raisins— Thompson Seedless, 4 lb. pkg. **25c**
Tissue— Milady, 5 rolls **25c**

POLY'S comin' to TOWN

See Page 5

OPEN ALL NIGHT

MODERN STATION — CLEAN REST ROOMS — FEDERAL TIRES — ACCESSORIES

Wholesale and Retail

McCormick Bros. Independent

Wholesale and Retail

East End of Pavement on Highway No. 7, Littlefield

WILDCATS DRUB WILDCATS 8 TO 0

Wildcats Talley With Touchdown, Safety

Bill Sanders' Wildcats punned and end-swept the Talley team into a daze here tonight to take an 8-0 non-sports victory before about a cheering fans.

In the first canto, a weak punt from their own 5-stripe line on the Bulldog 15. Wildcat and thrust a path to the goal, and Quarterback Talley kicked off on the goal, and Quarterback Talley kicked off on the goal, and Quarterback Talley kicked off on the goal.

In the third quarter, when the Talley team tried to kick their way into the game, the ball belted back to the Wildcats, and before a Talley player could get away after the kick, he was collared behind the goal for a touchdown.

The continued loss of backs to the Talley team, and Jimmy Foust, the Talley team's only smooth punter, and Slow Bulldog punts, and a third of which were blocked by the Talley team, cost them the game.

Lambert's sweeping jour-

neys around end lent color to the match, while smashing tackles by Capt. Brantley and Rowe broke up several Bulldog sallies.

Gibson's lengthy punt returns, Pierce's pass receiving and the work in the line of James Neely, Moore, Wilson, Lakey, Melton and Elmer McKnight, all heaped fuel on the Littlefield flame.

Hoover, Tahoka's 128-pound mail-carrying flash, roamed through holes for occasional gains, but for the most part was kept in check by fast Littlefield tacklers. Captain Minor, Brower, Snowden, Stephens and Rogge were other Bulldog stand-outs.

Olton Outclasses Hub City Cowhands, 26-13

Olton's football warriors whipped into a frenzy on their home turf and outclassed Lubbock's visiting Cowhands, 26-13, Friday.

Leading 14-13 at the half, Mustang backs came to life in the game's final four minutes and ran a long pass to the Lubbock 7. A Lubbock penalty carried it to the 2-stripe, then Fullback Bryant blasted through center. Later, Dodson intercepted a pass and raced 70 yards for the final score.

Mr. and Mrs. J. H. Barnett made a business and pleasure trip to El Centro Sunday, returning home Monday night.

Sport World

WHO? Littlefield vs. Slaton.

WHAT? A darn good football game.

WHERE? Right here at home.

WHEN? Friday night.

WHY? Well, it's a long story—

What promises to be easily the best football game of the season, thus far, will be played here under lights Friday. Blase fans who yawn and stay at home this week will mentally kick themselves all over the block.

Slaton will present a brother-act thought to be the fastest thing in a related backfield in Class B football, insofar as West Texas is concerned. The Brothers Henry, Warren and Lloyd if you know them, will be standouts in every Tiger offensive. Warren is fullback and Lloyd is quarter. These two ball-luggers are one of the chief reasons why the Tigers crushed Falls B team 51-0. They also had a little something to do with the 14-6 drubbing the Tigers handed Floydada the week before. And Floydada boasts its strongest team in years.

But back in the Wildcat lineup there will be, (we hope) a certain Bob McKnight, a kicker by training, a passer through hours of practice, a ball-carrier by heritage, and quite a defensive pillar by instinct. Also back at work, we trust, will be one Jim Foust, whose alert cerebrum is packed with plays devised by another football player, Coach Bill Sanders.

Then again, there might be, thanks to careful nursing, a fellow called Knowlin Tubbs, who in his first season of active play has ripped a whole or three in early-season lines. Besides this, a gee called Walker will be back in there to spell Neely at center once in a while.

Add all these fresh names together and they might spell disaster for Slaton's big Bengals. For these fresh names compose the formidable lineup which is Coach Sanders' best bet, and which he believes will be the combination to stop Slaton—a thing which no other set-up has been able to do.

No, this will be no ordinary Friday for fans. The grid chefs poured on their hottest oil and have brewed their most powerful potions in order to arrange the most tasty football menu of the year. If you football fans are hungry, come out to the home lot Friday night and savor the flavor of REAL gridiron goodies.

Former Littlefield Wildcats will battle each other when West Texas Teachers clash with McMurray on the Teachers turf at Canyon tomorrow.

Big Bill Carter, Littlefield '32, who played some of the headiest, most consistent football every played on a Wildcat team, and C. L. Harllas, another powerful Wildcat threat who culminated a high school career here in 1931, will both be in the McMurray lineup tomorrow.

Grappling with them from the Teachers side of scrimmage will be Elwood Dow of more recent Cat vintage. Dow carried the mail for the Cats and graduated in '33. He and Carter played together in '32 while Harllas and Carter were team mates in '31. All three left names in Littlefield football sands which, we believe, won't be eclipsed in quite a spell.

The Teacher-Aggie game will be a Littlefield drammer all its own. Fans who saw Carter, Dow and Harllas perform should get quite a boot out of running down for tomorrow's game at Canyon.

the evening group. The Choral club will furnish the music and it will be well done. The evening worship is growing in interest. This hour gave a drama last worship period which was appreciated by all.

Young people will have their session in their room at 7 p. m. A large crowd found their way into this service last Sunday evening, and why not? It is an interesting group and the subjects they discuss are practical and attractive.

TABERNACLE BAPTIST CHURCH

Premillennial, Missionary Evangelical
Jno. R. Denning, Pastor

Next Sunday at both services we are preaching upon subjects which are not only intensely interesting, but vital.

At the eleven o'clock service, our subject will be: "Grace vs. The Law." A Bible comparison between Sinai and Calvary.

The night message will be the second of a series on the miracles of the cross: "The Rent Vell."

We seek the entire membership to assist us in making our Sunday School attendance the largest of the year next Sunday. "And they stood every man in his place round about the camp."

CHURCH OF CHRIST

Littlefield Drive

Bible Study—9:45 a. m.
Preaching—11 a. m. and 7:45 p. m.

Lord's Supper—11:45 a. m.
Young People's Meeting—7:15 p. m.

Little Folk's Meeting—7:15 p. m.
Ladies' Bible Class—3 p. m. Tuesday.

Prayer and Praise—7:30 p. m. Wednesday.

Teacher's Training Class—8:30 p. m. Wednesday.

The officers of the church report large crowds at all services, with one addition at the Sunday morning service. Come and grow with us.

G. A. Dunn, Jr., will fill the pulpit Sunday as usual. The subject for the morning hour will be "The Church—Its Worship," and for the evening, "The Church—Its Terms of Admission." Come and study with us.

CHURCH OF THE NAZARENE

Eighth and S. Marra
Eugene Wood, Pastor

Sunday School—10 a. m.
Morning Worship—11 a. m.
Evening Service—7:45 p. m.

At the morning hour we will hold communion of the Lord's Supper. And let all the members remember our annual meeting at the close of the morning service.

Everyone invited to all our services. You will receive a friendly welcome.

Visitors Will Be Notified At Ritz And Palace Shows

Arrangements have been made that those qualifying for cash awards Saturdays and first Mondays may attend the Ritz and Palace Theatre programs, and will be notified at those theatres if their names are called and ample time given them to go to where the awards are being made.

See the Coleman gas stoves, burning natural gas, at Thaxton's, 25-tfc

El Martis Club Entertained By Mrs. L. C. Hewitt

Members of the El Martis Club were delightfully entertained Tuesday afternoon at the home of Mr. and Mrs. L. C. Hewitt, when Mrs. Hewitt was hostess at four tables of bridge.

Beautiful garden flowers, including Dahlias and roses, adorned the entertaining rooms for the occasion.

Mrs. S. J. Farquhar scored high for club members, while Mrs. Quinton Bellomy was awarded the guest prize.

THAXTON'S sells HOTOVEN CHINAWARE.

Man's Heart Stopped Stomach Gas Cause

W. L. Adams was bloated so with gas that his heart often missed beats after eating. Alderika rid him of all gas, and now eats anything and feels fine.

STOKES-ALEXANDER DRUG CO.

One Man Killed, Two Are Injured In Auto Crash

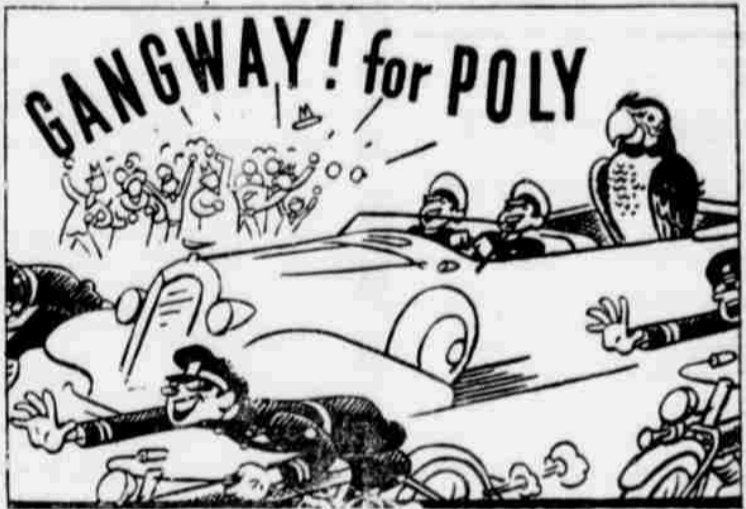
As a result of an automobile-truck crash one and one half miles east of Earth on Highway 28, Monday evening about 6:45 o'clock, one man was killed, and two others seriously injured.

Funeral services were conducted by Rev. H. H. Allen of Spring Lake and Rev. Vernie Pipes of Earth Tuesday afternoon at Spring Lake, for

Cecil Pool, 37, Earth laborer, who died instantly.

Clarence Hyatt, about 27, farmer of near Spring Lake, is critically injured. He is confined in a Plainview hospital, and is said to have "only a chance" of surviving head and internal injuries.

Cary Stafford, about 30, watchman for Farmers Cooperative Gin company at Earth, was rushed to West Texas hospital at Lubbock. He is suffering of a left shoulder that is broken in three places and of severe lacerations of the face. It is expected he will recover.



See Page 7

Doggett Garin Co.

Littlefield Phone 175

Still Open for Business

Announcing the Opening of a—

NEW PANHANDLE

SERVICE STATION

On Highway No. 7

WHOLESALE and RETAIL

—PANHANDLE PRODUCTS
—KELLY SPRINGFIELD TIRES

PHONE 25

Open Day and Night

5 MILES FREE ROAD SERVICE

HARRY HAWTHORN, Agent

WE, TOO, WELCOME YOU TO LITTLEFIELD!

Our Regular \$3.50 Permanent, Good for Saturday and Monday — Only — **1.95**

SHAMPOO and SET 50c
SET 25c
MANICURE 35c

All Work Guaranteed

De Luxe Beauty Shop

FREE This 5 Gal. Galvanized Steel MEASURING BUCKET

When you buy a COLUMBIAN Red Top GRAIN BIN \$3.00 Value.

These famous Columbian Bins make it easy for you to hold your wheat safely and economically for higher prices. You don't have to dump wheat on the ground. They also save the big expense of having to store wheat in terminal elevators. The first year pays for the bin. They last for 15 to 20 years.

COME IN at once and examine these Columbian Grain Bins. Get your FREE Measuring Bucket. This special offer good only for 30 days from this date. So hurry!

Manufactured by COLUMBIAN STEEL TANK CO. Kansas City, Mo., U. S. A.

P. W. WALKER GRAIN & SEED CO.

Littlefield Texas

FOLKS!

We Just Ask You to Visit Our Store and Compare Our Merchandise and Prices With Others

We Will Have Prices on Our Windows

W. J. Aldridge

GROCERY & MARKET

Free Delivery Phone 189

THE CLASSIFIED SECTION

BUY AND SELL HERE

DR. M. G. WOOD
DENTIST
Office in First Nat'l Bank Bldg.
X-RAY AND DIAGNOSIS
Off. Phone 124—Res. Phone 168
Permanently Located in
LITTLEFIELD — TEXAS

B. A. Prestridge, M. D.
PHYSICIAN and SURGEON
Office Northeast Corner Square
Hours 9-12 2-5
Res. Phone 13—Office Phone 60
OLTON, TEXAS

DR. T. B. DUKE
Physician and Surgeon
OFFICE SECOND FLOOR
DUGGAN BUILDING
Phone Office 229 Residence 198

T. WADE POTTER
ATTORNEY AT LAW
Office in First National Bank
Building
Littlefield, Texas

Anything Wrong
With Your Watch?
We guarantee our repair work
and appreciate your business.
R. R. HARRISON
JEWELER
In Stokes-Alexander Drug Co.
LITTLEFIELD

Your Car
**Vacuum
Cleaned**
Coupe ----- 35c
Sedan ----- 50c
**City Hall Texas
Station**
Dennis Jones, Prop.

Perfect—
Food and Beer
Perfectly Served
That's why most people
eat at—
Moody's
CAFE
LITTLEFIELD


You Have Wanted A
ROYAL
PORTABLE TYPEWRITER
NOW YOU CAN BUY A
ROYAL PORTABLE
At The Low Price Of
\$49.50
For Sale At
**LAMB COUNTY
LEADER**
Littlefield Phone 27

RATES
Want ads, Rentals, Lost and Found, Exchanges, Lands and Stock, Miscellaneous, etc.
RATES. Classified, first insertion, 10c per line, minimum 25c; subsequent insertions, 7 1-2c per line; obituaries, 5c per line; poetry 10c per line. Unless advertiser has open account, Cash must accompany offer.

WANTED
WANTED TO BUY bundles, heads or threshed grain, Littlefield Farms, Inc. 29-tfc.

FOR SALE
FOR SALE—1935 Chevrolet pick-up. Also practically new McCormick-Deering Rowbinder. J. W. Miller, 12 miles west of Dimmitt, Box 81. 26-2tp.

FOR TRADE—Will trade good milch cow for good bundle feed, kaffir or maize heads. J. H. Lucas, I. C. Enochs office, Littlefield, Texas.

FOR SALE—LOOK!—Must give up new Chevrolet Coach, trunk, 2300 miles, never speeded. Take your car, or cash for my equity. Box 131, Littlefield.

WANTED TO BUY—Coal sacks. PORCHER COAL & PRODUCE CO. 26 tfe

CHANGES MANAGEMENT
The Helpy-Selfy Laundry, of Morton, formerly operated by D. T. Smith, has been taken over by Tom Morgan, the east side barber. Mr. D. T. Smith, the former proprietor is now engaged in the abstract business.

**Easy Way To Free
Your Pet of Fleas**
Here's the quickest possible way to get rid of fleas on cats and dogs or lice on birds—best of all it's odorless.
Simply sprinkle your pet with Buhach, sifting the powder lightly through the fur or feathers. Then watch the vermin roll off! Buhach—guaranteed safe for human beings and animals—is sure death to insect pests. In Handy Sifter Cans at STOKES-ALEXANDER DRUG CO.

23 50 75 125
BUHACH
INSECT POWDER

**DE LUXE
BARBER SHOP**
Haircuts 25c
GERTIN FOWLER, Prop.
ALLEN McDONOUGH

INSURANCE
IS MY BUSINESS
Bill Clark
LITTLEFIELD

BEAN & BEAN
ATTORNEYS AT LAW
General Civil Practice
207 Citizens Nat'l Bank Bldg.
Geo. B. Bean Robt. H. Bean
LUBBOCK, TEXAS

Dr F. W. Zachary
VENEREAL CLINIC
503-4 Myrick Building
LUBBOCK, TEXAS

Walker's
LITTLEFIELD, TEXAS
Office in City Hall
Phone 118

Divorce Court Murder—

(Continued from Story Page)

dence of your wife's infidelity with Campbell."
Rowland made himself comfortable, lit a cigarette and offered Rankin one.
"My lawyer doesn't know anything about it personally," he returned easily. "Only what Mrs. Keith and I were lucky enough to discover two weeks ago; we both went to him and gave him the details."
"Well, exactly what was this occurrence that gave you the chance to defend? And how did Mrs. Keith happen to be a witness to it?"

"Only accidentally; when I needed some one to bear out my story, she was fortunately in a position to help me." Rowland plunged into his account. "But long before my affair with Miss Edmond, my wife and I disagreed because of her friendships with other men. I knew she had many admirers; but I had no reason to believe she was misbehaving with any of them. After she brought suit, however, I moved into my own apartments and began to watch her closely. What was sauce for the goose, I decided, was sauce for the gander, and I hoped, in the end, to get evidence that she was being unfaithful. I was my own detective. First, I paid her chauffeur, Donald Finley, to keep me posted as to when she went out in the evening—both when he drove her himself, and when she dismissed him, because some one else was taking her. On those nights, for the last two months, I waited outside the estate in my car. When she and her visitor left, I would follow them all over town—to parties, theaters and dinners. And Hugh Campbell was her most frequent companion."
"How long has he been acquainted with your wife?" Rankin asked. "Where did they meet?"

"At Soratoga last summer, Adele bet on the races regularly, and Campbell had a couple of horses entered on which she placed bets. They won, and afterward mutual acquaintances introduced them; that was the beginning. Then, last winter, we were at Palm Beach where he had taken a villa; she attended his parties and they saw much of each other at the casino and on the beach. He visited Philadelphia fairly regularly and as been a guest at the Willard home."
"Was the divorce entirely Mrs. Rowland's wish? You opposed it and would have done all in your power to prevent it?"

The young man spread his hands to emphasize his reply. "Certainly I opposed it," he declared vehemently. "I had everything to lose by it—the income Adele settled on me, plenty of leisure, and social position. And I was trustee of my wife's first husband's estate; that was most important. For that, I was as anxious to stay married as Mr. Willard was to force us apart."
Rankin's voice held a note of fresh interest. "Mr. Willard? How did it affect him? Had he a personal concern in the divorce besides his professional desire to win the case?"

"He benefited by it decidedly!" Rowland gave a short, scornful laugh. "The minute Adele was single, the executorship of Tom Marshall's estate—and with it the power to manage its income—reverted to him. But as long as the marriage lasted, I had charge. It was all part of Marshall's clever arrangement to make it difficult for Adele to marry a second time."
"Difficult?" The detective frowned his perplexity. "You'll have to explain, Mr. Rowland. How did he expect to accomplish such a purpose?"

The other shrugged. "Quite simply, through his will, Rankin. You see, Tom Marshall was a smart man and understood his wife as well as I do. And a jealous husband, it seemed inevitable that at his death she would marry again and he intended to forestall that. So in his will, he fixed it that whoever she

married next would be independent of her. In fact, he would actually manage her financial affairs and, through them, her, at least with regard to his property."
"Exactly what did the terms of the will provide?" Rankin inquired.

"In the first place, he made her brother executor of his estate so long as Adele remained single after his death," Rowland elaborated. "It was to direct all investments for both their benefits and turn over to her at least seventy per cent of the annual income. Or, if she married again and was then divorced, the control reverted to him. Naturally, it was to Willard's advantage to keep her a widow; and if she should remarry, induce her to separate."
CONTINUED NEXT WEEK

Olton 4-H Club Boy Feeds Out 50 Head Of Calves

Fifty head of Hereford calves are being fed by Merrill Brigance, 4-H club member of Olton. Merrill will select 15 head of these calves and show them in the car lot division at Fort Worth next spring. Last year Merrill fed 18 head of calves, states Donald Turner, assistant county agent.

State Auditor Carpenter Issues Warning, Pension

According to Orville S. Carpenter, State Auditor, unscrupulous persons are operating throughout the State in connection with the Old Age Pension, and Mr. Carpenter, accordingly, issues the following warning:
"It appears from newspaper reports that unscrupulous persons in several sections of the State have been posing as Old Age Pension agents and have been attempting to collect fees for 'assisting' in securing pensions for old people."
"The people of this state are warned against paying money to

Rid Yourself of Kidney Poisons

DO you suffer burning, scanty or too frequent urination, backache, headache, dizziness, swollen feet and ankles? Are you tired, nervous—feel all unwell and don't know what is wrong?
Then give some thought to your kidneys. Be sure they function properly, for functional kidney disorder permits excess waste to stay in the blood, and to poison and upset the whole system.
Use Doan's Pills. Doan's are for the kidneys only. They are recommended the world over. You can get the genuine, time-tested Doan's at any drug store.
DOAN'S PILLS

MIRROR MANUFACTURERS
NEW MIRRORS . . . RE-SILVERING
Picture Framing—Artist's Supplies
Welmaker Glass & Mirror Works
1009 Avenue Q LUBBOCK, TEXAS Phone 1615
Pure Distilled Water for Drinking Purposes



Plainview Sanitarium and Clinic
Plainview, Texas
THOROUGHLY EQUIPPED FOR EXAMINATION AND TREATMENT OF MEDICAL AND SURGICAL PATIENTS
Departments Include:
X-Ray Obstetrics Glasses Fitted
Pediatrics Dental
And Eye, Ear, Nose and Throat

anyone to help them secure an Old Age Pension or to put their name on the "rolls" or do anything else in this connection for pay."

"Numerous requests are received daily by the Office of the State Auditor. These letters come from all parts of the State from persons interested in Old Age Pensions. These people ask for application blanks and for the names of the proper persons in their districts to whom applications should be made for pensions."

"It is suggested that the people watch the newspapers for facts on pension procedure and wait until the proper agency has been designated to which applications may be made. They should remember that at this time no one is authorized to receive applications for Old Age Pensions."

"The Legislature is now working on the problem of enacting legislation to carry out the provisions of the Old Age Pension Amendment, but at this time no legislation has been enacted and there is, therefore, at present no agency to whom applications may be made."

Lady's Painful Trouble Helped By Cardui

Why do so many women take Cardui for the relief of functional pains at monthly times? The answer is that they want results such as Mrs. Herbert W. Hunt, of Hallsville, Texas, describes. She writes: "My health wasn't good. I suffered from cramping. My pain would be so intense it would nauseate me. I would just drag around, so sluggish and 'do-less.' My mother decided to give me Cardui. I began to mend. That tired, sluggish feeling was gone and the pains disappeared. I can't praise Cardui too highly because I know it helped me." . . . If Cardui does not help YOU, consult a physician.



Soft Water —Is Better!

Shirts ----- 10c
Trousers ----- 15c
Helpy-Self ----- 30c per hr.
SIX MAYTAGS
PHONE 29

Littlefield Laundry

Try a Leader Want-ad for
More Quality Reading
Money—Lamb County Lead
scribe now and Save the Di

**Watson
Produce**
We meet all Prices in
field and Appreciate your
Business

**MOST PARTICULAR
PEOPLE CHOOSE
LON'S CAFE
FOR BETTER FOOD**
LON CAMPBELL, Prop.

ARTHUR MUELLER
Littlefield, Texas - Phone
Representing
Southwestern Life Insurance
Dallas, Texas

**30c
PER HOUR**

We have plenty of machines
and plenty of good hot water.
Give us a try.

**Help-Ur-Self
LAUNDRY**
Opp. City Hall on XIT
Mrs. John Cary, Mgr.
Mrs. E. S. Rowe

**HAMMONS
FUNERAL HOME**
EAST 5TH and LFD DR
AMBULANCE SERVICE
Phone 64 Day or Night

**MONEY TO LOAN
FARMS AT
4 & 5%
Why Pay More?
—See—
J. S. HILLIARD**
Secretary-Treasurer
Littlefield National Farm L
Association for Lamb, Hockley
Cochran Counties
First Nat'l Bank, Littlefield, T

Look At Your Hat,
Everyone Else Do
LYNCH HAT WORKS
1106 Ave. "J"—Between Br
way and Main
LUBBOCK, TEXAS
Men's Hats Cleaned, Blocked,
trimmed—Ladies' Hats Cleaned
and Re-Blocked

**LUBBOCK
SANITARIUM & CLINIC**
Dr. J. T. Krueger
Surgery and Consultation
Dr. J. T. Hutchison
Eye, Ear, Nose and Throat
Dr. M. C. Overton
Diseases of Children
Dr. J. P. Lattimore
General Medicine
Dr. F. B. Malone
Eye, Ear, Nose and Throat
Dr. J. H. Sules
Surgery
Dr. H. C. Maxwell
General Medicine
Dr. Olan Key
Obstetrics
Dr. J. S. Stanley
Urology and General Medicine
Dr. J. P. Medelman
X-Ray and Laboratory
C. E. Hunt J. H. Felt
Superintendent Business Manager
A chartered training school
nurses is conducted in con-
nection with the sanitarium.


PHONE 91
For accurate dependable prescrip-
tions filled from pure, fresh
drugs. Your doctor will be pleased
to recommend our service.
WALKER'S
PHARMACY
At Madden's Drug Store

C. Camp Briefs

Recreation Hall presents a... appearance since eight... and a magazine rack... during the past week... started on improve... ping pong tables. It is... complete several domino... tables within the next

oOo... is due to be in full... the next few days as teams... different barracks have... started practicing. A sche...-barrack play is to be... during the coming week... barracks a team to... company will be cho... are good for a team... will always be in the run-

oOo... field layout was com... week, and work has been... bring this field up to ade... standards. The layout consists... mile track encircling... court, tennis court, vol... court, boxing ring, and soft... The field is arranged... activity will not inter... another.

oOo... K. P. is wanted dur... of their hours, everyone... knows that they can be... the Croquet Court. Most... are rapidly becoming... of the game of mallets, balls... and rivalry compares... of the hardest fought foot... as the soldiers of the... here great fight in each... day.

oOo... is to be the occasion... this Company's first dance... held, October 31, in the... Hall. An excellent or... being obtained for the... and arrangements are be... for our trucks to pick... guests from the... towns. The Recreation... be decorated in a man... to the occasion, and to... of the year.

oOo... Roehm, District Comman... L. Turner, District Ad-

IMPETIGO..

This infectious skin disease is common among children. BROWN'S LOTION quickly heals these sores. First bottle guaranteed. 6c and \$1.00 sizes. WALTERS DRUG Littlefield

Special Offer

LAMB COUNTY LEADER Regular Price \$1.50 and BI-WEEKLY FARM NEWS Regular Price \$1.00

for a short time only Both for 1 Year \$1.25

about our special offers on magazines.

Lamb County Leader

Adjutant visited the camp last Monday, September 30, and spent the greater part of the day in giving every part of the camp a detailed inspection. The entire camp personnel had something to be proud of before Major Roehm left, as he announced that this camp was to be awarded "Best Camp" Banner for the month of September, Major Roehm and Lt. Turner showed us where many improvements could be made and at the present time every one in camp is bending every effort to have these corrections made as soon as possible.

oOo The green and white flag signifying that this is the Best Camp in the Lubbock District is flying directly under Old Glory on the Company Flag Pole every day. The sight of this distinctive designed banner standing out proudly over the

Ends Aching Sore Muscles For longer lasting, quicker relief, use Ballard's Snow Liniment which contains active ingredients to give a more than local action, thus bringing a surge of warmed blood to scatter congestion and more quickly soothe away the pain from aching muscles, sprains, strains, backache and lumbago. Ballard's Snow Liniment, 30c and 60c. BRYAN DRUG COMPANY

POLYMERIZATION



A Supreme Achievement in Gasoline Chemistry An Amazing Stride Forward in Gasoline Quality

THIS is the story of a new... decidedly different... decisively superior gasoline.

A gasoline made by a process utterly novel in the petroleum industry.

A process developed, proved, and perfected in the Phillips laboratories and refineries. A process which not only gives you a vastly improved motor fuel, but also plays an important part in conserving our country's valuable petroleum reserves.

Pioneered by Phillips, this miracle of modern chemistry rearranges the atoms of high-explosive vapors and transforms them into stable, high-octane, outstandingly active gasoline.

This is the superlative product which will now enrich and fortify every gallon of Phillips 66.

The result is a gasoline more obedient to your wishes than ever before... a gasoline which actually steps up pick-up and peeps up power still further... a gasoline which yields more mileage because it gives up more of its energy to each piston stroke... a gasoline so lively that it sets new records for fast starting.

Note well the name of the process: Polymerization—orPOLY, for short. Mark the word well in your memory,



PHILLIPS 77 AVIATION POLYmerized 2¢ extra per gallon Today's Biggest Value in Premium Gasoline

because it is acclaimed as today's greatest advance in gasoline manufacture. Never before in the history of refining has any invention excited so much attention and interest. Again, Phillips has blazed a new trail! Again, Phillips leads in lifting the quality of motor fuel to higher levels of performance and value!

Remember, Phillips 66 is everything it has always been, PLUS! That "plus" is POLY. Hence, when you Phill-up with Phillips 66 POLYmerized, at no increase in cost, you can confidently expect that this greater gasoline will set new standards of service and value for your money.

Inevitably, this sensational gasoline will be the talk of motordom. It is now obtainable at all Phillips 66 Stations. Why not be among the first to try a tankful, and benefit from its unrivaled excellence and economy?

AN INVITATION FROM THE PRESIDENT. Polymerization is a scientific revolution in the making of gasoline. This newly invented process produces premium quality motor fuel, not by physical separation of the crude petroleum as heretofore, but by chemical reconstruction of the lighter gases. Based on my 31 years' experience in the oil business, I can assure you that Phillips Gasoline plus POLYmerization is the finest motor fuel that can be produced by the most modern refinery methods. I invite you to try a tankful of this unprecedented gasoline. After you do so, I will be glad to have you write me any comments you care to make. J. Paul Phillips, PRESIDENT, PHILLIPS PETROLEUM COMPANY, BARTLESVILLE, OKLA.

camp is a great incentive for all connected with the company to put forth their best efforts to keep it here.

oOo More equipment for the Technical Service is due to arrive in the next day or so as Mr. C. M. Munger headed a party on a truck to Dalhart Friday, October 4, for the

purpose of picking up some much needed equipment for use on the project here.

oOo Capt. Wilhite, District Surgeon, Capt. Worth, Commanding Co. 3820, and Lt. Turner, District Adjutant visited with this Company for a short time on last Saturday, October 5.

DON'T LET THIS HAPPEN TO YOU!

Protect Your— HOME FARM BUSINESS

Keithley-Stone

Agency Insurance — Phone 62



TRY A LEADER WANT AD FOR RESULTS

FREIGHT SERVICE THAT JUSTIFIES YOUR BUSINESS

Johnnie Graham Truck Express Loop Amarillo to Littlefield Littlefield, Phone 33 — Amherst Phone 33

Out of DALLAS and FORT WORTH

ROUTE SPROLES MOTOR FREIGHT Oklahoma City LEE WAY Motor-Ways

Does your trade buy mail order merchandise when quality and price are same as yours. At pre-trucking freight rates, if all commerce moved by TRUCK, trucking would employ more men than work for all railroads and all on relief today. ARE YOU FOR TEXAS AND LOCAL LABOR? TRUCK RATES ARE AT LEAST AS CHEAP.

—Johnnie

Trades Day—

(Continued from front page)

herst; Mrs. A. Bontke, Littlefield; Walter Minton, Littlefield; Pirron Winters, Jr., Rt. 2, Littlefield; Mrs. J. T. Baldwin, Rt. 1, Amherst; E. E. Grisham, Pep Rt., Littlefield; Mrs.

Lee Holtkamp, Rt. 1, Littlefield; Herbert Pierce, Rt. 1, Littlefield; Mary Jane Speight, Star Rt. 1, Littlefield; Mrs. R. N. Carpenter, Rt. 1, Littlefield; Eldon Kincaid, Littlefield; Miss Gladys Lawson, Star Rt., Littlefield; J. H. Curtis, Littlefield; Loyd Pollard, Rt. 1, Littlefield.
In an interview with a Leader representative, Mrs. C. E. Cowan, Rt.

1, Littlefield, who received \$40.00, stated: "This is the first time in my life I was ever awarded anything, and when my name was called I was so thrilled, I couldn't explain how I felt. I even believe the shock was greater to Mr. Cowan than to myself. And I am very grateful to the Littlefield business and professional men who made it possible for me to have this award. I have lived in the Littlefield trade territory for 11 years. I have always traded in Littlefield, and will continue to trade here. Henceforth I will always be a big booster for Littlefield."

Credit for the outstanding success of Littlefield's first celebration in connection with the trade expansion program is due to the untiring work of the various organization committees, to G. M. Shaw, who worked with the committees throughout, and to the eighteen business men who in six automobiles went out into the outlying districts on a good will tour, carrying sample copies of the Lamb County Leader, and inviting the residents to come to Littlefield to trade. These groups and the communities they visited are as follows:

Valley View, Pep and Morton District—Sam Rumback, T. S. Sales and Morris Morgan.
Bula, Enochs, Goodland and Causey, N. M.—Mancil Hall, Joe Hale and W. J. Aldridge.

Beck's Gin, Circle Back, Baileyboro—Jack Brannen, Raymond Renfro and Bob Cox.
Whitharral, Anton and Hodge—John Porcher, Joe Hale and Horace Moody.

Spade, Cotton Center and Newhome—L. B. Stone, Archie Dale and G. M. Shaw.

Earth, Filedon, Hart's Camp, Circle and Spring Lake—J. M. Stokes, Joe Replin and Joe Hale.

Another big day is expected next Saturday, when various sums of money will be given away at 10:30 a. m. in the block between the Lamb County Leader, W. J. Aldridge's Grocery and the Palace Theatre; and various amounts again in the afternoon at 4:30 at the same location. Extra values are also being planned for this Saturday by the local merchants in every line of merchandise.

Cotton Yield—

(Continued from front page)

exclusive of linters, compared with 4,962,384 bales to that date last year and 5,908,071 bales in 1933.

The condition of the crop Oct. 1 was reported 64.0 per cent of a normal, compared with 64.5 on Sept. 1 and 73.6 on August 1 this year, 55.9 on Oct. 1 last year and 57.9, the 1924-33 October 1 average.

The indicated yield was reported at 191.5 pounds per acre, compared with 192.0 a month ago, 198.3 two months ago, 170.9 produced last year and 177.1, the 1924-33 average yield.

The Oct. 1 condition and indicated production by states included: Texas, condition 60 per cent of a normal; indicated production 3,275,000 bales; Louisiana 66 and 600,000; Oklahoma 56 and 750,000 bales; Arkansas 58 and 950,000; New Mexico, 81 and 85,000.

Ginnings Listed
Ginnings of this year's crop prior to Oct. 1 by states included: Texas 927,330 running bales; Arkansas 246,583; Louisiana 365,112; New Mexico 1,550; Oklahoma 23,131. Total ginnings included 34,147 round bales, counted as half bales, and 2,128 bales of American-Egyptian, compared with 86,289 and 3,796,342 1934 and 195,410 and 633 for 1933.

C. OF C. MEETING TUESDAY NOON WELL ATTENDED

A large representation of Littlefield business men attended the luncheon meeting Tuesday of the local Chamber of Commerce, when Pat Boone, President, presided.

G. M. Shaw, who has had charge of the collection of the funds in Littlefield's extension trade program, reported generally on the success of the celebration.

He stated there had been pledged each week \$85.00; deposited in the bank \$174.75, and cash on hand 25.75; and that registrations were over 4000 at the present time.

He spoke in very complimentary terms of the splendid work done by the eighteen business men, who in six automobiles, drove to the many outlying communities on a good will tour, distributing publicity on the local trade expansion program, and inviting the citizens in these communities to come to the celebrations each Saturday and the first Monday of each month. He spoke of various cases where families had come to Littlefield in answer to these invitations from great distances.

Mr. Shaw reported that a number of the merchants had expressed their entire satisfaction at the success of the program, stating some of the comments he had heard were such as these: "Gus, I increased my business 100 per cent over last Saturday." "The only thing I have gone into in this city that has helped my business; I did twice as much business as I did the Saturday before, I was busy up to 10:30 that night;" and "I am heartily in favor of the program."

Sam Batton, Rev. J. W. Hendrix and E. A. Bills were appointed as a committee to work out with W. J. Chesher, Manager of the Palace and Ritz Theatres, for the notifying of those who qualify for the cash awards at the theatres.

L. B. Stone stated he was pleased at the success of the opening days of the trade expansion program, and offered some suggestions.

Joe Replin reported good business Saturday, which he attributed partly to the trade expansion program.

Leonard Theford said he believed it helped his business indirectly, and was good for the town.

W. J. Aldridge and J. O. Garlington also made talks.

An expression of appreciation was made by Morley B. Drake to G. M. Shaw, for his splendid work in connection with the opening days of the trade expansion program.

J. S. Hilliard reminded the meeting of the football game Friday evening, and solicited the cooperation and attendance of the gathering.

Woody Tire Store Is Located At New Panhandle Station

The Woody Tire Store has moved from the Panhandle Service Station, opposite the post office, to the new Panhandle Service Station on Highway No. 7, just west of Phelps avenue. "Heavy" Stevens is in charge of the Woody Tire Store, which handles Kelly Springfield tires. Harry Hawthorne is in charge of the service station.

We Think—

(Continued from front page)

Littlefield folks come to see us, and they are exceedingly friendly toward us.

Littlefield business concerns are cooperating splendidly in the development of Littlefield as a greater trading center. This progressive spirit is being reflected in increased friendship toward Littlefield on the part of the people of the trade territory. Their business and friendship is much appreciated.

Highway No. 7 is now virtually complete between Clovis and Lubbock, and every possible effort should now be directed toward the construction of the north and south and east and west highways. Building of the north and south and east and west roads will prove of great benefit to Littlefield and a vast surrounding territory. If, for no other reason, Littlefield should work zealously for the new highways as a part of this city's service to its vast trade territory.

P. T. A. MINSTREL

Littlefield P. T. A. are sponsoring a musical featuring "Otis Echols and his All Star Texans" Thursday evening, October 17, at the High school auditorium. Admission 15c and 25c.

Perfection and Florence Stoves—Oil burning heaters at Thaxton's.

TOO LATE TO CLASSIFY

WANTED—Two or three furnished room October 20th. See Dewey For

Try a Leader Want Ad.

First Baptist Votes To Call Rev. A. A. Bryan

Rev. A. A. Bryan, pastor of the Levelland Baptist church, has been called as pastor of the First Baptist church in this city, to succeed the Rev. Joe F. Grizzle, who resigned to become pastor of the First Baptist church at Portales, N. M.

The church voted at the mid week meeting last night to call Rev. Mr. Bryan. He was advised of his selection by telephone last night, and will come to Littlefield today to discuss the matter with the board of deacons.

There were five pastors of churches voted on, Rev. Mr. Bryan receiving the highest number of votes. Rev. Mr. Bryan has been pastor of the Levelland church for about five years.

Oddfellows, Rebekah To Go To Clovis, New Mexico Convention

Littlefield Oddfellows and Rebekahs have been invited to attend the New Mexico Grand Lodge convention at Clovis October 14 and 15, according to Troy Howton.

Local Oddfellows, victorious over Lubbock in degree work at the recent South Plains associational meeting here, has been invited to conduct the second degree at Clovis October 14, the only day when Littlefield lodge members will attend.

About 30 members of both the Oddfellow and Rebekah lodges are expected to attend the Clovis convention, Howton said.

Business Women To Sponsor A Dance At Legion Hall

The Business & Professional Women's Club are sponsoring a dance Thursday evening, October 17.

Jimmie Churchill's Orchestra has been engaged for the evening, and a good time is promised all who attend.

The dance will be held in the American Legion Hall.

Oil Burning heaters at THAXTON'S. 25-cfc



—Every Wanted Material!
—Every Style!

COATS REDUCED 10% FOR CASH!

A Hat Special—
Now you can afford one of the correctly hats offered at the Every color! Every shap urday Special—

\$2

ASK ABOUT OUR LAY-AWAY PLAN

THE FASHION

In Rumback Bldg

SPECIAL!
Regular \$5 Oil Permanent for Only—
To the first 10 persons entering our Shop Saturday. Come Early! **\$1.95**

ROSE BUD BEAUTY SHOP

Miss Pat McClary, Mgr. Miss Hazel Hobson



DON'T SELL YOUR EGGS



—Until you get our prices! Don't be misled—

COME AND SEE!

Specials for the Week-End

CRACKERS

Either Saxet or Excell, buy now for the school lunches—

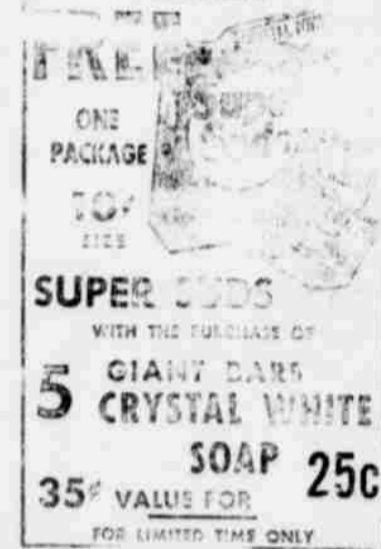
2-2 Lb. Boxes,

4 Lbs. in all

35c

POTTED MEAT, 3 Cans10c
VIENNA SAUSAGE, Can5c

BROOMS Good Value, Each **29c**



Libby's
Tomato Juice— 25c
Libby's, 3 cans
Pineapple Juice 25c
Libby's, 3 cans
Orange Juice— 10c
Libby's, can
Corn— 15c
Libby's, No. 2 can ..

SUGAR 10 Lbs. Pure Cane **51c**

RENFRO BLEND COFFEE, Try it, Lb.25c
FOLGERS COFFEE, Lb. Can29c
SALMON, Can11c
POWDERED SUGAR, 3 Lbs.25c

IN OUR MARRET

Forequarter, CHILLI— 20c
Choice Cuts, Home Made, Lb.
POUND HOT BARBECUE— 25c
Gravy Free, Lb.
15c OLEO— 20c
POUND
FRESH OYSTERS!

Save Your Cash Register Tickets and Get Silverware and Chinaware

RENFRO BROS.

GROCERY and MARKET

"Right on the Corner—Right on the Price"

MEN'S ALL-WOOL SUITS \$16.75

Made to measure and pressed ready to wear!

—Cleaning!
—Pressing!
—Alterations!

Jack Henry

PHONE 48
Call for and Delivery

LARGE STOCK OF USED CARS

- 1935 Standard Chevrolet Sedan (Like New)\$575.
- 1935 Standard Chevrolet Coach (A Dandy)\$550.
- 1934 Master Chevrolet Coach (See this before you buy) ...\$485.
- 1931 Chevrolet Coach\$235.
- 1934 Pontiac Sedan\$550.
- 1929 Ford Coach\$100.
- 1929 Chevrolet Coach\$100.
- 1930 Ford Coach\$185.
- 1930 Ford Coach\$150.
- 1930 Ford Coupe\$165.
- 1931 Ford Coach\$175.
- 1929 Ford Coupe\$90.
- 1933 GMC Truck (A Good Dual Truck)\$375.
- 1932 Chevrolet Truck (Long Wheel Base)\$285.
- 1932 Ford Truck (Long Wheel Base)\$250.
- 1931 Chevrolet Truck\$165.
- 1929 Ford Truck\$85.

WE WILL TRADE—EASY TERMS!

HEWITT Chevrolet Company
Littlefield, Texas