

Lamb County Leader

14 PAGES

Serving Texas' Second Largest Agricultural Producing County 10c

VOLUME 30

LITTLEFIELD, LAMB COUNTY, TEXAS, THURSDAY, JANUARY 14, 1965

NUMBER 36

School Board To Purchase Activities Bus

The Littlefield Independent School Board has voted to purchase a special bus to be used by the various athletic and scholastic groups of Littlefield High School, when making out of town trips.

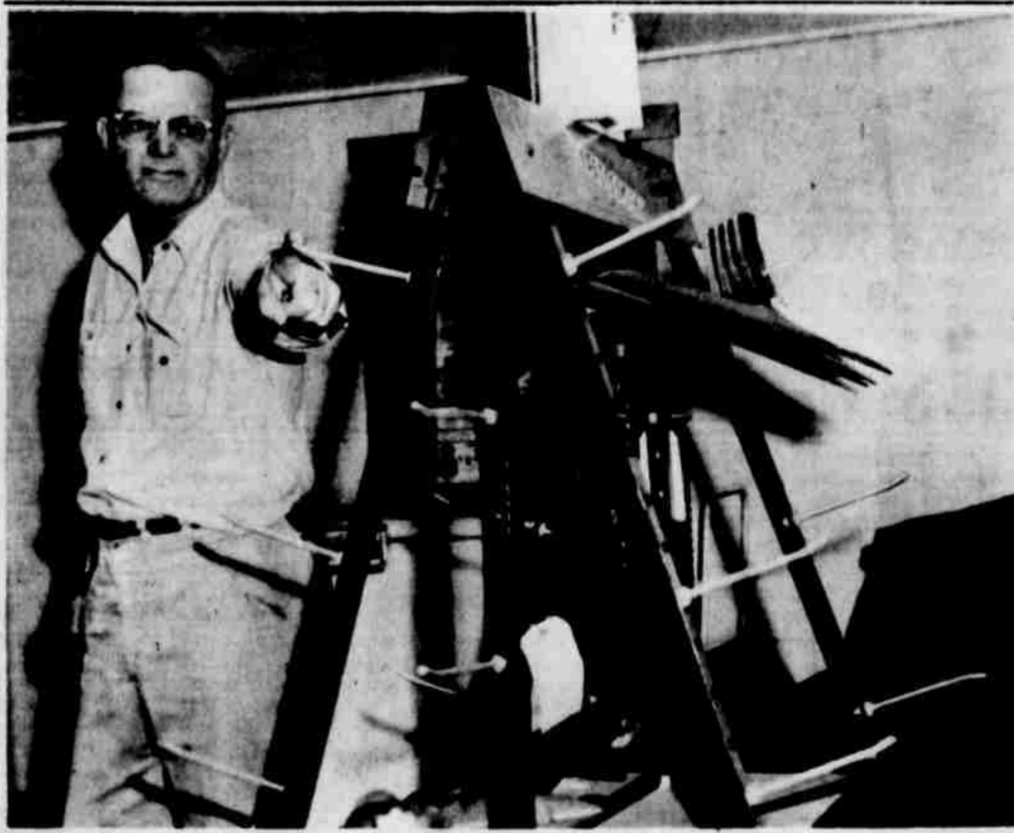
The purchase of the bus was originally discussed at the request of the Littlefield Quarterback Club, who said they would be willing to bear a portion of the expense. At the Monday meeting the board accepted the club's offer of \$3000 for the purchase of the bus, which will cost \$4650. School Superintendent Glenn Reeves told the board that the student council, Distributive Education Club, and the band had pledged their support to the purchase of the maroon and white bus.

The bus will be delivered on or about the start of the school this year and will be put into service immediately. It will be purchased from the Texas Surplus Properties Company, who will completely refinish and overhaul the bus before delivery.

The board discussed and accepted a proposal for the landscaping of the high school campus. Reeves announced bids for the first phase of the project will be called for in the February meeting. The board plans to landscape all the school grounds before completing the project, which should be begun in the early spring.

The board also discussed a proposed evaluation study that would encompass the entire school system. Reeves said the board had been concerned with the physical structures of the system for the past year, and had let the study of the curriculum wait. The board now plans a complete review of the entire curriculum, from the first grade through high school, and a study and self-evaluation of the personnel and test books.

Littlefield TEC Hears Farm Labor Report



AND THE RACK WAS BARE . . . Preston Pointer, manager of the Farmers Fertilizer and Chemical, in Spade, looks over the rack that up until Tuesday night, held 250 plow sweeps. The Spade company suffered its third break-in in 2 1/2 years. Pointer is beginning to wonder when it will stop.

Approximately 250-300 farmers, growers, and interested parties attended the meeting last Thursday in Lubbock held in the South Plains Electric Cooperative Auditorium. The meeting was held to discuss the recent regulations issued by the U.S. Department of Labor governing the employment of foreign workers in this county. Mr. Henry LeBlanc, Chief of Farm Placement for the Texas Employment Commission, explained the new regulations.

The U.S. Department of Labor stated several new rulings by which a farmer or grower must comply with even before he can seriously consider attempting to import foreign workers. The U.S. Department of Labor requires the farmer to make reasonable efforts utilizing all sources of domestic workers to fill his worker requirements. This has been interpreted to mean (1) the farmer must recruit both in Texas and, if need be, other states, seeking workers, (2) he must offer the worker a minimum of 90¢ per hour and in cases where the work is piece rate, the work should be designed to produce 90¢ per hour, (3) the farmer has to offer the domestic worker, as a minimum, all the terms and conditions of employment that were offered to Mexican workers under the Migrant Labor Agreement of 1951, as amended, including a written contract containing those conditions.

This all means the farmer, has to offer the domestic workers all that was previously offered a "bracero", plus the 90¢ per hour guarantee through March 31, 1965, then the guaranteed rate per hour would increase to \$1.15 per hour. This and other considerations such as family housing must be provided where feasible and necessary. Of course, the above conditions are for those farmers or growers who are interested in attempting to secure Mexican National labor. If the farmer or grower is not interested in importing foreign workers he may offer whatever wage he deems necessary to secure qualified workers.

At the present time there are several "Recruiting Teams" in the Littlefield, Muleshoe and Hereford areas contacting farmers and explaining the services of the Texas Employment Commission. Should a farmer desire workers now or in the future, and is not contacted by one of these "Recruiting Teams", he should feel free to contact the T.E.C. office nearest to him. The T.E.C. has farm offices located in Hereford, Littlefield and Muleshoe.

Juvenile Offenses Concern Officers

County and city law enforcement officers, and the county judge are becoming more concerned with the mounting county juvenile problem.

Twenty percent of the persons jailed by Lamb County officials, in 1964, were 17 years of age, or under. In 1964 the county confined 301 persons, of these 85 were juveniles.

The offenses for which the youths were jailed is as varied as their ages and backgrounds. They range from runaways, to aggravated assault and arson.

County Judge J.E. Davis reported the juvenile cases to appear before him in 1964 were more than double the 1963 count, the number confined to the state schools tripled. Davis said he heard 48 cases in 1964, and 22 in 1963.

The most common offense, reported by the law officers, was larceny, theft of a nature other than auto. Twenty-five youths were lodged in the county jail on this count.

The concern for the youths of the area is a thing to effect the entire community. Officials are beginning to wonder where the blame is to be placed. At one time, Judge Davis reported the county did not face the problem that now exists. He said, "The parents used to keep their children by their side when they worked, or knew at all times where they were."

The law enforcement officers, and the judge are not interested in the placing of the blame for this growing problem, they are more interested in helping the people involved, and the prevention of other youths getting into trouble.

Because the youths and the offenses are so varied, it is difficult to pin down any certain

(See JUVENILE Page 7)

ITS RIBBON OF DOLLAR BILLS—Mayor Armistead is shown above cutting the ribbon to officially open a new business in town. Littlefield Tuesday morning, the Western Investment Company. The bus-

ness is located at 420 Phelps Avenue. Looking are Dee Oden, left, SIC vice president; Carol Enloe, local cashier; and Randy Freeman, branch manager.

SIC Opens Littlefield Office Tuesday

Southwestern Investment Company opened its 72nd office this week in Littlefield.

This newest branch, in the ever-growing list of S.I.C. offices, will be managed by Randy Freeman. Freeman joined Southwestern Investment Company in 1959 and his most recent assignment was Discount Manager at Albuquerque, New Mexico.

Carol Enloe, a native of Littlefield, will handle the office duties.

Located at 420 Phelps Avenue, the building occupied by S.I.C. was recently remodeled to their specifications. It is designed for efficient handling of customers and in the tradition of Southwestern Investment Company, is completely modern in its decor.

Southwestern Investment Company was organized over

thirty years ago and now serves the vast Southwest with offices in Texas, Oklahoma, New Mexico, Arizona and California. It is considered one of the leading companies in the field of consumer loans, financing and insurance. The company provides a broad scale, encompassing everything from direct personal loans to large commercial loans. Through its affiliated companies, S.I.C. offers all types of insurance with on-the-scene claim adjusters to give immediate service on insurance losses.

In making the announcement of the opening of this Littlefield office, Dee Oden, Southwestern Investment Company Vice-President, said, "We have great confidence in the Littlefield area and its continued business growth. We are proud to be part of the Littlefield business community."

School Census Underway

Annual school census for the Littlefield Independent School District is underway with Maxie Bryan in charge of the counting procedure, Supt. Glenn Reeves announced this week.

The census is taken each year to determine the number of school-age children living within the district. It is required by state law and parents are required to give information asked.

Reeves emphasized that an accurate count of children who will be 6 years old on or before Sept. 1, 1965 is important so that the school can make definite plans for next fall.

He urged all residents in the school district to cooperate with the census taker in compiling the count. Parents who have children entering school for the first time this fall are asked to call Mrs. Bryan at 385-4314.

The counting will continue through this month with reports to be tabulated in February, according to Mrs. Bryan. Information obtained by the census taker is used by the school to determine probable needs for the coming year. The school must know how many teachers will be required, the number of textbooks needed, teaching supplies and other materials.

Members of the board were re-elected as follows: president—J.W. Borders, Jr.; vice-president—H.G. Walden; secretary—treasurer—C.E. Throckmorton; with R.L. Heard and A.L. Hudson.

Whitharral To Get New Water Supply

WHITHARRAL — The Whitharral Water Supply Commission held their annual board meeting at the Lions Club building Tuesday evening. J.W. Borders, Jr. presided.

A.W. Bowdoin of Lubbock, engineer, Horace Gilmore of Levelland, F.H.A. member, and Laverne McCann, also of Levelland, and attorney brought reports concerning the water well. The well located on the J.C. Taylor farm one mile north of Whitharral is 127 feet deep, has been gravel packed, bailed and test-pumped, pumping approximately 200 gallons per minute.

The board has applied for additional funds for bringing the 6 inch pipe from the Taylor site to the elevated storage tank to be placed on the L.C. ("Tot") Lewis lot at approximately the highest point in Whitharral and through part of the town. The storage tank will hold 24 hour storage without pumping. Bids for this will be let in the near future.

Members of the board were re-elected as follows: president—J.W. Borders, Jr.; vice-president—H.G. Walden; secretary—treasurer—C.E. Throckmorton; with R.L. Heard and A.L. Hudson.

Vandalism Plagues City Police

Vandalisms and thefts plagued city police this week, as area residents reported thefts ranging from clothes, off clothes line, to a two-ton truck, complete with cement mixer.

Police are still puzzling over the theft, Monday night, of a two-ton 1965 Chevrolet truck, with cement mixer, that was taken from Davis Concrete company in Littlefield. The truck, unharmed, was found abandoned two miles east of Muleshoe Tuesday morning. Officers are still seeking the thief, and wondering what his plans for the truck might have been.

H.C. Randall reported someone took several shirts and a few other garments from the clothes line in his back yard, sometime Monday night.

Other instances of vandalism were reported by Melvin Ray, at Lang Transit, and at Ward Pump company, where a battery was taken from a truck.

The city reported no accidents since Friday night, but indicated they had enough then to last several days.

Major damages resulted in a Sunday morning fire at Television Corner, owned by Leon Durham. Durham reported the fire apparently started in some wiring above the false ceiling. While there was no official estimate of the actual loss it is expected to be over \$7000.

THIRD IN 2 1/2 YEARS

Yeggs Make Heavy Haul

Lamb County sheriff officers are still investigating the Tuesday night break-in at Farmers Fertilizer and Chemical in Spade, in which an apparent gang of strong thieves ransacked 254 plow sweeps ranging in size from 2 1/2 inches up.

Preston Pointer, manager of the store, is wondering why that it will take so long to break-in. He reports he has been in business for two and a half years, and has been burglarized three times, this however is the largest haul made.

The plow sweeps were the

only items reported taken, although the building was given a good search, and letters and papers were strewn all over the building in the search.

The culprits overlooked the money in the soft-drink machine. Pointer said in the other two break-ins the door to the machine had been rigged open, so the new sweeps were in the door, in the sweep-press breaking in was to the machine they will not have to tear the door off.

The thieves also overlooked over \$1000 in other merchandise that would have been eas-

ier to haul off, indicating they were only after the plow sweeps, which were valued between \$500 and \$600.

The sheriff's department is reported to be investigating the break-in of a home in Spade, in which \$1.65 is missing. On the home break-in, officers theorize it to be the work of juveniles, since nothing other than the money was missing. In an effort to get away from the scene, or in an effort to mislead police, the culprits left behind an Oregon license plate, which the sheriff's department is currently checking out.

Littlefield Job Placements Drop

A review of the 1964 placement activities in the Littlefield Texas Employment Commission's placement figures revealed that non-agricultural placements were eight per cent below 1963, in contrast to a twenty-one per cent increase in farm placement activity. Billy L. Lynch, local T.E.C. manager, stated the increase in farm activities was reflected nearly throughout the year with the largest increase in placements being made in the cotton-chopping and hoeing season.

Lynch stated the reduction in non-agricultural placements was caused by the loss of a regular employment interviewer and a reflection of the decrease in dry-land cotton this year. The Littlefield T.E.C. Office had 643 non-agricultural placements and 3002 agricultural placements in 1964.

Lynch further stated, "The economy of Littlefield and Lamb County is based upon the success or failure of our area farmers. When they have a decrease in their crops, dry-land or irrigated, it is reflected in the area in every phase of business or marketing."

AUTHOR, ATTORNEY

Marshall Formby To Be Banquet Speaker

Littlefield Chamber of Commerce president, Jerry Sanders, announced this week that Marshall Formby, well known Plainview attorney and speaker, will be the featured speaker at the annual Chamber of Commerce banquet, to be held Tuesday, January 26, in the new Littlefield High School cafeteria.

Formby, former Dickens County Judge, State Highway Commissioner, and candidate for governor in 1962, is a well-known speaker, and has, for years been active in state and area government.

In addition to being a practicing attorney in Plainview, Formby is the author of the book, "These Are My People," and

has interest in radio stations at Hereford, Floydada, Andrews and Levelland.

Sanders said, "We are fortunate to get Formby for our banquet, in addition to being a fine banquet speaker who mixes humor with an inspirational message, he is a fine man, and realizes the vital function of the Chamber of Commerce."

The board of directors, who will serve with new Chamber president C.W. "Chick" Conway, will be installed, along with Conway.

Glenn Reeves will be master of ceremonies for the annual event, at which the outstanding area farmer will be named.



MARSHALL FORMBY

Tickets for the banquet will be handled by the membership committee of the chamber, and will go on sale Friday. Anyone wishing to make reservations for the banquet can call the C of C office at 385-4451.

Price of the tickets are \$2.50 per plate.

SCHOOL ELECTION SET FOR APRIL 3

The Littlefield Independent School Board, Monday night, set for the school election, April 3, 1965 as the annual School Trustees election. The deadline for filing for the election is March 3, in the school office. The only requirements for the past are: be a citizen and resident of Littlefield Independent School District.

Terms of Buster Owens as school board president, John Smith are expiring this year.



COUNTS HEADS — Mrs. Maxie Bryan, in charge of obtaining the school census, is pictured above at her desk in the Junior High School. The census, which began the first of this month and will continue until February 1, determines the number of school-age children living in the school district. This is Mrs. Bryan's fourth year to conduct the census.



FINISHING DRIFTWOOD — Marie Boyce, shown above, presented a program finishing driftwood and using it in arrangements, for the Littlefield Garden Club Tuesday afternoon. Mrs. R.N. Nicholas was hostess to the club meeting.

Garden Club Meets Tuesday

Mrs. R.N. Nicholas was hostess to members of the Littlefield Garden Club Tuesday afternoon at her home north of Littlefield. Marie Boyce gave a demonstration on using driftwood in arrangements. The vice president, Mrs. C.H. Messer, conducted the business meeting.

Refreshments of spinach, sand tarts, coffee and Cokes were served to two guests, Mrs. Boyce and Mrs. L.L. Messer. The following members: Mrs. Joe Dillon, Ellen Will, C.H. Messer, Tommie Gatz, J.L. Carrell, O.D. Brown, Belle Dow, Don Brewster and the hostess.

Historical Group Elects Officers

The Lamb County Historical Survey Committee met Friday in the First Methodist Church at Amherst. A book review, "The Reminiscences of Mary A. Blankenship", was given by Mrs. Randall Crawford.

New officers elected included Mrs. Paul Burrus, Olton, president; Mrs. Roy McQuarters, Littlefield, secretary; Mrs. Simon D. Hay, Sudan, treasurer; Mrs. T.H. Anderson, Littlefield, reporter; Mrs. M.E. Kelley, Earth, vice-president; Mrs. Tom Matthews, Littlefield, parliamentarian; Mrs. W.D.T. Storey, Littlefield, historian; and Mrs. C.O. Stone, Littlefield, second historian.

The following new members will be recommended by Judge J.B. Davis: Mr. and Mrs. Lee Payne, Amherst; Mrs. L.B. Cowart, Olton; and Tom Hilburn, Littlefield.

Mrs. W.D.T. Storey, chairman of the committee for Historical Markers for Civil War Veterans, reported the Major

George Littlefield marker, to be erected, has arrived. Rhea Bradley, highway engineer, reports that a roadside park will be put up where the monument is erected. John Ben Shepherd will be the speaker at the ceremony and the local bands and choirs will participate.

Coronado's route across the Plains is to be marked by Boy Scout Troop 1872 with Scoutmaster Tom Hilburn. This project will be begun in January beginning at Hale County and going to Fieldton.

Attending Friday's meeting were Mrs. M.E. Cowart, Paul Burrus, Bonnie Haber, W.D. Storey, T.L. Matthews, T.H. Anderson, Simon D. Hay, Lester LaGrange, also Tom Hilburn, Mr. and Mrs. Lee Payne, Mr. and Mrs. Roy McQuarters, Mr. and Mrs. L.E. Slane, Mr. and Mrs. Marshal Kelley, Rev. E.R. McGregor and Mrs. Randall Crawford.

The group will meet at Earth in March and Littlefield in May.

Shower Honors Mrs. Stehlik

Mrs. John Stehlik of Anton, nee Jana Crawford, was named honoree at a miscellaneous shower Thursday evening in the First Presbyterian Church.

The serving table was laid with a brown damask cloth and featured an orange centerpiece. Appointments were all white, including the Bavarian coffee and tea service. Daisy cookies, sand tarts, spiced tea or coffee, nuts and mints were served.

Musical games were played. Hostesses included Mrs. B.W. Armistead, Byron Douglas, Don Hayes, Dan French,

Frank Anzelme and Earl Rodgers. The hostess gift to the honoree was an electric skillet.

CITY BIT

Mr. and Mrs. Frank James returned home the first of this week after visiting in Odessa and Monahans. She was with her son, Charley James, who had eye surgery in Odessa. He is recuperating nicely at his home in Monahans.

Visiting Tuesday in the home of Mr. and Mrs. O.B. Scott

were their son and Mrs. Darwin Scott. Geyla Sue, Turkey, Tex.

Mr. and Mrs. Jerry Nett and family of Littlefield, visited her parents and Mrs. O.B. Scott and Wednesday on their way from Fort Worth. They adopted a three-year-old daughter. They have a daughter, Nancy Joyce, who is 13 ounces at birth. Mrs. Nett also has an old son, Rynn, they also visited Mr. Burnett, Mr. and Mrs. J.L. Nett of Whitehall.

Sunnydale HD Club Has First Meeting Of Year

Mrs. Ernest Brooks was hostess for the first meeting of the year for the Sunnydale Home Demonstration Club Friday afternoon.

The agent, Mrs. Lady Clare Phillips, presented the program on parliamentary procedure.

Officers serving this year include Mrs. E.J. Grisham, president; Mrs. W.O. Hampton, vice president; Mrs. A.L. Aldridge,

secretary. Others attending were Mrs. Melvin Tomison, Mrs. B.D. Birkelbach, Mrs. Daylor Wheeler, Mrs. Louise Bryce, Mrs. Thomas Harris, a new member, Mrs. Glen Young, and a visitor, Mrs. Kilpatrick of California.

The next club meeting will be January 22 in the home of Mrs. B.D. Birkelbach.

Presbyterian Women's Group Meets Monday

The Presbyterian Women's Association met Monday night at the church for their regular meeting.

Mrs. Horace Mitchell was in charge of the program which was presented in the form of a panel. Panelists were Mrs. Melvin Donaldson, Mrs. Dutch Wilkinson and Mrs. Jim Lang. Women of other countries were discussed.

Hostesses were Mrs. Mancel Hall and Mrs. George White.

Week Of Bible Study Conducted

AMHERST — The annual January Week of Bible Study was held Sunday through Thursday evening at the Baptist Church last week. Rev. Raymond Quick conducted the study for adults on the Book of Deuteronomy.

In charge of other groups were: Intermediates, Mrs. Keith Tumes; Juniors, Mrs. Eugene Young; Beginners, Mrs. Pat Branscum and Nursery, Mrs. Eddie Lenders.

Jaycee-ettes Meet Thursday In Dillon Home

Mrs. Elbert Dillon was hostess Thursday night for a regular meeting of the Jaycee-ettes.

A discussion was held on the Christmas window decorated by children in the downtown window

the Jaycee-ettes which placed decoration contest in December.

The local Jaycee-ettes are helping to organize a club at Muleshoe and a number from here plan to attend a meeting in Muleshoe Friday night for this purpose.

Mrs. Bob Gage gave a social report.

The next meeting will be January 21 in the home of Mrs. Paul Burch Jr. with Mrs. Bob Gage as co-hostess.

CITY BITS

Word has been received of the death of Mrs. Claude Miller, aunt of Mrs. Gladys Joplin and Mrs. W.H. Rutledge of Littlefield and Mrs. Henry Pickrell of Fieldton. Mrs. Miller died in the Bridgeport Hospital Thursday. Funeral services were Saturday with burial at Waco.

Double Feature

It Happened
Worlds
Fair

ELVIS
Permanently
Hollywood

PLUS

ROD TAYLOR, KEITH MICHELL
SEVEN SEAS TO CALAIS
LARRY JENSEN AND STAN
REY WISE, MARY WORTH

X I T FRI. -SAT. -SUN.
DRIVE-IN THEATRE JAN.

further reductions

JANUARY Fashion

CLEARANCE SALE

<p style="text-align: center; font-weight: bold;">PASTEL SPORTSWEAR</p> <p style="text-align: center;">Skirts-Pants-Sweaters</p> <p style="text-align: center;">REDUCED 1/3</p> <p style="text-align: center; font-weight: bold;">SELECTED GROUP LINGERIE</p> <p style="text-align: center;">P J's-Robes-Slips-Briefs</p> <p style="text-align: center;">REDUCED 1/3</p> <p style="text-align: center; font-weight: bold;">DRESSES</p> <p style="text-align: center;">Regrouped for Further Mark Down</p> <table style="width: 100%; border-collapse: collapse;"> <tr> <td style="width: 50%;">GROUP 1 REDUCED 1/2</td> <td style="width: 50%;">GROUP 2 REDUCED 1/3</td> </tr> </table> <p style="text-align: center; font-weight: bold;">LADIES HATS</p> <p style="text-align: center;">Values to 5.00 ----- 1.00 Values to 9.00 ----- 2.00</p> <p style="text-align: center; font-weight: bold;">HANDBAGS REDUCED</p>	GROUP 1 REDUCED 1/2	GROUP 2 REDUCED 1/3	<p style="text-align: center; font-weight: bold;">FALL SPORTSWEAR</p> <p style="text-align: center;">Selected Groups</p> <p style="text-align: center;">REDUCED 1/2 & 1/3</p> <p style="text-align: center; font-weight: bold;">UNTRIMMED COATS</p> <p style="text-align: center;">Regular to \$110 69.90</p> <p style="text-align: center; font-weight: bold;">FUR TRIMMED COATS</p> <p style="text-align: center;">Regular to \$110 69.90</p> <p style="text-align: center;">Regular to \$120 79.90</p> <p style="text-align: center; font-weight: bold;">CHRISTIAN DIOR HOSE</p> <p style="text-align: center;">Regular to 1.65 1.00</p> <p style="text-align: center; font-size: 36px; font-weight: bold;">NORMA'S</p> <p style="text-align: center;">Littlefield, Texas</p>
GROUP 1 REDUCED 1/2	GROUP 2 REDUCED 1/3		

What's really big, good-looking and goes like...

FURY

The biggest, plushiest Plymouth ever!

'65 Fury

...the top of the top...the flame on the torch! A completely different kind of Plymouth--the biggest, plushiest Plymouth ever. Yet all 22 models of the Fury are still solidly in the low-price field.

'65 Belvedere

... a new way to swing without going out on a limb.

'65 Valiant

... the compact that hasn't forgotten why you buy a compact.

'65 Barracuda

... the fast-moving fastback from Plymouth.

PLYMOUTH SALES IN TEXAS FOR OCT.-NOV. WERE UP 51.3% OVER LAST YEAR!

Go like Fury to your Plymouth Dealer's

GARLAND MOTOR CO. - Chrysler-Plymouth

720 East 3rd St. LITTLEFIELD, TEXAS

Penneys
ALWAYS FIRST QUALITY

STARTS TODAY COME SAVE!

JANUARY

CLEARANCE

LADIES

WOOL
Spring Skirts \$3-\$4-\$6
ONE RACK
Better Dresses \$3 TO \$6
2 GROUP (35 ONLY)
Blouses \$1 To 1.50

REDUCED
LADIES
FUR TRIMMED
LONG COATS
REGULAR 39.88
12 ONLY
29⁸⁸

CHROME
Over Blouses \$3-\$4
2 GROUP
Coats & Jackets \$6-\$8
BORDO ROY
Stretch Pants \$3
ENTIRE STOCK FALL & WINTER
Dress Hats \$1-\$2

REDUCED
ENTIRE STOCK
LADIES SWEATERS
VALUES TO 8.98
\$3 To \$6

ENTIRE STOCK
Winter Sleepwear 1.99
LARGE TABLE
Land Bags 1.88 3.88
FUR LINED
Leather Gloves 2.44
ENTIRE STOCK With 12 Doz. New
Costume Jewelry 3 Pcs. \$1

GIRLS

ENTIRE STOCK
WEATERS \$1 To \$4
2 GROUP
LAND BAGS \$1
EIGNOR SETS
NYLON GOWN & ROBE REG. 4.98 \$2
ONE RACK
BETTER DRESSES \$1 To \$4
COTTON FLANELETTE
SLEEPWEAR 88c To \$1.99
POLISHED COTTON
FULL SLIPS WHITE \$1



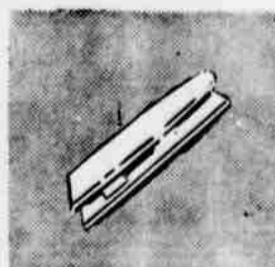
Round plastic waste basket.



Silicone ironing cover. Pad, iron rest.



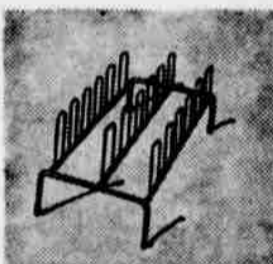
Twin-handled 6-gal. trash can.



Wood sleeve ironing board. Pad, cover.



Firm no-scratch rubber drain-board.



Chrome-plated metal 9-pr. shoe rack.

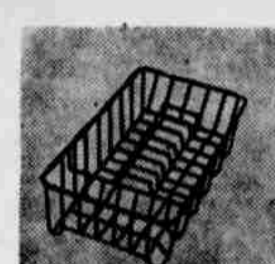


Metal waste basket assortment.



Two tin-plated steel cookie pans.

LOOK WHAT YOU CAN BUY FOR ONLY
88c
QUALITY! VALUE! SELECTION!



No-slip rubber dish drainer.



Set of 8 all-purpose glasses.



36 wood clothespins in vinyl bag.

HOME

REDUCED
1000's YDS
ALL COLORS, PATTERNS
PIECE GOODS
VALUES TO 98c
38c To 58c Yd.

WASHABLE WHITE
TRULON PANELS 41" x 81" 88c
FOAM PADDED
STADIUM PILLOWS 88c
54" WIDE 3 COLORS
WOOLENS 1.44
LARGE TABLE LINED & UNLINED
SHORT & LONG DRAPES \$5-\$10-\$15
BOSSA NOVA 27" x 72" 3.50
RUG RUNNERS 27" x 144" 7.00
TWIN SINGLE CONTROL
ELECTRIC BLANKET 8.99
DOUBLE SINGLE CONTROL
ELECTRIC BLANKET 9.99
DOUBLE SIZE DUAL CONTROL
ELECTRIC BLANKET 12.99
LARGE
BATH TOWELS 2 FOR \$1
GUEST
TOWEL 3 FOR \$1
WASH CLOTH 6 FOR \$1

BOY'S

LONG SLEEVE Flannels & Cottons
SPORT SHIRTS \$1
ENTIRE STOCK
SWEATERS \$1 To \$4
COTTON HOODED
JACKETS TODDLER SIZES \$3
FLANNEL
PAJAMAS \$1
TODDLER SIZES
SWEAT SHIRT & PANT SET 1.88
REG. 3.98 MATCHING
SHIRT & PANT SET 2.22
COTTON SIZE 4 TO 12
KNIT SHIRTS 2 For 99c
FURLINED DRESS
LEATHER GLOVES 1.44-2.44

REDUCED
COTTON & NYLON 11 1/4 OZ
COTTON 13 3/4 OZ
DENIM JEANS
SLIM-REGULAR 3 FOR \$5
ONE RACK
Sport Coat & Jackets \$4-\$8
COTTON SIZE 4 TO 12
Corduroy Pants 1.66
ENTIRE STOCK
WINTER CAPS \$1 To 1.44

MEN

ORLON
Sleeveless Sweater 1.44
WILDCAT
Sweat Shirts 88c
DACRON 88 OULTED
Nylon Jackets 5.44

REDUCED
LONG SLEEVE
SPORT SHIRTS
VALUES TO 3.98
1.66

COTTON FLANNEL
Shirts 1.33
WOOL BLEND REG. 22.95 -29.95
Sport Coats \$13-\$15
ONE RACK
Jackets \$3 To \$8
COTTON & COTTON BLENDS
Casual Pants 1.88
V. WOOLS ZIPPERED & BUTTON
Sweaters \$4 To 6
LARGE ASSORTMENT
Ready Ties 2 FOR \$1

BROADCLOTH AND FLANNEL
Pajamas & Robes \$2-\$3
FUR LINED & UNLINED
Leather Gloves \$1 To \$4
LINED AND UNLINED
Work Jackets 2.44 To 6.95
LAMINATED COTTON TO FOAM
Insulated Pants \$4
GRAY KHAKI Matching Shirt 1.50
Work Pants 1.99
PENTREAD SOLES-BLACK
Oxfords & Loafers 4.88
ENTIRE STOCK
Winter Caps \$1-1.44

REDUCED
200 PAIR
LADIES & CHILDRENS
SHOES
SEVERAL STYLES AND COLORS
\$1 To \$4

Party Honors Roy Jay Harris

Roy Jay Harris, son of Mr. and Mrs. Clyde Harris, was honored on his fourth birthday with a party Saturday at his home, 1220 West 2nd, by his parents.

The cowboy decorated cake and punch were served. Party favors were birthday hats, whis-

ties and balloons. Guests attending were Melissa Harris, Brent Fells, Lajuana Jo Leavelle, Linda Page, Kevin Yandell, Kathy Howell, Lisa Nichols of Plainview and Mrs. Jim Fells.

Sending gifts were Rodney and Gregg Geissler.

Mrs. Moncrief Presents Program For Garden Club

AMHERST — The Amherst Garden Club met Friday at 2:30 p.m. with Mrs. Maurice Brantley, hostess. The president, Mrs. C.A. Thomas, presided. Mrs. Arthur Moncrief presented the program "Do's and

Don't's in Mulching." Refreshments were served to Mmes. Oby Blanchard, Michael Duffy, George Harmon, Arthur Moncrief, J.D. Nix, W.E. Vaughn, Bill Workman, Thomas and Brantley.

Mrs. A.O. Dickson and Mrs. Aubrey Jones are new members of the club.

Mrs. W.P. Holland will be hostess for the next meeting, January 29.

Engagement Announced

BULA — Mr. and Mrs. W.C. Risinger of Bula, announce the wedding plans of their daughter, Jacqueline, and Gary Everett, son of Mr. and Mrs. Everett of Denver City.

Vows will be exchanged January 24, at 2 p.m. in the First Christian Church of Littlefield, with Winn Master of Canyon officiating.

The bride is a graduate of Bula High School and is presently a junior student at West Texas State University, Canyon. The prospective bridegroom is a senior student at West Texas State University.

Relatives and friends of the couple are invited to attend the wedding.

Mrs. Reast Hostess To Roundtable

The January meeting of the WMU Roundtable of the First Baptist Church was held Monday morning in the home of Mrs. Kenneth Reast. The topic of discussion was the problems facing the nations of the books members had read.

Mrs. Glen Batson, Roundtable chairman, was in charge of the business meeting.

The hostess served refreshments prior to the meeting to Mmes. Ralph Nelson, T.W. Mackey, E.G. Brunson, W.C. Nowlin, D.J. Stafford, Glenn Batson and Dora Wayne Manser.

Mrs. W.C. Nowlin will be hostess to the next meeting which will be February 8.

Oliver Wendell Holmes called Baltimore the "gastroscopic metropolis of the Union."

LAMB COUNTY LEADER

Published every Thursday morning by the Littlefield Publishing Co., 506 Phelps Ave., Littlefield, Texas. Entered as second class matter at the post office, Littlefield, Texas, Under the Acts of March 3, 1879.

Littlefield Publishing Company
 Publishers
 Dave Kucifer ... General Mgr.
 J.B. McShan ... Adv. Manager

Subscription rates: One year in Lamb County and adjoining counties, \$5.10; elsewhere in Texas \$7.10.

HD Club Has First Meeting Of New Year

ANTON — The Senior Home Demonstration Club met last Wednesday at the Legion Hall. The meeting opened with the THDA prayer. Mrs. W.G. McGrew, president, was in charge of the business meeting. Roll call was answered with "My New Year Resolution."

Programs for the year were planned and the yearbooks completed.

Attending were Mmes. McGrew, Hobe Parker, Paul Tibbitts, T.C. Talkington, Miss Frances Collins and a new member, Mrs. John Stehlik. Mrs. Parker was hostess.

The next meeting will be January 20, Mary Greenwood,

county health nurse, will be the guest speaker. Her topic will be "Hepatitis and Arthritis."

Agriculture accounts for 40 per cent of all water consumed in the United States.

A crucial stage in the development of alcoholism occurs when a person learns to prefer solitary drinking to social drinking.

Atom Smasher

The world's largest atom smasher, at the National Laboratory, York, has a vacuum a half-mile long made of nickel-chromium.

COMMUNICATIONS Your Tool for Progress



Old Mother Hubbard never had it so good

A bare cupboard in her day posed quite a problem. But the modern homemaker has many advantages — wonderful food stores, fast transportation, and communications. Food stores in several towns we serve use modern communications to help housewives shop and to increase food sales. They record daily specials on our ELECTRONIC SECRETARY® phone answering unit. A shopper telephones and receives the list of specials automatically through electronics. For full information about how our many communications services can be your Tool for Progress, please call our Business Office.

GENERAL TELEPHONE



Winner!

The new 1965 Cadillac has already proven itself the most talked-about, best-liked Cadillac of all time. You owe yourself a journey at the wheel of this great new motor car.

What is it about this excitingly new Cadillac that has earned the car such immediate and overwhelming acceptance? Many people tell us it is Cadillac's great new overall styling. Others suggest that it is the striking beauty of its wide front end. Still others are high in their praise of Cadillac's thoughtfully planned interiors—with greater spaciousness and a wider choice of superbly tailored fabrics.

And finally, there are those who declare no car can match this new Cadillac for smoothness and quietness of operation. As soon as you drive this finest of Cadillacs you find that Cadillac's entirely new frame and its beautifully poised suspension make motoring restful and relaxing as never before. Wouldn't it be wise to visit your dealer and discover what makes this fine car the greatest of them all?

Standard of the World Cadillac

SEE THE 1965 CADILLAC AT YOUR AUTHORIZED DEALER

JONES MOTOR COMPANY

801 HALL AVENUE • PHONE 385-5171

James E. Ware
 annual sale

one week only

January 9 thru January 16

- walking sheer — (reg. \$1.35) **\$1.15**, 3 prs. **\$3.45**
- reinforced sheer — (reg. \$1.50) **\$1.25**, 3 prs. **\$3.75**
- micro-mesh — (reg. \$1.50) **\$1.25**, 3 prs. **\$3.75**
- sheer heel demi-toe — (reg. \$1.65) **\$1.35**, 3 prs. **\$4.05**
- run guard® cantreco® — (reg. \$1.65) **\$1.35**, 3 prs. **\$4.05**
- stretch sheer — (reg. \$1.65) **\$1.35**, 3 prs. **\$4.05**
- sheerloc® — (reg. \$1.75) **\$1.45**, 3 prs. **\$4.35**
- sandalfloot — (reg. \$1.95) **\$1.65**, 3 prs. **\$4.95**

Ware's

Financial Condition December 31, 1964

ASSETS	LIABILITIES
First Mortgage Loans ----- \$7,378,939.69	Savings Capital ----- \$7,330,207.49
FHA Title I Loans ----- 97,165.81	PHLB Advances ----- 900,000.00
Share Loans ----- 75,902.39	Loans in Process ----- 21,671.67
PHLB Stock ----- 75,000.00	Escrow Accounts ----- 14,620.60
Cash & U.S. Govt. Bonds ----- 1,043,512.49	Other Liabilities ----- 18,345.72
Office Building ----- 72,991.09	Federal Insurance Reserves ----- 148,035.79
Office Equipment ----- 5,207.06	Contingent Reserves ----- 327,562.91
Prepaid Insurance - FSLIC ----- 56,820.03	Income Tax Reserve ----- 10,000.00
\$8,805,538.56	Surplus ----- 35,094.38
	\$8,805,538.56

OFFICERS:

Floyd Coffman, President
 David A. Keithley,
 Vice-President and
 Treasurer
 Frank Rogers, Vice-President
 Wayne Butler, Secretary
 Jerome Kirby, Attorney

DIRECTORS:

David A. Keithley
 Floyd Coffman
 Frank Rogers
 Don Bell
 Jerome Kirby
 J. M. Farmer
 Kenneth Ware

Member: Federal Home Loan Bank System

Savings Insured By Federal Savings And Loan Insurance Corporation

LITTLEFIELD FEDERAL SAVINGS AND LOAN ASSOCIATION
 LITTLEFIELD, TEXAS

New Credit Service

NEW CREDIT service to low-income families in rural areas raise their incomes now available in Texas, according to State Director, L. J. Gleaman, Farmers Home Administration.

Gleaman said today the service opens up Farmers Home Administration credit aid for the first time to many low-income rural families who previously were unable to obtain public or private loans to improve their earnings.

All County offices in Texas, Gleaman said, are accepting applications for loans up to \$100 to finance farming enterprises, small family businesses, trades and services. Rural cooperatives serving low-income families and providing services and facilities not otherwise available may also be eligible for credit under the program.

Borrowers will be provided financing management aid to help them make a success of their farming enterprises or businesses.

Farmers Home Administration's U.S. Department of Agriculture agency, will administer the new loan service under authority delegated to the Office of Economic Opportunity.

Liberalized loan terms and conditions for participating low-income families allow for interest rate of 4-1/8 percent.

To be eligible for the new credit program an applicant must live in a rural area, have an income that does not cover basic family necessities, be unable to obtain credit from other sources, including the regular loan program of the Farmers Home Administration, and show a reasonable promise of succeeding in the enterprise to be financed by the loan.

A cooperative, to be eligible, must be primarily composed of and serve low-income rural families and be unable to obtain credit from other sources.

About 3.5 million families in rural areas across the country, including 500,000 farm families, are unable to obtain credit to develop income-increasing enterprises. The new credit program is budgeted at \$5,000,000 for the current fiscal year.

In addition to the new credit service, the Farmers Home Administration serves all rural families in Texas with loans to finance farm operations, buy or enlarge farms, construct rural housing and develop community water systems, recreation areas and grazing land. It also provides a program of emergency loans, watershed loans and rural renewal loans.

Canadian Landmark
The smoke stack at International Nickel's iron ore recovery plant at Copper Cliff, Ontario, is the tallest in the British Commonwealth. Standing 637 feet high on a 22-foot base, the stack is almost two-thirds the height of the famed Eiffel tower in Paris.

Moon-Shot Alloy
One of the key materials used in the F-1 engine of the Saturn V rocket is a nickel-chromium alloy which was especially developed for high-temperature service under corrosive conditions. The rocket scheduled to send the Apollo spacecraft to the moon.

Pike as a name for a highway is a contraction for "turnpike," the bar on old toll roads.

SAT. NITE WRESTLING

Jose Lothario vs. Art Nelson

Soto Of Japan vs. Bill Graham

Dory Funk Jr. vs. Ken Lucas

TIME: 8:30
FOR RESERVATIONS
CALL 385-4112

LITTLEFIELD SPORTS ARENA

BULA NEWS

Housewarming Honors Jimmy Drakes Sunday

Mr. and Mrs. Jimmy Drake and children were honored with a housewarming Sunday evening after church services of the local churches. The Drakes have recently bought and moved to the former H.G. Thompson home.

A large crowd attended and many beautiful and useful gifts

were presented the Drakes. Cookies, punch and coffee were served by hostesses.

Mr. and Mrs. Dabney White, Lawton, Okla., were weekend guests in the Jack Speck home. Attending the wedding of Miss Linda Sue Alexander and Don Samples of Lubbock Sunday

were Mr. and Mrs. Eugene Bryan and Mr. and Mrs. W.T. Thomas.

Steve Cox, son of Mr. and Mrs. D.J. Cox, observed his 10th birthday by having several of his school friends ride the school bus home with him and spend the evening playing games at his home Thursday.

Mrs. Cox served birthday cake and cokes to Steve and his friends: Kenny Turney, David Kessler, Keith and Kenny Smith, the Rev. and Mrs. J.W. Reed.

Mrs. Lorene Cox was a lunch guest Sunday in the A.A. Pinkerton home at Sudan.

Recent guests in the W.T. Thomas home were Captain and Mrs. Kenneth B. Thomas a daughter and family, Mr. and Mrs. Travis Webb and her mother, Mrs. Annie Latham, Also

don spent several days the past week in the home of her daughter, Mr. and Mrs. John Blackman.

a sister, Mrs. P.A. Wardlow. Mrs. Lorene Cox and brother, Arnold Archer, attended the funeral Thursday at the White Funeral Home in Tahoka, for their uncle, Willis D. Kyle.

D.J. Cox spent the past week in Dallas on business and also attended the Young Farmers Convention held at the Adelphi Hotel.

Mr. and Mrs. Earl Shields and children of Lelia Lake, spent Wednesday through Sunday with her parents, the R.E. Jones.

Mrs. Cecil Jones left Friday for Fort Worth to spend several days with her daughter and family, Mr. and Mrs. Murry Alexander, Kelly Ray Alexander returned home with her after a visit of 10 days in the home of his grandparents.

Terry Blake and J.C. Withrow attended the area Church of Christ meeting and dinner held in the school cafeteria at Sudan Monday evening.

"69¢ SALE! 79¢! PIGGLY WIGGLY ALWAYS HAS THE BEST FOR LESS!"



Ground Beef

LEAN, 100% Pure Domestic BEEF, DATED FOR FRESHNESS

2.69 lbs.

Picnics **29¢** DECKER'S WHOLE, SMOKED POUND

Sliced Bacon

DECKER'S KORN KIST **2.79** POUNDS

Swiss Steak **69¢** ARMOUR STAR, Aged Heavy Beef, Value-Trimmed, 12oz. Pkg.

Lunch Meat **79¢** BUTCHER BOY BOLOGNA, PICKLE MACARONI OR OLIVE, 3 PKGS.

Beef Steaks **79¢** BLUE MORROW'S THRIFT-T, 12oz. Pkg.

Cheese **79¢** BORDEN'S SLICED PIMENTO, 12oz. Pkg.

SCOTT BEST COLORS Towels **2.69** MONARCH Apple Cider **49¢** BONNE, HEAVY DUTY, 104 OFF LABEL Detergent **57¢** BREATHE OF SPRING, ASSORTED FRAGRANCES Reodorizers **2.69** VANILLA OR BANANA Sweetie Pies **39¢**

HAND LOTION JERGEN'S **3 FOR 69¢** SEA FEAST PINK Salmon **59¢** COFFEE FOLGERS REGULAR **74¢**

THESE PRICES GOOD JAN. 14-16, 1965 AT YOUR PIGGLY WIGGLY STORE. WE RESERVE THE RIGHT TO LIMIT QUANTITIES!

FROZEN FOODS! Dinners **3.49** BANQUET BEEF, CHICKEN, TURKEY, 3 PKGS. Broccoli Spears **49¢** SEA-BROOK, 2 10oz. PKGS. Hush Puppies **29¢** KINGS, 19oz. PKG. Corn On The Cob **59¢** ORE IDA, 6 EARS PER PKG.

COMING SOON
BEAUTIFUL STEUBENVILLE FAIRLANE DINNERWARE

MIRACLE WHIP **49¢** KRAFT'S SALAD DRESSING QUART JAR

Dr. Pepper **49¢** 12 BOTTLE CARTON PLUS DEPOSIT

Baby Food **3 For 25¢** GERBERS STRAINED

PEACHES **5 For 1** PACIFIC GOLD IN HEAVY SYRUP NO. 2 1/2 CAN

PINEAPPLE JUICE **25¢** SANTA ROBA 48oz. CAN

MOUTHWASH **59¢** LISTERINE, 7% OFF LABEL, 16oz. BTL.

Eggs **3 FOR \$1** IDEAL MED. DOZ.

Potatoes **19¢** GOOD N RICH INSTANT, 7oz. BKG.

Flour **55¢** GOLD MEDAL KITCHEN TESTED, 5 LB. BAG

Facial Tissue **79¢** SCOTTIES ASST. COLORS, 400 CT. PILES

Green Beans **69¢** MOUNTY KIST KITCHEN SLICED, 5 NO. 303 CANS

Green Peas **79¢** MISSION, 5 NO. 303 CANS

Tuna **79¢** BITS O SEA GRATED, 5 NO. 1/2 CANS

Sausage **79¢** VIENNA, LIBBY ALL MEAT, 4 NO. 1/2 CANS

Lunch Meat **69¢** MORRELL SNACK, 2 12oz. CANS

Shortening **59¢** VEGETOLE, 3 LB. CAN

Vitamin Rich Produce Always At Piggly Wiggly!

Tomatoes

CALIFORNIA FANCY RED RIPE **15¢** POUND

FRESH GREEN SLICERS CUCUMBERS **19¢** POUND GREEN, FRESH PASCAL CELERY HEARTS **29¢** CALIF.

CHECK THESE EXTRAS AT PIGGLY WIGGLY!

CALIFORNIA CORN, BROCCOLI ARTICHOKES, LEAF LETTUCE ITALIAN SQUASH, EGG PLANTS, CAULIFLOWER

ORANGES

TEXAS FULL O JUICE **5 POUND 39¢** BAG

Lowest Prices Greatest Variety always at

Piggly Wiggly

AMHERST by Mrs. Lester LaGrange

Senior Student To Discuss Teens On Television

Jan Holland, daughter of Mr. and Mrs. James Holland, has been selected to appear on television at Amarillo to be seen on Clovis, also. The panel of teenagers will be seen Sunday afternoon. Jan has been assigned the subject, "The Teen-Age Boy".

Jan is a member of the Amherst High School senior class.

Mr. and Mrs. Floyd Quillett of Fayette, Ohio returned home Monday after a visit with their daughters and families. Mrs. Jim Humphreys and Mrs. Paul Cartwright of Brownfield, other guests in the Humphreys home Sunday were the Cartwrights and his parents, Mr. and Mrs. W.N. Humphreys.

Sunday guests in the Claud Cook home were her mother, Mrs. R.P. Priddy of Littlefield and her brother and wife, Mr.

and Mrs. Jack Priddy of Clovis. Mr. and Mrs. W.P. Holland and Mr. and Mrs. James Holland and Jan were guests of Mr. and Mrs. L.L. Swindle in Hart Sunday afternoon.

Mr. and Mrs. Bill Weaver left during the weekend for their annual vacation and fishing at Corpus Christi.

In Mulleshoe Sunday for a visit with Mrs. Ira Thompson were Mr. and Mrs. U.E. Thompson and Mrs. Buford Thompson.

Mr. and Mrs. Dale Johnson of Floydada are parents of a son named Allen Wayne born Jan. 8 in the Lockney hospital, weighing 7 lbs. 3 ozs. Mr. and Mrs. Robert Nichols of Amherst and Mr. and Mrs. Arthur Johnson of Floydada are the grandparents.

Mrs. Norman Snyder and Norman Edward returned from Longview Saturday.

Mr. and Mrs. John Enloe re-

turned last week from a visit with relatives in Vernon, Burk-burnet, Iowa Park, Seymour, Throckmorton and Knox City. Their daughter, Mrs. B.R. Bell, Mr. Bell and son of Odessa accompanied them.

Mrs. Fred Wilson and Mrs. A.A. Royal were Plainview visitors Tuesday.

Guests in the C.R. Roberts home Thursday were her mother and brother, Mrs. Bertha Westmoreland and Dewey of Littlefield.

Mr. and Mrs. William A. Bowling of Richmond, Calif. were guests in the Woodrow Love home last week. They were returning home after a visit to Paris, Tex.

Weekend guest in the Joe Thompson home was R.V. Smith of Littlefield.

Mr. and Mrs. Aubrey Jones returned Sunday from a visit with his father at Comanche and his sister at Coleman. They fished at Lake Brownwood while in that area. Their daughter Jan stayed with her sister and family, the Joe Embrys in Littlefield while they were away.

Mr. and Mrs. Jimmy Nix and daughter Johnny Rose of Earth visited his mother, Saturday.

Jim Nix, Vernon Stagner, Victor Oxford and Harley Bussanmas of Littlefield are fishing at Falcon Lake this week.

Mrs. Virgil Hinds returned

from Phoenix Sunday. She had spent two weeks with her son, Virgil Allen and family.

Mr. and Mrs. Pat Blessing and children of Olton spent Sunday with his parents, Mr. and Mrs. Ray Blessing.

Mr. and Mrs. W.O. Long, Gail and Bill of Kearns Canyon, Ariz. visited his parents, Mr. and Mrs. Ted Long, and her relatives in Canyon recently.

Miss Minnie Shannon left Monday for a visit with relatives in Cleburne.

Mr. and Mrs. Albert Johnson spent the weekend with their son Darman and family in Spearman.

Mrs. M.V. Cowan, Mrs. Bob Edwards, and Mr. and Mrs. Wayne Cowan of Fieldton were in Iowa Park Monday of last week and attended funeral services for Arnold Cunningham.

Bill Black of Amarillo visited his parents, Mr. and Mrs. Ernest Black, Tuesday.

Mrs. L.E. Vaughn and Mrs. Ernest Black attended funeral services for Byron Downing in Levelland Friday.

Rev. and Mrs. R.H. Campbell of Olton visited their son Gene and family Friday night. They attended the basketball tournament in progress at that time. Their granddaughter, Kathy Campbell, is one of the star players for the Amherst girls team.

Mr. and Mrs. Tom Davis and Brenda were recent guests of her mother in Carlsbad.

Guests of her parents, Mr. and Mrs. Bob Simmons, during

KIDNEY DANGER SIGNALS
Getting up nights, burning, frequent or scanty flow, leg or back pains may warn of functional kidney disorders—"Danger Ahead." Give kidneys a gentle lift with BUKETS green tablets. Increase and regulate output in 4 DAYS or your 30c back at any drug store. NOW at BRITAIN PHARMACY

the weekend were their daughter, Mr. and Mrs. Sam McCermick and family of Amarillo.

Mr. and Mrs. John Faust entertained with dinner for their son Eddie Mac on his birthday Sunday. Dr. and Mrs. B.O. McDaniel, Mr. and Mrs. Bill

McDaniel, Bill Jr., the honoree, his wife and four daughters, were guests.

Sunday guests in the Bob Simmons home were her mother, Mrs. Bertha Evans and sister, Mr. and Mrs. Clifford Ewing of Lubbock.

TRANSWESTERN Offers Outstanding Home Buys in Friendly CANNON TERRACE ADDITION

Join Your Friends
CHOOSE YOUR HOUSE PLANS AND YOUR LOCATION OR SEE ONE OF OUR SEVERAL NEW HOMES NOW UNDER CONSTRUCTION
PRICED \$11,000 To \$17,000
LOW F.H.A. DOWN PAYMENT
GI NO DOWN PAYMENT

TRANSWESTERN DEVELOPERS, INC.
LITTLEFIELD DIAL 385-4936
LUBBOCK CALL SW 9-3678

Whitharral Lions Have First Meeting Of Year

WHITHARRAL — C.E. Throckmorton presided for the first meeting of the Whitharral Lions for 1965 Thursday evening at the club building. Rev. Raymond Woodruff gave the invocation. J.W. Borders, Jr. led the pledge to the flag. With Joe Minter at the piano, R.H. Bryant led group singing.

Borders reported on needy families helped at Christmas time. The club agreed to send

\$25 to the Lamess Shuntown Symphony for a trip to the National Lions Convention in California in July. Support of the Hockley County Fat Stock Show was discussed with Robert Avery named as chairman of a committee to plan and set a date for a box supper for raising funds.

Rev. Woodruff presented the program on pending legislation for pari-mutual betting and horseracing in Texas.

Prior to the meeting, Mrs. Henry Womack, Mrs. Brace Hicks and Miss Shannon Womack served dinner to one visitor, Rev. Samuel Torres, pastor of the Mexican Mission; one new member, Woodrow Howard and the following members: Avery, Borders, Throckmorton, Minter, Woodruff, George Wade, Jr., H.G. Walden, Lowell Herring, J.E. Wade, Don Reding, Coy Grant, Ralph Wade, Rafe Rodgers, C.B. Keeney, Pervadius Wade and R.H. Bryant.

Auto Body Dies
The body sections of today's automobiles are stamped out on special dies cast from a nickel-containing ductile iron. More than 250,000 identical parts can be turned out by each die before it needs repair or replacement.
The manuscript of Franklin's Autobiography is preserved at the Huntington Library in California.

FIND SOLACE FOR YOUR SORROW THROUGH... QUIETUDE




FEEL FREE TO CALL ON US AT ANY HOUR
Hammons Funeral Home

NOTICE
SHORTY'S SHOE SHOP IS NOW OPEN IN AMHERST, TEXAS
ALL KINDS OF BOOT AND SHOE REPAIRING
SHOE POLISHES-BELTS-BUCKLES-GLOVES-BILL FOLDS
ONE DAY SERVICE
IN THE BUSINESS OVER 20 YEARS
YOUR BUSINESS IS APPRECIATED

ONSTEAD'S SEMI-ANNUAL CLEARANCE CONTINUES THROUGH SATURDAY

STILL LOTS OF CLEAN NEW MERCHANDISE TO CHOOSE FROM

IT'S SO TOUGH TRUCK TRADIN' TIME!



Go see THE DODGE BOYS

TOUGH: like durable, powerful; unequalled load capacity. **TRUCK:** like Dodge builds tough ones. **TRADIN':** like priced nose-to-nose with Chevy and Ford. **TIME:** like now!

Garland Motor Company 720 E. 3rd, Littlefield, Texas

WE'VE STARTED UP QUITE A SALE!

CLEAN SWEEP SALE

3 BIG DAYS THURS-FRI-SAT
ONCE A YEAR ALLEN ROBERTS CLEANS HIS COUNTERS OF ODDS AND ENDS
QUANTITIES ARE LIMITED

HOUSEWARES

QUANTITY	ITEM	WAS	SALE
33	Bar Mat Sets	1.98	
50	Dozen Wash Cloths	.19	
2	Electric Blankets	11.88	8.88
31	Full Blankets	3.98	2.98
6	Thermal Blankets	7.98	3.98
10	Dz. Iron Board Cover	.59	
33	Swing Waste Baskets	2.98	1.98
6	Mail Boxes	4.98	1/2 price
61	Trour Rugs	1.00	
	Full Counter Housewares Values To 59¢ Ea.		
46	Waste Baskets	1.99	
36	Foam Pillows	1.59	
72	Pillow Cases (Pair)	1.29	

LADIES DEPT

QUANTITY	ITEM	WAS	SALE
19	Ladies Capris	2.49	1.49
33	Clutch Bags	1.00	.79
10	Dz. Hair Roller Pkg.	1.59	.89
4	Dz. Hair Spray	1.00	.59
6	Train Cases	3.98	2.98
100	Flower Arrangements		20% OFF
24	Ladies Blouses	1.00	.79
72	Ladies Blouses	1.98	1.39
30	Dz. Ladies Panties	4	PAIRS 99¢
18	Dz. Ladies Bras	1.00	.79
4	Dozen Billfolds	1.00	.49
18	Fuzzy Houseshoes	2.98	.99

SEWING DEPT

QUANTITY	ITEM	WAS	SALE
	All Metal Zippers	(Values To 70¢)	
		15-20-25-30 and 35¢	
50	Skein Wool Knit	1.29	.99
	All Lace In Store	1/2 PRICE	

GIFT DEPT

QUANTITY	ITEM	WAS	SALE
2	Pocket Watches	3.98	2.77
7	Table Radios	8.88	5.88
9-6	Transistor Radios	8.88	5.88
4-2	Transistor Radios	4.98	2.49
1-3	Piece Luggage Set	14.95	8.88
1	Serving Tray	6.98	2.00
1	Electric Can Opener	9.98	7.00
1	Ladies Manicure Set	5.98	3.00
1	Ladies Manicure Set	3.98	1.50
2	Dz. Wall Plaques	1.00	.49
	All Costume Jewelry		ONE HALF PRICE

MEN & BOYS DEPT

QUANTITY	ITEM	WAS	SALE
4	Dz. T-Shirts	2.50	1.59
13	Men's Belts	2.00	1.00
6	Dz. Men's Hankies	12	FOR 99¢
18	Boy's Hooded Coats		ONE HALF PRICE
1	Men's Travel Set	5.98	2.00
24	5 Cell Flashlights (comp)		.99

CHILDREN'S DEPT

QUANTITY	ITEM	WAS	SALE
4	Dz. Pajamas	1.49	.88
4	Dz. Gabardine Pants	1.49	.89
3	Dz. Girl's Blouses	.99	.79
8	Dz. Plastic Panties	8	PAIRS \$1
8	Children's Sweaters		ONE HALF PRICE
18	Infant's Crawlies		ONE HALF PRICE
17	Sweat Shirts		ONE HALF PRICE

TOY DEPT

QUANTITY	ITEM	WAS	SALE
7	Dolls	3.98	1.98
1	Wagon	12.98	9.98
1	Wagon	8.98	6.99
1	Tricycle	11.98	6.99
3	Giant Teddy Bears	8.88	3.98
2	Giant Plush Dogs	8.88	5.00
17	Battery Op. Train	3.98	2.98
1	Typewriter	4.98	2.49
3	Table Tennis Sets	3.98	1.49
2	Table Tennis Sets	2.98	1.00
1	Ball Glove	5.98	2.00
2	Ball Gloves	6.98	3.00
1	Batmitton Set	4.98	2.98
2	Tennis Raquets	4.98	2.00
2	Football Helmets	2.98	2.00
1	Vacufoam Set	12.98	6.00
12	Black boards	1.98	1.00

HURRY-TO-SAVE
Ben Franklin
309 Phelps Allen Roberts

**Robison
Wednesday**

are pending at Ham-
meral Home for Ollie
son, 89, a resident of
22 years. Mr. Rob-
son died at 5:50 a.m. Wed-
nesday in West Plains Hos-
pital. He had been in
the West Plains Nur-
sing Home about two months.

August 12, 1875 in Be-
ll, he moved to Little-
field in 1938, where he owned
the Robison New
Furniture Store until
his death in 1958.

He preceded in death by
his wife, Mrs. Robison,
who died February 22, 1958.

He leaves five sons,
W. Spokane, Wash., Syl-
vester, Muleshoe, Newton O.,
L. Los Angeles, Calif., W. Ram-
brough, Grand Junction, Color.,
L. Littlefield; two daugh-
ters, Letha Bellier, Chico,
Calif., and Miss Luey V. Rob-
ison, Littlefield; 19 grandchild-
ren; 19 great-grandchildren and
10 great-great-grandchildren.

(Continued From Page 1)
JUVENILE

are for concentration or
in an effort to help com-
munity increasing problem, it
is suggested the county
juvenile board to deal
with offenders, and to inves-
tigate the environment and
background of the youths invol-
ved in various crimes.

of the blame for the in-
cidents is attributed to the
youths themselves, who do not
realize the record they
now will affect them the
rest of their lives. When ques-
tioned by officers, the youths
were only having fun, they
did not think they would
get into trouble. Few, if any, give any
thought to the future, or what
the record could do to
them. Another portion of the
problem is placed on the com-
munity. City and county offi-
cials do not feel there is
a real problem in the area,
we do not have any nar-
row-gang fights, or
robberies. In this, offi-
cials report, the people are mis-
guided just because the serious
crimes are not as numerous
in our county as they are in
other areas, the threat is still
there and the results are the

pattern that has been es-
tablished indicates the prob-
lem usually start with truancy
and it comes the other
way.

Law enforcement officers
in city and county have be-
come very concerned with this
problem, in all its
aspects. They do not feel, and
we, that this is their prob-
lem when they see these people
often too late to be of
any help. They are aware of the
problem and are convinced these
people can be deterred from
committing offenses, but only
with proper guidance and
supervision.

of the finest deterrents
growing juvenile prob-
lem. Attorney General Wag-
ner's Youth Council
work in the field of education
and enlightenment is to be com-
mended, but still it leaves a big
question mark. Some local offi-
cials feel part of the answer
is a youth council on a
city level.

Smart
people are
not ad minded!
CALL 5-4481

**QUIETLY
AND
EFFICIENTLY
BUILDING
THE
BEST**

**UNDERGROUND
IRRIGATION
SYSTEMS**

Over The Years
Under The Same
Ownership and
Management

**STANDARD
CONCRETE PIPE
COMPANY**

Check carefully the
quality of the product
before you purchase
it.

CONCRETE MATERIAL
LITTLEFIELD, TEXAS
5-4481



Vote For Your Favorite Checker
At Furr's

SIX INCH SALAD PLATE
WITH EACH \$5.00 PURCHASE

9¢ EACH THIS WEEK
AT FURR'S

LOVELY "BOUTONNIERE" DINNERWARE

You still have time to collect your 6-inch Salad Plates for only 9¢ each at Furr's. You are entitled to buy one Salad Plate, value 55¢ each, for only 9¢ each with each \$5.00 purchase or more all this week. A different piece each week for five weeks, then the cycle repeats twice more a total of 15 weeks! Complete pieces also available at big savings!

DR. PEPPER

12 BOTTLE CARTON With \$5.00 or more Purchase **39¢**

SAVINGS ON QUALITY PRODUCE

GRAPEFRUIT
TEXAS SWEET
5lb. Bag **39¢**

TOMATOES VINE RIPENED **15¢**
Lb.

CABBAGE
Firm Green Heads,
Lb. **5¢**

MUSTARD GREENS
Nice Fresh Bunch
2/19¢

ROMAINE
Salad Lettuce, Bunch
2/25¢

CHUCK ROAST

USDA INSPECTED FARM PAC
BLUE RIBBON OR GRADED
CHOICE

45¢

BACON FRONTIER SLICED Lb. **45¢**

SAUSAGE FARM PAC WHOLE HOG DAIRY FRESH 2-LB. SACK **1.29**

HAMBURGER PATTIES 2-LBS. **89¢**

USDA Inspected Farm Pac Blue Ribbon or Graded Choice Round Bone Arm Lb **69¢** **STEAK RIB CHOPS** Graded Choice Lb **79¢**

Join **1965** **MARCH OF DIMES**
FIGHT BIRTH DEFECTS

ORANGE DELIGHT

MINUTE MAID FRESH FROZEN 6 OZ. CAN **10¢**

DINNERS

Morton, fresh frozen, chicken, beef, Salisbury steak, macaroni & cheese, fish, ham or scallops, Your choice, each **3 For \$1**

SUGAR

HOLLY, IMPERIAL OR C&H 5 # BAG **49¢**

EGGS

FURR'S U.S.D.A. GRADE A, MEDIUM LARGE - Doz. **45¢** **3 for \$1**

CRISCO

SHORTENING 3-LB. CAN **69¢**

CHILI

WISLONS PLAIN 24 OZ. CAN

39¢

Food Club Tall can MILK **3/39¢**

Elna, 3-Lb. Can SHORTENING **59¢**

Food Club, In Heavy Syrup, No. 303 Can SWEET POTATOES **25¢**

Ranch Style, No. 300 Can BLACK EYE PEAS **2/25¢**

Alert, Can DOG FOOD **3/25¢**

White House, No. 303 Can APPLE SAUCE **2/39¢**

Food Club, All Grinds COFFEE 1-Lb. Can **69¢** 2-Lb. Can **1.37**

Geisha, Slices, Syrup packed PINEAPPLE No. 2 Can **25¢**

High Plains No. 303 Can TOMATOES **12 1/2¢**

Sunshine 1-Lb. Pkg CRACKERS **29¢**

Remarkable In Heavy Syrup PEARS 2 1/2 Can **3/\$1**

Sunshine Butter, 8 oz. or Chocolate COOKIES Chip 7 1/4 oz. pkg **31¢**

GENERAL MERCHANDISE

SHAMPOO

SUPREE AMBER OR GREEN 16 OZ. **29¢**

SUEPREE CREAM RINSE **29¢**

BUBBLE BATH CAPRI **79¢**

FURR'S FRESH FROZEN

POT PIES

Morton, fresh frozen, chicken, beef, turkey, spaghetti & meat balls, macaroni & cheese, each **2 for 29¢**

Morton Fresh Frozen, Assorted Each Cream Pies **29¢**

Top Frost, Fresh Frozen, 10 oz. Pkg Blackeye Peas **3/59¢**

Top Frost, Fresh Frozen, 6 oz. Can Grape Juice **19¢**

Top Frost, Fresh Frozen, 10 oz. Pkg Baby Limas **3/59¢**

FURR'S

SUPER MARKETS

SAVE BUSINESS SERVICES DIRECTORY

A DIRECTORY OF LITTLEFIELD'S RELIABLE BUSINESS SERVICES



The Maner Flying Service And Littlefield Airport Are Important Assets To Littlefield

The Maner Flying Service, owned and operated by D.W. Maner is operating the Littlefield Municipal Airport located two miles west on the Bula Highway. Services offered are student instruction, charter, aircraft rental, air taxi and Piper aircraft sales. Ground school courses in navigation, meteorology, theory of flight and Civil Air Regulations are also offered. D.W. Maner has been active in flying in this area for 22 years and has been operator at the Littlefield Municipal Airport for the past three years. Maner is licensed by the Federal Government as a

commercial pilot, holding single and multi-engine ratings.

V.G. Briggs is employed as instructor and charter pilot, holding single and multi-engine flight instructor and instrument ratings.

Pilot training is offered through Commercial Pilot Charter and Air Taxi is offered to any point in the Western Hemisphere.

The combined experience of Maner and Briggs exceeds 50 years.

Aircraft sales entail the entire Piper line of single and multi-engine airplanes, as well as used airplanes.

From time to time the public is invited to the airport when they display the Hughes Helicopter. Helicopter rides are then available.

The Littlefield Airport plays host to many transient aircraft as a refueling or rest stop, as well as a terminal for many business flights. It will pay anyone to get better acquainted with the operations at the Littlefield Airport and the Maner Flying Service.

Fuel Cost Lowered By Tail Water

Records of the High Plains Underground Water District reveal that farmers can save approximately one third of the fuel cost required to pump an acre foot of water from an irrigation well if they utilize available tail water.

Cost records from farms conducting this study revealed that it required approximately \$3.20 worth of natural gas to pump an acre foot of water from an irrigation well. The average cost of fuel (butane or elec-

tricity) of tailwater return systems was approximately \$1.90 per acre foot of water recovered.

Wayne Wyatt, field representative of the Water District, states that, "An acre foot of tailwater recovered eliminates foot of water from an irrigation well." He further states that, "By using the tailwater there has been a saving on fuel cost of \$1.30 per acre foot of water by eliminating the need of pumping water from their irrigation well."



For Welding of Any Kind, Gamble is the Man to See at 720 E. 4th or Phone 384 385-5437

A friend indeed, when in need is a competent experienced welder when anything made of metal breaks and is hard to replace.

Such a person in Littlefield is Merrill Gamble, owner of Gamble Welding Works located at 720 E. 4th St., who has had over 20 years experience in welding from an aluminum percolator to the heaviest road and farm equipment. Gamble Welding Works is equipped to handle most any kind of a welding job either arc or acetylene welding.

With his portable rig he will go anywhere, anytime.

Mr. Gamble gained his experience working in machine shops. He was with Cox Machine Works from 1938 to 1942. The Army beckoned and he was in the service with the 5th Armored Division. Upon his discharge, he again became identified with Cox Machine Works and was with them until the company sold the business. Gamble went to work for the McCoy Machine and Pump Co. and was with this concern for 8 years.

July 1st, 1963, Gamble went into business for himself at the above mentioned location.

During the period of more than 20 years, Gamble has the know how in fusing metals by arc or acetylene welding. He is adept at hard surface work on plow shares, lister points, and grader blades. In fact, if any

job is in the camp welding or braising, be assured that Gamble do a first class job. Mr. Gamble is a member of the VFW, the American Legion and the Woodmen of the World. He attends Church of Christ.

IT PAYS TO ADVERTISE

SAVE Groceries - Meats - Fruits - Vegetables AT RIGHT PRICES

MONROE Food Market 411 Hall Ave. 385-5125

FLY for BUSINESS

MANER FLYING SERVICE BULA HWY - PH 385-5437

PIPER

LOW COST BODY & FENDER WORK

4th St. BODY SHOP

POLISHING DENT & FENDER WORK WRECKS REBUILD GLASS INSTALLATION

C.W. Francis Owner 914 E. 4th 385-5125

PAWN FLOWERS SHOP

MONEY ON ANYTHING OF VALUE FIREARMS DIAMONDS - WATCHES JEWELRY - CAMERAS LUGGAGE - RADIOS HI-FI PHONOGRAPHS SPORTING GOODS

BONDED & INSURED CITY PAWN SHOP 709 E. DELANO

FAST ACTION LICENSED AUCTIONEERS
Col. DICK DOSHER Ph 385-5670
Col. DEAN SANDERS Ph. 938-4557 - Hart
Clerk BOB WILLIAMS Ph. 385-5438 - Lfd.

BILL'S BOOT SHOP
Western wear for everyone Boots - Men's, Boys, Ladies - Riding Exp. - Saddles
310 Phelps Ave. Littlefield

ENCO HUMBLE DAVE STAFFORD Agent
A Reliable One Stop Service Station
Atlas Tires & Batteries Washing-Greasing-Lubrication and Many Accessories
FAST SERVICE
901 Hall Ave 385-5452

FARLEY SALES COOPER TIRES AUTO SALVAGE 385-4329

B&C PUMPS & Machine Works
W.H. "Dub" BERRY - JOHN M. CLAYTON - Owners
COMPLETE IRRIGATION SERVICE
• WELL CLEAN-OUT
• PUMP PULLING
• PUMP SETTING
• COMPLETE PUMP REPAIR
304 Lake Ave. LITTLEFIELD 894-5025 LEVELLAND

SAFEMAX TAXI Ph. 385-5011
PUT THIS NUMBER IN BACK OF PHONE BOOK FOR EMERGENCY
Day or Night Service Think of Us as Your First or Second Car
BONDED-INSURED-LICENSED CHAUFFER
2 Way Radio
Air Conditioned Cars ANY WHERE ANY TIME

LAUNDRY THE EASY COIN-OPERATED WAY
SOFT WATER LITTLEFIELD'S FINEST
OPEN 24 HOURS
SPEED WASH
DIAL 385-8965 8th & FARWELL

Lamb County Abstract Co.
COMPLETE ABSTRACT & TITLE SERVICE
TITLE INSURANCE To All City Lots & Lands in Lamb County
PHOTO COPIES
401 Phelps Av Lfd., 385-3710
J.D. Bernethy Residence Lfd., 385-3349

GAMBLE WELDING WORKS
720 E. 4th Littlefield

Norrid Sewing Machine Ctr.
Littlefield 385-4330
622 Farwell (next door to frontier stamp store)
Dealer for Singer Sewing Machines, vacuum sweepers and typewriters.
We do repair on all brands of machines and stock all Singer parts.

BRING YOUR WATCH TO A SPECIALIST FOR repairs
CLEANED OILED AND ADJUSTED
You'll find it usually costs less for precision service... if not in the outset, certainly in the long run. We guarantee all work... unconditionally!
PRATT JEWELRY
Watches-Diamonds-Housewares-Small Appliances-China Gifts-Radios-Stereos-Greeting Cards
411 W 5th LFLD., 385-5125

Mobil 'SERVICE WITH A SMILE'
OPEN 24 HOURS Tourist Information DIAL 385-8974
AAA SERVICE ZOTH MOBIL SERVICE HWY. 385 & 84 LITTLEFIELD

Barton Spencer RADIO-TV LAB
ADMIRAL SALES AND SERVICE
WE REPAIR ALL MAKES & MODELS
Also Carry a Fine Line of Fishing Equipment, Boat and Skiing Supplies
PH 385-3633 DAY OR NIGHT 8th & Lovelland Hwy.

BARBARA'S BEAUTY SHOP
808 SUNSET PH 5-5222
Barbara McIntire Owner
Offering A Complete Beauty Service-Hair Styling A Specialty To Complement The Individual- Long Hair Coloring Expertly Done Shampoo & Sets Reasonably Priced
(Formerly Nita Moore Shop)

HANVEY PLUMBING & ELECTRIC CONTRACTING & REPAIRS
• PLUMBING • ELECTRICAL • AIR CONDITIONING
308 W. 2nd Littlefield

AUTOMOTIVE SUPPLY HEADQUARTERS
700 E 4th - PH 385-4431
• Car • Truck
• Tractor Industry
• Irrigation
• Motor Rebuilding
• Precision Machine Service

HUMDINGER DRIVE-IN
1009 EAST 5th PH. 385-5356
For Fast Service Phone your order in then drive by and pick it up.
SANDWICHES-MILKSHAKES-HAMBURGERS-HOT DOGS-FOUNTAIN ORDERS

Mc COY MACHINE & PUMP REPAIR
• GEAR HEADS • WELDING • PORTABLE WELDING
• PUMPS • REPAIRS ON ALL MAKES • MACHINE WORK
LUBBOCK HWY. DIAL 385-5233

COIN-OP LAUNDRY & DRY CLEANING

EVANS WASHTERIA
Help Yourself Wet Wash - Rough Dry Automatic & Tub Type Machines
COIN OPERATED DRY CLEANER
A NEW PRESS INSTALLED TO DO YOUR OWN PRESSING
OPEN 7:30 a.m. to 9 p.m. Monday to Friday Saturday 7:30 to 6 p.m. CLOSED SUNDAY 1201 E 9th Ph. 385-5054 Littlefield

SPUDNUT SHOP
A QUOTE FROM A 5 YEAR OLD YOUNGSTER:
"ARE REAL GOOD ARE REAL NICE ARE RIGHT TO BITE"
IF YOU LIKE DONUTS YOU'LL LOVE SPUDNUTS
702 W. 10 TH PH 385-5670

G & C AUTO SUPPLY
CHANDLER'S MOTOR MACHINE & SUPPLY STORES In Littlefield, Anton, Sudan, Earth

COX TIN & PLUMBING SHOP
Plumbing Heating LENNOX Heating & Air Conditioning Sheet Metal Work Fixtures & Supplies Licensed-Insured-Bonded
706 E. 3rd Dial 385-4020

315 W DELANO PH 385-3049
FOR THE BEST BUYS IN USED CARS SEE JAMES GRIMES at GRIMES AUTO SALES
Maintains Repair Service Shop to take care of all Repair Needs
Automatic Transmission Work A Specialty ALL REPAIR WORK GUARANTEED

Scout Troop No. 638 Court Of Honor

Community Center was the Monday night for the Court of Honor of Boy Scout Troop No. 638. Scoutmaster Edun conducted the Troop Court. Michael Gage, Davy and Russell Blevins were awarded as Tenderfoot Scouts. Oliver, assistant scoutmaster, presented the awards. Lynn Barton and Allan were advanced to Class Scouts. Allan also earned merit badges for home and swimming. Dan earned merit badges for leadership in the community, collecting and Indian lore. He received a 2-year service star.

Chisholms Host Fish Fry Monday

Mr. and Mrs. Herschel Chisholm were hosts Monday night for a fish fry at their home for the evening. Attending were Mr. and Mrs. Matthews, M.S. Lula Powell, and Mrs. Herbert Chisholm. Curtis Chisholm, Olin L. Mr. and Mrs. Ray Seaton and family, Mr. and Mrs. Chisholm and Angela, Mr. Dale Moore and sons, and Mrs. Bernal Ivey, Mr. Edward Gregory and all of Littlefield.

Mr. and Mrs. Norman Chisholm and family, Mr. and Mrs. Gerald Chisholm and family, and Mrs. Forrest Powell and Mrs. Eugene Edmond and boys, M.L. Chisholm and sons, Michael and Derwood, Sudan; Mr. and Mrs. Wil Lewis, Jr. and family of Littlefield; and Mrs. Albert Lynch and family.

Student Of The Month Chosen

The Anton Chapter of National Honor Society has chosen as its project the selection of a student of the month by the faculty of the Anton High School. The student will be chosen upon the basis of character, which is one of the four virtues of the National Honor Society. Martha Morton Card, a senior, is the first student chosen for this honor. She has been active in all school events in the past three years and is a newly elected member of the National Honor Society. She has been head cheerleader, Miss P.H.A., FFA sweetheart, football queen and class favorite. Martha was chosen for this honor by the faculty because of her "cheerful cooperation and outstanding character". Not only has she been active in school activities but also in church work, serving as church pianist, vocalist and leader of the young people at the Central Baptist Church. She became the bride of William Card III December 29 and after her mid-term graduation, they will make their home in Waco.

merit badges and received a 2-year service star. Bill Nowlin earned merit badges for safety, public health, fishing, firemanship and camping. Bill Tullis earned the nature merit badge and received the 2-year service star. The following scouts received a 1-year service star: Chris Brock, Charles Carter, Steve Collins, Charles Holt, Max Huchins, Geron Landrum, J.R. Lynch, Jimmy Moffett, Wayne Streety Jr. and Kerry Ward. Other awards included: Mark Crouch, bronze palm; Joe Hillman, gold palm; Max Huchins and Steve Collins, recruiter stripes for recruiting a new troop member. The annual troop uniform inspection and review was made by Dr. Aaron Williams, E.E. Carter and Wayne Streety.

family and Terry Chisholm of Lubbock; Mr. and Mrs. Dewayne Powell and Cindy of Sudan; Mr. and Mrs. Connie Powell and Tammy of Levelland; Mr. and Mrs. Paul Chisholm of Sudan and Sammy Buckner of Lubbock.

EXTRA SAVINGS IN EVERY SACK

Shurfine 12 oz. **LUNCHEON MEAT 39¢**
Food King **PORK & BEANS 9¢** 300 can
Light Crust **FLOUR 1.99** 25 Lbs.

WEDNESDAY IS DOUBLE GUNN BROS. STAMP DAY at PIONEER



STAR KIST TUNA SOLID LIGHT **39¢**
SHURFINE CAKE MIX BOX **33¢**
LYDIA GRAY Toilet Tissue 10 ROLL PKG. **79¢**
BAKE RITE SHORTENING 3 LB. CAN **77¢**

TREND LIQUID REG. 2/59¢	Peas & Carrots SHURFINE 303 23¢	RITZ NABISCO 12 OZ. 43¢
TOWELS NORTHERN JUMBO ROLL 31¢	PUREX QT. 23¢	PEAS SHURFINE EARLY HARVEST 303 23¢

Tom Scott 13 oz. **MIXED NUTS 59¢**

Shurfine **CATSUP 19¢** 14 oz.

Shurfresh **BISCUITS 25¢** 3 Cans
Clary's Grade A

FRYERS 29¢ Lb.

DELICIOUS MEATS
ARE A SPECIALTY AT PIONEER
Cured **BONELESS SHOULDER 1.59** EACH
CHOICE CHUCK ROAST LB. **59¢**
WISCONSIN RED SKIN CHEESE LB. **69¢**
RANCH STYLE STEAK LB. **59¢**
Lee Tasty **SAUSAGE 1.09** 2 Lbs.

Poultry Manure
HIGHEST IN NITROGEN
NO WEED SEED
DRY
\$1.50 PER TON
F.O.B. OUR FARM
CALL
JACK BARTON-385-3613
D.C. WARD-385-5477
CECIL MARTIN-385-4817

"Can a small-town girl find happiness (married to a man who's in love with his new Dodge Polara?)"

"A man who talks in his sleep about such nonsense as a 383 cubic inch V8, a 121 inch wheelbase, and over 17 cubic feet of trunk space?"
A man who even smiles while he dreams about the money he saved by buying a Polara instead of big-car X? Can she?
She can if he shares it with her once in a while!"



And now a word from our sponsor: "Polara."
POLARA. Two tons of body beautiful. 383 cu. in. V8 (regular gas). Full foam seats. Plush carpeting. Polara—at your Dodge dealer's.
'65 Dodge Polara
Garland Motor Company
720 EAST THIRD LITTLEFIELD, TEXAS
WATCH "THE BOB HOPE SHOW" NBC-TV. CHECK YOUR LOCAL LISTING.

PIONEER SUPER MARKET
3RD & XII DRIVE

THE FRESHEST IN **PRODUCE**
WASHINGTON DELICIOUS Apples LB. **15¢**
PASCAL LARGE STALK Celery **12½¢**
RED EMPEROR Grapes LB. **15¢**
CELLO Carrots BAG **9¢**
RUBY RED Grapefruit 5 LB. BAG **39¢**
GREEN Onions BUNCH 2 FOR **15¢**

Relatives Visit David Whitfield In Carlsbad Hospital Sunday

Mr. and Mrs. H.C. Kesey, day, David, son of Mr. and Mrs. Alvin Whitfield and Teddy Whitfield, was injured in a motor scooter accident December 31 at Carlsbad is still hospitalized there. Mrs. Whitfield reports he is recovering satisfactorily.

The Grand officers of the Anton chapter were present. They were Margaret Jackson, Erla Lee and Charles Lee, all of Lubbock. The Grand officers were hostesses.

Mr. and Mrs. C.O. Dooley had as their guests Sunday, their daughter and family, Mr. and Mrs. J.W. Stone, Mary Lee, Jo Ann, and Linda, Dimmitt; and Mr. and Mrs. Charles Dooley and Dana, Canyon.

Mrs. Jenna Mae Fisher and Mrs. Jewell Cobb, postmaster at Seminole, attended the retirement party Sunday afternoon honoring Mr. Amos Howard, Lubbock.

Bill Card, Waco, spent this weekend here with his wife, Martha, in the home of her parents, Mr. and Mrs. Floyd Morton.

Mr. and Mrs. Wayne Peek and children of Lubbock visited her parents, Mr. and Mrs. C.S. Stephenson, Sunday.

Mr. and Mrs. Bill Swanson and sons and Mrs. J.M. Swanson visited relatives in Oklahoma City recently.

Mrs. Odell Martin and children spent the weekend in the Bill Swanson home.

Sherri La Dean Stephenson, infant daughter of Mr. and Mrs. Bobby Stephenson, is a patient in Methodist Hospital in Lubbock.

Mr. and Mrs. Merel Parker, Mineola, are the parents of a seven pound, 2 ounce son, Roger Wayne, born Jan. 6. They have two other children, paternal grandparents are Mr. and Mrs. J.P. Parker, Anton, Mrs. Parker returned home Monday after spending several days with her son and family, Her son-in-law, Rev. Darrell Whitzen, and children, Carthage, brought her home and will visit there several days with relatives.

Mr. and Mrs. R.B. Brown and H.S. Swan went to Temple last week where Swan was to undergo surgery.

Mrs. C.S. Stephenson and June visited Mrs. Elgie Brock in Lubbock Sunday afternoon.

Visiting with Mr. and Mrs. C.L. Cobb and Mike during the weekend was her sister and brother-in-law, Mr. and Mrs. Frankie La Rosa, Chicago, Ill., and her brother and sister, Gordon Stevens and Mrs. Minnie Loooper, Tecumach, Okla.

Mr. and Mrs. Raymond Riesel attended funeral services for Alton Russell that were conducted in the Grace Lutheran Church Saturday afternoon.

Mr. and Mrs. Roy Grace are vacationing at Truth or Consequence, N.M.

The Anton Chapter O.E.S., 936 met Thursday night in a stated meeting. Worthy Matron Eva Dee Wright and Worthy Patron Paul Reed presided.

The next meeting will be February 4 and will be past matrons and past patrons night.

Visiting during the weekend with Mr. and Mrs. L.H. Williams were Mr. and Mrs. Rex Williams and sons, Friona; Mr. and Mrs. Gene Williams and daughter, Lubbock; Mr. and Mrs. Lanny Reagan and son, Clovis, N.M.; Mr. and Mrs. D.H. Dunlap, Levelland; Mr. and Mrs. W.J. Shockley and son, Ropesville.

Mr. and Mrs. L.E. Downs and Mrs. Edd Downs left for Houston Friday. Mrs. L.E. Downs will enter Methodist Hospital there Monday and she will have surgery later in the week.

Mr. and Mrs. James McGowan, Richmond, Calif., are visiting relatives here this week.

Mr. and Mrs. Roy Sheppard, Snyder, and Mr. and Mrs. Calvin Phillips, Welch, visited their mother, Mrs. Jim Parker, Sunday.

Mr. and Mrs. D.T. Teague visited relatives in Wichita Falls and Holiday over the weekend.

Mrs. Jewel Butler, and Miss Floradell Butler spent three weeks visiting relatives in California recently.

Mr. and Mrs. R.P. Jones, Mr. and Mrs. Chester Jones and Mrs. Lola Swanson, Anton, and Jimmy Jones, Littlefield, attended the 50th birthday anniversary of Mr. and Mrs. Rufus Jones, last Sunday in Wichita Falls. He is a brother of R.P. Jones. The celebration was held in the home of a daughter, Mr. and Mrs. F.M. Farrier.

Mr. and Mrs. Cecil Overstreet visited their son and daughter-in-law, Mr. and Mrs. Norman Overstreet, at Camp Hood last week.

Supt. A.E. Greer attended a Superintendents Convention in Austin last week.

Mrs. Hattie Burkett, Lubbock, spent the weekend here visiting Mrs. Eva Dee Wright.

Miss Eunice Stawfield of Plainview visited in the home of her sister, Mr. and Mrs. A.L. Bell, over the weekend.

Mr. and Mrs. E.V. Teague, Plains, visited his nephew and wife, Mr. and Mrs. D.V. Teague, Friday.

The hand used in measuring height of horses is four inches.

Gale winds range in speed from 39 to 46 miles per hour.

Attend State Meet Of Young Farmers

Mr. and Mrs. O.L. Harris, Mr. and Mrs. Bob Grant, Mr. and Mrs. Ernest Kristenik, Coy Mills and Danny Grant attended the State Young Farmers Convention in Dallas Thursday through Saturday. The Harris returned by Stamford for a weekend visit with relatives.

Mike Sadler will be released this week from a week's stay in the Methodist Hospital in Lubbock, the result of a shoulder injury received in football some time ago.

Mrs. S.J. Polk attended the funeral of Mrs. Juanita Chester at Littlefield Friday.

Mr. and Mrs. Coy Heard of Vega were here Friday to move Mr. and Mrs. Bruce Hicks, Lynn, Tony, Cheryl, Terry and Tony to Vega to live.

Mrs. Pete Polando and Rosemary are in Galveston with her niece, Janie Polando, 5-year-old daughter of Mr. and Mrs. Sandy Polando of Morton, who was critically burned several days ago and is to undergo surgery there.

Mr. and Mrs. J.C. Taylor spent Sunday and Monday in Plainview with their son, Mr. and Mrs. Laverne Taylor and Kenneth.

Mimes, H.J. Dobsen, J.D. Walters, D.C. Theford, Ella Hewitt, E.E. Pair and John Waters had a coffee-break with Mrs. B.L. Hicks, Sr. in Levelland Monday afternoon. Mrs. Hicks fell recently and broke her ankle.

The FHA girls are taking orders for homemade cakes this week which are to be delivered Saturday. Their prices range from \$1.50 for pineapple upside-down cakes; chocolate fudge or coconut cakes at \$2.50 to cherry nut angel cake for \$3.50. Contact any member of the FHA and place your order.

Mr. and Mrs. Harold Robertson and children who have resided on the old Ayers place northeast of town for several years are moving into the Rocky Ford community to live.

Mr. and Mrs. Leonard Adams and Gregory, age 6, of Amarillo have bought the Highway Cafe from the R.H. Bryants and opened for business Monday. They are living in Levelland until they can move a trailer on the lot behind the cafe. Mrs. Adams has had more than ten years

experience in cafe and invites your patronage. Adams is a carpenter by trade.

Mrs. John Hall is a patient in the South Plains Hospital at Levelland since Sunday where she will undergo surgery as soon as possible.

Dr. Robert Dobson, dean of Bible, Howard-Payne University, Brownwood, preached at the Whitharral Baptist Church Sunday, and is conducting a Bible Revival study course each night through Thursday. Rev. Woodruff, local pastor, is a nephew of the Dobsons.

Mr. and Mrs. Charlie Eller, Carrie and David will return to their home in Boston, Mass. this week after a month's stay here with Eller's mother, Mrs. Carrie Eller and other relatives.

WHITHARRAL SCHOOL LUNCH MENU

MONDAY -- Pinto beans, pork, buttered potatoes, greens, cornbread, cherry cobbler, milk.

TUESDAY -- Barbecue, hot rolls, green beans, mashed potatoes, tossed salad, butter, yellow cake, milk.

WEDNESDAY -- Rice with brown gravy, rice, ed asparagus, pickled hot rolls and butter, jelly.

THURSDAY -- Oven chicken, cream gravy, potatoes, tossed salad, butter, peaches and milk.

FRIDAY -- Hamburgers, kles, onions, potato sauce and tomatoes, sandwiches, milk.

SPC Spring Registration Set

LEVELLAND (Special) — Registration for the spring semester at South Plains College will be in the library building Jan. 18 for sophomores and Jan. 19 for freshmen students. Registration will remain open through Jan. 30.

Classes will begin Jan. 20, with Evening College classes beginning on that date also, at 7 p.m.

Beginning students must have a copy of their high school transcripts sent to the college and those transferring from another college should contact Academic Dean Nathan Tubb at the college.

Space is available in the women's dorm and a few are open in the men's dorms. Construction of a new men's dormitory is underway. It will be ready for occupancy Sept. 1, 1965.

A record spring enrollment is expected at South Plains this year.

New Officers Elected For Farmers Union

BULA — The Farmers Union met in the Bula lunch room Thursday night for the purpose of organizing monthly meetings for this section of Bailey County.

Kenneth Moss of Paducah, guest speaker, spoke on the cotton and feed program of this area.

New officers elected were: Chester Selfridge, president; Cecil Jones, vice president; John Hubbard, treasurer; Mrs. Cecil Jones, secretary; and Mrs. Dorothy Bogard.

The union will meet on the first Thursday night of each month.

CHARTER No. 12824

REPORT OF CONDITION OF FIRST NATIONAL BANK

OF LITTLEFIELD IN THE STATE OF TEXAS, AT THE CLOSE OF BUSINESS ON DEC. 31, 1964 PUBLISHED IN RESPONSE TO CALL MADE BY COMPTROLLER OF THE CURRENCY, UNDER SECTION 5211, U.S. REVISED STATUTES.

ASSETS	
Cash, balances with other banks, and cash items in process of collection	3,260,910.83
United States Government obligations, direct and guaranteed (Net of any reserves)	410,612.50
Obligations of States and political subdivisions (Net of any reserves)	209,798.03
Loans and discounts (Net of any reserves)	3,604,379.66
Fixed Assets	20,000.00
Other assets	11,792.89
TOTAL ASSETS	7,517,493.41
LIABILITIES	
Demand deposits of individuals, partnerships, and corporations	5,679,749.44
Time and savings deposits of individuals, partnerships, and corporations	322,612.32
Deposits of United States Government	43,831.57
Deposits of States and political subdivisions	802,595.88
Certified and officers' checks, etc.	151,634.89
TOTAL DEPOSITS	\$7,000,424.10
(a) Total demand deposits 6,257,617.78	
(b) Total time and savings deposits 772,806.32	
Other liabilities	15,000.00
TOTAL LIABILITIES	7,015,424.10
CAPITAL ACCOUNTS	
Common stock - par value per share \$100.00	
No. shares authorized 1,000	
No. shares outstanding 1,000	
Total par value	100,000.00
Surplus	200,000.00
Undivided profits	202,069.31
TOTAL CAPITAL ACCOUNTS	502,069.31
TOTAL LIABILITIES & CAPITAL ACCOUNTS	7,517,493.41

I, Robert Bridges, Cashier, of the above-named bank do hereby declare that this report of condition is true and correct to the best of my knowledge and belief.

Robert Bridges

We, the undersigned directors attest the correctness of this report of condition and declare that it has been examined by us and to the best of our knowledge and belief is true and correct.

Don Bell
C.O. Stone
James T. Lee
DIRECTORS

R APPENDICITIS IS STILL A KILLER

YOUR BODY OFTEN NEEDS EXTRA HELP Right now it is being exposed to cold January weather with more winter months ahead. You can easily catch colds, coughs and even more serious ailments.

GIVE YOUR BODY A HEALTH CHECK UP Visit your physician now and let him help you try to prevent possible future sickness. First, he will carefully examine you to see if you have a present serious ailment.

YOU CAN HAVE A HEALTHIER NEW YEAR By giving yourself the gift of a health check up. You will also have a happier one, for who can be completely happy without good health.

Phone 385-4500

Wright Prescription Drug

331 Phelps Littlefield

PRESCRIPTION CHEMISTS

Copyright 1964 (W10-1-64)

'65 Chevelle
by Chevrolet



(discover the difference)

Find out what 350 hp feels like

in America's favorite intermediate size car



Next time you're feeling low, come on in and plunk yourself down in the bucket seat of a Chevelle Malibu Super Sport. Flick the ignition—bring that special-order 350-hp power plant to life. Then go find a road and try not to smile.

We think it's the greatest pep pill since weekends—and that goes for the other Chevelle V8's too. The 195-hp. And the 250- and 300-hp jobs we can order for you.

And of course if power doesn't sell you right off, maybe Chevelle's short turning radius and overall handling edge will. Or its Full Coil suspension ride. Or its all-vinyl, carpeted interior. Or maybe it's just plain old Chevelle value.

discover the difference

CHEVROLET

Drive something really new—discover the difference at your Chevrolet dealer

Chevrolet • Chevelle • Chevy II • Corvair • Corvette

ARMES CHEVROLET CO.
LITTLEFIELD, TEXAS

S.I.C.
is
HERE!



PRIZES! PRIZES!

Visit our office during our opening and register for the RCA transistor radios and the portable TV set that will be given away.

(You Do Not Have to Be Present to Win)

NOW...IN LITTLEFIELD!

Southwestern Investment Company, better known as S.I.C., now offers the famous S.I.C. loan, financing, and insurance service in Littlefield.

S.I.C. brings to Littlefield more than thirty years' experience in consumer loans, financing, and insurance... along with the reputation of being one of the nation's leading companies in this type of business. This guarantees the people of this area the finest service possible whenever they have a need for extra C-A-S-H.

Southwestern Investment Company is proud to become a part of the Littlefield business community, and we would like to remind everyone in the area of our policy:

For the FASTEST SERVICE possible...at the LOWEST RATES available...whenever YOU need MONEY

WHATEVER YOUR NEED FOR C-A-S-H MAY BE

SOS for S.I.C.

SOUTHWESTERN INVESTMENT COMPANY

420 Phelps Avenue
Littlefield, Texas

ADDITIONAL NEWS by Sandra Moorhead

Shower To Honor Mrs. Dale Stanley

Mrs. Dale Stanley of Hereford will be honored Friday, Jan. 15, with a pink and blue shower in the Reddy Room in the field from 2 to 4 p.m. Mrs. Stanley is the daughter of Mr. and Mrs. H.A. Visk of Littlefield. Mrs. Stanley's parents, Mr. and Mrs. Gene Stanley of Spade. All friends of the couple are invited to attend.

Mrs. C.C. Byars has been visiting her daughter and family, Mr. and Mrs. Waymond Dunn and Mindy of Abilene, Mrs. Dunn is ill.

Mid-semester tests are being given at the schools this week. Donna Smith was admitted Friday night at Medical Arts Hospital and underwent an appendectomy Sunday morning. She is the daughter of Mr. and Mrs. Ray Smith.

Mr. and Mrs. Aubrey Nelms and family were dinner guests of his parents, Mr. and Mrs. W.P. Nelms of Littlefield, Sunday.

The school census is being taken this month. Anyone having a child who will be six before

September 1 of this year and doesn't have a child already enrolled in school, is asked to call the school secretary, Doris Stubblefield, soon.

Having birthdays this week are Lynn Baker, Mrs. Earle Hall, Joyce and Royce Stanley, Jimmy Nelson, Mrs. Don Eagan, W.O. Adams, Earle Hall.

Observing anniversaries are Mr. and Mrs. Alvin Whitfield, Mr. and Mrs. John Talburt, Mr. and Mrs. James Duke, Mr. and Mrs. Don Tindal and Mr. and Mrs. Kenneth Sorenson.

W.E. Bird, longtime resident, has returned to his home after spending some time in Littlefield. His daughter, Babe An-

derson, moved to Spade this week to be with him. Her family will join her later.

Mr. and Mrs. Garland Moore, former teachers at Spade, attended the basketball tournament at Anton Friday night and visited with Spade relatives. Mr. and Mrs. Moore are now living in Lubbock.

Dagmar Poteet, daughter of Mr. and Mrs. George Poteet, spent Sunday and Monday in the Medical Arts Hospital suffering from a virus.

Charles Ramage, Tech, spent the weekend with his parents and sisters, Mr. and Mrs. Robert Ramage, Carolyn and Linda.

Mrs. G.N. Vann has been dismissed from Medical Arts Hospital. She is recuperating at home.

The boys basketball team captured the consolation trophy in the Anton Basketball tournament in the final rounds Saturday night by defeating Floydada "B" team, 73-59. Bobby Jones led the Spade team with 18 points. The boys lost to Anton on Thursday and won over Abernathy "B" Friday with a score of 53-43, putting them in the consolation bracket.

The girls beat Sudan "B" Thursday in their first game of the tournament. They were defeated by Three-Way, 64-38, Friday with Lynette Hall managing 26 points for Spade. The girls then played Anton Saturday night in the third place division and were defeated 43-23. Lynette Hall made 15 points for Spade.

Evone Stubblefield, a student at Lubbock Christian College, was home for the weekend. She is the daughter of Mr. and Mrs. J.A. Stubblefield.

Terrill Moorhead spent Monday with his grandparents, Mr. and Mrs. Floyd Moorhead.

Sunday afternoon guests of Mr. and Mrs. John Vrabel, Larry and Karyn, were Mr. and Mrs. J.M. Key and sons, Ronnie and Jimmy, of Olton.

About 50 farmers met Tuesday night in the school cafeteria for a meeting on weed control. The speaker was Archie Martin of Plainview an agronomist employed by Roland Gordon of Plainview.

FARMERS FILING REQUIREMENTS

If you are a farmer who earned at least two-thirds of your 1964 gross income from farming, you should file your estimated 1964 Federal income tax return on or before Friday, January 15, 1965, according to John J. Sloan Administrative Officer of the Lubbock office of Internal Revenue Service. You should use Form 1040-ES in filing this return.

However, you do not need to file this estimate if you file your final return on Form 1040 and pay in full any tax due by February 15, 1965.

"Farmer's Tax Guide," which furnishes detailed information on this subject, is available upon request from the Internal Revenue Service.

HOSPITAL NEWS

MEDICAL ARTS CLINIC & HOSPITAL

January 6
ADMITTED: George Haskins, Patti Brantley, Mrs. Clifford E. Williams, Mrs. John C. Crawford, Randy Hill.
DISMISSED: Mrs. R.L. Byers, Jr., Fred Faust

January 7
ADMITTED: Ronnie Fine, Mrs. Earnest Lorenz, Mrs. C. O. Stone, Mrs. W.G. Street, Sr., W.E. Jordan.
DISMISSED: Mrs. Herman Monkes, Mrs. Robbie Pass, Craig Freeman

January 8
ADMITTED: Mrs. Jim Claunch, Mrs. T.H. Hemphill, Jim Claunch, Mrs. Pauline Waugh, Rudy Montalvo, W.L. Hopper, Hilda Jones.
DISMISSED: Frances Esquivel, Mrs. Tom Newton, Tom Sawyer, Mrs. W.T. Cook, Mrs. H.N. Bennett, Mrs. John Crawford, Mrs. Joe Conkin.

January 9
ADMITTED: Donna Smith, W.L. Manuel, Mrs. Kenneth Pounds, Mrs. Beatrice Clayton, Mrs. Ellis Foust, Miss Lula Hubbard.
DISMISSED: Hilda Jones, Mrs. G.M. Vann, Janie Torres, Mrs. M.G. Kellar, Mrs. A.A. McMahan, Ronnie Fine, Patti Brantley.

January 10
ADMITTED: Dagmar Poteet, Jackie Fox, Mrs. Ismael Luna.
DISMISSED: Rene Rochelle, Mrs. G.W. Davis, Mrs. W.G. Street, Sr.

January 11
ADMITTED: Mrs. Ed Seeley, C.C. Serratt, Sr., Mrs. Fred De La Rosa, Guy Hawkins, J. A. Littleton, Mrs. G.M. Vann, Mrs. Floyd Ivey.
DISMISSED: Dagmar Poteet, W.E. Jordan, George Haskins, W.L. Hopper.

January 12
ADMITTED: Mrs. Mike McLaugh, Mrs. T.R. Cannon, Mrs. Guy Walden, Mrs. Willie Flores, Sid Landers.
DISMISSED: Mrs. W.T. Bellar, Mrs. Clifford Williams, Mrs. Bertha Warner, Mrs. Kenneth Pounds and infant.

BIRTHS
Mr. and Mrs. Kenneth Pounds of Littlefield have a baby boy born January 10, 1965 at 12:20 a.m. He weighed 7 lbs. 2 oz. and has been named Michael Lynn.

Clinic For Crippled Children Set Saturday

St. John's Crippled Children's Clinic will conduct its winter session Saturday, Jan. 16, from 1 to 5 p.m., at St. John's Methodist Church, 15th and College Ave., Lubbock. Sponsored by the Fellowship Class, the clinic provides free medical care to dozens of indigent children of the South Plains area.

Physicians working in and cooperating with the clinic give of their services free. Corrective shoes, braces, and hospital care are provided from funds received by the class. Free consultations and x-ray examinations are offered by the clinic, which will have three orthopedists present Saturday. Children who are registering


for the first time should be accompanied by parent or guardian.

Since the clinics were started in April, 1963, approximately 500 examinations have been given. Of that number, 158 children had not been treated previously since they had not seen a physician. Ten of these children have received corrective surgery since the last clinic in October. Children already under the care of a physician are referred back to their doctors with the clinic's findings.

PLEASE Pardon The Noise!

PROGRESS IS OUR GOAL AND SOMETIMES IT IS NOISY

WE'RE REMODELING OUR MAIN OFFICES ON PHELPS AND ALSO CREATING AN UPSTAIRS OFFICE FOR HALL INVESTMENT CO. RIGHT NOW WE CAN'T HEAR OURSELVES THINK, BUT IT'S ALL A PART OF THE OVERALL PLAN AND WE'LL SOON BE BACK TO NORMAL.



BUT - - - DON'T WAIT - COME IN TODAY MITCHELL-FORD INC. LITTLEFIELD, TEXAS

OPEN 7 - 11 EVERY DAY
SPECIALS FRI.-JAN. 14TH THRU WED.-JAN. 20TH

EVANS Jim Dandy FOODS

322 W. Delano - Littlefield, Texas

1 LBS SUGAR 99¢	OUR DARLING FLOUR 1.69 (25 LB. PAPER BAG)
DETERGENT BREEZE GIANT SIZE With Dish Tassel 75¢	SPRAY AQUA NET LARGE CAN 59¢
HAMBURGERS 19¢ EACH	HAMBURGER SAUSAGE WEINERS BOLOGNA Mexican Hots 3 LBS \$1
CRISPRITE BACON LB. SLICED 49¢	MOHAWK CURED HAMS 5 LB. CAN 3.59
TUNA 25¢	PEACHES 25¢
PACKAGED NUTS 59¢ & 69¢ ALL KINDS 39¢	SHURFRESH CRACKERS 19¢

DOUBLE STAMPS SATURDAY

Sure. You might find another car as new as the Delta 88.



But not this year.

This is Oldsmobile's Delta 88. It's unique. Unique because it's new. New clear through. Styling is new. So new, not a line nor a highlight was borrowed from last year. Power plant is new. Super Rocket V-8 is the biggest in Olds history: 425-cubic-inches big, up to 370-horses strong. Transmission is new, too. Turbo Hydra-Matic, available on any Delta 88, provides up to 40% more torque from a standing start, superlative performance at all speeds. New styling. New engine. New transmission. This year, only Delta 88 lets you have all three, all new. Other cars have a lot of catching up to do.

'65 OLDSMOBILE Try a Rocket in Action... Look to Olds for the New!

SEE YOUR LOCAL AUTHORIZED OLDSMOBILE QUALITY DEALER... WHERE THE ACTION IS!

JONES MOTOR COMPANY, LITTLEFIELD, TEXAS

FOR THE BEST IN USED CARS - SEE YOUR OLDS DEALER FOR A LATE MODEL VALUE RATED USED CAR!

It's Clearance! SALE

This is the Largest and Most Complete Sale We Have Ever Had. Big Savings in Every Department.

Save 1/3 TO 1/2!

ON WESTERN WEAR

40% Off On Ladies RIDING SUITS PANTS & SHIRTS

OVER 600 PAIRS **BOOTS ON SALE**

All Sizes... All Styles... The Greatest Boot Sale In West Texas, including Tony Lamas, Nocona's, Justin's, Cowtown's, Acme, Rio And Texas... All Greatly Reduced In Price.

REG. \$44.50	now \$30
REG. \$42.50	now \$29
REG. \$37.95	now \$26.50
REG. \$34.50	now \$24.50
REG. \$32.50	now \$22.50
REG. \$29.95	now \$21.00
REG. \$24.50	now \$18.00
REG. \$19.95	now \$14.00

Children's Boots
by Texas and Acme

REG. \$10.95	now \$7.95
REG. \$9.95	now \$7.00
REG. \$7.95	now \$5.00

OUR COMPLETE STOCK **Men's And Ladies WESTERN SHIRTS**

REG. \$9.95	now \$6
REG. \$8.95	now \$5.50
REG. \$7.95	now \$5.00
REG. \$6.95	now \$4.50
REG. \$5.95	now \$4.00
REG. \$4.98	now \$3.50

ONE GROUP SHIRTS VALUES TO \$8.95 **ON SALE NOW \$3**

MANY OTHER ITEMS MARKED DOWN AS MUCH AS HALF

ALL COATS - VESTS - MEN'S SUITS ON SALE

REG. \$45	now \$29.95
REG. \$39.95	now \$25.00
REG. \$17.95	now \$12.95
REG. \$23.95	now \$15.00

FLEECE LINED LEATHER COATS AND VESTS

REG. \$26.95	now \$18.00
REG. \$31.95	now \$25.00
REG. \$13.95	now \$8.50

BILL'S BOOT SHOP

**BUY
SELL**

CLASSIFIED ADS

LEASE

LEADER and NEWS
CLASSIFIEDS SELL!
 TO USE THEM JUST CALL **5-4481** AND ASK FOR AD TAKER
 — CLASSIFIED RATES —
 First insertion, per word . 5c
 Second insertion, word 4c
 All Additional Insertions, word 3c
 Minimum Charge For First Ad run, \$1; minimum charge per subsequent insertion, 50c.
 MONTHLY RATE, per word 24c
 (All editions of Leader and News, two copy changes monthly)
DEADLINES FOR INSERTION:
 LAMB COUNTY LEADER
 10: a. m. Wednesday
 COUNTY WIDE NEWS
 10:00 a. m. Saturday

● Help Wanted A-1
 Farm Help Wanted: \$40.00 per week, \$1.00 an hour over 40 hours, housing, transportation, insurance. Call AN2-4328. 1-14B
 MAN OR WOMAN to serve consumers in Lamb Co. or Littlefield with Rawleigh products. Steady good earnings year round. No capital required. See J.W. Pack R#1, Shallower or write Rawleigh, TX L 282 11, Memphis, Tenn. 1-28C

● Work Wanted A-2
 Custom Flat Breaking - \$3.50 per acre. Listing \$1.50 per acre. Call or see Walter Branley, 385-5696. TF-B
 Listing \$1.25 an acre. Phone 299-4638. 1-31A
 Listing \$1.25 an acre. New 605 Moline - 3 row. Call 246-3423, Amherst. 2-7B
 Will keep children in my home. LVN, Mrs. Kennemer, Phone 385-3770. TF-K

● Business Opportunities A-3
 Would you like to supplement your income? Could you devote a couple of evenings per week representing World Book/Children's? For more information, write: Frank Medley, 1906 Avenue M, Lubbock, Texas.
● Lost & Found A-4
 Found: Men's initial ring. Owner may claim by paying for this ad. TF-O
● Special Notices A-5
 Will person I rode with from Shallower to Sudan Monday, Jan. 4, 1965 - please contact me about a tag I left in car. L.E. Buntin, U.S. Naval Hospital, Corpus Christi, Texas. 1-17W
 Be glad to take your order for Pioneer Sorghum seed, A.B. Enloe, Amherst, Texas. Phone 246-3265. 1-24E
● Personal Services A-8
 Will do baby sitting in my home day or night, also by the hour. Shirley Travis, LVN, 1224 W. 6th, Phone 385-5304. TF-C
 Will baby sit in your home day or night. Mrs. Lilly Fay Curtis, 385-3335. TF-C
 WANTED . . . Ironing, pickup and delivery. Also baby sitting, house keeping. Phone 385-3224. TF-D
 Will do ironing and sewing. Phone 385-3981. TF-H

Colonial House
 400 E. 22ND ST. - Lfd
SPACIOUS 2 BEDROOM APARTMENTS
 • Refrigerated Air Conditioning
 • Built-in Range
 • Refrigerator Furnished
 • Electric Dishwasher & Disposal
 • Private Patios
 • Bath and One-half
 • Off Street Parking
 • Central Heating
 • Interior Brick Walls
 • Washer and Dryer Connections
 CALL OR SEE **Brenda Wilkinson**
 385-5774
 404 E 22ND ST.-APT.A

● Houses to Rent B-3
 For Rent - 2 bedroom house, carpeted, fenced yard, \$75.00 per month, 217 E. 13th Street. Call 385-4304 or Chamber of Commerce. TF-M
 For rent: 2 bedroom brick house. Close in. Adults only. Call 385-3880. TF-H
 2 bedroom brick house, for rent, close in, Opheia Stone, Ph.385-4674. TF
FOR RENT . . . 1 bedroom house completely furnished. Available now. Shipley Phillips 66 Station, or 108-23rd Street nights. 1-25

● Houses to Rent B-3
 3 room house, plumbed for washer, 820 E. 6th, 385-3854. Mrs. J.P. Trimmer, 190 E. 12th. TF-T
 For Rent: several 1, 2, & 3 bedroom modern houses. Call K. Houk, 385-3492 or 385-4830 or Charlie Gaddis, 385-5381. TF-H
 2-bedroom, carpeted, fenced back yard, 608 Duggan, 385-3285 after 5 p.m. TF-D

● Rooms for Rent B-5
 Comfortable bedrooms for men. New home, heated rooms. Phone 385-3604, 204 E. 9th St. TF-A

● Offices for Rent B-6
 Office or business space for rent, new, modern, good location. Phone 385-3055. F.L. Newton. TF-N
 Choice office space, private bath, lots of storage. Bills paid, 2nd floor of the Yellow-house Building. Contact L. Peyton Reese. TF-R

● Houses For Sale C-1
 To be moved; 3 room and 1 bath house. Littlefield Hardware, call 385-3033. TF-L
 3 bedroom home, carpeted, built-in appliances, large small down payment. Call 385-4287. TF-S
 Nice 2 bedroom home, fully carpeted, attached garage. Low down payment, 721 E. 15th. Phone 385-3960. 1-24L
 For Sale: 3 bedroom home with 2 acres of land. On highway. Real nice inside. Phone 385-3714. TF-Y
 For Sale: 3 bedroom, 2 bath. Cannon Terrace, \$850.00 equity. 1312 W. 12th. Call 385-5101. 1-24P

● Real Estate for Sale C-6
PEYTON REESE
FARM LOANS
 110 Yellow House Bldg.
 Dial 385-5343
 FOR SALE: 227 acres to settle an estate. Two wells, one 8" and one 10". Modern two-story brick home, 4 bedrooms, den, large built-in kitchen with bar, \$700.00 per acre. Terms can be arranged. Located 8 miles north, 2 1/2 east of Littlefield, Ph. H.W. Terrell, AN2-4314, Route 1, Amherst or Odell Bills, Ph. 257-5322, Earth, 1-17T
 Choice irrigated 12 acres on pavement 1 1/2 mi. south of Westaco. Modern brick home, other improvements, good water, 14 livestock, tractor and equipment, minerals. Total price \$22,500.00. Terms. Sell or trade, all or part. Henry Oils, Route 2, Westaco, Texas. Phone WO 8-2937. 2-10U
 One of the best Stock Farms that I have ever had for sale--- 29 1/2 down, 29 years on balance 5%. L. Peyton Reese, 385-5363 or T.N. Hukill AN2-4344. TF-P

● Real Estate for Sale C-6
PEYTON REESE
FARM LOANS
 110 Yellow House Bldg.
 Dial 385-5343
 320 acres, 5 1/2 well, \$220.00 per acre, \$15,000.00 down, good terms on balance, L. Peyton Reese 385-5363 or T. N. Hukill AN 2-4344. TF

● Real Estate for Sale C-6
PEYTON REESE
FARM LOANS
 110 Yellow House Bldg.
 Dial 385-5343
 160 acres in Castro County, 2 good wells, lays perfect. \$550 per acre, good allotments and clean. Contact L. Peyton Reese or L.N. Hukill, phone AN 2-4344, Fieldtown. TF-R
 Irrigated, S.E. 1/4 section 13 R.M.T. 165.3 acres, \$325 per acre, 29% down, 6% interest, 1/2 mineral reserved, 57 acres cotton. C.B. McCoy administrator. Phone 233-2328. TF-M

● Real Estate for Sale C-6
 20 unit Broadmoore Courts on Highway 385, good income property. See Tommy or Orville at Littlefield Tire, 18th at Levelland Highway. TF-L
 7,000 acre farm located in Yoakum County being subdivided to be sold in tracts to suit purchaser. 35 irrigation wells being drilled at this area. Will take a trade clear of debt. Price from \$210 to \$325 per acre. Terms on balance is 15 years if wanted. 532 acres Lamar County farm located near Paris, Texas. Ideal Stock Farm. Will sell on good terms, \$160 per acre. Ed Hofacker Real Estate, 915 Houston Street, Phone 894-6615, Levelland, Texas. 1-13H

● Real Estate for Sale C-6
 160 acres Parmer County. Lots of water, 480 acres Curry County New Mexico. In water belt, 177 acres dry land, Lamb County. Good cotton allotment. J.D. Hagler, 300 E. 11th, St. Phone 385-5150, Littlefield, Texas. TF-H
 200 acres of irrigated land with sale of equipment, 2 year lease-third and fourth rent, 100 E. 20th. TF-P

● Real Estate for Sale C-6
 160 acres near Bovina. Good house, 1-good well, all good land, 60 acres of wheat. With possession before Feb. 1st, \$400 an acre - 29% down, Van Clark Real Estate, 704 E. Delano, Phone 385-4210. TF-C
 Choice irrigated 12 acres of pavement 1 1/2 mi. south of Westaco. Modern brick home, other improvements, good water, 14 livestock, farming equipment, minerals. \$22,500.00 complete. Terms. Sell or trade. All or part. 1-31O
 For sale - 2 1/2 acres. Close to town. \$2,000.00. L. Peyton Reese. TF-R

● Real Estate for Sale C-6
 Mr. Farmer, do you have sand in your well water - call 385-5339 for free demonstration on sand trap. Victor Neimast, 5-10N

● Real Estate for Sale C-6
 Do custom poultry dressing. Will dress any amount from one up. Call Mae at Littlefield Frozen Food Locker, 385-3818, 134 Eastside. TF-M
 COMPLETE EXTERMINATION SERVICE, household pests as roaches, mice, rats, termites, etc. Tree and lawn spraying, bird repellent, moth proofing. One year written service warranty. Low rate, \$2.00 a room-crawling insects. Day or night call collect. Levelland, 894-3824. Devision Pest Control 15 years experience. TF-D

● Real Estate for Sale C-6
 Ideal location - 3 acres with nice large home, den & 3 bedrooms; lots of closet space. Also has shop building. First house outside city limits on Bula Highway.
 PHONE 385-3741
IVAN OGERLY

● Real Estate for Sale C-6
 By owner: Square section: level land, 480 acres, irrigated. Well improved with good house and round top. Natural gas and underground pipe. Owner retiring: 3 1/2 miles N. of airport, then 3 1/2 miles W. of Walsh, Colorado. Write Irven Mangels, Walsh, Colorado. 1-MM
 320 acres, 2 - good wells, 100 acres of wheat, \$275.00 an acre - 29% down, Van Clark Real Estate, 704 E. Delano, Phone 385-4210. TF-C
 640 acres for sale by owners. On pavement, R.E.A. telephone. All in soil bank, excellent blue grams and buffalo. Three test holes indicate. Six to eight inch well, natural gas, \$200.00 per acre. Phone - Area code 806-538-4804 or 806-538-4809 - Adrian, Texas. 1-17A
 381 acres of land with 10" irrigation well - 8 miles northwest of Amherst, 210 acres grain allotment, 131 acres cotton allotment. See Henry Bass, Route 1, Muleshoe, Phone 3-3325. TF-B

● Real Estate for Sale C-6
 LAMB COUNTY
 289 acres \$325 per acre 3 wells 2-10" & 1-8" Good allotments Natural gas
 80 acres 1 very good 6" well, 2500 V.G. Tile, \$425 per acre \$15,500 down.
 177 acres lays almost perfect. Near Littlefield 65 acres cotton, Dry land.
 \$500 Down on these houses
 3 bedroom 2 bath, utility room \$9,000
 2 or 3 bedroom, Brick, large lot with trees, storm cellar \$9,250
 2 bedroom, utility room, garage, new carpet \$8,000
 2 bedroom, garage, fenced backyard \$6,000

● Real Estate for Sale C-6
JIM MILLS
REAL ESTATE
 FRANK, RANCHES, CITY PROPERTY
 385-5811 823 LRD DRIVE

● Real Estate for Sale C-6
 20 unit Broadmoore Courts on Highway 385, good income property. See Tommy or Orville at Littlefield Tire, 18th at Levelland Highway. TF-L

● Real Estate for Sale C-6
 7,000 acre farm located in Yoakum County being subdivided to be sold in tracts to suit purchaser. 35 irrigation wells being drilled at this area. Will take a trade clear of debt. Price from \$210 to \$325 per acre. Terms on balance is 15 years if wanted. 532 acres Lamar County farm located near Paris, Texas. Ideal Stock Farm. Will sell on good terms, \$160 per acre. Ed Hofacker Real Estate, 915 Houston Street, Phone 894-6615, Levelland, Texas. 1-13H

● Real Estate for Sale C-6
 160 acres Parmer County. Lots of water, 480 acres Curry County New Mexico. In water belt, 177 acres dry land, Lamb County. Good cotton allotment. J.D. Hagler, 300 E. 11th, St. Phone 385-5150, Littlefield, Texas. TF-H

● Real Estate for Sale C-6
 200 acres of irrigated land with sale of equipment, 2 year lease-third and fourth rent, 100 E. 20th. TF-P

● Real Estate for Sale C-6
 160 acres near Bovina. Good house, 1-good well, all good land, 60 acres of wheat. With possession before Feb. 1st, \$400 an acre - 29% down, Van Clark Real Estate, 704 E. Delano, Phone 385-4210. TF-C

● Real Estate for Sale C-6
 Choice irrigated 12 acres of pavement 1 1/2 mi. south of Westaco. Modern brick home, other improvements, good water, 14 livestock, farming equipment, minerals. \$22,500.00 complete. Terms. Sell or trade. All or part. 1-31O

● Real Estate for Sale C-6
 Mr. Farmer, do you have sand in your well water - call 385-5339 for free demonstration on sand trap. Victor Neimast, 5-10N

● Real Estate for Sale C-6
 Do custom poultry dressing. Will dress any amount from one up. Call Mae at Littlefield Frozen Food Locker, 385-3818, 134 Eastside. TF-M

● Real Estate for Sale C-6
 COMPLETE EXTERMINATION SERVICE, household pests as roaches, mice, rats, termites, etc. Tree and lawn spraying, bird repellent, moth proofing. One year written service warranty. Low rate, \$2.00 a room-crawling insects. Day or night call collect. Levelland, 894-3824. Devision Pest Control 15 years experience. TF-D

● Bus. Services D-3
 MATTRESS REBUILDING: Let us rebuild your old mattress into a firm interspring. We can convert your old bed springs into a modern Box Springs or trade in your old mattress on new inner springs, Box springs, Kingsize, Queensize, Long Boy, foam or rubber mattresses. Call Mrs. Claude Steffey 385-3386 day or night or Sewing Center 385-3140. Agents for A AND B Mattress Co. Lubbock. TF-A
DAVIS CONCRETE
 7th & Seldon
 Phone 385-3023
 SAND - GRAVEL - READY MIXED CONCRETE
 MATTRESS MAKING-Old mattresses renovated, also new mattresses and box springs. Innersprings \$12.50 and up, cotton \$50 trade-in allowance on king size, long boy, foam and rubber mattresses. Call Gregg Shop, 385-3112. Agent for Direct Mattress Co. of Lubbock The oldest and most modern mattress factory on the South Plains. TF-D
 Rent Convalescent equipment at Brittain Pharmacy. Wheelchairs, crutches, hospital beds, other items. Complete lines convalescent needs. TF-F

● Bus. Services D-3
PORTABLE RIG
COMPLETE WELDING SERVICE
GAMBLE WELDING WORKS
 720 E. 4TH
 385-5437

● Bus. Services D-3
INCOME TAX SERVICE
 Reasonable Rates
 J. CALVIN YOUNG
 Phone 385-8980
 MOTEL L-F
 Littlefield, Texas

● Farm Equipment E-1
 For Sale: 1957 720 John Deere has made 1 crop since - 1. Motor overhaul 2. Power steering checked and gone through 3. Hydraulic system checked and gone through 4. Rear tires replaced with new ones. This tractor is in excellent condition and may be seen 3 mi. N. and 3 1/4 mi. E. of Spade, Phone 233-2708. W. Don Bell, owner. 2-10B
 For Sale: 2 up and 2 down John Deere 16" Mold Board breaking plow, '56 G M C half ton pickup. Call 385-3323. TF-M
 For Sale: tractor. Excellent shape, few hours on it. Phone 385-3585. 1-17W

● Farm Equipment E-1
 For Sale: 1957 720 John Deere has made 1 crop since - 1. Motor overhaul 2. Power steering checked and gone through 3. Hydraulic system checked and gone through 4. Rear tires replaced with new ones. This tractor is in excellent condition and may be seen 3 mi. N. and 3 1/4 mi. E. of Spade, Phone 233-2708. W. Don Bell, owner. 2-10B

● Farm Equipment E-1
 For Sale: 2 up and 2 down John Deere 16" Mold Board breaking plow, '56 G M C half ton pickup. Call 385-3323. TF-M

● Farm Equipment E-1
 For Sale: tractor. Excellent shape, few hours on it. Phone 385-3585. 1-17W

● Farms, Ranches C-7
 Farm for Sale: 6 mi. West of Lfd, 194.5 A. 63 A. cotton, 1/2 minerals, Walter H. Hill, call 385-3137. TF-H

● Bus. Services D-3
WALL PAPER & PAINTS
LITTLEFIELD HARDWARE
 PH 385-3033
 Lubbock Hi-way

● Pets E-3
 For Sale: Chihuahua puppies. Phone 385-3053. 1-17C
● Cattle, Hogs, Horses, Sheep F-3
 FOR SALE: two registered Jersey milk cows, 2 registered Jersey heifer calves. Call 385-5484 after 5 or see at first house east on Spade Hwy. TF-W

● Bus. Services D-3
WALL PAPER & PAINTS
LITTLEFIELD HARDWARE
 PH 385-3033
 Lubbock Hi-way

● Bus. Services D-3
 Mr. Farmer, do you have sand in your well water - call 385-5339 for free demonstration on sand trap. Victor Neimast, 5-10N

● Bus. Services D-3
 Do custom poultry dressing. Will dress any amount from one up. Call Mae at Littlefield Frozen Food Locker, 385-3818, 134 Eastside. TF-M

● Bus. Services D-3
 COMPLETE EXTERMINATION SERVICE, household pests as roaches, mice, rats, termites, etc. Tree and lawn spraying, bird repellent, moth proofing. One year written service warranty. Low rate, \$2.00 a room-crawling insects. Day or night call collect. Levelland, 894-3824. Devision Pest Control 15 years experience. TF-D

MR. 2

 Home is where the heart is. Be sure your heart is in the right place when you buy lumber and building materials. You'll find it in the long run if you buy quality. And Roberts-Loff has it.

MITCHELL FORD INC.
 Littlefield, Texas
● Furniture, Appl. (Used) H-2
 Used TV sets from \$24.95. TV CORNER 385-3831. TF-T
 Automatic washing machine. Good condition. 385-4261. TF-S
 Good, clean Frigidaire range. Also, Clayback ter. Call 385-3181.

NOTICE
 WE ARE OPENING A NEW OFFICE IN THE "ONSTEAD FURNITURE STORE"
 DROP IN, WE HAVE FARMS - RANCHES - CITY PROPERTY AND HOT COFFEE.
PLAINS REAL ESTATE
 PHONE 385-3211
 I. D. Onstead Ph. 385-3211 Nite Ph. 385-3790
 Roy Wade Ph. 385-3790
 LITTLEFIELD, TEXAS

GARLAND MOTOR CO.
 DIAL 385-4454
 Serving Littlefield Since 1928
BOSS
ALUMINUM PIPE SALE
 Price Per Foot
 4"x30' LATERAL PIPE 51c
 4"x40' LATERAL PIPE 47c
 5"x30' MAIN PIPE 60c
 5"x40' MAIN PIPE 57c
 6"x30' MAIN PIPE 71c
 6"x40' MAIN PIPE 68c
 6"x30' FLOWLINE PIPE 65c

BOSS IRRIGATION
 AC 806 - PO 5-5559
 Clovis Hwy at Quarter St
 LUBBOCK, TEXAS

BANK AUTO LOANS
SECURITY STATE BANK
 MEMBER FEDERAL DEPOSIT INSURANCE CORPORATION
 an extra bonus for you
 ...the money you save on our
LOW COST

★ WANTS ADS ★

Cl. For Sale H-3
 Newly new 17 ft. Blacome boat by Lane Star. Has Johnson motor with tarp and cover for motor, trailer with big wheels, includes battery and 18 gal. can. 610 Henderson, Littlefield, Texas. Call 385-3541. 1-17S

Misc. For Sale H-3
 For sale: all steel carpets by Superior Metal Works, 3414 Olton Road, Plainview, Texas. Call collect CA 3-3247. TF-S

Good used batteries, \$5 exchange. Anderson Wrecking yard on the road to the Compress. TF-A

For Sale: bench saw, joiner, and skill saw. Acree Barton. 1-17B

FOR SALE OR TRADE--Vegetable shed and fixtures, walk-in box. Will sell altogether or separately. 385-4771. TF-P

For sale: Blonde Baldwin electric organ. Call 385-4940 after 6. 1-17M

Misc. For Sale H-3
 "Repossessed 1964 Singer sewing machine in optional 4 drawer walnut cabinet, equipped to blind hem, zig-zag, fancy stitches, etc. 5 payments at \$7.22 or will discount for cash. MUST HAVE GOOD CREDIT. Write Credit Department, 1114 19th Street, Lubbock Texas." 1-21L

For Sale: barracks building, 100 x 24 ft. Farmers Grain Company. Phone 385-5040. TF-F

For Sale: deep well pressure system for house. Complete set up. 35 G.P.M., 2 H.P., 25% off. Doyle Gilley, Rt. 2, Lfd., Ph. (Petit) 245-3195. TF-G

For Watkins Products, call 385-4584, 925 College. TF-H

FOR SALE OR TRADE... Good '56 model Ford pickup, good tires. Shipley Phillips 66 Station, or 106-23rd Street nights. 1-21S

For Sale: 1950 Ford pickup. Almost new motor; new tires. Dial 385-4269 or inquire at 119 23rd Street. 1-17A

For Sale: '63 Volkswagon, low mileage, custom deluxe, all vinyl interior, \$1250.00. Doyle Gilley, Rt. 2, Lfd. Ph. (Petit) 245-3195. TF-G

'60 model IHC 1 1/2 ton truck half-cab over, grain boards, and steel bed. New motor (not rebuilt). 4 miles W., 9 1/2 miles S. of Littlefield. Call Pettit 245-3195. Doyle Gilley. TF-C

Studebaker pickup '61 model. Air conditioner and overdrive. Good shape. Phone 385-4497 or 385-3883. TF-W

For Sale: 1964 Chevrolet pickup, custom, low mileage. Phone 385-4888. Nights 385-4693. TF-A

For Sale: '64 Comet, air conditioned, V-8 engine. Call 385-4441-day. 385-3736 after 5:00. 2-14B

Bible Study Held

The Baptist Church has been conducting the January Bible study. Rev. Swaggerty and Rev. Stillwell taught the book of Deuteronomy.

Rev. and Mrs. Swaggerty, and Mr. and Mrs. Marvin Qualls were with the Paul Hukill family Wednesday for the surgery of their granddaughter, Dana Hukill, of Clovis, N.M.

Mr. and Mrs. Tom Rowan visited over the holidays with his parents, Mr. and Mrs. W.L. Rowan, of Princeton, Mr. and Mrs. Rowan's 10 children, their grandchildren, and great grandchildren were there for the occasion with 42 present in all.

Visiting in the home of Mr. and Mrs. J.E. Elliott Jr. and sons were Mr. and Mrs. Hewitt Williams, and Mr. and Mrs. Charles Turnage of Berger. Mr. and Mrs. Mutt Elliott and Debbie left for Oklahoma City Saturday. Mr. Elliott and Debbie are going through the allergy clinic there.

Mr. and Mrs. H.B. Tharp have been visiting Mrs. Tharp's mother, Mrs. Alma George, of Amarillo.

The Fieldton Baptist Church recently ordained Bro. Samuel Arguez, pastor of the Fieldton Mexican Mission.

Mrs. Jeanne Becker is here from Newfoundland. Jeanne is the daughter of Mr. and Mrs. R.A. Reed, who were in a car accident Dec. 9. They were returning from Kansas City, Mo. where they had visited their son Raymond and his family. Mrs. Reed expired from the accident Dec. 23. Mr. Reed expired 16 days later. They had been residents of Fieldton many years.

Mrs. E.M. Sullivan has moved here from Amherst. Mrs. Sullivan is the mother of Mrs. A.H. Scivally.

Mrs. Minnie Ball visited her daughter and husband, Mr. and Mrs. Dick McCown and their son of Floydada. Bill is home on leave and is soon to leave for overseas duty.

Mr. and Mrs. Paul Elliott of Maud, visited recently with his parents, Mr. and Mrs. J.E. Elliott. They also visited Mr. and Mrs. Mutt Elliott and Debbie, and Mr. and Mrs. J.E. Elliott, Jr. and sons.

Mrs. Vernon Qualls has been a patient in the Littlefield Hospital, but is home now recuperating nicely from surgery.

Mr. and Mrs. Hubert Taylor and two grandchildren, Steve, and Alycia, have moved here from Portales, N.M. They are former Fieldton residents.

Mr. and Mrs. Don Brestrup and Mr. and Mrs. Allen Yoakum flew to Dallas to attend the football game at the Cotton Bowl. They returned home Sunday.

Mr. and Mrs. Howard Solley and sons visited Mr. and Mrs. Allen Yoakum, Edward and Dana. Mr. Solley, brother of Mrs. Yoakum, is stationed in Ellsworth, S.D.

Local Schools Participate In Dental Research

The Littlefield Schools are cooperating in a joint dental research project of the Texas State Department of Health and the California State Department of Public Health. The purpose of the study is to further determine the extent of prevention of tooth decay from life-long ingestion of water containing various amounts of fluoride in different temperature zones and to get more definitive information on the most desirable level of fluoride.

Children 12, 13, and 14 years of age who have lived in this community since infancy and who have used water continuously from the city water supply will participate in this study. Children meeting the necessary requirements will have an examination by a research dentist. Only a few children in each study community will qualify for the project.

Good dental health for all will only be achieved through continuing research. The children's participation in this important research study will contribute immeasurably to better dental health for all children.

Keith King To Be In College Production

ABILENE--Keith King, son of Mrs. Jack W. King of 1307 W. 13th, Littlefield, has won the role of Creon in the Abilene Christian College production of "Medea," to be staged April 12 and 13.

"Medea," the ancient Greek tragedy by Euripides, has been translated and adapted to American theatre by Robinson Jeffers.


King, a 1962 graduate of Littlefield High School, is a junior social science major at ACC.

Rechargeable Alarm
 Modern home fire alarms use nickel-cadmium batteries, which are always charged even when regular power fails, to operate the alarm system. The household current only serves to keep the batteries charged and is not used for the alarm itself.

BULLETIN!

WE NOW HAVE IN STOCK THE REAR TRAC-TOR TIRE THAT WILL PLOW 5 EXTRA ACRES PER DAY... SAVE ONE DAY'S FUEL IN EVERY SEVEN... OUTWEAR TWO SETS OF ORDINARY TIRES... AND WILL COST YOU NOTHING IF IT DOESN'T PROVE TO BE THE BEST TIRE YOU'VE EVER HAD.

Get The **'65 SUPER TORQUE** BUILT DEEP TO PULL MORE



RICHEY'S INC.

Phone 385-3747 Phone 257-5231
 LITTLEFIELD EARTH

REPORT OF CONDITION OF SECURITY STATE BANK

LITTLEFIELD IN THE STATE OF TEXAS AT THE CLOSE BUSINESS ON DEC. 31, 1964

STATE BANK NO. 1788
 FEDERAL RESERVE DISTRICT NO. II

ASSETS

Cash, balances with other banks, and cash items in process of collection 2,412,593.14

United States Government obligation, direct and guaranteed 1,588,441.41

Litigations of States and political subdivisions . . . 1,147,953.58

Loans and discounts (including \$6,588.62 overdrafts) 5,386,038.41

Bank premises owned \$32,899.72

Furniture and fixtures \$6,176.19 39,075.91

Real estate owned other than bank premises 41,000.00

Other Assets 3,020.86

OTHER ASSETS 10,617,823.31

LIABILITIES

Demand deposits of individuals, partnerships, and corporations 6,040,950.61

Time and savings deposits of individuals, partnerships, and corporations 2,833,414.97

Deposits of United States Government (including postal savings) 49,075.27

Deposits of States and political subdivisions . . . 667,965.16

Deposits of banks 51,415.95

Artificial and officers' checks, etc 10,660.84

DOTAL DEPOSITS \$9,753,482.80

(a) Total demand deposits \$6,740,867.83

(b) Total time & savings deposits \$3,012,614.97

Other liabilities 42,061.12

TOTAL LIABILITIES 9,795,543.92

CAPITAL ACCOUNTS

Capital (a) Common stock, total par value 250,000.00

250,000.00

Surplus 250,000.00

Divided profits 322,279.39

TOTAL CAPITAL ACCOUNTS 822,279.39

TOTAL LIABILITIES AND CAPITAL ACCOUNTS 10,617,823.31

MEMORANDA

Assets pledged or assigned to secure liabilities and for other purposes (including notes and bills discounted and securities sold with agreement to repurchase) 932,572.71

Loans as shown above are after deduction of loan loss reserves of 202,014.75

I, James D. Copeland, Cashier, of the above-named bank, solemnly swear that this report of condition is true and correct, to the best of my knowledge and belief.

Correct-Attest: James D. Copeland

J.C. Hilburn
 Paul Hyatt
 E.J. Walker
 DIRECTORS

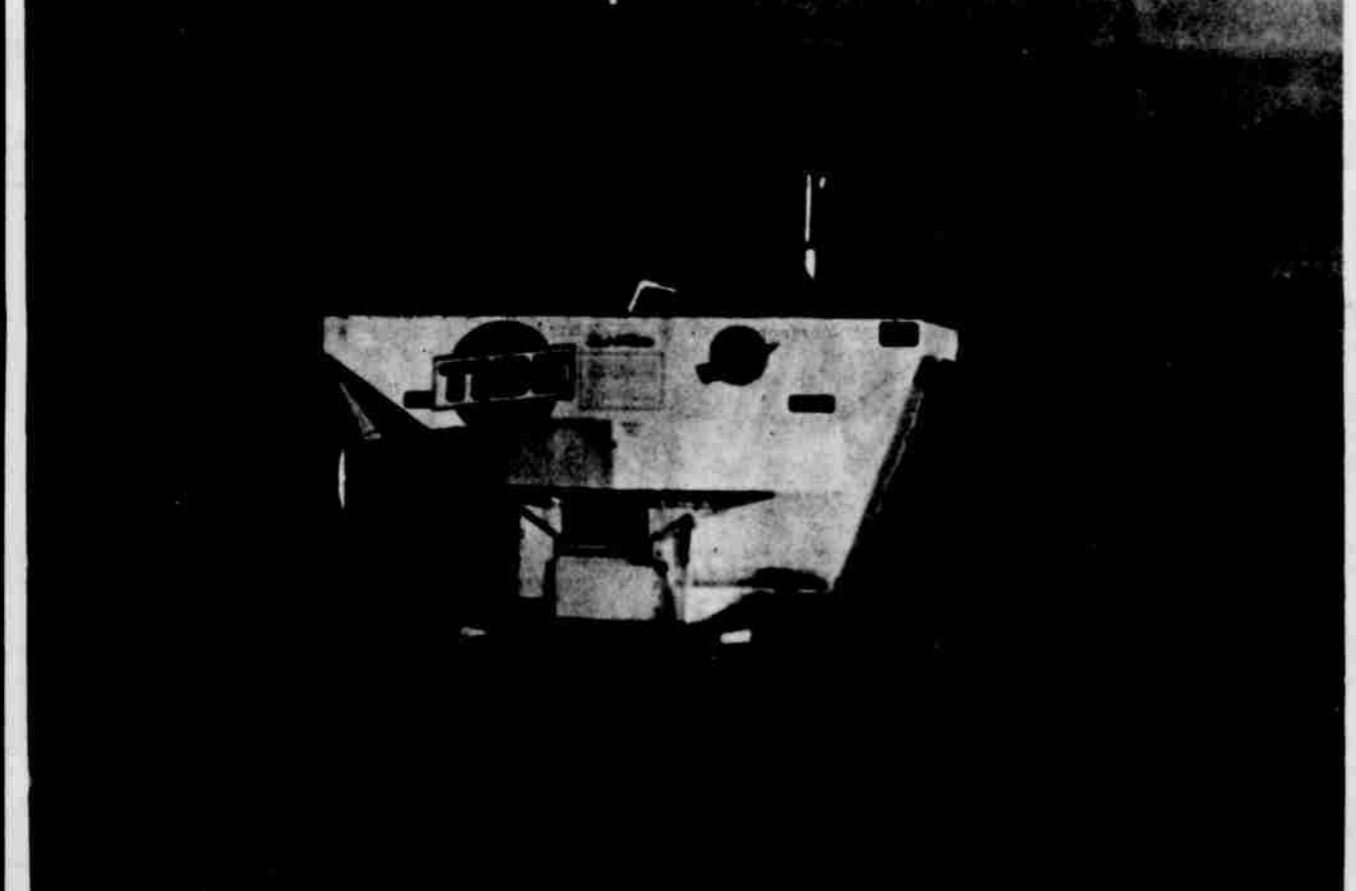
State of Texas, County of Lamb ss:
 I, Naomi Hyatt, Notary Public, do hereby certify that I am not an officer or director of this bank.
 My commission expires June 1, 1965

TRUCK SEATS EXCHANGED 15 MINUTE SERVICE

McCORMICK'S TRIM SHOP

PHONE 385-4555 227 MAIN

Memo to Lamb County Farmers



Tide's Plow Down Program SAVES YOU MONEY

ASSIST SOIL ORGANISMS
 To take advantage of the soil conditioning effect brought on by the decomposition of your grain stubble--use TIDE Bulk Fertilizer NOW. Put down part of your NITROGEN, all of your PHOSPHATE and POTASH now and have all of the needed nutrients available to your seedling plants this Spring by using the proven pre-plant fertilizer program. See your nearest TIDE representative.

DON'T PACK YOUR SOILS
 Don't pack your soils -- use standard size spreaders furnished by TIDE Products. By using small spreaders and our "on-YOUR-surface" bulk storage you can reduce this soil compaction problem.

LET THE EFFICIENCY OF OUR EQUIPMENT IMPROVE THE EFFICIENCY OF YOUR FARMING.

NO LOST TIME "LOADING" SPREADERS
 EFFICIENCY AT ITS PEAK IN THE FERTILIZER FIELD -- spreaders filled in minutes on your own surface from TIDE'S Bulk storage no wasted time "LOADING" spreaders to and from the field. See your nearest TIDE representative.


A SPECIFIC FERTILIZER BLENDED FOR A SPECIFIC CROP USE:
 Prescription blended on this basis to meet your soil needs:

1. BY SOIL TEST
2. BY THE AMOUNT OF CROP REMOVAL
3. BY THE AMOUNT OF ORGANIC MATTER LEFT TO DECOMPOSE
4. BY THE ROTATION SYSTEM USED
5. BY THE SOIL TYPE AND ITS CURRENT CONDITION

TIDE'S TILT BOX SERVICE:
 Only TIDE can give you the convenience of bulk service at the field... with no handling, 4,000 lb. spreaders filled in minutes with high analysis, Prescription blended fertilizer.


Tide of Littlefield - 385-5735
 Tide of Farwell - 481-3346
 Tide of Hart - 938-3595
 Tide of Hereford -

See Danah Wilkinson or David Bushon
 See Dick Bell or Richard Franks
 See Clarence Kerns Jr. or John Benworth
 See John Robertson



WHO BUT THE DODGE BOYS

can POP you in a zippy-er scooting snappy-er looking bigger-over-all



DART...for the same price as a Chevy II or Falcon?

	Wheelbase	Overall Length
Dart	111"	196.4"
Chevy II	110"	182.9"
Falcon	109.5"	181.6"

THE DODGE BOYS

GARLAND MOTOR COMPANY
 720 East Third
 Littlefield - Texas

HERE COMES
THE BIG
ONE

Anthony's
C. R. ANTHONY CO.

COME
AND SAVE

Gigantic Storewide
JANUARY

CLEARANCE SALE

BE ONE OF THE FIRST FOR THE BARGAINS

SALE STARTS FRIDAY

**JANUARY
15TH**

ANTHONY'S WILL CLOSE THURSDAY TO MARK DOWN PRICES IN THIS
GREAT STOREWIDE SALE - IT'S OUR MOST EXCITING SALE



MEN'S SUITS

79.95 values	-----	\$60
65.00 values	-----	\$50
45.00 values	-----	\$35
35.00 values	-----	\$25
29.00 values	-----	\$25

These Are The Biggest Suit Values We've Ever Offered!

MEN'S 5X BEAVER DRESS **HATS** (\$15 Value) **\$10**

MEN'S WORK **SOX** (A Sell Out) 4 Pairs **\$1**

BOY'S AND GIRLS **ANKLETS**

Regular 39¢ Sellers **18¢**

WORK CLOTHES

BOY'S NYLON **JEANS** REGULAR 2.69 **1.99**

MEN AND BOY'S **CASUAL PANTS** REGULAR 3.98 **2.66**

MEN'S INSULATED **WAIST PANTS** REGULAR 5.95 **3.99**

MATCHING INSULATED **JACKETS** REG. 7.95 - 9.95 **6.99 - 7.99**

SHOE DEPARTMENT VALUES

MEN'S DRESS LOAFERS	VALUES 14.95	7.99
BOY'S DRESS 3 TO 6 OXFORDS	REG. 7.95	5.99
LITTLE BOY'S OXFORDS	8 1/2 TO 3 SPECIAL	2.99
MEN'S HOUSE SLIPPERS		1.99
CHILDREN'S DRESS SLIPPERS	3.98 VALUES 4.98	2.88 3.88 4.88

LADIES DRESS HEELS - MID HEELS HI-HEELS	10.95 VALUES	5.99
LADIES FLATS	(2 PAIRS \$5) VALUES TO 6.95	2.98
LADIES LEATHER SOLE PIXIES	VERY SPECIAL	\$1
LADIES NURSES WHITE SHOES	VALUES TO 8.95	5.99
CHILDREN'S FUZZY HOUSE SHOES	REG. 3.98	1.99

LADIES READY TO WEAR 3-PIECE DOUBLE KNIT ALL WOOL SUITS

REGULAR \$40 VALUE **\$25**

ONE GROUP LADIES **BLouses** 1/2 PRICE

2.98 CORDUROY **PANTS** \$1.00

MEN'S DEPARTMENT

MEN'S JACKETS

REGULAR 14.95 - 18.95 **10.99 - 15.99**

MEN'S DRESS PANTS

5.95 & 6.95 VALUES **5.00**

9.95 VALUES **7.99**

12.95 VALUES **10.99**

MEN'S HOODED SWEAT SHIRTS

REGULAR 2.49 **1.99**

ZIP FRONT HOODED SWEAT SHIRTS

REGULAR 3.98 **2.99**

Men's Sport Coats

REGULAR 19.95 **14.99**

MEN'S BLAZERS

REGULAR 24.95 **19.95**

BOY'S BLAZERS

REGULAR 19.95 **15.99**

ENTIRE STOCK OF **Men's Western Shirts** VALUES TO 6.95 **4.99**

Men's Sport Shirts VALUES TO 3.98 **1.99**

LITTLEFIELD WILDCAT **Sweat Shirts** REG. 3.98 **2.99**

2.99 **1.99**

CANNON **WASH CLOTHS** 10 FOR **88¢**

WE'RE SHOOTING THE WORKS HERE!

Ladies First Quality 60 Gauge Sheer Full Fashion Nylon

HOSE 25¢

AS LONG AS THEY LAST

BOY'S **Sweat Shirts** 2 FOR **\$3**

3-PIECE **LUGGAGE SET** 7.99

MANY MANY OTHER ITEMS REDUCED IN PRICE

LADIES COATS

14.95 CORDUROY **CAR COATS** 12.99 LAMINATED **LONG COAT** 19.95 CRUSHED VINYL FUR TRIMMED **LONG COAT** 79.95 MINK COLLAR **LONG COAT**

CHILDREN'S & GIRL'S **CAR COATS**

REG. 6.95 - 8.95 **5.99 - 6.99**

REG. 10.95 - 12.95 **8.99 - 10.99**

REG. 16.95 - 18.95 **12.99 - 14.99**

REG. 19.95 - 21.95 **14.99 - 16.99**

LADIES DRESSES 100 REDUCED TO CLEAR

REG. 9.95 - 10.95 **6.99 - 7.99**

REG. 16.95 - 18.95 **12.99 - 14.99**

REG. 22.95 - 24.95 **18.99 - 20.99**

ONE GROUP **Arnel Jersey Dresses** A TERRIFIC VALUE **4.99**

LADIES 4.98 QUILTED **ROBES** 2.99

INFANT'S DEPARTMENT

2-PIECE KNIT SLEEPERS

REGULAR 1.39 - 1.99 **99¢ - 1.49**

1.49 FLANNEL LINED CORDUROY **BOXERS** 3 - 6X UNLINED REGULAR 98¢ **79¢**

2.98 3 - 6X FLEECE LINED **STRETCH PANTS** 1.99

BOY'S PANT & SHIRT SETS REGULAR 3.98 - 4.99 **2.99 - 3.99**

INFANTS COATS

REGULAR 4.98 **2.99**

REGULAR 2.98 **1.99**

GIRL'S **DRESSES** 1/2 PRICE

FRIDAY & SATURDAY ONLY **INSULATED COVERALLS** 19.95 VALUES **16.95**

MEN'S SWEATERS

7.95 VALUES	-----	\$5
9.95 VALUES	-----	\$6
10.95 VALUES	-----	\$7
12.95 VALUES	-----	\$8
14.95 VALUES	-----	\$10
16.95 VALUES	-----	\$12
19.95 VALUES	-----	\$14
24.95 VALUES	-----	\$15

MEN'S WOOL **SHIRTS** 8.95 VALUES **5.99**

MEN'S DRESS GLOVES

1.98 VALUES - 1.49 **4.99** VALUES - 2.99

2.98 VALUES - 1.99 **BOY'S SIZES** - 1.00

SPORT SHIRTS BOY'S 2.49 **1.99**

BOY'S **JACKETS** REG. 10.95 - 12.95 - 14.95 **8.99 - 9.99 - 12.99**

BOY'S SUITS

REGULAR 9.95 **7.99**

REGULAR 12.95 **9.99**

REGULAR 19.95 **14.99**

PIECE GOODS SAVINGS

REGULAR 1.98 YARD DRAPERY YD.	99¢	ODD LOT DAN RIVER CHECKS REG. 69¢	2 YARDS \$1
REGULAR \$2 WOOLENS YD.	99¢	98¢ PINWALE CORDUROY YD.	66¢

ONE GROUP 79¢ COTTON - REDUCED TO 29¢ A YARD

LADIES LINGERIE

3.98 CHALLIS GOWNS	2.99	2.98 FLANNEL PAJAMAS	2.33
\$3.98 BEMBERG GOWNS & PAJAMAS	2.99	1.98 FLANNEL PAJAMAS	1.44
2.99 CHALLIS PAJAMAS	2.33	1.98 CHILDREN'S FLANNEL PAJAMAS	1.44

HOME FURNISHINGS

48 X 84 READY MADE **DRAPES** Values To 5.95 **2.99**

7.98 Bates All Cotton **BED SPREADS** Reg. 2.98 21 x 36 **3.99**

27 x 48 Rayon Pile **BED SPREADS** **1.99**

3.98 22 X 34 **SKID PROOF RUGS** **1.88**

6.99 Airlow **TUFTED AND HOOKED RUGS** **2.99**

94% Rayon, 6% Nylon **THERMAL BLANKET** **4.99**

79¢ 22 X 42 Cannon **BLANKET** **2.99**

BATH TOWEL REG. 59¢ **2 FOR \$1**