

# Junior Livestock Show Opens Tomorrow



STOCK ENTRANTS--Left in the above pictures are entries in the Lamb County Junior Livestock Show. From left to right: David White with his Hereford, Elaine Graves and her pig, and Larry Vruble with his Duroc.

## Lamb County Leader

Serving Texas' Second Largest Agricultural Producing County 14 Pages

VOLUME 31

LITTLEFIELD, LAMB COUNTY, TEXAS, THURSDAY, FEBRUARY 17, 1966

NUMBER 41

### GEORGE KIRK

#### Littlefield Native Named Head Football Coach

George Kirk, 35, a native of Littlefield and presently head coach and Athletic Director of Double A Cameron, was named head coach for Littlefield High School Tuesday night.

Kirk, who played for the Wildcats under J.S. Fikes, has compiled a 21-10-2 record in his three years as head coach of the Cameron Yoemen, including two district and one bi-district championship.

In the unanimous action by the board, Kirk was given a contract that will cover two complete football seasons, subject to renewal at mid-term of the 1967-68 school year, at a salary of \$9330 per year.



A graduate of TCU and Baylor, where he received a Masters Degree, Kirk was an assistant at Diamond Hill High School of Fort Worth and at Temple High School before taking over the head coaching chores at Cameron. Last season his team won the bi-district crown.

Under the present policy, Kirk will be head coach and will be responsible for the coordination of all athletic programs, but will not be the Athletic Director, in the sense of purchasing equipment. Kirk told the school board, Tuesday morning, he plans to report in Littlefield and will begin working with the program.

In addition to his coaching duties, Kirk will teach three classes and will work with the other coaches when their sport is in season.

### Board Hires Six Instructors

The Littlefield School Board hired six new instructors, including a new head football coach, at the regular meeting Tuesday night.

George Kirk, a native of Littlefield, was given a contract as head coach, which will be up for renewal at the middle of the 1967-68 school year.

Others hired by the board were Jo Len Ballew, Paula Brock, Peggy Crawford, Joy Hammock, and Marilyn Reid.

Other action in one of the shortest meetings on record, saw the board accept the resignation of Dr. Dave Tullis, who will take a position with Angelo State College, in San Angelo, next year. The action of the board came only minutes after the members had voted to extend, for two years, the contracts of Tullis and school principals. In accepting the resignation of the long time school counselor, Board President Buster Owens asked that the minutes reflect the regret of the board and that Dr. Tullis be given a letter of appreciation for his many years of service to the school system and to the youth of the area.

In reply to a request by the FHA, the board established a policy concerning school sponsorship and involvement of social events that allows dancing. The board in a stated policy, which passed by a 4-2 vote, adopted the following policy concerning events where dancing is involved. "Be it resolved that the Littlefield School District will not sponsor or be associated with any social event at which there is dancing.

The board recognizes the right of parents to sponsor such events, but states it is the responsibility of such parents to assume all responsibility for the event."

The board said this is no change from the policy, it is merely a clarification of a policy which had never been entered in records of the school.

### Annual Voter Registration Receives Support

A bill calling for the annual registration for voters of the state appears to be gaining strength, according to State Representative Billy Wayne Clayton of Springlake.

In a report to the Lamb County Leader, Clayton said, "The bill has received enough support in the House of Representatives, but a filibuster may develop in the Senate where several Senators are leaning toward a one time registration measure. The Governor has recommended an annual sign up for voters to correspond with the past period of poll tax payments, October through January, with no fees involved."

"Should the Senate reach an agreement on the bill, the problem could be resolved by the middle of next week. If not the special session could last the full thirty days," Clayton stated.

One of the questions to be solved by the session is that of registering voters over 60 years of age. Under the present ruling persons over 60 are not required to register when there is no city in a county over 10,000 population. Under the proposed bill the registration of these people is a decision for the Commissioners' Court to decide. They can either require that the people come in and register or they can allow the current ruling to stand.

Should the bill receive approval of both the House and Senate, a 15 day temporary period, for the current year only, would be designated for sign-ups.

Following approval in the House, the measure would go to the State Affairs Committee for public hearing, before being passed on to the Senate for final action.

Clayton gave no indication that those who had paid their poll taxes would be required to register, but did say the new proposal stated they would be allowed to vote without re-registering.

### Soil Program Well Attended

More than 125 persons including many area farmers attended the Soil Fertility Program held at the Community Center Monday afternoon and evening.

The three hour program featured talks by Elmer Hudspeth, Texas Agricultural Experiment Center; Bill Lyle, Area Irrigation Specialist from Lubbock; John Box, Agronomist from Texas A&M; and John Seibert, Area Farm Management Specialist, and John McHaney also from Texas A&M.

Hudspeth talked on the use of chemical weed control and outlined the results obtained from different uses of controls on

several experimental sites.

"Water Conservation" was the topic of Lyle's address which included the present and future water outlook in the South Plains area.

Box spoke on the use of fertilizer while McHaney discussed the agricultural outlook for the area and Seibert outlined the results of an area economic study.

Following the talks each specialist answered questions and a panel discussion was held at the end of the addresses.

Following the conclusion of the program a free barbecue was held for those attending the program.

### Commissioner's Court Leases Land To City For Camp Site

The Lamb County Commissioners Court passed eight orders including the appointment of election judges for the coming elections and the leasing of land to the city of Littlefield for use as a camp site.

The land which is located just east of Highway 385 is part of the campus tract of the College Heights Addition and is not being used by the county at the present time.

The Commissioners voted to lease the land to the city for a period of twenty-five years for one dollar. The city proposes to use the land to build a campsite for travelers.

The election judges for the year are the same as 1965 with the exception of Precinct 12 and 16 here in Littlefield.

John D. Smith was named by the Commissioners as Presiding Judge for Precinct 12 and Paul I. Jones replacing Bruce Porcher as Presiding Judge for 16.

The other presiding judges are: Olton - Eldon Franks; Earth - Bob Armstrong; Spade - Norman Frey; West Littlefield - E.D. Dickson; Sudan - Joe West; Pleasant Valley - Gerald Allison; North Sudan - Curtis Savage; Amherst - Vic Oxford; Fieldton - Sherman Rushing; Sod House Hdq. - Charles White;

South Olton - Robert Sullivan; Beck Gin - Vic Diersing; Hart Camp - V.H. Lynch; Springlake - R.L. Byers Jr.; West Springlake - Jack Hinson.

The Court also approved the members of the special canvassing board for absentee votes. Mrs. Frank Rogers is presiding judge with Tom Hilburn and Mrs. Bobby Rogers as other members.

In other action the court purchased a diesel powered loader for Precinct 3. West Texas Equipment Co. was the successful low bidder with a bid of \$8,825. Ribble Machinery was the only other bidder and submitted a bid of \$12,000.

After approving the bills and reports from the Extension Service and Home Demonstration Service the court then passed an order raising the county's share of the salary paid to Raymond Cantrell, Amherst Police Chief. The court raised it from \$150 to \$200 per month.

Other orders passed by the court included the renewal of Time Deposits at the First National Bank and the payment of \$682.79 to the Pioneer Gas Co. for work performed on Highway 84 between Amherst and Sudan.

### Many Littlefield Students Suffering From Virus Illness

An outbreak of respiratory infections has caused the percentage of absenteeism among students at the Littlefield Junior High, Elementary and Primary schools during the past ten days.

Forrest Martin, Junior High Principal stated at the percentage had jumped from a normal six to seven percent up to between 12 to 14 percent the first part of this week.

In the primary school the virus among the students seems to be starting on the decrease this week as the absenteeism has dropped Monday and Tuesday after reaching a high of almost 20 percent last week when between 80 and 90 students out of an enrollment of 500 were absent, against an average of 25 to 35 per day.

Primary School Principal Lou Driskill said that the number of students absent had dropped to between 60 and 70 on Monday and Tuesday and "we hope that this is the start of the

absentees dropping down to near our normal rate."

Herbert Hoover, principal of the elementary school also said that the normal number of absentees has more than doubled during the past week.

"During the third six week period our average attendance ranged between 94 to 96 percent but in the last week it has dropped down to below 88 percent. Tuesday we had to send four children home during the day because of illness and three others were sent to the school nurse."

Hoover also pointed out that three has been the average number of days missed by the students suffering from the virus.

Dr. William Nowlin, City Health Officer stated that the illness called an RS virus is typed as a viral illness but with more than 150 types of known viruses it is almost impossible to determine the exact type now prevalent here.

### Mangum Announces For County Judge

Jim Mangum, 46, an area businessman for the past 18 years, this week authorized the Lamb County Leader to announce his candidacy for the post of County Judge of Lamb County.

Mangum, who for the last 18 years, has been a partner in a Littlefield insurance agency said he would make his formal announcement at a later date, but did want to announce his plans at this time.



Mangum, has long been active in the affairs of the community, serving as a member of the city commission in 1955-56, and as a member of the economy council in 1964-65. In addition to his partnership in the insurance business, Mangum is part owner of a farm in the area, and is familiar with the problems faced by the growers of the area, from both the business and farming side.

Since coming to Littlefield Mangum has been president of the Lions Club, president of the Lamb County Community Center, and has taken an active role in the affairs of his church, where he is presently serving as treasurer, and a member of the finance committee.

The father of three boys, Mangum is vitally interested in the youth of the area, and has been most active in the work of the Boy Scout program, a job which he continues to hold.

More than 200 members of the Littlefield High School and Junior High bands and choirs will go to Lubbock Saturday to participate in an interscholastic league contest.

The band competition will be held at Monterey High School Saturday morning while the choir contest will be held in the music building at Texas Tech Saturday afternoon.

The band competition will be held at Monterey High School Saturday morning while the choir contest will be held in the music building at Texas Tech Saturday afternoon.

### Lamb Judging Friday; Calves, Swine Saturday

The annual Lamb County Junior Livestock Show will get underway tomorrow afternoon with a total of 218 animals entered by FFA, FHA and 4-H club members throughout the county.

Swine entries head the list with 90 entries in the six classes to be shown at the show which will be held at the Littlefield Fair Grounds tomorrow and Saturday.

The largest number of entries is in the Duroc class where 30 animals are entered, followed by Hampshires with 24 entries. Other classes include Crosses with 15 entries, Poland Chinas where 12 animals will be shown and two small classes, Berkshires in which five entries have been received and the Chester White class in which only four are entered.

There will be a lightweight and heavyweight division in at least four classes of the swine and show officials will determine whether to break down the Chester White and Berkshires classes or to have only one division due to the small number of entries in the two classes.

All first place winners of each breed will compete for breed champions and all breed champions will then compete for Grand Champion and second place to Grand Champion will compete for Reserve Champion.

The premium schedule for the Grand Champion Swine is \$30 with the Reserve Champion to receive \$20.

Fifty steers will be vying for the top prize of the show as \$75 will go to the contestant showing the Grand Champion steer with the owner of the Reserve Champion steer to receive \$50.

Classes for steers this year will be Angus and other breeds and Herefords. Thirty Herefords have been entered in this year's show and a total of 20 entries have been received in the Angus class.

The number of lambs in this year's show almost matches the total of last year as 78 entries have been received by the extension service this year. Entries in the fine wool class lead the way with 31 entries followed by 24 in the Southdown class, 18 in the Medium wool and five crosses.

The Grand Champion of each class will receive a premium of \$10 with the Reserve Champion of the class receiving \$5.

In addition the Grand Champion and Reserve Champion steers, swine of the show and the four champion lambs will be awarded trophies which will be furnished by the Lamb County Farm Bureau and Lamb County Farmers Union. Trophies will also be given to the Champion swine of each breed by the Olton Swine Breeders.

The sifting of the animals will start at 1:30 p.m. Friday afternoon with the judging of the lambs to be held Friday evening starting at 5:30.

The swine judging will get underway at 9 a.m. Saturday morning followed by the judging of the steers.

Judges for this year's show are Chile Smith of Tullia who will judge the beef, Larry Tackitt who will judge the swine and Tom Neely who will judge the sheep.

*Handwritten note:* George Kirk's Desk

Next big event on the scene is the big city-Washington's Birthday when the merchants put their selling clothes and go for the customers. Each about this time cities the country are looking promotion, which in many makes the cash registers worth with the biggest day month. Of course, as is any promotion of this there is a lot of fun along with the buying, and year will be no exception, don't know what you might encourage you not to miss event, it's coming next month. See the Sunday issue County Wide News.

you doing your part? We notice some of our people taking advantage of the trash cans in the downtown area. Individuals worked hard in the downtown project and their efforts have been received by the area and people, but more help is needed. If we are to keep our clean and to keep up the pace we have spent much money to develop. You have some waste or trash, take that extra and put it in one of the containers that have been provided to take care of the problem.

It's an opportunity to do a good will work. Visit the Chamber of Commerce on Friday night. Some we forget about our up in the north part of county, but they are good and have for many supported our city. We can appreciate for these folks by taking this opportunity to visit with them and enjoy a fine meal and an ending program. If we can chance we plan to make up and enjoy these people, thank them for their support. We hope we can see you

Everything happens at once, the Lamb County Junior Livestock Show is set for this weekend. You know that's the youngsters of the area opportunity to demonstrate their ability to raise prize animals, and have the chance to put their entry up at others for the championship. This will be the 27th of the FFA, 4-H and FHA with the cooperation of the city, county and county, staged annual event, and it proves to be a good one. Don't miss it.



**WASHINGTON'S BIRTHDAY SALE**

Look at the Crazy Buys!

IN SUNDAY'S SPECIAL EDITION!  
LITTLEFIELD ANNUAL TOWN-WIDE BARGAIN EVENT

## Beta Sigma Phi Sorority Has Valentine Party Monday

The Community Center was the setting Monday night for the Valentine party for members of the Tau Chi Chapter of Beta Sigma Phi and their husbands. An old fashioned box supper was followed by a Valentine dance.

Boxes, elaborately decorated, and containing fried chicken and all the trimmings, were auctioned off to the highest bidder. Doug Monzingo and Finis Branham were auctioneers. The husbands shared the boxes with their wives.

Joan Johnson was crowned 1966 Valentine Girl. Vada Walker, the 1965 queen, presented her a pin and gave the crown to Cecil Johnson, Joan's husband. He then crowned her as Valentine Girl of 1966.

Entertainment was furnished by the Madrigals of the Littlefield High School.

Attending were Messrs. and Mmes. Neil West, Harry Miller, James Walker, Finis Branham, Dutch Wilkinson, Tom Sawyer, Benny Pickrell, Bobby Nelson, Reed Lotin, Roger Sell, Hal Stanislaw, Roger Lowe, Cecil Johnson, Jay Bridwell, Mickey Ratliff, Doug Monzingo and Alan Waldrop, also Ann Pullig.

The next meeting will be Monday, February 21 at 7:30 p.m. in the Reddy Room.

### OES Salad Supper Meeting Tonight

The Littlefield Chapter Order of Eastern Star No. 742 will meet tonight (Thursday) at 6 p.m. in the Masonic Hall for a salad supper followed by the regular stated meeting at 7:30 p.m.

Mrs. Ruth Dunn of Lubbock, Deputy Grand Marton, District 2, Section 4, will make her official visit.

All members are urged to attend.



VALENTINE GIRL CROWNED -- Mrs. Cecil Johnson, right, was named the Valentine Girl of the Tau Chi Chapter of Beta Sigma Phi Monday night at the annual Valentine Party in the Community Center. Pictured with her is the 1965 Valentine Girl, Mrs. James Walker, who presented a pin to Mrs. Johnson. Joan Johnson is a teacher in the Primary School, a homemaker and active club member.

### Garden Club Meets In Club House

OLTON - Members of the Olton Garden Club met for the first time in their newly decorated club house Thursday afternoon with Mrs. Doyle Pinson and Mrs. Jack Estes as hostesses.

A thought brought out was "All the flowers of tomorrow are in the seeds of today". The devotional "A Place to Witness Divinity", was given by Mrs. R.H. Campbell.

For roll call, most members present presented an unusual seed pod.

Mrs. L.G. Elkins discussed "The ABC's of Driftwood." She brought a large collection of driftwood used in making arrangements.

The hostesses served cherry pie topped with whipped cream and decorated with hatchets.

nuts, mints and spiced tea to the following members: Mmes. Jack Allcorn, C.E. Bley, George Brown, Raymond Carson, B.C. Cooner, Loyd Cowart, R.H. Campbell, Roy Dobbs, L.G. Elkins, I.D. Grimsley, H.A. Musinger, Idell Lewis, Athol Light, A.D. Melton, Lola Mills, C.M. Owen, C.W. Phillips, Preston Sampler, Jack Snyder, Walter Schreier, L.E. Silcott and H.G. Walker.

The next regular meeting will be March 10 at the club house.

A dainty sachet cushion makes a nice favor for a bridal shower. Pass these pretty favors to the guests as they leave, using a dainty be-ribboned basket from which to distribute them.

# News of Women

LOIS VRUBEL... SOCIETY EDITOR

## Gift Tea In Moss Home Honors Miss Phillips

Miss Diane Phillips, bride-elect of Mr. Richard Breedlove, was honored with a gift tea Friday evening, in the home of Mrs. Troy Moss, 201 East 23rd Street.

## LWML Meets At Church Friday

Mrs. Roger Sell presided at the regular meeting of the Lutheran Women's Missionary League Friday afternoon held in the educational wing of Emmanuel Lutheran Church.

The devotional was given by Mrs. William H. Remmert. Mrs. W.W. Birkelback spoke on "The Chalice and Its Use".

During the business meeting a Valentine party was planned. It will be at 7 p.m. Friday at the church. The families of the LWML members will be invited guests.

The project for the month of February is a linen shower for Bethesda Lutheran Home.

Following the meeting a "Make Your Dollars Grow" bake sale was held. Some of the members received gifts from their secret pals for Valentine's Day.

Refreshments of coffee, coffee cake, valentine cake and doughnuts were served to Mmes. Curtis Wilkinson, W.W. Birkelback, William Remmert, Roger Sell, Ed Drager, H.E. Gohlke, V.J. Hobratsch, Alex Kraushar, Emma Neuenschwander, Carl Reinsch, Ernest Sell, James Siems, J.E. Wuthrich and the Rev. William Remmert.

George Nicholson, Mrs. Nelson Naylor, Mrs. Melvyn Dutton, Mrs. Walter Kelsey, Mrs. Eldridge Latimer, Mrs. T.L. Dunlap, Mrs. Cephas Glover, Mrs. Bob Wear, Mrs. Alvis Jones, Mrs. Hill Rogers and Mrs. J.R. Fain.

In the receiving line with the honoree were her mother, Mrs. Harold Phillips, and Mrs. John Breedlove.

The serving table carried out a theme of "Hearts and Flowers" with white and varying tints of pink to red in refreshments and centerpiece. Mrs. Alvis Jones and Mrs. George Nicholson presided at the serving table.

The wedding will be solemnized Friday, Feb. 18 in the Chapel at Great Lakes Naval Training Base, Illinois.

Out-of-town guests were Miss Marsha Kelsey and Miss Sam Goff, Lubbock; Mrs. Glenn McKinney, Dimmitt; Mrs. June Kennedy and Mrs. W.A. Woods, Morton; Mrs. Doyle Carter and Mrs. Myrtle Metcalf, Plainview; and Mrs. Sam Randol, Clovis, N.M.

## Mrs. Feagley Is Club Hostess

The Rocky Ford Home Demonstration Club met Thursday afternoon in the home of Mrs. Johnnie Feagley. The program on "New Clothing Techniques" was given by Mrs. Lady Clare Phillips, home demonstration agent.

Recreation was led by Mrs. Charles Carpenter.

The president, Mrs. Leonard McNeese, conducted the business meeting and gave the recommendations of the council finance committee, which were accepted. The food booth for the Fat Stock Show was discussed.

The hostess served refreshments of chocolate cake, coffee and Cokes to Mmes. Alvin Mills, James Feagley, Charles Carpenter, Leonard McNeese, Lady Clare Phillips and a special guest, Mrs. Aubrey Russell of Lubbock, district home demonstration agent.

Mrs. McNeese will be hostess for the next meeting, February 24 at 2 p.m.

## Miss Nancy Williams Given Courtesy Saturday

An introduction coffee honoring Miss Nancy Williams of Sudan, bride-elect of Rex Wayne Foust of Littlefield, was given Saturday morning in the home of Mrs. Cloise Foust, 308 East 20th Street.

Miss Williams, daughter of Mr. and Mrs. Cliff Williams and Rex Wayne Foust, son of Mr. and Mrs. Cloise Foust, will exchange vows February 26 in the First Baptist Church here.

## Mrs. Sager Hosts Club Meeting

The Get-Together Club met recently in the home of Mrs. Henry Sager with seven members present. A demonstration was given by Mrs. C.A. Brock and Mrs. Sager on making decorations for the home.

Refreshments of cake, sandwiches, candy, nuts, soft drinks and coffee were served to Mmes. Brock, A.A. Craig, Martin Parmer, Millard Phillips, F.H. Glazener, W.J. Ward, W.B. Williams, and two new members, Mrs. Raymond Lancaster and Mrs. R.N. Nicholas.

The next meeting will be March 4 in the home of Mrs. Millard Phillips.

with a white satin bride. An arrangement of pink roses, in a tiered arrangement, and rose satin centerpieces were silverware, Ham balls, cheese, apricot turnovers, spiced tea were served. Assisting Mrs. Sager were hostess duties were Mrs. Arnold Neumann, Mrs. Jones, Mrs. Elmo Jones, George Parker, Mrs. Talubrt, and Mrs. Dicus.

Approximately 100 guests attended including a number out of town. Special guests the honoree's mother, Williams, and sister, Mrs. Weaver, both of Amherst.


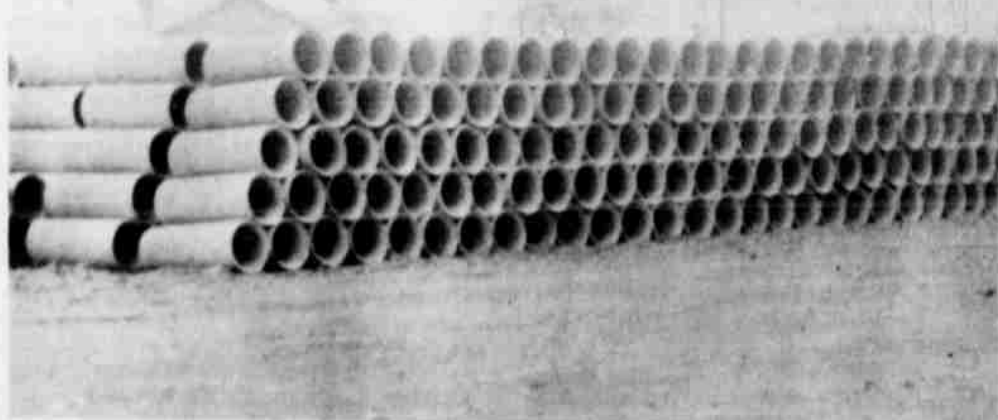
FREE ESTIMATE  
**BODY REPAIR**  
ALL MAKE  
**JONES MOTOR**

Looking For  
Linoleum  
? See  
**HILL ROGERS**

For  
**COLDS**  
take  
**666**

# CONGRATULATIONS


TO ALL THE  
4H - FFA BOYS AND  
GIRLS IN THE  
27TH ANNUAL  
**LAMB COUNTY**  
JUNIOR  
**FAT STOCK**  
**SHOW**  
FRIDAY AND  
SATURDAY

- CONCRETE PIPE
- PLASTIC PIPE
- JOHN MANSVILLE ASBESTOS CEMENT PIPE
- ALCOE ALUMINUM
- WHEEL MOVE SPRINKLER

**T.L. TIMMONS**  
GENERAL MANAGER

EARL PIERCE - SALES - JAMES MACHA - CONSTRUCTION



**STATE LINE IRRIGATION CO. Inc.**  
**IRRIGATION SYSTEMS**

GENERAL OFFICE & PLANT  
BOX 326 - LITTLEFIELD, TEXAS  
PHONE 508 - 385-4487

1916 W. 7TH ST. - CLOVIS, NEW MEXICO  
PHONE 508 - 782-4887




# CONGRATULATIONS

To The People Who Have Worked To Produce  
THE 27TH ANNUAL  
**LAMB COUNTY**  
**JUNIOR LIVESTOCK SHOW**  
FEBRUARY 18 AND 19

Tide Products, Inc., recognizes that behind a successful Livestock Show is a group of people who give of their time and talents. We take this opportunity to salute this, the board of the Lamb County Livestock Show:

Mr. Doug Walden - Chairman, Littlefield  
Mr. Donald Carr - Vice Chairman, Littlefield  
Mr. D. L. Givens - Sec. Treasurer, Olton  
and the following members:

T. B. Wheeler - Olton	Aubrey Oursbourn - Olton
L. B. Eady - Amherst	John Bridges - Springlake
Leroy Maxfield - Amherst	J.W. Dear - Springlake
Roy Smith - Spade	Jerry Ray - Sudan
	Dexter Baker - Sudan

CREDIT SHOULD GO TO COUNTY AGENT BILL KIMBROUGH AND ASSISTANT COUNTY AGENT RONNIE McNUTT AND TO VOCATIONAL AGRICULTURE TEACHERS: FINIS BRANHAM AND W.W. HALL-LITTLEFIELD DENNIS ALSUP-SPADE, RAYMOND DUVAL-AMHERST, DON HAM-SUDAN, GENE GASTIN SPRINGLAKE, CALVIN HORN AND MAX MALONE-OLTON



Symbol of Quality  
**"ONLY the BEST is fit to be TIDE"**  
COMPLETE AGRICULTURAL CHEMICAL SERVICE



**ON TO HELP MOTHER** — Little Lezlie is lending her mother, Yvette, a helping hand by adding salt to the cake batter. Yvette is cooking and it looks as though Lezlie is helping in her mother's footsteps. The

Roger Lowes live at 1219 South Phelps. They enjoy sports of various types, but especially water skiing. Roger is a partner with his father in Lowe and Company Wholesale.

--- LEADER STAFF PHOTO

## Mrs. Roger Lowe Submits Two of Her Favorite Recipes

Lowe enjoys making a Sheet Cake to take to picnics and picnics or just her family at home. She shares her recipe with others and says it is very easy to make and only takes 15 minutes, as the icing on the cake is as soon as taken from the oven. Yvette consented to share with recipe for Mexican Corn-

bread. Yvette likes to roller skate and ice skate. She also enjoys cooking her family's favorite dishes. The youngest member of the family, Lezlie, spends much of her day playing with the white poodle, Mopotee, which the Lowes have had since Lezlie was about six months old. They have more or less grown up together. Lezlie also likes to help her mother cook and do other housework.

Roger and Yvette are members of the First Baptist Church. He teaches a boy's Sunday School Class and she is assistant superintendent of the Young People's Department. Roger is a member of the Young Democrats and Yvette is a member of the Tau Chi Chapter of Beta Sigma Phi. Yvette's recipes follow. She suggests serving the Mexican Cornbread with beans, chili, or other Mexican dishes.

### MEXICAN CORNBREAD

2/3 cup Wesson Oil  
1 t. salt  
3 t. baking powder  
1 cup cream style corn  
1-1/2 cups yellow corn meal  
3 jalapino peppers chopped  
1 cup grated cheese  
3 eggs  
Put one-half of the batter in hot greased pan and add cheese. Then add rest of batter and bake at 425 or 450 degree oven until firm and brown.

### COOKIE SHEET CAKE

Put in large bowl:

### Students Given Valentine Party

The pupils of the Williams Kindergarten were entertained Monday with a valentine party at the school. As the children arrived at school with their valentines, they were "postmen" and delivered their valentines to the other children. During the morning several mothers served refreshments of red punch, valentine cookies and nut cups containing heart-shaped candies. The serving table was covered with a valentine cloth and special centerpieces were placed on each table. Small harmonicas were given to each child as a favor. Mothers assisting with the party were Mrs. Jerry Armstrong, Mrs. Ralph Carter, Mrs. Orville Bassett, Mrs. Bill Smith, Mrs. Paul Barker, Mrs. Bob Wilson, Mrs. Allen Waldrop and Mrs. Bob Roden.

## Mrs. Strother Honored By Club

Mrs. Wade Strother of Morton, a long-time member of the Valley View Community Club, who is moving to Hereford soon was presented pieces of china by club members Thursday afternoon in the monthly meeting held in the home of Mrs. Raymond Denney northwest of Whitarral. Mrs. David Vaughn read a poem in Mrs. Strother's honor, that she had written, "Yesterday, Today, and Tomorrow".

Mrs. Pervadius Wade will host the March 10 meeting at her home on the Anton Highway.

A Valentine decor was used in the dining room and in the refreshments of coffee, hot chocolate, nuts, mints, fruit jello and red velvet cake.

Those present were the honoree and Mmes. Glen Pace and small daughter of Annabehms, Calif., A.B. Roberts, Jimmy Starnes and Janie, H.G. Ferguson of Littlefield, Vernon Cox, Charles Osborn and Coy Grant of Levelland, J.C. Hodges of Anton, Hayes Denney, David Vaughn, Pervadius Wade, Elva Crank, Ross Kennedy, Johnnie Miller, Buddy Miller and the hostess.

## Forum Has Friendship Dinner

The annual Friendship dinner of the Forum Club was held Thursday evening in the Reddy Room with approximately 30 members, their husbands and other guests attending.

A patriotic decor was used. Tables were laid with white cloths. Red and blue streamers were placed down the center of the tables. Profiles of Abraham Lincoln and George Washington in white bases also decorated the tables.

Mrs. Edward Betts directed a patriotic game following the dinner. Hostesses were Mrs. Betts, Mrs. J.H. Carl, Mrs. Bill Burks, and Mrs. Dave Tullis.

### CITY BIT

Mr. and Mrs. Carl Pillion and their daughter, Mrs. Bill Brantley and children, Ken and K-ista, spent the weekend in Abilene visiting relatives.

### MOTHER-TO-BE NEW EXCITING SPRING FASHIONS ARRIVING DAILY

MATERNITY SHOP  
50TH AND FLINT  
LUBBOCK, TEXAS

2 cups flour  
2 cups sugar  
1/2 teaspoon salt  
Boil stirring constantly:  
1 cup water  
1/2 cups shortening  
2 tablespoons cocoa  
1 stick oleo  
Pour over first ingredients. Add two eggs, beating well after each. Add one teaspoon soda to 1/2 cup buttermilk. Pour into mixture. Add one teaspoon vanilla. Pour on ungreased cookie sheet and bake 20 minutes in 350 degree oven.

### ICING FOR COOKIE SHEET CAKE

1 stick oleo or butter (melted)  
6 tablespoons milk  
3 tablespoon cocoa  
1 teaspoon vanilla  
1/2 cup chopped nuts  
Gradually add one box powdered sugar. Mix and frost cake while cake is hot.

## Bridal Shower Given For Mrs. Andrew

Mrs. Neil Andrew, nee Melaine Cantrell, was honored Tuesday evening with a bridal shower given in the home of Mrs. L.C. Crosby.

The serving table, laid with a white linen cloth, was highlighted by a paper mache bride and silver coffee service. The bride's chosen colors of pink and white were used in the color scheme. Coffee, spiced tea, assorted cookies and nuts were

served by Pat Keeling and Carmem Chisholm. Appointments were silver and china.

The hostess gift was stainless steel cookware. Hostesses were Mmes. Ethel Austin, Mae Blevins, Pearl Bennett, Billie Crosby, June Ford, Mae Harrell, Alice Hood, Velma Keeling, Carleen King, Weda Liles, Pearl Lynch, Pearl Pace, Ans Lee Reams, Ann Smith, Fanny Smith and Ruby Tooley.

## Art Club Meets In Reddy Room

Mrs. Jack Wicker was hostess for the Art Club of Littlefield Monday when a group met in the Reddy Room. Work was done in oils.

Attending were Mmes. Wicker, Les Hewitt, C.O. Stone, J.C. Nichols, Cal Harvey, E.A. Mercer, Frank Rogers, James Steffey, and O.W. Still.

The next meeting will be February 28 at 10 a.m. in the Reddy Room.

Hot new weapon for the Battle of the Budget.

# Coronet

## '66 Dodge Coronet

Shape up, budget-balancers. With Dodge Coronet, you can afford to. Here's an "in" car with a new outlook for swingers. Coronet has everything you need to put fun back in driving. Take Coronet's looks. Lots of people have. Take the extras at no extra cost: Outside rearview mirror. Padded dash. Backup lights. Variable-speed wipers and washers. Turn signals. Seat belts, front and rear. They're all standard. And Coronet's price? That's easy to take, too. Hot new Dodge Coronet for 1966—now at your Dodge Dealer's.

### JOIN THE DODGE REBELLION

DODGE DIVISION CHRYSLER MOTORS CORPORATION

Garland Motor Company 720 E. 3rd, Littlefield, Texas

WATCH "THE BOB HOPE CHRYSLER THEATRE" WEDNESDAY NIGHTS ON NBC-TV. CHECK YOUR LOCAL LISTINGS.

**DOUBLE FEATURES**  
NEW HEIGHT IN FRIGHT!

**THE SKULL**  
COLOR TECHNISCOPE  
PARAMOUNT RELEASE

**PLUS**  
MAN WITH A GUN IS  
**AGGART**  
DAN DURYEY COLOR

**Thurs-Fri-Sat**  
**PALACE**

**JAMES STEWART** MATCHES HIS "SHENANDOAH" POWER WITH ADVENTURE THAT TAKES ON THE RAW WEST!

**JAMES STEWART · MAUREEN O'HARA · BRIAN KEITH**  
**"THE RARE BREED"**  
TECHNICOLOR · PANAVISION  
A UNIVERSAL PICTURE

**SUN-MON-TUE-WED THURS**  
**PALACE**

# Congratulations

TO THE 27TH ANNUAL  
**JUNIOR FAT STOCK SHOW**  
FRIDAY AND SATURDAY

"Our wish is for your every success ... not only during this show, but also your future as a farmer and a rancher."

**WE VALUE YOUR FRIENDSHIP AND LOOK FORWARD TO FUTURE SERVICE**

## Littlefield Farmers Co-op Gin AND ELEVATOR

SPADE HIGHWAY LITTLEFIELD

## New Committees Formed By Boy Scout Council

At a recent meeting of the South Plains Council two new operating committees were formed to further the Scouting Movement in the 20 county area served by the Council. Oscar Crain, Council President, announced Rex Webster as chairman of the Public Relations Committee and George Wilson as chairman of the Church Relations Committee.

The Public Relations Committee will operate as separate task forces to promote various events during the year such as: Scout Camp & Craft Show, March 26th, Summer Camp at C.W. Post Memorial Camp and Tres Ritos Scout Camp, the Fall Round-up Program, and many other special events. They will also work closely with all news media in the area.

The Church Relations Committee will review all boys on achievement of their Religious Awards, help get more churches to sponsor the whole Scouting Family (a Cub Pack, a Boy Scout Troop, and an Explorer

Post), and to get more churches to emphasize the Scouting Movement as an important part of their Church Youth Program.

## Tournament In Progress At Spade

The grade school basketball tournament which began Wednesday at the Spade School will continue through Saturday. Games will be from 1 p.m. until 8 p.m. today and Friday and from 9 a.m. until noon Saturday. Finals will begin at 5 p.m. Saturday.

Boys and girls teams are entered from Amherst, Whitharral, Bula, Anton, Three-Way, Bledsoe, Spade, Cotton Center and Smyer. The boys' team from Pep is also entered.

The concession stand will be open each day.



SPADE JUNIOR HIGH CHAMPS -- Leon Burch, coach, is pictured above with the junior high basketball girls' team, who are undefeated this year. They have entered the Spade tournament which began Wednesday and will continue through Saturday night. Front row, left to right, are Bonnie Thompson,

Marketta Leonard, Christie Adams, Janice Reed, Wendy Leach, Ginger Cooper and Janet Moore. Back row: Cathy Boyles, Maria Gonzales, Terri Wallace, Linda Hopper, Ann Wheeler, Belinda Thompson, Debbie Gregson and Debbie Myers.

## Springlake-Earth To Sponsor Volleyball Meet

The annual Springlake-Earth School Outsiders Invitational Volleyball Tournament will be held March 7-12. There will be no entrance fee; however, a \$5.00 deposit will be required. The deposit will be returned when the teams have completed all required games. Each player will pay admission fee of fifty cents (50¢) for each admission.

Trophies will be awarded the first, second and consolation teams in both men and women divisions. No high school students may play in the tournament with the exception of seniors who have completed interscholastic League eligibility.

All teams must submit a list of players who will participate on their team. Any team using players not listed must play but will forfeit the game.

The games will be played in two twelve minute halves, two minutes between halves, one time out allowed per half. Substitutions will be made in rear line after serving.

Please forward entries including name of team, fees and list of players to D.H. Koeninger, Principal Springlake-Earth High School Box 436 Earth, Texas. If there are any questions call 257-4321 (day) or 257-4221 (night).

All judgements of the officials will be final. In case of disorderly conduct on the part of the team member, point or ball will be awarded other team.

Games will be scheduled to start after 6:00 p.m. Two gyms will be used - earliest entries

will be given the benefit of use of new gym. Entries should be made prior to February 15, 1966 in order that brackets can be drawn up and mailed to participating teams.

## CITY BIT

Mrs. Polly Purdy and son Danny of Odessa spent Monday and Monday night with her mother, Mrs. Mabel Alexander.

Texas is the nation's No. 1 producer of chemicals from oil and natural gas.

## Party Honors Nancy Neumann

A surprise farewell party for Miss Nancy Neumann was given Saturday night at the Community Center by a number of her friends.

Entertainment was furnished by two new Littlefield bands: The Lamplighters, Bob Badger, Mike Sanders, Bruce Balfour, and Sammy Beard, and The Star Foursome, James Moore, Gary Purdy, Alan Veach and Ronnie Burns.

Gifts were presented to Miss Neumann and refreshments of red Hawaiian punch, cookies and sandwiches were served.

Nancy is leaving Sunday for Sulphur Springs where she will live.

## Amherst P.T.A. To Have Meeting

AMHERST -- The February meeting of the Amherst Parent-Teacher Association will be held today (Thursday) at 2:45 p.m. in the school auditorium.

Rev. Raymond Quick will be the speaker using the subject, "Together We Help A Child By Strengthening Our Heritage". The second grade pupils of Mrs. Settle and Miss Reeves will present the entertainment. Hostesses for the social hour will be chairman, Mrs. Bert Grimes, assisted by Mmes. Vernon Stagner, R.J. Cook, W.P. Holland Jr., Eryle Abbott, Leon Sherrill and Lamar Kelly.

## Young Adult Class Has Fish

Mr. and Mrs. Bobby Nelson were hosts for a fish fry given for the Young Adults Sunday School Class of the First Methodist Church Friday night in the fellowship hall of the church.

Games were played following the meal.

Attending were Mr. and Mrs. Jim Jones, Mr. and Mrs. Jack Fincher, Mr. and Mrs. Paul Larson, Mr. and Mrs. Joe Embury, Mr. and Mrs. Robert Stinson, Mr. and Mrs. L...

son, Mr. and Mrs. L... Dr. and Mrs. Jack... and Mrs. Jerry... and Mrs. Barry... and Mrs. Doug... Rev. and Mrs. Jack...

The Union of Soviet Republics was organized, Dec. 30, 1922.

## A SAVINGS PLAN THAT REALLY WORKS



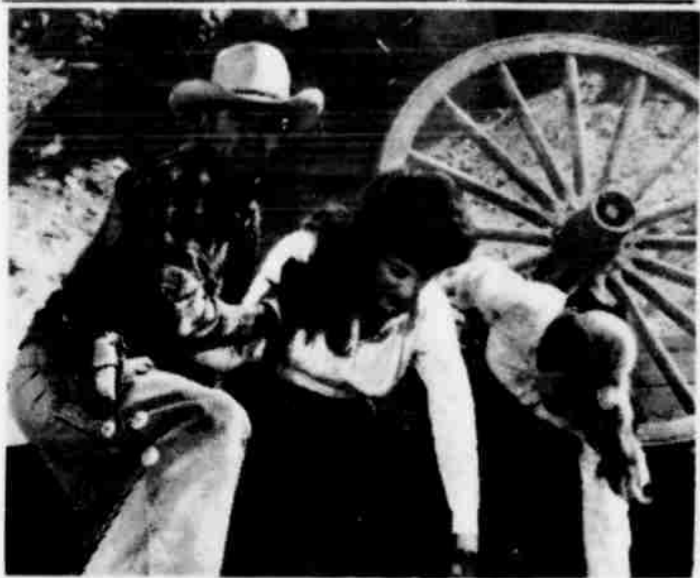
F.L.C. District Manager  
421 E. 16th  
Phone 385-4304  
Littlefield, Texas

Most people want to save. The problem is keeping it. The solution is the savings plan. Woodmen of the World Life Insurance Society has a savings plan that really works. You live, your savings will grow. Cash for special needs, or income for your retirement, or good return. If you die, you leave cash or income for your husband, children, or your estate. Call today for details, plus the story on Woodmen of the World outstanding program of fraternal social benefits.

Also investigate Woodmen's Health, Accident and Income Protection.

WOODMEN OF THE WORLD  
LIFE INSURANCE SOCIETY  
HOME OFFICE OMAHA, NEBRASKA

"The FAMILY Fraternity"



NARROW ESCAPE -- Jimmy Stewart races to the rescue of Maureen O'Hara and Juliet Mills after their wagon is overturned during a wild stampede of longhorn steers in Universal's stirring western drama, "The Rare Breed," in Technicolor and Panavision, starring Stewart, Miss O'Hara and Brian Keith; co-starring Miss Mills, Don Galloway, David Brian opens Sunday at the Palace Theatre.

## Lamb County Leader

Published every Thursday morning by the Littlefield Publishing Co., 506 Phelps Avenue, Littlefield, Texas, 79339. Entered as Second Class matter at the U.S. Post Office, Littlefield, Texas, 79339, Under the Acts of March 3, 1879.

Dave Kucifer . . . . . General Manager  
Tom Donnelly . . . . . Managing Editor  
J.B. (Mac) McShan . . . . . Advertising Mgr.

Subscription rates: by mail in Lamb and adjoining counties, \$5.10 per year. Elsewhere in Texas, \$7.10 per year. In City carrier delivery 70¢ per month.

Member 1966  
TEXAS PRESS ASSOCIATION



## Water Soluble for More Profit

Use NIPAK Ammonium Phosphates

- Get crops off to fast, strong start
- Plant foods completely available
- Stimulate strong, deep root growth
- Feed young plants extra phosphorus for full yield
- High analysis, save time and labor
- Pelleted for even distribution

Use NIPAK Ammonium Phosphates at planting. Get more for your fertilizer dollar, early maturity, high quality and bigger yields.

SEE YOUR NIPAK DEALER FOR YOUR STARTER NEEDS.



# BUICK \$1,000,000 SWEEPSTAKES

# WIN \$2,332

Manufacturer's suggested retail price for Special V-6, 2-Dr. coupe. Price includes Federal Excise Tax and suggested dealer delivery and handling charge.

Would you believe your car's vehicle identification number might be worth \$2,332.00 in cash to you? (This odd figure is also the price of a Buick Special\*. Pleasant surprise, isn't it?)

HERE'S HOW IT WORKS: Check that car registration of yours. If the first symbols of your vehicle identification number on it match up with one of those listed at the right, you might have won yourself \$2,332 cash. No slogan to invent, no puzzle to solve. To find out for sure if you won, just hop down to your nearest Buick dealer's. He's got a list of complete winning numbers posted. (No, you don't have to own a Buick to have a winning number.) If your complete vehicle identification number appears on his list--you're in the money.

Residents of Kansas, Missouri and Nebraska may, if they prefer, send a postcard to R. L. Park and Co., P. O. Box 1347, Detroit, Michigan 48202 and receive the weekly list of winning numbers by mail for numbers on their own vehicle identification number. An original entry form will be included. See restrictions limited to states over 21 living in the continental U.S. Entries must be postmarked before midnight, Tuesday, March 31, 1966. Not valid in Florida or states whose provisions by law.

011	2D63	2U74	313	3G47	3P72	3257	4D78	4J64	4Y85	626M	7J8	8K1
162M	2D64	2U76	314	3G62	3P74	3262	4E41	4J65	4Z41	626W	7K8	8P2P
163M	2D67	2U78	3151	3G65	3P76	4111	4E43	4J66	4Z42	628L	804C	963L
2111	2D69	2W26	3161	3G69	3P78	4121	4E51	4J69	4Z52	630C	804F	AJ1
212	2E67	2W63	362A	311	3531	4121	4E52	4J69	4Z53	631M	814M	BJ1
21211	2F31	2W64	363W	3J4	3554	413	4E53	4J8	4Z61	632L	834K	AK1
213	2F41	2W67	3D63	3J60	3557	4151	4E54	4J8	4Z62	636L	844K	L14
214	2F47	2W69	3D66	3J63	3565	4161	4E61	4P72	4Z68	638T	854L	L34
21511	2J62	2Z51	3D67	3J65	3W54	422	4E68	4F74	4Z68	639A	862L	
21611	2J67	2Z52	3D68	3K31	3W57	433	4F31	4P76	512	640K	863S	
263P	2K31	2Z61	3E60	3K4	3W60	4531	4F32	4P78	604B	662D	863P	
2A51	2S31	2Z62	3E63	3N51	3W63	4541	4F41	4S41	604K	663S	864A	
2A52	2S41	2Z65	3E65	3N52	3W66	4554	4F42	4S42	614M	6J8	864C	
2A61	2S62	2Z67	3F31	3N53	3W67	4564	4I4	4S68	614P	6K8	874A	
2A62	2S67	3111	3F32	3N54	3W68	4D72	4J43	4U51	620K	6I3	884K	
2A65	2U71	3112	3F41	3N61	3Y85	4D74	4J60	4W43	622T	714	894S	
2D26	2U72	312	3G43	3P64	3Z54	4D76	4J62	4W68	625A	762K	8J8	

SEE THE WINNING NUMBERS AT YOUR BUICK DEALER'S  
(A new list every week from now until March 31st. Good luck!)

There's an authorized Buick dealer near you. See his Double-Checked used cars, too.

1st WEEK

429 FIRST PRIZES 429

1st WEEK

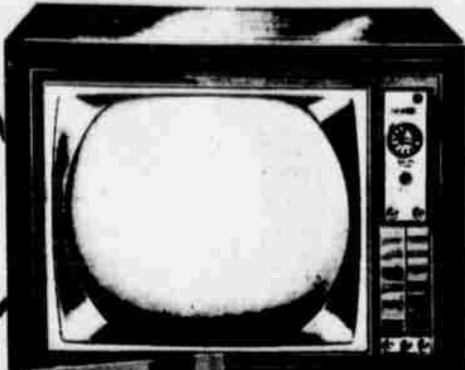


# Everyone is a Winner

IN FURR'S NEW  
dividend  
sweepstakes

**\$1000  
OR  
\$250  
IN  
CASH**

WESTINGHOUSE  
**COLOR TV SET**



**\$500  
\$100  
\$25**



**VALUE \$495  
IN FREE MERCHANDISE**

**5 BOOKS  
OF FRONTIER STAMPS  
1 BOOK  
OF FRONTIER STAMPS  
100  
FRONTIER STAMPS  
10 FRONTIER STAMPS**



**EXTRA  
BONUS!  
COLOR TV SET  
TO BE GIVEN IN EACH  
FURR'S SUPER MARKET  
THE FINAL WEEK**

**DROP YOUR DIVIDEND CARDS IN THE  
DROP BOX AS YOU PUNCH THEM OUT!**



**PICK UP YOUR PUNCH CARD AT FURR'S**

EXTRA CARE is not everything at Furr's...now we have a NEW Furr's Dividend Sweepstakes with prizes galore! You can win CASH, COLOR TELEVISION SETS, MERCHANDISE AND FRONTIER STAMPS in this new Punch Card promotion. Here's all you do...pick up your free punch card at any Furr's Super Market today, or any day...no purchase is necessary...then, punch this card out in a hurry. It has a \$25 in purchases value or it may be punched out with free punches each week. When the card is punched out...have the manager or assistant lift the seal on the card to reveal your prize. If seal has been tampered with, no prize can be given. Look what you can win...\$1,000 or \$250 in cash itself...\$500 \$100, or \$25 in free merchandise (groceries) at Furr's...a Westinghouse 21-inch Color Television Set, value \$495... 5 books of Frontier Stamps, one book of Frontier Stamps, 100 Frontier Stamps! EVERYBODY IS A WINNER! An extra bonus has been included...that of a Color TV to be given in EACH, not the whole area, but in EACH Furr's Super Market the final week. When your card has been completed, and prize revealed, drop it in the Drop Box at Furr's for the big drawing. Remember, no purchase is necessary. You need not be present at the final week's drawing to win. Personnel and their immediate families of Furr's, Inc., Furr's Cafeterias, Inc., Farm Pac Kitchens, Inc. and Frontier Stamps, Inc. are not eligible to win in the drawing or participate in the Sweepstakes. A person will be eligible to win only one \$1,000 cash award, one \$500 in free merchandise and one Color TV set.

**FRESH FROZEN FOODS-PRICED LOW!**

**FRUIT PIES** Morton, fresh frozen apple, peach, cherry, or cocconut. **3 FOR \$1**

**TATER BOY** 2 LB. BAG **FRENCH FRIED POTATOES** 29¢

**FURR'S ASSORTED FLAVORS CAKES** EACH 59¢ **DARTMOUTH FRESH FROZEN CAULIFLOWER** 10 OZ PKG 2/35¢

**GENERAL MERCHANDISE**

**SHAMPOO** ALBERTO VO-5 REG 1.09 **69¢**

**KOTEX** 12'S REG OR SUPER **31¢**

**KODOCOLOR** C-120, 620, 127 FILM, REG \$1.12 **.83¢**

**WOODBURY CREME RINSE** 4 OZ REG 39¢ **29¢**

**AQUA VELVA AFTER SHAVE** 6 OZ REG 98¢ **69¢**

**PICNIC** HICKORY SMOKED **49¢**



U.S.D.A. Inspected Farm Pac Blue Ribbon or Graded Choice **ROAST** Round Bone LB **59¢**

U.S.D.A. Inspected Farm Pac Blue Ribbon or Graded Choice **STEAK** Pinbone Sirloin LB **79¢**

U.S.D.A. Inspected Farm Pac Blue Ribbon or Graded Choice **ROAST** Prim Rib LB **75¢**

U.S.D.A. Inspected Farm Pac Blue Ribbon or Graded Choice **STEAK** Ranch Style Shoulder Cut LB **59¢**

U.S.D.A. Inspected Farm Pac Blue Ribbon or Graded Choice **STEAK** Top Cut Sirloin LB **89¢**

Fine For Baking or Bar-B-Q **SPARE RIBS** LB **79¢**

Farm Pac or Armour Star **BACON** LB **89¢**

**SUGAR** HOLLY BEET IMPERIAL OR C&H 5-LB BAG **49¢**

**EGGS** FARM PAC USDA GRADED A LARGE DOZ **49¢**

**MILK** CARNATION TALL CAN **3 FOR 43¢**

**DINNERS** Morton fresh frozen chicken, beef, turkey, Salisbury meat loaf, spaghetti & meat balls, fish, or macaroni & cheese. **2 FOR 79¢**

**CHERRIES** STOKELY RED SOUR PITTED NO 303 CAN **15¢**

**COFFEE** FOOD CLUB ALL GRINDS, 1-LB CAN **69¢** 2-LB CAN **137**

**SHOE POLISH** JOHNSON'S PASTE, ASSORTED COLORS, REG 4¢ CAN **39¢**

**CHERRY PIE FILLING** WILDERNESS NO 2 CAN **3 FOR \$1**

**BABY FOOD**  
FOOD CLUB STRAINED OR JUICES ASSORTED  
**3 JARS FOR 27¢**  
JUNIOR 2 FOR 29¢



**DOG FOOD**  
2¢ OFF LABEL CHICKEN OR REG. NO 300 CAN **2 FOR 31¢**

FOOD CLUB ALL GREEN CUT SPEARS **SPARAGUS** NO 300 CAN **29¢**

RATIO COMBINATION DINNER OR CHEESE **ENCHILADA DINNER** 12 OZ PKG **39¢**

OPCO **LIQUID DETERGENT** 22 OZ CAN **39¢**

ELLEN'S WITH CHEESE SAUCE **PAGHETTI** NO 300 CAN **10¢**

WICKEN OF THE SEA LIGHT **UNA** NO 1/2 CAN **37¢**

ONARCH **GRAPE DRINK** QUART **3 FOR 69¢**

**BROCK'S CHOCOLATE COVERED CHERRIES** 1 1/2 LB BOX **89¢**

FOOD CLUB **BLACK PEPPER** 4 OZ CAN **29¢**

FAULTLESS. 5¢ OFF LABEL **SPRAY STARCH** 15 OZ CAN **49¢**

TRE RIPE FREESTONE SYRUP PACKED **PEACHES** NO 2 1/2 CAN **25¢**

KRAFT. 4¢ OFF LABEL **SAFFLOWER** 1-LB PKG **39¢**

BOWMAN **GRAHAMS** 1-LB **39¢**

**BAGGIES** 25 FT **33¢**

**AJAX** 10¢ OFF WINDOW CLEANER **53¢**

**PALMOLIVE** GOLD BATH **2/47¢**

**CAULIFLOWER** FRESH SNO WHITE HEAD **19¢**

WASHINGTON RED DELICIOUS **APPLES** LB **15¢** **FIRM RED SLICERS TOMATOES** DOZ **39¢**



## Church News

### AMHERST BAPTIST

The Beginners Choir was given a Valentine party in the dining room of the First Baptist Church last Thursday afternoon.

Songs, games and refreshments of Valentine cookies and punch were enjoyed by Patricia Morrow, Jamie McDaniel, Sue Morrow, Terri Cowen, Jana Jones, David Jones, Tammy Tomes, Martha Brantley, Kelly Tomes, Eddie Branscum and Tana Landers. Mrs. Jimmy Cowen, Mr. Charles Jones and Delores Abbott were hostesses for the party.

### AMHERST METHODIST

The World Day of Prayer will be observed Friday, Feb. 25 at 2 p.m. at the Methodist Church.

The spiritual life chairman, Mrs. V.A. Hinds will lead the program with Mr. Jimmy Cowan of the Baptist Church assisting. Ladies of both church will attend.

### EMMANUEL LUTHERAN

Visitors in services Sunday were: Rev. E. Seay of Littlefield and Mr. and Mrs. Gus Lueck of Hamilton.

The choir met Tuesday night. A considerable amount of time was given to a new selection presented by Mrs. Wm. H. Remmert which it is hoped that the congregation will sing during its Lenten Services, conducted every Wednesday night at 7:30 beginning with Feb. 23rd. Mrs.

Gene Bartley serves as general director of this choir.

Pastor and Mrs. Remmert spent Tuesday in Wilson, where Mrs. Remmert visited with her relatives while Rev. Remmert did some scheduling and planning for future Conference of Circuit #2, of which he serves as chairman.

The Junior Confirmation class met Wednesday at 4:15 p.m. Pastor Remmert teaches this class.

### CITY BITS

Mr. and Mrs. Robert W. (Bob) Crawley and daughter Christina arrived in Littlefield Saturday after being discharged from the Army. He has been stationed at Fort Sam Houston, Texas, 4th Army Headquarters for 20 months of his two years while in service.

He and his family plan to make their home in Littlefield. He will be employed at Pioneer Super Market.

Sunday guests of Mr. and Mrs. G.T. Corry were Jim Gleason, Amarillo; Miss Kay Leverton, Lubbock; Mr. and Mrs. Bob Anthony, Clay and Amber, Cotton Center; and Steve Corry of Amarillo, grandson of the Corry's. Steve remained here for the rest of the week. PFC Clinton Corry is home on leave with his parents, after being stationed in Okinawa about seven months.



SING ALONG IN THE OLD TIME WAY....Members of the Littlefield Rotary Club and their Rotary Anns join in song, at the annual Valentine banquet Monday night. The event is held annually by the Rotarians to honor their wives and guests. The setting and decorations for

the event were provided by the wives of the board members, who employed an old fashion theme. The songs, of course were from years ago, and several even learned the first verse of "Let Me Call You Sweetheart."

--- LEADER STAFF PHOTO

### Luther League Meets Sunday

The Luther League of St. Martin Lutheran Church met Sunday evening. Two film strips, "Mission to America" and "Dock Hunting With Ted Williams", were shown.

Refreshments for the meet-

ing were served by Ronald Hill. The League decided to pay for part of the cost of advertising for the church during Lent. Other business included finalizing plans for the skit to be given at the congregational dinner March 6 after church service. A practice for this skit will be held next Sunday at 2:30 p.m.

A discussion was held, concerning what the church can do to loan money to new Lutheran churches by borrowing the money from the bank to be paid back by the new church.

The next meeting for the League will be Sunday, March 13 at 7:30 p.m. at which time the date for an ice skating party will be set. Ronald Hill will have the topic and Mike Brandt will serve refreshments.

### McMillen Is Selected For Armor Training

Philip C. McMillen, son of Mrs. Margaret McMillen of Amherst, was one of 28 advanced Reserved Officers' Training Corps cadets at West Texas State University selected for branch assignments, announced Col. Henry L. Calder, professor of military science.

McMillen, an economics graduate student, was assigned to the Armor division.

The 28 will enter specialized branch training after graduation from WTSU.

### Payton Serving In Vietnam

Seaman Harold R. Payton, USN, son of Mrs. Nannie M. Payton of Littlefield, participated in Operation "Double Eagle", the largest amphibious landing ever made in Viet Nam, while serving with this command.

The assault landing of a large U.S. Marine force near Thach Tru, 30 miles south of Chu Lai, began when a 13-ship Naval Task Force steamed into the objective area in the pre-dawn hours of Jan. 28.

Eight waves of assault troops were landed on the beaches, while warships patrolled offshore to provide naval gunfire support. The Marines were virtually unopposed, and received only light small arms fire.

Late in the afternoon of Jan. 29 more Marines were landed by helicopter four miles inland from the beachhead. These forces, also unopposed, reported seeing about 200 enemy fleeing the area on foot, changing from green regular forces uniforms to the black pajama-like garb of the Viet Cong.

The four U.S. cities which lead in automobile production are Detroit and Flint, Mich. St. Louis, Mo., and Hamtramack, Mich.

### Mrs. Hamby Is Club Hostess

OLTON - Kimichi Study Club of Olton met Thursday afternoon in the home of Mrs. Houston Hamby for a regular meeting. Roll call was answered with "How I met my husband." Lynda Roper, president, presided at a short business meeting. Mrs. Lynda Gillreath, Home

Service Advisor for Southwestern Public Service Co. of Plainview, gave a demonstration on the many uses of electrical appliances. She also brought some new recipes for the club members.

Mrs. Hamby served refreshments to Mmes. Harlan Carson, Danny Cure, Elmer Houston,

Randall Roper, Garland Oliver Rose, Garland and Harold Jordan and Smith.

The next meeting will be Thursday, February 24.

If you are weight conscious here's a reminder: cottage cheese plus milk makes a satisfying lunch. Like, you can use low-fat canned fruit and low-fat commercial cottage cheese.

# Get 1/3 More!

**NIPAK 45 gives you 1/3 more nitrogen per pound than any other form of solid nitrogen fertilizer**

Get better wheat crops and earn bigger profits. Topdress your wheat with NIPAK 45 right now — for greater yield and higher protein. NIPAK 45 gives you one third more nitrogen per pound than any other form of solid nitrogen fertilizer — which enables you to handle less fertilizer and cover more ground in less time. NIPAK 45 is uniformly prilled, too. It flows easily, won't

cake, clog — or corrode your equipment. NIPAK also dissolves in the soil moisture and moves quickly to the root zone where it stays put until your crops need it. So for more crop power ask your local NIPAK dealer about NIPAK 45. He can help you plan a complete fertilizer program because he can provide a complete fertilizer service. NIPAK — THE BEST 5-LETTER WORD FOR FERTILIZER



## LAMB COUNTY JUNIOR FAT STOCK SHOW VISITORS

MAKE US YOUR HEADQUARTERS

FOR ALL

GOOD THINGS TO EAT AND TO DRINK

- DRIVE IN WINDOW
- INSIDE SERVICE



# DAIRY QUEEN

FAMOUS FOR FRESH COUNTRY FLAVOR

FRANK & GLADYS ROBINSON

1001 E. 9 THST.

For the guy who'd rather drive than fly: Chevelle SS 396



Chevelle SS 396 Sport Coupe with Body by Fisher, seat belts front and rear, one of eight features now standard for your added safety.

## POTENT THE CHEVROLET WAY

This is about a Chevelle—a very special one—with a bulging hood, a black grille and red stripe nylon tires. Start it up and you've tuned in on 396 cubic inches of Turbo-Jet V8.

Get it moving and suddenly you're a driver again. With gears to shift. A clutch to work. Even a set of gauges to read, if specified.

Now take a curve, surrounded by a machine that delights in crooked roads.

This, you see, is an SS 396. A Chevelle, yes. But what a Chevelle.



All kinds of cars all in one place... at your Chevrolet dealer's CHEVROLET • CHEVELLE • CHEVY II • CORVAIR • CORVETTE

## ARMES CHEVROLET COMPANY

LITTLEFIELD, TEXAS

42-4810

# FARM SALE

FRIDAY, FEBRUARY 18, 1966 -- SALE TIME: 1:00 P. M.

LOCATED: 3 miles North of Littlefield, Texas, on Highway 385, then 3 miles East on Farm Road 2197.

I have quit farming and will sell the following at Public Auction:

### TRACTORS—

- 1—1960 - I.H.C. 560, butane, wide front, power steering, fast hitch.
- 1—1960 - I.H.C. 460, butane, wide front, fast hitch, power steering.
- 1—1952 - G John Deere, butane.
- 1—I.H.C. W-9, butane.

### FARM MACHINERY—

- 1—I.H.C. 4-row rear end Cultivator.
- 2—I.H.C. 4-row No. 11 Planters, fast hitch, gauge wheel drive.
- 1—I.H.C. 2-16" Spinner Moldboard.
- 1—4-sec. Burch Gang Rotary Hoe.
- 1—10-ft. Burch sealed bearing Tandem.
- 1—Eversman Camel Back Land Float, used very little.
- 1—Eversman 6-ft. V Ditcher.
- 2—4-row K & J Crustbusters, fast hitch.
- 3—9-row Sandfighters.
- 1—I.H.C. 3-row Lister.
- 1—2-row Stalk Shredder.
- 2—5-row Stalk Cutters.
- 1—5-row Steel Bed Knife.
- 1—3-row Steel Bed Knife.
- 1—I.H.C. 5-row Lister.
- 1—John Deere 4-row Planter.
- 1—John Deere Front End Loader.
- 1—4-row R & J Crustbuster, 3 point.
- 1—I.H.C. 7-ft. Power Mower.
- 1—Oliver 3-disk Plow.
- 1—John Deere two-bottom Moldboard.
- 1—Ford two row Knife.
- 1—Ford Hoeme.
- 1—Ferguson 3 point, 7-ft. Power Mower.
- 1—J. D. 6-ft. One Way, power lift, on rubber
- 1—I.H.C. No. 21 Cotton Stripper.
- 2—4-row IHC front end Cultivators, old style
- 1—4 row Seed Scratcher 1—4 row Knife Sled

### IRRIGATION EQUIPMENT —

- 1—1954 Chev. 235 Well Motor, complete.
- 1—1963 Pontiac Well Motor, complete.
- 1—1959 Chev. 261 Well Motor, complete.
- 1—2-wheel Pipe Trailer, 6—10x6" Hydrants
- 29—Joints of 6" Gated Pipe, 40" rows.
- 10—20-ft. Joints of 6" Flow Pipe.
- 1—Lot of L's - T's - End Caps.
- 1—Lot of 1 1/2" and 2" Tubes.

### TRUCKS — COMBINE — TRAILERS —

- 1—1952 - G.M.C. 2-ton Truck, hyd. hoist and grain bed.
- 1—1952 - I.H.C. One-ton Steel Bed Winch Truck with gin poles.
- 2—16-ft. Dual Wheel Breakover Implement Trailers.
- 8—3 & 4 Bale Cotton Trailers.
- 1—1959 Massey Ferguson 92 - 14-ft. Combine with cab. This combine is real clean.
- 1—16-ft. factory built Tandem Stock Trailer
- 1—1953 Chev. Burr Truck.
- 1—1958 Chev. Burr and Manure Truck.

### HAY MACHINERY —

- 1—1964 New Holland Wire Tie Baker, good
- 1—New Holland 2-row Self-propelled Ensilage Cutter.
- 1—W.5 Case Self-propelled Loader.

### MISCELLANEOUS —

- 1—I.H.C. Front End with 38" wheel spread
- 1—I.H.C. Swing Draw Bar for 460 or 560
- 2—I.H.C. Single Front Wheels.
- 1—Fowler Wagon Hand.
- 2—Buggy Tops.
- 1—4-row Set of M & M Row Markers.
- 7—M & M Orchard Shanks 3—Hyd. Clys.
- 1—Butane Filler Hose.
- 2—I.H.C. Comfort Covers.
- 1—Lot of Tires and Wheels.
- 1—I.H.C. Fast Hitch 3 point Adapter.
- 1—500-gal. Propane Tank on Trailer.
- 1—Lot of I.H.C. Rear Wheel Wts.
- 1—Lot of Misc. Items.

### HOUSE —

- 2-Bedroom and Bath, 24' x 28' - to be moved. This house is located 3 miles West of Littlefield on Bula and Pep Highway, just across the road South of Littlefield Airport. It will be sold immediately following Farm Sale (which will be about 4:00 p.m.). This house will be sold at the site of the house (not at the Farm Sale). Look it over.

Terms of Sale: CASH. — All accounts to be settled day of the sale.

**EMIL BIRKELBACK, - - OWNER**

RAYMOND AKIN ----- AUCTIONEERS ----- GENE HARRIS  
Ph. CA 4-7692, Plainview, Texas — Ph. UN 4-3641, Edmonson, Texas



**A Word to the Wives!**

**PIGGLY WIGGLY'S ALWAYS**

**BEST**

- RUSTY **DOG FOOD** 6 16 OZ. CANS **39¢**
- GOLDEN WEST, FULLY GUARANTEED **FLOUR** 5-LB. BAG **45¢**
- ORE IDA **INSTANT POTATOES** 13 OZ. BOX **49¢**
- CHOCOLATE AND BANANA **SWEETIE PIES** 16 OZ. BOX **39¢**
- SOFTPLY, ASSORTED COLORS **NAPKINS** 160 COUNT BOX **19¢**
- WOLF BEEF **TAMALES** NO. 300 CAN **29¢**

HEAVY DUTY DETERGENT **WIDE** GIANT BOX **73¢**

PILLSBURY LAYER CAKES, ASSORTED FLAVORS **CAKE MIX** 3 10 OZ. BOXES **\$1**

PURE MEAT **SAUSAGE** VIENNA 5 NO. 1/2 CANS **\$1**

THESE PRICES GOOD IN LITTLEFIELD FEB. 17-18-19-1966  
WE RESERVE THE RIGHT TO LIMIT QUANTITIES

HEALTH & BEAUTY AIDS!

- SKIN LOTION** QUIN. EXTRA DRY 10¢ OFF 49¢
- HEAD & SHOULDERS REG. \$1 **Shampoo** LARGE SIZE TUBE **79¢**
- BRYLCREME REG 79¢ KING-SIZE **Hair Dressing** TUBE **59¢**
- LAVORIS REG 95¢ 17 OZ. **Mouthwash** DECANTER **79¢**



VEGETOLE **SHORTENING**

**3 LB. CAN 59¢**

TOP JOB. 10¢ OFF LABEL **Liquid Cleaner** 28 OZ. BTL. **63¢**

WESSON **MAYONNAISE** QUART JAR **69¢**

MARSHALL, FREESTONE **PEACHES** 3 NO. 2 1/2 CANS **\$1**

CHICKEN OF THE SEA **CHUNK TUNA** NO. 1/2 CAN **39¢**

PILLSBURY'S BEST **FLOUR** 5-LB. BAG **57¢**

FROZEN FOODS

**ROLLS** HOLSOM, PARKERHOUSE 24 CT. PKG. **19¢**

SEABROOK F.F. **POTATOES** 2 9 OZ. PKG. **39¢**

SEABROOK, SPEARS **BROCCOLI** 10 OZ. PKG. **27¢**

CIRCUS, ASS'T FLAVORS

**FRUIT DRINKS**

**3 46 OZ CANS 69¢**



GLOVER'S DRYCURE, 12 TO 16 LB..AVG. WHOLE or SHANK PORTION **HAMS** POUND **65¢** CENTER SLICES LB..- 98¢

PIGGLY WIGGLY MEATS! FINEST QUALITY IN TOWN!

USDA CHOICE, AGED, HEAVY BEEF, VALU-TRIMMED

**CHUCK ROAST** POUND **49¢**

LEAN, 100% ALL BEEF DATED TO ASSURE FRESHNESS **GROUND BEEF** 2-LB. PKG. **78¢**

BUTCHER BOY, BOLOGNA, PICKLE OR OLIVE 6 OZ. PKG. **LUNCHEON MEAT** 3 FOR **87¢**

HORMEL'S ALL MEAT **FRANKS** 12 OZ. PKG. **49¢**

LEE'S ALL PROK **SAUSAGE** 2-LB. PKG. **1.79**

USDA CHOICE AGED, HEAVY BEEF, VALU-TRIMMED **RIB STEAK** POUND **79¢**

KRAFT'S INDIVIDUAL WRAPPED SLICES **SLICED CHEESE** 12 OZ. PKG. **55¢**

STOKLEY, YELLOW CLING **PEACHES** SLICED OR HALVES

**PEACHES**

NO. 2 1/2 CAN

**29¢**

- WESSON'S INSTANT, 10¢ OFF LABEL **COCA MIX** 2 LB. CAN **77¢**
- NABISCO, RITZ **Crackers** 12 OZ. PKG. **35¢**
- REGULAR **Applesauce** 3 25 OZ. JARS **\$1**
- LUCKY LEAF

**Liquid Detergent** THRILL 12 OZ..BTL. **37¢**

**Cleaner** SPIC-N-SPAN REGULAR BOX **31¢**

FRESH PRODUCE FROM PIGGLY WIGGLY

**TOMATOES**

RED, RIPE, BUBBLE PACK **19¢** EACH

TEXAS, RUBY RED **GRAPEFRUIT** POUND **7 1/2 ¢**



Lowest Prices... Greatest Variety... always at

**Piggly Wiggly**



GETTING IT READY — Ag students at Littlefield High School are busy this week at the county barns getting it ready for occupancy by approximately 200 animals this weekend during the Lamb County Junior Livestock Show to be held here Friday and Saturday February 18 and 19.

--- LEADER STAFF PHOTO

## Year Ahead Outlook For Feed Grains Reviewed

The production of feed grains in the nation set a new record in 1965. Yields were 18 percent higher than in 1964 and 11 percent above the previous record set in 1963, reports John G. McHaney, Extension economist at Texas A&M University.

The record per acre yields increased the supply for 1965-66 by 10 million tons above the previous year but the 217 million tons available, McHaney explains, is 5 million tons below the 1959-63 average.

The disappearance of feed grains is expected to increase during 1965-66 and may reach 157 million tons or 5 to 6 million above the past year and above the 1961-62 record. Lower feed grain prices and generally favorable livestock feed-price ratios, feeding livestock to heavier weights and an 8 to 10 percent increase in exports were cited by McHaney as major factors in the total disappearance picture. Despite the bright picture some 5 million tons will be added to the carryover at the end of the marketing year, he said, due to the big 1965 production.

As for sorghum grain, McHaney said Texas produced a lot of the record 655 million bushels, 34 percent higher than the 1964 crop. This large crop raised the supply to 1,221 million bushels, 7 percent above last year but slightly below the previous record supply of 1963-64.

McHaney said domestic use of sorghum grain is expected to substantially increase during the 1965-66 year due to the large crop and expected lower prices. Exports should equal the record of 148 million bushels of last year. Total disappearance is expected to increase by 7 percent to over 600 million bushels, he said.

## Homecoming Held Saturday

SPADE -- The Annual Spade Community and School Homecoming was held at the school Saturday. Registration and visitation began in the afternoon. The local Senior Class had charge of the activities and served a barbecue supper in the school cafeteria.

The Exes held a business meeting in the auditorium with president Joe D. Greer of Lubbock presiding. Bobby Jones, president of the senior class, welcomed the guests. Aubrey Neinaast gave the response. Mr. Greer led in recognizing the exes, beginning with the 1932 graduating class through the present time. Past and present teachers were also recognized.

Mr. and Mrs. Shine Miller of Littlefield were given a special "Thank You" from the group for the gift they presented to the school, a set of longhorns to be placed in the school as a symbol of the "Spade Longhorns." Officers for the coming year were elected. Bayne McCurry of Plainview was elected president, Martin Young of near Dimmitt was elected vice-president, and Mrs. H.W. Bradley of this community was elected as secretary and treasurer. The group voted to donate \$50 of their funds to the Spade Little League baseball program.

The local basketball teams then met the Anton teams in games in the school gymnasium.

## SPADE NEWS

### Missionary Society Has Study

The Woman's Missionary Society of the local Baptist Church met February 10 in the Fellowship Hall of the church for a special day of mission study. Rev. C. Kay Tate introduced the book to be studied entitled "Panama-The Land Between" and reviewed the first two chapters. Mrs. J.R. Hodges then brought a devotional based on scriptures from Psalms and Matthew. Mrs. Arthur Turner read the calendar of prayer and led in prayer for the missionaries listed on the calendar. Mrs. Doc Vann continued the study telling of the major tribes of Indians found in Panama. Rev. Tate led in prayer before the lunch hour. Those present enjoyed a covered dish luncheon. The group decided to have the conclusion of the book on the first Monday in March due to lack of time. Following a short time of discussion Mrs. J.R. Inklebarger led in the dismissal prayer.

Present for the meeting were Mrs. Vann, Rev. Tate, Toni and Tami, Mrs. Donald Caldwell, and Lori, Mrs. H. Harvey, Mrs. Hodges, Mrs. Turner, Mrs. Arwin Turner, Mrs. Ernest Savage, Mrs. Inklebarger, Mrs. Jess Emmons and Mrs. Jim Matthews.

The Homebuilder's Sunday School class of the local Methodist Church will have their next regular social on Friday night, Feb. 25. The group will meet at the church at 7 p.m. and then go bowling. A nursery will be provided at the church.

Word was received Monday morning of the death of Mrs. J.M. Srygley's mother, Mrs. N.W. Williams, who lived in Littlefield. The Srygleys live near Littlefield but are members of the local Methodist Church.

Mr. and Mrs. Charles Heffington were dinner guests Sunday in the home of Mr. and Mrs. Donald Caldwell, Kim and Lori. Visiting last Friday in the home of Mr. and Mrs. Arthur Turner were her nephew and wife, Mr. and Mrs. Duane Bynum. The Bynums are living in Okinawa where he is stationed with the Air Force.

Mr. and Mrs. J.R. Hodges

visited Sunday in the home of her mother, Mrs. Ava Warner of Littlefield. Also present were her brother and family, Mr. and Mrs. George Warner and children of Lamesa.

Mr. and Mrs. Arthur Turner went to Lubbock last Wednesday where they visited with her niece, Mrs. Ed Miller, Mrs. Miller lives in Owasso, Mich.

Mr. and Mrs. Boots Gray went to Morton Sunday where they visited in the home of her brother and wife, Mr. and Mrs. Clinton Moore. They also visited in the hospital there with Sue and Joyce Stevens who are hospitalized as a result of a recent car accident. They are former residents of this community.

Mr. and Mrs. Doyle Gilbert, Billy and Bobby visited Sunday in the home of her parents, Mr. and Mrs. R.A. Leonard. Visiting with them in the afternoon were Mr. and Mrs. Leonard and Marketta and Mr. and Mrs. D.R. Leonard of Hart Camp.

Visiting last Thursday and Friday nights in the home of his grandparents, Mr. and Mrs. Boots Gray were Gene Lappe of Lubbock.

Mrs. Ted Hutchins is still confined to the Medical Arts Hospital in Littlefield.

Mrs. Ada Reed, mother of Mrs. Jap Anderson of this community, is reported to be doing well following recent surgery in the University Hospital in Lubbock.

Mr. and Mrs. W.A. Tindal have been in Hamlin recently visiting in the home of his sister, Mrs. Grover Maynard and also in the home of a sister-in-law, Mrs. Leone Brown.

G.R. Nabors and Tyson Nabors went to Memphis last Saturday where they were with the former's brother, W.L. Nabors who has been seriously ill for some time.

## Embezzler Is Book-Of-Month Selection For March

Louis Auchincloss' new novel, THE EMBEZZLER, has been chosen as the Book-of-the-Month Club Selection for March. It is the story of an eminently respected Wall Street figure named Guy Prime who is caught embezzling funds from his family and his club.

Readers with long memories may be reminded of a not entirely different case of fraud which rocked New York's social and financial world in the 1930s -- that of Richard Whitney, president of the New York Stock Exchange, who was sentenced to a term in Sing Sing Prison.

In THE EMBEZZLER, Guy Prime, after serving a prison sentence, goes off to Panama, where he lives comfortably until he dies with his young Panamanian wife by his side. His story is told from three points of view: his own (set down before his death for the enlightenment of his grandchildren), his first wife's, and his oldest friend's.

Guy Prime describes himself as having become "a symbol of financial iniquity, of betrayal of trust, of the rot on Wall Street before the cleansing hose of the New Deal." He adds

that if he had not existed, Franklin Roosevelt would have had to create him.

Reporting to Club members, John Mason Brown calls THE EMBEZZLER a novel of contrasts, not only of social backgrounds and wealth but also of moral sensibilities confused by the code of an era. It is, he says, an "absorbing story of tangled times and scrambled values."

During the past nineteen years Louis Auchincloss novelist, essayist and short story writer--has published fifteen books while actively practicing law with a Wall Street firm. An admirer of Henry James and Edith Wharton, Mr. Auchincloss

has shown himself concerned as a writer of the rich, the old money, in New York.

He was born in New York, received his education at Yale (which he graduated) and the city of Virginia. He was admitted to the New York Bar in 1941.

Among his recent PORTRAIT IN BRONZE (1962), POWERS OF NEY (1963), and THE OF JUSTIN (1964), a Book-of-the-Month selection.

Mr. Auchincloss lives in New York City and has two sons.

## Stay in the heart of (downtown) TEXAS

<b>AMARILLO</b> 4th and Park Streets 5 Minutes from Hwy. 69, 87, 287 & 140 Phone DR. 6-4571	<b>CORPUS CHRISTI</b> Shoreline & Scholard Overlooking Beautiful Corpus Christi Bay Phone TU 4-4815	<b>EL PASO</b> Main & Texas From Main Street Phone 533-871
<b>AUSTIN</b> 11th and San Jacinto Sts. Across from Capitol Building Phone GR 6-7151	<b>FT. WORTH</b> 10th & Houston Sts. Across from City Hall & Federal Center Phone ED 6-2011	Everything you need is DOWNTOWN and DOWNTOWNER yours
<b>HOUSTON</b> Texas & Frensch Streets 15 Minutes from New Astrodome Stadium Phone 778-2911	<ul style="list-style-type: none"> <li>Free parking</li> <li>Free ice</li> <li>Heated swimming pool with cabana</li> <li>Free television and hi-fi music</li> <li>Oversize double beds</li> <li>Meeting and banquet rooms</li> <li>No charge for children under 12 occupying room with parents</li> </ul> For your traveling convenience use our FREE WIRE RESERVATION service between DOWNTOWN and DOWNTOWNER	<b>DOWNTOWNER MOTOR INN</b> "THE SIGN OF HAPPY TRAVEL"

For the newest free directory of DOWNTOWNER Motor Inns, please write to:  
 The DOWNTOWNER Corporation  
 202 Union Avenue  
 Memphis, Tennessee 38103

## Oltonites Have Entries In Stock Exposition

OLTON -- Twenty-five Olton stock showmen left this week for San Antonio to participate in the San Antonio Livestock Exposition.

Olton's FFA group lists 22 members participating in the show, with two open division and one 4-H entry also attending. The 25 have 15 cattle, 23 barrows and five lambs entered in the contest, which officially started Friday.

Exhibitors from Olton's FFA include Dennis Givens, Nancy Brigrance, Jason Latimer, Marcella Breland, Tim Givens, Jackie Burkhalter, Darrell Breland, Charlotte Brigrance, Danny Collins, Doyle Meadows, Gary Shawn, Guy Ballard, Steve Burleson, Joel Cordero, Preston Daniel, Rocky Farrar, Tony George, Larry Neinaast, Tommy Ray, Ricky Richardson, Aaron Robertson, Danny Sides, Ralph Thomas and Ted Wheeler.

Entered in the 4-H Club is Terry Horn, and in the open division, Darryl Dennis and Archie Mey.

The Symbols Of Better Agriculture As Demonstrated In The 27TH ANNUAL

## LAMB COUNTY JUNIOR LIVESTOCK SHOW February 18 And 19



Congratulations To All The Exhibitors, Sponsors, Officials And Judges Of The Livestock Show

This Is The Symbol Of Better Living - Electrically -



Call 385-4481



Best sellers. Year after year, more people choose Cadillac than choose any other luxury car in the world. Shouldn't this alone lead you to consider the worth of owning a Cadillac--new or used?

The reasons for Cadillac's overwhelming popularity are numerous. Among the most important are its advanced engineering and meticulous craftsmanship. Cadillac's styling and luxury are renowned for dignity and good taste. Its alert performance and handling rival many sports cars. No other motor car in the luxury car field retains its value as long or as well as

Cadillac--a most important consideration at trading time. Finally, your nearby Cadillac dealer is long experienced in caring for Cadillac owners--and in seeing that their every need is attended to. Whatever you plan to spend on your next car, you should investigate the elegance, excellence and excitement of a Cadillac, new or previously-owned.

Standard of the World 

SEE YOUR AUTHORIZED DEALER'S ATTRACTIVE SELECTION OF NEW AND USED CADILLACS

**JONES MOTOR COMPANY**  
 801 HALL AVENUE • LITTLEFIELD, TEXAS



**Line Nears Medicare Up**

People 65 or older who get security of railroad retirement benefits has received a new card for the Medicare part of health insurance, according to Mr. John Hutton, manager in Lubbock. People have marked the card with their names and addresses, intending to make a change later. Mr. Hutton said that these people get with their social security cards if they would like information about health insurance.

An enrollment card has been replaced or lost, the security office at Lubbock said. It is very important that you make a duplicate. Mr. Hutton added. If you are 65 or over January 1, you will have medical insurance when the program begins only if you sign up by February 1, 1966. A representative of the Lubbock Social Security Office will be in Littlefield on Tuesday, February 8, and 15, in the courtroom at 9:00 a.m.

**County Officials Scheduled To Dedication**

Judge J. B. Davis and members of the Lamb County Commissioners Court have been scheduled to attend the dedication of the TEXAS CONFEDERATE COMMISSIONERS' historical marker in Littlefield on Feb. 18, at 2:00 p.m. in the Washington County courthouse lawn. An announcement was made by Ben Shepperd of Odessa, member of the Texas State Historical Survey Committee. The story of the Commissioners' courts in Texas during the Civil War years to the present will be made by Shepperd. Old Green, president of the County Judges and Commissioners Association, of Waterbury (Tom Green County) will be the official marker on the occasion. County Judge Odis Tooacheff-Brenham will be master of ceremonies with Washington Commissioners participating. Open House for visitors will be held in the Courthouse under the auspices of the Washington County Historical Survey Committee.

**County Lions Take Applications For Children's Camp**

Applications for a summer vacation for handicapped children in the Olton area are now being accepted by members of the Olton Lions Club. The Texas Lions Camp for Handicapped Children at Kerrville will open its first two-weeks' session on June 5th. Sessions will be held this summer for youngsters from 7 through 16 years of age. The camp is free to eligible deaf, mute or crippled children. Transportation to and from the camp is supplied by the Lions. All requests for the camp are handled locally by Lions. For more information about the camp, contact Laus Hair, chairman of the Olton Lions' Committee.

It was the first country in the Middle East to discover oil territory. In 1868, oil was discovered at Gemsa at the mouth of the Gulf of Suez.

Fruit fritters -- apple, plum, orange, peach, orange--taste wonderful with batter-fried chicken. Just use some of the open batter for the fruit. Use canned plums, pineapple slices or peach halves are used. Should be thoroughly washed before dipping in the batter.

**FIND SOLACE FOR YOUR SORROW THROUGH... QUIETUDE**



FEEL FREE TO CALL ON US AT ANY HOUR  
**Hammons Funeral Home**

**Two Littlefield Students Make Wayland Honor Roll**

Thirty-seven students at Wayland Baptist College are listed on the Dean's Honor Roll for the fall semester, according to Dr. Robert G. Collmer, Academic Dean.

Named on the honor roll are two Littlefield students, freshmen Kenneth Minyard, who posted a 3.50, and Margaret Suzanne Martin, who had a 3.60. Minyard is the son of Mr. and Mrs. James F. Minyard, Star Route 1, while Miss Martin is the daughter of Mr. and Mrs. Blanton Martin, Star Route 2.

Only students posting grade-point averages between 3.50 and 4.00 (A) are named to the honor roll each semester.

This fall 12 freshmen, five sophomores, five juniors and 15 seniors are on the list.

Keep a ballpoint pen handy as you read a magazine. When you come to something you want to save, mark the page number on front cover. After everyone has finished reading the magazine, do your clipping. Saves time and keeps you from forgetting which magazine contained the article.

**Students Give Puppet Shows**

OLTON -- Junior High School students at Olton, instructed by Bill Cottrell, have constructed outstanding settings and puppets for puppet shows now being held in the film room at junior high building from 10:30 to 11:20 a.m. each Monday, Wednesday and Friday for the next two weeks.

The special art class built the settings, which feature fluorescent paint. The paint gives the effect of changing from daylight to nighttime, complete with stars in several of the scenes.

Cottrell said three members of the class, Janie Jones, Connie Hall and Marsha Parker, spent three-and-a-half months

painting one set. The children have enjoyed this art class so much that they have worked some on Saturday mornings.

The acts vary from a Beatle haired combo to a Hawaiian Hula dancer.

The class is composed of 14 sixth and seventh grade students. Included in the group are Lita Moralez, Frances Torres, Judie Truelock, Glenda Holliday, Americo Zavaleta, Rey Luers, Belinda Harcrow, Brenda Leathers, Rita Marroquin, Glenda Miller and the three girls who painted the scenery.

Cottrell said parents or visitors were welcome to come by and view the performances.



**NOW HEAR THIS -- "Andy" seems to have the situation well in hand and the attention of his audience as he prepares to give orders to the eight little pigs. Andy is a member of the Ray Graves household and seems to think that the pigs are his personal concern.**

**OUR CONGRATULATIONS ARE EXTENDED TO THE 4 H - FFA AND FHA CLUBS OF LAMB COUNTY FOR THEIR OUTSTANDING ACHIEVEMENTS IN THE LAMB COUNTY JUNIOR LIVESTOCK SHOW**

**FRIDAY AND SATURDAY**

*AT THE FAIR*

**GROUND IN LITTLEFIELD**



THE CONTINUED PROSPERITY OF THIS AREA DEPENDS ON THE KNOW HOW AND INTERESTS OF THESE FFA AND 4 H YOUNGSTERS. THE FARMERS AND STOCKMEN OF TOMORROW ARE THE YOUNG SHOW MEN OF TODAY.

**AND WE LOOK FORWARD TO SERVING YOU AT FIRST NATIONAL**

FRIENDLY

**First National Bank**

OF LITTLEFIELD

### Olton Rites Held For Mrs. Rucker

Mrs. Maggie Ann Rucker, 77, resident of Olton for 18 years, died Friday in Thurman Convalescent Home in Amarillo.

Funeral services were at 2:30 p.m. Sunday in the Olton First Baptist Church. The Rev. John E. Lewis, pastor, officiated. Graveside rites were conducted at 10 a.m. Monday in Amarillo Memorial Park under direction of Parsons Funeral Home, Olton. The Rev. Kenneth Carter, Amarillo, officiated.

Prior to moving to Olton Mrs. Rucker had lived in Floydada. Survivors include a daughter, Mrs. Betty Bailey, Waco; three sons, W.E. (Bill) and Russell, both of Olton, and Nolan, Amarillo; one brother, Nedham Whitely, Blossom; a sister, Mrs. Nannie Wright, Lockney; 13 grandchildren and 21 great-grandchildren.

Pallbearers were Jerry Hawk, Lynn Bailey, Billy Winn, Richard Hobson, Thomas Burrows and Thomas Rucker.

### Legal Notices

CITATION BY PUBLICATION  
THE STATE OF TEXAS

TO: MRS. E.C. WOOD, the husband and former husbands of MRS. E.C. WOOD, E.C. WOOD, the UNKNOWN STOCKHOLDERS OF LITTLEFIELD COLLEGE, a defunct corporation, and UNKNOWN CLAIMANTS, Defendants, if living, whose residence are unknown to Plaintiff, and if dead, the legal representatives of each of said named Defendants, and the unknown heirs of each of said named Defendants; the legal representatives of the unknown heirs of each of said named Defendants, if the unknown heirs of said named Defendants are dead, and the unknown heirs of

the unknown heirs of each of said named Defendants, if the unknown heirs of said named Defendants are dead whose places of residence are unknown to Plaintiff, all of said parties being Defendants in this cause, and hereinafter called Defendants: GREETINGS:

You and each of you, are hereby commanded to appear before the Honorable District Court, for the 154th Judicial District of Lamb County, Texas, to be held at the Court House of the said County, in the City of Littlefield, Texas, at or before 10:00 o'clock A.M. of the first Monday after the expiration of forty two (42) days from the date of issuance hereof; that is to say, at or before, 10:00 o'clock A.M. of Monday the 21st day of March A.D. 1966, and answer the petition of Plaintiff in Cause Number 5923, in which C.H. (DICK) EDWARDS is Plaintiff, and each of the above stated Defendants are Defendants, filed in said Court on the 1st day of February, A.D. 1966, and the nature of which said suit is as follows:

Being an action and prayer for judgment in favor of Plaintiff and against Defendants for title to and possession of the following described lands and premises lying and being situated in Lamb County, Texas, to-wit:

Acres Tracts Nos. Sixty-Six (66) and Ninety-Five (95), College Heights Addition to the City of Littlefield, Lamb County, Texas, according to the map or plat of said Addition recorded in the Deed Records of Lamb County, Texas.

Plaintiff alleges that on January 1, 1966, he was, and still is, the owner in fee of the above described lands and premises, and was in peaceful possession of said land on said day, and that afterward, on the 2nd day of January A.D. 1966, the Defendants unlawfully entered upon and dispossessed Plaintiff of such lands and premises, and withhold from Plaintiff the possession thereof; Plaintiff further alleges that Plaintiff has title to said lands and premises under and by virtue of the five (5) and/or ten (10) year Statute of Limitations as is more fully shown in Plaintiff's original petition on file in this suit; and Plaintiff further prays for relief, general and special;

All of which more fully appears from Plaintiff's original petition on file in this office, and to which reference is here made for all intents and purposes;

If this citation is not served within 90 days after date of its issuance, it shall be returned unserved.

WITNESS, the undersigned, Clerk of the 154th District Court of Lamb County, Texas.

Issued and given under my hand and the seal of said Court, at office in the City of Littlefield, Texas, this 1st day of February, A.D. 1966.

/s/ Ernest L. Owens  
ERNEST L. OWENS  
Clerk of the 154th District Court,  
Lamb County, Texas

(SEAL)

### Rites Held For Stone Infant

Graveside services for William Paul Stone, infant son of Mr. and Mrs. William Stone, were conducted at 2 p.m. Saturday in Littlefield Memorial Park under direction of Hammons Funeral Home, Bob Wear, minister of Crescent Park Church of Christ, officiated.

The infant was born at 6:22 a.m. Friday in Littlefield Hospital and lived about 11 hours.

Survivors include the parents, one sister, Teresia Irene of the home; paternal grandparents, Mr. and Mrs. W.P. Stone of Amherst; maternal grandparents, Mr. and Mrs. T.M. Roberts of Erick, Okla.; paternal great-grandparents, Mrs. Jesse Zeek of Pampa and Mrs. A. Hardin of Amarillo, paternal great-grandmothers, Mrs. Jesse Zeek of Pampa and Mrs. A. Hardin of Amarillo, and maternal great-grandmother, Mrs. Mattie Chisum of Saint Jo, Tex.

### Mrs. Testerman Services Today

Funeral services for Mrs. Mattie L. Testerman, 92, longtime resident of Lamb County, will be at 2 p.m. today (Thursday) in the First Methodist Church of Sudan. The pastor, Rev. Jack Riley, will officiate, assisted by Rev. U.S. Sherrill.

Burial will be in Sudan Cemetery under direction of Hammons Funeral Home.

Born March 12, 1873 in Green County, Tennessee, she had been a resident of Lamb County area, near Sudan, since 1924, moving here from Collin County.

Survivors include five sons, Harvey T. Lewisville, Tex., L.E., Muleshoe, Otis, Fieldton, Cecil and Earl, Sudan; one daughter, Mrs. Flora Baker, Terryton, Tex.; 18 grandchildren and 24 great-grandchildren.

### Rites Today For W.J. Aldridge

Funeral services for William J. Aldridge, longtime resident of the Fieldton Community, will be at 2:30 p.m. today (Thursday) at the First Baptist Church of Fieldton.

Burial will be in Littlefield Memorial Park under direction of Hammons Funeral Home.

Born in Itawamba County, Miss., Aldridge died suddenly Tuesday night at his home. He operated a grocery store in Littlefield from 1920 until 1943, when he retired and moved to Fieldton. He would have been 79 years old Wednesday.

Survivors include his wife, Myrtle, two sons, Guy, San Antonio, and William L. Fieldton; three brothers, John V., Irving; Orlando, Scroggins, Tex.; and Lester, Houston; and two grandchildren.

### Mrs. Williams' Rites Conducted

Mrs. Lillie Belle Williams, 83, died early Monday morning in St. Mary's of the Plains Hospital in Lubbock. Funeral services were conducted at 2 p.m. Wednesday at the First Methodist Church with the pastor, Rev. Jack Ellzey, officiating.

Burial was in Littlefield Cemetery under direction of Hammons Funeral Home.

Born August 15, 1882, in Tennessee, Mrs. Williams resided at 624 East 13th Street at the time of her death.

Survivors include three sons, Hoyet, Dallas; Robert, Clovis, N.M.; and Gaylen, Rockwell, Tex.; five daughters, Mrs. J. L. Sullivan, Morton; Mrs. E. V. Sherry and Mrs. J. M. Srygley, both of Littlefield; Mrs. Floyd Damron, Friona, and Dorothy Williams, Lubbock; 23 grandchildren, 28 great-grandchildren and four great-great-grandchildren; five sisters, Mrs. Mary Rothamel, Oklahoma City; Mrs. Mattie Smith, Dallas; Mrs. Fannie Martin, Lakeview; Mrs. Rose Glossup, Amarillo and Mrs. Lou Patterson, Commerce; one brother, Harris Anderson, Cumbie, Tex.

### Mrs. Dick Ratliff's Mother Dies

Funeral services for Mrs. Bessie Verna Kimmel, 78, of Portales, N.M., mother of Mrs. Dick Ratliff of Littlefield, were conducted at 2 p.m. Wednesday in the Fourth Street Church of Christ, Portales.

Arrangements were under direction of Wheeler Mortuary, Portales.

Mrs. Kimmel, wife of a retired Church of Christ minister, died Monday afternoon at the Retirement Ranch Home. She was a member of the Fourth Street Church of Christ.

Survivors include her husband, T.L. Kimmel Sr.; two daughters, Mrs. Ratliff, Littlefield, and Mrs. Madean Reynolds, Glendora, Calif.; a son, T.L. Kimmel, Jr., Dallas; three sisters, Mrs. Nellie Cotton, Mrs. Joe Drinkard and Mrs. E.J. Richardson, all of Snyder; five brothers, Houston, Fred and Leonard Cotton, all of Snyder; Harkley Cotton, Clyde, and Loren Cotton, San Angelo; seven grandchildren and five great-grandchildren.

### FOURTH NAZARENE HOSPITAL

The Nazarene church early this year will open a hospital in Banz, Western Highlands, New Guinea, in charge of Dr. Dudley Powers, formerly of Bethany, Okla. The hospital will be the fourth operated under the Nazarene world mission program. The others are in India, Swaziland and the Republic of South Africa.



### Methodists Set Mission Festival

The First Methodist Church will host other Methodist churches in the Brownfield District at a District Mission Festival at a District Mission Festival Program, Sunday, Feb. 20. The program will begin at 4:30 p.m. with visiting in various classrooms where different "mission projects" will be exhibited.

A sandwich supper plate will be served at 6:15 and at 7 p.m. a worship service will be conducted with the Rev. Mr. Thomas H. Clloyd, Superintendent of the Navajo Methodist Mission School at Farmington, N.M., as guest speaker.

The churches participating in mission projects are Amherst, Brownfield First, Enoch-Bledsoe, Levelland Wesley, Littlefield, New Home, Morton, Seminole, and Tahoka.

### TAX MAN SAM SAYS

A few years ago Internal Revenue reported that taxpayers were not paying several billion dollars in income taxes they owed on interest and dividend income. Most of us are reporting our dividend and interest income nowadays. It's a good idea to check your interest and dividend income before you file that 1965 federal income tax return. Even the Savings & Loan Association dividends are taxable. A payment on time could keep the tax man from your door.

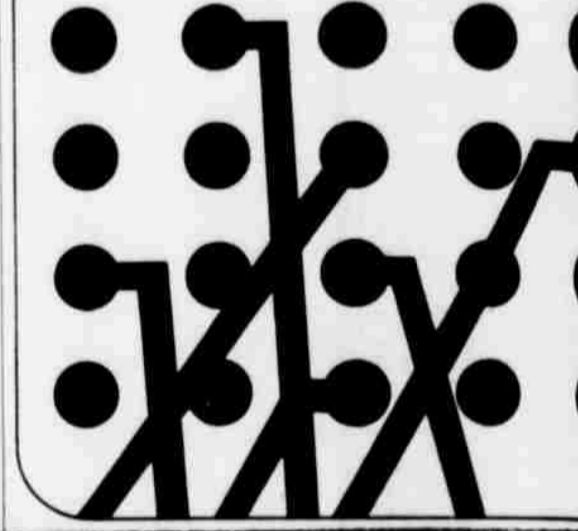
BEAUTIFUL - EASY  
TO CLEAN  
**SANDRAN**  
VINYL FLOOR  
COVERING  
AT  
**HILL ROGERS**

### Calendar of Events

- THURSDAY  
9:30 a.m. Ladies Bible Class at Crescent Park Church of Christ  
10:00 a.m. Palette Club meets in Rumbak Building  
12:00 noon Optimist Club meets at Crescent House Restaurant  
2:00 p.m. Oklahoma Avenue Home Demonstration Club meets in Sunnyside Home Demonstration Club meets in home of Mrs. Louise Bryce  
6:00 p.m. Eastern Star Salad Supper in Masonic Hall  
7:30 p.m. Sunday School teachers meet at St. Martin Lutheran Church  
7:30 p.m. Women of Woodcraft  
8:00 p.m. Circle Eight Square Dance Club meets at Community Center
- FRIDAY  
LAMB COUNTY ANNUAL JUNIOR LIVESTOCK SHOW  
7:00 p.m. Lutheran Women's Missionary League Valentine Party at Emmanuel Lutheran Church
- SATURDAY  
LAMB COUNTY ANNUAL JUNIOR LIVESTOCK SHOW  
9:00 a.m. Catechism Class at Emmanuel Lutheran Church  
10:00 a.m. Catechism Class at St. Martin Lutheran Church  
7:30 p.m. Annual Athletic Banquet in high school cafeteria
- SUNDAY  
4:30 p.m. District Mission Festival at First Methodist Church

designed, made, and painted the draperies, shown in the picture. These draperies present a panoramic scene of mission work. The room also has a lighted world map and bulletin boards showing various mission interests of the district. The room will be open, along with other "exhibits" Sunday during the special Mission Festival, 4:30 to 7:30 p.m.

**Bzzzzupp, bzzzzupp, bzz...** busy signals. Snarled communications? Increase your business telephone efficiency. Find COMMUNICATION CONSULTANTS fast in the **YELLOW PAGES**. Where your fingers do the walking.



## Congratulations TO THE 27TH ANNUAL LAMB COUNTY JUNIOR LIVESTOCK SHOW FEBRUARY 18 AND 19



**THANK YOU**  
... FOR YOUR CONTINUED LOYALTY AND SUPPORT. BECAUSE OF OUR MANY FAITHFUL CUSTOMERS, WE HAVE JUST COMPLETED ANOTHER BIG YEAR. WE WOULD LIKE TO TAKE THIS MEANS OF EXPRESSING OUR APPRECIATION FOR YOUR BUSINESS.

SERVING THE LAMB COUNTY COTTON GROWERS SINCE 1949  
**SPADE CO-OP GIN**  
SPADE, TEXAS

Hold it.  
Before you guess  
who's got the biggest V-8  
and the most car, read this:

Make	Wheelbase	Overall Length	V-8 Engine Cubic Inch Displacement	Base Monthly Payments	Difference Per Month
CHRYSLER NEWPORT	124"	219.0"	383	\$65.80	—
FORD GALAXIE 500	119"	210.0"	289	\$58.32	\$7.48
CHEVROLET IMPALA	119"	213.2"	283	\$58.45	\$7.35

Chrysler's got the biggest V-8 going in. But if you'd like to go all out, Chrysler also has a 440 TNT engine — biggest production V-8 in its class. Either way, we can move you up to the big car luxury and performance you want for far less than most people think. Come in and check our deal.

**CHRYSLER'S 5-YEAR/50,000-MILE ENGINE AND DRIVE TRAIN WARRANTY WITH THIS COVERAGE:** Chrysler Corporation warrants, for 5 years or 50,000 miles, whichever comes first, against defects in materials and workmanship and will replace or repair at a Chrysler Motors Corporation Authorized Dealer's place of business, without charge for required parts and labor, the engine block, head and internal parts, intake manifold, water pump, transmission case and internal parts (excluding manual clutch), torque converter, drive shaft, universal joints, rear axle and differential, and rear wheel bearings of its 1966 automobiles, provided the owner has the engine oil changed every 3 months or 4,000 miles, whichever comes first, the oil filter replaced every second oil change and the carburetor air filter cleaned every 6 months and replaced every 2 years, and every 6 months furnishes to such a dealer evidence of performance of the required service, and requests the dealer to certify (1) receipt of such evidence and (2) the car's then current mileage.

AUTHORIZED DEALER **CHRYSLER** MOTORS CORPORATION



Move up to Chrysler—the big car you can afford

**Garland Motor Company, Chrysler-Plymouth**  
710 EAST 3RD  
LITTLEFIELD, TEXAS

**HERST NEWS**

**Benches Observe Anniversary**

Mrs. J. D. Bench were on their wedding anniversary Sunday with a dinner home of Mr. and Mrs. Dixon.

**Fishing Guide Available**

1966 best seller--except to fishermen and others being readied for statewide distribution.

The fishing guide, angling part for the popular guide, tossed out like to assist sportsmen the late successful hunt-

ing guide also will be distributed mainly through where licenses are sold as at Texas Parks and Department offices.

The guide lists all the regulations for both fresh water angling.

It tells all about legal tackle, especially with reference to special fishing, and describes the areas where fishing is restricted.

As the main, Texas has no fishing season. Size limit bag limits, if any, are set by counties.

There are many exceptions of the varied locations under the state laws the Department responsibility in most counties.

There are many exceptions of the varied locations under the state laws the Department responsibility in most counties.

By diligently perusing the set, you can determine minnows may be taken by for bait, the size of for taking rough fish, gun rules, and such.

It is noted that the only provisions applying to both fresh and salt water are the requirement. The fishing license fee for residents and non-residents is \$2.15.

Littlefield attended.

Alton Nicholson of Lubbock attended the funeral services here Saturday for Mrs. Donna Bell Bradley of Fairfield, Calif. Kelley, Karen and Jackie Mixon of Clovis were guests of their grandparents, Mr. and Mrs. Alvie Mixon Thursday to Sunday.

Mrs. Bennie Harmon, Scott and Kit visited her parents, Mr. and Mrs. Horace Holt in Muleshoe Sunday.

Bennie Harmon and Tom Davis are fishing in El Novilla Lake in Mexico. It is located southeast of Nogales, Ariz.

Mrs. A.O. Dickson and Mr. and Mrs. O.M. Barker are in Oklahoma City. Mrs. Dickson's sister underwent major surgery

Monday.

Mrs. Frank Wilson of Bovina visited her daughter, Mrs. Don Carter and family recently.

Mr. and Mrs. Paul Lair and son of Moran, Wyo. are visiting his mother, Mrs. G.D. Lair. Mrs. Frank Ray left Sunday by plane for Washington D.C. when she received word that her sister's husband had died of a heart attack there.

Billy Gene and Jemma Blessing of Floydada were here for the weekend with their grandparents, Mr. and Mrs. Ray Blessing. Their parents attended the meeting of the West Texas Press Association in Lubbock.

Mr. and Mrs. Ernest Coleman returned home Thursday

after a visit with their relatives in Haskell County.

Guests of Mr. and Mrs. E.E. Gee and Jerry during the weekend were Earline and Cammie Sue Vaughn of Dimmitt. Mr. and Mrs. N.B. Embry had as guests for the weekend their daughters, Mr. and Mrs. Steve Dento of Canyon and Mrs. Larry Leonard of Dallas. Mr. Leonard did not come with her due to the illness of a relative.

C.A. Duffy Jr., Mr. and Mrs. Michael Duffy and Mr. and Mrs. Travis Wintere were among those attending the annual conference given by the Lubbock National Bank in Lubbock Saturday.

John Bradley of Fairfield, Calif., Austin Bradley of Richmond, Calif., and William Bradley of Amarillo were here for the funeral services of their mother, Mrs. Donna Bell Bradley of California Saturday.

Mr. and Mrs. Victor Reynolds have moved to Littlefield. Her sister, Mrs. John More-

land, Mr. Moreland and their daughter, Jewel Dickson have moved to the Reynold's place on the Springlake Highway.

Mrs. Lula Hardin of Amarillo is spending several days with her daughter, Mrs. W.P. Stone and Mr. Stone. She was here to attend the funeral services Friday afternoon in Littlefield for her great-grandson, William Stone Jr., who lived a few hours after birth in the Littlefield Hospital. Others there for the graveside service in the Littlefield Memorial Park were Mr. and Mrs. E.L. Carroll and children of Amarillo, Mr. and Mrs. W.A. Carroll and family of Shallowater, grandparents, Mr. and Mrs. Tom Roberts of Erick, Okla., Mr. and Mrs. W.P. Stone of Amherst and William Stone and daughter, Terri of Littlefield.

Mr. and Mrs. Ed Nicholson and Mr. and Mrs. Bill Weaver left Monday for a vacation at Corpus Christi.

Mr. and Mrs. Arthur Hedges,

Mr. and Mrs. Bob Hedges and daughter and Mr. and Mrs. Willis Hedges and daughters were in Elton Sunday with Mrs. W.P. Hedges.

Mr. and Mrs. David Harmon visited their daughter, Mrs. Jarrell Tharp and family in Lubbock during the weekend.

Rev. and Mr. James Patterson visited relatives in Haskell Wednesday and their son, Wendell and his wife in Abilene Thursday and returned home Friday. Mrs. Patterson was released from the Methodist Hospital in Lubbock Wednesday after being a patient there for several days.

Supper guests of Mr. and Mrs. Jim Templeton Tuesday were Mr. and Mrs. Leroy Nuttall

and daughter and Mr. and Mrs. John Norwood and Johnny.

Mr. and Mrs. Monte Hulse and daughter, Kristen Lea of Dallas visited their parents, Mr. and Mrs. Bill Bradley and Mr. and Mrs. Ray Hulse in Littlefield for the weekend. They attended the Hulse family reunion in Littlefield.

Bobbie Bradley and son of Hereford visited their grandparents, Mr. and Mrs. J.H. Bradley Sunday.

Mr. and Mrs. C.A. Thomas and Mr. and Mrs. J.H. Bradley left Monday for Falcon Lake.

Sam Templeton of Dimmitt visited his parents, Mr. and Mrs. Jim Templeton Sunday. Youth Day will be observed at the Methodist Church next

Sunday. The young people will teach the Sunday School classes and have charge of the morning worship service.

The annual spring revival will be held at the Methodist Church March 7-13. A former pastor here, Rev. Darris L. Egger of Colorado City, will deliver the sermons and his wife will be the song leader.

Mrs. Bertha Thompson's house was moved into town from her farm east of town during the weekend. It is now located on the lot south of her daughter, Mrs. Joe Brandstatt's home on Wood Street.

Mrs. T.I. Batson and granddaughter, Mrs. Jimmy Cowen and girls visited Mr. and Mrs. Claude Coffey and Martha in Farwell recently.



Come in and take on a tiger!

The only thing that looks low-priced on a Pontiac Tempest is its price sticker.

And that's removable.

Take it off, and there's just a pure, unabridged Pontiac: crisp, Wide-Track style and handling. A handsome interior. Plus the effervescent performance of a new, overhead cam 6 engine that puts out with all the spunk of an 8, yet saves like the traditional 6. And of course, being a Pontiac, Tempest allows you the luxury of choice—with options in engines, transmissions, suspensions,

practically everywhere. And like all Pontiacs, Tempest also has a standard safety package with items like seat belts to buckle—front and rear. (That ought to do for now. We'll tell you the rest when you get here.)

**Wide-Track Pontiac**

COME IN AND TAKE ON A TIGER AT YOUR PONTIAC DEALERS—A GOOD PLACE TO BUY USED CARS, TOO.  
**SUMRALL PONTIAC CO. 902-910 DELANO LITTLEFIELD, TEXAS**

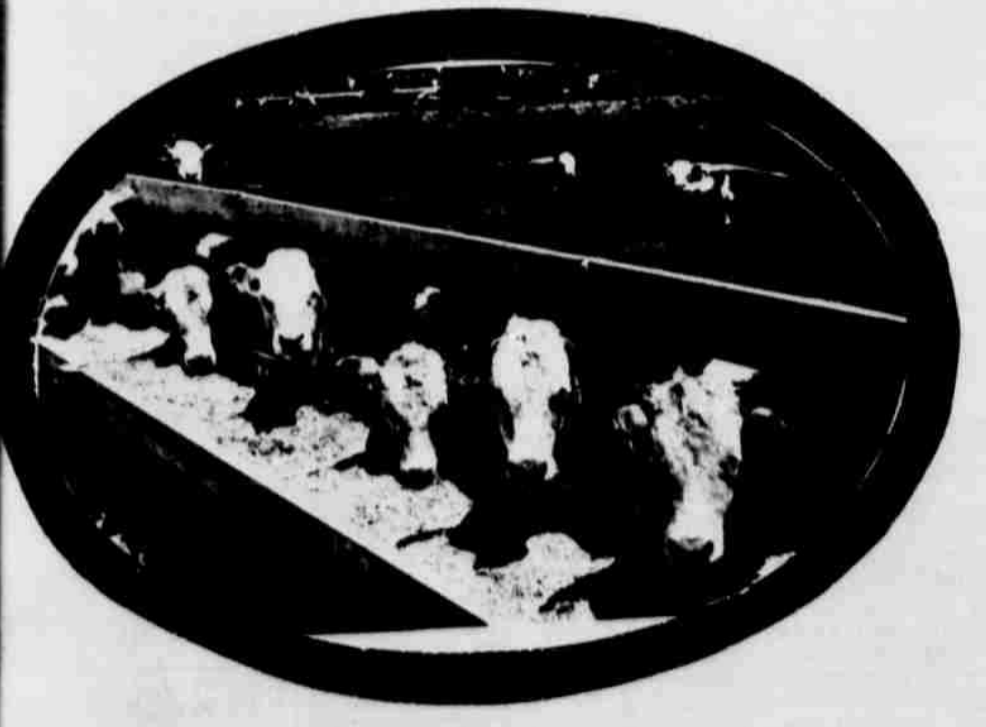
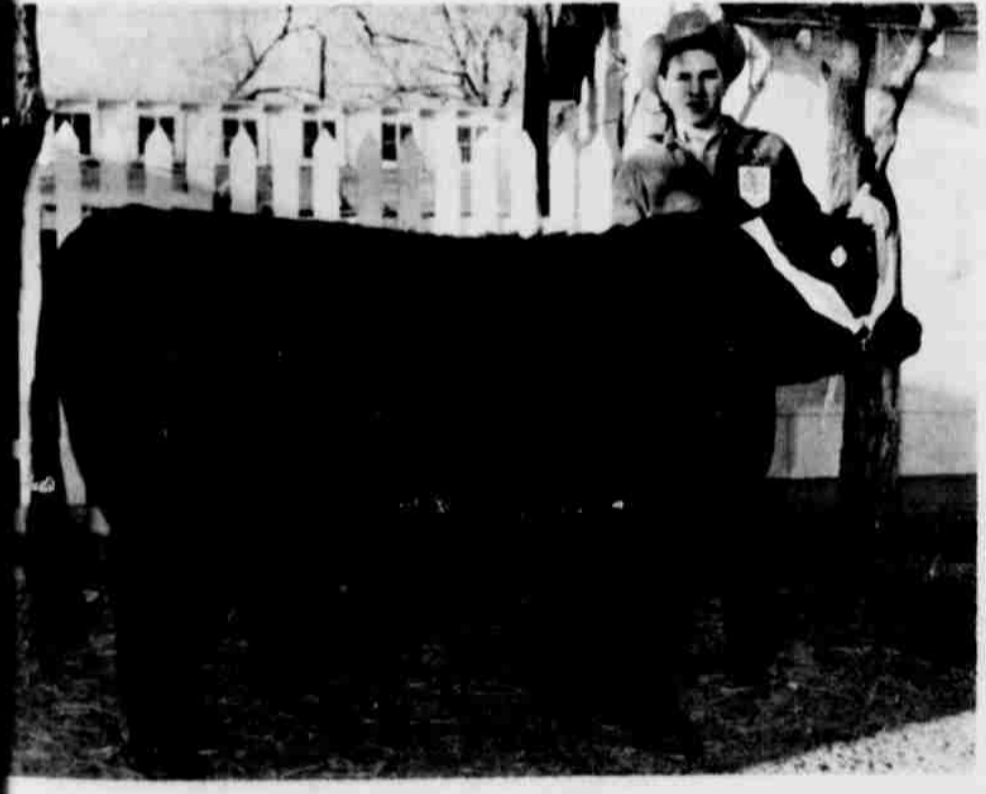
**Cotton Saver**

Seedling diseases of cotton used to mean skips in rows, and replanting costs. Not now. There's Lanstan. Niagara's highly effective new soil fungicide. Rhizoctonia, Pythium, Tnielaviopsis, Fusarium (sore shin, damping off, nub root, root rot)—Lanstan controls them. Try it. Granular, or in combination with FCNB—directly in the furrow. For a good even stand.

**Lanstan**

LANSTAN

FAIRFIELD CHEMICALS - NIAGARA CHEMICAL DIVISION - MIDDLEPORT, N. Y.



**BEST WISHES  
TO ALL THE BOYS AND GIRLS  
IN THE ANNUAL  
LAMBCOUNTY JUNIOR  
FAT STOCK SHOW  
FRIDAY AND SATURDAY  
IN  
LITTLEFIELD  
A Winning Finish .....**

THE ULTIMATE GOAL OF CLUB LIVE STOCK FEEDING IS TO PRODUCE LIVESTOCK AT A PROFIT! THAT IS OUR BUSINESS! FINISHING BEEF CATTLE TO A MARKET FINISH AT A PROFIT.  
WE INVITE AND WELCOME 4H AND FFA FEEDERS TO VISIT OUR LOTS FOR A FIRST HAND LOOK AT THE GOAL OF GOOD LIVESTOCK FEEDING...ALWAYS A GOOD BUSINESS.

**EAT MORE BEEF!**

**SUDAN LIVESTOCK AND FEEDING CO.**

HIGHWAY 84

SUDAN, TEXAS



# LOST • RENT • SELL • BUY • HIRE • TRADE "YOU'LL FIND IT IN THE WANT ADS!" FOUND • SERVICE • EMPLOYMENT • PERSONAL



**LEADER and NEWS**  
**CLASSIFIEDS SELL!**  
TO USE THEM **5-4481** AND ASK FOR JUST CALL **AD TAKER**  
— CLASSIFIED RATES —

**First insertion, per word** 5¢  
**Second insertion, word** 4¢  
**All Additional insertions, word** 3¢

Minimum Charge For First Ad run, \$1; minimum charge per subsequent insertion, 50¢.

**MONTHLY RATE, per word** 30¢  
(All editions of Leader and News, two copy changes monthly)

**DEADLINES FOR INSERTION:**  
**LAMB COUNTY LEADER**  
10: a. m. Wednesday  
**COUNTY WIDE NEWS**  
10:00 a. m. Saturday

**Help Wanted A-1**

Need representative for TheraSpa Portable Whirlpool Bath. Unlimited earnings. Write Sam W. Williams, Box 666, Abernathy, Texas. 2-27W

WANTED: aggressive sales person for Littlefield trade area, male or female, Hutchins Building Supply, Phone 385-5588 or come by 100 Sunset. TF-H

**Rooms for Rent B-5**

Comfortable bedrooms for men. New home, heated rooms, Phone 385-3604. 204 E. 9th St. TF-A

**Misc. For Rent B-7**

FOR RENT Completely furnished cafe on old Highway 84, Clovis Road, J.C. Hilburn.

**Wanted To Rent B-8**

WANTED TO RENT - farm thirds or fourths or otherwise will lease. Do custom farm leasing. Farming now. Have plenty equipment to farm any acreage. P.O. Box 1132, Littlefield, Texas. TF-S

**Lost & Found A-4**

LOST: Duffey twins' Terrier Bull-dog, 6 months old, brindle color with white. Call 385-5015. 2-17D

LOST: Yellow Gold Masonic Tie Clasp; between Citadell Ins. Agency and The First National Bank of Ltd. Lost on Feb. 7. Reward offered, call Charles Jones at 385-5173. 2-20J

**Card of Thanks A-10**

Since the beginning of my illness so many have been so very kind in giving of their time and substance, and not knowing the names, I take this means of expressing my sincere appreciation.

Thomas Moss & Family 2-17M

**Houses to Rent B-3**

2 bedroom, garage, fenced back yard. 705 West 2nd. Call 385-3112 or 385-5060. 3-17G

Nice 2 bedroom, plumbed for washer. Located at 1505 Nichols. Reasonable. Call 385-4287 or 385-5588. TF-H

One bedroom furnished house, also apartments, 2 rooms and bath. Call 385-4497 or 385-3883. TF-W

FOR RENT - nice 2 bedroom house, fenced back yard, carpeted. Close in. Call 385-4785 or 385-3233. TF-F

FOR RENT: 2 bedroom house with garage, plumbed for washer, carpeted. Call 385-3178 after 4:00 p.m. TF-C

2 bedroom, redecorated, storm windows, fenced back yard, 716 East 6th. Call 385-3112 or 385-5060. 3-17G

FOR RENT: 3 bedroom unfurnished house, 1 1/2 baths, on Hall Avenue. Washer and dryer connections. Also, 2 room and bath furnished apartment. Phone 385-4137. 2-13P

**HOMES**

Price reduced to \$21,000 on beautiful brick home with central heat, refrig. air, 3 baths. Large rooms include 3 bedrooms, den, living room and utility area. Also 26' x 28' attached garage. Terms as low as \$1,000 down for quick sale.

Brand new brick home - 225 E. 26th Street Features woodburning fireplace, central heat, 3 large bedrooms, 2 full ceramic baths, living room and large paneled den. This spacious home also has a built-in dishwasher, range, oven and disposal.

**JIM MILLS REAL ESTATE**  
PLAINS, TEXAS, CITY PROPERTY  
385-5484 823 LFD DRIVE

FOR RENT: 2-bedroom, carpeted, floor furnace, plumbed for washer-dryer, single garage, large electric water heater, fenced back yard. Phone 385-3604 or see J.D. Thomas at Jones Motor Co. TF-T

**JIM MILLS REAL ESTATE**  
PLAINS, TEXAS, CITY PROPERTY  
385-5484 823 LFD DRIVE

**JIM MILLS REAL ESTATE**  
PLAINS, TEXAS, CITY PROPERTY  
385-5484 823 LFD DRIVE

**Houses For Sale C-1**

2 bedroom house, fully carpeted, floor furnace, garage, fenced. Extra clean. Reasonable. 404 East 16th. Phone 385-4917. TF-P

3 bedroom brick Gold Medal-lion in Cannon Terrace, carpet, 2 baths, large family room, 2-car garage, fenced, 1600 ft. living space, large lot, Owner leaving town. 1307 W. 12th. Phone 385-5042. TF-C

**NOTICE VETERANS**  
FHA homes built to your plans for a total minimum move-in cost of \$200.00 if you have had 90 days active duty. PLAINS REAL ESTATE, I.D. Onstead, Realtor. TF-P

FOR SALE - three bedroom, fenced back yard, automatic dishwasher, plumbed for washer and dryer. Excellent location, 501 E. 17th. Established 4 1/2% loan, 385-3656. TF-H

FOR SALE IN CRESCENT PARK: 3 bedrooms, 1 1/2 baths, den and kitchen combination, fireplace, double car garage and fenced back yard. Phone 385-4084. TF-E

**LOW DOWN PAYMENT - MUST SELL IMMEDIATELY:** nice 2 bedroom home at 207 Ormond, Sudan, Texas. Carpet, fenced, separate living room, kitchen and den combined and attached garage. Call SW9-0120, Lubbock. TF-M

OUR LOSS IS YOUR GAIN. We have a repossessed house at 1206 Atchison that we must sell. Ideal for young couple who will paint for down payment. If you have a good credit rating, call Home Acceptance Corp. Area Code 512. GI-2-8891 or write P.O. Box 2123, Austin, Texas. 3-13H

**Real Estate for Sale C-6**

FOR SALE - short quarter, \$375 L. Peyton Reese. TF-R

**FARM LOANS**  
Prompt Loan Service. Low Interest. Long Term. No Commissions To Pay. No Stock To Buy. **JIM MILLS REALTOR** 385-5989 823 L.F.D. DRIVE

**Real Estate for Sale C-6**

FOR SALE - short quarter, \$375 L. Peyton Reese. TF-R

**FARM LOANS**  
Real nice quarter section dry land, on pavement Sudan area. Good allotments, good cotton yield, all in cultivation. \$47,000.00 29% down. Possession if bought soon.

Well improved Holly Colo irrigated farm, will trade for south plains land. See me on this, as this farm is reasonably priced.

**PLAINS REAL ESTATE**  
PH. 385-3211

**Farms**  
290 acres on pavement, 104 acres of cotton, 152 acres maize, Less than \$450 per acre. 4 wells and nice house. Excellent terms. Small down payment, up to 20 years on balance.

80 acres, good irrigated land on pavement, modern 2 bedroom house, Good cotton and maize allotments. \$475 per acre.

**JIM MILLS REAL ESTATE**  
PLAINS, TEXAS, CITY PROPERTY  
385-5484 823 LFD DRIVE

3 bedroom, living room, dining-room, kitchen, bath, central heat and air. Fenced back yard. Real nice home. \$375.00 move-in. \$68.00 per month, including taxes and insurance.

Nice 2 bedroom, large living-room, kitchen and dining-room combination, good location, can be bought reasonable.

We have for sale a nice 2 bedroom, den, living-room, nice kitchen, large closets, several built-ins, fenced back yard, with nice trees and grass, located at 407 East 13th. Good Terms.

Nice 2 bedroom, located at 205 East 15th, see us on this one, good price and terms.

**PLAINS REAL ESTATE**  
PH 385-3211  
Nite Ph.  
I. D. Onstead - 385-3009  
Roy Wade - 385-3790  
C. R. Onstead - 385-4879

**PLAINS REAL ESTATE**  
PH 385-3211  
Nite Ph.  
I. D. Onstead - 385-3009  
Roy Wade - 385-3790  
C. R. Onstead - 385-4879

**PLAINS REAL ESTATE**  
PH 385-3211  
Nite Ph.  
I. D. Onstead - 385-3009  
Roy Wade - 385-3790  
C. R. Onstead - 385-4879

**PLAINS REAL ESTATE**  
PH 385-3211  
Nite Ph.  
I. D. Onstead - 385-3009  
Roy Wade - 385-3790  
C. R. Onstead - 385-4879

**PLAINS REAL ESTATE**  
PH 385-3211  
Nite Ph.  
I. D. Onstead - 385-3009  
Roy Wade - 385-3790  
C. R. Onstead - 385-4879

**PLAINS REAL ESTATE**  
PH 385-3211  
Nite Ph.  
I. D. Onstead - 385-3009  
Roy Wade - 385-3790  
C. R. Onstead - 385-4879

**Real Estate for Sale C-6**

FOR SALE - 5 acres, Close in, \$3,500, L. Peyton Reese. TF-R

FOR SALE OR TRADE: 207 1/2 A. Good allotments. One 8". One 6" well. Fieldton area on pavement, O.B. Graham, Jr., 385-5095. TF-G

**FARM LOANS**  
L. PEYTON REESE  
110 YELLOW HOUSE BUILDING  
PHONE 385-5363

**Farms, Ranch-land C-7**

194.5 A. farm on pavement, 5 miles west of Littlefield, 61.5 A. cotton, 1/2 minerals, 385-3137. TF-H

640 or 2-320 acres, 7 full 8" wells with pumps, underground pipe - 200 A bermuda grass, 18A cotton, 90A grain, all fences, handle 300 cows, house, 10% down, 15 yrs, on bal., 6% int., \$360 per acre, 4 miles west, 1 mile south of Muleshoe, Owner 806-PO3-5323 or PO3-7809. TF-M

**FARM LOANS**  
Prompt Loan Service. Low Interest. Long Term. No Commissions To Pay. No Stock To Buy. **JIM MILLS REALTOR** 385-5989 823 L.F.D. DRIVE

**Real Estate for Sale C-6**

FOR SALE - short quarter, \$375 L. Peyton Reese. TF-R

**FARM LOANS**  
Prompt Loan Service. Low Interest. Long Term. No Commissions To Pay. No Stock To Buy. **JIM MILLS REALTOR** 385-5989 823 L.F.D. DRIVE

**Real Estate for Sale C-6**

FOR SALE - short quarter, \$375 L. Peyton Reese. TF-R

**FARM LOANS**  
Prompt Loan Service. Low Interest. Long Term. No Commissions To Pay. No Stock To Buy. **JIM MILLS REALTOR** 385-5989 823 L.F.D. DRIVE

**Real Estate for Sale C-6**

FOR SALE - short quarter, \$375 L. Peyton Reese. TF-R

**FARM LOANS**  
Prompt Loan Service. Low Interest. Long Term. No Commissions To Pay. No Stock To Buy. **JIM MILLS REALTOR** 385-5989 823 L.F.D. DRIVE

**Real Estate for Sale C-6**

FOR SALE - short quarter, \$375 L. Peyton Reese. TF-R

**FARM LOANS**  
Prompt Loan Service. Low Interest. Long Term. No Commissions To Pay. No Stock To Buy. **JIM MILLS REALTOR** 385-5989 823 L.F.D. DRIVE

**Real Estate for Sale C-6**

FOR SALE - short quarter, \$375 L. Peyton Reese. TF-R

**FARM LOANS**  
Prompt Loan Service. Low Interest. Long Term. No Commissions To Pay. No Stock To Buy. **JIM MILLS REALTOR** 385-5989 823 L.F.D. DRIVE

**Real Estate for Sale C-6**

FOR SALE - short quarter, \$375 L. Peyton Reese. TF-R

**FARM LOANS**  
Prompt Loan Service. Low Interest. Long Term. No Commissions To Pay. No Stock To Buy. **JIM MILLS REALTOR** 385-5989 823 L.F.D. DRIVE

**Real Estate for Sale C-6**

FOR SALE - short quarter, \$375 L. Peyton Reese. TF-R

**Bus. Services D-3**

TV service calls. Days, 385-3831. Nights, 385-3318. New and used TV sets. T.V. Corner, 601 W. Delano. Dial 385-3831.

**WEED KILLER: TREFLAN** sprayed at one pint per acre - \$5.25. Sprayed and disked - \$6.25 per acre. Cox Spraying Services, Phone 933-2300, Bula. 3-3

**Bill Miller**  
**The Kirby Man**  
PH. 385-3357

**MATRESS REBUILDING:** complete renovating - convert your old bedsprings into modern boxsprings. Call Mrs. Claud Steffy, 385-3386, day or night, or Sewing Center, 385-3140. Agents for A & B Mattress Co., Lubbock. TF-A

**FARM LOANS**  
Prompt Loan Service. Low Interest. Long Term. No Commissions To Pay. No Stock To Buy. **JIM MILLS REALTOR** 385-5989 823 L.F.D. DRIVE

**Real Estate for Sale C-6**

FOR SALE - short quarter, \$375 L. Peyton Reese. TF-R

**FARM LOANS**  
Prompt Loan Service. Low Interest. Long Term. No Commissions To Pay. No Stock To Buy. **JIM MILLS REALTOR** 385-5989 823 L.F.D. DRIVE

**Real Estate for Sale C-6**

FOR SALE - short quarter, \$375 L. Peyton Reese. TF-R

**FARM LOANS**  
Prompt Loan Service. Low Interest. Long Term. No Commissions To Pay. No Stock To Buy. **JIM MILLS REALTOR** 385-5989 823 L.F.D. DRIVE

**Real Estate for Sale C-6**

FOR SALE - short quarter, \$375 L. Peyton Reese. TF-R

**FARM LOANS**  
Prompt Loan Service. Low Interest. Long Term. No Commissions To Pay. No Stock To Buy. **JIM MILLS REALTOR** 385-5989 823 L.F.D. DRIVE

**Real Estate for Sale C-6**

FOR SALE - short quarter, \$375 L. Peyton Reese. TF-R

**FARM LOANS**  
Prompt Loan Service. Low Interest. Long Term. No Commissions To Pay. No Stock To Buy. **JIM MILLS REALTOR** 385-5989 823 L.F.D. DRIVE

**Real Estate for Sale C-6**

FOR SALE - short quarter, \$375 L. Peyton Reese. TF-R

**FARM LOANS**  
Prompt Loan Service. Low Interest. Long Term. No Commissions To Pay. No Stock To Buy. **JIM MILLS REALTOR** 385-5989 823 L.F.D. DRIVE

**Real Estate for Sale C-6**

FOR SALE - short quarter, \$375 L. Peyton Reese. TF-R

**FARM LOANS**  
Prompt Loan Service. Low Interest. Long Term. No Commissions To Pay. No Stock To Buy. **JIM MILLS REALTOR** 385-5989 823 L.F.D. DRIVE

**Real Estate for Sale C-6**

FOR SALE - short quarter, \$375 L. Peyton Reese. TF-R

**FARM LOANS**  
Prompt Loan Service. Low Interest. Long Term. No Commissions To Pay. No Stock To Buy. **JIM MILLS REALTOR** 385-5989 823 L.F.D. DRIVE

**Bus. Services D-3**

Rent convalescent equipment at Brittain Pharmacy, Wheel-chairs, crutches, hospital beds, other items. Complete lines of convalescent needs.

Our specialties are all types alterations, covered buttons, buckles, belts-including contour, button holes, decorative stitching and men's unclaimed tailor made suits, Mr. and Mrs. G.F. Scifres Drive-In Cleaners, Levelland Highway, TF-S

**Bill Miller**  
**The Kirby Man**  
PH. 385-3357

**MATRESS REBUILDING:** complete renovating - convert your old bedsprings into modern boxsprings. Call Mrs. Claud Steffy, 385-3386, day or night, or Sewing Center, 385-3140. Agents for A & B Mattress Co., Lubbock. TF-A

**FARM LOANS**  
Prompt Loan Service. Low Interest. Long Term. No Commissions To Pay. No Stock To Buy. **JIM MILLS REALTOR** 385-5989 823 L.F.D. DRIVE

**Real Estate for Sale C-6**

FOR SALE - short quarter, \$375 L. Peyton Reese. TF-R

**FARM LOANS**  
Prompt Loan Service. Low Interest. Long Term. No Commissions To Pay. No Stock To Buy. **JIM MILLS REALTOR** 385-5989 823 L.F.D. DRIVE

**Real Estate for Sale C-6**

FOR SALE - short quarter, \$375 L. Peyton Reese. TF-R

**FARM LOANS**  
Prompt Loan Service. Low Interest. Long Term. No Commissions To Pay. No Stock To Buy. **JIM MILLS REALTOR** 385-5989 823 L.F.D. DRIVE

**Real Estate for Sale C-6**

FOR SALE - short quarter, \$375 L. Peyton Reese. TF-R

**FARM LOANS**  
Prompt Loan Service. Low Interest. Long Term. No Commissions To Pay. No Stock To Buy. **JIM MILLS REALTOR** 385-5989 823 L.F.D. DRIVE

**Real Estate for Sale C-6**

FOR SALE - short quarter, \$375 L. Peyton Reese. TF-R

**FARM LOANS**  
Prompt Loan Service. Low Interest. Long Term. No Commissions To Pay. No Stock To Buy. **JIM MILLS REALTOR** 385-5989 823 L.F.D. DRIVE

**Real Estate for Sale C-6**

FOR SALE - short quarter, \$375 L. Peyton Reese. TF-R

**FARM LOANS**  
Prompt Loan Service. Low Interest. Long Term. No Commissions To Pay. No Stock To Buy. **JIM MILLS REALTOR** 385-5989 823 L.F.D. DRIVE

**Real Estate for Sale C-6**

FOR SALE - short quarter, \$375 L. Peyton Reese. TF-R

**FARM LOANS**  
Prompt Loan Service. Low Interest. Long Term. No Commissions To Pay. No Stock To Buy. **JIM MILLS REALTOR** 385-5989 823 L.F.D. DRIVE

**Real Estate for Sale C-6**

FOR SALE - short quarter, \$375 L. Peyton Reese. TF-R

**FARM LOANS**  
Prompt Loan Service. Low Interest. Long Term. No Commissions To Pay. No Stock To Buy. **JIM MILLS REALTOR** 385-5989 823 L.F.D. DRIVE

**Bus. Services D-3**

Rent convalescent equipment at Brittain Pharmacy, Wheel-chairs, crutches, hospital beds, other items. Complete lines of convalescent needs.

Our specialties are all types alterations, covered buttons, buckles, belts-including contour, button holes, decorative stitching and men's unclaimed tailor made suits, Mr. and Mrs. G.F. Scifres Drive-In Cleaners, Levelland Highway, TF-S

**Bill Miller**  
**The Kirby Man**  
PH. 385-3357

**MATRESS REBUILDING:** complete renovating - convert your old bedsprings into modern boxsprings. Call Mrs. Claud Steffy, 385-3386, day or night, or Sewing Center, 385-3140. Agents for A & B Mattress Co., Lubbock. TF-A

**FARM LOANS**  
Prompt Loan Service. Low Interest. Long Term. No Commissions To Pay. No Stock To Buy. **JIM MILLS REALTOR** 385-5989 823 L.F.D. DRIVE

**Real Estate for Sale C-6**

FOR SALE - short quarter, \$375 L. Peyton Reese. TF-R

**FARM LOANS**  
Prompt Loan Service. Low Interest. Long Term. No Commissions To Pay. No Stock To Buy. **JIM MILLS REALTOR** 385-5989 823 L.F.D. DRIVE

**Real Estate for Sale C-6**

FOR SALE - short quarter, \$375 L. Peyton Reese. TF-R

**FARM LOANS**  
Prompt Loan Service. Low Interest. Long Term. No Commissions To Pay. No Stock To Buy. **JIM MILLS REALTOR** 385-5989 823 L.F.D. DRIVE

**Real Estate for Sale C-6**

FOR SALE - short quarter, \$375 L. Peyton Reese. TF-R

**FARM LOANS**  
Prompt Loan Service. Low Interest. Long Term. No Commissions To Pay. No Stock To Buy. **JIM MILLS REALTOR** 385-5989 823 L.F.D. DRIVE

**Real Estate for Sale C-6**

FOR SALE - short quarter, \$375 L. Peyton Reese. TF-R

**FARM LOANS**  
Prompt Loan Service. Low Interest. Long Term. No Commissions To Pay. No Stock To Buy. **JIM MILLS REALTOR** 385-5989 823 L.F.D. DRIVE

**Real Estate for Sale C-6**

FOR SALE - short quarter, \$375 L. Peyton Reese. TF-R

**FARM LOANS**  
Prompt Loan Service. Low Interest. Long Term. No Commissions To Pay. No Stock To Buy. **JIM MILLS REALTOR** 385-5989 823 L.F.D. DRIVE

**Real Estate for Sale C-6**

FOR SALE - short quarter, \$375 L. Peyton Reese. TF-R

**FARM LOANS**  
Prompt Loan Service. Low Interest. Long Term. No Commissions To Pay. No Stock To Buy. **JIM MILLS REALTOR** 385-5989 823 L.F.D. DRIVE

**Real Estate for Sale C-6**

FOR SALE - short quarter, \$375 L. Peyton Reese. TF-R

**FARM LOANS**  
Prompt Loan Service. Low Interest. Long Term. No Commissions To Pay. No Stock To Buy. **JIM MILLS REALTOR** 385-5989 823 L.F.D. DRIVE

**Legal Notices**

**PUBLIC NOTICE**

Notice is hereby given that the City Council of the City of Littlefield, Texas, has received written request from Salina Davis, d/b/a Davis Concrete Company, Littlefield, Texas, for a Special Use Permit, Ordinance No. 191, for the installation of a Concrete Plant. The property is owned by T.M. Nix and described as follows:

Lots Nine (9) and Ten (10), Block Five (5), College Heights Addition, City of Littlefield, Lamb County, Texas, and being approximately Four hundred (400) feet Southeast of the Intersection of Highways 84 and 54, facing Highway 84 on the Lubbock Highway.

Public Hearing on the above application is set for February 17, 1966 at 7:30 o'clock P.M. in the Council Room of the City Hall, Littlefield, Lamb County, Texas. All interested persons are requested to be present. WITNESS my hand and seal of the City, this 1st day of February, 1966.

Charlotte Lightsey  
Charlotte Lightsey  
City Secretary, City of Littlefield, Texas.

(SEAL)

**CONTRACTORS' NOTICE OF TEXAS HIGHWAY CONSTRUCTION**

Sealed proposals for constructing 16.812 miles of Gr., Strs., Lime Treat, Base, Flex, Base & One Crse. Surf, Treat, From 2.91 MI. NW of Littlefield To 1.885 MI. SE of Bailey Co. Line on Highway No. US 84, covered by F 503(20) in Lamb County, will be received at the Highway Department, Austin, until 9:00 A.M., February 24, 1966, and then publicly opened and read.

The State Highway Department, in accordance with the provisions of Title VI of the Civil Rights Act of 1964 (78 Stat. 252) and the Regulations of the Department of Commerce (15 C.F.R., Part 8), issued pursuant to such Act, hereby notifies all bidders that it will affirmatively insure that the contract entered into pursuant to this advertisement will be awarded to the lowest responsible bidder without discrimination on the ground of race, color, or national origin. Plans and specifications including minimum wage rates as provided by Law are available at the office of Rhea E. Brad-

**INCOME TAX SERVICE**

**J.D. THOMAS**  
RES: 103 EAST 19TH  
Office At  
Jones Motor Co.

**SEWING MACHINE REPAIR.** We repair all makes of sewing machines. Can get parts for most foreign made machines. Special for February - clean, oil and adjust machine - 3.50. Robison Upholstery & Mattress, 308 W. 4th. 2-20R

REMEMBER The Federal Land Bank when you need a loan on your farm. Low interest rate, annual payments, repay at any time without penalty. Come in and see W.H. McCown, 504 2-27F

**Farm Equipment E-1**

FOR SALE: 20 joints of 3" used irrigation pipe, 1221 North Westside, Paul Vause. 3-13V

FOR SALE: 1954 Jubilee Ford tractor and equipment, also Shetland pony, and 4 room and bath house for rent, 2 1/2 miles towards Amherst, W.L. Swart, Rt. 1, Amherst, 246-3315, 2-20S

**COMPLETE EXTERMINATION SERVICE**, household pests as roaches, mice, rats, termites, etc. Tree and lawn spraying, bird repellent, moth proofing. One year written service warranty. Low rate, \$2.00 a room crawling insects. Day or night call collect. Levelland 894-3824, Davidson Pest Control. 15 years experience. TF-D

**Farm Equipment E-1**

FOR SALE: 20 joints of 3" used irrigation pipe, 1221 North Westside, Paul Vause. 3-13V

FOR SALE: 1954 Jubilee Ford tractor and equipment, also Shetland pony, and 4 room and bath house for rent, 2 1/2 miles towards Amherst, W.L. Swart, Rt. 1, Amherst, 246-3315, 2-20S

**Automotive Supply Headquarters**  
700 E 4th - PH 385-4431  
• Car • Truck  
• Tractor Industry  
• Irrigation  
• Motor Rebuilding  
• Precision Machine Service  
**G & C AUTO SUPPLY**  
**CHANDLER'S MOTOR MACHINE & SUPPLY STORES** In Littlefield, Anton, Sudan, Earth

**B&C PUMPS & Machine Works**  
W.H. "Dub" BERRY- JOHN M. CLAYTON- Owners  
**COMPLETE IRRIGATION SERVICE**

• WELL CLEAN-OUT  
• PUMP PULLING  
• PUMP SETTING  
• COMPLETE PUMP REPAIR

WESTERN PUMP CO. Tube Line New Guaranteed 5 Years  
PHONE 385-5137  
Nights 385-3118 Or 385-4185  
304 Lake Ave. LITTLEFIELD  
894-5025 LEVELLAND

**Bus. Services D-3**

Custom-flat breaking to 12", \$3.50; chiseling, \$1.60; listing, \$1.10 per acre. Call Walter Brantley, 385-5696 evenings. TF-B

Hutchins Building Supply is remodeling headquarters for this area from 1 room to a complete house. No money down - up to 7 years to pay. Phone 385-5588, 100 Sunset Avenue, TF-H

**COX TIN &amp**

**ats Drop Game**

**Welland**

ute cold spell in the er cost the Wildcats basketball game of as they dropped a ounter to Levelland 0 score.

rs went six minutes oring shortly after eriod opened as the re able to build a to a commanding 47 during the Wildcats

os who finished the h 10 wins and only district play, jump- n early 8 to 1 lead t to 18 to 8 before s came back to cut to 21 to 19 at the first quarter of play.

y Steve Lewis and on helped spark the 27 to 23 lead in the rter before the Lobos y Kruger went back ead by a 34 to 30 rmission.

red Koontz hit a bas- 20 feet to open the er to make it 34-32 then suffered through minute cold spell ehind by a 49 to 40 e end of three per-

s made a fight of it he final quarter and points while holding ers to one basket o winners lead to 51-48 e minutes left, but s then went into a ame and repeated fouls dcats in trying to get allowed the winners to their final margin.

ldcats outscored the om the field as they askets to the Lobos ere able to convert of 16 from the free e while the Lobos made 31 out of 36 chances charity lane.

led the Wildcat attack oints followed by Hut- 12, Phillip Pace with ontz with 10.

Wildcats ended their with 8 wins against 18

Junior Varsity came hind in the second half the Lobo "B" team by 34 score to end their on a winning not as they the season with 11 s against 10 defeats.

winners were able to only two points during the ight minutes of play as ere down by a 11 to 2 at the end of the first

winners were able to cut by only two points dur- econd quarter and trail- o 9 at the half.

Junior Varsity came back third quarter and scored ts during the period to 25-21 lead going into quarter.

General Manager

Paymaster

Move Office

ive March 1 Dr. Harold n, General Manager of r Seeds, will move his from the Seed Farm rters located near w to Anderson, Clay- gricultural Products Di- General Office in

announcement was made rt L. Horton, Vice Pres- f Anderson, Clayton & ricultural Products Di-

the Abilene General Loden will continue supervision and man- of all the Paymaster perations, both domestic eign.

**Questions & Answers**

Q -- One afternoon a week I answer the phones and type a few letters for my church. Can I deduct as a contribution what they would have to pay someone to do this?

A -- No. You cannot deduct the value of your services to a charitable group. In some cases, however, the unreimbursed out-of-pocket expenses you may have incurred in giving these services may be deductible.

Q -- I was 65 last year. Does that mean I don't have to file a return?

A -- Returns are required for taxpayers 65 and over when gross income is \$1,200 or more. Do not include Social Security benefits since they are not taxable. You should write to your District Director for the free IRS Publication, Document 5569, "Tax Benefits for Older Americans", which will help you with your return.

Q -- Because of a recent illness my doctor won't let me take a bus to work. Can I deduct my cab fares?

A -- No. Transportation expenses to and from work are considered personal expenses and are not deductible.

Q -- They put in a new sewer where I live and I was assessed for part of the cost. Is this deductible?

A -- The law generally does not permit deductions for local benefits that tend to increase the value of the property. You should capitalize the cost of your assessment, however, and add it to the cost of your property.

Q -- My son has an \$800 scholarship for college. Will this affect my dependency deduction for him?

A -- An amount received as a scholarship by your child who is a student is not included in determining total support so you will be able to continue to claim him as a dependent if the other requirements are met.

Q -- I retired last year and have a pension from my company. Is it taxable?

A -- If the company paid the entire cost of the pension, the amounts you received will be taxable to you. If you paid part of the cost, then there will be a portion which will not be subject to tax and the remainder will be taxable.

If you will recover the amount of your contributions within three years after your first payment, your pension will not be taxed until you have recovered your cost. If you will not recover the amount of your contributions within the three years, a portion of the pension will be taxable each year. The percentage to use in figuring the taxable portion is obtained by dividing your net cost of the pension by the amount you expect to receive during the life of the pension contract. Additional information on this subject may be found in IRS Document No. 5018, "Retirement Income and Credit," available free at your local Internal Revenue Office.

Q -- We recently bought a house and have rented it out. What expenses can we charge against the rental income we receive?

A -- Repairs and maintenance costs, such as painting, which are not permanent improvements and do not add to the value of the property may be charged against rental income. Expenditures that tend to increase the value of the property should be capitalized. Other expenses, such as interest, taxes, insurance, depreciation -- and utilities, if you pay for them -- are also deductible.

Q -- Do you have to be married to file as head of household?

A -- No, generally you must be unmarried or legally separated.

In certain cases where a person maintains a household for a relative, he is eligible to file as head of household. This is explained on page 4 of the 1040 instructions.

Q -- I'm a student. Do I have to add in my scholarship when I figure my total income?

A -- Generally, amounts received as scholarships may be excluded from income subject to certain limitations. Check with your local Internal Revenue office if you have any question about whether your scholarship is tax exempt.

Q -- I still haven't got a W-2 from my former employer. What should I do?

A -- Contact him and ask for your W-2. If you have moved since you last worked for him, the W-2 might have gone to your old address. In any event, don't let April 15 pass by without filing your return, even though you don't have your W-2. If you can't get it, use estimated figures if necessary and include a statement with your return explaining why the W-2 is not attached.

Q -- I am entitled to claim my father as a dependent. Since he just turned 65 can we claim an additional exemption for him?

A -- No. There is just one \$600 exemption for a dependent regardless of age.

Q -- I just filed my return. How long will it take to get my refund?

A -- It usually takes about six weeks to process a refund return that is properly made out. A refund may take longer than that if the return is filed just before the April 15 deadline.

An error on the return will also delay the refund and so will the selection of the return for a pre-refund audit. Among the most common causes of delay in receiving a refund are failure to sign returns and to give correct social security numbers.

Q -- What business travel expenses are deductible?

A -- Travel expenses include fares, the cost of operating and maintaining your automobile, and meals and lodgings incurred while away from home overnight on business. They are deductible to the extent that they are not lavish or extravagant under the circumstances. Transportation expenses (which do not include the cost of meals and lodging) may be deducted even though you are not away from home, if incurred for transportation which

is directly due to the actual conduct of your job.

Q -- Tax is withheld from my paycheck but I still end up owing money when I file my return. Is there anything I can do about this?

A -- One way to increase your withholding is to drop some of your exemptions for payroll purposes. You can always claim all the exemptions you are entitled to when you file your tax return. If this is not enough, you can ask your employer to withhold additional amounts from your paycheck.

Q -- What items do you include when figuring out support furnished a dependent?

A -- Support includes food, shelter, clothing, medical and dental care, educational and similar expenses. If items provided as support are goods or lodging then the fair market value of these items should be used.

Q -- I just sold my home. What should we include when working out the cost basis and the sales price?

A -- The cost of the house to you would be the initial purchase price plus the cost of permanent improvements you have made, purchase commissions,

title fees and the like less any deferred gain on a home previously sold. From your selling price you can deduct selling commissions, advertising fees and similar costs incurred in transferring the property.

Form 2119, "Statement Concerning Sale or Exchange of Personal Residence," will be of great help to you in calculating any tax liability. Write you: District Director for a copy. Also, ask for a copy of Document No. 5017 -- "Selling Your Home."

Q -- When you add up medical expenses, can you include premiums paid for hospital insurance?

A -- Yes you can. Remember to reduce your actual medical expenses by any reimbursement you receive from this insurance.

Q -- On a joint return, can I exclude \$200 in dividends from taxable income?

A -- The exclusion is \$200 only where the husband receives \$100 or more in dividends and the wife receives \$100 or more in dividends. On joint returns, each taxpayer may exclude up to \$100 in dividends received on stock he and she owns either

said his refund was held up because he forgot to sign his return. Do you really do this?

A -- Yes, a tax return is a legal document and has to be signed by the taxpayer. On joint returns both husband and wife must sign. If a signature is missing on a return it has to be obtained before processing can proceed. Naturally this will delay any refund that might be due.

Q -- How much can I deduct for cigarette tax?

A -- Cigarette taxes are not deductible as taxes on individual income tax returns.

Q -- I didn't cash my last December paycheck until after the first of the year. Does this mean I can include it with my 1966 income?

A -- No. This paycheck is 1965 income and has been included on your W-2. The general rule for checks is that they are taxable in the year received regardless of when they are cashed or deposited.

Q -- Do you have to list income and expenses down to the last penny on a tax return?

A -- You may round off your figures to the nearest dollar. However, this does not mean

that estimates are acceptable. Items listed on a return must be properly substantiated.

Q -- What about funeral expenses? Are any of them deductible?

A -- Funeral and burial expenses are not deductible medical expenses.

Q -- We gave a lot of furniture away when we moved from a house into an apartment. Can we take any deduction on this?

A -- If you gave the furniture to a qualified religious, charitable, etc., organization, you may deduct the fair market value, provided, of course, that you itemize your deductions. Check pages 8 and 9 of the 1040 instructions for details.

Q -- I got an interest report on Form 1099 from my savings bank. Does this have to be filed with my 1040 like a W-2?

A -- No, the report was for your information to show you the amount of interest earned for the year. This and other interest and dividend income must be shown on your 1040. A duplicate copy of this interest report is sent to IRS by the bank. You should retain your copies with your tax records.

**WE EXTEND OUR BEST WISHES TO ALL THE BOYS AND GIRLS PARTICIPATING IN THE LAMB COUNTY JUNIOR LIVESTOCK SHOW FRIDAY AND SATURDAY**



**WE JOIN IN WELCOMING EVERYONE TO ATTEND THIS OUTSTANDING SHOW AT THE FAIR GROUNDS IT WILL BE WORTH WHILE**

**Bye, Bye Bills!**



Happy the family with monthly "bill" problems smoothed away! Manager Jim Weeks at financial house, with a family of four, understands how bills can swamp you! He also understands, through his financial experience and training, how to pay off all those bills and leave you only one sensible monthly payment. Say "bye, bye, bills -- hello, Understanding Man". Call him now.

**Interstate financial house**

425 Phelps 385-3822

See Jim Weeks... He Understands



**OVER A HALF MILLION FARMERS AND RANCHERS USE LOANS FROM PRODUCTION CREDIT ASSOCIATIONS.**

**STOP IN - GET DETAILS**

**Plainview Production Credit Assn.**

**JIM HOLT - Manager Littlefield Office - Phone 385-3110**

**Olton C-CA Names New Officers**

OLTON - Three new officers and three new directors were named at the Olton Chamber of Commerce and Agriculture meeting recently.

Ralph Glover was elected to succeed Doug Jones as president of the group, while Willie Gene Green will replace Rex Chitwood as vice-president. Kenneth Moore was named to succeed Lester Thompson as secretary-treasurer.

Three new directors selected by ballots sent out earlier by the C-CA were Walter Struve, Larry Griffin and Ott Earl Peterson. The succeed three outgoing directors of the 12-member board, Basil Sherman, Walter Lewis and George Caddel.

The ninth annual C-CA banquet will be held in the Olton School cafeteria, Feb. 18th. Highlight of the event will be the naming of the C-CA's Man and Woman of the Year.

Nominated for Woman of the Year honors were Mrs. Fred Thompson, Mrs. Bob Allford, Mrs. Paul Burruss, Mrs. Ray Slatten and Mrs. Gene Trotter. In the men's category, nominees include Joe Turner, Royce Collins, I. E. (Doc) Holt, Basil Sherman and Laus Hair.

Speaker for the event will be S. J. Sparks, attorney from Texarkana.

**Four Littlefield Students At LCC**

Four Littlefield students have enrolled for the spring semester at Lubbock Christian College as a part of the 730-member student body this term.

Tonya Kay Petty, daughter of Mr. and Mrs. Clifton J. Petty, is a freshman at LCC majoring in business. Carla Townsend, daughter of Mr. and Mrs. H.W. Townsend, and James Ford, son of Mr. and Mrs. H.M. Ford, are also freshmen at LCC. Carla is majoring in business, and James is majoring in speech.

David Jones, son of Mr. and Mrs. W.B. Jones, is a sophomore and is majoring in business. LCC's largest student body this spring has set an all-time record for spring enrollment. There are 28 foreign students and 21 states represented.

The young college was founded in 1957. It is fully accredited, offering associate degrees in 12 fields.

**WHITHARRAL NEWS by MRS. LENA L. CRANK**

**Group Returns From Stock Show**

The F.F.A. and 4-H group has returned home from a weeks' stay in El Paso where they attended a fat stock show. Making the trip were Mr. and Mrs. O.L. Harris, Mr. and Mrs. Clifford Throckmorton and Glenn and Misses Sharon and Shari Throckmorton, A.W. Hunter, and Mike and Stanley Sadler.

The Sadlers entered a Duroc pig and Shari Throckmorton a Southdown lamb.

Mrs. Buddy Miller honored her son, Lynn last week with a party on his 9th birthday. The guests rode home with Lynn on the bus after school and then played Birthday Bingo and Tom Thumb.

Red fruit punch, strawberry jello and white birthday cake were served to Lynn and Johnny Hal Miller, Loyd Strickland, Kennie Dukatnik, Gary Hayes, Greg Wade, Johnny Minter, Jackie Davis, Mike Grant, Gary Strickland, Danny Dukatnik, Charla Hisaw, Cynthia Wade, Debbie Williams, Connie White, Vickie Hall, Donna Avery, Wandell Strother of Morton and his grandmother, Mrs. Johnnie Miller.

Mr. and Mrs. Henry Jones are home from a few days visit with relatives in Tipton, Okla. Mrs. Jack Gage reentered the Littlefield Hospital last Monday with an ear infection.

Ed Dickerson of Amarillo visited his aunt and uncle, Mr. and Mrs. John L. Burnett a short while Thursday.

Mr. and Mrs. Don Reding have returned from San Angelo where they went to visit Felix Juado who is critically ill in a hospital there. He has worked for the Redings for several years but has been ill for some time.

Mr. and Mrs. Raymond Denney went to Woodward, Okla. Friday for a weekend visit with a daughter and other relatives.

Mr. and Mrs. John L. Burnett visited their son, Mr. and Mrs. Jim Lewis in Amarillo, Friday.

Mr. and Mrs. V.D. Hodges accompanied Mr. and Mrs. Jack Grace of Anton left Saturday for the National R.E.A. Convention in Las Vegas, Nev. They expect to return Thursday or Friday.

Mr. and Mrs. Clifford Tuttle and Kimberley Kay of Lubbock spent Friday night here with Mr. and Mrs. Will Raines, Mr. and Mrs. Raymond Moore, Mike, Darrell, Jana and Tammy of Albuquerque, N.M. were weekend guests of Moore's mother, Mrs. Martin Moore.

Mr. and Mrs. E. Evans and sons spent Sunday in Hobbs, N.M.

Mr. and Mrs. H.J. Dobson and Mrs. W.H. Kilgore visited Mrs. K. Sullins at Amherst Sunday afternoon.

Mrs. B.E. Hayes has been a patient in the Littlefield Hospital since Monday.

Vickie Hudson, daughter of Mr. and Mrs. Claud Hudson is in the Medical Arts Hospital at Littlefield.

Mr. and Mrs. Don Avery were hosts Friday evening for a products party at the Lions Club Building. Mrs. Nova Melton of Littlefield was demonstrator. Ernest Kristinek was the "lucky man" and Mrs. Leslie Hulse was "lucky lady". Following the demonstration, "42" was played by the group.

Punch, sandwiches, coffee and cake were served to Mrs. Melton and Mr. and Mrs. Dutch Wilkinson of Littlefield, Mr. and Mrs. DeWayne Dixon of Springfield, Colo., Mr. and Mrs. Gene Wynn, Mr. and Mrs. Clifford Williams, Mr. and Mrs. F.J. Bryson, Mr. and Mrs. Ernest Kristinek, and Mr. and Mrs. Leslie Hulse.

**WHITHARRAL SCHOOL MENU**  
 MONDAY - Frito pie, whole kernel corn, tossed salad, hot rolls and butter, peanut butter cookies, milk.  
 TUESDAY - Roast beef w/ brown gravy, candied yams, green lima beans, tomato wedges, hot rolls and butter, plum jelly, milk.  
 WEDNESDAY - Hamburger

steak, buttered potatoes, agus, hot rolls and butter, jello, milk.  
 THURSDAY - Beans, barbecued meat, salad, corn bread, ter, cherry cobbler.  
 FRIDAY - Flapjacks, catsup, creamed potatoes, salad, hot rolls and butter, pineapple-coconut gelatin.

**Congratulations**

**4-H and FFA BOYS**

**On Your Entries In The JUNIOR LIVESTOCK SHOW**

FEBRUARY 18-19TH

Phone 385-3050

**Charles G. Nace**

LUBBOCK HIGHWAY GRADUATE VETERINARIAN LITTLEFIELD

**YOUR FORD DEALER'S BIG FORD DRIVE IS ON!**

Now save big on all our big, beautiful new '66 Fords! We're dealing to keep our Big Ford Drive moving at a stampede pace. Come test-drive one now!

Your choice of 19 models - sedans, hardtops, convertibles, wagons. There's something for everybody in the big Ford line... and big savings go with 'em all! Sixes and V-8's... just name the model you want and we'll deliver it equipped the way you want it at the price you want to pay!



**MITCHELL - FORD, INC.**  
 525 - 529 PHELPS AVE. LITTLEFIELD, TEXAS

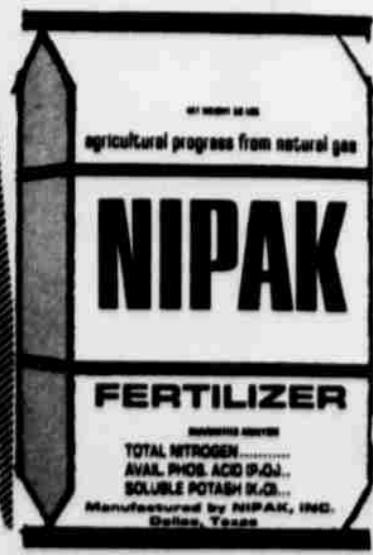
*Congratulations..*

*FFA  
 4-H  
 F. H. A.*

*On the eve of...  
 THE 27th ANNUAL  
 LAMB COUNTY JUNIOR  
 LIVESTOCK SHOW  
 FEBRUARY 18 and 19*



**NIPAK - The Best 5 Letter Word In Quality Fertilizers . . .**



**NIPAK, INC.**  
*Littlefield.*

LUBBOCK HIGHWAY  
 PHONE 385-5184

