

Lamb County Leader

26 Pages

Serving Texas' Second Largest Agricultural Producing County 10c

VOLUME 32

LITTLEFIELD, LAMB COUNTY, TEXAS, THURSDAY, JANUARY 27, 1966

NUMBER 38

COTTON SIGN-UP

Farmers Selecting Maximum Reduction



SIGN-UP HAS STARTED -- The scene pictured above has become a familiar one at the Littlefield ASCS office since the beginning of the Cotton and Feed Grain sign-up period which started Monday. Lamar Aten, head of the local ASCS office, stated that almost 200 farmers per day have signed up for the program with approximately 99 per-cent of those choosing to take the maximum reduction allowed. --- LEADER STAFF PHOTO

"We have had a crowd since we opened the doors Monday morning," stated Lamar Aten, head of the Littlefield ASCS office when asked if farmers are signing up for the cotton and grain program for 1966.

"We have been processing nearly 200 a day and expect it to keep up at this rate for at least the next 45 days," Aten said, "there is quite a bit of paper work connected with each sign-up and between 175 and 200 is about the most we are able to handle each day."

"The vast majority of the farmers signing up for the cotton are reducing the maximum 35 percent and during the first few days it has been running as high as 99 percent," Aten continued.

"Also, the majority of the farmers signing up have also been taking the money allotted at this time which is 50 percent of the money for the reduced acreage," Aten stated. The money being paid at this time is based on the average yield of the land from 1962 through 1964 and Aten reminded farmers that they have only until January 31 to dispute the figured average yield and that production proof must be presented that the yield was higher during that period, and that proof must be submitted on all their land.

Aten also pointed out that the majority of farmers signing up for the grain program are also taking the maximum reduction, which is the case of the feed grain program is 50 percent. And as in the cotton program the majority of these are now taking the fifty percent payment authorized.

Several farmers, when asked their reason for reducing the maximum 35 percent gave the reason that it is impossible to grow 16 to 18 cent cotton and make any profit at all on it.

Others stated that under the present cotton program only 65 percent of the cotton grown is now subsidized and if they were to grow their full quota it would in all probability mean just taking money from one place and into another without showing a profit.

Most of the farmers questioned as they were awaiting their turn at the ASCS office all agreed, that a cotton program is necessary but that they would wait at least a year to see how the present program works out before deciding if the present program is a suitable one for the farmer.

Aten also stated that several have entered the Cropland Adjustment Program whereby the farmer will take at least one of his crops out of production for either a five or ten year period.

Draft Boards Receive Quotas

State draft boards are scheduled to induct 1,372 men into the armed forces in February, Colonel Morris S. Schwartz, state Selective Service director, said Tuesday.

This compares with a quota of 1,475 in January and 1,523 in December. The February quota of 1,372 is the Texas share of a national call for 29,400 men, 26,400 for the Army and 3,000 for the Marine Corps.

Colonel Schwartz also announced that 8,640 men will be forwarded to examining and entrance stations during February to undergo the draft physical and mental examination.

Local board quotas for both induction and examination already have been figured and sent to the state's 137 local boards.

The February quota for induction will be filled with single and childless married men, 19 through 25 years old, and volunteers who have not attained the age of 26. No married man with children, or an expected child, will be selected to fill the February call.

"Draft boards must have the information about children, of course," Colonel Schwartz said, "and an unborn child must be certified by a physician. Otherwise, a young husband and father may find himself selected."

ARTISTRY IN ICE -- Mrs. W.M. Davis is standing under the giant willow tree in her front yard, 716 East 15th Street, which was beautifully coated with ice Tuesday morning. The entire city has been covered with ice

and snow for nearly a week. Residents' enjoyed the warmer weather Wednesday as they were preparing for another cold front and possibly more snow later this week. --- LEADER STAFF PHOTO

ANNUAL MEETING

Crowd Of 250-350, Expected For Chamber Fete

Depending on the weather, a crowd of between 250 and 350 is expected to turn out tonight for the annual Chamber

of Commerce Banquet, to be held in the High School Cafeteria at 7:30.

The highlight of the meeting will be the address by Dr. Charles Jarvis, humorist, from San Marcos, and the presentation of the outstanding farmer and outstanding citizen plaques.



DR. CHARLES JARVIS

Alan Waldrop, chairman of the advance ticket sales said his committee had sold over 250 tickets, but a limited number of tickets will be available at the door. Waldrop said, "The recent change in the weather has affected the advance sale of the tickets, we feel if the conditions clear up an additional 50 or so persons will attend the banquet. Most of the workers said those they contacted were waiting to see how the roads would be before making plans to attend."

The banquet, highlight of the Chamber year, is one of the few times the entire business and farming community has the opportunity to meet together to discuss the activities of the closing year, and to install officers and directors for the coming year.

This year the outgoing directors include Jerry Sanders, Otis Bennett, Ray Keeling, and Dick Carl. Directors to be installed include E.J. Foust, Jr., Amos Ward, Slick Chandler, and Dr. William Orr. Hold-over directors include H.A. Mitchell, Charles Russell, Jim Joyner, Authur Duggan, Jr., Kenneth Reast, Joe Montgomery, and C.W. Conway. In addition to the address by Dr. Jarvis and the presentations, the turns of the Chamber will be turned over to Arthur Duggan, Jr. who will be installed by outgoing president, C.W. Conway.

Well known for his humorist style, Dr. Jarvis is expected to draw a large number of out of town visitors to the banquet, which, according to Leon Slaughter, Chamber executive vice president, makes it all the more urgent that anyone wishing to purchase tickets at the door arrive early. The door sales is expected to be very limited.

South Plains Hospital Directors To Meet

Stockholders, and directors of the South Plains Hospital in Amherst will meet Saturday January 29th at 2 p.m. in the Amherst High School Auditorium, to elect two new directors, and discuss plans for the coming year.

This is the annual meeting of the stockholders and the importance of attendance by directors has been urged.

Contested Race Set In Primaries

Several filings during the past week has brought the number of candidates for national, state and county offices up to thirteen. This was announced by Glen Batson Wednesday.

Among the latest to file here are Walter Rogers for U.S. Representative from the 19th Congressional District which includes Lamb County; Jack Hightower for re-election as State Senator and Pat Boon Jr. for re-election as the 154th Judicial District Judge.

Others filing recently are Mrs. Ray Lynn Britt, presently Deputy County Clerk who will seek election to the District Clerk post; Lucy Moreland for re-election as County Treasurer; H.W. Lewis as Commissioner for Precinct Two; Glenn Batson for another term as County Democratic Chairman and Bill Hall for Chairman Precinct 12.

Previous filings for re-election to their present positions are County Judge J.B. Davis, County Clerk Charles Jones; C. Roy Stevens, School Superintendent; Earnest Owens, District Clerk; Herbert Dykes, Commissioner Precinct 4; and J.N. Bowen for Justice of the Peace.

Bales, Giles Plead Guilty

Fred Giles and James Bales of Littlefield pleaded guilty to charges of theft in District Court Monday afternoon and each received a four year probated sentence from presiding Judge Pat Boone Jr.

The two men pleaded guilty to the theft of six windows and 12 aluminum screens from a house under construction on East 26th Street, the night of October 23, 1965. They were apprehended at the scene by the contractor, M.E. Lee and his son, Monroe Lee of Muleshoe, builders of the house who had missed several items at an earlier date and were watching the house.

The father kept the two men under guard while the son went to bring city police officers to the scene. Bales and Giles had loaded four of the windows on a pick-up truck at the time they were discovered.

Cotton Grades Lower This Week

Cotton grades and micronaire were lower last week than those of the previous week, according to W.K. Palmer, in charge of the U.S.D.A. Lubbock Classing Office.

With the cotton harvest over ninety-five per cent complete, sample receipts at Lubbock declined to 3,000 daily.

The seasonal classing office at Lamesa received its last cotton for classification last Tuesday. Cotton samples remaining to be classed from the territory served by the Lamesa Office will be classed at Lubbock.

The South Plains U.S.D.A. Classing Offices classed 115,000 samples during the week ending Friday, January 21st, bringing the season's total to 2,075,000. At this date last year the three offices had classed 1,829,000 samples of the 1964-65 crop.

Spotted and Tinged cotton increased as more cotton was being picked up by ground salvage machines. Light Spotted, Spotted and Tinged cotton made up 70 per cent of all cotton classed at the Lubbock Office last week.

Accident Caused By Icy Highway

An accident Saturday night, the first since the snowstorm, caused \$2,100 damage to the cars involved.

The accident, which happened on the Highway 84 by-pass approximately 51 feet north of the Delano intersection was caused by the icy road conditions. A car driven by Rex Foust, Littlefield, was headed east on the by-pass when he attempted to turn onto old 84. After stopping at the stop sign at the east lane of the by-pass, he started across but could not make it because of the condition of the road, and then was unable to back up.

A car driven by Tony Shaw, Lubbock, and headed west on the by-pass saw the stalled vehicle and attempted to stop but went into a slide along the highway. A car driven by Mickey Swinburne, Slaton, which was following the Shaw vehicle, then attempted to pass it on the right side but approximately 51 feet north of the intersection the two vehicles collided.

The accident caused \$900 damage to the 1963 Chevrolet driven by Shaw and approximately \$1,200 to the 1966 Oldsmobile driven by Swinburne. The police also reported an accident Tuesday at 4th and Phelps when a car driven by Manuel Pena, Springlake, had stopped for the red light and was hit by a vehicle driven by William Priest, Littlefield, who was pulling out of a parking space. The accident caused \$90 damage to the Pena vehicle and \$35 to the Priest car.

Hightower Files For Re-Election

Senator Jack Hightower of Vernon was in Littlefield on Wednesday of this week in connection with his candidacy for re-election to the Texas Senate from the new 30th Senatorial District. Senator Hightower filed his application to the Democratic primary with Glenn Batson, Democratic Chairman for Lamb County.



SEN. JACK HIGHTOWER

The new senatorial district which includes Lamb County is now composed of 21 counties, stretching from Wichita and Archer Counties on the east to the New Mexico line on the West. The redistricting was done by the last session of the Legislature under orders of the federal courts to comply with the new "one man-one vote" decision of the Supreme Court.

While in Littlefield Senator Hightower visited briefly with campaign supporters and advised that he will publish his formal announcement in the near future.

Beadle Named Deputy Sheriff

Lamb County Sheriff Dick Dyer announced Wednesday that Delmar Beadle has been named county deputy sheriff for Olton, effective February 1. Beadle has been with the Hockley County Sheriff's Department the past two years.

He replaces Homer Whisenand, who has resigned to accept a post as security officer for Shop-Rite Foods in Wichita Falls. He served as county deputy sheriff in Olton approximately two years.

District Court To Hold Criminal Cases This Week

Ten criminal cases are on the docket to be heard by a jury in 154th Judicial Court when it convenes Monday, January 31.

The first case scheduled to be heard is the trial of Jesus Martinez, a murder charge in the slaying of his wife, Julia and Lupe Sepeda at the Martinez home at the gin quarters in Fieldton last August 21.

Martinez was indicted by a Grand Jury in September on two counts of murder with malice aforethought.

Sepeda was shot four times with a 25 caliber pistol with one shot entering just above his right eye, another in his right shoulder, one had grazed his back and the fourth bullet hit his knee. He was dead when Lamb County Sheriff officers arrived at the scene.

Mrs. Martinez, who was shot in the left side of her head died from the wound about an hour and a half after the shooting. She had been brought into the Medical Arts Hospital.

Martinez turned himself in to the police station following the shooting.

Other cases on the docket include four persons charged with theft. The defendants are James Sears charged on two counts, Otho Kyle Long and Del Severe and Frank Havens.

An assault with intent to murder case in which Woodrow Benson is the defendant is also on the docket. He is charged with the shotgun shooting of Billy Ray Morgan, Littlefield. Morgan received severe wounds in the abdomen from the shot-

gun blast which occurred at Amherst August 22.

Other cases scheduled to be heard include Noe Garcia, charged with robbery, Jose Villareal, with burglary, Cloyse Leon McCaleb on two counts of fraud in securities; and Harold Holmes charged with rape.

A petit jury list of 120 Lamb County residents have been ordered to report to the District Courtroom at 1:30 Monday afternoon. The complete list of jurors is on page 6 of today's Lamb County Leader.

Anton Lions To Sponsor Defense Program

The Anton Lions Club will sponsor a special program on defense following their meeting Monday, January 31 to which the public is invited. The program will start at 8:15 p.m.

The first part of the program will be on the "Aero Space Defense." C.C. Scott, Littlefield, will speak to the Lions and the public on the functions of the "Aero Space Defense" and how it operates. The second part of the program will be made possible through the facilities of General Telephone communications network.

The Lions and the public will have a chance to talk to the commanding officers of the headquarters of the Alert System in Colorado Springs. The commander officer will speak to the group and then answer questions from the floor.

'Cats' Lose 58-52 To Morton

The Wildcat cagers were defeated at the foul line Tuesday night as they dropped a 58 to 52 decision to the Morton Indians on the winners' home floor.

The Cats connected on 21 field goals to the winners 18 but were able to garner only 10 out of 18 attempts from the charity line while the Indians made good on 22 out of 30 free throws.

The Cats jumped off to an early 6-0 lead but then were able to score only one basket while the winners tallied 13 points. Phillip Pace, who led all scorers as he got 28 points, got six of his points in the first quarter, which ended with Morton on top by a 14-13 count. During the first eight minutes the Cats got 6 field goals and one free throw while the winners hit only three from the field but made good on six tries from the charity lane.

The winners lengthened their lead to 30 to 21 at half time as the Cats hit a cold second quarter and were able to get only eight points.

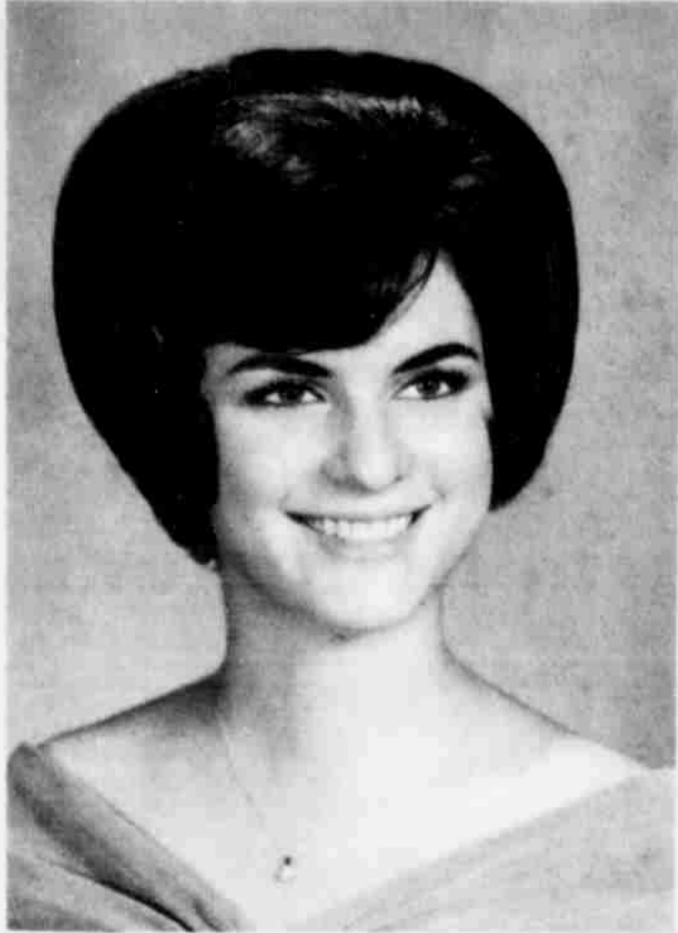
The Cats hit for 20 points during the third quarter to pull within four points of the Indians as the winner's lead was out to 45-41 starting the final eight minutes of play.

With six minutes left, the Cats pulled into a 47-47 tie, but the fouls started taking their toll, as during a six minute stretch starting toward the end of the third quarter and extending into the final quarter, the winners collected 11 free throws and only one basket.



NEW PRESIDENTS -- The Littlefield Woodmen of the World Camp and the Women of Woodcraft Court held their annual installation of officers Tuesday night at the Community Center. Officers of the Welch, Texas Camp were: Officers of the Welch, Texas Camp were: Officers of the Welch, Texas Camp were also installed at the banquet. Pictured above are Eugene Carter, District Manager, who acted as installing escort, Ray McKinney, new president of the Littlefield Camp; Mrs. Frank Robinson, new president of the Littlefield Court; Vernon Parks of the Welch Camp and installing officer, E.A. Bower, state manager of the Northwest Texas area.

TAX BY MONDAY.



ENGAGEMENT ANNOUNCED -- The engagement and approaching marriage of Miss Melaine Eileen Cantrell and Raymon Neil Andrew of Olton has been announced by her parents, Mrs. Grace Cantrell of Littlefield and J.L. Cantrell of Lubbock. The prospective bridegroom is the son of Mr. and Mrs. Bud Andrew of Olton. Vows will be exchanged sometime in February.

Kindergarten Pupils Ride Train

The pupils of Williams Day Kindergarten took their annual train ride to Muleshoe Wednesday, Jan. 19. The group left the depot in Littlefield in 9 a.m. and arrived in Muleshoe at 9:45. They then journeyed home by car.

Mothers accompanying them entertained with a party at the kindergarten before school was dismissed for the day.

Parents accompanying the children on the train were Mmes. Ronnie Fisher, Jerry Tunnell, Jack Compton, Lewis Glass Sr., Lewis Glass Jr., Billy Bales, Kenneth Haire, Jerry Armstrong, Philip Adkins, Joe Embry, Woody McGhee, Robert Richards, Dale Middlebrooks, Waymon Messer, James Bales, Bob Roden, Bill Smith, Virgil Zoth, Jeanine Lavo, Alan Waldrop, Louise Manusco, and Mr. Charles

Jones.

Parents taking cars to Muleshoe were Mrs. Herbert Pence, Mrs. Charles Jones, Mrs. Orville Bassett, Mrs. Billy Tom Grant, Mrs. Jim Davidson, Mrs. Hershall Wilson, Mrs. Bob Wilson, Mr. and Mrs. Charles Clark, Mrs. Horace Woodward, Mr. and Mrs. Jimmy Holt, Mr. and Mrs. Fred Giles, also James Bales, Bill Burks and Lewis Glass Sr., Kenneth Haire, Gene Williams, Billy Williams.

Mothers who helped with the party but were unable to attend because of sickness were Mmes. Bill Burks, John Clayton III, Kenneth Jackson and Neil West.

Train cakes and punch were served to the group. Napkins and tablecloths with trains helped carry out the motif. Favours were presented by the Santa Fe Railroad.

Church News

EMMANUEL LUTHERAN

The voters of Emmanuel Lutheran Church had a short meeting immediately after the services Sunday. Due to the inclement weather and the poor attendance the election of an delegate to District Convention at Ft. Worth was postponed until next Sunday.

At this meeting, it was announced that the religious canvass of the city was postponed due to inclement weather.

Those attending the Waltham League Rally at Wilson yesterday were Ralph and Mary Hobrantsch.

Thursday morning (today) Rev. Rommert, will leave for Plainview where he will attend the Conference of Circuit #2. This conference will be in session until 3:30 Friday afternoon.

Friday night at 8:30 a Chili Supper will be served here at the church. For such who do not like chili, vegetable soup will be available. This supper is sponsored by the LWML of Emmanuel Lutheran Church. The membership of the church, as well as its friends, are invited to attend this supper. A free-will offering will be received.

ST. MARTIN LUTHERAN

Visitors at St. Martin Lutheran Church Sunday included Mr. and Mrs. Fritz Bohue Jr. of San Antonio, Miss Lynn Jaquess of Littlefield, Mr. and Mrs. Bruno Ganzer of Mena, Ark.

The February newsletter, "Focus on Faith" will be in the mail soon. Those who have not picked up a yearbook and annual report for 1965 may do so in the Narthax. The devotional booklets "Christ in our Home" are now available.

Catechism Class will meet Saturday at 10:00 a.m. Sunday at 3:00 devotions will be led at King's Rest Home by Pastor Engel. At 5 p.m. Sunday afternoon the congregation is invited to attend the wedding at St. Martin Lutheran Church of Mrs. Rosie Hodges and Mr. Joe Vasek.

Pastor Engel will return from Seguin sometime tomorrow evening.

AMHERST METHODIST

The Women's Society of Christian Service met Wednesday of last week with the president, Mrs. Joe Allen Miller, presiding.

Rev. James Patterson led the opening prayer, Mrs. W. T. Weaver Jr. read verses from Mark and gave the introduction to the new study, "Mission, the Christians' Calling." Rev. Patterson showed the film, "Almost Neighbors" which pertained to

the study. A question and answer period followed led by Mrs. Weaver.

Mrs. W.P. Holland Jr. led the dismissal prayer.

Sorority Queen Named At Sudan

Martha Markham of Sudan was crowned queen of Epsilon Sigma Alpha District Nine recently at the district meeting held in the home economics cottage in Sudan. She was sponsored by Iota Eta Chapter of Sudan.

Mrs. Markham will represent the district at the state convention to be held in Midland in May.

First runner-up was Shirley Steward of Gamma Nu, Lubbock. Betsy Van Ness represented the Zeta Delta Chapter of Sudan.

Members of the Iota Eta and Zeta Delta chapters from Sudan were hostesses for the meeting. Charlotte Brown, president of Iota Eta Chapter, gave the welcome and Patty Crawford of Lubbock gave the response.

Out-of-town chapters represented at the meeting were Gamma Nu and Alpha Gamma, Lubbock; Gamma Nu, Post and Delta Mu of Denver City.

Homecoming Set At Pep Saturday

The annual homecoming of the Pep schools will begin with registration at 4:30 p.m. Saturday. A boys' basketball game will be at 5 p.m., followed by the crowning of the homecoming queen.

Dinner will be held in the school cafeteria from 6:30 to 8:00 p.m. A dance will be held from 8:30 p.m. until midnight.

All former students, teachers and patrons of the Pep School are invited to attend.

WANT ADS DO THE JOB!

385-4481

News of Women

LOIS VRUBEL... SOCIETY EDITOR

Shower Given Miss Ramage

SPADE -- Miss Vickie Ramage was the honoree at a bridal shower Tuesday afternoon, Jan. 18 in the annex of the Spade Baptist Church. Lynette Williams registered the guests in the bride's book as they arrived.

The honoree's chosen colors of emerald green and white were used in the table decor. The serving table was laid with a white taffeta cloth.

Two emerald green streamers lettered "Vicky" and "Burl" is silver, fell from the centerpiece of flowers and foliage. Miss Donna Smith served white iced cake squares topped with the initials of the bride-elect and prospective bridegroom. Hot spiced tea and coffee were served by Miss Karen Nolan and Miss Ka-

thrin Moorhead. Other refreshments served were mints and salted nuts. A silver service and crystal appointments were used on the serving table.

The hostess gift was an iron and ironing board. Hostesses were Mmes. Leon Leonard, Loy Mouser, T.O. Moler, Preston Pointer, J.G. Anderson, Tyson Nabers, N.E. Hall, Travis Hopper, Hubert Carrico and Bervel Ivey.

Miss Ramage and Mr. McCormick were married January 21 at 7:30 p.m. in the Parkview Baptist Church and are at home at 820 East 5th Street in Littlefield. The bride is the daughter of Mr. and Mrs. John Ramage of the Spade community and the bridegroom is a former resident of the Amherst community.

Club Meets In Aldrige Home

Mrs. A.L. Aldridge was hostess to the Sunnydale Home Demonstration Club Thursday. Mrs. Lorene Perkins had charge of a short recreation period after which Mrs. Virgil Bitner conducted the business meeting.

Mrs. B.L. Wheeler reported on the county council meeting where plans for the council food booth at the Junior Livestock Show were made. Clubs will provide cakes, pies, and sandwiches for the booth, February 18-19 at the stock show in Littlefield.

Leaders for the programs for the next few months were appointed.

Present were Mmes. Virgil Bitner, Ellen Yeary, B.L. Wheeler, Lorene Perkins, W.O. Hampton, Louise Bryce, B.D.

Birkelbach, I.J. Rice, E.J. Grisham, Nora Gaston, a new member, Mrs. Lorene Jennings, and a guest, Mrs. R.L. Murrcock.

The hostess served refreshments of sandwiches, chips, dips, cake and hot spiced apple punch.

Mrs. B.D. Birkelbach will be hostess for the next meeting, Feb. 3.

Clothing Program Given At TOPS Meeting Here

Mrs. Alvis Jones of Littlefield, home economics teacher at SpadP, was guest speaker at the meeting of the Be-Little TOPS Club Tuesday night, Jan. 18 in the dining room of Medical Arts Hospital. She spoke on clothing and accessories.

Pat McMahan, president, conducted the business meeting. Each member answered the roll call with the number of pounds she had lost or gained. The group sang "Excess, Bye Bye".

Marveen Jones, with a loss of five and one-half pounds, was queen of the week. Donna Cawthon was runner-up. Lucile Robinson presented awards to them and also to Marveen Jones for eight weeks' perfect attendance. Marveen was division two winner for six months and Nell Wood, runner-up. Violet Holly and Nell Wood were division four winners.

Party Honors Joe Mark Roden

Joe Mark Roden was honored on his sixth birthday Thursday with a party at Williams Kindergarten, given by his mother, Mrs. Bob Roden.

The table was covered with a cowboy tablecloth, the napkins were decorated with cowboys, and the centerpiece was a cowboy. Cupcakes and cold drinks were served. Favours were bottles of bubble soap.

Joe Mark's favorite nursery story was told. His father showed movies to both classes of kindergarten taken at the Christmas program and Joe Mark showed slides he had taken at Christmas.

FIND SOLACE FOR YOUR SORROW THROUGH... QUIETUDE

FEEL FREE TO CALL ON US AT ANY HOUR

Hammons Funeral Home

Dorcas Class Has Regular Meeting

WHITHARRAL -- Mrs. H.G. Walden led the Dorcas S.S. Class in their monthly business meeting and social in the Fellowship Hall of the Whitharral Baptist Church Tuesday evening. Mrs. John Waters led in prayer. Mrs. Henry Jones read the poem, "Because You Are My Friend". Mrs. Elva Crank gave the devotional reading "The Beatitudes" concluding with "His Presence" and "The Benediction".

Mrs. W.R. McDaniel directed the games and accompanied Mmes. Nixon, Jones, Walden and Howard as they sang "He Hideth My Soul in the Cleft of the Rock."

A salad supper was served to Mmes. Carrie Eller, Susie Bickley, J.M. Nixon, Will Raines, Henry Jones, T.E. Howard, John Waters, H.G. Walden, J.D. Waters, W.R. McDaniel, W.H. Kilgore, O.L. Martin and Elva T. Crank.

Dad-Daughter Pie Supper Slated

The annual Girl Scout Dad and Daughter pie supper will be Friday at 7:30 p.m. in the Junior High School cafeteria. Each girl attending will bring pie, which will be served with coffee and punch.

A flag ceremony will be presented by one of the girl scout troops. Mrs. Buster Owens will lead the various scout levels in singing songs.

Approximately 400 persons are expected to attend.

Forum To Meet With Grace Smith

Mrs. Grace Smith will be hostess for the Forum Club tonight (Thursday) at 8 p.m.

The theme for the meeting will be "Beauty Is Understanding--Our Children as Others See Them". Miss Peggy Ditto will direct the program.

W.H. McCowns Have New Granddaughter

Word has been received by Mr. and Mrs. W.H. McCown on the birth of a granddaughter.

Mr. and Mrs. Palmer McCown of Dallas announce the birth of Stephanie Lynn at 9 a.m. Sunday, January 23 at the Methodist Hospital, Dallas. The infant weighed six pounds, 11 1/2 ounces.

Mrs. McCown is the former Patsy Jones of Richardson, Tex.

Honored With Party

Mrs. Dale Middlebrooks honored her son, Brett on his sixth birthday Thursday at the Williams Day Kindergarten.

Circus napkins and cups with a circus tablecloth carried out the circus motif. Cupcakes with candles and punch were served to the group. As the candles were lighted the children sang "Happy Birthday" and blew out the candles. Bubble soap was given as party favors.

The children sang songs in honor of the "Birthday Boy".

PTA Bi-County Council To Meet

The Lamb-Bailey Bi-County PTA Council will meet Tuesday, Feb. 1 at 2 p.m. in the Amherst School. Mrs. Ed Thompson of Olton, council president, will conduct the meeting.

A vote will be taken on the proposed amendments to the by-laws.

All PTA members are invited to attend the meetings of bi-county council.

STOCKHOLDERS MEETING

SOUTH PLAINS HOSPITAL AND CLINIC

SATURDAY JANUARY 29TH

2 P.M.

AMHERST HIGH SCHOOL AUDITORIUM

2 DIRECTORS WILL BE ELECTED

Why settle for less? Get the big car with the big warranty* for a few dollars a month more.

Make	Wheelbase	Overall Length	V-8 Engine Cubic Inch Displacement	Base Monthly Payments	Difference Per Month
CHRYSLER NEWPORT	124"	219.0"	383	\$65.80	—
FORD GALAXIE 500	119"	210.0"	289	\$58.32	\$7.48
CHEVROLET IMPALA	119"	213.2"	283	\$58.45	\$7.35

BASIS OF COMPARISON--All models are two-door hardtops equipped with V-8 engine, automatic transmission, power steering, power brakes, radio and heater. Monthly payments have been computed on manufacturer's suggested retail price, \$5 down and 36 monthly payments. Not included are the extras you pay for on practically any new car: whitewall tires, deluxe wheel covers, destination charges, state and local taxes, interest, insurance, and licensing fees.

Nobody comes close to Chrysler's big-car value -- or its 5-year/50,000-mile engine and drive train protection.

Authorized Dealer **CHRYSLER**

Move up to Chrysler--the big car you can afford

Garland Motor Co. Chrysler - Plymouth

710 EAST THIRD STREET LITTLEFIELD, TEXAS

Club Meets In Kennedy Home

WHITHARRAL -- Mrs. Ross Kennedy was the hostess for the Whitharral Home Demonstration Club meeting at her home on the Yellowhouse Ranch northwest of Whitharral.

County Agent Jewel Robinson discussed "What's New in the Clothing Field; New Styles, Trends and Colors". She discussed the treatment and composition of new fabrics. She read "A Special Recipe of Time".

Mrs. L.C. Lewis presided at the business meeting, Mrs. D.C. Theford gave the council report. Committee reports were made and accepted.

Mrs. Kennedy served punch, cookies, open-faced cheese sandwiches and coffee to Mrs. Kennedy and Mrs. E.G. Waters of Levelland and Mrs. H.J. Dobson, Ella Herwin, E.E. Pair, J.D. Smith, C.G. Landers, D.C. Theford, O.L. Martin, Elva T. Crank and two visitors, Mrs. G. White and Mrs. W.D. Berry of Littlefield.

The weekly Nazarene "Blessings of Blessing" broadcast heard regularly over more than 520 radio stations of which are overseas. In addition, program in Spanish is heard on 315 stations in Latin America.

STORE - WIDE JEWELRY CLEARANCE SALE

CONTINUES

1 CARAT TOTAL WEIGHT

7 Brilliant Diamonds Colossal Value

REGULAR \$397.50 ONLY 249.95

EXTRA DIAMONDS ON DISPLAY

DIAMOND SETS	REG. 159.50	--- \$69.95
	REG. 165.00	--- \$89.88
SOLITAIRE	REG. 119.45	--- \$69.88
	REG. 209.00	--- \$99.95
	REG. 129.95	--- \$59.95
	REG. 400.00	--- \$199.95
1 CARAT	REG. 247.00	--- \$189.95
1 CARAT	REG. 397.50	--- \$249.95
1 1/2 CARAT	REG. 395.00	--- \$269.50
1 1/2 CARAT	REG. 450.00	--- \$289.50
1 1/2 CARAT	REG. 389.00	--- \$247.50
2 CARATS	REG. 695.00	--- \$369.50
DIAMOND WEDDING BANDS	2 CARATS - 3 ROWS	REG. 860.00 --- \$549.50
14 DIAMONDS	REG. 150.00	--- \$79.50
4 DIAMONDS	REG. 69.50	--- \$39.88
12 DIAMONDS	REG. 69.50	--- \$44.88
DINNER RINGS -	1/2 CARAT	REG. 275.00 --- \$189.50
	1/2 CARAT	REG. 345.00 --- \$249.50
	4 DIAMONDS	REG. 52.00 --- \$39.88
	1 LARGE DIAMOND	REG. 125.00 --- \$79.88
	1/2 CARAT	REG. 225.00 --- \$169.50
	.68 CARAT	REG. 279.50 --- \$189.50
	1/5 CARAT	REG. 89.50 --- \$44.88
	6 DIAMONDS	REG. 31.75 --- \$19.88
1 DIAMOND	REG. 14.50	--- \$7.88
MEN'S DIAMONDS	REG. 695.00	--- \$325.00
	1 CARAT CLUSTER	REG. 425.00 --- \$289.50
	1.17 CARAT SINGLE	REG. 995.00 --- \$588.95
	1/4 CARAT	REG. 89.50 --- \$52.88
	9 STONE CLUSTER	REG. 72.50 --- \$47.88
	LOOSE DIAMONDS	1.05 CARATS
	REG. 1195.50	--- \$725.00
	1.12 CARATS	REG. 1100.00 --- \$695.00

FREE \$15 SILVER BOX

With Any Diamond Set Sold During Sale

EXTRA SAVINGS ON WATCHES - CLOCKS - APPLIANCES - GIFT ITEMS AT

PRATT'S JEWELRY

DAY NEWS

Two New Teachers Hired

Juanene Hogan resigned her job as second grade teacher in the local school to accept a position in Dallas school. Replacing Hogan as second grade teacher is Mrs. Bobby Nelson Littlefield. Also joining the teaching staff at the local school is Shirley Campbell who is teaching in the new program. Mrs. Campesides in Lubbock.

Ada Bundick received a letter from her son, I.C.C. Ernest Bundick, last Friday night telling her that his buddies were all right after a missile accident on their ship, the U.S.S. The accident was reported on television and occurred while the ship was dock in Jacksonville, Fla.

Mr. and Mrs. Bob Wilson visited Saturday night in the home of Mr. and Mrs. A.F. Bundick.

Mr. and Mrs. Clarence Bundick and Mrs. Bernathy visited Saturday with her mother, Mrs. Bundick. The local FHA and FFA girls boys will be leaving this week to attend the fat stock show in Fort Worth. The show begins January 28. Mrs. Leta Mae Sams of Borwick visited last week in the home of her sister and husband, Mr. and Mrs. John Ramage, and Mrs. Troy Chambers. She has recently moved to

Lubbock where they have purchased a new home. Their son and family, Mr. and Mrs. Troy Champion Jr. have moved into their house on the family farm in this community.

Rita Maxwell and friend, Mrs. Becky Tyrone flew home to Dallas last Friday after a few days visit in the home of Rita's sister and family, Mr. and Mrs. Jimmy Long and children. Also visiting in the Longhome last week were Marita and Bill Colson, niece and nephew of Mrs. Long, from Lubbock.

Mr. and Mrs. Harrell of Abernathy were spending a few days in the home of their son and family, Mr. and Mrs. J.C. Harrell and children.

James Nichols received word of the death of his uncle last Saturday. He and his family left Sunday to attend the funeral services in Okla.

The local school dismissed all classes last Friday due to the bad weather.

Jimmy Long, Rita Maxwell, Becky Turner and Bill Colson visited in the home of Mr. and Mrs. Lee Minyard of New Deal last Thursday.

Funeral services were held for Mrs. Mary Mouser 68 year old local resident, Saturday, Jan. 22 at 2 p.m. in the local Baptist Church. Rev. C. Kay Tate and Rev. Dennis Heard officiated at the rites.

Mr. and Mrs. Jack Durham Jr. of Littlefield are happy to announce the arrival of a baby daughter, born January 17, in

the Littlefield Hospital. She weighed 6 lbs, 7 ozs., and her parents named her Dana Lynn. Maternal grandparents are Mr. and Mrs. Loy Mouser of this community, and Mr. and Mrs. Jack Durham Sr. of Amberst are the paternal grandparents.

Funeral services were held Sunday, January 23, at 2 p.m. in the local Baptist Church for Mrs. Mary Greer, 79 year old local resident. Rev. C. Kay Tate officiated at the last rites.

Mr. and Mrs. Buzz Goertz of Alpine visited during the weekend in the home of her parents, Mr. and Mrs. Joe Bailey.

Mr. and Mrs. Doc Vann spent several days recently vacationing at Buchanan Lake. They also went to Sonora where they visited the caves there. They went to Alpine where her parents, Mr. and Mrs. H.C. Carr of Littlefield joined them and accompanied them home.

Mrs. Glenn Walser and Tawny of Lubbock spent last week visiting in the home of her parents, Mr. and Mrs. W.B. Jones. Mr. Jones was in Bryan most of the week on business.

Their nephew, Randy Thomas of Bryan returned home with him for a visit with the Joneses. Mrs. Robert Wilson was on the sick list last week and spent some time in the hospital in Littlefield.

Mr. and Mrs. Don Tindal, Starla and Walt were supper guests last Thursday night in the home of Mr. and Mrs. Kenneth Haire. Tonya and Brad, of near Littlefield.

Mr. and Mrs. Lindell Holly, Mr. and Mrs. Wallace Holly, and Mrs. Donnie Walker went to Muleshoe Saturday where they attended funeral services for an uncle of Mr. Holly, Dan Cargile of Lazbuddie. Mr. Cargile died last Wednesday.

Mr. and Mrs. W.A. Tindal left last Wednesday to spend several days visiting relatives.

They visited in the home of his relatives in Hamlin, and then went on to Dallas where they visited in the home of her brother and family. Mr. and Mrs. Louis Brown and children, while in Winnsboro they visited in the home of another brother of Mrs. Tindal, Mr. and Mrs. Tom Brown and family.

HOSPITAL NEWS

MEDICAL ARTS CLINIC - HOSPITAL

January 15 & 16
ADMITTED: John Hill, Mrs. Alfred D. Smith, Mr. and Mrs. Frank Johnson, Patrick, Beverly, Vickie and Connie Johnson, Mrs. Harvey Harwell, Mrs. Earl Elliott, E.L. Bryant, Mrs. Troy Smith.

DISMISSED: Mrs. Harold Ingle, Mrs. W.T. Cook, Mrs. Robert Claunch, Mrs. Eddie Wallace, Mrs. David Thompson and infant, Russell Ray, Mrs. Lupe Molina and infant.

January 17
ADMITTED: John Miller, Mrs. Lloyd Sweat, Steve Bryant, Mrs. Bennie Claunch.

DISMISSED: Micky Pickrell, Frank Johnson, Mrs. Dwight Troyer.

January 18
ADMITTED: Mrs. Robert Wilson, Willie B. Cook, Mrs. Leroy Ellis.

DISMISSED: H.F. White Jr., Beverly, Connie, Vickie and Patrick Johnson, Miss Kathryn McCormick, E.L. Bryant, George Moore.

January 19
ADMITTED: H.C. Edmonds. DISMISSED: Mrs. Bertha Warner, Shelby Jeffers.

January 20

ADMITTED: Margaret Espinosa, Mrs. Pearl Hodge.

DISMISSED: Mrs. Bennie Claunch.

January 21
ADMITTED: Allen Veach, John Rice.

DISMISSED: Calarence P. Wages.

DOUBLE FEATURE FIRE IN THE HAYSTACK



PLUS OUTLAW TYRANNY! ARIZONA FURY!



Classified Ads Get Results

The Big Comedy of Nineteen-Sixty-Six!

TONY LEWIS JERRY CURTIS BOEING BOEING

WALLIS PRODUCTION

PALACE SUN-MON TUE-WED

Double Feature

THE AMOROUS ADVENTURES OF MOLL FLANDERS

ALSO **"THE THIRD DAY"**

FRIDAY-SATURDAY SUNDAY

X I T DRIVE-IN THEATRE

Tuned Car Tradin' Derby

WHERE PRICE IS NO HANDICAP

WHAT KIND OF A BUY IS A BUICK?

A SURE THING

BUICK SPECIAL

2332

Now you can afford a Buick. Now you no longer need to settle for the also rans. You'll get the best possible trade-in deal. The monthly payments won't crimp the budget. Make this week one of the best in your life. Hop on over to your Buick dealer. It couldn't be a better time.

See your local authorized Buick dealer

WHITHARRAL NEWS

Mrs. Herring Attends Postmaster's Course

Mrs. Herring was in Plainview Monday to meet his wife had arrived in Plainview Saturday from Dallas where she been blocked by the snow extreme cold weather. Mrs. Herring attended a postmaster's training course at Cactus, north of Dallas, Monday through Wednesday. On being delayed by the weather she worked in the post office Friday.

from Wednesday night until Friday and remained in Levelland until Sunday with her sister, Miss Imogene Copeland.

Mr. and Mrs. Ralph McClure attended the funeral services of McClure's 86 year old sister, Mrs. Berta Harmon of Idalou who passed away in Ray's Hospital Home in Lubbock Wednesday.

Mr. and Mrs. E.W. Hallford Sr. and Miss Emmelyne Hallford of Fredericksburg visited their son, Mr. and Mrs. E.W. Hallford Jr. from Wednesday until Sunday. Hallford Jr., injured several weeks ago in a car wreck in Lubbock, is able to be back at his work here as band director although still on crutches.

Mrs. Martin Moore returned Saturday from an extended visit with her son, Mr. and Mrs. Raymond Moore and children in Albuquerque.

Mr. and Mrs. Charles Denney of Dallas are visiting his parents, Mr. and Mrs. Hayes Denney and Ann and are moving to Lubbock to make their home.

Mr. and Mrs. Will Raines spent the weekend in Lubbock with relatives.

WHITHARRAL SCHOOL MENU: Jan. 31 to Feb. 4

MONDAY: Hot dogs with mustard, potato chips, pickles, apple pie, milk.

TUESDAY: Roast beef with brown gravy, rice, green beans, hot rolls, and butter, jelly, milk.

WEDNESDAY: Pinto beans, potato salad, onions, cornbread and butter, cherry cobbler, milk.

THURSDAY: Meat loaf, buttered asparagus, candied yams, hot rolls and butter, peanut butter cookies, milk.

FRIDAY: Barbecue, creamed potatoes, tossed salad, hot rolls and butter, prunes, milk.

Mrs. C.L. Harlow, Tom and family went to Van Horn last Thursday for the weekend with Mr. Harlow, Mrs. Harlow is a student at Texas Tech. She and her family are residing here with her parents, Mr. and Mrs. Tom Harlow south of town.

Edward Sones of Mallet's ranch near Sundown was a recent visitor in the Rafe Rodgers home east of town.

Mrs. Susie Bickley was a patient in the Levelland Hospital

MONTGOMERY WARD

RED TAG SALE

324 PHELPS LITTLEFIELD BLACK AND WHITE CONSOLE TV \$180 - \$150

CONSOLE STEREO \$203 - \$193

17 FOOT FREEZER \$209 - \$187

13.6 FT. FROSTLESS COMBINATION VACUUM CLEANER \$336 - \$252

15 LB 6 CYCLE WASHER \$234 - \$187

LOW SUDS DETERGENT 20 LBS \$3.99

Penneys ALWAYS FIRST QUALITY

Tomorrow's the day for big bargains at Penney's! We've gathered wanted merchandise from every department all month, and reduced prices for a fast sell-out! Hurry in - don't miss a single bargain... charge 'em!

end-of-month clean-up!

FOR WOMEN!

ENTIRE STOCK
Sweaters ORIG 5.98 TO 9.95 NOW **\$2 & \$4**

SEAT LINED
Wool Skirts ORIG 4.98 TO 5.98 NOW **\$2**

BLEEDING MADRAS
Head Scarfs ORIG 50¢ NOW **10¢**

FOR GIRLS!

NYLON
Quilted Robes ORIG 4.98 & 5.98 **\$2**

PLEATED
Wool Skirts ORIG \$3 TO 4.98 NOW **\$1**

ASSORTED STYLES
Sweaters ORIG 2.98 TO 5.98 NOW **\$1**

BARGAIN BUYS!

Shoe Savings For All The Family

House Shoes ORIG 1.99, 2.99, 3.99, 4.99 NOW **\$1**

FOR MEN!

Winter Caps ORIG 1.98 NOW **50¢**

Reversible Vests ORIG 4.98 NOW **\$1**

BRUSHED
Flannel Shirts ORIG \$3 & \$5 NOW **1.99**

Insulated Boots ORIG 20.99 NOW **\$8**

CAP ME
Work Shoes ORIG 10.99 NOW **\$3**

FOR BOYS!

ONLY 5
School Jackets ORIG 12.95 NOW **\$6**

ORLON
Knit Caps ORIG \$1 & 1.79 NOW **50¢**

Flannel Shirts ORIG \$1 & 1.66 NOW **77¢**

ROUGH OUT
Wellington Boots ORIG 6.99 NOW **\$2**

SELECT FROM 100 OR MORE lb Fur trim laminates

PERFECT IN STYLE 'N WEIGHT FOR WINTER IN THE SOUTH!

Fashion formula for winter down South: your favorite fabric blends with mouton-dyed lamb collars... each laminated for perfect weight and wear! All in lovely pastel tones! And

ORIGINALLY **19.98** each

NOW \$10

SIZES FROM 3 TO 14

HOSPITAL NEWS

LITTLEFIELD HOSPITAL AND CLINIC

January 15
 ADMITTED: Mrs. Mary Ellen Stone, Mrs. Edna Sisson, Mrs. Fay Massey, Mrs. Erma Sills.
 DISMISSED: Keith Latimer, Debra Lynn Hill, Mrs. Mary Martin and infant, Mrs. Jan De-Long.

January 16
 ADMITTED: Mrs. Sherry L. Aldridge, Lana Aduddell.
 DISMISSED: George Smith, Mrs. Edna Sisson, Mrs. Mary Lockwood, Mrs. Clara Rountree.

January 17
 ADMITTED: Mrs. Inell Koon-tz, Mrs. Vanetta Durham, Ray Maude Vincent, S.A. Foust, Mrs. Alice Orasco.
 DISMISSED: Florentino Ser-na, Haskell Stephens, Mrs. Marie Slaughter, Mrs. Mary Ellen Stone, John Burnett, Mrs. Mary Mathews.

January 18
 ADMITTED: Josephine McDaniel, Darren Marsh, Arthur McFarland, Mrs. Deweylene Wiade, David Doty, Mrs. Alice Mills.
 DISMISSED: Mrs. Ada Lee Barnett, Mrs. Beatrice Saenz, and infant, Mrs. Nel Carter, Mrs. Christine Howard.

January 19
 ADMITTED: Waymon Lewis, Mrs. Mae Adams, Mrs. Merle Davis.
 DISMISSED: Mrs. Vanetta Du-rham and infant, Bob Arm-strong, S.A. Foust.

January 20
 ADMITTED: Mrs. Marvene Jones, Jim Glasscock, John Gan-zer, Mrs. Linda Martin, Mrs. Dorothy Washington, Joe Klob-ber, Kim Brandon, Bob Arm-strong, D.H. Bryant, Mrs. Minnie Davidson.
 DISMISSED: Mrs. Sherry Ald-ridge, Lana Aduddell, Mrs. Tom-mie Fain, Mrs. James And-rews.

January 21
 David Grace, Jeanie Tharp, Abel Echaverra, Mrs. Juanita Salenas, Mrs. Nellie Burnett, Keith Woodard.
 DISMISSED: Mrs. Alice Oras-co and infant, Mrs. Juanita Mas-sey, Kim Brandon, Mrs. Minnie Davidson.

January 22
 ADMITTED: Sandra Rohm-field, Mrs. Rose Horner, Wil-liam Duesterhaus, Mrs. Johnnie Williams, Mrs. Linda Howell, Mrs. Odell Qualls, L.D. Pres-ton.
 DISMISSED: Waymon Lewis, Abel Echaverra, Bob Arms-trong.

January 23
 Mrs. Fay Hay, Mrs. Ella Eb-ling, Mrs. Sherry Aldridge, Bonzie Jones, Mrs. Edna Mae Cullum, Mrs. Vera Carlisle, Mrs. Delvina Gage.
 DISMISSED: Jeanie Tharp, Sandra Rohmfield, Keith Wood-ard, David Doty, Ray Batson.

January 24
 ADMITTED: Bill Franklin, Mrs. Melba Reast, Mrs. Mary Rogers, Mrs. Eula Wright.
 DISMISSED: Josephine Mc-Caniel, Mrs. Marvene Jones, Mrs. Ella Ebeling, Mrs. Bonzie Jones, Mrs. Rose Homer and infant, Mrs. Linda Martin and infant, Mrs. Merle Davis, Mrs. Juanita Salinas and infant, Mrs. Maude Vincent, D.H. Bryant.

January 25
 ADMITTED: Morris Mathis, Mrs. Jean Ward, Lyman Dale Nichols.
 DISMISSED: Mrs. Fay Hay, Bill Franklin, Mrs. Linda Wei-ge, Mrs. Mae Adams, Mrs. Nel-lie Burnett, Mrs. Johnnie Wil-liams, Mrs. Odell Qualls, Mrs. Sherry Aldridge.

Tax Man Sam Sez

Internal Revenue will match your 1965 income tax return with your Social Security records by the automatic data processing before a refund is made. You must get your name and Social Security number right or there will be a delay in issuing your refund. Get that Social Security card out and make sure that your name and Social Security number will match up when the machine gets "ahold" of it.

"To make the best better" is the motto of some 2 1/4 million 4-H boys and girls from coast to coast.

Cattle Quarantine In Effect In Portions Of County

The Administrator of the Agricultural Research Service, Animal Health Division of the U.S. Department of Agriculture on January 14, 1966, issued a Federal quarantine restricting the movement of all cattle from certain portions of five Texas Counties (Castro, Lamb, Hale, Swisher and Floyd.) This applies to cattle being offered for shipment to points out of the state of Texas, only. Such quarantine will appear in the Federal Register. The two Federal Cattle Scabies quarantine areas are described as follows:

"That portion of Castro, Swisher, Hale and Lamb Counties surrounding Hart in Cas-tro County, Texas, lying within the area bounded by a line beginning at a point in Dimmitt where State Highway 86 inter-sects U.S. Highway 385; thence running in a southerly direc-tion along Highway 385 for a dis-tance of approximately 22 miles to U.S. Highway 70 for a distance of approximately 25 miles to Farm Road 1424; thence running in a northerly direction along Road 1424 for a distance of approximately 24 miles to State Highway 86; thence running in a westerly direction along State Highway 86; thence running in a westerly direction along State High-way 86 for a distance of approx-imately 22 miles to point begin-ning in the town of Dimmitt.

Producers and shippers offering cattle for movement to other states from the quaran-tined areas are required to se-cure the services of a Federal Livestock Inspector prior to moving such cattle. Relocation of cattle to avoid such inspec-tion is prohibited. Producers anticipating sale of cattle into

Employment Shows Increase

The largest year-to-year in-crease in average monthly non-farm employment since 1956 reflects the sustained and vig-orous growth of general busi-ness activity during 1965, the Texas Employment Com-mission's "Texas Labor Mar-ket Report" revealed this week.

The 3,440,000 average non-farm employment figure during the first eleven months of 1965 represents an increase of 102,000 over the corresponding months of 1964.

"A dramatic aspect of the over-the-year rise was the re-surgence of manufacturing in the job growth picture," the report states.

The average employment of 579,000 during 1965 is the high-est annual average on record and an increase of 19,000 over the 1964 average. Of the 19,000 new factory jobs, about 79% were in durable goods, Non-electrical machinery and pri-mary and fabricated metals ac-counted for a combined total of 7,800 of these, while electrical machinery and transportation equipment increased by 5,400 and 1,900, respectively.

"The flourishing electronics sector accounted for much of the rise in electrical machin-ery," the report explains.

Army To Award 1,000 ROTC Scholarships

The Army will award 1,000 ROTC scholarships to outstand-ing high school graduates who will enter college for the first time during the 1966-67 school year, and to selected college students now in their second year of the four-year Army ROTC Program. Applications for the Program must be made between January 15 and March 1, 1966.

Four hundred of the new scholarships will be awarded for four years, and 600 for two years. Each scholarship pays for tuition, textbooks and labora-tory fees, and provides a \$50-per-month subsistence allow-ance for the duration of the award.

Applications must be submit- ted beginning on January 15 and postmarked not later than March 1, 1966. Application forms and detailed information on the four-year scholarships may be ob-tained from the Commanding General of any of the five Ar-mies in the United States, or from major United States Army overseas commands in which the applicants reside.

Students applying for the two-year awards will do so with the professor of military science at their present college or univer-sity.

Final selections will be made by the Department of Army and applicants will be notified during the month of May 1966 as to whether or not they have been selected.

New Education Publication Sponsored By Teachers

The 15 citizens appointed by Governor Connally to serve on the new Public Schools Study Committee need and deserve the support of Texans, a new education publication of the Texas State Teachers Associa-tion has said in an editorial.

The publication is TEXAS SCHOOLS, a tabloid-size news-paper distributed quarterly to the more than 101,000 TSTA members. The first issue was mailed this week.

The Public Schools Commit-tee, authorized by the com-promise teacher pay raise bill passed by the last session of the legislature, will conduct a well-financed, three-year study of the problems affecting public school education in Texas.

The editorial observed that Connally's recognition of the need for improvements in pub-lic education is welcomed. The problems he listed, said the editorial, have long been familiar agonies to teachers.

The TEXAS SCHOOLS' edi-torial said it is to be hoped that out of the committee's study "a new era will be born."

TEXAS SCHOOLS joins the TSTA's award-winning monthly "Texas Outlook" as the state's most widely-circulated edu-cation periodicals.

Charles H. Tennyson, TSTA executive secretary, said that special editions of TEXAS SCHOOLS would be published from time to time to coincide with periods of crucial educa-tion interest across the state.

Look Who's New

Born to Mr. and Mrs. Saenz, a girl, Rebecca Belinda, weigh-ing 6 pounds, 15 ounces, January 14, 1966, at 8:07 a.m.

Born to Mr. and Mrs. Jack Durham, Littlefield, a girl, Dana Lynn, weighing 6 pounds, 7 1/2 ounces, January 17, 1966 at 9:00 a.m.

Born to Mr. and Mrs. Roberto Orasco, a boy, Henry, weighing 6 pounds, 6 ounces, January 18, 1966 at 6:25 p.m.

Born to Mr. and Mrs. Robert Martin, Littlefield, a boy, Robert Louis, Jr., weighing 8 pounds, 2 ounces, January 20, 1966 at 5:02 p.m.

Born to Mr. and Mrs. Ward Homer, Littlefield, a boy, Keir Ann, weighing 7 1/2 pounds, 9 ounces, January 22, 1966 at 8:04 a.m.

1966 at 5:02 p.m.
 Born to Mr. and Mrs. Ward Homer, Littlefield, a boy, Keir Ann, weighing 7 1/2 pounds, 9 ounces, January 22, 1966 at 8:04 a.m.

A building the size of a capitol at Austin could be on the moon with a large scope.

BEAUTIFUL - EASY TO CLEAN SANDRAN VINYL FLOOR COVERING AT HILL ROGERS

FREE ESTIMATES BODY REPAIR ALL MAKES JONES MOTOR

Lamb County Leader

Published every Thursday morning by the Littlefield Publishing Co., 506 Phelps Avenue, Littlefield, Texas, 79339. Entered as Second Class matter at the U.S. Post Office, Littlefield, Texas, 79339, Under the Acts of March 3, 1879.

Dave Kucifer General Manager
 Tom Donnelly Managing Editor
 J.B. (Mac) McShan Advertising Mgr.

Subscription rates: by mail in Lamb and adjoining counties, \$5.10 per year. Elsewhere in Texas, \$7.10 per year. In City carrier delivery 70¢ per month.

Member 1966 TEXAS PRESS ASSOCIATION



ON THE SPOT! Tony Curtis and Jerry Lewis are put on the spot by beauties Dany Saval and Suzanna Leigh in Paramount Pictures' "Boeing-Boeing," which opens Sunday at the Palace Theatre. Also starring Christiane Schmidt and Thelma Ritter, the film is Hal Wallis' Technicolor adaptation of Europe's reigning stage comedy for a decade. It was directed by John Rich from a screenplay by Edward Anhalt.

No other car at Chevrolet's price offers all of these.

LUXURY THE CHEVROLET WAY

You can have thermostatically controlled heating, cooling and dehumidifying for comfort the year round. Steering-wheel convenience that adjusts up and down and in and out. True AM-FM multiplex stereo radio with four speakers and static-free full-toned reception.

Turbo-Jet V8 power that quietly gets up to 427 cubic inches of effortless authority going for you. And a whole lot more. If you go in for adding luxuries, you can go all out in a new Chevrolet.

All kinds of cars, all in one place...at your Chevrolet dealer's Chevrolet • Chevelle • Chevy II • Corvair • Corvette

Eight features now standard for your added safety: Seat belts front and rear • Padded instrument panel • Padded sun visors • Outside mirror (use it always before passing) • Shatter-resistant inside mirror • Two-speed electric wipers for better visibility in a downpour • Windshield washers • Back-up lights.

ARMES CHEVROLET CO.
 LITTLEFIELD, TEXAS

AUCTION

REAL ESTATE - FARM MACHINERY

320 IRRIGATED ACRES IN LAMB COUNTY

FIVE MILES SOUTH OF SPRINGLAKE, TEXAS ON FARM ROAD 385, THEN ONE AND ONE-HALF MILES EAST, OR FOURTEEN MILES NORTH OF LITTLEFIELD, TEXAS ON FARM ROAD 385, THEN ONE AND ONE-HALF MILES EAST. WATCH FOR SIGNS

THURSDAY, JANUARY 27, 1966

TERMS: 35% DOWN LAND AUCTION: 1:30 p.m. MACHINERY FOLLOWING

A STANDARD REAL ESTATE CONTRACT WILL BE SIGNED BY BOTH BUYER AND SELLER WHEN BID IS STRUCK DOWN BY AUCTIONEER. TEN PER CENT OF THE SALE PRICE WILL BE HELD IN ESCROW WITH THE SELLERS DEED. THE CONTRACT WILL BE FINALED WITHIN THIRTY DAYS.

THERE ARE TWO EIGHT INCH IRRIGATION WELLS WITH 140 FOOT SETTING ON NATURAL GAS. FULL PIPES, THREE-FOURTHS OF A MILE OF UNDERGROUND LINE.

FIVE ROOM HOUSE WITH NEW DOMESTIC WELL AND PUMP. GOOD FENCES. ALLOTMENTS:

- COTTON 108.5 ACRES - 520 POUNDS NORMAL YIELD.
- GRAIN 176 ACRES - 67 BUSHELS NORMAL YIELD.
- 120 ACRES OF BERMUDA GRASS CROSS FENCED ON 30 TO 40 ACRE BLOCKS.
- TWO AND THREE YEARS OLD, WILL CARRY 150 HEAD OF CATTLE.

THIS IS ONE OF THE BEST COMBINATION FARMS IN LAMB COUNTY. WATER IS UNLIMITED. WELLS ON NATURAL GAS. MIXED SANDY CLAY LOAM SOIL.

THERE IS A \$40,000 LOAN WHICH MAY BE ASSUMED.

FARM MACHINERY

LAND

- 1-1960 730 JOHN DEERE L.P. WIDE FRONT 4 ROW EQUIPPED.
- 1-1953 SUPER M.L.P. LIVE LIFT FOUR ROW EQUIPPED.
- NEW FOUR ROW ROLLING CULTIVATOR.
- 4 ROW 3 POINT J.D. GANG ROTARY HOE.
- 12 FT. J.D. WHEEL TANDEM DISK.
- 3 POINT 10 FT. M.M. TANDEM DISK.
- 4 ROW SEAL BEARING STALKCUTTER.
- 2 ROW WHEEL SHREDDER.
- 3-24" X 24" CULVERTS.
- BUTANE FILLER HOSE.

WATER

COTTON

GRAIN

CATTLE

- 30 GALLON BUTANE TANK FOR PICKUP.
- 4 ROWS OF J.D. BED PLANTERS. GOOD NEW 4-ROW SEED PACKER.
- JOHNSON WHEEL BLADE DITCHER.
- JOHNSON V DITCHER, 3 POINT.
- 9 ROW 3 POINT SAND FIGHTER.
- 3 ROW 3 POINT BED KNIFE.
- 4 ROW STALKCUTTER ON WHEELS.
- MIDLAND BERMUDA GRASS HARROW.
- 10 FT. OLIVER DRAG TANDEM DISK.
- 3-J.D. 28 INCH KNIFING HEADS.

ALUMINUM PIPE

- 5,280 FEET OF 6 INCH MAIN LINE SPRINKLER OR FLOW LINE, GOOD.
- 5,280 FEET OF 4 INCH AMES ALUMINUM BALL COUPLER SPRINKLER PIPE WITH HEADS.
- 12-6 X 4 INCH HYDRANTS FOR SPRINKLER LINE.
- 80- FEET 4 X 8 INCH GAITED PIPE 1-12 X 8 INCH HYDRANT.
- 1-LOT OF 2 INCH 1 1/2 INCH-TUBES AND DITCH STOPS.

All statements made on sale day supersede all previous statements.

FURTHER INFORMATION CALL OR WRITE

BOZEMAN

AUCTION SERVICE

172 DALOU ROAD PHONE P03-3747 NIGHT PHONE P03-8965 LUBBOCK, TEXAS

- STEMS & PIECES
MUSHROOMS 4 OZ. CAN 33¢
- KARO, BLUE LABEL,
SYRUP 1 1/2 LB. BOTTLE 33¢
- CO. SAL TINE
CRACKERS 1 LB. BOX 35¢
- HEINZ, FANCY
CATSUP 14 OZ. BOTTLE 25¢
- IES, REGULAR OR LIVER
FOOD NO. 1 CANS 2/31¢
- BONNE, HEAVY DUTY, 10¢ OFF LABEL
DETERGENT GIANT BOX 63¢
- RA
ARCH 12 OZ. PKG. 27¢
- SOFT PLY, ASSORTED COLORS
PAPER TOWELS JUMBO ROLL 33¢

PICK PIGGLY WIGGLY FOR PERFECT PRODUCE



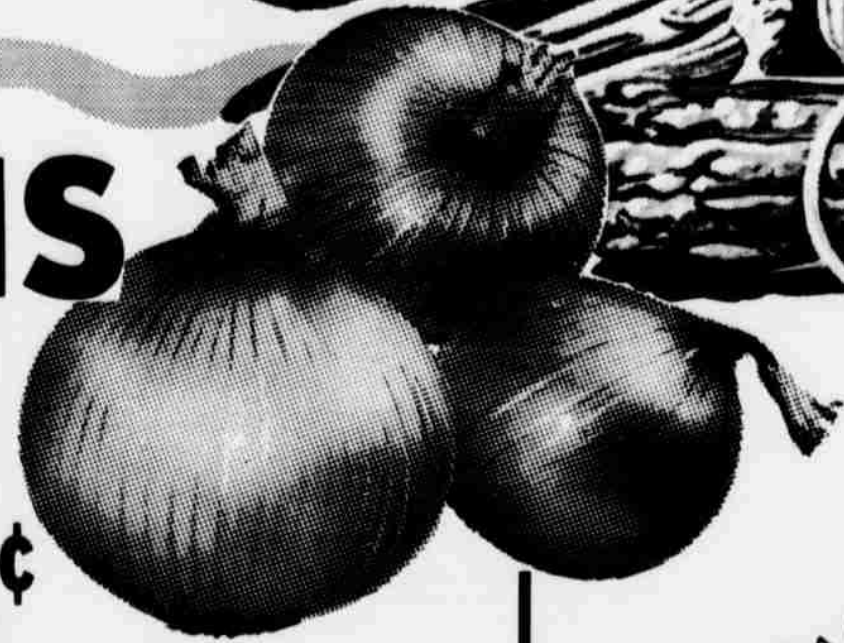
SUZAN
SALAD DRESSING
DIART
29¢

- LIGHT, FULLY GUARANTEED
LOUR 5-LB. BAG 39¢
- OF DELIGHT
CHEESE FOOD 2-LB. BOX 59¢
- EELY HONEY POD
GREEN PEAS 2 NO. 303 CANS 39¢
- OWN CUT
GREEN BEANS 2 NO. 303 CANS 25¢

ONIONS

YELLOW
U.S. NO. 1
MILD

5¢
POUND



BLEACH
DURITE LIQUID
PLASTIC BOTTLE
1/2 GALLON 25¢

DAMITA
TOILET TISSUE
ASSORTED COLORS
4 19¢
ROLL PACK

BANANAS

CENTRAL AMERICAN
GOLDEN RIPE
POUND

10¢

TOMATOES

RED RIPE
BUBBLE PACK

2 FOR 29¢

PLAINS OR HOMETREAT,
ASSORTED FLAVORS
MELLORINE
3 1/2 \$1
GALLONS

LIBBY, CHUNK, CRUSHED OR, SLICED

PINEAPPLE

4 \$1
NO 1 1/2 CANS

JOB 10¢ OFF LABEL
iquid Cleaner 28 OZ BTL. 63¢

QUID DETERGENT
OVE, 13¢ OFF LABEL 22 OZ. BTL. 53¢

TOILET SOAP
UX, ASSORTED COLORS, BATH SIZE 2-BAR PACK 35¢

BAKERITE
SHORTENING
3 59¢
LB. CAN

CAMPFIRE, WHITE OR GOLDEN
HOMINY 3 NO. 300 25¢

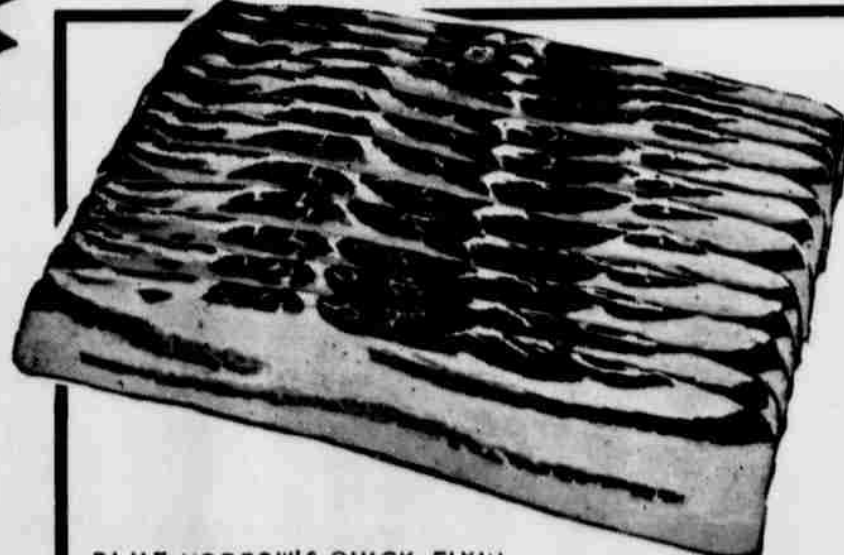
BLACKBURN, WAFFLE
SYRUP 32 OZ. BTL. 35¢

THESE PRICES GOOD IN LITTLEFIELD
JANUARY 27-28-29-1966
WE RESERVE THE RIGHT TO LIMIT QUANTITIES

homemakers on a budget appreciate piggly wiggly's low prices!

- Health And Beauty Aids
- AND LOTION**
ERGENS, REGULAR 1.49 OZ. BTL. **1.09**
 - PPETY-DO REG. 2.00
air Setting Gel 12 OZ. JAR 1.69
 - ANTISEPTIC, REG. 33¢
outhwash 16 OZ. BTL. 27¢
 - UTEX, 6¢ OFF LABEL
olish Remover 4 OZ. BOTTLE 35¢

- FROZEN FOODS
- ENCHILADA DINNER**
PATIO, BEEF 12 OZ. PKG. **39¢**
 - MINUTE MAID
Orange Juice 4 6 OZ. \$1
 - SEABROOK
Cauliflower 3 10 OZ. PKG. \$1
 - SEABROOK
Fordhook Limas 10 OZ. PKG. 27¢



TURN YOUR MEAL INTO A FEAST!
ALWAYS SERVE PIGGLY WIGGLY MEATS!

SLICED BACON
SWIFT'S SWEET RASHER
POUND **79¢**

- BLUE MORROW'S QUICK FIXIN
Beef Steak 16 OZ. PKG. 79¢
- USDA CHOICE, AGED HEAVY BEEF, BONELESS, VALU-TRIMMED TOP
Round Steak POUND 1.09
- BOTTOM USDA CHOICE, AGED, HEAVY BEEF, VALU-TRIMMED
Round Roast POUND 89¢
- BONELESS CUBES OF CHOICE BEEF, EXTRA LEAN
Beef Stew POUND 69¢
- USDA CHOICE, AGED, HEAVY BEEF, BONELESS, VALU-TRIMMED
Rump Roast POUND 79¢
- BUTCHER BOY THICK OR THIN
BOLOGNA 1 LB PKG 59¢
- TRADE WIND
Deviled Crab PKG. 1.09

EXTRA LEAN, DATED TO ASSURE FRESHNESS
GROUND CHUCK POUND 59¢

SMOKED PICNICS
SWIFT'S PREMIUM WHOLE
POUND **49¢**

BEEF SHORT RIBS
USDA CHOICE BEEF VALU-TRIMMED
POUND **23¢**

Lowest Prices... Greatest Variety... always at
Piggly Wiggly



Cotton industry leaders on the High Plains agree that one of the more significant factors influencing the future of cotton in the area will be quality.

Especially needing attention are staple, pressley, micronaire, and uniformity. The potential market for cotton in the 29/32 to 31/32 staple range is far short of the 1.5 to 2 million bales we have been producing. Technological advances in the textile industry are continually increasing mill demands for cotton with greater pressley strength, more ideal micronaire readings and greater uniformity. And it is markets for the cotton we grow which will set the pattern for our future as producers.

The first, the most indispensable, and one of the most economical means to improving cotton quality is planting seed.

And, ironically, this is one of the persistent stumbling blocks to gains in cotton quality on the High Plains. There has not been nearly enough research effort toward development of varieties with the desired quality characteristics and which are adapted to growing conditions on the Plains.

Any attempt to alleviate this situation must necessarily look first for the reason this segment of cotton production research has been slighted.

Harold Loden, general manager of Paymaster Seed Farms at Plainview, lays a large share of the blame to insufficient protection of plant breeders' rights. He says breeders of cotton seed are going to have to be shown where their investment can be recouped before they can afford to spend the money in research necessary to the improvement of quality.

Loden, one of the nation's leading seed breeders, pointed this out recently at the annual meeting of the Texas Certified Seed Producers Association in Dallas.

He said: "I think we can all agree that (1) research is the key to the improvement of cotton varieties. (2) the job of improving cotton varieties is becoming more and more complex and consequently more expensive.

(3) the research job in cotton is not being done as well as we know how to do, and (4) in all probability less research in cotton variety improvement can be expected in the future."

He went on to say: "It is axiomatic that the key to product quality lies more in the type of seed planted in cotton than with probably any other crop we produce." And he pointed out that "Cotton presents a more complex problem from the standpoint of satisfying the producer and the ultimate consumer since the value of the crop is determined by more quality factors than grain crops in which the major yardstick of income is pounds per acre. And the number of cotton breeders employed by commercial cotton breeding firms in the entire United States is probably less than the 27 professional employees currently engaged in grain sorghum research in Texas alone."

Getting back to the reason for this situation, Loden stated: "... I think I can speak factually with respect to the lack of more research efforts on the part of the commercial cotton breeder. He cannot afford it. The commercial cotton breeder is not doing the job he knows how to do, or is capable of doing, because he sees little hope of recovering funds spent in an increased research program.

"...If you doubt this statement, ask any cotton breeder how much money he is spending on fiber uniformity, spinning performance, cotton seed quality, gossypol free seed, seedling vigor and other desirable characteristics of a cotton variety which would improve the overall competitive position of cotton. You will be surprised to know that relatively few efforts are made in cotton variety improvement on characteristics other than those directly associated with factors for which the farmer is either paid, or penalized when lacking."

Referring specifically to breeder rights for commercial cotton breeders, he said: "I am going to stick my neck out and make predictions of what could be expected if the protection inherent in breeder's

rights were available to commercial cottonseed breeders.

"If the cottonseed breeder could increase his share of the total cotton planting seed market from its present 10 percent to 25 percent or more, I predict that the price paid by farmers for certified seed would be no more, and probably less, than is paid today. This would be made possible through increases in volume without proportionate increases in overhead and other fixed expenses.

"A system of breeders' rights which would vest with the developer of the variety the use of the variety name for all seed of that variety placed into commercial trade channels, would result in an immediate increase in research efforts within present commercial cotton breeding organizations. We would see the development of new cotton breeding firms, and the hesitancy to invest corporate funds in commercial breeding programs would disappear. In fact, the reverse of this situation would develop, and we would have an upsurge in total research efforts to develop new and improved cotton varieties, the like of which has never been experienced in the history of the cotton industry.

"Increased competition in development of commercial cotton varieties, coupled with increases in amounts of funds available for research, would result in the development of truly superior cotton varieties. The cotton producer would become a more discriminating buyer and inferior varieties would not become established.

"The additional research effort would result in improvement in the quality of the product grown by the cotton producer. The effect of this quality improvement would be felt in the market place. Improved spinning performance would result from (1) development of new and superior varieties and (2) the fact that farmers would be planting superior seed, fewer generations from the breeder and consequently subjected to less degeneration of inherent varietal characteristics.

"...This would result in still further improvements in quality of the overall cotton crop, particularly uniformity, and further strengthening of the overall competitive position of cotton in domestic and world markets, against both man-made fibers and foreign growths.

"The production of improved projects by the cotton farmer would strengthened the overall

JURY LIST

- LIST NO. 2 OF PETIT JURORS TO APPEAR JANUARY 31ST, 1966 AT 1:30 O'CLOCK P.M.:
- Mrs. Tom King - Sudan
 - Kirk Pitts - Earth
 - Richard West - Sudan
 - Frank Wuerlein - Muleshoe
 - Willie B. Cook - Spade
 - J.M. Brantley - Amherst
 - E.E. Trimmer - Littlefield
 - Jack Riley - Sudan
 - Troy Moss - Littlefield
 - Ular Johnson - Amherst
 - Alvin Messamore - Amherst
 - M.C. Ingram - Sudan
 - J.B. James - Olton
 - Wilson Ingle - Sudan
 - Cecil Harp - Littlefield
 - Doyle Watkins - Sudan
 - Houston Hamby - Olton
 - G.C. Bearden, Jr. - Amherst
 - Uvalde Askew - Littlefield
 - Ramon Sierra - Littlefield
 - W.H. Berry - Littlefield
 - Perry E. Coffey - Littlefield
 - Harold Bowman - Fieldton
 - E.T. Miller - Littlefield
 - Cecil Mason Johnson - Littlefield
 - Mrs. Clifford Laymon - Earth
 - Glenn Bulls - Earth
 - Mr. Weaver Barnett - Sudan
 - Cruz Esquibell - Littlefield
 - Robert Drake - Sudan

economic position of cotton, and consequently improve the economic position of the cotton producer with an expected increase in farm income."

Loden had high praise for the research work being done by state and federal research institutions, but called attention to the fact that outside of California the vast majority of cotton planted in the United States is planted to varieties released by commercial breeders. In some areas of California the variety to be planted is prescribed by law.

He also pointed out that in recent years there has been a reorientation of state and federal research programs toward more emphasis on basic research and less on the development and release of commercial varieties.

Breeders of hybrid corn and grain sorghum varieties have built-in rights protection in the fact that these hybrid seed will not reproduce themselves. The producer therefore is required to go back to the breeder for seed to plant each year's crop.

No such protection is available to the breeder of cotton seed varieties, but in view of Mr. Loden's remarks it might be well to consider legislation, either state or federal, to protect his rights.

- Nig Anderson - Littlefield
- Vernon Nixon - Olton
- Bill Keeley - Olton
- M.S. Bush - Anton
- Marsis Padilla - Sudan
- W.R. Farrington - Littlefield
- Marvin Wagner - Amherst
- William Elms - Amherst
- Lowell Walden - Hart
- Garner Ball - Olton
- Donald Ewing - Amherst
- P.A. Gonzales - Amherst
- L.A. Blackwell - Olton
- Mrs. V.O. Busby - Olton
- B.H. Bickle - Muleshoe
- Franklin Lane - Sudan
- Hubert Carrico - Littlefield
- Alfred Allen - Olton
- W.D. Lackey - Muleshoe
- Harley Bussanmus - Littlefield

- Gregario Huerton - Sudan
- Johnnie Johnson - Sudan
- W.W. Powell - Muleshoe
- Raymond Durham - Olton
- C.O. Bibby - Olton
- Pete Templeton - Amherst
- Marvin Bowling - Sudan
- W.W. Birkelbach - Littlefield
- Percy Carter - Littlefield
- M.G. Fisher - Olton
- Hubert Lee Wisian - Muleshoe
- W.T. Weaver, Jr. - Amherst
- George E. Caddel - Olton
- M.A. Elms, Jr. - Littlefield
- Gene Campbell - Amherst
- Mrs. Cecil Curtis - Dimmitt
- D.D. Yantis - Amherst
- Louis F. Clark - Olton
- John Driskell - Littlefield
- Edward Elliott - Littlefield
- A.B. Jeffery - Olton
- Sam Harmon - Amherst
- Glenn Horton - Littlefield
- J.E. Parish - Dimmitt
- Dean Faver - Anton
- Cleo Whitmire - Sudan
- W.R. Boone - Olton
- Tom Wood - Sudan
- Barney Scheller - Earth
- Bobby Short - Fieldton
- Martin Parmer - Littlefield
- A.N. Wells - Olton
- Don Avery - Littlefield
- Neil Webb - Earth

- Joe H. Guzman - Spade
- James Brown - Olton
- Roger Lowe - Littlefield
- Johnny Hodges - Olton
- B.E. Clayton - Amherst
- Robert Butler - Amherst
- Roy Bryant - Muleshoe
- John McCary, Jr. - Littlefield
- Elmer McGill - Olton
- Jack Barton - Littlefield
- W.A. Cure - Olton
- Kenneth Wiseman - Sudan
- Dorris Shavor - Amherst
- Mrs. Kenneth Campbell - Olton

- Carl Locke - Littlefield
- J.C. Bowen - Littlefield
- T.H. Anderson - Littlefield
- W.T. Bellar - Sudan
- F.M. Smith - Sudan
- J.H. Austin - Littlefield
- J.W. Gosdin - Sudan
- Mrs. Wilma Taylor - Earth
- A.L. Berry - Fieldton
- John Breedlove - Littlefield
- W.L. Chiddix - Littlefield
- B.V. Padon - Springlake
- Raymond Duvall - Amherst
- Orville Cleavinger - Springlake

- Jimmy Cowan - Amherst
- John F. Richey - Littlefield
- Delvin Batson - Amherst
- Earl Milligan - Littlefield
- Ralph Nelson - Littlefield
- R.D. Ussery - Earth
- Norris Sampler - Olton

Grover Cleveland was a bachelor when inaugurated President but married in the White House.

For **COLDS** take **666**

Sullins Attends Dallas Convention

Mr. L.E. Sullins of Sullins Farm Supply attended the 15th Annual Convention of the Agricultural Ammonia Institute which was held in the Adolphus Hotel in Dallas, January 18 through 20.

More than 1,200 delegates attended the meeting from across the U.S., Mexico and Canada. One hundred booths

of anhydrous ammonia were on display at the annual meeting. The Agricultural Ammonia Institute is headquartered in Memphis, Tennessee, and votes its efforts toward development of the ammonia industry and in the ammonia as a direct fertilizer.

Bye, Bye Bills



Happy the family with monthly problems smoothed away! Manager Weeks at financial house, with a few of four, understands how bills swamp you! He also understands through his financial experience training, how to pay off all those and leave you only one sensible payment. Say "bye, bye, bills -- Understanding Man". Call him.

Interstate SECURITIES COMPANY OF TEXAS

425 Phelps 385-3822

See Jim Weeks... He Understands

NOTICE TO TAXPAYERS

DEADLINE FOR PAYING CITY TAXES IS 5:PM
 JANUARY 31, 1966 ON FEBRUARY 1, 1966 A
 PENALTY OF 10% WILL BE ADDED TO ALL DELINQUENT TAXES AND INTEREST AT THE RATE
 OF 1/2 OF 1% PER MONTH WILL BE ADDED
 EACH MONTH BEGINNING MARCH 1, 1966.

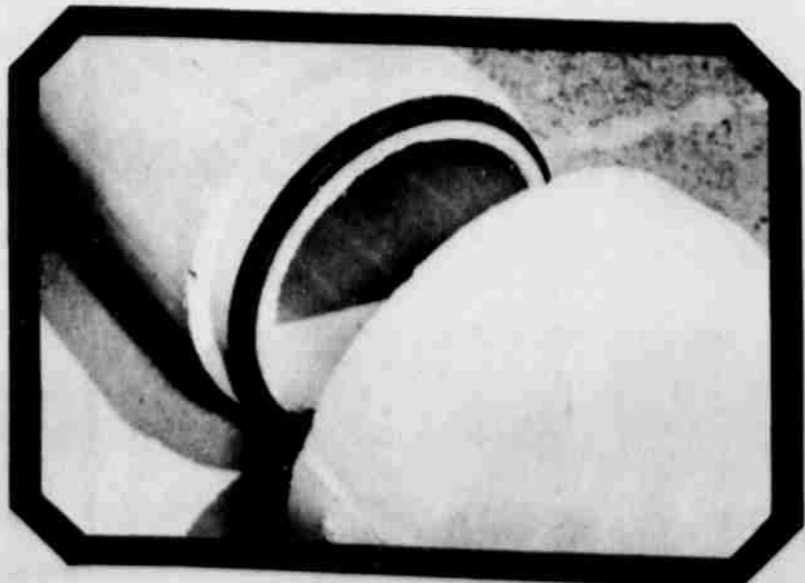
TAX DEPARTMENT
 City of Littlefield



under-the-surface
DEPENDABILITY!

An underground irrigation system can be one of the most important improvements on your farm! Besides conserving valuable irrigation water, you save productive acres and labor costs when you put your irrigation water underground. You'll want the most dependable products when you install an underground system and that means Gifford-Hill-Western's LOCK-SEAL irrigation pipe! LOCK-SEAL'S rubber gasket joint is flexible yet remains watertight... eliminates soil movement and variable temperature problems. Flexible joint, rigid wall and quality controlled construction all add up to generations of trouble free service. Contact Gifford-Hill-Western for all of your irrigation system needs.

LOCK-SEAL PIPE PUTS A STOP TO COSTLY IRRIGATION WATER-LOSS



GIFFORD-HILL WESTERN

CONTACT: BUD HOGAN
 BOX 633
 285-2050
 OLTON, TEXAS

QUESTIONS ANSWERS

My neighbor, a disabled man receiving monthly disability payments, received an questionnaire from VA; payments would be stopped if I do not report his annual income. I am receiving disability compensation payments, have never received the questionnaire. Should I file a report of income, anyway?

Your neighbor evidently had monthly "pension" payments for a non-service-connected disability. You are receiving "compensation" payments for a service-connected disability which is not affected by your other income. You do not have to file a report.

I receive a nonservice-connected disability pension from the VA amounting to \$80 per month. If I no longer live with my wife will I lose any of my pension and is so, how much?

If you and your wife are apart and you are contributing to her support, your pension payment will not change. You and your wife live apart and you do not contribute to her support, you will be considered a single person -- without dependents -- and your maximum amount could then not exceed \$600 per year. Your exact pension will depend on your individual income.

Will there be any change in tax rates next year?

There will be no change in income tax rates for individuals next year under present law. There are some rate changes scheduled in the Social Security, self-employment, and estate tax areas however.

For instance, the tax on telephone service drops from 10 percent on January 1, 1966, then one additional point per year until it is eliminated in 1969. The Social Security tax increases from 3.85% to 4.2% effective January 1, 1966. Self-employment tax increases to 6.15%.

THE FAMILY LAWYER

When her neighbor's Angora woman filed suit for damages based her claim on two points: (1) that the neighbor owned the cat, (2) that the cat had been trespassing in her back yard.

The court held that neither was enough to support the woman's claim. The court said trespass alone does not mean liability for a cat's mischief, since a cat seldom commits any. As for trespassing, the court said cats are given freedom to roam--and to cross boundary lines--by common consent of mankind.

As a rule, a cat's victim can collect damages only by showing some grossly vicious conduct by the cat. The court's decision puts the owner on notice that his pet is dangerous.

For example: A shopper, accompanied by her dog, entered a market. The proprietor's cat, which had recently had kittens, promptly tore into the dog. When the woman tried to protect her dog, she herself was scratched by the cat.

In this case the woman did collect damages. The court pointed out that a cat with kittens is likely to attack dogs; that customers often brought dogs to the market, and that another customer had been attacked in the same manner. Under these circumstances, the court decided the cat was indeed dangerous and should have been restrained.

However, a minor show of temper will not put the owner on notice that he has a feline menace on his hands. Thus another woman, bitten by a cat, was denied damages because the only prior misconduct she could prove was that the cat had once shown its teeth and attacked a girl's stocking.

In short, in view of the generally good record of the species, the law is tolerant of a cat's natural tendencies. And, in that same spirit, the law looks with favor on efforts to be kind to cats.

One woman left money in her will to establish a "cattery" for homeless cats. Although the bequest was challenged as useless to the community, a court upheld it as a valid charitable trust. In the words of one judge:

"A gift for the benefit of animals tends to encourage kindness toward them, promote feelings of humanity and morality generally, repress brutality, and thus elevate the human race."

Public service feature of the American Bar Association and the State Bar of Texas. Written by Will Bernard.

© 1966 American Bar Association

FURR'S EXCLUSIVE EXTRA CARE

MEANS MORE WHOLESOME FRESH FRUITS AND VEGETABLES

Furr's is the home of EXTRA CARE everywhere. In every department, including fresh fruits & vegetables, you find evidence of our exclusive treatment of merchandise to bring you the best. First of all, all fresh fruits and vegetables are RUSHED to you so that when you buy it you get FRESHNESS. Second we treat all perishable items with loving care so that they come to you undamaged...better tasting...more attractive. Third...we PRICE EVERYTHING LOW! This is just one more way in which Furr's workers go out of the way to make shopping with us more pleasant. We love you so please excuse us if we show it.

APPLES

WASHINGTON STATE RED DELICIOUS LB **17¢**

ROMAINE

SALAD LETTUCE BUNCH **23¢**

LIME

CALIF. JUICY LB **29¢**

4 1/2¢

12 1/2¢

TOMATOES VINE RIPE EA **5¢**

YELLOW ONIONS LB

ORANGES CALIF NAVEL SWEET AND SUGAR, LB **12 1/2¢**

POT PIES

MORTONS CHICKEN, BEEF, TURKEY, SPAGHETTI, OR MACARONI & CHEESE FRESH FROZEN PKG **6 FOR \$1**

FRUIT PIES

MORTONS APPLE PEACH, CHERRY, OR COCONUT FRESH FROZEN PKG **3 FOR \$1**

SHORTENING

JEWEL 3-LB CAN **59¢**

CRACKERS FOOD CLUB 1-LB BOX **19¢**

TOMATO JUICE HUNTS 46 OZ CAN **25¢**

COFFEE FOOD CLUB ALL GRINDS 1-LB **69¢**

EGGS FARM PAC USDA GRADE A MEDIUM DOZ **45¢**

PICNICS HICKORY SMOKED LB **49¢**

HAMBURGER PATTIES 10 LARGE SERVINGS **2 LBS FOR 89¢**

FRANKS Farm Pac All Meat 1 LB **63¢**

SMOKED LINKS Hickory Sweet LB **65¢**

PIKE PEAK ROAST Boneless Lean LB **75¢**

BISCUITS Farm Pac Flake Style LB **2/17¢**

BRICK CHILI Farm Pac LB **69¢**

SIRLOIN STEAK U.S.D.A. Inspected Farm Pac Blue Ribbon or Choice Pinbone LB **79¢**

EXTRA CARE FROZEN FOODS

BROCCOLI TOP FROST CHOPPED FRESH FROZEN 10 OZ PKG **2 FOR 35¢**

Blackeye Peas TOP FROST FRESH FROZEN 10 OZ PKG **19¢**

SWANSON ASS'T TV Dinner **59¢**

DARTMOUTH FRESH FROZEN Cauliflower 8 OZ PKG **19¢**

Grape Juice 6 OZ CAN **19¢**

FRESH FROZEN Apple Juice 6 OZ CAN **2/43¢** 12 OZ CAN **39¢**

GENERAL MERCHANDISE

DEODORANT RIGHT GUARD KING SIZE **69¢**

Revlon INTIMATE SPRAY MIST 2 OZ **\$2**

Bufferin 60 COUNT **63¢**

CHARLES ANTELL REG OR HARD TO HOLD Hair Styling Gel REG **59¢** **39¢**

RISE Shave Cream 6 1/2 OZ REG **79¢** **59¢**

CAPRI Bubbling Bath Oil QT **59¢**

SAWNSDOWN ASSORTED Cake Mix PKG **3 FOR \$1**

Marshmallow 10 1/2 OZ PKG **19¢**

STILLWELL Sweet Potatoes NO 303 CAN **15¢**

KRAFT Macaroni Dinner 7 OZ PKG **19¢**

FOOD CLUB CUT Green Beans NO 303 CAN **19¢**

PAY DAY BUTTER NUT, BIG PAY, MILK SHAKE Candy Bars OR TOP STAR YOUR CHOICE 6 BAR PKG. **19¢**

TOPCO LIQUID Detergent 32 OZ CAN **49¢**

SCOTT, WHITE, PINK, OR YELLOW Towels 200 ROLL **35¢**

GOLD MEDAL 4¢ OFF LABEL 20¢ OFF Flour 5-LB BAG **55¢** 25 LB BAG **\$2.19**

ELLIS PLAIN Chili 24 OZ CAN **49¢** FOOD CLUB LARGE CELLO BAG Prunes 2-LB **59¢**

FOOD CLUB SWEET Peas NO 303 CAN **19¢**

SUGAR HOLLY BEET, IMPERIAL OR C&H 5-LB BAG **49¢**

WISK 32 OZ **81¢**

LUX LIQUID 22 OZ **65¢**

Furr's SUPER MARKETS

EXTRA CARE SERVICE



LOST • RENT • SELL • BUY • HIRE • TRADE "YOU'LL FIND IT IN THE WANT ADS!" FOUND • SERVICE • EMPLOYMENT • PERSONAL



LEADER and NEWS
CLASSIFIEDS SELL!
TO USE THEM JUST CALL **5-4481** AND ASK FOR AD TAKER

— CLASSIFIED RATES —

First insertion, per word **5c**
Second insertion, word **4c**
All Additional Insertions, word **3c**

Minimum Charge For First Ad run. \$1; minimum charge per subsequent insertion, 50c.
MONTHLY RATE, per word **30c**

(All editions of Leader and News, two copy changes monthly)

DEADLINES FOR INSERTION:
LAMB COUNTY LEADER
10: a. m. Wednesday
COUNTY WIDE NEWS
10:00 a. m. Saturday

Help Wanted A-1
Experienced salesman to serve in capacity of Used Car Manager, Contact H.A. Mitchell, MITCHELL-FORD, INC., Littlefield, Texas. 1-30M

WANTED: aggressive sales person for Littlefield trade area, male or female, Hutchins Building Supply, Phone 385-5588 or come by 100 Sunset. TF-H

2 ladies in Littlefield in vicinity to help with spring rush business, Car necessary. For more information call Stanley Home Products, Nova Melton, 385-5543. 1-27M

Lost & Found A-4
FOUND: a small purse containing money. Owner may have by calling 385-4474 and identifying, and paying for this ad. 1-27K

Card of Thanks A-10
We are sincerely grateful to friends and neighbors for their many kind acts of sympathy during our sad bereavement. Our appreciation cannot be adequately expressed.
The Mary Alice Mouser Family

Words cannot express our heartfelt thanks and deep appreciation to our many friends and neighbors for the food, flowers, prayers and words of comfort in our time of sorrow and need. May God richly bless each and every one of you.
The Family of Mary Alice Greer

Apts. for Rent B-1
New 2 bedroom furnished apartment. Contact at Crescent Park Motel. Phone 385-4464. 2-3C

Now Renting
Furnished & Unfurnished 2-3 Bedroom Apartments.

Carpeted—
Refrigerated Air—
Central Heat—
Dish Washer—
Disposal—
Stove—
Refrigerator

COLONIAL APARTMENTS
400-404 E. 22ND.
CALL
385-5393

Houses to Rent B-3
FOR RENT: some nice houses to rent to some nice people. Worth the money. Glen Simmons. 385-3079. TF-S

FOR RENT: 2 bedroom house with garage, plumbed for washer, carpeted. Call 385-3178 after 4:00 p.m. TF-C

3 bedroom, newly stuccoed, fenced yard, carpeted, garage, washer and dryer connections. Get key at 1301 West 2nd. 1-30S

FOR RENT: 2 and 3 bedroom houses. Plumbed for washers, garages and fenced yards. One 3 room, private bath. Furnished. Bills paid. Call K. Houk, 385-3492 or 385-4830. TF-H

Houses to Rent B-3
FOR RENT: 2 bedroom house with fenced back yard and garage. Call Mrs. Hood, 385-5441. TF-H

FOR RENT: 2 bedroom furnished house on 9th Street. Also, 3 room furnished apartment. Call J.C. Smith, Sr., 385-4643. TF-S

FOR RENT - nice 2 bedroom house, fenced back yard, carpeted. Close in. Call 385-4785 or 385-3233. TF-F

FOR RENT: nice 3 bedroom house, good heating and plumbing. Good price to the right people. Located at 729 S. Sunset Avenue, Call 647-5528, Dimmitt, Texas. TF-B

Would like to rent a real good dry land or irrigated place. Can give references. Call Walter Brantley after 5:00 p.m. at 385-5696. 1-27B

WANTED TO RENT - farm thirds or fourths or otherwise will lease. Do custom farm leasing. Farming now. Have plenty equipment to farm any acreage. P.O. Box 1132, Littlefield, Texas. TF-S

Houses for Sale C-1
FOR SALE - 2 bedroom house, A bargain. L. Peyton Reese. TF-R

FOR SALE: 7 room brick house and 4 large lots east of high school. 385-3137. TF-H

FOR SALE - 5 room modern house to be moved. Call 385-4754. M.T. Emanuel. 731 E. 14th. 1-30E

HOUSE FOR SALE -- owner leaving town - 3 bedroom brick, kitchen and den, 306 E. 18th. Good location. TF-L

NOTICE VETERANS
FHA homes built to your plans for a total minimum move-in cost of \$200.00 if you have had 90 days active duty. PLAINS REAL ESTATE, I.D. Onstead, Realtor. TF-P

FOR SALE: new 2 bedroom ready-build house. Ready to move. Fully carpeted. Ceramic bath. See at Hutchins Building Supply, 100 Sunset. Phone 385-4287. TF-H

3 bedroom brick Gold Madalton in Cannon Terrace, carpet, 2 baths, large family room, 2-car garage, fenced, 1600 ft. living space, large lot. Owner leaving town. 1307 W. 12th. Phone 385-5042. TF-C

Pink and white frame and asbestos siding. Three bedroom, completely redecorated inside in white with new beige carpet throughout. \$150 down - \$62 monthly. \$8,200 Total. Jim Mills, Realtor, 385-5989. TF-M

FOR SALE - new all brick 3 bedroom, 2 baths, den, living room, dining room. This is an extra large house priced right with fireplace. Hutchins Building Supply, phone 385-5588. TF-H

LOW DOWN PAYMENT - MUST SELL IMMEDIATELY: nice 2 bedroom home at 207 Ormond, Sudan, Texas. Carpet, fenced, separate living room, kitchen and den combined and attached garage. Call SW9-0120, Lubbock. TF-M

Houses For Sale C-1
FOR SALE OR TRADE: 4 bedroom brick home, Crescent Park. Will sell my equity or trade for smaller home. 385-3898 or 385-3550. TF-E

4 bedroom brick home, carpeted, central heating-cooling, FHA loan. Near high school. In Cannon Terrace. Phone 385-5417. 2-3T

FOR SALE OR TRADE: a 2 bedroom house in Levelland at 1833 West 8th St. Call 385-5046 or see L.D. Sinclair, 1-27S

FOR SALE IN CRESCENT PARK BY OWNER - 3 bedroom, 1 3/4 baths, large den, fireplace, double garage, fenced backyard, 111 E. 21st. Phone 385-4332. TF-S

FOR SALE - four room house and bath to be moved, 3 miles west of Littlefield. Call George Zybura, CA4-5331, Plainview, 1-30Z

FOR SALE BY OWNER - 2 bedroom house, carpeted, plumbed for washer and wired for dryer. 504 E. 16th St. Phone 385-5268. TF-B

FOR SALE: 8 room house, furnished, carpeted, central heat, 2 baths, 300 1st Avenue, 2 blocks east of the bank, Sudan. Phone 277-4131. 2-3D

FOR SALE: 3 bedroom brick house, 1 3/4 baths, large family room, plumbed for washer and wired for dryer. Call 385-5278 after 6:00 on weekdays. 1207 W. 14th. TF-C

FOR SALE IN CRESCENT PARK: 3 bedrooms, 1 1/2 baths, den and kitchen combination, fireplace, double car garage and fenced back yard. Phone 385-4084. TF-E

FOR SALE - 2 bedroom house, wall-to-wall carpet, fenced back yard at 703 Henderson, Amherst. See Jimmy Bass at this address, or call 246-3567. 2-6B

FOR SALE BY OWNER -- Selling home at 1200 West 9th Street; FHA approved; 4 large rooms; low payments. Must sell soon. Inquire at 910 West 10th Street. Phone 385-5915. TF-W

FOR SALE OR RENT: 2 bedroom, floor furnace, wired and plumbed for evaporative cooling, close in. Phone 385-3064 or see J.D. Thomas at Jones Motor Co. TF-T

Rooms for Rent B-5
Comfortable bedrooms for men, New home, heated rooms. Phone 385-3604. 204 E. 9th St. TF-A

Wanted To Rent B-8
Would like to rent a real good dry land or irrigated place. Can give references. Call Walter Brantley after 5:00 p.m. at 385-5696. 1-27B

Farms, Ranch-land C-7
194.5 A. farm on pavement, 5 miles west of Littlefield, 61.5A, cotton, 1/2 minerals. 385-3137. TF-H

640-A. or two 320-A. 7 full 8" wells with pumps, underground pipe -- 4 miles West of Muleshoe, 200-A, bermuda grass, 18-A, cotton, 90-A, grain -- all fenced--house, 20% down --15 years on balance, 6% interest, \$350 per acre, OWNERS; PO3-5323 or PO3-7809, TF-MT

640 or 2-320 acres. 7 full 8" wells with pumps, underground pipe - 200A bermuda grass, 18A cotton, 90A grain, all fences, handle 300 cows, house, 10% down, 15 yrs. on bal., 6% int., \$360 per acre, 4 miles west, 1 mile south of Muleshoe, Owner 806-PO3-5323 or PO3-7809. TF-M

Real Estate for Sale C-6
FOR SALE - short quarter, \$375 L. Peyton Reese. TF-R

FOR SALE OR TRADE: 207 1/2 A. Good allotments, One 8", One 6" well, Fieldton area on pavement, O.B. Graham, Jr., 385-5095. TF-G

Real Estate for Sale C-6
FOR SALE - 5 acres. Close in, \$3,500. L. Peyton Reese. TF-R

Farms, Ranch-land C-7
290 acres on pavement, 104 acres of cotton, 152 acres maize. Less than \$450 per acre. 4 wells and nice house. Excellent terms. Small down payment, up to 20 years on balance.

80 acres, good irrigated land on pavement, modern 2 bedroom house. Good cotton and maize allotments. \$475 per acre.

Real Estate for Sale C-6
FOR SALE - 5 acres. Close in, \$3,500. L. Peyton Reese. TF-R

Real Estate for Sale C-6
FOR SALE - short quarter, \$375 L. Peyton Reese. TF-R

FOR SALE OR TRADE: 207 1/2 A. Good allotments, One 8", One 6" well, Fieldton area on pavement, O.B. Graham, Jr., 385-5095. TF-G

Real Estate for Sale C-6
FOR SALE - 5 acres. Close in, \$3,500. L. Peyton Reese. TF-R

Farm Loans
L. PEYTON REESE
110 YELLOW HOUSE
BUILDING
PHONE 385-5363

Farm & Ranch Loans
for any purpose.
Free, prompt and liberal appraisals.
Terms to meet your requirements. Low int. Rates.

Plains Real Estate
I.D. ONSTEAD
REALTOR
PH. 385-3211

Plains Real Estate
PH 385-3211
Nite Ph.
I. D. Onstead - 385-3009
Roy Wade - 385-3790
C. R. Onstead - 385-4879

Farms
290 acres on pavement, 104 acres of cotton, 152 acres maize. Less than \$450 per acre. 4 wells and nice house. Excellent terms. Small down payment, up to 20 years on balance.

80 acres, good irrigated land on pavement, modern 2 bedroom house. Good cotton and maize allotments. \$475 per acre.

Plains Real Estate
PH 385-3211
Nite Ph.
I. D. Onstead - 385-3009
Roy Wade - 385-3790
C. R. Onstead - 385-4879

Homes
Price reduced to \$21,000 on beautiful brick home with central heat, refrig. air, 3 baths. Large rooms include 3 bedrooms, den, living room and utility area. Also 26' x 28' attached garage. Terms as low as \$1,000 down for quick sale.

Brand new brick home - 225 E. 26th Street Features woodburning fireplace, central heat, 3 large bedrooms, 2 full ceramic baths, living room and large paneled den. This spacious home also has a built-in dishwasher, range, oven and disposal.

House Trailers C-2
FOR SALE: 50 x 10, 2 bedroom, beige and white 65 model mobile home. Buy equity - take up payments of \$63.00 per month. Phone 246-3423, Amherst. 1-30B

Real Estate for Sale C-6
FOR SALE - short quarter, \$375 L. Peyton Reese. TF-R

FOR SALE OR TRADE: 207 1/2 A. Good allotments, One 8", One 6" well, Fieldton area on pavement, O.B. Graham, Jr., 385-5095. TF-G

Real Estate for Sale C-6
FOR SALE - 5 acres. Close in, \$3,500. L. Peyton Reese. TF-R

Farm Loans
L. PEYTON REESE
110 YELLOW HOUSE
BUILDING
PHONE 385-5363

Farm & Ranch Loans
for any purpose.
Free, prompt and liberal appraisals.
Terms to meet your requirements. Low int. Rates.

Plains Real Estate
I.D. ONSTEAD
REALTOR
PH. 385-3211

Plains Real Estate
PH 385-3211
Nite Ph.
I. D. Onstead - 385-3009
Roy Wade - 385-3790
C. R. Onstead - 385-4879

Farms
290 acres on pavement, 104 acres of cotton, 152 acres maize. Less than \$450 per acre. 4 wells and nice house. Excellent terms. Small down payment, up to 20 years on balance.

80 acres, good irrigated land on pavement, modern 2 bedroom house. Good cotton and maize allotments. \$475 per acre.

Plains Real Estate
PH 385-3211
Nite Ph.
I. D. Onstead - 385-3009
Roy Wade - 385-3790
C. R. Onstead - 385-4879

Homes
Price reduced to \$21,000 on beautiful brick home with central heat, refrig. air, 3 baths. Large rooms include 3 bedrooms, den, living room and utility area. Also 26' x 28' attached garage. Terms as low as \$1,000 down for quick sale.

Brand new brick home - 225 E. 26th Street Features woodburning fireplace, central heat, 3 large bedrooms, 2 full ceramic baths, living room and large paneled den. This spacious home also has a built-in dishwasher, range, oven and disposal.

House Trailers C-2
FOR SALE: 50 x 10, 2 bedroom, beige and white 65 model mobile home. Buy equity - take up payments of \$63.00 per month. Phone 246-3423, Amherst. 1-30B

Real Estate for Sale C-6
FOR SALE - short quarter, \$375 L. Peyton Reese. TF-R

FOR SALE OR TRADE: 207 1/2 A. Good allotments, One 8", One 6" well, Fieldton area on pavement, O.B. Graham, Jr., 385-5095. TF-G

Farms, Ranch-land C-7
88.5 acres, no waste land, high pressure water line, good well, 33 acres cotton allotment, 3 miles north of Amherst. Phone 246-3458 or write Box 272, Amherst. 1-27T

Personal D-1
I am no longer responsible for the debts made by Judy Hawks, Angus Hawks. 1-30H

Notices D-2
Notice to boys looking for puppy - if you still want one, call Charlotte Morris, 385-4481. TF-C

Bus. Services D-3
TV service calls. Days, 385-3831. Nights, 385-3318. New and used TV sets. T.V. Corner, 601 W. Delano. Dial 385-3831.

Bill Miller The Kirby Man
PH. 385-3357

B&C PUMPS & Machine Works
W.H. "DUB" BERRY-JOHN M. CLAYTON-Owners
COMPLETE IRRIGATION SERVICE
• WELL CLEAN-OUT
• PUMP PULLING
• PUMP SETTING
• COMPLETE PUMP REPAIR

COX TIN & PLUMBING SHOP
Plumbing Heating
LENNOX Heating & Air Conditioning
Sheet Metal Work
Fixtures & Supplies
Licensed-Insured-Bonded
706 E. 3rd
Dial 385-4020

TRUCK SEATS EXCHANGED 15 MINUTE SERVICE
McCORMICK'S TRIM SHOP
PHONE 385-4555 227 MAIN

SPECIAL VALUE!
THIS FARM MACHINERY IS PRICED FOR QUICK SALE. IF YOU'RE LOOKING FOR A BARGAIN...COME SEE US.

1 USED M 5 MOLINE TRACTOR
2 USED 5 STAR MOLINE TRACTORS
11--MOLINE BREAKING PLOW 16"
4--MOLINE TANDEM DISCS.
ALL PRICED TO SELL

KELLEY MOTOR CO.
605 HALL AVE. LITTLEFIELD
PHONE 385-5777

Bus. Services D-3
Rent convalescent equipment at Brittain Pharmacy. Wheelchairs, crutches, hospital beds, other items. Complete lines of convalescent needs.

INCOME TAX SERVICE
J.D. THOMAS
RES: 103 EAST 19TH
Office At
Jones Motor Co.

INCOME TAX SERVICE
Reasonable Rates
J. CALVIN YOUNG
Phone 385-8980
MOTEL L-F
Littlefield, Texas

AUTOMOTIVE SUPPLY HEADQUARTERS
700 E 4th - PH 385-4431
• Car • Truck
• Tractor Industry
• Irrigation
• Motor Rebuilding
• Precision Machine Service
G & C AUTO SUPPLY
CHANDLER'S MOTOR MACHINE & SUPPLY STORES IN
Littlefield, Anton, Sudan, Earth

Wester Pump Co
TUBE LINE
Now Guaranteed 5 Years
PHONE
385-5137
Nights 385-3118 Or 385-4185
304 Lake Ave. LITTLEFIELD
894-5025 LEVELLAND

COX TIN & PLUMBING SHOP
Plumbing Heating
LENNOX Heating & Air Conditioning
Sheet Metal Work
Fixtures & Supplies
Licensed-Insured-Bonded
706 E. 3rd
Dial 385-4020

TRUCK SEATS EXCHANGED 15 MINUTE SERVICE
McCORMICK'S TRIM SHOP
PHONE 385-4555 227 MAIN

SPECIAL VALUE!
THIS FARM MACHINERY IS PRICED FOR QUICK SALE. IF YOU'RE LOOKING FOR A BARGAIN...COME SEE US.

1 USED M 5 MOLINE TRACTOR
2 USED 5 STAR MOLINE TRACTORS
11--MOLINE BREAKING PLOW 16"
4--MOLINE TANDEM DISCS.
ALL PRICED TO SELL

KELLEY MOTOR CO.
605 HALL AVE. LITTLEFIELD
PHONE 385-5777

Bus. Services D-3
REMEMBER the Federal Land Bank when you need a loan on your farm. Low interest rate, annual payments, repay at any time without penalty. Come in and see W.H. McCown, 504 Phelps Avenue, Littlefield. TF-F

3.F. GOODRICH
15.5 x 38 - 6 Ply..... 89.95
600 x 16 - 3 Rib..... 13.95

BITNER TIRE SUPPLY
PHONE 257-5361
EARTH

Farm Equipment E-1
10 ft. Krause tandem disc on wheels and 2 row Servis shredder. Good condition. Phone 385-3334. 1-30B

Misc. For Sale H-3
FOR SALE - 4 x 8 foot sheets of pre-finished mahogany paneling, only \$4.80, Hutchins Building Supply, 100 Sunset. TF-H

Singer sewing machines; new cabinets; \$160; used 5 years in sewing lab; see in Littlefield Junior High; call 385-5657. 2-13L

Articles Wanted H-4
WANTED - used tractors, farm equipment, trailers, trucks, wrenches, foreign cars and jeeps, Phone 385-4779, Littlefield, TF-S

Autos, Trucks For Sale J-1
FOR SALE - 1959 El Camino 6 with overdrive. Call 385-3203. TF-L

1964 Thunderbird, fully loaded, low mileage, excellent condition. See Ronnie Onstead at Onstead Furniture. TF-O

FOR TRADE: a real nice 58 Model Mercury Station Wagon to trade in on a house. Glen Simmons, 385-3079. TF-S

My personal car for sale. 1963 Pontiac Bonneville Excellent condition, Fully loaded. Ronnie Onstead at Onstead Furniture Company. TF-O

Will take older model work car or economy car for equity in '64 Fairlane 9-passenger station wagon, Bob Wheeler, Spade School, Call 233-2541 after 3:30 p.m. TF-W

Articles Wanted H-4
WANTED - used tractors, farm equipment, trailers, trucks, wrenches, foreign cars and jeeps, Phone 385-4779, Littlefield, TF-S

Autos, Trucks For Sale J-1
FOR SALE - 1959 El Camino 6 with overdrive. Call 385-3203. TF-L

1964 Thunderbird, fully loaded, low mileage, excellent condition. See Ronnie Onstead at Onstead Furniture. TF-O

FOR TRADE: a real nice 58 Model Mercury Station Wagon to trade in on a house. Glen Simmons, 385-3079. TF-S

My personal car for sale. 1963 Pontiac Bonneville Excellent condition, Fully loaded. Ronnie Onstead at Onstead Furniture Company. TF-O

Will take older model work car or economy car for equity in '64 Fairlane 9-passenger station wagon, Bob Wheeler, Spade School, Call 233-2541 after 3:30 p.m. TF-W

Autos, Trucks For Sale J-1
FOR SALE - 1963 Chevrolet Corvair Malibu \$795.00. See at Bell Station, Littlefield. TF-T

FOR SALE - 1957 GMC 1-ton pickup with 1959 Ford engine. Good tires. A good irrigation pickup. Phone 385-4152, Fieldton.

Repossessed 1965 Ford LTD fully equipped, one owner. \$1,100.00. Still well in new warranty. Ivory green with top. 385-3049 or see at West Delano.

Boats & Motors
14 ft. Texas Maid boat and H.P. elec. 15th after 5:00 p.m. or 124 E. 15th after 5:00 p.m. Also, house for sale. 1-27K

QUESTIONS & ANSWERS

Q -- I am a veteran of War II with a 50 percent service-connected disability. Four minor children but never notified the VA that fourth child since in VA would pay nothing for children beyond the three. Now a friend of mine has told me VA will pay national compensation for number of children. Is this true?

A -- Yes, but this national compensation for dependents is paid only where the disability is evaluated at 50 percent or more. It is always wise to inform the VA of change of status. Send a copy of the birth certificate of fourth child along with inquiry to the VA regional office.

Legal Notices

NOTICE TO BIDDERS
Sealed proposals addressed to the City of Littlefield, Texas, will be received at the office of the City Manager until 5:00 P.M. Thursday, February 2, 1966, for furnishing two 1966 model sedans in accordance with specifications prepared by the City of Littlefield. Copies of these specifications may be obtained from the office of the City Manager. Proposals received after closing time will be returned to the bidder. The City of Littlefield reserves the right to reject or all bids and waive any informalities.

NO. 1425
ESTATE OF DANNIE DYER, DECEASED
IN THE COUNTY COURT LAMB COUNTY, TEXAS

NOTICE TO CREDITORS
ESTATE
Notice is hereby given original letters of administration upon the estate of Dannie Earl Dyer, deceased, granted to me, the undersigned, on the 24th day of January, 1966, by the County Court of Lamb County, Texas. All persons having claims against said estate are hereby required to present the same to me at the time prescribed by law, residence and post office address 15 Star Route 2, Littlefield, Texas.

Curtis Jerome
Administrator of the Estate of Dannie Earl Dyer, Deceased

CORRECTED PUBLIC HEARING NOTICE
Notice is hereby given that City Council of the City of Littlefield, Texas, is conducting a Public Hearing for a plat as requested by M. Choate. Said Hearing is for the purpose of approving an application for subdividing the property owned by Mr. Choate, described as follows: Being West 132 ft. of the East 1/2 of Tract No. 37 of the County Heights Addition, City of Littlefield, Lamb County, Texas, joining U.S. Loop 84.

Public Hearing on the above publication will be held on February 3, 1966 at 7:30 P.M. in the Council Room of City Hall, Littlefield, Texas. All interested persons are requested to be present. WITNESS my hand and seal of the City, this 19th day of January, 1966.

Charlotte Light
City Secretary, City of Littlefield, Texas

Autos, Trucks For Sale J-1
1963 Chevrolet Corvair Malibu \$795.00. See at Bell Station, Littlefield. TF-T

FOR SALE - 1957 GMC 1-ton pickup with 1959 Ford engine. Good tires. A good irrigation pickup. Phone 385-4152, Fieldton.

Repossessed 1965 Ford LTD fully equipped, one owner. \$1,100.00. Still well in new warranty. Ivory green with top. 385-3049 or see at West Delano.

Boats & Motors
14 ft. Texas Maid boat and H.P. elec. 15th after 5:00 p.m. or 124 E. 15th after 5:00 p.m. Also, house for sale. 1-27K

Friendship Day Monday

Annual Friendship Day at the Home Demonstration Club of Lamb County will be held Monday, Jan. 31 at the Community Center in Littlefield. The day will begin at 10 a.m. with a salad luncheon at noon. The public is invited to attend an afternoon session beginning at 1:30 p.m. for a program on the heart presented

by Bill Renfro, Regional Director of the Heart Association in Lubbock, assisted by physician. This day is an annual affair with the home demonstration club women. Each year some outstanding program of interest to many people has been presented. For the past several years this program has been on health.

Kristinek Gives Homemaker Program

The Whitharral Young Homemakers held their regular meeting Monday evening in the home of Mrs. Kristinek at the school. The program was presented by Mrs. Kristinek, who presented the state convention program. The program was reported on the Governor John Connally's luncheon. Mrs. Kristinek presented the Whitharral Homemakers at this

convention, as a voting delegate. Discussion was held on the club project and the group decided to proceed with plans for buying materials for the construction of playground equipment for the Whitharral schools. Sandra Theford served refreshments of pound cake, spiced tea and coffee to Kay Herring, Lois Avery, Fredda Kristinek, Glenda White, Judy Theford and Shirley Grant. The next meeting will be February 8 at 7:30 p.m. in the home economics cottage.

FIELDTON NEWS

Group Fishes In Mexico This Week

Mrs. Wayne Cowan, Mrs. Harold Bowman, Mrs. Donald Cowan and Mrs. Bobby Short are on a fishing trip to Mexico.

Mr. and Mrs. W.J. Aldridge and Bill visited Tuesday in Lubbock with Mrs. Aldridge's sister and family, Mr. and Mrs. J.C. Wright.

Pickrell has been recovering from a Littlefield hospital. He is recovering very well.

Mr. and Mrs. Don Joyner stayed over the weekend with Mrs. Joyner's mother, Mrs. Sexton of Oklahoma, following the death of Mrs. Joyner's father.

Waldo, a former resident of Fieldton, died Thursday in Tempe, Ariz. where he was living at the time of his death. He and his family had lived in Fieldton for several years.

Mr. and Mrs. Gilbert Lemmons have moved to Fieldton from Snyder. The Lemmons will take over the Testerman's Food Store.

Mr. and Mrs. Mason Matthews have been fishing at Possum Kingdom.

TON NEWS

Sunday School Class Meets Thursday

Progressive Sunday School of the First Baptist Church met at the home of Mrs. J. Thornley, last Thursday for a business meeting and a short devotional was led by Mrs. N. Twilly. The scripture lesson was from the third chapter of the book of Proverbs. Mrs. J.M. Swanson led the prayer. Refreshments were served by Mrs. Swanson, Twilly, N.M. Molds, N.M. Tidwell, D.D. Mason, Annie McCary, and one visitor, Mrs. McReynolds. The next meeting will be February 17 at the home of Mrs. Swanson.

in Lubbock where she had surgery Friday morning. Deputy Sheriff Delmar

Beadle, who has been serving with the sheriff's department at Anton for the past two years, has announced his resignation, effective January 30.

Beadle, an experienced lawman, has made an impressive record in combating crime in the Anton area.

Beadle at the present is undecided about future plans. No one has been assigned to replace him.

Bob Biffle closed out his business, Biffle's Home Supply, last week after ten years in Anton.

In a school board meeting recently two new teachers were hired to replace Mrs. Kerr and Mrs. Herrin in the third and fifth grades for the second semester. Mrs. Kerr and Mrs. Herrin have volunteered to teach the new remedial reading course that is being started in Anton for the students that are having trouble reading.

Miss Linda Sue Lewis will teach the third grade. She is a graduate from Big Spring High School, Howard County Junior College and Texas Tech. She taught last summer in Project Head Start in Big Spring. Last fall she did her student teaching at Wheelock Elementary School in Lubbock.

Calendar of Events

- THURSDAY
 - 8 a.m. Ladies Bible Class at Crescent Park Church of Christ
 - 10 a.m. Optimist Club meets at Crescent House Restaurant
 - 10 a.m. Rotary Club meets at Community Center
 - 11 a.m. Rocky Ford HD Club meets in home of Mrs. James Feagley
 - 1 p.m. Rainbow Girls meet in Masonic Hall
 - 2 p.m. Chamber of Commerce Banquet at Senior High School
 - 4 p.m. Forum Club meets in home of Mrs. W.D. Smith
- FRIDAY
 - 7 p.m. Congregational Chili Supper at Emmanuel Lutheran
 - 8 p.m. Girl Scout Dad-Daughter Pie Supper at Junior High Cafeteria
- SATURDAY
 - 8 a.m. Catechism Class at St. Martin Lutheran
 - 10 a.m. Pep Homecoming

Food Finds for THRIFTY SHOPPERS

Shurfine
FLOUR 79¢
10 lb

Holly
SUGAR 49¢
5 lb

Shurfine
COFFEE 69¢
Drip Or Reg lb

HANDI ORANGE
DRINK 33¢
1/2 Gal

Shurfine Peach
PRESERVES 35¢
18oz

Wolf
CHILE 59¢
No 2 Can

Shurfresh
CRACKERS 19¢
lb

Rayette
AQUA NET 59¢
14 Oz

NABISCO THINS
TRIANGLE 43¢
9 1/2 OZ

SHURFRESH CORN OIL
MARGARINE 37¢
LB

REYNOLD
FOIL 37¢
25 FT

BAKE RITE
SHORTENING 79¢
NO 3 CAN

SHURFRESH
VEGETABLE OIL 49¢

SHURFINE
TEA 35¢
1/4 LB

SHURFINE
SPAGHETTI 2/27¢
7 OZ

SHURFINE
SLICED BEETS 17¢
NO 303 CAN

SUGARINE 63¢
4 OZ



Fresh PRODUCE

CENTRAL AMERICAN
Bananas 12 1/2¢
LB

FUERTE
Avocados 12 1/2¢
EACH

RUBY RED
Grapefruit 39¢
5 LB BAG

WAXED
Rutabagas 7 1/2¢
LB

EAST TEXAS SWEET
Potatoes 10¢
LB

LOOKING FOR TENDER STEAKS
DELICIOUS ROASTS?

CLUB
STEAK 79¢
PINKNEY COUNTRY STYLE

SAUSAGE 179¢
4 LB

CHOICE CHUCK ROAST 63¢
lb

FIRST CUTS
PORK CHOPS 69¢
lb

WISCONSIN
RED SKIN CHEESE 79¢
lb

FRESH GROUND
HAMBURGER 3 lb \$1

WE GIVE
GUNN
BROS.
STAMPS
DOUBLE
ON
WED.

3RD & XIT DRIVE
PIONEER
SUPER MARKET

AMHERST NEWS

Rev. Quick Conducts Study Course At Hart Camp Church

Rev. Raymond Quick is at the Hart Camp Baptist Church each evening this week for a study course on the Gospel of John. The study began Tuesday and will continue through Friday evening.

Dr. and Mrs. John Kantor named their son Theodore Lee. He weighed 10 pounds at birth on January 18. They have two older sons and a daughter.

Mr. and Mrs. Jim Humphreys Jimmy and Susie visited her sister, Mrs. Paul Cartright and family in Brownfield Saturday.

Mr. and Mrs. Dean Chisholm and Mr. and Mrs. Jimmy Hixon of Lubbock visited Mrs. Chisholm's parents, Mr. and Mrs. Leon Jardwick during the weekend.

Mr. and Mrs. Jack Durham Jr. have named their daughter Dana Lynn. She was born in the Littlefield Hospital January 17 weighing six pounds.

Grandparents are the Loy A. Mousers of Spade and the Jack Durham Sr.

Among those attending the funeral services in Bovina Thursday afternoon for Frank Wilson, father of Mrs. Don Carter, were Mr. and Mrs. Claud Cook, Mr. and Mrs. Raymond Hanns, Mr. and Mrs. Jon Cornelius and Mmes. Charles Nixon, Glynn Brandstatt, Murrell Sawyer, Bill Bradley, J.P. Brantley, John Humphreys, Bennie Harmon, A.J. Mote, Alfred Schroeder, Bennie Shipley, Laverne Nicholson, Vic Reynolds and Rev. Raymond Quick.

Judy Bowman was home from W.T.S.U. for a between semester visit with her parents, Mr. and Mrs. Carlton Bowman.

Mrs. Paul Nelson and daughters of Irving are spending a few days this week with her parents, Mr. and Mrs. W.E. McDaniel. Her husband was on a special assignment in Cape Kennedy, Fla. for his company, Mr. and Mrs. McDaniel met them in Snyder Sunday.

Mr. and Mrs. Hunter Skaggs of Colorado Springs and their daughter of Denver were here with Mrs. Skaggs' parents, Mr. and Mrs. Ben Fisher. Mr. Fisher is a patient in the local hospital.

Jack Bradley of Hereford was here for a visit Monday with his parents, Mr. and Mrs. J.H. Bradley.

Members of the Amherst Study Club are to meet in the school library at 3:45 p.m. Monday Jan. 31 to make reports for the district conference to be held in Brownfield.

Mrs. Pearl Lanier accompanied her daughter, Mrs. J.C. Franks and family to Vernon and Chillicothe last Wednesday for the funeral services of Mr. Fred Tooley.

David Shockley Speaks At Meet

ANTON -- The National Honor Society recently heard David Shockley speak on his tour of duty with the U.S. Department of State in Liberia, Africa and the guided tour he took through the Middle East and North Africa in October.

Of particular interest were the slides he showed of the native life in Liberia, Egypt, Saudi Arabia, and Jordan. He visited Cairo, Egypt and the Holy Land, including Jerusalem, the Jordan River and the Dead Sea.

Lions Club Sees Film On Viet Nam

Lion Boss Pervadus Wade presided for the Thursday evening meeting of the Whitharral Lions Club. Buck Bryant led the group in singing. E.E. Fair led the pledge of allegiance to the flag. A film on "Why Viet Nam?" was shown.

The club agreed to assist the Young Farmers with a Donkey Ballgame, the date to be set later and to help the F.F.A. and 4-H boys with the coming Fat Stock Show.

Clifford Throckmorton extended an invitation to the Lions and their families for family night at his home on March 17.

H.G. Walden gave the invocation before the meal of barbecued ribs, pinto beans, potato salad, peach pie, coffee and tea prepared by Mrs. John Waters and Mrs. J.D. Waters.

Present were Clinton Fagan, Pervadus Wade, H.G. Walden,

Mr. and Mrs. Gerald Coffey and family attended the wedding of his niece, Mary Lee Coffey at the First Baptist Church in Farwell Sunday afternoon.

Rev. Raymond Quick and Larry Branscum attended an Associational Worker's Conference held at the Calvary Baptist Church Monday night in Friona.

Mrs. Ralph Kammerlohr of Abilene is visiting her daughter, Mrs. John Kantor and family.

Shockley discussed at length and showed slides of the Hidden City of Petra, Athens, Greece, the Swiss Alps and Germany.

This program was part of a series to be provided for members of the National Honor Society to help them appreciate and better understand ancient and modern cultures.

Larry Crews, president, conducted the business meeting. Plans were made for the next initiation which will be held January 31.

Louis McCormack, E.E. Pair, C.E. Throckmorton, Ralph Wade, Ervin Sadler, Don Redding, John Williams, R.H. Bryant, Marion Polk and George Wade Jr.

Re-Elected As Director

Ronnie Onstead of Onstead's Furniture of Littlefield, has been re-elected a director of the Southwest Associated Furniture Buyer's, Inc.

Mr. Onstead was elected recently at the annual meeting of stockholders of the organization in Dallas.

Mr. Onstead said that sixteen new members joined the group in 1965 and its members reported that the group had had its best sales year in history.

Rites Tuesday For Mrs. Morris

Mrs. Jodie Foster Morris, 77, a native of Site Springs, Tex., and for 25 years a resident of Earth, died Sunday at the Community Hospital in Olton after a lengthy illness.

A retired telephone operator, Mrs. Morris was in the telephone business 30 years. She and her husband, the late Madison Monroe (Matt) Morris, had the first telephone exchange in the Idalou area.

Mrs. Morris was a member of the Methodist Church 70 years.

Funeral services were Tuesday at the First Methodist Church in Earth with the Rev. Albert Lindley, pastor, officiating. Rev. Cecil Hardaway of Olton assisted. Burial was in Earth Cemetery under direction of Parsons Funeral Home.

Survivors include two daughters, Mrs. E.C. Hudson, Earth; Mrs. Joe Chester, Olton; a twin sister, Mrs. Willard E. Trembel, Indianapolis, Ind.; seven grandchildren and eight great-grandchildren.

Pallbearers were John Welch, Pody Welch, L.G. Henderson, M.E. Kelly, Johnny Haberer, Clarence Hamilton, Lester Thompson and D.M. Holt.

Mrs. Mouser's Rites Conducted

Funeral services for Mrs. Mary Alice Mouser, 68, longtime resident of the Spade community, were conducted at the Spade Baptist Church Saturday at 2 p.m. The pastor, Rev. C.K. Tate, officiated.

Burial was in Littlefield Memorial Park under direction of Hammons Funeral Home.

Born in Tucker, Okla., September 18, 1897, Mrs. Mouser and her husband, B.D., moved on a farm southwest of Spade. Her husband died in March, 1964. Mrs. Mouser was a member of the Spade Baptist Church. All eight of their children graduated from Spade High School.

Mrs. Mouser's body was found in the wreckage of a car about noon Wednesday. The one-car mishap occurred Tuesday between Littlefield and Spade.

Survivors include five sons, Neal and Enslie, both of Irving; Leonard, Midland; Lester, Lubbock; and Donald, Odessa; three daughters, Mrs. Elaine Troc, Chicago, Ill.; Mrs. Edith Coomer and Mrs. Elsie Poindecker, both of Dallas; one brother, Rufus Robnett, Antlers, Okla.; two sisters, Mrs. Anna Madden, Antlers, Okla.; and Mrs. Millie Reagan, Hominy, Okla.; and 23 grandchildren.

Pallbearers were Preston Pointer, J.R. Hodges, Leon Leonard, W.B. Jones, Travis Hopper and O.L. Tomlinson.

Former Resident Dies In Dallas

Frank Gregory Allverson, 60, father of Mrs. Ellen Powell of Littlefield, died at 10:50 a.m. in the Oak Cliff Medical and Surgical Clinic in Dallas January 19.

Funeral services were held Saturday in the Dudley M. Hughes Funeral Chapel, Dallas, with the Rev. Jeff Pritchard of the Clarendon Drive Baptist Church, officiating. Interment was in Oak Wood Cemetery in Corsicana.

A former resident of Littlefield, Allverson had been in ill health for the past year.

Other survivors include his wife, Emma; two sons, Tommy C. and Loyd A., both of the United States Marines and both stationed in the far East; one granddaughter, two sisters, Mrs. W.C. Kessler and Mrs. T.J. Adkinson, both of Houston; one niece and six nephews.

The nephews were pallbearers.

Hooper Services Held At Olton

Funeral services for Roy Hooper, 61, were conducted at 2:30 p.m. Sunday in the First Baptist Church of Olton. The Rev. John B. Lewis pastor, officiated.

Burial was in Halfway Cemetery under direction of Parsons' Funeral Home, Olton.

A resident of Olton for eight years, Hooper died Friday in the Plainview Hospital. He was a farmer and a stockman. He was born August 31, 1904 in Hale County and was married to Ollie Smith April 24, 1926, in Plainview. He was a member of the Olton Baptist Church.

Survivors are his wife, Ollie; a daughter, Mrs. Doug Menden, Wichita Falls; one son, Richard R. Austin; three brothers, Chester, Plainview; R.L. Jr. and Sidney, Tulsa; three sisters, Mrs. Clayton Luellen, Plainview; Mrs. J. Tom Holland, Pasadena, Calif., and Mrs. Frank Fortenberry, Albuquerque, N.M.; and one grandson, Ricky Menden, Wichita Falls.

Pallbearers were Aubrey Oursburn, W.B. Dickerson, Fred Long, Henry Aigaki, Virgil King and Joe Edd Carson.

OLTON NEWS BY MRS. W.B. SMITH JR.

Book Reviewed At Olton Study Club

The Olton Study Club met Monday night for a book review. Guest reviewer Mrs. C.S. Silcott reviewed "Serendipity," by J. Wallace Hamilton.

Mrs. Roye Aikman presided over the business meeting. The next regular meeting of the club will be February 7 in the home of Mrs. Barton Prestridge.

Mrs. Straw served refreshments to the following members, Mmes. Aikman, Brent Burrow, Paul Burrus, H.B. Car-

son, J.L. Carson Jr., Frank Cornelius, J.E. Fuller, Bailey Hair, Barton Prestridge, Basil Sherman, Truett Sides, Marshall Stone, Bill Yates and two guests, Silcott and Jim Hyatt.

Charley Reynolds, a former Olton pioneer, now a resident of Brownwood, visited friends here recently.

Bob Allford, who underwent surgery at the Hospital in Canyon, is now able to return to his teaching position in Olton Public Schools.

Mr. and Mrs. John Lambright visited in the home of Mr. and Mrs. Ray Montgomery at Lubbock one day last week.

James Cowart is receiving treatment at Methodist Hospital in Lubbock. He fell recently while working on his cotton stripper at his farm home. He is suffering with a fractured skull, crushed heel and fractured ankle.

Mrs. A.D. Malton underwent surgery at Methodist Hospital in Lubbock Monday morning.

Charley Jones is receiving treatment at Hi-Plains Hospital in Hale Center.

Lubbock County Judge Rod Shaw, 42, has announced that he would be a candidate for a full four-year term in office in the May Democratic primary balloting.

Shaw, a longtime Lubbock attorney before taking the Judge's post, was reared on a farm near Olton and is a graduate of Olton High School and was graduated from Texas Tech with high honors.

He served 2 1/2 years in the U.S. Navy as a flier during World War II and was graduated from Southern Methodist University law school.

Ernest Ragle, son of Mr. and Mrs. J.A. Ragle, former Olton resident, has announced as a candidate for the office of District Clerk for Hale County in Plainview. Ragle is a World War

II veteran.

In November, 1941, Ragle was married to Miss Mae Moore, a fellow teacher at Olton. Mrs. Wars and of the American Legion, of which he is a vice officer.

Mrs. Robert Nelson went major surgery at West Texas Hospital last week. Mr. and Mrs. Parker and Mr. and Mrs. Smith Jr. visited with the hospital recently.

Bookmobile To Be In County

A visit by the Texas State Library High Plains Bookmobile will be made this week to Lamb County towns.

On Friday, January 28, the Bookmobile will be at Lums Chapel from 10 to 10:45 a.m. It will then visit three communities Friday afternoon, being in Spade from noon to 1:30; then at Hart Camp from 1:45 to 2:30 p.m. and the Library will be at Fieldton from 2:45 to 3:30 Friday afternoon.

Saturday the Library will be at Olton from 9:15 to 11:45 in the morning and will be available to Littlefield residents from 1:15 to 4 p.m. Saturday afternoon.

THREE TOED PE

was elected one of your county officials



DON'T let this happen

Pay Your Poll Tax Before January 31st

PAID FOR BY YOUNG DEMOCRATS LAMB COUNTY

Looking For Linoleum ? See **HILL ROGERS**



When we go skiing, we go in style...in our '66 Ford. I choose the speed I want with the automatic speed control...select the music I want with the stereo tape player...and relax with one of the world's quietest rides.



Ford sales are booming! One reason—engineering magic like this: New stereo tape player option with easy-loading cartridges. ■ New station wagon Magic Door—swings out like a door for people and down like a tailgate for cargo. ■ New automatic speed control option. ■ A ride so quiet that owners of European luxury cars—from a handcrafted Jaguar to a \$14,000 Mercedes—have said, after a demonstration ride in a Ford XL or LTD, that it was even quieter than their custom-built cars. ■ Quiet-test a '66 Ford for yourself.

★ SAVE NOW with the new excise tax cut...SAVE NOW with Ford Dealer White Sale specials!

MITCHELL - FORD, INC. 525-529 PHELPS AVE. LITTLEFIELD, TEXAS

FANCY DELICIOUS

APPLES 4 ^{16.} BAG 29¢

FRESH GREEN ONIONS 6 Bchs. 25¢

RUBY RED GRAPEFRUIT 20 ^{16.} BAG \$1.00

LARGE HEADS LETTUCE HEAD 25¢

EGGS 3 DOZ 1.29

RED GRAPES PER LB 9¢

SAUSAGE TASTY WHOLE HOG 2 LB. BAG 79¢

CITY FRUIT MARKET BILL AND BETTY SMITH

LITTLEFIELD

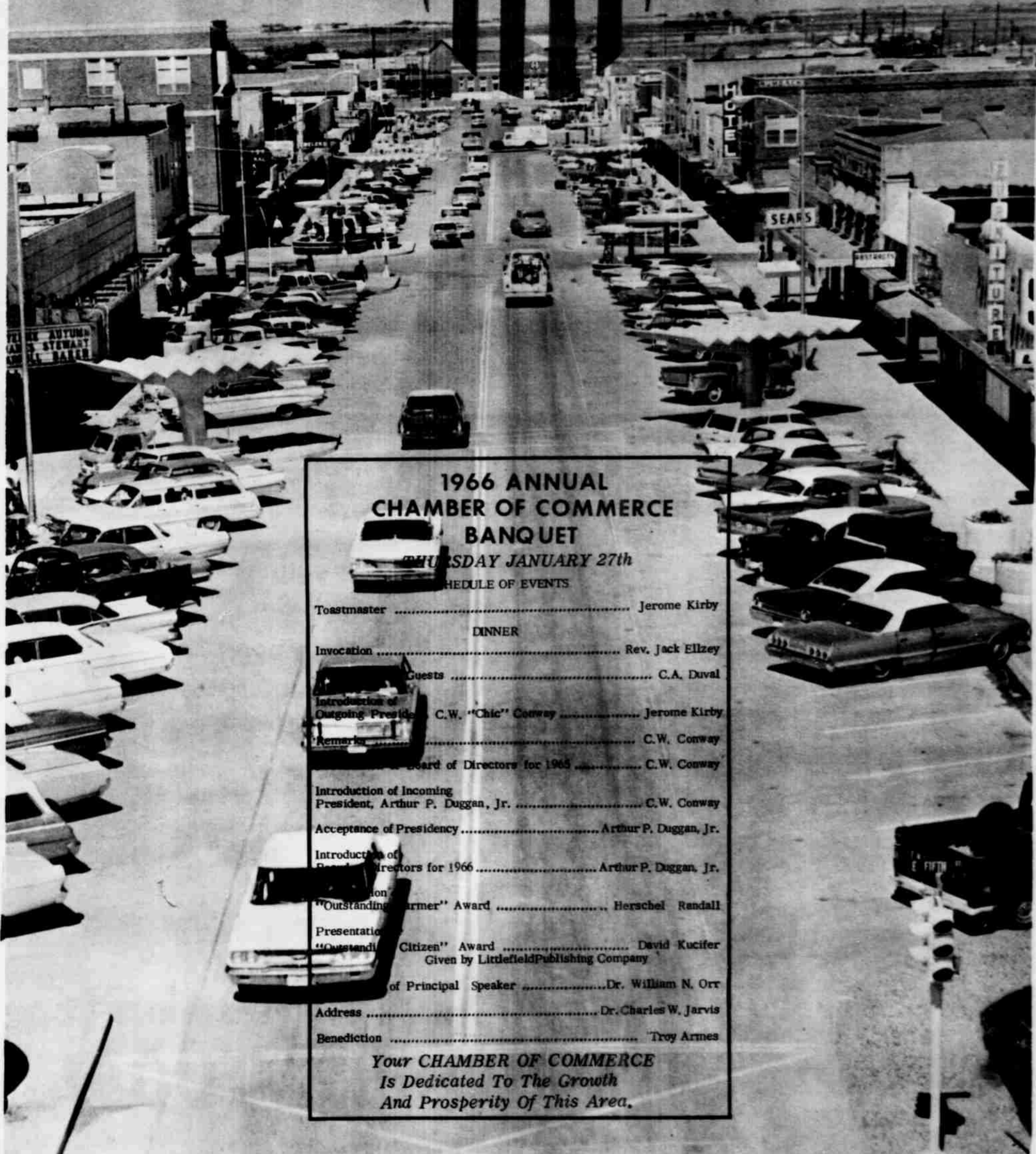
TEXAS' ONLY

1965

THE LAMB COUNTY LEADER
THURSDAY JANUARY 27, 1966



**ALL AMERICAN CITY
FINALIST**



**1966 ANNUAL
CHAMBER OF COMMERCE
BANQUET**

THURSDAY JANUARY 27th

SCHEDULE OF EVENTS

- Toastmaster Jerome Kirby
- DINNER**
- Invocation Rev. Jack Ellzey
- Guests C.A. Duval
- Introduction of
Outgoing President C.W. "Chic" Conway Jerome Kirby
- Remarks C.W. Conway
- Introduction of Board of Directors for 1965 C.W. Conway
- Introduction of Incoming
President, Arthur P. Duggan, Jr. C.W. Conway
- Acceptance of Presidency Arthur P. Duggan, Jr.
- Introduction of
Board of Directors for 1966 Arthur P. Duggan, Jr.
- Presentation of
"Outstanding Farmer" Award Herschel Randall
- Presentation of
"Outstanding Citizen" Award David Kucifer
Given by Littlefield Publishing Company
- Introduction of
Principal Speaker Dr. William N. Orr
- Address Dr. Charles W. Jarvis
- Benediction Troy Arnes

*Your CHAMBER OF COMMERCE
Is Dedicated To The Growth
And Prosperity Of This Area.*

FOR AN
**ACTIVE-PROGRESSIVE
COMMUNITY**
IT TAKES TWO
YOUR CHAMBER
AND YOU

*We're proud
of our part
in community
progress!*

CONGRATULATIONS
TO THE
LITTLEFIELD
CHAMBER OF COMMERCE

And To Each Member
Who Has Worked To
Make Our Progress
Steady And Healthy.

Work Together In 1966
For A Better Community

Ware's

28th Year Of Progress Marked

The Littlefield Chamber of Commerce is in its 28th year as an official organization having gotten its charter from the Texas Secretary of State on August 20, 1938, but an organization called the Chamber of Commerce was formed here as early as 1924.

The request for the official charter was made to the state

on August 17 with the request being signed by the nine members of the Board of Directors which included E.O. McIver, J.H. Ware, J.C. Hilbun, J.S. Hilliard, J.W. Keithley, J.O. Garlington, L.C. Hewitt, Viggo Peterson and Lester Walters.

The request included a paragraph outlining the purpose of the Chamber which stated

"To organize a chamber of commerce, with power to provide and maintain suitable rooms for the conduct of its business, and to establish and maintain uniformity in the commercial usages of cities and towns, to acquire, preserve and disseminate valuable business information, and generally to promote the interest of trade and increase the facilities of commercial transactions in accordance with Section 53, Article 1309, of the Revised Civil Statutes of the State of Texas."

The charter which is good for 50 years from the date was given number 73480 by the Secretary of State when he approved the request which also stated that the corporation would be a non-profit organization with no capital stock; and that the value of the goods, chattels, lands, rights and credits owned by the corporation was \$250.

Though the Chamber did not receive its charter until 1938 an organization known as the Chamber of Commerce had been active for many years preceding 1938 as long time residents of the city remember that an organization similar to the Chamber of Commerce was originally formed here in 1924.

One resident reported that as secretary for the Chamber over 30 years ago she had received the salary of \$5 per week.

In 1938 at approximately the time the Chamber of Commerce received their charter, the Chamber held monthly luncheons and at the luncheon held in August 1938, 35 members attended and the primary subject discussed was the paving of Littlefield streets.

The Chamber in the past twenty eight years has grown until at the present time there are more than 200 members of the Chamber.

Industrial Committee Study Presented To Prospects

As one of the six committees under the Business Development Division of the Chamber, the Industrial Committee with Mancil Hall as chairman has completed a detailed study of geographic and economic facts that would affect the location of industry in the Littlefield area.

The committee was organized so that the facts could be presented to industrial prospects in an attractive and complete form.

With the cooperation of General Telephone Company and the Texas Employment Commission of the area was conducted and

showed that 2,349 persons are available for employment in industry.

The committee has also investigated and screened numerous sources for industrial prospects. Contacts were made and detailed information was sent to 16 desirable prospects, and negotiations are still underway with several of these prospects.

The Industrial Committee also cooperated with the Key-To-Progress celebration and organized and were responsible for the Industrial Day held during the three day celebration.

Airport Study Conducted By Chamber Committee

The Aviation Committee of the Chamber, with Werner Birkelbach as chairman has completed a detailed study of the repairs and improvements necessary to bring the Littlefield airport up to minimum requirements for general aviation.

The report was submitted to the Chamber Board of Directors with the committee stressing the importance of an adequate airport to industrial growth.

With many concerns now having their own plane or planes the importance of their being able to base planes or land at the airport was stressed.

The board accepted the report and pledged the support of the Chamber of Commerce and a further study is now being conducted as to how the necessary repairs and improvements can be financed.

Progress 1965



AS

THE RESULT OF AN ACTIVE CHAMBER OF COMMERCE

We Pledge Our Support And
Efforts To The Advancement
Of The Littlefield Area

KZZN

1490

LAMB COUNTY ONLY RADIO STATION

COMMUNITY PROGRESS

depends upon contributions
from every segment
of the population

We are all a part of this nation's progress . . .

what each of us is accomplishing now and hopes to

accomplish in the future makes up the picture of progress

that we present to the rest of the world. Make

your part count by doing your best on the job . . .

in the factory, the field, the office, or the home.

AND

SUPPORT IN YOUR CHAMBER OF COMMERCE FOUST FOOD

601 East 10th



THE HONOR ROLL OF UNITY

THESE INDIVIDUALS AND FIRMS ARE JOINED IN A UNITED EFFORT DEDICATED TO THE GROWTH AND PROSPERITY OF THEIR COMMUNITY

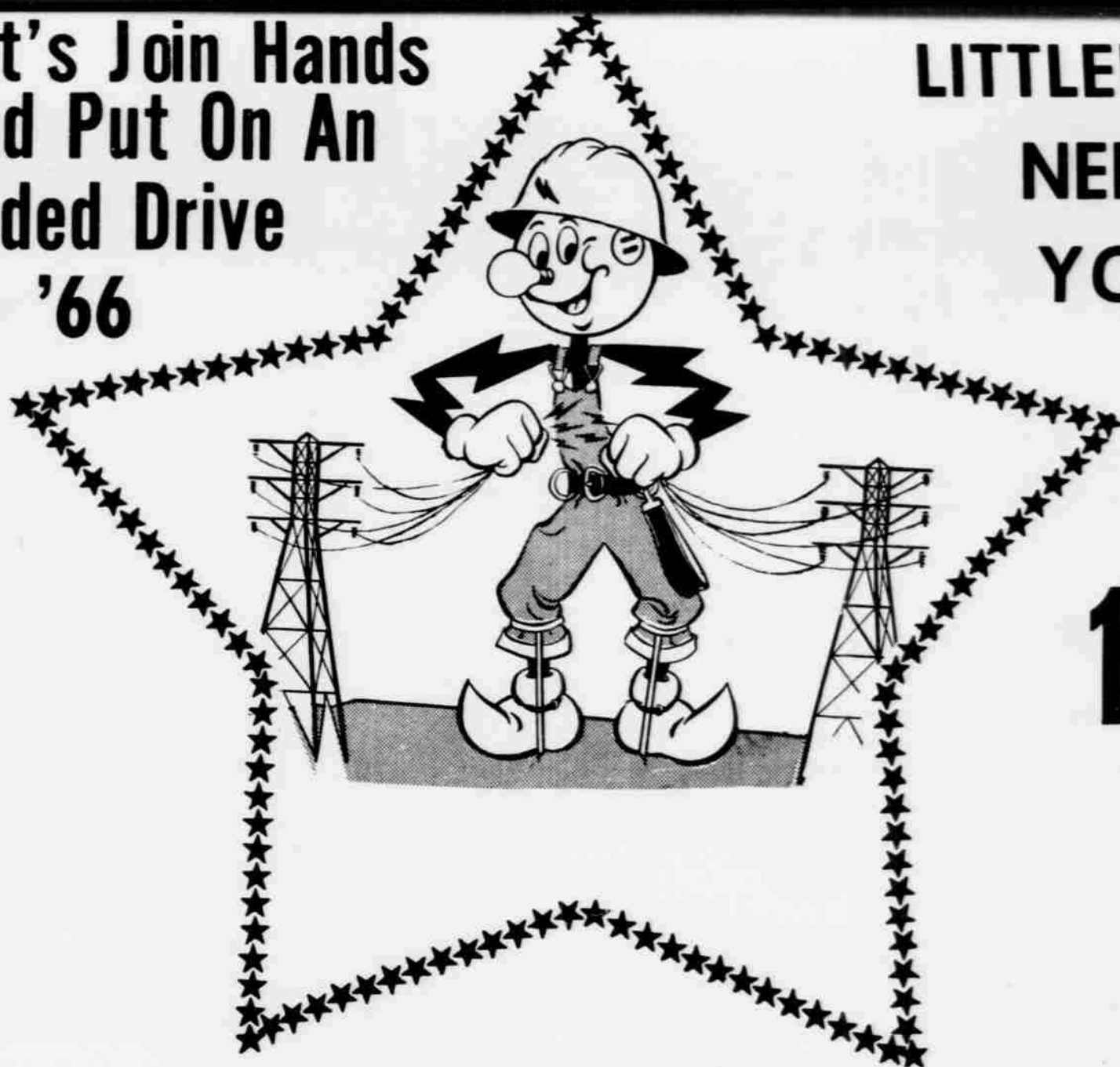
THIS IS YOUR CHAMBER OF COMMERCE

A & B Office Supply
C.R. Anthony Co.
Armes Chev.
Armistead & Burk Optometrists
AT&SF, Railroad
Donald R. Avery
B & C Pump Co.
Bawcom Butane Co.
Bell Dairy Products
Ben Franklin Store
Bennett's Firestone Store
Bigham's Furniture
Birkelback Machine Co.
Pat Boone, Jr.
Brittain Pharmacy
Brown & Harrell Implement Co.
Brown Supply
Byers Feed and Seed
C & O Cleaners
Chisholm Floral
Campbell's Plumbing
Jack Christian Texaco, Inc.
Van Clark
Connell Office Supply
Cox Tin & Plumbing
James Copeland
Coca Cola Bottling Co.
Crescent House Restaurant
Crescent Park Motel
Lloyd Crosby
Culligan Soft Water Serv.
Custom Frame Shop
Dairy Queen
Jim Davidson
Davis Concrete
J.B. Davis
Arthur P. Duggan, Jr.
Dairy Mart
Rev. Jack Ellzey
Farley Sales
Farmer's Grain Co.
Federal Land Bank Association
51 Auto Salvage
Findley's Jewelry
The First National Bank
Fishers Restaurant
Jack Fore
Ellis Foust, Sr.
Foust Grocery
Fullton Radiator Shop
Furr's
G & C Auto Supply
Garland Motor Co.
General Telephone Company
Cephas Glover
Gregg's Upholstry Shop
C.O. (Clint) Griffin
Grimes Auto Salvage
Grissom Gulf Products
Gunn Brothers Stamp Center
Edwin Hall
J.R. (Billy) Hall
Hall Investment Co.

W.W. Hall
Hammons Funeral Home
Hanlin Auto Parts
Cal Harvey Refrigeration Ser.
Chester Harvey
Don Hayes
Hazel's Beauty Shop
Kenneth Heard
Hubert Henry
Higginbotham Bartlett Lumber Co.
Rev. John Hill
Sid Hopping
Paul Hyatt
Paul Jensen
Elmo Jones
J.L. Jones Whsl. Conoco
Jones Motor Co.
Keithly & Co. Ins.
Bill Kimbrough
Radio Station KZZN
Jerome Kirby
Kelly Insurance Agency
Ray Keeling Buick
Lamb County Abstract
Lamb County Electric Co-op
Lang Transit
Littlefield Beauty Salon
Littlefield Butane
Littlefield Cleaners
Littlefield Development Co.
Littlefield Farmers Co-op Gin
Lfd. Federal Savings & Loan
Littlefield Glass Works
Littlefield Grain Co.
Littlefield Hospital
Littlefield Motor Parts
Littlefield Publishing
Littlefield Seed & Delinting
Littlefield Steam Laundry
Littles
Lowe & Co.
Luce & Nelson
Lumsden Gin Company
Billy L. Lynch
Maner Flying Serv.
Mangum-Hilbun Agency
Massengale Radiator Shop
Medical Arts Clinic-Hospital
Merlin's Food
Mitchell-Ford, Inc.
Mode-O-Day
Montgomery Ward Co.
Joe Montgomery
McAnally Jewelry
Rhenard McCary
McCormick Service Station
McCoy Machine & Pump
John Nail Studio
Nelson's Hardware
Nipak
Norma's Dress Shop
Onstead Furniture Co.
William N. Orr DDS

Palace Theatre
Pat's Record Center
Paymaster Oil Mill Co.
J.C. Penney Company
Clint Penn
Perry Brothers
Piggly Wiggly
Pioneer Natural Gas
Pioneer Super Market
Plains Real Estate
Plainview Production Credit Assn.
Pratt Jewelry
Prescription Shop
R & W Supply Co.
Reast Oil Company
Renfro Bros. Grocery
Retail Merchants Assn.
Richey's, Inc.
Roberts Lumber Co.
Roberts Lumber Co.
Olley Robbins
Robnett-Barton Farms, Inc.
Roden Rexall Drug
E.C. Rodgers Furniture
Hill Rogers Furniture
Rove Abstract Co.
S & J Service Parts
Sears, Roebuck & Co.
Security State Bank
Pete Shipley
Dr. James E. Shotwell
Skipper Smith
R.M. Smith
Southwestern Invest. Co.
Southwestern Public Serv.
J.M. Stokes
Sumrall Pont. Co.
Tasty Cream
Texan Motel
Thornton's Cafeteria
Tide Products
Tommy's Electronics
Union Compress & Warehouse
Virgies Beauty Bar
Vogue Cleaners
Judd Walker Insurance Agency
Amos Ward's Dept. Store
Ward Pump Co.
Ware's, Inc.
Jack Wattenbarger
Jack Weaver Bakery
Alvin C. Webb
West Drug & Pharmacy
Western Auto Store
White's Auto Store
Wilemon Wholesale Oil
Curtis R. Wilkinson
Winston Insurance Co.
Jack Wicker
Wright Drug
Zoth Mobile Serv. Sta.

Let's Join Hands
And Put On An
Added Drive
In '66



LITTLEFIELD
NEEDS
YOU!

in...

1966

It's Up To You!

With the aggressive new program of work
recommended by your CHAMBER OF
COMMERCE, We can see a new birth of
progress for our community.....



Your Support

.....for the new officers, directors and
committees as they work to carry out
the *Blueprint for Progress in 1966* is
all that is needed to assure success!
We urge all citizens to join us in the
continued support of our CHAMBER
OF COMMERCE during this year.



The
ELECTRIC
Company



WE SELL BY THE GENERATION...AFTER GENERATION...AFTER GENERATION

Every once in a while we sell a new Chevrolet to a young man whose father bought a Chevrolet from us. We consider it quite a compliment. As the saying goes, "Like father, like son." So we figure if the father liked us, chances are, the son will too. Selling to generations is especially gratifying. So, we take extra measures to see that each of our customers is satisfied with his dealings at our dealership. Maybe someday his son will be in for his first new Chevrolet. Why don't you stop in soon? You might start something that'll run in your family for many years to come.

Your Chamber Needs You!

THE LITTLEFIELD CHAMBER OF COMMERCE

NEEDS THE SUPPORT OF EVERY ONE. WE

PLEDGE OUR SUPPORT AGAIN IN 1966

**LET'S WORK
TOGETHER
FOR
PROGRESS**

ARMES CHEVROLET

See the new '66 Chevrolet, Chevelle, Chevy II, Corvair and Corvette



Farmers - Businessmen Dinners Sponsored By Ag Division

The Agriculture Division of the Chamber of Commerce, with Bill Kimbrough as chairman, sponsored two Farmer-Businessmen dinners during the past year.

The two, one in the Pep community and the other in the Rocky Ford community were attended by over 700 Littlefield businessmen.

The Agriculture Division as-

isted in the Key-To-Progress celebration and organized and planned the Agricultural Day held during the three day celebration.

They also cooperated with the Lamb County Jr. Livestock Show by encouraging buyers to be present and to purchase animals at the sale held at the conclusion of the stock show.

The committee assisted in the plans for a soil fertility day.

Publicity Comittee Works Opening

The Publicity committee helped secure local, state and national publicity for the Downtown Park 'N Shop project and the three day Key-To-Progress Celebration held in September.

The committee was also responsible for the gathering of information and photographs used in the preparation of a brochure to publicize Littlefield.

Three Committees In Organization Division

One of the main divisions of the Littlefield Chamber of Commerce is the Organization Improvement Division which is headed by vice-president H.A. Mitchell.

Three committees are under the division which is responsible for the operation of the Chamber office, membership and budget and finance.

During the last year new policies were drawn up for the operation of the Chamber office by the By-Laws committee headed by attorney Jerry Kirby while the membership committee with chairman Dave Kucifer gained 18 new members for the Chamber.

The Chamber also received encouraging news from chairman Alvin Webb of the Budget and Finance committee when the statement of income and expenses for the year showed a small profit.

Transportation Study Conducted

A detailed study of truck freight time from Littlefield to major cities in the United States was made by the Transportation Committee of the Chamber during the past year. The information secured was then made available to the Industrial Committee for their use in contacting potential industry.

Under the chairmanship of Ray Keeling, the committee also made studies of needed improvements of highways passing through Littlefield. The committee also, in co-operation with city officials and other interested citizens met with representatives of the Texas Highway Department in an attempt to secure an overpass at the intersection of State Highway 54 and US Highway 84 By-pass.

Better Business Committee Works On Bad Checks

The Better Business Committee with E.J. Foust Jr. as chairman held meetings this last year with the primary discussions and studies being made on bad checks accepted by the Littlefield merchants.

By-Laws Comm. Draw Up Policies

With Attorney Jerry Kirby as chairman the By-Laws Committee drew up new policies pertaining to the operation of the Chamber office.

The Board of Directors adopted the policies as presented by the committee.



Key-To-Progress Celebration Schools Set By Committee Has Busy Year Education Comm.

The Key-To-Progress Celebration committee, with Dr. Bill Armistead as chairman was one of the busiest of the Chamber committees during the past year as it was responsible for the planning, promoting and coordinating of the three day Key-To-Progress celebration.

The celebration which featured the opening of the Park 'N Shop project included one day in recognition of agriculture, one day in recognition of industry and one day in recognition of

government. Over 200 people planned and directed the various activities that were participated in by almost everyone in Littlefield, in addition to many people from over the state and nation.

During and since the celebration the Chamber of Commerce has entertained delegates from 26 cities looking at the project. In addition the Chamber office has answered inquiries about the project from 65 cities,

During the past year, through the encouragement of the Business Education committee of the Chamber, several businessmen participated in a Business Education School conducted in Levelland.

Arrangements have also been made by the committee, which is headed by Charlie Dival, for the Texas Education Agency to offer a course entitled "Dynamics in Selling" to the businessmen of Littlefield. The course will be held here the week of May 23, 1966.

Membership Up During Year

The Membership Committee of the Chamber, with Dave Kucifer as chairman secured 18 new members for the Chamber during 1965.

Though several resigned due to various reasons the membership showed a net gain for the year and a concentrated membership drive is scheduled for the coming year.

PROGRESS

*We Are Entering 1966 With Great
Confidence . . . Confidence In OUR
CHAMBER OF COMMERCE And
Confidence The Constant Cooperation
And Efforts Of All Members Will
Carry Our Community To Even Greater
Progress And Achievement In The Future*



Lowest Prices . . . Greatest Variety . . . always at . . .

Piggly Wiggly

THE SECRET OF SUCCESS

The secret of success of a Chamber of Commerce is really no secret at all. It is ACTION! An inactive Chamber of Commerce with no vision will soon die on the vine and the community will die along with it. Conversely, a Chamber of Commerce with vision, imagination and the ability to translate that vision and imagination into action will grow and prosper and the community will grow and prosper with it.

Too often, the Chamber of Commerce falls into the rut of complacency. This generally happens when just a handful of the members actually participate in the organization's program of work. In many cases, an officer or committee chairman will think that it would be easier to do the work himself than to have to delegate chores to someone else. Actually, a person is doing a disservice to the chamber when he does this. If we do not continually bring more people into the actual work of the chamber, soon there is no new leadership and the old leadership is tired. Then, deterioration sets in and there is no chamber.

We think the chamber is a most important part of the community. It is not just a business man's club or fraternal organization. The Chamber of Commerce is a vehicle whereby all the business and professional men plus all the citizens can work together for the overall betterment of the community. Every person in Littlefield, whether or not he is a member of the organization, has a stake in the Littlefield Chamber of Commerce. If this community is to grow and prosper then we must have new payrolls. The acquisition of these payrolls is one of the main projects of the chamber but it affects every citizen in the community. Therefore, it is just good business to make the Littlefield Chamber of Commerce a

community organization with community support. Every extra dollar that is spent in Littlefield or comes to Littlefield in the form of payrolls, means more money for Littlefield businesses and more opportunity for extra earning power for all our citizens. So, we believe that the chamber instead of an exclusive organization is really an inclusive organization.

We challenge the officers, directors and members of the Littlefield Chamber of Commerce to put forth a fair share of effort during the coming year. It is sheer folly to hand one man, despite his talent and ability, fifteen committee assignments. There are enough members of the chamber to give the work load a wide base so as not to be an undue burden on any one individual or group of individuals. Our economy is going through a critical period in this area. It behooves all of us to put our collective shoulders to the wheel and build an even stronger area than we already have.

We are proud of the Littlefield Chamber of Commerce. We think its accomplishments of recent years speak for themselves. We are looking forward to a brighter future for our entire area. If we shall all concentrate a portion of our efforts as working members in the chamber in 1966, we can see this brighter future come into fruition.

THE LITTLEFIELD STORY

An Adventure

In Excitement ...A Study Of Faith

Imagination ... Determination

The story of people.....of the years when the mortar of dreams, hopes and ambitions was being modeled to the image of progress and beauty. This is the story of LITTLEFIELD today: Bright star on the West Texas skyline, the home of economic stability, spiritual growth, cultural vitality. The First National Bank of Littlefield is confident that only the preface of the fabulous LITTLEFIELD STORY has been written: The real excitement, the realization of our town's real potential, are yet to come.....and through collective efforts of our citizenry and the planned determination of our CHAMBER OF COMMERCE, Littlefield is now beginning a brave new era of growth!

40 YEARS

OF SERVICE

1925

1966

PLEDGES
TO A
LITTLEFIELD

CONTINUED SUPPORT
MORE PROSPEROUS
AND LAMB COUNTY

Keep The "Story" Moving

Remember - It's Up To

YOU

For More

Progress In '66

We Urge You To Support Your
Chamber Of Commerce

Work With Them - And Us -

FIRST NATIONAL BANK

DOING MORE FOR MORE PEOPLE EVERYDAY!!

SERVING THE LAMB COUNTY AREA SINCE 1925
MEMBER FDIC



New Ambassador Committee Formed During Past Year

A new committee was organized this past year under the Civic Affairs Division of the Chamber. Named the Littlefield Ambassadors, a group of 25 volunteers purchased their own blazers.

With J.E. Chisholm and Charlie Duval as co-chairmen the 25 act as a welcoming committee for visiting dignitaries and serve as hosts at meetings and celebrations held in the city. They also serve as delegates representing Littlefield at out-

of-town functions. The 25 are: Dr. Bill Armistead, Troy Armes, Don Avery, J.E. Chisholm, Ernest Connell, James Copeland, C.W. Conway, Arthur Duggan Jr., Charlie Duval, B.D. Garland Jr.

Mancil Hall, Rev. John Hill, Allen Hodges, Huston Hoover, Jim Joyner, Dave Kucifer, James Lee, Horace Mitchell, Joe Montgomery, Dr. William Orr, Gene Pratt, Kenneth Reast, Gerald Sanders, Leon Slaughter and Merlin Yarbrough.

All-America City Presentation

In addition to the activities of the various committees, the Civic Affairs Division, with Arthur P. Duggan Jr., as chairman assisted in the preparation of the presentation that was made before Look Magazine and the National Municipal League All-American City Jury in St. Louis in November.

As a result of the preliminary application which included an outstanding display, Littlefield was chosen as one of the 24 finalists from which eleven winners will be selected.

**All Set And Ready To Go
In..1966**



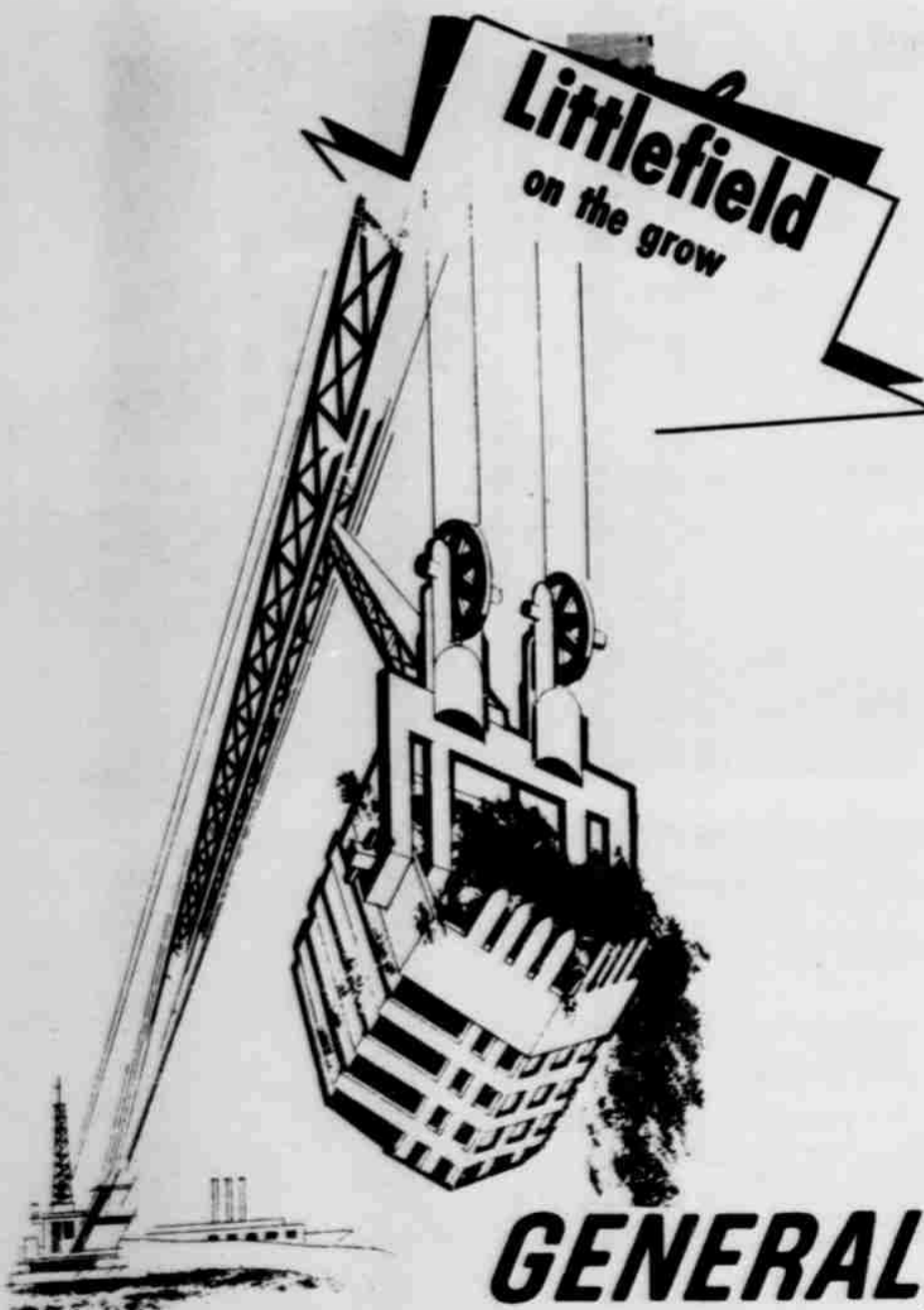
WE ARE PROUD OF OUR COMMUNITY AND PROUD TO HAVE HAD A PART IN THE COLLECTIVE EFFORTS OF THE CHAMBER OF COMMERCE WHICH HAS MADE OUR COMMUNITY SUCH A FINE PLACE TO LIVE.

**We Pledge Our Continued Support
To The Goals Of Our**

CHAMBER OF COMMERCE

Ray Keeling Buick Co.

HOME OF THE TUNED CAR FOR 1966



1966 A YEAR OF
CONFIDENCE

We Are Entering 1966 With Great Confidence...
Confidence In Our Chamber Of Commerce.
And Confidence That The Constant
Cooperation And Efforts Of The Membership
Will Carry Littlefield To Even Greater
Progress In The Future.

JOIN NOW - IT TAKES TWO
**OUR CHAMBER
AND YOU!**

GENERAL TELEPHONE



America's Largest Independent Telephone System



The Chamber, through the Christmas Window Decorating Committee with Jack Elzey as chairman, again sponsored the decorating of vacant windows in the downtown area. Fifteen groups including civic clubs, church groups and women's clubs participated in the decorating of the windows with Christmas scenes. \$150 in prizes were paid to the winners in the contest by the Chamber of Commerce.

It's Always



TO HEAR HOW
OUR
CHAMBER
HAS
ADVANCED
DURING
THE PAST
YEAR

WE ARE INDEED PROUD OF THE
RECORD OUR CHAMBER HAS MADE
AND PLEDGE OUR CONTINUED
SUPPORT TO THE GROWTH AND
ADVANCEMENT OF OUR
CHAMBER OF COMMERCE

Littlefield Publishing Co.

PUBLISHERS OF THE LAMB COUNTY LEADER
And COUNTY WIDE NEWS

OUR COMMUNITY HAS MADE TREMENDOUS PROGRESS

Ahead of us is a new year filled with promises of growth in man's many fields of endeavor . . . not only throughout the world and our nation, but here within our own community.

Today, as in our past. Progress is made by men who refuse to be satisfied with the achievements, however many, of by gone years. So in 1966, With our eyes on the far horizon let us through unity continue moving forward



REAST

OIL AND BUTANE



OUR CITY

LITTLEFIELD, TEXAS

The City On The Move

Our Growth Is The Results Of Unity Developed By
Citizen Dedication Dedicated To The Progress Of
Their City.

***We Pledge Our Continued
Support In 1966***



*WE ARE PROUD OF OUR CITIZENS WHO HAVE HAD A PART IN THE AGRICULTURAL AND
BUSINESS GROWTH OF OUR AREA AND ARE GRATEFUL FOR THE DIRECTION AND
LEADERSHIP OF OUR CHAMBER OF COMMERCE*



Member Federal Deposit Insurance Corporation



SIDEWALK SALE A BIG SUCCESS -- The first sidewalk sale in Littlefield, which was held last summer was termed a big success, with merchants and customers participating

in the fun shown above. **LEFT:** Amos Ward makes a sale; **CENTER:** Boys enjoyed the watermelon eating contest at Piggly Wiggly's and **RIGHT:** Mrs. H.L. Fisher provides

the shade for Hugh Bledsoe, Kenneth Reast and Ray Keeling.

LEADER - NEWS STAFF PHOTOS

Retail Council Sponsors Six Trade Promotions

The Retail Council committee, with Gene Pratt as Chairman, of the Littlefield Chamber of Commerce sponsored six trade promotions during 1965 in addition to the monthly Dollar Day Program which

was carried on and participated in by almost all the retail merchants.

The trade promotion sales included the George Washington sale in February, the Remodel-

ing sale on May 10; the first Sidewalk sale on July 23; the annual Back to School sale which was held August 19-21 in 1965. A Treasure Chest promotion on October 14 and 15 and the annual Stockin Festi-

val held last year on November 26 and 27.

During the Sidewalk Sale, which the Retail Council hopes was the first of what will become an annual event was fea-

tured by many merchants moving large quantities of merchandise out on the sidewalk and in many instances the merchants and employees dressed in clothes popular at the turn of the century.

Other activities of the Retail Council during the year included the instigating, organizing and

promotion, with the cooperation of the City, the background music for the downtown area.

The council also raised funds and purchased new Christmas lighting decorations for the downtown area and with the cooperation of the city decorated the entire city for Christmas.

CURRENT
DIVIDEND

4 1/2%

Payable
Quarterly

WE MAKE IDLE MONEY
"ACTIVE MONEY"
SERVING THE PROGRESS
OF LITTLEFIELD

OUR OBJECTIVES ARE TO ENCOURAGE THRIFT, TO HELP MORE AND MORE FAMILIES TO BECOME HOME OWNERS, AND TO PUT MORE TO WORK, BUILDING THE COMMUNITY.

We Are Proud To Grow With
Littlefield And The Chamber
Of Commerce

LITTLEFIELD
FEDERAL SAVING & LOAN
ASSOCIATION

OUR RESOURCES
NOW
TOTAL
10
MILLION
DOLLARS



Clean-Up Campaign Is Big Success

In cooperation with the Board of City Development and the city, the committee planned and promoted one of the most successful Clean-Up, Paint-Up, Fix-Up campaigns in Littlefield's history.

Under the campaign all residential areas were given special dates in which all trash and other debris was collected as the majority of Littlefield residents co-

operated in the campaign which resulted in a great improvement in the alleys and yards throughout the residential areas.

THE

KEY

TO...

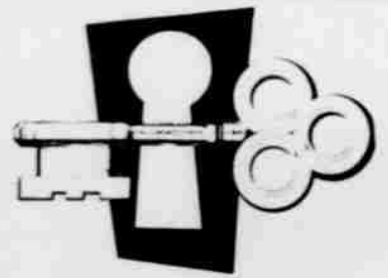
SUCCESS

YOUR

CHAMBER

of

COMMERCE



'ROUND the COUNTRY

NORTH - SOUTH - EAST - WEST

THE TALK IS

LITTLEFIELD AND ITS PROGRESS

WHY?

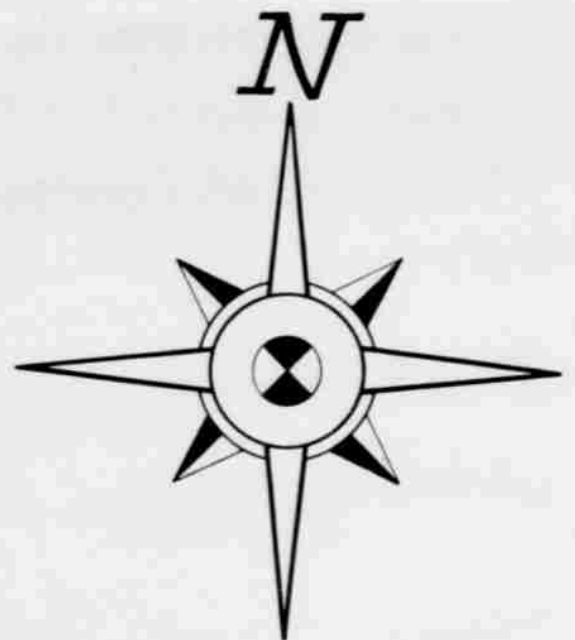
Because We Are Fortunate To Have A

WORKING Chamber Of Commerce

We Pledge To Do Our Part In 1966

GARLAND MOTORS

LITTLEFIELD'S DODGE - PLYMOUTH - CHRYSLER DEALER



YOUR 1966 OFFICERS AND DIRECTORS



AMOS WARD
Director



E.J. FOUST, JR.
Director



JIM JOYNER
President Elect



ARTHUR DUGGAN, JR.
PRESIDENT



CHARLES RUSSELL
Vice-President



JAMES LEE
Vice President



R.B. CHANDLER
Director



KENNETH REAST
Vice President



DR. BILL ORR
Director



H.A. MITCHELL
Vice-President



JOE MONTGOMERY
Treasurer



C.W. CONWAY
Director



LEON SLAUGHTER
Executive Vice-President

PROGRESS

is a flight into space — new weapons against disease — advancements in farming and industry — conservation and rehabilitation — and most of all the striving for a better way of life for all. As a member of the community, each of us contributes to that progress by making certain that whatever we do, we do it as well as we can. Let us all do our best for our community . . . so we can be proud to say this is our town!

Your Chamber Of Commerce

IS WORKING
TOWARD A

BETTER LITTLEFIELD

YOUR CONTINUED SUPPORT IS NEEDED

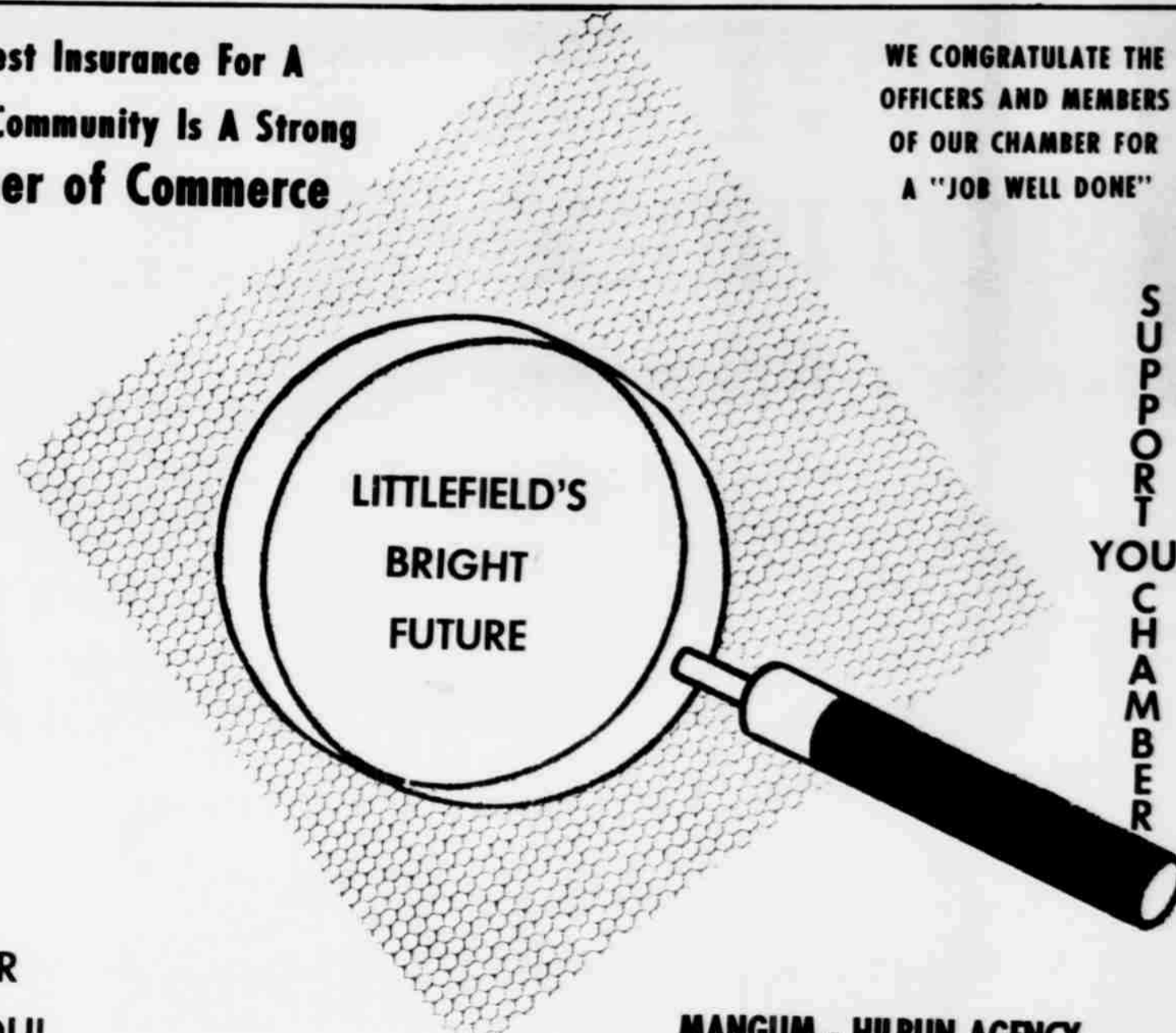
G.&C. AUTO SUPPLY

SERVING THIS AREA WITH FAMOUS BRAND PARTS & ACCESSORIES

LET'S WORK
TOGETHER
FOR
PROGRESS

The Best Insurance For A
Growing Community Is A Strong
Chamber of Commerce

WE CONGRATULATE THE
OFFICERS AND MEMBERS
OF OUR CHAMBER FOR
A "JOB WELL DONE"



SUPPORT
YOUR
CHAMBER

YOUR
CHAMBER
NEEDS YOU!

MANGUM - HILBUN AGENCY
Your **INA** Representative