

Owners Give Approval To Entire D'town Project

As to 150 downtown property owners, tenants, citizens, interested parties, filled the Courtroom to overflow Monday night, and gave endorsement to the entire equalization project.

The meeting was held by the council to hear the commission from both sides of the street, those for the plan and those against, and based on the expressions at the meeting, voted to enter into the project as one complete unit.

Position to the project from only three sources, two of these three could be termed questions rather than protest. J.L. Murdock, owner of the Mu. dock and Mrs. P. E. Roddy, who the building adjoining the block's asked why the first on Phelps Avenue could be excluded from the plan, in their estimation, not would help improve that end of the city. Mrs. Roddy questioned the amount of the assessment levied against her property, and said she felt it

would not increase the value of her holdings to any great extent.

A petition signed by nine property owners in the first block, asking that block be excluded from the project was presented, however only two of those who signed then petition spoke out at the meeting.

The petition against all or part of the project constituted only 13 percent of the total owners, and those speaking against the project, at the Monday meeting comprised only 4 percent of the affected owners.

In expressing his feelings on the outcome of the meeting, project co-chairman Dr. Bill Orr said, "When we opened discussion on the plans in May, we felt if we could get 75 percent approval we would be doing well, and here according to my figures close to 85 percent of the owners have given their support to the plans."

Mrs. Cleda B. Goodwin, who occupies the only non-business location in the improvement area, questioned the difference in

the assessed price difference on the cross streets, 3rd, 4th, and 5th, and those on XIT and LFD Drives. The side street property owners will be assessed at \$7.58 per front foot, while XIT and LFD property owners will be charged \$13.27 per foot.

The price difference in the two locations were explained as having been arrived at on the basis of property value increase.

Those involved in the planning stated they felt the property on the 'back' streets would derive more benefit than those on the side streets, and for that reason felt their participation in the plans should be greater.

Hugh Bledsole, contractor for the project has indicated he plans to start the physical side of the project about April 8, and 90 days later, about July 6, finish the entire program. Bledsole said his timetable for the project was dependent on the weather, but felt it could be completed no later than the end of July.

Four Burgaries Net Thieves Cash And Cigarettes

Four Littlefield commercial establishments were broken into during the past week with the thieves getting a total of approximately \$65 in cash and several packages of cigarettes.

Cox's Tin Shop and Kenneth Houk's Second Hand Store on East 3rd Ave. were broken into last Thursday night. The burglars gained entrance through the south door of the Houk store and after taking nothing gained entrance to the tin shop through the west window. Fifty dollars in cash was taken from the cash register in the store.

The break-in was accomplished with the use of a hatchet and a foot long steel rod.

The Olivia Shaw Cafe was broken into over the weekend and \$15 was taken from the cigarette machine as well as several packages of cigarettes. The juke box in the cafe was also damaged.

The third robbery occurred at the Garland Motor Company Saturday night. The thieves gained entrance into the building by breaking the glass in the back door. The cash register was broken into but nothing was taken while an undetermined amount of change was taken from the coke machine which was damaged.

Two accidents were reported with the first being caused by the three and six year old sons of Mr. and Mrs. Tom Conley.

Testimony Begins In Sanchez Trial

Testimony began yesterday morning in the 154th Judicial District Court in the trial of Samuel Sanchez, indicted for murder with malice aforethought in the October 31 slaying of Paschal Ortiz. Selection of the jury was finally completed at 10 p.m. Tuesday night having started Monday morning.

Faustino Lopez has already been convicted of firing the shot that killed Ortiz and sentenced to 30 years for the crime.

Dr. Barney Klein was the first witness for the prosecution, headed by District Attorney Jack Young, Muleshoe. Klein testified to the cause of death.

The next witness was Leon Ortega, one of two boys in the car with Lopez and Sanchez at the time of the slaying. He testified about the car and David Estrada picking up Lopez and Sanchez late Friday evening in front of the Littlefield Sports Arena.

Estrada then testified about the shooting and the events that happened afterward. He told of the four going to Lopez's brother's home then to other relatives of Lopez.

Sanchez is accused of providing the murder weapon by stealing it out of the home of a relative. He is being defended by Frank Kaiser, Levelland attorney and Mike Thompson also of Levelland.

The case should go to the jury sometime early today.

Man Jailed On Morals Charge

Lamb County sheriff officials took Chalma A. Walker, Littlefield, into custody Monday on a morals charge.

He is at present in the County Jail in Littlefield as Justice of the Peace J.N. Bowen denied bail when Walker was brought before him Tuesday.

County Attorney Curtis Wilkenson stated that the case would probably be presented to the Grand Jury when it meets this week.

Lamb County Leader

Serving Texas' Second Largest Agricultural Producing County 10¢

VOLUME 30

LITTLEFIELD, LAMB COUNTY, TEXAS, THURSDAY, MARCH 25, 1965

NUMBER 46

\$730.16 UNACCOUNTED FOR

City Audit Reveals Shortage

Council Acts On Eight Proposals

The Littlefield City Council discussed eight other items in addition to the city audit at their meeting last week.

Approved was the establishment of a telephone line for water controls from the sand hills. The South Plains telephone company will string the line as far as Fieldton where General Telephone will connect to bring it into Littlefield. The project is scheduled to get underway in the near future.

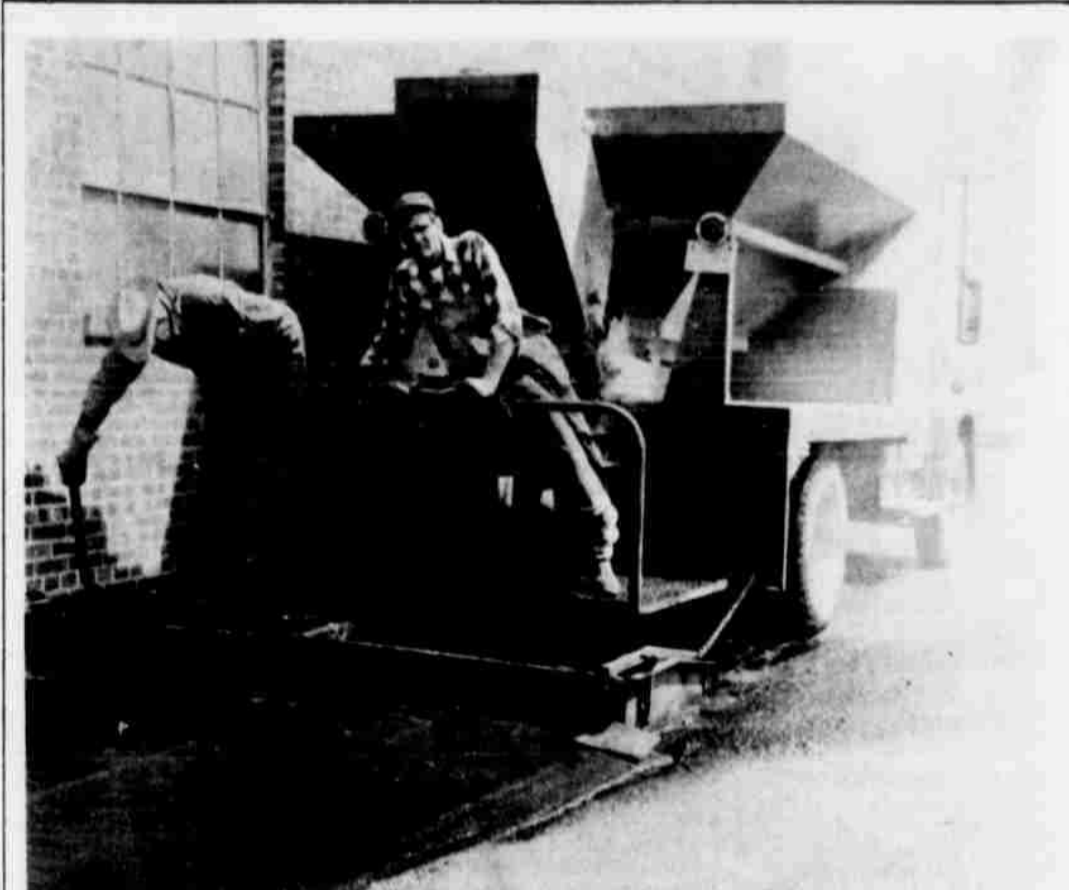
Mac Humphries was appointed as fire marshal for Littlefield effective April 1 with a salary of \$50 a month. He replaces J.P. Ray who resigned the post.

The council also appointed five members to the Board of Equalization, John Nail and Mac Humphries were appointed for another year while Charles Duval, David Keithley and Boyd Allen were the new members appointed to the board.

Bids were open for the new water billing machine, but action on letting the bid was delayed until more study could be made of the machines. National Cash Register and Burroughs Corp. submitted bids.

The City Treasurer was authorized to reinvest \$12,500 out of the 1938 Refunding Bond Fund in one year time certificate of deposit.

The Council also discussed the possibility of paving the road leading into the baseball diamonds. It was referred to study what could be done on the project in conjunction with the loaning of a lawn mower for the purpose of getting the fields in condition for play. The mower is not being used by the city at the present time.



SECOND LAYER GOING DOWN -- The second layer of asphalt was put down this week on the parking lot at 6th and Phelps. The lot which will provide space for over 40 cars will alleviate the off-street parking problem. The lot is now open for parking and lines will be added later.

A recent audit of the City of Littlefield's books for the period beginning October 1, 1963 and ended September 30, 1964, revealed a shortage totaling \$730.16 and involved four separate departments.

When the shortage was revealed last Thursday, the amount was \$26.14 greater, and covered six items. Work on the misappropriations by city officials and employees have cut the number of items to its current three and these are expected to be explained in the near future.

Two of the items were cleared before the audit was presented, when the auditors in their checking, found \$26.14 still in the deposit book. The third item was found and explained by City Manager J.W. Harrison before he left for his new position in Alamogordo, New Mexico.

In commenting on the shortages, Mayor Bill Armistead said, "We do not feel that the money was taken by anyone, but feel the method of record keeping we were using in the various departments could be one reason for the figures not balancing." The mayor stated, "I have directed the city auditors to continue the search for the missing records, and have asked they work on the shortages until some explanation can be made as to how they occurred."

Prior to leaving for his new position, City Manager J.W. Harrison had traced down one of the shortages, and indicated that he thought several of the others might be accounted for in the same manner, the recovery of records.

In addition to the missing \$730.16, six receipts from the period December 20, 1963 through March 11, 1964 are unaccounted for, however Mayor Armistead feels these might have been destroyed when the city hall underwent a partial remodeling program last year. In all, one entire receipt book cannot be located, but by tracing down original receipts, all but six of the items in the book have been reconciled.

Since the discovery of the shortage, more intensive measures have been instituted for the handling of funds and the auditors have been directed, by the city council, to make unannounced spot checks of city records and procedures for handling of receipts.

The only candidate for mayor, J.E. Chisholm said, "I feel there is a need to trace down this shortage, and feel too there is a need for stricter internal control and supervision in the departments where payments of one nature or another are received. If I should be elected, I intend to follow the recommendations of the auditors, and see that the mechanics of the safeguarding plans, now in effect are carried out."

The audit in which the shortages were discovered was the regular annual audit required by the city charter of 1958. Mayor Armistead said to his knowledge (Continued on Page 8)

Phelps
Wade's
Nesb

Littlefield got off and running last week, when the downtown property owners gave their support to the, no longer, proposed 'Park-and-Shop' project. Those who attended the meeting in the courtroom Monday night to be commended for their part in the future of Littlefield. It is only when we have a type of interest and freedom to express our feelings about fear of reprisal that we grow. It was a pleasure to see both sides of the project, to know the officials of our government have enough insight in the feelings of the Littlefield citizens to value their rights. The decision, by the city to go ahead with the entire project, in our estimation was only one that could be reached, and we know it was not an easy task. Many hours and much money has been spent on these projects to date, and it would be a injustice if we had to settle for only a partial project. The next step now comes April 8, date the contractor has indicated he plans to start work.

By now of course you know the United States has been successful in their first attempt to put men into orbit. The nation's collective breath at Tuesday morning, as John Young and Gus Grissom, sped high atop a Titan 2 rocket skyward. This feat, coupled with the Wednesday evening live TV transmission pictures from the moon leads to believe that we are not behind in the 'race for space'. We are just thinking how nice it would be if the talents of our astronaut could be combined with their counterparts of the U.S.S.R. It would make the job less lengthy, and it could be the beginning of closer understanding, at least in the space field.

Livestock Show Sales Total Over \$11 Thousand

The first Littlefield Area Junior Stock Show and sale was hailed as a success as the boys and girls from Littlefield, Spade and Amherst sold their stock for a total of \$11,509.20.

The sheep brought the highest average price per pound as 28 lambs were sold for \$1,195.59 an average of 49.22 cents per pound, with the Grand Champion Southdown, shown by Ronald Hill being bought by Clint Byers for a dollar per pound.

Steers entered in the show brought an average of 32.19 with Steve Carr's Grand Champion Hereford being bought by Security State Bank for 56 cents a pound. Twenty-two steers were sold at the sale for a total price of \$6,280.60.

The 65 hogs sold brought an average of 30.25 cents with the Grand Champion, also owned by Hill going to Farley Sales at 80¢ a pound.

Merchants of the three towns fully supported the sale as they bid from ten cents over the market price for the hogs to twenty-five cents over the market price for the lambs. The hogs average sale was 12¢ over the market. The 63 commercial firms or individual buyers spent \$6,382.59 in addition to the over \$5,000 spent by commercial buyers. The complete list of the buyers and donors to the show and sale are listed on page 4 of today's Leader.

Tax Office Open Saturday

Herbert Dunn, County Tax Assessor and Collector, announced yesterday that the County Tax Office will be open this Saturday, March 28 from 8 to 12 noon for the convenience of persons desiring to purchase 1965 automobile tags.

Dunn stated, "We know that there are many persons who have to take time off from work to purchase the tags during the week and we hope that the tax office being open Saturday morning will help these people."

County Court Tries 2 Cases

Two juveniles were sent to Gatesville State School for Boys by Lamb County Judge, J.B. Davis for their part in the car theft from Garland Motors. A third boy involved was released on probation. The car had been stolen from the used car lot but had broken down on the Lubbock highway and the car was recovered.

Judge Davis also sentenced

Meeting Set For Cancer Crusade

Mrs. J.R. Fain, Lamb County chairman for the American Cancer Society, announced the 1965 crusade against cancer will get underway this week with a training program scheduled for 7:30 p.m. (today) at the Crescent House Restaurant. Guest speaker will be L.E. Ross of Quannah. Mr. Ross underwent surgery five years ago for cancer of the larynx. Since that time he has mastered the esophageal method of speaking. He now teaches the method to others. He has spoken widely to many groups including both state and national conventions of the American Cancer Society.

Mrs. T.L. Dunlap, who is serving as the Independent Business chairman, urges all the volunteers whom she has contacted to be present for an enthusiastic and informative session. The public is invited to attend. Reservations may be made by calling the Crescent House. Plates will be \$2.50 each.

The business phase of the Crusade will be conducted April 2 with other phases to be carried on throughout the city and county during the remainder of the month of April.

Fonder Crayton to a one year prison term for violation of the liquor law. In addition Crayton was fined \$1,000 and court costs.

Pony League Registration

Registration for the Pony League baseball program will be held tomorrow and Saturday from 9 a.m. to 6 p.m. at Otis Bennett's Firestone store at 7th and XIT Drive in Littlefield.

All boys born between July 1, 1950 and June 30, 1952 are eligible to participate in the program. Boys are to bring their birth certificate to the sign-up with them.

Boys who played in the Pony League last year and are eligible to play again also have to register.

A try-out for boys reaching the pony league age group and others that did not participate last year will be held Saturday April 3, starting at 1:30 p.m. at the Pony League baseball diamond.



EACH ONE A CHAMPION

GRAND CHAMPIONS BRING GOOD PRICE -- The sale of three Grand Champions of the Littlefield Area Stock Show and Sale brought smiles to the face of their owners and money which

will no doubt be used to purchase stock to show in next year's show. The winning swine shown by Ronald Hill was purchased by Charley Farley of Farley Sales for eighty cents a pound. The

Grand Champion Hereford shown by nine year old Steve Carr was sold to the Security State Bank represented by Joe Montgomery. Steve received \$534.80 for his 955 pound steer. Hill

also showed the Grand Champion lamb and it was bought by Clinton Byers for a dollar a pound.

Annual Beta Sigma Phi Style Show To Be Friday Night In Country Club

"What's In The Cards For Spring", the annual Beta Sigma Phi Style Show will be presented Friday, March 26, at 8 p.m. at the Littlefield Country Club. Proceeds from the show go to Cystic Fibrosis Research and a Scholarship for a local high school student.

Last year's Beta Sigma Phi Scholarship student was Miss Dianne Phillips, daughter of Mr. and Mrs. Harold Phillips of Littlefield. Miss Phillips was one of the top ten graduates in 1964. She was awarded a sweater in government, a sweater in Algebra II, and a WOW history award. She attended Oklahoma State University at Stillwater, Okla. the first semester of this year, where she was on the Dean's List of Distinguished Students. Miss Phillips is a Business Major. She is now enrolled at Texas Tech.

The local stores participating in the Style Show this year are Anthony's, Little's, Ware's, J.C. Penney's, Frontier Store, Norma's and Haydon's Shoe Store. Door prizes will be given by each of these stores, also, by Brittain's Pharmacy, Roden's Drug Co. and West Drug and Pharmacy. Anthony's will give a \$25 gift certificate.

The organ for the style show will be furnished by the Hammond Organ Studio of Lubbock. The organist will be Mrs. Joe Embry.

Tickets to the Style Show will be \$1, and may be purchased from any member of Beta Sigma Phi or participating stores.

Garden Club Sets Spring Convention

Members of garden clubs in the 59 counties making up District One of Texas Garden Clubs, Inc. will meet in Amarillo April 8th for their annual spring convention. Headquarters will be the Coronado Inn, 701 Pierce Street.

The Panhandle's great prehistoric Alibates Flint Quarries dictated the convention theme "Rocks Through the Ages". A bus trip to the Quarries and adjacent Pueblos will conclude the meeting April 9th.

Kindergarten Pupils Visit Public School

The pupils of Williams Day Kindergarten visited the Public School Tuesday, March 16.

A group of children accompanied by two mothers visited each first grade room. After a visit to Mr. Jones' office and Mrs. Oliver's office, the group walked to the cafeteria for lunch.

Accompanying the group were Mrs. Douglas Walden, Mrs. Charles Schroeder, Mrs. James Charwell, Mrs. James Lee, Mrs. Herbert Hinkley, Mrs. Tommy McKinnon, Mrs. Gary Pickrell, Mrs. Kenneth Rotan, Mrs. Neil Wood, Mrs. Gene Williams and Mrs. Billy Williams.



COMMITTEES READY TO GO--The decorations committee of Beta Sigma Phi is busy gathering and putting up decorations for their annual style show Friday night to be held in the country club, while the clean-up committee is on hand to perform their task when the show is over. Members of the decorations committee shown above are, seated, left to right: Drusilla Moss, Myrlene Bridwell, Carol Howle and Sue Davis, also standing, far right, Yvette Lowe, Leta Merle Loflin, with the mop, and Carolyn West, with the hammer, are on the clean-up committee. Others on these committees, not pictured are: Linda Martin and Catherine Thrash, clean-up and Linda Barker, decorations.

Foreign Dish Supper Held

BULA -- The Bula FHA Chapter honored their families with a foreign dish supper, March 17 in the Bula School cafeteria.

The girls in FHA each prepared a foreign dish. Marilyn McCall and her committee decorated the room with travel posters, cards, and ornaments from various foreign countries. Dominos and other games were played following the meal.

Stephens Have New Grandson

Mr. and Mrs. M.H. Stephens have received word of the birth of a new grandson, Scott Allan Stephens, son of Mr. and Mrs. Miles Stephens of Jacksonville, N.C. The father is stationed there with the Marines.

The infant was born March 12 and weighed 7 pounds, 14 1/4 ounces.

Maternal grandparents are Mr. and Mrs. Lynn Williams of Anton.

CITY BIT

Richard Funk, a student at Colorado State University, has been home the past week visiting his parents, Mr. and Mrs. Herb Funk, and other relatives and friends. He returned to Tulsa Sunday, where he met a friend, Bentley Owen, whom he accompanied back to Fort Collins. They registered Monday for the spring quarter at the University. Richard is a freshman studying forestry.

WSG Meets at Church

The Wesleyan Service Guild of First Methodist Church met Tuesday evening in the church parlor for their regular meeting.

Mrs. Audie Collins, president, conducted the business meeting. The group accepted as a project, buying needed articles for the Nursery II and III rooms.

Mrs. Gladys Joplin announced the Northwest Texas Conference annual meeting will be held at St. John's Methodist Church, Stamford, March 20 and 21 for the Wesleyan Service Guild. Mrs. Joplin is secretary of the Brownfield District. The following persons plan to attend the meeting: Mmes. Audie Collins, Lula Dickenson, Gladys Joplin and LaVerne Seay.

The second study of "Genesis" was presented by Mrs. Joplin. The first study was recently given by LaVerne Seay. Dr. Charles F. Kraft is the author of the book for this study, and he has presented it as the "Beginning of the Biblical Drama".

At the close of the program the following members gathered at the Dairy Mart for the refreshment period: Mmes. Cecil Lora Brown, Audie Collins, Mattie Lou Clark, Lula Dickenson, Gladys Joplin, Mabel Kelley, LaVerne Seay, Mildred Smiley, Beulah Tullis, Ruth Wade and Miss Frances Smiley.

Cemetery Ass'n To Hold Dinner

The Littlefield Cemetery Association will hold a community, county-wide dinner Sunday afternoon starting at 12:30 p.m. The dinner will be held in the building at 330 Phelps now occupied by the Association.

The proceeds are to go to the hoped for sprinkler system for the Littlefield Cemetery. People are asked to bring the food to 330 Phelps prior to Sunday School, and to bring more than just for their own family.

Ham, roast beef, fried chicken, peas, beans, potato salad, pie, cake, tea and coffee will be on the menu. The cost will be \$1 per person for the dinner.

Silk was first reported in Europe in the first century A.D. as an extremely expensive fabric imported from China.

The couple will make their home in the Dodd Community.

Bridal Shower Honors Miss Lavetta Wilson

AMHERST -- Miss Lavetta Wilson was honored with a bridal shower in Mrs. Henry Meyer's home last Wednesday afternoon.

Miss Wilson is the bride-elect of Ronald L. Coleman, the wedding to take place Friday, March 26.

Mrs. Bobby Brantley registered guests in the bride's book. The refreshment table was laid with a white net cloth over light blue. An arrangement of white roses, flanked by white candles in crystal holders was the decoration. Mrs. Jimmy Cowan presided and served fruit punch, assorted cookies, mints in pastel shades and nuts.

The array of pretty and useful gifts on display included a set of cast aluminum cooking ware and a set of casseroles from the hostesses, who were Mmes. Henry Meyer, C.E. Johnson, Henry Brown, Bennie Shipley, Raymond Duvall, Paul Gonzales, James Holland, Eugene Young, T.I. Batson, Ted Long, Willie Tomes, Jim Bradley, C.A. Thomas, A.A. Blair, Jr., S.E. Lance, Woodrow Love, Charles Jones, Bobby Brantley, Marvin Wagner, Don Hevern, Clarence Black, Carrie Thomas, V.C. Commons, W.H. Crosby, H.E. Akin, Gene Enloe, Johnny Smith and Jimmy Cowen.

Bridal Shower Fetes Miss Sharon Brigance

OLTON -- Miss Sharon Lavonne Brigance, bride-elect of Fred D. Low, Lubbock, was complimented recently with a bridal shower in the home of Mrs. Owen Norfleet. Guests called from 3 to 5 p.m.

Mrs. Norfleet greeted the guests and presented them to the honoree, her mother, Mrs. M.P. Brigance and Mrs. Audie Low, of Lubbock, mother of the prospective bridegroom.

Miss Brigance, Mrs. Brigance and Mrs. Low were presented white carnation corsages by the hostesses.

Mrs. John Wayne Hair registered the guests.

The dining table was laid with a white linen cutwork cloth and centered with an arrangement of blue and white flowers. White satin streamers inscribed in silver with the names "Sharon and Fred" extended from the floral arrangement. White iced cake squares were served with fruit punch and mints from crystal appointments. Presiding at the serving table were Mrs. J. Frank Daugherty, Mrs. David Carlisle, Misses Nancy and Charlotte Brigance.

Hostess gift to the honoree was vacuum cleaner, electric skillet, mixette, and pop-up toaster.

Out-of-town guests were Mrs. and Mrs. Ben Low, all of Lubbock, Mrs. S.H. Halle, grandmother of the bride-to-be from Amarillo; Mrs. Houston Carson and Mrs. Dabby George both of Sunnyside.

Hostesses assisting Mrs. Norfleet were Mmes. Ancil Miller, William DeBerry, G.A. Nicholson, Carolyn Steffey, H.B. Carson Jr., Owne Jones, Elmer McGill, Leo Ross Bryant, Johnny Clark, Jr., Roy Hooper, Frank Struve, Clary Phillips, J.L. Carson, Jr., Jim Speer, Lowell McGill, W.C. Bley and Carolyn, Jack Straw, Jim Kemp, Garner Ball, H.B. Carson, Roland Green, Gloma Fancher, Laus Hair, R.D. Daniel, W.C. Gunter Jr., D.L. Givens, Bob Duncan, Melvin Hines and Paul Burrus.

Mrs. Reynolds Hosts WMU Meet

The Annie Armstrong Circle of the Baptist WMU met with Mrs. Victor Reynolds last Monday afternoon for mission study. Rev. Quick opened the meeting with prayer.

Mrs. Quick conducted the study assisted by Rev. Quick, taken from the mission book, "Winds of Change". A filmstrip and discussion was held to conclude the study.

Mrs. Bennie Shipley presided during the business session. Plans were made to entertain the visiting minister and singer who will be here for the revival meeting.

The hostess served refreshments in the St. Patrick's motif to: Mmes. J.D. Bench, Bill Bradley, J.P. Brantley, J.D. Nelson, Raymond Quick, Bennie Shipley, Reynolds and Rev. Quick.

CITY BIT

Mr. and Mrs. Acree Barton are moving this week to Burnett. They are longtime Littlefield residents.

Kindergarten Pupils Honored

Two pupils of Williams Kindergarten were recently honored on their sixth birthdays - Tammye Scott and Kevin Yandell. Tammye, with the assistance of her mother, Mrs. Don Scott, served refreshments of cupcakes and punch, carrying out the Cinderella motif. Favors were balloons and bubble gum.

Birthday songs were sung during story time. Mrs. Reed Yandell, mother, served cupcakes and punch for Kevin's birthday. Party favors were balloons and bubble gum. The group sang birthday songs and watched the "Show and Tell" stories.

TRANSWESTERN

Offers Outstanding Home Buys in Friendly CANNON TERRACE ADDITION

Join Your Friends

CHOOSE YOUR HOUSE PLANS AND YOUR LOCATION OR SEE ONE OF OUR SEVERAL NEW HOMES NOW UNDER CONSTRUCTION

PRICED \$11,000 To \$17,000

LOW F.H.A. DOWN PAYMENT GI NO DOWN PAYMENT

TRANSWESTERN DEVELOPERS, INC.

LITTLEFIELD DIAL 385-4936 LUBBOCK CALL SW. 9-362

We Extend Our Sincere Congratulations To The Officials and Scores of Workers Who Made Littlefield - Spade and Amherst's First Annual JUNIOR LIVESTOCK SHOW AND SALE Such A Great Success! May the '66 Show Be Even Greater



It is a pleasure to recognize this fine community effort dedicated to better agriculture always - and by a new generation! We recognize and appreciate your outstanding efforts.

Building To Serve You Better

SECURITY STATE BANK

MEMBER F.D.I.C.

Don't make me laugh.

You mean to say, I could have bought a big, luxurious Dodge Polara, and I would have gotten a 383 cu. in. V8, carpeting, foam seats, and all those other things at no extra cost? Who's laughing?

At Polara's prices, why clown around with smaller cars? See your Dodge Dealer.

See Polara—with a 121 inch wheelbase, weighing almost 4,000 pounds. Powered by a 383 cu. in. V8. At popular prices.

'65 Dodge Polara

Garland Motor Company 720 E. 3rd, Littlefield, Texas

WATCH "THE BOB HOPE SHOW," NBC-TV, CHECK YOUR LOCAL LISTING

News of Women

LOIS VRUBEL.....SOCIETY EDITOR

Courtesy Honors Mrs. Acrey Barton

Mrs. Otto Jones entertained Monday morning with a coffee honoring Mrs. Acrey Barton, who is moving this week to Bertram, where she and her husband have purchased a new home.

The table was laid with a hand-embroidered cloth and featured a silver candelabra and blue and white floral centerpieces. Sandwiches, cookies, coffee, and spiced tea were served from silver appointments. Mrs. Chester Harvey presided at the silver service.

Guests were registered by Mrs. Ben Lyman Sr. Piano music was furnished during the calling hours of 9:30 to 11:30 a.m. by Mrs. Dewey Hulise and Mrs. Ila Sewell.

Assisting with the coffee were Mmes. Viggo Peterson, V.S. Cassell, Norman Renfro, John Price, L.L. Massengill, Ben Lyman Sr., Winnie Campbell, D.C. Lindley, Dewey Hulise, Chester Harvey, Hulda Henson, Ila Sewell, Mrs. Fred Lichte and Mrs. Alline Edwards.

Gifts were presented to the honoree including the centerpiece, featured on the table. Mrs. Barton has been very active in church work and club work and will be greatly missed by her co-workers. The Bartons have lived in Littlefield about 40 years.



FIVE GENERATIONS -- This picture of the five generations of the Templeton family was made recently at a get-together at Kinney. They are Shonda Lynn Nuttall, seven-week old daughter of Mr. and Mrs. Leroy Nuttall of Amherst, sitting on top of her mother; Mrs. Emert Rose of Friona, grandmother; J.L. Templeton of Amherst, great-grandfather; A. Templeton of Princeton, great-great-grandfather, who is 95 years old.

Mrs. Stone Elected President Of PTA

The Anton PTA met March 18 in the school cafeteria. Mrs. W.P. Stone was elected president and Mrs. Bill Goen, vice president. Troop 386 presented the program. The girl scout leader is Mrs. McCa Morrow. Girls assistants were Patricia Byrum, Vicki Vickers, Connie Parks, Jean King, Mary Jane Jones and Rhoda Jane Klesner.

seior, on problem drop-outs and the school guidance program. The fifth and sixth grades served refreshments to approximately 100 persons who attended. The Saint Patrick's Day theme was used.

The next meeting will be April 8 with a program on interscholastic league participants.

Officers elected for the coming year were Mrs. Don Stone, president; Mrs. Bill Goen, vice president; Mrs. Rex Easter, secretary; and Mrs. Bobby McCa, treasurer.

Mrs. Shults' first grade room was the room count. Members served books for adoption and modern math books which were on display.

The program was given by Mrs. Eric Byers, guidance counselor.

Mrs. Shaw Hosts Club Meeting

OLTON -- The Olton Home Demonstration Club met Tuesday afternoon in the home of Mrs. Fred Shaw.

Mrs. Lee Simmons, president, presided at the meeting. The group voted to give \$10 toward the Teacher Appreciation Dinner.

Roll call was answered with "What to look for in Ready Made Garments."

Mrs. Charles Lewis and Mrs. C.C. Solesbee discussed "Points to Look for in Purchasing Clothing."

Mrs. Shaw served donuts, mints, nuts, coffee and Cokes to the following members: Mmes. Simmons, Tom Smith, Loyd Blackwell, Charles Lewis, C.C. Solesbee, L.O. Langley, Lolita Lee Mills and one guest, Mrs. Ray Culwell.

The next regular meeting will be April 6 in the home of Mrs. C.C. Solesbee.

LAMB COUNTY LEADER
Published every Thursday by the Littlefield Publishing Co., 506 Phelps Ave., Littlefield, Texas. Entered as second class matter at the post office, Littlefield, Texas, under the Acts of March 3, 1909.
Littlefield Publishing Company
Publisher
Kucifer... General Mgr.
Donnelly... Managing Editor
McShan... Adv. Manager
Subscription rates: One year \$5.10; elsewhere in Texas \$7.10.

Amherst Study Club Has Texas Program

AMHERST -- Federation of Texas Days were observed at the meeting of the Amherst Study Club held in the school lunch room last Monday night.

4-H Girls Have Meeting

PEP -- The Pep Girls 4-H Club meeting was held Monday, March 15 at the Pep School. Mary Sinnacher gave the girls pointers on demonstration teams as well as on how to give a demonstration. This will be April 20 at Levelland.

The girls that won ribbons on their dresses at the dress revue some time ago modeled their dresses at this meeting. Gloria Albus and Susan Diersing also showed their 4-H record books, ribbons and awards they received at the Favorite Foods Show, Fat Stock Show and Dress Revue.

Members attending were as follows: Susan, Donna and Jan Diersing, Dianna Walker, Barbara Glumpler, Terry Gerik, Mary Sinnacher, Karron and Vivian Green, Joyce and Gloria Albus. Adult leaders, Mrs. Leonard Albus, Mrs. Syl Diersing and Mrs. Coy Keahay and a visitor, Mrs. Franklin Green also attended.

Mrs. W.P. Stone was program chairman. She introduced junior high school girls, Debbie Lynch, Joy Priddy, Linda Johnson, Debbie Landers, Brenda Davis, Cassandra Ivey, Delores Abbott, Linda Smith and Jeannie Fleming who gave excerpts of Texas history and led the salute to the Texas Flag and the U.S. Flag. Pat Hinds' piano number was "The Yellow Rose of Texas" and she accompanied Betty Elms as she sang, "Deep in the Heart of Texas". The group sang "Texas, Our Texas."

Mrs. Bill Elms spoke, with the subject "Why Federate". The president, Miss Pearl Eudy presided in the business. Mrs. Elms and Mrs. George Brittain are to attend the Caprock District Convention in Friona March 30.

Refreshments were served in the St. Patrick's Day motif. Mrs. Allan White, Mrs. E.F. Ray, Mrs. Donnie Bowman and Mrs. Howard Campbell were hostesses to members and guests attending.

For COLDS take 666

Mrs. Thetford Hosts HD Club

WHITHARRAL -- Mrs. Jewel Robinson, county agent, discussed "Color and the Style Trend for Spring and Summer" at the Tuesday meeting of the Whitharral Home Demonstration Club in the home of Mrs. D.C. Thetford.

Randy Lawrence of Levelland, showed a film on a water softener and demonstrated the hardness and softness of water. Assisting him were Victor Neinst of Littlefield and Claud Laney of Levelland.

Mrs. John Waters presided for the business meeting. Roll call was answered with "a new color that I like". Using sayings of "the Country Parsons" a drawing was held for the hostess gift, a baking dish, won by a visitor, Mrs. A.H. Scivally of Fieldton.

Refreshments of coffee, cake and ice cream were served to the following visitors: Mesdames Bobby Gresham and Starla, Jack Lauderdale, R.E. Avery, Sr., E.G. Wade, Sr. Lee Lewis, and Robinson of Levelland; Bob Taylor, Hayes Denney, W.J. Heck, Ross Kennedy, Littlefield; Donald Cowan, Jon Latimer, and Scivally of Fieldton; Jesse Herrell of Lubbock; Violet Blakeley of Las Vegas, Nev.; and Mrs. Jack Hisaw. Members were: Mesdames Robert Strickland, S.J. Cleveinger, L.C. Lewis, Ella Hewitt, H.J. Dobson, Alma Kilgore, B. L. Hicks, J.D. Waters, Vick Matthews, Will Reding, Russell Cotton, Joe Ancinec, L.F. Duseck, John Waters, Ruben Brock and the hostess.

Mrs. Rank Howard will host the April 6th meeting at her home here. Hair-styles and make-up will be the topic.

Cancer Crusade Group Meet In Fain Home

Cancer Crusade Chairmen from the Lamb County towns attended a training meeting in the home of Dr. and Mrs. J.R. Fain Tuesday evening in preparation for conducting the crusade in their respective areas. Mrs. Fain is Cancer Crusade Chairman for Lamb County.

Don Lambert, field representative of District III South, Lubbock, was present to help conduct the training meeting. Films of an educational nature were shown. Mr. Lambert pointed out, "Our crusade is of two major aspects - education of the public, and the dangers of cancer and the raising of funds for the promotion of research."

In attendance were Mrs. Martha Markham, Sudan chairman, and Mmes. Jackie Markham, Lucille Brown, Charlotte Brown and Martha Taylor, all of Sudan; Mr. and Mrs. Buddy Hodges, Springlake chairmen; Mr. and Mrs. Harold Allison, Pleasant Valley chairmen; Mrs. Jean Beasley, Earth chairman, and Mrs. Johnny Martin and Mrs. C.D. Johnson, Littlefield rural chairmen and assistants. Mrs. Bill Kimbrough and Mrs. Fred Lichte; Mrs. Doyce Hutto and Mrs. Bob Gronewald; Mrs. Alex Kraushar and Mrs. Tommy McKinnon.

Chairman; and Mrs. T.L. Dunlap, business chairman.

Note to new cooks: "Par-boil" means to immerse food in liquid (usually water) and partially soak.

It happened in Climax, Nevada...

THE MIRISCH CORPORATION presents
DEAN MARTIN KIM NOVAK RAY WALSTON
- Billy Wilder's new comedy -
KISS ME, STUPID

FELICIA FARR CLIFF OSMOND
BILLY WILDER BILLY WILDER A.L. DIAMOND ALEXANDER TRAUER
GEORGE W. PAPA GERSHWIN ANGE PREVIN PARAVISION LORENT PICTURES CORPORATION

PALACE SUN-MON-TUES-WED
Littlefield, Texas MARCH 28-29-30-31

Double Feature

YOUNGBLOOD HAWKE
JAMES FRANCISCUS SUZANNE PLESHETTE

PLUS

THE MAN FROM GALVESTON

X I T FRI. -SAT. -SUN.
DRIVE-IN THEATRE MARCH 26 - 27 - 28

Sure there's a difference between the luxury '65 Chevrolet and expensive cars
You can put most of it in your savings account

You'll quickly find the big difference between this smart Jet-smooth '65 Chevrolet and costly cars. It's mostly price.

There's more foot, head, leg and shoulder room than in most expensive cars. The handsome instrument panel is easy to see and reach. Tasteful interiors with foam seats and deep-twist carpeting are features of even the low-cost Bel Airs and Biscaynes.

Engines go from the economical, peppy 140-hp Turbo-Thrift Six on up. That famous Jet-smooth ride is even better, with new Full Coil suspension, wider tread, and over 700 sound and shock absorbers.

You can customize this car to your taste in nearly 200 different ways. And your present car with low monthly payments will have you in one nearly as fast as you've read this!

discover the difference
CHEVROLET



Drive something really new - discover the difference at your Chevrolet dealer's
Chevrolet • Chevelle • Chevy II • Corvair • Corvette

ARMES CHEVROLET COMPANY
Littlefield, Texas

YOUR FAMILY DRINK MILK?

MILK Gallon Jug **59¢**
Marigold

LOWEST PRICES IN LITTLEFIELD

CELLO CARROTS	1 LB. BAG	5¢	FRESH CANTALOUPE	3/\$1
FRESH OKRA	LB.	29¢	ROMAN BEAUTY APPLES	4 LB. BAG 25¢

FRESH California ICEBERG LETTUCE
2 large heads **25¢** Fresh Produce

Bananas 2 LBS. **25¢**

CABBAGE Per Lb. **3¢**

FRESH CATFISH Per Pound **59¢**

TURNIPS & TOPS	2	25¢	BREAD	1 1/2 .LB. LOAF	25¢
COLLARDS				4 FOR	95¢

PORK SAUSAGE TOP BRAND 2 LBS. **59¢**

• OPEN SUNDAY •

CITY FRUIT MARKET
BILL AND BETTY SMITH



TO SING HERE -- The A Capella Choir of Bethany Nazarene College, Bethany, Okla. will appear Saturday at the First Church of the Nazarene, Lfd. Drive and 8th Street, at 7:30 p.m. in a concert of sacred music. The choir is directed by Lester L. Dunn, professor of voice. They make more than 50 appearances each year. Dr. Curtis Smith, assistant to the president of the college, is traveling with the choir. He will speak at the concert concerning the college and will interview prospective students. Rev. Hills Herren, pastor of the local church, cordially invites the public to attend the concert. There is no admission charge.

Career Day Held At Olton School Friday

OLTON -- Olton High School's Career Day was conducted Friday, March 19. The bi-annual event is sponsored by the Campbell P.T.A. Chapter. General assembly was held at 9:30 a.m. Speaker was Glenn Reeves, superintendent of Littlefield Public Schools. Miss Frankie Adams, daughter of Mr. and Mrs. Frank Adams and Don Sopher, son of Mr. and Mrs. Doug Sopher, were introduced as Mr. and Miss F.T.A. for 1964-1965. Students dressed in their best were invited to attend four classes which they selected themselves. A selection of approximately twelve different fields were offered. Guest speakers were Don Williams of Texas Tech; Lewis Eggenberger, Tech; Robert

Brown, Buffalo; E.R. Higgins, Lubbock; I.B. Holt, Olton; R.O. Bruchfield, Amarillo; C.C. Callarman, West Texas State University, Canyon; Harvie Jordan, Tulla; Bob Williams, Plainview; Curtis Wilkinson, Littlefield; L.W. Randerson, Lubbock and Dr. C.D. Wofford, Plainview. Subjects discussed were: coaching, agriculture, wildlife conservation, teaching, civil service, law enforcement, business, nursing, radio, banking, beautician, army and navy, attorney, oil industry, journalism and dentistry. Members of the Future Homemakers of America served coffee and cookies to the visiting speakers between sessions. Mrs. Linnie Campbell is local sponsor of F.T.A.

Cub Scout Pack Meeting Held In Cubmaster's Home Monday

The Cub Scouts of Spade held their monthly pack meeting Monday night in the home of the cubmaster and den mother, Mr. and Mrs. Duane Gray and family. The opening ceremony was the pledge to the flag. "South of the Border" has been the theme for the month of March and also served as the theme for the pack meeting. A skit entitled "Fun and Fiesta" was presented by the scouts. They also presented pantomime acts, strumming guitars they had made while "Mexican Joe" was being played. During game time, pinatas made by Nancy Ramage were broken. The cubmaster presented the following awards: Tommy Ramage, wolf badge and pin, a silver and gold arrowpoint; Kenny Ramage, bear badge and pin, gold and silver arrowpoint; Boyd Moore, silver arrowpoint under wolf; Ronald Nix, silver arrow

under bear; Jimmy McCurry, one year service pin; David Gray and Kenny Ramage, two year service pin; and Mrs. Gray, den mother, two year service pin. Tickets for the scout circus to be in Lubbock were distributed to each boy. The closing ceremony was given by the parents, stressing the importance of parent and son relationship. Refreshments of beef tacos, fritos, potato chips and dips were served with tea and coffee by Mrs. Nancy Ramage and Mrs. Jack Nix. Attending were Nancy Ramage and boys; Mr. and Mrs. Robert McCurry and Jimmy; Mr. and Mrs. Jack Nix and Ronald; Mrs. Leroy Wallace and children; Mrs. Billy Poteet and boys; Mr. and Mrs. Carl Reed and family; Mrs. Ralph Matthews and Marvin; Mr. and Mrs. Duane Gray and family.

Traffic Fatalities Exceed 3,000 For First Time

Traffic fatalities in Texas exceeded the 3,000 mark for the first time in history during the 1964 calendar year. Col. Homer Garrison, director of the Texas Department of Public Safety reported that the traffic death book for 1964 was closed at noon Monday, March 15, with a total of 3,006 fatalities on the streets and highways of Texas.

"The total for last year represents a 10 per cent increase over the 2,729 lives lost in 1963," Garrison said. "Coupled with this tragic loss of life is the staggering economic loss of almost \$487 million." Garrison reported that the DPS Statistical Services estimated that traffic accidents increased from 399,917 in 1963, to 454,762 during 1964. The number of miles driven in the state increased from 52.3 billion in 1963 to slightly over 55.6 billion last year.

Primary School Starts June 14

The Littlefield Primary School plans to operate again this summer a special school for beginners who have little or no understanding of the English language.

This special school is for pupils who will be six (6) years of age on or before September 1, 1965. You will need to bring the child's BIRTHCERTIFICATE to this office April 12 to April 30 to register for this class.

The classes will begin June 14, 8:00 a.m. and close on August 6, 11:00 a.m. This time will be forty (40) three hour sessions, Monday through Friday 8 to 11 each morning.

There is not any charge nor tuition for this class; however regular attendance is required.

The pupils who have attended these classes in the past have done better school work than those pupils who did not attend. Each eligible pupil should attend this special class!

Special Service Set Tonight

The Rev. John M. Hutson, pastor of the First Assembly of God Church, Hall and College Avenue, has announced a special service for tonight (Thursday) at 7:30 p.m. The featured speaker will be the Rev. Owen C. Carr from our National Headquarters in Springfield, Mo.

Rev. Carr is representing the national office of the Christ's Ambassadors, the youth organization of the Assemblies of God. He has been connected with youth work for approximately 20 years. Not only is Rev. Carr experienced, but he is also a very dynamic speaker.

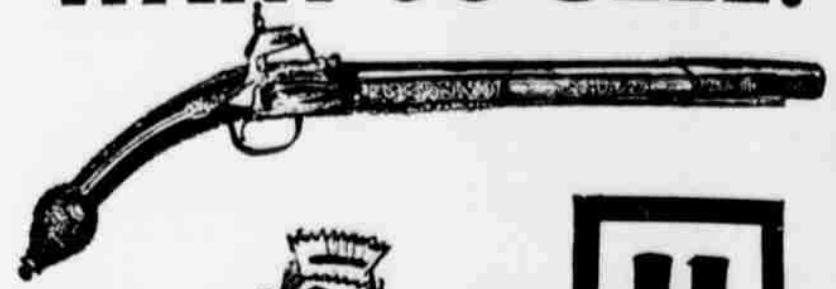
Although Rev. Carr represents the youth division of the organization, his message is directed to all age groups. "I am sure you will receive a blessing from hearing this man, and a cordial invitation is extended to all", says Pastor Hutson.

The Officers, Directors and participants wish to thank the following firms and individuals who as buyers and donors contributed so much to the success of the Littlefield Area Stock Show and Sale.

- | | | |
|-------------------------------|-------------------------------|-------------------------------------|
| LITTLEFIELD TIRE SERVICE | PETE STULTZ | HAYNES MELTON |
| PAYMASTER OIL MILL | HYDRO CONDUIT | DOYLE TAPLEY |
| LICHTE-SULLINS DELINTING | HILL ROGERS FURNITURE | J.W. BITNER |
| ARMES CHEVROLET | FARM EQUIPMENT CO. | ED ELLIOTT |
| SECURITY STATE BANK | EMBRY GIN | LUKE ALDRIDGE |
| JIM LANG | LITTLEFIELD MOTE PLANT | DUTCH WILKINSON |
| BRANTLEY-HABER FEED | FIRST NATIONAL BANK | GARLAND KOONTZ |
| FURR FOOD | LFD. FEDERAL SAVINGS AND LOAN | HARRY MILLER |
| BYERS GRAIN & FEED | GEORGE WHITE | LES LICHTÉ |
| BILL STREET | CRESCENT MOTEL | SUE DAILY |
| PRODUCERS CO-OP GIN | JACK CHRISTIAN TEXACO | CECIL JOHNSON |
| SULLINS FARM SUPPLY | SPUDNUT SHOP | FARMERS CO-OP GIN |
| CURTIS WILKINSON | LITTLEFIELD SEED & DELINTING | TOM MOSS |
| BACCUS CHEVROLET | GARLAND MOTOR CO. | TOM BELL |
| FASHION CLEANERS | YOHNER FEED & SEED | DON DOLLE |
| WARE'S DEPARTMENT STORE | J.C. PENNEY | DOYLE DEAN |
| GEBO DISTRIBUTING CO. | WRIGHT'S PRESCRIPTION | LLOYD LOCKE |
| SPADE CO-OP GIN | FOXWORTH LUMBER | NICK NICHOLSON |
| HERMAN NEUNSWANDER | FARMERS GRAIN | DON CARTER |
| PIGGLY WIGGLY | LITTLEFIELD CLEANERS | BAG ROUNDTREE |
| GRISSOM GULF | RODEN DRUG | FINUS BRANHAM |
| AMHERST MERCHANTS | SEDELL'S BARBER SHOP | W.W. HALL |
| WATKINS GIN | B & C PUMP & MACHINE | RONNIE OSBORN |
| UNION COMPRESS OF SUDAN, TEX. | J.L. AND KAY YEAGER | GAIL CHRISTIAN |
| ERNEST BLACK | BILL SMITH ELECTRIC | RAYMOND DUVAL |
| G & C AUTO SUPPLY | FINDLEY'S JEWELRY | BILL KIMBROUGH |
| WARD PUMP CO. | MONTGOMERY WARD | RONNIE MCNUIT |
| SKIPPER SMITH | LITTLEFIELD BELL STATION | FRED GERLACH |
| R.A. BROTHERTON | CRESCENT HOUSE RESTAURANT | BIRKELBACH MACHINE SHOP |
| GERALD GILES IMPLEMENT CO. | WALTER KING | SEDELL'S BARBER SHOP |
| ALVIN WEBB | R & W SUPPLY | BROWN-TEX GRAIN & FERTILIZER |
| NELSON HARDWARE | CULLIGAN SOFT WATER | DAIRY MART |
| DAVE'S HUMBLE STATION | WILLIE STEFFEY | RENFRO BROS. FOOD |
| LITTLEFIELD PUBLISHING | BARTON FARMS | ELMO JONES |
| GRIMES AUTO SERVICE | NEWTON INSURANCE | BAWCOM BUTANE |
| ONSTEAD FURNITURE | GILLEY BROS. ELECTRIC | JOE'S CONOCO |
| PATS RECORD SHOP | BROWN & HARRALL IMPLEMENT | LITTLEFIELD J.C.'S |
| JOHNNIE'S COSDEN STATION | LAMB CO. ABSTRACT | FOUST FOOD |
| WHITES AUTO | MARY SALES | W.O. HAMPTON GIN |
| BIGHAM FURNITURE | WINSTON INSURANCE AGENCY | WILEMON BUTANE CO. |
| WILEMON OIL CO. | HART-THAXTON | CITIDAL INSURANCE CO. |
| DAIRY MART | FIELD'S MENS WEAR | TIDE PRODUCTS |
| PASTIME CLUB | WEST DRUG | LITTLEFIELD FROZEN FOOD |
| JONES MOTOR CO. | WESTERN AUTO | BAWCOM MOBIL SERVICE |
| MONROE'S FOOD CO. | FABRIC CENTER | UNION COMPRESS OF LITTLEFIELD, TEX. |
| HANLIN AUTO PARTS | EVANS CLEANERS | LITTLEFIELD CO-OP GIN |
| GREAT AMERICAN OF DALLAS | CITY BARBER SHOP | LUCE & NELSON IMPLEMENT |
| ROBERTS LUMBER CO. | ORVILLE STEFFEY | SOUTHWESTERN PUBLIC SERVICE |
| MCCOY MACHINE CO. | ABE'S SELF SERVICE SHOES | FARLEY SALES |
| BOB'S GARAGE | A & B OFFICE SUPPLY | LFD. FEDERAL SAVINGS & LOAN |
| REAST OIL CO. | WALTER KESEY | EMIL MACHA |
| SUMRALL PONTIAC | NORMA'S DRESS SHOP | THORNTONS CAFETERIA |
| LAMB FRUIT CO. | JIM DANDY GROCERY | LUTHOR USELTON |
| DAVIS CONCRETE | BRITAIN PHARMACY | MITCHELL FORD INC. |
| EVANS WASHATERIA | | GENE CAMPBELL |
| DUNCAN AUTO | | |



WANT TO SELL?



FOR RENT?



LOST or FOUND?



Call the Classified Department whether you want to Buy, Sell, Hire, Rent or Find. Your opportunities to get things done quickly are increased many fold when you advertise in a market where you reach the greatest number of prospects. The Leader and News are the advertising mediums in this market best able to get fast action and the kind of results you want. You can do the job quickly and economically through Leader and News Classified Ads.

...WHAT EVER YOUR NEED
PHONE 385-4481
CLASSIFIED DEPARTMENT
NEWS - LEADER

Margaret James Service Today
 Funeral services for Margaret (Maggie) James will be held today (Thursday) at 10:00 a.m. in Hammons Funeral Home. Burial will be in Greenville Mount Cemetery, Greenville, Texas. Mrs. James died Monday at Knight's Nursing Home. She was a former resident of Earth before moving to Littlefield. Survivors include three daughters, Mrs. Ruby Anderson, Mrs. Mary Helen Terrell, Mrs. Big Spring, and Mrs. Era Walker, Earth; a son, James, Glendale, Ariz.; a brother, T.B. Cleary, San Antonio; a sister, Mrs. Ennis Kenosh, Wisc.; and 14 children.

Hammett Rites Held Monday
 Funeral services for Parson Hammett, 86, longtime resident of Littlefield who was pronounced dead Saturday at Methodist Hospital, were held at 10:00 a.m. Monday in Hammons Church with Ned Fairbairn, Church Christian layman, officiating. Burial was in Sudan Cemetery under the direction of Hammons Funeral Home. Mr. Hammett was a native of Hamilton County, Texas, and had lived in Littlefield 22 years and was a retired farmer.

Members Show Stock at Lubbock
 Members of the Littlefield 4-H Club exhibited a total of 20 animals at the South Plains Jr. Livestock Show held last week in Lubbock. Jimmy Sides, Olton, showed a crossbred barrow and won first with both. His heavy-weight cross barrow won 1st in his class and competed for champion crossbred while his medium weight barrow placed third. Approximately 1,200 barrows entered in all classes of the show. Both of Jimmy's barrows sold in the sale Wednesday.

Heavyweight Hampshire Steer
 Owned by Kevin May of Littlefield, the 4-H placed 2nd in his class and also sold Wednesday. Other Amherst 4-Hers exhibiting steers were: Bruce Bridges, Mike Cleaver, Janis and Terry Ege, and Phil Farmer were 4-H club members showing lambs.

Amherst 4-Hers Exhibited 11 Steers
 at the Lubbock show. Stacey and Carr of Littlefield placed 1st and 2nd in the show. Stacey's heavyweight Angus steer placed 6th and Steve's heavyweight Hereford placed 7th. Ray of Sudan exhibited a medium weight Hereford steer to a 5th place and sold for \$1,200. The 4-H steer in the sale Wednesday.

Amherst 4-Hers Exhibited 11 Steers
 at the Lubbock show. Stacey and Carr of Littlefield placed 1st and 2nd in the show. Stacey's heavyweight Angus steer placed 6th and Steve's heavyweight Hereford placed 7th. Ray of Sudan exhibited a medium weight Hereford steer to a 5th place and sold for \$1,200. The 4-H steer in the sale Wednesday.

CITY BIT
 Brenda Broadus, high school senior, spent last Friday on the campus of North Texas State University, Denton, "looking for a job" with the anticipation of attending school there next fall. Accompanying Brenda on her trip were her parents, Mr. and Mrs. Kenneth Broadus and Frances Smiley, former student at NTSU.

Have you discovered how to make a tossed green salad better?
 From the addition of marinated artichoke hearts (available in 6-ounce jars)? If you are preparing a salad for four, you use four cups of the greens and half the jar of the hearts. Add olive oil and wine vinegar dressing.

FRUIT SALES & SERVICE
 Local Sales Representative
 ANTON R. PHILLIPS, Jr.
 1123 West 6th St.
 Littlefield, Texas
 NOW IN PROGRESS
 14 BIRTHDAY SALE
 SPECIALS ON ALL
 REFRIGERATORS & CABINETS
 BUY NOW AND SAVE



THIS WEEK!!
 STEUBENVILLE'S FAIRLANE
 10" DINNER
 PLATE
 \$1.10 VALUE
 ONLY...
 WITH EACH \$5.00
 PURCHASE

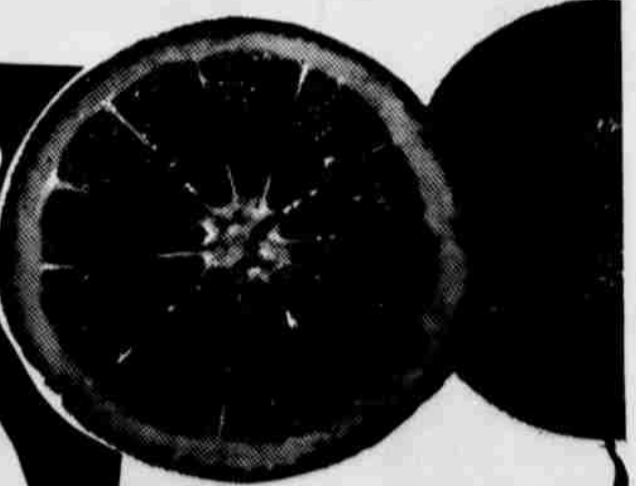
50 FREE!
 8 1/2 GREEN STAMPS WHEN YOU REDEEM COUPONS YOU RECEIVED IN MAIL FOR WEBSTER DICTIONARY AND COMPLETE BOOK OF SCIENCE!

FRESH FROZEN FOODS!
CAKE SARA LEE PINEAPPLE CHEESE 20oz. PKG. **79¢**
DINNERS MEXICAN PATIO 59¢ VALUE 16 oz. SIZE... **39¢**
POTATOES ONE-IDA HASH BROWNS 2 LB. BAG **39¢**
JUICE ORANGE TREESWEET 3 6oz. CANS **49¢**

HEALTH & BEAUTY AIDS!
TOWELS BY CANNON-EXTRA WEIGHT-8 ASSORTED COLORS REG 1.49 EA. **77¢**
Baby MAGIC MENNEN, PLASTIC BTL. REG. 98¢ 8oz. BTL. **79¢**

GREEN PEAS MISSION SWEET... 2 NO. 303 CANS **29¢**
 THESE VALUES GOOD AT YOUR PIGGLY WIGGLY IN LITTLEFIELD, TEX. March 25, 26, 27, '65

ORANGES
 TEXAS FULL O' JUICE
 5 LB BAG **39¢**



RADISHES CALIF. FRESH 2 LB. BUNCHES **29¢**

APPLES WE RESERVE THE RIGHT TO LIMIT QUANTITIES! ROMAN BEAUTY FOR COOKING OR EATING POUND... **15¢**

COFFEE
 MAXWELL HOUSE DRIP, FINE OR REGULAR 7+ OFF LABEL POUND CAN... **69¢**

GREEN BEANS RED DART CUT... 2 NO. 303 CANS **25¢**
CHICKENS ALLEN'S CANNED 52 oz. CAN... **79¢**
CAT FOOD DELIGHT... 6 NO. 1 CANS **49¢**

CHUCK ROAST ARMOUR STAR AGED HEAVY, BEEF, VALU-TRIMMED, POUND... **39¢**
GROUND BEEF 100% ALL BEEF, DATED TO ASSURE FRESHNESS... 3 LBS. **1.00**
SPARE RIBS LEAN, MEATY PORK POUND... **29¢**
COOKED HAMS RODEO'S DRY CURE, FULLY COOKED, SHANK PORTION LB. BUTT PORTION LB. 45¢ **39¢**
PORK CHOPS RODEO LEAN NORTHERN PORK FIRST CUTS LB. **49¢**

Pork CHOPS
 RODEO LEAN NORTHERN PORK CENTER CUT RIB CHOPS POUND... **59¢**



MELLORINE PLAINS OR BORDEN'S 1/2 GAL. **49¢**
MIRACLE WHIP KRAFT QT. JAR... **49¢**

FLOUR SUNLIGHT 5 LB BAG **29¢**
CORN KOUNTY KIST 12oz. CAN... **12 1/2¢**
EGGS IDEAL MED. DOZEN... 3 FOR **1.00**
BEANS PORK & CAMPFIRE... 6 NO. 303 CANS **39¢**

Lowest Prices... Greatest Variety... always at
Piggly Wiggly



DISPLAY AWARD -- Misses Dianne Perkins and Geoffree Grizzle, left to right, proudly show the plaque received by the seventh grade girls' choir, at the Region 1 Choral Contest last week in Lubbock, as a result of receiving a superior rating. Miss Grizzle was the president of this group the first semester and Miss Perkins is the president during this semester.

Future Homemakers Week To Be Observed April 4-10

Over one-half million Future Homemakers of America in states throughout the nation observe National FHA Week April 4 - 10, announced Ruth Huey, Director of Homemaking Education, Texas Education Agency. The 60,423 members of 1-314 chapters in the Texas Association FHA are celebrating their 20th year of nation-wide affiliation.

"In 1945 Texas was the fifth state to receive its charter and adopt their motto, 'Toward New Horizons,'" reported Josephine Pazdral, State Adviser.

FHA Week will find junior and senior high school chapters spotlighting their programs on family living and stay-in-school activities.

One Future Homemaker said Hutchins Expert On M-14 Rifle

Army Specialist Four Kenneth W. Hutchins, son of Mr. and Mrs. Ted Q. Hutchins, Star Route 2, Littlefield, Tex., qualified as expert in firing the high-powered M-14 rifle at Fort Hood, Tex., March 11.

The expert rating is the highest mark a soldier can achieve in his rifle qualification test. Specialist Hutchins, a line-man in Company C of the 1st Armored Division's 141st Signal Battalion at Fort Hood, entered the Army in January 1960. The 24-year-old soldier is a 1957 graduate of Spade High School.

Pep 4-H Boys Meet At School

PEP -- The Pep Boys 4-H Club met at the school Monday March 15. The meeting was called to order by the president, Samuel Albus. Discussions were on animals for the 1966 fair stock show, demonstrations for April 20 and a program of eight lessons on home economics for boys given by Miss Alexander, beginning April 1.

Members present were Gene and Alvin Walke, Paul Keahey; Steve Guen; Mitchel and Tony Schlottman; Samuel and Fred Williams; Kenneth Albus and adult leader, Coy Keahey.

it for all her sister-members this way. "To me, FHA means more than just an organization because I feel it is a part of me that I will still have when I have a home of my own." FHA is sponsored nationally by the U.S. Office of Education and the American Home Economics Association, and guided by homemaking teachers. As part of a large national organization of teeners concerned with good home and family life each girl grows through new experiences, new views and new friends.

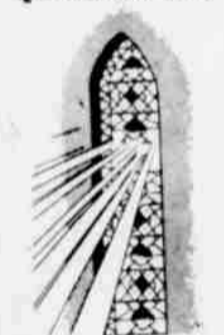
Members will celebrate FHA Week by attending church together, sponsoring style shows and faculty teas and participating in home and community service projects. Many FHAs will wear the traditional red and white colors to remind their classmates of FHA Week.

The national program of work this year includes (1) You and your values; (2) Focus on family friendship; (3) Marriage calls for preparation; (4) Stay in school; (5) Action for citizenship.

Three hundred Texas girls were awarded their State Degrees at the State Meeting last May. Officers, delegates and sponsors of the Texas Association will convene for their 1965 state meeting in Dallas April 23-24.

DISTURBED SLEEP
Does kidney irregularity wake you up? Are you bothered with leg pains, backache, frequent or scanty flow due to functional kidney disorders? Help nature eliminate excess acids and other wastes. After 3 doses of BUKETS, if not pleased your 35c back at any drug store. BRITAIN PHARMACY

FIND SOLACE FOR YOUR SORROW THROUGH... QUIETUDE



FEEL FREE TO CALL ON US AT ANY HOUR Hammons Funeral Home

SHOP LITTLEFIELD FIRST

LITTLEFIELD MERCHANTS WELCOME YOU

A Directory of reliable business services you can depend on.

JOHN CLAYTON

W. H. BERRY,



B&C PUMP & MACHINE WORKS



B&C Pump & Machine Works Owners Give Prompt And Efficient Pump Service

Due to the business acumen of both John Clayton and W.H. Berry, owners of the B & C Pump and Machine Works Littlefield and Levelland, efficiency and prompt service is the vogue at the B & C Pump and Machine Works. Recently a Bailing unit was added to develop wells before installing new pumps. A nine

thousand dollar installation for a brand new two-way radio systems for their eight trucks with a base station in both Littlefield and Levelland has been completed. Three winch trucks, a clean-out truck and four pickups are at your service. The company has a staff of 12 machinists, drivers and office personnel.

ers in Texas, winning a plaque for both their sales and service.

Last year the firm expanded by putting a sales office for pumps in Levelland. All maintenance work is done in the Littlefield shop. John Holder, formerly of Littlefield, is in charge of the office. Mrs. Holder assists him as receptionist.

of the new building is Mrs. Bernice Reaves, the company's bookkeeper for eight years. Both Berry and Clayton are long-time residents of Littlefield. Berry moved here in 1924 and Clayton in 1930. On October 1, 1951

It's important to buy clothes that are well made if you want to get good laundering results. And the fewer decorations and trimming there are on a garment, the less problems it will pose in the laundry.

One of the earliest books discussing the probability of life on other worlds was written about 300 years ago.

Hurricanes striking U.S. coasts in the past half century have left in their wake an average of 111 deaths a year.

HUMDINGER DRIVE IN



For Faster Service Call In Your Orders

PH 385-5356

BURGERS - SUPER DOGS FRENCH FRIES - SANDWICHES MALTS - SHAKES - ICE CREAM COLD DRINKS 505 W. DELANO

B&C PUMPS & Machine Works

W.H. "Dab" BERRY- JOHN M. CLAYTON- Owners COMPLETE IRRIGATION SERVICE

- WELL CLEAN-OUT
- PUMP PULLING
- PUMP SETTING
- COMPLETE PUMP REPAIR



Tube Line Now Guaranteed 5 Years

PHONE 385-5137 Nights 385-3118 Or 385-4185 304 Lake Ave. LITTLEFIELD 894-5025 LEVELLAND

VISTA DRIVE-IN for good food

621 HALL AVENUE PH. 385-8977

- Rainbow Trout
- Fresh Water Gaffish
- Steaks, Chops
- Sandwiches

Open from 8 A.M. to 8 P.M. Closed Sundays Mr. & Mrs. Bill Heinz Owners

A QUOTE FROM A 5 YEAR OLD YOUNGSTER: SPUDNUTS
• ARE REAL GOOD • ARE REAL NICE
• ARE RIGHT TO BITE
IF YOU LIKE DONUTS YOU'LL LOVE SPUDNUTS
SPUDNUT SHOP
702 W. 10 TH PH. 385-5670

Mc COY MACHINE & PUMP REPAIR

- GEAR HEADS
- WELDING
- PORTABLE WELDING
- PUMPS
- REPAIRS ON ALL MAKES
- MACHINE WORK

LUBBOCK HWY. DIAL 385-5233

To get rid of hard water today-Thurs. MARCH 25



Pick up your phone and say... **HEY CULLIGAN MAN!** "FIRST IN WATER"

1020 E. 9Th. Ph. 385-3111

COX TIN & PLUMBING SHOP

Plumbing Heating LENNOX Heating & Air Conditioning Sheet Metal Work Fixtures & Supplies Licensed-Insured-Bonded 706 E. 3rd Dial 385-4020



Lubbock Hwy - Lfd. Open 6 a.m. to 10 p.m.

For the finest in home-cooked Mexican and American dishes

WEDNESDAY SPECIAL From 11 a.m. to 8 p.m.

REGULAR DINNER

- 1 Taco • 1 Enchilada
- 1 Tamale • Rice
- Beans • Coffee or Iced Tea

77¢ We cater special parties ORDERS TO GO Under new management Mr. and Mrs. Briggs Mungary Mr. and Mrs. Joe Galindo

Mobil

"SERVICE WITH A SMILE" OPEN 24 HOURS Tourist Information DIAL 385-8974

AAA SERVICE ZOTH MOBIL SERVICE HWY. 385 & 84 LITTLEFIELD

IF YOU MAILED

3600 POST CARDS

IT WOULD COST

\$144

THIS SPACE TO

3600 SUBSCRIBERS

COSTS ONLY

\$4.80

IT PAYS TO

ADVERTISE

SAVE \$

Groceries - Meats - Fruits - Vegetables AT RIGHT PRICES

MONROE Food Market

411 Hall Ave 385-3111

AUTOMOTIVE SUPPLY HEADQUARTERS

700 E 4th - PH 385-4411

- Car • Truck
- Tractor Industry
- Motor Rebuilding
- Precision Machine Service

G & C AUTO SUPPLY

CHANDLER'S MOTOR MACHINE & SUPPLY STORES In Littlefield, Anton, Spade, Earth

SWITCH TO THE HOTLINE '65 FORD HARDTOPS



'65 MUSTANG HARDTOP \$2395

F.O.B. Detroit. Mrs. suggested retail price. *Manufacturer's suggested retail price for Mustang Hardtop. Destination charges, state and local taxes and fees, if any, not included. Options such as whitewalls extra cost. See your Ford Dealer for his selling price.

Come price hot-to-go hardtops powered to please Texans! Galaxie's got America's biggest new Six... Mustang's Six is bigger than ever! For long-distance value, switch to the hot line!

SEE YOUR TEXAS FORD DEALER

MITCHELL - FORD, INC.

525-529 PHELPS AVE.

LITTLEFIELD, TEXAS

'65 GALAXIE HARDTOP

Silence is standard equipment! A Galaxie 500 Sedan rode quieter, by actual test, than a new Rolls-Royce.

Leading acoustical consultants conducted tests in which V-8 powered Ford Galaxie sedans and hardtops with Cruise-O-Matic Drive rode quieter than a Rolls-Royce. These tests were certified by the U. S. Auto Club.

Seminar in Estate Planning Set

Area seminar in estate planning for women will be held at the First Baptist Church, Littlefield, Texas, on Friday, April 12-13. The meeting will offer sound principles and practical information to women interested in preparing themselves for their financial affairs or when circumstances necessitate their doing so.

Sponsored by the Baptist Federation of Texas, the seminar is open to all women. No registration fee or other charge is required. The First Baptist Church will provide nursery facilities. George W. McCleskey, Lubbock attorney, will speak on "What Happens to an Estate When the Owner Dies?" at the opening session April 12. At the same session, Buck W. Hill, vice president of the National Bank of Lubbock, will discuss "Gift and Taxation." Dr. D.M. Wiggin, chairman of the executive committee of Citizens National Bank of Lubbock will be moderator for the session. Speakers at the second session April 13 will be Bill King, president of Associated Agencies, Littlefield, "Practical Economics of Life Insurance and Security;" and Curtis J. King, investment broker for Pierce, Pierce and Co., Inc., Littlefield, "Investment Alternatives and Opportunities." Attorney Roy Bass of Lubbock will be the moderator.

Duggan Grandson seeks Information

David B. Gracy, II, a grandson of Arthur P. Duggan, Sr., has been in Littlefield since Saturday, March 18th, doing research for his masters thesis at the University of Texas. He is writing a history of the Littlefield Land Company from 1920.

He began the project last year when with the aid of George White of Littlefield he researched the correspondence file of the company, headed by A.P. Duggan, Sr., from under the old company office on the corner of Phelps Avenue and Third Street. He has found other correspondence and sales files of the Littlefield Land Company in Littlefield and Lubbock. These past few days, Gracy has been talking with many early members of Littlefield about their dealings with the company and their experiences in those first years. He is searching for copies of the early newspapers: Littlefield News in 1912 and The Littlefielder in 1914; the Lamb County News in 1918. Also he is trying to locate copies of advertising literature produced either by the company or by its various agents. If anyone has material which should be included in the book, Gracy would very much appreciate receiving it. He may be contacted at 2009 Hopi Trail, Littlefield, Texas, 78703.

Junior Class Play Set For Friday

WHITHARRAL -- The Junior Class of the Whitharral High School will present "Here Comes Charlie", a 3-act comedy play at the cafeteria Friday, March 26 at 7:30 p.m. Participating in the play will be Penny Tipton, Michael Sadler, Ann Throckmorton, Floyd Adams, Cathy Howard, Shannon Brack, Judy Wade, Charlotte Caldwell and A.W. Hunter. Mrs. Anna Duncan is the sponsor. Admission is 75¢ for adults and high school students; 50¢ for children and below. The play is to raise money for the Junior-Banquet. The public is invited to attend.

Republicans

Attend Convention

Mrs. Pat Downs accompanied a group of Young Republicans to a convention over the weekend held in the Commodore Perry Hotel, Austin. The group returned Friday and returned Sunday morning. Making the trip were Susan Downs, Mark Randall, Nancy Bell, Billie Cook and Larry Carter.

Everyone Should MAKE A WILL

It is simple when you use our prepared forms. They have only a few personal questions and a large amount of legal information. You need only a few minutes and a few dollars to get your will in the hands of your heirs. Don't leave an unpleasant task for your heirs. Make your will in the privacy of your home. These simple forms are prepared by a Licensed Insurance Adjuster. Send \$1.00 for complete forms and simple instructions. No other expense involved. Room #525, 110 N.W. 9th, Oklahoma City, Oklahoma. JEAN HARR

GREAT SAVINGS WITH

a BIG PLUS-

Furr's

SUPER MARKETS



FRONTIER STAMPS WITH EVERY PURCHASE AT FURR'S

FRESH FROZEN FOODS STRAWBERRIES

- DARTMOUTH FRESH FROZEN 10 OZ. PKG. **2 FOR 35¢**
- TOP FROST FRESH FROZEN **Cut Asparagus** 10. OZ. PKG. **29¢**
- OREIDA, FRESH FROZEN **Tater Tots** 16 OZ. PKG. **29¢**
- DARTMOUTH FRESH FROZEN **Cauliflower** 10 OZ. PKG. **19¢**
- MORTON'S FRESH FROZEN **Fish & Chip Dinner** 8 OZ. **39¢**

HAIR SPRAY

CREAM RINSE

BEACON 16 OZ. **49¢**

MILK BATH

CAPRI 16 OZ. **69¢**

NOSE DROPS

RHINALL 1 OZ. REG. 89¢ **69¢**

SUDDEN BEAUTY REG. 99¢

54¢ ORANGES

CALIFORNIA VALENCIA LB. **10¢**

CELERY 2 FOR 19¢

FRESH CRISP STALK

PRODUCE SPECIALS AT FURR'S

Try these items from Furr's fresh produce department: Asparagus, Broccoli, Egg Plant, Salad Endive, Red Cabbage, Avocados, Strawberries and many, many others.

ANNIVERSARY SPECIAL! PYREX BRAND OVENWARE 88¢ SALE JUST THROUGH MARCH 27, 1965



SALMON

HONEY BOY CHUM TALL CAN **39¢**

FLOUR ELNA 5-LB. BAG **29¢**

EGGS USDA INSPECTED GRADE A, MED. DOZ. **33¢**

FOOD CLUB OR MAXWELL HOUSE 1-LB. CAN **69¢**

Coffee 2-LB. CAN **1.37**

BREMNER CRACKERS 1-LB. BOX **15¢**



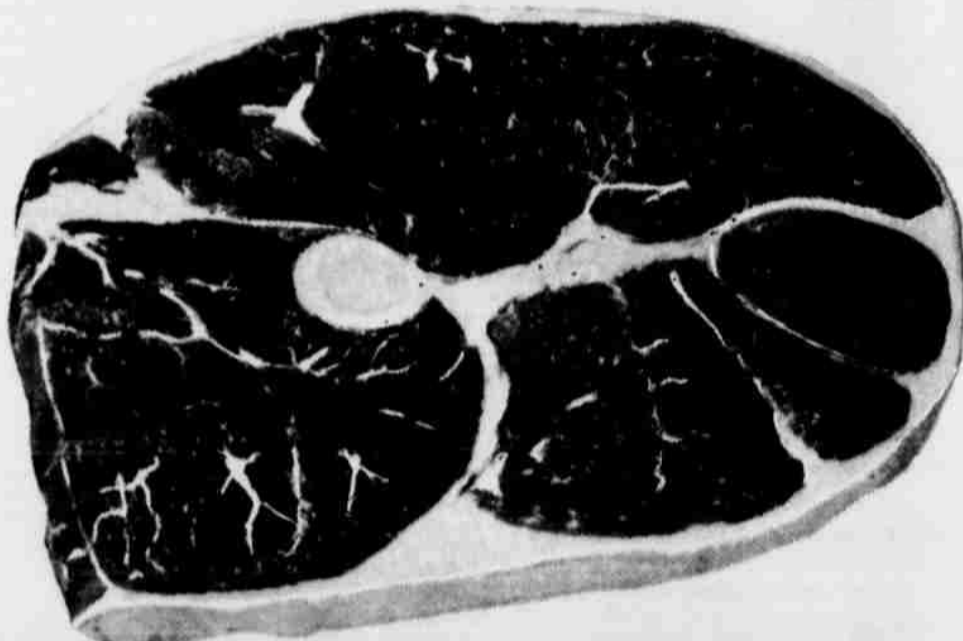
FOOD CLUB CHUNK STYLE TUNA CAN **25¢**

THIS WEEK, FURR'S OFFERS 6 INCH SALAD PLATE

FROM "EVER YOURS" BOUTONNIERE DINNERWARE **9¢**

WITH EACH \$5.00 PURCHASE Don't miss this chance to take home beautiful 'Boutonniere' at wonderful savings. This week is your LAST CHANCE to take home the 6" SALAD PLATE at the low price. Complete your place settings now through April 18.

FURR'S MEATS ARE GUARANTEED TO SATISFY!



FFA AND 4-H CLUB BEEF ROUND STEAK LB. **79¢**

FFA AND 4-H CLUB BEEF T BONE STEAK LB. **98¢**

FFA OR 4-H CLUB BEEF **CHUCK ROAST** LB. **39¢**

FFA OR 4-H CLUB BEEF **ARM ROAST** LB. **69¢**

FFA OR 4-H CLUB BEEF **SIRLOIN STEAK** LB. **89¢**

FFA OR 4-H CLUB BEEF **RIB STEAK** LB. **69¢**

FARM PAC OR RATH **BACON** LB. **59¢**

FFA OR 4-H CLUB **SHORT RIBS** LB. **19¢**

FFA OR 4-H CLUB BEEF **PINBONE SIRLOIN** LB. **69¢**

OCEAN BREEZE **SHRIMP** 10 OZ. PKG. **2/97¢**

always LOW, LOW PRICES at FURR'S

RITZ 1 LB. CRACKERS **43¢**

APPLE JUICE FOOD CLUB QT. **25¢**

COFFEE MARYLAND CLUB INSTANT 6 OZ. JAR **79¢**

Instant Starch NIAGARA 24 OZ. SIZE **49¢**

POST TOASTIES

CORN FLAKES 18 oz. pkg. **29¢**
With 7¢ Coupon in Paper
Without Coupon **36¢**

SANDWICH BAGS

NORTHERN WAXTEX 75 COUNT **23¢** 150 COUNT **39¢**

WAX PAPER

NORTHERN WAXTEX 100 FT. ROLL **23¢**

KNORR SOUPS

ASSORTED **39¢**



Buy, Sell, Trade, Hire, Rent, Find THROUGH THE

WANT ADS

LEADER and NEWS CLASSIFIEDS SELL! TO USE THEM JUST CALL 5-4481 AND ASK FOR AD TAKER

Help Wanted A-1, Apts. for Rent B-1, Work Wanted A-2, Business Opportunities A-3

LOOKING FOR AN APARTMENT? Call Brenda Wilkinson 385-5447

WANTED MAN OR WOMAN SPARE TIME To refill and collect money from machines dispensing HiGrade Candy, Gum and Sport Cards in this area.

Lost & Found A-4, Personal Services A-8, Apts. for Rent B-1

Houses to Rent B-3, Rooms for Rent B-5

Houses For Sale C-1

Real Estate for Sale C-6, Real Estate Wanted C-5, Real Estate for Sale C-6

Colonial House 400-404 E 22nd St., 2-3 Bedroom Apartments

PEYTON REESE FARM LOANS 110 Yellow House Bldg. Dial 385-5363

Houses to Rent B-3

Real Estate for Sale C-6

NOTICE WE NOW HAVE OUR OFFICE IN THE ONSTAD FURNITURE STORE

Real Estate for Sale C-6 PEYTON REESE Real Estate 110 Yellow House Bldg. Dial 385-5363

Real Estate for Sale C-6

Real Estate for Sale C-6

Real Estate for Sale C-6

JIM MILLS REAL ESTATE 785-2181 623 LTD DRIVE

Buy Sell Trade With Classified

Bus. Services D-3 WE REPAIR ALL MAKES OF BICYCLES Call 385-4215 BENNETT'S FIRESTONE

Real Estate for Sale C-6

DAVIS CONCRETE 7th & Seldon Phone 385-3023 SAND - GRAVEL - READY MIXED CONCRETE

SEWING MACHINES...just in time for spring sewing. We are back in the sewing machine business.

PORTABLE RIG COMPLETE WELDING SERVICE GAMBLE WELDING WORKS 720 E. 4TH 385-5437

COMPLETE EXTERMINATION SERVICE, household pests as roaches, mice, rats, termites, etc.

Bus. Services D-3 WALL PAPER & PAINTS LITTLEFIELD HARDWARE PH 385-3033 Lubbock Hi-way

RENT OUR HEAVY DUTY YARD TILLER Only \$6 A Day BENNETT'S

INCOME TAX SERVICE Reasonable Rates J. CALVIN YOUNG Phone 385-8980 MOTEL L-F Littlefield, Texas

New Luzier Cosmetic Consultant MRS. SYDNEY HOUK 385-4959 904 W. 9th St. Littlefield, Texas

ROBERTS STUDIO Portraits - Weddings - Photo copying 203 W. 3RD Littlefield

TRUCK SEATS EXCHANGED 15 MINUTE SERVICE McCORMICK'S TRIM SHOP PHONE 385-4555 227 MAIN

Farm Equipment E-1 PTO Driven, non prime booster pump, fits 3 point or belly type tractor. Floyd's Welding Shop, Amberst, Texas. 4-14F

Feed-Seed E-2 Select HINN Soybeans, State Analysis Tag, Eldon Gohlke, Route 1, Littlefield, Phone 385-4023. 4-11G

Pets F-1 Small part Collie, female, puppy to give away. Ideal pet for small child. Phone 385-4481, 8-5 Mon. thru Fri., 8-12 Sat. TF-R

READ and USE WANT ADS REGULARLY

MR. 2 BY 4

Roberts-Loflin LUMBER CO. SPADE HIWAY Phone 385 4140 PITTSBURGH PAINT AND READY MIXED CONCRETE

Cattle, Hogs, Horses, Sheep F-3 Registered Angus bull, 14 mo. old, sire Eileenmeh HY View 9 Dam Black Beauty. Phone 385-3207, Littlefield or 6891 Muleshoe. 4-4E

Leases G-4 For Lease...drive-inn and cafe in Portales, New Mexico. Gross...over \$100,000 per year. Reason...Health. Call 356-5601, Portales or write 101 S. Chicago St., Portales. 3-28G

Furniture, Appl. (Used) H-2 Used TV sets from \$24.95. TV CORNER 385-3831. TF-T

Misc. For Sale H-3 KEEP your carpets beautiful despite constant footsteps of a busy family. Get Blue Lustre. Rent electric shampooer \$1. Nelson Hardware and Supply.

Misc. For Sale H-3 All of Lots Three (3) and the East Twenty Feet (E 20') of Lot Four (4), Block Five (5), Duggan Annex to the City of Littlefield, Lamb County, Texas.

Autos, Trucks For Sale J-1 1960 Pontiac Ventura, 4-door hardtop, power steering, power brakes, factory air conditioning, white wall tires. Contact Dale Walthall, R & W Supply. *385-4447. TF-W

Boats & Motors J-4 For Sale...one 14 foot boat and trailer. Phone 385-5077. TF-B

Legal Notice THE STATE OF TEXAS COUNTY OF LAMB NOTICE OF EXECUTION SALE



LOOKING OVER THE SCRIPT -- R.B. (Mac) McAllister, Lubbock, who will narrate the Beta Sigma Phi Style Show "What's in the Cards for Spring", Friday at 8 p.m. at Littlefield Country Club, is shown going over the script with Leta Merle Loflin, who was in charge of securing the sponsor for the show. McAllister is a former resident of Littlefield, where he was active in the civic, social, and religious life of the community. He has done research and work on cystic fibrosis recently and is personally acquainted with several children with this disease. Proceeds from the style show will go to cystic fibrosis research and a scholarship for a school student.

SHORTAGE (Continued From Page 1)

lodge this was the first time an audit of this nature has been done, and indicated he was pleased with the results shown. "Anytime," the mayor said, "you have close to 50 employees handling almost \$500,000 per year, and come up with only this small of a shortage, most of which we feel will be traced to inadequate records, this is a fine reflection of our employees." The mayor went on to say that even one dollar short would be too great, and that if any theft or misappropriations can be proven, those involved should be exposed and appropriate action be taken.

Registration for the more than 1,050 delegates and officers representing the 14 Texas members will open at 1:00 p.m., March 28th, according to Head Consul Carl Theford, San Antonio, Texas, president. Speakers will include Mayor of San Antonio, the honorable W.W. McAllister, Sims, chairman of the board of the Woodmen; W.H. Mack, president; R.N. Dossman, executive vice president; Lena Alexander Shugart, honorary chairman of the Ruby Gene Sewell, manager of the Tau Phi Lambda service groups; and Robert Kirk, Littlefield, trustee, and Merle Beard, Littlefield, member of Woodmen's national committee of Legislation, and past Head Consul, will be present.

The 1965 Head Camp will be the first time that the representatives of the former Woodmen Circle Groves will be in attendance and play a part of the Head Camp program. The Supreme Forest Woodmen Circle merged with the men of the World Life Insurance Society on January 18, 1965. This is the first time that members of both groups will attend a combined meeting.

A pre-convention reception will be held at 6:30 p.m., March 20th in the hotel ballroom. This will be followed by an impressive Memorial Service to deceased Woodmen. Those participating are Pastor Frederick Haman, Jr., Faith Lutheran Church; Edgar McCannister, Shugart; and Lester Velton, Sr.

Following welcomes Mayor McAllister, and a welcome on behalf of local Woodmen from Jerry Musser, Robert Kirk will respond. At 8 a.m. Head Consul Theford will be introduced and the Camp officially opened. At the close of the convention awards will be announced. "Operation Scrapbook," a competition between Texas Camp Courts and Groves for the scrapbook telling the story of their many fraternal, social and civic activities. The first prize is \$150; second prize, \$75; and prize, \$50.

Read to Read NEWSPAPERS SELL THE MOST!

Awards Highlight Lions Club Banquet At Whitharral

Walden, Mrs. Elva T. and Mr. and Mrs. L.C. Lewis were honored last night at the Whitharral Lions Club annual awards banquet.

H.G. Johnson presented H.G. Walden the "Citizen of the Year Award". Walden received an inscribed plaque and certificate of lifetime membership in the Texas Lions Crippled Children's Camp, Kerrville. Walden has been in the grocery business in Whitharral 25 years. He served as Lion Boss, Community Chest Chairman, Chairman, Polio Drive Chairman, Democratic Pre-Chairman, and Democratic Delegate to the state convention. Walden is also vice president of the Whitharral Municipal Water Board and active in the Whitharral Baptist Church where he is an adult Sunday School leader.

Mrs. Crank was chosen Lady of the Year, and was presented with an inscribed plaque by Don Redding making the presentation. Mrs. Crank said, "A citizen is an individual possessing civic and freedom and puts it to use." Mrs. Crank takes pride in her work regardless of the work time required and is an asset to the community. She has made her Christian home for her children.

Mrs. Crank received the award with tears in her eyes. She has been a teacher in the Whitharral school system for 15 years and is retiring in June.

A special award was presented to J.W. Borders by Mr. and Mrs. L.C. Lewis honoring them on their 31st wedding anniversary for their help to the Lions Club. Mrs. Lewis prepared meals for the Lions Club several years.

Mrs. J.E. Wade said, "The Lions Club pay tribute to these people for acts and deeds performed without failure and recognition. We wish to recognize and honor Mr. and Mrs. Lewis who have worked and never complained whether doing service for or God."

Rev. Raymond Woodruff, pastor of the Whitharral Baptist Church was guest speaker at the Monday evening meeting of the local PTA. Using the topic, "Together We Help A Child by Stressing our American Heritage," Woodruff summarized participation in our government; (2) equality of every man, whether in race, creed or color; (3) responsibility of each person in carrying on our government, accepting our responsibility as a citizen; (4) freedom of speech, press, and religion; (5) justice for the poor as for the rich; and (6) peace brought by lives, blood, energy and sacrifice which we should use wisely and protect. He showed a number of the flags in the transition from the first flag to our present flag and stressed the emphasis of our pride in the flag.

A skit of the junior play, "Here Comes Charlie", was presented and announced for Friday, March 26 at 7:30 p.m. under the direction of the sponsor, Mrs. Anna Duncan.

Mrs. J.E. Wade presided for the meeting. Reports were made by Mrs. R.J. Clevenger on the spring meeting of the District PTA in Levelland, April 6.

Mrs. Ervin Sadler, chairman of the nominating committee, presented the following officers: president, Mrs. Robert Strickland; vice president, Mrs. Norman Theford; secretary, Mrs. Roger White; treasurer, Mrs. R.J. Clevenger. They were elected and will be installed at the April meeting.

A bake sale was announced for April 3 (Saturday) at Walden's grocery and at the Co-Op gin. Each member is asked to prepare at least one item for sale at this time.

The second grade had the most parents present and will receive the \$2 given by the PTA.



RECEIVE AWARDS -- In the above photo H.G. (Hasty) Walden receives a Citizen of the Year award and certificate of lifetime membership in the Texas Lions Crippled Children's Camp at Kerrville. The award was made by Ed Johnson at the Lions Club awards banquet held at Whitharral last week. Mrs. Elva T. Crank, teacher in the Whitharral schools for 23 years, was named the Lady of the Year at the same event. She is shown in the bottom photo accepting the award from Don Redding.

Whitharral PTA Hears Pastor Speak On American Heritage

WHITHARRAL -- Rev. Raymond Woodruff, pastor of the Whitharral Baptist Church was guest speaker at the Monday evening meeting of the local PTA. Using the topic, "Together We Help A Child by Stressing our American Heritage," Woodruff summarized participation in our government; (2) equality of every man, whether in race, creed or color; (3) responsibility of each person in carrying on our government, accepting our responsibility as a citizen; (4) freedom of speech, press, and religion; (5) justice for the poor as for the rich; and (6) peace brought by lives, blood, energy and sacrifice which we should use wisely and protect. He showed a number of the flags in the transition from the first flag to our present flag and stressed the emphasis of our pride in the flag.

A skit of the junior play, "Here Comes Charlie", was presented and announced for Friday, March 26 at 7:30 p.m. under the direction of the sponsor, Mrs. Anna Duncan.

Mrs. J.E. Wade presided for the meeting. Reports were made by Mrs. R.J. Clevenger on the spring meeting of the District PTA in Levelland, April 6.

Mrs. Ervin Sadler, chairman of the nominating committee, presented the following officers: president, Mrs. Robert Strickland; vice president, Mrs. Norman Theford; secretary, Mrs. Roger White; treasurer, Mrs. R.J. Clevenger. They were elected and will be installed at the April meeting.

A bake sale was announced for April 3 (Saturday) at Walden's grocery and at the Co-Op gin. Each member is asked to prepare at least one item for sale at this time.

The second grade had the most parents present and will receive the \$2 given by the PTA.

FIELDTON NEWS by Mrs. Elva T. Crank

Visit Club Meet At Whitharral

Fieldton residents attending the Whitharral Home Demonstration Club meeting Tuesday afternoon in the home of Mrs. Lillie Theford were Mrs. A.H. Scivally, Mrs. Donald Cowan and Mrs. Johnny Latimer.

Mrs. Sallie Anderson of Levelland spent a week recently with her sister, Mrs. W.J. Aldridge and family.

Mr. and Mrs. Clint Wright of Lubbock spent last Sunday with her sister, Mrs. W.J. Aldridge and family.

Visitors Sunday in the Ray Buck home were their children, Mr. and Mrs. Carl Buck, Mackie and Jackie; Mr. and Mrs. Charles Franz and children, all of Littlefield; Melvin Buck and Mr. and Mrs. Ron Suave and children.

Steve Cherry was honored Friday afternoon with a cub scout birthday party. His grand-

mother, Mrs. Hubert Taylor, served birthday cake and cold drinks to Rickey and Jerry Stamps, Edward Yoakum, Kippy McLelland and Connie Bowman. Steve Cherry was unable to attend because he was sick with the measles. The boys sang "Happy Birthday" to him over the telephone. Mary Stamps and Jeanie Yoakum are the scout leaders.

Mr. and Mrs. Dee Stamps and children visited Sunday afternoon at Olton with his uncle, Mr. and Mrs. Boyd Stamps and also with his parents, Mr. and Mrs. J.O. Stamps.

Mr. and Mrs. Truman McCain visited Sunday afternoon in Tullia with Mr. and Mrs. Norman Singer and family. Mr. Singer was ordained deacon of the Calvary Baptist Church of Tullia Sunday afternoon. The McCains attended the services. The Singers are former residents

of Fieldton.

The RA boys met Thursday afternoon after school at the Baptist Church. They are reviewing the "Page Manual". Those attending were Ricky and Jerry Stamps, Perry and Roger Muller and Dennis Cowan. Dee Stamps and Ray Muller are their leaders.

H.P. Pointer, father of Mrs. Billy McLelland, has been seriously ill in a Littlefield hospital. He was moved to a Plainview hospital last week for further treatment. Word has been received that he is some improved.

Mr. and Mrs. Lewis West of Hereford visited Thursday and Friday with Mr. and Mrs. Claude McCain.

Mr. and Mrs. Claude McCain visited Sunday at Bovina with their son, Mr. and Mrs. Leslie McCain. They attended church with them at the First Baptist Church.

Mr. and Mrs. Jake Armstrong and Roxie were honored with a housewarming Friday night. There were about 36 present. From out of town were Mr. and Mrs. Louis Hair and family of Olton and Mr. and Mrs. Buck Frederickson and Kay of Lubbock.

Weekend guests of Mr. and Mrs. Jake Armstrong were their son, Mr. and Mrs. Jerry Armstrong and family from Big Spring; also Georgia Armstrong's sister, Mrs. E.H. Wil-

son of Big Spring.

Mrs. J.E. Elliott was admitted to the Amherst Hospital Sunday morning for treatment.

Mr. and Mrs. Hubert Taylor visited Sunday in Littlefield with his sister, Mr. and Mrs. J.J. Cook. They also visited at the Amherst Hospital with Mrs. J.E. Elliott.

Mrs. Don Joyner returned home Sunday from Cache, Okla. where she had spent the past week with her parents. Her father has been sick but was some better.

Art Club Has Workshop

An all day meeting of the Daubers' Art Club was held Tuesday in the Reddy Room. The morning was spent in painting in oils.

Each one present brought a sack lunch. Mrs. Pearl Rountree and Mrs. Hattie Street were hostesses.

Starting at 1 p.m. a workshop in oil painting was begun. Mrs. Genie Davis, artist and student at South Plains College, Levelland, is the instructor for the series of art lessons to be given.

Present for the workshop were Mmes. Pearl Rountree, Dorothy Ferguson, Gwen Tucker, Hattie Street, Sonja Ball,

WSCS Honors Senior Class With Banquet

AMHERST -- Members of the high school seniors were honored with a banquet in Fellowship Hall of the Methodist Church last Tuesday.

This is an annual courtesy for seniors, given by the Women's Society of Christian Service. The Spanish-American

theme was used. It is the custom to use a theme in keeping with a study of the WSCS held the past year. Mrs. V.A. Hinds was general chairman, assisted by Mrs. Charles Hinds and several committees.

Mrs. Bert Grimes served as "emcee" and gave the welcome. Guy Hufstetler responded for the seniors.

Guest speakers were Rev. Bill Kent of Crosbyton and Rev. Jacinto Alderete of the Spanish Mission there. A combo of four high school boys, Eddie Hedges, Len Mixon, Johnny Norwood and Billy Sherrill furnished musical numbers. Rev. E.R. McGregor gave the benediction.

An authentic Spanish setting for the occasion was arranged by the WSCS ladies.

Jalee Mote, Donna Gilliland, Debbie Stagner and Kathy Campbell, wore Spanish costumes when they served as waitresses.

Corinne Evans, Vera Griffin, Louise Bennett, Irene Steffey, and a visitor, Mrs. Les Hewitt.

Wildcats Score Heavily In Two Track Meets

The Littlefield Wildcats track team have piled up 182 points in track meets at Denver City on March 13 and the Levelland Invitational Meet last Saturday.

The Wildcats garnered 92 points to win the Denver City meet and got 90 to finish behind Snyder at Levelland.

Included in their Denver City point total were three firsts, three seconds and a third place finish.

The 440 yard and the mile relay teams both broke the meet record as Larry Schovajsa, Ronald Sittin, Larry Coffman and Steve Lewis ran the quarter-mile relay in 44 seconds flat. Manuel Davila joined Coffman, Sittin and Schovajsa in setting the new mile relay mark in 3:27.9.

Davila got the other first place for the Wildcats as he won the 880 yard run in a time of 2:03.6. Sittin ended second in the 440 yard dash with a 50.8 clocking and Schovajsa finished close behind the leader in the 220 dash in 23.1 seconds.

The other second place went to Coffman in the 180 yard low

hurdles with a 20.7 effort.

Mike Sanders broke the five-minute mark for the first time in competition as he got third place for the Wildcats in the mile run with a 4:54 effort.

At the Levelland meet, the Wildcats were unable to win any events but picked up five second place ribbons, two third place finishes and four fourth place wins.

The 440 yard and mile relay teams both ended in second behind the winning Snyder foursome. The other second place wins were gotten by Davila in the 880; Coffman in the 180 yard low hurdles; and Schovajsa in the 220.

Kisner got third in the pole vault with a leap of 11'6" and George Willard threw the discus 131 feet.

The fourth place finishes were by Lewis in the broad jump, Sittin in the 100 yard dash; Sanders in the mile run and Coffman in the high jump.

The Wildcats journey to Kermit this weekend for the relays there.

Calendar of Events

- 10:00 a.m. THURSDAY: Associational Baptist WMU Prayer Retreat at Calvary Baptist Church of Friona
- 7:00 p.m. Forum meets in Reddy Room
- 7:30 p.m. Baptist Youth Rally at Bovina
- 7:30 p.m. Special service at Assembly of God Church
- 7:30 p.m. Training program on Cancer at Grestent House
- 5:30 p.m. FRIDAY: Spade Lions Club Pancake Supper
- 7:00 p.m. Preliminary organizational TOPS meeting in Reddy Room
- 7:30 p.m. Methodist Men's Bible Class social in church parlor
- 8:00 p.m. Beta Sigma Phi "What's in the Cards for Spring" Style Show at Country Club
- 7:30 p.m. SATURDAY: Bethany Nazarene A Capella Choir to present concert at First Church of the Nazarene



THE JUDO CHOP -- poised with his right hand for a judo chop to his opponent's neck will go against Jack Monroe in the second round on the Saturday night card at the Littlefield Sports Arena.

SAT. NITE WRESTLING
RETURN MATCH
Ken Lucas
vs
Rose Lothario
'Sato'
vs
Butnick Monroe
Dory Funk
vs
The Lawman
WRESTLING STARTS
8:30 P.M.
CALL 385-4112
LITTLEFIELD SPORTS ARENA

OPEN 7-11 EVERY DAY

EVANS FOODS

322 W. Delano - Littlefield, Texas
Specials Good March 26 - March 31

LARGE HEADS LETTUCE 2 For 25¢	LYDIA GREY FACIAL TISSUE 3 LARGE BOXES 29¢
LEE'S FRESH RENDERED LARD 25 LB. CAN 34¢	ROXEY DOG FOOD 6 CANS 49¢
SUNSHINE HYDROX COOKIES 1 LB BAG 39¢	HAIR SPRAY AQUA NET LARGE CAN 69¢
CHUCK ROAST LB 39¢	ARM ROAST LB 49¢
SHURFINE COFFEE 7 LB CAN 1 ³⁹	BEEF RIBS LB 29¢

HAMBURGER MEXICAN HOTSAHOMEMADE SAUSAGE WIENER? BOLONY 3 \$1 LBS.

DOUBLE GUNN BROS. STAMPS EVERY EVERY SATURDAY

SOY BEANS

★ A Good Cash Crop
★ Ready Market Available

We Have Soybean Seeds

We Have the facilities to handle your Soybean Crop

For All Your Seed and Fertilizer Needs - See the Folks at . . .

Goodpasture Grain and Milling Co., Inc.

BROWN FIELD • MEADOW • WELCH • SEAGRAVES
PLAINS • SEMINOLE • DENVER CITY • LEHMAN
ROPEVILLE • TAHOKA • LEVELLAND • ANTON

SPADE NEWS

**Pancake Supper Friday
Sponsored by Lions Club**

The Spade Lions Club is sponsoring a pancake supper Friday night at the school lunch room. They invite the public to come out to eat pancakes with them. Aubrey Neinst is the general chairman of the supper. Gail Christian is in charge of the food. Leon Burch is the publicity chairman.

Persons attending may get all the pancakes they can eat, served with bacon or sausage for 75¢ for adults and 50¢ for children under 12.

The money will be used for some worthy community project. A project just completed is the paving of the parking area at the school. This is something which has been badly needed for some time. Chairman of the paving project was Aubrey Neinst. Others serving on the committee were Bill Thompson and Jim Mills. The cost of the project was \$326. Joe Bailey is Lion Boss.

Karyn Vrabel spent Sunday afternoon with her grandmother, Mrs. Ellen Will of Littlefield. Rev. Frank Storey is critically ill in a Lubbock hospital. He underwent surgery last Tuesday and again Monday. His children and other relatives are at his bedside.

Mr. and Mrs. J.E. Long and family visited her parents, Mr. and Mrs. Horace Clay and Herbie of Wellington, during the weekend. The Clays and Longs visited Mr. and Mrs. Tom Sweat of Memphis, Tex. Saturday night. The Sweat's are lifelong friends of Mrs. Long and she had not seen them in about 15 years.

Mr. and Mrs. Duane Gray, David, Randal, and Fran visited in the home of Mr. and Mrs. Joe Oden and family of Littlefield, Sunday. The Oden's son and family, Mr. and Mrs. Billy Joe Oden and children of Galena Park, were visiting.

Funeral services for Gene Jackson of Brownfield were held Saturday at Brownfield. A brother of Mrs. Jack Vann, he died Thursday in a Houston hospital. He had been ill for some time

and had undergone heart surgery.

Guests of Mr. and Mrs. G.R. Nabers last Sunday were a niece and nephew of Littlefield.

Celebrating birthdays this week are Mrs. Muggs Glazener, Mrs. Donald Caldwell, H.R. Wallace, Bill Howard, Mrs. Harvey Jones, Ethel Jean Tomlinson. Observing anniversaries are the Howard Bakers, the W.J. Lomans, the T.O. Motes, and the Bobby Nelsons.

Mrs. Charles McKeown, who has been on the sick list several weeks, is reported to be getting along nicely. She went to Lubbock for a medical check-up Monday.

An outsiders' volleyball tournament is now in progress at the local school. Games begin each night at 7 p.m. and will conclude Saturday with game time at 7:30 p.m. Teams are entered from Earth, Sudan, Amherst, Littlefield, Spade, Olton, Plainview, Whitharral, Hale Center, Hart, and Levelland.

Questions & Answers

(Editors Note: This column of questions and answers on federal tax matters is provided by the Lubbock office of the U.S. Internal Revenue Service and is published as a public service to taxpayers. The column answers questions most frequently asked by taxpayers.)

Q -- I'm not sure what's called for on line A of Part II on the second page of the 1040 form. Do I want all my income other than wages listed as the gross amount on line A?

A -- No. Enter on line A only that portion of your other income which comes from dividends and similar distributions. Note that even dividends which are non-taxable should be included on line A.

You will find this section explained on page 6 of the 1040 instruction booklet that accompanied your return.

Q -- I received a refund last year on my state income tax. Do I have to list this as taxable income?

A -- Possibly. If you deducted the tax on your 1963 tax return and received a tax benefit from the deduction, you have to list the refund as taxable income. However, if you did not deduct the state income tax on your 1963 return and if you did not otherwise receive a tax benefit, you don't have to list it. Thus, if you used the 10% standard deduction or the tax table, you would not need to include the refund this year.

**FREE ESTIMATES
BODY REPAIR
ALL MAKES
JONES MOTOR**

R **VRORERVRORERVROR**

**HYPNOSIS IS NOT
A PARLOR GAME**

Never permit yourself to be hypnotized by anyone but a physician or a dentist, who sometimes may use hypnosis as an anesthetic for childbirth, surgery or easing of anxiety or pain. Avoid hypnotists who use it for entertainment. Hypnotism is not a toy.

For in unskilled direction, a reaction may result leaving one with mental disturbances, nausea, with some such cases reported serious enough to need psychiatric treatment or hospitalization. Amateur hypnotists are dangerous.

YOUR DOCTOR CAN PHONE US when you need a medicine. Pick up your prescription if shopping nearby, or we will deliver promptly without extra charge. A great many people entrust us with their prescriptions. May we compound yours?

Phone 385-4500
Wright Prescription Drug
331 Phelps Littlefield
PRESCRIPTION CHEMISTS
© 1965 (W-3-4-65)

VRORERVRORERVRORERVROR

EXTRA SAVINGS IN EVERY SACK

FLOUR
Gladiola 25 Lb. Paper Sack **1 89**

MILK
Shurfine 2 Tall Can For **25¢**

SHURFRESH BISCUITS
3 CANS **25¢**

SHURFINE CATSUP
20 OZ. **25¢**

SHURFRESH Cheese Spread
2 LBS. **69¢**

MAGIC CAKE MIX 8 OZ. PKG. **10¢**

Shurfine **PEACHES**
Slice and Halves
No. 2 1/2 Can **25¢**



Shurfine **SHORTENING**
3 Lb. Can **69¢**

LARGE EGGS
DOZEN **39¢**

SHURFINE FROZEN POTATOES
2 LBS. **45¢**

SHURFINE WAFFLE SYRUP
QUART **39¢**



COFFEE
2 Lb. Can **1 29**

Double Gunn Bros. STAMPS EACH WEDNESDAY WITH \$2.50 PURCHASE OR MORE

SHURFINE SLICED CARROTS 303	17¢	SHURFRESH SLICED CHEESE 6 OZ.	29¢
SHURFINE TOMATOES 303	23¢	WAXTEX WAXED PAPER 100 FT. REG.	27¢
STAR KIST SOLID LIGHT TUNA	39¢	Dutch Cleanser GIANT	17¢
SHURFINE STEM & PIECES MUSHROOMS 4 OZ.	39¢	Beads-O-Bleach	83¢

FRESH PRODUCE

LETTUCE VAC PAK	LB.	12 1/2¢
GRAPEFRUIT CALIF..RUBY RED	LB.	9¢
CELERY PASCAL	LARGE STALK	15¢
CELLO CARROTS BAG		2/15¢
POTATOES MAINE WHITE	LB.	7 1/2¢

MEAT SPECIALS
Ranch Style **STEAK lb. 59¢**
Pinkney Country Style **SAUSAGE 4 lb. sack \$1**

CHOICE CHUCK ROAST LB. 59¢
WISCONSIN LONG HORN CHEESE LB. 69¢
CLUB STEAK LB. 79¢
Fresh Ground **HAMBURGER 3 lbs. \$1**

PIONEER SUPER MARKET
3RD & XIT DRIVE

ATTENTION

SAFE - INSURANCE FOR TEXANS 65 AND OVER

NOW UNTIL APRIL 15th, 1965

NO MEDICAL

- Hospital Room up to \$35 per day
- Surgery up to \$650
- Some Misc. Expenses No Limit
- Doctor Calls up to \$6.00 per visit
- Special Services in Doctors Office
- Nurse Benefit up to \$2500.00 As For Plans HS 470-MS 350-HR 120

BE FULLY COVERED HOSPITAL BILLS HAVE GONE UP!

IMPORTANT FEATURES

- No Medical Exam
- No Waiting Period (with 52 supplement)
- Life Time Protection
- No Limit on Number of Times You Can Collect on Policy
- World-Wide Coverage
- Pays in Addition to Other Insurance

THIS IS ANOTHER PLAN COVERS EXISTING CONDITIONS

\$86.00 ONLY! ANNUALLY

No Obligation — Cut Out Coupon and Mail Today to:

American Union Life Insurance Co.
Post Office Box 13294
Fort Worth, Texas

Your Present Age Number in Family Please see that I receive complete free information about the Medical Care Plan I read about in LAMB COUNTY LEADER

Name
Address
City Occupation

Lamb County Leader

THURSDAY, MARCH 25, 1965

PAGE 1,

SECTION 2

Forecasting

Spring Fashion



FORECAST: fair and lovely,
all the way!

Suddenly, a feeling of excitement fills the air . . . it's Spring! Time to freshen a winter-weary wardrobe, time to put your home in sparkling new dress! You'll find wonderful spring fashions in your community shops, ready to make Spring '65 your smartest, ever! Turn the pages, and catch spring fever . . . you'll love it!

ONLY 21

SHOPPING DAYS
TIL EASTER

Sunday April 18



Spring Fashion Theme: Soft Lines, For Worlds Of Feminine Flattery!

There's a slightly prim and proper feeling to new spring fashions, and it's underscored by the Victorian and Edwardian mood of many of the latest accessories. It's all part of the feminine movement in fashion and it's all most flattering!

Fabrics such as airy crepes and basketweave wools are helping to create this softer look for spring, aided and abetted by such touches as trapunto detailing on coats, ruffles and bows on shirts, soft sectioning and shirring on dresses and the soft, drapery look of many new hats. If fashion for Spring 1965 could be summed up in one word (which it couldn't) the best word to select would be soft.

To illustrate the variety to be found on the spring scene, coats are both shaped and skinny for spring — take your choice! Many of them feature hidden closings, new beltings and deep armholes. Wrap coats are an important new look, while above-the-ankle coats are making a spectacular appearance.

Suit styles also vary, from the dinnit to the lean silhouette. Special interest is focused on the big little suit with its flared skirt, precision-shaped jacket and soft, ruffled shirt, with the 3-piece suit continuing to gain attention. Skirts are often fuller or gathered on a bias band, and topped with longer or hip-tipping jackets. Pantsuits echo the excitement over pants in a refined way by camouflaging them with a neat overskirt, while the Mary Poppins suit typifies spring's prim and proper look at its most becoming.

Dresses for spring favor swinging pleats and go to extremes with either low belting or high skimmer styling. Enveloping collars and bulky loose jackets top many of the new designs and the popularity of the A-mid style reflects the Victorian influence on spring fashions in general. New too, is the cape dress . . . another reflection of the same mood.

Spring hats are prettier than ever and more feminine than ever! The soft look is seen everywhere in turbans, or little hats with ostrich sweeps and tasseled caps. Brims are in evidence too, particularly in black leather swaggers. But the "small head" look prevails, often featuring back interest such as bows or drapes. Many hats have a tied-up kerchief effect and softer fabrics such as velvet, wool jersey or silk have come into their own.

In sportswear, everyone's jumping into stretch jumpsuits and, of course, the big news is the pantskirt. Culottes have been cited and are seen not only in skirt form but also as culotte-dresses. Here the look is still snappy and young, mole and yeye, bringing the new English chic into prominence. Sometimes copying the English school boy, this look features delicate little detailings, miniature prints and foulards, longer jackets and swinging skirts, plus crisp white collars.

The new units for spring are featuring distinctive patterns and interesting textures: ridges, lacy looks, airy and open weaves, "smoke rings," crinkly stripes, accented diagonals, berringtons, and chenilles. Bootleggers, or up-to-the-knee stockings that are cuffed closed with shoe laces, provide new

excitement, along with stretch nylons. Some hose feature over-the-knee garter tops . . . all are designed to make a woman feel more like a woman, and to make a man notice!

No sportswear story would be complete without sweaters and this season the variety is greater than ever. There are skinny ribbed styles that hug the body . . . sisified sweaters with crocheted lace edging . . . long, lacy, looks . . . sweaters striped like T-shirts . . . styles that feature enormous zippers . . . and the long-waisted look everywhere!

For evening, elegant crepes and delicately patterned cotton laces set the stage for both little dresses and the important

costume look and the disco dress is still going strong, whether shaped simply, like a slip or flirtatiously ruffled.

The new spring look doesn't stop there . . . it goes all the way to milady's toes with shoes that feature soft and fragile silk straps or stretch sides and backs of elasticized peau de soie. And the little T-bone cut shoe is busy making its mark everywhere.

In fabrics, the trend is toward brush stroke patterns, fine-line piques, dashing diagonals and small-scale prints. Good news for travelers is the emergence of new linen-look fabrics that keep their fresh appearance from morning until night, and travel with ease.

Cub Scouts Of Pack 666 Honored At Meeting

Cub Scout Pack 666 held its March meeting Monday at the Littlefield Community Center with approximately 100 attending.

The opening ceremony was presented by Den 3 led by the den mothers, Mrs. Latham Buck, Mrs. Marie Clark and Mrs. Gene Taylor.

Stunts and skits were presented by each den with the den mothers and den chief as leaders: Den 1, Mrs. Norman Murray, Mrs. Leslie Lichte and Gary Nace; Den 2, Mrs. Vernon Steed, Mrs. Jack Barton and Lynn Barton; Den 4, Mrs. Oran Kirk Jr., Mrs. James Feagley and Bruce Anderson; Den 5, Mrs. Gary Don Newton, Mrs. Bob Gage and Jimmy Collins; Den 6, Mrs. Hazel Mackey, Mrs. Fred Smith and Don McAdams; Den 7, Mrs. Mae Eblevins, Mrs. Bill Anderson and Martin Mangum.

Den 5 earned the Honor Den Banner for the month with Den 4 earning runner-up honors.

Cubmaster Jim Mangum presented awards to the following Cub Scouts: Bobcat to Randy Posey; Wolf Rank and Gold Arrow Points under Wolf to Billie

Adams and Kyndal Murray; Silver Arrow Points under Wolf to David Williams, Billie Adams, Ricky Richards, Ronnie Bales, Mark Brantley, Michael Cox, Roger Feagley and Lonnie Kirk; Bear Rank with a Gold Arrow Point to Gary Wilson and a Silver Arrow Point to David Barton; Denner Badge to Randy Posey; Assistant Denner Badge to David Williams and Billie Adams; and Recruiter Patch to Paul Parsons and Billie Adams.

Lynn Barton received a Den Chief's Cord upon qualifying to serve as a Den Chief of Den 2. Lynn is a member of Scout Troop 638.

The highest award possible in Cub Scouting, Webelos, was presented to Brad Nace who is the son of Dr. and Mrs. C.G. Nace. Scout Brad Nace joined Pack 666 when 8 years old and has been active in the pack continuously. The Webelos rank is most difficult to earn and young Nace was congratulated upon his achievement.

Cub Pack 666 has set the April pack meeting for Monday, April 26th at the Community Center.

ANTON NEWS by Mrs. C.D. Nelson

Baptist Revival Slated

Rev. James Green, Terrell, will lead the Bethel Baptist Church in a revival starting Friday, March 26 and continuing through April 2.

Services are scheduled for 9 a.m. and 8 p.m. except Sunday when the morning services will be at 10 a.m.

Rev. Green is a former pastor of the church. Bill Cundiff will lead the singing. The public is cordially invited.

Foot-notes and Fashion-Memos

Use the rule of thumb for checking shoe lengths. When you are standing, there should be enough space between the tips of the great toe and shoe to accommodate the side of your thumb.

Remember that some styles may be wrong for your foot in any size. The exaggeratedly high front, for example, which is so chic right now, is apt to prove binding on a higher than average instep. This type of foot will be more comfortable with equally stylish shoes that feature low-cut vamps and sides.

With so many shoe patterns to choose from, ranging from small slits to bare toes, heels and shanks, pick the designs that will both show off and support your foot to best advantage. If slings slip off your heel, buy the kind that have going in the strap's back center to anchor it.

After you have purchased your shoes, follow through with good shoe wear and care habits. Change shoes at least once a day, preferably twice; keep your shoes on wooden trees, as the wood absorbs moisture which lurks in the lining of a shoe after it has been worn.

Ward off April showers with an aerosol waterproofer!

Mr. and Mrs. R.B. Carden, Casta Mesa, Calif. are visiting their son and family, Mr. and Mrs. Roy Carden, and Roy Keith and other relatives.

Mrs. Frank Bishop, Gatesville, spent several days in Anton recently visiting her daughter, Mrs. Lynn Anderson, and sons, Bud, Adair and Ralph Bishop.

Mrs. Jim Parker, and Mr. and Mrs. Philmore Parker and Howard visited relatives at Welch and Lamesa Sunday.

Bill Molder made a business trip to Beatrice, Neb. last week.

Mr. and Mrs. Trevis Walker and children, Shallowater, and Mr. and Mrs. C.E. Morris and Carla, Lubbock, were luncheon guests of Mr. and Mrs. Reese Prichard and Rita Sunday.

Mrs. A.L. Bell and Fredda Margeret and Miss Eunice Stanfield, Plainview, visited in Odessa Sunday with Mrs. Bell's daughter and family, Mr. and Mrs. Freddy Givins and Donna.

Rev. and Mrs. W.M. Draper, Plainview, visited her sister, Mrs. C.D. Nelson Sunday.

Mr. and Mrs. B.J. Stephens, Friona, were guests of her parents, Mr. and Mrs. W.B. Harper, Sunday.

The Anton Lions Club has announced they will have their tournament March 26-27 in the school cafeteria, Games of bridge, pinocle, '42' and dominoes will be played.

Eight first prizes and eight second prizes will be given. Admission is \$1.50 per person.

Everyone is invited to attend. Jim Bollinger, who makes his home with his daughter and son-in-law, Mr. and Mrs. Richard Grace, fell at his home Thurs-

day afternoon and broke his hip. He is in Medical Arts Hospital where he had surgery Friday morning.

Mr. and Mrs. D.R. Wade and children, Abernathy, visited her mother, Mrs. J.P. Jackson Sunday.

ANTON A HONOR ROLL - Seniors: Sheila Rendleman and Charlotte Williams; sophomore, John Medrano; eighth grade, Natalie Marr; seventh grade, Larelle Biffle and Gene Ann Herrin.

ANTON B HONOR ROLL - Seniors: Ronnie Johns, Kay Motl, Frances Kesey, Susan Denson, Mike Cobb, Ray Gregg and Linda Buchanan, juniors, Janette Buchanan, Nicky Biffle, Roger Mitchell and Larry Crews; sophomore, Karen Lyda; freshmen, Tom Landers, Danny Markham, Cynthia Webb and Stacy Gilbert; eighth grade, Eva Luna, Brenda Johns, Chane Jones, Malva Teague, Rita Prichard and Debye Markham, seventh grade: James Synatsch, Messe Cantu, John Cantu and Billy Gene Moore.

In a special board meeting Monday night all teachers and employees of the Anton school were re-hired. Mrs. Nancy Saltsman and N.M. Curlee submitted their resignation. Mrs. Ruth Mullins, who has reached retirement age is a county co-op teacher. She has had 47 years teaching and came to Anton in 1959. She is a first grade teacher.

The new math books have been adopted and will be put into use at the beginning of the next school term in the first six grades. Teachers of these classes will attend college or workshop this summer to prepare to teach the new math system.

Sand dunes, some nearly a thousand feet high, cover a sixth of the Sahara. Arabs use 10 different words to describe the various shapes and sizes. One nomadic tribe gives the treacherous, shifting dunes pet names to pacate them.

The mines of Gambia, Spain, were reopened with 200 German mine metallurgists in charge.

Eleven African nations join in building a modern way across the Sahara.

mode o'day
the best of fashions

spring shapes up with gentle feminine wiles for your Easter image.

Going out beautifully . . . you in our pastel suit of uncrushable rayon, softly ruffled at the collar and cuffs. Sizes 14/20

5.99

400 Phelps Ave.

MODE O'DAY

Little's new for Easter

Bags
Gloves
Scarves
Jewelry
Lingerie
Estee' Lauder

See our wide selection of
Dresses
Costume Suits
Suits
Coats
Millinery

DON'T MISS
Annual Spring Style Show
Friday Night 8:00
Country Club

Little's
LITTLEFIELD'S FASHION CENTER



Say hello to the Bunny-Gator.

This is Acrobat's new reptile print for girls. It's designed for dress-up affairs. Dress-up affairs like Easter.

We have several different types of Bunny Gators in stock. And all are as nice as this one.

Get the jump on Easter shoppers. Buy Acrobat reptile prints for the young lady of the house today. (Ask to see Acrobat's other spring styles, too.) Priced 5.95 to 7.90

Acrobat
TESTED IN A "LIVING LABORATORY"

We Have New Easter SHOES FOR THE WHOLE FAMILY



ATTEND
New Spring
Style Show
Friday Nite
8 P.M.

Haydon
Shoes
301 Phelps

Jewelry, Bold 'n' Bright or Dainty And Delicate

There are two notable trends in fashion jewelry this season: the very bold, strong and colorful and the conservative, dainty and delicate.

The gold look continues very strong. Charming and excitingly smart effects are created by the combination of a bright polished finish with the matt, brushed or Florentine.

Necklaces are long or short. The long ones are swinging, dashing flashes of colored stones and crystals, many with huge, round, octagon or circle pendants of the same stones. An assortment of these coordinated necklaces add a dramatic touch to Spring dresses and suits. The shorter necklaces are closer to the choker length and feature dominant center groupings for the "fill-in" neckline.

Bracelets are prominent this Spring, especially because of the sleeveless dresses. Very popular are the thin bangle bracelets — five or six of which are worn together — as well as the wide, almost cuff-like bangle bracelet. Woven bracelets of colored crystal bring a dash of welcome color and there are textured gold finishes, many set with pearls, rhinestones or other attractive colored stones.



Featherweight Fabrics Weigh in... Svelte, Sheer Undercover Shapers

Not since Eve in the Garden of Eden have women been so lightly clad as is the fair sex for spring 1965.

Not only is the American woman the lightest dressed, but also the coolest and shapeliest in outerwear and undercover garments created in the wispiest, sheerest and most comfortable fabrics ever.

The experts at Gossard, famous makers of foundation garments, say that spring is the harbinger of some of the breeziest shape-makers in the history of women's apparel.

Even the women in Cleopatra's era wore more clothing than does the discreetly-dressed woman of today. Despite the warm climate of the Nile valley, Egyptian ladies wore over ten pounds of clothing. Though tunics were light and filmy, they disguised metal girdles and the jeweled ornaments

they wore were quite heavy too.

In the days of Shakespeare, iron corsets were in fashion. To those ten pounds of torture, Elizabethan ladies added farthingales and heavily-ornamented gowns and cloaks for a total of about 55 pounds.

In the lush, plush Victorian days, the woman wore a mere 37 or so pounds of fashionable attire. Although her girdles were made of linen or cotton, reinforced with whalebone, it weighed about a pound. However, petticoats and dresses added up the poundage.

Following World War I, woman's cultural and social status changed — as did her wardrobe.

Even when the flappers cast off her corsets but donned bosom flattening brassieres, her short-skirted dresses, "teddies" and other accoutrements were

still in the light-heavyweight division.

But now, long-legged panty girdles weigh in at as little as an ounce. Cottons are as light and airy as tissue and even bosom-shaping contour bras use a new kind of fiberfill — so light that it floats on air — nor do they mat or shift.

Spandex fibers have reduced the weight of fashion's finest creations — from the inside out.

Miraculously, a costume of dress, shoes, bag and all needed accessories, could weigh as little as two pounds.

The modern woman has the unique advantage of being able to dress as glamorously as she desires in complete comfort at all times in new, gossamer-weight wardrobe ensembles.

Made of Dacron polyester and Avril rayon, the new fabric

Understated Jewels, Costume Drama

Here's good news for those who love the look of jewelry — styles for spring are focusing attention on the jeweled look.

Both American and Paris designers alike agree on a slender, fluid feeling for spring, beginning with sleeves and collars; and the simple lines and ease of seam in the new fashions are perfect backgrounds for elegant touches of jewelry.

Balenciaga, for instance, features a blousy suit with dolman sleeves that can be dramatically accented with a sunburst pin of blazing diamonds resting on the outer sleeve. For evening, he also shows lush suits with gently draped and cowl necklines that serve as perfect frames for necklaces and chokers.

Christian Dior emphasizes yoke details on long-line suits; a smart idea for setting off this look would be a Florentine gold daisy pin sprinkled with diamonds. And the simulated low belt on the lower edge of his jacket provides another perfect setting for a jeweled pin. Dior is also showing a three-piece navy and white checked suit with pique overblouse that can be accented very simply

with a single piece of jewelry. Those new swingy little suits with short-stop jackets take beautifully to jewelry accents, while "V" neckline styles just cry to be filled in with matinee-length necklaces. Popular bow blouses are being cleverly accented with a circle pin right smack in the center of their bows.

The new open jackets offer other opportunities for imaginative uses of jewelry. You might perch a pin on the high-rise neckline of the blouse under an open jacket, or wear a necklace that has a pearl-and-diamond mounted clasp, with the clasp in front.

with a single piece of jewelry.

Those new swingy little suits with short-stop jackets take beautifully to jewelry accents, while "V" neckline styles just cry to be filled in with matinee-length necklaces. Popular bow blouses are being cleverly accented with a circle pin right smack in the center of their bows.

The new open jackets offer other opportunities for imaginative uses of jewelry. You might perch a pin on the high-rise neckline of the blouse under an open jacket, or wear a necklace that has a pearl-and-diamond mounted clasp, with the clasp in front.



NEW SPRING LIPSTICK SHADES such as "Sweet Honey Pink" emphasize the pretty, feminine look of veiled floral chapeaux.

...OF D'ARTAGNAN, PORTHOS AND ARAMIS! For adventurous ladies bent on... a swashbuckling brimmed hat of Pegalina straw that frames the face... beautifully from Spring into Summer. The manipulated up-and-down brim and... route lends wonderful pack-ability... It can be crushed and still emerge tri... want, to turn every captivated eye your way. Excellent choice for the softer... It also lends charm to new spring dresses. Wear yours with brim shaped to... individual taste and mood, for flattery unlimited!

Romantic Look In New Leather Fashions

With the latest leather fashion showing a new delicacy of Spring will be dressed for once this year.

Fit yourself with leather Spring. In lightweight and smooth leathers, lining two and three-piece ensembles are tailored to entice the wearer. Pastel suede jackets bound in smooth with matching slim Double-breasted suits in er come with their own er scarves to tie or tuck in the throat. Pretty leather-silk combinations are available — case in point: a raw blouse with leather skirt a leather vest trimmed silk applique.

Spring coats in exciting er textures and a full er of colors offer a variety silhouettes — fitted arrow-er or A-line. Mostly full-er, these elegant leather er feature many individual er, such as unusual but-er, contrasting leather piping er binding, self-ties or sashes er varied neckline treatments.

Whether softly flared, empire or shift-y, the leather dress is quietly devastating in delicate shades of coral, pistachio or sand. The versatile two-piece leather dress can be seen with slim, A-line or draped skirt and fitted or cropped top.

Leather separates accomplish wonders in the wardrobe-stretching department. Easy jackets in buttery suede and supple grained leathers in straight-cut or semi-fitted styles. Other smart leather separates include overblouses, skirts, dresses, jumpers and pants.

Color News is Bright Candy colors are sweetening every line with their exciting hues. Orange, yellow, blue and green tones come, this year, from different vats — combining in brilliant ways.

White gains status as a color alone or with the shades of nautical red and blue. Surprise combination is yellow, orange and deep pink.



Hear the new 'Spring Song' at **Norma's**

A collection of fashions in tune with the mood of Spring '65

See "What's in the Cards for Spring" Country Club — Friday at 8 p.m.

Penney's EASTER FASHIONS ANNIVERSARY PRICED!



LAST 3 DAYS!
TOWNCRAFT® DRESS SHIRTS

Reg. 3.25 and 2.98 NOW **2 for \$5**

Dozens of patterns, styles—regulars, tapers. Cotton or Dacron® polyester-cotton. Save now!

Reg. 3.98 shirts NOW **3 for \$10**



ENTIRE STOCK SPRING COATS REDUCED

\$10 \$13 \$17



PRICED SO LOW!
Exciting buys on boys' Easter suits

7⁹⁵ 10⁹⁵

Size 3 To 7 Size 6 To 12 Regulars & Slims



BOY'S SHORT SLEEVE DRESS SHIRT SPECIAL!

size 4-10 only **\$1** each

100% cotton broad-cloth white dress shirts. Short sleeves and King-dor short-point collar. Save now, at Penney's low price of just \$1!



BOX-PLEATED ELASTIC-WAIST SKIRTS

Girls' size 7 to 14 **2⁶⁶**

Penney-low price, extra value! Elastic waist gives exact fit for every girl! Dacron® polyester and cotton poplin in assorted spring colors.



easy-care nylon jerseys

only **3⁸⁸** Sizes 12-20, 14½-22½

PLUS ANY OF THESE

- WAMSUTTA'S FINE WAMPOISE COTTON
- CELANESE ARNEL TRIACETATE JERSEY
- CELANESE ARNEL TRIACETATE CREPE
- ESTRON ACETATE AND NYLON RIBBED
- POTENTIA — KODEL POLYESTER-COTTON
- WHIPPED CREAM DACRON POLYESTER
- ESPRESSO — DACRON POLYESTER-COTTON
- ZANTREL POLYNOSIC-COMBED COTTON
- BRIGADIER — DACRON-COTTON POPLIN
- ORLON ACRYLIC SWEATER 'N DRESS



GIRLS' COTTON KNIT SUITS AT AN EASTER-SPECIAL PRICE!

\$6

Cute as a bunny—and fashion-wise, too! Cotton knit favorite for comfy, easy-care and year-round wear! Pleated and a-line skirts... teamed up with blazer and cardigan jackets! Solids and jacquards! Spring-fresh colors, too. Sizes 6-14.

Little Miss Susie Clark, daughter of Mr. and Mrs. Charles Clark, will be one of the models showing footwear from Haydon's Shoe Store at the Beta Sigma Phi Show Friday night at the Country Club. Susie is shown above proudly admiring her new white reptile print shoes for spring.



Mrs. Kay Tunnell is modeling a sleeveless dress topped with a reversible three-quarter length Susie Wong collar featuring a large polka dot collar. The ensemble is one of the fashions from Norma's to be shown in the style show Friday night.



ATTEND THE SIGMA BETA PHI

"Whats In The Cards
For Spring?"

Spring and Summer Style Show

Friday March 26, 1965

Littlefield Country Club

8 P.M.



Miss Tonya Petty is ready for spring in her black and white outfit, featuring a slim line skirt and sleeveless top from Anthony's. The material is acetate and rayon. Small black buttons and a black tie compliment the outfit.



Mrs. Cleo Bales is wearing sportswear from the Frontier Store. The lined pants are from the new non-wrinkle linen. The printed blouse is of arnel fabric.



Dressed for a formal occasion is Miss Debbie Dutton, wearing a handmade gown of ice pink acetate brocade. The dress was made by a Simplicity pattern selected from Ware's Department Store.



Miss Judy Ford will model one of the Jantzen swim suits from Little's at the Beta Sigma Phi Style Show Friday night. The one she is wearing is yellow, one of the season's most popular colors.

OLTON NEWS by Mrs. W.B. Smith, Jr.

Number Of Residents On Sick List

O.B. LaFrance is reported improving at the University Hospital in Lubbock, where he is receiving treatment for a heart attack.

Mrs. Pink Lawson, medical patient at the University Hospital in Lubbock, is also reported to be slowly improving.

Charles Allen, son of Mr. and Mrs. Sidney Allen, has been quite ill at the West Texas Hospital, Lubbock, but is now improving.

Mrs. Vernon Jefferies underwent heart surgery recently at St. Luke's Hospital, Houston. Her doctors say she stood the operation well.

Gynella Breiland underwent surgery at Plainview Hospital and Clinic last week. She is reported to be improving satisfactorily.

Mr. and Mrs. E.R. Morris are back home after several months stay at the M.D. Anderson Hospital, Houston.

Dan Daniels was due to complete his series of treatments

at the M.D. Anderson Hospital, Houston, Friday.

Newest methods of teaching data processing were discussed at Texas Tech's 10th annual Business Teachers Conference Saturday in the ballroom of the Tech Union Building.

Approximately 200 business teachers from West Texas attended the one-day session which was sponsored by Tech's department of business education. Attending from Olton was David Howton, local business instructor.

Mr. and Mrs. Robert Bonner of Amarillo visited in the home of her parents, Mr. and Mrs. W.B. Smith Jr., last weekend. Preston Sampler, Norris Sampler, Dan Quigley and Mitchell Haddad returned Saturday from a week's fishing trip to Falcon Lake.

Richardson Roberson and F.A. Roberson fished at Falcon Lake last week.

Mrs. Jerry Edmonson and

daughter Carrie, of Tulsa, Okla., are here visiting in the home of her parents, Mr. and Mrs. Witt Laceywell. Mrs. Edmonson and daughter will visit relatives in Lubbock.

Ralford Daniel returned home

Saturday from Littlefield Hospital, where he received treatment for the flu.

Mr. and Mrs. Tom Smith visited in the home of his mother, Mrs. W.B. Smith Sr. in Hale Center Monday.

CITY BITS

Guests in the home of Mr. and Mrs. E.C. Caldwell Sunday were his brother and sister-in-law, Mr. and Mrs. Bill Caldwell of Amarillo; her brother and sister-in-law, Mr. and Mrs. J.R. McDuff of Lubbock; and the Caldwell's daughter and family, Mr. and Mrs. Benn Kinslow, Ronnie and Debra of Lubbock.

Mr. and Mrs. H.N. Bennett returned Monday from spending several days at Breckenridge, where they visited Mrs. Bennett's sister and brother-in-law, Mr. and Mrs. Jack Reed, and did some fishing. They also

visited in Dallas with Mr. Bennett's daughter and family, Mr. and Mrs. L.C. Grimes.

Mrs. Lee Messer visited her daughter and son-in-law, T Sgt. and Mrs. E.S. Hansen and family, last week in Merced, Calif.

Swimsuits take up addition with plus items of overblouse tops; button-front or pullover skirts; with ponchos, cardigans, coats or jackets. Or, they take cover with a handsome oversize, gay-colored "sweat shirt."



Femininity Enhances Beautiful, Duti-ful Coat, Suit Fashions

Gone are the days when a career woman's fashions strive to emulate the male. This Spring's designs are feminine and appealing in spite of the fact that they are geared to active lives.

Spring silhouettes are soft and fluid. There is no rigid tailoring and obvious seaming. Textures are smoother and flatter . . . fabrics are refined and understated.

Tender, delicate tones form the backdrop in the Spring garden of fashion, with teases, gentle greens, marigolds, sweet peas, delphiniums and the varied shades of pebbles and earth. As in every verdant setting, there is a peppering of vibrant colors too with bold pungent orange, red and vivid turquoise entering the scene and trailing along is the ever fashionable black and white.

Emphasis has been placed on the complete ensemble in the new career woman look, with the mating game being played in a hundred different ways. Trims of suits are coordinated with coats and blouses are keyed to linings. Ensemble color combinations are refreshing with pale-toned coats of chalk, blue or pink over suits of new rich, deep navy or cool black.

Suit jackets are longer officially but for those who look best in shorter jackets and know it . . . there are many hip-level styles.

Skirts are supple, with soft gathers and many feature pockets or belts. Pleats appear . . . but without fanfare. They do not flutter all over the place as heretofore, but are a subtle part of the flattering Spring '65 image.

Patterns once considered

"clashing" are now called "dashing", according to the National Board of the Coat and Suit Industry. They state that it is currently fashionable to combine a checked or even polka dot blouse with a pin-striped suit. Pin stripes or herringbone weaves are often used in the round as well as up and down in the same suit this season.

Kids' Togs Win "In The Stretch"

For the playpen crowd, the sandpile set and the soda-sippers' society come wonderfully gay, easy-care playwear in an exciting array of stretch fabrics.

As many as 58 types of stretch fabrics are being used to fashion versatile coordinated play-time togs for infants, toddlers and subteens.

In the William Carter Company's spring line, stretch styles are No. 1 on their hit parade of children's spring styles. Other manufacturers too, have taken to stretch fabrics for spring's smartest fashions for both sexes of all ages.

Notable stretch fabrics for the new season are stretch nylon denims, a soft knit cotton-nylon stretch terry cloth and an almost uncountable variety of stretch knits in novelty textures and patterns.

In playwear, beachwear and casual togs, these stretch fabrics shape-up in bathing suits for toddlers and their somewhat older brothers and sisters; in shift dresses, shift sets; tennis dresses and bountiful showings of mix or match coordinates of all kinds.

Boys, particularly, will enjoy outfits that include zipper front parkas, polo shirts, shorts and shirt sets, deck pants (favored in stretch ducks or denims). Boys will also go for a new line of stretch fabric underwear and pajamas.

The girls will like natty and nautical looking middy-type shirts, all types of shifts, and other coordinates to ensemble in polka dot, striped and solid color stretch knits.

HOW TO TRIM THE FIGURE — Smart lassies know that there's nothing like a cycling during the early spring to assure the lithe slimmness so necessary for the new fashions. But March and April can still be chilly, so a warm, wool "Poor Boy" and a matching wool cap are ideal cycling togs. Health and fitness are the main theme, and nearly 55 million Americans will be riding bikes this spring to keep them in good shape.

Fashion Loves Pale Colors

Pale colors, soft textures and styling will heighten the splash of fashion this Summer season.

Designers have shapely to accent female by highlighting the silhouette, cutting dresses to bias and lengthening hem lines to wrist level.

Always, the season's color awaited breathlessly. At chalk-like shades will dominate and white will prevail again.

Gray is expected to make a splash and from Paris will come peach and watery green.

You'll be glad to learn that you'll have no problem keeping the new colors fresh and bright. The Clorox Bureau of Bleaching Information reports that all synthetic fibers, except spandex, have passed washing and bleaching tests with flying colors.

'Fair Lady' Look

A new undergarment for girls of grammar school age is a camisole-type pullover called "the demisole".

Young mademoiselles will like the rib-cage covering top and matching panty. It is being shown in boucle-knit cotton trimmed with braid to make this undercover story a bright one.



His '65 Ford rides quieter . . . than his Rolls-Royce

Ever since tests proved a '65 Ford LTD would ride quieter than a Rolls-Royce, some people are all at sea. They just can't believe it. Solution . . . a no-nonsense test drive at your nearest Ford Dealer's. Take one. You won't find Ford a new rival of the fabulous Rolls-Royce. But you will find it has outstanding quality . . . because quiet means quality. Come see (and hear) for yourself . . .

New Quality ■ 100% new body strongest ever on a Ford. Frame tunes out irritating road vibration ■ New

suspension puts a big ultrasoft coil spring at each wheel

New Luxury LTD's ■ Decorator interiors, thick nylon carpeting ■ Walnutlike vinyl inserts on doors and instrument panel ■ Rear-seat center arm rests, five ash trays (4-door hardtops), padded instrument panel

New Power ■ Big, new 289-cu. in. V-8 standard in XL's and LTD's ■ New BIG SIX — biggest Six in any car, std. on other Galaxie and Custom models

Visit your Ford Dealer and take a test drive soon!

Leading acoustical consultants conducted tests in which 1965 Fords (Galaxie 500 Sedan, XL and LTD Hardtops) with 289-cu. in. V-8 engines and automatic transmissions rode quieter than a new Rolls-Royce. Tests were certified by the U.S. Auto Club.

Test Drive Total Performance '65 Best year yet to go Ford!

FORD

A PRODUCT OF Ford MOTOR COMPANY



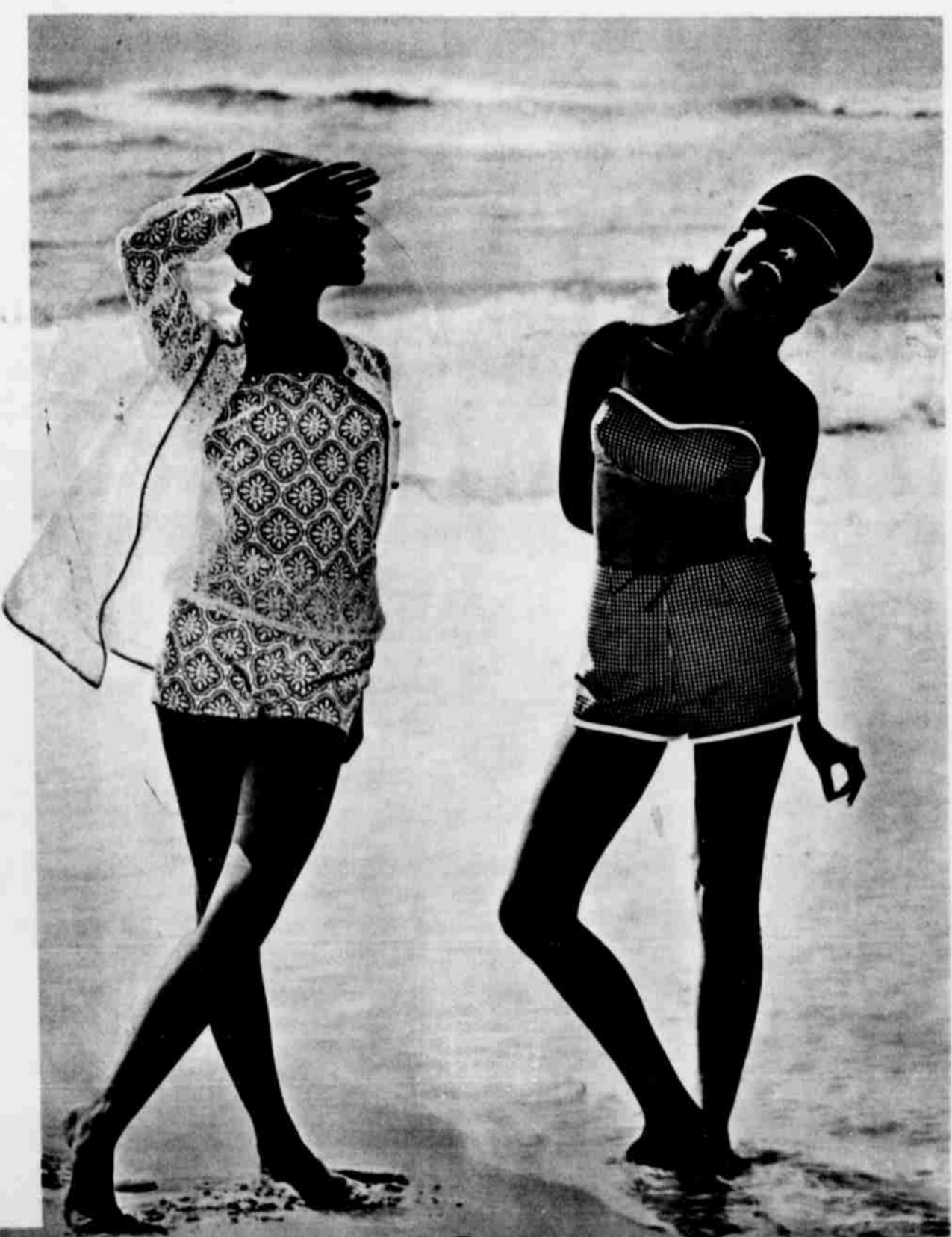
1965 Ford Galaxie 500 LTD 4-Door Hardtop

MITCHELL - FORD, INC.
LITTLEFIELD, TEXAS

525-529 PHELPS AVE.

the many swim looks of

Bobbie Brooks



Lacey Spray . . . for surfers — a lace blouse over a 2-piece suit. For landlubbers, a matching cotton cover-up. Turquoise/white; green/white; Suit, about \$20. Shirt, about \$15.

Checkarama . . . wins the beach game in a sweetheart-style bandeau. Its checkmate — a neat little boy short. All cotton. Red/white; Skipper blue/white. About \$13.

Get Your Tickets Early for the BETA SIGMA PHI STYLE SHOW FRI DAY COUNTRY CLUB 8:00 P. M.

Ware's

"Littlefield's Finest Store"



TERRY FOR TYKES comes in a new blend of knit cotton and nylon stretch terry. These "stretchable softies" are featured in gay playwear coordinates for kiddies. Here a short sleeved top with V-insert and anchor embroidery is worn over elasticized-waist deck pants.

PRESSLESS, PRICELESS

"Permanent press," a new wash-and-wear process that lets creases and pleats "bounce back" after washing!

What a boon to Mom as a labor-saver!

Ideally suited for modern laundry appliances, the new Koratron fashions (by Koret of California) will include ankle-length capris, Carmel shorts and slim skirts in year-'round colors.

These new garments will return to their original shape and press after laundering — in effect, they press themselves!

Of special importance to realizing the best laundering results with "permanent press" fashions is today's all-automatic dryer. Use the wash-and-wear setting on your dryer for "permanent press" garments.

Dryers with electronic control, innovated by Maytag, also feature an automatic cut-off of the dryer operation at the end of the special-wrinkle-removing conditioning period.

To wash the new fabrics, laundry experts recommend setting your automatic washer for a five-minute wash using warm or cold water and regular operating speed. Intensity of colors determines whether warm or cold water is used.

Use regular laundry detergent, but with cold-water use a dissolved granular or liquid laundry detergent.

Two fabrics are featured in this new Koret line. Koratron Bulwark is a blend of Fortrel polyester and cotton; Flexi-

Girls, Look Party-Perfect Every Day!

If you've been invited to a big party this Spring holiday season, getting ready for it can be half the fun because the fashion forecasts are all fresh, young and swinging.

Organize your plans for what to wear a few weeks in advance, so there'll be time for alterations, mending and shopping details. Decide on a dress first, then build an ensemble around it, coordinating your accessories.

About your dress; experiment with the whipped-creamy pastel shades, skinny disco dresses, wedding cake-tiered ones or some with ruffled accents. If you think a long gown will be appropriate, try that, too.

Then, take an honest, hard look in the shop mirror and let fashion guide — not mislead — you to select the dress that re-

flects your most flattering image. A word of caution about its hemline: the short, short skirts look best on girls with long, slender legs — so take it from there.

While you're still in the launching stages, be careful that you don't get so carried away with the project of dressing-up that you neglect your complexion's future appearance. Plan on having your skin glow along with what you're wearing. The best way is to start putting your skin in the right mood about two weeks in advance. This would include proper cleansing, a sensible diet and plenty of rest. Put yourself on schedule — then follow it faithfully.

Thorough skin cleansing is essential, otherwise pore openings may get clogged and if they become infected, blemishes can result. Wash your

face at least twice a day with Fresh-Start by Pond's. This greaseless gel cleanses away excess oils and cleans pore openings — the breeding ground for "trouble spots". At the same time its anti-bacterial action aids in reducing surface bacteria. For extra help between cleansings, wear a thin film to medicate and protect your skin.

White shadow is used on the eyelids, brown in the fold of the eye, with eyelashes cut in half and placed at the outer corner for emphasis. Blue pencil is used above the lower lashes to whiten the eyes and the brow is penciled in very naturally with gray brown liner. Lipstick is a soft hue, with just a hint of sharpness. The result is a wide-eyed, glowing look of innocence — perfect for the prim and proper new spring fashions.

Bonanza Of Handknit Fashions

Spring fashions have found a gold mine in new handknit styles. Knits are more important than ever and women can take to their needles to make the season's richest fashion treasure.

In an age of machine-made tools, handknits are the answer to custom originality in dress design. And, the accomplishment of turning out handsome, handknit fashions is a boost for the ego as well as the wardrobe.

Spring knits are designed to keep pace with women on the go. Bernat, yarn producers, have an around-the-clock collection of ready-to-knit styles inspired by world-famous designers. Dresses have the new "easy" skirts. Wear them belted or tied gently at the waist.

Chanel-type suits and blazer jackets are impeccably crisp, springy and fun to knit.

The popularity of knits is greater than ever this season, and they'll be worn everywhere for everything from active sports to dressy affairs.

denim is an east-west stretch cotton that resists sag. So, jump on the "permanent press" wagon... it's all there just for the wearing.

In A Brilliant Match— Bridal Fashions Wedded To Cotton



This summer, bridal fashions are wedded to cotton in the most brilliant match of the season.

As a result, wedding dresses for summer '65 are the prettiest, freshest styles to float down the aisle in many a year.

This happy combination of fashion and fabric is especially good news for the bride who plans to make her own dress — or for the mother who is following the long-established sentiment of sewing a wedding dress for her daughter.

Bridal patterns offer great variety — making it easy for each bride to find a style especially suited to her own beauty.

As for fabrics, none are more bridal-looking — or easier to sew — than the pure cottons in the offering for spring and summer. From embroidered sheers to rich elegant laces, they adapt equally well to regal, train-sweeping gowns or short, very young-looking wedding frocks.

By selecting your own pattern and fabric, you'll have a wedding dress that's yours alone — created to be a very special fashion for that very special occasion.

BRIDAL LACE—White cotton lace is the perfect choice for this short wedding dress. The long-sleeved overblouse can be removed later to transform the fully-lined sheath into a trousseau dress. Fabric and Simplicity Pattern 5698 available at more than 300 Singer sewing centers.

Glove Magic In A Variety Of Chic Styles

This year, it's a gay, young Spring marked by prettiness and an aura of school girlishness. And to "hand" you a look that is as fresh as a new crocus are a bevy of bright and sprightly new gloves.

Short, snappy and sure to make a special exclamation point on the clothes they accompany are the pert little gloves that contrast snowy whiteness with the touch of shiny patent leather. In crisp double-woven cotton is the gay shortie that bands its wrist-high inverted V-shaped notch with a slick ribbon of leather.

Other "briefers" are frankly feminine with buttons, bows and embroidery adding a light and lovely touch. Ideal to partner with any of the pastel tints so smart this year are the nylon shorties, their backs completely spattered with eyelets in pink, blue, yellow or white. Another nylon glove, scooped to a gentle curve at the wrist, takes its eyelets as a border trim. Then there are cotton lovelies threaded just at wrist-level with an embroidered ribbon ending in a flirty bow.

All of these styles are by Miss Aris who also provides glove magic with a variety of versatile designs in Wizard, a lizard-textured nylon that might almost be the real thing. They go well with the bubbly tweeds and flat-surfaced woollens of Spring or the silks and linens of Summer, just ahead. The "Wizards" can be had in either the smart shortie buttoned inside the wrist with a single pearl or the wrist-skimmer, wearing its pearl on top of a shallow scoop and self-

"Barely-There" Look For New Shoe Fashions

The news this season in shoe fashions is "Low-Down and Barely-There". Women will be stepping out in low, sling-backed pumps, delicate T-strap and criss-cross sandal styles. Heels have sunk to their lowest heights in years.

Texture, too, plays leading role in shoe styles this season, with both gleaming smooth pale leather and richly-toned reptile effects sharing the spotlight. And, the textured look in stocking fashions is loosely woven and patterned by day, becoming delicately webbed or super-sheer by night.

Smooth, well-groomed legs are also an important part of this new fashion look. One of the best ways to assure effective, carefree leg grooming is to use the new Lady Remington Lektronic shaver, recommended by beauty experts.

Soak feet in warm, soapy water, using a soft brush on toes and rough areas. A pumice stone will erase callouses and "pump bumps". Dry your feet thoroughly and push back cuticles with an orangewood stick. Cut nails straight across, then give two coats of polish in one of the soft, new "Barely-There" tones. Remember that your lipstick, too, should be a matching misty tone.

pipied at its slightly curved top.

Last, there are new crisp white pique-textured nylon gloves to spark the pleated school-girl-inspired navy blue fashions this season. They have pearl button closings, elastic banding to snug the wrist and eyelet cuffing.



LEATHER FOR A LADY—She's learned the secret of being feminine in a costume — wear leather. This red double-breasted, three-quarter coat in smooth leather is a springtime eye-opener. To complement it, an antique hide satchel with black calf outside pocket and black leather mid heel and elegant leather turban completes the ensemble.

If you think you're seeing more and more Plymouth Furies on the road, you're right.

This is the hottest-selling Fury in history.

Here's why:

Fury for '65 is the biggest, plushiest Plymouth ever... but still solidly in the low-price class. Big on the outside, its wheelbase is a whopping 119 inches. Big on the inside, plenty of headroom, legroom and hiproom. And new curved-glass side windows add to Fury's contemporary styling. The plush part is the beautiful interior. There's rich upholstery to compliment the exterior finish, wall-to-wall nylon carpeting and a smart, readable instrument panel. No wonder you're seeing more and more Plymouth Furies on the road. If you want more good reasons for buying Fury, see your Plymouth Dealer. He drives one too.



THE ROARING '65s
FURY
BELVEDERE
VALIANT
BARRACUDA
Plymouth

See the Hot Line at your Plymouth Dealer's.

PLYMOUTH DIVISION CHRYSLER MOTORS CORPORATION

GARLAND MOTOR CO. CHRYSLER - PLYMOUTH D

710 East Third St.

Littlefield, Texas

THINKING ABOUT SUMMER?



THINK ABOUT GAS AIR CONDITIONING!

GAS answers all of your air conditioning needs. First and foremost, it does the job you want air conditioning to do... keeping every room in your house cool and comfortable. And, GAS is so economical. People who own GAS air conditioning know it costs less to operate. Maintenance costs are kept to a minimum, too, because GAS air conditioning has no moving parts to wear out. Should the need occur, you are assured of fast, dependable service because Pioneer stands behind every unit they sell.

Sold and Serviced by

Pioneer Natural Gas Company



Furs Adopt Casual Look

What with tweed going to the opera and denim dining by candlelight, it's only natural that furs should undergo a change of pace this season.

Gone are the days when furs were obvious symbols of extravagance — today they are able to go more places with less formality than ever before, rivaling the infinite variety of cloth coats for dawn to dark, urban to suburban wearability. Today's furs are young, vital, and versatile, while still retaining an aura of opulence.

Noteworthy among the new furs are soft, supple Persian lambs in natural pales, jet blacks and new color mutations, and sleek, ebony Persian broad-tail lamb with its polished, satiny surface.

Because Persian lamb has not been used extensively in the past, when furs were designed to look lavish, it is emerging as an important fur now that restraint is the prime factor. It lends itself readily to chic understatement, the essence of fashion's "mood raffiné."

Leading designers are capitalizing on the versatility of Persian lamb to suggest more uses for furs than ever before, from the exquisite little jacket for opening nights to the casual daytime coat.

A wardrobe of Persian lamb could conceivably cover every activity in a busy day, starting with a black go-coat, switching to a natural grey greatcoat for luncheon and shopping. A cocktail date might call for a fingertip length, double-breasted brown jacket, followed with a jet black sheath coat for dinner and the theatre. Or, if entertaining at home, an overblouse of garnet red Persian with smoky black undertones would look great worn with velvet pants.

The softness and fabric-like maneuverability of Persian lamb takes on even more significance in chapeaux. Cloches, fedoras, and flattering off-the-face shapes are deftly delineated in Persian without bulkiness.

With such versatility, small wonder that designers are using more and more of this lovely, elegant fur for new spring fashions.

Bags, whether big or small, are bright and bold for spring. A riot of colors, flowers and stripes blossom forth in brilliant colors.



SOFT, SUBTLE LINES in a belted suit that will take you anywhere. It is handsomely accented by a generously notched collar and trim flap pockets. Designed by Zelinka-Matlick, it is made of lightweight "Fanfare," a smooth pure wool worsted fabric loomed in America.

DAILY PRINTED INFANTS' WEAR

There's rarely much fashion news in items for infants. To most shoppers a layette item doesn't have much "S.A." (style-appeal).

This spring you'll find a gay group of infants' playwear, layette essentials and even crib

coverings in coordinated ticking-stripe knits, polka dots or "Little Angel" prints.

Even tiny tot pajamas come in cheerful prints and colors, with appliques and other trims on fine knit fabrics.

Predicted for the Play Pen Set: brother and sister duets in diaper sets and play-clothes. Sometimes only the color differs; sometimes the addition of ruffles denotes the feminine attire.

Fashion-Tips on This 'n' that

Recent interviews of the nation's top beauty editors show that the popular new look in hair styles is short but not shingled, wavy, but not "marcelled". The most important new words, according to Lilt Reference Service, are fluffy, ruffled and casual curls.

Hair accessories will stage a big comeback in the next few months. New feminine hair-styles are ideal for bows, bar-

rettes, tiaras and hair bands. Interesting new materials are being used for these such as leather-look plastics, braided and embroidered weaves and stretch knits for bands, according to the Lilt Reference Service.

Other hair fashion news includes shorter cuts, and an emphasis on well-brushed, "swinging" shiny hair which complements today's feminine picture.

Handbags have taken a cue from the new feminine fashions and are favoring soft, mellow leathers, suedes and rep-

ettes in newer smaller shapes. Many bags feature fine little dressmaker pleats and tucks, and are reminiscent of the twenties. Shoulder bags continue in popularity, while others are dangled on short straps or chains. Often bags have both, for versatility and double duty.

Chanel's nautical theme is almost as strong as it was last season, with the grade school set. Washable white sharkskin is most important here. A blazer jacket with brass buttons may become a "can't do without"! Middies come forward in gay, new guises.



FOOTS STEP INTO THE SPRING SPOTLIGHT in coordinated fashions for toddlers and youngsters. A bright, polka dot Kobbie Knit cotton fabric shapes up an outfit with a ruffled flounce as shown. Other shifts, shift sets, blouses, pants and separates are presented in the same gay dotted fabric for mixing and matching.

Youngsters' Shoes Take on Risky-Footed, Light Look

Pop-scoot, rope jumping party-going, a-foot this spring for little girls are gay, full lightweight leather shoes with a more-opened look in the season past.

Most important from the little point of view is the new look and the great variety of lively leather textures available.

Polished smooth and patent leathers, sturdy grained and brushed leathers, sporty waxed leathers and silky suedes will be out in grand style this spring.

Little misses will love the new strapped pumps with T-strap, double T's, slit or laced with a wide sabot to spice them.

The love affair between suburban girls and sporty saddle oxford moccasins continues. For '65 saddle oxfords combine dazzling white patent leather and colored patent in suede leather saddle shoes are tops, too.

The moccasin is most popular spring in glove leather and waxed leather in natural or brassy tones. Plant soles, somewhat extended beyond the moccasin's silhouette, frame the shoe as they give wanted support to the foot.

For everyday wear, the leatherford takes on a new image combination of two textures leather. An applied effect without displays the second texture or leather as highlight. Party time shoes will surely all every little miss. Yellow, red, bright red, as well as black and white shoes dazzle in smooth leathers or grained patents, in trim sling sandals or shell pump styles.

Straps, small bows, neat apertures, cut-out designs or nail trim help give little girls' shoes a very grown-up look.

For the lassies, boys like to follow the fashion lead set by their brothers and their dads. In spring, the fashion byword is fashion-conscious boys is brogues.

Grained and smooth leather brogues are top scorers with young set and their leather oxford and slip-ons take on "regatta" styling, too. Rugby good-looking but light weight, these shoes are the perfect all-round wear footwear.

Perforations, pinking and wing tips add style to shoes for pre-teen young men in solid masculine brogues. Junior's oxfords and slip-ons repeat the same smart fashion detailing found in the true brogue.

The hand-sewn leather moccasin is as popular with the boys as with the girls. For dress-up, the young man will step out in sleek slip-ons of smooth or grained leather and sometimes in shoes that combine them both.

Trim fashion touches for swinging young fellows are visible side gores, monk strap detailing or side closings. Deep and medium browns, alpine tans, and of course, black, are favored colors.

For boy and girl, the shoe showings for spring indicate smart, high stepping.

Refreshing new styles for school include: grained leather strap pumps, pale glove-leather mocs with pinhole perforated trim and brushed leather booties with split throatlines. Spring's leather boots are light and feminine and complement pretty textured stockings.

Shoe Fashions

Color selection should pose no problem for shoe-buying teenagers. The color line this spring is a free and flowing one, encompassing soft pastels, clear dramatic tones and subtle neutrals.

Shoe-happy show-offs can display delicate T-strap flats in fine suede kitten sling-backs and smooth leather pumps in bright colors with discreet buckles or bows. These leather lovelies cradle the foot comfortably and boast flexible leather soles for needed support and protection.

Going all out for the romantic look are leather dress shoes for those red-letter dances and dates. Sling-backs and stripping sandals are devastating in refined smooth and lustre leathers, kitten soft suede, sleek patent leather and very fine grained leathers. Leather pumps cut low at sides or front, or opened up at the sides, are sometimes untrimmed, sometimes adorned with old fashioned jeweled buckles or large flat bows.

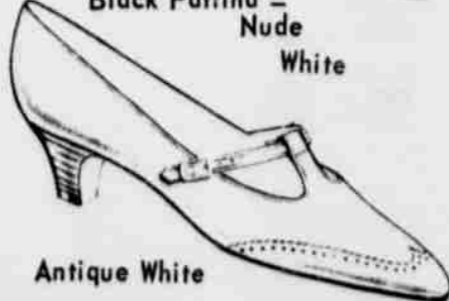


UNDER THAN SPRINGTIME and as lovely as spring blossoms are these pretty shoes in their fashions for new season. LEFT: the nautical ensemble with its regatta jacket features stripes of kayak red and crew blue, flap pockets, gay buttons and sleeveless pleated dress with perky tie. CENTER: Ahoy again as fashion styles the two-piece jumper dress. A crew blue short sleeved blouse shows off regatta against the jet-white cotton twill belted-back jumper. RIGHT: Aye, aye the regatta striped jumper with buttoned tab side built in red and blue.

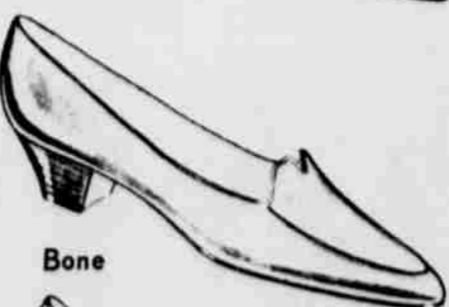
The Easter Shoe Parade



Medium & High Heel
Black Patina -
Nude -
White



Antique White



Bone



Medium Heel
Black Patina
Nude - Pink - Blue - White

ALL COME IN NARROW & MEDIUM WIDTH

The Easter parade starts at Abe's Self Service Shoes, where over 5,000 pairs of shoes are on display. Young, clever and spirited handbags and shoes... so olive with color... so right to put you in a gay mood.

You're sure to find the perfect footwear fashion for you in our fabulous collection of styles for the entire family.

FAMOUS BRANDS

4.90

5.90

6.90

SEE OUR TREMENDOUS STOCK

GIRL'S EASTER SHOES

SIZES 8½ TO 3

\$2.90

2 FOR \$5

OTHERS 3.90

FREE! FREE!
GIANT EASTER BUNNY



REGISTER FOR ABE'S GIANT EASTER BUNNY LARGEST IN WEST TEXAS! YOUR CHILD WILL LOVE IT! TO BE GIVEN AWAY APRIL 17. NO PURCHASE NECESSARY

Abe's SHOES Self-Service

327 Phelps-Littlefield
1817 Parkway Shopping Center-Lubbock

AMHERST NEWS by Mrs. Lester LaGrange

Visits Here From Washington, D.C.



WANT TO BEAT THE HEAT? Pick up a shirt in a bold new breed... Delectable Regency, a brand new fabric blended of 75 percent Dacron® polyester, 20 percent cotton and 5 percent nylon. The high percentage of cotton increases the absorbency and comfort, while the synthetic content insures quick-drying and no-ironing characteristics. The neat waffle weave offers a new effect. Here, it is designed with a permanent-stay Glen collar, in precise blue and white stripes. Note the double pocket.

Spring Fashions for Men Stress Grooming

The reason men no longer possess the fashionable elegance they once displayed is most likely due to the influence of the female of our species, according to a well known men's wear designer.

He points out that Nature's plan calls for the male to be more resplendent in the various species of animals, but the human animal has reversed the scheme so that the male now shows up as a pretty dull bird.

The male is allowed a short period of flamboyance when he is adorned with cowboy and Indian suits, but once the colorful age is past, his mother "lowers the boom", the designer comments.

She informs him that he is not supposed to be preoccupied with clothes and thus he is made to feel that it is his duty to care about them. The logical outcome which follows is that he subdues his inherent instinct for bright apparel.

This designer suggests that men aim to reverse this handicap. He advocates that men should throw off "dull shackles". He encourages men to develop their own fashion education, then select and buy what they like and feel comfortable in.

Some of the fashion innovations introduced by said designer are the one-button suit and pleated trousers among many others.

His forecast for the newest look in men's wear is the "open" look originating from wider-spread collars, elimination of top suit buttons, allowing more linen to show and wider ties.

Many men's stores will now take special orders to design and make an embroidered patch insignia for your blazer... based on your hobbies, interests, club affiliation, etc.

Gary Bearden of Washington, D.C. visited his parents, Mr. and Mrs. G.C. Bearden and his brother Barry and family last weekend. He was returning home from a business trip to the University of California.

Mr. and Mrs. N.B. Embrey have returned home from a vacation trip to South Texas. Mr. and Mrs. Lawrence Royal and sons L.A. Jr. and Dwight of Plainview visited his parents, Mr. and Mrs. A.A. Royal, Sunday.

Mr. and Mrs. Paul Lair and son Kirk of Moran, Wyo. are spending a few days with his mother, Mrs. G.D. Lair, Mrs. Elsie Bess Sherman, Mrs. Lair's daughter of Temple is expected for the weekend.

Mr. and Mrs. Willis Hedges were Olton visitors Monday afternoon.

Mr. and Mrs. Marvin Horton were business visitors in Muleshoe Tuesday.

Mr. and Mrs. Larkin White, Glen Williams of Hereford and Edwin Williams of Littlefield attended funeral services in Lubbock Thursday for Coy White.

Mr. and Mrs. Michael Duffy went to Albuquerque early this week to meet her mother, Mrs. Donna Vogt of Van Nuys, Calif.

Mrs. Edna Daniel has returned home after spending several weeks with her sons, Charlie in Muleshoe and L.D. in Amarillo. She continues to have her right arm in a cast. She had the misfortune to break it in a fall at her home in February.

Elder and Mrs. Ira M. Fry of Colorado Springs, Colo. visited Mrs. Myrtle Crain Monday and Tuesday. Mrs. Eva Attaway accompanied them to Muleshoe Monday night for Primitive Baptist Church service. They attended Tuesday night service at Anton.

Mr. and Mrs. H.E. Akin have returned home from several weeks spent at Rockport on the Texas Gulf Coast.

A recent guest of his daughter, Mrs. Clara Stokes was J. L. Harris of Portales. C.E. Johnson, a member of the Junior High School faculty underwent eye surgery in the West Texas Hospital, Lubbock, Thursday. Members of the

family are to be here with Mrs. Johnson and him this weekend. Joe Ben Dickson of Los Angeles was the guest of Mr. and Mrs. Henry Brown Wednesday. He is visiting his brother, R. O. Dickson, in Earth.

Mr. and Mrs. Henry Brown and Mrs. Grady Phillips of Munday joined Mr. and Mrs. C.A. Thomas at their cabin at Lake Diversion, near Wichita Falls for the weekend. The Thomases had gone there early in the week.

Mrs. John Enloe was called to Throckmorton due to the illness of her mother.

Mr. and Mrs. Sterle Harmon returned home Wednesday from vacation of several weeks in Hot Springs, Calif. and Tucson, Ariz.

Mr. and Mrs. W.T. Weaver, Jr. and daughters left Thursday morning for Corpus Christi. His father has been confined to the Parkview Hospital there since suffering a heart attack two weeks ago. His condition is improved.

Guests in the Ernest Coleman home this week have been their grandsons Brett and Scott Coleman of Lubbock. Their sister Kelly is with her uncle Arvil Blair Jr. and family since the birth of their sister in Lubbock, March 13.

O.G. Wagner was brought home from the local hospital Tuesday and continues to improve.

Mrs. W.P. Holland and Mrs. Joe Miller attended the W.S.C.S. Northwest Texas Conference meeting held at Stamford Thursday and Friday.

Mrs. Holland is leader of Sub-district No. 1 of the Brownfield District and Mrs. Miller was the delegate from the local W.S.C.S.

Gary Johnson, Sherwood Abbott, Mike Slate, Johnny Norwood, Sammy Maxfield of the F.F.A. showed animals at the Lubbock Junior stock show and were accompanied by Agteachers Raymond Duvall and several parents last weekend.

Bruce Nicholson, Paul Holland, Rodney Maxfield, Stephanie Carter and Sue Noles of the 4-H displayed animals there and also at the annual sale in Littlefield last weekend.

Mr. and Mrs. David Harmon returned home Friday from spending the past week in Corpus Christi with Mrs. Bill Weaver. Mr. Weaver is a patient there in a severe heart attack.

March 6, The Harmons were in south Texas on vacation, when word of his illness was received.

Mr. and Mrs. Harry Bennett of Hereford visited his parents, Mr. and Mrs. W.E. Bennett during the weekend.

Mrs. Mary E. Britt attended the rodeo in Lubbock Thursday night with her son Roger and children.

Mrs. Oby Blanchard is the guest of her daughter, Mrs. Raymond Gilder and family in Fort Worth.

Mr. and Mrs. V.L. Yarbrough and Mr. and Mrs. Alvin Yarbrough of Plainview visited Mrs. Mary E. Britt Sunday. Other guests were her daughter and family, Mr. and Mrs. Nolan Harlan and Ann of Bula and her granddaughter, Joann Haithcock, and her friend, Donna Hastings of Carlsbad, N.M.

Mr. and Mrs. W.N. Humphreys, Mr. and Mrs. Raymond Humphreys and Roger Mac returned home Saturday from a visit in southeast Texas. They visited Mr. and Mrs. Carl Hum-

phreys at Winnie near Houston, and in Galveston, and Beaumont and on their return they were overnight guests Friday with relatives in Winters.

Mrs. Jim Wheat visited her mother, Mrs. Mattie Goode in San Angelo, last week.

Mrs. Ora Smith of Elk City, Okla. is visiting her brother, Dave Black and Mrs. Black and her sister, Mrs. Etta Jones and other relatives.

Mr. and Mrs. Dale Weaver, Alane and Gay went to Corpus Christi Friday. Bill Weaver, their father and grandfather, continues to improve in the Parkview hospital there following a March 6 heart attack.

Mrs. V.C. Commons spent the weekend in Levelland with her daughter, Mrs. Kenneth Bates. J.L. Breshears and his daughter, Mrs. Don Delaj of Littlefield were Morton visitors Friday.

Mr. and Mrs. L.E. Vaughn and Mrs. Irma Jeffery were in Lubbock Sunday afternoon to see Mut Hufsteler, a patient in the Methodist Hospital. He continues to show some improvement. Mrs. Hufsteler was at the home of her daughter, Mrs. Dwaine Phillips, in Littlefield. She has not fully recovered from surgery performed early in February. She spends most of her time in Lubbock.

Mr. and Mrs. E.L. Black were in Amarillo Wednesday of last week. Their son Billy Ray and family will move to Greeley, Colo. where he has accepted the position of head accountant with the Hensel-Phelps Construction Company. He has been with Missouri Valley Construction Co. in Amarillo several years.

Mrs. Roger Britt spend the weekend in Dallas. She made the trip by air.

Just One of the Exciting New Ann Murray

Costumes to Be Modeled

at the Annual

SPRING STYLE SHOW

FRIDAY NIGHT
8:00 P. M.

LITTLEFIELD
COUNTRY CLUB



Ann Murray's

ULTRA FEMININE APPROACH

A most exquisite costume that starts in the daylight and lingers beautifully through the dinner hour. The skirt and jacket of imported Italian Dupioni Silk, the overblouse of embroidered cotton. Sizes 8-18. about 110.00

Ware's

"Littlefield's Finest Store"

EVERYTHING FOR a Man's Spring Wardrobe

We've got just the suit to let you do just that in our new seasonal collection. Whisper-weight blends and tropical worsteds to give you the utmost in cool comfort. Spring-weights too with easy-wearing qualities. Colors, patterns and weaves to suit your very particular fancy--including rich iridescents, elegant medium-tones, smart hairlines, subtle shadow plaids--in models that represent every wanted style.

Spring And Summer Suits From **49.95**



TOP DRAWER DRESS SHIRTS

4.95 to 8.95

JAYSON & EXCELLO. WIDE CHOICE OF COLORS, FABRICS, COLLAR STYLES. PERFECT FOR ANY OCCASION



Now's The Time To Buy For Spring, While Stock Is Complete And Selections Good.

FIELDS MEN'S WEAR

512 PHELPS - 385-3233



Toddlers

DRESSES

A. Made with a "young fashionable" in mind... tailored in 100% fine cotton fabric, crease resistant and drip dry resistant. Trimmed lavishly with lace, ruffled hem, full skirted, tied with a big bow in the back. Red or Mint stripes on white. Sizes 1 to 3.



5.95



B. Tailored in Peter Pan® Everglaze 100% cotton, gay full skirted dress with matching solid color bow tie in the back, fancy collar and sleeve trim. Washable, little or no ironing required. Gold or blue print. Sizes 1 to 3.

4.98



3.98



D. Light, fluffy and downy full skirt with a bow in the back, round collar edged with lace, trimmed with embroidered flowers. Orchid and White or Pink and White. Sizes 1 to 3.

2.98

SMOOTH LEATHER FLATS



Black smooth leather upper with composition sole. Double needle last, hard counter. 3/8" spectro heel. Styled so that go everywhere casual wear. Sizes 5-9, 5 and M widths. The priced too.

3.99

LADIES SPRING FLATS



Double needle toe last in black or white smooth leather upper with composition sole. Hard counter, 4/8" cowboy heel. Styled for the utmost in casual wear. Sizes 5-9, Medium widths only.

2.99

WOMEN'S FLATS



Black or white beaded lizard upper with composition sole. Hard counter, 4/8" cowboy heel. Styled by Priscilla Dean to go everywhere casual wear. Sizes 5-9, Medium widths only.

2.99

Get Your Tickets Now
SPRING STYLE SHOW
FRIDAY-March 26th
Littlefield Country Club
8:00 P.M.