

WILDCATS, MONAHANS MEET FRIDAY AT SEELY FIELD IN REGIONAL CONTEST

Electrical and Plumbing Ordinances Passed By City

Ordinances Outline
Work Must
Be Done, Fees, Etc.

Electrical Ordinance
Will Be Into Effect On
Monday Today

The City Commission last week this body passed an ordinance setting out the work required to be done in connection with each electrical and plumbing ordinance, and put in force a license, and put in force a fee of \$1,000; setting out fees for the work, and providing a penalty in case of violation of the provisions of the ordinance.

It had been planned for some time.

The ordinance, which was published in this newspaper, was passed at a meeting of the City Commission on Monday.

The ordinance was passed by a vote of 5-4. The ordinance was passed by a vote of 5-4.

The ordinance was passed by a vote of 5-4.

On Show
Club Benefit

The organization of the club in Littlefield, which was organized by the Jaycees, is now open for the season.

The club will have a benefit show on Friday night, and the proceeds will be used to defray the expenses of the club.

The club will have a benefit show on Friday night, and the proceeds will be used to defray the expenses of the club.

Good Area
Good Moisture

The area is now in good moisture, and the crops are doing well.

Local Area
Good Moisture

The area is now in good moisture, and the crops are doing well.

J. R. (Bob) Walker Reported Leader For November

The Great American Reserve Insurance Company announces that J. R. (Bob) Walker, special representative at Littlefield, Texas, led the entire sales force in November. He led the field in every department, writing more hospitalization, more accident and health, and more life insurance than any man with the company.

In addition to leading the sales force for the month of November, he



J. E. (BOB) WALKER

is leading the company's entire sales force for the year 1946. This feat is all the more remarkable in view of the fact that the average earnings for the company salesmen would exceed \$8,500 for 1946, while the earnings of the three top salesmen would exceed \$12,000 for 1946.

Mr. Walker has recently bought his home and moved his family to Littlefield.

Basketball Tourney Set For Friday

Sudan's Hornets and the Tigers of Slaton open the annual Levelland basketball tournament at Levelland Friday and Saturday.

Twelve teams will compete in the tourney, including O'Donnell, Sudan, Slaton, Seagraves, Levelland "B", Whiteface, Whitharral, Brownfield, Tahoka, Olton, Andrews and Levelland "A".

In the first round games beginning at 1 o'clock, Sudan meets Slaton; O'Donnell drew a bye; Seagraves tackles Levelland "B", with Whiteface and Whitharral drawing byes.

Tahoka and Brownfield wind up the first round of play.

O'Donnell meets the winner of the Sudan-Slaton game at 7 o'clock Friday night.

Olton plays Levelland "A", and Whitharral meets the victor of the Tahoka-Brownfield clash.

Whiteface will play the winner of the Seagraves-Levelland "B" game Saturday morning at 9 o'clock, and Andrews will face the winner of the Levelland "A"-Olton game in the second tilt.

Semi-finals are set for 2 o'clock and 3:30 o'clock Saturday afternoon, with the finals to be played off Saturday night.

Marvin Wheeler, director of athletics, arranged the tournament and will have charge of details.

PETTIT GIRLS LOSE TO WHITEFACE

Whiteface girls swept two basketball games from Pettit girls' teams at Whiteface Friday night.

The Whiteface "A" quintet, led by Gaylia Peters with 18 points, smacked the Pettit five, 25-14, while Betty Reynolds netted 10 points to lead the Whiteface "B" team to a 21-3 rout.

Mr. and Mrs. James Stokes, Lubbock, spent Thanksgiving with his parents, Mr. and Mrs. J. M. Stokes.

Mr. and Mrs. James Stokes, Lubbock, spent Thanksgiving with his parents, Mr. and Mrs. J. M. Stokes.

Mr. and Mrs. James Stokes, Lubbock, spent Thanksgiving with his parents, Mr. and Mrs. J. M. Stokes.

Mr. and Mrs. James Stokes, Lubbock, spent Thanksgiving with his parents, Mr. and Mrs. J. M. Stokes.

Mr. and Mrs. James Stokes, Lubbock, spent Thanksgiving with his parents, Mr. and Mrs. J. M. Stokes.

Mr. and Mrs. James Stokes, Lubbock, spent Thanksgiving with his parents, Mr. and Mrs. J. M. Stokes.

LAMB COUNTY LEADER

20 PAGES

20 PAGES

Official Newspaper Of Lamb County, Texas

THE SOUTH PLAINS GREATEST WEEKLY NEWSPAPER
Serving the Fastest Developing Agricultural Section of the Entire Southwest

VOL. XXIV

LITTLEFIELD, LAMB COUNTY, TEXAS, THURSDAY, DECEMBER 12, 1946

No. 38

To Grant Permit For Bus Line

A Texas Railroad Commission meeting was held at the Hilton Hotel, Lubbock, Texas, Tuesday.

Delegates from Hereford, Dimmitt, Littlefield, Levelland, Brownfield and Lamesa presented their evidence in favor of the daily bus service on the route between the above-mentioned towns.

E. C. Cundiff, secretary of the Littlefield Chamber of Commerce, attended from this city.

After hearing all the evidence and facts in the case, the examiner for the Railway Commission assured all the delegates present that he was certain the permit would be issued.

Mr. Levens, manager of the Texas, New Mexico & Oklahoma Bus Lines, told the delegates that his company would be prepared to start this service as soon as the permit was granted.

He also told them that his company has 46 new buses ordered, and would like to start this service with new buses, and figured they would be ready to go about Jan. 15 or Feb. 1.

Teachers' Assn. Elects Officers

The Lamb County Teachers' Association met for the first time this year Monday night, December 9, at Olton.

A musical program was rendered by students of Olton High School that was thoroughly enjoyed by all.

Judge I. B. Holt, representative-elect of this district, gave a talk on prospective legislation for this next meeting of the legislature.

The main speaker of the evening was Dr. Herschel Coffee of West Texas State College of Canyon, who delivered an address on "What It Is We Are Doing." In this address Dr. Coffee stressed the facts that the teachers of our schools have an obligation to fill to the community in which they are engaged, and that in turn the state and community have an obligation to fill by paying them a fair living wage for these services rendered.

He further stressed the fact that a crisis is on and approaching in the teaching profession, and that more and better legislation must take place supporting our schools or labor unions and strikes may result.

A business session was held following the program, in which officers for the year were elected, as follows:

Joe Hutchinson, president; Roy Stevens, vice president; Perry Morning, second vice president; J. Ernest Jones, secretary-treasurer.

The next meeting of the Lamb County Teachers' Association will be held at Amherst about two weeks before the West Texas State Teachers' Association meeting in March.

About one hundred teachers attended this meeting at Olton.

\$6,000 Raised For Community Chest

The Community Chest drive got underway Monday morning.

According to L. C. Hewitt, general chairman of the drive, a total of about \$6,000, or a little over half of Littlefield's goal of \$11,000, has been collected.

Mr. Hewitt stated that, although the drive had formerly been scheduled to end on December 15, it was going to take until about the 20th to complete the campaign.

MUST GET BOXES UP

Persons are requested and urged to get their mail boxes up for city delivery. No special type of box is approved. Boxes may be obtained from hardware or other merchants who may have them for sale.

Post Office Here Needs Vehicle For Delivery of Mail

Persons desiring to hire a motor vehicle to the government on an hourly basis without a driver, for delivery of parcel post mail in the city of Littlefield, should contact the postmaster and place their bids on same. December 16 has been set as the last day of accepting these bids.

The time for the need of such vehicle is approximately three hours daily for six days in the week.

Beer Election To Be Held In County Dec. 30

Petition Presented To Commissioners Monday Morning

A petition signed by 354 residents of Lamb County was presented to the county commissioners' court Monday morning, requesting the court to order a local option election for the purpose of determining whether or not wine and beer shall be sold in Lamb County.

This is the second such petition to be presented to the commissioners' court. The first of such documents was presented November 11 but, on being checked by the county clerk's office, was found insufficient, inasmuch as there were not enough legally qualified signers to the petition.

The second petition was duly checked by the county clerk before presentation and found to be sufficient to be acted upon. The required number of signers to make such a petition acceptable is 333 qualified voters.

According to Judge I. B. (Dock) Holt, the 333 figure is arrived at as follows: It is 10 per cent of the legally qualified voters who cast their votes for governor in the last general election of 1944, at which time 3325 votes were cast for governor, which would require 333 legally qualified signers to the above petition to carry.

In the above petition presented the court was petitioned to "order a local option election for the purpose of determining whether or not the sale of vinous and malt liquors that do not contain alcohol in excess of 4 per cent by weight shall be prohibited or legalized in Lamb County, Texas."

The county commission Monday approved the petition, and Judge I. B. Holt issued an order calling for an election to be held Monday, December 30.

Local Veteran Buys Automobile At Surplus Sale

Over 300 veterans attended a sale of surplus vehicles at Sheppard Field, Wichita Falls, Friday, December 6, to purchase 88 vehicles offered for sale by War Assets Administration, Fort Worth. Forty-five vehicles were awarded to holders of oldest dated certificates the first hour of the sale. The remainder were sold on a high-bid basis.

Oma C. Fox, a Littlefield veteran, bought a 1941 Ford combination stake and platform truck for \$597 with an oldest dated certificate.

This was the final sale where oldest dated certificates would be served first. After December 10, WAA has a new policy whereby veteran certificates will be honored for all types of disposals irrespective of date of issuance.

Highway 54 Is To Be Paved

An effort has been made for some time by the Littlefield Chamber of Commerce to interest other counties along Highway 54 from here to the New Mexico line to have this strip paved.

Mayor A. C. Chesher was named special committeeman some time ago to work on the project, and has from time to time called on commissioners of other counties in an effort to get the project over.

At a meeting of the directors of the Chamber of Commerce Thursday night, Mayor Chesher reported that this stretch of road, with the exception of about eight miles, is now under construction.

In an interview with E. C. Cundiff, secretary of the Littlefield booster club, Wednesday, Mr. Cundiff said: "We believe that some time during next summer, or by the latest, the end of next year, we will have the road completed to the New Mexico line."

The directors voted to give \$50 to the Community Chest.

A committee was also named to contact the proper authorities in an effort to get better mail service north and south, and various parts of the county.

Pass Road Bond Issue Saturday

The 1-A District of Lamb County Saturday voted a \$350,000 bond issue for the building of farm-to-market roads in the south end of the county, where the district is located.

A total of 476 votes were cast in the five election boxes of the district, which included 334 votes for, and 142 against, the bond issue, thus favoring the measure by 50 votes over the necessary two-thirds majority.

L. B. McCain And I. T. Graves Buy Clark's Grocery

L. B. McCain, of Oklahoma Avenue, and I. T. Graves of Stanton, Texas, have purchased Roy Clark's grocery and market and have taken possession.

They have rearranged the store and added a large stock of groceries, etc.

Mr. McCain and Mr. Graves are ably assisted in the story by Mrs. Graves.

Mr. Graves has been in the service 18 months, serving as a sergeant in the Paratroopers, 11th Airborne Division, and is now on terminal leave.

The McCain & Graves Grocery is open week days from 8 a.m. until 8 p.m., and on Sundays, closing for the church hour.

USO Drive Gets Underway In County Friday Morning

With a quota of \$1,925 to be filled in two days, Lamb County's USO drive gets underway Friday morning, it was announced by Joe T. Salem, of Sudan, county chairman.

Chairmen and their quotas for all the towns have been assigned by Mr. Salem, with the exception of Littlefield, which pays its share from the proceeds of the Community Chest drive held here this week.

"We are going to try to complete the drive in two days," Mr. Salem said in announcing Friday and Saturday had been selected as dates for raising funds to meet Lamb County's quota for the United States Service Organizations.

Chairmen for the towns and their quotas are as follows: Littlefield (funds to come from Community

Ward County's Region 2 Champs Will Put Up Scrap

Fikes' Crew Expected To Be Shipshape In Season's Final Go

With the Littlefield Wildcats and the Monahans Lobos as the contenders, the regional grid title for this year will be decided at Seely Field Friday afternoon.

This will be the third successive year that the Wildcats will compete in the Region Two Class A finals.

Last year Littlefield dumped Monahans, 21-7, to annex the regional championship. In 1944, Littlefield was beaten by Merkel.

Friday, the Littlefield Wildcats at Seminole overpowered that city's stubborn Indians, 52-22, in the bi-district playoff.

Saturday, at Monahans, the Monahans Lobos scrapped their way into the Region Two Class A finals, rolling to a 26-13 victory over the Merkel Badgers.

The regional championship game has been called for 2:30, and an immense crowd is expected to be on hand to witness the event.

Seminole Game

Coupling a crushing ground attack with some timely aerial connections, Coach J. S. Fikes' Wildcats marched 89 yards to score the first time in the Seminole contest, then rolled steadily on to achieve their eleventh straight win of the year.

Coach John Burns' outmanned Seminole crew rallied for 15 points in the closing quarter, with one touchdown coming against Littlefield's third team, but the late rush fell short of reaching the total amassed by the high-gear District 5-A champions. It was the first loss of the year, compared to ten wins, for the Indians, who copped the District 6-A bunting.

A "touchdown twins" scoring punch supplied by fleet Eugene Carter and bruising Sabin Hendrickson spelled the difference in Friday's scoring bee. Carter romped home for four touchdowns, the last on a 63-yard gallop, while Hendrickson powered his 188 pounds to three six-pintners, with the last coming on a 50-yard jaunt. This high school version of Army's famed Davis-Blanchard combination also accounted for most of Littlefield's total of 439 yards net rushing, as they teamed to rip Seminole's defense apart time and again.

Littlefield's other touchdown came on a 19-yard pass from Travis Price to End Jack Davis on the first play of the second quarter.

Sison Best Guard

A hard-charging Wildcat line, spearheaded by Guard Billy Sison—described by Fikes as "the best guard I've ever coached"—ends Gene McCannies and Jack Davis, and Tackle Jiggs Walker, kept Seminole well in hand until the final quarter. In that stanza, chunky James Powell replaced Val Joe Walker, the Indians' highly-touted tailback who was well-bottled by Littlefield Friday, and promptly sparked two scoring thrusts. Powell raced 52 yards for one tally, and connected on a 30-yard pass play to End John Burns for the other.

Legion and Auxiliary To Enjoy Christmas Party December 16

A joint meeting of the American Legion and Auxiliary will be held Monday night, December 16, at the Legion Hut, when the annual Christmas party will be held, including a program. Refreshments will be served.

The program will open at 7:30. All members are urged to enjoy the evening get-together.

The program will open at 7:30. All members are urged to enjoy the evening get-together.

The program will open at 7:30. All members are urged to enjoy the evening get-together.

The program will open at 7:30. All members are urged to enjoy the evening get-together.

The program will open at 7:30. All members are urged to enjoy the evening get-together.

The program will open at 7:30. All members are urged to enjoy the evening get-together.

The program will open at 7:30. All members are urged to enjoy the evening get-together.

The program will open at 7:30. All members are urged to enjoy the evening get-together.

The program will open at 7:30. All members are urged to enjoy the evening get-together.

The program will open at 7:30. All members are urged to enjoy the evening get-together.

The program will open at 7:30. All members are urged to enjoy the evening get-together.

The program will open at 7:30. All members are urged to enjoy the evening get-together.

The program will open at 7:30. All members are urged to enjoy the evening get-together.

The program will open at 7:30. All members are urged to enjoy the evening get-together.

MEMBER

WEDDINGS

SPECIAL EVENTS

Photographs

WASH AND NAIL



Watch Repairing

JACK FARR

JEWELER IN STOKES DRUG

PENNEY'S

SEE WHAT YOU CAN DO WITH THESE BRIGHT NEW **EPAULETTE PAIRS**

1.95
per pair

Don't Fail to See Our Large Selection of other Novelty Jewelry
RIGHT STYLES! • RIGHT PRICES!

Buy *Your* **Holiday Food** Now

MARVIN MINCE MEAT 9-oz. Pkg. **17c** AT **PIGGY WIGGLY**

DUFF'S GINGERBREAD MIX	Box 27c	LIBBY'S FRUIT COCKTAIL	No. 2 1/2
SNO-SHEEN CAKE FLOUR	Large Box 37c	LIBBY'S Fancy Halves PEARS (In Heavy Syrup)	No. 2 1/2
SUN-SWEET Tenderized Large PRUNES	2-Lb. Box 54c	LIBBY'S CATSUP	14-oz.

SARDINES VAN CAMP'S No. 1 Tall Can **19c**

VEGETOLE SHORTENING 3-Lb. Carton \$1.29	WHITSON'S TAMALES No. 2 Can 27c	BLUE BONNET MARGARINE
ROSEDALE PEACHES Packed in Sugar Syrup Gallon Can 95c	VAN CAMP'S CHILI Tall Can 31c	JEWEL COOKING OIL ..
	ARCHER HOUSE VIENNA SAUSAGE .. Can 17c	MOTT'S SWEET APPLE CIDER .. Full
	T.N.T. POPCORN Can 16c	SCOT TOWELS Large
	OLD-FASHIONED SWEET PICKLES 16-oz. Jar 25c	SKINNER'S RAISIN BRAN ..

FOLGER'S COFFEE ANY GRIND Pound **47c**

Garden Fresh Fruits and Vegetables

Ice-Packed LETTUCE Lb. 12c		Fresh Minnesota RUTABAGAS ..
Green, Firm Heads CABBAGE Lb. 7 1/2c		Fresh, White CELERY
Fancy TOMATOES .. Lb. 19c		Yellow Texas ONIONS
Fresh California CARROTS Bunch 10c		Fancy Delicious APPLES
Fresh Arizona RADISHES ... Bunch 6c		White Marsh GRAPEFRUIT
Fresh Texas ONIONS Bunch 9c	No. 1 Diamond WALNUTS	

Select Your Christmas Fruits from Our Complete Stock

AMERICAN CHEESE TWO-POUND BOX **99c**

ALL-MEAT FRANKS Lb. 39c	Wilson's Sliced BACON 79c Lb.	Assorted LUNCH MEAT ...
BORDEN'S COTTAGE CHEESE Lb. 32c		Pure Pork SAUSAGE
Mexican Style BLOCK CHILI ... Lb. 42c		Cured, Sliced SHOULDER ..

Piggly Wiggly

GIVE **YOUR COMMUNITY CHEST**

Drive Got Underway Monday, Dec. 9
Goodwill Workers Will Call on You... Meet Them With a Smile and Open Your Pocketbook!

Give-Give-Give
To the COMMUNITY CHEST — a Worthy Cause

And When in Need of **EXPERT SERVICE**
—on—
CHEVROLET CARS AND TRUCKS
—see—
Hewitt Chevrolet Co.

Phone 123 • Littlefield



Littlefield Hospital and Clinic
Littlefield, Texas
Private Branch Phone 301-302
X-Ray and Laboratory

F. W. Janes, M. D. Res. Ph. 150
Surgery, Diseases of Women, and Obstetrics

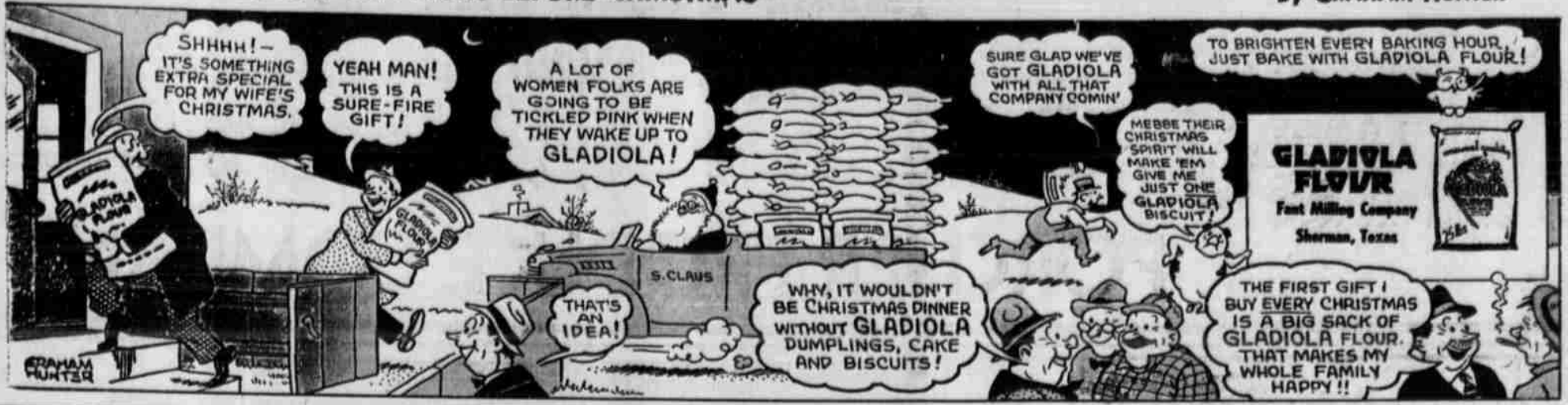
J. R. Coen, B. S., M. D. Res. Ph. 52
Medicine and Surgery

Wm. N. Orr, D. D. S.
Dentistry

Delegates Are in County

Members of community associations and delegates to a convention for the purpose of organizing a county committee to serve the needs of the 14 communities in Lamb County...

POSSUM FLATS... "THE NIGHT BEFORE CHRISTMAS"



By GRAHAM HUNTER

Community D—John J. Moses, LaFrance, Leslie B. Ken...

Community F—J. B. Davis, Grover C. Bearden, Lloyd Edwards. Community G—A. B. Enloe, Doyle...

Community H—Elgan Baccus, Joe D. West, G. W. Davis. Community I—Edward N. Ray, Russell J. Moses, Ernest T. Gaston...

Community J—Harry Brantley, Leslie R. Barker, Andrew J. Sison. Community K—G. O. Ratliff, Johnnie Wuthrich, Glen D. Young...

Community L—Paul E. Jones, Oren A. Kirk, W. W. Moore. Community M—Homer C. Miller, Deck Heard, Iliff A. Leonard...

Community N—W. E. Savage, Boyd Bryant, Grover Durham. The following persons were nominated as delegates to the county convention...

FOR A NICE SELECTION IN— Christmas GIFTS VISIT STOKES

- HERE ARE JUST A FEW GIFT SUGGESTIONS: Games, Pencils, Dominoes, Billfolds, Fountain Pens, Children's Books, Men's Dressing Sets, Dolls, Bibles, Footballs, Stationery, Scrap Books, Overnight Cases.

A NICE CHOICE IN— COSMETICS

MISSY'S • ELIZABETH ARDEN • CARA NOME • ELMO POND'S • WOODBURY'S • COTY'S In Beautiful Gift Sets COLOGNE IN A WIDE SELECTION

Stokes Drug Littlefield Phone 14 "In Business For Your Health"

The following persons were nominated as delegates to the county convention: Community A, C. U. Shelby; Community B, Floyd Crawford; Community C, C. E. Bley; Community D, John J. Moses; Community E, Julius C. Muller; Community F, V. M. Peterman; Community G, A. B. Enloe; Community H, L. C. Olds; Community I, Coleman Terrell; Community J, Harry Brantley; Community K, O. L. Walker; Community L, Bill Boley; Community M, Jim Ramage; Community N, G. A. Duffer.

The following persons were elected alternate delegates to the convention: Community A, N. Ray Kelley; Community B, J. B. Williams; Community C, George V. Estes; Community D, Houston Langford; Community E, Archie E. Howard; Community F, O. H. Herring; Community G, W. E. Nicholson; Community H, T. Fife; Community I, H. G. Boyles; Community J, Leslie R. Barker; Community K, David Vaughn; Community L, H. J. Miller; Community M, George H. Poteet; Community N, Joe Gregson.

Thirteen delegates and alternate delegates met at the county office of the association and elected the following members of the county committee, who will take office on Jan. 1, 1947: Henry M. Gilbert, Sudan, chairman; Berry A. Ball, Fieldton, vice-chairman; Floyd Crawford, Olton, regular member; Homer Hall, Sudan, and Harry Brantley, Amherst, were elected first and second alternates, respectively, to the county committee.

MOTOR VEHICLE SALES Sales of Texas motor vehicle dealers hit an all-time high in October, when they rose 9 per cent over September to reach a level of 95 per cent above their pre-war average, according to tabulations made currently by the University of Texas Bureau of Business Research. Previous high month was May, 1941, when sales were 92 per cent above the average month of the 1935-39 period. The high dollar volume of

sales is an indication that the automobile industry is not only back into production but into the distribution of its products.

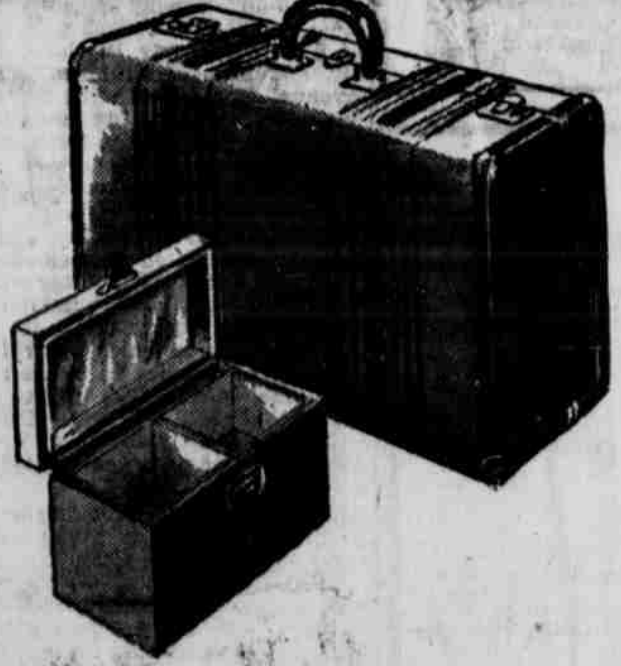
W. E. Bennett returned Sunday from a few days' business trip to San Angelo. He had been gone since Friday.

Jodye Jones, student of Baylor College, spent the past weekend at home with his parents, Mr. and Mrs. Otto Jones.

Gift Luggage

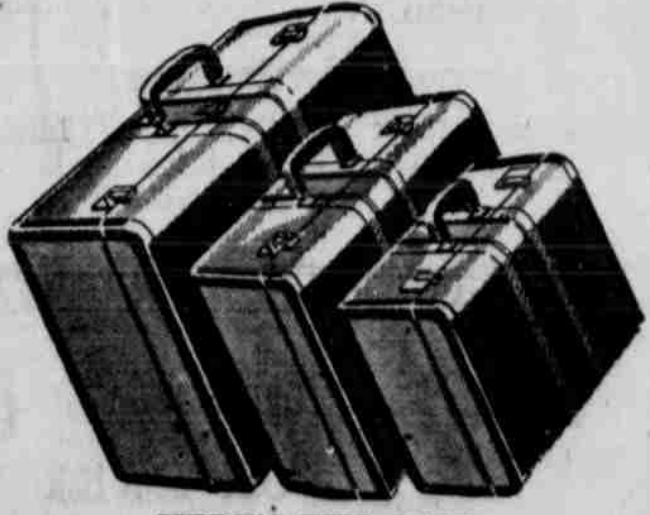
Something Special for Christmas!

There's Nothing So Nice AS GOOD LUGGAGE for HIS or HER Gift



JUST THE GIFT FOR DAD Including Wardrobe Styles.

NOTHING BETTER FOR MOTHER Than a Two- or Three-Piece Luggage Ensemble



HERE'S THE GIFT FOR SISTER or SWEETHEART



A Beautiful Overnight Case in Colors to Suit Your Taste.

Make Your Selections Early!

Little-Rutherford DEPARTMENT STORE Littlefield Texas

Announcing that L. B. McClain of Oklahoma Avenue and I. T. Graves of Stanton, Texas have purchased the ROY CLARK'S GROCERY and MARKET and are now in possession with a large new stock of STAPLE GROCERIES Meats • Fruits • Vegetables Eggs • Milk • Christmas Merchandise HOT BARBECUE SUNDAYS Bring your Container This Store is Open from 8 A. M. Until 8 P. M. Open Sundays --- We Close for Church Time McClain & Graves Grocery ON PEP HIGHWAY IN SOUTHMOOR Littlefield Phone 189-J

KEEP THEM LAYING —

A good hen deserves good feed, good housing good care. If you expect your flock to lay eggs they must have access to things which eggs are made of. EVERLAY EGG MASH supplies these with Vitamins, minerals, Proteins and Fats.

When hens are molting, feeding Everlay is very important. They will finish quicker; be in better condition when through, start back to laying sooner and lay a much longer period than if fed only grain through the molting season.



PORCHER PRODUCE COMPANY

We Want Your — CREAM POULTRY EGGS TOP PRICES PAID

SOCIAL EVENTS

Amherst American Legion Auxiliary Meet Monday

The regular meeting of the Amherst American Legion Auxiliary was held Monday at the American Legion Hall. Members present were: Mmes. L. A. Daniels, Harry Phelps, C. A. Duffy, R. L. Brown, Earl Abbott, Doc. Bowman, Edd Nicholson, Buck Elliott, M. F. Wagner and C. M. Coffey.

Meeting was called to order by the president, Mrs. Harry Phelps. The subject was "Rehabilitation," by Mrs. C. M. Coffey. Plans for a Christmas party were made, which will be held at the Amherst Legion Hall. The meeting was then adjourned.

Woodmen Circle Meets Tuesday

Members of Loyalty Grove No. 2178 of the Supreme Forest, Woodmen Circle, met in regular session Tuesday night at the American Legion Hall.

The following new members were initiated: Miss Imogene Humphries, Mrs. Della Mae Chapman and Mrs. Catharine Bevel.

Officers for the following year

were elected, as follows: President, Mrs. Vera Drake; first vice president, Mrs. Katherine Rumbach; second vice president, Mrs. Geneva Lloyd; secretary, Mrs. Cleta Goodwin; treasurer, Mrs. Lorene Burns; auditor, Mrs. Bessie Jane Bagwell, chaplain, Mrs. Tula Taylor; attendant, Mrs. Della Mae Chapman; assistant attendant, Mrs. Catharine Bevel; musician, Miss Imogene Humphries; team captain, Mrs. Jimmie Brown; past president, Mrs. Mabel Wallace.

The Christmas party will be held in the home of Miss Humphries, Tuesday night, December 17. Each member is to bring a gift.

House Party Enjoyed At Joplin Home

A house party was enjoyed by a number of Tech students over the past weekend at the home of Mr. and Mrs. Arbie Joplin, as guests of Miss Marjorie Claire Joplin.

Those spending the weekend here were Misses Ernestine Short, Mary Lee Akers, Howard Taylor, and Charles Akers. They were also joined here by Billy Jim Evans, a returned veteran of this area, and also by Joe Douglass and Miss Regina Evans, who also visited their parents here over the weekend.

Mrs. Jim Douglass entertained for the group Saturday night at a dinner party at the Douglass home and, fol-



SWISS CRASH HERO . . . Brig. Gen. Ralph Tate Sr., is shown with his son, Capt. Ralph Tate Jr., after the latter had been brought to Meiringen, Switzerland, by one of the Swiss rescue planes. Captain Tate was pilot of the plane that crashed on the rugged glacier. His mother was one of the passengers. Airmen say that the captain's feat of crash-landing the plane on the rugged glacier without loss of life was remarkable.

lowing the dinner, Mrs. Warren Rutledge honored the group with a bridge and dancing party at the Rutledge home.

Mrs. James Evans entertained the group at a dinner Sunday night.

Entertain Sunday School Class At Luce Home

On Monday evening, December 9, Mr. and Mrs. Kenton King and Mr. and Mrs. Ralph Nelson entertained the "50-50" Sunday School Class of the First Baptist Church with a lovely Christmas party in the home of Mr. and Mrs. E. B. Luce, 721 Hall Avenue. The guests were met at the door by Messrs. King and Nelson, and Mr. and Mrs. Luce were presented with unique programs in varied colors, bearing a Christmas greeting.

The reception rooms were beautifully decorated with holly and pine boughs, and lighted with candles and Christmas lights. The latter were arranged around the windows and peeped from behind holly to frame a large mirror in which was reflected a group of candles in banded holly and pine boughs. The coffee table bore a beautiful Christmas tree and another small table bore a snow scene in front of a candle and holly arrangement.

The evening's entertainment was opened with "White Christmas," a vocal solo by Charles Heathman, accompanied by Mrs. E. J. Packwood. An impressive portrayal of "The Nativity" followed, presented in Scripture poetry and song. M. O. Dunagin was narrator and the poetry and songs were by Mmes. King and Nelson and Mr. Heathman, accompanied by Miss Helen Heathman and Mrs. Packwood.

After the program the gifts were taken from the tree and exchanged in a clever manner.

At the close of the evening delicious refreshments of red-tinted

punch, applesauce and fruit cakes were served. The table, before a background of Christmas lights and holly was laid with white, centered with a snow scene, and lighted with tall red tapers in three-tiered crystal candelabra. Mrs. Luce presided at the punch service, and Mrs. King served the cakes. They were assisted by Miss Heathman and Mrs. Nelson.

Those present were: Messrs. and Mmes. Harley Busanamus, M. O. Dunagin, Herbert Funk, Charles Heathman, Norris Onstead, Darwin Pierce, Oley Robbins, Delbert Ross, E. S. Turner, Jean Williams and R. M. Yarbrough Jr.; Mmes. John Crawley and E. J. Packwood; Miss Helen Heathman; Mr. and Mrs. N. L. Riensch of Anton, and the hosts and hostesses.

Mrs. Winnie Zoth To Present Pupils In Recital Sunday

Miss Winnie Zoth will present a group of her pupils in piano and expression on Sunday afternoon, December 15, at the First Baptist Church.

Program will start at 3 o'clock. The public is cordially invited.

Miss Sybil White And S. J. Moore Wed Saturday

Miss Sybil White, daughter of Mr. and Mrs. L. E. White of Bula, and S. J. (Tunney) Moore, son of Forest Moore of Littlefield, were united in marriage Saturday night at the home of the bride's parents, with Rev. L. W. Baker, pastor of the Bula Methodist Church, officiating with the double-ring ceremony.

The bride wore a black suit with white accessories.

Miss Billie White, sister of the bride, was her attendant. Cpl. Wayne D. White attended the groom.

Mrs. Moore is a graduate of Littlefield High School, with the class of 1945, and was also a student of Tech College.

Mr. Moore has recently been released from the service. He is a son of Mr. and Mrs. Forrest Moore of Littlefield, and has been employed at Baldrige's Bakery, Lubbock.

A reception was held at the home of the bride's parents following the ceremony.

Those attending the wedding and reception were: Miss Billie White, Robert White, Miss Shirley White, Miss Nancy June White, Miss Shirley Moore, Mr. and Mrs. Forrest Moore, Mr. and Mrs. L. E. White, Mr. and Mrs. A. A. McMahon, Miss Betty Jo McMahon, Cpl. Wayne D. White, Miss Wanda B. Armstrong, Miss Wanda Lou Green, Miss Sammie Akin, Miss Imogene Humphries, Miss Nell Sublett and Miss Yvonne Smith. The couple left immediately following the ceremony for a short wedding trip.

Bible Class Stages Rally Tuesday Night

The Men's Bible Class of the First Baptist Church sponsored a men's rally at the church Tuesday night.

A banquet was enjoyed, served by members of the class, and about 100 men of the church were in attendance.

C. O. Stone is president of the class.

Rev. P. D. O'Brien, pastor of the First Baptist Church of Big Spring,

was the guest speaker.

Business matters of the church were discussed.

The program enjoyed was as follows:

"Onward Christian Soldiers," by group.

Invocation, Rev. D. C. Lindley.

Welcome to visitors, C. O. Stone, president.

Response to welcome, Henry Banks, Sunday School superintendent.

Quartet number, Pryor Hammons, W. E. Heathman, E. E. Joiner, C. Heathman.

Address, Dr. P. D. O'Brien, Big Spring, Texas.

CORPORATIONS CHARTERED

In October 263 corporations were chartered in Texas, according to the University of Texas Bureau of Business Research, as compared with 263 in September. A year ago only 137 companies were incorporated during October. Of the 263 incorporated in October of this year, 76 were merchandising establishments, 37 manufacturing concerns, and 18 construction companies.

CONSUMERS' PRICES ADVANCE

Continued advances in consumers' prices between September and October reported in government surveys have pushed the cost of living in Texas cities to new highs, according to the Bureau of Business Research of the University of Texas. Houston consumers paid 44 per cent more for goods and services which they bought in October this year than they did before the war. Food prices alone went up 75 per cent in Houston and 77 per cent in Dallas. The national index of food prices has risen 80 per cent.

Quartet number, A. B. Russell, Joe Dunn, Lee P. Plans and policies report, Benediction, L. L. Dunn.

NEW PASTOR AT FOURSQUARE GOSPEL CHURCH

Rev. Miss Ruth Johnson

cently as the new pastor

Foursquare Gospel Church

Rev. Johnson, whose home

Dallas, has been pastoring

in Tennessee the past four

Rev. Johnson comes highly

recommended as a very ca-

tor.

JUST RECEIVE SHIPMENT of Printed Dress Material LIMITED AMOUNT While It Lasts

29c Yard

PERRY BROS.

A LOT FULL OF BUTANE and PROPANE Tanks If You Don't See Us Will Both Lose Money

Special Price on 500 BUTANE TANKS CARBURETOR

for Irrigation Wells

PLAINS LIQUEFIED GAS COMPANY

Highway 84 — West Side of Phone 71 • Littlefield

ACCREDITED Maytag SERVICE

ALVIN MUELLEN

Authorized MAYTAG Dealer Phone 354 or 319-R

TANK DELIVERIES STORAGE TANKS

WHOLESALE AND RETAIL

PIERCE OIL CO.

PANHANDLE REFINING CO. PRODUCTS

L. V. AND DARWIN PIERCE

Littlefield

WEST ON HIGHWAY 84

GAS, OIL GREASES KEROSENE

Announcing that---

DR. CLYDE BENNETT

Formerly of Lubbock

HAS OPENED AN OFFICE

For the General Practice of

Chiropractic

—at—

106 East Tenth Street

In Duggan Annex

Littlefield

FREE CONSULTATION

As has been our custom

FOR MANY YEARS

Our Office Will Be Closed

WEDNESDAY, THURSDAY, FRIDAY,

December 25, 26, and 27

Drs. Woods and Armistead

OPTOMETRISTS

In New Building at Corner of LFD Drive and South Twitchell St.

LITTLEFIELD

Give Him a WHIZZER for Christmas! AMERICA'S NEWEST RIDING SENSATION. Makes Any Balloon-Tired Bike a MOTOR BIKE.

125 MILES ON A GALLON OF GAS. 97.55

SEE IT TODAY AT

"SLIM" KYZER'S

XIT Drive P. O. Box 226 Littlefield WE DO

All Kinds of Farm Machinery Repair Work

Welding and Blacksmithing

We Have In Stock ..

12x16 ft. Augur Type Grain Loaders

— also —

Blower Type Grain Loaders

For Immediate

Delivery

— by —

Klein-Hufstедler

Your Ford Tractor-Ferguson

System Dealer

LITTLEFIELD

UNEMPLOYMENT DEPARTMENT IS ADDED TO EMPLOYMENT OFFICE HERE

Unemployment of Texas added an employment claims department Monday to E. R. Williams, who is in charge of the office here is, therefore, now in charge of an employment office, where unemployed persons may be filed. Mr. Williams is J. D. Williams in addition Miss Lucy E. Williams is at Hart, Tex.

PERSONALS

A. F. Jones left Tuesday, Colo., to spend the winter with his son, Volos Jones.

Miss Enoch was attending school in Littlefield Saturday.

Miss Enoch, who has been confined to her home with strep throat, is now able to be out.

Miss Ferguson left Sunday for a visit with her mother, Mrs. Brown, at Dallas. She returns Friday.

Miss J. W. Johnson left for Los Angeles to spend the winter with their daughter and Mrs. E. H. Williams.

Miss C. C. Cramer of Clyde, Texas, is visiting at the home of Mr. and Mrs. W. C. Cramer on Thanksgiving Day, and will return home the following week.

Miss Goodwin, stationed at the Arsenal, is due to arrive on December 24. He expects to return to work. His furlough will run until Jan. 6.

Miss Enoch is in Duggan Annex attending for Cal Harvey in about two weeks. Miss Enoch and Mrs. Alvin Webb are planning on moving to the new quarters Saturday last. Mr. Smith invites his friends to visit him at his new location.

A. C. Rogers Buys Grocery, Market In Southmoor

A. C. Rogers, resident of this area for the past six years and farmer of eight miles southwest of Littlefield, purchased last week the grocery and market in Southmoor Addition recently operated by Y. & S. Food, and which was formerly the Heard's Grocery.

His Rogers invites his friends to visit him at his new location.

His advertisement appears elsewhere in this newspaper.

INTERNAL REVENUE COLLECTIONS

The federal government collected \$58,469,523 in revenues in Texas during October, according to official figures tabulated by the Bureau of Business Research of the University of Texas. This sum raised the total collected during the first four months of the current fiscal year to \$268,479,282, or 5 per cent more than in the corresponding months of 1945. Collections in the First or South Texas District were down 9 per cent, while collections in the Second or North Texas District have declined only 1 per cent.

Withheld income taxes accounted for about half of the total collections in both districts.

PURCHASES INTEREST

Otis Smith has purchased the interest of Sam Haile in the Haile & Haile Barber Shop, and moved to his new quarters Saturday last. Mr. Smith invites his friends to visit him at his new location.

EMMANUEL LUTHERAN CHURCH

E. H. Riess, Pastor.

Ladies' Aid meets Friday afternoon at 3 o'clock.

Sunday School and Bible classes meet at 10:15 a.m. Sunday School Christmas program rehearsal at 9:55 a.m.

Divine worship at 11 a.m. A cordial invitation is extended to all to worship with us.

Walter League Christmas social at 7:30 p.m. next Sunday.

Lovely assortment of Christmas Cards at Leader office.



OUTPLAYING TRUMAN . . . Tommy may lack the experience of President Truman as a piano player, and his twin sister, Kathy, may not be a Helen Morgan, but they demonstrate their technique. Their father is Reid W. McGibbeny, industrial arts teacher in Crafton, Pa., high school. When the twins were born they were not expected to live, but now the husky pair provides their 85-pound mother, Mrs. Dorothy McGibbeny, 21, with plenty of excitement, including their piano duet.

WEEKLY ARMY NEWS DIGEST

WASHINGTON.—The Women's Army Corps Service Medal and the Army of Occupation of Germany Medal nor are available for distribution to all authorized persons, it has been announced by the War Department.

The Army of Occupation of Germany Medal was authorized by Congress November 21, 1941 but, because of a shortage in critical metals, coinage of the medal was deferred and only the representative ribbon was issued. The medal is authorized for service in Germany or Austria-Hungary between November 12, 1918 and July 11, 1923, and should not be confused with the Army of Occupation Medal in World War II, which have not been designed nor struck off.

The Army of Occupation Medal is of bronze and carries a profile of General of the Armies John J. Pershing and on the reverse is an eagle with wings.

The "Women's Army Corps" medal carries on its face the head of Pallas Athene, superimposed on a sheathed sword crossed with oak leaves.

FORT SAM HOUSTON.—Col. David W. Craig has been named senior instructor to the National Guard of Oklahoma in orders published by Gen. Jacob L. Devers, commanding general, Army Ground Forces, it was announced here this week.

WASHINGTON.—An oil portrait of Major Gen. James E. Fechet, former chief of the Air Corps, was accepted recently for the Army Air Forces by Gen. Carl Spaatz, as a gift of the Sigma Chi National fraternity.

General Fechet enlisted as a private in the Regular Army in 1898, was retired as Major General in 1931, returning to active duty during World War II.

WASHINGTON.—"Had Congress in 1920 enacted the universal training program proposed, the United States would have had nine million trained reserves when Japan invaded Manchuria, ten millions when Hitler rose to power, twelve millions when Mussolini invaded Abyssinia, fourteen million when Germany invaded the Rhineland, and sixteen million when the Nazis seized Poland."

This statement was made by Secretary of War Robert P. Patterson in an address to the National Council Reserve Officers' Association held in Washington recently.

"The hundreds of thousands of lives lost in 1941-45 and the billions lost in treasure," he added, "can be chalked up to failure in the 1920's to adopt a sound plan of military strength—a failure that was intensified in the mad twenties and in the hopeless thirties at the expense of preparedness."

Secretary Patterson followed with a plea for adoption of the proposal to unify the armed forces of the nation under a single department of National Defense, and a further plea for the adoption of modified universal service.

WASHINGTON.—A universal training experimental unit is to be organized and trained for one year along the lines of the War Department's proposed plan for universal military training, it was announced this week by Gen. Jacob L. Devers, commanding Army Ground Forces.

The experimental unit will consist of Regular Army recruits, ranging from 18 to 19 years. Four platoons will receive infantry training, three artillery, two each armored cavalry, engineer and transportation corps, and one each Medical, Signal, Chemical, Ordnance and Quartermaster.

A committee composed of leading citizens in nearby Louisville and Elizabethtown, assisted by specially-appointed Army chaplains and medical officers, will advise and consult with Army and civilian authorities on all military and non-military phases of the program.

Renew your subscription to the Avalanche-Journal at the Leader office.

LETTERS TO... SANTA CLAUS

Dear Santa:

Sue wants a doll and buggy, candy and fruit, and little stove and sink.

Jimmie wants a truck, candy and fruit.

And I want a scooter and candy, nuts and fruit.

FRANKIE.

Littlefield, Texas, Dec. 5, 1946.

Dear Santa:

Please bring me a four-horse team and slide, a tractor with two trailers that have tin ends; a bow and three arrows, with a quiver to carry the arrows in. I would also like a grocery truck that has a van body on it. I have been a pretty good boy, and will try to be better.

Don't forget the other little boys and girls. Your friend,

STEPHEN BUTLER.

DRS. WOOD AND ARMISTEAD ARE NOW LOCATED IN NEW BUILDING

Drs. Ira Woods and B. W. Armistead, local optometrists, are now in their new building at South Twitchell and LFD Drive.

The entrance to Drs. Woods and Armistead's optometric establishment is on LFD Drive at the corner of South Twitchell Street, which opens into a space oval-shaped reception room. The interior of the building is decorated in light buff color, with the floor covered with buff asphalt tile, which blend beautifully with the light furniture and furnishings.

Two halls open off the reception room, one leading to Dr. Woods' private office and his refractory room, and the other hall to Dr. Armistead's rooms. The visual training room, laboratory and lens grinding department, and lounge room are further down the hall and at the rear of the building.

The Littlefield School Board has leased the south end of the building, with entrance on LFD Drive, as its business offices.

According to Dr. Woods, there are five apartments on the second story of the building. These are all occupied.

EMPLOYMENT INCREASES

During October the Bureau of Business Research of the University of Texas estimated that 315,500 persons were employed in the state's manufacturing industries. This represented an addition of 3800 workers over September. Employment in October, 1946, was about 1 per cent higher than in October, 1945.

GIFT SUGGESTIONS

Our Store is Laden With Beautiful Gifts
VISIT US FOR A GIFT FOR ANY MEMBER OF THE FAMILY

- Here Are a Few Suggestions JUST ARRIVED
- SKATES ● WAGONS (Metal)
 - ELECTRIC TOASTERS
 - ELECTRIC EGG COOKERS
 - COPPER SMOKING STANDS
 - TABLE LAMPS ● TOY TRUNKS

Jones Hardware

"Your Gift Store"
LITTLEFIELD

The NEWEST in Gifts For the Dearest Little Girl You Know!



MISS MIGNON
"Spidel"
bracelet with hand-engraved heart \$8.95*

A beautiful, new e-x-p-a-n-d-i-n-g bracelet she can wear year after year. Jeweler-crafted by Spidel and packaged in a gorgeous Jewel Box, it's the perfect gift for any girl from 8 days to 8 years old. Available in a variety of designs and in bracelet and earring sets as well.

BRACELETS only \$8.95 and \$9.50
BRACELET AND EARRING SETS \$10.95 and \$11.95

LINDLEY'S JEWELRY
LITTLEFIELD

Get Acquainted SPECIALS at Rogers Grocery

Pep Highway, in Southmoor Former Heard Store

ADMIRATION COFFEE Lb. 49¢

POST BRAN Pkg. 13c KRAUT JUICE Pint 10c
WHEATIES Pkg. 14c CHERRIES Jar 41c

POST TOASTIES White Swan Pkg. 9¢

Good No. 2 Can Bruce's Large Can
MUSTARD GREENS . . . 10c ORANGE JUICE 54c

SPINACH Crystal Pack No. 2 Can 17¢

Oats Pkg. Pineapple 1-Lb. Jar
CRYSTAL WEDDING . . . 31c PRESERVES 69c
Sauerkraut No. 2 1/2 Can Sour
SHUR-GOOD 17c PICKLES 42c

LUNCH MEATS Assorted Lb. 40¢

A MESSAGE FROM A. C. ROGERS . . .
I have just purchased the business, which was formerly the Heard Grocery, from the Y. A. S., and I am now in possession of the business, with a large stock of groceries, meats, fruits and vegetables. I have lived on Oklahoma Avenue for the past six years, and invite all my friends to visit me in my new location. It will be a pleasure for me to serve you with your grocery needs.
Come to see me!
—A. C. ROGERS.

Leader WANT ADS Get Quick Results

FOR SALE

FOR SALE—Girl's bicycle. Ferguson Implement Co. 38-1tc

FOR SALE—Gas hot water heater. W-W Electric. (dh)

FOR SALE—Farm equipment, cows, hogs, bundle feed, and one labor of land for rent. Immediate possession. W. A. Ash, six miles west of Whitarral. 38-1tp

FOR SALE—Superfex Oil Heater, Butane Bottle and Regulator. Watt Clifton, two miles east, one-half mile south of Fieldton. 38-1tp

FOR SALE—Electric range, 1942 model. Can be seen at W. T. Garnett farm, two miles south of Spade. 38-3tc

FARMS FOR SALE

118 1/2 acres six miles from Littlefield, in irrigation water district; five-room stucco house, modern, and outbuildings. Price \$75 acre; \$35000 cash or lease will handle this ideal home.

177 acres, five-room modern house, all in wheat, seven miles southeast of town, in irrigation district; all in wheat. \$125 acre and terms.

88 acres, five-room modern house, close in; irrigation well. A fine farm, \$17,850.

Half section in irrigation district; \$85 an acre.

147 1/2 acres in irrigation district; four-room house and garage; good outbuildings, \$65 an acre. Has loan of \$3,641.

Have some other good farms for sale.

LOANS on City, Farm and Ranch property.

HOUSES

New four-room modern house and garage, on West Second, \$5500; near school. \$2500 down, rest like rent. Possession now.

Two large rooms and large bath, one block off pavement, \$2,450. One-half cash, rest like rent.

Nice large five-room modern and garage, on pavement, \$8,400. This will carry a nice loan.

I have some nice lots, priced right. If you want to buy or sell, see me.

HAMP McCARY
Office Over George's Bakery
Office Ph. 168-J — Res. Ph. 203-M
Littlefield

FOR SALE

NEW TIRES at McCORMICK BROS. AUTO PARTS, Littlefield. 37tfc

NEW TIRES at McCORMICK BROS. AUTO PARTS, Littlefield. 37tfc

FOR SALE—Dandy little ranch, Bailey County, 900 acres, 650 acres short grass, balance cultivation; should run 100 steers; well improved. Two miles off pavement. Terms. E. B. Luce, owner. 36-3tp

CATTLE FOR SALE — Registered Shorthorn Durham: 1 bull, 1 heifer with calf, 1 heifer fresh soon; also 1 heifer calf. Mrs. W. R. Alexander, 6 1/2 miles northeast of Littlefield, Route 1. 36-2tp

FOR SALE—Rodgers Furniture have plenty of small radio sets. 31-1tc

REAR TRACTOR TIRES FOR SALE — Birdwell Bros. Firestone Store, Littlefield. 45-1t-c

NEW TIRES at McCORMICK BROS. AUTO PARTS, Littlefield. 37tfc

FOR SALE

Just received, shipment of printed dress materials, limited amount. While it last, 29 cents per yard. Perry Bros. 38-1tc

FOR SALE—Our home on West Second Street for sale—five rooms and bath; also rent house of two rooms and bath. Good location, between school and town, \$7500. See O. N. Robison at Robison's Furniture Store. 38-1tc

FOR SALE—Custom made, highest quality Flexible steel, aluminum or Wood Venetian Blinds. Cicero Smith Lumber Company. 35-tfc

FOR SALE—Hen house, 14x50, with nests, roost and all equipment. Price \$250.00. Three and half miles north of Spade. H. E. Lacy. 37-3tp

FOR SALE—One 24x28 house, with 10x18 garage. Can be moved or well located in Amherst. See John Horton in Amherst. 37-3tp

FOR SALE—1942 Chevrolet four-door sedan. Clean, excellent condition; good rubber. See at McCormick Station. 37-2tc

FOR SALE—160 acres, \$45 acre, northeast of Hart Camp. Want to sell at once. See me at City Laundry. N. L. Jarnagin, Littlefield, Box 935. 37-4tp

FARM FOR SALE—265 acres, good house, with all modern conveniences, on pavement and highline; also large steel barn. Located 1 3/4 miles east of Bula, on Bula-to-Littlefield highway. John Aduddell, Bula, Texas. 37-3tp

FOR SALE

WANTED — Washing and ironing. Bring it to Mrs. Will A. Hamilton, Room 17, Barton Apartments. 38-1tp

IRONING WANTED — Four years experience. Betty Livingstone, 701 East Seventh St., Littlefield. 38-3tp

WANTED — Nurses' aides. Payne-Shotwell Hospital and Clinic. 31-3tc

MISCELLANEOUS

\$25.00 REWARD for furnished apartment or house for couple. Call D. H. Hampton, Broadmoor Courts. 38-1tp

WANTED — Salesladies for regular holiday employment. Must be between ages of 18 and 35. Perry Bros. 38-1tc

WANTED — By responsible couple, with child, furnished apartment or house. Will pay \$25 reward. Phone Phillip Clasen, Broadmoor Courts. 38-1ttp

STOP BY and bring your empty milk and soda-pop bottles and fill up, at Barto Ramsey's Fruit Stand. 37-4tc

COVERED BUTTONS, belts and buttonholes made. Third house west of Lavender Motor Co. Mrs. Hugh Rice. 37-4tp

FARM FOR LEASE — 190 1/2 acres, \$600.00. See R. J. Rhoten Grocery, six miles north of Littlefield. 37-1tp

SEE US—We will take your used rear tractor tires in as part payment on a new tire. Birdwell Bros. Firestone Store, Littlefield. 45-1t-c

WE HAVE—A few sizes in good rear used tractor tires for sale. Birdwell Bros. Firestone Store, Littlefield. 45-1t-c

JUST RECEIVED — A shipment of 14/2 Romex Wire. Birdwell Bros. Firestone Store, Littlefield. 32-1tc

KEYS MADE at Perry Brothers. 25c. Bring your old keys or pieces. 7-4t-c

PLENTY OF AJAX ANTI-FREEZE for your radiator. Dennis Jones Tire Store and Service Station, Littlefield. 34-tfc

FOR RENT

FOR RENT

FARM FOR RENT and equipment for sale. See Vernon Bryant, three miles east, half mile south from Levelland courthouse. 38-1tp

CHISHOLM'S FLORAL & NURSERY
Flowers and Pot Plants
Large Variety of
Funeral Designs

FOR SALE

FOR A TIRE GUARANTEE That Sticks — see — BROWN TIRE COMPANY "The Complete Tire Service"

SEWING MACHINE REPAIR WORK See me for repairs on any Sewing Machine Fully Experienced—All Guaranteed

CLEAN and ADJUST We Buy, Sell, Trade Rent Machines EARL ROBISON at ROBISON'S FURN Littlefield

SPARTON TIRE MODEL RAD Now in Stock \$23.85 at HENRY'S PONTIAC SERVICE Littlefield

Rev. P. D. O'Brien Addresses Women Of First Baptist

The ladies of the First Baptist Church met at 3 p.m. Tuesday in the church auditorium, when Rev. P. D. O'Brien, pastor of the First Baptist Church of Big Spring, Texas, talked on the importance of Motherhood, and the different characteristics of motherhood. About thirty attended.

John Henry Chapman
Post No. 4854
V. F. W.
Meets Each
2nd and 4th
Monday
Nights
8 P. M.
Durwood Howell, Com.

GOODYEAR TIRES

for
Passenger, Trucks,
implements or Tractors

EUBANK TIRE & SUPPLY
Littlefield

Welding Service
with first-class portable rig
ARC and ACETYLENE
— see —
ROY CARTER, or
AL MUELLER
— at the —
MAYTAG SHOP
On Highway 84
Phone 354 or Night, 380-M

ALIGNMENT
Saves You
Car Wear! Gas!
Rubber!

Misaligned wheels cause unnecessary friction and wear on tires. They can interfere with proper car control.

Stop in Today!
Let Us Align and Balance Your Wheels with Our Complete BEAR Equipment.

SAVE TIRES
SAVE MONEY
SAVE LIVES

HENRY'S PONTIAC SERVICE
LITTLEFIELD

PAINTING and DECORATING...
A COMPLETE SERVICE
SPRAY or BRUSH
We Specialize in
ROOFS
FARM EQUIPMENT
and
BUSINESS BUILDINGS
— SEE —
BOB TAYLOR
417 W. Fifth St. Littlefield
Phone 343-M

Krueger, Hutchinson and Overton Clinic
GENERAL SURGERY
J. T. Krueger, M. D., F. A. C. S.
J. H. Stiles, M. D., F. A. C. S. (Ortho)
H. E. Mast, M. D. (Urology)
EYE, EAR, NOSE & THROAT
J. T. Hutchinson, M. D.
Ben B. Hutchinson, M. D.
R. M. Blake, M. D.
INFANTS AND CHILDREN
M. C. Overton, M. D.
Arthur Jenkins, M. D.
J. B. Roundtree, M. D.
OBSTETRICS
G. R. Hand, M. D.

INTERNAL MEDICINE
W. H. Gordon, M. D.
R. H. McCarty, M. D. (Cardiology)

GENERAL MEDICINE
G. S. Smith, M. D. (Allergy)
R. K. O'Doughlin, M. D. ()

X-RAY AND LABORATORY
A. G. Barsh, M. D.

RESIDENT PHYSICIAN
D. C. Lindsey, M. D.
L. M. Altaras, M. D.
*In U. S. Armed Forces

LUBBOCK MEMORIAL HOSPITAL
PATHOLOGICAL LABORATORY, X-RAY and RADIUM
School of Nursing fully recognized for credit by University of Texas
J. H. Felton, Business Manager/Clifford E. Hunt, Superintendent

Auction Sale!

Having sold my farm and moving to Littlefield, I will sell at public auction at my place three miles east of Littlefield, on Oklahoma Avenue,

WEDNESDAY, DEC. 18

the following described property:

<p>FARM EQUIPMENT</p> <ul style="list-style-type: none"> 1 Deep 1 Caterpillar 8-ft. blade, in good condition 1 Ford Mower 1 6-ft. Mower, on rubber 1 Set John Deere 2-row equipment, Cultivator and Lister 1 3-disc International Breaking Plow 1 Sulky Rake 1 2-wheel Stock Trailer 1 H Farmall, with 3-row lister and planter attachment. 1 Bench Drill, Anvil and Forge 1 2-row Stalk Cutter 1 12-ft. Grader—A-1 shape 1 4-wheel Trailer 1 Ensilage Cutter 1 Feed Saw 1 12-Gal. Spray Quantity of Posts and Wire 200 Bales of Hay 1 Wheelbarrow 1 Garden Plow 	<p>CATTLE</p> <ul style="list-style-type: none"> 1 Registered Guernsey Bull, 2 years old; papers furnished 1 Guernsey Heifer, 14 months old 1 Bull Calf, 8 months old 2 Guernsey Heifers, 6 months old 2 Guernsey Cows, both giving milk 2 Jersey Cows, 6 years old; both heavy springers, and give 5 gallons milk when fresh 1 Kid Pony, 5 years old, and saddle; gentle <p>CHICKENS</p> <ul style="list-style-type: none"> 75 Black Minorca Hens <p>FURNITURE</p> <ul style="list-style-type: none"> 1 Kitchen Cabinet 1 Table and Chairs 1 Bedstead and Springs 2 Rugs 1 English Doll Buggy
---	--

OTHER ARTICLES TOO NUMEROUS TO MENTION
Anyone Having Anything to Sell, Bring It to This Sale

TERMS OF SALE CASH — No Property to Be Moved Until Settled For
H. D. WOMEN WILL SERVE LUNCH
Free Coffee — Bring Your Cups

BUCK ROSS

JACK ROWAN, Auctioneer Littlefield. Owner CHARLIE CLARK, Clerk

READ THE CLASSIFIED

THERE'S A Phillip 66

Convenient to You and Business

THESE STATIONS IN FIELD AND TERRITORY WILL APPRECIATE YOUR BUSINESS

PRENTICE BROS.
Highway 51, Near Highway Station

MOBLEY STATION
Highways 84 and 51

LIGON'S TRIANGLE
Highway 84, Just West of St.

HODGE GROCERY & WEST ON HIGHWAY 84

COMMUNITY GROCER & STATION
West on Highway
Football Stadium

MAIN STREET SERVICE
Main Street, Opposite Drug

NICHOLS STORE
Bula

R. J. RHOTEN STORE
6 Miles North on Highway

W. O. HAMPTON STORE
4 Miles West on Bula

OKLAHOMA FLAT STORE

W. E. Heath
Wholesale Agent, Petroleum Co.
Littlefield

FOR A TIRE GUARANTEE That Sticks — see — BROWN TIRE COMPANY "The Complete Tire Service"

SEWING MACHINE REPAIR WORK
See me for repairs on any Sewing Machine Fully Experienced—All Guaranteed

CLEAN and ADJUST
We Buy, Sell, Trade Rent Machines
EARL ROBISON
at **ROBISON'S FURN Littlefield**

SPARTON TIRE MODEL RAD Now in Stock \$23.85 at HENRY'S PONTIAC SERVICE Littlefield

SAY... MERRY

CHRISTMAS

**HOWARD
RADIOS**
Table Models
Extra Nice **\$33.50**



Men's
**TOILET
SETS**
98c up

Men's
**HAND-TOOLED
BELTS**

Men highly appreciate such
a nice gift.

FLUORESCENT
BED LAMPS

Pastel Colors
\$6.95



**La Tausca
PEARLS**

Single Strand\$12.00
Double Strand with
Lovely Jewelry Chest...\$33.00

Sidewalk Bikes
\$29.50

Heating Pads
\$4.95 to \$7.50

with

Gifts

from

REESE DRUG

**G-E ELECTRIC
HEATERS**

Large Size
\$8.49



PERFUMES

Helena Ruben-
stein . . . \$1.00 to \$18.50
Coty's 1.00 to 3.00
Yardley's 1.50 to 8.50
Primrose House 1.50 to 3.50
Evening
in Paris 60c and 1.25

THE NICEST IN . . .
**COSMETIC
SETS**

- Any Price You Like
- Any Kind You Like

Bow and Arrow Sets...\$1.98
Air Guns 1.98
Dart Boards\$1.25 to 2.50
Scooters 9.95
Flutophone25

**CHRISTMAS
DECORATIONS**

BOXES of CIGARS
Old-Time Brands

• **CAMERAS---**
---FILMS •
Film Developing

CIGARETTES **PIPES**
By the 50c
Carton to
 \$7.50

TRICYCLES

A Gift That Always Thrills Young America.

\$17.49 and \$26.50



FOOTBALLS
\$2.98 and \$4.49



**FLASH-
LIGHTS**

\$1.15 to \$2.75

Billfolds
98c to \$9.95

—●—
**Cold Wave
Permanent Sets**

**COSTUME
JEWELRY**

A Wide Selection from Which to Choose
SELECT GIFTS FROM OUR LARGE STOCK

Parker Lifetime Fountain Pen Sets...\$12.75
Streamlined Syphon Sparkle Bottles... 12.50
Fluorescent Desk Lamps 11.49
Tobacco Humidors 2.49
Sterling Silver Buckle Sets...\$8.50 to 24.50
Handbags, hand tooled 29.50

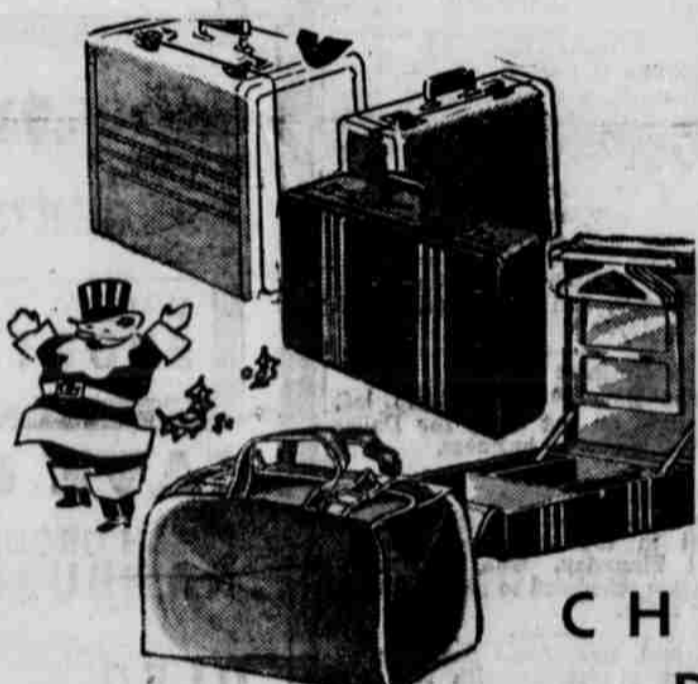
Vacuum-Packed O'Briens
Nuts Nutty
Assorted Brittle
1/2-Lb. Can 59c
89c

**DOLLS
DOLLS**

We have a large and nice selection. At this
store it's easy to find just the doll you are
seeking.

**\$2.98
to
\$9.95**

**XMAS
CARDS**
5c
to
25c



**GIFT LUGGAGE
of Distinction**

Surprise a swell Mom, Dad or Sweetheart with a
piece of this Lovely Luggage!

Reasonably Priced



**MEN'S and WOMEN'S
WRIST WATCHES**
Walthams and
Imperials **\$27.50 to \$35**
Lapel Watches \$49.50

REESE DRUG

Just South of Palace Theater

LITTLEFIELD

TELEPHONE 167-J

**BOXED
CHOCO-
LATES**

LEADING BRANDS
Enough for Everybody

**FAVORITE
Christmas
TOYS**

Cap Pistols, with plenty
of caps \$1.29 to \$3.49
Red Dot Cannon98
Rubber Balls19
Topping Tops25
Trucks49
Trucks49
Trucks 1.98
Trucks 1.49
Trucks 3.95



Hart Camp News

Hand Child Passes Away
The little two-year-old son of Mr. and Mrs. Billy Joe Hood of Lubbock passed away Saturday, Dec. 7, as a result of a throat ailment. He was only 1 1/2 short time.
The father is a Hart Camp young man, having lived there most of his life. He is the son of Mr. and Mrs. J. E. Hood, who now live at Plainview. The mother of the baby is a Lubbock young woman.
Those attending the funeral services from Hart Camp were: Mr. and

Mrs. Hareston, Mr. and Mrs. Kirby, Mr. and Mrs. John Winns, Mr. and Mrs. G. B. Finney, and Mrs. K. W. Mahaffey.
The funeral services were held Monday, Dec. 9, at the Church of Christ, Lubbock.

Leave For Points In North
K. W. Mahaffey and sister, Mrs. Nellie Kilpatrick, left Saturday for Norman, Okla., where they will visit their sister-in-law, Mrs. G. A. Smith, and also visit cousins at Kansas City.

Local Band Attends 'Clinic' at Lubbock

The band went to Lubbock Saturday morning, where they attended a fine "band clinic" at the Lubbock High School auditorium. Many towns throughout the state were represented at the clinic.
The following were the members from Littlefield who played: Iris Pace, Norma Wright, Ernest Repass, Buford Latimer, Bill Spencer, Elizabeth Schovastja and Morris Repass.
Some of the directors who were called on to direct were from Seminole, Tucumcari (N. M.), Abilene, Chico, Lubbock and Canyon. The bands went to the auditorium about 9:15. The groups tuned up about 9:45 and started at 10 o'clock. The music consisted largely of concert numbers, mainly overtures. The program lasted about two hours.
After lunch, the group went to the stock judging pavilion on the Texas Tech campus, where the Tech "B" band was playing. After a few numbers were played, the Tech concert band played for about three hours. That program, too, consisted mainly of overtures. Two solos were played, one a cornet solo and the other trombone. The quartet consisted of two trombones and two cornets.
The band enjoyed the trip immensely, and hopes to attend the clinic again next year.

Mr. Mahaffey will then go to Ohio to visit his aunts, and Mrs. Kilpatrick will join her son, Lester, at Boston, where he is going to school and taking an engineering course.

Gordon Woodley Visitor
Gordon Woodley of Devol, Okla., spent the past weekend visiting his uncle and aunts, Mr. and Mrs. A. S. Patterson, of Littlefield, and Mr. and Mrs. Henry Patterson of Spade.

Visits at Hart Camp
Mrs. Wayne Kirby and Mrs. Alvin Young of Hobbs, N. M., are visiting their parents at Hart Camp. Mrs. Kirby is the daughter of Mr. and Mrs. Buster Hareston, and daughter-in-law of Mr. and Mrs. L. A. Kirby. Mrs. Young is the daughter of the Kirbys.

Move Back to Hart Camp
Mr. and Mrs. Bud Jennings have moved back to Hart Camp. They have been gone from Hart Camp for several years. Although Mrs. Jennings says this is home and they "just came home."

Spade Boys Win; Girls Lose
In the basketball games between Spade and Amherst, the Spade boys won 25 to 21, and the Spade girls lost 15 to 23 in favor of Amherst.

Bro. Savage to Preach
Bro. Savage will preach at the Hart Camp Church of Christ Sunday, Dec. 15, at 10:30 o'clock a.m., and afternoon singing will be enjoyed at 2 o'clock. Everybody invited.
Bro. Verner Gregg preached Sunday morning, Dec. 1.
The church does not have a regular minister. Bro. Gregg preaches each first Sunday, and Bro. Saccage each third Sunday.

Goes On Business Trip
Louise Ball of Hart Camp left Wednesday of last week for Dallas and Fort Worth on business.

Spade Boys Win
The Spade boys and girls played Farwell in the tournament, which opened Thursday. The boys won. They were scheduled to play Amherst Friday night.
Mr. and Mrs. Arlin Jennings of Spade spent Sunday with Mr. and Mrs. Bud Jennings.



Want to get the most out of your Christmas money? Then make sure you get NELSON'S HARDWARE'S brand of quality, NELSON'S wide variety, NELSON'S intelligent service and NELSON'S day-in-and-day-out LOW PRICES! All four add up to low cost of giving no matter how long or short your Christmas list may be.



PERFECAKE PAN
The only pan of its kind. Don't forget to ask us how it works when you visit us today.

BOUNDING HORSE

Frame built of well seasoned lumber, painted red, bounding spring, 1/4 inch flat steel strong enough to support 70 pounds — a thriller for the kiddies.



ALL-METAL TRAIN

Engine and two cars — a small pull toy, attractively priced. Only—

\$1.29

Nelson's Hardware & Housewares
ELECTRICAL APPLIANCES & SUPPLIES
P.O. Box 506 Phone 315

Christmas Gift Suggestions...

FOR HIM

- | | | | |
|-------------------|-------------------------|---------------------------|---------------|
| Outboard Motors | "Hurd" Casting Rods | "Truetemper" Casting Rods | Fly Reels |
| Winnipeg Seines | Landing Nets | "Winchester" .22 Rifle | Game Bags |
| Montague Fly Rods | "Bronson" Casting Reels | Tackle Boxes | Thermos Jug |
| Swinging Bags | Hunting Knives | Canoe Paddles | Ammunition |
| Camp Ice Boxes | Electric Lanterns | Battery Radio | Pocket Knives |

FOR HER

- | | | |
|----------------------|----------------------------------|------------------------|
| "Easy" Coffee Maker | "Presto" Pressure Cookers | Metal Wastebasket Sets |
| "Sizz" Coffee Maker | Kitchen Ware | Metal Canister Sets |
| Electric Heating Pad | Combination Elec. Fan and Heater | Wood Burning Sets |

TOYS

- | | | | |
|---------------|---------|-----------------|-------------------|
| Roller Skates | Sooters | Building Blocks | Wood Burning Sets |
|---------------|---------|-----------------|-------------------|

BUILDING MATERIALS

- | | | | |
|------------------------------|-----------------|--------------------|----------------------|
| Lumber (Big Mill—Kiln Dried) | VC Kitchen Sink | Nails | Masonry Cement Lime |
| Shingles | Sand and Gravel | Builders' Hardware | Roofing |
| Glass | Carpenter Tools | Red Fencing | Poultry and Hog Wire |
| | | | 12-2 Romex Wire |
| | | | Rock Wool |

KITCHEN MAID CABINETS

- | | |
|---------------------|------------------------|
| Water Heaters (Gas) | Water Heaters (Butane) |
|---------------------|------------------------|

PITTSBURGH PAINTS

- | | | | | |
|---|-------|-----------|------------|-------------|
| Jet Type and Sucker Rod Type Pressure Water Systems | Tanks | Windmills | Pump Jacks | Sucker Rods |
|---|-------|-----------|------------|-------------|

EVINRUDE OUTBOARD MOTORS

WE OFFER SUBJECT TO PRIOR SALE THREE CARLOADS OF 5x8x12 LOAD BEARING BUILDING TILE (Red Clay) FOR DELIVERY IN FOUR TO SIX WEEKS

MORROW LUMBER & SUPPLY CO., Ltd.

P. O. Box 246 LITTLEFIELD, TEXAS Phone 207-J

DON'T STUDY!

YOUR CHRISTMAS SHOPPING Is No Problem at---

LYMAN'S

HEART'S DELIGHT Peaches In Heavy Syrup Can 29c

HEART'S DELIGHT FRUIT COCKTAIL

GENERAL MILLS



Purasnow FLOUR

24 Pounds

1.77

- TEXAS BLACKBERRIES
- RED PITTED CHERRIES
- WHOLE APRICOTS
- PRUNE PLUMS

- | | | |
|----------------|-----------|-----|
| NECTAR APRICOT | No. 2 Can | 20c |
| NECTAR PEACH | No. 2 Can | 23c |

- | | | |
|--------------|-----------|---|
| TOMATO JUICE | No. 2 Can | 1 |
| PRUNE JUICE | | 3 |

TEXAS GRAPEFRUIT JUICE 46-oz. Can 23

- | | | |
|-----------------------------------|--|---|
| PI-DO DOROTHY'S | | 1 |
| COFFEE FOLGER'S --- Drip or Grind | | 4 |

WHEAT-GREY SHORTS 100-Lb. Sack \$2.60

SAVE On Our MARKET SPECIALS

- | | | |
|------------------------|---------|-----------------------------------|
| FRESH GROUND HAMBURGER | | 35 |
| OLEO | Lb. 45c | |
| SHORT RIB ROAST | Lb. 29c | |
| | | PLENTY OF DRESSED FRYERS and HENS |

LARGE WIENERS --- Pure Meat Lb. 37c

Plenty of Fruits and Vegetables

- | | | | |
|-------------------|---------|---------------|-------|
| TURNIPS --- Bunch | 8c | No. 1 SPUDS | Lb. 5 |
| Tokay GRAPES | Lb. 19c | Firm CABBAGE | Lb. 5 |
| CARROTS --- Bunch | 7 1/2c | Yellow ONIONS | Lb. 5 |



FRESH CRANBERRIES Lb. 39c

● WE WILL CLOSE DURING THE LITTLEFIELD-MONAHANS GAME ●

LYMAN'S FOOD STORE

Family Wins Street Car--Looking for Disloyal Government Workers



A contest sponsored by American Transit Association with let-
 tect, "Kilroy Was Here," James Kilroy, Halifax, Mass., his
 children take over their prize—a streetcar. The car will
 from the Boston elevated yards to Halifax, where the Kilroys
 and use it for an addition to their present home. The young-
 it will make an ideal play room.



A. Devitt Vanech, special assistant
 to Attorney General Clark, who
 will head the President's commis-
 sion to purge the government of
 disloyal or subversive employees.



JOINS 'BIG FOUR' . . . M. De
 Saint Hardouin, French ambassa-
 dor to the U. S., who recently ar-
 rived in Washington.



Tommy may lack the experience of President Truman as a piano player,
 and his twin sister, Kathy, may not be a Helen Morgan, but they demon-
 strate their technique. Their father is Reid W. McGibbeny, industrial
 arts teacher in Crafton, Pa., high school. When the twins were born
 they were not expected to live, but now the husky pair provides their 85-
 pound mother, Mrs. Dorothy McGibbeny, 21, with plenty of excitement,
 including their piano duet.

LAMB COUNTY LEADER

Littlefield, Lamb County, Texas, Thursday, December 12, 1946

Rites Held
G. A. Anderson
 Services for G. A. Ander-
 son, father of Mrs. H. C. Ed-
 monds of this city, were conducted
 at 2:30 o'clock at the
 Methodist Church, Muleshoe,
 Texas, with Rev. J. G. Craft,
 officiating, assisted by Rev.
 W. H. Blake, pastor of the Muleshoe
 Church.
 Anderson, in charge of Hammons
 Home of Littlefield, took
 the Muleshoe cemetery.
 Anderson had been making his
 home with his daughter and son-in-
 law, Mrs. H. C. Edmonds, of
 Littlefield. He had suffered a stroke
 three years ago, and
 the time had been in bad
 health. He had also suffered two

slight strokes since.
 When Mrs. Edmonds, who is book-
 keeper at Penney's, returned to her
 home about 6:30 o'clock Wednesday
 night of last week, she found her
 father on the bathroom floor dead.
 He was believed to have been dead
 about three hours.
 Mr. Anderson was born March 4,
 1870, in Tennessee, and came to Tex-
 as when a young man. He married
 Miss Fannie Nelms November 23,
 1902, at McGregor, Texas, and moved
 to Texola, Okla., where Mrs. Ander-
 son passed away on December 24
 1909.
 To the above union were born four
 children, all of whom are living.
 Mr. Anderson came to Texas in
 1917. He lived a short time at Mc-
 Lean and Amarillo, after which he
 purchased a ranch 13 miles west of
 Muleshoe, which he operated until
 six years ago, when he came to Lit-
 tlefield to make his home.
 Surviving deceased are three

daughters and a son. The daughters
 are: Mrs. H. C. Edmonds of Little-
 field, Mrs. Inez Gates of Houston,
 and Mrs. Fannie Towery of Compton,
 Calif. The son is David Anderson of
 Muleshoe.
 Out-of-town attendants at the fu-
 neral services at Muleshoe were: Mr.
 and Mrs. Lloyd Gates and two daugh-
 ters, Dorothy and Peggy, of Houston;
 Mr. and Mrs. Charles F. Dobson, of
 Elkhart, Kans., and Mrs. H. C. Ed-
 monds of Littlefield; and Clyde Ed-
 monds, student of Rosewell Military
 Institute, Roswell, N. M.
 Mrs. Alvin Webb of Lubbock was
 attending to business in Littlefield
 Friday and paid a pleasant visit to
 the Leader office.
 It will never do to be behind the
 times in things most essential, which
 proceed from the standard of right
 that regulates human destiny.—Mary
 Baker Eddy.

**Economies Sought
 In Seed Handling**
 Formulating a plan for greater co-
 operation between existing seed dis-
 tribution agencies and certified seed
 producers to facilitate economical dis-
 tribution of certified seed is among
 the chief aims of the International
 Crop Improvement Association, ac-
 cording to Dr. A. W. Young, head of
 the plant industry department at Tex-
 as Technological College, who was re-
 cently named Texas representative to
 the association board of directors.
 Dr. Young pointed out that under
 the existing laws, seed producers
 must seal sacks of seed before they
 leave their farms, while distribution
 agencies usually prefer to receive
 seed in bulk to sack under a brand
 name, thus creating a handling prob-
 lem that must be worked out by com-
 promise.

**Boys and Girls---It's Time
 To Write Your Letter to Santa**

ATTENDS SCHOOL
 Roy McQuatters, Jr., left Monday
 for Fort Worth, where he is attend-
 ing a five-day veterinary school,
 starting Tuesday morning. Mr. Mc-
 Quatters was accompanied by Mrs.
 McQuatters and daughter, Martha
 Sue, who are visiting her grandmoth-
 er, Mrs. W. M. Yant, while her hus-
 band goes to school.
 Donate to the Community Chest
 Drive.

Letters to Santa Claus have al-
 ready started pouring into the Leader
 office for publication in this news-
 paper.
 Boys and girls—all of you—get
 busy and write your needs so that
 Santa will have time to get your fa-
 vorite toys and have them delivered
 to you by Christmas time. The Lead-
 er is glad to publish all your letters
 to this jolly old fellow. As the time
 is short, letters to Santa Claus should
 be written and either mailed or
 brought to the Leader office at once.

**LITTLEFIELD ISN'T
 LITTLE ANY MORE**

Littlefield has been growing steadily—
 a good healthy growth—but your
 Public Service Company has had to
 grow even faster, not only to keep up
 with the increasing demand for elec-
 tric service—but ahead of it.
 Littlefield is bound to grow indus-
 trially and with that new industry, the
 population will increase. We must be
 ready to serve that increased demand
 for power whenever it comes.
 We are prepared!

**SOUTHWESTERN
 PUBLIC SERVICE
 COMPANY**

22 YEARS OF GOOD CITIZENSHIP AND PUBLIC SERVICE

**Attend Delta Kappa
 Gamma Society
 Meeting Saturday**
 Members from Littlefield attended
 the Delta Kappa Gamma Society
 meeting at Abernathy, which took
 place at the home economics building
 at Abernathy Saturday afternoon.
 Members of Abernathy school fac-
 ulty were hostesses of the occasion,
 and a tea was enjoyed by the group.
 Mrs. Woodworth of Wayland Col-
 lege, Plainview, spoke on "Schools of
 Tomorrow."
 A discussion on the new constitu-
 tion and by-laws of the society was
 given Mrs. Elise Stone of Sudan.
 A general discussion also took
 place on the question of removal of
 headquarters from Austin.
 Members attending from Littlefield
 were: Mrs. Anne Louise Wiseman,
 Mrs. Ben Myers, Mrs. Joe Hutchin-
 son, and Mrs. A. B. Brown.
 Man's first care should be to avoid
 the reproaches of his own heart, and
 next to escape the censures of the
 world. If the last interferes with the
 first it should be entirely neglected.
 —Addison.

BAKERY With
 That
GOODS 'HOME'
 Flavor

Always Select Our Delicious
CAKES and PASTRIES
 Fresh Daily at Your Grocer
LITTLEFIELD PASTRY SHOP
 JACK WEAVER Owner and Mgr.

Intimate

Christmas
 Gatherings

Photographed In the Home

PHONE For
 122-W Appointment

CHISHOLM & NAIL Photographers
 Littlefield Phone 122-W

FOURTH ARMY WEEKLY NEWS DIGEST

WASHINGTON, D. C. — Another "top secret" now released shows that the United States, instead of lagging behind on guided missiles during the war, actually was far ahead of its enemies in this lethal "Black Rogers" aerial parade. Many examples are given in an announcement just released by the War Department.

A few months before the European phase of the war ended, the Nazis' anti-aircraft network alerted Cologne to the effect that a formation of high-flying Boeing B-17 Flying Fortresses was headed towards the city. Sirens wailed and German flak gunners manned their weapons but, when within sight of the city, the bombers unexpectedly turned back.

Then, just as the "All Clear" sounded, a swarm of winged bombs fell upon the city.

These were the first of the AAF glide bombs, formed by the simple

method of attaching wings and controllable tail surfaces to standard 2,000-pound general purpose bombs. These glide bombs have ranged up to 30 miles from the point of release, and are most effective when released 17 miles or less from the target—well outside normal anti-aircraft range. The glide bomb was guided by various means — by television cameras, radio, radar and a flight control box containing batteries, gyros and servo motors. Others used flare-seeking units or heat-seeking devices which, like moths to a flame, guide themselves to the point of great heat or light.

The same process proved devastating to the Japs when a flotilla of Nip vessels, including a carrier, were set afire by ghost-like torpedoes — also guided weapons.

FORT SILL.—For the first time in the four-year history of the air training program at the artillery school here, a pilot was forced to make an emergency jump from one of the liaison-type "grasshopper" planes.

The pilot, Second Lieut. David J. Adams, 1908 Sycamore Street, Lawton, an infantry officer taking aerial

Livestock Shipments Soar In Texas

Livestock shipments in Texas soared to 12,388 carloads in October with the end of meat price control, according to reports received by the Bureau of Business Research of the University of Texas. The gain over September was 54 per cent with interstate shipments edging up slightly more than intrastate shipments.

Compared with October, 1945, total shipments of livestock last month were still down 9 per cent. Instate shipments, however, were 5 per cent higher than a year ago, while interstate shipments fell 12 per cent.

With the exception of sheep, all types of shipments were heavier in October than in September of this year. Cattle shipments rose 86 per cent, shipments of calves 95 per cent, and hog shipments 145 per cent. Shipments of sheep were off 46 per cent for the month.

For the 12-month period from October, 1945, to October, 1946, total hog shipments showed the only increase, a gain of 8 per cent. Shipments of cattle were down 8 per cent, calves 10 per cent, and sheep 14 per cent.

Interstate cattle shipments declined 14 per cent last month from last year's total, but intrastate shipments of cattle went up 23 per cent.

training, suffered only a slightly sprained ankle.

In commenting on the accident, Col. William W. Ford, director of air crew training at the artillery school, paid tribute to the instructors, maintenance crews and the parachute department for the constant vigil that had made the hitherto uninterrupted safety record.

FORT SAM HOUSTON, Texas.—Gen. Jonathan M. Wainwright, defender of Bataan and Corregidor, commanding the Fourth Army at Fort Sam Houston, Texas, presented the Legion of Merit to Col. William W. Dixon, 1926 Tulip Street, Baton Rouge, La., for outstanding services during the war.

WASHINGTON.—Brig. Gen. Raymond H. Fleming, adjutant general of the Louisiana National Guard, was among high ranking officers present at a recent meeting of National Guard division and wing commanders held in Washington in connection with the meeting of the executive council of the National Guard Association.

WASHINGTON.—Plans to send 400 Army Ground Force officers annually to technical courses in the nation's leading schools and universities were announced here this week.

Officers who will be sent must be officers of the Regular Army or those on indefinite active duty. Age limits prescribed are thirty years for most officers, with waivers up to 35 years for certain specialists.

WASHINGTON, D. C.—The real rain-maker, sought all these years, may soon be here, borne on the wings of the Army Air Force.

An official announcement here stated that a B-25 Mitchell medium bomber will be dispatched to the General Electric Laboratory in Schenectady, N. Y., to aid in artificial control of the weather. Dropping pellets of dry ice into super cool clouds, it is expected that the result will be forced precipitation of snow, which will turn to rain of the air is sufficiently warm beneath the cloud layers.

Veterans Administration estimated the veteran population at nearly 17,900,000 on Oct. 31, an increase of more than 150,000 over Sept. 30.

Special combination club rate on renewals to Avalanche-Journal and Leader. Bring your renewal to the Leader office.

Information For Veterans

Q. If a disabled veteran completed his on-the-job training and is unemployed, can he draw unemployment compensation?

A. Yes. Under Public Law 346 (GI Bill), he may be entitled to readjustment allowance up to a maximum of 52 weeks, provided he is able to, and available for, work at the time. Any prior periods used for such purpose would be deducted from his maximum eligibility.

Q. May the wife or child of a veteran be granted hospital or domiciliary care by Veterans Administration because of the relationship to the veteran?

A. No. Admission to a Veterans Administration hospital or home is based on the service of a person in the armed forces and may be granted only to the persons who served.

Q. Is Veterans Administration issuing prosthetic service cards to amputee veterans?

A. Yes. Veterans wearing artificial limbs and who are entitled to re-

pairs at government expense may obtain a prosthetic service card. The card enables the veteran to obtain immediate repair service up to a limit of \$35 without prior approval from Veterans Administration.

Q. Is it possible for a disabled veteran taking vocational training under Public Law 16 to make a small loan from the government?

A. Yes, but loans cannot exceed \$100 and they are made only to veterans approved for vocational rehabilitation when the need is shown.

Q. Am I entitled to an increase in compensation if my service-con-

nected disability has increased? Compensation was allowed. A. Probably. The rate of compensation depends on increase in disability as shown by proper examination by a physician and evaluation under schedule.

Veterans Administration is providing 24 former Army and hospital space.

Office Supplies or all Leader office.

FRESH FRUITS and VEGETABLES

Shipped to Us Daily in Truckload Lots
PLENTY OF CHRISTMAS TREES

Open Every Day
CITY FRUIT STAND

ONLY

CHEVROLET
GIVES BIG-CAR QUALITY AT
LOWEST PRICES

In fact, Chevrolet has the lowest-priced line of passenger cars in its field!

Moreover, the new Chevrolet is the only car in its field that gives Big-Car beauty, Big-Car comfort, Big-Car performance, BIG-CAR QUALITY AT LOWEST COST in all items of purchase price, operation and upkeep. Take it from any and every standpoint, Big-Car quality—low purchase price—low operating and upkeep costs—all tell you to choose Chevrolet!

Hewitt Chevrolet Company
Littlefield, Texas

THE ARISTOCRAT OF MOTOR OILS . . .

VEEDOL MOTOR OIL
100% PENNSYLVANIA

Perfection For New Cars!
Protection For Old Cars!

NOW — petroleum science has improved on nature's petroleum masterpiece to produce a finer motor oil.

Veedol, refined 100% from world famous Bradford, Pennsylvania crude, gives you not only that tough, fighting film of protection . . . it gives you a cleaner, smoother-running motor, too!

Dennis Jones

COSDEN JOBBER

On the Curve at Levelland and Lubbock Highways
Phone 111 — Littlefield, Texas

The trains always run

Weather or no, the trains *always* go. It's a great way to travel, too! For you *see more*, save money on round trips, have generous baggage allowance, and arrive *near the place* you want to be. Travel by train—Go Santa Fe.

"Round Trips" cost less by train! For travel information — see your Santa Fe Agent.



1503-A

Enjoy the thrill of

Modern Automatic Gas Cooking!

1. Cooks without a look! Modern automatic cooking reaches a new peak of ease and convenience on a new automatic Gas range built to "CP" standards. An ingenious Clock Control turns the Gas on . . . cooks a delicious oven meal . . . turns Gas off . . . all while you're miles away!



2. Bakes like a dream! Cakes come out light and luscious . . . roasts shrink less, are wonderfully tender. For a new Gas oven is automatic! It stays at the exact temperature you set it for. And being Gas, it's ventilated . . . so that it browns evenly on any level . . . bakes perfectly in every corner.

3. Clicks to simmer in a second! Top-of-stove cooking is the fastest ever! Just flip the valves and these Gas burners instantly light to high-heat . . . another flip and they're automatically set on slow simmer. Yes, and there's no wasteful afterheat, long after you turn them off. Non-clog—so they're cleaner, too!

4. Flame-broils for flavor! A smokeless Gas broiler *really* broils! Whether it's golden rich chicken or luscious, crusty steak . . . the flexible flame does it up brown! So remember! For superb cooking performance *plus* every available automatic feature—a new Gas range with the "CP" seal is tops. How about choosing yours, today?



See Your Gas Appliance Dealer

West Texas Gas Company

CLUBS - WOMEN'S INTEREST - SOCIAL EVENTS

Wade Strother Honored Shower at A. A. Gray Home

Shirley Sparks was hostess at the blue and white shower at the home of Mrs. A. A. Gray, Tuesday afternoon, December 3, at 3 o'clock. Mrs. Wade Strother, who was decorated with the traditional pink and blue, in a unique and original manner, was the recipient of a beautiful array of gifts.

The receiving line were: Mrs. Wade Strother, Mrs. Bill Eudy and Mrs. Hodge, with Mrs. A. A. Gray presiding at the register.

A number of games were enjoyed and Mrs. Bill Eudy, Mrs. Buster Hodge and the hostess, Mrs. Johnny

in charge. The program also included several games by Mrs. A. A. Gray. Refreshments were served, consisting of salad, sandwiches, coffee, and hot chocolate.

Present were Meses E. G. Stuart, Claud Thaxton, Bart, Buck Anderson, Bruce Hart, John Attaway, R. R. Dyer, John Roberts, Ted Gray, Johnnie Vernon Cox, Lee Thornton, Mrs. Kate and Maggie Thorn, Mrs. Chas. Hale, Bill Eudy, Hodge, Ray Denney, J. D. Martin Farmer, Miss Rosa, Miss Peggy Jane Roberts, Mrs. Ann Gray, Miss Doralyn, Mrs. Johnnie Miller, Mrs. C.

Norma Lou Brisco, daughter of Mrs. J. F. Brisco of Morton, and Melvin E. Childs, son of Mrs. W. E. Childs of Morton, were married in a double-ring ceremony at 1 o'clock Tuesday afternoon at the First Baptist Church.

W. P. Brian, uncle of the bride, officiated at the double-ring ceremony. The altar was decorated with baskets of white mums, fern, smilax and candelabra holding white

Norma Lou and Melvin Childs Marry

W. E. Whitman played the organ and accompanied the bride and groom. The bride wore a blue suit and a corsage given in marriage by her mother. She also wore an aqua blue cardigan with black accessories and a bracelet that had been worn by her mother at her wedding.

The groom wore a blue suit and a tie given in marriage by his father. The ceremony was conducted in the presence of the bride's parents.

After the ceremony, the bride and groom were given a short wedding reception at the home of the bride's parents. The bride wore a gray wool suit with black accessories. She attended Texas Technological College two years, and for several months has been employed in the city hall at Morton.

The bridegroom has recently completed his service at Hardin-Simmons University after serving four years in the army.

Nancy Lou Stephens and L. G. Childs Wed Recently

Nancy Lou Stephens of Silverton, became the bride of L. G. Childs of Anton, Texas, Wednesday afternoon, November 27.

The double-ring ceremony was read by C. C. Findley at his home at 1:30 o'clock.

The bride wore a blue suit, with a white corsage. The ceremony was attended by a sister of the bride.

Covered-Dish Supper at Matron, OES

The deputy grand matron, Ruth Chenoweth, on Tuesday night visited the local Eastern Star chapter, the Littlefield group. A covered-dish supper was served at 6 o'clock at the home of the matron.

During the supper, the regular meeting will be held at 7:30 o'clock. William Rumbach, worthy matron, is in charge of arrangements.

Christmas Party at Troop 3

A Christmas party was held at the home of the matron, OES, on Thursday, December 5, when a number of the Christmas party took

Mr. and Mrs. Tom Ham Enjoy Family Reunion

Mr. and Mrs. Tom Ham celebrated Thanksgiving Day in their home in the Yellow House community Sunday, Dec. 2, with a family reunion.

Mr. and Mrs. Ham have seven children, all of whom were present except one grandson, J. W. Watley, who is serving in the Air Corps and stationed at Scott Field, Ill.

Mr. and Mrs. Ham came to Lamb County from Hall County in January, 1931, and have made their home on their farm nine miles southeast of Littlefield since then.

Thanksgiving dinner was served at 2 p.m. to the following children and

families: Mr. and Mrs. M. B. Ryals and children, Madeline and Alton, of Dickens, Texas; Mr. and Mrs. Henry Ham and Loretta and Loyd, of Littlefield; Mr. and Mrs. T. M. Watley, Edith and Kenneth, of Dickens, Texas; Mr. and Mrs. Leon Ham, Bonnie and Patsey, of Las Vegas, N. M.; Mr. and Mrs. A. J. White, Barbara Lou and Tommie Joanne, of Clovis, N. M.; Mr. and Mrs. R. B. Blalock and son, Forrest, of Lubbock; Mr. and Mrs. R. W. Turner and daughter, Leona Kay, of Clovis, N. M.

Other guests in the home were:

Eastern Star to Stage Annual Christmas Party Monday Next

The local chapter of the Order of Eastern Star will hold its annual Christmas party Monday evening, Dec. 16, in the Masonic hall, when Mr. and Mrs. Pat Boone, as grand officers, will be honored.

The hall will be beautifully decorated for the occasion, as will also the Christmas tree, from which gifts will be exchanged.

Mrs. Acree Barton will be in charge of decorations. Mrs. Ralph Nelson will be in charge of the program.

Each member is asked to bring to the hall on that evening a gift for the tree, not to exceed \$1, and a "white" gift for charity.

An average of 13 months is the time required for sugar cane to reach maturity.



-IN LITTLEFIELD...

And We're Ready for You! GIFTS GALORE THROUGHOUT THE STORE!



Hundreds of NEW GIFT TIES 98 1.49 2.98

Figures . . . Scenes . . . Plaids . . . Hand Prints . . . Woven . . . Neats . . . Bold Stripes*

We have some good selections of Pure Silk Ties — 2.98

GIVE HIM SOME Warm Felt HOUSE SHOES



You're sure to have House Shoes on your gift list! We have a nice selection. 2.29 2.89

Give Something Useful . . . GOLDEN DAWN —100% VIRGIN WOOL

BLANKETS 9.90 12.90 14.75

Guaranteed 5 years against moth damage! Several patterns and colors to choose from.

A Penney Blanket Makes an Ideal Gift!



Men's SPORT SHIRTS 2.98 - 3.98

A large selection of plaids and solid colors.

HEAVY DUTY ALL-WOOL

Plaid COATS For Men

Just the Coat for all-around wear. Cotton plaid lining . . . built to stand the hardest of wear!

9.90



FOR THE HARD TO PLEASE NOVELTY JEWELRY

Large selection of Novelty Jewelry, in Rhinestones and all the newest fashions in metal. 1.00 to 6.95

LADIES' WARM SLIPPERS 98c to 3.98

A large selection of warm dressy Slippers that are sure to please!

All Sizes



YOUNG WOMEN'S All-Wool JACQUERED SWEATERS 4.98

Good Looking NOVELTY SWEATERS That Are Sure to Please!



CHILDREN'S WARM HOUSE SHOES

Cozy warm Shoes that will delight every Youngster! 1.29 1.49

LET'S GO WILDCATS



CHAIN HOISTS
Chain - Also Small-
er Chain
Hydraulic Bumper
Jacks
ROTARY BARREL PUMPS
STIONS for FORD, CHEVROLET
and PLYMOUTH Cars
Crosley Radios

Premier Vacuum Cleaners
NOW IN STOCK

GOVERNMENT APPROVED RURAL MAIL BOXES
 ELECTRIC IRONS, IRONING BOARDS AND COVERS

SEAT COVERS
McCORMICK BROS.
AUTO PARTS
 YOUR CROSLY DEALER

MAIN STREET — PHONE 157 — LITTLEFIELD

Hot Shot Batteries
 Fence Chargers
 Battery and Electric

TIRES

HEAVY FELT BACK MATS
 CUT TO FIT YOUR CAR OR TRUCK

Freight Rates
Increased
 Freight rate increases for rail and motor carriers of nearly \$1,000,000, authorized Friday by the Interstate Commerce Commission. The commission permitted the railroads to increase a 10 per cent hike in rates granted on Feb. 10. This increase was scheduled to take effect six months after the legal expiration of the war. The average overall freight rate increase is about 17.6 per cent. The aggregate increase will approximate 17.9 per cent. The basic rates compared with the rates for the remainder of the war. The rates go into effect on Dec. 15. They compare with an 18.6 per cent rate hike on the class one railroads on Dec. 15. The commission in Friday's report authorized increases in the freight rates and charges (of motor carriers) and continued the increased passenger fares "for these purposes: for the carrying out of the transportation policy and the coordination and preservation of a national transportation system to meet the needs of the postal service and the defense. In order that freight traffic volume shall be such as to move the volume of traffic while adequate and efficient service at the lowest cost con-

sistent with the furnishing of such service." The emergency freight rate increases authorized by the commission last June 20 will be superceded by today's hikes. The emergency increases average 6 1/2 per cent for the whole country. The commission estimated they would boost the carriers' gross revenue about \$390,000,000 annually. Friday's increases authorized for long-haul services are on a general basis of 20 per cent for commodities other than those specially treated and 15 per cent for the basic products of agriculture (except fruits and vegetables) and livestock. However, an elaborate system of maximum increases was approved for various important commodities, such as fruits and vegetables. This, the commission said, is intended to preserve "competitive" relations that a "uniform percentage increase would disrupt."

WEEKLY SURPLUS WAA NEWS

Two important changes in the interests of better serving veterans of World War II in acquiring surplus property were made by War Assets Administration this past week. From now on, all veterans who hold WAA certificates will be sold on a "first come, first served" basis, regardless of date of certificate, according to Harold S. Gish, chief of the veterans division in Fort Worth. No further certificates will be issued for the numerous items on the veteran "set-aside" list due to the

large number of unfilled certificates nationally. A speed up drive is to be made endeavoring to sell all "set-aside" items to veterans by February 28.

Texas veterans will have two big buying opportunities to secure badly needed lumber, wiring, plumbing and hardware items for the construction of new homes starting next Monday, December 16. A sale of approximately 4,500,000 board feet of lumber, builders' hardware, electrical supplies and fitting will be held by WAA at Camp Howze, near Gainesville, starting Monday, December 16. On the same date a similar sale of stockpiled building materials from the demolition of more than 300 buildings at the former prisoner of war camp at McLean will get under way.

In both sales, WAA will serve only holders of HH priority certificates which are issued by the National Housing Agency or the CPA and veterans or contractors seeking to build a home for sale to a veteran will each be permitted to buy not more than sufficient materials to complete one individual five-room dwelling.

Approximately 400 foot lockers and 2800 locker boxes of Army surplus will be sold by War Assets Administration by means of sealed bids which will be opened next Tuesday, December 17. Veterans, other priority claimants and commercial dealers may all participate in the sale and orders should be submitted to the Fort Worth WAA office.

Large quantities of surplus telephone and telegraph equipment are to be offered for sale by WAA starting Monday, December 16, in a sale

which will last to December 30. Switchboards, telephone test sets, cordage and telephone cable are included. Complete description of all items may be obtained by inquiring of the Fort Worth WAA office in the T&P Building. The sale will be by means of sealed bids.

Some \$35,000,000 worth of powerful searchlights are being offered in a 30-day sale. These items will be

desirable for theaters, county fairs, amusement parks and other entertainment enterprises. The 60-inch searchlights are offered by War Assets Administration on a sealed bid basis and information concerning purchase may be had from the Fort Worth WAA office.

Nearly 2000 steel folding cots located at the former POW Camp at McLean, Texas, and some 50,000

double-deck wood beds with steel springs are being offered by the Fort Worth WAA office in a sealed bid sale which closes Tuesday, Dec. 17. Veterans, priority claimants and commercial dealers may all submit orders concurrently.

All men are endowed by their Creator with inalienable rights; among these are life, liberty, and the pursuit of happiness.—Jefferson.

NOTICE

Frank Cummings will be at the below named places collecting taxes on the following dates:

- AMHERST DECEMBER 14
- SUDAN DECEMBER 16
- OLTON DECEMBER 20 and 21

This is the last month in which State and County Taxes may be paid and get a discount.

FRANK CUMMINGS
 ASSESSOR-COLLECTOR
 Lamb County.

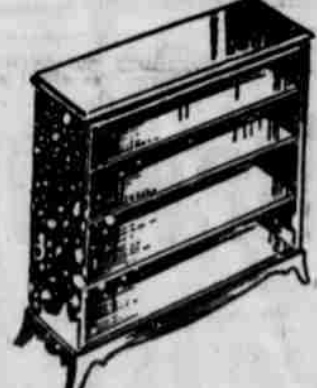
Say "Merry Christmas" With Gifts from ONSTEAD'S



PULL-UP CHAIRS in assorted styles and upholstering.



A REAL NICE SELECTION of What-Not Shelves, in walnut and mahogany.



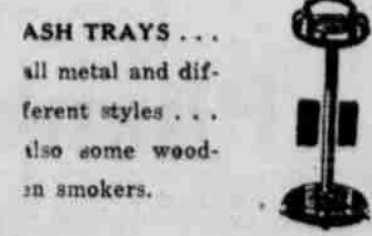
BOOK SHELVES, in mahogany and walnut, and unfinished... various widths.



TABLE LAMPS, very decorative, with china bases and metal shades. Also have some modern floor and table lamps—a large selection. Let's make this a bright Christmas.



HASSOCKS, assorted colors and sizes—just the thing for Dad to rest his supposed-to-be weary feet upon... and Mom likes them, also.

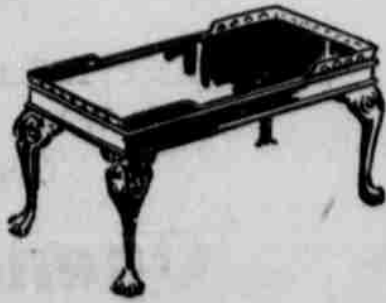


ASH TRAYS... all metal and different styles... also some wood-in smokers.

DESKS... a handy piece of furniture for your home.



MIRRORS. They are scarce, but we have a nice selection of framed mirrors and some Venetian mirrors... all plate glass.



COFFEE TABLES... a nice assortment of mahogany, walnut and bleached colors.

BE WISE and shop for your gifts now... avoid the rush and shortages that are certain to exist just before Christmas.

Use Our Lay-Away Plan

A REASONABLE DEPOSIT WILL HOLD ANY ARTICLE UNTIL CHRISTMAS

ONSTEAD'S

CONVENIENT CREDIT TERMS FURNITURE CONVENIENT CREDIT TERMS
 LITTLEFIELD

OFFICIAL RECORDS

Transfers Filed

L. Z. Anglin and wife, Alma Zada Anglin, to B. W. Maza, lots 3 and 4, block 11, Doughty Addition to town of Earth.

Eilbert F. Hooper and wife, Mary Hooper, to R. H. Burleson, SE 1/4 of section 36, block 36, block 0-2, D&SE Ry. Co. survey.

O. E. Kay and wife to B. W. Lindley, lot 7, and W 1/2 of lot 8, block

6, Duggan Annex, Arthur Moncrief to H. B. Teaff, all of Labor 10, League 212, Uvalde and Blanco counties school land in said Lamb County, containing 177.1 acres of land.

Ross Pannell and wife, Zollar Pannell, to Norman L. Wicheer, lot 10, block 61, original town of Littlefield.

J. A. Parish, a sole widower, lot, tract or parcel of land known as lots 30, 31, 32, block 1, Parish Addition to town of Earth.

C. C. Parish and wife to Farmers Co-Op. Assn., that lot, tract or parcel of land in NW corner of lot 32, block 1, Parish Addition to town of Earth.

J. A. Parish, a sole widower, to Farmers Co-Op. Assn. of Earth, Texas, lots 25, 26, 27 and 28, block 1, Parish Addition to town of Earth, County of Lamb, State of Texas.

L. W. Jaquess and wife to H. W. McCary, part of block 1, West Side Addition to city of Littlefield, Lamb County, Texas.

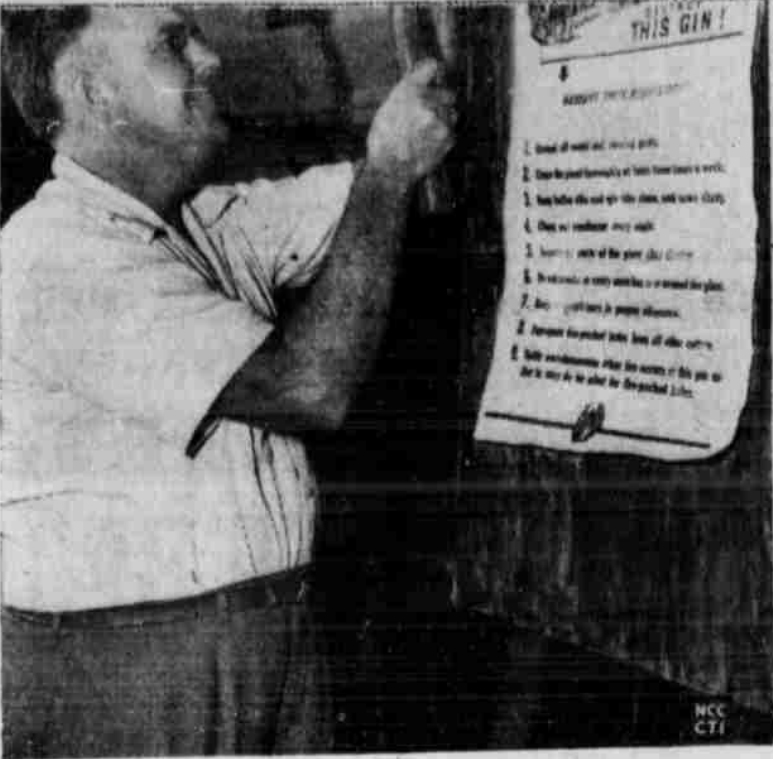
A. L. Henderson and wife, Mary Henderson, to A. B. Taylor, Jr., lot 8, block 20, of West Side Addition to city of Littlefield, Lamb County, Texas.

M. P. McCain and Dolores McCain, to A. L. Dishman, lots 5 and 6, block 62, of original town of Littlefield.

C. B. Turner and wife, Nellie A. Turner, to George T. Galloway, S 1/2 of NE 1/4 of section 34, block 0-2, D&SE Ry. Co.

S. E. Gibbs and wife, Viola Gibbs, to C. B. Price, N 2 acres of S 4 acres of block 12, original town of Earth.

Mrs. J. W. McCormick to Kathryn McCormick, lot 6, block 35, and lot 19, block 32, original town of Little-



STOP THAT FIRE!—Russell Barham, Blytheville, Ark., ginner, cooperates with the National Cotton Council's campaign to reduce fire losses that mounted last year to an alarming \$10,000,000 at gins and warehouses.

To Spend Christmas At Amarillo

George R. Mayo of Littlefield is looking forward to spending Christmas and the holidays in Amarillo in the home of Mr. and Mrs. John Mayo,

and will be Santa Claus in a tree there. Mr. Mayo also reports his family is looking forward from his son, Ernest Mayo, arrive soon to spend the Christmas time with him at Amarillo.

How women and girls may get wanted relief from functional periodic pain

Cardui is a liquid medicine which many women say has brought relief from the cramp-like agony and nervous strain of functional periodic distress. Here's how it may help:

- 1. Taken like a tonic, it should stimulate appetite, aid digestion, thus help build resistance for the "time" to come. 2. Started 3 days before "your time", it should help relieve pain due to purely functional periodic causes.



CARDUI

LOOK INTO this 2-way help! Try Cardui. If it helps, you'll be glad you did. SEE LABEL DIRECTIONS

FOR BEST RESULTS... MORE PROFIT

- Use... MERIT POULTRY FEEDS MERIT CHICK STARTER MERIT GROWING MASH MERIT EGG MASH COMPLETE LINE OF DR. SALSBUARY'S REMEDIES Poultry Supplies MILEUR & ROSS HATCHERY Littlefield Phone 257-J

C. C. Tremain and wife to M. A. Farmer, Labor 17, State Capitol League No. 666, containing 177.1 acres of land, less the portion heretofore conveyed to State of Texas.

H. E. Nix and wife to O. J. Young, SE 1/2 of section 19, block "T", T. A. Thompson, and SW 1/4 of section 15, block "B", R. M. Thomson, as shown by survey made by Sylvan Sanders.

A. J. Beckner and wife, Mae Sue Beckner, to C. M. Eudy, W 1/2 of lot 4, block 7, in Southmoor Addition to town of Littlefield.

A. L. Beckner and wife, Mae Sue Beckner, to C. M. Eudy, lot 3, block 7, Southmoor Addition to town of Littlefield.

R. W. Pankey and wife to Johnnie Harper, NW 1/4 of section 28, block 1, R. M. Thompson original grantee, containing 165.2 acres of land in Lamb County.

C. O. McAlpine and wife to L. H. Randolph, all of lots 11, 12, block 2, Parish Addition to town of Earth.

Lulu Hoover to Wilma Singer, lot 3, block 53, original town of Littlefield.

Jim Pickrell and Cleo Pickrell, husband and wife, to A. C. Rogers and wife, Vivian L. Rogers, that certain lot, tract or parcel of land lying and being situated in Lamb County, Texas, described as being part of R. C. Hopping 6-acre tract, as LaLor 23, State Capitol League No. 664, Abner Taylor.

Fred S. Briggs Opens New Plumbing Shop In Littlefield

Fred S. Briggs, formerly of Lubbock, has established a plumbing and heating business in the Renfro building at the corner of East Ninth Street and Highway 51, formerly occupied by the Corner Cafe, across from Standifer Grocery and Market.

Mr. Briggs is being assisted in the operation of the business by F. H. Huey.

Mr. Briggs, who has been in business in Lubbock for the past year, opened his new business here Monday of this week. He is originally from Brownwood, Texas.

The new plumbing firm is conducting a general plumbing and heating business, and are equipped to take contracts. Prompt service on repair and servicing work is promised. They are carrying the well known lines of Crane and Koeller lines of plumbing and heating appliances.

The Briggs family consists of Mr. and Mrs. Briggs and son, Freddie, aged 12.

son to Louis Bolinger, lot, tract or parcel of land described as being all of S 60 acres of NW 1/4 of section 36, block 1, of W. E. Halsell subdivision, containing 60 acres of land, in Lamb County.

Woodrow W. Nelson and Alma Nelson to M. A. Hughes, all of N 100 acres of NW 1/4 of section 36, block 1, of W. E. Halsell subdivision, containing 100 acres of land.

J. Arthur Edwards to Effie Edwards, lots 7, 10, 12 and 13, block 96, city of Olton, Lamb County.

E. R. Myers and Opal Myers to Jim Bell, Labor 18, League 226, Sterling County school land in Lamb County, Texas, and being the same and identical tract of land conveyed by K. P. Branter and wife to E. R. Myers.

C. B. McWilliams to W. D. Nance, lot 7, block 20, Highway Addition to city of Littlefield.

Willie Robinson and husband, H. H. Robinson to Mae Crane, lots 7, 8 and 9, block 16, city of Amherst, Texas.

H. C. Pumphrey and wife to Clyde W. Bennett, lots 5 and 6, block 7, Duggan Annex, an addition to city of Littlefield.

C. B. Scott and wife, Laverne Scott, an undivided 1/2 interest in and to all of N 200 acres of E 1/2 of section 16, block "A", situated in Lamb County.

W. M. Handy to Annie Mae Evans, lot 12, block 1, West Flats Annex, an addition to the city of Littlefield.

Marriage Licenses Issued S. J. Moore and Sybil Carlene White, Nov. 30. Robert Burkett, Jr., and Mozelle McGee, Nov. 20. John J. Williams and Reese Ann Johnson, Nov. 30. Joe Edd Lambert and Edith Barker, Dec. 2. H. G. Burkett and Hattie L. Wright, Dec. 5. Hubbard Rucker and Mamie Hodge, Dec. 6. Santiago Madrigal and Rosa Torres, Dec. 7.

Great Increase In Telephones Reported

There were 15 per cent more telephones in service in Texas at the end of October this year than at the same time a year ago, according to figures released by the University of Texas Bureau of Research. Gains in installations from month to month have been small but steady, October's installation representing a statewide gain of 2 per cent. The medium-sized cities of the state reported the biggest monthly increase. The number of telephones in Orange rose 3 per cent, in Temple 4 per cent, in Amarillo 5 per cent, and in Marshall 6 per cent.

The biggest percentage gain in telephones installed during the past 12 months was in Borger, where a 48 per cent increase was recorded.

Be just and fear not; let all the ends thou aimest at, be thy country's thy God's and truth's.—Shakespeare.

Stuffed-Up Nose, Headache? due to COLDS 666 Relief of your misery starts in 6 seconds with COLD PREPARATION TABLETS or LIQUID Caution: Take only as directed

EVINS CLEANER LITTLEFIELD Efficient Service.... Always

Announcing... that BARTO RAMS Has Purchased GRADY BEVELL Fruit Stand Where Highway 51 Intersects Highway 84— Across from Magnolia Service Station NOW IN POSSESSION WITH PLENTY OF FRUITS AND VEGETABLES FOR THE HOLIDAY SEASON Lots of APPLES • GRAPES • ORANGES • BANANAS GRAPEFRUIT — WHOLESALE AND RETAIL COLD DRINKS • CANDY • PEANUTS • BOTTLED COME TO SEE US We have, in the past, enjoyed a nice volume of business from our many customers, which has been appreciated. We invite you to come and see us, and let us supply you with your fruits and vegetables. We will enjoy serving you. BARTO RAMSEY'S FRUIT STAND (Formerly GRDY BEVELL'S Fruit Stand) Across from Magnolia Service Station Littlefield

FARM and RANCH LOANS 4% interest. Terms 5 to 25 years with annual payment. May be repaid in full after two years. No stock to buy and no loan expense except bringing abstract up. We also buy land notes. The WINSTON INSURANCE AGENCY LITTLEFIELD, TEXAS PHONE

SAVE MONEY SAVE TIRES RECAP We Have the Equipment Experienced Help and the Material TO DO YOU A GOOD JOB OK RUBBER WELDING & TIRE SHOP H. L. ATWOOD, OWNER Littlefield Muleshoe

Now Open for Business FRED S. BRIGGS

FORMERLY OF LUBBOCK is announcing THE ESTABLISHMENT OF A Plumbing & Heating Business IN THE BUILDING FORMERLY OCCUPIED BY THE Corner Cafe

AT THE INTERSECTION OF EAST NINTH ST. AND HIGHWAY 51, ACROSS FROM STANDIFER GROCERY & MARKET, WHICH Opened For Business Monday

—conducting a general plumbing and heating business... installation of plumbing and heating systems. Full line of Crane and Koeller lines of Plumbing and Heating Appliances.

Briggs Plumbing and Heating

Corner of East Ninth St. and Highway 51 934 East Ninth St. Littlefield

State Crippled Children Is Asked

Dec. 11.—Increased legislation to establish rehabilitation centers for victims of cerebral palsy by the Texas Society for Crippled Children. A resolution was passed at the ninth convention of the group held last of the month. The group would ask increased aid for the crippled children of the State Department of Vocational Rehabilitation of the Texas Department

America's favorite tenor



MELTON Sunday on the WEST OF STARS

with Howard Barlow and 10-piece Orchestra. Also Murray Chorus. Staged Dramatic Casts. Special Musical Guests. NETWORK • 1:30-2:00 P. M. CST. NATIONAL HARVESTER



ENJOY THE PLEASURE OF EFFICIENT REFRIGERATION

REFRIGATOR REPAIRS

BY A SPECIALIST
Carl Owens
formerly of Lubbock

with many years of actual experience is now OUR REFRIGERATION REPAIR EXPERT

We now do
Repairing and Installation

— of —
COMMERCIAL AND DOMESTIC
REFRIGERATION
W-W ELECTRIC
LITTLEFIELD

of Vocational Education and for the special education division of the State Department of Public Education. Representatives from these state departments, James L. Tenney, T. J. Brown and H. E. Robinson, reminded the convention that all three of the departments and all other state aid for crippled children has been the result of the Texas Society for Crippled Children's work.

Officers elected to work on the expanded program for the coming year were R. L. Thomas of Dallas, president; John W. Broome of Lubbock, vice-president; Mrs. Guy Rogers of Wichita Falls, vice-president; J. J. Gibson of Dallas, treasurer; Martin H. Ricker, executive secretary; and Mrs. Sam E. Wilson of Corpus Christi, Hal Moore of Texarkana and Mrs. Lawrence Tarlton of Ft. Worth, members-at-large of the executive committee.

More than 900 veterans of the Indian Wars that ended 48 years ago were receiving Veterans Administration pensions on Sept. 30.

Whenever our country calls, friends, sons, and sires should yield their treasure up, nor own a sense beyond the public safety.—Brooke.

Guranteed Watch
and
Clock Repairing
CRYSTALS FITTED WHILE YOU WAIT
See our nice selection of Costume Jewelry . . . Rings . . . Lockets . . . Identification Bracelets . . . Watches . . . Baby Jewelry.
GENE PRATT
in
WALTERS DRUG STORE

Three New United Nations Members



Seated in front of the dais at the U. N. general assembly are the representatives of three nations admitted to membership in the United Nations. They are shown as they listen to Paul Henri Spaak, center on dais, as he welcomed them to the fold. Left on dais is Trygve Lie, secretary general. At right is Assistant Secretary Ivan Kevno. Seated in front are Oesten Unden, Sweden; Thor Thors, Iceland, and Aboul Hosayn Aziz, Afghanistan, new delegates.

Surplus Property Official to Visit Lubbock, Plainview

PLAINVIEW, Dec. 11.— World War II veterans of this area of the Panhandle are to have an opportunity to obtain first-hand information on current and future sales offerings of government surplus property next week, according to Harry McCain, Hale County service officer.

McCain, who initiated arrangements early in December to have field representative of War Assets Administration make a visit to Plainview every other week, announced that Melvin M. Calvin and James L. Adkins from the Fort Worth regional WAA office, would be at the veterans county service office, second floor of the Halse county courthouse, from 9 to 12 and 1 to 5 on Friday, December 20. Veterans desiring to obtain certification to participate in sales of surplus war goods under their veteran priority rights, need only present a copy of their discharge to the WAA men in Plainview.

Clavin and Adkins will be at the Veterans Information Center in Amarillo Tuesday and Wednesday, December 17 and 18, and at the county service office, 910 Texas Avenue, in Lubbock on Thursday, December 19. This will be the final visit to the Panhandle counties this year and veterans, by applying for certification

Anton Lions To Distribute Christmas Packages This Year

The Anton Lions Club will distribute Christmas packages again this year, and a committee was appointed recently to make the arrangements and put the plan into effect. Santa Claus will make his appearance on the streets of Anton, with candy for the children. The fire truck will be used in distributing the packages.

A debate was the main feature of the entertainment at Monday's meeting. Proper care and feeding of babies was the subject of discussion. Four Lions were chosen to discuss the subject. They were Harlan Black and Tom Davis on one side, and Elmer Hall and Carl Harrington on the other.

TO REPRESENT CITY IN SPEAKING CONTEST

A leadership contest of the Littlefield district of the Future Farmers of America, comprising 10 nearby counties was held at Littlefield December 4, with O. T. Ryan and L. M. Hargrave, assistant professors of agriculture education at Texas Technological College, conducting the events.

now, will be in a position to avail themselves of many large offerings of surplus property early in January.

Buick Produces 22,680 Car Units During November

FLINT, Mich. — Buick produced 22,680 cars during November, boosting total 1946 model output and export users to 135,071 units, Harlow H. Curtice, Buick general manager and vice president of General Motors, disclosed this week.

Curtice said Buick's November production included the first units of Buick's lower-priced cars, the Series 40 Special on 121-inch wheelbase, rounding out the division's three lines of cars. The others are the Series 50 Super on 126-inch wheelbase, and the Series 70 Roadmaster on 129-inch wheelbase.

listed below in the order of their placement:

Senior chapter conducting contest, Littlefield, Muleshoe and Springlake; junior chapter conducting contest, Levelland, Littlefield and Sudan; farm demonstration contest, Muleshoe, Olton and Sudan; news writing, Jimmy Emmons of Littlefield, and Johnnie Sied of Muleshoe.

John Morton won the public speaking contest and will represent the Littlefield district in the area contest.

Lovely assortment of Christmas Cards at Leader office.

FARM LOANS
LONG TERM LOW RATE
PROMPT CLOSING
FIRST NAT'L BANK
LOCKNEY, TEXAS
In Association with
THE PRUDENTIAL
Insurance Company of America
Home Office, Newark, N. J.

Why Not
BUY HER
— A —
RADIO
— FOR —
Christmas
● Use Our
LAY-AWAY PLAN
WE HAVE JUST RECEIVED A LARGE SHIPMENT OF SMALL RADIOS
Five different makes to choose from - \$24 to \$37.75
Six-Tube National Radio \$37.75
Five-Tube Electronic Laboratory Set \$24.00
USED BATTERY and ELECTRIC SETS
Table and Desk Lamps \$4.50 and \$4.95
ZACHARY RADIO SERVICE
PARTS and SERVICE
Phone 375-J 201 West Fourth St.
LITTLEFIELD

We Want to Buy Your Grain
And Will Pay You Highest Prices
● YOUR BUSINESS APPRECIATED ●
Anton Grain Co.
Phone 16 or 28
TOM H. DAVIS — Owner and Manager

PROPANE FOR YOUR BOTTLES
NO FREEZING ON COLD MORNINGS!
Bottles Filled By Weight
PLAINS LIQUEFIED GAS CO.
Clovis Highway Phone 71
LITTLEFIELD

DODGE AND PLYMOUTH OWNERS

While you're waiting, get
DOUBLE PROTECTION
Safeguard your present car. Don't let it deteriorate. Whatever you spend now will not be wasted. Now, more than ever, you need SAFETY for yourself and family, and the best assurance of highest CASH VALUE when the time comes to trade in your car.
Drive in today or tomorrow for a thorough check-up. We promise you our sincerest Advice and quick, dependable service at lowest costs.
GARLAND MOTOR CO.
Your PLYMOUTH and DODGE Dealer
Phone 138 Littlefield
DODGE - PLYMOUTH
DODGE Job-Rated TRUCKS



From where I sit... by Joe Marsh

A Grand American Tradition

The Cuppers had a grand old family reunion last week—for the first time since the war.

Big and little Cuppers came, by car and train, from as far west as Nebraska and as far east as Vermont. They crowded Dee and Jane's house, set up quarters in the barns, or stopped with neighbors—and a jollier gathering you couldn't have imagined!

I was asked to their final Saturday night supper, when they sang old songs, drank beer and cider, reminisced. Dark Cuppers and

blonde ones—Vermont accents and Alabama draws—doctors and farmers... all with their differences of taste and politics, yet as close and harmonious in spirit as a group could be.

From where I sit, it's a great American tradition—not just family reunions, but the ability to get along as one harmonious family, regardless of differences of taste—whether it's taste for politics or farming, beer or cider.

Joe Marsh

Copyright, 1940, United States Brewers Foundation

MINERS' STRIKE DISTURBS FARM PRICES; CATTLE UP; OTHER PRODUCTS DOWN

Cattle held about the only strong position at southwest markets last week. Hogs registered the greatest losses, while other farm products were about steady to weak, reports USDA's Production and Market Administration.

Cattle prices declined only slightly last week as demand continued good, especially for lower grades. The coal strike caused increasing concern as to immediate effects on transportation, emphasizing on movement of cotton and mill supplies.

Grain markets were disturbed by the strike also. Wheat, corn, barley and sorghums declined. Oats went down, too, but regained most of the loss. Rice stood at top OPA levels. Feedstuffs dropped sharply as more feed grains were used in the place of commercial mixtures. Bran and shorts were off \$4 to \$6 per ton, linseed meal \$3 and cottonseed meal \$2.

Peanut crushers bought farmers' stock mostly at support prices last week. Demand has slackened but offerings have been fairly well cleared to date.

First carlot shipments of Texas spinach left the Winter Garden area last week. Prices held steady at \$1.10 per bushel basket under moderate demand. The Lower Rio Grande Valley reported dull market for tomatoes, steady prices for peppers and weaker bids for increased citrus offerings. Colorado noted some strength on potatoes late last week, but the onion market remained dull. Louisiana sweet potatoes were about the only

southwest vegetable bringing firm prices under good demand.

Demand for poultry and eggs followed the usual post-holiday lull. Prices held about steady for fryers and chicken hens, but tended weaker for turkeys with few sales reported. Eggs declined slightly as favorable weather increased fresh receipts.

Cattle went up 25 to 50 cents per hundred at most terminals last week. Beef cows appeared to have made the most gains. Common and medium cows brought \$9.50 to \$12.75 at Houston; \$10.50 to \$13.90 at Wichita, and \$11.50 to \$14 at Denver. Medium and good cows realized \$11.50 to \$14.25 at San Antonio and \$12 to \$14.50 at Fort Worth. At Oklahoma City beef cows reached a top of \$16.50.

Hog prices tumbled as much as \$2 to \$3 per hundred last week as marketers began to increase seasonally, especially at northern terminals. Top butchers were quoted last Friday at \$23 at San Antonio; \$23.50 at Fort Worth; \$24 at Oklahoma City; \$24.25 at Denver; and \$23.50 at Wichita.

Sheep and lambs were strong to 25 cents per hundred higher at Oklahoma City but weak to lower at other southwest markets last week. Medium lambs brought \$15 to \$17.50 at San Antonio, and medium and good fat lambs realized \$17 to \$20 at Fort Worth. Closing top was \$23 at Oklahoma City for good and choice lambs. Denver sold medium and good truckins at \$22. Good and

choice native lambs moved at \$22.25 to \$22.75 at Wichita. Domestic wool trading was extremely slow last week. New advances in prices about ended the little buying going on in Boston and Texas.

Lions Club Auction Sale Brings \$1700

The fund raised by the Anton Lions Club auction sale received a very large boost Thursday when Lion K. W. Wells took a whiteface steer which the Elwood estate contributed to the Lions to the Lubbock auction sale, where it was bought by Armour & Co. at a premium price of \$18.70 a hundredweight. The fine steer weighed 960 pounds and brought \$179.52.

Lion Claude Campbell of the Anton club was instrumental in securing this donation and will be honored by the local club for the service.

This brings the grand total for the auction up around \$1700.

Most Students At Tech Are Baptists Or Methodists

An overwhelming majority of the 5866 students enrolled at Texas Technological College, Lubbock, are either Baptists or Methodists, according to figures released from the office of the registrar.

Baptists are leading the field with 1781 members, and Methodists are close behind with 1701. Presbyterians are third with 430 members. Although most of the students are Protestants, 162 are Catholic, nine are Jewish and one is a Moslem. Memberships of remaining students are distributed among 18 denominations and sects.

Tech Student Is High Point Man In Livestock Judging

Nathan Allen, senior student at Texas Technological College, was high point man in the livestock judging contest held at the International Livestock Exposition in Chicago recently. Allen, who hails from Big Spring, is the first student from Texas to take this honor since 1913.

Tech's judging team took fourth place in the contest in competition with 21 other teams from over the United States and Canada. The team ranked fourth in the cattle division, fifth in sheep, sixth in horses and ninth in hogs.

Ohio State College team took first place in the contest, with 4636 points, Iowa State and the University of Nebraska took second and third places with a tie of 4510 points each, and Texas Tech followed closely with 4507 points. Other teams rated in the following order: Purdue, Missouri, University of Minnesota, Kentucky, Kansas State College, North Dakota, Oklahoma A&M, Texas A&M, Michigan State, Colorado State, Wisconsin University, South Dakota State, Ontario, North Carolina, West Virginia, Connecticut, Arkansas and Pennsylvania.

ATTENDS ST. LOUIS MEETING

Miss Doris Nesbitt, assistant professor of home economics education at Texas Technological College, was in St. Louis Dec. 8-10, attending a conference of state supervisors and teachers called by the United States Office of Education and some of the meetings of the American Vocational Association.

Less than one-half of one per cent of all veterans' loans approved for guaranty by Veterans Administration were in default by the end of September.

NEW and USED TRACTOR TIRES

NEW and USED PASSENGER TIRES

WASHING and GREASING

McCORMICK BROS.

PETROLEUM PRODUCTS

Highway 84 Phone 153
LITTLEFIELD
OPEN ALL NIGHT
WHOLESALE and RETAIL.



Santa's Special BARGAIN In New and Used FURNITURE

- OIL COOK STOVES, Used Stoves, five Burner ----- \$17.50
- TABLE TOP OIL RANGE, a very nice Range ----- \$39.50
- OIL HEATERS, new and used ----- \$18.50
- SMOKING STANDS ----- \$1.95 to \$7.50
- CHILD'S TABLE and CHAIRS, Natural Oak ----- \$10.90
- CHILDREN'S CHAIRS and ROCKERS ----- \$1.25 to \$3.90
- BABY BUGGIES ----- \$19.50
- THAYER STROLLERS ----- \$9.20
- UNFINISHED DESKS ----- \$5.80
- DESKS, Walnut, Natural, Sun Tan, Lime Oak ----- \$32.50
- DRESSING TABLES, unfinished ----- \$8.95
- CHEST OF DRAWERS, unfinished ----- \$7.95
- DROP LEAF TABLES, unfinished ----- \$13.50
- CHAIRS, unfinished, set of four ----- \$10.00
- BEDSTEADS, Wood Spool and Walnut Veneer ----- \$19.95 to \$28.50
- METAL BEDS ----- \$9.50 to \$12.50
- NEW ROLL-A-WAY BEDS and MATTRESSES ----- \$29.95
- BABY BEDS and MATTRESSES ----- \$14.00
- BABY CRIBS and MATTRESSES ----- \$4.50
- NEW DAY BEDS, with Innerspring Mattresses, makes single or double bed ----- \$69.50
- USED DAY BEDS ----- \$12.50 and \$15.00
- YOUTH BEDS ----- \$14.00
- LIVING ROOM SUITES, two-piece Lime Oak ----- \$59.00
- STUDIO SUITES, two-piece in Wine Velour ----- \$77.50
- STUDIO DIVANS ----- \$39.50 to \$79.50
- METAL KITCHEN STEP STOOLS ----- \$7.95
- END, COFFEE and LAMP TABLES ----- \$4.50 to \$15.00
- OCCASIONAL CHAIRS and ROCKERS ----- \$4.95
- STAPLE FELTED COTTON MATTRESSES ----- \$28.50 to \$39.50
- UTILITY CABINETS ----- \$9.95
- THROW RUGS ----- \$2.50 to \$5.95
- WALL PICTURES ----- 50c to \$5.95
- TARPAULINS, size 8x10 ----- \$8.25
- OIL COOK STOVE OVENS— Two-burner ----- \$7.95
- CLOTHES HAMPERS ----- \$7.50 to \$9.95
- HASSOCKS ----- \$3.95 to \$7.95
- PLATFORM ROCKER SPRINGS ----- \$2.00
- WINDOW SHADES ----- 20c
- SAMSON CARD TABLES ----- \$3.95
- DINETTE CHAIRS, Natural Oak, set of four, with Red Leatherette Seats ----- \$29.00
- CANE-BOTTOM CHAIRS ----- \$1.95
- SLAT-BOTTOM CHAIRS ----- \$2.25
- HIGH CHAIRS ----- \$4.95
- IRONING BOARDS ----- \$3.50
- FIVE-PIECE DINETTE SUITE— Heavy Natural Oak ----- \$67.50
- FIVE-PIECE DINETTE SUITE— Heavy White Oak ----- \$53.95
- FIVE-PIECE DINETTE SUITE— Natural Oak ----- \$39.50
- FIVE-PIECE DROP-LEAF SUITE— Unfinished ----- \$23.50
- FIVE-PIECE ENAMEL SUITE— Drop-Leaf Table ----- \$22.50
- One Good Small Round OAK TABLE ----- \$8.50
- One Used Roos CEDAR CHEST— a dandy ----- \$43.50
- ICE BOX, 50-Lb. capacity, Light Oak Finish ----- \$18.50
- DINING ROOM SUITE, four Chairs and Buffet ----- \$87.50

FLUORESCENT LIGHT FIXTURES
GOLDEN STAR MOPS, FURNITURE POLISH and WAX
Barlow Moth-Proofing — Guaranteed Five Years

ONSTEAD'S USED FURNITURE

Littlefield Hotel Building Phone 398

Gifts

For the Family at ROBISON'S

We can furnish your house throughout with our bedroom suites, dinette suites and single pieces for added design, including DESKS, CARD TABLES and BOUDOIR CHAIRS, to make your home a Etopia in comfort.



LAMPS
Our selections of table and floor lamps are adequate for any need... colors of your choice.



EASY CHAIRS
Make father comfortable after a hard day with an easy chair and ottoman.



TABLES
Colors and designs to match your furnishings in any room.



MAGAZINE STAND
Keeps your magazines in one place and easy to find. Take a load off mother with this lovely gift.

We are headquarters for children's gifts. The WONDER HORSE (a rocking horse on springs) is the latest of this type of plaything to delight the tiny tot. We also have CEDAR CHESTS, DOLLS and ROCKERS which are ideal to put cheer into the youngster's heart.

ROBISON'S FURNITURE STORE

One Block West of Bank

AMHERST ITEMS

Admitted to Hospital

Mrs. R. L. Campbell of six miles north and four miles east of Littlefield was admitted to the Amherst hospital Friday, threatened with pneumonia. She was reported as improving nicely Saturday.

Daughter Is Born

Mr. and Mrs. J. W. Jackson of Route One, Anton, are the proud parents of a girl, born in the Amherst hospital on Wednesday, Nov. 27. The young lady was named Mary Katherine.

In Hospital

The 11-year-old daughter of Mr. and Mrs. Lacy Green of Olton is receiving treatment at the Amherst hospital.

PERSONALS

Mary Lenore LaGrange, a student at McMurry College, Abilene, spent Thanksgiving with her parents, Mr. and Mrs. Lester LaGrange, at Amherst.

Mr. and Mrs. Lowell Burkes, teachers in the Sudan school, spent the past weekend visiting relatives in Southeast Texas.

Mrs. R. L. Brown of Amherst went to Lubbock Sunday to visit Mrs. Leon Sherrill at Lubbock Hospital.

Jimmy Moring, son of Supt. and Mrs. Perry Moring of Sudan, was dismissed this week from the Amherst Hospital.

Mr. and Mrs. Harry Brantley are the proud parents of a baby daughter.

Bill Eddings, a student of Amarillo College, spent the past weekend at his home in Sudan.

Mr. and Mrs. Homer Brunson and children, from Stephenville, and Mr. and Mrs. Laurance Brunson of Idalou visited Supt. and Mrs. Perry Moring of Sudan. The Brunson men are Supt. Moring's brothers.

Mrs. J. E. Mayfield of Amherst has spent the last week with her daughter, Mrs. Leon Sherrill, in the Lubbock Hospital.

Mrs. Nellie Kilpatrick of Star Route Two, Littlefield, left Friday, Dec. 6, for Boston, Mass.

EARTH NEWS

TO SPEND CHRISTMAS AT SPRINGLAKE

Mr. and Mrs. B. L. Dent of Rosenberg, Oregon, are expected to spend Christmas and the holidays with Mrs. Dent's parents, Mr. and Mrs. W. C. White, and other relatives at Springlake. Mrs. Dent's sister, Miss Wanda White, of Springlake, is planning to return with her sister and brother-in-law to Oregon, and remain and work there.

Visit in Lubbock

Bobbie Padon and Jessie Rae Sanders visited in Lubbock Sunday.

New Members Initiated

The Springlake chapter of, FHA initiated the new members in a beautiful ceremony at 7 p.m. Tuesday in the study hall of the high school building.

Refreshments were served to mothers and FHA members. After refreshments, everyone gathered around the piano and sang.

At Sister's Bedside

Mrs. W. C. Terry was called to Oklahoma to be at the bedside of her sister, who is seriously ill.

Spend Weekend in Lubbock

Misses Bobbie Padon, Jeanette Daugherty, Betty Jean Wages and Billye Gwynn Smith spent the weekend in Lubbock.

FAST RELIEF
SIMPLE HEADACHES
UPSET STOMACH
MUSCULAR PAINS
ALKA SELTZER
COLD DISCOMFORTS

Good for So Many Common Ailments

Always keep a good supply of Alka-Seltzer on hand because you never know what time of day or night you may need the relief it offers. Alka-Seltzer is pleasant to the taste—easy to take. Ask your druggist for Alka-Seltzer today. Remember, when your tablets get down to four—that's the time to buy some more!



Firestone

Pre-Christmas

CLEARANCE

GIVE BEAUTIFUL GIFTS AND SAVE MONEY TOO! PRICES SLASHED!

GIFTS FOR HER AT Slashed Prices!

Folding DOLL CAR
9.95
Sturdy steel covered with heavy simulated leather. Elegant riding for any doll! Rubber tires.

TRAVEL IRON
Now! 4.95
Does away with "suitcase wrinkles" in a jiffy! A rare value!

	Was	NOW!
Beautiful Cookie Jar	2.49	1.93
Two-foot Stepladder	2.98	2.19
Metal Kitchen Stool	4.79	3.98
Two-Slice Toaster	7.65	6.95
Toy Boats	1.98	.98
Checkers Game	.69	.49

GIFTS FOR HIM AT Slashed Prices!

Was 2.79

AUTO COMPASS
Now! 1.98

New in design! Unusually accurate! Wonderful gift for any car owner.

AUTO BABY SEATS (Were 1.49).....NOW! 98c

	Was	NOW!
Auto Winterfront	1.39	98c
Chrome Cleaner Kit	1.19	98c
Bumper Jocks	1.79	1.29
Supreme Tire Pump	2.79	2.29

SEE ALL THESE

Was 7.95

DEFROSTER AUTO FAN
Now! 5.95

The rubber blades make it safe. Does the job in no time! Unusual value.

TOYS FOR YOUNGSTERS AT Slashed Prices!

Was 4.95

THREE-WHEEL SCOOTER
Now! 3.95

The three wheels make it safer to ride. Rubber tires.

WAGON AND BLOCKS
Now! 98c

Big, beautiful wagon loaded with bright colored blocks!

Atom Gun
By the famed BUCK ROGERS
What a Gun!
It flashes red and pops when the trigger is pulled.
\$1.25

The Finest Gift of All

BIBLE Master Art Edition
6.95

Contains sixty-four reproductions of religious paintings by the great masters, half of them in full color. Red letter encyclopedic concordance.

Three-Piece CHILD'S SET
85c

A plate, cup and cereal bowl with cunning Mother Goose pictures.

Firestone

HOME and AUTO SUPPLY STORE

Phone 68 - Littlefield

BIRDWELL BROS., Owners

VERNON HOFACKET, Mgr.

Executive committee of the Foundation. Chairman Francisco said that support to the campaign had been gratifying throughout the state, and that practically every county which was organized has reported "over the top." Reports from the county organizations were being received at the state headquarters in the Driskill Hotel in Austin.

There was no organization in a number of Texas counties and it was to these counties that Chairman Francisco issued the final appeal for support in the campaign to combat polio, which struck Texas worse in 1946 than in many years. He said that campaign contributions, which are deductible from income tax returns, could be mailed direct to the Driskill Hotel headquarters and that all such contributions would be credited to the quota of the county from which they were received.

The campaign came to an official end on last Saturday, but contributions are still being made. In several of the larger counties of the state, the campaign has been extended until December 21.

TAXI
Courteous Service
Anywhere

CAB Co.
John B. Smith

LONG DISTANCE TELEPHONE CALLS INCREASE!

Although many people (perhaps including the telephone company) expected long distance calls to decrease following the end of the war, just the opposite has happened. Traffic on long distance lines is reaching new peaks each month... The equipment necessary to take care of the increase can't be produced fast enough. The 1946 long distance calls are officially pegged at more than 5,000,000 calls per month, about 270,000 more than last year's daily average. Perhaps this graphic illustration will help to explain why it takes longer to answer and why your calls are sometimes delayed.

Western Associated Telephone Company

DINO

in the FARM

ENRICHING MILK WITH CREAM SHOWS WHY SINCLAIR H-C GASOLINE GIVES TRACTORS MORE POWER, FASTER STARTS AND EASIER HANDLING

WELL, THE NEW SINCLAIR H-C IS ENRICHED WITH THE "CREAM" IN GASOLINES - 100-OCTANE COMPONENTS

YEP! SO GET POWER-PACKED PERFORMANCE FROM YOUR TRACTOR, TRUCK AND CAR WITH SINCLAIR H-C GASOLINE.

DELIVER DIRECT TO FARMS—PHONE OR WRITE US FOR

SINCLAIR H-C GASOLINE

Oscar P. Wilemon
Sales Agent Sinclair Refining Co.
Phone 32



CEDAR CHESTS
Bleached Mahogany, Walnut, Natural Red Cedar—
\$29.50 to \$49.50

FURNITURE, the LASTING GIFT!

DINETTE SETS for CHILDREN
\$13.95 to \$16.95
DINETTE SETS

Seven-piece suites, leather upholstered chairs, three-leaf extension . . . from—

\$49.50 to \$89.50
CHROME DINETTE SUITES

—with or without extension. Your choice of colors . . . red, blue or ivory—

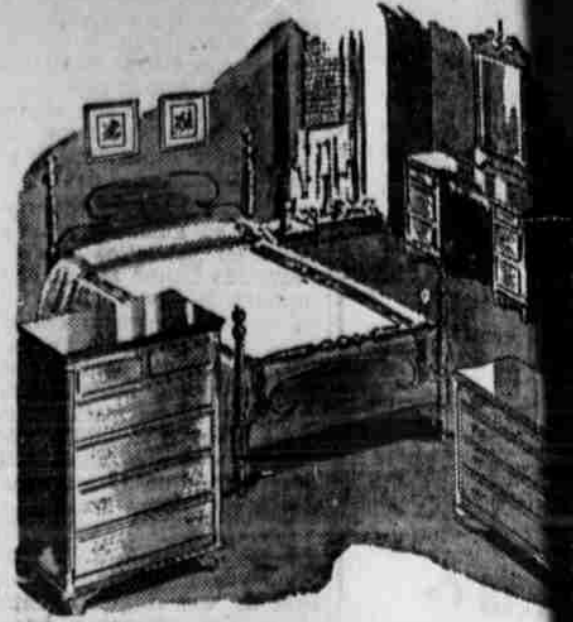
\$59.50
PLATFORM ROCKERS

Tapestry, Velour and Mohair Coverings.

\$15.00 to \$69.50

LARGE SELECTION OF RADIOS . . . BOTH SMALL AND CABINET MODELS
LAMPS OF ALL KINDS • PICTURES • SHAG RUGS IN VARIOUS COLORS

RODGERS FURNITURE



BEDROOM SUITES

Beauty and utility are featured in this

Tables of All Kinds • Desks

SOCIAL EVENTS

Mrs. Sidney Moore And Vernon Houk Wed at Fort Sumner

Mrs. Sidney Moore became the bride of Vernon Houk in a quiet ceremony at Fort Sumner, N. M., Friday, November 29.

Rev. John Kassen, pastor of the First Methodist Church, Fort Sumner, officiated at his home, at 5:30

o'clock in the evening. The bride wore a brown gabardine suit, with cherry Coke colored accessories.

She is a graduate of Littlefield High School, and has been connected with the Southwestern Associated Telephone Company for the past six years.

Mr. Houk is a graduate of Clovis High School, and has been a resident of Littlefield for the past five years. He is a partner with his brother, Eddie Houk, in the Houk Bros. Grocery

& Market, Highway 51, Littlefield. After spending the weekend at Clovis, N. M., the couple are at home in Littlefield.

Nurses Entertain Hospital Staff

The nurses of the Littlefield Hospital and Clinic entertained the staff and immediate friends with a pre-Christmas dance at the Legion Hut Wednesday night, December 4.

Those enjoying the evening included: Mr. and Mrs. Raymond Zoth, Mr. and Mrs. Ralph Zoth, Mr. and Mrs. Virgil Teague, Dr. and Mrs. Wm. N. Orr, Dr. and Mrs. J. R. Coen, Mr. and Mrs. Virgil Zoth, Mr. and Mrs. Alec Adams, Mr. and Mrs. Buster Owens, and Mrs. Lillian Treece, Miss Lucille Goolsby, Bob Armstrong, Mrs. Eva Nickels, J. E. Chisholm, Miss Marie Murphy, Ben Lyman Jr., Miss Dorothy Newgent, Ray Kesey, Miss Inez Dow, Forest Byrum, Miss Thelma, Lunsford, Bob Foust, Miss Louise Lee, Dick Swan, Miss Margaret Coffman, Jack Norman, Miss Becky Moore, Robert Trotter, Miss Lola Mae Gray, Alvin Whitfield, Miss Jessie Kesey, Benny Collins, Miss Dorothy Perry, Romer John and Conrad Demel.

Miss Ina Mae Hill Hostess to Junior Club Members

Members of the Junior Study Club met Thursday evening in the home of Miss Ina Mae Hill in the southwest part of town.

Mrs. Dick Carl was in charge of the Program and presented three films, one on the landing at Tarawa, and two comic films.

Present were: Misses Alma Allen, Alma Faye Henry, Ruth Griffin, Ina Mae Hill, Clara Jarman, Dorothy Newgent, Bernice Sanderson, Lucille Smith and Dora Jo Valverde, and Mmes. T. A. Hilbun, Edward Betts, Roy Byers, Jr., Dick Carl, Olene Gibson, Ollie Robbins, and Mrs. J. B. Kempton, a new member.

Visit Relatives And Friends At Dallas, Decatur

Mrs. B. D. Garland, Mrs. Neal A. Douglass and Miss Erna Douglass returned Sunday night from a trip to Decatur and Dallas. Mrs. Douglass

and Miss Douglass visited their daughter and sister, Mrs. H. S. Usury, and a granddaughter of Mrs. Douglass, Mrs. Hoyt Talley, and a grandson, Donald Usury, and family at Decatur.

Mrs. Garland visited Mr. and Mrs. J. M. Tunnell at Lake Dallas, and her son, B. D. Garland, student at SMU, Dallas. Mrs. Tunnell is ill and confined to her bed with a bad condition in one of her legs due to varicose veins.

The Littlefield party left here Friday and returned Sunday.

GEMS of THOUGHT

It is difficult to say which may be most mischievous to the human heart, the praise or the dispraise of men—Mary Baker Eddy.

Praise from the common people is generally false, and rather follows the vain than the virtuous.—Bacon.

Great minds had rather deserve contemporaneous applause without obtaining it, than obtain without deserving it.—Colton.

The silence that accepts merit as the most natural thing in the world is the highest applause.—Emerson.

HIGHER JOYS

Joy is an elation of spirit—of a spirit which trusts in the goodness and truth of its own possessions.—Seneca.

Who battles in worldly joys, swims in a world of fears.—Phineas Fletcher.

The most profound joy has more of gravity than of gaiety in it.—Montaigne.

Tranquil pleasures last the longest; we are not fitted to bear long the burden of great joys.—Bovee.

Great joy, especially after a sudden change of circumstances, is apt to be silent, and dwells rather in the heart than on the tongue.—Fielding.

CURBS ON OVERSEAS MAIL RENEWED

The Army has clamped down curbs again on mailing of parcels overseas.

During the month ended Nov. 15 it had suspended restrictions to allow Christmas parcel mailing. With the expiration of that period, the previous regulation requiring a written request from the serviceman for a package went back into force. The regulation is applicable to troops and civilians under military jurisdiction.

OLD BUILDING IS BEING TORN DOWN

Work got underway last week on the tearing down of the Day and Night Courts structure, which was almost completely demolished by fire recently.

According to Ellis Foust, owner, all the old buildings will be torn down with the exception of the corner cement building, which is a two-story, and will be remodeled for occupancy. He stated it was his plan to build some time in the future, but he didn't know just when.

Announcing . . .

—that—
I HAVE PURCHASED THE INTEREST OF

SAM HAILE

—in—

HAILE & HAILE
BARBER SHOP

—and—
MOVED TO MY NEW QUARTERS SATURDAY
Will Appreciate All My Old Customers Trading With Me.

OTIS SMITH

—at—

SMITH & HAILE
BARBER SHOP

NEW TIRES ARE HERE

YOUR INVESTMENT is worth protecting by having your wheels balanced on our BEAR ELECTRIC EYE WHEEL BALANCER.

Brown Tire Co.

"The Complete Tire Store"
LITTLEFIELD TEXAS



Boys' Blue Denim Cowboy Pants

For just about every occasion boys will pick blue jeans for the pant that suits them the best . . . Yes, and whenever they can they'll pick Tuffies Out Of The West as the ones they like the best. They're real cowboy pants in junior sizes . . . made of heavy 8-oz. Sanforized LANE Blue Denim, Copper Riveted and Double-Stitched with Orange Thread.

In Sizes 4 to 18

TUFFIES
OUT OF THE WEST

\$2.09

REPLIN'S



It has been said that only illness can make a person appreciate fully the value of good health. Truly it is a gift beyond price . . . more precious than jewels . . . more desirable than wealth. But good health isn't found in Santa's sack. It is found, in many cases, in the little black bag your doctor carries with him. Through the medium of the instruments it contains, he is able to diagnose the ailment and prescribe the proper treatment. Help your doctor to help you by bringing his prescriptions here where pure, fresh drugs will be weighed, measured and mixed with painstaking precision.

MADDEN & WRIGHT
DRUG
LITTLEFIELD, PHONE 91 TEXAS

LITTLEFIELD BODY AND FENDER CO

Highway 81 • East Side of City
PAINTING A SPECIALTY
NO JOB TOO LARGE OR TOO SMALL
As Good as the Best . . . Better Than the Rest
J. C. STOVALL - J. C. STOVALL, JR. - BILLY DON STOVALL
Owners • Operators



PAYNE-SHOTWELL HOSPITAL & CLINIC
Littlefield, Texas — Phones 155-156

C. E. PAYNE, M.D.
Medicine and Surgery

I. T. SHOTWELL, Jr., M.D.
Medicine and Radiology

O. W. STILL, M.D.
Obstetrics and Gynecology

RALPH E. MAURER, M.D.
Resident Physician

I. T. SHOTWELL, Sr.
Superintendent

MRS. D. C. LINDLEY, R.N.
Superintendent of Nurses

Churches

FIRST METHODIST CHURCH
S. M. Dunnam, Pastor.
Sunday School, 10 a.m.
Worship service, 11 a.m.
Methodist Youth Fellowship, 6 p.m.
Evening worship, 7:30 o'clock.
A welcome to all.

MAIN ST. CHURCH OF CHRIST, AMHERST
Sunday morning service, 10:30.
Evening service, 7 o'clock.
Communion at both services.

ASSEMBLY OF GOD CHURCH
Sunday School, 10 a.m.
Morning worship 11 o'clock.
Sunday evening, 8:30 o'clock.
Christian Ambassador service, 8:30 p.m. Wednesday.
Prayer meeting, 8:30 p.m. Saturday.
Everybody invited to attend.

FIRST BAPTIST CHURCH OF EARTH
Rev. C. T. Jordan, Pastor
Sunday School—10 a. m.
Morning Service—11 a. m.
Training Union—7:30 p. m.
Evening Service—8:30 o'clock.
Wednesday Evening—8:00 o'clock
W. M. S. Thursday—3 p. m.

LITTLEFIELD MISSIONARY BAPTIST CHURCH
XIT and Eighth Streets
Weldon B. Meers, Th.M., Pastor
Sunday School, 10 a.m.
Morning preaching service, 11 o'clock.
Young people's meeting, 6:30 p.m.
"Sunbeams," 6:30 p.m.
Adult prayer service, 7 p.m.
Evening preaching service, 7:30 o'clock.
Prayer service Wednesday, 7:30 p.m.
Teachers' meeting Wednesday, 8:30 p.m.
"Sunbeams" singing Wednesday, 8:30 p.m.
A friendly church with a warm welcome.

CHURCH OF CHRIST
Amherst, Texas
Second and Fourth Lord's Day services:
10 a.m., Bible classes.
11 a.m., Sermon.
11:45 a.m., Lord's Supper.
8 p.m., Sermon.
A warm welcome awaits you.

FIRST BAPTIST CHURCH
Lee Hemphill, Pastor.
Sunday School, 10 a.m.
Morning worship, 11 o'clock.
Training Union, 7:30 p.m.
Evening worship, 7:30 o'clock.
W.M.U., Monday, 2:30 p.m.
Prayer service, Wednesday, 7:30 p.m.
Teachers and officers, 8 p.m. Wednesday.

FIRST BAPTIST CHURCH
Whitharral, Texas
J. B. Dolan, Pastor.
Sunday School, 10 a.m.
Morning worship, 7:30 p.m.
Training Union, 7:30 p.m.
Evening worship, 8:30 p.m.
Wednesday, prayer service 8:30 p.m.

SACRED HEART CATHOLIC CHURCH
Rev. F. M. Higgins, Pastor
First, third and fifth Sunday, at 11 o'clock a.m.
Second and fourth Sundays, at 9 o'clock a.m.

CHRISTIAN SCIENCE SERVICES
"God the Preserver of Man" is the subject of the Lesson-Sermon which will be read in all Churches of Christ, Scientist, on Sunday, December 15.
The Golden Text is: "As the mountains are round about Jerusalem, so the Lord is round about his people from henceforth even forever" (Psalms 125:2).
Among the citations which comprise the Lesson-Sermon is the following from the Bible: "The Lord is thy keeper; the Lord is thy shade upon thy right hand" (Psalms 121:5).
The Lesson-Sermon also includes the following passage from the Christian Science textbook, "Science and Health with Key to the Scriptures" by Mary Baker Eddy: "Man, made in His likeness, possesses and reflects God's dominion over all the earth" (page 516).

HART CAMP CHURCH OF CHRIST
Sunday morning service, 10:30 o'clock, with Bro. Gregg occupying the pulpit, each first Sunday, and Bro. Savage preaching each third Sunday morning.
There is no regular preacher for the other two Sundays.

FOURSQUARE GOSPEL CHURCH
Rev. Miss Ruth Johnson, Pastor.
Sunday School, 10 a.m.
Sunday worship, 11 a.m.
Crusaders' service, 6:30 p.m.
Evangelistic service, 7:30 p.m.
Prayer service, Wednesday, 7:30 p.m.
We extend to you a cordial invitation.

CHURCH OF CHRIST
Fieldton, Texas
First and third Lord's Day Services:
10 a.m., Bible classes.
11 a.m., Sermon.
11:45 a.m., Lord's Supper.
8 p.m., Sermon.
A warm welcome awaits you.

CHURCH OF THE NAZARENE
The W.F.M.S. of the Church of the Nazarene held their weekly service in Whitharral at the home of Mrs. Dillard Ridings on Tuesday, Nov. 19. Interesting plans have been made

for the year by the society. The monthly program is as follows:
First Tuesday—Business meeting.
Second Tuesday—A study of "The Other Sheep" a (monthly journal devoted to the foreign missionary interests).
Third Tuesday—Devotional service.
Fourth Tuesday—Study Book lesson.
Fifth Tuesday—Social.
Everyone is cordially invited to attend these missionary services each Tuesday at 2:30 p.m.

UNITED PENTECOSTAL CHURCH
Sunday School, 10 a.m.
Morning service, 11 o'clock.
Evening service, 7:30 o'clock.
Prayer meeting, Wednesday evening, 7:30 o'clock.

SALVATION ARMY
Envoys and Mrs. H. C. Seago
Sunday School, 10 a.m.
Holiness meeting, 11 a.m.
Open air meeting, 6:30 p.m.
Young people's meeting, 7 p.m.
Evangelistic service, 8 p.m.
Preparation Class Tuesday evening, 7:30 o'clock.
Soldiers' meeting, Tuesday evening, 8 o'clock.
Home League, Wednesday afternoon, 2 o'clock.
Meeting, Thursday night, 7:30 o'clock.
Open air meeting, Saturday night, 7 o'clock.

Veterans Administration cleared over 84,000 requests for physical examination during September for pensions or compensations, the highest total to date.



A frantic mechanic named Crocket.
Got so mad at his car he could hock it,
But his wife, she said, "Nix!"
"It just needs '66!"
Now it starts every time like a rocket!



For Rocket Starts...

Get Phillips 66 Gasoline

Phillips regulates "66" gasoline to your seasonal driving conditions—that's why you get those quick starts on cold mornings! That's why your car will warm up faster than it does with low volatility gasoline.

We draw on our vast reserves of highest natural gasoline to give you more highly volatile elements in your fuel as the weather gets colder.

Try Phillips 66. See if this "controlled volatility" doesn't give you quicker starts and easier warm-ups in cold weather. Drive in at the next orange-and-black "66" sign!



AS THE SEASONAL TEMPERATURE GOES DOWN... PHILLIPS 66 VOLATILITY GOES UP!



For good service... Phillips 66!

YOU WILL BE FAR AHEAD... BOTH ON THE FARM AND THE ROAD... IF YOU CHANGE NOW TO

PHILLIPS 66 GASOLINE

W. C. Heathman

WHOLESALE AGENT

Littlefield

PHILLIPS PETROLEUM COMPANY

Don't overlook this warning!

PROPERTY VALUES have soared from 30 to 50 per cent in the last five years. This agency is downright worried because some people have not increased their insurance to keep pace with the greater insurable value of their property. They are so seriously under-insured that a bad fire will mean a heavy loss to them.

DON'T LET IT HAPPEN TO YOU!
Talk it over now with...

Keithley & Co.

TELEPHONE 62



A Shield in Time of Need

Scores of thousands of men have found Woodmen life insurance certificates their perfect shield against privation and distress when disability or old age have reduced their earning power.

Many more scores of thousands of wives and children have found security and happiness through the Woodmen protection provided by their husbands and fathers.

There is a Woodmen life insurance certificate that exactly meets your need. Ask the local Woodmen representative to tell you about this safe, sound, legal reserve life insurance protection furnished to Woodmen members at cost. Learn too, of the many "plus" benefits you can receive from Woodcraft's fraternal and social activities.

WOODMEN OF THE WORLD
Life Insurance Society
OMAHA, NEBRASKA

W. B. CHAPMAN, District Manager
LITTLEFIELD, TEXAS — PHONE 387-R

Farm Animals In New York City



Farm animals in New York are a rare sight, and these Bronx children felt they had to get acquainted when these animals arrived for the National Hotel Exposition from an experimental farm at La Grange, Ky. The steer, hogs, turkeys and chickens were awarded to the persons who came closest to guessing the weight of the steer.

WHITHARRAL TEAM COMPLETES VERY SUCCESSFUL SEASON

The Whitharral Panthers completed a very successful season when they defeated the New Deal Lions 38-7 for the District 2-B championship.

The powerful New Deal Lions had crashed through to win the north half with only one defeat, and that from the Springlake team, which was ineligible. But the Lions had played ten games, which is the limit, and every player that had played in ten games was ineligible for the championship game with Whitharral. This took six of the very best players out of the Lion lineup for the championship game.

Beware Coughs from common colds That Hang On

Creomulsion relieves promptly because it goes right to the seat of the trouble to help loosen and expel germ laden phlegm, and aid nature to soothe and heal raw, tender inflamed bronchial mucous membranes. Tell your druggist to sell you a bottle of Creomulsion with the understanding you must like the way it quickly allays the cough or you are to have your money back.

CREOMULSION
For Coughs, Chest Colds, Bronchitis

LAST RITES HELD FOR W. C. DENNIS

William C. Dennis, 52, of Olton, died at 2 o'clock Tuesday morning, Nov. 26, at the Amherst hospital, where he was taken after suffering a heart attack.

The funeral was held Thursday afternoon, Nov. 28, at the Olton Methodist Church. Rev. Berry Baker, Amherst Methodist pastor, officiated. Born in Houston County, Texas, on July 9, 1894, Dennis moved to Olton in 1939 from Kirkland, where he had lived several years. He was a farmer.

Survivors are his wife, and five daughters, Mrs. Clarence Carpenter, Clinton, Okla.; Mrs. Cecil Galloway, Mrs. Dean Dellis and Miss Betty Louise Dennis, all of Olton, and Mrs. Johnnie Wilson, Plainview; his mother, Mrs. Oscar Dennis, and four sisters, Mrs. Wylie Pridgeon, Miss Lorent Dennis, all of Grapeland; Mrs. Albert Gainey and Mrs. Harry Scarborough, both of Huntsville, and a brother, O. D. Dennis, Grapeland. Three grandchildren also survive.

Henry Replin of Houston and Mack Hirsch of Denver spent Tuesday and Wednesday of last week visiting in the home of Mr. Replin's sister and brother-in-law, Mr. and Mrs. Dan Berg, who returned to Littlefield Saturday after a few days visiting relatives in Houston.

Come to the Leader office for your office supplies.

JUST ARRIVED . . . IN TIME FOR CHRISTMAS

A Shipment of Bedroom Suites



LOVELY
BEDROOM
SUITES

BLOND MAPLE and
MAHOGANY FINISH

Oval and square mirrors
\$139.50 up

Lovely Large Cedar Chests

Natural Cedar Finish
\$39.50

- Livingroom Suites ● Platform Rockers
- Lamps of All Kinds ● Radios
- Tables of All Kinds ● Breakfast Suites
- Ottomans ● Dinette Suites

COLBERT'S
FURNITURE and BEDDING

GIVE

USO

YOUTH RECREATION

BOY SCOUTS

GIRL SCOUTS

SALVATION ARMY



YOUR COMMUNITY CHEST

COMMUNITY CHEST DRIVE

In Littlefield is Now Underway

THE PERSON WHO CALLS ON YOU AND ASKS YOUR CONTRIBUTION TO THE COMMUNITY CHEST RECEIVES NOT A CENT FOR HIS OR HER SERVICES

The directors who have been working, planning the drive for the Community Chest have devoted their time. The officers of the organization receive nothing for their time in keeping the records, accounts, and permanent files for the organization.

These people are giving their valuable time that through one central campaign for funds the money needed to take care of the sick, as well as the youth of our community may be raised, and avoid YOUR being asked for money every month, or even each week.

The organizations included in our Community Chest and their budgets for the coming year are as follows:

Salvation Army	\$4,000	Youth Recreation	\$2,000
Girl Scouts	2,000	Boy Scouts	2,000
U. S. O.	325	Emergency	675

THE ONLY OTHER DRIVE CONDUCTED DURING THE COMING YEAR WILL BE FOR THE AMERICAN RED CROSS

This pooling of your contributions will make it easier for the needs of our community to be taken care of.

THESE WORTHY CAUSES NEED YOUR HELP. THE COMMUNITY CHEST IS THE EASIEST WAY TO HELP RAISE OUR COMMUNITY'S STANDARDS OF GOOD HEALTH, GOOD CARE AND SELF-SUFFICIENCY. The budget is elastic enough to care for emergencies. WHEN YOUR NEIGHBORHOOD WORKER CALLS ON YOU, GIVE GENEROUSLY.

THIS SPACE DEVOTED TO AN ORGANIZATION WORKING ONLY FOR OUR COMMUNITY'S WELFARE

By The---

FIRST NATIONAL BANK

of Littlefield, Texas