

Lamb County Leader

10c

Serving Texas' Second Largest Agricultural Producing County 10 Pages

VOLUME 31

LITTLEFIELD, LAMB COUNTY, TEXAS, THURSDAY, DECEMBER 30, 1965

NUMBER 34

Five County Officials File For Re-Election

Five Lamb County officials have now filed for re-election to their present positions. Glenn Batson, Democratic County Chairman has announced, as three more filed during the past few days.

J.B. Davis has already filed for re-election to his second term as County Judge and Charles Jones for another term as County Clerk.

Those making a decision within the last week are Ernest Owens for the position of District Clerk, C. Roy Stevens for re-election to the School Superintendent post and J.N. Bowen for Justice of the Peace for Precinct 3.

February 7 is the deadline for filing for the primary elections to be held May 7. In addition to the above county positions up for election this year the post of County Treasurer and the County Commissioners in Precinct 2 and Precinct 4 will also be on the ballot.

Most Firms To Close Saturday

The majority of the retail merchants will close Saturday for New Year's Day with Dollar Day set for Monday, January 3.

The banks will also be closed Saturday but remaining open until 3 p.m. Friday afternoon. The Post Office will also close Saturday and there will be no mail deliveries on that day.

Other Federal offices, such as ASCS will be closed Friday in addition to Saturday while the County offices will remain open until 5 p.m. Friday and be closed Saturday as usual.

The City offices will close at noon on Friday for the weekend.

be a fine day for football, and one when Mom can't get Dad away from the 'One eyed monster'.

Shortly after the kids return to school, the Wildcats of LHS will enter into district play on the hard wood court, we hope the fans and people of the area will support our basketballers in the manner they deserve.

Coach Bob Martin has done a fine job with the hoopsters and it is possible they can go along way in district play, but they need the support of the community, let's not become a one sport town, we need to show these young men we are behind them all the way and give them our support at all times. We think our boys are capable of playing winning ball, and intend to support them to the fullest, won't you?

City Tax Receipts At \$76 Thousand

Clyde Glenn, City Tax Assessor-Collector, announced that \$76,990.47 in 1965 taxes had been received by his office through Tuesday.

The figure is approximately 44 percent of the total tax roll of \$174,454.50 and the percentage paid is almost the same as a year ago at this time.

Glenn reminded Littlefield residents that if they want to have their 1965 taxes apply to their 1965 income tax the taxes must be paid by December 31.

The city tax office will close along with other city offices at noon on Friday but Glenn stated that if the taxes which are mailed in have a December 31 postmark they apply to this year.

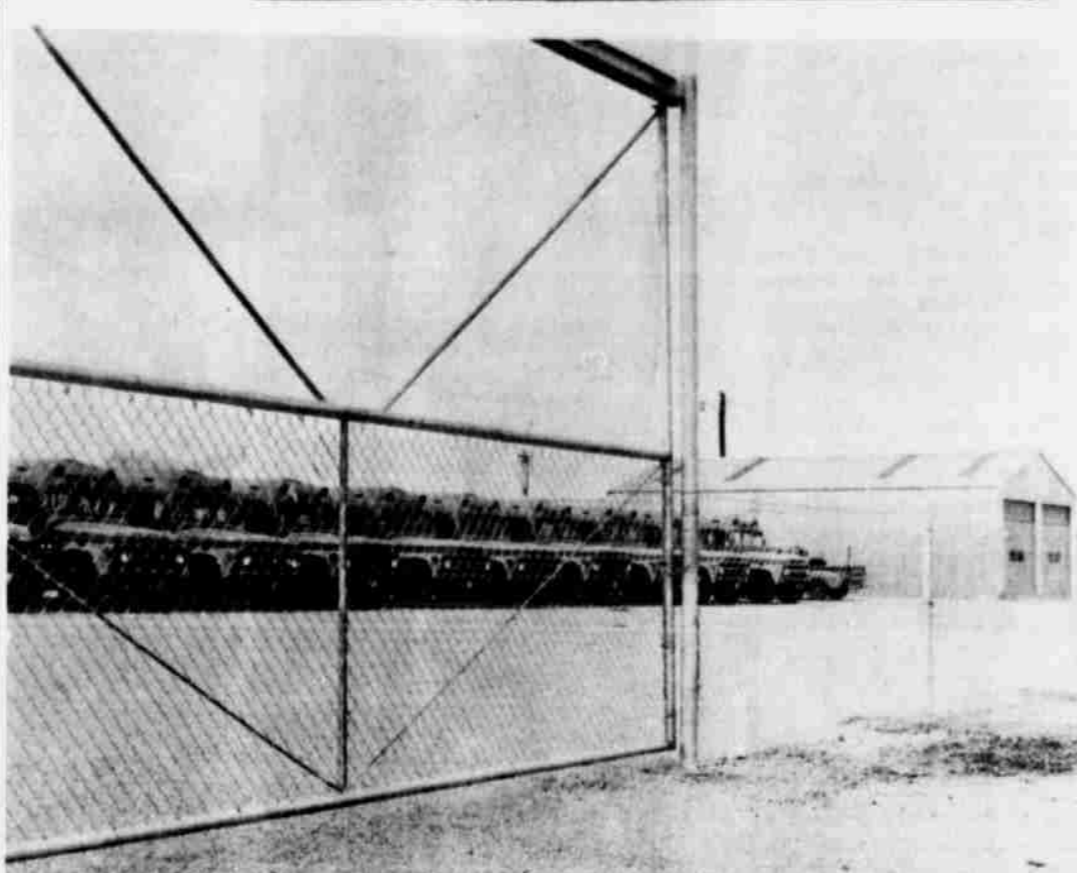
Fifty Five Killed Since Start Of Holiday Season

The Texas Department of Public Safety announced that through Wednesday morning at 10 a.m. fifty-five persons had been killed in automobile highway accidents since the beginning of Operation Deathwatch which started at 12:01 a.m. December 24 and will run through 11:59 p.m. January 2.

The total of 55 killed so far is exactly half of the estimated 110 deaths forecast prior to the start of the Christmas holidays.

A spokesman for the Department stated that it is feared that the 110 total will be exceeded. 'There were 51 killed over the four day Christmas holiday and we fear there will be at least that many killed over the next weekend.'

Col. Homer Garrison, head of the Department of Public Safety announced that every available patrolman will be on duty throughout the remainder of the holidays and that these men are on the road to help and serve the citizens. In addition some 150 extra personnel from other DPS uniformed services will also be on duty.



NEW BUS FACILITIES -- Construction of a new shop, paving of the parking area and the erection of a chain link fence has been completed for the busses operated by the Littlefield School system. The facilities were constructed to replace the former bus shed which was blown down during a windstorm last summer.

Annual Baby Derby Set For First 1966 Arrival

The first 1966 baby born in Lamb County has a real welcome waiting for him or her from 13 Littlefield business firms in the annual Leader and News First Baby Derby.

He or she as the case may be will receive gifts ranging from an ambulance triphome to cases of baby food, 15 dozen eggs, infant seat, baby sets and many other fine prizes.

The father and the mother will not be forgotten as both the parents will receive a gift from a Littlefield merchant.

The winner will be the first baby born in Lamb County after the start of the New Year at 12:01 a.m. Saturday morning. The time certified on the hospital or doctor's record will determine the first 1966 baby. The first baby of the New Year will have to arrive early to beat the record set last

year when the first 1965 baby arrived just seven minutes into the new year. She was Shonda Lynn Nuttall, daughter of Mr. and Mrs. Leroy Nuttall, Route 1, Amherst.

Hospitals in the county will be checked by the Leader and News starting New Year's Day, but parents are invited to enter the birth of their child to be sure, and especially in the event of a non-hospital birth. Entries can be mailed in to the Leader or News with the deadline being 5 p.m. January 4.

Firms participating in the Baby Derby are: Furr's Super Market, the Prescription Shop, Renfro Bros., Hammoms, Slow Grissom Gulf, C & O Cleaners, Chisholm Floral, Plains Egg Producers, J.C. Penny Co., Anthony's, Jones Jewelry, Littlefield Steam Laundry, Haydon Shoes and the Leader.

District Court Sets 20 Cases

Twenty civil cases are listed for trial before a jury in the District Court of Lamb County starting at 10 a.m. Monday, January 3.

Ten of the cases on the court's docket involve insurance companies including several injury claims.

Other cases on the list to be presented before District Judge Pat Boone Jr., also include several in connection with property claims, while several of the cases on the docket will probably be settled out of court prior to coming to trial.

Nineteen Littlefield residents are on the list of sixty petit jurors summoned to appear at the District Court at 1:30 p.m. Monday to hear the cases.

The complete list of the petit jury is on page 8 of today's Lamb County Leader.

ASCS Has Disbursed \$3 Million For Cotton

With the cotton harvest approximately seventy-five percent complete, Lamar Aten, head of the local ASCS office, stated that nearly \$3,000,000 had been distributed by his office to farmers who had put their cotton in the loan bank.

'The percentage of farmers putting their cotton harvest in the loan this year is running almost ninety percent, while only approximately five percent has been put in the loan the last few years,' stated Aten.

Our office has already processed over 250 loans with the

loans ranging between 40 bales and up to as high as 170 to 200 bales of certain farms,' continued Aten. 'We have been averaging disbursing payments of about 600 bales a day and at present we are running about three days behind in disbursements.'

'If the weather will remain dry and the remainder of the cotton is harvested within the next two weeks, we expect to disburse well over \$4,000,000 by the end of January because most of the cotton now coming in is expected to be put in loan,' Aten said.

Mahon Files Protest On Feed Grain Program

Congressman George Mahon of Lubbock has filed an official protest with Secretary of Agriculture, Orville Freeman, as to the administration of the 1966 Feed Grain Program. The Congressman charged that the Secretary had broken faith with members of Congress who had been assured that the program would be administered in such a manner as to 'maintain farm income' of producers if Congress would give wide authority allowing for administrative decisions in view of the rapidly changing world situation. Specifi-

cally, Mahon pointed out expected income losses to Southwestern grain sorghum producers ranging from \$3 to \$12 per acre. Information as to the Congressman's action came in the form of a telephone call directly from him to the Grain Sorghum Producers Association whose officers had just returned from Washington where actual case studies proving the lower income position of sorghum growers had been presented to USDA officials as well as to Administration farm policy advisors, members of Congress and Washington staff of other farm organizations.

Suspect Charged In Shooting

James W. Tolbert, 34, Littlefield resident is free on \$2,000 bond after being picked up by Lamb County sheriff officers following a shooting last Saturday evening.

Tolbert was arrested in connection with the shooting of 24 year old Lubbock negro, Bernard Presley at the farm of Kenneth Heard about two miles east of Littlefield.

Presley, who received a gunshot wound in the lower abdomen during the incident is listed in fair condition at Methodist Hospital in Lubbock where he was transferred Saturday night. He was shot with a .22 caliber rifle.

The Grain Sorghum Producers Association's efforts and those of Congressman Mahon follow an earlier announcement by the Secretary of Agriculture that provisions of the 1966 Feed Grain Program were being altered.

A Year Of Action And Accomplishments

the nation, and the week, people are reflect on the accomplishments of 1965. Here in Lamb County our reviewing the almost as one of great and accomplish- the area has shown many areas.

ing days of 1965 found us looking forward to work, as the thing on the horizon to be the pending improvement project, tentative approval of 1964. field took the lead in the year in which to be done and then do them, on their

field headline, of the big downtown project, the plan- problems, the changes attitude of the people, spirit of cooperation throughout the phase.

cases the year did not expectations, in ot- the year could be sum- the beginning of a for the area as a new year began. This unity to carry on into year, and will be the force behind the prog- community.

JANUARY the new year broke, the county had turned bales, slightly be- amount for the year sufficient to give a stable basis for the

Nuttall, born on Janu- to earn honors as the of 1965. recorded its first tic facilities on Jan- Mrs. Virginia was killed in a two car near Olton. through the month the county reported de- reached \$40,000,000. amount. The re- surge of optimis-

In the first week of March the City Council, with the approval of property owners and the entire city, awarded the contract for the remodeling of downtown to Bledsole and Caldwell, thus setting the stage for the commencing of construction in early April.

Tragedy entered the picture in March as the city recorded its first fire death in nine years, when a fire in his trailer home took the life of Coy Eugene Smith. Eight days later the city recorded two more fire deaths, as an early morning blaze took the lives of two children, in an apartment house on West Second.

In mid-March the county Historical Society and the Texas Highway Department unveiled a bright new marker, on the Highway 84 by-pass, in honor of Major George W. Littlefield.

The second of the year's two livestock shows found the sale of animals netting their owners over \$11,000.00.

APRIL In the first week in April, planners of the downtown improvement project were set back, when an out-of-town property owner filed a suit, stalling the start of the construction of the project, which was to have gotten underway on April 9th.

In the early part of the month, voters turned out to elect J.E. Chisholm, mayor, and Paul McCormick and Chester Harvey, councilmen. Early in the same week voters returned Buster Owens and J.D. Smith to the school board, in elections that drew little interest.

As far as the project was concerned, April was the big month as construction was started on April 21st, amid many congratulatory messages from state and federal officials.

April found the announcement of a new convalescent home for Littlefield, as Dr. I.T. Showell and his mother, Mrs. I.T. Showell, Senior, announced their plans to build a 48 bed home, on the Bula Highway.

MAY Following the beginning of construction on the project, things in the city began to take

on a new look as businesses along the main section of the city started private remodelings and rebuildings. One of the first to announced was the Littlefield Post Office which started an interior remodeling and exterior landscaping program which will be completed prior to the year's end.

The second traffic death of the year in the county took place in May as a resident of Canyon was killed in a one vehicle accident, on Highway 385 north of the city.

May saw the Rev. John Hill assume the presidency of the Board of City Development, and the BCD make plans to support the efforts of the downtown project.

In the last week of the month, schools of the area turned out one of the largest graduating classes in history, as 299 seniors received their diplomas.

JUNE June was a busy month as the city prepared to enter the final six months of the year. The first big occasion was Lamb County Electric's announcement of plans to build a \$462,119 complex in the southern part of the city.

June was the month the council hired Richard Bean as city manager, thus filling the post which had been vacant since Harrison resigned and moved to New Mexico.

In mid-month the crops of the area received the heaviest rains, since 1956, as rain fell in some areas measured up to 11 inches. Littlefield recorded a rain fall of 7.8 inches in a two day period.

The Littlefield School District began the search for a new Superintendent in June, following the resignation of Glenn Reeves, who had held the post for five years. Along the same lines the school board heard a report that the teachers of the system would share in a \$88,000 pay boost, as the results of a state-wide increase for teachers.

June was the month for tornadoes and the Lamb County Commissioners Court took a lesson from the experience of Hale Center, to set the wheels in motion for the start of a

civil defense organization, that provides protection for residents of the area, in the event the county ever suffers any type of disaster.

JULY Building permits for the city reached \$1 million in the closing days of June, due largely to the start of construction on the new Lamb County Electric building, and an increase in residential buildings.

An era ended in June as I.T. Showell and Mrs. Roy L. Garris passed away, both long time residents were active in civic and community affairs, and both had toiled long for the growth and advancement of Littlefield.

The long awaited Highway 84 by-pass was begun in July, looping the city for 6.8 miles, beginning 1.5 miles east of the city limits and ending about 2 miles west of the boundary on 84.

The merchants of the city went all out in the first sidewalk sale in many years as the customers responded to make it one of the most successful events of the year.

The quest for a new school superintendent ended late in the month when Paul Manning was hired to fill the post after it had been vacant for a little over a month.

AUGUST The mid-summer lull set in about the first of the month as many of the city's residents took vacations, and activity slowed to a snail's pace.

The headline story of the month was the opening of the new Security State Bank building, which had been started in March. The new home of the bank was built at an estimated cost of \$260,000.

Following the employment of Manning as school superintendent, in July, the board named Beryl Harris to succeed Pirkey as high school principal, and Herbert Hoover to take over as Elementary principal.

SEPTEMBER The plans and dreams of the entire community came to a climax on the 9th of the month when the remodeled downtown was formally re-opened and dedicated with a three day celebration featuring visits from the

state and federal officials as well as Paul Haney, the voice of NASA, nationally known radio commentator Paul Harvey, and Lee Herring, well known speaker who made the address on agriculture day. The event was heralded with nation-wide publicity and was covered by both major news wires as well as area papers and television stations.

In the opening days of the month, over 325 residents and former residents of the city got advance looks at the project as the annual pioneer reunion found the early resident of the area attending the gathering to relive olden times.

The cotton harvest was launched in September, as Ronnie Fisher hauled in the first bale, from his farm west of the city.

The council, at the second meeting of the month, approved a 1965-66 budget of \$561,550 to operate the city.

Encouraged by repeated inquiries from industrial prospects, the Chamber of Commerce started a labor survey to gather information to be used when talking with prospective industries about a Littlefield location. The survey, a success in every way, revealed the immediate area offers over 2,000 potential workers for industrial expansion.

Pressed for additional space, the ASCS office moved into new quarters, in the later part of the month, as their volume continues to increase as the crops and farms increase.

OCTOBER The selection of Littlefield as a finalist in the 1965 All-America City competition, marked the month as one of the most memorable in recent history, as citizens began to take a renewed pride in their community, and expressed their pleasure at the selection. The presentation before the All-America jury was made by an eight man delegation early in November, selection of the cities is expected in the early days of 1966. But all residents took great pride in reaching the finals, and have continued to

spread the word of Littlefield's accomplishments.

Herbert Dunn, County Tax Assessor-Collector said his office mailed a near record \$494,000 in tax bills to residents of the county as the tax roll showed a marked increase, with a big gain in oil revenue.

Mrs. Olene Gibson, was selected the 'Teacher of the Year' at the annual Rotary teachers appreciation banquet, held in the Community Center.

Tragedy once again entered the picture as six residents of the Whitharral community lost their lives in a truck-car crash on the outskirts of Lubbock. The six, five women and a child were enroute to a church meeting in Slaton when the tragic accident occurred.

John D. Smith of Littlefield was honored in October by being named president of the Plains Cotton Growers, an organization which has, for many years, helped the Plains cotton grower, both in the field of marketing and insect control.

The bumper grain harvest was all but wrapped up, as the elevators of the area recorded over 175 million pounds of grain in storage, and out of the fields. This fine yield brought about increased business conditions which carried through the remaining days of the year and was followed by increased activity in the cotton harvest.

Another pioneer of the area passed from the scene when James Harvey Lee, long time Littlefield banker, succumbed after a long illness.

The council, concerned with the expansion of the city, began a study of the sewage facilities, looking to the time the city could undertake the construction of a new sewage treatment plant, adequate to the city's needs.

NOVEMBER The eleventh month of the year was filled with community activity, building, openings and announcements as the new convalescent home officially opened their doors the first of the month.

One lane of the new U.S. Highway 84 by-pass, Marshall Howard Blvd., was opened to traf-

fic on the 15th. . . two days later the city recorded its first traffic fatality of the year as three persons lost their lives at the intersection of the by-pass, and the Bula Highway, touching off a protest by citizens for additional safety measures at that intersection.

A seven man delegation left November 7th, by air, to present 'The Littlefield Story' to the All-America City jury in St. Louis. The city is continuing to await word of the jury's selection, expected to be made public early next year.

The city council, late in the month, appointed two committees to study the need and financing arrangements for low cost housing, in the low income sections of the city.

DECEMBER The city moved into the final 31 days of the year amid a flurry of activity as the cotton harvest began to pick up steam, and the cash registers started to sing Christmas tunes, while merchants of the area enjoyed one of the finest buying seasons in several years.

The first snow of the year fell on December 15th, and stayed around long enough for the people to get the idea that winter was here at last. Prior to the snowfall the area had basked in spring-like weather as the temperatures remained in the 70's and low 80's much of November and December, making for ideal harvesting conditions.

As the month drew closer to the final days of the year and Christmas passed, the residents of the area slowed in their tasks and enjoyed a brief rest before embarking on the new year and all it holds in store.

Now as the shades of the old year begin to fall, the area looks into the future with anticipation of greatness, as the work begun in 1965 carries over into '66, and the spirit of unity develops into fullblown growth. Already many resolutions have been made, others will be, but as we watch the silver lined clouds gather in the distance, Littlefield is poised on the threshold of prosperity, brought on by the endeavors of its citizens..... Happy New Year.

Thaxton-Bankston Vows Solemnized Here Tuesday

Miss Karen Sue Thaxton and William Lee Bankston exchanged double ring wedding vows at 7 p.m. Tuesday in the First Baptist Church with the Rev. Robert D. Longshore, minister, officiating.

Parents of the couple are Mr. and Mrs. Ewing C. Thaxton, 1022 West 9th Street, and Mr. and Mrs. A.J. Bankston, Route 1.

Presented in marriage by her father, the bride wore a gown of white peau de soie designed with a portrait neckline and long sleeves tapering to petal points at the wrist. The bodice front and bell shaped skirt were lavishly embellished with alencon lace motifs embossed with hand sewn seed pearls. The double chapel length train was bordered by Venice lace attached under a Parisian bow at the natural waistline.

Her veil of silk English illusion was supported by a pearl trimmed rose cluster and petals of peau de soie. Her bouquet was a cascade arrangement of frenched carnations topped by a white orchid.

Traditionally for something

old she wore a wide gold banding that belonged to her great-grandmother, the late Mrs. Jennie Parker. For something borrowed and something blue she borrowed her mother's blue wedding garter. Something new was her wedding attire. She also had a sixpence in her shoe, a gift of her aunt, Miss Mary Louise Thaxton, Grand Prairie.

Miss Melaine Cantrell attended the bride as maid of honor, Miss Lana Burkett of Andrews was bridesmaid and Mrs. Barry Armes of Littlefield, cousin of the bride, was bridesmatron.

The attendants wore royal blue floor length taffeta dresses designed with wide oval neckline and elbow length sleeves. The 'A' line overskirt, attached under a fold, marked the empire waistlines. They were accented in the back by simulated water-tau panels. Their headpieces were double circulets finished by a front bow, and matching veils of tulle. They carried tapered hand corsages of white frenched spider mums.

Miss Woody's dress was identical to those of the honor attendants.

Miss Ann Farmer presented traditional organ selections and accompanied Miss Sue Hebel, soloist, as she sang 'Because' and 'Whither Thou Goest'. David Smith of Fort Stockton was best man. Groomsmen were David Loyd, Boyer, cousin of the bride, and Charles Heathman. Guests were seated by Robert Bolton and Jimmy Palmer.

The bride's mother wore a winter pastel pink wool and silk crape suit with matching accessories and a corsage of red roses. The mother of the bridegroom wore a pastel blue wool dress with matching accessories and pink rose corsage.

A reception in the church parlor followed the ceremony. Mrs. Ben Estes of Canyon, cousin of the bride, served the wedding cake. Presiding at the punch bowl and serving in the house party were Misses Connie Keeling, Sandra Smith, Elaine Bridges, Roxy Armstrong, and Pat Martin.

Miss Joann Cooke, Little Rock, Ark., cousin of the bride, presided at the guest register.

For travel, the bride chose a moss green raw silk two-piece suit trimmed with Belgium lace cuffs, and brown lizard accessories. Her corsage was the orchid from her bridal bouquet.

Both Mr. and Mrs. Bankston

are graduates of Littlefield High School. The bride is attending Texas Tech, majoring in elementary education. The bridegroom is attending South Plains College in Levelland and plans to transfer to Texas Tech's school of engineering at mid-semester. He is employed by Southwestern Public Service Company.



MRS. WILLIAM LEE BANKSTON nee Karen Sue Thaxton

Group Enjoys Caroling And Party

A group of friends gathered last Tuesday night at the home of Mr. and Mrs. Buster Owens and family. They went to the Hospitality House, Knights Rest Home and the homes of some friends to sing Christmas carols.

Following the caroling they went to the Rhea Bradley home where they enjoyed fellowship and refreshments of bambino pizza, dips, popcorn balls, cookies, assortment of Christmas candies, coffee, spiced tea and hot chocolate.

Persons attending were Mr. and Mrs. John Craig and children, Lubbock; Mr. and Mrs. Gene Hanlin and family; Dr. and Mrs. Carl Nowlin and fam-

ily; Mr. and Mrs. Dan Fench and family; Dr. and Mrs. D.J. Stafford and family; Mr. and Mrs. Rhea Bradley and family; and Mr. and Mrs. Buster Owens and family, Trudy and Geoff-green Grizzle and Patsy Russell.

CITY BITS

Holiday guests of Mrs. D.C. Lindley have been her children, Mr. and Mrs. D.C. Lindley Jr., Davida and Armetha of Canyon; Otho Lindley, Lubbock; Mrs. Evelyn Curb, Albuquerque, N.M.; Mr. and Mrs. R.G. Wilson, Lindell, Darrell and Preston, Muleshoe; Mr. and Mrs. Spencer McCarty, Daniel and Ronald, Plainview;

Mr. and Mrs. Troy Kesey, Henry and Toressa, Petersburg.

Holiday dinner guests in the home of Mr. and Mrs. J.E. Wade and girls south of Littlefield Sunday evening were Mr. and Mrs. Elmer Kimbell, Hereford; Mr. and Mrs. Lee Holtkamp, Mr. and Mrs. Walter Hill and Bill Hill, all of Littlefield.

Mr. and Mrs. Monte Hulse and

daughter Kristin spent the holidays with her parents, Mr. and Mrs. W. E. Amherst, Littlefield.

Norman Wuthrich, parents, Mr. and Mrs. Wuthrich and others here during the Christmas holidays. Norman is a teacher in the Kan. schools.

LETTERS TO THE EDITOR

To the Editor:

Now the Christmas dinners are eaten, the toys played with, and the tree ornaments packed away again, but before we plunge into the tasks of 1966, we would like to express our thanks to the people of this community who so generously supported the Salvation Army's Christmas work.

Your contributions put Christmas dinner on the table and presents under the tree--sometimes it put the tree there too--for 66 local families with little means. But they did more than that. They helped to put a smile on 239 children's faces on Christmas day and renewed faith in parent's heart. They helped to bring the joy of the holiday and courage for the coming year to many of the loneliest among us.

We wish you could have been personally present to see the difference that the Salvation Army makes--a difference that depends upon the support of citizens like yourself, citizens who care.

We want you to know that many persons have had a happier holiday and have found strength to face their problems through your generosity to the Salvation Army--and since they cannot thank you in person, we are doing it for them. To all those who helped us, many, many, thanks. May God bless you and yours in 1966.

Sincerely yours,
Lt. Harvey Harwell

Pratt's Famous After Christmas 1/2 PRICE SALE

Come And Buy For Next Year At Big Savings, Hurry As Quantities Are Limited

ENTIRE STOCK OF CHRISTMAS DECORATION

- LIGHTS
- WRAPPING PAPER
- TREE BALLS
- PLASTIC GARLANDS
- CANDLES
- SNOW

ALL CHRISTMAS CARDS ON SALE 1/2 PRICE

PRATT'S JEWELRY

HAPPY NEW YEAR!

OUR BIG NEW YEAR'S FIVE SPECIAL

Laff Along With TOMMY HOLDEN As The "Traveling Salesman" In "WHATS UP FRONT"

A GIRL-O-RAMA IN TECHNI-COLOR

FRIDAY 10:30 P.M. ONLY

PALACE

NOW SHOWING THURS-FRI-SAT

Julie Andrews & Dick Van Dyke

Walt Disney's Famous "MARY POPPINS"

Don't Miss This Great Show At Popular Prices

50¢ Children \$1 Adults

PALACE

- 1966 Calendar Refills
- Statements
- Letter Heads
- Envelopes
- Office Forms
- Ledger Sheets
- Ledger Binders
- Income Tax Needs
- Inventory Sheets
- Payroll Records
- Ideal Bookkeeping System

HOW IS YOUR SUPPLY ?

CALL 385 - 4646

A&B Office Supply

COMMERCIAL PRINTING

PLAYTEX GIANT JANUARY SALE!

save up to 20%

SAVE \$1.00
"Living" Stretch Bra only \$3.95, reg. \$4.95
Adjustable stretch straps; sheer back and sides. 32A-40C ("D" sizes \$1.00 more)

SAVE \$1.00
"Living" Long Line Stretch Bra only \$6.95, reg. \$7.95
Adjustable stretch straps; sheer back and sides. With or without 2-inch waistband. Also 3/4 Length Long Line only \$6.95, reg. \$7.95 32A-44D

SAVE \$1.00
"Living" Long Line Bra only \$5.95, reg. \$6.95
Bias cut side panels. 32A-44D
Also 3/4 Length Long Line only \$4.95, reg. \$5.95
32A-44C ("D" sizes \$1.00 more)

SAVE \$1.00
Playtex made with Lycra® Girdles only \$5.95, reg. \$6.95
Hold-in power that won't wash out--machine washable. Girdle only \$5.95, reg. \$6.95; Panty only \$6.95, reg. \$7.95. Long Leg Panty (shown) only \$8.95, reg. \$9.95

SAVE \$1.00
Golden Playtex Girdle only \$8.95, reg. \$9.95
Cloth lined with panels. Girdle and Girdle only \$8.95, reg. \$9.95; Zipper and Zipper Panty only \$10.95, reg. \$11.95

AS SEEN ON TV

Ware's

Penneys
FIRST QUALITY

SPECIAL 12 NOON OPENING THURSDAY

EVERY DEPARTMENT BURSTING WITH SPECIAL BUYS!

EXTRA SALES
PEOPLE
TO HELP YOU

• CLEARANCE

• EOM SAVINGS

• AFTER CHRISTMAS MARK DOWNS



SLEEPERS
Reduced

SIZES 1 - 4 REG. 2.19

\$4 FOR \$5

3 PAIRS REG. 2.49

NOW **4 FOR \$6**



5-Year Guarantee Acrylic
ELECTRIC BLANKET

ORIGINALLY \$20
DUAL CONTROL
80X84 FULL

\$15

Soft, fluffy, high-loft Supernap. Machine washable. Just dial desired warmth with neat stand-up control. Nylon bound, snap-fit corners.

**MANUFACTURER'S
CLOSE-OUT
DALLAS DRESSES**

• MANY STYLES • MANY COLORS
• MANY FABRICS

TAKE YOUR PICK AT ONLY

SIZES 10 TO 20

ORIGINALLY 6.98 TO 12.98

... select from shifts, shirtwaist, sheaths
in beautiful prints and solids. Many colors,
many textures.

4⁸⁸



**TOWNCRAFT JACKETS,
PILE-LINED CORDUROY!**

6⁸⁸ \$8^{6 to 12} \$10^{12 to 20}

A wale of a tale in thickest cotton corduroy, lined in Orlon® acrylic pile, cotton-backed. Prep and jr. boys' models have zip-on hoods, knit collars and cuffs, zip-fronts. Cadet boys' knee-length style has leather buttons, side vent tabs. All outstanding Penney values.



**Men's pile-lined
corduroy jacket**

\$11

Cotton corduroy makes a wide wale of a jacket! Warm Orlon® acrylic pile, cotton-backed, body liner; quilt-lined kicker and sleeves. Bulky knit cotton/nylon collar and cuffs. Self-yoke insert, button tab collar. 2 slash pockets. A Penney-great value! S-M-L-XL.

<p>DIAMOND DOT TOWELS ORIGINALLY 98¢ NOW 2 FOR \$1 ORIGINALLY 59¢ NOW 3 FOR \$1</p>	<p>WOMENS NYLON Robe & Gown Set SEVERAL COLORS \$5</p>
<p>GIRLS QUILTED ROBES ORIGINALLY 4.98 & 5.98 NOW 3⁴⁴</p>	<p>BABY CRADLE OR CRIB MAPLE FINISH ORIGINALLY 24.95 NOW \$18</p>
<p>GIRLS SWEATERS ENTIRE STOCK REDUCED ORIGINALLY 2.98-3.98-4.98-6.98 \$2 - \$3 - \$4</p>	<p>GIRLS SWEATER JACKETS ORIGINALLY 4.98 NOW 3⁴⁴</p>
<p>INFANT & GIRLS KNIT CAPS ORIGINALLY 1.98 & 1.50 NOW 88¢ & 1.44</p>	<p>BOYS Coat Style Sweaters ORIGINALLY 7.95 NOW 4⁸⁸</p>

STOREWIDE CLEARANCE

<p>MEN'S FUR LINED GLOVES ORIGINALLY 3.98 NOW \$2</p>	<p>MEN'S CORDUROY PANTS ORIGINALLY 4.98 NOW 3⁸⁸</p>	<p>WOMENS FUR LINED GLOVES ORIGINALLY 3.98 NOW \$1</p>	<p>WOMENS REVERSIBLE HALF SLIPS ORIGINALLY 2.99 NOW 1⁴⁴</p>
<p>MEN'S REVERSIBLE VESTS ORIGINALLY 4.98 NOW \$3</p>	<p>MEN'S BRUSHED FLANNEL SHIRTS NOW \$2 & \$4</p>	<p>WOMENS BRUSHED Bemberg Pajamas ORIGINALLY 3.98 NOW 2⁶⁶</p>	<p>WOMENS KNEE SOX ORIGINALLY 1.35 NOW 88¢</p>
<p>MEN'S SWEATERS ORIGINALLY 11.95 & 8.95 NOW \$8 & \$5</p>	<p>BOY'S FLANNEL PAJAMAS ORIGINALLY 1.98 & 2.59 NOW 1⁶⁶</p>	<p>WOMENS TEXTURED LACE NYLON HOSE ORIGINALLY 1.25 & 98¢ NOW 2 PAIR \$1</p>	<p>WOMENS Laminated Coats WITH FUR COLLAR ORIGINALLY 19.88 NOW \$15</p>



A HISTORICAL MARKER in honor of Major George W. Littlefield was unveiled on the Highway 84 by-pass in March and the ceremony was attended by relatives and several hundred persons.



Three persons were killed in the city's first traffic deaths of the year only two after one lane of U.S. Highway 84 by-pass was opened to traffic.



TRAGEDY -- Two small children were burned to death in the apartment house fire in March which followed the first fire death in Littlefield in eight years.



The first bale of a hoped for 200,000 in the County arrived the gins in September as the latest freeze in many years delayed the cotton harvest.

Pictorial

Review

Of 1965



THE SIDEWALK SALE was in August and the merchants and area residents enjoyed both the sales and the entertainment.



THE RAINS CAME -- In June of 1965 the County received the heaviest rain in years as amounts ranging from five up to nearly eleven inches fell and drylands in the County became lakes.



The gleaming new Security State Bank opened its doors in September as the Mayor presided over the ribbon cutting ceremonies.



Plans were drawn up early in the year for the construction of the Hospitality Hotel located on the Bula Highway and the buildings were completed and ready for occupancy in the fall.

Happy New Year BARGAINS FROM Piggly Wiggly!

HI-C, PINEAPPLE & GRAPEFRUIT, APPLE, GRAPE, ORANGE, ORAIGE & PINEAPPLE & FRUIT

Fruit Drinks

3 89¢

46 OZ. CANS

- AZARS HALVES & PIECES
- PECANS 10 OZ. 59¢
 - IDEAL GRADE A MEDIUM EGGS DOZ. 49¢
 - HUNT'S 20 OZ. BOTTLE CATSUP 4 FOR \$1
 - VAL VITA NO 2 1/2 CAN. PEACHES 4 FOR \$1
 - BETTY CROCKER 22 1/2 OZ. BOX BROWNIE MIX 47¢



TURN YOUR MEAT INTO A FEAST! SERVE PIGGLY WIGGLY MEATS!

CHUCK ROAST

USDA CHOICE, AGED, HEAVY BEEF, VALU-TRIMMED

49¢

POUND

SIRLOIN STEAK

89¢

POUND

- U.S.D.A. Choice, Aged, Heavy Beef, Valu-Trimmed, Semi-Boneless
- RIB ROAST LB 89¢
 - HORMEL SLICED BACON 2 LB. PKG 1.99
 - Cocktail Tradewinds SHRIMP 3-4 oz. Jars 99¢

- Fully Cooked, Hormel's Cure "81"
- HAMS LB 1.49
 - JOWLS LB 33¢
 - LUNCHEON MEAT 3 FOR \$1

- STEWED FLAVORS GELATIN
- NO. 10 6 3 OZ. BOXES 69¢
 - SOLID PACK TOMATOES NO. 300 CAN 23¢
 - POTATO JUICE 32 OZ. CAN 31¢
 - HEART, BACON OR BEEF FOOD 2 16 OZ. CANS 35¢
 - NO. 10 BAK & BEANS 4 2 1/2 CANS \$1
 - MONTE LI SAUCE 12 OZ. BTL. 31¢
 - STEWED TOMATOES 2 NO. 300 CANS 49¢

C&H, HOLLY, IMPERIAL

SUGAR

5 49¢

LB. BAG

We Will Be Open Sat. NEW YEARS DAY

ALL CARDS GOOD FOR FREE GREEN STAMPS

WIN UP TO \$1000.00 IN PIGGLY WIGGLY'S CASH CLUB! EVERYONE WINS!

GET YOUR FREE CARD TODAY!

SATURDAY JAN. 1ST. LAST DAY FOR CASH CLUB CARDS - HAVE YOUR CARDS PUNCHED NOW

BLACK EYE PEAS

NO. 300 CAN 7 1/2¢

BLACK EYE PEAS CHEF PRIDE 1-LB. BAG 19¢

OLEO

2 1 LB..PKG. 29¢

GINGER ALE

RITE GOOD, NO DEPOSIT NO RETURN 28 OZ. BTL. 15¢

SPARKLING WATER RITE GOOD 28 OZ. BOTTLE 15¢

MIRACLE WHIP

KRAFT SALAD DRESSING

49¢

QUART JAR

- SOFTPLY. ASST. COLORS
- Napkins 60 COUNT PKG. 10¢
 - BONNE, HEAVY DUTY, 10¢ OFF GIANT Detergent 53¢
 - MORTON TWIN PACK 59¢ BAG Potato Chips 49¢
 - BORDEN, BELL, FOREMOST Egg Nog QUART 49¢
 - 3-MI NUTE, WHITE OR YELLOW Popcorn 2-LB. BAG 29¢

FRESH PRODUCE FROM PIGGLY WIGGLY!

APPLES

ROME BEAUTY, COOKING OR EATING

10¢

POUND

POTATOES

BUSETS ALL PURPOSE

25 69¢

LB. BAG

- HEALTH & BEAUTY AIDS
- JERGENS, REG. 1.49
 - HAND LOTION 16 OZ. 1.19
 - VAPORIZER REG 1.19
 - CONJESTAID LARGE SIZE 99¢
 - REG 95¢
 - BUFFERIN 60 COUNT 69¢
- FROZEN FOODS
- BREAD DOUGH 2 69¢
 - HILL-O-HOME Blackeye Peas 2 10 OZ. PKG. 49¢
 - STILLWELL Turnips & Greens 2 10 OZ. PKG. 29¢
 - UNDERWOODS Barbeque Beef 14 OZ. PKG. 79¢

ICE CREAM

PLAINS OR GLACIER CLUB

47¢

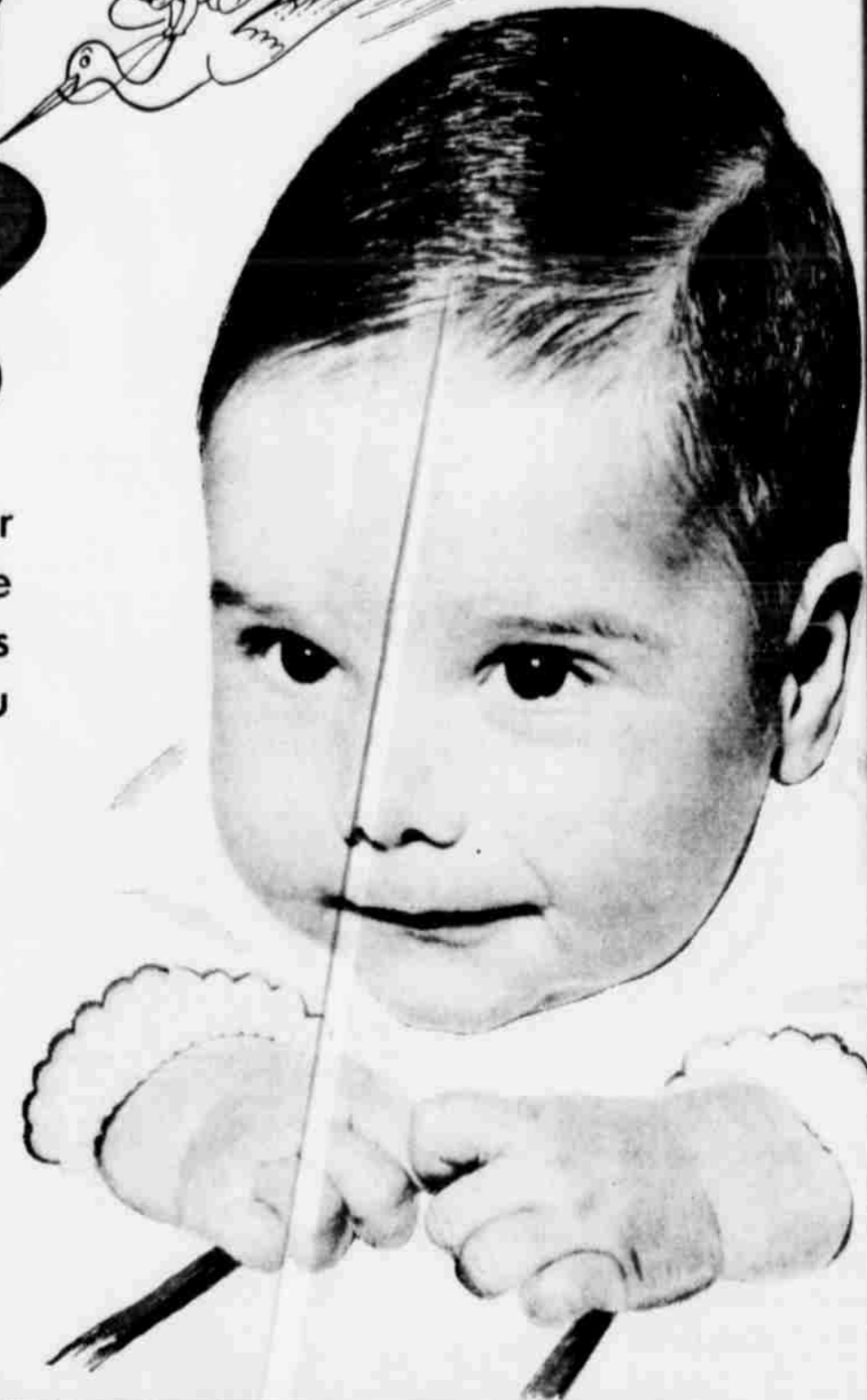
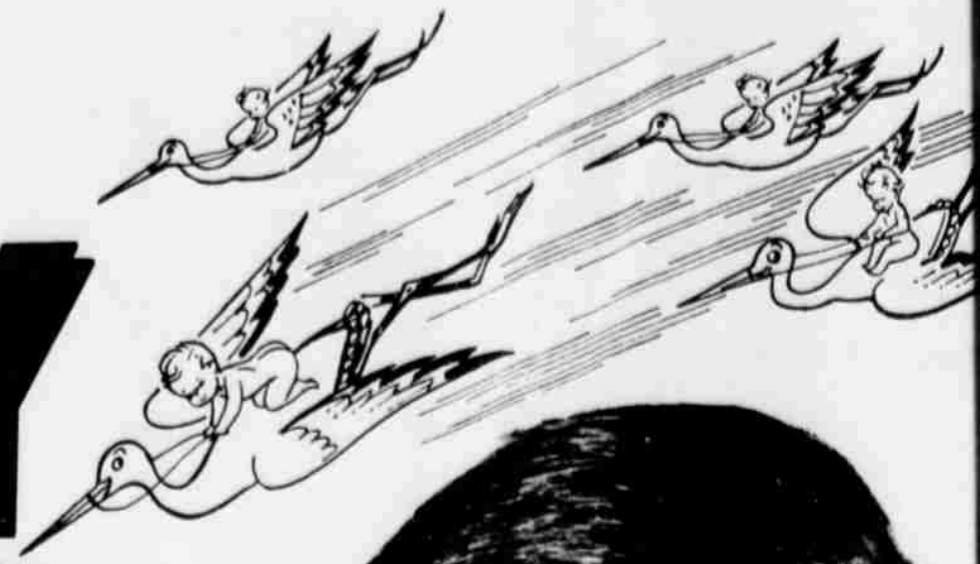
ASS'T. 1/2 GALLON

Lowest Prices... Greatest Variety... always at

Piggly Wiggly

THESE PRICES GOOD IN LITTLEFIELD DECEMBER 30TH. 31ST. 1965 JANUARY 1ST. 1966

Who Will Be the 1ST BABY of 1966?



Your guess is as good as ours . . . It really doesn't matter whether it's a boy or a girl . . . nothing but good luck is in store for the wee winner. Just look at the fabulous assortment of quality gifts he or she can receive. Don't put it off . . . In order to qualify you must register now.

PRIZES!



Calling all proud parents to be! The town's merchants wish the new baby lots of luck; that's why hundreds of dollars of valuable, practical and most wanted merchandise is being given away. Gift certificates will be presented to the lucky new parents. Don't miss out, enter now!



CONTEST RULES:

1. Baby must be born in LAMB COUNTY
2. Parents must live in LAMB COUNTY
3. Exact time of birth must be specified in writing by attending physician.
4. Deadline: JANUARY 4 by 5 P.M.
5. In case of tie, validated hospital records will be winning deciding factor.



<p>We're Happy To Supply The Little Winner With A Case of Heinz Baby Food Furr's Super Mkt</p>	<p>CONGRATULATIONS TO THE NEW PARENTS Our Gift Is \$2.50 In Our Famous Dry Cleaning Service C&O CLEANERS 628 FARWELL AVE. MR. & MRS. BILL FUDGE</p>	<p>Mother of the Winner Will Appreciate the Extra Convenience of Infant Seat A Gift From J. C. Penney Co.</p>
<p>BABY'S FIRST PRESCRIPTION Is Our Gift So the Little One Will Grow Up Strong and Healthy PRESCRIPTION SHOP</p>	<p>A Beautiful POTTED PLANT Will be Our Gift To The Mother of The Little Winner Chisholm Floral</p>	<p>To Little Mr. or Miss 1966 ONE DOZEN DIAPERS from our Gift Department Anthony's</p>
<p>WE ARE PROUD TO OFFER TO THE NEWEST BABY IN LAMB COUNTY 24 TALL CANS OF SHURFINE MILK RENFRO BROS.</p>	<p>For the Mother of The Little Winner - We Give 15 DOZEN OF THOSE DELICIOUS CAGED EGGS At Her Convenience PLAINS EGG PRODUCERS XIT CAGED EGGS AT YOUR GROCER 811 SELDON AVE.</p>	<p>Best Wishes - Our Gift From Our Baby Department 2-PIECE BABY SET JONES JEWELRY</p>
<p>FREE AMBULANCE SERVICE From the Hospital To Home in Lamb County HAMMONS FUNERAL HOME</p>	<p>RULES Mail All Entries To The Lamb County Leader Littlefield, Texas. Give Exact Time And Place Of Birth. Give Parents Name And Address. Deadline Is 5 P.M.</p>	<p>Congratulations! Our Gift To Mr. Or Miss 1966 of Lamb County \$2.50 Laundry Service Free LITTLEFIELD STEAM LAUNDRY AND LINEN SERVICE</p>
<p>For The Nervous Father We Give A Free CAR WASH & GREASE JOB SLOW GRISSOM GULF STATION</p>	<p>JANUARY 4, 1966</p>	<p>To The First Born Citizen in Lamb County, We Present A Pair of ACROBAT BABY SHOES HAYDON SHOES "Shoes for the entire family"</p>



A HEARTY HELLO TO THE FIRST BABY OF 1966!

HAVE A HAPPY NEW YEAR... EVERY DAY IN 1966

AT

Bake-Rite
SHORTENING
3-LB. CAN
59¢

PINEAPPLE-GRAPEFRUIT
DRINK
DEL MONTE
46 OZ CAN
29¢

HOLLY BEET
SUGAR
5-LB. BAG
49¢

FOOD CLUB-ALL GRINDS
COFFEE
1-LB. CAN **69¢**
2-LB CAN **137**



ICE CREAM

FAMILY PACK
ASSORTED FLAVORS
1/2 GALLON
47¢

PRESERVES

ZESTEE APRICOT,
PEACH, PLUM OR GRAPE
18 OZ. JAR
3 FOR \$1



BLACKEYE PEAS
RANCH STYLE
NO 300 CAN
9¢

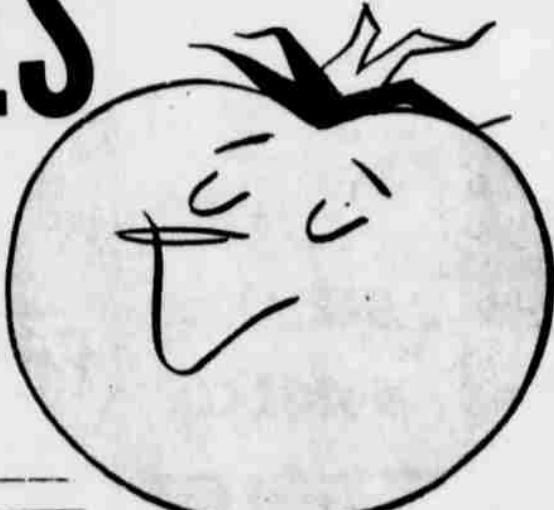


TIDE GIANT BOX
10¢ OFF LABEL **63¢**

PEANUT BUTTER
FOOD CLUB SMOOTH OR
KRUNCHY 18 OZ. JAR
49¢

- HUNTS SOLID PACK TOMATOES NO. 300 CAN **19¢**
- HUNT'S CATSUP 20 OZ BOTTLE **29¢**
- BURLESONS PURE EXTRACTED HONEY 12 OZ JAR **29¢**
- LIBBY'S IN HEAVY SYRUP FRUIT COCKTAIL NO. 303 CAN **27¢**
- BONDWARE PAPER PLATES 150 COUNT. PKG. **89¢**
- ELNA STRAWBERRY PRESERVES 18 OZ JAR **39¢**
- LIBBY'S IN HEAVY SYRUP PEARS NO 303 CAN **37¢**

TOMATOES
FRESH VINE RIPE
LB. **19¢**



- GREEN GIANT Asparagus NO. 1 CAN **29¢**
- GREEN GIANT Peas & Onions NO. 303 CAN **29¢**
- KLEENEX Napkins 50 COUNT PKG. **29¢**
- DELSEY Tissue 2-ROLL PKG. **29¢**
- DIXIELAND SWEET Chow Chow 16 OZ. **39¢**
- DIXIELAND HOT Chow Chow 16 OZ. **39¢**

- ENJOY FRESH FROZEN FOODS FROM FURR'S
- BLACKEYE PEAS**
TOP FROST. FRESH FROZEN
10 OZ. PKG. **2 FOR 35¢**
 - PIES JOHNSON PUMPKIN OR MINCE 20 OZ. **49¢**
 - LEMONADE TOP FROST. FRESH FROZEN 6 OZ. CAN **10¢**
 - Macaroni & Cheese MORTON. FRESH FROZEN 20 OZ. **39¢**

HAMS FARM PAC FULLY COOKED SHANK PORTION **65¢ 69¢**

ALKA-SELTZER 25'S **43¢**

HAIR SPRAY ARIMAID 14 OZ. SIZE **29¢**

- MOUTHWASH LISTERINE 3 OZ. **39¢**
- TOOTH PASTE CUE FAMILY SIZE **59¢**
- CREME RINSE BEACON 16 OZ. **49¢**
- HI HO CRACKERS 16 OZ. **43¢**
- WAX-TEX WAX PAPER 100 FT. **23¢**
- VERI THINS NABISCO PRETZELS 10 OZ. **39¢**

HAMBURGER PATTIES
TEN LARGE SERVINGS
READY FOR YOUR GRILL 2-LB. **89¢**

FRESH or SMOKED JOWLS
FOR YOUR NEW YEAR'S DAY
BLACKEYE PEAS
LB. **33¢**

ROUND BONE
Arm Roast
USDA INSPECTED FARM PAC
BLUE RIBBON OR CHOICE
POUND **59¢**



- PORKY PURE PORK SAUSAGE 2-LB. SACK **1.19**
- USDA INSPECTED FARM PAC BLUE RIBBON OR GRADED PRIME RIB ROAST CHOICE BEST FOR THE OVEN LB. **75¢**
- USDA INSPECTED FARM PAC BLUE RIBBON OR GRADED SIRLOIN STEAK CHOICE TOP CUT LB. **89¢**
- USDA INSPECTED FARM PAC BLUE RIBBON OR GRADED SIRLOIN STEAK CHOICE PINBONE LB. **79¢**



Fun Services In California
Landrum, 55, a resident of Lakewood, Calif., and a farmer in the Littlefield area, died December 29. Funeral services were at 10 a.m. Tuesday in Longview.
Services include his wife, daughter, Mrs. Jimmy Littlefield; one son, Landrum, Lakewood; five grandchildren; seven granddaughters; Cecil Campbell, Roy, Springfield, Ore.; Houma, La., Aubrey, Calif., Ray, Odessa, Tex., LaMarque, Tex., Littlefield.
Landrum was a farmer near Littlefield for a number of years before moving to California about 1950.

Mer Spade
Spade Dies
Funeral services for Mrs. Elizabeth Reddell, 96, resident of the Spade home, were conducted at 10 a.m. Monday in Idalou First Church. The pastor, Rev. Kendrick, officiated, assisted by the Rev. Glenn Reddell, minister from Littlefield.
Mrs. Spade was in Bridgeport, Texas, when she died Saturday. She had been a resident of Littlefield since 1955, moving from Spade. She was a member of the Tarrant County Fair and Country Club.
Survived by two daughters, Ada V. Reed, Idalou, and Mrs. Mary Hudson, Littlefield; two sons, Arthur and Ernest W. of Littlefield; three brothers, 15 grandchildren, including Mrs. Reddell, and seven great-grandchildren.

Don Thorp's
Thorpe Succumbs
Funeral services for N.B. Thorpe, 78, father of Don Thorpe, Littlefield, were held at 10 a.m. Wednesday at the home of Mrs. Dora Thorpe.
He died about 9 Wednesday morning in a Clovis, N.M., hospital. He had been a patient of the hospital after suffering a heart attack.
Funeral details were available at the time Wednesday.

WITTY BIT
Nancy Keeling is visiting in Alamogordo, N.M., where she is skiing at Cloudcroft. Nancy is the daughter of Mrs. Ray Keeling.

Donna Keeling, has been a rooming house in Dallas. Her parents, Mr. and Mrs. Keeling, during the holidays are a freshman at Tulane at Sophie Newcomb College in New Orleans.

Mrs. Wayne Barnett, of Wesley of Pasadena, died Tuesday. Her parents, Mr. and Mrs. Roy Barnett and Mr. Frank Royall and relatives during the holidays.

Saturday Nite
WRESTLING
RESUMES SATURDAY
Jan. 8th
AN EXCITING SHOW INCLUDING
BERRY FUNK
TEXAS FOOTBALL STAR
MEETING
Donnovan
PLUS
TOP WRESTLERS
SKATING
FRIDAY NIGHT AND
SATURDAY AFTERNOON
STARTS
Jan. 2nd
LITTLEFIELD SPORTS ARENA
JOHN USSERY

TRADE CLASSIFIED SELL BUY ADS LEA

LEADER and NEWS CLASSIFIEDS SELL!
 TO USE THEM JUST CALL **5-4481** AND ASK FOR AD TAKER

— CLASSIFIED RATES —

First insertion, per word **5c**
 Second insertion, word **4c**
 All Additional Insertions, word **3c**

Minimum Charge For First Ad run, \$1; minimum charge per subsequent insertion, 50c.

MONTHLY RATE, per word 30c
 (All editions of Leader and News, two copy changes monthly)

DEADLINES FOR INSERTION:
LAMB COUNTY LEADER
 10: a. m. Wednesday
COUNTY WIDE NEWS
 10:00 a. m. Saturday

● Help Wanted A-1

2 ladies in Littlefield in a vicinity to help with spring rush business. Car necessary. For more information call Stanley Home Products, Nava Melton, 385-5543. 1-27M

● Lost & Found A-4

LOST: male English bulldog, light tan, 75 lbs. Lost on December 25th. Reward, Phone 385-4016. 1-2M

LOST: tie clasp pin in gold shape of spur with F in center. Call 385-3685, Reward, 12-30W

● Personal Services A-8

ATTENTION WORKING MOTHERS! Would like to do regular baby sitting in my home. Will pickup after kindergarten or school. Phone 385-5496 or come by 103 E. 20th. 1-9S

● Card of Thanks A-10

A word of thanks to our many friends for the kindness shown us during my illness, for the beautiful flowers and cards received.
Mrs. A.E. Gardner

We wish to thank everyone for their thoughtfulness during the sickness and death of our loved one, Ida Bell Stephenson. To those who sat up, for the food and beautiful flowers sent, and to Rev. Longshore for his kindness and time spent with us, we say thank you.
Mr. and Mrs. A.E. Mann
The Leo Mann Family

● Apts. for Rent B-1

Nicely furnished apartment for rent. Panel ray heating system. Adults preferred. Phone 385-4460. TF-J

Now Renting

Furnished & Unfurnished 2-3 Bedroom Apartments.

- Carpeted—
- Refrigerated Air—
- Central Heat—
- Dish Washer—
- Disposal—
- Stove—
- Refrigerator

COLONIAL APARTMENTS
400-404 E. 22ND.
CALL
385-5393

● Houses to Rent B-3

FOR RENT - nice 2 bedroom house, fenced back yard, carpeted. Close in. Call 385-4785 or 385-3233. TF-F

Nicely furnished 2 bedroom, close to school, central heat. 401 Westside, Pete Shipley, phone 385-4526 or 385-4054. TF-S

FOR RENT: 2 and 3 bedroom houses. Plumbed for washers, garages and fenced yards. One 3 room, private bath, furnished. Bills paid. Call K. Houk, 385-3492 or 385-4830. TF-H

● Houses For Sale C-1

FOR SALE - 2 bedroom house. A bargain. L. Peyton Reese. TF-R

FOR SALE: new 2 bedroom ready-built house. Ready to move. Fully carpeted. Ceramic bath. See at Hutchins Building Supply, 100 Sunset, Phone 385-4287. TF-H

Pink and white frame and asbestos siding. Three bedroom, completely redecorated inside in white with new beige carpet throughout. \$150 down - \$62 monthly. \$8,200 Total. Jim Mills, Realtor, 385-5989, TF-M

● House Trailers C-2

FOR SALE OR TRADE - a '64 Detroit trailer house, 10' x 55', lots of storage space. Would like to trade for houseful of good furniture. Phone 385-4876, James T. Phillips. TF-P

● Real Estate for Sale C-6

FOR SALE - short quarter, \$375. L. Peyton Reese. TF-R

PRICED TO SELL: 207 1/2 A. Good allotments, One 8". One 6" well. Fieldton area on pavement. O.B. Graham, Jr., 385-5095. TF-G

FARM LOANS
L. PEYTON REESE
110 YELLOW HOUSE BUILDING
PHONE 385-5363

● Rooms for Rent B-5

Comfortable bedrooms for men. New home, heated rooms. Phone 385-3604, 204 E. 9th St. TF-A

● Wanted To Rent B-8

Would like to rent a real good dry land or irrigated place. Can give references. Call Walter Brantley after 5:00 p.m. at 385-5696. 1-27B

WANTED TO RENT your farm. I will water it with sprinkler irrigation. I have over 2 miles of sprinkler irrigation equipment. Write Box 504, Sudan or call 227-4971. 12-30W

● Houses For Sale C-1

WANTED TO RENT - farm 3 or 4th or otherwise will lease. Do custom farm leasing, Farming now. Have plenty equipment to farm any acreage. P.O. Box 1132, Littlefield, Texas. TF-S

HOUSE FOR SALE -- owner leaving town - 3 bedroom brick, kitchen and den. 306 E. 18th. Good location. TF-L

FOR SALE OR RENT: 2 bedroom, floor furnace, wired and plumbed for evaporative cooling, close in. Phone 385-3064 or see J.D. Thomas at Jones Motor Co. TF-T

FOR SALE BY OWNER - 2 bedroom house, carpeted, plumbed for washer and wired for dryer. 504 E. 16th St. Phone 385-5268. TF-B

PRICE FOR QUICK SALE

3 bedroom, 2 bath brick house on 23rd Street. Intercom and carpeted throughout. Call 385-5921 after 5:00 p.m.

FOR SALE BY OWNER -- Selling home at 1200 West 9th Street; FHA approved; 4 large rooms; low payments. Must sell soon. Inquire at 910 West 10th Street. Phone 385-5915. TF-W

FOR SALE OR TRADE: 4 bedroom brick home, Crescent Park. Will sell my equity or trade for smaller home. 385-3898 or 385-3550. TF-E

FOR SALE: two 3-bedroom houses. Nearly new. Fully carpeted. \$50.00 down. College Heights Addition. \$45.00 per month. Hutchins Building Supply, 100 Sunset, Phone 385-4287. TF-H

FOR SALE IN CRESCENT PARK: 3 bedrooms, 1 1/2 baths, den and kitchen combination, fireplace, double car garage and fenced back yard. Phone 385-4084. TF-E

LOW DOWN PAYMENT - MUST SELL IMMEDIATELY: nice 2 bedroom home at 207 Armand, Sudan, Texas. Carpet, fenced, separate living room, kitchen and den combined and attached garage. Call SW9-0120, Lubbock, or CA3-4523, Plainview. TF-M

FOR SALE
97 Acres Irrigated Farm, Good Water, 1/2 Mile Underground Tile, 35.7 Acres Cotton \$350.00 Per Acre, 29% Down.
See Ernest Connell.

● Farms, Ranch-land C-7

FARM LOANS
 Prompt Loan Service Low Interest Long Term No Commissions To Pay No Stock To Buy

JIM MILLS REALTOR
 385-5989
 823 LFD. DRIVE

● Notices D-2

I will not be responsible for Joyce Leonard's debts from this date on. Signed, Leon Leonard. 1-2L

● Bus. Services D-3

Rent convalescent equipment at Brittain Pharmacy. Wheelchairs, crutches, hospital beds, other items. Complete lines of convalescent needs.

● Bus. Services D-3

TV service calls. Days, 385-3831. Nights, 385-3318. New and used TV sets. T.V. Corner, 601 W. Delano. Dial 385-3831.

Custom-flat breaking to 12". \$3.50; chiseling, \$1.60; listing, \$1.10 per acre. Call Walter Brantley. 385-5696 evenings. TF-B

Bill Miller
The Kirby Man
 PH. 385-3357

Our specialties are all types alterations, covered buttons, buckles, belts - including contour, button holes, decorative stitching and men's unclaimed tailor made suits. Mr. and Mrs. C.E. Seifres Drive-In Cleaners, Levelland Highway. TF-S

AUTOMOTIVE SUPPLY HEADQUARTERS
 700 E 4th - PH 385-4431

- Car Truck
- Tractor Industry
- Irrigation
- Motor Rebuilding
- Precision Machine Service

G & C AUTO SUPPLY
CHANDLER'S MOTOR MACHINE & SUPPLY STORES in Littlefield, Anton, Sudan, Earth

B&C PUMPS & Machine Works
 W.H. "Dub" BERRY-JOHN M. CLAYTON - Owners
COMPLETE IRRIGATION SERVICE

- WELL CLEAN-OUT
- PUMP PULLING
- PUMP SETTING
- COMPLETE PUMP REPAIR

Tube Line New Guaranteed 5 Years
PHONE 385-5137
 Nights 385-3118 Or 385-4185
 504 Lake Ave. LITTLEFIELD 894-5025 LEVELLAND

GARLAND MOTOR CO.

WANT ADS DO THE JOB!
 CALL 385-4481

● Farm Equipment E-1

640-A. or two 320-A. 7 full 8" wells with pumps, underground pipe -- 4 miles West of Muleshoe, 200-A. bermuda grass, 18-A. cotton, 90-A. grain --all fenced--house, 20% down --15 years on balance, 6% interest, \$350 per acre, OWNER: PO3-5323 or PO3-7809, TF-MT

COX TIN & PLUMBING SHOP
 Plumbing Heating
LENNOX Heating & Air Conditioning
 Sheet Metal Work
 Fixtures & Supplies
 Licensed-Insured-Bonded
 706 E. 3rd Dial 385-4020

TRUCK SEATS EXCHANGED 15 MINUTE SERVICE
McCORMICK'S TRIM SHOP
 PHONE 385-4555 227 MAIN

● Bus. Services D-3

MATTRESS REBUILDING: complete renovating - convert your old bedsprings into modern boxsprings. Call Mrs. Claud Steffey, 385-3386, day or night, or Sewing Center, 385-3140. Agents for A & B Mattress Co., Lubbock. TF-A

REMEMBER the Federal Land Bank when you need a loan on your farm. Low interest rate. Annual payments, repay at any time without penalty. Come in and see W.H. McCown, 504 Phelps Avenue, Littlefield. TF-F

COMPLETE EXTERMINATION SERVICE, household pests as roaches, mice, rats, termites, etc. Tree and lawn spraying, bird repellent, moth proofing. One year written service warranty. Low rate. \$2.00 a room crawling insects. Day or night call collect: Levelland 894-3824. Davidson Pest Control, 15 years experience. TF-D

INCOME TAX SERVICE
BLAND IVIE
 327 Phelps Avenue

CHRYSLER AND DODGE SPECIALS

1965 Chrysler New Yorker, turquoise and white, factory warranty, all power equipped factory air conditioning, one owner car. One of the best you'll find anywhere \$3985

1963 CUSTOMER IMPERIAL color; gold, loaded with power equipment, all other fine extras. Like a new car. Priced \$2785

1961 DODGE PIONEER, color, carnal, 4 door wagon, a real bargain at \$795

1962 Dodge 330 4 Door Sedan, white color, a low mileage one owner car. Priced \$1050

GARLAND MOTOR CO.

WANT ADS DO THE JOB!
 CALL 385-4481

● Farm Equipment E-1

1964 Impala S.S., two door hardtop, 4 speed transmission. Wholesale. Phone 385-3049. 1-23S

Will take older model work car or economy car for equity in '64 Fairlane 9-passenger station wagon. Bob Wheeler, Spade School. Call 233-2541 after 3:30 p.m. TF-W

FOR SALE
 Extra Clean, Low Mileage
 1959 Dodge 4-Door Sedan
 .318 Cubic Inch V-8 Engine Power Steering, Air And Other Features. Call 385-5147 Or 385-4860

WANT ADS WORK WONDERS

● Farm Equipment E-1

FOR SALE
 Two, quarter mile, Pierce Sprinkling Systems; good condition, two years old; 76 inch wheels; gear box set in middle of each quarter mile. Also mainline pipe and valves to sell along with systems. Write 614, Gruver, Texas or call FI-702690, 12-30H

● Pets F-1

FOR SALE: registered German Shepherd puppies, \$35 and \$45. Mother is show dog. Call James Blackwell, 385-5535. TF-B

● Leases G-4

1600 acres irrigated farm and pasture land NE Dumas Moore County, Texas. 3 irrigation wells, 2 sets of improvements, 100% interest, growing crops and feed, 1 year cash lease \$46,500. Immediate possession. Contact J.S. Guleke, Vaughn Building, Amarillo, Texas, 806 DR2-1200. 1-2GS

● Furn., Appl. H-1

FOR SALE: nice Okeefe and Merritt gas range. Call Mrs. Joe Young, 385-3714. TF-Y

FOR SALE: full financing on used G.E. washer. Excellent condition. Phone 385-5528 after 6:00 p.m. TF-M

● Misc. For Sale H-3

FOR SALE: remodeled upright piano. Call 385-4060. TF-G

Wall heater special - while they last. Low, low price, Hutchins Building Supply, 100 Sunset. TF-H

WELL kept carpets show the results of regular Blue Lustre spot cleaning. Rent electric shampooer \$1. Nelson Hardware & Supply. 1-2N

FOR SALE - 4 x 8 foot sheets of pre-finished mahogany paneling, only \$4.80. Hutchins Building Supply, 100 Sunset. TF-H

'Need party with good credit in Littlefield are to take over payments on late model Singer sewing machine in 5 drawer walnut cabinet. Will zig-zag, buttonholes, fancy stitches, etc. \$31.50 cash or \$4.95 a month. Write Credit Manager, 1114-19th Street, Lubbock, Texas. TF-L

LOOK!
 We have in your area an extremely fine Steinway Piano. No down payment required. Write immediately to: SCHROEDER ORGAN & PIANO CO., INC. 1436 East McDowell Rd. Phoenix, Arizona.

● Articles Wanted H-4

WANTED - used tractors, farm equipment, trailers, trucks, wrenches, foreign cars and jeeps. Phone 385-4779, Littlefield. TF-S

● Autos, Trucks For Sale J-1

FOR SALE - 1959 El Camino 6 with overdrive. Call 385-3203. TF-L

FOR SALE - 1959 El Camino 6 with overdrive. Call 385-3203. TF-L

Will take older model work car or economy car for equity in '64 Fairlane 9-passenger station wagon. Bob Wheeler, Spade School. Call 233-2541 after 3:30 p.m. TF-W

FOR SALE
 Extra Clean, Low Mileage
 1959 Dodge 4-Door Sedan
 .318 Cubic Inch V-8 Engine Power Steering, Air And Other Features. Call 385-5147 Or 385-4860

WANT ADS WORK WONDERS

JURY LIST

LIST NO 1 OF PETIT JURORS TO APPEAR JANUARY 3, 1966 AT 1:30 P.M.

- Fred Adrian-Earth
 Johnny Enloe-Amherst
 Emelio Abeyto-Littlefield
 Daniel R. Banner-Littlefield
 Byron Ford-Sudan
 Elmo Hasha-Olton
 J.C. Doty-Sudan
 J.C. Franks-Amherst
 Lige Griffin-Amherst
 James Grace-Anton
 Odell Chandler-Littlefield
 R.V. Albis-Sudan
 Clinton Byers-Littlefield
 E.R. McAlpine-Earth
 Hoyt Robertson-Sudan
 Roy A. Hutson-Littlefield
 Roger Sell-Littlefield
 Mrs. Jack Wingo-Littlefield
 Norman Fisher-Anton
 Allen Purdy-Littlefield
 Mrs. D.W. Chirwood-Olton
 Earl Robertson-Olton
 Paul McFadden-Olton
 Landon Smith-Olton
 R.L. Masten-Sudan
 Olen Cowan-Littlefield
 Mabel Bizzell-Olton
 Norman C. Demel-Littlefield
 E.W. Mitchell-Olton
 V.O. Harrod-Olton
 Kenneth Burgess-Sudan

Legal Notice

CITY CHARTER OF THE CITY OF LITTLEFIELD, LAMB COUNTY, TEXAS

(Section 8:03) All Real and personal property within the City not expressly exempted by law shall be subject to annual taxation at its true value. Each person, partnership or corporation owning property within the limits of the city of Littlefield shall, prior to the first day of February of each taxable year, hand to the City Assessor-Collector a full and complete sworn inventory of the property possessed or controlled by him, her or them, within said limits on the first day of January of the current year. In all cases of failure to obtain a statement of real and personal property from any cause, the Assessor-Collector shall ascertain the amount and value of such property and assess the same as he believes to be true and full value thereof; and such assessment shall be valid and binding as if such property had been rendered by the owner thereof.

CLYDE E. GLENN, CTA, Assessor and Collector P.O. Box 1267 Phone 385-4411 LITTLEFIELD, TEXAS

Earle Abbott-Amherst
 H.C. Armstrong-Amherst
 Mrs. Elbert Hooper-Sudan
 Sam Barden-Springtown
 Richard McDaniel-Littlefield
 Cephas Glover-Littlefield
 Mrs. Leon Foster-Earth
 A.A. Smith-Olton
 F.W. Watts-Sudan
 Gwen Lee Nace-Littlefield
 Howard Baker-Spade
 Eldon Hill-Littlefield
 John Clayton Jr.-Olton
 Don Nafziger-Olton
 Harold Dean Carson-Sudan
 G.W. Steffey, Jr.-Springtown
 Ernest Connel-Littlefield
 Paul Wood-Earth
 Bobby Myers-Littlefield
 Willie Steffey-Littlefield
 Mrs. H.H. Melton-Olton
 Frank Struve-Olton
 George Laing-Earth
 Harlan Reese-Sudan
 Royce Chisholm-Littlefield
 Royce Goynes-Amherst
 Libburn Bales-Littlefield
 C.A. Duffy-Amherst
 Doyle Tapley-Amherst

The first artificial produced in 1946 by Schaefer of Schenectady according to World Encyclopedia.



TERRY FUNK

Wrestling On Here January

Terry Funk, son of Dory Funk, opens his wrestling career before a crowd at the Littlefield Spade Saturday night. Young Funk has completed a football career at West State University, and in the steps of his old and father in the ring. Young Funk meets novan in one of the exciting matches scheduled for the local arena. The holiday season there matches this coming Friday night afternoons skating will become a regular event.

Don't Miss All The Parades And Bowl Games

In WONDERFUL COLOR

And The Best Is

RCA VICTOR COLOR TV.

And The Best Is

RCA VICTOR COLOR TV.

Is

RCA VICTOR COLOR TV.

Is

RCA VICTOR COLOR TV.

Is

RCA VICTOR COLOR TV.

Whitharral Couple To Celebrate Anniversary Sunday

REAL -- Mr. and Mrs. J. Dobson will observe their 50th wedding anniversary with an open house at the building in Whitharral on January 2 from 2 to 4 p.m.

Guests will be their son-in-law and daughter-in-law, Wayne Howard of Mr. and Mrs. Thurston of Levelland. Assisted with the hospitalities will be granddaughters and a great-granddaughter who are Rodney Howard, Mickey Michael Dobson, Miss Amy Dobson and Howard.

Miss Amy Richardson Dobson were married on February 2, 1916 at the home in Willow, Okla. They were together until September 1959, when they moved to Littlefield where they have since resided. Dobson farmed until retirement in 1946. A dining table will be set over gold satin and white roses and a three-tiered cake with gold wedding appointments will be served.

TY BIT
Guests of Mr. and Mrs. Sell were their families, Mr. and Mrs. and family, Bob and Mrs. Sid Killough Hereford and Mr. Roger Sell and sons.

Mrs. Glenn Reeves of Saginaw, Tex. friends in Littlefield part of the week.

Guests of Mr. and Mrs. Owens and family and Mrs. Tom Thagard, Okla., parents.

Mrs. Clyde Glenn and family Christmas with Mr. and Mrs. M.C. of Durant, Okla. and the children sitting in the Holy couple of weeks.



MR. AND MRS. HENRY J. DOBSON
Mark Anniversary

Church Group Visits Shut-ins

A number from St. Martin Lutheran Church visited many homes of shut-ins both in Littlefield and as far as seven miles in the country to bring the message of the birth of Christ in the form of carol singing Thursday evening.

Homes visited included the Edgar Schulz family, the B.D. Birkelbachs, F.W. Luecks, Bill Hill, Mrs. Fritche, Mrs. Hamby, Mrs. M.H. Briggs, Mrs. Henry Brandt, the John Ganzer and the James Lees.

After the group composed of Rev. and Mrs. Brian Engle, Mr. and Mrs. Kenneth Carey

and Ronnie, Mrs. Janet Robinson, Cecil Price and Cecilia, Cindy Crone, Mrs. J.E. Wade, Cynthia and Linda, Ronald Hill, and Mike Brandt completed the visiting, they returned to the parsonage and were served refreshments of hot chocolate, coffee, cookies and doughnuts as guests of Rev. and Mrs. Engle.

Courtesy Honors Karen Thaxton

Mrs. Ray Keeling and daughter Connie were hostesses Monday for a luncheon honoring Miss Karen Thaxton, her attendants and members of the houseparty for Miss Thaxton's wedding Tuesday night to Billy Banks-ton.

Guests included Mrs. Ewing Thaxton, mother of the bride; Mrs. Barry Armes, and Misses Melaine Cantrell, Lana Barnett, Ann Farmer, Sue Hebel, Kathy Woody, Sandy Smith, Elaine Bridges, Roxey Armstrong, Pat Martin, and the hostesses.

FHA Girls Sing Carols At Rest Homes

The Junior FHA girls, accompanied by their sponsor, Mrs. T.J. Jones, and Mrs. Bill Kelly, sang carols at the Hospitality House and Knight's Rest Home Tuesday evening then went to the home of Dr. and Mrs. R.E. Maurer for refreshments of hot chocolate and cookies.

FHA members participating were Milynda Morris, Janis Oldham, Patricia Chandler, Candace Porcher, Gail Lichte, Lynette Gilley, Tonya Kelly, Jo Ann Grissom and Ginger Maurer.

Residents Have New Granddaughter

Mr. and Mrs. Bob Sweet of Fort Worth announce the arrival of Gloria Rhealene, December 10 at the Fort Worth Osteopathic Hospital. She weighed eight pounds, 12 ounces. Gloria has a sister, Ruth Rachell, age 2 1/2 years.

Maternal grandparents are Mrs. Ruth Kiker of Crowley. Maternal great-grandmother is Mrs. W.D. Chapman and maternal great-great-grandmother is Mrs. Pearl Chapman, both of Littlefield. Paternal grandmother is Mrs. Mae Sweet of Denver, Colo.

Church News

LUTHERAN:
Services Christmas Eve at Emanuel Lutheran packages containing gifts, and various goodies were distributed to needy children of city by Ralph Hobbs, Bruce Timian, and the Walthers League. A welfare pro-church carried on by church members League, the youth

EVE SERVICES:
Services will be held at 7 p.m. Friday with devotion of Holy Communion. William Rempeck on 'The Glory of God'. Regular service Sunday morning with Sunday School

OF GOD:
The service will be held at 7 p.m. New Year's Eve devotion service at mid-

PROCAST:
Devotion Service at the Baptist Church will be held at 7 p.m. New Year's Eve. Elements will be administered by the minister, Rev.

CHURCH OF THE:
The denomination of prayer will be held at 6 p.m. on Jan. 1, from 6 p.m. to 8 p.m.

WELDER:
LUTHERAN:
Young adults and Luther League last week. Visitation at the Christmas Eve Vespers Service in the H. Ganzer of Mena, and Mrs. Charles and family of Mr. and Mrs. V.D. and family of Walden, Mr. and Mrs. E.C. Roswell, N.M.; and Mrs. David Sager and Lubbock. A Christmas service was also held at Sunday service at the Neipast and sis-land, Ariz. and Joe

Vase of Stamford. Members may pick up 1966 calendars in the Narthax. The new offering envelopes for 1966 may be picked up also in the Narthax.

New Year's Day service will be held at 9:30 a.m. On Sunday, January 2, Holy Communion will be celebrated.

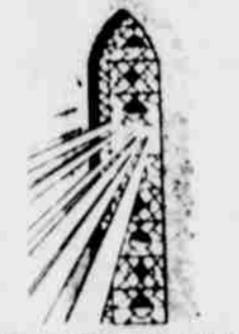
Featured in the January, 'Focus on Faith' is an article on the theme for the month of January in the American Lutheran Church. It is entitled, 'Which Way?' Sermon topic for New Year's Day will be, 'What Makes A New Year New.'

College students home; Miss Marilyn Hill, North Texas State University, in Denton, William Hill and Jerry Schulze, Levelland; Linda Walker, Texas Lutheran College, Seguin.

The death rate for patients suffering from delirium tremens is reported to be 10 to 12 per cent.

FREE ESTIMATES
BODY REPAIR
ALL MAKES
JONES MOTOR

FIND SOLACE
FOR YOUR
SORROW
THROUGH...
QUIETUDE



FEEL FREE TO CALL
ON US AT ANY HOUR
**Hammons
Funeral Home**

MOVING...!



IF SOMEONE YOU KNOW is moving into a new community, let us know too. A friendly call by the Welcome Wagon Hostess with her basket of gifts and helpful information, will make the newcomer feel quickly at home. Join in carrying on our community's traditional spirit of hospitality. Just give their name and address to

**Welcome Wagon
International**

WELCOME NEWCOMERS!
Use this coupon to let us know you're here

NAME _____
ADDRESS _____
CITY _____

Please have the Welcome Wagon Hostess call on me
 I would like to subscribe to the
 I already subscribe to the

Fill out coupon and mail to Circulation Dept.

SECURITY STATE BANK ANNOUNCES
NEW NEGOTIABLE AND AUTOMATICALLY
RENEWABLE

SAVING CERTIFICATES OF DEPOSIT

5% 2 YEARS \$20,000
4 1/2% 1 YEAR \$10,000

GUARANTEED INTEREST PAYABLE EVERY 6 MONTHS.
THESE SAVINGS CERTIFICATES GIVE OUR CUSTOMERS
WITH LONG RANGE GOALS A LARGER GUARANTEED
INCOME.

REGULAR SAVINGS ACCOUNTS

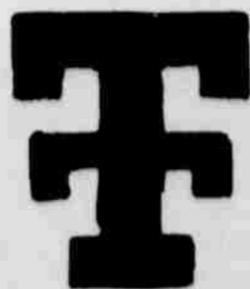
4% No Maximum - No Minimum 4%

These Accounts Still Give You The Convenience
And Availability Of A Guaranteed Return On
All Savings, Compounded Semi-Annually.

NO FINANCIAL INSTITUTION CAN OFFER MORE

Security State Bank

That's The Bank For Your Money



SEE THE GATOR BOWL GAME
IN COLOR

IN OUR XIT ROOM
FRIDAY-DEC. 31ST

We Wish You A Happy And Prosperous New Year

AMHERST NEWS

Visitors Here For Holidays

Christmas weekend guests of their mother, Mrs. V.C. Commons were Mr. and Mrs. Truman Commons of Dallas, Mr. and Mrs. Carroll Commons and family of Midland and Mr. and Mrs. Kenneth Bates and his mother of Levelland.

A/3C James E. Williams of Keesler Air Force Base, Miss., spent Christmas with his parents, Mr. and Mrs. S.D. Williams.

Mr. and Mrs. J.H. Bradley were in Hereford Thursday and were dinner guests of their grandson, Bob Bradley and family. They were overnight guests of their son, Jack, and his wife and they had Christmas dinner with their son Bill and family.

Mr. and Mrs. Monte Hulse and infant daughter, Kristen Lea of Dallas were here for Christmas with their parents, Mr. and Mrs. Bill Bradley and Mr. and Mrs. Ray Hulse of Littlefield. Mrs. Dave Black received word Christmas eve of the death of her sister's husband, Art Wilson, 81, in Albuquerque, N.M. He had been in ill health for some time.

Gary Bradley took his grandmother, Mrs. Blanch Howard to Lubbock for Christmas with her sisters, Mrs. Howard resides at Amherst Manor.

Mr. and Mrs. W.E. McDaniel spent Christmas with their dau-

ghter and family, Mr. and Mrs. Paul Nelson and daughters in Irving.

Mr. and Mrs. Arthur Hedges and family visited her parents, Mr. and Mrs. Joel Jones at Earth and his mother, Mrs. W.P. Hedges in Olton during Christmas.

Christmas guests of Mr. and Mrs. Allan Jr. and family of Lubbock and Sid and family of Dallas. They all left Monday for a few days at the White's cabin at Tres Ritos, N.M.

Recent guests in the C.D. Stafford home were her cousin, Mrs. Floyd Russell and Mr. Russell of Keames Canyon, Ariz. While they were here Mr. and Mrs. Claud McCain and Mr. and Mrs. Paul Carlisle and her mothers, Mrs. Ethel McCain of Goodland and Mr. and Mrs. R.W. Steward and Charles of Littlefield visited them.

Mrs. Bob Harrall of Levelland visited Mrs. Oby Blanchard and other friends early last week.

Cheryl Yandell of Olton was the guest of Carla and Anne Hedges Sunday and Monday.

Mr. and Mrs. Marvin Wagner were guests of her sister, Mrs. Doc Wingo in Littlefield Christmas. Other guests were Mr. and Mrs. R.A. Sharp of Borger and Mrs. Ruby Bassett and Mr. and

Mrs. Orville Bassett and girls of Littlefield.

Mr. and Mrs. Ben Greener and family visited his parents, Mr. and Mrs. H.J. Greener in Levelland for Christmas.

Guests in the Guy Hufstедler home for Christmas were Mr. and Mrs. Joe Melcher and Tina of Lubbock.

Mr. and Mrs. H.E. Akin returned home after spending several weeks at Rockport on the Texas Gulf Coast.

Miss Lynn Ann Warren of Tahoka and Joe Dan Willard of Lubbock were married in a double ring ceremony November 30 in the First Methodist Church in Tahoka.

The bride is a candidate for May graduation at Texas Tech and the groom is a department manager for J.C. Penney Company in Lubbock. He is the son of Mr. and Mrs. Elmer Watson of Lubbock and attended high school here.

Mr. and Mrs. Don Boyles of Munday visited Mrs. A.F. Cope and Mrs. Virginia Turner and in Sudan with Mr. and Mrs. W.V. Terry during the Christmas weekend.

Mr. and Mrs. Bob Payne and children of Shallowater were guests of their parents, the Lee Paynes and Harold Clements of Littlefield during Christmas.

Lamb County Leader

Published every Thursday morning by the Littlefield Publishing Co., 506 Phelps Avenue, Littlefield, Texas, 79339. Entered as Second Class matter at the U.S. Post Office, Littlefield, Texas, 79339, Under the Acts of March 3, 1879.

Dave Kucifer General Manager
Tom Donnelly Managing Editor
J.B. (Mac) McShan Advertising Mgr.

Subscription rates: by mail in Lamb and adjoining counties, \$5.10 per year. Elsewhere in Texas, \$7.10 per year. In City carrier delivery 70¢ per month.

Member 1965 - TEXAS PRESS ASSOCIATION

Awards Presented At Pack Meeting

Pack 667 held their monthly pack meeting Thursday night in the Community Center. A special guest was Ben Kellen of Lubbock, who spoke on what boy scouting had meant to him. Cubmaster Bud Durham presented awards to the following boys: Ralph Evans, Teddy Collins and Sheldon Zahn, bobcat badges, and silver arrowpoints to Larry Lobaugh, Chuck Durham, Kevin Kirby, and Mike Morris.

Refreshments were served from a serving table laid with a white cloth centered with a silver Christmas tree decorated with candy canes. The canes were given to the children attending. Assorted Christmas cookies, and red punch were served by the cub scouts to the guests.

Lt. McWilliams Family Visits Here

Lt. and Mrs. Ronnie McWilliams and son Danny of Fort Bragg, N.C. are holiday guests in the home of his parents, Mr. and Mrs. C.B. McWilliams, and sister Glenda, 404 Crescent Drive.

The McWilliams will be here until after New Year's Day. Mrs. McWilliams is a junior high teacher at Fayetteville.

CITY BIT

Mrs. C.H. Messer and her sister, Mrs. R.M. Saunders of Hedley left Christmas Day for a week's visit with two other sisters, Mrs. Houston Ferguson of San Diego, and Mrs. B.L. Curtis of Ventura, Calif.

Mr. and Mrs. Bill Fore and boys of Abilene visited during the Christmas holiday with his parents, Mr. and Mrs. Jack Fore.

CITY BITS

NOTICE: If you have been out of town, had holiday guests, know of college students that are spending the holidays here, we would appreciate it if you would call 5-4481. Your friends and neighbors are interested in reading this news. Deadline for society news for the County Wide News, Sunday, Jan. 2 is 2 p.m. Friday.

A houseguest in the Ross Lumsden home during the Christmas holidays was Mrs. Lumsden's mother, Mrs. J.D. McElhaney of Chico.

Mr. and Mrs. Bob Heath and family of Jacksonville, Fla. have returned after spending a few days with her mother, Mrs. Lula Dickenson and other relatives.

Mr. and Mrs. Eddie Ray Jones, Dennis and Tim of Dallas visited during the holidays with his parents, Mr. and Mrs. Dennis Jones.

Mr. and Mrs. Mike Cotter and family are planning to visit several days with her sister and children, Mark and Lizbeth of Dallas. They will leave Friday and stay about four days.

Mr. and Mrs. Paul Carmickle returned by plane Wednesday from spending the Christmas holidays with their daughter and family, Mr. and Mrs. Ray Anderson, Tammy and Darla of Las Vegas, Nev. They were met in Lubbock by their other daughter and family, Mr. and Mrs. Charles Schroeder and children.

Mr. and Mrs. Tom Sawyer are spending several days with their parents in Bedford, Iowa.

Guests of Mr. and Mrs. R.L. Byers Christmas eve and Christmas Day were most of their children and grandchildren, Mrs. Alma Achee and Johnny, Littlefield; Mr. and Mrs. Gary Bishop, Dallas; Mr. and Mrs. Andy Houk, Charlene and Jimmy, Lubbock; Mr. and Mrs. Charley Trull and three children, Abilene; Mr. and Mrs. Otis Baker, Lubbock; Mr. and Mrs. Thad Minyard and Corey, Lubbock; Mr. and Mrs. Doyle Dean and Peggy, Littlefield; Doyle Jr., Texas Tech; Mr. and Mrs. Roy Byers Jr. and sons, Ricky, Springlake, and Danny, Texas University; Mr. and Mrs. Bob Hubbard and three children, Idalou; and Mr. and Mrs. Clinton Byers and Bradley, Littlefield.

Mr. and Mrs. Allen Hodges spent Christmas day with their son and family, Rev. and Mrs. Houston Hodges and family of Lubbock.

Velton Lynn, West Texas State College, Canyon, is visiting during the holidays with his parents, Mr. and Mrs. K.O. Lynn.

Mr. and Mrs. Keith Dickson of Montgomery, near Houston, have been visiting during the holidays with their parents, Mr. and Mrs. Willie Steffey, Littlefield, and Mr. and Mrs. A.O. Dickson of Amherst. Keith is manager of a ranch and Mrs. Dickson teaches the second grade in a Conroe school. Mack Steffey, Texas Tech, is also spending the holidays with his parents.

Houseguests for the Christmas holiday in the home of Rev. and Mrs. Hillis Herren and family have been their parents, Mr. and Mrs. O.W. Clem of Fort Scott, Kan., and Rev. and Mrs. R.A. Herren of Stuart, Okla. Another guest was Ross Herren, who attends Bethany Nazarene College, Bethany, Okla. Ross is Rev. Hillis Herren's brother.

Marilyn Hill, North Texas State University freshman, and William Hill, South Plains College sophomore, are holiday guests of their parents, Mr. and Mrs. Walter Hill.

Guests of Mrs. E. Schwander over the weekend was her family, Mr. and Mrs. Alford and children.

Mr. and Mrs. Al Carlisbad, N.M. with his brother and family, Mrs. Stanley Aaron during the Christmas

Keith Neumann in parents, Mr. and Mrs. Neumann, during the Christmas holidays. Other guests in the home have been Mrs. Ronnie Neumann of

Mrs. Mike Fulton Abernathy visited days with her parents, Mrs. E. Torres and father-in-law, Mr. Lowell Fulton.

Calendar of Events

- 7:30 p.m. FRIDAY New Year's Eve Service at Emmanuel Lutheran Church
- 7:30 p.m. Watch Night Service at Assembly of God Church
- 11:45 p.m. Communion Service at First Methodist Church
- 9:30 a.m. SATURDAY New Year's Day Service at St. Martin Lutheran Church
- 6:00 p.m. January Watchnight of Prayer at First Church of the Nazarene



SATISFACTION GUARANTEED ON EVERY PURCHASE

ANNUAL MONEY-SAVING WHITE GO



WORLD WIDE SHEETS

Anthony's Own Famous Brand Fine Quality Smooth Type 128 Muslin



72x108 147
81x99 Each

81 x 108 Sheets 1.77
42 x 36 Cases 2 for 77¢

Anthony's World Wide Sheets, one of the finest sheet values on the market. Snow White bleached cotton, true cut strong selvage and neat straight hems. Tried and tested and approved by millions of satisfied customers.

PACIFIC CONTOUR Bottom Fitted Sheets

Easy on and Fit Wrinkle Free

TWIN SIZE 167 FULL SIZE 187

Nationally famous Pacific Contour sheets, quality and workmanship unsurpassed. They go on easily, fit smooth and wrinkle free. Buy now at big savings.

DAN RIVER SHEETS

Fine Smooth Percales

72 x 108 Flat or Twin Fitted 2.07
81 x 108 Flat or Full Fitted 2.27

Quality Colored Muslins

72 x 108 Flat or Twin Fitted 2.07
81 x 108 Flat or Full Fitted 2.27



24" x 46" TOWEL CANNON FIRST QUALITY SUPERB VALUES 2 FOR

Tier & Valance Set CURTAINS

Blue, Pink, Gold, Avacado Special White Sale Price

157 Set

Solid color cotton broadcloth with deep flocked dacron polyester ruffle and broadcloth trim. 36" tiers, 54" x 10 1/2 valance.

KODEL Polyester Fiberfill BED PILLOWS

21 x 27 Non Allergenic 3.98 Quality

2.98 2 For 5.50



100% virgin Kodel polyester fiberfill, white cotton percale cover corded edge. High resiliency extra fluffiness.

Rich Deep Pile Viscose Rayon

DECORATOR RUGS

Non Slip, Heavy 14 oz. Duck Backing

34" ROUND OR 24" x 40" OBLONG

2.99

Extra Money Saving Values Buy Now BED SPREADS

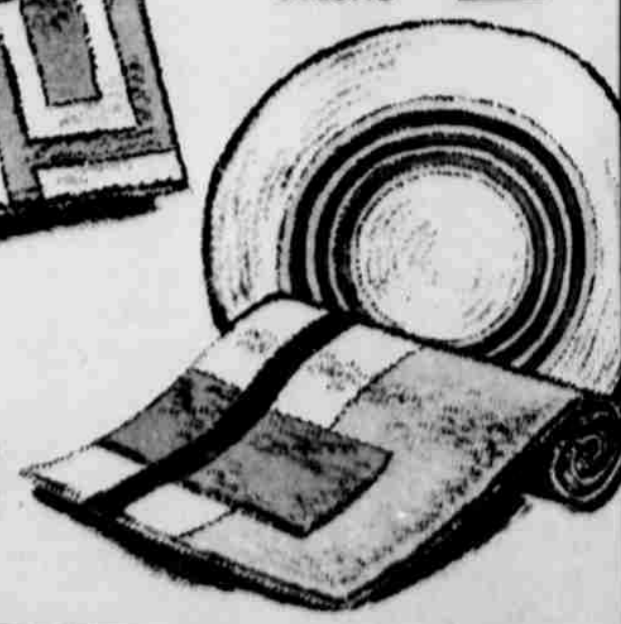
Full or Twin Sizes All First Quality

3.88



Special purchase for this Big White Sale Event saves you extra dollars on overlays, solid colors, heirloom types. Beautiful Viscose, rayons and cottons. Wide range of colors.

Beautiful new color combinations in interesting new designs. Rugs that will add new beauty to any room. See them — you'll want several.



Auto-Mated?



Before you say 'I do' to your new car, see (financial house) first! Interstate has financed autos for nearly half a century. Manager Jim Weeks knows the Littlefield car market, and he understands how to help you save on finance charges. Jim can even include money for taxes and insurance in your payments. Call the Understanding Man before you buy!

Interstate financial house SECURITIES COMPANY OF TEXAS

425 Phelps 385-3822 See Jim Weeks... He Understands

Heralding the Holidays

on your next trip to Denver—for Christmas shopping, holiday fun, shows, night clubbing—fine dining—for a gay stopover en route to ski resorts! Setting the mood for your trip—the warm welcome at the Albany—nearest everything you want to see or do in Denver!

- Spacious attractive rooms
- Beautifully Redecorated
- Fine Food at Moderate Prices
- Best Beverages Served in Denver
- Unsurpassed Service

The Albany

17th at Stout 308/584-0211 ALAN T. McDONOUGH, Mgr.



FREE INSIDE PARKING