

## PAGE ONE

A QUICK READ OF THE NEWS

### Police doughnut run soars

Albuquerque police took doughnut runs to new heights earlier this month, swooping down in an official helicopter for a late-night snack.

"I don't know how they decided that was a good idea," said Lt. Bob Huntsman, police spokesman, who added that an investigation was under way.

"If they violated policy or procedure, they're going to get disciplined," he said. "We've worked too hard to make this a professional unit to let lack of common sense tear us down."

Keith Turner, who works near a Krispy Kreme doughnut shop, said he was on a break with other people early Thursday when a police helicopter circled and landed in a field nearby.

"I was like, 'No, they'd better not go and get doughnuts,'" Turner said. As the helicopter idled, someone got out, went into the store and returned with a Krispy Kreme box, he said.

### Sikh tries patriotic turban

An American restaurateur is mixing his faith and patriotism: A red, white and blue turban sent by his mother in India.

To many, "the turban represents something not American, something Middle Eastern," says Narendra Singh Klotty, a Sikh from Santa Fe. "I'm trying to tell people, 'No, this is very American. Red, white and blue.'"

Klotty said his mother was concerned for his safety after people began associating turbans with Muslim extremists. He said he asked her to send him the turban from Bombay after people made rude gestures as he was driving.

"This is a great nation where I've seen so much love," Klotty said. "There are people on this planet who cannot love their fellow man because they're fighting for their next meal."



**Drawing date:** Wednesday, Oct. 17  
**Winning numbers:** 6-15-22-23-48-50  
**Estimated jackpot:** \$12 million  
**Winners:** 0  
**Next drawing:** Saturday, Oct. 20  
**Estimated jackpot:** \$15 million

### On this date in history

**Oct. 17** — Texas President Mirabeau B. Lamar takes up residence at Austin, the newly established permanent capital of the Republic of Texas (1839).

**Oct. 22** — Sam Houston is inaugurated as the first president of the Republic of Texas (1836).

### LOCAL WEATHER

Mild weather is expected to continue through the weekend, but the National Weather Service predicts mid-30s again by Wednesday and Thursday mornings. Daytime highs should cool gradually from about 79 on Sunday to about 69 on Wednesday.

Editor Ronn Smith can be reached at 272-4536 or ctyankee@fivearea.com

**Missed your paper?** Call carrier Bobby Flores at 272-6719 or the Journal during business hours, 8:30 a.m.-5 p.m.

# Joe's boots are walking . . .

JOURNAL STAFF REPORT

"Across from the mule in Muleshoe, Texas" is getting the boot.

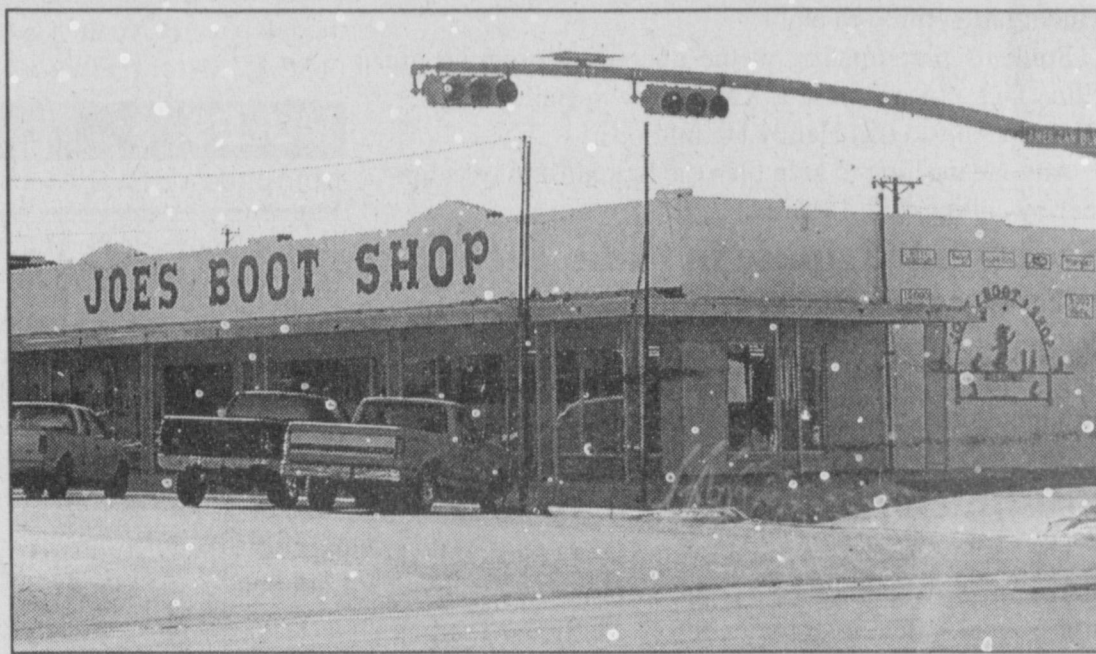
After two weeks of rumors — and less than a year after Beall's Department Store closed on Main Street — it appears certain that Joe's Boot Shop will move to Clovis.

While the deal will not be final until Monday, the western-wear business is expected to move into the former Aucutt's General Store building on Mabry Drive (U.S. 60-70-84).

"I'm encouraged that come Monday, we think we'll have a deal," said Kent Carruthers of Citizens Bank, which owns the Aucutt's building.

The 3 1/2-acre site includes 67,000-square-feet of building. While no timetable has been set, Joe Rhodes said he would like to be in the new location for the Christmas season.

"It's a great opportunity for our family and for Joe's Boot Shop, an opportunity for growth an expansion of our busi-



Journal photo: Beatrice Morin

Joe's Boot Shop, longtime anchor of the Main at American Boulevard intersection.

ness," Rhodes said. "But we'll miss Muleshoe and all our great neighbors. . . Muleshoe's been home since 1966 and it's been good to us, but this move has more to do with the opportunity for

growth than anything."

Most area residents are familiar with the story of Joe's Boot Shop beginning

see **BOOTS** on page 2

## Mules overwhelm tough Littlefield team

By DELTON WILHITE  
Journal correspondent

LITTLEFIELD — The Mules cautiously entered the Wildcats' den Friday night, and in only 48 minutes completely cleaned out the lair with a 40-21 skinning of the 'Cats.

A.J. Flores had been in Littlefield's end zone five times by the end of the first half, and had 20 carries in the game for 222 yards.

He had scoring runs of nine, one, 42 and 40 yards and a five-yard pass reception and 45-yard run only 37 seconds before the first half ended.

Lincoln Riley was 10 of 17 in

the passing department for 193 yards as the Mules rolled up a total of 492 yards of offense and 22 first downs. Kyle Atwood caught five passes for 95 yards and Stephan Shelburne plunged over from two yards out to add the final tally for the Mules.

Littlefield gained 158 yards on 29 carries and Matthew Vaught completed 11 of 19 passes for 149 yards for 307 yards of total offense. Matthew Hock carried 17 times for 96 yards as the 'Cats picked up 15 first downs.

"It was a tough, hard-hitting ball game against a team with a lot of tradition. Littlefield never

quit tonight, but our kids just kept coming after them. A.J. and Lincoln were on target tonight," Mule coach David Wood said.

"The game was won in the trenches — the game ball goes to our offensive and defensive linemen, the hawks," Wood said. "They dominated the line of scrimmage. Littlefield went for it on fourth-and-one two different times and our defensive line just stuffed them."

Flores gave the praise to his co-workers. "The credit all belongs to the line — the big boys make it happen," he said. "They are an awesome bunch of guys."

Lincoln was firing the ball,

Atwood was catching and the guys were getting the blocks — it was all working for us tonight. The five touchdowns were nice, but it didn't matter who scored them — we're a team."

After forcing the 'Cats to punt on the opening series of the game, the Mules strung together a 14-play, 75-yard drive. Flores capped it with a one-yard run through a hole wide enough to drive a truck through.

The Wildcats tried to power the ball up the field after returning the Mule kickoff to their 45. Hock carried up the middle five

see **MULES** on page 2

## Nursing home still struggling with inspectors

JOURNAL STAFF REPORT

The Muleshoe Area Hospital District received a state inspection team's report Thursday, detailing points to be addressed in getting the district's new nursing home ready to open.

Coda Stephenson of Lubbock's BGR Architects-Engineers told the board he would be meeting Friday with state officials to attempt to get some of the points nullified.

Some of the points cited, outlined by district administrator Jim Bone, were:

- Doors leading from the kitchen to the dining area and from there to the dishwashing area should have view panels, and they don't;
- There is a gap between the parts of a

see **STATE** on page 2



Journal photo: Beatrice Morin

### New dairy going in

Jeremy Scholz (left), Tony De León and Daniel Griego pouring concrete for the cow stands at Martin Dairy, a facility under construction east of Muleshoe and north of U.S. 84. The three men are employed by Lance Jones Construction of Clovis.

## Freeze helping to speed much of area cotton harvest

By SHAWN WADE  
Plains Cotton Growers

With crop projections still ranging between 2.1 to 2.6 million bales, and cotton harvest advancing at what seems like a snail's pace, the Texas High Plains continues to be a question mark in 2001.

The main reason for the slow start is that most producers in this area have been hard hit by the poor economics of agriculture over the past three to four years, and many have been hesitant to put much extra money into preparing the crop for harvest.

Another factor is that no single harvest-aid treatment combination has proven to

be the magic bullet that consistently works.

Freezing temperatures arrived in many areas over the past week. Though not uniform across the entire area, the low temperatures should help get plants ready for harvest and get things moving ahead as the better, irrigated cotton begins to come out of the field.

Opinions vary about the crop on everything from the quality to the amount of cotton out there in the first place.

Estimates from area USDA classing offices, which polled gins, have tallied a crop between 2.1 and 2.25 million bales. Other crop observers tend to agree with the

official USDA estimate of slightly more than 2.6 million bales.

With a nearly 400,000 bale difference in the two points of view, it will be interesting to see how things shake out.

The determining factor may be whether or not there are enough acres of really good cotton in the northern and northwestern parts of the High Plains to offset the reduced yields in other areas.

Yield and acreage losses have mounted throughout the season as growers have witnessed the outright destruction of hundreds of thousands of cotton acres by drought and hail.

## AROUND MULESHOE

### Character Counts breakfast planned

A breakfast meeting to inform business and community leaders about the Character Counts program, now being utilized in Muleshoe schools is scheduled for 7 a.m. Oct. 24 in the Bailey County Coliseum meeting room.

This week is Texans Building Character Week. About 100 local high school students have received Character Counts training and are holding workshops in grades kindergarten through eight.

Students participating in the upcoming program are Elida Diaz, Lisa Johnson, Kami Brown, Bailey Barrier, Ricardo Aburto and Hailey Hamilton.

Anyone wishing to help plan the breakfast may volunteer by calling 272-4583.

### Scouts participate in radio event

Muleshoe Boy Scouts are participating this weekend in the annual Jamboree on the Air.

This gives Scouts a chance to talk with Scouts from around the world over the Amateur Radio Service. Ham radio operators open their facilities to the Scouts.

### Freshmen plan pre-game dinner

The Muleshoe High School freshman class has scheduled a pre-game dinner for 5 p.m. to 7 p.m. Oct. 26 in the high school cafeteria. This is before the home football game against Shallowater.

The menu will feature hamburgers, and the price will be \$5 for adults and \$3 for children ages 12 and younger.

Delivery is available by calling 272-7306 between 4 p.m. and 6:30 p.m.

### Brunson clarifies firefighter position

City Manager David Brunson said Thursday he was concerned about a Page 1 story in the Sunday *Journal* that used the term "double-dipping" in reference to a request by local firefighters.

The question that had been raised was whether firefighters would be able to draw their retirement benefits but remain active. Brunson said the financial benefit from the city to active firefighters would not amount to more than \$20 per month, and then "only if they attended all the meetings."

The city's concern, as the story stated, was that if retired firefighters are also designated as active and one gets hurt on the job, the city's financial obligation could soar. On the advice of the city's attorney, that was not allowed.

Brunson added that the city does not want to discourage experienced firefighters from voluntarily contributing to the department, even if they are formally retired.

### Public calendar

**Oct. 22** — 7 p.m. Muleshoe School Board, in the board room of the administration office, 514 W. Avenue G.

Also on Oct. 22 — 7 p.m. Advanced high school and junior high choirs in concert directed by Alison Johnston, in the high school auditorium; in conjunction with the play "The Diviners" directed by Kimberly Beard. Adults \$2, students \$1.

**Oct. 23** — 3 p.m. Watson Junior High TAAS celebration at Benny Douglass Stadium.

Also on Oct. 23 — 7 p.m. Public hearing on possible consolidation of Three Way School District with either Muleshoe, Morton or Sudan; in the school cafeteria.

### BOOTS

from page 1

operations in the family garage near West Camp, selling factory seconds that Rhodes would be able to afford himself on his feedyard worker's salary.

When customers remarked to Rhodes that their first purchase had taken place in that garage, his typical response was, "You know, we appreciate that — without people like you, we never would have been able to move to town!"

Muleshoe Mayor Victor Leal, a lifelong friend of Rhodes and his wife, Darla, stressed the positive in commenting on the move.

"It's a tremendous loss for the community," he said. "But in the end, we respect the fact that it's a very personal decision for Joe and Darla. We're not dealing with a big corporation — it's a family business, and we've got to respect their decision."

Clovis' assistant city manager, Joe Thomas, said, "The bottom line is that we're certainly going

to do all we can to help any business that locates in Clovis, to be successful, and certainly want to encourage any business that chooses to locate here."

Neither Clovis Mayor David Lansford, City Manager Raymond Mondragon nor chamber manager Ernie Kos could be reached for comment Friday.

Kos has made it clear in earlier conversations that the chamber wants to welcome Joe's Boot Shop to Clovis, but she emphasized that the chamber had no part in recruiting the store.

Leal summed it up for Muleshoe. "We'll miss them, but we'll survive and go on. Muleshoe will be OK."

## Girls' cross country teams place at Friona

JOURNAL STAFF REPORT

Muleshoe High School cross country teams competed at Friona on Oct. 6, with the varsity girls finishing fourth and the JV girls a close second behind Canyon High.

Varsity girls finishing (with the top four earning medals) were Annie Cox (15th), Mitci Hawkins

(20th), Lindsey Wood (22nd), Ashley Gutiérrez (29th), Mindy Locker (32nd) and Eva Pylant (37th).

As a team, they finished behind Canyon High, Levelland and Dumas.

For the junior varsity girls, finishers were Gradee Adrian (third), Jessica Hall (sixth), Sara Benham

(10th), Cassandra Gonzales (14th), Jamie Carpenter (17th), Irene Torres (35th) and Amanda López (40th).

Also running for Muleshoe were varsity boys Kyle Atwood (10th), Eric Villa, Chris Peña and Valentín Colunga, and junior varsity boys Aaron Miranda (27th) and Jimmy Franco (30th).

### MULES

from page 1

times and moved to the Mule 34.

Then, on back-to-back plays, Jeff King and Daniel Johnson stuffed Hock for no gain and the Mules took over on downs.

Tadd Luiz and Riley moved the Mules to Littlefield's 46. Flores, on the hammer play, broke to the 'Cat one behind a block from Riley. Flores banged into the end zone behind Jeff Skipworth to put the Mules up 14-0 early in the second frame.

The Wildcats drove 80 yards to score on a 19-yard pass and run from Vaught to Hock for Littlefield's only

tally of the first half.

Rey Martínez returned the kickoff to the Mule 25.

Riley hit Shelburne and Atwood on back-to-back passes for 15 and 17 yards to move the Mules to the 'Cat 42. Flores shot through the middle of the line for 42 yards on the Mules' hammer play for a 20-7 lead.

Three minutes later in the second quarter, Flores again went 40 yards — then Riley hit Flores with a five-yard pass, and he ran 45 yards for his fifth TD, pushing the lead to 33-7 by halftime.

After intermission, Jesús Tovar returned the 'Cat kick to the Mules' 24. Riley found

D.J. Domínguez open on a crossing route to move into the 'Cat end of the field. Shelburne did the honors with a two-yard dive four minutes into the second half to give the Mules a 40-7 pad.

Vaught connected twice with Tyler Kirby for 10- and 30-yard touchdowns as the game wound down.

The Mules, 2-0 in district and 7-0 overall, face the Shallowater Mustangs in Muleshoe on Oct. 26. The Mustangs are 1-1 in district.

### STATE

from page 1

Dutch door where a shelf was eliminated, and the door has to serve as a smoke barrier;

- Night lights need to have controls separated from those of overbed lights;
- More smoke detectors are needed in some areas; and
- Emergency call stations in restrooms need to be re-

located.

Bone pointed out that for the district, any delay in moving residents into Park View, the new facility, is revenue lost — with a debt payment coming up in February.

"We can't stay out of that facility another month — we'll get in a financial bind," district board member Paul Wilbanks said.



### Burned By a Broken Oven? Let Farmers® Take the Heat!

When your furnace won't function or your plumbing pipes burst, Farmers Homeowners Plus™ keeps your home running smoothly. It provides coverage for the repair or replacement of things like your oven, electrical systems, built-in dishwasher, plumbing and more.

One toll-free call connects you to customer service from Sears National Network of repair specialists, 24 hours a day, seven days a week. No matter how old your appliance or home system is, you're covered. Call today to find out more about covering the comforts of your home.

**Laurie Winchell**  
104 W. 12th • Muleshoe, Texas  
(806) 272-7548



**FARMERS**  
Gets you back where you belong.

www.farmersinsurance.com

**Bailey County Journal** USPS 040-200  
Established March 31, 1963. Published by Triple S Publishing, Inc.  
Every Sunday at 304 W. Second. Box 449, Muleshoe, TX 79347.  
Periodicals Postage paid at Muleshoe, TX.  
POSTMASTER: Send address changes to the Bailey County Journal, P.O. Box 449, Muleshoe, TX 79347.

We are qualified members of:  
Panhandle Press Association, National Newspaper Association,  
West Texas Press Association and Texas Press Association

**WEST TEXAS PRESS ASSOCIATION**

**PPA**  
Panhandle Press Association

**TA** MEMBER 2001  
**TEXAS PRESS ASSOCIATION**

**Scot Stinnett, Publisher**  
**Lisa Stinnett, Vice-President/Comptroller**  
**Ronn Smith, Editor**  
**Beatrice Morin, Classifieds**  
**Leah Bell, Advertising**  
**Yolanda Martinez, Office Assistant**

© 1990

SUBSCRIPTIONS: Muleshoe Journal and Bailey County Journal  
By Carrier Yearly - \$22.00  
Bailey County — by mail - \$24.00  
Elsewhere - \$26.00  
Advertising Rate Cards on Application

\*Advertisers should check their ad the first day of insertion. The Journals will not be liable for failure to publish an ad or for a typographical error or errors in publications except to the extent of the cost of the ad for the first day of insertion. Adjustment for errors will be limited to the cost of that portion of the ad where the error occurred.\*



# Muleshoe Coop Gin

Muleshoe Coop Gin encourages all area farmers to come by and have their cotton ginned at a state-of-the-art facility designed specifically for efficiency and the highest quality ginning available.

Muleshoe Coop Gin strives to give its customer-owners the best value for their ginning dollar.

We would like to thank our loyal customers for their continued patronage and welcome all our new customers.

## Muleshoe Coop Gin

Darwin Robertson - Manager

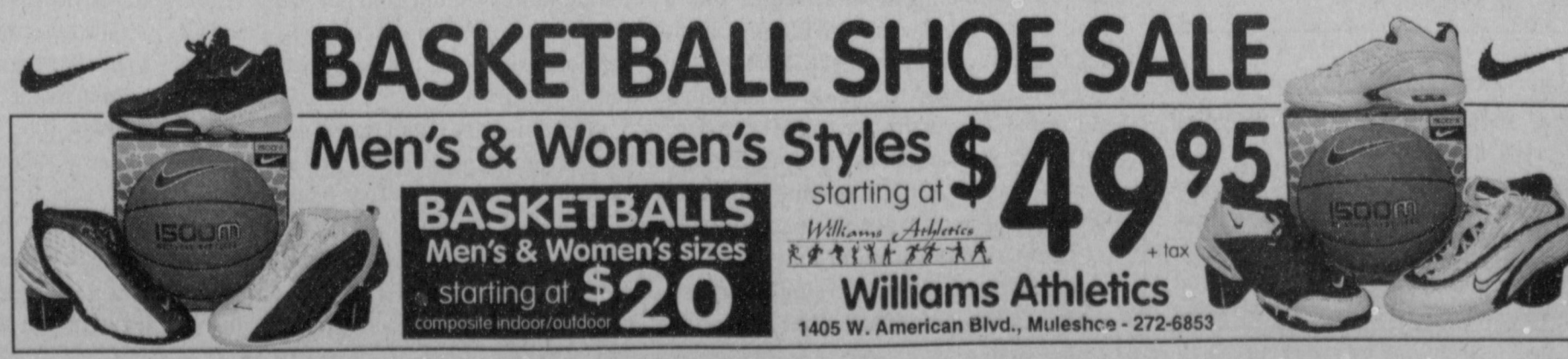
Give us a call for your ginning needs.  
**(806) 272-4794**

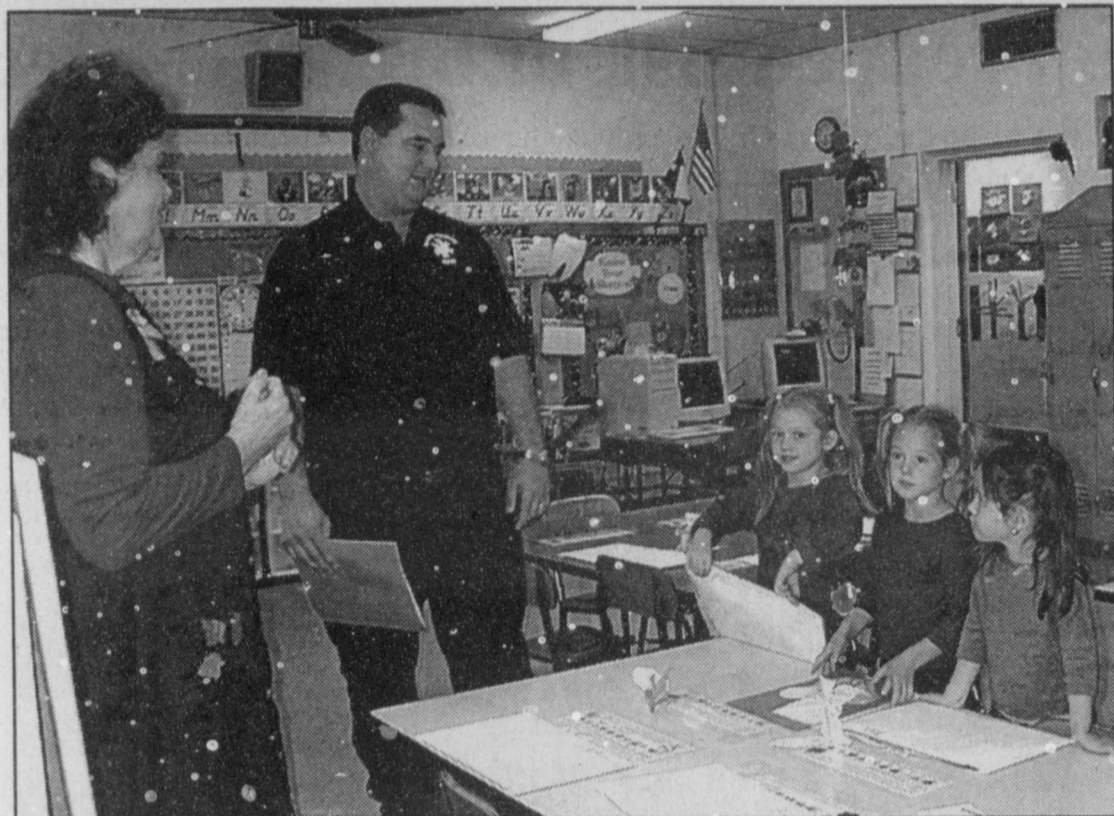
## BASKETBALL SHOE SALE

Men's & Women's Styles **\$49.95** starting at

**BASKETBALLS** Men's & Women's sizes starting at **\$20** composite indoor/outdoor

Williams Athletics  
1405 W. American Blvd., Muleshoe - 272-6853





Journal photo: Beatrice Morin

### Getting better acquainted

Visiting during Tuesday's open house at Dillman Elementary School are (from left) kindergarten teacher Louise Clapp, Brian Morris, 5-year-old Katelyn Gable, 4-year-old Kaylie Morris and 4-year-old Bethlee Gable. Katelyn is Clapp's student.

## JV Mules get back on track, 22-8

By DELTON WILHITE  
Journal correspondent

After dropping two close games in a row, the junior varsity Mules bounced back into the win column Thursday night by defeating the Littlefield Wildcats 22-8. Josué Sigala powered to the end zone in the first and second periods from eight and nine yards out to give the Mules a 14-0 advantage at halftime.

The Mules kicked off to open the second half and the Wildcats returned the ball to Littlefield's 46.

Facing a fourth-and-three on the Mule 25, the 'Cats pitched wide right to pick up the first down. Four plays later, a play-action pass to the Mule end zone cut the 'Cat deficit to 14-8 with 3:14 left in the third frame.

Tatom Heathington returned the ensuing kickoff

to the Mule 40. Ryan Marricle started the drive for the Mules with back-to-back carries up the middle; Joseph Gonzales carried to the 'Cats' 39. Landon Sheets moved the Mules to Littlefield's 25 and Gonzales broke a tackle to scamper 17 yards, putting the Mules on the 'Cat eight-yard line.

Sheets kept on the option and set up Andrew Reeves' block on the five to get to the end zone.

Sheets chased down a high snap for the extra-point kick and rambled back to the end zone for the two-point conversion, closing out the scoring.

Muleshoe's first points of the night had come after the Mules marched 73 yards, mixing formations and running backs after returning the opening kick to

their 27. Gonzales, Sheets and Sigala carried through the holes their offensive line punched in the Wildcat defense.

Sigala churned up the middle for his first touchdown with just less than three minutes in the first quarter.

Isaiah Pacheco broke up a Wildcat pass as the second frame started. The Mules held the 'Cats on a fourth-and-six to give the Mules possession for their second scoring drive of the night.

Sigala was again called on to power over, capping an eight-play, 58-yard drive at 5:18 before the half. Sheets rolled left and tossed to Matthew Sadler for the two-point conversion.

The Mules go to Shallowater on Oct. 25 for a showdown.

## Freshmen escape with 26-20 win

By DELTON WILHITE  
Journal correspondent

The freshman Mules dodged a bullet Thursday night as the Littlefield Wildcats cut a 26-6 fourth-quarter lead to 26-20.

Then Littlefield recovered an on-side kick with 32 seconds remaining in the game and initiated an aerial assault on the Mules.

The Wildcats moved to the Mule 26, but pressure from Jorge Mendoza and coverage by Aaron Miranda left the 'Cats short on the final play of the game.

The Mule defense had stopped Littlefield on its first series of the game, and a short punt gave Muleshoe possession on the Wildcat 41. Danny Bonilla capped the ensuing six-play, 59-

yard scoring drive with a 24-yard draw up the middle to put the Mules up 6-0 in the first quarter.

The 'Cats returned the kickoff to the Mule 49. Kory Atwood sniffed out the Wildcats' first-down play and made the tackle five yards deep in Littlefield's backfield.

Barry Morris met the Wildcats' big fullback at the line of scrimmage and hung on for reinforcements. The interior of the Mule defensive line stuffed the hole for a one-yard toss and forced the 'Cats to punt again.

Littlefield intercepted a Mule pass on first down and set up shop on the Mule 41 as the first period ended. The 'Cats powered downfield to tied the game

at 6-all at 6:26, before the half.

Raul Muñoz recovered a Wildcat fumble on the Mule 15 to halt a 'Cat drive with 1:42 left in the first half. Claye Tunnell broke a 21-yard run to move the Mules past midfield with only 16 seconds left on the clock.

Bonilla took a pitch from Tyler Wood wide around the right end for 44 yards to put the Mules up 12-6 at intermission.

Bonilla returned to the Littlefield end zone twice in the third quarter on a pair of eight-yard runs, giving the Mules a 26-6 pad as the final frame began.

The Mules, now 1-1 in district, go to Shallowater on Oct. 25 for a shootout with the Mustangs.

## Breast-cancer survival rates improve

SPECIAL TO THE JOURNAL

HOUSTON—Women diagnosed with breast cancer today find that it no longer carries a death sentence.

"The attitude of women toward the disease is changing as treatments improve and mortality from the disease declines," said Dr. Jenny Chang, an assistant professor at Baylor College of Medicine.

In the past decade, the death rate from breast cancer has decreased by 25 percent in the United States, while the incidence of breast cancer has remained

unchanged.

"This is a dramatic decline, and it will likely continue to go down as we see the results from widescale mammography screening," Chang said. Mammograms did not become a routine part of health care until the mid- to late 1980s.

Along with fewer deaths attributed to breast cancer,

the advances in treatment also have changed attitudes.

Now, women who are diagnosed with breast cancer are becoming more informed and less fearful.


"Women are empowered with knowledge and are able to take control of their lives," Chang said. "That has made a phenomenal difference in how they view this disease."

**We Encourage "Booing."**

**Special Finance Rates Will End October 31st**

**So scurry in!**

See our complete vehicle lineup at [www.muleshoemotor.com](http://www.muleshoemotor.com)



**MULESHOE MOTOR CO.**

1125 W. American Blvd. • 272-4251 • 1-800-432-7617

**Uan**



**Shelving & Cabinets**

**AMERICAN EQUIPMENT & TRAILER**

3707 M.L.K. Jr. Blvd.  
Lubbock, TX

**806-747-2991**

*You're Invited to A Weekend Pleasure*

## Muleshoe's Christmas Open House

# SATURDAY & SUNDAY

# OCTOBER 27 & 28

**Home for the Holidays**

Our first "Big Event" of the season!

Join us Oct. 27-28 at **SHEREE'S ATTIC...**

Sample our Homemade goodies...  
Enter to win a traveling Door Prize...  
...& Save BIG storewide!

**BUY ONE ITEM & GET A SECOND ITEM FOR 1/2 PRICE!**

(First item reg. price, second of equal or lesser value)

**Sterling Silver Jewelry included!**

Merle Norman Holiday Gift Selections Available

Open House hours: Sat. 10-6, Sun. 1-5  
*You don't want to miss this event!*

**1519 W. American Blvd. • 272-3459**

*Lasting Impressions*

**Floral & Gifts**

*& Beanie Babies, too!*

**DOOR PRIZES AND REFRESHMENTS**

*Bring A Friend!*

**516 South First • 272-4287**

Open House hours: Sat. 10-5, Sun. 2-5

**'Tis The Season**

And We Are Jolly...so  
Let The Celebrations Begin!

## Carolyn's Christmas Creations

224 West 2nd Street • Muleshoe

**10% DISCOUNT ON EVERY ITEM IN STORE!**

\* Refreshments \* Door Prizes \* Christmas Spirit

**Register to win \$100 LIBERTY KALEIDOSCOPE by Stain Glass Artist Elaine Case!**

Sat., Oct. 27 10 AM - 6 PM; Sun., Oct. 28 1-5 PM

**Register**

at each location

Sat. & Sun., Oct. 27-28 for a chance to win one of five traveling door prizes!

Each door prize is a wonderful Christmas treasure. Check with each participating business for special Open House hours.



### TODAY'S RECIPE

**TARRAGON BEEF SALAD**

2 lbs. beef round steak (1-inch thick)

1 cup olive or vegetable oil

1/3 cup cider or red wine vinegar

3 Tbsp. minced fresh tarragon or 1 Tbsp. dried

1 tsp. salt

3/4 tsp. sugar

1/2 tsp. ground mustard

1/2 tsp. pepper

1/4 tsp. garlic powder

1 large red onion, sliced

and separated into rings

1/2 lb. fresh mushrooms, sliced

1 large bunch romaine

1/2 cup minced fresh parsley

Place steak on a broiler pan. Broil 6 inches from the heat for seven minutes or until meat reaches desired doneness (for rare, a meat thermometer should read 140 degrees; for medium, 160; and for well-done, 170).

Cool slightly; cut steak into very thin strips.

In a large bowl, com-

bine the oil, vinegar, tarragon, salt, sugar, mustard, pepper and garlic powder. Add the steak, onion and mushrooms; toss to coat.

Cover and refrigerate for at least four hours.

Just before serving, place romaine leaves on plates. Using a slotted spoon, arrange beef mixture over romaine.

Using a slotted spoon, arrange beef mixture over romaine. Garnish with parsley.

Yield: 8 servings.

106 E. American Blvd.  
800-658-6378

## Country Junction

*Home For the Holidays*

*"Country" & "Western" Style!*

**JOIN US SAT., OCT. 27 FROM 9-6, AND SUN., OCT. 28 FROM 1-5, FOR CHRISTMAS OPEN HOUSE**

Register to win a \$65 Christmas Wreath to be given away & take advantage of our 10% Discount on All Christmas Items!

Enjoy refreshments as you browse through Christmas themes of Shabby Chic, Coca Cola, Western, Farm & Dairy, Elegant & Much More!

New for this season, "corner" & "wall" trees for homes with limited space

**Come & make believe it's Christmas Oct. 27-28!**

**Rusticam**

**Rustic Furniture & Linda's Gift Store**

104 W. AMERICAN BLVD.

Muleshoe, TX • 272-7528

**Elegant, Comfortable & Affordable Home Furnishings**

**SPECIAL EVENTS OCT. 27-28**

Bear Carving Demonstrations Both Days!

**SPECIAL DISCOUNTS THROUGHOUT THE STORE!**

Layaway for Christmas Now!



Journal photo: Beatrice Morin

### For a good cause

Donna Kirk (left) of the Food Bank joins the DECA student committee overseeing the collection of food for the Food Bank through Tuesday and selling paper footballs for a \$1 donation at the next two home games. Students are (back row, from left) Gabe Flores and Jason Sexton, (front row next to Kirk) Jean Kinnie and Rita Villalobos. All DECA students are participating in the fund-raiser.

### Treatment could cool hot flashes

**SPECIAL TO THE JOURNAL**  
HOUSTON — Breast-cancer patients often have a second battle to wage — against hot flashes, a common occurrence in menopause and during treatment for breast cancer.

A study at Baylor College of Medicine in Houston is looking at whether very low doses of an anti-depressant can reduce the number and severity of hot flashes for such patients.

The usual remedy, hormone-replacement therapy, is not recommended for breast-cancer patients because estrogens may promote or facilitate the disease.

"It's a considerable problem," said Dr. Lois Friedman, associate professor of psychiatry and behavioral sciences at Baylor. "Patients often want to stop some of their treatment for breast cancer because of hot flashes."

Hot flashes range from mild to very severe. Women suffering from the most severe form can experience a change in heart rhythm and difficulty breathing and functioning.

The physical and emotional symptoms may last

up to 45 minutes at a time. Preliminary data also suggest that low dosages of an anti-depressant might improve attention, concentration and memory.

"The dosages being used in the study are low and are not being used to have an anti-depressant effect," said Friedman, also director of psychosocial oncology at the Breast Care Center at Baylor College of Medicine and the Methodist Hospital. "Side effects are minimal, if present at all." The study will enroll 128 women who will receive either the anti-depressant or a placebo. Selection is random and neither the patient nor the doctor will know which treatment has been given until the six-week treatment phase is concluded.

Participants will be asked to keep a daily diary of hot flashes and will be required to meet with investigators four times during the six-week period.

"Hot flashes are a common problem, and very little other than hormone replacement therapy is available to treat hot flashes effectively," Friedman said.

"If this new type of therapy proves effective, it will offer relief to many

## Women can reduce risk of breast cancer

**SPECIAL TO THE JOURNAL**  
HOUSTON—Women can take actions to reduce the risk of breast cancer, ranging from simple lifestyle changes to aggressive treatment procedures.

"We can now assess an individual's risk of breast cancer from low to very high," said Dr. Powel Brown, an associate professor of medicine at Baylor College of Medicine.

"There is always some action women can take to reduce the risk, no matter what their risk level," he added.

Women at low risk for breast cancer may make lifestyle changes.

"For those in the moderate range, we recommend more aggressive screening practices. The annual mammogram continues,

but we advise visits to a doctor for a breast exam every six months," Brown said.

"In some of these women, it may be reasonable to use synthetic hormones, like tamoxifen or raloxifene,

to reduce the risk," he said.

For women considered to be at very high risk of breast cancer, aggressive prevention measures are encouraged.

"I think we are just at the beginning of major

efforts in cancer prevention," said Brown. "We are now able to intervene to reduce the risk for women at risk of breast cancer. In the future, I am sure we will also be able to reduce the risk of other cancers."

"Your Exhaust Specialist Since 1979"

### KC Muffler & Mfg., Inc.

425 N. 1st • Muleshoe • 272-5333

4" Exhaust for Diesel Pickups  
Performance Exhaust Systems  
on Domestic & Imports  
Pickup & Car Accessories  
Chrome Tips

## Join Us At Portales' 28th Annual Peanut Valley Festival

**Oct. 27-28, 2001**  
Saturday: 9 AM - 5 PM  
Sunday: Noon - 5 PM

**Campus Union Building**  
at Eastern New Mexico University in Portales, NM

**FREE ADMISSION**

You're Nuts If You Miss This Event!

women who have struggled with symptoms that affect their quality of life."

More information on the study is available by contacting Friedman at (713) 798-1972.

### HOSPITAL NEWS

Muleshoe Area Medical Center reports the following patient load.

**Oct. 11** — Johnnie Kimbrough, Lucy Lucero, Dovie C. Matthews, Petra B. Rejino, John L. Robbs, Tim T. Taylor and Graciela Villarreal.

**Oct. 12** — Betty A. Frost, Lucy Lucero, Dovie C. Matthews, Petra B. Rejino, John L. Robbs, Tim T. Taylor and Graciela Villarreal.

**Oct. 13** — None reported.

**Oct. 14** — None reported.

**Oct. 15** — Kathryn A. Hancock, Betty Johnson, David J. Lennon, Lucy Lucero and Petra B. Rejino.

**Oct. 16** — James E. Angeley, Myrtle Burke, Ollie F. Corbin, Kathryn A. Hancock, Betty Johnson and David J. Lennon.

**Oct. 17** — Laverna Brewer, Myrtle Burke, Ollie F. Corbin, Marvin E. Ezell, Kathryn A. Hancock and Yukari Vela.

the Eastern Star in Sweetwater, Texas, and Casper, Wyo.

She is survived by her husband and a brother, Nolan Stripling of Las Cruces.

The family suggests memorials to New Mexico Christian Children's Home (1356 New Mexico 236, Portales 88130-9411).

**LUCY LUCERO**  
Services will be held at 2 p.m. Monday at Immaculate Conception Catholic Church for Lucy Lucero, 77, of Muleshoe. The Rev. Joe Augustine will be the celebrant. Rosary will be said at 7 p.m. Sunday at Ellis Funeral Home Chapel. Burial will be in Bailey County Cemetery.

Ellis Funeral Home is handling arrangements.

She was born Dec. 26, 1923, at Ribera, N.M. She died Friday in Muleshoe Area Healthcare Center.

She married Pete Lucero on Aug. 21, 1948, in Las Vegas, N.M. He died Aug. 28, 1992.

They moved to the Muleshoe area in 1949 from Fowler, Colo. She was a homemaker and a member of Immaculate Conception Catholic Church, where she served as a member of the Guadalupanas.

Mrs. Lucero is survived by two sons, Raymond Lucero of Muleshoe and Tommy Lucero of Weslaco; three daughters, Patsy Bara of Vernon, Diana Balderas of Stafford, Va., and Esther Lucero of Clovis; 12 grandchildren; and seven great-grandchildren.

### OBITUARIES

#### PAT PIERCE

Services were held Friday at the First Baptist Church of Morton for Pat Pierce, 78, of Morton. The Rev. Paul Lively officiated. Burial was in Morton Memorial Cemetery.

Ellis Funeral Home of Morton handled arrangements.

Mrs. Pierce was born June 11, 1923, in Erick, Okla. She died Wednesday at home.

She married Roy L. Pierce on Nov. 11, 1962, in Springville, Ariz. They had lived in Morton for 15 years after moving there from Las Cruces, N.M. She was a licensed vocational nurse.

She was a member of the First Baptist Church of Morton and the Order of

### NOTICE OF SPECIAL ELECTION (AVISO DE ELECCION ESPECIAL)

To the Registered Voters of the County of Bailey, Texas:  
(A los votantes registrados del Condado de Bailey, Texas.)

Notice is hereby given that the polling places listed below will be open from 7:00 a.m. to 7:00 p.m., on November 6, 2001, for voting in a special election to adopt or reject the proposed Constitutional Amendments as submitted by the 77th Legislature, Regular Session, of the State of Texas.

(Notifíquese, por las presente, que las casillas electorales sitadas abajo se abrirán desde las 7:00 a.m. hasta las 7:00 p.m., el 6 de noviembre de 2001, para votar en la elección especial para adoptar o rechazar la enmienda propuestas constitucional así como fueron sometidas por la 77a Legislatura Sesión Regular, de la Estado de Texas.)

#### LOCATION(S) OF POLLING PLACES

(DIRECCION(ES) DE LAS CASILLAS ELECTORALES)

Precinct #1 ----- Voting Box #1 - Bailey County Courthouse  
Precinct #2 ----- Voting Box #2 - Bailey County Coliseum  
Precinct #3 ----- Voting Box #3 - Threeway School  
Voting Box #4 - New Vision Church of the Nazarene  
Precinct #4 ----- Voting Box #5 - Enochs Baptist Church  
Voting Box #6 - Needmore Community Center  
Voting Box #7 - Muleshoe City Hall

Early voting by personal appearance will be conducted each weekday at:  
(La votación adelantada en persona se llevará a cabo de lunes a viernes en:)

the Office of the County Clerk in Bailey County Courthouse, 300 S. 1st, Muleshoe, Texas

(location)

la oficina de la secretaria del Condado, 300 S. 1st, en Muleshoe, Texas

(sitio)

between the hours of 8:30 a.m. and 5:00 p.m. beginning on October 22, 2001

(date)

(entre las 8:30 de la mañana y las 5:00 de la tarde empezando el 22 de Octubre, 2001)

(fecha)

and ending on November 2, 2001 (y terminando el 2 de Noviembre, 2001.)

(date)

(fecha)

Applications for ballot by mail shall be mailed to:

(Las solicitudes para boletas que se votarán adelantada por correo deberán enviarse a:)

Sherrri Harrison, County Clerk

(Name of Early Voting Clerk)

(Nombre de la Secretaria de la Votación Adelantada)

300 S. 1st Street

(Address) (Dirección)

Muleshoe, TX 79347

(City) (Ciudad) (Zip Code) (Zona Postal)

Applications for ballots by mail must be received no later than the close of business on:

(Las solicitudes para boletas que se votarán adelantada por correo deberán recibirse para el fin de las horas de negocio el:)

October 30, 2001

(date) (fecha)

Issued this the 10th day of October, 2001.

(Emitteda esta día 10 de Octubre de 2001.)

*Maiden Cox*  
Signature of County Judge  
(Firma del Juez del Condado)

FILED FOR RECORD  
11th DAY OF October 2001  
AT 02 HR 05 MIN P M.  
SHERRI HARRISON, COUNTY CLERK  
BAILEY COUNTY, TEXAS

# McDaniel's

Celebrating  
over 48 years  
of Style and  
Service!

## Anniversary celebration

# 12\* MONTHS

# NO payment

# NO interest

## price list sale

## Save 5% to

# 40%<sup>\*\*</sup> off



Armstrong

On every square foot of

## carpet, ceramic, vinyl, wood and laminate.

All is priced to sell fast!

McDaniel's Floor Covering has over 200 rolls of carpet, over 100 rolls of sheet vinyl, huge selections of self-stick vinyl tile, vinyl composition tile, laminate, ceramic tile & hardwood flooring to choose from.

Pick up the price list at our sales counter and ask for details on our 12 months NO PAYMENT, NO INTEREST financing plan.\*

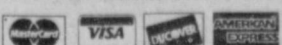
Sale includes special orders, custom blinds and much more\*\*\*

## Hurry in, sale ends October 31, 2001.

# McDaniel's



### FLOOR COVERING "Simply The Best Since 1953"



1013 Mitchell Street, Clovis • 505-762-4481 • 1-800-682-7891

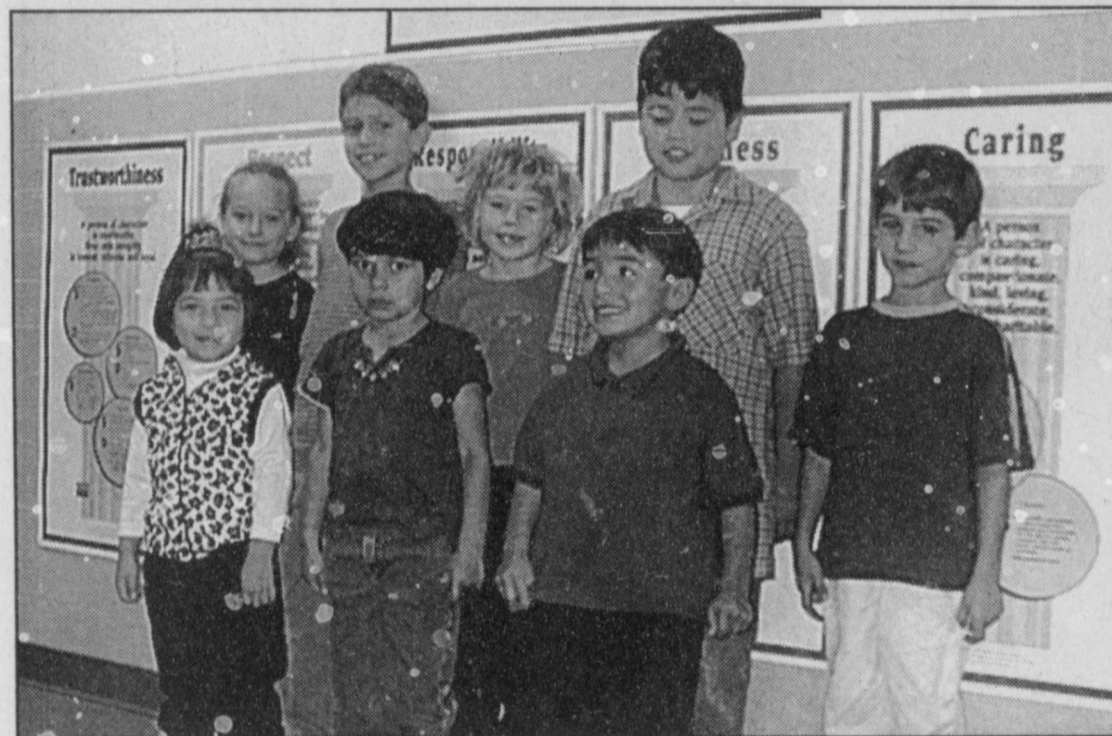
\*Ask store for details. On approved credit\*\*Materials only. Installation available for an extra charge.\*\*\*Excludes Oreck Vacuum Cleaners.



Courtesy photo: Muleshoe Area Public Library

### Scarecrow season

Librarian Dyan Shipley plays the role as the Muleshoe Area Public Library's reading program addresses the topic "Scarecrow" recently. Her audience is (back row, from left) Denys Arreola, Cindy Arreola, Stephanie Stancell, Brittany Prater and Ruby Facundo; (front row, from left) Bobby Sigala, Austin Stancell, Bethany Prater, Zachary Duncan, Kayla Preston and Angel Arreola. The program meets Monday mornings at 10:30 at the library, with a different topic each week.



### Dillman character kids

Dillman Elementary School's character kids for October are (back row, from left) Jodee Hall, Jordan Smith, Morgan Burris, Alex Vidaña and Elias Leal; (front row, from left) Betty Alvarado, Marion Gutiérrez and Nathan Rosas. The "character kids" designation takes the place of the previous "superkids," in light of the introduction to Muleshoe schools of the Character Counts program.

### Group seeks fan mail for military troops

Schools, churches, youth groups, veterans groups and others are already writing fan mail to members of the U.S. military for the Christmas 2001 Military Mail campaign. In this campaign, mail is sent to the Friends of Our Troops headquarters (Box 65408, Fayetteville, N.C. 28306). According to a press release, Crockett High School already has sent 1,246 cards — more than any other Texas school. The Fort Bliss NCO Wives Club has sent 5,410 cards.

### SCHOOL MENUS

MULESHOE ELEMENTARIES	MULESHOE JR./SR.HIGH
<p><b>Oct. 22</b>  <b>Breakfast</b> — Doughnut, French-toast sticks, cereal with graham crackers, fruit juice and milk.  <b>Lunch</b> — Cheeseburger, chef salad with roll, peanut-butter and jelly sandwich, french fries, ranch beans, peaches and milk; DeShazo: juice.  <b>Oct. 23</b>  <b>Breakfast</b> — Cinnamon rolls, pancakes, cereal with graham crackers, fruit juice and milk.  <b>Lunch</b> — Spaghetti, breadsticks, peanut-butter and jelly sandwich, tossed salad, carrots, pineapple tidbits, chef salad with roll, and milk; DeShazo: juice.  <b>Oct. 24</b>  <b>Breakfast</b> — Sausage biscuit, French-toast sticks, cereal, fruit juice and milk.  <b>Lunch</b> — Baked potato with roll, peanut-butter and jelly sandwich, pinto beans, tossed salad and milk; Dillman: chicken fajitas and brownies; DeShazo: beef taco, birthday cake and juice.  <b>Oct. 25</b>  <b>Breakfast</b> — Breakfast pizza, pancakes, cereal, fruit juice and milk.  <b>Lunch</b> — Hot dog, chef salad with roll, peanut-butter and jelly sandwich, baked Tater Tots, campfire baked beans and milk; Dillman: pears; DeShazo: Rice Krispy treats and juice.  <b>Oct. 26</b>  <b>Breakfast</b> — Cheese toast, French-toast sticks, cereal, fruit juice and milk.  <b>Lunch</b> — Super sack lunch meal, assorted chips, carrot sticks, cookie assortment and milk; DeShazo: juice.</p>	<p><b>Oct. 22</b>  <b>Breakfast</b> — Doughnut, cereal with graham cracker, fruit juice and milk.  <b>Lunch</b> — Foot-long hot dog, pepperoni pizza, hamburger sack lunch, french fries, campfire baked beans, corn, hamburger fixings, assorted fruit, fresh fruit, low-fat chocolate cake with vanilla glaze and milk.  <b>Oct. 23</b>  <b>Breakfast</b> — Breakfast burrito, cereal with graham crackers, fruit juice and milk.  <b>Lunch</b> — Taco salad, pepperoni pizza, super sack lunch meal, baked Tater Tots, Spanish rice, pinto beans, assorted chips, green beans, assorted fruit, fresh fruit, gelatin and milk.  <b>Oct. 24</b>  <b>Breakfast</b> — Cinnamon rolls, cereal with graham cracker, fruit juice and milk.  <b>Lunch</b> — BLT chicken sandwich, pepperoni pizza, hamburger sack lunch, french fries, tossed salad, hamburger fixings, broccoli, assorted fruit, fresh fruit, apple cobbler and milk.  <b>Oct. 25</b>  <b>Breakfast</b> — Sausage biscuit, cereal with graham crackers, fruit juice and milk.  <b>Lunch</b> — Salisbury steak, rolls, pepperoni pizza, super sack lunch meal, baked Tater Tots, mashed potatoes, assorted chips, peas and carrots, tossed salad, assorted fruit, fresh fruit, cherry freeze bar and milk.  <b>Oct. 26</b>  <b>Breakfast</b> — Breakfast on a stick, cereal with graham crackers, fruit juice and milk.</p>
<p><b>Lunch</b> — Stromboli, pepperoni pizza, hamburger sack lunch, french fries, hamburger fixings, carrots, assorted fruit, fresh fruit, sugar cookies and milk.  <b>THREE WAY</b>  <b>Oct. 22</b>  <b>Breakfast</b> — Pancakes, ham, cereal, graham crackers, juice and milk.  <b>Lunch</b> — Pepperoni pizza, green salad, corn, cookies and milk.  <b>Oct. 23</b>  <b>Breakfast</b> — Funnel cakes, Canadian bacon, cereal, graham crackers, juice and milk.  <b>Lunch</b> — Cheese enchiladas, refried beans, Spanish rice, crackers, Red Hot apples and milk.  <b>Oct. 24</b>  <b>Breakfast</b> — Breakfast pizza, cereal, graham crackers, juice and milk.  <b>Lunch</b> — Pork patty, mashed potatoes, green peas, gravy, Jell-O, hot roll and milk.  <b>Oct. 25</b>  <b>Breakfast</b> — Sausage biscuit with cheese, cereal, graham crackers, juice and milk.  <b>Lunch</b> — Chicken nuggets, potato wedges, green beans, white bread, pears and milk.  <b>Oct. 26</b>  <b>Breakfast</b> — Pop-Tarts, ham, cereal, graham crackers, juice and milk.  <b>Lunch</b> — Bologna and cheese sandwich, lettuce and tomato, potato soup, crackers, fresh fruit and milk.  <b>LAZBUDDIE</b>  <b>Oct. 22</b>  <b>Lunch</b> — Fried chicken (pre-k-1), submarine sandwiches, pizza, mashed potatoes, English peas, carrots, applesauce,</p>	<p>salad, Jell-O, yogurt, cottage cheese and milk.  <b>Oct. 23</b>  <b>Lunch</b> — Enchiladas (pre-k-1), tuna sandwiches, corn dogs, beans, Spanish rice, hominy, pears, salad, Jell-O, cottage cheese, yogurt and milk.  <b>Oct. 24</b>  <b>Lunch</b> — Chicken and rice, pizza (pre-k-1), Hot Pockets, green beans, sweet potatoes, squash, yogurt, pineapple, salad, Jell-O, cottage cheese and milk.  <b>Oct. 25</b>  <b>Lunch</b> — Chili-cheese fries (pre-k-1), hamburgers, ranch-style beans, corn, peaches, yogurt, salad, Jell-O, cottage cheese and milk.  <b>Oct. 26</b>  <b>Lunch</b> — Manager's special.</p>

### 'Candyland' theme set for bazaar

AMARILLO — "Christmas Roundup 2001 — A Journey Through Candyland" has been scheduled for Nov. 2-4 at the Amarillo Civic Center.

The annual Christmas bazaar is a fund-raiser for the Amarillo Symphony Guild and the Art Museum Alliance.

Fifty-two exhibitors are expected to participate.

Shopping and silent auction hours will be 10 a.m. to 6 p.m. Friday and Saturday, noon to 5 p.m. Sunday.

No information was available Friday night on whether there will be an admission charge or not. The event is underwritten by Amarillo businesses and individuals.

Items in the silent auction will include a \$1,000 shopping spree at Duncan and Boyd Jewelers; a \$220 facial and hand massage at Dove Creek Ranch Day Spa; a hot-air balloon tour and post-flight dinner courtesy of Amarillo National Bank and Macaroni Joe's, including a \$106 bottle of wine; a \$525 made-to-measure suit from Suspenders; a \$250 gift certificate from New Wine; two tickets to the Amarillo Symphony and a room on the "special concierge floor" of the Ambassador Hotel.

Reservations for the Candyland Luncheon (\$25 per person) must be made by calling Beth Brophy at (806) 376-7100 by Oct. 24.

The luncheon is scheduled for 11:30 a.m. Nov. 2 in the Civic Center's Grand Plaza.

**Happy 1st Birthday**  
**Ashlan Gloria Dominguez**  
*We Love You!*  
**Mommy, Andrea & Kristina**

## FISH

Channel Catfish, Florida Hybrid Bass, Hybrid Bluegill, Fathead Minnows, Crappie and Triploid Grass Carp are now available for Pond and Lake Stocking.  
 One week notice and permit required for Triploid Grass Carp  
 • We furnish your hauling containers!  
 • We guarantee live delivery!  
 • Discounts and Special Deliveries are available on large orders!  
 • Supplies—Sure-Katch Turtle Traps, Fish Feeders, Fish Traps, Spawning Mats, Liquid Pond Fertilizer and Gift Certificates

Delivery will be on **FRIDAY, NOV. 2, 2001** at the times listed for the following towns and locations:

PLACE	PHONE	TIME
Muleshoe-Wiedebush & Co.	272-4281	7:30-8:30 am
Sudan-Farmers Coop Sudan	227-2461	9:30-10:30 am
Plainview-Jalee's Outrigger, Inc.	293-5079	12-1 pm
Tulia-Big N Farm Store	995-3451	2-3 pm
Carryon-Consumers Fuel Assoc.	655-2134	4-5 pm

To place your order or for more information contact one of our fishery consultants or your local dealer.  
 Mon.-Fri. 7:00 am-8:00 pm CST/Sat. 8:00 am-6:00 pm CST  
**1-800-433-2950 • Fax (870) 589-2029**  
**DUNN'S FISH FARMS OF ARKANSAS, INC.**  
 PO Box 10, Monroe, AR 72108-0010

### What's Really Important in Our Nation and Our Lives?

It's been a little over a month since evil men who cared nothing for their own lives or for the lives of others failed to kill the 50,000 or so people in the World Trade Center towers they would very much like to have killed and, instead, put to death 5,000 and threw much of our world into a battle between people and nations who love life and nations mis-led by wicked leaders who hate it. In a time like this, I suppose we are all forced to think once again about that which is truly found-

**Focus On Faith**  
 Curtis Shelburne

joint session of Congress, there was Britain's Tony Blair sitting beside Laura Bush and then, back across the Pond, delivering to Britain's leaders a stirring speech of his own casting their nation's lot strongly with ours. Thank God for the Brits who, as one man said, can be counted on to be with us even if it was the last moment of the last hour of the last day of human history.

What's really important in life? Faith and friendship would be very high on the list. A friend, John Comer, reminded me recently of Norman Rockwell's *Four Freedoms*, four paintings done during WWII that reminded our nation of why we went to war. Just a few days ago Newsweek featured those paintings—*Freedom of Worship, Freedom from Fear, Freedom of Speech, and Freedom from Want*—in its pages. My friend recalled that in what had become "normal" times for our nation, an Andy Warhol might proclaim that "Art is what you can get away with." Most of the members of what Tom Brokaw has called the "greatest generation" would have laughed at what Warhol called art and thrown it into a dumpster. But they fought for the principles Rockwell captured so well in his art. Some things are worth nothing. Some things are worth everything.

Freedom. Faith. Friends who believe in both. My wife's family still has the purple hearts, Bronze Star, and French Cross her father won because he believed in what is at the heart of this nation's strength. He rarely if ever talked about his experiences in battle. He didn't like to remember. But he knew what was important. I'm glad to know our nation remembers.

Curtis Shelburne is minister of the 16th & D Church of Christ in Muleshoe.

## 50th Anniversary Celebrated

**Mr. & Mrs. Chester Yerby**  
 celebrated their  
*Golden Wedding Anniversary*  
 on October 20, 2001  
 with a family dinner  
 at Olive Garden Italian Restaurant  
 in Wichita Falls, Texas

Their daughter and family served as hosts for the event.  
 The Yerbys have one daughter and son-in-law, Lee Ann and Larry Baker, of Greenville, TX; two grandchildren and one great-grandchild.  
 Yerby and the former Elinor Ferrell were married October 12, 1951 in Plainview.



Courtesy photo: Clay Kidd

### Business of the month

Gathered to honor Leo's Blacksmith as the Muleshoe Chamber of Commerce business of the month for September are (from left) chamber member Sheila Stevenson, Kalam Puckett, Cheryl Puckett and Greg Williams. The business was honored specifically for Kalam Puckett's work on the kicking mule sign for the entrance at Benny Douglass Stadium.

## Choosing a CPA can be critical

SPECIAL TO THE JOURNAL

AUSTIN — Starting a small business? Upgrading computer systems? Developing an estate plan or trying to reduce next year's taxes? A certified public accountant can help but, according to the Texas Society of CPAs, how much a CPA can help depends on the customer's ability to find the right one and clearly communicate goals and objectives.

Business owners and managers of various for-profit and nonprofit organizations turn to CPAs for a wide range of services — from traditional auditing to advice on developing effective accounting systems, maximizing operations and resolving management problems.

Individuals also increasingly rely on CPAs not only for preparing taxes but for personal financial planning—building college funds, planning for retirement, and creating estate plans.

The Texas Society of CPAs' suggestions for selecting a CPA include:

- Referrals from friends, neighbors and co-workers are one of the best ways. Business people in similar fields as well as lawyers or bankers can be especially helpful.

Seeking out leads at chamber of commerce meetings also is effective, as are local small-business associations or professional associations. In addition, there are electronic referral services offered through various accounting websites, such as CPA2Biz.com.

In searching for a CPA, be sure to look for someone who works with businesses the size or with financial issues similar to the one being represented.

- In interviews with CPAs, be prepared to clearly explain why CPA services are needed and the result expected. Then ask about his or her qualifica-

tions, profiles of typical clients and availability.

Also find out exactly who will be handling the work — the CPA at the meeting or someone else in the firm. If others in the firm will be involved, take time to meet these individuals and learn about their credentials and experience.

- Like finding the right mate, finding the right CPA requires determining the compatibility of personalities.

For example, if the services will include financial planning assistance and the customer has typically been very conservative and risk-averse, will the CPA help develop a more balanced investment strategy?

What about the frequency for meetings or communication between CPA and customer? If the customer is the type of individual who will want to call the CPA once or twice a week, find out whether the CPA can provide that kind of access.

Finally, don't be afraid to ask about fees. The rates of CPAs vary widely from \$100 per hour to several hundreds of dollars. The services required, the complexity of the financial situation, the experience of the CPA, and the area of the country involved will all impact the CPA's fees.

If the CPA firm employs CPAs at various levels, find out how the billing rates for staff accountants, managers and partners. Then compare this to other firms in the area.

If there are specific deadlines the CPA will have to meet, make sure he or she can meet them. Keep in mind, however, that to get the most value from a CPA, the customer should be prepared to enter into a relationship that will grow over time and adjust to changing financial needs.

More information on picking CPAs is available on the Internet at [www.tscpa.org](http://www.tscpa.org).

### TOPS NEWS

TOPS No. 34 met Oct. 18 at the regular site, the Muleshoe Church of Christ Fellowship Room.

Laverne James, leader, presided and led the prayer and pledge.

Both TOPS songs — "The Slimmer We'll Be" and "The Goodnight Song" — were led by Alma Robertson.

Ten members were present.

Polly Otwell and Alene Bryant conducted the weighing. The best loser for the week was Otwell, with Bryant as first runner-up and Lucille Harp as second runner-up.

Get-well cards were prepared for mailing to Ozell Cherry and Bill Coburn by greeting-card chairperson Retha Knowles. Each member signed the cards.

Seven members still have tickets remaining in the jar contest. The leader is Molly Davis, with four tickets. Runners-up are Bryant, Otwell and Jewel Peeler, with two apiece. Harp, Knowles and Ruth Clements each have one.

The next meeting is scheduled for 5:30 p.m. Oct. 25 at the same site. Visitors are welcome.

### TODAY'S RECIPE

#### HONEY STRAWBERRY PRESERVES

6 cups sliced strawberries

2 boxes (1 3/4 oz. each) powdered pectin

1 3/4 cups honey

2 Tbsp. lemon juice

Combine strawberries and pectin in a large saucepan; crush berries to blend completely.

Bring mixture to a full rolling boil over medium-high heat. Boil hard for one minute, stirring constantly.

Stir in honey and lemon juice; return to a full rolling boil. Boil hard for three minutes, stirring constantly.

Remove from heat. Skim off foam. Ladle into clean, hot canning jars to within 1/4 inch of tops. Seal according

to manufacturer's directions. Place jars on the rack in a canner. Process for 10 minutes in a boiling-water bath with water 2 inches above jar tops.

Remove jars from canner. Place on thick cloth or wire rack; cool away from drafts.

After 12 hours, test lids for proper seal. Remove gins from sealed jars.

# PLATEAU To Go<sup>SM</sup>

**ONLY \$59**

OPEN THE BOX & YOU'RE READY TO TALK!

**EVERYTHING YOU NEED:**

- AUDIOVOX 480 PHONE
- 45 PREPAID MINUTES
- CELLULAR ACTIVATION

**EASY QUALIFICATIONS:**

- NO CONTRACT
- NO CREDIT CHECK
- NO AGE LIMIT

**PLATEAU Wireless**

FOR MORE INFORMATION VISIT YOUR NEAREST AUTHORIZED PLATEAU WIRELESS LOCATION OR CALL 1-877-PLATEAU.

PLATEAU LOCATIONS IN WEST TEXAS	FARWELL	B&E Radio Shack	MORTON	PLAINVIEW
<b>BROWNFIELD</b> Cellular Plus 405 Lubbock Rd. (806) 637-6232	ENMR • Plateau 200 Ave. A (806) 481-3800	712 Austin (806) 894-8053	Farm Equipment Co. Levelland Hwy. (806) 266-5517	Plateau Wireless 3200 A. Olton Rd. (806) 293-7466
<b>DIMMITT</b> Bryant's Sales & Services 317 N. Broadway (806) 647-3149	<b>FRIONA</b> WT Services 1010 Columbia (806) 290-5555	Gary Palk 502 E. Adams (806) 894-9072	<b>MULESHOE</b> Five Area Telephone Coop 302 Uvalde (806) 272-7700	Radio Shack 3435 Olton Rd. (806) 296-6738
<b>EARTH</b> Earth Reinka 304 W. Main (806) 257-2291	<b>HEREFORD</b> WT Services/ Doug Baker 5. Hwy. 38S (806) 364-7311	<b>LITTLEFIELD</b> Cartridge Pro 513 Phelps (806) 385-0026	Wilson Appliance 117 Main St. (806) 272-5532	Two Way Radio & Paging 404 Columbia (806) 296-2672
<b>LEVELLAND</b> Plateau Wireless 701 College Ave. (806) 636-1400	<b>Lonestar Communications</b> 219 Cactus (806) 894-8881	Larry's Radio Shack 601 Hall Ave. (806) 385-3422	<b>PLAINS</b> Plains Depot 902 Cowboy Way (806) 456-7112	<b>TULIA</b> Swisher Electric Cooperative 401 SW 2nd (806) 995-3567
		Richardson Enterprises 147 E. Delana (806) 385-7836		

**SPOOKED**  
about getting a loan?

We make getting a loan a lot less scary!  
Just see the friendly ghosts at

**Continental Credit**  
Loans \$100-\$495  
LOANS WHILE YOU WAIT OR BY PHONE  
¡Se Habla Espanol!  
Mon.-Thurs. 9:00 am-5:30 pm, Fri.-9:00 am-6 pm  
206 S. Main • Muleshoe • 272-3673

# BAILEY COUNTY DEVOTIONAL PAGE

## THE TRINITY COMPANY

**MULESHOE, TEXAS**  
**McCormick Seeds, Inc.**  
 400 East Ash • Muleshoe  
 272-3156  
 Tim McCormick • Roland McCormick

**Muleshoe Feed Barn**  
 311 W. American Blvd. HI-PRO  
 Muleshoe, TX  
 272-5626

**United Supermarkets**

**Antiques & Fine Things**  
 of Muleshoe  
 2104 W. American Blvd. • 272-4217

**"THE FIVE AREA TELEPHONE COOPERATIVE, INC."**  
 West Plains Telecommunications, Inc.  
 Five Area Systems, Inc., Plateau Wireless  
 Five Area Long Distance - Five Area Internet  
 302 Uvalde Muleshoe, USA (806) 272-5533

**Leo's Blacksmith & Machine Shop**  
 "Family Owned Since 1966"  
 • WELDING - SHOP OR FIELD • REBUSH TRACTOR FRONT ENDS  
 • ALL TYPES OF STEEL • BOLTS • AGRIC BEARINGS  
 • FABRICATING PARTS & EQUIPMENT  
 310 W. American Blvd. • 272-4418 • Muleshoe

**minsa corporation**  
 P.O. Box 484 272-5545  
 Muleshoe, TX  
 FAX (806) 272-5135 (800) 852-8291

**igginbotham-artlett co.**  
 Since 1916  
 215 Main Muleshoe  
 272-3351 FAX 272-6860

**Little Real Estate & Appraisal Services**  
 Walter B. "Jack" Little  
 272-4805  
 MOBILE: 946-7965 Muleshoe FAX: 272-3729

**MARTINEZ CAR WASH AND DETAIL SERVICE**  
 "Serving Muleshoe since 1980"  
 502 S. 1st Muleshoe 272-3251 M-F 8-6 Sat. 8-Noon

**Henry Insurance Agency**  
 "Serving You Since 1964"  
 111 West Avenue B 272-4581  
 Muleshoe, TX

**BAILEY COUNTY ELECTRIC COOPERATIVE ASSN.**  
 Muleshoe — 272-4504 Morton — 266-8600

**IRRIGATION PUMPS & POWER ZIMMATIC CENTER-PIVOTS**  
 W. Hwy. 84 272-4483

**JAMES CRANE TIRE CO., INC.**  
 107 Main 272-4594  
 Mike Hahn Muleshoe, TX

**SAIN IRRIGATION & MACHINES**  
 Complete Pump Service  
 W. American Blvd. 272-4397  
 Walt Sain Muleshoe, TX 272-4148

**MULESHOE MOTOR CO.**  
 1225 W. American Blvd. 272-4251

**FARMERS CO-OP ASS'N**  
 of ENOCHS  
 "Your Farmers Owned Gin"  
 806-927-5511 Wade Baker, Mgr.

**TEXAS FARM BUREAU INSURANCE CO.**  
 1612 W. American Blvd. • 272-4567 • Muleshoe

**MULESHOE ANIMAL CLINIC**  
 GENERAL PRACTICE  
 1430 US Hwy. 84 • Muleshoe Office: 272-4990

## Facts About The BIBLE BY JOHN LEHTI

THIS IS A DRAMATIZED VERSION OF FACTS TAKEN FROM THE BOOK OF AMOS, CHRONOLOGICALLY AND AUTHENTICALLY CONSOLIDATED!

**AMOS • THE SHEPHERD TURNED PROPHET**

DELIVERING THE LORD'S WARNING TO SINFUL ISRAEL IN THE TEMPLE AT BETHEL, AMOS HAS NOW BEEN CONFRONTED BY THE HIGH PRIEST AMAZIAH AND TOLD TO LEAVE, BUT AMOS CONTINUES HIS SPEECH.

I WAS A HERDMAN AND NOT A PROPHET, BUT THE LORD PICKED ME TO SPEAK!

...AND THE LORD HATH SAID ISRAEL WILL BECOME CAPTIVE TO HER ENEMIES AND ALL THE MIGHTY SHALL FALL!

WOE UNTO ISRAEL, SAITH THE LORD - I WILL SWITEE THEE FROM THE GREATEST TO THE VERY LEAST!

BUT IN VAIN! AMOS' WORDS FALL ON DEAF EARS....

GO! PROPHECY IN THINE OWN (AND - BUT NOT HERE IN BETHEL!

AND SO, WITH HOOTS, CATCALLS, AND JEERS FOLLOWING HIM, AMOS LEAVES THE TEMPLE! HE HAS DONE HIS JOB! ALL ISRAEL HAS BEEN WARNED, AND IF THEY WILL NOT LISTEN, THEN LET THEIR BLOOD BE UPON THEIR OWN HEADS - BUT AMOS KNOWS THAT HE REALLY HAS DELIVERED THE LORD'S WARNING!

Next Week RETRIBUTION!

SAVE THIS FOR YOUR SUNDAY SCHOOL SCRAPBOOK

This devotional & directory is made possible by these businesses who encourage all of us to attend worship services.

- ASSEMBLY OF GOD**  
**FIRST ASSEMBLY OF GOD**  
 521 South First Street • 272-3017  
 Jack Stone, Min. • 272-3984  
 S.S. 9:45 am, W.S. 11 am & 6:30 pm, Wed. 7:30 pm  
**EL BUEN PASTOR**  
 415 E. Ave. F • Pastor Felix Cadena  
 S.S. 9:45 am, W.S. 11 am & 6 pm; Wed. 7 pm
- BAPTIST**  
**CALVARY BAPTIST**  
 1733 W. Ave. C. Rev. Jeff Coffman  
**CIRCLE BACK BAPTIST**  
 Intersection FM 3397 & FM 298  
 Circle Back • 946-3676  
**FIRST BAPTIST**  
 220 West Ave. E., Dr. Stacy Conner  
**FIRST BAPTIST**  
 Lazbuddie • 965-2126  
**PRIMERA IGLESIA BAUTISTA**  
 223 E. Ave. E, Rev. Greg Guzman  
**PRIMITIVE BAPTIST**  
 621 South First,  
 Elder Cleveland Bass, Min.  
**PROGRESS BAPTIST**  
 Progress, TX  
**PROGRESS SECOND BAPTIST**  
 Arthur Hays, Min.  
 1st & 3rd Sundays  
**RICHLAND HILLS BAPTIST**  
 17th & West Ave. D, Bruce Cotton, Interim Pastor  
**ST. MATTHEWS BAPTIST**  
 Corner of W. Boston & W. Birch  
 Floyd R. Monroe, Min.  
**THREE WAY BAPTIST**  
 927-5467  
**TRINITY BAPTIST**  
 314 E. Ave. B, Robert Brown, Min.
- CATHOLIC**  
**IMMACULATE CONCEPTION CATHOLIC CHURCH**  
 805 E. Hickory, Joseph Agustine, Min.
- CHARISMATIC EPISCOPAL**  
**ST. CLEMENTS**  
 1536 W. American Blvd. • 272-5954  
 Father Sergio Leal  
 Sun. W.S. 10:30 am
- CHRISTIAN**  
**TRINITY CHRISTIAN CENTER**  
 1723 W. American Blvd. • 272-3877  
 Reydon Stanford, Min.
- CHURCH OF CHRIST**  
**LARIAT CHURCH OF CHRIST**  
 Sam Billingsley, Min.  
 S.S. 10 a.m.; W.S. 11 a.m. & 6 p.m., Wed. 7 p.m.  
**LAZBUDDIE CHURCH OF CHRIST**  
 Nathan Crawford, Min.  
 S.S. 9:30 am; W.S. 10:20 am & 5 pm; Wed. 7 pm  
**MULESHOE CHURCH OF CHRIST**  
 22nd & W. American Blvd.  
 Harry Riggs, Min.  
 S.S. 9:30 am; W.S. 10:20 am & 6 pm; Wed. 7:30 pm  
**16th & AVE. D CHURCH OF CHRIST**  
 Curtis Shelburne, Min. • 272-4619  
 S.S. 9:30 am; W.S. 10:30 am;  
 Growth Gr. 1:30 pm; Wed. 7:00 pm
- LUTHERAN**  
**ST. JOHN LUTHERAN**  
 Lariat, TX-David Symm, Min.  
 S.S. 10:30 am; W.S. 9:30 am
- METHODIST**  
**FIRST UNITED METHODIST HISPANIC MINISTRIES**  
 E. 5th and E. Ave. D  
 Pastor Benito Cavazos  
**FIRST UNITED METHODIST**  
 507 W. 2nd St.  
 Pastor Brad Reeves  
**LAZBUDDIE METHODIST**  
 S.S. 9:30 am; W.S. 10:30 am  
 Rev. Randy Thomas • 965-2121  
**EL DIVINO SALVADOR U.M.C.**  
 619 E. 5th Street & Ave. G, Muleshoe  
 Javier Rodriguez, Pastor  
 272-6888
- NAZARENE**  
**NEW VISION CHURCH OF THE NAZARENE**  
 814 W. Ave. C • 272-3622  
 William Perhealth, Pastor-S.S. 10 & 11 am; W.S. 7 pm
- PENTECOSTAL**  
**UNITED PENTECOSTAL LIGHTHOUSE**  
 207 East Ave. G • 1-800-454-6051  
 S.S. 10 am; Thursday, Bible Study 7 pm
- INTER DENOMINATIONAL**  
**NEW COVENANT**  
 Plainview Hwy.  
 Steve Claybrook, Pastor  
 W.S. 10 am; Wed. 7 pm

**Jarman Seed**  
**PIONEER.** 801 W. American Blvd.  
 Muleshoe, TX • 272-5985

**MULESHOE PEA & BEAN, INC.**  
 RR 2 Box 297 272-5589  
 Muleshoe, TX

**MULESHOE VALLEY INC.** West Hiway 84  
 272-4266  
 Muleshoe  
 STEVE STANCELL - OWNER

**FIRST AG CREDIT MULESHOE**  
 "Serving Farmer & Bailey Counties"  
 272-3010 • Fax 272-5388  
 316 Main • P.O. Box 424 • Muleshoe, TX

**AGRO DISTRIBUTION**  
 Hwy. 84 • 272-4203  
 Muleshoe, Texas Bruce Bruns - Mgr.

**Decorators Floral & Gifts**  
 616 South First 272-4340  
 Muleshoe, TX

**Lowe's MARKETPLACE**  
 401 W. American Blvd. • Muleshoe • 272-4585

1315 W. American Blvd.  
 272-3333  
 Muleshoe, TX **McDonald's**

**WINKLES TRUCKS, INC.**  
 Box 757 (806) 247-2724  
 Friona, TX

**MULESHOE LIVESTOCK AUCTION**  
 Muleshoe, TX • Sale Every Saturday  
 Clayton, C.L. & Thurman Myers • 272-4201

- Two locations to serve you -  
 1900 W. American Blvd. 272-5337  
 107 E. American Blvd. 272-3978  
 Muleshoe, TX **Town & Country**

**1ST BANK** MEMBER FDIC  
 202 South First 272-4515

**PACO FEED YARD, LTD.**  
 Commercial Cattle Feeders  
 P.O. Box 956 265-3281  
 Friona, TX  
 Feller Hughs-Mgr.

**Boehning Dairy**  
**DRINK MORE MILK.**  
 Brian Boehning Earth, Texas

**MAPLE COOP GIN**  
 927-5501  
 Maple, Texas

**Muleshoe Country Club**

**AG AVIATION**  
 2 1/2 miles North on HWY 214  
 272-3066 FAX 272-3534  
 P.O. Box 68 • Muleshoe, TX

**CENTRAL COMPRESS & WAREHOUSE**  
**SUDAN, TEXAS**

**WEST CAMP GIN, INC.**  
 Better Ginning & Courteous Service  
 Rt. 2 Box 1000 • 925-6681  
 James & Phyllis Shepard Muleshoe, TX

**WES-TEX FEED YARDS, INC.**  
 Custom Cattle Feeding  
 272-7555 Muleshoe, TX

**LUBBOCK BUILDING PRODUCTS**  
 2901 West American Blvd. Ph# 272-4501  
 Muleshoe, TX FAX# 806/272-3053

**Leal's Tortilla Factory, Inc.** 107 E. Ash  
 Muleshoe, TX 272-5772

**New Tex Truck Parts & Service**  
 107 E. 5th St. • Muleshoe  
 272-4106 or 800-918-9048  
 4200 Mabry Drive • Clovis, NM  
 (505) 762-7186 or (877) 762-9112

**WESTERN DRUG & Something Special Gifts**  
 1411 W. American Blvd. 272-3106 Muleshoe





**Reporting on progress**

Carmen Flores (above), president of the Student Community Action Club, speaks at the annual membership meeting of the Muleshoe Heritage Foundation, held Sept. 29. Flores presented a \$1,200 on behalf of the club to Wells Hall, president of the foundation board.

**Texas to observe national 4-H week**

SPECIAL TO THE JOURNAL: AMARILLO—With national 4-H week being celebrated this month, Texas Cooperative Extension is celebrating its 93-year history of youth development programs where school-age children, grades 3 through 12, are involved in wholesome educational experiences across the state. How's this done? One way is through 4-H club membership, according to Angela Burkham, Extension 4-H program specialist in the Texas Panhandle. She pointed to recent national surveys showing that 4-H continues to offer what young people say they want and need. "We like what we see and

hear about the state of 4-H and all that it offers," Burkham said. According to one survey by the Search Institute of Minneapolis, feeling safe in a group has emerged as a need of youth and families all over America. Members of 4-H say they feel safe when involved in club activities and secure within the group. Also notable was the finding that the most successful teen-agers received support from three or more non-parent adults. The study also found the young people wanted to be involved in activities with a caring and encouraging environment. "Every 4-H club is led by adult volunteers who are the

backbone of our programs," Burkham said. More than 66,000 volunteer in 4-H efforts across Texas. The Texas 4-H and Youth Development Program is part of a nationwide framework helping to instill values and skills that may reduce the chances of children becoming a negative statistic and a financial strain on society. Ninety percent of Texas 4-H club members surveyed have said the program has taught them to become involved in community concerns and that it is important to help their neighbors. "4-H members learn by doing," Burkham said. "Community service is a large part of every educational experience in the Texas program."

**NURSING HOME NEWS**

Thursday morning, the residents made fall centerpieces in craft class. Duane White lended a hand in preparation for the activity. Friday evening, the Church of God in Christ (Mennonite) youth group came to sing and visit with residents. Each Sunday morning, members of the Muleshoe Church of Christ direct a Communion service in the care center's day room. Buster Kittrell and Harold Burge taught the Bible study Sunday morning. Members of the 16th and D Church of Christ came Sunday afternoon for a gospel singing service.

Melvin and Wanda Griffin and Iris Clements directed the bingo bash Saturday afternoon and treated players to fresh fruit after the games. Aline Locke was visited by Iris Clements and Donna Locke on Saturday. Juanita Teague was visited this week by Melvin Young and Linda Jackson, both of Gretna, La.; Andrea Ridolfo of Metairie, La.; and Todd, Antoinette and

Ethan Young, Pat Young, Tisha Hughes and Bertie Mae Purcell, all of Muleshoe. Nettie Quesenberry was visited Sunday by her daughter, Anna B. Lane, and a great-grandson. Clara Coffman went to Lubbock to be with her brother and sister to celebrate their birthdays. She visited Sunday with her brother, Clark Harvey; her sister and brother-in-law, Lois and Wilson Witherspoon; also Terry Lee Harvey, Roger and Ann Harvey of Amarillo; and Freda and Dwight Hatluasworth. Hattie Heathington was honored with a party on her 93rd birthday Sunday. Family members present were Bill and Bertha Gardeahic of O'Donnell; Kenneth and Julie Heathington; Ashley Hanks; Don, Dani, Krystal, Myndi and Tatam Heathington; Aubry and Margaret Heathington; Shundi Vaughn; and the honoree's 9 year-old great-grandsons. The Rev. Gary and Judy Hubbard from Earth United Methodist Church directed a devo-

tional service Tuesday morning. Claudine Embry, Beverly Wagon, Mary Jo Burge, Pat Watson, Eva Nell Dale and Krystal Walton and Dorothy Turner shampooed and set the women's hair Tuesday afternoon. Norma Eaves gave manicures. Coffee and doughnut time was overseen by Wanda and Buster Kittrell and Harold and Mary Jo Burge on Wednesday morning. Roland McCormick shared his travel to Africa. Glen Williams, Loyce Killingsworth, Buster Kittrell and Jim Claunch directed the devotional. Glenda Jennings and Jackie Scoggins directed the sing-along Wednesday afternoon. Joe Embry, Elsie Damron, Sammie Ethridge, Jewel Strong and Harold Burge were among the center's visitors Tuesday afternoon. Kathryn Hancock is in the local hospital at this writing and Ozell Cherry is in Covenant Hospital in Lubbock. They ask for prayers.

**Area church plans annual turkey dinner**

St. Ann's Catholic Church of Bovina has scheduled its annual turkey dinner for 11:30 a.m. to 2 p.m. Nov. 4 in the church's parish hall. The menu will include turkey and dressing, creamed potatoes and gravy, green beans, cranberry sauce, a relish plate, homemade bread, desserts and tea or coffee. The price will be \$6 for adults and \$3 for children under the age of 6, with take-out available at the same price.

Fawwaz M. Shoukfeh, M.D. & Paul A. Overlie, M.D. are pleased to announce the association of **Gerry L. Maddoux M.D., F.A.C.C.** diplomate of the American Board of Cardiology

**Texas Cardiac Center**

3710 21st Street • Lubbock, Texas 79410  
(806) 780-8003 • (877) 780-8051 toll free

November 1, 2001 Now accepting new patients.

**Bailey County Journal's Football Contest**

**RULES**

- Circle your choice as the winning team in each of the 15 games below.
- The entry with the most correct selections will win. In the event of a tie, the entry which picks the closest to the actual tie breaker score will win.
- Entries may be mailed to Muleshoe Journal, P.O. Box 449, Muleshoe, TX 79347 or dropped off at the office during business hours (8:30-5:00). Please mark the envelope FOOTBALL CONTEST.
- Entries for this week's contest must be received by the Muleshoe Journal or postmarked by 5 P.M. FRIDAY, OCT. 26, 2001
- Muleshoe Journal employees are not eligible to win the contest.
- Decision of the judges will be final.

\$50 Awarded Each Week You Play. We'll Pay!

**ENTRY FORM**

Name: \_\_\_\_\_

Address: \_\_\_\_\_

Phone: (\_\_\_\_) \_\_\_\_\_

**1ST PLACE \$25**  
**2ND PLACE \$15**  
**3RD PLACE \$10**

**TIE BREAKER**

**LAZBUDDIE AT THREE WAY**

Combined Total of Both Teams: \_\_\_\_\_

**Viola's Mexican Food Restaurant**  
2002 W. American • 272-3838

**BIG SPRING AT LUBBOCK ESTACADO**

Three Way A. Jasso #21

**West Camp Gin, Inc.**  
West Camp • 925-6681

**SPRINGLAKE-EARTH AT SUDAN**

Three Way C. Heinrich #24

**Bailey County Farm Bureau**  
1612 W. American • 272-4567

**CHILDRESS AT SANFORD-FRITCH**

Three Way C. Kindle #3

**Maple Coop Gin**  
Maple • 927-5501

**HEREFORD AT PALO DURO**

Three Way A. Furgeson #70

**Decorators Floral & Gifts**  
616 S. 1st • 272-4340

**FRIONA AT ABERNATHY**

Three Way C. Cannon #80

**JOES BOOT SHOP**  
106 E. American • 272-7504

**LUBBOCK CORONADO AT AMARILLO HIGH**

Three Way Coach Branham

**McDonald's of Muleshoe**  
1315 W. American • 272-3333

**OKLAHOMA AT NEBRASKA**

Matt Lopez #4

**Five Area Telephone West Plains Telecommunications**  
302 Uvalde • 272-5533

**FLORIDA AT GEORGIA**

Bradley Thomason #60

**Muleshoe Animal Clinic Muleshoe Vet Supply**  
1430 US Hwy. 84 • 272-4990

**OREGON AT WASHINGTON STATE**

Kyle Atwood #10

**Dent & Co.**  
2800 W. American • 272-4296

**NEW MEXICO STATE AT MIDDLE TENNESSEE**

DJ Dominguez #11

**McCormick Seeds, Inc.**  
400 E. Ash • 272-3156

**IOWA STATE AT TEXAS A&M**

Lincoln Riley #12

**AZTECA MILLING L.P.**  
E. Hwy. 84 • 272-6701

**ARIZONA AT DALLAS**

Jordan Dale #14

**M-PYRE AUTO SALES, INC.**  
1112 W. American • 272-7777

**MINNESOTA AT TAMPA BAY**

Brandon Mount #2

**Muleshoe Journal**  
304 W. 2nd • 272-4536

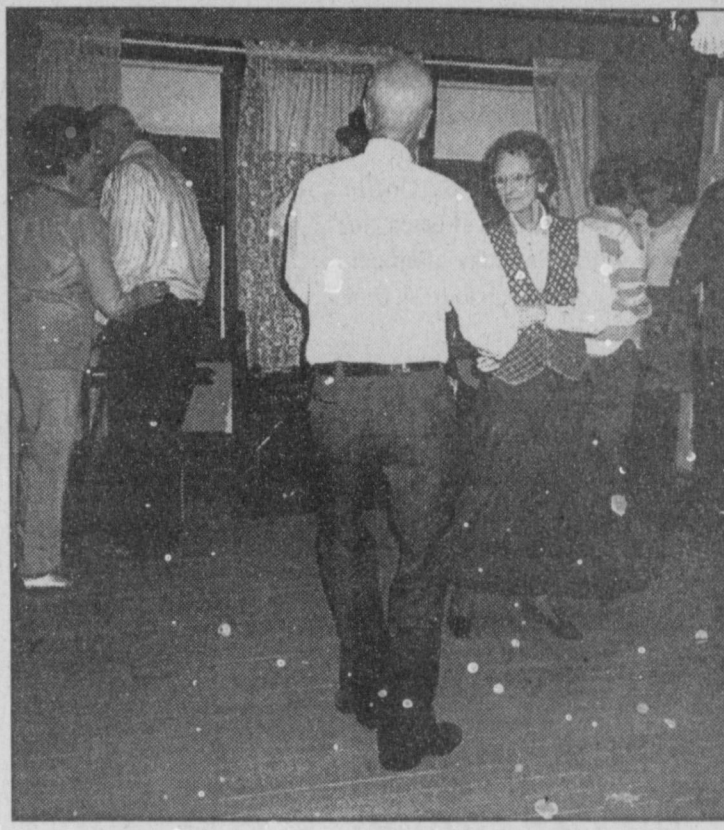
**SAN FRANCISCO AT CHICAGO**

Tad Lutz #23



### A big night

Members of the Muleshoe Square Dance Club heat up the outdoor stage (above) during the Sept. 29 annual membership meeting of the Muleshoe Heritage Foundation. James and Betty Glaze (right) demonstrated their skill later at the white-shirt/black-tie ball at the Janes ranch house. Ice cream, cake and free carriage rides added to the evening, which had the theme "Celebrate America Through Heritage." Wells Hall, president of the foundation board, acted as master of ceremonies for the membership meeting.



### Runners compete at Friona

Kate Lepard and Chelsi Hawkins of Watson Junior High finished second and third at the Oct. 6 Friona cross country meet.

Their times were 13:31 and 13:38, respectively.

Not far behind them were Lindsey Hall in fifth place (14:05) and Brandi Wood in sixth (14:13).

Also among the top finishers were Megan Baca (20th at 15:04) and Sarah Sexton (21st at 15:09).

Other finishers among the Watson girls, and their times, as turned in by coach Kara Grace, include:

Hillary Tipps (15:29), Veronica Nuñez (15:34), Liliana Ruiz (15:54), Janice Pacheco (15:56), Brittany Villa (16:00), Madison Myers (16:06), Kindra Pruitt and Cecelia Reyna (both at 16:34), Kelly Dale and Brittini Torres (both at 16:35), Kaitlyn Geissler and Shayla Hall (both at 16:36) and Emily Zackoski (16:59).

Also Andi Black (17:23), Ashley Dickson and Monica

Posadas (both at 17:35), Brittni Carter (17:57), Irma Torres (18:06), Jenna Rasco (18:15), Kati Brown (18:27), Belén Martínez (18:30), Calli Hancock (19:00), Chrisie Reeves (20:55) and Madison Smith (22:59).

Boys finishing for Watson include Rudy Gonzales (13:40), Jameson Skipworth (14:39), Jerry Colunga (14:41), Steven Martínez and Jarad Flores (both at 15:06) and Myles James (15:11).

### BIRTH

**ESTRADA**  
Adan and Lisa Estrada of rural Sudan are the parents of a son, Nathaniel A. Estrada, born at 5:15 p.m. Oct. 18 at Lamb Healthcare Center in Littlefield.

He weighed 7 pounds, 1 ounce, and was 20 inches long.

He is the couple's first child.

Grandparents are Cleto and María C. Longoria and Ignacio and María E. Estrada.

### 'CREATIVE LIVING'

Information on centerpieces made of cookies, window coverings and cooking seafood will be featured on "Creative Living" at 1 p.m. Oct. 23 and 3 p.m. Oct. 27. (All times are Central.)

"Creative Living" airs on public broadcasting station KENW-TV from Eastern New Mexico University in Portales.

Nancy Siler, director of consumer affairs for Wilton Industries in Woodridge, Ill., will use baked sugar cookies shaped like flowers and butterflies and show how to use icing to "glue" them to sticks to make centerpieces.

Cheryl Strickland, sewing expert and owner of the Professional Drapery School in Swannanoa, N.C., will share sewing techniques for making professional-looking window coverings.

Pat Baird, registered dietitian, author and spokesperson for the Alaska Seafood Marketing Institute in Bellevue, Wash., will explain why Americans are eating more seafood and will demonstrate how to cook salmon.

Aromatherapy and making cookies will be featured at 10:30 p.m. Oct. 23 and 1 p.m. Oct. 25.

Lorelei Taylor, an instructor at Eastern New Mexico University, will talk about the history of aromatherapy and make skin-care products using natural ingredi-

ents.

Donna Reynolds of Cary, N.C., representing KitchenAid of Benton Harbor, Mich., will share tips for making, baking and storing a variety of cookies.

"Creative Living" is produced

and hosted by Sheryl Borden of Portales.

The show is carried on more than 100 PBS stations in the United States, Canada, Guam and Puerto Rico and is distributed by Westlink of Albuquerque.

## CELLULAR 2000

Announces the Arrival of

# DIGITAL

For Renewals or New Activations

Change your analog service to digital today!

**3600** For **Minutes** **\$40<sup>00</sup>**

*Limited time offer. Some restrictions apply. See store for details.*

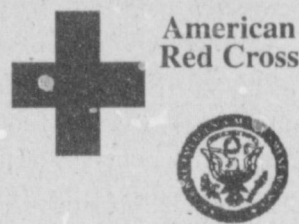
**RIGHT ON TARGET FOR YOUR BUDGET.**

CELLULARONE  
Authorized Dealer

**CELLULAR 2000**  
605 W. American Blvd. • Muleshoe  
**272-7523 or 272-5153**  
Open: M-F 9:30 am to 5:30 pm • Late appts. available

### TORNADO • FLASH FLOOD • EARTHQUAKE • WINTER STORM • HURRICANE • FIRE • HAZARDOUS MATERIALS SPILL

## Emergency Preparedness Checklist



**T**he next time disaster strikes, you may not have much time to act. Prepare now for a sudden emergency.

Learn how to protect yourself and cope with

disaster by planning ahead. This checklist will help you get started. Discuss these ideas with your family, then prepare an emergency plan. Post the plan where everyone will see it—on the refrigerator or bulletin board.

For additional information about how to prepare for hazards in your community, contact your local emergency management or civil defense office and American Red Cross chapter.

### Emergency Checklist

#### Call Your Emergency Management Office or American Red Cross Chapter

- Find out which disasters could occur in your area.
- Ask how to prepare for each disaster.
- Ask how you would be warned of an emergency.
- Learn your community's evacuation routes.
- Ask about special assistance for elderly or disabled persons.

#### Also....

- Ask your workplace about emergency plans.
- Learn about emergency plans for your children's school or day care center.

#### Create an Emergency Plan

- Meet with household members. Discuss with children the dangers of fire, severe weather, earthquakes and other emergencies.
- Discuss how to respond to each disaster that could occur.
- Discuss what to do about power outages and personal injuries.
- Draw a floor plan of your home. Mark two escape routes from each room.
- Learn how to turn off the water, gas and electricity at main switches.
- Post emergency telephone numbers near telephones.
- Teach children how and when to call 911, police and fire.
- Instruct household members to turn on the radio for emergency information.
- Pick one out-of-state and one local friend or relative for family members to call if separated by disaster (it is often easier to call out-of-state than within the affected area).
- Teach children how to make long distance telephone calls.
- Pick two meeting places.

- 1) A place near your home in case of a fire.
  - 2) A place outside your neighborhood in case you cannot return home after a disaster.
- Take a basic first aid and CPR class.
  - Keep family records in a water and fire-proof container.

#### Prepare a Disaster Supplies Kit

Assemble supplies you might need in an evacuation. Store them in an easy-to-carry container such as a backpack or duffel bag.

#### Include:

- A supply of water (one gallon per person per day). Store water in sealed, unbreakable containers. Identify the storage date and replace every six months.
- A supply of non-perishable packaged or canned food and a non-electric can opener.
- A change of clothing, rain gear and sturdy shoes.
- Blankets or sleeping bags.
- A first aid kit and prescription medications.
- An extra pair of glasses.
- A battery-powered radio, flashlight and plenty of extra batteries.
- Credit cards and cash.
- An extra set of car keys.
- A list of family physicians.
- A list of important family information; the style and serial number of medical devices such as pacemakers.
- Special items for infants, elderly or disabled family members.

#### Brought to you by

#### BAILEY COUNTY RED CROSS STEERING COMMITTEE MEMBERS:

• Noe Anzaldúa, Lt. Otis Carpenter, Janet Claborn, Donna Kirk and Robert Montgomery.

#### AND MULESHOE JOURNAL STAFF MEMBERS:

Scot Stinnett, Lisa Stinnett, Ronn Smith, Leah Bell, Beatrice Morin and Yolanda Martinez.

The Muleshoe Independent School District Board of Trustees will conduct a

**Public Hearing**  
**on Monday,**  
**October 22, 2001**  
**at 7:00 p.m.**

**in the Board Room of the**  
**School Administration Building**  
**514 West Ave. G**

The subject of the hearing will be a discussion of Re-drawing the boundaries of Single-Member Voting Districts.

*Everyone is invited to attend.*

# Journal Classifieds

# STOP & SHOP

Deadlines are 5 p.m. Monday and Thursday

Call 272-4536

October 21, 2001

## ADOPTION

Note: It is illegal to be paid for anything beyond medical and legal expenses in Texas adoption.

## DRIVERS WANTED

Ask about our 2-week spouse training program in automatic transmission trucks. Call 1-800-CFI-DRIVE.

**OUR HEARTFELT DESIRE** is to help a child grow up feeling loved, happy and fulfilled. We're a young (32) outdoorsy couple who enjoy BBQ's and swimming in our backyard pool with family/friends. We'd love to help in anyway possible. Kenna & Dan, 1-800-930-3685.

**DRIVE: COMPANY & OWNER operators** regional - home weekly. Pay for experience up to 31 cents per mile for owner/operators. 1-800-454-2887. Arnold Transportation.

## AUCTION

**ABSOLUTE AUCTION** - November 2nd. Beacon Fields, Smith County, Texas. 978+- acres selling in 14 parcels. Magnificent home, 3 ranch houses, 4 barns. J.F. King Auction Co. W. Scott Swenson #425652. 1-800-558-5464.

**COMPLETE DISPERSAL GAMBIT Cattle Co., Saturday Nov. 3, 2001, Shreveport, LA. 12:00 Noon.** Selling 600 plus Females. Contact: Dusty Taylor, 1-318-251-7232 LA Lic #836-01.

**TI VALLY RANCH.** 18,600+- acre timber/recreation ranch. Abundant trophy Whitetail deer/turkey/wild boar/quail/dove. Five lakes and numerous ponds teeming with Bass/Crappie/Bream. Auction Nov. 14th - 11AM. Free brochure 1-800-558-5464. Jerry Craig King, Broker (Lic#085284).

## BUSINESS OPPORTUNITY

**A+M&M MARS/NESTLE.** Established vending route. Will sell by 11/05/01. Under \$9K minimum investment required. Excellent monthly profit potential. Finance available/good credit. 1-800-637-7444.

**CALL THIS NUMBER now!** Amazing. 1-888-300-3850 (toll-free), recorded message. (end of message, leave contact info.) A few minutes today can save your life forever. www.legacyusa.com.

**RISK-FREE ROUTE \$3,250/mo. (realistic).** No competition with interactive game. 13 local vending sites. \$9,945 cash required. 1-800-268-6601 (24 hours).

## DRIVERS WANTED

**A CAREER OPPORTUNITY.** LISA Motor Lines has immediate openings for entry level drivers. No CDL-No problem. Company paid training if qualified. 1-866-367-9933 or 1-817-367-9933.

**CFI ANNOUNCES PAY increase.** Now hiring company drivers, O/O, solos & teams.

**DRIVER - COVENANT TRANSPORT** now offering per diem pay for experienced teams, solos and trainers. O/C-Solos/Teams 83 cents plus fuel surcharge. No CDL? No problem. We school, no money down. Licensed by SBPCE. School located in Stuttgart, AR. Call 1-888-MORE-PAY (1-888-667-3729).

**DRIVER - FEE TRANSPORTATION** is now hiring experienced drivers for its growing fleet. Start up to 29 cpm w/one year experience with pay increases every six months up to .42 cpm. Call 1-800-569-9230.

**DRIVERS: OTR DRIVERS needed.** Class A CDL w/experience required. Good work record, clean MVR. Call today, Marten Transport, Ltd., 1-800-395-3331 or visit our website www.marten.ocm on pay and benefits.

**DRIVERS: OWNER/OPERATORS,** Fleetwood Transportation is now leasing. Great lease package, we can help keep you loaded. Also need company drivers. 1-888-276-9923, www.ftwd.net.

**DRIVERS: SOLOS UP to .45cpm;** Teams up to .48 cpm; Contractors .81 cents all miles. Lease options available. (No maoney down.) Fuel incentives, increased holiday orientation pay & more. No CDL. No experience, Need Training... Call Burlington Motor Carriers, 1-800-684-3144.

**DRIVERS TRAINED NEEDED** at Dick Simon Trucking. Drivers earn \$32-\$45K per year. No experience needed. CDL training available. Tuition reimbursement. 1-800-562-9696.

**PROUD TO SERVE AMERICA!** Great miles, benefits and bonuses. Class "A" CDL, 6 months OTR required. Continental express, INC., 1-800-727-4374

## PUBLIC NOTICE

NOTICE TO CONTRACTORS OF PROPOSED TEXAS HIGHWAY IMPROVEMENT CONTRACTS Sealed proposals for highway improvement contracts will be received by the Texas Department of Transportation (TxDOT) until the date(s) shown below and then publicly read:

**CONSTRUCTION/MAINTENANCE CONTRACT(S)**  
District: Lubbock  
Contract 0053-01-100 for SEAL COAT in LUBBOCK County, etc will be opened on November 05, 2001 at 1:00 p.m. at the State Office.

Plans and specifications are available for inspection, along with bidding proposals, and applications for the TxDOT Prequalified Contractor's list, at the applicable State and/or District Offices listed below. Bidders must submit prequalification information to TxDOT at least 10 days prior to the bid date to be eligible to bid on a project. Prequalification materials may be requested from the State Office listed below. Plans for the above contract(s) are available from TxDOT's website at [www.dot.state.tx.us](http://www.dot.state.tx.us) and from reproduction companies at the expense of the contractor.  
NPO: 4861

State Office  
Construction Division  
200 E. Riverside Dr.  
Austin, Texas 78704  
Phone: 512-416-2540

District Office(s)  
Lubbock District  
District Engineer  
135 Station  
Lubbock, Texas 79404  
Phone: 806-745-4411

Minimum wage rates are set out in bidding documents and the rates will be part of the contract. TxDOT ensures that bidders will not be discriminated against on the grounds of race, color, sex, or national origin.

## AGRICULTURE

**GTM Custom Cotton Harvesting**

**JOHN DEERE 484 4 ROW-40 COTTON STRIPPER.**  
Call: Gene Rogers  
Home: 806-272-5720  
Mobile: 806-946-7754

## AUTOMOBILE

1995 Chevy Tahoe - 94K miles, leather, CD, clean. LOADED! Only reasonable offers considered.  
Call 806-272-3072 or 806-946-7450 (cellular).

## BUSINESS OPPORTUNITY

Carry out and delivery pizza franchise. Financing available for qualified individual. Call Lance 1-800-310-3848.

## ESTATE SALE

ESTATE SALE  
Sat. Oct. 27th, 8am-4pm.  
1416 W Ave. C  
Furniture, Bedding, Kitchenware, Craft Supplies & Much More!

## FARM SERVICE

Tractor For Lease To Run Module Builder or Pull Boll Buggies. Available To Run Either One. Custom Work With Tractor Also, Etc. Call 272-5445 Anytime & Leave Message.

## FOR SALE

PEANUT HAY FOR SALE. 1 TON SQUARE BALES. 65 A TON AT FARM. CALL MARK 806-893-2782

## HELP WANTED

ATTENTION: WORK FROM HOME \$500 - \$2,500/mo PT \$3,000-\$7,000/mo FT Free booklet. www.FreewayOfDreams.com (800)555-6435

Newspaper carrier needed in Muleshoe for Lubbock Avalanche Journal. Great part-time \$\$\$ for someone willing to get up early. Looking for honest, dependable person with good transportation. Call Customer Service at 806-762-8855.

## DRIVERS WANTED

**TANGO TRANSPORT, INC.** seeking O/O. Flatbed, stepdeck, van. Contact Van Tidwell, 1-888-408-2646.

**TRUCK DRIVERS OTR 3 week average** - Company drivers & O/O's - good miles/pay, excellent equipment and benefits - Two years OTR experience required. Gulf Coast Transport, 1-888-988-8666.

## HELP WANTED

ATTENTION: WORK FROM HOME! MAIL ORDER BUSINESS Need help immediately... \$522+/weekPT. \$1000-\$4000/weekFT. Full training. Free booklet. www.click2dreamit.com (800)683-1299

## PRODUCTION POSITION AVAILABLE

Now accepting applications for production position at HI-PRO FEEDS. Company insurance, 401(k), paid holidays. Must pass drug screen. Apply in person at HI-PRO FEEDS in Friona.

**Homeworkers Needed \$635 weekly processing mail. Easy! No experience needed. Call 1-800-440-1570 Ext 5085 24 Hrs**

## HOUSES FOR SALE

I'M MAD ... AT BANKS WHO DON'T GIVE HOUSE LOANS BECAUSE OF BAD CREDIT, PROBLEMS OR NEW EMPLOYMENT. I DO, CALL L. D. KIRK, H O M E L A N D M O R T G A G E S, (254)947-4475.

## MINI STORAGE FOR RENT

**SUDAN STORAGE** 400 W. Hwy 84 has available 20 new units 8x10=30, 10x12=35 Work 806-227-2325 Home 806-933-4347

## PETS

Heeler puppies for sale! Purebred, tails docked, males/females. \$50 each. Call 806-385-6201 in Littlefield.

**BOXER PUPPY FOR SALE MALE - 5 MONTHS OLD REGISTERED CALL 806-272-2636**

## FINANCIAL SERVICE

**\$\$\$ AWESOME LUMPSUM CASH\$\$\$** We buy Structured Insurance Settlements, Lottery Winnings, Trust, and Casino Jackpots. The best guaranteed. www.ppicash.com call toll free now 1-800-981-5976, ext. 80.

## HELP WANTED

**TOWN AND COUNTRY FOOD STORES** is Looking For People with Retail Experience People with Food Service Experience Presently Accepting Applications For Store Manager Trainees Assistant Managers Food Service Managers Great Benefits & Advancement Opportunity Equal Opportunity Employer Drug Testing Required Applications available at all location

## TEXAS MIGRANT COUNCIL, INC. EMPLOYMENT OPPORTUNITY

The Texas Migrant Council, Inc., a non-profit organization with 30 years experience providing child care services to migrant families, has the following position available at its Migrant Head Start Center in MULESHOE, TEXAS.

## CENTER MANAGER I

**General Responsibilities:** Implement goals and objectives and all activities that are part of the MHS Program plans as promulgated in the Head Start Performance Standards. Implements, provides guidance and monitors the activities of the Child and Adult Food Program. Responsible for overseeing the implementation and monitoring of Facilities and Transportation program areas. Responsible for the implementation and monitoring of the MIS and Fiscal duties and responsibilities at the center level. Assists in building and fostering partnerships and trust with families, center staff and the general community. Responsible to support and assist the family services advocates in on-going recruitment, registration and enrollment of children. Responsible to meet the funded enrollment for the center. Lead the "center management team" in implementing the agency's management systems for an overall efficient center operation.

**Minimum Qualifications:** Associates of Arts Degree in Management, Public Administration or Early Childhood Education OR, Forty-five (45) college credit hours leading to a degree in Early Childhood Education and a Child Development Associate Credential OR Thirty (30) college credit hours leading to a degree in Early Childhood Education and possess a current Child Development Associate Credential and a National Head Start Association's Mid-Management, Credential. Verify through enrollment and a written Degree Plan that Candidate will, within (03) years of employment, obtain a AA Degree in the areas of Management or Public Administration or E.C.E. or other related field commencing or if already employed by February 01, 2002. Meet the Center Administrator's Day Care Licensing requirements as described in the respective State of Protective and Regulatory Services, or AGREE TO ENROLL in an approved Child Care Administrator's Credential Program within (03) months of employment. Must have a minimum of four years of Migrant Head Start experience at the local center. Must be 21 years of age. Must demonstrate, through program testing to have intermediate computer skills, including working knowledge with MS Word, MS Excel, MS PowerPoint, desktop publishing. Must demonstrate good training/presentation skills, General working knowledge of the Community Resources.

FOR IMMEDIATE CONSIDERATION, PLEASE SUBMIT APPLICATION AND/OR RESUME WITH SALARY REQUIREMENTS BY NOVEMBER 2, 2001, AT 5:00 P.M. TO:

Texas Migrant Council, Inc.  
Attn: Regional Director  
1210 Ave. R - PO Box 2473  
Lubbock, Texas 79401  
Phone: (806) 763-4187  
Fax: (806) 763-9136

An Equal Opportunity Employer

## RECREATIONAL VEHICLE

'81 Presidential Holiday Fifth-Wheel. 36 ft. Good Condition. Jimmie Seaton 806-965-2161.

You read this ad. Chances are your neighbors did, too. Sell it in the classified!

## REAL ESTATE

Lazbuddie Area - 640 acres, 4 wells, 300-500 gal/well, 4 sprinklers, 3 houses (2 good), 2 large barns, lots of cattle pens & sheds. 395 acres of fertilized, irrigated wheat goes with lease. Call 806-965-2895, mobile 806-946-9413

Smile!

## REAL ESTATE

**For Sale By Owner** Brick - 3 BR, 1 3/4 Bath, Dining Room, Utility Room, Built-ins, New Dishwasher, Covered Patio, 2 Carports - Detached Garage w/Auto Door Opener, Cinder Block Stor. Bldg., Fenced Yard, Corner Lot, Cent. Heat/Evap. Air. Insulated Storm Windows. Good Location! \$54,500.00. 1534 W. Ave C, Muleshoe. 806-272-3841

**House for Sale** 307 W. 20th Muleshoe Call Wayne Copley 806-272-3697

**157 ACRES DRY LAND FARM, NEAR GOODLAND. \$275 PER ACRE. JIM HYSINGER, BROKER 806-578-4371.**

**Subscribe! 806-272-4536**

**TALK TO US** about building or leasing a new dairy. Choice locations in Texas and New Mexico from 160 acres to 4755 acres, sprinkler irr. One farm has 4000 head permit in place - one has 3000 head permit in process. Cash incentives in some areas.

**EARTH AREA - WE CAN DIVIDE THIS** 5165.3 acre well-watered ranch with a 120 acre circle, working pens & mobile home. ADJOINING THIS RANCH is 1378 acres with eight circles which can be divided. www.scottlandcompany.com Ben. G. Scott-Broker (800)933-9698 day/eve

## Vic Coker Land Co. Agricultural Real Estate

- West Camp Area** - 480 Acres, 2 Brick Homes, 3 Center Pivot Sprinklers, Fenced. A Very Nice Operation.
- Parmer County** - Clays Corner, 296 Acres, 2 Sprinklers, 3 Wells, Good Water.
- Coyote Lake Area** - 200 Acres - 40 Acres Cultivated, Balance is Grass, 3 Bedroom Home with Basement, Quail and Dove.
- Northeast of Muleshoe** - 800 Acres, Excellent Water, 5 Wells, 5 Sprinklers, 700 gpm each, Fenced. Best of the best.
- County home for sale** - 3 bedroom, 2 bath, 2 living areas, garage, close to town on 6.4 acres. Ask for Judy.
- Bailey County** - Nice Brick Home on 320 Acres, Large Barn, 2 Sprinklers.
- Northeast of Muleshoe** - 160 Acres with Pivot, 2 Subs, 400 g.p.m. Corners in C.R.P.
- Parmer County** - 234 Acres North of Progress. 2 Wells. Lateral Move Sprinkler. Good Soil & Water.
- Muleshoe Area** - 1600 Acres with Feedlot. 7500 feet of Bunk Space. 10 Circles, 18 Wells. Ideal Livestock Place.
- Dodd Area** - 800 gpm, 160 Acres, Good Soil & Water. Very Nice.
- Lamb County** - 80 Acres C.R.P. with House. Contract ends 2007.
- Lamb County** - 320 Acres of C.R.P. in two tracts. 7 years remaining.
- Bailey County** - 315 Acres Northeast of Muleshoe. 2 Sprinklers, 5 Wells, Very Reasonably Priced. Qualified person can assume seller's loan.

## 310 Main Street, Suite 103

Muleshoe, Texas Office 806-272-3100 Home 806-965-2468

# Nieman Realty

116 E. Ave. C • George Nieman, Broker • 272-5285 or 272-5286

- RICHLAND HILLS - PARK RIDGE AREA**
  - NICE 3-3-1 Brick, Cent. heat, evap. air, built-ins, fans, 2000+ lv. area, fenced yd., patio, stor. bldg. \$57.5K RH-1
  - NICE LOTS AVAILABLE, CALL FOR DETAILS!!!
- HIGHLAND AREA**
  - 3-2-2 Brick, Cent. Heat, built-ins, fans, fenced yd., large workshop/stor. bldg.!! PRICED REDUCED \$47.5K HL-2
  - NICE 3-1-1+1 carport Home, Cent. Heat & Air, carpet & hardwood, 4 fans, fenced yd., MORE!! \$26.5K!! HL-4
  - 2-1-1 Carport, wall furnace heat, evap. air, DW, fans, fenced yd., \$19,500!! HL-1
- LENAU - COUNTRY CLUB AREA**
  - 3-2 Brick, Cent. A&H, fenced yd., corner lot!! \$40K!!
  - 3-2-2 Brick, Cent. A&H, built-ins, Fireplace, 2000' lv. area, cov. patio, fenced yd., PRICED REDUCED \$75K!!
- COMMERCIAL**
  - HWY. 84-150' frontage, office, warehouses, truck dock, railroad spur access, with or without fuel storage tanks!! \$30K!!
  - An approx. 5.1 acre tract w/approx. 144.5' frontage on Hwy. 84, approx. 1584' office, 1320' shop, 4000' shop, & 2880 bldg., has railroad access, 2 mobile home hookups, MORE!!!
  - Duplex (2-2 bdrm. 1 bath units) plus 1 (2 or 3 bdrm) for residence or rental. PRICE REDUCED \$25K!!
  - GOOD INCOME PROPERTY - approx. 3490' bldg., paved parking, good net lease!! PRICED TO SELL!!
  - Established Business: Land, Bldg. & Equip., \$75K!!
  - 200 Main & E. Ave. B-4 rental units plus upstairs & basement or renovate for your own special use!! \$65K!!
  - VERY NICE 2300' bldg., Cent. A&H, 175' frontage on Hwy 84 & 70!! MUCH MORE!!
  - 140'x100' tract on Hwy. 84 & 70, 1760' bldg., 1500' storage, 2400' cov. area, paved parking!! \$49.5K!!
- HIGH SCHOOL AREA**
  - VERY NICE 3-1-1 Brick, Heat pump, DW, nice carpets, fenced yd., MORE!!! \$30's!!! HS-1
  - 3-2 Home, corner lot, fl. furn. heat, fenced yd. \$25K!! HS-10
  - NICE 3-2-1/2-2 carport Home, Cent. A&H, built-ins, FP, 2650' + Lv. area, fans, storm windows & doors, new roof, cov. patio, concrete cellar, fenced yd. w/ add. 2 carport, large workshop, & stor. bldg. PRICED REDUCED \$60K!! HS-7
  - 2-1 1/2-2 Home, Cent. Heat, win. air, built-ins, fans, workshop/stor., fenced yd.!! \$50K!! HS-2
  - NICE 3-2-1 Brick, Cent. A&H, built-ins, fenced yd., stor. bldg., MORE!!! \$51.5K HS-4
- RURAL**
  - EXCELLENT DAIRY LOCATION-1120 ac., 7 circles, 20 wells, very nice 3-2-3 Home w/basement, 40' x 60' barn w/ 30' x 40' shed, 3 mil. lb. grain facility, add. 3 bdrm. home, 2 mobile homes, on pavement convenient to Muleshoe, Clovis, Portales, & should have 5K head permit within 60 days!!! Could be split if needed!!!
  - PLEASANT VALLEY, Approx. 160 acres, 2 bdrm home, 1 bath, 2 car detached garage, on pavement!!!
  - W. of SUDAN-NICE 3-3-2 Brick Home, 5 acre tract on Hwy. 298, Cent. Air & Heat, built-ins, large Quonset Barn, MORE!!! \$95K!!!
  - PRICE REDUCED - 108 acres or 7 acre tract on Hwy. 70, approx. 2100' office area, 16,900' commercial bldg. w/ loading dock, 3,400' warehouse, new well, 2,800' runway!!!
  - EARTH - 4-2-2 carport home, Heat Pump, fans, storage-workshop!! \$35K
  - 2-2-2 carport Mobile Home on 1.997 acres on pavement close to town, storage, 45' x 74' barn, pens, & fenced pasture!!!



# Lowe's Marketplace

401 W. American Blvd. Muleshoe, Texas 272-4585

WE RESERVE THE RIGHT TO LIMIT QUANTITIES IN TEXAS

WESTERN UNION MONEY TRANSFER<sup>SM</sup>  
"The fastest way to send money"

7-STAR  
AFFILIATED  
FOODS INC.  
MEMBER STORE  
AT PARTICIPATING STORES



WEEKLY PRICES EFFECTIVE OCTOBER 17-23, 2001

## MEAT

X-TRA SAVINGS PAK NEW YORK  
**STRIP STEAKS** ..... LB **\$3<sup>99</sup>**  
WHOLE MARKET TRIMMED  
**BEEF BRISKET** ..... LB **\$1<sup>69</sup>**  
X-TRA SAVINGS PAK BONELESS  
**PORK SIRLOIN CHOPS** ..... LB **\$1<sup>99</sup>**  
X-TRA SAVINGS PAK BONELESS, SKINLESS  
**CHICKEN BREAST** ..... LB **\$1<sup>99</sup>**  
ASSTD. VARIETIES DECKER  
**SLICED BACON** ..... 12 OZ. PKGS **2/<sup>\$4</sup>**  
HILLSHIRE FARM SELECT VARIETIES  
**SMOKED SAUSAGE** ... 1 LB. PKGS **2/<sup>\$4</sup>**  
HILLSHIRE FARM BEEF OR TURKEY  
**SMOKED SAUSAGE** .... 1 LB. PKG **\$2<sup>39</sup>**

ASSTD. 6 CT. BIG POUCH OR 10 CT. REG.  
**CAPRISUN OR TANG DRINKS** ..... YOUR CHOICE **2/<sup>\$4</sup>**

## PRODUCE

PREMIUM WRAPPED CELLO  
**LETTUCE** ..... HEADS **2/<sup>\$1</sup>**  
LARGE RED OR GREEN  
**BELL PEPPERS** ..... **2/<sup>\$1</sup>**  
FRESH  
**BROCCOLI CROWNS** ..... LB **88¢**  
FRESH SWEET  
**CARROTS** ..... 1 LB. BAGS **2/<sup>\$1</sup>**  
EAST TEXAS  
**SWEET POTATOES** ..... LB **59¢**  
LARGE RED RIPE  
**TOMATOES** ..... LB **88¢**  
SWEET WASHINGTON  
**BARTLETT PEARS** ..... LB **88¢**

LOWE'S WHITE SANDWICH  
**BREAD** ..... 24 OZ. LOAVES **2/<sup>\$1</sup>**  
HEINZ TOMATO  
**KETCHUP** ..... 24 OZ. BTL **88¢**  
SHURFINE  
**PAPER TOWELS** ..... 3 ROLL PKGS **2/<sup>\$3</sup>**

## FROZEN & DAIRY

KRAFT LONGHORN MILD CHEDDAR OR COLBY  
**HALFMOON CHEESE** ..... 14 OZ. PKGS **2/<sup>\$6</sup>**  
ASSTD. TOTINO'S  
**PARTY PIZZA** ..... 9-10 OZ. PKG **99¢**  
PILLSBURY REG. OR BUTTERMILK  
**HUNGRY JACK WAFFLES** ..... 12 OZ. PKG **99¢**  
SELECT VARIETIES JOSE OLE  
**MEXICAN DINNERS** ..... 10.6-12 OZ. PKGS **2/<sup>\$4</sup>**

DORITOS®  
**TORTILLA CHIPS** .. PRE-PRICED \$3.29 **2/<sup>\$5</sup>**  
7" BANDED  
**CHILI BOWLS** ..... **3/<sup>99¢</sup>**  
ORIGINAL W/BEANS OR ORIGINAL OR HOT NO BEANS  
**HORMEL CHILI** ..... 19 OZ. CAN **99¢**  
ASSTD. SHURFINE SALTINE  
**CRACKERS** ..... 15-16 OZ. BOX **69¢**

### SPECIAL X-TRA SAVINGS PRICING GOOD THRU NOV. 6, 2001



• 5 LB. BAG  
**GOLD MEDAL FLOUR**  
• ALL VARIETIES GAL.  
**LOWE'S OR SHURFINE MILK**  
• ASSTD. POWDER 87 OZ.  
**TIDE DETERGENT**  
• 4 LB. BAG C&H  
**PURE CANE SUGAR**  
• 18 CT. PILGRIM'S PRIDE  
**EXTRA LARGE EGGS**  
• JACK-O-LANTERN  
**PUMPKIN**

**1¢**  
**X-tra Savings**  
**EACH WITH 1 REWARD COUPON**  
**1 ITEM PER COUPON**

## Use Your Reward Coupons To Save Big! Our Prices Are LOWER!

**Here's How It Works!**  
Lowe's is giving you deep discounts on many of the items you purchase everyday! For each dollar you spend at Lowe's, we will give you a point. After 50 points (or \$50), you will receive a Lowe's X-tra Savings Reward Coupon. This coupon can then be redeemed for deep discounts on selected items. Each month, Lowe's will select from our most popular items in the store and deeply discount them for our X-tra Savings Reward Coupon holders. Present your coupon and receive incredible savings on selected items.

**X-tra Savings Reward Program**  
• Each Dollar You Spend Is Worth ONE (1) Point.  
• After you earn 50 points, you will receive a Lowe's X-tra Savings Reward Coupon.  
• Use your Lowe's X-tra Savings Reward Coupon to get deep discounts on one of the selected items.  
• Only ONE (1) item can be purchased with each Reward Coupon. • Items will be changed monthly.

ANY X-TRA SAVINGS PAK  
**BEEF OR PORK** **\$2 OFF**  
ONLY 1 COUPON PER PACKAGE OF MEAT ... (with 1 Reward Coupon)

BETTY CROCKER  
**POP-SECRET POPCORN** **1¢**  
3 CT. BOX ..... (Each with 1 Reward Coupon)

RED LABEL  
**KARO SYRUP** **1¢**  
16 OZ. BTL. .... (with 1 Reward Coupon)

KELLOGG'S  
**RICE KRISPIES** **1¢**  
10 OZ. BOX ..... (with 1 Reward Coupon)

JET PUFFED  
**MARSHMALLOW CREME** **1¢**  
13 OZ. JAR ..... (with 1 Reward Coupon)

SELECT GROUP FUN OR SNACK SIZE  
**HERSHEY'S NESTLE AND M&M MARS CANDY** **1¢**  
13 OZ. BAG ..... (with 1 Reward Coupon)

BRACH'S PIC-A-MIX BULK  
**CANDY** **1¢**  
1 LB. PER COUPON ..... (with 1 Reward Coupon)

ASSTD. CRISCO  
**COOKING OIL** **1¢**  
48 OZ. BTL. .... (with 1 Reward Coupon)

LAY'S  
**POTATO CHIPS** **1¢**  
PRE-PRICED \$2.99 ..... (with 1 Reward Coupon)

ASSTD.  
**HOT POCKETS** **1¢**  
ASSTD. CTS. .... (with 1 Reward Coupon)

ECKRICH (EXCLUDING BEEF & MESQUITE)  
**SMOKED SAUSAGE** **1¢**  
14-16 OZ. PKG. .... (with 1 Reward Coupon)

VLASIC  
**SAUERKRAUT** **1¢**  
32 OZ. JAR ..... (with 1 Reward Coupon)

ASSTD. BAGGED  
**APPLES** **1¢**  
3 LB. BAG ..... (with 1 Reward Coupon)

LITEHOUSE CARAMEL  
**APPLE DIP** **1¢**  
16 OZ. TUB ..... (with 1 Reward Coupon)

CARNATION  
**HOT COCOA MIX** **1¢**  
10 CT. BOX ..... (with 1 Reward Coupon)

YOUR CHOICE  
**COCA-COLA, SPRITE OR DR. PEPPER** **1¢**  
3 LITER BTL. .... (with 1 Reward Coupon)

7 LB.  
**BAG OF ICE** **1¢**  
PER BAG ..... (with 1 Reward Coupon)

COLBY JACK OR LONGHORN CHEDDAR  
**KRAFT CHEESE** **1¢**  
10 OZ. PKG. .... (with 1 Reward Coupon)

10 LB. RUSSET OR 5 LB. YUKON GOLD  
**POTATOES** **1¢**  
YOUR CHOICE ..... (Each with 1 Reward Coupon)

**THE X-TRA SAVINGS REWARD PROGRAM GOOD AT LOWE'S MULESHOE, CANYON AND TUCUMCARI STORES ONLY!**  
Points are not transferable between stores. No substitutions please on X-tra Savings Reward Items. Only one item may be purchased at the special deep discount per Reward Coupon.