

Lamb County Leader

10 Pages

Serving Texas' Second Largest Agricultural Producing County 10c

VOLUME 31

LITTLEFIELD, LAMB COUNTY, TEXAS, THURSDAY, FEBRUARY 10, 1966

NUMBER 40

IN AREA

Eight Local Contests Loom



BASKETBALL QUEEN -- Barbara Burleson, was chosen as the first Basketball Queen at Littlefield High School. The Queen selected by members of the basketball team and her attendants at the ceremonies between games Tuesday evening were left, Janie McBride and right, Diana Walker. The basketball players escorting the queen candidates were (L-R) Kevin Hutson, Phillip Pace and Steve Lewis while in front are crown bearer Casey Stanislaw and flower girl Lisa Pullig.

Lamesa Downs Cats 97 - 67 Season's Home Final

Wildcat cagers lost their home game of the season Tuesday, dropping a 97 to 67 decision to the Golden Tornados of Lamesa.

A feature of the last home game of the season was the crowning of the first Basketball Queen, Junior Barbara Burleson, daughter of Mr. and Mrs. Lloyd Lust was crowned the queen while her attendants were sophomore Janie McBride, daughter of Mr. and Mrs. O.C. McBride and senior Diana Walker, daughter of Mr. and Mrs. Judd Walker.

The losers were able to hold the score close only in the first quarter as they were down by a 20 to 17 score at the end of the opening eight minutes of play as Phillip Pace, with seven points, and Steve Lewis, with five kept the Cats close.

Led by Pat Fees who got 21 of his 25 points in the first half, the winners moved out to a 46 to 31 halftime advantage as they got 26 points during the second quarter against only 14 for the Wildcats who were unable to take advantage of numerous one and one free throw attempts.

The winners, who moved into a lead for the district championship with the victory, increased their lead to 48 by the end of the third period as they outscored the losers by a 25 to 17 margin. The Wildcats were able to register only four field goals during the quarter against 12 for the winners.

Lamesa, with a sophomore lineup, in the final eight minutes increased their lead to 57 with 3 minutes left when they went into a stalling game and made their last five points of the game off the charity lane as the Wildcats fouled in an attempt to get the ball.

Pace led all scorers with 28 points while Kevin Hutson added 15 and Fred Koontz 11 for the losers.

Fees, with his 25, led the winners with three others getting into double figures as Bob Wiggins got 17, Carl Burton, 13 and Gene Everheart, 10.

The Wildcats connected on 19 field goals and made good on 29 out of 44 attempts from the free throw lane while the winners got 39 from the field and added 19 out of 22 from the charity lane.

The Wildcats will close their district season with games at Lakeview Friday night and Levelland Monday.

The Junior Varsity also went down to a 52 to 37 defeat as they went cold in the second half after holding a four point lead at halftime.

The school board is currently selecting a new head football coach. We wonder if when one is selected what attitude will be toward the program be supported. Will we again be critical of new methods?

The job of coaching a team is to the entire community and it is from the community that the material is supplied. The school hires coaches and the fundamentals of the sport are their success or failure a direct reflection of the material which we furnish.

As we are attempting to get the participants to be athletes of win, lose, or draw.

Quest For Football Coach Resumes

The quest for a coach to take over the reins of head football coach started anew. Wednesday morning, when the school board was unable to come to terms with applicants interviewed Tuesday night.

Since early January the board has been accepting and screening applicants for the position, and had screened the over 40 applicants to four by Tuesday, however the refusal to accept the terms of the board has resulted in the resumption of the search.

The board had hoped to announce its choice Tuesday.

School Superintendent Paul Manning said Wednesday morning the screening committee would meet Thursday and review the applications prior to scheduling another interview session, hopefully by the end of the week.

The board plans to offer the new coach a contract which would expire at mid-term of the 1967-68 school year and a year to year renewal. In this manner the coach would have two full football seasons before his contract would be up for review.

Stevens Files For School Post

This newspaper has been authorized to officially announce the candidacy of G. Roy Stevens for the office of County School Superintendent of Lamb County.

"In asking for re-election to the office of County School Superintendent of Lamb County, I would like first to thank the people of the county for the excellent vote you gave me when I was elected to this office, and secondly for the encouragement and confidence you have given me since then.

It has been my purpose and desire to reward your confidence in me by giving you courteous and efficient service. This service I pledge to continue to you if re-elected to the office of County School Superintendent.



As you know this is my busy time of the year, and having no office help it takes all my time to perform the duties of the office. However, I will try to see as many voters as possible between now and Election in May. If I fail to see you, please accept this as a personal solicitation of your influence and support in the May 7, 1966, Democratic Primary Election. If re-elected I will continue to put forth my every effort to serve the people and schools of Lamb County.
G. Roy Stevens
Lamb County School Superintendent

Four Youths Injured In One Car Accident Tuesday

A one car accident at 11:30 Tuesday evening resulted in four Abernathy youths being hospitalized in Medical Arts Hospital with three of the youths reported in good condition and the fourth in fair condition.

The most seriously injured of the four is 16 year old Jacky Judkins who received severe facial lacerations and a possible fracture of his left jaw and a broken nose.

Richard Montgomery, age 17, the driver of the car is in good condition, also receiving severe facial injuries.

The two passengers in the back seat of the vehicle, Adrian Harky, 18, has a possible broken left collarbone in addition to facial injuries while the driver's younger brother, William Montgomery, age 15, also is suffering from many facial injuries.

The accident occurred at the east end of Delano when the car which was traveling east failed to negotiate the curve onto Marshall Howard Blvd.

The driver lost control of the vehicle and it jumped the median and slid sideways for approximately 350 feet before coming to rest against a cleoche pile. The damage to the vehicle, a 1962 Ford was estimated at \$600.

Two other minor accidents caused \$200 damage to the vehicles involved. The first happened Sunday evening at the intersection of Phelps Ave. and

Stock Show Entries Grow

Tomorrow, February 11 is the final deadline for entries in the annual Lamb County Junior Livestock Show which will be held here February 18-19.

Through Tuesday a total of 68 entries had been received by the Lamb County Extension Service Office. Swine led the entry list with a total of 35 followed by 17 calves and 16 lambs being entered.

All Lamb County 4-H, FFA and FHA members residing or attending schools in Lamb County as of January 1, 1966 are eligible to participate in the show.

A boy or girl must have owned their calves prior to September 15, 1965 and must have owned the pigs or lambs 90 days before the date of the show.

There will be division for steers, barrows and wether lambs, and all animals must be in the barns by 11 a.m. February 18 with the sitting scheduled to start at 1:30 Friday afternoon.

Approximately \$750 in prizes will be distributed as premiums, also the Grand Champion and Reserve Champion steer, swine and four lamb champions will receive trophies.

The entry fee for steers will be \$2.50 per steer and \$1.25 for each lamb or barrow.

Each exhibitor may enter 4 barrows but can show only two in any one class. Exhibitors will be limited to three steers and can show two in any class.

In the swine division, there will be classes for Berkshires, Hampshires, Chester Whites, Durocs, Poland Chinas and Crosses and all others.

There will be classes of steers, Angus and other breeds and Herefords. In the lamb judging there will be four classes, fine wool; medium wool; Southdown, and animals showing evidence of Southdown breeding and Shropshires will also show in the same class. The fourth class will be Crossbred fine wool and medium wool.

The judges selected for the show are Larry Tackitt of Happy who will judge the barrows; Chile Smith of Tulla who will be the judge for the steer competition and Tom Neeley who will judge the lamb entries.

LIBRARY OPEN HOUSE -- More than 500 persons attended the Open House held Sunday afternoon at the Lamb County Library to commemorate the recently completed remodeling and enlargement of the Library including many new furnishings.

FHA Approves Emergency Loans For County Farmers

The Farmers Home Administration announced Wednesday that Lamb County Farmers are eligible to apply for emergency type loans from the FHA.

Word was received here from Congressman George Mahon in a telegram to this paper.

The emergency type loans can be used for operating expenses and for consumable goods on the farm. Farmers who have not previously had dealings with the FHA may now apply for the loan.

Truman J. Jones head of the FHA office had made a request for this type of emergency loan in January after talking to all but one of the banks throughout the county.

Under the emergency loan the FHA would work in conjunction with the banks in the county concerning mortgages with the FHA holding only crop mortgages if the loans are approved.

Jones stated that the new loan approval will greatly aid many farmers in the area who have not previously had the need for an operating type loan from the

Soil Fertility Program Set Here Monday

A team of four agricultural scientists will present a Soil Fertility Program at 3 p.m. Monday, February 14 in the Littlefield Community Center according to Ronny McNutt, Assistant Agent.

Topics to be discussed at the three hour meeting are chemical weed control, water conservation, agricultural outlook and use of fertilizer.

Following the meeting a free barbecue supper will be served to all those attending the program. The supper is scheduled to start at 6:15 p.m.

Chemical weed control will be the topic of a presentation by Agricultural Engineer Elmer Hudspeth, of the South Plains Research and Extension Center.

Hudspeth is a well known person on the South Plains for his pioneering research on broadcast cotton production and on-bed planting. Both production systems take advantage of herbicides to lower cotton production costs.

Bill Lyle, extension irrigation specialist from Lubbock will talk on water conservation.

Lyle, a native of Ralls, will discuss methods which stretch and conserve water.

Agricultural outlook and use of fertilizer will be discussed by two extension specialists from Texas A&M University.

Economist John McHaney will talk on the agricultural outlook for the coming year and Agronomist John Box will talk on the use of fertilizer.

Price To Run For School Board

Sid Hopping, School District Tax Assessor/Collector announced that Calvin Price has filed for election to the Littlefield School Board.

The election for the school board will be held Saturday April 2 and candidates have up until 30 days prior to election in which to file.

Three vacancies will be up for election this year as the terms of Dr. William Nowlin, Dr. Albert Perkins, and Charles Duval are expiring this year.



Cotton Research Increase Bill Introduced In Congress

The National Cotton Council's move to increase funds available for cotton research and promotion through a national marketing order has taken definite shape.

H.R. 12322, a bill which would enable the Secretary of Agriculture to hold a grower referendum to determine if cotton producers favor a \$1 bale "check-off," was introduced last week in the House of Representatives by Congressman Harold Cooley.

It was immediately referred to the House Agriculture Committee of which Cooley is Chairman.

Purpose of the bill is stated as: "A bill to enable cotton growers to establish, finance and carry out a coordinated program of research and promotion to improve the competitive position of, and to expand markets for, cotton." Leaders of the National Cotton Council have expressed the hope that the enabling legislation can get through Congress and the referendum held in time to make the marketing order effective with the 1966 crop.

A copy of the bill as introduced was received this week in the office of Plains Cotton Growers, Inc. If passed, it would give the Secretary authority to issue marketing orders assessing producers \$1 per bale, providing means for collection of the money, and for administering the program.

Approval in the referendum could come about in two ways, by a two-thirds majority vote of producers voting in the referendum or by a "yes" vote "by cotton producers voting in the referendum who...have produced at least two-thirds of the volume of the cotton produced."

While this language of the bill does not make it clear, members of the NCC committee responsible for writing the bill explain that this latter method is intended to mean a favorable vote from producers who produced two-thirds of the cotton produced "by producers vot-

DE Students To Hold Drive

The Distributive Education students will conduct a scrap metal drive starting today.

The proceeds from the drive will help defray expenses for the students attending the District meeting and also for the annual DE-employer banquet.

Anyone desiring to contribute to the drive can call 385-5612 from 8 a.m. to 4 p.m. and 385-5360 after 4 p.m. and the students will call to pick up the scrap metal.

DE Students To Hold Drive

Primary consideration in determining the eligibility of an organization, according to the act as now written, would be whether its cotton-farmer membership produced a relatively significant volume of cotton to warrant participation.

Producers who did not wish to support the research and promotion program would have the right to demand and receive from the Cotton Board a refund of the \$1 assessment. Each refund would have to be requested within thirty days from the date on which the assessment was collected.

Once approved by producers, the marketing order or orders could be suspended or terminated in a subsequent grower referendum which could be called by the Secretary at any time, or called on request of 10 percent or more of the number of cotton producers voting in the referendum which approved the original order. Termination or suspension by referendum would require a simple majority of voting producers who produced more than 50 percent of the cotton produced by those voting in the referendum.

One provision in the act stipulates that: "No producer requesting a refund shall be eligible to vote in any subsequent referendum until all amounts refunded to him have been repaid to the Cotton Board unless the Cotton Board is in accordance with regulations issued under the order waives such repayment."

(See COTTON Page 4)

Judge, Clerk Senator Race Head Ticket

Lamb County voters were assured of getting their money's worth, in the upcoming Democratic primary, as the filing closed at midnight Monday with a total of eight contested races looming on the local scene and one contested race in the area for State Senator.

Locally the hottest races will be for the District Clerk and County Judge, where Ray Lynn Britt is attempting to unseat incumbent District Clerk Ernest Owens, and Jim Mangum is vying with Judge J.B. Davis for a four-year term as County Judge.

In other races Edwin Hall is running against C. Roy Stevens for County School Superintendent, Charlie Duval is in a race with Glenn Batson for the county chairmanship, D.W. Bawcom announced for the chairman of Precinct 12, which is presently held by Littlefield attorney Billy Hill. In the other local race, J.C. Hall, Jr. has announced for chairman of Precinct 16. Also announced for precinct chairman of Precinct 16, was Bruce Porcher.

The campaign for State Senator from the 31st District became crowded when County Chairman Glenn Batson received Senator Andy Rogers' application, by registered mail, Tuesday morning, bringing the total entries in the newly expanded Senatorial race to three with Senator James Hightower, Jim Ray and Rogers all throwing their hat into the ring. At the present Hightower is State Senator from the Withcra Falls area, but under the redistricting schedule as designed by the last session of the state lawmakers, will be running in the expanded district which includes Bailey, Lamb and Hale Counties, making this a race with two incumbents.

For the first time since 1936, the name of George Mahon will be absent from the primary ballot of Lamb and Bailey Counties, as the redistricting moved the congressional district line, and put Mahon's northern most counties into the 19th Congressional District of Congressman Walter Rogers, who will be making his first race in the area.

Present incumbents who will not have to face an opponent in the primaries include: Judge Pat Boone, Jr., of the 154th Judicial District; Billy Wayne Clayton, Representative from the 78th District; Charles Jones, County Clerk; and Lucy Moreland, County Treasurer. The other contested race in the County will be for Justice of Peace, Precinct 1, with V.L. Smith vying with incumbent David B. Moxey.

Those filing for various races in the county include:

United States Representative, 19 Congressional District of Texas: Walter Rogers
State Senator, 30th District: James R. Ray
Jack Hightower
Andy Rogers
State Representative, 78th District: Billy W. Clayton
Judge, 154th Judicial District: Pat Boone, Jr.
District Clerk: Ray Lynn Britt
Ernest L. Owens
County Clerk: Charles D. Jones
County Treasurer: Lucy Moreland
County School Superintendent: C. Roy Stevens
Edwin L. Hall
County Judge: J.B. Davis
C.J. Mangum
Justice of Peace, Precinct #1: David B. Moxey
V.L. Smith
Justice of Peace, Precinct #2: L.A. Glasscock
Justice of Peace, Precinct #4: J.N. Bowen
County Commissioner, Precinct #2: H.W. Lewis
County Commissioner, Precinct #4: Hubert Dykes
Lamb County Democratic Chairman: Glenn Batson
C.A. Duval
Precinct #1: Glen W. Exter
(See CONTEST Page 4)

Cotton Research Increase Bill Introduced In Congress

The National Cotton Council's move to increase funds available for cotton research and promotion through a national marketing order has taken definite shape.

H.R. 12322, a bill which would enable the Secretary of Agriculture to hold a grower referendum to determine if cotton producers favor a \$1 bale "check-off," was introduced last week in the House of Representatives by Congressman Harold Cooley.

It was immediately referred to the House Agriculture Committee of which Cooley is Chairman.

Purpose of the bill is stated as: "A bill to enable cotton growers to establish, finance and carry out a coordinated program of research and promotion to improve the competitive position of, and to expand markets for, cotton." Leaders of the National Cotton Council have expressed the hope that the enabling legislation can get through Congress and the referendum held in time to make the marketing order effective with the 1966 crop.

A copy of the bill as introduced was received this week in the office of Plains Cotton Growers, Inc. If passed, it would give the Secretary authority to issue marketing orders assessing producers \$1 per bale, providing means for collection of the money, and for administering the program.

Approval in the referendum could come about in two ways, by a two-thirds majority vote of producers voting in the referendum or by a "yes" vote "by cotton producers voting in the referendum who...have produced at least two-thirds of the volume of the cotton produced."

While this language of the bill does not make it clear, members of the NCC committee responsible for writing the bill explain that this latter method is intended to mean a favorable vote from producers who produced two-thirds of the cotton produced "by producers vot-

Church News

FIRST METHODIST

The first session of the church-wide mission study sponsored by the Commission on Missions, was presented January 30 in two parts. Mrs. Bill Kimbrough and Mrs. Herbert Hoover spoke on "The Local Congregations--A Source of Hope" and "Here's In Our Midst". This past Sunday evening Mr. and Mrs. Jim Copeland spoke on the topics of "Claimed By God In History" and "The New World at Our Door". The study will be climaxed with a District Mission Festival at the local church February 20.

EMMANUEL LUTHERAN

Nancy Neuman, church organist for a number of months, was recognized after services Sunday by the pastor, Rev. William Remmert. In appreciation of the services that Miss Neuman rendered, the officials presented her with a leather covered Holman Bible.

Visitors Sunday were Mr. and Mrs. William Bush, Levelland; Mr. and Mrs. Eugene Hill and children, Paul, Idaho; and Mr. and Mrs. Gus Lueck, Hamilton.

Art Lichte, who has been a patient more than a week in Littlefield Hospital, is reported to be on the road to recovery. Rev. Remmert will attend a meeting of the clergy of the ALC and the Missouri Synod today (Thursday) at Redeemer Lutheran Church, Lubbock. He will serve as chairman of a meeting this afternoon of the clergy of Lutheran Church, Mo. Synod. Mrs. John Vrabel has accepted the position as the principal organist upon the resignation of Miss Nancy Neuman, who is moving to Sulphur Springs.

ST. MARTIN LUTHERAN

On the social agenda, St. Martin's Luther League will enjoy their Valentine's party beginning at 6 p.m. Friday. The League has planned to have a snack in the educational building of the church before leaving for Lubbock to attend a movie. Mrs. Ben Brandt will be hostess to the Faith Circle meet-

ing at 7:30 tonight (Thursday), while the present, Mrs. Kenneth Cary, presides. Pastor Enzel will show a filmstrip during the meeting entitled, "Mission to America."

The Catechism class will meet at 10 a.m. Saturday. The Luther League will meet Sunday in the educational building for a business meeting. The movie, "Duck Hunting With Ted Williams" will be shown. Mike Brandt is in charge of the topic. Ronald Hill is in charge of refreshments. The meeting begins at 7:30 p.m.

Mr. and Mrs. Hubert Stoerner and family of Hereford, and Mr. and Mrs. Bruno Ganzer of Mena, Arkansas, were among the visitors last Sunday at St. Martin.

AMHERST BAPTIST

The annual spring revival of the First Baptist Church will be held March 6-13. Rev. C.N. Rue of the Tulsa First Baptist Church will deliver the sermons and Benny Mayor of Seminole will lead the song services.

AMHERST METHODIST

The Woman's Society of Christian Service met recently in Fellowship Hall of the Methodist Church with the president, Mrs. Joe Miller, presiding.

Mrs. Miller gave the devotional. Mrs. W.T. Weaver Jr. conducted the study, "Mission--The Christians' Calling". Mrs. George Williams spoke on "Local Employment and Unemployment--Voices of Hope and Protest". Mrs. Harvie Messamore spoke on "Where the Jobs Are and the Necessity of an Education". Other articles were given by Mrs. Aubrey Jones, Mrs. Ray Blessing and Mrs. Miller. Thirteen members were present.

The Church of the Nazarene is working toward a goal of 500 new churches to be established in the current quadrennium by the end of June, 1968. The denomination now has nearly 5,000 churches with a world membership of about 450,000.

Oklahoma Avenue Club Meets In Williams Home

Mrs. Melvin Williams was hostess for the Oklahoma Avenue Home Demonstration Club Thursday afternoon. Lady Clare Phillips, home demonstration agent, presented the program one "New Sewing Techniques". Mrs. C.P. Davis, president, conducted the business meeting.

Roll call was answered with "Clothes I buy for my husband". Plans were made for serving food at the Fat Stock Show February 18-19. Mrs. Davis was the club nominee for THDA chairman.

The hostess served refreshments of cheese dainties, cake, hot pineapple punch and coffee to the following attending: Mmes. Dee Myers, Fred Lichte, J.W. Phillips, C.P. Davis, Ples Helms, E.T. Miller, J.M. Griffin, Dorothy Crawford, Mabel Messer, Fred Cook, A.E. Roberts, James Blessing, Bruce Wren, J.W. Bitner, C.C. Solesbee, H.W. Oden, Jimmy Starnes, Lady Clare Phillips and the hostess.

The next meeting will be February 17 in the home of Mrs. Cecil Brown for a program on knitting and crocheting.

Looking For Linoleum?

See HILL ROGERS

MONDAY FEB. 14 IS VALENTINE'S DAY

IT'S TIME TO REMEMBER VALENTINES for EVERYONE



for the very young ... and the "young in heart."

SEE OUR COMPLETE SELECTION

It's fun to browse thru the A.&B's collection of Valentines

You'll find:

- Lacy and sentimental cards
- Wacky wild ones
- Old-fashioned Valentines
- For every member of the family, every friend

Colorful Valentines in a beautiful selection from HALL MARK and GIBSON

A&B Office Supply

AND GIFT ARCADE

502 PHELPS

LITTLEFIELD

VALENTINE GIFT WRAPPING

Baptist Sunday School Meet Set

The First Baptist Church, Brownfield will host a regional Sunday School Convention, sponsored by the Baptist General Convention of Texas, Tuesday February 22nd.

Sessions are scheduled from 10 a.m. - 12:30 p.m.; 1:30 - 3:00 p.m. and 7:00 - 9:15 p.m. Provision for children will be made in each church who will have people attending. No facilities for nursery or preschool children will be furnished in Brownfield.

Sixteen Regional Sunday School Conventions were first conducted during January and February of 1964 on an experimental basis with 7,431 persons registering.

The conventions were projected in lieu of the one State Sunday School Convention which until 1964 had been an annual affair. The State Convention has been changed to a biennial convention and is alternated with the Training Union Convention.

The next State Sunday School Convention is slated for Corpus Christi in 1967.

Double Ring Vows Read In Enochs Ceremony

Miss Marilyn Joyce McDaniels, daughter of Mr. and Mrs. M.J. McDaniels of Bula, and Morris Truman Peterson, son of Mr. and Mrs. W.B. Peterson, Morton, exchanged double ring vows January 22

at 6 p.m. in the Enoch Baptist Church. The Rev. Ruben C. Maness, pastor of the First Baptist Church of Smyer, officiated.

Miss Georgia Bahlman, attended the bride as maid of honor. Miss Kay Peterson of Morton was bridesmaid.

Best man was Gayle Whitten of Tell, Gordon McDaniels of Bula was groomsmen. Dwight and Craig McDaniels, brothers of the bride, lighted the candles. Guests were seated by David McDaniels and Sammie Nichols, Enochs.

Two baskets of white ostrich plumes and greenery flanked with two 15-place candelabrum, formed the background for the wedding party.

Traditional wedding music was provided by Miss Lynda Grusendorf of Enochs, organist.

Presented in marriage by her father, the bride wore a full length wedding dress designed with a portrait neckline, lace trimmed bodice and long sleeves tapering to petal points over the wrists. Her elbow length veil of illusion was attached to a tiara of lace and seed pearls. She carried a white carnation corsage atop a white lace fan accented with white satin streamers.

The attendants wore emerald green sheath dresses of brocade satin, and dyed to match shoes. Their headpieces were large emerald green bows. Each

carried a large white chrysanthemum tied with an emerald green bow.

Following the ceremony a reception was held in Fellowship Hall of the church. Miss Lynda Grusendorf and Miss Patricia Grusendorf presided at the bride's table, laid with white net over emerald green.

For traveling the bride chose a three piece brown suit with brown accessories and a corsage of white carnations. Mrs. Peterson is a graduate of Pep High School and South Plains College. Her husband is a graduate of Morton High School and attended South Plains College and Wayland Baptist College.

The new couple is at home in Plainview.

Forum To Have Dinner

The Forum Club will meet Thursday at 7:30 p.m. in the Reddy Room for a Friendship Dinner, with each member bringing a guest. The meal will be a covered dish dinner.

Hostesses will be Lucille Betts, Johnnie Carl, Jackie Burks, Lulu Dickerson, and Beulah Tullis.

Palette Club Is Organized

The organizational meeting of The Palette Club, Littlefield's newest art club, was held Thursday afternoon in the Reddy Room with ten persons present.

Ellen Will was elected president and La Verne Carpenter, secretary-treasurer. Named to the by-laws committee were Dorothy Ferguson, Alma Roberts, Marie Hopper, Winnie Ragsdale, La Verne Carpenter, Katherine Jones, Flora Hall and Ellen Will.

Jehovah's Witnesses Set Meeting

A newly redistricted circuit of Jehovah's Witnesses, extending from Wichita Falls to Levelland and from Altus, Okla. to Haskell, will meet in Plainview, March 4-6, for a semi-annual assembly.

The 15 congregations will meet to discuss the subject, "Make Disciples of People of All the Nations."

Lloyd Lowery, representative minister of Jehovah's Witnesses in Littlefield, said, "According to their 1966 Yearbook, Jehovah's Witnesses are preaching and teaching in 197 nations and isles of the sea. Eleven nations, chiefly Russia and her satellite countries, have forced Jehovah's Witnesses' ministry underground."

The training program at this assembly is designed to accomplish the discipling work by promoting home Bible studies with interested persons. Lowery said, "Disciple means 'one who receives instruction from another, a learner.'"

The Watchtower Bible and Tract Society, directive agency, regrouped almost all congregations in Texas to approximately 15 congregations to each circuit. The re-formed circuit arrangement became operative February 1.

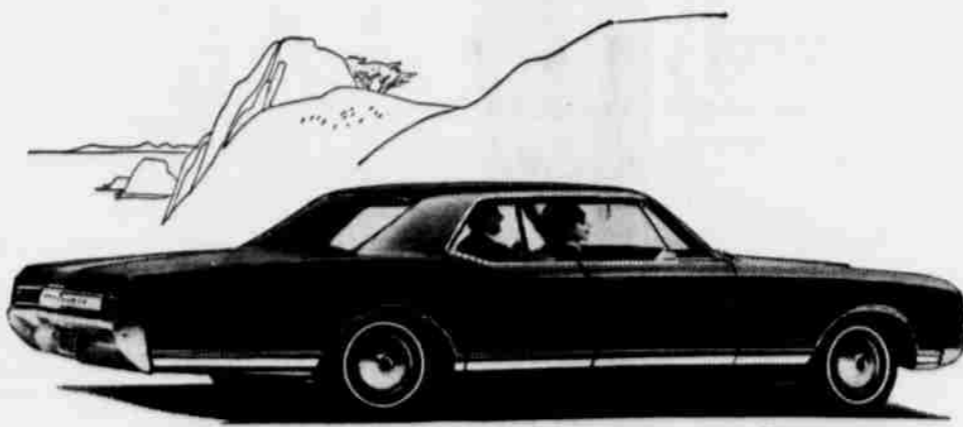
Department heads and their assistants throughout Circuit No. 9 met Saturday, February 5, in Plainview to reorganize about 20 departments for the assembly.

Colorado has the greatest number of high peaks of any state in the nation.



ENGAGEMENT ANNOUNCED - Mr. and Mrs. Harold Phillips, 309 East 20th, announce the engagement and approaching marriage of their daughter Diane to Mr. Richard Breedlove, of the United States Navy, son of Mr. and Mrs. John Breedlove, 307 East 22nd.

What would happen if everybody caught Olds 88 Swing Fever?



Mass happiness.

You may not be immune to Olds 88 Swing Fever (few folks are). But that's okay. Your Olds Dealer has a wonderful new cure: A Rocket Action Olds 88! And the choice of prescription is yours: Elegant new Delta 88... action-packed new Dynamic... low-priced Jetstar. All Rocket powered... all Olds styled... and all priced to make waiting for spring downright foolhardy. Feel your temperature rising? That's Swing Fever. Quick! Head for your Oldsmobile Dealer's... open your mouth and say "yeah!" LOOK TO OLDS FOR THE NEW!



Rule of the road: when you see this sign give the other fellow the right-of-way. And when a car is in your line of the road to see that you see it. Olds 88 is a safe, secure, steady, strong and sure. Olds 88 is a car that's built to last. Olds 88 is a car that's built to last. Olds 88 is a car that's built to last. Olds 88 is a car that's built to last.

OLDS 88 SWING FEVER IS SWEEPING THE COUNTRY!

STEP OUT FRONT ... In a Rocket Action Car!

OLDSMOBILE BY GM

JONES MOTOR COMPANY LITTLEFIELD, TEXAS

TO TRANSLATE BIBLE Dr. William Sedat, Nazarene missionary to Guatemala, who translated the New Testament into the Kekchi Indian language, has started work on assignment with the Indians in Central America hopes to finish the work within five years.

A GIFT OF FLOWERS

FLOWERS FOR EVERY OCCASION

WE DELIVER - CALL 385-3561

FLOWER BOX

518 E. 5TH

FREE

5x7

Silvertone portrait of member of your family.

★ ★ ★

Any age, any number will be individually photographed FREE.

FREE

One Complimentary 5 x 7 portrait will be given to each family as a gift from our store. These are beautifully posed portraits, not snapshots, taken by a skilled, professional Photographer.

Unmarried teenagers and children will not be photographed unless accompanied by a parent.

NO AGE LIMIT "ADULTS AND GROUPS WELCOME"

2

DAYS ONLY

C.R. ANTHONY CO.

FRIDAY FEB. 11TH AND SATURDAY FEB. 12TH

Small Charge For Group Portraits

Closing Notice

In Observance of Abraham Lincoln's Birthday the Littlefield banks will be closed

SATURDAY
FEBRUARY 12TH

First National Bank
Security State Bank

News of Women

LOIS VRUBEL, SOCIETY EDITOR



DISCUSS PROGRAM -- Mrs. Melvyn Dutton, president of Junior-Senior High PTA, discusses the program for the PTA meeting Friday night with Mrs. K.O. Lynn, left, and Mrs. Edward Betts. "Strengthening Our Heritage" was the theme for the meeting.

Three members of Mrs. Lynn's speech class gave readings on the American Flag. Mrs. Betts spoke on "Our Heritage". The high school band also played several patriotic selections.

"Strengthening Our Heritage" Is Theme Of PTA Meeting

"Strengthening Our Heritage" was the theme for the meeting of the Junior-Senior PTA meeting Monday night in the high school auditorium with Mrs. Melvyn Dutton presiding.

In deepening with the program theme, "Strengthening Our Heritage", the high school band under the direction of Don Hayes, played several patriotic selections, with Jack King as narrator.

reading with the band furnishing the background music, Glenda Parrott gave the history of the United States Flag and Cecilia Price gave the proper display of the flag.

Mrs. Edward Betts, American History teacher, spoke on the topic, "Our Heritage" elaborating on the 14th amendment.

Mrs. Melvyn Dutton, president, conducted the business meeting. Elected to serve on the nominating committee were Beryl Harris, Mrs. Charles Nace and Mrs. Bill Kimbrough. The president named a committee to select a deserving student for the scholarship given each year by the PTA.

Refreshments of heart-shaped cookies, valentine candy, and coffee were served from a serving table which featured a valentine decor. Hostesses were Mrs. Bill Bradley, Mrs. Joe Pat Hart, Mrs. Eldon Hill, Mrs. Roy Hutson and Mrs. Tom Hilburn.

Square Dance Club Meets Thursday
The Circle Eight Square Dance Club met Thursday night in the Lamb County Community Center. Hosts were Mr. and Mrs. R.V. Armstrong, Mr. and Mrs. Floyd Armstrong and Mr. and Mrs. Doyle Tischler.

Refreshments of cake, coffee and tea were served.

Red Cross Names Committee To Arrange Kick-Off Breakfast

At the regular meeting of the Board of Lamb County American Red Cross, Friday, Bonnie Haberer, county chairman, appointed a committee to arrange a Kick-off March Breakfast, at which time definite plans will be announced for the Annual Independent March Fund Drive to be conducted in the following communities: Olton, Sudan, Amherst, Earth, Springlake, Spade, Hart Camp, Pleasant Valley and Fieldton.

The various goals will be announced and it is probable that the quotas will be less than they have been in the past.

Board members, various community fund chairmen, their wives, or husbands, will be in attendance.

It was announced there will be an instruction on disaster at Amarillo February 16 and 17 at 1800 Harrison St. The disaster chairmen, executive secretary, and others are urged to attend.

WMU Holds Circle Program

WHITHARRAL -- Mrs. Driscoll Bryant read the Call to Prayer to open the meeting of the WMU at the Whitharral Baptist Church Monday afternoon, Proverbs 2: 1-12 was the Scripture reading followed in prayer by Mrs. Ellis Epts.

Mrs. Ernestine Clevenger gave the introduction of the circle program on the topic, "Teaching Missions in the Church", listing the tasks of the Brotherhood and the WMU. Assisting here in the discussion were Mrs. Elva Crank, Mrs. Roger White, Rev. Ellis Epts, Mrs. B.E. Hayes and Mrs. D. Bryant.

Mrs. Hayes presided for a brief business meeting. Others present were Mrs. Jack Bryant, Mrs. Jimmy Hisaw and Mrs. Kenith Polk.

Square Dancing Lessons Begin

A series of square dance lessons began Tuesday night at the Lamb County Community Center and will continue each Tuesday for 10 weeks. The instructor will be Joe D. Greer of Lubbock.

All persons interested in taking these lessons are invited to meet at the Community Center Tuesday at 8 p.m.

Coffee Given Primary Faculty

The Primary school faculty and staff were entertained Thursday evening with a coffee given by three former members of the Primary faculty, Mrs. O.L. Walker, Mrs. George Thompson and Mrs. W.M. Davis. The come and go occasion was held in the George Thompson home at 117 East 20th.

A valentine motif was used in the decorations and refreshments. Heart shaped pimento cheese sandwiches, valentine nut cups, pineapple-cherry congealed salad, German chocolate cake, coffee and hot spiced apple juice were served.

Approximately 30 guests attended, including two former Primary faculty members who were special guests, Mrs. Charles Duval and Mrs. Elvin Carter.



MISS SHIRLEY KAY MOTL

Wedding Plans Told

February 26 is the wedding date chosen by Miss Shirley Kay Motl and Robert (Pete) Swain.

Supt. Paul Manning discussed the Title I reading program. Refreshments of heart-shaped cookies, valentine candy, and coffee were served from a serving table which featured a valentine decor.

Vows will be exchanged in the First Methodist Church of Anton at 7 p.m.

All friends of the couple are invited to attend the wedding and reception following in the Fellowship Hall.

BEAUTIFUL - EASY TO CLEAN
SANDRAN
VINYL FLOOR COVERING
AT
HILL ROGERS

Sing - Song Honors Former Residents

WHITHARRAL -- Mr. and Mrs. C.E. Pendergrass of Anton, former Whitharral residents, were honored Friday afternoon with a sing-song at their home near Anton by members of the Whitharral Home Demonstration Club, Parents of Mrs. D.C. Thetford and Mrs. Ruben Brock, Sr., members of the Whitharral club, Mrs. and Mrs. Pendergrass have been confined to their home for several months because of illness.

Refreshments were taken by the group and served at the end of the visit and sing-song. Present were the honorees

and Mrs. J.B. Brimhall of Anton, Mrs. E.G. Wade of Levelland and Mmes. Thetford, Brock, J.M. Mixon, C.G. Lan-

ders, Ross Kennedy, L.C. Lewis, John Waters, Ella Hewitt, W.H. Kilgore, J.D. Waters, Eula Fyke and Miss Lena Maxey.

Double Feature

ESPIONAGE AND INTRIGUE

ESPIONAGE AND INTRIGUE
ESPIONAGE AND INTRIGUE
ESPIONAGE AND INTRIGUE



PLUS

ALAIN DELON-ANN-MARGRET
VAN HEFLIN-JACK PALANCE

Once a Thief
FRIDAY-SATURDAY
SUNDAY

X I T
DRIVE-IN THEATRE

Broadway's bouncingest bundle of joy...on the screen!



PAUL FORD-CONNIE STEVENS-MAUREEN O'SULLIVAN and JIM HUTTON
JANE WYATT HENRY JONES and LLOYD NOLAN

PALACE SLN-MON
TUE-WED

Sunnydale Club Meets In Birkelbach Home

Mrs. B.D. Birkelbach was hostess for the Sunnydale Home Demonstration Club Thursday afternoon. Mrs. Lorene Perhad had charge of the recreation.

Roll call was answered "my maiden name." Mrs. Virgil Bitner presided at the business meeting. Plans were made to help with the city council's food booth at the Junior Livestock Show February 18-19.

Woman's Club To Develop Park

The Woman's Club chose as one of their community improvement projects the creation of a small park and playground for children living in a section of town where no park existed.

Early in 1965 the city acquired some vacant property at the north end of the city's main street, Phelps Avenue, from the Santa Fe Railroad, which was made available for park purposes for a \$1 a year rental. Preliminary landscaping was completed including the planting of trees and grass and the installation of a water system.

The park was then turned over to the Woman's Club for upkeep and further development. The club plans to furnish materials providing a rest stop with a canopy over a seating arrangement, water fountain and bird bath. The labor for this will be donated.

The Dunbar Park, located on the north side of town, was begun in 1963 by the Woman's Club. It is located on a vacant city block, where a school was located prior to integration. The first year the lot was cleared of weeds and debris so that it could be used as a safe playground. The next year 40 trees, donated by the city, were planted by members of the Woman's Club and six swings, a table and concrete picnic table were erected. A barbecue pit and grill is soon to be built.

FREE ESTIMATES
BODY REPAIR
ALL MAKES
JONES MOTOR

Shower Given Nyoka Benton

Mrs. John Clayton's home was the setting recently for a bridal shower honoring Nyoka Benton, bride-elect of Ronnie Jenkins.

Approximately 25 guests registered from 1:30 to 3:30 p.m. The serving table featured a red lace heart behind a miniature bride and groom. White cake squares decorated with red hearts were served with hot cinnamon tea.

The hostess gifts included a broiler grill, iron and electric blanket. Hostesses were Mmes. John Clayton, Dub Berry, Kenneth Pitman Sr., Herman Bethel, Bill Penland, Ray Monroe, O.B. Scott, Leonard Steuart, Charlie Parkman, Reed Vandell, J.W. Wisdom and Forest Reeves.

GIFT YOUR VALENTINE WITH

Flowers

And You Can Say It Best By Calling

385 4461

And Let

CHISHOLM FLORAL

Deliver Your Valentine Flowers CALL TODAY

Save over 24%! Thousands sold for \$79.90... But now this full-size Wizard Zig-Zag Sewing Machine and Portable Carrying Case are...

ANOTHER WESTERN AUTO EXCEPTIONAL VALUE

\$59.99

Charge!

- End hand sewing! Built in Patch-O-Matic for stay put repairs. Floating foot sews over pins, bulky fabrics... ends basting. Sews on buttons.
- Plus these workavers! Numbered tension dial perfect tension for all fabrics. Light Automatic bobbin winder. Thread cutter. Accessory kit, bobbin, screwdriver, etc. Instruction book.
- W.A. Bonus! Vinyl-clad hardwood case (3KC8878) Variable speed foot control. Easyterm! 3KC846 Turq. Ivory, chrome 18x13x9 in. case \$59.99

• Save even more--no shipping to pay!
• So good--it's guaranteed 25 years!

You can pay \$57.95 for a straight stitch machine elsewhere! Get a Zig Zag at W.A.--save 14%!
• Do fancy work! Pattern design for Zig Zag stitches, tiny satin stitches, Monogramming, hemstitching, appliques, quilts, binds, shirts, pleats... adds lace, ruffles, zippers.

Classic... Beautiful 9-piece Set

99.95

King-size set for a growing family or people who like lots of company.
Table: Opens out to a full 84x36 in. with 12 in. leaf, closes to 72x36 in. on smooth-working center slides. Top is high-pressure laminated plastic--mar, stain, scratch-resistant. Rich tone-on-tone woodgrain finish. Tubular braced steel legs with floor protecting self-leveling glides. Highly polished metal apron.

Chairs: Thick cushioning covered by fabric-supported vinyl--looks, wears like leather, colorfast, waterproof, crack and tear-resistant. Sturdy 1 in. tapered tubular steel legs with non-mar self-leveling floor glides. Contour backs have two-tone scroll design. Richly styled to blend with any room decor.

3JC5078--Bronzestone, brown/beige chairs... \$99.95
3JC5078--Chrome, charcoal/grey chairs... \$99.95

WESTERN AUTO

JOHN POLONE, OWNER

423 PHELPS 385-4214



TO THE VICTORS THE TROPHY....Chic Conway, past president of the Lions Club, and co-chairman of the golfing committee that challenged the Littlefield Rotary Club to a tourney this past summer, presents the winners trophy to Jack Christian and Pop Hodges of Rotary, as evidence of the victory. At the same time Conway and the Lions re-issued the challenge for this season, which was again accepted by the Rotairans.

--- NEWS STAFF PHOTO

Bible Study In Progress

The Lums Chapel Baptist Church will begin a week of Bible study, Monday, Feb. 7 and will continue through Friday, Feb. 11 at 7:30 p.m.

Rev. Willie C. Hazel, pastor of the First Baptist Church, Sudan, will teach the adults, "John's Witness to Jesus". The pastor, Rev. J. Henry Cox, will teach Intermediates. "Letters

on Christian Living". Mrs. Hershel Barker will teach the Juniors, "Men Who Told His Story" and Mrs. W. D. Terry and Mrs. Melvin Mears will have charge of the elementary departments.

Mrs. J. Henry Cox will serve as secretary and Hershel Barker, Sunday School Superintendent, will direct the school.

--- COTTON

(Continued From Page 1)

There has been more than a little comment on this provision, and many are of the opinion that denying the right to vote to those who oppose the marketing order is not exactly in line with democratic principles.

Orders issued by the Secretary under the bill could provide for (a) the establishment and administration of appropriate plans or projects for the advertising and sale promotion of cotton and its products; (b) establishing and carrying on research and development projects and studies on production, ginning, processing, distribution or utilization of cotton and its products, and (c) providing that handlers of cotton maintain and make available for inspection whatever books and records might be required by the order and deemed necessary and appropriate by the Secretary.

Simply put, the program would work like this. The Secretary would establish and select a Cotton Board from nominees submitted by approved area and state producer organizations. The Cotton Board would develop and submit to the Secretary for his approval advertising, sales promotion or research and development plans, with no such plan or project becoming effective without the Secretary's approval. An annual budget for carrying out the approved projects would also be submitted to the Secretary for approval.

The point of collection is not specified in the bill except to state that "each handler of cotton, as prescribed by the order,

shall collect from the producer ... and shall pay to the Cotton Board an assessment prescribed by the order."

With the money thus made available the Cotton Board, with the approval of the Secretary, would enter into contracts or agreements for carrying out the research and promotion plans with an organization governed by cotton producers selected by area and state producer organizations certified by the Secretary. The act specifies that the producers of each cotton producing state will, to the extent practicable, have representation on the governing body of the contracting organization in proportion to the monetary contribution of producers in that state.

The only beltwide organization now in existence which fits this description is the Cotton Producers Institute which up to now has operated on voluntary \$1 per bale contributions. It is not spelled out in the bill itself, but the National Cotton

Council has previously said its staff would be available to research and promotion. And this being the case, it is easy to see that any legislator voting "yes" could more easily defend that position than otherwise.

Any change in the amount of the initial \$1 assessment could only come about by amendment of the order, recommended by the Cotton Board, approved by the Secretary and adopted by two-thirds of the cotton producers in a referendum of the cotton industry and farm organization leaders do not believe the enabling act can pass Congress as written. And certainly there is ample opportunity for changes to be made as the bill winds through the House Agriculture Committee, the Senate Agriculture Committee, the bodies of the House and Senate and finally a conference committee.

But others point out that Senators and Congressmen will only be voting on whether or not to allow producers to decide for

themselves whether or not they want such an approach to research and promotion. And this being the case, it is easy to see that any legislator voting "yes" could more easily defend that position than otherwise.

But regardless of the taken by PCG's Board of any other producers if and when an endum is called. A. Johnson, Executive President of Plains Cottoners, stresses this by voting that cotton farmers High Plains study the developments and keep them when they will be called to vote.

--- CONTEST

(Continued From Page 1)

- Precinct #2: J.A. Littleton, Jr.
- Precinct #3: N.N. Frey
- Precinct #4: W.H. Cunningham
- Precinct #5: R.D. Nix
- Precinct #6: Russell Haberer
- Precinct #7: R.L. Masten
- Precinct #8: W.P. Holland, Sr.
- Precinct #9: Vernon Qualls
- Precinct #10: Jim Melton
- Precinct #11: Robert Dysart
- Precinct #12: Billy Hall
- Precinct #13: D.W. Bawcom
- Precinct #14: V.H. Diersing
- Precinct #15: Johnny Talburt
- Precinct #16: Floyd Crawford
- Precinct #17: Bruce Porcher
- Precinct #18: J.C. Hall, Jr.
- Precinct #19: Orville Cleavinger

Edgar J. Diers, 5446 Seventh Street, Lubbock, district representative in this area for Aid Association for Lutherans, placed more than half a million dollars of life insurance during 1965, announced George V. Krampien, senior vice president and director of agencies, AAL is a fraternal life insurance society serving Lutherans throughout the United States and Canada.

Look Who's New

LITTLEFIELD HOSPITAL

Born to Mr. and Mrs. Lonnie Flowers, Littlefield, a girl, Sarah Melissa, weighing 6 pounds, 6 ounces, February 2, 1966 at 1:25 a.m.

Born to Mr. and Mrs. Harlin Trammell, Littlefield, a girl, Cynthia Sue, weighing 6 pounds, 14 ounces, February 4, 1966 at 12:50 p.m.

Born to Mr. and Mrs. Alberto Trejo, Littlefield, a boy, Martin, weighing 7 pounds, February 5, 1966 at 8:17 a.m.

Born to Mr. and Mrs. Joe Lane, Lubbock, a boy, Lincoln Dwayne, weighing 5 pounds, 1 ounce, February 5, 1966 at 8:20 a.m.

For COLDS take 666

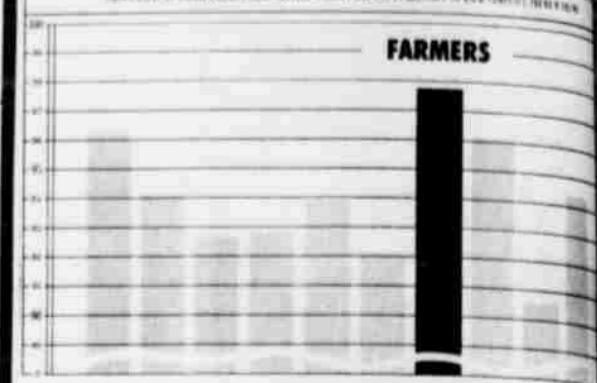
Bye, Bye Bills!

Happy the family with monthly "bill" problems smoothed away! Manager Jim Weeks at financial house, with a family of four, understands how bills can swamp you! He also understands, through his financial experience and training, how to pay off all those bills and leave you only one sensible monthly payment. Say "bye, bye, bills -- hello, Understanding Man". Call him now.

Interstate financial house
SECURITIES COMPANY OF TEXAS
425 Phelps 385-3822
See Jim Weeks... He Understands

The simple truth

HOW THE 10 TOP CAR INSURERS PAY



Some auto insurance companies save you money. Some pay claims faster than others. Farmers does both. Read the chart.

These are actual figures from the companies themselves. And these are the big, costly, worrisome third-party claims where you are liable for bodily injury to others. They are the sternest test of a company's willingness to back up its policies. Call a Farmers agent about the best buy in auto insurance.

FARMERS INSURANCE GROUP

*In Texas you save by dividend payments.

Foy Watson,
Littlefield Agent
Phone 385-4268

Stay in the heart of (downtown) TEXAS

Everything you need is DOWNTOWN and at the DOWNTOWNER you're there

- Free parking
- Free ice
- Heated swimming pool with patio
- Free television and hi-fi music
- Oversize double beds
- Meeting and banquet rooms
- No charge for children under 13 occupying room with parents

For your traveling convenience, use our FREE WIRE RESERVATIONS service between Downtowners

DOWNTOWNER MOTOR INNS

"THE SIGN OF HAPPY TRAVEL"

For the newest free directory of Downtowner Motor Inns, please write to:
The Downtowner Corporation
202 Union Avenue
Memphis, Tennessee 38103

Jean-Pierre Filipinetti, driver of a \$14,000 Mercedes, test-drove a '66 Ford. His opinion: Ford rides quieter.



Ford's Quiet Man here he discusses a '66 Ford 4-Door LTD with Jean-Pierre Filipinetti at the castle which houses the famed Filipinetti collection of over 80 classic autos.

"It's incredible," said M. Filipinetti, "the Ford is quieter."

"The quiet, it's tremendous," continued M. Filipinetti, "it's incredible that you could build a car so luxurious as this at such a price." Ford's amazing quietness is the result of deep-down quality and engineering excellence.

And Ford for '66 offers more engineering magic: Optional new Stereo-Sonic Tape System that turns your Ford into a concert hall. Exclusive Magic Doorgate for wagons swings out like a door for people and down

like a tailgate for cargo. Safety/Convenience Control Panel option—one button locks all doors, lights warn when fuel's low or a door's ajar, and remind you to fasten seat belts. Quiet test a '66 Ford soon.



FORD GALAXIE 500XL HARDTOP

TEST-DRIVE AMERICA'S TOTAL PERFORMANCE CARS

FORD

MUSTANG • BRONCO • FALCON • FAIRLANE
FORD • THUNDERBOLT



★ SAVE NOW! Best values yet at your Ford Dealer's 3rd Annual White Sale! ★

MITCHELL - FORD, INC.

525-529 PHELPS AVE.

LITTLEFIELD, TEXAS

We salute the
BOY SCOUTS
56th ANNIVERSARY
FEB. 7 to 13



CONGRATULATIONS TO ALL THE FINE SCOUT GROUPS IN THE AREA

WE ARE PROUD TO BE YOUR OFFICIAL BOY SCOUT OUTFITTERS



COME IN AND SEE OUR DISPLAY AND STOCK OF ITEMS... UNIFORMS... ACCESSORIES, HANDICRAFTS, BOOKS AND ALL RELATED ITEMS... FOR ALL SCOUTS.

WE AT WARES WILL CONTINUE IN THE FUTURE AS IN THE PAST... TO HELP ALL SCOUT MEMBERSHIP TO THE UTMOST OF OUR ABILITY.

YOU'RE ALWAYS WELCOME

Ware's

THESE PRICES GOOD IN LITTLEFIELD
FEB. 10-11-12-1966

RESERVE THE RIGHT TO
LIMIT QUANTITIES

**A PIGGLY WIGGLY
CUSTOMER DESERVES**

**NOTHING BUT
THE BEST!**

**8x
GREEN
STAMPS**

**SAVE!
WITH THESE
VALENTINE
VALUES!**



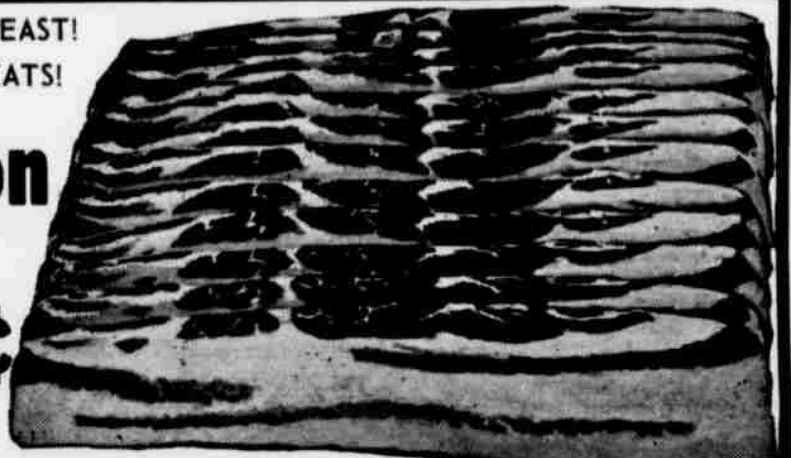
**BAKERITE
SHORTENING**
3 **59**¢
LB. CAN

**SUZAN
SALAD
DRESSING**
29¢
QUART
JAR

**HEALTH &
BEAUTY AIDS!**
TOP REGULAR 99¢
Air Spray 14 OZ. CAN **39**¢
REGULAR 98¢
CEDRIN 60 CT. BTL. **79**¢
REGULAR 75¢
VALIS MED. SIZE BTL. **66**¢
TONE, WIDE RULE, POLY WRAPPED, REG. 63¢
CLER PAPER 300 CT. PKG. **49**¢

TURN YOUR MEAL INTO A FEAST!
SERVE Piggly Wiggly MEATS!

Sliced Bacon
SWIFTS
PREMIUM **89**¢
LB. PKG.



FRYERS
USDA GRADE A,
WHOLE **33**¢
POUND

USDA CHOICE, AGED, HEAVY BEEF VALU-
SHORT RIBS TRIMMED POUND **23**¢
USDA CHOICE, AGED, HEAVY BEEF, VALU-
SWISS STEAK TRIMMED ARM CUT POUND **79**¢
ARMOUR STAR, THICK OR THIN
SLICED BOLOGNA POUND **59**¢
KRAFT'S AMERICAN OR PIMENTO
SLICED CHEESE 12 OZ. PKG. **55**¢
LEAN CHOICE BEEF, CUBES BONELESS
STEW MEAT POUND **69**¢

HORMEL'S ALL MEAT
FRANKS 12 OZ. PKG. **49**¢

FRESH PRODUCE FROM PIGGLY WIGGLY

APPLES
15¢
DELICIOUS,
WASHINGTON,
EXTRA FANCY,
DOUBLE RED
FOUND



**DR. PEPPER
OR
COCA-COLA**
12 **69**¢
BTL. CTN.

**RED DART
CUT
GREEN BEANS**
10¢
NO. 303
CAN

CELERY 2 FOR **19**¢

FROZEN FOODS!

KELLY SLICED 10 OZ. PKG.
STRAWBERRIES 3 FOR **69**¢
LIBBY, ALL VARIETIES FOR YOUR
VALENTINE PARTY
DRINKS 10 6 OZ. **1** \$1 CAN

Detergent VIM, TABLETS, 10¢ OFF LABEL 38 CT. BOX 65 ¢	Liquid Detergent SWAN, 13¢ OFF LABEL 22 OZ. BTL. 56 ¢	Cleanser COMET, POWDERED, 3¢ OFF LABEL GIANT CAN 23 ¢
--	--	--

HEAVY 50
DOG FOOD 2 NO. 1 CANS **23**¢
LEENEX, ASSORTED COLORS
TOWELS JUMBO ROLL **37**¢
HUNT'S
PORK & BEANS 2 NO. 300 CAN **31**¢
CHEF BOY-AR-DEE, WITH MUSHROOMS
SPAGHETTI DINNER 18 1/2 OZ CAN **51**¢
CHASE & SANBORN, ALL GRINDS 7¢ OFF
LABEL
COFFEE 1-LB. CAN **69**¢
KLEAR
FLOOR WAX 27 OZ. CAN **98**¢

MORTON, PLAIN
DONUTS POLY 18 CT. **39**¢
SEABROOK, WHOLE KERNEL OR
CREAM STYLE
CORN 2 10 OZ. **49**¢

APPLES
LOTUS
SLICED
NO. 2 CAN
15¢

BLEACH
DURITE
PLASTIC
1/2 GALLON
25¢

CHEF DELIGHT
Cheese Food 2-LB. BOX **59**¢

DEL MONTE SWEET
Green Peas 4 NO. 303 CANS **1** \$1

OLD FASHION
Applesauce NO. 300 CAN **12 1/2**¢

BELL, BORDEN, FOREMOST
Buttermilk 1/2 GALLON **39**¢

HAWAIIAN RED
Punch 46 OZ. CAN **35**¢

Lowest Prices... Greatest Variety... always at
Piggly Wiggly



PINT-SIZED ENGINEERS - These cub scouts of Den 4 of Pack 641 learned more about transportation by riding the train from Littlefield to Sudan Saturday morning. The theme for their January meetings was "Transportation".

Left to right are Gregory Bell, Randy Ross, Robert Heinen, Buster Bell, Bobby Crump, and David Bell, Kevin Bell, a guest of the scouts, is shown in front.

Viet Nam War Debated At Honor Society

AMHERST -- The National Honor Society met in the high school auditorium recently with the president, Billy Sherrill, presiding.

The program consisted of a debate. On the affirmative side were Kathy Campbell, Elaine Black and Barbara Campbell. For the negative side were Roy Simmons, Neil Duffy and James McAdams. Their first subject was, "Is the majority always right?" "Is the war in Viet Nam right?" was also debated, with the girls winning.

The group is planning a visit to Plant X near here. The society voted to sponsor a science fair to be held during Public School Week, March 7-11. The high school and junior high school will participate. Prizes will be awarded. Roy Simmons will be the chairman of the fair.

Cub Scouts Ride Train

Den 4 of Cub Scout Pack 641 rode the train to Sudan Saturday morning, in connection with their January theme "Transportation." The train trip had been postponed from an earlier date.

May Promoted By Air Force

Ramon L. May, son of Mr. and Mrs. W. Earl May of Rt. 5, Muleshoe, has been promoted to airman second class in the U.S. Air Force.

Airman May is an administrative specialist at Wakanai Air Station, Japan. The airman is a graduate of Sudan High School.

Cotton fiber is static free.

The four leading steel producers are the U.S., Russia, West Germany and Japan.

Calendar of Events

- 9:30 a.m. Ladies Bible Class at Crescent Park Church of Christ
- 12:00 noon Optimist Club meets at Crescent House
- 12:00 noon Rotary club meets in Community Center
- 2:00 p.m. Rocky Ford Home Demonstration Club
- 7:00 p.m. Perkins and Neuenschwander SS Classes meet in Dr. Perkins' home for covered dish supper
- 7:30 p.m. Friendship Dinner of the Forum Club in the Reddy Room
- 7:30 p.m. Faith WOC Circle meets at St. Martin Lutheran
- 7:30 p.m. Sunday School staff meets at Emmanuel Lutheran
- 8:00 p.m. WOW meets in IOOF Hall
- FRIDAY
- 2:30 p.m. Emmanuel Lutheran LWML meets at the church
- 6:00 p.m. Luther League of St. Martin Lutheran meets at church for Valentine party in Lubbock
- SATURDAY
- 10:00 a.m. Catechism Class meets at St. Martin Lutheran Church
- SUNDAY
- 5:30 p.m. JYF Group meets at First Christian Church
- 6:00 p.m. Church-Wide mission study at First Methodist Church
- 7:30 p.m. Luther League meets at St. Martin Lutheran Church

Does Littlefield need another new car dealer?

It sure does. What city wouldn't want another prosperous, well managed business? Maybe with you running it. Before you say, "Who, me?"; check out these fiscal facts about American Motors/Rambler dealers:

In the seven years, 1958-64, American Motors dealers averaged 36.8% per year return on investment (including owner's salary). During the same period they increased the number of American Motors cars on the road from under 400,000 to over 2,500,000.

For the last four years, American Motors has sold more cars per dealer nationally than any other U.S. nameplate except Chevrolet, Ford and Pontiac!

Today, American Motors dealers are bullish, and looking forward to a profitable future. And why not? Nearly 500 of them have boosted their volume of sales 25% or more over last year! One series alone, Ambassador, is way ahead of the entire industry with a year-to-year sales increase of 143%!

American Motors dealers are selling automobiles and making money! We're looking for a high-caliber, successful businessman to become an American Motors dealer right in this area. The investment required is much less than it would be for many a "big three" dealership of comparable size with expensive truck and truck parts inventories.

If you think you can measure up to this challenging, rewarding potential, contact:

W.B. McGAVGLY
P.O. BOX 10484
DALLAS, TEXAS 75205
PHONE 214-ME 1-5110

franchise now available

ANTON NEWS by MRS. C.D. NELSON

Mrs. Parker Has Weekend Guests

Mr. and Mrs. Orval Hughtlett and David, Wellington, Mr. and Mrs. Calvin Phillips and Merrell Nickell of Welch, Mr. and Mrs. Robert Parker, Odessa, Mr. and Mrs. Frank Parker and sons, Muleshoe, and Mr. and Mrs. Bob Parker and Brenda of Halfway visited Mrs. Jim Parker last weekend.

Mr. and Mrs. Emil Bigler, Portales, N.M., visited in Anton last week.

Members of the WMS at Central Baptist Church met at the home of Mrs. Eva Dee Wright Monday for a social and planning meeting.

In the business meeting, presided over by the president, Mrs. Wright, plans were made for the next three months.

Refreshments were served to Mmes. C.O. Dooley, L.L. Anderson, Lee Stone, Rudolph Shockey, T.C. Talkington, Morris Gregg, Jim Hobgood and Mrs. Wright.

Mr. and Mrs. Gary Bishop of Dallas spent the weekend with relatives here.

Mr. and Mrs. John Howard, Mr. and Mrs. Lon Howard and Bill Weaver attended funeral services for Omer Weaver at Carter, Okla., Friday afternoon. Mr. Weaver was a brother of

Mr. and Mrs. C.C. Riddles and John, who are spending the winter in Truth or Consequences, N.M., spent several days in Anton last week.

John Houston of Amarillo was a guest in the home of his aunt, Mrs. Eva Dee Wright, Thursday night.

Visiting with Mr. and Mrs. Bert Harper last week was their daughter, Mrs. B.J. Stephens and Mike of Friona and their granddaughters, Mrs. Basil Jones of Clovis and Mrs. Kenneth Harrington of Albuquerque.

Mrs. Cecil Overstreet spent last week with her son and family, Mr. and Mrs. Norman Overstreet and daughter in Fort Worth.

Mrs. D.D. Dickenson had surgery in the Littlefield Hospital Friday morning.

Mrs. John Howard and an uncle of Bill Weaver and Lon Howard.

Mrs. Ander McGrew who has been in Dallas the past several months with her husband, who is a patient in the Veteran's Hospital there, spent several days here last week. She returned to Dallas Friday. Ander's condition remains serious she reports.

Mr. and Mrs. Herbert Sudduth attended funeral services for her nephew, Edward Neighbors, in the First Baptist Church at Springtown Tuesday afternoon. He was killed in a car accident near Weathford Sunday afternoon.

Mrs. Leon Wooten is a patient in the Littlefield Hospital.

Mr. and Mrs. Alvin Mitchell Jr. and daughter Kathy of Abilene and Mr. and Mrs. Jacque Baker and sons, Muleshoe, visited their parents, Mr. and Mrs. A.A. Mitchell last weekend.

Mr. and Mrs. Monroe Parker and Tim spent the weekend in Fort Worth with their daughter, Mr. and Mrs. Sherrel Zoch and family.

Mr. and Mrs. Leon Wooten and Gary spent the weekend in Fort Worth with their son, Mr. and Mrs. Delmer Wooten and family. Their grandson Clay returned home with them for a week's visit.

Mrs. J.D. Rackler is at the bedside of her father in Brownfield who is seriously ill.

Mr. and Mrs. Buck Gossett returned home Saturday from a two weeks' vacation with friends in Washington, D.C. and relatives in North Carolina. They accompanied his mother, Mrs. Virgil Gossett of Floyd, N.M., and his grandmother, Mrs. Nora Henderson of Portales, N.M.

Their two children remained in Floyd, N.M. with their grandparents, Mr. and Mrs. Delo Stephenson.

Rev. and Mrs. Ralph Hagemier and children spent several days in Odessa this week.

Davis Webb, who is attending college in Weatherford, Okla., and Kirk Williams, who is attending Oklahoma Christian College in Oklahoma City, have been visiting their parents, Mr. and Mrs. J.D. Webb and Mr.

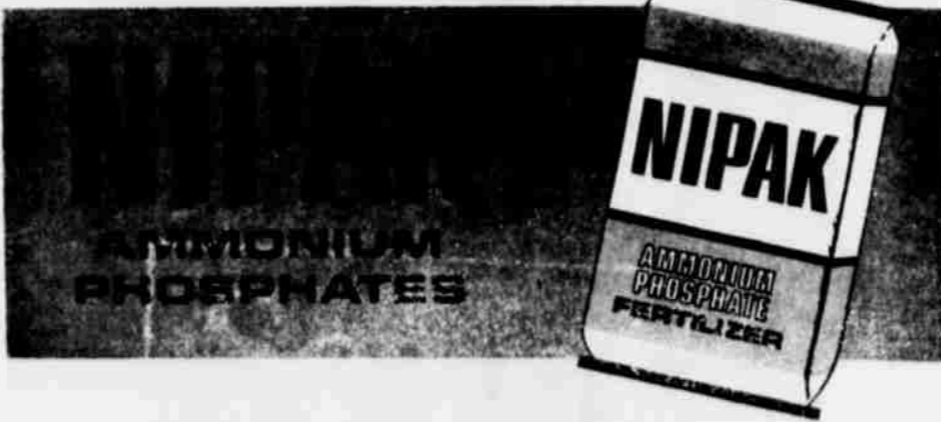
Lamb County Leader

Published every Thursday morning by the Littlefield Publishing Co., 506 Phelps Avenue, Littlefield, Texas, 79339, Entered as Second Class matter at the U.S. Post Office, Littlefield, Texas, 79339, Under the Acts of March 3, 1879.

Dave Kucifer General Manager
Tom Donnelly Managing Editor
J.B. (Mac) McShan Advertising Mgr.

Subscription rates: by mail in Lamb and adjoining counties, \$5.10 per year. Elsewhere in Texas, \$7.10 per year. In City carrier delivery 70¢ per month.

Member 1966
TEXAS PRESS ASSOCIATION



Water Soluble for More Profit

Use NIPAK Ammonium Phosphates

- Get crops off to fast, strong start
- Plant foods completely available
- Stimulate strong, deep root growth
- Feed young plants extra phosphorus for full yield
- High analysis, save time and labor
- Pelleted for even distribution

Use NIPAK Ammonium Phosphates at planting. Get more for your fertilizer dollar, early maturity, high quality and bigger yields.

SEE YOUR NIPAK DEALER FOR YOUR STARTER NEEDS.



with her doctor who turned home. Mr. and Mrs. Roy Moore of Lubbock has been staying in the Ham home to help care for her.

Mr. and Mrs. James McGowan and Mr. and Mrs. Lawrence Downs are in Houston this week. Mrs. Downs will have a checkup

PUBLIC AUCTION SALE OF LAMB COUNTY REAL ESTATE ON WEDNESDAY FEB 16, 1966 AT 1 P M FARM LOCATED FROM OLTON 7 MILES NORTH, 1 1/2 MILES WEST ON FARM MARK ROAD. 1 MILE NORTH 1 MILE WEST

THIS FARM SELLS WITHOUT LIMIT OR RESERVE

Farm consists of 480 acres, 300 acres in cultivation, balance in native grass, Crockett allotment 79 acres, normal yield 808 pounds per acre; grain sorghum 156 acres, normal yield 81 bushels per acre.

Farm has two 8" irrigation wells, 1 powered by Butane motor, well drilled 200' red bed, pump set 190 ft. - 1 powered by natural gas, well drilled 200', pump set 190 feet underground tile. All motors and pumps go with farm, 1/2 undivided acreage rights.

Legal description: NW 1/4 & N 1/2 of SW 1/4 & SE 1/4 & S 1/2 of NE 1/4 Tract Survey 22, Abstract 169.

Improvements: small house, windmill and corrals.

Terms: 10% down on day of sale, 21 days will be given purchaser to have abstract examined. Merchantable title furnished. Additional 19% at close of escrow. Owner to carry 7 1/2% of purchase price for 10 years at 5 1/2% interest on yearly payments. Possession of land at close of escrow.

Auctioneers Note: This is the first time this farm has been offered for sale at public auction. This is one of the few farms in Lamb County that has a cotton production record of over 800 pounds per acre and the terms are real good.

- ### FARM MACHINERY
- 1-Massey Ferguson 65 Diesel 2300 hrs, 1961
 - 1-Massey Ferguson 65 Diesel 1600 hrs, 1963 Multi-power
 - 1-John Deere Model A Tractor
 - 1-Four Row Lister Ford
 - 1-Nine Row Sandfighter
 - 1-4 Row Rotary Hoe 3 Pt. Birch
 - 1-4 Row Cultivator 3 Pt. Dempster
 - 1-5 Row Tool Bar With Gauge Wheels
 - 1-2-16" Massey-Ferguson Moldboard
 - 1-2-14" Ford Moldboard
 - 1-3 Ft. Nine Ft. Disc Harrow
 - 1-Eversman Float
 - 1-2 Row Stalk Shredder
 - 1-4 Row Dempster Bed Planter
 - 1-4 Row Disc-Opener Planter
 - 1-3 Row 3 Ft. Bed Knife
 - 1-4 Row Ford Knife Sled
 - 1-Eversman V-Type 3 pt. Ditcher
 - 1-3 pt. Blade Ditcher
 - 1-8' Hoeme
 - 1-8' International Tandem Disc
 - 1-6 Ft. 3 pt. Hoeme Plow
 - 1-PTO Rod Weeder
 - 1-6 Row Boom Sprayer
 - 1-3 Section Harrow
 - 1-Wheel Jack for Ford
 - 1-Land Measure Wheel
 - 1-Butane Bottle
 - 1-3 Bale Cotton Trailer
 - 1-4 Wheel Flat Trailer
 - 1-Lot of Irrigation Tubes 2", 1 1/2", 1 1/4"
 - 1-3 pt. Ford Crane Lift
 - 2-12" X 7" Hydrants
 - 2 Ellis
 - 1 Tee
 - 16-Joints Pipe 7" 38" Row Setting
 - 1-Ton Acid Delinted 54-B Cottonseed Terms On Farm Machinery; Cash.
- Any announcement made on day of sale supercedes all other announcements.
- Owner: Mr & Mrs Frank Adams - Ph 285-298
Olton, Texas

QUINTON JENKINS & ASSOCIATED THE AUCTIONEERS

LICENSED & BONDED PHONE FA-3-3623
CLINTON, OKLAHOMA

Read this chart, and it's easy to see why Chrysler is setting all-time sales records again:

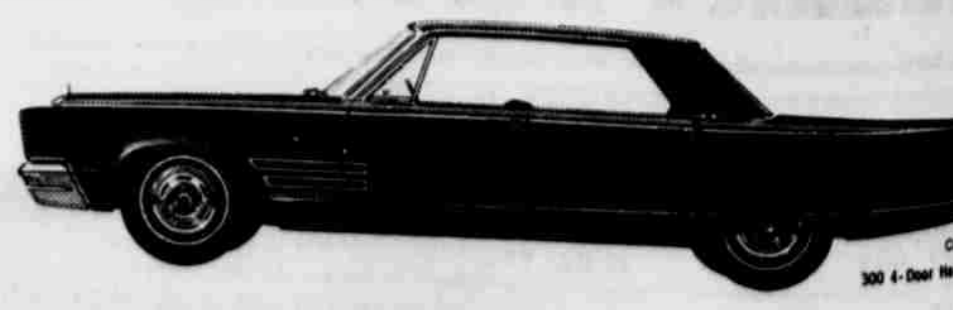
Make	Wheelbase	Overall Length	V-8 Engine Cubic Inch Displacement	Base Monthly Payments	Difference Per Month
CHRYSLER NEWPORT	124"	219.0"	383	\$65.80	—
FORD GALAXIE 500	119"	210.0"	289	\$58.32	\$7.48
CHEVROLET IMPALA	119"	213.2"	283	\$58.45	\$7.35

BASIS OF COMPARISON—All models are two-door hardtops equipped with V-8 engine, automatic transmission, power steering, power brakes, radio and heater. Monthly payments have been computed on manufacturer's suggested retail price, 1/4 down and 36 monthly payments. Not included are the extras you pay for on practically any new car: whitewall tires, deluxe wheel covers, destination charges, state and local taxes, interest, insurance, and licensing fees.

CHRYSLER'S 5-YEAR/50,000-MILE ENGINE AND DRIVE TRAIN WARRANTY WITH THIS COVERAGE: Chrysler Corporation, whichever comes first, against defects in materials and workmanship and will repair or replace at a Chrysler Motor Corp. Authorized Dealer's place of business, without charge for required parts and labor, the engine, block, head and internal parts, intake manifold, water pump, transmission case and internal parts (excluding manual clutch torque converter, drive shaft, universal joint, rear axle and differential), and the wheel bearings of its 1965 automobiles, provided the owner has the engine oil changed every 3,000 miles or 4,000 miles, whichever comes first, the oil filter replaced every second oil change and the carburetor air filter cleaned every 6 months and replaced every 2 years, and the dealer furnishes to such a dealer written performance of the required service and requests the dealer to certify (1) receipt of evidence and (2) the car's then correct mileage.

One thing the chart can't show: the kick people get out of moving up to a car of Chrysler's size and class for just a few dollars a month more than the car they were thinking of! Come in and see how easy we'll make your move up.

AUTHORIZED DEALER **CHRYSLER MOTORS CORPORATION**



Move up to Chrysler—the big car you can afford

GARLAND MOTOR CO. - Chrysler-Plymouth
710 EAST 3RD
LITTLEFIELD, TEXAS

Services Sunday

services for Mrs. Nelson, 81, were conducted 2:30 p.m. Sunday in Assembly of God...
 w. Ralph Hagemeyer, officiated, assisted by Murrell Johns, pastor of Baptist Church, Bryant, minister of St. Church of Christ, in Anton Cemetery section of Rix Funeral home...
 Nelson died around 9:30 a.m. in the Methodist Hospital, Lubbock. An Anton for 36 years, Mrs. moved to Anton from with her husband, the Nelson...
 sons include two sons, and L.J., Big two daughters, Mrs. Parker, Anton; and Bigler, Floyd, N.M.; children, 16 grandchildren; and three grandchildren...
 were Pat Nelson, Dixon, Howard Parker, Melin, Travis Mitchell, and Scoggin.

Hospital News Administrator

First -- Floyd Rowell is administrator of the...
 been a resident of the Community since 1932...
 until Cone sold the bus- the A.A.A. Grain Com-

Announcements Re-Election

time back I authorized...
 making this my official...
 I have enjoyed every...
 I feel that my age...
 I will try to advise them

office of District Clerk...
 Among other things, the...
 I have in the past...
 I am to see each and every...
 I will try to advise them

Won't you be our Valentine?



WE "EXTRA CARE" FOR YOU!

Roses are red, violets are blue,
 Come shop at Furr's, where there's more for you.
 Prices are Low, service Sublime,
 We care for you "EXTRA", all of the time.

TISSUE
 WALDORF ASSORTED COLORS
 4-ROLL PKG **29¢**

CHILI
 ELLIS 24 OZ CAN **49¢**

ALL SWEET MARGARINE 1-LB CTN **29¢**
 INSTANT CHASE & SANBORNE COFFEE 10¢ OFF LABEL 7 OZ JAR **89¢**

EASY EXTRA CARE FROZEN FOODS

Combination Plate
 ROSARITA FRESH FROZEN 12 OZ **3 FOR \$1**

Orange Juice DARTMOUTH 12 OZ CAN **25¢**

BABY LIMAS TOP FROST, FRESH FROZEN, 10 OZ PKG **19¢**

DONUTS MORTON, FRESH FROZEN 7¢ OFF LABEL PKG **29¢**

EXTRA CARE GENERAL MERCHANDISE

NYLON HOSE SEAMLESS PAIR **89¢**
 AFTER SHAVE OLD SPICE **1.50**
 LIME

REVLON INTIMATE SPRAY 2 OZ **\$2.00**
 CADDY FOR HAIR SPRAY EACH **99¢**
 OGILIVE HAIR SPRAY 20 OZ **\$2.25**

FRESH FRUITS & VEGETABLES

ORANGES TEXAS SWEET & JUICY 5-LB BAG FOR **23¢**

WASHINGTON RED DELICIOUS APPLES LB **15¢**

HEARTS FRESH & CRISP CELERY CELLO BAG **29¢**

FRUIT PIES MORTON, FRESH FROZEN, APPLE, PEACH, CHERRY, OR COCONUT, 8 INCH EACH **3 FOR \$1**

TOMATO JUICE HUNTS 46 OZ CAN **25¢**

CAKE MIX SWANSDOWN ASSORTED LAYER PKG **3 FOR \$1**

BAKE RITE SHORTENING 3-LB CAN **59¢**

COFFEE FOOD CLUB ALL GRINDS 1 LB **69¢** 2-LB CAN **\$1.37**

COOKIES NABISCO, IDEAL PEANUT BARS CHOCOLATE GRAHAMS OR PECAN SHORTBREAD, PKG

BANANAS FANCY GOLDEN CENTRAL AMERICAN LB **10¢**

SUGAR HOLLY BEET IMPERIAL OR C&H 5LB BAG **49¢**

EGGS FARM PAC, USDA GRADE A LARGE **49¢**

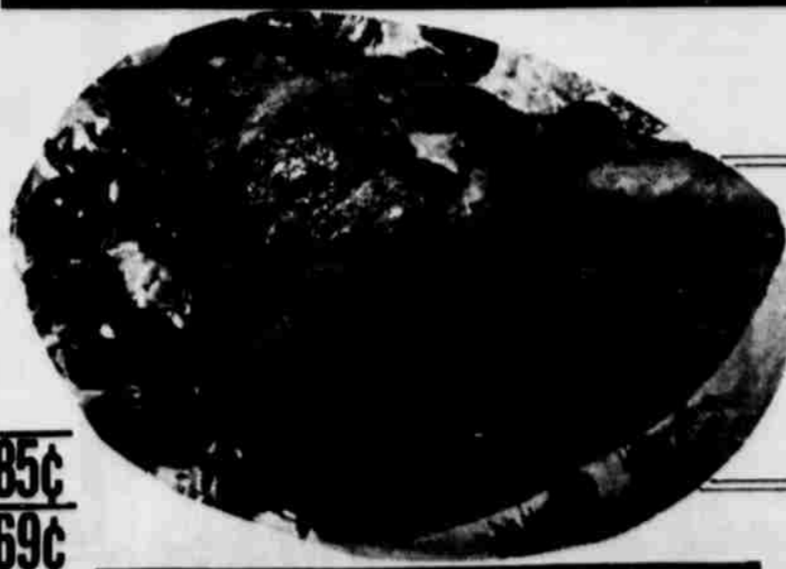
ACTION BLEACH GIANT SIZE **85¢**
 FAB DETERGENT 10¢ OFF LABEL GIANT SIZE **69¢**

Furr's SUPER MARKETS
 EXTRA CARE SERVICE

COLD POWER GIANT SIZE **83¢**

ALL CONDENSED 10¢ OFF LABEL **75¢**

FRYER PARTS
 BREAST LB **59¢**
 DRUMSTICKS LB **49¢**
 THIGHS LB **49¢**
 BACKS & NECKS LB **19¢**
 WINGS LB **23¢**



HAMS

FARM PAC BUTT CUT, LB **69¢** SHANK CUT, LB **65¢**

FRANKS FARM PAC LB. **59¢**

SAUSAGE FARM PAC WHOLE HOG 2-LB SACK **1.49**

ROAST USDA INSPECTED FARM PAC BLUE RIBBON OR CHOICE ROUND BONE ARM LB **59¢**

HENS MIGHTY GOOD 5-6 LB AVG LB **49¢**

HAM HOCKS HICKORY SMOKED LB **35¢**



LOST • RENT • SELL • BUY • HIRE • TRADE
"YOU'LL FIND IT IN THE WANT ADS!"
FOUND • SERVICE • EMPLOYMENT • PERSONAL



LEADER and NEWS
CLASSIFIEDS SELL!
TO USE THEM JUST CALL 5-4481 AND ASK FOR AD TAKER
— CLASSIFIED RATES —
First insertion, per word 5c
Second insertion, word 4c
All Additional Insertions, word 3c
Minimum Charge For First Ad run, \$1; minimum charge per subsequent insertion, 50c.
MONTHLY RATE, per word 30c
(All editions of Leader and News, two copy changes monthly)

DEADLINES FOR INSERTION:
LAMB COUNTY LEADER
10: a. m. Wednesday
COUNTY WIDE NEWS
10:00 a. m. Saturday

Help Wanted A-1
WANTED: aggressive sales person for Littlefield trade area, male or female. Hutchins Building Supply, Phone 385-5588 or come by 100 Sunset. TF-H

Wanted To Rent B-2
WANTED TO RENT - farm thirds or fourths or otherwise will lease. Do custom farm leasing, Farming now. Have plenty equipment to farm any acreage. P.O. Box 1132, Littlefield, Texas. TF-S

Personal Services A-8
Babysitting in my home. Experienced. Reasonable rates. Mrs. Mansell, 385-4740, 951 West 3rd. 3-3M

Card of Thanks A-10
Members of the family of Aylmer W. Parrott wish to express their sincere appreciation for the many kindnesses shown during the recent loss of their loved one. We take this opportunity to thank those who prepared food, gave of their time and for the beautiful floral offerings. Our special thanks to the Rev. J.B. Cagle, minister of the Missionary Baptist Church, and the Rev. Bill Penland, pastor of Parkview Baptist Church. The Parrott Family

Apts. for Rent B-1
FOR RENT - furnished apartment, panel ray heating system, back yard fenced. Desirable location. Phone 385-4460. TF-F

Houses to Rent B-3
2 bedroom house with fenced back yard and garage. Call Mrs. Hood, 385-5441. 2-6H

Houses For Sale C-1
FOR SALE IN CRESCENT PARK: 3 bedrooms, 1 1/2 baths, den and kitchen combination, (fireplace, double car garage and fenced back yard. Phone 385-4084. TF-E

Real Estate for Sale C-6
FOR SALE - short quarter, \$375 L. Peyton Reese. TF-R

Farms, Ranch-land C-7
Dry land farm for sale, 177 acres 7 miles S.W. of Sudan, 64.8 acres cotton allotment. 496 lbs. proven yield, 285.00 per acre, Phone 933-2541, Bula, Wayne Swart. 2-10S

Real Estate for Sale C-6
FOR SALE OR TRADE: 207 1/2 A. Good allotments. One 8', One 6' well. Fieldton area on pavement. O.B. Graham, Jr., 385-5095. TF-G

Farm Loans
Prompt Loan Service
Low Interest-Long Term-No Commissions To Pay-Stock To Buy
JIM MILLS REALTOR
385-5989
823 L.F.D. DRIVE

Real Estate for Sale C-6
FOR SALE OR TRADE: 207 1/2 A. Good allotments. One 8', One 6' well. Fieldton area on pavement. O.B. Graham, Jr., 385-5095. TF-G

Farms
290 acres on pavement, 104 acres of cotton, 152 acres maize. Less than \$450 per acre. 4 wells and nice house. Excellent terms. Small down payment, up to 20 years on balance.

Homes
Price reduced to \$21,000 on beautiful brick home with central heat, refrig. air, 3 baths. Large rooms include 3 bedrooms, den, living room and utility area. Also 26' x 28' attached garage. Terms as low as \$1,000 down for quick sale.

Farm Loans
L. PEYTON REESE
110 YELLOW HOUSE
BUILDING
PHONE 385-5363

Real Estate for Sale C-6
FOR SALE - 5 acres. Close in, \$3,500, L. Peyton Reese. TF-R

Farm Loans
Prompt Loan Service
Low Interest-Long Term-No Commissions To Pay-Stock To Buy
JIM MILLS REALTOR
385-5989
823 L.F.D. DRIVE

Farm Loans
Prompt Loan Service
Low Interest-Long Term-No Commissions To Pay-Stock To Buy
JIM MILLS REALTOR
385-5989
823 L.F.D. DRIVE

Real Estate for Sale C-6
FOR SALE OR TRADE: 207 1/2 A. Good allotments. One 8', One 6' well. Fieldton area on pavement. O.B. Graham, Jr., 385-5095. TF-G

Farm Loans
Prompt Loan Service
Low Interest-Long Term-No Commissions To Pay-Stock To Buy
JIM MILLS REALTOR
385-5989
823 L.F.D. DRIVE

Farms
290 acres on pavement, 104 acres of cotton, 152 acres maize. Less than \$450 per acre. 4 wells and nice house. Excellent terms. Small down payment, up to 20 years on balance.

Homes
Price reduced to \$21,000 on beautiful brick home with central heat, refrig. air, 3 baths. Large rooms include 3 bedrooms, den, living room and utility area. Also 26' x 28' attached garage. Terms as low as \$1,000 down for quick sale.

WARRANTED USED CARS
1964 Ford Galaxie 500, 4 dr. V8, power and air. Local one owner car. A beautiful turquoise interior. 1995

1963 Mercury Monterey Custom, power and air, lots of extras. Beautiful beige and extra clean throughout. Local one owner. 1795

1962 Ford Galaxie 4 dr. V8 automatic, white with blue interior. Priced to sell. Drive it and make us an offer. 695

1964 Econline Van, still under factory warranty, just right for a business vehicle or dual purpose as a camper. 695

1961 Falcon 4 dr. Blue and white. Clean. 695

TV service calls. Days, 385-3831. Nights, 385-3318. New and used TV sets. T.V. Corner, 601 W. Delano. Dial 385-3831.

Rent convalescent equipment at Brittan Pharmacy. Wheelchairs, crutches, hospital beds, other items. Complete lines of convalescent needs.

Custom-flat breaking to 12". \$3.50; chiseling, \$1.60; listing, \$1.10 per acre. Call Walter Brantley, 385-5696 evenings. TF-B

WEED KILLER: TREFLAN sprayed at one pint per acre - \$5.25. Sprayed and disked - \$6.25 per acre. Cox Spraying Services, Phone 933-2300, Bula. TF-S

Hutchins Building Supply is remodeling headquarters for this area from 1 room to a complete house. No money down - up to 7 years to pay. Phone 385-5588, 100 Sunset Avenue. TF-H

MATTRESS REBUILDING: complete renovating - convert your old bedsprings into modern boxsprings. Call Mrs. Claud Steffy, 385-3386, day or night, or Sewing Center, 385-3140. Agents for A & B Mattress Co., Lubbock. TF-A

COMPLETE EXTERMINATION SERVICE, household pests as roaches, mice, rats, termites, etc. Tree and lawn spraying, bird repellent, moth proofing. One year written service warranty. Low rate, \$2.00 a room crawling insects. Day or night call collect: Levelland 894-3824, Davidson Pest Control, 15 years experience. TF-D

INCOME TAX SERVICE
J.D. THOMAS
RES: 103 EAST 19TH
Office At
Jones Motor Co.

INCOME TAX SERVICE
Reasonable Rates
J. CALVIN YOUNG
Phone 385-8980
MOTEL L-F
Littlefield, Texas

BITNER TIRE SUPPLY
PHONE 257-5361
EARTH

G & C AUTO SUPPLY
CHANDLER'S MOTOR MACHINE & SUPPLY STORES in
Littlefield, Anton, Sudan, Earth

Our specialties are all types alterations, covered buttons, buckles, belts-including contour, button holes, decorative stitching and men's unclaimed tailor made suits. Mr. and Mrs. G.F. Scifres Drive-In Cleaners, Levelland Highway. TF-S

REMEMBER the Federal Land Bank when you need a loan on your farm. Low interest rate, annual payments, repay at any time without penalty. Come in and see W.H. McCown, 504 Phelps Avenue, Littlefield. TF-F

FOR SALE: poultry farm, 4,000 laying hens. Good market for all eggs. Call or write Lendel McCarty, 227-4001. Box 582, Sudan, Texas. 2-10M

WEST TEXAS DUCOC BREEDERS WINTER SALE: 15 bred, 40 open gilts, 18 boars. Fairgrounds, Lubbock, Texas, February 12, 1966 - 12:30 P.M. 2-10C

Alfalfa hay for sale, \$1.00 a bale or sold by the ton. Phone 262-4559, Fieldton. TF-H

Completely restored standard size pool table for sale. Call 233-2861 or 233-2321. 2-13S

Wall heater special - while they last, Low, low price. Hutchins Building Supply, 100 Sunset. TF-H

BRACE yourself for a thrill the first time you use Blue Lustre to clean rugs. Rent electric shampooer \$1. Nelson Hardware & Supply. 2-13N

WANTED - used tractors, farm equipment, trailers, trucks, wenches, foreign cars and jeeps. Phone 385-4779, Littlefield. TF-S

Honor Roll
ANTON - The Honor Roll of the Anton Junior High has been announced follows:
"A" Honor Roll
Seniors - Jeanette Sadler, Sonny Campbell, Sophia Denny Markham, Brenda Johns, eighth John Cantu, Jesse Cantu, Ann Herrin, seventh Tommy Cleverger and Synatschke.

Reams Complete Scout Training
Gayle Reams son of the Reams' Littlefield, completed training for professional Boy Scout training. Schuff Scout Reservation, Mendham, New Jersey. He has been employed by Rio Grande Council as Scout Executive at McElroy. He served three years as Scoutmaster at Camp Tanque, a year as assistant Scoutmaster and three years as Scoutmaster at Camp Philmont, Cimarron New Mexico. He is an August graduate of Texas Tech and was Secretary of Phi Epsilon Kappa at the Deans Honor List.

POLITICAL CALENDAR
STATE SENATOR
30TH DISTRICT
JACK HIGHTOWER
COUNTY CLERK - LAMB COUNTY
CHARLES D. JONES
DISTRICT CLERK
ERNEST OWENS
COUNTY SCHOOL SUPERINTENDENT
C. ROY STEVENS

Autos, Trucks For Sale
1963 Chevrolet Corvair Monte Carlo, 1500 cc engine, \$795.00. See at Bell Station, Littlefield. TF-S

1964 Thunderbird, fully loaded, low mileage, excellent condition. See Ronnie Onstead, Onstead Furniture. TF-F

'65 Impala Chevrolet, take any payments, take trade or cash for equity, 415 Eastside, across from Renfro's. 2-17J

My personal car for sale. 1959 Pontiac Bonneville, excellent condition, fully loaded. Ronnie Onstead at Onstead Furniture. TF-F

FOR SALE: extra clean 1957 Ford F-1 500, two-door hard top. V-8 and automatic. Sales white with red interior. See at 315 West Delano. 2-17I

FOR SALE: 1954 Jubilee Ford tractor and equipment, 2500 lb. Shetland pony, and 4 room bath house for rent. 2 1/2 miles towards Amherst, W.L. Swartz, Rt. 1, Amherst, 246-3515, 2-18I

FIRST NEWS

Girls Auxiliary To Have Coronation Ceremony Sunday

Girls Auxiliary of the W.M.U. will have a coronation ceremony at the service hour Sunday. Raymond Quick is the director and Mrs. J.P. is in charge of the decorations. Mrs. Young is the Junior G.A. and Vicki Dingus is immediate counselor.

Michael Duffy was the pink and blue tea for a group of friends at George Wesley Tooley's Wednesday afternoon. Gifts were given. Assortments of assorted spiced tea and coffee, plate favors were to Mmes. Tooley, Hewitt, C.A. Thomas, V.C. S. Pete Templeton, and Guy Hufsted-

Mrs. Wendall Patterson is a guest of his Rev. and Mrs. James before his departure, stationed at Ky, where he will direct Candidate School 14. He is a graduate of Murray College, Abilene, and will be employed in

Art Exhibits At Olton

The Olton Art Guild held Larry Hilburn, director of the High Plains Galleries, to conduct a course in painting and drawing. The sessions are being held Thursday from 3 to 5 at the school cafeteria. Local artists have signed up for the course.

The course will include such as drawings in charcoal, perception, edge overline, circular and linear perspective, space allotment, and pen and ink. The course is basic for the beginner and enough for the more advanced artist.

Larry Hilburn holds a B.A. in art from the Southwest State University in Oklahoma, an M.A. in education from West Texas State University, and has also worked at the Beaux Arts and the Louvre in Paris, for one year under a Fulbright Scholarship.

Work has been exhibited at various museums and galleries including the Duveen Gallery, New York; the Huit and Gallerie St. in Paris, France; Witte Museum in San Antonio; Museum of Fine Arts, Carnegie Art Institute, and artists taking the course are: Mmes. Jean Green, Andrew, Peggy Penns, Nig James, Lucille, Peggy Carson, Dorothy DeMetris, Brigrance, Kemp and Neva Prest-

Liscano Ends Combat Course

Pvt. Carlos Liscano, Mr. and Mrs. A.P. Liscano, completed a combat engineer course at Fort Wood, Mo., Feb. 4. During the seven-week course Liscano was trained in the operation and repair of railroads and bridges. He also received training in demolitions and mine warfare.

The 20-year-old soldier, who graduated from Morton High School, was employed by the Kirk Dean Morton before entering the army in October 1965. He received basic training at Fort La.

Abilene until next summer. They were given a farewell party by friends in Tahoka Tuesday night.

Mr. and Mrs. Alvin Mixon were in Clovis and Melrose, N.M. Saturday and Sunday.

Raymond Duvall, vocational ag teacher, was in Littlefield Thursday night to assist with plans for the Lamb County Stock Show to be held Feb. 17-19.

Mrs. Theala Sherrill is in Denton with her sister who is ill.

Mrs. Bert Bench of Seymour formerly of Amherst is improving from an illness suffered last week. She is on the nursing staff of a Seymour hospital.

Mr. and Mrs. Henry Brown are in Fort Sill, Okla. for the weekend with their son Pvt. Guy Brown. He is to be sent to Hawaii next Thursday for eight weeks training.

Mr. and Mrs. Ernest Coleman are visiting relatives in Haskell.

Mr. and Mrs. Leonard Tittle and Mr. and Mrs. Jerry Ward of Littlefield attended the lectureship held at Lubbock Christian College and the Broadway Church of Christ Monday.

Mrs. James Patterson is a patient in Methodist Hospital, Lubbock.

Mrs. Matt Nix Sr. was able to return home this week from the local hospital where she had a lengthy stay following a broken hip suffered in a fall. Mrs. Gladys Glenn of Sudan is making her home with Mrs. Nix.

Mr. and Mrs. Frank Ray visited their son Ed and family in Canyon recently.

Mrs. Raymond Quick and Mrs. Bob Clayton were Austin visitors Monday and Tuesday of this week.

Mr. and Mrs. James Holland and Mr. and Mrs. Authur Hedges were in Lubbock Sunday night and attended a musical concert at the First Baptist Church. The Ed Stalneckers of Memphis, Tenn., who presented the religious concert, have appeared throughout this country and in England.

Mrs. Charles D. Jones was honored with a surprise birthday dinner Sunday when Mrs. Etta Jones and Mrs. Eryle Abbott entertained in Mrs. Jones' home.

Those attending were the honoree and family, Mr. and Mrs. Jones and three children, Mr. and Mrs. Dave Black, Mr. and Mrs. Abbott, Delores, and Sherwood, Sammy Maxfield and Mrs. Pearl Abbott.

Postmaster Allan White is recovering from major surgery performed Monday morning at the Methodist Hospital in Lubbock.

Mrs. Della Dutton of Knox City is visiting Mrs. H.D. Dutton and Mrs. J.R. Simmons this week.

Kim Haydon of Sunnyside is here with her great-grandparents. Mr. and Mrs. Claude Stine, while her parents are attending the Fat Stock Show in Fort Worth. The other two girls are with their grandparents, Mr. and Mrs. Truman Stine in Earth.

Mrs. Flossie Dutton of Muleshoe and Floyd Walker of Sudan were married in Clovis Saturday. Mrs. Walker is a sister of Claude Stine.

Mrs. Fred Wilson and her sister, Mrs. Fay Goree of Plainview were in Paducah for the weekend with their sisters, Mrs. Audie Jordan and Mrs. Neeley Wilson.

Guests in the Hubert Sawyer home last Wednesday were his sister, Mrs. Paul Sanford and her daughter, Mrs. G.O. Brown of Hereford.

Mr. and Mrs. Clois Tomes and Kelly were guests of the Billy Ray Leese family in Lubbock Sunday.

Visiting Mrs. Effie Tapley Sunday were her niece, Mrs. Georgia Stephens, Rhonda and

Niel of Lubbock and Mr. and Mrs. Will Garton of Clovis. Sue Hinds of Amarillo was here for the weekend with her

parents. Mr. and Mrs. V.A. Hinds and other relatives.

Mrs. S.D. Williams is now living with Mrs. Joe T. Harmon. Mrs. Howard Cummings, Mrs. Ray Blessing and Mrs. Willis Hedges attended a branch and meeting of the Epsilon Chapter of Delta Kappa Gamma, teachers sorority was held in the party room of the Muleshoe State Bank, Saturday.

Guests of Mrs. Oby Blanchard Saturday night and Sunday were her daughter, Mrs. Davis

May of Lubbock and her granddaughter, Mrs. Jim Tomlinson and three children of Hawley near Abilene.

Jim Nix and Vernon Stagner fished at a fresh water lake about 100 miles from Guymas, Mexico last week. They returned home Friday after making fine catches. Mrs. Nix, who accompanied them as far as Wilcox, Ariz. for a visit with their daughter, returned with them.

Aubrey Jones was in

Comanche for the weekend with his father, J.A. Jones.

Mr. and Mrs. Elmer Watson visited Mr. and Mrs. Lee Payne and Mr. and Mrs. Pete Vaughn Sunday.

Mrs. Harry Bennett of Hereford was an overnight guest Saturday of Mrs. Lee Payne.

and family and plan to stop there on their return home.

Sunday guests in the A.B. Carter home were Mr. and Mrs. J.H. Roberson, Gay and Frances of McAllister, N.M. Mrs. Roberson and Mrs. Carter are sister.

Rev. and Mrs. Elton Wyatt of Petersburg were here Saturday for the funeral of Mr. W.E. Smith. Rev. Wyatt assisted the pastor, Rev. James Patterson with the service. Rev. Wyatt is a former pastor

of the church.

Mrs. S.D. Hay of Sudan was the guest of Mr. and Mrs. Lester LaGrange for Sunday dinner.

Spending Sunday in Paducah with his brother, G.W. Maxfield and family were Mr. and Mrs. Leroy Maxfield.

Mr. and Mrs. Leroy Bodkin and children of Hereford visited her brother, Joe Miller and family Sunday.

R.L. May of Kress visited friends in Amherst Friday.

YOU'LL LOVE OUR LOW FOOD PRICES TOP QUALITY FOODS!

Brach's Chocolate Covered CHERRIES
12 Oz Box **49¢**

Del Monte PEACHES 2 1/2 Can **29¢**

Gladiola FLOUR 5 Lbs **49¢**

Soothing Beauty BATH OIL Qt **59¢**

Ellis TAMALES Jumbo Size **33¢**

BORDEN ICE CREAM
1/2 GAL **69¢**

MAR'S CANDY
10-5¢ BARS PKG **33¢**

DURKEES COCONUT
14 OZ **59¢**

Tom Scott Mixed NUTS 13 Oz **59¢**

Holly SUGAR 5 Lbs **49¢**

CREAMY RICH IN FLAVOR
Good For Health

NORTHERN TISSUE	3 ROLL	29¢
BAKERITE SHORTENING	3 LB.	79¢
SHURFRESH VEGETABLE OIL	24 OZ	49¢
SUPREME LEMON CREME	1 1/4 LB	39¢
SHURFINE CRUSHED PINEAPPLE	NO 2 CAN	33¢
SHURFINE PAS & STEM MUSHROOMS	4 OZ	39¢
BAMA RED PLUM JAM	28 OZ	55¢
WOLF TAMALES	NO 303 CAN	33¢

Pinkney HAMS 12 To 16 Lb **59¢**

Calf LIVER Lb **39¢**

Sunshine-Grown PRODUCE

RUBY RED GRAPEFRUIT	EACH 3 FOR	25¢
FUERTE AVOCADOS	EACH 3 FOR	25¢
WINESAP APPLES	LB	12 1/2¢
YELLOW ONIONS	LB	5¢
CENTRAL AMERICAN BANANAS	LB	12 1/2¢
EAST TEXAS SWEET POTATOES	LB	10¢

CHUCK STEAK	Lb	69¢
SHORT RIBS	Lb	39¢
SWIFT PREMIUM HENS	Lb	49¢
HAMBURGER	FRESH GROUND	3 LBS \$1

3RD & XIT DRIVE
PIONEER SUPER MARKET

Family Folk



The happy people have just discovered that the stork is about to visit them. The scene is from Warner Bros.' "Never Late," the story of a middle-aged couple on the verge of getting a baby at an age when most couples are already grandparents. The effect on them, as well as on their daughter and in-law, provides both laughs and sentimental moments. "Never Too Late," opening Sunday at the Palace Theatre, stars Helen O'Sullivan, Paul Ford, Connie Stevens and Jim Hutton. Filmed in Technicolor and Panavision, the comedy was directed by Bud Yorkin, produced by Norman Lear and written by Arthur Long.

Legal Notices

CITATION BY PUBLICATION
THE STATE OF TEXAS

TO: MRS. E.C. WOOD, the husband and former husbands of MRS. E.C. WOOD, E.C. WOOD, the UNKNOWN STOCKHOLDERS OF LITTLEFIELD COLLEGE, a defunct corporation, and UNKNOWN CLAIMANTS, Defendants, if living, whose residence are unknown to Plaintiff, and if dead, the legal representatives of each of said named Defendants, and the unknown heirs of each of said named Defendants; the legal representatives of the unknown heirs of each of said named Defendants, if the unknown heirs of each of said named Defendants are dead, and the unknown heirs of the unknown heirs of each of said named Defendants, if the unknown heirs of each of said named Defendants are dead whose places of residence are unknown to Plaintiff, all of said parties being Defendants in this cause, and hereinafter called Defendants: GREETINGS:

You and each of you, are hereby commanded to appear before the Honorable District Court, for the 154th Judicial District of Lamb County, Texas, to be held at the Court House of the said County, in the City of Littlefield, Texas, at or before 10:00 o'clock A.M. of the first Monday after the expiration of forty two (42) days from the date of issuance hereof; that is to say, at or before, 10:00 o'clock A.M. of Monday the 21st day of March A.D. 1966, and answer the petition of Plaintiff in Cause Number 5923, in which C.H. (DICK) EDWARDS is Plaintiff, and each of the above stated Defendants are Defendants, filed in said Court on the 1st day of February, A.D. 1966, and the nature of which said suit is as follows:

Being an action and prayer for judgment in favor of Plaintiff and against Defendants for title to and possession of the following described lands and premises lying and being situated in Lamb County, Texas, to-wit:

Acres Tracts Nos. Sixty-Six (66) and Ninety-Five (95), College Heights Addition to the City of Littlefield, Lamb County, Texas, according to the map or plat of said Addition recorded in the Deed Records of Lamb County, Texas.

Plaintiff alleges that on January 1, 1966, he was, and still is, the owner in fee of the above described lands and premises, and was in peaceful possession of said land on said day, and that afterward, on the 2nd day of January A.D. 1966, the Defendants unlawfully entered upon and dispossessed Plaintiff of such lands and premises, and withhold from Plaintiff the possession thereof; Plaintiff further alleges that Plaintiff has title to said lands and premises under and by virtue of the five (5) and/or ten (10) year Statutes of Limitations as is more fully shown in Plaintiff's original petition on file in this suit; and Plaintiff further prays for relief, general and special;

All of which more fully appears from Plaintiff's original petition on file in this office, and to which reference is here made for all intents and purposes;

If this citation is not served within 90 days after date of its issuance, it shall be returned unserved.

WITNESS, the undersigned, Clerk of the 154th District Court of Lamb County, Texas.

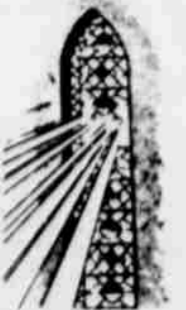
Issued and given under my hand and the seal of said Court, at office in the City of Littlefield, Texas, this 1st day of February, A.D. 1966.

/s/ Ernest L. Owens
ERNEST L. OWENS
Clerk of the 154th District Court,
Lamb County, Texas

(SEAL)
CONTRACTORS' NOTICE OF TEXAS HIGHWAY CONSTRUCTION

Sealed proposals for constructing 16.812 miles of Gr., Strs., Lime Treat, Base, Flex, Base & One Crse, Surf. Treat, From

FIND SOLACE FOR YOUR SORROW THROUGH... QUIETUDE



FEEL FREE TO CALL ON US AT ANY HOUR
Hammons Funeral Home

2.91 Mi. NW of Littlefield To 1.885 Mi. SE of Bailey Co. Line on Highway No. US 84, covered by F 503(20) in Lamb County, will be received at the Highway Department, Austin, until 9:00 A.M., February 24, 1966, and then publicly opened and read.

The State Highway Department, in accordance with the provisions of Title VI of the Civil Rights Act of 1964 (78 Stat. 252) and the Regulations of the Department of Commerce (15 C.F.R., Part 8), issued pursuant to such Act, hereby notifies all bidders that it will affirmatively insure that the contract entered into pursuant to this advertisement will be awarded to the lowest responsible bidder without discrimination on the ground of race, color, or national origin. Plans and specifications including minimum wage rates as provided by Law are available at the office of Rhea E. Bradley, Resident Engineer, Littlefield, Texas, and Texas Highway Department, Austin. Usual rights reserved.

CITATION BY PUBLICATION
THE STATE OF TEXAS
To: LEON A. GREEN, whose place of residence is unknown, Defendant.

GREETINGS:
You are hereby commanded to appear before the Honorable District Court, for the 154th Judicial District of Lamb County, Texas, to be held at the Court House of the said County, in the City of Littlefield, Texas, at or before 10:00 o'clock A.M. of the first Monday after the expiration of forty two (42) days from the date of issuance hereof; that is to say, at or before, 10:00 o'clock A.M. of Monday the 28th day of March, A.D. 1966, and answer the petition of Plaintiff in Cause Number 5928, in which LEONARD GREEN, ELIZABETH STREET, W.D. STREET, and CHESTER A. GREEN are Plaintiffs and LEON A. GREEN, is Defendant, filed in said Court on the 8th day of February, A.D. 1966, and the nature of which suit is as follows:

Being an action and prayer for judgment in favor of Plaintiffs and against Defendant for a partition of the following described lands and premises lying and being situated in Lamb County, Texas, to-wit:

FIVE (5) ACRES IN A SQUARE out of the NW corner of the following described thirty (30) acre tract:

BEGINNING in the N line of Labor 1, League 664, State Capitol Lands, Abner Taylor Original Grantee, at a point located 50 feet S 89 deg. 27' 30" E from the NW corner of said Labor;
THENCE S O deg. 39' W along the E line of Highway No. 51, 71 feet to a point for corner;
THENCE S O deg. 41' W

Young Farmers Have Program On Fertilizers

WHITHARRAL -- Don Avery introduced the program on fertilizers at the Whitharral Young Farmers meeting Monday evening. Marion Polk is president of the organization.

Lee Bowdin and Bud McMillan of Lubbock discussed herbicides. A question and answer period followed the showing of film strips and slides.

Dutch Wilkinson and Cliff Brown of Tide Chemical Co. of Littlefield, then presented a general fertilizer program and told how fertilizers affect West Texas farmers.

Attending the meeting and discussion were Avery, Polk, Lowell Westmoreland, Jimmy Hissaw, Coy Grant, George Wade, Jr., Don Reding, Rafe Rodgers, F.J. Bryson, Dale Hewitt, Danny Grant, Loyd Hood, Coy Mills, Lowell Herring, Ernest Krist-enik, Bobby Brown, Ronny Grant, Doyle Hewitt, Norman Theford and Bill Theford.

along the said E line 700 feet;
THENCE E 20 deg.
THENCE S O deg. 41' W 372.1 feet
THENCE S 89 deg. 27' 30" E 1133.6 feet
THENCE N O deg. 37' 40' E 11.43.1 feet to N line said Labor;
THENCE N 89 deg. 27' 30" W 1152.5 feet TO THE PLACE OF BEGINNING.

Plaintiffs allege that Plaintiffs and Defendant are the joint owners of undivided interests in said land and desire a partition thereof, as is more fully shown in Plaintiffs' original petition on file in this suit; and Plaintiffs further pray for relief, general and special;

All of which more fully appears from Plaintiffs' original petition on file in this office, and to which reference is here made for all intents and purposes;

If this citation is not served within 90 days after date of its issuance, it shall be returned unserved.

WITNESS, the undersigned, Clerk of the 154th District Court of Lamb County, Texas.

Issued and given under my hand and the seal of said Court, at office in the City of Littlefield, Texas, this 8th day of February, A.D. 1966.

/s/ Ernest L. Owens
ERNEST L. OWENS
Clerk of the 154th District Court,
Lamb County, Texas
By: Carol Feagley, Deputy

(SEAL)
One inch thick dry Texas yellow pine lumber gives the same insulation as six inches of brick or 15 inches of concrete.

SPADE NEWS by MRS. DONALD CALDWELL

WMS Reports Given Monday

The Women's Missionary Society of the local Baptist Church met Monday at 2:30 p.m. at the church for a general business meeting. Mrs. J.R. Hodges, president, brought the meeting to order and several announcements were made. The following chairman gave monthly reports: Mrs. J.R. Inklebarger, Bible study; Mrs. Doc Vann, program; Mrs. Jim Matthews, stewardship; and Mrs. Arthur Turner, prayer.

Mrs. Ted Hutchins, mission study chairman, presented plans for the teaching of the current home mission book. The group decided to have the study on February 7 at 10 a.m. in the Inklebarger home.

Mrs. Turner presented plans of visitation for enlisting new members and members not attending at the present time. She then read the calendar of prayer and led the dismissal prayer for the missionaries listed on the calendar.

Ladies present were Mrs. Hodges, Mrs. Vann, Mrs. Inklebarger, Mrs. Hutchins, Mrs. Matthews, Mrs. Arwin Turner, and Mrs. Arthur Turner.

Johnny Leonard has enrolled in South Plains College at Levelland this semester. Johnny is the son of Mr. and Mrs. Leon Leonard.

Bob Smith, son of Mr. and Mrs. Ray Smith, is attending college at Sayre, Okla.

Lt. Richard Ramage, son of Mr. and Mrs. Robert Ramage, graduated this past week from Missile Combat Crew Launch Officer training at Vandenberg Air Force Base, Calif. He and his wife, Catherine, daughter of Mr. and Mrs. John Forbes, also of this community, were in California about six weeks. They are now back in Minot, North Dakota, where he previously was stationed several months.

Mrs. H.P. Pointer has been visiting relatives in Monahans and Hamilton. In Monahans, she visited in the home of her daughter and husband, Mr. and Mrs. A.R. Dawson.

Mr. and Mrs. Bud Vann went to Arlington last Monday where they visited in the home of their daughter and family, Mr. and Mrs. Paul Pace and son and also their son Mack Vann. They attended the Fort Worth Fat Stock Show while there.

Mrs. G.H. Poteat and her sister, Mrs. Alvon Goen of Anton, went to Levelland last Monday where they attended funeral services for their cousin, Mrs. Della McFall Elliot. The services were held in the First Baptist Church there. Mrs. Elliot died last Saturday night in Snyder.

Mr. and Mrs. Arthur Turner spent last weekend in San Angelo visiting in the home of their daughter and family, Mr.

and Mrs. Lynn Sharpe and children.

Mr. and Mrs. Donnie Walker and children have moved into the house on the Mary Mouser farm southwest of Spade.

Mr. and Mrs. Harold Smotherman of Littlefield visited Sunday in the home of Mrs. La Jean Adams and family.

Mr. and Mrs. Arwin Turner have recently moved to a farm about six miles northwest of Spade.

Mr. and Mrs. Donnie Walker and children visited last Sunday afternoon in the home of Mrs. Ava Warner of Littlefield.

The local W.M.U. of the Baptist Church will have a special meeting Monday, Feb. 7 from 10 a.m. to 2 p.m. in the home of Mrs. J.R. Inklebarger. The group will have a mission study book review on work in Panama.

Mr. and Mrs. Don Tindal, Starla and Walt, Mr. and Mrs. Kenneth Haire, Tonya and Brad, Mr. and Mrs. W.A. Tindal and Mr. and Mrs. H.A. Vick spent last week fishing and vacationing at Falcon Lake.

Services were held for A.W. Parrot of Littlefield last Tuesday who was killed in an accident last Sunday near Hereford. Parrot was an uncle of Mrs. Charles Heffington of this community.

Mrs. Duane Gray, Mrs. Floyd Prentice, Mrs. Howard Baker, and Mrs. James Ball attended the P.T.A. Bi-County Council Tuesday afternoon in the Home Economics Cottage of the Amherst School.

Mr. and Mrs. Henry Cowan and children moved over the weekend to the Ross Lumsden farm about four miles southwest of Spade. They were living on the Albert Lockwood farm northeast of Spade. Mr. and Mrs. Larry Lockwood plan to move to the farm in the near future.

Mr. and Mrs. Doc Vann attended funeral services Monday in Lubbock for W.O. Gray, who died Friday. He was the father of Walter Gray of near Littlefield, who is a brother-in-law of the Vanns.

Mr. and Mrs. Preston Pointer and Mr. and Mrs. Charles McKeown and girls went to Rule over the weekend. They visited Mrs. Pointer's parents.

Rev. and Mrs. C. Kay Tate and girls went to Vega Sunday where he conducted services at the Baptist Church. T.J. Ozbun of Plainview, English instructor at Wayland Baptist College, held both the morning and evening service here in absence of the pastor.

Mr. and Mrs. Donald Caldwell and girls were hosts Friday night for a cooking ware dinner. Mr. and Mrs. Bill Pointer of Shallwater were demonstrators. Guests were Mr. and Mrs. Robert McCurry

and Jimmy, Mr. and Mrs. Floyd Prentice, Carol and Chris, Mr. and Mrs. Charles Heffington, and Mr. and Mrs. J.R. Hodges. Mr. and Mrs. Don Tindal, Starla and Walt visited in Robstown Friday night with Mrs. Tindal's grandparents, Mr. and Mrs. A.A. Kanemeier. The Tindals were returning from a fishing trip at Falcon.

Visiting during the weekend in the home of Mr. and Mrs. J.R. Inklebarger were their daughters and families, Mrs.

Raymond Wiley, Jana and Jeff of near Hereford, M.S. Bob Watson and children, Cotton Center. Another daughter, Mrs. J.D. Zahn and children of Lubbock, spent Friday night in the Inklebarger home.

Raymond Wiley, Bob Watson and David Hutchins, of near Hereford, were fishing at Falcon Lake last week.

Mr. and Mrs. Wayne George Jr., Gordon and Kevin of Arch, N.M. visited Saturday night in the home of Mr. and Mrs. Don Tindal and children, Sunday guests in the Tindal home were her parents, Mr. and Mrs. Houston Barker and Bud of Littlefield.

Mr. and Mrs. W.M. Bryant of Enochs, Mr. and Mrs. Harold Smotherman and Joy, and

Mr. and Mrs. Doc Vann and girls visited at services Sunday evening. Mr. and Mrs. Arwin Turner, Supper guests at Mrs. John Vrebel's Sunday were Mrs. Charles Carpenter and Mr. Charles Carpenter of Amherst. The was in honor of Mrs. birthday.

The Spade Lions tonight (Thursday) in the Crescent Home urant in Littlefield.

The meeting of the Board will be held tonight at 7:30 p.m. at the ton Gin. All city are invited to attend.



Fashion Fabric Sale

sew + save
SEE OUR FABULOUS ASSORTMENT OF STYLES AND COLORS
SPORT & DRESS FABRICS
ESTRON 100% ACETATE
PAMPERED COTTONS
65% DACRON 35% COTTON
FLAX - SILKS - COTTONS
ALL 45 INCHES WIDE.

WE HAVE A COMPLETE STOCK OF THREADS PATTERNS - ZIPPERS SEWING ACCESSORIES
PER YARD **50¢**

45 INCH WIDTHS
65% DACRON 35% COTTON
DOTTED SWISS - BROADCLOTH
BATES ORIGINALS
100% ARNEL TRIACETATE
POKE-A-DOT FOR BLOUSES
100% ESTRON **\$1**

FRUIT OF THE LOOM
100% COTTON SATIN
PER YARD **66¢**

AMOS WARD'S
333 PHELPS

erase bumps

Chevrolet Impala Sport Sedan with Body by Fisher

JET-SMOOTHER THE CHEVROLET WAY

We added new bushings and softened body-to-frame mounts to smooth Chevrolet's ride. We put in soft-acting shock absorbers and soft-working coil springs at every wheel. By soft, though, we don't mean mushy. Chevrolet's Way makes for a smooth, solid ride. Very steady on curves. A bump jumps from the supple springs and shocks—and pfft! It all but disappears.

Eight features now standard for your added safety—including seat belts front and back (always buckle up!) and an outside rear-view mirror (always check in back before passing).

Sealed proposals for constructing 16.812 miles of Gr., Strs., Lime Treat, Base, Flex, Base & One Crse, Surf. Treat, From

All kinds of cars, all in one place... at your Chevrolet dealer's: Chevrolet · Chevle · Chevy II · Corvair · Corvette
ARMES CHEVROLET CO.
LITTLEFIELD, TEXAS
42-4810