

LAMB COUNTY LEADER

Official Newspaper of Lamb County, Texas

Vol. 2.

Littlefield Lamb County, Texas Thursday, April 24, 1924.

No. 1.

COUNTY TRACK MEET DETAILS GIVEN PUBLIC

Representatives from four schools met in Olton April 12 to participate in the athletic events of the county interscholastic meet which was left unfinished from March 28-29. Although late in starting, the events were carried off in a rapid manner. Junior track, tennis and volley ball occupied the morning, with senior track in the afternoon. At noon sandwiches, pies and hot chocolate were sold by the Domestic Science Girls. No one could have asked for a better track meet day. Olton won the loving cup with 140 points while Littlefield followed with 125, Spring Lake 40 and Sudan 10. Other results were as follows:

Junior Track N N N
50 yard dash—1 Granberry, Olton; 2 Davenport, Olton; 3 Dickenson, Olton; 4 Baker, Littlefield.

100 yard dash—1 Davenport, Olton; 2 Granberry, Olton; 3 Finney, Olton; 4 Baker, Littlefield.

140 yard relay—1, Olton; 2, Spring Lake.

High jump—1 Granberry, Olton; 2 Finney, Olton; 3 Davenport, Olton; 4 Foust, Littlefield.

Broad jump—Finney, Olton; 2 Baker, Littlefield; 3 Granberry, Olton; 4 Davenport, Olton.

Pull up—1 Dye, Olton; 2 Heard, Littlefield; 3 Dickenson, Olton; 4, tie, Baker, Littlefield and Moore, Olton.

Total points, Olton 50 1-2, Littlefield 12 1-2.

Senior Track
120 yard hi hurdles—1 Springer, Littlefield; 2 Nafzger, Olton; 3 Stagers, Littlefield; 4 Dickerson, Olton; time 19 seconds.

100 yard dash—1 Nafzger, Olton; 2 Springer, Littlefield; 3 Linville, Spring Lake; 4 Schrier, Olton; time 11 sec.

1 mile run—1 Vichery, Littlefield; 2 Kirsh, Olton; 3 Daugherty, Olton; 4 Bridges, Olton, time 5:32.

50 yard dash—1 Lewis, Olton; 2 Springer, Littlefield; 3 Dennis, Olton; 4 Hopping, Littlefield, time 6 seconds.

220 yard dash—1 Lewis, Olton; 2 Cichery, Littlefield; 3 Jones, Olton; 4 Linville, Spring Lake, time 22 seconds.

440 yard dash—1 Stagers, Littlefield; 2 Danforth, Spring Lake; 3 Schrier, Olton; 4 Paterson, Olton, time 62 seconds.

880 yard run—1 Dennis, Olton; 2 Wood, Littlefield; 3 Parish, Spring Lake; 4 Daugherty, Olton, time 2:23.

1 mile relay—1 Olton, 2 Spring Lake.

Pole vault—1 Walker, Olton; 2 S. Hopping, Littlefield; 3 Dickerson, Olton; 4 E. Hopping, Littlefield, height 9-3.

Broad jump—1 Nafzger, Olton; 2 Linville, Spring Lake; 3 E. Hopping, Littlefield; 4 Walker, Olton, distance 18-2 1-2.

High jump—1 S. Hopping, Littlefield; 2 E. Hopping, Littlefield; 3 Linville, Spring Lake; 4 Schrier, Olton, height 5-6.

Shot put—1 Walker, Olton; 2 Springer, Littlefield; 3 Barber, Littlefield; 4 Hazelwood, Spring Lake, distance 39-10 1-2.

Discus—1 Barber, Littlefield; 2 S. Hopping, Littlefield; 3 Walker, Olton; 4 Jones, Olton, distance 98-5.

Total points, Olton 60, Littlefield 57.

SHALLOWATER WINS FROM LITTLEFIELD LAST SUNDAY

In the third game of the season played on the local diamond last Sunday, Shallowater won from Littlefield, the score being 7-6.

Littlefield had the big end of the game until the last two innings, when Shallowater ran in four scores.

Mueller & Mueller composed the battery for the local, while Hunter and Allen twirled and caught for the visitors.

LUBBOCK PLANS WEST TEXAS ORPHAN HOME

A West Texas Children's Orphan Home is to be located in Lubbock. The board of directors has been appointed, and plans are now being formulated for the erection of a \$40,000 building to house the little ones.

The home will be located two miles from the court house on the Lubbock-Tahoka road. The basement and other excavations, together with the foundation for the main building are now completed.

LITTLEFIELD GOT AHEAD IN THE SEMI-FINALS DIST MEET

Misses Anna Mae Brannen and Ruth Courtney won out in the semi finals in the district debate meet held at Lubbock last week. It was a clear decision of three straight against Tahoka, their opponent, but in the finals the Littlefield girls drew the negative and lost to Brownfield. It is reported that every debate decision in the district meet was in favor of the affirmative.

As several of the Littlefield contestants went to the A. & M. College stock judging contest, the school was not heavily represented.

Miss Coilla Mason and Travis Baker declaimed for Littlefield.

Although the number of points won by Littlefield was few, Lamb county managed to get 15 1-2 points out of the meet, in the following manner: Olton 7, Springlake 5, Littlefield 3 1-2.

TECH LAND RENTS TO GO TO STATE RULES ATTORNEY

Proceeds from the lease of lands acquired by the state on which is to be established the Texas Technological College at Lubbock, must be deposited in the state treasury to the credit of general revenue, members of the board of directors of the institution were advised Monday afternoon by the Attorney General's department.

In the selection of a site for the location of this college, the board acquired 2,000 acres of fertile farm lands and it may be nearly two years before this land is needed for college purposes, the board of directors decided to lease the land for farming purposes.

The board desired to know if the proceeds from leasing of this land could be deposited in a bank and be used for school purposes of the institution. Assistant Attorney General W. W. Caves, who answered the query held that there was no provision in the law creating this college which would authorize the proceeds from the lease of this land for school purposes.

He added that such a provision may be authorized by the next legislature.

REV. SMITH OF PLAINVIEW ACCEPTS BAPTIST PASTORATE

Rev. S. W. Smith of Plainview occupied the pulpit of the Baptist church in Littlefield last Sunday morning and evening, delivering two interesting sermons.

Rev. Smith is a strong preacher, having occupied some of the best pulpits of Kentucky and Texas. At the close of the night service he announced his acceptance of the pastorate of this church, stating he would preach at Littlefield every third Sunday, morning and evening.

Wanted: A Title For This Cartoon



The Lamb County Leader wants a title for this cartoon. The reader who sends us the best title will receive a cash prize of \$2.00. Put on your thinking cap now and give us a clever title which, with the picture, will tell the story complete. Send your title to the editor of this newspaper. The contest will close Saturday night, May 10th. Winning title and name of winner will be published in following regular edition of this newspaper.

City Life, Child's Jail

The apartment house is one of the greatest menaces to civilization, says H. T. Bailey, dean of the Cleveland school of art. He gives several reasons strongest of which is that the apartment house does not furnish room for the individual child, let alone the raising of large families.

Living in apartments, children lose the education gained through co-operation in home chores and in natural study out where there are grass and trees and sunshine.

Thirty years ago, people were horrified at the mention of tenements. And yet cities are steadily congesting to the point where all will live in high grade tenements—apartment houses.

The goal of cities, as now planned, seems to be streets lined with unbroken stretches of high brick apartments crowded as close to each other as the law permits. It used to be the custom to leave a strip of grass, the size of a living room rug, out front. This is being done away with, apartments crowding the sidewalk.

Death lurks in the streets where auto maniacs whiz by. No place for the kiddies to play except dangerous streets, sidewalks, back porches and parks that are miles away for most of them.

The alley, natural heritage and right of every red-blooded boy, is being eliminated by soaring land values.

The city is becoming a jail for the child even more than the grown-up.

Every problem, however, breeds its own solution, in time. People usually prefer to make their homes in the suburbs. The handicap is transportation. Autos, especially cheaper makes, are helping a lot along this line. Rapid transit is in site for the more progressive communities. It's badly needed for there isn't a city in America that isn't at least five years behind its transportation needs.

A childhood spent in the suburbs, or, better still, out in the country, is worth more to boy or girl than a large cash legacy later.

It is no wonder people are flocking in large numbers to the South Plains country. Not from the country alone, but there is a generous sprinkling of city folks, and many more yet would come if they could get away. They have become "fed up" as it were on the cramped and crowded conditions of the larger municipalities. Perhaps the old folks might get along with it alright, but they want a different environment for their growing children.

Nothing is so good for them, so conducive to robust health and virile character as the great open spaces of West Texas, where pure air and bright sunshine forming a salubrious climate is found in super-abundance.

No wonder the city folks bring their families out here and grow healthy and happy.

OLTON ORGANIZED A CHAMBER OF COMMERCE

A Chamber of Commerce was organized at Olton last night. The officers elected were W. H. Bohner, president; Holland Phillips, vice-president; Len Ervin, second vice-president; Arthur Cavett, treasurer. A secretary will be selected within the next few days. The directors are H. P. Webb, J. E. Fuller, Dr. Holt, J. E. Bly and F. W. Kersh.

A banquet was served to approximately 100, while 50 or more, who could not be seated at the tables, enjoyed the business session and participated in it. The domestic science girls of the school served the banquet.—Plainview Herald.

WHITE MARKET BUILDING SOLD TO NEW CITIZENS

A deal was closed last Saturday whereby the White Market building property was transferred to Messrs. H. L. Cope and A. S. Harper, the sale also included the butcher equipment.

It is understood that the building will still be occupied by Warrick & Anderson, while Cope and Harper will use the adjoining office room for real estate business.

C. D. SMITH BUILDING HOME

C. T. Fields is constructing a 4-room house for C. D. Smith, of the L. P. Barker Co., on Austin street. It will be completed within a few weeks.—Plainview Herald.

COMMERCIAL BODY WOULD HAVE TOWN TO INCORPORATE

At a meeting of the directors of the Littlefield Chamber of Commerce held last week it was the unanimous decision that Littlefield should become an incorporated municipality. It was pointed out that the town was now of sufficient population and the demands of city protection and improvements, which could not be secured otherwise, were sufficient for such a forward step. Accordingly Attorney E. S. Rowe was appointed to investigate the necessary steps required for securing such a charter and calling such a vote. The proposed corporate limits of the town will embrace nine labors of land, that is, three in each direction.

Other matters of town interest, such as light and ice plant, local water works, garbage disposal and sidewalks were discussed, but no action taken.

Miss Woody Light was asked to represent Littlefield at the meeting of the West Texas Chamber of Commerce to be held in Brownwood next month.

GROCERY STORE SOLD

The Yeager-Chesher Land Co., report the sale of the Brazeal grocery store to W. H. Seals of Lubbock.

Mr. Seals will take possession about the first of next month.

LIST OF JURORS IS DRAWN FOR DIST. & COUNTY COURTS

Herewith is the list of grand jurors and petit jurors for the District and County Courts which convenes next month, as follows:

Grand Jury
W. D. Arnett, W. S. Kennedy, H. J. Cassin, M. E. Clevinger, F. J. Bosterman, John Kling, Paul Bohner, E. E. Kuykendall, W. C. White, Jim Silvers, H. G. Walker, Cliff McKnight, T. Combast, T. P. Wright, H. W. Whisman.

Petit Jury, District Court
J. A. Boone, Homan Arnett, W. O. Gray, L. O. Dumis, J. M. Corruith, W. R. Krop, Ben Dodson, J. W. Roberts, Geo. R. Linville, Ben Smith, Will Graef, Henry Cavett, Otis Brown, Tom Matthews, Herbert Jordan, F. Holland, R. D. Borough, C. A. Crisp, W. O. Burford, C. B. Willis, Will Eby, J. M. Cope, D. F. Beisel, Loyd Cowart, D. E. Arnold, H. W. Swopes, E. G. Courtney, W. E. Scott, J. W. Kuykendall, Sam Jones, J. B. Patton, C. E. Ramsey, A. L. Cooper, F. W. Lichte, T. M. Springer.

Petit Jury, County Court
Sam Jones, A. P. Duggan, F. W. Hyatt, C. E. Willis, W. H. Furneaux, Joe West, H. J. Carter, A. Childers, F. M. Springer, Earl Beach, P. E. Bessen, R. V. Eberly, A. S. Erb, F. A. Butler, J. K. Wright, E. E. Kuykendall, H. L. Smith, J. N. Baker.

LUBBOCK HIGH SQUAD WINS FROM LITTLEFIELD

One of the snappiest games of baseball seen in Littlefield was played last Thursday afternoon between Lubbock and Littlefield high school teams.

The game resulted in a score of 8-9, with Lubbock on the big end.

There were few errors and few stars on either side, as every man worked hard to win the game, and it was only at the very last that Lubbock needed out one score ahead.

Three games will probably be played this week.

GOLD STAR CAFE

★
Regular Meals
and
Short Orders
A Menu & Service You Will
Always Appreciate
Mrs. Maude Foster
Proprietor

Concrete Work

Anything in that
Line
All Work
Guaranteed

L. B. WEBB
Littlefield

HOME DAIRY

Now open On the B. B.
Moulton Farm.

Fresh Milk and Cream deliv-
ered every morning
before 8 o'clock.

Place orders for Cream the
Night Before Delivery.

Phone, B. B. MOULTON

If You Want a Building

SEE
F. V. BARBER

CONTRACTOR & CARPENTER
Littlefield, Texas

Nothing too Large or too Small to
Figure on. Go Any Place.

RAISE LANDS

70,000 ACRES

Surrounding Amherst,
a new town on the South
Plains, in the center of
Lamb county and on the
main line of the Santa
Fe Railroad.

Deep Rich Soil and Level Land
No Rocks, Gravel nor Washes
Pure Water at Shallow Depth
Fine Climatic Conditions
Above the Boll Weevil Belt
Best Cotton Land in the State
Alfalfa and Diversified Farming

PRICE: \$25 per acre, 15 years
time, only 6 per cent interest.

R. C. HOPPING
General Agent
Littlefield, Lamb County, Texas

Clothes Cleaned And Pressed

—repairs made, ready to
give weeks more of
wear before you lay
them away for the win-
ter and invest in spring
duds.

Price and Service
Guaranteed

LET US SELL YOU
THAT SPRING SUIT

Fine line of tailoring
samples from which to
make selections.

**Littlefield Tailor
Shop**

C. E. WILLIS, Proprietor

Help keep Littlefield clean!

Help keep Littlefield clean!

LAMB COUNTY LEADER

Published every Thursday afternoon at Littlefield, Texas.
Subscription: \$1.50 per year; 75 cents for six months.
Advertising rates given upon application.

No. Entered as second-class matter May 24, 1923, at the post
27 office at Littlefield, Texas, under the Act of March 3, 1879.

JESS. MITCHELL,

Editor and Publisher

Subscribers who change their addresses, or fail to get their paper, should immedi-
ately notify this office, giving both new and old addresses.
Communications of local interest are solicited. They should be briefly written, on
one side of the paper, and must reach this office not later than Thursday noon
of each week. The right of revision or rejection is reserved by the publisher.
Advertising that does not show in its text or typography that it is paid for must
be marked as an advertisement. All local advertisements remain in this paper for the
time specified or until ordered out. All notices, matters not by whom nor for what
purpose, if the object is to raise money by admission fee or otherwise, is an adver-
tisement and when sent in for publication must be paid for at the regular adver-
tising rate per line for each issue printed.
Obituaries, eulogies, and resolutions of respect will also be charged for at
the same rate.
Any erroneous reflection upon the character, standing or reputation of any per-
son, firm or corporation which may appear in the columns of the Littlefield Leader
will be gladly corrected upon its being brought to the attention of the publisher.

A THOUGHT FOR THE WEEK

Reprove not a scorner, lest he
hate thee; rebuke a wise man,
and he will love thee.—Prov.
9:8.

Reprove thy friend privately;
commend him publicly.—Solon.

FOR INCORPORATION

The Littlefield Chamber of
Commerce is to be highly com-
mended for its initiative toward
the incorporation of Littlefield.
The Leader has frequently
advocated this measure, and
that it is needed, in numerous
different phases, there can be
no controversy.

Perhaps no town on the South
Plains today is developing more
rapidly than Littlefield. To-
day the town stands in need of
numerous civic improvements
which can be obtained only
through incorporation. Let
every citizen back up the
Chamber of Commerce in this
laudable action.

TEAM WORK

Team work is the system that
puts over any enterprise
whether it be of personal or
general interest. No matter
how strong the individual may
be, the co-operation of a num-
ber of persons in team work
always stands for greater
strength.

Every town needs team work
for its large interests. The
realization of co-citizens to as-
sist one another augurs good
for better commercial and so-
cial relations.

Team work attracts others,
who in turn lend their hands,
talents, resources and energies
toward mutual civic progress.

And, best of all the only dues
required to join the town team
is a good resolution backed up
by immediate action.

EASTER EGG HUNT FOR SUNDAY SCHOOL CLASS

Last Saturday afternoon at 4:00
o'clock, Miss Ann Douglass, assisted
by Mr. G. D. Lair, gave the children
of her Sunday school class an Easter
egg hunt at the city park. All the
members of the class were present
except Willard Street jr., who was
ill in a Lubbock sanitarium. Several
dozen eggs had been previously hid-
den, and the little ones were very
happy in the search for them. Ger-
trude Yorner won the prize for find-
ing the most eggs, while Lois Lair
won second prize.

Those present were, Maurine Lo-
gan, Olean Pyeatt, Gertrude and Le-
nora Yohner, Lois Lair, Eunice
Smith, Zelma Cosgrove, Ruby and
Opal Yeary, Olan Wharton, Robert
McKnight, Tilden Wright, Denver
Borough, Edwin Butler and Edwin
Logan.

VALUABLE DATA ON COTTON SEED FERTILITY GIVEN

Since there has been much
discussion of the planting value
of home grown cotton seed
grown and harvested during
1923 it has occurred to us that
a report on the results secured
on seed which we save had
tested might be of interest.

All of our testing has been
done by the State Department
of Agriculture which gives us
an assurance of the work hav-
ing been done by competent
authorities. We submit a re-
port on 13 samples as follows:

Sample No. 1. Snapped cot-
ton, 52 per cent germination.
Sample No. 2. Bollie cotton,
38 per cent germination.
Sample No. 3. Snapped cot-
ton, 37 per cent germination.
Sample No. 4. Snapped cot-
ton, 38 per cent germination.
Sample No. 5. Snapped cot-
ton, 37 per cent germination.
Sample No. 6. Snapped cot-

ton, 35 per cent germination.

Sample No. 7. Picked cotton,
(grown in Knox county) 86
per cent germination.

Sample No. 8. Picked cotton,
(grown in Knox county) 84
per cent germination.

Sample No. 9. Snapped cot-
ton, 27 per cent germination.

Sample No. 10. Picked cot-
ton, 80 per cent germination.

Sample No. 11. Snapped cot-
ton, 37 per cent germination.

Sample No. 12. Snapped cot-
ton, 37 per cent germination.

Sample No. 13. Snapped cot-
ton, 35 per cent germination.

Average germination of all
samples submitted, 48 per cent.
Eliminating the three samples
which tested 80 per cent or
over and which were not grown
in the Panhandle, we have an
average germination of only
41.4 per cent.

Any one can, by a glance at
the above table of results, see
the folly of any farmer plant-
ing the home grown seed with-
out testing them to see whether
or not they will germinate. To
do so, blindly hoping for a
stand of cotton through some
fortunate combination of soil
and weather conditions, is sim-
ply to court disaster and fail-
ure.

A. J. Mayfield,
Sudan, Texas.

Political Announcements

The Lamb County Leader is auth-
orized to announce the following pe-
sons for the office under which their
name appears. The candidates pledg
themselves to abide by the Democra-
tic primary to be held in July, 1924.

LEGISLATURE

A. B. Tarwater, Runningwater

Burke W. Mathes.

DISTRICT ATTORNEY

Charles Clements.

COUNTY JUDGE

W. W. Carpenter, Sudan.

E. N. Burris, Oilton.

R. C. Hopping, Littlefield.

SHERIFF & TAX COLLECTOR

E. G. Courtney, Littlefield.

H. W. Wiseman, Littlefield.

J. B. "Bee" Patton, Oilton.

G. T. Austin, Oilton.

T. P. Wright, Littlefield.

COUNTY & DISTRICT CLERK

Marshall R. Cavett, Oilton.

COUNTY TREASURER

L. E. "Jack" Silcott, Oilton.

TAX ASSESSOR

E. C. Cundiff, Littlefield.

COUNTY COMMISSIONER

OF FIRST PRECINCT

J. E. Fuller, Oilton.

COUNTY COMMISSIONER

OF SECOND PRECINCT

O. H. Reeves, Spring Lake

COUNTY COMMISSIONER

OF THIRD PRECINCT

Carl C. Tremain, Littlefield.

Geo. A. Stangeres, Littlefield.

T. M. Springer, Littlefield.

COUNTY COMMISSIONER

OF FOURTH PRECINCT

August A. Timian, Littlefield.

C. A. Joplin, Littlefield.

Simon D. Hay, Sudan

COTTON WEIGHER

Precinct Four

W. D. Danagin, Littlefield.

S. E. Ferguson, Littlefield

Precinct Two

E. S. Powell, Sudan.

Baileyboro Buzzings

Mr. John Culbert of Spur,
Texas, has been visiting Mr.
Riley Culbert this week.

The road graders have been
busy grading up the road which
runs from Sudan to the line of
New Mexico by the way of
Baileyboro.

Mr. and Mrs. Ed Hulse visit-
ed Mr. and Mrs. Lee Sherman
Sunday.

Several of the young people
enjoyed another kodaking trip
to Monument dam Sunday af-
ternoon.

Mr. and Mrs. J. C. Smith
spent Sunday and Sunday night
with Mr. and Mrs. D. M. Long.

The singing at Circleback
Sunday night was well attend-
ed by the Baileyboro folks.

Holbert Shirley is attending
to business in Crosby county
at the present time.

Mrs. C. O. Yorham of Rio
Vista, Texas, mother of G. D.
French, and sister of G. L.
Blackshear arrived in Bailey-
boro Tuesday afternoon in re-
sponse to a letter informing
her of Mrs. French's critical ill-
ness. She is slowly improving
this week.

The infant son of Mr. and
Mrs. G. D. French was buried
here Sunday afternoon after
living only twelve hours. We
wish to extend our sincere sym-
pathies to the bereaved parents
of this little one.

A spot was selected one half
mile west of the store for a
cemetery in the Baileyboro vi-
cinity.

Mr. and Mrs. Edgar Little
and children of Hugo, Okla-
homa, are visiting Mrs. Little's
mother, Mrs. W. H. White for
an indefinite time.

Mrs. Henry Hanes who has
been visiting the Coffman fam-
ily for several days returned to
her home in Crosbyton Thurs-
day accompanied by Mrs. Coff-
man and son, Clyde.

The Baileyboro Base Ball
Team received their first chal-
lenge from the Muleshoe Base
Ball Team Thursday for a game
Sunday afternoon but owing to
several players being away the
challenge was not accepted.

Grace Brannen, Noble and
Opal Blackshear are attending
the District Interscholastic
League Meet this Friday and
Saturday.

Charlie Durham, Babe Coop-
er, and Jimmie McMurray en-
joyed Wednesday night play-
ing "Forty-two" in the home of
Mr. and Mrs. Virgil Webb.

The Busy Bs.

Carload Cotton Seed Just Arrived!

Half & Half and Mebane
Price, \$1.50 per bushel

O. R. Norris
At Heinen's Wagon Yard

HAIL INSURANCE ON GROWING CROPS YOU CAN'T AFFORD TO RUN THE RISK!

Have Your Cotton Insured.

—SEE—

M. D. LONG

SUDAN, TEXAS
Agent for Niagra Fire Insurance Co., Hail Department, of New
York & Sterling Fire Insurance Co., of Indianapolis, Ind., Both are
Old Line Companies.

GENERAL BLACKSMITH AND REPAIR SHOP

AUTOMOBILE WORK OF ALL KINDS

We Do Horseshoeing

All Work Done to Your Satisfaction
Both in Price and Quality

W. J. Brown & Son

Located in old Ford Garage Building

FEED

and

Planting Seeds of All Kinds

Littlefield Grain Company

P. W. WALKER, Prop.

Want A Home ? On Easy Terms

WE HAVE IT!

Soil — Water — Climate — Railroads
Schools — Highways — Good Neighbors
You will find the majority of your
farm needs met here.

You had better hurry though, as the
crowds are coming and buying.

YELLOW HOUSE
AND COMPANY
LITTLEFIELD, TEXAS

Dr. P. W. Pillans
Office at Drug Store
Residence Phone, No. 37
Littlefield - Texas

DR. G. D. WEAVER
Physician and Surgeon
Office in Residence

Well Drilling
Domestic and Irrigation
Twenty Years Successful Experience on the Plains of West Texas
See Me for Prices and Date.
T. P. WRIGHT

E. S. Rowe
ATTORNEY AT LAW
See Me For
LAND LOANS
Office in Shaw-Earnest Bldg.
LITTLEFIELD, TEXAS

BALED HAY
For Sale at
Reasonable Price
W. H. Heinen, Prop.

Greene's Cafe
HOME MADE PIES
HAMBURGERS
MILK, COFFEE & CEREALS
Short Orders
Regular Dinners
Mrs. Kate Greene, Prop.

O. K. Transfer
SMALL OR BIG HAULS
EXPRESS, FREIGHT OR
BAGGAGE
Phone 22, or Leave Order with
Butler Lumber Co.
O. K. Yantis
Littlefield, Texas

IT'S A PLEASURE
To have your work done
at the Sanitary.
**WE CAN CLEAN YOUR
CLOTHES AS WELL AS
YOUR FACE**
Agency for the Post City Steam
Laundry. Out Tuesday, return
on Thursday.
Sanitary Barber Shop
VAN-CLARK, Prop.

HOUSE MOVING
Move Any Size House
Anywhere.
Quick Work and
Reasonable Prices
A. M. DUNAGIN
Littlefield, Texas

"A PEACH OF A STORY"
It isn't very often that country newspapers get a "scoop," but this week the Leader has a "peach of a story."
Tuesday night a can of peaches in the Lamb Mercantile Co. store got all swelled up on itself and burst, shooting the contents about 30 feet across the store room. That it was real high powered stuff was evident from the force of the explosion. G. M. Shaw thinks a little notice of the incident in this newspaper will be

ELITE CAFE

Special
Sunday Chicken
Dinner
50 cents

A. T. Parker, Prop.
North Shaw-Earnest Fur., Co.

TEETERS & PEARCE

Contractors & Builders

Estimates Furnished
Without Cost

First Class Work Only

Residence Phone No. 78

Want Ads.

FOR SALE

FOR SALE—Pure bred heavy laying strain Rhode Island Red chicken eggs, from my flock and mate pens, \$1.50 per setting. E. C. Cunniff

FOR SALE—Higari in bundles, 5 cents per bundle, up. Albert Nuenschuander, 4 1-2 miles N. W. Littlefield. 48-tf

FOR SALE—177 acre farm in cultivation, one mile from Littlefield.—W. G. Street, at Lamb County Mercantile Co. 50-4tc

FOR SALE: 7-room dwelling, 2 lots well and windmill, part cash, time on balance.—S. R. Little. 52-4tp

FOR SALE: Red Top Cane Seed. 52-4tp —R. A. Kelm..

FOR SALE: 3 year old milk cow, one-half Guernsey, fresh. \$40. G. F. Price. Littlefield. 52-2tp.

FOR SALE: Good young milk cows, cream separator, also young team light weight hores. E. A. Watson, 1 mi. N. Littlefield. 1-2tp

MISCELLANEOUS

Start your car with a Hot Shot Battery these cold days.—Littlefield Service Station.

Batteries recharged at Littlefield Auto Co. 41-tfc

BEST MEALS at lowest prices. White Restaurant.

DINNER 40 cents at White Restaurant.

LOST

LOST: Black mare, also sorrel mare with halter. W. A. Langford, Amherst. A-L2 tp

LOST: Horn rim glasses in case. Rinder return to L. J. Sullivan, 1tc

LOST: Miller tire on rim, for Ford car. Finder return to Leader office.

LAND NOTES PAID

I am representing a company which guarantees to pay your land notes in case of your death. Our services cost about another 1 per cent interest on your notes for the period. A. S. HARPER, at F. Z. BISHOP LAND CO., OFFICE.

\$100 REWARD

A reward of \$100 will be paid any person (officer one-half the amount) for arrest and conviction of any one caught stealing in Littlefield or adjacent community. Apply Littlefield State Bank. 50-tf

WELL DRILLING

Guaranty All Work
Experienced Drillers
—Lightfoot & Chambers.

sufficient to sell the entire remaining stock by the close of the week, as it is well known there are a number of citizens in this community who would be glad to pay a premium on that class of goods. The probabilities are, however, that this is the only can in the entire lot that has any kick in it.

Lamb County Treasurer's Report

Report of L. E. Silcott, County Treasurer of Lamb County, Texas, of Receipts and Expenditures from January 1st, 1924, to March 31st, 1924, inclusive.

JURY FUND. 1st Class
Balance last Report, Filed \$ 201.41
To Amount received since last Report, 8727.63
By Amount paid out since last Report, Ex. "A," \$ 227.41
By Amount transferred to other Funds, since last Report, 8000.00
Amount to Balance, 701.63

Balance \$ 8929.04 \$ 8929.04
ROAD AND BRIDGE FUND. 2nd Class
Balance last Report, Filed \$ 450.86
To Amount received since last Report, 8517.36
By Amount paid out since last Report, Ex. "B," \$ 2275.72
Amount to Balance, 6692.50

Balance \$ 8968.22 \$ 8968.22
GENERAL COUNTY FUND. 3rd Class
Balance last Report, Filed \$ 1342.04
To Amount received since last Report, \$10935.49
To Amount transferred to other Funds, since last Report, 8000.00
By Amount paid out since last Report, Ex. "C," 12597.85
Amount to Balance, 13995.60

Balance \$27935.49 \$27935.49
ROAD NO. 1 FUND
Balance last Report, Filed \$ 3188.92
To Amount received since last Report, \$ 6472.38
To Amount transferred from other Funds, since last Report, 750.00
By Amount paid out since last Report, Ex. "G," 582.60
By Amount transferred to other Funds, since last Report, 1000.00
Amount to Balance, 2450.86

Balance \$ 7222.98 \$ 7222.98
ROAD NO. 2 FUND
Balance last Report, Filed \$ 4781.75
To Amount received since last Report, 4713.95
To Amount transferred from other Funds, since last Report, 750.00
By Amount paid out since last Report, Ex. "H," \$ 901.50
Amount to Balance, 9344.20

Balance \$10245.70 \$10245.70
DROUTH RELIEF FUND
Balance last Report, Filed \$ 238.89
Amount to Balance, \$ 238.89

Balance \$ 238.89 \$ 238.89
STATE HIGHWAY FUND
Balance last Report, Filed \$ 102.00
To Amount received since last Report, 1411.90
By Amount paid out since last Report, Ex. "D," \$ 35.29
By Amount transferred to other Funds, since last Report, \$ 1500.00
Amount to Balance, O. D. 21.39

Balance \$ 1513.90 \$ 1513.90
SINKING NO. 1 FUND
Balance last Report, Filed \$ 6883.63
By Amount received since last Report, 45.88
To Amount transferred from other Funds, since last Report, 1000.00
Amount to Balance, \$ 7929.51

Balance \$ 7929.51 7929.51
SINKING FUND NO. 2
Balance last Report, Filed \$ 1814.36
To Amount received since last Report, 12.08
Amount to Balance, \$ 1826.44

Balance \$ 1826.44 \$ 1826.44
RECAPITULATION
Jury Fund, Balance \$ 701.63
Road and Bridge Fund, Balance \$ 6692.50
General County Fund, Balance \$13995.60
Road No. 1 Fund, Balance \$ 2450.86
Road No. 2 Fund, Balance \$ 9344.20
Drouth Relief Fund, Balance \$ 238.89
State Highway Fund, Balance O. D. \$ 21.39
Balance \$33402.29
Sinking No. 1 \$ 7929.51
Sinking No. 2 \$ 1826.44

THE STATE OF TEXAS, COUNTY OF LAMB:
Before me, the undersigned authority, on this day personally appeared L. E. Silcott, County Treasurer of Lamb County, who being by me duly sworn, upon oath, says that the within and foregoing report is true and correct.

L. E. Silcott, County Treasurer.
Sworn to and subscribed before me, this 14th day of April, 1924.
M. R. Canett, Clerk,
County Court, Lamb County, Texas.

MORTON

The people of this community enjoyed a singing at the Minnie Veal school house Sunday night.

People are gardening and planting their feed this week. Nearly all the land in this vicinity is now ready for planting.

Mr. and Mrs. Ed Lytle have returned from the bedside of his mother, recently deceased.

J. L. Winder made a trip to Littlefield in his new "Ford" this week. There was a dance at the home of Mr. and Mrs. Eual Hudson's Saturday night.

The Minnie Veal school enjoyed an Easter egg hunt on the school lawn Friday afternoon.

Miss Eunice Spickard spent the week end at home.

Miss Illa McCasland was a Littlefield shopper Saturday.

Mess. J. C. Tubbs and J. T. Tubbs of Shive, C. E. Manning of Colorado City and J. R. Webb, of Star, are prospectors in Littlefield vicinity this week.

Mr. and Mrs. R. D. Borough and Carl Arnold left Thursday overland for El Paso and points in northern Old Mexico. They expect to be gone about two weeks.

Letters From The People

Under this heading the public may express its opinion in a reasonable manner upon matters of general import. The Leader disavows any responsibility for opinions expressed in articles appearing under this general heading.

Somboddy's Wrong

"There's nothing so kingly as kindness and nothing so royal as truth."

In all contests there are rules to be observed by each individual alike. In the Home Economics class each girl was to design and select material for her own dress, as well as make it. But—there are exceptions to all rules.

In the domestic art class of 1924 it was found that all rules were not observed, subservient to the designing of dresses, that were to be entered in the contest. Contrary to the principles, each girl did not receive the attention due her, so each would be on an equal basis. The climax came when the girls, in order to get credit for their work, were obliged to enter their dresses, much against their wishes the girls donned their dresses and paraded before the judges in order that the proud instructor might contrast the needle

ICE
Delivered in Your Ice Box
Every Day
Send in Your Orders
Phone 22-3 rings
Littlefield Ice Co.

SERVICE That Serves
Tubes, Casings
Accessories, Repairs
Vulcanizing
Oil, Gasoline
Water, Air
Littlefield Service Station
Free Battery Service

MACHINE SHOP
and General Blacksmithing
Fix Anything — Make Anything
Horse Shoeing and Hoof Trimming
By an Expert Workman
Agents for Rumley Tractors and the Emerson Brantingham Implements.
BEISEL BROTHERS
Littlefield, Texas

\$500 REWARD! WHAT?
A \$500 reward is offered for any House Fly the celebrated Red Man Fly Killer will not kill. Think of it! One fly killed now means the destruction of thousands later on. Try a bottle. We sell it in different sizes. It is a dead shot on flies.
Listen!
We have the biggest line of Men's and Youth's Ready to Wear Suits coming that has ever been in Littlefield. We have them in the best grade of Blue and Brown Serges, also the cheaper Serges, together with patterns in stripes and plaids, all made in the latest designs. They are humdingers and the prices will be below the majority of Ready to Wear Clothing prices.
We have Men's ready to wear pants in all varieties. In fact, we can please the most exacting. We want you to look them over. They are due to arrive any time. Do not buy until you see them.

Tailor Made Clothing
We will be glad to make you a suit to order. We handle the celebrated Rose & Co. line of tailored suits, and will sell you at the very lowest cash prices, requiring a payment of \$10 down when suit is ordered.
Your patronage is earnestly solicited along this line as we expect to save you some money on your ready to wear, just as we are saving you money on your Tobacco, Groceries, Dry Goods and Farming Tools. We are trying to cater to your wants, and have decided that Littlefield people want just such a line as we are handling.
Brannen--McCormick Cash Store
"Credit makes enemies; let's be friends"
P.S. Now, do not get the above confused with the Hot Air Game, but let us show you that the "proof of the pudding is in chewing the string."

work of her pupils—to that of her rise.
The last straw drawn on Thursday April 17, when the results of the contest was openly announced. The one place in which fairness, honesty and justice were violated was shown in "group Two," when chosen dress displayed work other than the pupils own.
"Honor and shame from no condition rise.
Act well your part, there all the honor lies."
The judges were fair in their decision. They were unaware that the teacher's work was competing with that of the pupils
"Our greatest glory consists not in never falling, but in rising every time we fall."
—Contributed.

Meats and Groceries

FRESH AND SANITARY, AT PRICES TO PLEASE YOU.

PHONE IN YOUR ORDERS
WE DELIVER

The Cash Grocery & Market

F. L. STURGES, Prop.

MAGNOLIA GASOLINE

Magnolene Oils and Greases "The Dependable Lubricant"

Real Quality Products
Demand them from your Dealer

Magnolia Petroleum Company
G. W. Hargrove, Agent. Littlefield, Texas

Fresh & Staple Groceries

The Kind that is Pleasing in Taste to
The Appetite and Satisfying in Price
To the Pocketbook.

ONCE A BUYER ALWAYS A CUSTOMER
LITTLEFIELD GROCERY CO.

A Complete Line of

Candies, Cigars
Toilet Articles
Drugs and
Drug Sundries

Prescriptions
Our
Specialty

SADLER DRUG STORE
"Quality and Service"

Watch Repairing

Opening in Stokes & Alexander

Do all kinds of Watch, Clock and
Jewelry Repair Work.
Expert Work and Guaranteed Wrist Watches a Specialty

D. O. MOURER

GROCERIES

Quality and Quantity
The Best Brands the Market affords. The Largest
amount for the money consistent with Good Business.
Your Patronage Appreciated

BRAZEAL GROCERY

LAND

Our Unimproved Land \$20
To \$30 per Acre.

Improved Lands From \$25
To \$50 per Acre.

Let Us Show You

Neal Douglass Land Co.
Neal A. Douglass, Mgr. Pearce K. Barry, Sec.

A BALOON DRAG ROPE PICKS UP A STEER GIVING RIDE

Balooning in the vicinity of San Antonio has its thrills even for the cattle residing in this part of Texas.

When H. B. Fournier and M. E. Wills, his aid in the national nielinnaboit al baloon race on April 23, were drifting about the country on a test flight with their drag rope down, they gave a Texas steer what is doubtless furnishing him considerable food for thought yet.

The animal was peacefully grazing on the tender spring grass when the drag rope whacked him in the side, with a startled bellow he leaped straight into the air, and in so doing got the rope caught in a sort of half hitch around his horns. For several hundred feet he was dragged along by what to him probably appeared magic force.

In a short time, however, the rope became untangled and when the steer was last seen he was establishing a record of his own away from the territory where the free ride occurred.

OLTON METHODISTS PLAN OLD-TIME CAMP MEETING

At a meeting of the official board of the M. E. church at Olton last Tuesday night, arrangements were made and committees appointed to take charge of the work pertaining to the big old-fashioned camp meeting we are to have in Olton beginning Aug. 17. Ground south of the court house has been secured for the tabernacle and for campers. Lights will be furnished from the Western Electric plant which is established at the court house. Everybody, of all denominations, are invited to come and take part in the meeting. The following committees were appointed: Advertising: Messrs. L. H. Carlton, Elmyr Smith and W. H. Kayler. Entertaining: Dr. C. I. Holt, Fred Ogden and Miss Zulu Hair. Grounds: Messrs. L. S. Kennedy, Ellis Jones, Alvin Ogden. Beef: Messrs. Chas. Reynolds, Ellis Jones, Allan Pinkerton. Bread: R. P. Hair, Mrs. L. S. Kennedy and Mrs. R. E. Dennis. Finance: R. E. Dennis, W. H. Kayler, W. W. Jobe, Elmyr D. Smith, Mrs. Ed Kiser. Music: Miss Laura Kennedy, C. E. Raper, and Earl Lusk. Good order: Messrs. A. S. Erb, Morris Womack and Lindsay Dennis. This meeting will be held



**THE MAN
With a Home
Has the World
In His Hands**

We can sell you Town or
Country Property

Some Real Home Bargains

Insurance of All Kinds
Farm Loans

**YEAGER-CHESHER
Land Company**

by Rev. Jno. A. May, from Alabama, and the singing will be conducted by Jno. Adams of Tyler.—Plainview Herald.

O. H. REEVES IS CANDIDATE FOR CO COMMISSIONER

O. H. Reeves, of Spring Lake, this week makes his announcement for the office of County Commissioner of Precinct No. 2.

Mr. Reeves first came to this section in 1909, and has been a constant resident of the county for the past eight years. He lives on the 3-F Highway, about four miles from Spring Lake, is a property owner and well known in the community of his residence.

Mr. Reeves tells the Leader he has never been a candidate for office prior to this announcement, and he is willing to accept office at this time only because of his interest in the county's welfare.

He is well known among the older settlers, and respectfully refers the voters to any of his neighbors for recommendation as to his character and ability to serve the people in this capacity.

Her worst Fault

Probably the worst fault of the average woman is the ease with which a man can stand up and lie to her.

NOTICE

To the Public

I HA&E bought the
Brazeal Grocery
Store and will take
possession on or about
May 15th

I will be glad to meet
all my old friends and
customers and many
new ones at my new lo-
cation.

R. D. Borough

PATRIOTISM

By Lloyd Springer

Patriotism! How that word thrills us. During the great World War it was on every lip. It was the medium by which we tested true Americanism. It was the power that gathered our great army together and sent it across the seas to fight the terrible Hun.

Some people think of patriotism as connected only with war. Of course war gives a person a chance to show their patriotism, but a country needs patriotism as much or more in peace as in war.

Nowhere is there a greater place for peace than in a small community, to make its churches, to support its business and to promote its gen-

eral welfare, takes more patriotism than it did to fight the whole world's war.

In saying that patriotism is the passion inspiring one to serve one's country, the most appropriate place to begin is at home.

A very impressive communion service was held Easter Sunday at the Prebyterian church, the minister delivering a sermon appropriate to the dual occasion. There was a good attendance with several out of town visitors present.

Misses Marie Patton and Mona Horton spent the week end the guest of Miss Christena Holland, Lubbock. Miss Woody Light spent the week end with Miss Vernon Brown in Lubbock.

Saturday Specials

Did you visit our store last Saturday? If you did not, then ask your neighbor, he was here. Saturday is always a big money-saving day. We offer items from our Grocery Department at greatly reduced prices. Come in and make your Saturday purchases with us.

THINGS WORTH WHILE

3 pound can Star Coffee	\$.88
Gallon Apricots	.69
Gallon Peaches	.59
10 pounds Spuds	.29
10 pounds, Sugar	1.00
Apex Peas	.17
Wapco Tomatoes	.10
Hooker's Lye	.10
Large tube, Big Chief Oats,	.25
6 cans W. H. Baker's Cocoa	.25
22 bars Waltkes Naptha Soap	1.00
1 pound best Peaberry Coffee	.26
Empson Kraut	.11

LAMB COUNTY MERCANTILE Co.

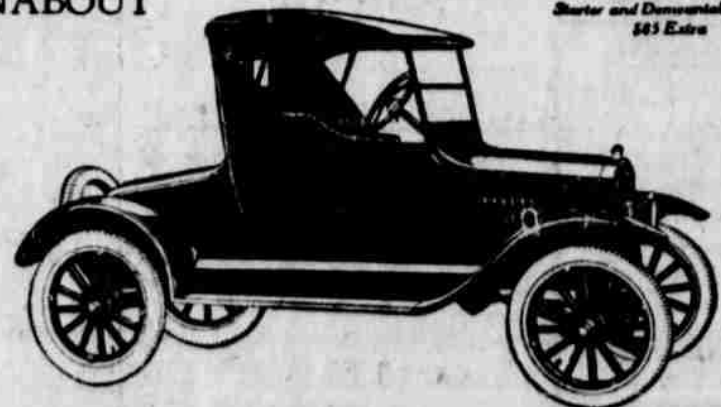
The Pioneer Store

LITTLEFIELD,

TEXAS

Ford
RUNABOUT

\$265 f.o.b. Detroit
Starter and Demountable Rims
\$43 Extra



The Lowest Priced Two-Passenger Car

The Ford Runabout is the most economical car for personal transportation known.

Priced lower than any other motor car, its maintenance and running expenses are in keeping with its present low cost.

To salesmen and others who average a high daily mileage in business, the Runabout has a special appeal both for its operating economy and its convenience in making city and suburban calls.

Ford Motor Company
Detroit, Michigan

See the Nearest Authorized Ford Dealer

Ford
CARS · TRUCKS · TRACTORS

Littlefield State Bank

A Guaranty Fund Bank



Solicits the business of all
New Settlers

No account too large for us to handle. No account too small for us to appreciate.

PLENTY OF UN-PLOWED LAND HERE FOR THE NEXT FIFTY YEARS TO COME

By PHEBE K. WARNER

You need only look into the mirror of the past to see the mirage of the future of West Texas. What was all West Texas fifty years ago? Memory answers. Visions of endless plains without a tree, a fence, a house, a man, except in the most unusual places. Scarcely a woman anywhere in all that vast domain. Was there a child in West Texas in 1875? Perhaps a few. Was there a school? Not many of us could answer that. No, there are not many of that day left to tell the story of West Texas before the days of 1875.

It was during the period from 1875 to 1900 that the people began to discover these great plains. No use to repeat the story here of the birth of the homes and the communities, then the coming of the little towns and the mail routes and the whistle of the trains. The cattle ranges and the cowboys had their special day. The whole of the first fifty years of Texas history in the west will some day read like a thrilling romance. It is a romance for we have all fallen in love with West Texas in the past quarter of a century and the most of us are truly wedded today to the land of our choice.

With the dawning of the new century a new life appeared in this fair land. The little wayside towns began to grow more like cities. The ranges began to give way very slowly to the home seekers. Families came. Homes were created. The first generation of West Texas children came to give new life and new inspiration to those homes. Little places of worship began to dot the plains. Schools had to follow the children. Colleges followed the rural schools—you know the rest.

If you were naming this period of history in West Texas what would you call it? Sure we are making history every day we live. But like the builders of all nations and all communities we do not realize it.

But it is not the past that we should consider, except for the examples and inspiration it holds for all of us. The part we should play in the future history of West Texas should concern us of the present generation most. And the future history must be built on the deeds of today. What are we going to do in OUR DAY? What happens in West Texas in the next twenty-five and fifty years depends on the men and women of this very hour. Beyond that we cannot begin to see. And beyond that we will be forgotten. Most of us will at least. But it will take every man and every woman to build the history of West Texas in the second half of the first century of her development.

And right now is one of the most important periods in that history. Because West Texas is at this time starting on her second great period of HOME MAKING. That is the name of this period. The home making epoch in West Texas. The biggest and most essential business in all this world is the business of building homes for the people. It has been said many times recently that there are

172 million acres of land in Texas. That ONLY 26 million of those acres have ever been touched by a plow. Only 26 million acres have been turned into farms and homes for the people. Is there room in Texas for more people? Is there room in Texas for more homes? Yes. And the great bulk of this unused land lies in West Texas.

Yes, says the skeptic, and that is where it will always lie. You're right, old boy. Nobody is ever going to pick up those millions of unused acres and transplant them in any other part of the world. That is where the hope of the next fifteen years comes in. And there will be land in fifty years from now in West Texas that will still be unplowed. But, put this away in your souvenir box for your grand-children to think about. There will be more homes and more people in West Texas fifty years from today than there are in the whole state at this time. It can't be done? The country won't support them? That is just what the people said about the Panhandle, the South Plains and all West Texas twenty-five years ago. Did such utterances keep the tide of immigrants back? No. They came. They came when there was no churches or towns. They came when there were no neighbors. On and on and on the people came. And in these years they have driven back all the foes of civilization. They have conquered the soil. They have built homes and cities and towns and schools and churches and highways. Why it is not even thrilling or romantic or even risky to move to West Texas today.

But who came? Most every kind of folks came but only those who could stand the acid test of character, those who were in dead earnest in their ambitions to own a home of their own stayed. What is the result? The result is this. All West Texas from the banks of Red River to the border lands of the Rio Grande is a land of Resident home owners. There is perhaps no other place in all this nation where such a high per cent of the people own their homes. And that is the secret of their love for this big new country which seems so plain and empty to the people from the East, the North, and the South. It is the DAY OF HOME OWNERSHIP in West Texas and there is land enough still unplowed to make this day possible for another fifty or a hundred years.

But you do not have to take the foreign land agent's word for anything any longer. The evidences are here for your own personal inspection if you will only take the time to make your

Continued on Page four

PRESIDENT LAMB COUNTY FAIR MAKES A REPORT

Oilton, Texas, Jan. 11, 1924. To the Executive Committee of the Lamb County Fair Ass'n. Gentlemen:

I have carefully checked the books of the secretary-treasurer of the Lamb County Fair Ass'n., and beg to make the following financial report:

DISBURSMENTS:	
1. Prizes	\$106.50
2. Printing catalogues, ribbons, etc.,	101.00
3. Drayage	13.00
4. Judging chickens	10.00
5. Phone calls	1.50
6. Postage	2.00
7. Lumber	96.60
8. Hardware	3.95
Total	\$334.55

RECEIPTS:	
1. Concessions	\$ 64.30
2. Advertising	91.50
3. Contributions:	
(1) Littlefield	28.50
(2) Oilton	50.00
(3) Spring Lake	30.53
4. Lumber sold	27.35
5. Returned prizes, (Cundiff)	4.00
Total	\$296.18
Deficit	\$ 38.37
	\$334.55

Respectfully,
H. P. Webb,
Pres. Lamb Co. Fair Ass'n.

COTTON SEED

Plenty of Half & Half cotton seed, tested for germination.

Get your Seed Corn, Seed Maize, Hegari, Kaffir, etc. from us. All re-cleaned, tested stock.

We handle Bewley's Best Flour, one of the oldest, best known flours in Texas. A trial sack will convince you.

Watch for announcement regarding watermelons. We will buy them.

We will open a Poultry, Egg & Cream department Friday, Apr. 25th, and will buy all your produce.

Mayfield & Hay
SUDAN, TEXAS

THAT Good Gulf GASOLINE

...and...

Supreme Auto Oil

Now in Littlefield

A Full Line of Tractor Oils,
Cup and Axle Greases

Gulf Refining Co.

T. L. MATTHEWS, Agent

Official Statement of the Financial Condition of the

SUDAN STATE BANK

CHARTER No. 1402

at Sudan, Texas, at the close of business on the
31st day of March, 1924.

RESOURCES:	
Loans and Discounts, personal or collateral,	\$69,532.41
Overdrafts,	214.63
Real Estate (banking house)	4,900.00
Furniture and Fixtures,	2,949.68
Due from other banks and bankers, and cash on hand,	26,730.58
Interest in Depositors' Guaranty Fund,	577.50
Assessment Depositors' Guaranty Fund,	4.84
TOTAL	\$104,909.64
LIABILITIES:	
Capital Stock paid in,	\$17,500.00
Surplus Fund,	1,750.00
Undivided Profits, net	1,600.07
Individual Deposits, subject to check, net,	83,740.81
Cashier's Checks,	3,187.06
TOTAL	\$104,909.64

STATE OF TEXAS } ss:
County of Lamb }

We, Wm. H. Furneaux, as president, and J. C. Barron, as cashier of said bank, each of us, do solemnly swear that the above statement is true to the best of our knowledge and belief.

WM. H. FURNEAUX, President.
J. C. BARRON, Cashier.

CORRECT-ATTEST:
P. E. Boesen, J. M. Carruth W. W. Carpenter, Directors.

Subscribed and sworn to before me this 10th day of April, A. D., 1924. F. Z. Payne, Notary Public, Lamb County, Texas.

(SEAL)

LUMBER



Every
thing
the
New
Settler
Needs

We can Supply you with all the material for your New House from Foundation to Flue and Plans to Paint.

PANHANDLE LUMBER CO.

S. D. Hav, Mgr.
SUDAN, TEXAS

LUMBER

and all kinds of
Building Materials

We have opened a nice new yard in Littlefield and have stacked great piles of Lumber and Building Materials in anticipation of an extensive building season this summer and fall. We have the agency for

**Standard Roller Bearing Windmills
& Cook's Paints And Varnishes**

We carry Posts, Barbed and Woven Wire, Windmill Supplies, Roofing Materials, Brick, Lime and Cement.

WHALEY LUMBER CO.

T. T. GARRETT, Manager

AUCTION SALE OF

MERCHANDISE

At Littlefield, April 25, 26, 28

Commencing Friday at 1:00 o'clock P. M.,
I will sell a stock of

**DRY GOODS, GROCERIES
& SHOES**

AT AUCTION

You buy this merchandise at your price for these three days, Friday, Saturday and Monday, commencing at one o'clock p. m. each day, at the

BOROUGH GROCERY STORE
Opposite Littlefield State Bank

W. H. SEALE, Auctioneer

Mr. and Mrs. D. F. Boisel, Misses Martha and Louise, Ed and Bill left last week in their auto for Shattuck and Okeene, Oklahoma, for a couple week's visit.

The August Timian and W. H. Bell families enjoyed Easter dinner in the home of C. R. Heard, southeast of town. Mr. Heard is one of the new settlers of this section, coming here last fall. The visitors report an excellent dinner and a delightful visit.

LITTLEFIELD DAIRY

All Dairy Products
Sweet Milk, Butter Milk,
Butter and Cream
Delivered Twice Daily
Before 9 a.m. & after 6 p.m.
W. L. Standridge Prop.
One-half mile west of
Littlefield, Texas

WELL DRILLING

NEW DRILLING OUTFIT
Several Years Successful
Experience
Drill Anywhere and
Through Anything
Satisfaction Guaranteed
Carl Allen

S. R. Thompson General Contractor

**Brick, Tile, Frame
and Stucco construction.**

**Plans, Specifications,
Estimates, and Con-
tracts, at a nominal
cost.**

25 years continuous expe-
rience enables me to offer you
service as good as the best.
Office: Room 5

Gold Star Hotel

LOCAL HAPPENINGS

Miss Gladys Douglass, of Lub-
bock spent Easter with home folks.

T. K. Garrett, of Lubbock was in
Littlefield Monday on business.

Lee O. Allen, sheriff of Williamson
county was a Littlefield propector
this week.

Miss Mary Wiebe left this week for
Dallas, Oregon to visit with her brother,
H. F. Wiebe.

J. C. Baker returned Tuesday from
Corryell county, where he has been on
business.

Dr. W. J. Harlan, of Bartlett was
here this week making real estate in-
vestigations.

Mr. and Mrs. T. G. Shaw and sons
of Lubbock were in Littlefield Mon-
day.

M. J. Murrin, representing the Cal-
ifornia Pressing Co., San Fran-
cisco, was here Saturday calling on
the trade.

Dr. W. J. Harlan was a prospector
here this week. He is from Bartlett,
SPECIAL Chicken Dinner, Satur-
day.—Greene's Cafe.

LOST: Small straw suitcase, con-
taining men and women's clothing
and in money. Liberal reward.
Leave at Amherst Hotel. L1A3-1tp

W. E. Logan, of Lubbock, repre-
sented the Rock Island Plow Co.,
is here this week assisting the
Shaw-Earnest Co., in putting on a
sale for their farming implements,
they having recently bought a car
load of that well known brand.

Louis W. Conder, of Belton, has
accepted a position as pharmacist at
Stokes & Alexander's Drug Store.
He is a druggist of several years
experience. He will move his family
here as soon as a house can be ar-
ranged.

WEALTH OF THE WORLD
Uncle Sam is worth \$220,-
803,862,000. In ten years his
national wealth has increased
72.7 per cent. Per capita
wealth increased from \$1,950
in 1912 to \$2918 in 1922, or an
increase of 49.6 per cent. It
goes without saying that the
American nation is the richest
in the world, that it is the richest
that has ever existed since
time began and that Ameri-
cans who growl at conditions
should be ducked in the near-
est pond.

Of course there are econo-
mists who say that the wealth
of the nation is drifting into
the hands of the few but there
is no direct evidence to sustain
their contention. America leads
the world in steel production
and the American mills, hav-
ing invaded Europe, are driv-
ing British and French and
German competitors to the
wall.

America leads the world in
the motor vehicle industry and
cars of American make are sold
wherever gasoline can be
bought. America leads the
world in the output of crude
petroleum as well as the output
of the products of petroleum.

America has actually corner-
ed two-thirds of the gold of the
world.

THE JOB OF A MAN

"It isn't the work we intend to
do,
Nor the work we've just begun,
That puts us right on the led-
ger sheet;
It's the work we've really done,
"Our credit is built on the
things we do,
Our debts are things we shirk;
The man who totals the big-
gest plus,
Is the one who completes his
work.
"Good intentions do not pay
bills,
It's easy enough to plan;
To wish is the play of an office
boy,
To do is the job of a man."
Terry County Herald.

LEVELLAND LEADERS

Tom Hart has let a contract
for the construction of a drug
store building on Main street
which, when completed, will
be occupied by Dr. E. J. Cook,
of Wilson.
Six applications for the prin-

cipalship of the Levelland
schools have been received by
the local school board.

The Commissioners' Court at
its last meeting ordered built a
250 barrel tank and piping laid
around the court yard for irri-
gation purposes.

R. E. Funn, postmaster and
merchant here, has just install-
ed a gasoline filling station in
front of his place of business.

The rough work on the new
brick school building is now
about completed and the finish-

Plenty Of Un-Plowed---

own inspections. And that is
what the people who live here
want you to do. No innocent
home seeker was ever fooled
into losing his hope of a home
of his own in this big free coun-
try by the people who live here
and have made it all that it is.
If you, Mr. Homeseeker, have
been fooled it was because you
were dealing with a crook. It
was not because the country
was crooked.

The day is here right now
when great tracts of virgin soil
are being placed on the mar-
kets. Until this year these
tracts of land have been enclosed
in the limitless ranches of
West Texas. But the country
has grown until farming is
more profitable for the individ-
ual and the state than ranch-
ing.

We believe the opportunity
is knocking at the door of West
Texas to build the most happy
and complete rural communi-
ties in the history of the nation
and the world right here in our
midst. If it is possible to build
an ideal addition to a city it
should be possible to build an
ideal addition to the open coun-
try. As West Texans it is our
new day. It is our new oppor-
tunity to set a higher standard
of rural life in Texas. Let's
not miss it. Let's co-operate
every way we can with these
first settlers of our part of the
state to make their last dreams
of life come true. The greatest
monument any man could leave
to his memory would be an
IDEAL RURAL COMMUNITY.

J. T. STREET

INSURANCE

Littlefield, Texas.

MEATS!

WE HAVE LEASED THE WHITE
MEAT MARKET AND ARE PRE-
PARED TO FURNISH YOU WITH
ALL KINDS OF GOOD MEATS.

Steaks, per pound	15 to 25c.
Beef Roast, shoulder	15 to 20c.
Stew meats	12 1-2c.
Pork Chops	25c.
Fresh Pork Roast, shoulder	18c.
Fresh Ham, whole or chunks	20c.
Pork Sausage	25c.
Cured Ham, chunks	25c.
Cured Ham, cut	30c.

Dressed Poultry on Saturdays
Will Be Glad to Serve You
WARRICK & ANDERSON

We Invite You—

To come and be one of our many satisfied customers.
We are friendly, and honestly want to be of use to you.
Our advice on Building Matters always gladly given.
We sell—

**Better Building Material—Sherwin-Williams Paints—
Star Winomills—Pipe—Casing—Tower Material—Etc.
Pittsburg Steel Wire—Badger Cedar Posts
—HARDWARE—**

F. A. Butler Lumber Company

REAL SERVICE

IN A HURRY

ing touches are being applied.
Mr. Bridges, the local barber
has purchased a lot and is put-
ting up a residence which, as
soon as completed, will be oc-
cupied by himself and family.
His folks are still in Browns-
field.



FURNITURE

There are many new pieces of Furniture to be
seen in our store this week.

We announce the arrival of a new line of rugs.
Many new and pretty patterns.

Our line of Dufolds, Beds, Dressers, Dining
Tables, Kitchen Cabinets, Chairs, are all complete,
and our prices will justify you to buy your needs at
home. Come in and see.

SHAW-EARNEST CO.

Sell It for Less



CITIES .. SERVICE OILS .. New Navy Gasoline
Water White Kerosene
Pennsylvania Lubricating Oils

THEY ARE BEST IN THE LONG RUN

Free Town and Country Delivery Service

LITTLEFIELD OIL COMPANY

G. E. McCELVEY, Prop.

FEET LIKE LEAD



that
well
known
tired
feeling

You of all others who used to be so full of "pop." Can
it be that you have joined the "drag through the day" class?
Perhaps it's the first indication of over-taxed nerves.

Every physician will tell you that the most of his patients
owe their ailments to nerve exhaustion. Digestive distur-
bances, deranged blood circulation and sleeplessness are usually
followed by general breakdown if not checked in time.

The first consideration is elimination of cause—rest and
relaxation—but more often—REMEDY—is needed to aid na-
ture rebuild the body.

When your physician has prescribed, bring your prescrip-
tion to Stokes & Alexander's Drug Store to be filled. Only
high grade chemicals and medicines are used and the greatest
care is taken in compounding each prescription.

Make use of our accurate
Service Department

Stokes & Alexander Drug Co.

The **Rozall** Store

"In Business for your Health."

5 Passenger Sedan

Now \$1695
f.o.b. Toledo

Now you can afford to make that
dream a reality! To own and drive
this luxurious sedan, powered by
the same type of engine used in
Europe's finest cars. Silently glid-
ing sleeve valves instead of ham-
mering cams and clicking poppet
valves. An engine that improves
with use! A 4-season car you'll
want to drive season after season.
For no Willys-Knight engine has ever
been known to wear out.

WILLYS- KNIGHT

LITTLEFIELD OVERLAND COMPANY
Littlefield, Texas