

RODEO EDITION

Second Section

LAMB COUNTY LEADER

Second Section

VOLUME XXIV

Littlefield, Lamb County, Texas, Thursday, September 19, 1946

NUMBER 26

Attend WOW Encampment at Catalena Lake, Ark.



In the above picture of Company L, 112th Regiment, of Littlefield Camp No. 3781, of the Woodmen of the World, who attended the week's encampment at Catalena Lake, Couchdale, near Hot Springs,

Ark., returning here Saturday, Aug. 31. Allan McDonough is Captain of this group, and W. D. Chapman is district manager. Bottom row (left to right) are L. D. Stanaford, W. I. Banks, Billy

Sisson, Bud Young, H. C. Sisson, J. P. Bean, J. D. Dodgen and Vincent Boring. Top row (left to right): John Sisson, Floyd Brown, Jack Sisson, Woodrow Altman, Granville Per-

kins, Olen Williams, Eddie Davis, R. N. (Slim) Kyzer, Kenneth Montgomery and Allan McDonough.

Plans Complete For Grid Special Train

Negotiations with the Fort Worth and Denver railway for a special train from Lubbock to Dallas for the grid game between Texas Tech and Southern Methodist University on Oct. 5 were announced completed following a meeting of the arrangements committee.

Simultaneously, it was announced that a campaign will be commenced immediately to gain funds to carry the Tech band along on the train and to pay other expenses it may incur. The goal was set at \$750.

DeWitt Landis and C. W. Ratliff of Lubbock were appointed to direct the drive.

A block of 1,500 tickets in the vicinity of the 50-yard line has been allocated to Tech fans. They will sell for \$2.60 each, the figure including admission to the state fairgrounds, where the state exposition will be in progress.

Routed through Childress, Wichita Falls and direct to Dallas, the special is expected to comprise at least 16 cars, including chair cars, tourist Pullmans and standard Pullmans. It will leave Lubbock at 8:30 p.m. on the Friday night preceding the game and arrive in Dallas at 8 o'clock Saturday morning. The return trip will start at 12:30 o'clock Sunday morning with arrival in Lubbock slated at 10:30 o'clock.

Roundtrip rates for the special, as announced, include: by coach, \$16.27; by tourist Pullman, first class fare of \$20.36, plus \$5.94 for lower berth, or \$3.80 for upper berth; by standard Pullman, first class fare of \$20.36, plus \$7.36 for lower berth or \$5.64 for upper berth. Drawing rooms and bedrooms also are available at higher prices, committee members announced.

Reservations are being made at the PX, 1116 Avenue L, Lubbock, for both railroad and football tickets. Reservations may be made by calling Hunter Tolbert at 5945, Lubbock.

Football and railroad tickets may be purchased together, for convenience of fans, or may be bought separately, it was announced.

School Days at South Plains Fair Oct. 9-10

Fair officials have set aside two big days of the six-day Annual Panhandle South Plains Fair, Lubbock, for the students of the South Plains. School Days are October 9 and 10.

Students from schools south of a line drawn along the southern border of Lubbock County and from Lubbock County will attend the Fair free on Wednesday, October 9. Those from north of the line will be admitted free the next day. Lubbock city pupils will be guests of the Fair on Tuesday, Lubbock Day.

All students will be required to pay a government tax of 5 cents if under 12 years of age, and 10 cents if over 12 as they enter the Fair grounds. This is required by federal law.

Did you know that traffic accidents cause more deaths than any disease, flood or fire? And—did you know that only eight cents out of every tax dollar allocated for public protection are expended for safety in traffic control? According to a survey conducted by the Texas Safety Association, 49 cents of the tax dollar is spent for health programs; 24 cents for fire protection and prevention; and 19 cents for crime detection. The estimated traffic accident toll for this year is 3,000 dead and 100,000 injured. It seems that Texas pennies are NOT making dollars and sense!

Littlefield PTA Sponsors Safety Program

The Littlefield P-T-A is sponsoring a safety program in the local schools. Mrs. Roy Wade is chairman of the safety committee for the Central school, while Mrs. Quinton Bellomy is chairman of the program for the primary division.

In an interview with Mrs. Bellomy Thursday she asked the Leader to urge on parents to cooperate with the P-T-A in the program by driving carefully and slowly, so as to prevent any accident in the vicinity of the schools, stating that if every one will cooperate, it will avoid any

accidents to the school children.

Plans for the safety program were not complete Thursday, and a later announcement will be made.

The local program is in cooperation with a national movement on safety. George Clark, director of Texas Safety Association, is urging all Texans to cooperate to exercise care in driving to avoid accidents.

U. S. Department of Agriculture has announced a grain export goal for 1946-47—400 million bushels of all grains and grain products.

Predicts Shortest Cotton Crop In Thirty-Seven Years

August's damaging drought has caused the United States Department of Agriculture to reverse a previous forecast and to predict the shortest Texas cotton crop in 57 years.

Texas farmers are now expected to harvest only 1,775,000 bales of 500 pounds gross weight. This is 125,000 bales below the Aug. 1 estimate and is 19,000 bales less than the 1945 harvest.

A yield of 141 pounds per acre harvest was in prospect, said the USDA report, based on observation of conditions up to Sept. 1.

The 1945 yield was 146 pounds per acre and the 10-year average, 1935-44, is 166 pounds.

Abandonment of acreage from the 6,350,000 acres in cultivation is expected to be 4.5 per cent, reducing the prospective harvest to 6,064,000 acres, the USDA reported.

Severe drought and high temperatures were responsible for the reduction in prospective production, said the USDA. The growing crop was severely damaged, and the hot, dry weather caused much premature opening of bolls.

North and Northwest Texas were particularly hard hit as the crop in those areas entered the fruiting stage under adverse weather conditions.

In the High Plains and Low Rolling Plains, the moisture supply was low a month ago and the crop began to deteriorate at that time.

Deterioration and premature opening of bolls were checked by rains in late August, but the moisture came too late to produce much additional fruit which might be expected to mature in advance of a normal frost date, the USDA explained.

Search For County Histories Is Urged

A search of bookshelves and attics for local histories and biographical compilations of Lamb County was urged by Judge Tom L. McCullough, president of Dallas Historical Society, in announcing a Centennial-of-Statehood project for the Hall of State at Dallas.

"The reference library in this majestic \$1,200,000 state-owned shrine of Texas History wants a copy of every book, pamphlet and special editions of newspapers dealing with the history of the county, and its towns, churches, families and organizations," Judge McCullough declared, in inviting citizens of the county to participate in the search.

"The items sought are not available from book dealers, and many of them are long out of print. Only through the co-operation of citizens who are interested in the preservation and dissemination of the history of their county can the Hall of State hope to locate the desired materials," he pointed out. "In the Hall of State, the general public will have access to them for reference use."

Full information about available materials on the county should be sent to Director Herbert Gambell,

Hall of State, Dallas 1, Texas. He stresses that pamphlets, locally printed histories of all kinds, and anniversary editions of newspapers are especially desired.

A special exhibition of county histories will be shown in the Hall of State during the State Fair of Texas in October, if the response to his appeal would justify it. The Hall of State, in the center of the Fair Park, will be open daily to visitors, free of charge.

Mancil Hall Named President Scout Board and Council

A meeting of the Girl Scout Board and Council was held Monday night, Sept. 9, at the Methodist church, when Mancil Hall was elected president to take the place of Charles Signor, who resigned recently on being transferred to Houston by the West Texas Cotton Oil Company.

Jack Christian was named finance chairman to take the place of Mr. Hall.

All Girl Scouts met again Wednesday afternoon of last week in the school rooms for their first meeting of the school year.

Lavender Motor Co. Entertains Employees At Buffalo Lake

W. E. Lavender, manager of the Lavender Motor Company, was host to the company's employees and their wives at a barbecue and watermelon feast at Buffalo Lake Sunday afternoon, Sept. 8.

About twenty were in attendance and all report a very enjoyable outing.

Mrs. Lavender very ably assisted her husband in making the picnic an outstanding success.

Texas Anglers To Engage in Casting Tournament at Fair

Texas anglers will engage in a casting tournament at Fair Park, Dallas, Oct. 19-20, as a part of the State Fair of Texas program, Cecil Cartwright, president of the Dallas Anglers' Club announced. More than a thousand plug and fly enthusiasts are expected to participate in the events, Cartwright said.

Included will be classes for junior anglers under 15 years of age, open classes for men and women separately, and a battle of the sexes thrown in for the finale. Divisions will include wet and dry flies, and three and five-eighths ounce plugs, Cartwright said.

A special event for Boy Scouts using the five-eighths ounce plug for accuracy will be held Oct. 19, while another new feature will be a class for anglers who have never entered a casting tournament. Either plugs or flies may be used for this event, according to Cartwright.

The Standard 10 targets will be utilized.

BUILDING SUPPLIES

- Three 5x5 Redwood Storage Tanks... 2 in. staves
- One 6x6 Redwood Storage Tank... 1 1/2 in. staves
- One 5x5 Redwood Storage Tank... 1 1/2 in. staves
- One 5x6 Redwood Storage Tank... 1 1/2 in. staves
- One 6x7 Redwood Storage Tank... 1 1/2 in. staves
- 8-foot Aermotor Windmills and Towers.
- 8-foot Monitor Windmills and Towers.
- 6 1/2-foot Monitor Windmills.
- 4"x24" Clay Sewer Tile; good stock.
- 26", 12 1/2 Ga. Hog Wire.
- 26", 14 1/2 Ga. Hog Wire.
- 90-lb. Roll Roofing, slate surfaced.
- 1x12-inch White Pine Lumber, unseasoned.

FORREST LUMBER CO.

ANTON Phone 2 TEXAS

Notice . . .

BLACKIE REPASS — MECHANIC

NOW ON DUTY, READY TO SERVICE YOUR CAR OR TRACTOR OR FIGURE YOUR NEXT REPAIR JOB FOR YOU

— at —

BATSON-PAYNE MOTOR COMPANY

— your —

KAYSER-FRAZER AGENCY

— located —

OLD INTERNATIONAL BUILDING, ON HIGHWAY 84

— Watch for the —

NEW KAISER-FRAZER NEW CAR

SHOWING SOON

BATSON-PAYNE MOTOR COMPANY

Sales and Service

LITTLEFIELD, TEXAS

Dance . . .
EVERY FRIDAY NIGHT AT
PRIBOTH ROLLER RINK
3 1/2 Miles Northeast of Muleshoe

— GOOD MUSIC BY —

Edd Hardage and His Lone Star Ramblers

COME WHERE EVERYBODY HAS A GOOD TIME

She used to pay \$15 for a permanent—

Now she gives herself a **Toni** wave at home

Today, thousands of women are giving themselves Toni waves in 2 to 3 hours at home. Easy, quick, gentle even for baby-fine hair. Use Toni for a professional-looking, long-lasting, lovely permanent!

\$1.25



Ann Bialer of Connecticut

Toni home permanent
CREME COLD WAVE
REESE DRUG
PHONE 167-J :: LITTLEFIELD



HITCH YOUR CAR TO A STAR TIRE AT DENNIS JONES TIRE STORE ON THE CURVE At Lubbock and Levelland Highways
PASSENGER * TRUCK * COMMERCIAL

Information On Veterans' Insurance

Activation of a new insurance service in the Dallas, Texas, branch office of the Veterans Administration affords ex-GI's living in Texas, Louisiana and Mississippi an opportunity to straighten out their government insurance problems.

The new service is devoted exclusively to veterans living in the tri-state area and will be able to handle insurance matters with much greater dispatch than has previously been possible under a central office in New York.

Effective immediately, all premium remittances and correspondence about GI insurance should be addressed to the Insurance Service, Veterans Administration, Branch Office No. 10, 1114 Commerce Street, Dallas, Texas.

Veterans who have let their GI insurance lapse can renew it with a little trouble. Up to January 1, 1947, this can be done by paying two monthly premiums and submitting a signed statement that you are in as good health as at the time of lapse.

VA's Dallas office can also issue new NSLI policies. Recent changes in the law authorize any person who has had active service between Oct. 8, 1940, and Sept. 2, 1945, to apply for new term insurance at any time upon application payment of premium and satisfactory evidence of good health.

Complete information on reinstatement of GI insurance can be had from VA contact men or the insurance officer in regional offices. If no VA office is nearby, veterans should write the insurance service of VA at the Dallas branch office.

Payment of Premiums

Veterans can avoid many delays in servicing their GI insurance if premium payments are made in a proper manner, VA's insurance service at Dallas reports.

If you live in Texas, Louisiana or Mississippi, make out your monthly check or money order to "Treasurer of the U. S." and mail it to Collections Unit, Insurance Service, Veterans Administration, Branch Office No. 10, 1114 Commerce Street, Dallas, Texas. Cash should not be forwarded.

Veterans should mail their checks whether or not they have received premium notices. They can, if they prefer, arrange to pay premiums annually, semi-annually, or quarterly.

Veterans who fail to get a premium notice, should send the amount due to the Collections Unit, anyway. With their payments, veterans should be sure to include full name, address, insurance certificate number, and all serial numbers assigned them while in service.

Any person may pay the premium on GI insurance, but authorization to receive premium notices by this person must be made by the insured.

Premiums may be paid in advance at a discount of 3 per cent per annum.

A grace period of 31 days without

interest will be allowed from the due date of the premium.

Veterans who are now holding term insurance policies need feel no compulsion to make an immediate change in the insurance they are carrying, as they have ample time to give mature consideration to their insurance program, VA says.

Term insurance policies issued before January 1, 1946, may be continued without change for eight years from the date they were issued, and policies issued after December 31, 1945, are good for five years without the necessity of converting to any of the more permanent types of insurance.

When veterans have studied their financial position and other prospects, here are the permanent forms of GI insurance to which they can convert:

1. Ordinary Life.
2. 20-Payment Life.
3. 30-Payment Life.
4. 20-Year Endowment.
5. Endowment at Age 60.
6. Endowment at Age 65.

For details regarding any of these plans, get in touch with your nearest VA contact office.

Veterans can not convert their GI insurance into private life insurance. It can only be converted to one form of the "permanent" National Service Life Insurance policies listed above.

New Disability Protection

A new feature added to GI insurance by recent amendments is the payment of benefits to an insured veteran who is totally disabled in excess of six months.

This added protection for the veteran can be had by the payment of small additional premiums, VA says.

The payments for such disability are at the rate of \$5 a month for each \$1,000 of insurance and are payable for as long as the disability exists.

The insurance itself is not affected by the payments so that beneficiaries receive the full face value of the policy upon the death of the insured veteran.

The new total disability feature may be added to any form of National Service Life Insurance, including term insurance. It is only necessary that the insured meet specified health requirements and pay the ex-

tra premium that is required for this additional benefit.

In any case where the applicant, not totally disabled and prior to Jan. 1, 1950, applies for such total disability provision and can furnish proof that his lack of good health is a result of a service-incurred injury or disability, requirement of proof of health is waived.

Veterans desiring this added protection should consult VA contact men or insurance officers in VA regional offices. If no VA office is nearby, veterans should write the Insurance Service in the Dallas branch office of VA.

Beneficiaries and Payment of Policies

All restrictions on the choice of beneficiaries which were originally imposed on GI insurance have been removed by recent amendments, VA's insurance service reports.

Formerly the insured was permitted only to designate beneficiaries who were near relatives. He now may designate any person or persons, a corporation or his estate as beneficiary in his insurance policy.

Payment of the insurance to beneficiaries also has been liberalized by recent amendments. Insurance maturing on or subsequent to August 1, 1946, can be made payable in accordance with the following optional modes of settlement:

- Option 1. In one lump sum.
- Option 2. In equal monthly installments of from 36 to 240 in number, in multiples of 12.
- Option 3. In equal monthly installments for 120 months certain with such payments continuing during the remaining lifetime of the first beneficiary.
- Option 4. As a refund life income in monthly installments with face value certain, provided such settlement would not result in payments of installments over a shorter period than 120 months.

The new GI insurance amendments do not permit beneficiaries who were receiving payments before Aug. 1, 1946, to change to lump-sum or short-term forms of payment.

Terminal Leave Applied to NSLI

Former enlisted personnel in the armed forces who are now drawing terminal leave pay authorized by Congress can apply bonds issued in such payment toward premiums on National Life Insurance policies.

The terminal pay act provided that the bonds issued as terminal leave payment, which are not negotiable and can not be cashed for five years, may be applied immediately to the payment of NSLI premiums, VA reported.

VA emphasized again that all persons who served in the armed forces between Oct. 8, 1940, and Sept. 2, 1945, are entitled to apply for new NSLI. The total amount which may be carried by any applicant may not exceed \$10,000.

The application may be filed at any time and will be granted upon proof that the applicant meets the required health standards. This is a definite change from the previous provision which limited all veterans to the amount of insurance they had while in service.

Information concerning all problems about National Service Life Insurance can be obtained from the nearest VA office or by letter from the Insurance Service, Veterans Administration, Branch Office No. 10, 1114 Commerce Street, Dallas, Texas. The latter address is for all veterans living in Texas, Louisiana and Mississippi.

Of particular importance to all veterans who write about NSLI policies, is the need for "writing right." VA gets more than 10,000 letters a day on insurance matters alone. This correspondence means the drafting of hundreds of thousands of replies, the crediting of millions of accounts.

It involves the searching of vast index files to establish the identity of the veteran who does not fully identify himself in his letter. There are 150,000 Johnsons in the files, 120,000 Browns. There are 13,000 John Smiths, 8,000 of them without middle initials.

VA goes to great lengths to identify the right veteran even when the information he furnishes is scanty. But the laborious searches that are

sometimes necessary obviously cause delays.

Every veteran writing or sending payments to VA should ALWAYS include in his letter his full name, written or printed clearly, including first name, middle name and last name, his insurance certificate or policy number, his service serial number, and his complete permanent address.

In other words, he should "write right."

A good stand of Ispedeza seed is generally worth far more than the grazing value it offers.

Need a LAXATIVE?
 Black-Draught is
 1-Usually prompt
 2-Usually thorough
 3-Always economical

25 to 40 doses only 25¢

Get **BLACK-DRAUGHT**

CAUTION: USE ONLY AS DIRECTED

FARM REAL ESTATE ON RISE

Farm real estate prices climbed another 4 per cent during March, April, May and June, the U. S. Department of Agriculture reports. This recent increase brings the real estate prices to a 13 per cent rise since July of last year. Prices now are 77 per cent above the 1935-39 average and only 14 per cent below the 1920 inflationary peak.

WELCOME, FRIENDS, to the



LITTLEFIELD RODEO

HIGGINBOTHAM-BARTLETT CO.

GOOD LUMBER

Ernest Fowler, Manager

NURSE LOSES FAT SAFELY AYDS WAY
 Get slimmer without exercise

Eat starches, potatoes, gravy, just cut down. AYDS Vitamin Candy Reducing Plan is safe, sensible, easier. No exercise. No drugs. No laxatives.

Nurse was one of more than 100 persons being 15 to 25 lbs. overweight in a few weeks in clinical tests with Ayds Plan conducted by medical doctor.

Delicious AYDS before each meal dulls the appetite. Yet you get vitamins, minerals, essential nutrients in Ayds. Start the AYDS Vitamin Candy way to lose weight now. 30 day supply of Ayds. \$2.50. MONEY BACK on the very first box if you don't get results. Please

Tear Out This Ad As A Reminder

STOKES DRUG STORE PHONE 14 LITTLEFIELD

DAVE HOLLADAY

SAYS:

"I Ain't No Good at Ridin' Broncs and Steers

but

the Bread I Sell is TOPS"



... and there'll be plenty of **TOP RIDERS** at the **LITTLEFIELD RODEO** **SEPTEMBER 19-20-21**

The Littlefield Rodeo offers you the best in fast, thrilling rodeo entertainment. ATTEND THIS RODEO! **THREE DAYS! . . . FOUR BIG SHOWS!**

Holsum

WHITE BREAD IS BACK ON YOUR GROCER'S BREAD RACKS IN ALL ITS PRE-WAR GOODNESS

When you go for groceries tomorrow, and every day thereafter, don't say bread—say **HOLSUM!** You can't buy a better bread!

Dave Holladay

LITTLEFIELD

PHONE 186-M

Distributor of

HOLSUM BREAD

WELCOME VISITORS



and **Congratulations, JAYCEES**

on your **LITTLEFIELD RODEO**

September 19, 20 and 21

... and when in Littlefield make your home at the

BATTON HOTEL

Y. ONSTOTT, Manager

Welcome, Rodeo Visitors!

We'll Be Looking For You!

ANNOUNCING THAT THE

STARR DRIVE-IN CAFE

ESTABLISHED BY

ROBERT GRAHAM and HAROLD HOOD

HIGHWAY 84

EAST SIDE OF CITY

IS OPEN For Business

In the new white building recently constructed by us on the east end of the A. L. Hood property, and west of the Ferguson Implement Co.



● LARGE SEATING CAPACITY . . .

In our new building, 36x48 feet, we have seating capacity for 74 people. Our L-shaped counter is 12 feet on one side and 16 feet on the other side, with 14 stools. We also have 15 booths for the comfort and convenience of our customers.

● CURB SERVICE and plenty of PARKING SPACE ●

We have curb service from 3 p.m. until midnight. We have plenty of parking space. Drive out where it is cool, sit in your cars and enjoy our curb service. Order your favorite drink, sandwiches, ice cream . . . or a full-course dinner.

Open All Night

— AT —
Your Service

at the Starr Drive-In Cafe

MR. and MRS.
ROBERT GRAHAM

MR. and MRS.
HAROLD HOOD

● BRING THE FAMILY

— to the —
STARR DRIVE-IN

— for a —
TASTY, HOME-COOKED MEAL ●

Too, it will be economical on your pocketbook

We Invite You to

You'll Find
EVERYBODY
at
Our FOUNTAIN

TRY OUR Fountain Treats



YES, WE HAVE INSTALLED A MODERN FOUNTAIN, AND WILL SERVE ALL POPULAR FOUNTAIN DRINKS, ICE CREAM DISHES, ETC.—

— NAME IT AND WE WILL MAKE IT!

AN INVITATION

We invite all our friends in Littlefield and area to visit us in our new location.

We will appreciate your business—
—"PLEASING YOU" will be our motto

Starr Drive-In Cafe

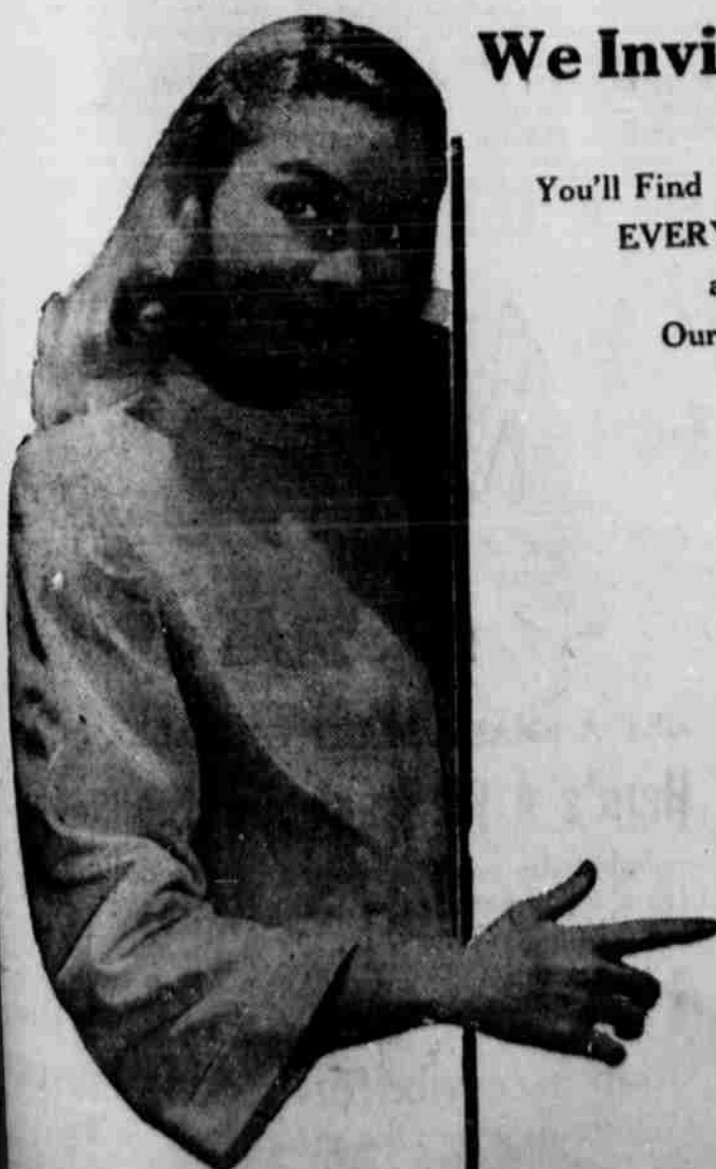
LITTLEFIELD

Highway 84

East Side of City

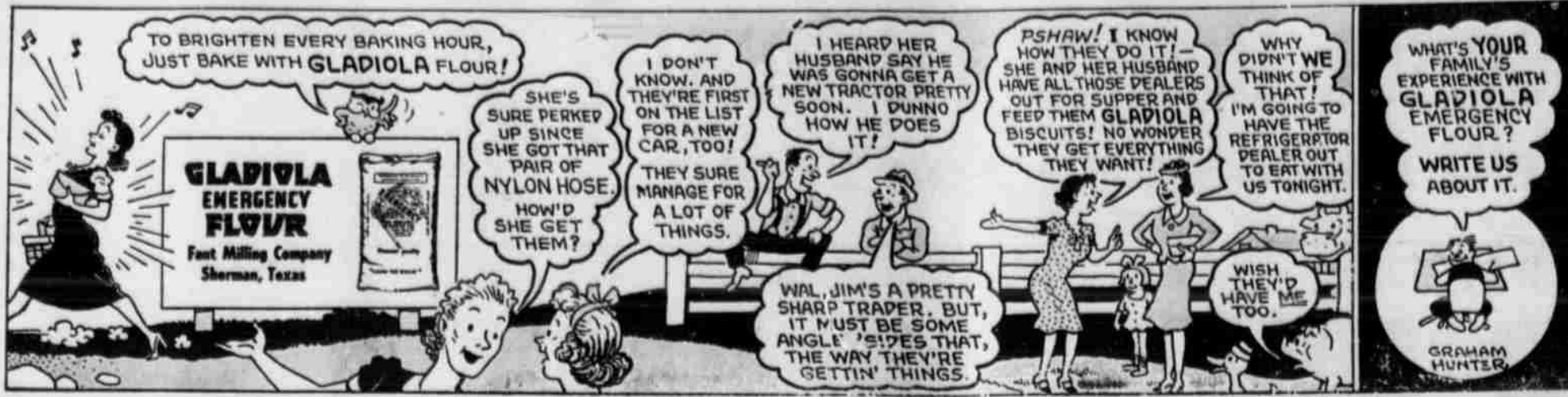
Just West of Ferguson Implement Co.

Mr. and Mrs. ROBERT GRAHAM ● Mr. and Mrs. HAROLD HOOD



POSSUM FLATS . . . "WHITE MARKET"

By GRAHAM HUNTER



VA Representative Available Every Second Wednesday

There are approximately 200,000 veterans in West Texas. Last month, 150,000 of them asked the Veterans Administration some form of questions concerning their rights and benefits as veterans.

They wanted to know about National Service Life Insurance, education or training-on-the-job benefits, hospitalization and medical care, loan guarantee or disability compensation claims. These are the benefits about which most questions are asked.

The answers are supplied by VA contact representatives conveniently located over the 81-county area served by the West Texas VA regional office at Lubbock.

The contact representative is the "front man" for the Veterans Administration. He is the man to whom the veterans or his dependent may go for the correct answers as to his rights and benefits provided him by laws administered by the VA.

The VA contact unit for this area is located at Lubbock, Texas, in 703 Lubbock National Bank Building. S.

Roscoe Clark is the senior contact representative in charge of this office.

As contact officer of this VA region, Gerald W. Collingsworth "rides herd" on contact representatives located in El Paso, Pecos, Odessa, Big Spring, San Angelo, Abilene, Lubbock and Amarillo. Contact men are later to be stationed at Childress and Borger.

Collingsworth, a World War II veteran and former contact representative, has the responsibility of training and supervising the men who provide the answers to the \$64 questions. His job is administrative, though he gets his greatest pleasure from visits to the contact units where he rubs shoulders with the many veterans who pour in with their varied questions. Collingsworth is a native West Texan and knows and appreciates the West Texas veteran. He is a former resident of Rotan and Abilene.

"Ours is a highly personalized service to the veteran or his dependents. The contact representative is his source of relationship with the Veterans Administration. Instead of the veteran having to go to each of the eleven divisions of the VA regional office to receive whatever information he may wish, or whatever benefit he may be entitled, he may consult the contact office nearest his home," Collingsworth explained.

George A. Sessums is the assistant contact officer in the regional office. He is a veteran of World War I and prior to his present assignment was VA contact representative for Lubbock and surrounding fifteen counties. He is widely known in this area and highly respected for the service he has rendered the many veterans who have come to him with their problems. "I have been asked every question from 'how can I get another discharge button?' to 'how can I buy a farm?' Since becoming assistant contact officer, I miss the personal touch with the veteran which a contact representative may enjoy," Sessums said.

The contact representative is not only a source of information for the veteran, but he is a source of actual help in preparing necessary forms, and applications, and in securing the necessary certificates and documents the veteran will need in order to receive his benefits from the VA. In many cases he fills out the forms for the veteran. All interviews are private and confidential. The first purpose of the representative is to put the veteran at ease and to assure him of his genuine interest to be of service.

The veteran's problem may be simple; it may be complicated. In any case the contact representative knows how to apply his specialized knowledge in the best way suited to the needs of the veteran who has come to him for an intelligent and workable solution to a problem that is all important to him.

The career of a contact representative is one which combines the professional techniques which may be compared with those of a lawyer practicing before the bar, and the human understanding and skill in counseling and helpfulness which are expressed by a social worker.

He knows exactly what he is talking about when offering advice and assistance to a claimant. He knows

the extent, meaning and application of the laws that have been passed by Congress in the interest of veterans and their dependents. He has the knowledge and common sense to interpret these laws, together with regulations made by the VA, into understandable language for the veteran.

Knowing that many veterans come into the VA poorly informed about the extent of their rights and benefits, he proceeds on the assumption that it is his job to see that the veteran does not miss out on some particular benefit just because he did not remember it, or because he was too confused to ask about it.

The greatest reward the contact representative can earn is the knowledge that because of his individual effort a veteran who so richly deserved help, received that help, courteously, accurately and completely.

But the services of the VA contact man does not end in his office. Surrounding towns are visited on an itinerant basis. The VA carries to the veteran or his dependents who live in surrounding communities the same service they would get if they traveled to the contact office.

If necessary, the VA contact representative will go to the home of a disabled veteran who is unable to come to his office in order to render service to which the veteran is so rightfully entitled. The theme of the contact service is "Serve the veteran, right up to his front doorstep."

Littlefield is served by a contact representative every two weeks, on Wednesdays, from 1:30 to 3:45 p.m. This service began Sept. 4. Office is located in the Yellowhouse Land Building.

Levelland Needs Game For Nov. 1

LEVELLAND, Sept. 11.—Coaches Gano Tubb and Marvin Wheeler and more than 20 Levelland Lobo gridlers returned Saturday from Lake Sweetwater, after a week there.

The Lobos have been going through calisthenics twice daily at the Sweetwater camp in preparation for the opening of the training season Monday.

Coaches Tubb and Wheeler have six returning lettermen, which include D. W. Harkins, Jeff Coffman, W. A. Wise and Kenneth Peeler, line-men; Bobby Hart and Stanley (But-ton) Williams.

Other Lobos in the squad include DeWitt Brown, Tom Alexander, Noble Haliburton, John Morton, Bobby Blondell, Vernon Wright, Billy Arwine, Donald Hamill, Ivan Tipps, Pete Morris, Kelley Ragland, J. T. Pugh, Winfred McKee, and possibly a few more, Coach Tubb said.

Levelland needs a game on the road for November 1, to complete their ten-game schedule, as they have five games in Lobo Stadium and four on the road.

Conference games are with Abernathy, Morton, Sudan, Olton, Muleshoe and Littlefield. Abernathy is playing its first season in Class A.

Levelland's District 5-A schedule: Sept. 13—Monahans, here. Sept. 20—Denver City, here. Sept. 27—Abernathy, there. Oct. 4—Brownfield, there. Oct. 11—Morton, here. Oct. 18—Sudan, here. Oct. 25—Olton, there. Nov. 1—Open date. Nov. 8—Muleshoe, there. Nov. 15—Littlefield, here.

If you wish success in life, make perseverance your bosom friend, experience your wise counsellor, caution your elder brother, and hope your guardian genius.—Addison.



We Join in Extending an Invitation to Everyone to Attend the Big Spectacular

LITTLEFIELD

Sept. 19-20-21 RODEO Sept. 19-20-21

Be On Hand At The New Arena On the Fair Grounds 3 BIG DAYS . . . 4 BIG SHOWS

This banking institution takes pride in our service to the people of Littlefield and territory. We welcome your accounts and will endeavor to give you courteous, efficient banking service at all times.

BE SURE TO DROP BY AND PAY US A VISIT ANY TIME. WE ESPECIALLY INVITE YOU TO VISIT US WHEN IN LITTLEFIELD FOR THE RODEO.

The First National Bank

Member Federal Reserve System

Member Federal Deposit Insurance Corporation

OFFICERS

J. H. LEE, President
J. T. ELMS, Vice-President
PAUL HYATT, Vice-President
DON BELL, Vice-President and Cashier
NAOMI HYATT, Assistant Cashier
MARJORIE MARTIN, Asst. Cashier
LOVELLE TAYLOR, Asst. Cashier

DIRECTORS

J. C. HILBUN
J. T. ELMS
T. WADE POTTER
ALBERT NEUENSCHWANDER
PAUL HYATT
J. H. LEE
DON BELL



GET A SMART START ON FALL . . .

Here's A Pleasant Forethought---

Subscribe now for your favorite daily paper . . . and get ready for the longer evenings of Fall and Winter . . .

- MAGAZINES
- CIGARETTES
- BOOKS
- CIGARS
- CANDY
- TOBACCO
- SHINES
- DRUGS
- COLD DRINKS

GOOD SELECTION OF SCHOOL SUPPLIES

YANTIS NEWS STAND

North Phelps Ave. Phone 257-R

1.1 Per Cent Increase Home Building
 Home building in 11 Texas cities increased 33.1 per cent in 1945 and 98.7 per cent in value from the preceding year, James R. Ridgway, vice president of Investors

Syndicate, Minneapolis, Minn., has revealed. Seven of these 11 cities showed home building gains, and four losses.
 New homes started in these 11 cities in 1945 provided shelter of 34,040 people, an increase of 8,472 from the 1944 total of 25,568. Valuations

of such residences totaled \$26,390,453, an increase of \$13,112,235 from the 1944 aggregate of \$13,278,218.
 Cities in the study were: Austin, Beaumont, Dallas, El Paso, Wichita Falls, Fort Worth, Galveston, Houston, Port Arthur and San Antonio.
 There were 499,659 dwelling units in these cities on Jan. 1, 1946. Of these, 380,392 or 76.1 per cent, figures made available by Investors Syndicate show, were built prior to Jan. 1, 1930, or more than 16 years ago, which indicates a promising demand for new homes as well as considerable remodeling.
Curbs, Despite War Work, Cut Housing
 "These cities," explained Mr. Ridgway, in commenting on the company's tenth and latest annual housing survey, "provided new homes in 1945 for 26.6 per cent more people than the 26,888 total in 1930, which the



DISCUSSION ON HIGH FINANCE . . . Secretary of Treasury John W. Snyder, attends first of a series of meetings at the treasury department, in which bankers and insurance executives will be asked for advice in the shaping of a policy for government financing. At the meeting are, left to right, Secretary Snyder, Robert Fleming, chairman American Banker's association committee on government borrowing, and C. W. Bailey, vice president of the American Banker's association.

A. B. Askew Now Operating Real Estate Office
 A. B. Askew of McKinney, formerly of Littlefield, has returned to Littlefield, and has leased offices in the Highway Hotel Building, where he is operating a general real estate office.

Mr. and Mrs. Graham Buy Cafe at Abernathy
 Mr. and Mrs. Edgar Groham, after disposing of Graham's Bakery, have purchased the Prather's Cafe at Abernathy, and took possession Tuesday of last week.
 They will move to Abernathy in a few days.

TEMPORARILY OUT OF GAME
 Johnny Sryggle, a promising sophomore quarterback and ball handler, has been absent from the camp for the past two weeks on account of a knee infection. He will be back in the game in about 10 days. His position will be taken tonight by Travis Price.

DRS. CAULEY and WELCH
OPTOMETRISTS

114 Ave. L LUBBOCK Phone 7180



DOGGONE RIGHT!
We're Going to the RODEO
BROWN TIRE CO.

national building industry generally considers a 'normal' year. The 1945 total, however, was 78.9 per cent below the peak when 61,436 people were supplied with new dwelling units. The low year was in 1934 when only 6,776 people were so supplied.

"Average annual volume of new home construction in these cities during the war years of 1942-43-44 supplied 28,988 people with homes, a decline of 50.0 per cent from the 1939-40-41 pre-war level of 58,000. Ban on home building during the war years restricted residential construction to dwelling units for war-plant employees and military personnel."

Valuations Down in War Years
 Value of new homes started in these 11 Texas cities in 1945 was 22.3 per cent greater than the 1930 aggregate of \$21,571,823 but 39.7 per cent under the 1940 peak of \$43,746,234. The low of \$3,748,299 was hit in 1933.

"Average annual valuations of new homes," resumed Mr. Ridgway, "built in these cities during the three war years was \$15,445,224, a decrease of 63.9 per cent from the pre-war level of \$42,761,190."

Costs Per Person Climb Sharply
 "The average cost per person supplied with new housing in these 11 Texas cities during 1945 was \$775.28, a gain of 49.3 per cent from the 1944 figure of \$519.30, but 3.4 per cent under the 1930 peak of \$802.29. A low of \$471.47 was hit in 1943, due primarily to war buildings."

Federal Housing Absent
 "There was no Federal housing in 1945. In 1944 Federal construction provided homes for 476 people. In that year it formed 1.9 per cent of all residential construction in these cities; in 1943, it amounted to 13.6 per cent and, in 1942, 10.4 per cent."

U. S. railroads used 124,114,000 tons of bituminous coal in 1945.

CAR WASHING

and **Lubrication**

Oils and Greases

For Your **Cars, Trucks and Tractors**

McCORMICK BROS.

PETROLEUM PRODUCTS
 Highway 84 Phone 153
 LITTLEFIELD
 OPEN ALL NIGHT
 WHOLESALE and RETAIL



STOKES DRUG
 "In Business For Your Health"
24 YEARS of SERVICE
 To the People of Littlefield and Territory

EXTENDS AN OLD-FASHIONED WESTERN WELCOME

Rodeo Visitors
 HAVE A GOOD TIME AT THE RODEO
 . . . ant visit our store

FOUNTAIN SERVICE

- DELICIOUS SANDWICHES . . .
- ICE COLD DRINKS ● COFFEE
- ICE CREAMS AS YOU LIKE IT

We thank you for your FRIENDSHIP, PATRONAGE and CO-OPERATION Down through the years

WE WANT TO SERVE YOU AND WE WANT TO SERVE YOU WELL!

RELIABLE PRESCRIPTION SERVICE

Stokes Drug

Small
 "In Business For Your Health"
 Littlefield :: Phone 14

ALKA-SELTZER BRIGHTENS MY DAY



"OCCASIONALLY, I wake up in the morning with a Headache. It sometimes wears off along the middle of the forenoon, but I don't want to wait that long, so I drink a glass of sparkling ALKA-SELTZER. In just a little while I am feeling a lot better."

Sometimes the week's ironing tires me and makes me sore and stiff. Then it's ALKA-SELTZER to the rescue—a tablet or two and a little rest makes me feel more like finishing the job.

And when I eat "not wisely but too well," ALKA-SELTZER relieves the Acid Indigestion that so often follows.

Yes, Alka-Seltzer brightens my day. It brings relief from so many of my discomforts, that I always keep it handy.

Why don't you get a package of ALKA-SELTZER at your drug store today?
 Large Package 60¢, Small 30¢.

COLD WAVE PRICES SLASHED
The New Charm-Kurl
COLD WAVE

Each kit contains 3 full courses of Salicylate solution, 60 Cutlers, 60 end tissues, cotton applicators, non-staining and complete instructions.

Madden-Wright Drug
 LITTLEFIELD

Your GI Insurance

Q. Why should I keep my National Service Life Insurance?

A. Because, as a veteran, it enables you and your family to enjoy life insurance protection to the cost of which the public, through our government, makes a substantial contribution.

Q. Now that I'm out of the service, how should I pay?

A. If you live in Texas, Louisiana or Mississippi, make out your monthly check or money order to "Treasurer of the U.S." and mail it to Collections Unit, Insurance Service, Veterans Administration, Branch Office No. 10, 1114 Commerce Street, Dallas, Texas. Mail your check whether or not you have received premium notices. (You can, if you prefer, arrange to pay premiums annually, semi-annually, or quarterly, which you may find a convenience as well as a saving).

Q. What do I do if I fail to get a premium notice?

A. Send the amount due to the Collections Unit anyway. With your payment, be sure that you include full name, address, insurance certificate number, and all serial numbers assigned you while in service.

Q. I stopped payment when I was discharged. Can I now reinstate my NSLI policy?

A. You can reinstate your NSLI "term" insurance up to January 1, 1947, by paying two monthly premiums and submitting a signed statement that you are in as good health as at the time of lapse. See a VA regional office. If no VA office is nearby, write VA in Dallas, Texas.

Q. Does it have to be "term insurance"?

A. As a veteran, you are entitled to convert NSLI "term" insurance into NSLI "permanent" insurance; that is, "ordinary life," "20 payment life," "36 payment life," or one of several "endowment" type policies offered. In fact, the law requires that you MUST convert your "term" insurance within eight years from the date it went into effect (within five years if it was bought after December 31, 1945).

Q. Can my NSLI be converted to private life insurance?

A. No. I can only be converted to some form of "Permanent" National Service Life Insurance.

Q. What will be the cash value of my NSLI?

A. Once you've converted your "term" insurance to a "permanent"



STUDIOUS KING . . . King Phumiphon Adulet, of Siam, 18, who recently succeeded his brother, King Ananda Mahidol, after the latter was shot to death under suspicious circumstances, is shown as he arrived by plane at Geneva, Switzerland, to continue his studies at Lausanne. With the young monarch are his mother, Queen Sangwan Chrakanoi, and his sister, escorted by Swiss officials.—Soundphoto.

form, your NSLI policy will provide cash value which increases with each premium payment. For example, \$10,000 of NSLI "ordinary life," bought at age 30 and held for 20 years, will have a cash value of more than \$2,760.

Q. Can I borrow on my NSLI policy?

A. Not while it is in the form of "term" insurance. But when you have converted it into NSLI "permanent" policies, and after the new policy has been in effect for one year, you can borrow up to 94 per cent of the cash value.

Q. What should I do to change my beneficiary?

A. Write the change you wish made to the Insurance Service, Veterans Administration, 1114 Commerce Street, Dallas, Texas, if you live in Texas, Louisiana or Mississippi.

Q. Must I keep up the entire amount of my wartime NSLI?

A. If you can't afford as much as before, you can arrange to keep an

amount you can afford from \$1,000 to \$10,000 in multiples of \$500.

Of the three principal plant foods, Germany led the world in production of nitrogen and potash prior to the war, with the United States using more phosphates than any other country, and France leading in their production.

ACTS ON THE KIDNEYS

To increase flow of urine and relieve irritation of the bladder from excess acidity in the urine

Are you suffering unnecessary distress, backache, run-down feeling and discomfort from excess acidity in the urine? Are you disturbed nights by a frequent desire to pass water? Then you should know about that famous doctor's discovery—**DR. KILMER'S SWAMP ROOT**—that thousands say gives blessed relief. Swamp Root is a carefully blended combination of 16 herbs, roots, vegetables, balsams. Dr. Kilmer's is not harsh or habit-forming in any way. Many say its marvelous effect is amazing. All druggists sell Swamp Root.

FOOD LOCKER PLANTS IN TEXAS NUMBER OVER 400

There are now 402 frozen food locker plants doing business in Texas. A survey by the Farm Credit Administration showed that Texas was among the seven states in the nation that have as many as 400 locker plants in operation. A nation-wide count showed 8,025 food locker plants

in the United States. There were only 2,870 in 1940.

HONORS BOARD MEMBERS

Woman's dormitory No. 2 at Texas Tech, Lubbock, has been named Florence Drane Hall by action of the board of directors, honoring the former board member from Corsicana. The three-story building, housing students, was erected in 1941. Drane was appointed by Governor Neff to the first board of directors in 1929, for a six-year term. She was reappointed in 1929 and 1931 until 1933.

Alka-Seltzer

HAVE you tried Alka-Seltzer for Gas on Stomach, Sour Stomach, "Morning After" and Cold Distress? If not, why not? Pleasant, prompt in action, effective. Thirty cents and sixty cents.

DR. MILES' NERVINE

FOR relief from Functional Nervous Disturbances such as Sleeplessness, Crankiness, Excitability, Nervous Headache and Nervous Indigestion. Tablets 50¢ and 75¢. Liquid 25¢ and 50¢. Read directions and use only as directed.

DR. MILES' ANTI-PAIN PILLS

A SINGLE Dr. Miles Anti-Pain Pill often relieves Headache, Muscular Pains or Functional Monthly Pains—25 for 25¢, 125 for \$1.00. Get them at your drug store. Read directions and use only as directed.



• **HOWDY NEIGHBOR!**
• **HOWDY STRANGER!**

WELCOME to the LITTLEFIELD RODEO SEPT. 19-20-21

WHEN YOU COME TO TOWN BE SURE TO COME AROUND TO OUR PLACE

- Hotpoint Household Equipment and Utensils, including Radios and Refrigerators.
- Speed Queen Washing Machines.
- Royal Vacuum Cleaners.
- Farnsworth Radios.
- Freeze-All Deep Freeze Boxes.
- Electric Light Fixtures and Accessories.
- We do all kinds of electrical work.
- REA wiring given special attention.
- We repair and install electric wiring and services homes, institutions, and business buildings.
- We are equipped to handle electrical contracts of any size.
- Radios repaired. We have a shop especially equipped for this work.
- Motor repairing and rebuilding.

W-W ELECTRIC

W-W ELECTRIC

E. E. WESLEY
Rumback Hotel Building

D. L. WHITSON
LITTLEFIELD Phone 1

THEY'RE BOTH GOOD SALLY ANN BREAD

AND THE **LITTLEFIELD RODEO SEPTEMBER 19-20-21**

SALLY ANN

- Deliciously FRESH —always!



SALLY ANN

AT ALL LEADING FOOD STORES IN LAMB COUNTY

Amputee Veterans Secure Cars

Application forms for amputee veterans to use in obtaining at government expense are expected to be available from Veterans Administration offices in West Texas within a few weeks, Gerald Collingsworth, congressional officer of the West Texas VA regional office, Lubbock, has announced.

He is responsible for administering a new \$30,000,000 program set up by Public Law 663 to provide automobiles or other conveyances for disabled veterans of World War II who are entitled to compensation for the loss of use of one or both arms or legs, or of one or both hands or feet, or of one or both feet or above the ankle.

Amputee veterans who think they are entitled to receive cars can obtain the necessary forms and information by contacting representatives who are available in all larger communities, Collingsworth said.

Following is the procedure to be observed:

The disabled veteran obtains application form and information from his contact representative who helps him fill the form out. If there is no contact representative in the veteran's town, he may write to the nearest VA office.

Every eligible veteran, except congressional officers, must mail his completed application form to the regional office having jurisdiction over compensation claim file. There the form will be processed, an entry

will be made as to his disability, and the form returned to the veteran.

Retired officers must mail their applications to the VA, Washington 25, D. C., and not to a VA regional office. After this step, their applications also will be handled through regional office.

3. The disabled veteran will take the approved form, together with his operator's license, to the local licensing agency. If his license satisfies requirements of the state motor vehicle law, that fact will be entered on his application form, in addition to other necessary information, such as special attachments required by state law. If the veteran has no operator's license, it will be necessary for him to get one. In event the state makes no provision for an operator's license, the local VA contact representative will decide if the veteran is able to drive the car with the aid of special appliances.

4. After all entries have been made and certified by the licensing agency, the veteran can present his application form to any dealer of his choice and negotiate for the automobile or other conveyance.

5. When the car is delivered, the dealer can submit necessary papers to the VA regional office for prompt payment.

VA warned veterans that the total purchase price of the car can not exceed \$1600. This must include all special attachments necessary to operate the vehicle safely and any tax which is reflected in the purchase price. The veteran can not buy a

more expensive car and pay the difference between the purchase price and the \$1600 VA limitation.

VA can pay only the seller and can not reimburse veterans for cars already purchased.

VA also pointed out that the man must actually be a World War II veteran separated from service, and his claim must be completed by June 30, 1947.

George Bernard Shaw had only five years of formal schooling.

A pre-organization Scout meeting was held Monday night at the Scout Hut, called by Houston Hoover, neighborhood commissioner. The purpose of the meeting was to make plans for the re-organization of Troops 41 and 26. Scoutmasters, assistant scoutmasters and committeemen, as well as Mr. Hoover, were present.

Acidity tests should be made before applying lime to pastures.

GET THAT NEW FEELING

TAKE CARE OF YOUR NUTRITION ZONE AND IT WILL TAKE CARE OF YOU!

IN JUST 10 DAYS!

GIVE NATURE A CHANCE!
Make sure your central source of health is functioning properly!

GET ADLERIKA TODAY!
Use every other day for 10 days and notice the difference! Try this 10 day TONE UP of NATURE'S NUTRITION ZONE Starting TOMORROW MORNING — UPON ARISING. Don't Delay!... Do it today!

ADLERIKA

ASK YOUR DRUGGIST! CAUTION—USE ONLY AS DIRECTED

FOR ECONOMICAL PRODUCTION—FEED RED CHAIN FEEDS

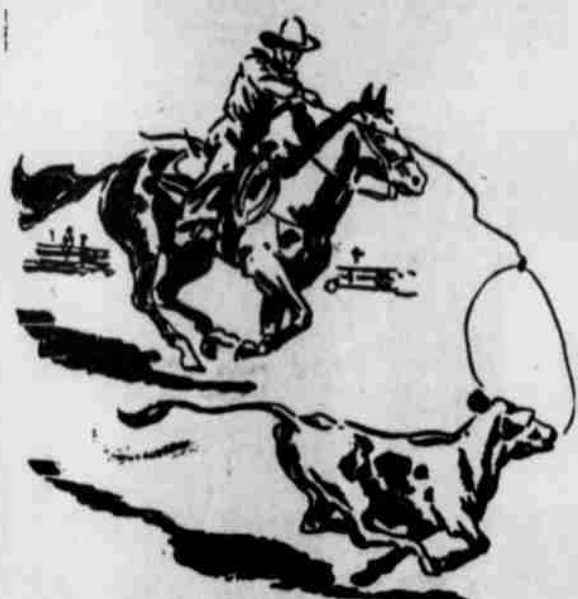
We carry a full line . . . and have feed for every need . . . including—

- R. C. 18% DAIRY FEED
- CHICK STARTER
- EGG MASH
- GROW MASH
- WA-MO-HOG Supplement
- ALCOMO HORSE and MULE FEED, Etc.

FARMERS—We want to buy your grain. See us before you sell.

— SEED WHEAT FOR SALE —

DOGGETT GRAIN CO.
Littlefield



WELCOME COWBOYS and COWGIRLS to the LITTLEFIELD

Sept. 19-20-21 RODEO 4 Big Shows

and while you're in town for the Rodeo, fill your car with—



AT ANY OF THE MANY CONVENIENTLY LOCATED **Phillips 66** SERVICE STATIONS **W. E. HEATHMAN** Phillips "66" Wholesale Agent Littlefield Phone 66

WELCOME Rodeo Visitors



We Join in Welcoming You To the LITTLEFIELD RODEO

Come prepared to enjoy every minute of the time. . . Meet your old friends and enjoy the fellowship of one another.

You'll find Littlefield with her latch-key on the outside. . . ENTER AND MAKE YOURSELF AT HOME!

SOUTHWESTERN PUBLIC SERVICE COMPANY
22 YEARS OF GOOD CITIZENSHIP AND PUBLIC SERVICE

For the First Time In Your Life....LET'S ALL GO!



LITTLEFIELD RODEO FOUR BIG RODEOS

SEPTEMBER 19-20-21

\$1500 Plus Entry Fees CASH PRIZES

LITTLEFIELD, TEXAS

- STOCK FURNISHED
By JACK HITSON,
of Ft. Sumner, N. M.
- NIGHT SHOWS ON
SEPTEMBER 19-20-21
AT 8 O'CLOCK
- AFTERNOON SHOW
ON SEPTEMBER 21
AT 2 O'CLOCK

RODEO TICKETS: \$1.50 Each Performance

Season Tickets (all four shows) Adults.....\$4.50
(Including Tax)

Season Tickets (all four shows) Children.....\$1.50
(Including Tax)

PARADE: 2:30 O'CLOCK
THURSDAY, SEPT. 19

- BRONC RIDING
- BULLDOGGING
- BULL RIDING
- CALF ROPING

RODEO QUEEN CORONATION
THURSDAY NIGHT

- CLOWN, TRICK RIDING
AND MANY OTHER
SPECIAL EVENTS



Sponsored by Littlefield Jaycee Rodeo Association

RODEO EDITION

Third
Section

LAMB COUNTY LEADER

Third
Section

VOLUME XXIV Littlefield, Lamb County, Texas, Thursday, September 19, 1946 NUMBER 26

HOCKLEY COUNTY FAIR PRIZES ANNOUNCED BY COUNTY AGENT

List of rules and prizes for Hockley County's annual livestock and crops show has this week been released by County Agent D. W. Sherrill, who will serve as general superintendent of the October 5 fair. The annual event is under sponsorship of the Hockley County Board of Development.

The planning committee met recently, and the different chairmen, Ed Hart and K. W. Wells from Anton were present.

Cash prizes for winning livestock and crops awards will total near the \$450 mark. Prizes in the women's division will be in addition to this amount.

The various contests will be open to any adult 4-H Clubber.

Three cash prizes and one ribbon award will be made on each entry section for the first four places. Judges will be final.

1. This contest shall be open to any adult 4-H Club member in Hockley County.

2. Classes shall be open to any person included in Rule 1.

3. No individual may show more than one entry in the same class.

4. Entries will be awarded money or ribbons through the first four classes.

5. Judges' decision is final in all cases.

6. All entries must be in place and fitted for show by 10 o'clock a.m., October 5, 1946.

Officials

General superintendent, D. W. Sherrill; beef cattle superintendent, Richard McChristial; dairy cattle superintendent, Artie Forehand; swine superintendent, J. S. Bridges; crops superintendent, W. M. Byrd.

In the division of cattle, first will receive \$5; second, \$3; third, \$2; and fourth, a ribbon.

Cattle judging will be in four breeds—Jersey, Shorthorn, Hereford and Guernsey—with six divisions under each. The divisions will be cows over two years, bulls over two years, heifers calves, one to two years; heifer calves, under one year; and bull calves under one year.

Five swine breeds will be shown in the fair—Duroc-Jersey, Chester White, Poland China, Berkshires and Hampshires.

Winners for crop exhibits will be

given \$1, 75 cents and 50 cents for the first three places, and ribbons for fourth.

To be shown in 10-head lots or 10 ears of corn, the following will be judged: regari, kaffir, Bonita, Martin, Planisman, red top early combine hegar, corn and popcorn.

Alfalfa will be judged by the bale the best bundles (fodder) and be designated for sweet sudan, sudan, red top and German millet.

Prizes for the best gallon of seed will be offered on hegar, kaffir, bo-

nita, martin, plainsman red top, early combine hegar, corn, sudan, sweet sudan, pinto beans, cream peas, blackeyed peas, wheat and millet.

Pound of lint cotton, any variety, as well as the best ten open bolls of cotton will be judged. Other products will receive the same four prizes, with the number for exhibits as follows: cantaloupe, three; tomatoes, six; onions, six; bell peppers, six; cucumbers, three; sweet potatoes, 12; apples, six; canned vegetables, three;

Motorists, how about being honest with yourself and doing a little self-analysis of your own driving? The Texas Safety Association thinks it might help you to become a better and safer driver. Have you had several accidents since you've been driving a car? Do you frequently go on

a fender bender? Have you had quite a few close shaves on the highway? If so, who is to blame? It's probably your own fault. Good drivers don't get into tight places—they stay out of them! Remember—your driving record is your best credential.

ANTON LIONS CLUB TO STAGE BIG AUCTION SALE NOV. 9

The Anton Lions Club plan to stage a big auction sale on Saturday, Nov. 9, the proceeds of which will go to decorate the stage in the Anton High School auditorium. The club has taken the sponsorship of this civic project, and the auction sale is to raise the money to finance the work. Everything sold will be donated to this particular cause. Already many very valuable articles have been contributed, and by the date of sale it is very probable that there will be a wide variety of household goods, farm equipment, farm appliances, feed, fine seed, livestock and merchandise to go on the block. If you have some useful article that you do not need, why not give it to this cause?

Remember the date, and be on hand; you may have an opportunity to buy something that you have been looking for.

Crippled Children Program Sept. 26

A one-day conference on the Crippled Children's Program will be held in the North Room of the Amarillo Hotel, Amarillo, Texas, on Thursday, Sept. 26. The program will begin at 9 a.m., and close at 4 p.m. This conference is being sponsored by the Crippled Children's Division of the State Department of Health in cooperation with other public agencies of the state interested in the care and well-being of crippled children.

Dr. John M. Hooper, city health officer of Amarillo, will preside at the morning session, and Charles M. Rogers, superintendent of Amarillo public schools, will have charge of the afternoon session. Representatives of civic clubs, women's clubs, health departments, Red Cross, public schools, city and county officials, the members of the Texas Society for Crippled Children and other individuals interested in child welfare are expected to attend this conference.

An interesting program has been arranged, and it is hoped that this city will be represented at the conference.

Pick-Up & Delivery Service TOMMY WRIGHT and ARTHUR WHISENHUNT

— announce —

THAT THEY HAVE ESTABLISHED

The City Transfer

in the small building at corner of XIT Drive and West 4th Street

Just North of Zachary's Electric Shop AND ARE NOW READY FOR BUSINESS PICKUP and DELIVER MOST ANYTHING

Cannot Get Phone at Present — So See Us at Our Office.

The City Transfer

W. 4th St. and XIT Drive

Littlefield

FARM and RANCH LOANS

4% interest. Terms 5 to 25 years with annual payment. May be repaid in full after two years. No stock to buy and no loan expense except bringing abstract up. We also buy land notes.

The WINSTON INSURANCE AGENCY LITTLEFIELD, TEXAS PHONE 233

Ships Certified Seed to Africa

Thirty-seven years after Sudan grass was introduced into the United States from Sudan, Africa, Texas Tech, Lubbock, has shipped back to Africa 500 pounds of Texas Certified Sweet Sudan grass seed.

Sudan grass was brought to America in 1909 by C. V. Piper, of the United States Department of Agriculture. Since that time improvement of the grass has been made in the United States and for many years Sudan has been the principal summer pasture grass crop for livestock from Kansas southward. Improvement in the main has been to make the grass more palatable to livestock and less subject to insects and diseases.

Texas Tech Department of Plant Industry, headed by Dr. A. W. Young, recently received a request for the Sweet Sudan seed from the Government Supply Mission of South Africa, in Sudan. The 500-pound shipment was made August 23.

One million of the World War II veterans who left farms already have or will return to the farms, the Veterans Administration reports. Ninety per cent of these expect to be farm operators.

A fellow in California was arrested for driving backwards. He had figured he could SAVE MONEY because he had rented the car on a mileage basis. The Texas Safety Association points out that this man was no more rash nor ridiculous than the people who take risks while walking or driving or working in order to SAVE TIME. To SAVE your life, you can't beat carefulness!



TUTOR JAP PRINCE . . . Mrs. Elizabeth Gray Vining, Philadelphia teacher and author, who was selected as a tutor for Crown Prince Kotoishi Akihito of Japan. She was selected by the U. S. state department.



We Extend a Hearty Invitation to All to Attend the LITTLEFIELD RODEO

SEPT. 19-20-21

Extensive preparations have been underway to make this event an outstanding success

COME AND ENJOY YOURSELF

While here, visit our store . . . See the many new items we are featuring for Fall.

Perry's Variety Store

Now You Can Subscribe to the STAR-TELEGRAM AT REDUCED RATES

Bargain Days rates, effective immediately and for a short time only, are:

STAR-TELEGRAM— One Year, Daily and Sunday — Regular Rate \$15.00 —Bargain Days rate, \$10.95

STAR-TELEGRAM— Daily and Sunday, and Lamb County Leader —Both for one year for \$12.45

STAR-TELEGRAM— One Year, Daily without Sunday — Regular Rate \$12.00 —Bargain Days rate, \$9.60

STAR-TELEGRAM— Daily, without Sunday, and Lamb County Leader —Both for one year for \$11.10

THE STAR-TELEGRAM RECENTLY INCREASED THEIR SUBSCRIPTION RATE, DUE TO HIGH COST OF OPERATION . . . THE FIRST INCREASE IN PRICE SINCE 1942.

We are authorized to accept a few new subscriptions to The Star-Telegram. Leave your new subscription or renewal at the

LAMB COUNTY LEADER



ADVENTUROUS! GO CLIMB AN ALP! . . . But you won't have to go to Switzerland to do a spot of Alpinering. Mountaineers from all parts of the United States and Canada do it in the Canadian Rockies, and they say the thrills are worth all the efforts. The Bugaboo glacier in the Purcell range of British Columbia is tougher than many Swiss Alps and unmatched in grandeur. Here is Maj. Rex Gibson, one of Canada's ace Alpinists, chopping footholds.

ing the sale at 8:30 a.m., and will remain open until 4:30 p.m. All sales will be made by method of sealed bids. Prospective buyers will be allowed to inspect all merchandise before submitting their bids. Bids will be opened Friday, Sept. 20, and successful bidders will be notified Monday, Sept. 23.

All property for sale is divided into small lots in order that all bidders will have a fair chance to secure the merchandise that they need.

For further information concerning the sale, interested parties may contact First Lt. E. L. Miller, salvage officer of SPAAF.

SUFFERS INFECTION IN LEFT HEEL

John Srygley, who plays with the second-string of the Littlefield Wildcats, suffered a blister on his left heel in which an infection took place, and he was a patient in the Lubbock General Hospital a week. He had his heel lanced at the hospital and was released Friday, Sept. 6.

Johnny was still going around with a crutch last weekend. Although it is now doing nicely, the boy said it would be some time before he could play football again.

Establish Transfer Business Here

Tommy Wright and Arthur Whisenhunt, both of Sudan, have established a transfer business in the small building located on West Fourth Street and XIT Drive, just north of Zachary's Electric Shop.

They are operating this business under the name of City Transfer, and will pick up and deliver anything they can handle in their three-quarter ton pickup.

Mr. Wright and Mr. Whisenhunt have moved here, and will make their homes in Littlefield.

Springlake P-TA Sponsors Chorus

Springlake P.T.A. began its regular meetings Tuesday, Sept. 10.

They organized a room representative group and are sponsoring a ladies' chorus.

Mrs. Ada Rudd was elected new finance chairman.

Social Security Official Is To Visit Littlefield

Elliott Adams, manager of the field office of the Social Security Administration at Lubbock, will be in Littlefield at the U. S. post office, Wednesday, Sept. 25, at 10:30 a.m., for the purpose of assisting persons who have questions regarding social security.

Old-age and survivors' insurance is a government insurance system for wage earners in business or industry. As the name implies, it protects both the aged worker and the survivors of young as well as old workers who die. It provides benefits for workers after they reach age 65 and stop work, and benefits for widows and children (in some cases parents) of insured workers, both young and old—who die. This plan makes it possible for a workers through his social security tax to lay away, every payday, a little bit of his earnings to make provision for the time when he is too old to work or for the support of his dependents in case of his death.

Under this plan, the money paid to the retired worker or his survivors is theirs by right, just as any other insurance money would be.

For further information, contact the Social Security Administration representative.

Salvage Sale At Army Air Field

Major Robert W. English, commanding officer of South Plains Army Air Field, Lubbock, has announced that the fifth in a series of salvage sales will be conducted Monday, Sept. 16, through Thursday, Sept. 19.

These sales are designed to return to civilian use many articles of value which are no longer needed by the army. Many scarce items will be on sale and include the following: Office furniture (chairs, desks, trays), sheet metal, tools, tool boxes, kitchen utensils (restaurant size), extension cords and some pipe fittings and plumbing supplies.

Gates at SPAAF will open daily dur-

FOR QUICK SERVICE
Bring Your Ford "Home" To Your Ford Dealer
 **Your Dealer Knows Your Car Best!**

Hall Motor Co.
Sales  Service

LITTLEFIELD, TEXAS

EVINS CLEANERS

LITTLEFIELD

Efficient Service . . . Always!

FERTILIZER PLANTING ATTACHMENTS

—for wide seed drills. Plants seed and fertilizer in one operation.

FOUR-LEAF POWDERED ROCK PHOSPHATE

—has produced \$50.00 worth of extra wheat for each \$1.50 sack applied.

ORDER NOW

—for wheat or alfalfa so we can make up a carload to your community.

SUPER-PHOSPHATE

—Rock Phosphate, and other fertilizers on hand in Hereford.

ARMSTRONG PRESCRIPTION FERTILIZER

(Back of the Santa Fe passenger depot)

Box 181 HEREFORD, TEXAS Phone 774

• NOTHING IS TOO GOOD FOR THE RODEO VISITORS! . . . ESPECIALLY FOR YOU WE HAVE MADE A



Of Good Steaks

FOR YOUR ENJOYMENT and GOOD EATING

It Doesn't Take Long For Even A Stranger to Find the Best Place In Town to Eat

STEAKS--CHICKEN--SHORT ORDERS

We Serve A Good 50c Lunch

DELANO CAFE

HIGHWAY 84 -- LITTLEFIELD
 Just West of Main Street

WE'LL BE OPEN EARLY and LATE • COME AROUND! . . . WE'LL FEED YOU GOOD!

EMIL and RUTH ONSTOTT, Proprietors

Extension Agent To Tour England

Silver Whitsett, Guadalupe County agricultural agent for the past 19 years, is one of the eight agricultural leaders of the United States who sailed from New York Sept. 4, to tour England as a guest of the British government.

As stated in the invitation from the British Embassy, tendered through Dr. Ide P. Trotter, director of the Texas Extension Service, College Station, the tour is being offered

in gratitude for the help given United Kingdom agriculturists by the land-grant colleges during World War II. The fact that Whitsett was among those invited to England is a tribute to the work of thousands of county agricultural agents and home demonstration agents over the nation in helping England solve problems on the food front.

Whitsett was graduated from Texas A&M College in 1924 with a B.S. degree in agriculture, and served as Llano County agricultural agent for two years before being transferred to his present location in 1926. He received the Distinguished County Agent's Award in 1943, and is a di-

rector and past president of the Texas County Agricultural Agents' Association. During World War I he served in France with the Sixth Reg., U. S. Marines. His work in soil building, soil conservation, animal husbandry, and in the 4-H Club field is considered outstanding.

Whitsett was granted a two-month leave by the Guadalupe County commissioners' court so that he could accept the British invitation.

Former tenants, laborers and sharecroppers who are buying farms with Farm Security Administration loans are 59 per cent ahead of schedule in their payments.

Taxes Pay Cost Of Schooling of Half Million Children

Nearly half a million Texas school children had the entire cost of their schooling paid last year by taxes from the oil and gas industry, a survey by the Texas Mid-Continent Oil and Gas Association shows.

Virtually one out of every three Texas school children was educated in 1945 by oil and gas taxes, the survey reveals. In addition, the petroleum industry paid more than \$8,500,000 last year in lease and royalty payments to the state permanent school and permanent university funds, such payments having totaled \$100,000,000 to date.

"Texas school children have an important stake in the state's petroleum industry, since over 30 per cent of them have their schooling paid for by oil and gas taxes," Fred W. Shield, Texas Mid-Continent president, said. "Last year taxes collected from the petroleum industry which went directly to the support of Texas public schools aggregated \$34,205,291, against \$78,478,815 from all other sources combined. The petroleum industry total does not include the schools' one-fourth, or \$10,000,000, of the gasoline tax paid by Texas motorists on our industry's principal product."

"Using the average per capita

For Greek War Relief



PEDIGREED JERSEYS "FLY" TO GREECE—Three aristocrats of CBS's "County Fair" program—two Jersey heifers and a Jersey bull—enter a Veterans' Air Transport at Newark, N. J. Airport for their flight to Greece. The prized stock, valued at more than \$10,000 and donated by the Borden Company, are winging their way overseas as part of the Greek War Relief Association's "Give An Animal" campaign, which calls for the re-stocking of Greece's small farms now. Until these animals can bring farm production back to pre-war levels, the Greek War Relief is urging all America to send pennies or dollars to the Association that a \$12.75 thirty-five pound food package may be "telegraphed" today to the heroic but starving people of Greece.

THERE'LL BE
Plenty of
EXCITEMENT
AT THE
LITTLEFIELD RODEO

SEPT. 19 - 20 - 21

IT HAS BEEN A PLEASURE
TO SERVE YOU AND WE
ARE LOOKING FORWARD
TO THE YEARS AHEAD!

CASE
IMPLEMENTS
and TRACTORS

PLEASE LET US KNOW WHEN WE CAN BE OF SERVICE TO YOU

**FERGUSON IMPLEMENT
& MACHINE CO.**

Littlefield

Phone 263



**WE'LL BE SEEING
ALL YOU FOLKS**

— at the —

**LITTLEFIELD
RODEO** 4 BIG
SEPT. 19 - 20 - 21 SHOWS

AND WE'LL BE MIGHTY HAPPY TO HAVE
YOU VISIT US WHILE IN
LITTLEFIELD

PEYTON PACKING CO.

PAINTING and DECORATING...

A COMPLETE SERVICE

SPRAY or BRUSH

We Specialize In

ROOFS

FARM EQUIPMENT

and

BUSINESS BUILDINGS

— SEE —

BOB TAYLOR

417 W. Fifth St. Littlefield

Phone 343-M

schooling cost of \$75.62, petroleum industry taxes alone paid for the education of 452,331 Texas boys and girls. They represent 30.4 per cent, or almost one-third, of the 1,490,059 scholastics last year. In many independent school districts of the state, taxes collected from the petroleum industry and its properties make up most of the revenue from all sources."

Besides taxes, Texas oil and gas operators pay large sums annually in lease bonuses and rentals and royalties to the permanent school and permanent university funds. Figures from the state comptroller of public accounts show that from 1932 through July, 1946, petroleum payments to the permanent school fund totaled \$42,278,123, while from 1925 on, such payments to the permanent university fund aggregated \$57,539,362. Petroleum payments to both funds totaled \$99,817,485.

More than 6,500 brides of American servicemen have left Australia to make their homes in the United



STOP RELIEF!... World War I food czar, ex-President Herbert Hoover, as he called for an immediate stoppage of relief supplies to Yugoslavia. He termed that nation's shooting down of American planes, "a poor token of gratitude."

States, bringing with them nearly 3,000 children.



WELCOME...

COWBOYS!

— and —

COWGIRLS!

● to the —

LITTLEFIELD

SEPT.
19 - 20 - 21

RODEO

SEPT.
19 - 20 - 21

And while you're in town for the three-day celebration, come around to see us. Fill up that car with our good products.

GASOLINE and OIL... WASHING and LUBRICATION

TIRES and TUBES... VULCANIZING

AUTOMOBILE and TRUCK ACCESSORIES

McCORMICK BROS.

PETROLEUM PRODUCTS

Highway 84

LITTLEFIELD

Phone 153

Open All Night

● Wholesale and Retail

SCENE IN TYPICAL TEXAS HOSPITAL



Many student nurses dream of the day when they can participate in scenes such as the above, depicting an operating room in a typical Texas hospital. The Texas League of Nursing Education, in co-operation with five other state health organizations, currently is seeking to raise student nurse enrollments in Fall classes from an all-time low of 300 to more than 2,000 by October 1. (FYI—Above picture made at Harris Memorial Methodist Hospital, Fort Worth).

J. O. Garlington and wife to Rhendard W. McCary, lot 6, and west half of lot 5, all in block 23, in Ouggan Annex.

John Edward Baldrige, a single man, to W. D. Lackey, NW ¼ of section 42, Edward K. Warren subdivision No. 1, block "W" in Lamb County, and containing 160 acres of land.

J. O. Garlington, joined by wife, to A. E. Mann and Ila Lue Mann, all of lot 16, and E. ½ of lot 15, block 7, Duggan Annex.

J. E. McKnight, joined by wife, to Emmett Brown, lot 16, block 7, College Heights Addition.

J. H. Wells and wife to R. L. Taylor, lot 17, block 29, original town of Littlefield.

J. T. Smith and wife, Ella Smith, to R. C. Evins, lot 1, block 5, High School Addition to the city of Littlefield.

Ewing Halsell, individually, and Clarence Halsell, et al, to John R. Tucker, Labor 12, out of League 636, State Capitol Lands, containing 177.1

acres, or less, in Lamb County.

J. T. Weaver and Rose R. Weaver to Roy McCary and wife, lot 9, block 9, Highway Addition to the city of Littlefield.

Price C. Smith and wife to Emma L. Akin, lot "H", in E. M. Akin subdivision of lot No. 9, block 1, of Broadacres Addition to the city of Littlefield, Lamb County.

Marriage Licenses Issued

Billy Owen Pryor and Floyce Sturgis, Sept. 10.

William J. Lee and Mildred Boone, Sept. 10.

C. P. Chandler and Nora Faye Evans, Sept. 11.

Sudan Child Dies As Result of Polio

Mary Elizabeth Hanna, aged 10, daughter of Mr. and Mrs. J. R. Hanna of Sudan, passed away at the Plainview Polio Center Sunday afternoon, Sept. 8, at 2 o'clock, as a

result of poliomyelitis. She had been a patient in the hospital since the Thursday previous.

The child had only been ill about four days.

Funeral services were conducted at the Church of Christ, Sudan, the next

day, Monday afternoon, at 3:30 o'clock. Burial, in charge of Hammons Funeral Home, took place in the Sudan cemetery.

The child is survived by her parents.

64 Day or Night 64

HAMMONS FUNERAL HOME

BPS OUTSIDE GLOSS WHITE

"IS MORE" THAN AN ORDINARY PAINT
IT STAYS WHITE and PROTECTS LONGER

You'll be Proud of Your Home

BPS OUTSIDE GLOSS WHITE is made to stay white, clean and attractive for many years.

- Holds its Gloss and does not yellow or 'gray' from atmospheric conditions.
- It will give you the whitest white house on your street and the most attractive.
- Use BPS Foul-Weather Coat White for the 'First Coat' . . . It has remarkable hiding qualities.

Only 4.40 Per Gal.

CICERO SMITH LUMBER COMPANY
Littlefield, Texas



BREAKS AIR SPEED RECORD . . . Lt. Wm. J. Reilly, San Francisco, winner of feature race at the National air races held at Cleveland. He piloted his P-80 jet craft to an average speed of 578.36 miles an hour. Reilly is shown receiving the trophy from Albert J. Weatherhead Jr. Many other records fell during the postwar air show and races. Cleveland plans to make this an annual event. Hundreds of thousands visited Cleveland to watch the big races.

OFFICIAL RECORDS

Campbell, lots 11, 12, 13, 14, 15 and 16, block 8, original town of Olton, Lamb County, Texas.

A. M. Nichols to Amos Buford Nichols, et al, lot 2, block 2, of Badger-Whicker Addition to town of Littlefield.

A. B. Taylor and wife to A. B. of lot 5, all in block 23, in Duggan Annex, city of Littlefield.

Mrs. Nannie B. Erwin, joined by husband, J. E. Erwin, to A. F. Jones, part of lot 11, block 5, High School Addition to the city of Littlefield.

Transfers Filed

J. V. Speights and wife, to Mrs. Mammie E. James, S. ½ of lot 6, block 4, Yellowhouse Addition to City of Littlefield.

Minnie Kemp, joined by husband, to C. H. Jeffers, lot 8, block 47, of original town of Littlefield.

R. H. Henson and wife to J. W.

WELCOME FOLKS!

. . . to the

LITTLEFIELD RODEO Sept. 19-20-21

AND WELCOME

— to —

POPE'S CAFE

If it's first-class chuck you want, you'll find it here . . . and served to you by courteous waitresses, after being prepared by cooks that know how.

WE'LL BE LOOKING FOR YOU!
Jack and Fleeta Pope

A Glad HAND Awaits YOU!

— at the —

LITTLEFIELD RODEO

— and —

AT OUR STORE

YOU'LL FIND THRILLS AT THE RODEO and BIG VALUES AT HOUK BROS.

WE'LL BE LOOKING FOR YOU

HOUK BROS.

Grocery & Market

Highway 51 — Just South of Highway 84

VERNON (MUTT) HOUK EDDIE HOUK

Mr. and Mrs. Dennis Jones accompanied their son, Eddie Ray, Sunday...

Institute. This is the second year for Eddie Ray. Mr. and Mrs. Jones returned home Monday.



We'll Be Seein' A PASSEL OF YOU FOLKS

— at the —

LITTLEFIELD

SEPT. 19 - 20 - 21 RODEO SEPT. 19 - 20 - 21

AND WE'LL BE MIGHTY HAPPY TO SEE

YOU AT OUR STORE WHILE

YOU'RE IN TOWN

YOU'RE ALWAYS WELCOME HERE, AND WE'LL TRY TO FILL YOUR NEEDS . . . ON RODEO DAYS AND EVERY DAY . . .

Complete PRESCRIPTION SERVICE

MADDEN & WRIGHT DRUG logo with contact info.



DIRECT ACTION . . . William G. Williams, 70, Washington, D. C., the consulting engineer who as a "plain citizen," protested plan to ship material to Yugoslavia and found his action started movement for new organization, "Direct Action."

At The Littlefield Hospital—

Mrs. A. C. Harris of Hale Center was admitted to the hospital Friday, Sept. 6, for medical treatment. Improved, she was released after four days' treatment.

Bill Bourlian had his tonsils removed Sept. 7, and was released the next day.

Mrs. F. A. Jenkins of Whitharral was admitted Sept. 8 for medical treatment, and was a patient three days.

Joan Taylor of Littlefield, threatened with appendicitis, was admitted Sept. 8 and, after two days' treatment was released.

Miss Billie Jo Green sustained a fractured leg Sept. 8, and was a patient in the hospital a couple of days for treatment.

Toni Weaver, 2-year-old daughter of Mr. and Mrs. J. E. Weaver, was admitted to the hospital Thursday, after she was reported to have drunk some draino. She was taken home Friday, improved.

Miss Becky Moore, who suffered an attack of pneumonia, and has been a patient for about 10 days, is improving nicely.

Mr. and Mrs. Marion Harper are the parents of a son, born Wednesday morning, Sept. 11, weighing five pounds, 10 ounces. He has been named Alton Ray.

Sustains Bruised Face When Hit By Swing at School

Twilla Brittingham, 13, sustained a severely bruised face when hit by a swing at school Wednesday noon of last week, and was a patient at the Amherst hospital until Thursday,

when she was taken home. She is a niece of Mr. and Mrs. Jack Farr, with whom she lives. She was obliged to remain in bed several days after going home, and keep cold and hot packs on her face to avoid infection.

Mrs. B. C. Woolridge of Newcastle, Texas, arrived Sept. 7 to spend a week with Mrs. Stella Zimmerman.

Mr. and Mrs. A. L. Legg left recently for Los Angeles to visit Mr. Legg's sister. They made the trip by train and will be away for two weeks.



TWINS ELECT TWINS PREXIES . . . The nation's twins at their Grand Rapids, Mich., convention elected the Hick twins, Emory, left, and Ernest of Birmingham, Ala., co-presidents of the association. Receiving the gavel from Chicago's twin policemen, Warren and Chester Doonan, right, who held the gavel as co-presidents of the International Twins association for the past five years, the Birmingham twins dedicated their efforts toward more and better twins in 1947.

Welcome to the Littlefield Rodeo



YOU CAN DEPEND ON FINDING A JAM-UP GOOD RODEO

FULL OF THRILLS

And you can depend on reliable, thorough CLEANING SERVICE every day in the year

— AT —

EVINS CLEANERS

LITTLEFIELD



FOR TOPS IN WESTERN ENTERTAINMENT

Plan Now to Attend the

LITTLEFIELD

SEPT. 19 - 20 - 21 RODEO SEPT. 19 - 20 - 21

AND FOR TOPS IN HOME FURNISHINGS VISIT OUR

STORE . . . YOU'LL FIND SOMETHING

. . . SOMETHING DIFFERENT!

Compare the Price! . . . Compare the Quality!

— AND YOU'LL BUY AT —

RODGERS

Littlefield FURNITURE Phone 221

Advertisement for Admiration Coffee featuring a woman pointing to a can of coffee and the slogan 'it's CUP-TESTED'.

"Cup-Tested"? Yes, that's exactly what I mean. The same experts who have been guarding the goodness of ADMIRATION for nearly thirty years personally "Cup-Test" all ADMIRATION coffee to see that the same fine blend of rich, fragrant coffee goes into every package. Cup after cup, day after day, year after year, ADMIRATION is tested BY TASTE to make it the distinctive coffee that never varies. The personally "Cup-Tested" ADMIRATION way is the ONLY way to assure the same perfect blend—package after package.



for FLAVOR



for AROMA



for RICHNESS

Admiration Coffee

Copyright 1944, Duncan Coffee Company

DUNCAN COFFEE CO. . . ROASTERS ALSO OF MARYLAND CLUB AND BRIGHT AND EARLY COFFEES



DAVIS AND BLANCHARD AGAIN . . . The Army's touchdown twins, Glen Davis, left, and "Doc" Blanchard, demonstrate how they plan to shake the opposition during the coming football season. They were snapped during practice at the United States military academy, West Point.

1945 Crop Cotton To Be Pooled

All cotton still under the 1945 crop loan on October 1, 1946, will be pooled for producers' account by the Commodity Credit Corporation.

According to F. C. Elliott, cotton work specialist of Texas A. and M. College Extension Service, Texas farmers who have 1945 crop cotton under loan now should give serious consideration to marketing the cotton before it is placed in pools. The average 1945 loan rate for 15/16-inch middling cotton, gross weight, was 21.09 cents per pound. Since the price now has climbed considerably, producers should be able to dispose of this cotton at prices that will give them a substantial profit.

The 1945 crop loan cotton which is not redeemed before October 1 will, as provided in the loan agreements, go into pools. Not until all the cotton in the pools is liquidated will the producer receive any payment. Net proceeds, if any, will then be distributed among the producers whose cotton was placed in the pools in proportion to their interest. From the proceeds of the pool cotton will be deducted all advances and accrued costs—including storage, insurance and handling charges. No payment will be made to producers at the time their cotton is placed in pools and after October 1, farmers will not be entitled to order the sale of cotton now under loan.

The Texas Safety Association reminds motorists to keep their minds on the road while driving—concentrate not only on what IS happening,



MODEL WINNER . . . Milton L. Guguelet, Chicago, who won the grand champion trophy at the national model airplane meet held at Wichita, Kans.

but on what MAY happen "up ahead." A daydream at the wheel may become a nightmare at the hospital!

Provide Rodeo Grounds With Loud Speakers

Bartley & Harvey are supplying the public address system complimentary at the rodeo grounds during the three days' show, while Zachary Electric is supplying two outside speakers at the grounds.

There are a lot of things your children can wait until they go to school to learn. But playing and walking safely should be taught them before they face dangerous tests at home, on the streets and in the places they play. The Texas Safety Association urges all parents to prepare their children for a long life. Don't let your child be a victim of an accident because his safety training was "a little and too late."

at GRADY BEVELL FRUIT STAND

Across from the Depot and Magnolia Service Station

ALL KINDS OF APPLES \$2.00 to \$4.00 per Bushel

BANANAS ICE COLD WATERMELON CALIFORNIA GRAPES

Potatoes 10 Lbs. 35c
Vine Ripe Tomatoes 3 Lbs. 25c

(We will have tomatoes until frost)

Painting Underway At Rodeo Grounds

Work got under way Thursday on painting the pens, chutes and bleachers at the rodeo arena.

Briggs & Pruitt are doing the work.

The pens and chutes are being painted red and the bleachers gray.

Dairymen should plant at least one acre of small grain pasture for each cow for the coming winter, say dairy specialists of the Texas A and M.



BELL TO HONOR HERO . . . A pig-tailed little girl is reading the inscription on the bell whose tolling will be a ringing memorial to the late Gen. George S. Patton, former commander of the U. S. 3rd army. It was presented to St. John's Episcopal church, Beverly Farms, Mass.

Here's a suggestion to Texas' bicycle-riding youngsters—and to their mothers and fathers. The safe bicyclist today will make the safe motorist tomorrow. Start right now doing things the correct way. Obey traffic rules. Look out for the other fellow. Your bicycle is a vehicle—not a toy. Don't get it tangled up in a traffic accident. Remember—on a bike your head counts more than your feet!

It is almost impossible to determine the exact length of the Mississippi River at any given time. The river is about 2,500 miles long, but the shifting river bed sometimes permits the water to take a shorter course.

Call 192

—FOR—

MOTOR SERVICE RADIO REPAIR ELECTRIC TROUBLES

—AND—

REA WIRING

WE PICK UP AND DELIVER

W-W Electric

Come to Littlefield

SEPT. 19, 20 and 21 . . . and CELEBRATE!

Enjoy our rodeo . . . also take advantage of our First-Class Equipment and Material . . .



to have your Tires recapped at the O. K. RUBBER Co.

Also Visit the New Home of the

Hudson Automobile

in former location of Bus Depot and Cotton's Cafe and inspect the beautiful new HUDSON on display

O. K. RUBBER and WELDING CO.

THOMPSON MOTOR CO.

H. L. ATWOOD ● JOE THOMPSON ● HUGH RICE

The Lavender Motor Co.

are proud of the opportunity to supply

"Miss Littlefield"

WITH A BEAUTIFUL

Chrysler Four Door Sedan

for transportation during the Rodeo FOR THRILLS and SPILLS

come to the

Littlefield Rodeo



We hope you'll come and stay for the three days of the event, and enjoy every minute while you are here

And for Real Riding Comfort Thrills

— choose —

CHRYSLER PLYMOUTH

EXPERT WASHING and LUBRICATION

BRING US YOUR CAR . . . YOU'LL LIKE OUR SERVICE

Complete facilities for—

- BODY WORK
- PAINTING
- WHEEL ALIGNMENT

LAVENDER MOTOR CO.

"A Modern Home for Modern Cars"

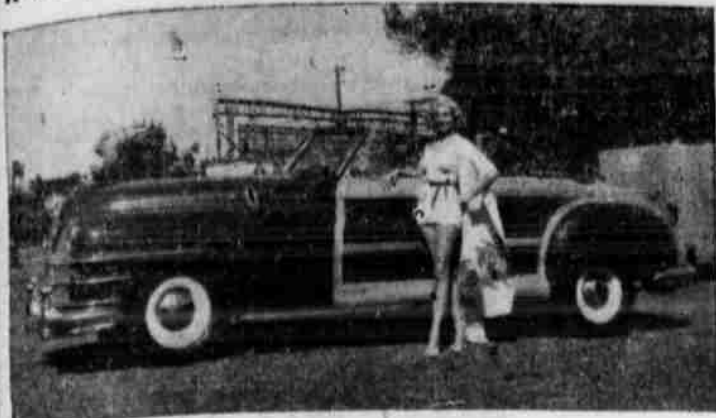
XIT Drive and Fifth St.

Littlefield

Phone 10



A Study in Symmetry—Human and Otherwise



Speaking of bodies, here we have Marie MacDonald, known as "The Body" in Hollywood, with a Chrysler Town and Country convertible coupe, also famous for the beauty of its body in which ornamental woods are used in their natural colors. Marie MacDonald is being starred in "Life's for the Loving," M. G. M. production.

Potato Growers Meet at Gilmer

More than 50 representatives of potato growers and buyers and research men gathered in Gilmer, Sept. 10, from all parts of Texas as guests of the East Texas Yamboree Association, to formulate plans for organization of a state potato association.

Speakers from A&M College, the Texas Chamber of Commerce, Louisiana and the Yamboree Association pointed the way to the organization of Texas' first all-state yam as-

sociation. Organization machinery was set up with a motion, carried by the group, for appointment of a representative from each county to draft plans to be offered at another meeting in the near future.

Speakers at the Gilmer meeting called upon the coordinated efforts of all the state's yam industry in setting up a program of research for increasing the quality and markets for this sandy-land crop. They cited the success of Gilmer's annual East Texas Victory Yamboree, scheduled this year for October 24, 25 and 26, as an example of what cooperative effort and publicity can do for the

yam industry.

"The yam has the greatest future of any East Texas crop," pointed out John Alford of Henderson, president of the East Texas Chamber of Commerce, and one of the speakers on the program. "It is already one of the South's 'big four' crops. It's got everything in the way of utilization. The small ones can be used for canning; the large ones for stock food." Mr. Alford also pointed out the possibilities of putting up sweet potatoes, through dehydration methods, like rolled oats for sale to world-wide markets. "Housewives would be able to use them months after they are harvested in making delicious yam dishes," he said.

Work of the sweet potato experimental laboratory, located at Gilmer—the only one of its kind in Texas—was outlined briefly by Ralph Michael, resident horticulturist. "The sweet potato industry," he stated, had received hundreds of thousands of dollars in publicity through the yamboree association, all the expenses being borne by the men around Gilmer's square. Now the industry has outgrown East Texas. Our laboratory needs to become statewide in scope. We need to carry on a series of experiments which

will be helpful to industry as a whole but our funds at present are too limited."

Don Purington, manager of the Gilmer Chamber of Commerce, pointed out further that the work of the laboratory was bringing untold benefits to the sweet potato farmer. "But present appropriations for this work amount to only about \$5,000 per year, too small a sum to serve adequately an industry which can become one of Texas' major economic crops."

Other speakers included D. W. Williams, J. P. Rosebrough, O. C. Haworth, Dr. W. E. Paulson and M. C. Jaynes, all of A&M College, and John Brogotti, president of the Yamboree Association.

They brought out that experiments in sweet potato production have produced strains which yielded 150 to 250 bushels per acre as against the former 75-bushel average. The group concurred unanimously on the need for an organization which would seek better methods of quality and quantity production and greater markets for the crop.

Rural Electrification Administration has approved loans totaling \$4,366,000 to 14 borrowers in nine states.

Prospects are still good for a record-sized corn crop, estimated at 3,442,202,000, U. S. Department of Agriculture reports.



PAYNE-SHOTWELL HOSPITAL & CLINIC
Littlefield, Texas — Phones 155-156

C. E. PAYNE, M.D.
Medicine and Surgery

I. T. SHOTWELL, Jr., M.D.
Medicine and Radiology

O. W. STILL, M.D.
Obstetrics and Gynecology

RALPH E. MAURER, M.D.
Resident Physician

I. T. SHOTWELL, Sr.
Superintendent

MRS. D. C. LINDLEY, R.N.
Superintendent of Nurses



It's Shore Gonna Be
A BIG SHOW!

We're Talking About the

LITTLEFIELD

Sept. 19-20-21 **RODEO** 4 Big Shows

3 DAYS

4 BIG SHOWS

We Welcome You to A
Thrilling Program of
Rodeo Entertainment

...and to Our Store

Fine Furniture For
Your Home

ONSTEAD'S
FURNITURE

LITTLEFIELD PHONE 283

Convenient Credit Terms



COME
to the
LITTLEFIELD
RODEO
for REAL THRILLS

and

**Come to Our Service Department for a Real
Repair Job On Your Car**

FINEST EQUIPMENT . . . EXPERT MECHANICS

*A Special Message
To Car Owners*

After making a thorough analysis of the new car outlook, including factory reports, and looking at conditions as they now stand, we are thoroughly convinced that it will be many months, maybe years, before new cars are available to all who want them. There is a good chance that the car you now have may be the car you will be driving two years from now.

Don't let your automobile get beyond repair. Bring your car to us for a free check-up; if your car is ok or not we will gladly tell you at no expense or obligation to you.

The very latest in automotive scientific equipment and know-how enables us to analyze automobile trouble, its causes or correction.

We recommend that you find out today if your present car will last until you can get a new one, or what it will take to make it last.

We Repair All Makss of Cars and Trucks

Henry's Pontiac Service

Littlefield

Phone 312



Philco Radios

—in stock at Amherst

Crosley Radios

—in stock at Littlefield

Hydraulic Bumper Jacks

BICYCLE PARTS

See the Easy SPINDRIER Washer Demonstrated

MCCORMICK BROS. AUTO PARTS

MAIN STREET — AMHERST — PHONE 2191 — Your Philco Dealer

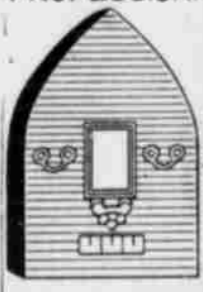
MAIN STREET — LITTLEFIELD — PHONE 157 — Your Crosley Dealer

Hot Shot Batteries
Fence Chargers
Battery and Electric

REAL RUBBER
HEAVY FELT BACK MATS
CUT TO FIT YOUR CAR OR TRUCK
ALSO MATS
FOR YOUR CAR TRUNKS

Seeing is Believing

GUILD OF SPECTACLE MAKERS IN FRANCE ADOPTED IN 1581 DISTINCTIVE EMBLEM FOR THEIR PROFESSION.



POPE LEO X WAS ONE OF THE FIRST TO USE CONCAVE LENSES IN SPECTACLES, ACCORDING TO THE BETTER VISION INSTITUTE. A PORTRAIT BY RAPHAEL SHOWS THE POPE HOLDING HIS GLASSES.



ON A TOMBSTONE IN FLORENCE (ITALY) IS THE INSCRIPTION— "HERE LIES SALVINO ARMATI, INVENTOR OF SPECTACLES. HE DIED 1317."

FOLLOWING DISCOVERY OF GOLD IN SWEDEN IN 1644, DUCATS WERE COINED SHOWING SPECTACLES AND LATIN INSCRIPTION, "BEHOLD THE MIRACLES OF THE LORD"

Full Employment Seen This Fall

C. E. Belk, state U. S. Employment Service director, has declared that Texas should look forward to one of its greatest periods of prosperity and full employment this fall.

In a report which covered the operations of the USES for one year after V-J Day, Belk said about one-half of the veterans are encountering no employment problems in returning to their old jobs or securing new ones without assistance.

He reported that during the one-year period, 425,377 jobs for Texas

workers were found through the USES, of which 134,738 were for veterans. Some 538,205 Texas veterans have returned from the armed services since V-J Day, Belk continued, and the USES has placed approximately one-fourth of them on jobs. An additional 64,739 veterans are now in some type of training, he added.

Thus, a majority of 307,747 Texas war veterans thrown out of employment with the defeat of Japan and all but 15 per cent of Texas' returning war veterans have been converted to peacetime employment, said Belk. "This would indicate that Texas has seen the completion of reconver-

sion and that the solution of one of the most pressing employment problems in its history," he continued.

"The winter months reflected a gloomy employment picture in the state as thousands of ex-war workers and veterans jammed the U. S. Employment Service doors. During the year, serious employment problems confronted many of the principal labor market areas of the state, and 4,072,170 calls were made by people who sought some type of job information from our 11 offices in Texas," Belk said.

He reported that while 8,267 handicapped workers have been placed on jobs during the year, 14,000 active applications still remain in the USES files.

"This is one of the most serious problems we face today," he said, "and all of the energies of the em-

ployment service are being directed toward a more satisfactory solution of the conditions preventing employment of the physically handicapped."

Belk said that a total of 670,061 new applications were received for work during the year, of which 357,425 were from veterans; 787,903 persons were referred to jobs and an additional 227,994 were directed to other agencies for further assistance by the USES during the year.

HAS TWO FIRST BALES

ANTON, Sept. 12.—Anton had two "first" bales of cotton last week. Vernon Bridges, who farms a few miles north of Anton, brought in a bale which was ginned by the Anton Co-Op Gin Saturday evening. Earl Burch brought in a bale early last week, but he took it to the Thomas

Gin and they were not ready to start up, so his bale was not ginned until Tuesday of this week. Bridges had the first bale ginned; Burch had the first bale brought in to the gin. E. D. Criswell and Jack Anders got out to make up a prize for Bridges for

the first bale, got about \$45 or but learned that there was some difference in opinions to which was first bale, so they returned the money to the persons from whom they solicited it. Now, you tell us—was first?

E. M. BOTSFORD
GROCERIES
GULF SERVICE Station

I'm back at my old stand— West side of City on Highway 84 — With a full line of groceries.

HOWDY, NEIGHBORS AND FRIENDS



We are Looking Forward to Seeing You in Littlefield for the

Big Rodeo

Sept. 19-20-21

Whether you live in Clovis, Bovina, Farwell, Muleshoe, Hereford, Plainview, Lubbock, Levelland, or Big Spring, Texas, we welcome you to Littlefield, and invite you to visit our establishment. Whether you are a cowboy, rancher, farmer, or town folks, we talk your language and will make you feel at home.

We operate one of the oldest and most complete hardware stores in Littlefield, and handle such well known brands as—

- BENDIX Washers
- RCA Radios
- GIBSON Refrigerators
- DEARBORN Heaters
- DOMESTIC Sewing Machines
- LAWSON Outboard Motors

Nelson's Hardware & Housewares
ELECTRICAL APPLIANCES & SUPPLIES
P.O. Box 506 Phone 315

10,000 BUSHELS OF APPLES FOR SALE

WHOLESALE OR RETAIL

Eight Different Varieties

W. T. DUKE

FORT SUMNER, NEW MEXICO

(Inquire for Location at Valley Grocery, Fort Sumner)



Littlefield Hospital and Clinic

Littlefield, Texas

Private Branch Phone 301-302
X-Ray and Laboratory

F. W. Janes, M. D.
Res. Ph. 150
Surgery, Diseases of Women, and Obstetrics

J. R. Coen, B. S., M. D.
Res. Ph. 52
Medicine and Surgery

Wm. N. Orr, D. D. S.
Dentistry

RODEO EDITION Lamb County Leader Section Four

LITTLEFIELD, TEXAS, THURSDAY, SEPTEMBER 19, 1946

WELCOME



VISITORS
CONTESTANTS
EVERYBODY! . . .
TO THE
LITTLEFIELD RODEO
Thursday • FRIDAY
Saturday

WE HOPE YOU WILL ENJOY EVERY
MINUTE OF YOUR STAY

WE ARE PROUD OF THE
JUNIOR CHAMBER OF COMMERCE
and what they are doing for Littlefield
For a Complete Automotive Service

— VISIT —

GERLACH'S BATTERY and ELECTRIC

LITTLEFIELD



Welcome Visitors

— TO THE —

Littlefield Rodeo

Our hearty congratulations to Littlefield Jaycees
on their community spirit and hard work
in putting on this big Rodeo.

When here, visit us for your laundry needs. We
offer a complete laundry service.

LITTLEFIELD LAUNDRY

ENJOY THE BEST

—in—

RODEO ENTERTAIN-
MENT

—at the—

Littlefield Rodeo



Come and Bring the Whole Family
WE WILL DO OUR BEST TO SHOW YOU A
GOOD TIME

PAINTING A SPECIALTY
NO JOB TOO LARGE OR TOO SMALL

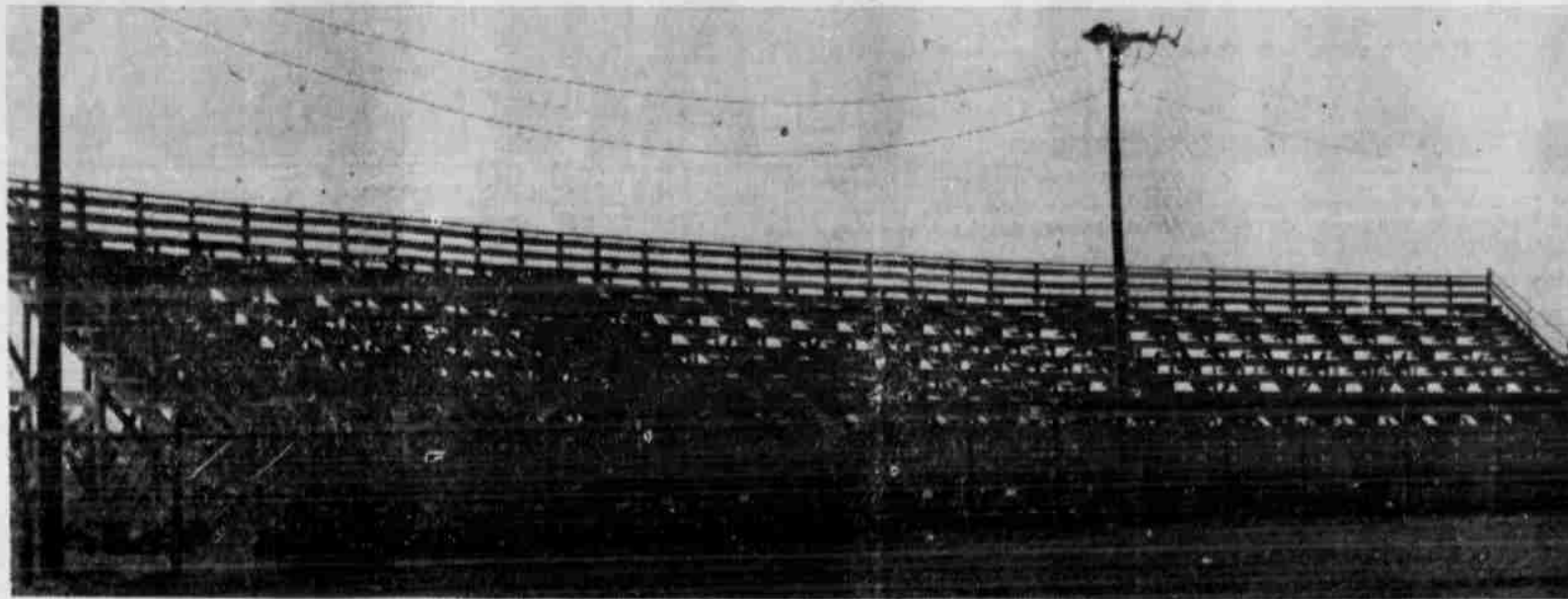
As Good as the Best . . . Better Than the Rest

LITTLEFIELD BODY AND FENDER CO.

L. C. STOVALL - J. G. STOVALL, JR. - BILLY DON STOVALL

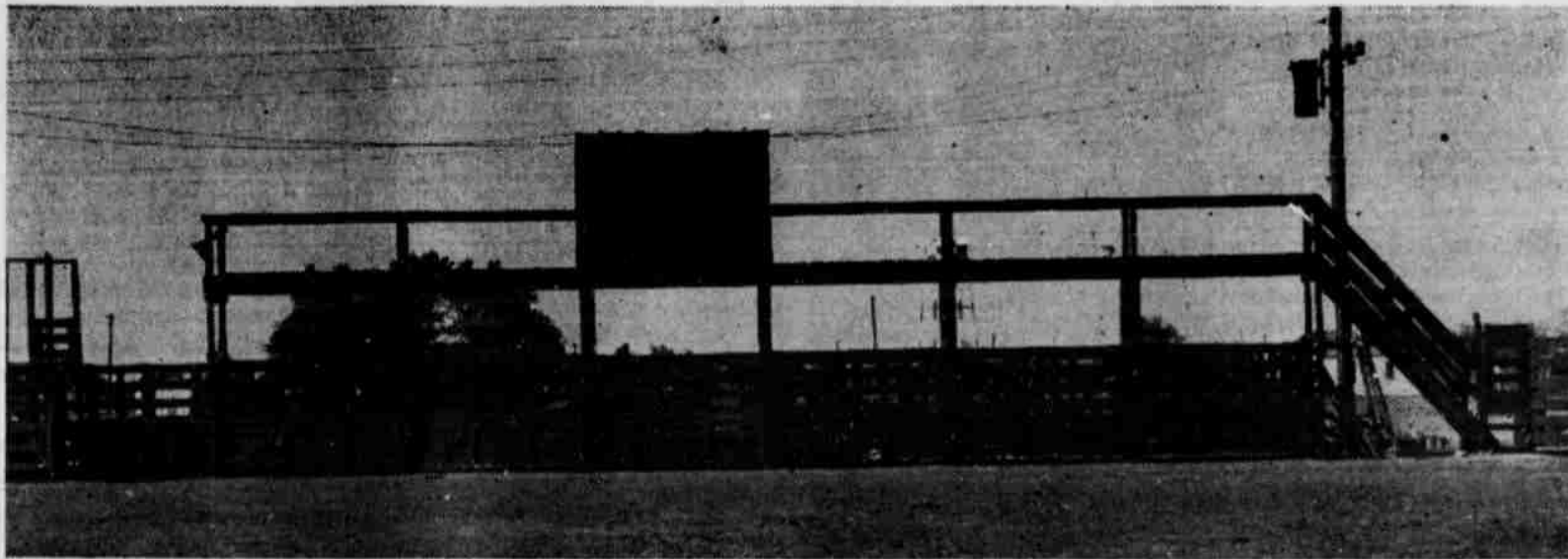
Owners • Operators
Highway 81 • East Side of City

Grandstand at the Littlefield Rodeo Grounds



The grandstand which has been recently constructed by the Littlefield Junior Chamber of Commerce, which provides seating capacity for 3,000 people.

Chutes At the Littlefield Rodeo Grounds



From these chutes the visitors will get many thrills and much excitement during the three-day rodeo. The chutes and pens and all the fixtures of the Littlefield Rodeo were constructed by the Junior Chamber of Commerce, through the efforts of Nelson Naylor, who drew plans, ordered materials and supervised the work himself.

Back to school go Jane and Johnny, with their hands full of books and their heads full of many things besides traffic danger. With them walks the future, Mister Motorist. Don't turn it into a tragic past for

some happy family. The Texas Safety Association reminds you: "Don't let your heedless hurry cause a needless accident. In the vicinity of a school, remember your childhood and your child."

You'll Be Pleased With Our Shop

COMPLETE AUTOMOBILE and TRUCK
REPAIRING

— UNDER —

HAROLD ANDERSON

NO JOB TOO SMALL — NO JOB TOO LARGE

WE THANK OUR FIRST FIFTY SHOP CUSTOMERS:

W. L. CLAWSON
MRS. H. U. JACKSON
J. W. BITNER
BOB NICKELS
DAN BERG
W. H. CUNNINGHAM
J. J. HARLAN
CLARK FOOD STORE
JOE WALTERS
CAMERON LUMBER CO.
W. P. HOLLAND
ROY McCARY
MRS. E. B. MILLER
JACK FARR
J. H. WELLS
MRS. ED HEWITT
J. T. LYBRAND
MRS. M. F. GRADY
DOC WINGO
SAM BAKER
JOHN SEALES
DR. W. N. ORR
FRED HARRELL
A. B. SHORT
L. C. GRISSOM

J. W. KEITHLY
A. G. BROWN
MRS. MINNIE JONES
PRYOR HAMMONS
J. S. ALBRAY
DR. G. KALMAR
MRS. MARY V. SALES
G. D. NEELY
C. E. BURCH, JR.
BOB KIRK
ONSTEAD FURNITURE CO.
B. M. FOWLER
JAMES STEFFEY
DAWN SCHOOL DISTRICT
J. S. LIGHTSEY
D. A. DALE
W. J. CHESHER
L. C. THOMPSON
LUTHER CUNNINGHAM
ORVILLE STEFFEY
CLAUDE COFFER
RALPH NELSON
BUCK OLDHAM
JAMES E. ELMS
J. L. MURDOCK

WE HAVE OPENED OUR

PAINT and BODY DEPARTMENT

— UNDER —

E. S. SMITH

PAINT, FENDER and BODY SPECIALIST

LITTLEFIELD MOTOR CO.

Your DE SOTO-PLYMOUTH DEALER

282 West 2nd Street

Phone 42-J

LITTLEFIELD, TEXAS

Surplus Used Motor Vehicles Reported For Sale Now

Amarillo Army Air Field is announced as one of six sites at which sales of surplus used motor vehicles will be conducted by War Assets Administration's Fort Worth region office during the week starting Monday, Sept. 23. The sales include "set-aside" items offered exclusively to veterans of World War II, and all veterans holding certificates for the vehicles being offered are eligible to participate in any or all of the sales.

The sale at Amarillo Army Air Field, which will also include vehicles of the Pantex Ordnance Plant which have been declared surplus, is scheduled for Tuesday, September 24, from 9 a.m. to 5 p.m. Inspection of the vehicles may be made both Monday as well as the day of the sale, from 8:30 a.m. to 4 p.m.

Included in the offering are listed command and reconnaissance cars, carryalls, ambulances, weapon carriers, pickup trucks, scooters and a wide variety of various makes and

models of trucks.

Other sales listed for the same week include: Sept. 23, Big Spring AAF; Sept. 24, Abilene AAS; Sept. 24, Goodfellow Field, at San Angelo; Sept. 26, Sheppard Field, at Wichita Falls; Sept. 26, Camp Hood, which is a two-day sale of some 461 vehicles, the largest sales of the six scheduled.

Last Rites Held For Mother of Gen. Dwight Eisenhower

Private funeral services were held Friday at 2 p.m. for Mrs. Ida Stover Eisenhower, 84-year-old mother of Gen. Dwight D. Eisenhower.

Services were conducted in the rambling frame house where the general and his brothers spent their youth and where Mrs. Eisenhower died Wednesday of last week in Abilene, Kansas.

The body was interred beside her husband in the family plot at the Abilene cemetery. Services at the home and graveside were conducted by Lt. Col. Claude R. Ingram, post chaplain at Ft. Riley.

Welcome . . .
Contestants and Visitors



— TO —
LITTLEFIELD'S COLORFUL RODEO
BRING THE FAMILY
Enjoy the Three Big Days of Entertainment
TOO, WE XTEND A CORDIAL INVITATION
TO MAKE OUR CAFE YOUR EATING
PLACE WHILE I NTOWN
Home Cooked Meals in a Friendly Cafe

DOWDY'S CAFE

MRS. L. T. DOWDY, Operator

LITTLEFIELD

For Best Results . . . More Profit . . .

● USE —

MERIT POULTRY FEEDS

- MERIT CHICK STARTER
 - MERIT GROWING MASH
 - MERIT EGG MASH . . .
- COMPLETE LINE OF DR. SALSBUARY'S
REMEDIES
— Poultry Supplies —

Milleur & Ross Hatchery

Littlefield

Phone 257-J

Leader WANT ADS Get Quick Results

FOR SALE

FOR SALE—My home in Amherst, six rooms and bath. Payment down and balance paid monthly if desired. Contact Scott Smith, Silvertown, Texas, Route 1. 23-3tp

FOR SALE—Wheat and barley seed. Wayne George Elevator, Roundup, Texas. 23-3tp

FOR SALE—2 new 30 gal. Clark Electric Hot Water Heaters. W-W Electric, Phone 192, Littlefield. 14-yt-c

FOR SALE—If you are needing Venetian Blinds. See Cicero-Smith Lumber Company

FOR SALE—Pressure Pumps at McCormick Bros., Amherst, Texas

FOR SALE—Comanche seed wheat, free of Johnson grass. Van Rogers, Circleback, 1 mile east. 24-2tp

FOR SALE—Practically new John Deere 10-foot broadcast binder. E. W. Chester, Sudan Elevator, Sudan, Texas. 24-4tp

FOR SALE—One two-row binder, I.H.C.; 10-foot broadcaster, I.H.C.; 30-foot Tamben axle, Hobbs trailer; two John Deere lister damers; two two-row sleds. W. W. Wheeler, six miles south, on Highway 51. 24-3tp

FOR SALE—One kitchen cabinet, one dresser, like new. See Mrs. L. C. Bosinger, at 517 West 6th St. 24-1tp

HOUSE FOR RENT—New, modern three-rooms and bath. Adults only. Inquire at Carden's Food Store, Littlefield. 24-2tp

FOR SALE—Four-room house and bath, to be moved. H. G. Ferguson, 299 North Whicker St. 24-2tp

FOR SALE—Seed wheat, Turkey Red, \$2.25 per bushel; cleaned, \$2.50 bushel. Spade Seed Farms. 24-3tp

FOR SALE—Tomatoes, by truckload or bushel. V. E. Pritchard, three miles east of Littlefield, on Lubbock highway. 24-4tp

FOR SALE—One broadcast binder, 10 ft.; seed wheat, free of Johnson grass, \$2 per bu. G. C. Young, 16 miles north Hart Camp. 25-3tp

FOR SALE—One Pepac hammermill. Inquire Cox Machine Shop, Littlefield. 255-1tp

FOR SALE—42-45 Harley-Davidson motorcycle, six miles north of Littlefield, one mile north Rhoten's Store. See Lewis Fleming. 25-3tp

FOR SALE—1939 Model C Combine. Would trade for Ford tractor, with or without equipment. P. O. Box 943, Littlefield. 26-1tp

SOR SALE—Service Station, cheap, on Highway 51, next to Carden's Grocery. Curley Fleming. 26-1tp

FOR SALE—1937 Model "A" John Deere tractor, two-row equipment; one 1942 Case hammermill; cattle self-feeder. See Harold Hall, two miles west of Whitharral. 26-2tp

WE HAVE ON HAND Children's Cowboy Suits, sizes small, medium and large. \$4.98 suit. Perry's Variety Store. 26-2tc

AT PERRY'S VARIETY STORE, Lovely plastic shower curtains, 72x72 inches; colors orchid, green, blue, orange, yellow, natural, rose and cherry. 26-2tc

FOR SALE—My garage business and building, house with four rooms and bath, and 3 1/2 acres of land, pressure water system, \$8,000 cash. E. G. Gage, 13 miles south of Muleshoe, at Needmore. 26-1tp

MISCELLANEOUS

KEYS MADE at Perry Brothers. 25c. Bring your old keys or pieces. 7-4t-c

SEE US—We will take your used rear tractor tires in as part payment on a new tire. Birdwell Bros. Firestone Store, Littlefield. 45-1t-c

REAR TRACTOR TIRES FOR SALE—Birdwell Bros. Firestone Store, Littlefield. 45-1t-c

WE HAVE—A few sizes in good rear used tractor tires for sale. Birdwell Bros. Firestone Store, Littlefield. 45-1t-c

DISTILLATE for killing Johnson Grass. McCormick Bros. Service Station. 10 tlc

NEW AND USED REAR TIRES and TUBES for tractors. McCormick Bros Service Station. 10-1tc

TIRES AND TUBES—We have plenty of used tires and tubes for cars, trucks and tractors. McCormick Bros. 5-1tc

FOR GENERAL REPAIRING, Inquire at Onstead Furniture, Littlefield. 26-tfc

WANTED

WANTED—Portable or standard typewriter, new or used. Leader Office. 24-tfc

LOST AND FOUND

LOST—Western hat, size 7 1/2 BX Beaver. Finder please return to W-W Electric. Phone 192. E. E. Wesley. 24-1tc

FOR RENT

FOR RENT—Modern rooms and apartments, furnished. Phone 352-J. Cecil Walker. 26-tfc

Spot Cotton Prices Rally

Southwest farm products brought mostly steady to higher prices last week, with only sorghums and onions dull and weak, according to USDA's Production and Marketing Administration.

Spot cotton prices rallied Friday after mid-week declines. Demand was strong for increased offerings.

Sorghums dropped about 25 cents a cwt. last week under dull demand. Yellow corn gained about five cents a bushel, while barley, wheat and oats held steady. Hay and some mixed feeds were slightly weaker due to improved pastures. Rice trading continued inactive with most growers holding their crop until USDA's recommended increase of \$1 per barrel in ceiling price of rough rice is announced by OPA.

Last week saw most Southwest vegetables move at steady prices under fair to good demand. Only onions were weak and dull. New Mexico, Oklahoma and Arkansas apples brought steady prices at most consuming centers. Cleanup offerings of Colorado peaches were stronger. End-of-the-season watermelons from Texas and Oklahoma moved slowly. Cantaloupes from Kansas, Texas, New Mexico and Colorado found good demand at steady prices. Louisiana sweet potatoes gained about 75 cents a bushel over the previous week's close.

Southwest egg and poultry markets were active last week, with most prices higher than they were the week before. The increasing shortage of meat called some eggs out of storage. Fryers advanced about one to three cents a pound under good demand.

Wools were irregular in the Boston market. Some buying of Texas original-bag mohair was reported at 61 cents a pound for adult, 71 for yearling and 81 cents for kid hair.

Lwes brought higher prices at most Southwest markets last week in line with similar gains at midwest and northern terminals. Common and medium ewes sold at \$6.25 to \$6.50, San Antonio; \$6.50 to \$7.25, Fort Worth; and \$6.00 to \$7.50, Denver. Compared with a week ago, spring lambs were strong to 25 cents higher at Texas markets, but down at Denver and Oklahoma City. Medium and good springers brought \$15, San Antonio; \$14 to \$15.00, Fort Worth; and \$15.00 to \$17, Denver.

Small receipts of hogs cleared quickly at ceiling prices of \$16.05 a cwt., San Antonio and Fort Worth; \$15.95, Oklahoma City; \$15.90, Wichita; and \$16.20, Denver. Last week's cattle receipts were above the previous week, but still short of a year ago. Finished cattle and slaughter steers were largely absent. Cows made up most of the runs and brought steady to higher prices. Common and medium cows were

quoted \$8.25 to \$11 a cwt., Houston; \$9 to \$11.50, San Antonio; \$9 to \$11.25, Wichita, and medium and good cows \$10.50 to \$13, Fort Worth. Oklahoma City sold good beef cows \$13.50 and above. Denver moved common to good cows at \$10 to \$13. Milk and butter prices were firm to strong at both southwest and northern markets.

75 NEW FACULTY MEMBERS
Seventy-five new faculty members have been named at Texas Technological College this fall to take care of the tremendously increased enrollment, it has been announced by W. M. Whyburn, president. While some

CHISHOLM'S FLORAL & NURSERY
Large Variety of Flowers and Pot Plants
Funeral Designs

W. E. HAYNES
SEPTIC TANKS
CESSPOOLS
Cleaned
ALL MODERN EQUIPMENT
All Waste Sanitarily Removed
PROMPT SERVICE
Night and Day
Phone 2-9840 Collect
LUBBOCK, TEXAS 26-4tc

GOODYEAR
TIRES
for
Passenger, Trucks,
Implements or Tractors

EUBANK TIRE & SUPPLY
Littlefield

SEWING MACHINE REPAIR WORK
See me for repairs on any make of Sewing Machine
Fully Experienced—All Work Guaranteed
CLEAN and ADJUST
We Buy, Sell, Trade and Rent Machines
EARL ROBISON
at
ROBISON'S FURNITURE
Littlefield

MUTT AND JEFF
THAT'S THE TROUBLE WITH YOU, JEFF! YOU DON'T THINK FIRST BEFORE YOU SPEAK!
JUST MAKE A PRACTICE OF COUNTING TO TEN BEFORE YOU SAY ANYTHING IMPORTANT!
AND IF IT'S VERY IMPORTANT COUNT TO FIFTY BEFORE YOU SAY IT!
FORTY-SIX, FORTY-SEVEN, FORTY-EIGHT—
FORTY-NINE, FIFTY!—YOU'RE ON FIRE, MUTT!

of the newcomers are replacing resigned persons, the majority of them are needed for Tech's current expansion program, he said.

FOR SALE
FOR SALE—Canning Tomatoes every day, \$2.00 bushel.
—SEE—
G. C. CLARK
2 Miles East on Oklahoma Ave. and 3/4 Mile South 24-tfc

CRYSTALS FITTED WHILE YOU WAIT
GUARANTEED WATCH and CLOCK REPAIRING
COSTUME JEWELRY...
RINGS...
LOCKETS...
IDENTIFICATION BRACELETS...
WATCHES...
BABY JEWELRY, including Bracelets and Rings.
GENE PRATT
in WALTERS DRUG STORE

GENERAL Furniture Repairing
INQUIRE AT...
Onstead Furniture
LITTLEFIELD

LEADER CLASSIFIED RATES
30c MINIMUM CHARGE
2c per word for FIRST INSERTION
1 1-2c per word for SECOND INSERTION
Leader Want Ads Get Quick Results

Krueger, Hutchinson and Overton Clinic
GENERAL SURGESY
J. T. Krueger, M.D., F. A. C. S.
J. H. Stiles, M.D., F. A. C. S. (Ortho)
H. E. Mast, M. D. (Urology)
EYE, EAR, NOSE & THROAT
J. T. Hutchinson, M. D.
Ben B. Hutchinson, M. D.
E. M. Blake, M. D.
INFANTS AND CHILDREN
M. C. Overton, M. D.
Arthur Jenkins, M. D.
J. B. Rountree, M. D.
OBSTETRICS
O. R. Hand, M. D.
INTERNAL MEDICINE
W. H. Gordon, M. D.*
R. H. McCarty, M.D. (Cardiology)
GENERAL MEDICINE
G. S. Smith, M. D. (Allergy)
R. K. O'Loughlin, M. D. ()
X-RAY AND LABORATORY
A. G. Barsh, M. D.
RESIDENT PHYSICIAN
D. C. Lindsey, M. D.
L. M. Altaras, M. D.
*In U. S. Armed Forces
LUBBOCK MEMORIAL HOSPITAL
PATHOLOGICAL LABORATORY, X-RAY and RADIUM
School of Nursing fully recognized for credit by University of Texas
J. H. Felton, Business Manager Clifford E. Hunt, Superintendent

WE SHARPEN and REPAIR LAWN MOWERS
COX
Machine Shop
Highway 84 Littlefield

THERE'S A Phillips 66 STATION
Convenient to Your Home and Business
THESE STATIONS IN LITTLEFIELD AND TERRITORY WILL APPRECIATE YOUR BUSINESS:
PRENTICE BROS.
Highway 51, Near Highway 84
MOBLEY STATION
Highways 84 and 51
LIGON'S TRIANGLE STATION
Highway 84, Just West of Main St.
HODGE GROCERY & MARKET
West on Highway 84
COMMUNITY GROCERY & STATION
West on Highway 84, Near Football Stadium
MAIN STREET SERVICE STA.
Main Street, Opposite Walters Drug
NICHOLS STORE
Bula
R. J. RHOTEN STORE
6 Miles North on Highway 51
W. O. HAMPTON STORE
4 Miles West on Bula Highway
OKLAHOMA FLAT STATION
W. E. Heathman
Wholesale Agent, Phillips Petroleum Co.
Littlefield Phone 66

John Henry Chapman
Post No. 4854
V. F. W.
Meets Every
2nd and 4th
Monday
Nights
8 P. M.
Durwood Howell, Com.

ACCREDITED Maytag SERVICE
ALVIN MUELLER
Authorized MAYTAG Dealer
Phones 354 or 316-R Littlefield

SPARTON TABLE MODEL RADIOS
Now in Stock
\$23.85
at
HENRY'S PONTIAC SERVICE
Littlefield

ALIGNMENT Saves You Car Wear! Gas! Rubber!
Misaligned wheels cause unnecessary friction and wear on tires. They can interfere with proper car control.
Stop in Today!
Let Us Align and Balance Your Wheels with Our Complete BEAR Equipment.
SAVE TIRES
SAVE MONEY
SAVE LIVES
HENRY'S PONTIAC SERVICE
LITTLEFIELD



Gabrielson Heads Carthage Hydrocol; Will Make Gasoline From Natural Gas

NEW YORK — The election of Guy George Gabrielson as president of Carthage Hydrocol, Inc., \$12,000,000 company recently organized to manufacture gasoline from natural gas, was announced today.



Guy George Gabrielson

Mr. Gabrielson has been general counsel of the new company since its organization. He will retain that position and continue his general practice of law in New York and New Jersey.

Eight large companies — The Texas Co., New York, N. Y.; Forest Oil Corp., Bradford, Pa.; Niagara Oil Corp., Buffalo, N. Y.; United Gas Corp., Shreveport, La.; La Gloria Corp., Corpus Christi, Texas; Stone & Webster, Inc., New York, N. Y.; Gulf States Oil Co., Houston, Texas; and Chicago Corp., Chicago, Ill. — are supplying \$10,000,000 of the capital required and the Reconstruction Finance Corporation has agreed to loan another \$2,000,000.

Directors of the company are George H. Clifford, president, Stone & Webster Service Corp.; Richard J. Dearborn, president, Texaco Development Corp.; Michael Halpern, vice-president, The Texas Co.; Percy C. Keith, president, Hydrocarbon Research, Inc.; Harry T. Klein, president, The Texas Co.; John F. Lynch, vice-president, La Gloria Corp.; H. Neil Mallon, president, Dresser Industries, Inc.; Cleveland W. Frank Miller, vice-president, Forest Oil Corp.; J. Fred Schoellkopf IV, president, Niagara Share Corp.; and Mr. Gabrielson.

A plant, estimated to cost \$15,000,000, will be erected in the vicinity of Brownsville, Texas, where there are numerous natural gas fields. Gasoline and other chemical components will be synthesized from the natural gas by a process developed by Mr. Keith and his associates in Hydrocarbon Research.

Mr. Gabrielson lives at Bernardsville, N. J. He is a native of Sioux Rapids, Iowa, and was graduated from the University of Iowa in 1914 and Harvard Law School in 1917.

Information For Veterans

the veteran and the lender. The VA does not object to its being given if the veteran is willing to give it.

Q. Is the guaranty or insurance privilege of a veteran restored to its original amount when the indebtedness is repaid.

A. No.

Jester to Speak At 'Welcome Home' Celebration

Beauford H. Jester, governor-elect of the State of Texas, will be principal speaker at the "Welcome Home" day celebration for veterans of World War II, on Monday, October 7, the opening night of the 29th Annual Panhandle South Texas Fair, at Lubbock, it was disclosed this week by Homer D. Grant, president of the Fair Association.

In addition to the talk by Jester, Col. Thomas G. Lanphier, deputy administrator of Veterans Administration branch office 10, in Dallas, will tell veterans of services available to them at the various offices of the Veterans Administration.

In accepting the invitation of the Fair association, Jester indicated his happiness at the opportunity to speak to the veterans of the Panhandle and South Plains areas and their families. Jester said he expected to discuss veterans' problems and the role of the individual veteran in taking part in the government of the state.

Fair officials have announced that all World War II veterans wearing discharge buttons or in uniform will be admitted to the fairgrounds free of charge during "Welcome Home" day. Veterans of Foreign Wars, the American Legion and other veterans' organizations will cooperate in the day's program.

Admission to the grandstand for Jester's speech will be free to everyone on the fairgrounds.



Welcome Folks TO THE Littlefield Rodeo

... ONE OF THE BEST IN RODEO ENTERTAINMENT

For GOOD READING ENTERTAINMENT

WE'VE GOT PLENTY OF EVERYTHING! **Yantis News Stand**

North Phelps Ave. Phone 257-R

RODEO Piggly Wiggly

ROUND-UP

---OF BIG VALUES

Schillings **COFFEE**

Pound Jar **32c**

POST RAISIN BRAN Box **13c**

VAN CAMP'S CHILI No. 303 Can **26c**

PALM OLIVE SOAP 3 Regular Bars **20c**

PREMIUM PEARS Size 10 Can **84c**

HARVEST INN PEAS No. 2 Can **14c**

BESTEX GRAPEFRUIT JUICE Size 5 Can **28c**

SUGAR

C. and H. CANE

10-Lb. Bag **73c**

No. 2 PLAIN TIN CANS 100 for **\$2.75**

THOMPSON SEEDLESS RAISINS 2-Lb. Bag **39c**

PINT KERR'S JARS Doz. **65c**

E-Z LIQUID STARCH Qt. Bottle **25c**

SCOTT HOMINY Size 2 1/2 Can **15c**

THERMO — MECHANICS' HAND CLEANER Large Can **33c**

LARGE BOX RAIN DROPS **23c**

PLAIN OR CHOCOLATE OVALTINE Large Can **66c**

ARCHER HOUSE VIENNA SAUSAGE **13c**

HARVESTER INN CORN Size 2 Can **12c**

FROZEN FOOD CONTAINERS Qt. Size **5c**



FRUITS AND VEGETABLES

Gold Medal **Flour White 1.79** 25-lb. Sack

LARGE BUNCH CARROTS 9c

FRESH GREEN CUKES ... Lb. **12c**

RED DELICIOUS APPLES .. Lb. **10c**

WHEAT BRAN or SHORTS 100-Lb. Bag **\$2.98**

No. 1 Quality RUSSET SPUDS Lb. **5c**

ICEBURG LETTUCE .. Lb. **12c**

FRESH YELLOW SQUASH ... Lb. **7 1/2c**

VAL-VITA SARDINES No. 1 Tall Can **12c**

PURE PORK SAUSAGE Lb. **37c**

MODART FLUFF SHAMPOO **39c**

ALL-MEAT FRANKS Lb. **35c**

BABY BEEF CHUCK ROAST Lb. **35c**

PORK BOSTON BUTTS Lb. **38c**

Full Cream **LONGHORN CHEESE 57c Pound**

ALL-MEAT BOLOGNA .. Lb. **35c**

BABY BEEF SHORT RIBS ... Lb. **19c**

ALL-BEEF HAMBURGER .. Lb. **27c**

Piggly Wiggly

Loboes Lose To Monahans Friday

The mighty Monahans Green Wave rolled over Levelland's Loboes, 34-0, at Levelland Friday night in the non-conference opener of the 1946 grid season.

Ted Seown romped 30 yards for the first Monahans tally in the opening quarter, and after Dan Bingham plunged across in the second period, Seown scooted 15 yards for the third touchdown.

The Green Wave added another counter in the third when Latham recovered a fumble and carried the ball across on the next play. Uechi pushed across from the one-yard line for the final Wave touchdown in the fourth period. Dawson kicked four

of the five points after touchdown. The Green Wave compiled the lopsided score although counting only eight first down to seven for the Loboes. Rain, falling at the opening kickoff, continued throughout the game, causing numerous fumbles by both teams.

Mustangs Down Lubbock Cowhands

Olton's Mustangs, showing a potent scoring punch in their first game of the grid season, downed the Lubbock Cowhands' Black 20 to 0 at Olton Friday night.

The Mustangs romped to 18 first downs to seven for Lubbock, and compiled 260 yards from scrimmage, while the Cowhands were rolling up only 83.

Cowboys to Play Indians Sept. 21

Abilene's Fair Park stadium will be the scene of battle Saturday night, September 21, when the Cowboys of Hardin-Simmons University take on the Indians from McMurry College's reservation for the first time in the history of the two Abilene schools.

Hardin-Simmons, a member of the Border Conference, is expected to give the Indians a tough time of it, and football fans in West Texas who have witnessed either of these teams play are anxious to see this contest.

J. Vernoi Hilliard, McMurry's head coach, has been putting his squad through hard workouts in preparation for this first game of the season. Previous to his coming to McMurry, Hilliard coached championship high school teams at Kerrville, Plainview, and Abilene.

The Indians' probable starting lineup will consist of ends Troy Wadzeck of Sochester, Texas, and Leslie Cowan of Hamlin; tackles Mel Jowell of Plainview, and Pat Patterson or Kenneth Tate, both of Abilene; guards Grady Baker of Winters, or Don Lyle of Tennessee, and Donald Havins of Abilene; center Neal Bradshaw of Abilene. Backfield men will be Tennesseans Tommy Ellis and Bill Cchultz, Doug Cox of Ballinger, Cisco's Garland Lasater, and Floren Hofer of Plainview.

Other games on the 1946 McMurry schedule are: September 28, Eastern New Mexico State, at Plainview; October 5, Sul Ross Teachers, at Sweetwater; October 19, Texas A&I, at Kingsville; October 26, Abilene Christian College, at Abilene; November 2, Austin College at Abilene; November 8, North Texas State, at Denton; November 16, Howard Payne, at Brownwood; and the Homecoming, November 23, with Southwestern University.

Morton Rolls Over Friona Eleven

The Morton High School gridders successfully inaugurated the 1946 football season Friday night, rolling over the visiting Friona eleven, 25-0, at Morton.

The scoring was divided among four of the Morton lads, with Bobby Graham setting the pace with a pair of touchdowns in the third and fourth quarters after Jack Shirley had opened the scoring with a 6-yard gallop in the first quarter and Kenneth Williams added another in the second. Billy McAlister scored the only extra point, bulging his way over for the one point.

The visitors showed a fair ground game, but could never get it to rolling for paydirt.

FOOTBALL BOYS GUESTS OF ROTARY CLUB THURSDAY

Coach Fikes and the football boys were guests of the Littlefield Rotary Club Thursday at their regular weekly luncheon.

Mr. Fikes addressed the club.

OLTON FOOTBALL SCHEDULE

- Sept. 20—Lockney at Lockney.
- Oct. 4—Littlefield at Littlefield.
- Oct. 11—Abernathy at Abernathy.
- Oct. 18—Open.
- Oct. 25—Levelland at Olton.
- Nov. 1—Morton at Olton.
- Nov. 8—Springlake at Springlake.
- Nov. 15—Open.
- Nov. 22—Sudan at Olton.

Lubbock Boosters To Visit City September 26

A large group of Lubbock business men, accompanied by good speakers and entertainers, will bring the latest available information about the 29th Annual Panhandle South Plains Fair to Littlefield at 9:10 o'clock, Thursday morning, Sept. 26. They will give a short program at the school, giving the highlights of the first renewal of the "Show Window of the South Plains" since 1941.

Their stay, a yearly pre-Fair feature, also includes a brief period for visiting and renewing old acquaintances on the downtown streets.

The delegation will travel by chartered bus and will have all the latest available information on what will be doing at this year's fair. Judging by the interest shown by South Plains residents the past two weeks, fair officials said they expected attendance and exhibits to be greater than ever before in the history of the event.

Recent rains have greatly improved the outlook for good agricultural and livestock displays. In several divisions, notably the milking Shorthorn cattle and the Chester White swine, considerable increases in premiums have been made. Total premiums to be awarded to exhibitors amount to nearly \$7,000, with extra prize money being awarded participants in the rodeo and midget auto races.

The two tours for the week beginning Sept. 22 include stops at Slaton, Southland, Post, Tahoka, O'Donnell, Lamesa, Seminole, Seagraves, Brownfield, Meadow, Ropesville, Shallowater, Antox, Littlefield, Amharst, Sudan, Muleshoe, Farwell, Clovis and Portales, N.M.

Announcing that . . .

C. R. BURGESS and AZEY SIMPSON of Graham, Texas

HAVE PURCHASED THE FURNITURE STORE AT AMHERST, KNOWN AS THE ALEXANDER FURNITURE AND MR. BURGESS, WHO HAS MOVED HIS FAMILY TO AMHERST, IS NOW IN CHARGE

— with —

A GENERAL LINE OF FURNITURE and FURNISHINGS

Nice Selection of Bedroom Suites IN THE NEWEST STYLES including natural maple and mahogany finish—in poster and panel style beds.

WE DO WATCH REPAIRING BURGESS-SIMPSON FURNITURE

(FORMERLY ALEXANDER FURNITURE)

AMHERST,

TEXAS



NOTICE

IF YOU HAVE A USED CAR TO SELL—OR WANT TO BUY ONE

SEE

FLOY MORRIS

— AT —

Morris Service Station

HIGHWAY 51

EAST OF TOWN

WE PAY HIGHEST PRICES FOR

USED CARS

BUY all YOUR FOOD NEEDS UNDER ONE ROOF



You Always

SAVE AT . . .

STANDIFER'S RED and WHITE STORE

Just Three or Four Blocks from the Rodeo Grounds WE EXTEND YOU

A CORDIAL WELCOME TO THE RODEO

and to OUR STORE

GENUINE

PIT BAR-B-Q

PLENTY OF

SOUR PICKLES

STANDIFER

GROCERY & MARKET

Highway 51 and Ninth Street

Phone 307-M



A Hearty Welcome

— to —

Contestants and Visitors

— to the —

LITTLEFIELD

SEPT. 19 - 20 - 21

RODEO

4 BIG SHOWS

— AND A —

Cordial Invitation to Visit Our Mill

WE'LL BE

LOOKING FOR YOU!

West Texas Cottonoil Co.

LITTLEFIELD