

3 S-Sickness Cases, 1 Death

A Lamb county outbreak of encephalitis resulted in the death early Wednesday of C. L. Berry, Springlake school administrator, and has two other Lamb persons seriously ill in hospitals.

Berry, 34, died in an ambulance enroute to Methodist Hospital in Lubbock about 9:45 Wednesday morning. He was being transferred there for special treatment of a respiratory condition, one of the results of encephalitis.

Seriously ill in Littlefield Hospital with the disease is F. E. McBride, Littlefield, maintenance supervisor for the Texas highway department here.

The third encephalitis case, Frances Conteras, has been transferred to a Lubbock hospital.

The three cases have developed in the past two weeks, and are part of a pattern of the disease that has cropped up in several instances over the South Plains in recent weeks.

The disease is transmitted by mosquitoes, medical doctors here report, and is described as a "viral infection of the brain." It frequently has serious consequences and can result in death or serious physical impairment.

There are several types of the disease, the doctors said, and there is no specific medication for its cure. Patients are maintained in best condition, and gradually overcome the disease, in most cases.

Symptoms are chills, fever and

headaches and often nausea.

"It is commonly called sleeping sickness," one Littlefield doctor explained. "The patient often becomes sleeper and sleeper, and paralysis of his breathing apparatus may result."

In some respects, the disease is similar to polio. When paralysis comes, patients are located in hospitals where facilities are available to help them breathe, the doctor added.

The disease may range in effect from mild cases to very severe.

There are several types of the disease that may vary according to the host animal from which the encephalitis germ is transmitted.

Horses are a common source

for the germ, and rodents are suspected in this area. Humans are not listed as carriers.

The animals are called "reservoirs" for the sleeping sickness germ. Presumably, the animal is bitten by a mosquito which later bites a human, transmitting the disease.

"The sure information is that the germ is transmitted by mosquitoes and that this time of year an outbreak is liable to occur," the doctor said.

Specimens from the Littlefield patients have been sent to the Texas health department laboratory for identification.

A patient may recover in three weeks, or three months.

"This is a very good argu-

ment for mosquito control," one doctor declared. "Mosquitoes are the known carrier."

Berry, who was principal of the Springlake junior high school, was admitted to the hospital a week ago.

Funeral services for Berry were pending Wednesday. He was born in Tulsa, Jan. 4, 1929 and moved to Floydada with his parents in 1936. He graduated from Floydada High School where he was an all-district tackle on the football team for two years.

He received his BS degree from West Texas State in 1950 and earned his master's degree in education from Texas Tech in 1954. Berry started teaching at Crosbyton and served as

a teacher, principal and girls' basketball coach at Spur and Amherst.

Berry and his family moved to Earth three years ago and he had been junior high principal at Springlake School.

He was an active worker and layman in the Methodist Church, a member of the Masonic Lodge and Lions Club, and a Scout leader.

His wife is the former Mary Henderson of Dallas. They have three children--Mike 12, Cynthia Ann 10, and Timothy 2.

Other survivors include his parents, Mr. and Mrs. Charley Berry of Floydada; a brother, Harold of Amarillo; and a sister, Mrs. Tubal Cain of Mangum, Okla.



Lamb County Leader

"Dedicated to a greater Lamb County"

12 PAGES

VOLUME 31 LITTLEFIELD, LAMB COUNTY, TEXAS, THURSDAY, AUGUST 22, 1963 NUMBER 16

School Sets \$1.80 Tax Rate

Earth Affray Results In Four Arrests

County deputies nabbed three persons on liquor law violations and arrested four men in an assault case to highlight the law enforcement scene this week.

Charged in county court with assault with a deadly weapon were Amevo Chavez and Gustavo, Arturo and Raymon Ruis. Each was released on \$1,000 bond. A deputy said the four were charged with assaulting another man as the result of a "feud." The incident occurred Sunday at Earth.

Velma McClendon, 43, of Sudan was charged with a liquor law violation and bond was set at \$1,000. Another Sudan resident was charged with minor in possession of an alcoholic beverage, and his bond was set at \$1,000 in JP court at Sudan.

Also charged with a liquor law violation was Eddie Homer, 58, of Littlefield. He was being held in lieu of fine and court costs totaling \$232.75. James A. Alex, 32, of Littlefield was being held in lieu of \$500 bond on a theft charge.

Charged with DWI and released on \$1,000 bond was R. Lee Gibson of Littlefield. Three juveniles were arrested this week. A 14-year-old boy was charged with DWI, drawing a \$100 fine plus costs and six-months probation. Two others, all Latin Americans from Olton, were charged with theft over \$50. The latter two were placed on probation and released to custody of their parents.



HEAD-KNOCKING TIME -- Coach John Howle gives the signal and two Wildcat grid candidates meet head-on as football drills get down to serious business this week. The Cats are holding twice-a-day drills until school starts, and the "board drill" shown above will help get them ready for the first game against Muleshoe here Sept. 6.

Trustees Approve \$907,181 Budget

The 1963-64 Littlefield Independent School District budget has been adopted at a total of \$907,181--reflecting an increase of \$124,000 over the past year's expenditures.

Supt. Glenn Reeves reported the final figures this week. The budget adoption also carried with it a new tax rate of \$1.80 per \$100 valuation. Of the new tax rate, \$1.28 goes for local maintenance tax and 52 cents for debt service.

The budget provides for a \$51,935 balance, including some \$20,688 in maintenance funds and the remainder in debt service.

The budget hearing was held Aug. 12 with trustees paring off \$14,044 from the proposed budget of \$921,225. A check with Reeves Monday showed the final figures as adopted in the revised budget.

Of the \$124,000 increase over last year, approximately \$81,000 is for instruction--teachers, teacher supplies, instructional equipment. Most of the balance is for debt service.

A general breakdown on the expenditures: \$38,694 for administration, \$584,254 for instruction, \$5,557 for health services, \$34,000 for pupil transportation, \$47,920 for operation of plant, \$14,700 for maintenance of plant, \$8,920 fixed charges, \$8,600 for student activities, \$150 for community service, \$17,750 capital outlay, and \$146,636 for debt service.

A summary of receipts includes \$433,520 from local sources, \$473,992 from state sources, and a beginning balance of \$51,604 for a total of \$959,116.

Local revenue is based on 97 percent collection of \$22 million property valuation in the district at the \$1.80 rate per \$100 value. This would account for \$384,120 of the revenue from local sources.

The new tax rate of \$1.80 represents an increase of 40 cents (See Schools on Page 11)

Spotted Rain Reports Given

Scattered showers were recorded in portions of Lamb County the past weekend, some measurements as high as .75 of an inch but the moisture was spotted.

One report from Amherst indicated .75 of an inch but the rain was net of a general nature. About .50 of an inch was reported in spots north and northwest of Earth.

Sudan reported a total of 1 inch for both Saturday and Sunday, but this moisture was mostly confined to the town area. There were hit-and-miss showers all around Sudan.

Points around the Rocky Ford community reported good showers of about .5 of an inch on both Saturday and Sunday. Spade recorded .5 in town Sunday.

County Budget Hearing Slated

Public hearing on the 1964 budget for Lamb County will be held on Tuesday, September 10, the County Clerk Charles Jones announces.

The budget will be presented by the commissioners court, who have been shaping it for the past several weeks. Hearing time will be 10 a.m.

FURTHER STUDY OUTLINED

Housing Project Bids Too High, Says Olton Board

The Olton Housing Authority Tuesday tabled all bids on a low rent housing project after deciding the prices were too high.

Melvin McReynolds, executive director, announced the low bid of \$249,000 was submitted by Barker Construction of Quanah. Three other bids were submitted.

The 5-member board of commissioners agreed that bids were too much in excess of the architect's estimated budget. R. C. Parsons, chairman of the board, said bids would be tabled pending further study.

The Housing Authority is a separate entity from the city, but

Grain Harvest To Start Soon

First loads of grain have been delivered in Littlefield and area towns, but the real start of the harvest is a week to 10 days off, according to local grain company officials.

One local grain buyer said the harvest should be in "full swing" about three weeks from now. A check with local grain companies showed only a few loads have been processed.

Moisture content was relatively high in the few loads to be delivered to date.

The local board is expected to confer with a Public Housing Administration official concerning the next step to take in the program.

'Little Merchant' Returns

Carrier delivery of the Leader and the County Wide News is being returned to the "Little Merchant" plan on a timed schedule, with some routes being changed over in August and September.

The newspapers have been centrally sold and delivered on advance subscriptions for the past year.

Under the "Little Merchant" plan, delivery will be by a corps of carriers, each responsible for an area of town.

Charge for the carrier service will be 70 cents per month, \$7.60 per year on advance payment, at the option of the subscriber. All subscribers who are paid in advance, as most are at present, will have their subscriptions fulfilled on the rate at which they subscribed.

New subscribers may pay monthly, or annually, as they prefer.

For perhaps one third of the city, your carrier boy will be getting acquainted in just a few days. Your welcome to a young businessman will be appreciated.

County Column

Jim Joyner returned home this week from a regional pigeon show at Wichita, Kansas, where he was both an exhibitor and a judge, in different pigeon classes.

Joyner judged the Modena breeder class at the show and exhibited three birds in the Kormer Tumbler class.

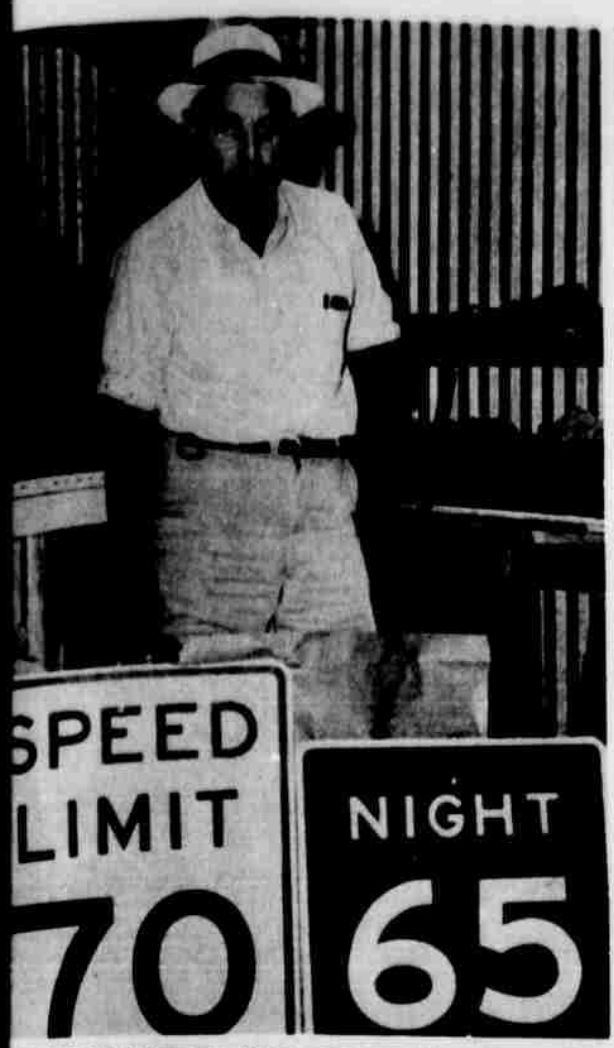
Mr. and Mrs. B. D. Garland, Jr., and Bob Falk are in Dallas for a two-day showing of the 1964 Chrysler and Dodge automobile lines. They will return late Thursday.

Bob Falk, the Garland Motor Company salesman, is limping with a broken toe that he injured in some way, not explained, on his vacation.

The Littlefield Historical Committee will meet Friday at 10 a.m. in the Reddy Room.

Weather

The 5-day forecast for the Lamb County area calls for temperatures to average near normal with little or no precipitation. Scattered, light thundershowers possible near end of week. Normal maximum 91-92, normal minimum 64-65.



GO UP FRIDAY--These new speed limit signs will be placed on U.S. and FM highways in Lamb County Friday, as well as over the state when the new 70 mph speed limit goes in effect. Emmett Brown, sign supervisor for the local Texas Highway Department office, unwrapped the signs for the photographer.

NEW SIGNS IN COUNTY New 70 MPH Speed Limit Begins Friday

Speed limits on the two major U.S. highways and the farm-market highways in Lamb County will be increased to the 70 miles-per-hour speed limit Friday.

All the signs in the county will be changed Friday, according to Emmett Brown, sign supervisor of the local Texas Highway Department maintenance crew. The job will include the change of 34 signs in the county, Brown said.

In some areas, the new signs already been erected but to remain covered until Friday. The local highway maintenance department has put steel posts and will be ready to attach the new signs Friday. Actually, the old signs will be used. Brown said the signs which indicate a 60 m.p.h.

Alternative EAS Rates

General Telephone's proposed rate increases to obtain needed area service to Bula Whitarral were clarified week by Bob Saunders, district manager of Littlefield.

The company proposed a 10 cents per month increase on all area telephones in the city as an alternative, 50 cents per month on each business line. The council is currently considering the proposals.

The rate increase would apply in the same manner for the EAS Whitarral.

The phone company has also proposed a 50-cent to \$1.25, for a 25-cent hike in business extensions--from \$1.50 to \$1.75.

Public Service Biggest Lamb Taxpayer Again

Lamb county's biggest taxpayer again in 1963 will be the Western Public Service Company, on a tax roll now being compiled by Herbert Dunn, county tax assessor and collector.

All the Public Service properties in the county are assessed on the 1963 tax rolls \$5,048,210, the rolls show. The assessment covers the company's distribution systems in five towns--Littlefield, Olton, Earth, Amherst and Sudan--and its giant generating station, Plant X, near Sudan. It also includes transmission lines from Plant X, and lines passing the county for service to the five towns.

For this assessment, Public Service will pay a tax bill of \$2,200 on the current county rate of \$1.42.

They can lessen this bill by more than \$2,000 by early payment of taxes, a practice they used most other large taxpayers last year. Taxes paid in October earn a three percent discount, and taxes paid in November a 6 percent discount.

The 1963 rolls do not, however, reflect substantial engagements that have been underway at Plant X during most of 1963 and that will not show up on the tax rolls until 1964 assessments, that will be made as of November 1.

Dunn's office will mail tax bills on the last day of September. Taxes may be paid in

Southside Garage Is Jeep Dealer

A franchise to handle the "Jeep" and pickup line of Kaiser Jeep company has been taken for Littlefield by Earl Dow at Southside Garage and Jeep Company.

Dow has received on 1963 model "Jeep" and will receive the 1964 models and Jeep pickups in September, he said.

A native of Littlefield, Dow has operated the Southside Garage since 1947 and for several years has been rebuilding "Jeeps," the vehicle that was fashioned for World War II and has maintained a civilian popularity.

WHOSE HANDS ARE THESE?



HERE ARE SOME HINTS -- The man with hands in today's photo feature is a relative newcomer to Littlefield, having been here since 1957. He was born in Oklahoma but lived in Donley County in Texas most of his life. You'll want to stay on good terms with him. See Page 3.



MUSIC TO COOK BY--Mrs. Jack Wattenbarger of 1433 Cherry Blossom Drive picks out some of her favorite records as she pre-

pare to "whip up" this week's favorite recipe of "Tropical Pork Chops." She enjoys listening to music while cooking.

RECIPE OF WEEK

Pork Chops Rate High With Family

We chose a soft-spoken, red-haired homemaker this week for our recipe feature. She is a mother of two school-aged children, and a lot of her extra curricular work is "pushed" off on her by her husband. She is Betty Wattenbarger, wife of Jack Wattenbarger and mother of Duff, 9 and Cindy, 7.

For her recipe to share with the readers, she chose Tropical Pork Chops. She says her family especially enjoys them in the fall and winter months. Mrs. Wattenbarger spends much of her time with her children and assists her husband in activities of the Lamb County Farm Bureau. He is the insurance agent for the Farm Bureau here and in charge of the bureau office. The couple has served as judges in several Farm Bureau queen and talent contests in this area. She has also served as emcee at many of these occasions. Her busy husband is Cubmas-

ter of Pack 666, and Mrs. Wattenbarger says she is his "reminder". The den mothers meet in the Wattenbarger home once a month. The entire family went to the Philmont Scout Training Camp at Cimmaron, N.M. this past summer for scout training. She took a course in den mother's handicraft training. Mrs. Wattenbarger served as president of the Woman's Society of Christian Service for two years. They are members of the Methodist Church, where they work with the young adult class in Sunday school. Wattenbarger teaches the class, and once again, she assists. She enjoys doing visitation with church members and prospects, and also enjoys entertaining the group. They have a lovely home to do entertaining in. The Wattenbargers moved here from Lamesa nine years ago. He was insurance agent with the Farm Bureau there

and she worked as a tax accountant for a certified accountant there. She still finds herself doing bookwork for her husband and tax work, when that time of year rolls around.

Mrs. Wattenbarger's main interest seems to be "people", she enjoys playing card games, and loves to read. She spends much time listening to her stereo while working around the house or visiting with friends over a cup of coffee.

The Recipe of the Week: **TROPICAL PORK CHOPS**
 4 pork chops
 1/4 c. vinegar
 1/2 c. catsup
 9 oz. can crushed pineapple
 1 T. soy sauce
 3 T. brown sugar
 1/2 t. salt
 2 cups cooked Rice

Trim a little fat from the edges of pork chops and fry out in a heavy skillet. Remove pieces of fat. Flour chops and brown in the hot fat. Combine remaining ingredients. Spoon fat from skillet and pour catsup mixture over and around chops. Cover and cook over low heat for 1 1/4 hours, or until very tender. Spoon sauce over chops once or twice during cooking and add a little water when needed. Serve chops and sauce with cooked rice. Serves 4.

C. R. Bartley Family Returns From Philmont

Clarence R. Bartley, 1212 W. 6th St., returned Tuesday night from the 1963 "Farm-City Scouting Conference" which was held at the Philmont Training Center, located on the 137,000-acre Philmont Scout Ranch near Cimarron, N.M.

Bartley was one of almost 200 Scoutmasters selected by the National Council, Boy Scouts of America, to participate in the program. He was named on the basis of his outstanding services to youth and his community and recognized with a scholarship provided by the National Assn. of Soil Conservation Districts for himself and his wife to attend this conference.

He was one of 7 outstanding Scout leaders so honored by the association and represented the fourth area, which includes Arkansas, Louisiana, Oklahoma and Texas.

Purpose of the conference was to study the newest and most effective program ideas and outreach methods geared to the changing population patterns of our times.

Bartley has been active in Scout leadership for 9 years and has served in his present capacity as a Scoutmaster of Troop 637, sponsored by the Methodist Men of the Littlefield Methodist Church, for 4 years. He is married and has 3 children--Myra Lynn 9, Clarence Russell 7, and Martha Rena 7,--and is employed by the Pioneer Natural Gas Company. Bartley is an active member



CLARENCE R. BARTLEY

of the Parkview Baptist Church, the Volunteer Fire Department of Littlefield, the Littlefield emergency police, and the Masonic Lodge. He is a firm believer that the program of Scouting is an outdoor program. He believes and practices the belief that good Scouting must be accompanied with a desire to conserve water, wild life, soil, and other resources.

Church Group To Muleshoe

Ten members of the Littlefield First Baptist Church traveled to Muleshoe Monday night to hear "sermon in music". The occasion was an association of workers' conference at the Trinity Baptist Church there.

Choirs from all churches in the association participated. Presenting special music on the program was a quartet from here.

It consisted of Dr. Albert Perkins, Dr. Aaron Williams, Herman Neuschwander, and Stowell Russell. Mrs. Beryle Lovelace furnished the accompaniment for the entire program.

Party Honors Alane Weaver

AMHERST--Mrs. Dale Weaver honored her daughter, Alane, with a birthday party Saturday.

Pictures were made and indoor and outdoor games were played to mark the 9th birthday event. Ice cream, cake and punch were served to Bruce, Hall, Darlene, Linda and Lana Weaver, Doug Cummings, Dick Heard, Jay Peel, Pam Yantis, Claudia Cook, Joey Batson, Debbie Cummings, Teresa Templeton, Terri Blair, Debbie Hughes, Kim Harmon, Sherry Shields, the honoree, and her sister, Gay. Mrs. Cliff Williams of Sudan and Mrs. Will Weaver, the honoree's grandmother, assisted with hospitalities.

DIAL 385-4135

Frank Cummings Agent for Southland Life Insurance Co

News of Women

★ ★ ★ ★ ★

Timeliness Important

The Lamb County Leader and the County Wide News are always happy to publish engagement announcements and wedding stories, but readers are reminded that BEFORE is the key word in submitting the information and pictures.

Officers Installed

The Whitharral Young Homemakers met Monday night for a regular meeting in the Home Economics Cottage.

Installation of officers followed a short business meeting. Installed were: Mrs. Norman Theford, president; Mrs. Roger White, vice president; Mrs. Billy Theford, secretary-treasurer; Mrs. Dewayne Dixon, reporter-historian; Mrs. Lloyd Hood, parliamentarian; Mrs. Ernest Kristinek, social and program chairman.

Refreshments were a cake, formed in the shape of Texas, made by Mrs. Dewayne Dixon, and sparkling red punch made by Mrs. Norman Theford and Mrs. Roger White.

Centerpiece was a bouquet of red carnations and white pom poms. The table was covered in red. Present were Mrs. Roger White, Mrs. Norman Theford, Mrs. Lloyd Hood, Mrs. Billy Theford, Mrs. Doyle Hewitt, Mrs. Dale Hewitt, Mrs. Dewayne Dixon, and advisor, Mrs. Jackie Lewelling and a visitor Mrs. W. D. Martin of Lubbock. The next meeting will be Sept. 9. Everyone is invited to meet with us at anytime.

GA's Hold Mission Study

AMHERST--A proposed supper and a mission study for Intermediate GA's Wednesday evening.

The girls met at the home of Linda Clayton for the course. Guests were Elaine and Vicki Pigg, dressed in formal style.

The second course was served in the Hedges home. Carla and Ann Hedges, Brantley, Mrs. James Hedges and Mrs. G. C. Beard were hostesses. The buffet main course included ham, sweet potatoes, beans, hot rolls, relishes and tea.

The final course was served at the home of Mrs. Micki Brantley and Micki were hostesses for dessert of pineapple-orange and Chinese chews.

After each course, a session of the mission book, "Fruit of the Tree", was taught by Mrs. Linda and Martha Slate.

Youth Rally In Floydada

There will be a youth rally in Floydada this afternoon. Members from the First Church and Park Church are expected to attend.

The rally will begin at 7:30 p.m. and there will be recreation, swimming and games, and a program with Rev. E. R. Rathiel of the Trinity Church in Lubbock speaking.

In Revival

Beryle Lovelace, director of music and education at the First Baptist Church, will spend part of his vacation directing music for a revival near Paducah.

Rev. Weaver Lovelace, Beryle's father, who is pastor of the Harmony Baptist Church near Paducah, will be doing the preaching. Lovelace will spend the week there, and then next week he will join Mrs. Lovelace and their children in Greenville.

Meeting Called For Pep Squad

Anyone interested in organizing a pep squad for Littlefield High School is asked to meet at Crescent Park Tuesday, Aug. 27, at 7:30 p.m.

This is not a school-sponsored project. For further information, phone 385-3602.

your once-a-year opportunity to save!

BERKSHIRE stockings



SALE

AUGUST 22 - SEPTEMBER 7

Yes, they're really Berkshires - the famous stockings with the Nyloc® Run-Barrier. Guaranteed not to run from top or toe into the sheer leg area - or you get a new pair free.

Check these fabulous savings!

Regular Price	Sale Price	3 Pairs
\$1.35	\$1.09	\$3.19
\$1.50	\$1.19	\$3.49
\$1.65	\$1.29	\$3.79

We Give Gunn Bros. Stamps

Ware's

IT WILL PAY YOU TO ... CHECK *these* FOOD SPECIALS

FRYERS
Per Pound
29¢

3 LB CAN **69¢**

SUGAR
5 LBS
55¢

ROAST USDA GOOD CHUCK Pound **39¢**

LIBBY'S TOMATO JUICE 4 46 OZ. CANS \$1

LIBBY'S DEEP BROWN BEANS 2 CANS 25¢

KIMBLE DETERGENT GIANT SIZE 59¢

HONEY BOY SALMON TALL CAN 49¢

COMPARE OUR LOW PRICES!

COKE OR DR. PEPPER 12 BOTTLES 59¢

KIMBLE FACIAL TISSUE 400 COUNT 19¢

KIMBLE MILK SUPREME LEMON CREAM 2 TALL CANS 25¢

COOKIES BRUCE SELF POLISHING 2 BOXES 69¢

KIMBLE SALAD DRESSING GOLDEN WEST QT. 39¢

WAX PINT 29¢

WHITE, YELLOW-CHOCOLATE CAKE MIX 3 BOXES \$1

FLOUR 25 LBS. 1.98



GET YOUR BACK TO SCHOOL SUPPLIES HERE

WEDNESDAY IS DOUBLE FRONTIER STAMP DAY SAVE MONEY WITH THE FRIENDLY FOLKS AT

SPADE CASHWAY

GROCERY & MARKET AT THE SIGNAL LIGHT IN SPADE



GIANT TOMATOES--Mrs. Ernest Sell, E. 16th St., gathers large, luscious tomatoes in her small backyard garden. The seed is "super giant" variety came from her

brother in Akron, Ohio. She has only six stalks, but they've furnished tomatoes for the Sells, their friends and neighbors. They've also canned 40 pints of green beans from a small patch.

Sullins Slates Diana Trip

Mrs. Sullins, a senior student at the University of Texas, will be making an unpaid trip to the national Sigma Epsilon fraternity convention in Indianapolis, Ind., Sept. 2-31.

Mrs. Sullins, wife of Mr. and Mrs. Sullins, will be the delegate for the University chapter.

Mr. and Mrs. Sullins are returning home, Sullins to Santa Fe, N.M., where he is serving as a member of the University of New Mexico.

REYNOLDS REESE
Deaf Extension
Yellow House Bldg.
Dial 385-5363

Church Names New Officers

SUDAN (Special)--Officers for the First Baptist Church here are being named for the coming year, and those already selected include:

Tommy Cate, organist; Mrs. W. E. Hancock, pianist; Nolan Parrish, clerk; Sara Woods, librarian; Dexter Baker, head usher; Mrs. R. E. DeLoach, Vacation Bible School principal; Richard West, Sunday School superintendent; Waymon Gordon, assistant SS superintendent.

Also: Mrs. Lee Roy Fisher, Mrs. Waymon Bellar, Mrs. W. E. Hancock, Mrs. Tommy Cate, social committee; Mrs. Bill Turner, extension superintendent; Lester Shanks, Adult No. 1 supt.; Henry Gilbert, Adult No. 2 supt.; B. J. Markham, young people's supt.; Mrs. Fredda Gage, interne-

mediate supt.; Lee Roy Fisher, junior supt.; Mrs. Homer Morris, primary supt.; Mrs. D. W. Williamson, beginner No. 1 supt.; Mrs. Raymond Harper, beginner 2 supt.; Mrs. Calvin Vernon, nursery supt.; Mrs. Dan Wood, cradle roll; Mrs. Van Patterson, general SS secretary;

Calvin Vernon, training union director; B. A. Beauchamp, Jr., assistant; Bill Turner, Adult 2 director; Hoyt Robertson, adult 1 director; Mrs. Nolan Parrish, adult secretary; Mrs. Lee Roy Fisher, general secretary; Mr. and Mrs. Tommy Cate, young people's directors; Mrs. Willie Hazel, junior director; Mrs. Homer Morris, primary director; Mrs. Raymond Harper, beginner director; Mrs. Halbert Harvey, nursery director.

CITY BITS

Mr. and Mrs. Bill Street returned recently from a week in Las Vegas, Nev., and Taos, N.M.

David Street has been at camp in Ruidoso, N.M. Mrs. Bill Street left Friday to pick him up. T. J. Herring, a friend of David's, went along and spent the night at camp with David. Mr. Street came up in the afternoon. They all returned home Saturday morning.

Mrs. W. G. Street, Sr. celebrated her birthday with a cook-out at Mr. and Mrs. Bill Street's. Mrs. Street's mother, Mrs. Marks, and T. J. Herring were visiting for the occasion.

Mr. and Mrs. Murry Hart and grandson, Mac, of Palacios, are here visiting Mr. and Mrs. Bill Owen. While here Mr. and Mrs. Jimmy Owen entertained them with dinner Monday night. At noon Tuesday they were guests of Mr. and Mrs. Bill Owen at the Crescent House Restaurant.

Mr. and Mrs. Walter Brantley and family of Rapid City, S.D., visited the Bill Brantleys recently.

Jim Black, the KZZN man, is carrying a broken arm this week, the result of a softball game last Friday.

Recent visitors in the home of H. K. Currie and daughter, Dorothy, were Pete Currie and J. T. Adair from Cache, Okla. Currie is the son of Staff Sgt. Currie in Germany. Adair is the son of Mr. and Mrs. Worley Adair. Pete Currie will be living with the Worley Adair's while attending high school in Cache.

Rev. and Mrs. Clarence Coffman of the Parkview Baptist Church, plan to attend graduation services at Hardin-Simmons University in Abilene Friday. Their daughter-in-law, Mrs. Walter Coffman, will be receiving her degree in elementary education.

There will be a church wide

fellowship at the Parkview Baptist Church Sunday night. Donnie Howell, training union director, will be in charge. The social is being sponsored by the training union.

The Kenneth Reast family is in Florida vacationing this week.

Mr. and Mrs. Dale Middlebrooks and children have returned from a trip to points in Colorado, Taos, and Tres Ritos, N.M.

Mrs. Buddy Bruton and boys are in Oklahoma visiting Mrs. Bruton's parents.

Mr. and Mrs. Alvis Collins and children are in Slaton this week visiting Mrs. Collins parents.

Mitchell Pope, 12-year-old son of Mr. and Mrs. Claude Pope, returned Wednesday by bus from San Antonio where he spent the last three weeks with his grandmother, Mrs. U. J. King.

Mr. and Mrs. Bill Fore and son, Clayton, were guests last weekend of Mr. Fore's parents, Mr. and Mrs. Jack Fore.

Mr. and Mrs. O. E. Moore of Mineola were guests of Rev. and Mrs. Robert Longshore over the weekend. They are the parents of Mrs. Longshore, and were on their way to Lordsburg, N.M., where Mr. Moore teaches school.

Guests in the home of Mrs. Winnie Hogan have been her daughter, Mrs. Betty Glatz and children, Ken and James of Albany, N.Y. and Betty Sue Rankin of Villa Park, Ill.

Mr. and Mrs. Clifford Hutson and sons Rodney and Ricky, formerly from here and now of Hereford, visited in Littlefield last weekend.

Visiting in the Glenn Blackman home have been their grandchildren, Kelly and Andy of Shallowater.

Back from a week's vacation of skiing at Conchas Lake are Mr. and Mrs. M. O. Dunigan and son, Steve. Accompanying them were Mr. and Mrs. Wayne Taylor, and children, Pat and Nicky of Lubbock.

Mr. and Mrs. J. D. Thomas went to Mobeetie last weekend



POLICE CHIEF FEATURED--F. A. Fitzgerald, shown preparing fingerprint cards in his office, is the man in the "hands" photo this week. Fitzgerald has been chief of the Littlefield Police Department since July, 1957, and is a former deputy sheriff from Donley County.

GOAL OF HIS OFFICE

Strives To Treat All Equal

Littlefield's competent chief of police, F. A. Fitzgerald, is the topic for this week's "hands" feature.

Fitzgerald has been police chief here since July of 1957, and was acting head of the department for several months prior to that time.

A native of Atoka, Okla., Fitzgerald moved with his family to Donley County in Texas at an early age. He received his schooling at Hedley and graduated from high school at Lone Star, north of Lockney.

He lived in Clarendon for a number of years and was deputy sheriff there, in Donley County, for about six years before coming to Littlefield.

He moved here in January of 1957 to take a post on the police force. Lawrence Walraven was police chief at the time, but he died several months later. Fitzgerald was named

acting chief for several months and later was promoted to the head position.

Fitzgerald's parents are deceased, but he has three brothers and six sisters. Two of the sisters--Mrs. J. F. Minyard and Mrs. Dale McLaugh--live here.

He and his wife, Ruby, have one son and one daughter, both married and living in Littlefield. Mrs. Mary Whitsell is the daughter, and she has two sons, Danny and Tony. Gary, the son, graduated from Littlefield High in May and is now married to the former Kathy Steed.

Asked for his creed in carrying out the responsibilities of office, Fitzgerald replied: "I always try to treat everyone

the same way, in a fair and impartial manner. When I get where I cannot operate that way, I'll quit my job," he stated.

Fitzgerald had high praise for the youngsters of the community, pointing out that he was called on to work with problem children many times since there is no juvenile officer here. "We have the best bunch of kids here that you'll find anywhere," the chief stated emphatically.

The chief and his wife are members of the Crescent Drive Church of Christ, and he is a member of the Masonic Lodge and Quarterback Club.

He is a big backer of local sports activities, and has high praise for the Little League program. Bowling is his favorite participant sport.

SEARS
ROEBUCK AND CO.

BACK TO SCHOOL Specials

School Jeans and Dresses

This cotton, nylon blend is **70% stronger** than all-cotton denim

83% Cotton fortified with 17% DuPont 420 nylon

Regular \$2.76
Special for Back to School **\$2.27**

Sturdy 10-oz. cotton that's nylon fortified for greater abrasion resistance. Sanforized... max. fabric shrinkage 1%. Riveted, bar-tacked. Cotton drill front pockets. Machine wash with other dark clothes.

• BLUE • DARK GREEN
• DARK BROWN • GRAY

Heavy 13 1/2-oz. Blue Jeans

\$2.47, \$2.69, \$2.79

Our heaviest, longest wearing all-cotton denim and they're proportioned to fit any build. Strongly ribbed rip-resistant seams. Riveted and bar-tacked. Sanforized. 5 pockets.

Blue Only

Woven Plaid Dresses in Dacron Polyester and Cotton
- by Galey and Lord **\$4.77**

Lively plaids are matched at seams which are French-finished to prevent raveling. Each has a full-sweep skirt with deep, 3-inch hem. Machine washable at medium temperature... drip-dry without ironing.

FILLER PAPER
555 Sheets **88c**

Filler Paper... 3 or 5 holes

LOOK! 30
Yes... 30 BALL-POINT PENS for **88c**

BOX OF 120 CRAYONS
88c

SEARS 406 Phelps Littlefield Dial 385-4444

Witcher Rites In Lubbock

Funeral services for Virgil D. Witcher, a former Littlefield resident, were held Tuesday in Lubbock's Sewell Street Church of Christ with burial in Elmwood Memorial Park.

Mr. Witcher, 65, died about 5 p.m. Sunday at St. Ann Hospital in Lubbock. A retired contractor, he moved to Lubbock from Littlefield in 1935. He was a native of Tennessee.

Two brothers and two sisters reside in Littlefield. The survivors include four daughters; four sisters, Mrs. E. W. Yearly and Mrs. B. E. Turner of Littlefield, Mrs. Vera Pinkerton of Turkey, and Mrs. C. C. Festerman of Sudan; five brothers, including Otis and Alva Witcher of Littlefield; and nine grandchildren.

AUNT DIES IN LEVELLAND
Mrs. Clyde Kendrick, 69, of Levelland, aunt of Arvel White of Littlefield, died Monday there. Funeral services for Mrs. Kendrick were held Wednesday afternoon.

Housewarming At Amherst

AMHERST -- Mrs. Carrie Thomas was given a housewarming in her new home here Friday afternoon.

Mrs. Thomas has served on the nursing staff of the local hospital for many years. Hospital employees were hosts for the occasion, and Mrs. Hazel May registered 53 guests.

Mrs. Agnes Rhodes presided at the refreshment table. Garden flowers were used in decorations at the new home. Several articles of furniture were gifts from the host group. Other useful gifts were displayed.

when the time comes

YOU WILL FIND US HELPFUL AND UNDERSTANDING

Warm and personal consideration, as well as efficient handling of details, characterizes our way of making arrangements.

HAMMONS FUNERAL HOME

TONY CURTIS GUY BRYNNER

NOW...ADD A MOTION PICTURE TO THE WONDERS OF THE WORLD!

in the HAROLD HECHT Production
TARAS BULBA

SAM WANAMAKER BRAD DEXTER GUY ROLFE PERRY LOPEZ George the Violator Macready Windish Sokoloff

Directed by HAROLD HECHT

SUN.-MON.-TUES.

XIT DRIVE IN

THE RED PHONE... HIS MISTRESS...HER RIVAL...

HURLING HIM TO THE EDGE OF SPACE... FREEZING HER LOVE ON THE EDGE OF TIME!

ROCK HUDSON
A GATHERING OF EAGLES

in Eastman COLOR

ROD TAYLOR MARY PEACHY BARRY SULLIVAN

SUN.-MON.-TUE.-WED
PALACE THEATRE

PENNEY'S
ALWAYS FIRST QUALITY

One Shirtwaist to wear 3 ways!

4.98

in 4 fabrics, too! Flip! And she really will when she sees easy way to change the look of this little shirtwaister. Just flip off one collar dickey--flip on another or leave it as is! Cotton plaid, stripe, print or cotton-and-Zantre rayon solids... machine washable, too! Sizes 6 to 16.

collarless
match-up collar
contrast collar

Hospital News

Littlefield Hospital & Clinic

August 17
ADMITTED: Patricia Alvarado, Mrs. Mary West, Sidney Albus, Kenneth Albus, Beulah Eldson, Hazel Crawford, Cheryl Ann Blackwell.
DISMISSED: Mrs. Mary Gore, Mrs. Melisha Bass and infant, Mrs. Deborah Taylor and infant Glenda Stroud, Travis Johnson.
August 18
ADMITTED: Francisco Rey, Susan Parker, Mrs. Neila West, W. J. Ward, Mrs. Edna Armstrong, Mrs. Rose Marie Butler, Mrs. Velna Berry, Mrs. Lena Jones, Beatrice Acquire, Donna Blessing, Mrs. Christine Dennis.
DISMISSED: C. E. Cowan, Linda Shafer, Mrs. Maria Garcia and infant, Mrs. Norma Brown and infant, Homer Curry, Mrs. Christine Dennis, Sidney Albus, Kenneth Albus, Mrs. Jo-lene Greer, Clay Hammett, Lola Sioane, Alvin Mitchell, Cheryl Blackwell.
August 19
ADMITTED: Santos Rodriguez, Eloise Ingram, Christine Ward, Stephen Hart, Zoe Beth Hart, Patsy Jordan, Banks Davis, Charlotte Brond, Mrs. Wanda White, Mary Murrillo.
DISMISSED: Mrs. Verniece Pence, Onie Bennett, Hazel Crawford, Acry Barton.
August 20
ADMITTED: Joe Rendon, Dorothy Sherrill, A. D. Chaney, Edith Lynch, Craig Kennedy, Ronald Cogburn.
DISMISSED: Otha Cotton, Jan Mitchell, Stephen Hart, Zoe Beth Hart, Amidel Monroe, Jim Black, Velna Berry.
Births
 Mr. and Mrs. Secundino Murrillo are the parents of a boy, born August 20. His name is Secundino, Jr.
 Mr. and Mrs. Arthur Allen Brown are the parents of a girl, born August 15. Her name is Gina Lorraine.
 Mr. and Mrs. Jose Garcia are the parents of a boy, born August 16. His name is Jose Alberto.
 Mr. and Mrs. Carous West are the parents of a boy, born August 18. His name is Billy Ray.
 Mr. and Mrs. Gayle Broward are the parents of a girl, born August 19. Her name is Janie Gay.
 Mr. and Mrs. Roy Earl Jordan are the parents of a girl, born August 10. Her name is Sheila Pat.
Medical Arts Clinic-Hospital
August 17
ADMITTED: Mrs. Raymond Gage Jr., Mrs. Wayde Streety, Wendell Boyd Taylor, Mrs. M. Rebalosa, P. M. Mankins, Ella Mae Dobson, Karen Sue Sessions.
DISMISSED: Mrs. Louis Dubec and infant, Calvin Burns, Mrs. Raymond Parks, Mrs. A. A. McMahan, Mrs. L. W. Taylor, Patricia Sharp, Ben Dodson.

Federal Crop Insurance Climbs to Record High

With the 1963 crop year well under way, a record total of more than \$470 million of farm crop production investments is protected by Federal Crop Insurance, the U. S. Department of Agriculture announced today.

"Although the sales period for citrus in Florida and oranges and raisins in California has not yet ended, this \$470 million of protection is already the highest in the 25-year history of Federal Crop Insurance," reported Manager John N. Luft of the Federal Crop Insurance Corporation.

Acres and number of crops protected by Federal Crop Insurance has risen sharply this year. Over 420,000 crops on 13 million acres are now insured against production cost losses from natural hazards, Luft said. This is 57,000 crops and nearly 3.5 million acres above the 1962 crop year.

The \$470 million of protection represents a 30 percent in-

crease over the 1962 figure of \$358 million. This is the second straight year of better than 30 percent increase in farm production expense protection, a total of \$200 million increase in the two years since the Crop Insurance service changed from an experimental to an action program of the U.S. Department of Agriculture.

"As Crop Insurance expands by its legislative limit of 100 counties and three new crops a year," Luft said, "and as improved management, program training, and information practices begin to take effect, we expect to increase this basic protection to a billion dollars within the next five years."

Federal Crop Insurance, now protecting farmers in 1,096 counties for the 1964 crop year. Names of these counties and the crop are now being announced.

Youth Groups Hold Party

The Young People and Intermediate departments of the Parkview Baptist Church went to Lubbock Tuesday night and played miniature golf. This was a training union party.

Mrs. Clarence Coffman heads the department. Assisting were Mr. and Mrs. Reed Yandell and Mr. and Mrs. Clint Phillips.

Turkey Shoot At Whitharral

Whitharral Lions will sponsor a "Turkey Shoot" Saturday and Sunday, beginning at 1 p.m., with hams and turkeys to be given as prizes.

The trap has been moved this year, now being located 3 miles west of Whitharral. The Lions Club uses proceeds for worthwhile club activities.

Crime Rate Up Again In Texas



It's the Law in TEXAS

Crime Rate Up Again In Texas

AUSTIN -- An average of more than 26 major crimes were committed every hour in Texas during the first six months of 1963 as crime continued to outstrip the population growth throughout the state and nation.

Col. Homer Garrison, Jr., director of the Texas Department of Public Safety, reported that crime in the state increased 6.2 per cent in the period January through June, compared to the same period of 1-62.

The DPS six months report showed that murder and homicide were up 13.3 per cent, rape increased 27.5 per cent, robbery increased 14.8 per cent, burglary 6.0 per cent, theft 7.0 per cent, and auto theft was up 4.4 per cent. Aggravated assault, the only major crime to decrease, was down 2.9 per cent.

Overall crime in rural areas showed an increase of 13.1 per cent, while the increase in urban areas was 5.2 per cent. By population groups, the greatest increase was 25.7 per cent in cities between 2,500 and 5,000, while the largest decrease was 13.3 per cent in counties with under five rural population per square mile.

"The 1963 figures prepared by our Statistical Services Section," said Garrison, "means that on the average there was one major crime committed every 2 1/2 minutes, one murder every 7 1/2 hours, one rape every 6 hours and 12 minutes, one robbery every 2 hours and 42 minutes, one burglary every eight minutes, one aggravated assault every 40 minutes, one theft every three minutes and 48 seconds, and one auto theft every 32 minutes."

Livingston Rites Held

Funeral services for Mrs. Betty L. Livingston, 67, were held Wednesday at 2 p.m. in the Hammons Funeral Home Chapel with Ned Fairbairn officiating.

Mrs. Livingston died Monday in Wichita Falls. Burial was in Littlefield Cemetery under direction of Hammons Funeral home.

A native of Frederick, Okla., Mrs. Livingston moved to Littlefield in 1932 from Oklahoma.

Survivors include two sons, Lavern Gray of California and Leon Gray of Littlefield; three daughters, Mrs. Noreen Wiser of Oakland, Calif., Mrs. Bernice Palmer of Corpus Christi and Miss Juanita Gray of New York; seven grandchildren and 2 great-grandchildren; 1 brother, John Bealleau; and 1 sister, Mrs. Cleo Ray of Oklahoma.

Former C-C Man to Speak

In the absence of Rev. Jack Ellzey who is on vacation, Bob Crowell will be filling the pulpit Sunday morning at the Methodist Church.

Crowell was formerly the Chamber of Commerce manager here, and now fills that capacity in Snyder.

Farm Facts

The United States is the largest exporter of farm products in the world. This is pointed out by the U. S. Department of Agriculture in "Food and Agriculture—A Program for the 1960's."

The product of 1/6 of our crop acreage is exported. Agricultural exports were valued at \$5 billion in 1961—1/4 of our total exports.

"More than 2/3 of these exports go to commercial markets and are paid for in freely convertible currencies," the USDA report explains.

"Thus, agricultural exports are one of our best earners of dollars abroad and one of our best tools for dealing with the critical balance of payments problem."

"Half of total wheat production in 1961 was exported; producers of rice and dried peas are even more dependent upon exports. Cotton exports in the calendar year 1961 were equal to nearly 1/2 the 1960 crop. Soybeans (including soybean oil) and tallow



The U.S. is the largest exporter of farm products.

High Plains Field Day On Sept. 1

The 7th annual Field Day at the High Plains Reservation at Halfway has been scheduled for Friday, Sept. 1, after originally being set for 1962.

Average attendance in past 6 years has been 2,500 for the Field Day. The increase of 26 percent this year, this year, is expected to be exceeded.

The farm tour headquarters building at the farm machinery implement dealers to supply new tractors to port the tractors around the acre farm. Seven stops made on the tour.

The fifteen lawn and the thirty-five shrubs plus the flowers in the buildings at the Field Day have attracted many during the year. A new this year will be an opportunity to view the grasses, and flowers before or after farm field tours, which begin at 1:30 p.m.

Added to this new walk will be a display of the in lawn and tree maintenance equipment by local hosts will be available to plain the grasses and equipment. Signs, prepared by the Club of Halfway, will be on the trees and shrubs for who are interested," Dr. Collister, Director of the station, said in an announcement.

"Garden Club lawn enthusiasts will be part of the afternoon program."

The farm machinery will be located around the way Community Building of the Baptist Church at Halfway, and south of the Community Building and the Church. Latest in farm equipment kinds of farm operations on display with persons presenting the various pieces on hand to explain the operation and value. The cultivation equipment will be included since the two fields have been combined for

Whitharral Young Farmers Attend Field Day Program

Members of the Whitharral Young Farmers Club attended a field day at the Texas Agricultural Experiment Station in Lubbock Monday afternoon, then held a regular meeting at 8 p.m. Monday in the Whitharral ag shop.

The farmers took a tour of the experiment station area and heard discussions on cotton, irrigation, conservation, grain sorghums, castor beans, soy beans and vegetable production.

Pre-emergence and post-emergence chemicals were also discussed, along with control of midge and other insects. Shops and equipment were also toured.

An experiment station official spoke on chemicals during the Monday night meeting. Slides were shown concerning the application and the method of applying chemicals.

The club also viewed a film on cotton strippers with soil separation. The club's next meeting will be Sept. 3 at 8 p.m., and the program will be

on cotton stripping. Jack Schutte of Slaton, who manufactures boll separators and baskets, will be the speaker.

The young farmers are also planning to attend the area convention, which will be held at Plainview Sept. 14.

Present at the meeting were Coy Mills, Dwain Dixon, Doyle Hewitt, Lloyd Hood, Leslie Hulse, Clifford Williams, Ernest Kristnik, Marion Polk, Dan Grant, Jack Lewelling, Joe Don Phillips, supervisor Orville Harris, associate member J. E. Wade, and visitors D. Fortmire, J. Watt, Jerome Kristnik.

Beta Sigma Phi Meeting Monday

There will be a called meeting of the Beta Sigma Phi chapter of Littlefield next Monday night, August 26, at the Reddy Room. Time is 8 p.m. All members are urged to attend, by Mrs. Tommy Moss, chapter president.

Need A Plumber Fast?
DIAL 385-3012
Eller Plumbing

The Fieldton WMU met Monday afternoon at the church for a program on Circle reporting. Present were Mrs. Royce Goyno, Mrs. T. H. Hukill, Mrs. Noland Hukill, Mrs. Marvin Quails, Mrs. Gerald Langford.

Help NATURE Protect your Cotton



KILL Fleahopper SAVE Beneficial Insects

Dylox works hand-in-hand with nature... knocks out fleahopper and beet armyworm in a hurry. But, when used at proper recommended rates, Dylox does not sterilize your fields of all insects. It leaves beneficial predators and parasites in your cotton fields doing their natural work of suppressing harmful pests. They keep populations down so you spray less often. You save on chemicals and labor. Control is better and costs are usually lower.

You'll be dollars ahead with Dylox. Order tomorrow.

CHEMAGRO CORPORATION
 HANSA CITY 60 • MISSOURI

OPENING SATURDAY Phillips Produce Shed

3 Miles North of Littlefield on Springlake Highway South of the Country Club

SAVE MONEY ON HOME GROWN VEGETABLES

OPENING SPECIALS

SATURDAY & SUNDAY

HOME GROWN CANTALOUPE'S	3/25¢	HOME GROWN LARGE OR CHERRY TOMATOES lb.	20¢
PRETTY YELLOW SQUASH	Lb. 10¢	3 LB. BASKET	50¢
		JUST PICKED CUCUMBERS	Lb. 10¢

See Our Selection of

- WATERMELON
- SWEET POTATOES
- WHITE & RED POTATOES
- HOT & BELL PEPPER
- EGG PLANTS
- PEARS
- OKRA
- WHITE & YELLOW ONIONS

We Pick Fresh Vegetables Every Day

2 CONVENIENT LOCATIONS

Phillips Produce Shed
 3 Miles on Springlake Highway

Gallini Vegetable Shed
 3 1/2 Miles on Spade Highway

GUS GALLINI - MANAGER

EXTRA DISABILITY BENEFIT for WOODMEN OF THE WORLD MEMBERS

Here's how Woodmen of the World's extra Disability Benefit works: If you become totally permanently disabled after your membership and before age 60, you can turn in your certificate and receive one-half the face amount in cash.

Most insuring organizations do not have this emergency benefit. With Woodmen of the World it's an extra value, written every certificate except term.

Call today for specific information and for the full story on Woodmen of the World's outstanding program of protection plus financial and social benefits.



W. D. Chapman F.I.
 720 LFD Drive
 Phone 385-4262
 Littlefield, Texas



Edgar McCanlies, F.I.
 421 E. 16th Street
 Phone 385-4304
 Littlefield, Texas



MADE NEWS by Mrs. John Vrubel

Cub Scouts In Pack Meet

The Spade Cub Scouts held a meeting Monday evening in the home of Mr. and Mrs. Duane Gray and family beginning at 7 p.m. They enjoyed playing games, back races, three-legged races, obstacle races and clothes relay. The parents also participated in the games. The time for the month has been busy. The scouts have been working and playing games during the month. The group then enjoyed a cooked dinner. Attending were Mr. and Mrs. Howard Boren, Danny and Lynn, Mr. and Mrs. Kenneth Ramage and Kenneth, Mr. and Mrs. Duane Gray, Randy and Fran, and Mr. and Mrs. Bill Thompson, Betty, Roy Wayne and Vivian.

Mrs. R. D. Stokes of Amarillo is a former resident, visited Mr. and Mrs. Robert Wilson Tuesday and Thursday. Mrs. Marie Hamilton also visited Tuesday. Mrs. Stella Ed-

wards of Littlefield was a dinner guest of the Wilsons Thursday.

Mr. and Mrs. Floyd Moorhead were in Big Spring Saturday night and Sunday visiting relatives.

Mrs. John Vrubel and Karyn, Mrs. Rosie Hodges and Mrs. Eileen Will of Littlefield left early Thursday morning for Temple where they visited Rudolph Vrubel in the Veteran's Hospital. He was seriously hurt in a car accident in late May. He is recovering satisfactorily but still is confined to bed. They also visited other relatives, Mrs. Augusta Kretzmaier, Mr. and Mrs. Ben Will and Benny of Temple, Mr. and Mrs. George Simcik and sons of Granger, Mr. and Mrs. Ernest Will of Hico. They returned home Saturday night.

Girl Killed In Pep Crash

A 12-year-old Cochran County girl was killed and 5 other persons were injured Tuesday afternoon when a pickup overturned on a county dirt road 4 miles west of the Pep community.

Killed was Esperanza Sanchez, 12, daughter of Mr. and Mrs. Jose Sanchez of the County Line community. Her sister, Yolanda, 17, and brother, Jose Sanchez, Jr., 6, also were hurt in the accident, along with 20-year-old Aelarda Vaillalovos, her sister, Alicia, 13, and brother, Larry, 15.

The injured were taken to Cochran County Memorial Hospital. Alicia and Larry Vaillalovos and Yolanda Sanchez were reported in fair condition. The others were treated and released. The 6-year-old boy did not require hospital treatment.

Highway patrolman Don Frazier of Levelland said the brakes were applied on the pickup, and the driver apparently lost control as the vehicle skidded and overturned.

T. O. Mote spent several days last week in the Methodist Hospital. He was dismissed Thursday and is recuperating at home.

Mrs. Jimmy Long, Jason and Bryne visited Mrs. James Colson, Bill and Marita of Lubbock Thursday. Marita returned home with them and stayed until Sunday. Mr. and Mrs. James Colson, Marita and Bill, Mr. and Mrs. W. E. Colson and Darryl of Wellington were dinner guests of the Longs Sunday.

Spade received 1/2 inch of rain Sunday evening. Some areas received only a sprinkle. Mrs. Juanita Robinson attended the Key reunion at Lamesa Saturday. It was held in the community center at Forest Park there. She was an overnight guest with a friend Saturday night. Mrs. Robinson is a former Lamesa teacher.

Mr. and Mrs. Doc Key and sons of Olton were visitors of Mr. and Mrs. John Vrubel and family Sunday afternoon.

REA Meet Sept. 3

A thousand new-minted silver dollars, still in their seals, will be door prizes at the annual membership meeting for the Lamb County Electric Cooperative here on Sept. 3.

The annual meeting will elect officers and directors for the upcoming year and will hear reports on the year's operations from officers of the REA and Dick Carl, system manager.

The meeting is for all members of the cooperative, which serves 5,000 meters in Lamb and parts of five other counties. All subscribers to the cooperative power are members of the LCEC.

Victor Diersing, Pep, is president of LCEC. Meeting time is 7:30 at Littlefield Sports Arena. There will be refreshments, and entertainment for children attending.

Mr. and Mrs. Travis Hopper, Linda and Brenda spent the weekend with Mr. and Mrs. James Easter and girls of Ira. Visitors of Mr. and Mrs. Kenneth Ramage, Kenny and Tommy Sunday were Mrs. Ramage's parents and grandmother, Mr. and Mrs. Tom Gill of Tahoka and Mrs. Ellen Monroe of Dallas. Tommy returned to Tahoka with his grandparents for several days.

Overnight guests of Mrs. Juanita Robinson Thursday night were her son Eddy Lanious and a friend, Joe McAlister of Sunray.

Mr. and Mrs. Jimmy Long and children visited Mr. and Mrs. G. R. Nabers Sunday afternoon. Weekend guests of Mr. and Mrs. Paschal Caldwell were Mr.

and Mrs. Aubrey Beil and Brenda of O'Dell. Also visiting Sunday were his brothers, Mr. and Mrs. Jim Caldwell, Buddy and Pat of Almogordo, N.M. and Mr. and Mrs. Murphy Caldwell of Clovis also Mr. and Mrs. Donald Caldwell, Kim and Lori. Homer Miller has been a patient in the Littlefield Hospital since.

Meeting in the home of Mrs. Kenneth Ramage Monday afternoon were Mrs. John Vrubel and Mrs. Travis Hopper and Mrs. Ramage to plan the PTA program for the coming school year.

Mr. and Mrs. W. T. Cook visited Mr. and Mrs. Grover Durham Sunday afternoon.

Mr. and Mrs. Chock Carpenter and Charla of Rocky Ford

and Mrs. Ellen Will were supper guests of Mr. and Mrs. John Vrubel and family Monday night.

C. B. Middleton of San Diego, Calif. was an overnight guest of Mr. and Mrs. Grover Durham Monday night. He is a minister and has held several gospel meetings in Spade. Other supper guests Monday evening were Mr. and Mrs. Floyd Millican of Hereford and Mr. and Mrs. D. R. Hammock and children.

Mr. and Mrs. W. W. Thompson and family returned Wednesday night from a week's vacation. They spent Thursday night with Mr. and Mrs. Cliff Heard of Seymour. They visited their grandfather, R. L. Heard of Olney several days. They were overnight guests of Mrs. Eva

Nichols of Ft. Worth Saturday night. They visited Six Flags. They also visited his aunt and uncle, Mr. and Mrs. J. W. Thompson of Overton, Mrs. Lea Ledger of Copperas Cove. Also Mr. and Mrs. Walker Boren, Mr. and Mrs. Newton Boren and their mother, Mrs. W. W. Boren, former residents of Littlefield.

Mr. and Mrs. J. R. Hodges recently vacationed at Vallecito Reservoir near Durango, Colo. for a week. Cub scouts met Monday afternoon in the home of their den mother, Mrs. Duane Gray. They made tennis rackets with clothes hangers and nylon hose, and tennis balls from nylon hose. Attending were Roy Wayne Thompson, Kenny Ramage, Danny Baker and David Gray.

Rites Held For Matthews

Services for Clay H. Matthews, longtime resident of Sudan, were held Tuesday at 2 p.m. in the First Baptist Church of Sudan.

Mr. Matthews died Sunday at the Veterans' Hospital in Big Spring. Rev. Wayne Perry of Ropesville and the Rev. Willie C. Hazel, pastor of the Sudan church, officiated the last rites.

Matthews had been a resident of Lamb County for 50 years. Survivors include his wife; two daughters, a step-daughter, a son, two sisters and one grandchild.

AMHERST

Cook accepted the job as backfield coach and head track coach at Armon Carter Riverside high school in Fort Worth. His good record as coach here made him eligible for the place in the class AAAA school.

Lamb County Leader

Published every Thursday morning by the Littlefield Press, Inc., 506 Phelps Avenue, Littlefield, Texas. Entered as second class matter at post office, Littlefield, Texas, under the Acts of March 3, 1879.

Jack Reavis, Publisher; Eddy Nieman, Managing Editor; E. McShan, Adv. Manager; John Edd Blessing, Prod. Mgr.

Subscription Rates: One year, Lamb County and adjoining counties, \$5.10; elsewhere, \$6.14.

BACK TO SCHOOL

-but first to Staggs!



PENCILS
6 for 10¢

FREE!!
2 RING
NOTEBOOK
BINDER
WITH PURCHASE 98¢
NOTEBOOK PAPER.
A 50¢ VALUE

HEAVY DUTY BOOK SATCHEL
REG. \$2.98
HOLD BOOK PAPERS, PENS \$1.99

PASTE WHITE LARGE 5 1/2 OZ. WITH APPLICATOR REG. 30¢ 18¢

BINDER ZIPPER LARGE RING SPLIT LEATHER HEAVY GUSSET \$2.88

NOTEBOOK \$1 SIZE SPIRAL 66¢

CRAYOLAS 8'S 9¢

SHEAFFER'S CARTRIDGE PEN School Special Cartridge Pen 1.00 Strip & Pack49 Total Value 1.49 79¢

WE HAVE ALL LITTLEFIELD OFFICIAL SCHOOL SUPPLY LISTS FILL YOUR'S WITH ONE STOP!

Staggs

DRUG CENTER

Serve Yourself and Pay Less!

SHURFINE SHORTENING 3# 59¢	JOHNSON FRUIT PIES APPLE CHERRY PEACH 34 OZ. 59¢	SOFLIN FACIAL TISSUE 400 COUNT 2 for 35¢
ALADDIN LOOSE LEAF FILLER 25¢ PACKAGE 15¢	LIFTON TEA 1/4 lb. 39¢	
STAFFORD PENCIL NO. 2 EACH 1¢	SCOTKINS NAPKINS TABLE SIZE 29¢	
SHURFINE PIECES & STEMS MUSHROOM 4 OZ. 39¢	SHURFINE PEACH PRESERVES 18 OZ. 47¢	
SHURFINE WAFFLE SYRUP QT. 47¢	SHURFINE SLICED BEETS 303 17¢	
SHURFINE Milk TALL CAN 2 for 25¢	SHURFINE COFFEE DRIP OR REG. Lb. 55¢	
CHOICE MEATS		
ARMOUR STAR BACON Lb. 59¢		
PINKNEY COUNTRY STYLE SAUSAGE 4# \$1		
CELLO Carrots 2 bags 15¢	PORK ROAST 1/2 lb. 55¢	
TEXAS Cabbage lb. 5¢	HENS lb. 39¢	
RED MALAYA Grapes lb. 19¢	FRESH GROUND HAMBURGER 3 LBS. \$1.00	
CALIF. LEMONS lb. 19¢		
IDAHO GEM RUSSETT 10# POTATOES 49¢		

PIONEER

SUPER MARKET

ROAD & KIT DRIVE

FIELDTON NEWS by Mrs. R. A. Reed

Roberts Attend Reunion

Weekend visitors of Mr. and Mrs. B. C. Roberts were her brother and wife, Mr. and Mrs. R. J. Nixon of Eldorado; a sister and her husband, Mr. and Mrs. Franklin Lang of San Antonio; a daughter and family, Mr. and Mrs. Pearson Adams, W. O., Martha and Jackie, and their son Terry Adams, wife and two sons of Bovina. All members of the family attended the annual Roberts reunion Sunday.

Mrs. May Chaney and her sister, Mrs. Earl Douglas of Olton, are visiting in Midland this week with a brother and family. Candy Chaney had a birthday Sunday. Other children who ate birthday cake and ice cream were her brother, Ronnie and sister, Cindy, Trisha Woods, Jennie Snow, Dee Ann, Jerry and Ricki Stamps.

Mr. and Mrs. Leo Burnett of Dimmitt, spent Thursday here with Mr. and Mrs. B. F. Roberts.

Mr. and Mrs. J. E. Elliott, Sr. and Mr. and Mrs. Paul Elliott, spent Sunday in Littlefield, where they visited Mr. and Mrs. J. E. Elliott, Jr. and sons.

Mrs. Gus A. Becker, Jr., Van-

ean, Allen, Leesa, Rick and Amy left Monday for their home in Seefridge Air Force Base, Michigan. They had spent the summer here with Mrs. Becker's parents, Mr. and Mrs. R. A. Reed.

Mr. and Mrs. L. L. Brawley, Littlefield, visited Sunday with their niece, Mrs. Tink Chaney, and family.

Mr. and Mrs. S. G. Cowan attended church Sunday morning at the Church of Christ in Olton.

Vernon Qualls visited Sunday afternoon with his mother, Mrs. H. W. Qualls and sons of Sudan. A granddaughter, Deanna Jeffrey, accompanied him and also Donna Bowman.

Roxy Armstrong spent a week recently at Camp La Junta in Hunt County attending a drum majoring school. Her parents, Mr. and Mrs. Jack Armstrong, picked her up at the end of the week and the three spent the weekend in San Antonio.

Mr. and Mrs. Francis Franks and two sons of Arch, N.M., spent the weekend here with his cousin and family, Mr. and Mrs. Noiland Hukill, and sons. Other visitors for Sunday dinner were Mr. and Mrs. J. C. Franks and Reba of Amherst.

Mr. and Mrs. Frank Hukill and granddaughter, Donna, left Monday for Mangum, Okla. after a weeks visit here with his mother, Mrs. Mollie Hukill; brothers, Paul and Homer Hukill, and their families; a sister, Mrs. Royce Goynne and family, and other relatives.

Mrs. Jerry Armstrong, Craig and Robin of Big Spring are visiting here with Mr. and Mrs. Jack Armstrong and Roxy.

Judy Foley and Elaine Bridges of Littlefield spent the weekend here with Roxy Armstrong.

Terry Reunion Set Saturday

The third annual reunion of the Terry County Pioneers Association is scheduled to be held in Brownfield Saturday.

The affair will be held at the American Legion Hall, located at 800 Seagraves Road, and registration will begin at 8 a.m.

Present members of the association, who now number about 500, as well as former residents and their children who have lived in Terry County for 40 years or more, are invited to attend and being a picnic lunch.



The Red Telephone, known as "the Colonel's Mistress", casts its ever-menacing shadow over the lives of Strategic Air Force men and their wives in "A Gathering of Eagles." The Colonel is Rock Hudson, shown with Mary Peach who co-stars together with Rod Taylor and Barry Sullivan. Scenes of the taut, day and night watch against possible enemy attack were photographed at SAC's Headquarters Base, Omaha, Nebraska.

AMHERST NEWS by Mrs. Lester LaGrange

Ray's Home From Germany

Mr. and Mrs. Ed Ray and little sons arrived last week from Germany where he was stationed in the service. They made the air trip to New York and motored from there and have been guests of his parents, Mr. and Mrs. Frank Ray since last Wednesday.

They will make their home in Littlefield and he will be a member of the Junior High school faculty. He graduated from Littlefield High School and Trinity University before serving as a lieutenant in the army.

Mr. and Mrs. Eddie Haydon and children of Sunnyside visited her grandfather, Mr. Claud Stine in the local hospital Sunday. Mr. and Mrs. Jim Humphreys, Jimmy and Susie are visiting her parents in Ohio.

Mr. and Mrs. A. A. Royal attended the annual Royal family reunion in Mangum, Okla. It was held at his sister, Mrs. Helen Hathaway's home. About 50 attended.

Congressman Victor Wickersham, his wife and son of Mangum, Okla. spent the weekend with her sister, Mrs. Virgil Hinds and family.

Mr. and Mrs. Bill McDaniel of Sodhouse returned during the weekend from a week vacation at Corpus Christi.

Mr. and Mrs. Alfred Schroeder were in Vernon for the weekend and visited his sister, Mrs. Floyd Phillips.

Mr. and Mrs. W. P. Stone fished at Umbarger Lake last week. They visited her sister, Mrs. E. L. Garroll of Amarillo who is ill and in a hospital there.

Guests in the home of her parents, Mr. and Mrs. Jim Nix Sunday were Mr. and Mrs. Ross Brock and family of Earth.

Mrs. James (Rip) Elms of Abilene visited Mrs. Ted Long Sunday. She and her husband are guests of his parents in Littlefield and other area relatives.

Mr. and Mrs. Fred Wilson and grandson, Roger Humphreys, spent Tuesday to Sunday fishing near Junction. They were joined by her brother, Mr. and Mrs. C. D. Jones, and son and daughter of Lamesa.

Mrs. Mabel Chafin visited her sister, Mrs. Hubert Sawyer Friday. She serves on the staff at the Baptist Buckner Girl's Home in Lubbock.

Mike Slate returned during the weekend from Tucson, Ariz. He accompanied his uncle Lloyd partment Store.

Mr. and Mrs. Lloyd Cowart were guests in the home of Mr. and Mrs. Albert Martin at Hale Center Sunday afternoon.

Mr. and Mrs. Elbert Goynne and family of Clovis, N.M. were guests in the home of Mr. and Mrs. J. F. Cole Sunday.

Mr. and Mrs. John Lambright left Sunday for a few days vacation and visit with relatives in Kansas.

Lynch and family of Olton. Mr. and Mrs. Don Hays were in Amarillo for the weekend.

Weekend guests in the J. Allensworth home were Mr. and Mrs. J. W. Long of Olton City.

C. A. Duffy is visiting California. He joined his Mike and family, who are visiting her relatives in Van Horn.

Mrs. Arnold McManus is in air for her home in Key Fla. Saturday after a visit her sisters, Mrs. Lester Grange and Mrs. L. E. Sudan.

Guests of her cousin, Homer Harper and Mr. and Mrs. Bill Hays of Cal Allen, Texas.

Mrs. Florence Nix of Deal visited Mrs. Velma Nix Sunday.

Sunday dinner guests at James Holland home were parents, Mr. and Mrs. Vause of Littlefield. The occasion was the seventy-fifth birthday of Mr. Vause.

Rev. John Rankin visited brother Harvey Rankin and nephew Jack O'Rear while tending the Royal Ambassador Congress in Washington, last week. They reside in tropic area.

Mrs. Irma Clayton and children and her mother, Mrs. Bennett spent the weekend Sweetwater with Mrs. Bennett brother and wife, Mr. and Mrs. T. J. Kemp.

Weekend guests of Mrs. Mrs. T. L. Bennett were mother, Mrs. Frizzell brother, Billy and sister, Mrs. Gerald Sayle and Geraldine of Amarillo.

Mr. and Mrs. T. L. Bennett were business visitors in land and Big Spring Monday.

Weekend guests in the McGreggor home were their ghter and family the Bol wards of Houston. Billie Gregor, who had been employed in Houston this summer, returned home with her son Roy McGreggor was home Canyon. He attends W.

OLTON NEWS Mrs. W. B. Smith, Jr.

Families To Possum Kingdom

Mrs. J. G. McMannus and children of Dallas visited in the home of her mother, Mrs. Nell Crawford, recently.

Mrs. Basil Sherman is visiting in Richmond in the home of their daughter and son-in-law, Mr. and Mrs. Edward Featherngill. Basil plans to drive to Dallas this week and see his new grandson, and Mrs. Sherman plans to return home with him.

Mr. and Mrs. James Gallagher and Jerry, Bob, Kenneth, Eugene, Evelyn and Laurie, all attended the annual picnic of the Pioneer Natural Gas Company in Plainview Sunday afternoon.

Mr. and Mrs. K. Y. Givens, Ida Myrtle and Deborah Kay left Monday morning for a vacation at Possum Kingdom Lake.

Mr. and Mrs. Elmo Hashey and children and John Montgomery are vacationing at Possum Kingdom Lake this week. Billie Ellen and Kyle Curry, daughter and son of Mr. and Mrs. Clifford L. Curry, had their tonsils removed at Taylor Clinic in Lubbock recently. They are improving nicely.

Little Steffney Smith of Brownwood spent last week here visiting in the home of her grandparents, Mr. and Mrs. Louis Hair.

Mrs. Johnny Hodges and children and Mrs. James Cowart and children visited in Lubbock Thursday.

Mrs. Leslie Armstrong has been moved from a Lubbock Nursing Home to the home of her sister, Mrs. E. L. Church, 615 S. Westside Ave., Littlefield. Her condition is unimproved.

Jerry McKenzie is reported to be improving after undergoing brain surgery at Methodist Hospital in Lubbock.

Mrs. A. L. Amundsen and Chris returned to their home in San Antonio, last week after visiting here with her parents, Mr. and Mrs. R. H. Thomas, in the home of her sister and brother-in-law, Mr. and Mrs. J. C. Scruggs, with her brother and sister-in-law, Mr. and Mrs. Billy Guy Thomas, and in the home of Mr. and Mrs. Jack Thomas.

Mr. and Mrs. Ivan Stewart,

Merle, and Wayne of Fort Worth, arrived here Sunday for a visit in the home of her parents, Mr. and Mrs. Ben Andrews, and in the homes of her brothers, Mr. and Mrs. Bud Andrews and Mr. and Mrs. W. E. Andrews.

Little Tammy Green of Slaton visited her grandparents, Mr. and Mrs. Leon May several days last week.

Mr. and Mrs. Scott Blakley of Hico were guests in the home of Mr. and Mrs. Witt Laceywell last weekend. The Blakleys are former residents of Olton.

Mr. and Mrs. Dickie Scruggs of Odessa announce the arrival of a son who was born August 11. Grandparents are Mr. and Mrs. J. C. Scruggs, Olton.

The men of the Main Street Church of Christ enjoyed a breakfast and fellowship together and with their visiting preacher, Dean Brookshire of Tyler, Monday morning at the

Ideal Cafe.

Mr. and Mrs. Edward Featherngill of Richardson announce the arrival of a son, Lovel Allen, who was born Aug. 12. The Featherngills have one other child, 3 1/2 year-old daughter, Lynda. Grandparents are Mr. and Mrs. Basil Sherman and Mr. and Mrs. Paul Featherngill, all of Olton. Great grandparents are Mr. and Mrs. Holland and Mr. and Mrs. Lee Sherman, also of Olton and Mr. and Mrs. A. H. Allen of San Antonio.

Mr. and Mrs. Tom Lawson, Judy and Richard from Albertville, Alabama, arrived Thursday for a visit in the home of his parents, Mr. and Mrs. Pink Lawson.

Mr. and Mrs. W. M. Bourland and family have moved to Hale Center to make their home. While living in Olton Bourland was manager of Walter's De-



OTIS BENNETT

BACK TO SCHOOL OFFER-WE BOUGHT A CARLOAD

BICYCLE SALE

We Sell Only TOP QUALITY Bicycles At The LOWEST Possible PRICES

Firestone
Speed
Cruisers



3 DAYS ONLY
Thursday
Friday
Saturday

\$39.95
\$5 DOWN
\$1.75 A WEEK

Firestone
"500"
BIKES



\$5.00 DOWN
\$2.00 A WEEK

YOUR DOLLAR BUYS MORE AT FIRESTONE

Firestone
NEW TREADS

APPLIED ON SOUND TIRE BODIES OR YOUR OWN TIRES

ANY SIZE
WHITE-WALLS **\$49.49**

Plus tax and 4 trade-in tires of same size off your car

Same tread design... Same tread width...
... Same tread depth
AS NEW FIRESTONE TIRES!

GUARANTEED DELUXE CHAMPION



Firestone DOUBLE GUARANTEE

Our retreads, identified by Medallion and shop mark, carry this DOUBLE GUARANTEE

1. LIFETIME GUARANTEE - Retreaded where a retreaded tire is worn out, we'll retread it again for the life of the tire.

2. ROAD HAZARD GUARANTEE - We'll replace a retreaded tire if it's worn out in 12 months.

BENNETT'S


Firestone

where your dollar buys MILES more

SOUTH SIDE COURT HOUSE
FREE PARKING- PHONE 385-4215

GENERAL TELEPHONE TOWNS ON THE MOVE

Wylie prepares for more growth



As it was. After facelifting.

When Wylie, Texas planned civic improvements, its progressive citizens went all the way. Showing a population increase of 34% over 1960 census figures of 1804, Wylie set out to prepare for even more growth.

They launched a street paving program, downtown business modernization, construction of a new school, new bank building, new residences and a new post office.

This combination of public and private improvement is well under way today.

as shown in the "before and after" facelifting photos above. The Wylie story is another reason we say big things are happening in General Telephone towns.

These towns are on the move. Community improvements are under way, local resources are being developed, new businesses, new industries are coming in. If your town seeks additional information about expansion, perhaps we can help. Just write our Community Development Department, Box 1001, San Angelo, Texas.

GENERAL TELEPHONE OF THE SOUTHWEST

Best time to make a real buy—

RAMBLER'S SAVINGEST DAYS!

Get the best values in best-selling Ramblers! All Ramblers — American, Classic, Ambassador — give you Rambler exclusives like Deep-Dip rustproofing and Ceramic-Armored muffler. All models give you the extra security of Double-Safety Brakes.

The wide choice of six-cylinder and V-8 power includes the American's 125-hp miles-per-gallon champ of every economy run entered. And that's just a sampling of features that won Rambler '63 the "Car of the Year" Award.

THE SAVINGEST DAYS ARE HERE!

Get the best buys and the biggest trade-ins! All year long, Rambler sales have been soaring—smashing one record after another. But we're not satisfied yet—and we won't be until we wind up the season still higher on the best-seller list.

To make sure, we're going all-out. We're offering the best buys yet—biggest trade-in allowances when you buy an already low-priced Rambler. Come in and make us prove that these are Rambler's Savingest Days!

Join the Trade Parade to Rambler 6 or V-8



Rambler Classic 770 4-Door Sedan

Ray Keeling Rambler

800 E. FOURTH

CHUCK ROAST
 U.S.D.A. INSPECTED
 FARM PAC BLUE RIBBON
 OR U.S.D.A. CHOICE
 SLADE CUT, LB.
49¢

INSPECTED FARM PAC BLUE RIBBON CR USDA CHOICE ARM.
WISS STEAK LB. **69¢**
 INSPECTED FARM PAC BLUE RIBBON OR USDA CHOICE FULL
IRLOIN STEAK TOP CUT LB. **89¢**
 INSPECTED FARM PAC BLUE RIBBON OR USDA CHOICE
BONE STEAK LB. **89¢**
 CLOSED SUNDAY

CASH IN EACH WEEK IN FURR'S BLUE RIBBON BONANZA
10 Winners in Each Store Each Week
 LINCOLNS, COLOR TVS, BOATS, RADIOS, ETC.



THIS CLASSIC LINCOLN CONTINENTAL CAN BE YOURS!

SUGAR PURE CANE **57¢**
 5 LB. BAG

MIRACLE WHIP
 49¢
 Qt. Jar

DR. PEPPER OR PEPSI-COLA
COCA-COLA 12 BOTTLE CARTON **59¢**
 FOOD CLUB MILK TALL CAN 2 FOR **25¢**
 SHORTENING BAKERITE 3 LB. CAN **59¢**
 TUXEDO CHUM SALMON TALL CAN **49¢**
 MARYLAND CLUB ALL GRINDS COFFEE LB. CAN **65¢** 3 LB. CAN **\$1.89**
 WE RESERVE THE RIGHT TO LIMIT QUANTITIES

TOMATO JUICE STOKELY'S 46 OZ. CAN **19¢**
TISSUE NORTHERN 4¢ OFF LABEL 4 ROLL PKG. **25¢**
 CHASE & SANBORN INSTANT COFFEE 20¢ OFF 6 OZ. JAR **79¢**

FRESHEST FRUITS & VEGETABLES

25 LB. BAG RED **POTATOES 69¢**
PEACHES LARGE CALIF. FRESH, TASTY LB. **19¢**
CORN-ON-THE-COB FRESH FROM COLORADO 4 EARS **19¢**

BETTY CROCKER RICE
 RICE MILANESE 5 OZ. **49¢**
 RICE PROVENCE 5 1/4 OZ. **49¢**
 RICE WITH VALENCIANA SAUCE 13 1/2 OZ. **59¢**
BORDEN STARLAC INSTANT MILK 12 OT. SIZE **89¢**
APPLE SAUCE
 WHITE HOUSE NO. 303 CAN 2 FOR **35¢**

OLEO ELNA
 QUARTERS 2 LB. **29¢**
MELLORINE
 DARTMOUTH ASSORTED 1/2 GAL. **49¢**
IVORY
 PERSONAL SIZE BAR 4 FOR **29¢**

HAND LOTION JERGEN'S 12 OZ. SIZE **62¢**
JOY SUDS BUBBLE BATH **19¢**
REVLON 2 TUBES **\$1.50**
MASCARA HELENA RUBINSTEIN LONG LASH **\$2.50**
Unguentine FIRST AID SPRAY **69¢**
TOOTHBRUSH PEPESODENT LIFELINE REG. **49¢**

EVERYBODY LIKES FARM PAC BLUE RIBBON BEEF!



HAMBURGER FRESH GROUND LB. 3 FOR **\$1**
FRANKFURTERS TENDER SKINLESS LB. **39¢**

TENDERIZED STEAK
 TOWN & COUNTRY LEAN, NO WASTE. 8 STEAKS 20 OZ. PKG. **89¢**
 SAVE FRONTIER STAMPS AT FURR'S

LEG-O-LAMB LB **79¢**
LAMB CHOPS LB **98¢**
LAMB SHOULDER LB **59¢**
LAMB RIBS LB **29¢**

SAVE ON FRESH FROZEN FOODS!

ENCHILADA DINNERS
 PATIO FRESH FROZEN 12 OZ. PKG. 3 FOR **\$1**

MEXICAN DINNERS
 PATIO FRESH FROZEN 16 OZ. PKG. **39¢**

CREAM PIES
 MORTON'S ASS'T. FLAVORS FRESH FROZEN EACH **39¢**

MORTON'S FRESH FROZEN APPLE, PEACH, CHERRY OR COCONUT CUSTARD.
Fruit Pies EACH **29¢**
CUT OKRA 10 OZ. PKG. **15¢**

FRENCH FRIED TOP FROST **POTATOES** 16 OZ. PKG. **19¢**
 MORTON'S ASSORTED MEATS **DINNERS** 11 OZ. PKG. **39¢**

ASPARAGUS
 TOP FROST CUT FRESH FROZEN 10 OZ. PKG. **29¢**
BABY LIMAS
 TOP FROST FRESH FROZEN 10 OZ. PKG. 3 FOR **59¢**

EMPTY FREEZER?
 WE SPECIALIZE IN FREEZER FILLUPS!
\$10.99
 Furr's Frozen Food Service
 AT YOUR NEARBY FURR'S SUPER MARKET
 GENERAL MERCHANDISE BARGAINS

FRESH FROZEN GERMAN **CHOCOLATE CAKE** EACH **89¢**
 CAMPBELLS POTATO FRESH FROZEN **SOUP** 10 OZ. CAN **19¢**
 SPARE TIME CHICKEN BEEF, OR TURKEY **POT PIES** 8 OZ. PKG. **19¢**
 JOHNSTON'S ASS'T FULL OF FRUIT **FRUIT PIES** 9 INCH EACH **59¢**
 PEPPERIDGE FARM ASS'T FLAVORS **TURNOVERS** 11 OZ. PKG. **45¢**
 FRESH FROZEN TOP FROST **GRAPE JUICE** 6 OZ. CAN 2 FOR **35¢**
 TOP FROST **BLACK EYE PEAS** 10 OZ. PKG. 3 FOR **59¢**
 TOP FROST CHOPPED OR LEAF. **SPINACH** 10 OZ. PKG. **12 1/2¢**
 FRESH FROZEN MORTON'S **DONUTS** 10 OZ. PKG. 2 FOR **69¢**

FURR'S
 SUPER MARKETS

HOWDY!

by Dick Reavis

You can expect your newspaper and that 21-inch evil eye this week to concentrate on that upcoming march on Washington that happens in just six more days.

Actually, a Washington march is not a new experience. There was an aggregation years back, of hungry and discontent, termed Coxy's army who camped at the capital. Then there was the bonus march by World War I veterans at the depression's depth.

But next week's demonstration will be far and away the most significant, the most dangerous and probably the most frustrating ever. For thousands of Negroes, and some white persons, will converge on the ganglion of federal government to insist on their "rights" as first class citizens.

They will, as Shakespeare said, have their center of the stage--and they certainly will have this--and then pass on. But to where?

The Negro march is actually part of a revolt. Negroes the nation over have been militarized to demand in 1963 those rights that President Lincoln opened for them in 1863, the right to be citizens of these United States.

It is hard to quarrel with their purpose, but it is even harder to agree that their all actions have a practical purpose.

Right now, the march will demand the civil rights program outlined by the administration, a set of objectives that a lot of legislators are having trouble digesting.

And for the simple reason that there are parts of the civil rights program that may correct a national evil by creating another, that for the long pull can be more harmful.

The section that would force integration of personal services under federal pressure is an abridgement of the right of individual enterprise, and cannot be effected without serious consequences.

Other parts of the program flex the muscles of federal agencies. For example, banking institutions could be called to answer for alleged discrimination--perhaps in employment of their people--under the federal systems by which banks are regulated.

Look about you. There are few business enterprises that do not have a federal hook attached somewhere. For the most part these federal connections have been invited by the business groups themselves, or have come of necessity as did the Federal Reserve System, the Federal Deposit Insurance Corporation to protect your bank deposits, or others.

However they came, they are here. The federal government can pull a chain on almost any business operator today. The Federal Communications System has powerful latitude in the regulation of television and radio stations. Presumably, here is an entry into the information field, where the government has absolutely no business.

An administration so minded can exert almost irresistible pressure. The Eisenhower administration proved this beyond argument, and the Kennedy administration may make like's determined efforts look small.

Under the guise of civil rights--and it is hard to find a higher cause--this nation may surrender many of its essential liberties that are equally important.

You cannot expect the Negro to be much concerned about this, in his 100 years of freedom he has made little progress against subjugation, until the last few years. He has had little chance to learn of essential liberties.

Now, somebody has flipped him the ball and is running powerful interference for him. He can be expected to run, and sometimes run blindly.

The big drawback is: The goal he is running for has not been marked off on the field yet, and can be drawn only through more years of patient, persistent effort, with the help of many people.

The Negro cannot demonstrate forever. Somewhere, he must stop and consolidate his gains and aim for the next practical goal. But he will not tumble the walls of Jericho in 1963; nor can he go back to the wilderness of passive inequality. He has spent twice as much time there already as did the peoples of Egypt.

He can but continue to protest, with purpose. He can multiply his James Merediths and his Martin Luther Kings. And he can depend on help from the government and the mass of his fellow citizens.

But not if the government is

going to use all its tentacles to force a course of action that will inevitably infringe on the rights of many of its people. This course, and surely many people in Washington must recognize it, can only create a new revolt. And that is at least one more than any country can afford.

Contact

by Speedy Nieman

A necessary evil is one that we like so well we do not want it abolished.

It doesn't seem possible that another football season is just around the corner, but the head-knocking is underway at Wildcat Stadium and the first game is just two weeks away.

Littlefield's team may be a little shy on depth and experience, but you can bet they'll have a hustling, well conditioned and well coached crew. Grid "experts" rate the Cats no better than third in the district, but the LIS gridgers will be out to prove them wrong.

Speaking of football, Coaches Forrest Faver and Butch Gerber are thinking about filing suit against this writer (influenced, no doubt, by the \$3 million suit making the headlines recently).

In an article on the coaching staff, an error was made in the mechanical department and the story had Faver as an ex-West Texas State griddier. Actually, he is from East Texas State. He hated to be associated with West Texas, while ex-WTS man Gerber took this as an insult also.

I think they've decided a public apology will suffice.

If there's one matter which city councilmen agree is the most important one facing them, it's the water situation. They realize a wrong answer could hurt the city immensely, and they are proceeding with caution and deliberation in an attempt to find the right answers.

No member of the council wants it to go down in history that he was one of the men who failed to make ample plans for the city's future water supply. Neither does he want it said that he had a part in making unnecessary plans for the future. These are just two of the reasons the council is giving long and careful consideration to the all-important water supply. An engineer's report and "water hearing" has been set Sept. 19. The course of action could be mapped as a result of this meeting.

The council has held some informal discussions on proposals advanced by former mayor Les Hewitt and other citizens. They believe these men are sincere in their opinions, but they don't know if the men are right. As some fellow noted the other day, scientists and engineers know more about what's about us than what is below us.

Reception For Teachers Next Wednesday

Littlefield school teachers will get a special welcome in a reception on Wednesday, Aug. 28, by the retail council of the chamber of commerce.

Mrs. Betty Smith is chairman for the reception. It will be held at 9 a.m. at the high school. A general teachers meeting will be held by Superintendent Glenn Reeves following the reception.

A number of door prizes will be given at the reception. Firms wishing to offer door prizes are asked to call the chamber of commerce office to list them.

One Accident Logged By City

Activity was quiet on the city police front this week with one accident recorded Monday and two men arrested for drunkenness.

The accident occurred at 1:59 p.m. Monday when cars driven by Allen Purdy of Littlefield and Jose Sanchez of Lubbock collided at XIT Drive and W. 6th St. Damage was estimated at \$290 to the Purdy vehicle and \$60 to the other.

City firemen extinguished a car motor blaze on Phelps Ave. Wednesday morning, and two false alarms were reported this week.

Teachers Start 'Class' Early

Teachers in the Littlefield school system will get an early start on the fall term at special sessions of the West Texas School Study Council next week in Lubbock.

"What is Successful Teaching?" will be the topic of a study session Thursday in Lub-

STATE CAPITAL Highlights AND Sidelights by Vern Sanford

AUSTIN, Tex.--Texas Youth Council's parole division will triple in the next six months or so. But the problem of trying to help "reform school" graduates become useful citizens is still great.

Until September 1, five state parole officers are responsible for some 1,800 juvenile parolees spread over 169 counties. That's a ratio of one parole officer to about 357 parolees, compared to national standards of one officer to 40 parolees.

Staff will increase to 10 on September 1--a ratio of one to 178. On March 1, 1964, when five more are added, ratio will be down to one parole officer to 119 parolees, spread over the Lone Star State.

Biggest number of parolees is centered in big cities where the general rate of crime is always higher. More than a third of the paroled children are in Dallas, Harris and Tarrant counties; another 288 in El Paso, Jefferson, Tarrant and Travis counties. About 154 are in Nueces, McLennan, Bell and Lubbock counties.

But sizeable juvenile parole populations are centered in smaller counties, such as Cameron, Grayson, Braxton, Ector, Galveston, Gregg, Hale, Hidalgo, Howard, Hunt, Midland, Navarro, Potter, San Patricio, Smith, Taylor, Wichita and Williamson.

Some counties only have one paroled child. But the state is responsible for every one it has "retrained."

First Aide--State Regulatory Loan Commissioner Frank Miskell appointed Robert C. Duke, Houston attorney, as Deputy Commissioner and General Counsel of the new state agency. Duke formerly served as acting Securities Commissioner in the Secretary of State's securities division.

Regulatory bill takes effect on Aug. 23. Some 2,000 loan companies operating in Texas will have to file for state licenses at that time.

Insurance Hearing--A State Insurance Board hearing on proposed rules for regulating credit insurance--which pays off a man's debt if he dies, or makes the payments when he is disabled--drew a big crowd.

One controversial point was a ceiling rate of 90 cents per \$100 of insurance. Some insurance company executives insisted the ceiling should be no more than 60 or 65 cents per \$100. But one spokesman thought the 90-cent per \$100 rate was too low and recommended \$1.

Some loan companies said they now give credit insurance free. They feared the proposed rules might outlaw this practice. A second hearing with new proposed rules will be aired on Sept. 10.

Money Men--The Legislative Budget Board, lawmakers who make the Legislature's financial decisions between sessions, recommended \$4,644,000 worth of state building to Gov. John Connally.

Plans approved included one by the State Hospitals Board to equip a genetics lab and follow-up clinic on mental retardation in the State Psychiatric Institute at Houston; new dormitories for Gatesville School for Boys, Gainesville School for Girls and Crockett School for Negro Girls; and several prison system units.

Authorization was recommended for \$25,000 worth of partitioning to provide 23 new offices in Atty. Gen. Waggoner Carr's department.

But the board balked at Texas A&M University's request to spend some \$100,000 on a home--exclusive of land and furnishings--for A&M President Earl Rudder, to replace the one destroyed by fire.

A compromise recommendation of about \$60,000 for a 4,500 square-foot home was the outcome.

Cities Growth Formula--About 200 city attorneys, city engineers and city councilmen gathered in Austin to hear a Texas Municipal League explanation of the Texas Municipal Annexation Act, which will become effective on August 23.

Annexation act sets out "extraterritorial jurisdictions" dictating the extent of the city's growth in any three-year period. For cities of less than 5,000 population, the extraterritorial area extends a half mile beyond city limits; cities 5,000 to 25,-

bock's Municipal Auditorium. This session will involve all teachers, according to Supt. Glenn Reeves, who is also chairman of the WT School Study Council.

Friday's program will be primarily for school administrators and will concern the role of counseling in the schools. This session is scheduled in Tech's Student Union building. Littlefield is a charter member of the study council. Membership is composed of some 22 area schools.

rim. It could swing arcs or "fingers" out to "desirable areas for growth," and obtain the annual area allocation of 10 per cent of its square acreage in these areas.

For example, officials of a city of 20,000 acres could annex up to 2,000 acres of "desirable" land one year; 2,200 acres the next, etc., without ever annexing undesirable new territory.

School Land Board--Land Commissioner Jerry Sadler, Governor Connally and Atty. Gen. Waggoner Carr, members of the State School Land Board make and revise leases on public school lands, including river beds, bays and inlets of the Gulf of Mexico.

Attorney General requested that he be removed from the land board. After Aug. 23 he

will be replaced by a private citizen of his choosing. Before Carr leaves the board he will sign the deed which conveys state-owned land on Padre Island to the federal government for a national seashore.

Short Notice--Rep. Sam F. Collins of Newton asked to be allowed to serve as a state representative without pay, when he accepted a job as assistant to General Manager John W. Simmons of the Sabine River Authority.

Governor Connally appointed Hudson Davis of Borger as Canadian River Compact Commissioner, and R. Leighton McKinney Jr. of Denison, Interstate Compact Commissioner for the Red River.

The State General Revenue Fund finished July with \$19,-

500,000 in the black.

High School Dropout--The growing problem of high school dropouts will be the topic of the annual meeting of the Texas State Committee on Public Education in Austin on Sept. 22.

President of the committee, Mrs. Helen J. Bechtel of Corpus Christi, is inviting all interested persons to attend the one-day session. No registration fee will be charged.

Gov. Connally has estimated the state rate of dropouts for the next five years as 325,000.

Oil Allowable Cut--Producing ability of Texas oil wells was cut by some 28,617 barrels a day when the Railroad Commission reduced the daily oil

allowable from 28.3 per cent August to 28 per cent September.

Most of the major companies wanted more oil. But independent producers succeeded in getting the commission to hold production August allowable.

Commissioner Thompson of Amarillo to his office after a long and attended the hearing.

U-H Regents Named--Ernor Connally named University of Houston regents for the U. of H., who join the state college university system in September.

SCENE OF FIRE--Several Littlefield Volunteer Firemen are shown putting out a fire last week at the Lamb County Electric Cooperative Co. warehouse near W. 3rd St. The fire department was able to confine the blaze before major damage was done. Cause of the fire was undetermined.



SCENE OF FIRE--Several Littlefield Volunteer Firemen are shown putting out a fire last week at the Lamb County Electric Cooperative Co. warehouse near W. 3rd St. The fire department was able to confine the blaze before major damage was done. Cause of the fire was undetermined.

This is one of a new series of informative reports on the unique advantages of print media presented by this newspaper and the Print Advertising Association.

will be replaced by a private citizen of his choosing. Before Carr leaves the board he will sign the deed which conveys state-owned land on Padre Island to the federal government for a national seashore.

Short Notice--Rep. Sam F. Collins of Newton asked to be allowed to serve as a state representative without pay, when he accepted a job as assistant to General Manager John W. Simmons of the Sabine River Authority.

Governor Connally appointed Hudson Davis of Borger as Canadian River Compact Commissioner, and R. Leighton McKinney Jr. of Denison, Interstate Compact Commissioner for the Red River.

SNO-MAN WHO AM I?

- I'm a Poly-Vinyl plastic roof coating.
- I'm a Texan, I'm 9 years old and may look like a baby, but Man! I'm long on service and protection.
- I'm made -- sold -- applied by Texans.
- I'm FHA approved in the Dallas - Ft. Worth area and will be approved here soon. Also approved by the public housing administration for a five year area.
- I've been tested and recommended by the Western Laboratories in Ft. Worth from 5 degrees to 140 degrees.
- I came to Amarillo last August and cover over Amarillo roofs -- ask the man who has me.
- MY DUTIES--I lock on gravel--I seal roof leaks--I reflect 80% of the sun's rays, reduce temperatures 20%, lower cooling cost 50%.
- I am white or pastel colors, I have asbestos and am fire retardant.
- I'll be happy to give free estimates.
- I'm sold by the Sno-Man Co., 3319 West DR 4-8089, Amarillo, Texas.
- I'm applied by C. G. Cheadle, DR 4-8089, West 8th, Amarillo, Texas.

I'M NOW BEING APPLIED AT 400 PHELPS AVENUE IN LITTLEFIELD

This is one of a new series of informative reports on the unique advantages of print media presented by this newspaper and the Print Advertising Association.



DON'T YOU READ BEFORE YOU BUY?

Most people generally do. Not only do they read; they cut out and show ads to their family and friends; they clip coupons for information and samples. When people see an advertisement in print, they can compare designs... features... and prices of nationally known products and services. (And people do compare before they go out and buy.) Advertising in print is a handy thing. You can check back; the message is still there even when your attention is distracted. When you add it up, print advertising--the kind you read in this newspaper--makes sense. And because it measures up to the buying habits of most consumers, print makes sales. Don't you read before you buy? Leader-News



FRUIT COCKTAIL MIRACLE WHIP TOMATO SOUP CANE SUGAR COCA COLA

HUNT'S FANCY IN SYRUP NO. 300 CAN	19¢
KRAFT'S, SALAD DRESSING, QUART JAR	47¢
CAMPBELL'S NO. 1 CAN	10¢
C & H OR IMPERIAL PURE 5 LB. BAG	57¢
OR DR. 12 BTL. PEPPER CTN.	59¢

These values good in Littlefield, August 22-26, 1963. We Reserve the Right to Limit Quantities.

FREE FRIDAY-SATURDAY COCA COLA BORDEN'S ICE CREAM MOVIES SATURDAY ONLY 10 A.M. - 12 NOON ; 3 P.M. - 5 P.M.	FRIDAY - SATURDAY HOT DOGS WITH ARMOUR STAR FRANKS 10¢ EACH
--	--

GREEN BEANS	CALIFORNIA, EXTRA FANCY, KENTUCKY WONDERS, POUND	19¢
PEACHES	CALIFORNIA FREESTONE, POUND	15¢
BANANAS	CENTRAL AMERICAN, GOLDEN FRUIT, POUND	10¢
SQUASH	FRESH YELLOW, POUND	7 1/2¢
CABBAGE	COLORADO, FRESH GREEN, POUND	5¢
CARROTS	CALIFORNIA, 1 POUND CELLO BAGS	2 FOR 25¢
ROMAINE	FRESH, GREEN, LARGE BUNCHES	2 FOR 29¢
PLUMS	CALIFORNIA, SANTA ROSA, POUND	19¢
AVOCADOS	LARGE SIZES 2 FOR	25¢
GREEN ONIONS	FRESH, RED THIN SKIN, LARGE BUNCHES	2 FOR 15¢
NEW POTATOES	FRESH, POUND	5¢
CELERY	GREEN PASCAL, CELLO BAG, EACH	29¢
CUCUMBERS	FRESH, LONG, GREEN, POUND	12 1/2¢
RADISHES	FRESH, LARGE BUNCHES	2 FOR 15¢
OKRA	FRESH AND TENDER, POUND	19¢

FRESHEST, FROZEN FOODS AT PIGGLY WIGGLY!

FRUIT PIES

SEA BROOK, ITALIAN 9 OZ. PACKAGE	27¢	SEABROOK 10 OZ. PACKAGE	19¢
BANQUET, BEEF, CHICKEN, & TURKEY, 8 OZ. PACKAGE	33¢	BANQUET, PLAIN OR COCONUT 22 OZ. PKG.	3 FOR \$1

DINNERS

ENCHILADA PATIO, 12 OZ. PKG. 39¢



GET IN THE PICTURE WITH YOUR FAVORITE BIG LEAGUER GET YOUR ORDER BLANK ONLY AT PIGGLY WIGGLY!

Biscuits	HOLSOM, BUTTERMILK OR SWEETMILK	4 CANS	29¢
Peaches	MAYFLOWER FREESTONE IN SYRUP, NO 2 1/2 CAN		25¢
Eggs	IDEAL GRADE A MEDIUM DOZEN		33¢
Cooking Oil	BESSIE LEE, ALL VEGETABLE, 24 OZ. BOTTLE		29¢
Shortening	BAKE-RITE	3 LB. CAN	59¢
MILK	BODHOPE, EVAPORATED, TALL CAN		12 1/2¢
COFFEE	MARYLAND CLUB, DRIP, FINE, OR REGULAR, 1 POUND CAN		59¢
LOUR	UNLIGHT, FULLY GUARANTEED, 5 POUND BAG		39¢
WELLORINE	PLAIN OR HOME TREAT ASSORTED FLAVORS, 1/2 GALLON		49¢
DOG FOOD	TASTE T CHEW, NESTLE, INSTANT TEA, 25¢ OFF LABEL, 3 OZ. JAR	10 POUND BAG	99¢
NESTEA	SUNSHINE, OATMEAL COOKIES, 16 OZ. BAG		39¢
TOILET TISSUE	ZEE, ASSORTED COLORS, 4 ROLL PACK		35¢

RIB STEAK	ARMOUR'S STAR, AGED HEAVY BEEF, VALU-TRIM, POUND	69¢
SHORT RIBS	ARMOUR'S STAR, AGED HEAVY BEEF, VALU-TRIM, POUND	19¢
BACON	SLICED, BUTCHER BOY, THICK OR THIN 2 LB. PKG.	97¢
FRANKS	ARMOUR'S STAR POUND	49¢
SHOULDER ROAST	ARMOUR'S STAR, AGED HEAVY BEEF, "VALU-TRIM", POUND	59¢
GROUND BEEF	LEAN, 100% PURE BEEF, DATED FOR FRESHNESS 3 POUNDS	\$1
SIRLOIN STEAK	ARMOUR'S STAR, AGED, HEAVY BEEF, "VALU-TRIM", POUND	89¢
PERCH FILLETS	BOOTH'S, FRESH FROSTED, READY TO COOK, POUND	49¢
FISH STEAKS	BOOTH'S FRESH FROSTED, COD OR PERCH, 1 1/2 POUND	89¢
SHRIMP	BOOTH'S PEELLED AND DEVEINED, 12 OZ. BAG	98¢
CHICKENS	ROASTING, WILSON'S CERTIFIED GENUINE ROASTERS, POUND	29¢
CANNED HAMS	ARMOUR'S STAR, BONELESS, FULLY COOKED 5 LB. CAN	\$3.89

DOWNY FABRIC SOFTENER	REGULAR BOTTLE	45¢
SALVO DETERGENT TABLETS	24 COUNT BOX	81¢
DUZ DETERGENT WITH	PREMIUM GIANT SIZE	81¢
WAX PAPER	ZEE, 100 FOOT ROLL	19¢
PAPER TOWELS	ZEE, JUMBO ROLL 225 COUNT	27¢
GRAPE JUICE	WELCH'S, DIET, 12 OZ. CAN	23¢
PRUNE JUICE	LADY BETTY, QUART BOTTLE	43¢
EXTRACT	SCHILLING'S, VANILLA, 2 OZ. BOTTLE	39¢

HEALTH & BEAUTY AIDS!
STYLE, SUPER OR REGULAR, REGULAR 97¢
HAIR SPRAY VALUE, PLUS 7¢ TAX 10 OZ. CAN 66¢
VITALIS, 25¢ OFF LABEL, REGULAR \$1.49
HAIR DRESSING RETAIL, PLUS 10¢ TAX 99¢
SAFE GUARD PLAIN OR MEDICATED, BANDAGE & ANTISEPTIC REGULAR \$1.49
REGULAR \$3.69 RETAIL, QUART SIZE
THERMOS BOTTLE \$2.99





JOSE LOTHARIO
Lothario To Meet Monroe

Dory Funk returns to Littlefield Sports Arena Saturday night, teaming up with Dick in a big tag team match. The pair will take on Tokyo Tom and Treach Phillips in the main event of the evening. The match will be the best 2-of-3 falls with an hour's time limit. The top main event will match Lothario against big Supt. Monroe in a 1-hour struggle. Monroe won last week's match against Ricky Romero, but the latter being disqualified when he put Monroe over the top rope of the ring in the fall. Lothario, one of the top wrestlers in the area, will be meeting tough Monroe for the first time in the local ring. Matches start at 8:45 a.m. with Dunn and Tom tussling in the first. This is a 1-fall, 20-minute match.

BOWLING BEAT

Littlefield Cleaners posted team scores in the Mixed Pines League at Lamb Bowl-Lanes last week. The team rolled a 659 high ball and 1909 series for top pins. Jimmy Ratliff tabbed a 300 single and Bob McCrary led a 553 series for individual honors. Vera Weaver was high for the men with a 198 game and 506 pins. Team standings:

MIXED COUPLES LEAGUE	
W L	W L
Brus.	51 21
Quarters	48,5 23,5
Cleaners	44 28
Men Foremost	37 35

CLASSIFIED ADventures!

1305 MAR 59 M.P. 13

I FOUND HIM IN THE PET COLUMN OF THE WANT AD SECTION OF THE LEADER TO PLACE YOUR WANT AD CALL 385-4481 --and ask for Ad Taker!

WE'RE OPEN

Ready To Serve You With Wonderful Treats and Good Things To Eat

FRANK AND GLADYS ROBINSON

Dairy Queen

- INSIDE SERVICE
- OUTSIDE DRIVE
- IN WINDOWS

1001 East 9th

SPORTS NEWS

Still, Barnett Cop LCC Golf Crowns

Dr. Jack Still and Ann Barnett emerged as club champions of the annual Littlefield Country Club men and women's tourneys Saturday and Sunday. Still won a pair of extra-hole matches enroute to capturing the club crown. He and Carl Rushing met in the finals Sunday, and Still parred No. 1 while Rushing failed on a three-foot putt. The two battled on even terms all the way before Still won on the extra hole. Still slipped by Dale Weaver on an extra-hole match in the first round, then erased defending champ Rhenard McCary, 2 and 1, in the second round. Rushing reached the finals by turning back Jim Tom Brittain, 2 and 1, in the first round and posting a 1 up decision over Buster Owens in the second match.

Weaver bounded back to win the championship consolation title, defeating J. R. Chamberlain and Don Eagan. McCary had beaten Chamberlain and Owens had topped Eagan in other first-round matches. Alvin Webb triumphed in the first flight, taking out Johnny Talburt on 20 holes in first round, defeating Glenn Batson by 3 and 2 in the second round and trimming Vernon Egan, 1 up, in the finals. Glenn Burk, a 1-up loser to Batson, went on to capture the consolation crown in the first flight. Vernon Egan and Buddy Duggan hooked up in the tourney's longest match in this flight. Egan finally won out over 27 holes. Other flight winners: David Penn, second flight; Walter Hobgood, consolation; Sterl Harmon, 3rd flight; Lindell Holly, consolation; Charlie Duvall, 4th flight; Arthur Duggan, consolation; Chick Brown, 5th flight; Lloyd White, consolation; Jerry Williams, 6th flight; Steve Webb, consolation.

Ann Barnett took out Dorothy Brown, 2 up, then downed defending champion Jean McCary for the women's championship. Mrs. McCary defeated Maurine Giles, 4 and 3, in her opening match. Frances Chamberlain defeated Virgie Haile for the first flight title, and Loreta Jones took consolation prize over Phyllis Giles. Nina Talburt edged Lee Shields in the second flight, while Joannie Egan downed Jean Gilliam in the third flight. Jennie Messer won the second flight consolation title, while Pat Street claimed the third flight consolation. The complete results: **CHAMPIONSHIP** -- Rhenard McCary def. J. R. Chamberlain, 3-2; Jack Still def. Dale Weaver, 1 up 19; Carl Rushing def. J. T. Brittain, 2-1; Buster Owens def. Don Egan, 3-1. Still def. McCary, 2-1; Rushing def. Owens, 1 up. Still def. Rushing, 1 up 19 for title. Consolation: Weaver def. Chamberlain, 4-3; Eagan def. Brittain, 3-1; Eagan def. Weaver, 4-3 for title. 1ST FLIGHT -- Alvin Webb def. Johnny Talburt, 1 up 20; Glenn Batson def. Glenn Burk, 1 up; Vernon Egan def. Buddy Duggan, 1 up 27; J. S. Brown def. Sid Hopping, 2-1. Webb def. Batson, 3-2; Eagan def. Brown, 3-2. Webb def. Eagan, 1 up for title. Consolation: Burk def. Talburt, 6-4; Hopping def. Duggan, 3-2. Burk def. Hopping, 5-4, for title. 2ND FLIGHT -- Jack Wicker def. Walter Hobgood, 4-3; David Penn def. Carl Keeling, 2-1; Neil Herrin def. Frank Rogers, 1 up; L. C. Hewitt def. Shelby Duvall, 2-1; Penn def. Wicker, 1 up 19; Herrin def. Hewitt, 2-1. Penn def. Wicker, 2-1, for title. Consolation: Hobgood def. Keeling, 2-1; Duvall def. Rogers, 1 up. Hobgood def. Duvall, 2-1 for title. 3RD FLIGHT -- Sterl Harmon def. Bill Sibley, 1 up; Merlin Yarbrough def. Larry Shipp, 1 up 19; Terry Hyatt def. Lindell Holly, 2-1; A. T. Hedgpeth, Harmon def. Yarbrough, 3-2; Hyatt def. Hedgpeth, 1 up. Harmon def. Hyatt, 5-4, for title. Consolation: Sibley def. Shipp, 1 up; Holly bye. Holly def. Sibley, 1 up, for title. 4TH FLIGHT -- Jackie Van Ness def. Pop Hodges, 1 up 20; Charles Duvall def. Arthur Duggan, 2 up; Adrian Martin def. Al Herrin, 2-1; Glenn Reeves def. Mancil Hall, 3-2. Duvall def. Van Ness, 1 up; Martin def. Reeves, 3-2. Duvall def. Martin, 1 up, for title. Consolation: Duggan def. Hodges, 1 up; Herrin def. Hall, 2-1. Duggan def. Herrin, 2-1, for title. 5TH FLIGHT -- Chick Brown def. Ardis Barton, 6-5; Jerrell Haberer def. Guy Walden, 2-1; Don Avery def. Lloyd White, 1 up 19; Alvin Bagwell def. G. W. Steffey, 1 up. Brown def. Avery, 2-1; Haberer def. Bagwell, 2-1. Brown def. Haberer, 2-1, for title. Consolation: White def. Barton, 3-2; Steffey def. Walden, 1 up; White def. Steffey, 1 up.

QB Club Will Meet Monday

All interested football fans are invited to attend the Littlefield Quarterback Club's kick-off meeting Monday night at Wildcat Stadium. A free watermelon party has been planned, beginning at 7 p.m. QB Club President Ed McCann announced that Coach John Howie will speak at the meeting, and members will start their annual membership drive.

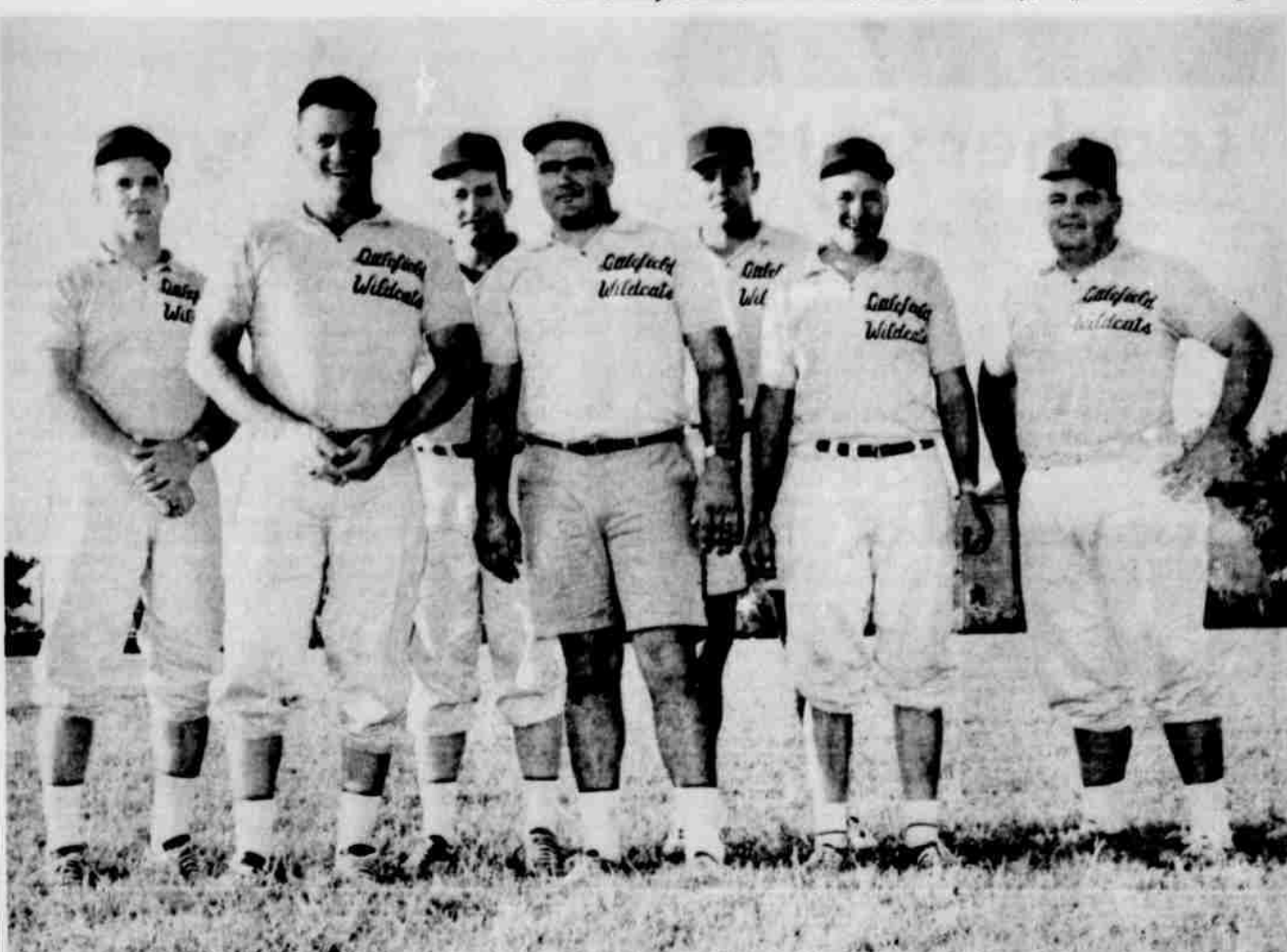
Mary Edith's	36	36
McGuire's	35	37
Branham's	29	43
Dillon's	27.5	44.5
Richey's	27	45
Darden's	25	47

Pep School Okays Budget of \$82,156

A 1963-64 school budget of \$82,156 was adopted for the Pep school district in a meeting of trustees Tuesday evening. Of this figure, \$54,208 is for teacher salaries and teaching materials. A figure of \$9,256 was set up for school bonded indebtedness and retirement of a short term loan. The bond retirement and interest fund will require about \$8,000 of this appropriation. The tax rate of \$1.85 per \$100 valuation, same as last year, was set for the current year. Of this \$1.85, \$1.30 will go into school operation and 55 cents for debt service. Current school district tax valuations are \$1,378,674 and are expected to be increased some when final values are set after an equalization board hearing on September 7. The Tuesday night meeting adopted the budget and accepted a bid for milk for the school lunchroom at 5.5 cents per half pint, from Bell Milk company. Vic Diersing, board president, headed up the meeting. Budget was presented by Marlon McDaniel, school superintendent, who is starting his eighth year as head of the Pep schools. The board of equalization will hold hearings from 2 to 4 p.m. on September 7. Members of the board are Leonard Albus, A. H. Jungman, Walter Gerik, George Silhan and Conrad Demel. Two alternate members are J. D. Vick and James Glumpler.

WILDCAT COACHING STAFF

Athletic Director and Head Football Coach John Howie is flanked by six assistants now working with the Littlefield High School football team. All but two coaches are starting their second year here. Left to right: Ernie Davis, Jim Taylor, Forrest Faver, Howie, Bob Martin, Bob Pullig, Bill Gerber. Martin is a new assistant and head basketball coach from Memphis; Pullig has been a teacher in the system and will be junior high assistant.



WILDCAT COACHING STAFF -- Athletic Director and Head Football Coach John Howie is flanked by six assistants now working with the Littlefield High School football team. All but two coaches are starting their second year here. Left to right: Ernie Davis, Jim Taylor, Forrest Faver, Howie, Bob Martin, Bob Pullig, Bill Gerber. Martin is a new assistant and head basketball coach from Memphis; Pullig has been a teacher in the system and will be junior high assistant.

6TH FLIGHT

-- Jerry Williams def. Steve Webb, 1 up; Hamp McCary def. Ollie Davis, 2-1; Paul Cartwright def. Gene Vickers, 4-2; Lew Jones def. Paup Bennett, 1 up. Williams def. McCary, 3-2; Jones def. Cartwright, 2 up. Williams def. Jones, 2-1, for title. Consolation: Webb def. Davis, 9-8; Vickers def. Bennett, 5-4. Webb def. Vickers, 6-5, for title.

SCHOOLS

(Continued from Page One) per \$100 valuation. The rate was \$1.40 with \$1.10 going to maintenance and 30 cents to debt service. Valuations were raised from about \$18 million to \$22 million. Trustees had indicated a probable hike in the tax rate of 40 cents when the school improvements bond issue was introduced early this year. Voters approved an \$800,000 bond issue on April 27. The first steps in this big improvements program are un-

derway

-- remodeling of primary and elementary buildings, renovation of junior high and conversion of the auditorium to classrooms, and the construction of a junior high field house. Much of this work is due to be completed by the start of school, and the new athletic field house is tabbed for completion in December. The major portion of the program provides for new high school facilities. The site has been picked and a target date for letting contracts has been set for Sept. 20. The buildings will be located on a 20-acre plot at Sunset and W. 10th St. Estimated cost is \$629,900 plus \$35,000 for site and improvements.

WOMEN'S DIVISION

CHAMP -- Ann Barnett def. Dorothy Brown, 2 up; Jean McCary def. Maurine Giles, 4-3. Barnett def. McCary, 1 up, for title. Consolation: Giles def. Brown 2-1. 1ST FLIGHT -- Frances Chamberlain def. Loreta Jones, 3-2; Virgie Haile def. Phyllis Giles, 2-1. Chamberlain def. Haile, 2-1, for title. Consolation: Jones def. Giles, 1 up. 2ND FLIGHT -- Nina Talburt def. Jennie Messer, 2-1; Lee

Shields def. Grace Haberer, 1 up. Talburt def. Shields, 1 up, for title. Consolation: Messer def. Haberer, 2-1. 3RD FLIGHT -- Jean Gilliam def. Pat Street, 1 up 10; Joannie Egan def. Lucy Dalton, 2-1. Egan def. Gilliam, 1 up on 10 for title. Consolation: Street def. Dalton, 1 up.

derway

-- remodeling of primary and elementary buildings, renovation of junior high and conversion of the auditorium to classrooms, and the construction of a junior high field house. Much of this work is due to be completed by the start of school, and the new athletic field house is tabbed for completion in December. The major portion of the program provides for new high school facilities. The site has been picked and a target date for letting contracts has been set for Sept. 20. The buildings will be located on a 20-acre plot at Sunset and W. 10th St. Estimated cost is \$629,900 plus \$35,000 for site and improvements.

SAVED IN HALF

Need something sawed, or nailed or repaired? You'll find CARPENTERS in the YELLOW PAGES, where YOUR FINGERS DO THE WALKING

WANT ACTION? Use the WANT ADS CALL 5-4481

PUBLIC NOTICE

PROPOSED CONSTITUTIONAL AMENDMENT TO BE VOTED ON AT AN ELECTION TO BE HELD ON NOVEMBER 5, 1963.
SENATE JOINT RESOLUTION NUMBER 127.
Section 1. That Section 49-b, Article III of the Constitution of the State of Texas, be amended so that the same will hereafter read as follows: "By virtue of prior Amendment to this Constitution, there has been created a governmental agency of the State of Texas known as the Commission on Veterans' Land Fund, which has been designated the Veterans' Land Board. Said Board shall be composed of the following: (1) two citizens, one of whom shall be well versed in financial matters and one (1) of whom shall be well versed in financial matters and one (1) of whom shall be well versed in financial matters, shall be appointed by the Governor for a term of four (4) years; (2) the members serving on said Board on the date of adoption hereof shall complete the terms to which they were appointed. In the event of the resignation or death of any such citizen member, the Governor shall have the authority to place in his stead another citizen to serve for the unexpired portion of the term to which the original member was appointed. The compensation for said citizen members shall be as now or may hereafter be fixed by the Legislature; and each shall make bond in such amount as is now or may hereafter be prescribed by the Legislature."
"The Commissioner of the General Land Office shall act as Chairman of said Board and shall be the administrator of the Veterans' Land Program under such terms and restrictions as are now or may hereafter be provided by law. In the absence or illness of said Commissioner, the Chief Clerk of the General Land Office shall be the Acting Chairman of said Board with the same duties and powers that said Commissioner would have if present."
"The Veterans' Land Board may provide for, issue and sell not to exceed Three Hundred Fifty Million Dollars (\$350,000,000.00) in bonds or obligations of the State of Texas for the purpose of creating a fund to be known as the Veterans' Land Fund, Two Hundred Million Dollars (\$200,000,000.00) of which have heretofore been issued and sold. Such bonds or obligations shall be sold for not less than par value and accrued interest shall be issued in such denominations, and upon such terms as are now or may hereafter be provided by law; shall be issued and sold at such times, at such places, and in such installments as may be determined by said Board; and shall bear a rate or rates of interest as may be fixed by said Board but the average annual interest rate, as that phrase is commonly and ordinarily used and understood in the municipal bond market, of all the bonds issued and sold in any installment of any bonds may not exceed four and one-half percent (4 1/2%). All bonds or obligations issued and sold hereunder shall, under execution by the Board, approved by the Attorney General of Texas, registration by the Comptroller of Public Accounts of the State of Texas, and delivery to the purchaser or purchaser, be inconvertible and shall constitute general obligations of the State of Texas under the Constitution of the State of Texas; and all bonds heretofore issued and sold by said Board in pursuance of the provisions of the Constitution of the State of Texas, and all bonds heretofore issued and sold by said Board in pursuance of the provisions of the Constitution of the State of Texas, and all bonds heretofore issued and sold by said Board in pursuance of the provisions of the Constitution of the State of Texas, shall remain in full force and effect, and shall constitute general obligations of the State of Texas under the Constitution of the State of Texas; and all bonds heretofore issued and sold by said Board in pursuance of the provisions of the Constitution of the State of Texas, shall remain in full force and effect, and shall constitute general obligations of the State of Texas under the Constitution of the State of Texas; and all bonds heretofore issued and sold by said Board in pursuance of the provisions of the Constitution of the State of Texas, shall remain in full force and effect, and shall constitute general obligations of the State of Texas under the Constitution of the State of Texas; and all bonds heretofore issued and sold by said Board in pursuance of the provisions of the Constitution of the State of Texas, shall remain in full force and effect, and shall constitute general obligations of the State of Texas under the Constitution of the State of Texas; and all bonds heretofore issued and sold by said Board in pursuance of the provisions of the Constitution of the State of Texas, shall remain in full force and effect, and shall constitute general obligations of the State of Texas under the Constitution of the State of Texas; and all bonds heretofore issued and sold by said Board in pursuance of the provisions of the Constitution of the State of Texas, shall remain in full force and effect, and shall constitute general obligations of the State of Texas under the Constitution of the State of Texas; and all bonds heretofore issued and sold by said Board in pursuance of the provisions of the Constitution of the State of Texas, shall remain in full force and effect, and shall constitute general obligations of the State of Texas under the Constitution of the State of Texas; and all bonds heretofore issued and sold by said Board in pursuance of the provisions of the Constitution of the State of Texas, shall remain in full force and effect, and shall constitute general obligations of the State of Texas under the Constitution of the State of Texas; and all bonds heretofore issued and sold by said Board in pursuance of the provisions of the Constitution of the State of Texas, shall remain in full force and effect, and shall constitute general obligations of the State of Texas under the Constitution of the State of Texas; and all bonds heretofore issued and sold by said Board in pursuance of the provisions of the Constitution of the State of Texas, shall remain in full force and effect, and shall constitute general obligations of the State of Texas under the Constitution of the State of Texas; and all bonds heretofore issued and sold by said Board in pursuance of the provisions of the Constitution of the State of Texas, shall remain in full force and effect, and shall constitute general obligations of the State of Texas under the Constitution of the State of Texas; and all bonds heretofore issued and sold by said Board in pursuance of the provisions of the Constitution of the State of Texas, shall remain in full force and effect, and shall constitute general obligations of the State of Texas under the Constitution of the State of Texas; and all bonds heretofore issued and sold by said Board in pursuance of the provisions of the Constitution of the State of Texas, shall remain in full force and effect, and shall constitute general obligations of the State of Texas under the Constitution of the State of Texas; and all bonds heretofore issued and sold by said Board in pursuance of the provisions of the Constitution of the State of Texas, shall remain in full force and effect, and shall constitute general obligations of the State of Texas under the Constitution of the State of Texas; and all bonds heretofore issued and sold by said Board in pursuance of the provisions of the Constitution of the State of Texas, shall remain in full force and effect, and shall constitute general obligations of the State of Texas under the Constitution of the State of Texas; and all bonds heretofore issued and sold by said Board in pursuance of the provisions of the Constitution of the State of Texas, shall remain in full force and effect, and shall constitute general obligations of the State of Texas under the Constitution of the State of Texas; and all bonds heretofore issued and sold by said Board in pursuance of the provisions of the Constitution of the State of Texas, shall remain in full force and effect, and shall constitute general obligations of the State of Texas under the Constitution of the State of Texas; and all bonds heretofore issued and sold by said Board in pursuance of the provisions of the Constitution of the State of Texas, shall remain in full force and effect, and shall constitute general obligations of the State of Texas under the Constitution of the State of Texas; and all bonds heretofore issued and sold by said Board in pursuance of the provisions of the Constitution of the State of Texas, shall remain in full force and effect, and shall constitute general obligations of the State of Texas under the Constitution of the State of Texas; and all bonds heretofore issued and sold by said Board in pursuance of the provisions of the Constitution of the State of Texas, shall remain in full force and effect, and shall constitute general obligations of the State of Texas under the Constitution of the State of Texas; and all bonds heretofore issued and sold by said Board in pursuance of the provisions of the Constitution of the State of Texas, shall remain in full force and effect, and shall constitute general obligations of the State of Texas under the Constitution of the State of Texas; and all bonds heretofore issued and sold by said Board in pursuance of the provisions of the Constitution of the State of Texas, shall remain in full force and effect, and shall constitute general obligations of the State of Texas under the Constitution of the State of Texas; and all bonds heretofore issued and sold by said Board in pursuance of the provisions of the Constitution of the State of Texas, shall remain in full force and effect, and shall constitute general obligations of the State of Texas under the Constitution of the State of Texas; and all bonds heretofore issued and sold by said Board in pursuance of the provisions of the Constitution of the State of Texas, shall remain in full force and effect, and shall constitute general obligations of the State of Texas under the Constitution of the State of Texas; and all bonds heretofore issued and sold by said Board in pursuance of the provisions of the Constitution of the State of Texas, shall remain in full force and effect, and shall constitute general obligations of the State of Texas under the Constitution of the State of Texas; and all bonds heretofore issued and sold by said Board in pursuance of the provisions of the Constitution of the State of Texas, shall remain in full force and effect, and shall constitute general obligations of the State of Texas under the Constitution of the State of Texas; and all bonds heretofore issued and sold by said Board in pursuance of the provisions of the Constitution of the State of Texas, shall remain in full force and effect, and shall constitute general obligations of the State of Texas under the Constitution of the State of Texas; and all bonds heretofore issued and sold by said Board in pursuance of the provisions of the Constitution of the State of Texas, shall remain in full force and effect, and shall constitute general obligations of the State of Texas under the Constitution of the State of Texas; and all bonds heretofore issued and sold by said Board in pursuance of the provisions of the Constitution of the State of Texas, shall remain in full force and effect, and shall constitute general obligations of the State of Texas under the Constitution of the State of Texas; and all bonds heretofore issued and sold by said Board in pursuance of the provisions of the Constitution of the State of Texas, shall remain in full force and effect, and shall constitute general obligations of the State of Texas under the Constitution of the State of Texas; and all bonds heretofore issued and sold by said Board in pursuance of the provisions of the Constitution of the State of Texas, shall remain in full force and effect, and shall constitute general obligations of the State of Texas under the Constitution of the State of Texas; and all bonds heretofore issued and sold by said Board in pursuance of the provisions of the Constitution of the State of Texas, shall remain in full force and effect, and shall constitute general obligations of the State of Texas under the Constitution of the State of Texas; and all bonds heretofore issued and sold by said Board in pursuance of the provisions of the Constitution of the State of Texas, shall remain in full force and effect, and shall constitute general obligations of the State of Texas under the Constitution of the State of Texas; and all bonds heretofore issued and sold by said Board in pursuance of the provisions of the Constitution of the State of Texas, shall remain in full force and effect, and shall constitute general obligations of the State of Texas under the Constitution of the State of Texas; and all bonds heretofore issued and sold by said Board in pursuance of the provisions of the Constitution of the State of Texas, shall remain in full force and effect, and shall constitute general obligations of the State of Texas under the Constitution of the State of Texas; and all bonds heretofore issued and sold by said Board in pursuance of the provisions of the Constitution of the State of Texas, shall remain in full force and effect, and shall constitute general obligations of the State of Texas under the Constitution of the State of Texas; and all bonds heretofore issued and sold by said Board in pursuance of the provisions of the Constitution of the State of Texas, shall remain in full force and effect, and shall constitute general obligations of the State of Texas under the Constitution of the State of Texas; and all bonds heretofore issued and sold by said Board in pursuance of the provisions of the Constitution of the State of Texas, shall remain in full force and effect, and shall constitute general obligations of the State of Texas under the Constitution of the State of Texas; and all bonds heretofore issued and sold by said Board in pursuance of the provisions of the Constitution of the State of Texas, shall remain in full force and effect, and shall constitute general obligations of the State of Texas under the Constitution of the State of Texas; and all bonds heretofore issued and sold by said Board in pursuance of the provisions of the Constitution of the State of Texas, shall remain in full force and effect, and shall constitute general obligations of the State of Texas under the Constitution of the State of Texas; and all bonds heretofore issued and sold by said Board in pursuance of the provisions of the Constitution of the State of Texas, shall remain in full force and effect, and shall constitute general obligations of the State of Texas under the Constitution of the State of Texas; and all bonds heretofore issued and sold by said Board in pursuance of the provisions of the Constitution of the State of Texas, shall remain in full force and effect, and shall constitute general obligations of the State of Texas under the Constitution of the State of Texas; and all bonds heretofore issued and sold by said Board in pursuance of the provisions of the Constitution of the State of Texas, shall remain in full force and effect, and shall constitute general obligations of the State of Texas under the Constitution of the State of Texas; and all bonds heretofore issued and sold by said Board in pursuance of the provisions of the Constitution of the State of Texas, shall remain in full force and effect, and shall constitute general obligations of the State of Texas under the Constitution of the State of Texas; and all bonds heretofore issued and sold by said Board in pursuance of the provisions of the Constitution of the State of Texas, shall remain in full force and effect, and shall constitute general obligations of the State of Texas under the Constitution of the State of Texas; and all bonds heretofore issued and sold by said Board in pursuance of the provisions of the Constitution of the State of Texas, shall remain in full force and effect, and shall constitute general obligations of the State of Texas under the Constitution of the State of Texas; and all bonds heretofore issued and sold by said Board in pursuance of the provisions of the Constitution of the State of Texas, shall remain in full force and effect, and shall constitute general obligations of the State of Texas under the Constitution of the State of Texas; and all bonds heretofore issued and sold by said Board in pursuance of the provisions of the Constitution of the State of Texas, shall remain in full force and effect, and shall constitute general obligations of the State of Texas under the Constitution of the State of Texas; and all bonds heretofore issued and sold by said Board in pursuance of the provisions of the Constitution of the State of Texas, shall remain in full force and effect, and shall constitute general obligations of the State of Texas under the Constitution of the State of Texas; and all bonds heretofore issued and sold by said Board in pursuance of the provisions of the Constitution of the State of Texas, shall remain in full force and effect, and shall constitute general obligations of the State of Texas under the Constitution of the State of Texas; and all bonds heretofore issued and sold by said Board in pursuance of the provisions of the Constitution of the State of Texas, shall remain in full force and effect, and shall constitute general obligations of the State of Texas under the Constitution of the State of Texas; and all bonds heretofore issued and sold by said Board in pursuance of the provisions of the Constitution of the State of Texas, shall remain in full force and effect, and shall constitute general obligations of the State of Texas under the Constitution of the State of Texas; and all bonds heretofore issued and sold by said Board in pursuance of the provisions of the Constitution of the State of Texas, shall remain in full force and effect, and shall constitute general obligations of the State of Texas under the Constitution of the State of Texas; and all bonds heretofore issued and sold by said Board in pursuance of the provisions of the Constitution of the State of Texas, shall remain in full force and effect, and shall constitute general obligations of the State of Texas under the Constitution of the State of Texas; and all bonds heretofore issued and sold by said Board in pursuance of the provisions of the Constitution of the State of Texas, shall remain in full force and effect, and shall constitute general obligations of the State of Texas under the Constitution of the State of Texas; and all bonds heretofore issued and sold by said Board in pursuance of the provisions of the Constitution of the State of Texas, shall remain in full force and effect, and shall constitute general obligations of the State of Texas under the Constitution of the State of Texas; and all bonds heretofore issued and sold by said Board in pursuance of the provisions of the Constitution of the State of Texas, shall remain in full force and effect, and shall constitute general obligations of the State of Texas under the Constitution of the State of Texas; and all bonds heretofore issued and sold by said Board in pursuance of the provisions of the Constitution of the State of Texas, shall remain in full force and effect, and shall constitute general obligations of the State of Texas under the Constitution of the State of Texas; and all bonds heretofore issued and sold by said Board in pursuance of the provisions of the Constitution of the State of Texas, shall remain in full force and effect, and shall constitute general obligations of the State of Texas under the Constitution of the State of Texas; and all bonds heretofore issued and sold by said Board in pursuance of the provisions of the Constitution of the State of Texas, shall remain in full force and effect, and shall constitute general obligations of the State of Texas under the Constitution of the State of Texas; and all bonds heretofore issued and sold by said Board in pursuance of the provisions of the Constitution of the State of Texas, shall remain in full force and effect, and shall constitute general obligations of the State of Texas under the Constitution of the State of Texas; and all bonds heretofore issued and sold by said Board in pursuance of the provisions of the Constitution of the State of Texas, shall remain in full force and effect, and shall constitute general obligations of the State of Texas under the Constitution of the State of Texas; and all bonds heretofore issued and sold by said Board in pursuance of the provisions of the Constitution of the State of Texas, shall remain in full force and effect, and shall constitute general obligations of the State of Texas under the Constitution of the State of Texas; and all bonds heretofore issued and sold by said Board in pursuance of the provisions of the Constitution of the State of Texas, shall remain in full force and effect, and shall constitute general obligations of the State of Texas under the Constitution of the State of Texas; and all bonds heretofore issued and sold by said Board in pursuance of the provisions of the Constitution of the State of Texas, shall remain in full force and effect, and shall constitute general obligations of the State of Texas under the Constitution of the State of Texas; and all bonds heretofore issued and sold by said Board in pursuance of the provisions of the Constitution of the State of Texas, shall remain in full force and effect, and shall constitute general obligations of the State of Texas under the Constitution of the State of Texas; and all bonds heretofore issued and sold by said Board in pursuance of the provisions of the Constitution of the State of Texas, shall remain in full force and effect, and shall constitute general obligations of the State of Texas under the Constitution of the State of Texas; and all bonds heretofore issued and sold by said Board in pursuance of the provisions of the Constitution of the State of Texas, shall remain in full force and effect, and shall constitute general obligations of the State of Texas under the Constitution of the State of Texas; and all bonds heretofore issued and sold by said Board in pursuance of the provisions of the Constitution of the State of Texas, shall remain in full force and effect, and shall constitute general obligations of the State of Texas under the Constitution of the State of Texas; and all bonds heretofore issued and sold by said Board in pursuance of the provisions of the Constitution of the State of Texas, shall remain in full force and effect, and shall constitute general obligations of the State of Texas under the Constitution of the State of Texas; and all bonds heretofore issued and sold by said Board in pursuance of the provisions of the Constitution of the State of Texas, shall remain in full force and effect, and shall constitute general obligations of the State of Texas under the Constitution of the State of Texas; and all bonds heretofore issued and sold by said Board in pursuance of the provisions of the Constitution of the State of Texas, shall remain in full force and effect, and shall constitute general obligations of the State of Texas under the Constitution of the State of Texas; and all bonds heretofore issued and sold by said Board in pursuance of the provisions of the Constitution of the State of Texas, shall remain in full force and effect, and shall constitute general obligations of the State of Texas under the Constitution of the State of Texas; and all bonds heretofore issued and sold by said Board in pursuance of the provisions of the Constitution of the State of Texas, shall remain in full force and effect, and shall constitute general obligations of the State of Texas under the Constitution of the State of Texas; and all bonds heretofore issued and sold by said Board in pursuance of the provisions of the Constitution of the State of Texas, shall remain in full force and effect, and shall constitute general obligations of the State of Texas under the Constitution of the State of Texas; and all bonds heretofore issued and sold by said Board in pursuance of the provisions of the Constitution of the State of Texas, shall remain in full force and effect, and shall constitute general obligations of the State of Texas under the Constitution of the State of Texas; and all bonds heretofore issued and sold by said Board in pursuance of the provisions of the Constitution of the State of Texas, shall remain in full force and effect, and shall constitute general obligations of the State of Texas under the Constitution of the State of Texas; and all bonds heretofore issued and sold by said Board in pursuance of the provisions of the Constitution of the State of Texas, shall remain in full force and effect, and shall constitute general obligations of the State of Texas under the Constitution of the State of Texas; and all bonds heretofore issued and sold by said Board in pursuance of the provisions of the Constitution of the State of Texas, shall remain in full force and effect, and shall constitute general obligations of the State of Texas under the Constitution of the State of Texas; and all bonds heretofore issued and sold by said Board in pursuance of the provisions of the Constitution of the State of Texas, shall remain in full force and effect, and shall constitute general obligations of the State of Texas under the Constitution of the State of Texas; and all bonds heretofore issued and sold by said Board in pursuance of the provisions of the Constitution of the State of Texas, shall remain in full force and effect, and shall constitute general obligations of the State of Texas under the Constitution of the State of Texas; and all bonds heretofore issued and sold by said Board in pursuance of the provisions of the Constitution of the State of Texas, shall remain in full force and effect, and shall constitute general obligations of the State of Texas under the Constitution of the State of Texas; and all bonds heretofore issued and sold by said Board in pursuance of the provisions of the Constitution of the State of Texas, shall remain in full force and effect, and shall constitute general obligations of the State of Texas under the Constitution of the State of Texas; and all bonds heretofore issued and sold by said Board in pursuance of the provisions of the Constitution of the State of Texas, shall remain in full force and effect, and shall constitute general obligations of the State of Texas under the Constitution of the State of Texas; and all bonds heretofore issued and sold by said Board in pursuance of the provisions of the Constitution of the State of Texas, shall remain in full force and effect, and shall constitute general obligations of the State of Texas under the Constitution of the State of Texas; and all bonds heretofore issued and sold by said Board in pursuance of the provisions of the Constitution of the State of Texas, shall remain in full force and effect, and shall constitute general obligations of the State of Texas under the Constitution of the State of Texas; and all bonds heretofore issued and sold by said Board in pursuance of the provisions of the Constitution of the State of Texas, shall remain in full force and effect, and shall constitute general obligations of the State of Texas under the Constitution of the State of Texas; and all bonds heretofore issued and sold by said Board in pursuance of the provisions of the Constitution of the State of Texas, shall remain in full force and effect, and shall constitute general obligations of the State of Texas under the Constitution of the State of Texas; and all bonds heretofore issued and sold by said Board in pursuance of the provisions of the Constitution of the State of Texas, shall remain in full force and effect, and shall constitute general obligations of the State of Texas under the Constitution of the State of Texas; and all bonds heretofore issued and sold by said Board in pursuance of the provisions of the Constitution of the State of Texas, shall remain in full force and effect, and shall constitute general obligations of the State of Texas under the Constitution of the State of Texas; and all bonds heretofore issued and sold by said Board in pursuance of the provisions of the Constitution of the State of Texas, shall remain in full force and effect, and shall constitute general obligations of the State of Texas under the Constitution of the State of Texas; and all bonds heretofore issued and sold by said Board in pursuance of the provisions of the Constitution of the State of Texas, shall remain in full force and effect, and shall constitute general obligations of the State of Texas under the Constitution of the State of Texas; and all bonds heretofore issued and sold by said Board in pursuance of the provisions of the Constitution of the State of Texas, shall remain in full force and effect, and shall constitute general obligations of the State of Texas under the Constitution of the State of Texas; and all bonds heretofore issued and sold by said Board in pursuance of the provisions of the Constitution of the State of Texas, shall remain in full force and effect, and shall constitute general obligations of the State of Texas under the Constitution of the State of Texas; and all bonds heretofore issued and sold by said Board in pursuance of the provisions of the Constitution of the State of Texas, shall remain in full force and effect, and shall constitute general obligations of the State of Texas under the Constitution of the State of Texas; and all bonds heretofore issued and sold by said Board in pursuance of the provisions of the Constitution of the State of Texas, shall remain in full force and effect, and shall constitute general obligations of the State of Texas under the Constitution of the State of Texas; and all bonds heretofore issued and sold by said Board in pursuance of the provisions of the Constitution of the State of Texas, shall remain in full force and effect, and shall constitute general obligations of the State of Texas under the Constitution of the State of Texas; and all bonds heretofore issued and sold by said Board in pursuance of the provisions of the Constitution of the State of Texas, shall remain in full force and effect, and shall constitute general obligations of the State of Texas under the Constitution of the State of Texas; and all bonds heretofore issued and sold by said Board in pursuance of the provisions of the Constitution of the State of Texas, shall remain in full force and effect, and shall constitute general obligations of the State of Texas under the Constitution of the State of Texas; and all bonds heretofore issued and sold by said Board in pursuance of the provisions of the Constitution of the State of Texas, shall remain in full force and effect, and shall constitute general obligations of the State of Texas under the Constitution of the State of Texas; and all bonds heretofore issued and sold by said Board in pursuance of the provisions of the Constitution of the State of Texas, shall remain in full force and effect, and shall constitute general obligations of the State of Texas under the Constitution of the State of Texas; and all bonds heretofore issued and sold by said Board in pursuance of the provisions of the Constitution of the State of Texas, shall remain in full force and effect, and shall constitute general obligations of the State of Texas under the Constitution of the State of Texas; and all bonds heretofore issued and sold by said Board in pursuance of the provisions of the Constitution of the State of Texas, shall remain in full force and effect, and shall constitute general obligations of the State of Texas under the Constitution of the State of Texas; and all bonds heretofore issued and sold by said Board in pursuance of the provisions of the Constitution of the State of Texas, shall remain in full force and effect, and shall constitute general obligations of the State of Texas under the Constitution of the State of Texas; and all bonds heretofore issued and sold by said Board in pursuance of the provisions of the Constitution of the State of Texas, shall remain in full force and effect, and shall constitute general obligations of the State of Texas under the Constitution of the State of Texas; and all bonds heretofore issued and sold by said Board in pursuance of the provisions of the Constitution of the State of Texas, shall remain in full force and effect, and shall constitute general obligations of the State of Texas under the Constitution of the State of Texas; and all bonds heretofore issued and sold by said Board in pursuance of the provisions of the Constitution of the State of Texas, shall remain in full force and effect, and shall constitute general obligations of the State of Texas under the Constitution of the State of Texas; and all bonds heretofore issued and sold by said Board in pursuance of the provisions of the Constitution of the State of Texas, shall remain in full force and effect, and shall constitute general obligations of the State of Texas under the Constitution of the State of Texas; and all bonds heretofore issued and sold by said Board in pursuance of the provisions of the Constitution of the State of Texas, shall remain in full force and effect, and shall constitute general obligations of the State of Texas under the Constitution of the State of Texas; and all bonds heretofore issued and sold by said Board in pursuance of the provisions of the Constitution of the State of Texas, shall remain in full force and effect, and shall constitute general obligations of the State of Texas under the Constitution of the State of Texas; and all bonds heretofore issued and sold by said Board in pursuance of the provisions of the Constitution of the State of Texas, shall remain in full force and effect, and shall constitute general obligations of the State of Texas under the Constitution of the State of Texas; and all bonds heretofore issued and sold by said Board in pursuance of the provisions of the Constitution of the State of Texas, shall remain in full force and effect, and shall constitute general obligations of the State of Texas under the Constitution of the State of Texas; and all bonds heretofore issued and sold by said Board in pursuance of the provisions of the Constitution of the State of Texas, shall remain in full force and effect, and shall constitute general obligations of the State of Texas under the Constitution of the State of Texas; and all bonds heretofore issued and sold by said Board in pursuance of the provisions of the Constitution of the State of Texas, shall remain in full force and effect, and shall constitute general obligations of the State of Texas under the Constitution of the State of Texas; and all bonds heretofore issued and sold by said Board in pursuance of the provisions of the Constitution of the State of Texas, shall remain in full force and effect, and shall constitute general obligations of the State of Texas under the Constitution of the State of Texas; and all bonds heretofore issued and sold by said Board in pursuance of the provisions of the Constitution of the State of Texas, shall remain in full force and effect, and shall constitute general obligations of the State of Texas under the Constitution of the State of Texas; and all bonds heretofore issued and sold by said Board in pursuance of the provisions of the Constitution of the State of Texas, shall remain in full force and effect, and shall constitute general obligations of the State of Texas under the Constitution of the State of Texas; and all bonds heretofore issued and sold by said Board in pursuance of the provisions of the Constitution of the State of Texas, shall remain in full force and effect, and shall constitute general obligations of the State of Texas under the Constitution of the State of Texas; and all bonds heretofore issued and sold by said Board in pursuance of the provisions of the Constitution of the State of Texas, shall remain in full force and effect, and shall constitute general obligations of the State of Texas under the Constitution of the State of

SUDAN NEWS by Evelyn Scott

Teacher Gets Honorary Degree

Don Ham, vocational agriculture teacher in Sudan schools, recently attended two farm related meetings at the Adolphus Hotel in Dallas. One meeting was a Farm Bureau Institute and the other was a state wide conference of Vocational Agriculture teachers, an annual meeting. Ham received an Honorary Lone Star Farmers degree, awarded for outstanding service to the state FFA.



TOMMY ROSSON

Tommy Rosson, son of Mr. and Mrs. C. W. Rosson, will be among 200 candidates who will receive degrees at West Texas State College's summer convocation, August 22. Rosson will receive his Bachelor of Science degree. Summer convocation is scheduled at 8 p.m. in the field house. Speaker for the commencement will be Dr. David W. Mullins, president of the University of Arkansas.

Rosson is a member of the Lambda Chi Alpha Fraternity and has accepted a position as High School science teacher at Morton.

Visiting recently in the home of Mr. and Mrs. R. K. Allen were their son and wife, Mr. and Mrs. Dwayne Allen of Nederland. Other guests in the Allen home have been her brother, C. H. Yeager, of Leuders; her sister and husband, Mr. and Mrs. N. B. Ramsey of Brownfield; Mrs. Gladys Jost of Lubbock; Mrs. Bessie Cantrell of Hooker, Okla.

Melvin Campbell left last week for a two weeks training camp at Camp Polk, Louisiana.

Mrs. Charles Heffington of Spade was a weekend visitor in the home of her parents, Mr. and Mrs. R. E. Scott, while her husband made a business trip to the Rio Grande Valley. He accompanied W. O. Hampton of Littlefield.

Mr. and Mrs. J. T. Henderson have been vacationing at Truth or Consequences.

Visiting recently in the home of Mr. and Mrs. Ves Patterson were Glen Patterson and children of Henrietta, Texas. Mr. and Mrs. Billy Gage and family moved this week to Lubbock to make their home.

Mr. and Mrs. Roy Hartsell and daughter of Rodessa, Louisiana have been visiting in the home of his sister and husband, Mr. and Mrs. H. H. Olds.

Weidon Wiseman and Kenneth Wiseman were fishing last week at Umberger.

Mr. and Mrs. Bobby Jack Markham have a new son, born Saturday at a hospital in Lubbock.

Visiting in the home of Mr. and Mrs. Dean Slaughter is his mother and husband, Mr. and Mrs. Bill Evans of Kansas City. Mr. and Mrs. Joe Don Parrott

of Littlefield have been visiting in the home of her parents, Mr. and Mrs. R. D. Muller.

Mr. and Mrs. Tom Chatwell and daughter of San Antonio were guests during the weekend in the home of his brother, the Wesley Chatwells. While they were here the two families were Ruidoso visitors.

Mr. and Mrs. Bob Drake and family and Mr. and Mrs. Gene Moore spent the weekend at Conchas Dam.

Horace Hyatt and daughters of Spur visited last week in the home of his niece, Mrs. Joe Salem.

Mr. and Mrs. Joe Salem were in Littlefield Saturday to attend funeral services for J. B. Findley, a former Sudan resident. Among others attending from Sudan were Mr. and Mrs. J. E. Dryden, Mr. and Mrs. W. O. Willingham.

Mrs. R. W. Bowman is in Wichita Falls where she was called due to the illness of her brother-in-law, Eli Lam, who is reported to have suffered a heart attack.

Mrs. E. Pope has returned from the Lubbock home of her son, the Claude Pops, where she had been staying to recuperate from a fall she suffered recently.

Major and Mrs. Wib Richarz and family have returned to their home in Colorado Springs after visiting a number of days with Mrs. Richarz' family, the S. D. Hayes.

Mrs. Walton McManus left Saturday to return to her home in Key West, Florida after visiting a month with her sisters, Mrs. Lester LaGrange of Amherst and Mrs. L. E. Slate.

Mr. and Mrs. L. E. Slate left this week for Eagle Nest, New Mexico. They will be joined there by a number of Mr. Slate's relatives for a family reunion. Meeting them there will be Mr.

and Mrs. J. V. Slate of Denver; Mr. and Mrs. H. Slate of Oklahoma City; Mr. and Mrs. Vernon Price and daughter, Marge, of Iowa City, Iowa.

The group will be guests in the Laguna Vista Hotel. Mr. and Mrs. Audrey West and family were vacationing last week at Brownwood.

Among those from Sudan to be in Canyon Thursday evening for summer graduation exercises to be held at West Texas State College are Mr. and Mrs. C. W. Rosson, and Miss Madeline Turner. The Rosson's son, Tommy, is to receive his Bachelor of Science degree.

Mr. and Mrs. Hubert Dykes and Butch were in Amarillo Sunday to attend the wedding of Mr. Dyke's nephew, Larry Don Hardy to Miss Margaret Griffie.

Mrs. J. R. Ainslow and children of Tampa, Florida, have been visiting in the home of her parents, Mr. and Mrs. A. W. Ormand, and with her sister and family, the E. C. Minyards. Visiting recently in the home

DPS Fears 31 To Die Labor Day

AUSTIN -- The director of the Texas Department of Public Safety announced today an estimated 31 persons will be killed in traffic crashes in Texas over the three-day Labor Day weekend, and called for "an all-out effort to prove the statistics are wrong."

Col. Homer Garrison, Jr. pointed out that the estimate by the DPS Statistical Services is based on past experience, but added: "There is always a chance that it can be proved too high if motorists will put forth a concerted effort to hold the line by driving within safe and legal limits and remaining especially alert to the added dangers of holiday travel."

To emphasize these hazards, he said, "Operation Motorcade" will be placed in effect from 12:01 a.m. Saturday, Aug. 31 through 11:59 p.m. Monday, Sept. 2. During this period, all traffic fatalities on the street and highways of the state will be tabulated and released three times daily to the public through the co-operation of the news media.

In addition, the Department of Public Safety will do everything possible with the limited manpower available to stop reckless and illegal driving on the highways, Garrison said. Officers from the DPS uniformed services will be assigned for the holiday period to Highway Patrol duty to add to the enforcement effort.

The DPS Director said Labor Day this year comes at a time when traffic tragedy for the year 1963 appears to be heading for an all-time high. He reported that more than 1,400 persons have been killed already this year for an increase of some eight per cent, adding that if the trend continues the toll will exceed the high of 2,611 persons killed in 1956.

A new delivery service was initiated by the Littlefield Post Office starting Monday. The service is in the form of faster delivery service to most mail going to points beyond Lubbock, Postmaster T. A. Henson announced. In order to take advantage of the speedier service patrons must have the mail to the post office by 4:30 p.m. The special mail pouch is dispatched Monday through Friday. Mail going to Lubbock is not affected, but it provides hours

of Mrs. M. M. Gann has been her sister and husband, Mr. and Mrs. Glenn Drury of Monteca, Calif. and her daughter, Mrs. Gladys Nichols of Dinuba, California.

Mrs. Gann left Tuesday to attend a reunion of the George Norris family at Eldorado, Okla. At the reunion were to be fourteen children of the Norris family including seven boys and seven girls, with the youngest being fifty-six and oldest being seventy-nine.

Mrs. M. M. Gann and daughter, Mrs. Gladys Nichols of Dinuba, Calif. were in Littlefield Monday to visit Mrs. Gann's sister, Mrs. R. S. Henderson. Mr. and Mrs. Walter Bostick of Lubbock visited Saturday in the Martin Maxwell home.

Mr. and Mrs. Joe Fisher and Kenny are vacationing this week in Bayfield, Colo. Also at Bayfield are Mr. and Mrs. Jerry Ray and daughters.

Returning home after a number of days stay near Corpus Christi have been Mr. and Mrs. Marvin Bowling and sons, and Mr. and Mrs. Raymond Maxwell and Wanda and Freddy.

the highways, Garrison said. Officers from the DPS uniformed services will be assigned for the holiday period to Highway Patrol duty to add to the enforcement effort.

The DPS Director said Labor Day this year comes at a time when traffic tragedy for the year 1963 appears to be heading for an all-time high. He reported that more than 1,400 persons have been killed already this year for an increase of some eight per cent, adding that if the trend continues the toll will exceed the high of 2,611 persons killed in 1956.

New Postal Service Starts

A new delivery service was initiated by the Littlefield Post Office starting Monday.

The service is in the form of faster delivery service to most mail going to points beyond Lubbock, Postmaster T. A. Henson announced.

In order to take advantage of the speedier service patrons must have the mail to the post office by 4:30 p.m. The special mail pouch is dispatched Monday through Friday.

Mail going to Lubbock is not affected, but it provides hours

Bartley In Scout Center

C. R. Bartley of Littlefield Scoutmaster, is taking specialized training in Boy Scout leadership at the Philmont Youth Training Center which operated by the Boy Scouts of America at the Philmont Ranch in the Sangre de Cristo range of the great Rocky Mountain chain in northeastern Mexico.

National Scouting leaders instructors for the 1,500 sons who will attend the 22 ferences being offered there mer at the 137,000 acre Scout camp.

Participating in the program at the Volunteer Training Center are Mrs. Bartley, Russel and Rena.

In addition to the Training Center, Philmont, the boys' camp in the world, of 15,000 Explorers and Boy Scouts this summer.

Bartley has been active Scouting for 9 years and Meter Repairman. quicker delivery for many beyond Lubbock, either by air mail.

BACK-TO-SCHOOL

CORRECT ANSWERS IN CLOTHING

BLACK ISCOAT LEATHER HIDDEN GORE UNIMOLD SOLE & HEEL
6.95

BLACK NYLON VELVET LEATHER VULCANIZED CREPE SOLE
6.95

WHEN THEY ARE HEADING FOR THE CLASSROOM PUT THEM IN Red Goose SHOES

For all that lies ahead for the youngsters at school, you'll find just the right shoes among the many new Red Goose styles: boots that make cool crisp days exciting—sturdy oxfords to endure rough play—dress shoes to highlight special events.

And if your youngster is especially "hard" on shoes, ask to see Red Goose shoes with genuine Goodyear Welt construction, or those with Unimold soles and Iscoat leather uppers. Indeed thrifty buys.

Top grain leather uppers, balance of shoe composed of man made materials.

BLACK OR RED PATTINA SEMI SOFT SOLE
3.98

BLACK & WHITE SOFT SOLE
3.98

BLACK NYLON VELVET
6.95

BLACK STAR BLOW PATENT NEEDLE TOE COWBOY HEEL
6.95

BLACK ISCOAT UNIMOLD SOLE
6.95

BLACK NYLON MULTI-COLOR SUEDE
6.95

BLACK
4.98

BLACK OR BROWN
4.98

WHITE SEMI SOFT LEATHER SOLE
4.98

STEP INTO FALL

in Footwear of Fashion

Elegante PATTINAS*

IN HIGHLY POTENT HUES

Hot off the fashion presses—Elegante Pattina*, temptingly toned in highly potent hues, a marvelous glossy finish which refuses to crack, chip or peel, retains its spectacular beauty throughout seasons of duress.

*DuPont Pattina Olefinic Uppers

MATCHING BAG
IN PATTINA
\$6.95

JOLI
Hi tailored pump in Cranberry Red and Bronze Elegante Pattina. \$10.95

RADIANCE
Mid heel pump in Cranberry Red, Bronze and Gun Metal Gray Elegante Pattina. \$10.95

NOVA
Hi opera pump in Black Leather. \$12.95

Grace Walker Anthony's

SHOES FOR WOMEN