

LAMB COUNTY LEADER

Official Newspaper of Lamb County, Texas

LITTLEFIELD, LAMB COUNTY, TEXAS, THURSDAY, JANUARY 7, 1926

LEADER WILL CELEBRATE MONSTER MASS MEETING FRIDAY NIGHT

First mass meeting of the year of Commerce for the year is to be held at the Lee building, Friday night, Jan. 8, 8 p. m., and every citizen of the town, whether a member at this meeting, is urged to be present. Those of vital interest in the Littlefield Chamber of Commerce and Littlefield in particular brought up for discussion. Littlefield can at this time boast of a Chamber of Commerce that would be a town of three times as large as any other organization that has a membership as large or larger than any town in Texas in its class; an organization that has formulated a plan for the ensuing year that will place before the eyes of the community a greater way than has ever been done before. Every citizen is interested in making his town of Littlefield, a better town in which to live should feel it his duty to be present at this meeting. The following program has been planned:

- Carriney, E. G.
- Crockett, L. R.
- Cunoda D. G. Co.
- Curtiss, E. C.
- Denton, W. B.
- Duggan, C. J.
- Duggan, A. P.
- Dunagin, A. M.
- Ellis, C. E.
- Elms, J. T.
- Farquhar, S. J.
- Faust, E. J.
- Fletcher, C. C.
- Fulkerson, J. W.
- Garrett, J. W.
- Gardner, W. H.
- Garrett, T. T.
- Garrett, R. A.
- Gift and Art Shop.
- Glover, M. H.
- Green, J. W.
- Gustine, N. B.
- Halle, S. R.
- Hall, E. K.
- Hargrove, G. W.
- Harless, Jim.
- Harless, Chas.
- Harvey, Clayborne.
- Harris, J. T.
- Harris, Dr. W. H.
- Hargrove, L. F.
- Hardin, Cliff.
- Hansen, Wm. H.
- Hester, J. S.
- Hemphill, A. G.
- Higginbotham-Bartlett Co.
- Hookings, E. W. Jr.
- Hoover, Fred.
- Hopping, R. C.
- Hopping, J. W.
- Houk, Jas.

- Houk, D. C.
- Jones, J. D.
- Jones Bros.
- Jordan, L. W.
- Kerr T. M.
- Kling, John.
- Lamb County Merc.
- Lacy Clem.
- La Nell Confectionery.
- Liles, Dr. B. B.
- Little Drug Store.
- Littlefield Coal and Grain.
- Littlefield Bakery.
- Littlefield Steam Laundry.
- Littlefield Ice and Bottling Co.
- Logan, E. A.
- Maddy, Dr. H. P.
- Mathews, T. L.
- Mathews, S. B.
- Maxey, E. L.
- Miller, Earl.
- Miller, Irvin.
- Mitchell, Jess.
- Mueller, Alvin.
- McGavock, A. H.
- McCullough, E. E.
- McCaskill, E. E.
- Panhandle Tel. System.
- Panhandle Tel. System.
- Perkins, Dr. R. H.
- Phipps, Rev. W. P.
- Porter, L. P.
- Pope, J. M.
- Porcher, J. W.
- Porter, A. L.
- Potter, T. Wade.
- Pumphreys, H. C.
- Reeves Market.

(Continued on last page)



NEW TOWN WILL BUILT ON BLEDSOE LINE OF SANTE FE

The advent of the new Santa Fe line from Lubbock to Bledsoe has given birth to a new town, Chipley, located some 53 miles west of Lubbock and between Whiteface and Lehman, Santa Fe towns that were ushered into being before the new line was completed.

Chipley has been named for H. D. Chipley, of Lubbock, who is foster daddy to the new town and who has interested a large number of his friends in Lubbock and elsewhere in the place.

Homes, churches, schools and business houses will be built on the new townsite before many months, Chipley believes, and has persuaded a number of his friends here that the work will be done in the immediate future.

Located on proposed highways that will be run through Cochran county, and for which bonds will be voted soon for hardsurfacing these highways, the new town bids well to become one of the lively trade centers on the Plains.

FARM BUREAU SPEAKER AT OLTON NEXT MONDAY

Clarence Ousley, speaker for the Texas Farm Bureau, will speak at the court house in Olton next Monday evening, January 11th, at 7:00 p. m. on the work of the Farm Bureau in general. Along this line he will especially stress the soundness of the Farm Bureau on a money basis.

An interesting feature of the evening will be an explanation of the production credit that is open to the farmers. The Bureau has \$3,000,000 to loan cotton farmers in Texas, and Mr. Ousley will explain the terms and various angles of this proposition.

Everyone is invited to hear Mr. Ousley speak.

NEW ELECTRIC STORE Texas Utilities Co., To Have Modern Stock of Kind

Texas Utilities Co., have closed a lease for the middle room of the new Cooper block and will occupy it next Monday afternoon.

In this room will be moved the business offices of the concern, according to Manager R. E. McCaskill, and they will also put in a large stock of electrical goods, fixtures and appliances of all kinds for the trade.

McCaskill states it is the intention of his company to give to Littlefield an electrical store second to none, and goods will be sold at such prices no one can afford to be without the pleasures of electrical features and labor saving devices.

COLE MOVES OFFICE

R. E. Cole has moved his office location into the new Cole building, same occupies a portion of the L. B. Porter Grocery.

HIGH POWER LINE IN LITTLEFIELD NEW YEAR'S DAY

Friday of last week Littlefield received the high line current from the Texas Utilities' plant at Lubbock. It was a New Year's gift worth while and for which the town had been looking forward for many months.

Work of constructing the high line from Lubbock to Littlefield was begun during the month of last June, the company meeting with numerous and various hindrances which held up the work until the close of the year.

When the switch over was made from the local plant to the big aluminum wires carrying 2,300 voltage at 7:00 o'clock last Friday night there was a noticeable increase in the brilliancy of every light in town. At the same time the lights were switched onto the streets, flooding the principal thoroughfares of the town with a blaze of electricity that made it look real "cited."

The town is now equipped with a real "White Way" down Main street, 24 lights shedding their opalescent beams over the pedestrians and joyriders of the night. There was also 87 lights, one located at every fire hydrant, throughout the residence portion of the city.

The high line is now being built on toward Clovis, New Mexico. It is understood that the Texas Utilities Co., has made purchase of the light plants at both Amherst and Sudan. According to Manager McCaskill his company will be furnishing light to Amherst by Saturday night of this week, and perhaps by the end of the month they will be into Sudan.

Littlefield now has an electric service of which the town may well indeed be proud. The parent plant furnishing the "juice" for this string of towns up the Santa Fe cut-off is located at Lubbock. It is the largest thing of its kind in West Texas, having 1,250 h. p., and two 500 h. p. engines, which, when synchronized into mechanical action give a potential voltage of 2,300, carried over large stepped down by transformers at aluminum wires, and considerably cry station.

Political Announcements

The Leader is authorized to announce Charles Clements, of Plainview, as a candidate for the office of District Judge, 64th Judicial District, subject to the action of the voters of the district at the Democratic primary.

The Leader is authorized to announce W. E. Huffines, of Floydada, as a candidate for the office of District Attorney, 64th Judicial District, subject to the action of the voters of the district at the Democratic primary.

GOVERNOR SETS ASIDE JANUARY AS LAUGH MONTH

January was designed as "laugh month" by Governor Ferguson Thursday, when representatives of every newsreel organization in the State took moving pictures of her and her family at the State House and mansion.

Her proclamation read:

"Realizing that the year of 1925 brought prosperity to many, though adversity to some; and

"Believing that a cheerful, happy outlook is the best antidote for gloom, as well as the greatest assurance of future well being, and with the most heartfelt conviction that it is better to laugh than to mourn and that we must laugh to live.

"I hereby proclaim the month of January, 1926, as laugh month for the State of Texas; and I recommend to the people of the great and glorious commonwealth that they start the year with happy laughter and good cheer, with the assurance of a happy and prosperous new year."

Y. H. LAND SALES

Local Concern Reports Business of New Year Starts Good

Two farms sold January 1st, and four farms the following day, is the way business started of this year with the Yellow House Land Co., according to Arthur P. Duggan, office manager for the company.

Duggan states his company has no room whatever for complaint; that their previous buyers are, with few exceptions, making prompt payments on their land, and that the prospects for business during the coming months are excellent.

MEAT MARKET MOVED

The Star Meat Market, Fred Meyer, proprietor, has moved into the new Cole building, north of the Shaw-Arnett Company.

The new location makes a more desirable location as well as supplies sufficient space for the business.

Buy it in Littlefield!

TEXAS UTILITIES CO. EMPLOYEES TO BE INSURED FREE

Texas Utilities has announced a plan of group insurance effective December 24th, 1925, on all employees of one or more years continuous service, according to local manager R. E. McCaskill.

By this plan each employee affected is insured in proportion to the number of years service at no cost and with no physical examination required. Employees of one year are insured for \$500 and this amount of insurance is increased \$100 each year of service. The maximum amount of insurance is \$1,500.

In case of permanent total disability before the age of 60, the amount of the insurance will be paid in a fixed number of installments. Upon leaving the employ of the company the insurance may be converted without medical examination and continued at the expense of the person to whom it is issued.

The Texas Utilities Company now employs about 175 persons, while the Community Light and Power company has an employment list of around 1,000 people, the average of these employees with the company is about four years.

Six men, including Manager McCaskill, of the local force were favorably affected by the insurance plan.

LITTLEFIELD WILL PARTICIPATE IN STONE MOUNTAIN CAMPAIGN FOR THE CONFEDERATE MEMORIAL SOUVENIRS

The Stone Mountain Confederate Memorial contest, for the purpose of raising money to build that memorial in Georgia, will be opened at the Chamber of Commerce meeting to be held at the Lee Theatre Friday night.

Every town and city in the Southern states has been given a quota of money to raise, similar to the manner in which money was raised for bonds during the World War, and it is expected at this time that Littlefield will go "over the top," with her apportionment, as is usually the custom of this town.

Mrs. A. C. Cheser has been appointed director-general of the local campaign and working with her are the following assistants: Representing the city, Maxey L. R. Crockett; Littlefield State Bank, E. A. Logan; First National Bank, E. L. Maxey; Chamber of Commerce, E. A. Ellis; Boy Scouts, T. Windsor; Masonic Lodge, Pat Boone; Eastern Star, Mrs. Bessie Baze; Advisory Board, (Rainbow Girls) B. L. Cogdill; Civic League, Mrs. Pat Boone; Baptist Missionary Union, Mrs. Happy Jordan; Methodist Missionary Society, Mrs. W. H. Gardner; Retail Merchants Association, T. W. Barnes and Mrs. Clayborn Harvey; Mothers Club, Mrs. E. L. Maxey; Superintendent of Schools R. L. Speight; Parent Teachers' Association, Mrs. W. G. Street; Women's Study Club, Mrs. G. T. Ritchson and A. P. Duggan; Presbyterian Auxiliary, Mrs. R. D. Berough; Christian Ladies' Auxiliary, Mrs. D. C. Houk; West Texas Chamber of Commerce, A. P. Duggan.

The building of this magnificent monument, a tribute to the valor of the Confederate soldiers, is to be financed by the selling of Confederate memorial half-dollars. Their face value is 50 cents, but they sell for \$1.00 each. Five million of these coins have been made by the Government.

Continued on last page

MORE THAN 33,000 ACRES OF FAMOUS PADE RANCH, SECOND SUB-DIVISION IS NOW SOLD TO ARRIVING NEW SETTLERS

King land in 160 acre tracts, such large quantities, as to appearance of a wholesale sale. The record of Judge R. H. Hopping, general agent for the land, lying within five miles of Littlefield.

On January 1st, last year when W. H. Hopping, the well known landowner, decided to put on the second subdivision of this land, and at that time several orders were issued for 33,000 acres in farms of 200 to 400 acres each. Judge Hopping, who has already arranged for the sale of this land, expressed it. To day more than 33,000 acres of this fine tract has been disposed of, and dotted here and there are the homes of the new settlers being erected, while their plows are turning the soil, getting ready for next year's crop. To date 152 different prospectors have invested in this good land, each purchaser buying from 100 to 640 acres each. Of this number 64 of them are now actively engaged in making their improvements or else having it done, while several others are planning being here shortly after the first of this new year to start their new homestead.

Judge Hopping states that very few of the purchasers were speculators; that the majority of them bought land with the intention of making it their future permanent home. They are all of a very high class of citizens, and the Judge, and will be a valuable addition to the community.

Continued on last page

24, 1923 at the post
the Act of March 3, 1877

Editor and Publisher
Texas Press Association

change their addresses or fail to get their paper, should immediately give both new and old addresses.
Comments of local interest are invited. They should be briefly written on each week. The right of revision or rejection is reserved by the publisher.
Advertising that does not show in its type or typography that it is paid for must be marked as an advertisement. All local advertisements remain in this paper for the time specified or until ordered out. No notices, matters not by whom nor for what purpose, if the object is to raise money by admission fee or otherwise, is an advertisement and when sent for publication must be paid for at the regular advertising rate per line for each issue printed.
Entertainments, cards of thanks, and resolutions of respect will also be charged for at same rate.
Any erroneous reflection upon the character, credit or reputation of any person or firm of corporation which may appear in the columns of the Littlefield News, will be gladly corrected upon its being brought to the attention of the publisher.

As the Eagle Soars

MONEY MAY BE SCARCE BUT YOUR POLL TAX IS WORTH THE PRICE. PAY IT!

that "fools and his money are soon parted."

TRY THIS AWHILE

THE FAMILY BUDGET

There has been creeping over the country in the past year or two a movement that we sincerely believe could be adopted by the average Littlefield family with profit.

Women's clubs in many towns and cities are now giving considerable attention to the "family budget" plan, and we understand it has proven of such great value, and aided so materially in regulating household expenses that, taken the country over, a vast sum is saved by the thousands who have adopted it.

Keeping a "family budget" requires, a little simple bookkeeping, and a desire to watch carefully after expenditures, without skipping in any part of the house and without resorting to miserly methods. Simply figure out—and now at the start of a new year is a most opportune time to start—how much of the family income can safely be set aside for clothing, how much for the table, for upkeep of the home, such

We don't know whether everyone is acquainted with the fact or not, but the editor of this newspaper makes it a rule to always have a pencil and a scrap or two of paper, or the back of an envelope, in easy reach.

If you stop him on the street and tell him of visitors at your home, of a visit you have made or expect to make, or if you call his attention to something your neighbors have done that is worth repeating, you'll find that he can easily get hold of that pencil and paper. Later on you will realize that you have helped your home town paper by giving it something of interest to its readers.

Papers in towns like this can not employ a staff of news gatherers. They have to depend upon the people of the town to furnish them items of interest. It takes but a moment of your time, and your reward comes in knowing you have aided in making your home paper a better paper.

DID YOU EVER STOP TO THINK?

By
Edison R. Wainwright

insurance, how much for the church, for education, for family luxuries, such as picture shows and vacations and, finally, what sum can be laid away in the bank each week after all other necessary things have been allowed for.

You many find it necessary to do a little shifting or a little pinching here and there to keep within the budget, but those who have given it a fair trial say it is well worth it. Modern housewives in large numbers are now running their homes on the "budget plan," and declare it is proving both healthful and economical. So if it works in other communities it ought to work here. At least there can be no harm in trying it out for awhile.

LOSSES IN FRAUDS

As a rule we don't get very much mail in this office from Wall street, because we suppose that Wall street isn't as well acquainted with us as it is with Mr. Morgan and Mr. Rockefeller and a few hundred thousand others. But yesterday we did find a circular letter from Wall street. It interested us, and we believe it would interest our readers in and around Littlefield.

This circular, in the nature of a report, states that over 600 concerns one half dealing in fake stocks and fraudulent securities have been put out of business during the past year, and that losses through "wild-cat" oil, mining and real estate operations in the United States totaled more than \$1,000,000,000 during the past year.

Every state in the union has people who are trying to get rich quick by offering nothing except pretty promises for something of unsound value. And every city, town and farming district, has its citizens who are trying to get rich quick by beating the other fellow's game. So the sharper thrives and the sucker gets caught.

We want, for once in our lives to thank Wall street for something, and that is the thoughtfulness in trying to do what seems to be impossible—to impress the people of this county with the fact that there is still as much truth as ever in the old adage

Clyde Willis, looking at a prominent local attorney the other day, remarked that the principle reason an attorney didn't cut his own hair was because he was afraid he might implicate the last lock.

LITTLE LEADERS

Middle-age is the time when the average Littlefield man is going to begin saving next month.

Sympathy is what one Littlefield woman sometimes offers another woman in exchange for a little bit of gossip.

While the smartest people in the city are looking for coal, some smart Littlefield person can own our tanks by investing a substitute for washing.

We overheard a Littlefield man say yesterday he has discovered that the hardest thing to dodge about an auto is the payments on it.

There is still hope and chances for a good husband in store for the Littlefield girl who still knows what it means to be embarrassed.

The Littlefield girl who shows more interest in what a man has above his ears than in what make of car he has, is sure of getting a pretty fair husband.

We know love must be a peculiar thing when it makes a girl give up a good job to marry into a harder one that doesn't pay any wages at all, but even some of the Littlefield girls will do it.

We recently heard of a man not a thousand miles from Littlefield, who calls his wife "angel," because she seems to never have any clothes, is always up in the air and never quits harping.

HAVE IT YOUR OWN WAY

Texas farmers are being warned against placing faith in forecasts of an extremely cold winter ahead to be followed by an unseasonable summer in 1926. The winter may be extremely cold and the summer unseasonable, but scientists have no means of telling it at this early date. A week is the longest dip possible into the weather future.

Neither is there reason for believing that the winters in this section are no longer so cold nor the summers so hot as formerly, according to weather bureau figures on the point, running back three decades. The mean December January and February temperature over the decade 1885-1904 was 48.4 degrees; for the decade 1905-1914 it was 49.7 degrees; and for 1915-1924, 51.9 degrees, a difference in the total range of 3.5 degrees. The mean temperature for the same three winter months last year was 49.8 degrees.

Snows that lay on the ground for months on end, skating that began in November and lasted until March, snow drifts that reached almost any height one might mention, were the exceptional occurrences in grandfather's day as they are today. One mild winter starts the rumor that overcoat manufacturers had better go into the Palm Beach suit business, while an extremely cold winter is dubbed as a good old-fashioned winter. One explanation for this is that memory is tricky and recalls the exceptional rather than the average. Another is that modern living has taken the edge off the extreme weather. A snowfall that our fathers would have trodden under foot for days now is shovelled away before we get up in the morning. Better heating, too, makes us feel the low temperature less, and ice refrigerating plants and electric fans makes extremes of heat more endurable.

While the weather is constantly changing from one year to another, big climatic changes are too gradual to be observed in the lifetime of one or even a hundred generations. Scientists figure that the climate of this continent has not changed in some ten-million years, not since the passing of the glacial period, and probably will not for another ten-million.

FOLKS

Business is good. The farmer sells a load of wheat, and all the world grows fair and sweet; he burns a couple of cheerful tunes, and pays the grocer for his prunes. The grocer who had the blues, now buys his wife a pair of shoes. That ten-the shoeman thinks God sent, and runs

mail order catalog that fairly swamped the post office. Give the home man a chance. Put the final word on the catalog out of business by doing your buying at home. Support the home town institution, and do not forget the fact that the print shop is as much a home town institution as the dry goods store or the grocery store.

MAIL ORDER MERCHANDISE

While many country editors are giving their readers the right to mail order goods, some are not. Some are not patronizing the home printers, are killing the work of the printer by patronizing the mail order houses. When the business man sends off for his work, he is putting a spike in the home town job press. And when the business man talks about boosting for the home town he forgets that he is not helping to build up the home town when he is sending his money out of town to help bring in the sacks of



ENERGY-PLUS

Milk is a recognized necessity for children and a most wholesome diet for adults. Milk drinkers have greater force, more vitality and more energy, but be sure the milk is PURE!

You are assured of pure milk when it comes from our dairy—rich, creamy, body-building milk from healthy cows, bottled with the utmost care and under the most sanitary conditions. DELIVERED FRESH DAILY. HOME DAIRY. B. B. MOULTON, Prop. One Mile East of Littlefield

PLUMBING

Do all kinds of Plumbing and Heating Installation and Repair Work. See me for estimates and material prices. All work to your satisfaction.

J. H. McGEHEE

At Higginbotham-Bartlett Lumber Yard Littlefield, Texas

LITTLEFIELD HOTEL

AMERICAN PLAN
Courtesy and Service



WHICKER and THOMAS Proprietors

Blind Senator



This is the latest photo of Senator Thomas D. Schell from Littlefield, who has attained citizenship post despite the great handicap of blindness.

NOTICE TO RIDERS

The Commissioner's Court of Lamb County will receive bids on one or more Crawler Type Road Tractor, Feb. 14, 1926, with sufficient power to pull twelve-foot grader.—E. N. BURRUS, County Judge, Lamb County. Jan. 7, 14, 21, 28.

The question of "When is a man drunk?" has given way to the more puzzling question of "when is a girl clothed?"

Don't let the mail order house deceive you.



Builder's Hardware

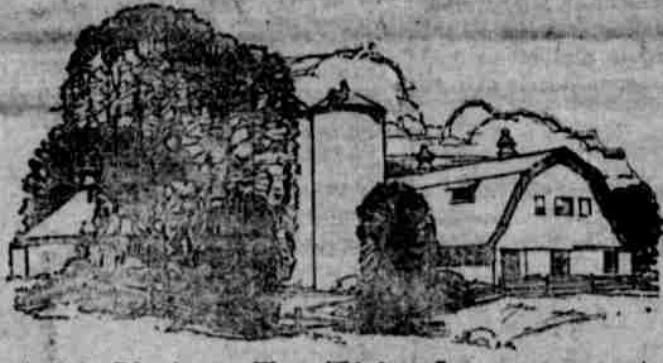
Finishings are of the utmost importance in the good building job, and we have the nicest line of Builder's Hardware to be found in town. Whether you are building a new home or repairing the old one, you will want us to show you our stock.

Farmers needing repairs for Planters and other farm machinery, are urged to place their orders early, thus avoiding disappointment of delay during the rush season.

We have a full line of Harness and Harness Findings for the new settler who comes here on the train. Just buy your team and we will outfit it ready for work.

If in need of Furniture, we have some bargains you cannot afford to overlook. We also have some Heating Stoves that are worth the money.

J. W. Robertson



Add Value To This Investment

SAVE the farm buildings—the barns, silos, the dairy buildings. It costs a small fortune to build anew, and there's no need for it.

With Glidden Barn Paint, there is an economical way to not only safeguard your farm-building investment, but to increase it.

GLIDDEN

Barn Paint

is recommended to you as a safe paint to use. Pure pigments, and the right proportions of other ingredients make it stand several years of hard exposure.

Come in and we'll advise you regarding your painting problems.

We also have paints of all kinds for inside and outside surfacing.

See us for Varnishes, Stains, Roof Paints, Barn Paints, Ochres, Oils, Putty and Turpentine.

If in the market for Builders' Material, remember we handle a full line of the best Lumber available for all kinds of construction. Plans and specifications cheerfully furnished.

Higginbotham-Bartlett Company

WITH A SMILE

AGRICULTURE SHORT COURSE AT LUBBOCK, JAN. 28

farmers, bankers, merchants, wives and all other South Plains are invited to attend the Agricultural Short Course which will be at Lubbock, January 28, and 29, according to D. F. Eaton, Lubbock Agricultural Agent, who is in charge of the committee making arrangements.

Short Course is being held under the direction of the International Water Company, who will send invited speakers for the two-day course. The speakers slated to speak are: A. Hawkins, practical farm-horticulturist, Mrs. Gordon W. G. Janssen, assistant crew leader will accompany the speakers and operate a movie machine showing slides and reels illustrating brought out by the speakers. Program of diversified and intensive farming will be stressed by speakers at the short course look-

ing toward better conditions among South Plains farmers in the future.

WEST TEXAS NEWS

WHAT'S DOING IN WEST TEXAS

Amarillo—Amarillo voted overwhelmingly to extend the city limits to take in several suburban additions and to raise the city tax limits. This election will facilitate the sale of the \$1,750,000 bonds for the municipal water system.

Wellington—A bond issue of \$200,000 carried here by a vote of 200 to 3. The issue will provide funds for a modern water system here. Wellington development is proceeding steadily. Gas is the next step proposed.

Washington, D. C.—Bills have been introduced in both the House and Senate carrying substantial appropriations for exploration and development of the potash deposits of Western Texas. These deposits are said to be comparable to the great German deposits which now constitute the world's sole source of supply. Senator Morris Sheppard and Representative Claude Hudsbeth are authors of the bills.

Amherst—Sugar beet culture is proving practicable in the shallow water belt of the Plains. The Hall-sell Farms experimented with the crop this year and met with great success. Heavy yield of fine quality beets was made. It is planned to try the crop on a larger scale next year and if it proves successful to go after a sugar factory and encourage the crop on a great scale.

PASTOR IS CALLED

Rev. C. A. Dugger, of Phoenix, Ariz., To Presbyterian Church

Rev. C. A. Dugger, D. D., of Phoenix, Arizona, occupied the pulpit of the local Presbyterian church last Sunday, both morning and evening. Monday morning a called meeting of the church officials was held, at which time the pastorage was extended to him and accepted.

Dr. Dugger comes to Littlefield highly recommended as a scholar and pastor, following a pastorate of nearly nine years in Arizona. He returned home Monday evening, and expects to be here with his family within the next two weeks, when he will take active charge of the local church.

Mrs. Dugger, the minister's wife, is also a very accomplished woman in church activity. She is now state synodical secretary of the Woman's Missionary Society, of Arizona, and a member of the United States Mission Council.

The Leader for printing.

WHO SAID

"Time will un-veil all things to posterity."

THE author of this truth was Euripides, the celebrated Greek writer of plays. Euripides was a thinker and, like all thinkers, was inclined to think of things that were ahead of his time. It may well be that the above quotation was his reply to criticism directed at him for some of his advanced beliefs. "You may believe it or not," we can imagine this Greek man of letters saying, "but the future will prove me right. Time will unveil all things to posterity!"

The first published play of this great tragedian was "Pelides," which appeared in 455 B. C. The play was well received, but did not win the first prize which the Greeks were in the habit of bestowing on the writer of the most meritorious play.

Like every man of prominence, Euripides had his enemies and these men determined upon his downfall. They charged the poet with impiety and unbelief in the gods. Whether or not the charges were true, they were believed by the people, and their admiration for Euripides turned to enmity and he was forced to flee from Greece. At the court of Archelaus, the king of Macedonia, the poet was warmly received and was accorded the highest honors by the sovereign and his courtiers.

Euripides is entitled to be called the master of the Greek tragedy and one of the greatest playwrights of all time. He is said to have composed between 70 and 90 tragedies.—Wayne D. McMurray.

(© by George Matthew Adams)

SOMETHING TO THINK ABOUT

By F. A. WALKER

BIASED MINDS

TO AN incredible degree, our beliefs are greatly influenced by our feelings and wishes. By bringing together ideas and dwelling on them under the sway of strong feelings, the mind tends naturally to believe in the corresponding realities.

This is seen in the strength of belief associated with the wild dreams of youth. To keep these airy visions constantly before the mind without testing them in practice, sooner or later is sure to cause a bias or prejudice which in turn brings about dangerous likings or dislikings to the detriment of the intellectual forces.

To exercise the senses and let them have undisturbed freedom is the best way to accumulate the richest store of clear impressions, without which man or woman in his or her calling or profession can hope to attain any degree of distinction.

To become biased and "set" in ideas is to become warped and imprisoned in a vicious circle from which, as the years advance, there is but little likelihood of escaping.

The simple process of thinking clearly, accepting facts as they present themselves and weighing the accumulated evidence thus gathered on scales whose weights are true, is the only method by which the young or the old can expect to achieve and attain.

If you will study the bright intellects of the past, the minds which have left their shining monuments in the world, you will find that they reached their exalted places by clear reasoning, and a cheerful willingness to listen to words of counsel from others.

There was in them no desire to declare their superiority, for they were ever anxious to avoid the ruts and drive steadily up the hills with free reins and open minds untrammelled by prejudice and bias, those terrible destroyers of success, lying in wait at the cross roads for the foolish, the obtuse and the self-conceited.

(© by McClure Newspaper Syndicate.)

Wheat Cooked Whole in Pressure Cooker Good

Nutrition specialists urge, among other necessary foods, the frequent use of whole-grain cereals in the diet, especially in families where there are growing children who need the vitamins and mineral substances. For this reason such foods as whole wheat breads or breakfast foods, brown rice, cornmeal made from the entire grain, and oatmeal, should appear on the table at frequent intervals. The whole grain cereals can be prepared in a variety of ways. The United States Department of Agriculture suggests a way of making whole wheat very palatable—cooking it in the steam-pressure cooker. This makes an excellent breakfast cereal rich in flavor and food value.

To prepare it, sort the grain, wash it thoroughly, then cover with about two and one-half times its volume of water, add salt, and cook under 15 to 20 pounds pressure for a half hour or longer if needed to make the grains soft. A generous dish of these thoroughly cooked whole wheat berries with milk or cream, and a serving of fruit, makes an ideal breakfast, lunch, or supper. The germ and the outer layers of the wheat grain are rich in vitamins and minerals, while the rest is such an excellent source of energy for the body that whenever possible people all over the world use wheat in some form as the mainstay of their diet.

IRVING KING

RATS

THE popular saying "Rats desert a sinking ship," imperfectly describes the superstition to which it is supposed to give expression. The belief of sailors—and of many who are not sailors—is that when a ship is in port and the rats suddenly swarm ashore, forsaking her, that ship, in all probability, will go down on her next voyage. Many a ship has been held for long weeks in port wanting a crew, the old crew having refused to reshipe because the rats had been seen leaving the vessel as she lay at her dock.

A common explanation of the superstition is that it has a foundation in a physical fact. A ship in bad repair—unseaworthy—is damp down below and the rats desert to dryer quarters ashore. And a leaky ship is, of course, most likely to go down if she encounters heavy weather.

But sailors scout this explanation and will tell you that well-found ships are as likely to go down as any others if the rats desert them—which is not so, of course. The common explanation of the superstition, unromantic and unclassical as it is, is undoubtedly the true one. But that innate proclivity for superstition which pertains to all mankind in general and sailors in particular, prefers to see a mysterious omen in the desertion of a ship by her rat inhabitants rather than a plain, prosaic intimation that the "old hooker" needs calking.

(© by McClure Newspaper Syndicate.)

Trapped by Drawing

Rene Berger, a French painter, was attacked a few nights ago while returning to his house in Montmartre, Paris, by two robbers who knocked him down and stole his valuables. He was taken to the hospital, where, after a few days, he died. Although he regained consciousness, Berger had lost his power of speech and could not give a verbal description of his assailants. But he remembered their faces and on his death bed made a more or less accurate drawing of them. With the help of that drawing the police have found and arrested Berger's murderers.

No. 1039

Official Statement of the Financial Condition of the LITTLEFIELD STATE BANK at Littlefield, State of Texas, at the close of business on the 31st day of Dec., 1925, published in the Lamb County Leader, a newspaper printed and published at Littlefield, State of Texas, on the 7th day of January, 1926.

Deposits sub-check on which	280,718.82
is paid	
credits of De-	
	301.44
on Deposit:	
\$22,747.70	
8,033.61	
21,023.21	
8,804.52	
Total	420,941.02
Cashier's Check outstanding	18,818.25
Bills payable	15,000.00
	15,000.00
TOTAL	420,941.02

STATE OF TEXAS, County of Lamb.

We, E. A. Logan, as president, and C. O. Stone, as cashier of said bank, each of us, do solemnly swear that the above statement is true to the best of our knowledge and belief.

E. A. LOGAN, President.
C. O. STONE, Cashier.
Subscribed and sworn to before me this 5th day of January, A. D. 1926.

(SEAL) VERNIE V. WRIGHT,
Notary Public, Lamb County, Texas.
CORRECT—ATTEST:
ARTHUR P. DUGGAN,
A. C. CHESHER,
J. M. STOKES,
Directors.



START OFF THE NEW YEAR RIGHT!

By Trading Where Quality, Price and Service Count For Much

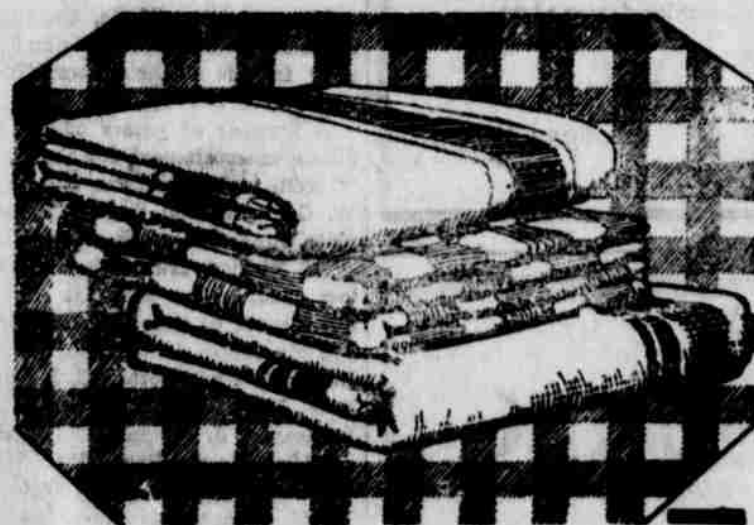
We have everything for your table—Quality Groceries, Vegetables, Fresh and Cured Meats. Also, Fresh Fish and Oysters Each Week.

Houk's Cash Grocery & Market

Call for Gold Bond Stamps

SALE OF BLANKETS!

Soft As Eider Down



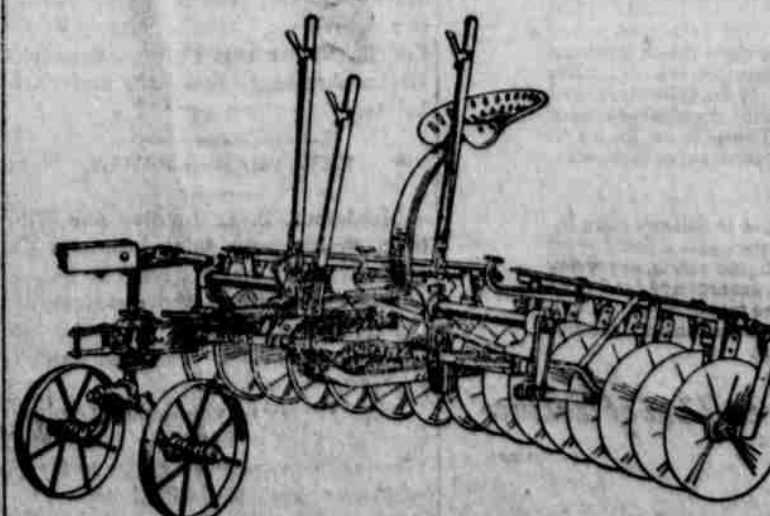
Every Pair Perfect
ALL WOOL
or
WOOL MIXED
In Beautiful Colors
Plaids—Checks
Solid Colors

C. E. ELLIS

Littlefield

Texas

Rock Island No. 35 Bonanza -- DISC HARROW



Bonanza Disc Harrow with Fore Carriage

F. A. Butler Implement Company

C. O. ROBBINS, Manager.

The only Disc Harrow with gangs angling from outer ends, which with center lever permits application of pressure in the center and ten inches closer to the gangs than is possible with any other Harrow. Have just received a full car of Rock Island tillage tools and Sanders Plows. Come in and look them over and get our prices.

Cleaning and Dressing

We have as good equipment as may be on the South Plains

do as good work as may be found on the South Plains

give as quick service as may be secured on the South Plains

Do Your Work
ring it or phone
we will call

Field Tailor
Shop

WILLIS, Prop.



Knock It Out!

Knock the "L" out of Slave by Saving

Put in a saving account at the bank and you will return you more than three or four per cent, but money spent for groceries at our store frequently return you from ten to twenty per cent on the investment, because of the savings paid.

Do not become rich through saving just as you do through slaving. Money saved is good as money earned. The money you save by trading with us during this year can much toward your general saving.

MAKE THAT RESOLUTION NOW

System Grocery

Proprietors
Texas



Quality and Service is our hobby—and we live up to it.
We have a well assorted stock of Fresh Groceries that will please you—so will our prices.

PORTER Grocery Co.

In New Cole Bldg., on Corner, South Ford Garage

—A NICE CLEAN—

Stock of Groceries
PURE FRESH AND WHOLESOME

Sold at "Live and Let Live Prices"
FRUITS, VEGETABLES AND CANDIES
Try A Sack of Our
TEXAS BEAUTY FLOUR
Every Sack Guaranteed
We Buy Produce

Beisel's Cash Grocery

"Sell It For Less"



Responsibility Is YOURS

Efficiency is of the utmost importance in compounding drugs. You never take medicine for fun—you take it to get well—in the quickest possible time. And unless your prescription is compounded of only the finest, most pure drugs, you are defeating your own purpose when you take it.

The Model Drug store realizes the responsibility attached to prescription compounding, and every prescription—or any other drug—that goes out of this store is Grade A1. We have in our service a skilled pharmacist of several years successful experience who will promptly and carefully supply your needs. We are willing and anxious to render you personal service day or night.

MODEL DRUG STORE

CLAUDE FERREL, Prop. Cooper Bldg., Littlefield, Texas

The Better BUICK

Starts easily

Buick motor cars are designed to run efficiently in every temperature, and under every climatic condition.
Buicks start quickly, even at zero. The new, high-speed starting motor accomplishes this most desirable result.

Runs smoothly

Buick Automatic Heat Control reduces another cold-weather starting annoyance—that of bucking, spitting, misfiring engines. The exclusive Buick feature heats the fuel supply, and saves gasoline, automatically and immediately.

Stops safely

In rain, snow or sleet Buick mechanical 4-wheel brakes stop the car firmly, in a straight line. Neither heat nor cold affects the direct mechanical action of these brakes. There is no liquid in them to expand, contract or leak away.

and the Buick engine is full-pressure lubricated

The Buick engine is full-pressure lubricated. Every part gets a flood of oil as soon as the engine starts, every day in the year. An emergency feed tube siphons oil to the pump, even though the cold has congealed the oil around the pump screen.

Buick is a better Motor Car—In Every Kind of Weather

City Garage

Littlefield Texas

FAREWELL ENTERTAINMENT

As a farewell tribute to a number of their friends, who have on many occasions enjoyed the hospitality of Mr. and Mrs. W. D. Arnett, at the north Spade ranch, they entertained for their last time at the home which so many times has been the scene of delightful social events, New Year's eve, because of their departure in the near future to make their home at the South headquarters of the Spade ranch. The North ranch having been crowded out to give room to the many land settlers and the ranch headquarters will be converted into a camp.
Four tables for bridge and one for "500" were arranged and a very pleasant hour was spent in the games and at their conclusion dainty refreshments, consisting of pineapple jello topped with whipped cream and cherries, were served to the following guests: Mr. and Mrs. G. M. Shaw and daughter, Mestle Marion, Mr. and Mrs. C. E. Cooper, Mr. and Mrs. W. G. Street and children, Mr. and Mrs. A. P. Duggan, Mr. and Mrs. W. O. Stockton, Mr. and Mrs. H. W. Wiseman, Mr. and Mrs. Pat Boone and son, Pat Jr., Mrs. Lena Howard and Miss Mildred Boone, McKnight and Mr. Allison, of Roswell, N. M.

MRS. STOCKTON—BRIDGE

One of the most enjoyable social affairs of the season was given Saturday afternoon, when Mrs. W. O. Stockton entertained the Senior bridge club and additional guests at her home.

Eight tables were arranged for the game in rooms appropriately decorated in Christmas colors and symbols. The shades were drawn and lights from colored shades cast a pretty glow making a lovely setting for the occasion. Green and red lunch sets were used for a delicious salad course followed by fruit cake and whipped cream topped with cherry, which was served to the following: Mesdames J. C. Whicker, W. D. Arnett, Pat Boone, Charles Harless, Bessie Baze, Harry Wiseman, Ray B. Jones, A. P. Duggan, G. M. Shaw, W. G. Street, F. G. Sadler, Lena Howard, E. S. Rowe, J. M. Stokes, Clayborne Harvey, R. D. Borough, J. W. Forcher, E. L. Maxey, B. L. Cogdill, R. S. Thomas, J. C. Houk, Otho Key, Robert Steen, R. H. Perkins, A. C. Giesler and Mrs. C. E. Cooper, of DeLand, Florida and Misses Mildred Boone and Miss McKnight, of Roswell, N. M.

Mrs. Stockton was graciously assisted in the entertaining by Mrs. J. W. Percher.

MRE GARDNER ENTERTAINS

Mr. and Mrs. W. H. Gardner delightfully entertained a number of their friends at their home Tuesday evening of last week.

A number of games of "42" furnished entertainment for the evening, wherein high score was tied by Mrs. W. C. Street and S. J. Farquhar. A plate lunch consisting of chicken salad, pickles, fruit cake, marshmallow cake, coffee and hot chocolate, was passed to the following: Messrs and Mesdames A. G. Hemphill, C. C. Burns, T. Wade Potter, C. J. Duggan, J. W. Johnson, Claude Parke, T. Paul Johnson, S. J. Farquhar, A. C. Cheshier, Mrs. Bessie Baze, Mrs. H. W. Wiseman, Mrs. W. W. Gillette, Mrs. W. G. Street, Misses Alma Spivey and Mamie Burke, the host and hostess.

MRS. HOLLAND HOSTESS

Mr. and Mrs. Mildred Holland entertained with a party at their home Thursday evening.

Various games were enjoyed and delicious refreshments, consisting of sandwiches and hot chocolate, were served. Candies were passed throughout the games. The following guests were present: Misses Mary Reid, Louella Foster and Frances Sanders, Messrs Armon Logan, Ross and Earl White.

NEW YEAR'S PARTY

Mesdames B. L. Lindley and Hilburn Smith were joint hostesses at a New Year's party given in honor of the husband's of the members of the Sunshine Club, at the home of Mr. and Mrs. G. B. Mauldin, Friday evening.

Decorations in the holiday colors were used throughout the house and a beautiful shower of green and silver hung from the chandelier. Delicious refreshments were served to the following: Mesdames Van Clark, Star Haile, Paul Maddery, Frank Mauldin, C. O. Stone, G. B. Mauldin and the hostesses.

Your home paper, \$1.50 a year.

NOTICE TO CONTRACTORS

Notice is hereby given that bids will be received by Clyde Shofner, City Clerk, Littlefield, Texas, up until ten (10) a. m., Monday, January 25th, 1926, for the furnishing and installing complete of a Sanitary Sewer System and Disposal Plant, as per plans and specifications on file in the office of the City Clerk, Littlefield, Texas.

Bids will be received on the basis of a lump sum for the work complete in accordance with plans and specifications.

Bidders are requested to examine the location of the work, also the plans and specifications.

Each bid must be accompanied by a certified check on a solvent bank in the City of Littlefield, Texas, in the amount of ten (10) per cent of the Contractor's bid, made payable to the City Treasurer, Littlefield, Texas.

Unsuccessful bidders will recover their certified checks upon awarding of contract.

A construction surety bond from the successful bidder, equal to fifty (50) per cent of the total amount of the bid, and acceptable to the City of Littlefield, will be required.

Contractor will be paid according to the Engineers' estimates, on or before the tenth (10) day of each month.

Plans and specifications are on file with the City Clerk, Littlefield, Texas, and in the office of the Engineers, Gantt-Baker Co., Inc., 1116 West Main St., Oklahoma City, Oklahoma, and may be obtained upon payment of Twenty-five (\$25) Dollars. Upon return of the complete set of plans and specifications within five (5) days after the awarding of the contract. Ten (10) Dollars will be refunded.

Dated this 18th day of December, 1925.

CITY OF LITTLEFIELD, TEXAS
By L. R. CROCKETT, Mayor.
Dec. 24, 31, 1925; Jan., 7, 14, 1926.

Most of us can remember when an application for divorce attracted some attention, but it is different now.

A thief may have the honor in some things, a deadbeat may have charity, but a common gossip has no redeeming trait.

Scientists say English will soon be the Universal language. Yes, they will be speaking it everywhere on earth except in New York.
It costs ten billion dollars a year to run the United States, and a good deal of the running is not first at all.
We often wonder why the makers are not so careful about putting on buttons as the dealers in putting on the price tags.

PROFIT BY EXAMPLE

Those who can spend are those who save. If their holidays are merrier and happier—if their summer vacations are more enjoyable—it is because they made them so by saving that they might buy the which suited their fancy.

PROFIT BY THE EXAMPLE OF THOSE WHO GET ALONG WELL, SAVE NOW THAT YOU MAY ENJOY THE FRUITS OF YOUR SAVING LATER ON

—WHY — PUT — IT — OFF!—

Don't postpone prosperity. Don't aside happiness that money can buy. Don't wait for it to rain before patching the roof!

Come in and let us surprise you by telling you how little it takes to start saving, and how it profits those who have already started.

First National Bank

Littlefield, Texas

The TEXAS UTILITIES COMPANY

Electrical Store, de Luxe

We are this week opening in the center room of the new Cooper building a strictly up-to-the-minute electrical store, where we will carry a full and complete line of

All Kinds of Electrical Equipment and Appliances

With the new high line service now running into Littlefield there will be plenty of electrical power for everyone and for every purpose. Included in our new stock of electrical goods will be a nice line of Electric Stoves, Washing Machines, Vacuum Cleaners, and various kinds of smaller articles, such as coffee percolators, table stoves, toasters, hair curlers, etc., together with a nice line of fixtures of all kinds and a wide variety of supplies for everything electrical.

We will sell you an electric stove or washing machine on the instalment plan, and, without extra steps, you can make monthly payments when paying your light or power bills, as our business office will also be located in this new store.

Just as soon as our stock arrives and it is straightened up and ready for business, we extend you a most cordial invitation to call and see the many electrical things we have for your pleasure and convenience.

TEXAS UTILITIES COMPANY

R. E. McCASKILL, Manager, Cooper Bldg., Littlefield, Texas

"COURTESY AND SERVICE"

Pay
Cash
and
Pay
Less

JANUARY SALE

Pay
Cash
and
Pay
Less

Begins Saturday, Jan., 9th, Closes Saturday, Jan., 16th

There is not a man or woman in this community who will not be interested in this January Clearance Sale. We will make it to your interest.

It may be only new Towels or a paper of Pins that you will need, or it may be a handsome Coat or Gown that you desire; but whatever it is you will find the necessary items of value and quality here. Our complete stock is reduced in price. Many items far below cost. Don't fail to take advantage of this timely sale.



JANUARY CLEARANCE

Men's Hats

These Hats consist of Felts and Velours in many snappy styles and colors.

All Men's \$3.50 Hats go at	\$2.65
All Men's \$4.00 Hats go at	\$3.25
All Men's \$5.00 Hats go at	
All Men's \$10.00 Hats go at	\$7.95
All Men's \$12.00 Hats go at	\$10.00
All Men's \$15.00 Hats go at	\$12.50
All Men's \$25.00 Hats go at	\$18.50

JANUARY CLEARANCE

Specials For Men and Boys

Men's \$1.00 Neck Ties, go at	79c
Men's Bow Ties, go at	35c
Men's 19c Sox, go at	12c
Men's 35c Sox, go at	25c
Men's 65c Silk Sox, go at	50c
Men's Blue Denim Overalls Special	\$1.50
Men's \$10.00 Leather Coats, go at	\$6.50
Men's \$5.50 Fancy Wool Shirts, go at	\$3.93
Men's \$5.50 Lace Leg Pants, go at	\$4.75
Boys' \$1.75 Knee Pants, Special	\$1.00
Men's and Boys' Overcoats	One-Third Off
Men's and Ladies Sweaters	One-Third Off
Men's 75c Heavy Wool Sox	50c



JANUARY CLEARANCE

Ladies' and Misses Shoes

\$9.00 Ladies' Pumps go at	\$7.50
\$8.50 Ladies' Pumps go at	\$7.00
\$7.00 Ladies' Pumps go at	\$5.50
\$6.50 Ladies' Pumps go at	\$5.50
\$5.50 Ladies' Pumps go at	\$4.50
\$5.00 Ladies' Pumps go at	\$3.98
\$3.50 Ladies' Pumps go at	\$2.98
\$2.98 Ladies' Pumps go at	\$2.50
\$2.50 Ladies' Pumps go at	\$1.98
\$2.00 Ladies' Pumps go at	\$1.67
\$1.50 Ladies' Pumps go at	\$1.29

JANUARY CLEARANCE

Children's Coats

\$2.98 Children's Coats go at	\$1.98
\$3.98 Children's Coats go at	\$2.98
\$5.00 Children's Coats go at	\$3.98
\$5.85 Children's Coats go at	\$4.25
\$6.95 Children's Coats go at	\$4.95
\$9.95 Children's Coats go at	\$6.95
\$10.95 Children's Coats go at	\$7.95

ALL LADIES' COATS GO AT HALF PRICE
All Ladies' Dress Hats, values up to \$15.00 go at \$1.00

JANUARY CLEARANCE

Specials for Ladies' and Children

19c 29-inch Outing goes at	15c
25c 36-inch Percale goes at	16c
25c 36-inch Cretone goes at	19c
35c 36-inch Cretone goes at	23c
35c Pillow Cases go at	25c
\$1.75 Full Size Sheets go at	\$1.29
98c Colored Towels	71c
20c 27-inch Light Outing	13c
25c 27-inch Cotton Flannel	19c
Seven Spools of Cotton Thread for	18c
	25c

JANUARY CLEARANCE

Men's and Boys' Work Shoes

All Men's \$5.00 Work Shoes, go at	\$3.98
All Men's \$4.00 Work Shoes, go at	\$2.98
All Men's \$2.50 Work Shoes, go at	\$1.98
All Boys' \$4.00 Work Shoes, go at	\$3.25
\$10.00 Bootees, go at	\$7.50
\$8.50 Bootees, go at	\$6.50
\$7.50 Bootees, go at	\$5.75

JANUARY CLEARANCE

Blankets

\$4.50 Pearl Blankets, go at	\$3.98
\$5.00 Plaid Blankets, go at	\$4.25
\$6.95 Wool Mixed Blankets, go at	\$5.95

EXTRA SPECIALS

27-inch Gingham, Guaranteed Quality	12 1/2c
32-inch Gingham, Guaranteed Quality	15c
32-inch Kalburnie Gingham	19c
Ladies' Silk Hose, Black and Colors	69c
White Damask Napkins, full size, per set	50c
All Knit Goods, Caps and Sweaters	One-Third Off

JANUARY CLEARANCE

Men's Dress Shirts, Collars Attached

All \$2.00 Men's Dress Shirts at	\$1.55
All \$2.50 Men's Dress Shirts at	\$1.98
All \$3.00 Men's Dress Shirts at	\$2.25
One lot Men's Dress Shirts, Collars Detached, Values up to \$4.00 at	\$1.75
All Men's \$1.00 Work Shirts at	89c

JANUARY CLEARANCE

Men's Dress Shoes

All Men's \$9.00 Shoes, go at	\$7.50
All Men's \$8.00 Shoes, go at	\$6.95
All Men's \$7.00 Shoes, go at	\$5.95
All Men's \$6.00 Shoes, go at	\$4.95
All Men's \$5.00 Shoes, go at	\$3.98



JANUARY CLEARANCE

Ladies' Silk and Wool Dresses

There are just two lots of these dresses, value up to \$16.75 go at \$6.75
Values up to \$35.00 go at \$10.75

JANUARY CLEARANCE

Wool Piece Goods

\$1.25 36-inch Storm Serge, go at	89c
\$1.98 40-inch French Serge, go at	\$1.35
\$1.25 36-inch Novelty Woolens, go at	95c
\$1.75 40-inch Novelty Woolens, go at	\$1.35
\$1.95 40-inch Novelty Woolens, go at	\$1.39

JANUARY CLEARANCE

Trunks

\$6.50 Trunks go at	\$4.95
\$7.50 Trunks go at	\$5.95
\$15.00 Trunks go at	\$12.50
\$16.50 Trunks go at	\$14.50

Suit Cases

\$1.50 Suit Cases go at	\$1.10
\$2.00 Suit Cases go at	\$1.50
\$2.75 Suit Cases go at	\$2.25
\$3.25 Suit Cases go at	\$2.65
\$4.00 Suit Cases go at	\$3.25



DISHES! DISHES!

Homer Laughlin dishes of quality, in neat pretty designs—will sell by the set or will sell separately.

\$22.50 62-piece set, Homer Laughlin dishes	\$13.50
\$27.50 62-piece set, Homer Laughlin dishes	\$16.50

We have on display some Egbert Imported Dishes priced at One-Third Off

SHAW-ARNETT CO.

LITTLEFIELD,

WORRY

prevails worry could be prevented. And, most people go out of their way to find something to worry about. Thomas Edison asks: "Why should any one envy the captains of industry? Their lives are made of three vast, incessant worries which average individual is happily spared. Worry, worry, that is the evil of life." And yet how many

DANGER DAYS

When home fires are lighted in the fall they bring cheer—but they also can—and quite often do bring misery—and loss.



Fire losses during winter months are treble those of any other season of the year. The reason is the increased hazard—two to three times more fires in every home. Is your property protected against such loss? Are you "covered" with ample insurance—if your home and its furnishings should burn tonight

No matter what type policy you want, we write it to insure you complete protection. Do not delay action. Rates are low and you may lose all before the morrow.

YEAGER-CHESTER LAND COMPANY

Insurance Department, Littlefield, Texas

SAVE MONEY HERE!

WEDNESDAY JANUARY 13th

DOLLAR DAY

So many took advantage of our Day last Wednesday we have decided to give you advantage of numerous other articles at exceptionally low prices.

- PALM OLIVE SOAP**
Special 14 cakes for \$1.00
- BUNGALOW CRETONNES**
36-inch wide, variety of patterns, 25c regular, 5 yards for... \$1.00
- WHITE TOWELING**
Red and blue checks white Huck, 25c grade, 5 yards for... \$1.00
- CURTAIN SCRIM**
White, ecru and cream curtain scrim, 15c grade, special at 10 yards for \$1.00
- COTTON FLANNEL**
Four pieces, material suitable for shirts, dresses, skirts and etc., sells regular at 50c per yard, 3 yards for \$1.00
- COLORED EPONGE**
In blue, rose, green and plaid, nice for early spring dresses, 85c quality, 2 yards for \$1.00
- HALF LINEN SUITING**
All wanted colors at per yard 59c
- MEN'S DRESS SHIRTS**
Specials at \$1.00
- WOOL DRESS GOODS**
For Dollar Day at a 10 per cent discount
- PHOENIX HOSE**
Chiffon hose, spring colors, per pair \$1.00
- BOYS' SWEATERS**
Boys' grey cotton sweaters, heavy grade, your choice..... \$1.00
- CREPE De CHENE**
Blue, rose, white, tan, purple, special at..... \$1.00
- DRESS PANTS**
For spring dresses, 36-inch wide, guaranteed colors, 2 yards. \$1.00
- CHILDREN'S SHOES**
Special lot of children's high top shoes, per pair \$1.00
- MILLINERY**
All remaining winter millinery regardless of price, each..... \$1.00
- MEN'S MERCERIZED SOX**
Mercerized lisle sox, colors white, black, gray, cordovan and palm beach, 4 pairs for \$1.00
- TOWELING**
Brown cross toweling, 12 1-2c value, 10 yards \$1.00
- COTTON BLANKETS**
Gray, single, size 56x76, your choice \$1.00
- MEN'S WORK SHIRTS**
Blue, double stitched, 2 pockets 85c

CUENOD'S

T. S. SALES, Mgr.

PHONE 166

Complete line of war-timed Toilet Goods.

Littlefield, Texas

Standard Masterpiece School Supplies Hopping Building

HUNT'S LIGHTNING OIL
SADLER DRUG STORE

men and women worry their lives away because they haven't the worries of a captain of industry to worry about.

Worry is a trait or habit common to all men. It is instinctive with the young and is an almost constant companion with the individual throughout life.

Men, women and children worry, but mothers seem to be the most adept and habitual. There is reason to believe that mothers worry twenty-four hours a day whether asleep or awake. They worry about their offspring when the latter are absent and they worry about them when they are home. The health of the family is a constant worry and cooking meals, housecleaning and the other household duties are all worries. And then there are her clothes, the laundry and shopping to worry her.

There is so much for little boys and girls to worry about, too. School lessons and the possibility of rain on play-day are two juvenile worries. New worries greet them at each stage of their education.

Most men worry for leisure while they are working and worry for something to do when they are at leisure. What mountains of worry are wasted on politics, baseball and golf.

"I've studied people in all classes and conditions and everywhere I have found, when you get below the surface, that it is mostly the insincere individuals who says "I am happy," writes the great inventor.

MAKE ME A COWBOY AGAIN FOR A DAY

By J. Baley, in the Sayre Journal

Backward, turn backward, oh time on your wheels;
Airplanes, wagons and automobiles.
Dress me once more in a sombrero that flaps;
Spurs, a flannel shirt, slicker, and chaps.
Give me a six-shooter or two in my hand
And show me a steer to rope and to brand.
Out where the sage brush is dusty and gray
Make me a cowboy for a day.
Give me a horse that knows how to dance,

Buckskin of color, and wicked of glance.

New to the feeling of bridle and bits;
Give me a quirt that will sting when it hits;

Strap on poncho behind in roll.
And pass me the lariat so dear to my soul.

Then over the trail let me lope for away,

Make me a cowboy again for a day.
Thunder of hoofs over range as we ride,

Hissing of iron and smoking of hide.
Bellow of cattle and snort of cayuse,
Longhorns from Texas as wild as the deuce;

Midnight stampedes and milling of herds,
Yells from the cowboys, too angry for words;

Right in the midst of it all I would stay,
Make me a cowboy again for a day.

Under the star-studded canopy vast,
Campfire, coffee, and comfort at last.
Tales of the ranchmen, rustlers retold,

Over the pipes as the embers grow cold,
These are the tunes that old memories play,
Make me a cowboy again for a day.

BUYS IN GROCERY

Herman Stagers Takes Partnership With L. B. Porter

Herman Stagers this week bought an interest in the "Outlaw" grocery store with L. B. Porter, and the firm name was changed to the Porter Grocery Co.

Mr. Stagers is one of Littlefield's most popular young business men. For the past two years he has been in the employ of the Butler Lumber Co., giving up this position the first of the year to embark in business for himself. His many friends here will wish him success in this new field.

Be sure to read Cuenod's Dollar Day advertisement. Make your dollars do their duty next Wednesday. 38-1tc.

The Colorado woman who killed 140 rattlesnakes in one day should be given a prohibition enforcement job.

Want Ads.

Want ads., Rentals, Lost and Found, Exchanges, Lands and Stock, Miscellaneous, etc. RATES: Classified, first insertion, 10c per line; minimum 25c; subsequent insertions, 7 1/2 c per line. Unless advertiser has an open account, cash must accompany order.

FOR SALE

FOR SALE: Classified ads at 10c per line for first issue, and 7 1/2c per line for each successive issue. Unless you have an account with this office, cash must accompany order, and all ads will be taken only for a specified time.

FOR SALE: Good Rhode Island Red cockerels from my best blood. Your choice for \$2.00 each. E. C. Cundiff. 38-4tc.

FOR SALE: 190 acres of land adjoining Littlefield. Wirtz S. F. Wadden, Souix City, Iowa.

FOR SALE: Fifty, Ringlet Barred Rocked pullets, from "Pitt's" prize winning, ever laying strain. Price \$1.50 and \$2.00. Claude Craghead, Littlefield, Texas. 38-2t-p.

FOR SALE: One 1925 Model Ford touring car, good shape. For sale or trade. See owner at Bill's Lunch Counter. 38-1tp.

FOR SALE: Two good resident lots in Littlefield. See owner at Bill's Lunch Counter. 38-1tp.

FOR SALE: One good business lot on Main street at Anton. See owner at Bill's Lunch Counter. 38-1tp.

FOR RENT

FOR RENT: One furnished apartment and one light housekeeping room in the Allen building 38-tp.

FOR RENT: Two offices, one \$15.00 and one \$25.00 per month. See Dr. Simpson, at Simpson sanitarium. 37-4tc

WANTED

WANTED—Good housekeeper. Apply to Mrs. E. S. Rowe. 38-1tc.

WANTED: Plain sewing, prices reasonable. Mrs. W. C. Squires, one mile west of town. Phone 65M. 38-1tc.

WANTED: Doctor as a partner, at once. Must be a graduate of a class A medical college, age about 30 years, gentle, married. Compitent to do laboratory work as necessary to general practice and with a sanitarium. Will consider for part in sanitarium on personal interview. Dr. J. D. Simpson, Littlefield, Texas. Box 25. 35-4tc

MISCELLANEOUS

TRACTOR PLOWING: By acre or contract. New tractor, work guaranteed. T. M. Neely, Littlefield. 37-4tc

Bargains in used cars of different makes. Cash or terms.—Bell-Gillette Chevrolet Co. 52-1tc

Carbon Paper and Second Sheets, at the Leader office. 1f.

PHONE 134 for day police, or 170 for night police service. 24-1tc.

WHICKER Land Co., Home office, Littlefield Hotel, Littlefield, Texas. Land Office, Bledsoe, Texas. Terminus of Santa Fe west from Lubbock. Fine cat-claw land. 17-1tc

LUMBER: Direct from the mills to the builders anywhere, high grades, prompt shipments. Write us for prices. Louisiana Lumber & Supply Co., Massie Bldg., Amarillo, Texas. 36-1tc

Don't fail to take advantage of the special Dollar Day bargains offered you at the Cuenod's store next Wednesday. 381tc.

Help keep Littlefield clean

CITATION BY PUBLICATION

Alias Citation
The State of Texas,
To the Sheriff or any Constable of Lamb County—Greeting:

You are hereby commanded as before to summon Henry C. Beckner by making publication of this citation once in each week for four successive weeks previous to the return day hereof, in some newspaper published in your county, if there be a newspaper published therein, but if not, then in any newspaper published in the 64th Judicial District, but if there be no newspaper published in said Judicial District, then in a newspaper published in the nearest District to

May, 1925, and the same being the 3rd day of May A. D. 1925, then and there to answer a petition filed in said court said court on the 17th day of October A. D. 1925 in a suit, numbered on the docket of said Court No. 136, wherein Ida E. Beckner is plaintiff, and Henry C. Beckner is defendant, and said petition alleging

1. That plaintiff was duly and legally married to defendant in Plainview, Hale county, Texas, on or about the 29th day of November 1920, and continued to live with him until they separated on or about the 1st day of April 1925, in Lamb county, Texas, at which time they became permanently separated.

2. That plaintiff has resided in the State of Texas for twelve months and in the County of Lamb, six months next prior to the filing of this petition having been borned and reared in the State of Texas.

3. That this plaintiff has, at all times while they were married as aforesaid, been a dutiful and agreeable wife to defendant and has done her duty as a wife should and has been guilty of no act bringing into the conduct of the defendant and did not tribute to his cruel and inhuman treatment towards this plaintiff, as hereinafter alleged, but was true to her marriage vow and obligation in every respect.

4. That shortly after plaintiff and defendant were married as aforesaid, the defendant commenced a course of unkind, harsh and tyrannical conduct.

5. That defendant would not treat this plaintiff as a wife and disregarded her and his marriage vow to treat her with kindness and attention, and gave her no kindness as a husband would and should if he cared anything for her; and this conduct was of such a nature as to render their living together longer as husband and wife insupportable.

towards this plaintiff which never ended until he left her and the home.

6. That on many occasions the defendant would accuse this plaintiff with infidelity, which she was not guilty of, and he did it without probable cause, all of which was cruel and unbearable treatment to this plaintiff by the defendant and caused her much embarrassment and humiliation.

7. That the defendant did not and would not support his family as he should have done and did not provide for them to make them comfortable. That the plaintiff's mother and father and aunt bought her and their adopted son about all of the clothes they wore and had. And the defendant left this plaintiff and their child

in destitute circumstances and without a penny which was an utter disregard for their health and life.

8. That plaintiff and defendant adopted a boy, which is now about seven years of age and that this plaintiff loves said child as well as a mother could under the circumstances and is desirous of it having the best care and attention that is possible to give it and would be right for this court to give her the custody and possession of said child that it may be properly educated and reared. The defendant cares nothing for said child and could not care for it as to its best interest.

9. That this plaintiff has purchased, since the separation of plaintiff and defendant, a tract of land being ten acres in Lamb county, Texas, and located adjoining southwest corner of the section on which the town of Clinton is located and being further described as follows, to-wit:

And being ten acres of land out of the southeast corner of section No. 26 in block 0-5 being the same land conveyed to E. J. Cowart by J. E. Fuller, by deed dated the 10th day of January 1922, and recorded in Vol. 15, page 142 of the deed records of Lamb county, Texas, to which instrument and the record reference is here made for description; said land described by metes and bounds as follows:

Beginning at the southeast corner of Section No. 26, block 0-5 in the southeast corner of this tract; Thence west 220 yards to a point in the southwest corner of this tract; Thence north 220 yards for the southeast corner of this tract; Thence south 220 yards for the southeast corner of this tract, and the place of beginning, which said above described property is in her own separate property and should be decreed by this court quieting her title and possession.

Herein fail not but have before said Court, at its aforesaid regular term, this writ with your return thereon, showing how you have executed the same.

Given under my hand and the seal of said Court, at office in Littlefield, Texas, on this 10th day of Dec. A. D. 1925.

(SEAL) H. E. CAVENY,
Clerk District Court, Lamb County, Texas.
Dec. 24, 31, 1925, Jan. 7, 14, 1926

...whole lot about the so called Florida boom and yet, the bona fide, substantial, honest to God development of West Texas fundamentally is greater than the progress of either of the two states named. It has not been so spectacular, it has not been heralded by thousands of dollars of paid publicity, nor has it been fostered by a few great railroad and steamship corporations. It has rather been

of thousands and hundreds of thousands of just ordinary human beings working systematically for the development of one of the fairest regions in the United States.

Every time an actual land settler has broken new ground in either Florida or California, four new settlers have done the same job in West Texas, and this shall continue for many years to come, for even the most thickly settled part of our West Texas counties are after all only thinly populated. Land prices in West Texas are based on crop values, cost of production and land fertility. In the boom states, land values are based on speculative promises and are bound to drop. West Texas is a safe bet.

Your organization, the West Texas Chamber of Commerce entered its eighth year on the 18th of December last, and it has constantly stood as an exponent of substantial and fundamental progress in West Texas. It has consistently and determinedly fought against speculative conditions and boom prices, but everything that it has done would have been as nothing had it not always had the loyal and enthusiastic support of the press. Today West Texas is, man for man and woman for woman, one of the most prosperous regions in the world and it is so because of sound and substantial elemental conditions. 1926 is going to be the biggest year West Texas has ever known.

We thank you for the support you have given, and wishing you a prosperous 1926, we are

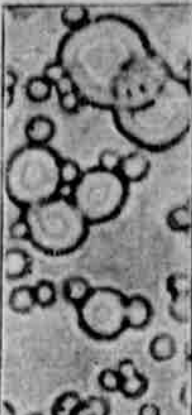
Respectfully yours,
R. Q. LEE, President.

How Butter Fat in Milk Is Broken Up

Do you know what the word homogenization means?

Ninety-eight out of 100 housewives to whom the question recently was put admitted they couldn't answer. Can you?

But here it is explained by Miss Meta H. Given, food authority doing research work at the University of Chicago.



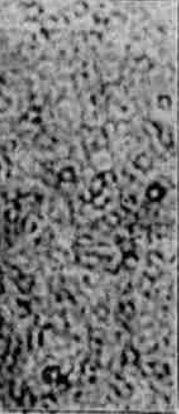
Fat Globules in Raw Milk.

"Homogenization," says Miss Given, "is the name of the process which breaks up butter fat in evaporated milk into tiny particles so they blend evenly with the solids. Homogenization causes the butter fat globules to adhere to the albumin and the casein of the milk. In the process, milk is forced through countless numbers of openings at a pressure of around 3,500 pounds.

"In addition to preventing a cream and skim milk line, this breaking up of fat contributes to smoothness and perfect blending of foods such as cream sauces, soups, ice cream and in baked products.

"It also has a digestive advantage for those who have difficulty in assimilating milk. Many pediatricians recommend evaporated milk as a baby food, although, like other substitutes for the natural supply, it should not be considered as a food complete in itself. Addition of orange or tomato juice, barley water or lime water are important in providing adequate diet for the infant.

"All authorities recognize that normal mother's milk is the best food for infants, but this natural milk is frequently inadequate in quality and quantity. Scientists say cow's milk is the best substitute. But cow's milk must be modified and supplemented with other foods. The fat in mother's milk is in homogeneous suspension and being flocculent forms small curds in the stomach, but the fat in cow's milk is in relatively large globules, forms large tough curds in the stomach and is much harder to digest.



Globules After Homogenization.

In evaporated milk the fat is broken up by homogenization and the curds softened until in size and digestibility they resemble natural infant food."

Nourishing Drink for Children



BABIES and children, the same as adults, grow weary of being fed the same food in the same way each day. It is true that most children take naturally to milk, but that does not mean that they must be fed it ad nauseam. On the contrary, that is the very thing to be avoided.

Pediatricians advise consumption by children of a quart of milk a day in one form or another. This does not mean skim milk, but whole milk, for the skimmed product is lacking both in butter fat and the essential food element known as vitamin A, which is found in butter fat. Many mothers do not appreciate that removal of cream from the top of a bottle of milk results in skim milk.

In evaporated milk, a product recommended by many leading doctors for the use of infants and children and which is simply pure cow's milk sterilized in cans and with sixty per cent of the water removed, there is no cream line. The milk in the top of a can is the same as it is in the bottom of the container. This results from a process called homogenization, in which the fat globules in the milk are broken up into such microscopic bits that they remain in homogeneous suspension. Every drop of homogenized milk has a buttery taste because it contains butter fat. For this reason, in evaporated milk, there is none of the flat taste one finds in drinking from the bottom of a bottle of market milk.

In order to avoid feeding the baby or child plain milk three or four times a day, many authorities recommend the use of a mixture of fruit juice and milk, a highly palatable and refreshing drink.

Following is a recipe worked out by experts for an orange-milk drink: Mix in a fruit jar 1/2 of a cupful of orange juice, 1/2 of a cupful of evaporated milk, one teaspoonful of sugar, and a dash of lemon juice and a pinch of salt. Shake well.

COAL! COAL!
If you want good coal phone
W. H. HEINEN, Phone 164

HALT YOUR CAR
At The
QUICK SERVICE STATION
Under New Management
Let us fill it with good American Oil & Refining products—High Test Gasoline and Lubricating Oils.
We carry a full line of Automobile Tires, Tubes and Accessories.
We specialize on Courtesy and Quick Service. Your patronage will be appreciated.
MARTIN & REED
R. R. MARTIN Proprietors CHAS. REED

General Insurance
Fire, Life, Hail, Tornado,
Casualty and Automobile
J. T. Street
Littlefield TEXAS PHONE 206

Porcher Lumber Co.

A HOME CONCERN
—SELLING—
Building Materials
Wire, Post, Etc,
Littlefield, Texas

HARDWARE
QUEENSWARE
STOVES
CUTLERY
Lamb County Mercantile Co.
The Pioneer Store
Phone 206 Littlefield Texa

BLUE MONDAY!
—Don't dread wash day any longer, but send us your laundry. We'll do it like it is done at home, and we never lose a piece. Special pains taken with fine linen goods. PHONE 150
AND WE'LL DO THE REST.
CITY LAUNDRY

Chili
King Cafe
Where Everybody Eats
Try Our Plate Lunches
You Will Like Them
We sell CHILI, the best
V. A. VALLES, Prop

NOTICE!
Bring your car to us to have your lights tested.
Our garage is the official light testing station.
Littlefield.
You must have your lights tested before getting a
1926 license
CITY GARAGE

Lincoln - Ford - Fordson
TRUCKS CARS TRACTORS
Genuine Ford Parts
and
Accessories
MODERN EQUIPPED SHOP
BATTERY STATION
See.. Our.. New.. and.. Used..
John H. Arnett Motor Company
Phone 24, Littlefield.

SAY, MR. FARMER!
We have just received a car load of Deere tractor and horse drawn implements, sold in connection with our present Oliver implements. All to be sold at 5 per cent discount cash.
Mr. Enos, John Deere implement expert, three days here recently assembling a new listers and cultivators, which are now ready use.
Our Oliver repair line is complete.

Duncan & Pennington
Near Davanay Gin
Littlefield

Reeves Meat Market
—Of all kinds, guaranteed tender and
Cheese, Lunch Goods, Fresh Eggs and
Bread, Fruit and Vegetables.
You'll Like Our Goods Because They'll Taste
Reeves Meat Market
Ask for S & H Green Discount Stamps.

LET US CLEAN AND PRESS THE
JUST LIKE NEW
City Tailors
C. H. STALLCUP, Manager
TELEPHONE NO. 48

CHRYSLER AUTOMOBILES

a class by themselves, having all super-rem-
ments, conveniences and accessibility. Pick-up
ed, power, endurance, comfort and durability
passed. Let us demonstrate to you.

STAR CARS

he luster of the STAR is undimmed by any
r car of its class on the market today. This car
resents the biggest buy for the money anyone
possibly make. Let us show them to you!

OCKETT-BLAIR MOTOR COMPANY

RIBE TO THE LAMB COUNTY LEADER, NOW

1926 WILL DEMAND VERY MUCH

From the Service of the Panhandle Telephone
tem.

The year that has just closed was a constructive
ar. This community and the state made great
gress and in doing it called upon the Telephone
vice for much expansion and improvement.

The New Year promises to see still greater
rowth of this essential public service. This com-
munity is growing and new uses and extended re-
quirements upon the Telephone service to aid in
rowth and development show increasing need for
operation and understanding between the peo-
ple served and the Telephone service.

The interests of this company and of this com-
munity are the same—neither can prosper and
erve to the fullest extent without the aid of the
ther.

Let's make 1926 a year of understanding and
chievement by working together for the good of
mmunity.

Panhandle Telephone System

Littlefield, Amherst, Sudan, Anton, Pev, Morton, Lehman
Long Distance Connections. All Over the United States



JUST WHAT YOU MAKE IT

—As true today as when you said, "Your
home is just what you make it—and it is a stamp
of YOU. It reflects you and your thoughts.

—Perhaps you are planning a new home—if
you are a new settler in this new country, we know
you are. You already have ideas of how you want
it. Maybe you also have plans of it.

—Investment in a new home is a worthy en-
deavor. It is deserving of encouragement and
support. A part of the service we render our cus-
tomers is careful attention to detail.

—If you are ready to build and want helpful
suggestions as to materials, cost of construction—
or even plans, we solicit your patronage. We can
supply you with building materials of all kind and
no better quality to be found anywhere on the
South Plains of Texas.

—Do not hesitate to confer with us—no mat-
ter how big or how small your building job may
be. We guarantee our materials.

—We also carry a nice line of Hardware of
all kinds—Stoves, Kitchen Utensels, Tin, Granite
and Aluminumware, Plumbing Supplies, Gasoline
Engines, Tools and Cutlery.

F. A. Butler Lumber Co.

Real Service In a Hurry

PERSONAL ITEMS

Ross White made a business trip
to Sudan Monday.

Lon Campbell, local restauran-
is reported on the sick list this

J. L. Pate returned Friday from a
business trip to points in Oklahoma.

G. M. Shaw spent the week-end
in Amarillo.

Mrs. E. L. Maxey made a trip to
Lubbock Tuesday.

T. L. Wheeler was here Monday,
from his home on the Spade land.

Mr. and Mrs. O. F. Greer and chil-
dren are visiting relatives in Denton
this week.

Mr. and Mrs. T. S. Sale, accom-
panied by Mrs. Corrie Leach, made
a trip to Lubbock Sunday.

Miss Fern Hoover is sporting a new
Hudson coach, purchased at Anathio
last week.

Fulkerson and Fellomy are putting
in a 10-ton platform scale just west
of their grocery store.

G. S. Glen purchased a Dodge
sedan of the Smith & Robert Co.,
it being delivered Monday.

C. A. Gattis, from Slaton, has ac-
cepted a position as prescription clerk
for the Model Drug store.

Mr. and Mrs. M. P. Reid and fam-
ily moved Monday from their home
in Broad Acres addition to 13 miles
east of Littlefield.

Misses Hazel and Doll Gregg,
Messrs Claude and John Ferrel at-
tended the New Year's dance at Plain
view Thursday evening.

Miss Clara Mattieski, of Aberna-
they, is filling the vacancy on the
grammar school faculty caused by the

Jess York made business trip to
Lubbock Monday.

W. R. Yelverton made a business
trip to Lubbock Friday.

Mr. and Mrs. M. T. Todd, of Pecos,
visited Monday with Mr. and Mrs. C.
D. Smith.

S. Richardson, of the Self Serving
Grocery Co., Lamesa, is here this
week looking after business interests.

Attorney J. M. Randal and Lee
Duggan, of Lubbock, were in Little-
field Tuesday.

Miss Fay Hendrick has accepted
the position as bookkeeper for the
Harris Lumber Company.

Mrs. Alex Reeves is in Fort Worth
at the bed side of her mother, Mrs.
Bell Simpson, who is seriously ill.

Mrs. C. L. Smith, who lives five
miles west of Littlefield, was report-
ed quite ill the first of the week.

Mr. and Mrs. W. J. Simpson left
Tuesday to visit their son, C. F. Simp-
son, who lives near Hawley.

Misses Dessa Key and Alyne Ar-
nett were the guest of Mrs. J. L.
Spiers, in Plainview, New Year's Day.

J. W. Tidwell, of Grace, is here
this week making improvements on
his land recently purchased from the
Yellow House Land Co.

Dick Arnett, of Midland and
daughter, Miss Lou Arnett, of Lub-
bock, visited their son and brother,
Kay Arnett here Tuesday.

Misses Helen Lightfoot and Chlo-
vene Lindley, Messrs. Cooper Wilson,
Ozo Blalock and Moore made a trip
to Lubbock Tuesday.

Cecil Bishop, small son of Mr. and
Mrs. L. F. Bishop, who live three
miles east of Littlefield, was quite ill
the first of the week.

Mrs. R. L. Speight is filling the
vacancy on the primary school faculty
caused by the resignation of Mrs. R.
L. Coghill.

The parsonage for the Baptist
church has been completed and Mrs.
W. B. Phipps and children have ar-
rived from Dallas, and are at home
in the new building.

W. M. Bondurant, of Crosbyton,
has accepted a position in the insur-
ance department of the Yeager-
Chesher Land Company. He has had
several years experience in the insur-
ance business.

Rev. H. J. Jordan left Wednesday
to join his family at Benson, Arizona,
where he has accepted the pastorate
of the Presbyterian church. He was
accompanied by C. D. Smith.

The John H. Arnett Motor Com-
pany, Ford agency, report the follow-
ing sales; Wm. E. Hay, Hale Center,
truck; M. W. Eppwright, of Austin
purchased a truck for his farm near
Littlefield; John J. Smith, Morton,
coupe; S. B. Webb, Burnett, touring
and E. E. Wells, touring.

FERGUSON HAS SALE

Going to Sunny California For the
Health of His Wife

An estimate of more than 300 peo-
ple were in attendance at the auction
sale held Tuesday at the home of S.
F. Ferguson, four miles south of Lit-
tlefield, and the sale was reported
a great success.

The sale was held in order that
Mr. and Mrs. Ferguson might dis-
pose of their farming equipment so
that they can leave in the near future
for California, a warmer attitude,
where the latter might regain her
health.

CAFE IS MOVED

Name of Gold Star Changed To Man-
hattan By Thompson

The building on Main street form-
erly occupied by the Fair Store and
the Thompson Land Company, was
this week remodeled and the parti-
tions removed. The Gold Star Cafe,
recently purchased by Charles Thomp-
son was moved into the space Wed-
nesday and will be known in the
future as the Manhattan Cafe.

A private office has been arranged
in a corner at the front of the build-
ing for the land office.

COTTON SEED

Selected Mebane Cot-
ton Seed for sale at—

W. H. HEINEN

Littlefield, Texas



Star Athletes

—Make our confection-
ery their headquarters.
After a strenuous game
nothing could be more
refreshing than a good
hot or cold drink, or a
good sundae at—

La Nell

Nell Ruth Earnest, Prop.

CHURCH PRAYER WEEK

The W. M. U. of the Baptist church

The process will be
the lyceum fund.

The church is full of fellow-
who feast on their own nest by rob-
bing some other bird.



AUTO- motive Specialist

We are specialists in Automotive Machinery, and with our
new shop and added equipment are prepared to take care of prac-
tically all your needs in this line.

We specialize on Auto Ignition, sell, charge and repair bat-
teries of all kinds, do ignition adjusting and armature rewinding.

We are prepared to handle nearly all kinds of Oxo-Actelyne
Weldings in a prompt and efficient manner.

We are agents for all kinds of Blacksmithing and Lathe
work.

Beisel Brothers

Littlefield,

Texas

ANNOUNCEMENT

We have just bought the First and
Last Chance Filling Station and Grocery,
and are now in charge, ready to give you
first class service day or night.

Come in and give us a trial!

FIRST AND LAST CHANCE SERVICE STATION & GROCERY

J. M. SETSER & SON, Proprietors

LOOK! READ!

GROCERIES AT UNHEARD OF PRICES

High Patent Flour, every sack guaranteed per
sack ----- \$2.20

Crystal White Syrup, per gallon ----- 63c

Be Sure You Know Our Location—Next Door to
the Old Tin Theatre Building

Eggs, per dozen ----- 25c

Palm Olive Soap, per cake ----- 6c

Almond Coco Soap, per cake ----- 6c

Economize During the Hard Times—Buy Your
Groceries At the Self Serving Grocery

Armour's Pork and Beans, No. 2 can, per ... 8 1-3c

Aluminum Roast Pan, 2 pounds high grade
Coffee ----- \$1.25

Buy Your Winter's Supply at These Prices.

Salmon, high grade, 7 cans ----- \$1.00

Self Serving Grocery

Next Door to Old Theatre Building, Littlefield
Phone No. 10 We Deliver

...of his...
 ...extreme. One moment
 ...has his audience sitting spell-
 ...bound in wonderment, almost holding
 their breath to the point of tempo-
 rary exhaustion, watching the whirl
 of his magic wand, listening to the rapid
 fire of his loquacious tongue, which
 keeps up a steady flow of deceitful
 explanations; the next moment his
 listening spectators are holding their
 sides with laughter as the trick is
 pulled and they realize what dupes
 they have been to take the magician
 so seriously, for after all they came
 there to be deceived, and that is the
 only way a magician can be success-
 ful in his work.

Birch has an exceptional pleasing
 personality, winsome with every per-
 son he meets. The moment he makes
 his entry on the stage he has made
 friends with every one in the audi-
 ence, from eight to eighty years of
 age—and they are all there, especially

...of his...
 ...extreme. One moment
 ...has his audience sitting spell-
 ...bound in wonderment, almost holding
 their breath to the point of tempo-
 rary exhaustion, watching the whirl
 of his magic wand, listening to the rapid
 fire of his loquacious tongue, which
 keeps up a steady flow of deceitful
 explanations; the next moment his
 listening spectators are holding their
 sides with laughter as the trick is
 pulled and they realize what dupes
 they have been to take the magician
 so seriously, for after all they came
 there to be deceived, and that is the
 only way a magician can be success-
 ful in his work.

Birch has an exceptional pleasing
 personality, winsome with every per-
 son he meets. The moment he makes
 his entry on the stage he has made
 friends with every one in the audi-
 ence, from eight to eighty years of
 age—and they are all there, especially

Hands Keynote to Milk Supply



At the 14th annual convention of the International Association of Dairy and Milk Importers held at Indianapolis, recently, leading authorities of the United States and Canada submitted interesting and informative papers relative to the purification of the nation's milk supply.

In the closing session of the series of meetings, Dr. Roy F. Leslie, Chief Meat and Dairy Inspector of Cleveland, Ohio, emphasized the great importance of co-operative measures by the producer in the production of clean milk.

"With co-operation on the part of the milk producers," said Dr. Leslie, "much can be done along this line that would otherwise be impossible." He then told of how the public was kept informed of steps taken to control the milk supply with a view to safeguarding the health of all who use milk and dairy products.

"In Cleveland," said Dr. Leslie, "more than 70% of the milk is sold at one or another of a system of chain stores where the customer is given an allowance of 2 cents on the purchase of each quart of milk."

The 2 cents allowed covers the cost of delivery in the home and represents a saving of about 12% to the consumer.

district director of the League is responsible for the schedule and play in his district and in seeing that the district championship is decided and certified in the state office by Feb. 20. During the period from that date until the state tournaments which will be held March 2 and 3, the district championships are decided, Henderson explained. This leaves sixteen teams in the race for the state title which they play off on these dates.

HIGH SCHOOL NEWS

The boys' basketball team will go to Muleshoe Friday night where they will play a game with the High School team there.

A basketball game will be played in the gymnasium here Wednesday night at 7:30 o'clock between the High School boys team and the Muleshoe High School boys team.

The H-Y Club will hold a banquet Tuesday evening in the High School diningroom. The Home Economics class, under the direction of Miss Ruth Craddock will serve the banquet.

Beginning Monday morning a Littlefield business man will address the student body at chapel each Monday morning for the remainder of the school term, from an invitation from Superintendent R. E. Speight. Monday morning Jess M. Hest, editor of the Leader, will deliver an address. The following Monday morning Attorney E. A. Bills will deliver an address.

The Senior class is sponsoring a contest among the students for the following places: Most popular girl, Patti Hopping; Emma Lou Jones, Jessye Yantis, Lucille Yancy and Lydia Crockett; most beautiful girl, Eupha Trasee; Lora Ann, Virginia Turner, Norma Hanson and Maxine Courtney; Best all round girl, Freddie Horn, Sybil Giblin, Evelyn Ferguson, Lillian Hopping, Clevean Lindley, and Verma Hanson; best sport boy, Troy Phipps, Payne Wood, Loyd Davenson and Howard Robertson; most handsome boy, Eugene Trimble, Bill Smith, Arthur Duggan and Floyd Hemphill. The sum of one cent is being paid for each vote and the first primary will end Wednesday. The two highest contestants will be in the runoff, which will continue about ten days. The proceeds from the contest will be applied on the annual best winner's photograph in the annual. Several more contestants will form. A special place will be given probably be added to the list this week.

First semester examinations will be held in High School beginning Jan. 10th.

All High School clubs will hold their regular meetings this week-end. At the Lamb County Teachers' Association to be held at Otton, Saturday, Dr. R. P. Jarrett, of the W.

T. S. T. College, at Canyon River the principal address. Boles, principal of the Littlefield School will make a talk on plans for recitations. Made rendered by the Staff of the Otton school will discuss the Littlefield will also reading on the program.

TEACHERS' MEETING

All Urged To Be At Otton 9th, For Session

Every teacher in Lamb should attend the next of the Lamb County Teachers' Association to be held at Otton, Jan. 9, according to Prof. H. P. Webb, superintendent of the Otton school. Prof. R. P. Jarrett, of the Texas Teachers' College will be principal speaker at the meeting.

SPECIAL NOTICE

Do not cash checks for any items whatever to my without an order from me. 36-4c JOHN W. B...

Don't let the mail order house get you.

GET YOUR MONEY OUT OF IT!

—Every item or country...
 ...do not need, but...
 ...value to some...
 ...these articles if they...
 ...you had them... People...
 ...quickly convert...
 ...cash that for which they...
 ...no use.

CLASSIFIED ADS

—in the Leader...
 ...has a number of useful...
 ...cash innumerable...
 ...advertisements every...
 ...are quick result-bringers...
 ...are being tried and...
 ...every week. Look...
 ...State and Miscellaneous...
 ...advertisements in this...
 ...read by hundreds of...
 ...any week. They get...
 ...others, they will see you.

THE COST

—is only 10 cents per...
 ...first insertion, 75...
 ...line for each subsequent...
 ...insertion—counting seven...
 ...line—no additional...
 ...25 cents. Try one...
 ...and be...
 ...vinced.

LAMB COUNTY LEADER

FURNITURE

Everything for the New Settler

We specialize in furniture needs for the folks just moving into this new country. At our store you will find everything needed to begin your housekeeping in this new section—and at "live and let live prices."

The general assortment of furniture we carry covers both the staple and finer kinds. We have everything in home equipment from the finest parlor to the plainest kitchen, and at prices that prove you are getting your money's worth.

LITTLEFIELD FURNITURE COMPANY
 N. B. GUSTINE, Proprietor



Your bank book will have a fairer, fatter appearance if you keep in good health during the year 1926. We "are in business for your health." Our store is stocked with all kinds of health-giving tonics. At the first symptom of disease, or whenever feeling slightly indisposed—see us—we have just the remedy needed to keep you healthy and hearty—so you can keep the bank book filling.

Stokes & Alexander Drug Company

The Rexall Store

"In Business For Your Health"

COOK'S

Armorcote Enamel WHITE AND TINTS



ENAMELED wood-work is more fashionable today than it was in the Colonial days. Its rich, distinctive beauty lends an air of dignity to the interior of your home.

Armorcote Enamel imparts a hard, beautiful, porcelain-like finish which is easy to wash and keep clean; can be used on both woodwork and furniture, either indoors or outdoors. Comes in white and five beautiful tints, either gloss or eggshell finish.

WHALEY LUMBER CO.
 Littlefield Texas

if it happens to be Birch's second performance in the town.

Birch's bag of baffles contains all the tricks of other magicians—and even more. Even the old ones that others perform slip from him with a different interpretation and under the spell of a more skilled art than is generally the case. His extensive repertoire of deceptive numbers, running from a bunch of card tricks, through the gauntlet of disappearing rabbits, doves and guinea pigs, up to the heavier spirit of exposures and the climaxical Chinese mirage, requiring nearly \$800 worth of material for its performance, hold the tense interest of his auditors until a two hour program seems as but twenty minutes had slipped by.

During the seven years Birch has been on the stage he has traveled and given performances in practically every state in the Union, making frequent trips into Canada. This is his second visit to Littlefield, and he would be welcomed every year, for each return date he brings a complete new and interesting program of mysteries rivaling the necromancing performances of Aladdin's lamp of Arabian Nights Entertainment.

TALE OF TWO HAMMERS

Paul Ivey of the University of Nebraska tells it. Says he: "I went into a store and asked for a hammer and said: 'That's a mighty fine hammer. You can't go wrong on it.' I looked it over and waited for him to tell me something about it. After a while he said 'That's a mighty fine hammer. That's a real hammer. We sell lots of 'em.'"

"I looked it over again. That's a mighty fine hammer," he said, "a real hammer. You'll like it. We sell lots of them."

"And then," says Ivey, "I went and got a mail order catalogue and in it I found an attractive picture of a hammer and the following description of it: 'This hammer is made of the best crucible steel, full nickel plated. The face and the claws are tempered just right for service and the claws are split to a fine point. They grip firmly and will not break. hammer. You'll like it. We sell lots. The handle is made of selected second growth hickory, mahogany finish, and is fastened in with iron wedges so that it will not work loose.'"

That's the difference between the order taker and the salesman—the difference between good and poor advertising. The average ladies' shop will say: "We are showing an exquisite line of fall modes." "Our wraps set off woman's charms." Ask the woman which advertisement has the strongest pull.—Inland Printer

LITTLEFIELD VS. MULESHOE

A very fast and interesting basketball game was played at the gymnasium Monday evening between the Littlefield Fire Department team and the Muleshoe High School team. The game resulted in a score of 17-10 in favor of the local lads.

M. E. MISSION MEET

The Missionary Society of the Methodist church met Monday afternoon at the church in a business session. A large number of members were in attendance and all new officers were in the chair.

The next meeting will be a social held at the home of Mrs. B. L. Cogdill.

A PEPPY DANCE AT PEP

The people of Pep will be hosts at a dance Friday evening at the new school auditorium there.

The Oklahoma City Merry Makers, a ten-piece orchestra will furnish music for the occasion. The grand march will begin promptly at nine o'clock.

County Basketball Teams Getting Ready For State Meetings

A county basketball tournament will be held here the 29-30 of this month.

Four teams, namely Littlefield, Amherst, Sudan and Otton will participate in the tournament. Thursday night two games will be played. The winners of these two games will play Friday night at the Littlefield gymnasium.

This contest is being held to select the team to take part in the district meet, and the winners from which will go to the state meeting. Last year the Littlefield team held second place in this district, next to Idalou, who won over them and took first place in this district. This year two games have been played between the Littlefield and Idalou teams, and Littlefield was winner in one. The Idalou team is generally conceded to be the strongest in this district, and the fact that Littlefield won over them in a fast game is encouraging in their efforts to win first place this year.

As the closing date of January 15, for registering for the University of Texas Interscholastic League basketball contests approaches, the state office is kept busy accepting the enrollment fees, according to Roy B. Henderson, athletic director of the League. As this is the first year the closing date for enrolling for participation in the basketball has been in effect, many of the schools have delayed registering, Henderson said, thinking it possible to enroll throughout the month of February as heretofore.

To date between 200 and 300 schools have enrolled with the period of heaviest registration yet to come—that from the opening of the school after the holidays to the closing date of January 15. Last year there were over 500 schools engaged in the League for basketball contests, according to Henderson.

The basketball plan to be followed this year is practically the same as that used in previous years, as this proved satisfactory in eliminating the contestants, Henderson stated. The

To Be Happy and Successful

YOU MUST HAVE CONTENTMENT AND EASE OF MIND

IF YOU make it a rule and practise to save a part of every dollar you earn or receive, you will have the feeling that your efforts are managed so that the value of your possessions is being constantly increased as the months go by.

THINGS THEN WON'T BE SO GLOOMY

APPLY GOOD OLD-FASHIONED THRIFT

Frequent Trips to the Bank and Not the Size of Deposits Are What Count.

Littlefield State Bank

Professional Cards

E. POTTER
 Attorney at Law
 New Hopping
 Building
 Littlefield, Texas

W. LILES
 Surgeon
 Post Office
 147
 165

PERKINS
 Surgeon
 Duggan Building

W. GARDEN
 Engineer
 Specialty
 Lamb County
 Office

Harris
 Surgeon
 G STORE
 Littlefield

CLINIC
 Ellis Bldg.
 10
 M. D.
 J. D. Greary
 M. D.
 J. D. Greary
 and
 M. D.
 J. D. Greary
 Throat
 M. D.
 J. D. Greary
 Diseases of
 M. D.
 J. D. Greary
 of Women
 Diseases
 D. S.
 J. D. Greary
 Surgery
 D. S.
 J. D. Greary
 Surgical Surgeon
 Littlefield

W. D.
 Registered
 Staff to be
 future.

Wichita Business College
 Wichita Falls, Texas
 A big salary is what counts on the road to
 success. We quickly train you for a good posi-
 tion in a home, mercantile establishment, and the like.
 you. Coupon will bring SPECIAL information Mail

Appropriate Gifts

find the appropriate gift at
 every day in the year. We
 complete line of necessary arti-
 cles for the bridge party, hand paint-
 ings, and stamped embroidery
 of various kinds.

also do hemstitching

EVERY DAY A GIFT DAY

Art Shop

Goodland Gleanings

Miss 1925 Chitwood, who has been
 Saturday night, December 20, 1925,
 and Mrs. Harry E. Barber gave a
 delightful entertainment. The gala
 crowd danced or played forty-two
 until host and hostess served delicious
 turkey sandwiches, coffee, and cake.
 Those present were Misses Anderson,
 Payne, Lindle and Francis Gaddy,
 Aileen and Toby Schuman, Messrs.
 Maltberger, Harris, Warren, Fuller,
 Rex and Cass Steagall, and Messrs.
 and Mesdames Gaddy, Locke and
 Maxwell.

Fun and revelry prevailed at the
 slumber party given by Miss Arc Lee
 Anderson, Tuesday night. Misses
 Bifle, Payne, Frances and Lindle
 Gaddy, Rex and Cass Steagall, War-
 ren, Harris, Fuller, Maltberger and
 Cowboy Bob dropped in for a few
 hours of entertainment. As soon as
 the guests arrived every one went
 down to Mrs. Gaddy's—about a mile
 from Miss Anderson's. Here the mu-
 sic of the piano, victrola, guitar and
 violin proved to be the desired thing
 to produce the highest degree of
 gaiety. Indeed, one would have
 thought that the spirit of "Allegro"
 laughter holding both sides "dwelled
 in the hearts of every one present.
 About 10:00 o'clock the hostess took
 her guests to her home where she
 served coffee and sandwiches. After
 this the gentlemen reluctantly bid
 the ladies goodnight leaving them to
 pass the remainder of the slumberless
 night together.

Your have probably noticed that
 the people who can do as they please
 usually don't know what to do.

We've often wondered what col-
 lege students find to do after the
 football season closes.

Storm Center



Here is the latest photo of Ger-
 ald P. Nye, of North Dakota, just
 named by Governor Sorlie to suc-
 ceed the late Senator Edwin F.
 Ladd. Nye's political policies have
 caused many Senators to vigor-
 ously oppose his being seated.

AT THE CHURCHES

METHODIST CHURCH
 The Small Church With A Large
 Purpose
 Sunday school, 10:00 a. m.
 Preaching, 11:00 a. m., and 7:30
 p. m.
 Prayer meeting Wednesday even-
 ing, 7:30 p. m.
 Women's Missionary Society, Mon-
 day afternoon.
 H. G. Scoggins, Pastor

PRESBYTERIAN SERVICES
 The First Presbyterian church, the
 "home folks church," extends a cor-
 dial welcome to all worshipping
 Christians to come and worship with
 us.
 Sunday school, 10:00 a. m.

BAPTIST SERVICES
 Sunday school at 9:45 a. m.
 Preaching at 11:00 and 8:30 p. m.
 B. Y. P. U., at 6:30 p. m.
 Prayer meeting, Thursday, 7:30
 p. m., followed by a business meeting.
 Please be on time.
 W. M. U. meets Tuesday at 3:00
 p. m.

CHURCH OF CHRIST
 Bible Study every Lord's Day,
 beginning at ten o'clock. Preach-
 ing services upon announcement until
 regular pastor is secured.

Church of Christ
 Cor. 9th & Park Ave.
 Preaching at 11:00 A. M. on every
 Lord's day. Everybody invited.

Whitharral
 Sunday school each Sunday. Ev-
 erybody invited to attend and take
 part. Preaching twice each month,
 at 3:00 p. m.

Progressive Christian Church
 Meets every Sunday morning at
 10:00 o'clock.
 Bible Study.



The mammoth new Madison
 Square Garden opens its doors to
 sport throngs. Here is Tex Rick-
 ard, promoter, posing in hockey re-
 galia, first sport he will stage in
 new arena.

WHAT'S DOING IN WEST TEXAS
 Furnished by West Texas
 Chamber of Commerce

Jacksboro—A twenty-four thou-
 sand egg capacity hatchery will be
 installed here in time for spring
 hatchery.

Ozona—A new modern fire proof
 hotel will be erected here during the
 coming year at a cost of \$100,000.

Hereford—Mrs. Harrison Trow of
 this city has donated to Wayland Col-
 lege an entire section of land located
 near Dimmitt, in Castro County. Tot-
 al value of the gift is given at \$1,000.
 Wayland College is said to have re-
 ceived donations of more than \$100,-
 000 during the past year.

Floydada—The Floydada Chamber
 of Commerce arranged with the West
 Texas Chamber of Commerce to send
 B. M. Whiteker, exhibit manager of
 the organization, to put on a week's
 campaign through Floyd County in
 the interest of diversified farming.
 Mr. Whiteker made instructive talks
 of seed selection and displayed in-
 teresting and instructive motion pic-
 tures in the campaign.

San Saba—San Saba County pecan
 growers have organized an association
 which has for its purpose to promote
 the growing of improved varieties of
 pecans in this county. The organiza-
 tion also proposes to encourage top
 working native pecan trees in the sec-
 tion. An annual pecan day is to be
 held at which time a pecan show with
 prizes will be put on.

Electra—More and better dairy
 cows on the farms in Electra's terri-
 tory is being urged. The Electra
 creamery is forced to ship in its raw
 products from points three or four
 hundred miles away and the Electra
 Chamber of Commerce has resolved
 that Electra shall feed itself and pro-
 duce a surplus for shipment to other
 points.

Treasury Department

Office of Comptroller of the Currency
 Washington, D. C., Sept. 19, 1925
 Whereas, by satisfactory evidence
 presented to the undersigned, it has
 been made to appear that "The First
 National Bank of Littlefield," in the
 town of Littlefield, in the county of
 Lamb, and State of Texas, has com-
 plied with all the provisions of the
 Statutes of the United States, requir-
 ed to be complied with before an as-
 sociation shall be authorized to com-
 mence the business of banking;
 Now therefore, I, J. W. McIntosh,
 Comptroller of the Currency, do here-
 by certify that "The First National
 Bank of Littlefield," in the town of
 Littlefield, in the county of Lamb,
 and State of Texas, is authorized to
 commence the business of banking as
 provided in section Fifty One Hun-
 dred and Sixty-Nine of the Revised
 Statutes of the United States.
 In testimony whereof, witness my
 hand and seal of office this nineteenth
 day of September, 1925.

(SEAL) J. W. McIntosh,
 Comptroller of the Currency.
 Dec. 3, 10, 17, 24, 31, Jan. 8, 15, 22.

COMPLETE INSURANCE SERVICE
 Fire, Windstorm, Automobile, Casualty, Life
STRONG-DUGGAN INSURANCE AGENCY
 M. D. Strong C. J. Duggan
 Phone 80

Farm and Ranch Loans 6 per cent
Improved City Loans 7 per cent
 ON EASY TERMS
 DUGGAN ANNEX
 LITTLEFIELD TOWNSITE LOTS
 LOTS IN SOUTHMOOR ADDITION
 ACREAGE TRACTS IN BROAD ACRES
 CONVEYANCING & NOTARY WORK
 C. J. DUGGAN, LITTLEFIELD, TEXAS

MAGNOLIA GASOLINE
Magnolene Oils and Greases
 'The Dependable Lubricant'
 Real Quality Products
 Demand them from your Dealer
Magnolia Petroleum Company
 G. W. Hargrove, Agent. Littlefield, Texas

Home Killed Meats Range Raised
THE STAR CASH MARKET
 FRED HOOVER, Proprietor
 Where Quality Tells and Price Sells
 Littlefield, Texas

LUMBER!
 Everything you need, all quality material.
 Building supplies for Home, Business or other
 location and our expert advice and assistance cheer-
 lection, and our expert advice and assistance cheer-
 fully given on your estimates.
NIGGER HEAD COAL
 Winter is now here in dead earnest. Better
 fill your coal bins before our supply is exhausted.
 Littlefield, Texas
CICERO SMITH LUMBER CO.

MONEY TO LOAN—
 ON BUSINESS AND RESIDENCE PROPERTY.
 From \$500.00 up, and you pay the loan off at less than rent, on
 the following plan:
PLAN A
 \$17.00 per month per thousand the first 18 months
 \$16.50 per month per thousand the next 12 months and re-
 duces down to
 \$10.90 per month, this pays both principal and interest in
 ten years.
 Total interest and expenses—just 40 cents more than the interest
 cost (alone) of a term loan for a similar period at 6 per cent
 We write all Lines of Insurance.
HEMPHILL & BARNES
 Littlefield State Bank Building Littlefield, Texas

Little-But Oh My!
 That is the remark frequently heard by new
 customers coming in to our store. "A regular mul-
 tum en parvo," remarked a recent visitor. "I don't
 see how you get so much goods in such a small
 place."
 Yet we have a good assortment of all the goods
 to be found in a modern and up-to-date drug store
 standard patent and proprietary preparations,
 toilet articles, perfumes, candies, cigars and tobac-
 cos. Soda fountain in connection.
 You will appreciate the goods you buy at our
 store, because they are all fresh and pure, sold at
 reasonable prices by a firm that appreciates your
 business and endeavors to show their appreciation
 in the service given and the quality offered.
Little Drug Store