

LAMB COUNTY LEADER

Official Newspaper of Lamb County, Texas

LITTLEFIELD, LAMB COUNTY, TEXAS, THURSDAY, SEPTEMBER 3, 1925.

NO. 20

VIVAL MEETING STARTS OFF WITH INTENSE INTEREST

Co-operative revival under the tent, located just south of the theatre began Monday night. The ballads are here with their message of sermon and song, and the flocking in great numbers for them. Evangelist L. C. Garofalo of Houston, has charge of the meeting, and he is already winning into the hearts of the people. He possesses a unique personality and a large corporosity, good and prepossessing appearance, and carries the force of an orator in his messages and the inspiration of a poet in his delivery. With a fluency that is thoroughly mobile, he frequently releases his constant for an expression of adamant lightning thunderbolts of conviction at the hosts of inquiry.

E. O. Oden has charge of the choir and is an efficient director and soloist. He is this week organizing a choir of 100 voices, and everyone makes an attempt at singing. The cultured vocalist of virtuosos sends to the chap whose voice is like a cross-cut saw in the cow shed, is invited to sing in the chorus.

This year Evangelist Garrison held meetings in three different states, traveling 21,000 miles in a Ford car. He says the journeys in this well equipped conveyance never even phased him. This year he has held 14 meetings, resulting in nearly 900 additions to the churches. Last Sunday he closed a very successful meeting at O'Donnell, wherein there were conversions, 40 of them coming in penitence during one of his services. As a result of the meeting, the public dance there was closed and a \$20,000 campaign inaugurated.

There is every indication that the beginning in Littlefield this year will be a successful one. All churches are co-operating in the revival, and much interest has been aroused. Everyone with ability and in reasonable traveling distance from around Littlefield is invited to attend these services at 10:00 o'clock in the morning and again at 8 o'clock in the evening.

AMHERST VOTED BONDS

Being Advertised for Immediate System Construction

Amherst has voted \$50,000 bond issue for the construction of a water supply system, the vote being 107 for and 34 against.

Plans for the construction are now being advertised. It is planned to draw the water from two wells and store it in a large capacity storage tank on a tower 50 feet high.

Mr. T. Wade Potter is attending to the institute in Lubbock this week.

She Sold the Eggs



Relative in Iowa got address of Mrs. F. T. Murphy and sent her eggs to Mrs. F. T. Murphy. To save her his loss, she sent a store room and sold the eggs at 25 cents per dozen, the regular retail price.

NEW IMPLEMENT CONCERN

A. R. Lee, of Amherst Has Oliver and Moline Agency Here.

A. R. Lee, who recently sold his Lubbock Truck Line to Mr. J. C. Hall, has moved to Littlefield this week and will sell Oliver and Moline implements for Messrs. Duncan & Pennington of Amherst. This firm expects a number of cars of farming implements to be at Littlefield in a few days and have employed Mr. Lee to look after their interests there.

The Argus regrets to lose Mr. Lee and his estimable family from our midst but wish them every success in his new undertaking.

Messrs. Duncan & Pennington have sold more farming implements than any firm on the South Plains. The Argus believes so it is proper that they should spread out in order to extend their trade territory.—Amherst Argus.

B. L. Vann, former proprietor of the Vann Implement Company, has recently sold his stock to Duncan and Pennington of Amherst, who have re-opened for business here.

A. R. Lee, with his family, moved here this week from Amherst and will have the management of the firm.

AGED MATRON EXPIRES

Mrs. A. R. Singer Died Wednesday At Age of 58 Years

Mrs. Ellen E. Singer, born February 24th, 1867, in Clayborn, Mississippi, passed away Wednesday morning, at five o'clock, at the family home here.

She has long been a sufferer of asthma, yet death claimed her very unexpectedly.

She had been a member of the Missionary Baptist church since childhood. Before her marriage to A. R. Singer she was Miss Ellen Crow, of Terrell, Texas, since she has resided in Roosevelt, Oklahoma, having moved to Littlefield only six months ago.

The deceased is survived by a husband, A. R. Singer and eight children; Mrs. A. C. Hendricks, C. R. Singer and T. A. Singer, of Memphis, J. G. Singer, of Amherst, C. H. Singer, O. L. Singer, A. C. Singer and W. C. Singer of Littlefield.

Funeral services were held from the late residence of the deceased, conducted by Rev. W. B. Phipps, and interment in the local cemetery.

LITTLEFIELD GETS DOUBLE SOURCE OF HIGH LINE POWER

That the poles and cross arms for the Littlefield-Lubbock high line have arrived and are being distributed this week, preparatory to completion of the line, is the statement of C. A. Reynolds, construction superintendent.

Mr. Reynolds says the line from Littlefield to Sudan is now about 85 per cent completed, and it will not be long now before his company will be ready to give service to the citizens of Sudan.

This week Chief Engineer C. S. Billings, of St. Louis, Judge R. B. Kelso, chief counsel for the Texas Utilities Co., and J. B. Scott, general manager, of Plainview, are making a tour of the company's property and investigating the status of the new construction work in progress in various sections of West Texas.

It was stated that this concern is now actively engaged in establishing more than 100 miles of high-power transmission lines in the Panhandle district, and already sufficient electrical generating units, of the latest type have been installed in the various major distributing stations, awaiting the completion of these new lines which are being rushed forward as rapidly as possible.

When the Littlefield-Lubbock line is completed, Littlefield will then be favorably situated so far as current is concerned, for it will be in position to receive juice from two sources—both Littlefield and Lubbock, and without any interruption.

Mr. Reynolds says that already a number of applicants have been received from farmers over the section, who reside along the high lines, asking for power with which to do irrigation, run water pumps and other kinds of farm machinery.

Buy R in Littlefield

APROPOS OF LABOR DAY

By A. B. CHAPIN



SENATOR MARVIN JONES AND OTHER NOTED CITIZENS TO BE GUESTS OF LITTLEFIELD AT CHICKEN BARBECUE

At the regular meeting of the Board of Directors, Littlefield Chamber of Commerce, held Tuesday noon, it was officially announced that Congressman Marvin Jones had accepted the invitation of this body to accept of the hospitality of this little city at a big barbecue to be given here on the evening of Saturday, September 12th.

It was also stated by members that invitations had been sent out to Senators Morris Sheppard and Earl J. Mayfield, F. E. Clarity, of the Burlington railroad system, Messrs. A. B. Martin and R. A. Underwood, of Plainview, Porter Whaley and B. F. Bennett of the West Texas Chamber of Commerce, Senator W. H. Bledsoe, of Lubbock, and several other prominent citizens of the state. Replies had already been received from some of them, and their acceptance signified.

A committee was immediately appointed to look after the barbecue and prepare the program for the occasion. According to the plan, while everyone is extended an invitation to attend the meeting, the barbecue will necessarily have to be limited to only those holding tickets for same. G. M. Shaw and A. P. Duggan are the committee appointed to make the arrangements and should be seen at the earliest possible date if they want to be in on the chicken eats prepared in a la Littlefield style.

GIVE AWAY FORD

Proceeds Go Toward Paying For Piano At School House

C. J. Duggan is going to give away a Ford car next Monday, which is Trades Day in Littlefield. The proceeds will go toward paying for a piano at the high school building.

It is understood that several of the merchants are also donating merchandise which will be auctioned off at the same time, the funds going for the same purpose.

NEW COTTON YARD

W. R. Oatts, well known to several Littlefield citizens, was here the first of the week and closed a lease for property located just opposite the Littlefield gin, where he will maintain a public weighing yard during the cotton season.

Mr. Oatts is a cotton weigher of 20 years experience, and will bring with him a full complement of scales and equipment for his business.

MISS RAMSEY WINS FORD COUPE IN LEADER CONTEST

As a result of the circulation contest of the Lamb County Leader, which closed last Saturday night, this newspaper today boasts of a circulation unequalled by any other town in West Texas, four times the size of Littlefield. The magnificent manner in which the subscriptions rolled in during the past 30 days was an undisputed tribute to the general popularity of this newspaper. It was the statement of the various contestants that not a single person refused to subscribe for this newspaper because they had any criticism against it. Those who were approached for their subscription and failed to come across did so, frankly, as they admitted, because at this time of the year they were short financially. And, since the contest was on a cash basis entirely they had to temporarily forgo the pleasure of reading this popular weekly.

Miss Willie Ramsey was the successful winner of the handsome Ford coupe, offered as the grand prize in this contest. Miss Alynne Arnett won the prize of \$100.00 in gold, while Misses Thelma Barnes and Lora Barber were high runners up in the contest, receiving financial commissions for their services.

For more than a year now the Lamb County Leader has been commonly referred to, by those who are capable of judging, as the best weekly newspaper on the South Plains—a compliment very much appreciated, but which does not have any egotistical effect upon the management. Rather, it is our desire to make this paper even better than ever before and more popular and wide spread in its circulation and influence in the future than in the past.

This newspaper already possesses a printing plant which is not surpassed by any other newspaper in West Texas. There are a few somewhat larger, but none better or more capable of turning out first class newspaper and job work. During the past month more than \$1,500 worth of machinery and other equipment has been added to this already modern and efficient printery, and orders are now being placed for several hundred dollars worth more.

As its name indicates, it is the desire of the Leader to always be in the lead for the advancement of this town and county in general. No labor nor expense has ever been spared to make this newspaper a creditable representative of this community. It will be more so in the future.

The Leader for printing

600 PEOPLE AT C. OF C. MEETING LAST FRI. NIGHT

There were probably 600 people who attended the monthly fun and feed-fest of the Chamber of Commerce, held last Friday night at the ball park, and if indications count for anything at all everyone present had a good time.

The program was in charge of C. J. Duggan and M. A. Lightfoot, and it was all that could be asked. Everyone entered heartily into all the plans and stunts, putting the whole thing over in fine shape. After the program there was plenty of watermelon on ice for everyone, also plenty of lemonade to drink.

President E. A. Bills introduced the program by making a rousing speech in behalf of local patriotism and civic betterment. He took a vote of the audience, and everyone was in favor of the paving program, that is now being generally discussed.

In the first event—a sack race by boys, the prize to the winner was a baseball given by Stokes & Alexander. In the bean race, by girls, Middle Beth Butler won first prize, it being a bottle of toilet water given by Sadler drug store.

In the nailing contest, Mrs. T. P. Wright lead, receiving an award of a box of stationery donated by Stokes & Alexander.

The egg race was won by Mr. Tyrone, who received for his swiftness a box of cigars, donated by the Littlefield drug store.

"Going to the Country Fair" was an interesting event participated in by 15 couples. The first prize for women a pair of silk hose, donated by the Fair store, was won by Mrs. Chas. Harless; for men, a pair of silk socks, donated by Littlefield Supply Co., won by N. H. Walden.

All booby prizes, given to lowest contenders, were donated by Jess Trimble.

LAY CORNER STONE

Muleshoe To Celebrate Labor Day With County Program

Arrangements are being made for the celebration of Labor Day at Muleshoe by the laying of the corner stone of the new Bailey county court house. This week an elaborate program for the occasion is being arranged, and people from all over the county and adjoining counties are invited to attend.

ABERNATHY FAIR

Neighboring Town Will Celebrate September 24, 25 and 26.

The Abernathy fair will be held September 24, 25 and 26, and it should prove a big factor of progress and prosperity in that community.

According to announcement, there will be plenty of wholesome amusement, carnivals, football games and other athletic events, broncho busting, and good exhibits of live stock and farm products, also fancy needle work, baking, etc.

La Follette's Seat



Wm. G. Brown, publisher of the Leader, is the Democratic nominee for Senator to fill the seat left vacant by the death of Sen. La Follette.

LAMB COUNTY LEADER

Published every Thursday afternoon at Littlefield, Texas.
 Subscription: \$1.50 per year; 75 cents for six months.
 Advertising rates given upon application.

Entered as second-class matter May 24, 1923, at the post office at Littlefield, Texas, under the Act of March 3, 1897

Jesse Mitchell, Editor and Publisher
 Member Texas Press Association

Subscribers who change their addresses, or fail to get their paper, should immediately notify this office, giving both new and old addresses.
 Communications of local interest are solicited. They should be briefly written on one side of the paper, and must reach this office not later than Thursday noon of each week. The right of revision or rejection is reserved by the publisher.
 Advertising that does not show in its text or typography that it is paid for must be marked as an advertisement. All local advertisements remain in this paper for the space specified or until ordered out. All notices, if matters not by whom nor for what purpose, if the object is to raise money by admission fee or otherwise, is an advertisement and when sent in for publication must be paid for at the regular advertising rate per line for each issue printed.
 Resolutions, cards of thanks, and resolutions of respect will also be charged for at the same rate.
 Any erroneous reflection upon the character, standing or reputation of any person, firm or corporation which may appear in the columns of the Littlefield Leader will be gladly corrected upon its being brought to the attention of the publisher.

As the Editor Sees It

LABOR DAY

Once again the mechanic lays aside his working tools; the artisan pauses in his labors; the surveyor, architect and draftsman abandon their respective instruments; the capitalist sees his watchman closing the gates of the big factory or mill; and Labor will come into its own by enjoying a day of rest and recreation and set apart for rest and recreation of the toiling masses in our country.

The government has officially recognized the dignity of labor by annually releasing its employees, and releasing the bureaus and departments in annual observation of this day, and will cover the country throughout the

various states of the Union the day will be observed in appropriate manner.

There is no task in this world that is menial only as one makes it so, and labor—the effort put forth to improve the conditions of the toiling millions is always honorable. As a matter of fact, we are all workmen together, in our several vocations, whether in actual muscular labor, preparing plans for the laborers, or study the calculations of philosophy the advancement of civilization and the knowledge, the destruction of ignorance and barbarism.

The American laboring men of varied trades throughout the country are vitally essential in our everyday life. They are engaged in building a greater America by providing dwelling places for the immense population

installing the latest types of commodities, luxuries and actual necessities, constructing the home, the church, the office building and the myriad other types in the category of modern building operations.

The well known and highly esteemed British sportsman, Sir Thomas Lipton, is reported to have made the remark, "There is no fun like work," and this admirably justifies the working man's pride in duties faithfully performed, giving him a distinct position of importance in our national life.

The American laboring man need not ever deplore any lack he may have in scholarly attainments, or collegiate honors, he is adequately filling his niche by contributing individual, honest service in the nation's great program of activities.

TOWN RESOURCE

Charles Pack, head of the American Tree Association, has started a movement whereby he hopes to promote a "Town Forest Plan," and in a short time citizens of Littlefield may be called upon to join hands with him. He says the plan will serve to increase interest in town beautification, and will instill a greater community pride in the children of every section of the country.

Everyone upon beholding a mighty tree is impressed with feelings that are not easily put into words. Its majesty and beauty give a sense of awe and satisfaction scarcely conveyed by anything else. But the tree has something besides strength and beauty to commend it.

Man needs the trees, for as yet he has found no substitute for wood in the arts and manufactures he carries on. The town forest will impress this fact on the citizens. When the development reaches the point, as it will in time, where the forest becomes a revenue producer, the value of the tree will be understood. Beautiful as these western prairies are, inspiring as they may be with their wide sweep of vision, reaching from horizon to horizon, yet the monotony would be broken and greatly enhanced by the planting of a few trees.

In the United States 81,000,000 acres of land are idle and useful only for growing trees. Nebraska has, possibly, larger tracts that could be devoted to this purpose than any other state, but here in West Texas there is some land good for nothing but tree growing, while there are multiplied acres that would be greatly enhanced in their beauty and commercial value if they possessed a few trees. Every town and city home would be the more beautiful for a few trees grown around the lot, every farm place would furnish greater inspiration for the possession of a woodlot. Trees attract the birds, conserve the moisture, cause greater precipitation and a better general run and stability of crop conditions, to say nothing of the commercial value.

The federal government is now planting a reserve supply of forests systematically and effectively. In time the people of the nation will realize what a resource is being allowed to go undeveloped. We believe we are safe in saying that citizens of this section are ready and willing to join in a movement for the growing of more trees at any moment it is launched.

SECRET OF SUCCESS

That great railroad builder, James J. Hill, once asked for the secret of success, replied: "The ability to save money is the secret of all success. If you can save, you will succeed, if not, you might as well give up now, the seed of success is not in you."

There are a goodly number of people still mightily taken with the idea that thrift is all nonsense. They wear themselves out trying to find some short cut to success. They yearn for large profits and large returns. The saving habit appears too slow. The almost miraculous power of money to increase does not appeal to them. Yet the advice of men like Hill, and the life stories of similar leaders all hinge upon the ability to save, and go back to Franklin's wise axiom always to spend a little less than one earns.

The provident have always prospered but today and tomorrow more than ever before. There will be drones as well as workers in the human hive. But the workers will increase in power, if not in number, and dominate the affairs of the drones.

This country is now being largely populated with new settlers. It is an excellent time for them to take the advice of Mr. Hill. Some of them have made financial failures elsewhere. Some of them would like even greater successes to come their way out here in this new country. Saving coupled with industry will bring that about.

FEAR

Does fear make men moral? Would the world be farther advanced today if our religious institutions had placed as much emphasis on the power of love to reform and regenerate as they have on the power of fear? Are we yet wholly cured of the strange idea that fear aids morality?

Fear, in its heyday, used torture, imprisonment and murder to cure criminality. Fear beat children and burned heretics. Like water thrown on burning gasoline, fear only spreads the evils it aimed to suppress.

Fear, as a deterrent, is passing. But we are not yet out of the woods. War itself is essentially an instrument of fear. The old hoodoo persists that by greater and greater armies and navies and air forces, we shall keep the enemy at bay.

Business was once based on fear, and still is so based to a certain extent. King Tut built an empire on slavery. It never occurred to him that there was any other way to get men to work except to enslave them and hold them down through fear. The capitalist and laborer still attempt the appeal of fear. On the one side it is the threat of a walkout, on the other, a lockout. The public fears either eventually and tries to compose differences instead of calling for a new spirit altogether.

The folly of fear is apparent. Its cost in dollars and cents is appalling. Its continuance as a settled policy leads nowhere. Its crimes contribute to nine-tenths of the world's history. Its cure was suggested of old—"Perfect love casteth out fear."

HAPPINESS IN WORK

"If you want anything done well do it yourself?" is a workable axiom, but it is not infallible. If it were without exceptions our great industrial and commercial enterprises would never have developed. There are inefficient workers, but they are surely not in the majority.

Carless and unfinished work is the hardest kind whether for the wage earner, salaried man, tradesman or manufacturer. When you fall down on the job you lose that satisfaction which is part of the wage of the good workman, and you face the possibility of losing the job, a profit, a contract, a customer or a business.

Elbert Hubbard said that we must "get happiness out of our work or never know what happiness is." The easiest way of getting happiness out of work is by doing good work.

Public commiseration is to blame for much inefficiency among employees of others. People will complain to a store keeper about unsatisfactory goods, but they will not report inattention or discourtesies on the part of clerks because they fear the clerk might lose his or her position. As a consequence, the clerk, the public and the store owner all suffer. In the factory the foreman is responsible for the work of those under him, just as the manufacturer is responsible for the quality of his products. Each has the advantage of this additional urge to do good work.

Everyone would profit if everybody would strive rather to do better work than to do less work.

WHEN A MAN IS OLD

Who is a man old? That is a question frequently asked.

A Civil War veteran of Illinois aged 88, is told by the judge that a man 88 has no business to get married. Perhaps he hasn't from one standpoint, yet if the marriage be the proper kind, from another point of view, his right is perfect.

A Pennsylvania man of 91 settles property on his children, then marries a woman of 45, who says her husband is "old in years only." Jacob Wettler, Swiss embroiderer, only 74 years old, shot himself, saying life wasn't worth while at that age.

"When he is forsaken, withered and shaken, what can an old man do but die?"

Some men are so old at 50 as anybody can be. Moltke at 90 was younger than many of the junior officers that stood in stiff respect of him. A man is old when his mind stops working along new lines. And perhaps that is the great reason why folks remain young so long in this country. There is so much that is always new, fresh and invigorating; so much variation and constant change. And, added to the fact of the altitude and invigorating climate, it is no wonder that folks live well into the century section, and finally die just from old age.

Read all the news of your town and county in the Leader, "the old home paper."

She—the wife—"These strikes makes me sick. Why don't both sides in this coal controversy wipe the slate clean and go ahead?"
 He—the husband—"Who ever heard of hand-wiped coal?"

SO IT GOES

First Tourist—"I motored way to see the scenery, but one can't see anything for the boards."

NOW OPEN LITTLEFIELD SWIMMING POOL

PURE FRESH WATER AT ALL TIMES



FOR YOUR PLEASURE
 POOL 50x100 FEET, GRADUATED DEPTH
 BLAIR & WILLIAMS, Proprietors

For the Latest

Styles in Millinery
 See Our Stock Before Buying

See Our Dressmaker
 For Your Clothes Problems

MRS. WALDEN & WEST
 In Balcony of J. E. Brannen's Store



PUTTING
 MONEY
 INTO A
 HOME
 IS BETTER
 THAN
 PUTTING
 IT IN A
 BANK

—Money is of no value only as for its buying power, and there is no investment possible where greater returns are realized in both pleasure and profit than putting your money into a home. Every home in this country increases in value, and adds to the increased value of your other property. Besides, there is nothing that brings to a man and his family a greater sense of joy and feeling of independence than the owning of the home in which he lives.

—We have assisted in the building of hundreds of happy and prosperous homes in this community, and we will gladly cooperate with you toward the realization of your dreams.
 —Whatever building plans you may have, we have the lumber and builders' material for carrying them out—and no better quality of material will be found anywhere on the South Plains than that we carry.



—We have hundreds of plans for beautiful homes that are at your service. They represent different costs and many styles of architecture.

—Our expert will be glad to assist you in drawing the plans and working out the details of any building. We have everything from plans to paint.

F. A. Butler
 Lumber Co.

Real Service

In a Hurry

NEW THINGS

We have to show this week a nice line of Woolen Materials in Ladies Dress Goods and Flannels, in the latest colors, weights, etc. To appreciate these one must see them, so visit our store at once.

OTHER LINES

In a few days we will have in a shipment of Ladies Footwear. The newest in straps, heels and colors. Also, a line of Men's Suits—the best in town and next week will bring us a complete line of Boys Trousers, for both dress and school wear, also a nice line of Men's extra Trousers.

GROCERIES

We are keeping our line of Groceries as complete as one can ask for, and will be glad to give our prices. We will greatly appreciate a share of your trade.

You will find at our store the best in Meats, Vegetables, Flour and all kinds of Canned Goods. We have fresh Milk at 10 cents per quart, nice fresh Steak, Buttermilk, Country and Creamery Butter. Try us once and be convinced.

TELEPHONE NO. 146

Call us and we will bring your order up.

Littlefield Supply Co.

"THE FRIENDLY STORE"
 SQUIRES, McCORMICK & DARBY, Proprietors

CHEVROLET

SERVICE and REPAIRS

—In our own garage located in the rear of our sales rooms, equipped with all the necessary tools and machinery and in charge of competent workmen who will make any repair or adjustment to your entire satisfaction. Flat rate charges and all work guaranteed. Repair all makes of cars.

FULL LINE OF CHEVROLET PARTS

BELL-GILLETTE CHEVROLET CO.

Littlefield,

Texas

Right Way to Lay Carpet
 Carpets should always be laid so that the pile is smooth when brushed toward the door. This will save much trouble when sweeping.

GET—
 at Good Gulf Gasoline, Gulf Supreme and Mobile Oils at the
R. Q. M. SERVICE STATION
 also have a good value in second hand casings
 Your business appreciated
PORTER, Owner Littlefield

Our Cuts always the CHOICEST
 Fresh and Tasty, too. Come in and see for yourself what splendid meats we carry. You will find here the best in steaks, roasts and chops. We also carry a choice line of Staple and Fancy groceries—the best the market affords. Our place is always headquarters for Fresh vegetables—you can depend on us! We deliver Ice to your Home or Business.
WALKER'S CASH GROCERY AND MARKET
 "Service and Courtesy"

FURNITURE
 Both New and Second Hand Goods
 New Perfection Oil Stoves
 We do all kinds of Repair Work, Refinishing and Upholstering
 Special Price on Shelf Goods, Including Chinaware, Aluminumware, Etc.
LITTLEFIELD FURNITURE COMPANY
 N. B. GUSTINE, Proprietor

Blacksmith and Machine SHOP
 All Kinds of Blacksmith & Woodwork
 Equipped for Machine Work of Any Kind
 Have Largest Turning Lathe on South Plains
 Oxy-Acetyline Welding
 Auto Batteries Repaired & Recharged
ALL WORK TO YOUR SATISFACTION
Beisel Brothers
 Littlefield, Texas

Lamb County Mercantile Co.
 THE PIONEER STORE
HARDWARE
 New Perfection Oil Stoves
 Coleman Gasoline Stoves
 LITTLEFIELD Lamb County TEXAS

ORGANIZATION OF CIVIC CLUB MADE HERE SATURDAY

The Civic Club met Saturday afternoon in the basement of the First Presbyterian church, for the purpose of electing officers. A representative body of members were present and much enthusiasm was manifested. The following officers were elected: Mrs. Pat Boone, president; Mrs. A. C. Chesher, first vice-president; Mrs. Roy Gattis, second vice-president; Mrs. W. H. Gardner, third vice-president; Mrs. E. L. Maxey, secretary and Mrs. C. C. Burns, treasurer. A committee to draw up a constitution and by-laws was appointed, namely, Mrs. L. W. Jordan, chairman, Mrs. W. H. Badger and Mrs. E. A. Bills. The next meeting will be held Saturday afternoon at three o'clock in the basement of the First Presbyterian church, at which time all the women and girls in Littlefield and the surrounding country are urged to be present.

TO ENLARGE HARDWARE

Alex Hagman, of Taylor, has accepted a position as manager of the hardware department of the Butler Lumber Co. Mr. Hagman is a hardware man of 18 years experience, and states that in the future their stock of hardware will be greatly enlarged, both as to quantity and variety of stock. This week more shelving is being placed by carpenters for the accommodation of the new stock that has been ordered. New lines, consisting of shelfware, queensware, crockery and special aluminum ware is being added.



Star Parasite Remover
 A WONDERFUL POULTRY REMEDY
 Given fowls in drinking water or feed absolutely will rid them of lice mites, fleas, blue bugs, and all destructive insects. Contains sulphur scientifically compounded with other health-building ingredients; is a good tonic and blood purifier; nothing better for preventing disease. Give it to your fowls one month. If they are not healthier, don't lay more eggs and are kept free of destructive insects—your money refunded. For sale by **SADLER DRUG STORE** Littlefield, Texas

Bulletin on Caring for Farm Woodlands Knowledge of Forestry Is Profitable in Farming.

(Prepared by the United States Department of Agriculture.)
 "A knowledge of farm forestry, applied along simple lines, should make farming more profitable," according to the bulletin "Forestry Lessons on Home Woodlands," just revised by the United States Department of Agriculture for general distribution. The bulletin gives the farm woodland a distinctive place in the management of the farm and in the development of the community. The various chapters take up the important local kinds of trees and their uses, the proper location of woodlands on farms, their economic value, the different farm timber products, measuring and marketing timber, utilizing timber correctly, protecting and improving woodlands, and planting young timber. This bulletin has been prepared to give to the organized school work in elementary and secondary agriculture additional impetus in forestry. It provides material for instruction and furnishes a topic for home projects in forestry that may be worked out profitably in many communities. The bulletin contains subject matter material and a plan of study which should be of real educational value to the pupils themselves. "Forestry Lessons on Home Woodlands" may be secured on application to the United States Department of Agriculture, Washington, D. C., free of charge as long as the supply lasts. After that it may be secured from the government printing office, Washington, D. C., for 15 cents a copy.

Powdery Mildew Disease Often Very Troublesome

Powdery mildew is another disease which occasionally is troublesome, although it is not usually so. As the name would indicate, when leaves are attacked by this disease, they take on a white, powdery appearance. Generally bordeaux mixture, such as one would use for leaf blight, will control this disease. There are other diseases which attack the strawberry from time to time but they are not universal enough to need special mention at this time, and where they are largely local in character, the county agents or the state agricultural experiment stations are generally equipped to give the desired information on such insects and diseases.

Pollination of Cherry in Northwest Sections

Studies of sweet cherry pollination in the Northwest have revealed that some of the best varieties, such as Bing, Lambert and Napoleon, are not only self-sterile but are inter-sterile with each other. Two of the best varieties with which to pollinate the above are Long Stem Waterhouse and Black Tartarian. C. L. Long of Oregon and Mr. D. Armstrong of Washington are demonstrating the top working of some of the commercial plantings to these pollen-producing varieties. H. B. Tukey of the Hudson valley section of New York reports results which agree pretty closely with western results. Considering these results, it does not seem advisable for growers to maintain solid plantings of the Bing, Lambert and Napoleon cherries.

Mineral Supplements Is Subject of a Bulletin

"Mineral elements are not to be regarded as medicines to be fed in doses, but as foods to be supplied daily," says L. S. Palmer of the Minnesota agricultural experiment station in special bulletin No. 94 entitled "Minerals for Farm Animals." Five mineral elements are ever likely to be lacking in farm rations—sodium, chlorine, iodine, phosphorus and calcium. Common salt supplies the first two. Iodine can be supplied by feeding sodium or potassium iodide, or as sea salt from which the iodine has not been removed by refining, or as commercially iodized common salt. For phosphorus and calcium deficiency the mineral supplements must be bone-meal, spent bone black, or raw rock phosphate floats. Spent bone black is not a uniform product; only that which has been used by the sugar refineries should be fed. Fertilizer bonemeal is not recommended.

FARM FACTS

Maintenance of soil fertility is not a prerogative; it is an obligation.
 Give your boy a colt; both will grow in more ways than one.
 It is not safe to plant the tomato in the open ground until all danger of frost is over.
 Dust the cabbage with a mixture of 10 parts air-slacked lime and one part of dry lead arsenate.
 The onion is the most important of the bulb crops. A few onions should be found in every garden.
 Chinese cabbage is a vegetable well worth knowing. It will not properly head in hot weather, but will quickly bolt to seed, hence it is best to sow seed in July.

VISIT THE STOCKTONS
 Californians Realize There Are Other Assets Besides Climate
 Messrs. K. L. Stockton and G. C. Stockton, both of Los Angeles, Calif., who have been visiting with Mr. and Mrs. Wilbur O. Stockton for several days have returned home. While in Texas, with their brother, they made a sight-seeing trip, visiting the new Technological college, at Lubbock, and other points there; Amarillo, Plainview, Amherst and Sudan. They visited with another brother, Paul M. Stockton, at Ralls. K. L.

formerly owned land and lived there and stated he was surprised, as well as pleased to see the great change and advancement in the last two years on the Plains. He stated that crops were better here than any place he has been on his trip. They were enroute home from a month's vacation in Ohio, Indiana, Illinois and Michigan. K. L., is supervisor of Schools in Huntington Park, Los Angeles, while G. C. Stockton owns and operates a chain of bakeries in various cities along the coast. Buy it in Littlefield!

GATES TIRES The Tire with the Wider and Thicker Tread
 The place to buy them
CITY GARAGE
 LITTLEFIELD, TEXAS

GENERAL HARDWARE
 —Our store is equipped to supply practically all your needs in the hardware line. We have—
 —Carpenter and Mechanics Tools of all kinds.
 —Tools for Brick Masons and Plasterers.
 —Shelf Hardware—nearly anything you may wish.
 —Hunting time will soon be here, and we have a nice line of Rifles, Shot Guns and all kinds of ammunition.
 —New Dog Chains and Collars just arrived.
 —See us for your Cutlery wants—we have anything for your Table Service.
J. W. Robertson
 Littlefield, Texas

COAL! COAL!
 Better lay in you winter supply NOW, the price is going higher.
 We Have the Best Quality
Littlefield Coal & Grain Company
 Claud Holcomb A. W. Hall C. W. Phillips

BIG LAND SALES RECORD IS MADE AT LITTLEFIELD

Twenty-nine farms in 29 days is surely some record, but such is the accomplishment of the Whicker Land Co., during the month of August. And, as J. C. Whicker stated to a Leader representative, the best part about it is that they were all bona fide cash sales, actually all closed up with names on the dotted line, papers transferred and cash paid.

These sales mark the beginning of a development in the western part of Cochran county that is destined to rapidly increase during the coming months. The Landon lands, which the Whicker Land Co., is selling, comes up within a quarter of a mile of Bledsoe, the western terminus of the new Santa Fe line now being built west from Lubbock to the New Mexico border. The steel is being laid at the rate of a mile a day, and early in October a big celebration is planned at Bledsoe to commemorate the culmination of this important event.

The railroad grade is already completed, the depot at Bledsoe is in the process of construction, contract has been let for a \$25,000 roundhouse there, and the town is already becoming active in a commercial way.

Bartlett Bros. Co., is putting in a big general merchandise store there; three lumber companies have already secured lots for building—The Whaley Lumber Co., Cicero Smith and Higginbotham-Bartlett Co.; trackage has been sold for wholesale gas and oil, poultry and grain concerns, and a large number of residence lots have already been sold. The Santa Fe system is now putting down a big 18 inch well for city water supply, and it has been liberally predicted by men well acquainted with conditions that Bledsoe will, within two years time become a city of 5,000 people.

GOODS RECOVERED FROM THE TEXAS FILLING STATION

Friday night, of last week a quantity of automobile tubes, casings and other accessories were stolen from the Texas Filling Station, located near the public square. Sheriff Len Irvin was notified of the robbery about daylight Saturday morning and immediately got busy on the case.

Lubbock was notified and that afternoon the Chief of Police at Lubbock phoned that he had located a quantity of auto tires and tubes in a ditch near Lubbock, and which he had taken into custody. City Marshal T. P. Wright and Deputy Sheriff J. P. Beck went immediately to Lubbock and identified the articles as belonging to the local concern. They were returned here Monday.

Mrs. Tom Cannon, Bertillion expert came to Littlefield Saturday afternoon and made a close examination of finger prints on various articles in the station, and as a result connection has been made with parties whose finger prints are on record at Lubbock. It is the expectation of Sheriff Irvin that the robbers of the Texas Filling Station will be taken in custody before the week ends.

Irvin states he is confident that the parties who robbed the Littlefield concern are members of a gang guilty of a chain of robberies in this section and every effort is being made by officers of this section to break up the gang.

Handicapped

He who envies the happiness others will never be happy.—Housatonic Post-Dispatch.



PAINTING, PAPERHANGING AND DECORATING

Of The Better Class

All Work Guaranteed. Estimates Cheerfully
Furnished.

O. H. GRIFFITH Phone 15

AUTO RACING AND BAND CONTEST AT TRI-STATE FAIR

One of the outstanding features of the Tri-State Exposition to be held at Amarillo, September 26th to October 1st, is that the show is going to open with a crash. It is going in like two lions and come out like two other lions.

So often a fair drags about for a day or two before getting into full swing. The 1925 show has many of its best features the first two days.

Among them are—the band contest, the opening of the popularity contest, the automobile races, the motorcycle races, and on the very first day the great football game between Clarendon College and W. T. S. T. C. Dave Darden, chairman of the band contest, has announced seventeen bands ready to take part in this exposition. They have been classified and arranged so that absolute fairness will prevail. As a side attraction but a popular one, will be the old fiddlers contest.

In the popularity contest names are already being entered. For this event an \$1,800.00 Studebaker Sedan is being given by the McCarty Motor Co. No Amarillo girl will be permitted to compete and the winners will lead the grand march of the ball at the Palo Duro Hotel, Thursday night. Those entering this contest are required to remain in Amarillo during the week of the exposition.

The track is now being put in shape for the automobile and motorcycle races. It is being oiled so as to prevent dust and many of the fastest riders and drivers in the country are coming. The motorcycle races, which proved such an attraction last year, have many of the same riders again entered, with a long list of new, but well known, drivers of the dirt track.

Then there is the football game, this will immediately precede the motorcycle races. Clarendon and Canyon are seeking by this game to renew athletic relations and the game is expected to be a hot one. It will start at 1 o'clock. Special trains from both cities with hundreds of students are coming. Many others of their neighbors are expected to follow suit.

Besides these attractions of course there will be the exhibits. They will be wide open and ready on the first day. The only problem now confronting the directors is where to house them all. But they will be amply provided for.

The horse races will follow the machine races. These come Tuesday, Wednesday and Thursday; and the same string which will make Hutchinson, Wichita Falls, and Dallas are coming. J. L. Nunn is chairman of this department.

SHERIFF NAMES DEPUTIES

Department Active in Law Enforcement of Lamb County

Sheriff Len Irvin states that all his deputies are new appointees, and that he is not using any of the appointees under the former sheriff.

Those serving under Mr. Irvin are: Guy Willis, office deputy, Olton; Earl Patterson, Olton; J. P. Beck, Littlefield and Charles Rayburn, Jess Mitchell, Littlefield; Zeb Payne, Sudan.

Mr. Irvin states that the Sheriff's Department is using every means available for the enforcement of the law, and will greatly appreciate the co-operation of the citizens in general. Any information regarding the perpetration of crime that will lead to arrests and conviction will be especially appreciated.

INSTITUTE FOR TEACHERS DRAWS FROM 9 COUNTIES

All Littlefield public school teachers are attending institute at Lubbock, and, according to the reports they bring back, it is proving to be perhaps the best institute ever held on the South Plains.

Dr. P. W. Horn, president of the Tech. College has charge of the program, assisted by Prof. C. L. Sone, superintendent of the Slaton schools, and the other department directors go toward making an exceptionally strong faculty. There are several other representatives of the new College who are on the program for addresses either in general assembly or section meetings.

For the first time in the history of this section, the departments of Vocational Agriculture and Home Economics are being represented at institute, the former being in charge of J. B. Rutland, member of the State Department of Education, and

the latter being directed by Miss Margaret Weeks, dean of home economics in the Technological College. The counties of Bailey, Crosby, Dickens, Garza, Hale, Lamb, Lubbock, Terry and Yoakum are all cooperating in the meeting.

"Banking" System Old

The Roman emperors lent money upon land. The lending of money on the security of movable articles, which were said to be pledged, became common in European countries during the Fifteenth century. Out of this grew the system known as pawnbroking, which was specially regulated in England in 1704 and 27 years later the business of pawnbroking was licensed.

Woman and Home

"Home," says the Newcastle (Pa.) Courier, "is a place where a woman in about fifteen seconds can find something for which a man has searched one hour."

More Likely

The man who says he runs things at his house may mean the washing machine and vacuum cleaner.—Sunset (S. C.) Item.

QUESTIONS AND ANSWERS ABOUT THE BLED SOE DISTRICT BY THE WHICKER LAND CO

- Where is the Bledsoe district?**
The Bledsoe district embraces a large area of good agricultural cat-claw land located in the central west portion of Cochran County.
- Where is Bledsoe?**
Bledsoe is the terminus of the Santa Fe Railroad running west from Lubbock. It is a beautiful town site and is from 1/4 to 7 miles distant from the Whicker Land Co., holdings.
- What is the nature of the soil?**
The soil is very rich. It is from 3 to 6 feet deep, and varies from a chocolate color to a red sandy loam with a clay subsoil. There is just enough sand in the loam to scour a plow. There are absolutely no rocks or gravel.
- What is the altitude of the Bledsoe district?**
It averages about 3300 feet above sea level.
- Is it hot there in summer?**
No. According to Government statistics the AVERAGE TEMPERATURE during a period of ten years for June is 72 degrees; July 79.1 degrees; August 76.4 degrees. There is no humidity and the sensible temperature is less than the thermometer indicates. In this atmosphere the summer nights are always cool and invigorating, cover being necessary for comfortable sleeping.
- Are your winters long or severe?**
For this altitude the winters are exceptionally short. They may be considered mild, since a winter seldom contains more than 48 hours altogether, of weather as cold as 10 degrees above zero. The thermometer rarely reaches zero, and then only for a few hours. There is occasionally some snow, but it has never covered the ground more than a day or so that stock could not graze.
- What is the length of your growing season?**
Six to eight months.
- Is your section generally healthful?**
Remarkably so. But few sections of the country have as low a death rate. The sanitary conditions are such that there is practically no danger of any epidemic.
- Do you have malaria, tuberculosis or asthma?**
The only cases are those which have come here from some other locality to be cured, and they are usually successful.
- Do you ever have cyclones in the Bledsoe district?**
Not within the memory of the oldest inhabitants.
- What are the disadvantages of this country, if any?**
The only one that could be found is perhaps 10 to 15 windy days in February, March and April, when the wind blows sufficiently hard to make it disagreeable to work in the fields. With over 325 sunny days every year this small discomfort amounts to nothing.
- What is your rainfall, and when does it come?**
Twenty-two inches per annum for a period of the last 25 years. Most of the rain comes between April and October, during the growing season.
- What is the depth of your water?**
One hundred and fifty to two hundred and forty feet.
- Is there any alkali in the soil or water?**
None.
- Have you good drinking water?**
The water both from the shallow wells operated by windmills and the deeper wells is approximately 90 per cent pure. It is soft, cold and practically the same as rain-water.
- Can fruit be raised on your land, and what varieties?**
This section is ideal for fruit growing. Practically all the leading commercial varieties of apples, peaches, plums, pears, pecans, cherries, berries, grapes, prunes and apricots flourish here.
- Do vegetables do well there, and if so, what kinds?**
Experienced truck growers get almost incredible yields from such crops as strawberries, cantaloupes, watermelons, pumpkins, asparagus, beans, peas, cabbage, sweet and Irish potatoes, beets, parsnips, carrots, turnips, onions, tomatoes, celery, pepper, cauliflower, artichoke, rhubarb, cucumbers, eggplant, radishes, kale, lettuce,

ATTENTION

Oliver and Moline Implements

Full Line of Both Makes also Good Line of

Oliver Repairs

SEE US BEFORE BUYING

Duncan & Pennington

Near Davanay Gin

Littlefield

We Carry Massy-Harris Row Binders

THE LEADER, YOUR HOME PAPER \$1.50

mustard, okra, parsley, spinach, squashes, sugar beets, etc. It seems that practically all vegetables do well here, and it is almost impossible to overtax this virgin soil.

- Do you grow any corn or cotton?**
Both make very satisfactory yields. Indian corn has averaged 40 to 75 bushels per acre—1 to 1 1/2 tons of maize or kaffir are not uncommon. Especially adapted to cotton growing and wonderful possibilities for this crop. Owner of this land will make affidavit to the fact that there has not been a crop failure on his farm of 250 acres for the past TEN years.
- Have you a successful stock raising country?**
This section has always been famous in that respect. Feed is plentiful, horses, mules, cattle, hogs and sheep are extremely healthy, and they neither suffer from heat in summer nor do they have to be housed during our mild winter months. Every well-rounded farm contains sufficient live stock to consume the surplus and waste from truck, fruit and general farm crops.
- Do hogs have cholera in the Bledsoe district?**
No case has ever been known here. Should infected hogs occasionally get through Texas' strict quarantine laws, the disease can easily be stamped out, as the health conditions are as near perfect as possible.
- Have you the dairy cow in your country?**
Within the past few years large numbers of fine dairy cows have been imported, and dairying is becoming one of our most important industries. Tuberculosis never bothers the herds.
- Does poultry do well in the Bledsoe district?**
This is one of the most profitable poultry raising sections of the United States. Poultry is practically free from disease, and all varieties of fowls thrive here.
- Have you good railroad and marketing facilities?**
The best there is, as we are on the Santa Fe Railroad.
- What is the nature of the country roads?**
The Bledsoe district has the best natural roads in the United States. They are kept in perfect condition by the county.
- How are your farms located with reference to railroads?**
Every farm offered for sale by the Whicker Land Company, is situated from 1/4 to 7 miles from the railroad depot.
- How about rural schools and churches?**
The townsites of Bledsoe is donating land for the purpose of churches and independent schools. Both will be developed to the high standards of Texas people.
- Are your lands increasing in value?**
At the present rate of increase, land here should double in price in less than 5 years.
- What are some of the popular varieties of shade trees?**
Locust, maple, elm, walnut, cottonwood, poplar and cedar.
- How is this land divided?**
Surveyed in tracts of 123 acres each. One to four tracts make a fine farm.
- What are the prices and terms?**
\$30.00 to \$35.00 per acre. Some few pieces at \$25.00. Cash payment \$10.50 per acre. Balance of consideration divided into 14 equal notes. First note due two years after cash payment, and one note due each year for 13 more years. Each note due December 1st, at 6 per cent interest, on or before. This gives a chance for TWO crops before a payment is due. Cheaper than rent.
- Can a man pay in full for his farm at any time?**
Yes. All notes are payable "on or before."
- Are there any livery charges while inspecting your lands?**
No, we have a number of good automobiles free for your service, and will be glad to meet you at the train if you will notify us as to the date of your arrival. We raise more cattle, sheep, hogs and poultry at less expense than any state. Texas land never decreases in price. Why not get the increase which is sure to come soon.

"NO MINERAL OR OIL RIGHTS RESERVED"

WHICKER LAND COMPANY

Home Office—Littlefield Hotel, Littlefield, Texas

Land Office—Bledsoe, Texas

"There is But One Crop Of Land"

There Will Never Be Another

SERVICE Our Motto

Keep our force large enough to give service at all times. Badger Guaranteed Tires—Adjustments made here.

Amalie Oils, Auto Accessories

LITTLEFIELD SERVICE STATION

A COMPLETE LINE OF DRUGS & DRUG SUNDRIES

Candies, Cigars, Toilet Goods

Prescriptions - Properly - Prepared

Handle Celebrated Lincoln Climatic Paint

SADLER DRUG STORE

"Quality and Service"

For Your FALL NEEDS

Anticipating the needs of the buyers of this vicinity, we have just returned from markets where we purchased a line of goods that will meet the demands of the most exacting and fastidious purchaser of this section. The goods are now rolling in everyday—already our store is being filled up with the choicest the market affords—all fresh, new and of latest styles. We are going to make a strong bid for your patronage this fall, and in order to do so we have laid in a stock of exceptional values, which were bought right and will be sold right. In justice to yourself you cannot afford to pass paying our store a visit before making your fall purchases.



Big Shipment of Men's Goods

We have just received a big shipment of Men's Goods, nifty, new styles in Fall Hats and Fall Suits. There are a variety of patterns in the season's most popular tones and all-wool fabrics. The tailoring and finish goods of these garments is strictly up to the minute, and no classier specimens were ever shipped into West Texas. Our hats are all of the latest colors and styles—you will want one, when you see them.

AUTUMN'S NEW HATS

Featuring satin and velvet combinations in various head sizes and in various brims, some having almost no brim while others shade the eyes comfortably. New browns, new blues, new purples chiefly, but some other tones scattered here and there in the assortment. The trimmings are especially smart, showing metal threads and cloth, burnt ostrich, charming ornaments and novelties. Modish hats to freshen one's outfit—and all at so little cost.



SPECIALS FOR NEXT WEEK
72x90 Quilted Cotton Bats \$1.00
Regular \$2.50 Hose—Popular Shades \$1.69

BARNES MERCANTILE

"The Store With The Goods"

Littlefield Texas

Pure Bred Animals Not Prone to T. B.

One Breed Is as Susceptible as Another.

(Prepared by the United States Department of Agriculture.)
There is no relation between the breeding of cattle and their susceptibility to tuberculosis. One breed is as susceptible as another, and grades are as likely to become infected as pure breeds.

These are conclusions of veterinary specialists of the bureau of animal industry, United States Department of Agriculture, based on several years experience in eradicating bovine tuberculosis. In support of the conclusion the bureau veterinarians have compiled a large number of statistics arranged according to the various breeds and whether the animals are pure breeds or grades.

From July 1, 1921, to April 1, 1924, tuberculin tests were applied to 1,424,302 pure bred cattle, of which 4.7 per cent were found to be tuberculous. During the same period 4,456,439 grade cattle were subjected to the test, of which 4.8 per cent reacted. Among the pure bred and grade cattle representing the various breeds the federal specialists have been able to find no evidence that any breed is more susceptible or resistant than any other. These conclusions apply to large groups representing conditions for the entire country. It is well known that certain localities have more infection than others, but the management of cattle, extent of buying and selling without paying proper attention to health, the control of sanitary conditions, and the individual resistance of the animals appear to be the principal factors that determine the degree of infection. Breeding apparently has nothing to do with the extent of tuberculosis.

Set Strawberries Early in Spring Is Best Plan.

As a rule it is best to set out strawberry plants in the spring quite early, and give them good care throughout the season. They give their maximum crop of fruit the second season after planting, though they will give more or less fruit for several years; but after the first crop, the berries are likely to be small.

In the fall after the ground is about ready to freeze a mulching of bean straw, clover hay or some other kind of straw should be applied, to give some protection during the winter and keep the fruit clean at bearing time. The mulch should not be applied very heavy, however.

Strawberry plants may also be set out in August if good plants can be secured and provided the ground is not too dry to get them started. But August planting will not give as much fruit the next year after setting as will the plants set out in the spring.

Many Farmers Overlook Potato Patch in Spring

Many farmers forget their potato patch until the weeds force them to give the crop a thorough working with the ordinary cultivators. By this time the weeds have secured such a foothold that they will be a trouble throughout the season and if there have been rains, the soil has become hard and crusted. To prevent this, and to start the young plants off right, our best growers are cultivating their potatoes immediately after the field is planted with an ordinary weeder or a spike-tooth harrow with the teeth inclined backward so as to prevent dragging out of the seed pieces and later the young plants. This practice is usually followed until the rows can be plainly seen across the field, when the only deep close cultivation is given.

Price Quite Important in Cattle Feed Venture

The cost of gains alone does not determine profit in cattle feeding. Selling price is equally important. Selling price is determined very largely by finish, hence the problem of the feeder is to produce as much gain and as rapid gains as possible as cheaply as possible. Most gains cost more than is necessary, but on the other hand the cheapest gains are not necessarily the most profitable. This emphasizes the complexity of the cattle-feeding business and the absolute necessity of using definite information relative to the comparative feeding value of different feeds and how they may be combined to make the most profit in a cattle-feeding venture.

Farm Hints

Hope springs eternal; so do weeds. Plan to use one to kill the other.

The radish is one of the old stand-bys of the home gardener.

The best time to plan the attack against insects is while they are in winter quarters.

Barley generally produces more pounds of grain per acre than any other small grain crop.

A tractor that is properly broken in will wear many years longer than one improperly used at the start.

If it is good enough to take prizes at the fair, it will sell well and is good enough for foundation for future production.

CITATION BY PUBLICATION

The State of Texas
To the Sheriff or any Constable of Lamb County, Greeting:

You are hereby commanded to cause to be published in a newspaper of general circulation, which has been published continuously and regularly for a period of not less than one year in your county, at least once each week for four consecutive weeks previous to the return day thereof, a copy of the following notice; and will also cause three copies of the same to be posted for not less than ten days before the return day thereof, one of which copies shall be posted at the door of the court house of said county, and the two other copies at two other public places in said county, not in the same city or town.

The State of Texas.

To all persons interested in the welfare of Roy Smith, Jr., a minor, Viola Smith has filed an application in the County Court of Lamb County, Texas, on the 24th day of August, A. D. 1925, to be appointed Guardian of the Person and Estate of Roy Smith, Jr., which application will be heard by said Court on the First Monday in November, A. D. 1925, the same being the 2nd day of November A. D. 1925, the same being the first day of the regular November Term, 1925 of said Court, at the Court House of said County, in Olton, Texas, at which time all persons interested in the welfare of said minor, the said Roy Smith, Jr., are required to appear and answer said application, and contest same, should they desire to do so.

Herein fail not, but have you this writ before said court at the next term thereof, with your return thereon, showing how you have executed the same.

Given under my hand and seal of said court, at my office in Olton, Texas, this 24th day of August, A. D. 1925.

(Seal) M. R. Cavett,
Clerk of the County Court of Lamb County, Texas.
Aug. 27, Sept. 3, 10, 17.

DUMB DAN AT WORK

Customer:—"Have you any bananas?"

Green Clerk:—"No—no mam, nothing but the old fashioned night shirts."

REGULAR HUBBY

Mrs. Peters:—"Is your husband a sound sleeper?"
Mrs. Nelson:—"Sound?—Nothing but sound. He snores."

Idea Was Napoleon's

The first abattoirs were organized near Paris in accordance with a law for their establishment signed by Emperor Napoleon in 1810. They were not put in operation, however, until eight years later, in 1818.

SHOE REPAIRING AND HARNESS OF ALL KINDS

I am this week opening a Shoe and Harness Repair Shop in the building just west of the Main Garage and across the street from the new brick garage building now being erected. I will handle all kinds of Harness, including accessories, and will make all kinds of repairs. I am an expert shoe man of several years successful experience and can do all kinds of boot and shoe repair work. I guarantee the satisfactory quality of my workmanship. "Service at the right price," is my motto.

LILLY'S SHOE SHOP

J. A. Lilly, Proprietor Littlefield, Texas



In the getting ready for school—the most important item of all is school supplies—and it won't be very long before you are going to need them. Better take our advice and be making your selections now.

Once again we have a new and complete stock. Every needed supply is right here. We can completely outfit you with everything you are going to need for the fall term.

TABLETS, PENCILS, RULERS, ERASERS, PENS, SACHELS, LUNCH BOXES, DRAWING AND WRITING PAPER

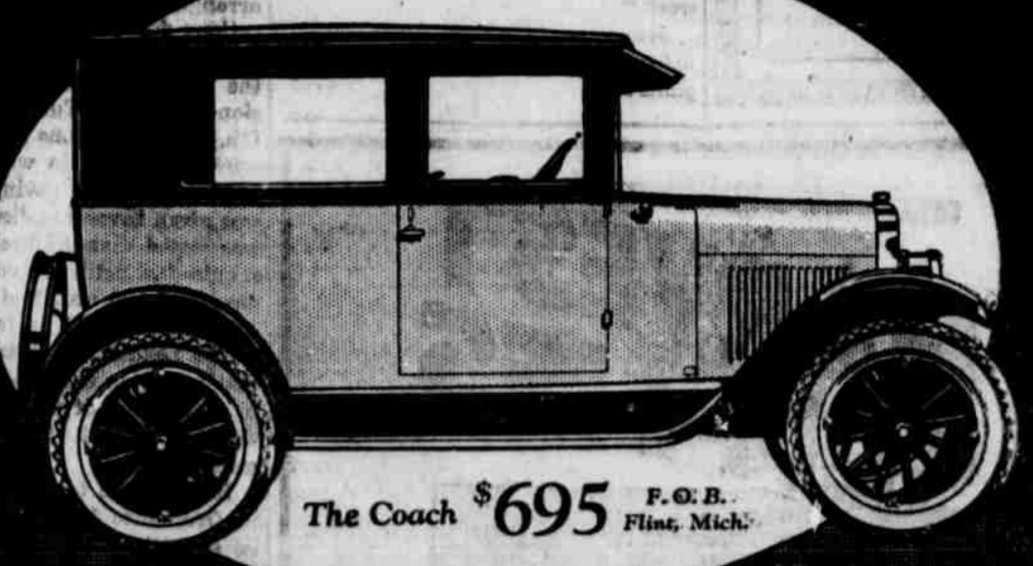
If you have not made out your complete list of needed supplies, drop in and we will assist you. A look over our stock will refresh your memory and perhaps save much inconvenience after school has begun.

Stokes & Alexander Drug Company

THE REXALL STORE
"In Business For Your Health"

for Economical Transportation

CHEVROLET



The Coach \$695 F.O.B. Flint, Mich.

The Public Acclaims this the finest Low Priced Coach

Built on the new Chevrolet chassis with construction typical of the highest priced cars—powerful motor; a new disc clutch, the easiest-acting you have ever handled; extra strong rear axle; long semi-elliptic springs—this car provides a remarkable combination of strength, power and comfort.

But in addition it is a beautiful car. Its fine Fisher body meets your ideals of fine appearance and comfort. It is finished in sage-green and black Duco whose lustre and color last for years. For such a coach to be priced so low is truly an achievement in motor car manufacture. See this car today.

Touring - \$525 Coupe - \$675 Commercial Chassis - \$425
Roadster - 525 Sedan - 775 Express Truck Chassis - 550

ALL PRICES F. O. B. FLINT, MICHIGAN

BELL-GILLETTE CHEVROLET COMPANY

Littlefield, Texas

QUALITY AT LOW COST

THE LEADER, YOUR HOME PAPER, \$1.50 A YR.

Your Birthday

Is it this week?

September 6-12—VIRGO

If your birthday is this week, you are exceptionally well-balanced and are never likely to go to extremes in anything. You have an innate refinement, purity and sensitiveness. You are always modest, and are of a quiet and retiring nature. With these qualities, it is very seldom a Virgo person sinks into degradation and vice, regardless of their adverse circumstances or early unfavorable environment. Mercury, the ruling planet of this sign, gives to its subjects much wit and very ingenious minds. These people have a cool, confident bearing, are inclined to be exclusive, and are always very discriminating in the selection of their friends and companions.

Virgo people are adapted for either a mercantile or professional life. They display much tact and cleverness in their commercial undertakings as well as professional callings. They make exceptionally fine authors, because of their great insight into human nature.

The most profound faults of these people are selfishness, self-gratification and pride, which often makes them envious and disagreeable. They do not get along well as a rule with other members of the family, are excitable and need responsibility of some kind.

SPRAINS

This soothing, healing, penetrating remedy takes all of the swelling pain out of burns, scalds, cuts, sprains, etc., and quickly heals the injury. Get a bottle of the bottles and drug store today.

HUNT'S LIGHTNING OIL
SADLER DRUG STORE
Littlefield, Texas

LITTLEFIELD HOTEL

AMERICAN PLAN

Courtesy and Service

WHICKER and THOMAS Proprietors

Leads Pirates



Bill McKetchnie, manager of Pittsburgh Pirates and "the wonder man" of 1925 baseball. Inset is Fred Clarke, who led the Pirates in other pennant days—and now helps McKetchnie keep the Pirates out in front.

TROUBLE ANTICIPATED

Mother: "Come Johnny—I want you to go to town with me for a few suit. You know school starts next week."

Johnny: "Oh Mom—will you buy me one of them with two pair of pants?"

CITY COMMISSION FAVORS PAVING OF MAIN STREET

At a special meeting of the Littlefield City Commissioners, held at the City Hall Saturday afternoon, it was decided that Tuesday, September 8th, should be observed by all citizens of Littlefield as Clean-up Day. In accordance with the decision the proclamation to that effect has been issued and published in this issue of the Leader.

Commenting upon the advisability of Clean-up Day, Mayor Crockett stated that every town ought to have enough pride among its citizens to keep that town clean at all times, but that there were always certain conditions of unsanitation that could never be entirely controlled. However, he said, on this day every citizen will be expected to turn out and clean their premises of all accumulated weeds, rubbish and refuse of various kinds.

A clean city is always an attractive city, and aside from the value of local pride and sanitation, at this time when the prospectors, tourists, land buyers and visitors generally are thronging here in great numbers it is highly essential for their favorable impression that the town be made and kept as clean as possible.

It was also voted at this meeting to ask for the resignation of the present sanitary officer and employment of another one made.

It was decided to build a calaboose, 8x12 feet on the city property where the waterworks wells are being located.

In the matter of a city night watchman, it was decided to ask for the resignation of the present incumbent, effective September 1st, but that he be employed to continue service until future arrangements are made. It was the decision of the Commission that the city sponsor the salary of the night watchman, and that a report be made by him of all subscriptions from business men toward his salary and any failure of meeting such payments. The night watchman will, in the future, be required to carry an official punch clock, with the keys located at certain definite places on his beat, same to be punched regularly, and that the daily dial of his rounds will be on constant exhibition at the City Clerk's office for public inspection. It is probable that the payment of the night watchman will be worked out on an equitable basis wherein each participant will be asked to pay according to the magnitude of his business or the total frontage of his property protected.

The temporary city marshal was also asked to hand in his resignation but to continue to act until further arrangements would be made. Applications for both city marshal and night watchman will be received at the regular meeting of the Commission to be held Tuesday night, Aug. 8th. All applications for such officers must be on file in writing.

The matter of paving Main Street was given favorable discussion, and it was stated that the preliminary steps required a petition containing the names of 100 qualified voters before such action could be taken.

The Leader was instructed to state that no action would be taken regarding the hiring of pumper for the city water system at the next regular meeting.

It was voted to make some changes in Ordinance No. 13, which has relation to the amusement question.

YANTIS—RAMSEY

The wedding of Miss Beth Yantis and Barto Ramsey came as a surprise to their many friends, when accompanied by Misses, Willie and Opal Ramsey, Cora Mae Munn and Miss Jesse Yantis; Messrs, Adlia and Murel Ramsey, they motored over to Levelland Monday evening and were united in marriage by Justice of Peace Taylor.

The bride is the daughter of Mr. and Mrs. O. K. Yantis and has a wide circle of friends here, having been reared in Littlefield and attended the public and high schools, of which she was a graduate of the 1924 class.

The groom came to Littlefield about two years ago, from Cisco, and has since resided with his brothers and sisters on their farm six miles south of town. Recently he has been employed with the Rice Construction Company, in the construction of the new school building.

Mr. and Mrs. Ramsey will make their future home at Enochs where they will have the management of the Enochs Hotel and Grocery.

BUY POULTRY HOUSE

We have bought the A. L. Poultry Produce business and are moving it to the old Ford garage across from the Post Office. Your patronage will be appreciated.—Fulkerson & Beljomy.

About Your Health

Things You Should Know



By John Joseph Gaines, M. D.

Your Throat

Undoubtedly, in our struggle with the invisible enemies of mankind, we have been baffled by the invaders of the breathing-passages more than anywhere else. Here many of the deadliest germs attack. We have practically abolished typhoid; cholera is a thing of the past; small-pox is no more dreaded; diphtheria and scarlet fever are yielding; influenza, pneumonia and tuberculosis remain mysterious and un-conquered.

It is known that disease-germs may reside for years in a throat that appears healthy, and annoys its owner but little. From this locality they wander to more remote tissues: an overworked joint, an idle gall-bladder, or an irritable kidney is fertile soil for immigrants from a very modest throat-infection. Worst of all however, a diseased throat is more apt to infect the heart-muscle, especially in people past middle-age. I am safe in asserting that, the majority of fatal heart diseases have their real origin in a perfectly curable throat infection, neglected!

Removal of tonsils is too often only a step in the right direction—merely removing the headquarters of the enemy. Millions of bacteria are left behind to continue depredations. The number of "poisoned hearts" from influenza-germs is appalling! It is in this field that an ounce of prevention is worth many pounds of cure. What better prevention than daily cleansing the upper air-passages with some harmless antiseptic? The invisible foe can be successfully combated, only when he is not deeply fortified. To neglect the throat is to court disaster.

NEXT
ICE COLD DRINKS

Help keep Littlefield clean:

Be proud of your home town.

Dialects in South Africa
There are many different dialects spoken by the Dutch inhabitants of South Africa, the most common being Plat Deutsch or Low Dutch similar to Low German.

Sounds Like Utters
"Carrots," says a culinary "can be cooked in many ways," but as they can be prepared in one way we will pass up carrots.—New Orleans States.

First And Last Chance Service Station and Garage

Oils, Gas and Accessories

We have Expert Mechanics

And Repair All Makes of Cars

Call and See Us

HENRY STALLO, Prop.

Littlefield, Texas

GROCERIES

—Why pay more for Groceries? These are just a few of our Regular Prices. We have many more money-saving values. It will pay you to see us before buying.

Blackberries, No. 2 can, each	1.10
Blackberries, No. 10 pails, each	1.10
Peaches, No. 10, solid pack pails, each	1.10
Bartlett Pears, No. 10 pails, solid pack, each	1.10
Pineapple, No. 10 pails, each	1.10
Pineapple, No. 2 1/2 cans, each	1.10
Pineapple, No. 2 cans, each	1.10
Sugar Peas, No. 2 cans, each	1.10
Tomatoes, No. 2 cans, each	1.10
Certo	1.10
Wapco Coffee, 3 lb. pail	1.10
Wapco Coffee, 1 lb.	1.10
Peaberry Coffee, 1 lb.	1.10
Sugar, 13 pounds for	1.10
Sugar, 10 pound bag, for	1.10
Good grade of Flour, 48 pounds	1.10
Meal, 25 pounds	1.10

—Our Groceries are all Quality Stock—sold at "live and let live" prices. We will appreciate your patronage. We sell for strictly cash.

Park Grocery Store

N. W. Cor. Public Park

J. L. Christian, Prop.

HARVEST SUPPLIES



HARVEST TIME AND COTTON PICKING

—Will soon be here, and we are ready to care for your needs, no matter how great they may be. Our store is chock full of fresh

Staple and Fancy Groceries

—Everything that will be needed for your own table and to supply the wants of your hired help.

Bring us your order. We specialize in

Quality Groceries

The MODEL GROCERY

The Texas Utilities Company

It Supplies Light and Power Without Effort on Your Part

That is one of the reasons why service of electricity is growing so fast. It meets the definition of "an essential public service."

No community that expects to grow can get along without electric light and power. No community can grow unless its electric service grows ahead of it to make its growth possible.

Supplying electric power and light is not selling a commodity. It is doing service. This service must be ready every minute of the day. It must be ample to meet all demands. It must be supplied to all alike.

These things about this service lend it the great public interest that attend it. They are the things that make it desirable for the community and its people and electric utility management to understand each other fully and be perfectly frank with each other.

This company seeks that kind of co-operation with the people that it serves.

The TEXAS UTILITIES CO.

R. E. McCASKILL, Manager

Littlefield, Texas

"COURTESY AND SERVICE"

Unworthy Citizens
 That can give up essential life
 obtain a little temporary safety
 neither safety nor safety—
 in Florida.



HOME DAIRY
 Sanitary and
 Wholesome
 Products
 Popular Prices
 Service our Specialty
 Please Help Us By Set-
 ting Out Your Empty
 Cans.
B. Moulton, Prop.
 One mile east of Littlefield

GO TO—
LITTLEFIELD
WRECKING CO.
 —for—
USED CAR PARTS
 Nearly All Makes of
 Cars
 Many Parts Good as
 New
 Located on East Side
 of Town

OLD STAR CAFE
 Regular Meals
 and
 Short Orders
 A Menu & Service You Will
 Always Appreciate
Mr. Maude Foster
 Proprietor

Home Killed Meats Range Raised
THE STAR CASH MARKET
FRED HOOVER, Proprietor
 Where Quality Tells and Price Sells
 Littlefield, Texas



Grandma Walked.
 Consider your life with grandma's as
 to ease, comfort and convenience. The ur-
 gent need of even a yard or two of calico
 entailed no end of trouble for her—where-
 as—you today—with a telephone in your
 home have available the greatest step-saver
 ever perfected by man.
 Have us install a telephone in your home or
 place of business for six months—and you
 wouldn't think of doing without it.

Panhandle Telephone System
 Littlefield, Amberst, Sudan

B. Y. P. U. PROGRAM
 Subject—Devotional Meeting—
 Cultivating The Spirit of Service:
 August 6, 1925.
 Leader—Lee Pool.
 Parable of The Plowing Servant—
 Lillian Hopping
 Is God Under Obligations—Mary
 Wiebe.
 A False Teaching of To-day—Opal
 Pilcher.
 Bought by His Blood—Modena
 Webb.
 Serve Our God with Gladness—
 Opal Ramsey.
 Take Pride in Our Masters Plans—
 Willie Hay
 Meet with us Sunday night in the
 High School building at 6:30 and help
 to make it a hundred per cent union.
 Help keep Littlefield clean!

FOR SALE
FAIRBANKS
WAGON SCALE
W. H. HEINEN
 At Wagon Yard



FRESH BREAD
HOT ROLLS
AND PIES
 Whole Wheat Bread
 Every Thursday.
The Littlefield
BAKERY

**Flavors and Odors
 of Milk From Feed**
 Precautions Must Be Taken
 in Feeding Vegetables.

(Prepared by the United States Department
 of Agriculture.)
 When cows are fed such succulent
 feed as cabbage, potatoes, green al-
 falfa, green corn, turnips and silage,
 there is liable to be some noticeable
 flavor in the milk unless precautions
 are taken, says the United States De-
 partment of Agriculture. A great deal
 of experimental work has been done
 in the use of these feeds, and certain
 practices have been found desirable
 and practicable. The important facts
 brought out were as follows:
 Feeding succulent feed before milk-
 ing is likely to impart an undesirable
 flavor and odor to the milk.
 The longer the time elapsing be-
 tween feeding and milking the less
 pronounced will be the undesirable
 flavors and odors.
 Feeding succulent feeds immedi-
 ately after milking has little or no detri-
 mental effect.
 Prompt and thorough aeration of
 milk while still warm will remove
 slight flavors and odors and will less-
 en the intensity of strong flavors and
 odors.
 The department's market milk spe-
 cialists say that feeds may be one of
 the most frequent causes of abnormal
 flavors and odors in milk, and for that
 reason the feeding of the succulent
 feeds listed above should be done very
 carefully.
 Sometimes the appearance of feed
 flavor or odor in milk alarms the con-
 sumer, and it may be to the interest
 of the producer or distributor to ac-
 quaint the public with the cause.

**Economical Ration for
 Feeding Ewes and Lambs**
 Experiments at the Ohio agricul-
 tural experiment station have shown
 that when the ewes are in good thrifty
 condition heavy grain feeding prior to
 lambing is uneconomical and does not
 increase the efficiency of the ration. A
 light grain allowance, however, is to
 be strongly recommended even though
 legume hay and corn silage make up a
 large part of the daily feed, for the
 ewes fed one-third to one-half pound
 of grain per head daily in addition to
 legume hay and corn silage weaned
 strong lambs and had an abundant
 supply of milk.

After lambing, the grain allowance
 should be increased sufficient to main-
 tain the condition of the ewes as far
 as possible and to insure a good flow
 of milk. When the lambs have learned
 to eat grain, and they should always
 have a creep where they can eat with-
 out interference, the grain allowance
 of the ewes can be somewhat reduced
 without reducing the efficiency of the
 ration.

**Proper Plan to Supply
 Bee Colony Foundation**
 The cost of foundation is very small
 compared to the cost of letting the
 bees build it. If the bees build comb
 they have to eat a good deal of honey
 and stay in the hive to generate the
 comb. They seldom build comb except
 when there is a good honey flow on.
 By using foundation the beekeeper
 saves the comb builders much work,
 and thus provides many more field
 workers. Two advantages for comb
 foundation are as follows:
 1. Combs built on foundation are
 straight and easy to handle.
 2. Comb foundation is stamped for
 working bee cells, and the bees draw
 it out as it is started, and in this way
 avoid raising excessive numbers of
 drones.—E. S. Prevost, Extension Bee
 Specialist, Clemson College.

**Sheep Shearing Machine
 Is Quite Satisfactory**
 There are many methods of shear-
 ing sheep, ranging all the way from a
 pair of ordinary scissors to the finest
 machine clippers. Quite a few farmers
 at the present time are using hand
 shears. Probably the most satisfactory
 machine on the market now is the
 flexible shaft machine, which has an
 attachment for clipping horses and
 mules and another attachment, or flex-
 ible arm, for sheep shearing. This ma-
 chine will cost somewhere in the neigh-
 borhood of \$30. Where several farmers
 in a community are growing sheep
 Prof. L. V. Starkey, chief of the animal
 husbandry division at Clemson
 college, suggests that they can co-op-
 erate by purchasing a machine and
 use the same machine for all of the
 small flocks.

FARM NOTES
 Ten pounds of alfalfa seed per acre
 is about right.
 The good farmer keeps himself and
 his farm well posted.
 A handsome, durable, convenient
 farm gate is a three-fold blessing.
 Count 'em.
 The crop we used to regard as a
 weed, farmers now regard as one of
 their most valuable crops.
 The best way to appreciate fully the
 value of proper farm equipment is to
 do without it and figure the loss.
 Sweet clover pastures carried from
 six to ten times as much stock as
 would native grass and with greater
 returns in milk and meat.

**MONSTER CROWD IS
 EXPECTED AT THE
 SO. PLAINS FAIR**

The largest crowd that has ever
 gathered in Lubbock is expected Sep-
 tember 30 to attend the opening day
 of the twelfth annual session of the
 Panhandle South Plains Fair, known
 as "The Show Window of the Plains",
 and the opening exercises of the Tex-
 as Technological College, which will
 be held that day and which will be
 so arranged that visitors may attend
 both without conflict, according to
 Geo. E. Benson, president of the fair
 association, and Dr. P. W. Horn, pres-
 ident of the Texas Technological Col-
 lege.
 Fireworks, free attractions, and
 other features are to be added to this
 year's fair entertainment program.
 Five football games will be played
 during the exposition. An increase in
 interest is being taken in each depart-
 ment according to superintendents
 who state that their work is well up
 and the opening day of the fair will
 find their department ready for the
 twelfth annual show.

The following vice-presidents in
 South Plains towns are representing
 the fair in their section and report
 increase of interest and expect a re-
 cord attendance during the four days
 of the exposition: Roy C. Russell,
 Idalou; N. E. Smallin, Lorenzo; Mar-
 vin A. McLaughlin, Ralls; W. P.
 Walker, Crosbyton; W. P. Hesting,
 Slaton; S. W. Gregory, Southland;
 Ira L. Duckworth, Post City; W.
 Brown Bishop, Tahoka; Ben T. Brown
 O'Donnell; R. R. Townsend, Lamesa;
 J. P. Nystell, Abernathy; Earl T.
 Cadenhead, Meadow; J. B. Cardwell,
 Plainview; U. N. Oliver, Amarillo;
 Joe A. Henderson, Ropesville; Mor-
 gan L. Copeland, Brownfield; Bob
 Crump, Shallowater; Charles F. Far-
 rar, Olton; Gus M. Shaw, Littlefield;
 H. C. McGee, Amherst; L. E. Slate,
 Sudan; R. L. Brown, Muleshoe; G. H.
 Tubb, Levelland; R. E. Fry, Floyd-
 ada; J. W. Childers, Seminole; A. B.
 Brown, Lockney; and R. A. Jeffries.

THE DEAD BEAT
 The dead beat poses as an honest
 man, and by reason of his pose is
 enabled to prey upon his fellows.
 Wherever he can obtain credit, there
 he buys. He buys freely and fares
 well. When those who have given him
 credit demand a settlement, he an-
 swers truthfully that he has no money
 and cannot pay. He will make fine
 promises, call heaven to witness that
 he is an honest man sore beset by
 circumstances, and protest that the
 debt slipped upon him without his
 knowledge. And so protesting, he will
 earn a measure of faith and pity,
 and escape some portion of the con-
 demnation that he deserves.
 There is no truth in him. He knows
 the amount of his income; he knows
 that he is making debts faster than
 he is making money; he knows that
 he cannot pay for the goods he is
 buying; and his clear intent is to
 defraud those who trust him.
 People of large sympathy and small
 wit will be tempted to find excuses
 for him. They will say that he is im-
 provident by nature; that one of
 reckless and care-free temperament
 can not school himself to thrift. Their
 defense does little credit to their in-
 telligence. Any man possessed of suf-
 ficient wit to earn a dollar knows
 that he cannot pay out more money
 than he takes in.—Fiona Star.

If the average Littlefield woman
 ever got a chance to marry again she
 would pick a husband who made so
 much money she would never have to
 hear the word "economy" again.

First "National" Journal
 The National Intelligencer, estab-
 lished in Washington, in 1800, by
 Samuel Harrison Smith, was claimed
 to be the first newspaper in this coun-
 try that might justly assert itself as
 "national."

SICKLY, PEEVISH CHILDREN
 Children suffering from intestinal worm-
 are cross, restless and unhealthy. There
 are other symptoms, however. If the
 child is pale, has dark rings under the
 eyes, bad breath and takes no interest in
 play, it is almost a certainty that worms
 are eating away its vitality. The surest
 remedy for worms is White's Cream Ver-
 minex. It is positive destruction to the
 worms but harmless to the child. Price
 25c per bottle.

STOKES & ALEXANDER DRUG CO.
O. K. Transfer
 SMALL OR BIG HAULS
 EXPRESS, FREIGHT OR
 BAGGAGE
 Phone 22, or Leave Order with
 Butler Lumber Co.
O. K. Yantis
 Littlefield, Texas

**Money Spent For
 INSURANCE
 Is An Investment**

We'll Save You Money

—Whether for Life or Fire Insurance, money expended in this
 wise should never be charged on the debit side of the ledger—for
 it is invariably a good business investment.
 —For the comparatively small amount insurance costs, no man
 can afford to be without it. Both property and life should al-
 ways be kept well insured.
 —We have known instances where fire has reduced a man to
 poverty, and within a very short time afterward he died, leaving
 his family penniless. Insurance would have averted such a
 calamity.
 —We represent leading strong companies of America. Better
 drop into our office immediately and talk the matter over with us.

A. G. HEMPHILL
 State Bank Bldg. Littlefield, Texas

THE LEADER, YOUR HOME PAPER \$1.50 A YEAR

Farm and Ranch Loans 6 per cent
Improved City Loans 7 per cent
 ON EASY TERMS
 LITTLEFIELD TOWNSITE LOTS
 LOTS IN SOUTHMOOR ADDITION
 ACREAGE TRACTS IN BROAD ACRES
 CONVEYANCING & NOTARY WORK
C. J. DUGGAN, LITTLEFIELD, TEXAS.

J. D. Simpson, B. L., M. D. **Ira Simpson, R. N.**
 Surgery and Medicine Supt.
R. H. Perkins, D. D. S.
 Dentistry
SIMPSON SANITARIUM
 Littlefield, Texas Telephone 131-J
 —Newly equipped and furnished. Private rooms, accommodations
 for surgical, medical and obstetrical cases.
 —Open to regular Physicians, and for the accommodation of their
 patients.

Fire Lightning Tornado Casualty
J. T. STREET INSURANCE
Complete Service
 The oldest Agency in Lamb County
 Established 1913
 Every loss ever reported to this Agency has been
 paid promptly and 100 per cent.
 Littlefield, Texas

THE LEADER, YOUR HOME PAPER, \$1.50 A YEAR

LIGHT CRUST FLOUR.
 The purpose of this ad is to enlighten you on the merits of
 Light Crust Flour.
 This, you know, is just what the name implies. It makes
 light white biscuits, satisfies the palate, and pleases the eye; makes
 the housewife think more of her "better half" and makes the
 visitors return. Should you operate a hotel, it just simply puts the
 other fellow out of business. It does not cost any more than any
 good high grade flour and you get at least twenty per cent the
 best of the deal over any other brand. Try a sack, you will always
 buy this flour.

DRY GOODS
 We have in Dry Goods some items that we are making
 a special price on in order to move before the season is over.
 Come in and get your share of the bargains. We never make
 prices, it might suit us to cut the prices even below this suffice to
 say that we will not be undersold by any merchant in Littlefield
 or any town on the Plains.

BOY'S AND MEN'S SUITS
 Try one of our Boy's suits while they last at \$5.00 per
 suit, they retail from \$10.00 to \$15.00. Men's suits and extra pants
 at 20 per cent discount, try one. We will make you a suit and
 save you from \$3.00 to \$10.00 per suit on them

SHOES
 Shoes as good as the best and at a saving, from \$1.00 to
 \$3.00 per pair.

HOSE
 Ladie's and men's, young men's and Misses, they are all
 the latest styles as well as the ever-day variety. The price, that
 is what tickles you.

LADIES HATS
 A few ladie's hats, while they last at cost. They are con-
 signed hats and we will have to return them soon—Better Hurry.

J. E. BRANNEN CASH STORE
 Credit makes enemies; let's be friends

Fall Opening

Autumn inaugural at this store has come to be an event awaited with great interest by the women of Littlefield and Lamb County. This year we feel we have outdone all previous efforts in the selection of high-grade merchandise. Our leadership in this territory is founded on QUALITY—and where quality is—there will be all that is new and desirable in style. We invite all of our friends and patrons to visit our store this week for the big style exposition.



Authentic Modes in MILLINERY

Fall millinery that forecasts the mode for Winter, 1925-26. A very smart, exclusive collection of models which may be worn with perfect propriety throughout the Fall and Winter season. There are new felts, velvets, satins, and new combinations. The shapes are numerous—there are small, medium, and large models. There are sports models, tailored models, and dress models, in all the bright new colors as well as black, and the more conservative tones.

Smart and New JEWELRY

The smartness of the new Fall Jewelry lies equally in the exquisite tints, the novel designs, and the unique manner in which they may be worn. Included in this display are bracelets, necklaces, chokers, pins, earrings, pendants, rings, new beaded necklaces, etc.

One remarkably fine value is a finely woven pearl necklace, in two-tone effect, with or without pendant drops, with a smart jeweled clasp. \$2.69.

Made to match the pearl necklace is the braided pearl bracelet, with jeweled clasp, in one, two and three strand effects. \$2.25.



Lovely All Silk HOSIERY

High-grade silk hose, full fashioned of pure thread silk, soft, lustrous and closely woven, in sheer, medium and heavy weight. With or without French clox. Also on display are fine quality, 48-gauge chiffon hose, full fashioned, with silk tops. In all the authoritatively fashionable shades, including Rachel, Nude, Beige Blonde, Amber, Sunset, Fawn, Ash rose, Navy, Black, and White. These are just a few of the many smart colors we are showing.

Autumn's Demand for SPORT WEAR

The woman who goes in for sports and outdoor activities will find here the correct costume—and the most becoming one for her—whether her interest lies in golfing, hiking, tennis, camping, hunting, motoring, etc.

Bright sweaters, smart top coats, snappy hats, comfortable footwear, gloves, hose—silk or wool—knickers—at the lowest prices in town. Also a complete stock of sport equipment.



C. E. ELLIS
Littlefield, Texas

Color Is Feature of Latest Modes

Autumn Styles Already Being Shown in Woolens, Velvets and Silks.

Recently there have been held a number of attractive fashion shows, expositions of the trend of the mode as it is presented by the foremost creators of styles in Paris and America. These, observes a fashion writer in the New York Times, illustrated principally the fabrics made by the American manufacturers, and for this reason have been occasions of greater significance than any ever before given.

At each of the gatherings there was evident a tendency toward a higher plane, a better standard in all things that have to do with women's dress. A vital point was the harmony between art and commerce, beauty and style, an underlying union of the practical and the ideal. It is interesting to observe the psychology that has drawn together the artist who designs and the men who weave, dye and market the materials that represent an appreciation of quality, a feeling for color. The intelligence, skill and industry to accomplish these things and the imagination which sees the finished model command one's most profound admiration and respect.

Showing Autumn Modes.

The theme that caught the attention at these style conventions was color. It is a sort of slogan not only for the moment, but for the days to come. Design, line, method are all important in their latest variants, but we have apparently gone on a long spree. It is the thing uppermost in the thought of every promoter, from whichever end he approaches the subject.

Fabrics and styles for the summer having been established, it is the mode for next autumn that is being shown in so many engaging models. There are the woolens, velvets and silks illustrated by the most prominent couturiers on both sides of the ocean in frocks and suits and coats, giving one a peep into the season far ahead, but acting also as a gauge by which to check up the present styles. The designs already accepted will have some sequel in the fashions that are to follow those of the summer. Their genuine points may be traced in the creations that carry on. The acid test will apply most of all to color. Fabric is first of all a matter of season, though all tradition has been left out of the scheme in the latest materials, since the mood is for silk, satin and crepe. Any, in fact, of the silk variants. In these a wider horizon, a deeper sense of color, is painted from a fuller palette than has ever given beauty and importance to just clothes, translating them into creations. From the inception of a type to its finished form, it is now, as never before in the history of fashion, a problem of



Autumn Dress of Royal Blue, With Velvet Ribbon at Waistline.

harmony in form and proportion, but most of all in color.

Among the fashion plates presented by the artists who are drawing for the future, the advance fashions for next autumn are many of great distinction. It is safe to predict soft woolens of the quality of kasha, of flannel-like twills and of the kid finish goods, like and yet unlike duvetone. These for frocks and suits and coats, and for wraps are of such materials or of velvet, lined with one of the new printed silks of the Cinderella type—the silhouette, modern floral, geometric or other tracery patterns. Those which give merely a hint of the wealth of ideas that will later find expressions in models designed by the world's foremost creators will share popularity with rich satin and surah.

For gowns of the softer type for both day and evening, there are the luxurious silks and velvets of subtle feeling, luscious quality and enchanting colors. A multi-colored, embossed velvet on a chiffon ground reflecting the richest tones of the Orient with the softer shades, monotone and two-tone velvets. Roman stripes, no resque, arabesque, cubist, and bold

THE CLEAN TOWN

Cleanliness, it has been said, is next to Godliness. A dirty individual is neither clean spiritually nor mentally. Dirt makes for ruin physically, mentally, morally. This is as true of a town as an individual. The dirty town the town full of rubbish, of untidy houses, of muddy streets, of unsanitary conditions, is non-progressive materially, morally and educationally. Neither moral nor material advancement flourish in dirty, unkept dwelling or in unkept towns.

If any town or city is ambitious for advancement, or if ever a few of its men and women are ready to devote their time and energy to the betterment of the community, the surest way to achieve success is to clean up—make back yards and front yards clean, make streets clean and keep them clean, encourage the people to beautify their homes and their yards, stimulate a love for and a pride in their homes and in their towns, repair the tumble-down yard fences, paint up, make things as clean outside as they should be inside, and then that community will look up

mentally, morally and materially. No community which does not up and paint up, which does not best to have clean streets and yards, has any right to look up face the world.

It might be said a dirty town is a dirty people; a dirty people is a moral and material dirt and it is the duty of all men and women to make their homes and their towns just as clean and attractive and beautiful as possible. He who is short in this respect falls short in his duty to God and man, it is not what else he may do—*Journal*.

BUY POULTRY HOUSE

We have bought the A. L. Produce business and are moving to the old Ford garage across the Post Office. Your patronage be appreciated.—Fulkerson & Jory.

When you know any news of est, tell the editor, so it can be on to others.

MARLIN HOT WELLS

WHERE LIFE GIVING WATERS FLOW
Come to Marlin, the year-round health resort, for rheumatism, neuritis, stomach trouble and all chronic diseases. Modern up-to-date hotels, clinics and bath houses. Golfing and dancing. Ask your neighbor who has been here or write,
THE MARLIN CHAMBER OF COMMERCE
MARLIN, TEXAS

Real Estate

Improved and Unimproved

We Buy, Sell And Trade

List Your Property With Us!

Harless Bros.

Littlefield, Texas

First Showing Men's Fall Suits



Here they are, for the men who believe in a full season's wear for suits—the new fall styles in all-wool fabrics and in the season's most popular tones. We can't begin to describe all of the clever little tailoring twirls on these suits. You must see them.

\$30

The styles this fall are for full he-man garments which are comfortable—in dress—in business—in sport.

C. E. ELLIS

LITTLEFIELD, PHONE 137

TEXAS

BY PUBLICATION

of Texas.

Sheriff or any Constable of County, Greeting:

are hereby commanded to be published in a newspaper of circulation, which has been continuously and regularly of not less than one year county, at least once each four consecutive weeks prior to the return day thereof, and the following notice; and will use copies of the same to be for not less than ten days the return day thereof, at different places in said county, which copies shall be posted at each house door of said county, and two other copies at two oth-

er public places in said county, not in the same city or town. The State of Texas.

To all persons interested in the welfare of Roy Smith, Jr., a minor: Viola Smith was on the 24th day of August, 1925, appointed by the Hon. E. N. Burrus, County Judge of said County, temporary guardian of the person and estate of Roy Smith, Jr., a Minor; and all persons interested in the welfare of said minor are required to appear at the next regular term of the County Court of Lamb County, Texas, to be holden on the first Monday in November, 1925, the same being the 2nd day of November 1925, and contest said appointment if they desire to do so; and if said appointment is not contested at said term of court, then the same shall become permanent.

Herein fail not, but have you this writ before said court at the next term thereof, with your return thereon, showing how you have executed the same.

Given under my hand and seal of said court, at my office in Olton, Texas, this the 24th day of August, 1925.

(Seal) M. R. Cavett,
Clerk of the County Court of Lamb County, Texas.
Aug. 27, Sept. 3, 10, 17.



Join Our PARTY

Everyone who visits La Nell is happy

Choice Fountain Drinks
Ice Cream, Sundaes
Cones, Malted Milks
Toothsome Candies
Cigars, Tobaccos
Light Lunches

You are always welcomed with a smile

La Nell
Nell Ruth Earnest, Prop.

SHERIFF IRVIN ARRESTS TWO MEN FROM AMHERST

The hand of the law, represented by Sheriff Len Irvin and Deputy C. A. Rayburn, fell heavily upon two citizens of Amherst last Monday night when J. H. Hughes and J. W. Nance were arrested, the former on the charge of running a gambling place, and the latter of aggravated assault.

Both men were taken to the county seat at Olton where, in lieu of bond, they were placed in the county bastille.

Commenting upon the arrest of these two men, Sheriff Irvin declared there was entirely too much violation of the law going on in this county and it was his desire to put an end to it as rapidly as possible. He declared the only thing that kept him from wiping it out entirely was the lack of information leading to arrest and conviction. "The Sheriff's Department stands ready to fulfil its duties at all times," said Irvin. "Give us the evidence or any clues leading to evidence and arrest and we will go after the violators at once."

NOW IT'S "DAD"

Littlefield citizens were strangely shocked Tuesday morning to see a prominent local young man in one of the drug store buying Castoria, Paregoric, baby nipples and bottles, and a little later on he was discovered sneaking out of a dry goods store with a bundle under his arm which the clerk was unwise enough to say "birdseye." The expression spread across his face was unusual—it showed something of embarrassment mingled with happiness—it was far from being natural, rather supernatural.

Investigation revealed the fact that his name was V. C. Walden, and that a brand new baby girl, tipping the scales at 10 pounds had arrived at their house that morning. Mother and child are reported getting along well, but it is darned hard to tell what the fate of the editor of this newspaper will be when V. C. reads this story.

MISS BARNES ENTERTAINS

Miss Thelma Barnes delightfully entertained a number of her friends Monday morning from nine to twelve o'clock, with a Bridge luncheon.

After a number of rounds of bridge wherein Miss Vernon Brown, of Lubbock, was presented with a dainty hand painted card tray for high score honor.

A well appointed luncheon was served to the following guests: Messdames, R. S. Thomas, P. W. Walker, G. E. McCelvey, Robert Steen, A. C. Chesher, Otha Key and Bill Chesher: Misses Maxine Burns, Alyne Arnett, Dessa Key, Grace Chesher, Miss Ver-

non Brown, of Lubbock and the hostess.

AUXILIARY MEET

The Ladies Auxiliary of the First Presbyterian church met in regular session, Tuesday afternoon, at the home of Mrs. W. G. Street, with about fifteen members in attendance.

"I will find a way or make one."



JOHN W. BLALOCK

The devotional was led by Dr. DeWitt and the lesson was conducted by Mrs. Lena Howard, the subject being, Alaska, Past, Present and Future.

The next meeting will be held at the home of Mrs. G. B. Richardson.

Help keep Littlefield clean!

Your home paper, \$1.50 a year.

Reserves of Coal

In estimating coal in reserves it is usual to figure that in a vein of coal one foot thick there would be 1,300 tons under an acre. In a vein three feet thick it would amount to 3,900 tons. About one-third is estimated as recoverable, therefore, mined, it would amount to 3,000 tons. The amount might be some less or possibly more.

63,387 ACRES SOUTH PLAINS LAND IN ANY SIZE FARMS \$2.50 to \$5.00 Per Acre Down No More Payments To Us Until Next Year Then 1/3 and 1/4 of Crops

The Blalock Company
Littlefield, Texas

YOUR LAST CHANCE!

ON THE

\$450 FORD Touring Car

Brand New 1925 Model For \$25

TRADES DAY, MONDAY, SEPT., 7th, AT 4:00 P. M.

Broad Acres Addition may have an opportunity to purchase this car for \$25.00, if his ticket is drawn at this time. The \$25.00 goes to the piano fund of the Littlefield Public schools.

—Articles donated by Littlefield merchants will also be auctioned off at the time of drawing, the money derived from them to also be given the same piano fund. See—

C. J. DUGGAN
Owner of Southmoor and Broad Acres Add'ns
For Further Information As To How You May Secure This Car



Before You Know It

Last spring when you hung it away you thought you would "One day soon" send it to be cleaned—pressed—and have it ready for fall wear.

Well, Fall is almost here—and before you know it a brisk, cool breeze will be blowing—and you haven't yet sent us that suit for needed work.

We will make it look like new. Our prices for cleaning and pressing are very low, and we have as fine equipment as may be found anywhere in West Texas. Let us call for your work

Phone
Littlefield Tailor Shop
C. E. WILLIS, Prop.

NOW OPEN!

Second Subdivision

FAMOUS SPADE RANCH LANDS

Ellwood Farms

In Lamb County on the South Plains of Texas

—Fifty thousand acres being surveyed into 160 acre farms, 20,000 acres of which are now available for immediate sale and settlement.

—All fine Cat-Claw land, lies rich and level in a well proven agricultural section, where climate is ideal, water pure and abundant, rainfall sufficient and diversified crops assured annually.

—The first subdivision of this well known ranch, consisting of 45,000 acres, was thrown open for settlement October 6th, last year, and by the first of the following January was practically all sold out. This second subdivision is the same kind of land, just as favorably located, and will be sold as quickly.

RESERVATIONS NOW BEING MADE

—This land is being sold at the very reasonable price of \$35.00 per acre; \$5.00 per acre cash payment, balance due in fifteen years—fourteen years at \$1.00 per acre, and last payment of \$16.00 per acre due the fifteenth year—six per cent interest on deferred payments.

—In this proven new agricultural country that is now attracting such wide attention, a man with small means can easily buy and pay for a home. After the first payment is made, the annual crops received from off the land insure all future obligations. There is no reason for anyone being a hireling to some landlord when a home of their own may be secured so easily.

—Write or see us for further detailed information.

Ellwood Farms Company
R. C. Hopping, Sales Mgr. Littlefield, Texas

FURNITURE!

We Have It—Anything You Want

Just Name It and Take It—The Price Is Right

New, Fresh and Up-to-date styles in House Furnishings—The kind that makes a house a real home and a real home happier.

Bed Room Suites
Living Room Suites
Dining Room Suites
Kitchen Furnishings

Office Furniture
Rocking Chairs
Breakfast Room Suites
Individual Pieces

No matter how beautiful the bedstead may be, unless there is a soft comfortable mattress on it one cannot rest. After the labor of the day the entire family is entitled to refreshing slumber. Equip your home with our extra stuffed mattress and learn the real enjoyment of restful, peaceful slumber. We have them for all sizes of beds.

If you have not yet paid our store a visit, come in and let's get acquainted. Tho you may not wish to purchase anything now, you will some time. We are proud of our line of furniture and it is always a pleasure to show it.

BURLESON-MASON COMPANY
Opposite Lamb County Mercantile Co.
Littlefield Texas

MCCORMICK & DEERING ROW BINDERS

The supply is limited so get yours early. Twine is high, so naturally you want all you can get for your money. Your money will go farther when invested in QUALITY goods.

We have the ORIGINAL BIG BALL DEERING SISAL TWINE. Deering twine is GUARANTEED FOR LENGTH, WEIGHT AND STRENGTH. DEERING twine runs smoothly through the knotter, does not kink or snarl, runs 500 more feet to the ball, (8lb) than any other twine. DEERING twine is specially treated to insure against insects of all kinds.

The outside cover of the ball is specially crussed to guard against tangling, thereby insuring you the use of every foot of the twine.

DEERING—THE STANDARD TWINE FOR ONE-HALF CENTURY
For Sale By

Blair Implement Co.

Littlefield,

Texas

DRINK

NuGrape

Reg. U. S. Pat. Off.

IMITATION GRAPE—NOT GRAPE JUICE

Favorite Beverage

--of--

West Texas

For sale at all Soda Fountains, Restaurants
Cold Drink Stands

Once You Try It You'll Always Like It

Nu Grape Bottling Co

Allen Building

Littlefield, Texas

Make This Bank

YOUR BANK

—The better the opportunity is that comes to you, the more inquisitive it usually is about your bank account. Plan to have more money in the bank for your own needs this year. We are here to help you prosper.

The
**Littlefield State
Bank**

LITTLEFIELD,

TEXAS

This Crew Now Opening Its Nation-Wide Dry Drive



All state and divisional chiefs in Gen. Lincoln C. Andrew's new Federal Dry Army were in Washington last week for a final council-of-war before the big drive which started this week. There are 22 district chiefs, unrestricted by auto lines. It is planned to "get the big ones"—cutting off the liquor supply at the source. No. 1., Comm. Haynes; No. 2., Gen. Andrews; No. 3., Comm. White.

PERSONAL ITEMS

Seldon Reid, of Austin, is here this week on business.

Alvin Hendricks transacted business in Anton Monday.

Mrs. E. S. Rowe is attending teacher's institute in Lubbock this week.

Mrs. William Hay is in Lubbock this week, attending teacher's institute.

Mr. D. P. Earnest and daughter, Nell Ruth, made a trip to Lubbock Monday.

Mrs. B. L. Cogdill is spending the week in Lubbock, attending teacher's institute.

Mr. and Mrs. M. P. Reid returned Sunday from a visit with relatives in Canadian.

Mrs. Bessie Baze is spending this week in Lubbock, attending Teacher's institute.

Mrs. G. M. Vann and son Jack, of Pershing, Oklahoma, are the guests of Mr. and Mrs. W. H. Gardner.

H. G. Wilson and family, of Slaton, spent the week-end in the home of A. A. Anderson.

T. Windsor, assistant secretary of the Lubbock Chamber of Commerce, was here Tuesday on business.

Paul G. Cuenod, of McGregor, is here this week prospecting for a location.

C. W. Alexander, of Lubbock, passed through Littlefield Tuesday en route to Pep.

Mrs. H. W. Teeters returned home this week from a two weeks visit at Sipe Springs.

Mr. and Mrs. Joe Simmons, of Fort Worth, have been visiting the latter's sister, Mrs. Ed Griffin, the past week.

Mr. and Mrs. Ed Parnell returned Friday, from an extended pleasure trip through Colorado and East Texas.

Mrs. Maude Foster left Sunday for Chillicothe, in answer to a summons to the bed side of her father, who is very ill.

Miss Era Brock, of Berwyn, Oklahoma, arrived here Sunday for an indefinite visit with her sister, Mrs. Ray Hutson.

Mr. Oliver and son, of Berwyn, Oklahoma, are here this week prospecting and visiting in the home of Ed Wallace.

H. S. Goertz returned last week from a visit to his old home at Hillsboro, Kansas. He was accompanied home by F. T. Goosen.

Mr. and Mrs. O. D. Graham and children of Thorndale, were prospecting in Littlefield this week. They liked it so well that they purchased a tract of land in Broad Acres. Mr. Graham is an attorney and may move here later.

Mr. and Mrs. A. M. Farquhar, of Lake Victor, Mr. and J. D. Dodgen, of San Marcus, and C. E. Hode, of Marble Falls, are guests this week of Mr. and Mrs. S. J. Farquhar.

W. O. Stevens, of Lubbock, was here Tuesday looking after business interests. He stated the new bank would be ready for business about the middle of this month.

Miss Lois Glee Graham, of McGregor, formerly a teacher in the Grammer school here, arrived in Littlefield Saturday and is this week attending institute in Lubbock, preparatory to resuming her work here.

The Duggan family had a family

reunion at Anton last Sunday. All the family, including the mother, Mrs. Medie Duggan, 75 years old, five sons and a daughter were present. One son living in California was unable to be there for the occasion.

Misses Vivian and Ruth Courtney, who have been attending the summer term at the West Texas State Teachers College, at Canyon, returned to their home here Sunday. Miss Vivian is attending institute in Lubbock this week, and will resume her work as teacher in the Grammer school here.

Miss Gladys Douglass, now of Cleburne, but who has lived in Littlefield for several years past, has accepted a position on the news staff of the Leader. She was formerly connected with the Lubbock Avlanche and has a wide acquaintances here. She will appreciate any news items that you may give her.

The Leader editor is this week the happy recipient of a generous contribution of garden truck, consisting of cucumbers, peppers and tomatoes, the product and gift of Zeb Robinson. They were just a sample of the fine stuff he is growing and which is generally being produced in this section this year. Some of the cukes were eight and nine inches long, and, notwithstanding their tendency toward monstrosity, were perfectly tender and juicy. The tomatoes and big peppers were as fine as we ever tasted from the garden of any expert marketer.

Whitharral Items

Mr. and Mrs. Martin and family of Hollis, Okla., have been the guests of Mrs. Martin's daughter, Mrs. W. D. Armstrong and family this week.

Mrs. Jerome Manis of Hooks, Texas, came in Saturday to join her husband, who has been here several weeks on account of his health. She was accompanied by her grandson, Jack Manis, also of Hooks, Texas.

Verlin Edgar, three year old son of Mr. and Mrs. C. B. Edgar, met with a painful accident Wednesday noon. He and a playmate were playing with

a little wagon when Verlin fell overboard, breaking his left arm between the wrist and elbow. He is getting along nicely now.

Rev. Silas Dixon of Littlefield and Rev. Kendrick of Lum's Chapel will begin a series of revival services at Whitharral next Sunday at eleven o'clock. Everybody is invited to come and help in the meeting.

Mr. Newsome is drilling a well on Mr. Keeny's place this week. Mr. Keeny is also building a rent house.

Mr. Lawhorn from Taylor, Texas, moved to his land west of "Fourteen-Mile Camp" this week.

Messrs. Joe and Monroe Woodruff, and Edd Langford went to the Brazos

LEE

THEATRE

Littlefield Texas

THURSDAY

Lou Tellegen and Anna Q. Nilsson in "Between Friends"
Larry Seaman, Comedy "Bood and Bandits."

FRIDAY

James Kirkwood and Anna Q. Nilsson in "Panjola."
Two Reel Comedy "All at Sea."

SATURDAY

Buffalo Bill Jr. in "Double Action Daniels."
Comedy "East is Worst."

MONDAY

Norma Shearer in "Excuse Me."
TUESDAY

Last chapter of "Riddle Rider."
Western "Valley of Rogues."
Comedy, "Puzzled by Cross-words."

WEDNESDAY

Adolph Menjon and Frances Howard in "The Swan"
Gump Comedy

MAGNOLIA GASOLINE

Magnolene Oils and Greases

'The Dependable Lubricant'
Real Quality Products
Demand them from your Dealer

Magnolia Petroleum Company

G. W. Hargrove, Agent. Littlefield, Texas

REAL LAND VALUES

If you are looking for real land values, that means you are looking for the Yeager-Chesher Land Co. office.

We have the largest listing of desirable farm property of any concern in Lamb county. We have farm property both improved and unimproved—property priced worth the money. During the past few days there has come in our possession some exceptional bargains that will make some purchaser big money on his investment.

We handle town property. Let us sell you a home whether in town or country.

Yeager-Chesher Land Company

Littlefield

Texas

river fishing Tuesday.
C. Millap of O'Donnell, Texas Woodruff to break his land which located about 1 1/2 miles south of Whitharral. He expects to improve place soon.

Rev. Johnson and Mr. Hollis, Okla., visited W. D. Armstrong and family this week.

Earl Kurds returned home week from a visit of several days duration at Hollis, Okla. He was accompanied home by his father, mother and sister, Miss Ollie Kurds who will visit here for awhile.

Alvin Lawhorn was taken to the infirmary at Lubbock Sunday to go an operation for appendicitis. Joe Woodruff purchased a McCormick-Deering tractor.

Lee Crownover was over in Mexico Monday looking at some land.

Mr. E. L. Howard and son returned Monday from Knox City where they were called a few days on account of the illness of their mother.

Mr. and Mrs. Jack Lawhorn Lubbock visitors Sunday.

INSURANCE

Old Line Companies with YEAGER-CHESSHER Land Co.

Insure Everything

ICE

—Served at the vault or delivered to your business daily—product of Lubbock "People's Ice Plant"—none better.

N. H. WALDEN

Opposite Presbyterian Church

THERE IS NO QUESTION

—The well dressed man is he who regularly cleaned and pressed clothes wear longer—more the paying the difference of the cost of the valet service vs. the iron.

—Clothes-care is our specialty—whether ladies or gents. Let us call for yours.

—Our new samples of Fall and Winter Suitings are now here—they are beauties—come examine them.

CITY TAILORS

J. H. POPE, Prop.
Phone 48—Use



JUST RECEIVED
A Nice Stock of New Tires and Casings
INVITE US TO YOUR NEXT BLOWOUT
Quick Service Station
T. C. & R. M. SMITH
Proprietors

DANDRUFF
 CAUSES THE HAIR TO FALL OUT—
 AND THE HEAD TO BECOME BALD

Dandruff is a germ disease and known as a scaly form of Tetter or Eczema. This microbe lives on the oily substance of the skin and robs the hair of its proper nourishment, causing it to fall out and the head to become bald. Get rid of dandruff before it is too late. Wash the scalp well with hot water and soap, dry with a soft towel and apply Hooper's Tetter-Item (Don't Scratch), rubbing it in well. Then steam the head with hot towels. Ask your barber for Hooper's Tetter-Item scalp treatments. Hooper's Tetter-Item is positively guaranteed for all scalp and skin diseases. Two size 75c and 1.25. Sold and guaranteed by

SADLER DRUG STORE

THINKING AHEAD

Years ago the world first feeble attempt at photo-play it is as full of pictures as are full of leaves. When the airplane has been invented, we cannot help but wonder what conditions will be. All that man is transporting his mail and mail through the air. The roads will be all rusted out and the highways overgrown with trees, shrubbery in another seven years. Will the horse be the automobile a mere museum relic? A few of us will be here to doubtful if even our

imagination can picture the amazing living habits of the people of the earth in the year of our Lord 2,000.

And wouldn't it be interesting to come back to Littlefield and see if they were taking time by the forelock and cleaning up the streets and alleys, burning the constantly accumulating trash, seeing that the toilets were kept sanitary, and a dozen or so other things that should be done right now but are not.

MOTOR WISE FOLKS

A scientist says that the young people of today have become "motor car wise". By instinct they avoid automobiles and adapt themselves to traf-

Professional Cards :-:

P. O. Box 2113
JOE SEALE
 AUCTIONEER—
 Office on Farm and Stock Sales.
 LUBBOCK, TEXAS

T. WADE POTTER
 Attorney at Law
 Office in the new Hopping Building.
 Littlefield, Texas

B. B. LILES
 Physician & Surgeon
 State Bank Building
 Office in Littlefield Hotel
 Phone 147

E. S. ROWE
 Attorney
 General Practice in All Courts
 Office in Thompson Land Co. Building.
 Littlefield, Texas

W. TEETERS
 Financial Sec'y.

E. A. BILLS
 Attorney and Counselor at Law
 Littlefield, Texas
 Office with Green Line Land Company, Across Street From Post Office
 General Practice in all Courts. Special Attention given to Land Titles.

R. R. H. PERKINS
 DENTIST—
 Special attention given to treatment of Pyorrhea and Extract-Teeth, using Block anesthetic. Office in new Duggan Building.

—Look For—
Dock's Barber Shop
 Located in ALLEN BUILDING
 On the Highway
 Anything You Want For 25 Cents

(BERT) DRYDEN
 Attorney
 Sudan, Texas

C. C. CLEMENTS
 Dentist
 Office in Littlefield State Bank Building.

Dr. W. H. Harris
 Physician & Surgeon
 Office at SADLER'S DRUG STORE
 Phone 49, Littlefield

Arthur Mueller
 Representing
 SOUTHWESTERN LIFE INSURANCE COMPANY OF DALLAS
 Office: Room 8, Duggan Bldg. Littlefield, Texas

JOHN H. WOOD
 Attorney at Law
 General Practice
 Amherst, Texas

Progressive Christian Church
 Meets every Sunday morning at 10:00 o'clock in the Grammar school building for Bible study.

Swims "U. S. Channel"



Lillian Cannon of Baltimore, starting from Washington, swam Chesapeake Bay—24 miles in 11 hours, combatting strong winds and tide. George Lake started with her but was forced to give up. Lillian is the first woman to swim the bay.

Older people seem unable to learn. Even dogs and chickens have learned something. They stay out of the road and are killed less frequently than they once were.

It would be good news if the young people of this generation would be "whiskey wise" in addition to being motor car wise. During the next few years there will be more young people killed by rotten whiskey than old people killed by automobiles.

TEXAS SCHOOLS ADVANCE
 Better Teachers and Better Facilities Is Order of Day.

Texas public schools will this fall have the best prepared faculties in the history of the state. More than 20,000 superintendents, principals and classroom teachers have been students in summer schools. More than a score of superintendents this summer achieved the Master of Arts degree; possibly 100 others received the Bachelor of Arts degree; a few were awarded the Doctorate degree; and hundreds did special courses aimed to

AT THE CHURCHES

METHODIST SERVICES
 Sunday school, 10:00 a. m.
 Preaching, 11:00 a. m., and 7:30 p. m.
 Epworth League, 6:30 p. m.
 Prayer meeting and choir practice, Wednesday evening, 7:30 p. m.
 —Silas Dixon, Pastor.

PRESBYTERIAN SERVICES
 The First Presbyterian church, the "home folks church," extends a cordial welcome to all worshipping Christians to come and worship with us.
 Sunday school, 10:00 a. m.
 Morning worship, 11:00 a. m.
 Evening worship, 8:00 p. m.
 H. J. JORDAN, Pastor.

BAPTIST SERVICES
 Sunday school at 9:45 a. m.
 Preaching at 11:00 and 8:30 p. m.
 B. Y. P. U., at 6:30 p. m.
 Prayer meeting, Thursday, 8:30 p. m., followed by a business meeting. Please be on time.
 W. M. U. meets Tuesday at 3:00 p. m.

CHURCH OF CHRIST
 Bible Study every Lord's Day, beginning at ten o'clock. Preaching services upon announcement until regular pastor is secured.

LUTHERAN SERVICES
 English service every 1st and 3rd Sunday evening at 7:30 o'clock.
 German service every 1st, 3rd and 5th Sunday at 10:30 o'clock.
 A hearty welcome is extended to all.
 C. Scheiderer, Pastor.

Church of Christ
 Cor. 9th & Park Ave.
 Preaching at 11:00 A. M. on every Lord's day. Everybody invited.

Whitharral.
 Sunday school each Sunday. Everybody invited to attend and take part. Preaching twice each month, at 3:00 p. m. Rev. W. B. Phipps will preach every fourth Sunday and Rev. Silas Dixon every second Sunday at this hour. Everyone invited to attend these services.

fit them for better administrative work. Texas universities and colleges enrolled most of these, and Colorado, California, New York and Illinois claimed large numbers.

Demands for better trained faculties are being voiced in every sector of Texas. Higher standards of certifications are being demanded by the Texas State Teachers Association and all other groups interested in the betterment of the public schools. School boards are looking well to the training of the teachers they employ.

MARRIED LIFE

Wife:—"Boo-ho-ho. Boo-ho-ho."
 Hubby:—"Fr cat's sake—what's the matter?"
 Wife:—"Boo-ho-ho-ho-ho-ho—I must have some money."
 Hubby:—"Well, can that sob stuff Here—here's some money. (frisks pockets) Take this dollar."
 Wife:—"What—One Dollar—Fr cryin' out loud?"

He:—"Ah Edith—I've found a man for you. You will fairly thrill and tremble at his very touch."
 Sister-in-law:—"Oh—who is he?"
 He:—"My dentist."

ITCH!
 Money back without question if HUNT'S GUARANTEED SKIN DISEASE REMEDIES (Hunt's Salve and Soap), fail in the treatment of Itch, Eczema, Ringworm, Tetter or other itching skin diseases. Try this treatment at our risk.

SADLER DRUG STORE
 Littlefield, Texas

BLUE MONDAY!

—Don't dread wash day any longer, but send us your laundry. We'll do it like it is done at home, and we never lose a piece. Special pains taken with fine linen goods. PHONE 150

AND WE'LL DO THE REST.

CITY LAUNDRY

HOUSE MOVING
 —AND—
HEAVY HAULING
 Nothing Too Big Nor Too Heavy
 Prices Reasonable
A. M. DUNAGIN

VISIT OUR SODA FOUNTAIN
For The Best Drinks in Town
 We cater to Curb Trade—Just honk your horn
 Our stock of Drugs is arriving daily—pure, fresh and guaranteed. You will enjoy the staple brand of goods we carry.
 See us for—
 Stationery, Toilet Articles and Sundries
 Cigars, Cigarettes and Tobaccos
 Your Patronage Appreciated

The Little Drug Store

Seed Wheat

—It will not be long before it will be time to plant wheat. We have desirable kinds and quantities.

KANRED AND TURKEY RED VARIETIES

—Present indications are that wheat will be a good price the coming year, better include a few acres in your crop plans for next year.
 —We will be glad to show you our seed and talk the matter over with you.

P. W. Walker
Grain and Seed Co.
 Littlefield, Texas

SERVE SELF AND COMMUNITY

Lumber **Roofing**
Brick **Windmills**
Cement **Gravel**
Lime **Sand**
Shingles **Nails**
Lath **Tar**

—Free yourself from the ever-present rent problem. Anyone who can pay rent can own a home. Don't wait until you have accumulated a lot of money before you build. By building now you not only provide a proper place for the raising of your family, but you are doing a service to the community by increasing the number of dwellings. High rents are brought about by the shortage of houses. When you move into your new home you release a house for the use of some one else.

—How much have you paid in rent the last two or three years? Perhaps several hundred dollars. The rent money which you are now paying will buy you a new home and provide a profitable investment for you at the same time. **BUILD NOW!** Consult us freely in regard to your plans and we will gladly furnish estimate on cost of materials and assist you in every way in our power.

HIGGINBOTHAM-BARTLETT CO.
"SERVICE WITH A SMILE"

Mr. and Mrs. Joe Lockett, Mr. and Mrs. Bert Lockett, Messrs. Henry Williams, J. on Chesh... and Walter... of Mills county were here this week of the week prospecting.

Miss Lillie M. Nelson, of Mitchell county, this week purchased two lots in Littlefield, and expects to erect thereon two nice cottages for rent in the near future.

LOCAL HAPPENINGS

John Pope made a trip to Happy, Friday.

Dr. B. B. Liles spent the week-end in Amarillo.

T. W. Barnes, made a business trip to Lubbock Friday.

Mr. and Mrs. J. L. White visited in Lubbock Sunday.

F. O. Boles is attending institute in Lubbock this week.

Miss Rilla Webb, of Amherst, visited home folks here Sunday.

Charlie Hawkinson, of Lubbock, was here Tuesday on business.

Mrs. P. W. Walker has as her guest Miss Vernon Brown, of Lubbock.

Miss Faye Gurthrie spent the week-end with her parents, at Levelland.

Mrs. D. P. Earnest spent Sunday at her home on Scrapeout ranch.

T. G. Shaw and little son, Gaston, of Lubbock, spent several hours here Friday.

Miss Audie Terrell is attending teachers institute in Lubbock this week.

Mrs. J. W. Sutton and sons, Geo. and Earl, are visiting in the home of Mr. and Mrs. T. W. Barnes.

Everett Whicker was here Tuesday from Elk City, Oklahoma, visiting

home folks. He reports crop conditions more favorable here than any place he has seen.

Winfield Miller, of Happy, has accepted a position with the Littlefield State Bank.

C. N. Jackson, left Monday for his home at Venus, after several days prospecting in this section.

Ex-Sheriff, Dug Barton, of Eastland, spent Sunday here with his former deputy, Joe Beck.

J. Q. Barnes and family, formerly of Amarillo, have moved to Littlefield to make their future home.

Mrs. D. H. Rogers left Wednesday for Amarillo where she will spend the winter.

Miss Ora Mae Baker left Sunday for Lubbock where she will attend the West Texas Business college.

Mr. and Mrs. W. O. Stockton were dinner guests of Mr. and Mrs. J. W. Porcher, at their pretty new country home, Sunday.

W. H. Gardner is having a Duplex apartment erected this week, which will be occupied by teachers of the local schools.

Bill Jeffries, son of Mr. and Mrs. W. E. Jeffries, left Sunday for Las Vegas, New Mexico, where he will enter Montezuma College.

Mrs. Ben Lyman and little son, Ben Jr., accompanied by Mrs. J. T. Douglass and little son, Joe made a trip to Lubbock Friday.

G. M. Shaw left Sunday for St.

Want Ads.

Want ads., Rentals, Lost and Found, Exchanges, Lands and Stock, Miscellaneous, etc.

RATES: Classified, first insertion, 7 1/2 c per line; minimum 25c; subsequent insertions, 5c per line. Unless advertiser has an open account, cash must accompany order.

FOR SALE

FOR SALE: Delco light plant, cheap, good condition, will take in Ford road-steer. Will also sell Dodge speed wagon, Dempster windmill with steel tower, Fairbanks-Morse 3, 6 and 10 horse power engines.—P. W. Walker. 17-tfc

FOR SALE—L. C. Smith typewriter, in good running condition. Will sell worth the money. Leader office. 19-tfd

FOR SALE or Trade: 320 acres good unimproved land in Roosevelt County, New Mexico, for property in Littlefield or Sudan or farm land in this vicinity. Address, Leader office. 3-tf.

TRUCKS FOR SALE: Two Dodge Graham's 1-2 ton, practically new rubber, new stake bodies. Just the thing for cotton hauling and truck line work. A bargain. Priced to sell, cash and terms. At Rollin's Sales and Service, Lubbock, Texas. 20-2tp

FOR SALE or Trade: Fine 323 acre highly improved farm in Moffat Co., Colo., near Craig. Crop failure unknown, for farm land in Sudan vicinity.—Will H. Rogers, Craig, Colo. 20-2tp

FOR RENT

FOR RENT—Furnished bed room. Mrs. J. M. Stokes. 20-1tc

Louis and other markets, where he has gone to buy fall merchandise for the Shaw-Arnett-Tolbert Dry Goods Company.

Bill Tolbert made a trip to Quanah, Sunday. (Wonder why—Ed.)

Mrs. Lucy Killough and daughters, Misses Thelma, Lucille and Tommie, accompanied by Miss Cleda Blair, returned Friday from a week's visit in Wilbarger county.

Mrs. H. S. Sheppard and little son, Hamilton Jr., who have been visiting her parents, Mr. and Mrs. Fred Bartsch, near Littlefield, left Saturday for their home at Miles. They were met at Sweetwater by Mr. Sheppard.

Mr. and Mrs. Dabney Harvey and daughters, Misses Mabel and Lucille, left for their home, in Abilene, Monday, after an extended visit with Mr. and Mrs. Clayborne Harvey.

Mrs. J. M. Stokes has returned to her home here, after spending a few days in Afton. She was accompanied on her return by her mother, Mrs. S. C. Floyd, who will make her home in Littlefield.

Henry Price, of Pawhuska, Oklahoma, who has been visiting relatives in Littlefield, was so impressed with this section that he purchased several hundred acres of land on the Spade ranch.

For the benefit of some who have enquired the status of the band since Clayborne Harvey resigned the secretaryship of the Chamber of Commerce, he states that he will continue the band directorate indefinitely.

Mr. and Mrs. Fred Lichte and son returned Monday from a three weeks visit through Oklahoma and Kansas. He says of all the country he never saw anything that begins to come up to the Littlefield section.

Miss Eristine Layne, of Canyon, arrived here Saturday. Monday she went to Lubbock, where she was joined by her sister, Miss Rhoda Lou Layne, where together they will attend institute, later to return to Littlefield where they have accepted a place on the school faculty.

Miss Martha Cox of Muleshoe, is visiting with friends here this week.

Mr. and Mrs. Paul Stockton and little son, Karey Paul, who have been the guests of Mr. and Mrs. Wilbur O. Stockton, left Saturday for their home at Ralls.

Harry P. Burke and family, of Red Eagle, Oklahoma, who have been visiting in the home of Mr. and Mrs. W. H. Gardner, have returned to their home. While here Mr. Burke purchased one-half section of land on the Spade ranch, and expects to move here in the near future and improve his land.

Two 11-acre tracts, five school houses. \$1500. Cundiff.

FOR SALE: Lumber and a corral 60x100 ft. 1 1/2 in. x 6 in. 2 1/2 x 6 in. shape. Will sell cheap. Littlefield.

FOR SALE: White Wyandots, at \$1.00 each. J. T. ...

GOOD LAND sold by Brothers at Pop. Liberal paid Real-estate dealers. Pop, seventeen miles from Littlefield. Phone 4-2 ...

FOR SALE—Good land and Touring car, 1925 and 1925 sport model Dodge Smith & Roberts Garage.

WANTED

WANTED: To rent four cottages. E. A. Bills.

WANTED.—Three or four apartment, furnished or unfurnished. R. A. Crawford, Carlsbad. 19-2tp

WANTED: Man to take city sanitation work. A. Hall.

WANTED.—To wash all and blankets in Littlefield 40 cents each.—Littlefield. 19-3tc.

WANTED—Room and school teachers. Anyone wish such kindly contact Prof. R. L. Speight.

LOST

LOST: Wrist watch, white leather strap. Finder please State Bank for reward.

LOST: Small white spitz dog. Return to J. W. Horn for reward.

MISCELLANEOUS

WHICKER Land Co., Real Estate Office, Bledsoe, Texas, of Santa Fe west from Fine cat-claw land.

Come to Pop, where Brothers sell GOOD LAND.

Carbon paper at the Leader office.

TYPEWRITING for the Lorena Barber, at C. J. DeWitt's office.

Green's Cafe—where cats.

Advertise when busy to advertise when not busy to.

Come to Boone Bros. Real Estate Office, (20 miles from San Angelo) famous Christian baths, followed with adjustments and massage. Ideal climate, swimming, fishing. Open the year round. 14-8tp.

BUY your fresh meats and the Littlefield Supply Co.

You should see the crop Bledsoe, Texas.—Whicker Littlefield.

HEMSTITCHING and Sewing. Mrs. John Blair.

Batteries recharged at Motor Co.

Bargains in used cars of makes. Cash or terms.—Be Chevrolet Co.

IF YOU need any light bulbs. J. W. Robertson. Every bulb guaranteed.

LEGAL BLANKS: Chattel mortgage, Vendor's Lien and Power of Sale. Notes, at Leader office.

Carbon Paper and Second Hand Paper. The Leader office.

BUY your fresh milk and cream from us.—Littlefield Supply Co. 13-tfc

Come to Pop, where Brothers sell GOOD LAND.

Green's Cafe—where cats.

SEE our Macey-Harris Real Estate before buying.—Duncan & Littlefield.

GOOD LAND sold by Brothers at Pop. Liberal paid Real-estate dealers. Pop, seventeen miles from Littlefield. Phone 4-2 ...

NOTICE: I will return to Littlefield Sept. 16. Pupils desiring to take music will please come before the 14th, as classes close on that date.—Nannie Thibault.

OPPORTUNITY Of a Life Time

Consider the Location of Our Yellow House and Spade Lands.

Lying between Littlefield on the north, Levelland on the south, and Anton on the east, with railroad, school and highway facilities already equal to older settled countries. The fertility of the soil and location makes this one of the most attractive propositions to be found anywhere on the South Plains.

PRICES: \$30 and \$35 per Acre. Long Time, Low Interest Rate of Six Per Cent. All Notes Payable On or Before.

Between Four and Five Hundred Farms in the best of location now on the market and selling rapidly. It will pay you to investigate and make your selection early.

YELLOW HOUSE LAND COMPANY

Littlefield, Texas