

# Lamb County Leader

"Dedicated to a greater Lamb County"

LITTLEFIELD, LAMB COUNTY, TEXAS, THURSDAY, SEPTEMBER 6, 1962

Page 2, Lamb County Leader, September 6, 1962, Page 3  
LAMB COUNTY  
'62  
INDUALS

## Dryland Receives Moisture

### Cotton Estimate Hits 205,000

A "cotton makin" rain fell over most of the dryland areas of Lamb County west of Littlefield Sunday morning, and light showers were reported again Monday afternoon. The rain, sorely needed on the dryland crops, came as a surprise to farmers and weather forecasters alike.

The areas around Pep and Bula reported three inches to three and a half inches from Sunday participation, Monday afternoon, fields which had been burning from the hot, dry weather, perked up and agriculture observers raised the estimates on the total number of bales to be produced in the county.

The rains were general in nature with every area of the county receiving at least a half inch. Lightest rainfall was recorded in the Bainer area where measurements showed between a half and .7 inches.

Other measurements from around the county include Olton with .75 and east of Olton with three inches, Lumsden Gin area with two inches plus, north of Littlefield with 1.3 to 1.7 inches, Amherst and Sudan with two and a half inches, and Spade and Fieldton with over two inches.

Bill Kimbrough, county agent said the crops throughout the county look the "best I've seen this year." He continued that what is needed now more than anything else, is hot, dry weather which will give a lot of the young cotton in the dryland areas a chance to develop and mature.

"And when you ask for that kind of weather in West Texas, you usually get it," he commented. He predicted a larger production with a dry September than with a wet month.

"As best I can tell," the agent continued, "the dryland could make between a half and three-quarters of a bale but not quite as good a grade as last year."

Kimbrough's prediction remained at 180,000 bales. He said there are a few scattered bollworms throughout the area but plenty of friendly insects to prevent serious trouble.

"We have lost less cotton this year than last," Kimbrough stated, "but some of it did get too hot and shed off more than normal."

Anderson Clayton Company in Lubbock upped their estimates for this year's cotton production to 205,000 bales over their August 1 estimate of 102,000. If these predictions are correct, Lamb County would finish second on the South Plains.

The Anderson Clayton predictions call for 275,000 bales in Lubbock County, 200,000 in Hockley and 191,000 in Hale.

Figures are based on a third of a bale on dryland and over a bale on irrigated.

Leon Durham, partner in the radio and television store, discovered the burglary and reported it to authorities. He listed the loss as five transistor radios, three electric radios, one clock radio, one musaphonic radio and two radio cases.

Ten radios were reported taken from the establishment sometime during Saturday night or early Sunday morning. The burglars gained entry into the business by breaking out a window on the north side with a rock.

City Police investigated the burglary of the TV Corner, located on the Clovis Highway, according to records of the department.

City Police investigated the burglary of the TV Corner, located on the Clovis Highway, according to records of the department.

Over 450 members of the Lamb County REA organization attended the annual meeting in the Littlefield Sports Arena Tuesday night.

The members elected directors, heard the annual financial report, enjoyed refreshments and many electrical gifts were given away.

Secretary V. M. (Pete) Peterson read the agenda of business and also read the minutes of last year's annual meeting.

Local accountant Alvin Webb gave the financial report which revealed that a profit of almost \$200,000 was made the first nine months. He also stated that the members of the association had accrued one and a half million dollars equity.

Vic Diersing was re-elected president, E. L. Bryant, vice president and Leroy Hackler secretary.

Members voted on directors for districts seven, eight and nine. Kenneth Spradley was elected to district seven, Jim Horton to district eight and Bryant to district nine.

(See Electric on Page 7)

Littlefield's school enrollment was up 142 over last year according to a statement issued Wednesday noon by Glenn Reeves, superintendent.

The total this year is 2142 compared to exactly 2000 this time last year.

"This figure will continue to rise for the next six or seven weeks," Reeves commented, "as the remainder of students start the school year late."

Figures by buildings with the 1961 total in parentheses are Primary 705 (652), Elementary 621 (572), Junior High 328 (331) and Senior High 488 (445).

### TOWN and COUNTRY

by Wendell Tooley

SEVERAL persons, (obviously not Democrats) are passing a printed sheet around that definitely states that President Kennedy was formerly married to a woman by the name of Durie (Kerr) Malcom. This printed sheet further states, "this reveals that this man who poses as a devout Catholic, this pious man, who, ostensibly never misses a mass, has through the years been making a mockery of his church. . . has secretly smashed the most sacred canon of his church."

It also states, "Unquestionably, if Nixon had used this marriage item in his campaign not only would he have won the election, but it would have torpedoed Jack (and all the Kennedys) out of the political world forever."

It also states, "Unquestionably, if Nixon had used this marriage item in his campaign not only would he have won the election, but it would have torpedoed Jack (and all the Kennedys) out of the political world forever."

It also states, "Unquestionably, if Nixon had used this marriage item in his campaign not only would he have won the election, but it would have torpedoed Jack (and all the Kennedys) out of the political world forever."

It also states, "Unquestionably, if Nixon had used this marriage item in his campaign not only would he have won the election, but it would have torpedoed Jack (and all the Kennedys) out of the political world forever."

It also states, "Unquestionably, if Nixon had used this marriage item in his campaign not only would he have won the election, but it would have torpedoed Jack (and all the Kennedys) out of the political world forever."

It also states, "Unquestionably, if Nixon had used this marriage item in his campaign not only would he have won the election, but it would have torpedoed Jack (and all the Kennedys) out of the political world forever."

It also states, "Unquestionably, if Nixon had used this marriage item in his campaign not only would he have won the election, but it would have torpedoed Jack (and all the Kennedys) out of the political world forever."

It also states, "Unquestionably, if Nixon had used this marriage item in his campaign not only would he have won the election, but it would have torpedoed Jack (and all the Kennedys) out of the political world forever."

It also states, "Unquestionably, if Nixon had used this marriage item in his campaign not only would he have won the election, but it would have torpedoed Jack (and all the Kennedys) out of the political world forever."

It also states, "Unquestionably, if Nixon had used this marriage item in his campaign not only would he have won the election, but it would have torpedoed Jack (and all the Kennedys) out of the political world forever."

It also states, "Unquestionably, if Nixon had used this marriage item in his campaign not only would he have won the election, but it would have torpedoed Jack (and all the Kennedys) out of the political world forever."

It also states, "Unquestionably, if Nixon had used this marriage item in his campaign not only would he have won the election, but it would have torpedoed Jack (and all the Kennedys) out of the political world forever."

It also states, "Unquestionably, if Nixon had used this marriage item in his campaign not only would he have won the election, but it would have torpedoed Jack (and all the Kennedys) out of the political world forever."

It also states, "Unquestionably, if Nixon had used this marriage item in his campaign not only would he have won the election, but it would have torpedoed Jack (and all the Kennedys) out of the political world forever."



LITTLEFIELD'S 1962 WILDCAT VARSITY -- Pictured above is the 1962 Wildcat varsity football team. The team will open the season Friday night at Muleshoe. On the front row, from left to right, they are Ricky Phillips, Larry Coffman, Junior Hodge, Steve Lowe, Ricky Miller, Richard Eddings, Tony Estrada, Gary Schovajsa, Paul Keeling, Richard Kimbrough and David Dusek. The second row is Ronald Sitton, Grover Pigrum, Pete Estrada, Gary Fitzgerald, Robert Conley, Jim Melton, Ray McKinney, Frank Crone, John Dick Carl and Robert Bolton. Third row is Billy Bankston, Tim Chambers, Cooper, Johnny Basden, Bobby Ross, Billy Thompson and Larry Wood.

### Season Opener Wildcats Tangle With Muleshoe

Littlefield Wildcats will open the 1962 grid season Friday night at Muleshoe as they take on the strong Mule team. This will be the 19th meeting of the two teams with the Wildcats winning every contest.

John Howle, head Wildcat coach, said Wednesday that he "feels like our own mistakes may beat us against Muleshoe." "We just haven't had enough time to teach our boys both a new offense and defense."

"We do have a lot of hustle and desire," Howle stated, "and the boys are ready to play the full game."

Commenting on the Muleshoe team, Howle said, "Muleshoe has a very fine AA ball club, capable of beating anyone they play on a given night." "We expect them to be very high for this first game of the season and hope we have coached our boys well enough to cope with their multiple offense," he concluded.

Howle said the strong point of the Wildcat team is the backfield where three of the starters are returnees from last year's squad. He commented on the Wing T formation to be used this season, but added he hoped to have a well balanced running and passing attack.

The three backfield starters are Gary Schovajsa, Tony Estrada and Pete Estrada. Schovajsa will start at half-back.

Committee attendance varied from a 27 per cent on the governmental affairs group to 76 per cent for the public relations committee. Some committees showed a 100 per cent, but had called only one meeting for the year as in the case of the agricultural committee. The retail council of 70 members showed only an 18 per cent committee attendance.

After the three problem areas were agreed upon the Priorities group asked this question, "Can we improve the communications and increase willingness of the entire membership to assume individual responsibility for overall community development through the Littlefield Chamber of Commerce?"

The committee studied special charts on this year's committee performance and the performance of the entire membership.

These facts were revealed: committee participation is weak, only about 30 per cent attend and work on designated committees; not enough of the total membership has committee assignments (98); a few members are overloaded.

The charts revealed that two members of the chamber are overloaded with ten committee assignments. On the other hand 98 members have no assignments.

Committee attendance varied from a 27 per cent on the governmental affairs group to 76 per cent for the public relations committee. Some committees showed a 100 per cent, but had called only one meeting for the year as in the case of the agricultural committee. The retail council of 70 members showed only an 18 per cent committee attendance.

After the three problem areas were agreed upon the Priorities group asked this question, "Can we improve the communications and increase willingness of the entire membership to assume individual responsibility for overall community development through the Littlefield Chamber of Commerce?"

The committee studied special charts on this year's committee performance and the performance of the entire membership.

These facts were revealed: committee participation is weak, only about 30 per cent attend and work on designated committees; not enough of the total membership has committee assignments (98); a few members are overloaded.

The charts revealed that two members of the chamber are overloaded with ten committee assignments. On the other hand 98 members have no assignments.

Committee attendance varied from a 27 per cent on the governmental affairs group to 76 per cent for the public relations committee. Some committees showed a 100 per cent, but had called only one meeting for the year as in the case of the agricultural committee. The retail council of 70 members showed only an 18 per cent committee attendance.

After the three problem areas were agreed upon the Priorities group asked this question, "Can we improve the communications and increase willingness of the entire membership to assume individual responsibility for overall community development through the Littlefield Chamber of Commerce?"

### Sudan Businessman Dies In Accident

Funeral services for Doyle Allen, 37-year-old Sudan businessman, were held Wednesday at 2:30 p.m. in the Sudan First Baptist Church.

Allen was accidentally electrocuted Monday afternoon while he and his family camped in the mountain near Ruidoso, N. M.

Allen had been setting up a television antenna near the trailer in which the family was staying when the 18-foot antenna hit a power line. Attendees from Mason Funeral Home in Ruidoso administered artificial respiration 45 minutes before a doctor arrived and pronounced Allen dead.

The body will be brought from Ruidoso by Hammons Funeral Home in Littlefield.

Allen, his wife and son, Doyle, Jr., had been vacationing in the area a week when the mishap occurred.

A former Lubbock resident, Allen was part owner of MAGCO, a fertilizer and farm supply business in Sudan. The Allens had lived in Sudan about 2 1/2 years.

A former Wayland College student, he was named Jaycee of the year in Sudan in 1961.

Other survivors include a brother, his parents, two nephews and a niece.

Burial was in the Sudan Cemetery.

Burial was in the Sudan Cemetery.

Burial was in the Sudan Cemetery.

Burial was in the Sudan Cemetery.

Burial was in the Sudan Cemetery.

Burial was in the Sudan Cemetery.

Burial was in the Sudan Cemetery.

Burial was in the Sudan Cemetery.

### Rotary Club Hosts District Head Today

Floyd Stark, of Seminole, governor of district 573 of Rotary International, world-wide service organization will speak today to the Littlefield club at their noon meeting.

The local Rotary Club is one of 45 clubs in his district.

He conferred with Dr. Carl Nowlin, president of the local club.

He conferred with Dr. Carl Nowlin, president of the local club.

He conferred with Dr. Carl Nowlin, president of the local club.

He conferred with Dr. Carl Nowlin, president of the local club.

He conferred with Dr. Carl Nowlin, president of the local club.

He conferred with Dr. Carl Nowlin, president of the local club.

He conferred with Dr. Carl Nowlin, president of the local club.

He conferred with Dr. Carl Nowlin, president of the local club.

He conferred with Dr. Carl Nowlin, president of the local club.

He conferred with Dr. Carl Nowlin, president of the local club.

He conferred with Dr. Carl Nowlin, president of the local club.

He conferred with Dr. Carl Nowlin, president of the local club.

He conferred with Dr. Carl Nowlin, president of the local club.

He conferred with Dr. Carl Nowlin, president of the local club.

### CC Priorities Group Identifies Problems

The Priorities committee developed three areas of study at its regular meeting Monday night in the Chamber of Commerce conference room, concerning problems in the Littlefield Chamber of Commerce.

The group decided to begin seeking facts in the solution of weaknesses in communication, individual and committee responsibility and responsibility of leadership.

The committee studied special charts on this year's committee performance and the performance of the entire membership.

These facts were revealed: committee participation is weak, only about 30 per cent attend and work on designated committees; not enough of the total membership has committee assignments (98); a few members are overloaded.

The charts revealed that two members of the chamber are overloaded with ten committee assignments. On the other hand 98 members have no assignments.

Committee attendance varied from a 27 per cent on the governmental affairs group to 76 per cent for the public relations committee. Some committees showed a 100 per cent, but had called only one meeting for the year as in the case of the agricultural committee. The retail council of 70 members showed only an 18 per cent committee attendance.

After the three problem areas were agreed upon the Priorities group asked this question, "Can we improve the communications and increase willingness of the entire membership to assume individual responsibility for overall community development through the Littlefield Chamber of Commerce?"

The committee studied special charts on this year's committee performance and the performance of the entire membership.

These facts were revealed: committee participation is weak, only about 30 per cent attend and work on designated committees; not enough of the total membership has committee assignments (98); a few members are overloaded.

The charts revealed that two members of the chamber are overloaded with ten committee assignments. On the other hand 98 members have no assignments.

Committee attendance varied from a 27 per cent on the governmental affairs group to 76 per cent for the public relations committee. Some committees showed a 100 per cent, but had called only one meeting for the year as in the case of the agricultural committee. The retail council of 70 members showed only an 18 per cent committee attendance.

After the three problem areas were agreed upon the Priorities group asked this question, "Can we improve the communications and increase willingness of the entire membership to assume individual responsibility for overall community development through the Littlefield Chamber of Commerce?"

The committee studied special charts on this year's committee performance and the performance of the entire membership.

These facts were revealed: committee participation is weak, only about 30 per cent attend and work on designated committees; not enough of the total membership has committee assignments (98); a few members are overloaded.

The charts revealed that two members of the chamber are overloaded with ten committee assignments. On the other hand 98 members have no assignments.

Committee attendance varied from a 27 per cent on the governmental affairs group to 76 per cent for the public relations committee. Some committees showed a 100 per cent, but had called only one meeting for the year as in the case of the agricultural committee. The retail council of 70 members showed only an 18 per cent committee attendance.

### Ed Botsford Leaves Memories Colorful Resident Remembered

It was Buffalo Bill Cody who said that American cowpunchers were the best horsemen in the world. Cody, himself, was some shakes as a rider. As a youngster, he once rode over three hundred miles in less than a day, exhausting twenty horses. Then, at the age of sixty, he climbed aboard a bucking bronco, and stuck for a creditable two minutes.

But Cody's statement was not a self reference. Neither was he thinking of the run-of-the-mill waddy. More than likely the famous scout, Indian fighter and showman was giving a pat on the back to the man who had ridden with him in his famed Wild West show - the unheralded rider who helped him re-create the saga of the wild and woolly West for the delight of millions.

The backbone of all the highly advertised "West" shows was a hard core of little known riders, who, week after week, cast their lot against the meanest, most devilish horseflesh that money could buy and the sparring of a quirt lash over the head could maintain. Easily, Cody could have been thinking of commercial busters such as Ed Botsford, who today, at the age of eight-seven, resides out on the high plains of Texas in the town of Littlefield. During two decades of his thirty - seven years in show business, Botsford rode at least four thousand buck - jumpers -- two a day, every other day, seven months a year for twenty years! And, readily, this old cowpoke can recall a heap of other accomplishments, a host of interesting characters he has known and a lot of places he has been, but he "allows as how" his feet do not itch any more.

The rather nomadic life that Botsford embarked upon at an early age, and that, prior to his sojourn in show business, carried him through the Indian territory, west Texas, and Montana was not at all uncommon for the times. Born of farm parents in Rantoul, Illinois, on June 22, 1869, Botsford drifted westward as a teenager and quickly began to acquire the frontier savvy that was to sustain him for the major portion of his long active life.

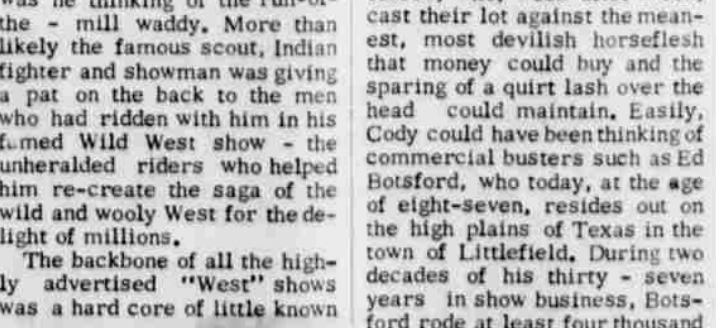
It was in the land of the Choc-taws that Botsford got his first job, The St. Louis and San

It was in the land of the Choc-taws that Botsford got his first job, The St. Louis and San

It was in the land of the Choc-taws that Botsford got his first job, The St. Louis and San

It was in the land of the Choc-taws that Botsford got his first job, The St. Louis and San

It was in the land of the Choc-taws that Botsford got his first job, The St. Louis and San



ED BOTSFORD and his favorite horse BALDY.

### Whitharral's "Big Day" Saturday

The biggest day of the year comes to Whitharral Saturday as the annual Community Day begins at 2 p.m.

Most of the games which involve both adults and children will be conducted on the school ground and the supper.

The evening festivities and auction will be staged in the Lion's Club House which is located adjacent to the school grounds. The "dirtiest foot" contest, "prettiest girl" contest will also be in the new Lion building.

Sponsorship of the Whitharral Community Day is by the Lions Club and auction proceeds go to the Lions fund which is used for all types of community projects.

Sponsorship of the Whitharral Community Day is by the Lions Club and auction proceeds go to the Lions fund which is used for all types of community projects.

Sponsorship of the Whitharral Community Day is by the Lions Club and auction proceeds go to the Lions fund which is used for all types of community projects.

Sponsorship of the Whitharral Community Day is by the Lions Club and auction proceeds go to the Lions fund which is used for all types of community projects.

Sponsorship of the Whitharral Community Day is by the Lions Club and auction proceeds go to the Lions fund which is used for all types of community projects.

Sponsorship of the Whitharral Community Day is by the Lions Club and auction proceeds go to the Lions fund which is used for all types of community projects.

Sponsorship of the Whitharral Community Day is by the Lions Club and auction proceeds go to the Lions fund which is used for all types of community projects.

Sponsorship of the Whitharral Community Day is by the Lions Club and auction proceeds go to the Lions fund which is used for all types of community projects.

### 450 Attend Lamb Electric Meeting

Over 450 members of the Lamb County REA organization attended the annual meeting in the Littlefield Sports Arena Tuesday night.

The members elected directors, heard the annual financial report, enjoyed refreshments and many electrical gifts were given away.

Secretary V. M. (Pete) Peterson read the agenda of business and also read the minutes of last year's annual meeting.

Local accountant Alvin Webb gave the financial report which revealed that a profit of almost \$200,000 was made the first nine months. He also stated that the members of the association had accrued one and a half million dollars equity.

Vic Diersing was re-elected president, E. L. Bryant, vice president and Leroy Hackler secretary.

Members voted on directors for districts seven, eight and nine. Kenneth Spradley was elected to district seven, Jim Horton to district eight and Bryant to district nine.

(See Electric on Page 7)

Littlefield Shows 142 More Pupils

Littlefield's school enrollment was up 142 over last year according to a statement issued Wednesday noon by Glenn Reeves, superintendent.

The total this year is 2142 compared to exactly 2000 this time last year.

"This figure will continue to rise for the next six or seven weeks," Reeves commented, "as the remainder of students start the school year late."



LAMB REA OFFICERS . . . elected at the annual meeting in Littlefield Tuesday night (left to right) Vic Diersing, president; E. L. Bryant, vice president; Leroy Hackler, secretary and Dick Carl, manager. (Staff Photo)

### SUDAN NE LEADER

# Wally

Wally is the Sudanese leader of the Sudanese Club at Littlefield. He is a member of the Sudanese Club and is a member of the Sudanese Club. He is a member of the Sudanese Club and is a member of the Sudanese Club.

Subscription Rates: This Lamb County Leader is published weekly, except on Thursdays and the County Wide News (published Sunday) for one year \$5.10 within trade territory. Outside trade territory \$6.12 per year.

## Montgomery Reunion Held

Mrs. Lillie O. Montgomery and seven children held a reunion at San Angelo, Aug. 25 & 26. Those attending were: Mr. and Mrs. J. C. Montgomery, Littlefield, Mr. and Mrs. Oscar Dueitt, El Paso, Mrs. Mary Holland, San Angelo, Mr. and Mrs. L. D. Sinclair, Littlefield, Miss Lillie Montgomery, Midland, Mrs. Gladys Lynn, Wilmington, Calif., Mr. and Mrs. Jess Bedford, Boyd, Tex., Mr. and Mrs. Gordon West and child, Oklahoma City, Mr. and Mrs. Bill Biddy and daughter, Lubbock, Mr. and Mrs. Dick Metzler and baby, Lubbock, Mr. and Mrs. Albert Washburn, Boyd, Tex., Mr. and Mrs. James Bedford, Ft. Worth, Mr. and Mrs. Herbert Bedford, Boyd, Tex., Mrs. Mary Bell Ulman and child, El Paso.

## Miss Lackey Is Honored On Birthday

Jacalene Lackey, daughter of Mr. and Mrs. J. E. Lackey, was honored with a birthday party celebrating her third birthday Aug. 29 at her home. Birthday cake and pink lemonade were served to Regina Macha, Darla and Linda Sanderson, Buddy Stafford, Tommie and Beverly Brown, Buster Sanders, Rodney and Linda Mahaffey, Valorie White, DeAnn, Susan and Chris Ogerly, Mrs. Emil Macha, Mrs. Larry Sanderson, Mrs. Ivan Ogerly, Mrs. Bud White and Mrs. Doyal White.



## Mrs. Jo Ann Henningsen Dance Enrollment Begins Here Saturday

Mrs. Jo Ann Henningsen, instructor of dance at Billie Jo's School of Dance located in the Modern Manor Shopping Center at 42nd and Boston Ave., in Lubbock, announces the opening of a Branch School of Dance in Littlefield. Classes will be held in the big room of the Lamb County Community Center in Littlefield, two days each week.

Mrs. Henningsen will be taking enrollments at the Community Center in Littlefield, Saturday, Sept. 8 from 10 a.m. to 6 p.m., including students three years of age and up.

A complete course is offered for preschoolers, and notebooks are used and are available to students for homework study. Classes are limited in number in order that each student receive the attention required for building the stature admired by so many.

Students are selected for public appearances and are sent out to perform before numerous groups. A recital was held in May at the Lubbock Municipal Auditorium with an attendance of well over 2400.

Lubbock classes begin Sept. 4 in tap, ballet, acrobatic modern jazz, ballroom, trampoline and baton. Billie Jo's has only specially trained teachers. Other teachers are Jan Payne, Mrs. Jewell Simpson, Mrs. Doris Harris, Mrs. Billie Jo Inglis, Jo Don Shockley, Marsha Deament, Desi Andress and Olivia Sanders, who is assistant teacher.



AMHERST CHEERLEADERS WIN RIBBONS -- These five Amherst cheerleaders attended school at SMU in Dallas. There were 900 girls registered for the school including both high school and college from Texas, Arkansas, Oklahoma, Kansas and New Mexico. The Amherst girls won three different

ribbons for their performances. Shown above standing, left to right, they are Katie Hardwick, Judy Tapley and Billie McGregor. Kneeling are Linda Clayton and Sherry Tomes. Adults accompanying the girls were Mrs. Doyle Tapley and Mrs. Bob Clayton.

## Eberl Trio Program Set At Whitharral Friday

The Southern School Assemblies Agency will present the Eberl Trio Friday, Sept. 14, at 9 a.m. in the high school gymnasium. Appearing in their Tyrolean dress and under the personal direction of Jacob Eberl and direct from their native Austria, the Gay Tyroleans play their native instruments -- accordion, guitar, zither and raffle -- sing Austrian folk songs, dance the famous "lander" (hand-clapping) and "schuhplatter" (shoe-slapping) dances, and in the process of so going quickly establish themselves as true masters of diversified entertainment. These Tyroleans can do a most interesting vocal gymnastic of yodeling, also. For novelty, a collection of cow and goat bells, deftly handled, ring forth in tuneful selections.

Jacob Andre Eberl, the group's director and master of ceremonies, is acknowledged to be one of Austria's finest yodelers and entertainers. He is a well known radio, T.V. and recording star. A graduate actor, he has worked at the famous "EXL-Goehne." He holds a teachers degree and a masters degree in economics from the University of Innsbruck.

Herman Gruber, guitarist, comes from Zillertal, a rural valley in the Tyrolean Alps renowned for the finest yodeling and its inborn love for and pursuit of folk music. Not only a fine guitarist and yodeler, he is one of the most skilled performers of the "schuhplatter" folk dance. He is also an experienced mountain climber, winner of several titles in amateur skiing competition, holds a degree in geology and mineralogy from the University of Innsbruck.

## It's Time For... EYE CARE

Dr. Newton K. Wesley  
FACTS ABOUT THE EYES  
When one thinks about the eyes, he thinks of them as very sensitive. But, actually we have learned the eye is not as sensitive as we thought, and consequently, many eye problems occur without prior warning. This is why we stress the importance of regular eye examinations. According to the National Eye Research Foundation, this should be done every six months.

One's eyes appear darker or lighter from grey, blue, etc., to the very dark black eyes, due to the amount of pigment which determines the amount of coloring in the eye.

Eyes can be made darker through the use of contact lenses, but not lighter unless you use a cosmetic lens which is one where the pupil is left clear and the outside portion of the iris, or colored section, is actually painted in. This does not restrict the pupil size and the field of vision but it is not recommended unless it is for a specific purpose such as acting. This is done only with the consent and knowledge of your eye doctor, however.

This message has been brought to you in the interest of better vision by Drs. B. W. Armistead, and Glenn S. Burk, Optometrists, Littlefield, Texas.

## FHA Holds First Meeting Of 1962-63 School Year Tuesday

The Whitharral Chapter of Future Homemakers of America met Aug. 28, 1962 at the home economics cottage for the first meeting of the 1962-1963 school term. The program outline for the year was read and approved. Chapter mothers were elected as follows: Mrs. Doyle Gilley, Mrs. Vellie Dickerson, Mrs. A. L. Chisholm, and Mrs. C. W. Stafford.

The chapter voted to go to the Dallas State Fair on Oct. 6. Two bake sales were scheduled for Sept. 12, and Oct. 3. Each girl is to furnish \$4.00 worth of cakes or pies or bring \$4.00 in cash. The members voted to baby-sit for the P. T. A. and for the Young Homemakers, rotating so that each group will baby-sit once a month.

The installation ceremony is set for Friday, Sept. 6, during school hours. Grade school and high school will be present. It will be given under the Southern School Assemblies Agency here during the school year.

## Bowling League Meeting Called

James Lunsford, president of the Town and Country Bowling League, has called a meeting of all captains and members from teams participating in the league for 7:30 tonight at the Lamb Bowling Lanes.

Lunsford requested that all attend so the schedule for the league could be established.

## Whitharral HD Club Meets In Pelfrey Home

"The Heart" was discussed Tuesday afternoon by Mrs. E. E. Pair and Mrs. Raymond Clevenger when the Whitharral Home Demonstration Club met at the home of Mrs. Joe Pelfrey southwest of town.

Mrs. D. C. Thetford presided for the meeting. Roll call was answered with "Have You Had A Heart Check-up Lately?" Miss Lena Maxey read a poem on "Friends."

Donuts, coffee, nuts and cold drinks were served to two visitors; Mrs. O. L. Baisden and Mrs. Vick Matthews; and the following members: Mesdames Pair, R. Clevenger, Hub Spraberry, Eula Fyke, Thetford, S. J. Clevenger, B. L. Hicks, Sr., Robert Strickland, Pelfrey and Miss Maxey.

## Funeral Rites Scheduled For H. C. Holt Today

Funeral services for H. C. Holt, 72, a resident of Muleshoe since 1931, will be held today at 10 a.m. in the Muleshoe First Methodist Church with the Rev. J. Frank Peery, pastor, officiating. The Rev. T. G. Craft, pastor of the Y. L. Methodist Church, will assist.

Holt died at 11 a.m. Tuesday at his home in Muleshoe.

A native of Sharp County, Ark., Holt moved to Muleshoe from Sudan. He was in the oil and gasoline business in Houston. He was a member of the First Methodist Church.

Burial will be in the Sudan Cemetery under direction of Singleton Funeral Home, Muleshoe.

Survivors include his wife, Callie; two sons, Clyde and Horace, both of Muleshoe; two daughters, Mrs. Lester Garth, Ukiah, Calif.; and Mrs. Paul Gardner, Richardson; a sister, Mrs. Allie Little, Tulsa; a half-sister, Mrs. G. B. Knox, Earth; and a half-brother, Coy White; eight grandchildren and eight great-grandchildren.

## AT AMHERST

Kenneth Rosson and sons, San Diego, Calif. visited here this week with his wife's parents, Mr. and Mrs. A. H. Scivally.

J. E. Elliott, Jr. returned home last week from Kwajalein Islands where he had been on a construction job. He and his father went to Ranger the next day to get his wife and sons who were visiting her mother. They are visiting now with his parents, Mr. and Mrs. J. E. Elliott and Paul.



## Movie Actor Will Speak For Taylor

George Murphy, motion picture actor and executive, is coming to West Texas in behalf of the 19th Congressional District candidacy of Dennis Taylor of Crosbyton. Murphy is to be the featured speaker at a huge Republican rally in Lubbock, on Thursday night, Sept. 6. State Representative Kenneth Kholer, Amarillo, will be master of ceremonies for the rally.

Murphy, a well-known and dedicated Conservative, will leave his Hollywood duties briefly to appear for Taylor in his formal campaign kick-off. George Mahon of Colorado City is the incumbent Congressman for the 19th Congressional district.

Participating in the program with Murphy and Taylor will be the Moon Discs, a musical act from Floydada who have set a new record, and who will delight and amaze the crowd with his demonstrations of gic.

Attractive Texas Testeds (Taylorettes) will be hostesses for the affair. Candidate Taylor will speak briefly.

Two major Lubbock events will be blocked off in Taylor's campaign headquarters at 14th St. and Ave. to accommodate the rally which will conclude at 8 p.m. Refreshments will be served in the Taylor campaign headquarters.

Buddy Hedges of Clinton, Lamb County campaign manager.

## Eby Promoted In Germany

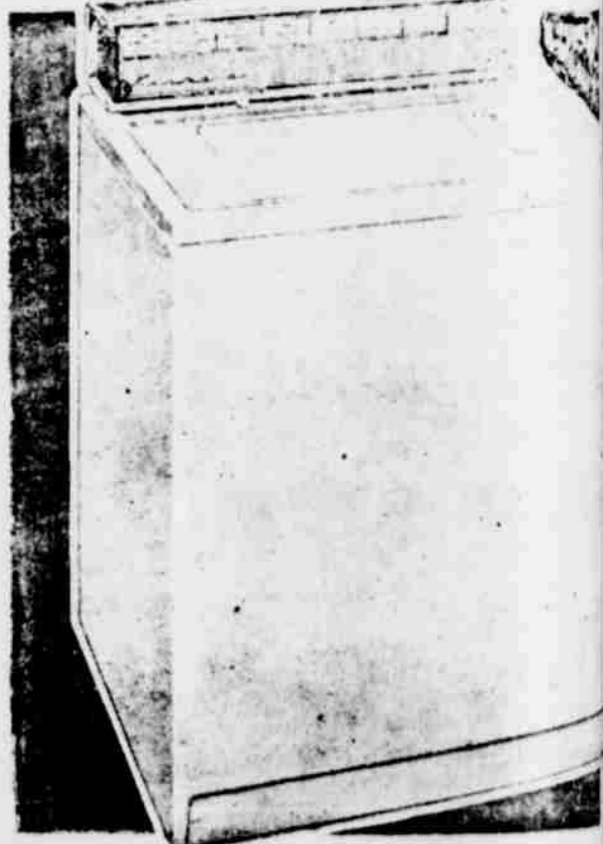
WORMS, GERMANY (AP) -- Harold D. Eby, son of and Mrs. Diane C. Eby, 1, Olton, Tex., recently promoted to specialist in Germany, where he is serving with the 48th Infantry Specialist Eby, a rifle in the infantry's Company in Worms, entered the Army November 1960, completed basic training at Fort Hood, Tex. and arrived overseas in 1961.

The 24-year-old soldier is a 1956 graduate of Olton School and was employed by Elmer Phillips Plumbing Co. entering the Army.

for the 19th Congressional district.



# PRICED LOWER THAN EVER BEFORE!



### Our Best-Selling Kenmore Automatic Washer Cut \$25.95 WAS \$209.95

# \$184

NO MONEY DOWN \$9.50 Month

Easier to operate than your television set... simply turn the dial to the cycle for your fabric... everything else is done for you. Big 10-lb. capacity; acrylic finish slim cabinet; porcelain top, tub, lid. Built-in filter. Infinite water level; Roto-Swirl agitator.

W26 W 6471N--Wt. 255 lbs. .... \$184  
W26 W 6471N--All porcelain finish, Wt. 270 lbs. .... \$194

"Satisfaction guaranteed or your money back" SEARS

Phone 385-4444 406 Phelps Ave. Littlefield



### Littlefields Authorized RCA VICTOR COLOR TELEVISION DEALER

# If You Are To Buy a New TV... COLOR



# BUY RCA VICTOR

WORLD LEADER IN COLOR TV

## New 1963 Models New Low Prices- RCA Color TV-

# \$525

MODEL 213 F 102 M

### Easy Terms

# Nelson's Hardware & Housewares

P.O. Box 871 Phone 385-4331

# Hospital News

**Littlefield Hospital and Clinic**  
 September 1  
**ADMITTED:** Josephine So-  
 Dewayne Kisner, Allen  
 Mansell, Mrs. Sallie  
 ch. Mrs. Adrienne Burns,  
**DISMISSED:** Rafael Alvarez,  
 Hattie Hobrathsch, Mr.  
 Ricks, Mrs. Vera Hod-  
 Mr. Gavin Hayes, Mrs.  
 Mullins.

**September 2**  
**ADMITTED:** Mr. Aurora  
 Mrs. Delores Gonzales,  
 June Bills, Mrs. Melba  
 Marvalene West, Mrs.  
 Clevering, James F.  
 Mrs. Fred Grisham,  
**DISMISSED:** James E. Kent,

**Bob Gigel**  
**to Wrestle**  
**here Saturday**  
 Saturday night wrestling fans  
 plenty of action as Killer  
 Kox defeated new comer  
 Gypsy Biviano in the opening  
 event in the time of twelve min-  
 utes.

Formerly beat Gypsy Biviano  
 the first main event of the  
 evening.  
 Gigel as was expected, re-  
 ceived his title as Champion of  
 North America, when he whip-  
 ped Kox in two straight falls.  
 The match was wild and brutal,  
 and Gigel turned the heat on in-  
 ending Monroe.

Bob Gigel  
 this week Big Bob Gigel re-  
 turns to the local arena after  
 absence of two years to meet  
 Gypsy Biviano in the opening  
 event, a one fall 20 minute  
 match.

The first main event will see  
 Pacho Pico meet Ali Ali in a  
 return match of four weeks ago.  
 Pacho wanted a return match the  
 following week, but John Usa-  
 any, promoter, was unable to  
 make the match again until  
 this week. In their first match  
 Ali Ali lost on a disqualifica-  
 tion as he injured Pico, who  
 was unable to continue the  
 match.

Tag Team fans will be happy  
 to see this match as their main  
 event this week. Bob Gigel  
 teams up with his former tag  
 partner, Ricky Romero as they  
 meet a new Tag Team, Killer  
 Kox, one of the roughest wrestl-  
 ers ever to appear in Texas.  
 Kox has found a new partner in  
 Gypsy Biviano.

Kox and Biviano should make  
 a team whose knowledge of dirty  
 wrestling and cunning would put  
 to shame even the team of The  
 Viking and Sir Nelson Royal.  
 Kox knows all the angles of Tag  
 Team wrestling.

Gigel who has been wrestl-  
 ing in Canada and the Midwest,  
 made a tour of Japan under his  
 name, returns to this area a  
 much wiser and better wrestl-  
 er. Fans will be pleased to  
 see Bob as he was one of the  
 best wrestlers ever to appear in  
 the local arena. Matches start  
 at 8:45 p.m.

**BOB GIGEL**  
 The last  
 of the  
 red hot  
 Lamas  
 !  
**ANG CROSBY BOB HOPE JOAN COLLINS**  
 PANAMA & FRANK'S  
**THE ROAD TO HONG KONG**  
**ROTHY LAMOUR** ROBERT MORLEY NORMAN PANAMA & MELVIN FRANK  
**PALACE** SUN-MON-TUES  
 SEPT. 9-10-11  
 ALSO  
 XIT DRIVE IN WED-THURS (SEPT 12-13)

**Mrs. Adrienne Burns,**  
 September 3  
**ADMITTED:** Mrs. Ben Con-  
 trearez, Mrs. Gina Downing, El-  
 roy Wisian, Jr., Dean Hogue,  
 Michael Burns, Mrs. Alpha Mc-  
 Carty, Mrs. Ruby Elmore, Mr.  
 Gerald Cochran, Mr. L. L.  
 Rendleman.  
**DISMISSED:** Mr. Flores Gus-  
 tavo, Mr. Arthur Perry, Al-  
 len Wayne Mansell, Mrs. Della  
 Church, Mrs. Doris Thornton,  
 Mrs. Jackie Watkins, and in-  
 fant, Mrs. Savannah Perkins,  
 Mr. Robert Hebel.

**September 4**  
**ADMITTED:** Mrs. Robbie  
 Moore, Mr. A. H. McFarland,  
 Jerry Meyers, Mrs. Kathy Ar-  
 ter, Mrs. Maxine Hutto, Mrs.  
 Deweylene Waide.  
**DISMISSED:** Mrs. Delores  
 Gonzales, Mrs. Josie Solis,  
 Dean Hogue, Mrs. Sallie Finch,  
 Mrs. Melba Royal, Michael  
 Burns, Marvalene West, Mr.  
 James F. Collins.  
**BIRTHS**  
 Mr. and Mrs. Schuyler M.  
 Watkins of Earth have a baby  
 girl, born August 30, 1962, at  
 3:48 p.m. She weighed 6 pounds  
 8 ounces and has been named  
 Kimberley Ann.

Mr. and Mrs. James W. Roy-  
 al of Littlefield, Texas, have  
 a baby girl born Sunday, Sep-  
 tember 2, 1962 at 8:20 p.m.  
 She weighed 6 pounds, and has  
 been named Brenda Elaine.  
 Mr. and Mrs. Dianicio Can-  
 tu have a baby girl born Mon-  
 day, September 3, 1962, at 1:25  
 a.m. She weighed 7 pounds 2  
 ounces.  
 Mr. and Mrs. Jackey Arter  
 have a baby girl born Tuesday  
 September 4, 1962, at 4:20 a.m.  
 She weighed 7 pounds 10 oun-  
 ces and has been named Sherry  
 Gay.

**Medical Arts Clinic**  
**Hospital**  
 September 1  
**ADMITTED:** Mrs. Kenneth  
 Houk, Miss Charlotte Williams,  
 Nathan Knight.  
**DISMISSED:** Mrs. Alice  
 Hollabaugh, Mrs. Marilyn Tay-  
 lor and infant, Mrs. Tunnie  
 Weige.

**September 2**  
**ADMITTED:** Mrs. R. C. Todd,  
 Randy Barnes, Mrs. P. M. Man-  
 kins.  
**DISMISSED:** Kenny Pounds,  
 Sandra Hunt, Nathan Knight.  
**September 3**  
**ADMITTED:** Henry Stanley,  
 Mrs. W. M. Smith, O. L. Rob-  
 erts, H. C. Richardson, Mrs.  
 O. M. Smith, Mrs. Edward L.  
 Bell, Mrs. Belle Pratt, R. H.  
 Hukill.  
**DISMISSED:** Mrs. Roy Jack-  
 son, Sr., Alton Miller, W. C.  
 Gray, Charlotte Williams.

**September 4**  
**ADMITTED:** Duane Gray,  
 Mrs. Joe Madrid, Mrs. Sarah  
 Clark, W. H. Kilgore, Homer  
 Sealy, Mrs. Ray Williams,  
 Mrs. P. W. Walker, Mrs. Dan  
 Johnson.  
**DISMISSED:** Lewis T. Dow-  
 dy, Mrs. P. M. Mankins, Mrs.  
 William C. Gray, Mrs. Effie  
 Wood, Joe Conkin, O. L. Rob-  
 erts.

**September 5**  
**DISMISSED:** Duane Gray,  
 Henry Stanley.  
**BIRTHS**  
 Mr. and Mrs. Joe Madrid  
 of Littlefield are the parents  
 of a six pound twelve ounce  
 baby girl born Sept. 4, 1962, at  
 10:00 a.m. She has been named  
 Mary Gloria.  
 Mr. and Mrs. Ray Williams of  
 Littlefield are the parents of a  
 five pound fifteen ounce baby  
 boy born Sept. 4, 1962. He has  
 been named Joseph Roland.

**AT FIELDTON**  
 Mr. and Mrs. Don Muller  
 Donna and Bryan, spent Sunday  
 with her parents, Mr. and Mrs.  
 Bruce Porcher, near Little-  
 field.

## Lately In Littlefield

**Phone 385-3438 or 385-4481**  
 Mrs. Lillie O. Montgomery  
 and daughters, Essie Dewitt,  
 Gladys Lynn and Lois Sin-  
 clair attended the Old Settlers  
 Reunion Thursday in Littlefield.  
**LIL**  
 Mr. and Mrs. J. E. Eller and  
 Mr. and Mrs. Walter Sewell  
 spent the weekend in Ruidosa,  
 N. M.  
**LIL**  
 Mrs. Allen Dickson of Hale  
 Center spent the weekend in Lit-  
 tlefield with her brother, and  
 wife, Mr. and Mrs. Buck Ross.  
**LIL**  
 Mr. and Mrs. Tack Purdy,  
 Debby and Danny of Odessa were  
 weekend guests in the home of  
 her mother, Mable Alexander,  
 Mr. and Mrs. Donald Belew,  
 Mike and Pam of Garland, Mr.  
 and Mrs. Bob Inman, Kerl Lynn  
 and Robert Devon of Albuquer-  
 que, nephew of Mrs. Alexander,  
 were also weekend visitors.  
**LIL**  
 Mr. and Mrs. Shorty Sisson  
 and daughter of Littlefield spent  
 the weekend in Ruidosa, N. M.  
**LIL**  
 Mr. and Mrs. Estin Whipple  
 of LaMarge visited over the  
 weekend here with her daughter  
 and family, Mr. and Mrs. Ken-  
 neth Reast.  
**LIL**  
 Mr. and Mrs. Bill Brock spent  
 the weekend in Ruidosa, N. M.  
**LIL**  
 Mrs. J. C. Glover returned  
 home Sunday from a seven week  
 visit in Oregon with her son and  
 family, Mr. and Mrs. R. E. Glo-  
 ver, and a three week visit in  
 Abilene with her daughters,  
 Mrs. Foy R. Smith and family  
 and Eudene Glover.  
**LIL**  
 Mr. and Mrs. Roger Jones,  
 Ft. Carson, Colo. visited this  
 weekend with his parents, Mr.  
 and Mrs. Ray Jones, and with  
 her parents, Mr. and Mrs. B. E.  
 Ivey.  
**LIL**  
 Roy Jones, Ed Jones and  
 Boots Crews are fishing at  
 Lake Stamford this week.  
**LIL**  
 Mary Ann Reams, daughter of  
 Mr. and Mrs. Lynn H. Reams,  
 left today for Searcy, Ark.  
 where she will attend Harding  
 College.  
**LIL**  
 Mrs. D. H. Elliott and son,  
 Steven Craig, of Lubbock visit-  
 ed here Wednesday with her  
 parents, Mr. and Mrs. H. V.  
 Elkins.  
**LIL**  
 Dr. and Mrs. William Dean  
 of Demopolis, Ala and Mrs.  
 Sadie B. Hinckley of Dallas  
 have been visiting here with Dr.  
 and Mrs. Herbert Hinckley.  
**LIL**  
 Mrs. Robert Gollehon's niece  
 and husband, Mr. and Mrs. Ver-

## Mrs. Feagley Rites Scheduled Here Today

Funeral services for Mrs.  
 Vera Mae Feagley, 48, a re-  
 sident of this area for 34 years,  
 will be held today at 2:30 p.m.  
 in the First Baptist Church.  
 The Rev. Richard Heard, pas-  
 tor of the Rocky Ford Baptist  
 Church, will officiate, assisted  
 by the Rev. Johnny Wilson, pas-  
 tor of the Sunset Baptist Church  
 here.  
 Burial will be in the Lit-  
 tlefield Cemetery under direc-  
 tion of Hammons Funeral Home.  
 Mrs. Feagley was born Oct.  
 5, 1914 in Wolf City, Tex. and  
 died Tuesday.  
 Survivors include her hus-  
 band, J. W.; her father, Char-  
 les John Kyzer of Galveston;  
 her step-mother, Tina Kyzer of  
 Galveston; three sons, Johnny  
 Lee Feagley of Amherst, Fred  
 A. Feagley of Amherst and  
 James W. Feagley of here; four  
 brothers, Jessie Kyzer of Mid-  
 land, Roy Kyzer of Austin,  
 Hubert Kyzer of Fort Worth  
 and Charles Kyzer of Galveston;  
 four sisters, Mrs. Ada  
 Cloud of Cleburne, Mrs. Bertha  
 Daniels of Liberty Hill, Mrs.  
 Gwendolen Feagley of Fort  
 Worth, and Mrs. Terdeta Fea-  
 gley of Littlefield; and eight  
 grandchildren.  
 Pallbearers will be Dwayne  
 Bryant, Charles Carpenter, La-  
 Verne Nicholson, R. J. Cook,  
 Harold Roberson, and Dean  
 Carpenter.

**AT FIELDTON**  
 Mr. and Mrs. Gerald Lang-  
 ford and Kathy, were dinner  
 guests Sunday of his sister,  
 Mrs. Laverne Selser, and fam-  
 ily, Levelland. His brother and  
 family were also present, and  
 three sisters and families.  
**LIL**  
 Mr. and Mrs. J. E. Elliott  
 made a business trip to Am-  
 arillo Monday.  
**LIL**  
 Mr. and Mrs. Ray Muller and  
 three sons went to Denver Cit-  
 y Sunday to visit her sister  
 and family. While they were  
 there the sister, Mrs. Hayes,  
 received word that the body of  
 their brother, Travis R. Hicks,  
 had been found five miles from  
 Stanton. He had been dead for  
 some time.

## Mrs. Walker Hospitalized

Mrs. P. W. Walker was hos-  
 pitalized yesterday with a bro-  
 ken knee cap received in a fall  
 at her home.  
 She was reported to be doing  
 fine.

## FEATS BEYOND DESCRIPTION! SPECTACLE BEYOND IMAGINATION!

**The Magic Sword**  
 with BASIL RATHBONE ESTELLE WINWOOD  
 GARY LOCKWOOD ANNE HELM  
**THEATRE**  
 In EASTMAN COLOR Released thru UNITED ARTISTS  
**PLUS "THE CLOWN AND THE KID"**  
**PALACE** FRIDAY-SATURDAY  
 SEPT. 7-8

## XIT DRIVE IN - THEATRE

FRIDAY & SATURDAY ONLY  
**STARTS TOMORROW**  
**ADULT ENTERTAINMENT**  
 RECOMMENDED FOR HIGH SCHOOL AGE AND ABOVE

ALL TICKETS 75¢  
 "The sexual side of marriage chills me!"



**KEN** PRESENTS  
**FRIGID WIFE**  
 SEE WHY 1 OUT OF EVERY 3 MARRIAGES ENDS IN DIVORCE!  
 Written and Produced by JOHN KENLO  
 ASSOCIATE PRODUCER - ARNOLD JACK ROSENTHAL  
 ALL STAR CAST  
 JEANNE MEHER - REED HADLEY - SONORA FISHER  
 BOB CARR - KEN ELLIOTT - SID NOEL  
 MADE IN HOLLYWOOD, U.S.A.

**THE MOST OUTSPOKEN MOTION PICTURE EVER MADE**

## BUSINESS Review For '62



## Elmer Owens Has The Know How For Repairing Your Auto

Elmer Owens who last May opened the shop known as EL-  
 MER'S AUTO CLINIC located at  
 318 Littlefield Drive, Little-  
 field, has gained an enviable  
 "know how" reputation as an  
 Automobile Mechanic.  
 For over 25 years Elmer has  
 been working on the mechanical  
 structure of all kinds of auto-  
 mobiles. However most of his  
 experience has been on Chev-  
 rolets. He spent over 14 years  
 working for various Chevrolet  
 dealers throughout the Plains  
 area.  
 In 1956 he opened his own  
 shop in Littlefield, on the Cle-  
 vis Highway, which he operated  
 for about two years. He had a  
 shop in Amherst for about the  
 same length of time. His repu-  
 tation as a skillful and conscien-  
 tious mechanic became well  
 known throughout the area.

He became identified with  
 hereford Chevrolet Dealers and  
 was with them for about 5 years.  
 Owning his own home at 1104  
 West 3rd, he decided to open his  
 shop again in Littlefield. He  
 calls his place of business EL-  
 MER'S AUTO CLINIC, 318 Lfd.  
 Dr.  
 Here he specializes on Motor  
 Tune Up, Generator, Starter and  
 complete brake work.  
 Elmer's slogan is "WE  
 DEAL, NOT DICKER."

**McCOY MACHINE & PUMP**  
**REPAIR** LAYNE PUMPS  
 GEARHEADS  
 WELDING REPAIRS ON PORTABLE  
 MACHINE WORK ALL MAKES WELDING  
 Lubbock Hwy. Dial 385-5233

**ELMER'S AUTO CLINIC**  
 Irrigation Motor Motor Overhaul Auto Repairs  
 Repair WE DEAL NOT DICKER  
 Satisfaction Guaranteed 313 Lfd. Drive

**S. & J. SERVICE PARTS, INC.**  
 TRACTOR - AUTOMOTIVE PARTS  
 If You Need It -- We Have It...  
 Phone 385-5194 211 East 9th Street Littlefield

**Drive In Cleaners**  
 MR. AND MRS. G. E. SCIFRES  
 ALTERATIONS OF ALL TYPES BUTTON HOLTS  
 COVERED BUTTNS BUCKLES AND BELTS  
 Including contour belts Made From Your Material  
 UNCLAIMED TAILOR MADE SUITS -- \$29. 85 UP  
 LEVELLAND HIGHWAY

**S & S ARMY STORE**  
 S. B. Dyer, Owner  
 GENERAL MERCHANDISE SPORTING GOODS  
 HARDWARE & HAND TOOLS CLOTHING  
 "We Buy - Sell - Trade"  
 209 XIT DRIVE DIAL 385-3944

**ROBERTS LUMBER CO.**  
 READY - MIXED CONCRETE  
 Pittsburgh Paints Building Materials  
 Hardware-Sand and Gravel  
 HWYS 84 & 54 LITTLEFIELD TEL. 385-4140

**PAUL JENSEN**  
 Proudly Announces  
 DISTRIBUTORSHIP  
 IN LAMB AND  
 HOCKLEY  
 COUNTIES  
 FOR  
**FOREMOST Dairy Products**  
 FRESH DAILY  
 AT YOUR GROCERS  
 Dial 385-3234

**R & H MOTOR CO**  
 4th & XIT DRIVE  
 PH. 385-3344  
 OWNERS TOM RICE  
 DICK HENSHAW

**Automotive Supply**  
 Headquarters  
 700 E. 4th 385-4431  
 Car Truck  
 Tractor Industry  
 Irrigation  
 Motor Rebuilding  
 Precision Machine Service.  
**G & C Auto Supply**  
 Chandlers  
 Motor Machine and Supply  
 Littlefield, Anton  
 Sudan, Earth

**BIRKELBACH Machine Shop**  
 COMPLETE PUMP SERVICE  
 IRRIGATION PUMP REBUILDING A SPECIALTY  
 GENERAL MACHINE WORK  
**BIRKELBACH MACHINE SHOP**  
 Ph. 385-3733  
 1012 E 9th Littlefield

**OUR MEATS ARE TOP QUALITY**  
 BUY A WHOLE HALF or QUARTER BEEF  
 for the locker.  
 Or buy by the lb.  
 for the highest  
 quality on all  
 meats.  
 Hogs processed  
 & cured. Chickens  
 dressed.  
 Littlefield  
 Frozen Food Locker  
 134 N Eastside Ave.  
 Phone 385-3818

**ROBERTS LUMBER CO.**  
 READY - MIXED CONCRETE  
 Pittsburgh Paints Building Materials  
 Hardware-Sand and Gravel  
 HWYS 84 & 54 LITTLEFIELD TEL. 385-4140

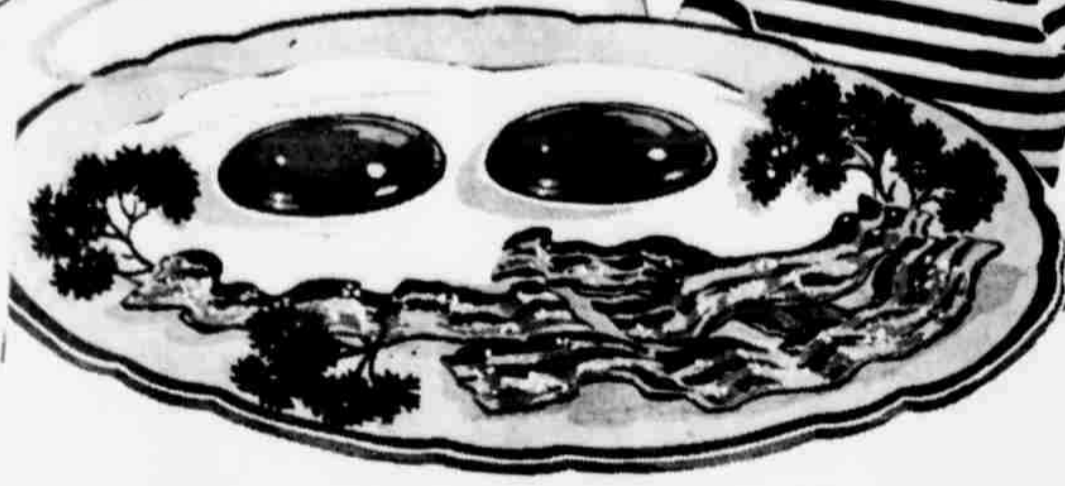
**PAUL JENSEN**  
 Proudly Announces  
 DISTRIBUTORSHIP  
 IN LAMB AND  
 HOCKLEY  
 COUNTIES  
 FOR  
**FOREMOST Dairy Products**  
 FRESH DAILY  
 AT YOUR GROCERS  
 Dial 385-3234

**ROBERTS LUMBER CO.**  
 READY - MIXED CONCRETE  
 Pittsburgh Paints Building Materials  
 Hardware-Sand and Gravel  
 HWYS 84 & 54 LITTLEFIELD TEL. 385-4140

**PAUL JENSEN**  
 Proudly Announces  
 DISTRIBUTORSHIP  
 IN LAMB AND  
 HOCKLEY  
 COUNTIES  
 FOR  
**FOREMOST Dairy Products**  
 FRESH DAILY  
 AT YOUR GROCERS  
 Dial 385-3234

**ROBERTS LUMBER CO.**  
 READY - MIXED CONCRETE  
 Pittsburgh Paints Building Materials  
 Hardware-Sand and Gravel  
 HWYS 84 & 54 LITTLEFIELD TEL. 385-4140

**"Give 'em  
a Good  
Breakfast"**



Lowest Prices... Greatest Variety... always at...  
**Piggly Wiggly**

— Fresh Frozen Foods! —

**GRAPE JUICE** WELCHES 12 OZ CAN **33¢**

PATIO, BIG BEEF ENCHILADAS 24 OZ. SIZE 49¢  
PATIO, BEEF TAMALES 20 OZ PKG. 39¢  
SEABROOK CUT CORN 2 10 OZ PKGS 35¢  
SEABROOK BABY LIMAS 10 OZ PKG. 23¢

**DOUBLE Toothpaste**



HEALTH AND BEAUTY AIDS!  
CUE ECONOMY SIZE 69¢ RETAIL. LESS 12¢ OFF LABEL **45¢**  
LILT PUSH BUTTON, \$2.50 RETAIL. PLUS 19¢ TAX  
HOME PERMANENT \$1.80  
LUSTRE CREME, 99¢ RETAIL. PLUS 8¢ TAX  
HAIR SPRAY 71¢  
CHAPAN, MEDICATED, LARGE TUBE, 65¢ RETAIL  
HAND CREAM 47¢

**ORANGE JUICE** SEALED SWEET FROZEN 6 OZ CAN **12 1/2¢**  
**PEACHES** HUNTS, YELLOW CLING. SLICED OR HALVES. IN HEAVY SYRUP, NO 2 1/2 CAN **23¢**

**EVERY WED.**  
WITH \$2.50 PURCHASE IN MORE

**SUGAR** C & H OR IMPERIAL PURE CANE 5 LB BAG **49¢**  
**EGGS** IDEAL GRADE A MEDIUM DOZEN **37¢**

— FRESHEST MEATS IN TOWN AT PIGGLY WIGGLY! —

**GROUND BEEF** LEAN DATED FOR FRESHNESS 3 LBS **\$1.00**  
**PORK CHOPS** FRESH NORTHERN PORK, CENTER CUT, RIB CHOPS. SERVE FOR BREAKFAST POUND **59¢**  
**SAUSAGE** PINKNEY'S ALL PORK 2 LB BAG **59¢**  
ARMOUR'S STAR AGED, HEAVY BEEF, "VALU TRIM," POUND **69¢**  
ARMOUR'S STAR, AGED, HEAVY BEEF, "VALU TRIM," NEW YORK STEAK LB **\$1.69**  
ARMOUR'S CAMPFIRE, SLICED BACON 5<sup>ND</sup> **59¢**  
OSCAR MAYER'S, JOKIES, BREAKFAST LINKS 7 OZ. PKG. **49¢**  
DECKER'S, STICK, BY THE PIECE, CANADIAN BACON POUND **99¢**  
KRAFT'S, PHILADELPHIA CREAM CHEESE 2 3 OZ PKGS. **29¢**  
JOHNSON'S, HEAT & EAT, CORN DOGS PKG OF 4 **49¢**

BONNEBELLE, SWEET CREAM BUTTER QUARTERS **73¢**  
SUNSHINE CHEEZ-IT 10 OZ PKG. **29¢**  
HI VI 50, DOG FOOD 26 OZ CAN **15¢**  
RUSTY DOG FOOD 4 NO 1 TALL CANS **29¢**  
WHITE SWAN, PORK & BEANS NO 300 CAN **12 1/2¢**  
HEINZ, FANCY TOMATO, KETCHUP 14 OZ BOTTLE **25¢**  
BUBBLE BATH, JOY SUDS 16 OZ BOX **27¢**  
IRELAND'S BEEF CHOPPED OR SLICED BARBECUE NO 300 CAN **69¢**  
KRAFT'S, 5¢ OFF LABEL, SALAD OIL QUART **59¢**  
LA CHOY, CHOW MEIN NOODLES NO 303 CAN **17¢**  
MORTON'S TEA 5 POUND PKG. **29¢**  
WHITEHOUSE APPLESAUCE 2 303 CANS **33¢**  
VAN CAMP'S BEANEE WEANEE 12 OZ CAN **27¢**  
WE RESERVE THE RIGHT TO LIMIT QUANTITIES

— FRESHEST PRODUCE ALWAYS AT PIGGLY WIGGLY —

**CANTALOUPE** HOME GROWN LB **5¢**  
**CARROTS** CALIF. TABLE SIZE CELLO BAG **2/19¢**  
**ROMAINE** FRESH GREEN LARGE BUNCH **2/25¢**  
**YELLOW ONIONS** NEW CROP LB **5¢**

**Biscuits** MEADS, BUTTERMILK OR SWEETMILK 4 CANS **29¢**  
**Flour** SUNLIGHT FULLY GUARANTEED 5 LB BAG **29¢**  
**Tissue** TOILET, DELSEY ASSORTED COLORS 4 ROLL PACK **49¢**  
**Shortening** BAKE RITE 3 LB CAN **59¢**  
**Instant Milk** BELLE NON FAT 8 QT. SIZE **49¢**

**KNOW THE SCORE WHY PAY MORE**  
**Oleo** ELGIN SOLIDS POUND PKG. **12 1/2¢**  
**Coffee** FOLGERS, DRIP REG OR FINE POUND CAN **62¢**  
**Coffee** FOLGERS DRIP REG OR FINE 2 LB CAN **\$1.19**

Lowest Prices... Greatest Variety... always at...  
**Piggly Wiggly**

PRESS

(Continued from Page One)
Always be in the upper left hand corner of the contest page. Only the official football page can be used in submitting entries.

In the event of a tie among contestants the prize money will be split among those being tied. A game will appear in each of the football ads on the page. A circle around one of the names will indicate the choice. Members of the editorial staff of the Press will judge the contest and their decision will be final.

Deadline for submitting entries will be each Friday at 5 p.m. The winners will be announced in the following Thursday's issue of the Lamb County Leader. There is no limit on the number of entries one person may submit. Be sure that the name and address are printed on the back of each sheet submitted. All entries must be either mailed or brought to the offices of the Littlefield Press. Sponsors of this year's contest include: Roberts Lumber, Cecil Howard's Station, Grissom Gulf, Howard's Feed & Seed, Dairy Mart, Lichte - Sullins Acid Distilling, Armes Chevrolet, Gies Equipment, Ray Keeling, Gies Equipment, Ray Keeling Truck, Dick Ratliff Gulf, G & C Auto, Furr's Super Market, Gene Pratt Jeweler, Keithley Company, Dairy Queen, Farley Sales, Findley Jewelry, Cox in Shop, Tommy's Radio & TV, Pasty Cream, Lumsden Gin, and Littlefield Steam Laundry.

WILDCATS
(Continued from Page One)
back, T. Estrada at fullback and P. Estrada at wingback. Each is playing their third year as a regular. Our biggest question is in the line. Howie stated, "but where we lack size, we have some good boys who are quick and determined." The line averages 168 pounds while the backfield average is 167. The coach listed two injuries which may hurt the team this first game, Billy Banks, an end, suffered a shoulder injury but will see limited action Friday. Robert Bolton, a guard, has a knee injury and will also see limited play. Howie gave his probable starting lineup for the Muleshoe game as Billy Thompson and Gary Fitzgerald at ends, Johnny Eadsen and Jim Melton at tackles, Robert Conley and Steve Lowe at guards, Tim Chambers at center, either Larry Wood or Ray McKinney at quarterback, Schovajsa, P. Estrada and T. Estrada. Muleshoe is picked to win their district. They will be depending on quarterback Kenny Heathington, halfback Jerry Blumbrath, guard Gerald White and fullback Don Finn, all starters last season. Tickets to the Muleshoe game are on sale at Brittain's Pharmacy in Littlefield. Game time is 7 p.m. Friday.

from Your Chamber Office

By Kenneth Ware
The Priorities Committee has chosen to make a study of the Chamber of Commerce itself as our first project. We think this is proper because the Priorities Committee is a Chamber of Commerce group. First in our study we compiled a chart of all the committees and the membership represented on those committees.

Table with 2 columns: Persons, Assignments. Lists various committee assignments and the number of people assigned to each.

The Priorities Committee decided that too many people have no committee assignment and some people are over-loaded. We further concluded that the method of selecting committee members should be studied. At present the President elects the committee chairman with the approval of the board. The committee chairman selects the committee members with the approval of the President and the Board.

TOWN

(Continued from Page One)
look: "Dad, what's a traitor in politics?" "A man who leaves our party and goes over to the other side." "Then what's a man who leaves them and comes over to us?" "A patriot, my son."

THE FINE rains that came to this area Saturday night and Sunday have certainly brightened the dryland crop picture. Most of our cotton forecasters have increased their estimates for the county.

In the meantime grain sorghum continues to turn brown and some combining has begun in the area. The rains could not have come at a better time. Dryland crops were beginning to hurt and irrigation farmers were applying a last watering to both cotton and grain.

DICK CARL always looks forward to the annual REA meeting for several reasons, and one of the big ones is that he usually goes fishing as soon as it's over. Think he has some good fishing spots picked near Raton, N. M. this year. Dick could have looked forward to this year's annual meeting for another reason. . . that of having a good report for the membership. The Lamb County REA has netted almost \$200,000 the first nine months of the fiscal year.

ONE OF the best investments now, and always has been land. Farm land values are 5% higher than a year ago and the highest in history. During the past year, prices advanced 6% to 10% in 12 southern states. Landowners in all states, except Washington, shared in the rise. A moderate advance in values during the next six months appears promising. Obviously land prices increase in this area of the country as we continue to have wet

AT FIELDTON

Mr. and Mrs. Archie Howard and Mr. and Mrs. Dickie Lee and Velva visited recently in Ft. Worth with relatives. Also going was Mrs. Pinkie Holbert, Lubbock.

A sister, Mrs. Sarah Henry, Ft. Worth, accompanied them home, and she and Mrs. Holbert are spending the week with the Howards, and Lee families, also Mr. and Mrs. B. A. Ball and other relatives. Mr. and Mrs. Howard and Mr. and Mrs. Lee and Velva also visited Six Flags Over Texas.

LITTLEFIELD WILDCAT 1962 SCHEDULE. Table listing dates and locations for the football season, including Muleshoe, Brownfield, Seminole, Denver City, Plainview, Perryton, Dumas, Levelland, Hereford, and Phillips.

FOOTBALL

FOOTBALL takes the front seat of entertainment Friday night on the South Plains. The Littlefield Press hopes you enjoy the special "Pigskin Section" of this edition. Although we're backing the Littlefield Wildcats all the way, we're naturally looking for our area teams in other classifications to make a good showing.

COUNCIL

(Continued from Page One)
and adoption of the 1962 - 63 budget for the city. Another major item will be the approval of the corrected plat of a portion of the Crescent Park addition and opening bids on water and sewer for the same addition.

Other items on the agenda include introduction of an arson reward ordinance, review of current water rates, discussing the condition of one of the city's water wells and discussing sealcoating the airport. The meeting is open to the public.

BOTSFORD

(Continued from Page One)
Francisco railroad was being laid through the Indian country from Fort Smith, Arkansas, to Paris, Texas. With his saddle horse and bed horse, Botsford's assignment was to ride twenty miles down the construction route to "time the time of the sub-contractors." On the following day he would make the return trip.

With the completion of the track in 1887, Botsford crossed the Red River into Texas. At Abilene, a young, bustling shipping point for cattle, sheep, and buffalo bones, he purchased a new saddle and then continued further westward with all of his worldly possessions -- a pistol, a rope, a pocket knife, a bed roll, a "war bag" (containing a few clothes), his two horses and the new saddle. At this time, the famed Slaughter Cow outfit was operating extensively in west Texas, a windy world of endless prairie and sky. Colonel C. C. Slaughter was Texas' first native-born cattle king. At the peak of his career he ran thousands of "Lazy S" cattle on some two million acres. This made him the Lone Star State's largest individual taxpayer, just prior to Botsford's arrival. Slaughter had established headquarters at the headwaters of the Colorado River and had begun a sizeable roundup. Botsford was hired as a cowhand. He spent about a year, sleeping out each night, helping gather the 2,300 Longhorns that were divided into four herds and pointed toward Montana in 1888. Dan Kyle was boss and Botsford was a driver for him.

years that make our crops continue to make good. In other parts of the nation the need for additional acres to enlarge farm size is a big influence. (A recent report shows Lamb County farms average 330 acres). Other factors include purchase of land for urban and industrial development, the demand for an investment that will move up in prices as inflation takes place, and hopes for improvement in farm income.

Will land values continue to rise? The answer to this can be found in farm income trends. Inflation, increase in farm size and need for farm land for non-farm purposes. One thing we know -- poor land is overpriced. Good land still looks like a safe investment, though some individual tracts may be overpriced.

FOOTBALL

FOOTBALL takes the front seat of entertainment Friday night on the South Plains. The Littlefield Press hopes you enjoy the special "Pigskin Section" of this edition. Although we're backing the Littlefield Wildcats all the way, we're naturally looking for our area teams in other classifications to make a good showing.

COUNCIL

(Continued from Page One)
and adoption of the 1962 - 63 budget for the city. Another major item will be the approval of the corrected plat of a portion of the Crescent Park addition and opening bids on water and sewer for the same addition.

Other items on the agenda include introduction of an arson reward ordinance, review of current water rates, discussing the condition of one of the city's water wells and discussing sealcoating the airport. The meeting is open to the public.

BOTSFORD

(Continued from Page One)
Francisco railroad was being laid through the Indian country from Fort Smith, Arkansas, to Paris, Texas. With his saddle horse and bed horse, Botsford's assignment was to ride twenty miles down the construction route to "time the time of the sub-contractors." On the following day he would make the return trip.

With the completion of the track in 1887, Botsford crossed the Red River into Texas. At Abilene, a young, bustling shipping point for cattle, sheep, and buffalo bones, he purchased a new saddle and then continued further westward with all of his worldly possessions -- a pistol, a rope, a pocket knife, a bed roll, a "war bag" (containing a few clothes), his two horses and the new saddle. At this time, the famed Slaughter Cow outfit was operating extensively in west Texas, a windy world of endless prairie and sky. Colonel C. C. Slaughter was Texas' first native-born cattle king. At the peak of his career he ran thousands of "Lazy S" cattle on some two million acres. This made him the Lone Star State's largest individual taxpayer, just prior to Botsford's arrival. Slaughter had established headquarters at the headwaters of the Colorado River and had begun a sizeable roundup. Botsford was hired as a cowhand. He spent about a year, sleeping out each night, helping gather the 2,300 Longhorns that were divided into four herds and pointed toward Montana in 1888. Dan Kyle was boss and Botsford was a driver for him.

As was often the case in trail herding, the slow-paced, seven-month trip -- steeped with inclement weather and stampedes -- was hard on the men. But the cattle thrived. Early each morning the bed and chuck wagons were trotted out to make the next camp so that the Dutch-oven-beef, the sour dough biscuits, the potatoes and beans would be ready when the hungry trailers caught up. If drinking water was scarce, the men drank the juice from canned tomatoes. Night duty entailed two hours on and two hours off with each man keeping his pistol handy. Habitually, the puncher's first concern on arising was to get his gun on, even before his boots. The only Indians encountered, a strangely enough, were Idaho Bannacks. This was after they reached Montana and not of serious consequence.

Throughout that first hard northern Montana winter, Botsford was a line rider with the Slaughter cattle as they thickened their tallow on the ranch's vast holdings in the Milk River region. In the spring he was sent to the Bear's Paw country to look for strays. It was here that Botsford met Charlie Russell, a night hawk for an association of cowmen known as the Bear's Paw Pool. That winter, 1889-90, Botsford and Russell joined four other punch-

ers -- Bob Tingley, Tommy Kernan, Kid (Con) Price and Charlie Stuart. Calling themselves the "starved six" they holed up in a rented, one room shack in the small town of Chino on the Milk River. They had a stove, a pine table, and pine - box seats which they shifted around at night to clear the floor for their bed rolls. As their credit wore thin, Botsford went to work on a daily coal route; once a week, Tommy Kernan played his French harp for dancing at the school house, after which the hat was passed; while Russell worked in an unheated shed attached to the Bank Saloon painting pictures which, about once a month, he sent down state to Great Falls in return for a few dollars each. These three sources of revenue brought in meager, but sufficient grub and whiskey for the all - for - one and - for - all group of roustabout cowboys.

For five years Botsford worked cattle and rode the winter grub line in Montana. Then in 1893, he was afforded an opportunity that changed his life, radically. He was then with the D H S outfit, working under a man named Concorse (?) who was about to ship to Chicago thirty two sixty-foot cars of Longhorns with each car containing three - five head. Would Botsford like to see the "Windy City?" Sure enough! And he did. As a result, he spent the next thirty seven years of his life traipsing around the country like a tumbleweed with a tail wind.

After the cattle were in the stockyards, Botsford decided on October 21, 1893, to take in the Buffalo Bill Show. He had hopes of seeing an old Montana cropy, one Phil Smith, who had been hired as a bronc rider by Col. Cody sometime back in Sheridan, Wyoming. Erroneously, Botsford thought the show was at the World's Fair. The ticket he purchased to the "World's Columbian Exposition" was of no value when he discovered that Buffalo Bill's extravaganza was down the street, in competition with the Fair.

In due time, Botsford did find Phil Smith, who promptly urged him to try out for a vacancy in the troupe. So it was that between performances, and shortly before the end of a highly successful season, Colonel Cody selected a dapple grey with a mean streak for Botsford to ride.

Botsford was twenty-four, hearty, virile and a splendid specimen of a man. In authentic range fashion, he pounded leather the best he could, raking with his spurs and slashing the animal with a quirt. The Colonel offered Botsford a job, but he reminded him to never again hit a pitching horse over the head, as it would take the "outlaw" out of him and make him unsuitable for show work.

The original "West" show originated July 4, 1882, at Colonel Cody's North Platte, Nebraska ranch when Buffalo Bill staged a celebration for his neighbors, featuring "roping, riding and shooting." Although the American Frontier was in its last decade, the true Old West was not to run out its string until after the turn of the century. Hungrily, the American Public yearned for a taste of the buffalo - Indian - cowboy panorama and they wanted it served-up while current like freshly butchered beef, red and raw. For such a job, Buffalo Bill was a natural. No one knew better than he how to authentically stage the exciting personages, paraphernalia and events of the true Old West. On May 17, 1883, Cody's show went on the road for the first time, opening in Omaha. As a gauge of the venture's success, the show played to over a million customers and netted a neat \$100,000 during the first five months of 1885, it took thirteen heavily - booked seasons before it could work its way west of the Mississippi River.

Cody received high - echelon assistance from his friend, counselor and erstwhile associate, Major John M. Burke; also from James A. Bailey, veteran circus man who joined the show at an early date; and from Major Gordon W. (Pawnee Bill) Little, who was with the show in 1883 and 1885 and who was a partner with Buffalo Bill in the "Buffalo Bill's Wild West

and Pawnee Bill's Far East Show" beginning in 1910. Under these "two Bills" the show had varying but world - renowned success until August 21, 1913, when it was sold at auction. Until the end Buffalo Bill was a striking figure and a drawing card. In 1916 he joined the 101 Ranch Show and made several "final appearances" prior to his retirement in November 1916, and his subsequent death, January 10, 1917.

In general, all three shows -- the Buffalo Bill, the Pawnee Bill and the Miller Brothers 101 Ranch Show -- were similar in travel routes, performances and type of personnel. Botsford who was successively an employee of all three shows, recalls that a given show traveled the same route about every third year. The 1895 tour for the Buffalo Bill Show included 131 stands in 190 days with two trains transporting the 700 showmen over 9,000 miles. In 1927, the 191 Ranch Show season began April 23 - 24 with a Grand Assembly at the Miller Ranch in Marland, Oklahoma. After a five-day sojourn in St. Louis, the show moved into Illinois, Indiana, Kentucky and Ohio; followed by stops in Pennsylvania, West Virginia, Maryland, Connecticut, Massachusetts, New Hampshire, Maine, Rhode Island, New York, Washington, D. C., and New Jersey, as well as Michigan, Wisconsin, Iowa, Nebraska and Kansas. All in all, the show played in 131 small and large towns over a 10,232 mile route; it closed out the season on October 17, 1927 at Oklahoma City.

The arrival of a West show into a town was a great event. After the canvass men, rough-necks and cowboys had unloaded the train the townspeople were usually treated to a parade. This was a sight to be forever cherished for those who got a glimpse of buffalo Bill out in front on his beautiful white horse. The following account, concerning Pawnee Bill's show and its impact on a community is summarized from an undated newspaper clipping from a Rushville, Indiana paper.

The show arrived here from Marion early Sunday morning and pitched its tents on the West Third Street grounds, west of L E & W station. It is estimated that half the city visited the show grounds at some time Sunday. The stream of curious people began early and continued until nightfall. The work of raising the tents was speedily done and the show's employees to some extent had a day of rest. The tent arena is 280 feet by 280 feet but the show has the largest tent for horses even seen here. It contains seven poles and 33,000 square feet of canvas. This tent was open to visitors Sunday and was thronged all day. The annex to the arena is a tent which takes the place of the menegere of a circus. In the arena are shown groups of the various nations represented in the Wild West and Far East shows. In the Wild West are Indians, Cowboys, Cowgirls, Rough Riders, Mexicans, etc. In the Far East section are Cossacks, Japanese, Singalese, Filipinos, Bushmen, etc.

The Indian Village to the southwest of the arena, containing six Indian tepees, or huts, has been quite an object of curiosity since the show arrived. The Indians, especially the old braves, walk around a great deal and did not seem to notice the attention given them. The livestock is in fine condition. There are seven camels and a herd of buffaloes, some Texas steers and a variety of horses among the 470 head of livestock. There are a lot of band wagons, teams of eight and ten horses. There are many strange people with the show and it gives the grounds a cosmopolitan appearance. There were Indians in their bright hewed blankets and painted faces and the Singalese with white cloth bandages enveloping their heads, Cossacks with their heavy tail caps, dark skinned wirey Japanese and Mexicans and Cowboys in their broad brimmed hats and leather britches filled with pistols.

It was an orderly and behaved gathering of assorted humanity. There was a parade at 10:00 in the morning. There were two sections. The first, the Wild West and the second section, the Far East. Between the two sections was a wild west in miniature with small wagons drawn by ponies driven by boys. The parade surpassed anything of its type ever seen here. As for length and interest it equaled the big circuses. There were three brass bands in line, an electric organ, a colored circus and a calliope. There were many old vehicles of frontier travel -- stage coaches, prairie schooners -- as well as the various animals and assorted American and Oriental characters. In Rushville the two hour and twenty minute arena performance consisted of twenty - two acts, including bronco riding, incidents of frontier life, reproductions of the famous Mountain Meadow Massacre, Winona's rifle shooting, reproductions of a Jap and Russian engagement and the "wonderful" riding of the Cossacks. As a patron - pleasure the show management changed this bill - of - fare frequently through the years; often from season to season there would be major or minor alterations. In the early days Buffalo Bill always featured a scene depicting Custer's Last Stand. This was subsequently replaced, following the Spanish - American War, by the Battle of San Juan Hill with over a dozen of Teddy Roosevelt's former Rough Riders participating. Highlights from the Boxer Rebellion and the Boer War were also featured when they were newsworthy. In a flash of genius, Major Burke had been responsible for adding, in 1893, the "Congress of Rough Riders of the World" to the Buffalo Bill Show. This usually consisted of at least ten representatives of some foreign country, complete with their own horses and equipment. Perhaps remembered most often were the Gauchos from South America, the precision riding regiment of Royal Mounted Police and the Cossacks. Show publicity usually reached for something dramatic as, for instance, the following excerpt from a newspaper account banner headlined: "Hippodrome 'Battle' Real Peril to Actors; 'Pioneer Days' So Carefully Planned To Last Detail That Performers Take Engagement as Seriously as Audience Does."

Wild and bloodthirsty as seems "Pioneer Days" now being presented in the Metropolitan Opera House, with two other productions of the Hippodrome Company, the action is even more so to the performer. The fight seems real to the audience and it is to the actors, who to the least important member of the cast, knows the exact moment he is to "kill" his opponent or be "killed" in the battle between the stage coach protectors on hand, and the bandits and Indians on the other . . . the smell of gun-pow-

er, the rush of the Indians and the "battle to the death" . . . The first scene shows the departure of a stage coach with lady passengers and a guard with rifle. The second scene shows Sioux warriors in a war dance; this may seem like acting to the audience but it is real to the red skins, who, with Ed Botsford standing in the left wing giving guttural commands, chant and step in the worship their forefather ordained centuries ago. The final scene takes only three minutes but every second of that time is real live "fireworks" action . . . with bandits, Indians, guards, trick ropers all mixing it up and then, just in the nick of time, comes the U. S. Soldiers saving the women and children but too late to save many a brave pioneer.

On at least one occasion, Botsford considered seeking a more normal way of life. But there was a certain aura about the show world. It got in his blood. Even after his wife, a fellow rodeo rider, retired, Botsford stayed on. Through the years his list of acquaintances became fabulous -- Annie Oakley, Will Rogers, Tom Mix, Buck Jones, Neal Hart, Vester Pigg, Tommy Grimes, Helen Gibson, Death Valley Scottie, and on and on.

Botsford's early training in the Indian territory, west Texas and the last of the open range days in Montana had fitted him well for his show duties as well as for a number of off-season odd-jobs. He was the man who recruited and trained Indians for the show. He was the entrepreneur who procured and transported buffaloes; for a two year stint he also managed Buffalo Bill's ranch at North Platte. Later, he worked his non - performing months on the vast 101 Ranch in Oklahoma. Then, after promotion to Arena Director, when he was "putting on" the show, there could be no quitting. So Botsford stayed on until the great 1930's depression put the final strangle hold on the show.

The crux of Botsford's show life was bronco riding. That was the real, live, action - packed part of each show. It was almost always accompanied by the stamp of thousands of feet in the audience. Customers seemed never to tire of the buck-jumpers as they yelled and stamped their approval. Men of Botsford's caliber were ever eager to match wits and guts with mean horses. In fact, some of these riders would have been delighted to cinch a saddle on an earthquake or hurricane and ride it to a finish.

But sometimes the activity of these riders was on another level as exemplified by the following summary from a newspaper clipping: The far-famed alertness and bravery of the cowboy were demonstrated in a practical manner in Waynesboro this forenoon, and was the means of averting what might have been a more serious accident.

Mrs. G. Arvid Anderson, accompanied by her little son, her mother, her sister, and a friend was driving this morning on Cleveland Avenue, when near Clugston's distillery part of Pawnee Bill's outfit passed along near the tracks of the W. M. railroad, at which the horse took fright, and suddenly turning around in the road, the front wheel of the trap broke down. Mrs. Anderson and her mother were thrown from the front seat, and the horse being free, started on a mad pace toward Hoover's mill.

In the field south of the distillery were a number of the showmen including some cowboys and Indians, who were witnesses of the accident. Without parleying as to what should be done, a half dozen of them jumped their ponies over the fence and dashed after the runaway at full speed. About 200 yards up the road they brought up with the team and stopped it. Ed Botsford, by name, being ahead of the rest, seized the bridle first.

This was really for real.

er, the rush of the Indians and the "battle to the death" . . . The first scene shows the departure of a stage coach with lady passengers and a guard with rifle. The second scene shows Sioux warriors in a war dance; this may seem like acting to the audience but it is real to the red skins, who, with Ed Botsford standing in the left wing giving guttural commands, chant and step in the worship their forefather ordained centuries ago. The final scene takes only three minutes but every second of that time is real live "fireworks" action . . . with bandits, Indians, guards, trick ropers all mixing it up and then, just in the nick of time, comes the U. S. Soldiers saving the women and children but too late to save many a brave pioneer.

On at least one occasion, Botsford considered seeking a more normal way of life. But there was a certain aura about the show world. It got in his blood. Even after his wife, a fellow rodeo rider, retired, Botsford stayed on. Through the years his list of acquaintances became fabulous -- Annie Oakley, Will Rogers, Tom Mix, Buck Jones, Neal Hart, Vester Pigg, Tommy Grimes, Helen Gibson, Death Valley Scottie, and on and on.

Botsford's early training in the Indian territory, west Texas and the last of the open range days in Montana had fitted him well for his show duties as well as for a number of off-season odd-jobs. He was the man who recruited and trained Indians for the show. He was the entrepreneur who procured and transported buffaloes; for a two year stint he also managed Buffalo Bill's ranch at North Platte. Later, he worked his non - performing months on the vast 101 Ranch in Oklahoma. Then, after promotion to Arena Director, when he was "putting on" the show, there could be no quitting. So Botsford stayed on until the great 1930's depression put the final strangle hold on the show.

The crux of Botsford's show life was bronco riding. That was the real, live, action - packed part of each show. It was almost always accompanied by the stamp of thousands of feet in the audience. Customers seemed never to tire of the buck-jumpers as they yelled and stamped their approval. Men of Botsford's caliber were ever eager to match wits and guts with mean horses. In fact, some of these riders would have been delighted to cinch a saddle on an earthquake or hurricane and ride it to a finish.

But sometimes the activity of these riders was on another level as exemplified by the following summary from a newspaper clipping: The far-famed alertness and bravery of the cowboy were demonstrated in a practical manner in Waynesboro this forenoon, and was the means of averting what might have been a more serious accident.

Mrs. G. Arvid Anderson, accompanied by her little son, her mother, her sister, and a friend was driving this morning on Cleveland Avenue, when near Clugston's distillery part of Pawnee Bill's outfit passed along near the tracks of the W. M. railroad, at which the horse took fright, and suddenly turning around in the road, the front wheel of the trap broke down. Mrs. Anderson and her mother were thrown from the front seat, and the horse being free, started on a mad pace toward Hoover's mill.

In the field south of the distillery were a number of the showmen including some cowboys and Indians, who were witnesses of the accident. Without parleying as to what should be done, a half dozen of them jumped their ponies over the fence and dashed after the runaway at full speed. About 200 yards up the road they brought up with the team and stopped it. Ed Botsford, by name, being ahead of the rest, seized the bridle first.

This was really for real.

er, the rush of the Indians and the "battle to the death" . . . The first scene shows the departure of a stage coach with lady passengers and a guard with rifle. The second scene shows Sioux warriors in a war dance; this may seem like acting to the audience but it is real to the red skins, who, with Ed Botsford standing in the left wing giving guttural commands, chant and step in the worship their forefather ordained centuries ago. The final scene takes only three minutes but every second of that time is real live "fireworks" action . . . with bandits, Indians, guards, trick ropers all mixing it up and then, just in the nick of time, comes the U. S. Soldiers saving the women and children but too late to save many a brave pioneer.

On at least one occasion, Botsford considered seeking a more normal way of life. But there was a certain aura about the show world. It got in his blood. Even after his wife, a fellow rodeo rider, retired, Botsford stayed on. Through the years his list of acquaintances became fabulous -- Annie Oakley, Will Rogers, Tom Mix, Buck Jones, Neal Hart, Vester Pigg, Tommy Grimes, Helen Gibson, Death Valley Scottie, and on and on.

Botsford's early training in the Indian territory, west Texas and the last of the open range days in Montana had fitted him well for his show duties as well as for a number of off-season odd-jobs. He was the man who recruited and trained Indians for the show. He was the entrepreneur who procured and transported buffaloes; for a two year stint he also managed Buffalo Bill's ranch at North Platte. Later, he worked his non - performing months on the vast 101 Ranch in Oklahoma. Then, after promotion to Arena Director, when he was "putting on" the show, there could be no quitting. So Botsford stayed on until the great 1930's depression put the final strangle hold on the show.

The crux of Botsford's show life was bronco riding. That was the real, live, action - packed part of each show. It was almost always accompanied by the stamp of thousands of feet in the audience. Customers seemed never to tire of the buck-jumpers as they yelled and stamped their approval. Men of Botsford's caliber were ever eager to match wits and guts with mean horses. In fact, some of these riders would have been delighted to cinch a saddle on an earthquake or hurricane and ride it to a finish.

But sometimes the activity of these riders was on another level as exemplified by the following summary from a newspaper clipping: The far-famed alertness and bravery of the cowboy were demonstrated in a practical manner in Waynesboro this forenoon, and was the means of averting what might have been a more serious accident.

Mrs. G. Arvid Anderson, accompanied by her little son, her mother, her sister, and a friend was driving this morning on Cleveland Avenue, when near Clugston's distillery part of Pawnee Bill's outfit passed along near the tracks of the W. M. railroad, at which the horse took fright, and suddenly turning around in the road, the front wheel of the trap broke down. Mrs. Anderson and her mother were thrown from the front seat, and the horse being free, started on a mad pace toward Hoover's mill.

In the field south of the distillery were a number of the showmen including some cowboys and Indians, who were witnesses of the accident. Without parleying as to what should be done, a half dozen of them jumped their ponies over the fence and dashed after the runaway at full speed. About 200 yards up the road they brought up with the team and stopped it. Ed Botsford, by name, being ahead of the rest, seized the bridle first.

This was really for real.

er, the rush of the Indians and the "battle to the death" . . . The first scene shows the departure of a stage coach with lady passengers and a guard with rifle. The second scene shows Sioux warriors in a war dance; this may seem like acting to the audience but it is real to the red skins, who, with Ed Botsford standing in the left wing giving guttural commands, chant and step in the worship their forefather ordained centuries ago. The final scene takes only three minutes but every second of that time is real live "fireworks" action . . . with bandits, Indians, guards, trick ropers all mixing it up and then, just in the nick of time, comes the U. S. Soldiers saving the women and children but too late to save many a brave pioneer.

On at least one occasion, Botsford considered seeking a more normal way of life. But there was a certain aura about the show world. It got in his blood. Even after his wife, a fellow rodeo rider, retired, Botsford stayed on. Through the years his list of acquaintances became fabulous -- Annie Oakley, Will Rogers, Tom Mix, Buck Jones, Neal Hart, Vester Pigg, Tommy Grimes, Helen Gibson, Death Valley Scottie, and on and on.

Botsford's early training in the Indian territory, west Texas and the last of the open range days in Montana had fitted him well for his show duties as well as for a number of off-season odd-jobs. He was the man who recruited and trained Indians for the show. He was the entrepreneur who procured and transported buffaloes; for a two year stint he also managed Buffalo Bill's ranch at North Platte. Later, he worked his non - performing months on the vast 101 Ranch in Oklahoma. Then, after promotion to Arena Director, when he was "putting on" the show, there could be no quitting. So Botsford stayed on until the great 1930's depression put the final strangle hold on the show.

The crux of Botsford's show life was bronco riding. That was the real, live, action - packed part of each show. It was almost always accompanied by the stamp of thousands of feet in the audience. Customers seemed never to tire of the buck-jumpers as they yelled and stamped their approval. Men of Botsford's caliber were ever eager to match wits and guts with mean horses. In fact, some of these riders would have been delighted to cinch a saddle on an earthquake or hurricane and ride it to a finish.

But sometimes the activity of these riders was on another level as exemplified by the following summary from a newspaper clipping: The far-famed alertness and bravery of the cowboy were demonstrated in a practical manner in Waynesboro this forenoon, and was the means of averting what might have been a more serious accident.

Mrs. G. Arvid Anderson, accompanied by her little son, her mother, her sister, and a friend was driving this morning on Cleveland Avenue, when near Clugston's distillery part of Pawnee Bill's outfit passed along near the tracks of the W. M. railroad, at which the horse took fright, and suddenly turning around in the road, the front wheel of the trap broke down. Mrs. Anderson and her mother were thrown from the front seat, and the horse being free, started on a mad pace toward Hoover's mill.

In the field south of the distillery were a number of the showmen including some cowboys and Indians, who were witnesses of the accident. Without parleying as to what should be done, a half dozen of them jumped their ponies over the fence and dashed after the runaway at full speed. About 200 yards up the road they brought up with the team and stopped it. Ed Botsford, by name, being ahead of the rest, seized the bridle first.

This was really for real.

er, the rush of the Indians and the "battle to the death" . . . The first scene shows the departure of a stage coach with lady passengers and a guard with rifle. The second scene shows Sioux warriors in a war dance; this may seem like acting to the audience but it is real to the red skins, who, with Ed Botsford standing in the left wing giving guttural commands, chant and step in the worship their forefather ordained centuries ago. The final scene takes only three minutes but every second of that time is real live "fireworks" action . . . with bandits, Indians, guards, trick ropers all mixing it up and then, just in the nick of time, comes the U. S. Soldiers saving the women and children but too late to save many a brave pioneer.

On at least one occasion, Botsford considered seeking a more normal way of life. But there was a certain aura about the show world. It got in his blood. Even after his wife, a fellow rodeo rider, retired, Botsford stayed on. Through the years his list of acquaintances became fabulous -- Annie Oakley, Will Rogers, Tom Mix, Buck Jones, Neal Hart, Vester Pigg, Tommy Grimes, Helen Gibson, Death Valley Scottie, and on and on.

Botsford's early training in the Indian territory, west Texas and the last of the open range days in Montana had fitted him well for his show duties as well as for a number of off-season odd-jobs. He was the man who recruited and trained Indians for the show. He was the entrepreneur who procured and transported buffaloes; for a two year stint he also managed Buffalo Bill's ranch at North Platte. Later, he worked his non - performing months on the vast 101 Ranch in Oklahoma. Then, after promotion to Arena Director, when he was "putting on" the show, there could be no quitting. So Botsford stayed on until the great 1930's depression put the final strangle hold on the show.

The crux of Botsford's show life was bronco riding. That was the real, live, action - packed part of each show. It was almost always accompanied by the stamp of thousands of feet in the audience. Customers seemed never to tire of the buck-jumpers as they yelled and stamped their approval. Men of Botsford's caliber were ever eager to match wits and guts with mean horses. In fact, some of these riders would have been delighted to cinch a saddle on an earthquake or hurricane and ride it to a finish.

But sometimes the activity of these riders was on another level as exemplified by the following summary from a newspaper clipping: The far-famed alertness and bravery of the cowboy were demonstrated in a practical manner in Waynesboro this forenoon, and was the means of averting what might have been a more serious accident.

Mrs. G. Arvid Anderson, accompanied by her little son, her mother, her sister, and a friend was driving this morning on Cleveland Avenue, when near Clugston's distillery part of Pawnee Bill's outfit passed along near the tracks of the W. M. railroad, at which the horse took fright, and suddenly turning around in the road, the front wheel of the trap broke down. Mrs. Anderson and her mother were thrown from the front seat, and the horse being free, started on a mad pace toward Hoover's mill.

In the field south of the distillery were a number of the showmen including some cowboys and Indians, who were witnesses of the accident. Without parleying as to what should be done, a half dozen of them jumped their ponies over the fence and dashed after the runaway at full speed. About 200 yards up the road they brought up with the team and stopped it. Ed Botsford, by name, being ahead of the rest, seized the bridle first.

This was really for real.

**OLTON NEWS by Mrs. W.B. Smith Jr.**

# Shower Honors Gayle Nicholson In Weaver Home

Miss Gayle Nicholson, bride-elect of David Carlisle, was honored with a bridal shower Monday from 2 to 5 p.m. in the home of Mrs. Bill Weaver.

Mrs. Buddy Nicholson, sister-in-law of the bride-elect, registered the gifts. Miss Barbara Nicholson, sister of the bride-elect, registered the guests.

The serving table was laid with a lace cloth over yellow, centered with an arrangement of yellow gladiolus. Yellow satin streamers with "Gayle and David" inscribed in silver letters extended from the bouquet. Crystal and silver appointments completed the decor. Fruit punch and lead cake squares were served by Janice Moses, Sharon Briggance, Dana Speer and Sherry Caddell.

Miss Nicholson, Mrs. Vernon Carlisle, Jr. and Mrs. G. A. Nicholson were presented white glad corsages.

The hostess gifts consisted of bed spread, blanket, starter set of china, two sheets and pillowcases, four piece set of coming wars, pressure cooker and toaster.

Hostesses were Mrs. Archie Sorley, T. J. Robertson, Merle Briggance, Melvin Berry, Elvin Berry, Dwayne Eby, S. H. Platt, Leon May, Bill Weaver, Dewey Moses, John Moses, Walter Malone, George Caddell, Paul Paynor, Hanev Paynor, Barton Prestridge, H. C. Webb, Ezra Whittington, Don Huguley, D. Y. Ray, W. T. Hankins, Billy Hankins, Virgil Gray, Fred Smith and G. D. James.

About 25 young people and their leaders attended the retreat at the Plains Baptist Assembly grounds, near Floydada Friday night and Saturday.

The Olton Order of the Eastern Star Chapter held their annual Robert Morris picnic at the community building south of Springlake Saturday evening.

Attending the meeting and picnic were: Mr. and Mrs. Charles Jones, Mr. and Mrs. L. L. LaDuke, Mr. and Mrs. Marshall Stone, Mrs. A. A. Smith, Mrs. Ira J. Foster, Mrs. Era May Walkball, Mr. and Mrs. Ralph Glover, Mr. and Mrs. Kenneth Campbell and Mr. and Mrs. L. H. LaDuke.

Mrs. Ivin Stewart and children, Merle and Wayne of Fort Worth visited in the home of her parents, Mr. and Mrs. Ben Andrews, also in the home of Mr.

and Mrs. Bud Andrews and Mr. and Mrs. W. E. Andrews.

Attending the Lamb County reunion at Littlefield Tuesday were: Mr. and Mrs. George Bohner, Henry Miller, Bill Dickenson, Curley Daugherty, Les Marshall, Mr. and Mrs. Roy Granbery, H. D. Riley and C. H. Myers.

John Jefferies, son of Mr. and Mrs. V. Y. Jefferies is teaching typing, business math and economics at Trent High School in Trent this year.

Mr. and Mrs. Louis Clark and family attended a family reunion of her relatives at Vera last weekend.

Mrs. Joe Allen returned to her home in Port Neches, Tuesday by bus, after spending three weeks here visiting with her parents, Mr. and Mrs. C. S. Skott and her sister and brother-in-law, Mr. and Mrs. R. V. Allcorn and other relatives.

Mr. and Mrs. F. A. Robertson are vacationing in Ruidosa, N. M. this week.

Born to Mr. and Mrs. Manuel Ramos of Edmonson, a daughter named Rosa Linda, August 24 at Community Clinic in Olton. She weighed 6 pounds and 10 ounces.

Mr. and Mrs. Justo Garcia announce the arrival of a 9 pound 7 ounce son, Ramiro, who was born August 25 in Community Clinic.

Mr. and Mrs. Delfino Garcia of Dimmitt announce the arrival of a girl, Diana, who weighed 7 pounds and 1 ounce, August 30. The mother is the former Virginia Ramos of Olton.

Mrs. Leora Farris and Mr. and Mrs. Norman Daulton, all of Lubbock and Mrs. Bessie Jones of Olton, all vacationed in Red River, N. M. last week.

Mr. and Mrs. Meredith Crawford and Mr. and Mrs. Mick McGill attended the Crawford reunion at Hollis, Okla. last weekend.

Mr. and Mrs. Bill Boverie and daughter, Debie of Baltimore, Md., are here visiting their parents, Mr. and Mrs. Meredith Crawford and Mr. and Mrs. J. A. Boverie. Bill plans to return to Baltimore this

weekend, but his wife will remain for two more weeks visit with relatives and friends.

Mr. and Mrs. Ralph Glover and Darrel and Mr. and Mrs. Kenneth Campbell and sons vacationed at Truth or Consequences, N. M. last week.

Mrs. V. Y. Jefferies visited her mother, Mrs. Della Shipley at Lubbock Thursday and Friday. Mrs. Shipley accidentally fell Wednesday and broke her arm and cut a gash in her head.

Mr. and Mrs. Alvin Hysinger and Mr. and Mrs. Lec Carson attended the Wesley - Taylor family reunion at Crowell last weekend.

Mr. and Mrs. W. R. Bean attended the funeral of his nephew Amos Barton at Tahoka Tuesday afternoon. Friday they attended the funeral for her aunt, Mrs. E. H. Baugh, at First Christian Church in Haskell at 4 p.m.

Janice Gallaway, daughter of Mr. and Mrs. Cecil Gallaway, has signed up for a beauty course at a beauty school in Lubbock.

Mr. and Mrs. Tom Witten and Mr. and Mrs. E. W. Mitchell and daughters vacationed near Las Vegas, N. M. last week.

Mr. and Mrs. Bill Walden and family returned Wednesday from a two weeks vacation in Minnesota and Canada.

Travis Walden of Fort Worth is here visiting his parents, Mr. and Mrs. E. W. Walden and other friends and relatives.

Barbara Williams, daughter of Mr. and Mrs. C. F. Williams, is working in the afternoons at Zale's Jewelry in Lubbock and attending Draughon's business college in the mornings.

The Olton Lions Club will hold their annual broom sale Tuesday, according to Don Spain, Lion Boss. The sale will start at 9 a.m. and continue all day. Members of the Lions Club will make house-to-house calls starting at 5 p.m. Brooms, mops and other household items will be for sale. Proceeds from this sale

will go to the Lions' general fund for community work. Olton Lions have approximately fifty members, who meet every Tuesday noon at the Legion Hall for lunch.

Mr. and Mrs. W. M. Barnett, Mrs. Garland Peck and daughter and grand daughter, all of New Home visited in the Gene Wilson home Wednesday.

The Senior FHA girls gave a coke party for the Freshmen FHA girls Friday afternoon at 3 p.m. at the homemaker cottage. Approximately thirty five girls attended.

Mr. and Mrs. J. L. Synder and family, Mr. and Mrs. Wayne Wester and family of Amarillo and Mr. and Mrs. Wilbur Gibson of Hereford all vacationed at Conchas Lake in N. M. last week.

Mr. and Mrs. Russell Rucker and daughter, Neida and Joyce Howard vacationed in Las Ve-

gas, N. M. last week end. Mr. and Mrs. Jack Snyder and daughter Phyllis visited friends in Erick, Okla. last weekend.

O. B. LaFrance, who underwent kidney surgery at Plainview Sanitarium last week, is reported to be improving. Mr. and Mrs. Paul Burrus are vacationing in Truth or Consequences, N. M. this week.

Miss Charla Beth Granbery visited friends in Denver, Colo. last week.

Marvin Dellis, brother of Mrs. Jack Silcott, underwent surgery at the Veterans Hospital in Amarillo Thursday. Mr. and Mrs. Jack Silcott visited him Thursday and Friday.

Guy Granbery, son of Mr. and Mrs. Dubbs Granbery is teaching English and Speech in the high school at Petersburg, this year. Guy has his degree from

ACC and has taught English two years in Puerto Rico, for trainees at Fort Buchanan.

Mr. and Mrs. Gayland Finney and Mr. and Mrs. Clyde Witten and sons also Mr. and Mrs. Charles Mills and Leslie all vacationed in Red River,

**ICE CAPADES**  
22ND NEW FACES EDITION

**STARTS SUNDAY, SEPT. 23**  
for just 4 NITES and 5 MATS

Mon through Thurs 8:30 PM—Sun. through Wed 3 pm Fri 5:30 PM

PRICES \$2.00-2.50-3.00-3.50 all reserved  
1ST TIME EVER! NEW FAMILY PRICES

Mon-Tue, Wed 3 PM Matinees only  
TEENS 113-19 \$2.00 ANY SEATS—KIDS 112 or under 1/2 PRICE

TICKETS ON SALE PIONEER HOTEL—Lubbock

TO ORDER VIA MAIL: Just write letter to Ice Capades, c/o Panhandle So Plains Fair, Lubbock. Enclose check or money order, stamped return envelope and state performance, number of tickets and price.

PANHANDLE SO PLAINS FAIR  
Lubbock

ICE CAPADES ICE CAPADES ICE CAPADES ICE CAPADES

**COMING**

**THE MUSIC MAN**

**PALACE**  
SEPT 16-20 SUN.  
MON-TUE-WED-THUR

**ANTON NEWS by Mrs. C. D. Nelson**

# Coffee Honors Hereford Visitor In Harper Home

Mrs. J. D. Gilbert, Hereford, was honored with a coffee Friday morning from 9:30 to 11 in the home of Mrs. Jennie Harper, with Mrs. Gilbert's daughter, Mrs. Claud Couch acting as co-hostess.

The table was laid with a white linen cloth centered with an arrangement of yellow roses in a crystal bowl. Mrs.

Jack Grace presided at the silver coffee service. Twenty guests called.

Mr. and Mrs. Arvol Bell, Freddy Margaret, and Melvin, Mrs. Freddy Givens, and Larry Crews attended the annual Stanfield reunion at the Slide road club house in Lubbock Sunday. Fifty attended from Plainview, Latessa, Ft. Worth, Austin, Littlefield and Anton.

Mr. and Mrs. C. D. Doolley attended the Doolley family reunion at Hereford Sunday. Those attending were from Dallas, Slaton, Harlingen, Anton and Hereford.

Visiting Mr. and Mrs. D. T. Teague Wednesday was her cousin, Mr. and Mrs. Arnold Bowden and Joy from Las Cruces, N. M.

Gary Baccus and Bob Stephenson left for Dallas Saturday where they will spend a few days with Ray Keith Carden, who was moved to Caruth Memorial rehabilitation center, Dallas, Thursday, after spending several weeks in Methodist Hospital in Lubbock, following an accident at the Co-op gin in Anton.

Mr. and Mrs. Gus Maynard and Jenna left Friday for an extended visit with their daughter, Mr. and Mrs. Gene Bennett, Garland, and their son, Buddy Maynard and family, San Antonio. Before they returned home they will take Jenna to Belton where she will attend Mary Hardin College.

Mr. and Mrs. Bob Pool and Danny, from San Antonio, visited the weekend with his parents, Mr. and Mrs. E. G. Pool.

Mrs. Edd Hart and Mrs. Jack Grace were hostesses for a get acquainted coffee for the newcomers in the Hart home Saturday, from 9:30 to 11 a.m. The table was laid with an Italian linen cloth centered with an arrangement of rose colored dahlias and ivy in a crystal bowl.

Coffee was served from a silver service by Mrs. Kenneth

Grace. Those honored were Mrs. Bill Watson, Mrs. A. L. Greer, Mrs. John Cotton, Mrs. M. G. Gary, Mrs. Henry Young and Mrs. Rom Taylor.

Those in the house party were Mrs. Nell Herring, Mrs. Cecil Overstreet, Mrs. K. W. Wells and Mrs. Claud Couch. Eighty guests attended.

Mr. and Mrs. V. R. Stephenson of Boulder, Colo., visited last week with his parents, Mr. and Mrs. W. A. Stephenson, and other relatives.

Mrs. T. J. Bevel is visiting this week in Lubbock with her son and family, Mr. and Mrs. Leon Bevel.

Mr. and Mrs. D. T. Teague returned home Saturday after spending several days at the bedside of her brother, John Killian, who is in a Wichita Falls hospital following an oil-field accident last week.

Mr. and Mrs. L. H. Williams left Thursday for several days vacation in the mountains of Colorado.

Mr. and Mrs. Alton Bullington and Mr. and Mrs. Pete Orcutt are in Santa Anna, Cal. where they attended funeral services for Mr. Orcutt's brother-in-law.

Visiting in the A. L. Bell home during the weekend were her sisters, Mrs. W. J. Capers, Ft. Worth, and Miss Eunice Stanfield, Plainview.

The Stone - Goheen reunion was held Sunday, Sept. 2 at the Anton school cafeteria.

About one hundred attended from Levelland, Waco, Floydada, Plainview, Cisco, Kermit, Hereford, Lubbock, Antlers, Okla., Cloudy, Okla., Lovington, N. M., Las Cruces, N. M., and Anton.

**AT SPADE**

Mrs. Ted Hutchins, and Mrs. Doc Vann attended a meeting of the executive board of the local WMU at Sunnyside Tuesday. They worked out plans for the new year book.

## FURR'S FROZEN FOODS - THE BEST PRICES OF ALL!

<b>DINNERS</b>	BANQUET FRESH FROZEN ASSORTED PACKAGE	<b>39¢</b>
<b>BROCCOLI</b>	TOP FROST FRESH FROZEN CHOPPED 10 OZ PKG	<b>15¢</b>
<b>CORN</b>	TOP FROST FRESH FROZEN 10 OZ PKG	<b>2 FOR 25¢</b>
<b>LEMONADE</b>	TOP FROST FRESH FROZEN 6 OZ CAN	<b>3 FOR 29¢</b>
<b>ENCHILADA DINNERS</b>	PATIO 11 OZ	<b>39¢</b>
<b>POT PIES</b>	BANQUET FRESH FROZEN CHICKEN, BEEF, TURKEY 8 OZ PKG	<b>19¢</b>
<b>OKRA</b>	TOP FROST CUT FRESH FROZEN 10 OZ	<b>15¢</b>
<b>GRAPE JUICE</b>	6 OZ CAN	<b>15¢</b>
<b>GERMAN CHOCOLATE</b>	BY COLONIAL	<b>79¢</b>
<b>CHOCOLATE CAKE</b>	26 OZ PK	<b>79¢</b>
<b>BARB-B-Q BEEF</b>	14 OZ PKG	<b>79¢</b>
<b>SARA LEE CAKES</b>	LARGE SIZE	<b>79¢</b>
<b>CREAM PIES</b>	BANANA BUTTERS COTCH COCOANUT STRAWBERRY FAM SIZE	<b>39¢</b>
<b>DINNERS</b>	MORTON MACARONI & CHEESE FRESH FROZEN PACKAGE	<b>39¢</b>
<b>MORTON'S PIES</b>	BOYSENBERRY, STRAWBERRY BLUEBERRY FAMILY SIZE	<b>49¢</b>
<b>BABY LIMAS</b>	FRESH FROZEN 10 OZ PKG	<b>19¢</b>
<b>COKES</b>	OR DR. PEPPER 12 BOTTLE CARTON	<b>57¢</b>
<b>SUGAR</b>	PURE CANE 5 LB. BAG	<b>49¢</b>
<b>COFFEE</b>	MARYLAND CLUB 1 LB CAN	<b>62¢</b>
<b>COCKTAIL</b>	FRUIT FOOD CLUB IN HEAVY SYRUP NO 2 1/2 CAN	<b>29¢</b>
	FOOD CLUB ALL GRINDS COFFEE LB	<b>59¢</b>
	FOOD CLUB CUT GREEN BEANS 303 CAN	<b>19¢</b>
	ARMOUR VEGETOLE SHORTENING 3 LB CAN	<b>59¢</b>
	PILLSBURY FLOUR 5 LB BAG	<b>49¢</b>
	WHITEHOUSE 303 CAN APPLE SAUCE	<b>2 FOR 35¢</b>
	PARD TALL DOG FOOD 2 CANS	<b>25¢</b>

**FRYERS** Fresh Dressed Grade A Lb. **33¢**

**T-BONE STEAK** U.S.D.A. GRADED CHOICE BEEF LB **89¢**

**BACON** FAMILY PAC **\$1.15**

**SIRLOIN STEAK** 5 SERVINGS PER POUND **69¢**

**HAMBURGER PATTIES** **39¢**

**BISCUITS** FOOD CLUB SWEETMILK OR BUTTERMILK CAN **4 FOR 29¢**

**MY FAVORITE FLOWER IS THE ROSE. THE GARDENIA IS YOURS.**

**BUT WE'RE BOTH PARTIAL TO**

**WRIGHT DRUG**

**FOR GETTING OUR PRESCRIPTIONS FILLED.**



**\$1.49 S.S.S. 98¢**

**\$1.50 Peruna 98¢**

**Wright PRESCRIPTION DRUG**

581 CHESTNUT ST. LITTLEFIELD, TEXAS

# BUY! SELL! SWAP!

READ and USE THE

# WANT ADS

**Want Ads-Phone 385-4481**

Words	1 time	2 times	3 times	other times
1-14	.80	1.40	1.90	.45
15-19	.90	1.60	2.20	.45
20-24	1.00	1.80	2.50	.65
25-30	1.10	2.00	2.80	.75

**CASH WITH ORDER**

1-14	.65	1.15	1.55	.35
15-19	.75	1.30	1.75	.45
20-24	.85	1.45	2.00	.60
25-30	.95	1.60	2.25	.70

Headline ads \$1.00 extra.  
**ALL CARD OF THANKS, \$1.50 (within 1 col x 3")**  
**DEADLINE FOR CLASSIFIED ADVERTISING**  
**5:00 P.M. TUESDAYS AND FRIDAYS**  
**LEGAL ADVERTISING**  
 1c per word, 1st issue, 3c per word per issue thereafter

**FOR SALE**

Food Freezer, used 19 cubic feet, Terms, Hill Rogers Furniture, TF-R

3 bedroom home, fenced backyard, All carpet, central heat, built in range and oven, 2 1/2 years old, in Crescent Park. Call 385-5037 after 5:00 p.m. TF-P

2 bedroom house down town, Has garage, Call 385-4528 after 6:00 p.m. TF-T

1 or a 100 geese for sale, \$1.50 each, Reno Rochelle, 12 miles north on Highway 385, Call Andrew 2 - 4222, 9-9-R

**SERVICES**

**MATTRESS MAKING** -- Old mattresses renovated, also new mattresses and box springs, King size and Long Boy mattresses, Call Mrs. Claude Steffey, leave name, 385-3356, Agent for Direct Mattress Co., of Lubbock. TF-D

For ditching, backhoes, pipe lines, jack hammers or bulldozer. Call Messer Brothers Construction Co. 385-4506 or 385-4543 in Littlefield. TF-M

One ton Carrier Refrigerated Air - conditioner, \$75, W. H. McCown, Littlefield, Phone 385-4114. TF-Mc

We do motor rewinding and refrigeration work. Service is our most important product. Call us today at 385-5472, Lone Star Electric Co., 1015 E. 9th Street. TF-L

Will do Babysitting in my home day or night. Licensed nurse, 1504 W. 4th St. Phone 385-5304. TF-C

**COMPLETE EXTERMINATION SERVICE** Household pests as roaches, mice, rats, termites, etc. Tree and lawn spraying, bird repellents, moth proofing. One year written service warranty. Low rates, 600 West First St. Phone 894-3824, Levelland, Collect, DAVIDSON PEST CONTROL, 15 years experience. TF-D

Custom Grain Sowing - Call Bill McKinnon at 385-3447. 9-6-Mc

**NO MONEY DOWN**

on

2-3 Bedroom homes on Kirk Street

**PAY OUT LIKE RENT**

**WILLSON-CRUMP LUMBER CO.**

**CARD OF THANKS**

We wish to express our thanks and deep appreciation for the many kindnesses shown during the illness and death of our husband, father and grandfather. To the Doctors, nurses, friends and neighbors. To the organist and choir for the music. To Rev. E. R. McGregor and Rev. R. D. Heard for words of comfort and sympathy. To the Payne's for their services and comfort, and also to the Pallbearers. Thanks for the cards, flowers, food brought in and those who served it. May God bless each of you in our prayer.

Mrs. H. D. Dutton  
 Mr. and Mrs. Floyd Dutton,  
 Joe Mack and Billy Dean  
 Mr. and Mrs. Clarence Muncy, Patricia, Barbara and Charles.  
 Mr. and Mrs. George B. Williams and Wyleta  
 Mr. and Mrs. Gene Radford, Marilyn and Beverly.

**AMHERST NEWS Mrs. LaGrange**

## Call Meeting Of P-TA Is Held

The called meeting of the Amherst Parent - Teacher Assn. at 10 a.m. Monday was well attended. The president, Mrs. James Holland was in charge. The meeting opened with the P-TA prayer.

Reports were given by the projects chairman, Mrs. Kenneth Noles, the membership chairman, Mrs. D. D. Yantis, and the year book chairman, Mrs. Dale Weaver. The year books were ready for distribution.

The resignation of Mrs. C. A. Duffy, Jr., as secretary, was accepted. Mrs. Gerald Coffey was elected. Announcement will be made of the first regular meeting to be held at night soon.

## "Miss Grain" Contest Set For Tonight

Tonight's the night for two Amherst girls who have entered the "Miss Grain Sorghum" national contest in Dimmitt. The two are Kay Bradley and Judy Tapley.

Miss Bradley is sponsored by the Lamb County Farm Bureau and Miss Tapley is being sponsored by the Littlefield Junior Chamber of Commerce. First prize in the contest is a \$500 college scholarship.

Miss Bradley, daughter of Mr. and Mrs. Bill Bradley, is a 19-year-old sophomore student at West Texas State College. She was graduated from Amherst High School in 1961.

At WTSU, she is a member of Zeta Tau Alpha, social sorority, and a member of the student senate. Her hobbies include singing, playing the piano and riding horses.

Miss Tapley, daughter of Mr. and Mrs. Doyle Tapley, is a 16-year-old junior student at Amherst High School. She is vice-president of the Amherst FHA and area vice-president of the organization. In addition she is a cheerleader, an officer in the band where she is a majorette and was football princess.

She is also very active in the Amherst and Lamb County 4-H clubs. Her hobbies include skiing, dancing, twirling and swimming.

## Human Beings Waste a Lot of Time Trying to Appear Important

Human beings waste a lot of time trying to appear important to others who know they are not important.

Mrs. Oby Blanchard returned home from a month spent in California. In San Marcos she visited her son, Oby, Jr., and family. In Inglewood with friends and in San Bernardino.

Mr. and Mrs. E. E. Gee were in Seymour Sunday. They met their son, Billie Gene and family of Dallas for a visit with the Studers her relatives.

## Quarterbacks See Films Tuesday

Members of the Wildcat Quarterback Club saw films of the Littlefield - Lockney football scrimmage held here Saturday night. They also saw the highlights of the Southwest Conference 1961 season.

Over 50 sports enthusiasts attended the Tuesday night meeting held in the High School Library.

Bill Kelly, president, held a short business meeting prior to the showing of the films. Reports from the membership committee and football program committee were heard.

Persons interested in becoming a member of the club should contact any member of the organization or attend the next session set for Tuesday night, Sept. 11, at 7:30. Films of the Littlefield - Muleshoe game will be shown at that time.

## Red Cross Meeting Set

Regular monthly meeting of the Lamb County Chapter of the American Red Cross will be held Friday at 4 p.m. in the Red Cross office, Mrs. Doris Frey, Executive Secretary, would like for as many board members to be in attendance as possible.

During the month of August fifteen cases were handled out of the local office, thirteen being active servicemen and two being veteran's cases. These included such services as emergency leaves for servicemen, health and welfare reports on relatives at home and the service member, wires informing servicemen that relatives had passed away, hardship discharges, counseling and correspondence to Veterans Administration.

## PRIORITIES

(Continued from Page One) of commerce?"

Although the group will begin seeking facts to answer the above questions relating to the problem, the chamber board and the entire membership will be called upon to submit suggestions for solution. Should constructive answers to these questions be agreed upon, the plan would go to the chamber board for approval.

Members of the Priorities meeting will be meeting with the membership committee of the chamber this week to exchange ideas for solution of the problems.

Attending the meeting were Betty Teck, Gene Garrison, Dr. James Shortwell, Jim Joyner, Hubert Henry, Kenneth Ware, James Lee, Jerry Sanders, and Wendell Tooley.

## ELECTRIC

(Continued from Page One) Manager Dick Carl explained how the company is continuing to grow in spite of less and less rural population each year. He cited the increased power facilities that have been installed near Hart Camp. He explained that although the association is now making a good profit that in looking ahead, it was important to have a reserve to expand and operate.

President Diersing officiated over the meeting and announced the winners of the various gifts. Invocation was given by REA member Jack Barton.

**J.R. (BILLY) HALL**  
 ATTORNEY-AT-LAW  
 Telephone 385-5493  
 Office 109 E. 4th St.  
 Roland Gibson, Owner  
 PHONE 385-4630 LITTLEFIELD, TEXAS

**FOR RENT**

Furnished or unfurnished APARTMENTS, suitable for single, L. B. Stone, Phone 385-3665. TF-S

Comfortable bedrooms for rent, New home, air - conditioned, phone 385-3604, 14 E. 9th St. TF-A

**KEEP WHILE YOU WANT TO WORK**

Storage space for furniture, L. B. Stone, Ph. 385-3665. TF-S

**LET US RENT YOUR APARTMENT**

Two bedroom house across street from Primary School, L. B. Stone, Phone 385-3665. TF-S

Two room furnished house, two bedrooms, 1110 Kirk Ave., Come by appointment, Claud Tillman, 9-9-T

I have several nice two bedroom houses for rent in very desirable locations, to responsible parties, L. B. Stone, Phone 385-3665. TF-S

**READ IT IN THE CLASSIFIEDS**

Bedroom house, Contact Marjorie Stowers, at 901 E. 9th, 385-3491. TF-S

Small 3 room house for rent, call 385-3690 or 385-4800. TF-H

Professional carpet cleaning results - rent Blue Lustre Electric Carpet Shampooer \$1 per day. 9-6-N

Bedroom for rent, 412 West 3rd Street. TF-H

Three room furnished house and four room unfurnished house, Mrs. E. W. Rowe, Phone 385-4106. TF-R

**FOR SALE**

Tracts in Parmer and Bailey County for sale. Where the water and land are both good, 80- or 320+ acres at good prices and terms, Weldon Criswell, 410 E. 5th St., Muleshoe, Tex. Phone 385-0980, 9-20-C

20 acres; \$2,500; 10 acres; \$1,000; 20 acres; \$10,000; 5 acres; \$2,500; 2 bedroom house; \$500; 2 bedroom house; \$500; Reese Bros. Real Estate, Phone 385-4214. Box 447. TF-R

Model 70 LP fuel tractor with or without equipment, tires like new, Jordan - Douglas Implement Co., Sudan, Tex. TF-J

140 foot lot for sale on E. 13th Street, Good location, near school. Call 385-3674. TF-L

Trailers, three 16 foot trailers, new paint, good shape, cheap, Phone 233-2127 or 2-2274 in Spade. TF-R

Furniture for sale, On-ward Furniture, Phelps Ave., Littlefield. TF-O

Motor scooter, Excellent condition, \$125, 108 E. 18th, Phone 385-4101. TF-Y

Bedroom house, 2 extra large bedrooms, paved on both sides, Owner of 102 E. 13th Street, will be at place Sunday afternoon, or may call PO 5-6222, Lubbock. 9-9-H

**FOR SALE**

Brand New Platform Rockers, assorted colors \$19.95, Onstead Furniture, Littlefield, TF-C

Plenty of free caliche for your driveways -- come get it. Call 385-3102. TF-T

Good Used Batteries \$5 Exchange, Anderson Wrecking Yard on the road to the Compress. TF-A

2 wheel stock trailer, Excellent condition, Phone 385-4593. TF-P

Almost new Rawlings Tennis Racket for sale, Call 385-3102. TF-T

Well equipped machine shop, New building, well located, Call 385-4200. TF-N

2 houses in Olton for sale, One 1 bedroom and one with 3 bedroom school on 5 lots. Close to school, Call Jed Blessing at 385-4481. TF-B

Self propelled gasoline lawn mower, Call Norma Molder at 385-4481. TF-N

1 used International stripper, 2 years old, will fit Massey Ferguson or International Tractor, terms, Jordan - Douglas Implement Co. Sudan, Tex. TF-J

3 bedroom home, carpet, concrete cellar, 1033 East Duncan, also apartment house on West 5th Street, Cecil Walker, Phone 385-4497 or 385-3053, Vivian Cooper. TF-W

1958 Magnolia Trailer House, 35 x 8 foot, Two bedroom with air conditioner, Phone 385-3013. 9-13-Mc

Five room house on 3.7 acres in Littlefield, irrigation well. Would accept terms, Phone 385-3026. TF-T

1956 Model ARA Car Air conditioner, \$100, Norma Molder, 385-4481 or 385-4200. TF-M

Two dry land farms in Bailey County near the New Mexico border, 160 and 240 acres, 110.8 acres in cotton and 22.5 acres of wheat on both farms, located on farm road 298. Call C. J. Coffman at 385-3213 at 912 West 5th. 9-6-C

One good used 95 John Deere combine, will trade for truck or pickup. One model 70 LP fuel tractor with or without equipment. Tires like new, Jordan - Douglas Implement, Sudan, Texas. TF-J

Registered 3 year old Boston Terrier, Call Mrs. Buster Molder at 385-4481. TF-M

1956 Ford Fairlane, Clean, good tires, good motor and body, 4 door, Call 385-3813. TF-G

4 room and bath in Amherst. Seven closets, plumbed for washer, fenced backyard, garage, store room, Call Earnest Black in Amherst or Buster Molder in Littlefield. TF-N

**LOST AND FOUND**

Eastern Star pin, lost August 13, Reward, Phone 385-4588. 9-6-R

LOST! One pair of eyeglasses, Black plastic frames with grey clip-on case, Call 385-4481. TF-J

FOUND ... at the Pastime Club boy's glasses, very nice, black with gray tips, single vision, Own-guy may have same by identifying and paying for this adv.

**FOR SALE**

1958 John Deere S. P. Combine #55 on butane, 1954 Chevrolet truck with hoist, 1947 Diamond T. Truck, 150 gallon butane tank, Combine transport trailer, Dean's Garage, Field-ton, Tex. or call 385-4637, 9-16-S

3 bedroom home, fenced yard, brick trim, garage, phone 385-3169, 503 E. 17th St. Littlefield. TF-B

To be moved: 3 bedroom modern house, drapes and carpet, also 3 room house and granary, John Hayhurst, Amherst, Phone AN 2-4327, 9-6-H

Good used washing machine in first class condition, air conditioner, almost new, Call 385-4895. TF-D

Weaning pigs for sale, V. J. Hobratch, 2 miles Northwest on 84 Highway, and 1 1/2 miles north. 9-9-H

IHC Wheat Drill, 6 miles west and one mile north of Littlefield, Bill McKinnon, Phone 385-3447. 9-6-Mc

MINIATURE POODLES, blacks and chocolates, Gayle Clark, PO 3-1868 or 3108 Jarvis, Lubbock, Tex. 9-13-C

80 foot Brick Business Building with 30 foot steel extension, 318 Phelps, Carlyle Russell, Phone 385-3255. TF-R

Farm fresh tomatoes and onions ... by bushel or truck load, One mile north, 3/4 east of Yellow House Switch, H. O. Weidel. 9-6-W

3 bedroom home, fenced yard, brick trim, garage, 513 E. 17th St. Write 209 Sandia Drive, Clovis, N. M. TF-B

1961 Bonneville Pontiac Safari Factory air, power brakes, new tires, Calvin Price, 620 Hall Ave. TF-P

1 used Pharis - Wilkins Shredder, 4 row excellent condition, Jordan - Douglas Implement Co. Sudan, Tex. TF-J

Two bedroom homes, \$1500 equity, monthly payments \$57, located at 726 East 15th, Call SW 9-1189, Lubbock. 9-9-P

**FOR SALE OR TRADE**

80 foot Brick Business Building with 30 foot steel extension, 318 Phelps, Carlyle Russell, Phone 385-3255. TF-R

Cotton trailers, three 16 foot trailers, new paint, good shape, real cheap, Phone 233-2127 in Spade. TF-R

**USE CLASSIFIEDS TO BUY, SELL OR TRADE.**

**WANTED**

Have plenty of native and permanent pasture for grazing at Hereford, Call 385-3102.

Want your plaster and paint work, Phone 385-3026. TF-T

WANTED - to lend money, See Calvin Price, 620 Hall Ave. TF-P

Would like to keep school teacher's child ... do practical nursing and baby sitting, Phone 385-3639, 803 Badger Street.

Would like to start band, Need all types of musicians, and girl trio, If interested call 385-5223. TF-W

**HELP WANTED**

Need one good outside salesman to call on farm customers in the Littlefield Area, Contact T. L. Timmons at Brown Supply Co. in Muleshoe, Tex. TF-B

MANAGER - Montgomery Ward Catalog Store, Career type woman to age 35; experienced in selling, bookkeeping, management desirable, salary based on past experience, opportunity for advancement, company benefits, insurance, paid vacation, discounts on purchases, Reply by letter giving brief resume of experience and description. Include home phone number. All replies confidential. Write W. S. Walker, District Manager, Montgomery Ward, Amarillo, Texas. TF-M

Wanted - Lady is needed for laundry work. Apply at Littlefield Steam Laundry. TF-L

**PERSONAL**

I have a good friend who wishes to buy antique or old six-shooters, revolvers or old guns of any kind, Contact me, L. B. Stone, P. O. Box 243, Phone 385-3665, Littlefield, Tex. TF-S

**FARM MACHINERY**

1949 "A" John Deere Cultivator  
 Used "G" John Deere & Equipment  
 1954 "UB" Moline  
 1955 "A" Gleaner Comb.  
 1 John Deere Cultivator  
 1 International Cultivator  
 2 Used Tandem Discs  
 1 International 2-Way Breaking Plow  
 1 Pickup Camper House  
 2 & 3 Bottom Moldboard Plows  
 Ditch Fillers  
 Grain Loaders & Sprayers  
 3 Point Blades  
 Gauge Wheels  
 Moline Tandem Disc  
 Gleaner Baldwin Combine  
 Burch Tandems  
 Moline Cotton Strippers - "New and Rebuilt!"  
 "We will service and repair any make and model Diesel tractor." We have purchased additional machines, completing our shop and are now set up to do complete valve work on all types of engines (Gasoline and Diesel)  
 We have pickup and delivery service. For quick and dependable service, call 385-5225.

**Giles Equipment Co.**

1016 East 9th  
 Littlefield, Texas

**NO MONEY DOWN**

on

2-3 Bedroom homes on Kirk Street

**PAY OUT LIKE RENT**

**WILLSON-CRUMP LUMBER CO.**

**DIXON'S NEW LAND CONCEPT**

Grass Land and Farm land, Low Down Payment.

1 to 3.5 cents per acre per day after 20 years terms. no int.

**O H DIXON, BOX 158, CANYON, TEX.**

**FOR THE BEST SEE Hawkeye SPRAYING SERVICE**

PHONE 385-5155 OR DANIEL MOTEL, LITTLEFIELD

**Reliance HOMES**

NO DOWN PAYMENT NO CLOSING COSTS

**RENTALS**

IF YOU HAVE ANY PROPERTY THAT YOU WISH TO RENT THEN LIST IT WITH ME.

FOR A SMALL FEE I WILL ADVERTISE IT FOR RENT OR LEASE PLACE ATTRACTIVE SIGNS ON THE PROPERTY AND ASSIST YOU IN ANY WAY TO OBTAIN RESPONSIBLE PEOPLE TO OCCUPY SAME. SEE OR CALL ME

**L. B. STONE**  
 PHONE 385-3665  
 P. O. BOX 243  
 LITTLEFIELD, TEXAS

**Go in' Fishin'**

GET ACCIDENT INSURANCE TO COVER WHILE YOU'RE AWAY FROM HOME.

For one day or longer, up to 6 months. Continuous protection anywhere on land, or sea or in the air. Rates are low--\$1.00 & up.

**Mangum-Hilbun Agency**

XIT Dr. --PH. 385-5131 Littlefield, Texas

**FIELDTON NEWS by Mrs. R.A. Reed**

**Relatives Are Visitors In Leggitt Home Sunday**

Visitors Sunday of Mr. and Mrs. Glenn Leggitt and Preston were her brother and wife, Mr. and Mrs. J. D. Ellis, Dallas, Mr. and Mrs. Jordan Abbott, Plainview, also Mr. and Mrs. G. J. Abbott, Durango, Colo.

Mr. and Mrs. Eldon Hill, Kathy, and Jimmy, Mr. and Mrs. Truman McCain, Mr. and Mrs. Norman Singer, Randy and Norma Kay vacationed recently at Lake Brownwood.

Mrs. W. C. McCain recently

accompanied their son, Leslie and family on a trip to Red River, N. M.

Mr. and Mrs. Paul Hukill left Sunday for O'Brien, Tex. where they will visit with her sister, and husband, Mr. and Mrs. Abb Johnston.

Mrs. Thomas Rowan and Patricia spent the weekend holiday at Weatherford, Tex. where they visited with their son and brother, Mr. and Mrs. Bill Ward and daughter, Jerry Blake accompanied them on the

trip.

Mr. and Mrs. Guy Aldridge and children, San Antonio, left for home Sunday, after a visit here with his parents, Mr. and Mrs. W. J. Aldridge and Bill.

Mr. and Mrs. Glenn Blackmon and Janey attended the recent home coming of the First Baptist church of Shallowater. They are former members of the church.

Mr. and Mrs. Don Joyner

were in Spearman last week, where they visited her sisters, and their families. Donna and Chip returned home with them. Donna has spent the summer in Spearman where she assisted her uncle in his store. Chip had accompanied an aunt and family on a trip to Colorado.

Mr. and Mrs. Don Brestrup and sons were in Snyder for the weekend where they visited with Mr. and Mrs. James Traugott and daughters. They also visited Mrs. Brestrup's mother and husband, Mr. and Mrs. Will Barton, Pleasant Valley, on their way home.

Andy and Katy Blackmon, Shallowater, spent several days here with their grand parents, Mr. and Mrs. Glenn Blackmon

and Janey, while their parents, Mr. and Mrs. Blenn B. Blackmon and Kelly made a trip to Ruidosa.

Kenneth Harlan left Tuesday for Ft. Worth where he will be a student at the Baptist Seminary the coming school year.

Mr. and Mrs. Tink Chaney and children spent the weekend at Hereford with her sister and family.

Mrs. May Chaney and her aunt and house guest, Mrs. Vera Quattlebaum, Dallas, visited several days last week with friends in Clovis, N. M.

Mr. and Mrs. James Cook, Sherry and Sharla, spent a week end at Red River, N. M. re-

cently. Mr. and Mrs. James Durham and Mr. and Mrs. Charles Richardson vacationed last week at Durango, Colo. and other points.

Mr. and Mrs. Sherman Rushing were in Whitman, Tex. Sunday to attend the annual reunion of the Rushing family.

Mr. and Mrs. Reuben Brock, Jr. and baby daughter spent the weekend at Snyder, with her parents, Mr. and Mrs. Dub Coward and Waymon.

Mr. and Mrs. J. E. Elliott, Sr., and Paul, their grandson, Randy, and niece, Vicki, also Mr. and Mrs. Snooks Goyme, of Olton, visited Boys Ranch

Monday.

Recent visitors of Mr. and Mrs. J. E. Elliott and Paul were her sister and husband, Mr. and Mrs. Joe Huckavey, Stockton, Cal.

Mr. and Mrs. Alva Pearson and Jan attended the Pearson reunion Sunday at Mackenzie Park, Lubbock.

Mrs. Loyd Clevenger and baby daughter of Del Rio Air base are here with her parents, Mr. and Mrs. Alva Pearson. Loyd is away on a training mission in Hawaii.

Mr. and Mrs. Morris Bush, Spade, spent Sunday with Mr. and Mrs. S. G. Cowan.

Mr. and Mrs. Clayton G. en and children, Mr. and Basil Jeffrey and children, and Mrs. Dock Bowman, returned home Monday from week in Red River, N. M. other places.

**MUSCLE MAN**  
THE MOST MARVELOUS MOVIE EVER  
COMING TO  
**PALACE**  
SEPT-16-20 (SUN)  
MON, TUE, WED, TH

**SPADE NEWS by Mrs. J.R. Hodges**

**Stokes' Are Hosts To Family Get-Together**

Mr. and Mrs. R. D. Stokes were hosts to all their children and grandchildren Sunday. Present were Mr. and Mrs. Robert D. Stokes, Larry Bob and Katha of Lubbock, Mr. and Mrs. Volgie Stokes and children of Littlefield, Mr. and Mrs. Fred Owens and children of Amarillo.

Mr. and Mrs. R. L. Stubblefield and Doris spent the weekend in Amarillo visiting their daughter and sister, Mr. and Mrs. Harold Thurman and children.

Mrs. E. N. Gray and Sandra returned last week from Houston where they spent several days in the home of a sister, Mrs. Gray.

Mr. and Mrs. W. B. Jones, Sr. left Saturday for several days vacation in Yuma, Ariz.

Miss Patricia Mitchell is

**Water District Files Shubert Reply Brief**

The main brief in the groundwater depletion case, styled Martin Shubert, et al, v. The United States of America, was filed on August 28th with the U. S. District Court in Amarillo, Texas. The suit is being sponsored as a test case by the High Plains Underground Water Conservation District.

On August 27th, attorneys for the Water District filed with the Court what they term a "reply brief." This brief is a reply to the Government's main brief.

The suit seeks to establish ground water in the Southern Plains of Texas as a depletable natural resource within the definition of the term as used in the Federal Internal Revenue Service's tax code.

Should the Court rule in favor of Shubert and such ruling is upheld on appeal, then he and other ground water owners throughout the area will qualify for a federal income-tax deduction during those years when a decline in ground water levels is experienced. Only those who can show a coat in their water and who are using the water to produce income would be eligible.

The Water District will make public additional information concerning progress of the case as developments become known.

spending several days visiting in the home of her parents, Mr. and Mrs. Edd Mitchell between semesters at Texas Tech.

Mr. and Mrs. Carl Reed and children returned to their home Sunday after several days vacation. They visited Mr. Reed's sister and family, Mr. and Mrs. C. A. Hutson and children in Grass Valley, Calif. They also spent some time in Reno, Nev. and Salt Lake City, Utah.

Mr. and Mrs. Earnest Savage Mr. and Mrs. Muggs Glazner and girls, and Mr. and Mrs. Edd Mitchell and Patricia attended a family reunion Sunday in the home of Mr. and Mrs. L. C. Arts in Canyon.

Larry Bob and Katha Stokes of Lubbock spent several days last week in the home of their grandparents, Mr. and Mrs. S. D. Stokes.

Donald Caldwell, Don Tindal, and Doc Vann went to Amarillo Friday and helped move Rev. and Mrs. Delbert Serratt and son to the local Baptist parsonage. Rev. Serratt is the new pastor of the Spade Baptist church.

Visiting in the home of Mr. and Mrs. J. R. Hodges Sunday were Mr. and Mrs. Donald Caldwell and Kimberly, Mr. and Mrs. George Warner, and children of Lamesa, Mrs. Ava Warner of Littlefield.

Mr. and Mrs. Jess Emmons, Mr. and Mrs. Neel Trull and girls of Lubbock returned Monday after several days visiting in San Antonio with Mr. and Mrs. Claude Pool and children.

Spade school opened Monday. A short assembly was held with Rev. Aaron Mitchell group then gave the pledge of allegiance to the flag. Mr. Joe Bailey, superintendent, welcomed the group with a good number of parents and friends being present.

Teachers for the year were then introduced. First grade, Mrs. Joe Bailey; Second grade, Mrs. Dan Norton; Third grade, Mrs. Moore; Fourth grade, Mrs. Juanita Roberson; Fifth grade, Mrs. Frank Smith; Sixth grade, Mr. James Turner. High school teachers are Mr. Harvey Bradley, Vocational Agriculture; Mrs. Bill Kimbrough Home Economics; Mrs. Dick Green, English; Mr. Leon Burch, seventh and eighth grade math; Mr. Moore, Math and coach; Mr. J. S. Bridges, high school principal, Miss Doris Stubblefield, school secretary, Mrs. Roy McCarty is lunch room supervisor, assisted by

Mrs. Earnest Cotton, Mr. Roy McCarty is custodian, Mrs. Viola Humphries is school nurse.

W.M.U. of the First Baptist church met Monday at 2:30 p.m. in the church for mission study. Mrs. Bob Inklebarger gave the call to prayer using as the scripture Isaiah 41:10. She also led the opening prayer. Mrs. Doc Vann, mission study chairman, finished the current mission book, "Enlistment for Missions." She spoke on "Women in Missions," using flip charts and roll posters for the two hours study. After the study, they had a short business meeting. Mrs. Arthur Turner brought the nomination committee report, and moved that it be accepted.

New officers for the coming year are: President, Mrs. J. R. Inklebarger; Vice - president, Mrs. J. R. Hodges; secretary and treasurer, Mrs. Ted Hutchens, mission study chairman, Mrs. Doc Vann; program chairman, Mrs. Preston Pointer, prayer chairman, Mrs. H. Harvey; Community missions chairman, Mrs. Jess Emmons; Circle chairman, Mrs. Arwin Turner; Social chairman, Mrs. Sam Tindal, benevolence chairman, Mrs. Arthur Turner, enlistment chairman, Mrs. J. R. Hodges; Mrs. Robert McCarty will work with the young people.

The congregation of the local Methodist church was happy Sunday to have their pastor, Rev. Aaron Mitchell back with them. Rev. Mitchell had charge of both morning and evening preaching services for the first time since his recent car accident and illness.

**AT FIELDTON**

Mr. and Mrs. Bobby Short and Mr. and Mrs. J. R. Nicholas spent Friday till Sunday at Ruidosa, N. M.

Mr. and Mrs. Bud Thomas were in Lubbock Sunday, to be with her brother, Ray Pannell, who is ill in the West Texas hospital, following a stroke.

Mr. and Mrs. Al Squires and Bobby, and his father, W. J. Squires, Odessa, spent the weekend here with her mother, Mrs. R. O. McCown.

Mr. and Mrs. Allie White, Tahoka, visited Monday with the Glenn Leggitt family.

Mr. and Mrs. B. F. Roberts visited Sunday at the Primitive Baptist Church, Muleshoe.

Mr. and Mrs. O. W. Testerman spent the Labor Day holidays in the mountains of New Mexico.

**SPOTLIGHT ON FOOD SAVINGS**

<b>IMPERIAL SUGAR</b>	5 LB	<b>49¢</b>	<b>FOOD KING PORK &amp; BEANS</b>	300	<b>10¢</b>
<b>SNOWDRIFT SHORTENING</b>	3 LB CAN	<b>65¢</b>	<b>SHURFRESH CHEESE SLICED</b>	6 OZ	<b>27¢</b>
<b>HUNTS 14 OZ BOTTLE CATSUP</b>		<b>25¢</b>	<b>NORTHERN NAPKIN</b>	80 COUNT	<b>2 FOR 27¢</b>
<b>SHURFINE CRUSHED PINEAPPLE</b>	NO 2	<b>31¢</b>	<b>MORTON SALAD DRESSING</b>	1/2 GAL	<b>39¢</b>
<b>STALEY CORN OIL</b>	QT	<b>75¢</b>	<b>MORTON SALAD DRESSING</b>	QT	<b>39¢</b>
<b>ARMOUR CHOPPED HAM</b>	12 OZ	<b>63¢</b>	<b>COCA COLA DR PEPPER</b>	12 BOTTLE CARTON	<b>57¢</b>
<b>SUNSHINE MARSHMALLOW</b>	8 OZ	<b>19¢</b>	<b>TIDE GIANT</b>		<b>79¢</b>
<b>REYNOLD 18 IN WIDE FOIL</b>	25 FT	<b>69¢</b>	<b>TREND LARGE</b>	2 FOR	<b>39¢</b>
<b>SUNSHINE HI HO</b>	LB	<b>39¢</b>	<b>NORTHERN TISSUE</b>	4 ROLLS	<b>36¢</b>
<b>SHURFINE FLOUR</b>	25 LB	<b>\$1.95</b>	<b>GLADIOLA POUND CAKE</b>	BOX	<b>39¢</b>
<b>LIQUID AJAX</b>	PT	<b>34¢</b>	<b>ARMOUR STAR BACON</b>	LB	<b>59¢</b>
<b>ARMOUR STAR BACON</b>	SMALL	<b>19¢</b>	<b>HENS</b>	LB	<b>19¢</b>
<b>RUSSETT POTATOES</b>	10 LB	<b>45¢</b>	<b>FRESH GROUND HAMBURGER</b>	3 LBS	<b>\$1</b>
<b>YELLOW ONIONS</b>	LB	<b>5¢</b>	<b>FRESH GROUND HAMBURGER</b>		
<b>FRESH MUSTARD GREENS</b>	BUNCH	<b>2 FOR 25¢</b>	<b>GOLDEN SWEET POTATOES</b>	LB	<b>12 1/2¢</b>
<b>GOLDEN SWEET POTATOES</b>	LB	<b>12 1/2¢</b>	<b>CALIF LEMONS</b>	LB	<b>19¢</b>
<b>CALIF LEMONS</b>	LB	<b>19¢</b>	<b>THOMPSON SEEDLESS GRAPES</b>	LB	<b>15¢</b>
<b>THOMPSON SEEDLESS GRAPES</b>	LB	<b>15¢</b>	<b>CLABBER GIRL BAKING POWDER</b>	5#	<b>\$1.00</b>
			<b>SAVADAY PLATES</b>	40 COUNT	<b>53¢</b>
			<b>HAIR REP WOODBURY SHAMPOO</b>	14 OZ	<b>75¢</b>
			<b>WISCONSIN LONGHORN CHEESE</b>	ECONOMY SIZE	<b>59¢</b>
			<b>RANCH STYLE STEAK</b>	LB	<b>69¢</b>
			<b>CHOICE CHUCK ROAST</b>	LB	<b>59¢</b>
			<b>WISCONSIN LONGHORN CHEESE</b>	LB	<b>59¢</b>
			<b>PORK ROAST</b>	LB	<b>49¢</b>

**Wrestling**

**SATURDAY 8:45 P. M.**

**OPENING EVENT**  
Bob Gigel vs Gypsy Biviano

**FIRST MAIN EVENT**  
Ali Ali vs Pancho Pico

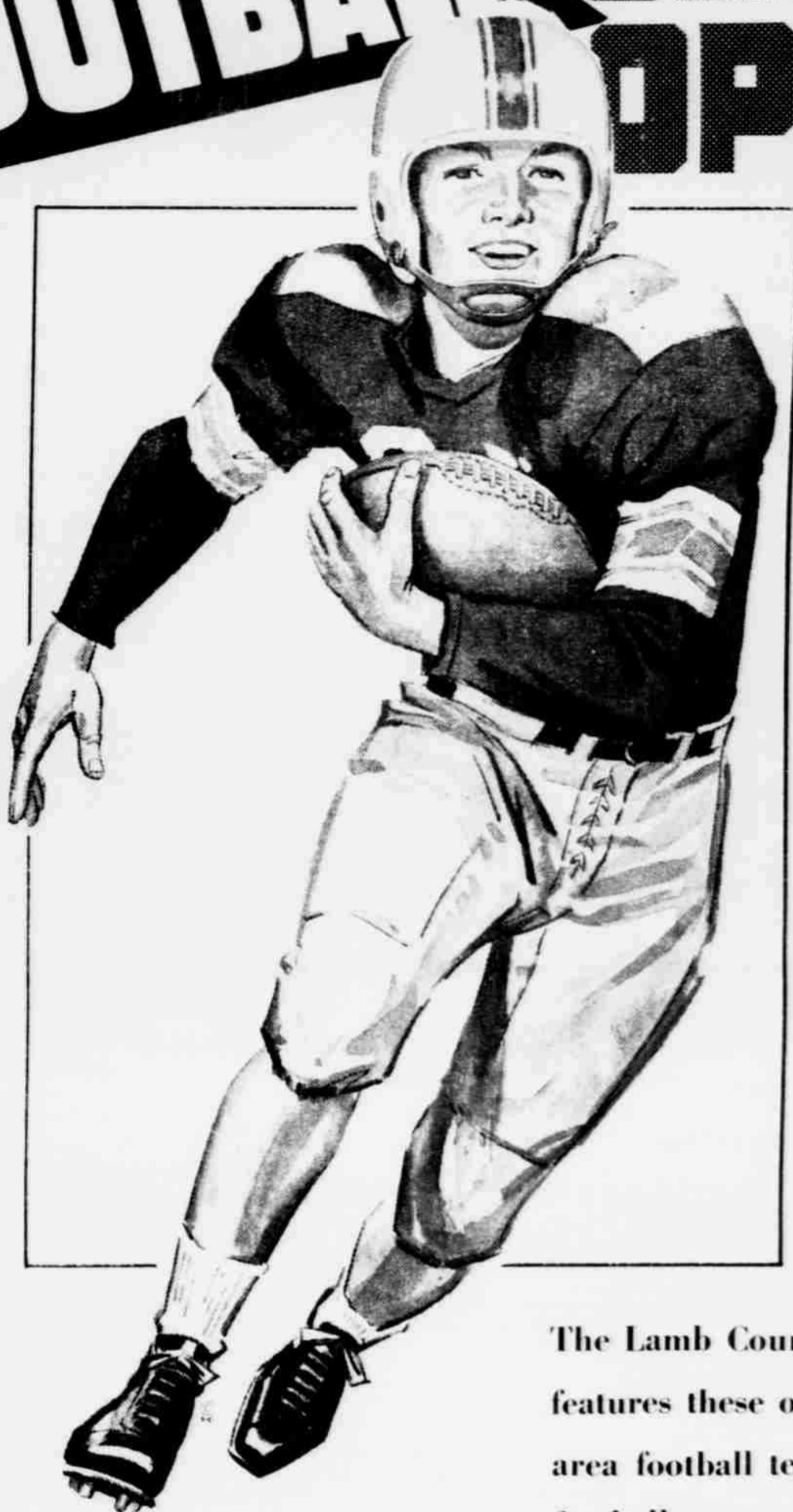
**SECOND MAIN EVENT**  
TAG TEAM MATCH!  
Bob Gigel and Rickey Romero vs Killer Kox and Gypsy Biviano

**LITTLEFIELD SPORTS ARENA**

Bing Crosby again touts Bob Hope into danger in the latest of their "road" pictures, "The Road to Hong Kong." Co-starring with them are Joan Collins, Robert Morley and their favorite cup of tea, Dorothy Lamour. Norman Panama and Melvin Frank wrote, produced and directed the comedy. Opens Sunday at the Palace



# FOOTBALL SEASON OPENS



The Lamb County Leader features these outstanding area football teams as football season begins Friday night . . .

• *Springlake*

• *Olton*

• *Amherst*

• *Whitharral*

• *Bula*

• *Sudan*

• *Anton*

PICTURES - SCHEDULES - FORECASTS



**SUPPORT**

YOUR  
TEAM



WHITHARRAL'S 1962 PANTHER FOOTBALLERS -- These 11 boys make up the nucleus of the 1962 Whitharral High School football team. On the front row from left to right they are Skip Hayes, Jerry Sires, Bobby Collins,

Roger Wade and Larry Wade. The back row is Butch Bryant, Terry Gage, C. E. Thetford, Lynn Simmons, Ken Polk and Sammy Pair

### Backfield Is Long Suit

## Whitharral Returns 11, Depth Is Problem

Whitharral's Panthers will have 11 returning letterman on this football squad, but Max Dickerson, head coach, would predict that the team will be "as good as in the past."

Five of the 11 lettermen are seniors and seven are backs thus giving the backfield experience and making it the long Panther suit. Six of the retur-

nees are starters from last season's team.

Depth may prove the undoing of the Panthers as they will have only 14 boys suited out. "An injury in the wrong spot could really hurt," the coach commented.

The Panther's will run the T-formation.

Whitharral last year won six,

lost three and tied one. They will open the season Friday night against Lorenzo on the Hornet's field.

Dickerson said Friday's game should be pretty close with both teams being almost equal. Last year's game ended with Whitharral on the long end of a 12 - 6 score.

#### WHITHARRAL PANTHERS

##### 1962 SCHEDULE

Sept. 7 - at Lorenzo  
 14 - New Home  
 21 - Bovina  
 28 - at Meadow  
 Oct. 5 - Cooper  
 12 - Open  
 19 - At Lazbuddie  
 26 - at New Deal  
 Nov. 2 - at Anton  
 9 - Amherst  
 16 - Whiteface



MAX DICKERSON

**We're Behind The Whitharral Panthers All The Way!**



**COMPLETE LINE OF FARM SUPPLIES**  
**OUR GINS ARE READY FOR THE HARVEST**  
**WE APPRECIATE YOUR BUSINESS**

**Whitharral Farmers Co-op Gins**

J. W. BORDERS, MGR.



AMHERST 1962 BULLDOGS -- Shown above is the 1962 version of the Amherst Bulldogs. They will square off Friday night at Meadow. On the front row from left to right they are Guy Hufstedler, Bob Campbell, Donald Ritter, Ronnie Hufstedler, Keith Kelton, Billy Sherrill, Mark Parrish, Eddie Hedges, Lon Koumalas and Sam Sawyer. Second row is Neil Duffy, Darrell Priddy, Terry Hughes, Bobby Cowan, Jay Elms, Ben Kelton, Joe

Cowan, John Galaviz, Stanley Simmons, Mike Heard, Ronnie Smith, coach Willis Hedges. Third row is coach Norman Lockett, Bob Hedges, Quinton Pierce, Roy Edwards, Chris Eady, Terry Robinson, Gary Pigg, Gary Sherrill, John Stokes, Toby Cox, Charles Collins, Billy Breshears and coach Lawrence Cook.

### Nine Lettermen Returning

## Amherst Builds Team Around Backs

Amherst will be depending on three good backs included in nine returning lettermen this season as they invade the gridiron. Lawrence Cook, head Bulldog coach, isn't making any rash predictions about the prospects.

"We lack experience," the coach added, "and don't have a real outstanding quarterback,

but one may develop." Cook said the team should win a few ball-games, but added they will probably lose one or two.

The Bulldogs will build their Wing - T formation around backs Roy Edwards, Gary Sherrill and Gary Pigg. Returning linemen include Billy Breshears, Bob Hedges, John Stokes, Charles Collins, Ben

Kelton and Terry Hughes.

Cook pointed out that there are some fine young players coming up this year and if things go just right, some of them will develop fast and give the team the additional boost when needed.

He also looked favorably toward the next years as only six of the squad are seniors.

Amherst takes on Meadow Friday night to open the season's play. The Bulldogs downed Meadow 34 - 6 last season. The game will be played at Meadow.

#### AMHERST BULLDOGS 1962 SCHEDULE

Sept. 7 - At Meadow  
Sept. 14 - Wilson, here  
Sept. 21 - Sudan, here

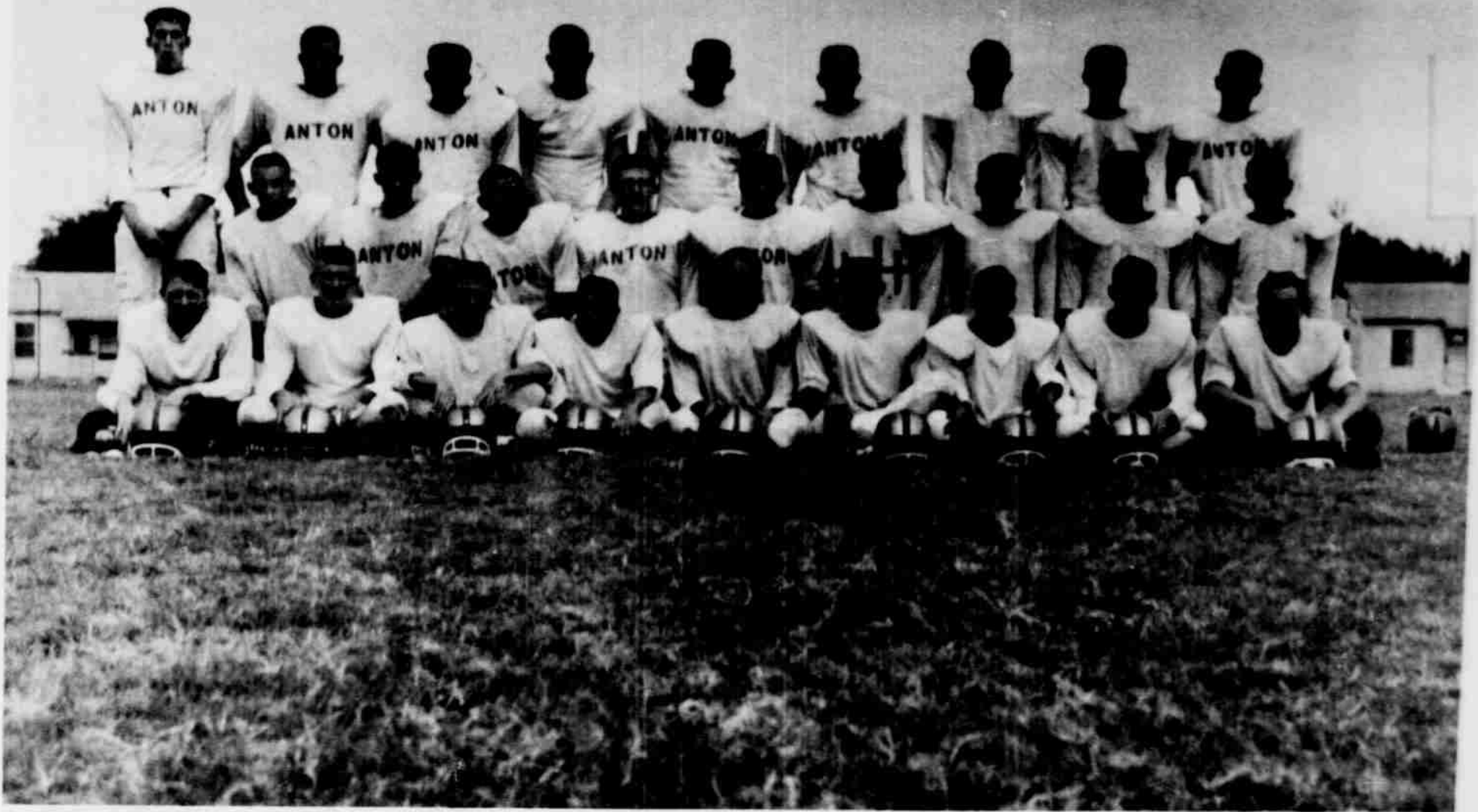
Sept. 28 - at Bovina.  
Oct. 5 - at Lazbuddie  
Oct. 12 - Springlake, here  
Oct. 19 - Anton, here\*  
Oct. 26 - Open  
Nov. 2 - at Whiteface\*  
Nov. 9 - at Whitharral\*  
Nov. 16 - New Deal, here\*  
\* Denotes District Game

**Good Luck---to the Amherst Bulldogs**

"Serving Lamb County Since 1925"

**First National Bank of Amherst**

MEMBER F. D. I. C.



ANTON'S 1962 BULLDOGS — Pictured above is the 1962 version of Anton's Bulldogs. On the front row from left to right they are Jerry Parker, Mike Couch, Nicky Biffle, Jerry Fisher, Rodger Mitchell, Larry Crews, Johnny Perry, John Stephens and Ronald Clark. Second row, Ronny Glass, Mike

Fowler, Phillip Reep, Davis Webb, Mike Smith, Kirk Williams, Billy Eaton, Eddie Henson and Kenneth Grant. Back row, J. D. Harrell, Charles Buchanan, Melvin Bell, Alvin Swanson, Wayne Smith, Bob Conkin, Paul Swanson, Wayne Jones and Norman Overstreet.

### Lack Line Experience

# Anton's Bulldogs Are Strong Contenders

"If our young, inexperienced players develop the way we think they should, we will have about as good a team as last year," commented Dave Smith, head coach of the Anton Bulldogs.

Anton's Bulldogs have eleven returning lettermen and are favored to finish high if not first in District 3-B. Last year's team won the roses in the district as they posted a 8-4 season. They were downed by Groom in regional play.

Five lettermen return to the forward wall including 200-pound tackle Wayne Smith who started both ways last season. Other linemen returning are Davis Webb, 170-pound center, J. D. Harrell, 165-pound

guard, Wayne Jones, 153-pound guard and Bob Conkin, 160-pound guard.

With Wayne Smith holding down one slot and 210 pound freshman Eddie Henson filling the other, the tackle positions appear in little danger of getting shoved around. Smith, a senior, carries three letters with him for credentials and his coach tabs him as "the anchor of our line."

Unfortunately the terminal positions don't seem to be too generously endowed. Currently Conkin, barring his transfer back to guard, will hold down one of the end slots, and he is the only letterman among the six candidates. Smith is banking on Billy Eaton, a junior transfer, to come through for the other po-

sition.

ONE OF THE MAJOR ANTON losses via graduation was the departure of Quarterback Jan Crews but Smith isn't even unhappy over the man-under situation. For one thing he has a numeral winner to man the slot and for another he has another Crews in the hole.

Mike Fowler, 145 pound senior, is not as strong a passer as the departed Crews but Smith says he is an excellent ball handler, an able play selector and a two-year letterman.

THERE ARE NO COMPLAINTS over the halfback situation either, with four of the six candidates already holding eight letters. Alvin Swanson will probably get a chance to show his versatility as he may get in

on the action as halfback, fullback and guard before the 1962 slate is over.

Swanson started both ways as a guard and made all-district as a junior but has been listed in the backfield for the coming campaign. He will be seeking his fourth letter.

Bona fide halfbacks with two letters already in their pockets are Melvin Bell, a returning offensive starter, and Phillip Reep, who started an offense and defense last season. Mike Smith, a sophomore with one letter makes the half-back position the strongest on the team in depth.

THAT BRINGS UP THE QUESTION of fullback, which is actually no question at all because if there are any crying

rowels out they belong to Anton's rivals. The cause of the doldrums is big Charles Buchanan who looks larger than his 185 pounds and probably will be before the campaign is very far along.

Anton will get to test their team Friday as they take on the strong Kress Kangaroo team at Kress.

#### ANTON HIGH SCHOOL

1962 Football Schedule  
 Sept. 7 - Kress - There.  
 Sept. 14 - Ropesville - There  
 Sept. 21 - Sundown - Home  
 Sept. 28 - Wilson - Home  
 Oct. 5 - Hart - Home  
 Oct. 12 - Petersburg - There  
 Oct. 19 - Amherst - There  
 Oct. 27 - Whiteface - There  
 Nov. 2 - Whitharral - Home  
 Nov. 9 - New Deal - Home

**Another good Anton football team is ready to go---We're for the Bulldogs all the way!**

**Another good grain crop is here and our grain storage is ready to go.**

**Anton Enterprises, Inc.**

GRAIN ELEVATOR-STORAGE



OLTON'S 1962 MUSTANGS -- Pictured above is the 1962 edition of the Olton Mustangs who will battle Abernathy Friday night in the season opener. They are on the front row from left to right, Richard Hall, Clyde Gallaway, Billy Carson, Sam Roden, Leroy Powers, Charlie Burrus, and George Jones. Second row is Johnny Moses, Dennis Givens, Dwight Clark, Daryl

Glover, Paul Hernandez, Junior Cordero, Ronnie Trusty, Steve Sherry, Ricky Skelton and Ronnie Parsons. The back row is coach Robert Nicholson, Leon Kendall, Robert Struve, Joe McKnight, George Phillips, Don Sopher, Jerry LaFrance, Joe Costello, Eddie Mac Smith and coach Walter Bryan.

### Experience, Speed Lacking Says Coach

# Olton Mustangs "About Like Last Year"

Lack of experience and lack of speed are the two reasons Walter Bryan, head coach of the Olton Mustangs, gives for saying this season will be "about like last year's."

One strong point is that the Mustang return six lettermen, all of whom were starters last season. Three regulars will be back in the backfield and both ends were starters last year.

But, as Bryan said, inexperience is predominant on the team which will probably see four sophomores and a junior land starting positions.

One regular from the 1961 team, halfback James Lovelless, was killed in an auto accident in Shallowater during the summer. And Larry Fancher, a 170-pounder who was being counted on this season, is out with a back injury.

Olton won't be hurting at the quarterback post, where George Jones returns after playing regularly as a sophomore in 1961. "He has a good arm, and besides, he's my best running back," Bryan said. The 145-pound junior also handles the Mustang punting chores.

The top linemen on the team are end George Phillips, a 185-pound senior who also was a regular last year and Charlie Burrus, another end returning off the 1961 starting team.

"Burrus has pretty good speed. He played fullback quite a bit during the past two seasons, and we're really counting on him," Bryan said.

Fullback is another position that appears to be well-manned for Olton. It is occupied by Johnny Moses, a 165-pound senior, Moses, who along with Jones will furnish the major

part of the Mustang infantry attack, is classed as a proficient up-the-middle man.

But sophomores will have to come through if the football situation takes much of an upward swing in Olton. First year men will be sitting at the left tackle, center, right guard and left half-back positions.

In fact, the only two centers on the Mustang roster are both sophomores.

The tentative starting Olton lineup will boast a line that averages 173 pounds, but three of the seven-man front will

### be sophomores. OLTON MUSTANG 1962 Schedule

- Sept. 7 - Abernathy.
- Sept. 14 - At Floydada.
- Sept. 21 - At Springlake.
- Sept. 28 - Hale Center.
- Oct. 5 - At Lockney.
- Oct. 12 - Tulia.
- Oct. 19 - Dimmitt.\*
- Oct. 26 - At Morton.\*
- Nov. 2 - At Muleshoe.\*
- Nov. 9 - Open.
- Nov. 16 - Friona.\*

\* Denotes district games.

**Olton's Caprock Fertilizer Dealer Is Happy To**

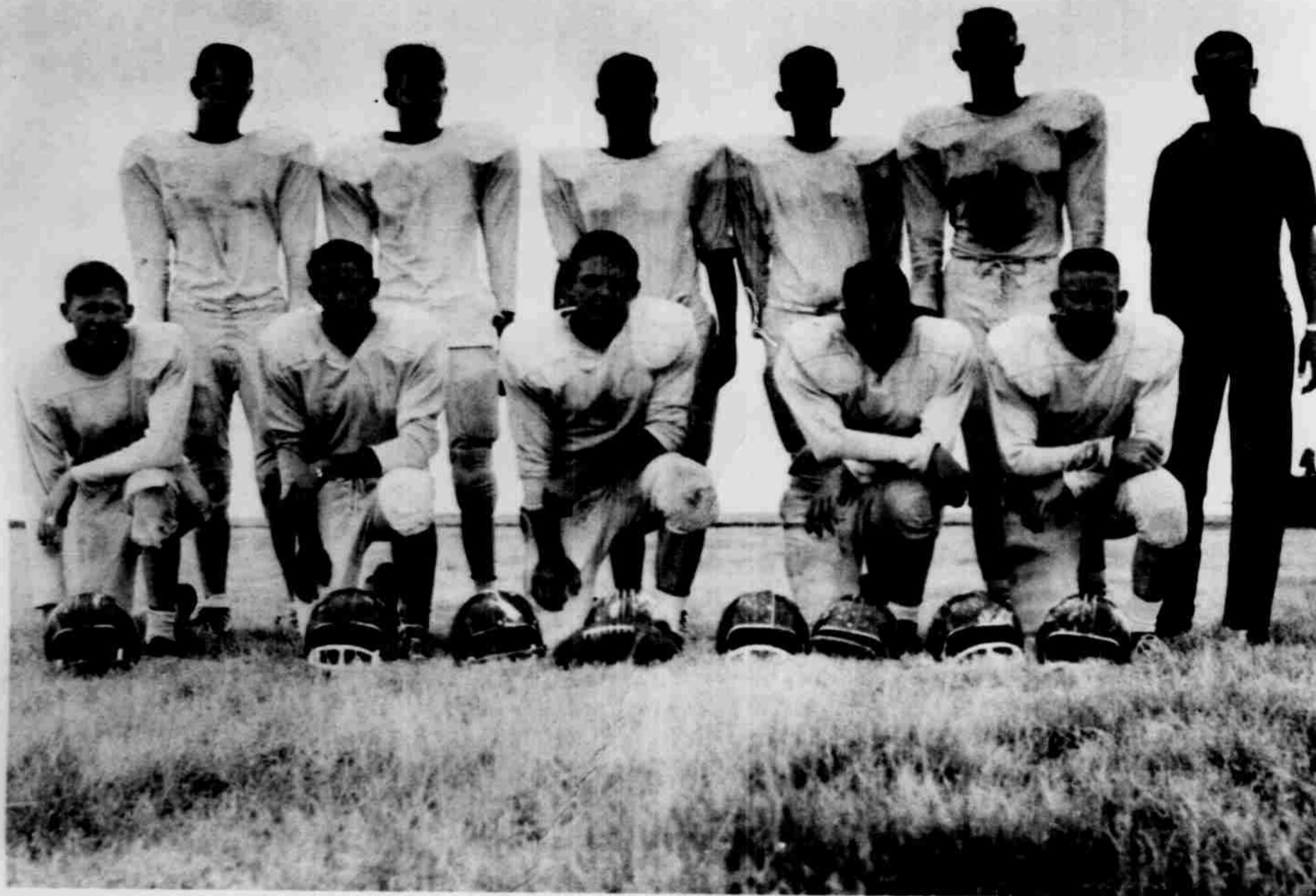
**Feature The Mustangs Page**

**The Mustangs Are An Outstanding Team And**

**Caprock Fertilizer Is Another Winner For Area Farmers**

**Plainsman Farm And Ranch**

**Olton**



BULA'S 1962 BULLDOGS -- Pictured above is the 1962 Bula Bulldog football team. On the front row from left to right they are Mike Capehart, Michael Overland, Bruce Angle, Sammy Nichols and Roger Jones. On the

back row is Curtis Archer, Dennis Midlin, Kenneth Overland, Dennis Turney, Gene Autry and Pat Risinger.

### Lose Four Starters

## Bula Hurt By Last Season's Injuries

Bula's chances for being a powerhouse in their eight-man football district went down the drain last season when four starters received injuries which will keep them out of competition for the remainder of their schooling. There are, however, six returning lettermen.

But this only slows down the team a little as the eleven boys who reported out for play this

season are working twice as hard under their new coach Marvin Young.

Young, coaching his first year, isn't crying about the prospects. He said he hasn't heard about any of the other teams in the area so really doesn't know what to expect.

"We are just going to work until every man is up to the best of his abilities and if that isn't good enough for us to win,

we will at least say we tried hard," the coach commented.

Bula will depend on wide option plays and passes on offense. There isn't as much hard blocking in eight-man football as in the standard variety.

In eight-man ball the linemen hit quick and hard, trying to block the defense in and allowing the speedy backs to get outside.

There are only two things different in the rules of eight-man ball. These are the field being only 80 yards long and on touchbacks the ball is placed on the 15 yard line.

Each man on the team at Bula knows every position and in practice the boys change around so that each learns the job on the field.

The 1962 season will begin Friday night as Bula travels to

Southland.

**BULA BULLDOGS**  
1962 Football Schedule  
Sept. 7 - At Southland.  
Sept. 14 - Patton Spring.  
Sept. 21 - At Jayton.  
Sept. 28 - Three Way  
Oct. 12 - Roaring Springs  
Oct. 19 - Cotton Center  
Oct. 26 - At Nazareth  
Nov. 2 - Smyer  
Nov. 9 - Pettit  
Nov. 16 - At Threeway

We are happy to sponsor this page featuring

our Bula Bulldogs.

and---we look forward to again serving the gin needs of the farmers in this area .

Paul G. Young—Roy B. Young  
OWNERS

**Bula Gin**

MOSS  
LINT  
CLEANERS

MOSS  
LINT  
CLEANERS



SUDAN'S 1962 HORNETS—Ready to battle on the gridiron are these boys which comprise the 1962 Sudan Hornet football squad. They are on the front from left to right, Ricky Humphreys, Mario Cantu, Bill Allen, Frank Carbo, Mike McWilliams, D. W. Muller and Bill Boyles; second row is Dan Masten,

Mark Baker, Don Ford, Mike Nix, Johnny King, Robert Earl Williamson, Kenzel May, Mike Smith and Pat Brown; third row is James Parrish, Mike Masten, Joe Hollis, Mike Mudgett, Julian Zamron, Josh Soyars, Tom Thompson and Dan Allen.

### Coach Predicts Scrappy Squad

## Sudan Lacks Experience, But Has Hustle

Sudan Hornet coach Hank Brown is not at all optimistic about this year's chances of winning the district, but he is praising the work that each of his charges is showing in practice.

The coach said the Hornets will be one of the scrappiest teams he has coached at Sudan

if there are no injuries but "we won't win many games."

Only three starters are back from last year and sophomores and juniors will probably determine the starting lineup. Brown cited inexperience as the main drawback.

Sudan will run out of the Wing T and Spin T formations most

of the time.

Probably starting lineup will include Danny Masten and Danny Allen at ends, Robert Earl Williamson and Julian Zamron at tackles, Mike Masten and James Parrish at guards, Johnny King at center, Joe Hollis and Mike Mudgett at fullback, Jimmy Soyars at

fullback and Tommy Thompson at quarterback.

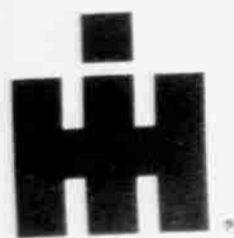
"We have plenty of hustle," Brown added, "and hustle can win a lot of ball games."

Sudan squares off Friday with St. Martin.

SUDAN HORNETS  
1962 schedule  
Sept. 7 - St. Martin.

Sept. 14 - Friday  
Sept. 27 - At Amberst  
Sept. 28 - Sunday  
Oct. 5 - At Plains  
Oct. 12 - Friendship  
Oct. 19 - Springlake\*  
Oct. 26 - Owen  
Nov. 2 - At Kress\*  
Nov. 9 - Jewell\*  
Nov. 16 - At Hale Center\*  
\*Denotes District Games

Best Wishes And Good Luck To Our Sudan Hornets



Farmers--- Come In, We'll Make  
You A Good Deal On An  
International Cotton Stripper

**BROWND IMPLEMENT CO.**

SUDAN, TEXAS



SPRINGLAKE'S 1967 WOLVERINES - Shown above is the 1967 Springlake Wolverine football team as they stand in front of the Springlake High School building. Back row (left to right) B. Campbell, R. B. Packard, J. B. Sanders, K. Kembrakovich,

Saffer and R. Mitchell; second row of J. Garrett, J. Sanders, T. Layman, J. Boon, J. Myers, and Holt; Third row is B. Clayton, C. Townsend, G. Stephens, G. Latham and L. English.

### Wolverines Picked To Finish Second

# Springlake Plagued With Many Injuries

Springlake, picked to place second in their district this season behind Kress, Will Lake, Oil Field and Bay, are anywhere from 100 to 1000 yards away from that strength.

The Wolverine is coached by Judie Wilson, who has coached the team for many years. He says the team has many injuries.

Mahan follows with quarterback Jerry Boon and fullback

Gary Latham along with our starting line-up. Holt, Townsend and Clayton will lead the Wolverine to a successful season.

The head injuries and injuries to the players are the result of the hard hitting game. The Wolverine players are the contenders Kress, Will Lake and

almost missed by the Kangaroo perfect record in district play.

Injuries reported by Mahan included that of Boon with a broken leg, nose, ribs and hand. Also, several other players with several other injuries.

Our first contest is against the pretty tough Mahan school. In previous years we have

Wolverines downed Vega and Victoria.

The Wolverine have eight returning lettermen including four starters from last season out of the forty boys who reported for football this season. Springlake will operate out of the J. Latham.

Assisting Mahan are Danny Smith, Elton Davis and C. L. Boon.

#### SPRINGLAKE WOLVERINES 1967 SCHEDULE

- Sept. 7 - Bowing
- 14 - at Hart
- 21 - Orion
- 28 - New Deal
- OCT. 5 - at Idaleu
- 12 - at Amherst
- 19 - at Sodin
- 27 - Kress
- Nov. 7 - at Hale Center
- 16 - Farwell



It's Football Time—And Grain Harvest Time

Springlake Has A Good Football Team—We Have Modern Grain Facilities

LET US HANDLE YOUR GRAIN SORGHUM

## Springlake Elevator

PURINA FEEDS

PURINA FEEDS