



Aerial view of the main street of Earth.

Lamb County connected to reap the benefits from the \$6,000,000 power plant by the Southwestern Electric Co. are Earth.

The plant will be constructed four miles south of Earth and nine miles north of Amherst on a portion of the famous old Halsell ranch.

While Earth will be nearest to the plant of any Lamb County communities, Amherst is the nearest rail point. Both cities are expected to benefit greatly both from the money which will be spent during the construction period and in the later days of permanent operations.

The need to provide housing accommodations for construction workers is expected to start a minor building boom in Earth before the start of construction work on the big plant. The power company has signed a conditional purchase agreement with Ewing Halsell, representing the ranch owners, to purchase 354 acres of land and to obtain water rights on an additional 9700 acres.

### THESE LAMB COUNTY TOWNS WILL BENEFIT FROM PROPOSED POWER PLANT

While the communities nearest the proposed new development such as Earth and Amherst will reap the greatest direct benefits from the project, Littlefield and other cities will derive perhaps even greater indirect advantages. Littlefield as the county seat,



A portion of the main business street in Amherst.

the center and shopping hub of the area the new plant services, will be a major beneficiary.

"Anything that contributes to the industrial or agricultural development and growth of Lamb county is of great importance to businessmen and other citizens of Littlefield," Dr. B. W. Armistead, president of the Chamber of Commerce, said when the new power project was announced.

## Sunday Edition

OFFICIAL NEWSPAPER OF LAMB COUNTY

# LAMB COUNTY LEADER

LITTLEFIELD, LAMB COUNTY, TEXAS, SUNDAY, NOVEMBER 19, 1950

NO. 77

## Combine Influx Aids Harvest Here

### Tractors Bring Outfits to County

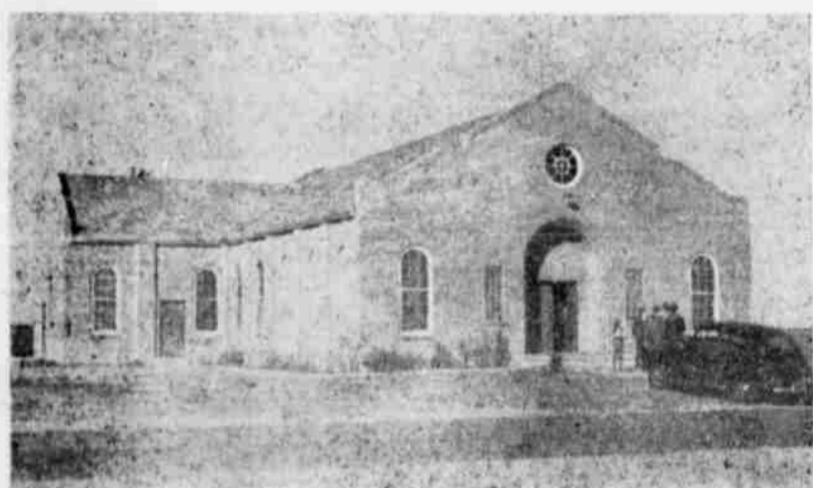
Lamb county of latter part of the their own answer to the Texas Employment offices in Littlefield in the grain har-

and sixty com- manded to have come in the last few a definite figure obtained as many of went to fields dis-

additional com- pleted in the county D. Jordan, manager of office, estimat-

dition, he said, har- b county's 240,000 could be virtually the end of the week, of the tractors here appeals by Mr. Jor-

Classified Page)



FIRST BAPTIST CHURCH OF SPRINGLAKE — This beautiful building, which is of light brick construction, has a floor space of 90x44 feet with an annex 20 by 32 feet.

The building has been in use for some time, using benches and folding chairs to accommodate the congregation. However, according to Rev. C. T. Jordan, pastor of the church, who is largely responsible for the building, it is expected to install 35 pews and pulpit, including stand, chairs, communion table

and 30 opera chairs for use by the choir, about December 1. It is also planned to cover the floor with tile flooring at the same time.

The church was organized by the West Plains Baptist Association on July 27, 1948, with 32 members, and Rev. C. T. Jordan was named pastor. It now boasts a membership of 140, with an average of 95 in Sunday school for the year 1949. The goal for this year has been set at 125 as an average attendance in Sunday school. Some times, according to Rev. Jordan, there is a larger attendance than 125 and some times smaller. Since organization there have been 54 persons joining the church by baptism.

Springlake is a very prosperous community, and it is expected that in the not far distant a membership of 200 will be reached.

### Churches Join in Service of Thanks; Stores to Close

Observance of Thanksgiving Day in Littlefield will begin Thursday morning at 8 o'clock with a united service of Thanks in which all churches affiliated with the ministerial alliance will participate.

The united community service will be held in the auditorium of the First Baptist Church. The Rev. W. E. Peterson, pastor of the First Methodist Church of Plainview will be the speaker.

(Continued on Classified Page)

### Sunday Edition Is New Service

This is the first Sunday Edition of the Lamb County Leader. The appearance of the Sunday Edition marks an important step in the Leader's program of continuous betterment of its service to the readers of this area.

Henceforth The Leader will be published each Sunday and Thursday instead of Tuesday and Thursday. The Thursday issue, with its pages of grocery bargains and week-end shopping guides, will continue as in the past.

The switch from Tuesday to Sunday was decided upon as a logical step in the program of The Leader to give quicker and better news service.

It was deemed a natural sequence to the acquisition of the Associated Press franchise for Littlefield by the publisher of The Leader.

While the start of the new Sunday Edition may be modest, it marks the beginning of an enlarged program for the future.

The Leader, serving Littlefield and its trade territory with two newspapers a week for the price of one, will continue its program of expansion unhurriedly, step by step.

The appearance of the Sunday Edition is additional evidence that in Littlefield and Lamb County, The Leader leads in service to its readers and its advertisers.

### Just Aridin' and Alookin' and Atalkin'

BY MORLEY B. DRAKE

Our deep interest in the progress of the Lamb County Electric Cooperative caused us to read an article in the Muleshoe Journal announcing the formal opening of the new headquarters of the Bailey County Electric Cooperative association in Muleshoe. The new office and warehouse building, occupied late in October, was erected at a cost of \$75,000. One of the features of the office is a model demonstration kitchen.

Correct us if we are in error, but we are of the opinion that interest in good cattle is increasing in Lamb county and throughout the Plains. Our opinion is based on the enlarged interest in the livestock shows, both by exhibitors and the general public, and in the fact that there is an increase in the number of registered cattle being brought to the South Plains, particularly bulls. The Hereford continues to retain prominence, but other breeds appear to be increasing in popularity, notably the Milking Shorthorn, the Aberdeen Angus, and the Brown Swiss.

The youth of our land really gets around these days. For example, there's Doris M. Prater of Anton, who will represent Hockley county in the tenth annual \$6,000 production-marketing competition of the National Junior Vegetable Growers association. Miss Prater is seeking the nation's junior vegetable growing championship and a share of the cash awards and scholarships provided by A & P food stores. She will compete with other teen age tillers of the soil throughout the country.

(Continued on Classified Page)



Amherst's pride: A view of the Co-Op Hospital.

## Amherst Farmer Dies in Car Crash

Henry Adkinson, 33, a lifetime resident of the Amherst community, was killed in a head-on motor car collision near Ft. Sumner, N. M., Thursday night which cost the lives of five other persons and injured four others.

Mr. Adkinson's brother-in-law, Gerald Sneller, a former Army captain of Colorado Springs, riding with Mr. Adkinson in his 1956 Ford sedan, also was killed in the collision.

Funeral services for the Amherst victim and his brother-in-law were being arranged by the Payne Funeral Home in Amherst. Lee Payne went to Ft. Sumner Friday to bring the bodies of the two men back to Amherst following an inquest in the New Mexico city Friday afternoon.

Sheriff Roy Skipworth of the New Mexico city identified three of the other dead as Arnie Sharp, Phoenix; Ruby Hallman, Phoenix; and Charles Boyd, of Oklahoma. The sixth victim, a patient at the Arizona state hospital at Phoenix, was unidentified Friday.

The four injured, all from Phoenix, were Allen Ennis, Emil Lespot, Charles LaGrange and Mrs. Sharp.

Sheriff Skipworth said a party of eight from the Phoenix hospital were traveling in a Buick station wagon owned and operated by Mr. Sharp and were believed on their way to Oklahoma.

The sheriff said two occupants of a gas truck told him the station wagon pulled out to pass the truck, colliding head-on with the westbound car.

The accident took place three and a half miles east of Fort Sumner. Witnesses said both vehicles were demolished.

The dead were taken to the Juliana mortuary in Fort Sumner. (Continued on Classified Page)



ASSUMES COUNTY POST — William G. Rodgers, who succeeded James G. Simmons last week as assistant county agricultural agent for Lamb county. Mr. Rodgers is a graduate of Texas Tech.

### Concert Group Assured Series Of Fine Talent

Music lovers of Littlefield, Lamb county and this area were assured of an exceptionally fine concert series for the 1951 season as a result of a highly successful membership campaign by the Lamb County Mutual Concert Association.

Reports of division chairmen and team captains at the campaign's end at noon Saturday indicated capacity subscriptions for the series. Only 525 seats are available at the junior high school auditorium, where the artists will be presented.

The success of the campaign gives the Littlefield association a budget adequate for an exceptionally fine series, it was reported at the Chamber of Commerce Saturday.

The series will start in January and run through April. The exact dates for the concerts will be announced after the artists selected by the executive committee can be contacted to find what dates they will be available here.

### Flower Judging School Planned By Garden Club

The Littlefield Garden Club will sponsor a flower judging school at the Youth Center in Littlefield City Park Tuesday and Wednesday, December 5 and 6.

Instructions will be on Course 2. Mrs. W. B. Little will be chairman of the committee in charge.

## Used Car Dealers Feel Pinch of Credit Curb

BY EDD ROUITT (Associated Press Staff Writer) These are sad days for Texas used car dealers.

Most are swearing, some have quit the business and others pray that Regulation "W" will be repealed. Only some who deal in jalopies express satisfaction.

It's the same story over the nation. Regulation "W," set up by the board of governors of the federal reserve system to keep down credit buying, requires that a person pay one-third down on a car and the rest in 15 months.

"My customers can't pay one-third down on a car and even if they could they wouldn't be able to pay it out in 15 months," L. R.

Penson, a big, red-faced second-hand dealer in Dallas said. "It looks like I'll just have to close the gates."

### Older Cars in Demand

But another Dallas dealer, Dave Sharp, deals in cars 10 years old or older, and gives another view: "The big boys are hoierlag. But my business is as good or better than ever. My cars are junkers and don't sell for much anyway. They cost me more now, but I just add it on to the customer's price. And I've always charged more than a third down and given the customer less than 15 months to pay the balance."

This month the national association of used car dealers met to talk

about regulation "W". Collectively, they said sales were off 50 to 75 per cent.

A survey of the market in Texas shows:

- 1. The price of old cars (pre World War II) is up from \$25 to \$100. New car dealers have boosted slightly, the prices they charge used car dealers for older cars the new car dealers obtain as trade-ins.
- 2. New car dealers have lowered, fractionally, the prices of 1948-1950 trade-ins they sell to used car dealers.
- 3. Because the new car dealer isn't selling as many new cars, he hasn't as many trade-ins to sell used car dealers.

4. The demand for the old jalopies has increased since Regulation "W" went into effect in September.

### May Appeal to Congress

The used car association threatens to take its case to congress. Many of its members feel consumer credit control should be lifted from the jurisdiction of the board of governors of the federal reserve system. They want an independent board with representatives from the automotive industry.

Dallas used car dealers were interviewed:

David Karlen, who sells late-model used cars, said his business dropped from 50 cars a month to 15.

Manry Shallette, thinks he'll have to let some of his mechanics go.

"I can't buy cars, and I can't sell them. I'd buy a bunch of old crates if I could find them. They just aren't to be found."

Rudy Bergfield handles old cars mostly, says he's not hurt.

W. D. McDowell believes things will get better when "more money gets into circulation."

Where's the money coming from?

### See More Money Coming

"Oh, war plants, new jobs, and so on. There'll be plenty of money soon and people can make these big down payments and monthly installments," he explained.

(Continued on Classified Page)

BY OES—Mr. and Mrs. Taylor is the new associate grand matron for the grand chapter of Texas and Mr. Boone is a past worthy grand patron for the state.

Photo By Taylor

is the new associate grand matron for the grand chapter of Texas and Mr. Boone is a past worthy grand patron for the state.

# High Tribute

The dollars' and cents' cost of tuberculosis in this country is conservatively estimated at \$350,000,000 a year.

That is high tribute to pay a disease. It is particularly high tribute to pay a preventable disease.

Even so, it is only a small part of the cost of tuberculosis. The worst toll exacted by this disease cannot be computed in dollars and cents. It is paid for in suffering, in the pain of separation for months, perhaps years, from loved ones, in the sense of frustration when careers are interrupted.

The costliness of tuberculosis lies in the fact that it is a chronic, long-term, communicable disease. These characteristics explain both the financial burden and the physical and emotional suffering it causes.

TB has a slow onset, thus too frequently it is not recognized and diagnosed until it has a firm hold on its victim. Recovery is then a slow process. During the period when the patient is under treatment, he is deprived of normal family life, of earning a livelihood, of following a chosen vocation.

Yes, TB comes high. Better, far better, than paying the cost of TB would be preventing TB. This is not an impossible task. We know that if all the people who have TB but who are unknown to health authorities—and it is estimated there are at least 250,000 in this country—were diagnosed and placed under proper treatment, within a reasonable time we could eradicate TB, and, eventually, the tremendous costs it exacts.

For the sake of our financial and human resources, it is obviously sound economy to prevent TB. And each of us can help bring this costly disease under control by supporting the campaign against TB in our community. We have an opportunity to day to show our faith in the eradication of TB in a very tangible way. We can buy Christmas Seals, sole support of the Texas Tuberculosis Association and its affiliated county associations in the year-round campaign against the "white plague."

Through Christmas Seals, we can cut down the tribute to TB.

are the sole financial support of the association in its work to bring tuberculosis under complete control in our community. The activities of the association include such worthwhile projects as case-finding and health education.

Continuation of these activities may make the difference between life and death to some of our residents. Surley all of us want to support the work of our tuberculosis association. It will take but a moment to tell the association we are back of its life-saving program, only a moment to acknowledge our Christmas Seals.

Funds realized from the sale of Christmas Seals

she was buried more than three centuries ago. They want to make room for a factory. Gov. John Battle of Virginia asks that her bones be brought back instead to Jamestown for reburial. But the rector of the church vetoes that as nothing short of "ecclesiastical vandalism."

What an odd view to take when it is proposed to dump a boiler plant or soap factory on all that remains of a Princess who died so far away.

They are about to raze poverty-stricken little church at Gravesend on the Thames estuary where



The Associated Press day office in the Dallas Times Herald Building.



The Associated Press night office in the Dallas Morning News Building.

**LAMB COUNTY LEADER**

Published Every Sunday and Thursday At 412 Phelps Ave., Littlefield, Texas

Member **Texas Press Association** Associate Member of the **Associated Press**

Entered As Second Class Matter at the Post Office at Littlefield, Texas, January 26, 1950 Under Act of March 3, 1879

The Associated Press is entitled exclusively to the use for republication of all the local news printed in this newspaper, as well as all (AP) news dispatches.

**SUBSCRIPTION RATES:** In Littlefield and Trade Territory \$3.50 per year. Elsewhere \$5.00 per year.

**MORLEY B. DRAKE** EDITOR AND PUBLISHER

**E. M. DRAKE** BUSINESS MANAGER

Subscribers who change their address, or fail to get their paper, should immediately notify this office, giving both new and old addresses. Communications of local interest are solicited, they should be briefly written, on only one side of the paper, and must reach this office not later than noon of the day previous to publication. The right of revision or rejection is reserved by publisher.

Any erroneous reflection upon the character, standing or reputation of any person, firm or corporation which may appear in the columns of the Lamb County Leader will be gladly corrected upon being brought to the attention of publisher. In case of errors or omissions in local or other advertisements, the Publisher does not hold himself liable for damage further than amount received by him for such advertisement.

# Lamb County Leader Joins AP, World's Greatest News Service

### Editor's Note

The Lamb County Leader now is a member of The Associated Press, world-wide, non-profit, cooperative news-gathering association. In this connection the accompanying story of The Associated Press is presented to our readers.

By The Associated Press

The riches of the Texas plains country were still scores of years from discovery when the first serious effort at organized news-gathering was attempted.

The present day site of Littlefield was a naked plain on the fringe of America's frontier.

The United States and Mexico—destined to become good neighbors and allies in arms against world dictators—were at war. The population of the United States, concentrated in the East, was hungry for war news, hungry for news from the Texas country north of the Rio Grande.

That news came in dribbles, uncertain reports that traveled by pony express, rickety railroad or by the sparse new telegraph lines. Real systematic news-gathering was to come, but the momentous Mexican war and the aggressiveness of James Gordon Bennett, publisher of the New York Herald, in reporting it played a vital part in its background.

Followed Telegraph

A few years before, Prof. Samuel F. B. Morse had successfully operated the first telegraph line, between Washington and Baltimore. Another three years saw wires expanded to New York and run westward to St. Louis.

Bennett with characteristic vigorousness lost no time in taking advantage of the new means of communication. He hired "telegraph reporters" along the ever lengthening line of the telegraph. As soon as the situation with Mexico became serious, he established a courier system between New York and New Orleans, center for news coverage for activities along the Rio Grande.

This began in 1845 and Bennett's express beat the United States mails by from one to four days. Soon after the war broke out in the spring of 1846 Bennett lengthened the express service with the aid of the Philadelphia Ledger and the Baltimore Sun. The telegraph line between Philadelphia and New York served to speed the news over its last few miles and saved many hours needed to bring news by train-messenger.

Told Mexico's Defeat

Bennett was the first with news of the fall of the City of Mexico in 1847 and not only gave the news to the other papers but to the government at Washington as a matter of public service.

Not long after that David Hale, publisher of the New York Journal and Commerce, proposed to Bennett that the Herald and the Journal and Commerce join forces in the collection of their news. Bennett agreed.

The following year Hale made a proposal that four other New York City papers join the Journal and Commerce and the Herald in the formation of The Associated Press.

Bennett's aggressive tactics in pursuit of telegraphed news forced other New York papers to follow suit or be left in the lurch. It was not long before the scant telegraph lines were jammed with an overload of copy. Costs for each paper soared. Newspaper editors found each paper was paying six or seven times the amount necessary to get the telegraphed story in New York because each paper was paying full rates for each item.

Since many of the items were virtually the same, there was considerable waste of money. A practical solution was necessary if these papers were to continue in business. Hale proposed the formation of The Associated Press in

1848 to carry out the aim. His plan was accepted and he was named first president.

Attractive to Editors

The young association represented the first noteworthy attempt at systematic gathering of news for newspapers, and newspaper owners throughout the United States turned to this privately owned enterprise as a means of getting their news.

As the list of subscribers increased they gathered together in loosely formed geographical groups to make dealings with the New York Associated Press and to collect and transmit news to papers in each group. Among these were the Southern Associated Press, the Western Associated Press and the New York Associated Press.

The Civil War came and before it ended disturbing developments were taking place in the news-gathering front that were to change the whole basis of systematic news-gathering in the nation.

While the Civil War was being fought, members of the Western Associated Press began a struggle for equality with the New York organization, a struggle for an equal voice in the management of the news-gathering work and an equal share in the expense. This struggle went on for many years until an impossible stage was reached in 1892.

Monopoly Opposed

The New York organization, privately owned, threatened to have complete control of all news-gathering and to be in a position to force all papers to pay heavy tribute for their news service.

The Western Associated Press led the revolt. It sought and obtained the support of the Southern Associated Press, the New York State Associated Press and kindred groups. Together they formed the modern Associated

Press under the laws of the State of Illinois. The plan was for each paper to pay a fair share of the total cost of collecting and distributing the news and for each paper to have a voice in the management of the organization's affairs.

The first president was Victor F. Lawson, publisher of the Chicago Daily News, and the first general manager, Meville E. Stone, Lawson's partner. They laid down the rule that the Association's news should be written upon verified facts without bias or partisan color. This has become the accepted principle for news writing by all American papers.

**Texan A Leader**

In 1900 The Associated Press re-incorporated under New York law. One of the incorporators was the late Col. A. H. Belo of Dallas. In that year the organization had 612 newspapers on its membership list and approximately 30,000 miles of telegraph lines.

By 1920, after the close of World War I, the association pointed to a membership roll of 1,181 and to a total of 65,000 miles of leased wires for news dissemination. In that decade the automatic high speed teletype printer began to supplant the older Morse telegraph circuits in most cities, increasing the ever-quicken pace of news distribution.

**New Serves 3900 Papers**

The Associated Press continued its growth until now, operating on a budget of more than \$1,000,000 monthly, it serves more than 3,900 newspapers and radio stations the world over.

The first AP dispatch to a Texas newspaper trickled in over a tottering telegraph wire shortly before the turn of the century. This abbreviated service continued for more than a decade. In 1910 the first Texas bureau was established in Dallas, and the association's Texas system rapidly expanded to the state's four boundaries.

The Lamb County Leader joins more than 80 other Texas newspapers in maintaining the most extensive state service in the association. Bureaus are located in Dallas, Austin and Houston. The personnel is made up of experienced reporters and editors, some drawn

from member newspapers in addition to those employed by the Texas office and gathered by telegraph and telephone. Trunk lines to all United States, including each state, other countries, and the smaller cities. In recent years the use of photography and other methods by which news could be printed made readers and editors more conscious.

When Kent Cooper, general manager of the AP saw that pictures had much to do with the ten words in the field of news.

The Associated Press set up a photo service and distribute news pictures as the organization had lecturing and distributing agencies. As pictures became popular newspaper readers see pictures of news events same time they read accounts.

The problem was solved when The Associated Press operation of its network and became the organization to send news by wire parallel with the Feature Service Office.

As a further function the Press supplies to each a complete feature comprising newspaper, picture stories with illustrations and news columns.

Robert McLean, publisher Philadelphia Bulletin, is of The Associated Press. He headed the late Press publisher of the Washington Post and Times Herald, who was president for many years.

General headquarters are in The Associated Press Building, Rockefeller Plaza, New York City—the most modern association plant in the world.

Use the Class

**FARR'S**

**Gifts**

for Her  
for Him  
for the Home

It's Time to Select... **Christmas** GIFT

For the Lasting Gift, Make Jewelry and Silverware

**Choice...!**

**Time WATCHES**

Waterproof and Shockproof Watches

**\$15.95 up**

Leading Makes in... **WATCHES**

Gruen, Bulova, Elgin, Hamilton, and Wyler.

**\$24.75 up**

**SILVERWARE**

In Both Plated and Sterling

Reed and Barton, Wallace, and national.

**RINGS**

That Thrill

**BRIDAL SETS**

**\$35.00**

to **\$1000**

All Kinds of... **Stone Set Rings**

**CHOOSE YOUR GIFTS**

A Small Deposit Will Hold And Article Until Christmas.

**FARR'S**

Jewelry

LITTLEFIELD

# Law Limits Spending By Candidates

**TED EASLEY** (Washington Service) — Texas candidates usually report one red cent on their campaign. It's a little different with the Republican actively from the 18th district.

primary report filed of the house, as defeated Republican campaign contribution of \$360 for the district. He listed: A. P. Liak, Carl Ellis, Perry, D. Thompson, Jr., D. O. Beene, Wheeler, Hickman, Pampa, E. Amarillo, \$200. had been received by the Democrat Rogers of Pampa.

**Limits Spending** at least state law lesser amount, a the House may spend or an amount "multiplying three cents number of votes cast general election for the office which the weeks." In no event, the itemized amount provides for a number that are not determining the law-include any state fee or charge, per- or subsistence expenses for station- writing, printing, billboards or news- distributing letters, cir- or wire and phone reports may be no whatever of the final- heaviest contributions may come in the of the campaign.

**May Spend Freely** dates do not have to spent in their behalf for they may have no how much was

involved. Gull in his preliminary report said: "Friends of mine through the district have been buying radio time in my behalf and I shall have an accounting of that time used by myself in my final statement."

Mose R. Blumrosen, Corsicana Republican seeking election to congress from that central Texas area, reported expenditure of \$2.50 for cards.

**AROUND THE CAPITAL**  
Two young graduates from Texas Christian University are in the business and promotion department of Group Health Association, a local medical, surgical and hospital insurance organization.

One is David Bunn, '47 president of the student body in 1946. The other is George E. Miller, Jr., '48.

Group Health organized in 1937 by employees in the Agriculture and Labor Departments. About four years ago, when its membership was opened to other than federal employees, it had about 8,000 enrolled.

It now has 20,000 members.

**Monthly Cost Law**  
Observing that \$11.50 monthly will insure a man and wife and two children against all hospital and doctor bills, Bunn added: "Pre-paid medical insurance such as Group Health is the best answer to the problem middle-income bracket folks have in meeting all such expenses."

"It is strictly a voluntary membership organization. Those who join largely are sound citizens who are too well off to qualify for any kind of charity, yet are not rich and consequently would be hard hit financially by any unusual medical expenses."

**Own 11-Story Building**  
He noted that Group Health here has grown in such popularity that its members recently voted to purchase an 11-story downtown office building, and there will concentrate offices which presently are scattered in three part of the city.

The organization has 24 full time carefully chosen doctors and 10 part-time doctors, in addition to nurses and administrative personnel.

Staff Doctors are not hard to engage, Bunn said, because they receive excellent compensation and do not have to meet normal overhead expenses such as billing and collecting, office and nurse expenses.

They take turns on night duty, and the staff includes many specialists.

Bunn graduated from San Augustine high school. Miller is the son of a medical missionary, and spent his youth in India before attending TCU.

## Church of God Youth Rally Opens Here Wednesday

A West Texas Youth Rally beginning Wednesday night and continuing through Thursday will be conducted at the Littlefield Church of God this week.

The rally, which will be attended by delegates from fourteen Church of God congregations in West Texas, will start Wednesday night with the Rev. B. L. Wright of Amarillo as the principal speaker.

The Thursday rally, Thanksgiving Day, will begin at 8:15 a. m.

and continue through until 3:30 in the afternoon. A Thanksgiving dinner will be served at noon.

The public is cordially invited to attend any or all of the sessions while the rally is in progress, the Rev. T. N. Minix, pastor of the Littlefield Church, said Monday.

Delegations to the rally are expected from Sweetwater, Abilene, Cisco, Eastland, Ira, Big Spring, Odessa, Amarillo, San Angelo, Ballinger, Coleman, Gorman and other communities in West Texas.

## Housewarming at J. E. Dryden Home

Neighbors and friends of Mr. and Mrs. J. E. Dryden gathered at their new home Tuesday night holding a house warming and enjoying a carry-in supper. About 16 attended the party and "42" was enjoyed with the social evening.

## SCHOLARSHIPS AWARDED

Chester Gollightly, McLain, and Jack Butler, Lubbock, have received the first pre-med scholarships offered at Texas Technological College, Lubbock.

The scholarships, donated by the Lubbock-Crosby County Medical Society, are \$200 each.

## TECK PROF HONORED

LUBBOCK. (Special) — Cecil Ayers, associate professor of Plant

Industry at Texas Technological College, has been chosen judge for grain and sorghum exhibits at the International Hay and Grain meeting to be held in Chicago in December.

## Truck Overloading Condemned By Vote Of Trails Group

MARFA. — The resolution, unanimously condemning the use of highways by overloaded trucks, was adopted here today by the Big Bend Trail Association, Inc., in annual convention.

The resolution presented by J. Albert Lain of Cleburne incoming president of the Association follows:

"That the practice of operating overloaded trucks on Texas highways be condemned and that all law enforcement officers be called upon for strict enforcement of

the highway laws and requiring overloaded trucks to be unloaded at the point of violation."

Christmas Seal funds are currently aiding 26 medical research projects on tuberculosis.



From where I sit... by Joe Marsh

## We Ask That "Fares" Play Fair

Judge Cunningham was telling about a taxi ride he took over to the County Seat last week. The cab was all littered with cigarette butts, plus candy and gum wrappers. This annoyed the Judge and he spoke to the driver about it.

To his surprise the cabman answered right back. "Don't blame me," he said "Fast as I clear this taxi out, the fares just mess it up again. I like a clean cab as well as anybody, but a man has to have some co-operation!"

Judge figures the fellow was in the right, and maybe we ought to

do a little campaigning with the public. I agree with him—that's why I'm writing this article.

From where I sit, it's important for us to remember the fellow who's going to get in the cab after we leave it. Because he pays the same as we do, he's got the same right to a clean, comfortable ride—just as he has the same right to enjoy the beverage of his choice (be it coffee, beer, lemonade, or what have you).

Joe Marsh

**R. (BILLY) HALL**  
ATTORNEY-AT-LAW  
333 LITTLEFIELD, TEXAS

**FARMERS!**  
**DON'T STOP WORK**  
When you have tire trouble  
**PHONE 234-R**

We'll come right out to your farm and service your tires on the job!  
Tires fixed on any make or size tire without removing the wheel from your equipment.  
Cuts and breaks repaired.  
Tube valves replaced.  
Liquid filling drained and replaced.  
Our tires need vulcanizing we'll loan you while yours are being repaired.

WE YOURSELF A TRIP TO TOWN —  
CALL US WHEN YOU HAVE TIRE TROUBLE

**RICHEY & SONS**  
OIL COMPANY  
Shamrock Petroleum Products  
Highway 84 Littlefield



Mrs. Jennie Lee Adele, 412 N. 27 St., East St. Louis, Ill., a nurse, says she wishes she had found out about HADACOL sooner because since taking HADACOL she feels so good. Mrs. Adele was suffering a deficiency of Vitamins B<sub>1</sub>, B<sub>2</sub>, Niacin and Iron which HADACOL contains.

Here is Mrs. Adele's own statement: "I have been a nurse for over 14 years. My food never seemed to agree with me. I heard one day how so many folks were being helped because of HADACOL. I tried it and after 3 bottles I could tell a big improvement. Now I eat anything I want—sleep well and I am full of energy."

**Why HADACOL Gives Such Fine Results**  
HADACOL does not bring just symptomatic relief. HADACOL now makes it possible to actually relieve the cause of aches and pains in the shoulders, legs and arms, certain nervous disturbances, and a general run-down weakened condition due to deficiencies of Vitamins B<sub>1</sub>, B<sub>2</sub>, Niacin and Iron in your system.

HADACOL not only supplies deficient systems with extra quantities of Vitamins B<sub>1</sub>, B<sub>2</sub>, Iron, and Niacin but also helpful amounts of important Calcium and Phosphorus

—elements so vital to help maintain good health and physical fitness.

**Why These Vitamins and Minerals Come In Liquid Form**  
There's a very good reason why HADACOL comes in special liquid form. These precious Vitamins and Minerals are more easily and quickly absorbed into the blood stream this way—ready to go right to work. A big improvement is often noticed within a few days.

**Don't Be A 'Doubting Thomas'**  
After reading Mrs. Adele's wonderful experience with HADACOL—how can you doubt that this great new nutritional formula will help you if your system lacks Vitamins B<sub>1</sub>, B<sub>2</sub>, Iron, and Niacin?

What HADACOL did for Mrs. Adele, it can do for you if you're troubled with aches and pains in the shoulders, legs, and arms, certain nervous disturbances, insomnia when due to an upset stomach, stomach distress and a general run-down weakened condition due to such deficiencies.

So what are you waiting for? Don't you see that HADACOL is the kind of product you need—the kind you should buy and the kind you should start taking immediately!

**Sold On A Strict Money-Back Guarantee**

HADACOL even helps build up the hemoglobin content of your blood (when Iron is needed) to course through your body, carrying these great health-building elements to every body organ. No wonder HADACOL helps you feel wonderful.

Be fair to yourself! Give yourself a break if you have such deficiencies! Why continue to drag yourself around—a burden to yourself and your family—when relief may be as close at hand as your nearest drugstore if you suffer a deficiency of Vitamins B<sub>1</sub>, B<sub>2</sub>, Niacin and Iron. This great HADACOL is inexpensive, too—costs only a small amount a day. Trial size, only \$1.25. Large family or hospital size, \$3.50. If your druggist does not have HADACOL, order it direct from The LeBlanc Corporation, Lafayette, Louisiana.  
© 1959, The LeBlanc Corporation.

**REESE DRUG**  
425 Phelps Ave.  
LITTLEFIELD — PHONE 500

here's how to make your home shine with DU PONT PAINTS!

**DU PONT HOUSE PAINT**  
cleans itself!  
Every rain helps keep it clean! Let us tell you how its "self-cleaning" action keeps your home sparkling white. Made in self-cleaning tints, too.

- ★ Starts white... stays white
- ★ Spreads far... hides solid
- ★ Protects against rot, rust and decay

\$5.95 Gal.  
In 4-Gal. Lots

**DU PONT "DULUX" TRIM & TRELIS FINISHES**  
resist fading!  
These amazing paints stay bright, and hold their color for years.

- ★ Hold gloss & color
- ★ Resist fading & mildew
- ★ Excellent one-coat hiding

\$2.43 Qt.

**DU PONT PORCH & FLOOR ENAMEL**  
A tough, hard finish for wood or concrete floors, indoors or out. Beautiful colors that stay bright... laugh at wear and weather.

\$1.72 Qt.

**DU PONT "DULUX" METAL PROTECTIVE FINISH**  
Keeps metal surfaces from rusting! Exceptionally resistant to fading and cracking—gives long-lasting protection to all metal surfaces.

\$1.86 Qt.

**Nelson's Hardware & Housewares**  
ELECTRICAL APPLIANCES & SUPPLIES  
P.O. Box 506 Phone 315

Save the surface and you save all!

**DU PONT PAINTS**

**CHEVROLET and V-8 MUFFLERS... \$3.95**  
**1-50 V-8 and CHEVROLET MUFFLERS... \$4.95**  
**ALL REGULAR RAIL PIPES... \$2.95**

**SMITTY MUFFLERS**  
... A Smitty Muffler gives a deep mel-low tone, protects valves... increases gasoline mileage & lasts longer.

**MOHAWK BATTERIES**  
12-MONTH GUARANTEE ..... \$9.95  
24-MONTH GUARANTEE ..... \$12.95 ex.  
30-MONTH GUARANTEE ..... \$14.95 ex.  
NO BETTER BATTERY — AND NO BETTER PRICE!

**McCORMICK BROS.**  
Auto Parts & Hardware  
AT CUT RATE PRICES

Main Street Littlefield

**CLASSIFIED ADS PERSON-TO-PERSON WANT ADS FOR QUICK RESULTS!**

**For Sale**

**FOR SALE**—A Gleener Baldwin 12-foot combine, 1945 model, good shape, ready to go, one half price. See W. H. Cunningham, Cunningham Seed Farm, southwest of Littlefield. 74-3tc

**WE HAVE PLENTY** of good tires and tubes, most any size. MCCORMICK SERVICE STATION, LITTLEFIELD, TEXAS.

**FOR SALE:** Gas space heaters all sizes for either butane or natural gas. \$11.95 to \$24.95. HART-THAXTON, Hardware & Furniture, Littlefield, Texas.

**FOR SALE**—2150 bushel steel grain bins. John Deere bolt stripper. Phone 687-W. Canyon, Texas. 75-2tp

**FOR SALE**—Massey-Harris clipper-combine with motor; can be seen at Massey-Harris lot in Littlefield. E. J. Stone, Box 536, Sudan. 75-3tc

**FOR SALE**—One John Deere cotton harvester; one Oliver cotton harvester; one 12-foot Baldwin combine, 1946 model. E. J. Stone, Box 536, Sudan. 75-3tc

**FOR SALE**—19 acres close to town, fenced hog proof. See L. Peyton Reese, Phone 508 or 356-R. 71-3tc

**DISTINCTIVE MEMORIALS**  
of  
**LASTING BEAUTY**

**Littlefield Monument Company**  
CECIL HARP

Monuments  
Mausoleums

Vaults  
Curbs

**OPPORTUNITIES IN SEASON**—150 acres, all in cultivation, 8" irrigation well. Case Motor, Johnsona pump. Nice modern improvements. 80 acres, nice and level, 80 acres, slopes but all is being watered. Complete job \$145 per acre. 220 acres. Extra nice modern improvements. Three bedroom home. Grade A dairy barn. Lots of out buildings. 240 acres in cultivation, 80 acres good grass. Plenty of irrigation water. About 130 acres perfect for watering, balance some slope. Located on paved highway east of Bovina. All goes including 230 acres summer tilled wheat. At only \$110 per acre. Very attractive terms can be arranged.

O. W. RHINEHART  
W. E. McCUAN  
Office in Masonic Bldg.  
Bovina, Texas 72-1tc

**FOR SALE**—Foley automatic saw sharpener, excellent condition. Reasonable price. L. J. Bates at Cor Machine Shop, Littlefield. 75-2tc

**MISCELLANEOUS**

**NURSERY SCHOOL** for Children from 2 to 6 years of age. All day care \$7.00 per week, 1121 S. Westside Avenue. Mrs. Geneva James, Phone 727-W. 69-1tc

**IRONING WANTED**—Cheap rates—Shirts 19c; Pants 15c; 611 XIT Drive, Littlefield. 65-1tc

**For Sale**

**Massey Harris**

Tractors; Plows; Harrows;  
Combines; Parts & Shop Service.

**Littlefield Implement Company**  
1421 E. 9th St.  
PHO 470-J

**Wanted**

**WANTED**—Experienced Parts man. GARLAND MOTOR CO., Littlefield. 73-1tc

**WANTED MAN** to work installing irrigation pumps and do general work. Texas Pump & Equipment Co., Littlefield. 68-2tc

**WANTED**—Experienced mechanic on Chrysler products. Apply GARLAND MOTOR COMPANY, Littlefield. 73-1tc

**WANTED AT ONCE**—Men or Women to supply Consumers with Raleigh Products in the City of Littlefield. Full or part time. For details write The W. T. Raleigh Co. Dept. TXK-280-216, 139 W. Illinois, Memphis, Tenn. 72-6tp

**WANTED**—Experienced mechanic on Chrysler products. Apply IDEAL MOTORS, Phone 10, Littlefield. 73-3tc

**For Rent**

**FOR RENT**—Three-room modern house on West First. Phone 101-R or call at 512 West First. 74-1tc

**FOR RENT**—Modern furnished houses:  
All new furniture, 4-room house and garage, on pavement, West 10th St.  
3-room furnished house, new house completely furnished. Real modern.  
5-room unfurnished house on East 7th St.  
4-room unfurnished house on East 7th St.  
See B. D. Garland, Jr., at Ideal Motors, Phone 10, Littlefield. 72-1tc

**NICE ROOMS FOR RENT** to young men. Mrs. Thomas B. Duke, 1103 South Phelps Ave. Phone 198. 69-1tc

**HOUSE FOR RENT**—Modern three rooms. See Robinson Upholstery 308 West Fourth St. 68-1tc

Tuberculosis is not inherited. If it seems to run in families, it is because one person passes on the disease to others.

Climate is not important in the treatment of tuberculosis. The most important factor in treatment is rest, which should be under medical supervision.



**LIGHTING—SET—FIRE**—A 10,000-barrel oil storage tank blazes furiously at the Danahoe Refinery, about a quarter mile north of Pettus, Texas. The burned-out remains of another tank, can be seen just below the blazing tank. Blazing oil from the crumbling tanks for a time endangered the entire refinery and the town of Pettus, but bulldozers built a protective dirt wall that contained the fire. The fire caused about \$300,000 damage. (AP Wirephoto)

**Just Aridin'—**

(Continued from Page 1)

Oilton is ablowin' and agoin'! Must be so because Dewey Dennis, deputy sheriff, told us all about it.

The town went and got lit up . . . new lights all around the square . . . more lights down the street that leads to the highway . . . and a whole flock of lights on the highway.

The city fathers blew the lid off for seven miles of new streets; Rex Kee of Wichita Falls, started hammering and banging around on a \$90,000 grain elevator, and the dirt has started to fly in the building of a hard surface road from Oilton to Hart Camp.

And here's something more important than gold and silver and treasure, immense: The town has got a winning football team.

Further up the road in a westerly direction, activity is immense at Springlake.

Must be true because a preacher told us all about it. The preacher referred to is the Rev. C. T. Jordan, pastor of the Springlake Baptist Church.

Conspicuous in the Springlake progress report given by Brother Jordan is the fact that natural gas mains are being laid throughout the city. Rev. Mr. Jordan did not know the number of meters which will be installed. How could you expect him to know everything? Any man who can teach school, preach, marry folks, and bury the dead, is just too gosh alflired busy to go around counting gas meters.

**JUST DRIVE UP and ask for your Favorite Brand of MOTOR OIL.**

**WE HAVE ALL KINDS**

**DENNIS JONES TIRE STORE**

Highway 84 and 51

PHONE 111



**JUST RECEIVED**  
—a large shipment of  
**ROSEVILLE POTTERY**  
Featuring the New Pattern  
**the SILHOUETTE**

Also other leading patterns . . . GARDENIA, APPLE BLOSSOM, MING TREE, and FLORANE.

A STORE OVERFLOWING WITH NICE CHRISTMAS GIFTS

**RAY'S BUTANE**

PHONE 71

332 Phelps Ave.

Littlefield

**Use Our Layaway Plan**

A Small Deposit Will Hold Any Article Until Christmas



**Used Car—**

(Continued from Page 1)

Dave Karlen, late-model dealer said he may be able to survive the low credit rate.

"I own my own lot, and finance many of my sales. But most Texas dealers have to pay high rent and many of them have to floor-board their cars (floor-board in the used car business means to borrow money to buy a car).

"Sometimes the interest runs pretty high. The dealer has got to move the car or have it eaten up by interest," Karlen explained.

"I used to wholesale a lot of used cars out in the state, but that phase of my business is gone too. I can't find the cars to sell."

**Amherst—**

(Continued from Page 1)

In Phoenix, officials of the state

hospital for the insane said Sharp, the institution's deportation officer, and Mrs. Sharp were taking five former patients to other states.

Mr. Adkinson for the past several years had been farming three miles northwest of Amherst.

He is survived by his wife, and three daughters, Margaret Juanita, 15, Donna Faye, 12, and Judith Ann, 5.

**Combine—**

(Continued from Page 1)

employment offices in West Texas citing the immediate need of combines if Lamb county grain was to be saved from the threatening winds.

On the basis of estimates of an average yield of 1800 pounds to the acre, the 240,000-acre Lamb county grain sorghum crop should total around 432 million pounds.

**Churches—**

(Continued from Page 1)

Littlefield stores, in reception of some food and drug stores, will close the retail trade centers of the Littlefield Chamber of Commerce.

All banks, schools and office will be closed, and field schools closing the afternoon until the following day.

Schools, banks and offices and most stores and communities in the area closed in observance of the day.

The Littlefield County be the scene of a dance and their guests night.

For Best Results Use Classifieds.

SEE . . .

**CICERO SMITH LUMBER**

FOR ALL KINDS OF

**BUILDING MATERIAL**

JUST UNLOADED A CAR OF

**TEXACO COMPOSITION SHINGLES**

(All Colors)

AND OTHER ROOFING PRODUCTS

LET US FIGURE YOUR COMPLETE HOUSE BUILT WE CAN HELP YOU GET THAT REPAIR LOAN

**CICERO SMITH COMPANY**

LITTLEFIELD

301 XIT DRIVE

TEXAS

**BROWN & MILLER**

Choose **TEXACO PRODUCTS**

For Their New and Modern

**SERVICE STATION**

NINTH AND LFD DRIVE

**FIRE CHIEF GASOLINE HAVOLINE MOTOR OIL**



**YOU ALL KNOW**

**"SKIPPER" SMITH**

SKIPPER says, "FILL'ER UP WITH TEXACO" out at the new BROWN and MILLER MOTOR CO.

Congratulations Brown & Miller, and you "SKIPPER" SMITH. We believe your success with Texaco is assured!

**JACK CHRISTIAN, Consignee**  
The—  
**TEXAS COMPANY**

**MUTT AND JEFF**

By Bud Fisher



# New Formula Offers Weapon Successful War on Rats

of increased rat population in Lamb County and of increased infestations in areas was issued Friday, Eaton, county agricultural agent, said.

The new formula was developed by the Wisconsin Agricultural Experiment Station and is named "Warfarin". It is described as the most effective and safe rat and mouse poison yet developed.

Rodents Guessing agency can be mixed with ground grain, chick feed, and requires about 10 days to build up a

concentration in the rodents that produces internal hemorrhage and death.

The fact that it requires several days to produce death in rodents makes it more effective in wiping out rat populations because it does not alarm the others or let them discover how the poison is being administered, Mr. Eaton said.

Also, it is less dangerous to children, domestic animals or domestic fowls as one sampling of the poisoned bait will not build up a sufficient concentration to cause any great harm.

To be effective, the bait must be kept out, preferably in the runs, over a period of time.

### Rats On Increase

Mr. Eaton said one-fourth pound of "Warfarin" in its pure, undiluted state would make 16 pounds of rodent bait. However, he said, lit-

erature on the formula has been sent out to all rodenticide dealers over the country and commercial baits containing it probably would be available at almost any dealer's soon.

The threat of possible infestation in Lamb County was seen in a bulletin by the United States Fish and Wildlife Service cautioning that rat populations were building up in this area.

The warning was based on a recent survey in Lubbock County which showed a marked increase. Plagues of rats have been reported recently in South Texas.

### Exact Big Toll

The necessity for controlling rats both on the farm and in towns is highly important both from economic and health standpoints, Mr. Eaton said.

"Rats over the United States eat or destroy as much foodstuff as 200,000 produce," he said. "They are the greatest destroyers of property and the worst carriers of disease known to man. They form the greatest potential danger to the health and safety of the human race that exists."

"The deadly typhus fever is almost exclusively carried by rats, and bubonic plague is carried by fleas that are found almost exclusively on rats."

### Bites Cause Fever

"Well's disease in rats causes so-called rat-bite fever in humans when bitten."

"It is important that everyone do everything he can to eliminate as many of these dangerous rodents as possible."

"The new formula, 'Warfarin,' offers man a new and effective weapon against these destroyers. Both farmers and city dwellers in Lamb County should employ it now before the rat populations grow larger."

The tuberculosis death rate of white men is more than twice as high as that of white women.

Milk furnishes vitamin A and riboflavin, one of the B vitamins. Puppetry is one of the oldest drama forms.

For Best Results Use the Leader Classifieds.

# Loboes Victory Gives Team Edge For 4A District Title

The Lovelland Loboes appeared the probable choice as District 4A representatives in the state football championship playoffs as a result of their top-heavy 52-0 victory Friday night over Tahoka.

Although the Lovelland victory resulted in a tie for the conference championship with Littlefield, each with only one conference defeat, the fact the Loboes defeated the Wildcats, 26-14, the week before was expected to weigh heavily in the selection of the district's representative in the playoffs.

The superintendents of the district were meeting in Lubbock Saturday to decide which team should be designated as district champions, but no announcement had been made at press time.

Three courses were open to the superintendents. They could vote to let the team that defeated the other tied leader represent the district (in this instance, Lovelland), they could designate the team they think best qualified to represent the district or they could permit representatives of the two teams to flip a coin.

# Sudan Wins, Goes In Tie For Title

Sudan scored an upset victory over Olton Friday night to enter a three-way tie with the losers and Dimmitt for the District 3-B championship. The score was 19-

Unless the last alternative was resorted to it was believed as the meeting opened that Lovelland had the better chance of being selected.

The Loboes started their touchdown parade early and scored three touchdowns to lead at the half, 20 to 0.

to 12. Each of the three teams in the championship tie lost only one game in conference play—Olton to Sudan, Sudan to Dimmitt, and Dimmitt to Olton.

League superintendents were expected to designate a champion from among the three.

Christmas Seal funds finance tuberculosis control programs conducted by 3,000 voluntary tuberculosis associations.

The first Christmas Seal Sale to fight tuberculosis was conducted in Denmark in 1904 and was inspired by Einar Holboell, a postal clerk.

BEST ...



YET ...!

WE INVITE you to celebrate your family Thanksgiving dinner here.

DELICIOUS DINNERS With All the Trimmings

HAY'S COFFEE SHOP

# 329 YEARS of AMERICAN THANKSGIVING

There's something good about knowing, when you sit down to your holiday dinner, that you're taking part in the oldest truly American act of faith—the humble offering of thanks to God for His blessings on us all.

And it's good to think that now, 329 years after the First Thanksgiving, we Americans can still give thanks in a land where our faiths and our freedoms stand as firm as Plymouth Rock!

Let's never lose Thanksgiving!

Let's make it our job—now, today—to preserve the good life for our children's children, as our fathers have kept it for us. That's not so difficult. All it requires, really, is that each of us shall make himself a strong, stable, economically sound citizen—with the financial security for ourselves and our families that gives us a stake in our way of life.

This Bank Will Welcome the Opportunity to Assist and Serve You

THE FIRST NATIONAL BANK

Littlefield, Texas

"Member Federal Deposit Insurance Corporation"

## Firestone TOYLAND NOW OPEN

**Toni DOLLS**  
The Only Doll with Magic Nylon Hair That You Can Shampoo and Play Wave  
\$1.95

## SPECIAL PURCHASE

**PLASTIC TOY GAS STATION**  
Complete with Gas Pumps Lube and Wash Racks  
The Perfect Gift for that Young Motorist!  
Three Plastic Cars and Towing Truck Included.  
Don't Miss this Big Value!

# 47¢

LIMITED QUANTITIES GET HERE EARLY!

**Excel 16mm PROJECTOR**  
\$15.95  
Shows all standard 16mm film. All mechanism fully enclosed. 200-foot reel.

**DOLL CARRIAGE** 775  
The Pride of "Little Mothers" ... Has Rubber Tires too!

**The Rage of Young America "Curley Coos" DOLLS**  
Boy or Girl 24.95 EACH  
30 inches  
Big As a 3-Year Old Child ... They Coo, Cry and Sob! Magic Skin Bodies  
Small Down Payment Holds It ... or Buy it on Our Budget Plan

**\$1.00 HOLDS IT ON LAYAWAY**

**Famous LIONEL UNION PACIFIC DIESEL**  
4750 6-UNIT FREIGHT WITH HORN  
There's a Twin Diesel Engine, Stock Car, Oil Car, Coal Hopper, Caboose, Transformer, Track, etc.

**No. 8 CONSTRUCTIONER SET**  
\$9.50  
Builds Ferris Wheels, Chair-a-Planes, many other big models. Motor has forward, neutral and reverse action.

**A "Structo" Toy Hit**

**Mechanical DUMP TRUCK**  
\$3.29

**Shop Early ... Use Our Lay-Away Plan**  
Small Down Payment Holds Any Item ... Pay for it on Our Easy Pay Plan

**A Real Thriller for a Boy!**

**COMPLETE TOOL CHEST**  
\$5.29  
Twenty-one pieces! Handsome steel chest, complete set of quality-made tools, "Things to Make" Manual.

**'TOMIC ROCKET**  
3.19  
Streaks Across the Floor ... Sparks Fly ... Roars Like a Rocket. 15 Inches Long

**STREET SWEEPER** 2.98  
A Real Scale Model! Brooms Rotate as It Goes Across Floor!

**TUMBLING BEAR** 6.95  
Wind Him Up and He Somersaults Across the Floor. He's 13 inches Tall

**Baby Grand PIANO** 4.98  
Actually Plays Sharps and Flats ... Has 25 Keys ... Music Book Included

HUNDREDS OF GIFT ITEMS FOR EVERY MEMBER OF THE FAMILY!

HAUK & HOFACKET  
**Firestone**  
STORE

PHONE 68

LITTLEFIELD

# DELICIOUS FOOD-GOOD SERVICE - FAIR PRICES STARR DRIVE-IN

East On Highway 84  
LITTLEFIELD  
WE SERVE CLUB  
and PARTIES  
PHONE 204-J

## SANTA PLANS LITTLEFIELD VISIT

Littlefield will have a distinguished visitor beloved by all children December 1. That is the day the strings of colored Christmas lights will be turned on in the downtown district.

More important to the kiddies of Lamb county and the Littlefield trade area, however, is the fact that on that day Santa Claus is coming to town.

Bob Crowell, manager of the Littlefield Chamber of Commerce, said Wednesday the Littlefield organization had made special arrangements with the jolly old saint to be in Littlefield and greet all the children of this area December 1.

The jovial Christmas saint not only will want all the boys and girls to tell him what they would like for Christmas but he'll also want to know if they are good little boys and girls and deserve the nice things they would like for him to leave them Christmas Eve.

Old Santa also suggested the children and their parents visit the Littlefield stores before he arrives here in order that they may have a better idea of the things they wish to put on their lists.

The friend of the kiddies told Mr. Crowell in a radio-telephone conversation from the North Pole just this Wednesday that he had heard the Littlefield merchants had exceptionally fine stocks of Christmas gifts which the children and their parents could look over for ideas in compiling their Christmas lists.

The Chamber of Commerce manager verified the report on the fine Christmas gift stocks on the merchants' shelves here and promised he would get that information to all the boys and girls of this area.

Santa told Mr. Crowell he would call him at a later date and let him know more details regarding to his visit here December 1.

## First Baptist to Have a Special Thanks Service

The Ministerial Association has planned a Thanksgiving Service for everyone to be held at the First Baptist Church Thursday morning at 8 o'clock.

Rev. W. E. Peterson, pastor of the First Methodist Church, Plainview, will be the speaker.

Rev. Peterson is an excellent speaker and will bring a good message.

Bro. Connell Taylor will be in charge of the music.

## Sgt. Donald Harper In Service 3 Years Re-Enlisted Recently

Sgt. Donald Harper is visiting his parents, Mr. and Mrs. W. G. Harper of 809 East 5th Street.

Sgt. Harper is a senior gunner on a B-59 Superfort, and is stationed at Davis Monthan Airforce base, Tucson, Ariz.

He was graduated from the airforce gunnery school at Denver, Colo., in early 1949. He had just returned to Tucson from maneuvers in Goose Bay, Labrador. He also spent seven months in England and Germany.

He has been in the service since September, 1947. Sgt. Harper has been on furlough

since October 20, and has been visiting friends at Rochester, N. Y. He has been here since Monday of last week.

He recently re-enlisted for three more years.

## Attends Funeral At Hollis, Okla.

Mrs. Ernest Brock of Littlefield, accompanied by Mrs. W. T. Holder, Mr. and Mrs. J. L. Pate and Mrs. L. M. Hart of Lubbock attended the funeral of Mrs. Ernest Brock's aunt, Mrs. Vada Parks, 58, at Hollis, Okla., Tuesday of last week.

The remains of Mrs. Parks,

## OIL LEASES WANTED

On City Lots in Littlefield and on Farms.

QUICK ACTION COME AND SEE US!

Hamp McCary AND SON

Office Across Street in Front of First National Bank - Littlefield Our New Phone No. 30

## First Baptist Church To Dedicate New Building Dec. 3

The First Baptist Church will soon make plans for dedicating the new educational building.

The church voted in conference recently to set the First Sunday in December which is Dec. 3 as the day to pay off all outstanding accounts. This calls for a goal of \$10,000.00. This goal is believed to be within the reach of the church, but challenges the very best cooperation.

## Muleshoe Motor Company Robbed

No trace had been reported of two armed men who took approximately \$50 from the cash register of City Motor company of Muleshoe late Wednesday night in an armed robbery.

Ed Meyer, station attendant, said the men, probably in their twenties and extremely nervous, ordered him to lie on the floor and keep quiet.

He said one, about 20 and with black curly hair gathered up the money while the other about 21 and 6 feet 2 inches tall, kept watch. Both men were barehead-

ed, whose home was in Houston, was taken to Hollis, where she formerly lived, where funeral services were held at the First Methodist Church, at 2 o'clock Tuesday afternoon, with burial in Fairmount Cemetery.

Mrs. Parks was Mrs. Brock's mother's brother's wife.

She died as a result of high blood pressure and a brain hemorrhage.

Mrs. Parks had made her home in Hollis for many years.

The men were believed to have left toward Lubbock in a 1948 Oldsmobile convertible. It was believed the car was blue.

The motor company is owned by Francis Gilbreath, T. L. Glasscock and Jim Burkhead.

Milk contains fats, carbohydrates and proteins in easily digestible forms.

Tuberculosis can — and does — kill at any age. It kills more than 1,500 children under 15 years of age a year, but the medium age of which it kills has advanced from 39 in 1939 to 46 in 1947. The medium age for cancer is 65 and for heart diseases, 70.

The first Christmas Seal Sale to fight tuberculosis was conducted in Denmark in 1904 and was inspired by Einar Holboell, a postal clerk.

Christmas Seals have been sold in the United States since 1907 to support anti-tuberculosis work.

At least one per cent of the money raised from the sale of Christmas Seals in 1950 will be used for medical and social research on tuberculosis.

An adaptation of the Cross of Lorraine, the Double-Barred Cross was adopted in 1902 as the international insignia of the campaign against tuberculosis.

## Safer Cough Relief

When new drugs or old fail to stop your cough or chest cold don't delay. Creomulsion contains only safe, helpful, proven ingredients and no narcotics to disturb nature's process. It goes right to the seat of the trouble to aid nature soothe and heal raw, tender, inflamed bronchial membranes. Guaranteed to please you or drugist refunds money. Creomulsion has stood the test of many millions of users.

## CREOMULSION

relieves Coughs, Chest Colds, Acute Bronchitis

The international emblem of the crusade against tuberculosis is the Double-Barred Cross.

Christmas Seal funds finance tuberculosis control programs conducted by 3,000 voluntary tuberculosis associations.

Christmas Seals are sold in 28 countries to support anti-tuberculosis campaigns.

Tuberculosis causes more deaths in the United States than all other infectious diseases combined.

Tuberculosis has taken the lives of approximately 4,500,000 persons during the 20th century.

Tuberculosis is a communicable disease, spread by persons who have the disease in active form.

**Asthma**  
Hay fever

Why suffer when something will help you? After your symptoms have been diagnosed as Asthma or Hay Fever you owe it to yourself to investigate.

**ASTHMA NEFRIN**

If you are a user of AsthmaNefrin, please bring in your nebulizer for free inspection and servicing.

## REESE DRUG

LITTLEFIELD  
Phone 167-J

Nutrition experts believe children should have a quart of milk a day. One of the world's factories is located in the

**Stop! PROTECT YOURSELF!**

**INSURANCE IS THE BEST RE-BUILDER**

... and the least costly! Compare our low fire insurance premiums with the high cost of starting over from scratch.

**CAN YOU AFFORD THE DIFFERENCE?**

**KEITHLEY and COMPANY**  
—INSURANCE—

Phone 62 Littlefield

AT YOUR SERVICE

• GAS • OIL • GREASE

Washing and Lubrication  
**Fritz Diersing**

200 Phelps Ave. and Highway 84—Phone 200-J

**Standard Equipment For Driving Safety**

Automobile insurance is as vital to your driving safety as are your brakes! Don't risk the tragic expense of an accident, a law suit — or the loss of your car through fire or theft — when it costs so little to be safe. Call Hilbun Insurance Agency today for that much needed coverage.

**HILBUN**  
INSURANCE AGENCY

Phelps Ave. & Fourth — Phone 125 — Littlefield

**YOU NEED INSURANCE!**  
if you own or drive a car

Now you can get ...

**THE FAMOUS Firestone**

**CHAMPION CURVED BAR TRACTOR TIRE** in either **OPEN CENTER** or **TRACTION CENTER** Design

SOME farmers prefer Open Center tires, while others demand Traction Center. Regardless of the type you prefer, Firestone has it. No one else offers you a choice, because Firestone alone provides both tread designs.

If it's Open Center design you want, see the sensational new Firestone Champion Open Center, Curved Bar Tractor Tire. Try it—for traction, for cleaning, for smoothness on the highway, for all around performance. You'll find it's way ahead of any open center tire ever made.

If it's the Traction Center Tire you want, there's only one—the patented Firestone Champion. This tire has long been recognized by thousands of farmers the country over as the top performer for year-around work. A test on your own farm will show you.

So again we say, regardless of your preference in tractor tire tread design, see us.

**HAUK & HOFACKET**  
**Firestone**  
STORE

PHONE 68 LITTLEFIELD

SEE—...

**G & C AUTO SUPPLY**

202 LFD Drive  
Phone 206-M—Littlefield

FOR—

- Auto-Life Batteries
- Perfect Circle Piston Rings
- Bonded Brake Shoes
- A. C. Products
- Wagner Brake Parts
- Gates Rubber Products
- Plomb Tools
- Marvel Mystery Oil

FOR ALL YOUR HARDWARE AND FURNITURE NEEDS ...

**ECONOMY Hardware & Furniture**

"BRANDS YOU KNOW—AT PRICES YOU CAN AFFORD"

3 DOORS SOUTH ON ONSTEAD FURNITURE

## Cross Nursing Course to Open Monday, November 27

A cross nursing course in home nursing will be open on Monday, Nov. 27, from 7 to 9 p. m. The course will be taught by Miller who has just completed a 30-hour course, as a representative of the Tuesday Red Cross nursing course in Amherst. The course is free and open to the public. Any woman interested in calling Minyard's attention to this course should contact Mrs. J. W. Miller.

## LOANS

Loans On Farm And City Property

## Automobile Financing

## Winston Insurance Agency

Phones 233 and 255—LITTLEFIELD, TEXAS

## BUCK ROSS

Give You An Estimate

- Terracing
- Bench Levelling
- Tree Pulling
- Elevated Ditches
- Slush Pits
- Silos Dug or Filled
- Caliche Drives

## BUCK ROSS

PHONE 363-W

LITTLEFIELD

## YOU CAN WIN

MORE THAN

\$1,000<sup>00</sup>

IN PRIZES AND CASH

## CAN YOU SING? DANCE? PLAY A MUSICAL INSTRUMENT?

Your talent can win you over a 1,000 Dollars worth of prizes—PLUS a trip to Dallas to appear on the BIG JAMBOREE! Make an appointment for your audition TODAY with the...

## L-F-D JAMBOREE

Mail this Coupon today to: P. O. Box 592—L-F-D Jamboree—Littlefield

I would like a talent audition for the L-F-D JAMBOREE. My talent is singing, dancing, playing a \_\_\_\_\_.

Name is \_\_\_\_\_ Sex \_\_\_\_\_ Post Office \_\_\_\_\_ State \_\_\_\_\_

## Colleges Must Meet Challenge, Students Told

HOUSTON.—"Christianity must challenge campus paganism," Dr. Blake Smith, Austin, told 3,000 Baptist students here for their thirty-first annual convention.

Representing more than 50 college Baptist Student Unions and several high school groups all over the state, the young people gathered in the First Baptist church here.

The convention is sponsored each year by the department of student work of the Baptist General Convention of Texas. W. F. Howard, Dallas, is state director of student activities.

The students here heard denominational leaders from Texas and three other states. Addresses, panel discussions and conference periods carry out the theme of the convention, "That All May Know Christ."

For the second year, sacred music was featured at the convention. Student choirs from six Texas colleges and universities sang for the meetings, which began Friday night, Nov. 17, and close Sunday noon.

Among speakers for the program were Robert S. Denny, Nashville, Tenn., associate secretary of student work for the Southern Baptist convention; Dr. Joseph M. Dawson, Baptist public relations director, Washington, D. C.; Dr. J. Howard Williams, Texas Baptist executive secretary, Dallas.

Dr. Wallace Bassett, pastor, Cliff Temple Baptist church, Dallas; Howard E. Butt, Jr., layman, Corpus Christi; Dr. Samuel E. Maddox, personnel secretary, Southern Baptist convention, Richmond, Va.; and Dr. W. Boyd Hunt, pastor of the First Baptist Church, Houston.

Of the 59 most serious infectious and parasitic diseases, deaths from tuberculosis alone number more than all the others combined.

**W. O. Jenkins and Y. B. Thompson**  
the new owners of the...  
**Lamb Wrecking Company**  
Will Appreciate Your Business  
We buy and sell and pay highest prices for...  
● Used Cars  
● Wrecked Cars  
● Old Iron  
● Metals  
● Radiators  
● Batteries



Don't go around worrying about those problems of protection. Let us handle them. After all, that's our business.

We will be glad to give you our experienced advice without obligation... and provide you with the very best in insurance coverage.

Call On Us Today!

**Mangum - Cheshier Company**  
Phone: 54  
First National Bank Bldg.  
Littlefield

**RAILROAD PLANNED**  
DJIBOUTI, French Somaliland. (AP)—A committee of French technicians is expected to leave here soon to survey a road-bed for an extension of the Franco-Ethiopian Railway Co. The new extension will cover approximately 310 kilometres and will connect Modjo—now on the 785-kilometre Djibouti to Addis Ababa line—to Lake Margaret to the south.

**BRITISH EXPORT MORE**  
LONDON. (AP)—British exports are averaging 17 per cent more this year than the 1949 monthly average. Monthly imports are also up 12 per cent on the 1949 averages, the Board of Trade reported.

**BIGGEST SHAVING BARGAIN EVER!**  
Buy A Gillette  
SUPER-SPEED ONE-PIECE RAZOR and 10-Blade Gillette Dispenser \$1.00 \$1.50 VALUE...

**THEY PULL BETTER**

**THEY LAST LONGER**

**THEY COST LESS UNDER OUR LIBERAL TRADE-IN POLICY**

**Firestone**  
Curved Bar Open Center TRACTOR TIRES

Come In GET OUR FIGURES ON YOUR SIZE

**Hauk & Hofacket**  
**Firestone**  
STORE  
Phone 68 Littlefield

**PEOPLE YOU KNOW**  
G. M. Shaw left Saturday night for Dallas to attend the shoe market. He returned to Littlefield Tuesday.  
Mrs. Emma Fartheroe of Carnegie, Okla., sister of J. E. Chisholm, and Miss Rosalee Day of Watonga and Mrs. Joe Tillerson of Duncan, Okla., nieces, arrived Wednesday of last week, spending until Saturday in the home of Mr. and Mrs. J. E. Chisholm.

**LAMB COUNTY LEADER, SUNDAY, NOVEMBER 19, 1950**  
Try the Classifieds for Results

**EVINS CLEANERS**  
—AND—  
**TAILOR SHOP**  
LITTLEFIELD, TEXAS  
EXPERT CLEANING AND PRESSING  
MEN'S AND LADIES' SUITS, COATS AND SLACKS TAILORED TO ORDER  
316 Phelps Phone: 250

make it a gala **THANKSGIVING**

Bring the Family in for Our...  
*Special!*

**THANKSGIVING DINNER... complete with**

- Cream of Chicken Soup
- Oyster Dressing
- Giblet Gravy
- Cranberry Sauce

**Delano Cafe**

For More Enjoyment of Football Games...  
**KNOW YOUR SIGNALS**  
FIRST DOWN

**Palace**  
Bargain Matinees Daily 1:30 Till 4 P. M.  
MONDAY THROUGH FRIDAY

**MONDAY** Nov. 20  
Stephen McNally  
Alexis Smith  
Howard da Silva  
—in—  
**"Wyoming Mail"**  
**TUESDAY**  
**WEDNESDAY**  
**THURSDAY**  
Nov. 21, 22 and 23  
Betty Grable  
Dan Dailey  
—in—  
**"My Blue Heaven"**

**Rio**  
**MONDAY**  
**TUESDAY**  
Nov. 20 and 21  
Jack Carson  
Lola Albright  
Jean Wallace  
—in—  
**"Good Humor Man"**  
**WEDNESDAY**  
**THURSDAY**  
**FRIDAY**  
Nov. 22, 23 and 24  
Gary Cooper  
Patricia Neal  
Kent Smith  
—in—  
**"The Fountain Head"**

**LFD**  
DRIVE-IN-THEATRE  
**MONDAY**  
November 20  
Linda Darnell  
Richard Widmark  
Veronica Lake  
—in—  
**"Slattery's Hurricane"**  
**TUESDAY**  
November 21  
Dick Foran  
Anne Gwynne  
—in—  
**"Mob Town"**  
**WEDNESDAY**  
**THURSDAY**  
November 22 and 23  
Fred MacMurray  
Betty Lynn  
—in—  
**"Father Was a Fullback"**

You Can't Ignore **FACTS!**

and... you can't ignore the fact that 100% Bradford Pennsylvania Motor Oil is the best motor lubricant you can buy for your car!

When You Buy **VEEDOL** You Get **100% BRADFORD PENNSYLVANIA (AT ITS FINEST)**  
**VEEDOL IMPROVES PERFORMANCE 3 WAYS**  
1. KEEPS YOUR MOTOR CLEANER... SMOOTHER-RUNNING  
2. PROTECTS AGAINST BEARING CORROSION  
3. GIVES YOUR MOTOR THE FAMED "FILM OF PROTECTION"

**VEEDOL MOTOR OIL**  
THE FILM OF PROTECTION  
PREMIUM QUALITY 100% PENNSYLVANIA

**Dennis Jones**  
**TIRE STORE & SERVICE STATION**  
On the Curve at Highways 51 and 84  
LITTLEFIELD, TEXAS PHONE 111

# Mr. and Mrs. Pat Boone Are Feted By O. E. S. Organization

## Miss Verna Lichte Honored At Lovely Bridal Shower Thursday

Miss Verna Lichte, bride-elect of Ralph Carter, was the honoree at a lovely miscellaneous bridal shower in the parlor of the First Baptist Church Thursday evening from 7 to 9 o'clock.

The refreshment table was laid with white lace cloth with an unique centerpiece, which represented a farmer and his wife in truck, stopped at a parking meter on the road, for which they were holding a ticket.

**Unique Theme Featured**  
This theme was carried out due to the fact that the bride-to-be is employed in the office of the City Secretary and Manager.

**Miss Ross at Register**  
Miss Thetogene Ross presided at the register and registered the guests.

Miss Joyce Carr poured spiced tea, while Miss Laverne Will served.

**Misses Hemphill, McCown Play**  
Misses Rosa Lee Hemphill and Sue McCown furnished the music.

The honoree was the recipient of a large array of beautiful gifts, including linens, bedding, crystal ware, chinaware and silverware.

**About Sixty Guests Attended**  
Hostesses of the occasion were: Mesdames Maude Street, J. J. Renfro, U. E. Kelley, L. B. Davis, J. M. Griffin, Rex Matthews, C. C. Solesbee, O. C. Fox, E. J. Packwood, George Ross, G. G. Wilson, Tom Matthews, A. S. Bolton, Ha Sewell, and L. L. Massengill, and Miss Joyce Carr.

Christmas Seal funds help support X-ray surveys among apparently healthy people to find tuberculosis in that early stage before there are outward signs.

Approximately 100,000 persons who are free from tuberculosis today will have the disease within a year.

## Church of God Youth Rally Opens Wednesday

A West Texas Youth Rally beginning Wednesday night and continuing through Thursday will be conducted at the Littlefield Church of God this week.

The rally, which will be attended by delegates from fourteen Church of God congregations in West Texas, will start Wednesday night with the Rev. B. L. Wright of Amarillo as the principal speaker.

The Thursday rally, Thanksgiving Day, will begin at 8:15 a. m. and continue through until 3:30 in the afternoon. A Thanksgiving dinner will be served at noon.

The public is cordially invited to attend any or all of the sessions while the rally is in progress, the Rev. T. N. Minix, pastor of the Littlefield Church, said Monday.

Delegations to the rally are expected from Sweetwater, Abilene, Cisco, Eastland, Ira, Big Spring, Odessa, Amarillo, San Angelo, Ballinger, Coleman, Gorman and other communities in West Texas.



E. Hanneman, burgomeister of Harlingen, Holland, smiles on his arrival at International Airport, New York from Amsterdam. He is enroute to Harlingen, Texas, to be guest at the dedication of a new park to the Texas city's founder, Lon C. Hill. (AP Wirephoto)



## News of Women

LAMB COUNTY LEADER, SUNDAY, NOVEMBER 19, 1950

In the receiving line (above) at the OES reception for Mr. and Mrs. Pat Boone at the Littlefield Country Club Tuesday night are, from left to right, Mrs. W. D. T. Storey, Mrs. Boone, Mrs. Lillian Bernard of Decatur, past worthy grand matron for Texas; Mr. Boone, Mrs. Cheba DeWess, of Fort Worth, past worthy grand matron; J. E. Wall, junior past grand patron for New Mexico; Mrs. Mildred Garlitz, Fort Worth, grand conductress, and Mrs. Alice Mae Stewart, vice-chairman of the board of grand trustees. At left is Mrs. Storey as she appeared as narrator for the program and at right is Mrs. Marye Sales, worthy grand matron of the Littlefield OES chapter, with the two tea table hostesses in the background, Mrs. Cassie Luce (left) and Mrs. Ruth Little.



At least one per cent of the money raised from the sale of Christmas Seals in 1950 will be used for medical and social research on tuberculosis.

An adaptation of the Cross of Lorraine, the Double-Barred Cross was adopted in 1902 as the international insignia of the campaign against tuberculosis.

Tuberculosis has taken the lives of approximately 4,500,000 persons during the 20th century.

## More Than 300 Attend Social Function

The reception room of the Country club was filled to capacity Tuesday evening when members of the order of Eastern Star came from various points over the state of Texas to attend a reception given in compliment to Pat H. Boone, past worthy grand patron and member of the jurisprudence committee and Mrs. Boone, associate grand matron, of the Grand chapter, of Texas.

Over 300 guests registered. A "Floretta" presented "This is Your Life" was presented from an improvised garden using the club dining room. Mrs. W. D. T. Storey was narrator and gave the life history of Mrs. Boone, each period being enacted in pantomime by artists character, appropriately attired, from infancy to the present day.

**Receiving Line Formed**  
Following the program a receiving line was formed headed by Mrs. Marye Sales, worthy matron of the local chapter with Mr. and Mrs. Boone next in line along with Grand officers.

**Mrs. Little, Mrs. Luce Pours**  
From the beautifully appointed tea table Mrs. W. B. Little and Mrs. E. B. Luce poured, assisted by Mrs. Acree Barton and Mrs. Elton Houk.

The following grand officers were present:  
Mrs. Pat Boone, Associate Grand

Matron; Mr. Boone, Past Grand Patron and Chairman of Jurisprudence Committee; Mrs. Mildred Garlitz, Grand Conductress; Mrs. Lillian Bernard, Past Grand Matron; Mrs. Cheba DeWess, Past Grand Matron; Mrs. Alice Mae Stewart, Vice-Chairman of Board of Directors of Grand Chapter Benevolence; Mrs. Pauline Baker, Member of Credentials Committee; Mrs. Esther Bates, Deputy Grand Matron, Dist. 1, Sect. 4; Mrs. Gladys Schoffit, Dist. Deputy Grand Matron; Mrs. J. Emby Wall, Jr., Past Grand Patron of New Mexico; Mrs. Theima Lee Huffman, Deputy Grand Matron, Dist. 3, Section 1.

Chapters represented were: Amarillo, Canyon, Fort Worth, Anton, Indian Creek, Meadow, Ropesville, Bovina, Dimmitte, Farwell, Earth, Claude, Sudan, Silverton, Idalou, O'Donnell, Morton, Lubbock, Crosbyton, Hale Center, Ralls, Muleshoe, Plainview, Olton, Big Spring, Lamesa, Floydada, Slaton, Brazoria, Levelland, Goldsmith, Panhandle, Elida, N. M., Roswell, Las Vegas, Hobbs, and Loco, Okla.

Puppet shows are believed to have been presented in China 1,000 years before Christ.

Early Hindus, Egyptians, Greeks and Romans had puppets.

The Limestone, Mo., base of the U. S. Air Force is less than two miles from the Canadian border.

## Mrs. Pat Boone to Attend Eastern Star International Meeting

Mrs. Pat Boone of Littlefield, associate Grand Matron of Texas, and Mrs. Lucille Dufner, Worthy Grand Matron, of San Antonio, as delegates, will attend the Centennial of the Writing of the Ritual of the General Grand Chapter, Order of Eastern Star, which will meet Friday, Saturday and Sunday, November 24, 25 and 26, at Washington, D. C.

**To Leave Thursday**  
Mrs. Boone will leave Lubbock by plane next Thursday for Dallas, where she will meet Mrs. Duf-

ner, and together they will travel by plane to Washington to attend this international meeting.

Mrs. Mable Harle of Port Arthur, Junior Past Worthy Grand Matron, will also attend as a delegate from Texas. She will be accompanied by Mrs. Olsey Shirley, also of Port Arthur, who will also attend the meeting.

**International Meeting**  
The Most Worthy Grand Matron, Mrs. Abbie Hanson, whose home is in Indiana, has called this conference at Washington, D. C. of the

Worthy Grand Matrons and the Associate Grand Matrons of every grand jurisdiction in the World. The sessions will be held in the Eastern Star Temple.

Following the international conference, Mrs. Boone and Mrs. Dufner will go to New York and visit a couple of days with Mrs. Mildred Harris, Past Worthy Grand Matron of Texas, but who has been living in New York. They will return to Texas November 29.



**SCHOOL DE SWEETHEART**  
Miss Freda Lindley, elected by vote of the Littlefield high school Distributive Education Club as "DE Sweetheart." She is a senior in the school and is employed part-time under the distributive education program by the J. C. Penney Co.



MISS SUE GLOVER



NADINE BUISENBER

**SUDAN SWEETHEART**  
These two Sudan high girls were honored by school in their selection as band and football sweetheart (left) and the band queen (right) and the band queen (left) and the band queen (right) were crowned at the Muleshoe game.

**Asthma Hay Fever**

Why suffer when something will help you? After your symptoms have been diagnosed as Asthma or Hay Fever you owe it to yourself to investigate.

**ASTHMA NEFRIN**

If you are a user of AsthmaNefrin, please bring in your nebulizer for free inspection and servicing.

**REESE DRUG**  
LITTLEFIELD  
Phone 167-J

**Stop! PROTECT YOURSELF!**

**INSURANCE IS THE BEST RE-BUILDER**

... and the least costly! Compare our low fire insurance premiums with the high cost of starting over from scratch.

**CAN YOU AFFORD THE DIFFERENCE?**

**KEITHLEY and COMPANY**  
—INSURANCE—

Phone 62 Littlefield

**Be Sure he thinks about YOU... every time he looks at his watch!**

**it's Sensational THE PERFECT KEEPSAKE**

**the BULOVA Photo WATCH**  
17 Jewels  
Only \$55.00

**PAY ONLY \$1.00 WEEKLY**

For a Gift That Will Last Shop

**FINDLEY'S JEWELRY**  
404 Phelps Ave.  
Littlefield

**ICE CREAM Is A Treat Any Time!**

Take Home A Carton ... of Wayne's Ice Cream from your Grocer's, Soda Fountain or Eating Place.

**Wayne's Ice Cream**